

## Migration Analysis for La Hipotecaria S.A Panama

### Personal Loans February 2011

An analysis of historical loan payment data was used to compile a migration analysis of delinquency by annual vintage. Delinquencies for each vintage were grouped into the following buckets; Current, 1-30, 31-60, 61-90, 91-120, 121-150, 151-180, and 180+. Results are provided in graphical and tabular form. The cutoff date is 2/28/2011.

## Personal Loans - La Hipotecaria Panama Migration Analysis (All Vintages)

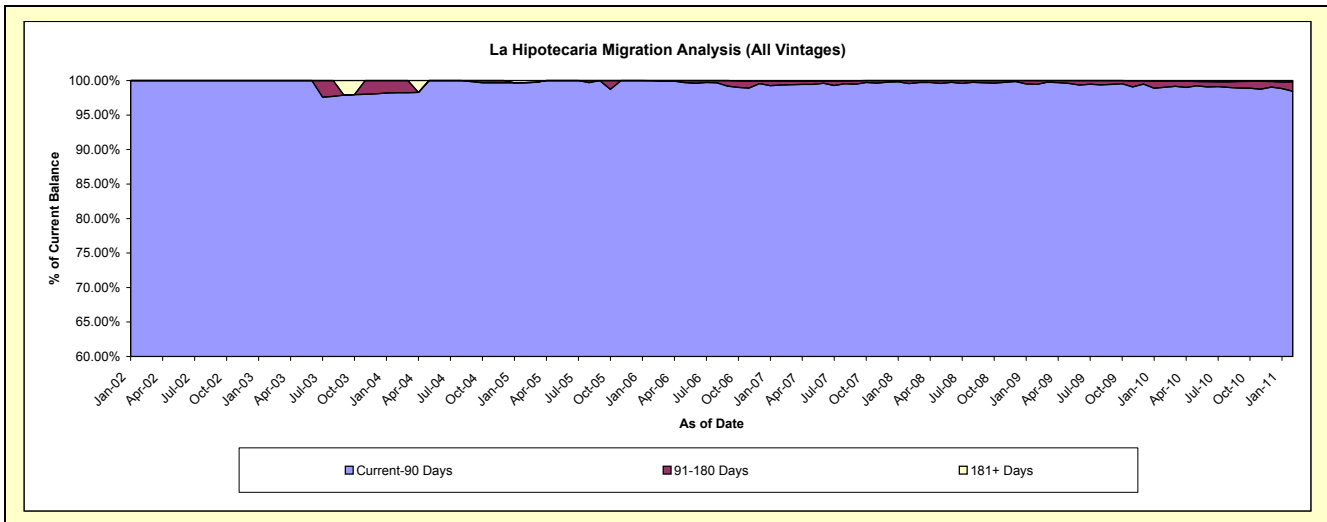
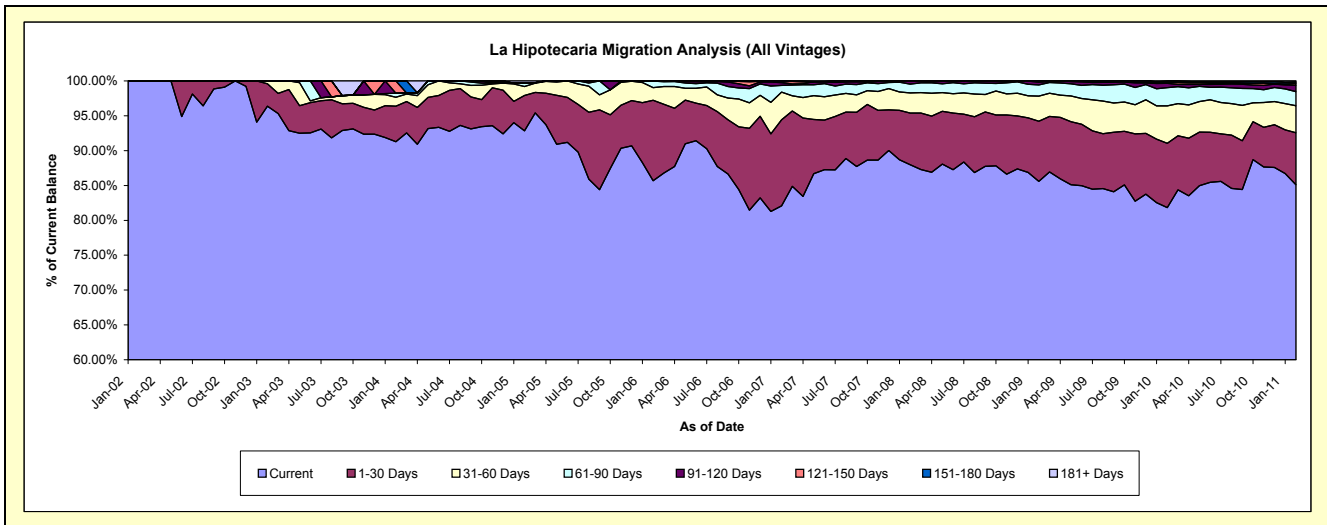
### Delinquency Status (\$ of Current Balance)

Data Cutoff: 2/28/2011

Current Portfolio Balance	2,547.62	117,008.15	251,707.42	320,759.39	3,908,849.03	11,052,212.27	19,370,029.50	25,665,705.50	23,961,858.83	22,266,671.03
	Feb-02	Feb-03	Feb-04	Feb-05	Feb-06	Feb-07	Feb-08	Feb-09	Feb-10	Feb-11
Current	2,547.62	112,777.60	229,754.57	297,823.00	3,348,914.75	9,070,818.47	17,038,788.27	21,968,139.36	19,608,080.87	18,948,901.39
1-30 Days	-	3,758.05	12,835.12	16,243.97	451,154.65	1,366,294.80	1,437,816.37	2,216,084.22	2,208,241.28	1,663,641.31
31-60 Days	-	472.50	3,230.10	4,109.46	70,926.02	436,383.84	558,414.61	919,634.28	1,287,888.42	861,099.31
61-90 Days	-	-	1,435.05	1,597.97	37,153.61	106,845.67	247,978.70	416,047.20	625,713.99	448,373.12
91-120 Days	-	-	-	-	700.00	43,719.36	82,510.65	97,583.24	150,004.45	202,133.04
121-150 Days	-	-	4,452.58	-	-	15,542.00	-	48,217.20	39,290.02	53,688.03
151-180 Days	-	-	-	-	-	6,674.56	4,520.90	-	23,783.17	46,477.52
181+ Days	-	-	-	984.99	-	5,933.57	-	-	18,856.63	42,357.31

### Delinquency Status (% of Current Balance)

Current Portfolio Balance	2,547.62	117,008.15	251,707.42	320,759.39	3,908,849.03	11,052,212.27	19,370,029.50	25,665,705.50	23,961,858.83	22,266,671.03
	Feb-02	Feb-03	Feb-04	Feb-05	Feb-06	Feb-07	Feb-08	Feb-09	Feb-10	Feb-11
Current	100.00%	96.38%	91.28%	92.85%	85.68%	82.07%	87.96%	85.59%	81.83%	85.10%
1-30 Days	0.00%	3.21%	5.10%	5.06%	11.54%	12.36%	7.42%	8.63%	9.22%	7.47%
31-60 Days	0.00%	0.40%	1.28%	1.28%	1.81%	3.95%	2.88%	3.58%	5.37%	3.87%
61-90 Days	0.00%	0.00%	0.57%	0.50%	0.95%	0.97%	1.28%	1.62%	2.61%	2.01%
91-120 Days	0.00%	0.00%	0.00%	0.00%	0.02%	0.40%	0.43%	0.38%	0.63%	0.91%
121-150 Days	0.00%	0.00%	1.77%	0.00%	0.00%	0.14%	0.00%	0.19%	0.16%	0.24%
151-180 Days	0.00%	0.00%	0.00%	0.00%	0.00%	0.06%	0.02%	0.00%	0.10%	0.21%
181+ Days	0.00%	0.00%	0.00%	0.31%	0.00%	0.05%	0.00%	0.00%	0.08%	0.19%
Current - 90 Days	100.00%	100.00%	98.23%	99.69%	99.98%	99.35%	99.55%	99.43%	99.03%	98.45%
91-180 Days	0.00%	0.00%	1.77%	0.00%	0.02%	0.60%	0.45%	0.57%	0.89%	1.36%



## Personal Loans - La Hipotecaria Panama Migration Analysis (2002 Vintage)

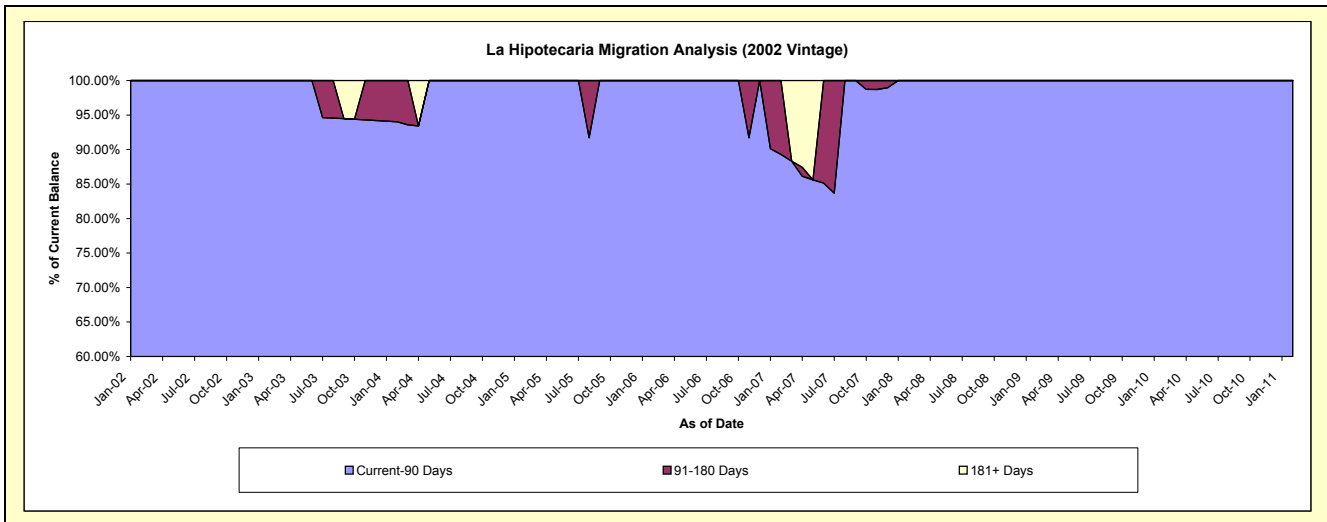
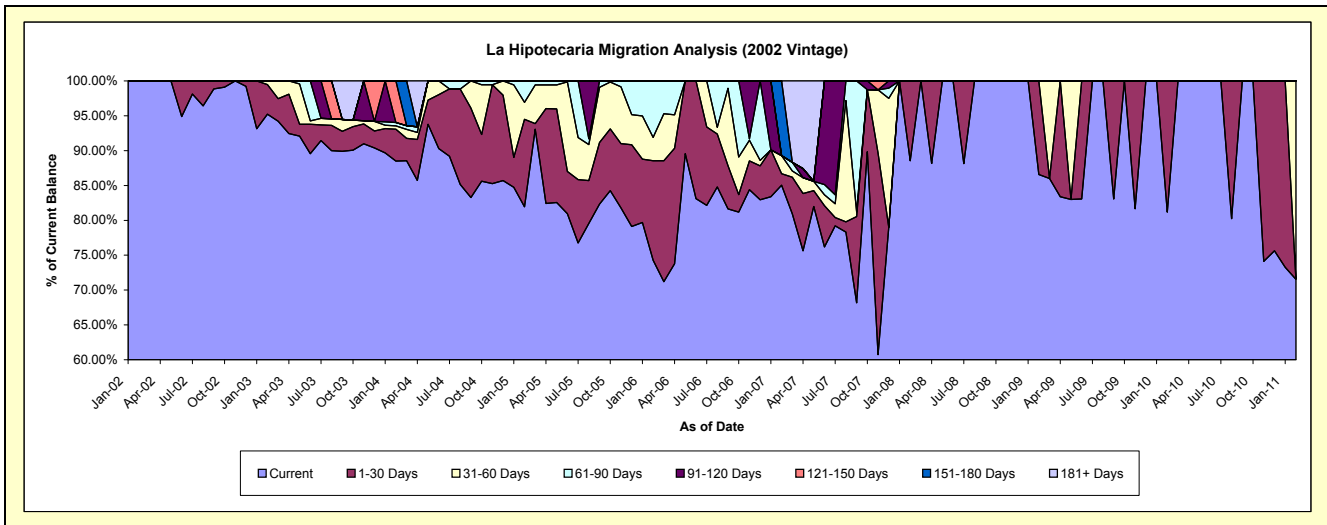
### Delinquency Status (\$ of Current Balance)

Data Cutoff: 2/28/2011

Current Portfolio Balance	2,547.62	88,605.25	74,558.16	52,085.27	26,692.50	10,772.74	4,541.36	2,467.54	1,416.11	799.19
	Feb-02	Feb-03	Feb-04	Feb-05	Feb-06	Feb-07	Feb-08	Feb-09	Feb-10	Feb-11
Current	2,547.62	84,374.70	65,988.49	42,673.19	19,827.76	9,160.88	4,021.17	2,136.51	1,149.69	571.80
1-30 Days	-	3,758.05	3,405.26	6,537.63	3,805.02	179.03	520.19	331.03	266.42	-
31-60 Days	-	472.50	354.10	1,276.48	900.02	277.93	-	-	-	227.39
61-90 Days	-	-	357.73	1,597.97	2,159.70	-	-	-	-	-
91-120 Days	-	-	-	-	-	-	-	-	-	-
121-150 Days	-	-	4,452.58	-	-	-	-	-	-	-
151-180 Days	-	-	-	-	-	1,154.90	-	-	-	-
181+ Days	-	-	-	-	-	-	-	-	-	-

### Delinquency Status (% of Current Balance)

Current Portfolio Balance	2,547.62	88,605.25	74,558.16	52,085.27	26,692.50	10,772.74	4,541.36	2,467.54	1,416.11	799.19
	Feb-02	Feb-03	Feb-04	Feb-05	Feb-06	Feb-07	Feb-08	Feb-09	Feb-10	Feb-11
Current	100.00%	95.23%	88.51%	81.93%	74.28%	85.04%	88.55%	86.58%	81.19%	71.55%
1-30 Days	0.00%	4.24%	4.57%	12.55%	14.26%	1.66%	11.45%	13.42%	18.81%	0.00%
31-60 Days	0.00%	0.53%	0.47%	2.45%	3.37%	2.58%	0.00%	0.00%	0.00%	28.45%
61-90 Days	0.00%	0.00%	0.48%	3.07%	8.09%	0.00%	0.00%	0.00%	0.00%	0.00%
91-120 Days	0.00%	0.00%	0.00%	0.00%	0.00%	0.00%	0.00%	0.00%	0.00%	0.00%
121-150 Days	0.00%	0.00%	5.97%	0.00%	0.00%	0.00%	0.00%	0.00%	0.00%	0.00%
151-180 Days	0.00%	0.00%	0.00%	0.00%	0.00%	10.72%	0.00%	0.00%	0.00%	0.00%
181+ Days	0.00%	0.00%	0.00%	0.00%	0.00%	0.00%	0.00%	0.00%	0.00%	0.00%
Current - 90 Days	100.00%	100.00%	94.03%	100.00%	100.00%	89.28%	100.00%	100.00%	100.00%	100.00%
91-180 Days	0.00%	0.00%	5.97%	0.00%	0.00%	10.72%	0.00%	0.00%	0.00%	0.00%



## Personal Loans - La Hipotecaria Panama Migration Analysis (2003 Vintage)

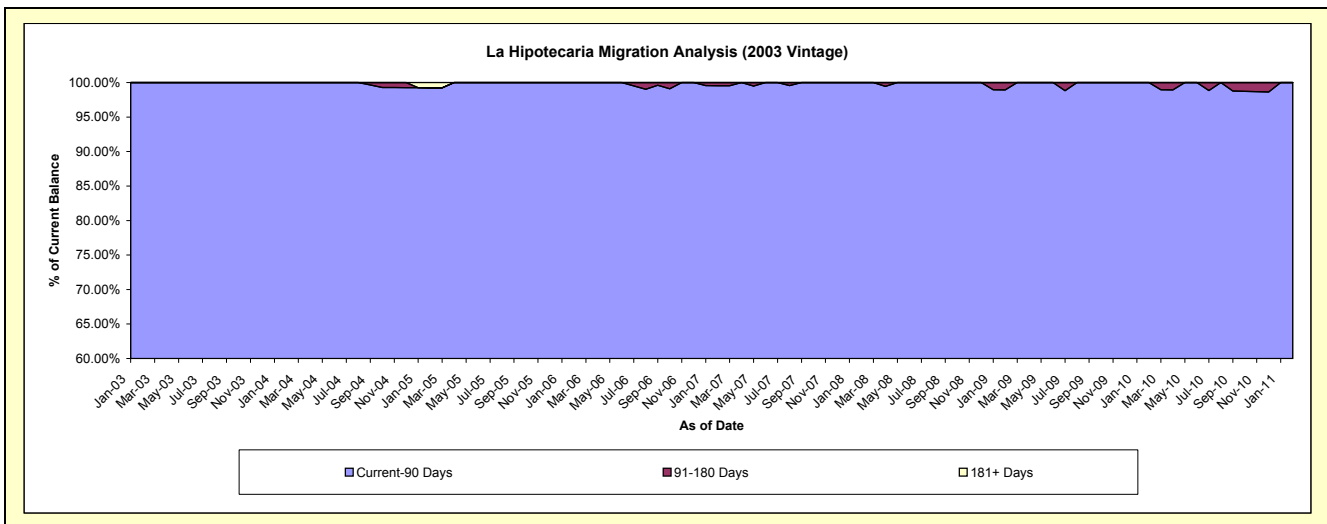
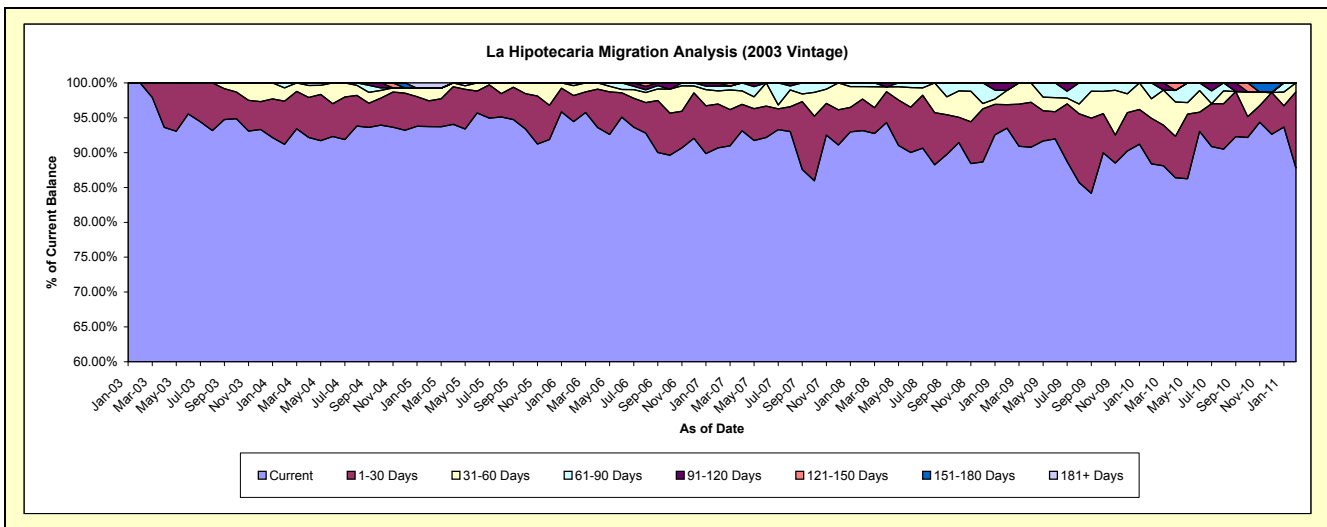
### Delinquency Status (\$ of Current Balance)

Data Cutoff: 2/28/2011

Current Portfolio Balance	-	28,402.90	151,692.34	130,697.32	104,313.74	77,999.22	54,004.61	37,160.42	24,380.68	14,502.13
	Feb-03	Feb-04	Feb-05	Feb-06	Feb-07	Feb-08	Feb-09	Feb-10	Feb-11	
Current	28,402.90	138,309.16	122,510.65	98,527.60	70,732.28	50,315.79	34,751.28	21,550.04	12,731.62	
1-30 Days	-	9,429.86	4,825.21	3,891.44	4,907.57	2,443.21	1,249.48	1,592.54	1,582.63	
31-60 Days	-	2,876.00	2,376.47	1,494.14	1,462.14	959.39	762.24	681.94	187.88	
61-90 Days	-	1,077.32	-	400.56	541.53	286.22	-	556.16	-	
91-120 Days	-	-	-	-	355.70	-	397.42	-	-	
121-150 Days	-	-	-	-	-	-	-	-	-	
151-180 Days	-	-	-	-	-	-	-	-	-	
181+ Days	-	-	984.99	-	-	-	-	-	-	

### Delinquency Status (% of Current Balance)

Current Portfolio Balance	-	28,402.90	151,692.34	130,697.32	104,313.74	77,999.22	54,004.61	37,160.42	24,380.68	14,502.13
	Feb-03	Feb-04	Feb-05	Feb-06	Feb-07	Feb-08	Feb-09	Feb-10	Feb-11	
Current	100.00%	91.18%	93.74%	94.45%	90.68%	93.17%	93.52%	88.39%	87.79%	
1-30 Days	0.00%	6.22%	3.69%	3.73%	6.29%	4.52%	3.36%	6.53%	10.91%	
31-60 Days	0.00%	1.90%	1.82%	1.43%	1.87%	1.78%	2.05%	2.80%	1.30%	
61-90 Days	0.00%	0.71%	0.00%	0.38%	0.69%	0.53%	0.00%	2.28%	0.00%	
91-120 Days	0.00%	0.00%	0.00%	0.00%	0.46%	0.00%	1.07%	0.00%	0.00%	
121-150 Days	0.00%	0.00%	0.00%	0.00%	0.00%	0.00%	0.00%	0.00%	0.00%	
151-180 Days	0.00%	0.00%	0.00%	0.00%	0.00%	0.00%	0.00%	0.00%	0.00%	
181+ Days	0.00%	0.00%	0.75%	0.00%	0.00%	0.00%	0.00%	0.00%	0.00%	
Current - 90 Days	100.00%	100.00%	99.25%	100.00%	99.54%	100.00%	98.93%	100.00%	100.00%	
91-180 Days	0.00%	0.00%	0.00%	0.00%	0.46%	0.00%	1.07%	0.00%	0.00%	



## Personal Loans - La Hipotecaria Panama Migration Analysis (2004 Vintage)

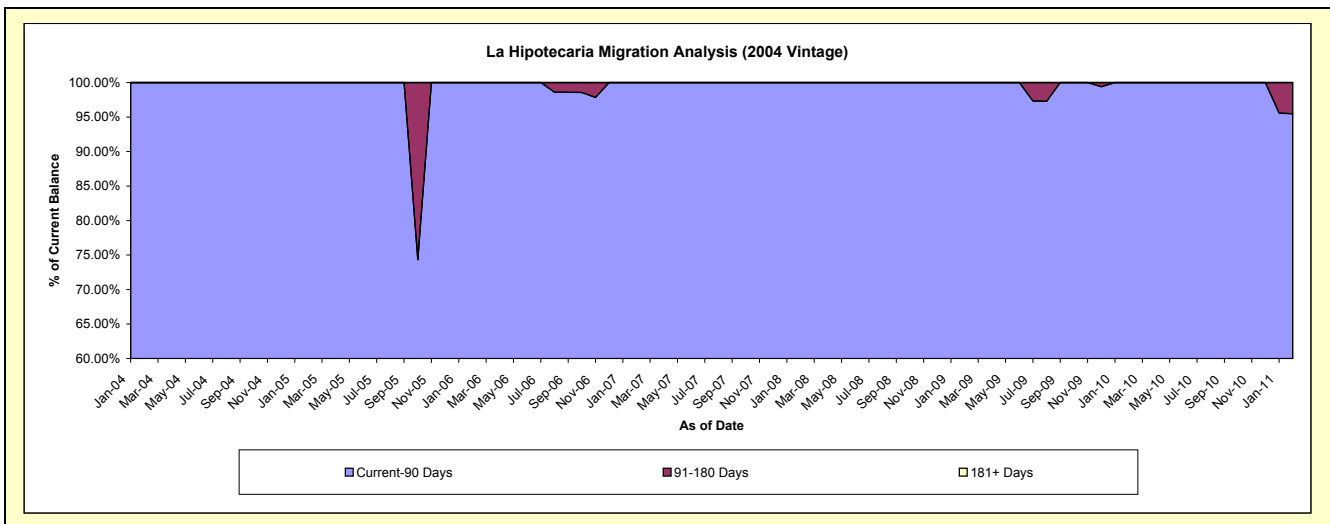
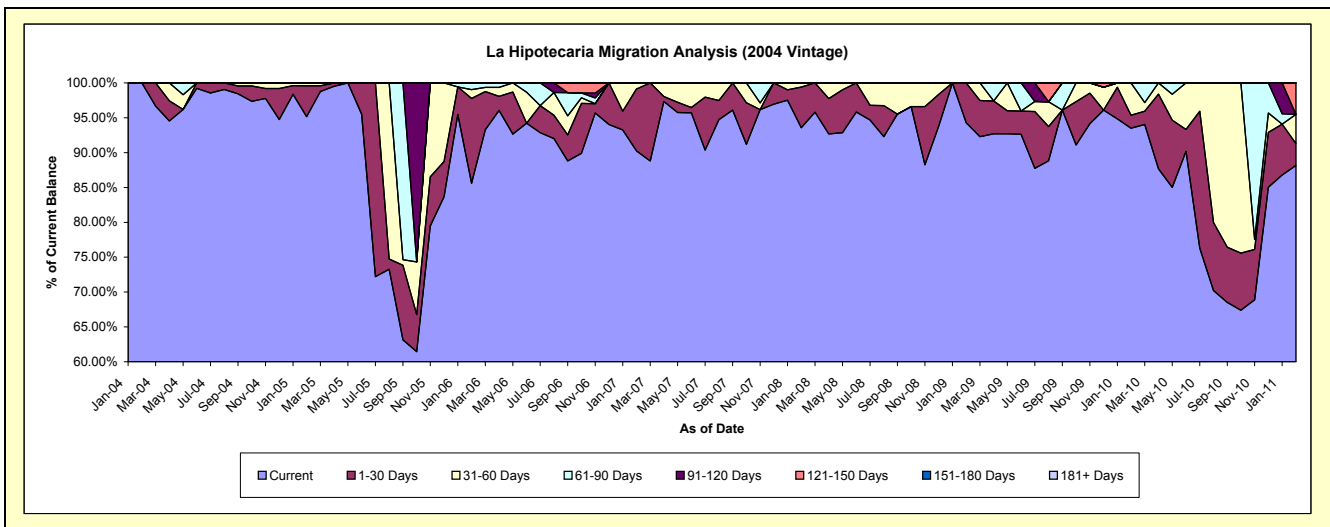
### Delinquency Status (\$ of Current Balance)

Data Cutoff: 2/28/2011

Current Portfolio Balance	-	-	25,456.92	110,034.33	67,134.49	53,435.12	34,428.16	26,612.51	20,724.30	15,629.35
	Feb-04	Feb-05	Feb-06	Feb-07	Feb-08	Feb-09	Feb-10	Feb-11		
Current	25,456.92	104,696.69	57,474.63	48,222.79	32,219.52	25,091.15	19,380.72	13,777.97		
1-30 Days	-	4,881.13	8,171.19	4,749.97	2,005.69	1,521.36	385.23	493.24		
31-60 Days	-	456.51	838.60	462.36	202.95	-	958.35	651.92		
61-90 Days	-	-	650.07	-	-	-	-	-		
91-120 Days	-	-	-	-	-	-	-	-		
121-150 Days	-	-	-	-	-	-	-	706.22		
151-180 Days	-	-	-	-	-	-	-	-		
181+ Days	-	-	-	-	-	-	-	-		

### Delinquency Status (% of Current Balance)

Current Portfolio Balance	-	-	25,456.92	110,034.33	67,134.49	53,435.12	34,428.16	26,612.51	20,724.30	15,629.35
	Feb-04	Feb-05	Feb-06	Feb-07	Feb-08	Feb-09	Feb-10	Feb-11		
Current	100.00%	95.15%	85.61%	90.25%	93.58%	94.28%	93.52%	88.15%		
1-30 Days	0.00%	4.44%	12.17%	8.89%	5.83%	5.72%	1.86%	3.16%		
31-60 Days	0.00%	0.41%	1.25%	0.87%	0.59%	0.00%	4.62%	4.17%		
61-90 Days	0.00%	0.00%	0.97%	0.00%	0.00%	0.00%	0.00%	0.00%		
91-120 Days	0.00%	0.00%	0.00%	0.00%	0.00%	0.00%	0.00%	0.00%		
121-150 Days	0.00%	0.00%	0.00%	0.00%	0.00%	0.00%	0.00%	4.52%		
151-180 Days	0.00%	0.00%	0.00%	0.00%	0.00%	0.00%	0.00%	0.00%		
181+ Days	0.00%	0.00%	0.00%	0.00%	0.00%	0.00%	0.00%	0.00%		
Current - 90 Days	100.00%	100.00%	100.00%	100.00%	100.00%	100.00%	100.00%	95.48%		
91-180 Days	0.00%	0.00%	0.00%	0.00%	0.00%	0.00%	0.00%	4.52%		



# Personal Loans - La Hipotecaria Panama Migration Analysis (2005 Vintage)

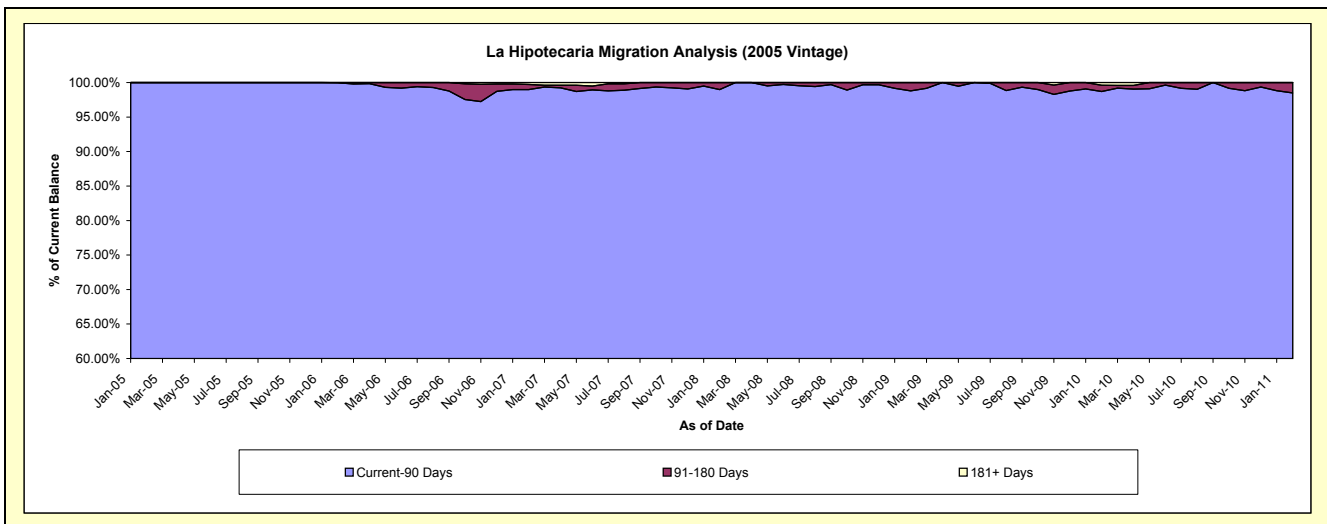
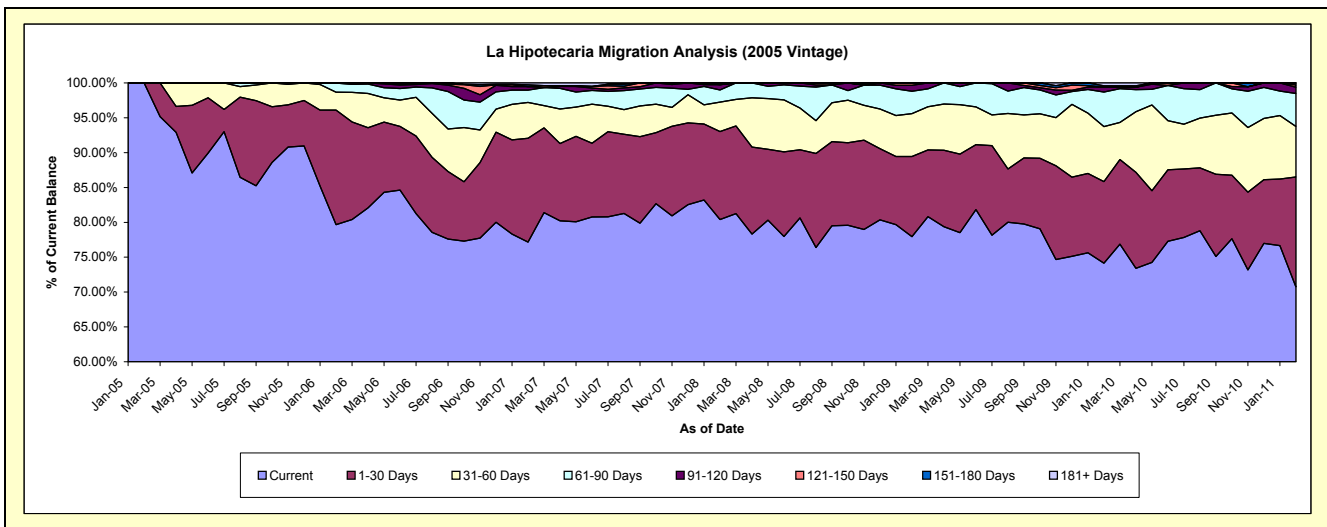
## Delinquency Status (\$ of Current Balance)

Data Cutoff: 2/28/2011

Current Portfolio Balance	-	-	-	27,942.47	2,622,938.20	2,164,794.15	1,792,344.68	1,364,601.42	1,118,272.51	885,069.81
	Feb-05	Feb-06	Feb-07	Feb-08	Feb-09	Feb-10	Feb-11			
Current	27,942.47	2,089,874.66	1,670,293.80	1,441,248.71	1,063,657.31	829,145.65	626,079.36			
1-30 Days	-	430,727.00	322,797.81	226,249.91	156,973.16	130,801.93	139,587.83			
31-60 Days	-	67,693.26	110,878.40	75,414.40	83,797.08	88,261.93	64,068.34			
61-90 Days	-	33,943.28	38,645.12	31,342.71	43,863.29	55,434.64	42,003.33			
91-120 Days	-	700.00	10,725.79	13,568.05	11,765.07	7,950.66	7,820.29			
121-150 Days	-	-	-	-	4,545.51	-	2,926.06			
151-180 Days	-	-	5,519.66	4,520.90	-	2,178.06	2,584.60			
181+ Days	-	-	5,933.57	-	-	4,499.64	-			

## Delinquency Status (% of Current Balance)

Current Portfolio Balance	-	-	-	27,942.47	2,622,938.20	2,164,794.15	1,792,344.68	1,364,601.42	1,118,272.51	885,069.81
	Feb-05	Feb-06	Feb-07	Feb-08	Feb-09	Feb-10	Feb-11			
Current	100.00%	79.68%	77.16%	80.41%	77.95%	74.15%	70.74%			
1-30 Days	0.00%	16.42%	14.91%	12.62%	11.50%	11.70%	15.77%			
31-60 Days	0.00%	2.58%	5.12%	4.21%	6.14%	7.89%	7.24%			
61-90 Days	0.00%	1.29%	1.79%	1.75%	3.21%	4.96%	4.75%			
91-120 Days	0.00%	0.03%	0.50%	0.76%	0.86%	0.71%	0.88%			
121-150 Days	0.00%	0.00%	0.00%	0.00%	0.33%	0.00%	0.33%			
151-180 Days	0.00%	0.00%	0.25%	0.25%	0.00%	0.19%	0.29%			
181+ Days	0.00%	0.00%	0.27%	0.00%	0.00%	0.40%	0.00%			
Current - 90 Days	100.00%	99.97%	98.98%	98.99%	98.80%	98.69%	98.49%			
91-180 Days	0.00%	0.03%	0.75%	1.01%	1.20%	0.91%	1.51%			



# Personal Loans - La Hipotecaria Panama Migration Analysis (2006 Vintage)

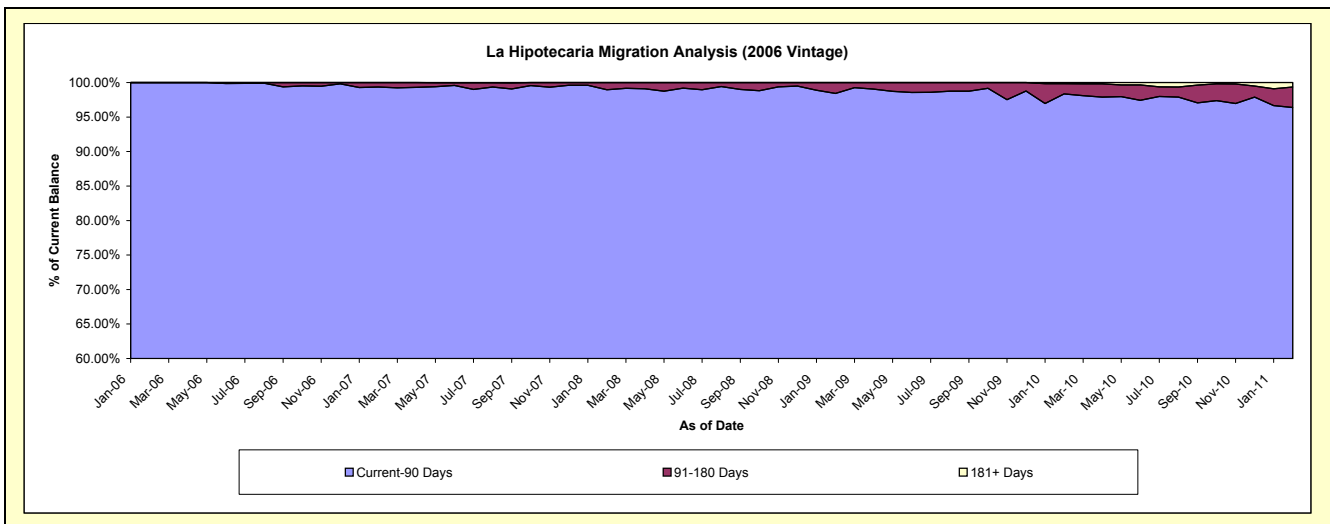
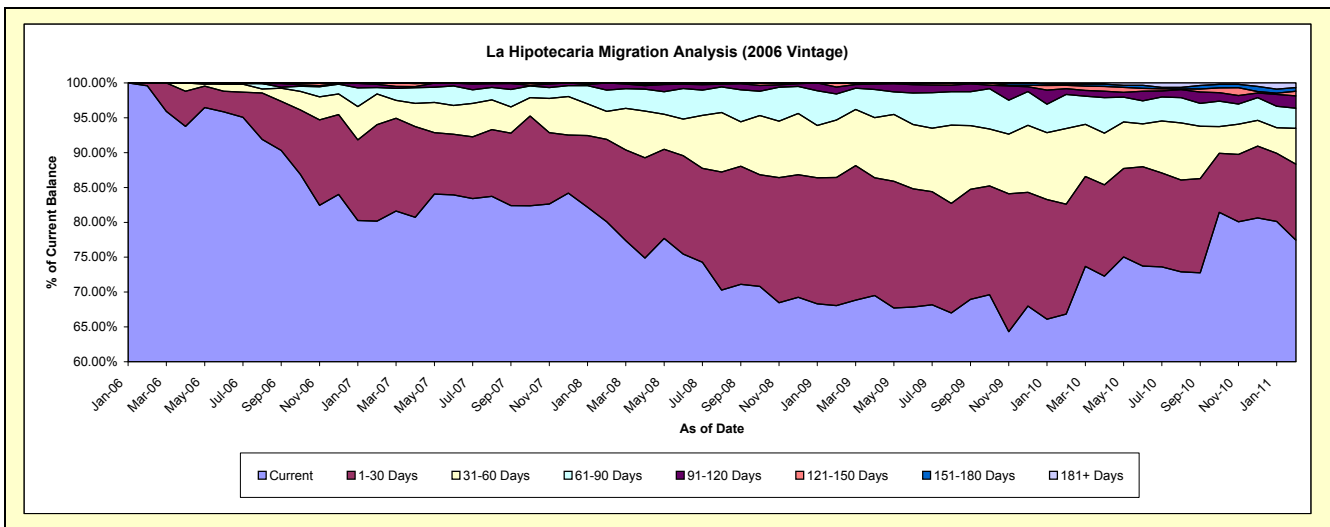
## Delinquency Status (\$ of Current Balance)

Data Cutoff: 2/28/2011

Current Portfolio Balance	-	-	-	-	1,087,770.10	7,339,015.37	5,885,468.37	4,785,472.94	4,168,434.90	3,461,876.15
					Feb-06	Feb-07	Feb-08	Feb-09	Feb-10	Feb-11
Current					1,083,210.10	5,884,388.05	4,713,515.82	3,256,784.97	2,785,985.61	2,680,591.01
1-30 Days					4,560.00	1,015,485.42	695,233.23	879,374.36	657,776.80	377,506.03
31-60 Days					-	323,303.01	236,190.41	394,707.85	452,065.77	178,459.88
61-90 Days					-	67,659.02	179,673.54	178,983.92	203,528.18	100,026.91
91-120 Days					-	32,637.87	60,855.37	46,688.60	34,712.52	61,189.10
121-150 Days					-	15,542.00	-	28,933.24	19,945.53	22,571.02
151-180 Days					-	-	-	-	7,200.81	18,841.87
181+ Days					-	-	-	-	7,219.68	22,690.33

## Delinquency Status (% of Current Balance)

Current Portfolio Balance	-	-	-	-	1,087,770.10	7,339,015.37	5,885,468.37	4,785,472.94	4,168,434.90	3,461,876.15
					Feb-06	Feb-07	Feb-08	Feb-09	Feb-10	Feb-11
Current					99.58%	80.18%	80.09%	68.06%	66.84%	77.43%
1-30 Days					0.42%	13.84%	11.81%	18.38%	15.78%	10.90%
31-60 Days					0.00%	4.41%	4.01%	8.25%	10.84%	5.16%
61-90 Days					0.00%	0.92%	3.05%	3.74%	4.88%	2.89%
91-120 Days					0.00%	0.44%	1.03%	0.98%	0.83%	1.77%
121-150 Days					0.00%	0.21%	0.00%	0.60%	0.48%	0.65%
151-180 Days					0.00%	0.00%	0.00%	0.00%	0.17%	0.54%
181+ Days					0.00%	0.00%	0.00%	0.00%	0.17%	0.66%
Current - 90 Days					100.00%	99.34%	98.97%	98.42%	98.34%	96.38%
91-180 Days					0.00%	0.66%	1.03%	1.58%	1.48%	2.96%



## Personal Loans - La Hipotecaria Panama Migration Analysis (2007 Vintage)

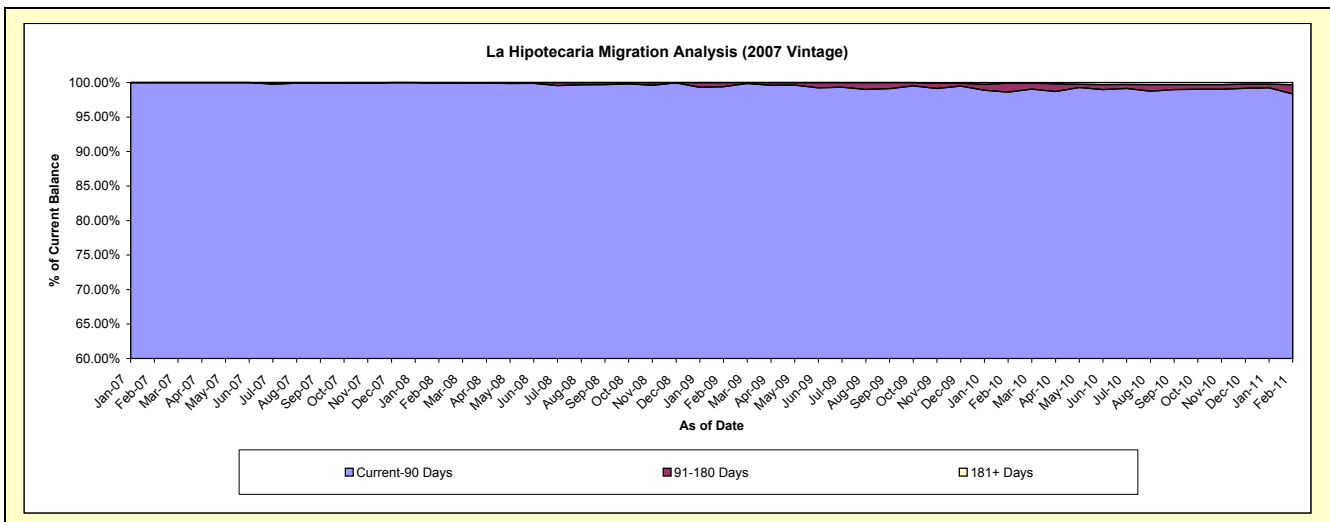
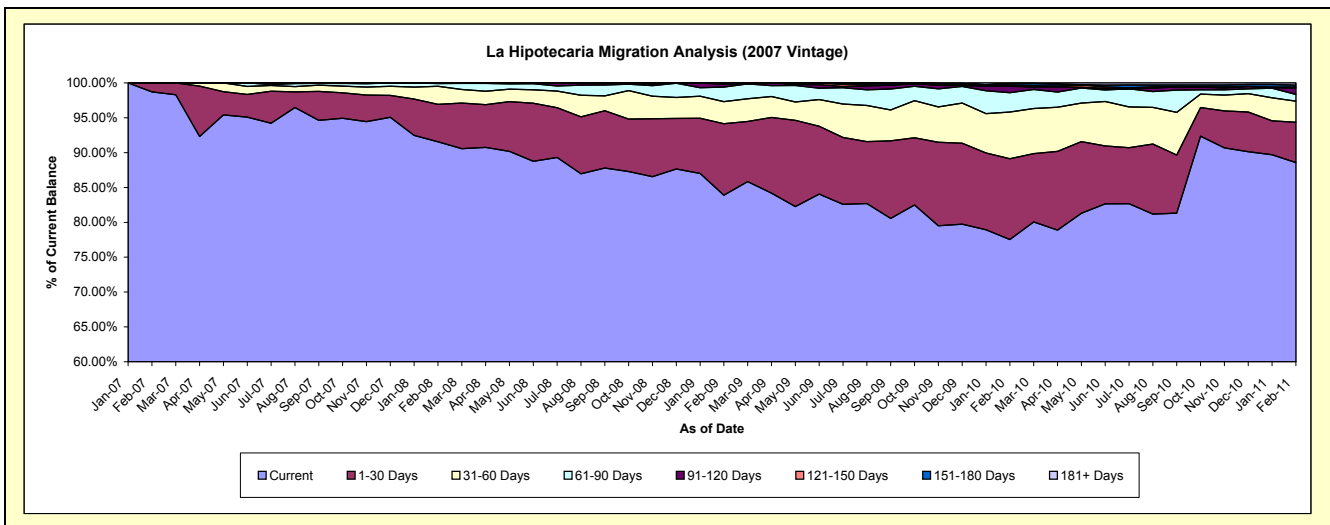
### Delinquency Status (\$ of Current Balance)

Data Cutoff: 2/28/2011

Current Portfolio Balance	-	-	-	-	-	1,406,195.67	9,412,338.06	8,011,206.56	7,247,118.15	6,211,045.18
						Feb-07	Feb-08	Feb-09	Feb-10	Feb-11
Current						1,388,020.67	8,617,363.00	6,720,951.69	5,618,157.49	5,501,193.23
1-30 Days						18,175.00	504,564.14	820,979.78	840,741.65	358,605.64
31-60 Days						-	245,647.46	254,576.50	484,720.52	188,817.84
61-90 Days						-	36,676.23	166,509.52	202,267.08	60,503.64
91-120 Days						-	8,087.23	33,450.62	66,530.26	57,289.24
121-150 Days						-	-	14,738.45	13,159.54	7,395.71
151-180 Days						-	-	-	14,404.30	17,572.90
181+ Days						-	-	-	7,137.31	19,666.98

### Delinquency Status (% of Current Balance)

Current Portfolio Balance	-	-	-	-	-	1,406,195.67	9,412,338.06	8,011,206.56	7,247,118.15	6,211,045.18
						Feb-07	Feb-08	Feb-09	Feb-10	Feb-11
Current						98.71%	91.55%	83.89%	77.52%	88.57%
1-30 Days						1.29%	5.36%	10.25%	11.60%	5.77%
31-60 Days						0.00%	2.61%	3.18%	6.69%	3.04%
61-90 Days						0.00%	0.39%	2.08%	2.79%	0.97%
91-120 Days						0.00%	0.09%	0.42%	0.92%	0.92%
121-150 Days						0.00%	0.00%	0.18%	0.18%	0.12%
151-180 Days						0.00%	0.00%	0.00%	0.20%	0.28%
181+ Days						0.00%	0.00%	0.00%	0.10%	0.32%
Current - 90 Days						100.00%	99.91%	99.40%	98.60%	98.36%
91-180 Days						0.00%	0.09%	0.60%	1.30%	1.32%





# Personal Loans - La Hipotecaria Panama Migration Analysis (2008 Vintage)

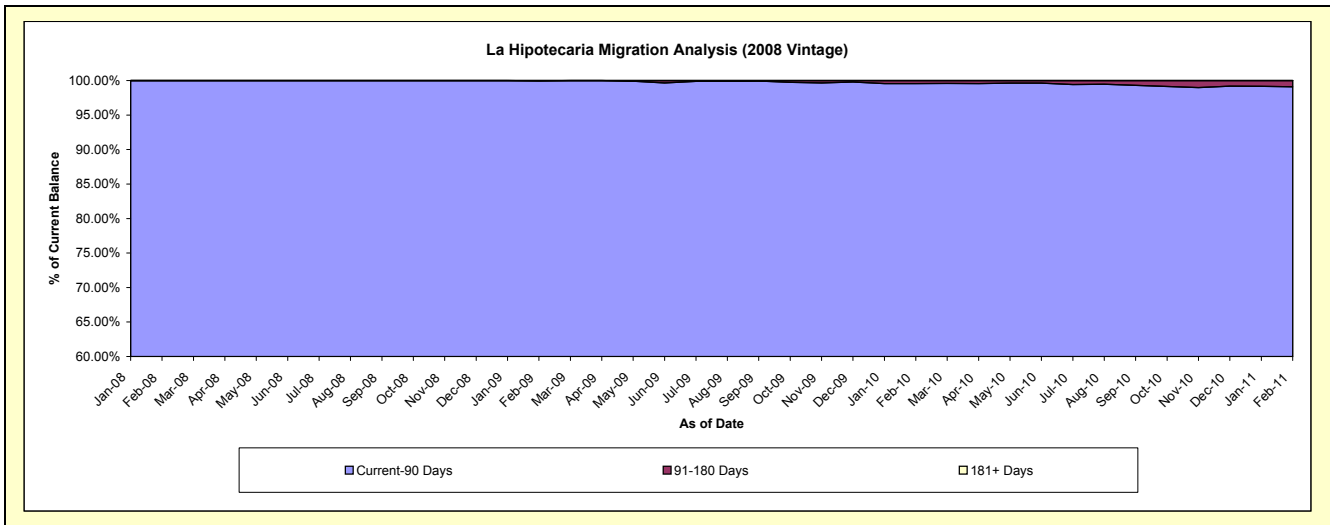
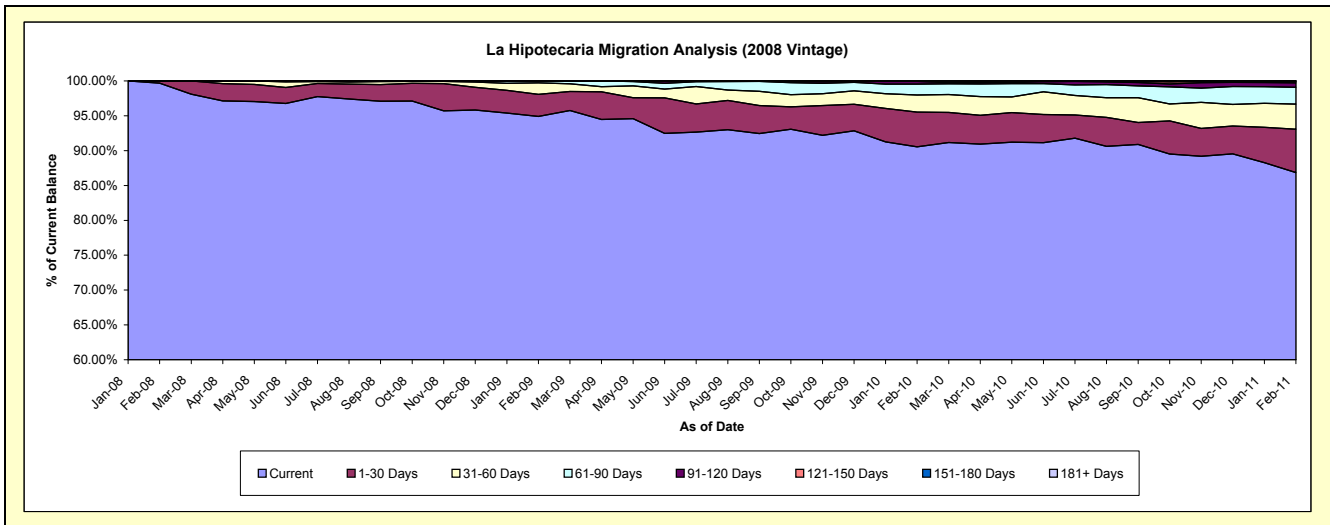
## Delinquency Status (\$ of Current Balance)

Data Cutoff: 2/28/2011

Current Portfolio Balance	-	-	-	-	-	-	-	2,186,904.26	11,249,638.93	10,451,477.42	9,385,546.52
								Feb-08	Feb-09	Feb-10	Feb-11
Current								2,180,104.26	10,676,221.27	9,463,537.46	8,151,083.50
1-30 Days								6,800.00	355,655.05	520,773.19	583,767.44
31-60 Days								-	185,790.61	256,242.88	338,397.05
61-90 Days								-	26,690.47	163,927.93	226,399.38
91-120 Days								-	5,281.53	40,811.01	59,832.64
121-150 Days								-	-	6,184.95	18,588.36
151-180 Days								-	-	-	7,478.15
181+ Days								-	-	-	-

## Delinquency Status (% of Current Balance)

Current Portfolio Balance	-	-	-	-	-	-	-	2,186,904.26	11,249,638.93	10,451,477.42	9,385,546.52
								Feb-08	Feb-09	Feb-10	Feb-11
Current								99.69%	94.90%	90.55%	86.85%
1-30 Days								0.31%	3.16%	4.98%	6.22%
31-60 Days								0.00%	1.65%	2.45%	3.61%
61-90 Days								0.00%	0.24%	1.57%	2.41%
91-120 Days								0.00%	0.05%	0.39%	0.64%
121-150 Days								0.00%	0.00%	0.06%	0.20%
151-180 Days								0.00%	0.00%	0.00%	0.08%
181+ Days								0.00%	0.00%	0.00%	0.00%
Current - 90 Days								100.00%	99.95%	99.55%	99.08%
91-180 Days								0.00%	0.05%	0.45%	0.92%



**Personal Loans - La Hipotecaria Panama Migration Analysis (2009 Vintage)**

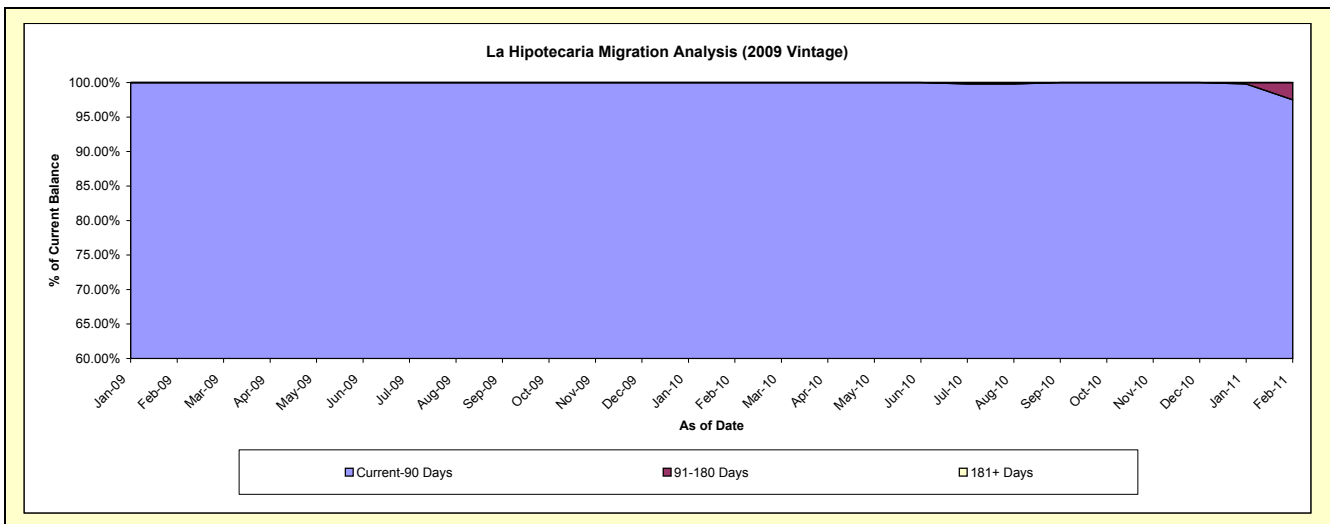
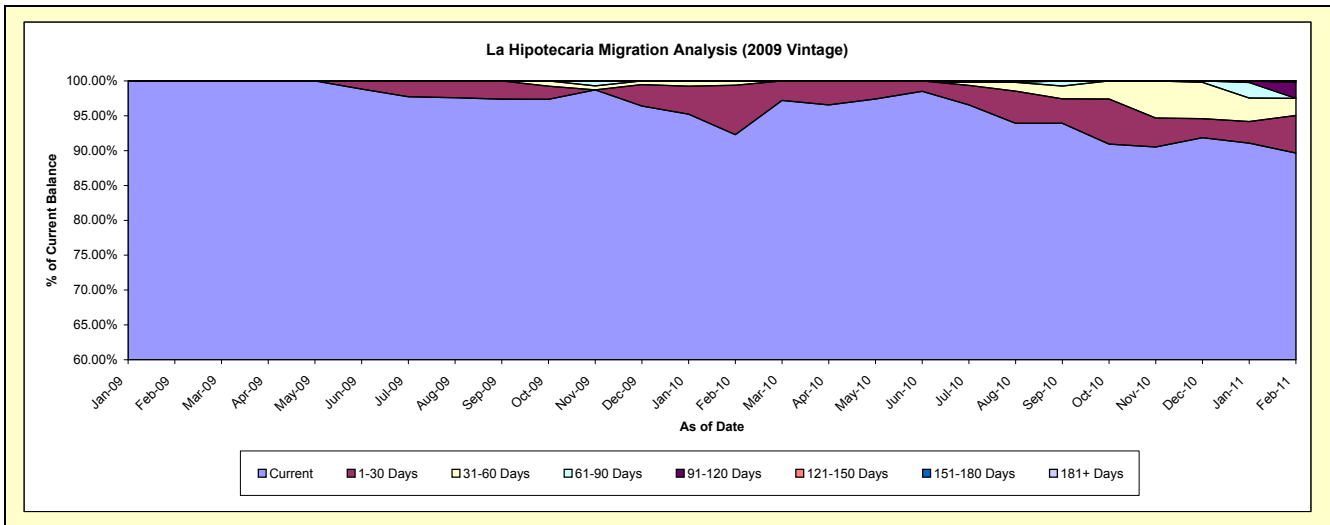
**Delinquency Status (\$ of Current Balance)**

Data Cutoff: 2/28/2011

Current Portfolio Balance	-	-	-	-	-	-	-	-	-	188,545.18	790,154.87	671,356.73
										Feb-09	Feb-10	Feb-11
Current										188,545.18	729,294.32	601,909.12
1-30 Days										-	55,903.52	36,223.37
31-60 Days										-	4,957.03	16,421.81
61-90 Days										-	-	-
91-120 Days										-	-	15,301.77
121-150 Days										-	-	1,500.66
151-180 Days										-	-	-
181+ Days										-	-	-

**Delinquency Status (% of Current Balance)**

Current Portfolio Balance	-	-	-	-	-	-	-	-	-	188,545.18	790,154.87	671,356.73
										Feb-09	Feb-10	Feb-11
Current										100.00%	92.30%	89.66%
1-30 Days										0.00%	7.08%	5.40%
31-60 Days										0.00%	0.63%	2.45%
61-90 Days										0.00%	0.00%	0.00%
91-120 Days										0.00%	0.00%	2.28%
121-150 Days										0.00%	0.00%	0.22%
151-180 Days										0.00%	0.00%	0.00%
181+ Days										0.00%	0.00%	0.00%
Current - 90 Days										100.00%	100.00%	97.50%
91-180 Days										0.00%	0.00%	2.50%



**Personal Loans - La Hipotecaria Panama Migration Analysis (2010 Vintage)**

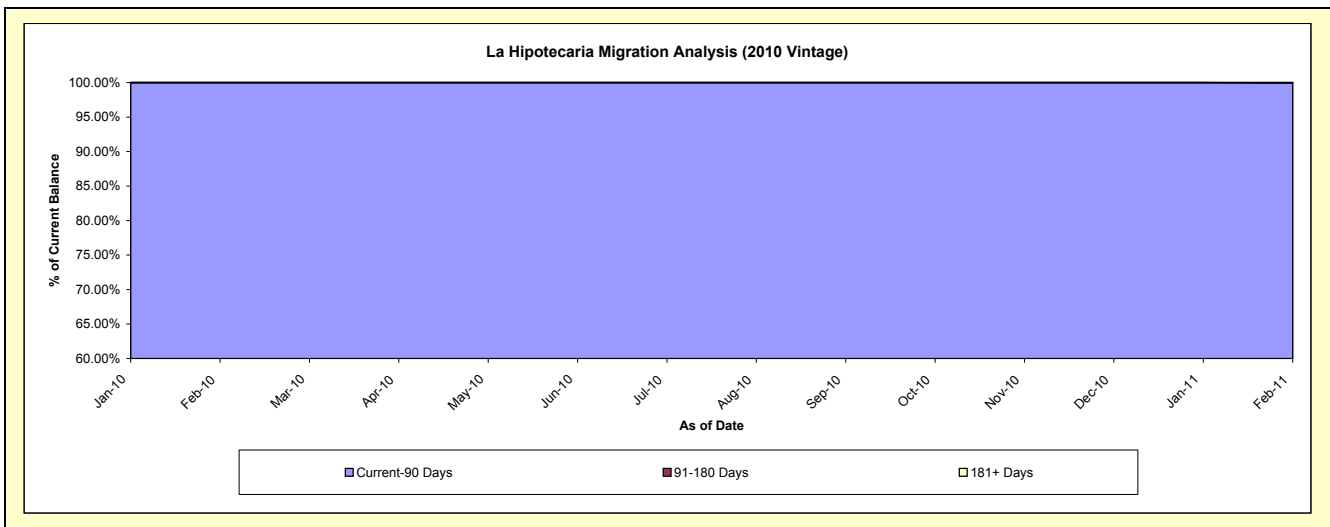
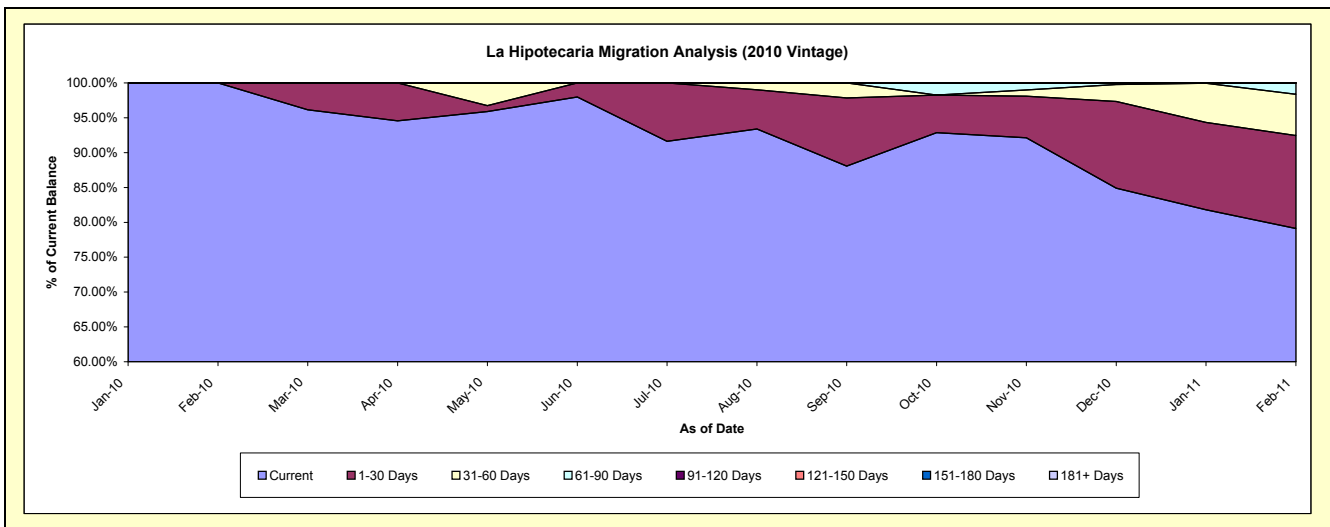
**Delinquency Status (\$ of Current Balance)**

Data Cutoff: 2/28/2011

Current Portfolio Balance										139,879.89	1,244,355.74
										Feb-10	Feb-11
Current										139,879.89	984,473.55
1-30 Days										-	165,875.13
31-60 Days										-	73,867.20
61-90 Days										-	19,439.86
91-120 Days										-	700.00
121-150 Days										-	-
151-180 Days										-	-
181+ Days										-	-

**Delinquency Status (% of Current Balance)**

Current Portfolio Balance										139,879.89	1,244,355.74
										Feb-10	Feb-11
Current										100.00%	79.12%
1-30 Days										0.00%	13.33%
31-60 Days										0.00%	5.94%
61-90 Days										0.00%	1.56%
91-120 Days										0.00%	0.06%
121-150 Days										0.00%	0.00%
151-180 Days										0.00%	0.00%
181+ Days										0.00%	0.00%
Current - 90 Days										100.00%	99.94%
91-180 Days										0.00%	0.06%



# Personal Loans - La Hipotecaria Panama Migration Analysis (2011 Vintage)

## Delinquency Status (\$ of Current Balance)

Data Cutoff: 2/28/2011

Current Portfolio Balance											376,490.23
											<b>Feb-11</b>
Current											376,490.23
1-30 Days											-
31-60 Days											-
61-90 Days											-
91-120 Days											-
121-150 Days											-
151-180 Days											-
181+ Days											-

## Delinquency Status (% of Current Balance)

Current Portfolio Balance											376,490.23
											<b>Feb-11</b>
Current											100.00%
1-30 Days											0.00%
31-60 Days											0.00%
61-90 Days											0.00%
91-120 Days											0.00%
121-150 Days											0.00%
151-180 Days											0.00%
181+ Days											0.00%
Current - 90 Days											100.00%
91-180 Days											0.00%

