

Migration Analysis for La Hipotecaria S.A  
Panama

Personal Loans  
June 2011

An analysis of historical loan payment data was used to compile a migration analysis of delinquency by annual vintage. Delinquencies for each vintage were grouped into the following buckets; Current, 1-30, 31-60, 61-90, 91-120, 121-150, 151-180, and 180+. Results are provided in graphical and tabular form. The cutoff date is 6/30/2011.

## Personal Loans - La Hipotecaria Panama Migration Analysis (All Vintages)

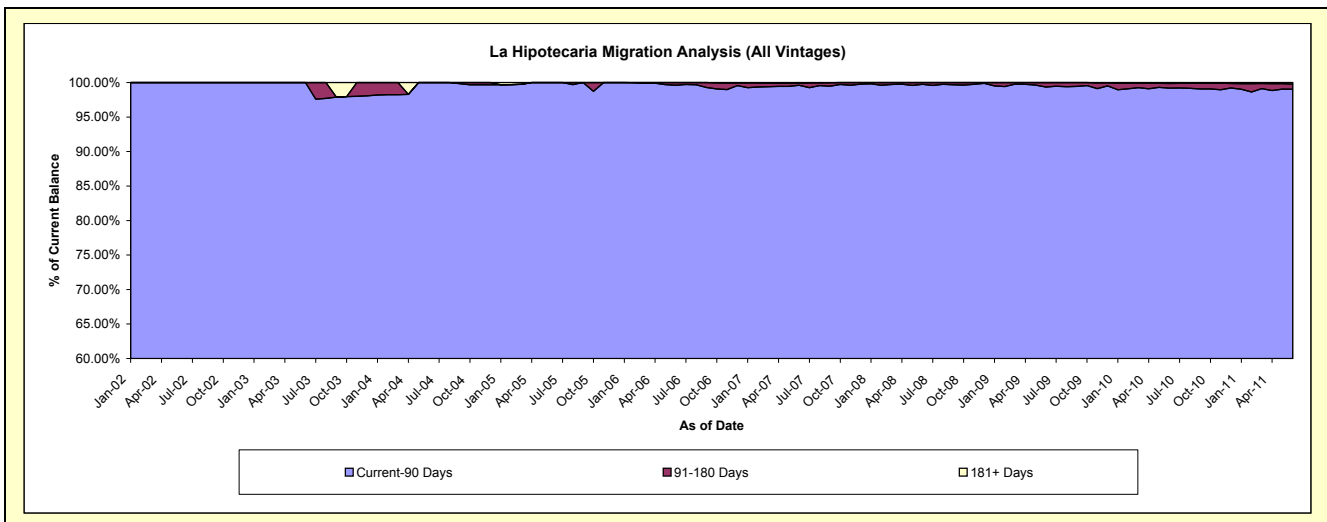
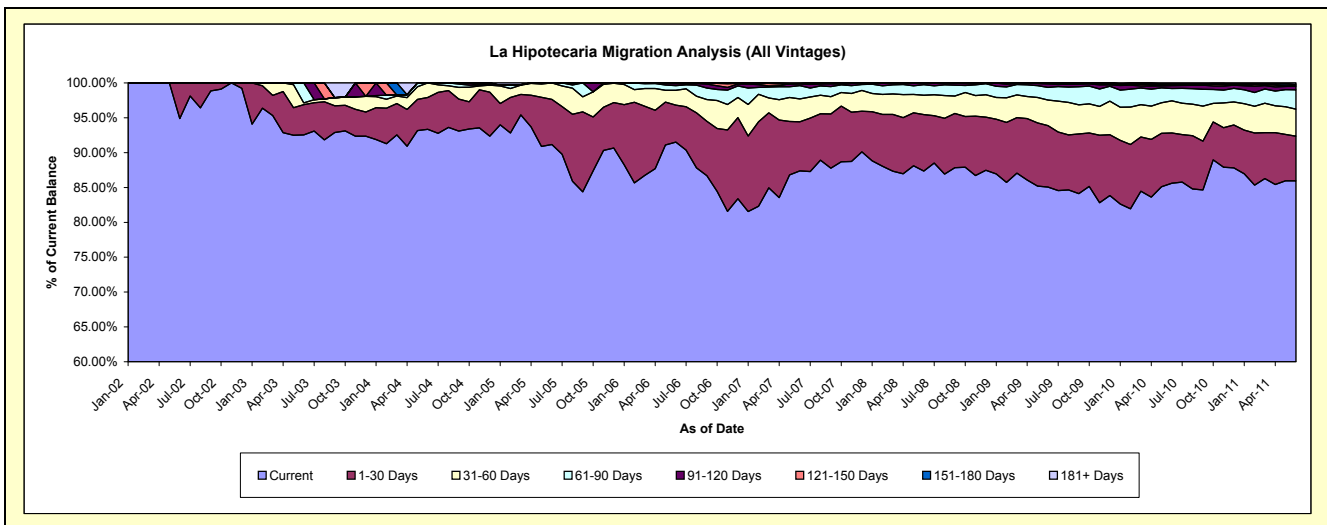
### Delinquency Status (\$ of Current Balance)

Data Cutoff: 6/30/2011

Current Portfolio Balance	23,184.82	167,991.84	269,748.04	693,194.80	6,233,588.17	13,594,220.80	22,620,514.82	25,009,768.82	23,247,664.74	21,863,350.81
	Jun-02	Jun-03	Jun-04	Jun-05	Jun-06	Jun-07	Jun-08	Jun-09	Jun-10	Jun-11
Current	21,996.87	155,470.13	251,806.00	631,997.95	5,704,996.41	11,878,002.95	19,761,798.22	21,272,427.20	19,901,014.71	18,792,456.89
1-30 Days	1,187.95	7,290.81	12,301.81	44,815.24	330,290.90	959,671.28	1,832,784.31	2,206,248.43	1,674,777.63	1,399,843.80
31-60 Days	-	393.42	5,640.23	16,318.59	131,890.02	445,835.04	624,271.20	916,364.65	1,072,654.27	850,195.60
61-90 Days	-	4,837.48	-	63.02	41,939.00	258,366.95	343,131.10	452,070.19	409,933.49	606,305.56
91-120 Days	-	-	-	-	17,415.35	35,530.92	48,586.56	130,211.83	96,044.97	116,389.60
121-150 Days	-	-	-	-	3,657.00	4,298.52	9,943.43	26,611.47	33,390.57	4,539.14
151-180 Days	-	-	-	-	3,399.49	-	-	5,835.05	29,838.28	42,459.56
181+ Days	-	-	-	-	-	12,515.14	-	-	30,010.82	51,160.66

### Delinquency Status (% of Current Balance)

Current Portfolio Balance	23,184.82	167,991.84	269,748.04	693,194.80	6,233,588.17	13,594,220.80	22,620,514.82	25,009,768.82	23,247,664.74	21,863,350.81
	Jun-02	Jun-03	Jun-04	Jun-05	Jun-06	Jun-07	Jun-08	Jun-09	Jun-10	Jun-11
Current	94.88%	92.55%	93.35%	91.17%	91.52%	87.38%	87.36%	85.06%	85.60%	85.95%
1-30 Days	5.12%	4.34%	4.56%	6.47%	5.30%	7.06%	8.10%	8.82%	7.20%	6.40%
31-60 Days	0.00%	0.23%	2.09%	2.35%	2.12%	3.28%	2.76%	3.66%	4.61%	3.89%
61-90 Days	0.00%	2.88%	0.00%	0.01%	0.67%	1.90%	1.52%	1.81%	1.76%	2.77%
91-120 Days	0.00%	0.00%	0.00%	0.00%	0.28%	0.26%	0.21%	0.52%	0.41%	0.53%
121-150 Days	0.00%	0.00%	0.00%	0.00%	0.06%	0.03%	0.04%	0.11%	0.14%	0.02%
151-180 Days	0.00%	0.00%	0.00%	0.00%	0.05%	0.00%	0.00%	0.02%	0.13%	0.19%
181+ Days	0.00%	0.00%	0.00%	0.00%	0.00%	0.09%	0.00%	0.00%	0.13%	0.23%
Current - 90 Days	100.00%	100.00%	100.00%	100.00%	99.61%	99.61%	99.74%	99.35%	99.19%	99.02%
91-180 Days	0.00%	0.00%	0.00%	0.00%	0.39%	0.29%	0.26%	0.65%	0.69%	0.75%



## Personal Loans - La Hipotecaria Panama Migration Analysis (2002 Vintage)

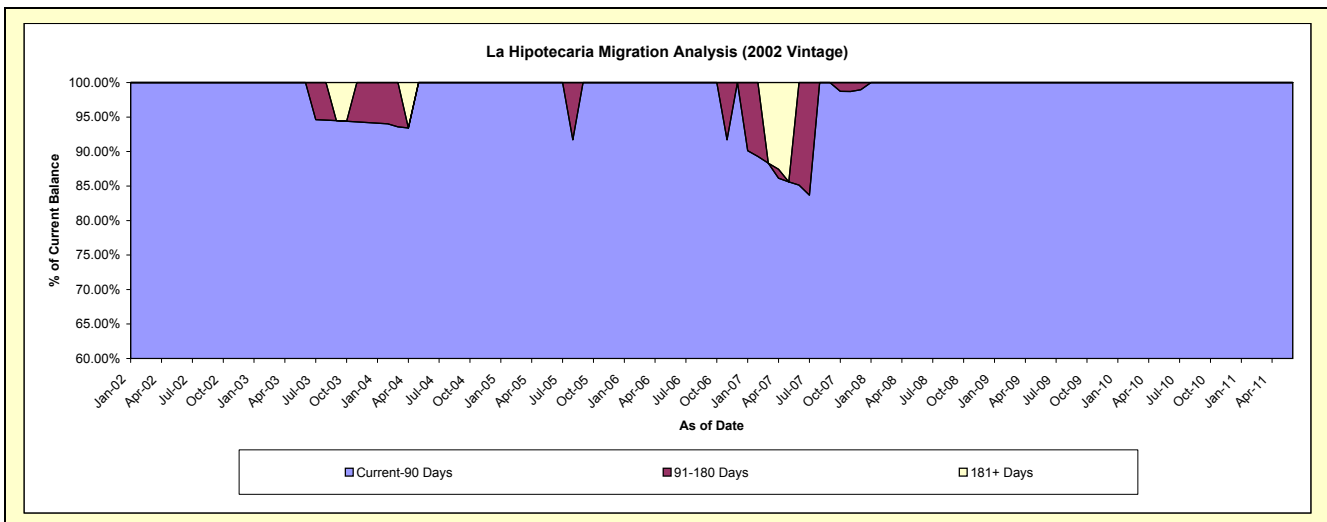
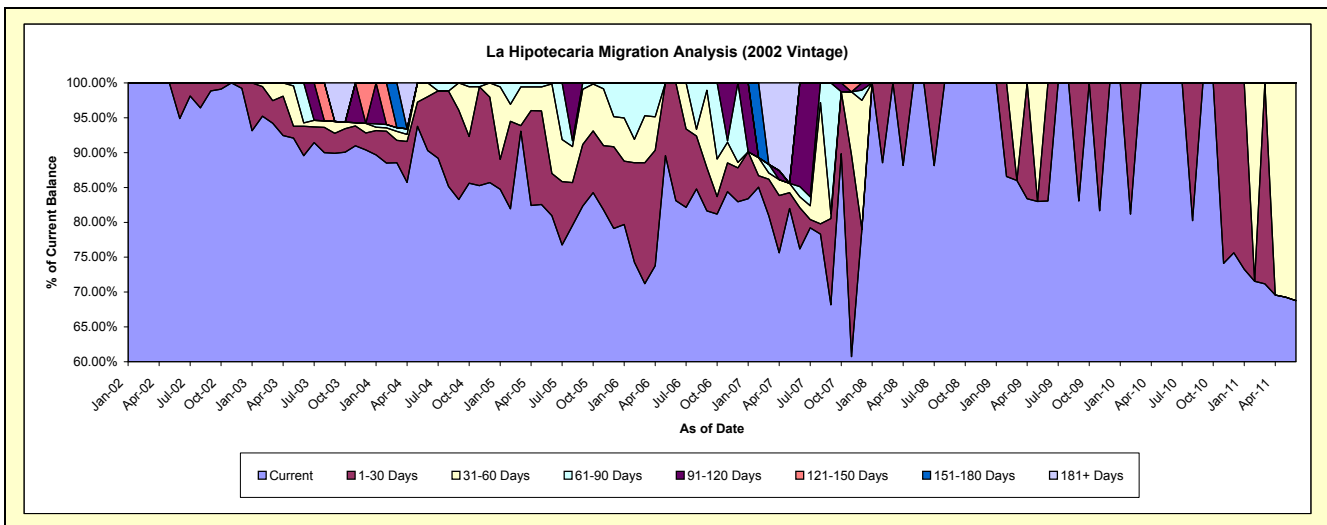
### Delinquency Status (\$ of Current Balance)

Data Cutoff: 6/30/2011

Current Portfolio Balance	23,184.82	84,149.17	64,822.08	46,655.54	20,798.62	7,327.34	3,029.86	1,883.55	1,212.67	617.87
	Jun-02	Jun-03	Jun-04	Jun-05	Jun-06	Jun-07	Jun-08	Jun-09	Jun-10	Jun-11
Current	21,996.87	75,363.80	58,529.64	37,773.81	17,287.31	5,581.20	3,029.86	1,564.70	1,212.67	424.92
1-30 Days	1,187.95	3,554.47	5,008.47	2,822.95	3,511.31	435.37	-	318.85	-	-
31-60 Days	-	393.42	1,283.97	5,995.76	-	112.80	-	-	-	192.95
61-90 Days	-	4,837.48	-	63.02	-	108.03	-	-	-	-
91-120 Days	-	-	-	-	-	1,089.94	-	-	-	-
121-150 Days	-	-	-	-	-	-	-	-	-	-
151-180 Days	-	-	-	-	-	-	-	-	-	-
181+ Days	-	-	-	-	-	-	-	-	-	-

### Delinquency Status (% of Current Balance)

Current Portfolio Balance	23,184.82	84,149.17	64,822.08	46,655.54	20,798.62	7,327.34	3,029.86	1,883.55	1,212.67	617.87
	Jun-02	Jun-03	Jun-04	Jun-05	Jun-06	Jun-07	Jun-08	Jun-09	Jun-10	Jun-11
Current	94.88%	89.56%	90.29%	80.96%	83.12%	76.17%	100.00%	83.07%	100.00%	68.77%
1-30 Days	5.12%	4.22%	7.73%	6.05%	16.88%	5.94%	0.00%	16.93%	0.00%	0.00%
31-60 Days	0.00%	0.47%	1.98%	12.85%	0.00%	1.54%	0.00%	0.00%	0.00%	31.23%
61-90 Days	0.00%	5.75%	0.00%	0.14%	0.00%	1.47%	0.00%	0.00%	0.00%	0.00%
91-120 Days	0.00%	0.00%	0.00%	0.00%	0.00%	14.87%	0.00%	0.00%	0.00%	0.00%
121-150 Days	0.00%	0.00%	0.00%	0.00%	0.00%	0.00%	0.00%	0.00%	0.00%	0.00%
151-180 Days	0.00%	0.00%	0.00%	0.00%	0.00%	0.00%	0.00%	0.00%	0.00%	0.00%
181+ Days	0.00%	0.00%	0.00%	0.00%	0.00%	0.00%	0.00%	0.00%	0.00%	0.00%
Current - 90 Days	100.00%	100.00%	100.00%	100.00%	100.00%	85.13%	100.00%	100.00%	100.00%	100.00%
91-180 Days	0.00%	0.00%	0.00%	0.00%	0.00%	14.87%	0.00%	0.00%	0.00%	0.00%



## Personal Loans - La Hipotecaria Panama Migration Analysis (2003 Vintage)

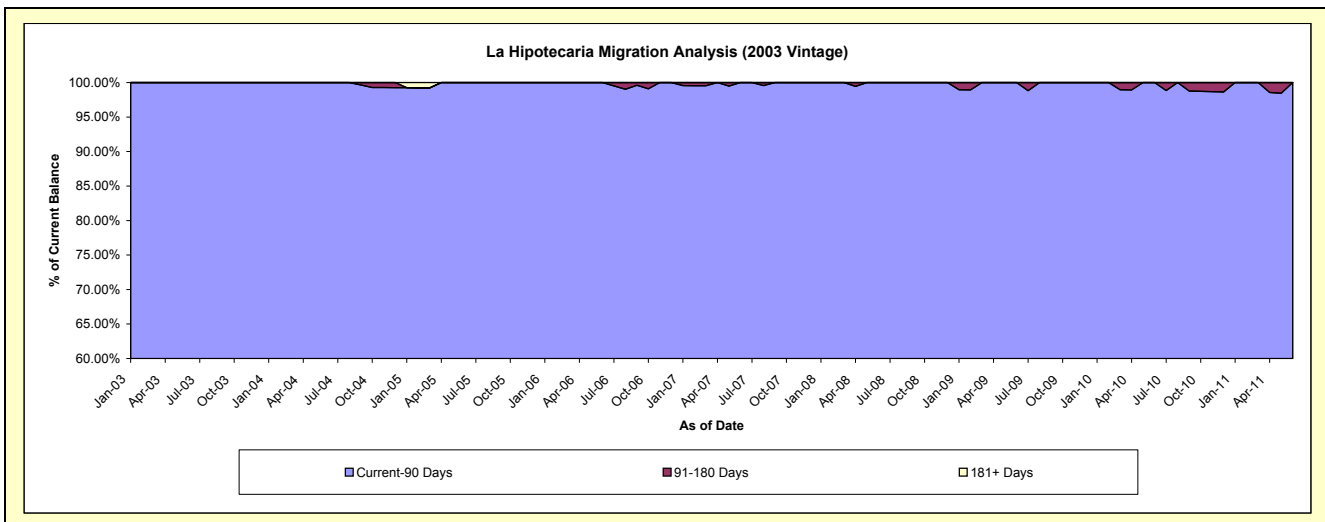
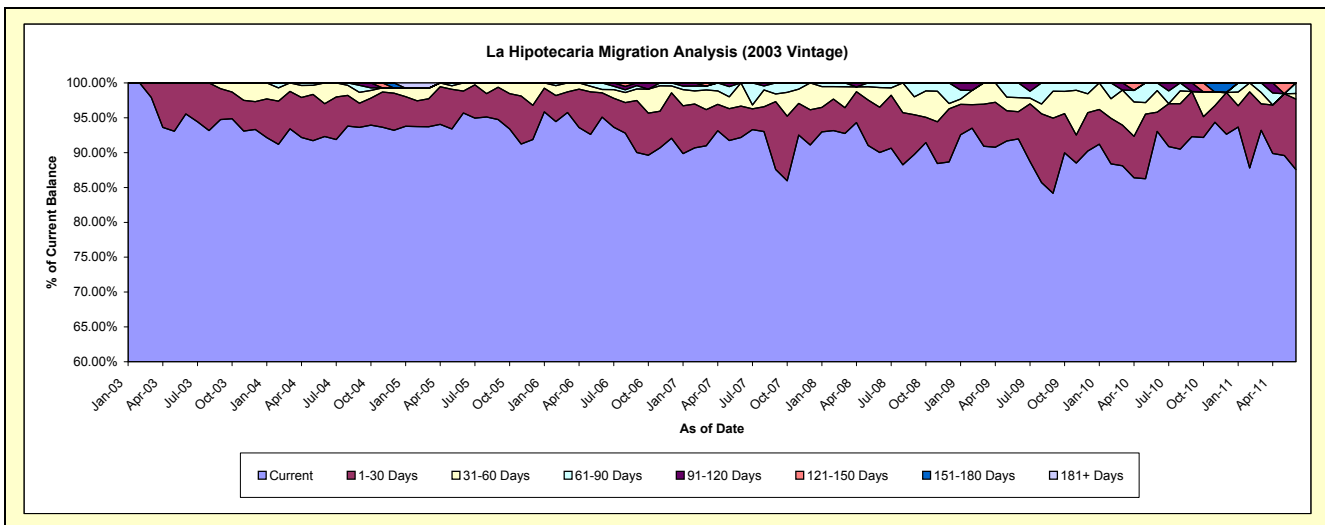
### Delinquency Status (\$ of Current Balance)

Data Cutoff: 6/30/2011

Current Portfolio Balance	-	83,842.67	145,705.06	121,525.90	94,502.44	68,382.94	47,683.73	32,339.39	20,762.36	11,440.22
	Jun-03	Jun-04	Jun-05	Jun-06	Jun-07	Jun-08	Jun-09	Jun-10	Jun-11	
Current	80,106.33	134,515.06	116,270.55	89,850.58	63,032.16	42,923.86	29,740.31	19,319.62	10,016.24	
1-30 Days	3,736.34	6,833.74	3,832.52	3,310.64	3,082.02	3,096.38	1,266.12	571.06	1,159.69	
31-60 Days	-	4,356.26	1,422.83	449.89	2,268.76	1,340.93	651.27	642.62	89.76	
61-90 Days	-	-	-	891.33	-	322.56	681.69	229.06	174.53	
91-120 Days	-	-	-	-	-	-	-	-	-	
121-150 Days	-	-	-	-	-	-	-	-	-	
151-180 Days	-	-	-	-	-	-	-	-	-	
181+ Days	-	-	-	-	-	-	-	-	-	

### Delinquency Status (% of Current Balance)

Current Portfolio Balance	-	83,842.67	145,705.06	121,525.90	94,502.44	68,382.94	47,683.73	32,339.39	20,762.36	11,440.22
	Jun-03	Jun-04	Jun-05	Jun-06	Jun-07	Jun-08	Jun-09	Jun-10	Jun-11	
Current	95.54%	92.32%	95.68%	95.08%	92.18%	90.02%	91.96%	93.05%	87.55%	
1-30 Days	4.46%	4.69%	3.15%	3.50%	4.51%	6.49%	3.92%	2.75%	10.14%	
31-60 Days	0.00%	2.99%	1.17%	0.48%	3.32%	2.81%	2.01%	3.10%	0.78%	
61-90 Days	0.00%	0.00%	0.00%	0.94%	0.00%	0.68%	2.11%	1.10%	1.53%	
91-120 Days	0.00%	0.00%	0.00%	0.00%	0.00%	0.00%	0.00%	0.00%	0.00%	
121-150 Days	0.00%	0.00%	0.00%	0.00%	0.00%	0.00%	0.00%	0.00%	0.00%	
151-180 Days	0.00%	0.00%	0.00%	0.00%	0.00%	0.00%	0.00%	0.00%	0.00%	
181+ Days	0.00%	0.00%	0.00%	0.00%	0.00%	0.00%	0.00%	0.00%	0.00%	
Current - 90 Days	100.00%	100.00%	100.00%	100.00%	100.00%	100.00%	100.00%	100.00%	100.00%	
91-180 Days	0.00%	0.00%	0.00%	0.00%	0.00%	0.00%	0.00%	0.00%	0.00%	



## Personal Loans - La Hipotecaria Panama Migration Analysis (2004 Vintage)

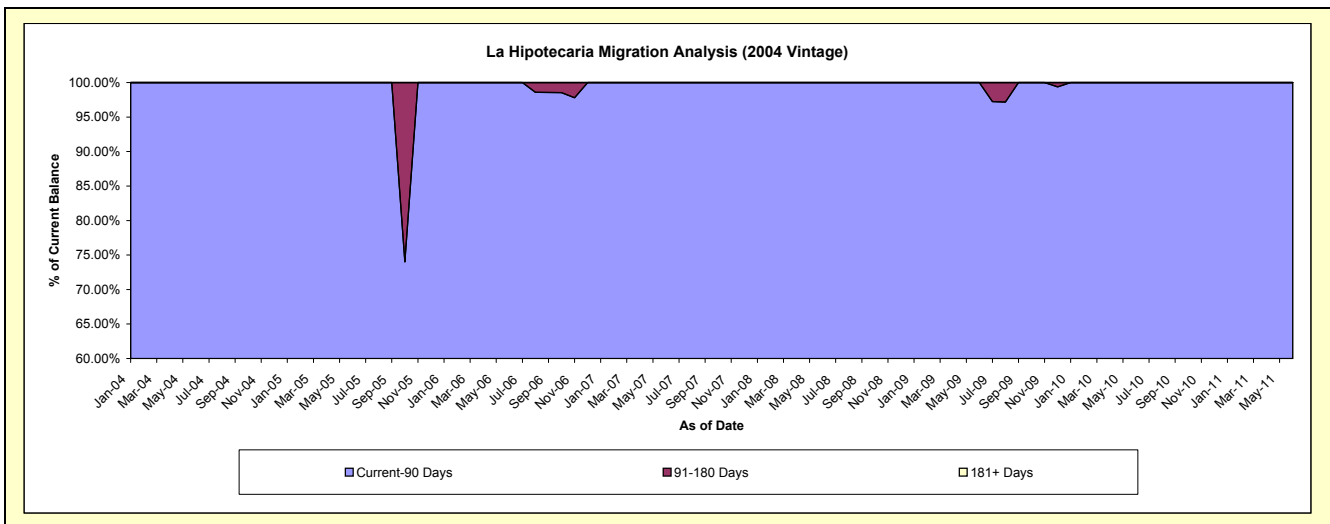
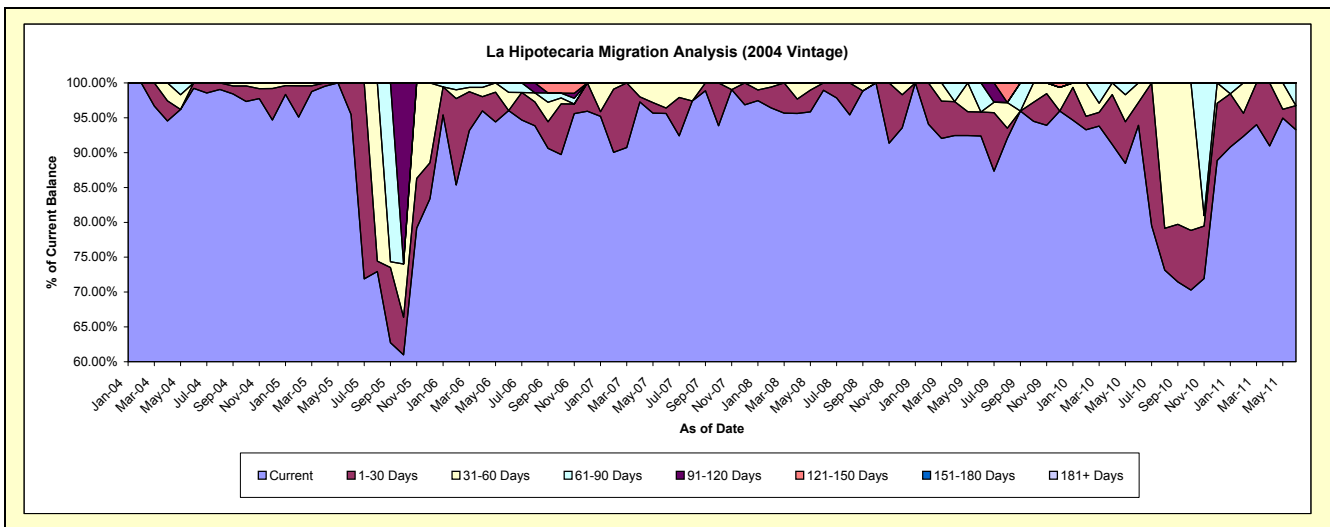
### Delinquency Status (\$ of Current Balance)

Data Cutoff: 6/30/2011

Current Portfolio Balance	-	-	59,220.90	105,846.04	61,157.88	48,294.60	30,320.76	23,937.55	17,939.34	13,372.47
			Jun-04	Jun-05	Jun-06	Jun-07	Jun-08	Jun-09	Jun-10	Jun-11
Current			58,761.30	101,029.43	58,732.36	46,178.31	30,001.16	22,114.27	16,847.97	12,474.09
1-30 Days			459.60	4,816.61	-	371.13	319.60	821.21	589.94	461.46
31-60 Days			-	-	1,594.48	1,745.16	-	-	501.43	-
61-90 Days			-	-	831.04	-	-	1,002.07	-	436.92
91-120 Days			-	-	-	-	-	-	-	-
121-150 Days			-	-	-	-	-	-	-	-
151-180 Days			-	-	-	-	-	-	-	-
181+ Days			-	-	-	-	-	-	-	-

### Delinquency Status (% of Current Balance)

Current Portfolio Balance	-	-	59,220.90	105,846.04	61,157.88	48,294.60	30,320.76	23,937.55	17,939.34	13,372.47
			Jun-04	Jun-05	Jun-06	Jun-07	Jun-08	Jun-09	Jun-10	Jun-11
Current			99.22%	95.45%	96.03%	95.62%	98.95%	92.38%	93.92%	93.28%
1-30 Days			0.78%	4.55%	0.00%	0.77%	1.05%	3.43%	3.29%	3.45%
31-60 Days			0.00%	0.00%	2.61%	3.61%	0.00%	0.00%	2.80%	0.00%
61-90 Days			0.00%	0.00%	1.36%	0.00%	0.00%	4.19%	0.00%	3.27%
91-120 Days			0.00%	0.00%	0.00%	0.00%	0.00%	0.00%	0.00%	0.00%
121-150 Days			0.00%	0.00%	0.00%	0.00%	0.00%	0.00%	0.00%	0.00%
151-180 Days			0.00%	0.00%	0.00%	0.00%	0.00%	0.00%	0.00%	0.00%
181+ Days			0.00%	0.00%	0.00%	0.00%	0.00%	0.00%	0.00%	0.00%
Current - 90 Days			100.00%	100.00%	100.00%	100.00%	100.00%	100.00%	100.00%	100.00%
91-180 Days			0.00%	0.00%	0.00%	0.00%	0.00%	0.00%	0.00%	0.00%



## Personal Loans - La Hipotecaria Panama Migration Analysis (2005 Vintage)

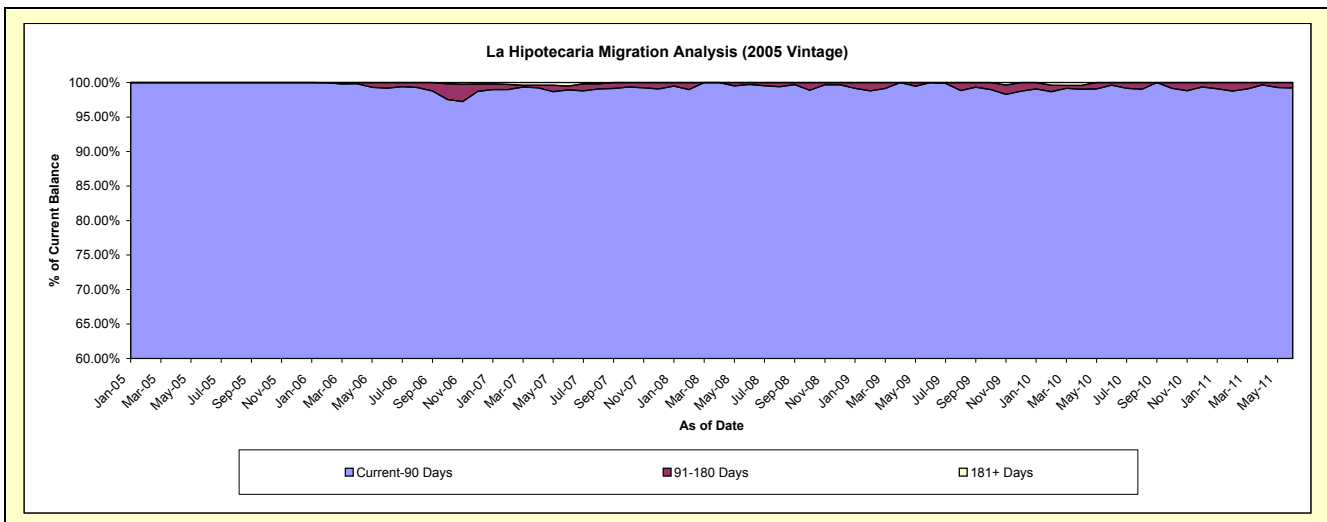
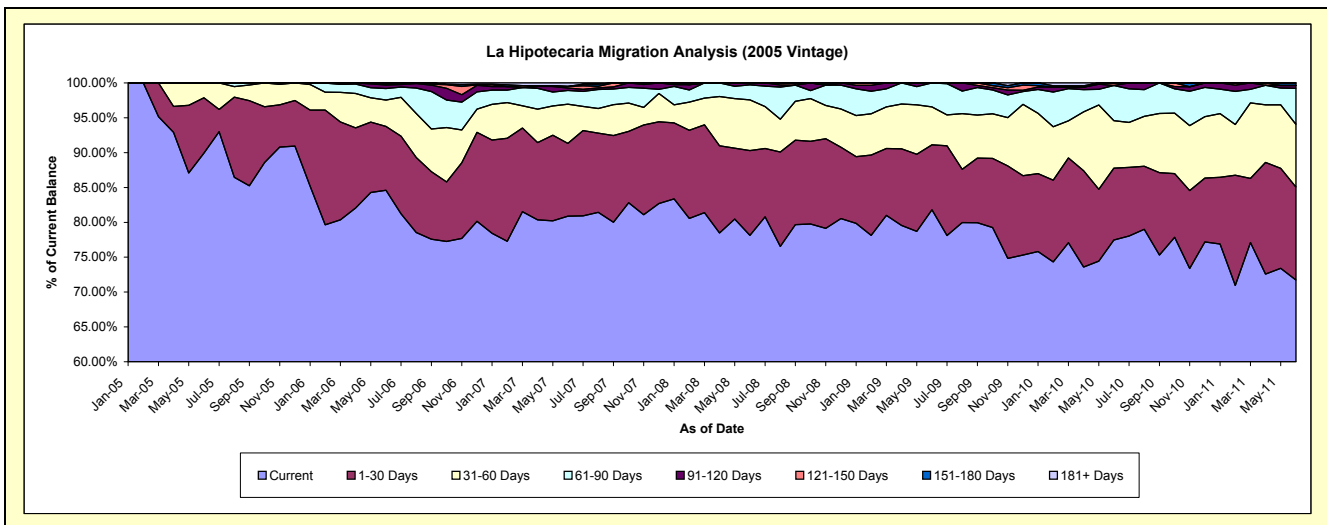
### Delinquency Status (\$ of Current Balance)

Data Cutoff: 6/30/2011

Current Portfolio Balance	-	-	-	419,167.32	2,422,512.50	2,040,048.82	1,602,444.21	1,286,131.63	1,041,252.76	799,217.49
	Jun-05	Jun-06	Jun-07	Jun-08	Jun-09	Jun-10	Jun-11			
Current	376,924.16	2,049,292.46	1,650,297.08	1,251,921.54	1,051,970.71	806,692.82	573,279.92			
1-30 Days	33,343.16	221,867.59	212,813.15	195,116.16	119,875.40	107,278.94	106,526.42			
31-60 Days	8,900.00	91,662.98	114,703.36	116,493.52	69,903.03	70,853.01	71,978.96			
61-90 Days	-	40,216.63	40,333.59	34,319.81	44,382.49	52,627.53	41,168.00			
91-120 Days	-	12,416.35	7,079.03	4,593.18	-	-	3,357.46			
121-150 Days	-	3,657.00	4,298.52	-	-	3,800.46	-			
151-180 Days	-	3,399.49	-	-	-	-	2,906.73			
181+ Days	-	-	10,524.09	-	-	-	-			

### Delinquency Status (% of Current Balance)

Current Portfolio Balance	-	-	-	419,167.32	2,422,512.50	2,040,048.82	1,602,444.21	1,286,131.63	1,041,252.76	799,217.49
	Jun-05	Jun-06	Jun-07	Jun-08	Jun-09	Jun-10	Jun-11			
Current	89.92%	84.59%	80.89%	78.13%	81.79%	77.47%	71.73%			
1-30 Days	7.95%	9.16%	10.43%	12.18%	9.32%	10.30%	13.33%			
31-60 Days	2.12%	3.78%	5.62%	7.27%	5.44%	6.80%	9.01%			
61-90 Days	0.00%	1.66%	1.98%	2.14%	3.45%	5.05%	5.15%			
91-120 Days	0.00%	0.51%	0.35%	0.29%	0.00%	0.00%	0.42%			
121-150 Days	0.00%	0.15%	0.21%	0.00%	0.00%	0.36%	0.00%			
151-180 Days	0.00%	0.14%	0.00%	0.00%	0.00%	0.00%	0.36%			
181+ Days	0.00%	0.00%	0.52%	0.00%	0.00%	0.00%	0.00%			
Current - 90 Days	100.00%	99.20%	98.93%	99.71%	100.00%	99.64%	99.22%			
91-180 Days	0.00%	0.80%	0.56%	0.29%	0.00%	0.36%	0.78%			



# Personal Loans - La Hipotecaria Panama Migration Analysis (2006 Vintage)

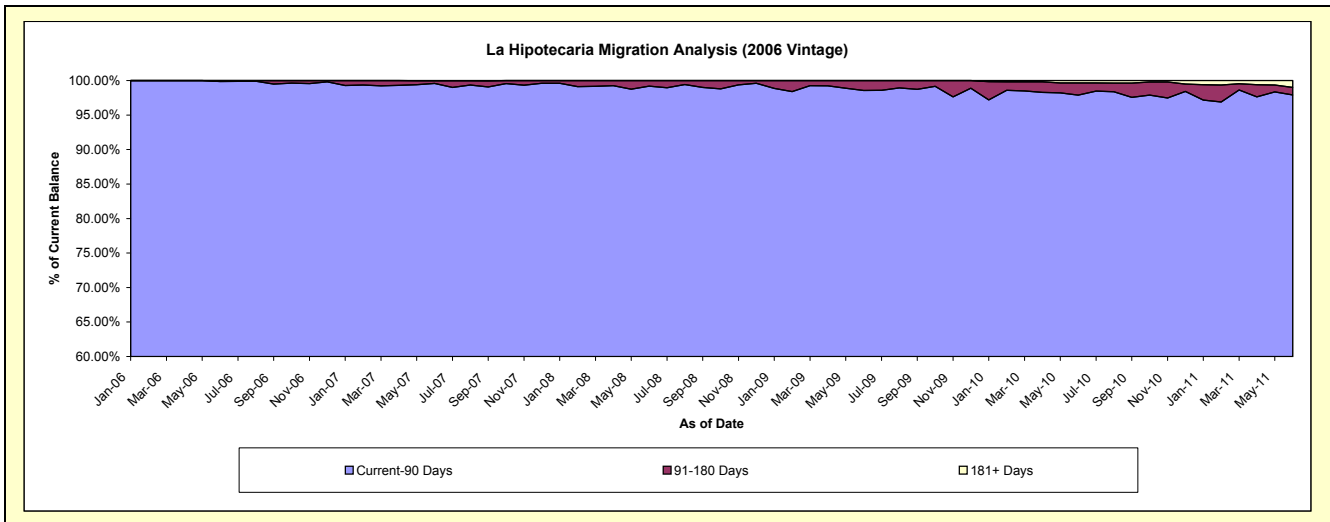
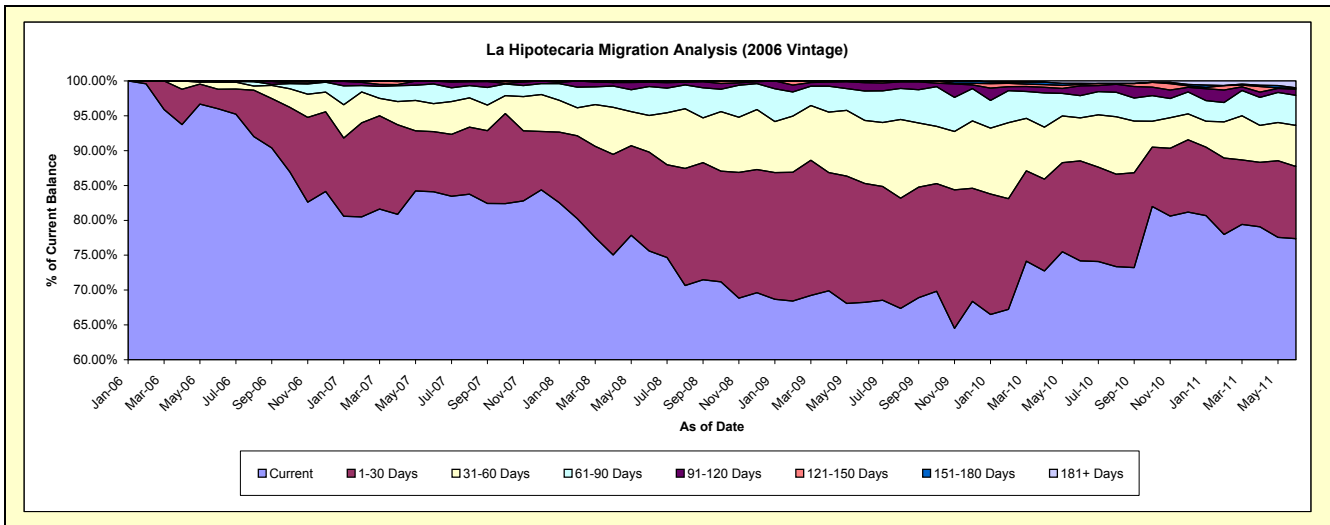
## Delinquency Status (\$ of Current Balance)

Data Cutoff: 6/30/2011

Current Portfolio Balance	-	-	-	-	3,634,616.73	6,876,220.39	5,391,797.29	4,546,513.55	3,916,851.65	3,194,659.22
					Jun-06	Jun-07	Jun-08	Jun-09	Jun-10	Jun-11
Current					3,489,833.70	5,782,500.43	4,076,228.83	3,101,997.92	2,905,648.53	2,471,579.24
1-30 Days					101,601.36	594,274.25	764,697.37	775,207.74	561,880.21	330,600.60
31-60 Days					38,182.67	275,467.38	284,163.89	411,196.07	242,129.50	188,832.85
61-90 Days					-	194,625.33	223,013.01	192,392.43	124,866.83	137,310.31
91-120 Days					4,999.00	27,361.95	33,750.76	54,193.10	54,756.20	27,913.62
121-150 Days					-	-	9,943.43	6,469.85	7,414.45	4,539.14
151-180 Days					-	-	-	5,056.44	6,421.31	2,265.22
181+ Days					-	1,991.05	-	-	13,734.62	31,618.24

## Delinquency Status (% of Current Balance)

Current Portfolio Balance	-	-	-	-	3,634,616.73	6,876,220.39	5,391,797.29	4,546,513.55	3,916,851.65	3,194,659.22
					Jun-06	Jun-07	Jun-08	Jun-09	Jun-10	Jun-11
Current					96.02%	84.09%	75.60%	68.23%	74.18%	77.37%
1-30 Days					2.80%	8.64%	14.18%	17.05%	14.35%	10.35%
31-60 Days					1.05%	4.01%	5.27%	9.04%	6.18%	5.91%
61-90 Days					0.00%	2.83%	4.14%	4.23%	3.19%	4.30%
91-120 Days					0.14%	0.40%	0.63%	1.19%	1.40%	0.87%
121-150 Days					0.00%	0.00%	0.18%	0.14%	0.19%	0.14%
151-180 Days					0.00%	0.00%	0.00%	0.11%	0.16%	0.07%
181+ Days					0.00%	0.03%	0.00%	0.00%	0.35%	0.99%
Current - 90 Days					99.86%	99.57%	99.19%	98.55%	97.90%	97.92%
91-180 Days					0.14%	0.40%	0.81%	1.45%	1.75%	1.09%



## Personal Loans - La Hipotecaria Panama Migration Analysis (2007 Vintage)

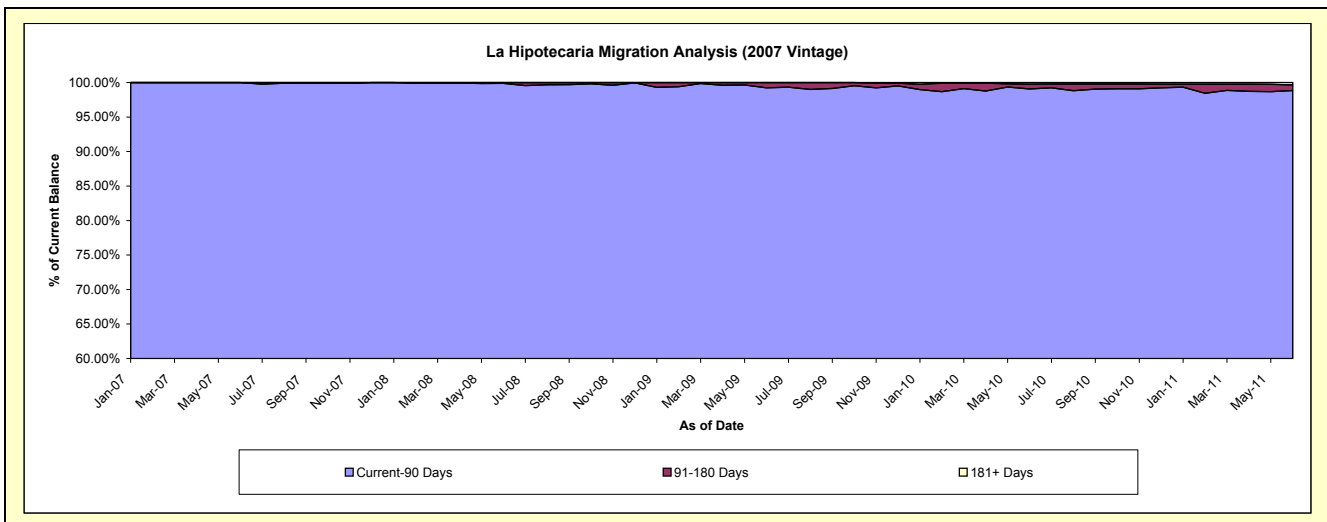
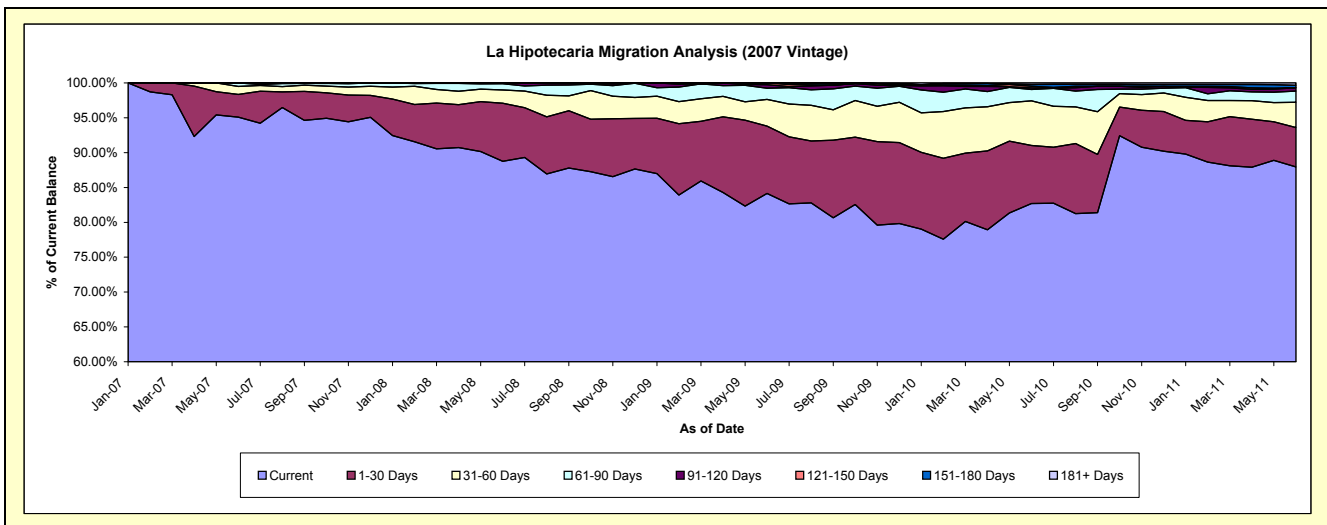
### Delinquency Status (\$ of Current Balance)

Data Cutoff: 6/30/2011

Current Portfolio Balance	-	-	-	-	-	4,553,946.71	8,703,062.62	7,713,574.75	6,910,912.64	5,777,577.31
						Jun-07	Jun-08	Jun-09	Jun-10	Jun-11
Current						4,330,413.77	7,724,496.44	6,490,188.86	5,715,453.12	5,081,431.86
1-30 Days						148,695.36	724,407.43	744,557.48	576,031.63	326,152.23
31-60 Days						51,537.58	167,240.41	296,522.21	441,120.11	209,841.90
61-90 Days						23,300.00	76,675.72	123,027.15	113,728.90	93,003.88
91-120 Days						-	10,242.62	39,137.43	15,434.34	27,428.93
121-150 Days						-	-	20,141.62	15,097.45	-
151-180 Days						-	-	-	17,770.89	20,176.09
181+ Days						-	-	-	16,276.20	19,542.42

### Delinquency Status (% of Current Balance)

Current Portfolio Balance	-	-	-	-	-	4,553,946.71	8,703,062.62	7,713,574.75	6,910,912.64	5,777,577.31
						Jun-07	Jun-08	Jun-09	Jun-10	Jun-11
Current						95.09%	88.76%	84.14%	82.70%	87.95%
1-30 Days						3.27%	8.32%	9.65%	8.34%	5.65%
31-60 Days						1.13%	1.92%	3.84%	6.38%	3.63%
61-90 Days						0.51%	0.88%	1.59%	1.65%	1.61%
91-120 Days						0.00%	0.12%	0.51%	0.22%	0.47%
121-150 Days						0.00%	0.00%	0.26%	0.22%	0.00%
151-180 Days						0.00%	0.00%	0.00%	0.26%	0.35%
181+ Days						0.00%	0.00%	0.00%	0.24%	0.34%
Current - 90 Days						100.00%	99.88%	99.23%	99.07%	98.84%
91-180 Days						0.00%	0.12%	0.77%	0.70%	0.82%





## Personal Loans - La Hipotecaria Panama Migration Analysis (2008 Vintage)

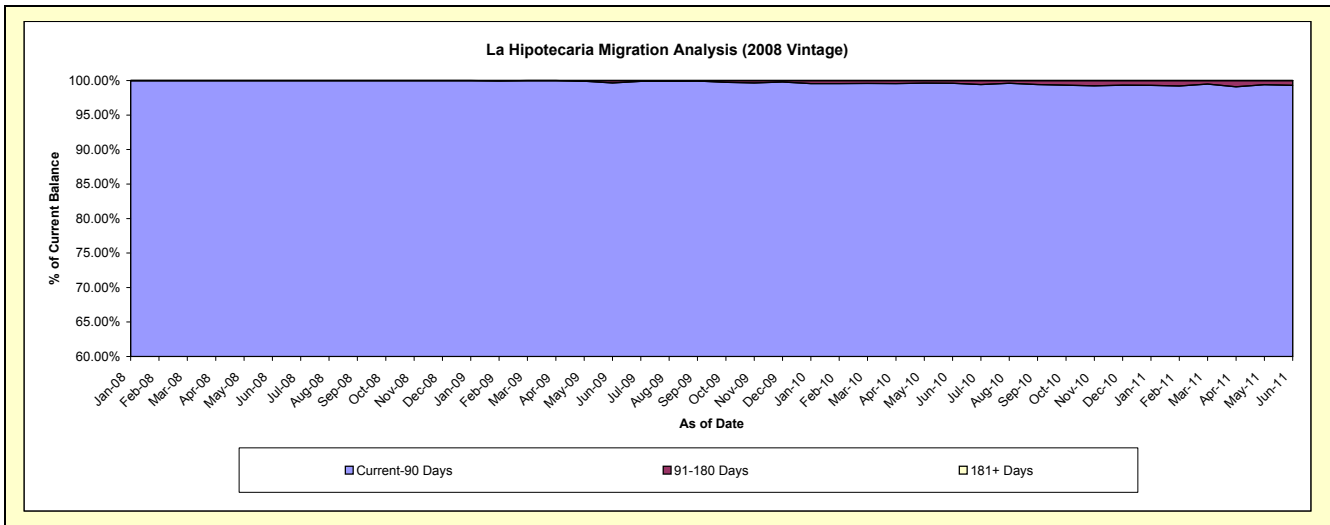
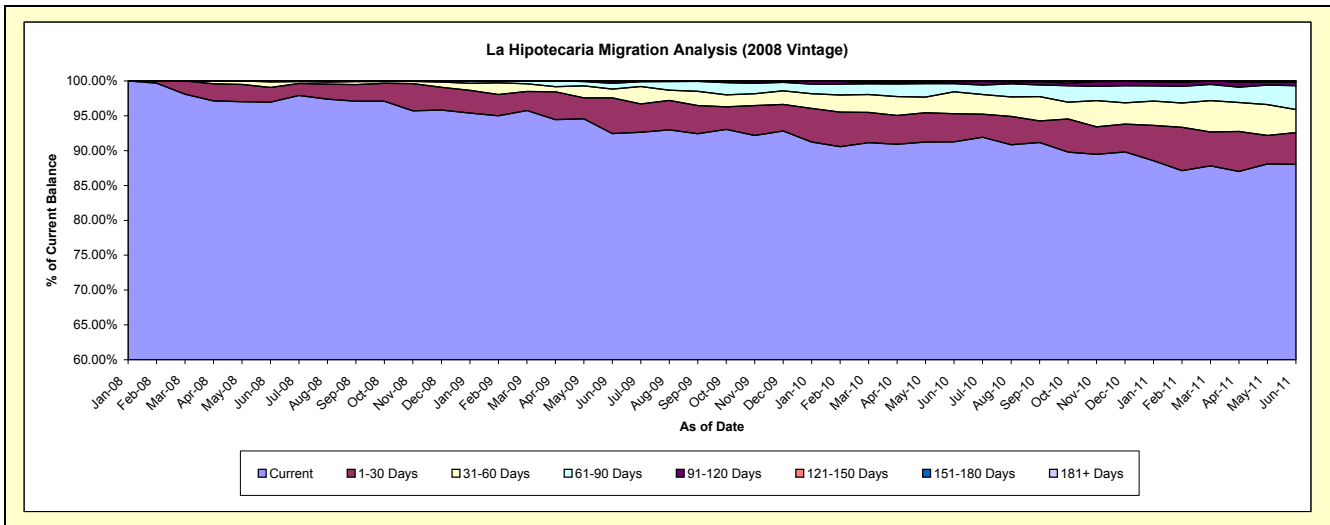
### Delinquency Status (\$ of Current Balance)

Data Cutoff: **6/30/2011**

Current Portfolio Balance	-	-	-	-	-	-	-	6,842,176.35	10,937,787.13	10,074,249.69	8,946,673.33
								Jun-08	Jun-09	Jun-10	Jun-11
Current								6,633,196.53	10,112,727.74	9,192,895.88	7,873,958.88
1-30 Days								145,147.37	558,723.05	406,886.32	409,858.79
31-60 Days								55,032.45	138,092.07	317,407.60	295,178.00
61-90 Days								8,800.00	90,584.36	118,481.17	306,270.14
91-120 Days								-	36,881.30	25,854.43	44,296.00
121-150 Days								-	-	7,078.21	-
151-180 Days								-	778.61	5,646.08	17,111.52
181+ Days								-	-	-	-

### Delinquency Status (% of Current Balance)

Current Portfolio Balance	-	-	-	-	-	-	-	6,842,176.35	10,937,787.13	10,074,249.69	8,946,673.33
								Jun-08	Jun-09	Jun-10	Jun-11
Current								96.95%	92.46%	91.25%	88.01%
1-30 Days								2.12%	5.11%	4.04%	4.58%
31-60 Days								0.80%	1.26%	3.15%	3.30%
61-90 Days								0.13%	0.83%	1.18%	3.42%
91-120 Days								0.00%	0.34%	0.25%	0.50%
121-150 Days								0.00%	0.00%	0.07%	0.00%
151-180 Days								0.00%	0.01%	0.06%	0.19%
181+ Days								0.00%	0.00%	0.00%	0.00%
Current - 90 Days								100.00%	99.66%	99.62%	99.31%
91-180 Days								0.00%	0.34%	0.38%	0.69%



## Personal Loans - La Hipotecaria Panama Migration Analysis (2009 Vintage)

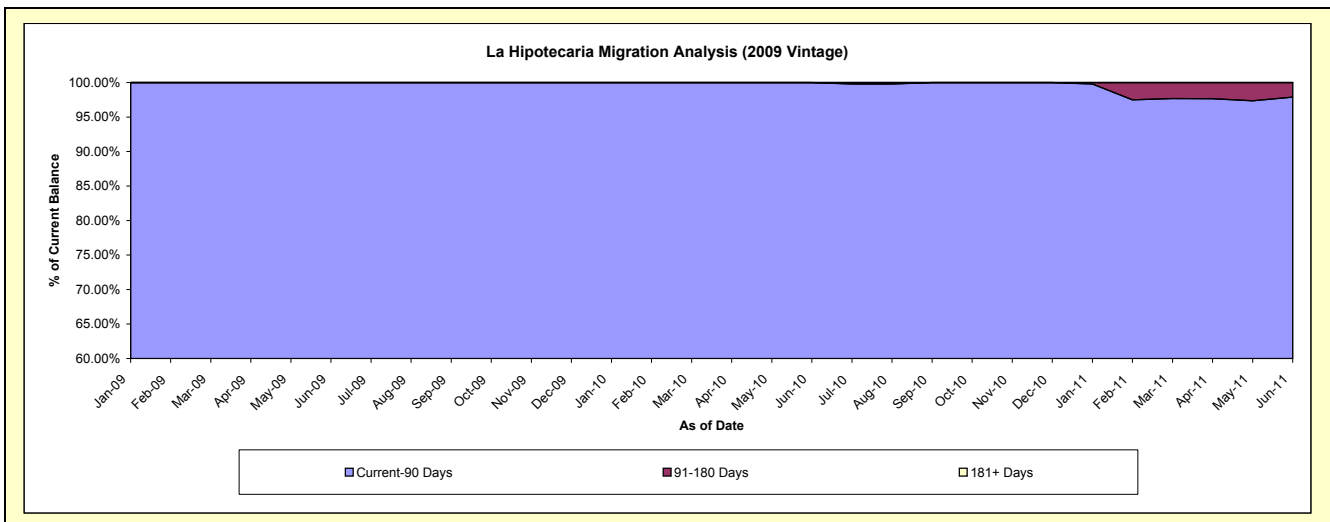
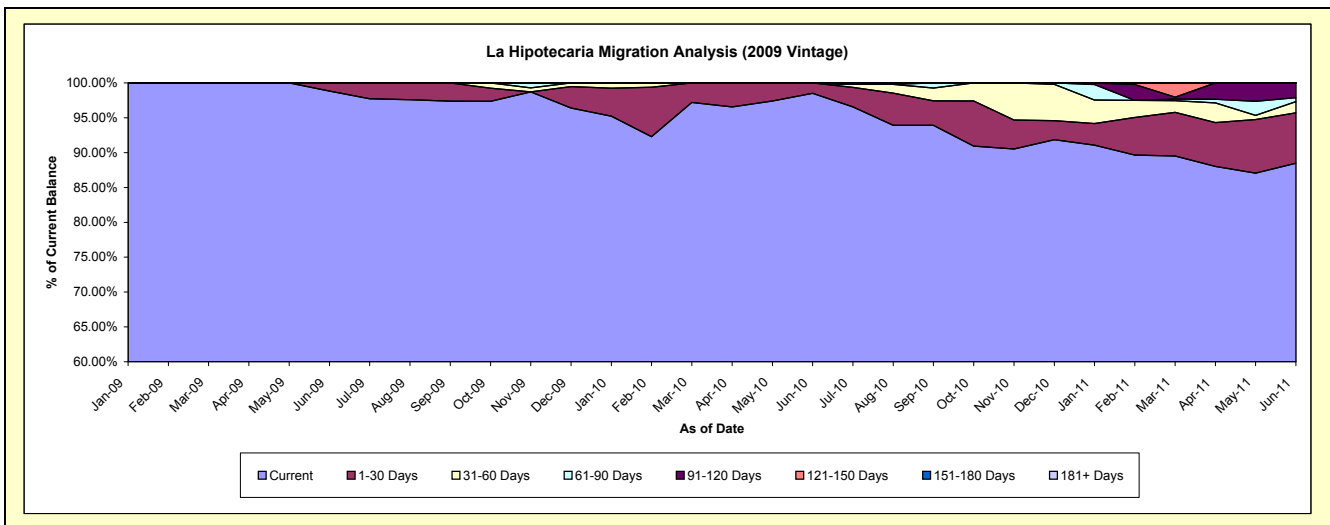
### Delinquency Status (\$ of Current Balance)

Data Cutoff: 6/30/2011

Current Portfolio Balance	-	-	-	-	-	-	-	-	-	467,601.27	759,584.59	632,578.28
										Jun-09	Jun-10	Jun-11
Current										462,122.69	748,245.06	559,702.49
1-30 Days										5,478.58	11,339.53	45,774.20
31-60 Days										-	-	10,126.30
61-90 Days										-	-	3,581.70
91-120 Days										-	-	13,393.59
121-150 Days										-	-	-
151-180 Days										-	-	-
181+ Days										-	-	-

### Delinquency Status (% of Current Balance)

Current Portfolio Balance	-	-	-	-	-	-	-	-	-	467,601.27	759,584.59	632,578.28
										Jun-09	Jun-10	Jun-11
Current										98.83%	98.51%	88.48%
1-30 Days										1.17%	1.49%	7.24%
31-60 Days										0.00%	0.00%	1.60%
61-90 Days										0.00%	0.00%	0.57%
91-120 Days										0.00%	0.00%	2.12%
121-150 Days										0.00%	0.00%	0.00%
151-180 Days										0.00%	0.00%	0.00%
181+ Days										0.00%	0.00%	0.00%
Current - 90 Days										100.00%	100.00%	97.88%
91-180 Days										0.00%	0.00%	2.12%



# Personal Loans - La Hipotecaria Panama Migration Analysis (2010 Vintage)

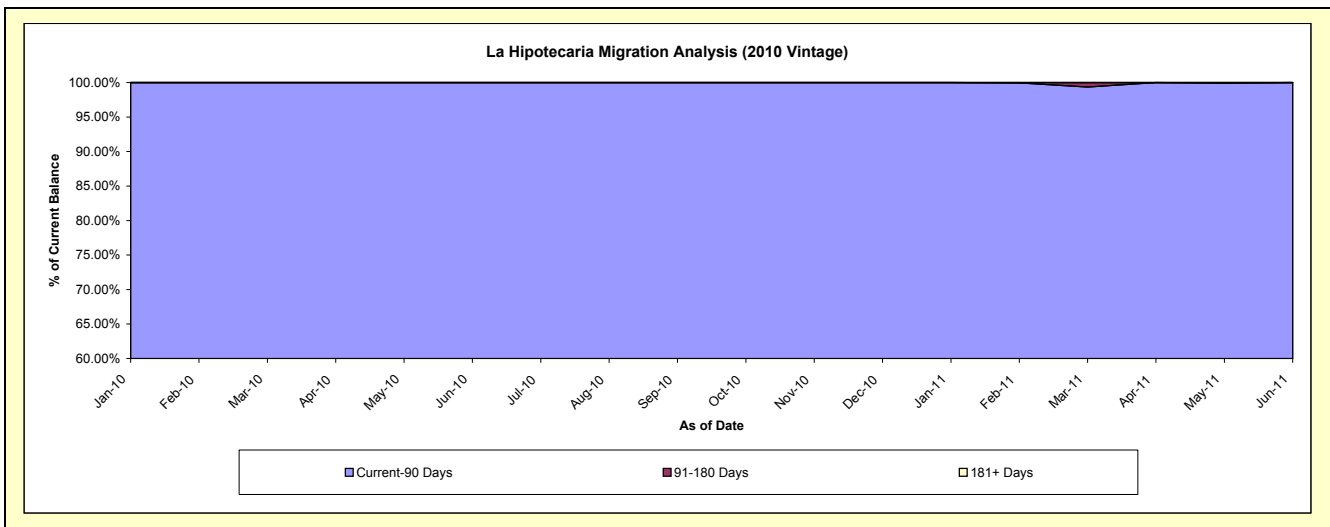
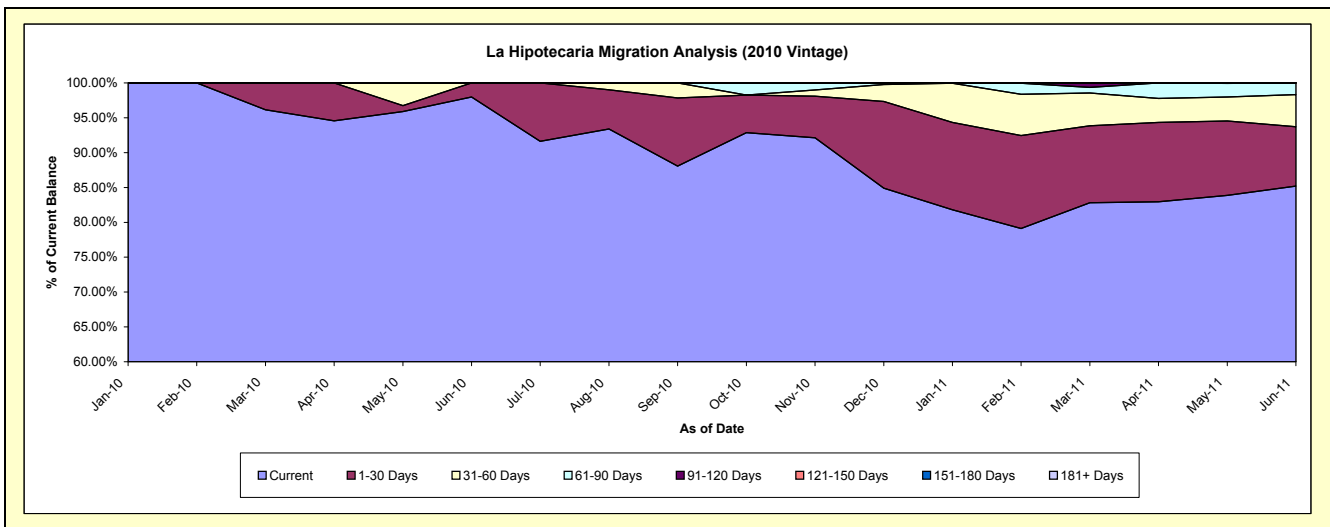
## Delinquency Status (\$ of Current Balance)

Data Cutoff: 6/30/2011

Current Portfolio Balance										504,899.04	1,162,278.82
										Jun-10	Jun-11
Current										494,699.04	990,119.39
1-30 Days										10,200.00	99,085.65
31-60 Days										-	53,613.70
61-90 Days										-	19,460.08
91-120 Days										-	-
121-150 Days										-	-
151-180 Days										-	-
181+ Days										-	-

## Delinquency Status (% of Current Balance)

Current Portfolio Balance										504,899.04	1,162,278.82
										Jun-10	Jun-11
Current										97.98%	85.19%
1-30 Days										2.02%	8.53%
31-60 Days										0.00%	4.61%
61-90 Days										0.00%	1.67%
91-120 Days										0.00%	0.00%
121-150 Days										0.00%	0.00%
151-180 Days										0.00%	0.00%
181+ Days										0.00%	0.00%
Current - 90 Days										100.00%	100.00%
91-180 Days										0.00%	0.00%



**Personal Loans - La Hipotecaria Panama Migration Analysis (2011 Vintage)**

**Delinquency Status (\$ of Current Balance)**

Data Cutoff: 6/30/2011

Current Portfolio Balance											1,324,935.80
											<b>Jun-11</b>
Current											1,219,469.86
1-30 Days											80,224.76
31-60 Days											20,341.18
61-90 Days											4,900.00
91-120 Days											-
121-150 Days											-
151-180 Days											-
181+ Days											-

**Delinquency Status (% of Current Balance)**

Current Portfolio Balance											1,324,935.80
											<b>Jun-11</b>
Current											92.04%
1-30 Days											6.05%
31-60 Days											1.54%
61-90 Days											0.37%
91-120 Days											0.00%
121-150 Days											0.00%
151-180 Days											0.00%
181+ Days											0.00%
Current - 90 Days											100.00%
91-180 Days											0.00%

