

## Migration Analysis for La Hipotecaria S.A Panama

### Personal Loans August 2011

An analysis of historical loan payment data was used to compile a migration analysis of delinquency by annual vintage. Delinquencies for each vintage were grouped into the following buckets; Current, 1-30, 31-60, 61-90, 91-120, 121-150, 151-180, and 180+. Results are provided in graphical and tabular form. The cutoff date is 8/31/2011.

## Personal Loans - La Hipotecaria Panama Migration Analysis (All Vintages)

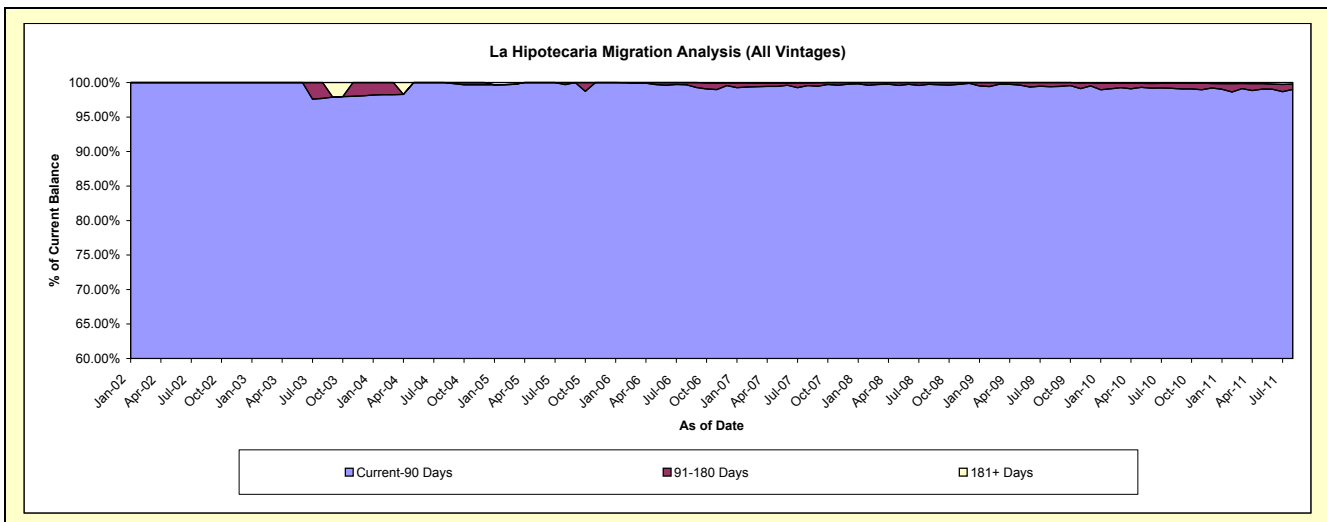
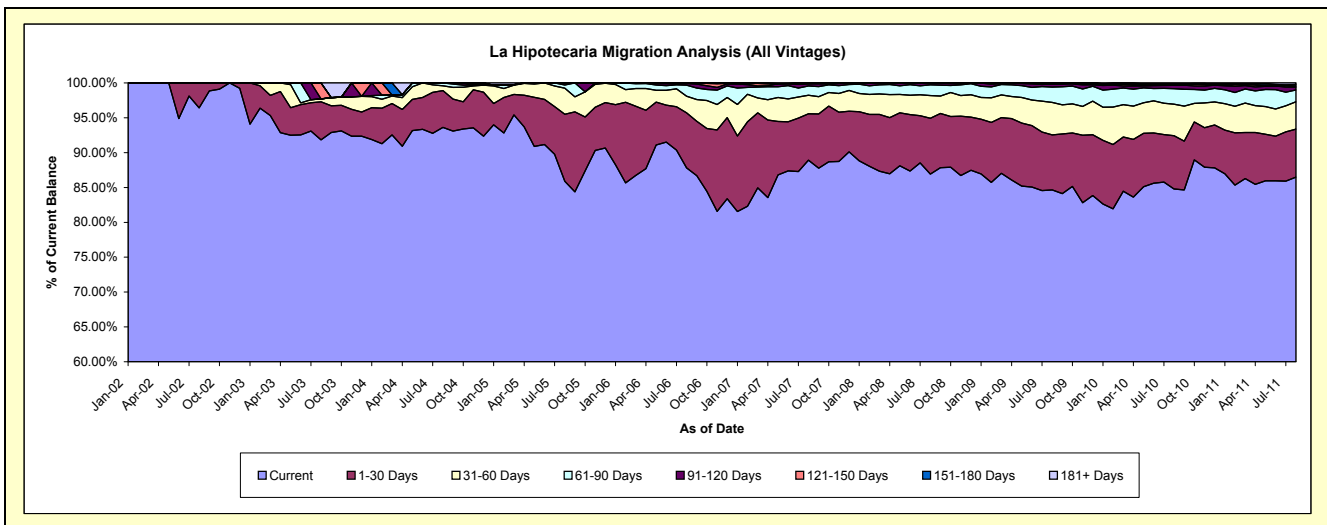
### Delinquency Status (\$ of Current Balance)

Data Cutoff: **8/31/2011**

Current Portfolio Balance	43,294.20	193,579.50	296,321.11	1,194,691.63	7,516,008.56	14,998,637.21	24,618,064.59	24,704,948.98	22,879,966.32	21,710,403.90
	Aug-02	Aug-03	Aug-04	Aug-05	Aug-06	Aug-07	Aug-08	Aug-09	Aug-10	Aug-11
Current	41,739.32	177,764.96	277,436.32	1,026,059.59	6,599,649.62	13,334,841.57	21,400,195.31	20,914,174.84	19,396,732.05	18,775,704.71
1-30 Days	1,554.88	10,584.89	15,631.10	114,854.60	593,322.36	1,000,821.03	1,966,761.96	1,947,688.33	1,749,215.55	1,493,393.56
31-60 Days	-	772.14	2,040.38	44,770.20	180,162.22	396,261.63	803,312.33	1,153,342.12	1,033,468.63	855,071.55
61-90 Days	-	-	1,213.31	5,366.48	119,137.65	199,640.92	382,201.32	542,562.51	509,046.32	368,615.23
91-120 Days	-	-	-	3,640.76	16,281.23	45,480.00	52,036.18	106,710.94	113,723.48	82,405.21
121-150 Days	-	4,457.51	-	-	7,455.48	9,326.42	13,557.49	18,890.26	25,364.23	35,604.17
151-180 Days	-	-	-	-	-	6,534.62	-	21,579.98	24,372.11	51,025.86
181+ Days	-	-	-	-	-	5,731.02	-	-	28,043.95	48,583.61

### Delinquency Status (% of Current Balance)

Current Portfolio Balance	43,294.20	193,579.50	296,321.11	1,194,691.63	7,516,008.56	14,998,637.21	24,618,064.59	24,704,948.98	22,879,966.32	21,710,403.90
	Aug-02	Aug-03	Aug-04	Aug-05	Aug-06	Aug-07	Aug-08	Aug-09	Aug-10	Aug-11
Current	96.41%	91.83%	93.63%	85.88%	87.81%	88.91%	86.93%	84.66%	84.78%	86.48%
1-30 Days	3.59%	5.47%	5.28%	9.61%	7.89%	6.67%	7.99%	7.88%	7.65%	6.88%
31-60 Days	0.00%	0.40%	0.69%	3.75%	2.40%	2.64%	3.26%	4.67%	4.52%	3.94%
61-90 Days	0.00%	0.00%	0.41%	0.45%	1.59%	1.33%	1.55%	2.20%	2.22%	1.70%
91-120 Days	0.00%	0.00%	0.00%	0.30%	0.22%	0.30%	0.21%	0.43%	0.50%	0.38%
121-150 Days	0.00%	2.30%	0.00%	0.00%	0.10%	0.06%	0.06%	0.08%	0.11%	0.16%
151-180 Days	0.00%	0.00%	0.00%	0.00%	0.00%	0.04%	0.00%	0.09%	0.11%	0.24%
181+ Days	0.00%	0.00%	0.00%	0.00%	0.00%	0.04%	0.00%	0.00%	0.12%	0.22%
Current - 90 Days	100.00%	97.70%	100.00%	99.70%	99.68%	99.55%	99.73%	99.40%	99.16%	99.00%
91-180 Days	0.00%	2.30%	0.00%	0.30%	0.32%	0.41%	0.27%	0.60%	0.71%	0.78%



## Personal Loans - La Hipotecaria Panama Migration Analysis (2002 Vintage)

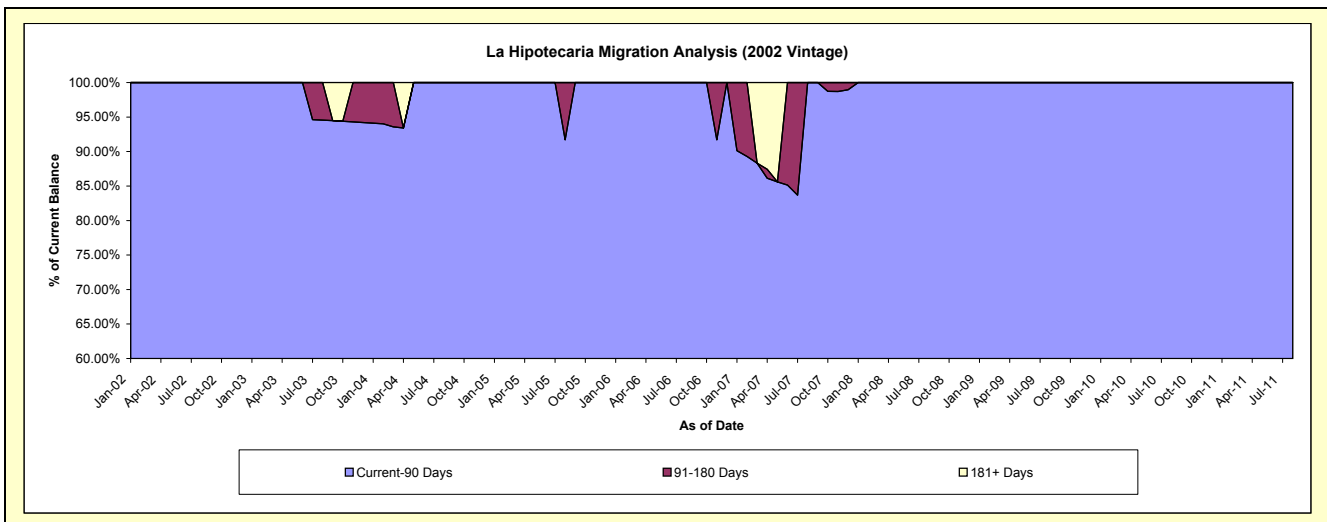
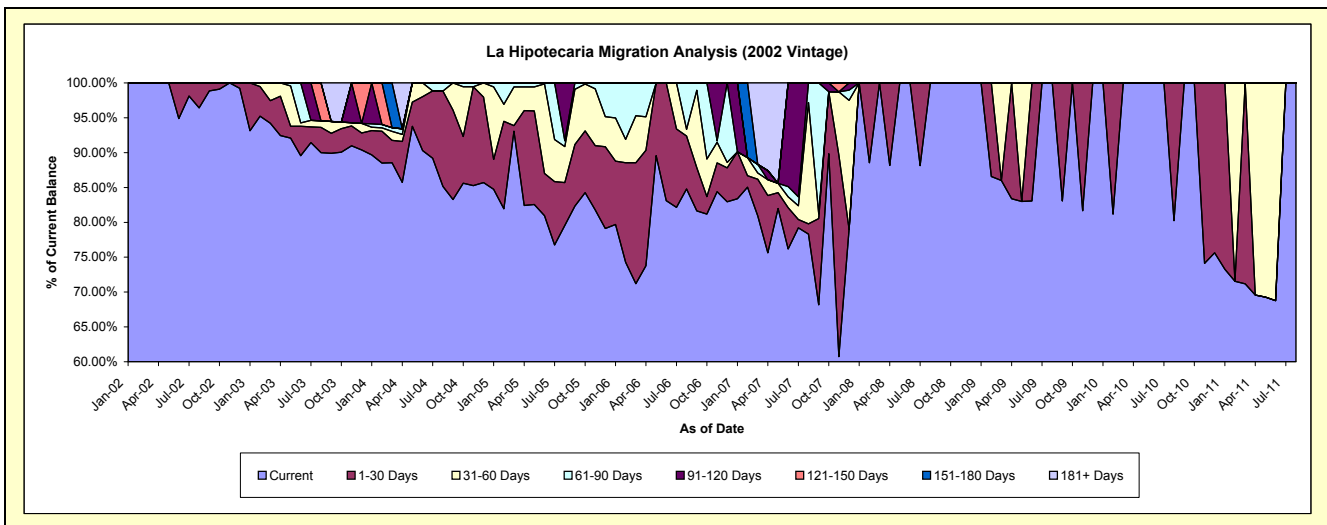
### Delinquency Status (\$ of Current Balance)

Data Cutoff: 8/31/2011

Current Portfolio Balance	43,294.20	81,956.01	62,486.87	43,878.57	17,454.57	6,182.33	2,779.01	1,797.50	1,142.31	497.83
	Aug-02	Aug-03	Aug-04	Aug-05	Aug-06	Aug-07	Aug-08	Aug-09	Aug-10	Aug-11
Current	41,739.32	73,762.68	53,206.61	34,905.54	14,800.06	4,842.26	2,779.01	1,797.50	916.59	497.83
1-30 Days	1,554.88	2,963.68	8,552.37	2,700.85	1,323.46	90.08	-	-	225.72	-
31-60 Days	-	772.14	-	2,264.94	170.92	1,075.69	-	-	-	-
61-90 Days	-	-	727.89	366.48	1,160.13	174.30	-	-	-	-
91-120 Days	-	-	-	3,640.76	-	-	-	-	-	-
121-150 Days	-	4,457.51	-	-	-	-	-	-	-	-
151-180 Days	-	-	-	-	-	-	-	-	-	-
181+ Days	-	-	-	-	-	-	-	-	-	-

### Delinquency Status (% of Current Balance)

Current Portfolio Balance	43,294.20	81,956.01	62,486.87	43,878.57	17,454.57	6,182.33	2,779.01	1,797.50	1,142.31	497.83
	Aug-02	Aug-03	Aug-04	Aug-05	Aug-06	Aug-07	Aug-08	Aug-09	Aug-10	Aug-11
Current	96.41%	90.00%	85.15%	79.55%	84.79%	78.32%	100.00%	100.00%	80.24%	100.00%
1-30 Days	3.59%	3.62%	13.69%	6.16%	7.58%	1.46%	0.00%	0.00%	19.76%	0.00%
31-60 Days	0.00%	0.94%	0.00%	5.16%	0.98%	17.40%	0.00%	0.00%	0.00%	0.00%
61-90 Days	0.00%	0.00%	1.16%	0.84%	6.65%	2.82%	0.00%	0.00%	0.00%	0.00%
91-120 Days	0.00%	0.00%	0.00%	8.30%	0.00%	0.00%	0.00%	0.00%	0.00%	0.00%
121-150 Days	0.00%	5.44%	0.00%	0.00%	0.00%	0.00%	0.00%	0.00%	0.00%	0.00%
151-180 Days	0.00%	0.00%	0.00%	0.00%	0.00%	0.00%	0.00%	0.00%	0.00%	0.00%
181+ Days	0.00%	0.00%	0.00%	0.00%	0.00%	0.00%	0.00%	0.00%	0.00%	0.00%
Current - 90 Days	100.00%	94.56%	100.00%	91.70%	100.00%	100.00%	100.00%	100.00%	100.00%	100.00%
91-180 Days	0.00%	5.44%	0.00%	8.30%	0.00%	0.00%	0.00%	0.00%	0.00%	0.00%



## Personal Loans - La Hipotecaria Panama Migration Analysis (2003 Vintage)

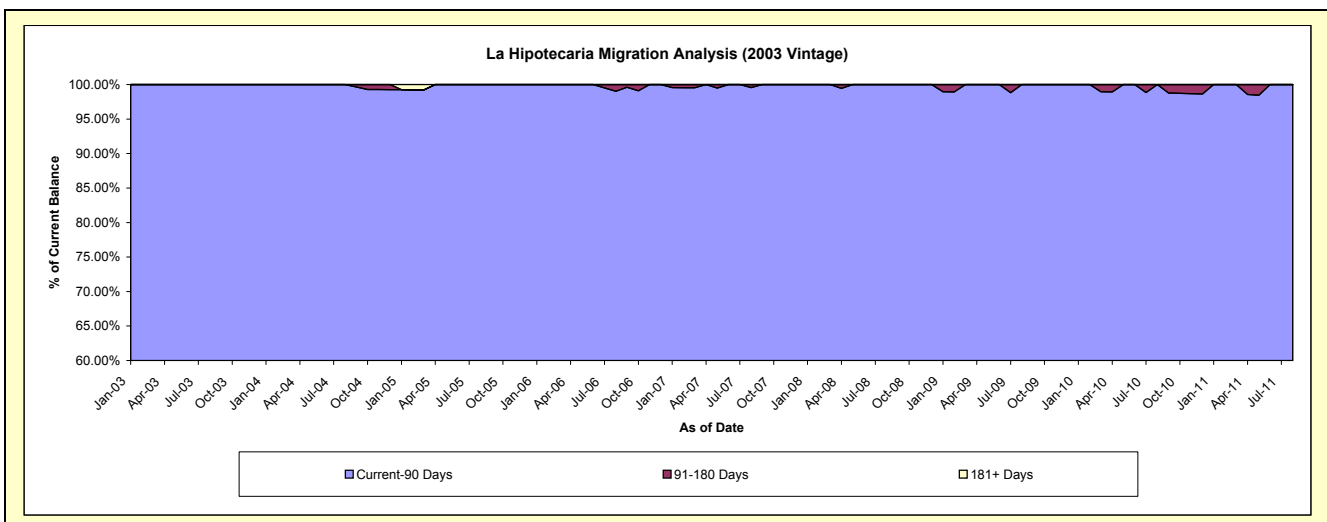
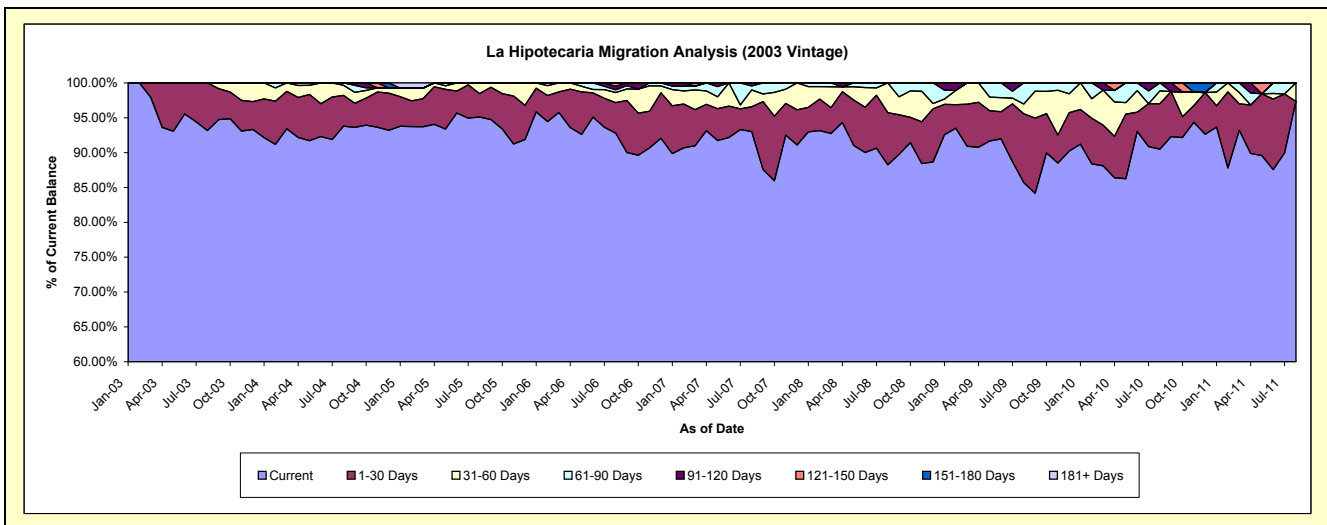
### Delinquency Status (\$ of Current Balance)

Data Cutoff: 8/31/2011

Current Portfolio Balance	-	111,623.49	141,113.66	118,916.67	90,714.96	64,107.56	44,102.40	30,509.44	19,083.27	9,802.05
	Aug-03	Aug-04	Aug-05	Aug-06	Aug-07	Aug-08	Aug-09	Aug-10	Aug-11	
Current	104,002.28	132,382.55	113,099.43	84,180.09	59,631.54	38,919.30	26,150.76	17,270.58	9,541.28	
1-30 Days	7,621.21	6,205.31	3,996.67	3,979.30	2,285.74	3,303.18	3,008.04	1,241.91	-	
31-60 Days	-	2,040.38	1,820.57	1,308.54	1,548.82	1,879.92	423.05	350.22	260.77	
61-90 Days	-	485.42	-	355.70	357.28	-	927.59	220.56	-	
91-120 Days	-	-	-	434.85	284.18	-	-	-	-	
121-150 Days	-	-	-	456.48	-	-	-	-	-	
151-180 Days	-	-	-	-	-	-	-	-	-	
181+ Days	-	-	-	-	-	-	-	-	-	

### Delinquency Status (% of Current Balance)

Current Portfolio Balance	-	111,623.49	141,113.66	118,916.67	90,714.96	64,107.56	44,102.40	30,509.44	19,083.27	9,802.05
	Aug-03	Aug-04	Aug-05	Aug-06	Aug-07	Aug-08	Aug-09	Aug-10	Aug-11	
Current	93.17%	93.81%	95.11%	92.80%	93.02%	88.25%	85.71%	90.50%	97.34%	
1-30 Days	6.83%	4.40%	3.36%	4.39%	3.57%	7.49%	9.86%	6.51%	0.00%	
31-60 Days	0.00%	1.45%	1.53%	1.44%	2.42%	4.26%	1.39%	1.84%	2.66%	
61-90 Days	0.00%	0.34%	0.00%	0.39%	0.56%	0.00%	3.04%	1.16%	0.00%	
91-120 Days	0.00%	0.00%	0.00%	0.48%	0.44%	0.00%	0.00%	0.00%	0.00%	
121-150 Days	0.00%	0.00%	0.00%	0.50%	0.00%	0.00%	0.00%	0.00%	0.00%	
151-180 Days	0.00%	0.00%	0.00%	0.00%	0.00%	0.00%	0.00%	0.00%	0.00%	
181+ Days	0.00%	0.00%	0.00%	0.00%	0.00%	0.00%	0.00%	0.00%	0.00%	
Current - 90 Days	100.00%	100.00%	100.00%	99.02%	99.56%	100.00%	100.00%	100.00%	100.00%	
91-180 Days	0.00%	0.00%	0.00%	0.98%	0.44%	0.00%	0.00%	0.00%	0.00%	



## Personal Loans - La Hipotecaria Panama Migration Analysis (2004 Vintage)

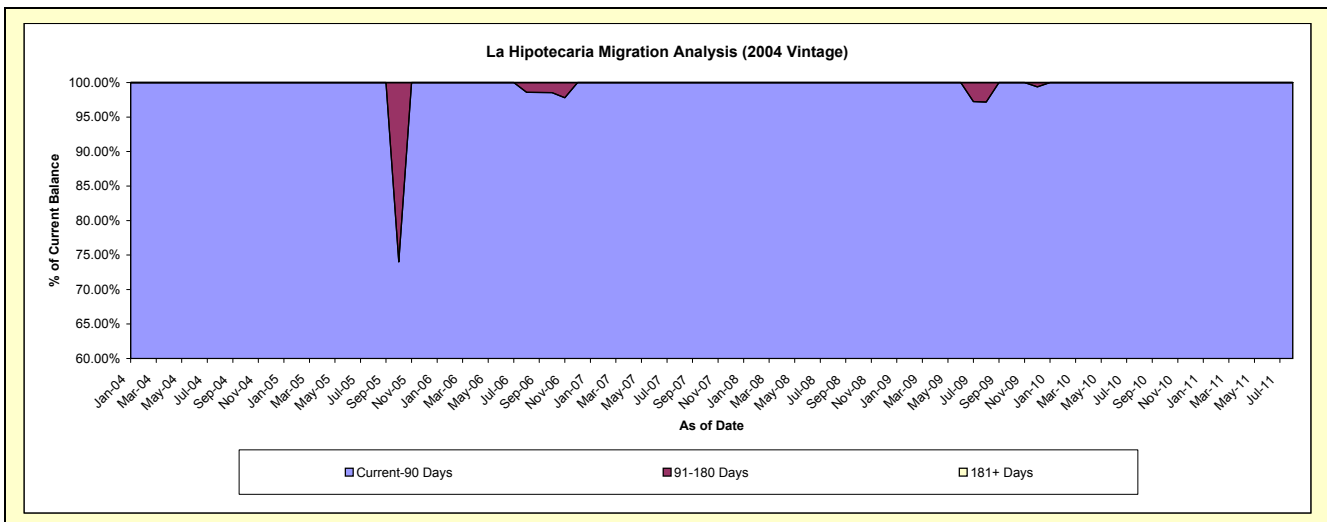
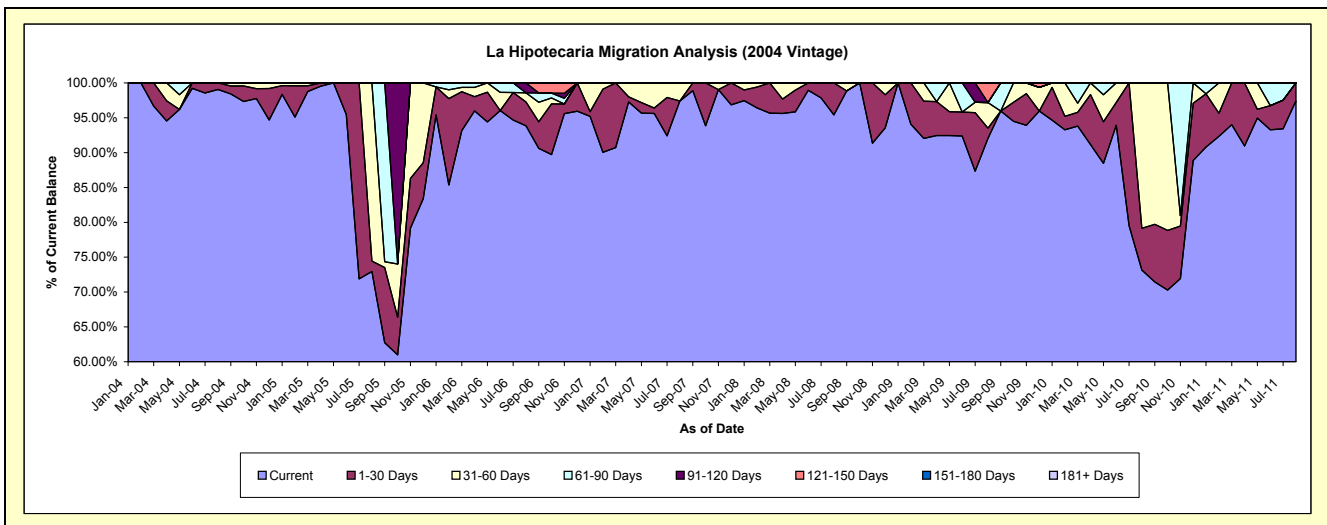
### Delinquency Status (\$ of Current Balance)

Data Cutoff: 8/31/2011

Current Portfolio Balance	-	-	92,720.58	104,567.76	58,832.22	38,078.66	29,073.10	23,080.36	17,246.56	9,042.39
	Aug-04	Aug-05	Aug-06	Aug-07	Aug-08	Aug-09	Aug-10	Aug-11		
Current	91,847.16	76,272.58	55,215.46	37,093.08	27,739.98	21,242.28	12,616.80	8,808.29		
1-30 Days	873.42	1,570.12	2,007.30	-	1,333.12	341.38	1,031.10	234.10		
31-60 Days	-	26,725.06	778.42	985.58	-	846.41	3,598.66	-		
61-90 Days	-	-	-	-	-	-	-	-		
91-120 Days	-	-	831.04	-	-	-	-	-		
121-150 Days	-	-	-	-	-	650.29	-	-		
151-180 Days	-	-	-	-	-	-	-	-		
181+ Days	-	-	-	-	-	-	-	-		

### Delinquency Status (% of Current Balance)

Current Portfolio Balance	-	-	92,720.58	104,567.76	58,832.22	38,078.66	29,073.10	23,080.36	17,246.56	9,042.39
	Aug-04	Aug-05	Aug-06	Aug-07	Aug-08	Aug-09	Aug-10	Aug-11		
Current	99.06%	72.94%	93.85%	97.41%	95.41%	92.04%	73.16%	97.41%		
1-30 Days	0.94%	1.50%	3.41%	0.00%	4.59%	1.48%	5.98%	2.59%		
31-60 Days	0.00%	25.56%	1.32%	2.59%	0.00%	3.67%	20.87%	0.00%		
61-90 Days	0.00%	0.00%	0.00%	0.00%	0.00%	0.00%	0.00%	0.00%		
91-120 Days	0.00%	0.00%	1.41%	0.00%	0.00%	0.00%	0.00%	0.00%		
121-150 Days	0.00%	0.00%	0.00%	0.00%	0.00%	2.82%	0.00%	0.00%		
151-180 Days	0.00%	0.00%	0.00%	0.00%	0.00%	0.00%	0.00%	0.00%		
181+ Days	0.00%	0.00%	0.00%	0.00%	0.00%	0.00%	0.00%	0.00%		
Current - 90 Days	100.00%	100.00%	98.59%	100.00%	100.00%	97.18%	100.00%	100.00%		
91-180 Days	0.00%	0.00%	1.41%	0.00%	0.00%	2.82%	0.00%	0.00%		



## Personal Loans - La Hipotecaria Panama Migration Analysis (2005 Vintage)

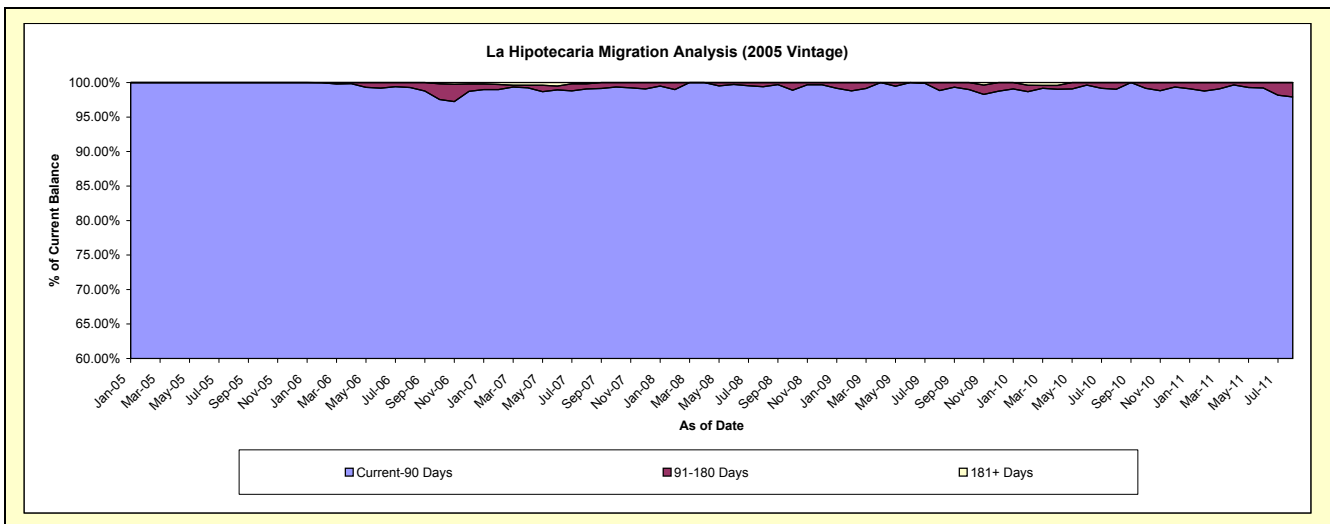
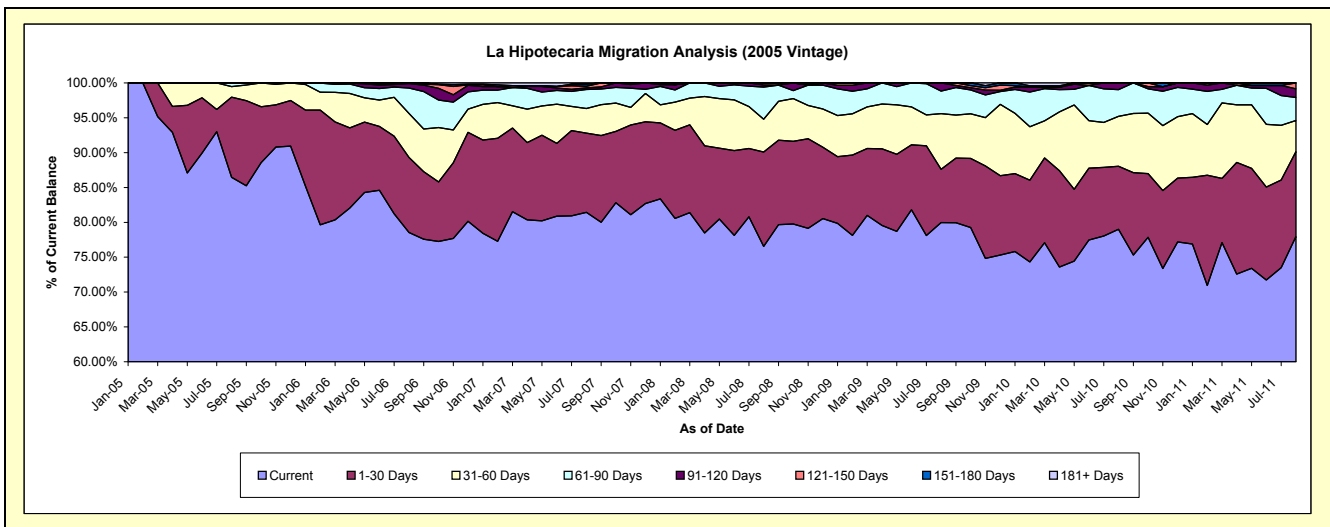
### Delinquency Status (\$ of Current Balance)

Data Cutoff: 8/31/2011

Current Portfolio Balance	-	-	-	927,328.63	2,352,363.16	1,956,427.56	1,516,285.36	1,244,142.59	994,244.89	730,382.25
	Aug-05	Aug-06	Aug-07	Aug-08	Aug-09	Aug-10	Aug-11			
Current	801,782.04	1,847,622.42	1,592,994.67	1,160,772.06	994,847.92	785,425.79	569,333.48			
1-30 Days	106,586.96	253,227.34	222,365.63	205,093.01	95,224.07	90,027.54	89,021.14			
31-60 Days	13,959.63	148,617.62	69,169.62	71,428.91	99,357.58	71,053.98	32,559.21			
61-90 Days	5,000.00	85,880.44	53,611.01	70,020.29	40,214.39	38,043.59	24,209.75			
91-120 Days	-	15,015.34	4,298.20	4,377.91	14,498.63	9,693.99	9,023.77			
121-150 Days	-	2,000.00	4,346.74	4,593.18	-	-	6,234.90			
151-180 Days	-	-	5,901.72	-	-	-	-			
181+ Days	-	-	3,739.97	-	-	-	-			

### Delinquency Status (% of Current Balance)

Current Portfolio Balance	-	-	-	927,328.63	2,352,363.16	1,956,427.56	1,516,285.36	1,244,142.59	994,244.89	730,382.25
	Aug-05	Aug-06	Aug-07	Aug-08	Aug-09	Aug-10	Aug-11			
Current	86.46%	78.54%	81.42%	76.55%	79.96%	79.00%	77.95%			
1-30 Days	11.49%	10.76%	11.37%	13.53%	7.65%	9.05%	12.19%			
31-60 Days	1.51%	6.32%	3.54%	4.71%	7.99%	7.15%	4.46%			
61-90 Days	0.54%	3.65%	2.74%	4.62%	3.23%	3.83%	3.31%			
91-120 Days	0.00%	0.64%	0.22%	0.29%	1.17%	0.98%	1.24%			
121-150 Days	0.00%	0.09%	0.22%	0.30%	0.00%	0.00%	0.85%			
151-180 Days	0.00%	0.00%	0.30%	0.00%	0.00%	0.00%	0.00%			
181+ Days	0.00%	0.00%	0.19%	0.00%	0.00%	0.00%	0.00%			
Current - 90 Days	100.00%	99.28%	99.07%	99.41%	98.83%	99.02%	97.91%			
91-180 Days	0.00%	0.72%	0.74%	0.59%	1.17%	0.98%	2.09%			



## Personal Loans - La Hipotecaria Panama Migration Analysis (2006 Vintage)

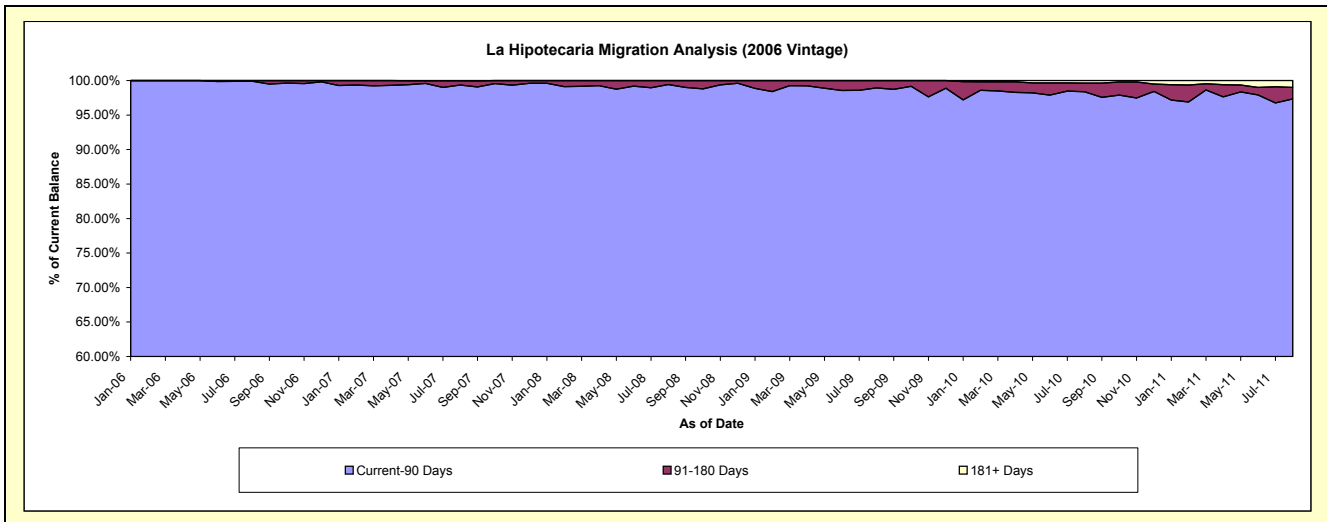
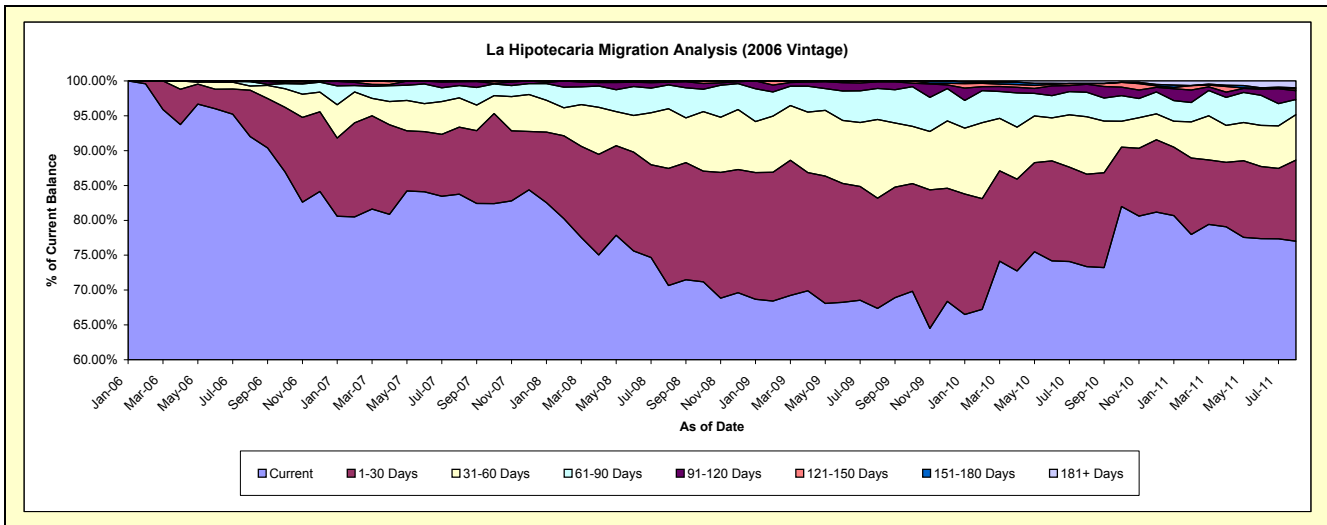
### Delinquency Status (\$ of Current Balance)

Data Cutoff: 8/31/2011

Current Portfolio Balance	-	-	-	-	4,996,643.65	6,581,070.54	5,143,491.42	4,460,582.46	3,777,379.54	3,058,378.82
					Aug-06	Aug-07	Aug-08	Aug-09	Aug-10	Aug-11
Current					4,597,831.59	5,512,249.45	3,633,249.63	3,005,265.59	2,771,164.97	2,355,382.78
1-30 Days					332,784.96	633,045.46	864,488.79	704,698.15	501,181.62	355,327.09
31-60 Days					29,286.72	275,043.84	440,704.47	503,457.50	311,055.61	199,891.67
61-90 Days					31,741.38	117,653.43	175,114.44	199,199.38	132,672.35	66,220.38
91-120 Days					-	35,474.73	20,969.78	41,949.77	43,505.61	38,887.79
121-150 Days					4,999.00	4,979.68	8,964.31	6,012.07	4,064.76	7,767.81
151-180 Days					-	632.90	-	-	-	4,601.60
181+ Days					-	1,991.05	-	-	13,734.62	30,299.70

### Delinquency Status (% of Current Balance)

Current Portfolio Balance	-	-	-	-	4,996,643.65	6,581,070.54	5,143,491.42	4,460,582.46	3,777,379.54	3,058,378.82
					Aug-06	Aug-07	Aug-08	Aug-09	Aug-10	Aug-11
Current					92.02%	83.76%	70.64%	67.37%	73.36%	77.01%
1-30 Days					6.66%	9.62%	16.81%	15.80%	13.27%	11.62%
31-60 Days					0.59%	4.18%	8.57%	11.29%	8.23%	6.54%
61-90 Days					0.64%	1.79%	3.40%	4.47%	3.51%	2.17%
91-120 Days					0.00%	0.54%	0.41%	0.94%	1.15%	1.27%
121-150 Days					0.10%	0.08%	0.17%	0.13%	0.11%	0.25%
151-180 Days					0.00%	0.01%	0.00%	0.00%	0.00%	0.15%
181+ Days					0.00%	0.03%	0.00%	0.00%	0.36%	0.99%
Current - 90 Days					99.90%	99.35%	99.42%	98.92%	98.38%	97.33%
91-180 Days					0.10%	0.62%	0.58%	1.08%	1.26%	1.68%



## Personal Loans - La Hipotecaria Panama Migration Analysis (2007 Vintage)

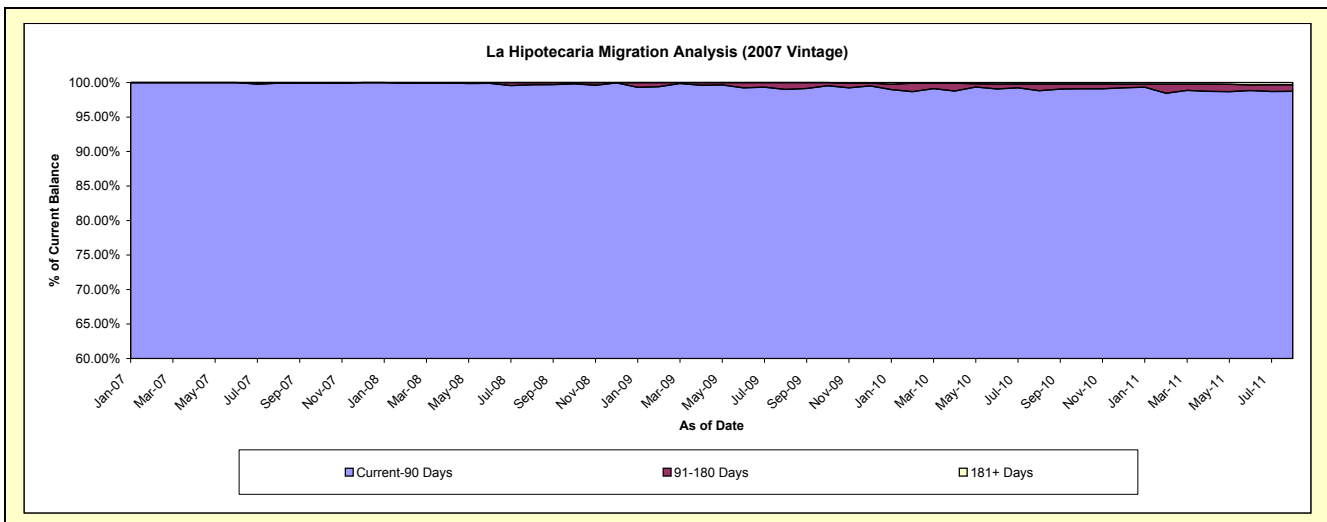
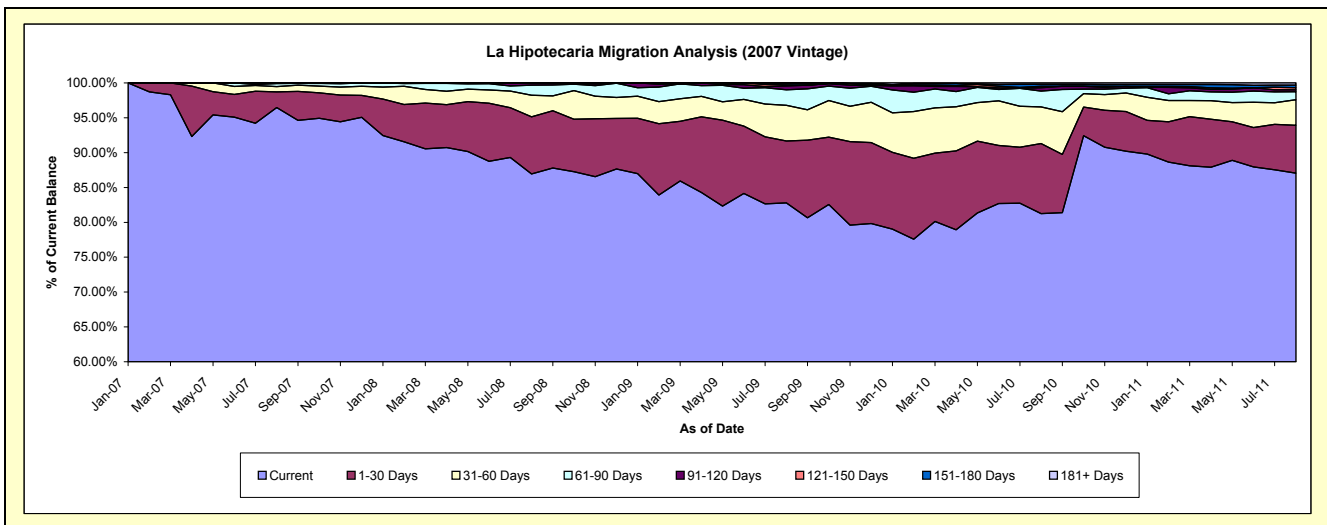
### Delinquency Status (\$ of Current Balance)

Data Cutoff: 8/31/2011

Current Portfolio Balance	-	-	-	-	-	6,352,770.56	8,416,668.87	7,592,736.28	6,741,898.58	5,578,268.28
						Aug-07	Aug-08	Aug-09	Aug-10	Aug-11
Current						6,128,030.57	7,318,155.51	6,285,234.81	5,478,046.37	4,855,809.23
1-30 Days						143,034.12	688,391.76	675,325.03	678,226.43	383,664.74
31-60 Days						48,438.08	261,260.82	388,789.47	354,109.64	204,739.49
61-90 Days						27,844.90	122,172.29	168,294.02	152,492.41	63,100.82
91-120 Days						5,422.89	26,688.49	41,285.07	32,796.44	15,427.37
121-150 Days						-	-	12,227.90	14,147.07	16,560.72
151-180 Days						-	-	21,579.98	17,770.89	20,682.00
181+ Days						-	-	-	14,309.33	18,283.91

### Delinquency Status (% of Current Balance)

Current Portfolio Balance	-	-	-	-	-	6,352,770.56	8,416,668.87	7,592,736.28	6,741,898.58	5,578,268.28
						Aug-07	Aug-08	Aug-09	Aug-10	Aug-11
Current						96.46%	86.95%	82.78%	81.25%	87.05%
1-30 Days						2.25%	8.18%	8.89%	10.06%	6.88%
31-60 Days						0.76%	3.10%	5.12%	5.25%	3.67%
61-90 Days						0.44%	1.45%	2.22%	2.26%	1.13%
91-120 Days						0.09%	0.32%	0.54%	0.49%	0.28%
121-150 Days						0.00%	0.00%	0.16%	0.21%	0.30%
151-180 Days						0.00%	0.00%	0.28%	0.26%	0.37%
181+ Days						0.00%	0.00%	0.00%	0.21%	0.33%
Current - 90 Days						99.91%	99.68%	99.01%	98.83%	98.73%
91-180 Days						0.09%	0.32%	0.99%	0.96%	0.94%





# Personal Loans - La Hipotecaria Panama Migration Analysis (2008 Vintage)

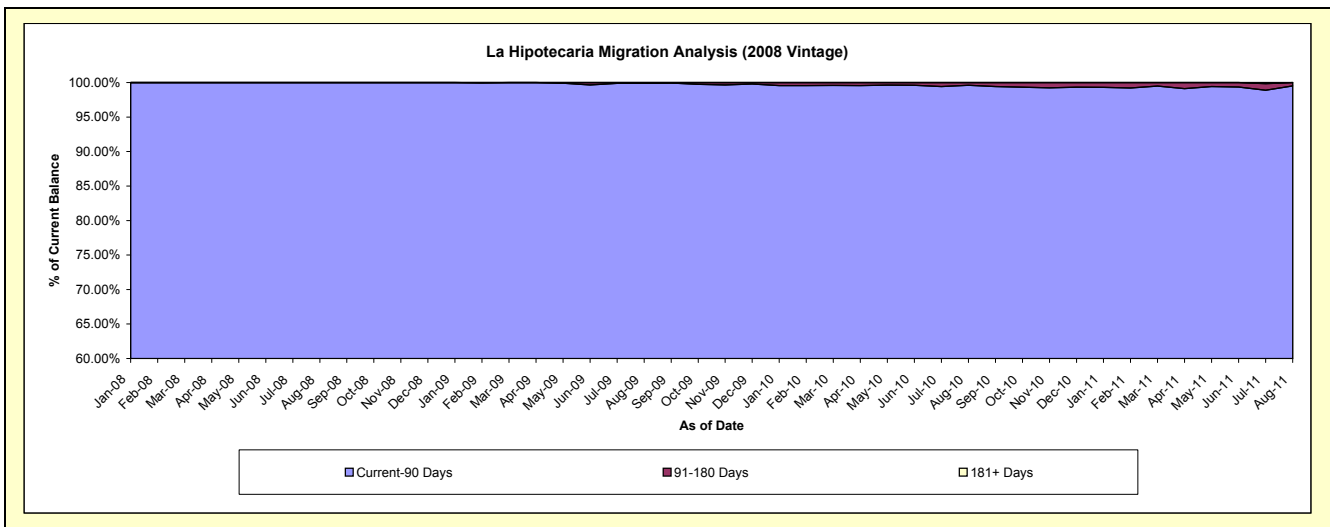
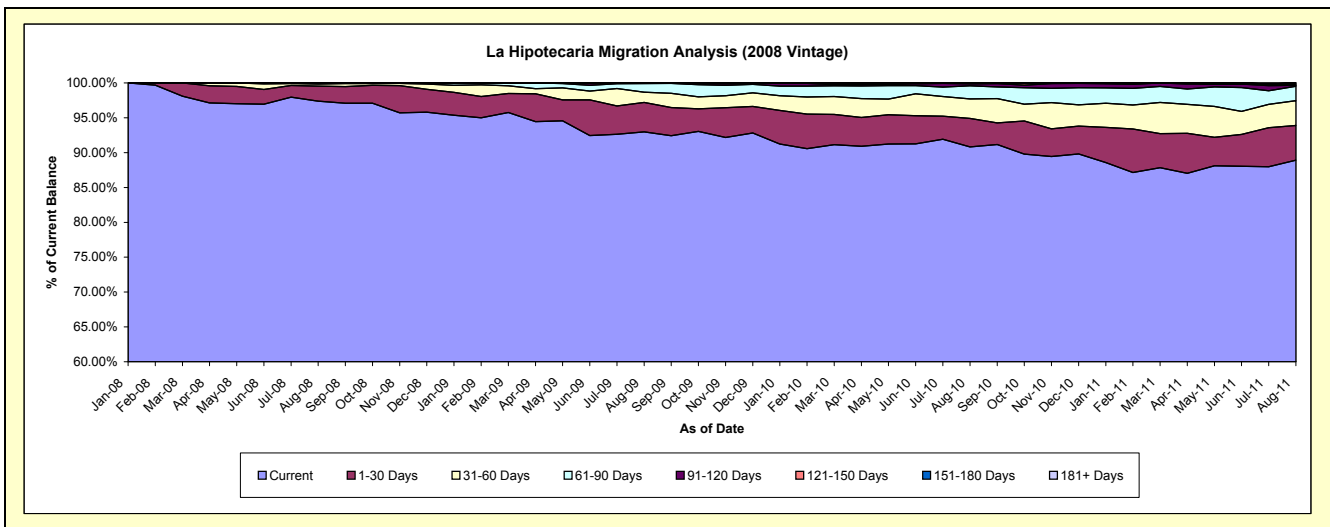
## Delinquency Status (\$ of Current Balance)

Data Cutoff: 8/31/2011

Current Portfolio Balance	-	-	-	-	-	-	-	9,465,664.43	10,824,579.72	9,876,376.83	8,755,303.07
								Aug-08	Aug-09	Aug-10	Aug-11
Current								9,218,579.82	10,064,818.92	8,970,798.19	7,785,541.40
1-30 Days								204,152.10	456,388.09	403,036.62	435,388.04
31-60 Days								28,038.21	160,468.11	276,944.21	310,408.34
61-90 Days								14,894.30	133,927.13	185,617.41	180,793.62
91-120 Days								-	8,977.47	26,226.78	12,388.67
121-150 Days								-	-	7,152.40	5,040.74
151-180 Days								-	-	6,601.22	25,742.26
181+ Days								-	-	-	-

## Delinquency Status (% of Current Balance)

Current Portfolio Balance	-	-	-	-	-	-	-	9,465,664.43	10,824,579.72	9,876,376.83	8,755,303.07
								Aug-08	Aug-09	Aug-10	Aug-11
Current								97.39%	92.98%	90.83%	88.92%
1-30 Days								2.16%	4.22%	4.08%	4.97%
31-60 Days								0.30%	1.48%	2.80%	3.55%
61-90 Days								0.16%	1.24%	1.88%	2.06%
91-120 Days								0.00%	0.08%	0.27%	0.14%
121-150 Days								0.00%	0.00%	0.07%	0.06%
151-180 Days								0.00%	0.00%	0.07%	0.29%
181+ Days								0.00%	0.00%	0.00%	0.00%
Current - 90 Days								100.00%	99.92%	99.60%	99.51%
91-180 Days								0.00%	0.08%	0.40%	0.49%



**Personal Loans - La Hipotecaria Panama Migration Analysis (2009 Vintage)**

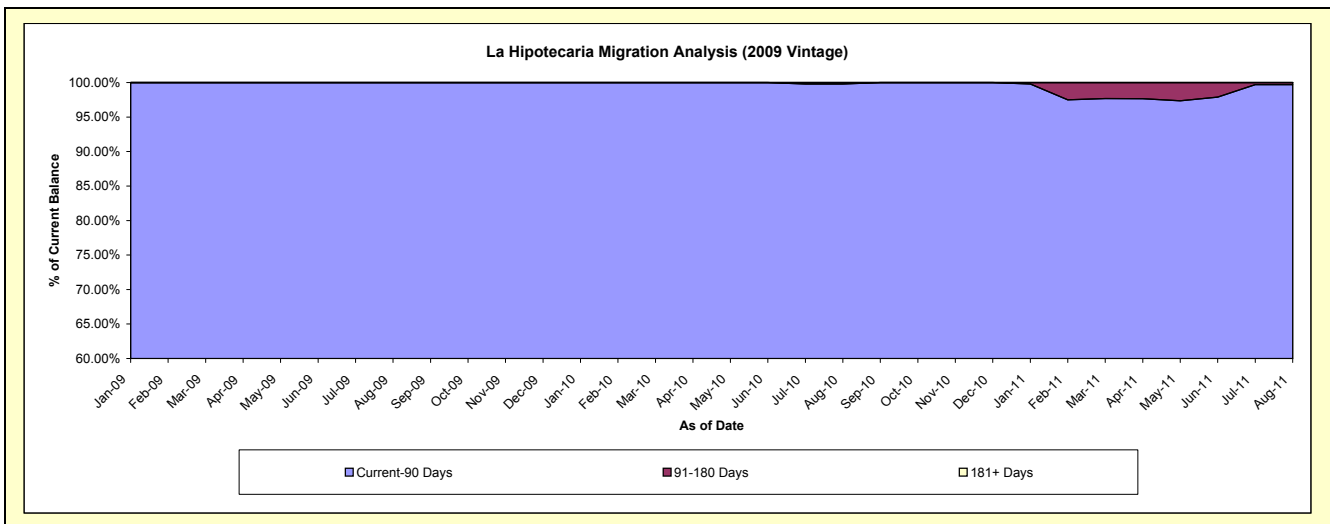
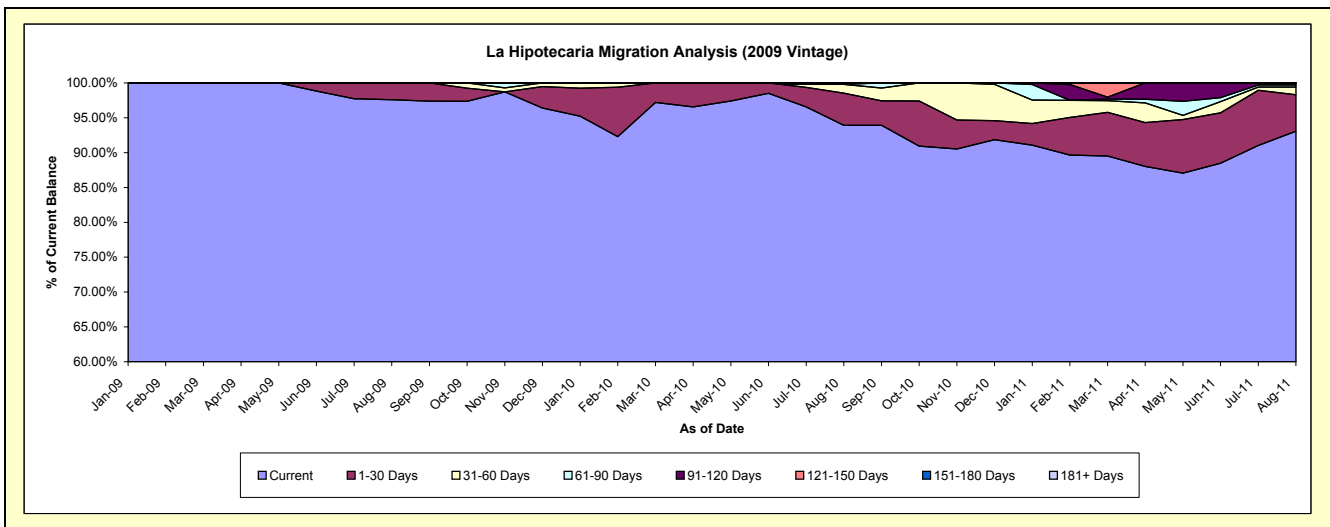
**Delinquency Status (\$ of Current Balance)**

Data Cutoff: 8/31/2011

Current Portfolio Balance				527,520.63	739,805.89	592,532.69
				Aug-09	Aug-10	Aug-11
Current				514,817.06	694,835.89	551,519.19
1-30 Days				12,703.57	34,088.16	30,887.92
31-60 Days				-	9,381.18	6,596.28
61-90 Days				-	-	1,751.69
91-120 Days				-	1,500.66	1,777.61
121-150 Days				-	-	-
151-180 Days				-	-	-
181+ Days				-	-	-

**Delinquency Status (% of Current Balance)**

Current Portfolio Balance				527,520.63	739,805.89	592,532.69
				Aug-09	Aug-10	Aug-11
Current				97.59%	93.92%	93.08%
1-30 Days				2.41%	4.61%	5.21%
31-60 Days				0.00%	1.27%	1.11%
61-90 Days				0.00%	0.00%	0.30%
91-120 Days				0.00%	0.20%	0.30%
121-150 Days				0.00%	0.00%	0.00%
151-180 Days				0.00%	0.00%	0.00%
181+ Days				0.00%	0.00%	0.00%
Current - 90 Days				100.00%	99.80%	99.70%
91-180 Days				0.00%	0.20%	0.30%



**Personal Loans - La Hipotecaria Panama Migration Analysis (2010 Vintage)**

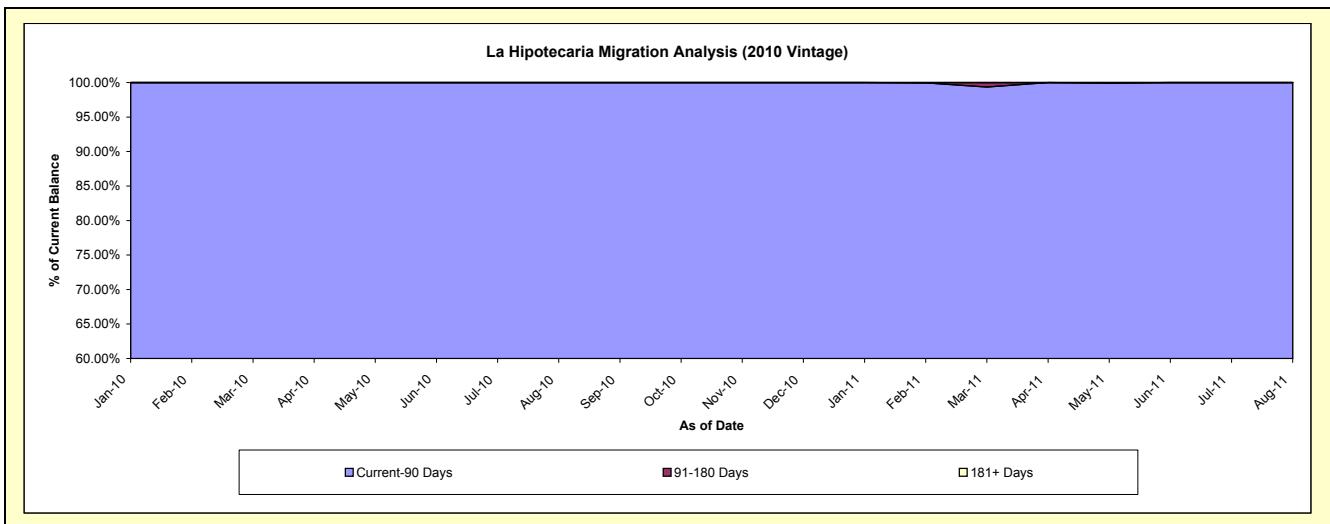
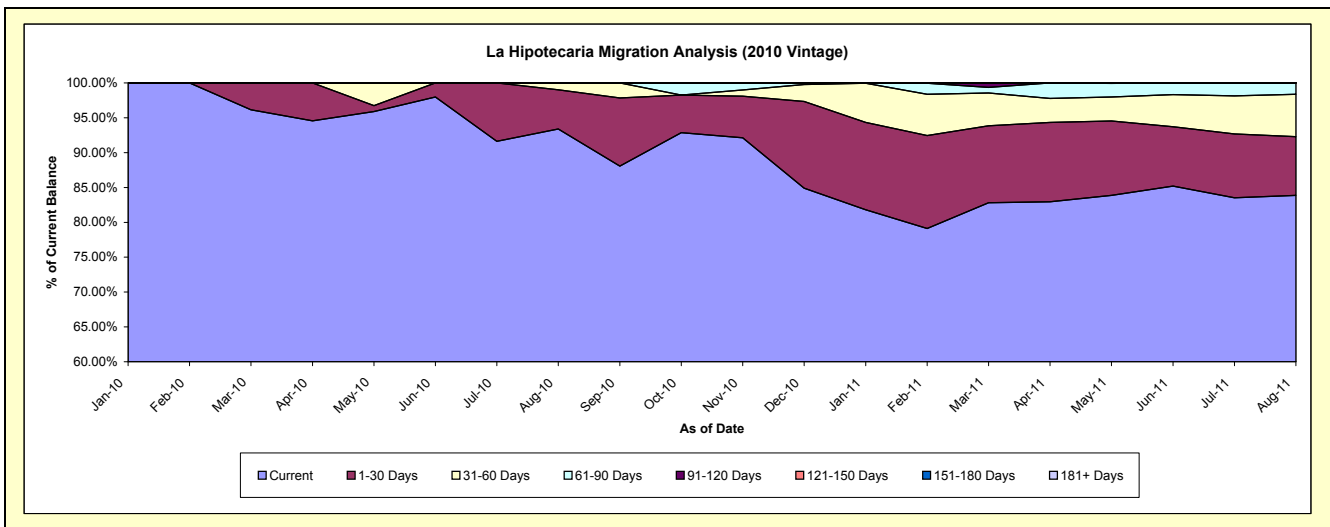
**Delinquency Status (\$ of Current Balance)**

Data Cutoff: 8/31/2011

Current Portfolio Balance										712,788.45	1,142,515.45
										Aug-10	Aug-11
Current										665,656.87	958,158.13
1-30 Days										40,156.45	96,257.55
31-60 Days										6,975.13	69,544.80
61-90 Days										-	18,554.97
91-120 Days										-	-
121-150 Days										-	-
151-180 Days										-	-
181+ Days										-	-

**Delinquency Status (% of Current Balance)**

Current Portfolio Balance										712,788.45	1,142,515.45
										Aug-10	Aug-11
Current										93.39%	83.86%
1-30 Days										5.63%	8.43%
31-60 Days										0.98%	6.09%
61-90 Days										0.00%	1.62%
91-120 Days										0.00%	0.00%
121-150 Days										0.00%	0.00%
151-180 Days										0.00%	0.00%
181+ Days										0.00%	0.00%
Current - 90 Days										100.00%	100.00%
91-180 Days										0.00%	0.00%



# Personal Loans - La Hipotecaria Panama Migration Analysis (2011 Vintage)

## Delinquency Status (\$ of Current Balance)

Data Cutoff: 8/31/2011

Current Portfolio Balance										1,833,681.07
										<b>Aug-11</b>
Current										1,681,113.10
1-30 Days										102,612.98
31-60 Days										31,070.99
61-90 Days										13,984.00
91-120 Days										4,900.00
121-150 Days										-
151-180 Days										-
181+ Days										-

## Delinquency Status (% of Current Balance)

Current Portfolio Balance										1,833,681.07
										<b>Aug-11</b>
Current										91.68%
1-30 Days										5.60%
31-60 Days										1.69%
61-90 Days										0.76%
91-120 Days										0.27%
121-150 Days										0.00%
151-180 Days										0.00%
181+ Days										0.00%
Current - 90 Days										99.73%
91-180 Days										0.27%

