

## Migration Analysis for La Hipotecaria S.A Panama

### Personal Loans October 2011

An analysis of historical loan payment data was used to compile a migration analysis of delinquency by annual vintage. Delinquencies for each vintage were grouped into the following buckets; Current, 1-30, 31-60, 61-90, 91-120, 121-150, 151-180, and 180+. Results are provided in graphical and tabular form. The cutoff date is 10/31/2011.

## Personal Loans - La Hipotecaria Panama Migration Analysis (All Vintages)

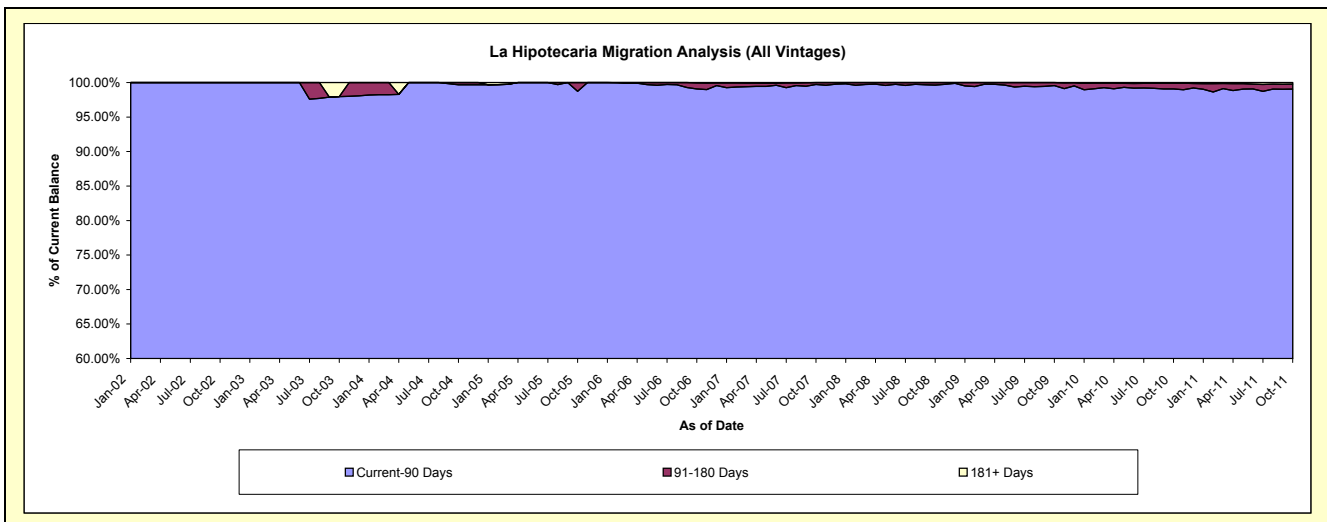
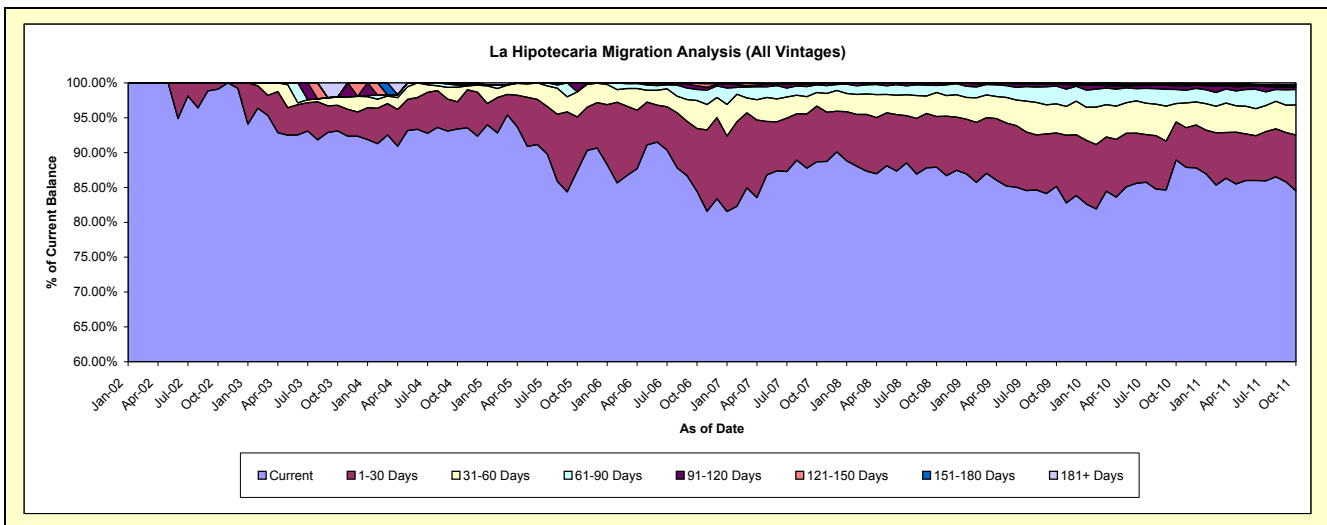
### Delinquency Status (\$ of Current Balance)

Data Cutoff: 10/31/2011

Current Portfolio Balance	70,220.70	219,219.17	296,517.34	2,079,283.27	8,805,248.17	16,541,915.94	25,510,560.78	24,472,158.61	22,704,327.92	21,593,926.52
	Oct-02	Oct-03	Oct-04	Oct-05	Oct-06	Oct-07	Oct-08	Oct-09	Oct-10	Oct-11
Current	69,597.14	204,138.43	276,948.65	1,817,007.43	7,434,960.99	14,670,963.78	22,423,235.86	20,836,952.18	20,194,964.82	18,249,127.37
1-30 Days	623.56	8,057.72	11,552.43	160,825.66	794,736.21	1,321,804.74	1,855,632.75	1,875,366.64	1,238,721.79	1,729,883.43
31-60 Days	-	2,565.51	6,196.44	74,669.34	353,602.14	321,089.36	879,598.85	1,021,780.54	600,997.82	930,335.70
61-90 Days	-	-	834.83	55.78	139,711.14	182,609.33	259,971.36	628,163.75	458,400.44	479,576.08
91-120 Days	-	-	984.99	26,725.06	46,507.65	18,222.81	66,864.88	74,016.35	110,946.62	76,597.37
121-150 Days	-	-	-	-	30,113.69	20,875.92	25,257.08	24,242.20	60,996.53	27,860.74
151-180 Days	-	-	-	-	1,116.35	6,350.00	-	11,636.95	17,770.89	52,773.47
181+ Days	-	4,457.51	-	-	4,500.00	-	-	-	21,529.01	47,772.36

### Delinquency Status (% of Current Balance)

Current Portfolio Balance	70,220.70	219,219.17	296,517.34	2,079,283.27	8,805,248.17	16,541,915.94	25,510,560.78	24,472,158.61	22,704,327.92	21,593,926.52
	Oct-02	Oct-03	Oct-04	Oct-05	Oct-06	Oct-07	Oct-08	Oct-09	Oct-10	Oct-11
Current	99.11%	93.12%	93.40%	87.39%	84.44%	88.69%	87.90%	85.15%	88.95%	84.51%
1-30 Days	0.89%	3.68%	3.90%	7.73%	9.03%	7.99%	7.27%	7.66%	5.46%	8.01%
31-60 Days	0.00%	1.17%	2.09%	3.59%	4.02%	1.94%	3.45%	4.18%	2.65%	4.31%
61-90 Days	0.00%	0.00%	0.28%	0.00%	1.59%	1.10%	1.02%	2.57%	2.02%	2.22%
91-120 Days	0.00%	0.00%	0.33%	1.29%	0.53%	0.11%	0.26%	0.30%	0.49%	0.35%
121-150 Days	0.00%	0.00%	0.00%	0.00%	0.34%	0.13%	0.10%	0.10%	0.27%	0.13%
151-180 Days	0.00%	0.00%	0.00%	0.00%	0.01%	0.04%	0.00%	0.05%	0.08%	0.24%
181+ Days	0.00%	2.03%	0.00%	0.00%	0.05%	0.00%	0.00%	0.00%	0.09%	0.22%
Current - 90 Days	100.00%	97.97%	99.67%	98.71%	99.07%	99.73%	99.64%	99.55%	99.07%	99.05%
91-180 Days	0.00%	0.00%	0.33%	1.29%	0.88%	0.27%	0.36%	0.45%	0.84%	0.73%



## Personal Loans - La Hipotecaria Panama Migration Analysis (2002 Vintage)

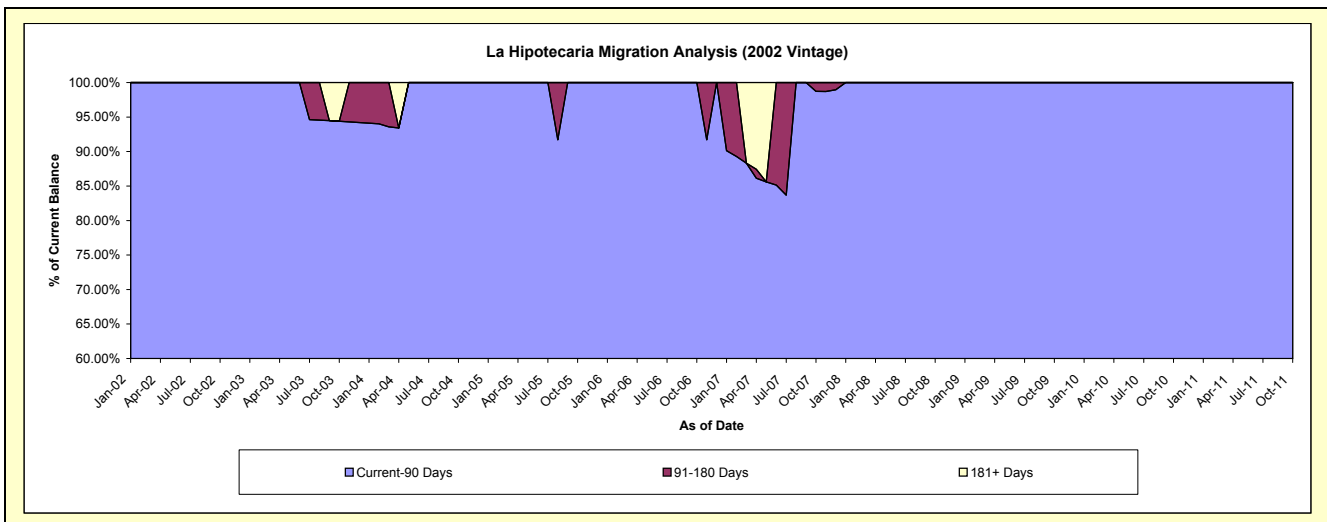
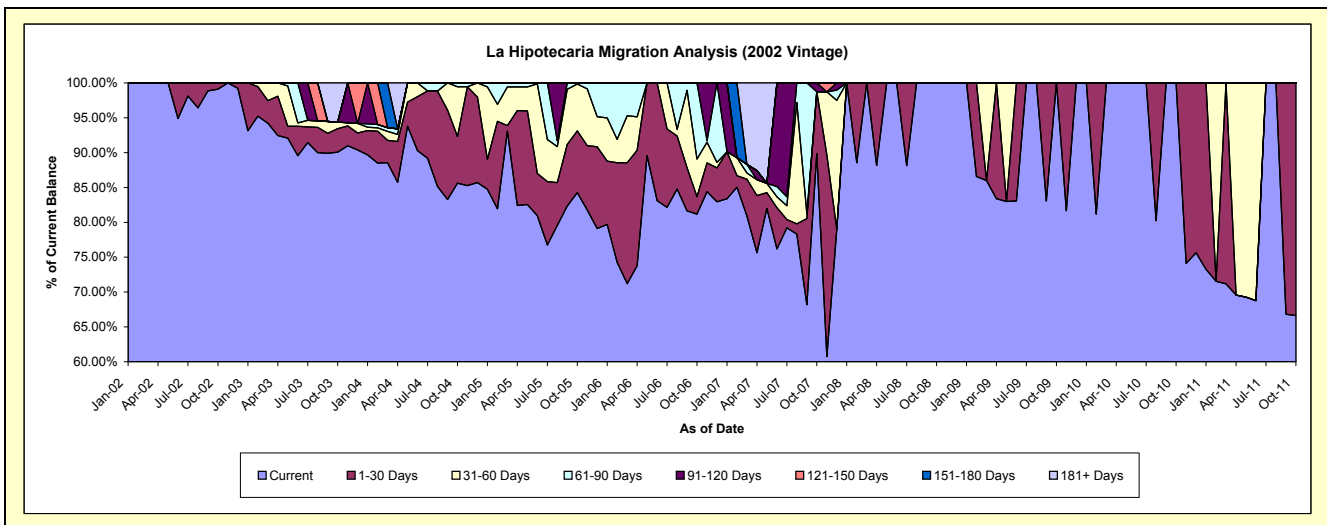
### Delinquency Status (\$ of Current Balance)

Data Cutoff: 10/31/2011

Current Portfolio Balance	70,220.70	79,395.96	59,520.96	35,939.54	15,210.84	5,400.73	2,663.28	1,590.32	1,038.60	448.23
	Oct-02	Oct-03	Oct-04	Oct-05	Oct-06	Oct-07	Oct-08	Oct-09	Oct-10	Oct-11
Current	69,597.14	71,508.05	50,951.58	30,281.18	12,348.64	4,851.25	2,663.28	1,590.32	1,038.60	298.69
1-30 Days	623.56	2,678.34	3,990.82	3,185.45	381.31	480.74	-	-	-	149.54
31-60 Days	-	752.06	4,255.17	2,417.13	817.83	-	-	-	-	-
61-90 Days	-	-	323.39	55.78	1,663.06	-	-	-	-	-
91-120 Days	-	-	-	-	-	68.74	-	-	-	-
121-150 Days	-	-	-	-	-	-	-	-	-	-
151-180 Days	-	-	-	-	-	-	-	-	-	-
181+ Days	-	4,457.51	-	-	-	-	-	-	-	-

### Delinquency Status (% of Current Balance)

Current Portfolio Balance	70,220.70	79,395.96	59,520.96	35,939.54	15,210.84	5,400.73	2,663.28	1,590.32	1,038.60	448.23
	Oct-02	Oct-03	Oct-04	Oct-05	Oct-06	Oct-07	Oct-08	Oct-09	Oct-10	Oct-11
Current	99.11%	90.07%	85.60%	84.26%	81.18%	89.83%	100.00%	100.00%	100.00%	66.64%
1-30 Days	0.89%	3.37%	6.70%	8.86%	2.51%	8.90%	0.00%	0.00%	0.00%	33.36%
31-60 Days	0.00%	0.95%	7.15%	6.73%	5.38%	0.00%	0.00%	0.00%	0.00%	0.00%
61-90 Days	0.00%	0.00%	0.54%	0.16%	10.93%	0.00%	0.00%	0.00%	0.00%	0.00%
91-120 Days	0.00%	0.00%	0.00%	0.00%	0.00%	1.27%	0.00%	0.00%	0.00%	0.00%
121-150 Days	0.00%	0.00%	0.00%	0.00%	0.00%	0.00%	0.00%	0.00%	0.00%	0.00%
151-180 Days	0.00%	0.00%	0.00%	0.00%	0.00%	0.00%	0.00%	0.00%	0.00%	0.00%
181+ Days	0.00%	5.61%	0.00%	0.00%	0.00%	0.00%	0.00%	0.00%	0.00%	0.00%
Current - 90 Days	100.00%	94.39%	100.00%	100.00%	100.00%	98.73%	100.00%	100.00%	100.00%	100.00%
91-180 Days	0.00%	0.00%	0.00%	0.00%	0.00%	1.27%	0.00%	0.00%	0.00%	0.00%



## Personal Loans - La Hipotecaria Panama Migration Analysis (2003 Vintage)

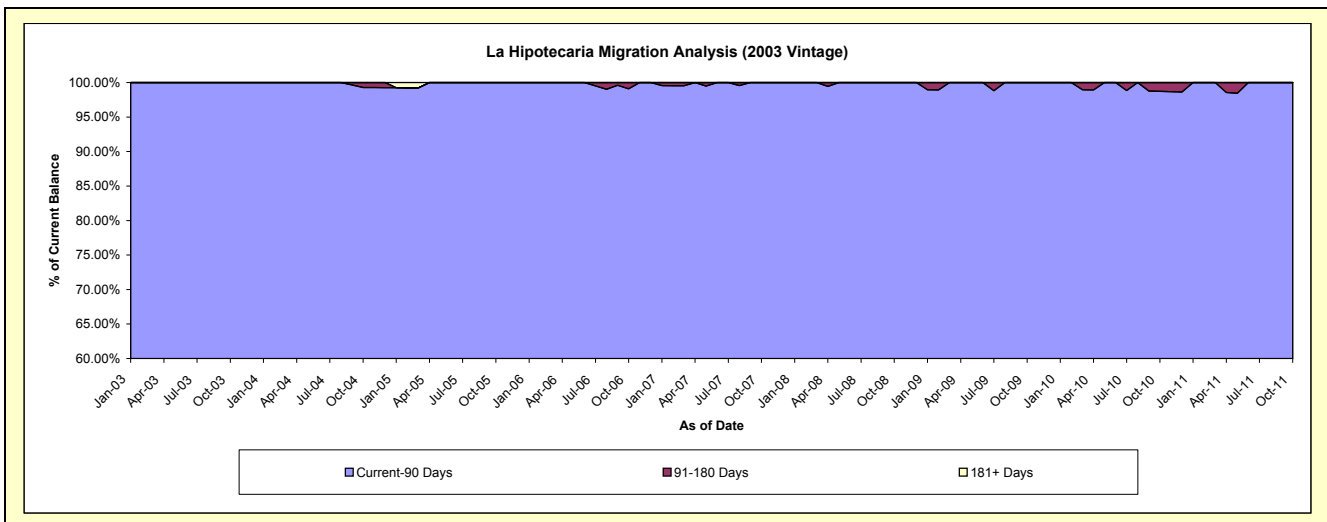
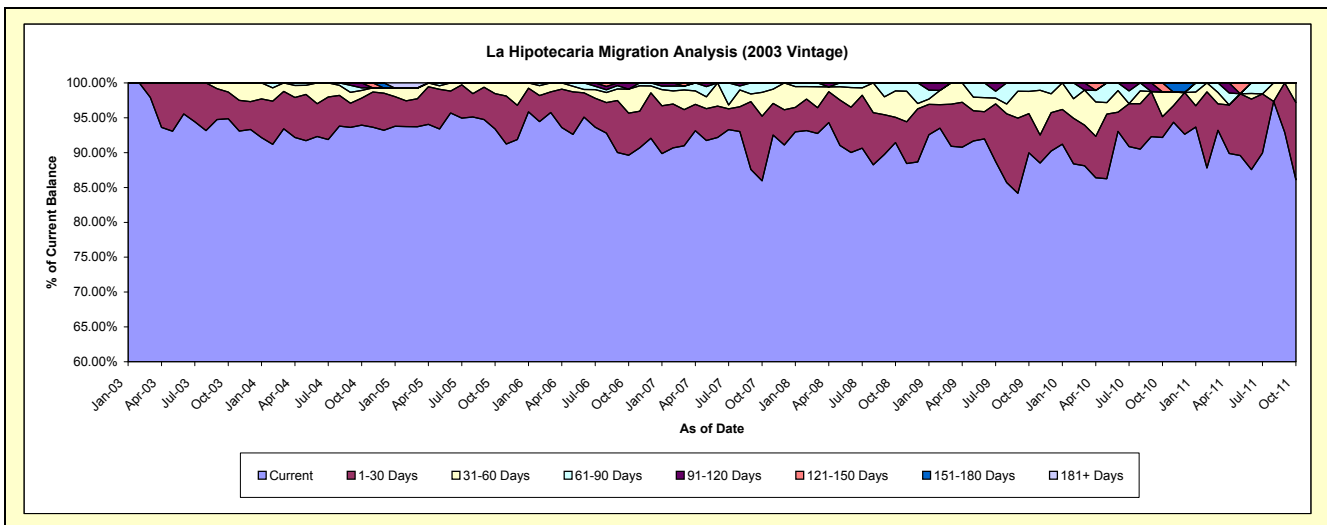
### Delinquency Status (\$ of Current Balance)

Data Cutoff: 10/31/2011

Current Portfolio Balance	-	139,823.21	137,716.45	113,861.31	88,326.40	60,568.34	41,987.92	28,351.68	17,268.23	8,022.60
	Oct-03	Oct-04	Oct-05	Oct-06	Oct-07	Oct-08	Oct-09	Oct-10	Oct-11	
Current	132,630.38	129,370.04	106,323.11	79,156.04	52,057.06	38,394.98	25,508.45	15,916.84	6,906.80	
1-30 Days	5,379.38	5,344.41	5,788.47	5,342.90	5,619.15	1,525.46	1,594.17	517.07	889.29	
31-60 Days	1,813.45	1,505.57	1,749.73	3,037.26	2,077.35	1,586.72	905.50	613.76	226.51	
61-90 Days	-	511.44	-	-	814.78	480.76	343.56	-	-	
91-120 Days	-	984.99	-	790.20	-	-	-	-	-	
121-150 Days	-	-	-	-	-	-	-	220.56	-	
151-180 Days	-	-	-	-	-	-	-	-	-	
181+ Days	-	-	-	-	-	-	-	-	-	

### Delinquency Status (% of Current Balance)

Current Portfolio Balance	-	139,823.21	137,716.45	113,861.31	88,326.40	60,568.34	41,987.92	28,351.68	17,268.23	8,022.60
	Oct-03	Oct-04	Oct-05	Oct-06	Oct-07	Oct-08	Oct-09	Oct-10	Oct-11	
Current	94.86%	93.94%	93.38%	89.62%	85.95%	91.44%	89.97%	92.17%	86.09%	
1-30 Days	3.85%	3.88%	5.08%	6.05%	9.28%	3.63%	5.62%	2.99%	11.08%	
31-60 Days	1.30%	1.09%	1.54%	3.44%	3.43%	3.78%	3.19%	3.55%	2.82%	
61-90 Days	0.00%	0.37%	0.00%	0.00%	1.35%	1.14%	1.21%	0.00%	0.00%	
91-120 Days	0.00%	0.72%	0.00%	0.89%	0.00%	0.00%	0.00%	0.00%	0.00%	
121-150 Days	0.00%	0.00%	0.00%	0.00%	0.00%	0.00%	0.00%	1.28%	0.00%	
151-180 Days	0.00%	0.00%	0.00%	0.00%	0.00%	0.00%	0.00%	0.00%	0.00%	
181+ Days	0.00%	0.00%	0.00%	0.00%	0.00%	0.00%	0.00%	0.00%	0.00%	
Current - 90 Days	100.00%	99.28%	100.00%	99.11%	100.00%	100.00%	100.00%	98.72%	100.00%	
91-180 Days	0.00%	0.72%	0.00%	0.89%	0.00%	0.00%	0.00%	1.28%	0.00%	



## Personal Loans - La Hipotecaria Panama Migration Analysis (2004 Vintage)

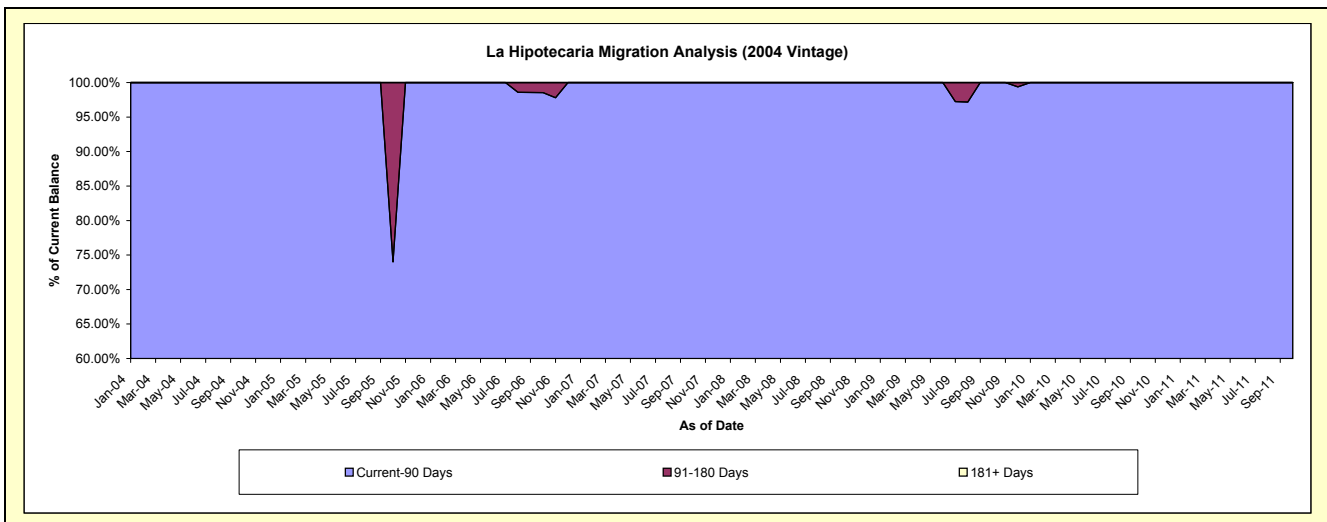
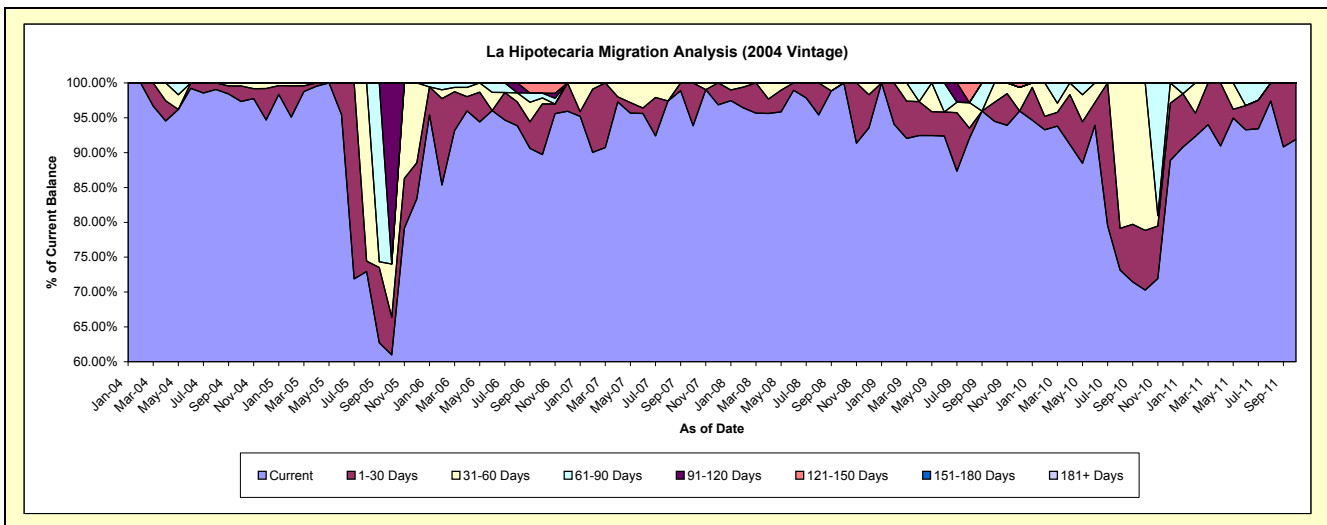
### Delinquency Status (\$ of Current Balance)

Data Cutoff: 10/31/2011

Current Portfolio Balance	-	-	99,279.93	102,852.89	56,578.72	36,769.83	27,496.01	22,057.11	16,572.36	7,984.38
	Oct-04	Oct-05	Oct-06	Oct-07	Oct-08	Oct-09	Oct-10	Oct-11		
Current	96,627.03	62,725.30	50,758.03	34,511.62	27,496.01	20,840.47	11,647.82	7,338.04		
1-30 Days	2,217.20	5,545.97	4,125.25	2,258.21	-	602.73	1,418.00	646.34		
31-60 Days	435.70	7,856.56	469.95	-	-	613.91	3,506.54	-		
61-90 Days	-	-	394.45	-	-	-	-	-		
91-120 Days	-	26,725.06	-	-	-	-	-	-		
121-150 Days	-	-	831.04	-	-	-	-	-		
151-180 Days	-	-	-	-	-	-	-	-		
181+ Days	-	-	-	-	-	-	-	-		

### Delinquency Status (% of Current Balance)

Current Portfolio Balance	-	-	99,279.93	102,852.89	56,578.72	36,769.83	27,496.01	22,057.11	16,572.36	7,984.38
	Oct-04	Oct-05	Oct-06	Oct-07	Oct-08	Oct-09	Oct-10	Oct-11		
Current	97.33%	60.99%	89.71%	93.86%	100.00%	94.48%	70.28%	91.90%		
1-30 Days	2.23%	5.39%	7.29%	6.14%	0.00%	2.73%	8.56%	8.10%		
31-60 Days	0.44%	7.64%	0.83%	0.00%	0.00%	2.78%	21.16%	0.00%		
61-90 Days	0.00%	0.00%	0.70%	0.00%	0.00%	0.00%	0.00%	0.00%		
91-120 Days	0.00%	25.98%	0.00%	0.00%	0.00%	0.00%	0.00%	0.00%		
121-150 Days	0.00%	0.00%	1.47%	0.00%	0.00%	0.00%	0.00%	0.00%		
151-180 Days	0.00%	0.00%	0.00%	0.00%	0.00%	0.00%	0.00%	0.00%		
181+ Days	0.00%	0.00%	0.00%	0.00%	0.00%	0.00%	0.00%	0.00%		
Current - 90 Days	100.00%	74.02%	98.53%	100.00%	100.00%	100.00%	100.00%	100.00%		
91-180 Days	0.00%	25.98%	1.47%	0.00%	0.00%	0.00%	0.00%	0.00%		



## Personal Loans - La Hipotecaria Panama Migration Analysis (2005 Vintage)

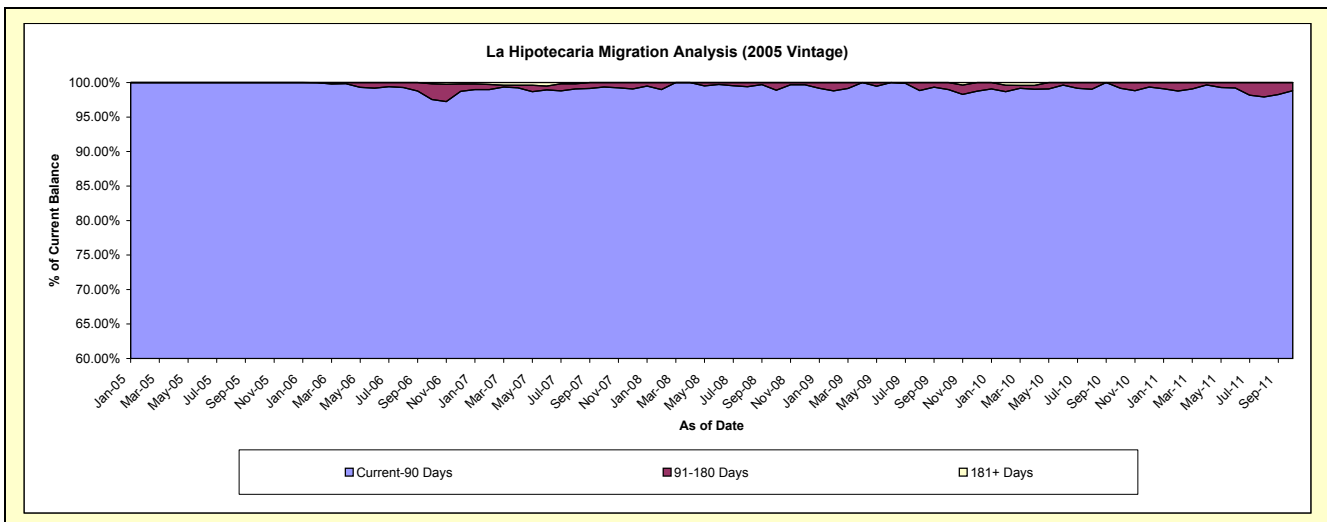
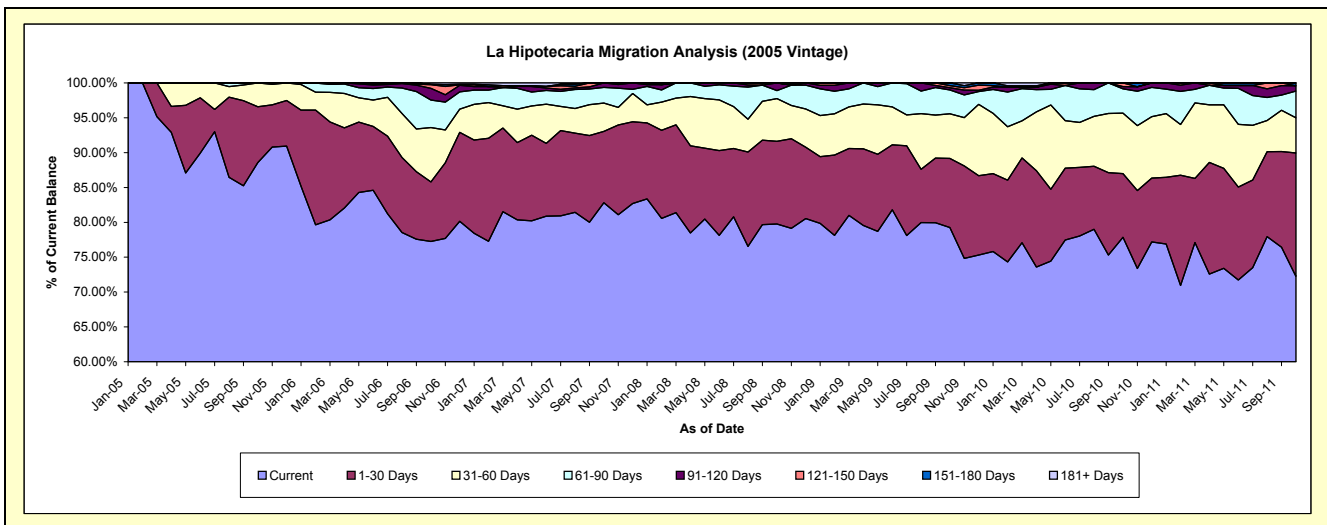
### Delinquency Status (\$ of Current Balance)

Data Cutoff: 10/31/2011

Current Portfolio Balance	-	-	-	1,826,629.53	2,301,481.48	1,905,672.85	1,439,144.25	1,188,253.05	965,885.85	686,633.66
	Oct-05	Oct-06	Oct-07	Oct-08	Oct-09	Oct-10	Oct-11			
Current	1,617,677.84	1,778,122.68	1,578,236.67	1,147,853.59	941,735.18	752,014.98	496,123.28			
1-30 Days	146,305.77	196,267.86	194,732.76	170,818.88	117,913.52	88,219.33	121,452.19			
31-60 Days	62,645.92	179,705.57	77,760.10	88,060.24	75,916.22	83,783.28	34,779.76			
61-90 Days	-	90,911.78	42,737.01	16,538.18	40,555.06	33,709.18	26,179.39			
91-120 Days	-	38,568.42	12,206.31	15,873.36	3,996.67	2,988.35	5,320.70			
121-150 Days	-	12,288.82	-	-	3,636.76	5,170.73	-			
151-180 Days	-	1,116.35	-	-	4,499.64	-	2,778.34			
181+ Days	-	4,500.00	-	-	-	-	-			

### Delinquency Status (% of Current Balance)

Current Portfolio Balance	-	-	-	1,826,629.53	2,301,481.48	1,905,672.85	1,439,144.25	1,188,253.05	965,885.85	686,633.66
	Oct-05	Oct-06	Oct-07	Oct-08	Oct-09	Oct-10	Oct-11			
Current	88.56%	77.26%	82.82%	79.76%	79.25%	77.96%	72.25%			
1-30 Days	8.01%	8.53%	10.22%	11.87%	9.92%	9.13%	17.69%			
31-60 Days	3.43%	7.81%	4.08%	6.12%	6.39%	8.67%	5.07%			
61-90 Days	0.00%	3.95%	2.24%	1.15%	3.41%	3.49%	3.81%			
91-120 Days	0.00%	1.68%	0.64%	1.10%	0.34%	0.31%	0.77%			
121-150 Days	0.00%	0.53%	0.00%	0.00%	0.31%	0.54%	0.00%			
151-180 Days	0.00%	0.05%	0.00%	0.00%	0.38%	0.00%	0.40%			
181+ Days	0.00%	0.20%	0.00%	0.00%	0.00%	0.00%	0.00%			
Current - 90 Days	100.00%	97.55%	99.36%	98.90%	98.98%	99.16%	98.82%			
91-180 Days	0.00%	2.26%	0.64%	1.10%	1.02%	0.84%	1.18%			



# Personal Loans - La Hipotecaria Panama Migration Analysis (2006 Vintage)

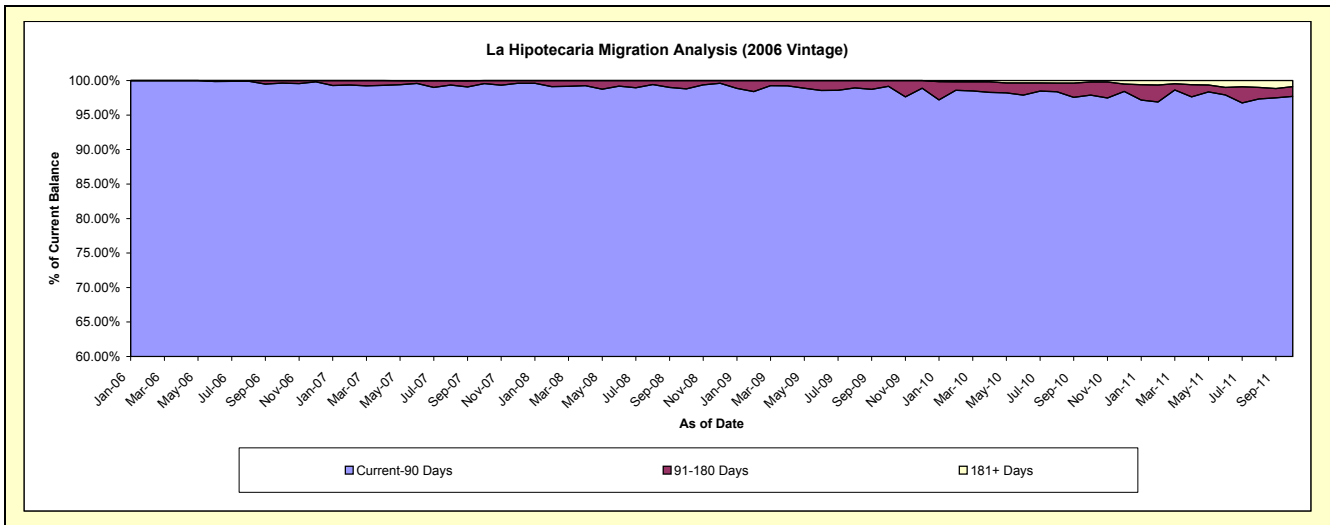
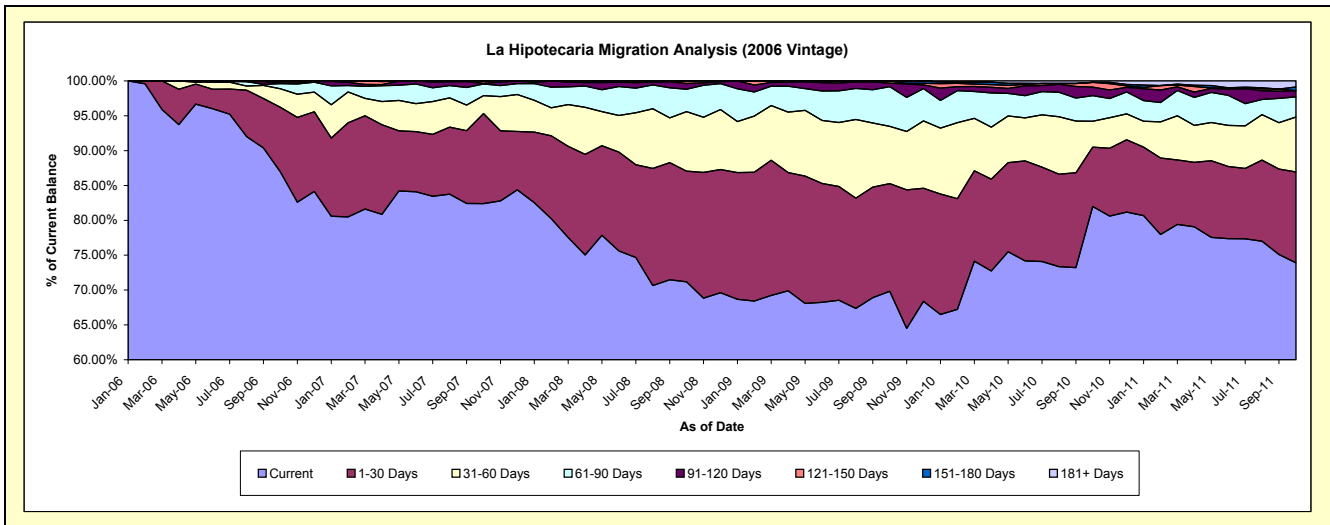
## Delinquency Status (\$ of Current Balance)

Data Cutoff: 10/31/2011

Current Portfolio Balance	-	-	-	-	6,343,650.73	6,345,201.62	4,962,031.14	4,367,426.74	3,653,578.03	2,918,166.86
					Oct-06	Oct-07	Oct-08	Oct-09	Oct-10	Oct-11
Current					5,514,575.60	5,228,662.12	3,532,110.70	3,049,059.44	2,995,226.16	2,166,640.05
1-30 Days					588,618.89	819,631.36	787,409.52	674,717.04	311,543.07	380,165.78
31-60 Days					169,571.53	162,828.27	423,339.30	359,076.08	135,859.31	230,168.59
61-90 Days					46,741.85	106,329.08	159,682.95	248,036.73	133,522.15	84,522.62
91-120 Days					7,149.03	5,947.76	41,531.59	22,116.96	44,915.78	25,900.64
121-150 Days					16,993.83	18,303.03	17,957.08	14,420.49	25,291.88	-
151-180 Days					-	3,500.00	-	-	-	15,282.22
181+ Days					-	-	-	-	7,219.68	25,486.96

## Delinquency Status (% of Current Balance)

Current Portfolio Balance	-	-	-	-	6,343,650.73	6,345,201.62	4,962,031.14	4,367,426.74	3,653,578.03	2,918,166.86
					Oct-06	Oct-07	Oct-08	Oct-09	Oct-10	Oct-11
Current					86.93%	82.40%	71.18%	69.81%	81.98%	73.90%
1-30 Days					9.28%	12.92%	15.87%	15.45%	8.53%	13.03%
31-60 Days					2.67%	2.57%	8.53%	8.22%	3.72%	7.89%
61-90 Days					0.74%	1.68%	3.22%	5.68%	3.65%	2.90%
91-120 Days					0.11%	0.09%	0.84%	0.51%	1.23%	0.89%
121-150 Days					0.27%	0.29%	0.36%	0.33%	0.69%	0.00%
151-180 Days					0.00%	0.06%	0.00%	0.00%	0.00%	0.52%
181+ Days					0.00%	0.00%	0.00%	0.00%	0.20%	0.87%
Current - 90 Days					99.62%	99.56%	98.80%	99.16%	97.88%	97.72%
91-180 Days					0.38%	0.44%	1.20%	0.84%	1.92%	1.41%



## Personal Loans - La Hipotecaria Panama Migration Analysis (2007 Vintage)

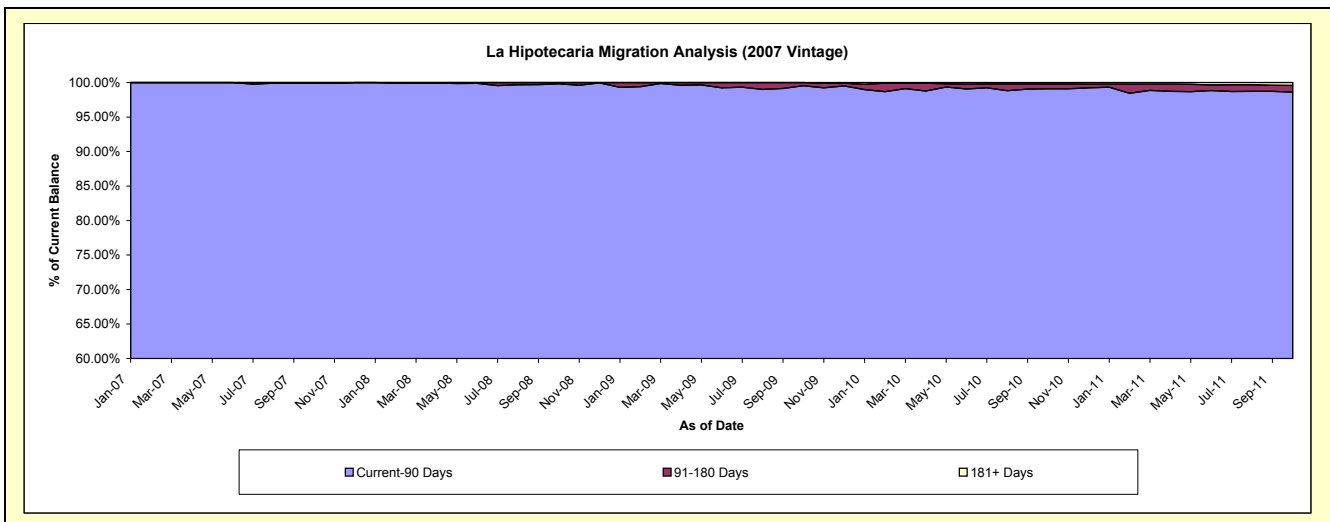
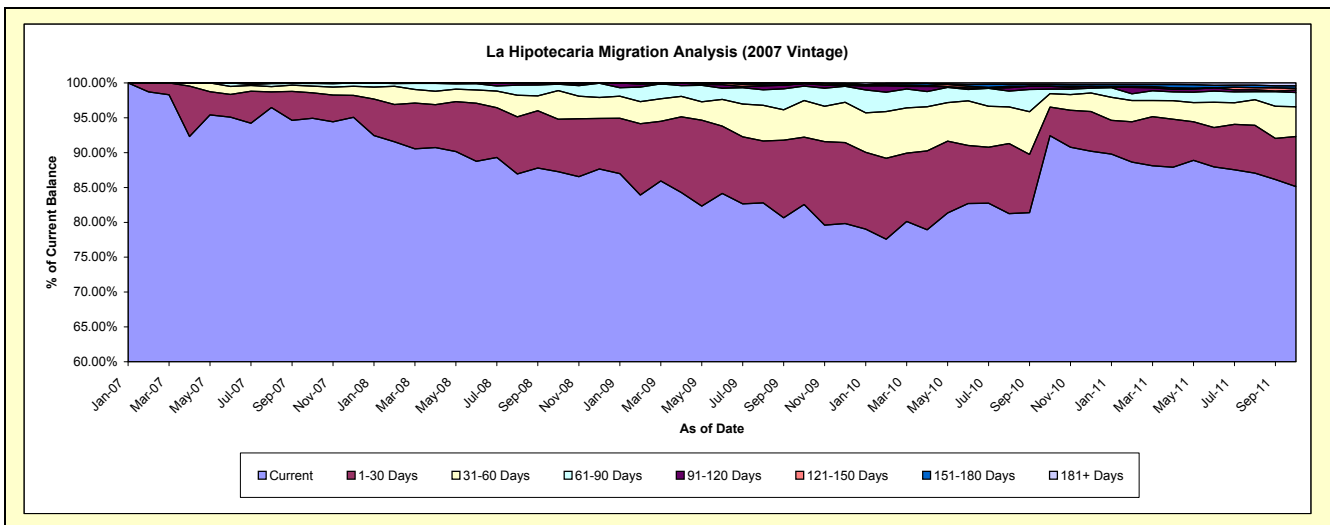
### Delinquency Status (\$ of Current Balance)

Data Cutoff: 10/31/2011

Current Portfolio Balance	-	-	-	-	-	8,188,302.57	8,232,933.68	7,481,054.12	6,594,684.43	5,422,481.95
						Oct-07	Oct-08	Oct-09	Oct-10	Oct-11
Current						7,772,645.06	7,184,949.18	6,177,081.04	6,094,922.44	4,616,637.92
1-30 Days						299,082.52	619,804.85	721,811.64	271,708.26	388,843.13
31-60 Days						78,423.64	336,847.03	393,962.55	126,917.57	231,087.78
61-90 Days						32,728.46	75,358.55	154,334.58	41,942.44	110,733.67
91-120 Days						-	8,674.07	26,727.00	27,113.50	19,201.43
121-150 Days						2,572.89	7,300.00	-	-	13,205.72
151-180 Days						2,850.00	-	7,137.31	17,770.89	20,486.90
181+ Days						-	-	-	14,309.33	22,285.40

### Delinquency Status (% of Current Balance)

Current Portfolio Balance	-	-	-	-	-	8,188,302.57	8,232,933.68	7,481,054.12	6,594,684.43	5,422,481.95
						Oct-07	Oct-08	Oct-09	Oct-10	Oct-11
Current						94.92%	87.27%	82.57%	92.42%	85.14%
1-30 Days						3.65%	7.53%	9.65%	4.12%	7.17%
31-60 Days						0.96%	4.09%	5.27%	1.92%	4.26%
61-90 Days						0.40%	0.92%	2.06%	0.64%	2.04%
91-120 Days						0.00%	0.11%	0.36%	0.41%	0.35%
121-150 Days						0.03%	0.09%	0.00%	0.00%	0.24%
151-180 Days						0.03%	0.00%	0.10%	0.27%	0.38%
181+ Days						0.00%	0.00%	0.00%	0.22%	0.41%
Current - 90 Days						99.93%	99.81%	99.55%	99.10%	98.61%
91-180 Days						0.07%	0.19%	0.45%	0.68%	0.98%





# Personal Loans - La Hipotecaria Panama Migration Analysis (2008 Vintage)

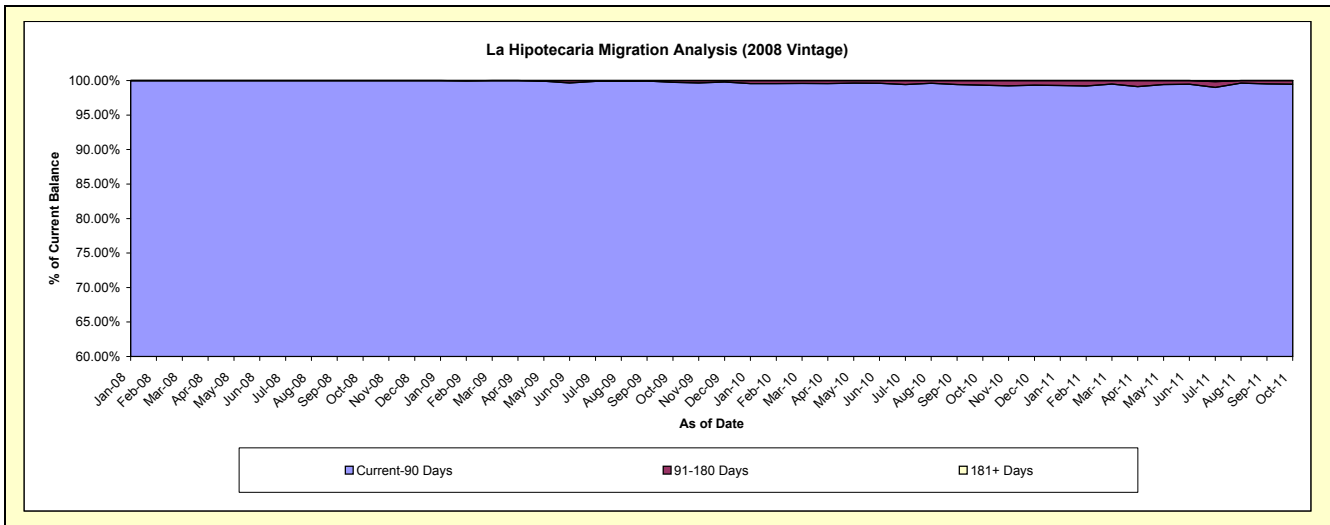
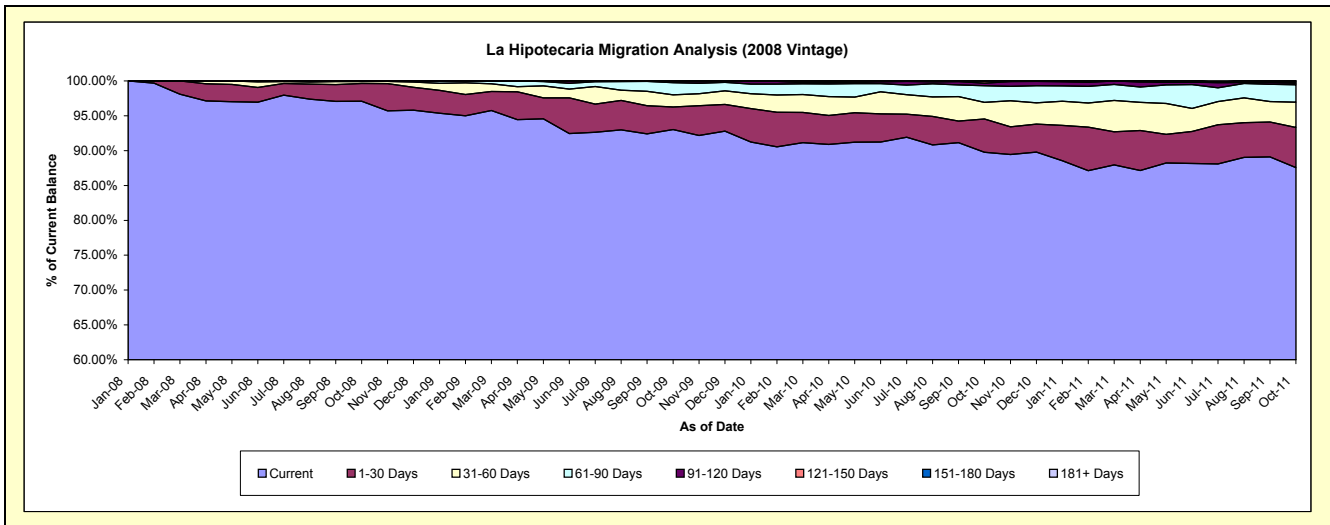
## Delinquency Status (\$ of Current Balance)

Data Cutoff: 10/31/2011

Current Portfolio Balance	-	-	-	-	-	-	-	10,804,304.50	10,667,463.65	9,689,441.29	8,509,793.79
								Oct-08	Oct-09	Oct-10	Oct-11
Current								10,489,768.12	9,924,000.74	8,698,174.98	7,452,205.53
1-30 Days								276,074.04	345,306.50	462,281.94	490,238.67
31-60 Days								29,765.56	185,901.92	231,787.15	307,253.84
61-90 Days								7,910.92	184,893.82	230,954.87	214,151.28
91-120 Days								785.86	21,175.72	35,928.99	17,063.44
121-150 Days								-	6,184.95	30,313.36	14,655.02
151-180 Days								-	-	-	14,226.01
181+ Days								-	-	-	-

## Delinquency Status (% of Current Balance)

Current Portfolio Balance	-	-	-	-	-	-	-	10,804,304.50	10,667,463.65	9,689,441.29	8,509,793.79
								Oct-08	Oct-09	Oct-10	Oct-11
Current								97.09%	93.03%	89.77%	87.57%
1-30 Days								2.56%	3.24%	4.77%	5.76%
31-60 Days								0.28%	1.74%	2.39%	3.61%
61-90 Days								0.07%	1.73%	2.38%	2.52%
91-120 Days								0.01%	0.20%	0.37%	0.20%
121-150 Days								0.00%	0.06%	0.31%	0.17%
151-180 Days								0.00%	0.00%	0.00%	0.17%
181+ Days								0.00%	0.00%	0.00%	0.00%
Current - 90 Days								99.99%	99.74%	99.32%	99.46%
91-180 Days								0.01%	0.26%	0.68%	0.54%



**Personal Loans - La Hipotecaria Panama Migration Analysis (2009 Vintage)**

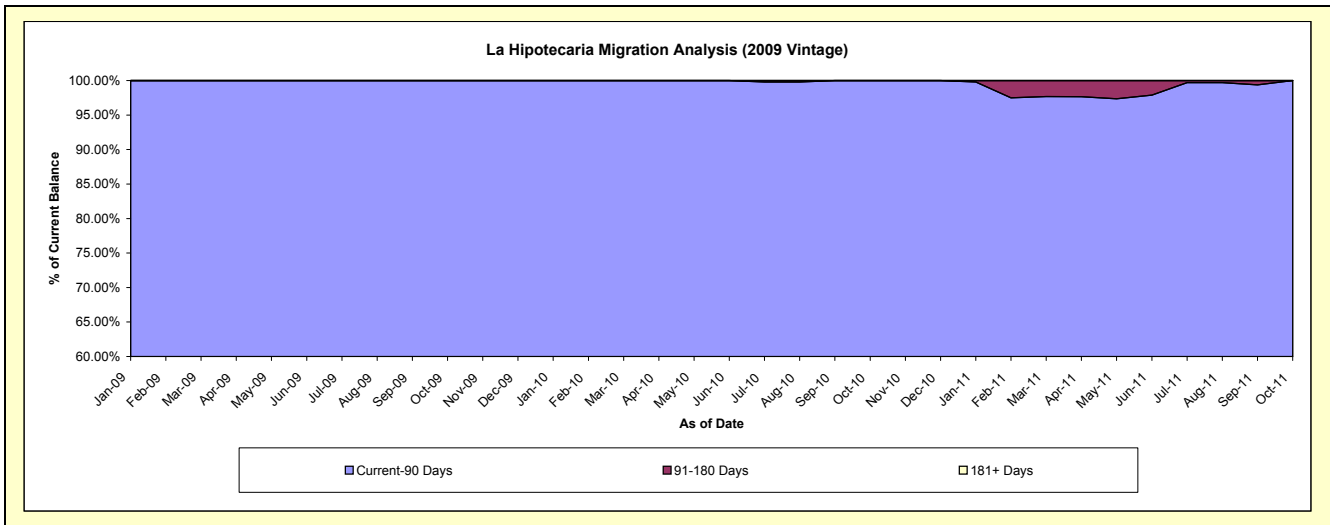
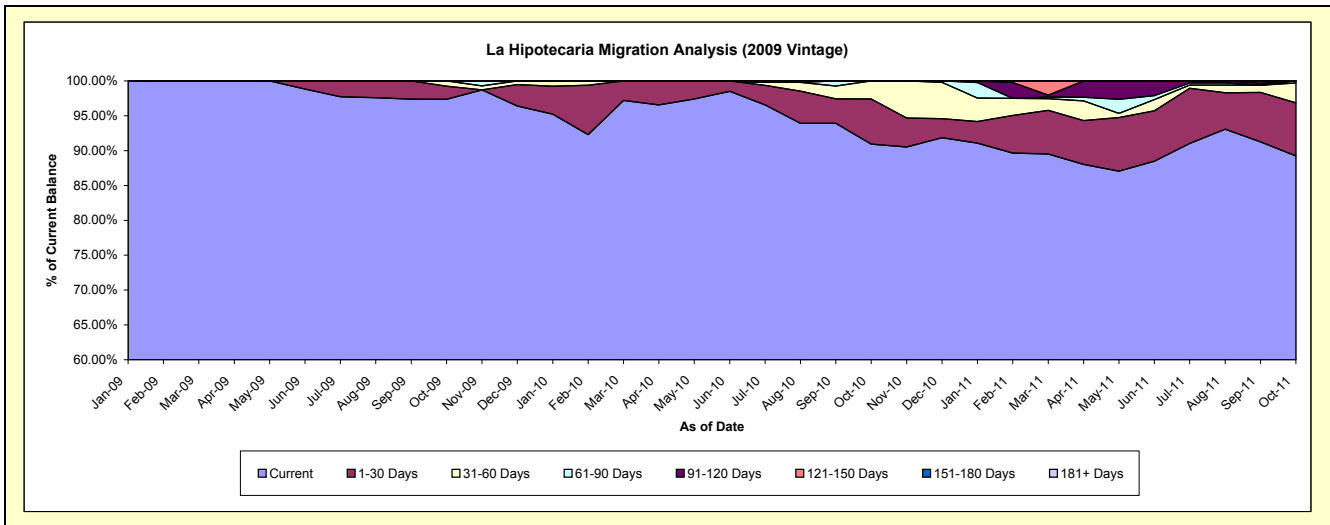
**Delinquency Status (\$ of Current Balance)**

Data Cutoff: 10/31/2011

Current Portfolio Balance	-	-	-	-	-	-	-	-	-	715,961.94	715,360.22	557,794.94
										Oct-09	Oct-10	Oct-11
Current										697,136.54	650,553.81	497,756.07
1-30 Days										13,421.04	46,276.20	42,459.53
31-60 Days										5,404.36	18,530.21	15,938.87
61-90 Days										-	-	1,640.47
91-120 Days										-	-	-
121-150 Days										-	-	-
151-180 Days										-	-	-
181+ Days										-	-	-

**Delinquency Status (% of Current Balance)**

Current Portfolio Balance	-	-	-	-	-	-	-	-	-	715,961.94	715,360.22	557,794.94
										Oct-09	Oct-10	Oct-11
Current										97.37%	90.94%	89.24%
1-30 Days										1.87%	6.47%	7.61%
31-60 Days										0.75%	2.59%	2.86%
61-90 Days										0.00%	0.00%	0.29%
91-120 Days										0.00%	0.00%	0.00%
121-150 Days										0.00%	0.00%	0.00%
151-180 Days										0.00%	0.00%	0.00%
181+ Days										0.00%	0.00%	0.00%
Current - 90 Days										100.00%	100.00%	100.00%
91-180 Days										0.00%	0.00%	0.00%



**Personal Loans - La Hipotecaria Panama Migration Analysis (2010 Vintage)**

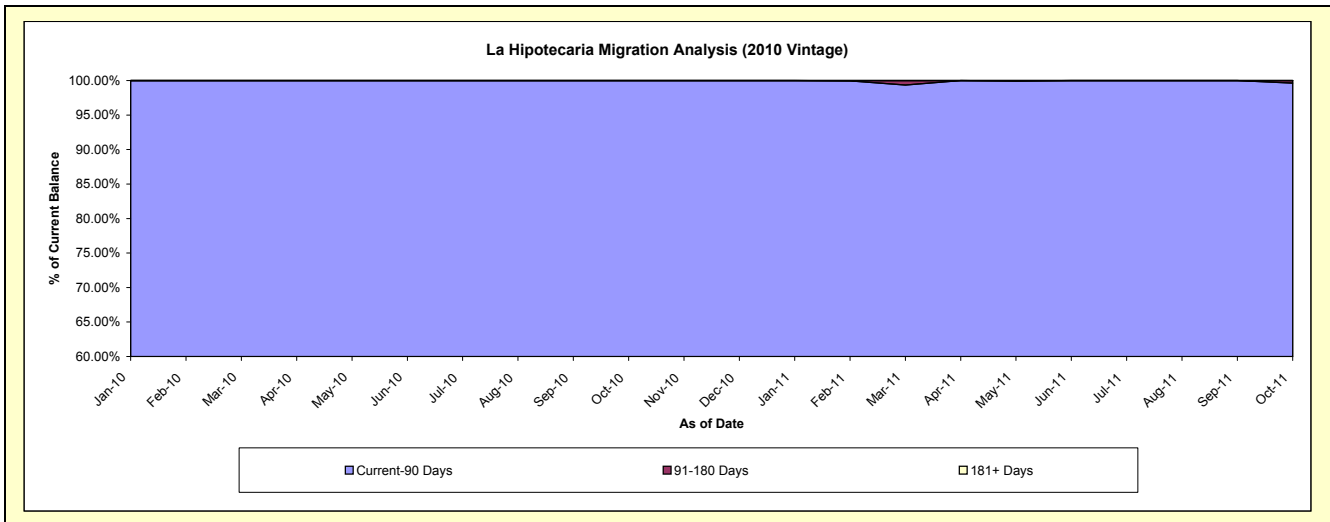
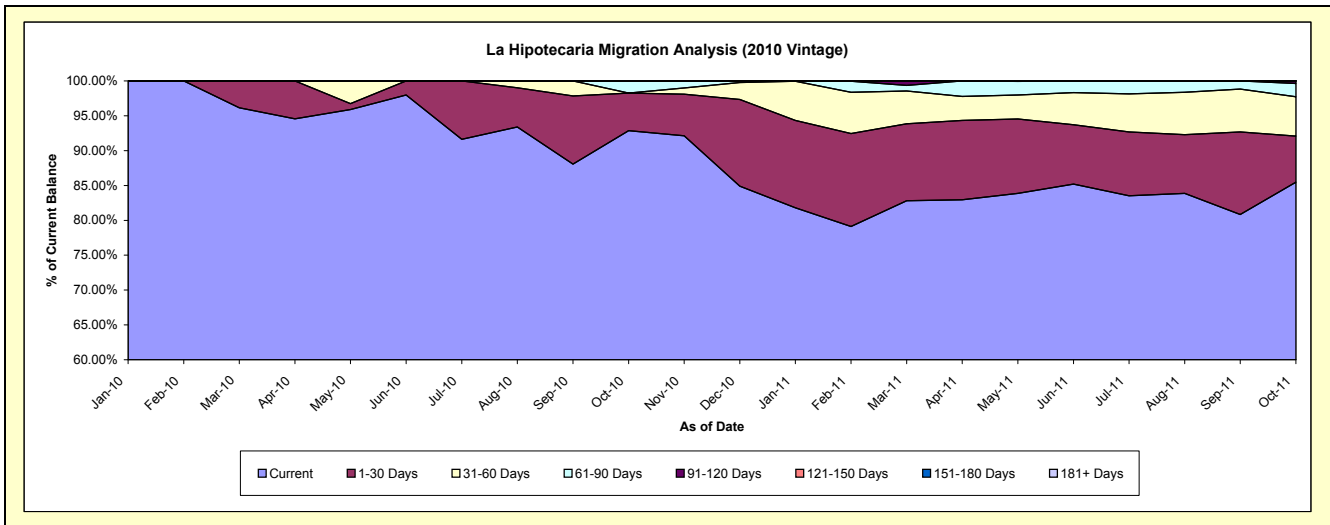
**Delinquency Status (\$ of Current Balance)**

Data Cutoff: 10/31/2011

Current Portfolio Balance										1,050,498.91	1,121,665.53
										Oct-10	Oct-11
Current										975,469.19	958,626.57
1-30 Days										56,757.92	74,155.96
31-60 Days										-	63,336.36
61-90 Days										18,271.80	21,435.48
91-120 Days										-	4,111.16
121-150 Days										-	-
151-180 Days										-	-
181+ Days										-	-

**Delinquency Status (% of Current Balance)**

Current Portfolio Balance										1,050,498.91	1,121,665.53
										Oct-10	Oct-11
Current										92.86%	85.46%
1-30 Days										5.40%	6.61%
31-60 Days										0.00%	5.65%
61-90 Days										1.74%	1.91%
91-120 Days										0.00%	0.37%
121-150 Days										0.00%	0.00%
151-180 Days										0.00%	0.00%
181+ Days										0.00%	0.00%
Current - 90 Days										100.00%	99.63%
91-180 Days										0.00%	0.37%



# Personal Loans - La Hipotecaria Panama Migration Analysis (2011 Vintage)

## Delinquency Status (\$ of Current Balance)

Data Cutoff: 10/31/2011

Current Portfolio Balance										2,360,934.58
										<b>Oct-11</b>
Current										2,056,594.42
1-30 Days										230,883.00
31-60 Days										47,543.99
61-90 Days										20,913.17
91-120 Days										5,000.00
121-150 Days										-
151-180 Days										-
181+ Days										-

## Delinquency Status (% of Current Balance)

Current Portfolio Balance										2,360,934.58
										<b>Oct-11</b>
Current										87.11%
1-30 Days										9.78%
31-60 Days										2.01%
61-90 Days										0.89%
91-120 Days										0.21%
121-150 Days										0.00%
151-180 Days										0.00%
181+ Days										0.00%
Current - 90 Days										99.79%
91-180 Days										0.21%

