

## Migration Analysis for La Hipotecaria S.A Panama

### Personal Loans December 2011

An analysis of historical loan payment data was used to compile a migration analysis of delinquency by annual vintage. Delinquencies for each vintage were grouped into the following buckets; Current, 1-30, 31-60, 61-90, 91-120, 121-150, 151-180, and 180+. Results are provided in graphical and tabular form. The cutoff date is 12/31/2011.

## Personal Loans - La Hipotecaria Panama Migration Analysis (All Vintages)

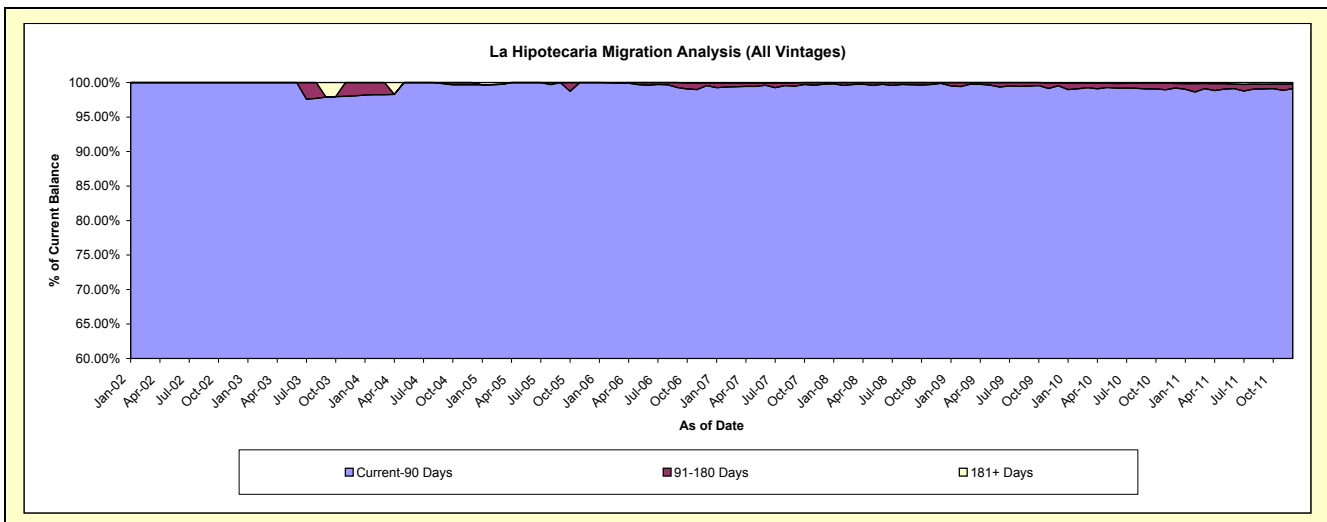
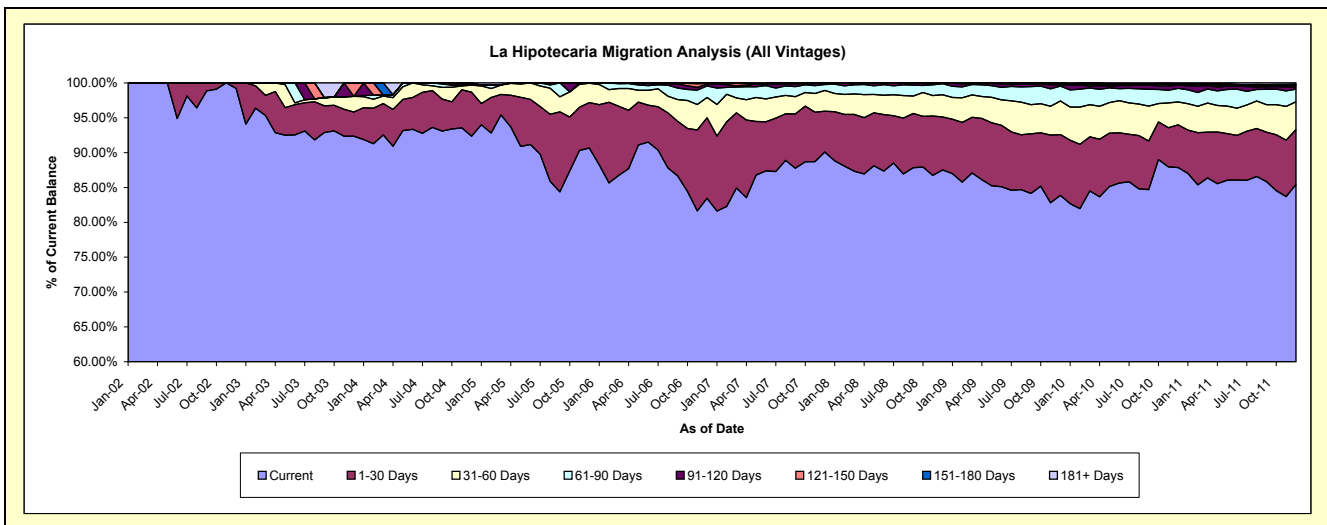
### Delinquency Status (\$ of Current Balance)

Data Cutoff: 12/31/2011

Current Portfolio Balance	90,778.28	231,758.23	300,535.67	2,909,041.35	9,929,552.52	17,718,225.98	25,697,644.11	24,095,493.70	22,281,894.31	21,578,817.15
	Dec-02	Dec-03	Dec-04	Dec-05	Dec-06	Dec-07	Dec-08	Dec-09	Dec-10	Dec-11
Current	90,073.28	214,030.66	277,586.23	2,637,651.91	8,286,328.53	15,963,177.18	22,487,415.51	20,207,731.85	19,576,845.38	18,435,462.84
1-30 Days	705.00	8,051.41	18,949.20	188,949.21	1,147,371.34	1,034,353.05	1,953,993.19	2,100,312.88	1,364,827.84	1,697,379.21
31-60 Days	-	5,218.65	3,015.25	81,001.86	289,061.70	527,885.33	816,991.32	1,161,950.87	732,933.17	860,131.28
61-90 Days	-	-	-	1,438.37	163,813.19	151,997.38	411,143.25	515,295.12	432,224.60	393,649.75
91-120 Days	-	-	-	-	27,895.16	40,813.04	21,688.67	49,345.05	103,242.02	68,948.53
121-150 Days	-	4,457.51	-	-	9,149.03	-	5,626.31	24,442.35	14,402.74	46,633.35
151-180 Days	-	-	984.99	-	1,433.57	-	785.86	29,278.27	25,304.59	32,531.46
181+ Days	-	-	-	-	4,500.00	-	-	7,137.31	32,113.97	44,080.73

### Delinquency Status (% of Current Balance)

Current Portfolio Balance	90,778.28	231,758.23	300,535.67	2,909,041.35	9,929,552.52	17,718,225.98	25,697,644.11	24,095,493.70	22,281,894.31	21,578,817.15
	Dec-02	Dec-03	Dec-04	Dec-05	Dec-06	Dec-07	Dec-08	Dec-09	Dec-10	Dec-11
Current	99.22%	92.35%	92.36%	90.67%	83.45%	90.09%	87.51%	83.87%	87.86%	85.43%
1-30 Days	0.78%	3.47%	6.31%	6.50%	11.56%	5.84%	7.60%	8.72%	6.13%	7.87%
31-60 Days	0.00%	2.25%	1.00%	2.78%	2.91%	2.98%	3.18%	4.82%	3.29%	3.99%
61-90 Days	0.00%	0.00%	0.00%	0.05%	1.65%	0.86%	1.60%	2.14%	1.94%	1.82%
91-120 Days	0.00%	0.00%	0.00%	0.00%	0.28%	0.23%	0.08%	0.20%	0.46%	0.32%
121-150 Days	0.00%	1.92%	0.00%	0.00%	0.09%	0.00%	0.02%	0.10%	0.06%	0.22%
151-180 Days	0.00%	0.00%	0.33%	0.00%	0.01%	0.00%	0.00%	0.12%	0.11%	0.15%
181+ Days	0.00%	0.00%	0.00%	0.00%	0.05%	0.00%	0.00%	0.03%	0.14%	0.20%
Current - 90 Days	100.00%	98.08%	99.67%	100.00%	99.57%	99.77%	99.89%	99.54%	99.21%	99.11%
91-180 Days	0.00%	1.92%	0.33%	0.00%	0.39%	0.23%	0.11%	0.43%	0.64%	0.69%



## Personal Loans - La Hipotecaria Panama Migration Analysis (2002 Vintage)

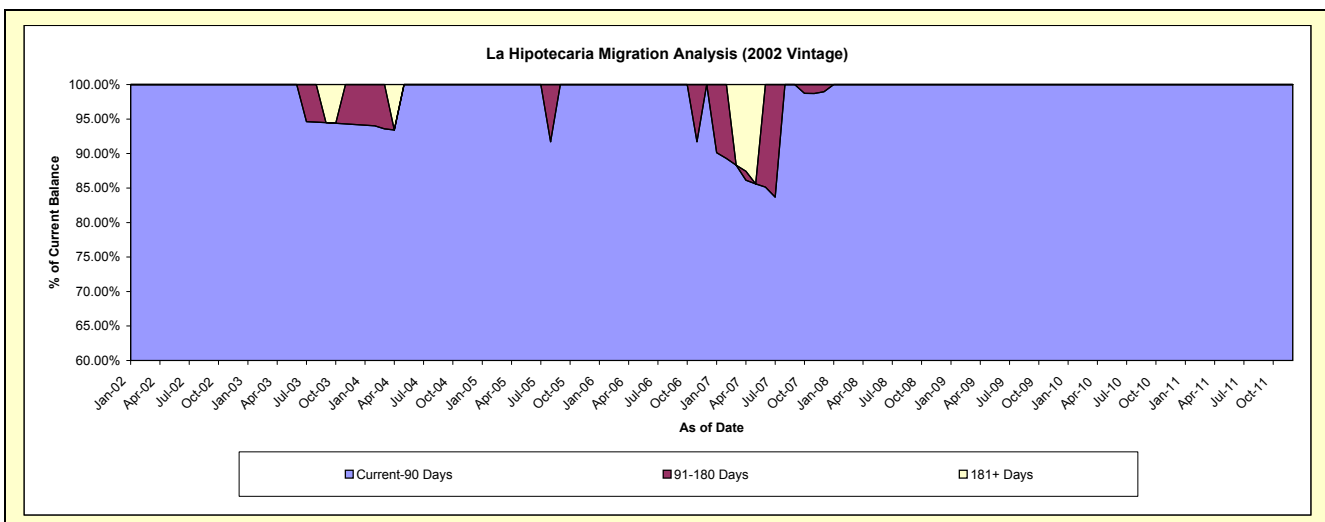
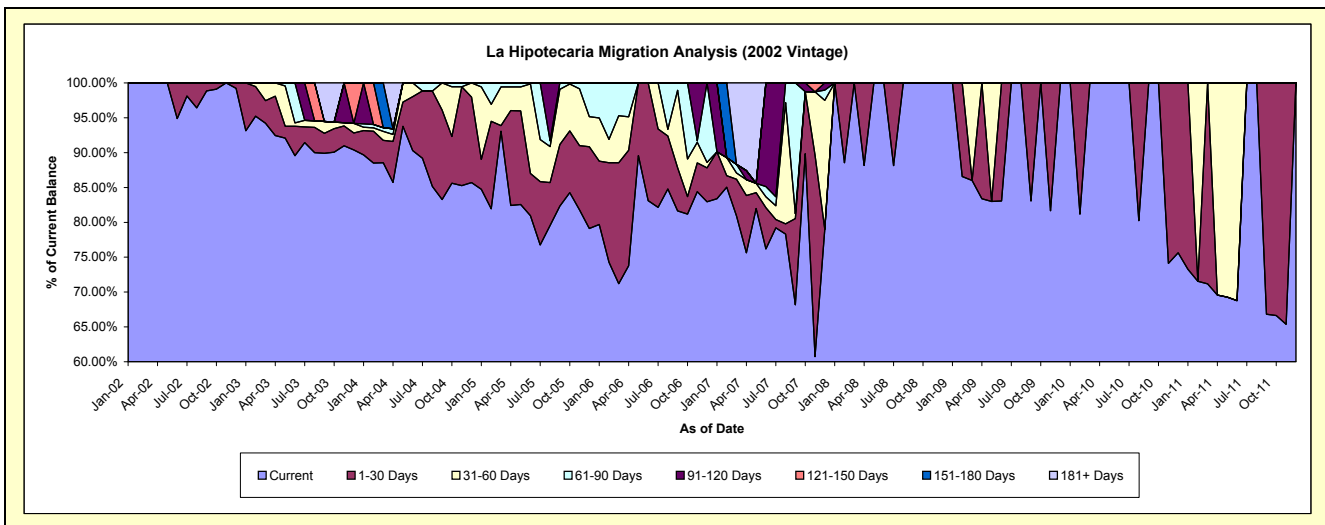
### Delinquency Status (\$ of Current Balance)

Data Cutoff: 12/31/2011

Current Portfolio Balance	90,778.28	76,814.46	55,555.03	29,641.50	12,785.59	5,106.37	2,550.59	1,494.57	933.03	363.71
	Dec-02	Dec-03	Dec-04	Dec-05	Dec-06	Dec-07	Dec-08	Dec-09	Dec-10	Dec-11
Current	90,073.28	69,421.02	47,607.83	23,450.44	10,606.61	4,034.38	2,550.59	1,494.57	705.64	363.71
1-30 Days	705.00	1,874.08	6,813.39	3,479.84	621.86	-	-	-	227.39	-
31-60 Days	-	1,061.85	1,133.81	1,272.85	98.05	943.87	-	-	-	-
61-90 Days	-	-	-	1,438.37	1,459.07	75.07	-	-	-	-
91-120 Days	-	-	-	-	-	53.05	-	-	-	-
121-150 Days	-	4,457.51	-	-	-	-	-	-	-	-
151-180 Days	-	-	-	-	-	-	-	-	-	-
181+ Days	-	-	-	-	-	-	-	-	-	-

### Delinquency Status (% of Current Balance)

Current Portfolio Balance	90,778.28	76,814.46	55,555.03	29,641.50	12,785.59	5,106.37	2,550.59	1,494.57	933.03	363.71
	Dec-02	Dec-03	Dec-04	Dec-05	Dec-06	Dec-07	Dec-08	Dec-09	Dec-10	Dec-11
Current	99.22%	90.37%	85.69%	79.11%	82.96%	79.01%	100.00%	100.00%	75.63%	100.00%
1-30 Days	0.78%	2.44%	12.26%	11.74%	4.86%	0.00%	0.00%	0.00%	24.37%	0.00%
31-60 Days	0.00%	1.38%	2.04%	4.29%	0.77%	18.48%	0.00%	0.00%	0.00%	0.00%
61-90 Days	0.00%	0.00%	0.00%	4.85%	11.41%	1.47%	0.00%	0.00%	0.00%	0.00%
91-120 Days	0.00%	0.00%	0.00%	0.00%	0.00%	1.04%	0.00%	0.00%	0.00%	0.00%
121-150 Days	0.00%	5.80%	0.00%	0.00%	0.00%	0.00%	0.00%	0.00%	0.00%	0.00%
151-180 Days	0.00%	0.00%	0.00%	0.00%	0.00%	0.00%	0.00%	0.00%	0.00%	0.00%
181+ Days	0.00%	0.00%	0.00%	0.00%	0.00%	0.00%	0.00%	0.00%	0.00%	0.00%
Current - 90 Days	100.00%	94.20%	100.00%	100.00%	100.00%	98.96%	100.00%	100.00%	100.00%	100.00%
91-180 Days	0.00%	5.80%	0.00%	0.00%	0.00%	1.04%	0.00%	0.00%	0.00%	0.00%



## Personal Loans - La Hipotecaria Panama Migration Analysis (2003 Vintage)

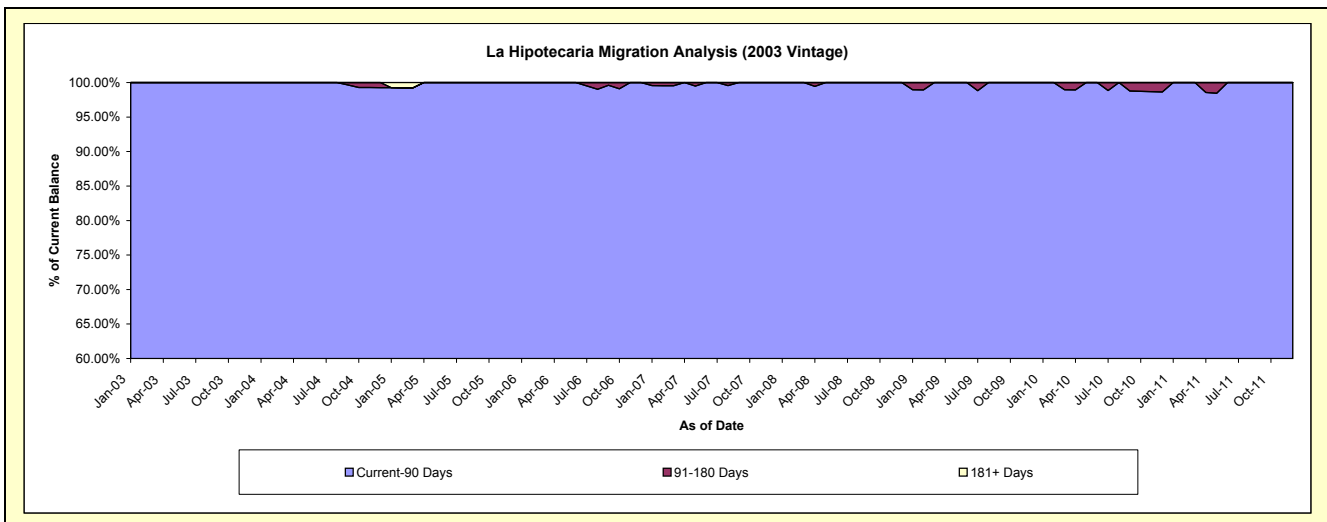
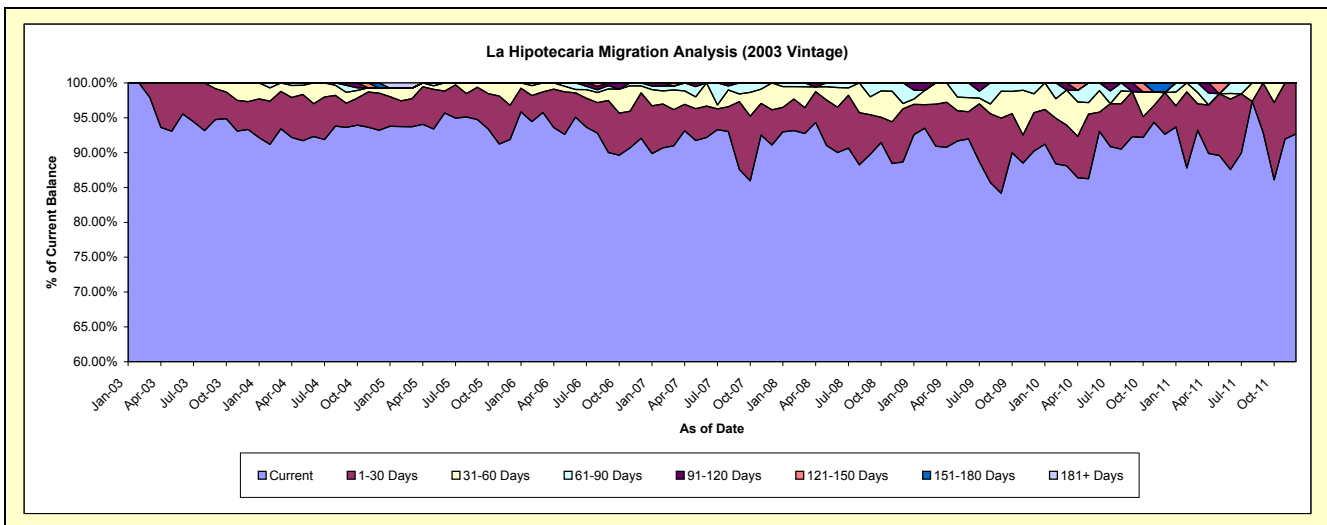
### Delinquency Status (\$ of Current Balance)

Data Cutoff: 12/31/2011

Current Portfolio Balance	-	154,943.77	134,135.18	109,972.97	80,773.59	56,861.74	39,195.48	26,120.94	15,936.32	6,931.80
	Dec-03	Dec-04	Dec-05	Dec-06	Dec-07	Dec-08	Dec-09	Dec-10	Dec-11	
Current	144,609.64	125,028.24	101,045.05	74,352.03	51,800.64	34,747.71	23,566.13	14,763.11	6,424.39	
1-30 Days	6,177.33	7,135.81	5,406.79	5,279.35	2,875.21	2,987.98	1,439.43	953.94	507.41	
31-60 Days	4,156.80	986.14	3,521.13	786.51	2,185.89	297.79	709.29	-	-	
61-90 Days	-	-	-	355.70	-	1,162.00	406.09	-	-	
91-120 Days	-	-	-	-	-	-	-	-	-	
121-150 Days	-	-	-	-	-	-	-	-	-	
151-180 Days	-	984.99	-	-	-	-	-	219.27	-	
181+ Days	-	-	-	-	-	-	-	-	-	

### Delinquency Status (% of Current Balance)

Current Portfolio Balance	-	154,943.77	134,135.18	109,972.97	80,773.59	56,861.74	39,195.48	26,120.94	15,936.32	6,931.80
	Dec-03	Dec-04	Dec-05	Dec-06	Dec-07	Dec-08	Dec-09	Dec-10	Dec-11	
Current	93.33%	93.21%	91.88%	92.05%	91.10%	88.65%	90.22%	92.64%	92.68%	
1-30 Days	3.99%	5.32%	4.92%	6.54%	5.06%	7.62%	5.51%	5.99%	7.32%	
31-60 Days	2.68%	0.74%	3.20%	0.97%	3.84%	0.76%	2.72%	0.00%	0.00%	
61-90 Days	0.00%	0.00%	0.00%	0.44%	0.00%	2.96%	1.55%	0.00%	0.00%	
91-120 Days	0.00%	0.00%	0.00%	0.00%	0.00%	0.00%	0.00%	0.00%	0.00%	
121-150 Days	0.00%	0.00%	0.00%	0.00%	0.00%	0.00%	0.00%	0.00%	0.00%	
151-180 Days	0.00%	0.73%	0.00%	0.00%	0.00%	0.00%	0.00%	1.38%	0.00%	
181+ Days	0.00%	0.00%	0.00%	0.00%	0.00%	0.00%	0.00%	0.00%	0.00%	
Current - 90 Days	100.00%	99.27%	100.00%	100.00%	100.00%	100.00%	100.00%	98.62%	100.00%	
91-180 Days	0.00%	0.73%	0.00%	0.00%	0.00%	0.00%	0.00%	1.38%	0.00%	



## Personal Loans - La Hipotecaria Panama Migration Analysis (2004 Vintage)

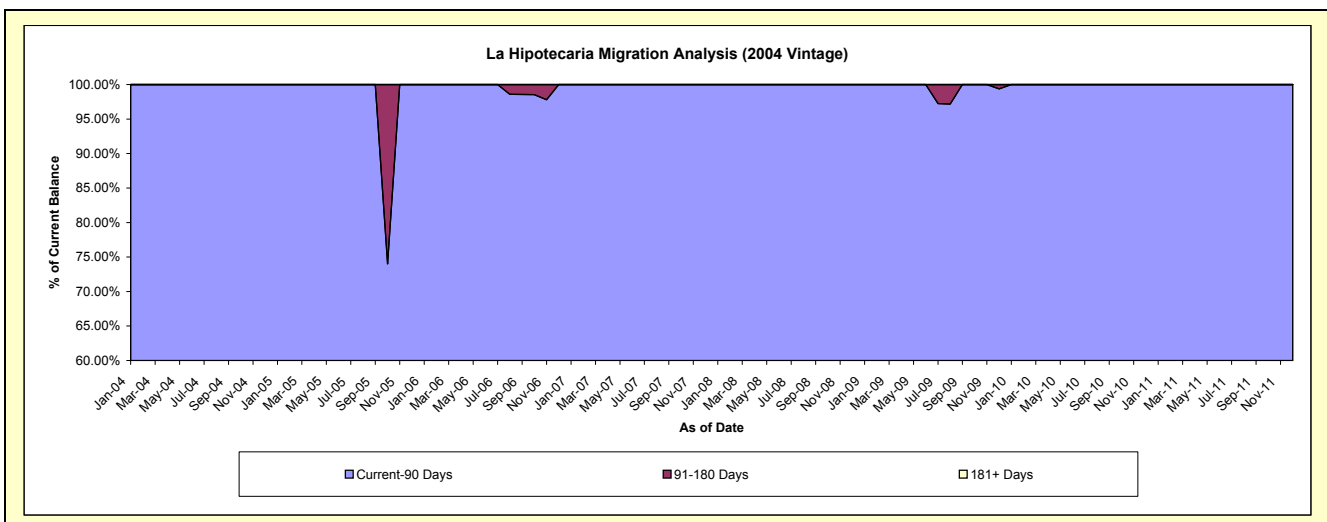
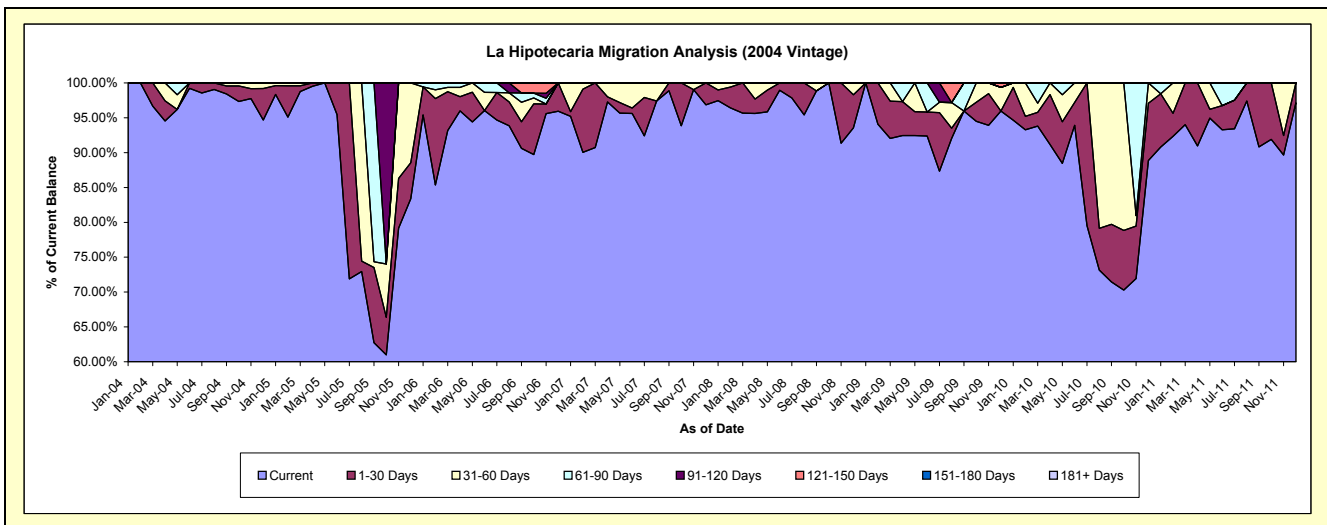
### Delinquency Status (\$ of Current Balance)

Data Cutoff: 12/31/2011

Current Portfolio Balance	-	-	110,845.46	72,770.77	55,057.11	34,581.93	26,700.92	20,993.41	15,688.09	7,295.76
	Dec-04	Dec-05	Dec-06	Dec-07	Dec-08	Dec-09	Dec-10	Dec-11		
Current	104,950.16	60,682.03	52,826.48	33,492.96	24,981.82	20,144.27	13,942.28	7,087.98		
1-30 Days	5,000.00	3,762.69	2,230.63	1,088.97	1,264.19	-	1,290.11	207.78		
31-60 Days	895.30	8,326.05	-	-	454.91	716.64	455.70	-		
61-90 Days	-	-	-	-	-	-	-	-		
91-120 Days	-	-	-	-	-	-	-	-		
121-150 Days	-	-	-	-	-	132.50	-	-		
151-180 Days	-	-	-	-	-	-	-	-		
181+ Days	-	-	-	-	-	-	-	-		

### Delinquency Status (% of Current Balance)

Current Portfolio Balance	-	-	110,845.46	72,770.77	55,057.11	34,581.93	26,700.92	20,993.41	15,688.09	7,295.76
	Dec-04	Dec-05	Dec-06	Dec-07	Dec-08	Dec-09	Dec-10	Dec-11		
Current	94.68%	83.39%	95.95%	96.85%	93.56%	95.96%	88.87%	97.15%		
1-30 Days	4.51%	5.17%	4.05%	3.15%	4.73%	0.00%	8.22%	2.85%		
31-60 Days	0.81%	11.44%	0.00%	0.00%	1.70%	3.41%	2.90%	0.00%		
61-90 Days	0.00%	0.00%	0.00%	0.00%	0.00%	0.00%	0.00%	0.00%		
91-120 Days	0.00%	0.00%	0.00%	0.00%	0.00%	0.00%	0.00%	0.00%		
121-150 Days	0.00%	0.00%	0.00%	0.00%	0.00%	0.63%	0.00%	0.00%		
151-180 Days	0.00%	0.00%	0.00%	0.00%	0.00%	0.00%	0.00%	0.00%		
181+ Days	0.00%	0.00%	0.00%	0.00%	0.00%	0.00%	0.00%	0.00%		
Current - 90 Days	100.00%	100.00%	100.00%	100.00%	100.00%	99.37%	100.00%	100.00%		
91-180 Days	0.00%	0.00%	0.00%	0.00%	0.00%	0.63%	0.00%	0.00%		



## Personal Loans - La Hipotecaria Panama Migration Analysis (2005 Vintage)

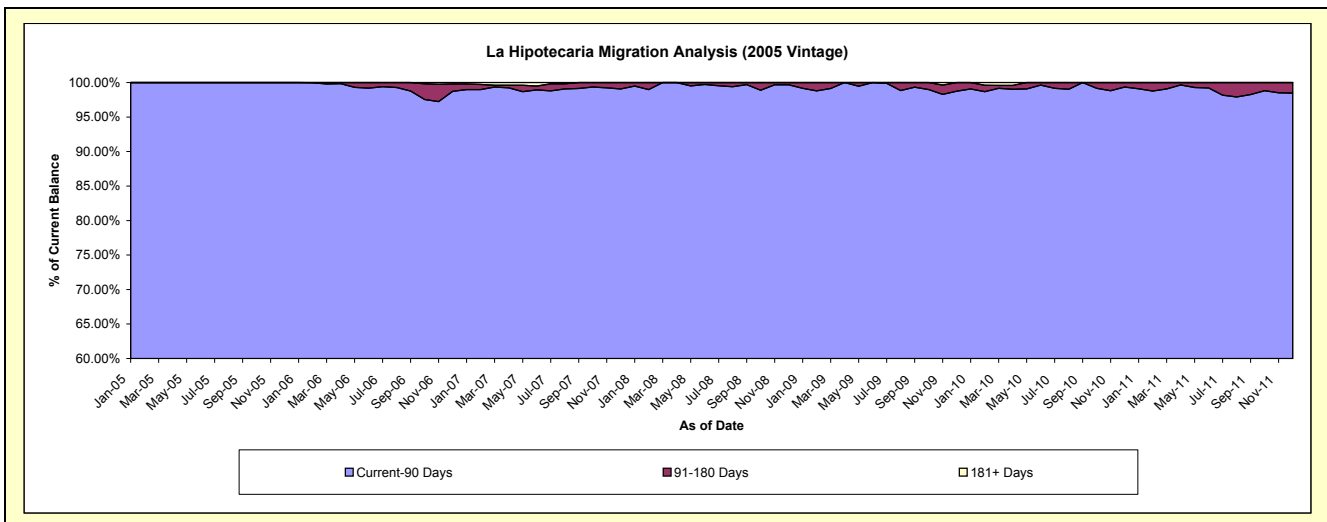
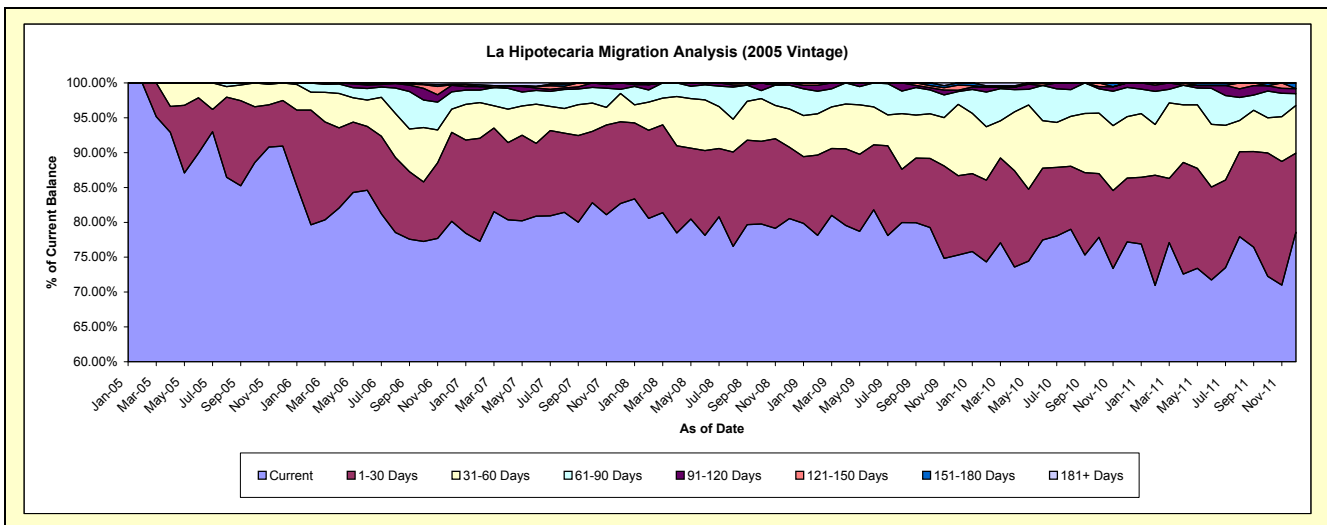
### Delinquency Status (\$ of Current Balance)

Data Cutoff: 12/31/2011

Current Portfolio Balance	-	-	-	2,696,656.11	2,239,640.91	1,840,332.92	1,396,493.61	1,151,012.78	916,864.77	653,052.54
	Dec-05	Dec-06	Dec-07	Dec-08	Dec-09	Dec-10	Dec-11			
Current	2,452,474.39	1,794,811.73	1,521,802.85	1,124,772.68	866,785.66	707,777.98	513,152.50			
1-30 Days	176,299.89	286,164.08	215,969.65	142,910.00	131,047.50	83,919.22	74,173.42			
31-60 Days	67,881.83	74,295.07	74,789.80	76,421.51	117,827.92	80,806.09	44,543.32			
61-90 Days	-	55,693.93	10,784.73	47,796.24	21,040.57	38,400.39	11,179.42			
91-120 Days	-	20,742.53	16,985.89	4,593.18	2,178.06	5,961.09	4,683.18			
121-150 Days	-	2,000.00	-	-	8,496.31	-	-			
151-180 Days	-	1,433.57	-	-	3,636.76	-	5,320.70			
181+ Days	-	4,500.00	-	-	-	-	-			

### Delinquency Status (% of Current Balance)

Current Portfolio Balance	-	-	-	2,696,656.11	2,239,640.91	1,840,332.92	1,396,493.61	1,151,012.78	916,864.77	653,052.54
	Dec-05	Dec-06	Dec-07	Dec-08	Dec-09	Dec-10	Dec-11			
Current	90.95%	80.14%	82.69%	80.54%	75.31%	77.20%	78.58%			
1-30 Days	6.54%	12.78%	11.74%	10.23%	11.39%	9.15%	11.36%			
31-60 Days	2.52%	3.32%	4.06%	5.47%	10.24%	8.81%	6.82%			
61-90 Days	0.00%	2.49%	0.59%	3.42%	1.83%	4.19%	1.71%			
91-120 Days	0.00%	0.93%	0.82%	0.33%	0.19%	0.65%	0.72%			
121-150 Days	0.00%	0.09%	0.00%	0.00%	0.74%	0.00%	0.00%			
151-180 Days	0.00%	0.06%	0.00%	0.00%	0.32%	0.00%	0.81%			
181+ Days	0.00%	0.20%	0.00%	0.00%	0.00%	0.00%	0.00%			
Current - 90 Days	100.00%	98.72%	99.08%	99.67%	98.76%	99.35%	98.47%			
91-180 Days	0.00%	1.08%	0.92%	0.33%	1.24%	0.65%	1.53%			



# Personal Loans - La Hipotecaria Panama Migration Analysis (2006 Vintage)

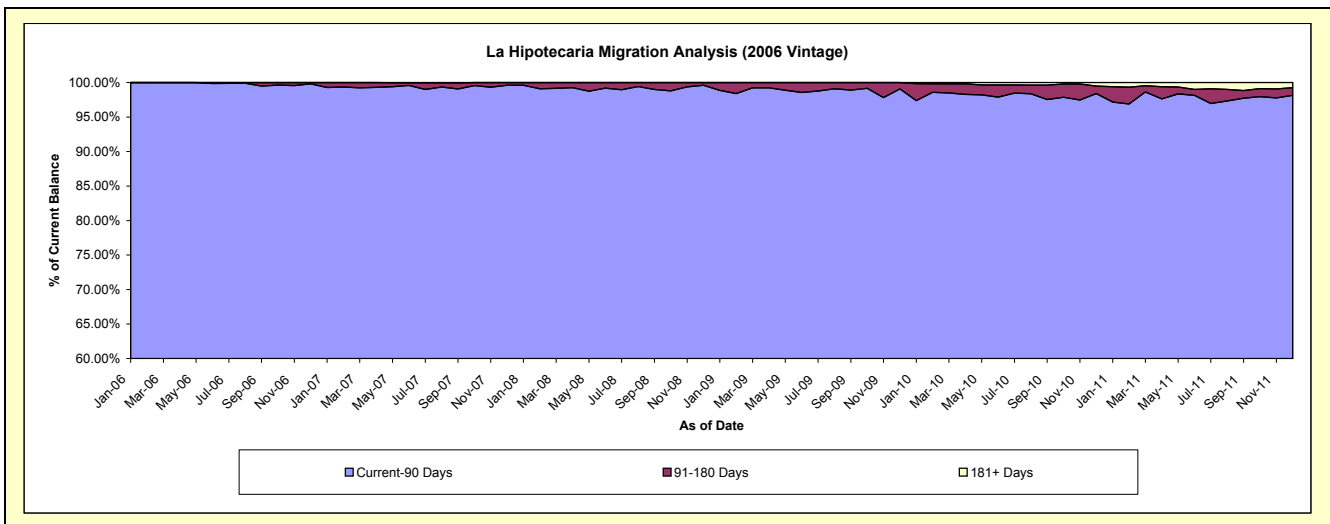
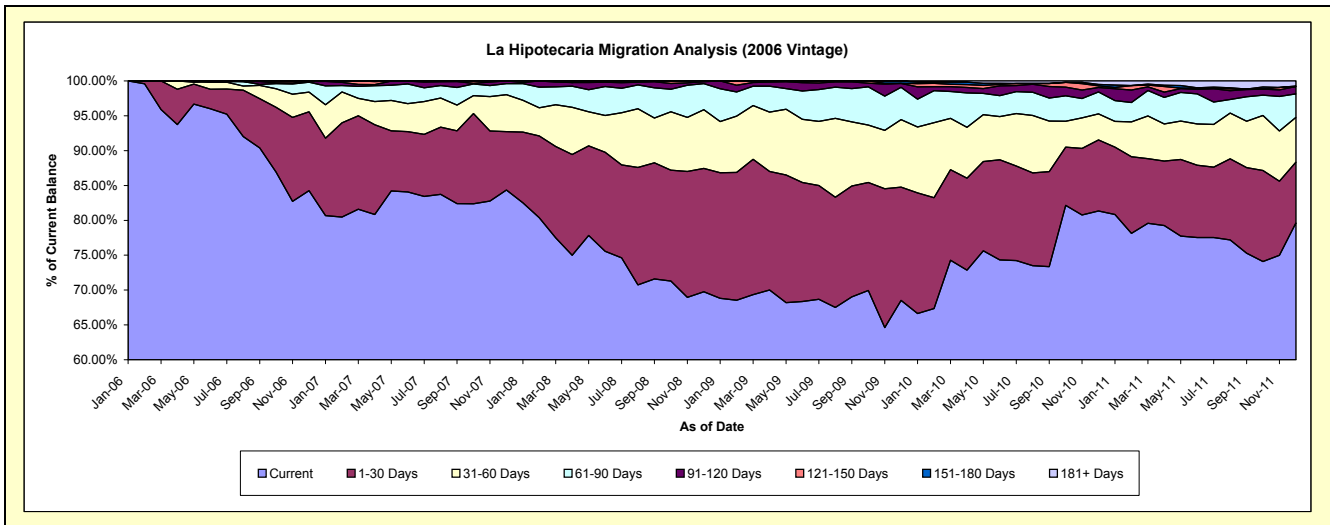
## Delinquency Status (\$ of Current Balance)

Data Cutoff: 12/31/2011

Current Portfolio Balance	-	-	-	-	7,541,295.32	6,064,120.22	4,838,426.52	4,230,805.58	3,538,215.63	2,795,305.87
					Dec-06	Dec-07	Dec-08	Dec-09	Dec-10	Dec-11
Current					6,353,731.68	5,115,131.38	3,374,432.72	2,898,478.98	2,878,046.18	2,225,506.65
1-30 Days					853,075.42	508,058.86	856,246.26	687,524.92	360,581.47	244,210.83
31-60 Days					213,882.07	321,847.81	408,317.60	409,549.99	132,077.65	179,153.23
61-90 Days					106,304.49	95,308.07	180,439.10	196,113.44	111,206.33	94,454.32
91-120 Days					7,152.63	23,774.10	13,364.53	23,184.62	23,383.41	29,338.01
121-150 Days					7,149.03	-	5,626.31	1,533.14	7,801.52	-
151-180 Days					-	-	-	14,420.49	7,314.43	2,143.85
181+ Days					-	-	-	-	17,804.64	20,498.98

## Delinquency Status (% of Current Balance)

Current Portfolio Balance	-	-	-	-	7,541,295.32	6,064,120.22	4,838,426.52	4,230,805.58	3,538,215.63	2,795,305.87
					Dec-06	Dec-07	Dec-08	Dec-09	Dec-10	Dec-11
Current					84.25%	84.35%	69.74%	68.51%	81.34%	79.62%
1-30 Days					11.31%	8.38%	17.70%	16.25%	10.19%	8.74%
31-60 Days					2.84%	5.31%	8.44%	9.68%	3.73%	6.41%
61-90 Days					1.41%	1.57%	3.73%	4.64%	3.14%	3.38%
91-120 Days					0.09%	0.39%	0.28%	0.55%	0.66%	1.05%
121-150 Days					0.09%	0.00%	0.12%	0.04%	0.22%	0.00%
151-180 Days					0.00%	0.00%	0.00%	0.34%	0.21%	0.08%
181+ Days					0.00%	0.00%	0.00%	0.00%	0.50%	0.73%
Current - 90 Days					99.81%	99.61%	99.61%	99.07%	98.41%	98.14%
91-180 Days					0.19%	0.39%	0.39%	0.93%	1.09%	1.13%



## Personal Loans - La Hipotecaria Panama Migration Analysis (2007 Vintage)

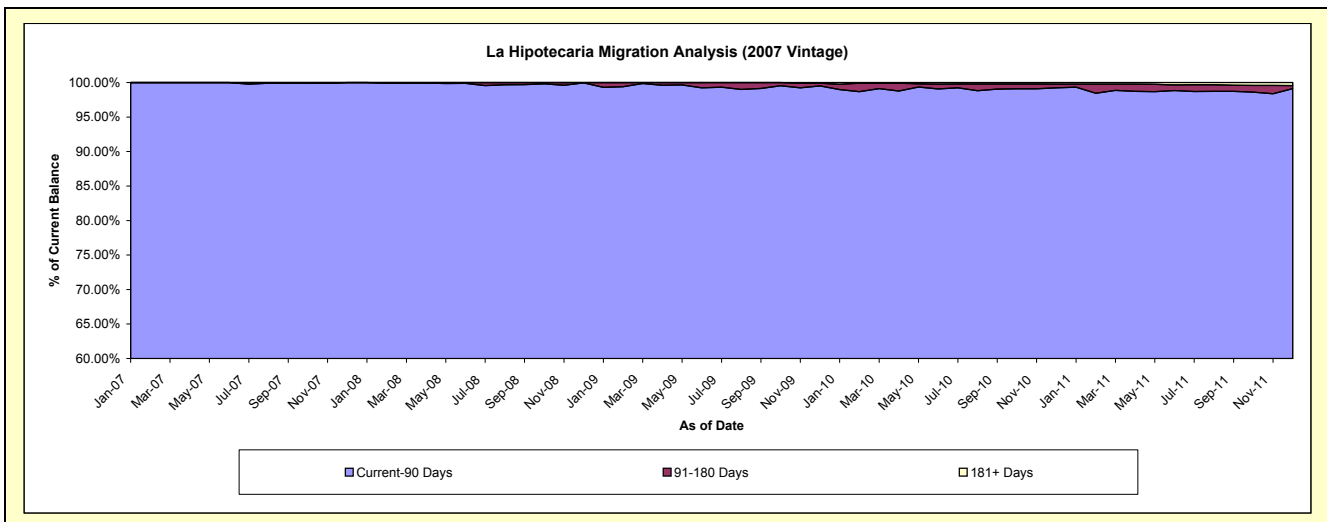
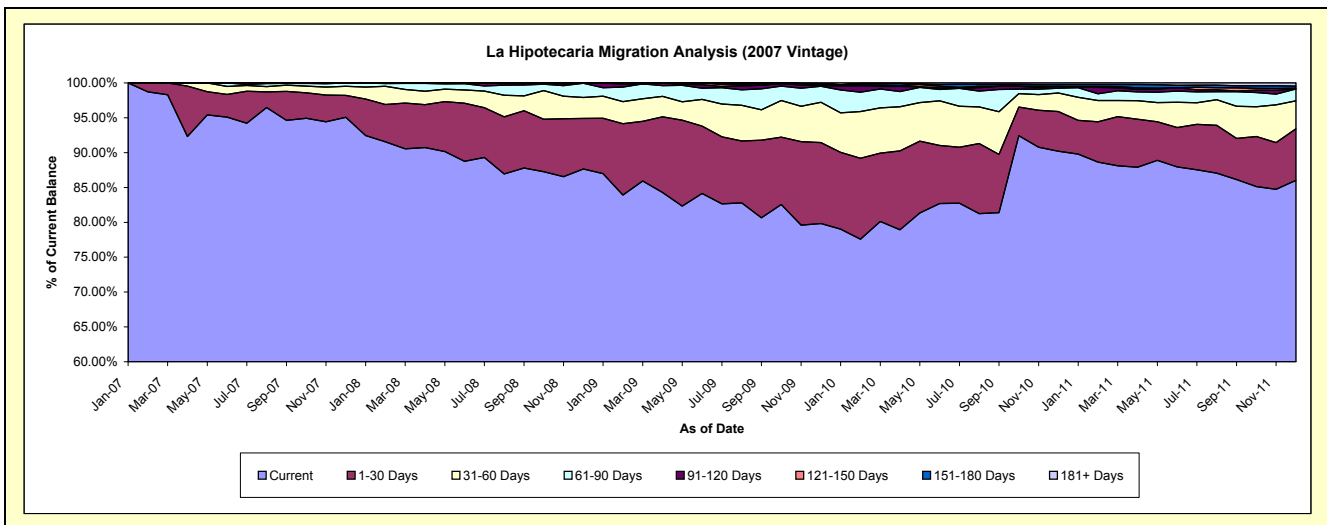
### Delinquency Status (\$ of Current Balance)

Data Cutoff: 12/31/2011

Current Portfolio Balance	-	-	-	-	-	9,717,222.80	8,106,535.24	7,343,846.01	6,340,161.16	5,239,978.21
						Dec-07	Dec-08	Dec-09	Dec-10	Dec-11
Current						9,236,914.97	7,105,540.57	5,862,311.15	5,719,317.33	4,507,229.50
1-30 Days						306,360.36	587,274.16	852,580.13	361,011.59	387,585.21
31-60 Days						128,117.96	244,481.53	424,421.84	167,499.56	210,033.83
61-90 Days						45,829.51	165,508.02	169,406.92	44,158.89	88,900.05
91-120 Days						-	3,730.96	8,672.19	16,093.57	-
121-150 Days						-	-	8,095.45	-	6,709.05
151-180 Days						-	-	11,221.02	17,770.89	15,938.82
181+ Days						-	-	7,137.31	14,309.33	23,581.75

### Delinquency Status (% of Current Balance)

Current Portfolio Balance	-	-	-	-	-	9,717,222.80	8,106,535.24	7,343,846.01	6,340,161.16	5,239,978.21
						Dec-07	Dec-08	Dec-09	Dec-10	Dec-11
Current						95.06%	87.65%	79.83%	90.21%	86.02%
1-30 Days						3.15%	7.24%	11.61%	5.69%	7.40%
31-60 Days						1.32%	3.02%	5.78%	2.64%	4.01%
61-90 Days						0.47%	2.04%	2.31%	0.70%	1.70%
91-120 Days						0.00%	0.05%	0.12%	0.25%	0.00%
121-150 Days						0.00%	0.00%	0.11%	0.00%	0.13%
151-180 Days						0.00%	0.00%	0.15%	0.28%	0.30%
181+ Days						0.00%	0.00%	0.10%	0.23%	0.45%
Current - 90 Days						100.00%	99.95%	99.52%	99.24%	99.12%
91-180 Days						0.00%	0.05%	0.38%	0.53%	0.43%





## Personal Loans - La Hipotecaria Panama Migration Analysis (2008 Vintage)

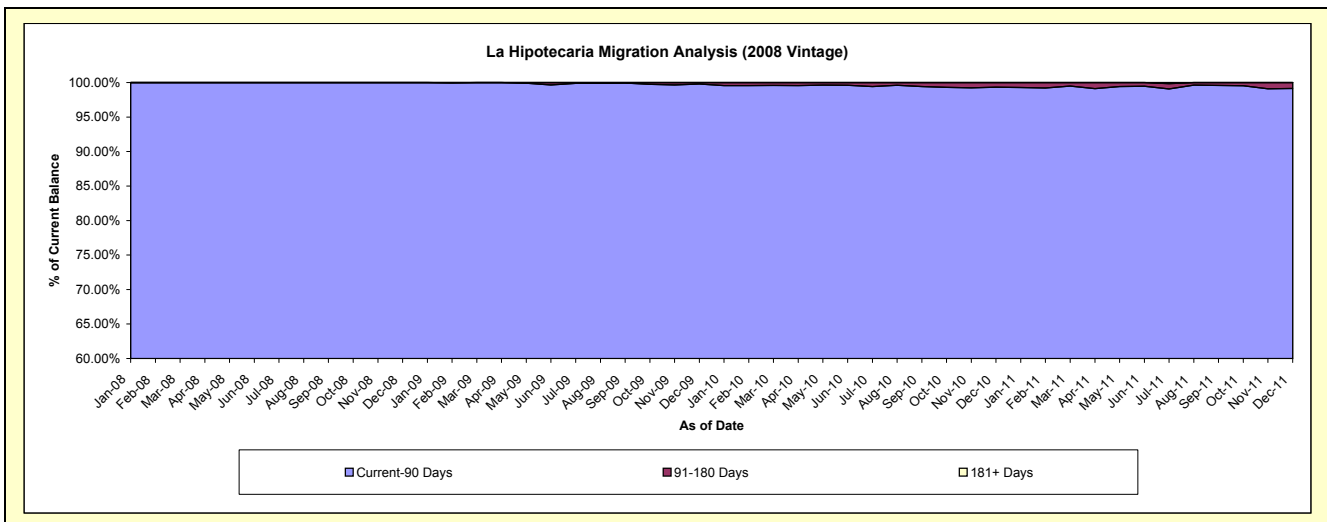
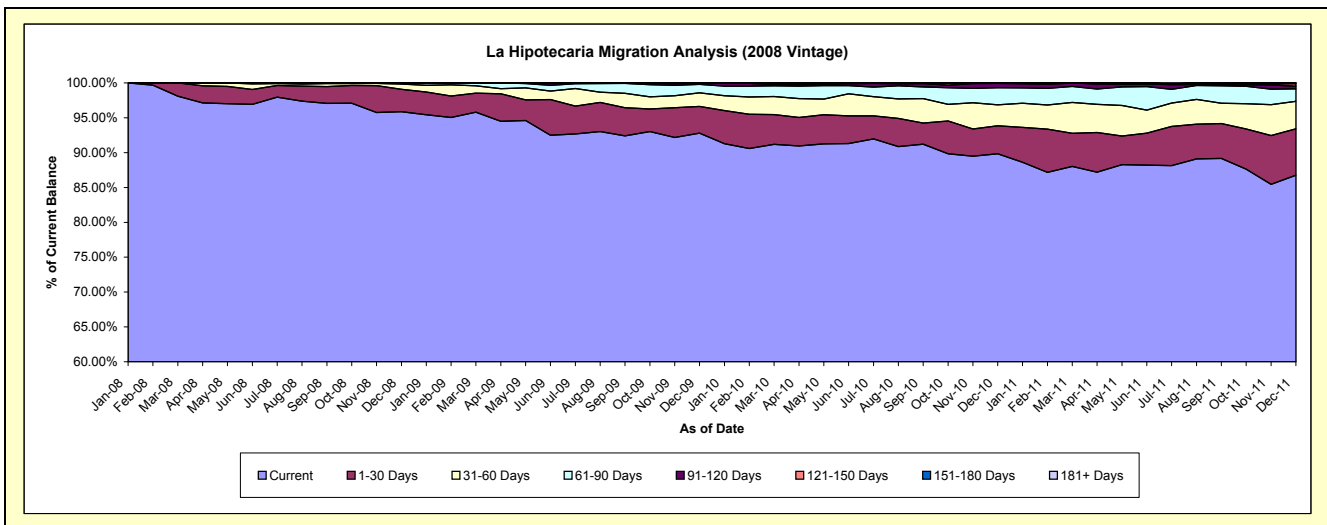
### Delinquency Status (\$ of Current Balance)

Data Cutoff: 12/31/2011

Current Portfolio Balance	-	-	-	-	-	-	-	11,287,741.75	10,508,422.02	9,483,952.43	8,378,399.22
								Dec-08	Dec-09	Dec-10	Dec-11
Current								10,820,389.42	9,751,492.00	8,520,841.94	7,268,716.08
1-30 Days								363,310.60	402,716.64	379,981.87	557,645.81
31-60 Days								87,017.98	204,390.15	284,687.41	330,644.57
61-90 Days								16,237.89	128,328.10	234,036.04	150,258.06
91-120 Days								-	15,310.18	57,803.95	30,827.34
121-150 Days								-	6,184.95	6,601.22	31,179.27
151-180 Days								785.86	-	-	9,128.09
181+ Days								-	-	-	-

### Delinquency Status (% of Current Balance)

Current Portfolio Balance	-	-	-	-	-	-	-	11,287,741.75	10,508,422.02	9,483,952.43	8,378,399.22
								Dec-08	Dec-09	Dec-10	Dec-11
Current								95.86%	92.80%	89.84%	86.76%
1-30 Days								3.22%	3.83%	4.01%	6.66%
31-60 Days								0.77%	1.95%	3.00%	3.95%
61-90 Days								0.14%	1.22%	2.47%	1.79%
91-120 Days								0.00%	0.15%	0.61%	0.37%
121-150 Days								0.00%	0.06%	0.07%	0.37%
151-180 Days								0.01%	0.00%	0.00%	0.11%
181+ Days								0.00%	0.00%	0.00%	0.00%
Current - 90 Days								99.99%	99.80%	99.32%	99.15%
91-180 Days								0.01%	0.20%	0.68%	0.85%



**Personal Loans - La Hipotecaria Panama Migration Analysis (2009 Vintage)**

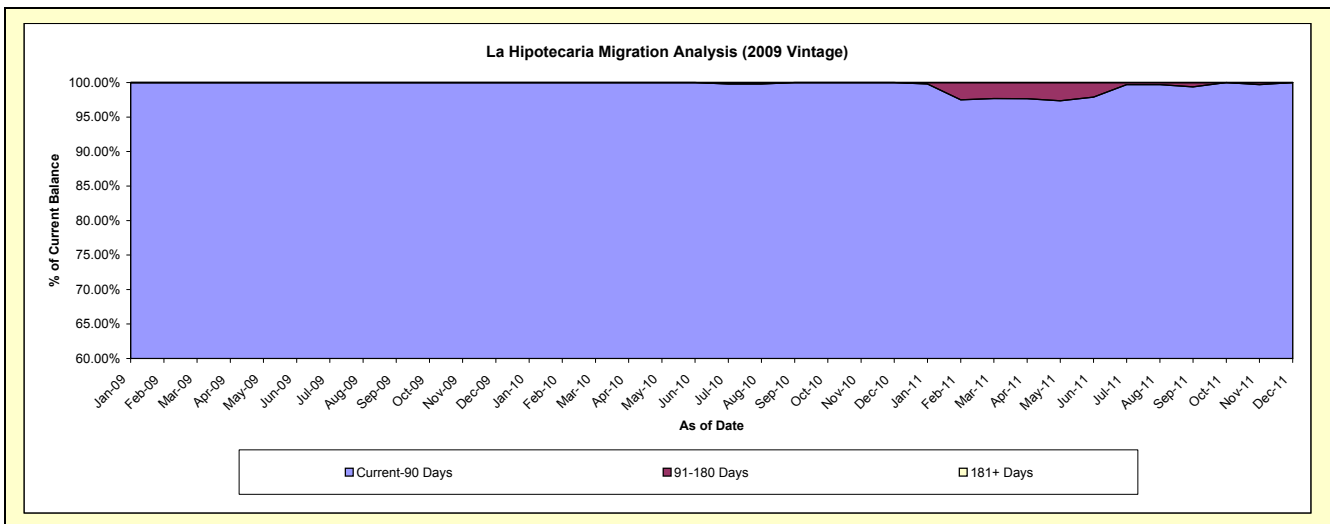
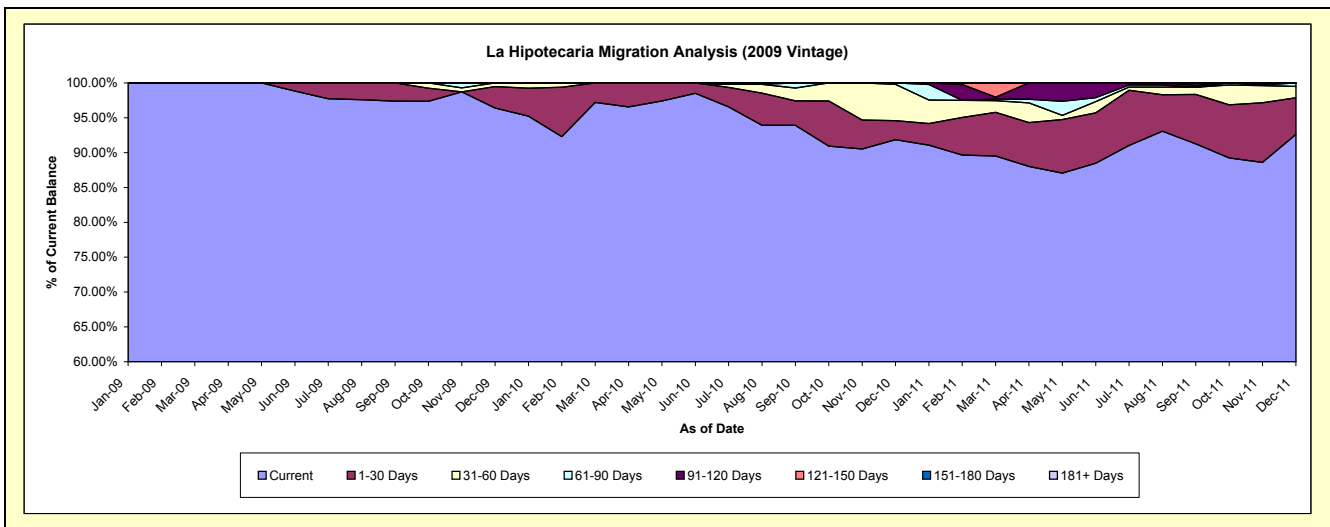
**Delinquency Status (\$ of Current Balance)**

Data Cutoff: 12/31/2011

Current Portfolio Balance				812,798.39	700,729.95	521,320.13
				Dec-09	Dec-10	Dec-11
Current				783,459.09	643,583.76	482,747.09
1-30 Days				25,004.26	19,195.94	27,499.80
31-60 Days				4,335.04	36,449.59	8,455.33
61-90 Days				-	1,500.66	2,617.91
91-120 Days				-	-	-
121-150 Days				-	-	-
151-180 Days				-	-	-
181+ Days				-	-	-

**Delinquency Status (% of Current Balance)**

Current Portfolio Balance				812,798.39	700,729.95	521,320.13
				Dec-09	Dec-10	Dec-11
Current				96.39%	91.84%	92.60%
1-30 Days				3.08%	2.74%	5.28%
31-60 Days				0.53%	5.20%	1.62%
61-90 Days				0.00%	0.21%	0.50%
91-120 Days				0.00%	0.00%	0.00%
121-150 Days				0.00%	0.00%	0.00%
151-180 Days				0.00%	0.00%	0.00%
181+ Days				0.00%	0.00%	0.00%
Current - 90 Days				100.00%	100.00%	100.00%
91-180 Days				0.00%	0.00%	0.00%



## Personal Loans - La Hipotecaria Panama Migration Analysis (2010 Vintage)

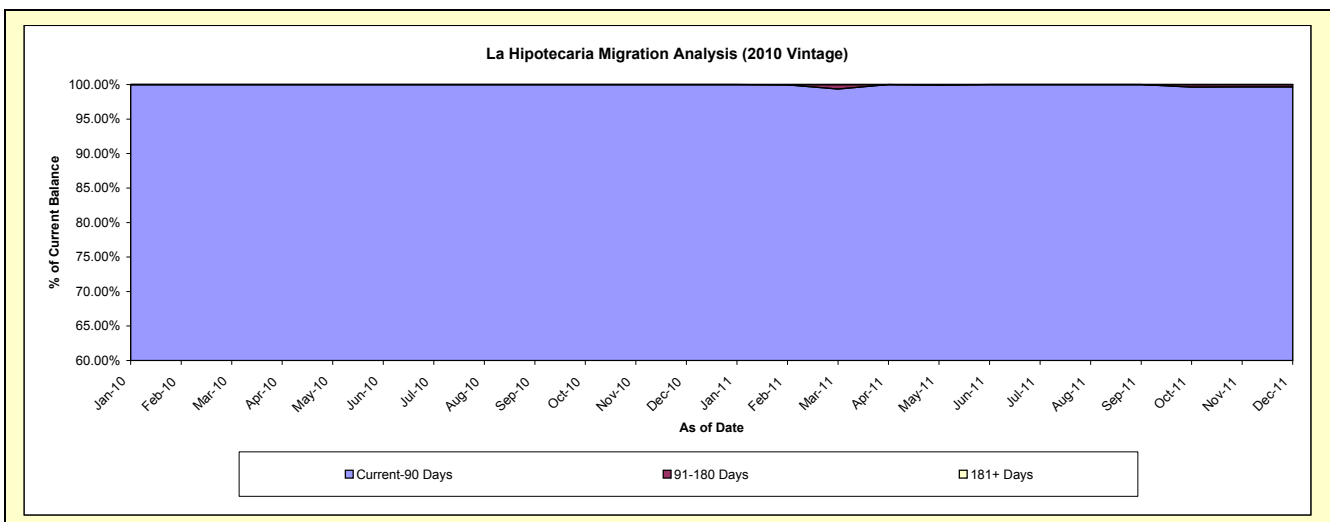
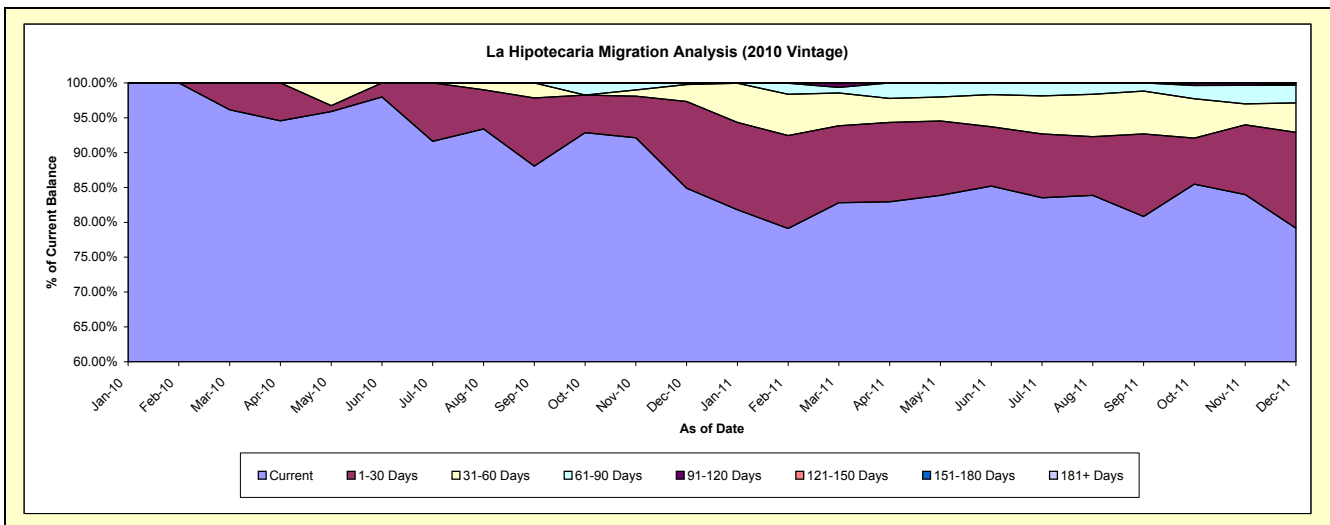
### Delinquency Status (\$ of Current Balance)

Data Cutoff: 12/31/2011

Current Portfolio Balance										1,269,412.93	1,087,007.24
										Dec-10	Dec-11
Current										1,077,867.16	860,395.36
1-30 Days										157,666.31	149,466.26
31-60 Days										30,957.17	46,011.05
61-90 Days										2,922.29	27,289.54
91-120 Days										-	-
121-150 Days										-	3,845.03
151-180 Days										-	-
181+ Days										-	-

### Delinquency Status (% of Current Balance)

Current Portfolio Balance										1,269,412.93	1,087,007.24
										Dec-10	Dec-11
Current										84.91%	79.15%
1-30 Days										12.42%	13.75%
31-60 Days										2.44%	4.23%
61-90 Days										0.23%	2.51%
91-120 Days										0.00%	0.00%
121-150 Days										0.00%	0.35%
151-180 Days										0.00%	0.00%
181+ Days										0.00%	0.00%
Current - 90 Days										100.00%	99.65%
91-180 Days										0.00%	0.35%



**Personal Loans - La Hipotecaria Panama Migration Analysis (2011 Vintage)**

**Delinquency Status (\$ of Current Balance)**

Data Cutoff: 12/31/2011

Current Portfolio Balance											2,889,162.67
											<b>Dec-11</b>
Current											2,563,839.58
1-30 Days											256,082.69
31-60 Days											41,289.95
61-90 Days											18,950.45
91-120 Days											4,100.00
121-150 Days											4,900.00
151-180 Days											-
181+ Days											-

**Delinquency Status (% of Current Balance)**

Current Portfolio Balance											2,889,162.67
											<b>Dec-11</b>
Current											88.74%
1-30 Days											8.86%
31-60 Days											1.43%
61-90 Days											0.66%
91-120 Days											0.14%
121-150 Days											0.17%
151-180 Days											0.00%
181+ Days											0.00%
Current - 90 Days											99.69%
91-180 Days											0.31%

