



## Migration Analysis for La Hipotecaria S.A Panama

### Personal Loans May 2019

An analysis of historical loan payment data was used to compile a migration analysis of delinquency by annual vintage. Delinquencies for each vintage were grouped into the following buckets; Current, 1-30, 31-60, 61-90, 91-120, 121-150, 151-180, and 180+. Results are provided in graphical and tabular form. The cutoff date is 5/31/2019.

# Personal Loans - La Hipotecaria Panama Migration Analysis (All Vintages)

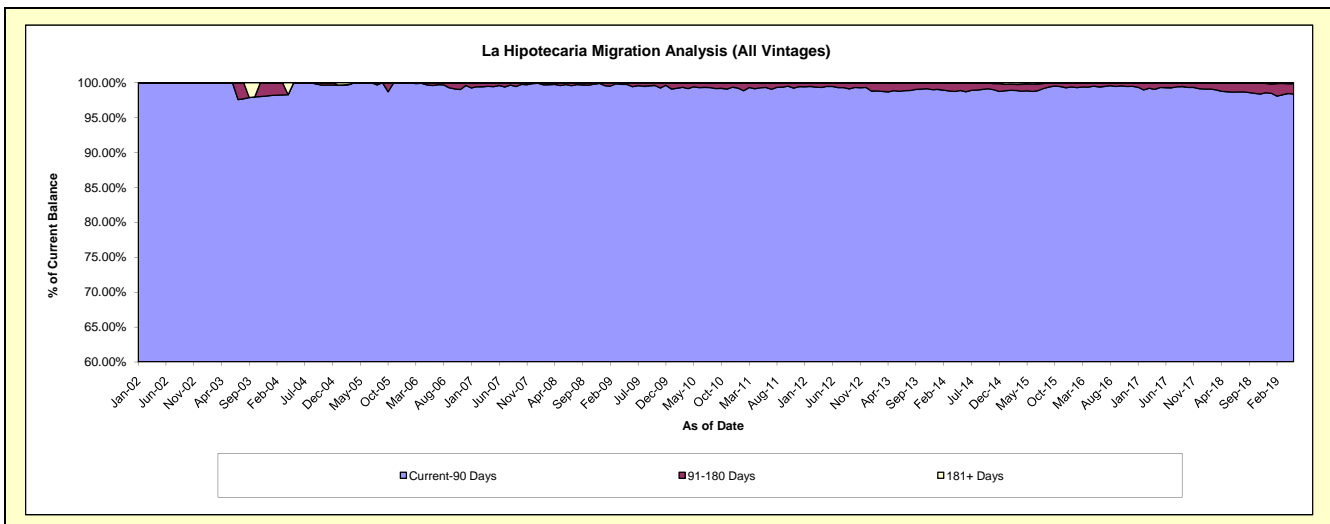
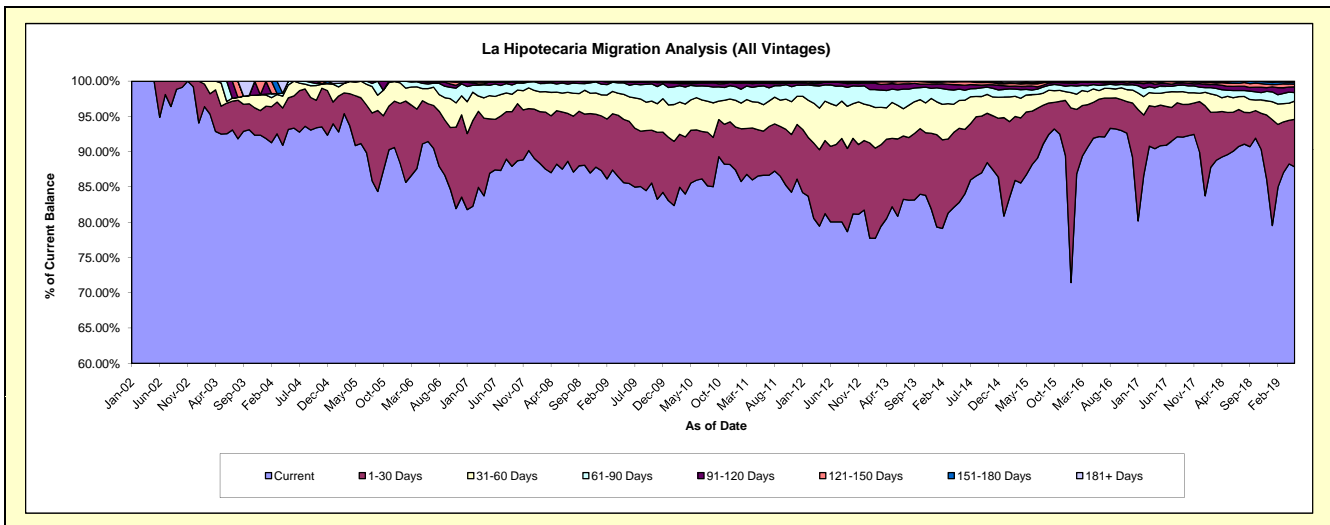
## Delinquency Status (\$ of Current Balance)

Data Cutoff: 5/31/2019

Current Portfolio Balance	22,914,123.71	21,394,313.80	21,127,839.51	22,569,282.62	24,795,164.26	25,621,131.15	28,726,820.56	31,808,805.71	36,193,730.00	41,666,240.22
	May-10	May-11	May-12	May-13	May-14	May-15	May-16	May-17	May-18	May-19
Current	19,605,220.07	18,517,972.91	17,161,167.52	18,553,647.63	20,533,313.91	22,225,857.31	26,403,624.15	28,901,211.15	32,429,453.49	36,606,366.31
1-30 Days	1,713,656.88	1,405,381.84	2,188,517.32	2,184,679.43	2,605,875.04	2,278,937.06	1,461,752.00	1,830,185.79	2,158,152.15	2,805,021.48
31-60 Days	987,375.38	832,097.77	1,179,097.79	1,152,054.93	978,401.52	614,624.54	547,517.53	531,350.44	829,143.66	1,077,684.37
61-90 Days	472,468.65	483,130.17	487,896.95	423,988.75	401,516.90	202,912.49	170,839.78	329,512.15	312,320.62	503,334.16
91-120 Days	56,158.41	94,874.51	82,799.67	178,219.26	146,985.64	115,984.19	105,355.19	114,860.33	201,621.42	341,982.20
121-150 Days	41,486.13	4,509.57	4,817.79	50,952.77	107,613.51	92,533.36	13,681.88	46,817.42	164,193.43	159,091.97
151-180 Days	28,685.87	44,560.04	19,522.84	20,023.55	18,700.58	39,535.98	9,203.63	51,578.61	71,718.66	114,387.43
181+ Days	9,072.32	11,786.99	4,019.63	5,716.30	2,757.16	50,746.22	14,846.40	3,289.82	27,126.57	58,372.30

## Delinquency Status (% of Current Balance)

Current Portfolio Balance	22,914,123.71	21,394,313.80	21,127,839.51	22,569,282.62	24,795,164.26	25,621,131.15	28,726,820.56	31,808,805.71	36,193,730.00	41,666,240.22
	May-10	May-11	May-12	May-13	May-14	May-15	May-16	May-17	May-18	May-19
Current	85.56%	86.56%	81.23%	82.21%	82.81%	86.75%	91.91%	90.86%	89.60%	87.86%
1-30 Days	7.48%	6.57%	10.36%	9.68%	10.51%	8.89%	5.09%	5.75%	5.96%	6.73%
31-60 Days	4.31%	3.89%	5.58%	5.10%	3.95%	2.40%	1.91%	1.67%	2.29%	2.59%
61-90 Days	2.06%	2.26%	2.31%	1.88%	1.62%	0.79%	0.59%	1.04%	0.86%	1.21%
91-120 Days	0.25%	0.44%	0.39%	0.79%	0.59%	0.45%	0.37%	0.36%	0.56%	0.82%
121-150 Days	0.18%	0.02%	0.02%	0.23%	0.43%	0.36%	0.05%	0.15%	0.45%	0.38%
151-180 Days	0.13%	0.21%	0.09%	0.09%	0.08%	0.15%	0.03%	0.16%	0.20%	0.27%
181+ Days	0.04%	0.06%	0.02%	0.03%	0.01%	0.20%	0.05%	0.01%	0.07%	0.14%
Current - 90 Days	99.41%	99.27%	99.47%	98.87%	98.89%	98.83%	99.50%	99.32%	98.72%	98.38%
91-180 Days	0.55%	0.67%	0.51%	1.10%	1.10%	0.97%	0.45%	0.67%	1.21%	1.48%



## Personal Loans - La Hipotecaria Panama Migration Analysis (2002 Vintage)

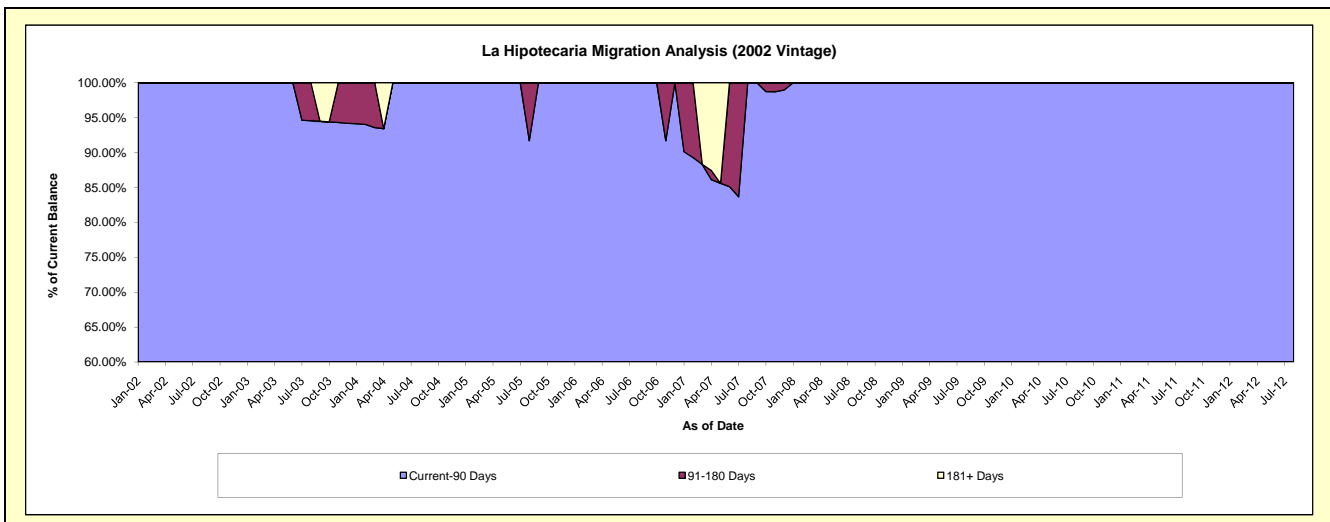
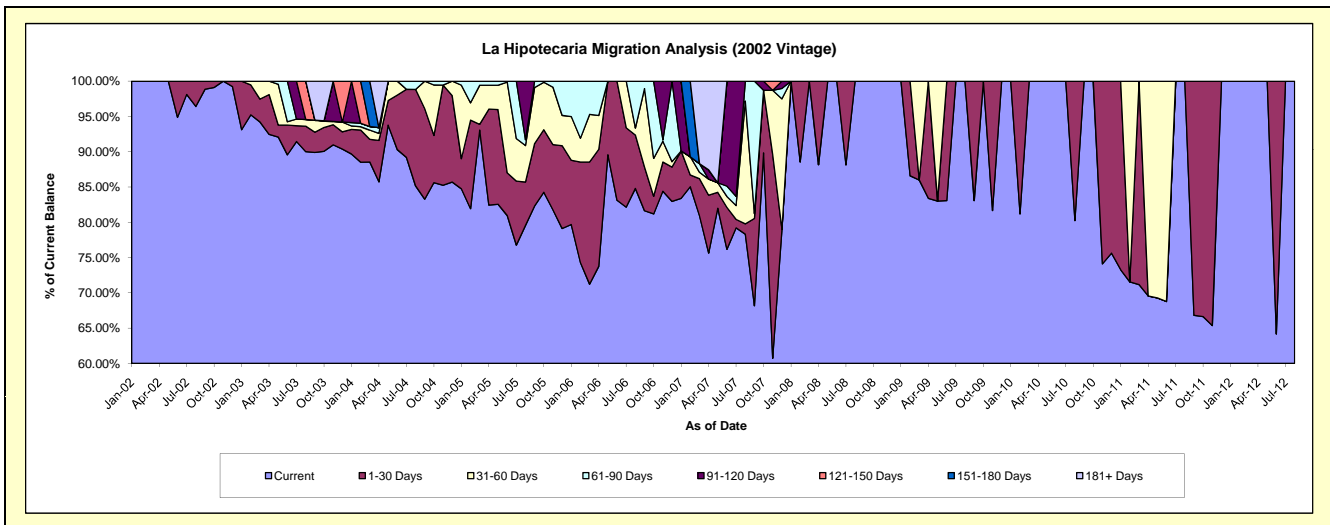
### Delinquency Status (\$ of Current Balance)

Data Cutoff: 5/31/2019

Current Portfolio Balance	1,248.72	659.53	104.27	#N/A	#N/A	#N/A	#N/A	#N/A	#N/A	#N/A
	May-10	May-11	May-12	May-13	May-14	May-15	May-16	May-17	May-18	May-19
Current	1,248.72	456.92	104.27	#N/A	#N/A	#N/A	#N/A	#N/A	#N/A	#N/A
1-30 Days	-	-	-	#N/A	#N/A	#N/A	#N/A	#N/A	#N/A	#N/A
31-60 Days	-	202.61	-	#N/A	#N/A	#N/A	#N/A	#N/A	#N/A	#N/A
61-90 Days	-	-	-	#N/A	#N/A	#N/A	#N/A	#N/A	#N/A	#N/A
91-120 Days	-	-	-	#N/A	#N/A	#N/A	#N/A	#N/A	#N/A	#N/A
121-150 Days	-	-	-	#N/A	#N/A	#N/A	#N/A	#N/A	#N/A	#N/A
151-180 Days	-	-	-	#N/A	#N/A	#N/A	#N/A	#N/A	#N/A	#N/A
181+ Days	-	-	-	#N/A	#N/A	#N/A	#N/A	#N/A	#N/A	#N/A

### Delinquency Status (% of Current Balance)

Current Portfolio Balance	1,248.72	659.53	104.27	#N/A	#N/A	#N/A	#N/A	#N/A	#N/A	#N/A
	May-10	May-11	May-12	May-13	May-14	May-15	May-16	May-17	May-18	May-19
Current	100.00%	69.28%	100.00%	#N/A	#N/A	#N/A	#N/A	#N/A	#N/A	#N/A
1-30 Days	0.00%	0.00%	0.00%	#N/A	#N/A	#N/A	#N/A	#N/A	#N/A	#N/A
31-60 Days	0.00%	30.72%	0.00%	#N/A	#N/A	#N/A	#N/A	#N/A	#N/A	#N/A
61-90 Days	0.00%	0.00%	0.00%	#N/A	#N/A	#N/A	#N/A	#N/A	#N/A	#N/A
91-120 Days	0.00%	0.00%	0.00%	#N/A	#N/A	#N/A	#N/A	#N/A	#N/A	#N/A
121-150 Days	0.00%	0.00%	0.00%	#N/A	#N/A	#N/A	#N/A	#N/A	#N/A	#N/A
151-180 Days	0.00%	0.00%	0.00%	#N/A	#N/A	#N/A	#N/A	#N/A	#N/A	#N/A
181+ Days	0.00%	0.00%	0.00%	#N/A	#N/A	#N/A	#N/A	#N/A	#N/A	#N/A
Current - 90 Days	100.00%	100.00%	100.00%	#N/A	#N/A	#N/A	#N/A	#N/A	#N/A	#N/A
91-180 Days	0.00%	0.00%	0.00%	#N/A	#N/A	#N/A	#N/A	#N/A	#N/A	#N/A



## Personal Loans - La Hipotecaria Panama Migration Analysis (2003 Vintage)

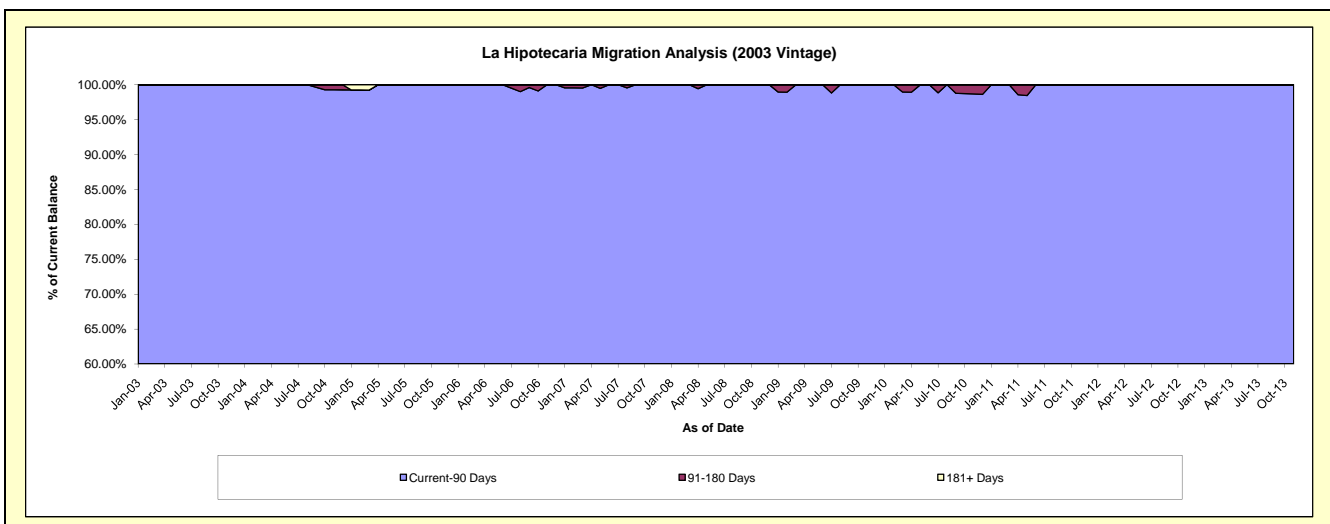
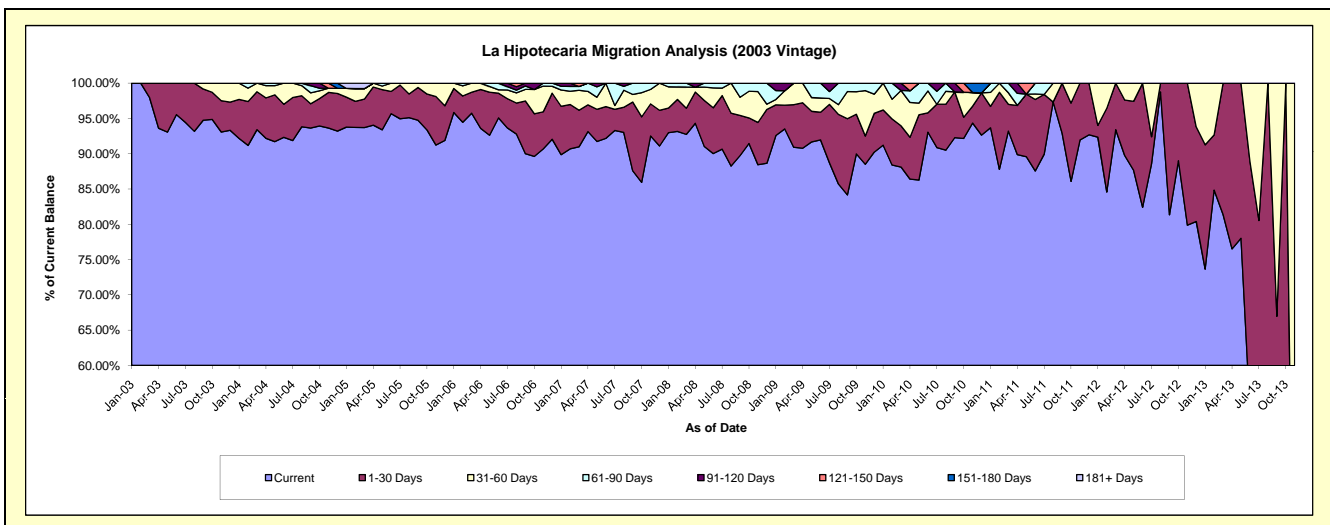
### Delinquency Status (\$ of Current Balance)

Data Cutoff: 5/31/2019

Current Portfolio Balance	21,565.00	12,108.25	4,523.22	531.37	#N/A	#N/A	#N/A	#N/A	#N/A	#N/A
	May-10	May-11	May-12	May-13	May-14	May-15	May-16	May-17	May-18	May-19
Current	18,603.01	10,845.65	3,963.52	414.54	#N/A	#N/A	#N/A	#N/A	#N/A	#N/A
1-30 Days	1,994.50	1,074.72	443.35	116.83	#N/A	#N/A	#N/A	#N/A	#N/A	#N/A
31-60 Days	358.97	-	116.35	-	#N/A	#N/A	#N/A	#N/A	#N/A	#N/A
61-90 Days	608.52	-	-	-	#N/A	#N/A	#N/A	#N/A	#N/A	#N/A
91-120 Days	-	-	-	-	#N/A	#N/A	#N/A	#N/A	#N/A	#N/A
121-150 Days	-	187.88	-	-	#N/A	#N/A	#N/A	#N/A	#N/A	#N/A
151-180 Days	-	-	-	-	#N/A	#N/A	#N/A	#N/A	#N/A	#N/A
181+ Days	-	-	-	-	#N/A	#N/A	#N/A	#N/A	#N/A	#N/A

### Delinquency Status (% of Current Balance)

Current Portfolio Balance	21,565.00	12,108.25	4,523.22	531.37	#N/A	#N/A	#N/A	#N/A	#N/A	#N/A
	May-10	May-11	May-12	May-13	May-14	May-15	May-16	May-17	May-18	May-19
Current	86.26%	89.57%	87.63%	78.01%	#N/A	#N/A	#N/A	#N/A	#N/A	#N/A
1-30 Days	9.25%	8.88%	9.80%	21.99%	#N/A	#N/A	#N/A	#N/A	#N/A	#N/A
31-60 Days	1.66%	0.00%	2.57%	0.00%	#N/A	#N/A	#N/A	#N/A	#N/A	#N/A
61-90 Days	2.82%	0.00%	0.00%	0.00%	#N/A	#N/A	#N/A	#N/A	#N/A	#N/A
91-120 Days	0.00%	0.00%	0.00%	0.00%	#N/A	#N/A	#N/A	#N/A	#N/A	#N/A
121-150 Days	0.00%	1.55%	0.00%	0.00%	#N/A	#N/A	#N/A	#N/A	#N/A	#N/A
151-180 Days	0.00%	0.00%	0.00%	0.00%	#N/A	#N/A	#N/A	#N/A	#N/A	#N/A
181+ Days	0.00%	0.00%	0.00%	0.00%	#N/A	#N/A	#N/A	#N/A	#N/A	#N/A
Current - 90 Days	100.00%	98.45%	100.00%	100.00%	#N/A	#N/A	#N/A	#N/A	#N/A	#N/A
91-180 Days	0.00%	1.55%	0.00%	0.00%	#N/A	#N/A	#N/A	#N/A	#N/A	#N/A



## Personal Loans - La Hipotecaria Panama Migration Analysis (2004 Vintage)

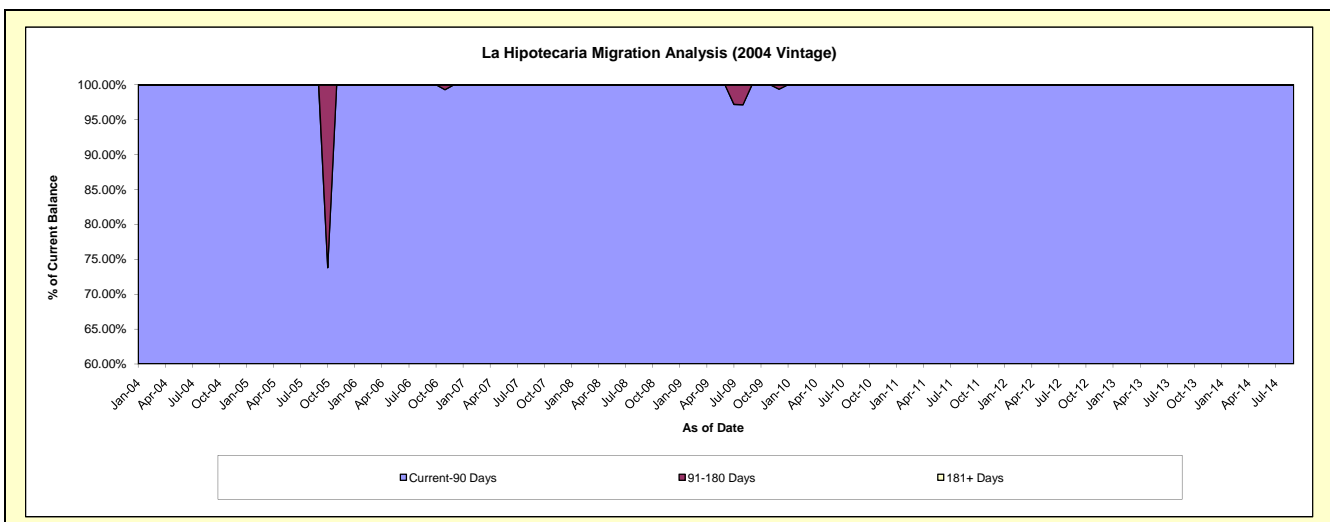
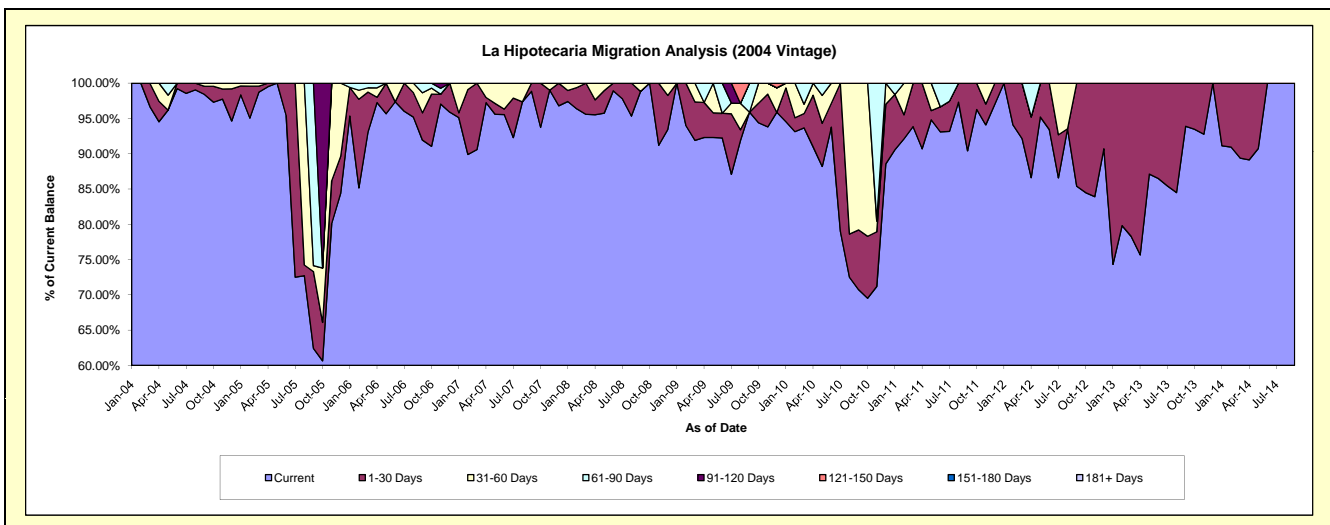
### Delinquency Status (\$ of Current Balance)

Data Cutoff: 5/31/2019

Current Portfolio Balance	17,985.43	13,331.17	5,551.10	1,539.34	82.28	#N/A	#N/A	#N/A	#N/A	#N/A
	May-10	May-11	May-12	May-13	May-14	May-15	May-16	May-17	May-18	May-19
Current	15,862.19	12,639.06	5,285.00	1,340.92	74.66	#N/A	#N/A	#N/A	#N/A	#N/A
1-30 Days	1,098.98	173.23	266.10	198.42	7.62	#N/A	#N/A	#N/A	#N/A	#N/A
31-60 Days	711.92	518.88	-	-	-	#N/A	#N/A	#N/A	#N/A	#N/A
61-90 Days	312.34	-	-	-	-	#N/A	#N/A	#N/A	#N/A	#N/A
91-120 Days	-	-	-	-	-	#N/A	#N/A	#N/A	#N/A	#N/A
121-150 Days	-	-	-	-	-	#N/A	#N/A	#N/A	#N/A	#N/A
151-180 Days	-	-	-	-	-	#N/A	#N/A	#N/A	#N/A	#N/A
181+ Days	-	-	-	-	-	#N/A	#N/A	#N/A	#N/A	#N/A

### Delinquency Status (% of Current Balance)

Current Portfolio Balance	17,985.43	13,331.17	5,551.10	1,539.34	82.28	#N/A	#N/A	#N/A	#N/A	#N/A
	May-10	May-11	May-12	May-13	May-14	May-15	May-16	May-17	May-18	May-19
Current	88.19%	94.81%	95.21%	87.11%	90.74%	#N/A	#N/A	#N/A	#N/A	#N/A
1-30 Days	6.11%	1.30%	4.79%	12.89%	9.26%	#N/A	#N/A	#N/A	#N/A	#N/A
31-60 Days	3.96%	3.89%	0.00%	0.00%	0.00%	#N/A	#N/A	#N/A	#N/A	#N/A
61-90 Days	1.74%	0.00%	0.00%	0.00%	0.00%	#N/A	#N/A	#N/A	#N/A	#N/A
91-120 Days	0.00%	0.00%	0.00%	0.00%	0.00%	#N/A	#N/A	#N/A	#N/A	#N/A
121-150 Days	0.00%	0.00%	0.00%	0.00%	0.00%	#N/A	#N/A	#N/A	#N/A	#N/A
151-180 Days	0.00%	0.00%	0.00%	0.00%	0.00%	#N/A	#N/A	#N/A	#N/A	#N/A
181+ Days	0.00%	0.00%	0.00%	0.00%	0.00%	#N/A	#N/A	#N/A	#N/A	#N/A
Current - 90 Days	100.00%	100.00%	100.00%	100.00%	100.00%	#N/A	#N/A	#N/A	#N/A	#N/A
91-180 Days	0.00%	0.00%	0.00%	0.00%	0.00%	#N/A	#N/A	#N/A	#N/A	#N/A



## Personal Loans - La Hipotecaria Panama Migration Analysis (2005 Vintage)

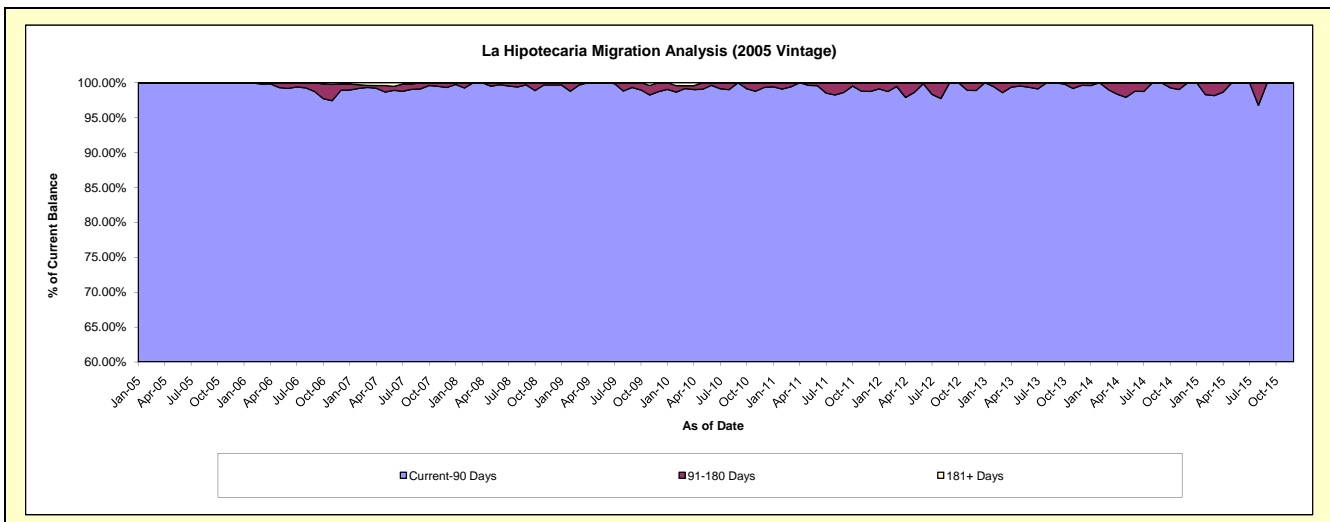
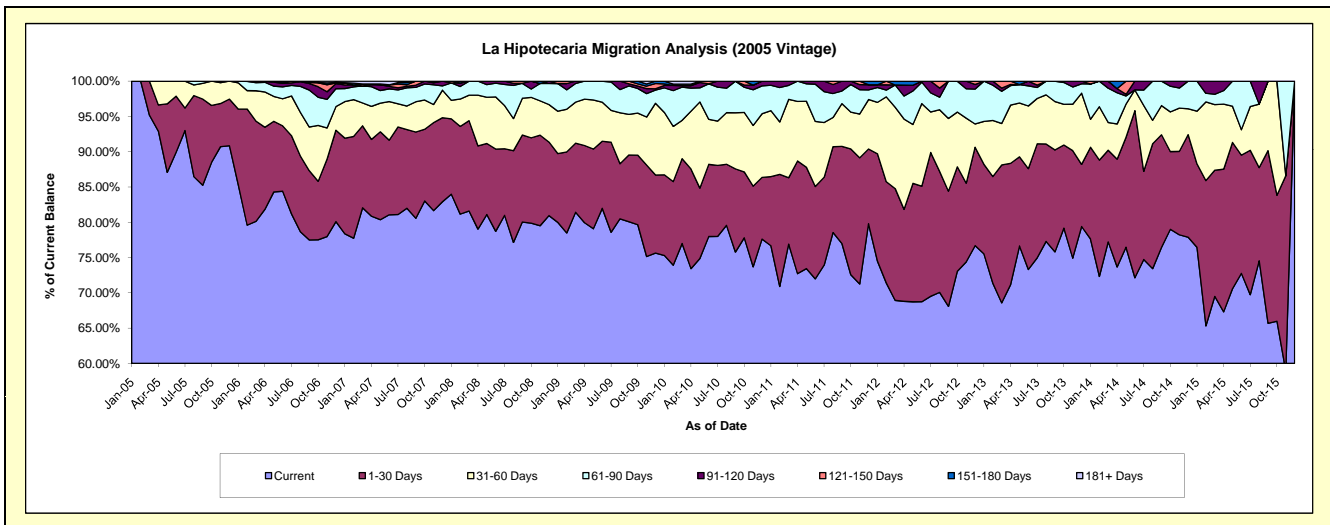
### Delinquency Status (\$ of Current Balance)

Data Cutoff: 5/31/2019

Current Portfolio Balance	1,036,557.41	797,445.02	531,759.80	331,129.04	151,589.86	37,207.52	#N/A	#N/A	#N/A	#N/A
	May-10	May-11	May-12	May-13	May-14	May-15	May-16	May-17	May-18	May-19
Current	776,043.62	585,595.21	365,471.86	253,793.73	115,924.04	26,265.96	#N/A	#N/A	#N/A	#N/A
1-30 Days	103,392.71	114,581.41	89,299.32	41,807.61	23,561.66	7,710.16	#N/A	#N/A	#N/A	#N/A
31-60 Days	126,560.36	74,554.33	44,328.37	25,289.67	7,178.66	1,909.91	#N/A	#N/A	#N/A	#N/A
61-90 Days	20,849.51	19,698.78	25,300.19	8,647.16	1,752.05	1,321.49	#N/A	#N/A	#N/A	#N/A
91-120 Days	7,674.69	3,015.29	4,318.86	-	341.00	-	#N/A	#N/A	#N/A	#N/A
121-150 Days	2,036.52	-	-	-	2,832.45	-	#N/A	#N/A	#N/A	#N/A
151-180 Days	-	-	3,041.20	1,590.87	-	-	#N/A	#N/A	#N/A	#N/A
181+ Days	-	-	-	-	-	-	#N/A	#N/A	#N/A	#N/A

### Delinquency Status (% of Current Balance)

Current Portfolio Balance	1,036,557.41	797,445.02	531,759.80	331,129.04	151,589.86	37,207.52	#N/A	#N/A	#N/A	#N/A
	May-10	May-11	May-12	May-13	May-14	May-15	May-16	May-17	May-18	May-19
Current	74.87%	73.43%	68.73%	76.64%	76.47%	70.59%	#N/A	#N/A	#N/A	#N/A
1-30 Days	9.97%	14.37%	16.79%	12.63%	15.54%	20.72%	#N/A	#N/A	#N/A	#N/A
31-60 Days	12.21%	9.35%	8.34%	7.64%	4.74%	5.13%	#N/A	#N/A	#N/A	#N/A
61-90 Days	2.01%	2.47%	4.76%	2.61%	1.16%	3.55%	#N/A	#N/A	#N/A	#N/A
91-120 Days	0.74%	0.38%	0.81%	0.00%	0.22%	0.00%	#N/A	#N/A	#N/A	#N/A
121-150 Days	0.20%	0.00%	0.00%	0.00%	1.87%	0.00%	#N/A	#N/A	#N/A	#N/A
151-180 Days	0.00%	0.00%	0.57%	0.48%	0.00%	0.00%	#N/A	#N/A	#N/A	#N/A
181+ Days	0.00%	0.00%	0.00%	0.00%	0.00%	0.00%	#N/A	#N/A	#N/A	#N/A
Current - 90 Days	99.06%	99.62%	98.62%	99.52%	97.91%	100.00%	#N/A	#N/A	#N/A	#N/A
91-180 Days	0.94%	0.38%	1.38%	0.48%	2.09%	0.00%	#N/A	#N/A	#N/A	#N/A



## Personal Loans - La Hipotecaria Panama Migration Analysis (2006 Vintage)

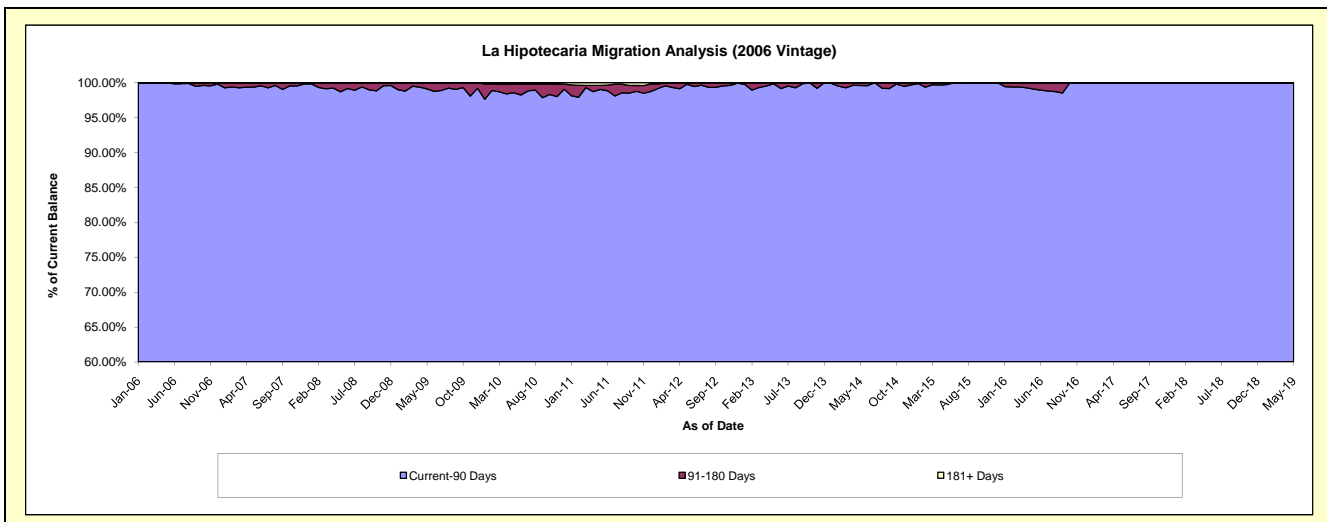
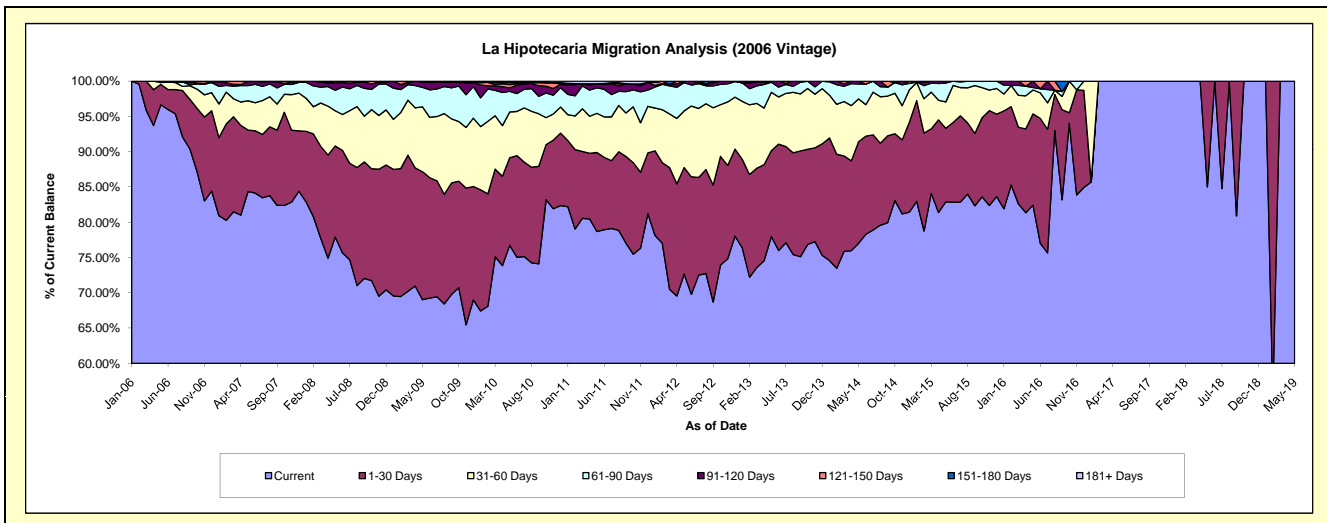
### Delinquency Status (\$ of Current Balance)

Data Cutoff: 5/31/2019

Current Portfolio Balance	3,864,724.97	3,157,604.41	2,413,020.41	1,678,782.49	965,457.67	449,701.30	89,137.64	28,971.52	22,744.92	14,402.45
	May-10	May-11	May-12	May-13	May-14	May-15	May-16	May-17	May-18	May-19
Current	2,965,183.14	2,484,645.64	1,753,759.32	1,309,432.19	743,591.19	372,739.90	73,472.13	28,971.52	19,338.21	14,402.45
1-30 Days	480,359.66	353,551.67	363,630.20	203,815.23	138,998.21	46,916.86	11,535.33	-	3,406.71	-
31-60 Days	250,264.60	175,447.79	193,928.31	139,008.78	58,688.41	16,845.49	3,014.84	-	-	-
61-90 Days	113,231.40	114,134.78	96,570.38	24,146.59	20,390.09	11,971.55	314.29	-	-	-
91-120 Days	18,882.36	18,037.54	5,132.20	2,379.70	3,789.77	1,227.50	801.05	-	-	-
121-150 Days	17,654.77	-	-	-	-	-	-	-	-	-
151-180 Days	11,929.36	-	-	-	-	-	-	-	-	-
181+ Days	7,219.68	11,786.99	-	-	-	-	-	-	-	-

### Delinquency Status (% of Current Balance)

Current Portfolio Balance	3,864,724.97	3,157,604.41	2,413,020.41	1,678,782.49	965,457.67	449,701.30	89,137.64	28,971.52	22,744.92	14,402.45
	May-10	May-11	May-12	May-13	May-14	May-15	May-16	May-17	May-18	May-19
Current	76.72%	78.69%	72.68%	78.00%	77.02%	82.89%	82.43%	100.00%	85.02%	100.00%
1-30 Days	12.43%	11.20%	15.07%	12.14%	14.40%	10.43%	12.94%	0.00%	14.98%	0.00%
31-60 Days	6.48%	5.56%	8.04%	8.28%	6.08%	3.75%	3.38%	0.00%	0.00%	0.00%
61-90 Days	2.93%	3.61%	4.00%	1.44%	2.11%	2.66%	0.35%	0.00%	0.00%	0.00%
91-120 Days	0.49%	0.57%	0.21%	0.14%	0.39%	0.27%	0.90%	0.00%	0.00%	0.00%
121-150 Days	0.46%	0.00%	0.00%	0.00%	0.00%	0.00%	0.00%	0.00%	0.00%	0.00%
151-180 Days	0.31%	0.00%	0.00%	0.00%	0.00%	0.00%	0.00%	0.00%	0.00%	0.00%
181+ Days	0.19%	0.37%	0.00%	0.00%	0.00%	0.00%	0.00%	0.00%	0.00%	0.00%
Current - 90 Days	98.56%	99.06%	99.79%	99.86%	99.61%	99.73%	99.10%	100.00%	100.00%	100.00%
91-180 Days	1.25%	0.57%	0.21%	0.14%	0.39%	0.27%	0.90%	0.00%	0.00%	0.00%



## Personal Loans - La Hipotecaria Panama Migration Analysis (2007 Vintage)

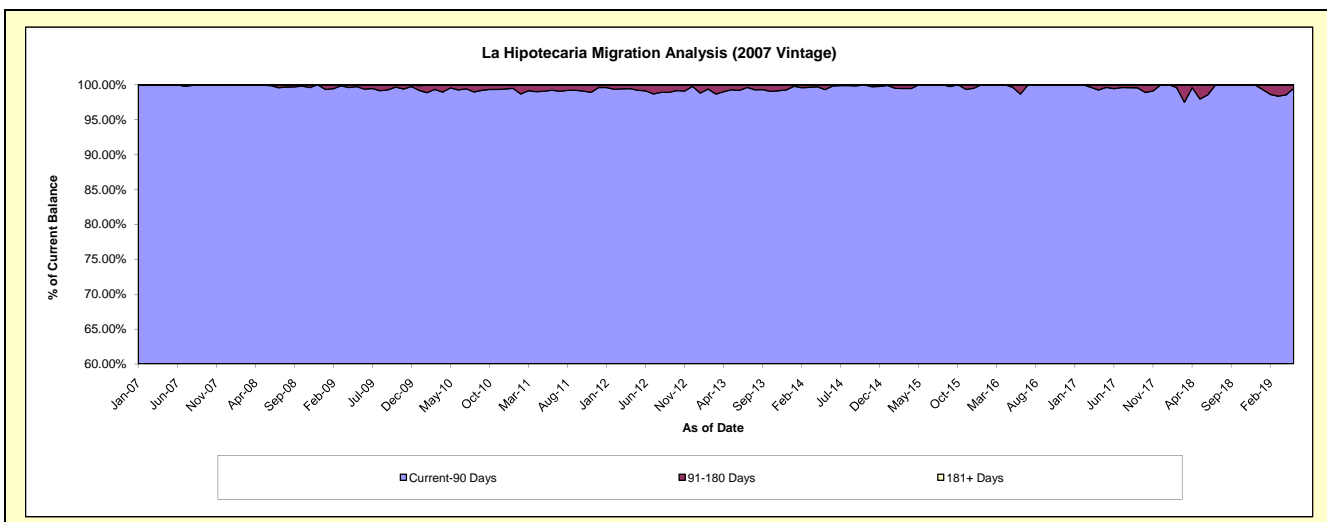
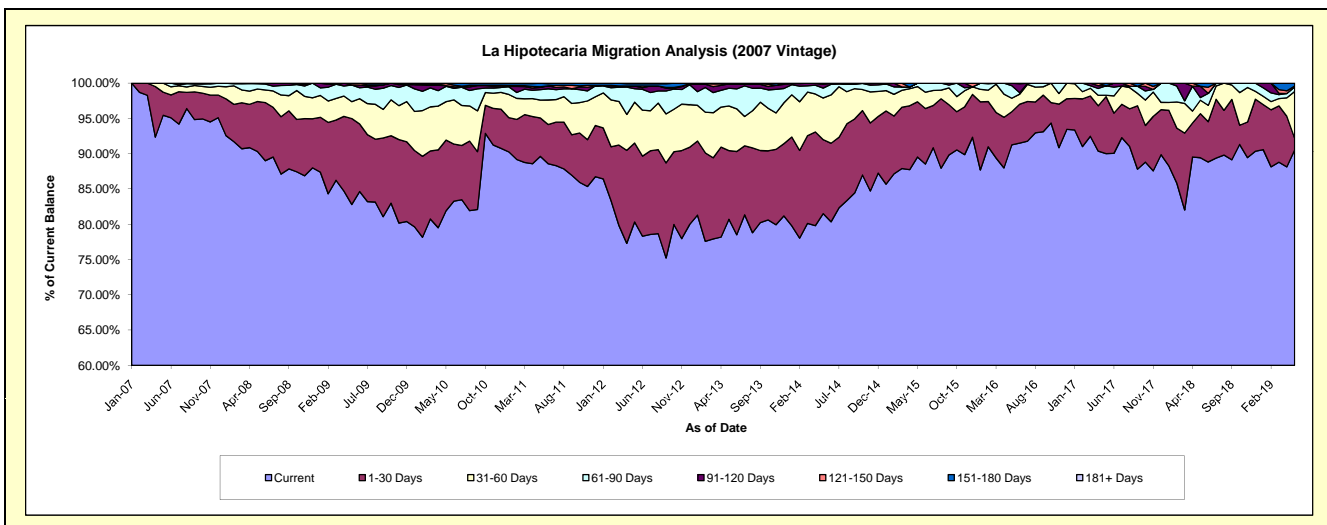
### Delinquency Status (\$ of Current Balance)

Data Cutoff: 5/31/2019

Current Portfolio Balance	6,883,924.15	5,796,322.34	4,741,220.22	3,801,461.89	2,935,468.93	2,146,286.77	1,419,430.17	880,162.49	570,069.96	326,788.60
	May-10	May-11	May-12	May-13	May-14	May-15	May-16	May-17	May-18	May-19
Current	5,638,103.38	5,195,184.01	3,808,258.31	3,068,062.60	2,392,688.68	1,921,866.01	1,295,311.76	792,175.57	509,825.67	295,842.78
1-30 Days	690,758.92	315,448.16	530,720.41	369,928.68	307,668.93	167,729.78	66,762.62	71,154.22	35,585.67	5,408.52
31-60 Days	374,665.92	147,272.48	274,971.20	240,673.48	173,329.54	46,322.32	27,077.66	11,764.23	10,893.53	21,685.17
61-90 Days	149,131.46	84,812.58	89,803.16	95,782.75	41,463.40	10,368.66	25,231.88	11,743.93	2,087.97	2,153.65
91-120 Days	7,616.99	18,949.39	18,443.05	23,515.99	15,614.88	-	5,046.25	-	9,117.50	-
121-150 Days	21,794.84	4,321.69	-	-	4,703.50	-	-	-	-	388.48
151-180 Days	-	30,334.03	15,004.46	3,498.39	-	-	-	3,324.54	2,559.62	1,310.00
181+ Days	1,852.64	-	4,019.63	-	-	-	-	-	-	-

### Delinquency Status (% of Current Balance)

Current Portfolio Balance	6,883,924.15	5,796,322.34	4,741,220.22	3,801,461.89	2,935,468.93	2,146,286.77	1,419,430.17	880,162.49	570,069.96	326,788.60
	May-10	May-11	May-12	May-13	May-14	May-15	May-16	May-17	May-18	May-19
Current	81.90%	89.63%	80.32%	80.71%	81.51%	89.54%	91.26%	90.00%	89.43%	90.53%
1-30 Days	10.03%	5.44%	11.19%	9.73%	10.48%	7.81%	4.70%	8.08%	6.24%	1.66%
31-60 Days	5.44%	2.54%	5.80%	6.33%	5.90%	2.16%	1.91%	0.20%	1.91%	6.64%
61-90 Days	2.17%	1.46%	1.89%	2.52%	1.41%	0.48%	1.78%	1.33%	0.37%	0.66%
91-120 Days	0.11%	0.33%	0.39%	0.62%	0.53%	0.00%	0.36%	0.00%	1.60%	0.00%
121-150 Days	0.32%	0.07%	0.00%	0.00%	0.16%	0.00%	0.00%	0.00%	0.00%	0.12%
151-180 Days	0.00%	0.52%	0.32%	0.09%	0.00%	0.00%	0.00%	0.38%	0.45%	0.40%
181+ Days	0.03%	0.00%	0.08%	0.00%	0.00%	0.00%	0.00%	0.00%	0.00%	0.00%
Current - 90 Days	99.55%	99.08%	99.21%	99.29%	99.31%	100.00%	99.64%	99.62%	97.95%	99.48%
91-180 Days	0.43%	0.92%	0.71%	0.71%	0.69%	0.00%	0.36%	0.38%	2.05%	0.52%





# Personal Loans - La Hipotecaria Panama Migration Analysis (2008 Vintage)

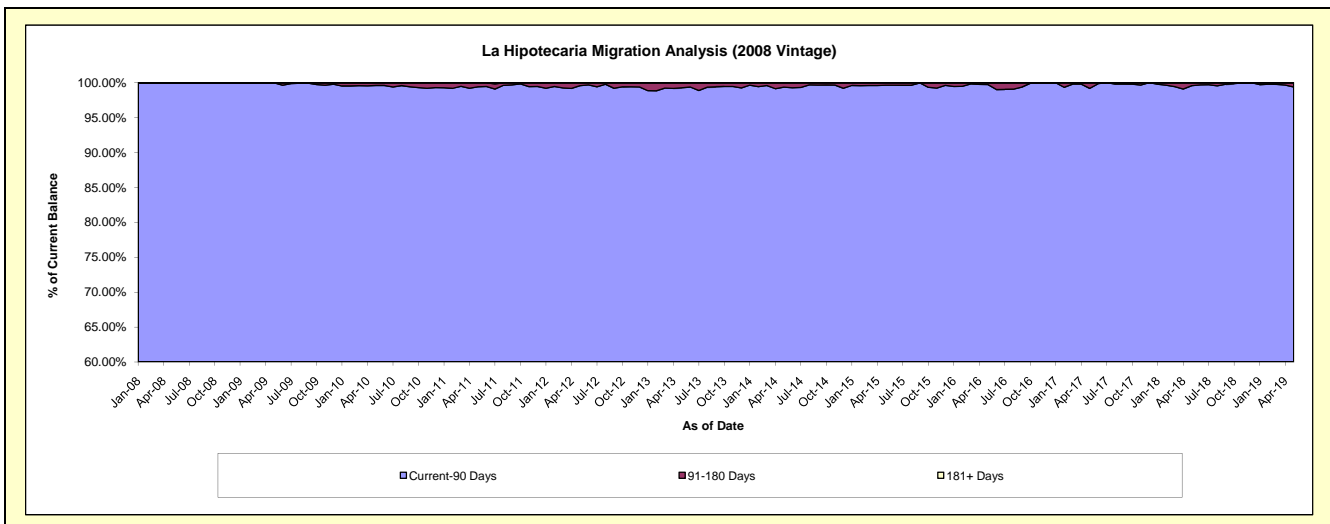
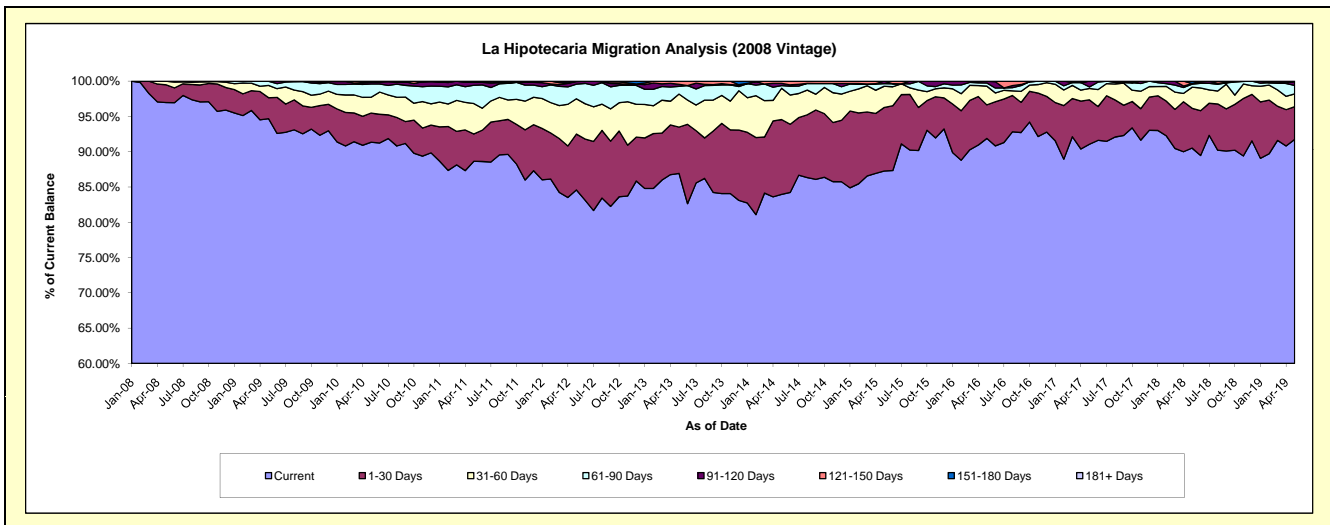
## Delinquency Status (\$ of Current Balance)

Data Cutoff: 5/31/2019

Current Portfolio Balance	9,965,981.46	8,831,078.14	7,581,127.38	6,262,251.10	5,025,448.83	3,921,872.25	2,905,240.32	2,188,104.14	1,526,509.75	992,399.92
	May-10	May-11	May-12	May-13	May-14	May-15	May-16	May-17	May-18	May-19
Current	9,103,097.38	7,828,120.65	6,412,968.55	5,443,834.48	4,219,147.94	3,422,469.63	2,669,485.40	1,992,548.94	1,381,806.59	910,527.73
1-30 Days	412,975.69	342,308.16	599,912.13	410,794.09	532,741.21	353,397.64	138,218.87	137,578.53	86,145.40	46,011.96
31-60 Days	222,832.09	380,900.17	379,761.63	293,391.37	223,266.74	117,956.58	77,115.80	35,593.68	45,457.94	17,988.21
61-90 Days	188,335.42	228,226.70	156,862.39	68,716.29	18,603.03	14,214.24	12,895.76	4,630.39	6,553.70	11,863.38
91-120 Days	21,984.37	37,296.45	26,804.89	17,211.25	16,113.90	13,834.16	7,524.49	17,752.60	1,416.47	5,134.73
121-150 Days	-	-	4,817.79	28,303.62	15,576.01	-	-	-	-	873.91
151-180 Days	16,756.51	14,226.01	-	-	-	-	-	-	5,129.65	-
181+ Days	-	-	-	-	-	-	-	-	-	-

## Delinquency Status (% of Current Balance)

Current Portfolio Balance	9,965,981.46	8,831,078.14	7,581,127.38	6,262,251.10	5,025,448.83	3,921,872.25	2,905,240.32	2,188,104.14	1,526,509.75	992,399.92
	May-10	May-11	May-12	May-13	May-14	May-15	May-16	May-17	May-18	May-19
Current	91.34%	88.64%	84.59%	86.93%	83.96%	87.27%	91.89%	91.06%	90.52%	91.75%
1-30 Days	4.14%	3.88%	7.91%	6.56%	10.60%	9.01%	4.76%	6.29%	5.64%	4.64%
31-60 Days	2.24%	4.31%	5.01%	4.69%	4.44%	3.01%	2.65%	1.63%	2.98%	1.81%
61-90 Days	1.89%	2.58%	2.07%	1.10%	0.37%	0.36%	0.44%	0.21%	0.43%	1.20%
91-120 Days	0.22%	0.42%	0.35%	0.27%	0.32%	0.35%	0.26%	0.81%	0.09%	0.52%
121-150 Days	0.00%	0.00%	0.06%	0.45%	0.31%	0.00%	0.00%	0.00%	0.00%	0.09%
151-180 Days	0.17%	0.16%	0.00%	0.00%	0.00%	0.00%	0.00%	0.00%	0.34%	0.00%
181+ Days	0.00%	0.00%	0.00%	0.00%	0.00%	0.00%	0.00%	0.00%	0.00%	0.00%
Current - 90 Days	99.61%	99.42%	99.58%	99.27%	99.37%	99.65%	99.74%	99.19%	99.57%	99.39%
91-180 Days	0.39%	0.58%	0.42%	0.73%	0.63%	0.35%	0.26%	0.81%	0.43%	0.61%



## Personal Loans - La Hipotecaria Panama Migration Analysis (2009 Vintage)

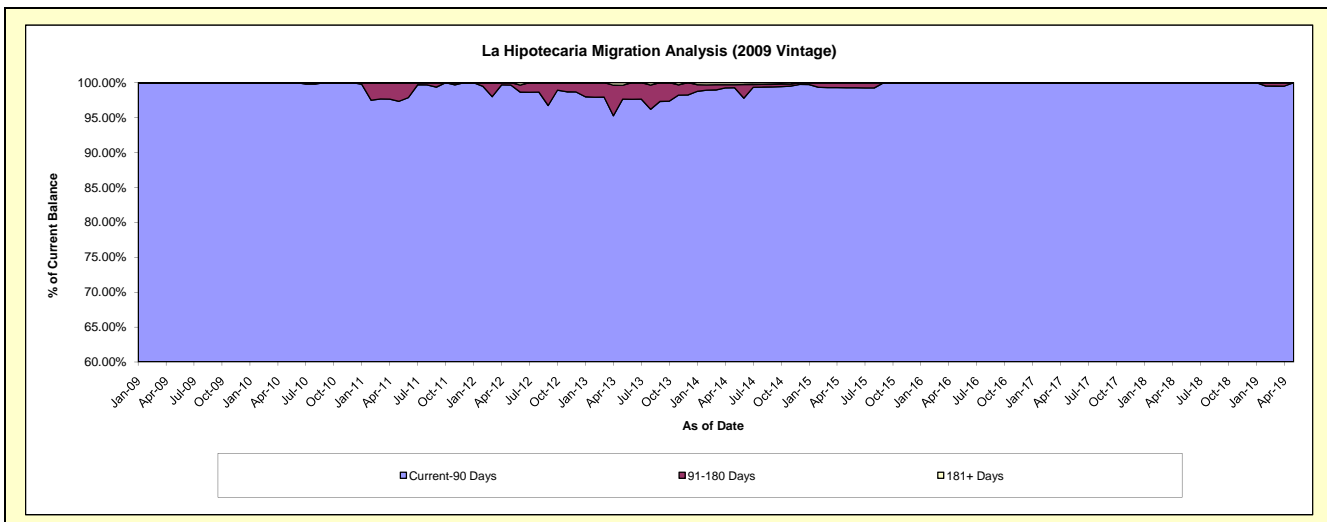
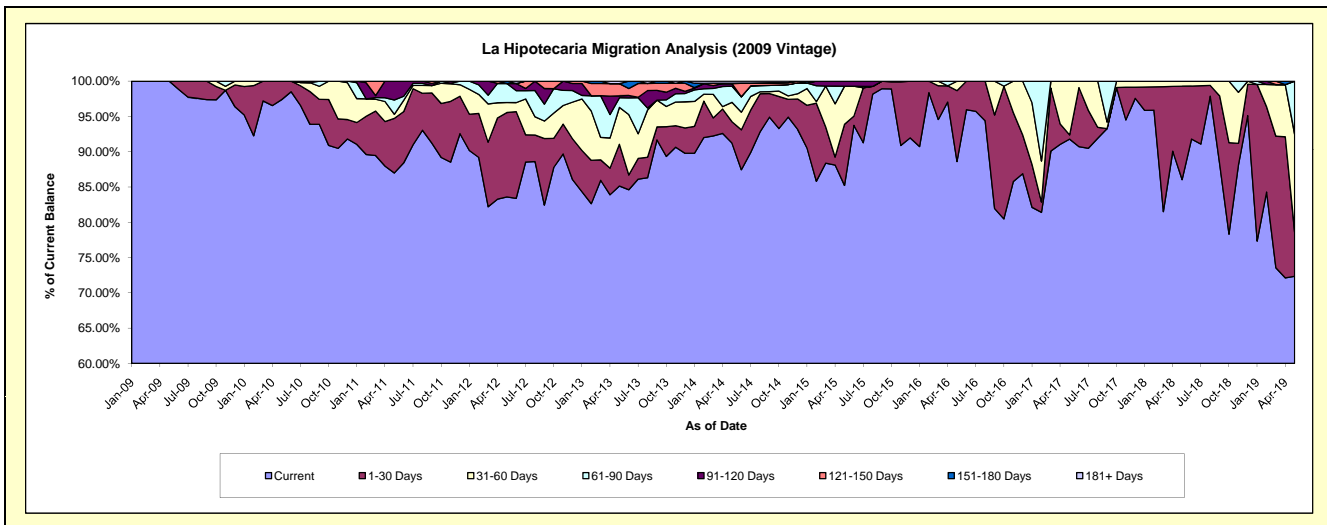
### Delinquency Status (\$ of Current Balance)

Data Cutoff: 5/31/2019

Current Portfolio Balance	764,459.58	633,806.27	448,778.34	345,892.64	264,182.74	178,059.87	139,443.10	104,481.82	80,273.28	65,049.68
	May-10	May-11	May-12	May-13	May-14	May-15	May-16	May-17	May-18	May-19
Current	744,501.16	551,303.29	375,170.78	294,464.81	240,996.07	151,755.79	123,568.21	95,904.56	69,074.62	47,067.65
1-30 Days	19,958.42	49,095.76	53,663.34	20,482.97	8,011.76	15,424.44	14,000.13	610.07	10,624.49	4,052.21
31-60 Days	-	3,680.78	6,334.56	18,081.61	7,239.50	9,606.81	1,874.76	7,967.19	574.17	9,037.10
61-90 Days	-	12,850.60	12,132.48	4,736.17	6,028.28	-	-	-	-	4,892.72
91-120 Days	-	16,875.84	-	904.01	994.33	1,272.83	-	-	-	-
121-150 Days	-	-	-	6,007.74	-	-	-	-	-	-
151-180 Days	-	-	1,477.18	-	151.51	-	-	-	-	-
181+ Days	-	-	-	1,215.33	761.29	-	-	-	-	-

### Delinquency Status (% of Current Balance)

Current Portfolio Balance	764,459.58	633,806.27	448,778.34	345,892.64	264,182.74	178,059.87	139,443.10	104,481.82	80,273.28	65,049.68
	May-10	May-11	May-12	May-13	May-14	May-15	May-16	May-17	May-18	May-19
Current	97.39%	86.98%	83.60%	85.13%	91.22%	85.23%	88.62%	91.79%	86.05%	72.36%
1-30 Days	2.61%	7.75%	11.96%	5.92%	3.03%	8.66%	10.04%	0.58%	13.24%	6.23%
31-60 Days	0.00%	0.58%	1.41%	5.23%	2.74%	5.40%	1.34%	7.63%	0.72%	13.89%
61-90 Days	0.00%	2.03%	2.70%	1.37%	2.28%	0.00%	0.00%	0.00%	0.00%	7.52%
91-120 Days	0.00%	2.66%	0.00%	0.26%	0.38%	0.71%	0.00%	0.00%	0.00%	0.00%
121-150 Days	0.00%	0.00%	0.00%	1.74%	0.00%	0.00%	0.00%	0.00%	0.00%	0.00%
151-180 Days	0.00%	0.00%	0.33%	0.00%	0.06%	0.00%	0.00%	0.00%	0.00%	0.00%
181+ Days	0.00%	0.00%	0.00%	0.35%	0.29%	0.00%	0.00%	0.00%	0.00%	0.00%
Current - 90 Days	100.00%	97.34%	99.67%	97.65%	99.28%	99.29%	100.00%	100.00%	100.00%	100.00%
91-180 Days	0.00%	2.66%	0.33%	2.00%	0.43%	0.71%	0.00%	0.00%	0.00%	0.00%



## Personal Loans - La Hipotecaria Panama Migration Analysis (2010 Vintage)

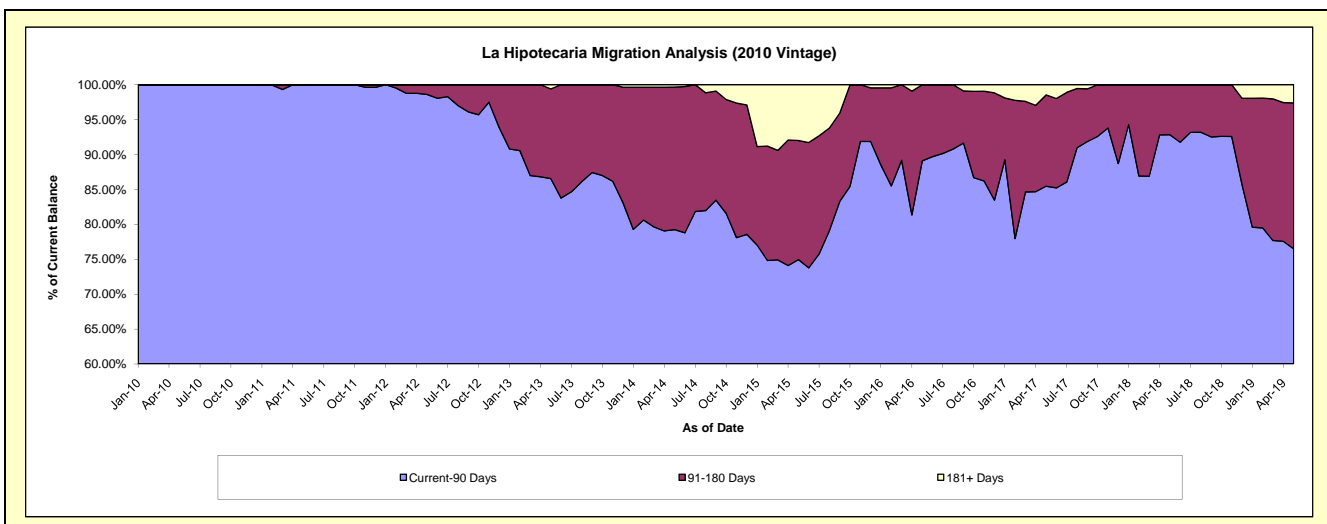
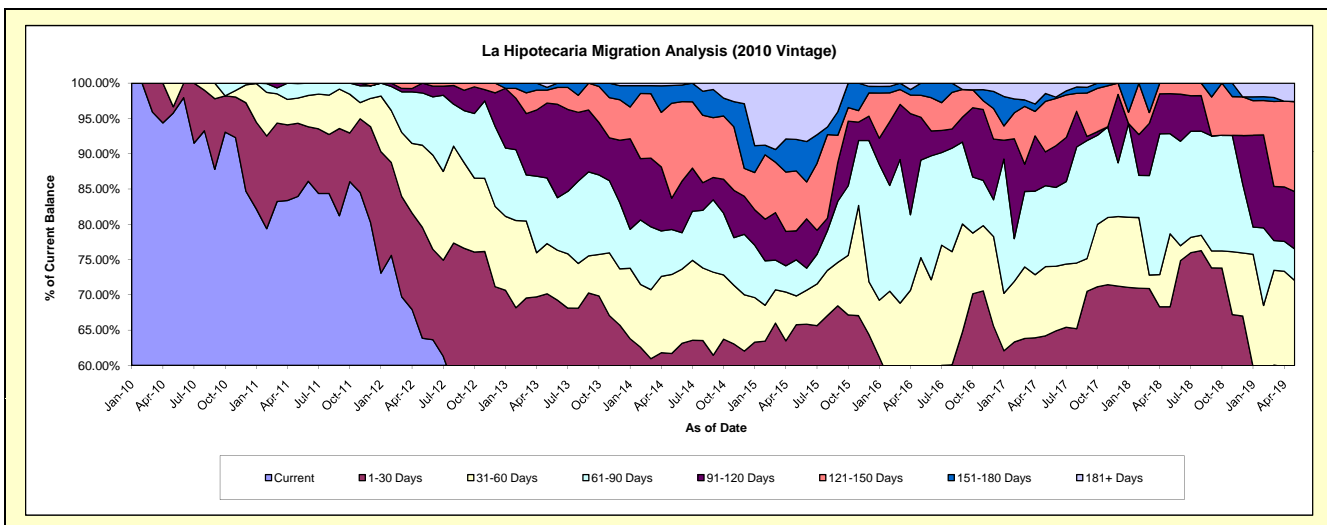
### Delinquency Status (\$ of Current Balance)

Data Cutoff: 5/31/2019

Current Portfolio Balance	357,676.99	1,143,063.59	962,115.87	756,680.51	592,522.26	437,410.33	265,770.47	167,772.01	109,755.40	63,480.97
	May-10	May-11	May-12	May-13	May-14	May-15	May-16	May-17	May-18	May-19
Current	342,577.47	959,507.73	614,178.66	415,968.92	304,622.49	221,426.79	103,737.21	84,012.49	59,369.97	29,959.35
1-30 Days	3,118.00	118,528.40	151,120.30	114,830.63	60,945.71	66,269.04	49,821.91	23,677.56	15,604.42	6,684.42
31-60 Days	11,981.52	40,920.73	112,160.00	53,807.15	66,272.74	17,825.46	46,498.12	16,453.50	11,346.27	9,087.36
61-90 Days	-	23,406.73	71,322.51	70,457.52	37,762.23	22,396.84	36,765.40	19,253.77	15,575.71	2,835.32
91-120 Days	-	700.00	13,334.40	80,298.12	26,248.27	17,945.54	16,110.07	8,037.69	6,235.89	5,164.23
121-150 Days	-	-	-	13,804.40	79,833.38	37,161.40	8,268.12	12,007.90	1,623.14	8,095.37
151-180 Days	-	-	-	3,012.80	14,841.57	19,476.79	4,569.64	1,880.93	-	-
181+ Days	-	-	-	4,500.97	1,995.87	34,908.47	-	2,448.17	-	1,654.92

### Delinquency Status (% of Current Balance)

Current Portfolio Balance	357,676.99	1,143,063.59	962,115.87	756,680.51	592,522.26	437,410.33	265,770.47	167,772.01	109,755.40	63,480.97
	May-10	May-11	May-12	May-13	May-14	May-15	May-16	May-17	May-18	May-19
Current	95.78%	83.94%	63.84%	54.97%	51.41%	50.62%	39.03%	50.08%	54.09%	47.19%
1-30 Days	0.87%	10.37%	15.71%	15.18%	10.29%	15.15%	18.75%	14.11%	14.22%	10.53%
31-60 Days	3.35%	3.58%	11.66%	7.11%	11.18%	4.08%	17.50%	9.81%	10.34%	14.32%
61-90 Days	0.00%	2.05%	7.41%	9.31%	6.37%	5.12%	13.83%	11.48%	14.19%	4.47%
91-120 Days	0.00%	0.06%	1.39%	10.61%	4.43%	4.10%	6.06%	4.79%	5.68%	8.14%
121-150 Days	0.00%	0.00%	0.00%	1.82%	13.47%	8.50%	3.11%	7.16%	1.48%	12.75%
151-180 Days	0.00%	0.00%	0.00%	0.40%	2.50%	4.45%	1.72%	1.12%	0.00%	0.00%
181+ Days	0.00%	0.00%	0.00%	0.59%	0.34%	7.98%	0.00%	1.46%	0.00%	2.61%
Current - 90 Days	100.00%	99.94%	98.61%	86.57%	79.25%	74.97%	89.11%	85.47%	92.84%	76.51%
91-180 Days	0.00%	0.06%	1.39%	12.83%	20.41%	17.05%	10.89%	13.07%	7.16%	20.89%



## Personal Loans - La Hipotecaria Panama Migration Analysis (2011 Vintage)

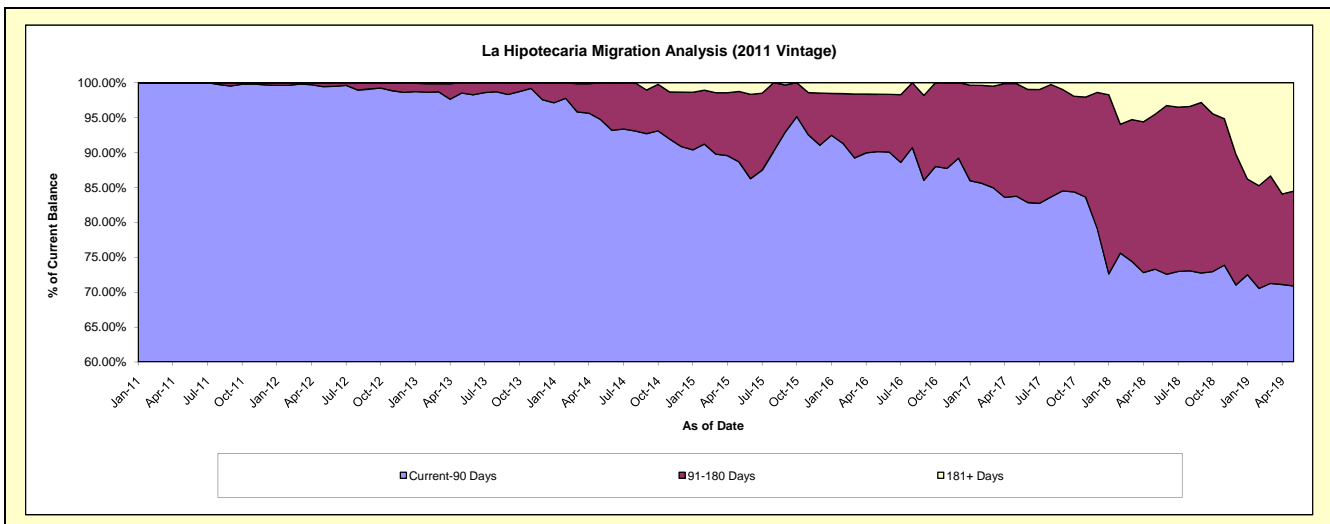
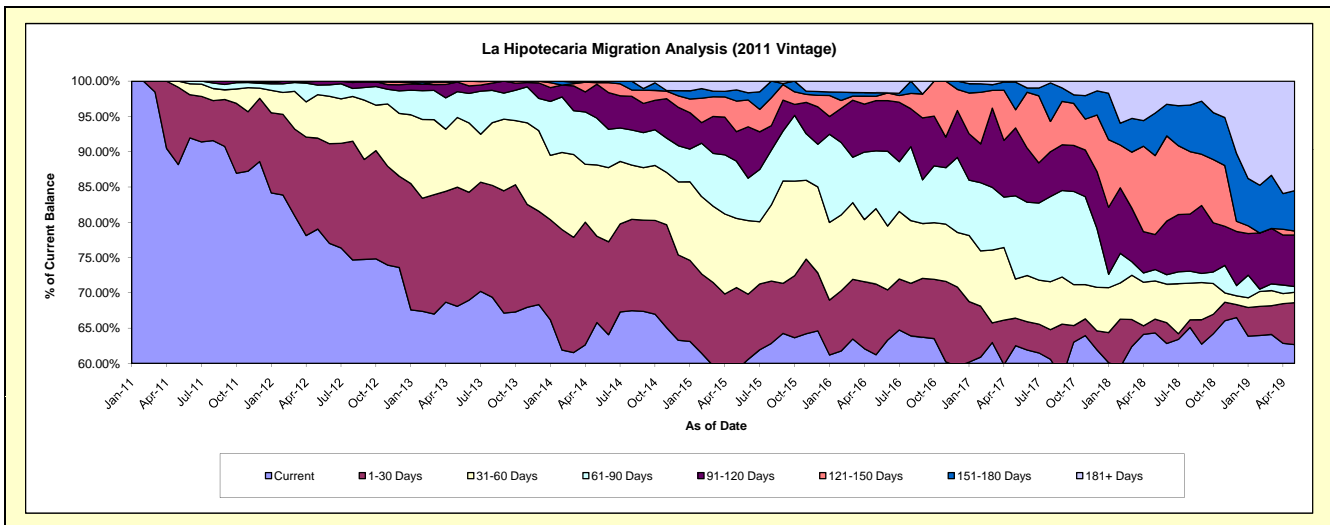
### Delinquency Status (\$ of Current Balance)

Data Cutoff: 5/31/2019

Current Portfolio Balance	-	1,008,895.08	2,648,510.02	2,201,647.94	1,742,635.02	1,274,991.17	906,158.99	647,610.06	447,473.70	302,011.11
	May-11	May-12	May-13	May-14	May-15	May-16	May-17	May-18	May-19	
Current	889,674.75	2,093,276.05	1,499,112.30	1,146,412.20	753,057.24	554,744.71	404,814.62	287,766.08	189,272.77	
1-30 Days	110,620.33	341,437.46	371,668.17	213,210.28	149,001.23	90,793.67	25,307.39	8,808.68	17,943.16	
31-60 Days	8,600.00	163,124.40	217,557.03	176,296.35	125,025.32	96,879.15	35,877.80	24,216.50	4,402.01	
61-90 Days	-	35,905.84	80,623.30	115,276.46	103,346.76	74,326.44	76,371.77	7,227.17	2,492.58	
91-120 Days	-	14,766.27	29,850.13	83,883.49	53,291.72	64,520.87	62,246.31	22,158.37	22,079.70	
121-150 Days	-	-	2,837.01	3,848.74	55,371.96	5,413.76	16,754.34	50,095.79	1,688.93	
151-180 Days	-	-	-	3,707.50	20,059.19	4,633.99	25,396.18	26,969.20	17,260.14	
181+ Days	-	-	-	-	15,837.75	14,846.40	841.65	20,231.91	46,871.82	

### Delinquency Status (% of Current Balance)

Current Portfolio Balance	-	1,008,895.08	2,648,510.02	2,201,647.94	1,742,635.02	1,274,991.17	906,158.99	647,610.06	447,473.70	302,011.11
	May-11	May-12	May-13	May-14	May-15	May-16	May-17	May-18	May-19	
Current	88.18%	79.04%	68.09%	65.79%	59.06%	61.22%	62.51%	64.31%	62.67%	
1-30 Days	10.96%	12.89%	16.88%	12.23%	11.69%	10.02%	3.91%	1.97%	5.94%	
31-60 Days	0.85%	6.16%	9.88%	10.12%	9.81%	10.69%	5.54%	5.41%	1.46%	
61-90 Days	0.00%	1.36%	3.66%	6.62%	8.11%	8.20%	11.79%	1.62%	0.83%	
91-120 Days	0.00%	0.56%	1.36%	4.81%	4.18%	7.12%	9.61%	4.95%	7.31%	
121-150 Days	0.00%	0.00%	0.13%	0.22%	4.34%	0.60%	2.59%	11.20%	0.56%	
151-180 Days	0.00%	0.00%	0.00%	0.21%	1.57%	0.51%	3.92%	6.03%	5.72%	
181+ Days	0.00%	0.00%	0.00%	0.00%	1.24%	1.64%	0.13%	4.52%	15.52%	
Current - 90 Days	100.00%	99.44%	98.52%	94.75%	88.66%	90.13%	83.75%	73.30%	70.89%	
91-180 Days	0.00%	0.56%	1.48%	5.25%	10.10%	8.23%	16.12%	22.17%	13.59%	



## Personal Loans - La Hipotecaria Panama Migration Analysis (2012 Vintage)

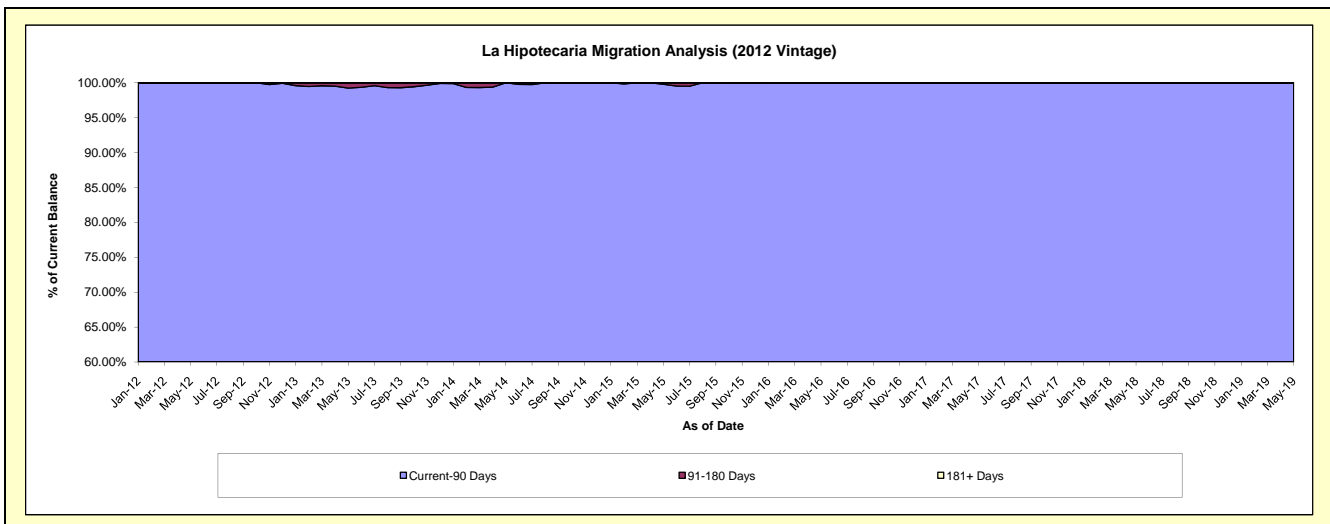
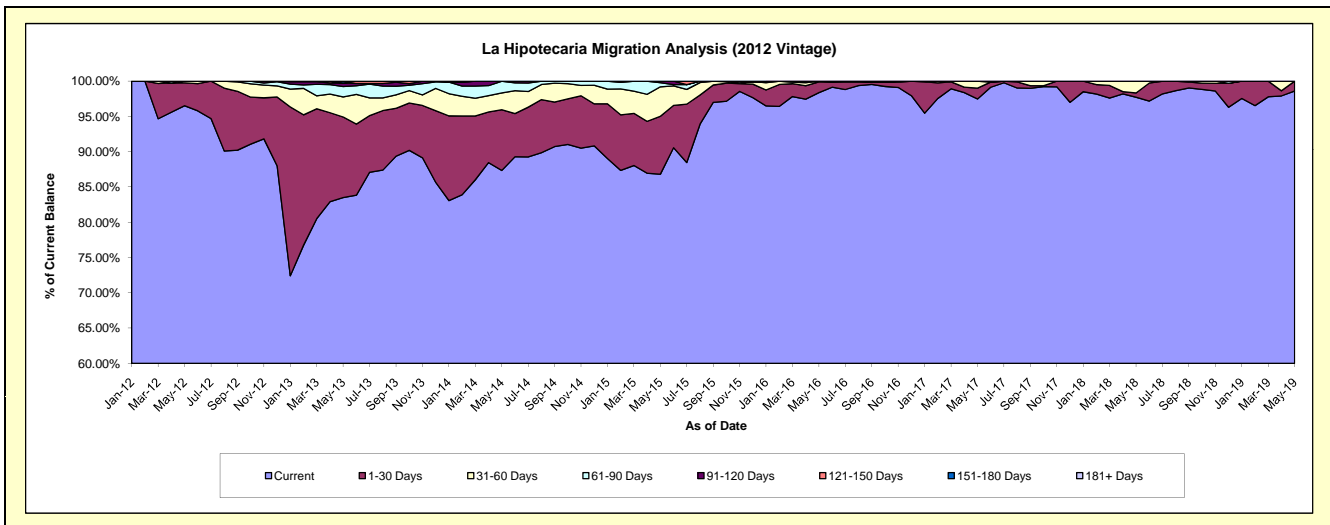
### Delinquency Status (\$ of Current Balance)

Data Cutoff: 5/31/2019

Current Portfolio Balance	-	-	1,791,128.88	4,708,331.97	3,970,874.91	3,000,650.50	2,209,990.31	1,683,439.41	1,317,990.13	929,087.96
			May-12	May-13	May-14	May-15	May-16	May-17	May-18	May-19
Current			1,728,731.20	3,931,262.57	3,468,331.30	2,605,037.79	2,174,079.46	1,641,027.72	1,287,961.07	916,054.13
1-30 Days			58,024.71	537,861.04	341,723.47	246,271.75	33,588.20	25,785.63	8,036.87	13,033.83
31-60 Days			4,372.97	133,945.84	94,194.29	125,281.53	2,322.65	16,626.06	21,992.19	-
61-90 Days			-	69,280.97	65,806.42	17,466.75	-	-	-	-
91-120 Days			-	24,060.06	-	6,592.68	-	-	-	-
121-150 Days			-	-	819.43	-	-	-	-	-
151-180 Days			-	11,921.49	-	-	-	-	-	-
181+ Days			-	-	-	-	-	-	-	-

### Delinquency Status (% of Current Balance)

Current Portfolio Balance	-	-	1,791,128.88	4,708,331.97	3,970,874.91	3,000,650.50	2,209,990.31	1,683,439.41	1,317,990.13	929,087.96
			May-12	May-13	May-14	May-15	May-16	May-17	May-18	May-19
Current			96.52%	83.50%	87.34%	86.82%	98.38%	97.48%	97.72%	98.60%
1-30 Days			3.24%	11.42%	8.61%	8.21%	1.52%	1.53%	0.61%	1.40%
31-60 Days			0.24%	2.84%	2.37%	4.18%	0.11%	0.99%	1.67%	0.00%
61-90 Days			0.00%	1.47%	1.66%	0.58%	0.00%	0.00%	0.00%	0.00%
91-120 Days			0.00%	0.51%	0.00%	0.22%	0.00%	0.00%	0.00%	0.00%
121-150 Days			0.00%	0.00%	0.02%	0.00%	0.00%	0.00%	0.00%	0.00%
151-180 Days			0.00%	0.25%	0.00%	0.00%	0.00%	0.00%	0.00%	0.00%
181+ Days			0.00%	0.00%	0.00%	0.00%	0.00%	0.00%	0.00%	0.00%
Current - 90 Days			100.00%	99.24%	99.98%	99.78%	100.00%	100.00%	100.00%	100.00%
91-180 Days			0.00%	0.76%	0.02%	0.22%	0.00%	0.00%	0.00%	0.00%



# Personal Loans - La Hipotecaria Panama Migration Analysis (2013 Vintage)

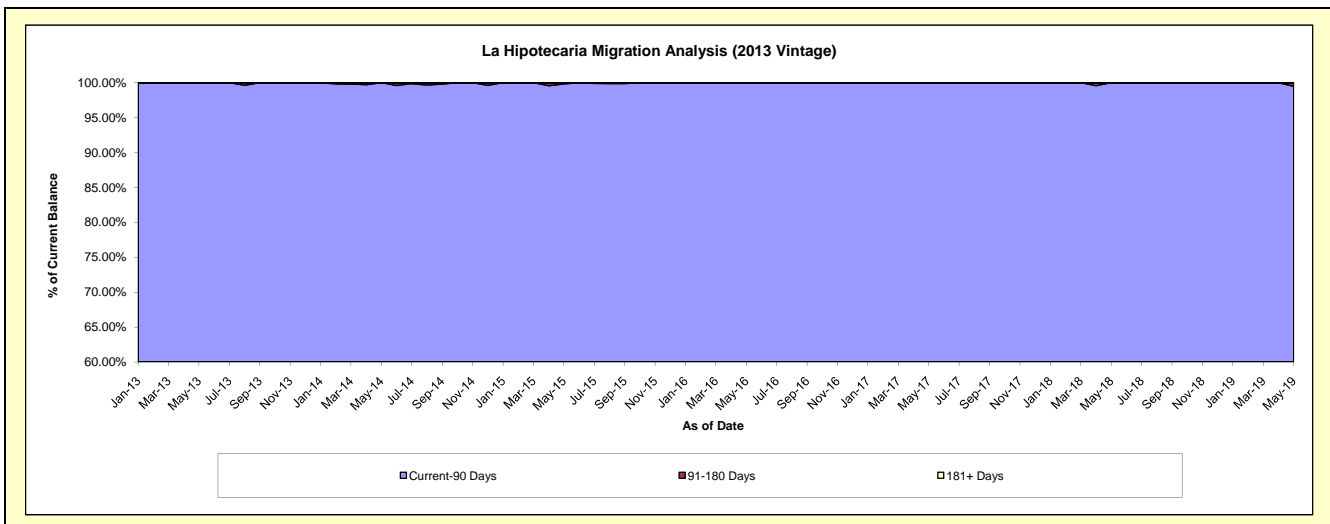
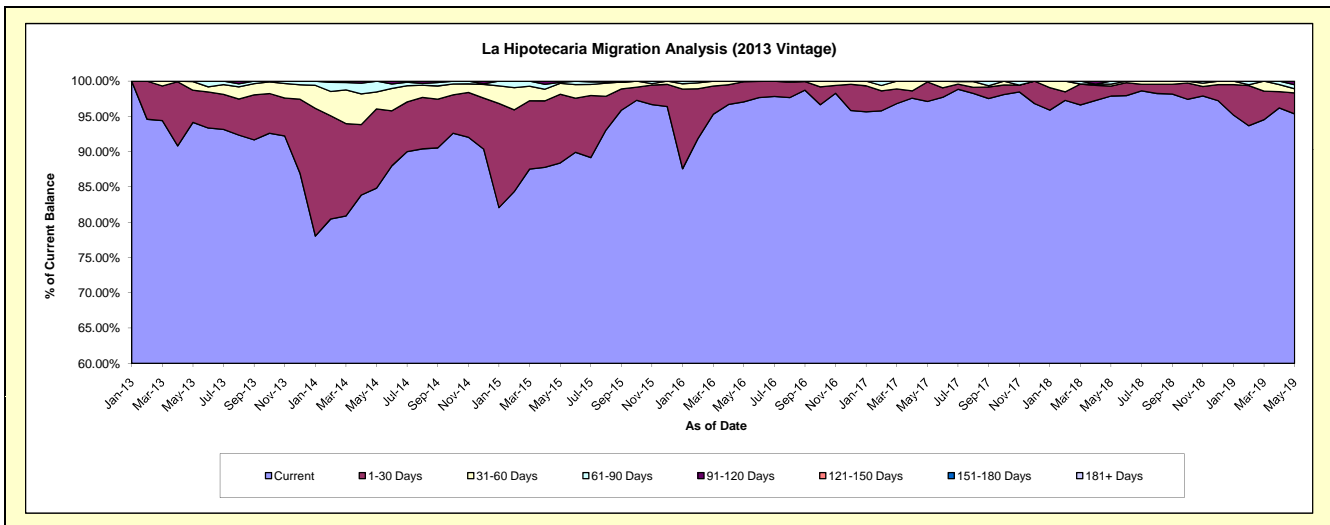
## Delinquency Status (\$ of Current Balance)

Data Cutoff: 5/31/2019

Current Portfolio Balance	-	-	-	2,481,034.33	5,788,260.99	4,258,793.94	3,128,780.89	2,320,744.40	1,830,127.05	1,443,244.79
	May-13	May-14	May-15	May-16	May-17	May-18	May-19			
Current	2,335,960.57	4,910,705.75	3,765,179.23	3,036,790.19	2,253,924.91	1,791,495.74	1,376,236.07			
1-30 Days	113,175.76	649,446.37	414,607.53	89,467.94	64,137.95	26,078.39	43,059.72			
31-60 Days	30,300.00	139,402.71	65,857.59	2,522.76	2,681.54	4,775.95	8,285.90			
61-90 Days	1,598.00	88,706.16	5,832.28	-	-	7,776.97	8,326.79			
91-120 Days	-	-	7,317.31	-	-	-	7,336.31			
121-150 Days	-	-	-	-	-	-	-			
151-180 Days	-	-	-	-	-	-	-			
181+ Days	-	-	-	-	-	-	-			

## Delinquency Status (% of Current Balance)

Current Portfolio Balance	-	-	-	2,481,034.33	5,788,260.99	4,258,793.94	3,128,780.89	2,320,744.40	1,830,127.05	1,443,244.79
	May-13	May-14	May-15	May-16	May-17	May-18	May-19			
Current	94.15%	84.84%	88.41%	97.06%	97.12%	97.89%	95.36%			
1-30 Days	4.56%	11.22%	9.74%	2.86%	2.76%	1.42%	2.98%			
31-60 Days	1.22%	2.41%	1.55%	0.08%	0.12%	0.26%	0.57%			
61-90 Days	0.06%	1.53%	0.14%	0.00%	0.00%	0.42%	0.58%			
91-120 Days	0.00%	0.00%	0.17%	0.00%	0.00%	0.00%	0.51%			
121-150 Days	0.00%	0.00%	0.00%	0.00%	0.00%	0.00%	0.00%			
151-180 Days	0.00%	0.00%	0.00%	0.00%	0.00%	0.00%	0.00%			
181+ Days	0.00%	0.00%	0.00%	0.00%	0.00%	0.00%	0.00%			
Current - 90 Days	100.00%	100.00%	99.83%	100.00%	100.00%	100.00%	99.49%			
91-180 Days	0.00%	0.00%	0.17%	0.00%	0.00%	0.00%	0.51%			



## Personal Loans - La Hipotecaria Panama Migration Analysis (2014 Vintage)

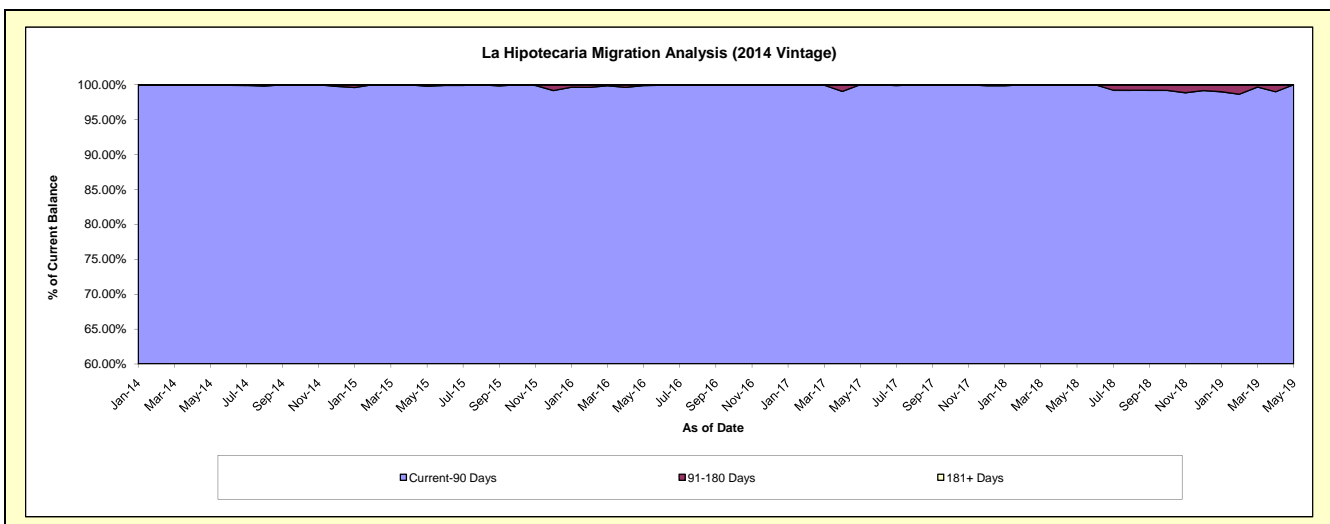
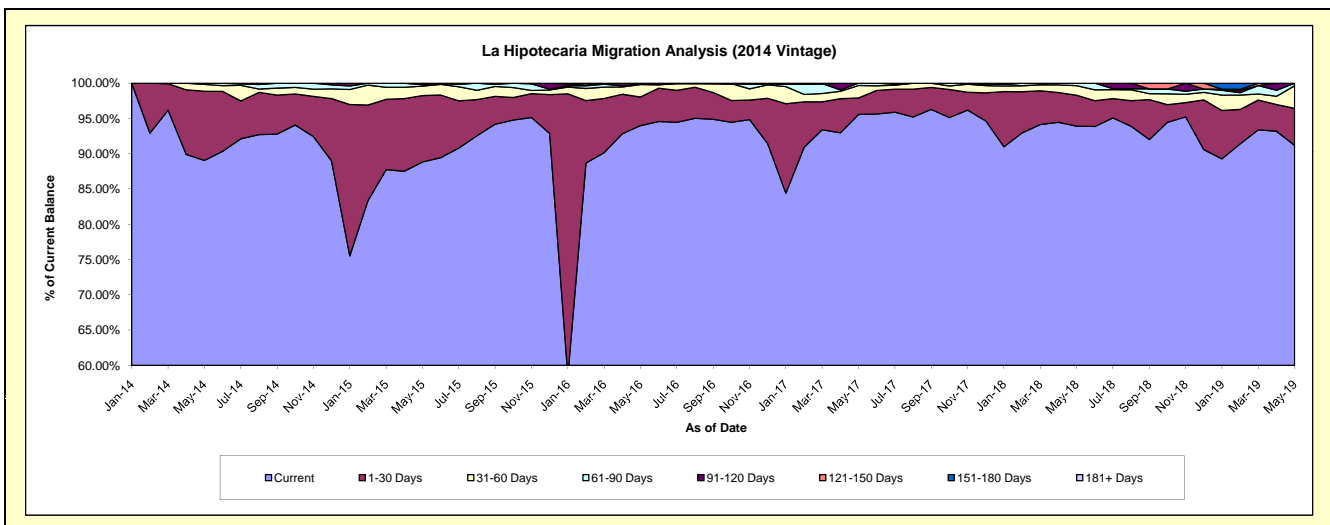
### Delinquency Status (\$ of Current Balance)

Data Cutoff: 5/31/2019

Current Portfolio Balance	-	-	-	-	3,358,640.77	6,591,949.29	5,356,418.10	4,210,917.40	3,412,714.80	2,811,353.44
					May-14	May-15	May-16	May-17	May-18	May-19
Current					2,990,819.59	5,855,350.84	5,034,214.85	4,024,550.41	3,204,591.55	2,563,395.45
1-30 Days					329,559.82	621,284.73	217,344.56	98,254.89	149,872.98	147,295.35
31-60 Days					32,532.58	87,031.35	94,135.60	74,490.75	45,964.51	90,604.61
61-90 Days					5,728.78	13,779.92	4,565.62	13,621.35	12,285.76	10,058.03
91-120 Days					-	14,502.45	6,157.47	-	-	-
121-150 Days					-	-	-	-	-	-
151-180 Days					-	-	-	-	-	-
181+ Days					-	-	-	-	-	-

### Delinquency Status (% of Current Balance)

Current Portfolio Balance	-	-	-	-	3,358,640.77	6,591,949.29	5,356,418.10	4,210,917.40	3,412,714.80	2,811,353.44
					May-14	May-15	May-16	May-17	May-18	May-19
Current					89.05%	88.83%	93.98%	95.57%	93.90%	91.18%
1-30 Days					9.81%	9.42%	4.06%	2.33%	4.39%	5.24%
31-60 Days					0.97%	1.32%	1.76%	1.77%	1.35%	3.22%
61-90 Days					0.17%	0.21%	0.09%	0.32%	0.36%	0.36%
91-120 Days					0.00%	0.22%	0.11%	0.00%	0.00%	0.00%
121-150 Days					0.00%	0.00%	0.00%	0.00%	0.00%	0.00%
151-180 Days					0.00%	0.00%	0.00%	0.00%	0.00%	0.00%
181+ Days					0.00%	0.00%	0.00%	0.00%	0.00%	0.00%
Current - 90 Days					100.00%	99.78%	99.89%	100.00%	100.00%	100.00%
91-180 Days					0.00%	0.22%	0.11%	0.00%	0.00%	0.00%



# Personal Loans - La Hipotecaria Panama Migration Analysis (2015 Vintage)

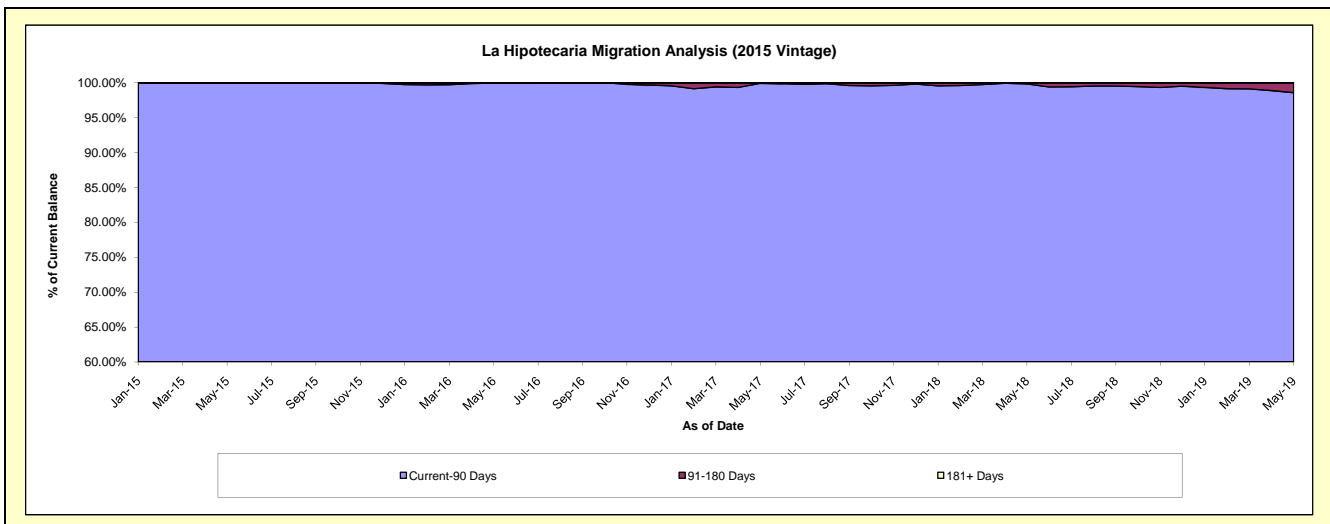
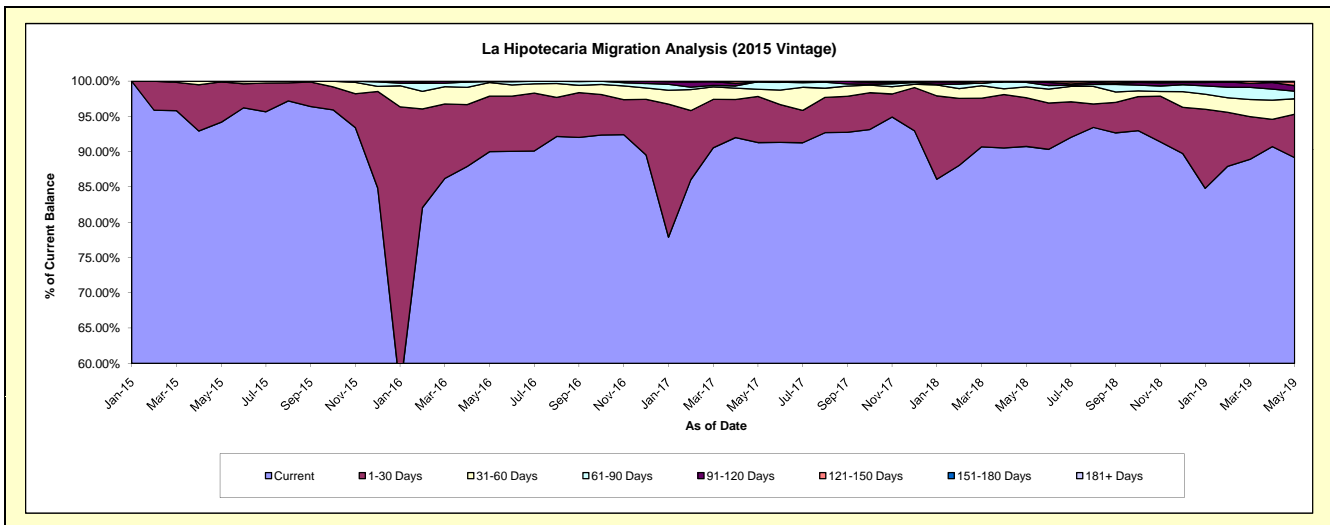
## Delinquency Status (\$ of Current Balance)

Data Cutoff: 5/31/2019

Current Portfolio Balance	-	-	-	-	-	3,324,208.21	8,520,377.66	6,766,456.97	5,567,773.01	4,526,998.28
						May-15	May-16	May-17	May-18	May-19
Current						3,130,708.13	7,668,702.92	6,177,250.28	5,052,641.48	4,036,244.43
1-30 Days						190,323.90	670,366.43	443,093.62	384,313.97	278,420.68
31-60 Days						962.18	164,344.53	68,071.28	86,220.20	99,441.97
61-90 Days						2,214.00	11,768.79	73,095.67	34,816.12	48,502.97
91-120 Days						-	5,194.99	-	9,781.24	35,603.92
121-150 Days						-	-	4,946.12	-	23,865.60
151-180 Days						-	-	-	-	4,918.71
181+ Days						-	-	-	-	-

## Delinquency Status (% of Current Balance)

Current Portfolio Balance	-	-	-	-	-	3,324,208.21	8,520,377.66	6,766,456.97	5,567,773.01	4,526,998.28
						May-15	May-16	May-17	May-18	May-19
Current						94.18%	90.00%	91.29%	90.75%	89.16%
1-30 Days						5.73%	7.87%	6.55%	6.90%	6.15%
31-60 Days						0.03%	1.93%	1.01%	1.55%	2.20%
61-90 Days						0.07%	0.14%	1.08%	0.63%	1.07%
91-120 Days						0.00%	0.06%	0.00%	0.18%	0.79%
121-150 Days						0.00%	0.00%	0.07%	0.00%	0.53%
151-180 Days						0.00%	0.00%	0.00%	0.00%	0.11%
181+ Days						0.00%	0.00%	0.00%	0.00%	0.00%
Current - 90 Days						100.00%	99.94%	99.93%	99.82%	98.58%
91-180 Days						0.00%	0.06%	0.07%	0.18%	1.42%





## Personal Loans - La Hipotecaria Panama Migration Analysis (2016 Vintage)

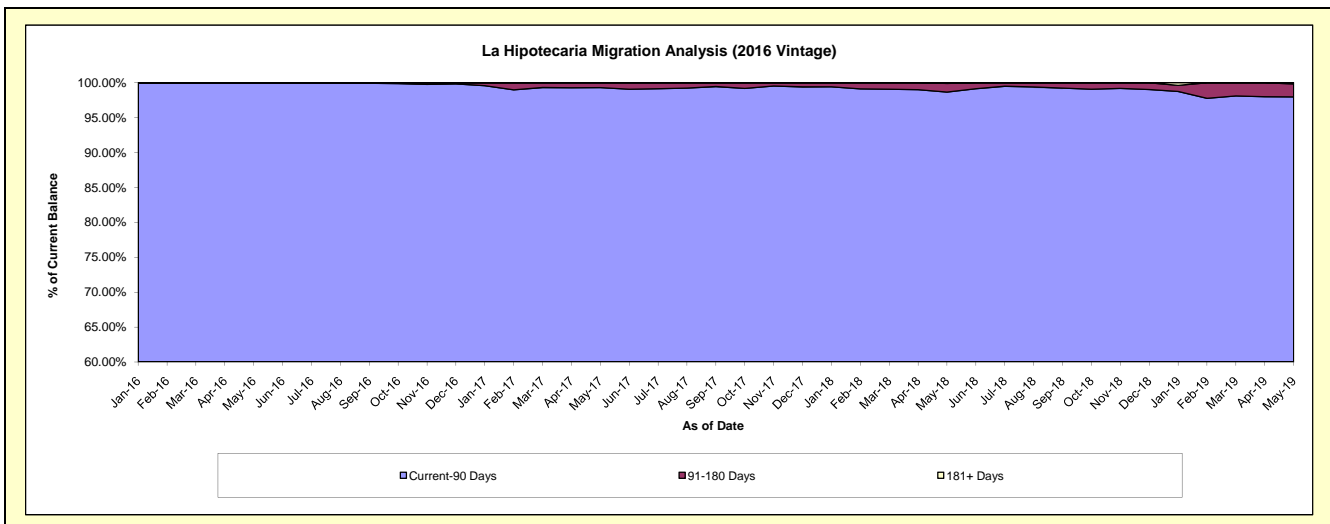
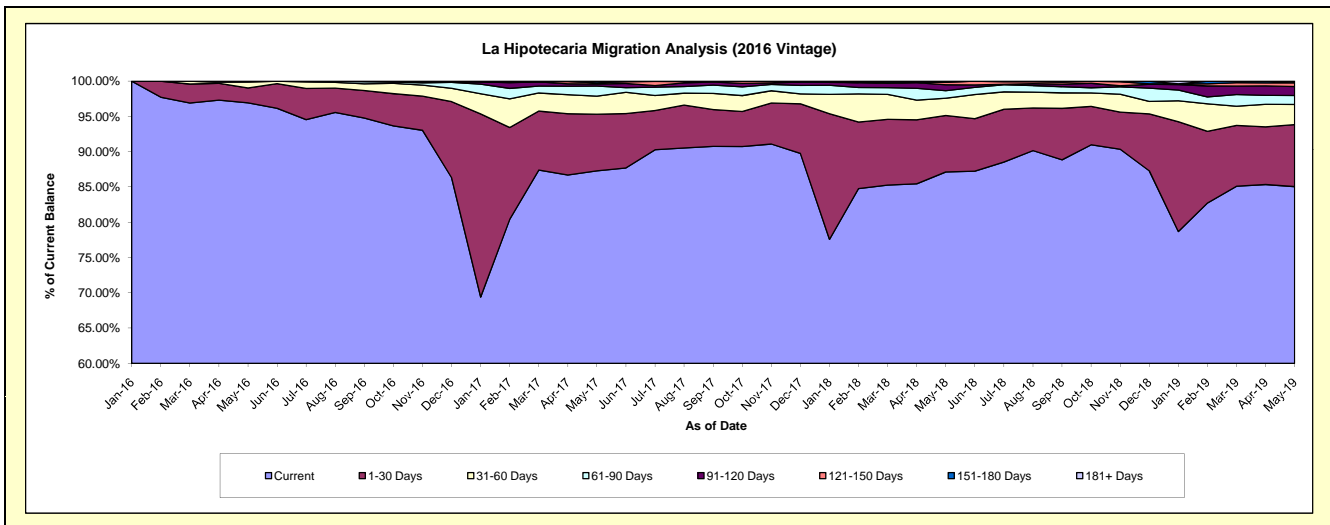
### Delinquency Status (\$ of Current Balance)

Data Cutoff: 5/31/2019

Current Portfolio Balance	-	-	-	-	-	-	-	3,786,072.91	8,770,838.54	7,306,652.65	6,047,930.77
								May-16	May-17	May-18	May-19
Current								3,669,517.31	7,655,917.60	6,365,905.09	5,144,172.63
1-30 Days								79,852.34	703,355.09	584,956.99	531,423.72
31-60 Days								31,731.66	224,860.83	179,794.28	173,293.46
61-90 Days								4,971.60	125,795.27	77,647.90	76,026.11
91-120 Days								-	26,823.73	60,946.07	77,141.13
121-150 Days								-	13,109.06	30,507.66	31,325.28
151-180 Days								-	20,976.96	-	4,702.88
181+ Days								-	-	6,894.66	9,845.56

### Delinquency Status (% of Current Balance)

Current Portfolio Balance	-	-	-	-	-	-	-	3,786,072.91	8,770,838.54	7,306,652.65	6,047,930.77
								May-16	May-17	May-18	May-19
Current								96.92%	87.29%	87.12%	85.06%
1-30 Days								2.11%	8.02%	8.01%	8.79%
31-60 Days								0.84%	2.56%	2.46%	2.87%
61-90 Days								0.13%	1.43%	1.06%	1.26%
91-120 Days								0.00%	0.31%	0.83%	1.28%
121-150 Days								0.00%	0.15%	0.42%	0.52%
151-180 Days								0.00%	0.24%	0.00%	0.08%
181+ Days								0.00%	0.00%	0.09%	0.16%
Current - 90 Days								100.00%	99.31%	98.65%	97.97%
91-180 Days								0.00%	0.69%	1.25%	1.87%



# Personal Loans - La Hipotecaria Panama Migration Analysis (2017 Vintage)

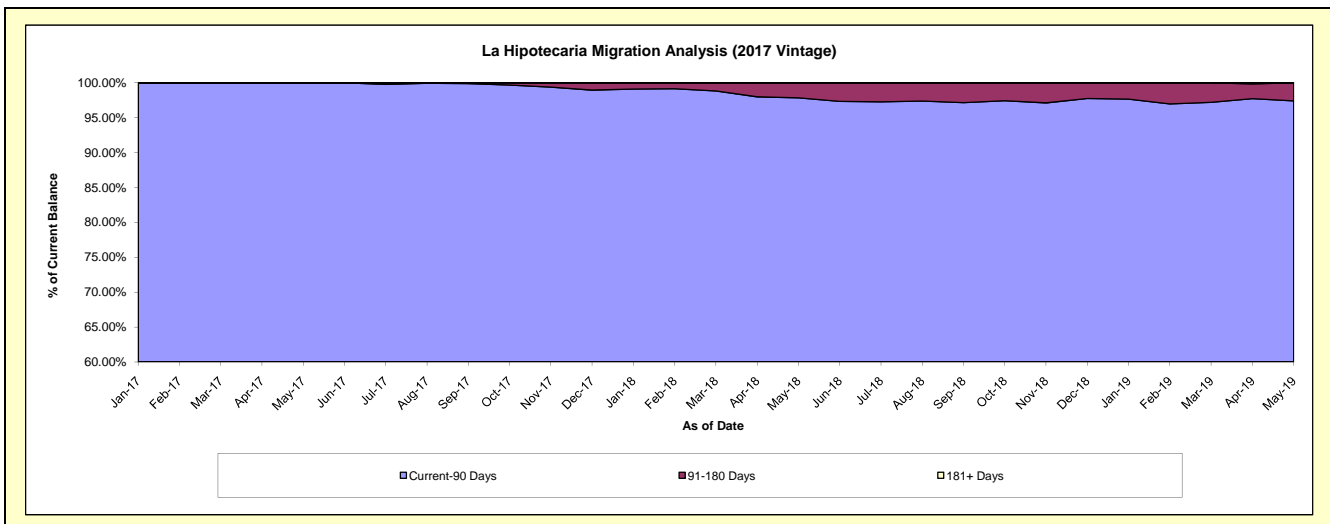
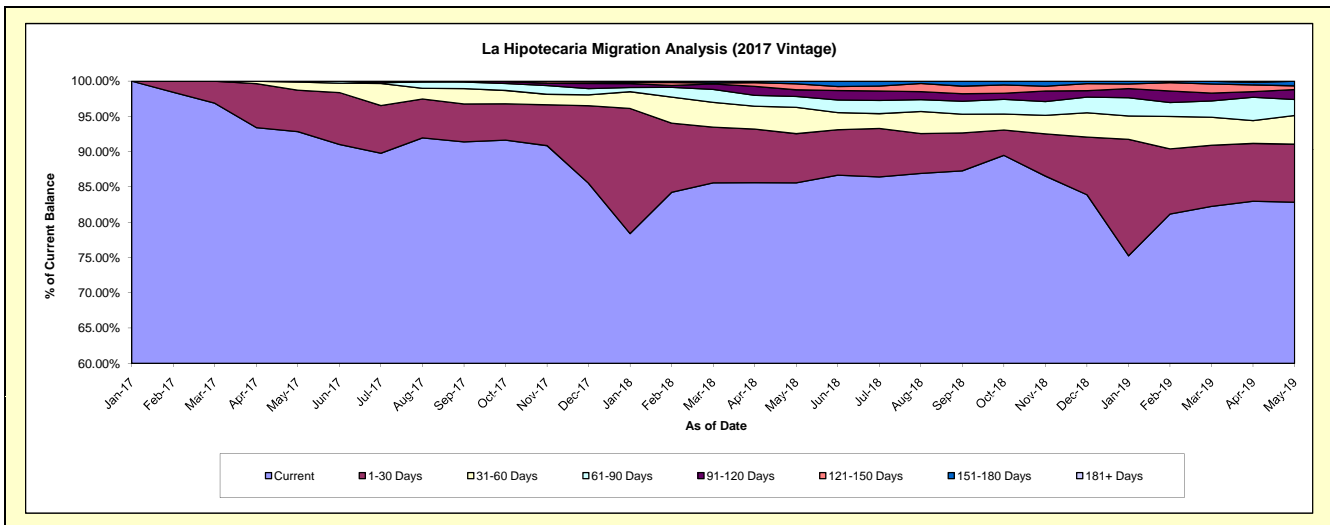
## Delinquency Status (\$ of Current Balance)

Data Cutoff: 5/31/2019

Current Portfolio Balance	-	-	-	-	-	-	-	-	-	4,039,306.95	9,715,520.88	8,046,104.78
										May-17	May-18	May-19
Current										3,750,112.53	8,316,004.23	6,665,352.54
1-30 Days										237,230.84	676,882.03	661,911.38
31-60 Days										46,963.58	363,292.39	327,281.44
61-90 Days										5,000.00	148,349.32	182,938.39
91-120 Days										-	91,965.88	112,403.67
121-150 Days										-	81,966.84	42,539.40
151-180 Days										-	37,060.19	53,677.96
181+ Days										-	-	-

## Delinquency Status (% of Current Balance)

Current Portfolio Balance	-	-	-	-	-	-	-	-	-	4,039,306.95	9,715,520.88	8,046,104.78
										May-17	May-18	May-19
Current										92.84%	85.60%	82.84%
1-30 Days										5.87%	6.97%	8.23%
31-60 Days										1.16%	3.74%	4.07%
61-90 Days										0.12%	1.53%	2.27%
91-120 Days										0.00%	0.95%	1.40%
121-150 Days										0.00%	0.84%	0.53%
151-180 Days										0.00%	0.38%	0.67%
181+ Days										0.00%	0.00%	0.00%
Current - 90 Days										100.00%	97.83%	97.41%
91-180 Days										0.00%	2.17%	2.59%



**Personal Loans - La Hipotecaria Panama Migration Analysis (2018 Vintage)**

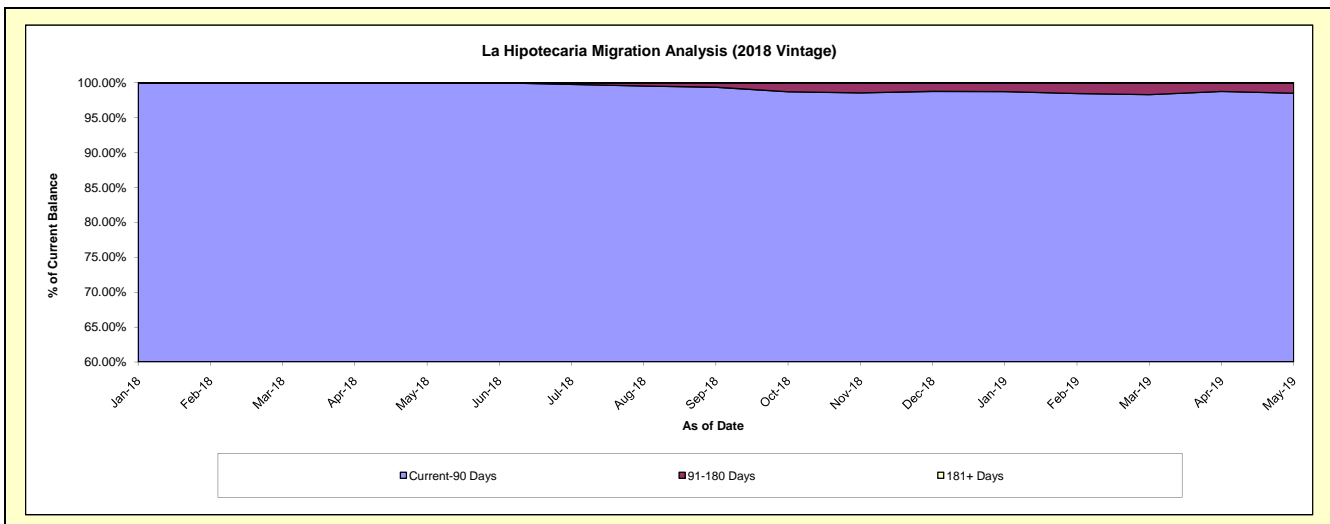
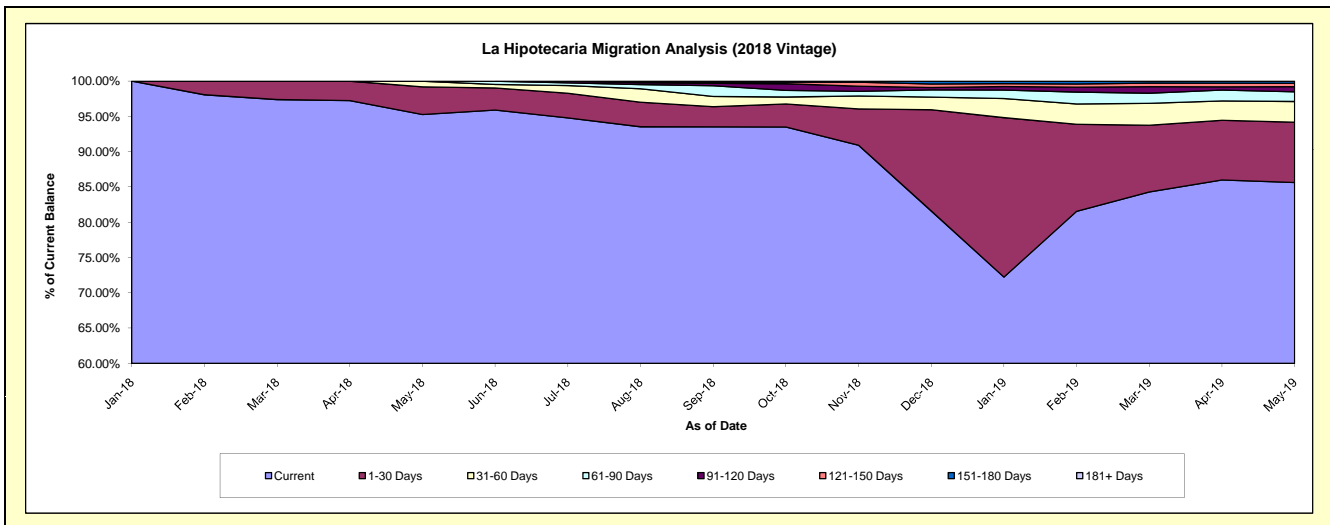
**Delinquency Status (\$ of Current Balance)**

Data Cutoff: 5/31/2019

Current Portfolio Balance										4,286,124.47	10,627,667.76
										May-18	May-19
Current										4,083,673.19	9,100,613.73
1-30 Days										167,835.55	909,214.61
31-60 Days										34,615.73	311,643.95
61-90 Days										-	146,244.22
91-120 Days										-	77,118.51
121-150 Days										-	50,315.00
151-180 Days										-	32,517.74
181+ Days										-	-

**Delinquency Status (% of Current Balance)**

Current Portfolio Balance										4,286,124.47	10,627,667.76
										May-18	May-19
Current										95.28%	85.63%
1-30 Days										3.92%	8.56%
31-60 Days										0.81%	2.93%
61-90 Days										0.00%	1.38%
91-120 Days										0.00%	0.73%
121-150 Days										0.00%	0.47%
151-180 Days										0.00%	0.31%
181+ Days										0.00%	0.00%
Current - 90 Days										100.00%	98.49%
91-180 Days										0.00%	1.51%



**Personal Loans - La Hipotecaria Panama Migration Analysis (2019 Vintage)**

**Delinquency Status (\$ of Current Balance)**

Data Cutoff: **5/31/2019**

<b>Current Portfolio Balance</b>	-	-	-	-	-	-	-	-	-	-	-	-	<b>5,469,719.71</b>
													<b>May-19</b>
Current													5,317,224.60
1-30 Days													140,561.92
31-60 Days													4,933.19
61-90 Days													7,000.00
91-120 Days													-
121-150 Days													-
151-180 Days													-
181+ Days													-

**Delinquency Status (% of Current Balance)**

<b>Current Portfolio Balance</b>	-	-	-	-	-	-	-	-	-	-	-	-	<b>5,469,719.71</b>
													<b>May-19</b>
Current													97.21%
1-30 Days													2.57%
31-60 Days													0.09%
61-90 Days													0.13%
91-120 Days													0.00%
121-150 Days													0.00%
151-180 Days													0.00%
181+ Days													0.00%
Current - 90 Days													100.00%
91-180 Days													0.00%

