



Migration Analysis for La Hipotecaria S.A Panama

Mortgages March 2020

An analysis of historical loan payment data was used to compile a migration analysis of delinquency by annual vintage. Delinquencies for each vintage were grouped into the following buckets; Current, 1-30, 31-60, 61-90, 91-120, 121-150, 151-180, and 180+. Results are provided in graphical and tabular form. The cutoff date is 3/31/2020.

Mortgages - La Hipotecaria Panama Migration Analysis (All Vintages)

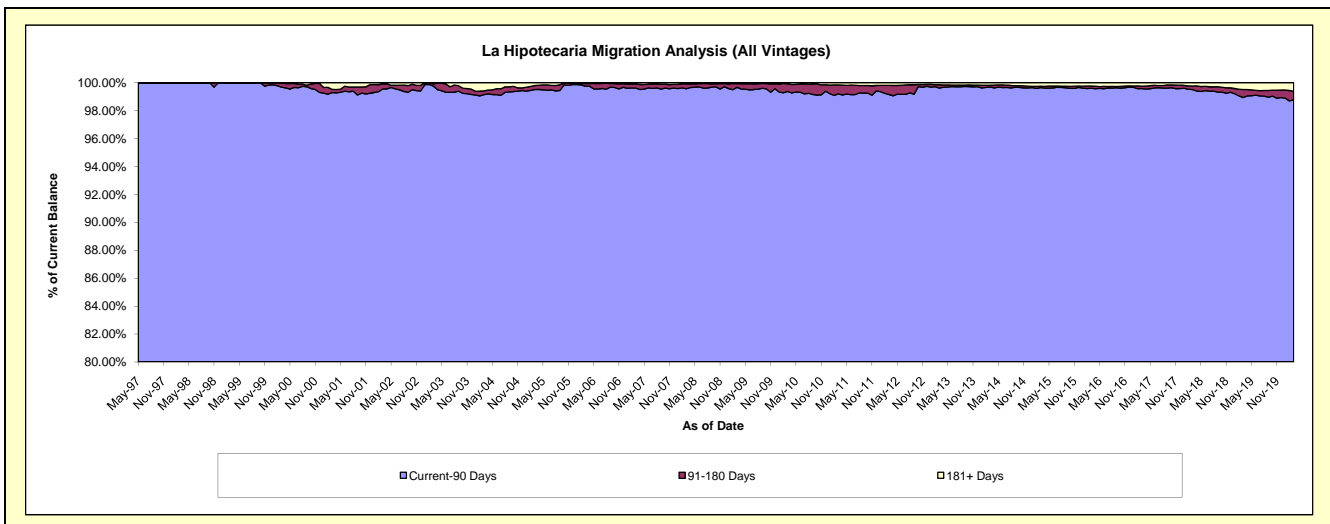
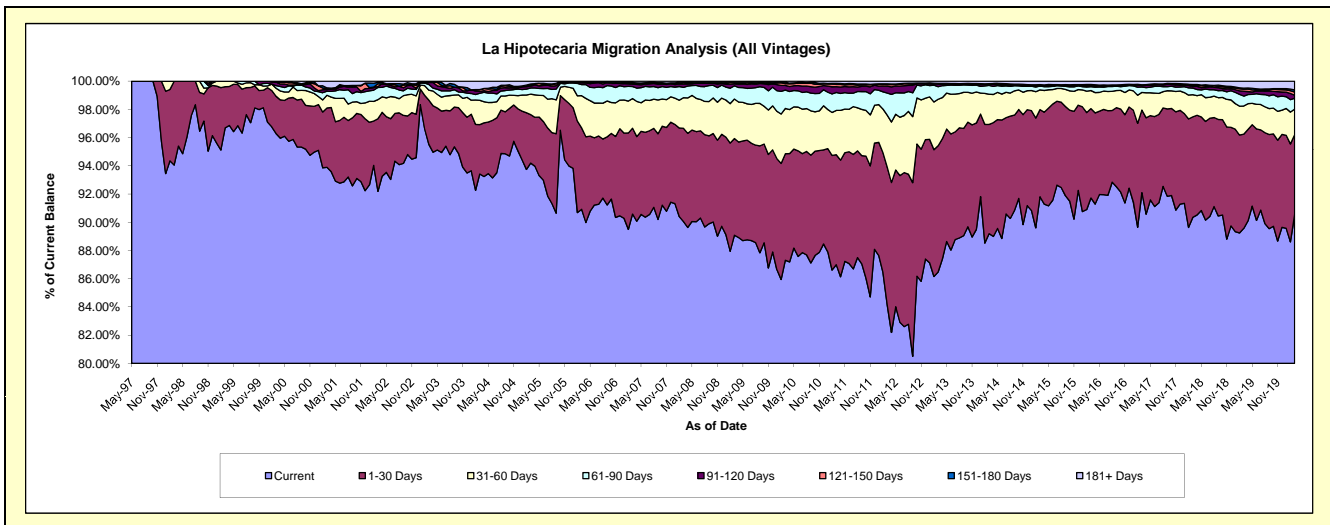
Delinquency Status (\$ of Current Balance)

Data Cutoff: 3/31/2020

Current Portfolio Balance	292,305,420.49	309,868,291.40	337,142,053.92	375,554,345.33	417,879,625.48	458,724,230.17	493,392,218.87	548,189,621.90	598,119,436.15	646,239,954.36
	Mar-11	Mar-12	Mar-13	Mar-14	Mar-15	Mar-16	Mar-17	Mar-18	Mar-19	Mar-20
Current	254,283,045.84	260,682,137.54	291,540,828.01	334,955,643.16	383,658,661.31	420,740,711.74	454,394,332.07	495,313,344.28	535,717,428.88	585,197,087.34
1-30 Days	22,779,235.93	30,294,177.69	30,188,005.45	29,087,948.82	25,803,507.79	29,047,888.08	28,915,481.81	39,014,794.15	39,927,927.18	36,576,642.38
31-60 Days	9,187,110.38	11,443,407.05	11,089,554.41	8,022,864.02	5,827,032.66	5,891,285.35	6,143,437.66	8,604,221.18	11,951,311.94	11,678,631.92
61-90 Days	3,721,052.46	4,844,110.81	3,010,958.68	2,345,033.55	1,139,163.35	1,226,531.10	1,877,719.22	2,571,245.88	4,200,410.04	4,989,092.24
91-120 Days	1,187,897.76	1,487,087.26	631,589.72	344,889.37	113,697.38	255,297.16	551,276.33	631,635.23	2,045,481.61	1,357,381.90
121-150 Days	462,541.99	374,725.24	126,509.22	51,632.71	178,483.71	202,999.92	179,324.99	544,912.22	887,436.42	1,522,787.08
151-180 Days	224,824.28	157,514.18	48,492.94	79,543.14	135,857.94	277,915.64	93,451.93	199,647.34	451,217.60	954,537.52
181+ Days	459,711.85	585,131.63	506,115.49	666,790.56	1,023,221.34	1,081,601.18	1,237,194.86	1,309,821.62	2,938,222.48	3,963,793.98

Delinquency Status (% of Current Balance)

Current Portfolio Balance	292,305,420.49	309,868,291.40	337,142,053.92	375,554,345.33	417,879,625.48	458,724,230.17	493,392,218.87	548,189,621.90	598,119,436.15	646,239,954.36
	Mar-11	Mar-12	Mar-13	Mar-14	Mar-15	Mar-16	Mar-17	Mar-18	Mar-19	Mar-20
Current	86.99%	84.13%	86.47%	89.19%	91.81%	91.72%	92.10%	90.35%	89.57%	90.55%
1-30 Days	7.79%	9.78%	8.95%	7.75%	6.17%	6.33%	5.86%	7.12%	6.68%	5.66%
31-60 Days	3.14%	3.69%	3.29%	2.14%	1.39%	1.28%	1.25%	1.57%	2.00%	1.81%
61-90 Days	1.27%	1.56%	0.89%	0.62%	0.27%	0.27%	0.38%	0.47%	0.70%	0.77%
91-120 Days	0.41%	0.48%	0.19%	0.09%	0.03%	0.06%	0.11%	0.12%	0.34%	0.21%
121-150 Days	0.16%	0.12%	0.04%	0.01%	0.04%	0.04%	0.10%	0.10%	0.15%	0.24%
151-180 Days	0.08%	0.05%	0.01%	0.02%	0.03%	0.06%	0.02%	0.04%	0.08%	0.15%
181+ Days	0.16%	0.19%	0.15%	0.18%	0.24%	0.24%	0.25%	0.24%	0.49%	0.61%
Current - 90 Days	99.20%	99.16%	99.61%	99.70%	99.65%	99.60%	99.58%	99.51%	98.94%	98.79%
91-180 Days	0.64%	0.65%	0.24%	0.13%	0.10%	0.16%	0.17%	0.25%	0.57%	0.59%



Mortgages - La Hipotecaria Panama Migration Analysis (1997 Vintage)

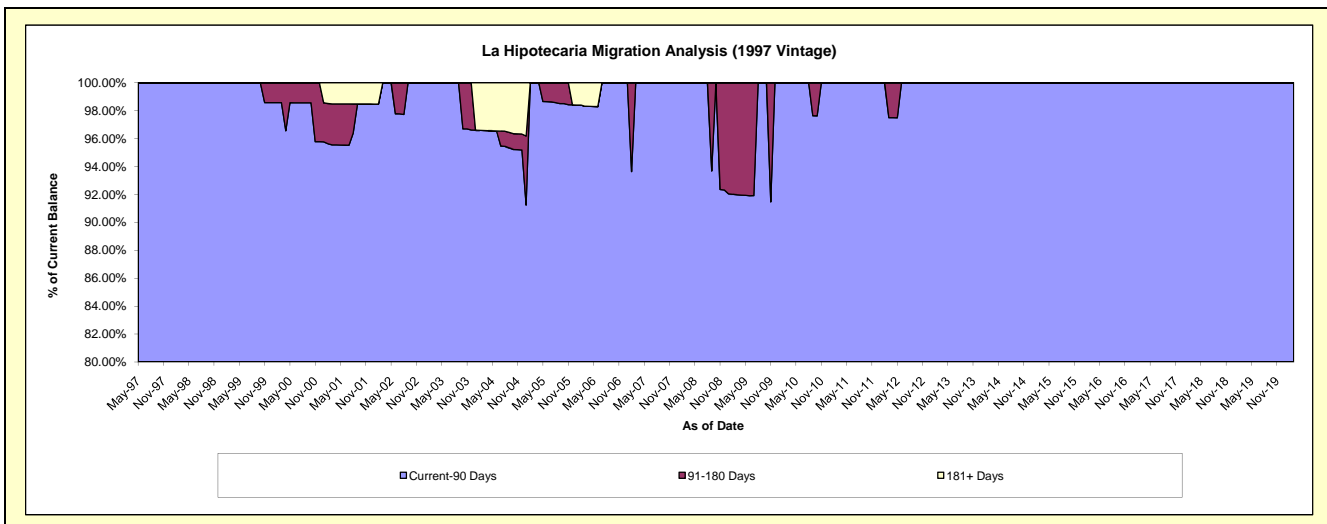
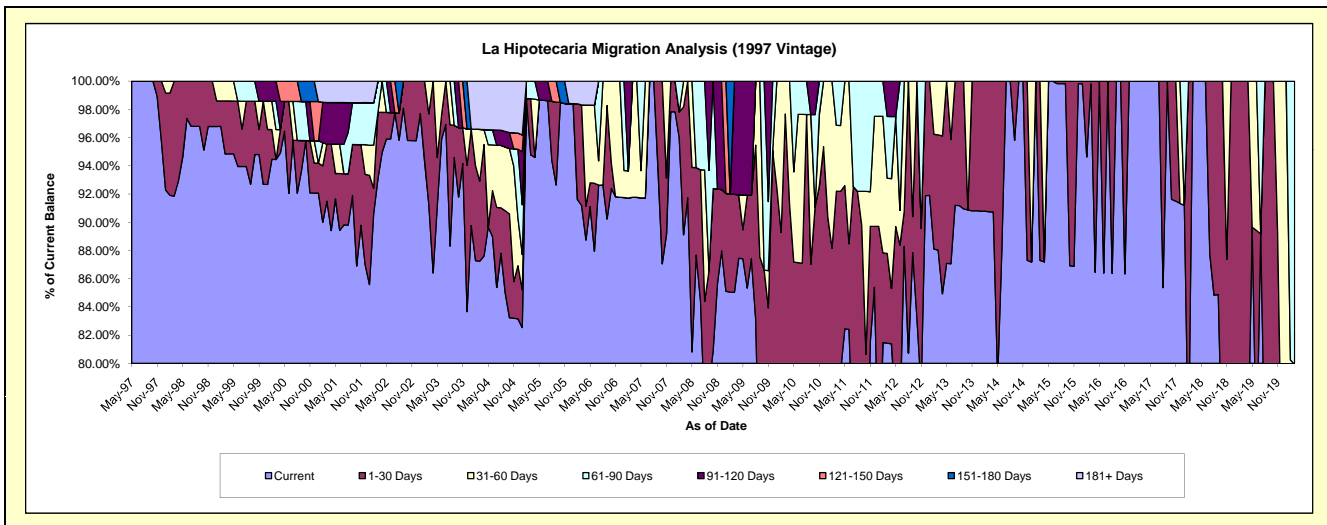
Delinquency Status (\$ of Current Balance)

Data Cutoff: 3/31/2020

Current Portfolio Balance	450,608.53	403,232.67	321,082.32	264,585.05	226,706.55	191,575.70	162,297.83	127,448.92	94,349.00	59,620.32
	Mar-11	Mar-12	Mar-13	Mar-14	Mar-15	Mar-16	Mar-17	Mar-18	Mar-19	Mar-20
Current	357,823.84	328,381.48	282,656.30	240,089.66	197,913.73	191,206.09	162,297.83	127,448.92	66,530.66	40,386.15
1-30 Days	57,655.19	25,631.73	26,209.08	24,495.39	28,792.82	369.61	-	-	27,818.34	7,265.45
31-60 Days	21,033.98	21,481.67	12,216.94	-	-	-	-	-	-	-
61-90 Days	14,095.52	17,654.36	-	-	-	-	-	-	-	11,968.72
91-120 Days	-	10,083.43	-	-	-	-	-	-	-	-
121-150 Days	-	-	-	-	-	-	-	-	-	-
151-180 Days	-	-	-	-	-	-	-	-	-	-
181+ Days	-	-	-	-	-	-	-	-	-	-

Delinquency Status (% of Current Balance)

Current Portfolio Balance	450,608.53	403,232.67	321,082.32	264,585.05	226,706.55	191,575.70	162,297.83	127,448.92	94,349.00	59,620.32
	Mar-11	Mar-12	Mar-13	Mar-14	Mar-15	Mar-16	Mar-17	Mar-18	Mar-19	Mar-20
Current	79.41%	81.44%	88.03%	90.74%	87.30%	99.81%	100.00%	100.00%	70.52%	67.74%
1-30 Days	12.79%	6.36%	8.16%	9.26%	12.70%	0.19%	0.00%	0.00%	29.48%	12.19%
31-60 Days	4.67%	5.33%	3.80%	0.00%	0.00%	0.00%	0.00%	0.00%	0.00%	0.00%
61-90 Days	3.13%	4.38%	0.00%	0.00%	0.00%	0.00%	0.00%	0.00%	0.00%	20.07%
91-120 Days	0.00%	2.50%	0.00%	0.00%	0.00%	0.00%	0.00%	0.00%	0.00%	0.00%
121-150 Days	0.00%	0.00%	0.00%	0.00%	0.00%	0.00%	0.00%	0.00%	0.00%	0.00%
151-180 Days	0.00%	0.00%	0.00%	0.00%	0.00%	0.00%	0.00%	0.00%	0.00%	0.00%
181+ Days	0.00%	0.00%	0.00%	0.00%	0.00%	0.00%	0.00%	0.00%	0.00%	0.00%
Current - 90 Days	100.00%	97.50%	100.00%	100.00%	100.00%	100.00%	100.00%	100.00%	100.00%	100.00%
91-180 Days	0.00%	2.50%	0.00%	0.00%	0.00%	0.00%	0.00%	0.00%	0.00%	0.00%



Mortgages - La Hipotecaria Panama Migration Analysis (1998 Vintage)

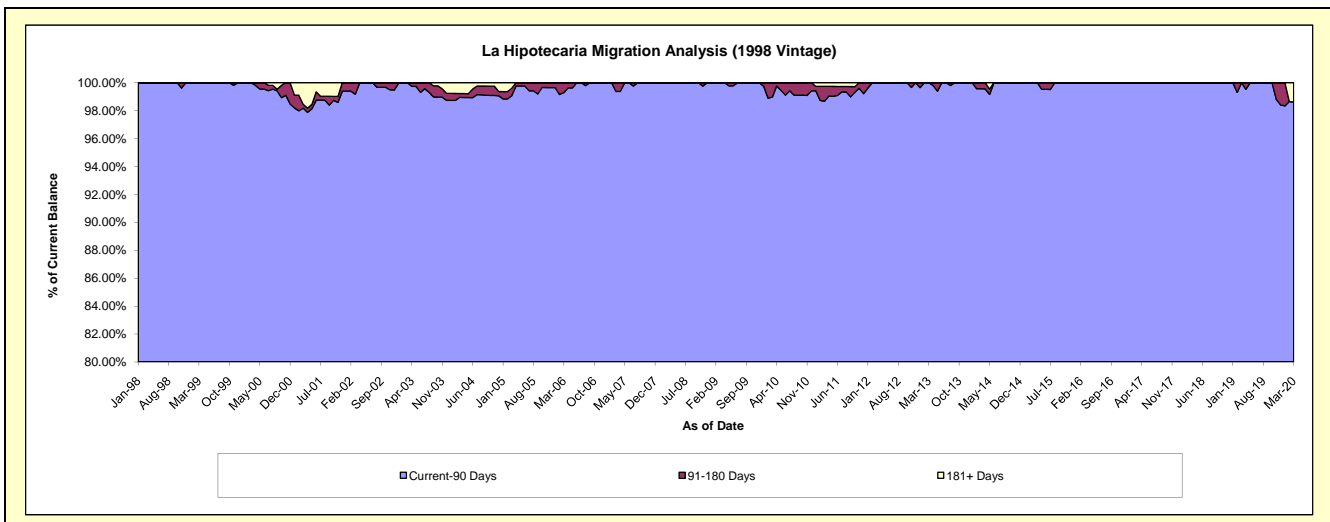
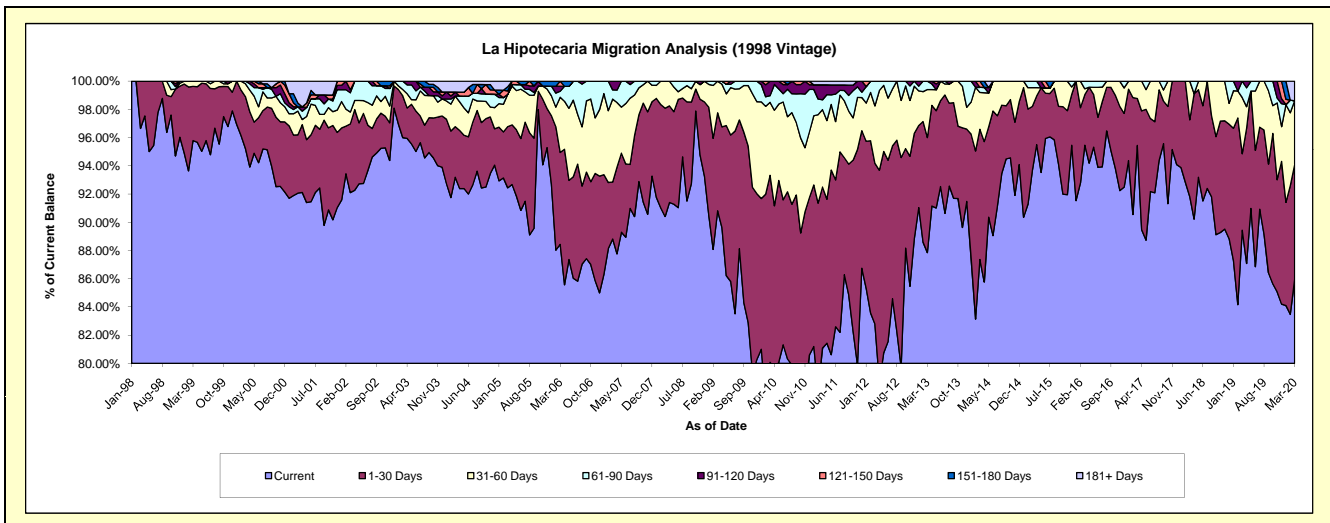
Delinquency Status (\$ of Current Balance)

Data Cutoff: 3/31/2020

Current Portfolio Balance	4,264,380.95	3,752,766.56	3,339,375.83	2,948,903.00	2,483,412.53	2,099,799.91	1,748,810.85	1,366,364.84	1,030,268.58	720,790.46
	Mar-11	Mar-12	Mar-13	Mar-14	Mar-15	Mar-16	Mar-17	Mar-18	Mar-19	Mar-20
Current	3,457,701.84	3,106,299.92	2,933,692.96	2,576,318.47	2,326,037.78	2,004,505.08	1,669,089.55	1,254,459.53	921,407.95	619,592.99
1-30 Days	486,706.27	427,739.58	272,289.14	271,972.31	112,766.70	75,191.06	58,290.16	74,533.01	55,907.12	58,786.57
31-60 Days	233,975.01	152,994.54	113,627.50	76,926.16	33,241.12	8,870.06	21,431.14	37,372.30	41,003.29	32,426.80
61-90 Days	29,599.54	65,732.52	19,766.23	10,968.29	11,366.93	11,233.71	-	-	11,950.22	-
91-120 Days	45,298.86	-	-	-	-	-	-	-	-	-
121-150 Days	-	-	-	12,717.77	-	-	-	-	-	-
151-180 Days	-	-	-	-	-	-	-	-	-	-
181+ Days	11,099.43	-	-	-	-	-	-	-	-	9,984.10

Delinquency Status (% of Current Balance)

Current Portfolio Balance	4,264,380.95	3,752,766.56	3,339,375.83	2,948,903.00	2,483,412.53	2,099,799.91	1,748,810.85	1,366,364.84	1,030,268.58	720,790.46
	Mar-11	Mar-12	Mar-13	Mar-14	Mar-15	Mar-16	Mar-17	Mar-18	Mar-19	Mar-20
Current	81.08%	82.77%	87.85%	87.37%	93.66%	95.46%	95.44%	91.81%	89.43%	85.96%
1-30 Days	11.41%	11.40%	8.15%	9.22%	4.54%	3.58%	3.33%	5.45%	5.43%	8.16%
31-60 Days	5.49%	4.08%	3.40%	2.61%	1.34%	0.42%	1.23%	2.74%	3.98%	4.50%
61-90 Days	0.69%	1.75%	0.59%	0.37%	0.46%	0.53%	0.00%	0.00%	1.16%	0.00%
91-120 Days	1.06%	0.00%	0.00%	0.00%	0.00%	0.00%	0.00%	0.00%	0.00%	0.00%
121-150 Days	0.00%	0.00%	0.00%	0.43%	0.00%	0.00%	0.00%	0.00%	0.00%	0.00%
151-180 Days	0.00%	0.00%	0.00%	0.00%	0.00%	0.00%	0.00%	0.00%	0.00%	0.00%
181+ Days	0.26%	0.00%	0.00%	0.00%	0.00%	0.00%	0.00%	0.00%	0.00%	1.39%
Current - 90 Days	98.68%	100.00%	100.00%	99.57%	100.00%	100.00%	100.00%	100.00%	100.00%	98.61%
91-180 Days	1.06%	0.00%	0.00%	0.43%	0.00%	0.00%	0.00%	0.00%	0.00%	0.00%



Mortgages - La Hipotecaria Panama Migration Analysis (1999 Vintage)

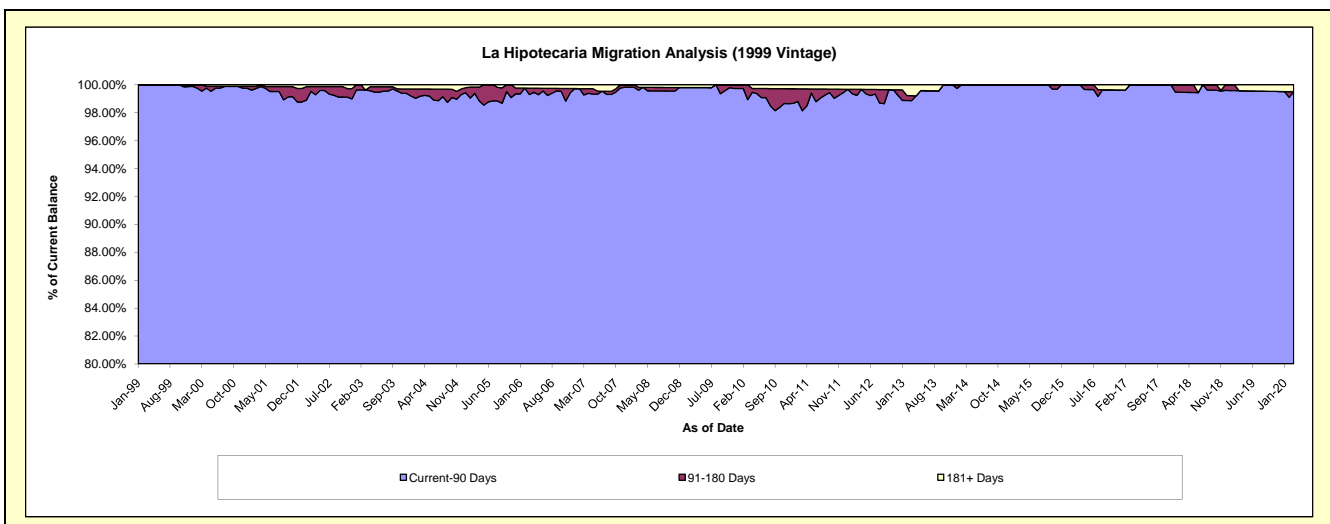
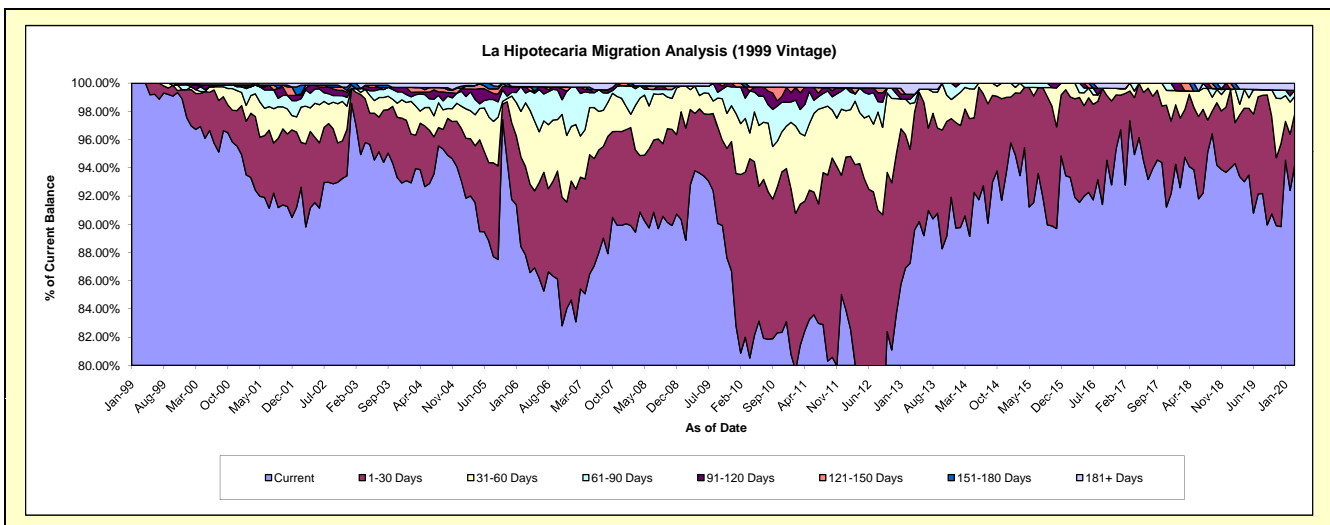
Delinquency Status (\$ of Current Balance)

Data Cutoff: 3/31/2020

Current Portfolio Balance	6,643,730.23	5,882,754.25	5,186,996.62	4,521,830.20	4,006,187.18	3,426,022.90	2,891,194.48	2,479,791.43	2,025,172.92	1,693,585.39
	Mar-11	Mar-12	Mar-13	Mar-14	Mar-15	Mar-16	Mar-17	Mar-18	Mar-19	Mar-20
Current	5,408,766.94	4,713,279.51	4,525,451.05	4,096,558.11	3,743,756.60	3,148,780.13	2,814,061.93	2,349,609.91	1,891,053.16	1,594,627.38
1-30 Days	665,255.05	829,520.44	418,534.18	342,372.71	233,786.48	239,392.89	61,013.40	83,577.17	88,734.54	62,329.25
31-60 Days	333,057.90	265,083.89	167,190.33	69,386.29	28,644.10	37,849.88	16,119.15	33,163.30	15,101.53	20,579.38
61-90 Days	112,879.64	30,073.43	16,725.84	13,513.09	-	-	-	-	21,672.14	7,437.83
91-120 Days	78,223.56	-	18,438.14	-	-	-	-	-	-	-
121-150 Days	26,040.91	25,290.75	-	-	-	-	13,441.05	-	-	-
151-180 Days	-	-	-	-	-	-	-	-	-	-
181+ Days	19,506.23	19,506.23	40,657.08	-	-	-	-	-	8,611.55	8,611.55

Delinquency Status (% of Current Balance)

Current Portfolio Balance	6,643,730.23	5,882,754.25	5,186,996.62	4,521,830.20	4,006,187.18	3,426,022.90	2,891,194.48	2,479,791.43	2,025,172.92	1,693,585.39
	Mar-11	Mar-12	Mar-13	Mar-14	Mar-15	Mar-16	Mar-17	Mar-18	Mar-19	Mar-20
Current	81.41%	80.12%	87.25%	90.60%	93.45%	91.91%	97.33%	94.75%	93.38%	94.16%
1-30 Days	10.01%	14.10%	8.07%	7.57%	5.84%	6.99%	2.11%	3.37%	4.38%	3.68%
31-60 Days	5.01%	4.51%	3.22%	1.53%	0.71%	1.10%	0.56%	1.34%	0.75%	1.22%
61-90 Days	1.70%	0.51%	0.32%	0.30%	0.00%	0.00%	0.00%	0.00%	1.07%	0.44%
91-120 Days	1.18%	0.00%	0.36%	0.00%	0.00%	0.00%	0.00%	0.00%	0.00%	0.00%
121-150 Days	0.39%	0.43%	0.00%	0.00%	0.00%	0.00%	0.54%	0.00%	0.00%	0.00%
151-180 Days	0.00%	0.00%	0.00%	0.00%	0.00%	0.00%	0.00%	0.00%	0.00%	0.00%
181+ Days	0.29%	0.33%	0.78%	0.00%	0.00%	0.00%	0.00%	0.00%	0.43%	0.51%
Current - 90 Days	98.14%	99.24%	98.86%	100.00%	100.00%	100.00%	100.00%	99.46%	99.57%	99.49%
91-180 Days	1.57%	0.43%	0.36%	0.00%	0.00%	0.00%	0.00%	0.54%	0.00%	0.00%



Mortgages - La Hipotecaria Panama Migration Analysis (2000 Vintage)

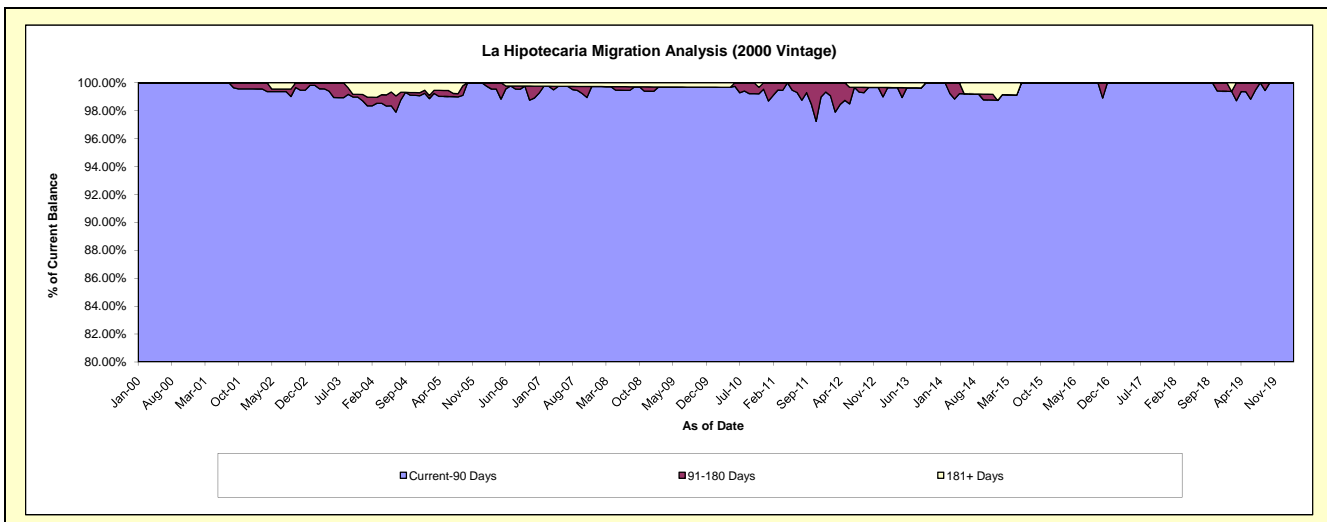
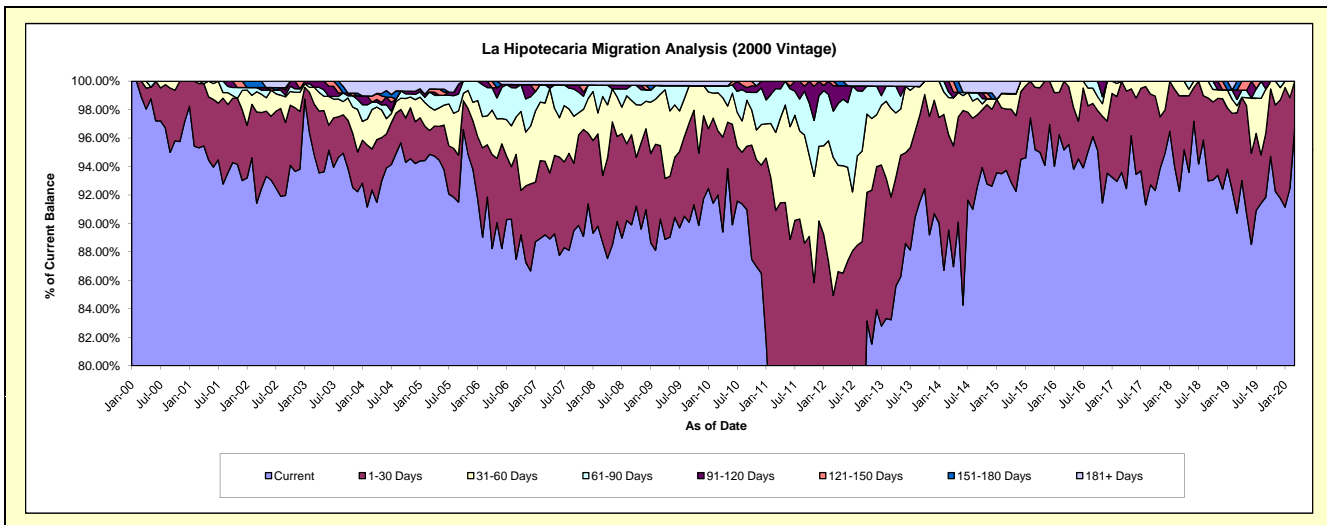
Delinquency Status (\$ of Current Balance)

Data Cutoff: 3/31/2020

Current Portfolio Balance	5,501,819.04	5,019,229.23	4,630,589.16	4,044,392.51	3,618,986.60	3,053,710.12	2,769,593.37	2,379,996.18	2,072,656.34	1,748,036.91
	Mar-11	Mar-12	Mar-13	Mar-14	Mar-15	Mar-16	Mar-17	Mar-18	Mar-19	Mar-20
Current	4,069,036.98	3,371,752.06	3,854,170.03	3,621,356.66	3,391,819.95	2,906,220.55	2,592,260.76	2,195,894.58	1,880,491.27	1,690,250.08
1-30 Days	932,680.25	891,646.20	399,587.04	270,503.34	156,370.68	147,489.57	177,332.61	159,670.32	146,176.32	57,786.83
31-60 Days	302,203.55	486,251.98	288,349.51	105,744.29	39,702.57	-	-	24,431.28	10,251.35	-
61-90 Days	168,907.17	164,071.80	72,390.16	15,694.82	-	-	-	-	9,003.37	-
91-120 Days	28,991.09	89,414.77	-	31,093.40	-	-	-	-	13,734.12	-
121-150 Days	-	16,092.42	-	-	-	-	-	-	-	-
151-180 Days	-	-	-	-	-	-	-	-	12,999.91	-
181+ Days	-	-	16,092.42	-	31,093.40	-	-	-	-	-

Delinquency Status (% of Current Balance)

Current Portfolio Balance	5,501,819.04	5,019,229.23	4,630,589.16	4,044,392.51	3,618,986.60	3,053,710.12	2,769,593.37	2,379,996.18	2,072,656.34	1,748,036.91
	Mar-11	Mar-12	Mar-13	Mar-14	Mar-15	Mar-16	Mar-17	Mar-18	Mar-19	Mar-20
Current	73.96%	67.18%	83.23%	89.54%	93.72%	95.17%	93.60%	92.26%	90.73%	96.69%
1-30 Days	16.95%	17.76%	8.63%	6.69%	4.32%	4.83%	6.40%	7.21%	7.05%	3.31%
31-60 Days	5.49%	9.69%	6.23%	2.61%	1.10%	0.00%	0.00%	1.03%	0.49%	0.00%
61-90 Days	3.07%	3.27%	1.56%	0.39%	0.00%	0.00%	0.00%	0.00%	0.43%	0.00%
91-120 Days	0.53%	1.78%	0.00%	0.77%	0.00%	0.00%	0.00%	0.00%	0.66%	0.00%
121-150 Days	0.00%	0.32%	0.00%	0.00%	0.00%	0.00%	0.00%	0.00%	0.00%	0.00%
151-180 Days	0.00%	0.00%	0.00%	0.00%	0.00%	0.00%	0.00%	0.00%	0.63%	0.00%
181+ Days	0.00%	0.00%	0.35%	0.00%	0.86%	0.00%	0.00%	0.00%	0.00%	0.00%
Current - 90 Days	99.47%	97.90%	99.65%	99.23%	99.14%	100.00%	100.00%	100.00%	98.71%	100.00%
91-180 Days	0.53%	2.10%	0.00%	0.77%	0.00%	0.00%	0.00%	0.00%	1.29%	0.00%



Mortgages - La Hipotecaria Panama Migration Analysis (2001 Vintage)

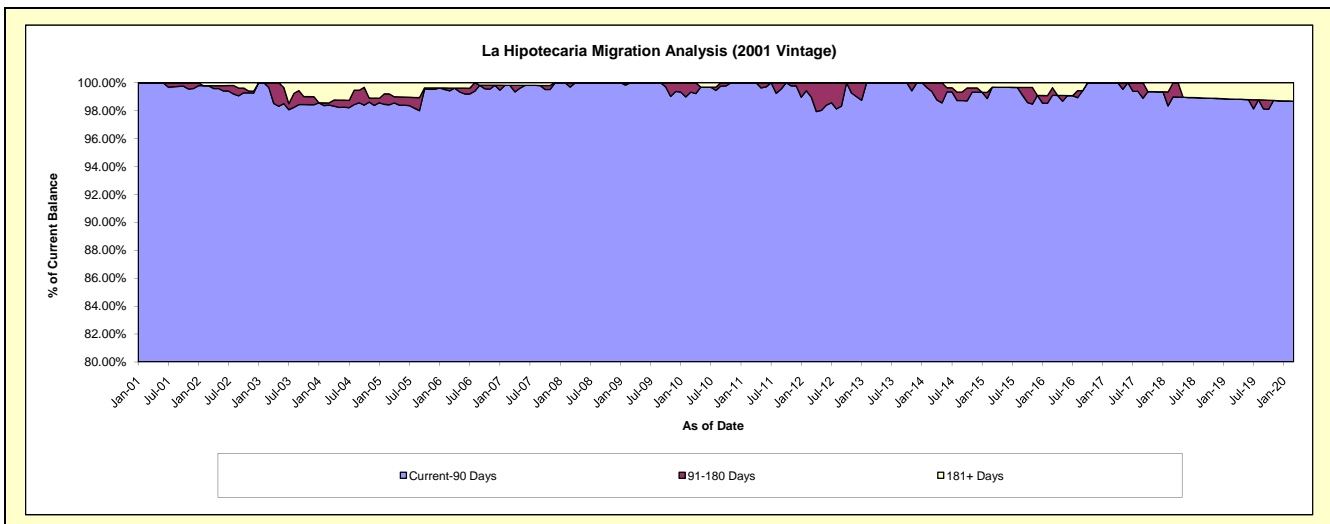
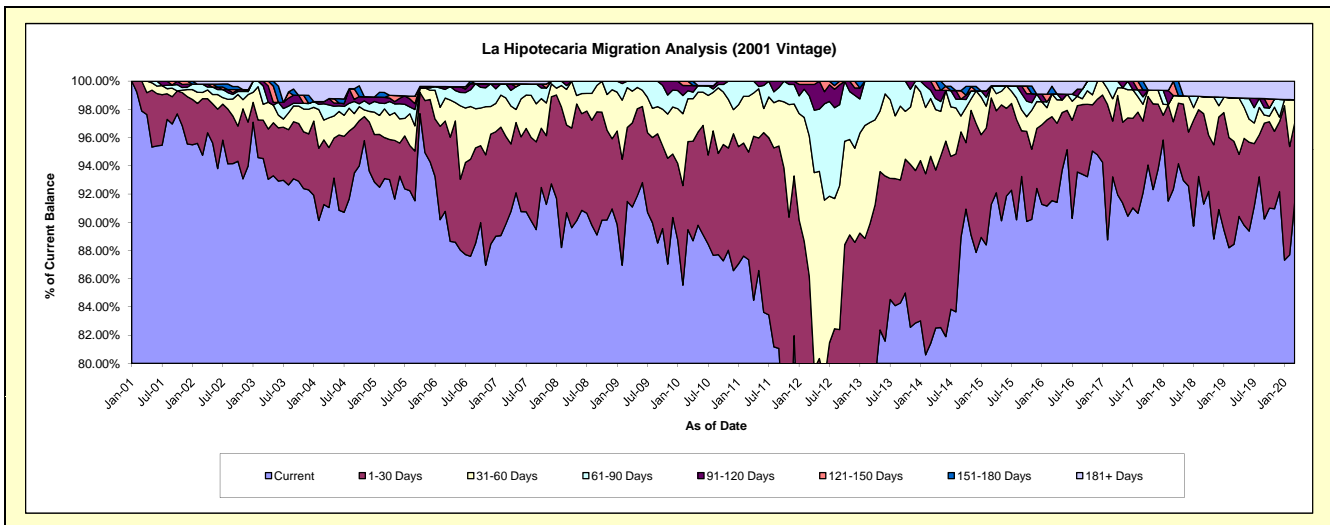
Delinquency Status (\$ of Current Balance)

Data Cutoff: 3/31/2020

Current Portfolio Balance	5,703,931.55	5,429,658.37	4,694,402.00	4,144,831.31	3,738,154.53	3,356,897.55	3,050,459.21	2,718,003.19	2,359,422.33	2,090,319.77
	Mar-11	Mar-12	Mar-13	Mar-14	Mar-15	Mar-16	Mar-17	Mar-18	Mar-19	Mar-20
Current	4,982,537.96	3,238,695.15	3,581,110.53	3,374,240.85	3,412,260.61	3,072,676.29	2,843,626.88	2,509,687.50	2,086,739.15	1,910,589.58
1-30 Days	434,754.70	1,440,878.64	638,826.83	550,083.69	281,435.45	199,771.93	120,514.22	130,195.38	171,970.49	118,347.59
31-60 Days	225,464.49	539,051.89	337,245.75	169,612.50	32,513.15	54,135.12	48,381.83	50,520.91	73,113.29	33,783.20
61-90 Days	61,174.40	154,460.92	137,218.89	24,415.38	-	-	37,936.28	-	-	-
91-120 Days	-	43,982.02	-	26,478.89	-	-	-	-	-	-
121-150 Days	-	12,589.75	-	-	-	-	-	27,599.40	-	-
151-180 Days	-	-	-	-	-	18,368.89	-	-	-	-
181+ Days	-	-	-	-	11,945.32	11,945.32	-	-	27,599.40	27,599.40

Delinquency Status (% of Current Balance)

Current Portfolio Balance	5,703,931.55	5,429,658.37	4,694,402.00	4,144,831.31	3,738,154.53	3,356,897.55	3,050,459.21	2,718,003.19	2,359,422.33	2,090,319.77
	Mar-11	Mar-12	Mar-13	Mar-14	Mar-15	Mar-16	Mar-17	Mar-18	Mar-19	Mar-20
Current	87.35%	59.65%	76.28%	81.41%	91.28%	91.53%	93.22%	92.34%	88.44%	91.40%
1-30 Days	7.62%	26.54%	13.61%	13.27%	7.53%	5.95%	3.95%	4.79%	7.29%	5.66%
31-60 Days	3.95%	9.93%	7.18%	4.09%	0.87%	1.61%	1.59%	1.86%	3.10%	1.62%
61-90 Days	1.07%	2.84%	2.92%	0.59%	0.00%	0.00%	1.24%	0.00%	0.00%	0.00%
91-120 Days	0.00%	0.81%	0.00%	0.64%	0.00%	0.00%	0.00%	0.00%	0.00%	0.00%
121-150 Days	0.00%	0.23%	0.00%	0.00%	0.00%	0.00%	0.00%	1.02%	0.00%	0.00%
151-180 Days	0.00%	0.00%	0.00%	0.00%	0.00%	0.55%	0.00%	0.00%	0.00%	0.00%
181+ Days	0.00%	0.00%	0.00%	0.00%	0.32%	0.36%	0.00%	0.00%	1.17%	1.32%
Current - 90 Days	100.00%	98.96%	100.00%	99.36%	99.68%	99.10%	100.00%	98.98%	98.83%	98.68%
91-180 Days	0.00%	1.04%	0.00%	0.64%	0.00%	0.55%	0.00%	1.02%	0.00%	0.00%



Mortgages - La Hipotecaria Panama Migration Analysis (2002 Vintage)

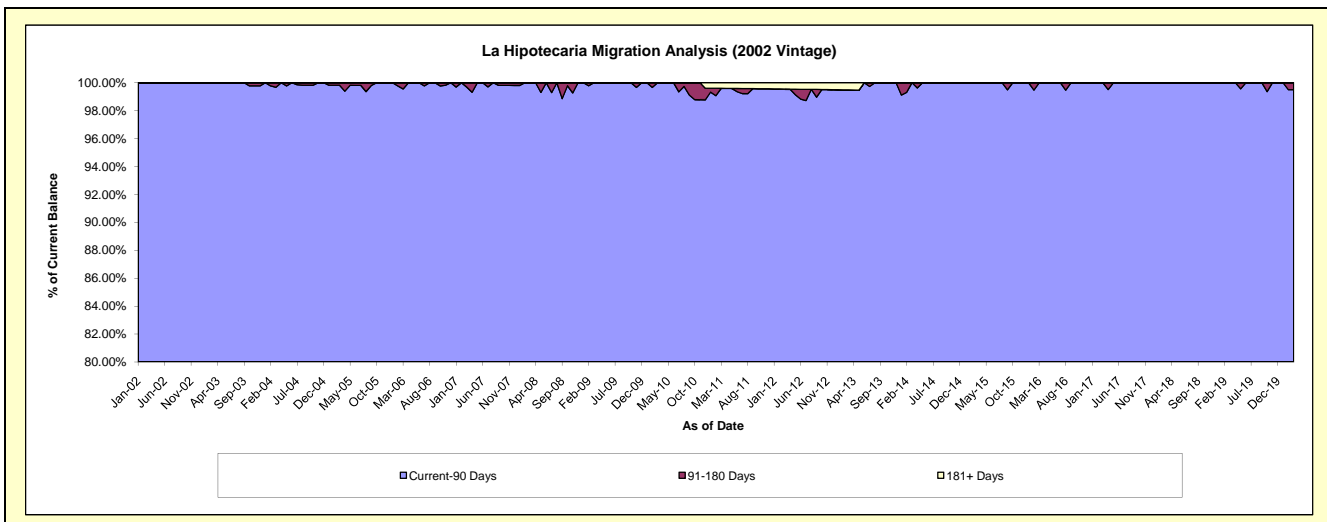
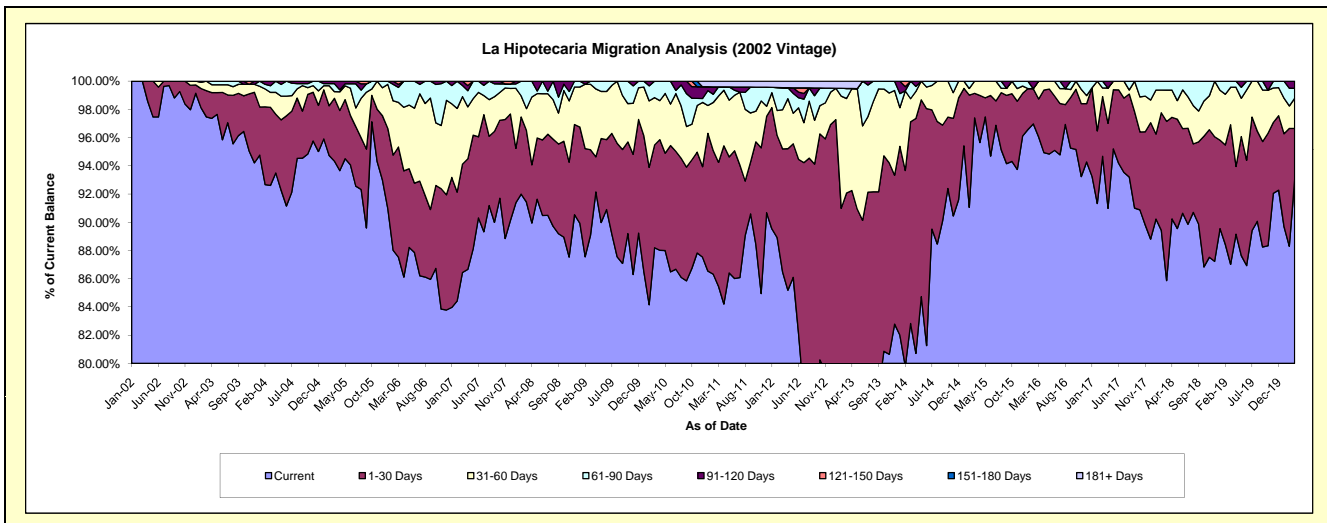
Delinquency Status (\$ of Current Balance)

Data Cutoff: 3/31/2020

Current Portfolio Balance	5,519,747.21	4,858,217.28	4,295,848.34	3,612,447.98	3,265,217.84	2,975,299.04	2,640,509.02	2,455,186.56	2,208,280.84	1,964,697.82
	Mar-11	Mar-12	Mar-13	Mar-14	Mar-15	Mar-16	Mar-17	Mar-18	Mar-19	Mar-20
Current	4,716,567.93	4,201,240.05	2,996,106.71	2,991,996.46	3,180,315.36	2,858,040.95	2,499,831.06	2,108,337.81	1,921,645.60	1,828,040.97
1-30 Days	485,582.94	423,765.57	959,391.10	516,557.49	56,778.81	79,758.20	111,860.91	276,825.21	218,299.61	70,915.13
31-60 Days	259,632.24	134,637.93	287,589.98	59,032.48	28,123.67	37,499.89	15,962.65	54,411.72	58,875.28	41,860.55
61-90 Days	35,804.09	76,413.72	30,600.54	44,861.55	-	-	12,854.40	15,611.82	9,460.35	14,016.54
91-120 Days	-	-	-	-	-	-	-	-	-	9,864.63
121-150 Days	-	-	-	-	-	-	-	-	-	-
151-180 Days	-	-	-	-	-	-	-	-	-	-
181+ Days	22,160.01	22,160.01	22,160.01	-	-	-	-	-	-	-

Delinquency Status (% of Current Balance)

Current Portfolio Balance	5,519,747.21	4,858,217.28	4,295,848.34	3,612,447.98	3,265,217.84	2,975,299.04	2,640,509.02	2,455,186.56	2,208,280.84	1,964,697.82
	Mar-11	Mar-12	Mar-13	Mar-14	Mar-15	Mar-16	Mar-17	Mar-18	Mar-19	Mar-20
Current	85.45%	86.48%	69.74%	82.82%	97.40%	96.06%	94.67%	85.87%	87.02%	93.04%
1-30 Days	8.80%	8.72%	22.33%	14.30%	1.74%	2.68%	4.24%	11.28%	9.89%	3.61%
31-60 Days	4.70%	2.77%	6.69%	1.63%	0.86%	1.26%	0.60%	2.22%	2.67%	2.13%
61-90 Days	0.65%	1.57%	0.71%	1.24%	0.00%	0.00%	0.49%	0.64%	0.43%	0.71%
91-120 Days	0.00%	0.00%	0.00%	0.00%	0.00%	0.00%	0.00%	0.00%	0.00%	0.50%
121-150 Days	0.00%	0.00%	0.00%	0.00%	0.00%	0.00%	0.00%	0.00%	0.00%	0.00%
151-180 Days	0.00%	0.00%	0.00%	0.00%	0.00%	0.00%	0.00%	0.00%	0.00%	0.00%
181+ Days	0.40%	0.46%	0.52%	0.00%	0.00%	0.00%	0.00%	0.00%	0.00%	0.00%
Current - 90 Days	99.60%	99.54%	99.48%	100.00%	100.00%	100.00%	100.00%	100.00%	100.00%	99.50%
91-180 Days	0.00%	0.00%	0.00%	0.00%	0.00%	0.00%	0.00%	0.00%	0.00%	0.50%



Mortgages - La Hipotecaria Panama Migration Analysis (2003 Vintage)

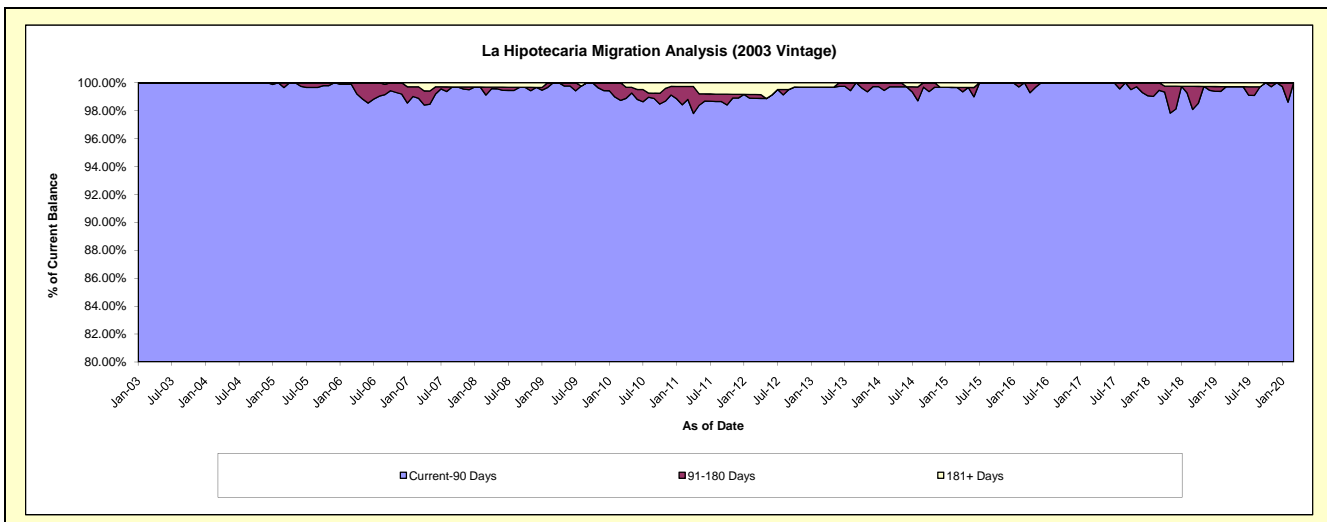
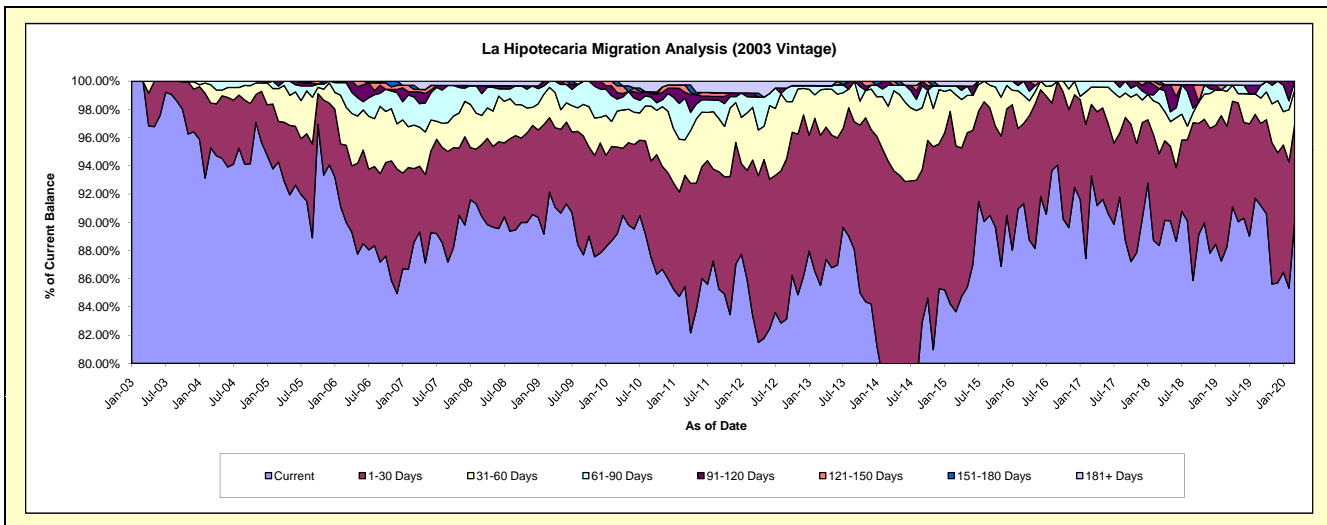
Delinquency Status (\$ of Current Balance)

Data Cutoff: 3/31/2020

Current Portfolio Balance	8,338,845.16	7,773,909.70	7,061,048.88	6,222,793.74	5,606,845.41	4,941,473.35	4,397,722.50	3,951,012.87	3,400,233.83	3,069,582.09
	Mar-11	Mar-12	Mar-13	Mar-14	Mar-15	Mar-16	Mar-17	Mar-18	Mar-19	Mar-20
Current	7,125,326.91	6,482,570.17	6,039,891.25	4,745,490.35	4,690,959.08	4,512,390.83	4,103,037.89	3,490,971.32	3,001,387.02	2,764,876.23
1-30 Days	656,818.97	857,194.97	749,344.07	1,124,561.98	658,774.46	281,651.01	222,331.07	257,080.69	290,168.67	209,850.72
31-60 Days	210,265.77	290,409.29	228,034.20	241,880.19	202,981.89	97,535.23	54,065.20	140,525.76	84,126.46	75,326.34
61-90 Days	246,518.45	56,965.71	21,241.15	92,949.82	35,368.06	49,896.28	18,288.34	41,030.97	15,046.21	19,528.80
91-120 Days	34,067.81	20,960.88	-	17,911.40	-	-	-	-	-	-
121-150 Days	43,270.47	-	-	-	-	-	-	11,898.66	-	-
151-180 Days	-	-	-	-	-	-	-	9,505.47	-	-
181+ Days	22,576.78	65,808.68	22,538.21	-	18,761.92	-	-	-	9,505.47	-

Delinquency Status (% of Current Balance)

Current Portfolio Balance	8,338,845.16	7,773,909.70	7,061,048.88	6,222,793.74	5,606,845.41	4,941,473.35	4,397,722.50	3,951,012.87	3,400,233.83	3,069,582.09
	Mar-11	Mar-12	Mar-13	Mar-14	Mar-15	Mar-16	Mar-17	Mar-18	Mar-19	Mar-20
Current	85.45%	83.39%	85.54%	76.26%	83.66%	91.32%	93.30%	88.36%	88.27%	90.07%
1-30 Days	7.88%	11.03%	10.61%	18.07%	11.75%	5.70%	5.06%	6.51%	8.53%	6.84%
31-60 Days	2.52%	3.74%	3.23%	3.89%	3.62%	1.97%	1.23%	3.56%	2.47%	2.45%
61-90 Days	2.96%	0.73%	0.30%	1.49%	0.63%	1.01%	0.42%	1.04%	0.44%	0.64%
91-120 Days	0.41%	0.27%	0.00%	0.29%	0.00%	0.00%	0.00%	0.00%	0.00%	0.00%
121-150 Days	0.52%	0.00%	0.00%	0.00%	0.00%	0.00%	0.00%	0.30%	0.00%	0.00%
151-180 Days	0.00%	0.00%	0.00%	0.00%	0.00%	0.00%	0.00%	0.24%	0.00%	0.00%
181+ Days	0.27%	0.85%	0.32%	0.00%	0.33%	0.00%	0.00%	0.00%	0.28%	0.00%
Current - 90 Days	98.80%	98.88%	99.68%	99.71%	99.67%	100.00%	100.00%	99.46%	99.72%	100.00%
91-180 Days	0.93%	0.27%	0.00%	0.29%	0.00%	0.00%	0.00%	0.54%	0.00%	0.00%



Mortgages - La Hipotecaria Panama Migration Analysis (2004 Vintage)

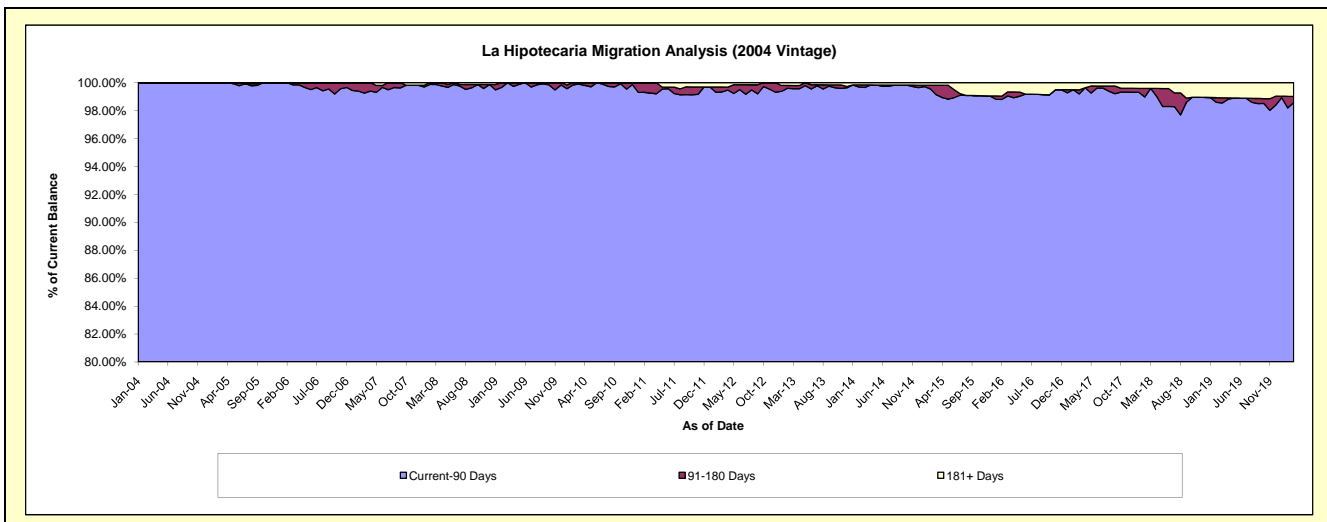
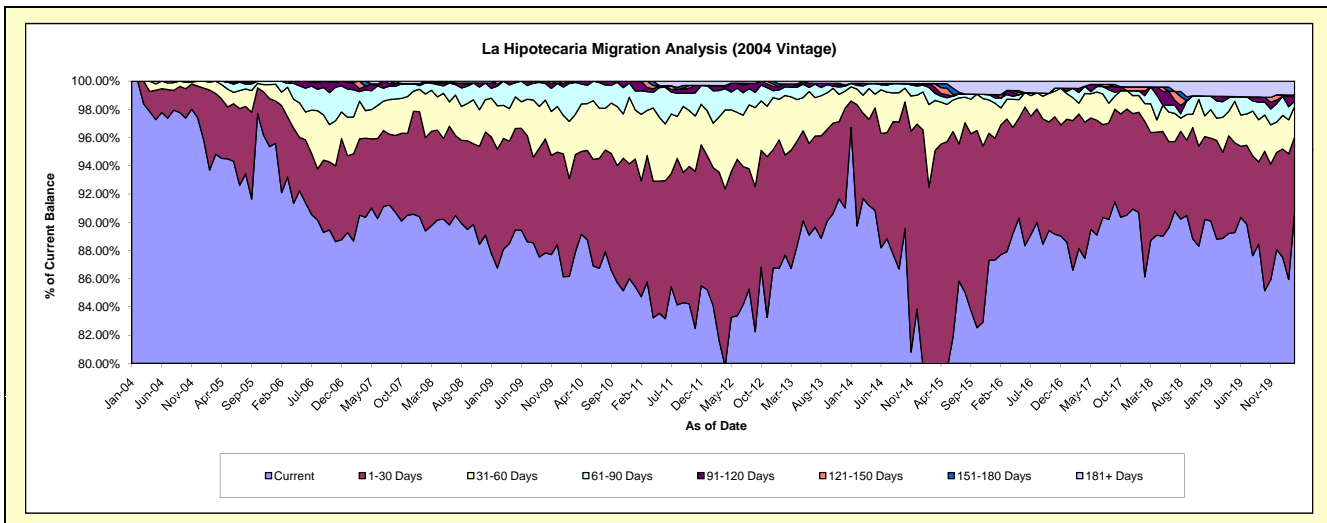
Delinquency Status (\$ of Current Balance)

Data Cutoff: 3/31/2020

Current Portfolio Balance	15,250,299.27	14,088,534.55	12,737,871.10	11,440,030.79	10,182,833.72	8,958,160.51	7,869,595.28	7,157,643.16	6,490,490.31	5,961,842.06
	Mar-11	Mar-12	Mar-13	Mar-14	Mar-15	Mar-16	Mar-17	Mar-18	Mar-19	Mar-20
Current	13,080,546.67	11,495,925.65	11,047,042.92	10,488,762.29	8,010,751.73	7,875,727.04	6,937,181.96	6,351,062.19	5,767,765.73	5,413,037.46
1-30 Days	1,365,596.66	1,683,323.60	1,068,269.77	692,806.72	1,671,724.90	842,254.27	749,517.81	545,593.33	395,454.23	313,853.42
31-60 Days	488,773.37	553,105.40	480,566.02	145,010.97	360,754.98	125,469.43	60,358.83	145,933.59	161,543.72	128,793.74
61-90 Days	203,012.11	262,450.57	87,469.15	74,920.57	51,808.37	29,903.36	59,442.86	85,797.20	71,371.09	21,111.71
91-120 Days	43,496.93	50,081.54	29,462.79	3,298.74	42,283.00	26,049.70	22,740.76	-	24,373.54	20,515.41
121-150 Days	68,873.53	-	-	17,133.14	27,412.38	-	-	-	-	-
151-180 Days	-	-	-	-	-	-	-	-	-	6,003.73
181+ Days	-	43,647.79	25,060.45	18,098.36	18,098.36	58,756.71	40,353.06	29,256.85	69,982.00	58,526.59

Delinquency Status (% of Current Balance)

Current Portfolio Balance	15,250,299.27	14,088,534.55	12,737,871.10	11,440,030.79	10,182,833.72	8,958,160.51	7,869,595.28	7,157,643.16	6,490,490.31	5,961,842.06
	Mar-11	Mar-12	Mar-13	Mar-14	Mar-15	Mar-16	Mar-17	Mar-18	Mar-19	Mar-20
Current	85.77%	81.60%	86.73%	91.68%	78.67%	87.92%	88.15%	88.73%	88.86%	90.79%
1-30 Days	8.95%	11.95%	8.39%	6.06%	16.42%	9.40%	9.52%	7.62%	6.09%	5.26%
31-60 Days	3.21%	3.93%	3.77%	1.27%	3.54%	1.40%	0.77%	2.04%	2.49%	2.16%
61-90 Days	1.33%	1.86%	0.69%	0.65%	0.51%	0.33%	0.76%	1.20%	1.10%	0.35%
91-120 Days	0.29%	0.36%	0.23%	0.03%	0.42%	0.29%	0.29%	0.00%	0.38%	0.34%
121-150 Days	0.45%	0.00%	0.00%	0.15%	0.27%	0.00%	0.00%	0.00%	0.00%	0.00%
151-180 Days	0.00%	0.00%	0.00%	0.00%	0.00%	0.00%	0.00%	0.00%	0.00%	0.10%
181+ Days	0.00%	0.31%	0.20%	0.16%	0.18%	0.66%	0.51%	0.41%	1.08%	0.98%
Current - 90 Days	99.26%	99.33%	99.57%	99.66%	99.14%	99.05%	99.20%	99.59%	98.55%	98.57%
91-180 Days	0.74%	0.36%	0.23%	0.18%	0.68%	0.29%	0.29%	0.00%	0.38%	0.44%



Mortgages - La Hipotecaria Panama Migration Analysis (2005 Vintage)

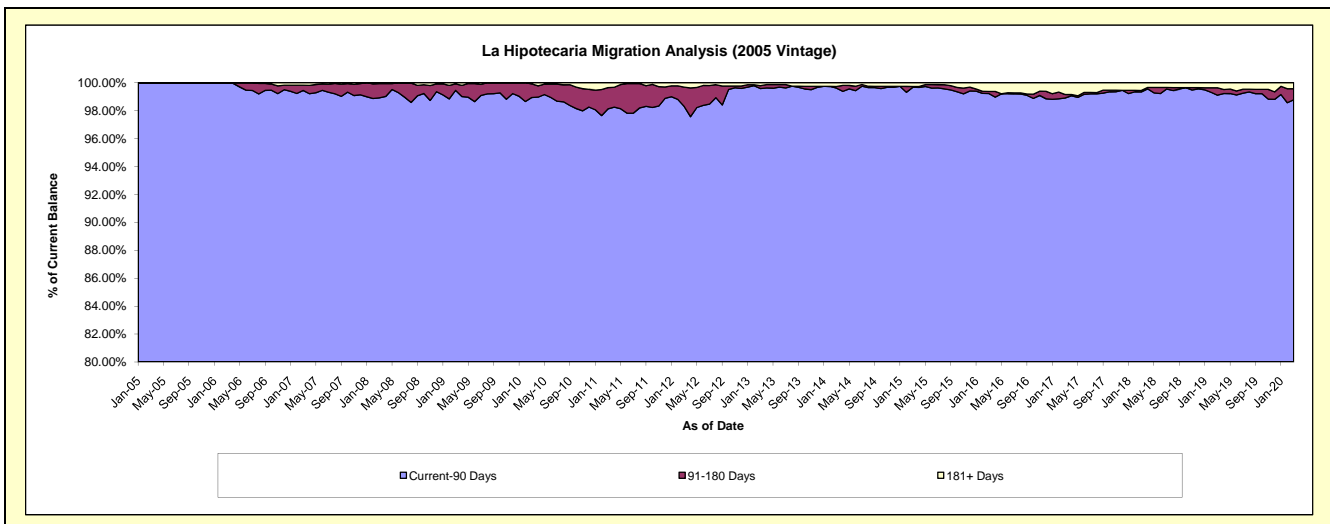
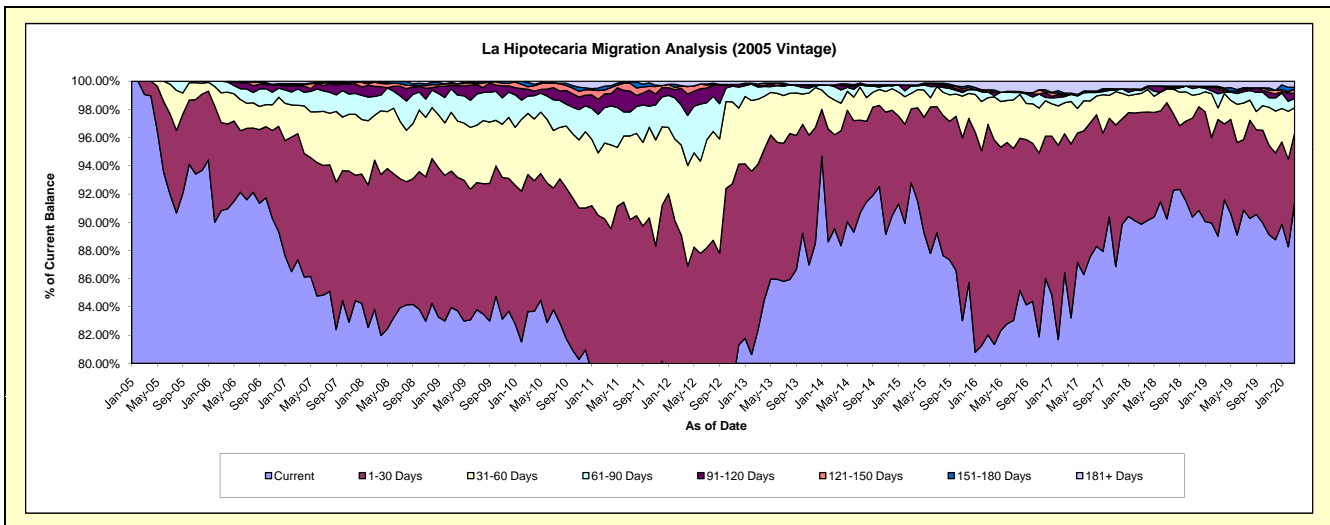
Delinquency Status (\$ of Current Balance)

Data Cutoff: 3/31/2020

Current Portfolio Balance	28,554,307.13	25,947,461.98	23,709,964.42	21,530,684.72	19,717,562.20	17,170,010.87	15,340,405.55	13,908,933.35	12,741,940.31	11,571,190.72
	Mar-11	Mar-12	Mar-13	Mar-14	Mar-15	Mar-16	Mar-17	Mar-18	Mar-19	Mar-20
Current	22,189,426.39	19,156,725.46	19,525,758.33	19,280,474.22	18,297,929.01	14,083,900.84	13,258,254.22	12,499,073.39	11,342,230.31	10,579,560.60
1-30 Days	3,580,123.95	3,967,004.66	2,788,003.76	1,432,761.74	1,034,491.18	2,560,461.42	1,510,174.17	1,103,335.53	1,053,145.76	569,936.63
31-60 Days	1,533,472.60	1,647,298.02	1,092,557.12	529,119.56	215,487.27	324,950.57	337,738.09	185,219.99	105,692.62	203,670.41
61-90 Days	716,616.83	737,098.30	205,448.11	204,871.00	104,427.32	67,694.96	65,980.08	29,401.59	127,130.55	76,634.81
91-120 Days	275,838.41	307,110.63	17,860.42	26,341.27	-	-	10,421.67	14,370.53	42,014.02	42,632.77
121-150 Days	80,464.71	39,392.20	30,004.57	-	12,794.48	26,341.27	12,860.71	-	14,768.89	32,503.14
151-180 Days	77,864.21	10,394.60	-	-	-	-	15,728.64	-	10,596.38	16,075.31
181+ Days	100,500.03	82,438.11	50,332.11	57,116.93	52,432.94	106,661.81	129,247.97	77,532.32	46,361.78	50,177.05

Delinquency Status (% of Current Balance)

Current Portfolio Balance	28,554,307.13	25,947,461.98	23,709,964.42	21,530,684.72	19,717,562.20	17,170,010.87	15,340,405.55	13,908,933.35	12,741,940.31	11,571,190.72
	Mar-11	Mar-12	Mar-13	Mar-14	Mar-15	Mar-16	Mar-17	Mar-18	Mar-19	Mar-20
Current	77.71%	73.83%	82.35%	89.55%	92.80%	82.03%	86.43%	89.86%	89.01%	91.43%
1-30 Days	12.54%	15.29%	11.76%	6.65%	5.25%	14.91%	9.84%	7.93%	8.27%	4.93%
31-60 Days	5.37%	6.35%	4.61%	2.46%	1.09%	2.20%	2.20%	1.33%	0.83%	1.76%
61-90 Days	2.51%	2.84%	0.87%	0.95%	0.53%	0.39%	0.43%	0.21%	1.00%	0.66%
91-120 Days	0.97%	1.18%	0.08%	0.12%	0.00%	0.00%	0.07%	0.10%	0.33%	0.37%
121-150 Days	0.28%	0.15%	0.13%	0.00%	0.06%	0.15%	0.08%	0.00%	0.12%	0.28%
151-180 Days	0.27%	0.04%	0.00%	0.00%	0.00%	0.00%	0.10%	0.00%	0.08%	0.14%
181+ Days	0.35%	0.32%	0.21%	0.27%	0.27%	0.62%	0.84%	0.56%	0.36%	0.43%
Current - 90 Days	98.13%	98.31%	99.59%	99.61%	99.67%	99.23%	98.90%	99.34%	99.11%	98.78%
91-180 Days	1.52%	1.38%	0.20%	0.12%	0.06%	0.15%	0.25%	0.10%	0.53%	0.79%



Mortgages - La Hipotecaria Panama Migration Analysis (2006 Vintage)

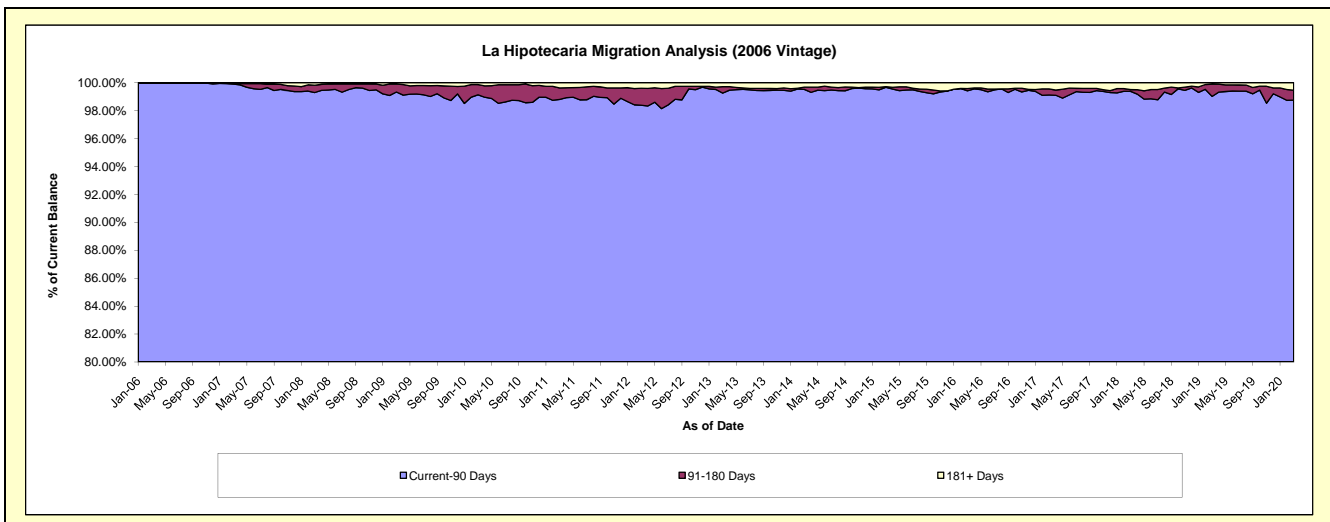
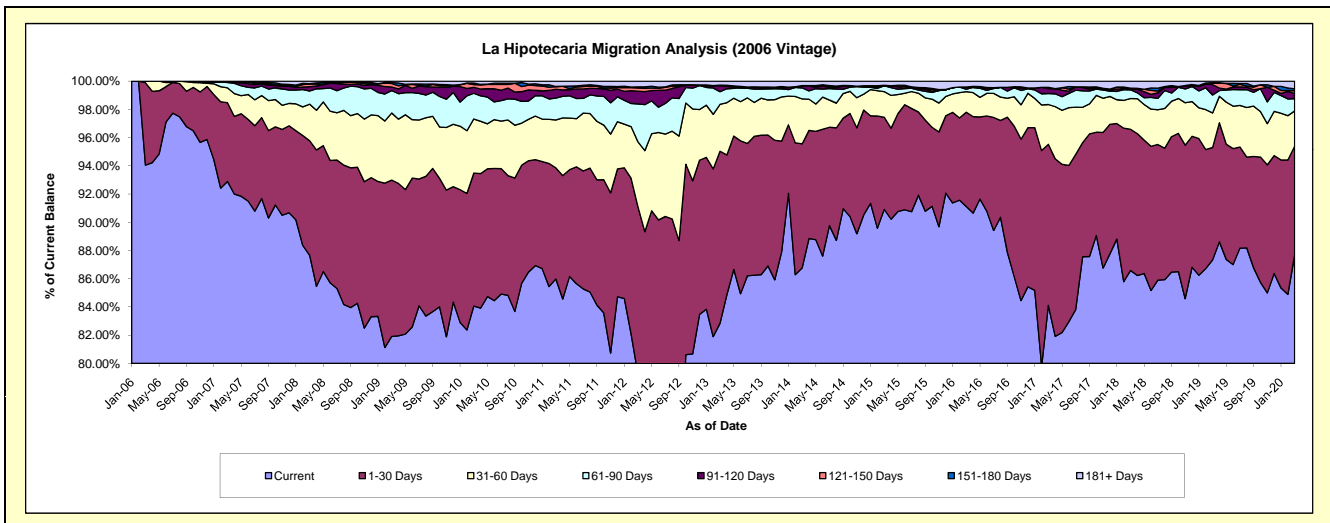
Delinquency Status (\$ of Current Balance)

Data Cutoff: 3/31/2020

Current Portfolio Balance	49,656,727.13	46,164,457.91	42,131,628.87	37,756,390.90	34,447,728.63	30,588,407.82	27,093,079.31	24,714,055.15	22,322,598.29	20,667,532.45
	Mar-11	Mar-12	Mar-13	Mar-14	Mar-15	Mar-16	Mar-17	Mar-18	Mar-19	Mar-20
Current	42,697,562.80	36,582,009.74	34,907,585.87	32,757,191.66	31,317,442.43	27,871,143.20	22,788,888.18	21,398,783.17	19,494,772.96	18,124,899.61
1-30 Days	3,906,796.15	5,476,399.70	5,130,459.95	3,322,450.03	2,248,162.80	2,044,472.41	3,091,070.98	2,473,152.27	1,778,574.32	1,591,398.36
31-60 Days	1,689,233.88	2,120,680.41	1,401,881.65	1,202,102.91	626,526.41	446,149.25	764,395.66	538,804.93	546,852.28	514,706.35
61-90 Days	771,151.87	1,241,908.21	377,364.85	294,453.18	143,134.12	50,655.10	211,749.12	151,387.83	283,717.98	179,757.36
91-120 Days	306,342.64	417,780.42	175,545.86	62,061.13	-	48,070.76	93,796.57	12,852.00	163,096.24	76,260.29
121-150 Days	91,256.87	102,330.99	19,672.26	-	13,772.67	-	23,738.58	17,080.07	20,777.70	41,390.80
151-180 Days	8,408.93	39,150.53	-	-	-	-	-	-	11,695.84	28,556.41
181+ Days	185,973.99	184,197.91	119,118.43	118,131.99	98,690.20	127,917.10	119,440.22	121,994.88	23,110.97	110,563.27

Delinquency Status (% of Current Balance)

Current Portfolio Balance	49,656,727.13	46,164,457.91	42,131,628.87	37,756,390.90	34,447,728.63	30,588,407.82	27,093,079.31	24,714,055.15	22,322,598.29	20,667,532.45
	Mar-11	Mar-12	Mar-13	Mar-14	Mar-15	Mar-16	Mar-17	Mar-18	Mar-19	Mar-20
Current	85.99%	79.24%	82.85%	86.76%	90.91%	91.12%	84.11%	86.59%	87.33%	87.70%
1-30 Days	7.87%	11.86%	12.18%	8.80%	6.53%	6.68%	11.41%	10.01%	7.97%	7.70%
31-60 Days	3.40%	4.59%	3.33%	3.18%	1.82%	1.46%	2.82%	2.18%	2.45%	2.49%
61-90 Days	1.55%	2.69%	0.90%	0.78%	0.42%	0.17%	0.78%	0.61%	1.27%	0.87%
91-120 Days	0.62%	0.90%	0.42%	0.16%	0.00%	0.16%	0.35%	0.05%	0.73%	0.37%
121-150 Days	0.18%	0.22%	0.05%	0.00%	0.04%	0.00%	0.09%	0.07%	0.09%	0.20%
151-180 Days	0.02%	0.08%	0.00%	0.00%	0.00%	0.00%	0.00%	0.00%	0.05%	0.14%
181+ Days	0.37%	0.40%	0.28%	0.31%	0.29%	0.42%	0.44%	0.49%	0.10%	0.53%
Current - 90 Days	98.81%	98.39%	99.25%	99.52%	99.67%	99.42%	99.13%	99.39%	99.02%	98.76%
91-180 Days	0.82%	1.21%	0.46%	0.16%	0.04%	0.16%	0.43%	0.12%	0.88%	0.71%



Mortgages - La Hipotecaria Panama Migration Analysis (2007 Vintage)

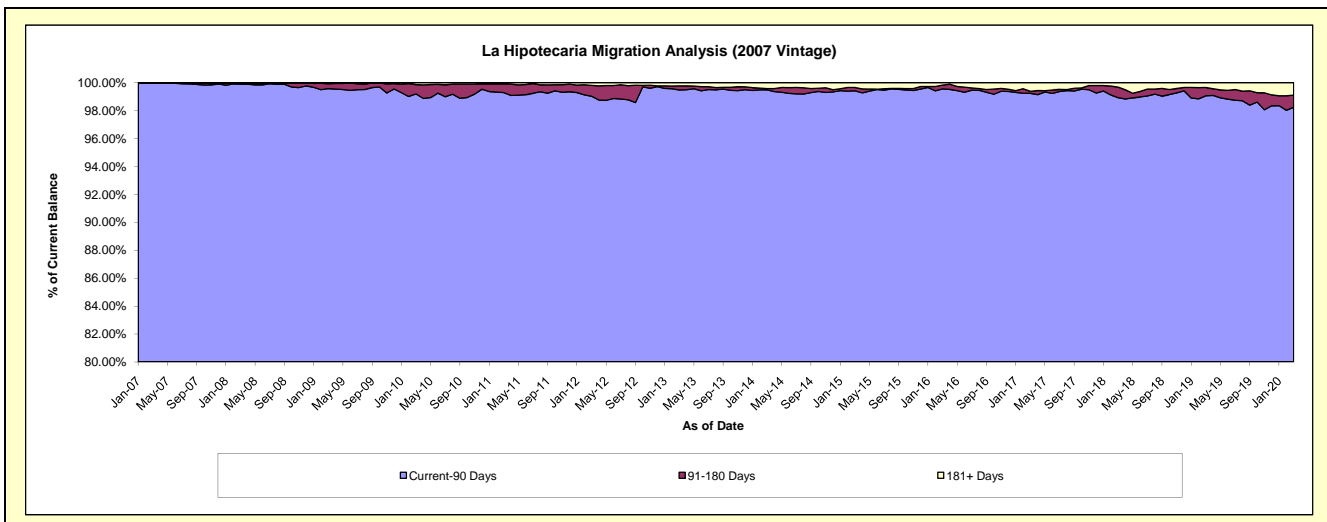
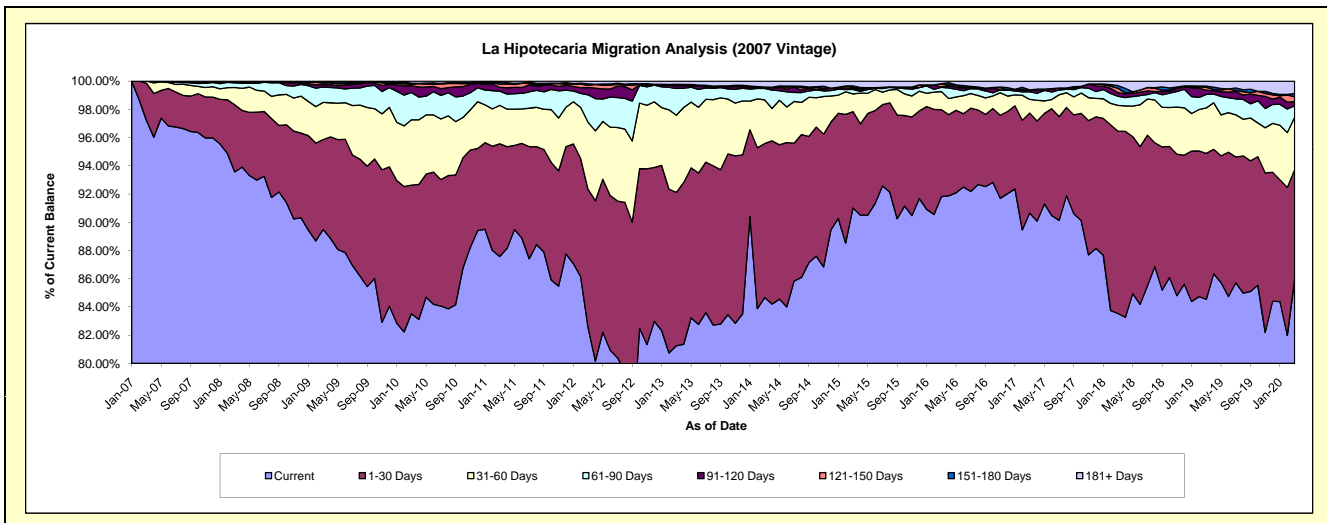
Delinquency Status (\$ of Current Balance)

Data Cutoff: 3/31/2020

Current Portfolio Balance	60,640,090.26	56,279,935.22	51,732,899.15	47,065,658.82	42,413,431.72	38,475,969.86	35,013,425.22	31,961,260.47	28,610,359.71	26,281,587.26
	Mar-11	Mar-12	Mar-13	Mar-14	Mar-15	Mar-16	Mar-17	Mar-18	Mar-19	Mar-20
Current	53,105,355.33	46,464,862.69	42,033,759.15	39,847,027.88	38,602,359.18	35,328,610.85	31,742,010.08	26,700,373.31	24,189,064.63	22,599,321.81
1-30 Days	4,841,845.48	5,501,267.05	5,621,168.36	5,138,738.54	2,894,913.83	2,369,177.57	2,480,507.45	4,128,915.81	2,956,455.67	2,034,960.61
31-60 Days	1,656,103.44	2,673,976.72	2,830,637.87	1,455,582.89	534,748.31	494,684.38	339,719.82	584,065.78	923,137.31	975,140.33
61-90 Days	607,146.50	1,096,247.60	977,893.21	382,185.13	133,847.98	113,960.28	186,360.46	205,018.92	274,449.39	213,148.45
91-120 Days	163,177.88	291,133.97	98,323.62	20,433.60	29,184.93	14,596.44	45,681.75	83,467.74	85,346.45	77,065.02
121-150 Days	135,851.70	80,531.71	48,708.70	-	27,865.85	78,804.29	-	96,988.08	56,420.86	90,711.69
151-180 Days	79,502.63	67,178.82	4,683.82	23,869.53	46,179.75	10,194.07	3,763.60	61,079.56	27,724.76	59,051.79
181+ Days	51,107.30	104,736.66	117,724.42	197,821.25	144,331.89	65,941.98	215,382.06	101,351.27	97,760.64	232,187.56

Delinquency Status (% of Current Balance)

Current Portfolio Balance	60,640,090.26	56,279,935.22	51,732,899.15	47,065,658.82	42,413,431.72	38,475,969.86	35,013,425.22	31,961,260.47	28,610,359.71	26,281,587.26
	Mar-11	Mar-12	Mar-13	Mar-14	Mar-15	Mar-16	Mar-17	Mar-18	Mar-19	Mar-20
Current	87.57%	82.56%	81.25%	84.66%	91.01%	91.82%	90.66%	83.54%	84.55%	85.99%
1-30 Days	7.98%	9.77%	10.87%	10.92%	6.83%	6.16%	7.08%	12.92%	10.33%	7.74%
31-60 Days	2.73%	4.75%	5.47%	3.09%	1.26%	1.29%	0.97%	1.83%	3.23%	3.71%
61-90 Days	1.00%	1.95%	1.89%	0.81%	0.32%	0.30%	0.53%	0.64%	0.96%	0.81%
91-120 Days	0.27%	0.52%	0.19%	0.04%	0.07%	0.04%	0.13%	0.26%	0.30%	0.29%
121-150 Days	0.22%	0.14%	0.09%	0.00%	0.07%	0.20%	0.00%	0.30%	0.20%	0.35%
151-180 Days	0.13%	0.12%	0.01%	0.05%	0.11%	0.03%	0.01%	0.19%	0.10%	0.22%
181+ Days	0.08%	0.19%	0.23%	0.42%	0.34%	0.17%	0.62%	0.32%	0.34%	0.88%
Current - 90 Days	99.29%	99.03%	99.48%	99.49%	99.42%	99.56%	99.24%	98.93%	99.07%	98.25%
91-180 Days	0.62%	0.78%	0.29%	0.09%	0.24%	0.27%	0.14%	0.76%	0.59%	0.86%



Mortgages - La Hipotecaria Panama Migration Analysis (2008 Vintage)

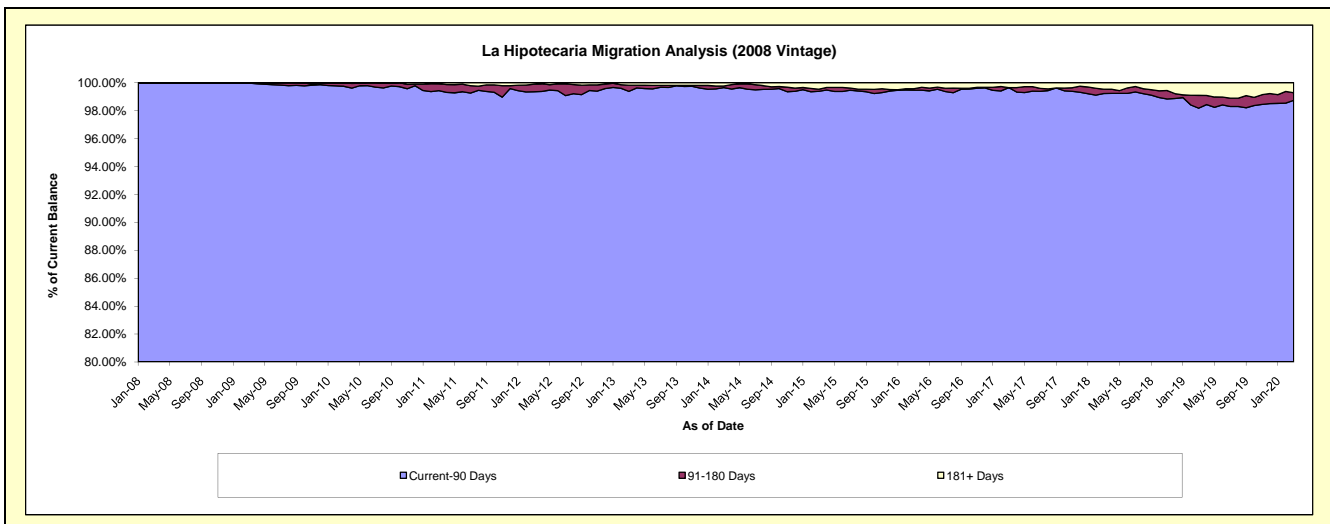
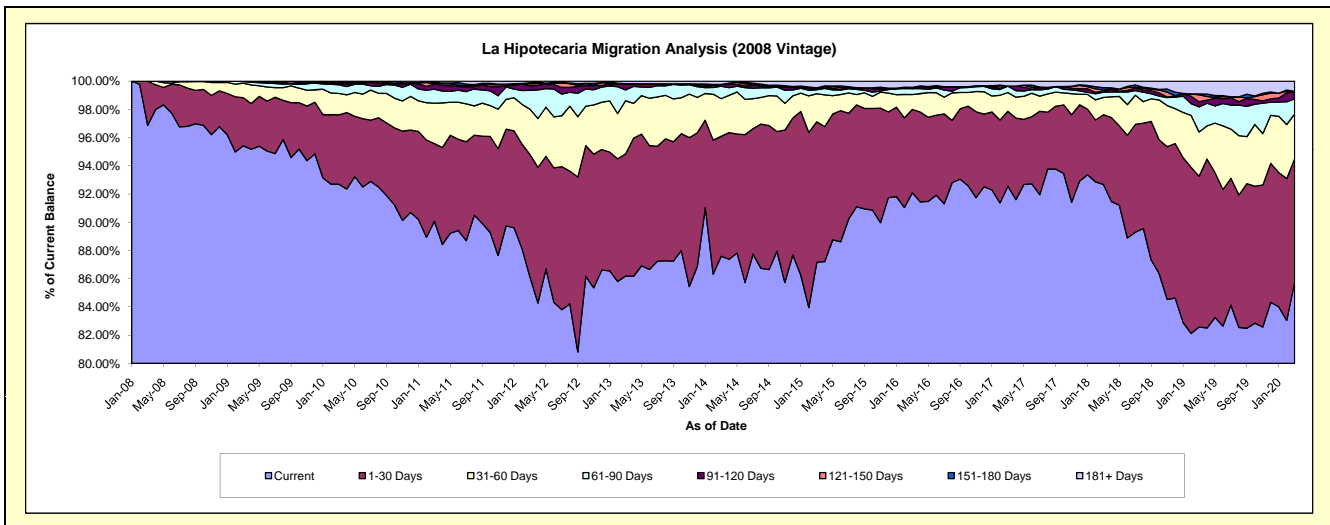
Delinquency Status (\$ of Current Balance)

Data Cutoff: 3/31/2020

Current Portfolio Balance	58,722,230.13	54,971,422.94	51,341,166.16	46,374,019.75	41,790,191.88	37,240,318.08	33,661,827.14	30,792,349.92	27,627,316.74	24,975,374.84
	Mar-11	Mar-12	Mar-13	Mar-14	Mar-15	Mar-16	Mar-17	Mar-18	Mar-19	Mar-20
Current	52,895,874.48	47,343,703.92	44,250,764.15	40,621,850.87	36,428,791.65	34,297,212.26	31,157,026.24	28,537,731.92	22,813,898.86	21,418,956.43
1-30 Days	3,231,571.21	4,766,674.65	4,440,057.44	3,941,339.99	4,156,318.95	2,198,363.30	1,786,204.67	1,522,379.77	2,952,813.33	2,185,550.19
31-60 Days	1,678,148.44	1,769,414.22	1,937,756.16	1,237,193.18	830,849.81	392,637.35	447,427.50	378,100.47	865,316.47	790,119.07
61-90 Days	581,555.03	736,551.84	394,171.87	410,498.34	119,344.98	155,200.02	153,695.28	114,568.53	492,082.88	266,032.53
91-120 Days	212,460.58	169,567.49	211,757.44	53,528.80	15,262.37	-	625.68	19,652.71	99,254.92	121,318.30
121-150 Days	16,783.80	82,084.35	3,959.82	-	43,699.33	35,598.03	-	27,006.03	136,658.49	13,794.23
151-180 Days	59,048.51	40,790.23	10,266.92	-	-	-	-	49,552.53	17,030.06	-
181+ Days	46,788.08	62,636.24	92,432.36	109,608.57	195,924.79	161,307.12	116,847.77	143,357.96	250,261.73	179,604.09

Delinquency Status (% of Current Balance)

Current Portfolio Balance	58,722,230.13	54,971,422.94	51,341,166.16	46,374,019.75	41,790,191.88	37,240,318.08	33,661,827.14	30,792,349.92	27,627,316.74	24,975,374.84
	Mar-11	Mar-12	Mar-13	Mar-14	Mar-15	Mar-16	Mar-17	Mar-18	Mar-19	Mar-20
Current	90.08%	86.12%	86.19%	87.60%	87.17%	92.10%	92.56%	92.68%	82.58%	85.76%
1-30 Days	5.50%	8.67%	8.65%	8.50%	9.95%	5.90%	5.31%	4.94%	10.69%	8.75%
31-60 Days	2.86%	3.22%	3.77%	2.67%	1.99%	1.05%	1.33%	1.23%	3.13%	3.16%
61-90 Days	0.99%	1.34%	0.77%	0.89%	0.29%	0.42%	0.46%	0.37%	1.78%	1.07%
91-120 Days	0.36%	0.31%	0.41%	0.12%	0.04%	0.00%	0.00%	0.06%	0.36%	0.49%
121-150 Days	0.03%	0.15%	0.01%	0.00%	0.10%	0.00%	0.00%	0.09%	0.49%	0.06%
151-180 Days	0.10%	0.07%	0.02%	0.00%	0.00%	0.00%	0.00%	0.16%	0.06%	0.00%
181+ Days	0.08%	0.11%	0.18%	0.24%	0.47%	0.43%	0.35%	0.47%	0.91%	0.72%
Current - 90 Days	99.43%	99.35%	99.38%	99.65%	99.39%	99.47%	99.65%	99.22%	98.18%	98.74%
91-180 Days	0.49%	0.53%	0.44%	0.12%	0.14%	0.10%	0.00%	0.31%	0.92%	0.54%



Mortgages - La Hipotecaria Panama Migration Analysis (2009 Vintage)

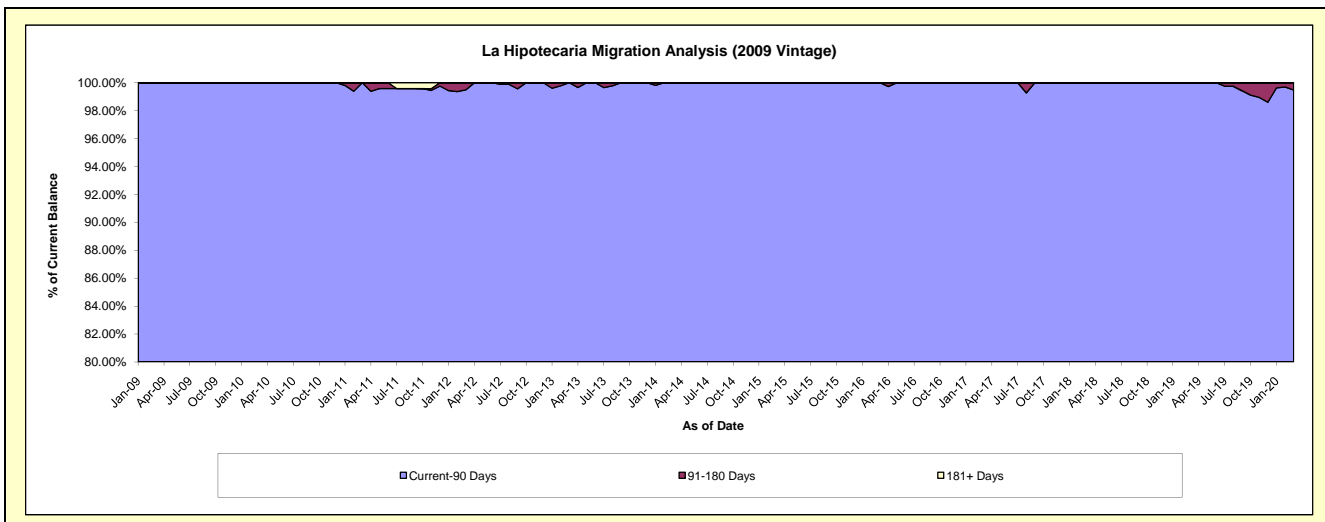
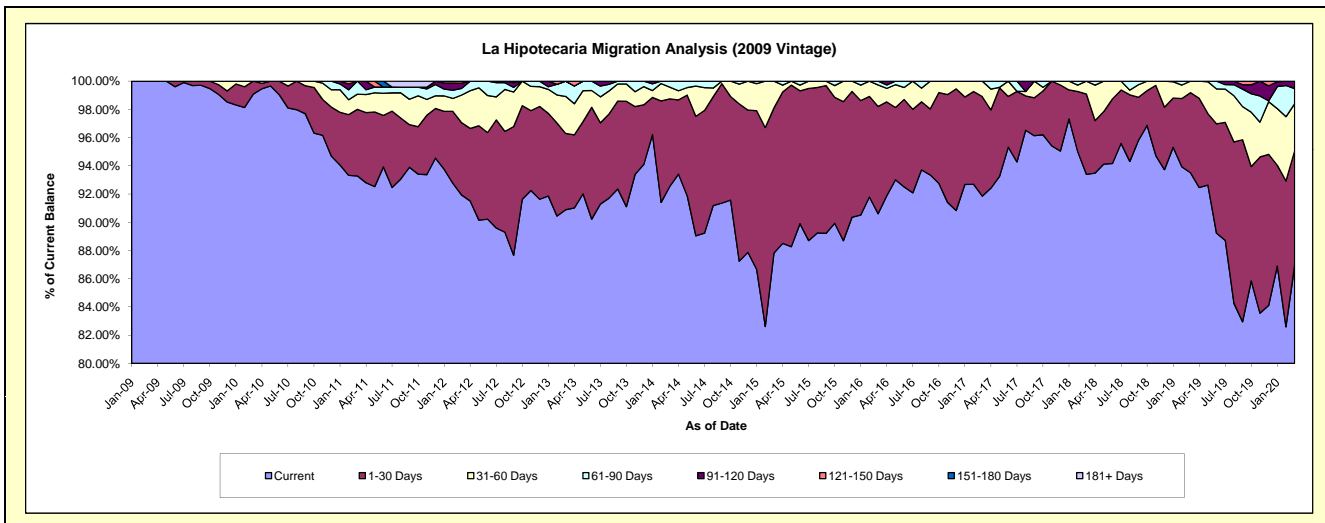
Delinquency Status (\$ of Current Balance)

Data Cutoff: 3/31/2020

Current Portfolio Balance	12,193,058.95	11,661,761.84	10,698,072.70	9,733,867.35	8,871,234.32	7,779,300.36	7,075,418.40	6,382,293.87	5,911,231.51	5,477,097.99
	Mar-11	Mar-12	Mar-13	Mar-14	Mar-15	Mar-16	Mar-17	Mar-18	Mar-19	Mar-20
Current	11,374,358.30	10,721,720.79	9,723,243.12	9,008,125.52	7,790,592.69	7,049,011.31	6,499,369.42	5,961,024.20	5,527,560.27	4,763,183.15
1-30 Days	575,516.69	597,214.76	578,402.37	603,497.21	912,371.94	590,704.11	498,672.62	362,718.55	335,418.63	444,146.96
31-60 Days	130,857.30	227,765.26	281,061.81	80,939.74	168,269.69	118,746.22	77,376.36	58,551.12	48,252.61	182,106.14
61-90 Days	112,326.66	55,329.46	115,365.40	41,304.88	-	20,838.72	-	-	-	58,933.13
91-120 Days	-	43,318.50	-	-	-	-	-	-	-	28,728.61
121-150 Days	-	16,413.07	-	-	-	-	-	-	-	-
151-180 Days	-	-	-	-	-	-	-	-	-	-
181+ Days	-	-	-	-	-	-	-	-	-	-

Delinquency Status (% of Current Balance)

Current Portfolio Balance	12,193,058.95	11,661,761.84	10,698,072.70	9,733,867.35	8,871,234.32	7,779,300.36	7,075,418.40	6,382,293.87	5,911,231.51	5,477,097.99
	Mar-11	Mar-12	Mar-13	Mar-14	Mar-15	Mar-16	Mar-17	Mar-18	Mar-19	Mar-20
Current	93.29%	91.94%	90.89%	92.54%	87.82%	90.61%	91.86%	93.40%	93.51%	86.97%
1-30 Days	4.72%	5.12%	5.41%	6.20%	10.28%	7.59%	7.05%	5.68%	5.67%	8.11%
31-60 Days	1.07%	1.95%	2.63%	0.83%	1.90%	1.53%	1.09%	0.92%	0.82%	3.32%
61-90 Days	0.92%	0.47%	1.08%	0.42%	0.00%	0.27%	0.00%	0.00%	0.00%	1.08%
91-120 Days	0.00%	0.37%	0.00%	0.00%	0.00%	0.00%	0.00%	0.00%	0.00%	0.52%
121-150 Days	0.00%	0.14%	0.00%	0.00%	0.00%	0.00%	0.00%	0.00%	0.00%	0.00%
151-180 Days	0.00%	0.00%	0.00%	0.00%	0.00%	0.00%	0.00%	0.00%	0.00%	0.00%
181+ Days	0.00%	0.00%	0.00%	0.00%	0.00%	0.00%	0.00%	0.00%	0.00%	0.00%
Current - 90 Days	100.00%	99.49%	100.00%	100.00%	100.00%	100.00%	100.00%	100.00%	100.00%	99.48%
91-180 Days	0.00%	0.51%	0.00%	0.00%	0.00%	0.00%	0.00%	0.00%	0.00%	0.52%



Mortgages - La Hipotecaria Panama Migration Analysis (2010 Vintage)

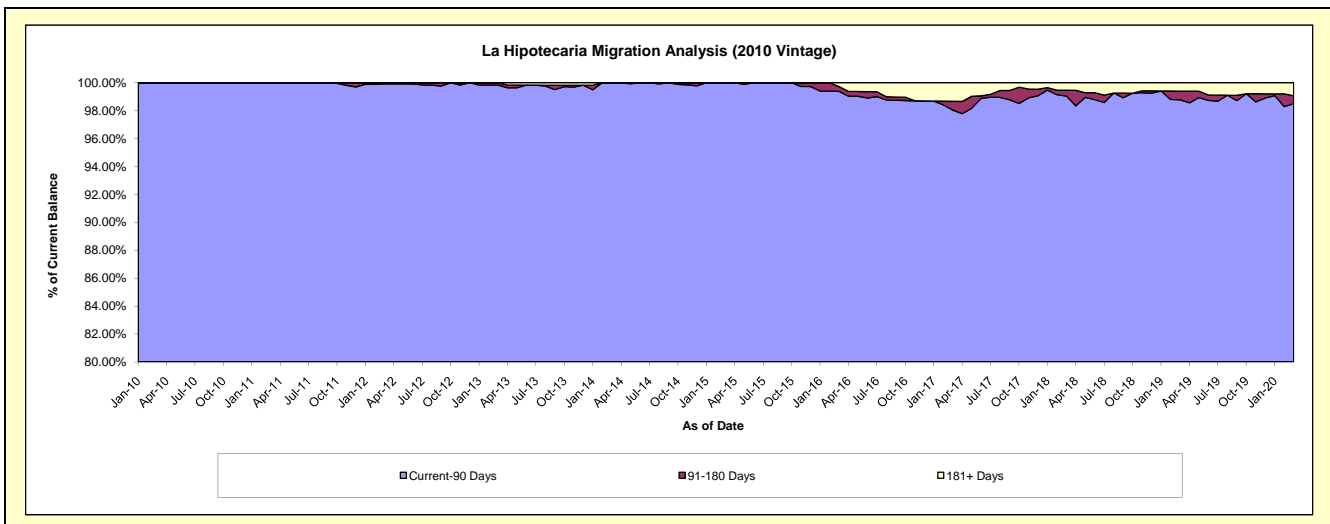
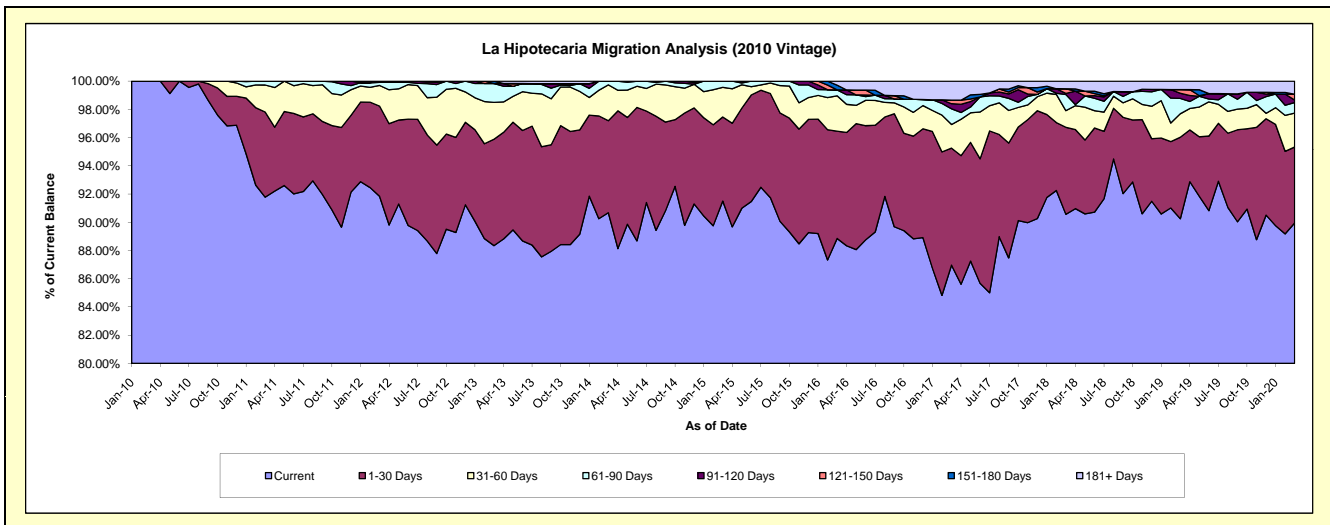
Delinquency Status (\$ of Current Balance)

Data Cutoff: 3/31/2020

Current Portfolio Balance	22,144,440.00	21,353,678.55	20,024,624.32	18,309,373.91	16,731,240.75	14,757,918.67	12,946,944.62	11,740,965.72	10,575,653.59	9,707,225.09
	Mar-11	Mar-12	Mar-13	Mar-14	Mar-15	Mar-16	Mar-17	Mar-18	Mar-19	Mar-20
Current	20,325,138.08	19,611,915.51	17,691,054.84	16,602,178.46	15,309,619.28	13,113,229.21	11,259,530.76	10,633,449.23	9,544,563.81	8,732,180.97
1-30 Days	1,334,148.86	1,363,903.76	1,509,866.29	1,194,464.07	996,932.87	1,121,008.46	1,073,406.60	723,867.74	610,765.11	521,898.31
31-60 Days	424,888.41	312,972.90	522,500.07	464,491.63	351,120.83	370,887.60	216,654.32	138,383.35	176,340.10	233,891.36
61-90 Days	60,264.65	46,360.02	267,660.92	48,239.75	73,567.77	61,496.50	144,063.30	133,512.24	114,572.35	72,690.21
91-120 Days	-	18,526.36	-	-	-	-	46,442.17	10,075.24	39,186.67	17,127.73
121-150 Days	-	-	-	-	-	-	33,410.76	38,388.47	26,936.10	39,210.96
151-180 Days	-	-	33,542.20	-	-	49,794.28	-	-	-	-
181+ Days	-	-	-	-	-	41,502.62	173,436.71	63,289.45	63,289.45	90,225.55

Delinquency Status (% of Current Balance)

Current Portfolio Balance	22,144,440.00	21,353,678.55	20,024,624.32	18,309,373.91	16,731,240.75	14,757,918.67	12,946,944.62	11,740,965.72	10,575,653.59	9,707,225.09
	Mar-11	Mar-12	Mar-13	Mar-14	Mar-15	Mar-16	Mar-17	Mar-18	Mar-19	Mar-20
Current	91.78%	91.84%	88.35%	90.68%	91.50%	88.86%	86.97%	90.57%	90.25%	89.96%
1-30 Days	6.02%	6.39%	7.54%	6.52%	5.96%	7.60%	8.29%	6.17%	5.78%	5.38%
31-60 Days	1.92%	1.47%	2.61%	2.54%	2.10%	2.51%	1.67%	1.18%	1.67%	2.41%
61-90 Days	0.27%	0.22%	1.34%	0.26%	0.44%	0.42%	1.11%	1.14%	1.08%	0.75%
91-120 Days	0.00%	0.09%	0.00%	0.00%	0.00%	0.00%	0.36%	0.09%	0.37%	0.18%
121-150 Days	0.00%	0.00%	0.00%	0.00%	0.00%	0.00%	0.26%	0.33%	0.25%	0.40%
151-180 Days	0.00%	0.00%	0.17%	0.00%	0.00%	0.34%	0.00%	0.00%	0.00%	0.00%
181+ Days	0.00%	0.00%	0.00%	0.00%	0.00%	0.28%	1.34%	0.54%	0.60%	0.93%
Current - 90 Days	100.00%	99.91%	99.83%	100.00%	100.00%	99.38%	98.04%	99.05%	98.78%	98.49%
91-180 Days	0.00%	0.09%	0.17%	0.00%	0.00%	0.34%	0.62%	0.41%	0.63%	0.58%



Mortgages - La Hipotecaria Panama Migration Analysis (2011 Vintage)

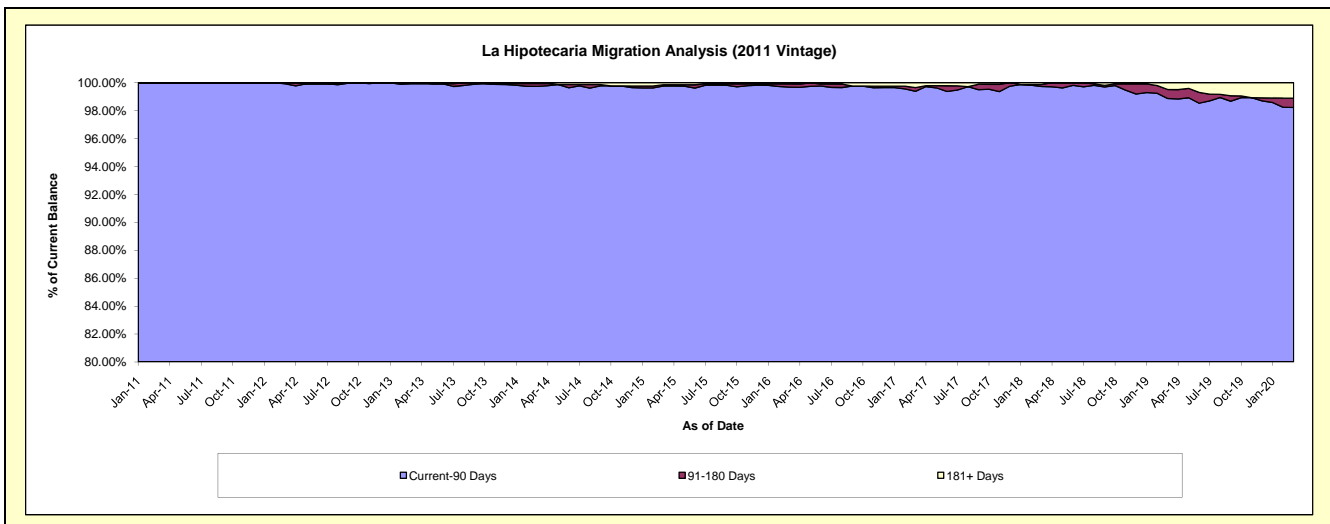
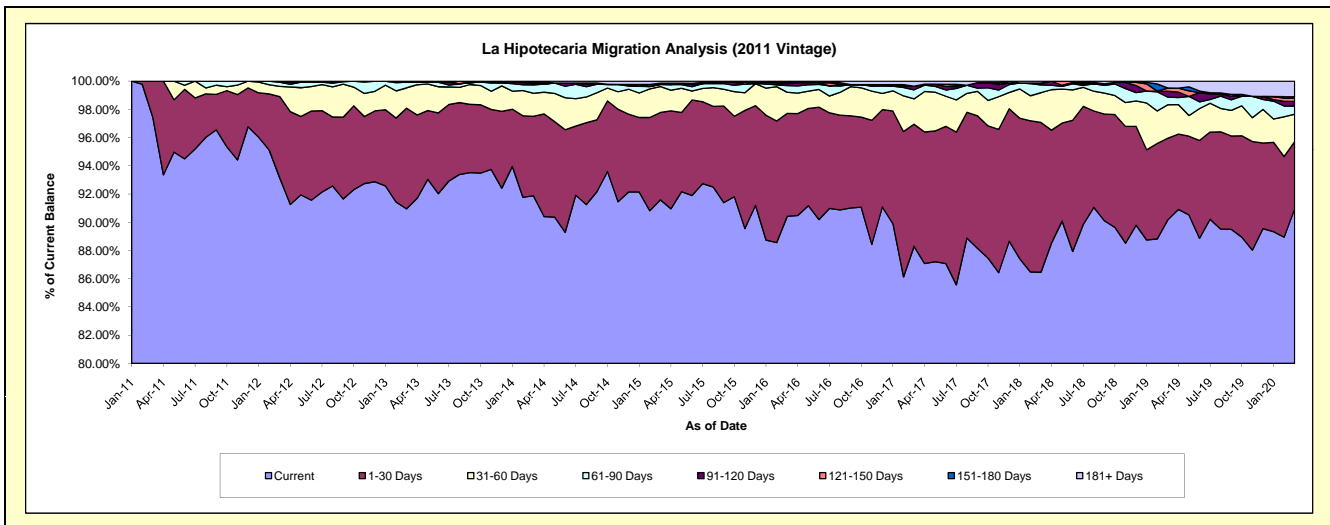
Delinquency Status (\$ of Current Balance)

Data Cutoff: 3/31/2020

Current Portfolio Balance	8,721,204.95	34,492,076.20	32,969,946.15	30,683,783.61	27,526,936.93	24,639,045.55	22,437,194.43	20,577,711.14	18,583,130.27	16,899,817.02
	Mar-11	Mar-12	Mar-13	Mar-14	Mar-15	Mar-16	Mar-17	Mar-18	Mar-19	Mar-20
Current	8,497,021.39	32,131,011.29	29,986,455.85	28,191,938.39	25,212,793.10	22,279,490.93	19,811,382.91	17,792,097.00	16,756,210.33	15,371,242.43
1-30 Days	224,183.56	1,984,862.38	2,352,294.11	1,726,466.19	1,702,437.49	1,796,442.82	1,940,759.44	2,183,849.40	1,075,921.90	803,666.49
31-60 Days	-	248,282.93	474,516.13	503,306.12	507,466.12	369,033.31	403,320.92	433,995.16	440,527.82	329,589.89
61-90 Days	-	102,792.35	132,516.19	181,611.47	38,942.78	117,133.89	144,096.53	112,418.88	100,758.02	96,233.84
91-120 Days	-	25,127.25	-	25,480.46	-	30,690.76	58,297.10	18,590.28	77,023.06	56,787.22
121-150 Days	-	-	24,163.87	21,781.80	25,371.88	-	-	9,784.71	41,786.87	36,242.67
151-180 Days	-	-	-	15,055.42	-	24,472.04	-	-	1,179.93	18,824.00
181+ Days	-	-	-	18,143.76	39,925.56	21,781.80	79,337.53	26,975.71	89,722.34	187,230.48

Delinquency Status (% of Current Balance)

Current Portfolio Balance	8,721,204.95	34,492,076.20	32,969,946.15	30,683,783.61	27,526,936.93	24,639,045.55	22,437,194.43	20,577,711.14	18,583,130.27	16,899,817.02
	Mar-11	Mar-12	Mar-13	Mar-14	Mar-15	Mar-16	Mar-17	Mar-18	Mar-19	Mar-20
Current	97.43%	93.15%	90.95%	91.89%	91.59%	90.42%	88.30%	86.46%	90.17%	90.96%
1-30 Days	2.57%	5.75%	7.13%	5.63%	6.18%	7.29%	8.65%	10.61%	5.79%	4.76%
31-60 Days	0.00%	0.72%	1.44%	1.64%	1.84%	1.50%	1.80%	2.11%	2.37%	1.95%
61-90 Days	0.00%	0.30%	0.40%	0.59%	0.14%	0.48%	0.64%	0.55%	0.54%	0.57%
91-120 Days	0.00%	0.07%	0.00%	0.08%	0.00%	0.12%	0.26%	0.09%	0.41%	0.34%
121-150 Days	0.00%	0.00%	0.07%	0.07%	0.09%	0.00%	0.00%	0.05%	0.22%	0.21%
151-180 Days	0.00%	0.00%	0.00%	0.05%	0.00%	0.10%	0.00%	0.00%	0.01%	0.11%
181+ Days	0.00%	0.00%	0.00%	0.06%	0.15%	0.09%	0.35%	0.13%	0.48%	1.11%
Current - 90 Days	100.00%	99.93%	99.93%	99.74%	99.76%	99.69%	99.39%	99.73%	98.87%	98.23%
91-180 Days	0.00%	0.07%	0.07%	0.20%	0.09%	0.22%	0.26%	0.14%	0.65%	0.66%



Mortgages - La Hipotecaria Panama Migration Analysis (2012 Vintage)

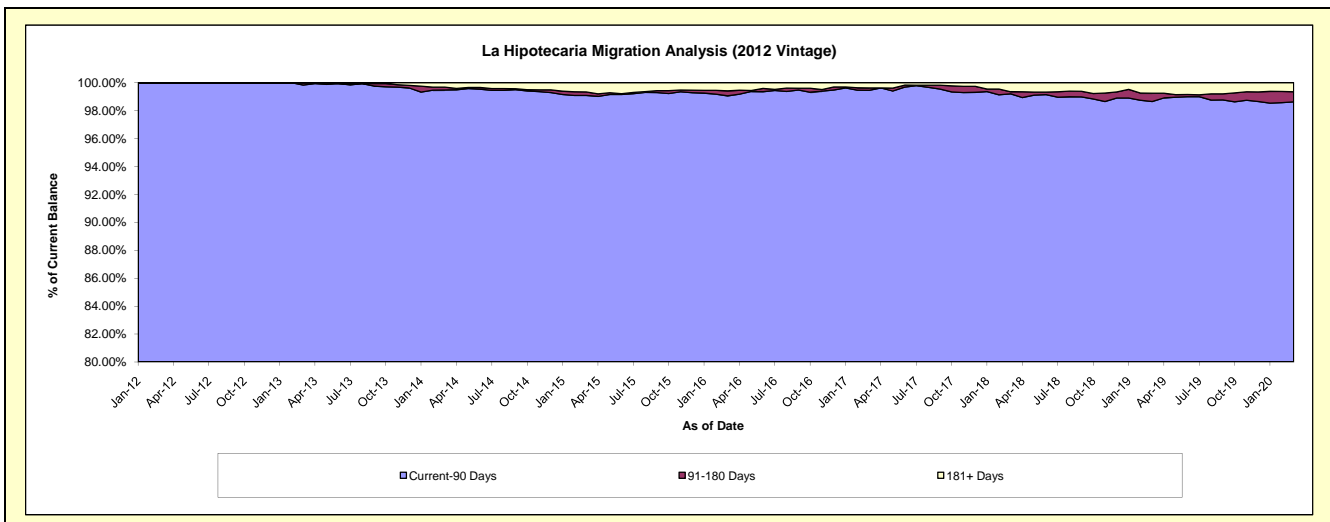
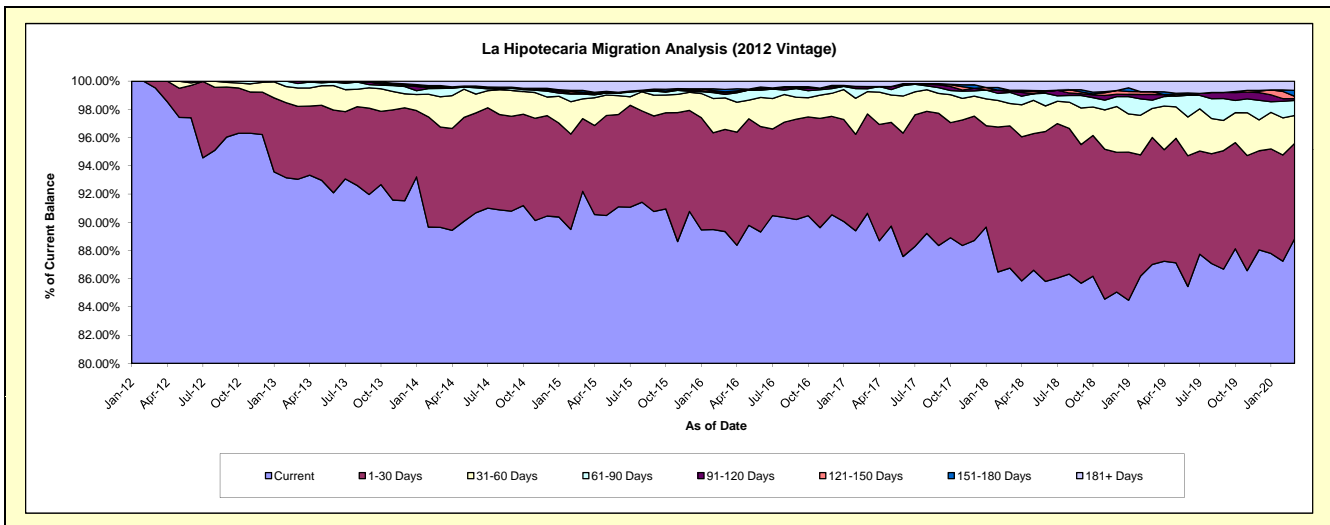
Delinquency Status (\$ of Current Balance)

Data Cutoff: 3/31/2020

Current Portfolio Balance	-	11,789,194.15	48,727,992.89	46,539,873.30	43,115,630.47	39,561,371.20	36,096,357.96	33,165,068.05	30,492,808.42	27,858,234.57
	Mar-12	Mar-13	Mar-14	Mar-15	Mar-16	Mar-17	Mar-18	Mar-19	Mar-20	
Current	11,732,044.15	45,340,956.44	41,717,921.37	39,748,723.87	35,344,834.48	32,715,942.29	28,771,372.71	26,531,611.09	24,749,419.44	
1-30 Days	57,150.00	2,517,885.46	3,312,213.20	2,221,048.11	2,865,559.23	2,541,584.38	3,341,444.88	2,744,933.74	1,880,431.90	
31-60 Days	-	633,823.37	996,014.38	605,470.96	881,830.37	570,999.95	527,430.86	626,912.36	552,076.98	
61-90 Days	-	155,126.17	271,878.68	147,146.28	97,323.70	71,601.32	261,500.62	178,487.85	294,627.84	
91-120 Days	-	80,201.45	53,357.78	26,967.08	46,389.20	60,324.76	24,478.74	123,613.20	35,030.74	
121-150 Days	-	-	-	27,567.12	27,482.03	-	25,863.87	59,480.72	48,922.99	
151-180 Days	-	-	40,618.19	55,314.39	66,736.52	-	-	-	116,943.88	
181+ Days	-	-	147,869.70	283,392.66	231,215.67	135,905.26	212,976.37	227,769.46	180,780.80	

Delinquency Status (% of Current Balance)

Current Portfolio Balance	-	11,789,194.15	48,727,992.89	46,539,873.30	43,115,630.47	39,561,371.20	36,096,357.96	33,165,068.05	30,492,808.42	27,858,234.57
	Mar-12	Mar-13	Mar-14	Mar-15	Mar-16	Mar-17	Mar-18	Mar-19	Mar-20	
Current	99.52%	93.05%	89.64%	92.19%	89.34%	90.64%	86.75%	87.01%	88.84%	
1-30 Days	0.48%	5.17%	7.12%	5.15%	7.24%	7.04%	10.08%	9.00%	6.75%	
31-60 Days	0.00%	1.30%	2.14%	1.40%	2.23%	1.58%	1.59%	2.06%	1.98%	
61-90 Days	0.00%	0.32%	0.58%	0.34%	0.25%	0.20%	0.79%	0.59%	1.06%	
91-120 Days	0.00%	0.16%	0.11%	0.06%	0.12%	0.17%	0.07%	0.41%	0.13%	
121-150 Days	0.00%	0.00%	0.00%	0.06%	0.07%	0.00%	0.08%	0.20%	0.18%	
151-180 Days	0.00%	0.00%	0.09%	0.13%	0.17%	0.00%	0.00%	0.00%	0.42%	
181+ Days	0.00%	0.00%	0.32%	0.66%	0.58%	0.38%	0.64%	0.75%	0.65%	
Current - 90 Days	100.00%	99.84%	99.48%	99.09%	99.06%	99.46%	99.21%	98.85%	98.63%	
91-180 Days	0.00%	0.16%	0.20%	0.25%	0.36%	0.17%	0.15%	0.60%	0.72%	



Mortgages - La Hipotecaria Panama Migration Analysis (2013 Vintage)

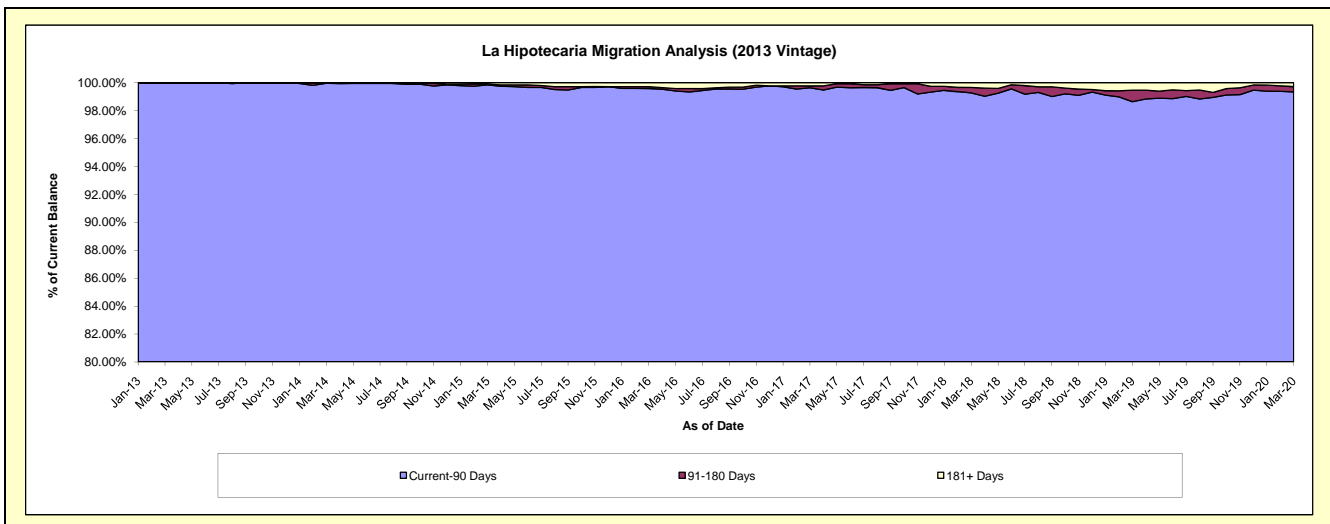
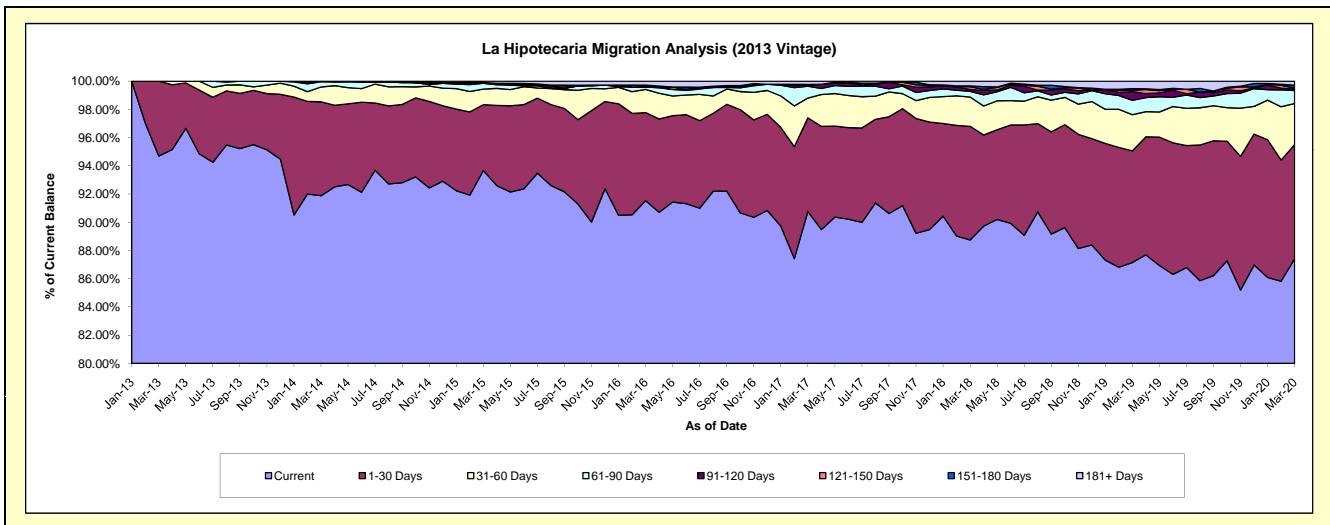
Delinquency Status (\$ of Current Balance)

Data Cutoff: 3/31/2020

Current Portfolio Balance	-	-	13,538,545.01	62,860,027.92	59,781,230.20	55,149,836.68	51,029,811.54	47,133,058.43	43,436,209.79	39,677,156.92
	Mar-13	Mar-14	Mar-15	Mar-16	Mar-17	Mar-18	Mar-19	Mar-20		
Current	12,821,128.51	57,757,929.64	55,995,493.25	50,481,423.31	46,315,418.00	41,830,300.05	37,855,456.59	34,683,345.53		
1-30 Days	717,416.50	4,182,706.05	2,790,436.89	3,438,564.93	3,386,627.24	3,795,165.52	3,434,228.88	3,212,097.71		
31-60 Days	-	661,820.73	659,875.43	908,346.14	717,402.23	977,965.46	1,114,242.07	1,151,910.79		
61-90 Days	-	232,667.60	241,120.47	93,625.08	428,513.60	189,021.65	441,499.20	366,995.13		
91-120 Days	-	24,903.90	-	-	33,570.77	63,877.75	265,723.50	40,876.87		
121-150 Days	-	-	-	34,774.30	-	94,281.59	45,893.86	26,929.34		
151-180 Days	-	-	34,363.80	37,126.64	31,445.54	24,883.21	49,080.36	81,520.59		
181+ Days	-	-	59,940.36	155,976.28	116,834.16	157,563.20	230,085.33	113,480.96		

Delinquency Status (% of Current Balance)

Current Portfolio Balance	-	-	13,538,545.01	62,860,027.92	59,781,230.20	55,149,836.68	51,029,811.54	47,133,058.43	43,436,209.79	39,677,156.92
	Mar-13	Mar-14	Mar-15	Mar-16	Mar-17	Mar-18	Mar-19	Mar-20		
Current	94.70%	91.88%	93.67%	91.54%	90.76%	88.75%	87.15%	87.41%		
1-30 Days	5.30%	6.65%	4.67%	6.23%	6.64%	8.05%	7.91%	8.10%		
31-60 Days	0.00%	1.05%	1.10%	1.65%	1.41%	2.07%	2.57%	2.90%		
61-90 Days	0.00%	0.37%	0.40%	0.17%	0.84%	0.40%	1.02%	0.92%		
91-120 Days	0.00%	0.04%	0.00%	0.00%	0.07%	0.14%	0.61%	0.10%		
121-150 Days	0.00%	0.00%	0.00%	0.06%	0.00%	0.20%	0.11%	0.07%		
151-180 Days	0.00%	0.00%	0.06%	0.07%	0.06%	0.05%	0.11%	0.21%		
181+ Days	0.00%	0.00%	0.10%	0.28%	0.23%	0.33%	0.53%	0.29%		
Current - 90 Days	100.00%	99.96%	99.84%	99.59%	99.64%	99.28%	98.64%	99.34%		
91-180 Days	0.00%	0.04%	0.06%	0.13%	0.13%	0.39%	0.83%	0.38%		



Mortgages - La Hipotecaria Panama Migration Analysis (2014 Vintage)

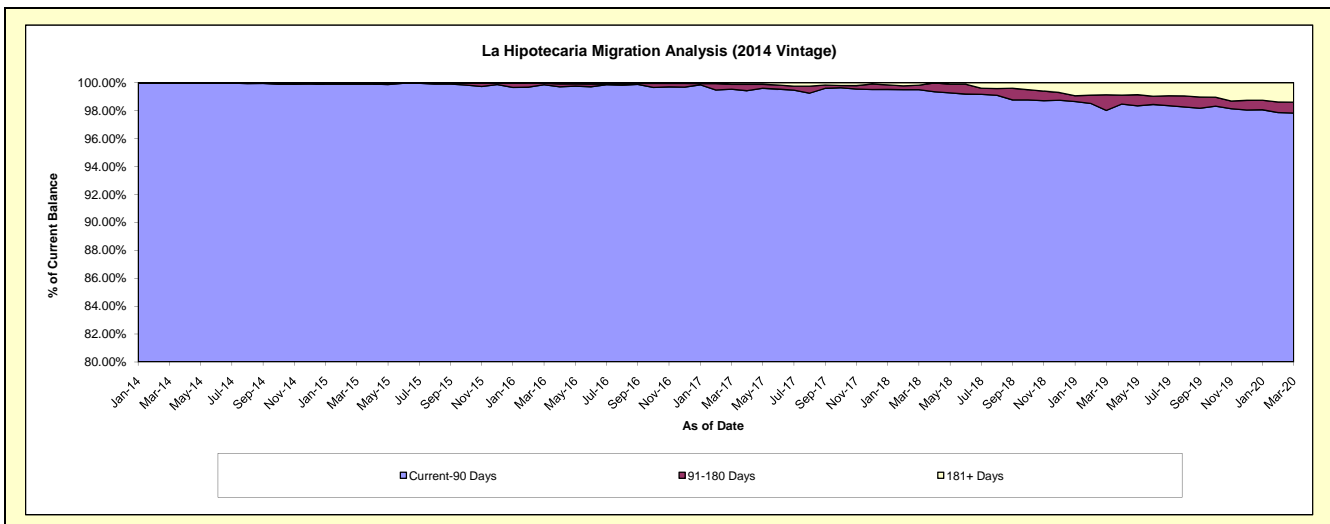
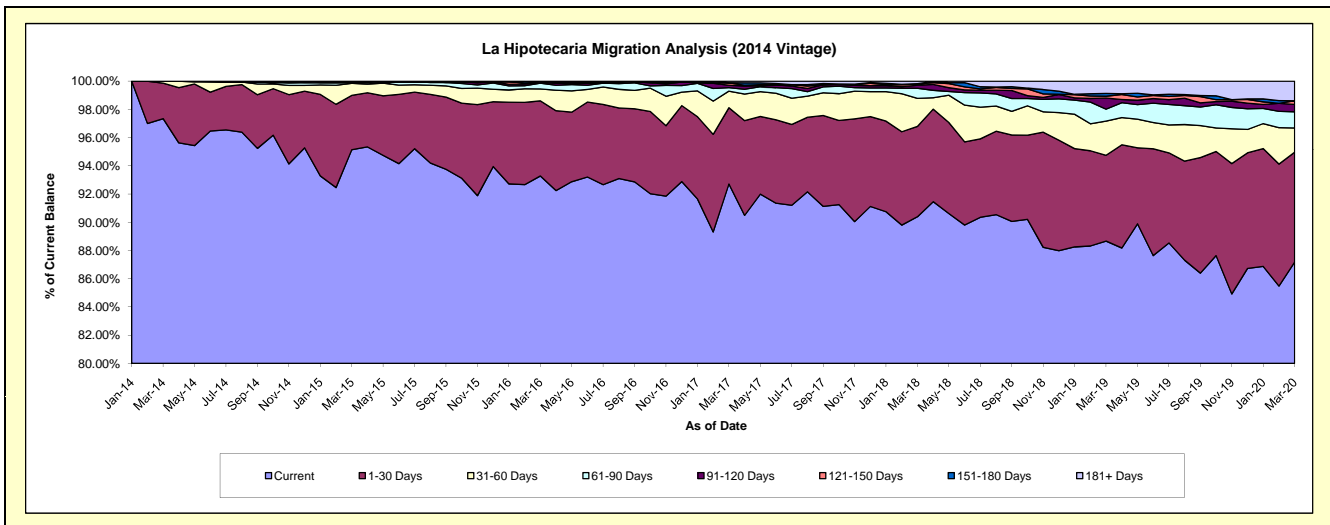
Delinquency Status (\$ of Current Balance)

Data Cutoff: 3/31/2020

Current Portfolio Balance	-	-	-	17,500,850.47	70,382,933.85	67,141,011.03	62,603,259.36	58,284,173.05	54,493,628.57	50,766,127.92
	Mar-14	Mar-15	Mar-16	Mar-17	Mar-18	Mar-19	Mar-20			
Current	17,036,192.30	66,964,139.17	62,630,652.59	58,043,817.53	52,686,438.76	48,319,033.85	44,259,612.89			
1-30 Days	439,958.17	2,709,766.10	3,573,402.11	3,380,986.28	3,730,179.71	3,312,287.96	3,949,305.22			
31-60 Days	24,700.00	601,256.35	568,566.79	735,208.26	1,157,816.59	1,320,025.28	871,849.03			
61-90 Days	-	39,088.29	274,092.73	155,408.38	417,835.63	461,918.75	583,967.72			
91-120 Days	-	-	33,941.50	106,766.09	123,272.49	428,404.17	263,333.05			
121-150 Days	-	-	-	109,314.94	49,914.26	71,044.72	131,084.96			
151-180 Days	-	-	35,959.70	-	16,838.37	110,496.42	-			
181+ Days	-	68,683.94	24,395.61	71,757.88	101,877.24	470,417.42	706,975.05			

Delinquency Status (% of Current Balance)

Current Portfolio Balance	-	-	-	17,500,850.47	70,382,933.85	67,141,011.03	62,603,259.36	58,284,173.05	54,493,628.57	50,766,127.92
	Mar-14	Mar-15	Mar-16	Mar-17	Mar-18	Mar-19	Mar-20			
Current	97.34%	95.14%	93.28%	92.72%	90.40%	88.67%	87.18%			
1-30 Days	2.51%	3.85%	5.32%	5.40%	6.40%	6.08%	7.78%			
31-60 Days	0.14%	0.85%	0.85%	1.17%	1.99%	2.42%	1.72%			
61-90 Days	0.00%	0.06%	0.41%	0.25%	0.72%	0.85%	1.15%			
91-120 Days	0.00%	0.00%	0.05%	0.17%	0.21%	0.79%	0.52%			
121-150 Days	0.00%	0.00%	0.00%	0.17%	0.09%	0.13%	0.26%			
151-180 Days	0.00%	0.00%	0.05%	0.00%	0.03%	0.20%	0.00%			
181+ Days	0.00%	0.10%	0.04%	0.11%	0.17%	0.86%	1.39%			
Current - 90 Days	100.00%	99.90%	99.86%	99.54%	99.50%	98.02%	97.83%			
91-180 Days	0.00%	0.00%	0.10%	0.35%	0.33%	1.12%	0.78%			



Mortgages - La Hipotecaria Panama Migration Analysis (2015 Vintage)

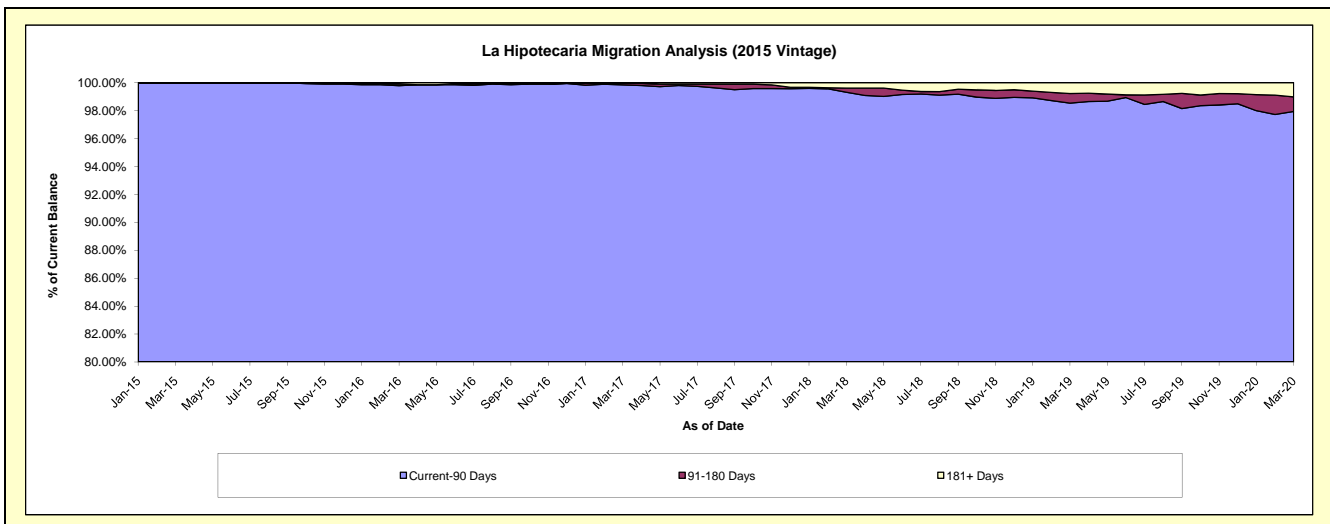
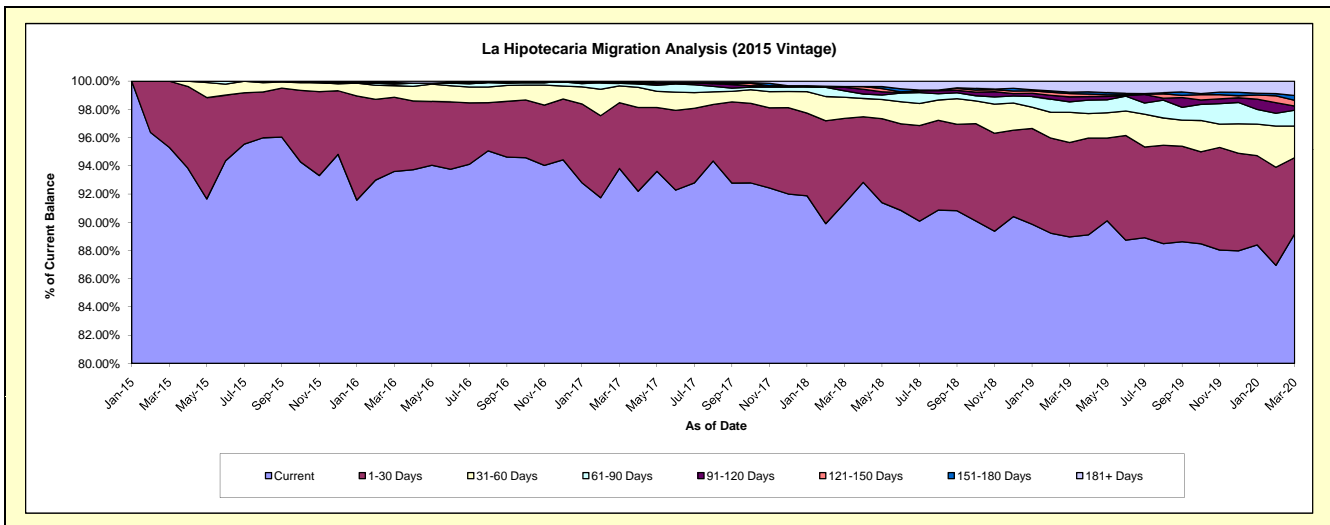
Delinquency Status (\$ of Current Balance)

Data Cutoff: 3/31/2020

Current Portfolio Balance	-	-	-	-	19,973,160.17	78,222,245.02	75,282,999.25	71,409,846.02	67,249,204.18	63,557,386.00
					Mar-15	Mar-16	Mar-17	Mar-18	Mar-19	Mar-20
Current					19,036,962.84	73,218,150.86	70,627,385.27	65,232,841.94	59,826,703.77	56,678,812.09
1-30 Days					936,197.33	4,109,502.17	3,506,195.89	4,295,842.09	4,501,105.07	3,434,172.90
31-60 Days					-	646,093.76	899,433.92	1,065,070.09	1,437,349.60	1,422,692.30
61-90 Days					-	83,476.77	130,916.55	325,622.87	500,013.07	713,962.44
91-120 Days					-	55,558.80	37,901.23	177,652.01	236,177.95	186,034.29
121-150 Days					-	-	-	39,170.65	158,902.94	261,651.90
151-180 Days					-	35,263.50	42,514.15	-	69,154.92	212,461.75
181+ Days					-	74,199.16	38,652.24	273,646.37	519,796.86	647,598.33

Delinquency Status (% of Current Balance)

Current Portfolio Balance	-	-	-	-	19,973,160.17	78,222,245.02	75,282,999.25	71,409,846.02	67,249,204.18	63,557,386.00
					Mar-15	Mar-16	Mar-17	Mar-18	Mar-19	Mar-20
Current					95.31%	93.60%	93.82%	91.35%	88.96%	89.18%
1-30 Days					4.69%	5.25%	4.66%	6.02%	6.69%	5.40%
31-60 Days					0.00%	0.83%	1.19%	1.49%	2.14%	2.24%
61-90 Days					0.00%	0.11%	0.17%	0.46%	0.74%	1.12%
91-120 Days					0.00%	0.07%	0.05%	0.25%	0.35%	0.29%
121-150 Days					0.00%	0.00%	0.00%	0.05%	0.24%	0.41%
151-180 Days					0.00%	0.05%	0.06%	0.00%	0.10%	0.33%
181+ Days					0.00%	0.09%	0.05%	0.38%	0.77%	1.02%
Current - 90 Days					100.00%	99.79%	99.84%	99.31%	98.54%	97.94%
91-180 Days					0.00%	0.12%	0.11%	0.30%	0.69%	1.04%



Mortgages - La Hipotecaria Panama Migration Analysis (2016 Vintage)

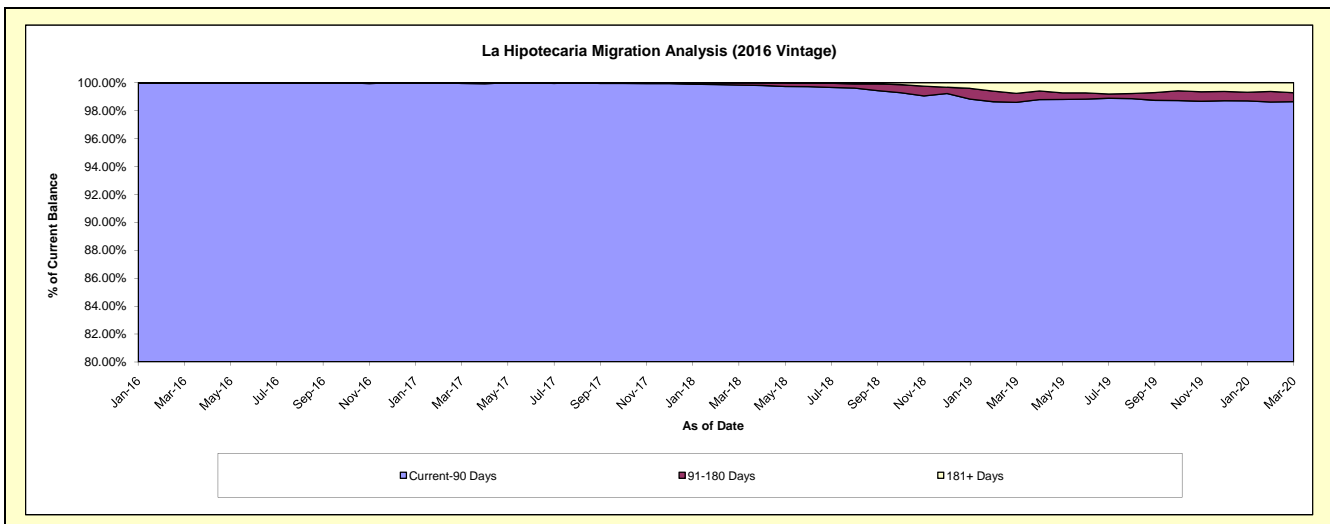
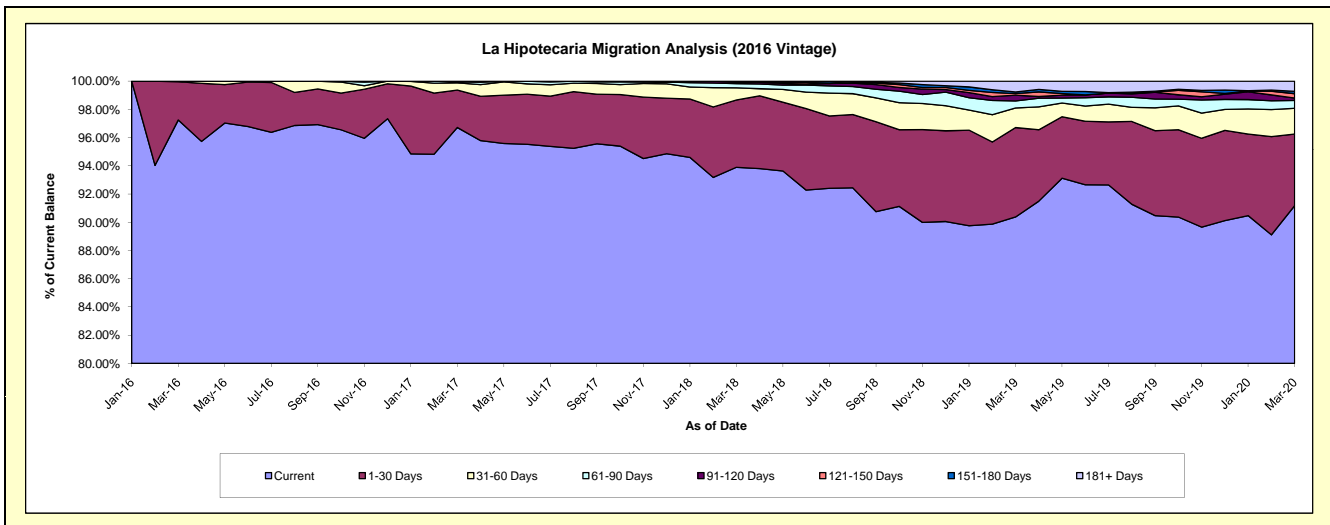
Delinquency Status (\$ of Current Balance)

Data Cutoff: 3/31/2020

Current Portfolio Balance	-	-	-	-	-	18,995,855.95	74,099,878.85	71,422,834.44	67,800,435.63	64,609,083.14
						Mar-16	Mar-17	Mar-18	Mar-19	Mar-20
Current						18,473,504.94	71,667,616.75	67,064,801.52	61,274,876.10	58,908,603.42
1-30 Days						514,351.01	1,963,799.77	3,402,662.99	4,296,088.65	3,279,662.45
31-60 Days						8,000.00	376,941.83	619,664.16	940,846.91	1,176,604.35
61-90 Days						-	56,812.72	214,571.83	338,288.76	364,238.92
91-120 Days						-	34,707.78	83,345.74	279,851.88	109,675.15
121-150 Days						-	-	-	77,671.03	199,015.07
151-180 Days						-	-	37,788.20	73,585.66	108,362.14
181+ Days						-	-	-	519,226.64	462,921.64

Delinquency Status (% of Current Balance)

Current Portfolio Balance	-	-	-	-	-	18,995,855.95	74,099,878.85	71,422,834.44	67,800,435.63	64,609,083.14
						Mar-16	Mar-17	Mar-18	Mar-19	Mar-20
Current						97.25%	96.72%	93.90%	90.38%	91.18%
1-30 Days						2.71%	2.65%	4.76%	6.34%	5.08%
31-60 Days						0.04%	0.51%	0.87%	1.39%	1.82%
61-90 Days						0.00%	0.08%	0.30%	0.50%	0.56%
91-120 Days						0.00%	0.05%	0.12%	0.41%	0.17%
121-150 Days						0.00%	0.00%	0.00%	0.11%	0.31%
151-180 Days						0.00%	0.00%	0.05%	0.11%	0.17%
181+ Days						0.00%	0.00%	0.00%	0.77%	0.72%
Current - 90 Days						100.00%	99.95%	99.83%	98.60%	98.64%
91-180 Days						0.00%	0.05%	0.17%	0.64%	0.65%



Mortgages - La Hipotecaria Panama Migration Analysis (2017 Vintage)

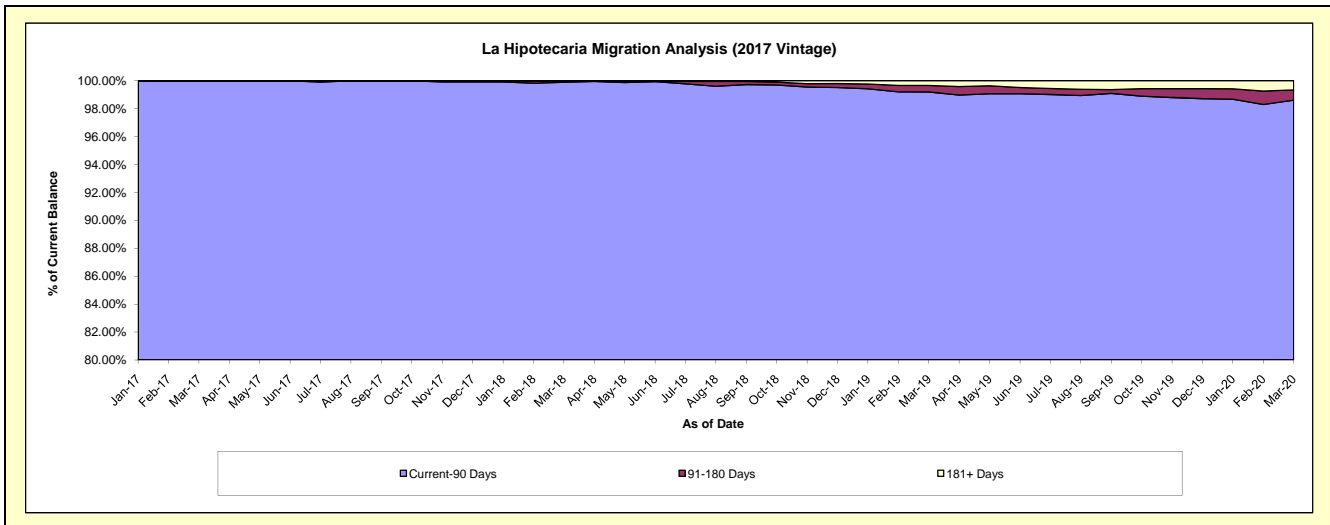
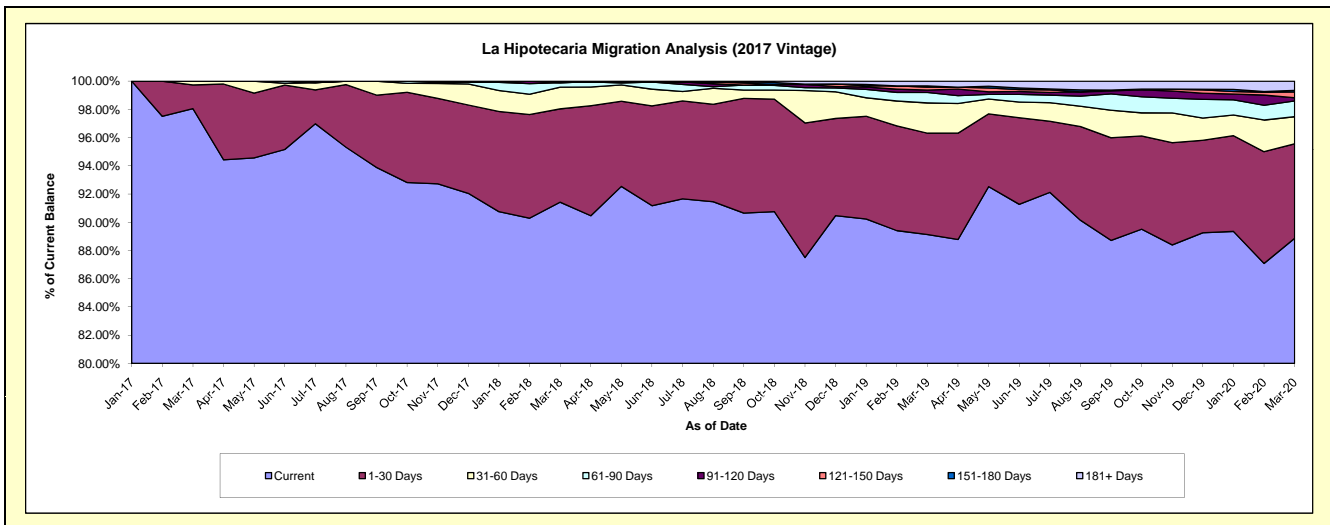
Delinquency Status (\$ of Current Balance)

Data Cutoff: 3/31/2020

Current Portfolio Balance	-	-	-	-	-	-	-	15,181,434.70	87,164,604.10	83,790,600.20	80,710,956.11
								Mar-17	Mar-18	Mar-19	Mar-20
Current								14,886,302.56	79,689,493.72	74,683,654.46	71,723,815.38
1-30 Days								254,632.14	5,764,675.34	6,019,171.11	5,402,964.26
31-60 Days								40,500.00	1,342,994.36	1,796,148.90	1,552,053.69
61-90 Days								-	273,945.30	619,533.06	904,850.29
91-120 Days								-	-	142,603.63	183,225.97
121-150 Days								-	93,495.38	177,094.24	325,871.38
151-180 Days								-	-	67,673.36	88,984.18
181+ Days								-	-	284,721.44	529,190.96

Delinquency Status (% of Current Balance)

Current Portfolio Balance	-	-	-	-	-	-	-	15,181,434.70	87,164,604.10	83,790,600.20	80,710,956.11
								Mar-17	Mar-18	Mar-19	Mar-20
Current								98.06%	91.42%	89.13%	88.87%
1-30 Days								1.68%	6.61%	7.18%	6.69%
31-60 Days								0.27%	1.54%	2.14%	1.92%
61-90 Days								0.00%	0.31%	0.74%	1.12%
91-120 Days								0.00%	0.00%	0.17%	0.23%
121-150 Days								0.00%	0.11%	0.21%	0.40%
151-180 Days								0.00%	0.00%	0.08%	0.11%
181+ Days								0.00%	0.00%	0.34%	0.66%
Current - 90 Days								100.00%	99.89%	99.20%	98.60%
91-180 Days								0.00%	0.11%	0.46%	0.74%



Mortgages - La Hipotecaria Panama Migration Analysis (2018 Vintage)

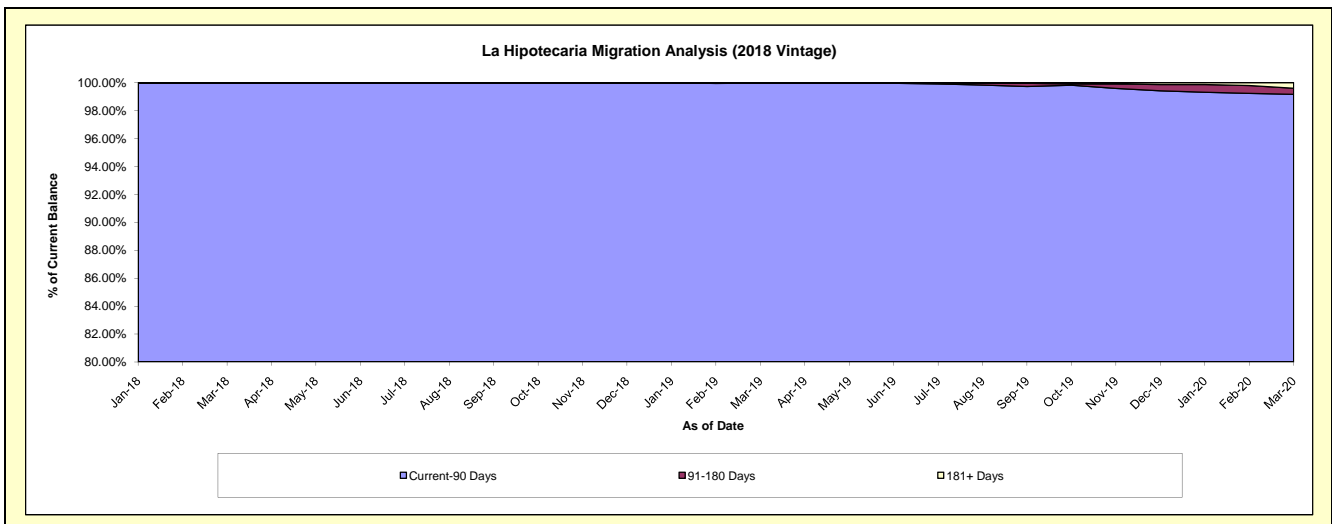
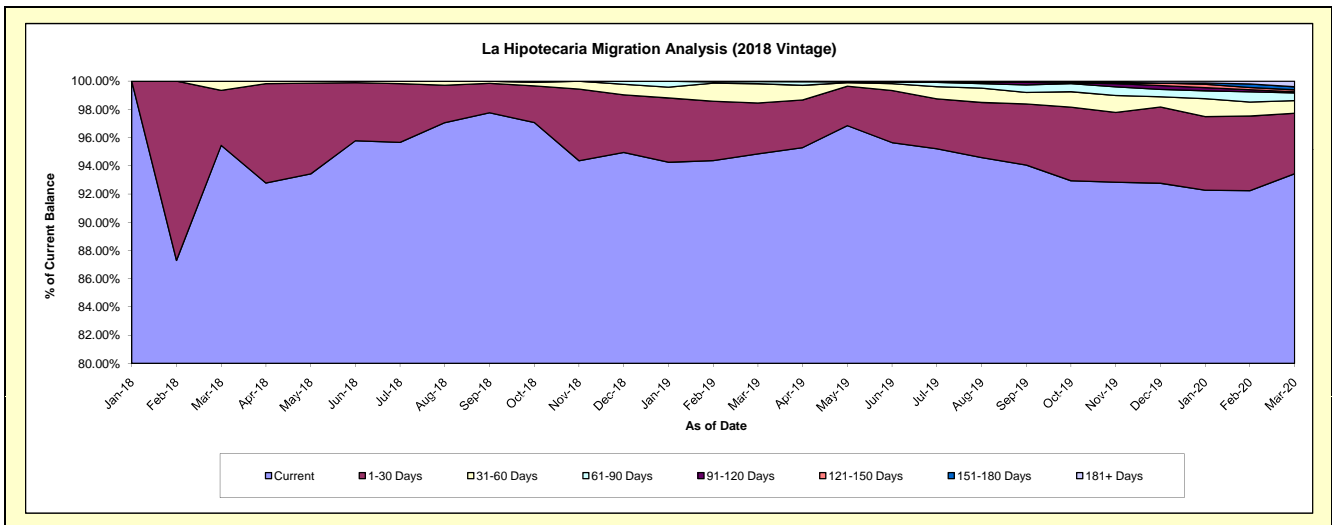
Delinquency Status (\$ of Current Balance)

Data Cutoff: 3/31/2020

Current Portfolio Balance	-	-	-	-	-	-	-	-	-	16,897,021.04	85,073,504.22	82,624,256.99
										Mar-18	Mar-19	Mar-20
Current										16,128,091.60	80,687,772.37	77,202,095.06
1-30 Days										659,129.44	3,065,546.10	3,542,024.83
31-60 Days										109,800.00	1,165,652.69	741,788.11
61-90 Days										-	129,454.80	452,217.15
91-120 Days										-	25,078.26	57,905.85
121-150 Days										-	-	121,783.87
151-180 Days										-	-	178,193.97
181+ Days										-	-	328,248.15

Delinquency Status (% of Current Balance)

Current Portfolio Balance	-	-	-	-	-	-	-	-	-	16,897,021.04	85,073,504.22	82,624,256.99
										Mar-18	Mar-19	Mar-20
Current										95.45%	94.84%	93.44%
1-30 Days										3.90%	3.60%	4.29%
31-60 Days										0.65%	1.37%	0.90%
61-90 Days										0.00%	0.15%	0.55%
91-120 Days										0.00%	0.03%	0.07%
121-150 Days										0.00%	0.00%	0.15%
151-180 Days										0.00%	0.00%	0.22%
181+ Days										0.00%	0.00%	0.40%
Current - 90 Days										100.00%	99.97%	99.17%
91-180 Days										0.00%	0.03%	0.43%



Mortgages - La Hipotecaria Panama Migration Analysis (2019 Vintage)

Delinquency Status (\$ of Current Balance)

Data Cutoff: 3/31/2020

Current Portfolio Balance										19,729,940.57	85,804,821.83
										Mar-19	Mar-20
Current										19,332,998.94	81,877,167.46
1-30 Days										396,941.63	2,745,130.14
31-60 Days										-	647,663.11
61-90 Days										-	270,738.82
91-120 Days										-	31,000.00
121-150 Days										-	153,674.08
151-180 Days										-	39,559.77
181+ Days										-	39,888.45

Delinquency Status (% of Current Balance)

Current Portfolio Balance										19,729,940.57	85,804,821.83
										Mar-19	Mar-20
Current										97.99%	95.42%
1-30 Days										2.01%	3.20%
31-60 Days										0.00%	0.75%
61-90 Days										0.00%	0.32%
91-120 Days										0.00%	0.04%
121-150 Days										0.00%	0.18%
151-180 Days										0.00%	0.05%
181+ Days										0.00%	0.05%
Current - 90 Days										100.00%	99.69%
91-180 Days										0.00%	0.26%

