



## Migration Analysis for La Hipotecaria S.A Panama

Mortgages  
July 2020

An analysis of historical loan payment data was used to compile a migration analysis of delinquency by annual vintage. Delinquencies for each vintage were grouped into the following buckets; Current, 1-30, 31-60, 61-90, 91-120, 121-150, 151-180, and 180+. Results are provided in graphical and tabular form. The cutoff date is 7/31/2020.

# Mortgages - La Hipotecaria Panama Migration Analysis (All Vintages)

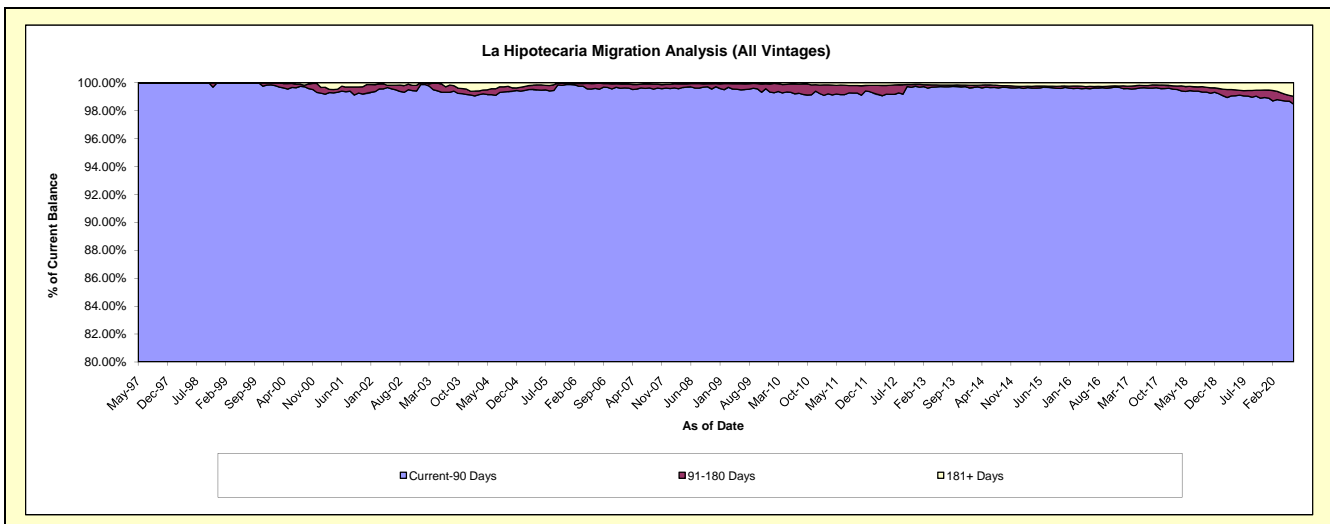
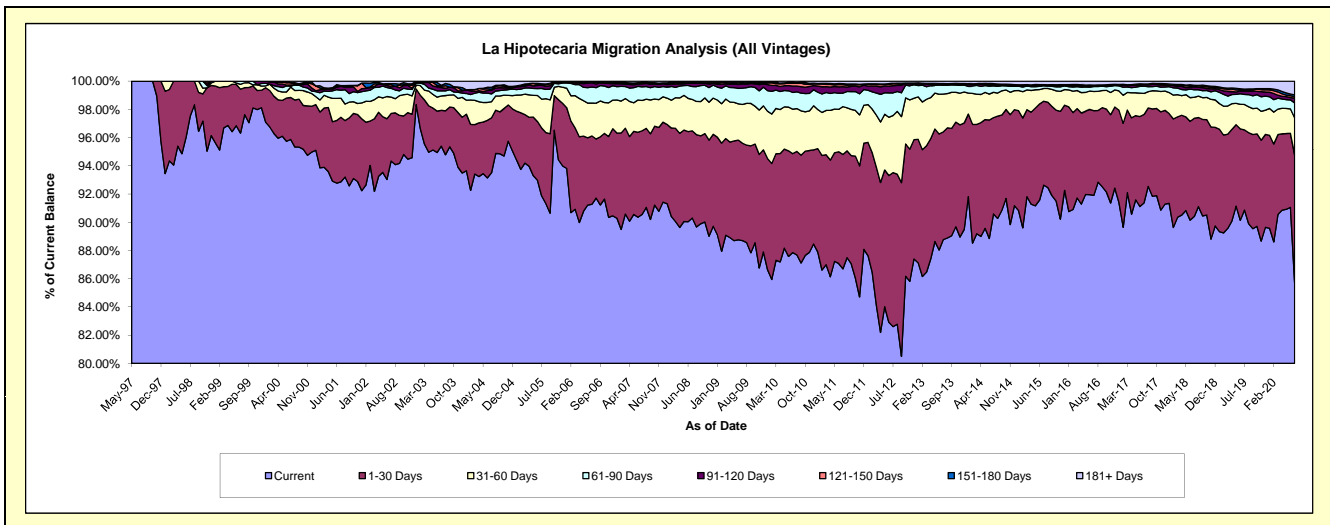
## Delinquency Status (\$ of Current Balance)

Data Cutoff: 7/31/2020

Current Portfolio Balance	295,174,426.25	317,935,565.72	350,299,395.97	389,779,453.71	432,085,686.27	469,605,406.04	511,324,217.34	561,460,726.82	616,145,005.58	643,326,683.10
	Jul-11	Jul-12	Jul-13	Jul-14	Jul-15	Jul-16	Jul-17	Jul-18	Jul-19	Jul-20
Current	255,907,883.12	262,639,982.16	310,981,280.40	353,102,853.22	400,251,968.16	431,612,301.41	467,212,692.09	507,621,059.94	559,878,029.89	551,472,604.57
1-30 Days	23,934,558.33	34,690,063.70	26,725,711.31	26,600,864.08	25,702,272.23	28,179,187.95	32,045,418.97	39,075,567.24	34,992,012.12	58,221,318.49
31-60 Days	10,008,750.36	12,869,220.83	9,403,651.81	7,001,792.51	3,889,349.87	6,392,268.79	7,645,980.98	8,359,779.64	11,093,237.80	16,918,952.51
61-90 Days	2,816,605.95	5,098,909.13	2,177,270.33	1,754,864.44	861,691.79	1,631,142.50	2,581,921.22	3,002,865.02	4,384,345.78	6,799,108.75
91-120 Days	1,348,453.44	1,607,738.21	304,284.89	371,898.42	184,192.25	256,851.24	584,547.43	1,125,042.55	1,531,280.14	2,133,055.34
121-150 Days	437,122.67	436,596.77	44,591.95	152,337.06	41,560.18	139,018.71	189,040.41	298,156.90	534,875.18	699,669.88
151-180 Days	183,620.41	100,074.79	86,733.59	120,046.34	111,223.76	104,754.73	22,679.33	371,781.00	260,516.85	871,526.41
181+ Days	537,431.97	492,980.13	575,871.69	674,797.64	1,043,428.03	1,289,880.71	1,041,936.91	1,606,474.53	3,470,707.82	6,210,447.15

## Delinquency Status (% of Current Balance)

Current Portfolio Balance	295,174,426.25	317,935,565.72	350,299,395.97	389,779,453.71	432,085,686.27	469,605,406.04	511,324,217.34	561,460,726.82	616,145,005.58	643,326,683.10
	Jul-11	Jul-12	Jul-13	Jul-14	Jul-15	Jul-16	Jul-17	Jul-18	Jul-19	Jul-20
Current	86.70%	82.61%	88.78%	90.59%	92.63%	91.91%	91.37%	90.41%	90.87%	85.72%
1-30 Days	8.11%	10.91%	7.63%	6.82%	5.95%	6.00%	6.27%	6.96%	5.68%	9.05%
31-60 Days	3.39%	4.05%	2.68%	1.80%	0.90%	1.36%	1.50%	1.49%	1.80%	2.63%
61-90 Days	0.95%	1.60%	0.62%	0.45%	0.20%	0.35%	0.50%	0.53%	0.71%	1.06%
91-120 Days	0.46%	0.51%	0.09%	0.10%	0.04%	0.05%	0.11%	0.20%	0.25%	0.33%
121-150 Days	0.15%	0.14%	0.01%	0.04%	0.01%	0.03%	0.04%	0.05%	0.09%	0.11%
151-180 Days	0.06%	0.03%	0.02%	0.03%	0.03%	0.02%	0.00%	0.07%	0.04%	0.14%
181+ Days	0.18%	0.16%	0.16%	0.17%	0.24%	0.27%	0.20%	0.29%	0.56%	0.97%
Current - 90 Days	99.15%	99.17%	99.71%	99.66%	99.68%	99.62%	99.64%	99.39%	99.06%	98.46%
91-180 Days	0.67%	0.67%	0.12%	0.17%	0.08%	0.11%	0.16%	0.32%	0.38%	0.58%



## Mortgages - La Hipotecaria Panama Migration Analysis (1997 Vintage)

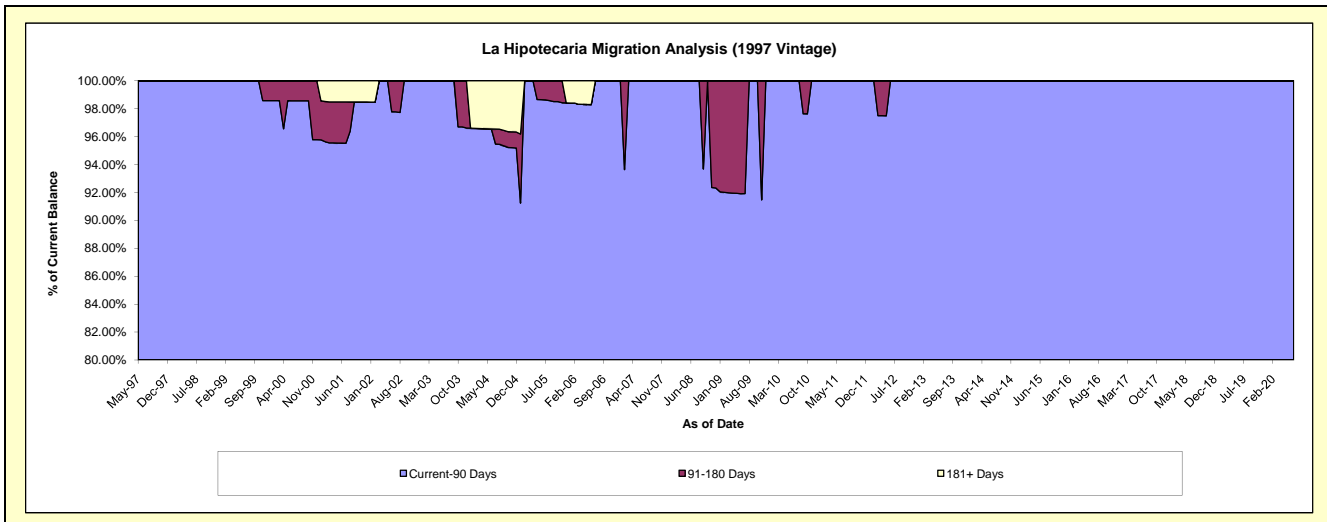
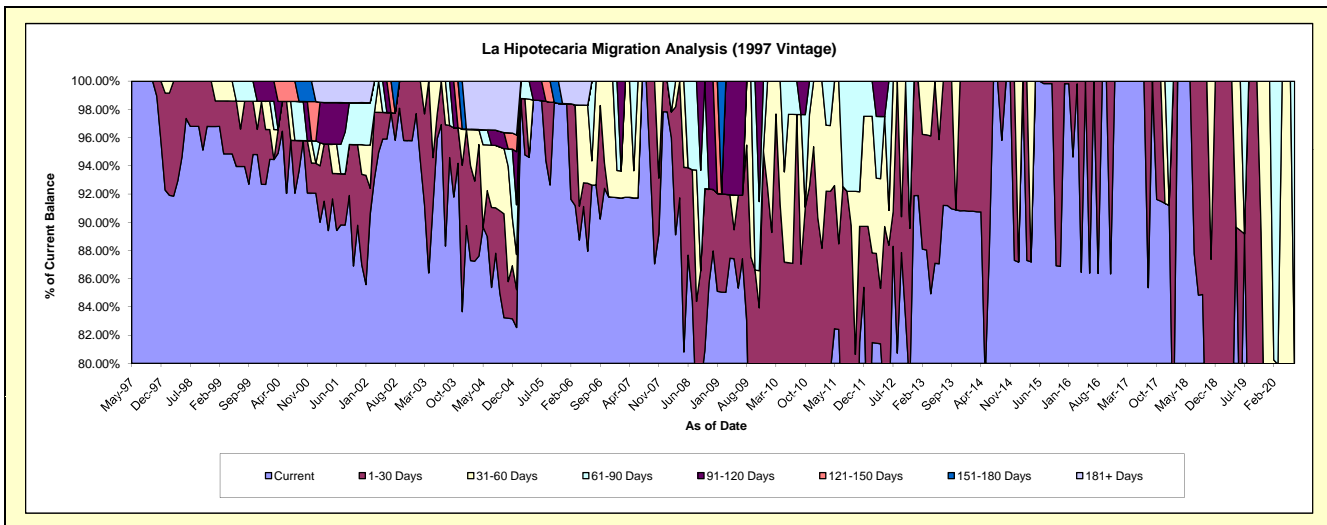
### Delinquency Status (\$ of Current Balance)

Data Cutoff: 7/31/2020

Current Portfolio Balance	441,374.13	390,480.39	289,485.90	254,191.63	216,748.33	181,270.59	145,536.24	118,210.65	85,061.48	51,917.83
	Jul-11	Jul-12	Jul-13	Jul-14	Jul-15	Jul-16	Jul-17	Jul-18	Jul-19	Jul-20
Current	325,096.57	344,773.49	264,012.23	254,191.63	216,378.72	181,270.59	145,536.24	103,747.65	75,854.62	26,890.98
1-30 Days	83,316.93	9,637.38	25,473.67	-	369.61	-	-	14,463.00	-	7,504.88
31-60 Days	-	36,069.52	-	-	-	-	-	-	-	6,667.03
61-90 Days	32,960.63	-	-	-	-	-	-	-	9,206.86	10,854.94
91-120 Days	-	-	-	-	-	-	-	-	-	-
121-150 Days	-	-	-	-	-	-	-	-	-	-
151-180 Days	-	-	-	-	-	-	-	-	-	-
181+ Days	-	-	-	-	-	-	-	-	-	-

### Delinquency Status (% of Current Balance)

Current Portfolio Balance	441,374.13	390,480.39	289,485.90	254,191.63	216,748.33	181,270.59	145,536.24	118,210.65	85,061.48	51,917.83
	Jul-11	Jul-12	Jul-13	Jul-14	Jul-15	Jul-16	Jul-17	Jul-18	Jul-19	Jul-20
Current	73.66%	88.29%	91.20%	100.00%	99.83%	100.00%	100.00%	87.77%	89.18%	51.80%
1-30 Days	18.88%	2.47%	8.80%	0.00%	0.17%	0.00%	0.00%	12.23%	0.00%	14.46%
31-60 Days	0.00%	9.24%	0.00%	0.00%	0.00%	0.00%	0.00%	0.00%	0.00%	12.84%
61-90 Days	7.47%	0.00%	0.00%	0.00%	0.00%	0.00%	0.00%	0.00%	10.82%	20.91%
91-120 Days	0.00%	0.00%	0.00%	0.00%	0.00%	0.00%	0.00%	0.00%	0.00%	0.00%
121-150 Days	0.00%	0.00%	0.00%	0.00%	0.00%	0.00%	0.00%	0.00%	0.00%	0.00%
151-180 Days	0.00%	0.00%	0.00%	0.00%	0.00%	0.00%	0.00%	0.00%	0.00%	0.00%
181+ Days	0.00%	0.00%	0.00%	0.00%	0.00%	0.00%	0.00%	0.00%	0.00%	0.00%
Current - 90 Days	100.00%	100.00%	100.00%	100.00%	100.00%	100.00%	100.00%	100.00%	100.00%	100.00%
91-180 Days	0.00%	0.00%	0.00%	0.00%	0.00%	0.00%	0.00%	0.00%	0.00%	0.00%



## Mortgages - La Hipotecaria Panama Migration Analysis (1998 Vintage)

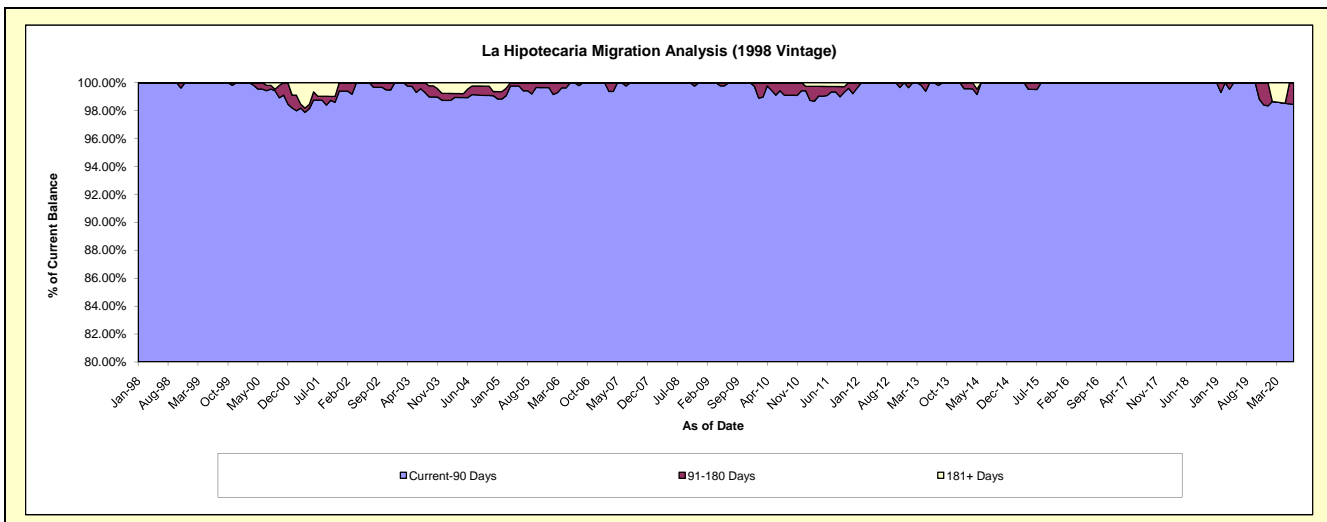
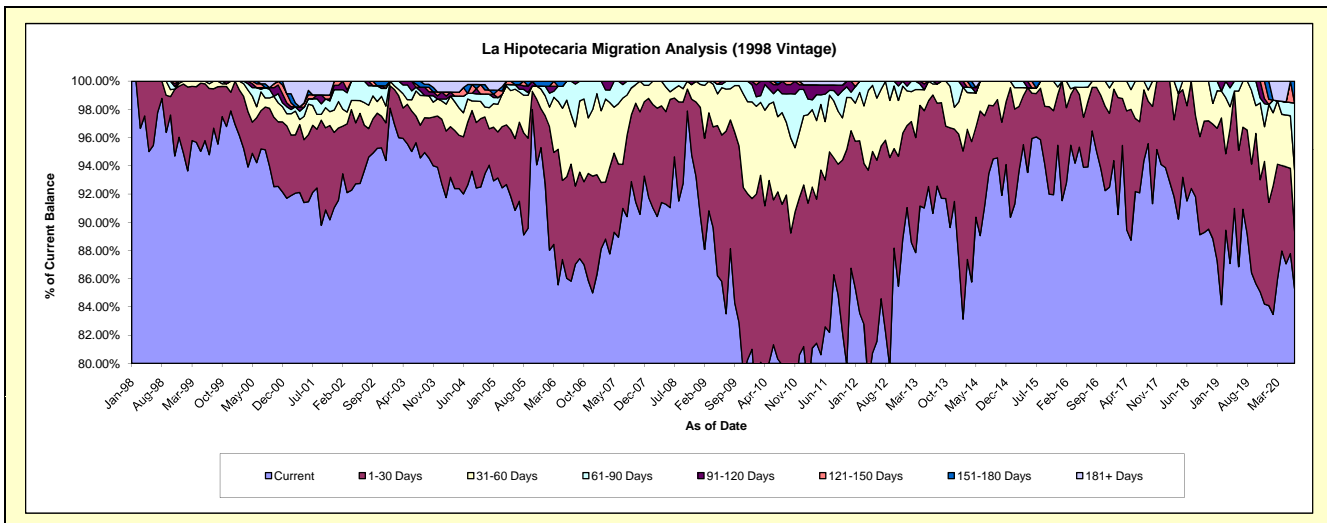
### Delinquency Status (\$ of Current Balance)

Data Cutoff: 7/31/2020

Current Portfolio Balance	4,141,612.13	3,627,647.41	3,208,022.79	2,764,429.41	2,330,498.17	2,002,499.15	1,626,229.53	1,266,025.62	935,980.98	644,371.66
	Jul-11	Jul-12	Jul-13	Jul-14	Jul-15	Jul-16	Jul-17	Jul-18	Jul-19	Jul-20
Current	3,404,336.05	3,068,262.39	2,907,458.24	2,518,273.54	2,238,438.84	1,880,945.27	1,497,586.88	1,169,766.05	851,057.77	549,515.41
1-30 Days	529,798.94	392,882.19	269,157.73	178,472.01	71,682.14	92,475.92	81,914.44	96,259.57	54,413.15	26,264.23
31-60 Days	166,619.03	146,188.84	25,018.23	67,683.86	9,010.26	20,672.60	46,728.21	-	30,510.06	27,902.93
61-90 Days	13,737.75	20,313.99	6,388.59	-	-	8,405.36	-	-	-	30,704.99
91-120 Days	16,020.93	-	-	-	-	-	-	-	-	-
121-150 Days	-	-	-	-	-	-	-	-	-	-
151-180 Days	-	-	-	-	11,366.93	-	-	-	-	9,984.10
181+ Days	11,099.43	-	-	-	-	-	-	-	-	-

### Delinquency Status (% of Current Balance)

Current Portfolio Balance	4,141,612.13	3,627,647.41	3,208,022.79	2,764,429.41	2,330,498.17	2,002,499.15	1,626,229.53	1,266,025.62	935,980.98	644,371.66
	Jul-11	Jul-12	Jul-13	Jul-14	Jul-15	Jul-16	Jul-17	Jul-18	Jul-19	Jul-20
Current	82.20%	84.58%	90.63%	91.10%	96.05%	93.93%	92.09%	92.40%	90.93%	85.28%
1-30 Days	12.79%	10.83%	8.39%	6.46%	3.08%	4.62%	5.04%	7.60%	5.81%	4.08%
31-60 Days	4.02%	4.03%	0.78%	2.45%	0.39%	1.03%	2.87%	0.00%	3.26%	4.33%
61-90 Days	0.33%	0.56%	0.20%	0.00%	0.00%	0.42%	0.00%	0.00%	0.00%	4.77%
91-120 Days	0.39%	0.00%	0.00%	0.00%	0.00%	0.00%	0.00%	0.00%	0.00%	0.00%
121-150 Days	0.00%	0.00%	0.00%	0.00%	0.00%	0.00%	0.00%	0.00%	0.00%	0.00%
151-180 Days	0.00%	0.00%	0.00%	0.00%	0.49%	0.00%	0.00%	0.00%	0.00%	1.55%
181+ Days	0.27%	0.00%	0.00%	0.00%	0.00%	0.00%	0.00%	0.00%	0.00%	0.00%
Current - 90 Days	99.35%	100.00%	100.00%	100.00%	99.51%	100.00%	100.00%	100.00%	100.00%	98.45%
91-180 Days	0.39%	0.00%	0.00%	0.00%	0.49%	0.00%	0.00%	0.00%	0.00%	1.55%



## Mortgages - La Hipotecaria Panama Migration Analysis (1999 Vintage)

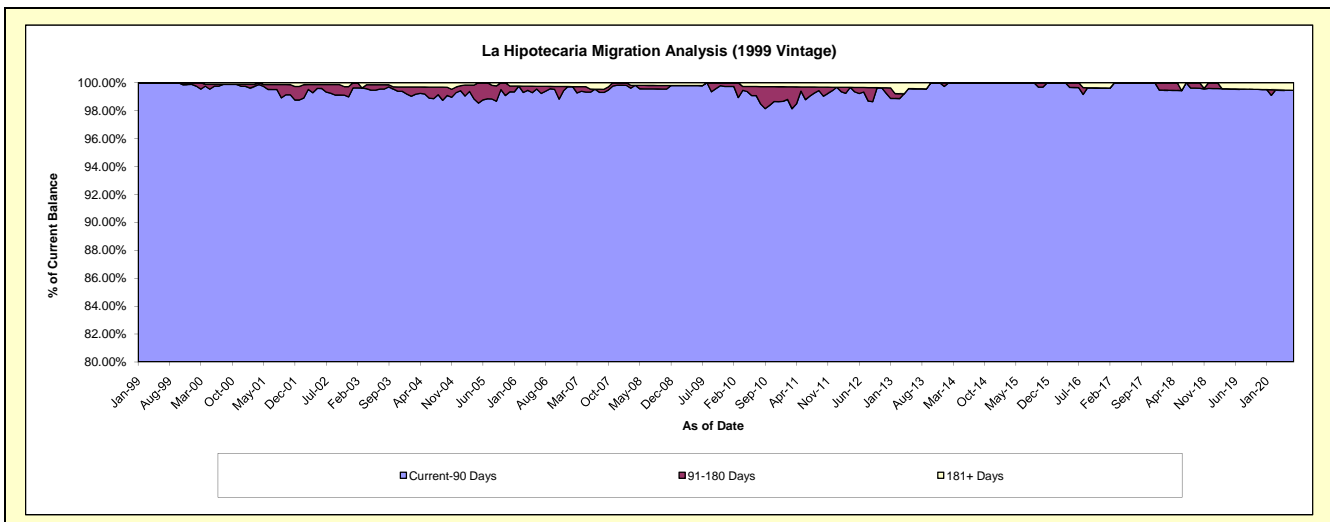
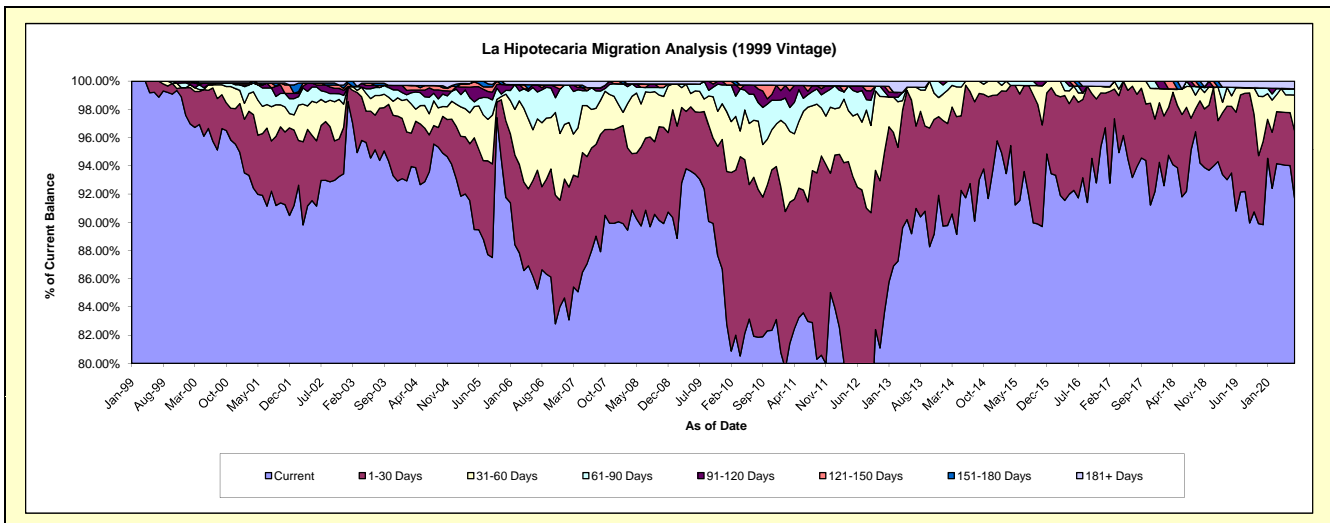
### Delinquency Status (\$ of Current Balance)

Data Cutoff: 7/31/2020

Current Portfolio Balance	6,335,736.78	5,714,017.11	4,931,600.18	4,331,179.06	3,806,270.82	3,247,970.89	2,750,036.87	2,311,497.05	1,915,459.40	1,584,657.72
	Jul-11	Jul-12	Jul-13	Jul-14	Jul-15	Jul-16	Jul-17	Jul-18	Jul-19	Jul-20
Current	5,257,420.21	4,366,620.52	4,486,716.08	4,016,677.20	3,562,631.22	2,979,483.03	2,562,313.94	2,131,266.34	1,764,978.40	1,453,203.39
1-30 Days	536,382.44	907,161.53	287,974.16	281,995.89	231,886.40	219,763.99	177,886.26	137,404.98	131,846.77	75,247.02
31-60 Days	425,256.60	274,375.21	135,759.09	32,505.97	-	21,818.47	9,836.67	34,214.18	10,022.68	40,622.46
61-90 Days	56,295.40	127,837.38	-	-	11,753.20	15,560.66	-	8,611.55	-	6,973.30
91-120 Days	15,146.10	18,516.24	-	-	-	-	-	-	-	-
121-150 Days	25,729.80	-	-	-	-	-	-	-	-	-
151-180 Days	-	-	-	-	-	11,344.74	-	-	-	-
181+ Days	19,506.23	19,506.23	21,150.85	-	-	-	-	-	8,611.55	8,611.55

### Delinquency Status (% of Current Balance)

Current Portfolio Balance	6,335,736.78	5,714,017.11	4,931,600.18	4,331,179.06	3,806,270.82	3,247,970.89	2,750,036.87	2,311,497.05	1,915,459.40	1,584,657.72
	Jul-11	Jul-12	Jul-13	Jul-14	Jul-15	Jul-16	Jul-17	Jul-18	Jul-19	Jul-20
Current	82.98%	76.42%	90.98%	92.74%	93.60%	91.73%	93.17%	92.20%	92.14%	91.70%
1-30 Days	8.47%	15.88%	5.84%	6.51%	6.09%	6.77%	6.47%	5.94%	6.88%	4.75%
31-60 Days	6.71%	4.80%	2.75%	0.75%	0.00%	0.67%	0.36%	1.48%	0.52%	2.56%
61-90 Days	0.89%	2.24%	0.00%	0.00%	0.31%	0.48%	0.00%	0.37%	0.00%	0.44%
91-120 Days	0.24%	0.32%	0.00%	0.00%	0.00%	0.00%	0.00%	0.00%	0.00%	0.00%
121-150 Days	0.41%	0.00%	0.00%	0.00%	0.00%	0.00%	0.00%	0.00%	0.00%	0.00%
151-180 Days	0.00%	0.00%	0.00%	0.00%	0.00%	0.35%	0.00%	0.00%	0.00%	0.00%
181+ Days	0.31%	0.34%	0.43%	0.00%	0.00%	0.00%	0.00%	0.00%	0.45%	0.54%
Current - 90 Days	99.05%	99.33%	99.57%	100.00%	100.00%	99.65%	100.00%	100.00%	99.55%	99.46%
91-180 Days	0.65%	0.32%	0.00%	0.00%	0.00%	0.35%	0.00%	0.00%	0.00%	0.00%



## Mortgages - La Hipotecaria Panama Migration Analysis (2000 Vintage)

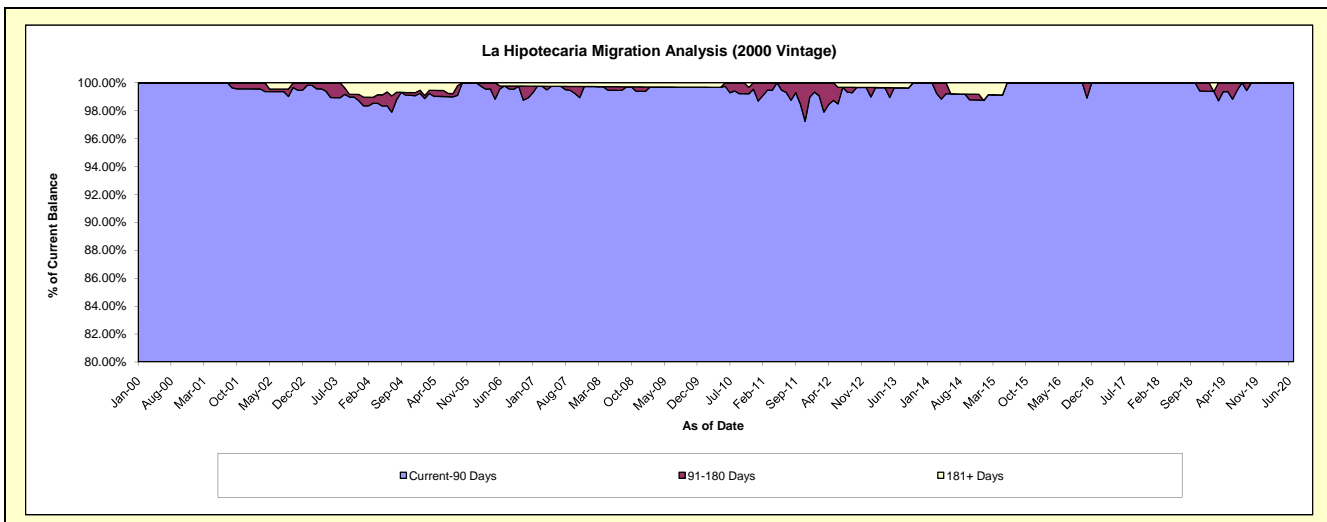
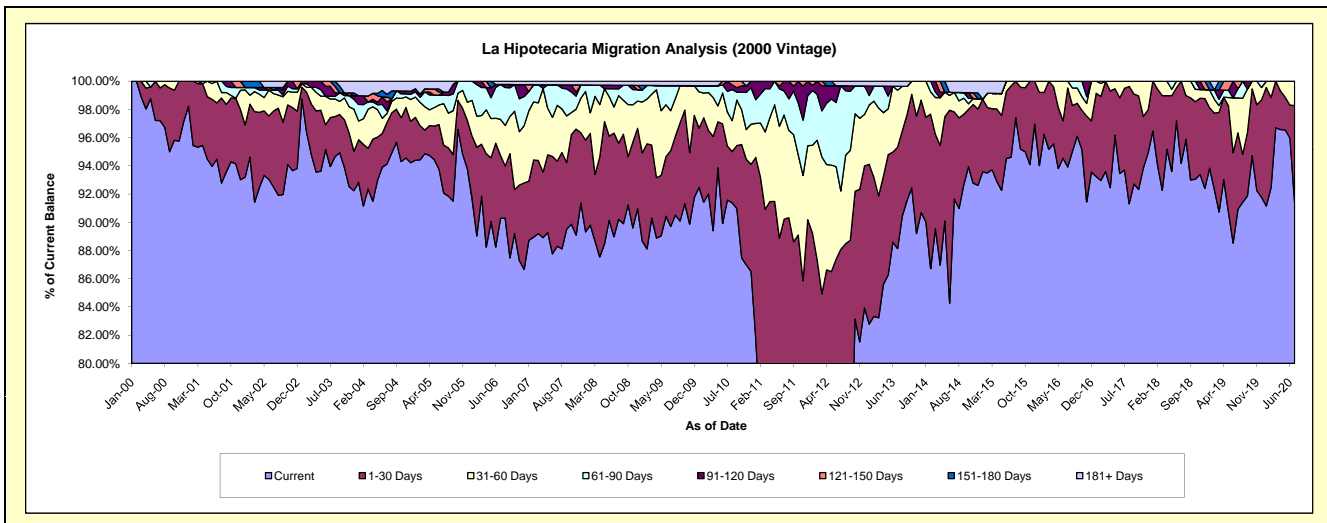
### Delinquency Status (\$ of Current Balance)

Data Cutoff: 7/31/2020

Current Portfolio Balance	5,354,207.49	4,910,271.00	4,454,199.97	3,910,319.80	3,417,938.45	2,961,697.61	2,641,271.86	2,307,214.92	1,940,946.00	1,654,671.34
	Jul-11	Jul-12	Jul-13	Jul-14	Jul-15	Jul-16	Jul-17	Jul-18	Jul-19	Jul-20
Current	3,806,616.96	3,451,138.24	3,925,939.70	3,583,607.23	3,233,493.13	2,781,422.99	2,474,967.73	2,172,945.38	1,764,773.58	1,512,476.70
1-30 Days	1,024,192.78	874,119.61	320,282.12	241,396.33	173,057.43	166,022.13	153,053.54	134,269.54	104,979.34	113,539.67
31-60 Days	394,963.28	203,001.74	179,318.77	54,222.84	11,387.89	14,252.49	13,250.59	-	48,071.32	28,654.97
61-90 Days	91,063.73	365,918.99	12,566.96	-	-	-	-	-	12,870.41	-
91-120 Days	37,370.74	-	-	-	-	-	-	-	-	-
121-150 Days	-	-	-	-	-	-	-	-	10,251.35	-
151-180 Days	-	-	-	-	-	-	-	-	-	-
181+ Days	-	16,092.42	16,092.42	31,093.40	-	-	-	-	-	-

### Delinquency Status (% of Current Balance)

Current Portfolio Balance	5,354,207.49	4,910,271.00	4,454,199.97	3,910,319.80	3,417,938.45	2,961,697.61	2,641,271.86	2,307,214.92	1,940,946.00	1,654,671.34
	Jul-11	Jul-12	Jul-13	Jul-14	Jul-15	Jul-16	Jul-17	Jul-18	Jul-19	Jul-20
Current	71.10%	70.28%	88.14%	91.64%	94.60%	93.91%	93.70%	94.18%	90.92%	91.41%
1-30 Days	19.13%	17.80%	7.19%	6.17%	5.06%	5.61%	5.79%	5.82%	5.41%	6.86%
31-60 Days	7.38%	4.13%	4.03%	1.39%	0.33%	0.48%	0.50%	0.00%	2.48%	1.73%
61-90 Days	1.70%	7.45%	0.28%	0.00%	0.00%	0.00%	0.00%	0.00%	0.66%	0.00%
91-120 Days	0.70%	0.00%	0.00%	0.00%	0.00%	0.00%	0.00%	0.00%	0.00%	0.00%
121-150 Days	0.00%	0.00%	0.00%	0.00%	0.00%	0.00%	0.00%	0.00%	0.53%	0.00%
151-180 Days	0.00%	0.00%	0.00%	0.00%	0.00%	0.00%	0.00%	0.00%	0.00%	0.00%
181+ Days	0.00%	0.33%	0.36%	0.80%	0.00%	0.00%	0.00%	0.00%	0.00%	0.00%
Current - 90 Days	99.30%	99.67%	99.64%	99.20%	100.00%	100.00%	100.00%	100.00%	99.47%	100.00%
91-180 Days	0.70%	0.00%	0.00%	0.00%	0.00%	0.00%	0.00%	0.00%	0.53%	0.00%



## Mortgages - La Hipotecaria Panama Migration Analysis (2001 Vintage)

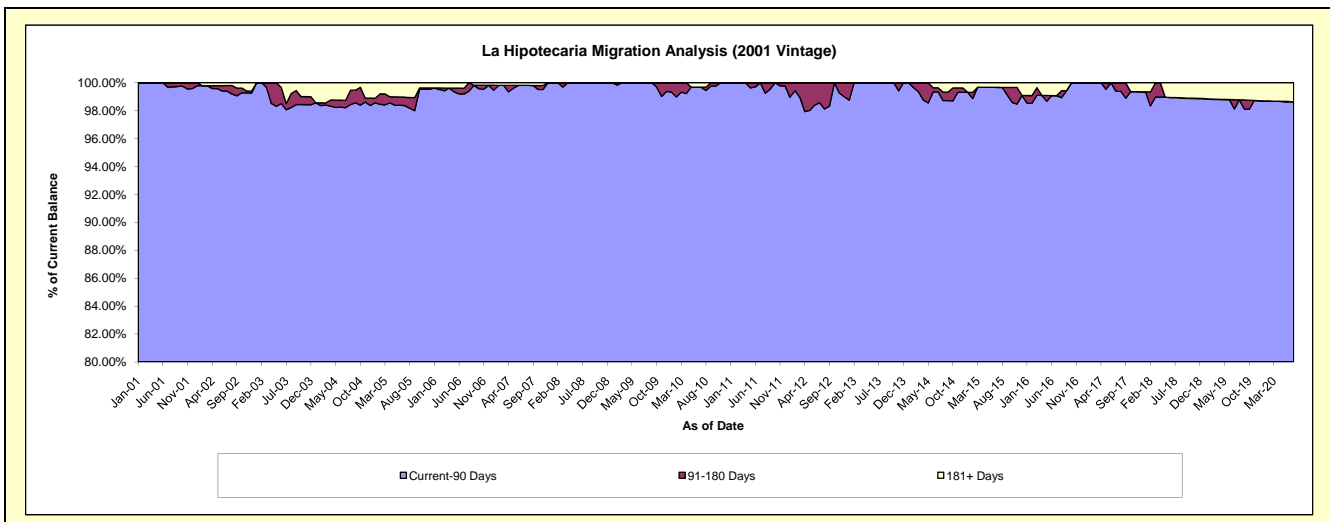
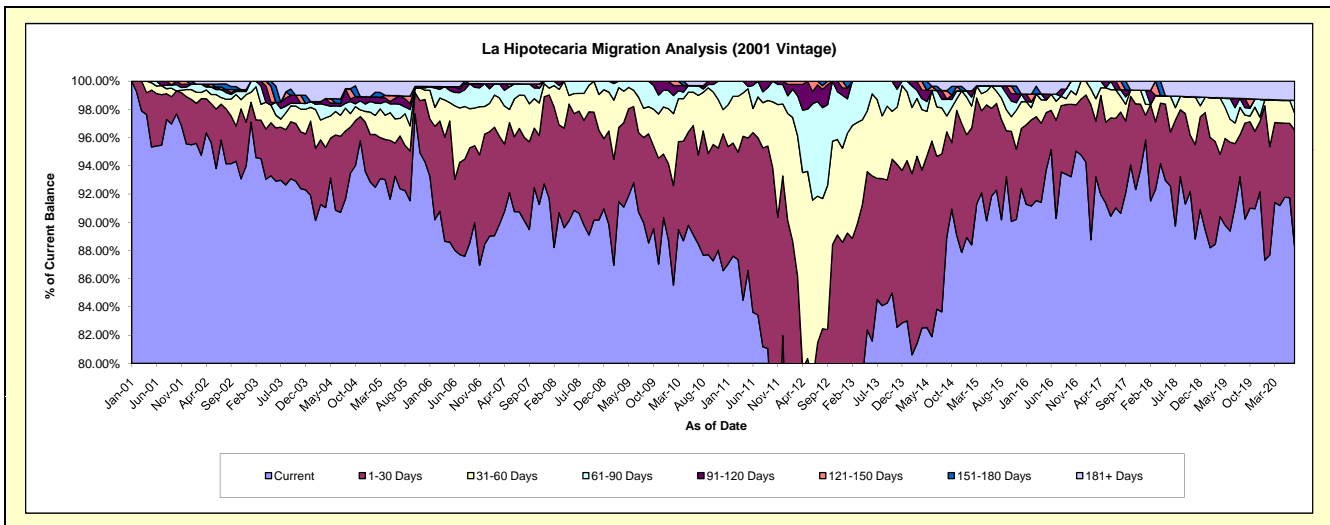
### Delinquency Status (\$ of Current Balance)

Data Cutoff: 7/31/2020

Current Portfolio Balance	5,616,132.60	5,243,445.98	4,457,208.99	3,979,664.08	3,583,969.02	3,279,922.43	2,973,539.71	2,593,308.89	2,268,209.57	2,015,719.48
	Jul-11	Jul-12	Jul-13	Jul-14	Jul-15	Jul-16	Jul-17	Jul-18	Jul-19	Jul-20
Current	4,685,665.01	3,140,547.63	3,767,643.90	3,336,650.58	3,307,131.39	2,961,052.39	2,706,668.18	2,327,049.22	2,067,281.13	1,779,194.02
1-30 Days	705,390.58	1,131,081.63	382,402.39	430,982.85	220,264.26	227,970.74	188,586.66	194,507.72	100,479.59	166,638.70
31-60 Days	162,284.97	544,512.47	248,982.68	139,778.25	30,819.36	44,309.53	60,163.37	23,209.13	33,225.36	23,985.26
61-90 Days	62,792.04	351,995.12	58,180.02	45,970.61	13,808.69	16,275.56	-	20,943.42	24,722.39	18,302.10
91-120 Days	-	61,898.94	-	-	-	-	18,121.50	-	14,901.70	-
121-150 Days	-	13,410.19	-	-	-	-	-	-	-	-
151-180 Days	-	-	-	11,945.32	-	-	-	-	-	-
181+ Days	-	-	-	14,336.47	11,945.32	30,314.21	-	27,599.40	27,599.40	27,599.40

### Delinquency Status (% of Current Balance)

Current Portfolio Balance	5,616,132.60	5,243,445.98	4,457,208.99	3,979,664.08	3,583,969.02	3,279,922.43	2,973,539.71	2,593,308.89	2,268,209.57	2,015,719.48
	Jul-11	Jul-12	Jul-13	Jul-14	Jul-15	Jul-16	Jul-17	Jul-18	Jul-19	Jul-20
Current	83.43%	59.89%	84.53%	83.84%	92.28%	90.28%	91.03%	89.73%	91.14%	88.27%
1-30 Days	12.56%	21.57%	8.59%	10.83%	6.15%	6.95%	6.34%	7.50%	4.43%	8.27%
31-60 Days	2.89%	10.38%	5.59%	3.51%	0.86%	1.35%	2.02%	0.89%	1.46%	1.19%
61-90 Days	1.12%	6.71%	1.31%	1.16%	0.39%	0.50%	0.00%	0.81%	1.09%	0.91%
91-120 Days	0.00%	1.18%	0.00%	0.00%	0.00%	0.00%	0.61%	0.00%	0.66%	0.00%
121-150 Days	0.00%	0.26%	0.00%	0.00%	0.00%	0.00%	0.00%	0.00%	0.00%	0.00%
151-180 Days	0.00%	0.00%	0.00%	0.30%	0.00%	0.00%	0.00%	0.00%	0.00%	0.00%
181+ Days	0.00%	0.00%	0.00%	0.36%	0.33%	0.92%	0.00%	1.06%	1.22%	1.37%
Current - 90 Days	100.00%	98.56%	100.00%	99.34%	99.67%	99.08%	99.39%	98.94%	98.13%	98.63%
91-180 Days	0.00%	1.44%	0.00%	0.30%	0.00%	0.00%	0.61%	0.00%	0.66%	0.00%



## Mortgages - La Hipotecaria Panama Migration Analysis (2002 Vintage)

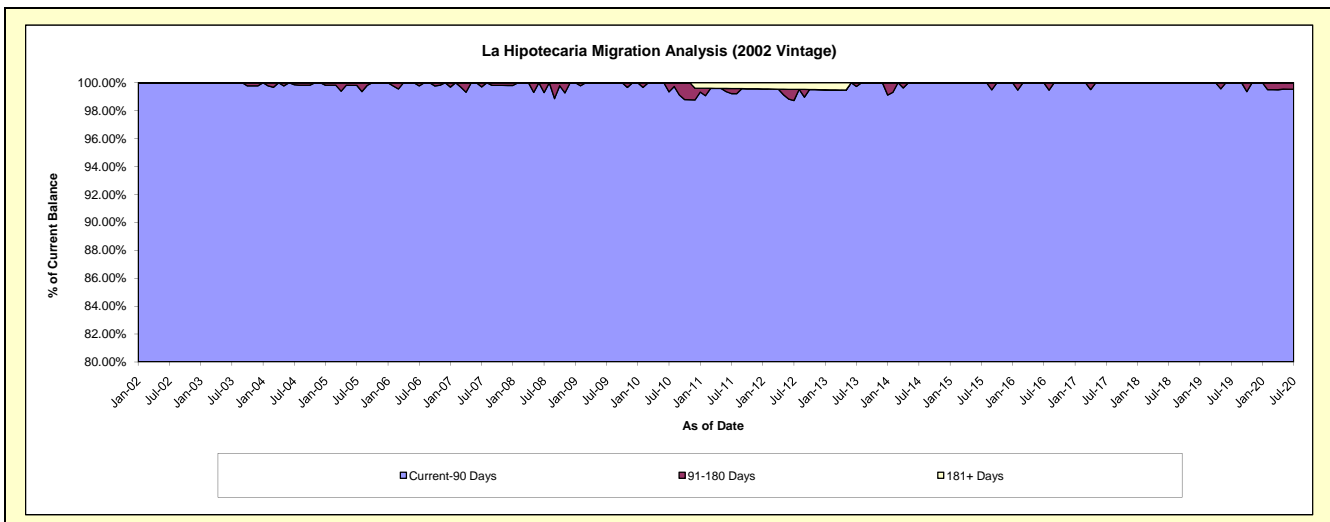
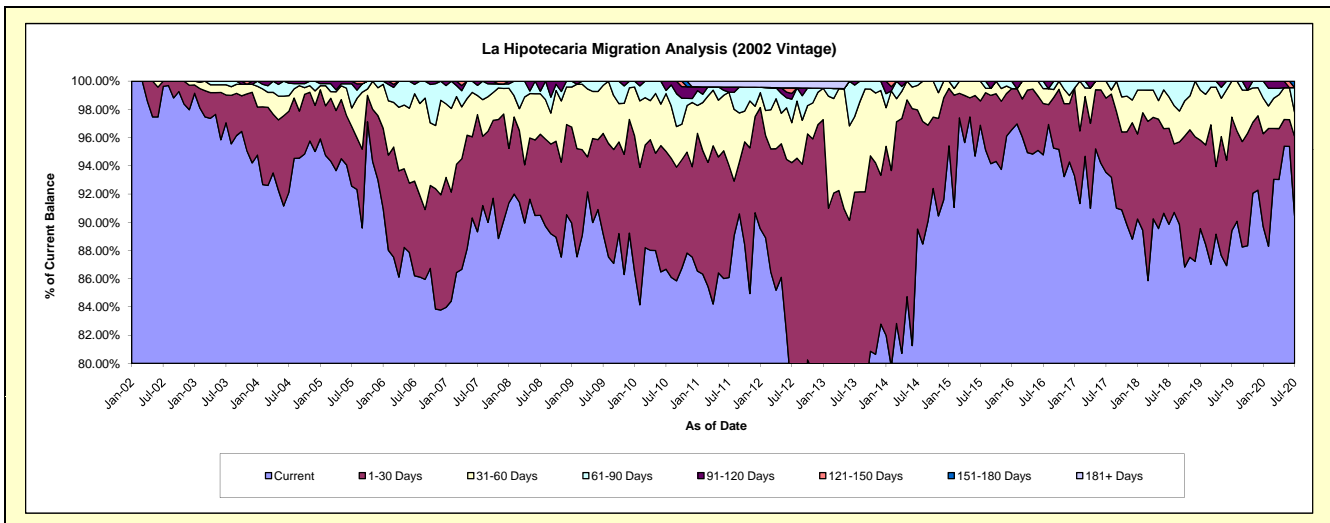
### Delinquency Status (\$ of Current Balance)

Data Cutoff: 7/31/2020

Current Portfolio Balance	5,335,456.73	4,670,779.59	4,001,109.56	3,493,559.83	3,198,455.24	2,878,567.66	2,563,851.47	2,388,480.90	2,143,970.49	1,914,284.09
	Jul-11	Jul-12	Jul-13	Jul-14	Jul-15	Jul-16	Jul-17	Jul-18	Jul-19	Jul-20
Current	4,593,028.24	3,626,824.19	2,893,035.97	3,127,417.84	3,098,425.20	2,728,356.84	2,397,943.54	2,146,277.74	1,916,793.87	1,731,463.64
1-30 Days	425,315.39	774,394.03	793,219.92	294,860.81	55,298.79	104,677.46	135,171.71	162,557.40	172,614.59	107,385.42
31-60 Days	275,542.90	132,295.93	214,159.67	60,863.42	44,731.25	30,357.40	30,736.22	53,323.61	54,562.03	32,229.55
61-90 Days	-	77,651.30	89,862.36	10,417.76	-	15,175.96	-	26,322.15	-	34,326.77
91-120 Days	19,410.19	18,858.19	10,831.64	-	-	-	-	-	-	-
121-150 Days	-	18,595.94	-	-	-	-	-	-	-	-
151-180 Days	-	-	-	-	-	-	-	-	-	8,878.71
181+ Days	22,160.01	22,160.01	-	-	-	-	-	-	-	-

### Delinquency Status (% of Current Balance)

Current Portfolio Balance	5,335,456.73	4,670,779.59	4,001,109.56	3,493,559.83	3,198,455.24	2,878,567.66	2,563,851.47	2,388,480.90	2,143,970.49	1,914,284.09
	Jul-11	Jul-12	Jul-13	Jul-14	Jul-15	Jul-16	Jul-17	Jul-18	Jul-19	Jul-20
Current	86.09%	77.65%	72.31%	89.52%	96.87%	94.78%	93.53%	89.86%	89.40%	90.45%
1-30 Days	7.97%	16.58%	19.82%	8.44%	1.73%	3.64%	5.27%	6.81%	8.05%	5.61%
31-60 Days	5.16%	2.83%	5.35%	1.74%	1.40%	1.05%	1.20%	2.23%	2.54%	1.68%
61-90 Days	0.00%	1.66%	2.25%	0.30%	0.00%	0.53%	0.00%	1.10%	0.00%	1.79%
91-120 Days	0.36%	0.40%	0.27%	0.00%	0.00%	0.00%	0.00%	0.00%	0.00%	0.00%
121-150 Days	0.00%	0.40%	0.00%	0.00%	0.00%	0.00%	0.00%	0.00%	0.00%	0.00%
151-180 Days	0.00%	0.00%	0.00%	0.00%	0.00%	0.00%	0.00%	0.00%	0.00%	0.46%
181+ Days	0.42%	0.47%	0.00%	0.00%	0.00%	0.00%	0.00%	0.00%	0.00%	0.00%
Current - 90 Days	99.22%	98.72%	99.73%	100.00%	100.00%	100.00%	100.00%	100.00%	100.00%	99.54%
91-180 Days	0.36%	0.80%	0.27%	0.00%	0.00%	0.00%	0.00%	0.00%	0.00%	0.46%





## Mortgages - La Hipotecaria Panama Migration Analysis (2003 Vintage)

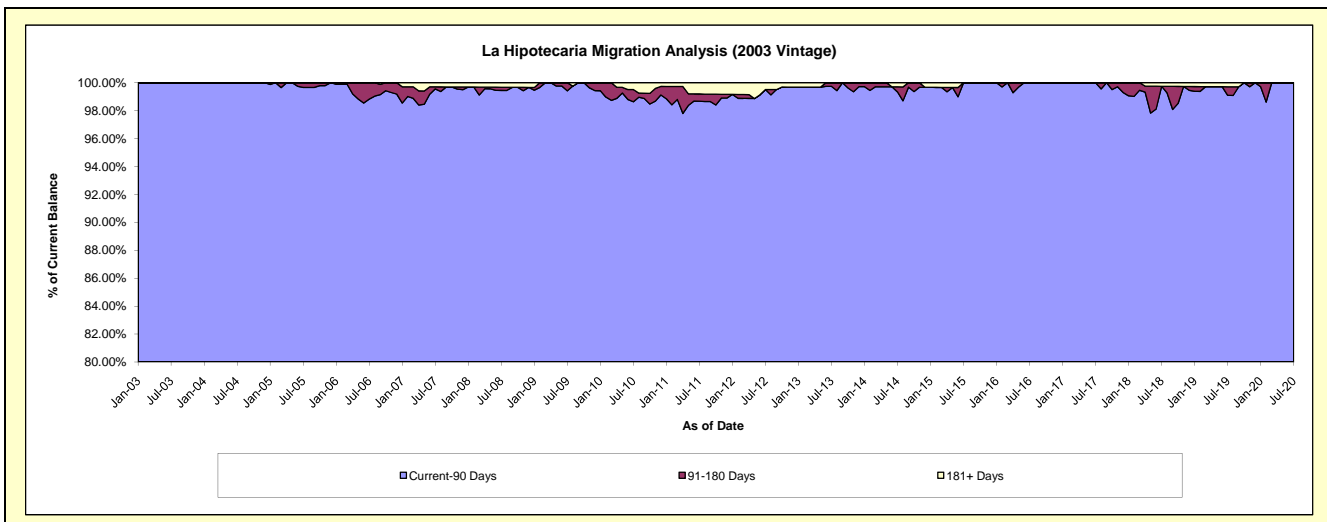
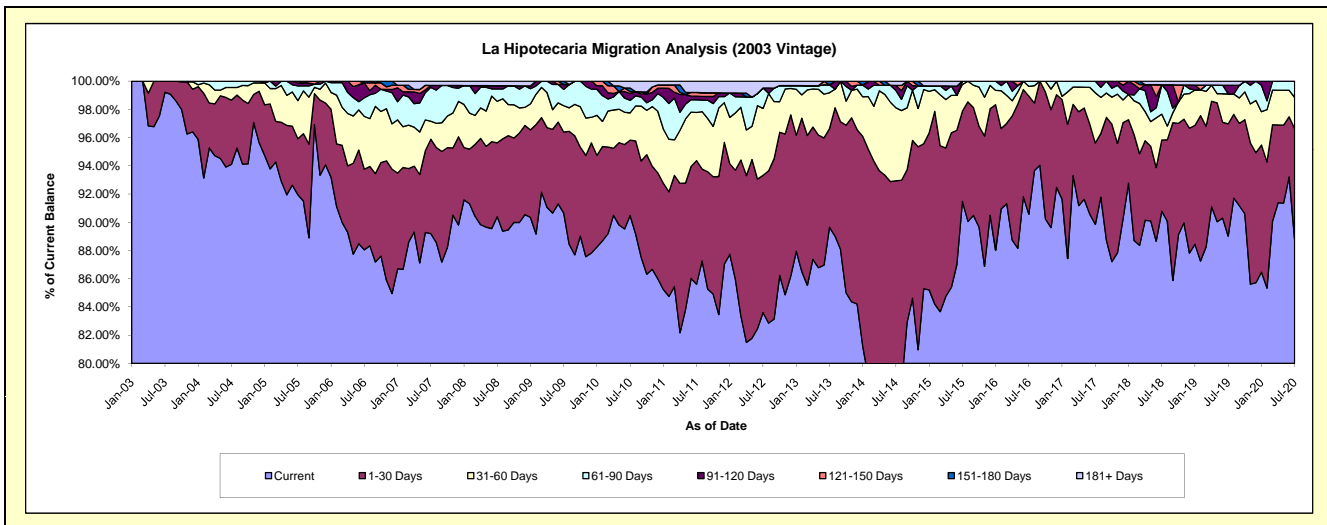
### Delinquency Status (\$ of Current Balance)

Data Cutoff: 7/31/2020

Current Portfolio Balance	8,213,469.48	7,471,965.73	6,920,489.37	6,033,451.25	5,384,579.03	4,699,333.60	4,187,995.03	3,745,551.51	3,294,638.80	3,004,558.81
	Jul-11	Jul-12	Jul-13	Jul-14	Jul-15	Jul-16	Jul-17	Jul-18	Jul-19	Jul-20
Current	7,031,466.37	6,247,013.99	6,203,835.97	4,537,515.33	4,925,818.21	4,256,302.39	3,763,252.35	3,400,312.31	2,932,725.30	2,667,419.06
1-30 Days	719,414.31	726,172.55	484,146.28	1,070,070.39	344,042.57	393,485.06	241,079.85	189,181.66	262,427.29	235,825.93
31-60 Days	280,496.19	354,238.42	175,838.66	312,039.19	101,872.21	32,138.99	149,005.01	68,523.76	69,806.47	66,724.40
61-90 Days	73,383.70	108,419.36	38,757.06	73,850.70	12,846.04	17,407.16	34,657.82	78,028.31	-	34,589.42
91-120 Days	21,471.40	-	-	22,064.24	-	-	-	-	20,174.27	-
121-150 Days	21,390.26	-	-	-	-	-	-	-	-	-
151-180 Days	-	-	17,911.40	-	-	-	-	-	-	-
181+ Days	65,847.25	36,121.41	-	17,911.40	-	-	-	9,505.47	9,505.47	-

### Delinquency Status (% of Current Balance)

Current Portfolio Balance	8,213,469.48	7,471,965.73	6,920,489.37	6,033,451.25	5,384,579.03	4,699,333.60	4,187,995.03	3,745,551.51	3,294,638.80	3,004,558.81
	Jul-11	Jul-12	Jul-13	Jul-14	Jul-15	Jul-16	Jul-17	Jul-18	Jul-19	Jul-20
Current	85.61%	83.61%	89.64%	75.21%	91.48%	90.57%	89.86%	90.78%	89.02%	88.78%
1-30 Days	8.76%	9.72%	7.00%	17.74%	6.39%	8.37%	5.76%	5.05%	7.97%	7.85%
31-60 Days	3.42%	4.74%	2.54%	5.17%	1.89%	0.68%	3.56%	1.83%	2.12%	2.22%
61-90 Days	0.89%	1.45%	0.56%	1.22%	0.24%	0.37%	0.83%	2.08%	0.00%	1.15%
91-120 Days	0.26%	0.00%	0.00%	0.37%	0.00%	0.00%	0.00%	0.00%	0.61%	0.00%
121-150 Days	0.26%	0.00%	0.00%	0.00%	0.00%	0.00%	0.00%	0.00%	0.00%	0.00%
151-180 Days	0.00%	0.00%	0.26%	0.00%	0.00%	0.00%	0.00%	0.00%	0.00%	0.00%
181+ Days	0.80%	0.48%	0.00%	0.30%	0.00%	0.00%	0.00%	0.25%	0.29%	0.00%
Current - 90 Days	98.68%	99.52%	99.74%	99.34%	100.00%	100.00%	100.00%	99.75%	99.10%	100.00%
91-180 Days	0.52%	0.00%	0.26%	0.37%	0.00%	0.00%	0.00%	0.00%	0.61%	0.00%



# Mortgages - La Hipotecaria Panama Migration Analysis (2004 Vintage)

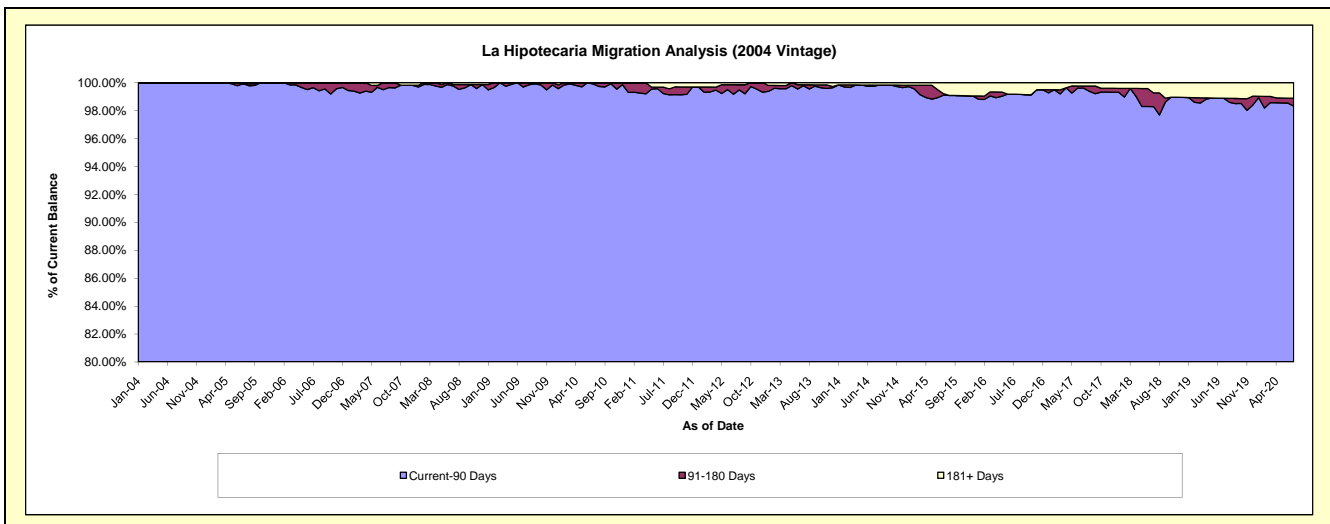
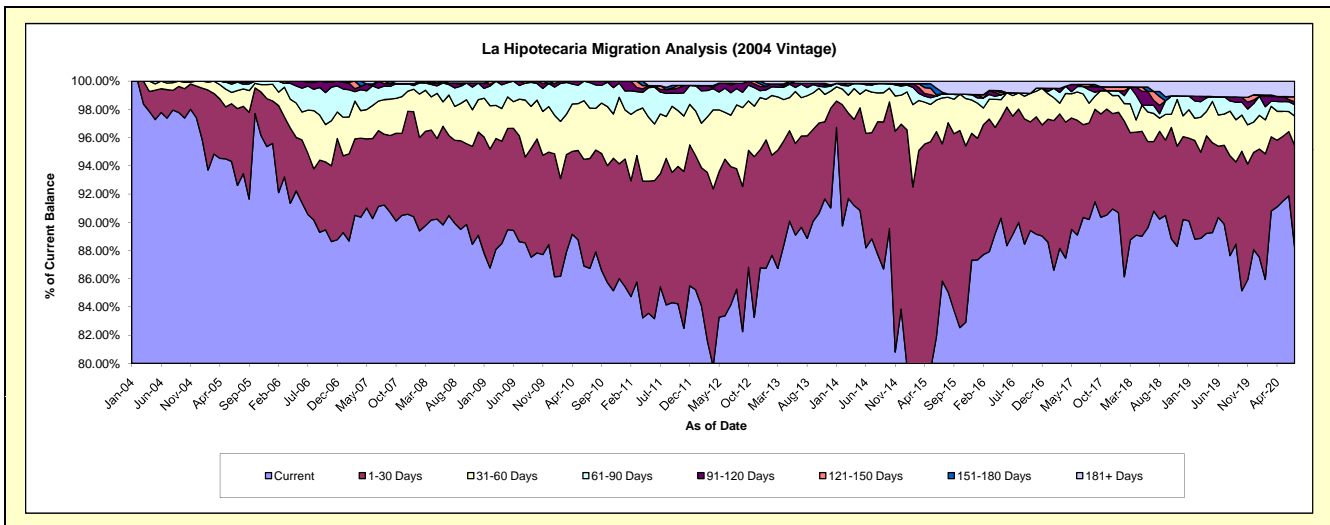
## Delinquency Status (\$ of Current Balance)

Data Cutoff: 7/31/2020

Current Portfolio Balance	14,975,714.64	13,690,545.96	12,168,791.81	11,028,349.40	9,661,667.33	8,654,338.56	7,621,844.56	6,955,061.15	6,321,818.45	5,811,755.29
	Jul-11	Jul-12	Jul-13	Jul-14	Jul-15	Jul-16	Jul-17	Jul-18	Jul-19	Jul-20
Current	12,794,744.07	11,520,556.29	10,909,382.13	9,796,447.43	8,292,675.22	7,713,299.83	6,885,704.52	6,314,410.54	5,681,474.81	5,127,488.80
1-30 Days	1,200,051.21	1,340,854.48	786,651.53	829,683.62	940,099.65	726,659.04	501,492.74	343,139.16	353,120.34	419,647.55
31-60 Days	632,703.97	499,137.10	330,553.05	316,454.79	314,552.08	125,854.55	165,414.52	138,312.58	139,957.31	121,004.29
61-90 Days	232,698.51	217,378.11	116,210.84	56,787.88	28,171.29	17,547.59	39,975.93	40,137.19	77,283.99	46,626.74
91-120 Days	27,479.24	74,073.29	7,895.90	-	-	-	-	24,153.45	-	11,951.19
121-150 Days	40,067.20	18,402.53	-	10,877.32	-	-	11,455.41	44,347.00	-	20,506.40
151-180 Days	-	-	-	-	10,330.78	-	-	-	-	-
181+ Days	47,970.44	20,144.16	18,098.36	18,098.36	75,838.31	70,977.55	17,801.44	50,561.23	69,982.00	64,530.32

## Delinquency Status (% of Current Balance)

Current Portfolio Balance	14,975,714.64	13,690,545.96	12,168,791.81	11,028,349.40	9,661,667.33	8,654,338.56	7,621,844.56	6,955,061.15	6,321,818.45	5,811,755.29
	Jul-11	Jul-12	Jul-13	Jul-14	Jul-15	Jul-16	Jul-17	Jul-18	Jul-19	Jul-20
Current	85.44%	84.15%	89.65%	88.83%	85.83%	89.13%	90.34%	90.79%	89.87%	88.23%
1-30 Days	8.01%	9.79%	6.46%	7.52%	9.73%	8.40%	6.58%	4.93%	5.59%	7.22%
31-60 Days	4.22%	3.65%	2.72%	2.87%	3.26%	1.45%	2.17%	1.99%	2.21%	2.08%
61-90 Days	1.55%	1.59%	0.95%	0.51%	0.29%	0.20%	0.52%	0.58%	1.22%	0.80%
91-120 Days	0.18%	0.54%	0.06%	0.00%	0.00%	0.00%	0.00%	0.35%	0.00%	0.21%
121-150 Days	0.27%	0.13%	0.00%	0.10%	0.00%	0.00%	0.15%	0.64%	0.00%	0.35%
151-180 Days	0.00%	0.00%	0.00%	0.00%	0.11%	0.00%	0.00%	0.00%	0.00%	0.00%
181+ Days	0.32%	0.15%	0.15%	0.16%	0.78%	0.82%	0.23%	0.73%	1.11%	1.11%
Current - 90 Days	99.23%	99.18%	99.79%	99.74%	99.11%	99.18%	99.62%	98.29%	98.89%	98.33%
91-180 Days	0.45%	0.68%	0.06%	0.10%	0.11%	0.00%	0.15%	0.98%	0.00%	0.56%



## Mortgages - La Hipotecaria Panama Migration Analysis (2005 Vintage)

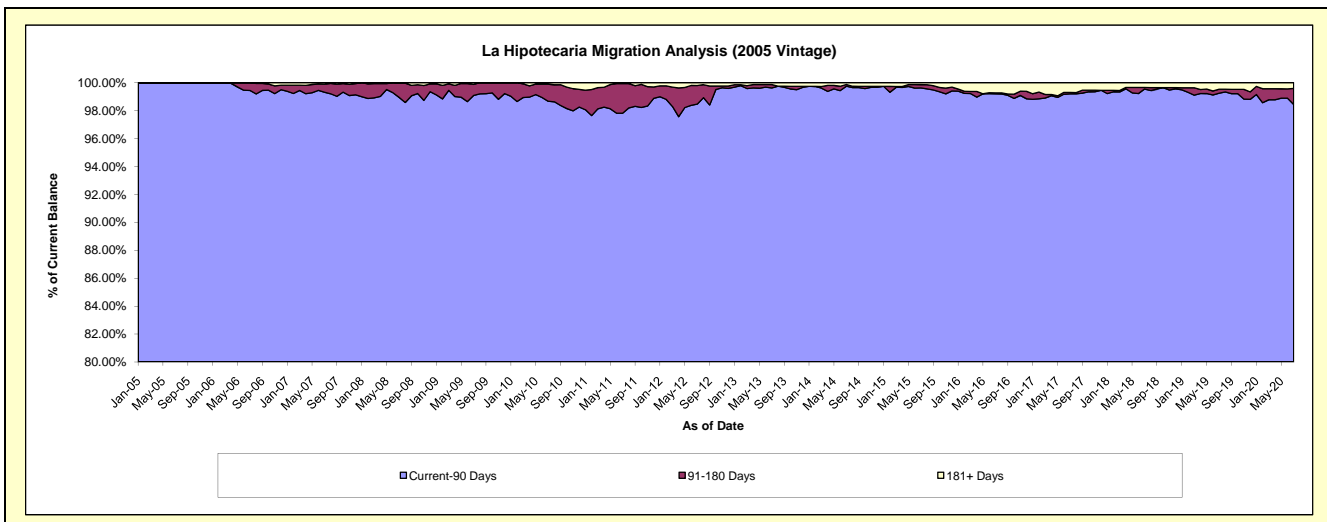
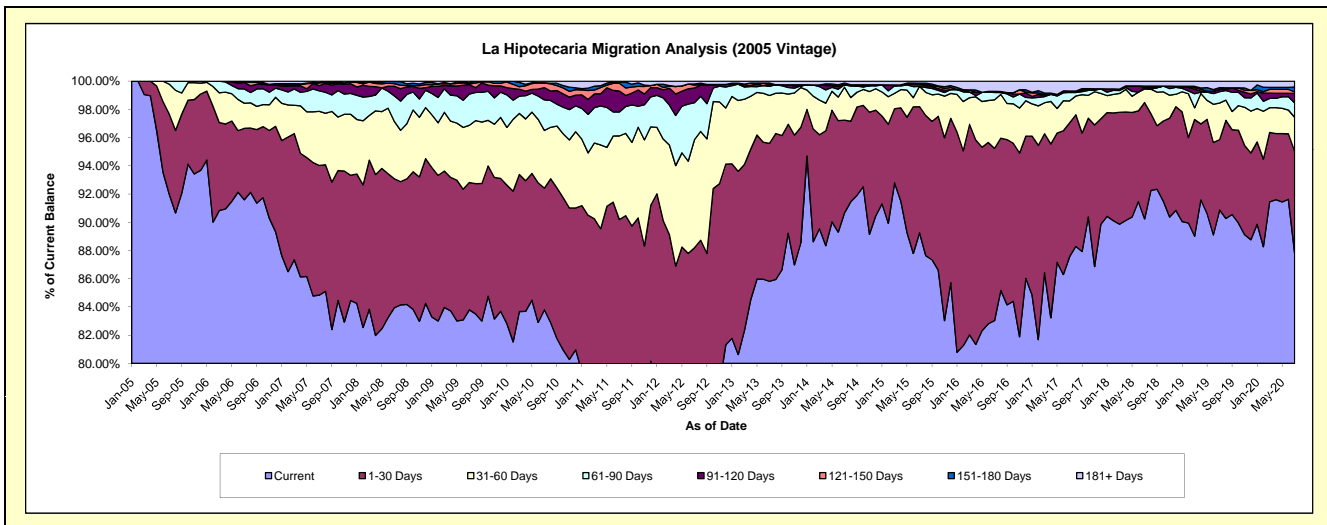
### Delinquency Status (\$ of Current Balance)

Data Cutoff: 7/31/2020

Current Portfolio Balance	27,770,906.57	25,120,646.10	22,972,760.19	20,930,566.32	19,008,130.10	16,498,353.07	14,877,328.25	13,533,256.22	12,283,192.39	11,384,319.66
	Jul-11	Jul-12	Jul-13	Jul-14	Jul-15	Jul-16	Jul-17	Jul-18	Jul-19	Jul-20
Current	21,572,610.15	17,887,233.73	19,714,095.13	18,976,471.64	16,966,321.27	13,699,504.66	13,026,764.20	12,212,505.46	11,162,240.26	9,997,923.90
1-30 Days	3,474,031.56	4,267,553.52	2,245,687.54	1,376,504.43	1,698,470.07	2,012,131.81	1,409,875.67	1,115,198.81	612,841.01	820,323.19
31-60 Days	1,647,475.84	1,922,732.71	779,037.07	488,879.11	273,032.47	568,326.97	232,752.04	130,344.26	317,708.01	274,321.16
61-90 Days	471,891.99	658,715.52	148,470.22	36,278.20	-	87,076.23	89,759.65	14,505.54	98,535.90	115,001.14
91-120 Days	409,686.99	263,681.71	28,353.30	-	31,170.54	-	-	-	20,140.16	78,010.24
121-150 Days	152,488.15	51,429.21	-	-	12,794.48	11,648.45	14,384.82	14,340.37	-	12,362.98
151-180 Days	24,519.42	19,968.38	26,753.20	26,091.67	-	-	-	-	14,768.89	39,684.85
181+ Days	18,202.47	49,331.32	30,363.73	26,341.27	26,341.27	119,664.95	103,791.87	46,361.78	56,958.16	46,692.20

### Delinquency Status (% of Current Balance)

Current Portfolio Balance	27,770,906.57	25,120,646.10	22,972,760.19	20,930,566.32	19,008,130.10	16,498,353.07	14,877,328.25	13,533,256.22	12,283,192.39	11,384,319.66
	Jul-11	Jul-12	Jul-13	Jul-14	Jul-15	Jul-16	Jul-17	Jul-18	Jul-19	Jul-20
Current	77.68%	71.21%	85.82%	90.66%	89.26%	83.04%	87.56%	90.24%	90.87%	87.82%
1-30 Days	12.51%	16.99%	9.78%	6.58%	8.94%	12.20%	9.48%	8.24%	4.99%	7.21%
31-60 Days	5.93%	7.65%	3.39%	2.34%	1.44%	3.44%	1.56%	0.96%	2.59%	2.41%
61-90 Days	1.70%	2.62%	0.65%	0.17%	0.00%	0.53%	0.60%	0.11%	0.80%	1.01%
91-120 Days	1.48%	1.05%	0.12%	0.00%	0.16%	0.00%	0.00%	0.00%	0.16%	0.69%
121-150 Days	0.55%	0.20%	0.00%	0.00%	0.07%	0.07%	0.10%	0.11%	0.00%	0.11%
151-180 Days	0.09%	0.08%	0.12%	0.12%	0.00%	0.00%	0.00%	0.00%	0.12%	0.35%
181+ Days	0.07%	0.20%	0.13%	0.13%	0.14%	0.73%	0.70%	0.34%	0.46%	0.41%
Current - 90 Days	97.82%	98.47%	99.63%	99.75%	99.63%	99.20%	99.21%	99.55%	99.25%	98.45%
91-180 Days	2.11%	1.33%	0.24%	0.12%	0.23%	0.07%	0.10%	0.11%	0.28%	1.14%



## Mortgages - La Hipotecaria Panama Migration Analysis (2006 Vintage)

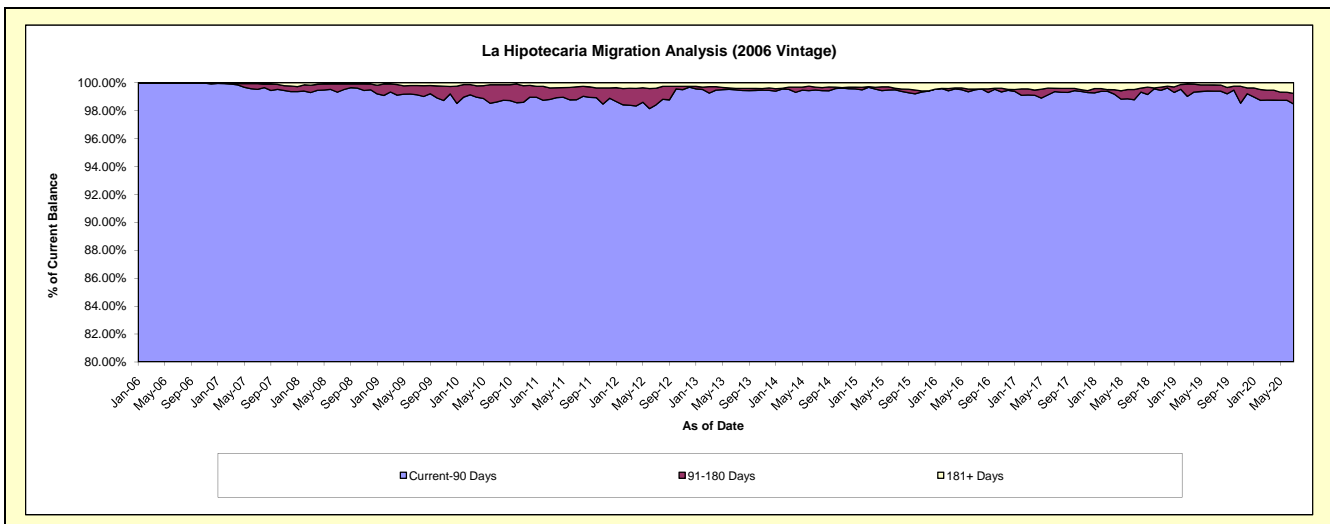
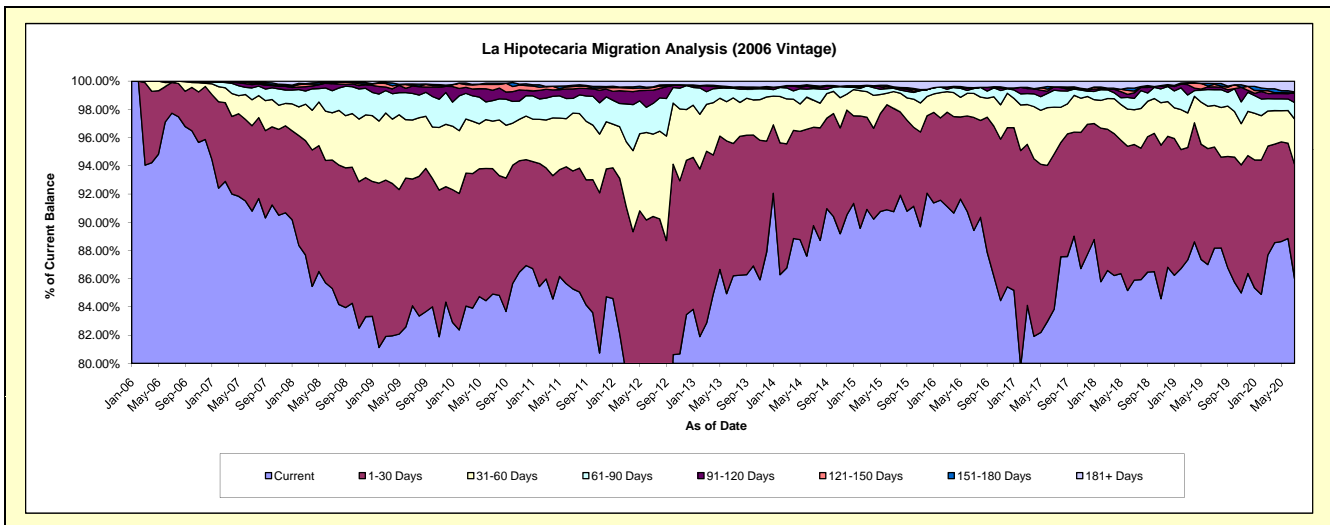
### Delinquency Status (\$ of Current Balance)

Data Cutoff: 7/31/2020

Current Portfolio Balance	48,421,597.62	44,850,091.91	40,451,466.44	36,560,072.25	33,176,899.90	29,302,940.79	26,305,145.45	23,807,705.05	21,682,247.68	20,309,565.58
	Jul-11	Jul-12	Jul-13	Jul-14	Jul-15	Jul-16	Jul-17	Jul-18	Jul-19	Jul-20
Current	41,292,067.65	33,809,229.36	34,871,440.20	32,817,972.07	30,108,906.15	26,203,424.00	22,051,568.83	20,451,193.70	19,117,463.81	17,464,825.89
1-30 Days	4,050,038.86	6,740,801.54	3,793,327.60	2,548,003.09	2,426,593.92	2,345,296.48	2,891,111.78	2,288,578.69	1,552,704.72	1,642,539.35
31-60 Days	1,985,084.84	2,617,236.49	1,307,762.63	702,663.10	396,855.21	500,619.11	877,047.99	585,384.82	638,898.18	655,547.28
61-90 Days	502,843.82	974,412.35	273,369.63	300,411.61	76,148.60	102,907.60	317,112.66	191,624.71	242,991.34	237,550.87
91-120 Days	323,226.75	419,881.20	29,595.41	25,284.23	16,566.02	-	62,595.77	94,736.43	42,235.60	142,049.12
121-150 Days	85,862.89	94,775.91	-	38,282.85	3,785.74	-	-	30,528.17	38,702.46	-
151-180 Days	40,343.98	14,297.23	9,978.84	11,487.18	14,697.71	16,566.02	-	48,994.96	14,444.76	12,196.62
181+ Days	142,128.83	179,457.83	165,992.13	115,968.12	133,346.55	134,127.58	105,708.42	116,663.57	34,806.81	154,856.45

### Delinquency Status (% of Current Balance)

Current Portfolio Balance	48,421,597.62	44,850,091.91	40,451,466.44	36,560,072.25	33,176,899.90	29,302,940.79	26,305,145.45	23,807,705.05	21,682,247.68	20,309,565.58
	Jul-11	Jul-12	Jul-13	Jul-14	Jul-15	Jul-16	Jul-17	Jul-18	Jul-19	Jul-20
Current	85.28%	75.38%	86.21%	89.76%	90.75%	89.42%	83.83%	85.90%	88.17%	85.99%
1-30 Days	8.36%	15.03%	9.38%	6.97%	7.31%	8.00%	10.99%	9.61%	7.16%	8.09%
31-60 Days	4.10%	5.84%	3.23%	1.92%	1.20%	1.71%	3.33%	2.46%	2.95%	3.23%
61-90 Days	1.04%	2.17%	0.68%	0.82%	0.23%	0.35%	1.21%	0.80%	1.12%	1.17%
91-120 Days	0.67%	0.94%	0.07%	0.07%	0.05%	0.00%	0.24%	0.40%	0.19%	0.70%
121-150 Days	0.18%	0.21%	0.00%	0.10%	0.01%	0.00%	0.00%	0.13%	0.18%	0.00%
151-180 Days	0.08%	0.03%	0.02%	0.03%	0.04%	0.06%	0.00%	0.21%	0.07%	0.06%
181+ Days	0.29%	0.40%	0.41%	0.32%	0.40%	0.46%	0.40%	0.49%	0.16%	0.76%
Current - 90 Days	98.78%	98.42%	99.49%	99.48%	99.49%	99.49%	99.36%	98.78%	99.40%	98.48%
91-180 Days	0.93%	1.18%	0.10%	0.21%	0.11%	0.06%	0.24%	0.73%	0.44%	0.76%



## Mortgages - La Hipotecaria Panama Migration Analysis (2007 Vintage)

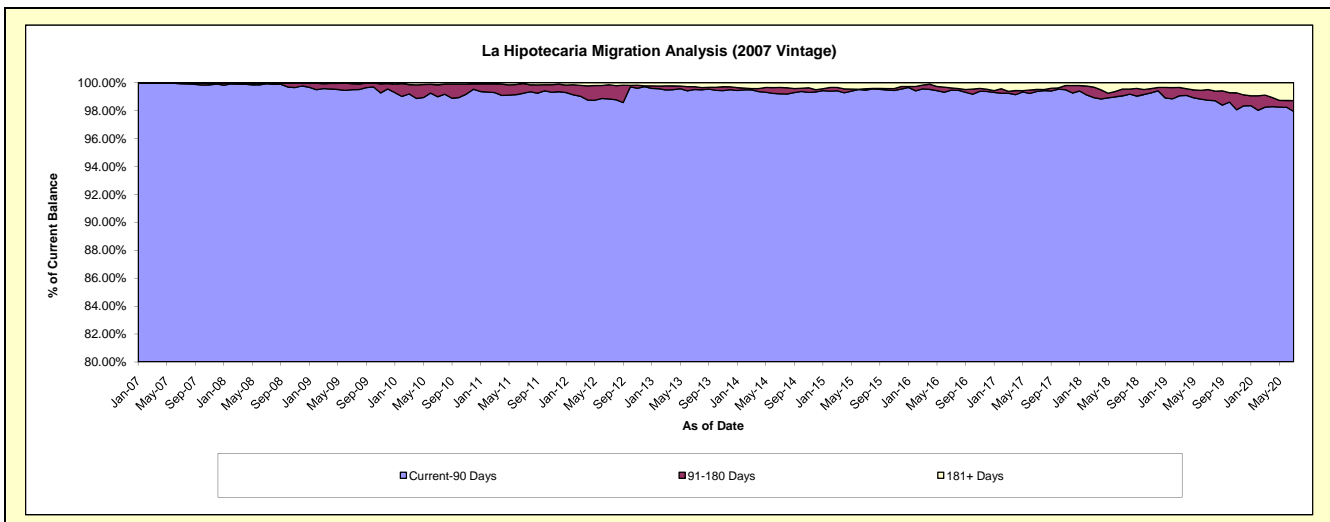
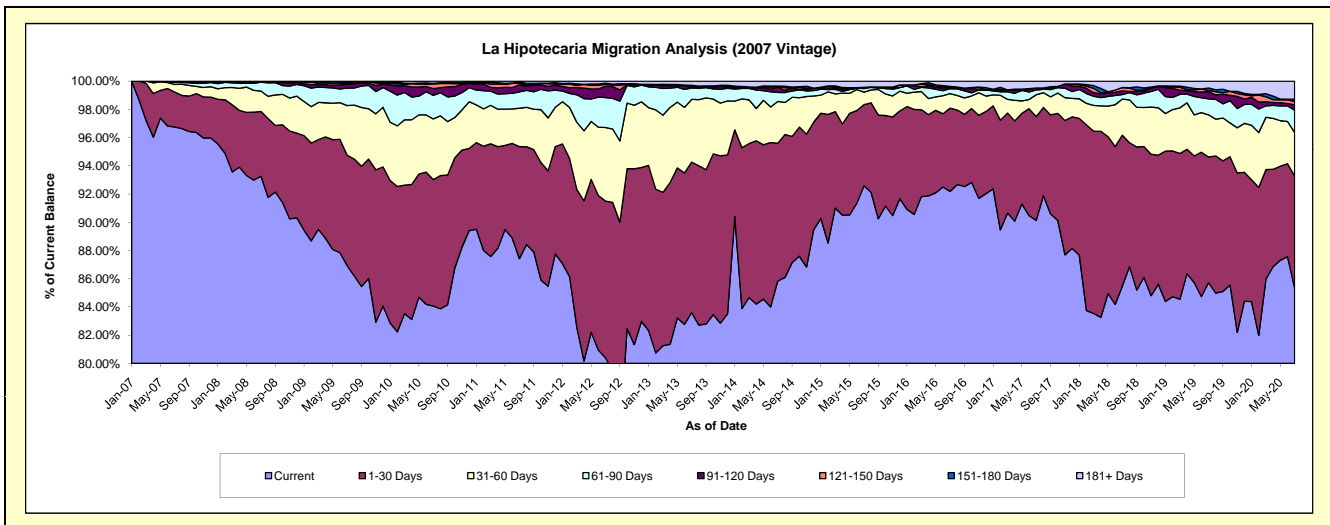
### Delinquency Status (\$ of Current Balance)

Data Cutoff: 7/31/2020

Current Portfolio Balance	59,143,321.88	55,027,975.24	50,027,399.40	45,555,417.38	41,086,215.12	37,313,583.56	33,955,055.34	30,809,323.05	27,672,768.78	25,889,243.69
	Jul-11	Jul-12	Jul-13	Jul-14	Jul-15	Jul-16	Jul-17	Jul-18	Jul-19	Jul-20
Current	51,705,405.94	44,239,603.91	41,823,330.06	39,105,369.03	38,036,000.37	34,398,146.21	30,604,310.17	26,341,182.03	23,721,337.09	22,089,929.75
1-30 Days	4,694,286.28	6,114,102.62	5,332,265.61	4,447,868.67	2,365,830.84	2,200,715.89	2,497,525.06	3,287,977.20	2,465,263.98	2,059,742.86
31-60 Days	1,610,321.52	2,867,194.99	2,226,202.68	1,349,075.01	364,011.89	386,320.02	526,752.79	791,321.39	826,325.74	798,174.13
61-90 Days	689,373.14	1,165,841.84	403,090.06	291,676.50	103,159.96	129,623.91	114,373.60	97,808.01	313,202.96	410,461.37
91-120 Days	285,839.24	449,292.77	22,997.40	166,459.96	38,618.52	31,565.33	48,585.36	80,612.29	141,687.16	98,182.31
121-150 Days	59,908.04	72,718.99	44,591.95	33,618.15	-	2,275.51	-	71,860.83	21,485.82	59,131.69
151-180 Days	61,536.99	38,726.91	32,090.15	5,768.58	-	26,884.64	-	-	49,644.97	42,691.04
181+ Days	36,650.73	80,493.21	142,831.49	155,581.48	178,593.54	138,052.05	163,508.36	138,561.30	133,821.06	330,930.54

### Delinquency Status (% of Current Balance)

Current Portfolio Balance	59,143,321.88	55,027,975.24	50,027,399.40	45,555,417.38	41,086,215.12	37,313,583.56	33,955,055.34	30,809,323.05	27,672,768.78	25,889,243.69
	Jul-11	Jul-12	Jul-13	Jul-14	Jul-15	Jul-16	Jul-17	Jul-18	Jul-19	Jul-20
Current	87.42%	80.39%	83.60%	85.84%	92.58%	92.19%	90.13%	85.50%	85.72%	85.32%
1-30 Days	7.94%	11.11%	10.66%	9.76%	5.76%	5.90%	7.36%	10.67%	8.91%	7.96%
31-60 Days	2.72%	5.21%	4.45%	2.96%	0.89%	1.04%	1.55%	2.57%	2.99%	3.08%
61-90 Days	1.17%	2.12%	0.81%	0.64%	0.25%	0.35%	0.34%	0.32%	1.13%	1.59%
91-120 Days	0.48%	0.82%	0.05%	0.37%	0.09%	0.08%	0.14%	0.26%	0.51%	0.38%
121-150 Days	0.10%	0.13%	0.09%	0.07%	0.00%	0.01%	0.00%	0.23%	0.08%	0.23%
151-180 Days	0.10%	0.07%	0.06%	0.01%	0.00%	0.07%	0.00%	0.00%	0.18%	0.16%
181+ Days	0.06%	0.15%	0.29%	0.34%	0.43%	0.37%	0.48%	0.45%	0.48%	1.28%
Current - 90 Days	99.25%	98.83%	99.52%	99.21%	99.47%	99.47%	99.38%	99.06%	98.75%	97.95%
91-180 Days	0.69%	1.02%	0.20%	0.45%	0.09%	0.16%	0.14%	0.49%	0.77%	0.77%



## Mortgages - La Hipotecaria Panama Migration Analysis (2008 Vintage)

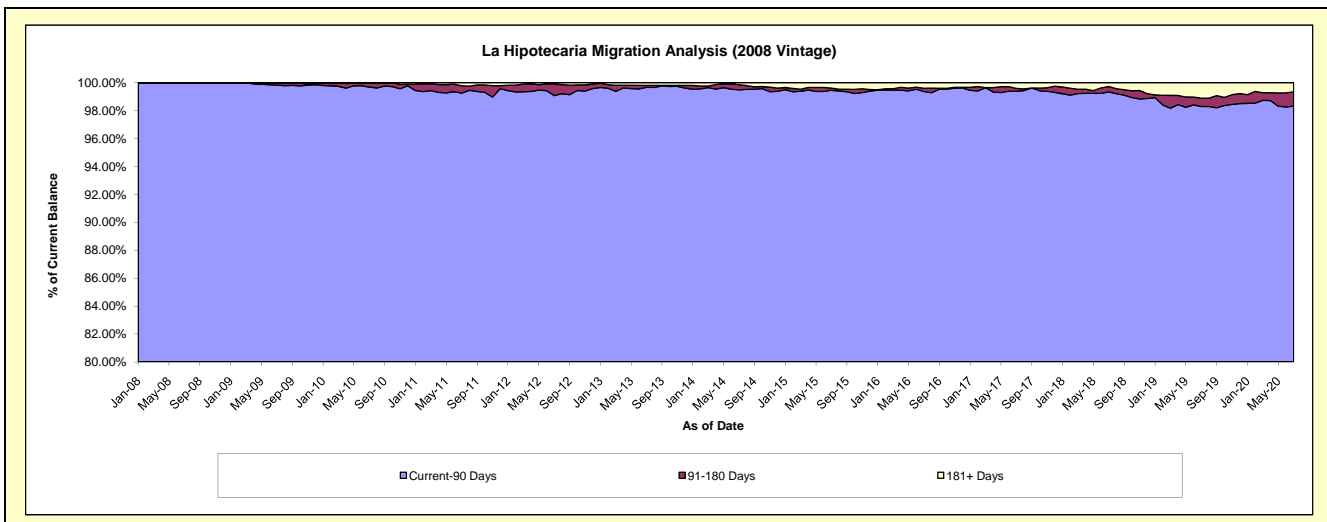
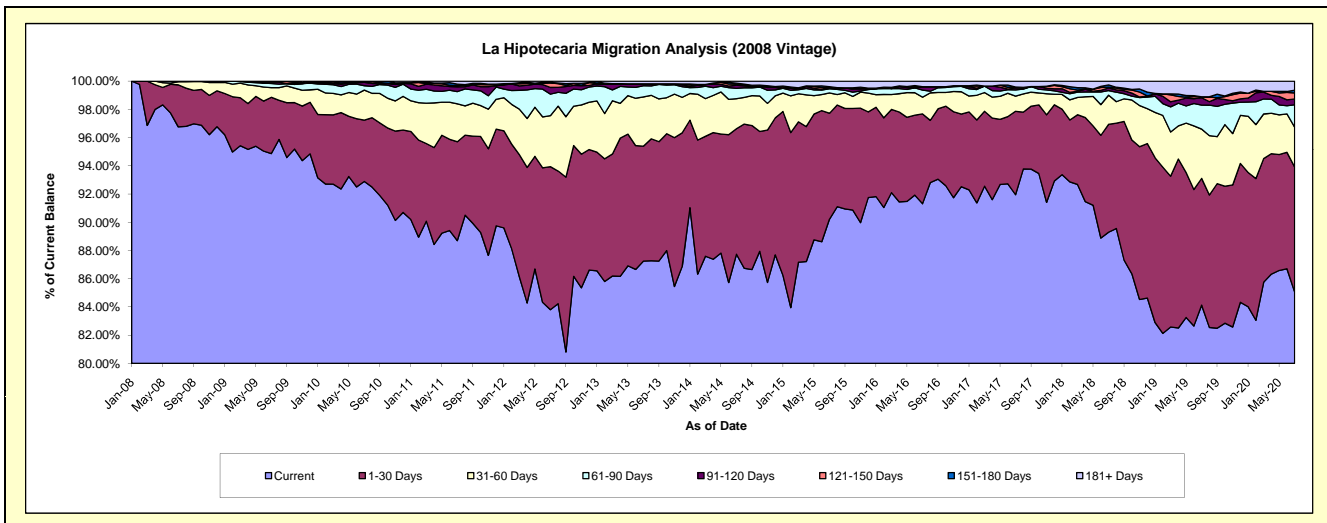
### Delinquency Status (\$ of Current Balance)

Data Cutoff: 7/31/2020

Current Portfolio Balance	57,580,473.61	53,958,665.27	49,463,384.24	44,868,232.95	39,807,126.97	35,733,635.20	32,717,076.14	29,724,094.64	26,769,345.39	24,577,625.21
	Jul-11	Jul-12	Jul-13	Jul-14	Jul-15	Jul-16	Jul-17	Jul-18	Jul-19	Jul-20
Current	51,074,054.02	45,219,812.00	43,154,960.03	39,366,615.34	35,915,766.69	32,629,135.18	30,085,100.16	26,542,007.09	22,520,597.56	20,904,030.58
1-30 Days	4,036,325.57	5,468,444.40	4,030,552.97	3,990,864.53	2,984,936.36	2,274,419.03	1,933,183.92	2,273,177.94	2,404,529.94	2,178,625.28
31-60 Days	1,543,571.95	1,952,174.46	1,726,637.95	953,675.90	575,967.38	423,987.65	352,071.56	613,629.94	934,993.02	694,828.77
61-90 Days	501,493.67	822,410.67	392,082.51	329,949.35	116,543.62	180,590.85	145,404.27	98,643.05	454,637.15	389,100.17
91-120 Days	192,801.86	256,931.18	66,718.42	98,920.21	31,173.87	85,194.94	43,747.73	51,929.40	139,669.63	100,254.89
121-150 Days	51,676.33	167,264.00	-	32,303.77	-	-	14,766.69	17,943.68	19,373.60	106,478.07
151-180 Days	57,220.02	27,082.27	-	32,279.09	28,113.15	-	8,477.84	46,825.47	-	46,020.56
181+ Days	123,330.19	44,546.29	92,432.36	63,624.76	154,625.90	140,307.55	134,323.97	79,938.07	295,544.49	158,286.89

### Delinquency Status (% of Current Balance)

Current Portfolio Balance	57,580,473.61	53,958,665.27	49,463,384.24	44,868,232.95	39,807,126.97	35,733,635.20	32,717,076.14	29,724,094.64	26,769,345.39	24,577,625.21
	Jul-11	Jul-12	Jul-13	Jul-14	Jul-15	Jul-16	Jul-17	Jul-18	Jul-19	Jul-20
Current	88.70%	83.80%	87.25%	87.74%	90.22%	91.31%	91.96%	89.29%	84.13%	85.05%
1-30 Days	7.01%	10.13%	8.15%	8.89%	7.50%	6.36%	5.91%	7.65%	8.98%	8.86%
31-60 Days	2.68%	3.62%	3.49%	2.13%	1.45%	1.19%	1.08%	2.06%	3.49%	2.83%
61-90 Days	0.87%	1.52%	0.79%	0.74%	0.29%	0.51%	0.44%	0.33%	1.70%	1.58%
91-120 Days	0.33%	0.48%	0.13%	0.22%	0.08%	0.24%	0.13%	0.17%	0.52%	0.41%
121-150 Days	0.09%	0.31%	0.00%	0.07%	0.00%	0.00%	0.05%	0.06%	0.07%	0.43%
151-180 Days	0.10%	0.05%	0.00%	0.07%	0.07%	0.00%	0.03%	0.16%	0.00%	0.19%
181+ Days	0.21%	0.08%	0.19%	0.14%	0.39%	0.39%	0.41%	0.27%	1.10%	0.64%
Current - 90 Days	99.26%	99.08%	99.68%	99.49%	99.46%	99.37%	99.38%	99.34%	98.30%	98.33%
91-180 Days	0.52%	0.84%	0.13%	0.36%	0.15%	0.24%	0.20%	0.39%	0.59%	1.03%



## Mortgages - La Hipotecaria Panama Migration Analysis (2009 Vintage)

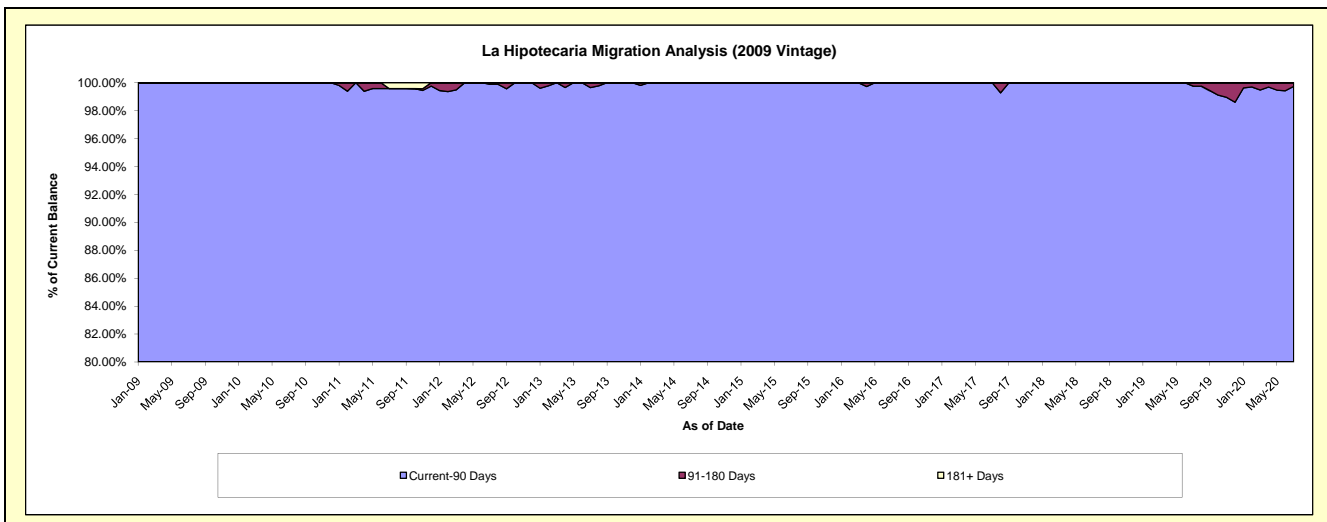
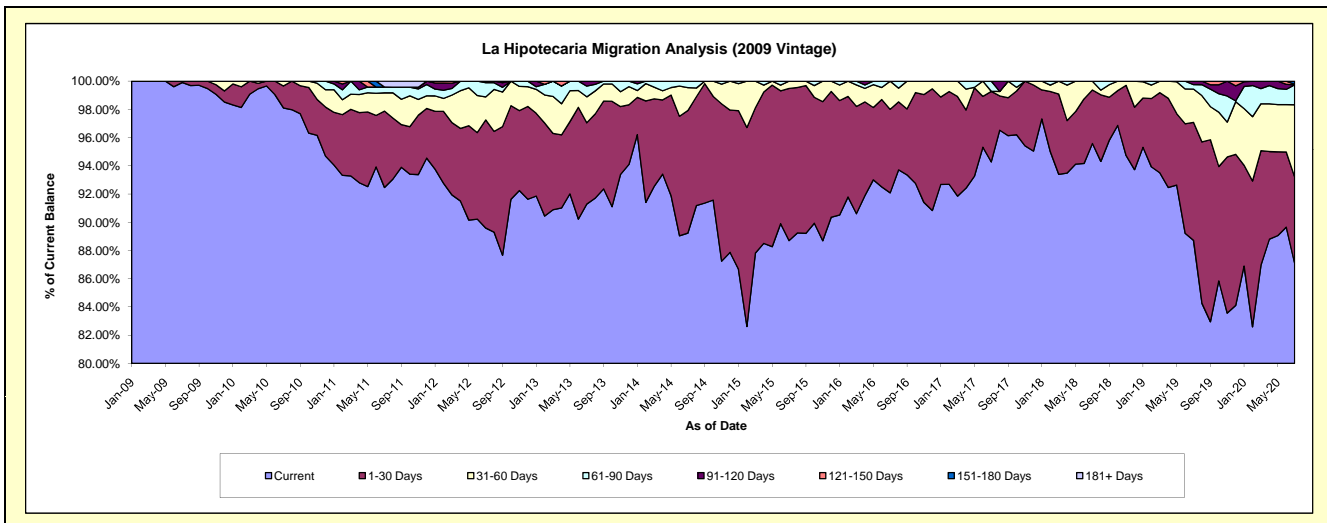
### Delinquency Status (\$ of Current Balance)

Data Cutoff: 7/31/2020

Current Portfolio Balance	12,021,387.93	11,407,356.86	10,430,647.60	9,415,428.26	8,537,206.13	7,566,381.12	6,784,926.99	6,226,213.94	5,753,291.37	5,382,865.49
	Jul-11	Jul-12	Jul-13	Jul-14	Jul-15	Jul-16	Jul-17	Jul-18	Jul-19	Jul-20
Current	11,115,589.69	10,220,827.67	9,522,479.62	8,401,768.47	7,572,487.20	6,967,756.48	6,396,657.36	5,951,409.84	5,104,255.10	4,687,461.49
1-30 Days	650,604.96	872,960.40	600,456.65	818,338.77	920,769.42	447,687.86	339,335.55	235,736.53	481,006.10	329,826.00
31-60 Days	155,749.23	186,701.58	192,173.29	151,953.43	43,949.51	150,936.78	-	39,067.57	135,658.79	275,514.50
61-90 Days	48,907.66	114,184.37	79,346.45	43,367.59	-	-	48,934.08	-	18,107.16	75,821.73
91-120 Days	-	12,682.84	36,191.59	-	-	-	-	-	14,264.22	-
121-150 Days	-	-	-	-	-	-	-	-	-	2,401.76
151-180 Days	-	-	-	-	-	-	-	-	-	11,840.01
181+ Days	50,536.39	-	-	-	-	-	-	-	-	-

### Delinquency Status (% of Current Balance)

Current Portfolio Balance	12,021,387.93	11,407,356.86	10,430,647.60	9,415,428.26	8,537,206.13	7,566,381.12	6,784,926.99	6,226,213.94	5,753,291.37	5,382,865.49
	Jul-11	Jul-12	Jul-13	Jul-14	Jul-15	Jul-16	Jul-17	Jul-18	Jul-19	Jul-20
Current	92.47%	89.60%	91.29%	89.23%	88.70%	92.09%	94.28%	95.59%	88.72%	87.08%
1-30 Days	5.41%	7.65%	5.76%	8.69%	10.79%	5.92%	5.00%	3.79%	8.36%	6.13%
31-60 Days	1.30%	1.64%	1.84%	1.61%	0.51%	1.99%	0.00%	0.63%	2.36%	5.12%
61-90 Days	0.41%	1.00%	0.76%	0.46%	0.00%	0.00%	0.72%	0.00%	0.31%	1.41%
91-120 Days	0.00%	0.11%	0.35%	0.00%	0.00%	0.00%	0.00%	0.00%	0.25%	0.00%
121-150 Days	0.00%	0.00%	0.00%	0.00%	0.00%	0.00%	0.00%	0.00%	0.00%	0.04%
151-180 Days	0.00%	0.00%	0.00%	0.00%	0.00%	0.00%	0.00%	0.00%	0.00%	0.22%
181+ Days	0.42%	0.00%	0.00%	0.00%	0.00%	0.00%	0.00%	0.00%	0.00%	0.00%
Current - 90 Days	99.58%	99.89%	99.65%	100.00%	100.00%	100.00%	100.00%	100.00%	99.75%	99.74%
91-180 Days	0.00%	0.11%	0.35%	0.00%	0.00%	0.00%	0.00%	0.00%	0.25%	0.26%



## Mortgages - La Hipotecaria Panama Migration Analysis (2010 Vintage)

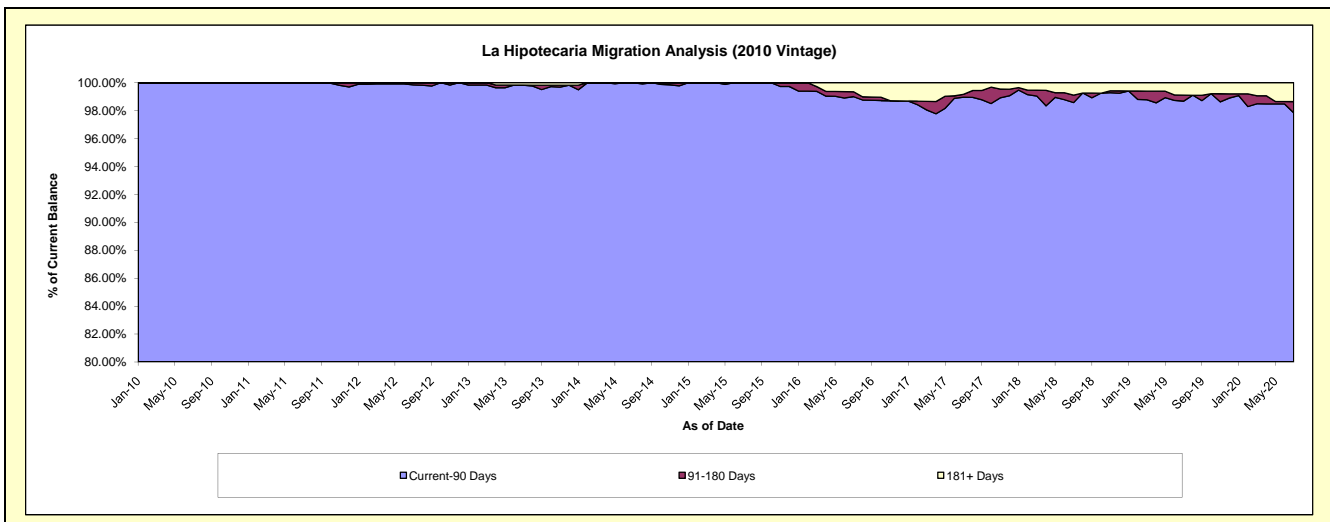
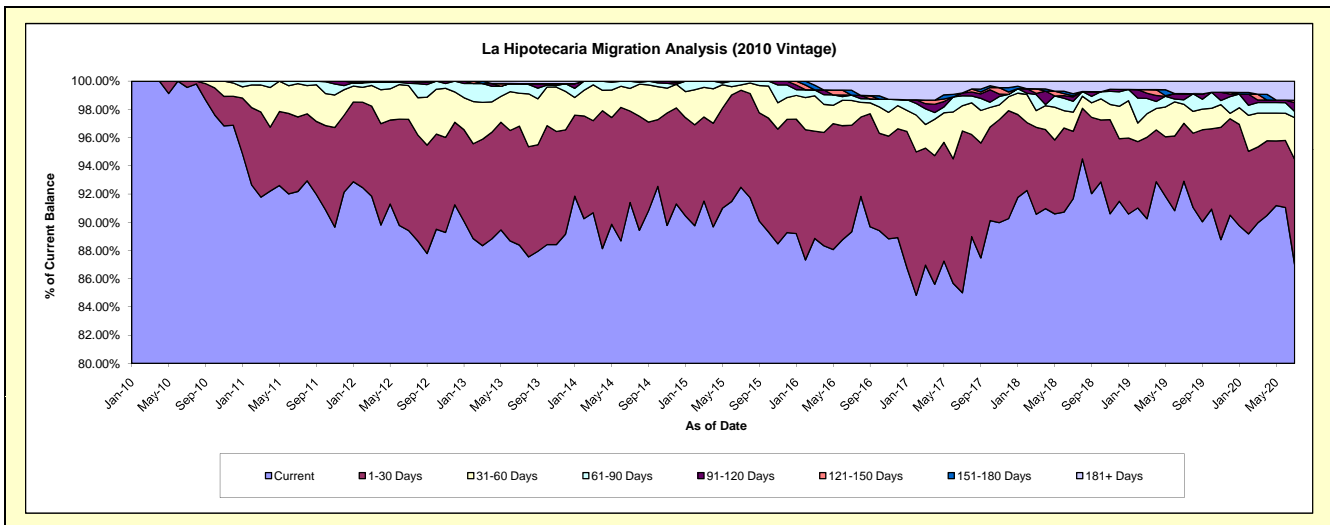
### Delinquency Status (\$ of Current Balance)

Data Cutoff: 7/31/2020

Current Portfolio Balance	21,926,458.63	21,010,354.66	19,517,780.34	17,802,148.53	16,319,096.34	14,169,541.46	12,629,419.58	11,391,691.11	10,196,356.31	9,573,826.21
	Jul-11	Jul-12	Jul-13	Jul-14	Jul-15	Jul-16	Jul-17	Jul-18	Jul-19	Jul-20
Current	20,212,620.51	18,785,178.90	17,250,592.48	16,271,338.48	15,092,647.12	12,656,205.13	10,736,011.50	10,442,541.12	9,472,968.09	8,330,417.77
1-30 Days	1,158,718.49	1,657,770.79	1,645,157.45	1,153,478.43	1,121,345.43	1,070,309.37	1,448,127.45	544,185.68	418,993.31	713,365.75
31-60 Days	515,955.72	501,285.73	455,612.99	286,177.67	61,514.78	248,729.48	225,973.43	154,916.49	137,459.69	282,482.51
61-90 Days	39,163.91	34,197.39	132,875.22	91,153.95	43,589.01	53,041.25	88,446.97	88,235.22	32,593.65	41,624.62
91-120 Days	-	31,921.85	-	-	-	-	25,723.08	34,674.34	44,116.02	59,565.12
121-150 Days	-	-	-	-	-	-	-	9,304.33	-	16,933.93
151-180 Days	-	-	-	-	-	49,959.33	-	16,269.79	-	-
181+ Days	-	-	33,542.20	-	-	91,296.90	105,137.15	101,564.14	90,225.55	129,436.51

### Delinquency Status (% of Current Balance)

Current Portfolio Balance	21,926,458.63	21,010,354.66	19,517,780.34	17,802,148.53	16,319,096.34	14,169,541.46	12,629,419.58	11,391,691.11	10,196,356.31	9,573,826.21
	Jul-11	Jul-12	Jul-13	Jul-14	Jul-15	Jul-16	Jul-17	Jul-18	Jul-19	Jul-20
Current	92.18%	89.41%	88.38%	91.40%	92.48%	89.32%	85.01%	91.67%	92.91%	87.01%
1-30 Days	5.28%	7.89%	8.43%	6.48%	6.87%	7.55%	11.47%	4.78%	4.11%	7.45%
31-60 Days	2.35%	2.39%	2.33%	1.61%	0.38%	1.76%	1.79%	1.36%	1.35%	2.95%
61-90 Days	0.18%	0.16%	0.68%	0.51%	0.27%	0.37%	0.70%	0.77%	0.32%	0.43%
91-120 Days	0.00%	0.15%	0.00%	0.00%	0.00%	0.00%	0.20%	0.30%	0.43%	0.62%
121-150 Days	0.00%	0.00%	0.00%	0.00%	0.00%	0.00%	0.00%	0.08%	0.00%	0.18%
151-180 Days	0.00%	0.00%	0.00%	0.00%	0.00%	0.35%	0.00%	0.14%	0.00%	0.00%
181+ Days	0.00%	0.00%	0.17%	0.00%	0.00%	0.64%	0.83%	0.89%	0.88%	1.35%
Current - 90 Days	100.00%	99.85%	99.83%	100.00%	100.00%	99.00%	98.96%	98.58%	98.68%	97.85%
91-180 Days	0.00%	0.15%	0.00%	0.00%	0.00%	0.35%	0.20%	0.53%	0.43%	0.80%





## Mortgages - La Hipotecaria Panama Migration Analysis (2011 Vintage)

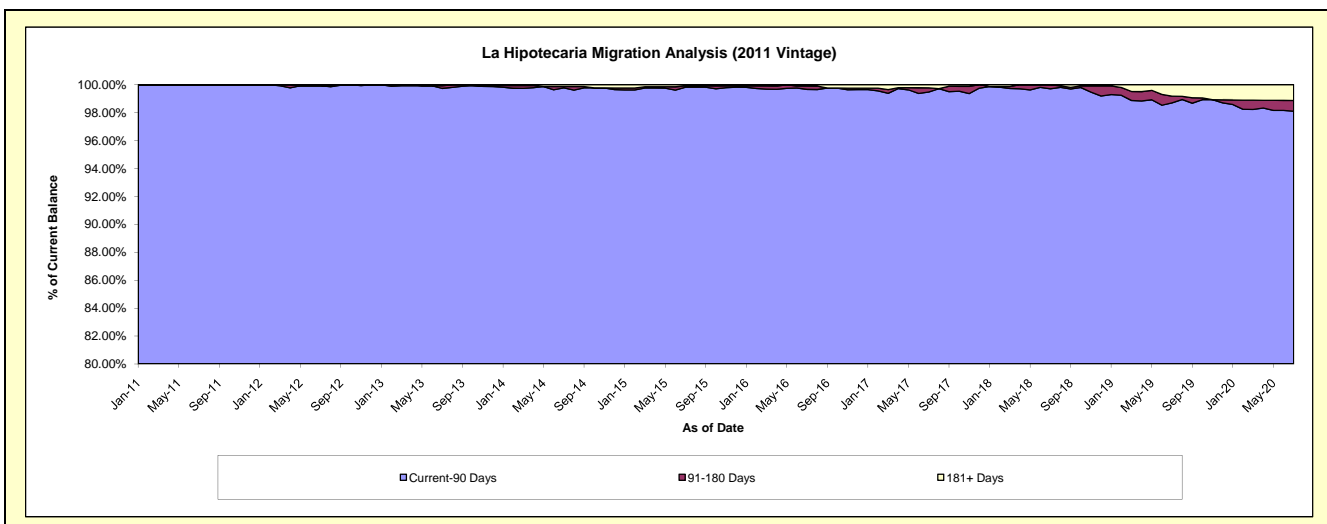
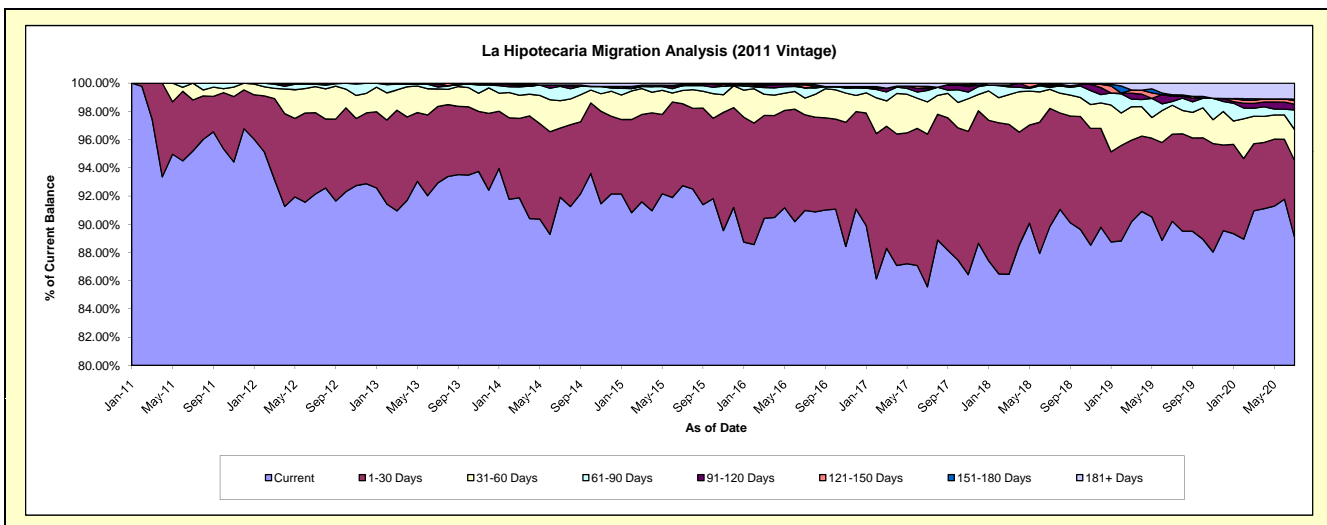
### Delinquency Status (\$ of Current Balance)

Data Cutoff: 7/31/2020

Current Portfolio Balance	17,896,576.03	34,027,148.43	32,213,115.48	29,698,643.74	26,600,615.79	23,863,619.53	21,769,711.89	19,806,768.20	17,902,369.59	16,625,003.92
	Jul-11	Jul-12	Jul-13	Jul-14	Jul-15	Jul-16	Jul-17	Jul-18	Jul-19	Jul-20
Current	17,037,161.68	31,355,181.31	29,935,409.22	27,298,913.61	24,667,766.14	21,711,228.26	18,628,082.18	17,794,574.49	16,150,574.29	14,802,834.77
1-30 Days	646,690.03	1,960,963.10	1,745,437.62	1,456,087.35	1,545,593.46	1,617,519.61	2,356,190.11	1,657,977.42	1,105,898.46	909,479.23
31-60 Days	212,724.32	626,244.03	400,518.81	576,014.79	249,044.80	283,559.90	496,759.35	268,141.13	366,255.27	364,174.48
61-90 Days	-	59,632.74	46,722.07	301,844.71	91,449.63	171,848.88	175,397.65	27,635.16	46,882.95	233,593.25
91-120 Days	-	-	60,863.89	25,857.72	-	-	27,021.79	21,236.78	67,710.19	67,221.67
121-150 Days	-	-	-	-	24,979.96	55,135.70	24,415.48	21,026.79	18,405.93	41,699.63
151-180 Days	-	-	-	-	-	-	14,201.49	16,176.43	-	18,770.41
181+ Days	-	25,127.25	24,163.87	39,925.56	21,781.80	24,327.18	47,643.84	-	146,642.50	187,230.48

### Delinquency Status (% of Current Balance)

Current Portfolio Balance	17,896,576.03	34,027,148.43	32,213,115.48	29,698,643.74	26,600,615.79	23,863,619.53	21,769,711.89	19,806,768.20	17,902,369.59	16,625,003.92
	Jul-11	Jul-12	Jul-13	Jul-14	Jul-15	Jul-16	Jul-17	Jul-18	Jul-19	Jul-20
Current	95.20%	92.15%	92.93%	91.92%	92.73%	90.98%	85.57%	89.84%	90.21%	89.04%
1-30 Days	3.61%	5.76%	5.42%	4.90%	5.81%	6.78%	10.82%	8.37%	6.18%	5.47%
31-60 Days	1.19%	1.84%	1.24%	1.94%	0.94%	1.19%	2.28%	1.35%	2.05%	2.19%
61-90 Days	0.00%	0.18%	0.15%	1.02%	0.34%	0.72%	0.81%	0.14%	0.26%	1.41%
91-120 Days	0.00%	0.00%	0.19%	0.09%	0.00%	0.00%	0.12%	0.11%	0.38%	0.40%
121-150 Days	0.00%	0.00%	0.00%	0.00%	0.09%	0.23%	0.11%	0.11%	0.10%	0.25%
151-180 Days	0.00%	0.00%	0.00%	0.00%	0.00%	0.00%	0.07%	0.08%	0.00%	0.11%
181+ Days	0.00%	0.07%	0.08%	0.13%	0.08%	0.10%	0.22%	0.00%	0.82%	1.13%
Current - 90 Days	100.00%	99.93%	99.74%	99.78%	99.82%	99.67%	99.48%	99.70%	98.70%	98.11%
91-180 Days	0.00%	0.00%	0.19%	0.09%	0.09%	0.23%	0.30%	0.30%	0.48%	0.77%



# Mortgages - La Hipotecaria Panama Migration Analysis (2012 Vintage)

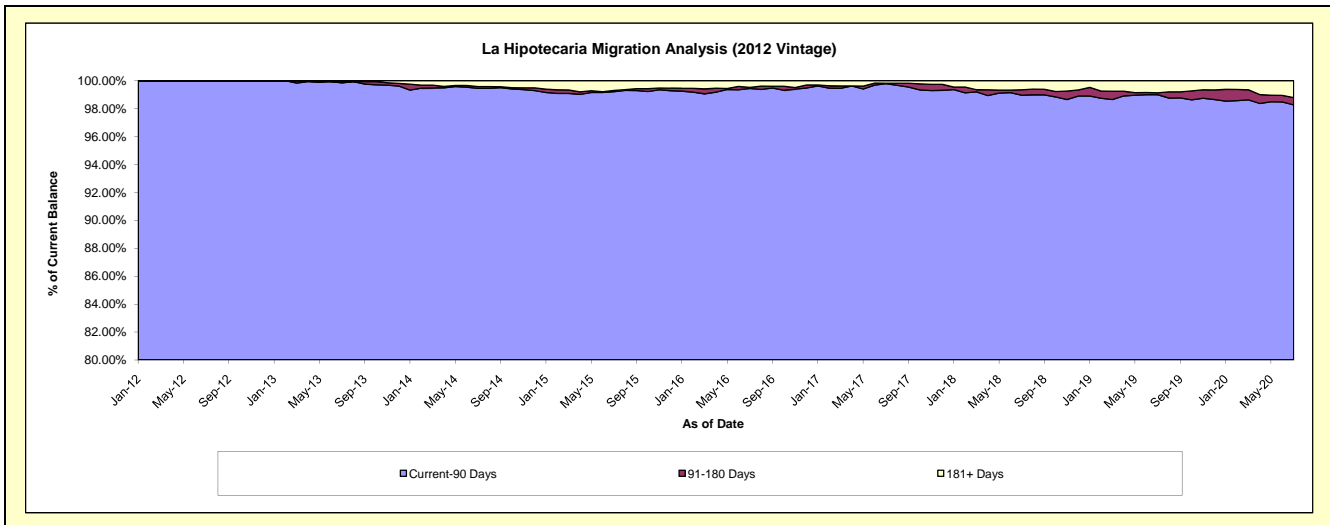
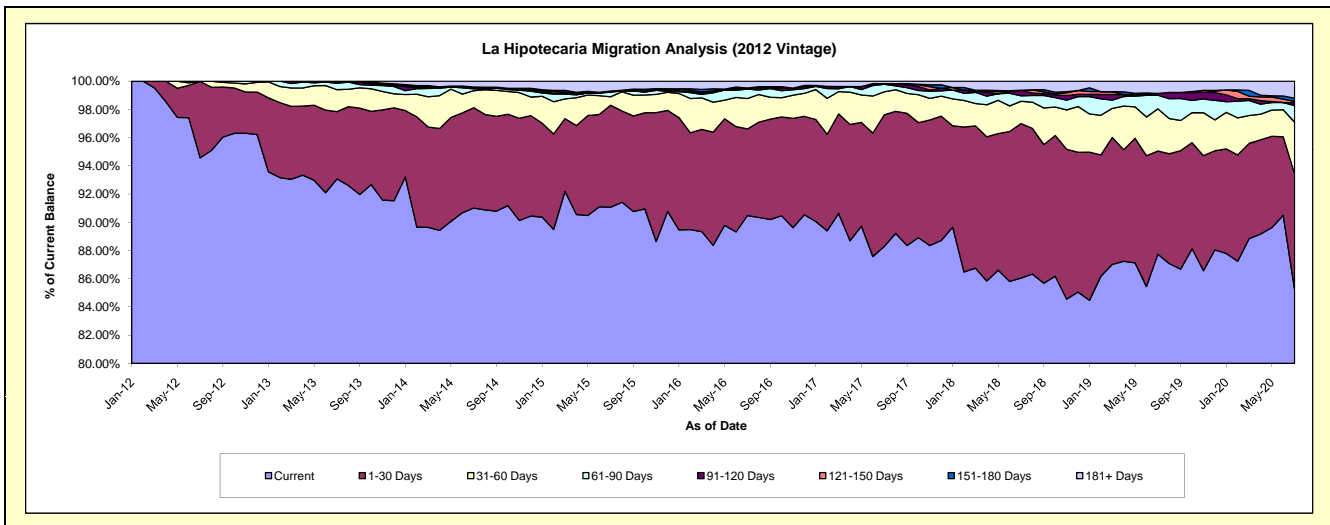
## Delinquency Status (\$ of Current Balance)

Data Cutoff: 7/31/2020

Current Portfolio Balance	-	26,814,174.08	48,174,032.17	45,771,020.83	41,944,861.54	38,145,024.59	35,257,361.84	32,315,327.91	29,416,158.26	27,347,758.51
	Jul-12	Jul-13	Jul-14	Jul-15	Jul-16	Jul-17	Jul-18	Jul-19	Jul-20	
Current	25,357,178.54	44,838,854.97	41,654,530.88	38,199,945.91	34,509,516.51	31,127,069.62	27,806,968.47	25,809,366.45	23,307,926.15	
1-30 Days	1,451,163.93	2,295,123.09	3,254,989.96	3,028,979.91	2,342,859.52	3,289,785.30	3,536,084.83	2,151,184.79	2,242,567.90	
31-60 Days	5,831.61	750,490.66	551,276.31	253,215.53	823,110.87	573,867.64	513,164.79	878,178.61	1,001,327.89	
61-90 Days	-	217,521.83	61,378.83	135,145.38	255,630.36	190,600.68	124,049.62	283,537.93	322,948.79	
91-120 Days	-	40,837.34	33,312.06	34,174.06	-	14,765.50	126,322.45	38,350.01	54,969.07	
121-150 Days	-	-	23,615.97	-	31,189.78	-	-	-	25,250.45	
151-180 Days	-	-	-	-	-	-	-	-	61,739.01	
181+ Days	-	31,204.28	191,916.82	293,400.75	182,717.55	61,273.10	208,737.75	255,540.47	331,029.25	

## Delinquency Status (% of Current Balance)

Current Portfolio Balance	-	26,814,174.08	48,174,032.17	45,771,020.83	41,944,861.54	38,145,024.59	35,257,361.84	32,315,327.91	29,416,158.26	27,347,758.51
	Jul-12	Jul-13	Jul-14	Jul-15	Jul-16	Jul-17	Jul-18	Jul-19	Jul-20	
Current	94.57%	93.08%	91.01%	91.07%	90.47%	88.29%	86.05%	87.74%	85.23%	
1-30 Days	5.41%	4.76%	7.11%	7.22%	6.14%	9.33%	10.94%	7.31%	8.20%	
31-60 Days	0.02%	1.56%	1.20%	0.60%	2.16%	1.63%	1.59%	2.99%	3.66%	
61-90 Days	0.00%	0.45%	0.13%	0.32%	0.67%	0.54%	0.38%	0.96%	1.18%	
91-120 Days	0.00%	0.08%	0.07%	0.08%	0.00%	0.04%	0.39%	0.13%	0.20%	
121-150 Days	0.00%	0.00%	0.05%	0.00%	0.08%	0.00%	0.00%	0.00%	0.09%	
151-180 Days	0.00%	0.00%	0.00%	0.00%	0.00%	0.00%	0.00%	0.00%	0.23%	
181+ Days	0.00%	0.06%	0.42%	0.70%	0.48%	0.17%	0.65%	0.87%	1.21%	
Current - 90 Days	100.00%	99.85%	99.46%	99.22%	99.44%	99.78%	98.96%	99.00%	98.27%	
91-180 Days	0.00%	0.08%	0.12%	0.08%	0.08%	0.04%	0.39%	0.13%	0.52%	



# Mortgages - La Hipotecaria Panama Migration Analysis (2013 Vintage)

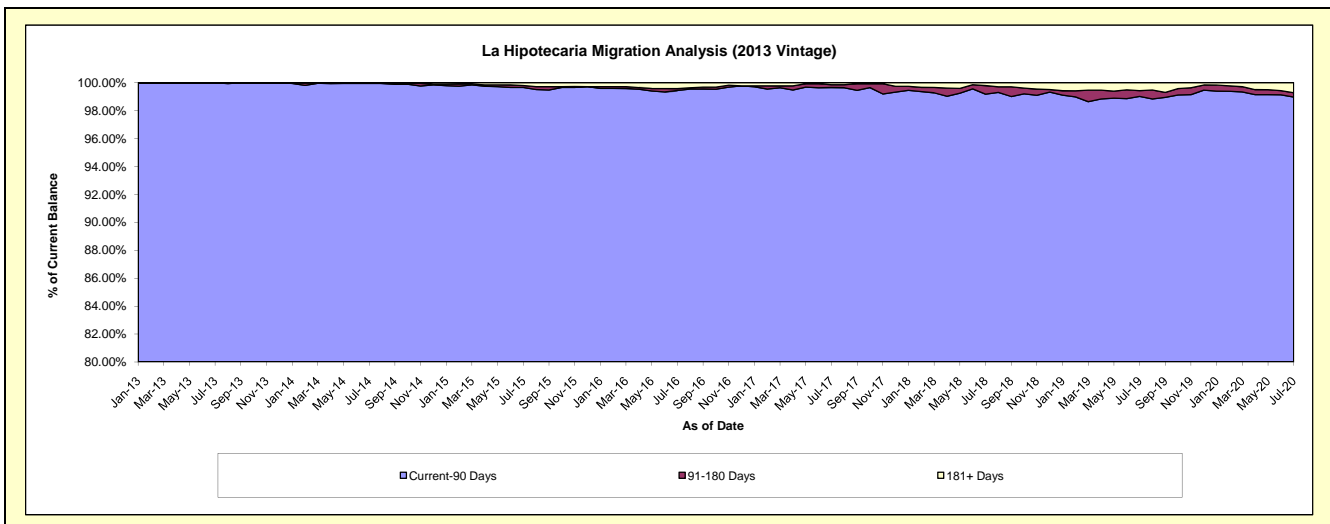
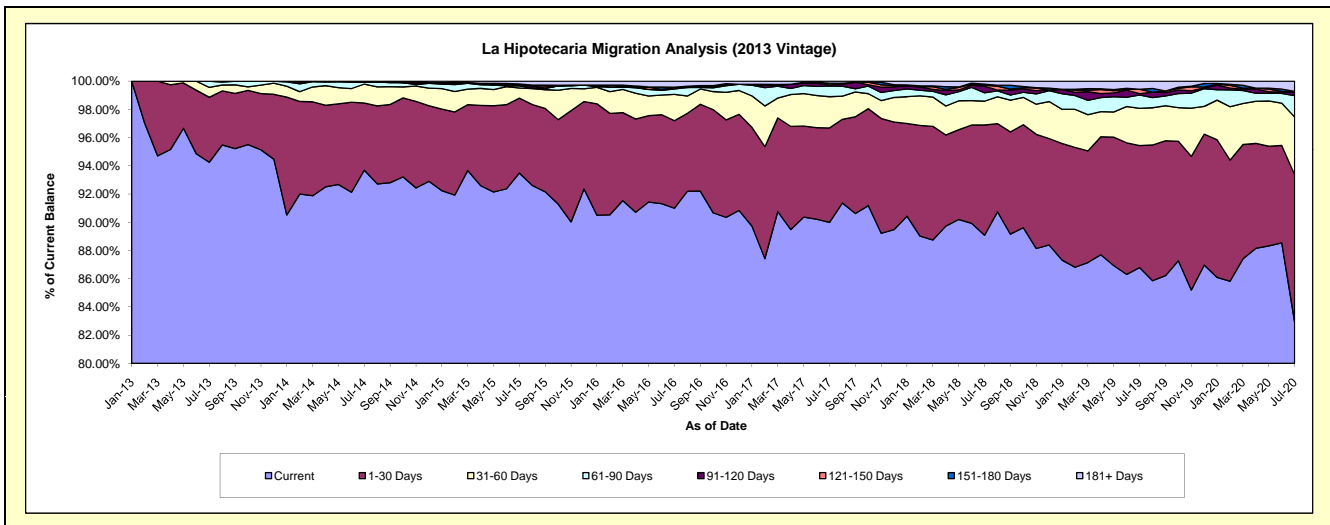
## Delinquency Status (\$ of Current Balance)

Data Cutoff: 7/31/2020

Current Portfolio Balance	-	-	36,617,901.54	62,063,379.10	58,425,557.40	53,782,503.45	49,700,721.13	45,933,804.88	42,047,237.29	39,085,119.27
	Jul-13	Jul-14	Jul-15	Jul-16	Jul-17	Jul-18	Jul-19	Jul-20		
Current	34,512,094.47	58,146,573.68	54,620,540.86	48,940,024.58	44,726,542.26	40,918,413.94	36,494,025.69	32,414,441.85		
1-30 Days	1,688,394.98	2,953,390.63	3,104,442.42	3,336,131.86	3,326,735.92	3,588,601.52	3,634,404.46	4,079,058.95		
31-60 Days	255,585.58	835,830.24	419,703.27	1,003,897.97	1,100,716.75	775,812.20	1,110,556.92	1,599,004.43		
61-90 Days	161,826.51	95,110.05	84,417.53	205,567.26	375,879.23	274,043.90	396,134.85	592,051.17		
91-120 Days	-	-	32,489.24	69,004.56	36,087.72	213,225.24	36,626.23	93,157.24		
121-150 Days	-	-	-	-	62,228.00	32,054.64	135,350.09	5,893.98		
151-180 Days	-	32,474.50	46,715.19	-	-	36,988.41	-	20,000.13		
181+ Days	-	-	117,248.89	227,877.22	72,531.25	94,665.03	240,139.05	281,511.52		

## Delinquency Status (% of Current Balance)

Current Portfolio Balance	-	-	36,617,901.54	62,063,379.10	58,425,557.40	53,782,503.45	49,700,721.13	45,933,804.88	42,047,237.29	39,085,119.27
	Jul-13	Jul-14	Jul-15	Jul-16	Jul-17	Jul-18	Jul-19	Jul-20		
Current	94.25%	93.69%	93.49%	91.00%	89.99%	89.08%	86.79%	82.93%		
1-30 Days	4.61%	4.76%	5.31%	6.20%	6.69%	7.81%	8.64%	10.44%		
31-60 Days	0.70%	1.35%	0.72%	1.87%	2.21%	1.69%	2.64%	4.09%		
61-90 Days	0.44%	0.15%	0.14%	0.38%	0.76%	0.60%	0.94%	1.51%		
91-120 Days	0.00%	0.00%	0.06%	0.13%	0.07%	0.46%	0.09%	0.24%		
121-150 Days	0.00%	0.00%	0.00%	0.00%	0.13%	0.07%	0.32%	0.02%		
151-180 Days	0.00%	0.05%	0.08%	0.00%	0.00%	0.08%	0.00%	0.05%		
181+ Days	0.00%	0.00%	0.20%	0.42%	0.15%	0.21%	0.57%	0.72%		
Current - 90 Days	100.00%	99.95%	99.66%	99.45%	99.66%	99.18%	99.02%	98.98%		
91-180 Days	0.00%	0.05%	0.14%	0.13%	0.20%	0.61%	0.41%	0.30%		



# Mortgages - La Hipotecaria Panama Migration Analysis (2014 Vintage)

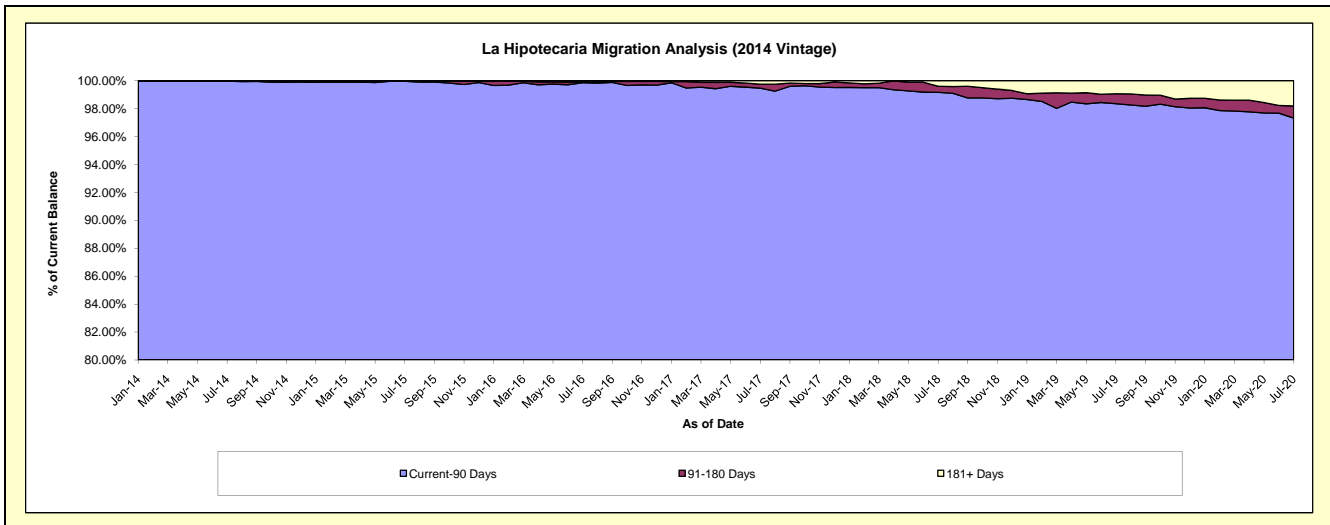
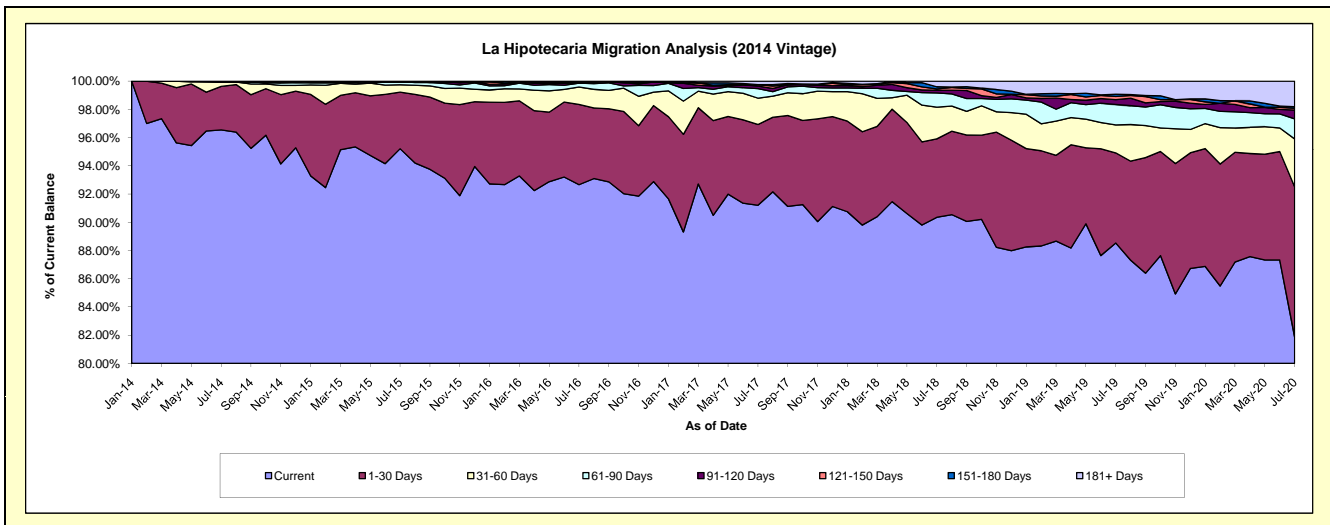
## Delinquency Status (\$ of Current Balance)

Data Cutoff: 7/31/2020

Current Portfolio Balance	-	-	-	41,319,399.89	69,476,232.51	65,778,027.03	61,183,351.01	57,211,734.69	53,171,793.36	50,143,026.66
	Jul-14	Jul-15	Jul-16	Jul-17	Jul-18	Jul-19	Jul-20			
Current	39,892,519.24	66,151,868.12	60,951,559.90	55,806,141.61	51,693,357.89	47,075,242.83	41,054,150.03			
1-30 Days	1,273,876.32	2,787,619.00	3,744,109.68	3,499,322.09	3,180,203.83	3,393,383.27	5,333,146.78			
31-60 Days	122,698.63	361,780.85	810,645.58	1,141,625.26	1,282,277.80	1,055,937.68	1,701,590.20			
61-90 Days	16,666.70	144,658.84	178,922.39	410,900.34	580,432.38	770,725.12	713,117.72			
91-120 Days	-	-	32,434.17	113,769.57	105,112.70	180,078.31	312,778.43			
121-150 Days	13,639.00	-	-	61,790.01	56,751.09	122,298.83	63,639.38			
151-180 Days	-	-	-	-	86,530.73	79,595.65	56,886.73			
181+ Days	-	30,305.70	60,355.31	149,802.13	227,068.27	494,531.67	907,717.39			

## Delinquency Status (% of Current Balance)

Current Portfolio Balance	-	-	-	41,319,399.89	69,476,232.51	65,778,027.03	61,183,351.01	57,211,734.69	53,171,793.36	50,143,026.66
	Jul-14	Jul-15	Jul-16	Jul-17	Jul-18	Jul-19	Jul-20			
Current	96.55%	95.22%	92.66%	91.21%	90.35%	88.53%	81.87%			
1-30 Days	3.08%	4.01%	5.69%	5.72%	5.56%	6.38%	10.64%			
31-60 Days	0.30%	0.52%	1.23%	1.87%	2.24%	1.99%	3.39%			
61-90 Days	0.04%	0.21%	0.27%	0.67%	1.01%	1.45%	1.42%			
91-120 Days	0.00%	0.00%	0.05%	0.19%	0.18%	0.34%	0.62%			
121-150 Days	0.03%	0.00%	0.00%	0.10%	0.10%	0.23%	0.13%			
151-180 Days	0.00%	0.00%	0.00%	0.00%	0.15%	0.15%	0.11%			
181+ Days	0.00%	0.04%	0.09%	0.24%	0.40%	0.93%	1.81%			
Current - 90 Days	99.97%	99.96%	99.86%	99.47%	99.17%	98.35%	97.33%			
91-180 Days	0.03%	0.00%	0.05%	0.29%	0.43%	0.72%	0.86%			



# Mortgages - La Hipotecaria Panama Migration Analysis (2015 Vintage)

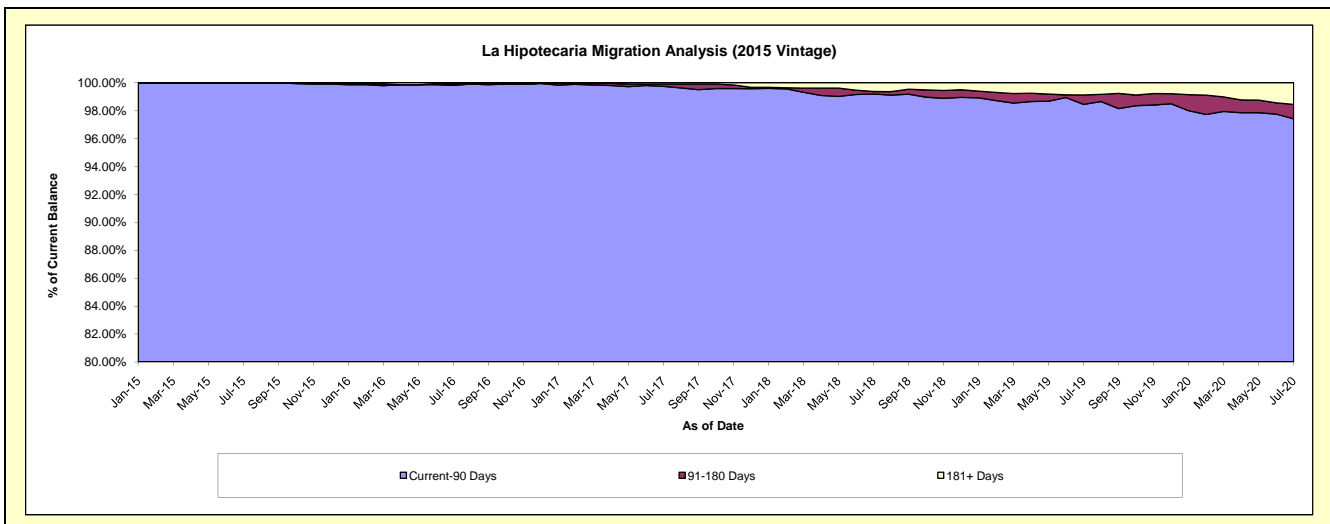
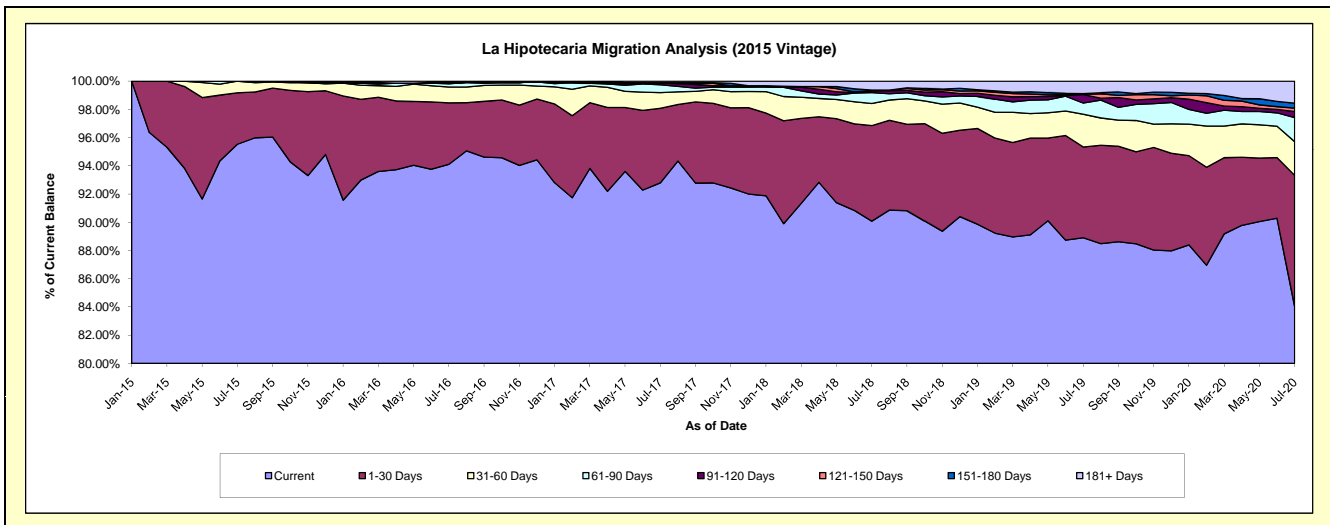
## Delinquency Status (\$ of Current Balance)

Data Cutoff: 7/31/2020

Current Portfolio Balance	-	-	-	-	46,103,618.08	77,314,988.59	73,578,691.35	70,001,591.25	65,989,347.93	62,878,317.11
					Jul-15	Jul-16	Jul-17	Jul-18	Jul-19	Jul-20
Current					44,044,726.40	72,762,379.04	68,276,500.89	63,053,274.20	58,669,405.15	52,844,140.53
1-30 Days					1,680,990.55	3,366,539.88	3,887,489.93	4,742,311.24	4,241,956.56	5,837,707.03
31-60 Days					377,901.13	863,224.02	821,351.23	1,099,849.31	1,535,939.54	1,501,946.00
61-90 Days					-	175,561.48	402,374.12	541,577.79	518,093.96	1,072,949.34
91-120 Days					-	38,652.24	110,559.80	96,073.03	397,412.60	272,109.57
121-150 Days					-	38,769.27	-	-	17,755.00	150,455.99
151-180 Days					-	-	-	27,536.70	31,019.09	219,746.59
181+ Days					-	69,862.66	80,415.38	440,968.98	577,766.03	979,262.06

## Delinquency Status (% of Current Balance)

Current Portfolio Balance	-	-	-	-	46,103,618.08	77,314,988.59	73,578,691.35	70,001,591.25	65,989,347.93	62,878,317.11
					Jul-15	Jul-16	Jul-17	Jul-18	Jul-19	Jul-20
Current					95.53%	94.11%	92.79%	90.07%	88.91%	84.04%
1-30 Days					3.65%	4.35%	5.28%	6.77%	6.43%	9.28%
31-60 Days					0.82%	1.12%	1.12%	1.57%	2.33%	2.39%
61-90 Days					0.00%	0.23%	0.55%	0.77%	0.79%	1.71%
91-120 Days					0.00%	0.05%	0.15%	0.14%	0.60%	0.43%
121-150 Days					0.00%	0.05%	0.00%	0.00%	0.03%	0.24%
151-180 Days					0.00%	0.00%	0.00%	0.04%	0.05%	0.35%
181+ Days					0.00%	0.09%	0.11%	0.63%	0.88%	1.56%
Current - 90 Days					100.00%	99.81%	99.74%	99.19%	98.45%	97.42%
91-180 Days					0.00%	0.10%	0.15%	0.18%	0.68%	1.02%



## Mortgages - La Hipotecaria Panama Migration Analysis (2016 Vintage)

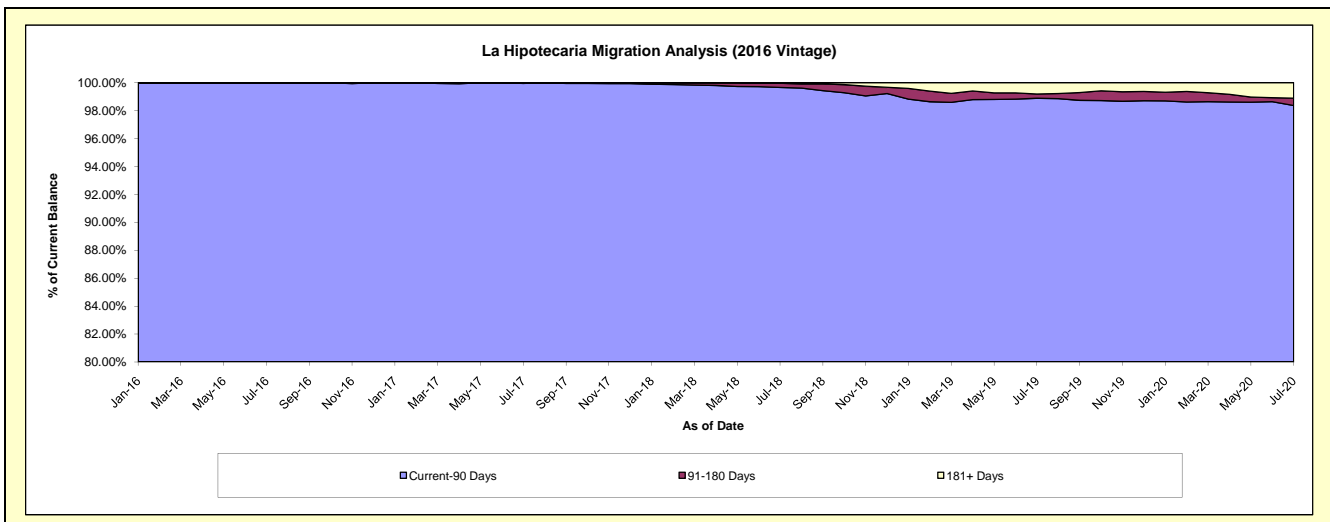
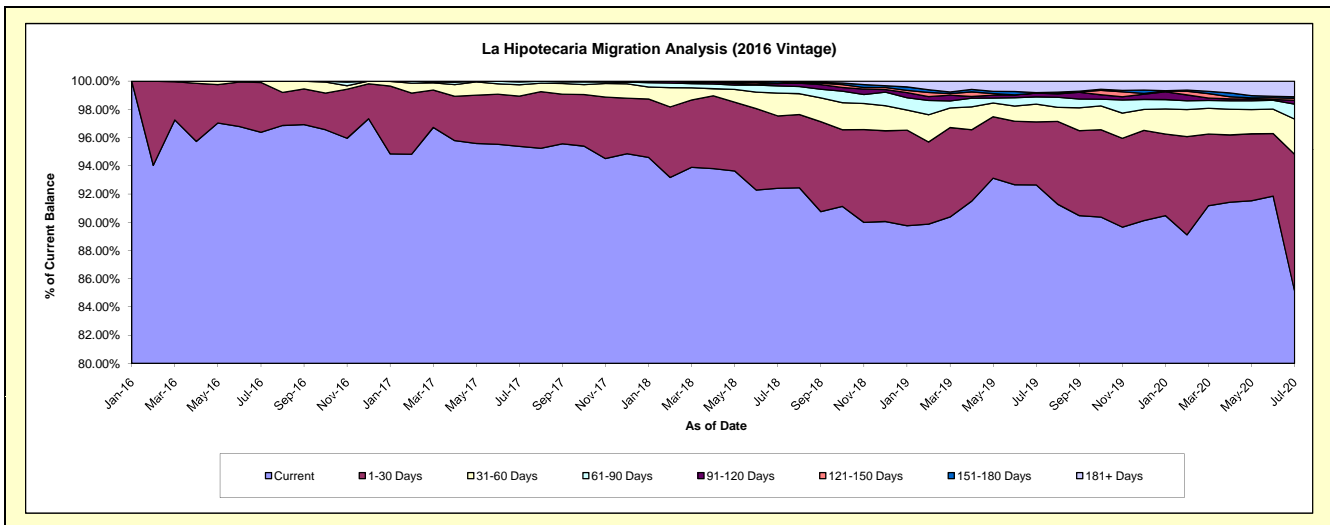
### Delinquency Status (\$ of Current Balance)

Data Cutoff: 7/31/2020

Current Portfolio Balance	-	-	-	-	-	42,231,207.16	73,333,416.80	70,198,002.92	66,548,664.68	63,899,275.73
						Jul-16	Jul-17	Jul-18	Jul-19	Jul-20
Current						40,701,288.13	69,942,058.49	64,867,926.71	61,653,344.92	54,379,952.96
1-30 Days						1,490,412.62	2,615,404.00	3,601,662.78	2,973,263.72	6,205,446.06
31-60 Days						39,506.41	589,820.48	1,132,960.58	842,004.23	1,594,836.57
61-90 Days						-	148,104.22	357,678.19	339,746.65	676,219.05
91-120 Days						-	38,029.61	121,001.92	180,321.93	174,341.66
121-150 Days						-	-	-	-	88,414.68
151-180 Days						-	-	92,458.51	21,121.79	76,342.73
181+ Days						-	-	24,314.23	538,861.44	703,722.02

### Delinquency Status (% of Current Balance)

Current Portfolio Balance	-	-	-	-	-	42,231,207.16	73,333,416.80	70,198,002.92	66,548,664.68	63,899,275.73
						Jul-16	Jul-17	Jul-18	Jul-19	Jul-20
Current						96.38%	95.38%	92.41%	92.64%	85.10%
1-30 Days						3.53%	3.57%	5.13%	4.47%	9.71%
31-60 Days						0.09%	0.80%	1.61%	1.27%	2.50%
61-90 Days						0.00%	0.20%	0.51%	0.51%	1.06%
91-120 Days						0.00%	0.05%	0.17%	0.27%	0.27%
121-150 Days						0.00%	0.00%	0.00%	0.00%	0.14%
151-180 Days						0.00%	0.00%	0.13%	0.03%	0.12%
181+ Days						0.00%	0.00%	0.03%	0.81%	1.10%
Current - 90 Days						100.00%	99.95%	99.66%	98.89%	98.37%
91-180 Days						0.00%	0.05%	0.30%	0.30%	0.53%



# Mortgages - La Hipotecaria Panama Migration Analysis (2017 Vintage)

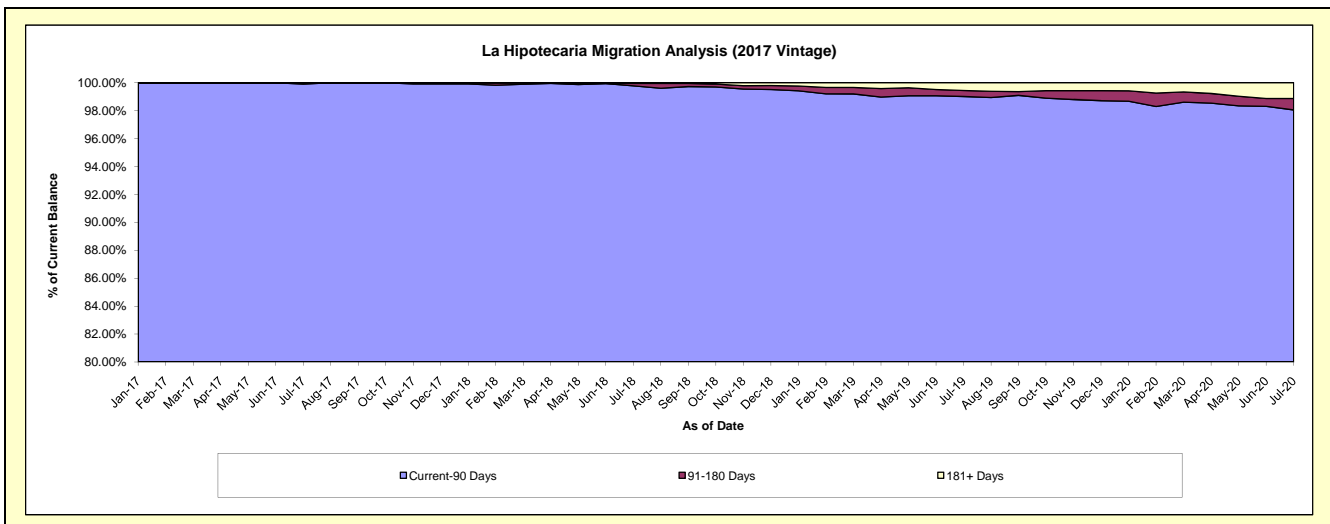
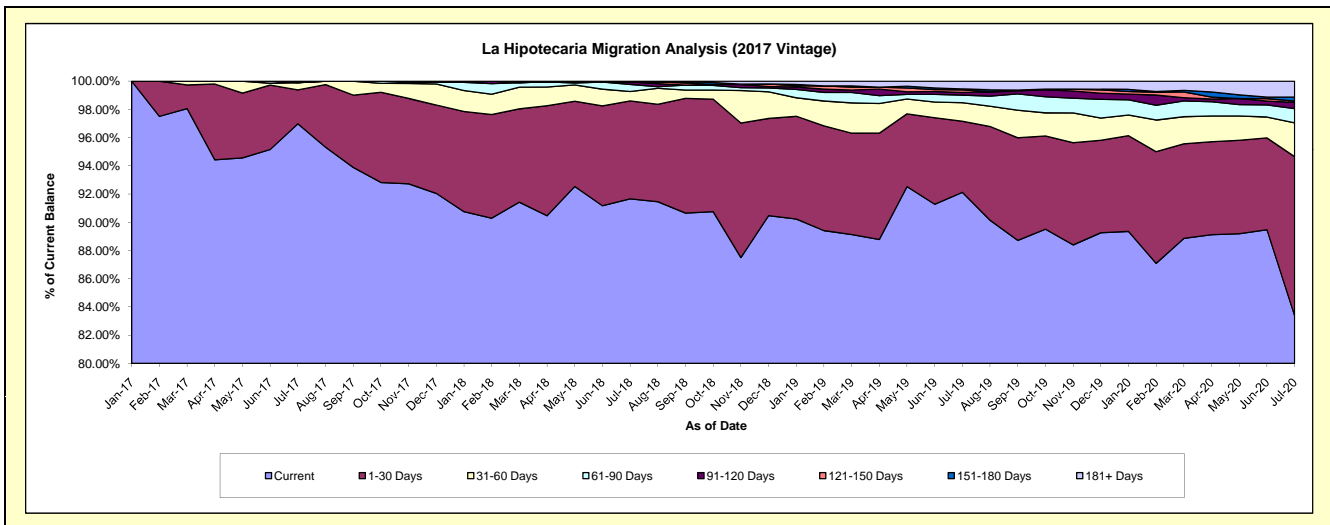
## Delinquency Status (\$ of Current Balance)

Data Cutoff: 7/31/2020

Current Portfolio Balance	-	-	-	-	-	-	-	44,721,706.30	86,202,640.21	82,819,311.59	79,934,461.60
								Jul-17	Jul-18	Jul-19	Jul-20
Current								43,371,911.44	79,014,316.86	76,292,824.20	66,648,273.20
1-30 Days								1,072,146.99	5,980,105.13	4,171,160.05	9,006,304.29
31-60 Days								232,107.87	579,699.56	1,095,131.41	1,917,491.14
61-90 Days								-	432,588.83	443,694.29	805,878.15
91-120 Days								45,540.00	155,964.52	154,750.55	356,115.11
121-150 Days								-	-	151,252.10	70,570.34
151-180 Days								-	-	49,921.70	229,169.95
181+ Days								-	39,965.31	460,577.29	900,659.42

## Delinquency Status (% of Current Balance)

Current Portfolio Balance	-	-	-	-	-	-	-	44,721,706.30	86,202,640.21	82,819,311.59	79,934,461.60
								Jul-17	Jul-18	Jul-19	Jul-20
Current								96.98%	91.66%	92.12%	83.38%
1-30 Days								2.40%	6.94%	5.04%	11.27%
31-60 Days								0.52%	0.67%	1.32%	2.40%
61-90 Days								0.00%	0.50%	0.54%	1.01%
91-120 Days								0.10%	0.18%	0.19%	0.45%
121-150 Days								0.00%	0.00%	0.18%	0.09%
151-180 Days								0.00%	0.00%	0.06%	0.29%
181+ Days								0.00%	0.05%	0.56%	1.13%
Current - 90 Days								99.90%	99.77%	99.01%	98.05%
91-180 Days								0.10%	0.18%	0.43%	0.82%



# Mortgages - La Hipotecaria Panama Migration Analysis (2018 Vintage)

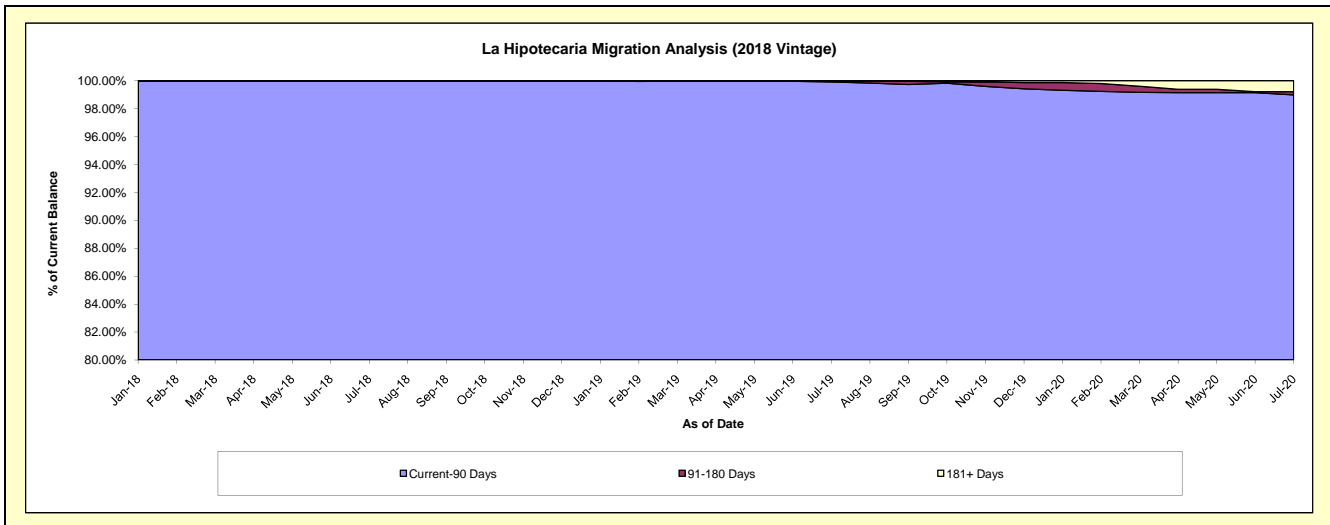
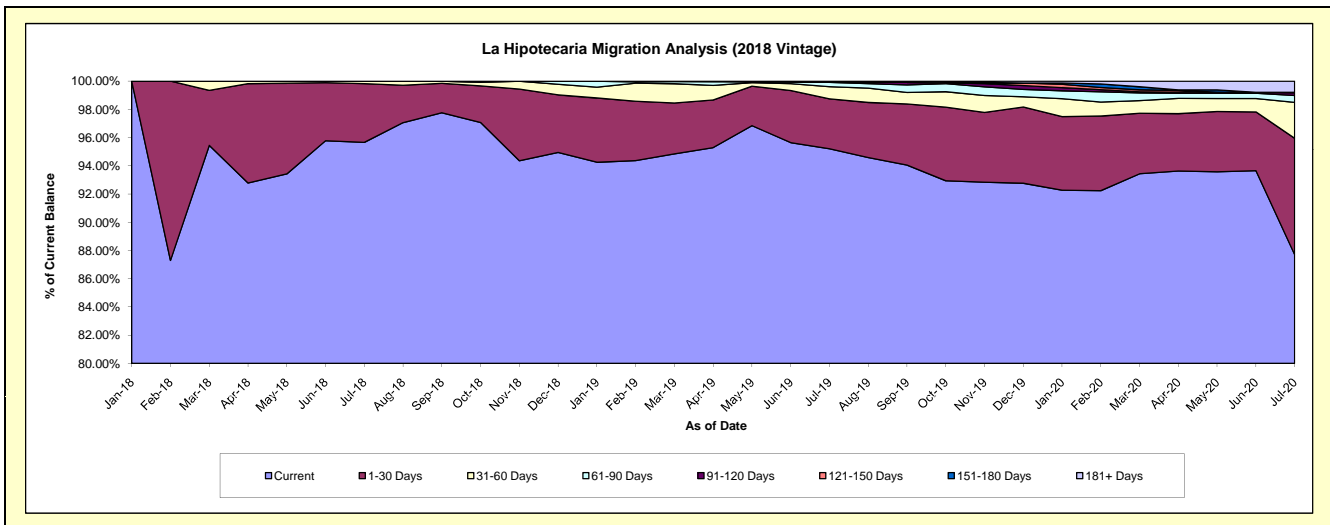
## Delinquency Status (\$ of Current Balance)

Data Cutoff: 7/31/2020

Current Portfolio Balance	-	-	-	-	-	-	-	-	-	42,613,222.06	84,219,046.18	81,976,762.46
										Jul-18	Jul-19	Jul-20
Current										40,765,612.91	80,186,806.59	71,902,754.66
1-30 Days										1,771,982.61	2,978,544.83	6,757,432.59
31-60 Days										75,626.54	725,444.64	2,087,145.87
61-90 Days										-	259,813.68	400,403.05
91-120 Days										-	38,841.56	167,342.59
121-150 Days										-	-	-
151-180 Days										-	-	17,574.97
181+ Days										-	29,594.88	644,108.73

## Delinquency Status (% of Current Balance)

Current Portfolio Balance	-	-	-	-	-	-	-	-	-	42,613,222.06	84,219,046.18	81,976,762.46
										Jul-18	Jul-19	Jul-20
Current										95.66%	95.21%	87.71%
1-30 Days										4.16%	3.54%	8.24%
31-60 Days										0.18%	0.86%	2.55%
61-90 Days										0.00%	0.31%	0.49%
91-120 Days										0.00%	0.05%	0.20%
121-150 Days										0.00%	0.00%	0.00%
151-180 Days										0.00%	0.00%	0.02%
181+ Days										0.00%	0.04%	0.79%
Current - 90 Days										100.00%	99.92%	98.99%
91-180 Days										0.00%	0.05%	0.23%





**Mortgages - La Hipotecaria Panama Migration Analysis (2019 Vintage)**

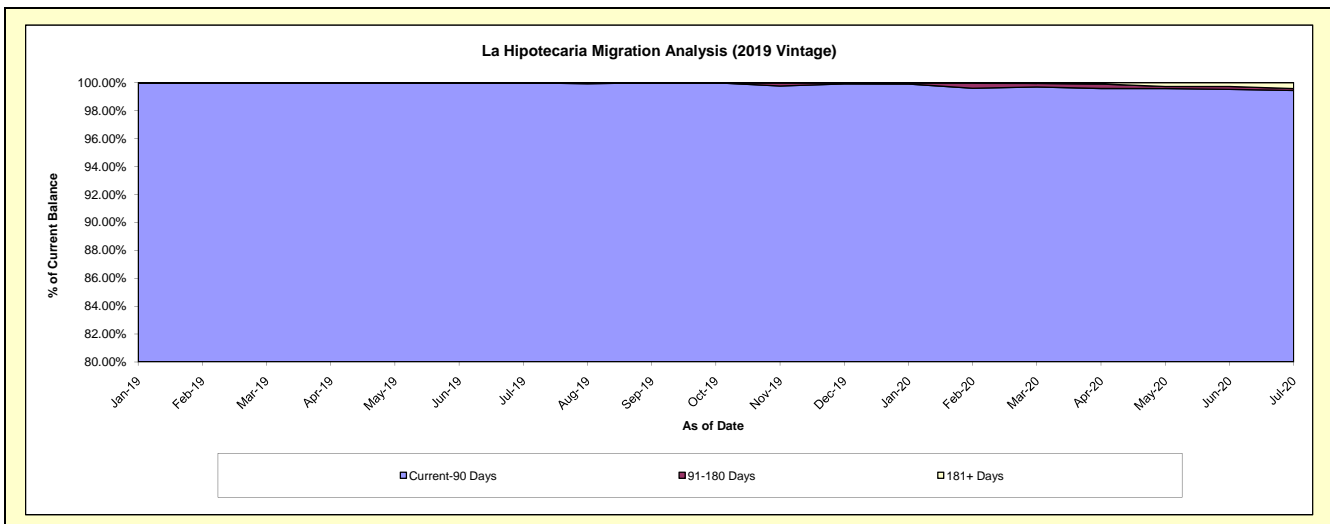
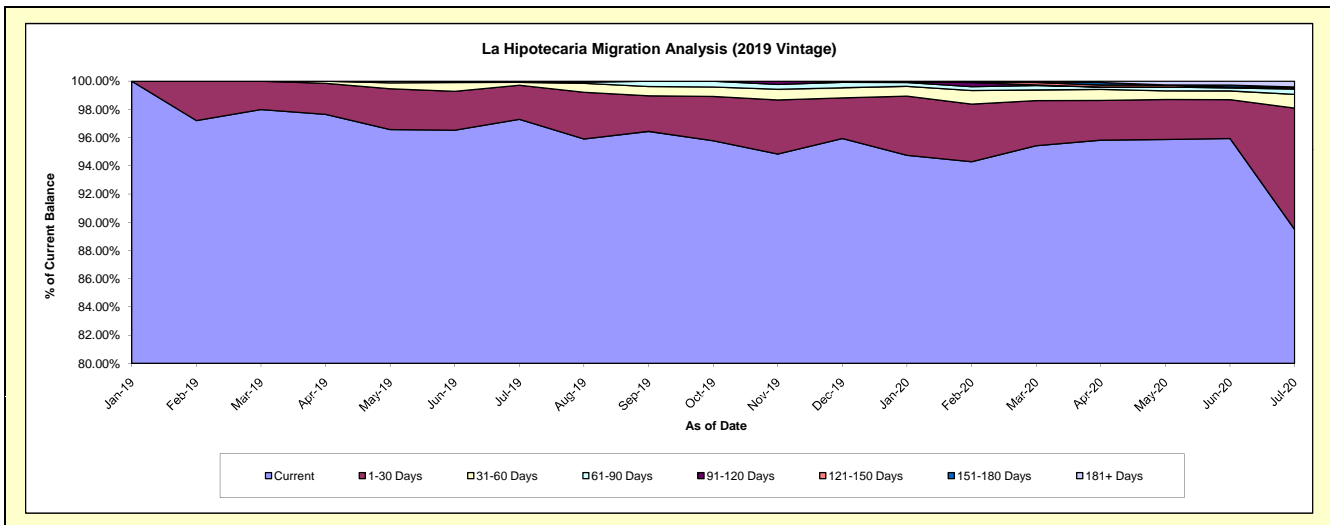
**Delinquency Status (\$ of Current Balance)**

Data Cutoff: 7/31/2020

Current Portfolio Balance										50,767,789.61	85,149,154.24
										Jul-19	Jul-20
Current										49,392,638.38	76,199,121.88
1-30 Days										1,226,995.85	7,321,161.56
31-60 Days										106,590.84	834,054.82
61-90 Days										41,564.54	319,015.83
91-120 Days										-	85,607.13
121-150 Days										-	35,930.60
151-180 Days										-	-
181+ Days										-	354,262.42

**Delinquency Status (% of Current Balance)**

Current Portfolio Balance										50,767,789.61	85,149,154.24
										Jul-19	Jul-20
Current										97.29%	89.49%
1-30 Days										2.42%	8.60%
31-60 Days										0.21%	0.98%
61-90 Days										0.08%	0.37%
91-120 Days										0.00%	0.10%
121-150 Days										0.00%	0.04%
151-180 Days										0.00%	0.00%
181+ Days										0.00%	0.42%
Current - 90 Days										100.00%	99.44%
91-180 Days										0.00%	0.14%



## Mortgages - La Hipotecaria Panama Migration Analysis (2020 Vintage)

### Delinquency Status (\$ of Current Balance)

Data Cutoff: 7/31/2020

Current Portfolio Balance										22,488,421.54
										<b>Jul-20</b>
Current										19,596,767.16
1-30 Days										1,632,538.27
31-60 Days										988,721.87
61-90 Days										210,994.24
91-120 Days										59,400.00
121-150 Days										-
151-180 Days										-
181+ Days										-

### Delinquency Status (% of Current Balance)

Current Portfolio Balance										22,488,421.54
										<b>Jul-20</b>
Current										87.14%
1-30 Days										7.26%
31-60 Days										4.40%
61-90 Days										0.94%
91-120 Days										0.26%
121-150 Days										0.00%
151-180 Days										0.00%
181+ Days										0.00%
Current - 90 Days										99.74%
91-180 Days										0.26%

