



Migration Analysis for La Hipotecaria S.A Panama

Mortgages
August 2020

An analysis of historical loan payment data was used to compile a migration analysis of delinquency by annual vintage. Delinquencies for each vintage were grouped into the following buckets; Current, 1-30, 31-60, 61-90, 91-120, 121-150, 151-180, and 180+. Results are provided in graphical and tabular form. The cutoff date is 8/31/2020.

Mortgages - La Hipotecaria Panama Migration Analysis (All Vintages)

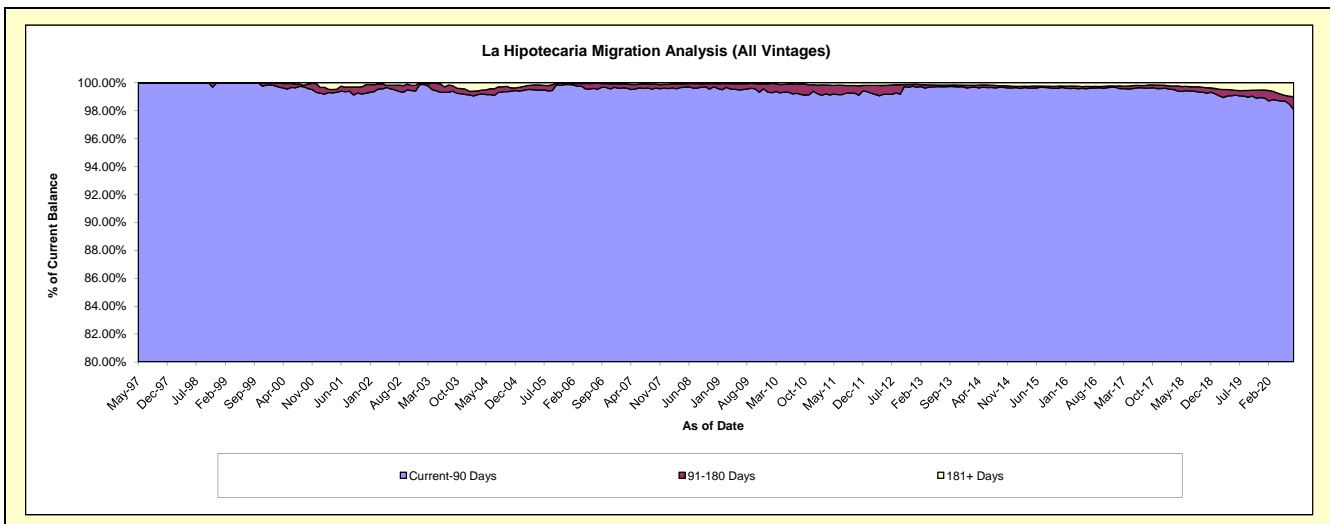
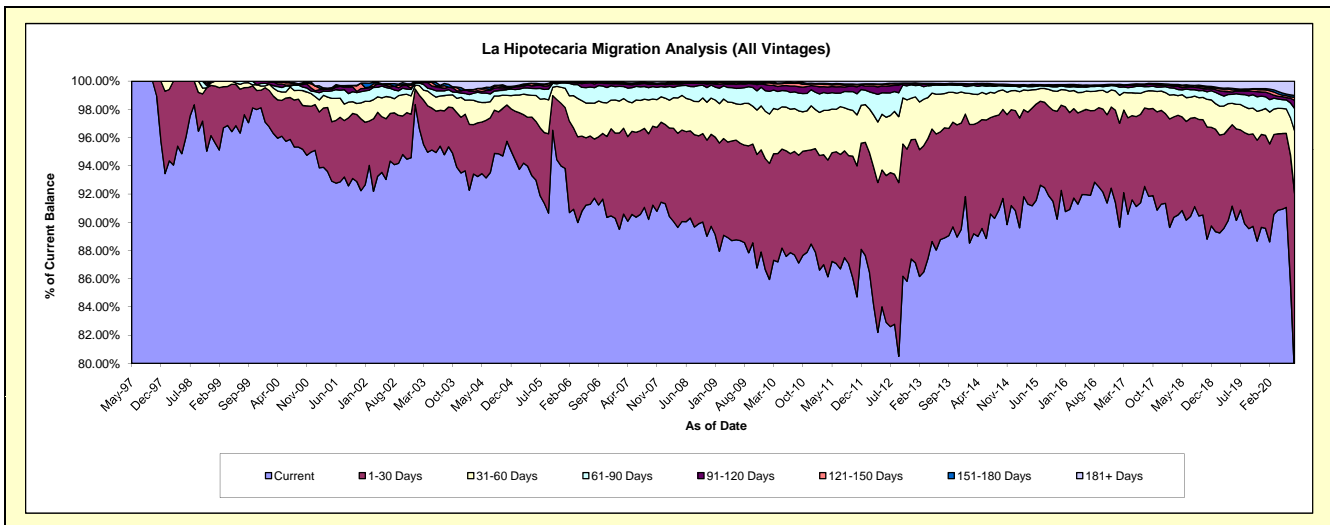
Delinquency Status (\$ of Current Balance)

Data Cutoff: 8/31/2020

Current Portfolio Balance	296,402,132.94	320,919,528.19	353,931,210.44	393,370,377.43	435,791,809.11	472,325,107.05	520,912,794.63	566,706,971.21	622,136,175.21	643,375,859.48
	Aug-11	Aug-12	Aug-13	Aug-14	Aug-15	Aug-16	Aug-17	Aug-18	Aug-19	Aug-20
Current	259,337,159.99	265,637,074.56	314,602,754.24	355,107,207.45	402,938,510.16	438,519,930.53	482,057,612.40	516,325,779.88	559,268,154.68	607,865,031.34
1-30 Days	22,431,129.21	34,128,476.21	27,627,489.91	28,500,686.91	26,349,094.27	23,996,431.38	28,978,644.14	35,790,161.12	40,148,598.89	84,218,815.68
31-60 Days	9,028,945.23	14,279,778.44	8,601,954.90	6,454,550.12	4,252,434.00	6,431,414.73	5,992,394.09	8,588,459.26	11,427,616.65	28,522,320.55
61-90 Days	3,436,184.75	4,533,798.53	2,076,758.20	1,840,071.40	769,467.18	1,593,623.10	1,872,569.16	2,572,165.96	5,362,763.74	10,303,313.80
91-120 Days	931,150.04	1,393,819.80	311,989.00	340,031.61	260,855.17	356,457.40	599,099.56	938,714.84	1,458,930.25	3,720,717.24
121-150 Days	365,393.49	335,626.33	83,627.85	192,780.13	102,415.43	117,358.80	293,526.20	671,124.07	564,478.77	1,373,430.28
151-180 Days	266,575.40	134,194.28	19,000.95	140,205.83	16,580.22	68,254.05	90,608.48	128,131.18	453,555.21	754,888.57
181+ Days	605,594.83	476,760.04	607,635.39	794,843.98	1,102,452.68	1,241,637.06	1,028,340.60	1,692,434.90	3,452,077.02	6,617,342.02

Delinquency Status (% of Current Balance)

Current Portfolio Balance	296,402,132.94	320,919,528.19	353,931,210.44	393,370,377.43	435,791,809.11	472,325,107.05	520,912,794.63	566,706,971.21	622,136,175.21	643,375,859.48
	Aug-11	Aug-12	Aug-13	Aug-14	Aug-15	Aug-16	Aug-17	Aug-18	Aug-19	Aug-20
Current	87.50%	82.77%	88.89%	90.27%	92.46%	92.84%	92.54%	91.11%	89.89%	78.94%
1-30 Days	7.57%	10.63%	7.81%	7.25%	6.05%	5.08%	5.56%	6.32%	6.45%	13.09%
31-60 Days	3.05%	4.45%	2.43%	1.64%	0.98%	1.36%	1.15%	1.52%	1.84%	4.43%
61-90 Days	1.16%	1.41%	0.59%	0.47%	0.18%	0.34%	0.36%	0.45%	0.86%	1.60%
91-120 Days	0.31%	0.43%	0.09%	0.09%	0.06%	0.08%	0.12%	0.17%	0.23%	0.58%
121-150 Days	0.12%	0.10%	0.02%	0.05%	0.02%	0.02%	0.06%	0.12%	0.09%	0.21%
151-180 Days	0.09%	0.04%	0.01%	0.04%	0.00%	0.01%	0.02%	0.02%	0.07%	0.12%
181+ Days	0.20%	0.15%	0.17%	0.20%	0.25%	0.26%	0.20%	0.30%	0.55%	1.03%
Current - 90 Days	99.27%	99.27%	99.71%	99.63%	99.66%	99.62%	99.61%	99.39%	99.05%	98.06%
91-180 Days	0.53%	0.58%	0.12%	0.17%	0.09%	0.11%	0.19%	0.31%	0.40%	0.91%



Mortgages - La Hipotecaria Panama Migration Analysis (1997 Vintage)

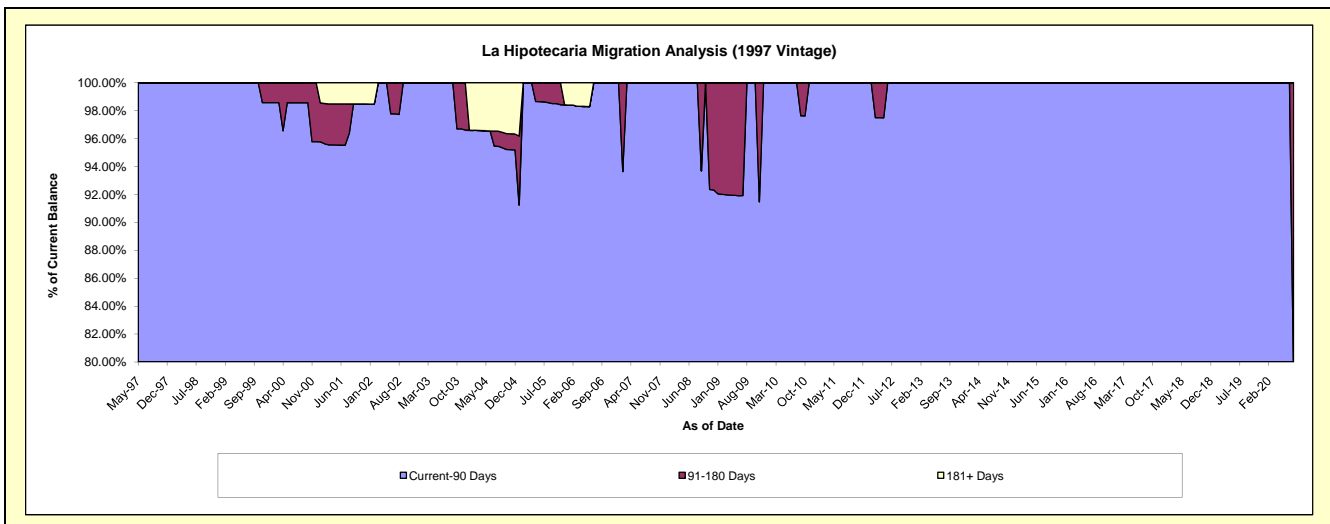
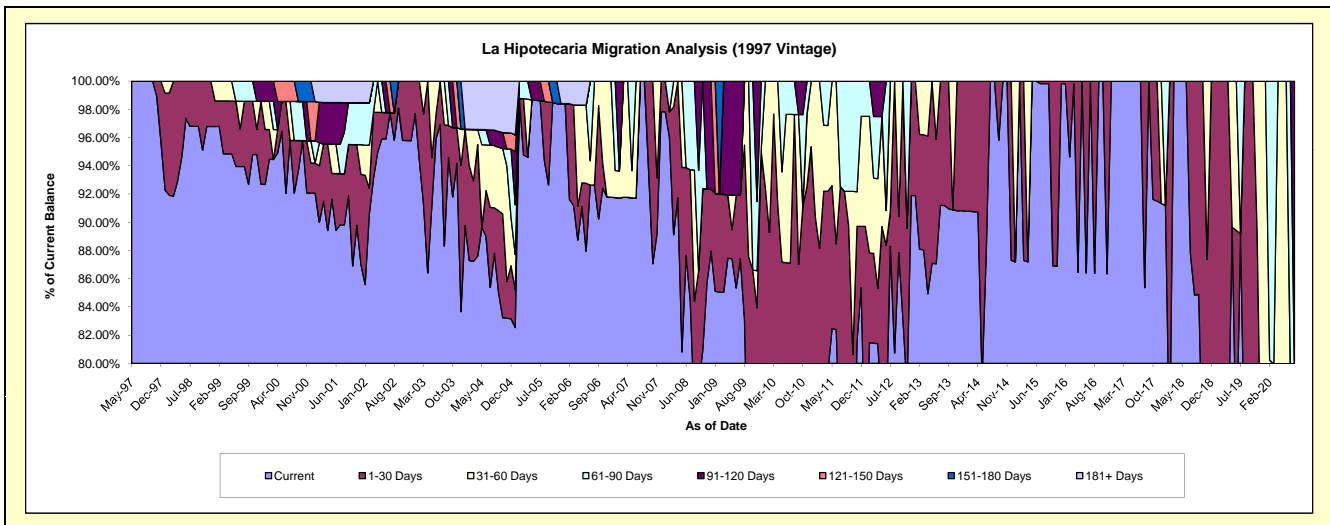
Delinquency Status (\$ of Current Balance)

Data Cutoff: 8/31/2020

Current Portfolio Balance	420,813.95	374,878.37	286,782.70	252,085.81	214,786.91	179,148.83	143,465.90	114,728.72	82,065.02	50,498.89
	Aug-11	Aug-12	Aug-13	Aug-14	Aug-15	Aug-16	Aug-17	Aug-18	Aug-19	Aug-20
Current	314,488.02	302,640.79	261,509.02	252,085.81	214,417.30	154,742.08	122,480.89	97,331.85	59,972.32	25,488.71
1-30 Days	73,474.33	72,237.58	25,273.68	-	369.61	24,406.75	20,985.01	17,396.87	22,092.70	-
31-60 Days	-	-	-	-	-	-	-	-	-	7,504.88
61-90 Days	32,851.60	-	-	-	-	-	-	-	-	6,650.36
91-120 Days	-	-	-	-	-	-	-	-	-	10,854.94
121-150 Days	-	-	-	-	-	-	-	-	-	-
151-180 Days	-	-	-	-	-	-	-	-	-	-
181+ Days	-	-	-	-	-	-	-	-	-	-

Delinquency Status (% of Current Balance)

Current Portfolio Balance	420,813.95	374,878.37	286,782.70	252,085.81	214,786.91	179,148.83	143,465.90	114,728.72	82,065.02	50,498.89
	Aug-11	Aug-12	Aug-13	Aug-14	Aug-15	Aug-16	Aug-17	Aug-18	Aug-19	Aug-20
Current	74.73%	80.73%	91.19%	100.00%	99.83%	86.38%	85.37%	84.84%	73.08%	50.47%
1-30 Days	17.46%	19.27%	8.81%	0.00%	0.17%	13.62%	14.63%	15.16%	26.92%	0.00%
31-60 Days	0.00%	0.00%	0.00%	0.00%	0.00%	0.00%	0.00%	0.00%	0.00%	14.86%
61-90 Days	7.81%	0.00%	0.00%	0.00%	0.00%	0.00%	0.00%	0.00%	0.00%	13.17%
91-120 Days	0.00%	0.00%	0.00%	0.00%	0.00%	0.00%	0.00%	0.00%	0.00%	21.50%
121-150 Days	0.00%	0.00%	0.00%	0.00%	0.00%	0.00%	0.00%	0.00%	0.00%	0.00%
151-180 Days	0.00%	0.00%	0.00%	0.00%	0.00%	0.00%	0.00%	0.00%	0.00%	0.00%
181+ Days	0.00%	0.00%	0.00%	0.00%	0.00%	0.00%	0.00%	0.00%	0.00%	0.00%
Current - 90 Days	100.00%	100.00%	100.00%	100.00%	100.00%	100.00%	100.00%	100.00%	100.00%	78.50%
91-180 Days	0.00%	0.00%	0.00%	0.00%	0.00%	0.00%	0.00%	0.00%	0.00%	21.50%



Mortgages - La Hipotecaria Panama Migration Analysis (1998 Vintage)

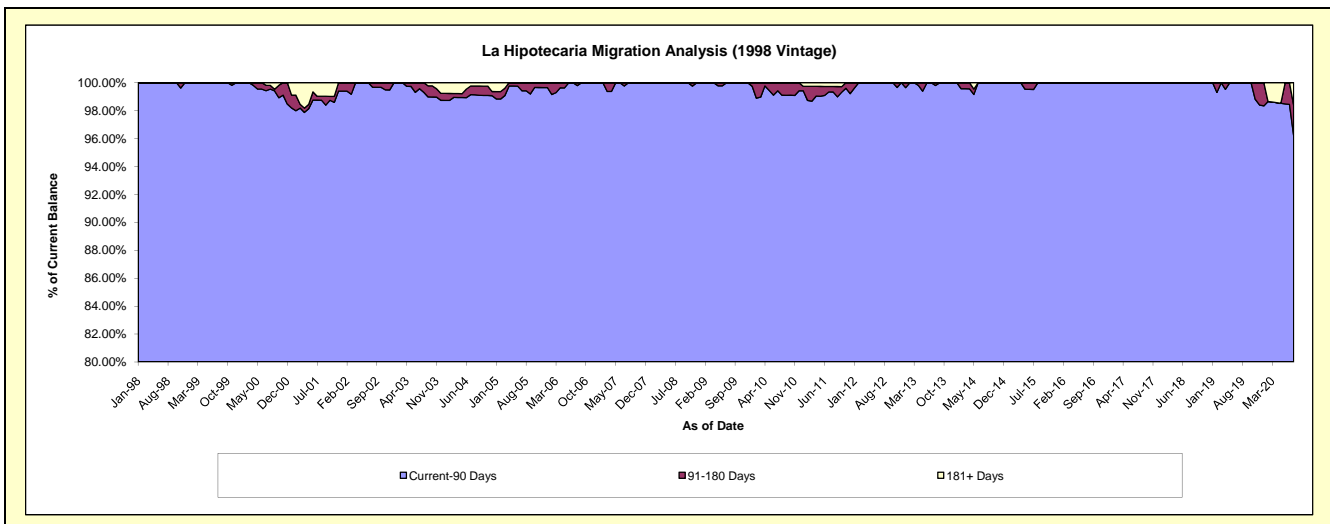
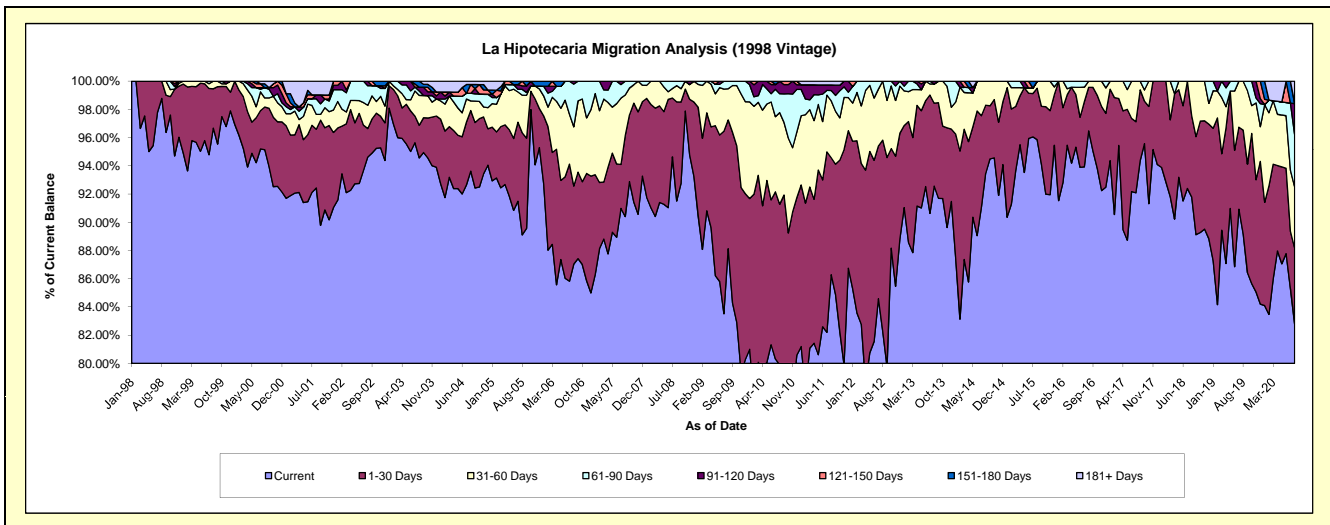
Delinquency Status (\$ of Current Balance)

Data Cutoff: 8/31/2020

Current Portfolio Balance	4,074,286.70	3,586,989.16	3,179,215.27	2,740,052.42	2,307,352.44	1,966,295.95	1,570,766.15	1,226,960.12	910,521.73	625,487.65
	Aug-11	Aug-12	Aug-13	Aug-14	Aug-15	Aug-16	Aug-17	Aug-18	Aug-19	Aug-20
Current	3,515,362.09	2,950,672.41	2,942,778.61	2,560,988.26	2,211,562.55	1,896,984.80	1,482,343.73	1,126,357.79	811,721.33	517,825.28
1-30 Days	337,861.02	486,307.93	186,706.45	132,404.38	84,205.13	60,798.08	78,760.58	70,540.25	67,184.80	33,554.25
31-60 Days	164,105.80	150,008.82	43,341.62	46,659.78	11,584.76	8,513.07	9,661.84	30,062.08	31,615.60	27,151.79
61-90 Days	29,897.39	-	-	-	-	-	-	-	-	23,330.39
91-120 Days	15,960.97	-	6,388.59	-	-	-	-	-	-	13,641.84
121-150 Days	-	-	-	-	-	-	-	-	-	-
151-180 Days	-	-	-	-	-	-	-	-	-	-
181+ Days	11,099.43	-	-	-	-	-	-	-	-	9,984.10

Delinquency Status (% of Current Balance)

Current Portfolio Balance	4,074,286.70	3,586,989.16	3,179,215.27	2,740,052.42	2,307,352.44	1,966,295.95	1,570,766.15	1,226,960.12	910,521.73	625,487.65
	Aug-11	Aug-12	Aug-13	Aug-14	Aug-15	Aug-16	Aug-17	Aug-18	Aug-19	Aug-20
Current	86.28%	82.26%	92.56%	93.46%	95.85%	96.48%	94.37%	91.80%	89.15%	82.79%
1-30 Days	8.29%	13.56%	5.87%	4.83%	3.65%	3.09%	5.01%	5.75%	7.38%	5.36%
31-60 Days	4.03%	4.18%	1.36%	1.70%	0.50%	0.43%	0.62%	2.45%	3.47%	4.34%
61-90 Days	0.73%	0.00%	0.00%	0.00%	0.00%	0.00%	0.00%	0.00%	0.00%	3.73%
91-120 Days	0.39%	0.00%	0.20%	0.00%	0.00%	0.00%	0.00%	0.00%	0.00%	2.18%
121-150 Days	0.00%	0.00%	0.00%	0.00%	0.00%	0.00%	0.00%	0.00%	0.00%	0.00%
151-180 Days	0.00%	0.00%	0.00%	0.00%	0.00%	0.00%	0.00%	0.00%	0.00%	0.00%
181+ Days	0.27%	0.00%	0.00%	0.00%	0.00%	0.00%	0.00%	0.00%	0.00%	1.60%
Current - 90 Days	99.34%	100.00%	99.80%	100.00%	100.00%	100.00%	100.00%	100.00%	100.00%	96.22%
91-180 Days	0.39%	0.00%	0.20%	0.00%	0.00%	0.00%	0.00%	0.00%	0.00%	2.18%



Mortgages - La Hipotecaria Panama Migration Analysis (1999 Vintage)

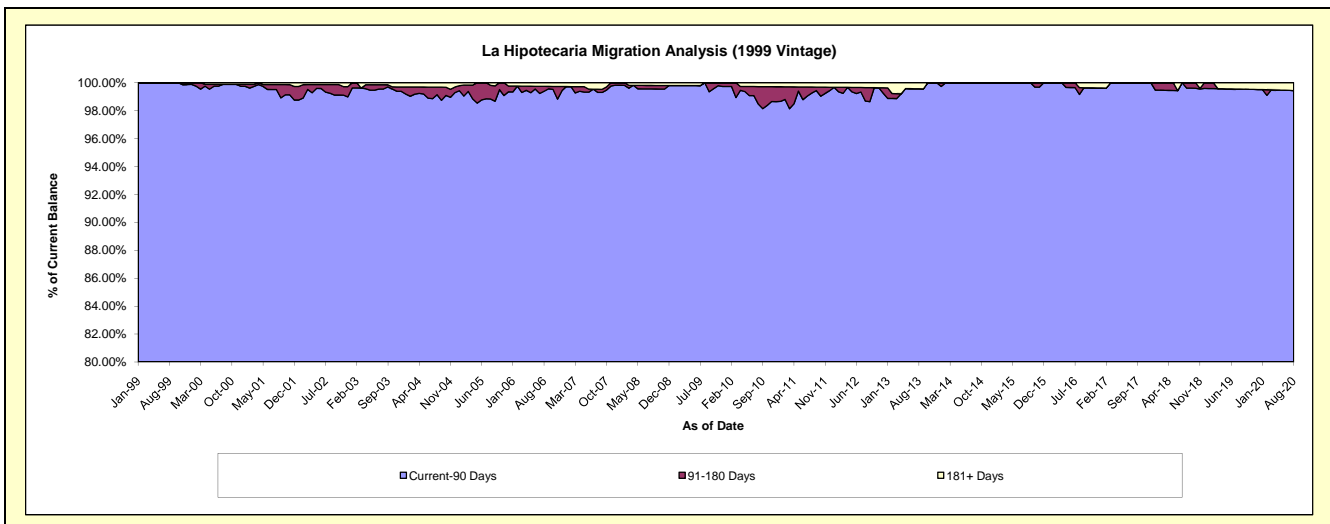
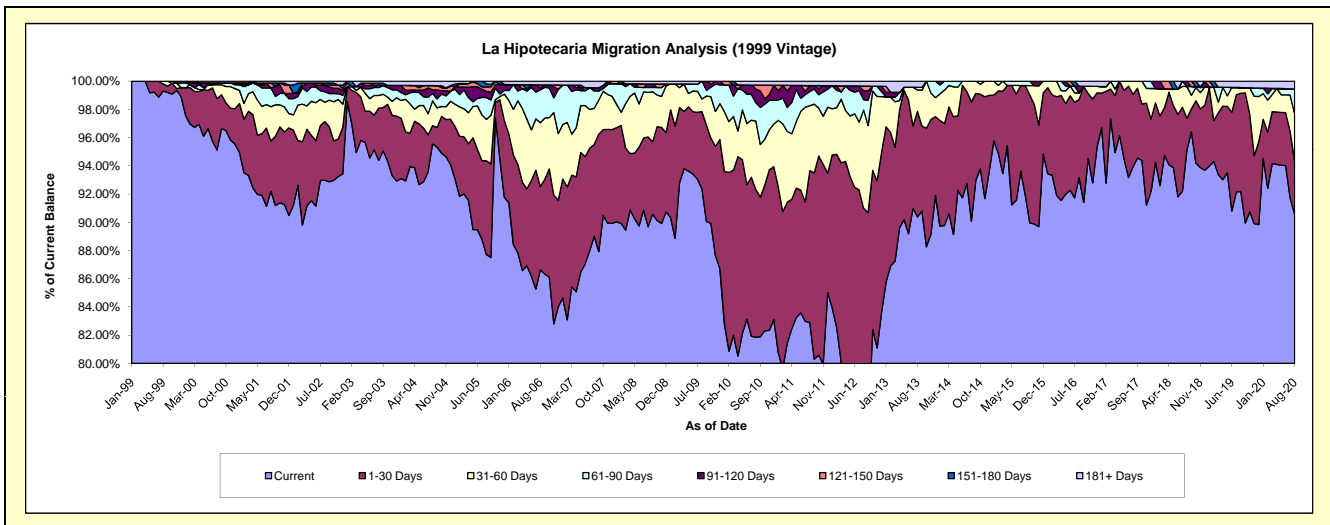
Delinquency Status (\$ of Current Balance)

Data Cutoff: 8/31/2020

Current Portfolio Balance	6,285,638.58	5,632,813.24	4,872,447.38	4,285,941.12	3,761,746.09	3,209,748.43	2,721,488.94	2,269,606.99	1,880,207.30	1,527,738.60
	Aug-11	Aug-12	Aug-13	Aug-14	Aug-15	Aug-16	Aug-17	Aug-18	Aug-19	Aug-20
Current	5,210,372.90	4,214,395.78	4,403,871.02	3,860,753.87	3,457,371.32	2,990,172.47	2,556,402.97	2,158,761.93	1,733,143.24	1,383,593.37
1-30 Days	676,644.41	911,800.33	364,207.44	362,526.27	292,725.99	178,015.24	139,859.85	51,283.70	131,042.91	57,403.45
31-60 Days	289,234.23	391,299.83	73,827.39	62,660.98	-	14,655.32	25,226.12	50,949.81	7,409.60	51,167.91
61-90 Days	62,933.24	41,403.83	9,390.68	-	11,648.78	-	-	-	-	26,962.32
91-120 Days	26,947.57	35,851.51	-	-	-	15,560.66	-	8,611.55	-	-
121-150 Days	-	18,555.73	-	-	-	-	-	-	-	-
151-180 Days	-	-	-	-	-	-	-	-	-	-
181+ Days	19,506.23	19,506.23	21,150.85	-	-	11,344.74	-	-	8,611.55	8,611.55

Delinquency Status (% of Current Balance)

Current Portfolio Balance	6,285,638.58	5,632,813.24	4,872,447.38	4,285,941.12	3,761,746.09	3,209,748.43	2,721,488.94	2,269,606.99	1,880,207.30	1,527,738.60
	Aug-11	Aug-12	Aug-13	Aug-14	Aug-15	Aug-16	Aug-17	Aug-18	Aug-19	Aug-20
Current	82.89%	74.82%	90.38%	90.08%	91.91%	93.16%	93.93%	95.12%	92.18%	90.56%
1-30 Days	10.76%	16.19%	7.47%	8.46%	7.78%	5.55%	5.14%	2.26%	6.97%	3.76%
31-60 Days	4.60%	6.95%	1.52%	1.46%	0.00%	0.46%	0.93%	2.24%	0.39%	3.35%
61-90 Days	1.00%	0.74%	0.19%	0.00%	0.31%	0.00%	0.00%	0.00%	0.00%	1.76%
91-120 Days	0.43%	0.64%	0.00%	0.00%	0.00%	0.48%	0.00%	0.38%	0.00%	0.00%
121-150 Days	0.00%	0.33%	0.00%	0.00%	0.00%	0.00%	0.00%	0.00%	0.00%	0.00%
151-180 Days	0.00%	0.00%	0.00%	0.00%	0.00%	0.00%	0.00%	0.00%	0.00%	0.00%
181+ Days	0.31%	0.35%	0.43%	0.00%	0.00%	0.35%	0.00%	0.00%	0.46%	0.56%
Current - 90 Days	99.26%	98.69%	99.57%	100.00%	100.00%	99.16%	100.00%	99.62%	99.54%	99.44%
91-180 Days	0.43%	0.97%	0.00%	0.00%	0.00%	0.48%	0.00%	0.38%	0.00%	0.00%



Mortgages - La Hipotecaria Panama Migration Analysis (2000 Vintage)

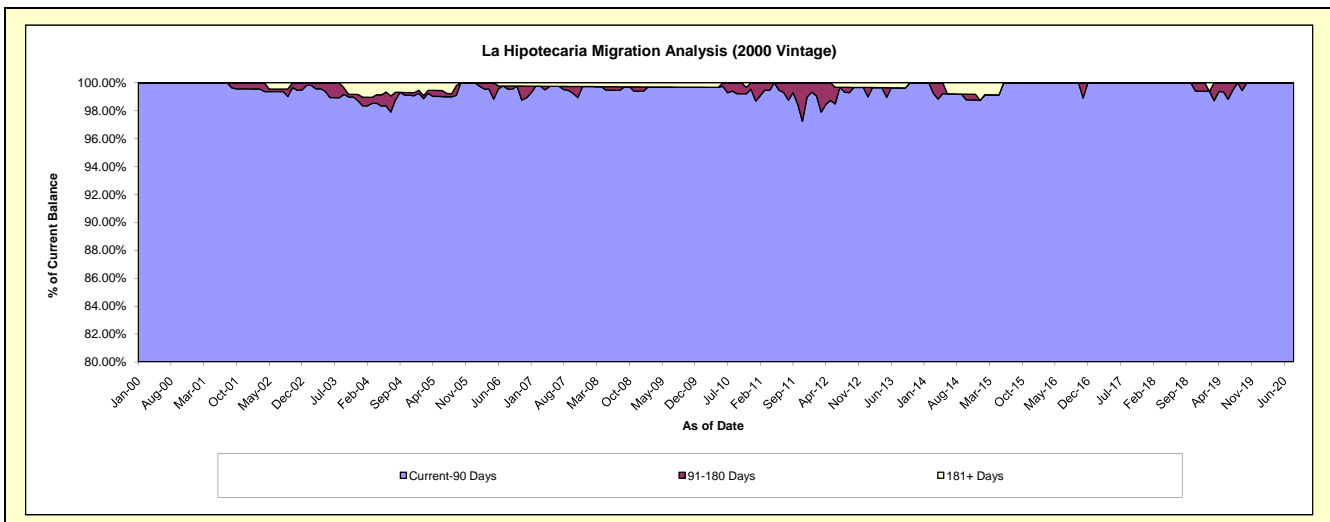
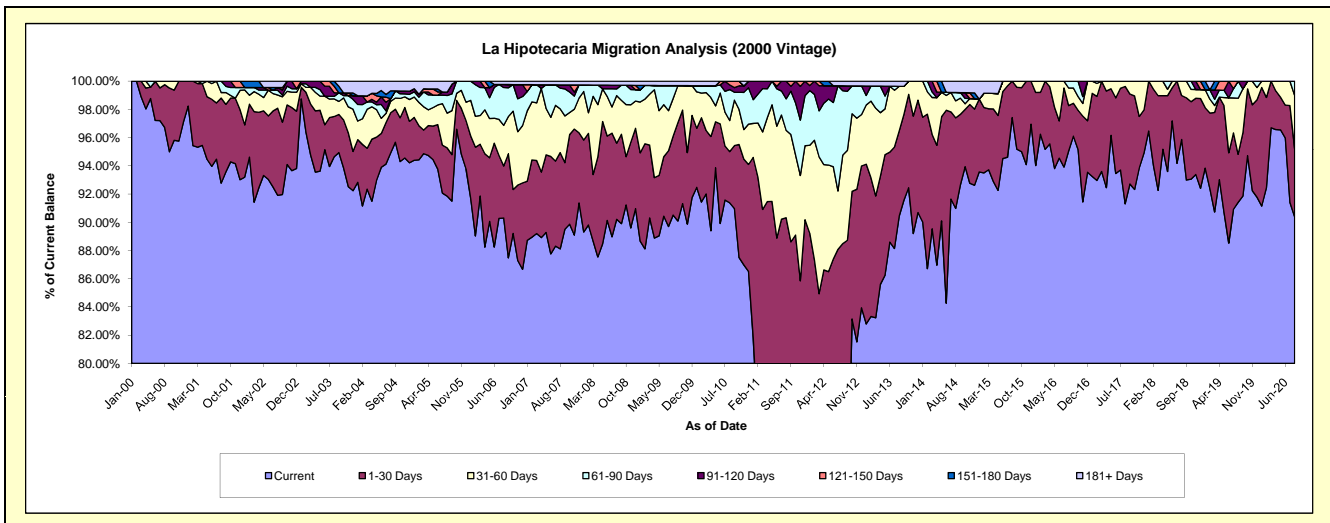
Delinquency Status (\$ of Current Balance)

Data Cutoff: 8/31/2020

Current Portfolio Balance	5,338,990.18	4,879,123.60	4,398,379.49	3,869,757.20	3,364,424.65	2,943,239.12	2,624,976.98	2,288,422.36	1,896,361.08	1,639,724.25
	Aug-11	Aug-12	Aug-13	Aug-14	Aug-15	Aug-16	Aug-17	Aug-18	Aug-19	Aug-20
Current	3,757,497.36	3,632,581.54	3,978,045.04	3,520,901.05	3,277,586.67	2,797,783.03	2,396,878.31	2,193,855.70	1,733,596.28	1,481,866.92
1-30 Days	1,064,683.14	684,332.77	265,465.86	248,198.94	86,837.98	94,547.39	218,249.31	71,153.85	64,520.11	79,287.85
31-60 Days	330,478.72	306,462.60	138,776.17	46,754.06	-	36,656.21	9,849.36	23,412.81	75,267.96	61,821.09
61-90 Days	119,518.50	222,900.97	-	22,809.75	-	14,252.49	-	-	22,976.73	16,748.39
91-120 Days	66,812.46	16,753.30	-	-	-	-	-	-	-	-
121-150 Days	-	-	-	-	-	-	-	-	-	-
151-180 Days	-	-	-	-	-	-	-	-	-	-
181+ Days	-	16,092.42	16,092.42	31,093.40	-	-	-	-	-	-

Delinquency Status (% of Current Balance)

Current Portfolio Balance	5,338,990.18	4,879,123.60	4,398,379.49	3,869,757.20	3,364,424.65	2,943,239.12	2,624,976.98	2,288,422.36	1,896,361.08	1,639,724.25
	Aug-11	Aug-12	Aug-13	Aug-14	Aug-15	Aug-16	Aug-17	Aug-18	Aug-19	Aug-20
Current	70.38%	74.45%	90.44%	90.99%	97.42%	95.06%	91.31%	95.87%	91.42%	90.37%
1-30 Days	19.94%	14.03%	6.04%	6.41%	2.58%	3.21%	8.31%	3.11%	3.40%	4.84%
31-60 Days	6.19%	6.28%	3.16%	1.21%	0.00%	1.25%	0.38%	1.02%	3.97%	3.77%
61-90 Days	2.24%	4.57%	0.00%	0.59%	0.00%	0.48%	0.00%	0.00%	1.21%	1.02%
91-120 Days	1.25%	0.34%	0.00%	0.00%	0.00%	0.00%	0.00%	0.00%	0.00%	0.00%
121-150 Days	0.00%	0.00%	0.00%	0.00%	0.00%	0.00%	0.00%	0.00%	0.00%	0.00%
151-180 Days	0.00%	0.00%	0.00%	0.00%	0.00%	0.00%	0.00%	0.00%	0.00%	0.00%
181+ Days	0.00%	0.33%	0.37%	0.80%	0.00%	0.00%	0.00%	0.00%	0.00%	0.00%
Current - 90 Days	98.75%	99.33%	99.63%	99.20%	100.00%	100.00%	100.00%	100.00%	100.00%	100.00%
91-180 Days	1.25%	0.34%	0.00%	0.00%	0.00%	0.00%	0.00%	0.00%	0.00%	0.00%



Mortgages - La Hipotecaria Panama Migration Analysis (2001 Vintage)

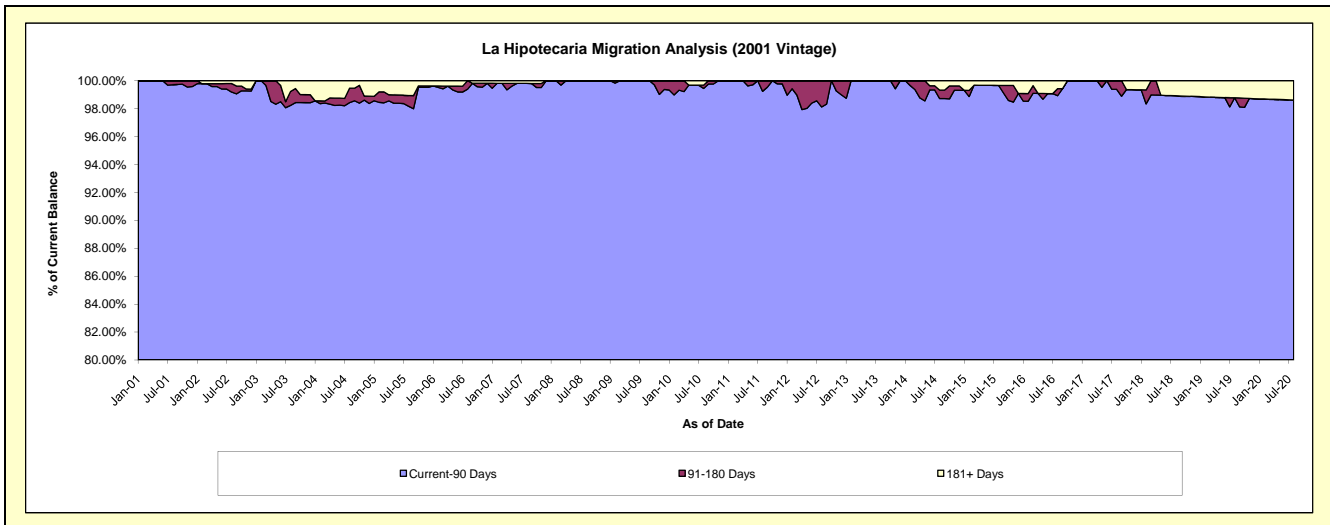
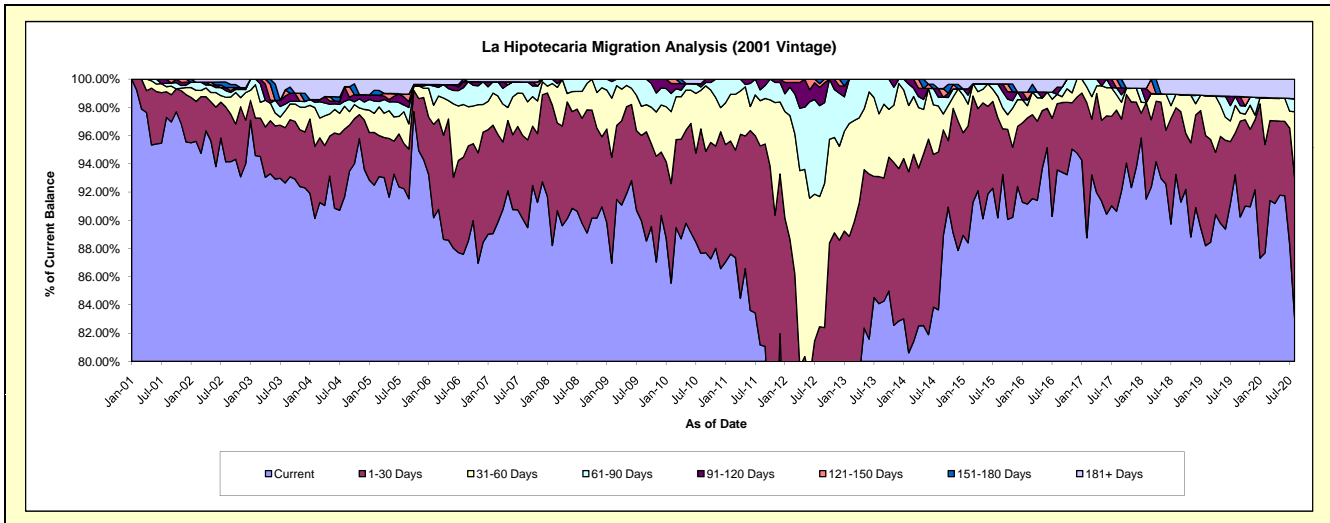
Delinquency Status (\$ of Current Balance)

Data Cutoff: 8/31/2020

Current Portfolio Balance	5,599,358.21	5,171,009.64	4,374,616.22	3,940,655.21	3,552,357.24	3,233,587.23	2,934,208.42	2,564,635.22	2,252,839.47	1,989,770.98
	Aug-11	Aug-12	Aug-13	Aug-14	Aug-15	Aug-16	Aug-17	Aug-18	Aug-19	Aug-20
Current	4,545,178.04	3,367,927.95	3,678,718.33	3,296,604.61	3,203,539.16	3,025,486.92	2,659,467.86	2,391,313.02	2,100,081.52	1,653,276.30
1-30 Days	789,437.27	895,979.97	393,804.62	440,852.90	252,181.23	151,850.52	210,454.62	121,332.20	67,138.38	198,011.21
31-60 Days	179,362.96	476,979.56	194,772.65	128,333.52	53,872.17	21,605.34	31,975.56	24,390.60	43,691.86	92,581.97
61-90 Days	42,977.77	333,082.89	107,320.62	24,600.00	30,819.36	-	14,188.88	-	14,328.31	18,302.10
91-120 Days	42,402.17	67,311.21	-	23,982.39	-	16,275.56	-	-	-	-
121-150 Days	-	13,374.53	-	-	-	-	18,121.50	-	-	-
151-180 Days	-	16,353.53	-	-	-	-	-	-	-	-
181+ Days	-	-	-	26,281.79	11,945.32	18,368.89	-	27,599.40	27,599.40	27,599.40

Delinquency Status (% of Current Balance)

Current Portfolio Balance	5,599,358.21	5,171,009.64	4,374,616.22	3,940,655.21	3,552,357.24	3,233,587.23	2,934,208.42	2,564,635.22	2,252,839.47	1,989,770.98
	Aug-11	Aug-12	Aug-13	Aug-14	Aug-15	Aug-16	Aug-17	Aug-18	Aug-19	Aug-20
Current	81.17%	65.13%	84.09%	83.66%	90.18%	93.56%	90.64%	93.24%	93.22%	83.09%
1-30 Days	14.10%	17.33%	9.00%	11.19%	7.10%	4.70%	7.17%	4.73%	2.98%	9.95%
31-60 Days	3.20%	9.22%	4.45%	3.26%	1.52%	0.67%	1.09%	0.95%	1.94%	4.65%
61-90 Days	0.77%	6.44%	2.45%	0.62%	0.87%	0.00%	0.48%	0.00%	0.64%	0.92%
91-120 Days	0.76%	1.30%	0.00%	0.61%	0.00%	0.50%	0.00%	0.00%	0.00%	0.00%
121-150 Days	0.00%	0.26%	0.00%	0.00%	0.00%	0.00%	0.62%	0.00%	0.00%	0.00%
151-180 Days	0.00%	0.32%	0.00%	0.00%	0.00%	0.00%	0.00%	0.00%	0.00%	0.00%
181+ Days	0.00%	0.00%	0.00%	0.67%	0.34%	0.57%	0.00%	1.08%	1.23%	1.39%
Current - 90 Days	99.24%	98.12%	100.00%	98.72%	99.66%	98.93%	99.38%	98.92%	98.77%	98.61%
91-180 Days	0.76%	1.88%	0.00%	0.61%	0.00%	0.50%	0.62%	0.00%	0.00%	0.00%



Mortgages - La Hipotecaria Panama Migration Analysis (2002 Vintage)

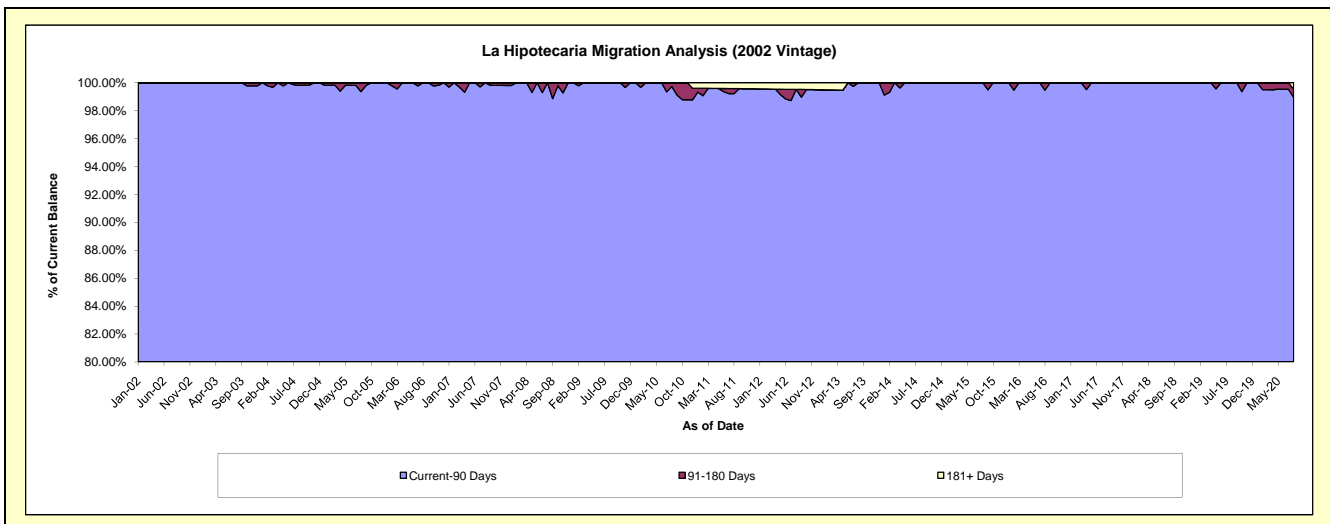
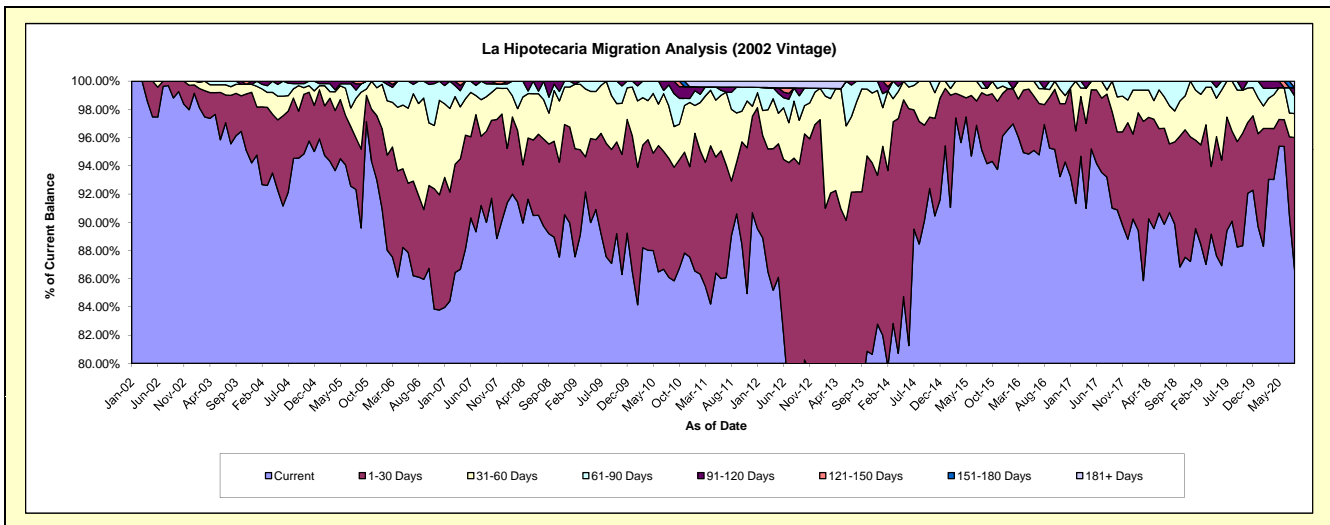
Delinquency Status (\$ of Current Balance)

Data Cutoff: 8/31/2020

Current Portfolio Balance	5,298,130.05	4,657,748.19	3,987,625.49	3,463,396.50	3,186,217.87	2,848,398.32	2,550,448.54	2,359,196.14	2,101,013.89	1,884,018.31
	Aug-11	Aug-12	Aug-13	Aug-14	Aug-15	Aug-16	Aug-17	Aug-18	Aug-19	Aug-20
Current	4,718,067.52	3,577,020.15	3,002,548.66	3,063,687.53	3,030,736.84	2,760,930.81	2,377,045.68	2,139,822.27	1,892,351.03	1,631,981.18
1-30 Days	204,974.03	826,716.74	672,420.83	300,794.04	129,427.33	40,059.62	150,104.66	114,486.43	134,260.88	176,761.80
31-60 Days	269,372.59	188,137.89	254,541.55	98,914.93	9,999.74	32,231.93	7,384.40	63,854.45	74,401.98	31,979.00
61-90 Days	64,145.71	43,713.40	58,114.45	-	16,053.96	-	15,913.80	41,032.99	-	23,641.51
91-120 Days	19,410.19	-	-	-	-	15,175.96	-	-	-	10,776.11
121-150 Days	-	-	-	-	-	-	-	-	-	-
151-180 Days	-	-	-	-	-	-	-	-	-	-
181+ Days	22,160.01	22,160.01	-	-	-	-	-	-	-	8,878.71

Delinquency Status (% of Current Balance)

Current Portfolio Balance	5,298,130.05	4,657,748.19	3,987,625.49	3,463,396.50	3,186,217.87	2,848,398.32	2,550,448.54	2,359,196.14	2,101,013.89	1,884,018.31
	Aug-11	Aug-12	Aug-13	Aug-14	Aug-15	Aug-16	Aug-17	Aug-18	Aug-19	Aug-20
Current	89.05%	76.80%	75.30%	88.46%	95.12%	96.93%	93.20%	90.70%	90.07%	86.62%
1-30 Days	3.87%	17.75%	16.86%	8.68%	4.06%	1.41%	5.89%	4.85%	6.39%	9.38%
31-60 Days	5.08%	4.04%	6.38%	2.86%	0.31%	1.13%	0.29%	2.71%	3.54%	1.70%
61-90 Days	1.21%	0.94%	1.46%	0.00%	0.50%	0.00%	0.62%	1.74%	0.00%	1.25%
91-120 Days	0.37%	0.00%	0.00%	0.00%	0.00%	0.53%	0.00%	0.00%	0.00%	0.57%
121-150 Days	0.00%	0.00%	0.00%	0.00%	0.00%	0.00%	0.00%	0.00%	0.00%	0.00%
151-180 Days	0.00%	0.00%	0.00%	0.00%	0.00%	0.00%	0.00%	0.00%	0.00%	0.00%
181+ Days	0.42%	0.48%	0.00%	0.00%	0.00%	0.00%	0.00%	0.00%	0.00%	0.47%
Current - 90 Days	99.22%	99.52%	100.00%	100.00%	100.00%	99.47%	100.00%	100.00%	100.00%	98.96%
91-180 Days	0.37%	0.00%	0.00%	0.00%	0.00%	0.53%	0.00%	0.00%	0.00%	0.57%



Mortgages - La Hipotecaria Panama Migration Analysis (2003 Vintage)

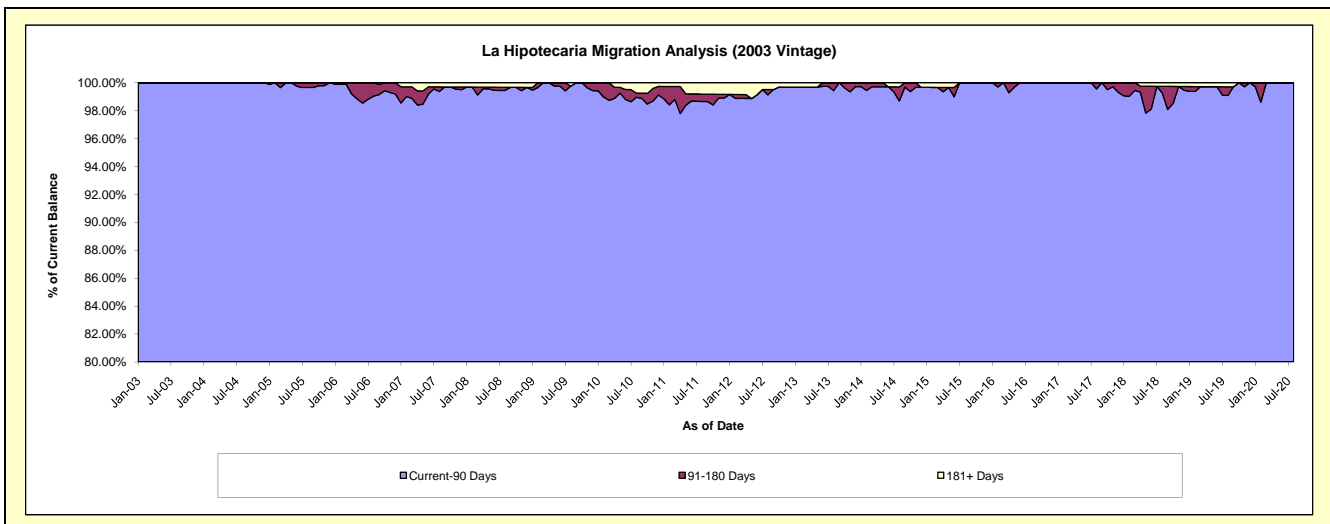
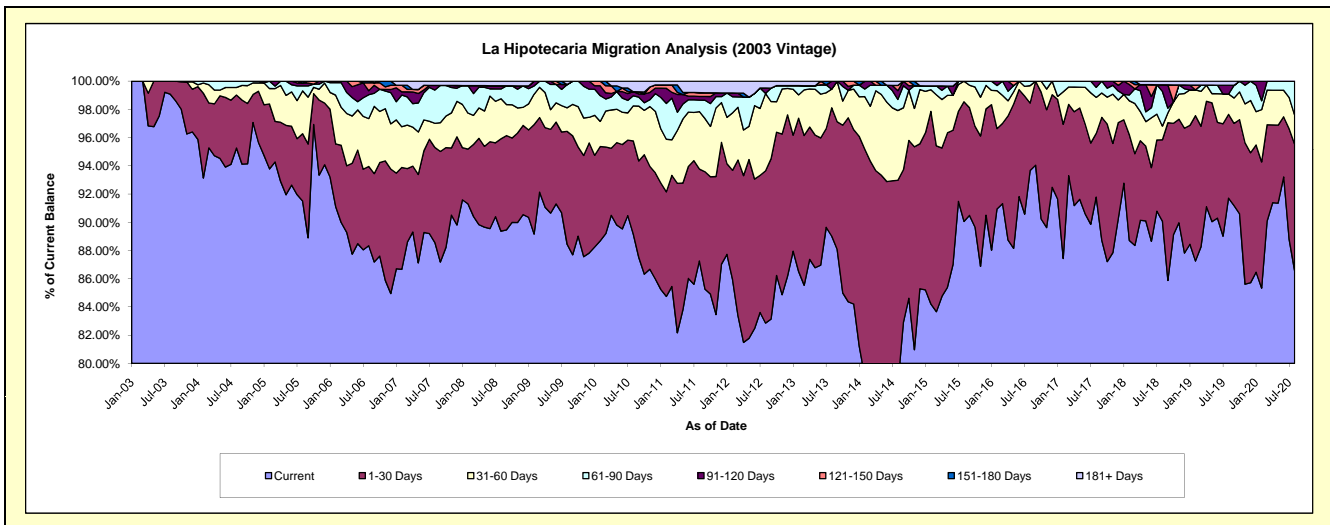
Delinquency Status (\$ of Current Balance)

Data Cutoff: 8/31/2020

Current Portfolio Balance	8,068,154.38	7,400,532.73	6,853,212.11	5,955,189.93	5,310,748.63	4,679,534.37	4,159,019.73	3,707,053.76	3,259,275.75	2,993,064.65
	Aug-11	Aug-12	Aug-13	Aug-14	Aug-15	Aug-16	Aug-17	Aug-18	Aug-19	Aug-20
Current	7,040,086.97	6,131,877.81	6,100,805.82	4,668,547.12	4,782,819.55	4,383,186.46	3,817,244.76	3,339,577.03	2,989,129.26	2,590,909.97
1-30 Days	525,373.31	798,192.79	623,228.49	868,071.30	450,288.82	223,818.38	188,045.39	213,597.78	193,413.61	268,171.15
31-60 Days	328,766.95	405,978.68	90,420.74	294,551.87	77,640.26	57,635.37	105,830.00	35,875.99	47,053.14	61,550.50
61-90 Days	65,279.19	-	-	46,980.78	-	14,894.16	29,620.71	91,065.54	-	72,433.03
91-120 Days	21,410.45	28,362.04	38,757.06	37,063.22	-	-	18,278.87	17,431.95	20,174.27	-
121-150 Days	21,390.26	-	-	22,064.24	-	-	-	-	-	-
151-180 Days	-	-	-	-	-	-	-	-	-	-
181+ Days	65,847.25	36,121.41	-	17,911.40	-	-	-	9,505.47	9,505.47	-

Delinquency Status (% of Current Balance)

Current Portfolio Balance	8,068,154.38	7,400,532.73	6,853,212.11	5,955,189.93	5,310,748.63	4,679,534.37	4,159,019.73	3,707,053.76	3,259,275.75	2,993,064.65
	Aug-11	Aug-12	Aug-13	Aug-14	Aug-15	Aug-16	Aug-17	Aug-18	Aug-19	Aug-20
Current	87.26%	82.86%	89.02%	78.39%	90.06%	93.67%	91.78%	90.09%	91.71%	86.56%
1-30 Days	6.51%	10.79%	9.09%	14.58%	8.48%	4.78%	4.52%	5.76%	5.93%	8.96%
31-60 Days	4.07%	5.49%	1.32%	4.95%	1.46%	1.23%	2.54%	0.97%	1.44%	2.06%
61-90 Days	0.81%	0.00%	0.00%	0.79%	0.00%	0.32%	0.71%	2.46%	0.00%	2.42%
91-120 Days	0.27%	0.38%	0.57%	0.62%	0.00%	0.00%	0.44%	0.47%	0.62%	0.00%
121-150 Days	0.27%	0.00%	0.00%	0.37%	0.00%	0.00%	0.00%	0.00%	0.00%	0.00%
151-180 Days	0.00%	0.00%	0.00%	0.00%	0.00%	0.00%	0.00%	0.00%	0.00%	0.00%
181+ Days	0.82%	0.49%	0.00%	0.30%	0.00%	0.00%	0.00%	0.26%	0.29%	0.00%
Current - 90 Days	98.65%	99.13%	99.43%	98.71%	100.00%	100.00%	99.56%	99.27%	99.09%	100.00%
91-180 Days	0.53%	0.38%	0.57%	0.99%	0.00%	0.00%	0.44%	0.47%	0.62%	0.00%



Mortgages - La Hipotecaria Panama Migration Analysis (2004 Vintage)

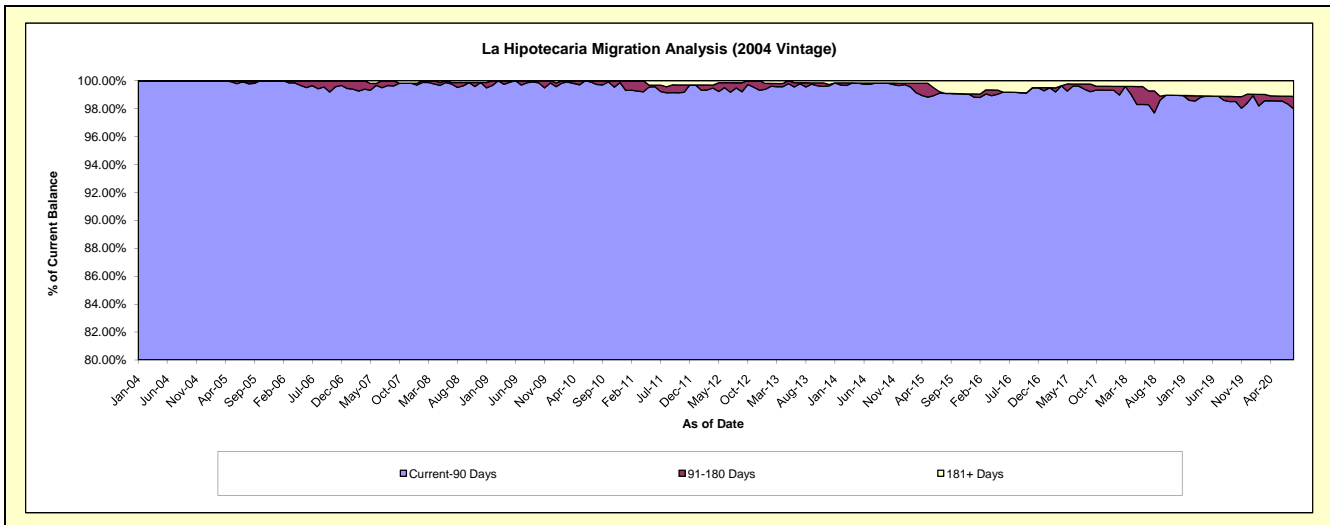
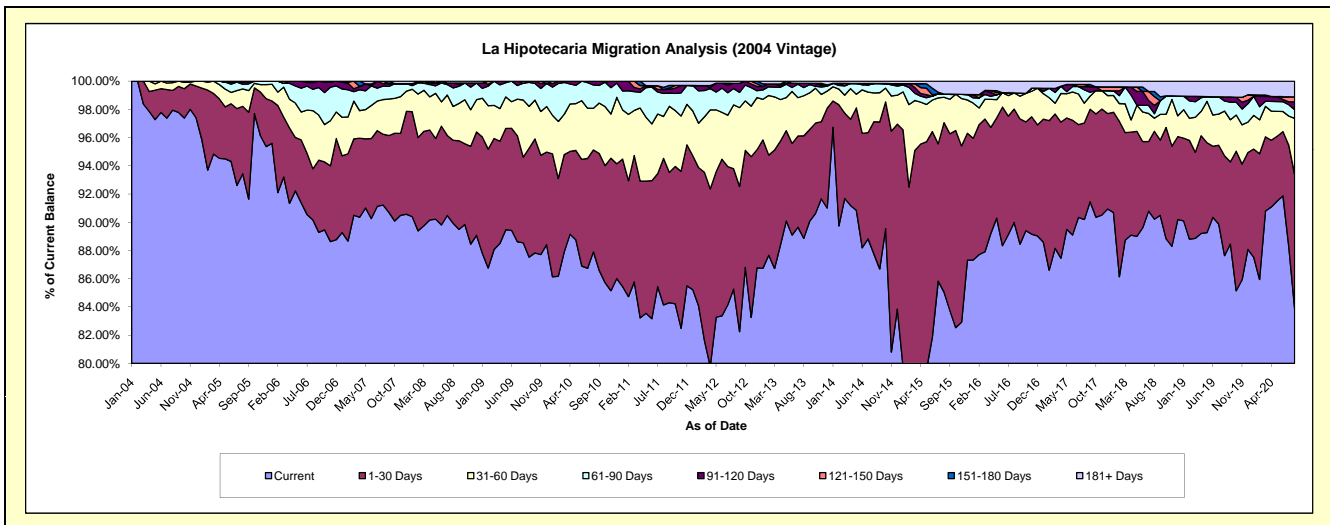
Delinquency Status (\$ of Current Balance)

Data Cutoff: 8/31/2020

Current Portfolio Balance	14,786,330.06	13,540,410.30	12,104,861.92	10,871,240.64	9,475,870.06	8,531,776.92	7,540,580.55	6,913,914.28	6,278,504.33	5,785,471.65
	Aug-11	Aug-12	Aug-13	Aug-14	Aug-15	Aug-16	Aug-17	Aug-18	Aug-19	Aug-20
Current	12,441,635.62	11,545,044.10	10,756,726.43	9,538,199.49	8,059,403.77	7,677,695.31	6,801,594.63	6,238,027.44	5,502,446.91	4,853,259.94
1-30 Days	1,535,594.85	1,154,383.75	879,578.11	1,020,315.31	1,137,745.81	685,290.39	515,587.27	430,022.56	443,970.36	549,575.75
31-60 Days	439,469.68	613,820.47	343,588.49	221,684.37	170,902.09	97,813.67	105,912.07	64,790.85	199,098.79	230,212.82
61-90 Days	241,998.94	157,054.89	70,375.29	72,943.11	21,649.30	-	71,277.99	21,874.56	44,912.99	35,692.80
91-120 Days	39,593.33	49,962.93	36,495.24	-	-	-	16,951.74	40,137.19	18,093.28	31,693.62
121-150 Days	-	-	-	-	-	-	11,455.41	43,574.22	-	20,506.40
151-180 Days	23,503.63	-	-	-	-	-	-	24,926.23	-	-
181+ Days	64,534.01	20,144.16	18,098.36	18,098.36	86,169.09	70,977.55	17,801.44	50,561.23	69,982.00	64,530.32

Delinquency Status (% of Current Balance)

Current Portfolio Balance	14,786,330.06	13,540,410.30	12,104,861.92	10,871,240.64	9,475,870.06	8,531,776.92	7,540,580.55	6,913,914.28	6,278,504.33	5,785,471.65
	Aug-11	Aug-12	Aug-13	Aug-14	Aug-15	Aug-16	Aug-17	Aug-18	Aug-19	Aug-20
Current	84.14%	85.26%	88.86%	87.74%	85.05%	89.99%	90.20%	90.22%	87.64%	83.89%
1-30 Days	10.39%	8.53%	7.27%	9.39%	12.01%	8.03%	6.84%	6.22%	7.07%	9.50%
31-60 Days	2.97%	4.53%	2.84%	2.04%	1.80%	1.15%	1.40%	0.94%	3.17%	3.98%
61-90 Days	1.64%	1.16%	0.58%	0.67%	0.23%	0.00%	0.95%	0.32%	0.72%	0.62%
91-120 Days	0.27%	0.37%	0.30%	0.00%	0.00%	0.00%	0.22%	0.58%	0.29%	0.55%
121-150 Days	0.00%	0.00%	0.00%	0.00%	0.00%	0.00%	0.15%	0.63%	0.00%	0.35%
151-180 Days	0.16%	0.00%	0.00%	0.00%	0.00%	0.00%	0.00%	0.36%	0.00%	0.00%
181+ Days	0.44%	0.15%	0.15%	0.17%	0.91%	0.83%	0.24%	0.73%	1.11%	1.12%
Current - 90 Days	99.14%	99.48%	99.55%	99.83%	99.09%	99.17%	99.39%	97.70%	98.60%	97.98%
91-180 Days	0.43%	0.37%	0.30%	0.00%	0.00%	0.00%	0.38%	1.57%	0.29%	0.90%



Mortgages - La Hipotecaria Panama Migration Analysis (2005 Vintage)

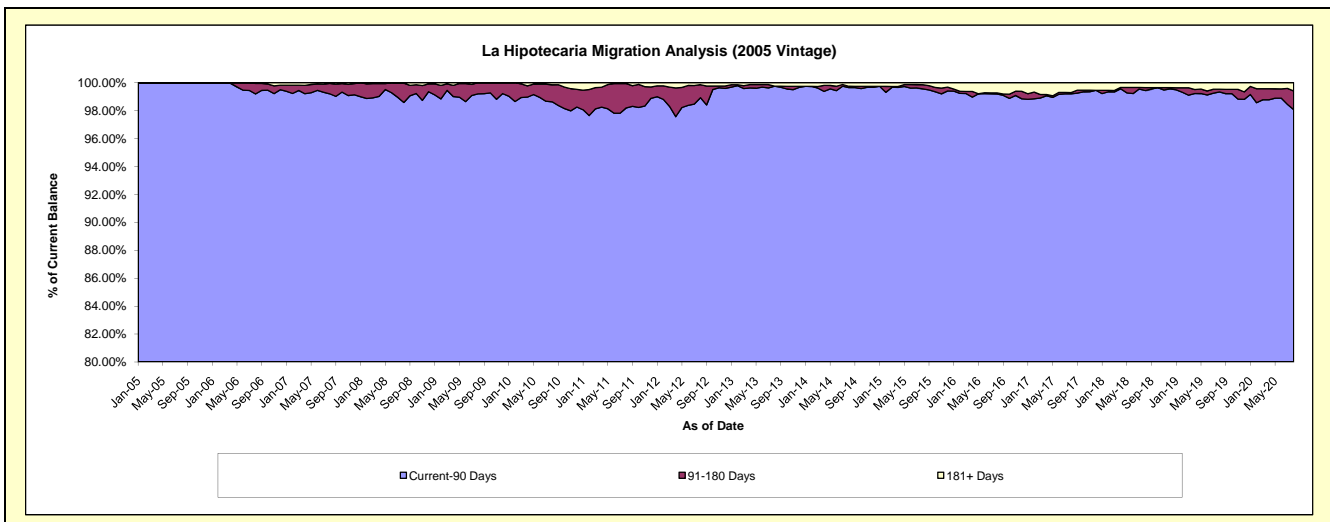
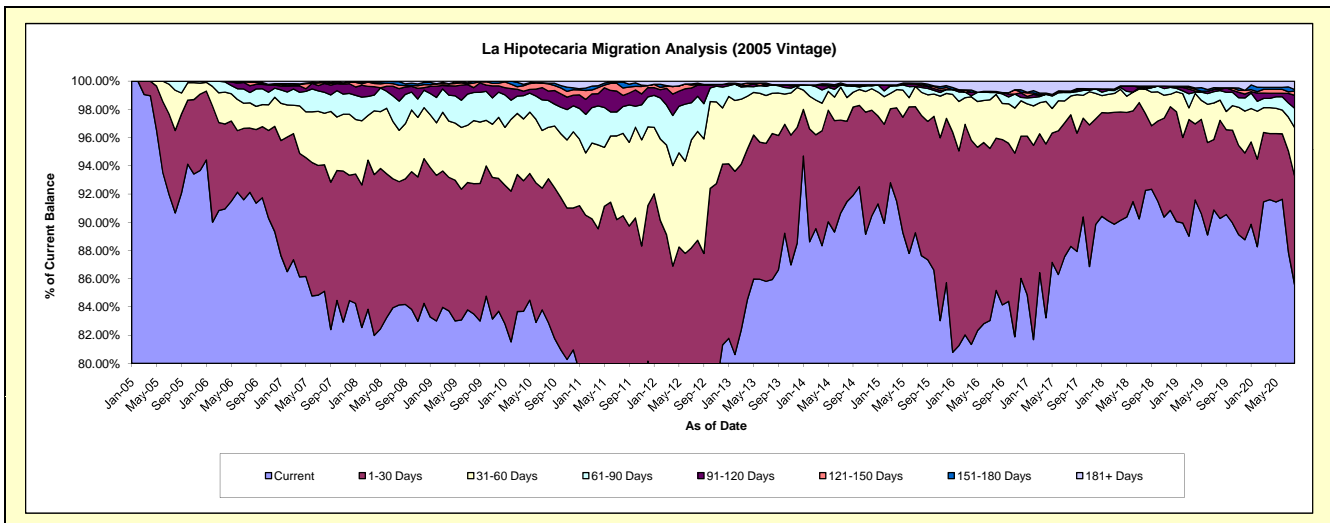
Delinquency Status (\$ of Current Balance)

Data Cutoff: 8/31/2020

Current Portfolio Balance	27,531,577.23	24,970,600.43	22,857,544.02	20,748,595.31	18,733,002.82	16,325,782.70	14,766,224.94	13,425,658.35	12,198,619.08	11,330,297.09
	Aug-11	Aug-12	Aug-13	Aug-14	Aug-15	Aug-16	Aug-17	Aug-18	Aug-19	Aug-20
Current	21,433,547.93	18,113,172.57	19,645,158.30	18,976,287.64	16,415,610.83	13,904,554.90	13,037,936.15	12,386,184.05	11,011,942.04	9,695,578.28
1-30 Days	3,474,192.39	4,042,312.76	2,364,871.85	1,182,127.19	1,861,820.67	1,761,912.96	1,376,944.27	732,787.44	848,116.46	871,547.13
31-60 Days	1,605,833.55	1,926,742.87	650,897.24	349,393.18	307,043.74	505,970.45	195,926.50	231,489.38	174,471.76	389,748.98
61-90 Days	522,433.38	621,482.02	139,499.70	168,929.51	64,883.16	22,030.99	37,241.33	-	83,308.89	155,274.00
91-120 Days	216,976.49	197,051.08	-	19,424.85	22,322.37	-	-	14,505.54	9,052.88	104,763.81
121-150 Days	146,187.03	12,703.25	-	-	22,186.30	-	14,384.82	14,330.16	14,768.89	34,205.02
151-180 Days	114,203.99	22,655.89	-	-	12,794.48	11,648.45	-	-	-	12,362.98
181+ Days	18,202.47	34,479.99	57,116.93	52,432.94	26,341.27	119,664.95	103,791.87	46,361.78	56,958.16	66,816.89

Delinquency Status (% of Current Balance)

Current Portfolio Balance	27,531,577.23	24,970,600.43	22,857,544.02	20,748,595.31	18,733,002.82	16,325,782.70	14,766,224.94	13,425,658.35	12,198,619.08	11,330,297.09
	Aug-11	Aug-12	Aug-13	Aug-14	Aug-15	Aug-16	Aug-17	Aug-18	Aug-19	Aug-20
Current	77.85%	72.54%	85.95%	91.46%	87.63%	85.17%	88.30%	92.26%	90.27%	85.57%
1-30 Days	12.62%	16.19%	10.35%	5.70%	9.94%	10.79%	9.32%	5.46%	6.95%	7.69%
31-60 Days	5.83%	7.72%	2.85%	1.68%	1.64%	3.10%	1.33%	1.72%	1.43%	3.44%
61-90 Days	1.90%	2.49%	0.61%	0.81%	0.35%	0.13%	0.25%	0.00%	0.68%	1.37%
91-120 Days	0.79%	0.79%	0.00%	0.09%	0.12%	0.00%	0.00%	0.11%	0.07%	0.92%
121-150 Days	0.53%	0.05%	0.00%	0.00%	0.12%	0.00%	0.10%	0.11%	0.12%	0.30%
151-180 Days	0.41%	0.09%	0.00%	0.00%	0.07%	0.07%	0.00%	0.00%	0.00%	0.11%
181+ Days	0.07%	0.14%	0.25%	0.25%	0.14%	0.73%	0.70%	0.35%	0.47%	0.59%
Current - 90 Days	98.20%	98.93%	99.75%	99.65%	99.55%	99.20%	99.20%	99.44%	99.34%	98.07%
91-180 Days	1.73%	0.93%	0.00%	0.09%	0.31%	0.07%	0.10%	0.21%	0.20%	1.34%



Mortgages - La Hipotecaria Panama Migration Analysis (2006 Vintage)

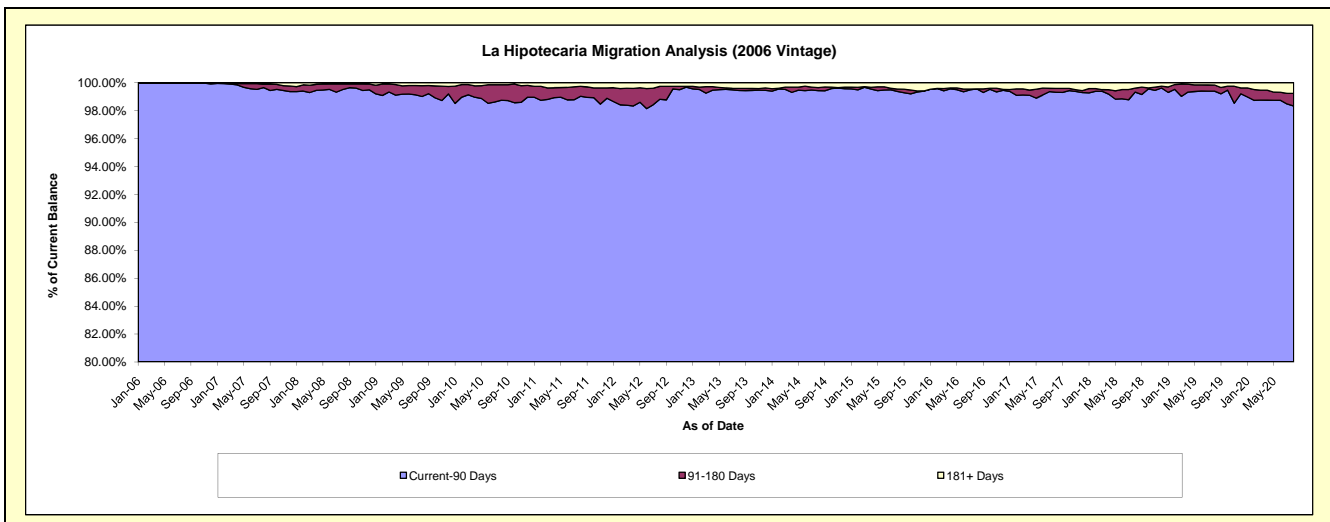
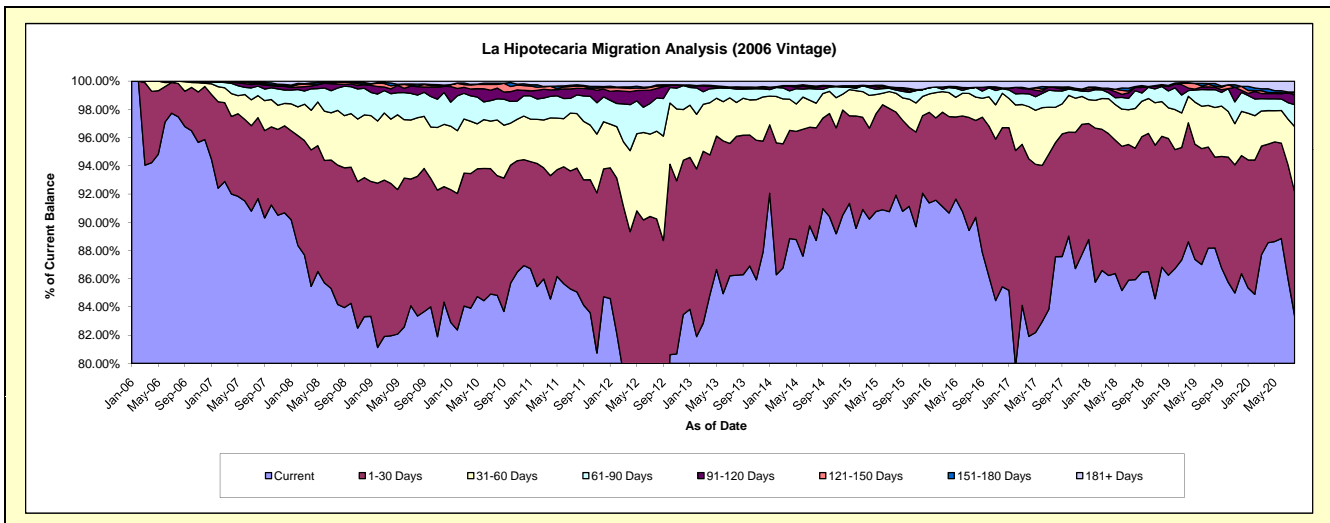
Delinquency Status (\$ of Current Balance)

Data Cutoff: 8/31/2020

Current Portfolio Balance	48,189,354.82	44,506,419.09	40,113,249.86	36,198,692.77	32,916,609.47	28,971,373.16	26,008,807.28	23,443,337.08	21,498,203.39	20,242,136.11
	Aug-11	Aug-12	Aug-13	Aug-14	Aug-15	Aug-16	Aug-17	Aug-18	Aug-19	Aug-20
Current	40,988,497.82	32,923,847.80	34,597,900.26	32,114,568.46	30,255,389.44	26,176,138.69	22,771,757.07	20,145,020.29	18,958,099.89	16,875,615.88
1-30 Days	4,230,975.99	7,238,109.00	3,947,597.99	2,887,251.65	1,942,248.01	1,989,257.29	2,104,891.70	2,185,204.74	1,382,524.86	1,776,191.53
31-60 Days	1,861,518.06	2,767,522.82	961,660.48	633,150.34	438,467.03	479,100.56	650,662.76	659,925.14	755,642.48	939,007.06
61-90 Days	639,981.45	1,050,658.72	382,503.60	359,626.43	73,365.21	200,279.67	303,524.40	296,539.52	272,742.42	313,848.85
91-120 Days	226,471.79	296,412.13	43,183.68	40,789.21	38,743.76	-	57,237.52	51,624.40	37,113.69	139,476.71
121-150 Days	70,260.70	77,771.50	16,913.30	13,464.11	16,566.02	-	15,025.41	14,582.95	18,570.78	30,943.01
151-180 Days	47,182.19	35,133.41	-	22,387.27	3,785.74	-	-	-	38,702.46	12,196.62
181+ Days	124,466.82	116,963.71	163,490.55	127,455.30	148,044.26	126,596.95	105,708.42	90,440.04	34,806.81	154,856.45

Delinquency Status (% of Current Balance)

Current Portfolio Balance	48,189,354.82	44,506,419.09	40,113,249.86	36,198,692.77	32,916,609.47	28,971,373.16	26,008,807.28	23,443,337.08	21,498,203.39	20,242,136.11
	Aug-11	Aug-12	Aug-13	Aug-14	Aug-15	Aug-16	Aug-17	Aug-18	Aug-19	Aug-20
Current	85.06%	73.98%	86.25%	88.72%	91.92%	90.35%	87.55%	85.93%	88.18%	83.37%
1-30 Days	8.78%	16.26%	9.84%	7.98%	5.90%	6.87%	8.09%	9.32%	6.43%	8.77%
31-60 Days	3.86%	6.22%	2.40%	1.75%	1.33%	1.65%	2.50%	2.81%	3.51%	4.64%
61-90 Days	1.33%	2.36%	0.95%	0.99%	0.22%	0.69%	1.17%	1.26%	1.27%	1.55%
91-120 Days	0.47%	0.67%	0.11%	0.11%	0.12%	0.00%	0.22%	0.22%	0.17%	0.69%
121-150 Days	0.15%	0.17%	0.04%	0.04%	0.05%	0.00%	0.06%	0.06%	0.09%	0.15%
151-180 Days	0.10%	0.08%	0.00%	0.06%	0.01%	0.00%	0.00%	0.00%	0.18%	0.06%
181+ Days	0.26%	0.26%	0.41%	0.35%	0.45%	0.44%	0.41%	0.39%	0.16%	0.77%
Current - 90 Days	99.03%	98.82%	99.44%	99.44%	99.37%	99.56%	99.32%	99.33%	99.40%	98.33%
91-180 Days	0.71%	0.92%	0.15%	0.21%	0.18%	0.00%	0.28%	0.28%	0.44%	0.90%



Mortgages - La Hipotecaria Panama Migration Analysis (2007 Vintage)

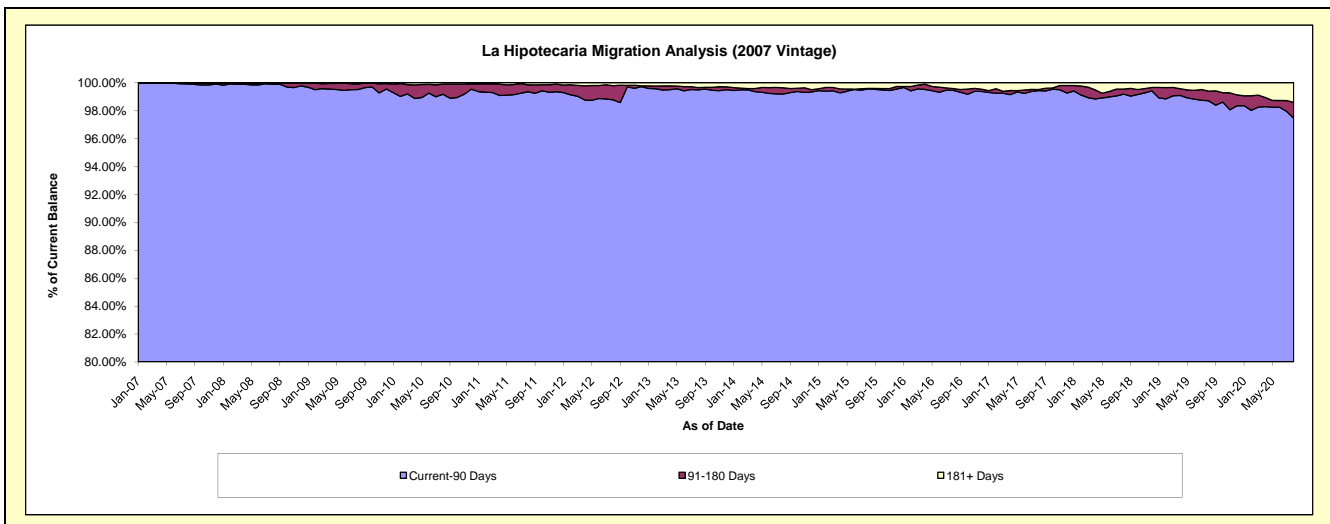
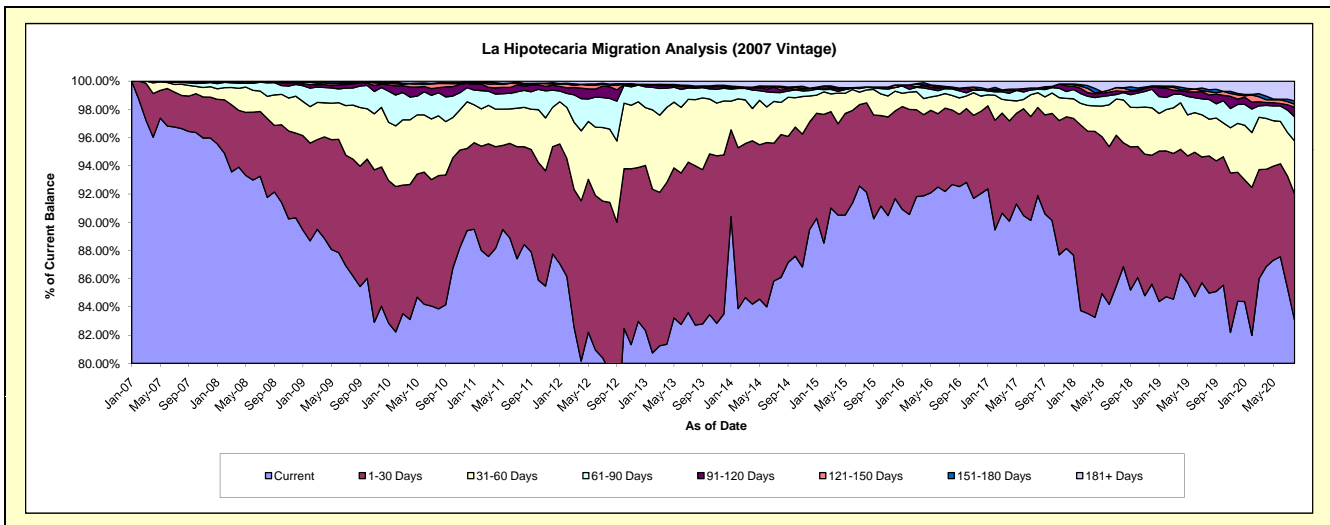
Delinquency Status (\$ of Current Balance)

Data Cutoff: 8/31/2020

Current Portfolio Balance	58,613,501.42	54,632,197.69	49,556,208.29	45,097,522.10	40,620,101.70	37,078,616.67	33,646,386.03	30,378,649.88	27,481,733.49	25,674,315.77
	Aug-11	Aug-12	Aug-13	Aug-14	Aug-15	Aug-16	Aug-17	Aug-18	Aug-19	Aug-20
Current	51,827,191.91	43,417,182.55	40,991,323.16	38,826,068.86	37,423,392.46	34,362,993.01	30,917,390.23	26,386,451.38	23,355,479.50	21,311,029.52
1-30 Days	4,065,575.95	6,523,690.51	5,594,154.59	4,566,287.87	2,573,043.97	1,957,020.63	2,102,936.62	2,664,670.84	2,670,469.03	2,310,011.59
31-60 Days	1,634,308.89	2,837,061.82	2,321,341.13	1,026,042.97	372,229.61	382,314.94	350,731.69	924,054.76	715,894.19	964,515.51
61-90 Days	706,614.86	1,187,395.48	397,491.68	316,249.30	73,700.06	173,025.61	83,241.60	156,110.28	384,382.33	438,479.87
91-120 Days	167,192.36	453,785.49	52,538.68	74,444.96	12,882.65	23,611.40	12,590.89	25,894.48	85,579.44	174,048.10
121-150 Days	64,773.80	60,878.19	5,850.66	78,818.26	-	-	15,986.64	71,337.12	64,977.15	58,078.75
151-180 Days	59,784.58	37,667.35	19,000.95	48,259.82	-	24,911.91	-	11,569.72	39,230.07	57,462.61
181+ Days	88,059.07	114,536.30	174,507.44	161,350.06	164,852.95	154,739.17	163,508.36	138,561.30	165,721.78	360,689.82

Delinquency Status (% of Current Balance)

Current Portfolio Balance	58,613,501.42	54,632,197.69	49,556,208.29	45,097,522.10	40,620,101.70	37,078,616.67	33,646,386.03	30,378,649.88	27,481,733.49	25,674,315.77
	Aug-11	Aug-12	Aug-13	Aug-14	Aug-15	Aug-16	Aug-17	Aug-18	Aug-19	Aug-20
Current	88.42%	79.47%	82.72%	86.09%	92.13%	92.68%	91.89%	86.86%	84.99%	83.01%
1-30 Days	6.94%	11.94%	11.29%	10.13%	6.33%	5.28%	6.25%	8.77%	9.72%	9.00%
31-60 Days	2.79%	5.19%	4.68%	2.28%	0.92%	1.03%	1.04%	3.04%	2.60%	3.76%
61-90 Days	1.21%	2.17%	0.80%	0.70%	0.18%	0.47%	0.25%	0.51%	1.40%	1.71%
91-120 Days	0.29%	0.83%	0.11%	0.17%	0.03%	0.06%	0.04%	0.09%	0.31%	0.68%
121-150 Days	0.11%	0.11%	0.01%	0.17%	0.00%	0.00%	0.05%	0.23%	0.24%	0.23%
151-180 Days	0.10%	0.07%	0.04%	0.11%	0.00%	0.07%	0.00%	0.04%	0.14%	0.22%
181+ Days	0.15%	0.21%	0.35%	0.36%	0.41%	0.42%	0.49%	0.46%	0.60%	1.40%
Current - 90 Days	99.35%	98.78%	99.49%	99.20%	99.56%	99.45%	99.43%	99.19%	98.71%	97.47%
91-180 Days	0.50%	1.01%	0.16%	0.45%	0.03%	0.13%	0.08%	0.36%	0.69%	1.13%



Mortgages - La Hipotecaria Panama Migration Analysis (2008 Vintage)

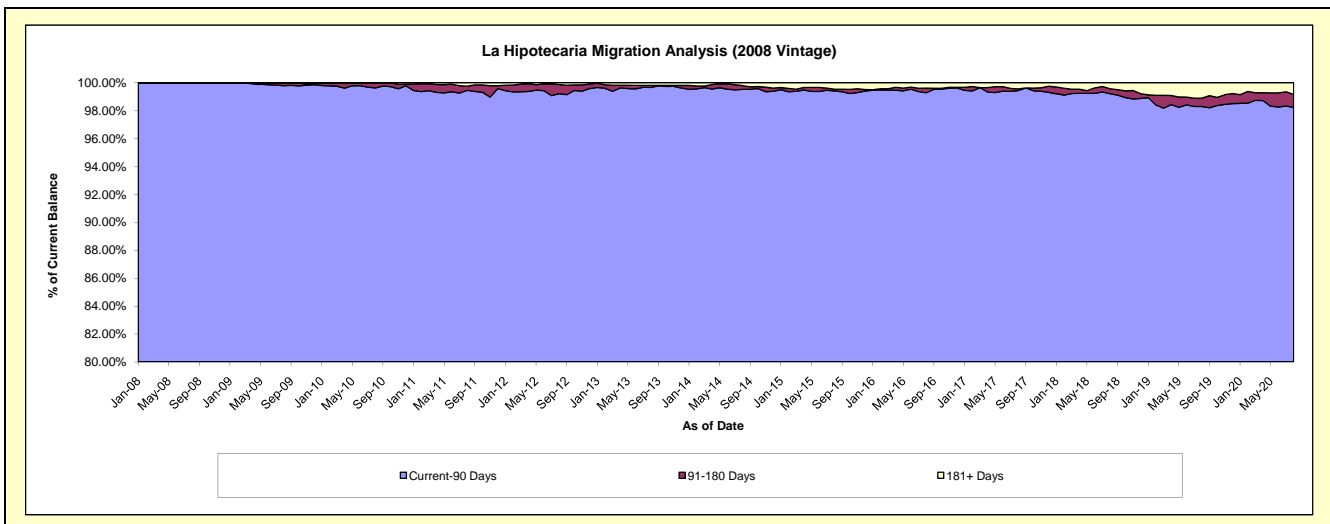
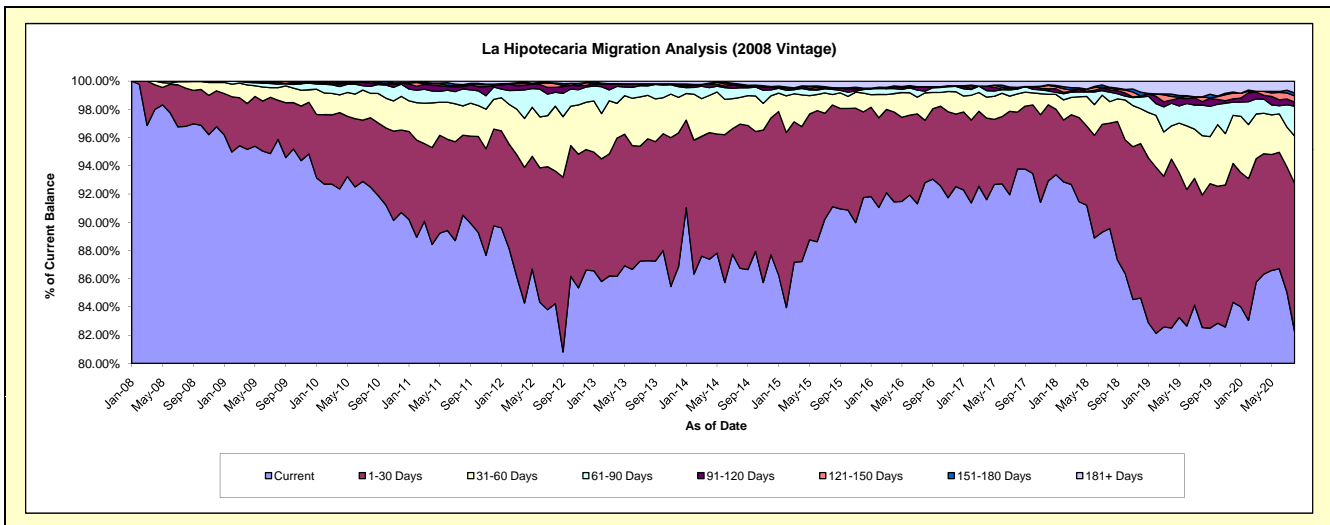
Delinquency Status (\$ of Current Balance)

Data Cutoff: 8/31/2020

Current Portfolio Balance	57,195,112.83	53,585,888.93	49,050,647.09	44,504,751.26	39,432,397.44	35,486,300.24	32,498,156.49	29,359,133.53	26,640,507.02	24,397,514.19
	Aug-11	Aug-12	Aug-13	Aug-14	Aug-15	Aug-16	Aug-17	Aug-18	Aug-19	Aug-20
Current	51,763,062.07	45,136,093.33	42,808,923.57	38,603,481.68	35,923,924.75	32,934,997.42	30,475,386.41	26,293,942.49	21,991,193.16	20,069,725.06
1-30 Days	3,243,759.14	5,037,474.82	4,239,040.37	4,547,925.89	2,843,366.03	1,565,335.81	1,308,930.20	2,190,796.19	2,500,569.11	2,561,976.56
31-60 Days	1,185,274.29	2,463,696.95	1,512,534.88	842,851.05	293,746.14	692,165.71	420,349.03	448,069.51	1,120,597.32	816,397.64
61-90 Days	689,179.21	526,732.17	323,604.70	299,414.87	139,903.48	40,598.50	111,036.20	197,310.50	575,221.64	517,567.41
91-120 Days	87,972.26	188,931.36	74,111.21	63,606.41	17,544.12	115,047.74	15,641.40	46,962.38	66,602.37	69,053.19
121-150 Days	62,781.70	138,947.64	-	19,263.74	31,173.87	-	24,011.44	37,345.24	84,899.47	107,819.72
151-180 Days	21,901.01	22,384.10	-	32,303.77	-	-	-	17,943.68	5,879.46	50,667.16
181+ Days	141,183.15	71,628.56	92,432.36	95,903.85	182,739.05	138,155.06	142,801.81	126,763.54	295,544.49	204,307.45

Delinquency Status (% of Current Balance)

Current Portfolio Balance	57,195,112.83	53,585,888.93	49,050,647.09	44,504,751.26	39,432,397.44	35,486,300.24	32,498,156.49	29,359,133.53	26,640,507.02	24,397,514.19
	Aug-11	Aug-12	Aug-13	Aug-14	Aug-15	Aug-16	Aug-17	Aug-18	Aug-19	Aug-20
Current	90.50%	84.23%	87.27%	86.74%	91.10%	92.81%	93.78%	89.56%	82.55%	82.26%
1-30 Days	5.67%	9.40%	8.64%	10.22%	7.21%	4.41%	4.03%	7.46%	9.39%	10.50%
31-60 Days	2.07%	4.60%	3.08%	1.89%	0.74%	1.95%	1.29%	1.53%	4.21%	3.35%
61-90 Days	1.20%	0.98%	0.66%	0.67%	0.35%	0.11%	0.34%	0.67%	2.16%	2.12%
91-120 Days	0.15%	0.35%	0.15%	0.14%	0.04%	0.32%	0.05%	0.16%	0.25%	0.28%
121-150 Days	0.11%	0.26%	0.00%	0.04%	0.08%	0.00%	0.07%	0.13%	0.32%	0.44%
151-180 Days	0.04%	0.04%	0.00%	0.07%	0.00%	0.00%	0.00%	0.06%	0.02%	0.21%
181+ Days	0.25%	0.13%	0.19%	0.22%	0.46%	0.39%	0.44%	0.43%	1.11%	0.84%
Current - 90 Days	99.45%	99.21%	99.66%	99.53%	99.41%	99.29%	99.44%	99.22%	98.30%	98.23%
91-180 Days	0.30%	0.65%	0.15%	0.26%	0.12%	0.32%	0.12%	0.35%	0.59%	0.93%



Mortgages - La Hipotecaria Panama Migration Analysis (2009 Vintage)

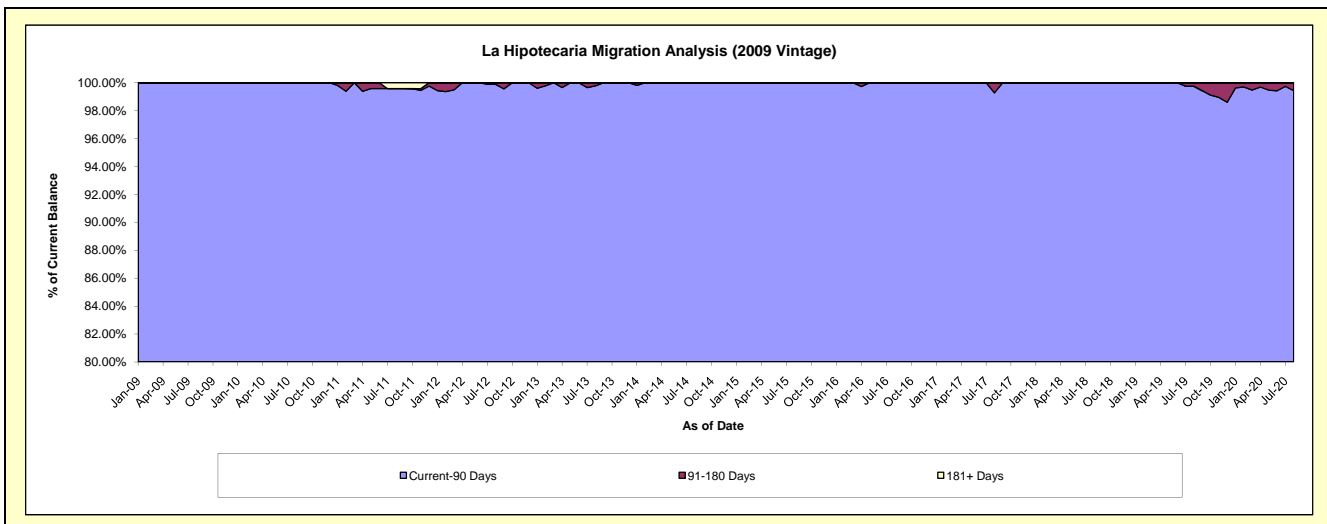
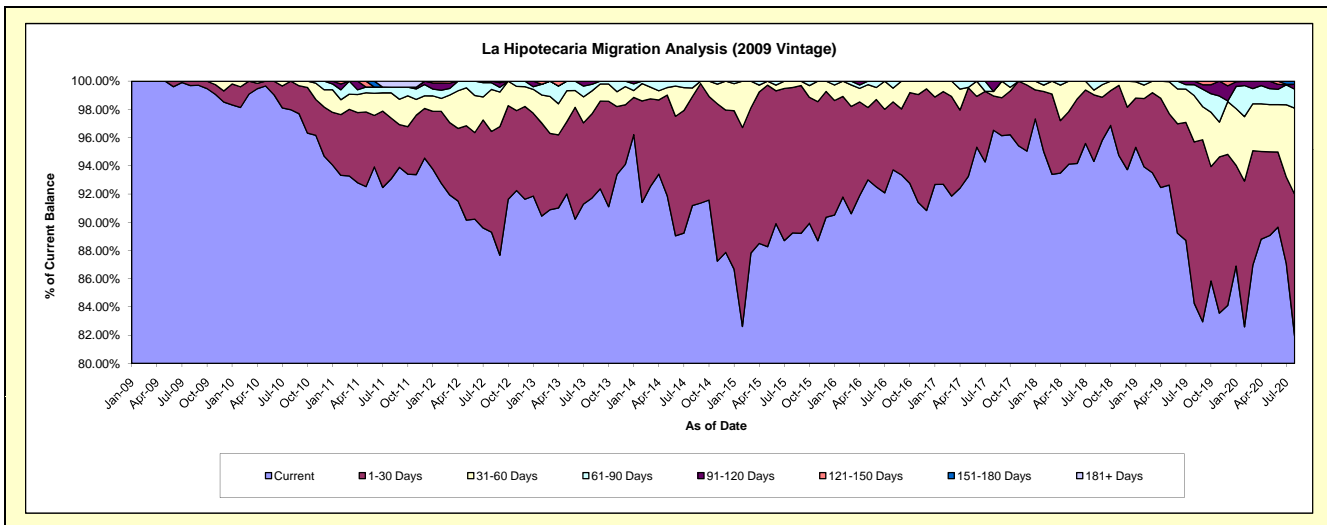
Delinquency Status (\$ of Current Balance)

Data Cutoff: 8/31/2020

Current Portfolio Balance	11,996,134.52	11,382,440.52	10,377,977.12	9,322,775.81	8,515,082.76	7,435,077.52	6,736,774.90	6,158,914.65	5,720,839.80	5,345,459.74
	Aug-11	Aug-12	Aug-13	Aug-14	Aug-15	Aug-16	Aug-17	Aug-18	Aug-19	Aug-20
Current	11,164,806.90	10,164,519.88	9,517,625.30	8,500,511.19	7,599,324.72	6,967,650.24	6,502,609.49	5,808,662.64	4,820,239.35	4,379,313.64
1-30 Days	517,974.63	812,474.70	619,452.16	719,429.01	877,934.37	358,549.64	163,688.24	290,680.58	654,246.42	537,691.88
31-60 Days	214,071.11	339,123.95	169,257.04	57,472.67	37,823.67	71,955.27	21,543.09	20,503.86	187,578.62	326,182.78
61-90 Days	48,745.49	53,639.15	48,370.59	45,362.94	-	36,922.37	-	39,067.57	44,511.19	72,105.97
91-120 Days	-	12,682.84	23,272.03	-	-	-	48,934.08	-	14,264.22	18,325.46
121-150 Days	-	-	-	-	-	-	-	-	-	-
151-180 Days	-	-	-	-	-	-	-	-	-	11,840.01
181+ Days	50,536.39	-	-	-	-	-	-	-	-	-

Delinquency Status (% of Current Balance)

Current Portfolio Balance	11,996,134.52	11,382,440.52	10,377,977.12	9,322,775.81	8,515,082.76	7,435,077.52	6,736,774.90	6,158,914.65	5,720,839.80	5,345,459.74
	Aug-11	Aug-12	Aug-13	Aug-14	Aug-15	Aug-16	Aug-17	Aug-18	Aug-19	Aug-20
Current	93.07%	89.30%	91.71%	91.18%	89.25%	93.71%	96.52%	94.31%	84.26%	81.93%
1-30 Days	4.32%	7.14%	5.97%	7.72%	10.31%	4.82%	2.43%	4.72%	11.44%	10.06%
31-60 Days	1.78%	2.98%	1.63%	0.62%	0.44%	0.97%	0.32%	0.33%	3.28%	6.10%
61-90 Days	0.41%	0.47%	0.47%	0.49%	0.00%	0.50%	0.00%	0.63%	0.78%	1.35%
91-120 Days	0.00%	0.11%	0.22%	0.00%	0.00%	0.00%	0.73%	0.00%	0.25%	0.34%
121-150 Days	0.00%	0.00%	0.00%	0.00%	0.00%	0.00%	0.00%	0.00%	0.00%	0.00%
151-180 Days	0.00%	0.00%	0.00%	0.00%	0.00%	0.00%	0.00%	0.00%	0.00%	0.22%
181+ Days	0.42%	0.00%	0.00%	0.00%	0.00%	0.00%	0.00%	0.00%	0.00%	0.00%
Current - 90 Days	99.58%	99.89%	99.78%	100.00%	100.00%	100.00%	99.27%	100.00%	99.75%	99.44%
91-180 Days	0.00%	0.11%	0.22%	0.00%	0.00%	0.00%	0.73%	0.00%	0.25%	0.56%



Mortgages - La Hipotecaria Panama Migration Analysis (2010 Vintage)

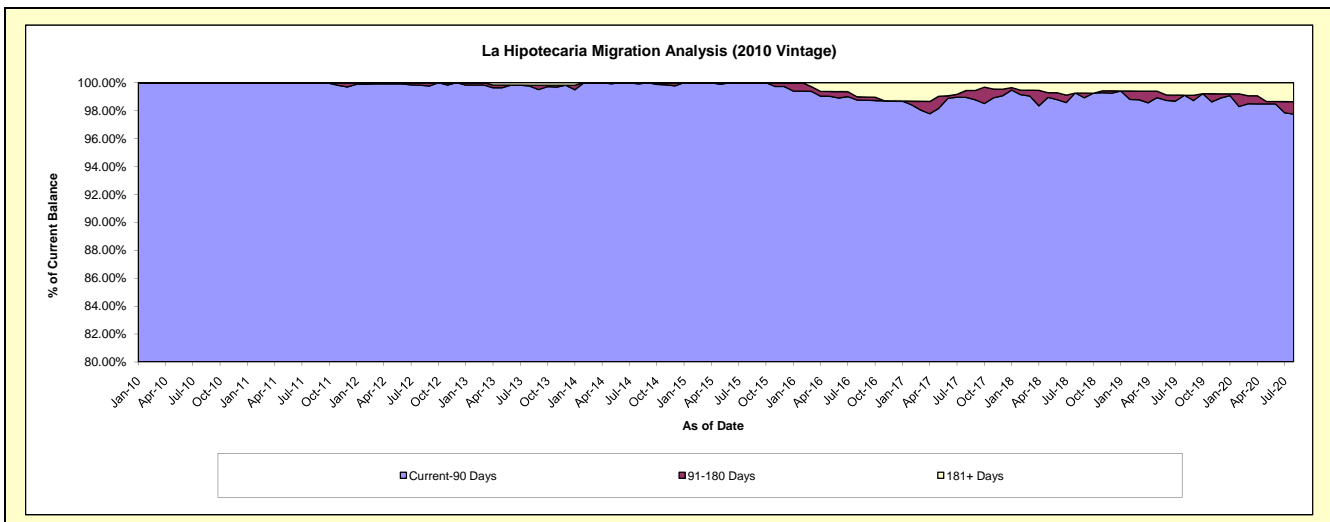
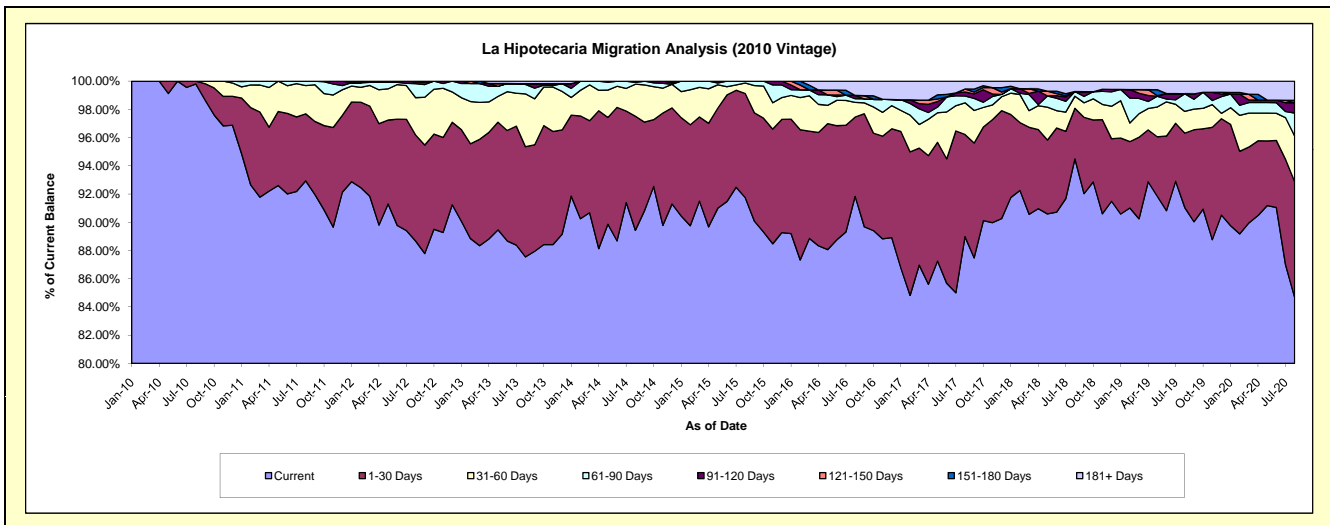
Delinquency Status (\$ of Current Balance)

Data Cutoff: 8/31/2020

Current Portfolio Balance	21,881,524.97	20,802,604.19	19,347,725.33	17,583,658.33	16,165,280.53	14,000,836.51	12,415,838.24	11,271,384.47	10,076,415.35	9,548,836.41
	Aug-11	Aug-12	Aug-13	Aug-14	Aug-15	Aug-16	Aug-17	Aug-18	Aug-19	Aug-20
Current	20,336,226.27	18,446,385.67	16,938,092.06	15,725,240.96	14,830,437.21	12,857,699.28	11,047,844.69	10,650,376.66	9,173,669.39	8,085,024.39
1-30 Days	1,039,318.76	1,563,378.83	1,510,189.23	1,422,496.12	1,193,654.98	787,358.06	899,072.69	404,292.82	531,298.47	784,109.13
31-60 Days	437,675.03	549,800.60	725,479.81	398,386.47	119,510.62	145,715.41	278,666.03	96,571.93	155,555.84	309,024.13
61-90 Days	68,304.91	206,852.21	128,474.47	21,917.69	21,677.72	36,627.05	59,811.62	37,288.96	125,666.10	155,222.86
91-120 Days	-	22,791.39	11,947.56	15,617.09	-	32,180.48	35,858.62	-	-	69,085.46
121-150 Days	-	13,395.49	-	-	-	-	25,723.08	-	-	-
151-180 Days	-	-	-	-	-	-	-	-	-	16,933.93
181+ Days	-	-	33,542.20	-	-	141,256.23	68,861.51	82,854.10	90,225.55	129,436.51

Delinquency Status (% of Current Balance)

Current Portfolio Balance	21,881,524.97	20,802,604.19	19,347,725.33	17,583,658.33	16,165,280.53	14,000,836.51	12,415,838.24	11,271,384.47	10,076,415.35	9,548,836.41
	Aug-11	Aug-12	Aug-13	Aug-14	Aug-15	Aug-16	Aug-17	Aug-18	Aug-19	Aug-20
Current	92.94%	88.67%	87.55%	89.43%	91.74%	91.84%	88.98%	94.49%	91.04%	84.67%
1-30 Days	4.75%	7.52%	7.81%	8.09%	7.38%	5.62%	7.24%	3.59%	5.27%	8.21%
31-60 Days	2.00%	2.64%	3.75%	2.27%	0.74%	1.04%	2.24%	0.86%	1.54%	3.24%
61-90 Days	0.31%	0.99%	0.66%	0.12%	0.13%	0.26%	0.48%	0.33%	1.25%	1.63%
91-120 Days	0.00%	0.11%	0.06%	0.09%	0.00%	0.23%	0.29%	0.00%	0.00%	0.72%
121-150 Days	0.00%	0.06%	0.00%	0.00%	0.00%	0.00%	0.21%	0.00%	0.00%	0.00%
151-180 Days	0.00%	0.00%	0.00%	0.00%	0.00%	0.00%	0.00%	0.00%	0.00%	0.18%
181+ Days	0.00%	0.00%	0.17%	0.00%	0.00%	1.01%	0.55%	0.74%	0.90%	1.36%
Current - 90 Days	100.00%	99.83%	99.76%	99.91%	100.00%	98.76%	98.95%	99.26%	99.10%	97.74%
91-180 Days	0.00%	0.17%	0.06%	0.09%	0.00%	0.23%	0.50%	0.00%	0.00%	0.90%



Mortgages - La Hipotecaria Panama Migration Analysis (2011 Vintage)

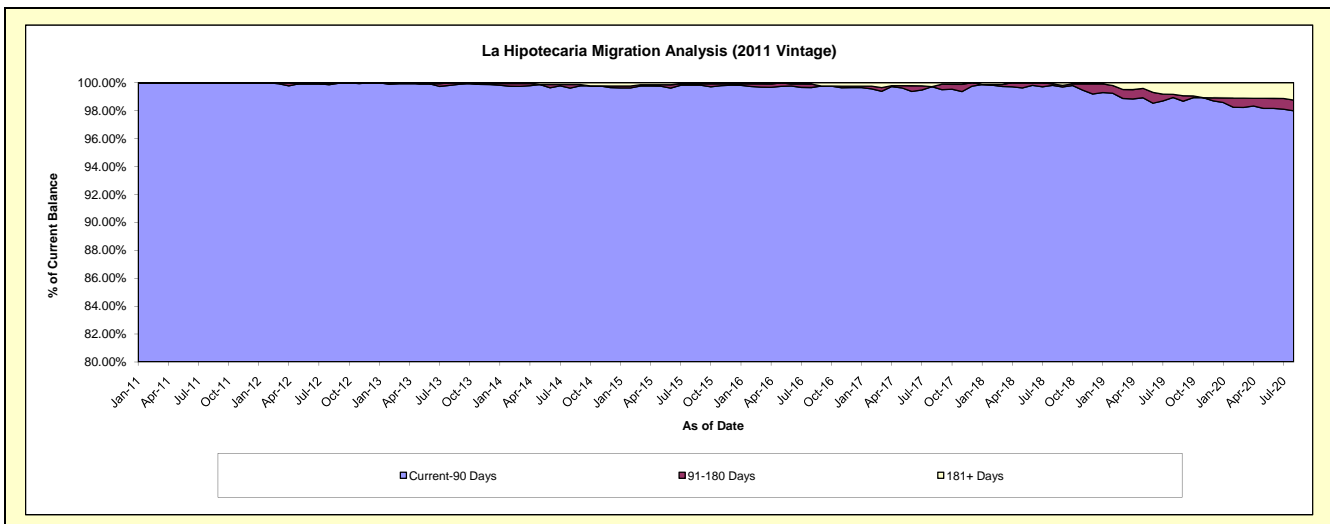
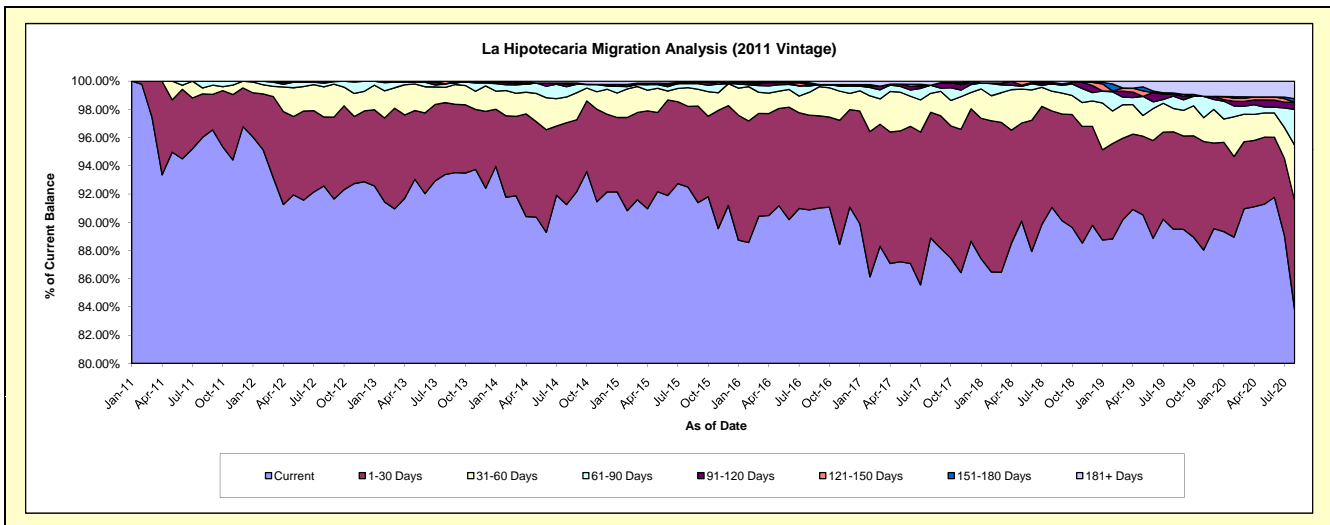
Delinquency Status (\$ of Current Balance)

Data Cutoff: 8/31/2020

Current Portfolio Balance	21,123,225.04	33,959,200.64	31,998,676.05	29,383,382.26	26,359,062.63	23,590,621.70	21,637,335.99	19,656,542.96	17,691,119.40	16,556,116.90
	Aug-11	Aug-12	Aug-13	Aug-14	Aug-15	Aug-16	Aug-17	Aug-18	Aug-19	Aug-20
Current	20,281,138.57	31,438,015.17	29,882,972.23	26,813,970.99	24,382,620.17	21,439,691.17	19,232,547.77	17,899,021.90	15,836,847.32	13,874,050.32
1-30 Days	651,289.99	1,658,634.87	1,629,463.31	1,704,377.48	1,506,886.89	1,581,690.88	1,927,236.34	1,342,865.35	1,220,040.79	1,281,697.95
31-60 Days	89,473.37	724,616.03	346,882.04	535,371.32	347,998.25	382,717.05	290,367.87	274,342.05	292,521.42	649,195.95
61-90 Days	101,323.11	88,882.80	78,494.58	215,442.41	74,922.54	105,427.56	125,338.68	103,110.44	154,479.39	419,101.61
91-120 Days	-	23,924.52	-	48,436.78	24,852.98	25,074.17	-	-	22,182.05	84,370.55
121-150 Days	-	-	60,863.89	25,857.72	-	-	-	-	-	-
151-180 Days	-	-	-	-	-	31,693.69	-	21,026.79	18,405.93	41,699.63
181+ Days	-	25,127.25	-	39,925.56	21,781.80	24,327.18	61,845.33	16,176.43	146,642.50	206,000.89

Delinquency Status (% of Current Balance)

Current Portfolio Balance	21,123,225.04	33,959,200.64	31,998,676.05	29,383,382.26	26,359,062.63	23,590,621.70	21,637,335.99	19,656,542.96	17,691,119.40	16,556,116.90
	Aug-11	Aug-12	Aug-13	Aug-14	Aug-15	Aug-16	Aug-17	Aug-18	Aug-19	Aug-20
Current	96.01%	92.58%	93.39%	91.26%	92.50%	90.88%	88.89%	91.06%	89.52%	83.80%
1-30 Days	3.08%	4.88%	5.09%	5.80%	5.72%	6.70%	8.91%	6.83%	6.90%	7.74%
31-60 Days	0.42%	2.13%	1.08%	1.82%	1.32%	1.62%	1.34%	1.40%	1.65%	3.92%
61-90 Days	0.48%	0.26%	0.25%	0.73%	0.28%	0.45%	0.58%	0.52%	0.87%	2.53%
91-120 Days	0.00%	0.07%	0.00%	0.16%	0.09%	0.11%	0.00%	0.00%	0.13%	0.51%
121-150 Days	0.00%	0.00%	0.19%	0.09%	0.00%	0.00%	0.00%	0.00%	0.00%	0.00%
151-180 Days	0.00%	0.00%	0.00%	0.00%	0.00%	0.13%	0.00%	0.11%	0.10%	0.25%
181+ Days	0.00%	0.07%	0.00%	0.14%	0.08%	0.10%	0.29%	0.08%	0.83%	1.24%
Current - 90 Days	100.00%	99.86%	99.81%	99.61%	99.82%	99.66%	99.71%	99.81%	98.94%	97.99%
91-180 Days	0.00%	0.07%	0.19%	0.25%	0.09%	0.24%	0.00%	0.11%	0.23%	0.76%



Mortgages - La Hipotecaria Panama Migration Analysis (2012 Vintage)

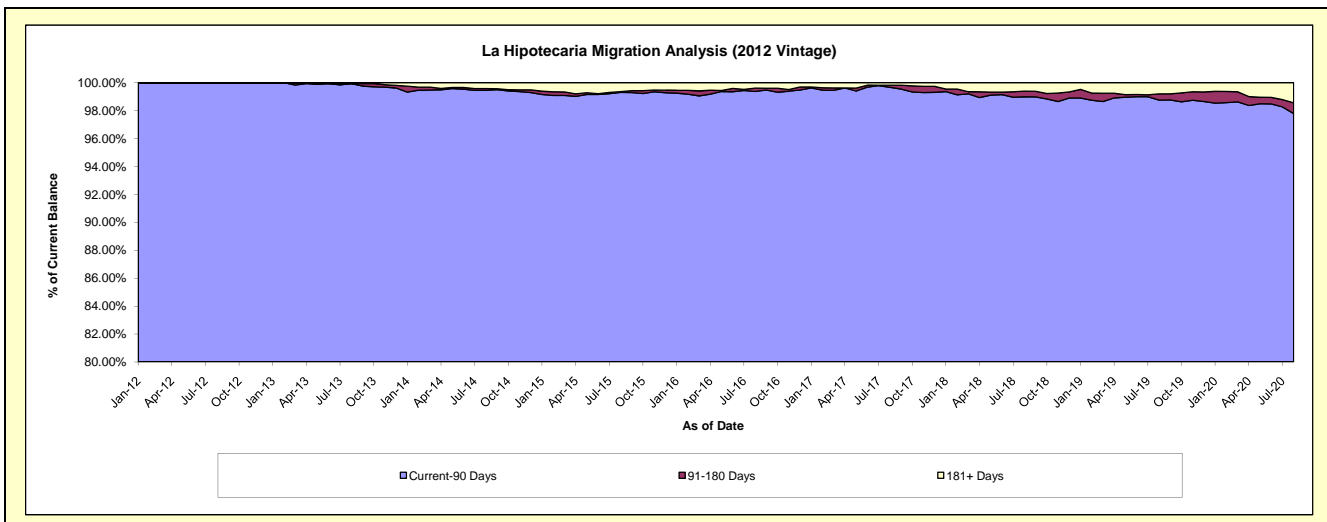
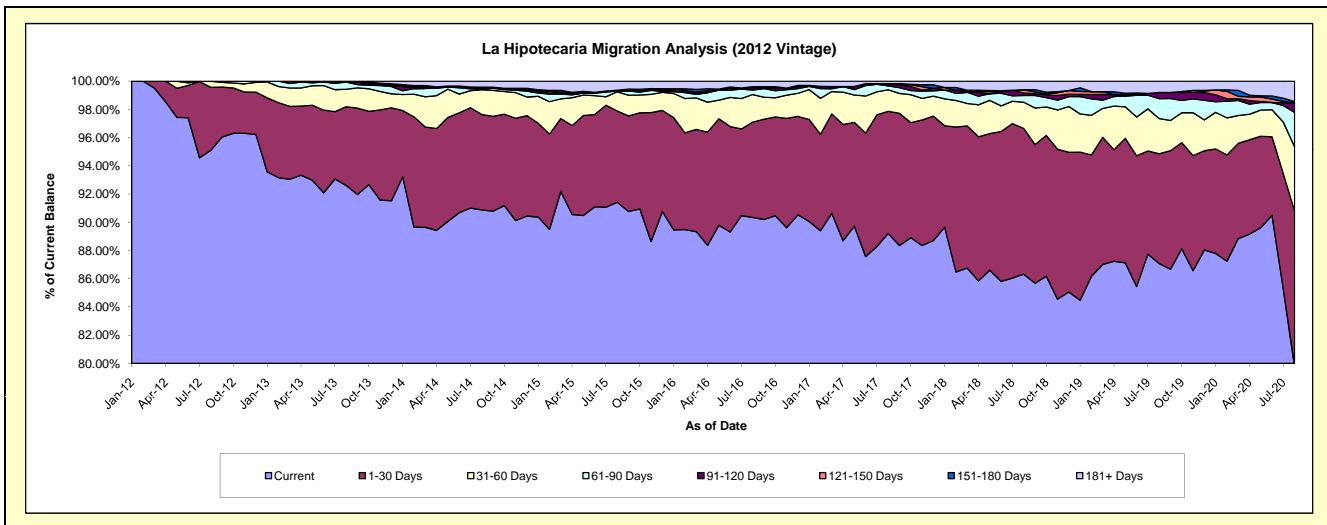
Delinquency Status (\$ of Current Balance)

Data Cutoff: 8/31/2020

Current Portfolio Balance	-	31,836,671.47	48,076,761.66	45,353,028.75	41,741,225.61	37,924,074.66	34,858,303.95	32,134,862.13	29,240,699.92	27,215,791.96
	Aug-12	Aug-13	Aug-14	Aug-15	Aug-16	Aug-17	Aug-18	Aug-19	Aug-20	
Current	30,275,697.06	44,521,719.32	41,216,892.24	38,159,677.51	34,263,552.85	31,098,030.80	27,741,333.77	25,461,394.23	21,706,051.23	
1-30 Days	1,422,448.86	2,684,249.35	3,063,999.30	2,700,327.53	2,559,703.82	3,015,400.95	3,318,940.15	2,276,015.91	3,002,946.90	
31-60 Days	138,525.55	596,972.54	795,017.12	568,214.68	743,443.90	532,457.10	596,115.87	729,799.12	1,236,837.76	
61-90 Days	-	242,616.17	28,275.24	23,030.76	120,058.55	97,760.56	154,158.64	410,851.75	668,082.22	
91-120 Days	-	-	-	23,665.97	58,765.66	38,615.94	54,517.66	129,678.73	184,012.98	
121-150 Days	-	-	33,312.06	-	31,065.27	14,765.50	75,823.79	-	-	
151-180 Days	-	-	23,615.97	-	-	-	-	-	25,250.45	
181+ Days	-	31,204.28	191,916.82	266,309.16	147,484.61	61,273.10	193,972.25	232,960.18	392,610.42	

Delinquency Status (% of Current Balance)

Current Portfolio Balance	-	31,836,671.47	48,076,761.66	45,353,028.75	41,741,225.61	37,924,074.66	34,858,303.95	32,134,862.13	29,240,699.92	27,215,791.96
	Aug-12	Aug-13	Aug-14	Aug-15	Aug-16	Aug-17	Aug-18	Aug-19	Aug-20	
Current	95.10%	92.61%	90.88%	91.42%	90.35%	89.21%	86.33%	87.08%	79.76%	
1-30 Days	4.47%	5.58%	6.76%	6.47%	6.75%	8.65%	10.33%	7.78%	11.03%	
31-60 Days	0.44%	1.24%	1.75%	1.36%	1.96%	1.53%	1.86%	2.50%	4.54%	
61-90 Days	0.00%	0.50%	0.06%	0.06%	0.32%	0.28%	0.48%	1.41%	2.45%	
91-120 Days	0.00%	0.00%	0.00%	0.06%	0.15%	0.11%	0.17%	0.44%	0.68%	
121-150 Days	0.00%	0.00%	0.07%	0.00%	0.08%	0.04%	0.24%	0.00%	0.00%	
151-180 Days	0.00%	0.00%	0.05%	0.00%	0.00%	0.00%	0.00%	0.00%	0.09%	
181+ Days	0.00%	0.06%	0.42%	0.64%	0.39%	0.18%	0.60%	0.80%	1.44%	
Current - 90 Days	100.00%	99.94%	99.45%	99.31%	99.37%	99.67%	98.99%	98.76%	97.79%	
91-180 Days	0.00%	0.00%	0.13%	0.06%	0.24%	0.15%	0.41%	0.44%	0.77%	



Mortgages - La Hipotecaria Panama Migration Analysis (2013 Vintage)

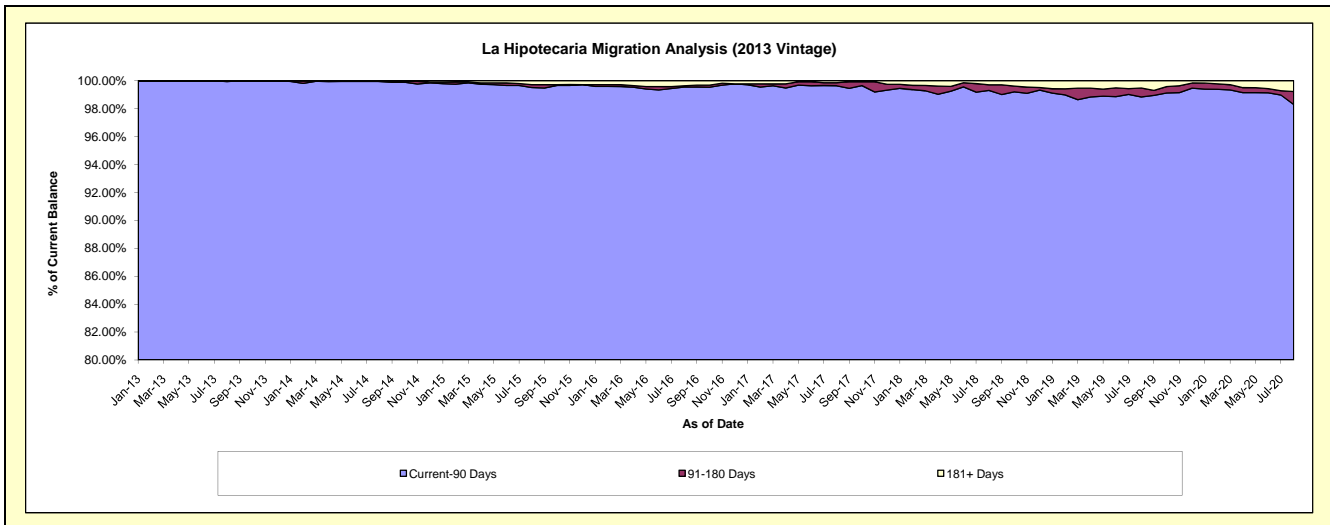
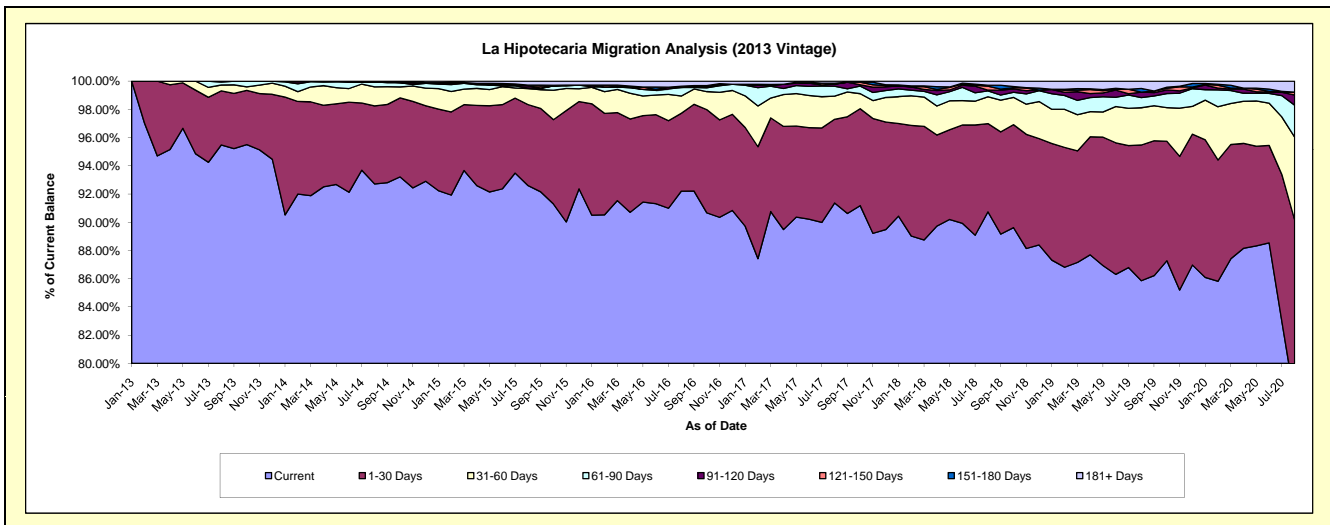
Delinquency Status (\$ of Current Balance)

Data Cutoff: 8/31/2020

Current Portfolio Balance	-	-	42,495,280.44	61,799,474.93	58,076,637.10	53,445,466.53	49,344,108.56	45,591,109.11	41,657,384.99	38,953,601.33
	Aug-13	Aug-14	Aug-15	Aug-16	Aug-17	Aug-18	Aug-19	Aug-20		
Current	40,574,037.11	57,299,905.11	53,785,040.55	49,277,737.84	45,085,385.98	41,370,816.05	35,767,012.23	30,177,748.79		
1-30 Days	1,627,785.58	3,418,222.46	3,329,646.93	2,950,553.67	2,925,813.49	2,849,775.16	4,005,753.36	4,946,229.44		
31-60 Days	177,661.13	831,353.49	652,831.88	655,348.47	810,745.94	865,590.50	1,100,432.47	2,286,860.34		
61-90 Days	90,501.67	217,519.37	28,246.89	321,082.34	346,706.24	190,275.50	299,168.78	880,540.20		
91-120 Days	25,294.95	-	84,417.53	-	74,107.19	25,078.62	162,936.92	280,185.53		
121-150 Days	-	-	32,489.24	47,641.29	-	125,865.20	-	74,631.40		
151-180 Days	-	-	-	-	28,818.47	32,054.64	106,420.18	5,893.98		
181+ Days	-	32,474.50	163,964.08	193,102.92	72,531.25	131,653.44	215,661.05	301,511.65		

Delinquency Status (% of Current Balance)

Current Portfolio Balance	-	-	42,495,280.44	61,799,474.93	58,076,637.10	53,445,466.53	49,344,108.56	45,591,109.11	41,657,384.99	38,953,601.33
	Aug-13	Aug-14	Aug-15	Aug-16	Aug-17	Aug-18	Aug-19	Aug-20		
Current	95.48%	92.72%	92.61%	92.20%	91.37%	90.74%	85.86%	77.47%		
1-30 Days	3.83%	5.53%	5.73%	5.52%	5.93%	6.25%	9.62%	12.70%		
31-60 Days	0.42%	1.35%	1.12%	1.23%	1.64%	1.90%	2.64%	5.87%		
61-90 Days	0.21%	0.35%	0.05%	0.60%	0.70%	0.42%	0.72%	2.26%		
91-120 Days	0.06%	0.00%	0.15%	0.00%	0.15%	0.06%	0.39%	0.72%		
121-150 Days	0.00%	0.00%	0.06%	0.09%	0.00%	0.28%	0.00%	0.19%		
151-180 Days	0.00%	0.00%	0.00%	0.00%	0.06%	0.07%	0.26%	0.02%		
181+ Days	0.00%	0.05%	0.28%	0.36%	0.15%	0.29%	0.52%	0.77%		
Current - 90 Days	99.94%	99.95%	99.52%	99.55%	99.64%	99.31%	98.84%	98.30%		
91-180 Days	0.06%	0.00%	0.20%	0.09%	0.21%	0.40%	0.65%	0.93%		



Mortgages - La Hipotecaria Panama Migration Analysis (2014 Vintage)

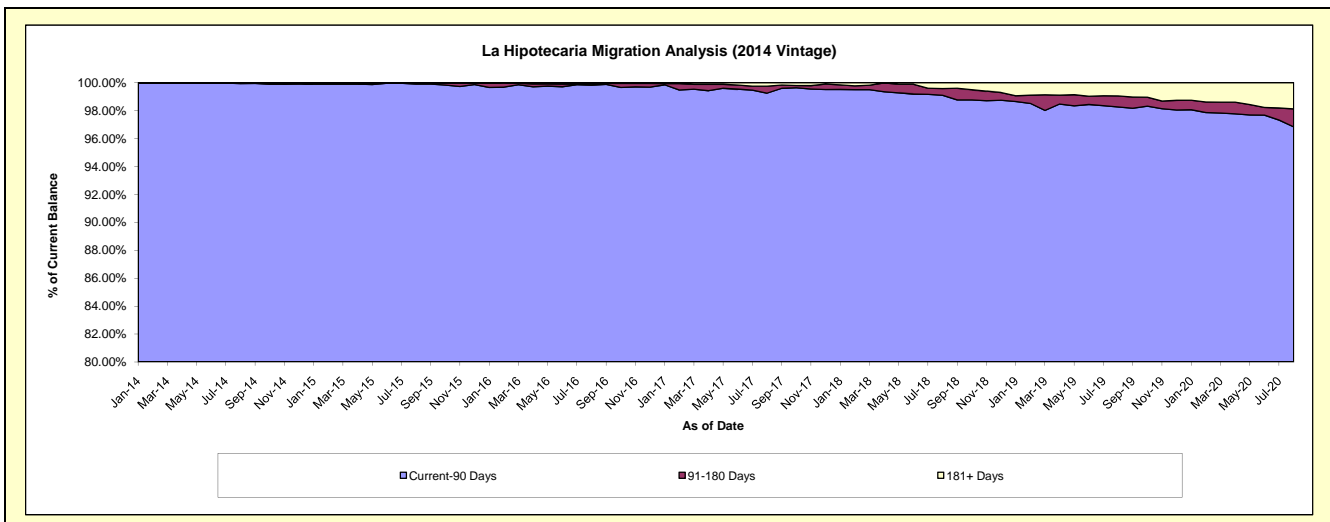
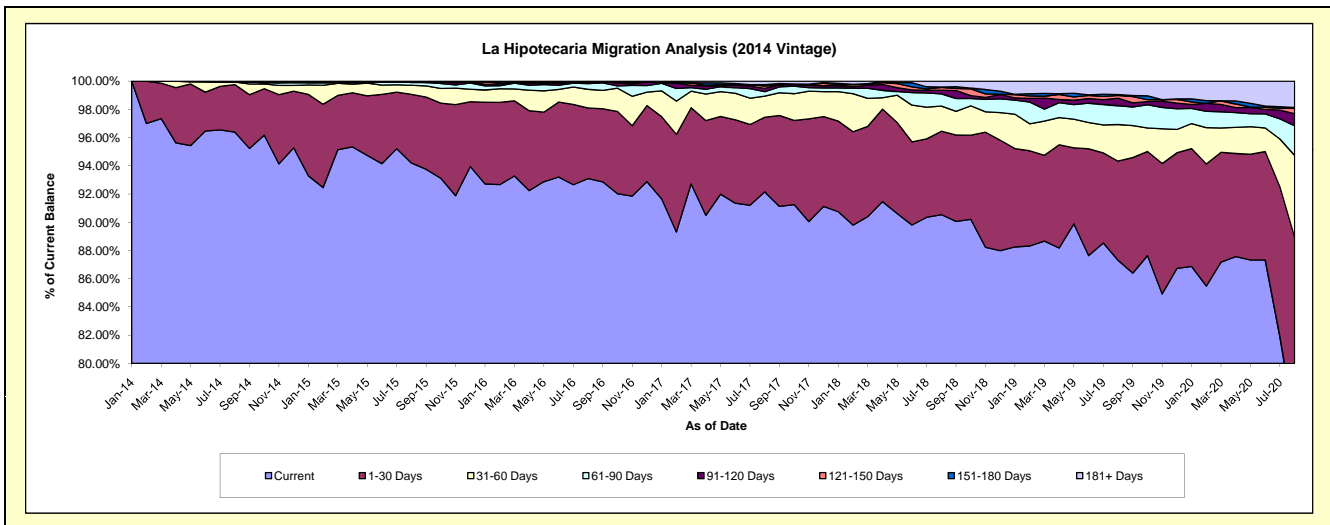
Delinquency Status (\$ of Current Balance)

Data Cutoff: 8/31/2020

Current Portfolio Balance	-	-	-	48,000,177.08	69,204,386.62	65,422,034.53	60,761,092.19	56,874,280.40	52,941,065.68	49,957,476.28
	Aug-14	Aug-15	Aug-16	Aug-17	Aug-18	Aug-19	Aug-20			
Current	46,268,512.58	65,192,670.14	60,906,168.36	55,998,502.02	51,495,675.24	46,223,823.55	37,784,457.86			
1-30 Days	1,615,406.80	3,367,255.86	3,272,743.61	3,209,309.85	3,361,611.68	3,717,453.65	6,647,635.92			
31-60 Days	85,952.00	445,133.97	864,389.08	908,799.56	1,013,149.07	1,373,042.82	2,897,613.30			
61-90 Days	-	132,595.16	263,612.40	191,607.03	490,216.77	708,414.12	1,048,920.21			
91-120 Days	16,666.70	36,425.79	54,765.77	139,289.65	150,866.86	278,119.28	424,434.10			
121-150 Days	-	-	-	101,991.94	106,805.71	101,863.15	190,910.95			
151-180 Days	13,639.00	-	-	61,790.01	20,610.12	36,854.43	29,107.23			
181+ Days	-	30,305.70	60,355.31	149,802.13	235,344.95	501,494.68	934,396.71			

Delinquency Status (% of Current Balance)

Current Portfolio Balance	-	-	-	48,000,177.08	69,204,386.62	65,422,034.53	60,761,092.19	56,874,280.40	52,941,065.68	49,957,476.28
	Aug-14	Aug-15	Aug-16	Aug-17	Aug-18	Aug-19	Aug-20			
Current	96.39%	94.20%	93.10%	92.16%	90.54%	87.31%	75.63%			
1-30 Days	3.37%	4.87%	5.00%	5.28%	5.91%	7.02%	13.31%			
31-60 Days	0.18%	0.64%	1.32%	1.50%	1.78%	2.59%	5.80%			
61-90 Days	0.00%	0.19%	0.40%	0.32%	0.86%	1.34%	2.10%			
91-120 Days	0.03%	0.05%	0.08%	0.23%	0.27%	0.53%	0.85%			
121-150 Days	0.00%	0.00%	0.00%	0.17%	0.19%	0.19%	0.38%			
151-180 Days	0.03%	0.00%	0.00%	0.10%	0.04%	0.07%	0.06%			
181+ Days	0.00%	0.04%	0.09%	0.25%	0.41%	0.95%	1.87%			
Current - 90 Days	99.94%	99.90%	99.82%	99.25%	99.10%	98.27%	96.84%			
91-180 Days	0.06%	0.05%	0.08%	0.50%	0.49%	0.79%	1.29%			



Mortgages - La Hipotecaria Panama Migration Analysis (2015 Vintage)

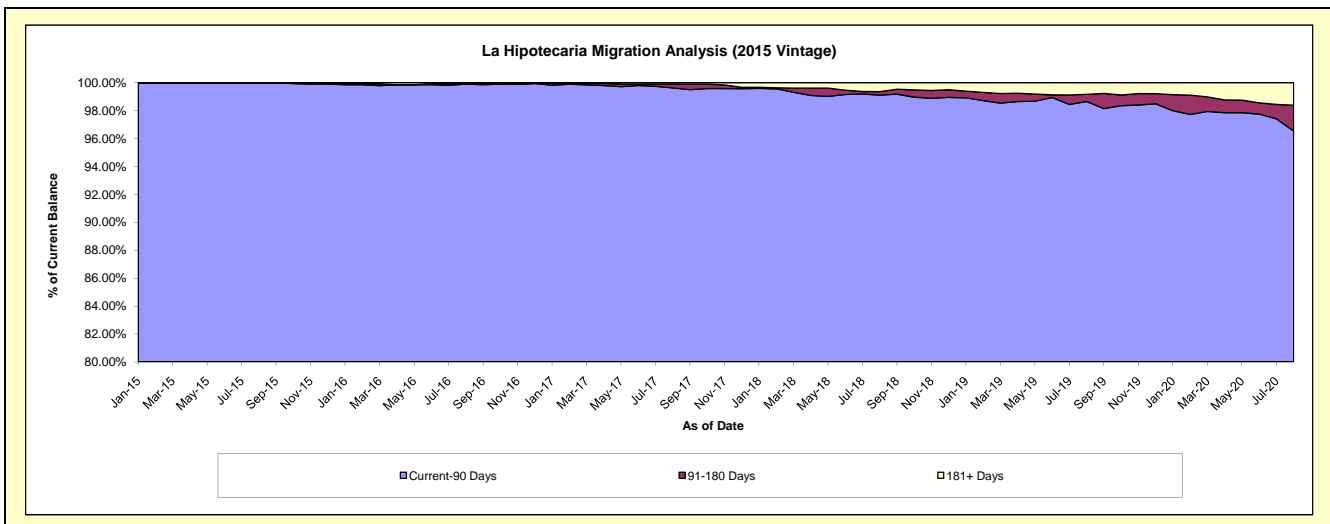
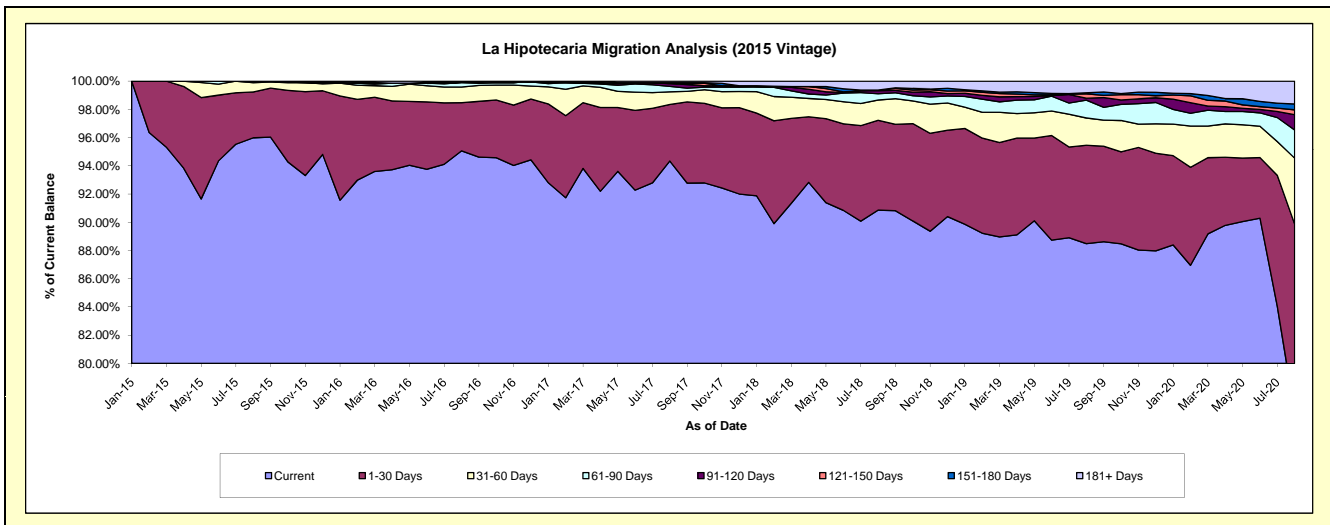
Delinquency Status (\$ of Current Balance)

Data Cutoff: 8/31/2020

Current Portfolio Balance	-	-	-	-	52,854,518.54	77,004,781.69	73,370,177.11	69,678,245.23	65,655,896.52	62,760,119.63
					Aug-15	Aug-16	Aug-17	Aug-18	Aug-19	Aug-20
Current					50,732,985.22	73,202,735.05	69,219,826.84	63,310,301.52	58,097,678.48	48,021,090.88
1-30 Days					1,719,127.13	2,626,072.75	2,941,656.34	4,436,177.55	4,576,631.41	8,382,983.34
31-60 Days					345,435.39	857,246.74	656,169.25	999,542.40	1,269,111.60	2,933,051.99
61-90 Days					56,970.80	244,811.41	278,455.18	314,537.80	829,272.45	1,250,309.39
91-120 Days					-	-	141,593.66	144,146.31	88,052.96	680,172.10
121-150 Days					-	38,652.24	52,060.46	32,570.67	203,353.98	218,201.10
151-180 Days					-	-	-	-	48,705.08	262,385.97
181+ Days					-	35,263.50	80,415.38	440,968.98	543,090.56	1,011,924.86

Delinquency Status (% of Current Balance)

Current Portfolio Balance	-	-	-	-	52,854,518.54	77,004,781.69	73,370,177.11	69,678,245.23	65,655,896.52	62,760,119.63
					Aug-15	Aug-16	Aug-17	Aug-18	Aug-19	Aug-20
Current					95.99%	95.06%	94.34%	90.86%	88.49%	76.52%
1-30 Days					3.25%	3.41%	4.01%	6.37%	6.97%	13.36%
31-60 Days					0.65%	1.11%	0.89%	1.43%	1.93%	4.67%
61-90 Days					0.11%	0.32%	0.38%	0.45%	1.26%	1.99%
91-120 Days					0.00%	0.00%	0.19%	0.21%	0.13%	1.08%
121-150 Days					0.00%	0.05%	0.07%	0.05%	0.31%	0.35%
151-180 Days					0.00%	0.00%	0.00%	0.00%	0.07%	0.42%
181+ Days					0.00%	0.05%	0.11%	0.63%	0.83%	1.61%
Current - 90 Days					100.00%	99.90%	99.63%	99.11%	98.65%	96.54%
91-180 Days					0.00%	0.05%	0.26%	0.25%	0.52%	1.85%



Mortgages - La Hipotecaria Panama Migration Analysis (2016 Vintage)

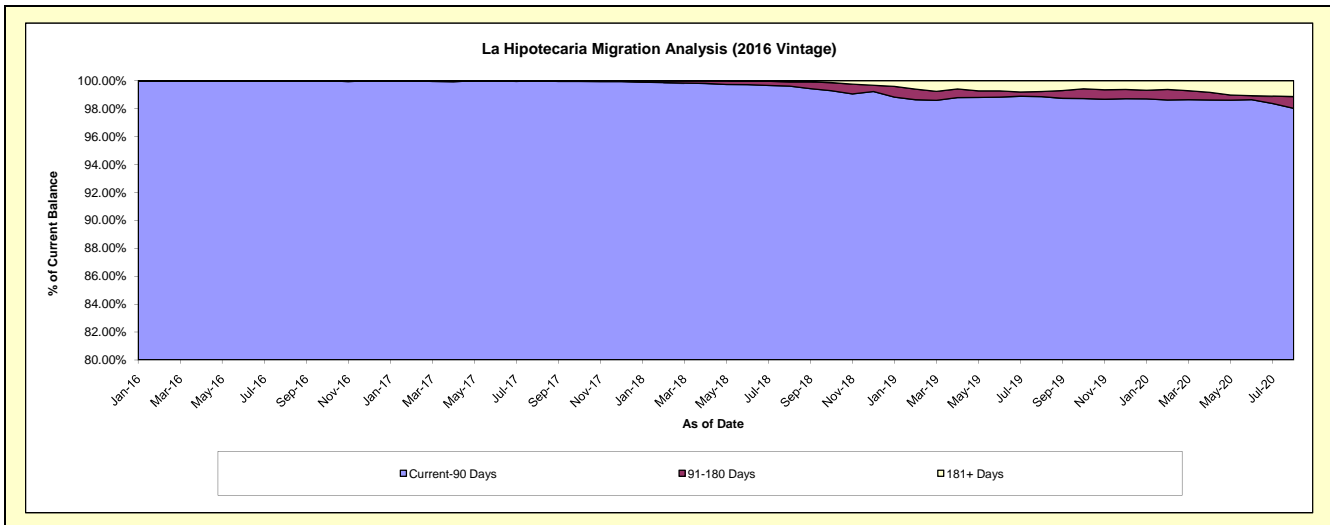
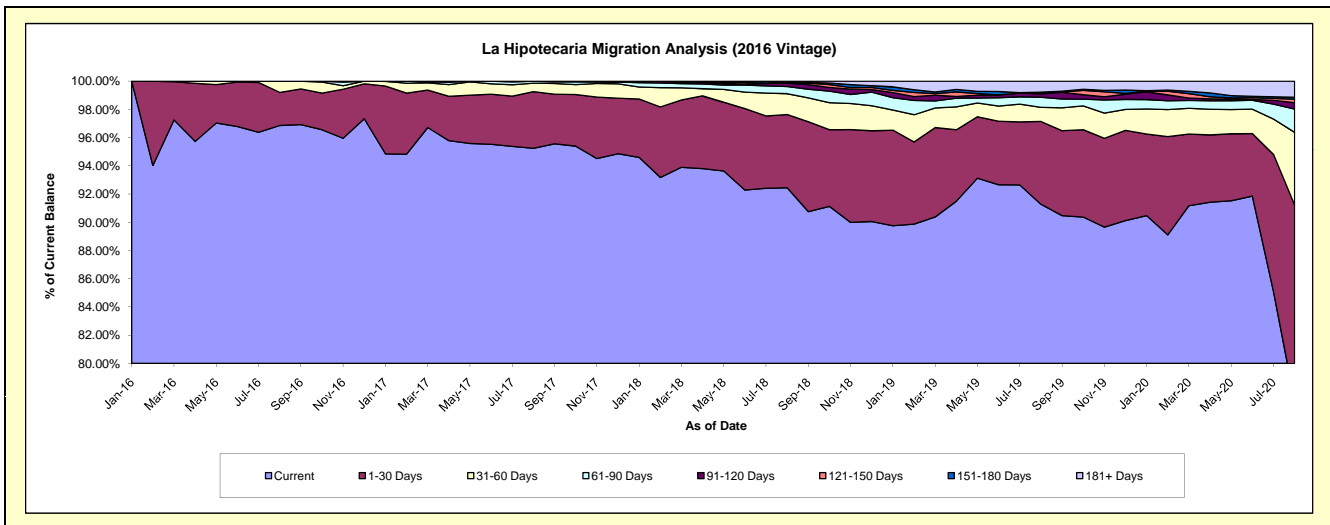
Delinquency Status (\$ of Current Balance)

Data Cutoff: 8/31/2020

Current Portfolio Balance	-	-	-	-	-	48,048,411.97	73,031,250.76	69,868,518.35	66,247,162.69	63,784,689.08
						Aug-16	Aug-17	Aug-18	Aug-19	Aug-20
Current						46,539,029.84	69,556,939.00	64,590,024.43	60,467,941.31	49,330,403.92
1-30 Days						1,127,445.89	2,928,648.84	3,625,021.51	3,886,869.64	8,859,622.85
31-60 Days						381,936.24	438,817.98	1,035,265.29	661,432.69	3,279,265.96
61-90 Days						-	106,844.94	349,441.44	476,815.83	1,054,130.06
91-120 Days						-	-	173,806.54	156,916.20	288,633.16
121-150 Days						-	-	33,252.46	37,203.79	155,937.22
151-180 Days						-	-	-	46,747.98	86,598.25
181+ Days						-	-	61,706.68	513,235.25	730,097.66

Delinquency Status (% of Current Balance)

Current Portfolio Balance	-	-	-	-	-	48,048,411.97	73,031,250.76	69,868,518.35	66,247,162.69	63,784,689.08
						Aug-16	Aug-17	Aug-18	Aug-19	Aug-20
Current						96.86%	95.24%	92.45%	91.28%	77.34%
1-30 Days						2.35%	4.01%	5.19%	5.87%	13.89%
31-60 Days						0.79%	0.60%	1.48%	1.00%	5.14%
61-90 Days						0.00%	0.15%	0.50%	0.72%	1.65%
91-120 Days						0.00%	0.00%	0.25%	0.24%	0.45%
121-150 Days						0.00%	0.00%	0.05%	0.06%	0.24%
151-180 Days						0.00%	0.00%	0.00%	0.07%	0.14%
181+ Days						0.00%	0.00%	0.09%	0.77%	1.14%
Current - 90 Days						100.00%	100.00%	99.62%	98.86%	98.02%
91-180 Days						0.00%	0.00%	0.30%	0.36%	0.83%



Mortgages - La Hipotecaria Panama Migration Analysis (2017 Vintage)

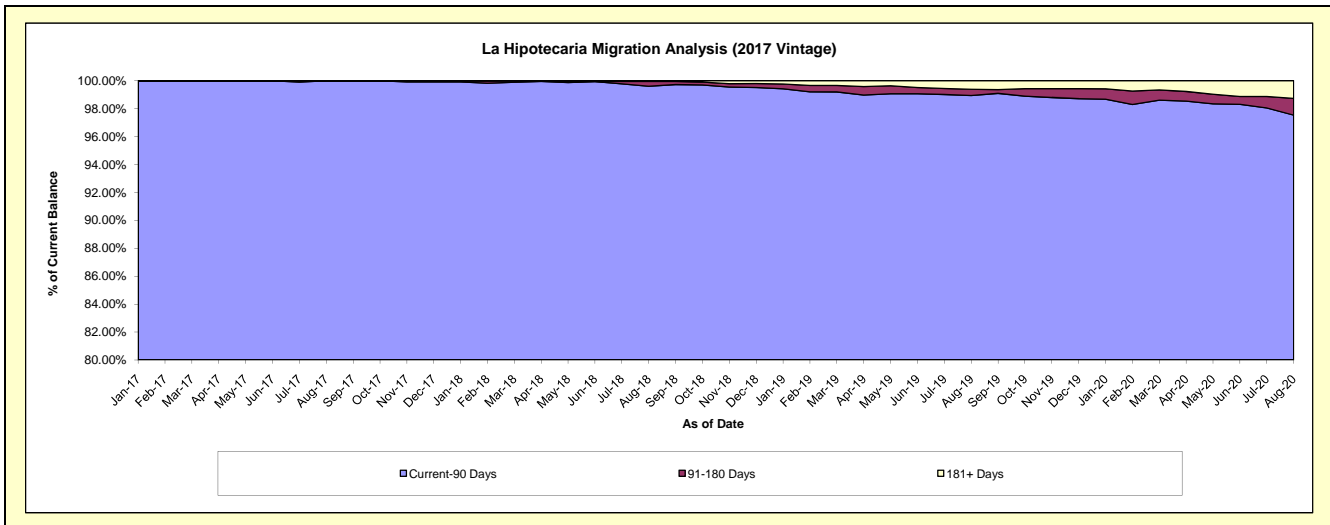
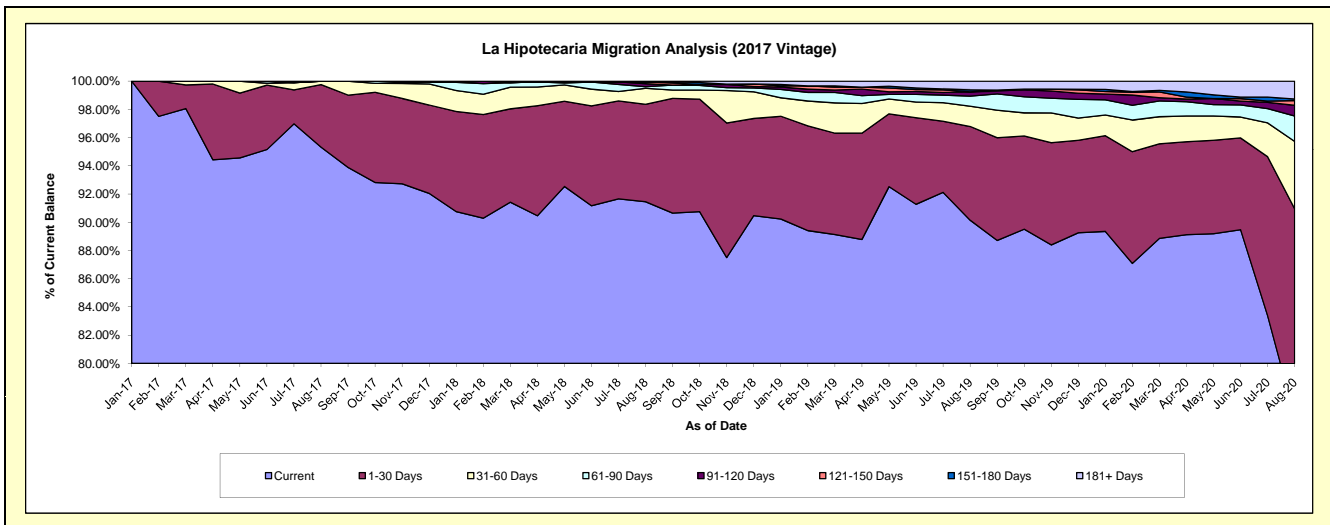
Delinquency Status (\$ of Current Balance)

Data Cutoff: 8/31/2020

Current Portfolio Balance	-	-	-	-	-	-	-	57,593,382.98	86,002,785.55	82,651,253.26	79,741,361.77
								Aug-17	Aug-18	Aug-19	Aug-20
Current								54,899,997.12	78,655,472.50	74,506,354.03	60,796,225.11
1-30 Days								2,552,067.92	5,936,184.36	5,490,711.55	11,736,563.12
31-60 Days								141,317.94	980,260.02	1,187,663.82	3,803,375.48
61-90 Days								-	90,135.45	589,506.74	1,441,145.14
91-120 Days								-	185,131.36	253,964.79	598,532.39
121-150 Days								-	115,636.55	-	269,818.87
151-180 Days								-	-	112,609.62	88,984.18
181+ Days								-	39,965.31	510,442.71	1,006,717.48

Delinquency Status (% of Current Balance)

Current Portfolio Balance	-	-	-	-	-	-	-	57,593,382.98	86,002,785.55	82,651,253.26	79,741,361.77
								Aug-17	Aug-18	Aug-19	Aug-20
Current								95.32%	91.46%	90.15%	76.24%
1-30 Days								4.43%	6.90%	6.64%	14.72%
31-60 Days								0.25%	1.14%	1.44%	4.77%
61-90 Days								0.00%	0.10%	0.71%	1.81%
91-120 Days								0.00%	0.22%	0.31%	0.75%
121-150 Days								0.00%	0.13%	0.00%	0.34%
151-180 Days								0.00%	0.00%	0.14%	0.11%
181+ Days								0.00%	0.05%	0.62%	1.26%
Current - 90 Days								100.00%	99.60%	98.94%	97.54%
91-180 Days								0.00%	0.35%	0.44%	1.20%



Mortgages - La Hipotecaria Panama Migration Analysis (2018 Vintage)

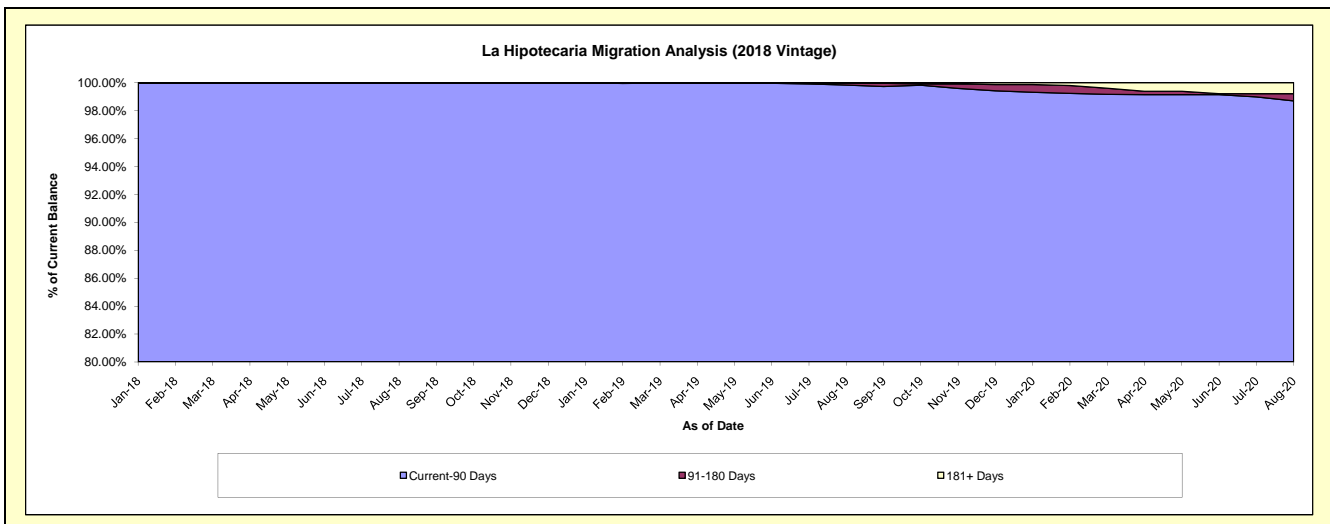
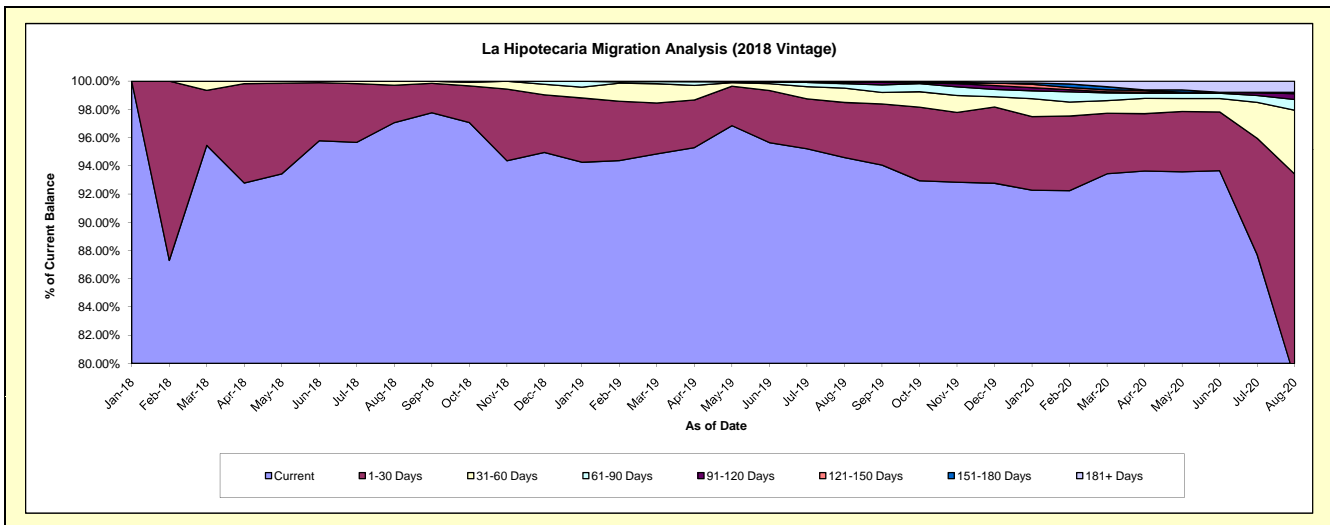
Delinquency Status (\$ of Current Balance)

Data Cutoff: 8/31/2020

Current Portfolio Balance	-	-	-	-	-	-	-	-	-	51,419,031.93	84,051,466.63	81,852,063.34
										Aug-18	Aug-19	Aug-20
Current										49,907,449.93	79,500,260.96	64,642,510.18
1-30 Days										1,361,339.11	3,283,458.76	11,822,923.97
31-60 Days										150,242.89	849,077.68	3,697,428.01
61-90 Days										-	275,598.16	625,367.62
91-120 Days										-	74,634.63	334,779.15
121-150 Days										-	38,841.56	67,370.71
151-180 Days										-	-	17,574.97
181+ Days										-	29,594.88	644,108.73

Delinquency Status (% of Current Balance)

Current Portfolio Balance	-	-	-	-	-	-	-	-	-	51,419,031.93	84,051,466.63	81,852,063.34
										Aug-18	Aug-19	Aug-20
Current										97.06%	94.59%	78.97%
1-30 Days										2.65%	3.91%	14.44%
31-60 Days										0.29%	1.01%	4.52%
61-90 Days										0.00%	0.33%	0.76%
91-120 Days										0.00%	0.09%	0.41%
121-150 Days										0.00%	0.05%	0.08%
151-180 Days										0.00%	0.00%	0.02%
181+ Days										0.00%	0.04%	0.79%
Current - 90 Days										100.00%	99.83%	98.70%
91-180 Days										0.00%	0.14%	0.51%



Mortgages - La Hipotecaria Panama Migration Analysis (2019 Vintage)

Delinquency Status (\$ of Current Balance)

Data Cutoff: 8/31/2020

Current Portfolio Balance										59,723,019.42	85,026,679.82
										Aug-19	Aug-20
Current										57,273,777.35	67,286,750.36
1-30 Days										1,980,815.72	14,288,050.16
31-60 Days										376,255.89	2,402,136.90
61-90 Days										50,605.92	452,931.09
91-120 Days										41,564.54	121,011.16
121-150 Days										-	85,607.13
151-180 Days										-	35,930.60
181+ Days										-	354,262.42

Delinquency Status (% of Current Balance)

Current Portfolio Balance										59,723,019.42	85,026,679.82
										Aug-19	Aug-20
Current										95.90%	79.14%
1-30 Days										3.32%	16.80%
31-60 Days										0.63%	2.83%
61-90 Days										0.08%	0.53%
91-120 Days										0.07%	0.14%
121-150 Days										0.00%	0.10%
151-180 Days										0.00%	0.04%
181+ Days										0.00%	0.42%
Current - 90 Days										99.93%	99.30%
91-180 Days										0.07%	0.29%

