



Migration Analysis for La Hipotecaria S.A Panama

Mortgages October 2020

An analysis of historical loan payment data was used to compile a migration analysis of delinquency by annual vintage. Delinquencies for each vintage were grouped into the following buckets; Current, 1-30, 31-60, 61-90, 91-120, 121-150, 151-180, and 180+. Results are provided in graphical and tabular form. The cutoff date is 10/31/2020.

Mortgages - La Hipotecaria Panama Migration Analysis (All Vintages)

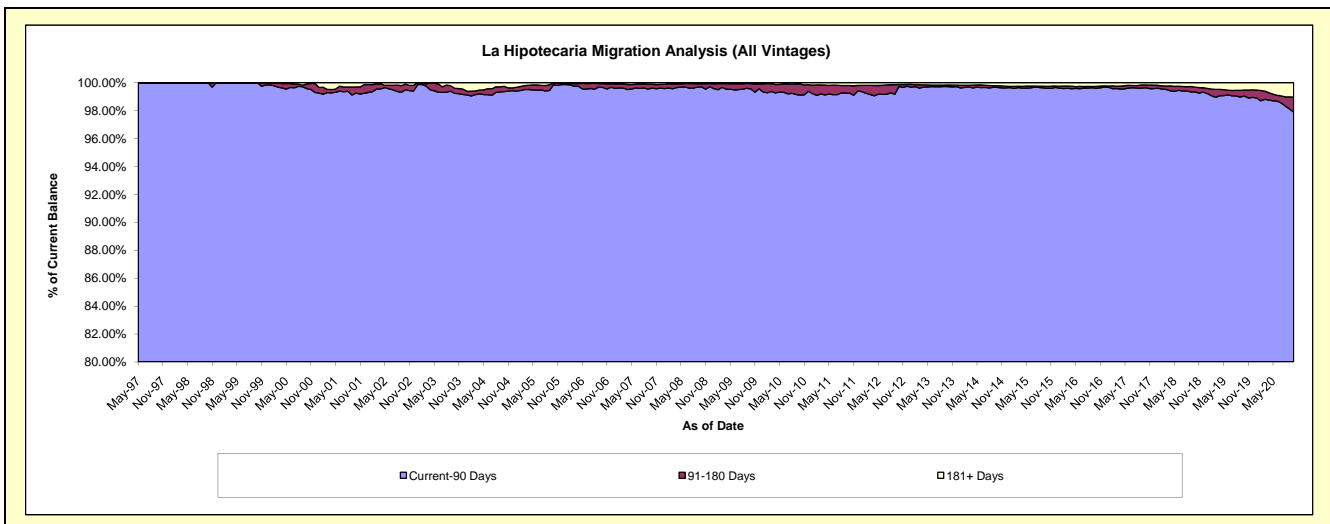
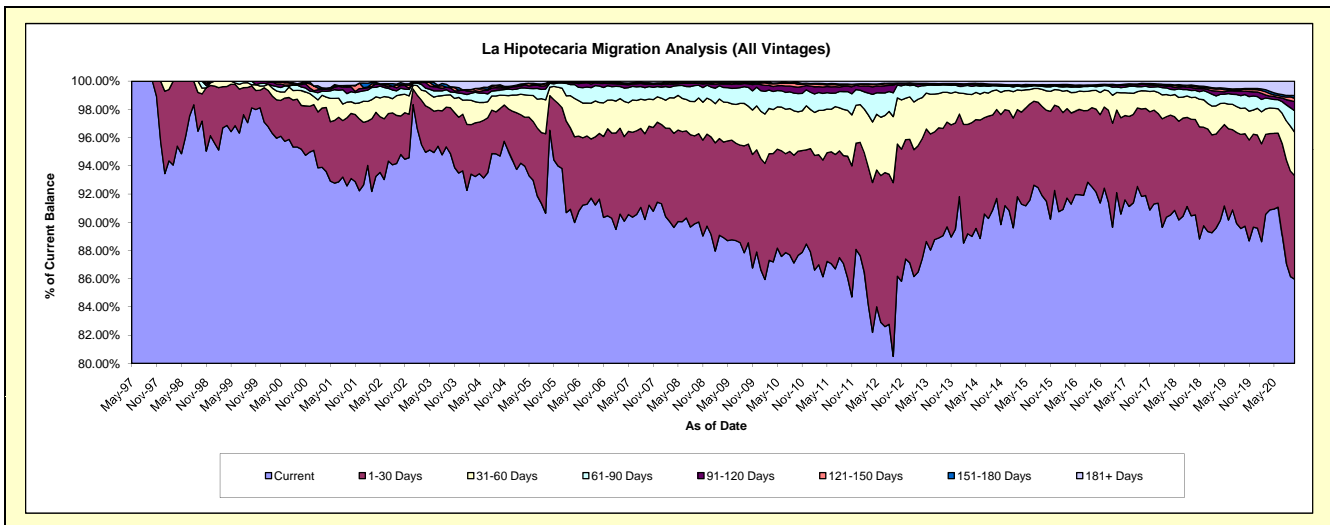
Delinquency Status (\$ of Current Balance)

Data Cutoff: 10/31/2020

Current Portfolio Balance	299,674,263.69	325,543,478.29	360,124,735.38	400,258,858.53	443,090,901.83	478,806,749.07	529,964,089.47	578,165,346.05	630,785,723.37	645,047,972.68
	Oct-11	Oct-12	Oct-13	Oct-14	Oct-15	Oct-16	Oct-17	Oct-18	Oct-19	Oct-20
Current	257,841,486.28	280,537,190.67	322,961,717.95	366,994,998.21	405,400,927.07	441,190,157.54	487,016,826.33	523,372,063.86	565,971,885.02	554,529,798.84
1-30 Days	25,897,031.63	30,504,393.62	26,700,482.67	25,226,758.44	28,563,545.25	28,154,692.05	32,680,722.25	39,102,629.76	41,305,908.64	47,322,035.12
31-60 Days	9,721,938.05	10,638,955.72	7,615,409.75	5,548,456.09	6,092,046.65	6,345,824.90	6,616,092.39	9,108,332.22	11,536,972.58	19,875,709.00
61-90 Days	3,998,178.18	2,973,846.48	1,854,493.25	1,154,826.29	1,263,863.47	1,246,332.10	1,747,876.16	2,788,569.95	5,972,218.60	9,760,118.02
91-120 Days	1,135,683.44	325,688.73	289,799.33	230,314.42	381,137.19	414,126.92	655,245.97	833,836.17	1,502,777.66	4,246,552.87
121-150 Days	311,136.14	106,754.92	67,297.24	135,723.02	154,859.69	113,343.00	309,520.59	703,731.64	921,282.13	1,539,727.99
151-180 Days	176,532.48	23,562.85	59,105.61	109,391.81	109,146.68	93,303.17	84,890.44	444,347.55	303,905.40	1,159,953.36
181+ Days	592,277.49	433,085.30	576,429.58	858,390.25	1,125,375.83	1,248,969.39	852,915.34	1,811,834.90	3,270,773.34	6,614,077.48

Delinquency Status (% of Current Balance)

Current Portfolio Balance	299,674,263.69	325,543,478.29	360,124,735.38	400,258,858.53	443,090,901.83	478,806,749.07	529,964,089.47	578,165,346.05	630,785,723.37	645,047,972.68
	Oct-11	Oct-12	Oct-13	Oct-14	Oct-15	Oct-16	Oct-17	Oct-18	Oct-19	Oct-20
Current	86.04%	86.18%	89.68%	91.69%	91.49%	92.14%	91.90%	90.52%	89.72%	85.97%
1-30 Days	8.64%	9.37%	7.41%	6.30%	6.45%	5.88%	6.17%	6.76%	6.55%	7.34%
31-60 Days	3.24%	3.27%	2.11%	1.39%	1.37%	1.33%	1.25%	1.58%	1.83%	3.08%
61-90 Days	1.33%	0.91%	0.51%	0.29%	0.29%	0.26%	0.33%	0.48%	0.95%	1.51%
91-120 Days	0.38%	0.10%	0.08%	0.06%	0.09%	0.09%	0.12%	0.14%	0.24%	0.66%
121-150 Days	0.10%	0.03%	0.02%	0.03%	0.03%	0.02%	0.06%	0.12%	0.15%	0.24%
151-180 Days	0.06%	0.01%	0.02%	0.03%	0.02%	0.02%	0.02%	0.08%	0.05%	0.18%
181+ Days	0.20%	0.13%	0.16%	0.21%	0.25%	0.26%	0.16%	0.31%	0.52%	1.03%
Current - 90 Days	99.26%	99.73%	99.72%	99.67%	99.60%	99.61%	99.64%	99.34%	99.05%	97.90%
91-180 Days	0.54%	0.14%	0.12%	0.12%	0.15%	0.13%	0.20%	0.34%	0.43%	1.08%



Mortgages - La Hipotecaria Panama Migration Analysis (1997 Vintage)

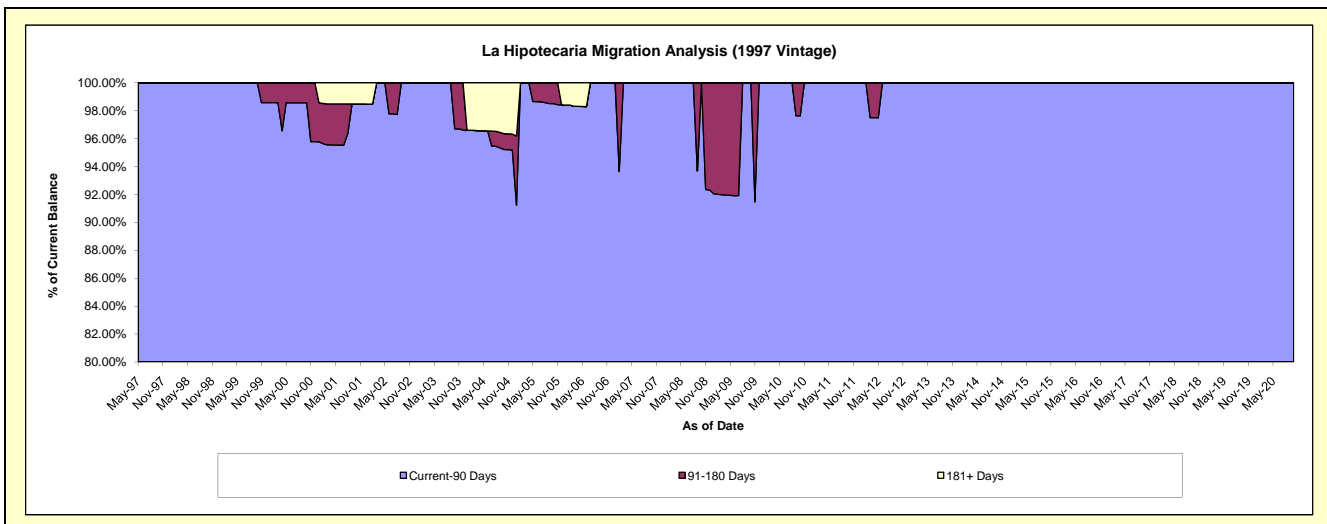
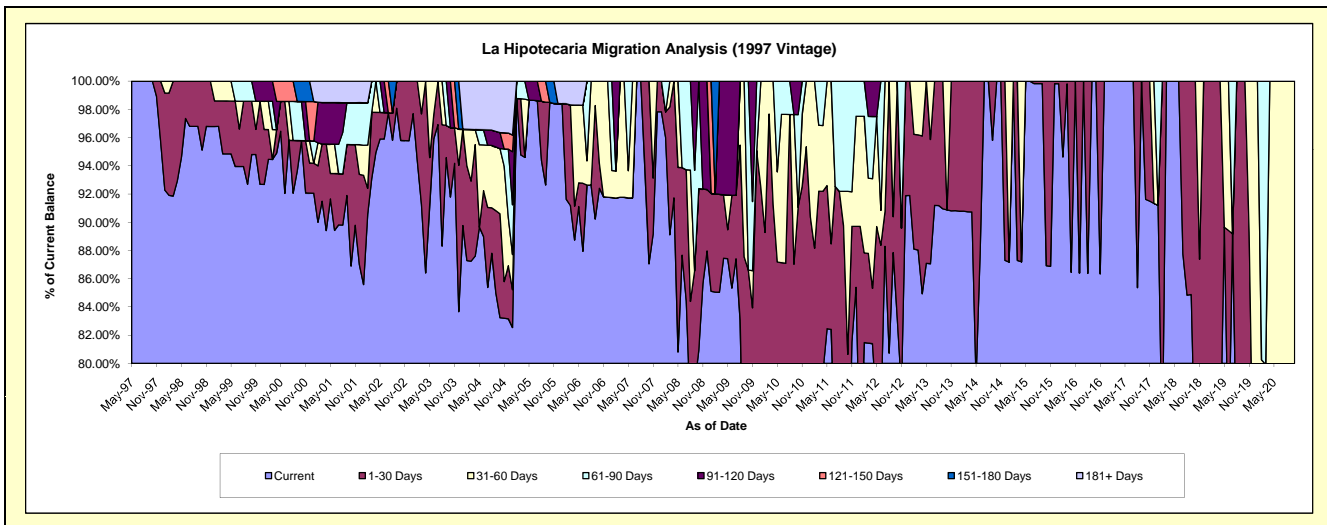
Delinquency Status (\$ of Current Balance)

Data Cutoff: 10/31/2020

Current Portfolio Balance	416,500.06	369,511.14	274,942.04	237,739.05	210,242.72	174,407.03	139,092.95	110,341.47	76,824.71	48,764.95
	Oct-11	Oct-12	Oct-13	Oct-14	Oct-15	Oct-16	Oct-17	Oct-18	Oct-19	Oct-20
Current	279,758.37	307,193.45	249,857.27	237,739.05	182,747.38	174,407.03	127,441.46	79,835.94	55,610.86	31,369.46
1-30 Days	56,090.72	62,317.69	-	-	27,495.34	-	11,651.49	30,505.53	21,213.85	6,540.55
31-60 Days	48,123.22	-	25,084.77	-	-	-	-	-	-	10,854.94
61-90 Days	32,527.75	-	-	-	-	-	-	-	-	-
91-120 Days	-	-	-	-	-	-	-	-	-	-
121-150 Days	-	-	-	-	-	-	-	-	-	-
151-180 Days	-	-	-	-	-	-	-	-	-	-
181+ Days	-	-	-	-	-	-	-	-	-	-

Delinquency Status (% of Current Balance)

Current Portfolio Balance	416,500.06	369,511.14	274,942.04	237,739.05	210,242.72	174,407.03	139,092.95	110,341.47	76,824.71	48,764.95
	Oct-11	Oct-12	Oct-13	Oct-14	Oct-15	Oct-16	Oct-17	Oct-18	Oct-19	Oct-20
Current	67.17%	83.14%	90.88%	100.00%	86.92%	100.00%	91.62%	72.35%	72.39%	64.33%
1-30 Days	13.47%	16.86%	0.00%	0.00%	13.08%	0.00%	8.38%	27.65%	27.61%	13.41%
31-60 Days	11.55%	0.00%	9.12%	0.00%	0.00%	0.00%	0.00%	0.00%	0.00%	22.26%
61-90 Days	7.81%	0.00%	0.00%	0.00%	0.00%	0.00%	0.00%	0.00%	0.00%	0.00%
91-120 Days	0.00%	0.00%	0.00%	0.00%	0.00%	0.00%	0.00%	0.00%	0.00%	0.00%
121-150 Days	0.00%	0.00%	0.00%	0.00%	0.00%	0.00%	0.00%	0.00%	0.00%	0.00%
151-180 Days	0.00%	0.00%	0.00%	0.00%	0.00%	0.00%	0.00%	0.00%	0.00%	0.00%
181+ Days	0.00%	0.00%	0.00%	0.00%	0.00%	0.00%	0.00%	0.00%	0.00%	0.00%
Current - 90 Days	100.00%	100.00%	100.00%	100.00%	100.00%	100.00%	100.00%	100.00%	100.00%	100.00%
91-180 Days	0.00%	0.00%	0.00%	0.00%	0.00%	0.00%	0.00%	0.00%	0.00%	0.00%



Mortgages - La Hipotecaria Panama Migration Analysis (1998 Vintage)

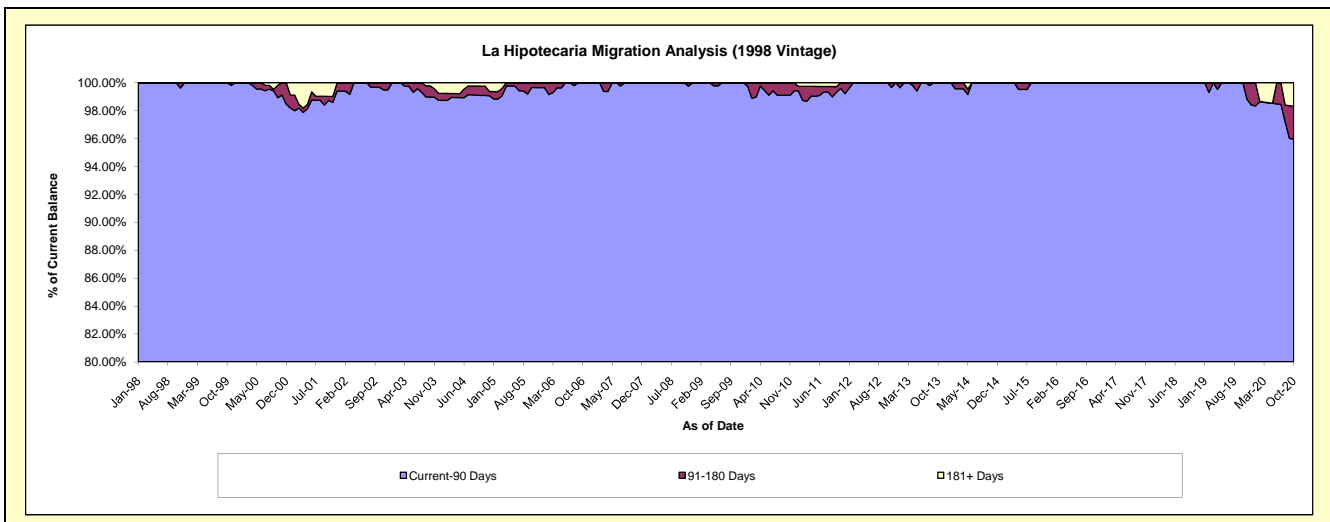
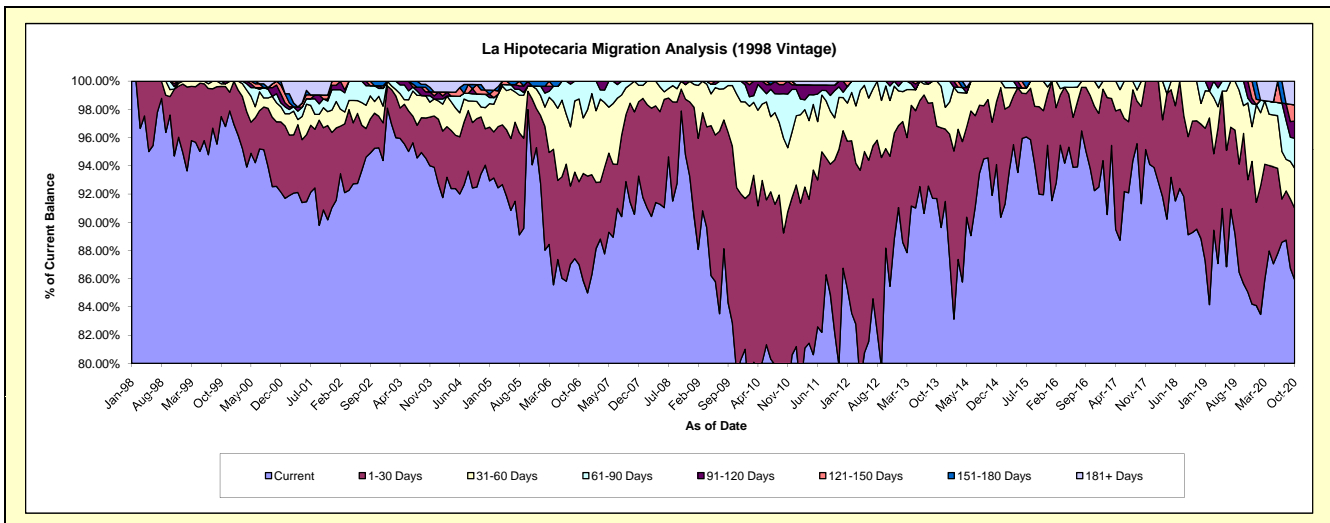
Delinquency Status (\$ of Current Balance)

Data Cutoff: 10/31/2020

Current Portfolio Balance	3,968,598.20	3,495,986.72	3,096,207.76	2,666,520.60	2,241,044.14	1,893,326.87	1,507,885.76	1,168,564.62	857,906.06	591,067.73
	Oct-11	Oct-12	Oct-13	Oct-14	Oct-15	Oct-16	Oct-17	Oct-18	Oct-19	Oct-20
Current	3,264,144.40	3,082,321.96	2,838,808.98	2,521,671.85	2,061,633.50	1,776,104.06	1,377,030.06	1,043,211.41	734,755.80	507,833.98
1-30 Days	482,357.60	246,623.85	158,504.32	110,063.20	138,819.93	98,150.99	103,846.53	92,268.46	91,355.92	30,019.74
31-60 Days	119,022.56	155,411.27	98,894.46	34,785.55	40,590.71	19,071.82	27,009.17	33,084.75	16,931.82	16,767.62
61-90 Days	76,170.41	11,629.64	-	-	-	-	-	-	14,862.52	12,521.11
91-120 Days	15,803.80	-	-	-	-	-	-	-	-	7,178.42
121-150 Days	-	-	-	-	-	-	-	-	-	6,762.76
151-180 Days	-	-	-	-	-	-	-	-	-	-
181+ Days	11,099.43	-	-	-	-	-	-	-	-	9,984.10

Delinquency Status (% of Current Balance)

Current Portfolio Balance	3,968,598.20	3,495,986.72	3,096,207.76	2,666,520.60	2,241,044.14	1,893,326.87	1,507,885.76	1,168,564.62	857,906.06	591,067.73
	Oct-11	Oct-12	Oct-13	Oct-14	Oct-15	Oct-16	Oct-17	Oct-18	Oct-19	Oct-20
Current	82.25%	88.17%	91.69%	94.57%	91.99%	93.81%	91.32%	89.27%	85.65%	85.92%
1-30 Days	12.15%	7.05%	5.12%	4.13%	6.19%	5.18%	6.89%	7.90%	10.65%	5.08%
31-60 Days	3.00%	4.45%	3.19%	1.30%	1.81%	1.01%	1.79%	2.83%	1.97%	2.84%
61-90 Days	1.92%	0.33%	0.00%	0.00%	0.00%	0.00%	0.00%	0.00%	1.73%	2.12%
91-120 Days	0.40%	0.00%	0.00%	0.00%	0.00%	0.00%	0.00%	0.00%	0.00%	1.21%
121-150 Days	0.00%	0.00%	0.00%	0.00%	0.00%	0.00%	0.00%	0.00%	0.00%	1.14%
151-180 Days	0.00%	0.00%	0.00%	0.00%	0.00%	0.00%	0.00%	0.00%	0.00%	0.00%
181+ Days	0.28%	0.00%	0.00%	0.00%	0.00%	0.00%	0.00%	0.00%	0.00%	1.69%
Current - 90 Days	99.32%	100.00%	100.00%	100.00%	100.00%	100.00%	100.00%	100.00%	100.00%	95.95%
91-180 Days	0.40%	0.00%	0.00%	0.00%	0.00%	0.00%	0.00%	0.00%	0.00%	2.36%



Mortgages - La Hipotecaria Panama Migration Analysis (1999 Vintage)

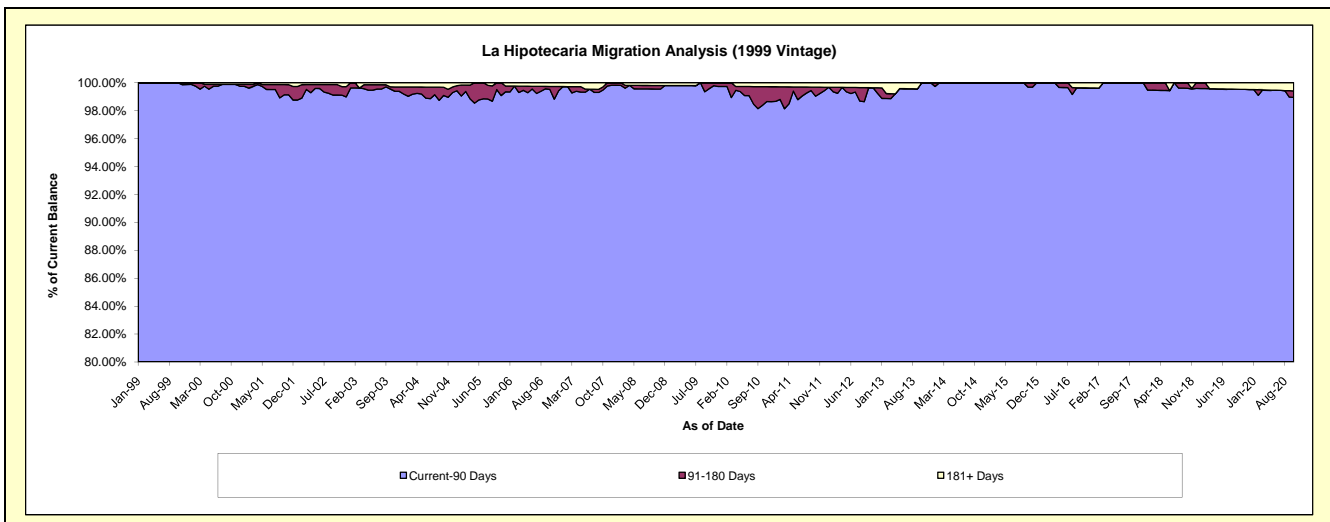
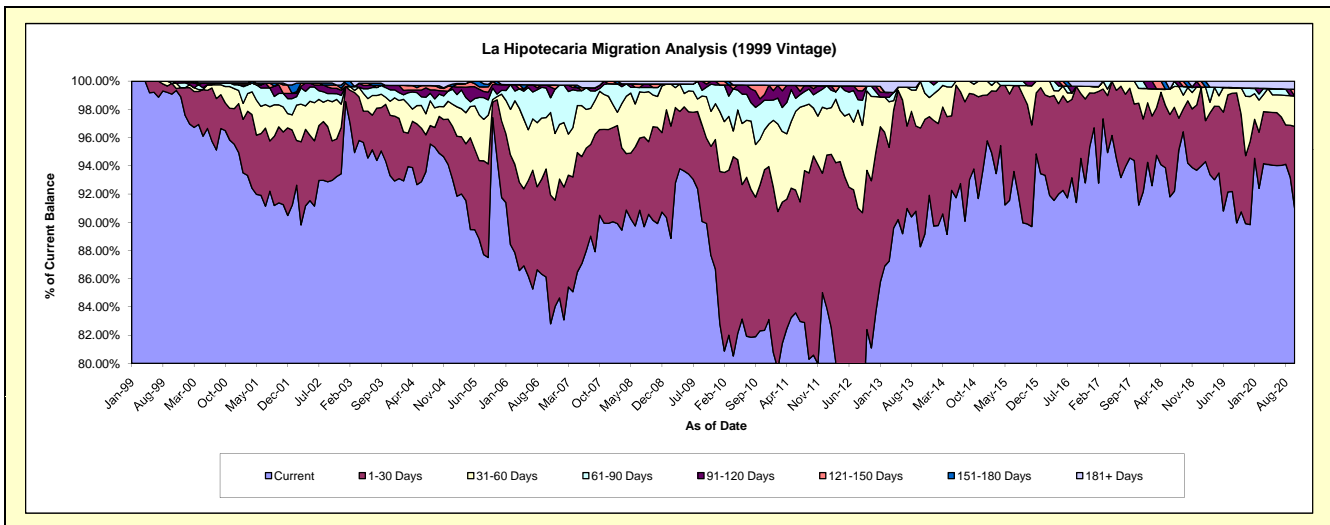
Delinquency Status (\$ of Current Balance)

Data Cutoff: 10/31/2020

Current Portfolio Balance	6,166,554.13	5,486,308.49	4,713,744.00	4,198,105.13	3,704,582.14	3,116,622.62	2,668,916.95	2,199,074.90	1,822,398.06	1,468,440.26
	Oct-11	Oct-12	Oct-13	Oct-14	Oct-15	Oct-16	Oct-17	Oct-18	Oct-19	Oct-20
Current	4,969,451.43	4,520,367.00	4,160,665.90	3,937,075.34	3,329,628.50	2,946,112.42	2,518,860.72	2,071,569.07	1,653,673.58	1,336,488.36
1-30 Days	870,525.30	619,241.45	396,442.32	222,170.95	314,303.93	143,319.24	106,854.30	96,995.69	126,031.83	84,849.49
31-60 Days	209,116.54	308,669.04	156,635.78	29,906.81	49,084.35	15,846.22	43,201.93	20,663.94	34,081.10	31,668.87
61-90 Days	57,789.62	18,524.77	-	8,952.03	-	-	-	1,234.65	-	-
91-120 Days	26,889.46	-	-	-	11,565.36	-	-	-	-	-
121-150 Days	13,275.55	-	-	-	-	-	-	-	-	6,821.99
151-180 Days	-	-	-	-	-	-	-	8,611.55	-	-
181+ Days	19,506.23	19,506.23	-	-	-	11,344.74	-	-	8,611.55	8,611.55

Delinquency Status (% of Current Balance)

Current Portfolio Balance	6,166,554.13	5,486,308.49	4,713,744.00	4,198,105.13	3,704,582.14	3,116,622.62	2,668,916.95	2,199,074.90	1,822,398.06	1,468,440.26
	Oct-11	Oct-12	Oct-13	Oct-14	Oct-15	Oct-16	Oct-17	Oct-18	Oct-19	Oct-20
Current	80.59%	82.39%	88.27%	93.78%	89.88%	94.53%	94.38%	94.20%	90.74%	91.01%
1-30 Days	14.12%	11.29%	8.41%	5.29%	8.48%	4.60%	4.00%	4.41%	6.92%	5.78%
31-60 Days	3.39%	5.63%	3.32%	0.71%	1.32%	0.51%	1.62%	0.94%	1.87%	2.16%
61-90 Days	0.94%	0.34%	0.00%	0.21%	0.00%	0.00%	0.00%	0.06%	0.00%	0.00%
91-120 Days	0.44%	0.00%	0.00%	0.00%	0.31%	0.00%	0.00%	0.00%	0.00%	0.00%
121-150 Days	0.22%	0.00%	0.00%	0.00%	0.00%	0.00%	0.00%	0.00%	0.00%	0.46%
151-180 Days	0.00%	0.00%	0.00%	0.00%	0.00%	0.00%	0.00%	0.39%	0.00%	0.00%
181+ Days	0.32%	0.36%	0.00%	0.00%	0.00%	0.36%	0.00%	0.00%	0.47%	0.59%
Current - 90 Days	99.03%	99.64%	100.00%	100.00%	99.69%	99.64%	100.00%	99.61%	99.53%	98.95%
91-180 Days	0.65%	0.00%	0.00%	0.00%	0.31%	0.00%	0.00%	0.39%	0.00%	0.46%



Mortgages - La Hipotecaria Panama Migration Analysis (2000 Vintage)

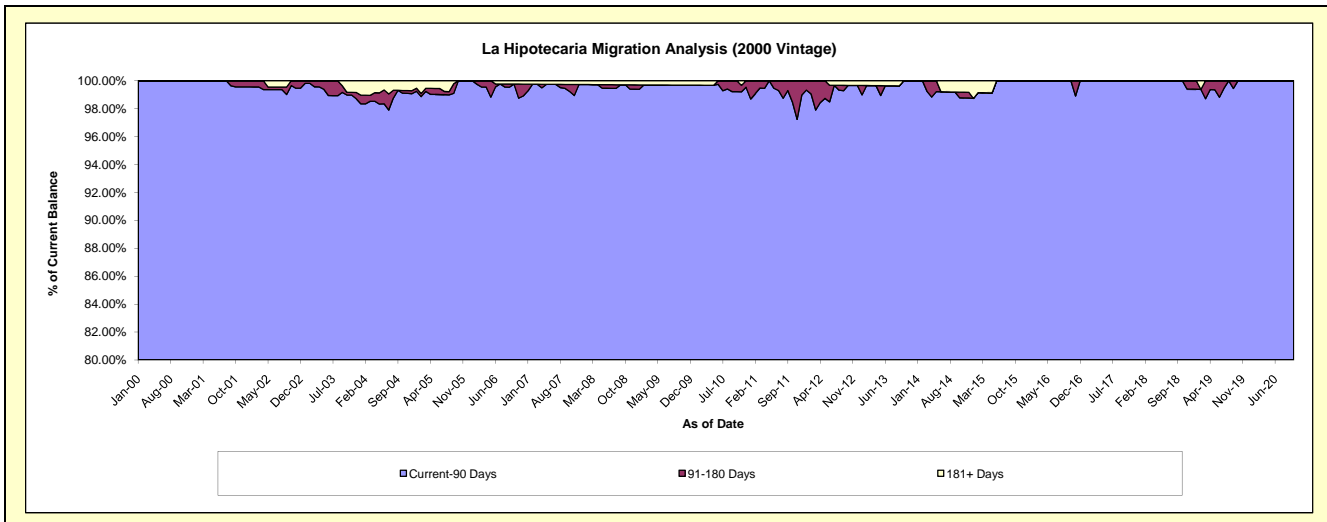
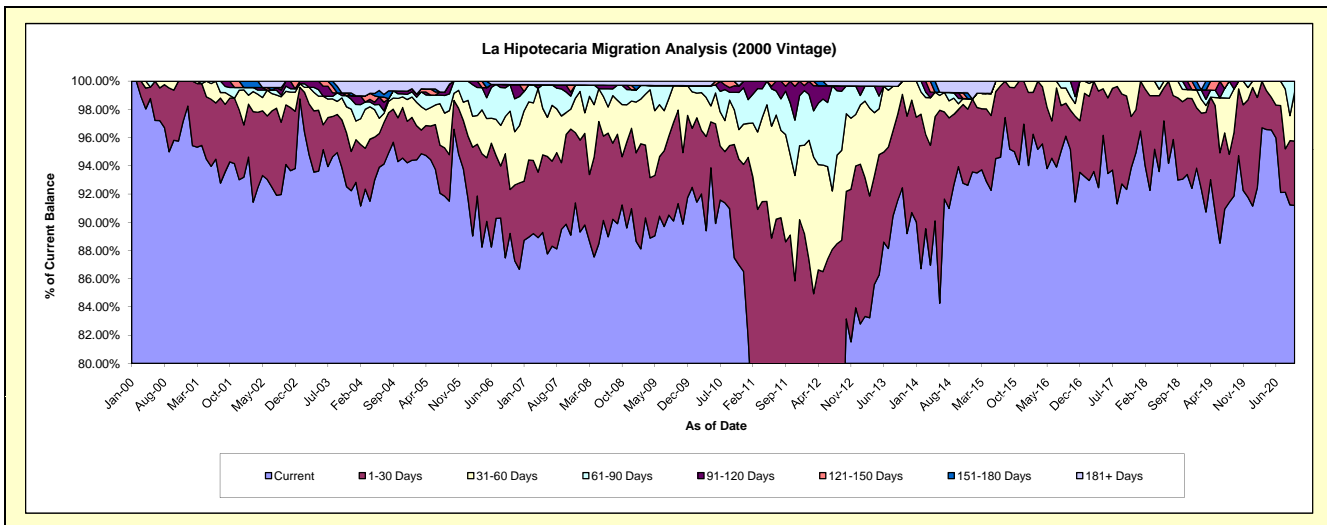
Delinquency Status (\$ of Current Balance)

Data Cutoff: 10/31/2020

Current Portfolio Balance	5,221,517.43	4,810,773.95	4,227,323.03	3,815,498.69	3,237,241.82	2,892,885.22	2,556,491.57	2,227,799.36	1,837,423.30	1,601,299.60
	Oct-11	Oct-12	Oct-13	Oct-14	Oct-15	Oct-16	Oct-17	Oct-18	Oct-19	Oct-20
Current	3,663,956.32	4,000,260.50	3,907,873.01	3,584,183.97	3,075,383.74	2,752,508.41	2,360,266.89	2,073,093.67	1,740,404.93	1,460,236.05
1-30 Days	988,099.09	434,844.22	279,827.76	154,834.96	146,944.33	80,695.93	169,437.00	122,296.65	86,980.23	73,058.83
31-60 Days	296,754.88	264,619.34	39,622.26	15,428.28	14,913.75	28,128.28	26,787.68	19,409.13	10,038.14	55,721.11
61-90 Days	192,211.42	94,957.47	-	14,617.11	-	31,552.60	-	12,999.91	-	12,283.61
91-120 Days	80,495.72	-	-	15,340.97	-	-	-	-	-	-
121-150 Days	-	-	-	-	-	-	-	-	-	-
151-180 Days	-	-	-	-	-	-	-	-	-	-
181+ Days	-	16,092.42	-	31,093.40	-	-	-	-	-	-

Delinquency Status (% of Current Balance)

Current Portfolio Balance	5,221,517.43	4,810,773.95	4,227,323.03	3,815,498.69	3,237,241.82	2,892,885.22	2,556,491.57	2,227,799.36	1,837,423.30	1,601,299.60
	Oct-11	Oct-12	Oct-13	Oct-14	Oct-15	Oct-16	Oct-17	Oct-18	Oct-19	Oct-20
Current	70.17%	83.15%	92.44%	93.94%	95.00%	95.15%	92.32%	93.06%	94.72%	91.19%
1-30 Days	18.92%	9.04%	6.62%	4.06%	4.54%	2.79%	6.63%	5.49%	4.73%	4.56%
31-60 Days	5.68%	5.50%	0.94%	0.40%	0.46%	0.97%	1.05%	0.87%	0.55%	3.48%
61-90 Days	3.68%	1.97%	0.00%	0.38%	0.00%	1.09%	0.00%	0.58%	0.00%	0.77%
91-120 Days	1.54%	0.00%	0.00%	0.40%	0.00%	0.00%	0.00%	0.00%	0.00%	0.00%
121-150 Days	0.00%	0.00%	0.00%	0.00%	0.00%	0.00%	0.00%	0.00%	0.00%	0.00%
151-180 Days	0.00%	0.00%	0.00%	0.00%	0.00%	0.00%	0.00%	0.00%	0.00%	0.00%
181+ Days	0.00%	0.33%	0.00%	0.81%	0.00%	0.00%	0.00%	0.00%	0.00%	0.00%
Current - 90 Days	98.46%	99.67%	100.00%	98.78%	100.00%	100.00%	100.00%	100.00%	100.00%	100.00%
91-180 Days	1.54%	0.00%	0.00%	0.40%	0.00%	0.00%	0.00%	0.00%	0.00%	0.00%



Mortgages - La Hipotecaria Panama Migration Analysis (2001 Vintage)

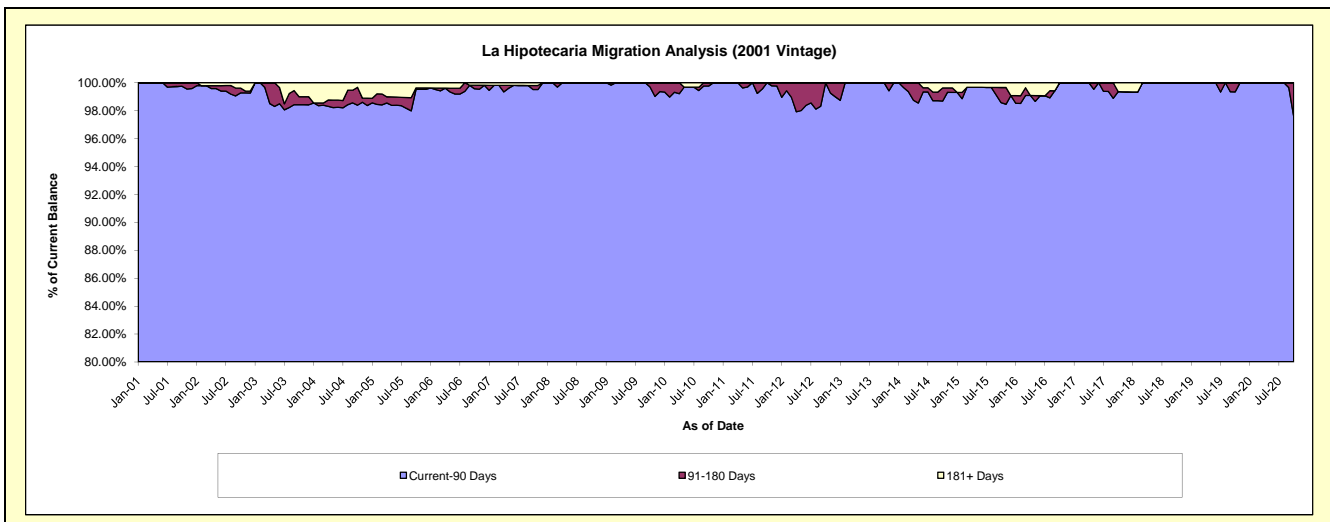
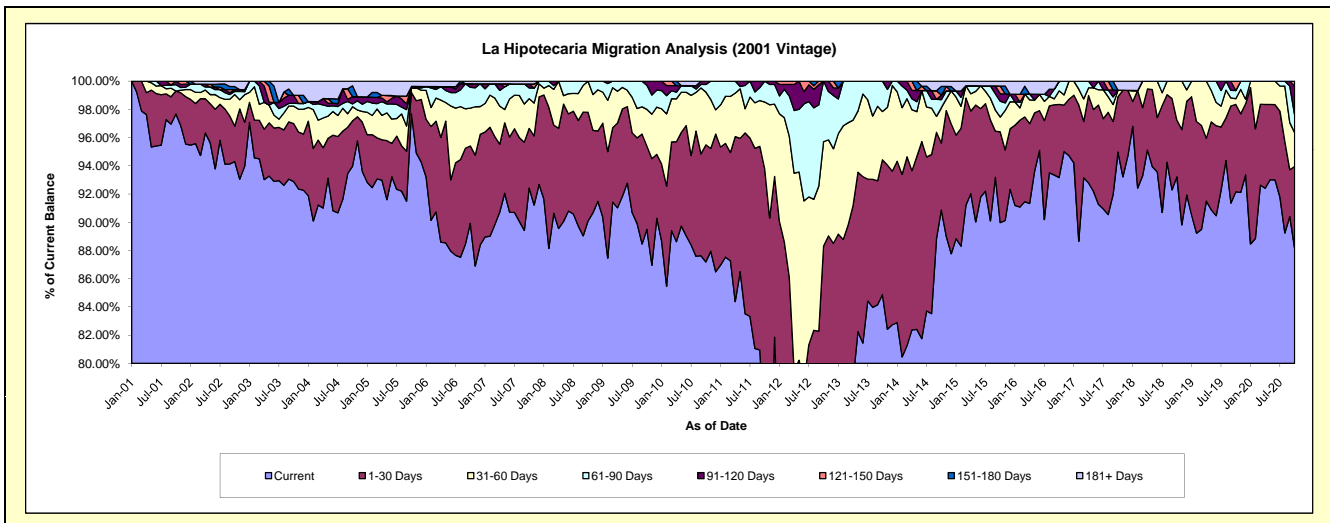
Delinquency Status (\$ of Current Balance)

Data Cutoff: 10/31/2020

Current Portfolio Balance	5,527,158.75	4,953,777.08	4,260,075.06	3,844,122.09	3,478,625.17	3,150,127.18	2,828,934.26	2,464,852.20	2,173,677.67	1,936,832.56
	Oct-11	Oct-12	Oct-13	Oct-14	Oct-15	Oct-16	Oct-17	Oct-18	Oct-19	Oct-20
Current	4,107,877.95	3,612,109.33	3,615,927.49	3,492,967.72	3,130,025.05	2,934,963.23	2,686,865.63	2,297,784.96	2,003,171.68	1,707,441.05
1-30 Days	1,076,802.21	763,483.81	406,776.22	182,439.64	223,827.70	163,044.40	111,106.57	99,012.86	134,765.18	112,397.76
31-60 Days	260,768.77	365,851.87	145,643.73	96,462.33	36,442.34	30,514.21	12,840.56	68,054.38	8,706.59	46,202.62
61-90 Days	81,709.82	212,332.07	91,727.62	21,988.22	38,739.15	21,605.34	-	-	12,705.91	24,624.21
91-120 Days	-	-	-	11,945.32	18,368.89	-	-	-	-	39,288.98
121-150 Days	-	-	-	-	19,276.72	-	-	-	14,328.31	6,877.94
151-180 Days	-	-	-	23,982.39	-	-	-	-	-	-
181+ Days	-	-	-	14,336.47	11,945.32	-	18,121.50	-	-	-

Delinquency Status (% of Current Balance)

Current Portfolio Balance	5,527,158.75	4,953,777.08	4,260,075.06	3,844,122.09	3,478,625.17	3,150,127.18	2,828,934.26	2,464,852.20	2,173,677.67	1,936,832.56
	Oct-11	Oct-12	Oct-13	Oct-14	Oct-15	Oct-16	Oct-17	Oct-18	Oct-19	Oct-20
Current	74.32%	72.92%	84.88%	90.87%	89.98%	93.17%	94.98%	93.22%	92.16%	88.16%
1-30 Days	19.48%	15.41%	9.55%	4.75%	6.43%	5.18%	3.93%	4.02%	6.20%	5.80%
31-60 Days	4.72%	7.39%	3.42%	2.51%	1.05%	0.97%	0.45%	2.76%	0.40%	2.39%
61-90 Days	1.48%	4.29%	2.15%	0.57%	1.11%	0.69%	0.00%	0.00%	0.58%	1.27%
91-120 Days	0.00%	0.00%	0.00%	0.31%	0.53%	0.00%	0.00%	0.00%	0.00%	2.03%
121-150 Days	0.00%	0.00%	0.00%	0.00%	0.55%	0.00%	0.00%	0.00%	0.66%	0.36%
151-180 Days	0.00%	0.00%	0.00%	0.62%	0.00%	0.00%	0.00%	0.00%	0.00%	0.00%
181+ Days	0.00%	0.00%	0.00%	0.37%	0.34%	0.00%	0.64%	0.00%	0.00%	0.00%
Current - 90 Days	100.00%	100.00%	100.00%	98.69%	98.57%	100.00%	99.36%	100.00%	99.34%	97.62%
91-180 Days	0.00%	0.00%	0.00%	0.93%	1.08%	0.00%	0.00%	0.00%	0.66%	2.38%



Mortgages - La Hipotecaria Panama Migration Analysis (2002 Vintage)

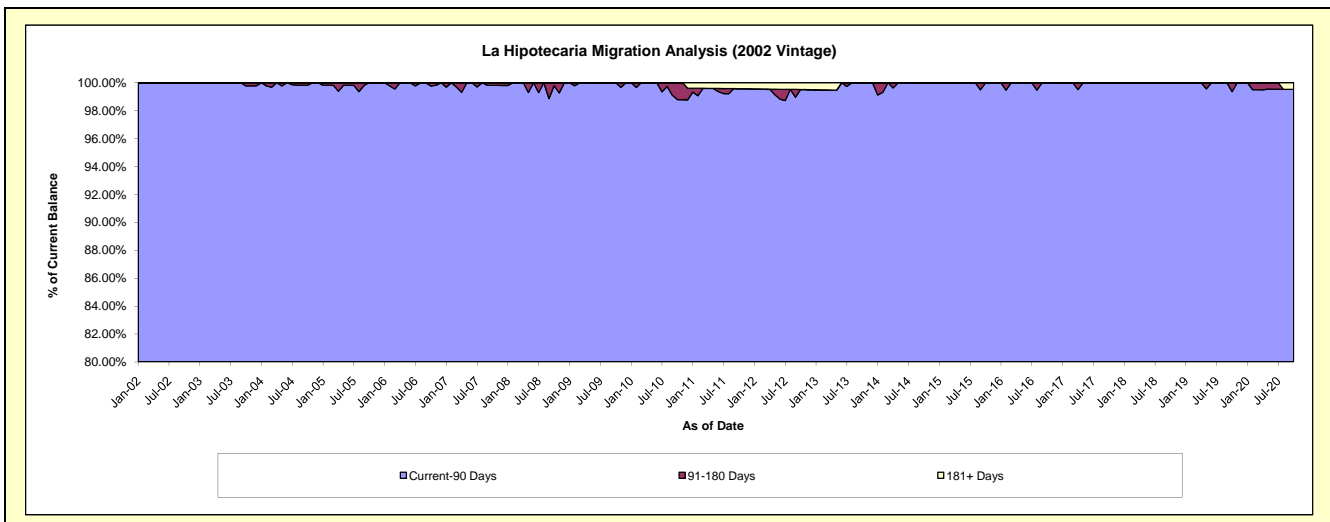
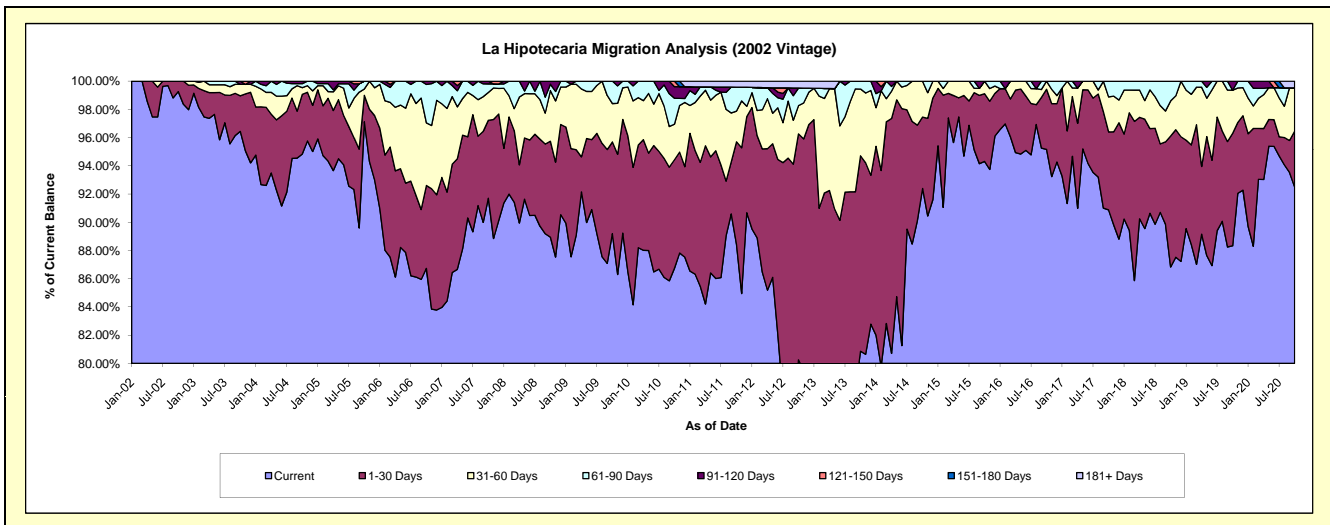
Delinquency Status (\$ of Current Balance)

Data Cutoff: 10/31/2020

Current Portfolio Balance	5,210,102.62	4,560,753.00	3,899,012.23	3,409,309.85	3,112,279.03	2,737,395.79	2,516,643.12	2,326,432.09	2,061,655.71	1,861,814.44
	Oct-11	Oct-12	Oct-13	Oct-14	Oct-15	Oct-16	Oct-17	Oct-18	Oct-19	Oct-20
Current	4,606,870.41	3,659,970.12	3,152,602.04	3,150,028.79	2,935,226.53	2,605,036.24	2,286,985.47	2,020,126.69	1,821,206.98	1,721,967.36
1-30 Days	379,304.85	730,246.18	540,152.20	172,528.70	149,320.46	116,579.03	139,139.59	215,729.65	164,261.10	73,922.27
31-60 Days	113,217.52	91,346.33	184,514.96	86,752.36	27,732.04	15,780.52	62,516.06	58,052.40	62,980.33	57,046.10
61-90 Days	88,549.83	57,030.36	21,743.03	-	-	-	28,002.00	32,523.35	-	-
91-120 Days	-	-	-	-	-	-	-	-	13,207.30	-
121-150 Days	-	-	-	-	-	-	-	-	-	-
151-180 Days	-	-	-	-	-	-	-	-	-	-
181+ Days	22,160.01	22,160.01	-	-	-	-	-	-	-	8,878.71

Delinquency Status (% of Current Balance)

Current Portfolio Balance	5,210,102.62	4,560,753.00	3,899,012.23	3,409,309.85	3,112,279.03	2,737,395.79	2,516,643.12	2,326,432.09	2,061,655.71	1,861,814.44
	Oct-11	Oct-12	Oct-13	Oct-14	Oct-15	Oct-16	Oct-17	Oct-18	Oct-19	Oct-20
Current	88.42%	80.25%	80.86%	92.39%	94.31%	95.16%	90.87%	86.83%	88.34%	92.49%
1-30 Days	7.28%	16.01%	13.85%	5.06%	4.80%	4.28%	5.53%	9.27%	7.97%	3.97%
31-60 Days	2.17%	2.00%	4.73%	2.54%	0.89%	0.58%	2.48%	2.50%	3.05%	3.06%
61-90 Days	1.70%	1.25%	0.56%	0.00%	0.00%	0.00%	1.11%	1.40%	0.00%	0.00%
91-120 Days	0.00%	0.00%	0.00%	0.00%	0.00%	0.00%	0.00%	0.00%	0.64%	0.00%
121-150 Days	0.00%	0.00%	0.00%	0.00%	0.00%	0.00%	0.00%	0.00%	0.00%	0.00%
151-180 Days	0.00%	0.00%	0.00%	0.00%	0.00%	0.00%	0.00%	0.00%	0.00%	0.00%
181+ Days	0.43%	0.49%	0.00%	0.00%	0.00%	0.00%	0.00%	0.00%	0.00%	0.48%
Current - 90 Days	99.57%	99.51%	100.00%	100.00%	100.00%	100.00%	100.00%	100.00%	99.36%	99.52%
91-180 Days	0.00%	0.00%	0.00%	0.00%	0.00%	0.00%	0.00%	0.00%	0.64%	0.00%



Mortgages - La Hipotecaria Panama Migration Analysis (2003 Vintage)

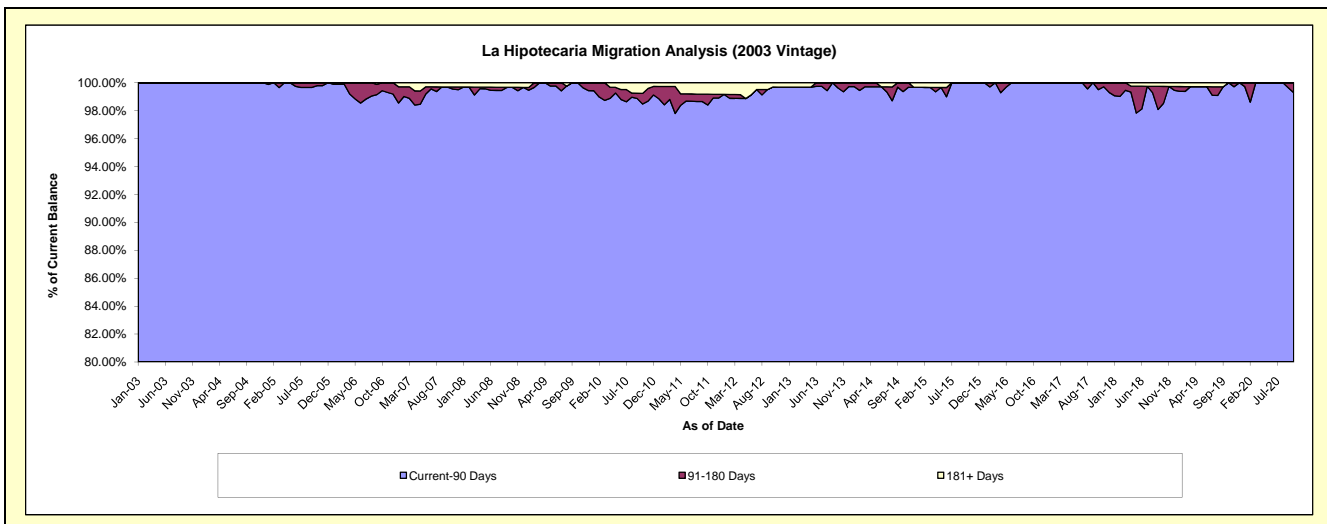
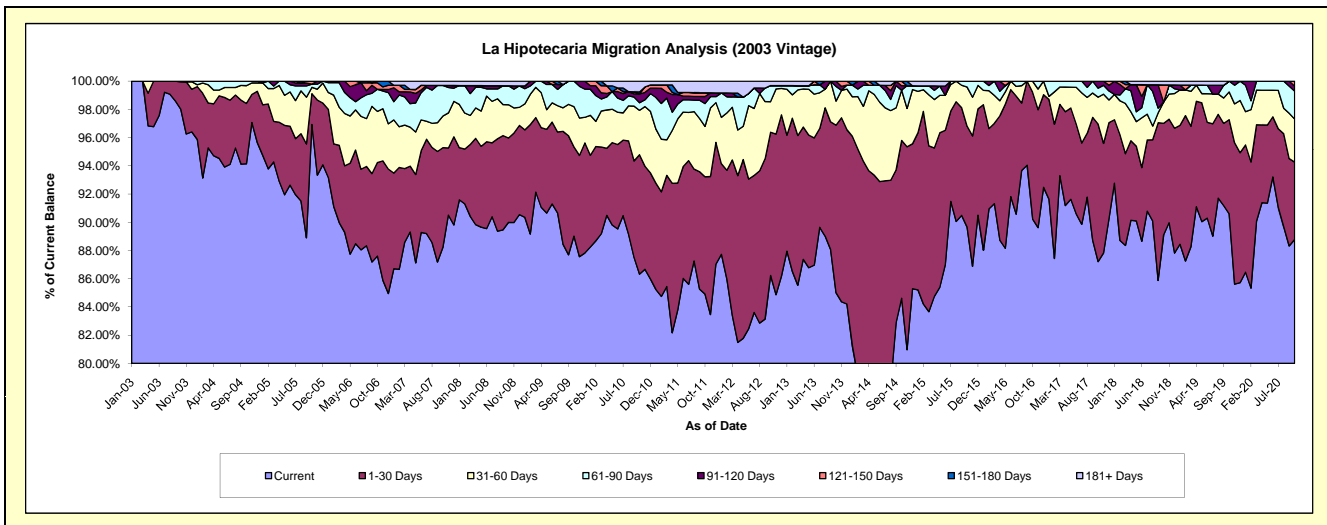
Delinquency Status (\$ of Current Balance)

Data Cutoff: 10/31/2020

Current Portfolio Balance	8,002,026.62	7,297,398.73	6,593,952.78	5,839,652.34	5,185,787.45	4,611,304.31	4,112,974.22	3,613,827.80	3,203,583.89	2,963,413.97
	Oct-11	Oct-12	Oct-13	Oct-14	Oct-15	Oct-16	Oct-17	Oct-18	Oct-19	Oct-20
Current	6,794,879.41	6,292,612.07	5,604,899.09	4,941,212.75	4,649,403.39	4,160,941.38	3,587,042.72	3,220,281.81	2,902,461.32	2,631,197.75
1-30 Days	665,283.69	740,839.31	783,196.13	653,007.62	370,921.64	414,386.28	400,753.68	285,582.81	213,740.30	162,082.74
31-60 Days	285,210.68	157,849.14	112,846.09	208,368.75	144,070.39	35,976.65	78,603.74	54,576.15	63,010.85	90,506.99
61-90 Days	129,262.64	83,560.00	68,516.18	-	21,392.03	-	26,244.53	-	24,371.42	58,566.11
91-120 Days	40,191.26	-	24,495.29	18,301.30	-	-	20,329.55	-	-	10,360.31
121-150 Days	21,390.26	-	-	18,761.92	-	-	-	43,881.56	-	10,700.07
151-180 Days	-	-	-	-	-	-	-	-	-	-
181+ Days	65,808.68	22,538.21	-	-	-	-	-	9,505.47	-	-

Delinquency Status (% of Current Balance)

Current Portfolio Balance	8,002,026.62	7,297,398.73	6,593,952.78	5,839,652.34	5,185,787.45	4,611,304.31	4,112,974.22	3,613,827.80	3,203,583.89	2,963,413.97
	Oct-11	Oct-12	Oct-13	Oct-14	Oct-15	Oct-16	Oct-17	Oct-18	Oct-19	Oct-20
Current	84.91%	86.23%	85.00%	84.61%	89.66%	90.23%	87.21%	89.11%	90.60%	88.79%
1-30 Days	8.31%	10.15%	11.88%	11.18%	7.15%	8.99%	9.74%	7.90%	6.67%	5.47%
31-60 Days	3.56%	2.16%	1.71%	3.57%	2.78%	0.78%	1.91%	1.51%	1.97%	3.05%
61-90 Days	1.62%	1.15%	1.04%	0.00%	0.41%	0.00%	0.64%	0.00%	0.76%	1.95%
91-120 Days	0.50%	0.00%	0.37%	0.31%	0.00%	0.00%	0.49%	0.00%	0.00%	0.35%
121-150 Days	0.27%	0.00%	0.00%	0.32%	0.00%	0.00%	0.00%	1.21%	0.00%	0.36%
151-180 Days	0.00%	0.00%	0.00%	0.00%	0.00%	0.00%	0.00%	0.00%	0.00%	0.00%
181+ Days	0.82%	0.31%	0.00%	0.00%	0.00%	0.00%	0.00%	0.26%	0.00%	0.00%
Current - 90 Days	98.41%	99.69%	99.63%	99.37%	100.00%	100.00%	99.51%	98.52%	100.00%	99.29%
91-180 Days	0.77%	0.00%	0.37%	0.63%	0.00%	0.00%	0.49%	1.21%	0.00%	0.71%



Mortgages - La Hipotecaria Panama Migration Analysis (2004 Vintage)

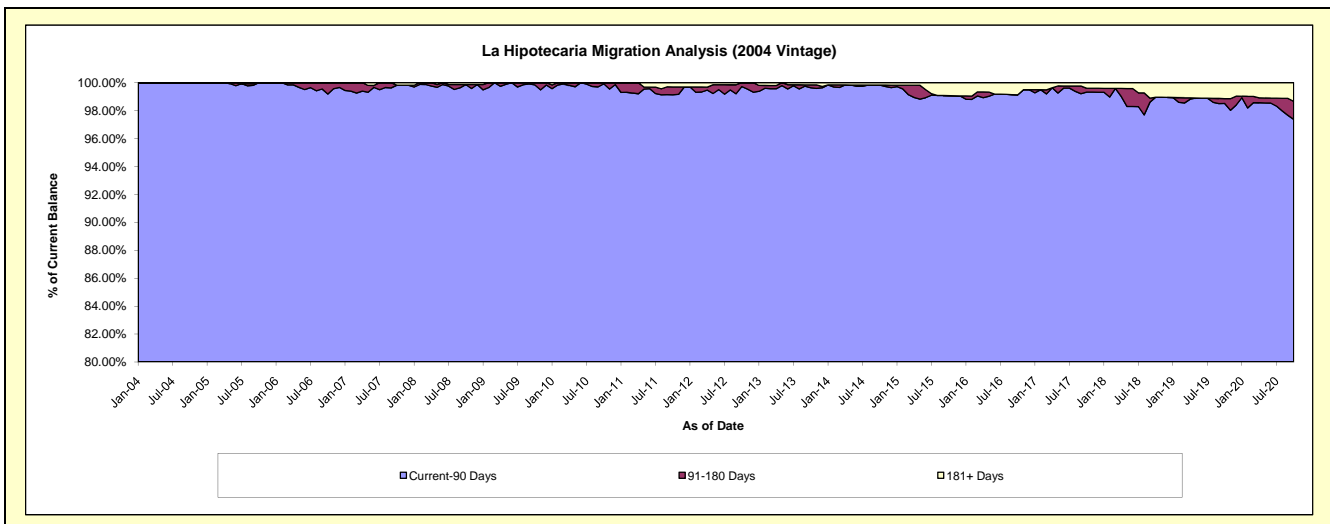
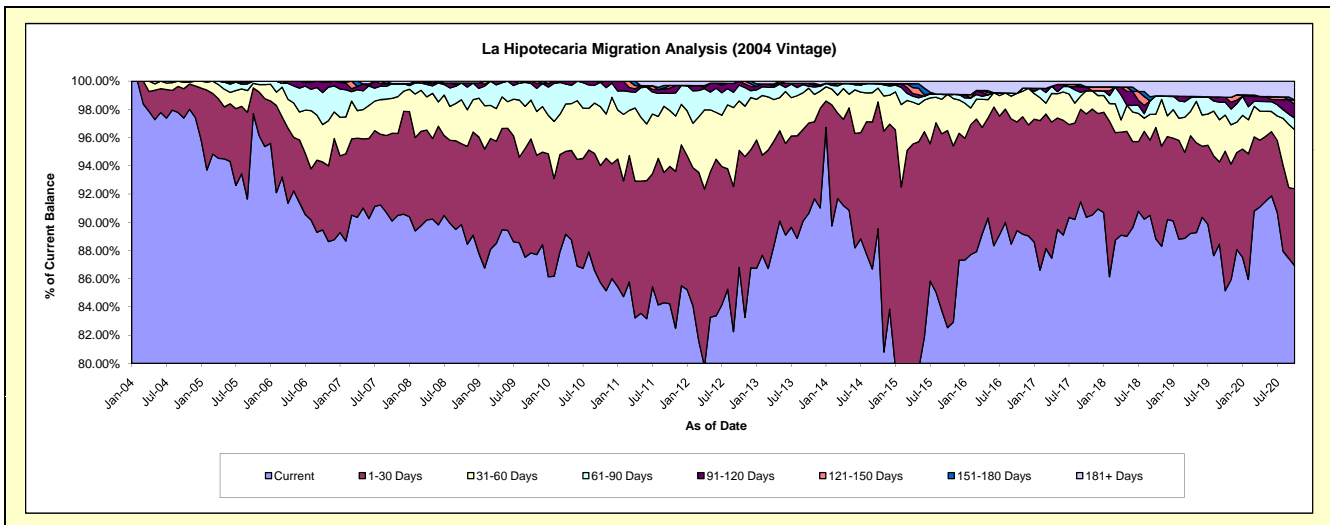
Delinquency Status (\$ of Current Balance)

Data Cutoff: 10/31/2020

Current Portfolio Balance	14,506,026.33	13,216,790.88	11,979,896.06	10,622,357.03	9,368,670.33	8,212,431.78	7,398,001.21	6,767,254.54	6,162,173.97	5,700,258.31
	Oct-11	Oct-12	Oct-13	Oct-14	Oct-15	Oct-16	Oct-17	Oct-18	Oct-19	Oct-20
Current	12,217,995.92	11,472,874.69	10,856,225.79	9,511,380.19	7,732,396.54	7,342,500.70	6,684,462.29	6,011,450.06	5,246,946.23	4,954,321.02
1-30 Days	1,411,440.91	1,095,856.56	767,912.62	954,616.54	1,308,601.04	632,820.81	541,752.29	533,688.24	609,323.23	311,582.26
31-60 Days	574,106.87	463,294.94	295,709.20	103,787.37	241,503.66	166,132.72	122,272.49	63,454.23	157,896.16	237,910.97
61-90 Days	177,265.78	148,195.94	17,249.58	34,474.57	-	-	-	88,680.01	56,543.72	47,034.58
91-120 Days	53,869.67	36,568.75	24,700.51	-	-	-	20,257.29	-	21,482.63	55,562.33
121-150 Days	27,699.39	-	-	-	-	-	-	-	-	17,850.61
151-180 Days	-	-	-	-	-	-	-	-	-	-
181+ Days	43,647.79	-	18,098.36	18,098.36	86,169.09	70,977.55	29,256.85	69,982.00	69,982.00	75,996.54

Delinquency Status (% of Current Balance)

Current Portfolio Balance	14,506,026.33	13,216,790.88	11,979,896.06	10,622,357.03	9,368,670.33	8,212,431.78	7,398,001.21	6,767,254.54	6,162,173.97	5,700,258.31
	Oct-11	Oct-12	Oct-13	Oct-14	Oct-15	Oct-16	Oct-17	Oct-18	Oct-19	Oct-20
Current	84.23%	86.81%	90.62%	89.54%	82.53%	89.41%	90.35%	88.83%	85.15%	86.91%
1-30 Days	9.73%	8.29%	6.41%	8.99%	13.97%	7.71%	7.32%	7.89%	9.89%	5.47%
31-60 Days	3.96%	3.51%	2.47%	0.98%	2.58%	2.02%	1.65%	0.94%	2.56%	4.17%
61-90 Days	1.22%	1.12%	0.14%	0.32%	0.00%	0.00%	0.00%	1.31%	0.92%	0.83%
91-120 Days	0.37%	0.28%	0.21%	0.00%	0.00%	0.00%	0.27%	0.00%	0.35%	0.97%
121-150 Days	0.19%	0.00%	0.00%	0.00%	0.00%	0.00%	0.00%	0.00%	0.00%	0.31%
151-180 Days	0.00%	0.00%	0.00%	0.00%	0.00%	0.00%	0.00%	0.00%	0.00%	0.00%
181+ Days	0.30%	0.00%	0.15%	0.17%	0.92%	0.86%	0.40%	1.03%	1.14%	1.33%
Current - 90 Days	99.14%	99.72%	99.64%	99.83%	99.08%	99.14%	99.33%	98.97%	98.52%	97.38%
91-180 Days	0.56%	0.28%	0.21%	0.00%	0.00%	0.00%	0.27%	0.00%	0.35%	1.29%



Mortgages - La Hipotecaria Panama Migration Analysis (2005 Vintage)

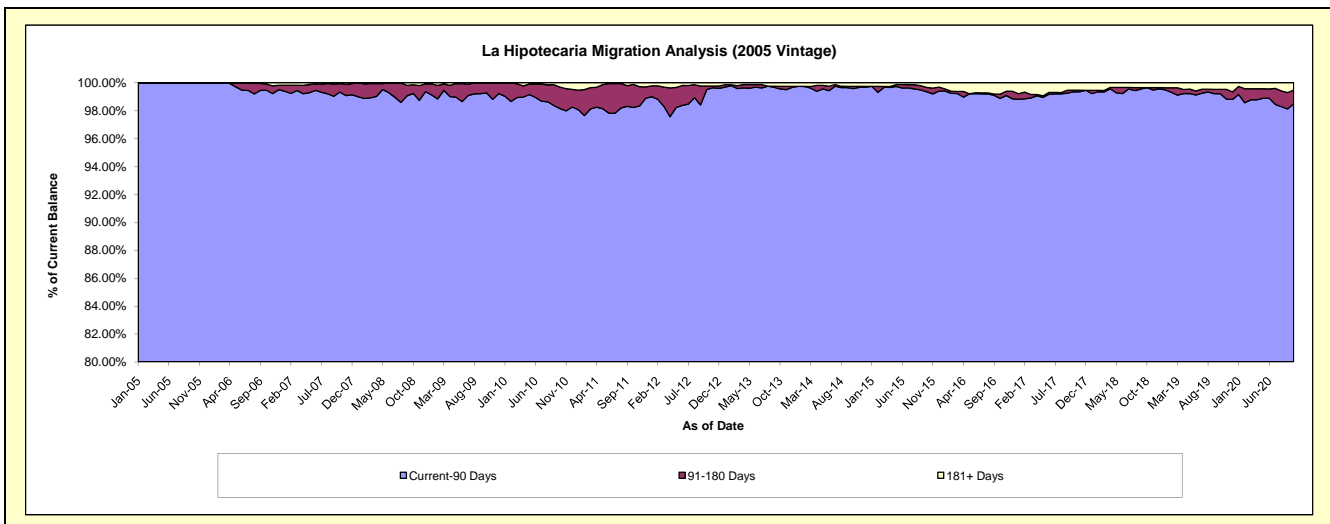
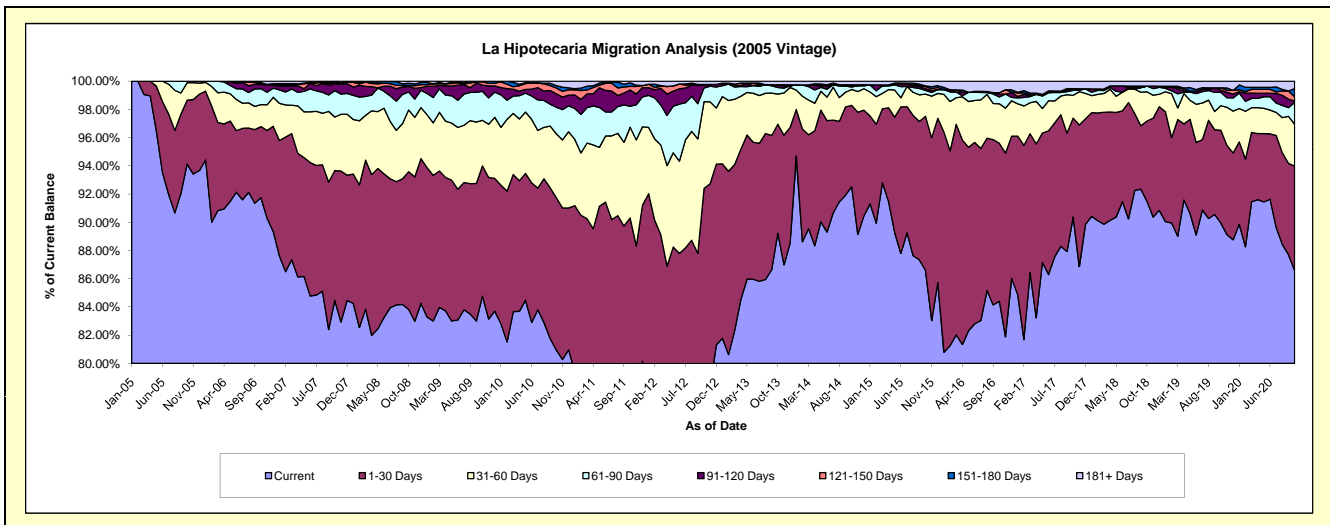
Delinquency Status (\$ of Current Balance)

Data Cutoff: 10/31/2020

Current Portfolio Balance	27,085,695.00	24,569,766.02	22,454,221.16	20,536,844.79	18,321,327.13	16,048,421.81	14,517,715.90	13,261,564.33	11,968,019.05	11,207,678.91
	Oct-11	Oct-12	Oct-13	Oct-14	Oct-15	Oct-16	Oct-17	Oct-18	Oct-19	Oct-20
Current	20,469,068.90	19,238,235.00	20,035,264.27	19,000,992.30	15,864,842.97	13,545,396.56	13,121,064.07	12,132,336.23	10,765,491.95	9,703,327.15
1-30 Days	3,992,160.77	3,461,780.65	1,732,557.58	1,183,796.11	2,000,508.07	1,796,146.98	1,015,973.74	754,637.34	786,689.12	829,902.04
31-60 Days	1,739,897.12	1,513,958.74	480,813.82	231,440.23	289,140.07	450,041.50	235,027.23	274,049.37	208,242.45	332,765.66
61-90 Days	404,789.92	236,501.13	105,090.12	34,462.83	48,040.96	77,094.39	50,888.14	54,179.61	113,854.25	172,674.09
91-120 Days	310,156.37	48,203.56	43,378.44	14,295.53	23,099.11	33,557.79	17,230.40	-	16,642.96	10,525.35
121-150 Days	69,399.82	13,951.06	-	-	25,389.66	14,871.19	-	-	20,140.16	34,171.41
151-180 Days	67,508.02	-	-	19,424.85	8,984.24	-	-	-	-	65,258.03
181+ Days	32,714.08	57,135.88	57,116.93	52,432.94	61,322.05	131,313.40	77,532.32	46,361.78	56,958.16	59,055.18

Delinquency Status (% of Current Balance)

Current Portfolio Balance	27,085,695.00	24,569,766.02	22,454,221.16	20,536,844.79	18,321,327.13	16,048,421.81	14,517,715.90	13,261,564.33	11,968,019.05	11,207,678.91
	Oct-11	Oct-12	Oct-13	Oct-14	Oct-15	Oct-16	Oct-17	Oct-18	Oct-19	Oct-20
Current	75.57%	78.30%	89.23%	92.52%	86.59%	84.40%	90.38%	91.48%	89.95%	86.58%
1-30 Days	14.74%	14.09%	7.72%	5.76%	10.92%	11.19%	7.00%	5.69%	6.57%	7.40%
31-60 Days	6.42%	6.16%	2.14%	1.13%	1.58%	2.80%	1.62%	2.07%	1.74%	2.97%
61-90 Days	1.49%	0.96%	0.47%	0.17%	0.26%	0.48%	0.35%	0.41%	0.95%	1.54%
91-120 Days	1.15%	0.20%	0.19%	0.07%	0.13%	0.21%	0.12%	0.00%	0.14%	0.09%
121-150 Days	0.26%	0.06%	0.00%	0.00%	0.14%	0.09%	0.00%	0.00%	0.17%	0.30%
151-180 Days	0.25%	0.00%	0.00%	0.09%	0.05%	0.00%	0.00%	0.00%	0.00%	0.58%
181+ Days	0.12%	0.23%	0.25%	0.26%	0.33%	0.82%	0.53%	0.35%	0.48%	0.53%
Current - 90 Days	98.23%	99.51%	99.55%	99.58%	99.35%	98.88%	99.35%	99.65%	99.22%	98.49%
91-180 Days	1.65%	0.25%	0.19%	0.16%	0.31%	0.30%	0.12%	0.00%	0.31%	0.98%



Mortgages - La Hipotecaria Panama Migration Analysis (2006 Vintage)

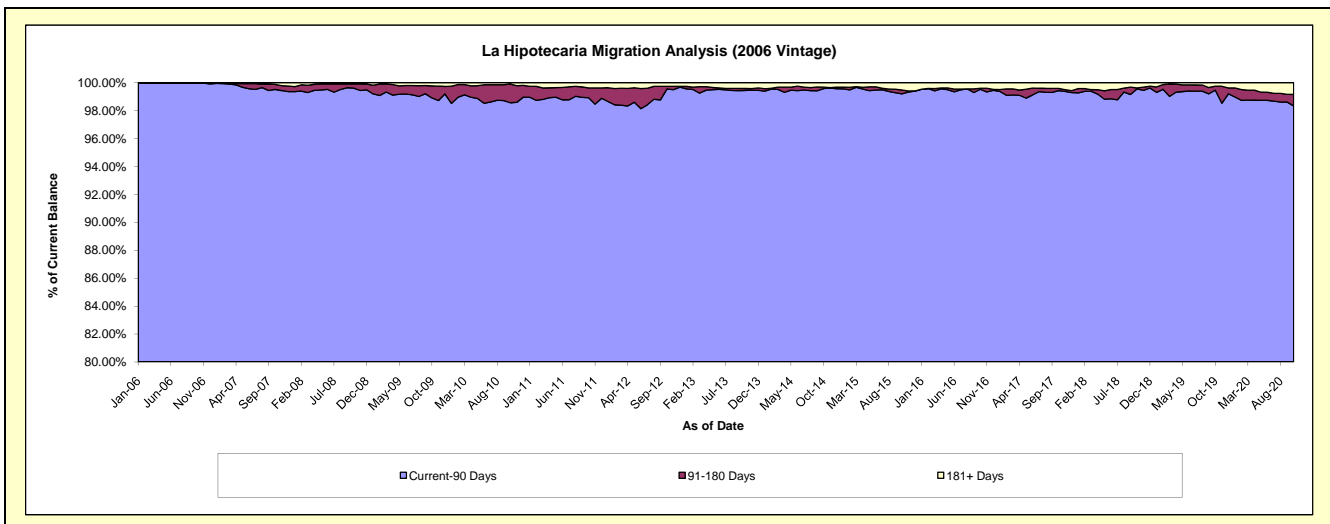
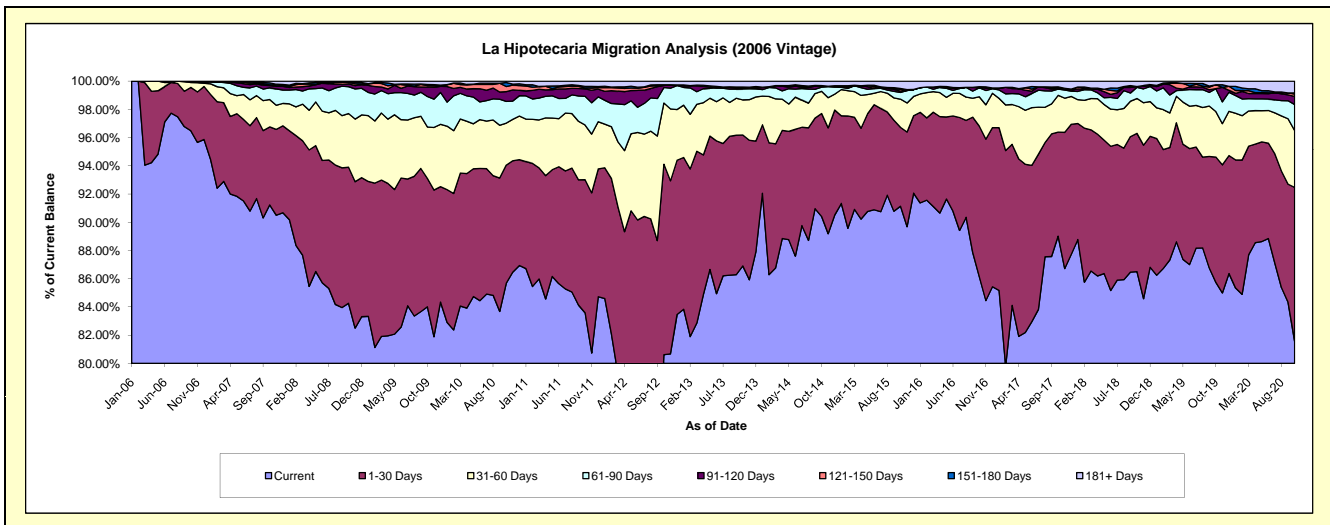
Delinquency Status (\$ of Current Balance)

Data Cutoff: 10/31/2020

Current Portfolio Balance	47,526,394.47	43,839,029.23	39,521,120.98	35,614,446.89	32,335,962.83	28,358,857.48	25,542,664.04	23,171,815.76	21,248,091.29	19,958,717.90
	Oct-11	Oct-12	Oct-13	Oct-14	Oct-15	Oct-16	Oct-17	Oct-18	Oct-19	Oct-20
Current	39,724,093.97	35,342,268.70	34,347,140.47	32,197,588.48	29,469,780.93	24,431,770.63	22,736,993.96	20,044,808.76	18,219,765.35	16,278,919.88
1-30 Days	4,482,869.93	5,915,627.59	3,666,069.64	2,600,809.40	1,808,567.81	3,023,920.72	1,882,104.19	2,270,229.05	1,885,697.03	2,176,934.43
31-60 Days	1,840,391.73	1,902,475.21	983,348.97	560,887.11	646,300.92	589,178.87	666,749.78	571,840.11	686,287.71	805,594.88
61-90 Days	968,893.17	482,308.43	306,904.45	104,771.51	154,010.84	180,774.37	112,400.87	183,653.68	343,310.70	366,736.64
91-120 Days	247,757.33	65,744.71	25,393.21	23,627.44	29,027.13	-	1,825.54	12,291.52	-	114,139.55
121-150 Days	35,648.34	-	5,256.26	-	37,988.68	20,537.06	15,066.98	-	59,652.91	34,758.63
151-180 Days	51,396.83	17,484.69	23,517.43	14,300.08	21,890.50	-	23,354.91	1,796.72	-	14,580.82
181+ Days	175,343.17	113,119.90	163,490.55	112,462.87	168,396.02	112,675.83	104,167.81	87,195.92	53,377.59	167,053.07

Delinquency Status (% of Current Balance)

Current Portfolio Balance	47,526,394.47	43,839,029.23	39,521,120.98	35,614,446.89	32,335,962.83	28,358,857.48	25,542,664.04	23,171,815.76	21,248,091.29	19,958,717.90
	Oct-11	Oct-12	Oct-13	Oct-14	Oct-15	Oct-16	Oct-17	Oct-18	Oct-19	Oct-20
Current	83.58%	80.62%	86.91%	90.41%	91.14%	86.15%	89.02%	86.51%	85.75%	81.56%
1-30 Days	9.43%	13.49%	9.28%	7.30%	5.59%	10.66%	7.37%	9.80%	8.87%	10.91%
31-60 Days	3.87%	4.34%	2.49%	1.57%	2.00%	2.08%	2.61%	2.47%	3.23%	4.04%
61-90 Days	2.04%	1.10%	0.78%	0.29%	0.48%	0.64%	0.44%	0.79%	1.62%	1.84%
91-120 Days	0.52%	0.15%	0.06%	0.07%	0.09%	0.00%	0.01%	0.05%	0.00%	0.57%
121-150 Days	0.08%	0.00%	0.01%	0.00%	0.12%	0.07%	0.06%	0.00%	0.28%	0.17%
151-180 Days	0.11%	0.04%	0.06%	0.04%	0.07%	0.00%	0.09%	0.01%	0.00%	0.07%
181+ Days	0.37%	0.26%	0.41%	0.32%	0.52%	0.40%	0.41%	0.38%	0.25%	0.84%
Current - 90 Days	98.93%	99.55%	99.45%	99.58%	99.20%	99.53%	99.43%	99.56%	99.47%	98.34%
91-180 Days	0.70%	0.19%	0.14%	0.11%	0.27%	0.07%	0.16%	0.06%	0.28%	0.82%



Mortgages - La Hipotecaria Panama Migration Analysis (2007 Vintage)

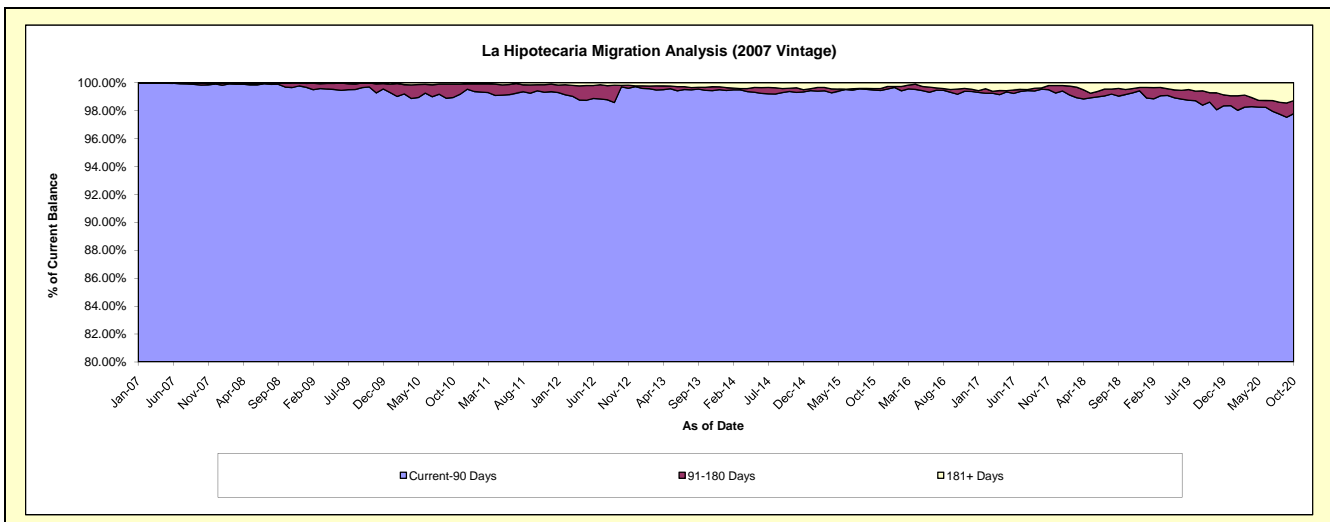
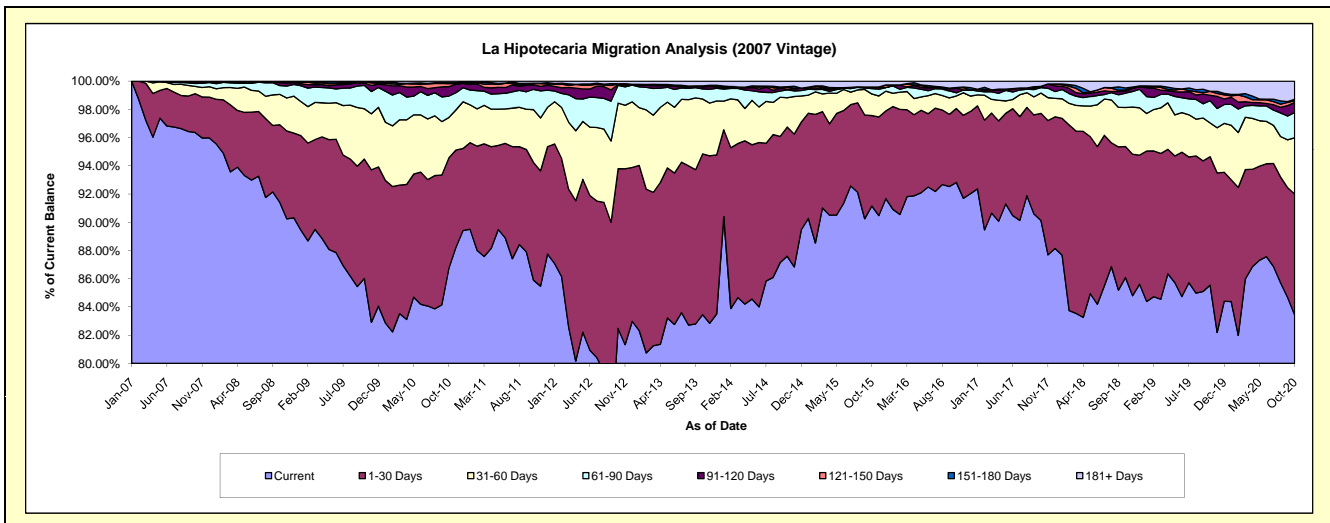
Delinquency Status (\$ of Current Balance)

Data Cutoff: 10/31/2020

Current Portfolio Balance	57,909,007.43	53,714,563.63	48,789,914.10	44,100,922.66	39,841,354.29	36,394,274.30	33,199,781.27	29,790,934.92	26,980,455.55	25,429,200.91
	Oct-11	Oct-12	Oct-13	Oct-14	Oct-15	Oct-16	Oct-17	Oct-18	Oct-19	Oct-20
Current	49,745,710.11	44,305,793.08	40,720,448.53	38,631,373.01	36,316,176.46	33,783,611.16	29,923,541.94	25,647,283.86	23,080,749.84	21,215,630.34
1-30 Days	4,829,779.93	6,077,667.24	5,555,311.22	4,035,656.68	2,553,842.59	1,904,411.35	2,519,280.32	2,764,891.52	2,455,568.05	2,178,239.55
31-60 Days	2,164,736.87	2,497,068.52	1,897,189.15	915,390.35	610,870.79	325,520.74	479,585.14	822,800.59	645,815.69	1,015,886.50
61-90 Days	832,909.38	674,538.37	351,006.51	244,170.57	152,576.76	80,591.61	123,693.42	304,881.36	424,257.62	455,487.15
91-120 Days	185,927.64	37,049.54	65,494.72	27,305.39	15,044.32	113,389.30	29,919.13	36,727.45	101,809.10	178,799.00
121-150 Days	56,183.50	21,862.76	37,648.63	58,901.82	27,990.42	16,957.98	-	30,685.25	78,649.42	32,352.06
151-180 Days	10,162.38	-	414.20	15,482.70	-	6,653.42	-	39,785.06	-	26,272.12
181+ Days	83,597.62	100,584.12	162,401.14	172,642.14	164,852.95	163,138.74	123,761.32	143,879.83	193,605.83	326,534.19

Delinquency Status (% of Current Balance)

Current Portfolio Balance	57,909,007.43	53,714,563.63	48,789,914.10	44,100,922.66	39,841,354.29	36,394,274.30	33,199,781.27	29,790,934.92	26,980,455.55	25,429,200.91
	Oct-11	Oct-12	Oct-13	Oct-14	Oct-15	Oct-16	Oct-17	Oct-18	Oct-19	Oct-20
Current	85.90%	82.48%	83.46%	87.60%	91.15%	92.83%	90.13%	86.09%	85.55%	83.43%
1-30 Days	8.34%	11.31%	11.39%	9.15%	6.41%	5.23%	7.59%	9.28%	9.10%	8.57%
31-60 Days	3.74%	4.65%	3.89%	2.08%	1.53%	0.89%	1.44%	2.76%	2.39%	3.99%
61-90 Days	1.44%	1.26%	0.72%	0.55%	0.38%	0.22%	0.37%	1.02%	1.57%	1.79%
91-120 Days	0.32%	0.07%	0.13%	0.06%	0.04%	0.31%	0.09%	0.12%	0.38%	0.70%
121-150 Days	0.10%	0.04%	0.08%	0.13%	0.07%	0.05%	0.00%	0.10%	0.29%	0.13%
151-180 Days	0.02%	0.00%	0.00%	0.04%	0.00%	0.02%	0.00%	0.13%	0.00%	0.10%
181+ Days	0.14%	0.19%	0.33%	0.39%	0.41%	0.45%	0.37%	0.48%	0.72%	1.28%
Current - 90 Days	99.42%	99.70%	99.45%	99.38%	99.48%	99.18%	99.54%	99.16%	98.61%	97.78%
91-180 Days	0.44%	0.11%	0.21%	0.23%	0.11%	0.38%	0.09%	0.36%	0.67%	0.93%



Mortgages - La Hipotecaria Panama Migration Analysis (2008 Vintage)

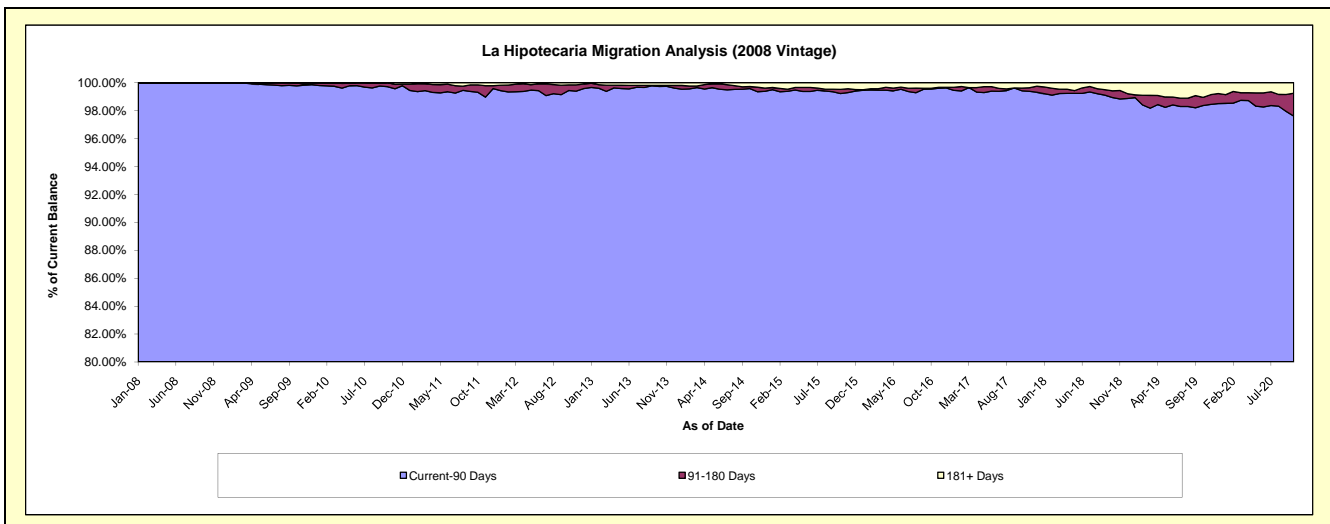
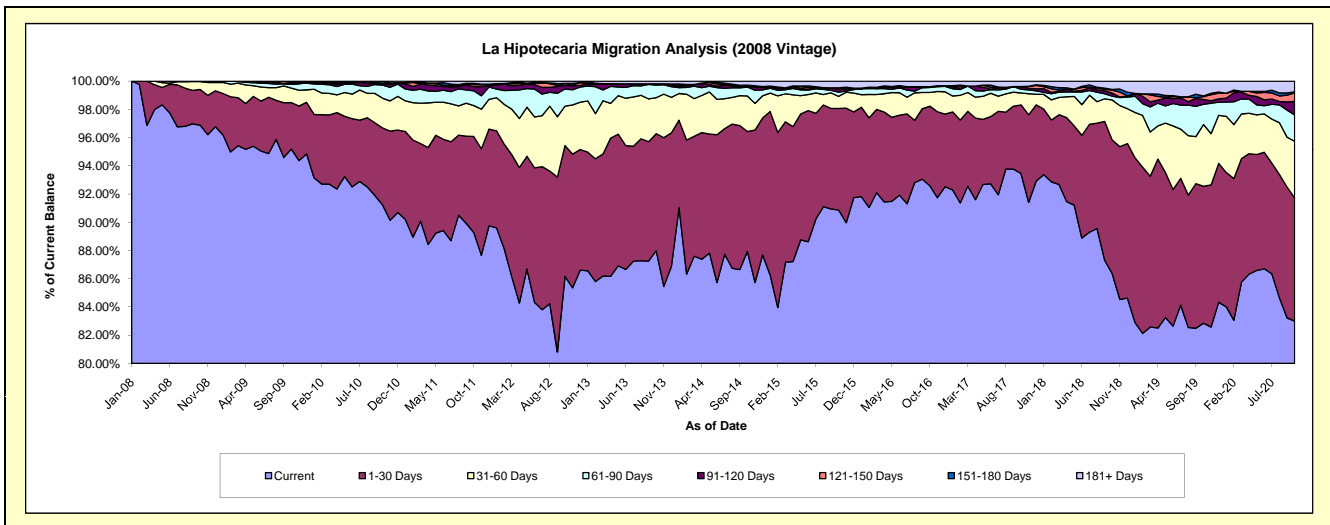
Delinquency Status (\$ of Current Balance)

Data Cutoff: 10/31/2020

Current Portfolio Balance	56,612,725.02	53,101,571.75	48,143,640.31	43,703,266.92	38,787,222.31	34,991,233.45	31,892,407.17	28,875,036.19	26,061,914.10	24,048,538.64
	Oct-11	Oct-12	Oct-13	Oct-14	Oct-15	Oct-16	Oct-17	Oct-18	Oct-19	Oct-20
Current	50,542,520.76	45,755,713.65	42,362,511.54	38,433,250.63	35,243,761.05	32,397,863.67	29,804,587.78	24,933,856.76	21,592,267.09	19,960,285.61
1-30 Days	3,850,592.87	4,923,255.88	3,989,429.96	3,710,553.70	2,794,433.51	1,973,302.82	1,551,923.08	2,737,204.23	2,529,526.07	2,097,901.95
31-60 Days	1,241,717.40	1,482,688.83	1,227,834.00	1,101,345.70	330,235.96	340,392.19	271,053.47	818,185.72	1,138,562.95	966,071.16
61-90 Days	589,921.24	642,823.43	432,604.26	274,674.66	117,407.73	122,591.10	81,586.46	80,174.65	375,779.00	450,127.95
91-120 Days	165,104.13	138,122.17	38,828.19	19,430.25	78,361.20	18,928.61	61,632.07	61,500.09	86,442.01	228,734.18
121-150 Days	87,539.28	70,941.10	-	24,278.48	40,283.81	-	-	-	61,387.79	55,239.96
151-180 Days	47,465.25	6,078.16	-	19,535.09	-	-	-	14,332.40	11,362.41	16,722.81
181+ Days	87,864.09	81,948.53	92,432.36	120,198.41	182,739.05	138,155.06	121,624.31	168,394.55	272,734.61	180,269.91

Delinquency Status (% of Current Balance)

Current Portfolio Balance	56,612,725.02	53,101,571.75	48,143,640.31	43,703,266.92	38,787,222.31	34,991,233.45	31,892,407.17	28,875,036.19	26,061,914.10	24,048,538.64
	Oct-11	Oct-12	Oct-13	Oct-14	Oct-15	Oct-16	Oct-17	Oct-18	Oct-19	Oct-20
Current	89.28%	86.17%	87.99%	87.94%	90.86%	92.59%	93.45%	86.35%	82.85%	83.00%
1-30 Days	6.80%	9.27%	8.29%	8.49%	7.20%	5.64%	4.87%	9.48%	9.71%	8.72%
31-60 Days	2.19%	2.79%	2.55%	2.52%	0.85%	0.97%	0.85%	2.83%	4.37%	4.02%
61-90 Days	1.04%	1.21%	0.90%	0.63%	0.30%	0.35%	0.26%	0.28%	1.44%	1.87%
91-120 Days	0.29%	0.26%	0.08%	0.04%	0.20%	0.05%	0.19%	0.21%	0.33%	0.95%
121-150 Days	0.15%	0.13%	0.00%	0.06%	0.10%	0.00%	0.00%	0.21%	0.21%	0.62%
151-180 Days	0.08%	0.01%	0.00%	0.04%	0.00%	0.00%	0.00%	0.05%	0.04%	0.07%
181+ Days	0.16%	0.15%	0.19%	0.28%	0.47%	0.39%	0.38%	0.58%	1.05%	0.75%
Current - 90 Days	99.31%	99.44%	99.73%	99.58%	99.22%	99.55%	99.43%	98.94%	98.37%	97.61%
91-180 Days	0.53%	0.41%	0.08%	0.14%	0.31%	0.05%	0.19%	0.48%	0.59%	1.64%



Mortgages - La Hipotecaria Panama Migration Analysis (2009 Vintage)

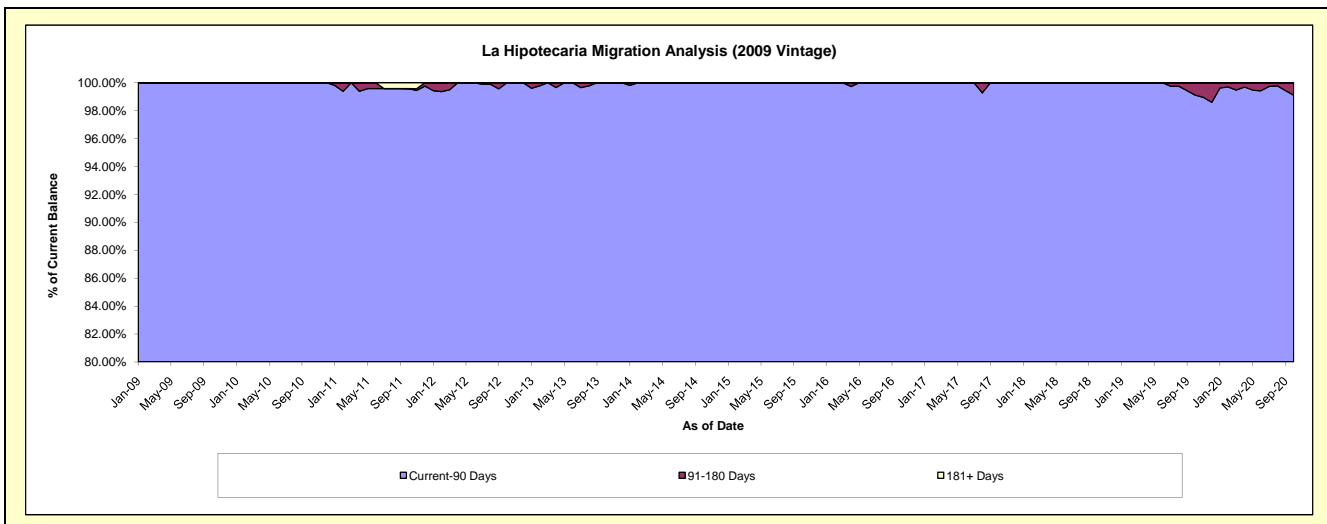
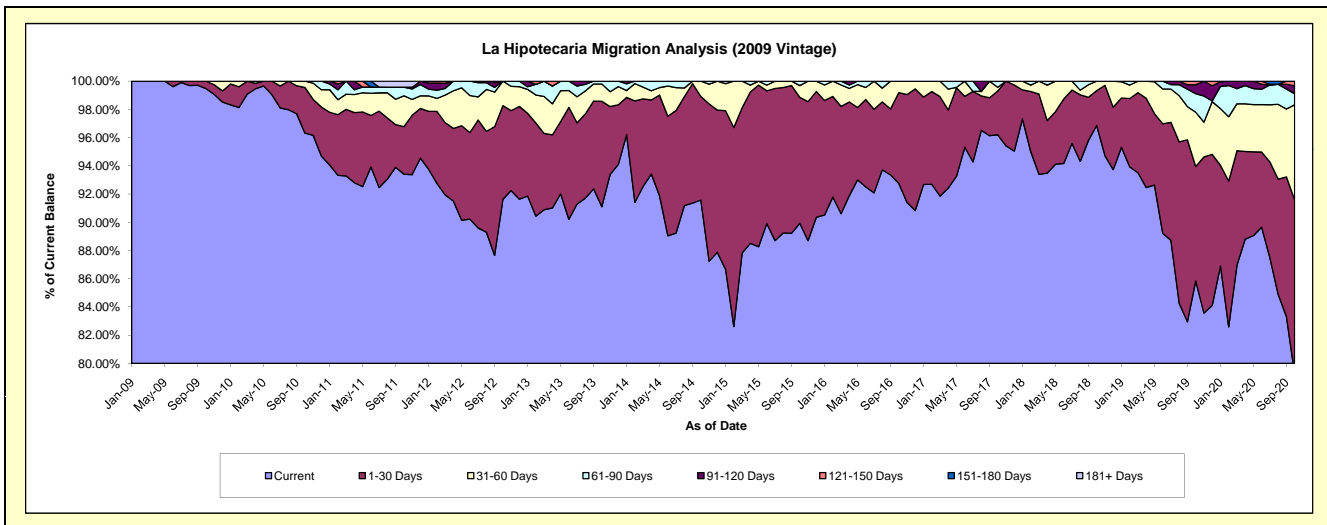
Delinquency Status (\$ of Current Balance)

Data Cutoff: 10/31/2020

Current Portfolio Balance	11,925,050.84	11,129,436.11	10,169,158.43	9,195,188.94	8,269,071.52	7,316,617.15	6,605,336.71	6,095,668.88	5,643,018.78	5,276,932.92
	Oct-11	Oct-12	Oct-13	Oct-14	Oct-15	Oct-16	Oct-17	Oct-18	Oct-19	Oct-20
Current	11,139,289.50	10,197,790.09	9,264,687.39	8,420,397.27	7,436,628.78	6,787,133.93	6,354,389.32	5,904,475.83	4,844,157.90	4,182,512.50
1-30 Days	401,686.73	738,676.72	759,305.28	675,559.46	737,909.19	470,398.95	204,908.37	150,256.18	457,576.72	650,424.53
31-60 Days	260,034.22	192,969.30	124,617.17	99,232.21	68,686.55	59,084.27	17,287.28	40,936.87	216,993.47	355,713.27
61-90 Days	73,504.00	-	20,548.59	-	25,847.00	-	28,751.74	-	74,094.09	41,073.57
91-120 Days	-	-	-	-	-	-	-	-	35,932.38	29,349.49
121-150 Days	-	-	-	-	-	-	-	-	14,264.22	17,859.56
151-180 Days	-	-	-	-	-	-	-	-	-	-
181+ Days	50,536.39	-	-	-	-	-	-	-	-	-

Delinquency Status (% of Current Balance)

Current Portfolio Balance	11,925,050.84	11,129,436.11	10,169,158.43	9,195,188.94	8,269,071.52	7,316,617.15	6,605,336.71	6,095,668.88	5,643,018.78	5,276,932.92
	Oct-11	Oct-12	Oct-13	Oct-14	Oct-15	Oct-16	Oct-17	Oct-18	Oct-19	Oct-20
Current	93.41%	91.63%	91.11%	91.57%	89.93%	92.76%	96.20%	96.86%	85.84%	79.26%
1-30 Days	3.37%	6.64%	7.47%	7.35%	8.92%	6.43%	3.10%	2.46%	8.11%	12.33%
31-60 Days	2.18%	1.73%	1.23%	1.08%	0.83%	0.81%	0.26%	0.67%	3.85%	6.74%
61-90 Days	0.62%	0.00%	0.20%	0.00%	0.31%	0.00%	0.44%	0.00%	1.31%	0.78%
91-120 Days	0.00%	0.00%	0.00%	0.00%	0.00%	0.00%	0.00%	0.00%	0.64%	0.56%
121-150 Days	0.00%	0.00%	0.00%	0.00%	0.00%	0.00%	0.00%	0.00%	0.25%	0.34%
151-180 Days	0.00%	0.00%	0.00%	0.00%	0.00%	0.00%	0.00%	0.00%	0.00%	0.00%
181+ Days	0.42%	0.00%	0.00%	0.00%	0.00%	0.00%	0.00%	0.00%	0.00%	0.00%
Current - 90 Days	99.58%	100.00%	100.00%	100.00%	100.00%	100.00%	100.00%	100.00%	99.11%	99.11%
91-180 Days	0.00%	0.00%	0.00%	0.00%	0.00%	0.00%	0.00%	0.00%	0.89%	0.89%



Mortgages - La Hipotecaria Panama Migration Analysis (2010 Vintage)

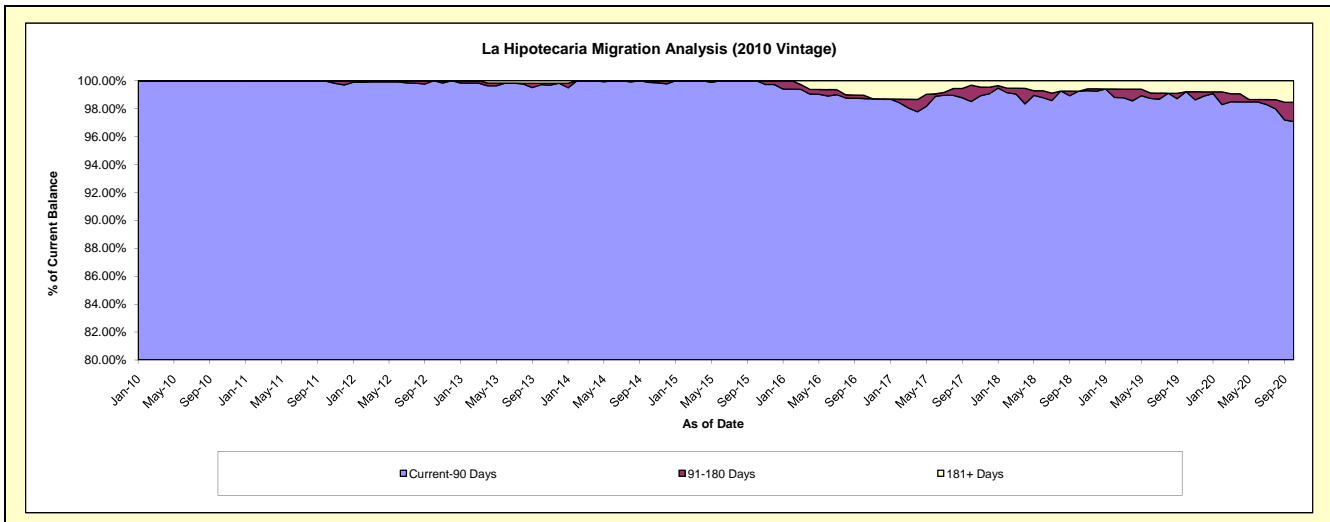
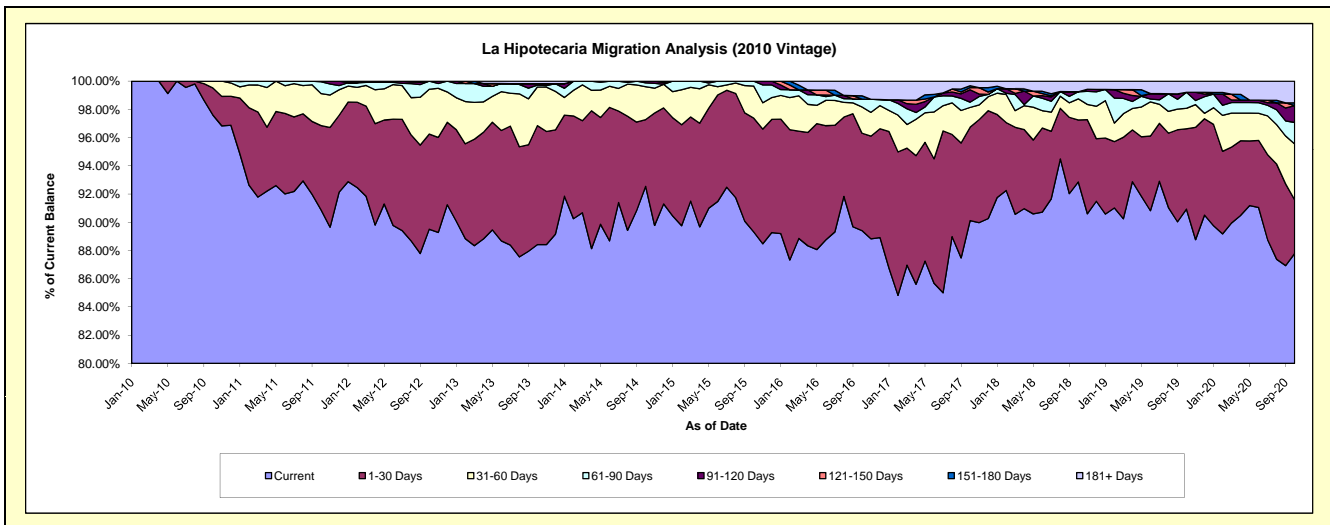
Delinquency Status (\$ of Current Balance)

Data Cutoff: 10/31/2020

Current Portfolio Balance	21,758,892.61	20,502,596.37	18,834,291.16	17,296,134.53	15,752,630.65	13,629,031.90	12,233,078.61	11,068,986.30	9,945,845.66	9,500,973.55
	Oct-11	Oct-12	Oct-13	Oct-14	Oct-15	Oct-16	Oct-17	Oct-18	Oct-19	Oct-20
Current	19,774,292.80	18,351,434.43	16,652,762.70	16,006,608.29	14,069,221.12	12,185,803.85	11,024,725.77	10,278,648.41	9,044,118.06	8,340,445.32
1-30 Days	1,299,796.07	1,382,393.69	1,587,873.77	817,497.38	1,270,050.24	940,804.26	810,213.11	486,476.80	566,465.09	361,648.67
31-60 Days	492,551.53	651,299.63	516,450.99	403,445.87	358,338.03	254,149.28	170,651.57	165,367.80	144,111.15	376,473.38
61-90 Days	182,764.15	117,468.62	24,779.45	47,476.18	55,021.26	74,837.80	45,027.75	55,639.19	112,995.73	144,471.94
91-120 Days	9,488.06	-	18,882.05	21,106.81	-	-	107,914.36	-	-	113,925.61
121-150 Days	-	-	-	-	-	-	18,728.84	-	-	-
151-180 Days	-	-	-	-	-	32,180.48	16,575.49	-	-	17,638.19
181+ Days	-	-	33,542.20	-	-	141,256.23	39,241.72	82,854.10	78,155.63	146,370.44

Delinquency Status (% of Current Balance)

Current Portfolio Balance	21,758,892.61	20,502,596.37	18,834,291.16	17,296,134.53	15,752,630.65	13,629,031.90	12,233,078.61	11,068,986.30	9,945,845.66	9,500,973.55
	Oct-11	Oct-12	Oct-13	Oct-14	Oct-15	Oct-16	Oct-17	Oct-18	Oct-19	Oct-20
Current	90.88%	89.51%	88.42%	92.54%	89.31%	89.41%	90.12%	92.86%	90.93%	87.79%
1-30 Days	5.97%	6.74%	8.43%	4.73%	8.06%	6.90%	6.62%	4.39%	5.70%	3.81%
31-60 Days	2.26%	3.18%	2.74%	2.33%	2.27%	1.86%	1.40%	1.49%	1.45%	3.96%
61-90 Days	0.84%	0.57%	0.13%	0.27%	0.35%	0.55%	0.37%	0.50%	1.14%	1.52%
91-120 Days	0.04%	0.00%	0.10%	0.12%	0.00%	0.00%	0.88%	0.00%	0.00%	1.20%
121-150 Days	0.00%	0.00%	0.00%	0.00%	0.00%	0.00%	0.15%	0.00%	0.00%	0.00%
151-180 Days	0.00%	0.00%	0.00%	0.00%	0.00%	0.24%	0.14%	0.00%	0.00%	0.19%
181+ Days	0.00%	0.00%	0.18%	0.00%	0.00%	1.04%	0.32%	0.75%	0.79%	1.54%
Current - 90 Days	99.96%	100.00%	99.72%	99.88%	100.00%	98.73%	98.51%	99.25%	99.21%	97.07%
91-180 Days	0.04%	0.00%	0.10%	0.12%	0.00%	0.24%	1.17%	0.00%	0.00%	1.38%



Mortgages - La Hipotecaria Panama Migration Analysis (2011 Vintage)

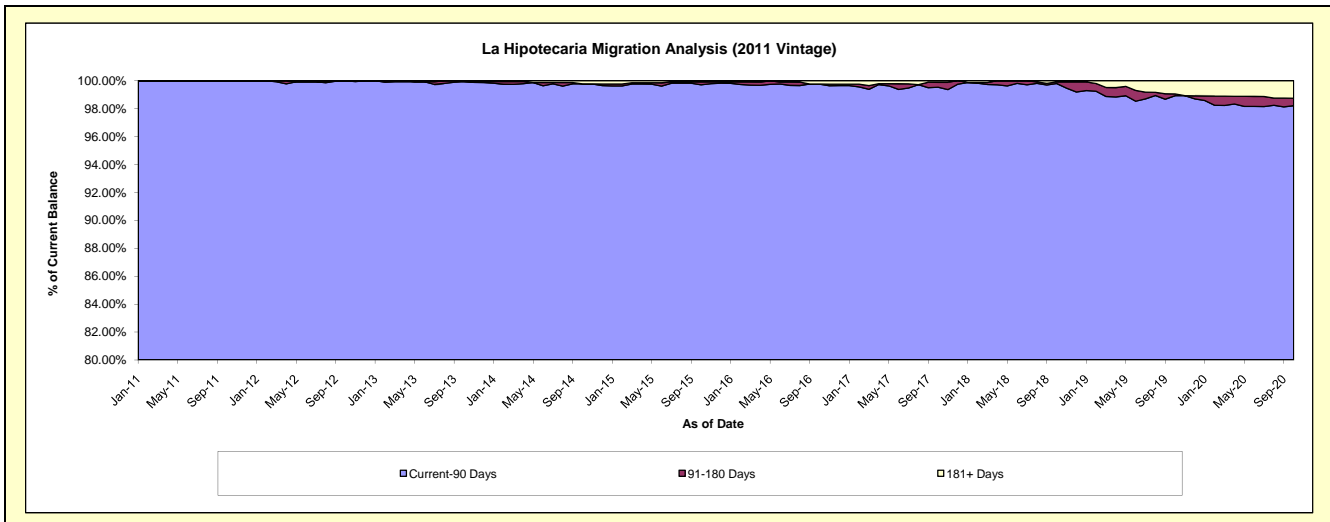
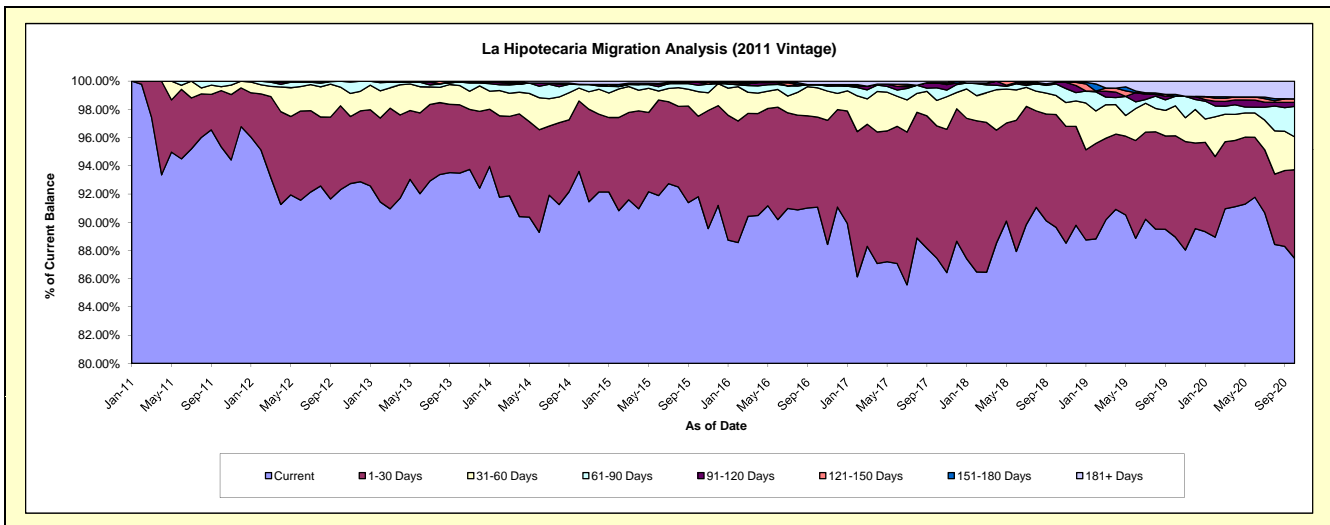
Delinquency Status (\$ of Current Balance)

Data Cutoff: 10/31/2020

Current Portfolio Balance	27,838,014.18	33,705,421.81	31,530,488.14	28,882,765.99	25,850,700.47	23,197,714.06	21,320,753.07	19,300,650.09	17,530,840.33	16,440,650.16
	Oct-11	Oct-12	Oct-13	Oct-14	Oct-15	Oct-16	Oct-17	Oct-18	Oct-19	Oct-20
Current	26,541,576.03	31,112,674.32	29,475,960.88	27,033,819.59	23,734,118.55	21,125,635.47	18,647,059.67	17,300,527.83	15,593,166.16	14,375,567.90
1-30 Days	1,110,240.96	2,004,046.25	1,526,309.00	1,444,285.71	1,474,707.83	1,481,566.33	1,997,948.61	1,543,287.13	1,259,156.77	1,033,682.56
31-60 Days	76,288.14	446,729.45	431,073.63	263,854.19	449,793.95	480,676.53	385,183.27	260,438.24	372,728.46	383,283.09
61-90 Days	109,909.05	141,971.79	79,000.87	75,023.22	117,103.56	53,814.86	190,723.90	157,926.44	118,558.46	354,188.37
91-120 Days	-	-	-	-	53,194.78	-	75,510.44	22,294.02	-	46,503.53
121-150 Days	-	-	-	-	-	-	-	-	-	41,474.08
151-180 Days	-	-	-	-	-	-	-	-	22,182.05	-
181+ Days	-	-	18,143.76	65,783.28	21,781.80	56,020.87	24,327.18	16,176.43	165,048.43	205,950.63

Delinquency Status (% of Current Balance)

Current Portfolio Balance	27,838,014.18	33,705,421.81	31,530,488.14	28,882,765.99	25,850,700.47	23,197,714.06	21,320,753.07	19,300,650.09	17,530,840.33	16,440,650.16
	Oct-11	Oct-12	Oct-13	Oct-14	Oct-15	Oct-16	Oct-17	Oct-18	Oct-19	Oct-20
Current	95.34%	92.31%	93.48%	93.60%	91.81%	91.07%	87.46%	89.64%	88.95%	87.44%
1-30 Days	3.99%	5.95%	4.84%	5.00%	5.70%	6.39%	9.37%	8.00%	7.18%	6.29%
31-60 Days	0.27%	1.33%	1.37%	0.91%	1.74%	2.07%	1.81%	1.35%	2.13%	2.33%
61-90 Days	0.39%	0.42%	0.25%	0.26%	0.45%	0.23%	0.89%	0.82%	0.68%	2.15%
91-120 Days	0.00%	0.00%	0.00%	0.00%	0.21%	0.00%	0.35%	0.12%	0.00%	0.28%
121-150 Days	0.00%	0.00%	0.00%	0.00%	0.00%	0.00%	0.00%	0.00%	0.00%	0.25%
151-180 Days	0.00%	0.00%	0.00%	0.00%	0.00%	0.00%	0.00%	0.00%	0.13%	0.00%
181+ Days	0.00%	0.00%	0.06%	0.23%	0.08%	0.24%	0.11%	0.08%	0.94%	1.25%
Current - 90 Days	100.00%	100.00%	99.94%	99.77%	99.71%	99.76%	99.53%	99.80%	98.93%	98.21%
91-180 Days	0.00%	0.00%	0.00%	0.00%	0.21%	0.00%	0.35%	0.12%	0.13%	0.54%



Mortgages - La Hipotecaria Panama Migration Analysis (2012 Vintage)

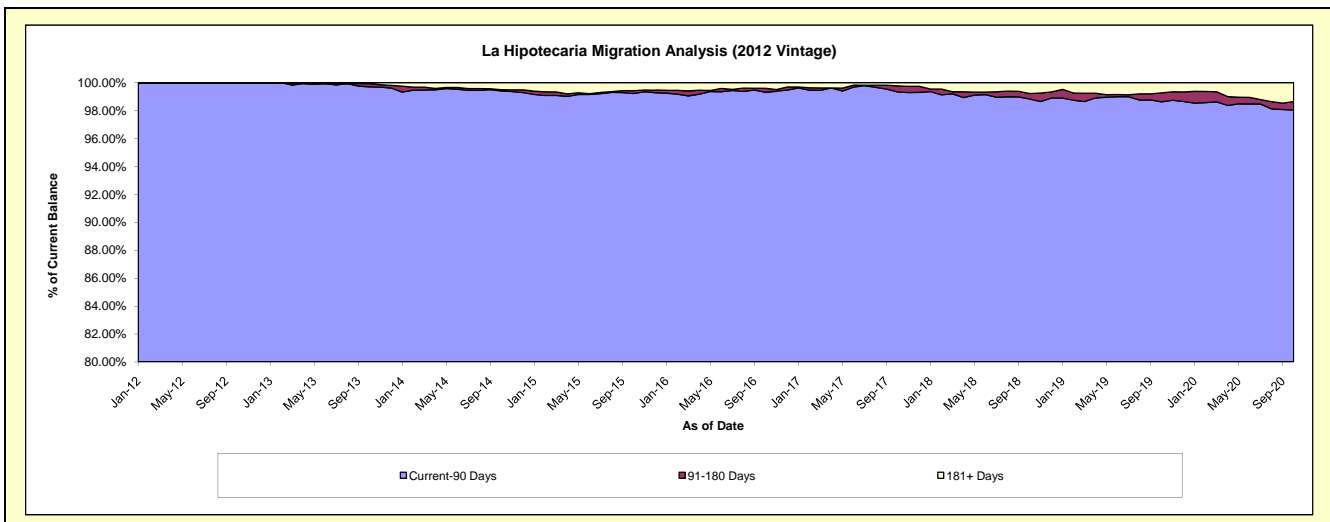
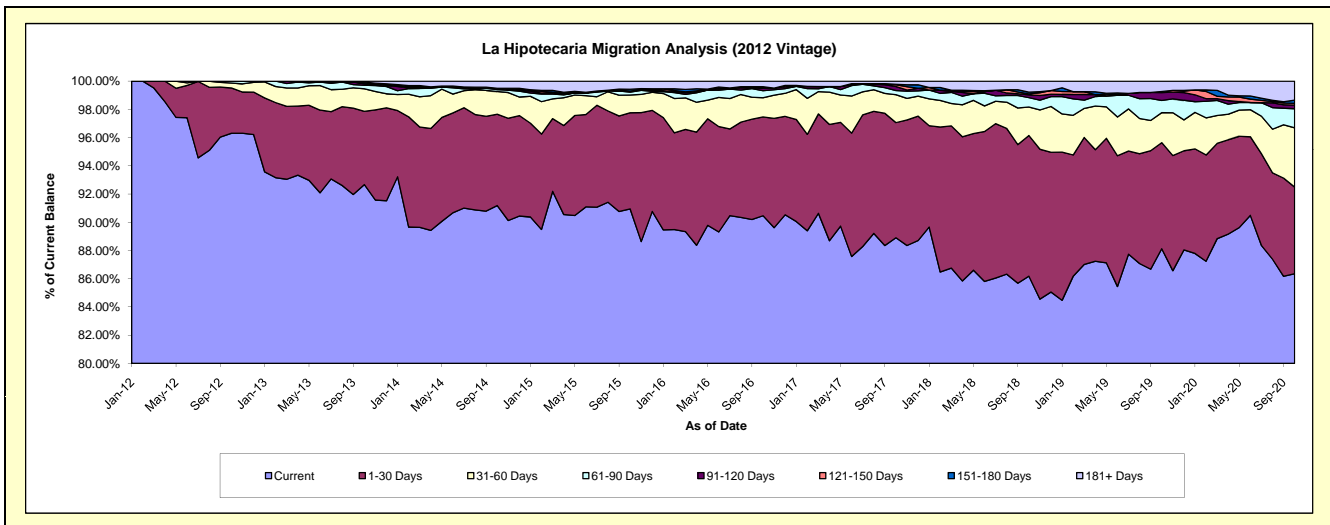
Delinquency Status (\$ of Current Balance)

Data Cutoff: 10/31/2020

Current Portfolio Balance	-	40,789,793.38	47,696,827.57	44,687,874.42	40,975,287.43	37,132,002.46	34,385,453.69	31,665,001.39	28,957,232.03	26,889,992.59
	Oct-12	Oct-13	Oct-14	Oct-15	Oct-16	Oct-17	Oct-18	Oct-19	Oct-20	
Current	39,285,572.28	44,202,158.87	40,748,190.14	37,267,202.26	33,591,344.72	30,570,668.88	27,288,858.76	25,519,345.78	23,220,730.05	
1-30 Days	1,307,492.53	2,477,225.85	2,892,761.13	2,789,388.15	2,598,152.98	2,804,924.97	3,157,402.74	2,175,958.17	1,651,290.60	
31-60 Days	144,724.11	758,560.14	720,447.62	518,412.29	506,627.84	680,441.12	638,123.22	615,293.74	1,129,552.04	
61-90 Days	52,004.46	119,485.18	60,663.48	82,826.90	184,556.00	101,137.19	210,756.51	251,173.55	362,276.32	
91-120 Days	-	48,626.92	40,583.17	27,731.72	69,815.81	96,691.51	62,235.85	160,068.03	69,254.36	
121-150 Days	-	24,392.35	-	3,930.40	-	43,477.81	23,097.58	23,865.63	35,212.13	
151-180 Days	-	35,173.98	-	51,895.94	34,020.50	12,073.61	39,386.24	-	59,111.67	
181+ Days	-	31,204.28	225,228.88	233,899.77	147,484.61	76,038.60	245,140.49	211,527.13	362,565.42	

Delinquency Status (% of Current Balance)

Current Portfolio Balance	-	40,789,793.38	47,696,827.57	44,687,874.42	40,975,287.43	37,132,002.46	34,385,453.69	31,665,001.39	28,957,232.03	26,889,992.59
	Oct-12	Oct-13	Oct-14	Oct-15	Oct-16	Oct-17	Oct-18	Oct-19	Oct-20	
Current	96.31%	92.67%	91.18%	90.95%	90.46%	88.91%	86.18%	88.13%	86.35%	
1-30 Days	3.21%	5.19%	6.47%	6.81%	7.00%	8.16%	9.97%	7.51%	6.14%	
31-60 Days	0.35%	1.59%	1.61%	1.27%	1.36%	1.98%	2.02%	2.12%	4.20%	
61-90 Days	0.13%	0.25%	0.14%	0.20%	0.50%	0.29%	0.67%	0.87%	1.35%	
91-120 Days	0.00%	0.10%	0.09%	0.07%	0.19%	0.28%	0.20%	0.55%	0.26%	
121-150 Days	0.00%	0.05%	0.00%	0.01%	0.00%	0.13%	0.07%	0.08%	0.13%	
151-180 Days	0.00%	0.07%	0.00%	0.13%	0.09%	0.04%	0.12%	0.00%	0.22%	
181+ Days	0.00%	0.07%	0.50%	0.57%	0.40%	0.22%	0.77%	0.73%	1.35%	
Current - 90 Days	100.00%	99.71%	99.41%	99.23%	99.32%	99.34%	98.83%	98.63%	98.04%	
91-180 Days	0.00%	0.23%	0.09%	0.20%	0.28%	0.44%	0.39%	0.64%	0.61%	



Mortgages - La Hipotecaria Panama Migration Analysis (2013 Vintage)

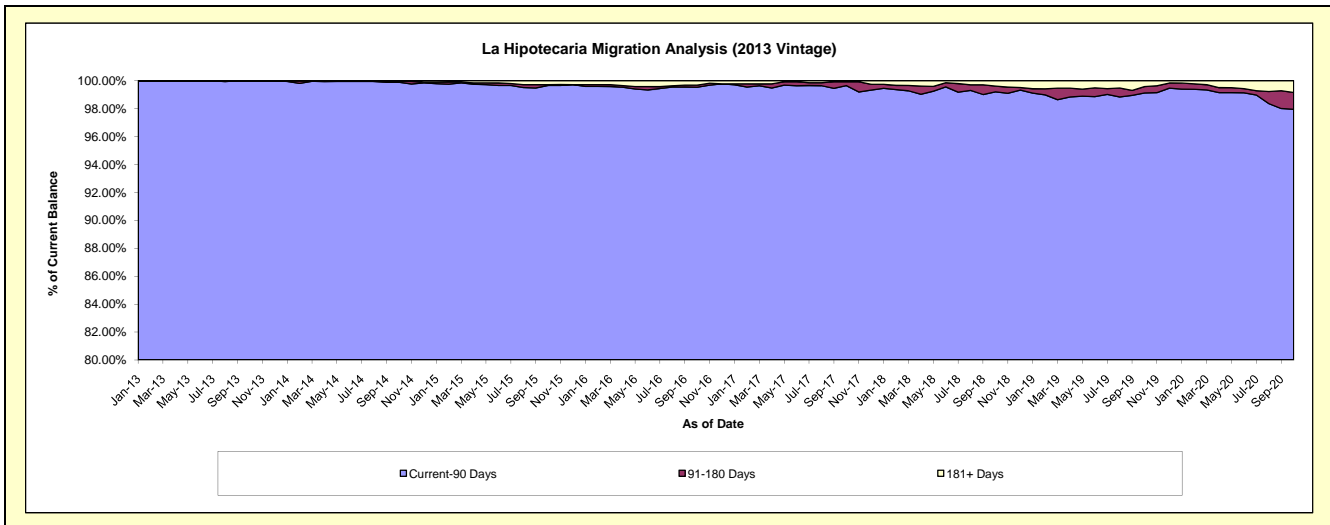
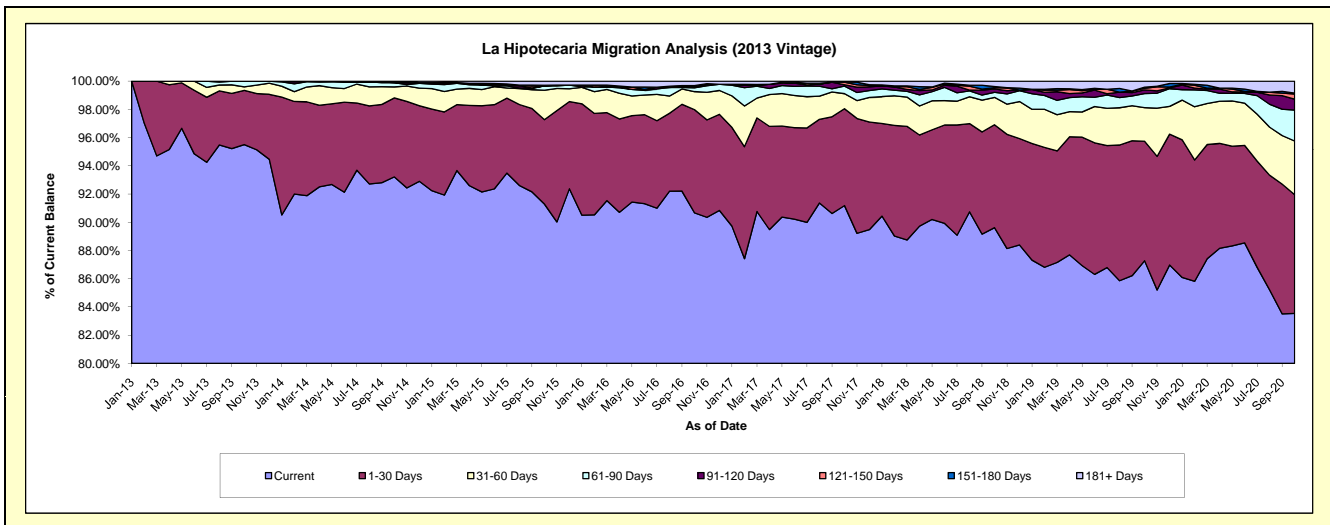
Delinquency Status (\$ of Current Balance)

Data Cutoff: 10/31/2020

Current Portfolio Balance	-	-	53,939,920.57	61,078,973.66	57,069,845.48	52,434,779.16	48,459,383.75	44,882,848.11	40,901,576.80	38,655,093.08
	Oct-13	Oct-14	Oct-15	Oct-16	Oct-17	Oct-18	Oct-19	Oct-20		
Current	51,513,923.73	56,936,167.68	52,102,159.39	47,542,186.55	44,187,175.10	40,224,065.79	35,697,858.85	32,294,296.52		
1-30 Days	2,073,588.80	3,419,294.55	3,410,301.01	3,833,991.53	3,326,057.29	3,273,125.25	3,461,440.48	3,252,578.14		
31-60 Days	136,570.63	474,501.93	1,191,343.46	671,916.10	517,295.43	869,881.88	974,261.95	1,468,703.75		
61-90 Days	215,837.41	182,754.20	175,701.54	141,962.87	259,264.41	160,141.34	409,767.90	847,984.10		
91-120 Days	-	-	-	35,303.83	45,108.55	110,704.82	104,708.06	298,371.05		
121-150 Days	-	33,780.80	-	22,242.59	88,967.88	40,647.67	49,157.27	139,582.48		
151-180 Days	-	-	26,376.00	20,448.77	-	33,643.97	32,029.80	27,065.72		
181+ Days	-	32,474.50	163,964.08	166,726.92	35,515.09	170,637.39	172,352.49	326,511.32		

Delinquency Status (% of Current Balance)

Current Portfolio Balance	-	-	53,939,920.57	61,078,973.66	57,069,845.48	52,434,779.16	48,459,383.75	44,882,848.11	40,901,576.80	38,655,093.08
	Oct-13	Oct-14	Oct-15	Oct-16	Oct-17	Oct-18	Oct-19	Oct-20		
Current	95.50%	93.22%	91.30%	90.67%	91.18%	89.62%	87.28%	83.54%		
1-30 Days	3.84%	5.60%	5.98%	7.31%	6.86%	7.29%	8.46%	8.41%		
31-60 Days	0.25%	0.78%	2.09%	1.28%	1.07%	1.94%	2.38%	3.80%		
61-90 Days	0.40%	0.30%	0.31%	0.27%	0.54%	0.36%	1.00%	2.19%		
91-120 Days	0.00%	0.00%	0.00%	0.07%	0.09%	0.25%	0.26%	0.77%		
121-150 Days	0.00%	0.06%	0.00%	0.04%	0.18%	0.09%	0.12%	0.36%		
151-180 Days	0.00%	0.00%	0.05%	0.04%	0.00%	0.07%	0.08%	0.07%		
181+ Days	0.00%	0.05%	0.29%	0.32%	0.07%	0.38%	0.42%	0.84%		
Current - 90 Days	100.00%	99.89%	99.67%	99.53%	99.65%	99.21%	99.12%	97.95%		
91-180 Days	0.00%	0.06%	0.05%	0.15%	0.28%	0.41%	0.45%	1.20%		



Mortgages - La Hipotecaria Panama Migration Analysis (2014 Vintage)

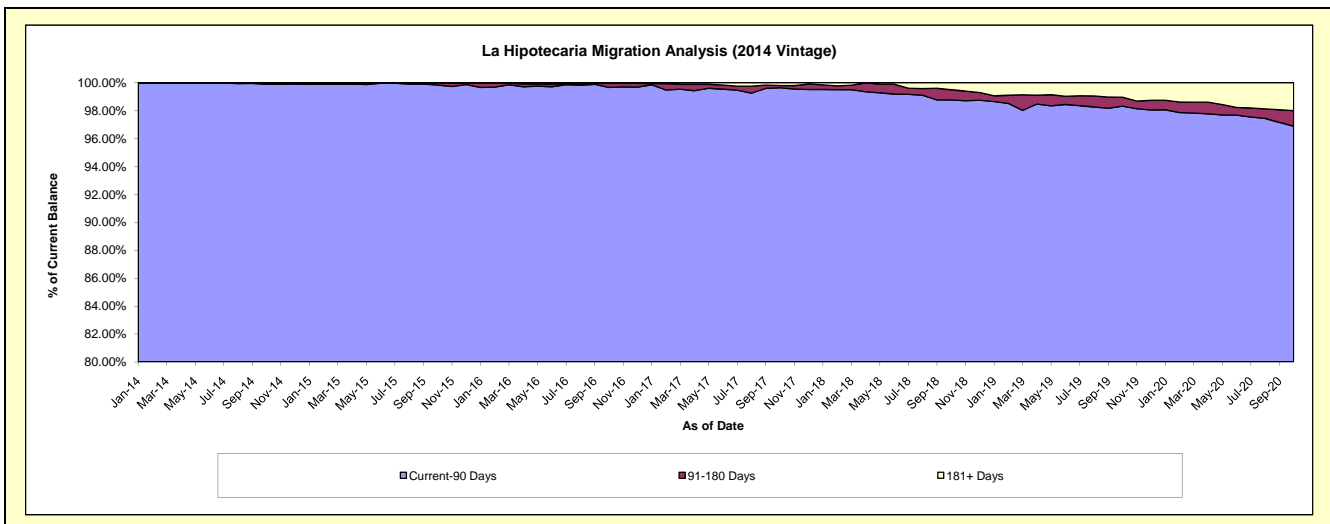
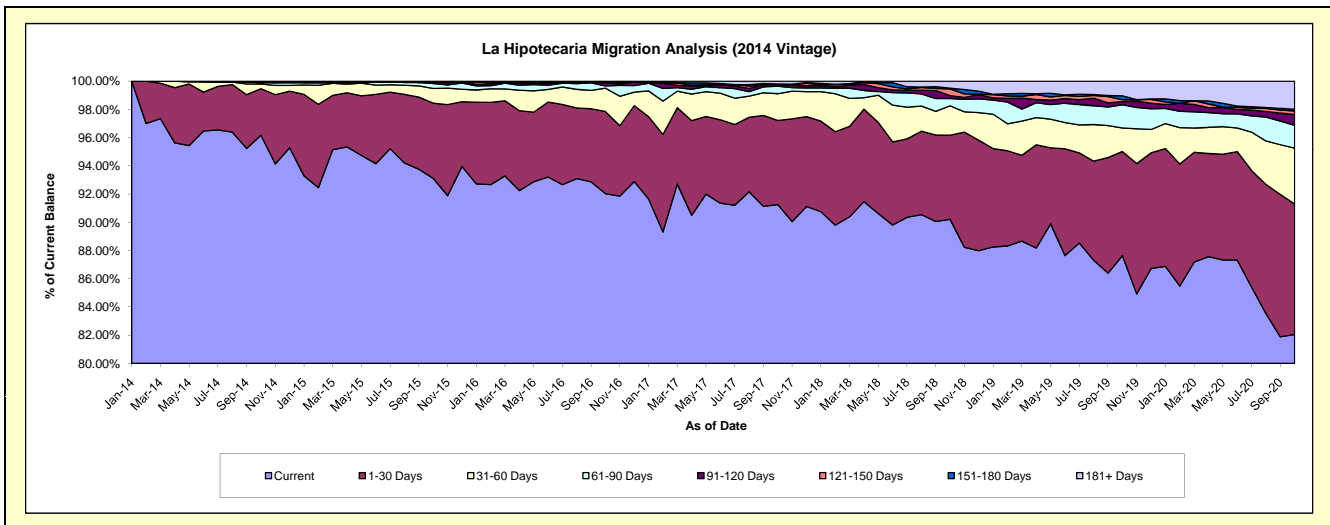
Delinquency Status (\$ of Current Balance)

Data Cutoff: 10/31/2020

Current Portfolio Balance	-	-	-	60,529,134.95	68,761,023.96	64,328,858.15	59,890,974.91	56,195,407.08	52,316,940.85	49,543,844.46
				Oct-14	Oct-15	Oct-16	Oct-17	Oct-18	Oct-19	Oct-20
Current				58,210,351.16	64,026,142.29	59,197,550.87	54,654,230.22	50,693,780.87	45,848,717.43	40,651,281.61
1-30 Days				1,996,882.71	3,661,827.64	3,745,769.96	3,571,354.63	3,349,489.52	3,860,768.16	4,578,345.33
31-60 Days				202,419.43	717,007.07	1,065,795.77	1,135,096.83	1,171,200.46	871,848.55	1,961,272.91
61-90 Days				50,797.71	240,596.58	101,916.09	316,718.37	290,495.75	858,204.32	805,367.81
91-120 Days				38,378.24	85,144.68	143,131.58	69,051.31	111,446.94	119,638.35	369,956.11
121-150 Days				-	-	38,734.18	21,610.29	267,890.67	73,353.45	131,974.32
151-180 Days				16,666.70	-	-	-	30,207.41	141,527.59	53,642.69
181+ Days				13,639.00	30,305.70	35,959.70	122,913.26	280,895.46	542,883.00	992,003.68

Delinquency Status (% of Current Balance)

Current Portfolio Balance	-	-	-	60,529,134.95	68,761,023.96	64,328,858.15	59,890,974.91	56,195,407.08	52,316,940.85	49,543,844.46
				Oct-14	Oct-15	Oct-16	Oct-17	Oct-18	Oct-19	Oct-20
Current				96.17%	93.11%	92.02%	91.26%	90.21%	87.64%	82.05%
1-30 Days				3.30%	5.33%	5.82%	5.96%	5.96%	7.38%	9.24%
31-60 Days				0.33%	1.04%	1.66%	1.90%	2.08%	1.67%	3.96%
61-90 Days				0.08%	0.35%	0.16%	0.53%	0.52%	1.64%	1.63%
91-120 Days				0.06%	0.12%	0.22%	0.12%	0.20%	0.23%	0.75%
121-150 Days				0.00%	0.00%	0.06%	0.04%	0.48%	0.14%	0.27%
151-180 Days				0.03%	0.00%	0.00%	0.00%	0.05%	0.27%	0.11%
181+ Days				0.02%	0.04%	0.06%	0.21%	0.50%	1.04%	2.00%
Current - 90 Days				99.89%	99.83%	99.66%	99.64%	98.77%	98.32%	96.88%
91-180 Days				0.09%	0.12%	0.28%	0.15%	0.73%	0.64%	1.12%



Mortgages - La Hipotecaria Panama Migration Analysis (2015 Vintage)

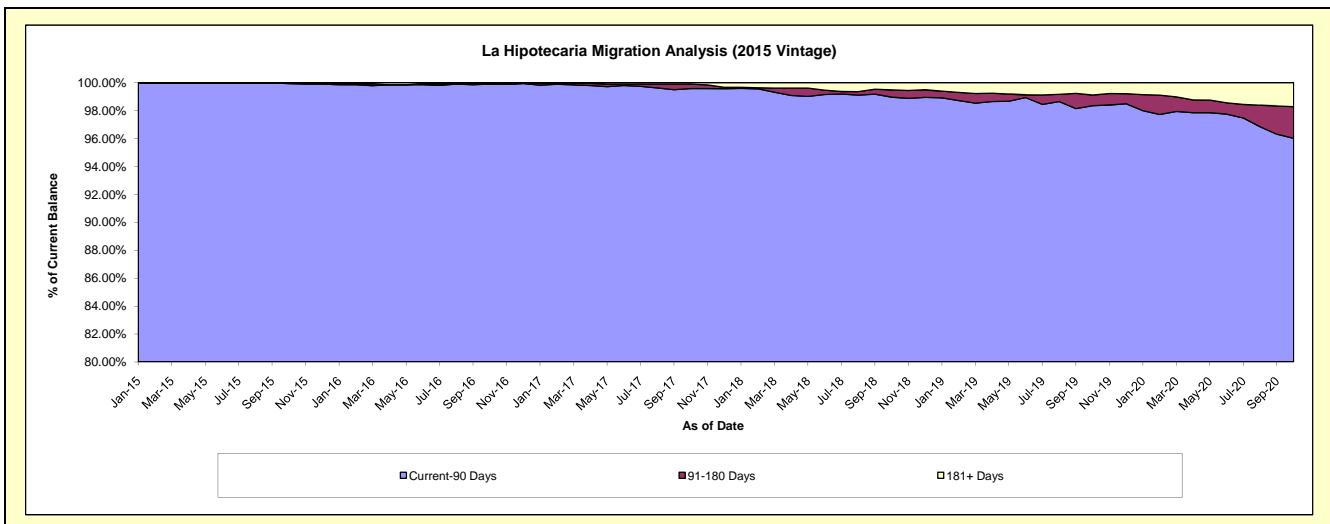
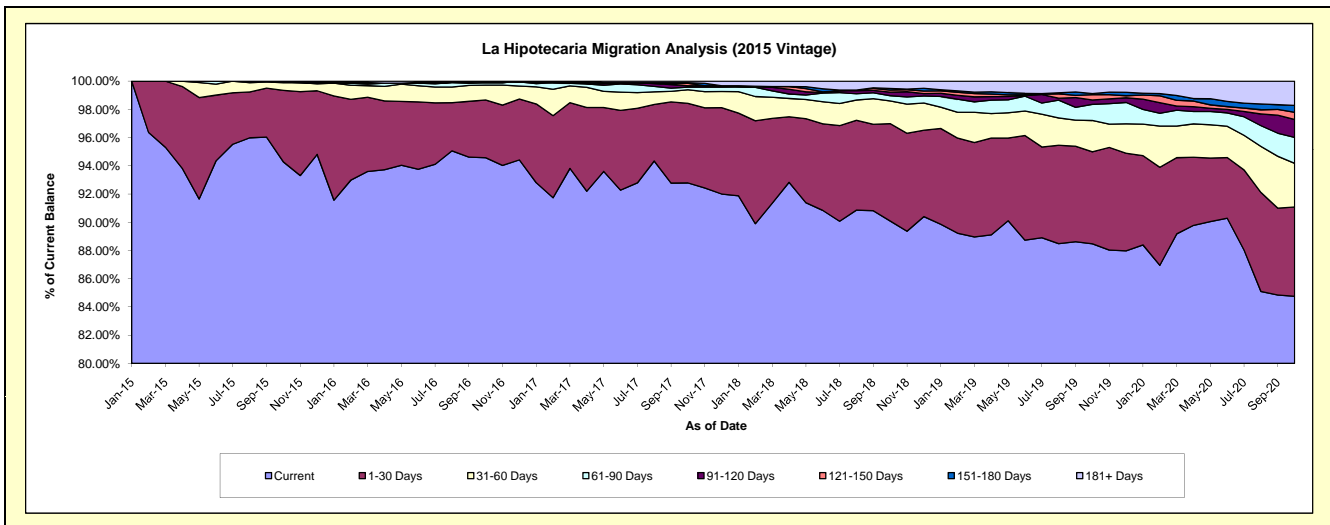
Delinquency Status (\$ of Current Balance)

Data Cutoff: 10/31/2020

Current Portfolio Balance	-	-	-	-	66,588,002.96	76,491,067.81	72,889,192.08	68,675,669.78	64,975,325.10	62,345,078.96
					Oct-15	Oct-16	Oct-17	Oct-18	Oct-19	Oct-20
Current					62,774,448.64	72,340,847.91	67,633,016.88	61,867,055.71	57,486,967.94	52,843,962.30
1-30 Days					3,381,774.84	3,131,703.33	4,108,022.51	4,741,736.43	4,235,231.91	3,941,145.76
31-60 Days					357,580.32	808,075.76	707,536.71	1,103,956.47	1,440,855.57	1,930,141.75
61-90 Days					34,599.16	136,525.07	133,899.17	254,348.74	744,147.66	1,144,818.41
91-120 Days					39,600.00	-	71,746.21	177,780.12	202,244.82	791,177.54
121-150 Days					-	-	121,668.79	95,570.41	242,362.28	320,805.29
151-180 Days					-	-	32,886.43	80,643.95	50,055.57	302,500.52
181+ Days					-	73,915.74	80,415.38	354,577.95	573,459.35	1,070,527.39

Delinquency Status (% of Current Balance)

Current Portfolio Balance	-	-	-	-	66,588,002.96	76,491,067.81	72,889,192.08	68,675,669.78	64,975,325.10	62,345,078.96
					Oct-15	Oct-16	Oct-17	Oct-18	Oct-19	Oct-20
Current					94.27%	94.57%	92.79%	90.09%	88.48%	84.76%
1-30 Days					5.08%	4.09%	5.64%	6.90%	6.52%	6.32%
31-60 Days					0.54%	1.06%	0.97%	1.61%	2.22%	3.10%
61-90 Days					0.05%	0.18%	0.18%	0.37%	1.15%	1.84%
91-120 Days					0.06%	0.00%	0.10%	0.26%	0.31%	1.27%
121-150 Days					0.00%	0.00%	0.17%	0.14%	0.37%	0.51%
151-180 Days					0.00%	0.00%	0.05%	0.12%	0.08%	0.49%
181+ Days					0.00%	0.10%	0.11%	0.52%	0.88%	1.72%
Current - 90 Days					99.94%	99.90%	99.58%	98.97%	98.36%	96.01%
91-180 Days					0.06%	0.00%	0.31%	0.52%	0.76%	2.27%



Mortgages - La Hipotecaria Panama Migration Analysis (2016 Vintage)

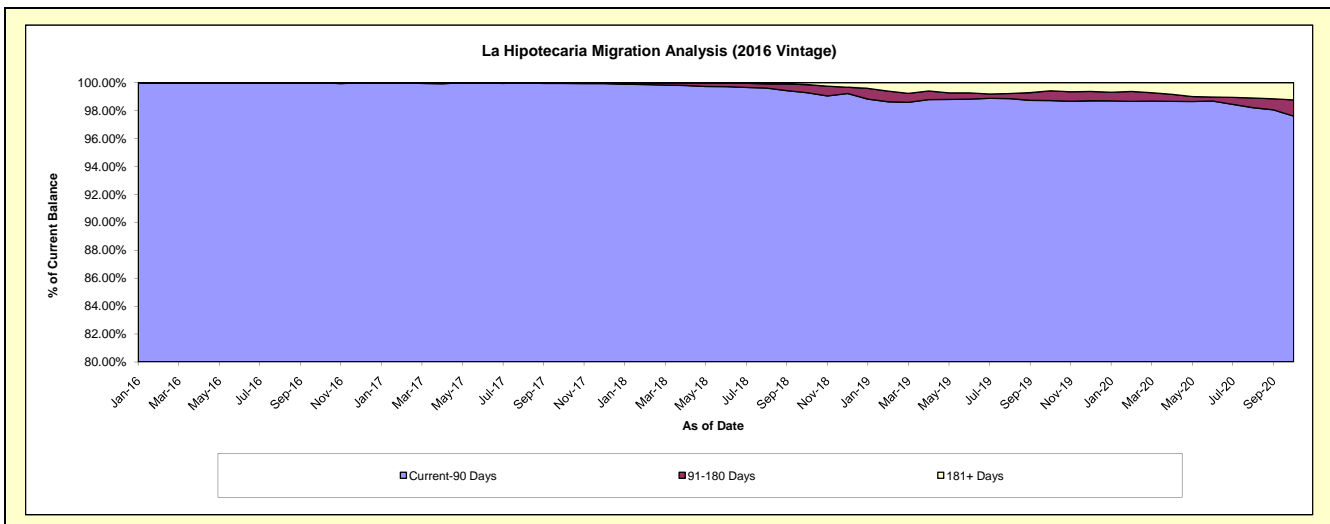
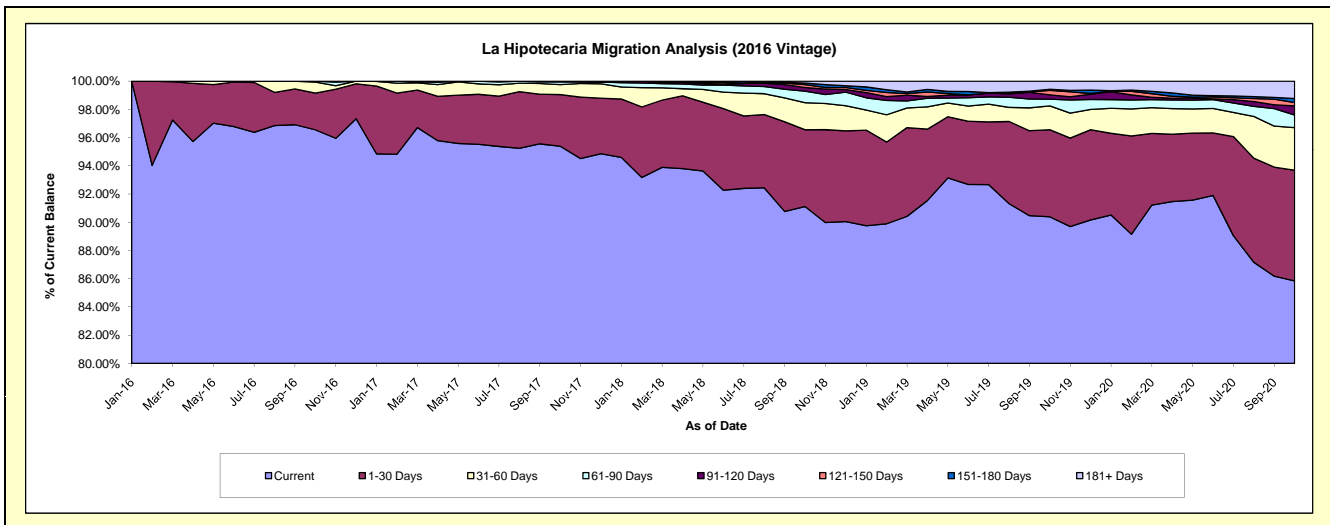
Delinquency Status (\$ of Current Balance)

Data Cutoff: 10/31/2020

Current Portfolio Balance	-	-	-	-	-	61,695,390.54	72,580,184.05	69,250,100.57	65,755,622.18	63,487,144.32
						Oct-16	Oct-17	Oct-18	Oct-19	Oct-20
Current						59,568,438.75	69,237,334.97	63,100,130.72	59,434,520.71	54,503,260.62
1-30 Days						1,605,526.16	2,651,929.23	3,768,155.96	4,056,992.45	4,979,197.98
31-60 Days						482,915.63	515,489.74	1,326,906.37	1,113,566.94	1,912,660.24
61-90 Days						38,510.00	137,400.50	561,636.10	311,015.46	571,833.36
91-120 Days						-	38,029.61	181,994.31	205,009.21	405,229.05
121-150 Days						-	-	140,570.71	207,992.38	157,028.49
151-180 Days						-	-	75,747.26	46,747.98	174,018.60
181+ Days						-	-	94,959.14	379,777.05	783,915.98

Delinquency Status (% of Current Balance)

Current Portfolio Balance	-	-	-	-	-	61,695,390.54	72,580,184.05	69,250,100.57	65,755,622.18	63,487,144.32
						Oct-16	Oct-17	Oct-18	Oct-19	Oct-20
Current						96.55%	95.39%	91.12%	90.39%	85.85%
1-30 Days						2.60%	3.65%	5.44%	6.17%	7.84%
31-60 Days						0.78%	0.71%	1.92%	1.69%	3.01%
61-90 Days						0.06%	0.19%	0.81%	0.47%	0.90%
91-120 Days						0.00%	0.05%	0.26%	0.31%	0.64%
121-150 Days						0.00%	0.00%	0.20%	0.32%	0.25%
151-180 Days						0.00%	0.00%	0.11%	0.07%	0.27%
181+ Days						0.00%	0.00%	0.14%	0.58%	1.23%
Current - 90 Days						100.00%	99.95%	99.29%	98.72%	97.61%
91-180 Days						0.00%	0.05%	0.58%	0.70%	1.16%



Mortgages - La Hipotecaria Panama Migration Analysis (2017 Vintage)

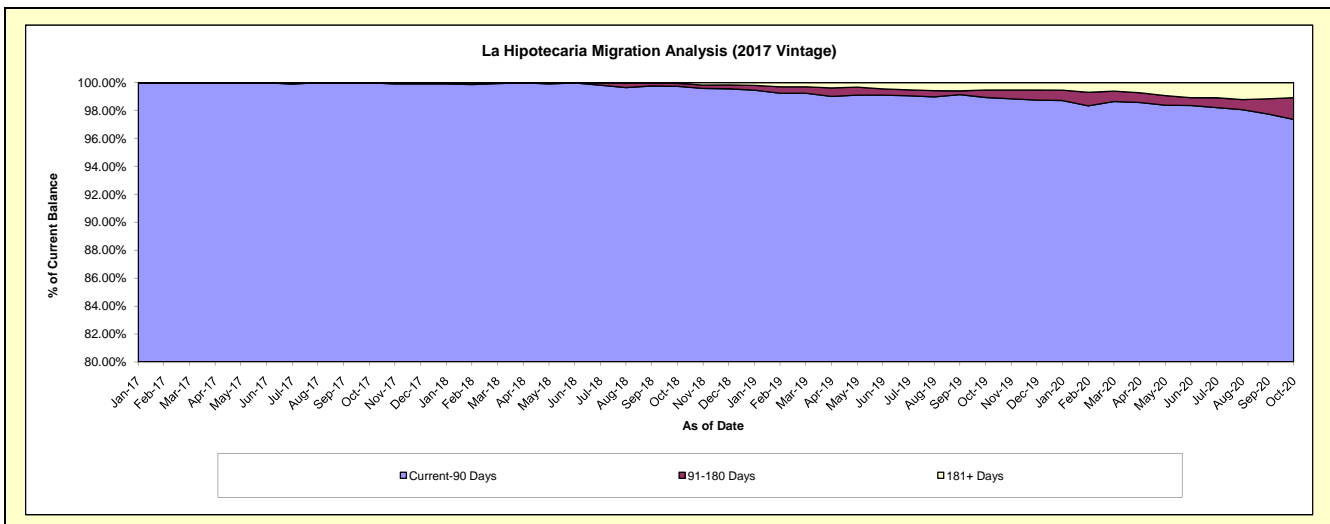
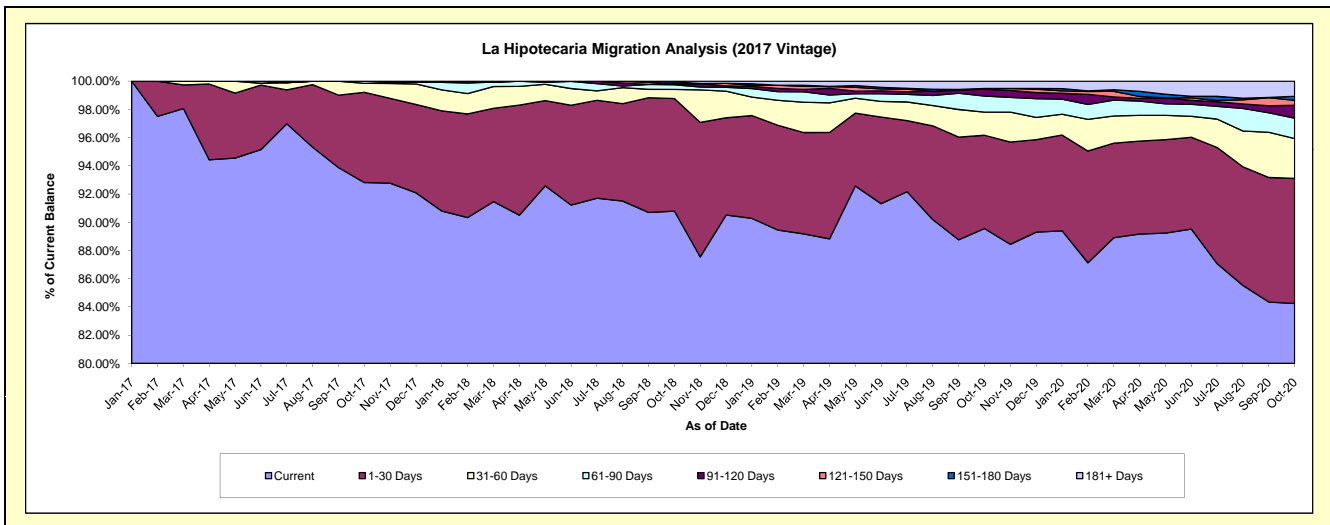
Delinquency Status (\$ of Current Balance)

Data Cutoff: 10/31/2020

Current Portfolio Balance	-	-	-	-	-	-	-	72,718,224.18	85,507,308.12	81,960,373.30	79,420,656.97
								Oct-17	Oct-18	Oct-19	Oct-20
Current								67,493,082.53	77,633,237.87	73,401,694.11	66,912,164.96
1-30 Days								4,651,540.75	6,823,023.84	5,417,210.13	7,036,667.94
31-60 Days								461,463.19	551,122.85	1,340,789.28	2,246,730.14
61-90 Days								112,137.71	281,595.13	936,812.22	1,137,063.63
91-120 Days								-	56,861.05	397,339.64	728,855.29
121-150 Days								-	-	42,663.84	285,306.82
151-180 Days								-	120,192.99	-	224,044.68
181+ Days								-	41,274.39	423,864.08	849,823.51

Delinquency Status (% of Current Balance)

Current Portfolio Balance	-	-	-	-	-	-	-	72,718,224.18	85,507,308.12	81,960,373.30	79,420,656.97
								Oct-17	Oct-18	Oct-19	Oct-20
Current								92.81%	90.79%	89.56%	84.25%
1-30 Days								6.40%	7.98%	6.61%	8.86%
31-60 Days								0.63%	0.64%	1.64%	2.83%
61-90 Days								0.15%	0.33%	1.14%	1.43%
91-120 Days								0.00%	0.07%	0.48%	0.92%
121-150 Days								0.00%	0.00%	0.05%	0.36%
151-180 Days								0.00%	0.14%	0.00%	0.28%
181+ Days								0.00%	0.05%	0.52%	1.07%
Current - 90 Days								100.00%	99.74%	98.95%	97.37%
91-180 Days								0.00%	0.21%	0.54%	1.56%



Mortgages - La Hipotecaria Panama Migration Analysis (2018 Vintage)

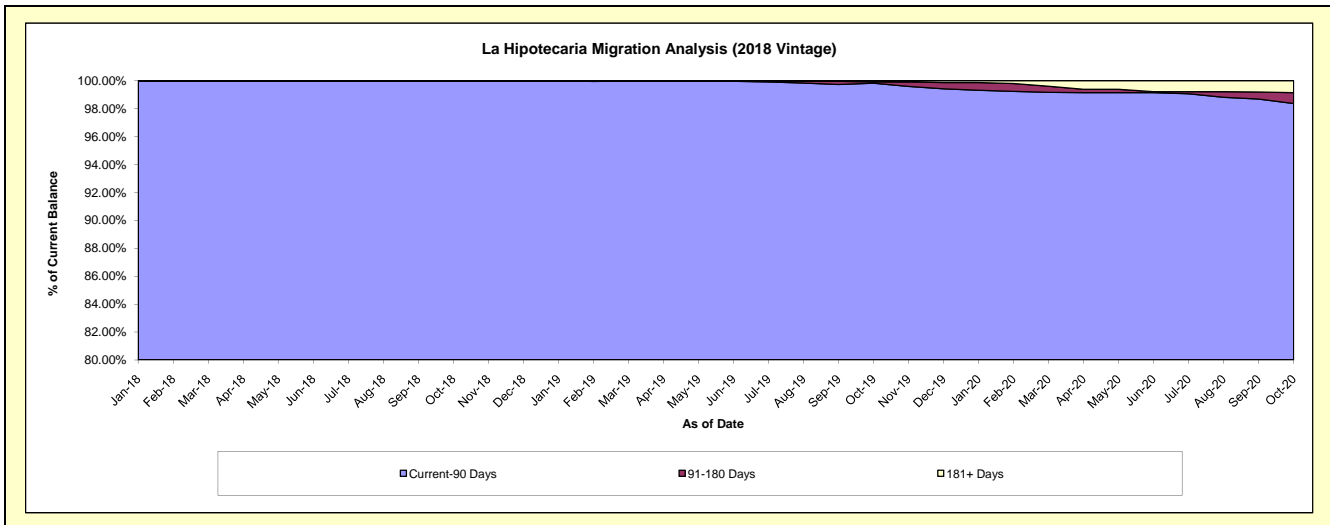
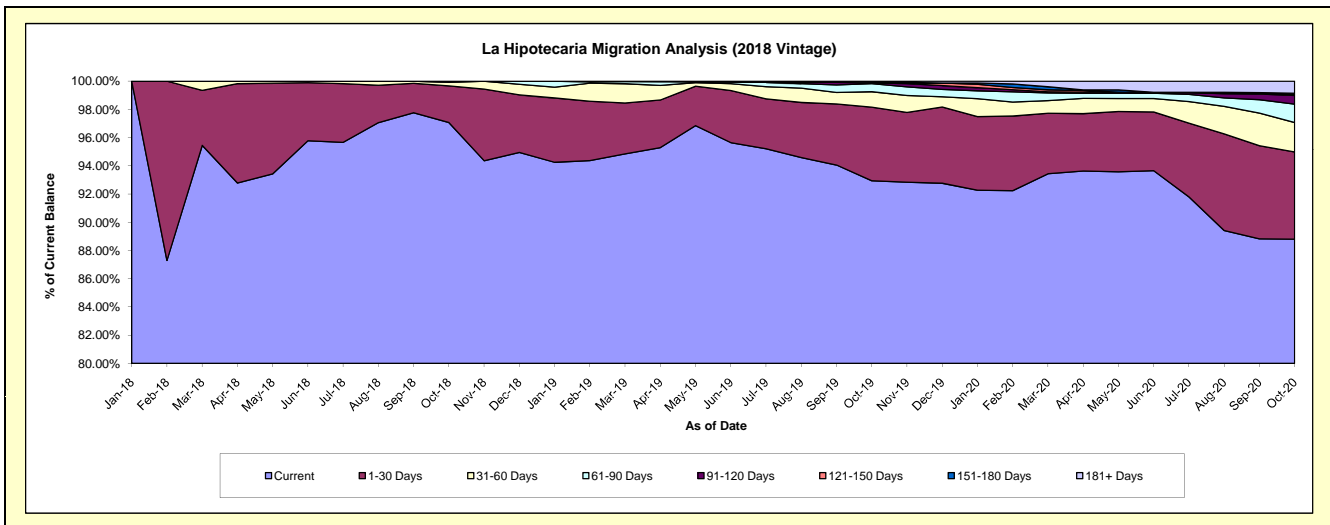
Delinquency Status (\$ of Current Balance)

Data Cutoff: 10/31/2020

Current Portfolio Balance	-	-	-	-	-	-	-	-	-	69,546,207.55	83,658,706.85	81,550,362.08
										Oct-18	Oct-19	Oct-20
Current										67,505,642.85	77,752,682.02	72,420,192.24
1-30 Days										1,806,633.88	4,368,356.31	5,036,461.80
31-60 Days										176,227.29	911,595.92	1,702,897.98
61-90 Days										57,703.53	479,770.69	1,061,370.63
91-120 Days										-	38,253.17	505,899.75
121-150 Days										-	39,612.30	77,344.58
151-180 Days										-	-	50,368.99
181+ Days										-	68,436.44	695,826.11

Delinquency Status (% of Current Balance)

Current Portfolio Balance	-	-	-	-	-	-	-	-	-	69,546,207.55	83,658,706.85	81,550,362.08
										Oct-18	Oct-19	Oct-20
Current										97.07%	92.94%	88.80%
1-30 Days										2.60%	5.22%	6.18%
31-60 Days										0.25%	1.09%	2.09%
61-90 Days										0.08%	0.57%	1.30%
91-120 Days										0.00%	0.05%	0.62%
121-150 Days										0.00%	0.05%	0.09%
151-180 Days										0.00%	0.00%	0.06%
181+ Days										0.00%	0.08%	0.85%
Current - 90 Days										100.00%	99.83%	98.37%
91-180 Days										0.00%	0.09%	0.78%



Mortgages - La Hipotecaria Panama Migration Analysis (2019 Vintage)

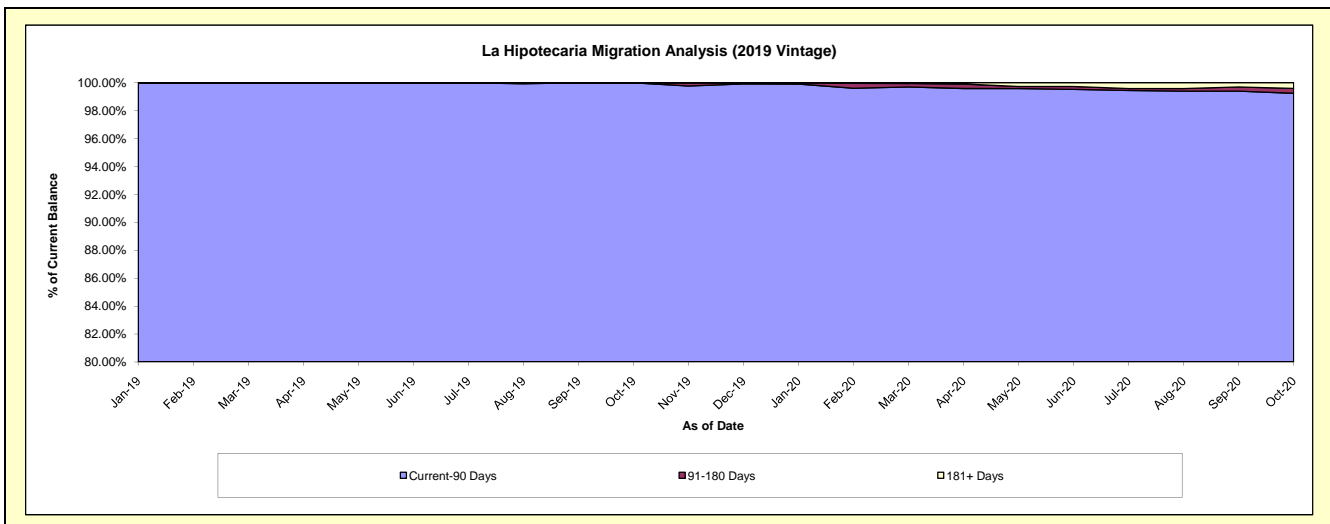
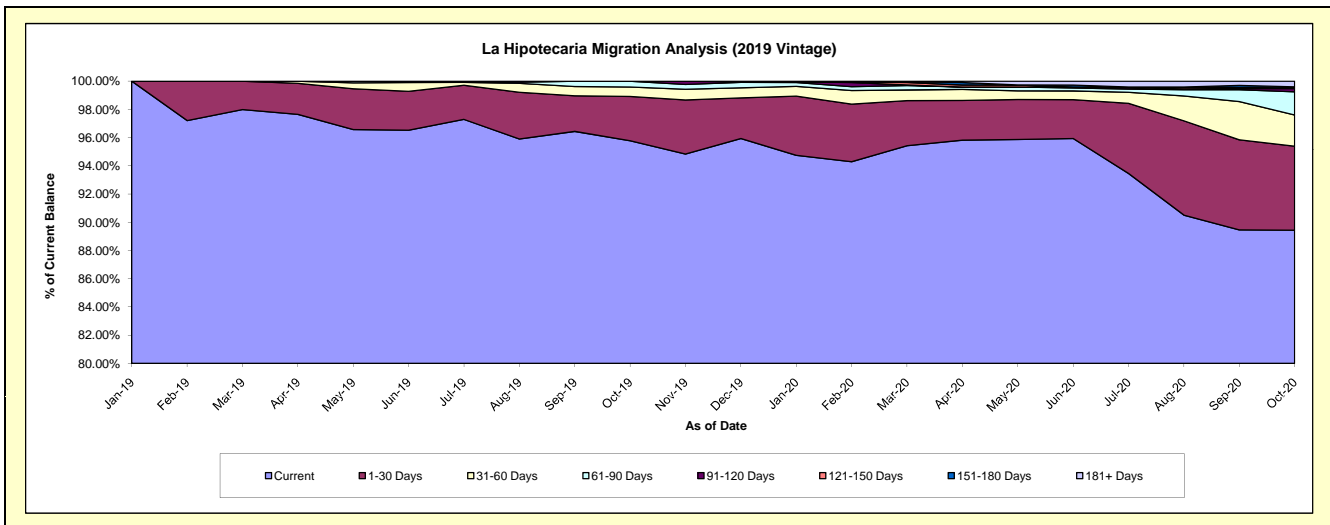
Delinquency Status (\$ of Current Balance)

Data Cutoff: 10/31/2020

Current Portfolio Balance										74,686,118.13	84,787,343.07
										Oct-19	Oct-20
Current										71,532,150.45	75,832,427.64
1-30 Days										2,341,600.54	5,046,779.59
31-60 Days										502,373.76	1,876,012.25
61-90 Days										309,993.38	1,390,944.41
91-120 Days										-	193,231.21
121-150 Days										-	34,419.70
151-180 Days										-	69,328.52
181+ Days										-	344,199.75

Delinquency Status (% of Current Balance)

Current Portfolio Balance										74,686,118.13	84,787,343.07
										Oct-19	Oct-20
Current										95.78%	89.44%
1-30 Days										3.14%	5.95%
31-60 Days										0.67%	2.21%
61-90 Days										0.42%	1.64%
91-120 Days										0.00%	0.23%
121-150 Days										0.00%	0.04%
151-180 Days										0.00%	0.08%
181+ Days										0.00%	0.41%
Current - 90 Days										100.00%	99.24%
91-180 Days										0.00%	0.35%



Mortgages - La Hipotecaria Panama Migration Analysis (2020 Vintage)

Delinquency Status (\$ of Current Balance)

Data Cutoff: 10/31/2020

Current Portfolio Balance										30,333,872.34
										Oct-20
Current										27,443,939.17
1-30 Days										1,616,380.61
31-60 Days										865,270.78
61-90 Days										298,670.02
91-120 Days										50,211.76
121-150 Days										-
151-180 Days										59,400.00
181+ Days										-

Delinquency Status (% of Current Balance)

Current Portfolio Balance										30,333,872.34
										Oct-20
Current										90.47%
1-30 Days										5.33%
31-60 Days										2.85%
61-90 Days										0.98%
91-120 Days										0.17%
121-150 Days										0.00%
151-180 Days										0.20%
181+ Days										0.00%
Current - 90 Days										99.64%
91-180 Days										0.36%

