



## Migration Analysis for La Hipotecaria S.A Panama

Mortgages  
May 2021

An analysis of historical loan payment data was used to compile a migration analysis of delinquency by annual vintage. Delinquencies for each vintage were grouped into the following buckets; Current, 1-30, 31-60, 61-90, 91-120, 121-150, 151-180, and 180+. Results are provided in graphical and tabular form. The cutoff date is 5/31/2021.

# Mortgages - La Hipotecaria Panama Migration Analysis (All Vintages)

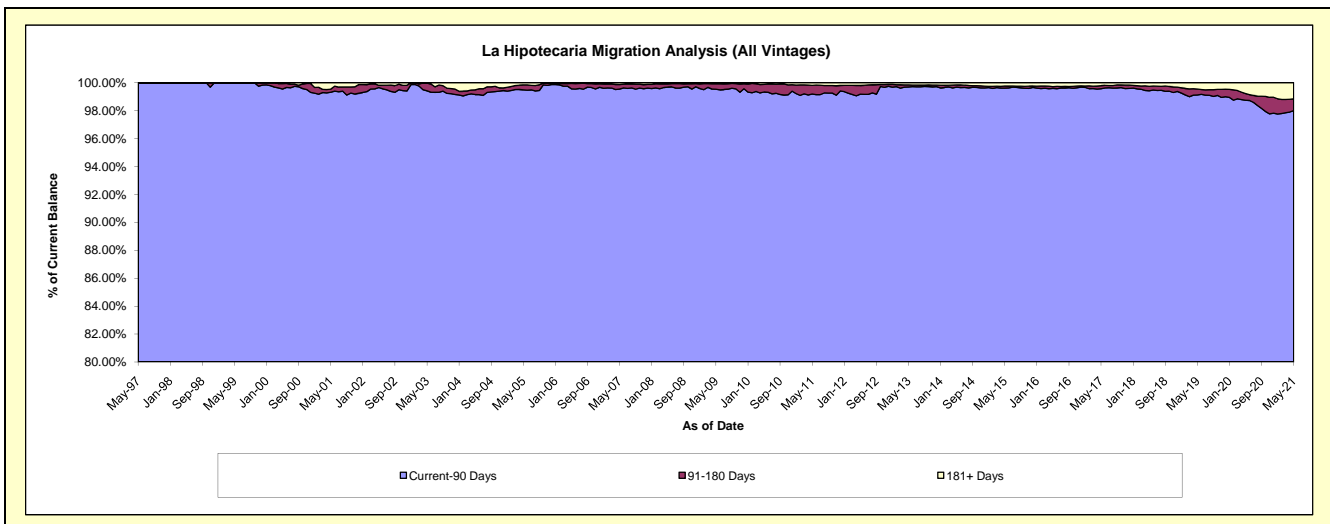
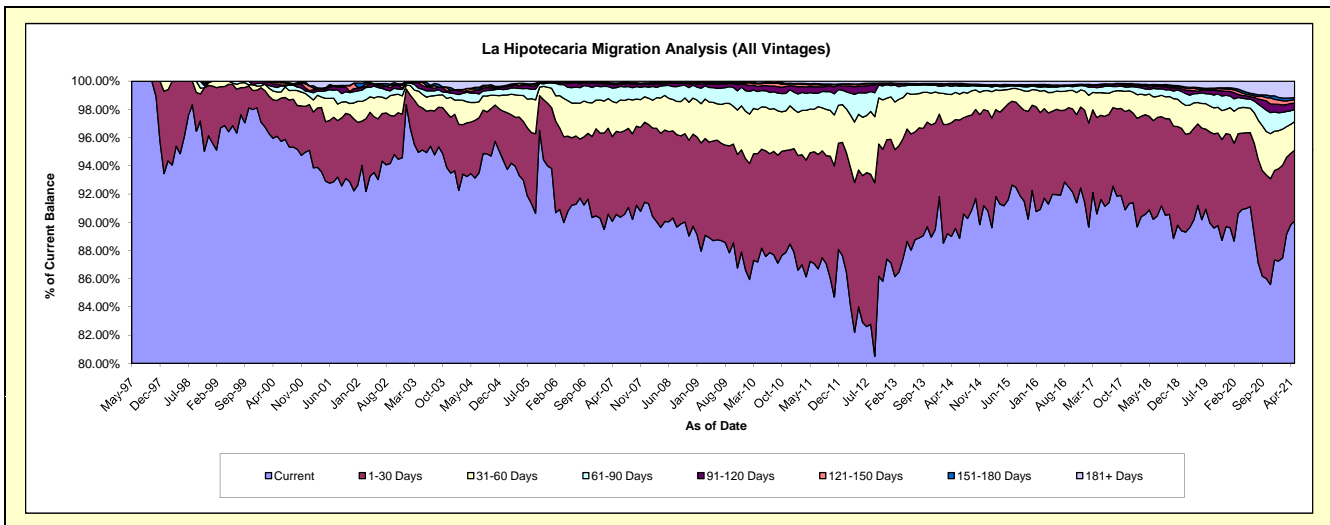
## Delinquency Status (\$ of Current Balance)

Data Cutoff: 5/31/2021

Current Portfolio Balance	312,891,870.81	343,284,794.82	382,453,807.69	423,522,330.90	463,433,245.30	497,690,520.83	553,630,218.16	604,860,219.06	644,503,885.19	656,056,669.10
	May-12	May-13	May-14	May-15	May-16	May-17	May-18	May-19	May-20	May-21
Current	262,867,001.21	304,276,800.74	342,570,443.44	386,136,494.45	426,271,457.46	455,940,527.56	503,184,546.32	551,627,665.76	586,347,382.86	591,090,851.05
1-30 Days	30,326,902.28	27,368,181.88	29,465,922.07	29,272,883.02	27,303,924.00	29,709,367.46	36,680,594.94	34,917,539.34	34,563,031.58	32,966,059.50
31-60 Days	12,356,891.74	8,744,843.52	7,380,722.51	5,519,255.17	6,176,291.65	7,982,419.70	8,702,357.00	9,174,489.36	11,509,327.23	13,193,033.99
61-90 Days	4,771,817.28	1,853,853.53	1,841,241.33	955,653.59	1,776,342.83	1,934,092.92	1,847,490.32	3,851,842.76	4,018,079.55	5,699,118.71
91-120 Days	1,480,921.60	337,845.70	313,238.67	296,639.00	210,527.83	663,876.64	899,552.40	988,724.56	1,382,259.39	2,843,763.45
121-150 Days	334,443.02	56,911.58	158,140.12	235,108.04	335,450.49	233,521.16	640,892.44	884,283.02	700,867.60	1,584,598.76
151-180 Days	144,250.13	127,399.11	142,517.31	100,408.61	74,675.57	158,376.80	261,139.14	691,746.42	980,377.53	1,083,161.47
181+ Days	609,643.55	518,958.76	581,582.24	1,005,889.02	1,284,575.47	1,068,338.59	1,413,645.60	2,723,927.84	5,002,559.45	7,596,082.17

## Delinquency Status (% of Current Balance)

Current Portfolio Balance	312,891,870.81	343,284,794.82	382,453,807.69	423,522,330.90	463,433,245.30	497,690,520.83	553,630,218.16	604,860,219.06	644,503,885.19	656,056,669.10
	May-12	May-13	May-14	May-15	May-16	May-17	May-18	May-19	May-20	May-21
Current	84.01%	88.64%	89.57%	91.17%	91.98%	91.61%	90.89%	91.20%	90.98%	90.10%
1-30 Days	9.69%	7.97%	7.70%	6.91%	5.89%	5.97%	6.63%	5.77%	5.36%	5.02%
31-60 Days	3.95%	2.55%	1.93%	1.30%	1.33%	1.60%	1.57%	1.52%	1.79%	2.01%
61-90 Days	1.53%	0.54%	0.48%	0.23%	0.38%	0.39%	0.33%	0.64%	0.62%	0.87%
91-120 Days	0.47%	0.10%	0.08%	0.07%	0.05%	0.13%	0.16%	0.16%	0.21%	0.43%
121-150 Days	0.11%	0.02%	0.04%	0.06%	0.07%	0.05%	0.12%	0.15%	0.11%	0.24%
151-180 Days	0.05%	0.04%	0.04%	0.02%	0.02%	0.03%	0.05%	0.11%	0.15%	0.17%
181+ Days	0.19%	0.15%	0.15%	0.24%	0.28%	0.21%	0.26%	0.45%	0.78%	1.16%
Current - 90 Days	99.18%	99.70%	99.69%	99.61%	99.59%	99.57%	99.42%	99.13%	98.75%	98.00%
91-180 Days	0.63%	0.15%	0.16%	0.15%	0.13%	0.21%	0.33%	0.42%	0.48%	0.84%



## Mortgages - La Hipotecaria Panama Migration Analysis (1997 Vintage)

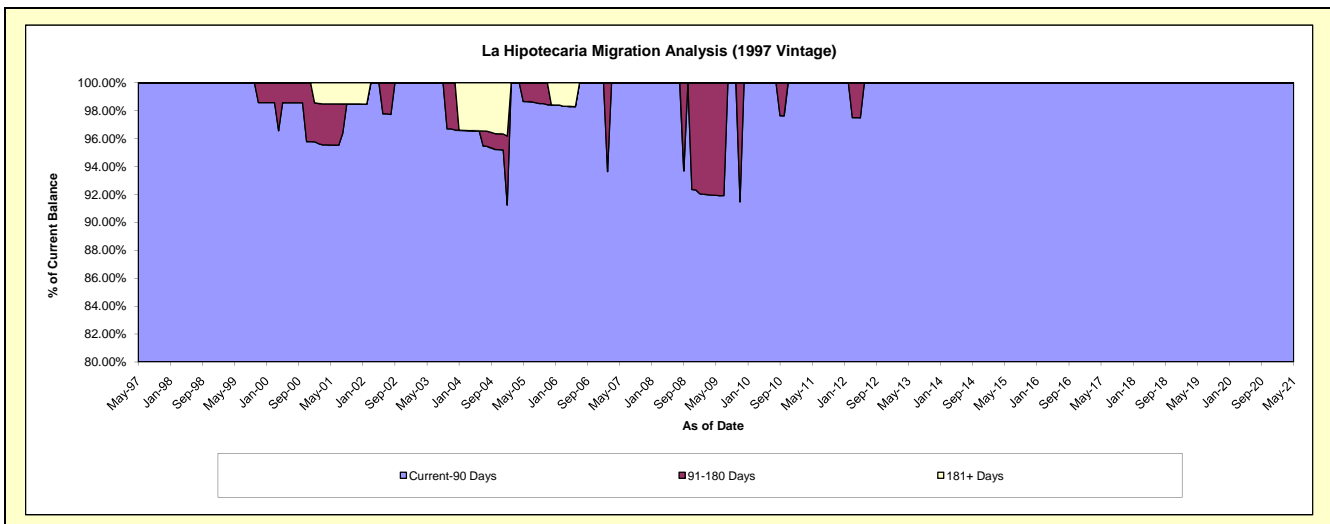
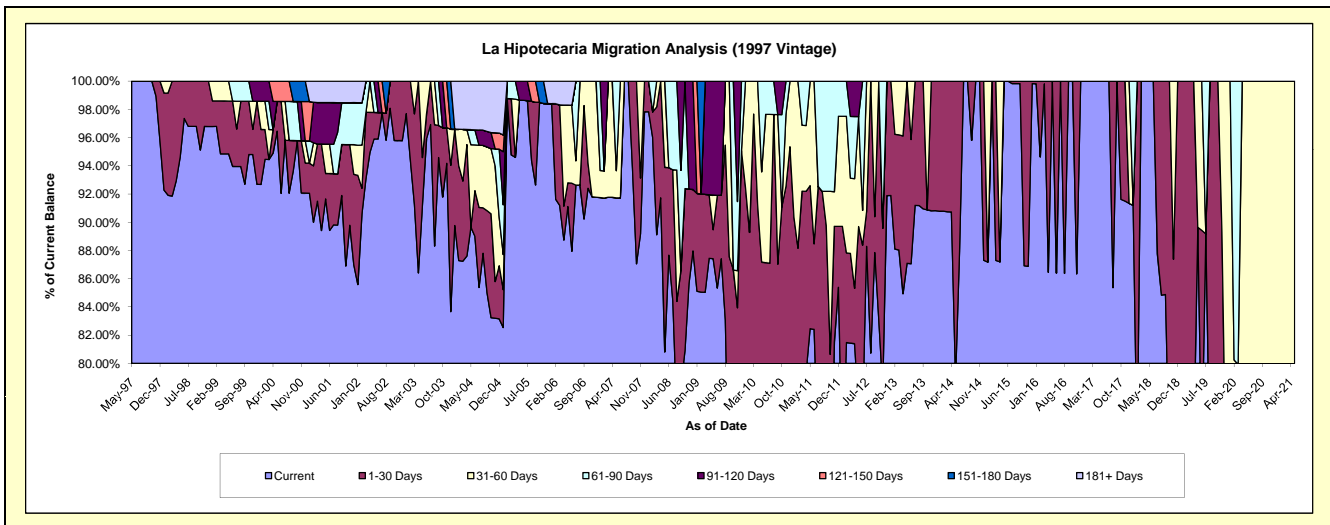
### Delinquency Status (\$ of Current Balance)

Data Cutoff: 5/31/2021

Current Portfolio Balance	397,020.38	294,292.57	259,964.27	221,785.88	186,000.70	150,150.61	123,062.93	88,971.62	55,052.08	40,419.63
	May-12	May-13	May-14	May-15	May-16	May-17	May-18	May-19	May-20	May-21
Current	304,377.39	256,313.20	204,880.28	221,785.88	186,000.70	150,150.61	123,062.93	79,764.76	36,947.73	29,564.69
1-30 Days	51,727.27	37,979.37	55,083.99	-	-	-	-	-	6,904.18	-
31-60 Days	30,945.48	-	-	-	-	-	-	9,206.86	11,200.17	10,854.94
61-90 Days	-	-	-	-	-	-	-	-	-	-
91-120 Days	9,970.24	-	-	-	-	-	-	-	-	-
121-150 Days	-	-	-	-	-	-	-	-	-	-
151-180 Days	-	-	-	-	-	-	-	-	-	-
181+ Days	-	-	-	-	-	-	-	-	-	-

### Delinquency Status (% of Current Balance)

Current Portfolio Balance	397,020.38	294,292.57	259,964.27	221,785.88	186,000.70	150,150.61	123,062.93	88,971.62	55,052.08	40,419.63
	May-12	May-13	May-14	May-15	May-16	May-17	May-18	May-19	May-20	May-21
Current	76.67%	87.09%	78.81%	100.00%	100.00%	100.00%	100.00%	89.65%	67.11%	73.14%
1-30 Days	13.03%	12.91%	21.19%	0.00%	0.00%	0.00%	0.00%	0.00%	12.54%	0.00%
31-60 Days	7.79%	0.00%	0.00%	0.00%	0.00%	0.00%	0.00%	10.35%	20.34%	26.86%
61-90 Days	0.00%	0.00%	0.00%	0.00%	0.00%	0.00%	0.00%	0.00%	0.00%	0.00%
91-120 Days	2.51%	0.00%	0.00%	0.00%	0.00%	0.00%	0.00%	0.00%	0.00%	0.00%
121-150 Days	0.00%	0.00%	0.00%	0.00%	0.00%	0.00%	0.00%	0.00%	0.00%	0.00%
151-180 Days	0.00%	0.00%	0.00%	0.00%	0.00%	0.00%	0.00%	0.00%	0.00%	0.00%
181+ Days	0.00%	0.00%	0.00%	0.00%	0.00%	0.00%	0.00%	0.00%	0.00%	0.00%
Current - 90 Days	97.49%	100.00%	100.00%	100.00%	100.00%	100.00%	100.00%	100.00%	100.00%	100.00%
91-180 Days	2.51%	0.00%	0.00%	0.00%	0.00%	0.00%	0.00%	0.00%	0.00%	0.00%



## Mortgages - La Hipotecaria Panama Migration Analysis (1998 Vintage)

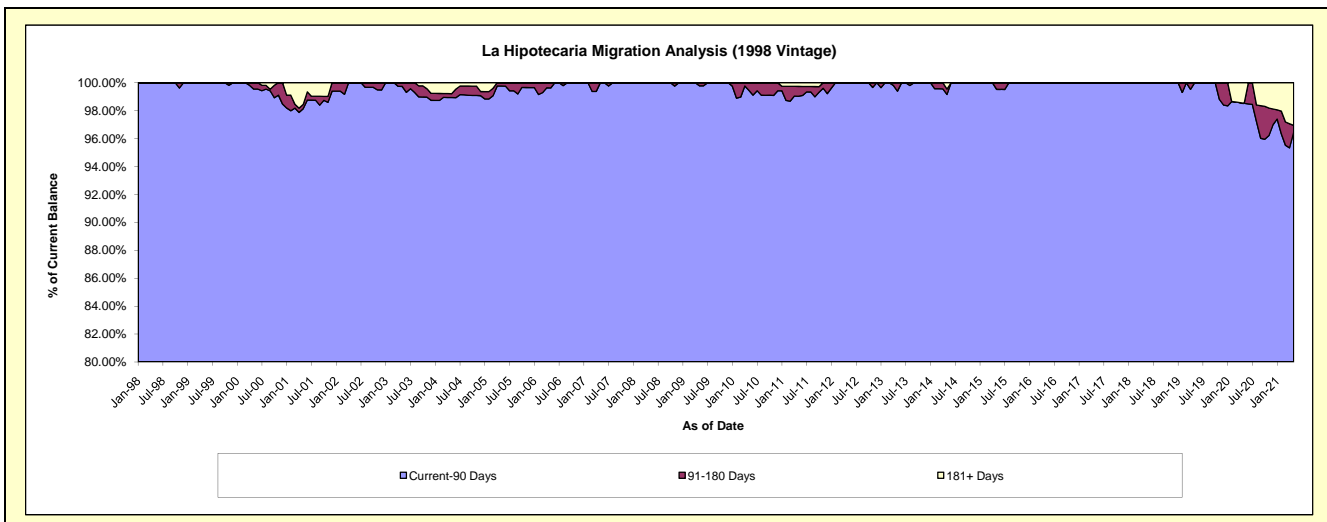
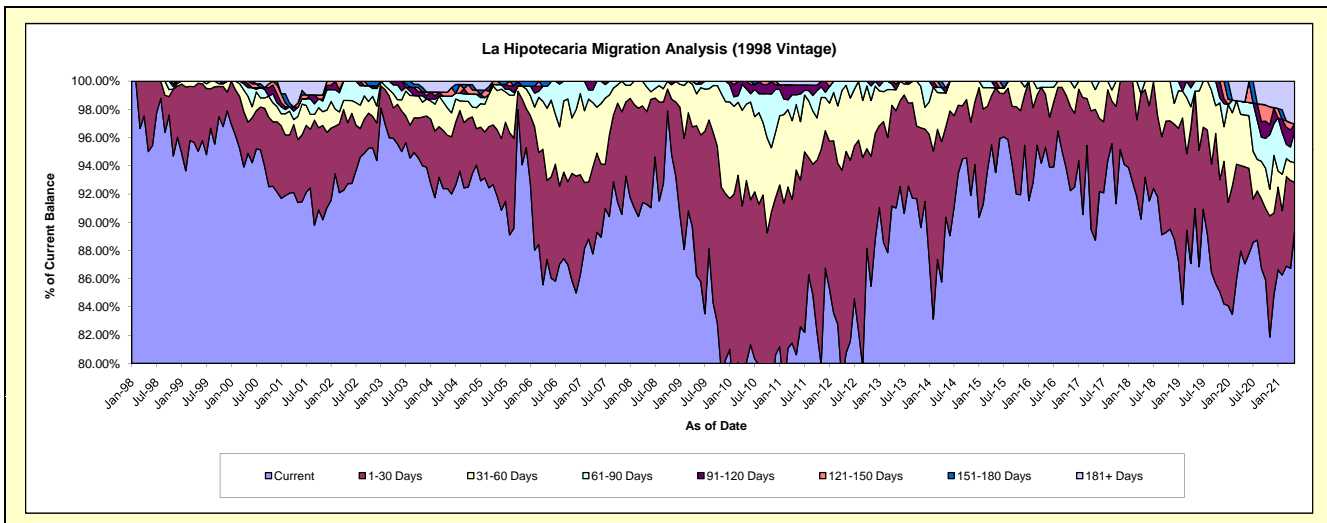
### Delinquency Status (\$ of Current Balance)

Data Cutoff: 5/31/2021

Current Portfolio Balance	3,700,222.59	3,276,443.44	2,820,664.08	2,424,134.70	2,050,623.87	1,691,749.26	1,314,845.51	980,602.17	679,772.66	436,989.11
	May-12	May-13	May-14	May-15	May-16	May-17	May-18	May-19	May-20	May-21
Current	2,987,975.56	2,982,105.86	2,548,789.37	2,267,321.71	1,954,694.50	1,501,124.30	1,225,261.38	892,163.03	591,791.67	390,776.24
1-30 Days	527,909.67	225,774.58	180,427.82	145,446.06	76,740.20	156,838.81	81,634.66	81,562.07	46,702.48	14,914.90
31-60 Days	173,390.27	48,796.77	67,760.83	-	10,319.11	23,652.27	7,949.47	-	24,993.03	6,054.46
61-90 Days	10,947.09	-	-	-	8,870.06	10,133.88	-	6,877.07	6,301.38	9,634.92
91-120 Days	-	13,377.64	10,968.29	11,366.93	-	-	-	-	-	2,264.01
121-150 Days	-	6,388.59	-	-	-	-	-	-	-	-
151-180 Days	-	-	-	-	-	-	-	-	-	-
181+ Days	-	-	12,717.77	-	-	-	-	-	9,984.10	13,344.58

### Delinquency Status (% of Current Balance)

Current Portfolio Balance	3,700,222.59	3,276,443.44	2,820,664.08	2,424,134.70	2,050,623.87	1,691,749.26	1,314,845.51	980,602.17	679,772.66	436,989.11
	May-12	May-13	May-14	May-15	May-16	May-17	May-18	May-19	May-20	May-21
Current	80.75%	91.02%	90.36%	93.53%	95.32%	88.73%	93.19%	90.98%	87.06%	89.42%
1-30 Days	14.27%	6.89%	6.40%	6.00%	3.74%	9.27%	6.21%	8.32%	6.87%	3.41%
31-60 Days	4.69%	1.49%	2.40%	0.00%	0.50%	1.40%	0.60%	0.00%	3.68%	1.39%
61-90 Days	0.30%	0.00%	0.00%	0.00%	0.43%	0.60%	0.00%	0.70%	0.93%	2.20%
91-120 Days	0.00%	0.41%	0.39%	0.47%	0.00%	0.00%	0.00%	0.00%	0.00%	0.52%
121-150 Days	0.00%	0.19%	0.00%	0.00%	0.00%	0.00%	0.00%	0.00%	0.00%	0.00%
151-180 Days	0.00%	0.00%	0.00%	0.00%	0.00%	0.00%	0.00%	0.00%	0.00%	0.00%
181+ Days	0.00%	0.00%	0.45%	0.00%	0.00%	0.00%	0.00%	0.00%	1.47%	3.05%
Current - 90 Days	100.00%	99.40%	99.16%	99.53%	100.00%	100.00%	100.00%	100.00%	98.53%	96.43%
91-180 Days	0.00%	0.60%	0.39%	0.47%	0.00%	0.00%	0.00%	0.00%	0.00%	0.52%



## Mortgages - La Hipotecaria Panama Migration Analysis (1999 Vintage)

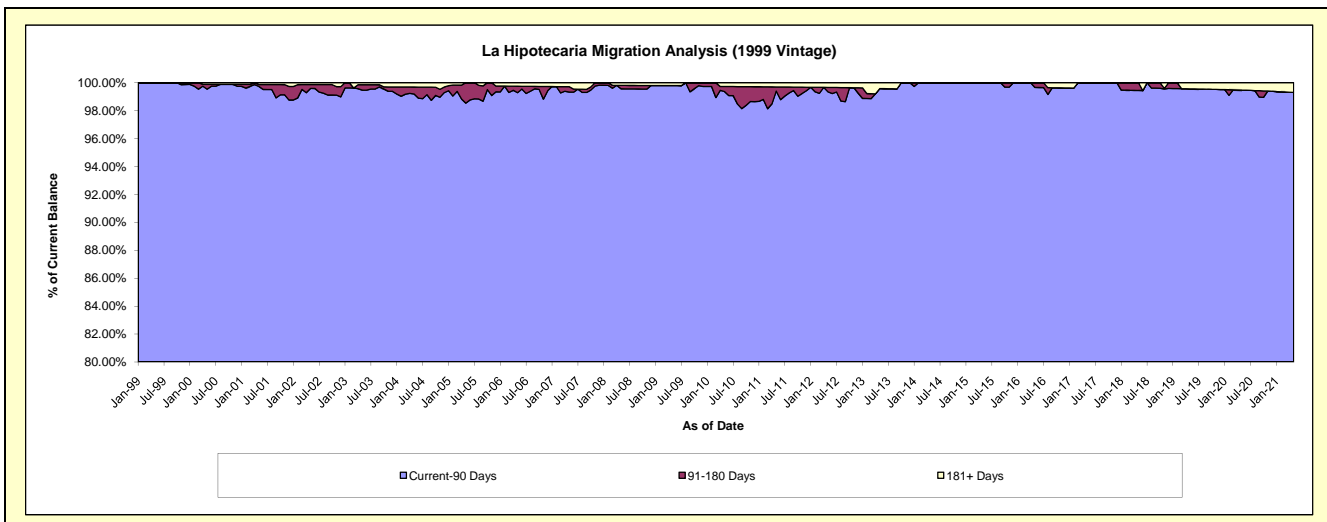
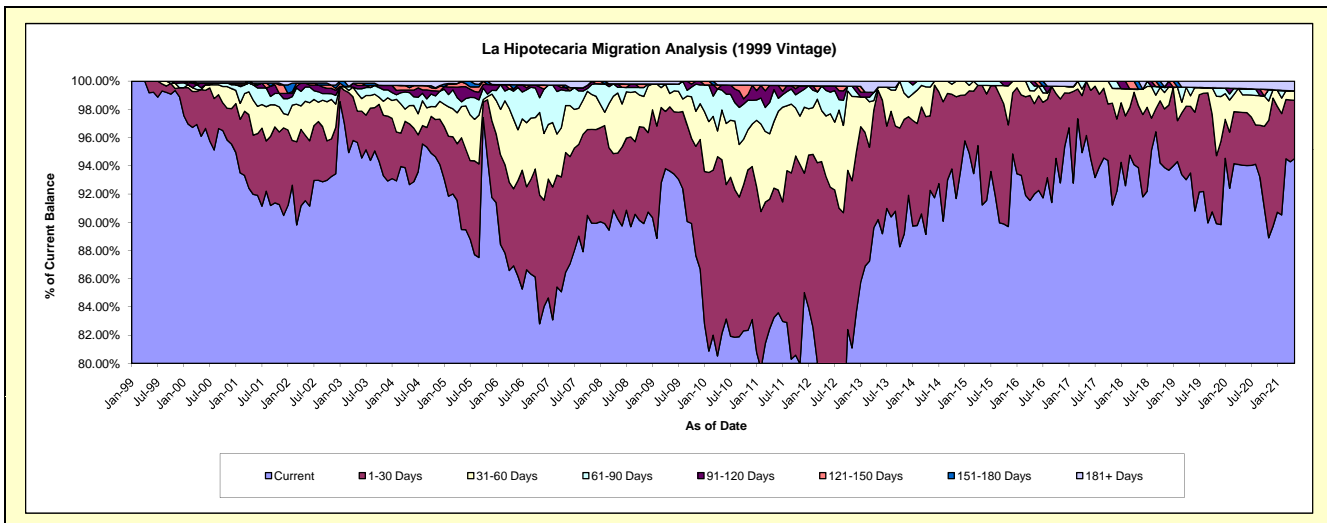
### Delinquency Status (\$ of Current Balance)

Data Cutoff: 5/31/2021

Current Portfolio Balance	5,809,432.46	5,023,405.37	4,411,829.31	3,915,795.20	3,327,309.58	2,817,514.48	2,411,064.80	1,971,323.34	1,624,644.82	1,249,147.67
	May-12	May-13	May-14	May-15	May-16	May-17	May-18	May-19	May-20	May-21
Current	4,515,835.23	4,530,658.96	4,070,380.87	3,572,495.76	3,060,941.10	2,709,148.50	2,263,107.48	1,843,098.74	1,527,877.68	1,180,674.42
1-30 Days	900,791.12	459,982.27	233,034.28	331,429.07	213,454.25	108,365.98	106,243.39	93,070.12	60,781.79	51,556.08
31-60 Days	249,541.30	11,613.29	90,070.70	-	30,092.45	-	28,272.88	14,792.20	20,294.76	8,305.62
61-90 Days	105,202.85	-	18,343.46	11,870.37	11,477.04	-	-	11,750.73	7,079.04	-
91-120 Days	18,555.73	-	-	-	11,344.74	-	-	-	-	-
121-150 Days	-	-	-	-	-	-	-	-	-	-
151-180 Days	-	-	-	-	-	-	13,441.05	-	-	-
181+ Days	19,506.23	21,150.85	-	-	-	-	-	8,611.55	8,611.55	8,611.55

### Delinquency Status (% of Current Balance)

Current Portfolio Balance	5,809,432.46	5,023,405.37	4,411,829.31	3,915,795.20	3,327,309.58	2,817,514.48	2,411,064.80	1,971,323.34	1,624,644.82	1,249,147.67
	May-12	May-13	May-14	May-15	May-16	May-17	May-18	May-19	May-20	May-21
Current	77.73%	90.19%	92.26%	91.23%	91.99%	96.15%	93.86%	93.50%	94.04%	94.52%
1-30 Days	15.51%	9.16%	5.28%	8.46%	6.42%	3.85%	4.41%	4.72%	3.74%	4.13%
31-60 Days	4.30%	0.23%	2.04%	0.00%	0.90%	0.00%	1.17%	0.75%	1.25%	0.66%
61-90 Days	1.81%	0.00%	0.42%	0.30%	0.34%	0.00%	0.00%	0.60%	0.44%	0.00%
91-120 Days	0.32%	0.00%	0.00%	0.00%	0.34%	0.00%	0.00%	0.00%	0.00%	0.00%
121-150 Days	0.00%	0.00%	0.00%	0.00%	0.00%	0.00%	0.00%	0.00%	0.00%	0.00%
151-180 Days	0.00%	0.00%	0.00%	0.00%	0.00%	0.00%	0.56%	0.00%	0.00%	0.00%
181+ Days	0.34%	0.42%	0.00%	0.00%	0.00%	0.00%	0.00%	0.44%	0.53%	0.69%
Current - 90 Days	99.34%	99.58%	100.00%	100.00%	99.66%	100.00%	99.44%	99.56%	99.47%	99.31%
91-180 Days	0.32%	0.00%	0.00%	0.00%	0.34%	0.00%	0.56%	0.00%	0.00%	0.00%



## Mortgages - La Hipotecaria Panama Migration Analysis (2000 Vintage)

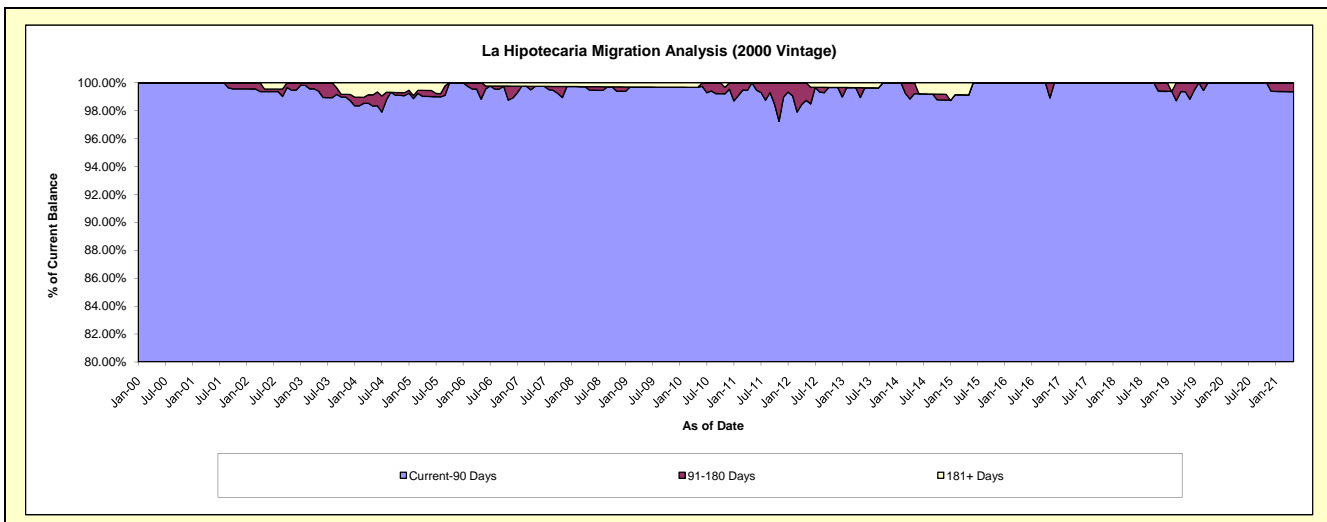
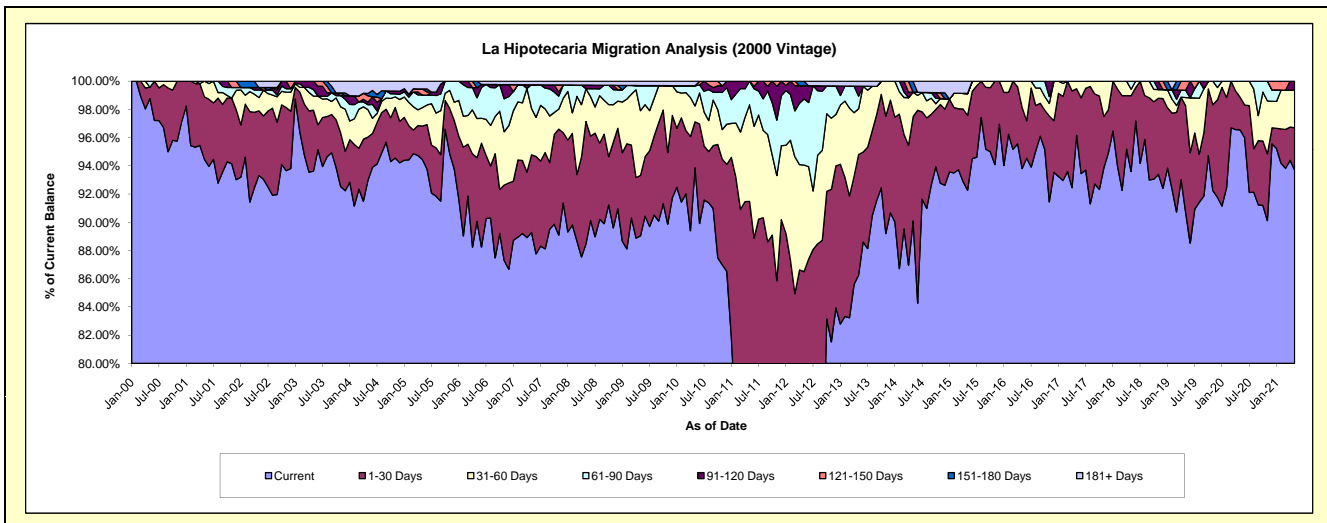
### Delinquency Status (\$ of Current Balance)

Data Cutoff: 5/31/2021

Current Portfolio Balance	4,969,695.21	4,522,488.81	3,970,460.66	3,541,719.96	3,018,369.57	2,686,105.22	2,344,325.92	1,997,876.85	1,712,022.68	1,424,005.48
	May-12	May-13	May-14	May-15	May-16	May-17	May-18	May-19	May-20	May-21
Current	3,404,719.78	3,900,649.90	3,577,286.38	3,267,776.91	2,831,514.27	2,582,986.18	2,194,214.73	1,811,958.51	1,652,980.82	1,334,238.39
1-30 Days	894,179.50	386,476.61	293,357.39	187,843.31	130,806.22	88,671.71	125,992.74	151,152.69	39,516.60	42,748.96
31-60 Days	375,460.22	146,699.36	68,723.49	55,006.34	56,049.08	14,447.33	10,784.65	11,514.39	19,525.26	37,841.47
61-90 Days	232,586.11	40,876.83	-	-	-	-	13,333.80	10,251.35	-	-
91-120 Days	46,657.18	31,693.69	-	-	-	-	-	-	-	9,176.66
121-150 Days	-	-	-	-	-	-	-	12,999.91	-	-
151-180 Days	16,092.42	-	31,093.40	-	-	-	-	-	-	-
181+ Days	-	16,092.42	-	31,093.40	-	-	-	-	-	-

### Delinquency Status (% of Current Balance)

Current Portfolio Balance	4,969,695.21	4,522,488.81	3,970,460.66	3,541,719.96	3,018,369.57	2,686,105.22	2,344,325.92	1,997,876.85	1,712,022.68	1,424,005.48
	May-12	May-13	May-14	May-15	May-16	May-17	May-18	May-19	May-20	May-21
Current	68.51%	86.25%	90.10%	92.27%	93.81%	96.16%	93.60%	90.69%	96.55%	93.70%
1-30 Days	17.99%	8.55%	7.39%	5.30%	4.33%	3.30%	5.37%	7.57%	2.31%	3.00%
31-60 Days	7.55%	3.24%	1.73%	1.55%	1.86%	0.54%	0.46%	0.58%	1.14%	2.66%
61-90 Days	4.68%	0.90%	0.00%	0.00%	0.00%	0.00%	0.57%	0.51%	0.00%	0.00%
91-120 Days	0.94%	0.70%	0.00%	0.00%	0.00%	0.00%	0.00%	0.00%	0.00%	0.64%
121-150 Days	0.00%	0.00%	0.00%	0.00%	0.00%	0.00%	0.00%	0.65%	0.00%	0.00%
151-180 Days	0.32%	0.00%	0.78%	0.00%	0.00%	0.00%	0.00%	0.00%	0.00%	0.00%
181+ Days	0.00%	0.36%	0.00%	0.88%	0.00%	0.00%	0.00%	0.00%	0.00%	0.00%
Current - 90 Days	98.74%	98.94%	99.22%	99.12%	100.00%	100.00%	100.00%	99.35%	100.00%	99.36%
91-180 Days	1.26%	0.70%	0.78%	0.00%	0.00%	0.00%	0.00%	0.65%	0.00%	0.64%



## Mortgages - La Hipotecaria Panama Migration Analysis (2001 Vintage)

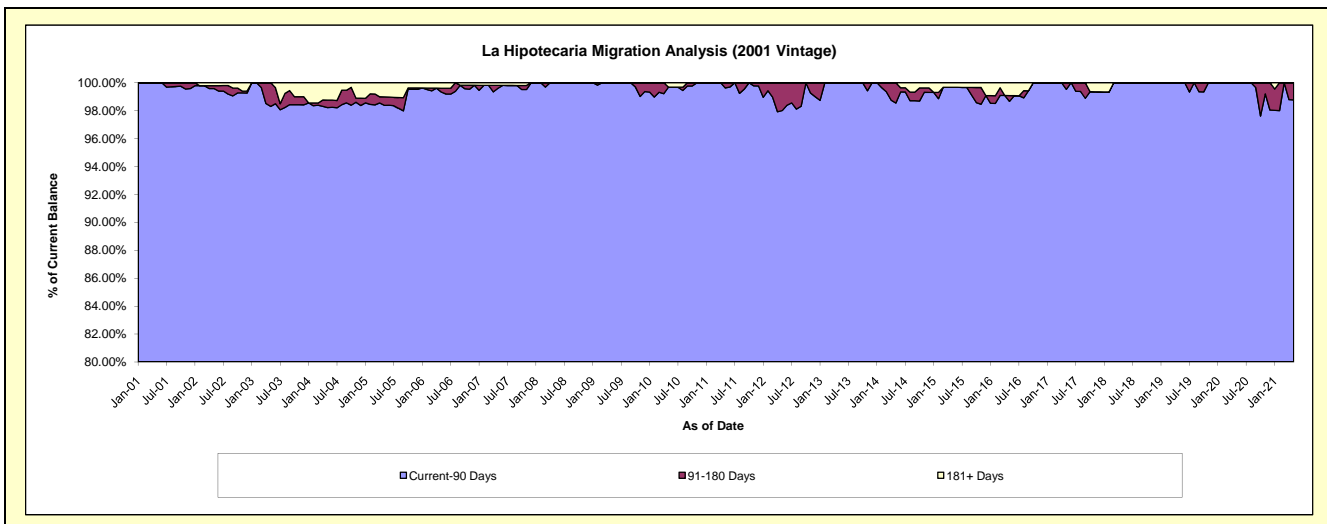
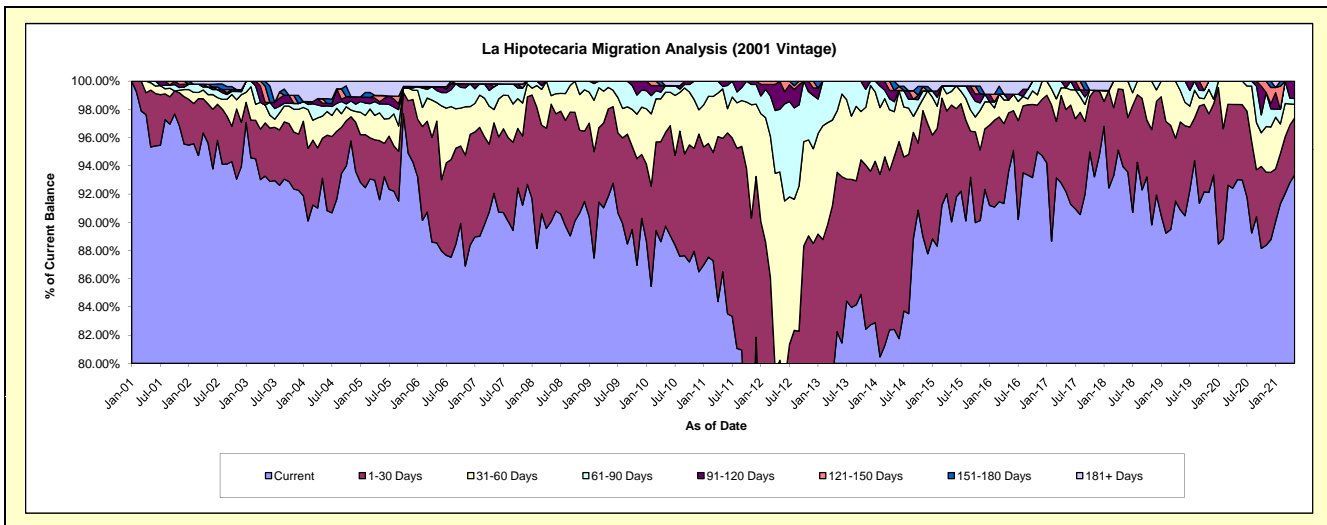
### Delinquency Status (\$ of Current Balance)

Data Cutoff: 5/31/2021

Current Portfolio Balance	5,304,693.63	4,536,784.81	4,009,951.72	3,635,118.27	3,295,078.17	2,990,639.19	2,636,212.37	2,275,441.76	2,030,433.63	1,754,096.29
	May-12	May-13	May-14	May-15	May-16	May-17	May-18	May-19	May-20	May-21
Current	3,164,358.33	3,731,369.73	3,304,370.66	3,272,703.11	3,084,950.48	2,756,956.82	2,476,445.58	2,067,997.57	1,888,825.31	1,637,719.26
1-30 Days	1,091,169.73	512,610.83	491,477.49	300,875.93	136,102.66	173,462.54	143,919.52	141,707.12	108,026.81	70,623.22
31-60 Days	707,866.68	196,900.20	127,470.04	35,351.87	29,905.86	46,030.95	15,847.27	50,835.37	33,581.51	16,890.38
61-90 Days	235,532.93	95,904.05	28,361.44	14,242.04	-	-	-	14,901.70	-	7,251.37
91-120 Days	105,765.96	-	31,793.20	-	13,804.96	14,188.88	-	-	-	21,612.06
121-150 Days	-	-	-	-	-	-	-	-	-	-
151-180 Days	-	-	26,478.89	-	-	-	-	-	-	-
181+ Days	-	-	-	11,945.32	30,314.21	-	-	-	-	-

### Delinquency Status (% of Current Balance)

Current Portfolio Balance	5,304,693.63	4,536,784.81	4,009,951.72	3,635,118.27	3,295,078.17	2,990,639.19	2,636,212.37	2,275,441.76	2,030,433.63	1,754,096.29
	May-12	May-13	May-14	May-15	May-16	May-17	May-18	May-19	May-20	May-21
Current	59.65%	82.25%	82.40%	90.03%	93.62%	92.19%	93.94%	90.88%	93.03%	93.37%
1-30 Days	20.57%	11.30%	12.26%	8.28%	4.13%	5.80%	5.46%	6.23%	5.32%	4.03%
31-60 Days	13.34%	4.34%	3.18%	0.97%	0.91%	1.54%	0.60%	2.23%	1.65%	0.96%
61-90 Days	4.44%	2.11%	0.71%	0.39%	0.00%	0.00%	0.00%	0.65%	0.00%	0.41%
91-120 Days	1.99%	0.00%	0.79%	0.00%	0.42%	0.47%	0.00%	0.00%	0.00%	1.23%
121-150 Days	0.00%	0.00%	0.00%	0.00%	0.00%	0.00%	0.00%	0.00%	0.00%	0.00%
151-180 Days	0.00%	0.00%	0.66%	0.00%	0.00%	0.00%	0.00%	0.00%	0.00%	0.00%
181+ Days	0.00%	0.00%	0.00%	0.33%	0.92%	0.00%	0.00%	0.00%	0.00%	0.00%
Current - 90 Days	98.01%	100.00%	98.55%	99.67%	98.66%	99.53%	100.00%	100.00%	100.00%	98.77%
91-180 Days	1.99%	0.00%	1.45%	0.00%	0.42%	0.47%	0.00%	0.00%	0.00%	1.23%



## Mortgages - La Hipotecaria Panama Migration Analysis (2002 Vintage)

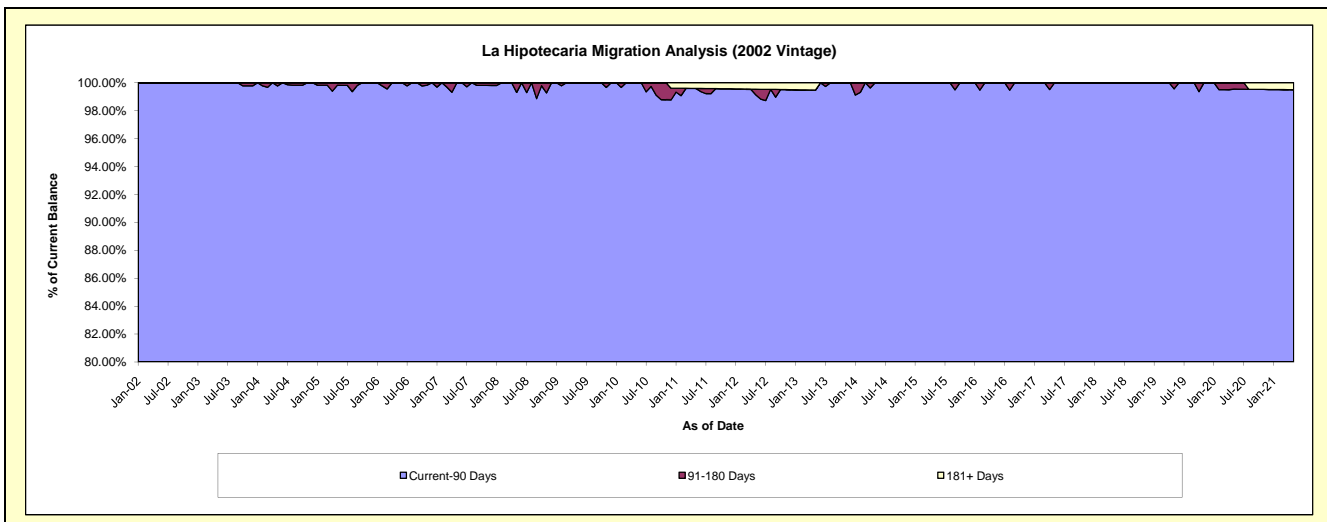
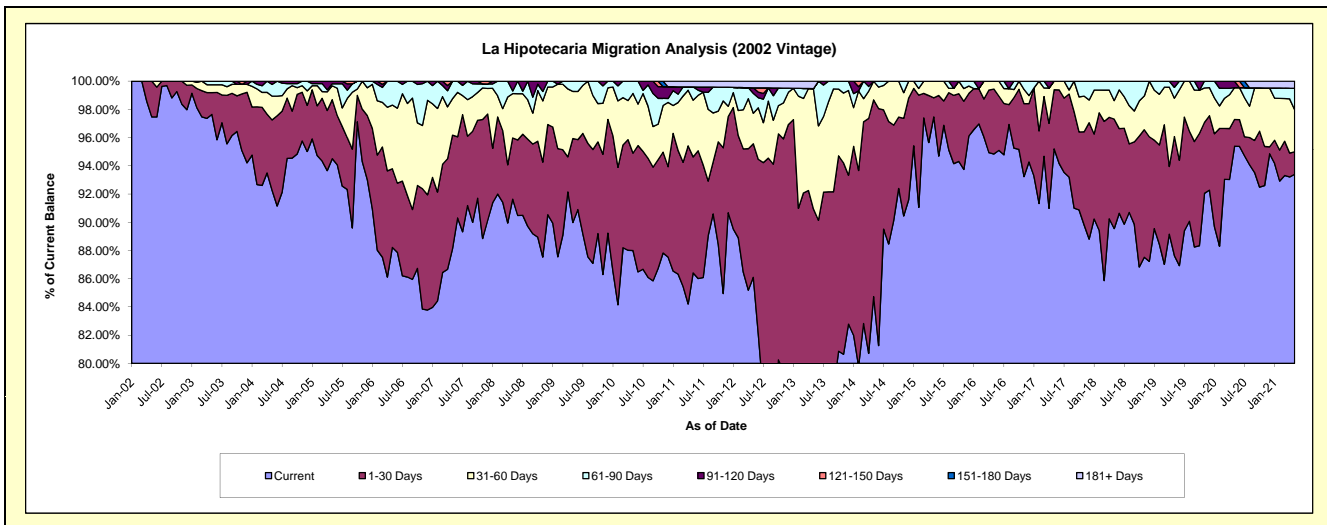
### Delinquency Status (\$ of Current Balance)

Data Cutoff: 5/31/2021

Current Portfolio Balance	4,715,421.20	4,192,900.97	3,537,999.38	3,224,806.78	2,938,660.53	2,606,566.33	2,427,979.06	2,169,209.96	1,938,364.62	1,757,553.94
	May-12	May-13	May-14	May-15	May-16	May-17	May-18	May-19	May-20	May-21
Current	4,059,921.69	2,924,261.47	2,997,737.33	3,143,133.80	2,787,031.01	2,481,509.45	2,174,454.91	1,900,918.94	1,849,013.51	1,641,551.01
1-30 Days	446,372.33	888,694.18	493,428.73	43,631.35	135,186.51	109,109.80	188,232.95	183,152.48	36,774.97	27,964.02
31-60 Days	102,002.91	357,785.31	46,833.32	38,041.63	16,443.01	15,947.08	31,886.92	58,916.79	43,697.43	52,361.23
61-90 Days	66,368.32	-	-	-	-	-	33,404.28	16,761.40	-	26,798.97
91-120 Days	18,595.94	-	-	-	-	-	-	9,460.35	8,878.71	-
121-150 Days	-	-	-	-	-	-	-	-	-	-
151-180 Days	-	-	-	-	-	-	-	-	-	-
181+ Days	22,160.01	22,160.01	-	-	-	-	-	-	-	8,878.71

### Delinquency Status (% of Current Balance)

Current Portfolio Balance	4,715,421.20	4,192,900.97	3,537,999.38	3,224,806.78	2,938,660.53	2,606,566.33	2,427,979.06	2,169,209.96	1,938,364.62	1,757,553.94
	May-12	May-13	May-14	May-15	May-16	May-17	May-18	May-19	May-20	May-21
Current	86.10%	69.74%	84.73%	97.47%	94.84%	95.20%	89.56%	87.63%	95.39%	93.40%
1-30 Days	9.47%	21.20%	13.95%	1.35%	4.60%	4.19%	7.75%	8.44%	1.90%	1.59%
31-60 Days	2.16%	8.53%	1.32%	1.18%	0.56%	0.61%	1.31%	2.72%	2.25%	2.98%
61-90 Days	1.41%	0.00%	0.00%	0.00%	0.00%	0.00%	1.38%	0.77%	0.00%	1.52%
91-120 Days	0.39%	0.00%	0.00%	0.00%	0.00%	0.00%	0.00%	0.44%	0.46%	0.00%
121-150 Days	0.00%	0.00%	0.00%	0.00%	0.00%	0.00%	0.00%	0.00%	0.00%	0.00%
151-180 Days	0.00%	0.00%	0.00%	0.00%	0.00%	0.00%	0.00%	0.00%	0.00%	0.00%
181+ Days	0.47%	0.53%	0.00%	0.00%	0.00%	0.00%	0.00%	0.00%	0.00%	0.51%
Current - 90 Days	99.14%	99.47%	100.00%	100.00%	100.00%	100.00%	100.00%	99.56%	99.54%	99.49%
91-180 Days	0.39%	0.00%	0.00%	0.00%	0.00%	0.00%	0.00%	0.44%	0.46%	0.00%





## Mortgages - La Hipotecaria Panama Migration Analysis (2003 Vintage)

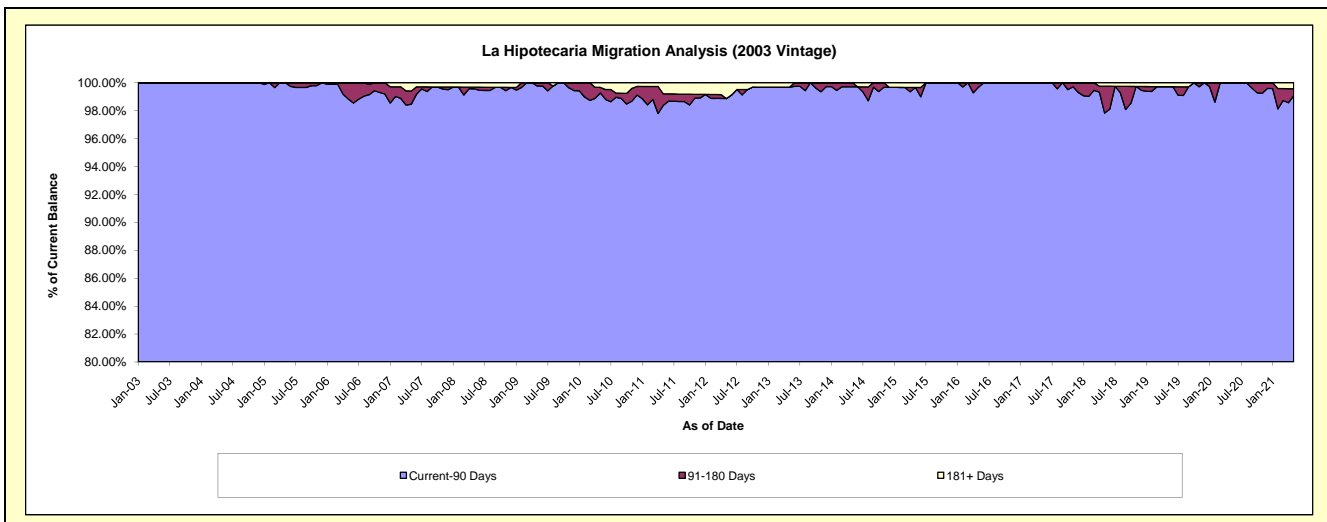
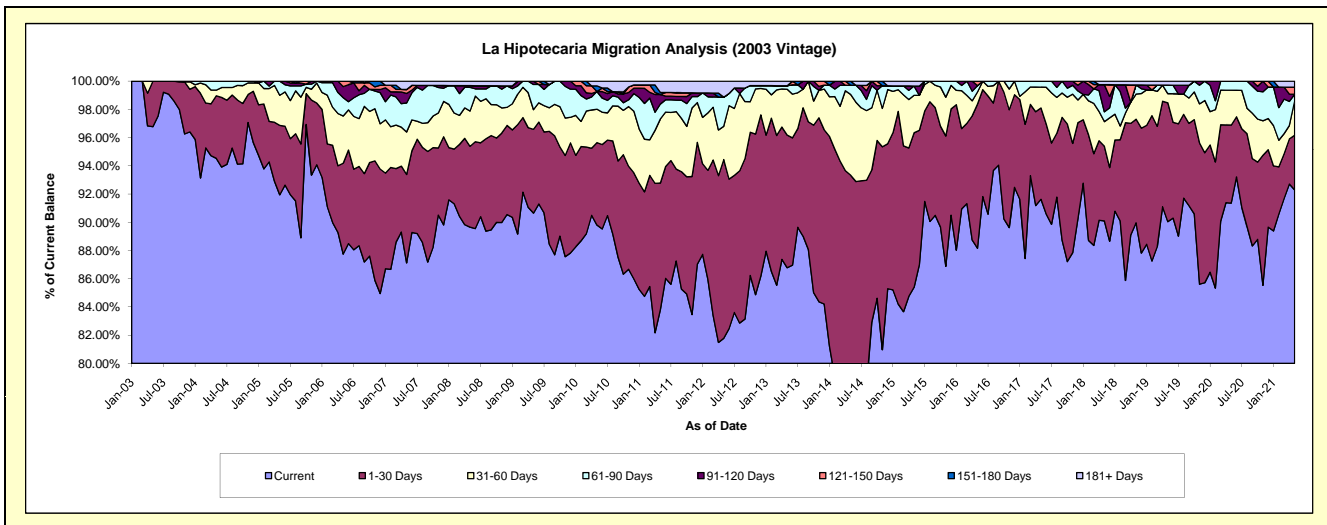
### Delinquency Status (\$ of Current Balance)

Data Cutoff: 5/31/2021

Current Portfolio Balance	7,669,214.66	7,009,389.67	6,165,779.19	5,489,944.20	4,773,312.94	4,298,433.60	3,843,312.04	3,357,392.51	3,036,509.01	2,796,275.37
	May-12	May-13	May-14	May-15	May-16	May-17	May-18	May-19	May-20	May-21
Current	6,271,944.02	6,082,858.60	4,608,731.65	4,687,810.13	4,207,934.11	3,938,616.54	3,462,558.06	3,023,196.08	2,774,112.22	2,580,630.74
1-30 Days	971,126.66	658,609.56	1,146,268.31	601,302.13	487,713.72	278,223.64	203,778.54	282,642.74	167,764.41	108,563.63
31-60 Days	180,960.65	227,471.90	352,582.79	145,845.88	41,444.78	63,305.08	66,813.67	21,873.95	75,103.58	68,361.55
61-90 Days	158,413.77	17,911.40	40,285.04	36,224.14	20,996.30	18,288.34	26,630.97	20,174.27	19,528.80	12,752.15
91-120 Days	-	-	-	-	-	-	74,025.33	-	-	-
121-150 Days	-	-	-	-	15,224.03	-	-	-	-	13,931.89
151-180 Days	-	-	17,911.40	-	-	-	-	-	-	-
181+ Days	86,769.56	22,538.21	-	18,761.92	-	-	9,505.47	9,505.47	-	12,035.41

### Delinquency Status (% of Current Balance)

Current Portfolio Balance	7,669,214.66	7,009,389.67	6,165,779.19	5,489,944.20	4,773,312.94	4,298,433.60	3,843,312.04	3,357,392.51	3,036,509.01	2,796,275.37
	May-12	May-13	May-14	May-15	May-16	May-17	May-18	May-19	May-20	May-21
Current	81.78%	86.78%	74.75%	85.39%	88.16%	91.63%	90.09%	90.05%	91.36%	92.29%
1-30 Days	12.66%	9.40%	18.59%	10.95%	10.22%	6.47%	5.30%	8.42%	5.52%	3.88%
31-60 Days	2.36%	3.25%	5.72%	2.66%	0.87%	1.47%	1.74%	0.65%	2.47%	2.44%
61-90 Days	2.07%	0.26%	0.65%	0.66%	0.44%	0.43%	0.69%	0.60%	0.64%	0.48%
91-120 Days	0.00%	0.00%	0.00%	0.00%	0.00%	0.00%	1.93%	0.00%	0.00%	0.00%
121-150 Days	0.00%	0.00%	0.00%	0.00%	0.32%	0.00%	0.00%	0.00%	0.00%	0.50%
151-180 Days	0.00%	0.00%	0.29%	0.00%	0.00%	0.00%	0.00%	0.00%	0.00%	0.00%
181+ Days	1.13%	0.32%	0.00%	0.34%	0.00%	0.00%	0.25%	0.28%	0.00%	0.43%
Current - 90 Days	98.87%	99.68%	99.71%	99.66%	99.68%	100.00%	97.83%	99.72%	100.00%	99.07%
91-180 Days	0.00%	0.00%	0.29%	0.00%	0.32%	0.00%	1.93%	0.00%	0.00%	0.50%



## Mortgages - La Hipotecaria Panama Migration Analysis (2004 Vintage)

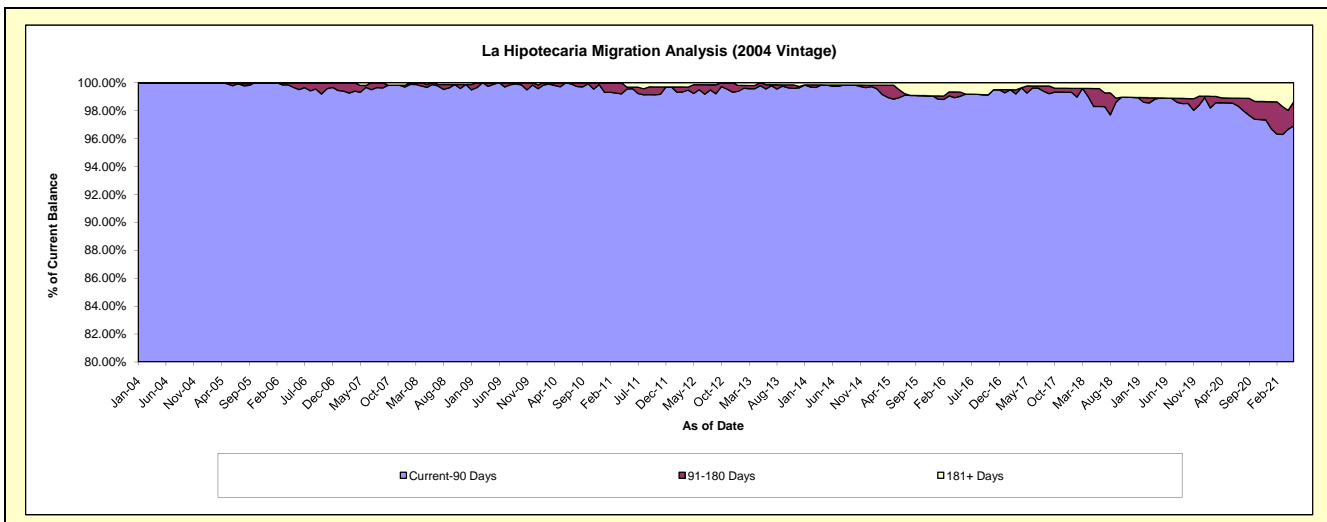
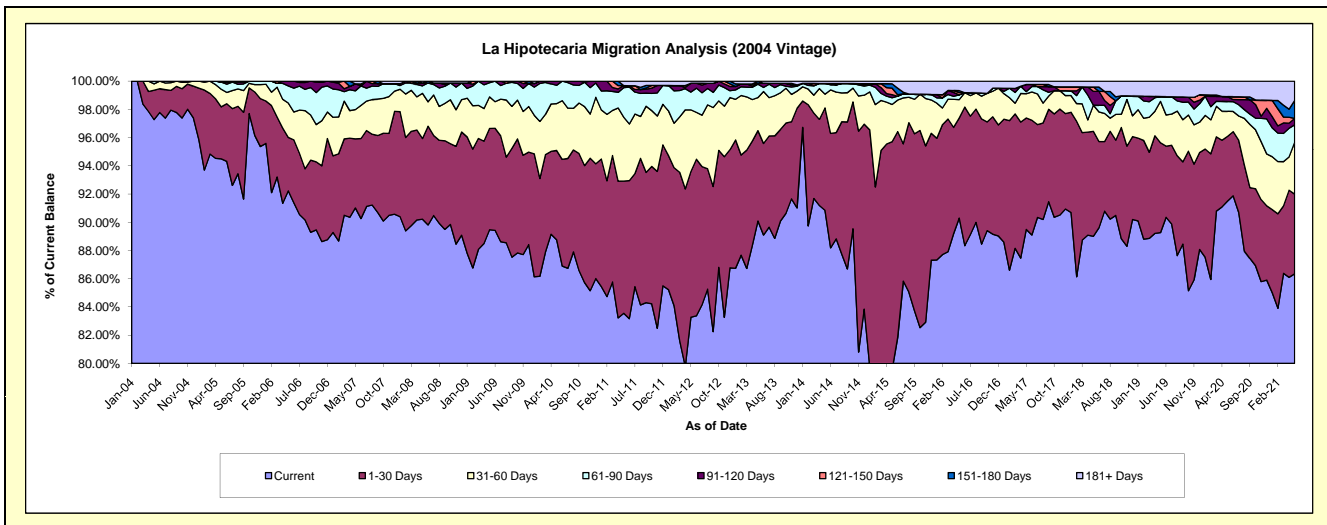
### Delinquency Status (\$ of Current Balance)

Data Cutoff: 5/31/2021

Current Portfolio Balance	13,881,839.60	12,387,048.11	11,176,243.00	9,821,647.82	8,765,919.52	7,739,295.69	7,013,966.99	6,395,278.54	5,884,309.81	5,440,104.26
	May-12	May-13	May-14	May-15	May-16	May-17	May-18	May-19	May-20	May-21
Current	11,560,150.03	11,159,584.81	10,152,970.37	7,815,049.45	7,915,374.42	6,926,051.48	6,242,813.70	5,708,657.00	5,384,051.08	4,697,306.34
1-30 Days	1,431,128.46	792,967.31	811,734.96	1,584,983.87	621,748.04	611,493.53	521,470.95	407,491.84	270,446.41	307,334.39
31-60 Days	608,569.47	290,444.10	108,745.57	259,525.86	114,054.62	133,050.67	130,620.66	187,577.32	103,909.96	199,653.48
61-90 Days	174,692.06	118,020.59	84,693.74	47,196.82	29,936.03	11,455.41	-	21,570.38	40,856.63	67,564.68
91-120 Days	87,155.42	7,932.94	-	20,955.15	-	39,443.16	68,500.45	-	20,515.41	24,981.85
121-150 Days	-	-	-	45,213.82	13,828.86	-	21,304.38	-	-	-
151-180 Days	-	18,098.36	-	30,624.49	12,220.84	-	-	-	-	68,963.94
181+ Days	20,144.16	-	18,098.36	18,098.36	58,756.71	17,801.44	29,256.85	69,982.00	64,530.32	74,299.58

### Delinquency Status (% of Current Balance)

Current Portfolio Balance	13,881,839.60	12,387,048.11	11,176,243.00	9,821,647.82	8,765,919.52	7,739,295.69	7,013,966.99	6,395,278.54	5,884,309.81	5,440,104.26
	May-12	May-13	May-14	May-15	May-16	May-17	May-18	May-19	May-20	May-21
Current	83.28%	90.09%	90.84%	79.57%	90.30%	89.49%	89.01%	89.26%	91.50%	86.35%
1-30 Days	10.31%	6.40%	7.26%	16.14%	7.09%	7.90%	7.43%	6.37%	4.60%	5.65%
31-60 Days	4.38%	2.34%	0.97%	2.64%	1.30%	1.72%	1.86%	2.93%	1.77%	3.67%
61-90 Days	1.26%	0.95%	0.76%	0.48%	0.34%	0.15%	0.00%	0.34%	0.69%	1.24%
91-120 Days	0.63%	0.06%	0.00%	0.21%	0.00%	0.51%	0.98%	0.00%	0.35%	0.46%
121-150 Days	0.00%	0.00%	0.00%	0.46%	0.16%	0.00%	0.30%	0.00%	0.00%	0.00%
151-180 Days	0.00%	0.15%	0.00%	0.31%	0.14%	0.00%	0.00%	0.00%	0.00%	1.27%
181+ Days	0.15%	0.00%	0.16%	0.18%	0.67%	0.23%	0.42%	1.09%	1.10%	1.37%
Current - 90 Days	99.23%	99.79%	99.84%	98.83%	99.03%	99.26%	98.30%	98.91%	98.55%	96.91%
91-180 Days	0.63%	0.21%	0.00%	0.99%	0.30%	0.51%	1.28%	0.00%	0.35%	1.73%



# Mortgages - La Hipotecaria Panama Migration Analysis (2005 Vintage)

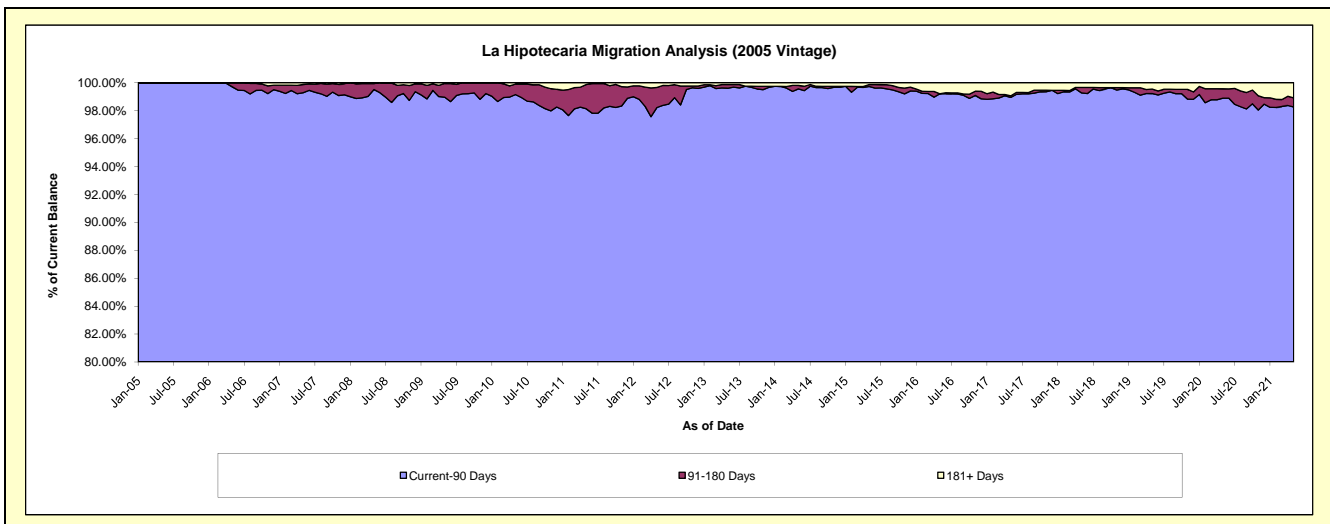
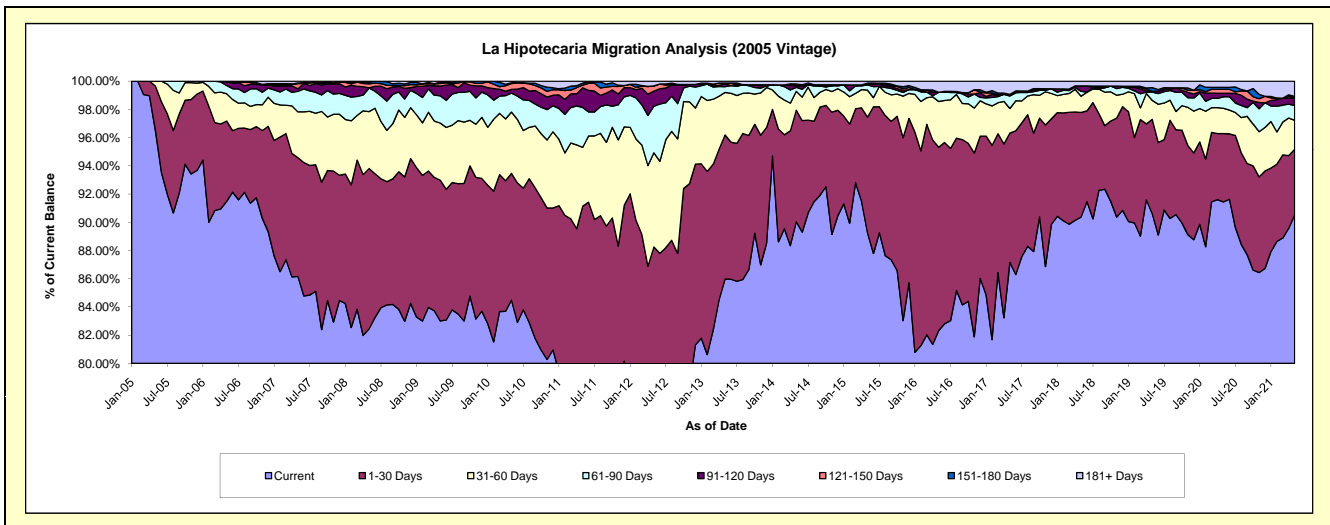
## Delinquency Status (\$ of Current Balance)

Data Cutoff: 5/31/2021

Current Portfolio Balance	25,424,067.10	23,344,087.64	21,217,510.74	19,424,647.52	16,837,420.43	15,169,985.29	13,715,445.83	12,499,371.55	11,501,407.09	10,646,714.10
	May-12	May-13	May-14	May-15	May-16	May-17	May-18	May-19	May-20	May-21
Current	18,976,957.13	20,070,099.14	19,102,865.45	17,337,363.18	13,860,179.61	13,222,025.10	12,394,922.29	11,324,969.86	10,516,692.92	9,637,804.32
1-30 Days	3,458,864.49	2,383,519.25	1,677,935.56	1,591,597.60	2,188,717.64	1,389,628.84	1,016,165.72	836,152.22	557,130.64	495,233.61
31-60 Days	1,698,250.96	704,215.17	283,289.07	373,067.15	546,036.05	264,508.74	158,442.75	167,990.02	206,421.44	218,367.44
61-90 Days	838,293.14	95,093.48	59,722.91	70,145.71	109,484.05	134,430.72	46,741.05	72,931.22	94,385.07	110,731.69
91-120 Days	272,194.23	42,936.45	26,091.67	12,794.48	-	17,283.21	52,812.24	-	28,021.52	56,598.24
121-150 Days	94,041.87	-	-	13,338.13	-	-	-	9,052.88	32,503.14	-
151-180 Days	-	17,860.42	26,341.27	-	-	-	-	31,317.19	16,075.31	12,743.07
181+ Days	85,465.28	30,363.73	41,264.81	26,341.27	133,003.08	142,108.68	46,361.78	56,958.16	50,177.05	115,235.73

## Delinquency Status (% of Current Balance)

Current Portfolio Balance	25,424,067.10	23,344,087.64	21,217,510.74	19,424,647.52	16,837,420.43	15,169,985.29	13,715,445.83	12,499,371.55	11,501,407.09	10,646,714.10
	May-12	May-13	May-14	May-15	May-16	May-17	May-18	May-19	May-20	May-21
Current	74.64%	85.98%	90.03%	89.25%	82.32%	87.16%	90.37%	90.60%	91.44%	90.52%
1-30 Days	13.60%	10.21%	7.91%	8.19%	13.00%	9.16%	7.41%	6.69%	4.84%	4.65%
31-60 Days	6.68%	3.02%	1.34%	1.92%	3.24%	1.74%	1.16%	1.34%	1.79%	2.05%
61-90 Days	3.30%	0.41%	0.28%	0.36%	0.65%	0.89%	0.34%	0.58%	0.82%	1.04%
91-120 Days	1.07%	0.18%	0.12%	0.07%	0.00%	0.11%	0.39%	0.00%	0.24%	0.53%
121-150 Days	0.37%	0.00%	0.00%	0.07%	0.00%	0.00%	0.00%	0.07%	0.28%	0.00%
151-180 Days	0.00%	0.08%	0.12%	0.00%	0.00%	0.00%	0.00%	0.25%	0.14%	0.12%
181+ Days	0.34%	0.13%	0.19%	0.14%	0.79%	0.94%	0.34%	0.46%	0.44%	1.08%
Current - 90 Days	98.22%	99.61%	99.56%	99.73%	99.21%	98.95%	99.28%	99.22%	98.90%	98.27%
91-180 Days	1.44%	0.26%	0.25%	0.13%	0.00%	0.11%	0.39%	0.32%	0.67%	0.65%



# Mortgages - La Hipotecaria Panama Migration Analysis (2006 Vintage)

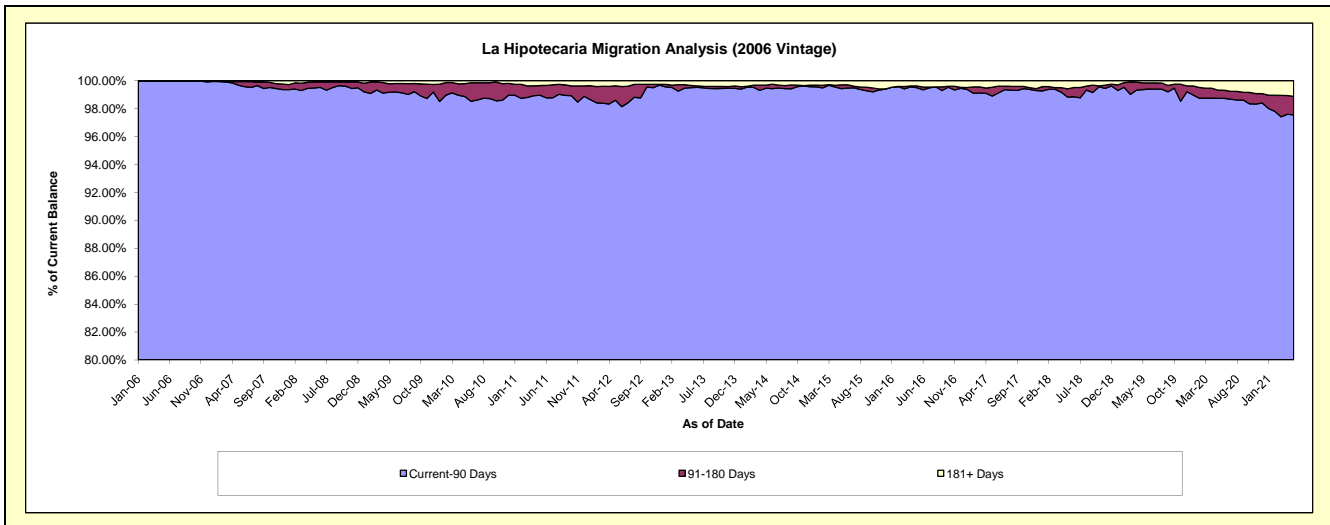
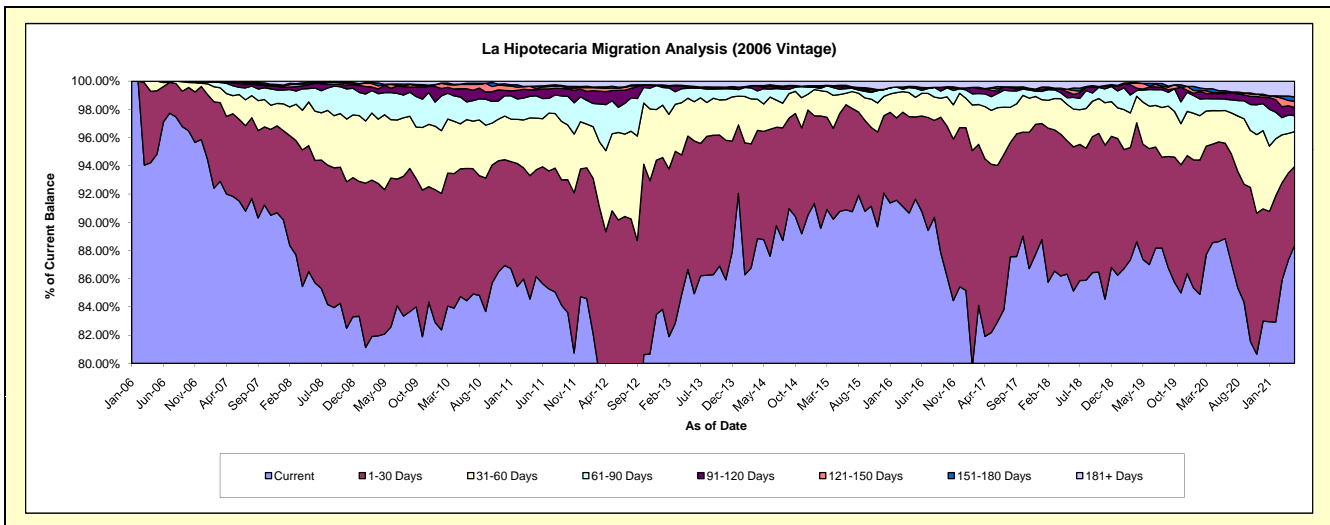
## Delinquency Status (\$ of Current Balance)

Data Cutoff: 5/31/2021

Current Portfolio Balance	45,486,396.38	41,298,160.97	37,236,129.24	33,813,364.54	30,086,416.40	26,654,987.34	24,225,296.66	21,963,323.38	20,469,554.35	18,960,803.34
	May-12	May-13	May-14	May-15	May-16	May-17	May-18	May-19	May-20	May-21
Current	35,444,808.37	35,787,464.43	33,052,631.35	30,690,605.72	27,572,609.19	21,906,386.34	20,913,698.71	19,189,158.03	18,143,826.53	16,755,118.92
1-30 Days	5,862,727.09	3,903,993.66	2,861,011.38	2,344,786.46	1,749,805.08	3,177,477.18	2,288,514.80	1,793,386.55	1,445,549.78	1,061,249.03
31-60 Days	2,484,734.37	1,108,232.44	720,219.20	456,672.82	419,621.28	1,021,415.69	623,040.97	654,687.66	451,475.06	465,291.96
61-90 Days	1,059,367.07	292,615.70	403,260.24	128,352.22	193,687.25	256,153.03	115,865.04	187,468.65	172,013.33	215,204.51
91-120 Days	332,968.72	39,862.61	40,731.46	59,600.77	16,566.02	123,072.84	104,012.68	14,444.76	76,179.17	111,123.94
121-150 Days	81,604.75	12,538.93	23,320.80	35,231.83	-	47,840.52	41,089.51	89,370.92	13,457.41	83,171.22
151-180 Days	56,385.85	14,662.51	16,822.82	-	20,908.19	-	-	-	28,556.41	57,613.41
181+ Days	163,800.16	138,790.69	118,131.99	98,114.72	113,219.39	122,641.74	139,074.95	34,806.81	138,496.66	212,030.35

## Delinquency Status (% of Current Balance)

Current Portfolio Balance	45,486,396.38	41,298,160.97	37,236,129.24	33,813,364.54	30,086,416.40	26,654,987.34	24,225,296.66	21,963,323.38	20,469,554.35	18,960,803.34
	May-12	May-13	May-14	May-15	May-16	May-17	May-18	May-19	May-20	May-21
Current	77.92%	86.66%	88.76%	90.76%	91.64%	82.18%	86.33%	87.37%	88.64%	88.37%
1-30 Days	12.89%	9.45%	7.68%	6.93%	5.82%	11.92%	9.45%	8.17%	7.06%	5.60%
31-60 Days	5.46%	2.68%	1.93%	1.35%	1.39%	3.83%	2.57%	2.98%	2.21%	2.45%
61-90 Days	2.33%	0.71%	1.08%	0.38%	0.64%	0.96%	0.48%	0.85%	0.84%	1.13%
91-120 Days	0.73%	0.10%	0.11%	0.18%	0.06%	0.46%	0.43%	0.07%	0.37%	0.59%
121-150 Days	0.18%	0.03%	0.06%	0.10%	0.00%	0.18%	0.17%	0.41%	0.07%	0.44%
151-180 Days	0.12%	0.04%	0.05%	0.00%	0.07%	0.00%	0.00%	0.00%	0.14%	0.30%
181+ Days	0.36%	0.34%	0.32%	0.29%	0.38%	0.46%	0.57%	0.16%	0.68%	1.12%
Current - 90 Days	98.60%	99.50%	99.47%	99.43%	99.50%	98.90%	98.83%	99.37%	98.75%	97.55%
91-180 Days	1.04%	0.16%	0.22%	0.28%	0.12%	0.64%	0.60%	0.47%	0.58%	1.33%



## Mortgages - La Hipotecaria Panama Migration Analysis (2007 Vintage)

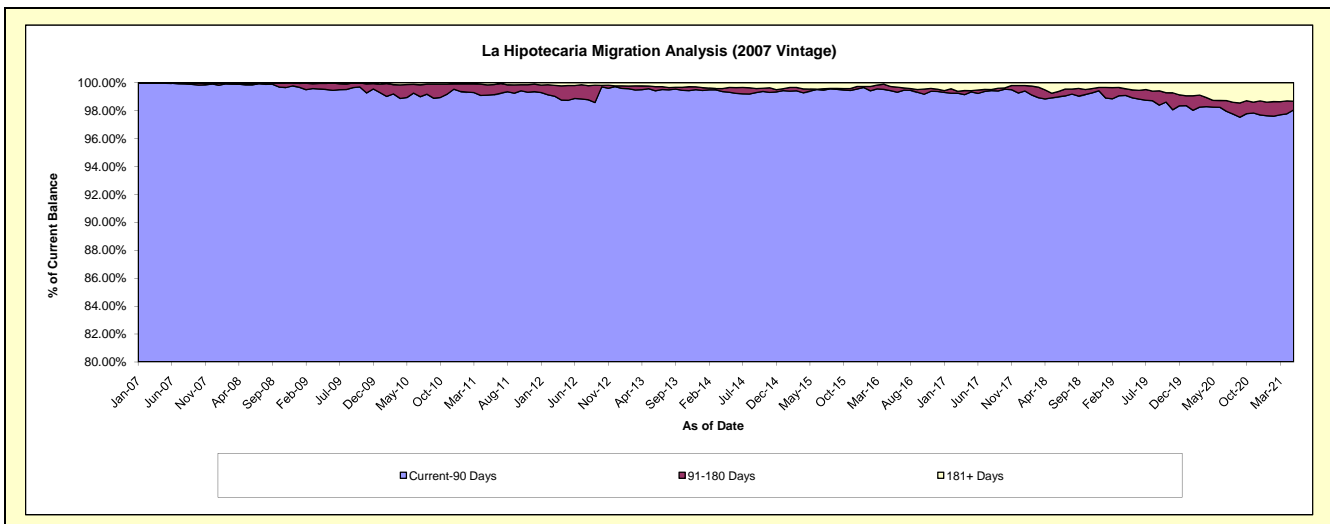
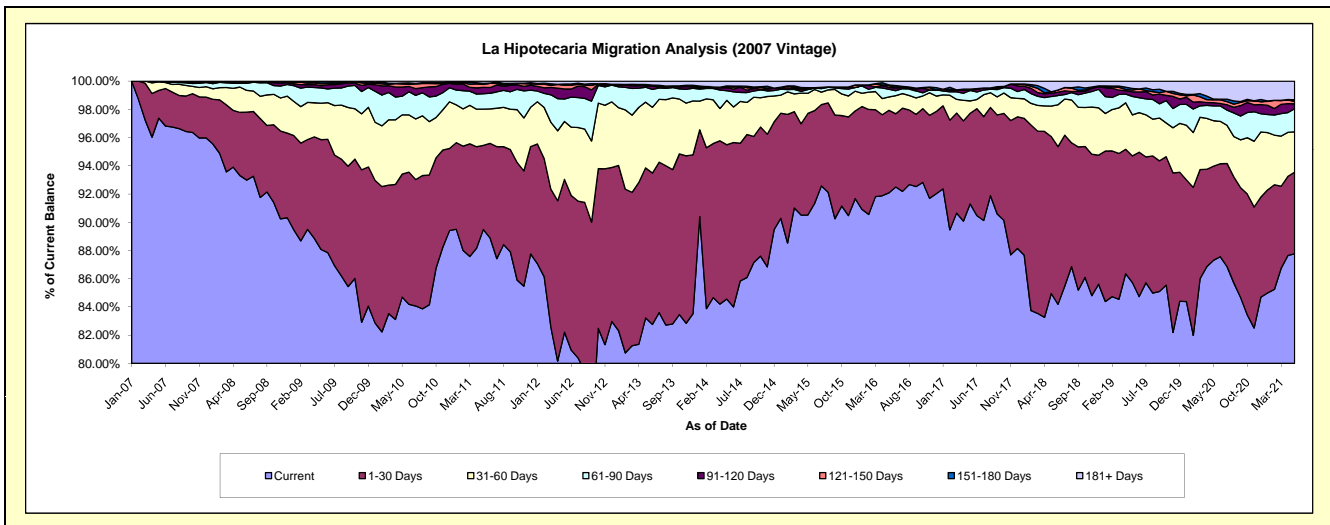
### Delinquency Status (\$ of Current Balance)

Data Cutoff: 5/31/2021

Current Portfolio Balance	55,627,920.84	50,833,177.63	46,398,998.56	41,738,224.33	37,850,556.24	34,446,794.83	31,354,536.39	28,122,383.29	26,108,133.39	24,503,086.84
	May-12	May-13	May-14	May-15	May-16	May-17	May-18	May-19	May-20	May-21
Current	45,732,204.78	42,306,948.58	39,233,199.61	37,778,590.99	34,857,461.50	31,450,293.21	26,634,789.65	24,108,850.49	22,794,309.09	21,507,241.28
1-30 Days	6,027,030.76	5,402,896.21	5,074,446.80	3,005,257.59	2,212,460.81	2,211,399.79	3,488,276.22	2,524,622.47	1,741,412.31	1,416,454.77
31-60 Days	2,281,130.05	2,367,172.00	1,461,531.20	595,799.93	356,586.38	304,479.85	679,257.50	816,731.69	841,200.92	700,015.38
61-90 Days	886,628.72	536,732.15	314,544.60	109,071.42	208,177.50	254,156.77	213,270.45	367,670.90	274,446.86	401,100.72
91-120 Days	396,699.32	56,130.73	99,777.29	18,952.02	51,830.24	-	71,482.67	92,031.17	59,496.19	84,566.87
121-150 Days	140,773.11	-	34,904.82	12,294.59	44,853.65	30,894.67	30,852.98	35,657.17	53,405.72	42,978.88
151-180 Days	53,768.19	45,573.54	23,869.53	27,554.67	17,191.38	-	-	31,547.79	12,931.76	25,394.09
181+ Days	109,685.91	117,724.42	156,724.71	190,703.12	101,994.78	195,570.54	236,606.92	145,271.61	330,930.54	325,334.85

### Delinquency Status (% of Current Balance)

Current Portfolio Balance	55,627,920.84	50,833,177.63	46,398,998.56	41,738,224.33	37,850,556.24	34,446,794.83	31,354,536.39	28,122,383.29	26,108,133.39	24,503,086.84
	May-12	May-13	May-14	May-15	May-16	May-17	May-18	May-19	May-20	May-21
Current	82.21%	83.23%	84.56%	90.51%	92.09%	91.30%	84.95%	85.73%	87.31%	87.77%
1-30 Days	10.83%	10.63%	10.94%	7.20%	5.85%	6.42%	11.13%	8.98%	6.67%	5.78%
31-60 Days	4.10%	4.66%	3.15%	1.43%	0.94%	0.88%	2.17%	2.90%	3.22%	2.86%
61-90 Days	1.59%	1.06%	0.68%	0.26%	0.55%	0.74%	0.68%	1.31%	1.05%	1.64%
91-120 Days	0.71%	0.11%	0.22%	0.05%	0.14%	0.00%	0.23%	0.33%	0.23%	0.35%
121-150 Days	0.25%	0.00%	0.08%	0.03%	0.12%	0.09%	0.10%	0.13%	0.20%	0.18%
151-180 Days	0.10%	0.09%	0.05%	0.07%	0.05%	0.00%	0.00%	0.11%	0.05%	0.10%
181+ Days	0.20%	0.23%	0.34%	0.46%	0.27%	0.57%	0.75%	0.52%	1.27%	1.33%
Current - 90 Days	98.74%	99.57%	99.32%	99.40%	99.43%	99.34%	98.92%	98.92%	98.25%	98.05%
91-180 Days	1.06%	0.20%	0.34%	0.14%	0.30%	0.09%	0.33%	0.57%	0.48%	0.62%



# Mortgages - La Hipotecaria Panama Migration Analysis (2008 Vintage)

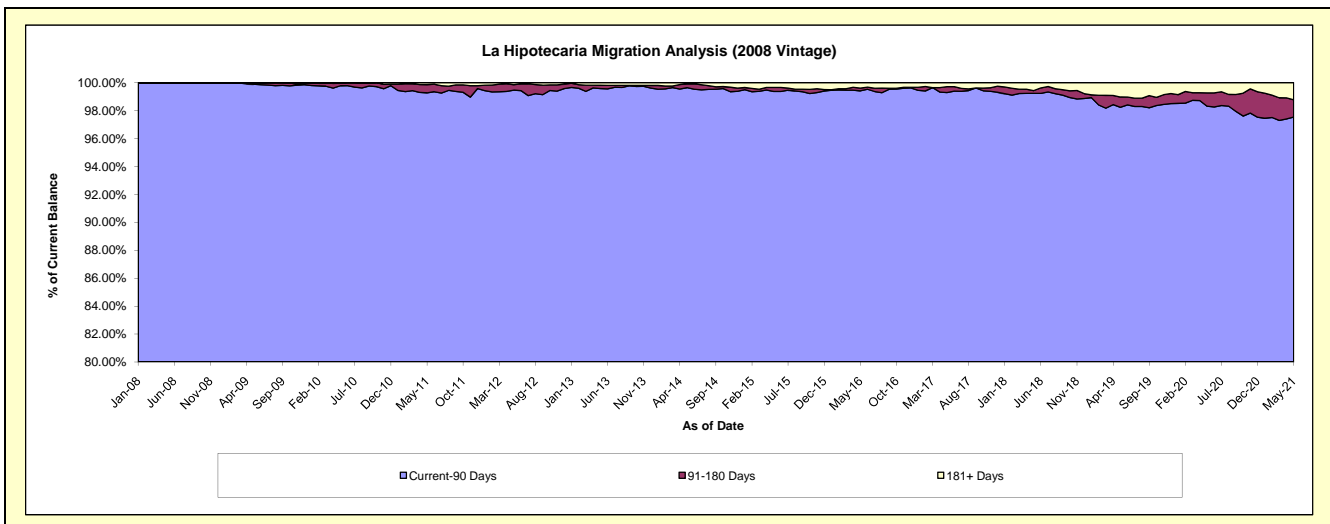
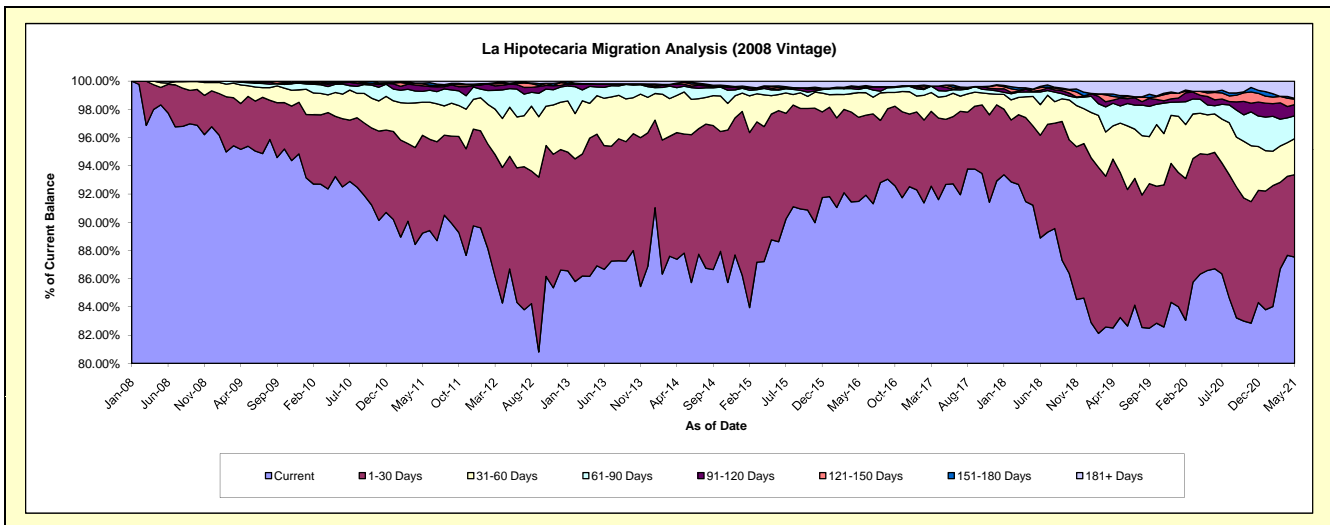
## Delinquency Status (\$ of Current Balance)

Data Cutoff: 5/31/2021

Current Portfolio Balance	54,358,836.41	50,406,290.32	45,446,149.31	40,845,467.73	36,436,447.88	33,264,042.05	30,252,956.80	27,194,812.62	24,814,135.76	23,038,022.73
	May-12	May-13	May-14	May-15	May-16	May-17	May-18	May-19	May-20	May-21
Current	47,127,531.97	43,812,054.99	39,910,015.02	36,252,961.00	33,332,561.80	30,830,774.89	27,592,973.01	22,641,185.73	21,485,278.34	20,165,207.72
1-30 Days	4,336,197.43	4,701,934.01	3,831,610.05	3,640,187.45	2,171,638.67	1,533,560.26	1,699,383.71	2,792,647.47	2,039,795.55	1,347,010.30
31-60 Days	1,890,783.97	1,376,013.26	1,357,295.99	531,487.27	638,412.64	544,227.09	633,862.63	953,302.83	696,774.61	589,139.91
61-90 Days	717,478.59	306,737.07	185,694.22	167,086.36	80,886.25	122,535.70	96,959.23	329,888.35	174,999.06	371,311.84
91-120 Days	173,832.50	117,118.63	58,817.31	47,977.82	46,835.63	90,142.30	16,606.46	150,782.67	148,885.01	183,436.19
121-150 Days	18,023.29	-	66,364.91	50,414.57	25,987.20	49,552.53	38,720.94	17,933.67	61,531.31	88,330.35
151-180 Days	18,003.67	-	-	15,262.37	-	-	4,086.83	31,461.08	27,267.79	12,853.44
181+ Days	76,984.99	92,432.36	36,351.81	140,090.89	140,125.69	93,249.28	170,363.99	277,610.82	179,604.09	280,732.98

## Delinquency Status (% of Current Balance)

Current Portfolio Balance	54,358,836.41	50,406,290.32	45,446,149.31	40,845,467.73	36,436,447.88	33,264,042.05	30,252,956.80	27,194,812.62	24,814,135.76	23,038,022.73
	May-12	May-13	May-14	May-15	May-16	May-17	May-18	May-19	May-20	May-21
Current	86.70%	86.92%	87.82%	88.76%	91.48%	92.68%	91.21%	83.26%	86.58%	87.53%
1-30 Days	7.98%	9.33%	8.43%	8.91%	5.96%	4.61%	5.62%	10.27%	8.22%	5.85%
31-60 Days	3.48%	2.73%	2.99%	1.30%	1.75%	1.64%	2.10%	3.51%	2.81%	2.56%
61-90 Days	1.32%	0.61%	0.41%	0.41%	0.22%	0.37%	0.32%	1.21%	0.71%	1.61%
91-120 Days	0.32%	0.23%	0.13%	0.12%	0.13%	0.27%	0.05%	0.55%	0.60%	0.80%
121-150 Days	0.03%	0.00%	0.15%	0.12%	0.07%	0.15%	0.13%	0.07%	0.25%	0.38%
151-180 Days	0.03%	0.00%	0.00%	0.04%	0.00%	0.00%	0.01%	0.12%	0.11%	0.06%
181+ Days	0.14%	0.18%	0.08%	0.34%	0.38%	0.28%	0.56%	1.02%	0.72%	1.22%
Current - 90 Days	99.47%	99.58%	99.64%	99.38%	99.42%	99.30%	99.24%	98.24%	98.32%	97.55%
91-180 Days	0.39%	0.23%	0.28%	0.28%	0.20%	0.42%	0.20%	0.74%	0.96%	1.24%



# Mortgages - La Hipotecaria Panama Migration Analysis (2009 Vintage)

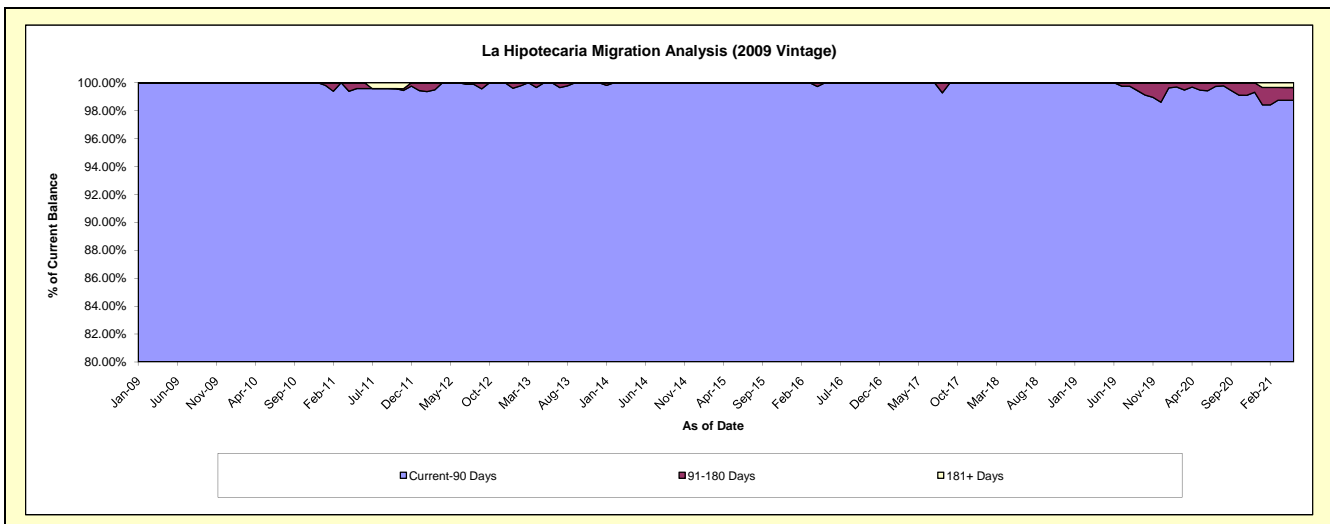
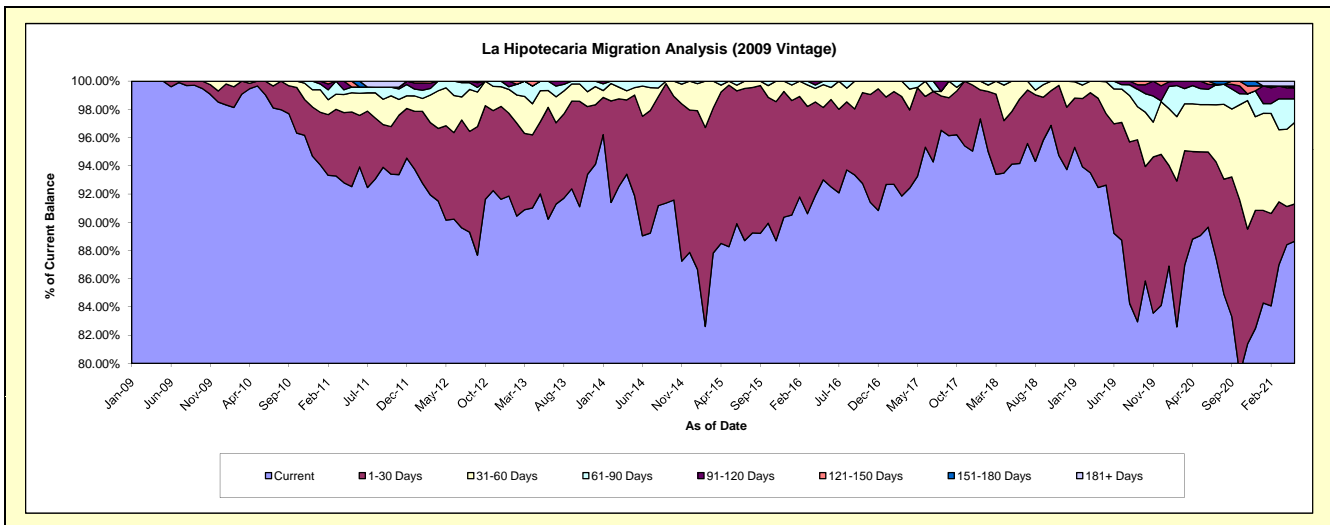
## Delinquency Status (\$ of Current Balance)

Data Cutoff: 5/31/2021

Current Portfolio Balance	11,598,647.21	10,650,082.17	9,589,737.83	8,676,243.28	7,666,070.32	6,959,195.35	6,313,545.97	5,839,400.71	5,431,785.31	5,088,880.33
	May-12	May-13	May-14	May-15	May-16	May-17	May-18	May-19	May-20	May-21
Current	10,456,385.08	9,799,475.12	8,811,509.69	7,658,377.25	7,130,201.90	6,490,341.26	5,942,124.30	5,409,610.39	4,837,368.80	4,511,610.09
1-30 Days	775,662.59	545,022.32	684,058.12	993,572.44	392,811.48	436,097.36	235,341.41	295,499.58	322,296.65	134,471.07
31-60 Days	311,797.47	233,634.69	50,630.83	24,293.59	124,123.02	2,498.13	136,080.26	131,866.53	182,056.36	293,899.39
61-90 Days	54,802.07	71,950.04	43,539.19	-	18,933.92	30,258.60	-	2,424.21	61,334.89	84,915.77
91-120 Days	-	-	-	-	-	-	-	-	28,728.61	39,966.02
121-150 Days	-	-	-	-	-	-	-	-	-	-
151-180 Days	-	-	-	-	-	-	-	-	-	6,508.51
181+ Days	-	-	-	-	-	-	-	-	-	17,509.48

## Delinquency Status (% of Current Balance)

Current Portfolio Balance	11,598,647.21	10,650,082.17	9,589,737.83	8,676,243.28	7,666,070.32	6,959,195.35	6,313,545.97	5,839,400.71	5,431,785.31	5,088,880.33
	May-12	May-13	May-14	May-15	May-16	May-17	May-18	May-19	May-20	May-21
Current	90.15%	92.01%	91.88%	88.27%	93.01%	93.26%	94.12%	92.64%	89.06%	88.66%
1-30 Days	6.69%	5.12%	7.13%	11.45%	5.12%	6.27%	3.73%	5.06%	5.93%	2.64%
31-60 Days	2.69%	2.19%	0.53%	0.28%	1.62%	0.04%	2.16%	2.26%	3.35%	5.78%
61-90 Days	0.47%	0.68%	0.45%	0.00%	0.25%	0.43%	0.00%	0.04%	1.13%	1.67%
91-120 Days	0.00%	0.00%	0.00%	0.00%	0.00%	0.00%	0.00%	0.00%	0.53%	0.79%
121-150 Days	0.00%	0.00%	0.00%	0.00%	0.00%	0.00%	0.00%	0.00%	0.00%	0.00%
151-180 Days	0.00%	0.00%	0.00%	0.00%	0.00%	0.00%	0.00%	0.00%	0.00%	0.13%
181+ Days	0.00%	0.00%	0.00%	0.00%	0.00%	0.00%	0.00%	0.00%	0.00%	0.34%
Current - 90 Days	100.00%	100.00%	100.00%	100.00%	100.00%	100.00%	100.00%	100.00%	99.47%	98.74%
91-180 Days	0.00%	0.00%	0.00%	0.00%	0.00%	0.00%	0.00%	0.00%	0.53%	0.91%



## Mortgages - La Hipotecaria Panama Migration Analysis (2010 Vintage)

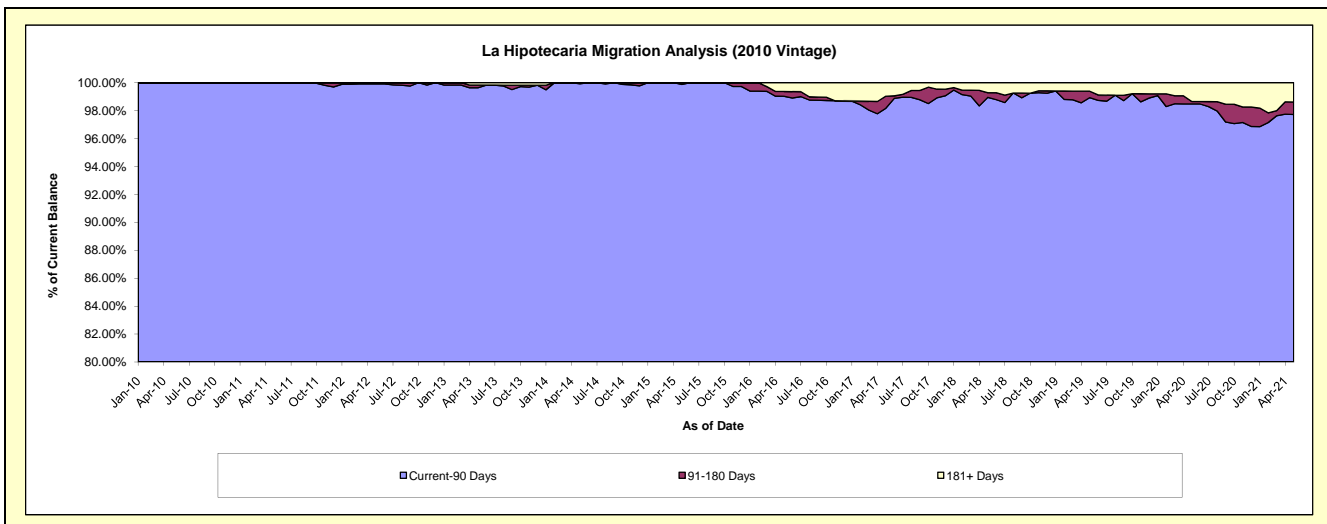
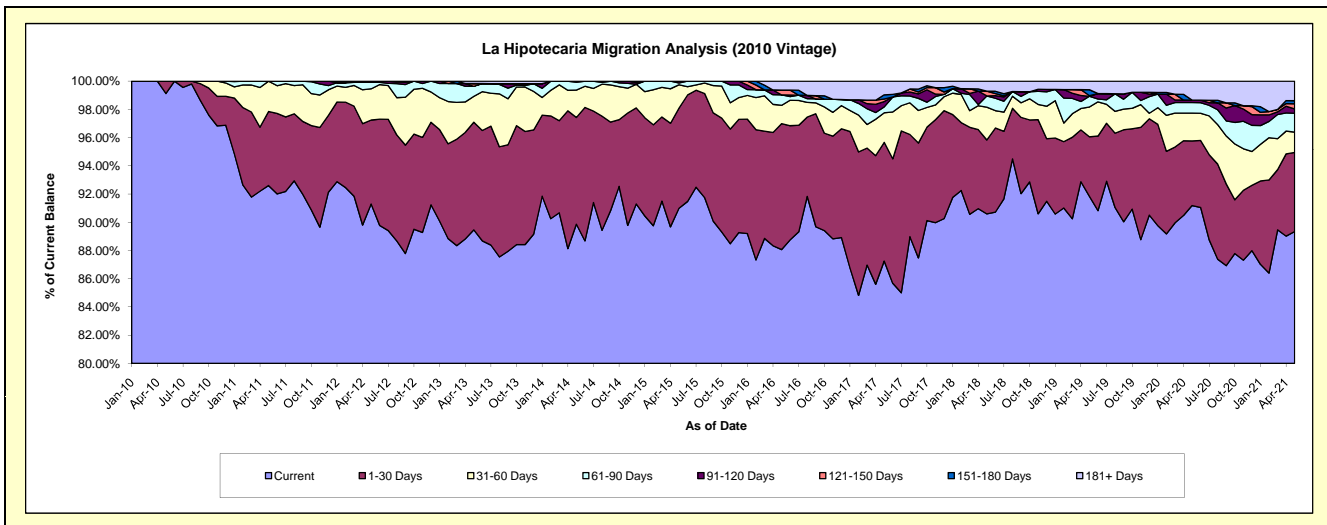
### Delinquency Status (\$ of Current Balance)

Data Cutoff: 5/31/2021

Current Portfolio Balance	21,269,895.34	19,683,882.09	18,100,311.65	16,494,433.67	14,538,559.10	12,757,194.69	11,519,935.99	10,409,782.10	9,647,195.80	9,045,224.58
	May-12	May-13	May-14	May-15	May-16	May-17	May-18	May-19	May-20	May-21
Current	19,418,823.22	17,609,699.75	16,265,419.81	15,009,013.38	12,803,399.00	11,130,997.09	10,436,468.43	9,560,383.81	8,796,768.78	8,081,096.16
1-30 Days	1,265,088.08	1,501,735.49	1,368,840.81	1,170,092.07	1,297,709.32	1,073,267.64	603,345.45	439,294.49	441,976.20	507,658.58
31-60 Days	470,367.22	360,136.99	351,684.05	272,838.68	188,598.86	266,998.79	267,755.80	219,710.28	189,760.27	130,231.18
61-90 Days	97,090.46	140,783.60	101,782.03	21,837.20	107,595.69	52,564.51	91,869.39	79,036.76	72,252.92	120,770.84
91-120 Days	18,526.36	-	12,584.95	20,652.34	-	49,307.56	-	-	17,001.12	27,759.08
121-150 Days	-	37,984.06	-	-	49,959.33	23,162.39	38,497.43	4,551.21	-	32,709.91
151-180 Days	-	-	-	-	-	37,419.33	-	43,516.10	-	19,782.13
181+ Days	-	33,542.20	-	-	91,296.90	123,477.38	81,999.49	63,289.45	129,436.51	125,216.70

### Delinquency Status (% of Current Balance)

Current Portfolio Balance	21,269,895.34	19,683,882.09	18,100,311.65	16,494,433.67	14,538,559.10	12,757,194.69	11,519,935.99	10,409,782.10	9,647,195.80	9,045,224.58
	May-12	May-13	May-14	May-15	May-16	May-17	May-18	May-19	May-20	May-21
Current	91.30%	89.46%	89.86%	90.99%	88.07%	87.25%	90.59%	91.84%	91.18%	89.34%
1-30 Days	5.95%	7.63%	7.56%	7.09%	8.93%	8.41%	5.24%	4.22%	4.58%	5.61%
31-60 Days	2.21%	1.83%	1.94%	1.65%	1.30%	2.09%	2.32%	2.11%	1.97%	1.44%
61-90 Days	0.46%	0.72%	0.56%	0.13%	0.74%	0.41%	0.80%	0.76%	0.75%	1.34%
91-120 Days	0.09%	0.00%	0.07%	0.13%	0.00%	0.39%	0.00%	0.00%	0.18%	0.31%
121-150 Days	0.00%	0.19%	0.00%	0.00%	0.34%	0.18%	0.33%	0.04%	0.00%	0.36%
151-180 Days	0.00%	0.00%	0.00%	0.00%	0.00%	0.29%	0.00%	0.42%	0.00%	0.22%
181+ Days	0.00%	0.17%	0.00%	0.00%	0.63%	0.97%	0.71%	0.61%	1.34%	1.38%
Current - 90 Days	99.91%	99.64%	99.93%	99.87%	99.03%	98.17%	98.95%	98.93%	98.48%	97.73%
91-180 Days	0.09%	0.19%	0.07%	0.13%	0.34%	0.86%	0.33%	0.46%	0.18%	0.89%





## Mortgages - La Hipotecaria Panama Migration Analysis (2011 Vintage)

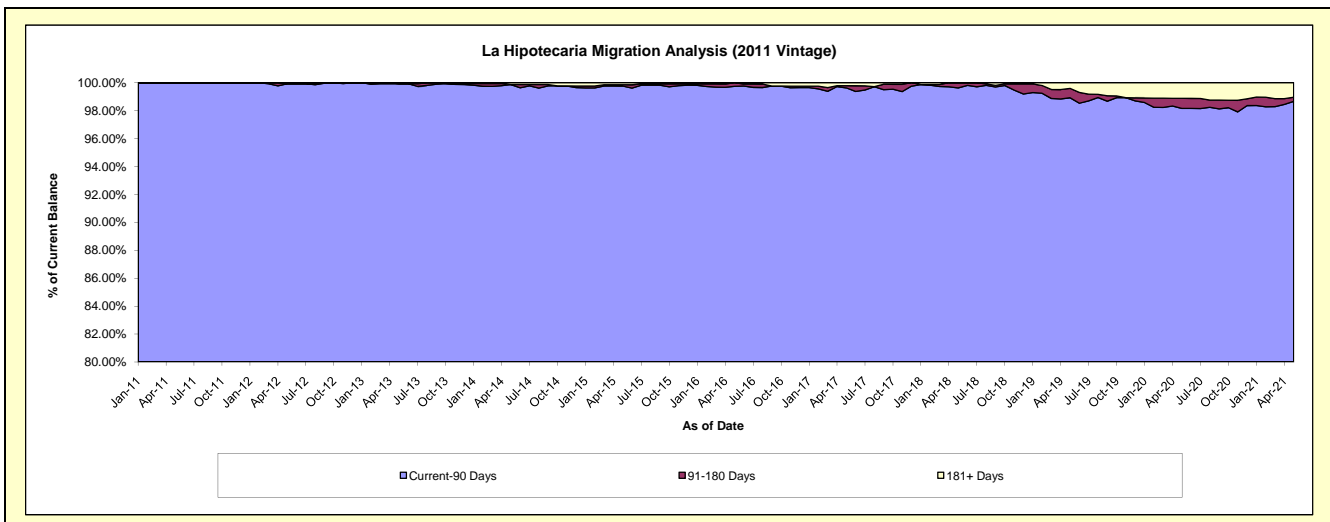
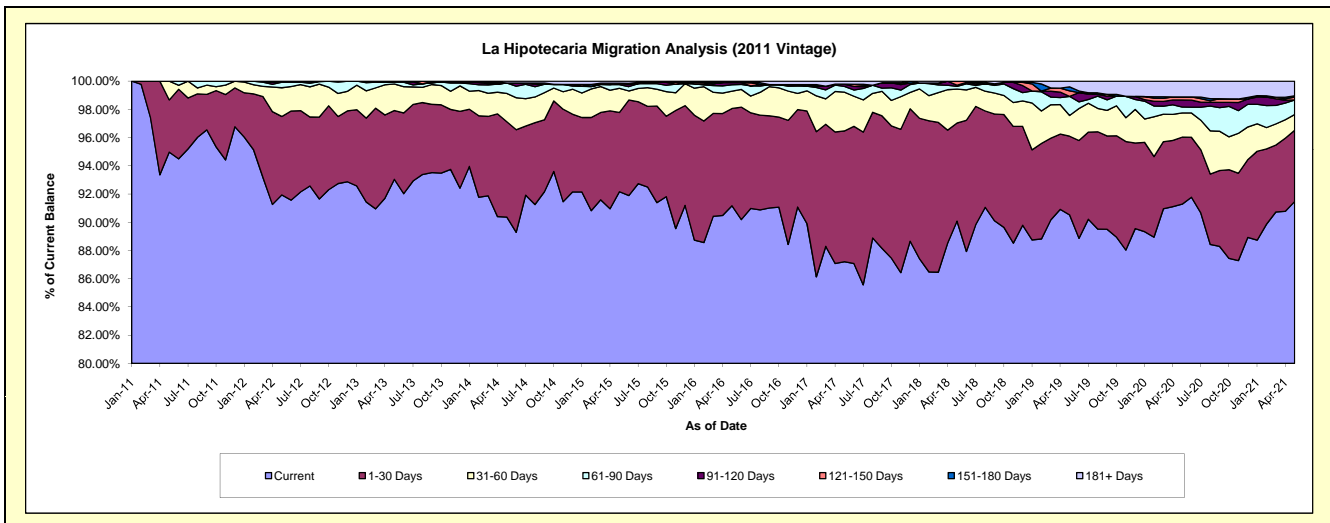
### Delinquency Status (\$ of Current Balance)

Data Cutoff: 5/31/2021

Current Portfolio Balance	34,312,960.67	32,648,618.77	30,262,934.08	26,970,417.73	24,151,696.80	22,041,563.44	20,168,190.53	18,283,251.26	16,738,986.03	15,857,844.13
	May-12	May-13	May-14	May-15	May-16	May-17	May-18	May-19	May-20	May-21
Current	31,547,035.32	30,377,684.89	27,348,500.14	24,857,446.64	22,019,929.93	19,221,455.32	18,168,891.12	16,550,749.66	15,279,939.83	14,505,977.30
1-30 Days	1,907,611.42	1,591,523.96	2,045,890.02	1,513,941.13	1,664,518.04	2,042,921.87	1,400,906.90	1,019,490.87	794,847.23	799,964.88
31-60 Days	698,772.58	613,869.60	605,160.01	461,995.39	296,270.65	605,040.46	484,741.84	268,041.86	287,815.49	177,004.02
61-90 Days	134,414.10	41,376.45	223,458.35	72,025.09	109,049.57	91,102.52	38,777.18	248,028.84	69,065.57	163,336.62
91-120 Days	-	-	-	25,083.92	37,573.45	33,399.43	16,176.43	-	83,591.05	-
121-150 Days	-	-	-	-	-	-	58,697.06	71,501.77	36,496.38	32,174.81
151-180 Days	-	-	-	-	24,355.16	-	-	51,892.35	-	15,401.67
181+ Days	25,127.25	24,163.87	39,925.56	39,925.56	-	47,643.84	-	73,545.91	187,230.48	163,984.83

### Delinquency Status (% of Current Balance)

Current Portfolio Balance	34,312,960.67	32,648,618.77	30,262,934.08	26,970,417.73	24,151,696.80	22,041,563.44	20,168,190.53	18,283,251.26	16,738,986.03	15,857,844.13
	May-12	May-13	May-14	May-15	May-16	May-17	May-18	May-19	May-20	May-21
Current	91.94%	93.04%	90.37%	92.17%	91.17%	87.21%	90.09%	90.52%	91.28%	91.48%
1-30 Days	5.56%	4.87%	6.76%	5.61%	6.89%	9.27%	6.95%	5.58%	4.75%	5.04%
31-60 Days	2.04%	1.88%	2.00%	1.71%	1.23%	2.74%	2.40%	1.47%	1.72%	1.12%
61-90 Days	0.39%	0.13%	0.74%	0.27%	0.45%	0.41%	0.19%	1.36%	0.41%	1.03%
91-120 Days	0.00%	0.00%	0.00%	0.09%	0.16%	0.15%	0.08%	0.00%	0.50%	0.00%
121-150 Days	0.00%	0.00%	0.00%	0.00%	0.00%	0.00%	0.29%	0.39%	0.22%	0.20%
151-180 Days	0.00%	0.00%	0.00%	0.00%	0.10%	0.00%	0.00%	0.28%	0.00%	0.10%
181+ Days	0.07%	0.07%	0.13%	0.15%	0.00%	0.22%	0.00%	0.40%	1.12%	1.03%
Current - 90 Days	99.93%	99.93%	99.87%	99.76%	99.74%	99.63%	99.63%	98.92%	98.16%	98.67%
91-180 Days	0.00%	0.00%	0.00%	0.09%	0.26%	0.15%	0.37%	0.67%	0.72%	0.30%



## Mortgages - La Hipotecaria Panama Migration Analysis (2012 Vintage)

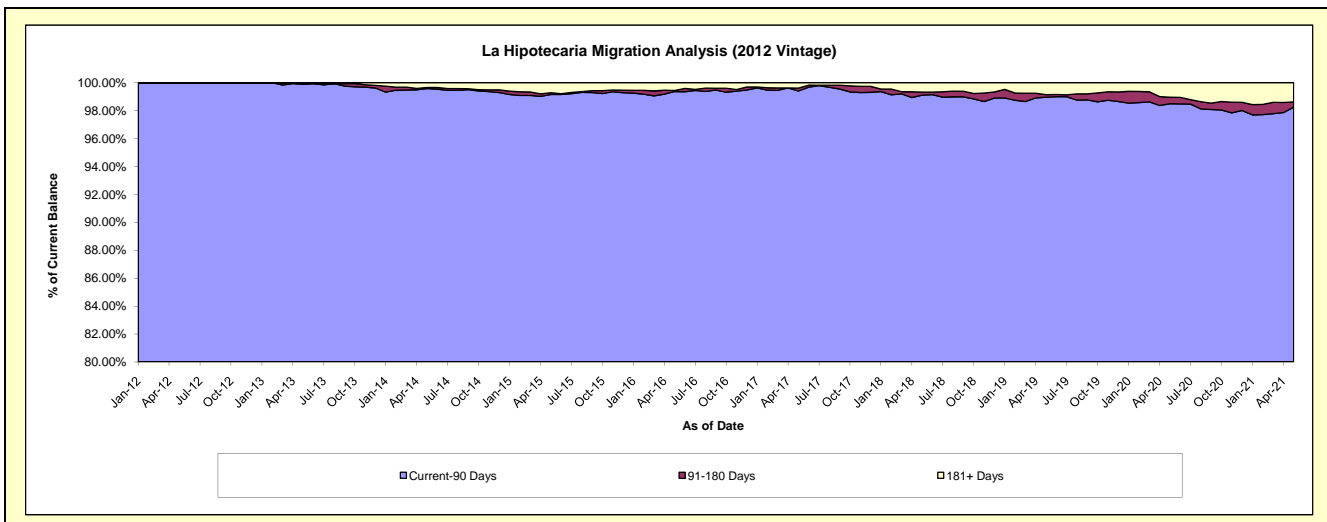
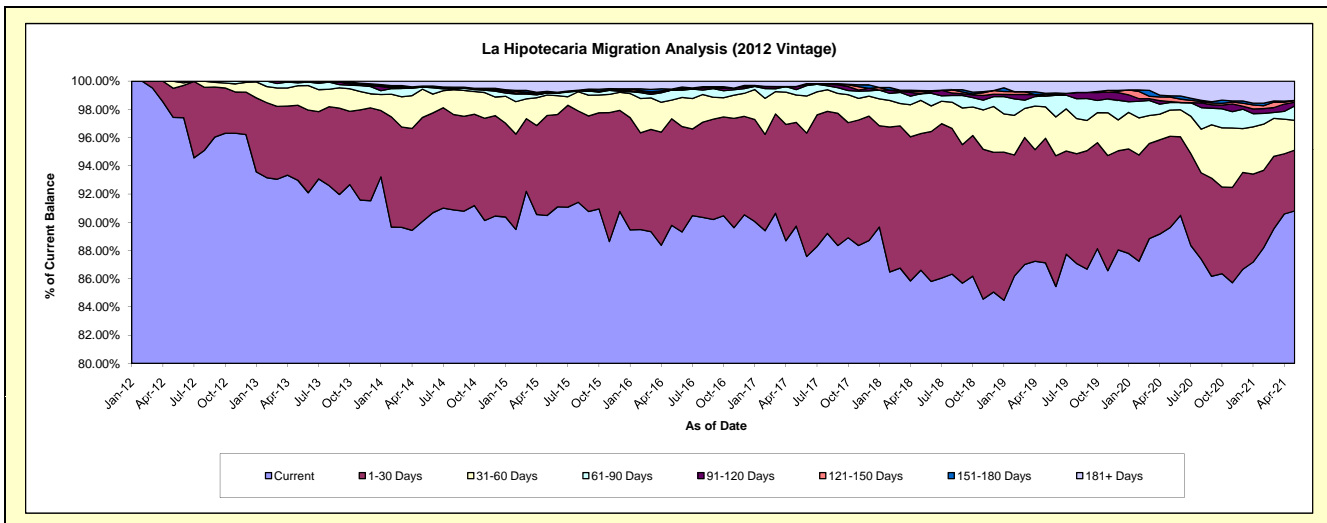
### Delinquency Status (\$ of Current Balance)

Data Cutoff: 5/31/2021

Current Portfolio Balance	18,365,607.13	48,524,825.82	46,232,097.83	42,465,278.03	39,004,594.95	35,736,840.86	32,726,664.04	29,913,123.79	27,671,001.90	26,023,160.34
	May-12	May-13	May-14	May-15	May-16	May-17	May-18	May-19	May-20	May-21
Current	17,893,973.31	45,116,618.54	41,639,027.42	38,424,082.13	35,019,218.51	32,066,986.54	28,343,640.16	26,063,023.92	24,800,090.64	23,630,029.69
1-30 Days	379,315.68	2,580,717.93	3,406,203.55	3,007,122.42	2,946,117.27	2,627,046.33	3,168,697.88	2,639,305.24	1,790,562.90	1,121,756.86
31-60 Days	92,318.14	671,639.89	925,326.64	618,288.49	517,124.84	693,182.50	770,049.79	666,904.41	514,413.95	549,344.92
61-90 Days	-	95,852.17	69,623.40	59,586.70	276,441.04	136,556.73	152,332.86	234,059.75	147,732.06	265,243.38
91-120 Days	-	28,793.01	-	-	-	77,163.50	-	-	19,384.16	70,090.50
121-150 Days	-	-	33,549.59	23,026.61	27,252.60	-	48,970.47	33,851.96	87,334.88	29,825.33
151-180 Days	-	31,204.28	-	26,967.08	-	-	24,478.74	20,445.22	23,156.13	-
181+ Days	-	-	158,367.23	306,204.60	218,440.69	135,905.26	218,494.14	255,533.29	288,327.18	356,869.66

### Delinquency Status (% of Current Balance)

Current Portfolio Balance	18,365,607.13	48,524,825.82	46,232,097.83	42,465,278.03	39,004,594.95	35,736,840.86	32,726,664.04	29,913,123.79	27,671,001.90	26,023,160.34
	May-12	May-13	May-14	May-15	May-16	May-17	May-18	May-19	May-20	May-21
Current	97.43%	92.98%	90.07%	90.48%	89.78%	89.73%	86.61%	87.13%	89.62%	90.80%
1-30 Days	2.07%	5.32%	7.37%	7.08%	7.55%	7.35%	9.68%	8.82%	6.47%	4.31%
31-60 Days	0.50%	1.38%	2.00%	1.46%	1.33%	1.94%	2.35%	2.23%	1.86%	2.11%
61-90 Days	0.00%	0.20%	0.15%	0.14%	0.71%	0.38%	0.47%	0.78%	0.53%	1.02%
91-120 Days	0.00%	0.06%	0.00%	0.00%	0.00%	0.22%	0.00%	0.00%	0.07%	0.27%
121-150 Days	0.00%	0.00%	0.07%	0.05%	0.07%	0.00%	0.15%	0.11%	0.32%	0.11%
151-180 Days	0.00%	0.06%	0.00%	0.06%	0.00%	0.00%	0.07%	0.07%	0.08%	0.00%
181+ Days	0.00%	0.00%	0.34%	0.72%	0.56%	0.38%	0.67%	0.85%	1.04%	1.37%
Current - 90 Days	100.00%	99.88%	99.58%	99.16%	99.37%	99.40%	99.11%	98.96%	98.49%	98.24%
91-180 Days	0.00%	0.12%	0.07%	0.12%	0.07%	0.22%	0.22%	0.18%	0.47%	0.38%



## Mortgages - La Hipotecaria Panama Migration Analysis (2013 Vintage)

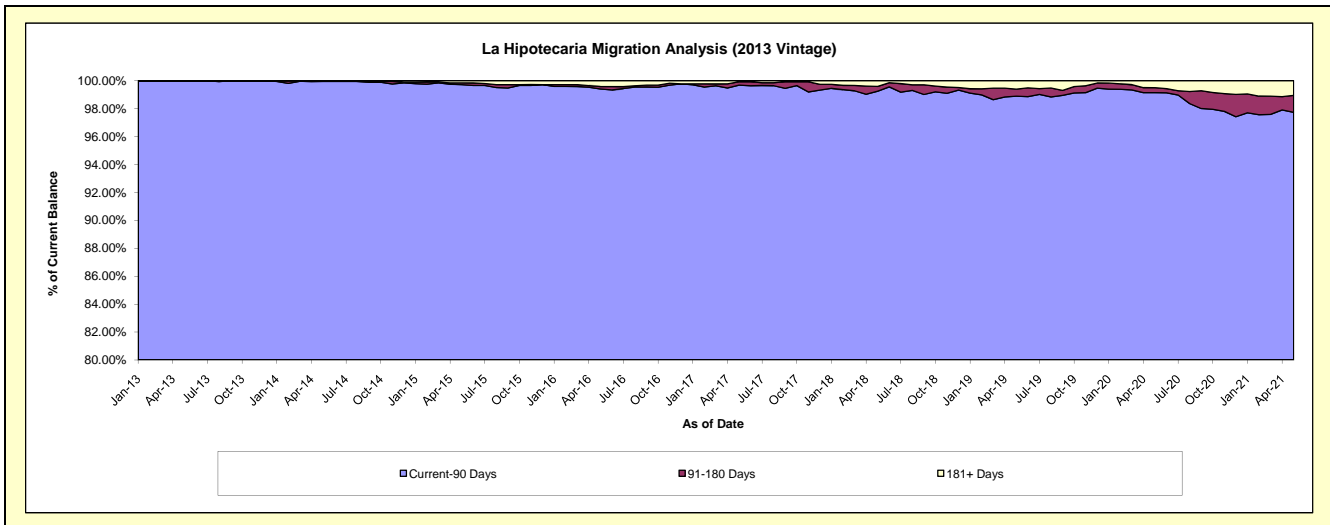
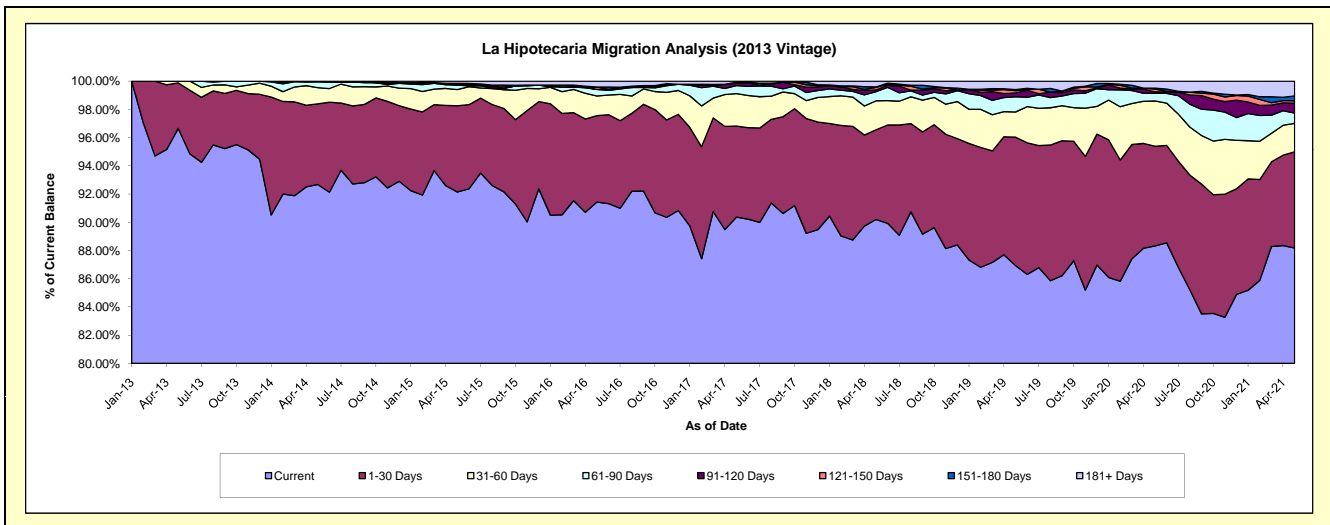
### Delinquency Status (\$ of Current Balance)

Data Cutoff: 5/31/2021

Current Portfolio Balance	-	24,652,915.66	62,497,458.76	59,312,238.33	54,418,421.44	50,378,565.06	46,660,724.97	42,736,610.84	39,391,939.61	37,372,966.96
	May-13	May-14	May-15	May-16	May-17	May-18	May-19	May-20	May-21	
Current	23,828,952.77	57,920,835.65	54,655,088.82	49,756,594.42	45,526,154.36	42,088,566.94	37,152,659.89	34,795,257.32	32,955,479.66	
1-30 Days	793,744.34	3,571,314.44	3,623,162.30	3,332,372.20	3,250,575.14	2,964,683.27	3,887,802.74	2,779,396.07	2,546,289.18	
31-60 Days	30,218.55	718,540.46	683,547.61	761,022.40	1,156,895.39	957,341.58	762,591.31	1,263,513.43	752,689.55	
61-90 Days	-	254,293.71	186,475.52	249,620.90	286,658.11	300,674.48	462,857.09	217,488.21	271,249.69	
91-120 Days	-	32,474.50	14,071.43	-	85,750.81	58,254.19	113,208.22	36,953.85	262,199.72	
121-150 Days	-	-	55,588.49	90,934.30	35,515.09	84,514.69	70,116.69	77,399.84	67,264.65	
151-180 Days	-	-	-	-	-	15,712.63	32,029.80	26,929.34	125,019.96	
181+ Days	-	-	94,304.16	227,877.22	37,016.16	190,977.19	255,345.10	195,001.55	392,774.55	

### Delinquency Status (% of Current Balance)

Current Portfolio Balance	-	24,652,915.66	62,497,458.76	59,312,238.33	54,418,421.44	50,378,565.06	46,660,724.97	42,736,610.84	39,391,939.61	37,372,966.96
	May-13	May-14	May-15	May-16	May-17	May-18	May-19	May-20	May-21	
Current	96.66%	92.68%	92.15%	91.43%	90.37%	90.20%	86.93%	88.33%	88.18%	
1-30 Days	3.22%	5.71%	6.11%	6.12%	6.45%	6.35%	9.10%	7.06%	6.81%	
31-60 Days	0.12%	1.15%	1.15%	1.40%	2.30%	2.05%	1.78%	3.21%	2.01%	
61-90 Days	0.00%	0.41%	0.31%	0.46%	0.57%	0.64%	1.08%	0.55%	0.73%	
91-120 Days	0.00%	0.05%	0.02%	0.00%	0.17%	0.12%	0.26%	0.09%	0.70%	
121-150 Days	0.00%	0.00%	0.09%	0.17%	0.07%	0.18%	0.16%	0.20%	0.18%	
151-180 Days	0.00%	0.00%	0.00%	0.00%	0.00%	0.03%	0.07%	0.07%	0.33%	
181+ Days	0.00%	0.00%	0.16%	0.42%	0.07%	0.41%	0.60%	0.50%	1.05%	
Current - 90 Days	100.00%	99.95%	99.72%	99.41%	99.69%	99.25%	98.90%	99.15%	97.73%	
91-180 Days	0.00%	0.05%	0.12%	0.17%	0.24%	0.34%	0.50%	0.36%	1.22%	



## Mortgages - La Hipotecaria Panama Migration Analysis (2014 Vintage)

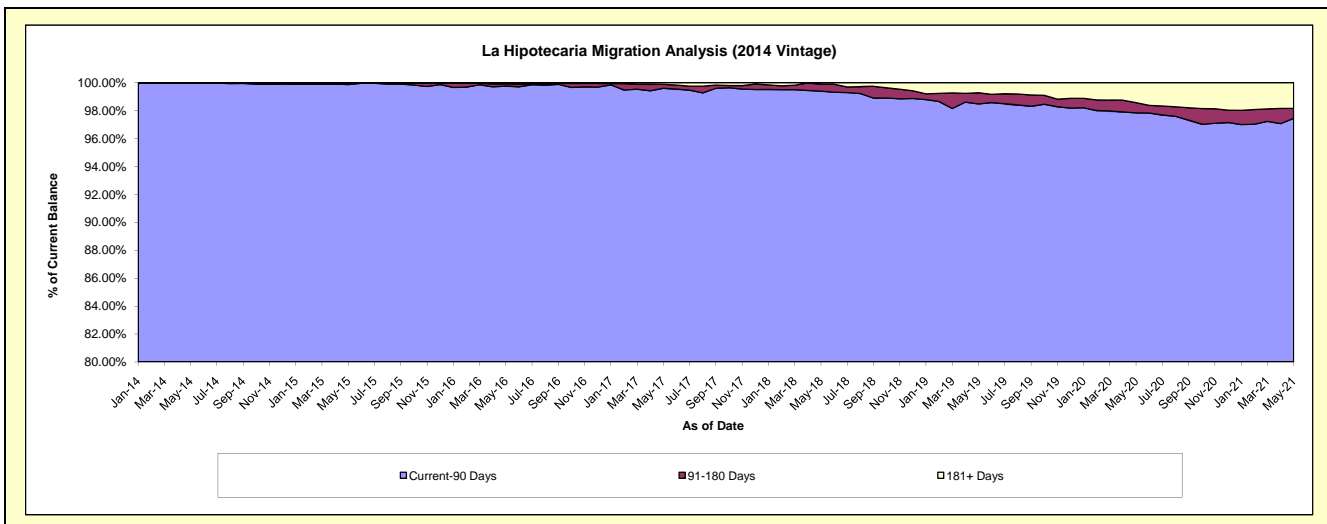
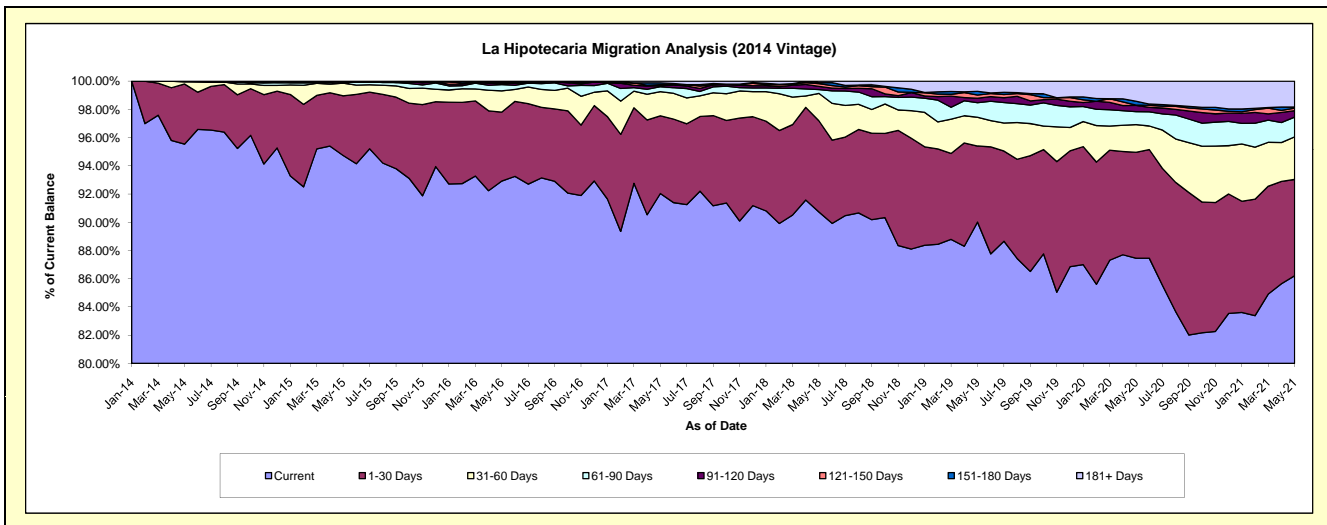
### Delinquency Status (\$ of Current Balance)

Data Cutoff: 5/31/2021

Current Portfolio Balance	-	-	29,119,588.08	69,882,543.43	66,478,544.06	61,898,272.12	57,644,732.88	53,861,131.37	50,430,775.21	48,265,336.27
	May-14	May-15	May-16	May-17	May-18	May-19	May-20	May-21		
Current	27,821,292.39	66,202,230.82	61,770,418.22	56,971,301.09	52,302,987.08	48,484,588.30	44,105,982.94	41,612,865.28		
1-30 Days	1,239,798.37	2,954,021.34	3,247,393.56	3,408,283.66	3,723,737.66	2,902,916.04	3,782,874.20	3,292,147.69		
31-60 Days	44,858.32	630,801.43	1,002,932.22	1,059,903.82	1,118,501.84	1,096,396.64	987,424.03	1,457,142.60		
61-90 Days	13,639.00	-	297,461.44	215,997.73	153,831.36	556,932.16	463,897.17	673,235.34		
91-120 Days	-	65,184.14	32,572.79	41,415.74	130,890.65	167,261.91	222,525.34	220,921.45		
121-150 Days	-	-	67,410.52	46,555.96	114,026.80	124,102.32	13,528.04	86,239.89		
151-180 Days	-	-	-	83,056.24	37,930.22	140,087.60	137,811.42	36,174.60		
181+ Days	-	30,305.70	60,355.31	71,757.88	62,827.27	388,846.40	716,732.07	886,609.42		

### Delinquency Status (% of Current Balance)

Current Portfolio Balance	-	-	29,119,588.08	69,882,543.43	66,478,544.06	61,898,272.12	57,644,732.88	53,861,131.37	50,430,775.21	48,265,336.27
	May-14	May-15	May-16	May-17	May-18	May-19	May-20	May-21		
Current	95.54%	94.73%	92.92%	92.04%	90.73%	90.02%	87.46%	86.22%		
1-30 Days	4.26%	4.23%	4.88%	5.51%	6.46%	5.39%	7.50%	6.82%		
31-60 Days	0.15%	0.90%	1.51%	1.71%	1.94%	2.04%	1.96%	3.02%		
61-90 Days	0.05%	0.00%	0.45%	0.35%	0.27%	1.03%	0.92%	1.39%		
91-120 Days	0.00%	0.09%	0.05%	0.07%	0.23%	0.31%	0.44%	0.46%		
121-150 Days	0.00%	0.00%	0.10%	0.08%	0.20%	0.23%	0.03%	0.18%		
151-180 Days	0.00%	0.00%	0.00%	0.13%	0.07%	0.26%	0.27%	0.07%		
181+ Days	0.00%	0.04%	0.09%	0.12%	0.11%	0.72%	1.42%	1.84%		
Current - 90 Days	100.00%	99.86%	99.76%	99.61%	99.40%	98.48%	97.84%	97.45%		
91-180 Days	0.00%	0.09%	0.15%	0.28%	0.49%	0.80%	0.74%	0.71%		



# Mortgages - La Hipotecaria Panama Migration Analysis (2015 Vintage)

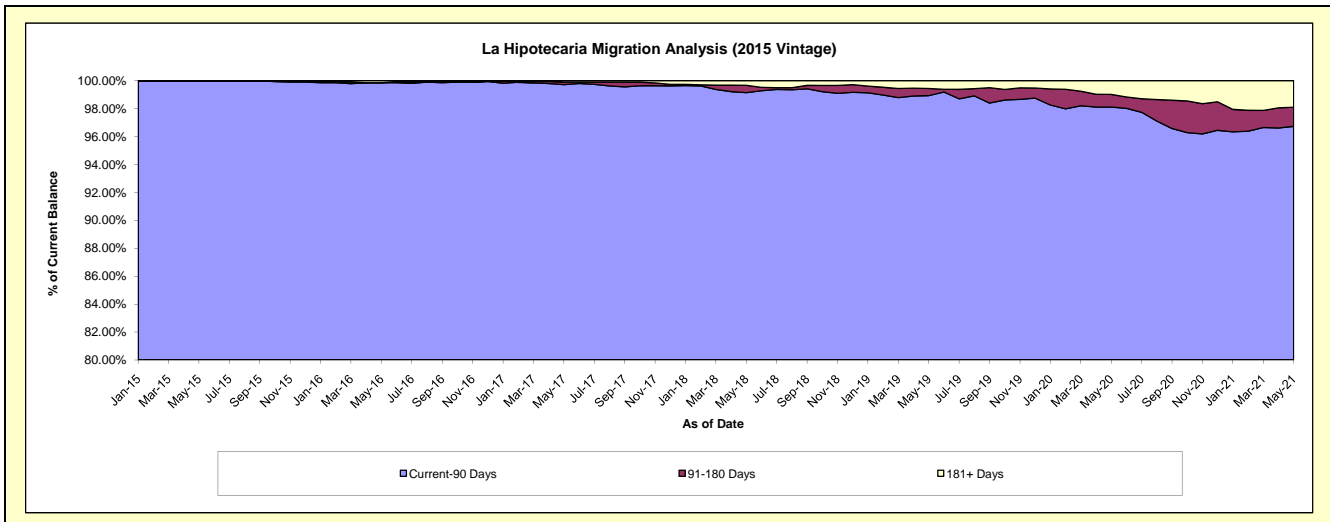
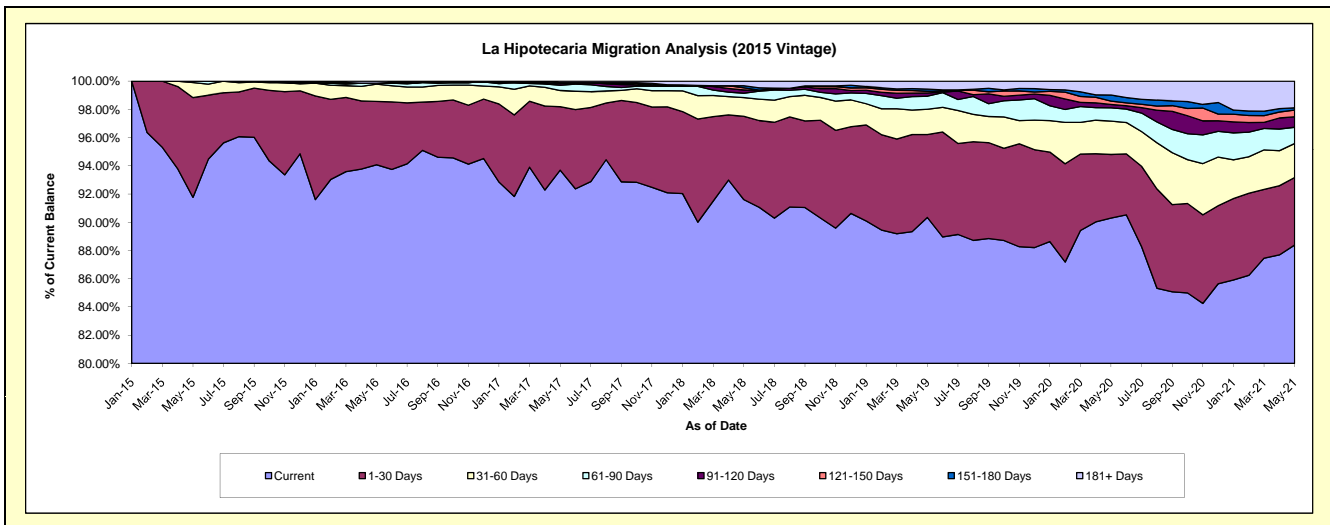
## Delinquency Status (\$ of Current Balance)

Data Cutoff: 5/31/2021

Current Portfolio Balance	-	-	-	31,624,519.50	77,616,279.24	74,561,614.19	70,638,564.40	66,387,557.62	63,045,323.94	60,875,334.86
	May-15	May-16	May-17	May-18	May-19	May-20	May-21			
Current	29,022,657.77	73,020,216.68	69,863,847.85	64,709,783.37	59,974,726.37	56,929,643.69	53,808,332.15			
1-30 Days	2,233,630.50	3,479,833.27	3,349,300.16	4,170,602.33	3,903,425.46	2,842,161.65	2,914,318.62			
31-60 Days	336,691.23	953,312.01	857,617.52	934,320.58	1,191,331.84	1,488,031.23	1,463,028.20			
61-90 Days	31,540.00	53,725.79	279,071.83	223,170.58	610,675.71	595,356.70	701,813.64			
91-120 Days	-	-	92,709.21	160,356.56	155,002.56	147,318.06	451,862.47			
121-150 Days	-	-	-	109,152.12	78,131.18	152,085.93	287,788.12			
151-180 Days	-	-	37,901.23	103,001.31	102,933.19	272,975.27	96,283.54			
181+ Days	-	109,191.49	81,166.39	228,177.55	371,331.31	617,751.41	1,151,908.12			

## Delinquency Status (% of Current Balance)

Current Portfolio Balance	-	-	-	31,624,519.50	77,616,279.24	74,561,614.19	70,638,564.40	66,387,557.62	63,045,323.94	60,875,334.86
	May-15	May-16	May-17	May-18	May-19	May-20	May-21			
Current	91.77%	94.08%	93.70%	91.61%	90.34%	90.30%	88.39%			
1-30 Days	7.06%	4.48%	4.49%	5.90%	5.88%	4.51%	4.79%			
31-60 Days	1.06%	1.23%	1.15%	1.32%	1.79%	2.36%	2.40%			
61-90 Days	0.10%	0.07%	0.37%	0.32%	0.92%	0.94%	1.15%			
91-120 Days	0.00%	0.00%	0.12%	0.23%	0.23%	0.23%	0.74%			
121-150 Days	0.00%	0.00%	0.00%	0.15%	0.12%	0.24%	0.47%			
151-180 Days	0.00%	0.00%	0.05%	0.15%	0.16%	0.43%	0.16%			
181+ Days	0.00%	0.14%	0.11%	0.32%	0.56%	0.98%	1.89%			
Current - 90 Days	100.00%	99.86%	99.72%	99.15%	98.93%	98.11%	96.73%			
91-180 Days	0.00%	0.00%	0.18%	0.53%	0.51%	0.91%	1.37%			



## Mortgages - La Hipotecaria Panama Migration Analysis (2016 Vintage)

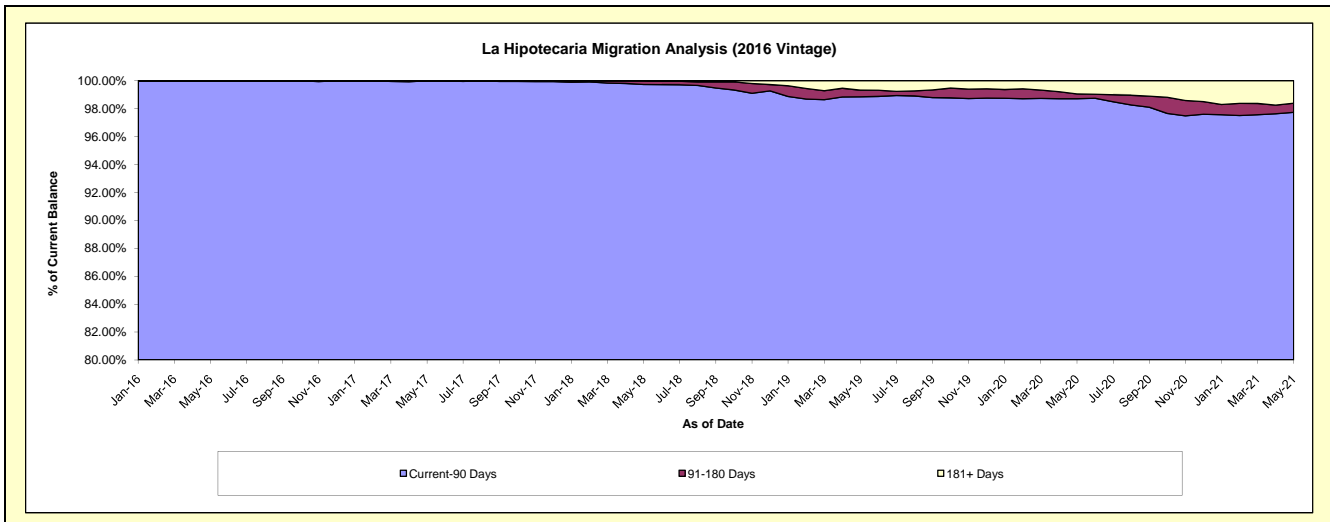
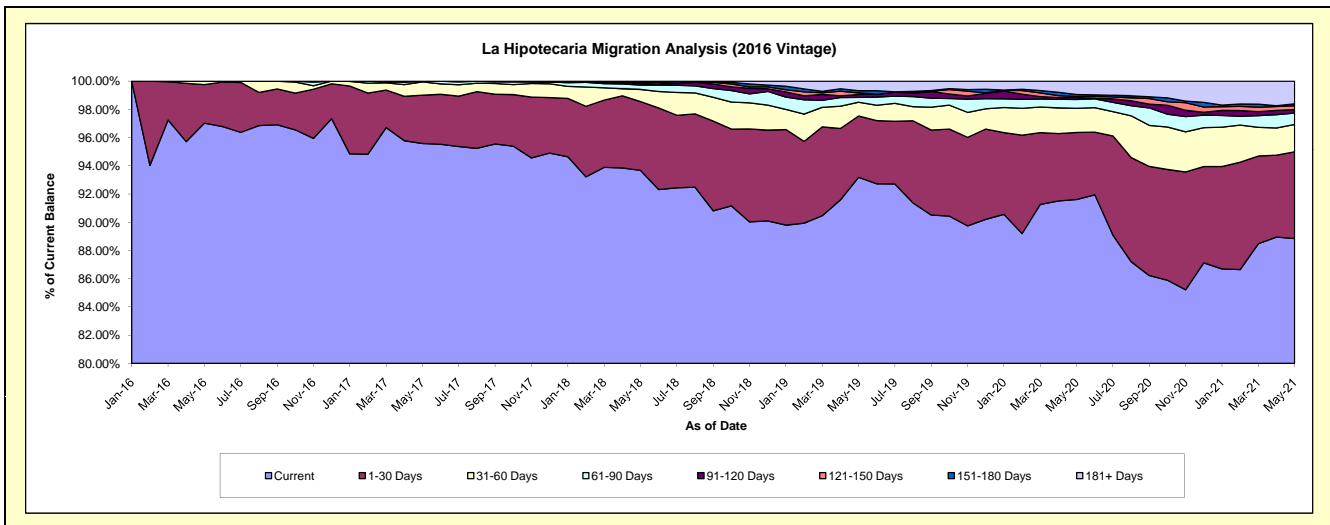
### Delinquency Status (\$ of Current Balance)

Data Cutoff: 5/31/2021

Current Portfolio Balance	-	-	-	-	29,992,963.56	73,687,811.02	70,641,230.58	67,190,594.57	64,201,192.09	62,147,193.32
					May-16	May-17	May-18	May-19	May-20	May-21
Current					29,100,226.11	70,430,133.48	66,173,732.65	62,613,982.26	58,820,162.07	55,215,169.92
1-30 Days					818,795.06	2,525,650.41	3,448,185.35	2,916,607.32	3,049,140.14	3,821,552.74
31-60 Days					73,942.39	697,298.09	603,090.08	654,748.52	1,100,803.79	1,202,994.70
61-90 Days					-	34,729.04	222,808.74	232,200.93	400,680.67	503,778.08
91-120 Days					-	-	75,859.34	136,587.67	84,909.87	151,718.07
121-150 Days					-	-	55,066.06	80,083.45	51,984.83	169,621.68
151-180 Days					-	-	62,488.36	101,993.88	87,515.15	84,449.29
181+ Days					-	-	-	454,390.54	605,995.57	997,908.84

### Delinquency Status (% of Current Balance)

Current Portfolio Balance	-	-	-	-	29,992,963.56	73,687,811.02	70,641,230.58	67,190,594.57	64,201,192.09	62,147,193.32
					May-16	May-17	May-18	May-19	May-20	May-21
Current					97.02%	95.58%	93.68%	93.19%	91.62%	88.85%
1-30 Days					2.73%	3.43%	4.88%	4.34%	4.75%	6.15%
31-60 Days					0.25%	0.95%	0.85%	0.97%	1.71%	1.94%
61-90 Days					0.00%	0.05%	0.32%	0.35%	0.62%	0.81%
91-120 Days					0.00%	0.00%	0.11%	0.20%	0.13%	0.24%
121-150 Days					0.00%	0.00%	0.08%	0.12%	0.08%	0.27%
151-180 Days					0.00%	0.00%	0.09%	0.15%	0.14%	0.14%
181+ Days					0.00%	0.00%	0.00%	0.68%	0.94%	1.61%
Current - 90 Days					100.00%	100.00%	99.73%	98.85%	98.71%	97.74%
91-180 Days					0.00%	0.00%	0.27%	0.47%	0.35%	0.65%



## Mortgages - La Hipotecaria Panama Migration Analysis (2017 Vintage)

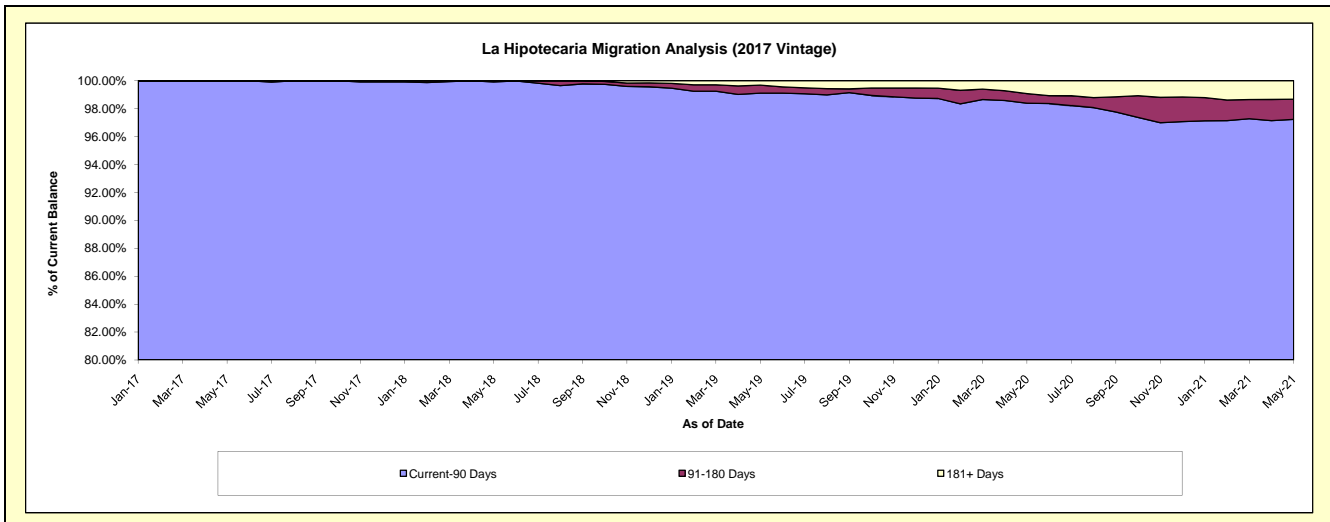
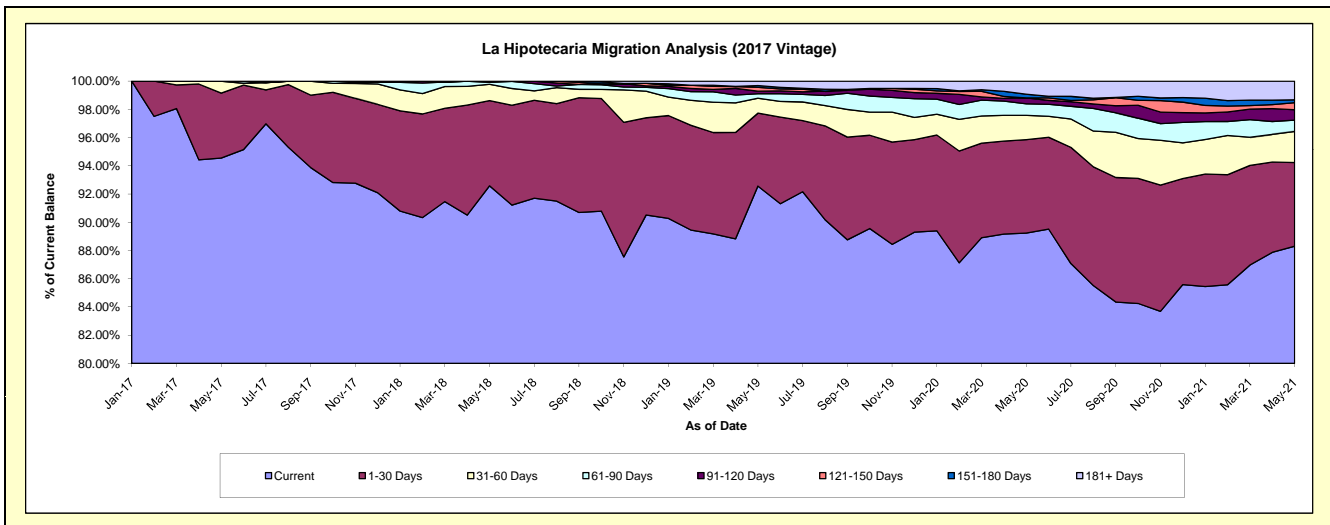
### Delinquency Status (\$ of Current Balance)

Data Cutoff: 5/31/2021

Current Portfolio Balance	-	-	-	-	-	25,153,200.21	86,707,093.56	83,224,207.15	80,310,806.46	77,979,757.20
						May-17	May-18	May-19	May-20	May-21
Current						23,783,287.15	80,276,804.07	77,040,285.28	71,664,895.37	68,858,172.88
1-30 Days						1,157,992.81	5,238,697.32	4,297,170.46	5,321,241.37	4,627,923.62
31-60 Days						211,920.25	1,003,195.86	877,427.17	1,379,637.58	1,710,830.41
61-90 Days						-	117,820.91	268,622.34	653,388.38	628,030.17
91-120 Days						-	70,575.40	149,945.25	341,965.47	575,892.17
121-150 Days						-	-	227,335.01	-	388,475.31
151-180 Days						-	-	104,522.22	209,492.34	159,236.34
181+ Days						-	-	258,899.42	740,185.95	1,031,196.30

### Delinquency Status (% of Current Balance)

Current Portfolio Balance	-	-	-	-	-	25,153,200.21	86,707,093.56	83,224,207.15	80,310,806.46	77,979,757.20
						May-17	May-18	May-19	May-20	May-21
Current						94.55%	92.58%	92.57%	89.23%	88.30%
1-30 Days						4.60%	6.04%	5.16%	6.63%	5.93%
31-60 Days						0.84%	1.16%	1.05%	1.72%	2.19%
61-90 Days						0.00%	0.14%	0.32%	0.81%	0.81%
91-120 Days						0.00%	0.08%	0.18%	0.43%	0.74%
121-150 Days						0.00%	0.00%	0.27%	0.00%	0.50%
151-180 Days						0.00%	0.00%	0.13%	0.26%	0.20%
181+ Days						0.00%	0.00%	0.31%	0.92%	1.32%
Current - 90 Days						100.00%	99.92%	99.11%	98.39%	97.24%
91-180 Days						0.00%	0.08%	0.58%	0.69%	1.44%



**Mortgages - La Hipotecaria Panama Migration Analysis (2018 Vintage)**

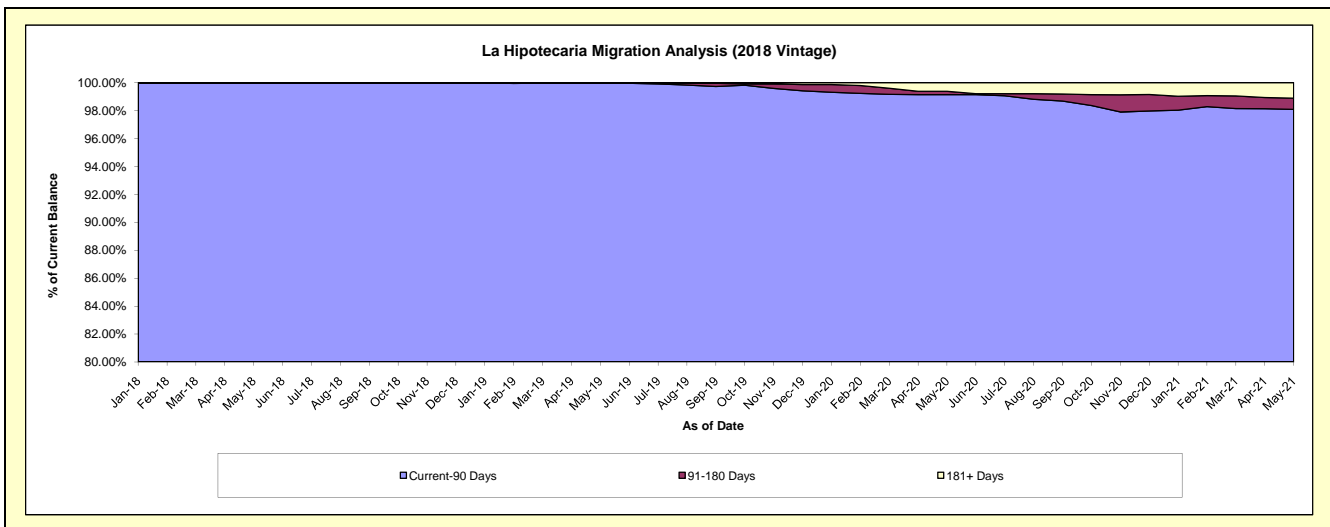
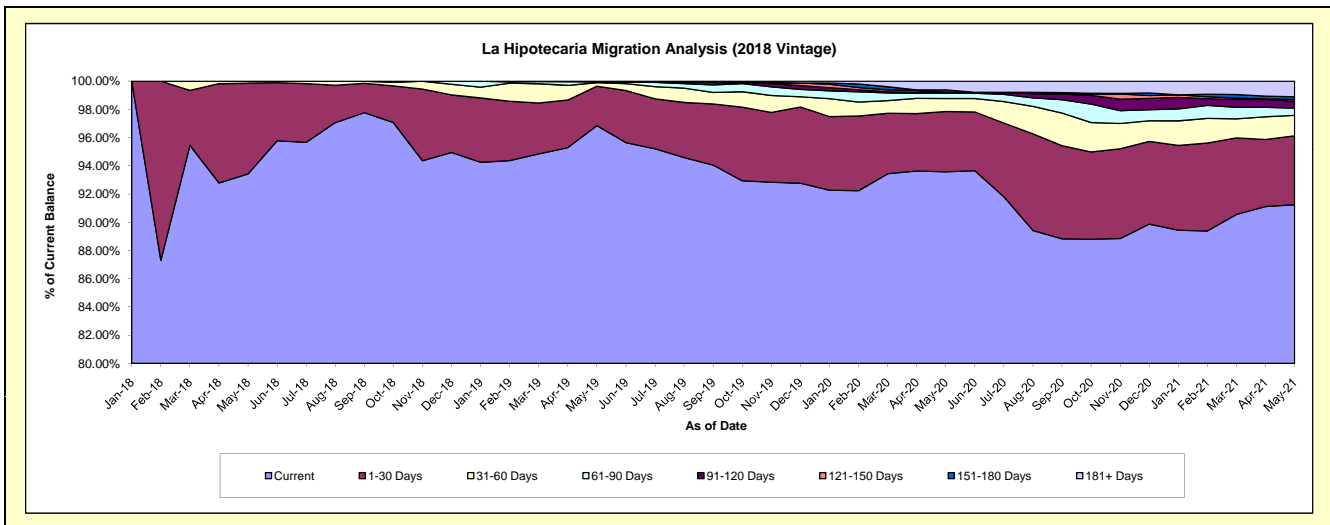
**Delinquency Status (\$ of Current Balance)**

Data Cutoff: 5/31/2021

Current Portfolio Balance	-	-	-	-	-	-	-	28,946,529.94	84,693,763.76	82,281,659.11	80,355,351.35
								May-18	May-19	May-20	May-21
Current								27,043,245.77	82,024,152.35	76,992,918.02	73,321,832.00
1-30 Days								1,862,784.17	2,365,962.28	3,517,343.19	3,918,701.82
31-60 Days								40,500.00	217,259.27	757,519.23	1,165,958.81
61-90 Days								-	56,794.98	311,864.09	414,730.57
91-120 Days								-	-	57,905.85	394,251.34
121-150 Days								-	29,594.88	-	94,318.56
151-180 Days								-	-	137,666.61	153,988.93
181+ Days								-	-	506,442.12	891,569.32

**Delinquency Status (% of Current Balance)**

Current Portfolio Balance	-	-	-	-	-	-	-	28,946,529.94	84,693,763.76	82,281,659.11	80,355,351.35
								May-18	May-19	May-20	May-21
Current								93.42%	96.85%	93.57%	91.25%
1-30 Days								6.44%	2.79%	4.27%	4.88%
31-60 Days								0.14%	0.26%	0.92%	1.45%
61-90 Days								0.00%	0.07%	0.38%	0.52%
91-120 Days								0.00%	0.00%	0.07%	0.49%
121-150 Days								0.00%	0.03%	0.00%	0.12%
151-180 Days								0.00%	0.00%	0.17%	0.19%
181+ Days								0.00%	0.00%	0.62%	1.11%
Current - 90 Days								100.00%	99.97%	99.15%	98.09%
91-180 Days								0.00%	0.03%	0.24%	0.80%





# Mortgages - La Hipotecaria Panama Migration Analysis (2019 Vintage)

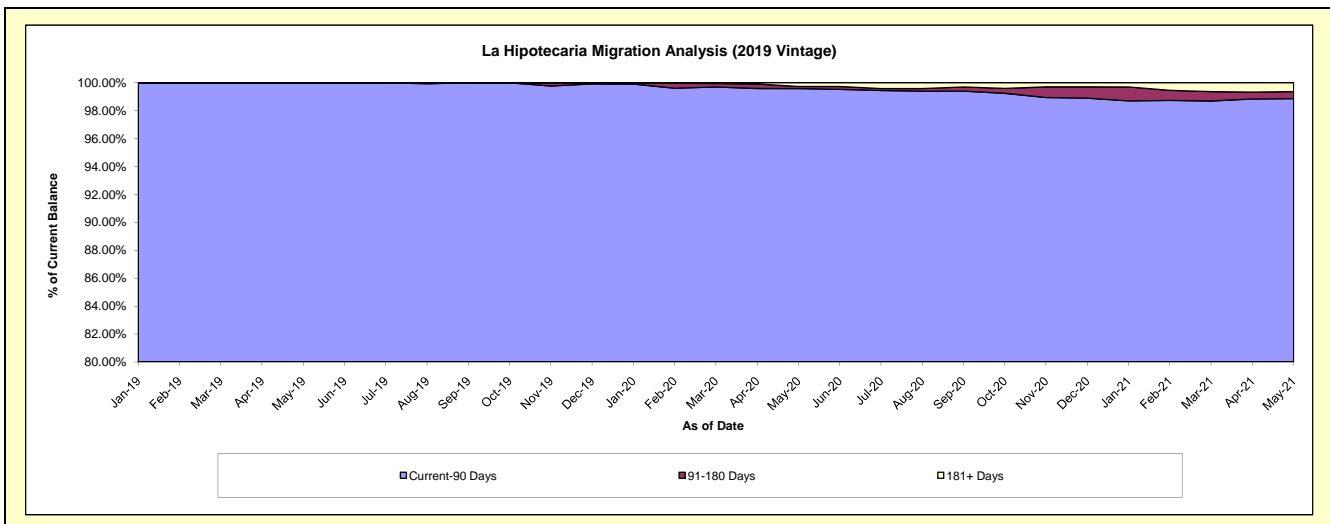
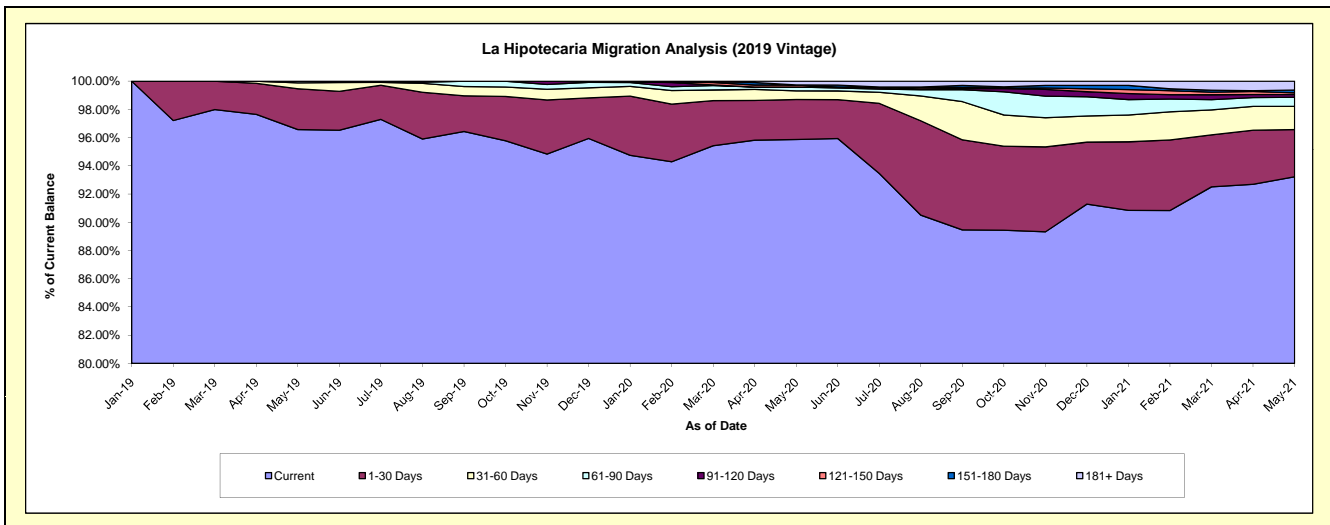
## Delinquency Status (\$ of Current Balance)

Data Cutoff: 5/31/2021

Current Portfolio Balance	-	-	-	-	-	-	-	-	-	33,304,808.30	85,457,656.91	83,833,240.59
										May-19	May-20	May-21
Current										32,161,584.79	81,922,583.30	78,157,630.02
1-30 Days										962,477.09	2,428,323.08	2,798,136.18
31-60 Days										140,782.45	517,079.39	1,383,333.90
61-90 Days										39,963.97	235,408.72	541,861.52
91-120 Days										-	-	155,342.81
121-150 Days										-	121,140.12	108,368.16
151-180 Days										-	-	158,536.79
181+ Days										-	233,122.30	530,031.21

## Delinquency Status (% of Current Balance)

Current Portfolio Balance	-	-	-	-	-	-	-	-	-	33,304,808.30	85,457,656.91	83,833,240.59
										May-19	May-20	May-21
Current										96.57%	95.86%	93.23%
1-30 Days										2.89%	2.84%	3.34%
31-60 Days										0.42%	0.61%	1.65%
61-90 Days										0.12%	0.28%	0.65%
91-120 Days										0.00%	0.00%	0.19%
121-150 Days										0.00%	0.14%	0.13%
151-180 Days										0.00%	0.00%	0.19%
181+ Days										0.00%	0.27%	0.63%
Current - 90 Days										100.00%	99.59%	98.86%
91-180 Days										0.00%	0.14%	0.50%



## Mortgages - La Hipotecaria Panama Migration Analysis (2020 Vintage)

### Delinquency Status (\$ of Current Balance)

Data Cutoff: 5/31/2021

Current Portfolio Balance	-	-	-	-	-	-	-	-	-	-	20,041,222.92	37,433,366.35		
												May-20	May-21	
Current													18,756,065.20	35,265,129.66
1-30 Days													972,062.97	1,417,384.20
31-60 Days													313,094.75	533,438.49
61-90 Days													-	107,802.24
91-120 Days													-	-
121-150 Days													-	59,400.00
151-180 Days													-	50,211.76
181+ Days													-	-

### Delinquency Status (% of Current Balance)

Current Portfolio Balance	-	-	-	-	-	-	-	-	-	-	20,041,222.92	37,433,366.35		
												May-20	May-21	
Current													93.59%	94.21%
1-30 Days													4.85%	3.79%
31-60 Days													1.56%	1.43%
61-90 Days													0.00%	0.29%
91-120 Days													0.00%	0.00%
121-150 Days													0.00%	0.16%
151-180 Days													0.00%	0.13%
181+ Days													0.00%	0.00%
Current - 90 Days													100.00%	99.71%
91-180 Days													0.00%	0.29%

