



Migration Analysis for La Hipotecaria S.A Panama

Mortgages
June 2021

An analysis of historical loan payment data was used to compile a migration analysis of delinquency by annual vintage. Delinquencies for each vintage were grouped into the following buckets; Current, 1-30, 31-60, 61-90, 91-120, 121-150, 151-180, and 180+. Results are provided in graphical and tabular form. The cutoff date is 6/30/2021.

Mortgages - La Hipotecaria Panama Migration Analysis (All Vintages)

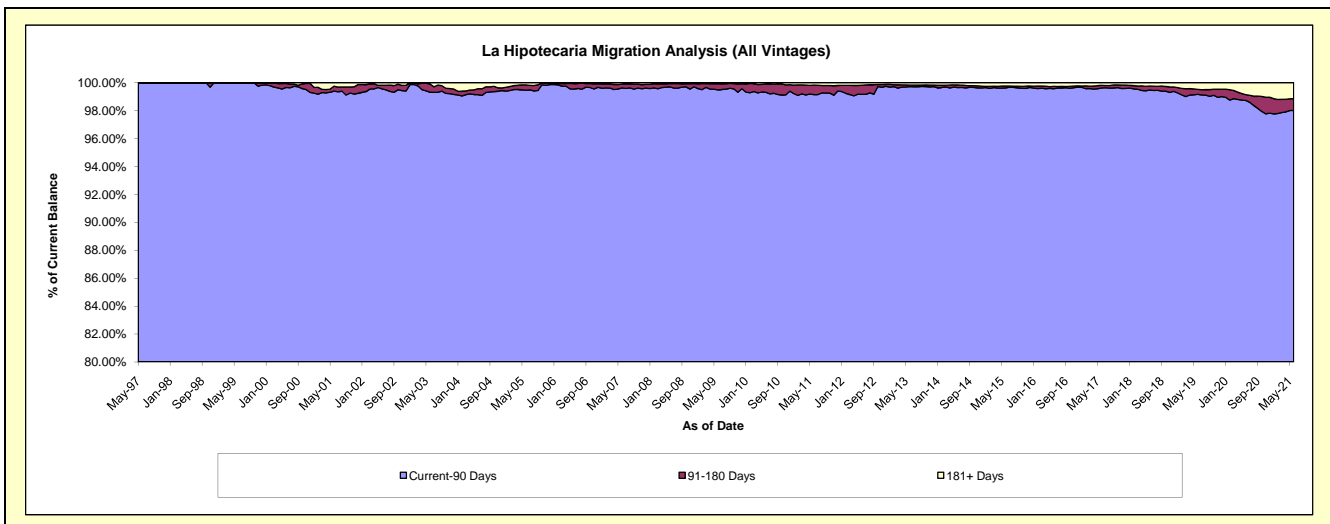
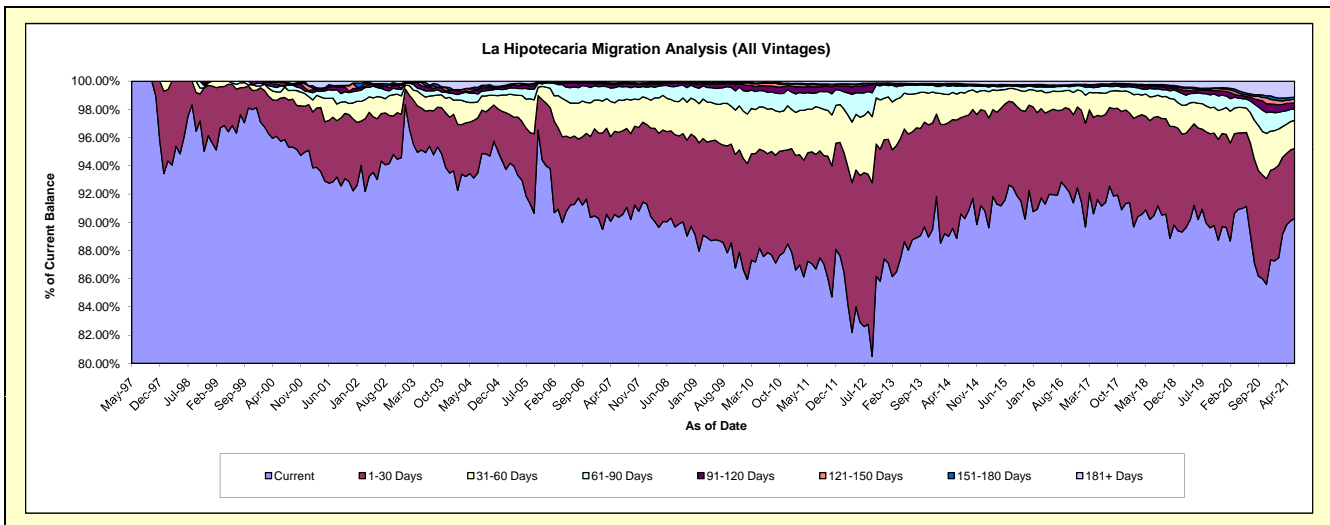
Delinquency Status (\$ of Current Balance)

Data Cutoff: 6/30/2021

Current Portfolio Balance	315,162,658.82	346,826,713.31	386,098,213.77	427,960,451.96	465,702,616.98	500,332,607.10	557,234,273.76	610,353,963.84	643,483,282.45	657,742,833.13
	Jun-12	Jun-13	Jun-14	Jun-15	Jun-16	Jun-17	Jun-18	Jun-19	Jun-20	Jun-21
Current	261,283,538.39	305,305,762.43	343,092,929.54	391,883,445.73	428,259,768.47	456,046,238.89	502,703,235.66	550,524,210.19	586,306,963.13	593,839,340.38
1-30 Days	32,786,448.88	28,549,063.30	32,370,398.71	29,151,328.14	28,153,748.98	31,841,038.14	38,951,180.09	39,564,751.46	33,748,878.21	32,563,651.06
31-60 Days	13,032,193.39	9,781,654.96	7,107,297.55	4,358,889.53	6,013,236.05	8,282,057.87	9,367,808.76	10,674,689.42	11,161,361.84	13,102,929.28
61-90 Days	5,448,971.66	2,212,461.98	2,169,854.39	992,121.23	1,297,334.00	2,310,423.85	3,314,423.39	4,538,597.00	4,125,288.58	5,167,451.07
91-120 Days	1,521,500.60	281,884.25	376,034.79	163,673.60	338,958.30	536,259.54	670,102.22	1,164,655.36	1,081,251.11	2,959,582.35
121-150 Days	405,193.19	119,600.50	217,773.18	193,518.13	161,874.36	154,146.14	485,763.54	435,631.73	854,247.23	1,762,486.05
151-180 Days	114,161.08	12,953.13	143,368.11	189,126.15	255,991.40	217,994.37	436,912.23	518,055.08	742,204.30	863,910.31
181+ Days	570,651.63	563,332.76	620,557.50	1,028,349.45	1,221,705.42	944,448.30	1,304,847.87	2,933,373.60	5,463,088.05	7,483,482.63

Delinquency Status (% of Current Balance)

Current Portfolio Balance	315,162,658.82	346,826,713.31	386,098,213.77	427,960,451.96	465,702,616.98	500,332,607.10	557,234,273.76	610,353,963.84	643,483,282.45	657,742,833.13
	Jun-12	Jun-13	Jun-14	Jun-15	Jun-16	Jun-17	Jun-18	Jun-19	Jun-20	Jun-21
Current	82.90%	88.03%	88.86%	91.57%	91.96%	91.15%	90.21%	90.20%	91.11%	90.28%
1-30 Days	10.40%	8.23%	8.38%	6.81%	6.05%	6.36%	6.99%	6.48%	5.24%	4.95%
31-60 Days	4.14%	2.82%	1.84%	1.02%	1.29%	1.66%	1.68%	1.75%	1.73%	1.99%
61-90 Days	1.73%	0.64%	0.56%	0.23%	0.29%	0.46%	0.59%	0.74%	0.64%	0.79%
91-120 Days	0.48%	0.08%	0.10%	0.04%	0.07%	0.11%	0.12%	0.19%	0.17%	0.45%
121-150 Days	0.13%	0.03%	0.06%	0.05%	0.03%	0.03%	0.09%	0.07%	0.13%	0.27%
151-180 Days	0.04%	0.00%	0.04%	0.04%	0.05%	0.04%	0.08%	0.08%	0.12%	0.13%
181+ Days	0.18%	0.16%	0.16%	0.24%	0.26%	0.19%	0.23%	0.48%	0.85%	1.14%
Current - 90 Days	99.17%	99.72%	99.65%	99.63%	99.58%	99.63%	99.48%	99.17%	98.73%	98.01%
91-180 Days	0.65%	0.12%	0.19%	0.13%	0.16%	0.18%	0.29%	0.35%	0.42%	0.85%



Mortgages - La Hipotecaria Panama Migration Analysis (1997 Vintage)

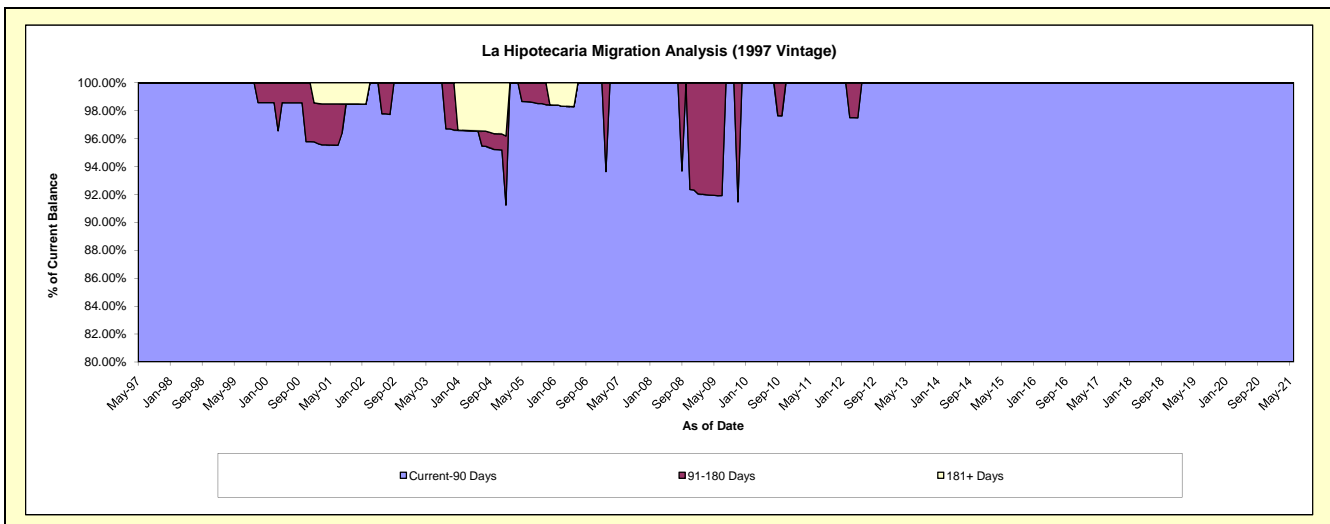
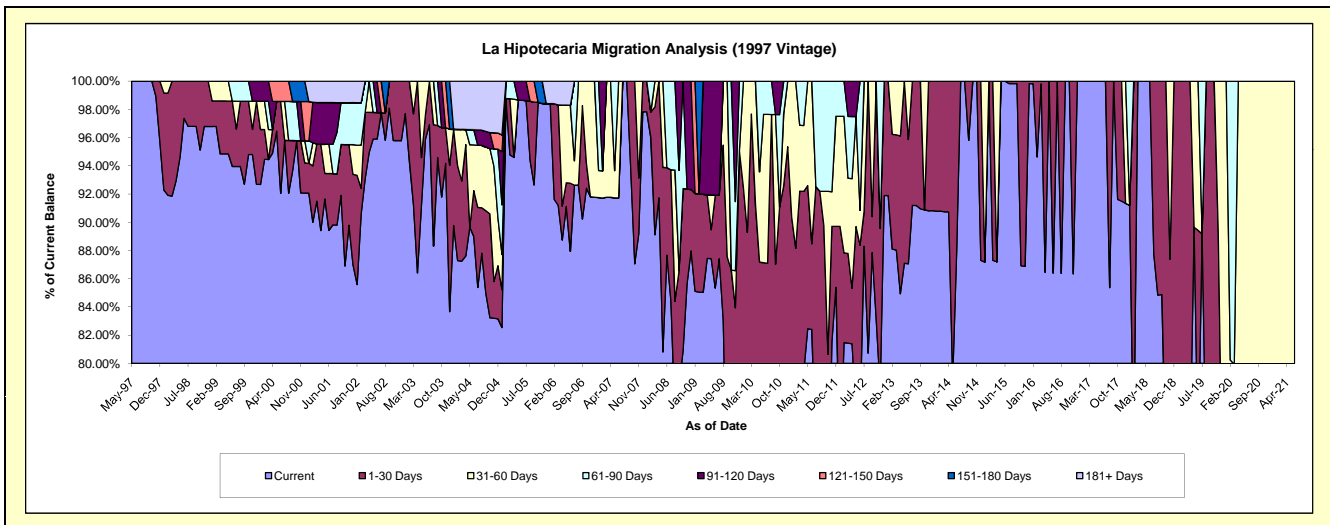
Delinquency Status (\$ of Current Balance)

Data Cutoff: 6/30/2021

Current Portfolio Balance	393,848.85	292,556.20	256,743.00	219,061.39	183,769.67	148,194.45	120,136.71	87,115.39	52,659.53	39,116.79
	Jun-12	Jun-13	Jun-14	Jun-15	Jun-16	Jun-17	Jun-18	Jun-19	Jun-20	Jun-21
Current	299,675.85	254,709.14	225,826.45	219,061.39	158,784.05	148,194.45	120,136.71	63,763.64	35,091.20	28,261.85
1-30 Days	48,378.67	25,748.62	30,916.55	-	24,985.62	-	-	14,144.89	6,713.39	-
31-60 Days	9,724.81	12,098.44	-	-	-	-	-	9,206.86	10,854.94	10,854.94
61-90 Days	36,069.52	-	-	-	-	-	-	-	-	-
91-120 Days	-	-	-	-	-	-	-	-	-	-
121-150 Days	-	-	-	-	-	-	-	-	-	-
151-180 Days	-	-	-	-	-	-	-	-	-	-
181+ Days	-	-	-	-	-	-	-	-	-	-

Delinquency Status (% of Current Balance)

Current Portfolio Balance	393,848.85	292,556.20	256,743.00	219,061.39	183,769.67	148,194.45	120,136.71	87,115.39	52,659.53	39,116.79
	Jun-12	Jun-13	Jun-14	Jun-15	Jun-16	Jun-17	Jun-18	Jun-19	Jun-20	Jun-21
Current	76.09%	87.06%	87.96%	100.00%	86.40%	100.00%	100.00%	73.19%	66.64%	72.25%
1-30 Days	12.28%	8.80%	12.04%	0.00%	13.60%	0.00%	0.00%	16.24%	12.75%	0.00%
31-60 Days	2.47%	4.14%	0.00%	0.00%	0.00%	0.00%	0.00%	10.57%	20.61%	27.75%
61-90 Days	9.16%	0.00%	0.00%	0.00%	0.00%	0.00%	0.00%	0.00%	0.00%	0.00%
91-120 Days	0.00%	0.00%	0.00%	0.00%	0.00%	0.00%	0.00%	0.00%	0.00%	0.00%
121-150 Days	0.00%	0.00%	0.00%	0.00%	0.00%	0.00%	0.00%	0.00%	0.00%	0.00%
151-180 Days	0.00%	0.00%	0.00%	0.00%	0.00%	0.00%	0.00%	0.00%	0.00%	0.00%
181+ Days	0.00%	0.00%	0.00%	0.00%	0.00%	0.00%	0.00%	0.00%	0.00%	0.00%
Current - 90 Days	100.00%	100.00%	100.00%	100.00%	100.00%	100.00%	100.00%	100.00%	100.00%	100.00%
91-180 Days	0.00%	0.00%	0.00%	0.00%	0.00%	0.00%	0.00%	0.00%	0.00%	0.00%



Mortgages - La Hipotecaria Panama Migration Analysis (1998 Vintage)

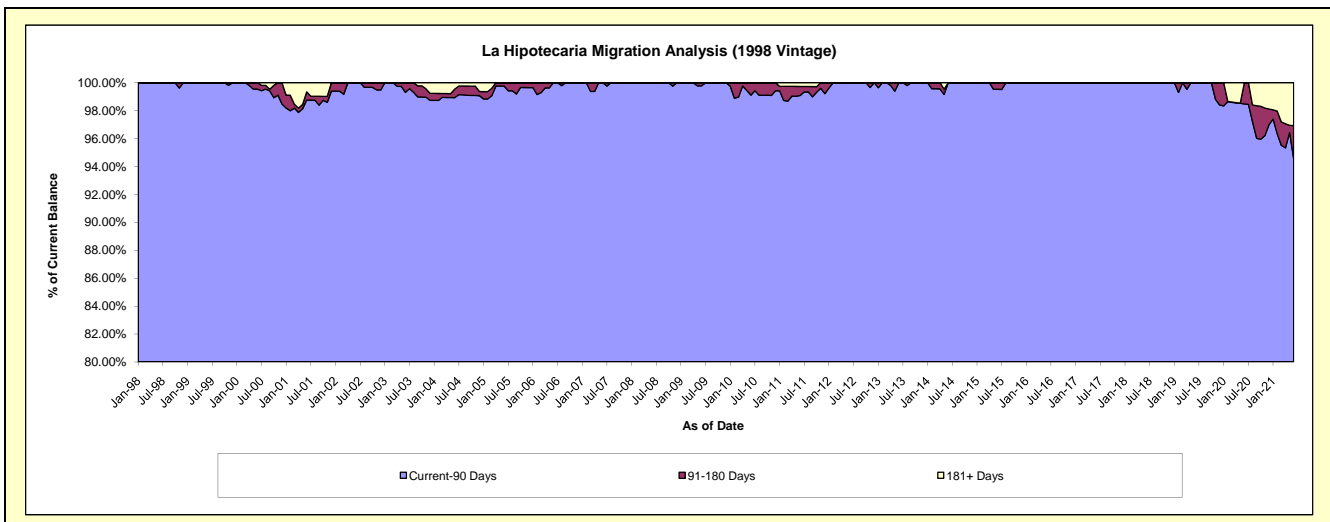
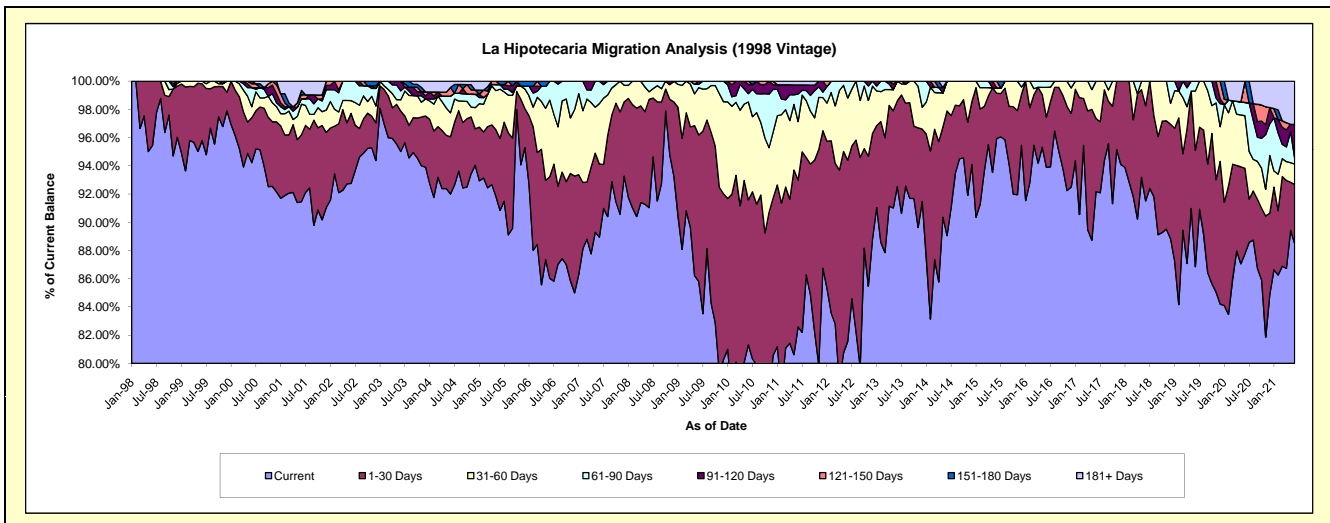
Delinquency Status (\$ of Current Balance)

Data Cutoff: 6/30/2021

Current Portfolio Balance	3,679,726.00	3,242,959.61	2,791,518.57	2,384,896.56	2,026,661.04	1,655,537.48	1,294,883.48	958,420.89	659,017.69	417,744.03
	Jun-12	Jun-13	Jun-14	Jun-15	Jun-16	Jun-17	Jun-18	Jun-19	Jun-20	Jun-21
Current	3,001,080.95	3,000,617.95	2,486,090.99	2,288,116.48	1,902,838.16	1,526,021.36	1,184,992.98	832,426.20	578,458.71	369,624.79
1-30 Days	472,334.38	197,579.62	246,412.17	76,402.89	72,017.20	85,804.66	87,404.11	79,062.01	39,869.89	17,524.55
31-60 Days	162,220.13	44,762.04	59,015.41	9,010.26	42,937.49	43,711.46	22,486.39	40,223.06	24,517.46	6,054.46
61-90 Days	44,090.54	-	-	-	8,868.19	-	-	6,709.62	6,187.53	1,903.77
91-120 Days	-	-	-	-	-	-	-	-	-	9,838.16
121-150 Days	-	-	-	11,366.93	-	-	-	-	9,984.10	-
151-180 Days	-	-	-	-	-	-	-	-	-	-
181+ Days	-	-	-	-	-	-	-	-	-	12,798.30

Delinquency Status (% of Current Balance)

Current Portfolio Balance	3,679,726.00	3,242,959.61	2,791,518.57	2,384,896.56	2,026,661.04	1,655,537.48	1,294,883.48	958,420.89	659,017.69	417,744.03
	Jun-12	Jun-13	Jun-14	Jun-15	Jun-16	Jun-17	Jun-18	Jun-19	Jun-20	Jun-21
Current	81.56%	92.53%	89.06%	95.94%	93.89%	92.18%	91.51%	86.85%	87.78%	88.48%
1-30 Days	12.84%	6.09%	8.83%	3.20%	3.55%	5.18%	6.75%	8.25%	6.05%	4.20%
31-60 Days	4.41%	1.38%	2.11%	0.38%	2.12%	2.64%	1.74%	4.20%	3.72%	1.45%
61-90 Days	1.20%	0.00%	0.00%	0.00%	0.44%	0.00%	0.00%	0.70%	0.94%	0.46%
91-120 Days	0.00%	0.00%	0.00%	0.00%	0.00%	0.00%	0.00%	0.00%	0.00%	2.36%
121-150 Days	0.00%	0.00%	0.00%	0.48%	0.00%	0.00%	0.00%	0.00%	1.51%	0.00%
151-180 Days	0.00%	0.00%	0.00%	0.00%	0.00%	0.00%	0.00%	0.00%	0.00%	0.00%
181+ Days	0.00%	0.00%	0.00%	0.00%	0.00%	0.00%	0.00%	0.00%	0.00%	3.06%
Current - 90 Days	100.00%	100.00%	100.00%	99.52%	100.00%	100.00%	100.00%	100.00%	98.49%	94.58%
91-180 Days	0.00%	0.00%	0.00%	0.48%	0.00%	0.00%	0.00%	0.00%	1.51%	2.36%



Mortgages - La Hipotecaria Panama Migration Analysis (1999 Vintage)

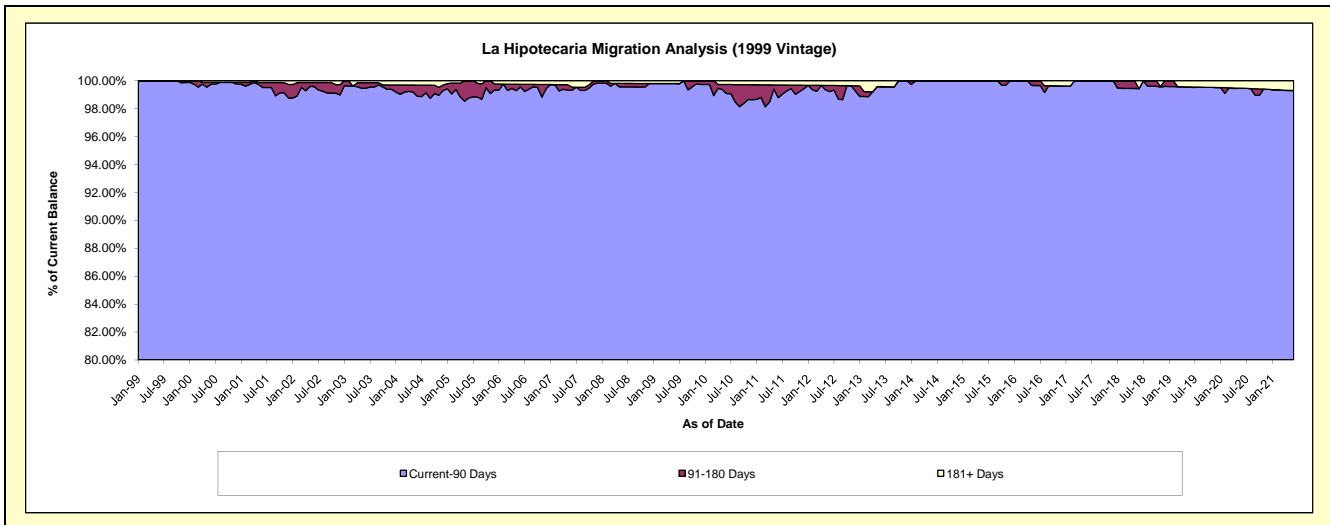
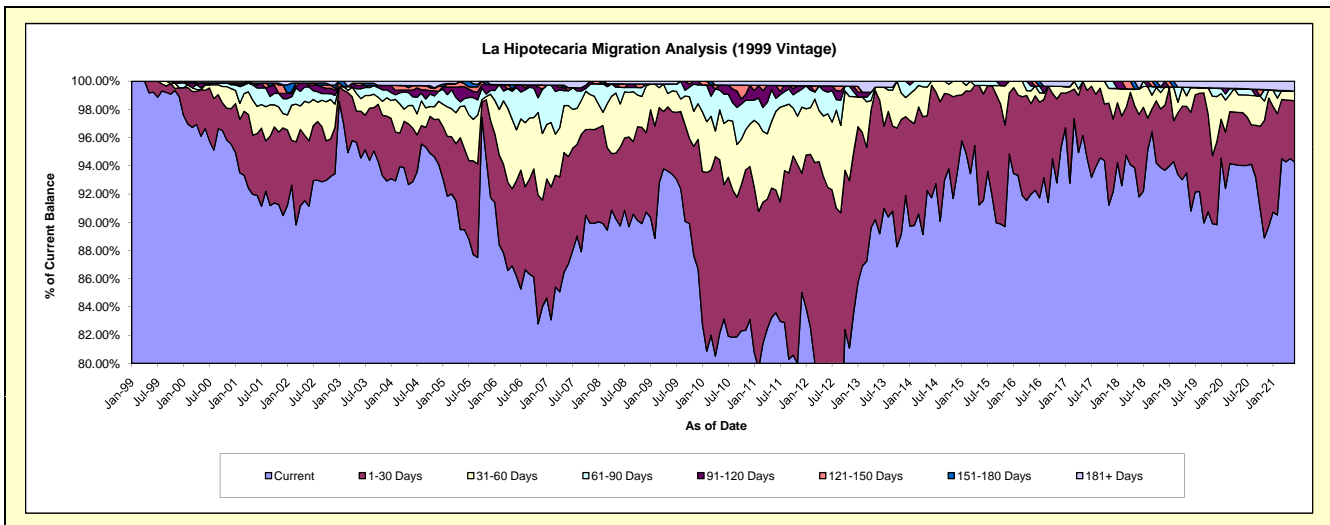
Delinquency Status (\$ of Current Balance)

Data Cutoff: 6/30/2021

Current Portfolio Balance	5,755,044.69	4,980,400.86	4,386,909.48	3,879,808.34	3,288,994.95	2,782,867.25	2,363,216.07	1,943,610.69	1,600,404.79	1,215,204.00
	Jun-12	Jun-13	Jun-14	Jun-15	Jun-16	Jun-17	Jun-18	Jun-19	Jun-20	Jun-21
Current	4,370,206.59	4,442,239.75	4,024,507.09	3,551,754.04	3,034,593.83	2,629,766.91	2,169,551.23	1,764,729.18	1,504,751.35	1,145,456.62
1-30 Days	952,068.54	471,136.38	349,953.16	292,860.19	220,360.60	135,001.14	137,788.41	136,213.77	59,969.72	52,830.21
31-60 Days	299,766.99	45,873.88	12,449.23	23,345.75	22,695.78	18,099.20	42,435.38	34,056.19	20,098.87	8,305.62
61-90 Days	88,445.43	-	-	11,848.36	-	-	-	-	6,973.30	-
91-120 Days	25,050.91	-	-	-	-	-	-	-	-	-
121-150 Days	-	-	-	-	11,344.74	-	-	-	-	-
151-180 Days	-	-	-	-	-	-	-	-	-	-
181+ Days	19,506.23	21,150.85	-	-	-	-	13,441.05	8,611.55	8,611.55	8,611.55

Delinquency Status (% of Current Balance)

Current Portfolio Balance	5,755,044.69	4,980,400.86	4,386,909.48	3,879,808.34	3,288,994.95	2,782,867.25	2,363,216.07	1,943,610.69	1,600,404.79	1,215,204.00
	Jun-12	Jun-13	Jun-14	Jun-15	Jun-16	Jun-17	Jun-18	Jun-19	Jun-20	Jun-21
Current	75.94%	89.19%	91.74%	91.54%	92.27%	94.50%	91.81%	90.80%	94.02%	94.26%
1-30 Days	16.54%	9.46%	7.98%	7.55%	6.70%	4.85%	5.83%	7.01%	3.75%	4.35%
31-60 Days	5.21%	0.92%	0.28%	0.60%	0.69%	0.65%	1.80%	1.75%	1.26%	0.68%
61-90 Days	1.54%	0.00%	0.00%	0.31%	0.00%	0.00%	0.00%	0.00%	0.44%	0.00%
91-120 Days	0.44%	0.00%	0.00%	0.00%	0.00%	0.00%	0.00%	0.00%	0.00%	0.00%
121-150 Days	0.00%	0.00%	0.00%	0.00%	0.34%	0.00%	0.00%	0.00%	0.00%	0.00%
151-180 Days	0.00%	0.00%	0.00%	0.00%	0.00%	0.00%	0.00%	0.00%	0.00%	0.00%
181+ Days	0.34%	0.42%	0.00%	0.00%	0.00%	0.00%	0.57%	0.44%	0.54%	0.71%
Current - 90 Days	99.23%	99.58%	100.00%	100.00%	99.66%	100.00%	99.43%	99.56%	99.46%	99.29%
91-180 Days	0.44%	0.00%	0.00%	0.00%	0.34%	0.00%	0.00%	0.00%	0.00%	0.00%



Mortgages - La Hipotecaria Panama Migration Analysis (2000 Vintage)

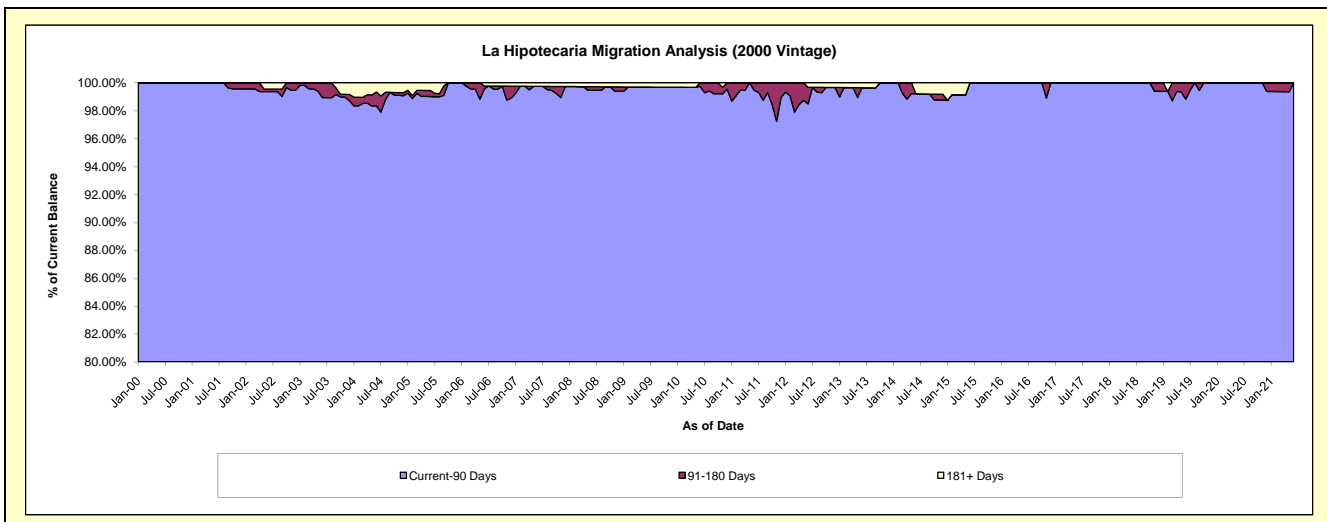
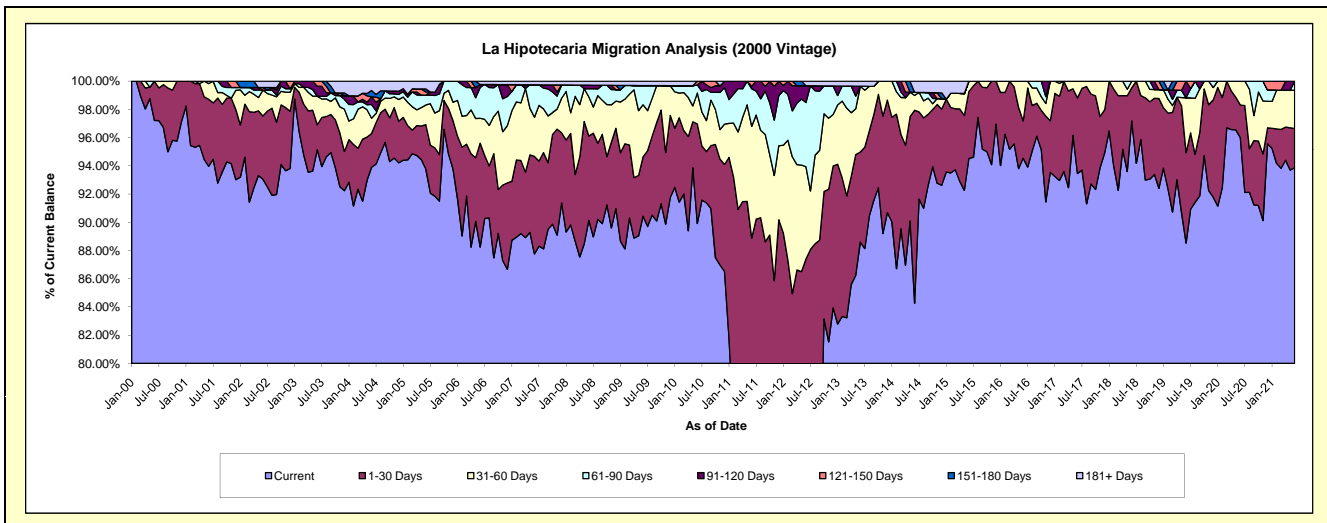
Delinquency Status (\$ of Current Balance)

Data Cutoff: 6/30/2021

Current Portfolio Balance	4,945,484.66	4,500,017.24	3,932,357.26	3,466,290.57	3,001,602.17	2,658,868.79	2,325,726.98	1,970,730.88	1,692,677.96	1,401,416.88
	Jun-12	Jun-13	Jun-14	Jun-15	Jun-16	Jun-17	Jun-18	Jun-19	Jun-20	Jun-21
Current	3,490,153.84	3,986,931.33	3,313,687.93	3,276,199.11	2,837,842.56	2,484,845.56	2,260,237.58	1,744,577.70	1,624,573.73	1,315,451.75
1-30 Days	831,914.79	286,834.50	537,664.56	164,447.57	79,342.92	142,634.01	54,716.43	126,245.78	39,386.43	39,069.95
31-60 Days	323,841.77	210,158.99	41,231.51	25,643.89	84,416.69	31,389.22	10,772.97	76,656.14	28,717.80	37,841.47
61-90 Days	224,783.89	-	8,679.86	-	-	-	-	-	-	9,053.71
91-120 Days	58,697.95	-	-	-	-	-	-	23,251.26	-	-
121-150 Days	-	-	-	-	-	-	-	-	-	-
151-180 Days	-	-	-	-	-	-	-	-	-	-
181+ Days	16,092.42	16,092.42	31,093.40	-	-	-	-	-	-	-

Delinquency Status (% of Current Balance)

Current Portfolio Balance	4,945,484.66	4,500,017.24	3,932,357.26	3,466,290.57	3,001,602.17	2,658,868.79	2,325,726.98	1,970,730.88	1,692,677.96	1,401,416.88
	Jun-12	Jun-13	Jun-14	Jun-15	Jun-16	Jun-17	Jun-18	Jun-19	Jun-20	Jun-21
Current	70.57%	88.60%	84.27%	94.52%	94.54%	93.45%	97.18%	88.52%	95.98%	93.87%
1-30 Days	16.82%	6.37%	13.67%	4.74%	2.64%	5.36%	2.35%	6.41%	2.33%	2.79%
31-60 Days	6.55%	4.67%	1.05%	0.74%	2.81%	1.18%	0.46%	3.89%	1.70%	2.70%
61-90 Days	4.55%	0.00%	0.22%	0.00%	0.00%	0.00%	0.00%	0.00%	0.00%	0.65%
91-120 Days	1.19%	0.00%	0.00%	0.00%	0.00%	0.00%	0.00%	1.18%	0.00%	0.00%
121-150 Days	0.00%	0.00%	0.00%	0.00%	0.00%	0.00%	0.00%	0.00%	0.00%	0.00%
151-180 Days	0.00%	0.00%	0.00%	0.00%	0.00%	0.00%	0.00%	0.00%	0.00%	0.00%
181+ Days	0.33%	0.36%	0.79%	0.00%	0.00%	0.00%	0.00%	0.00%	0.00%	0.00%
Current - 90 Days	98.49%	99.64%	99.21%	100.00%	100.00%	100.00%	100.00%	98.82%	100.00%	100.00%
91-180 Days	1.19%	0.00%	0.00%	0.00%	0.00%	0.00%	0.00%	1.18%	0.00%	0.00%



Mortgages - La Hipotecaria Panama Migration Analysis (2001 Vintage)

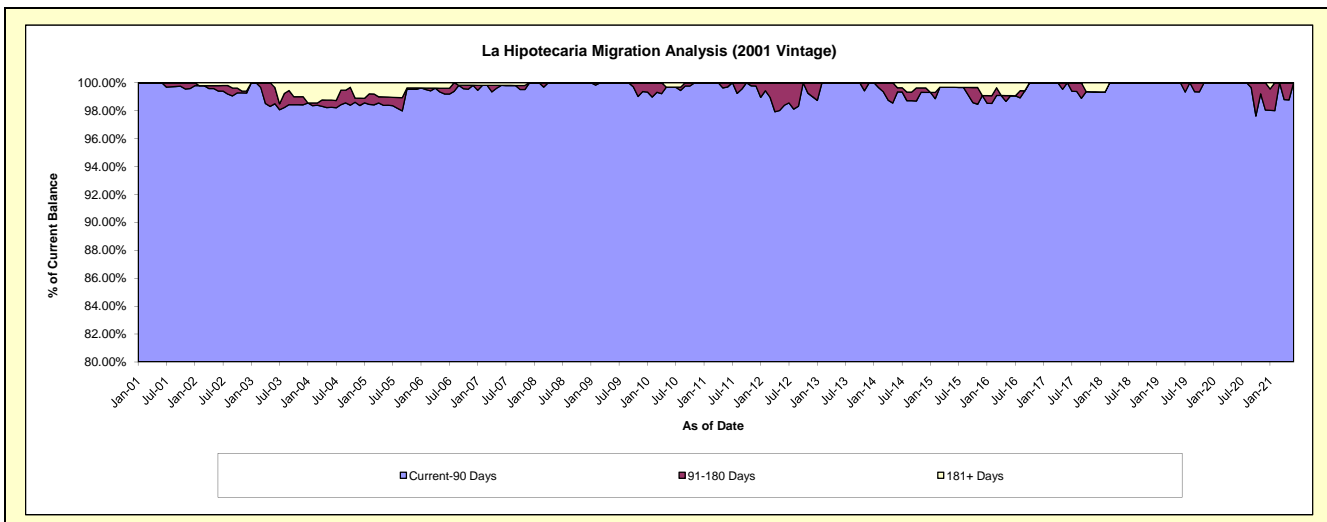
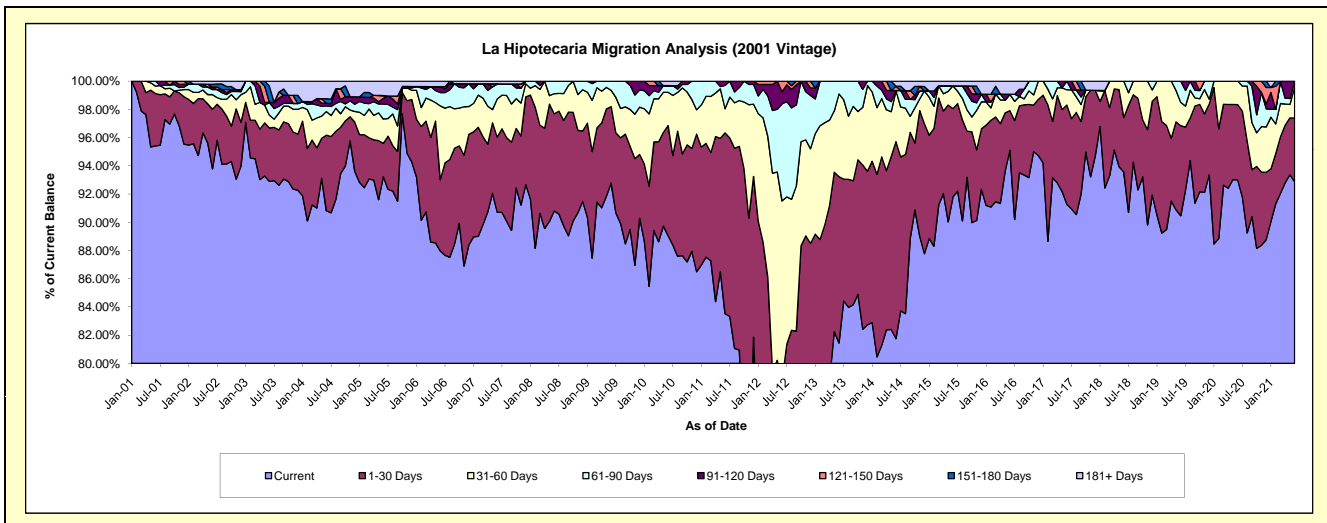
Delinquency Status (\$ of Current Balance)

Data Cutoff: 6/30/2021

Current Portfolio Balance	5,277,406.41	4,441,661.24	3,977,483.03	3,602,602.36	3,267,685.78	2,965,016.94	2,583,503.97	2,258,074.57	2,012,866.00	1,725,373.76
	Jun-12	Jun-13	Jun-14	Jun-15	Jun-16	Jun-17	Jun-18	Jun-19	Jun-20	Jun-21
Current	3,060,472.62	3,617,457.25	3,251,851.41	3,306,771.22	3,107,515.14	2,706,314.71	2,417,057.65	2,042,805.92	1,871,948.78	1,602,451.72
1-30 Days	1,094,368.52	523,566.24	555,210.69	225,836.11	91,975.53	208,605.17	99,878.07	143,889.74	107,453.22	77,905.91
31-60 Days	674,728.22	260,282.37	144,139.14	58,049.71	37,880.90	31,975.56	66,568.25	37,387.51	33,464.00	37,899.14
61-90 Days	362,680.88	40,355.38	-	-	-	18,121.50	-	33,991.40	-	7,116.99
91-120 Days	45,545.41	-	-	-	-	-	-	-	-	-
121-150 Days	39,610.76	-	11,945.32	-	-	-	-	-	-	-
151-180 Days	-	-	-	-	-	-	-	-	-	-
181+ Days	-	-	14,336.47	11,945.32	30,314.21	-	-	-	-	-

Delinquency Status (% of Current Balance)

Current Portfolio Balance	5,277,406.41	4,441,661.24	3,977,483.03	3,602,602.36	3,267,685.78	2,965,016.94	2,583,503.97	2,258,074.57	2,012,866.00	1,725,373.76
	Jun-12	Jun-13	Jun-14	Jun-15	Jun-16	Jun-17	Jun-18	Jun-19	Jun-20	Jun-21
Current	57.99%	81.44%	81.76%	91.79%	95.10%	91.27%	93.56%	90.47%	93.00%	92.88%
1-30 Days	20.74%	11.79%	13.96%	6.27%	2.81%	7.04%	3.87%	6.37%	5.34%	4.52%
31-60 Days	12.79%	5.86%	3.62%	1.61%	1.16%	1.08%	2.58%	1.66%	1.66%	2.20%
61-90 Days	6.87%	0.91%	0.00%	0.00%	0.00%	0.61%	0.00%	1.51%	0.00%	0.41%
91-120 Days	0.86%	0.00%	0.00%	0.00%	0.00%	0.00%	0.00%	0.00%	0.00%	0.00%
121-150 Days	0.75%	0.00%	0.30%	0.00%	0.00%	0.00%	0.00%	0.00%	0.00%	0.00%
151-180 Days	0.00%	0.00%	0.00%	0.00%	0.00%	0.00%	0.00%	0.00%	0.00%	0.00%
181+ Days	0.00%	0.00%	0.36%	0.33%	0.93%	0.00%	0.00%	0.00%	0.00%	0.00%
Current - 90 Days	98.39%	100.00%	99.34%	99.67%	99.07%	100.00%	100.00%	100.00%	100.00%	100.00%
91-180 Days	1.61%	0.00%	0.30%	0.00%	0.00%	0.00%	0.00%	0.00%	0.00%	0.00%



Mortgages - La Hipotecaria Panama Migration Analysis (2002 Vintage)

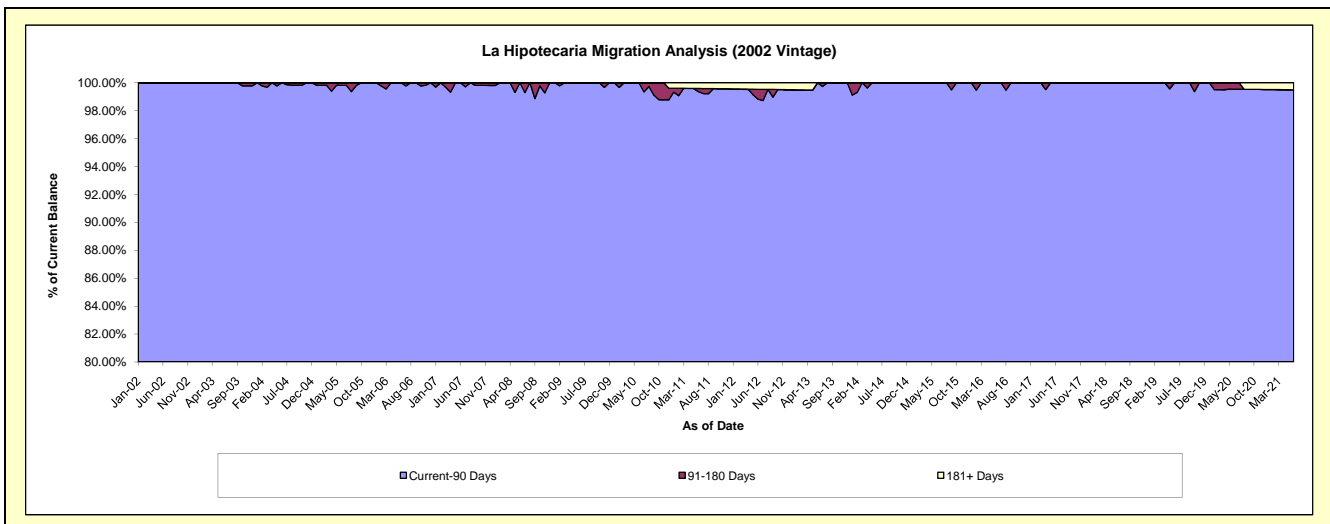
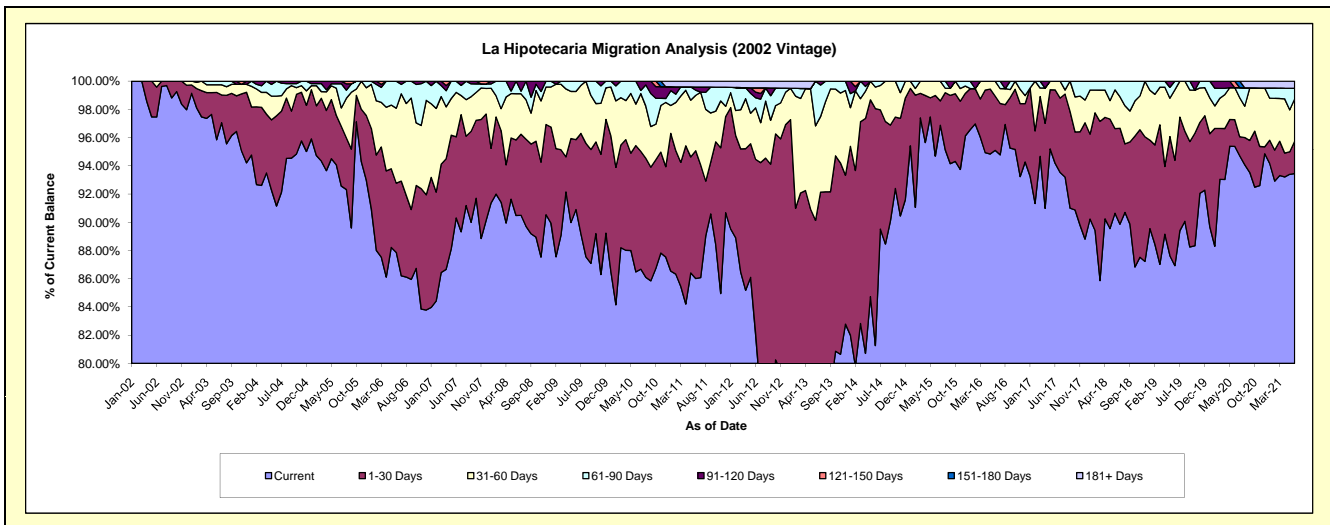
Delinquency Status (\$ of Current Balance)

Data Cutoff: 6/30/2021

Current Portfolio Balance	4,686,527.04	4,085,520.80	3,525,959.75	3,212,191.79	2,925,445.76	2,583,463.09	2,414,193.99	2,157,656.30	1,925,165.66	1,744,927.34
	Jun-12	Jun-13	Jun-14	Jun-15	Jun-16	Jun-17	Jun-18	Jun-19	Jun-20	Jun-21
Current	3,846,542.01	2,969,930.91	2,865,292.12	3,041,622.62	2,781,961.93	2,433,161.51	2,188,184.55	1,875,598.21	1,836,127.07	1,630,629.88
1-30 Days	580,366.56	712,691.48	592,128.93	137,947.39	112,518.95	134,387.78	144,837.93	161,134.36	36,612.65	39,979.85
31-60 Days	171,163.28	273,506.13	53,714.62	32,621.78	30,964.88	15,913.80	66,329.42	107,543.34	43,547.23	52,304.45
61-90 Days	33,341.27	129,392.28	14,824.08	-	-	-	14,842.09	13,380.39	-	13,134.45
91-120 Days	18,901.26	-	-	-	-	-	-	-	-	-
121-150 Days	14,052.65	-	-	-	-	-	-	-	8,878.71	-
151-180 Days	-	-	-	-	-	-	-	-	-	-
181+ Days	22,160.01	-	-	-	-	-	-	-	-	8,878.71

Delinquency Status (% of Current Balance)

Current Portfolio Balance	4,686,527.04	4,085,520.80	3,525,959.75	3,212,191.79	2,925,445.76	2,583,463.09	2,414,193.99	2,157,656.30	1,925,165.66	1,744,927.34
	Jun-12	Jun-13	Jun-14	Jun-15	Jun-16	Jun-17	Jun-18	Jun-19	Jun-20	Jun-21
Current	82.08%	72.69%	81.26%	94.69%	95.10%	94.18%	90.64%	86.93%	95.38%	93.45%
1-30 Days	12.38%	17.44%	16.79%	4.29%	3.85%	5.20%	6.00%	7.47%	1.90%	2.29%
31-60 Days	3.65%	6.69%	1.52%	1.02%	1.06%	0.62%	2.75%	4.98%	2.26%	3.00%
61-90 Days	0.71%	3.17%	0.42%	0.00%	0.00%	0.00%	0.61%	0.62%	0.00%	0.75%
91-120 Days	0.40%	0.00%	0.00%	0.00%	0.00%	0.00%	0.00%	0.00%	0.00%	0.00%
121-150 Days	0.30%	0.00%	0.00%	0.00%	0.00%	0.00%	0.00%	0.00%	0.46%	0.00%
151-180 Days	0.00%	0.00%	0.00%	0.00%	0.00%	0.00%	0.00%	0.00%	0.00%	0.00%
181+ Days	0.47%	0.00%	0.00%	0.00%	0.00%	0.00%	0.00%	0.00%	0.00%	0.51%
Current - 90 Days	98.82%	100.00%	100.00%	100.00%	100.00%	100.00%	100.00%	100.00%	99.54%	99.49%
91-180 Days	0.70%	0.00%	0.00%	0.00%	0.00%	0.00%	0.00%	0.00%	0.46%	0.00%



Mortgages - La Hipotecaria Panama Migration Analysis (2003 Vintage)

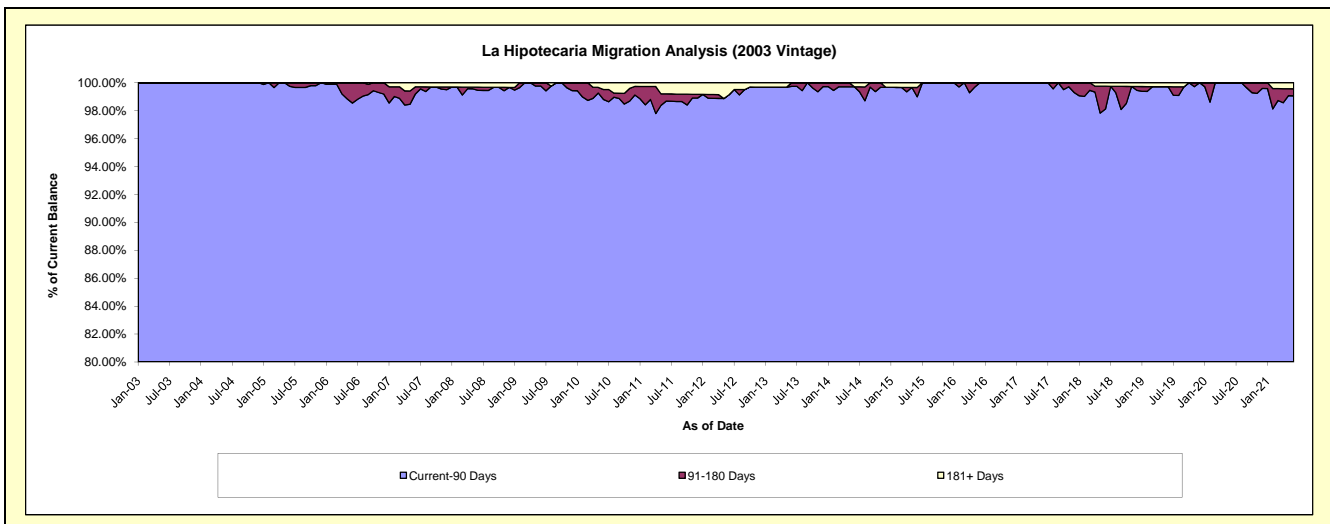
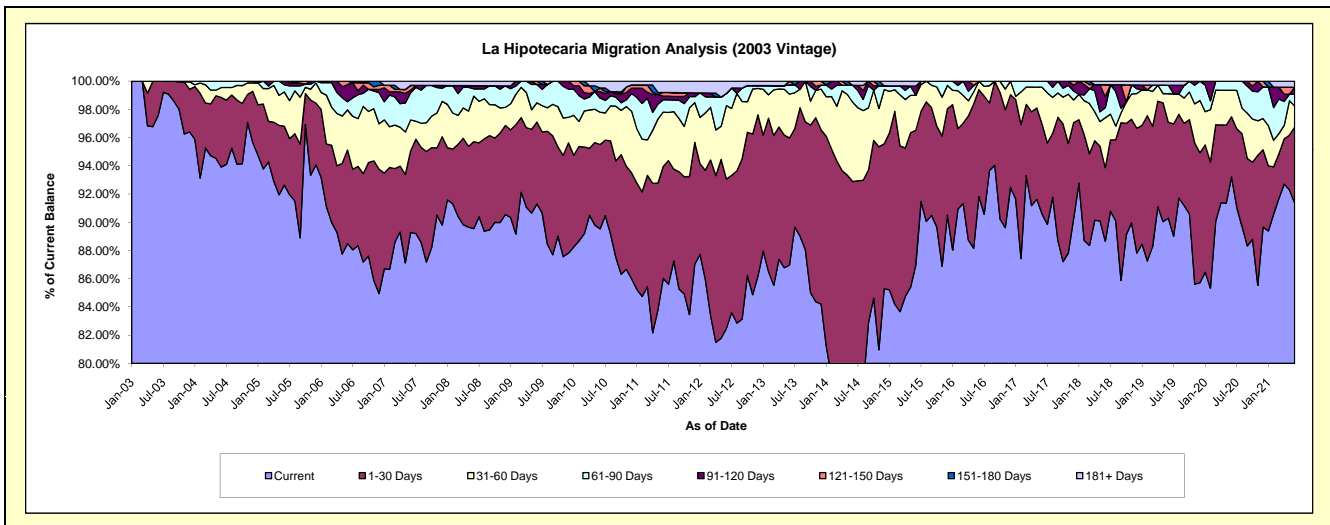
Delinquency Status (\$ of Current Balance)

Data Cutoff: 6/30/2021

Current Portfolio Balance	7,589,668.33	6,964,660.03	6,089,747.68	5,461,220.29	4,716,206.42	4,205,852.76	3,800,639.04	3,331,709.78	3,016,422.30	2,764,656.48
	Jun-12	Jun-13	Jun-14	Jun-15	Jun-16	Jun-17	Jun-18	Jun-19	Jun-20	Jun-21
Current	6,258,943.26	6,056,776.00	4,424,741.43	4,751,242.84	4,330,401.94	3,809,915.33	3,369,541.22	3,008,262.57	2,811,724.35	2,525,781.88
1-30 Days	804,007.06	627,974.59	1,231,746.53	519,959.53	357,607.48	267,920.62	198,407.32	226,031.67	128,513.44	149,123.14
31-60 Days	395,132.83	215,892.25	342,406.11	135,031.86	28,197.00	109,728.47	133,872.11	67,735.80	56,655.71	41,021.26
61-90 Days	65,776.50	46,105.79	72,942.21	-	-	18,288.34	27,249.27	20,174.27	19,528.80	22,762.90
91-120 Days	-	-	-	36,224.14	-	-	30,273.82	-	-	13,931.89
121-150 Days	-	17,911.40	-	-	-	-	31,789.83	-	-	-
151-180 Days	-	-	-	-	-	-	-	-	-	-
181+ Days	65,808.68	-	17,911.40	18,761.92	-	-	9,505.47	9,505.47	-	12,035.41

Delinquency Status (% of Current Balance)

Current Portfolio Balance	7,589,668.33	6,964,660.03	6,089,747.68	5,461,220.29	4,716,206.42	4,205,852.76	3,800,639.04	3,331,709.78	3,016,422.30	2,764,656.48
	Jun-12	Jun-13	Jun-14	Jun-15	Jun-16	Jun-17	Jun-18	Jun-19	Jun-20	Jun-21
Current	82.47%	86.96%	72.66%	87.00%	91.82%	90.59%	88.66%	90.29%	93.21%	91.36%
1-30 Days	10.59%	9.02%	20.23%	9.52%	7.58%	6.37%	5.22%	6.78%	4.26%	5.39%
31-60 Days	5.21%	3.10%	5.62%	2.47%	0.60%	2.61%	3.52%	2.03%	1.88%	1.48%
61-90 Days	0.87%	0.66%	1.20%	0.00%	0.00%	0.43%	0.72%	0.61%	0.65%	0.82%
91-120 Days	0.00%	0.00%	0.00%	0.66%	0.00%	0.00%	0.80%	0.00%	0.00%	0.50%
121-150 Days	0.00%	0.26%	0.00%	0.00%	0.00%	0.00%	0.84%	0.00%	0.00%	0.00%
151-180 Days	0.00%	0.00%	0.00%	0.00%	0.00%	0.00%	0.00%	0.00%	0.00%	0.00%
181+ Days	0.87%	0.00%	0.29%	0.34%	0.00%	0.00%	0.25%	0.29%	0.00%	0.44%
Current - 90 Days	99.13%	99.74%	99.71%	98.99%	100.00%	100.00%	98.12%	99.71%	100.00%	99.06%
91-180 Days	0.00%	0.26%	0.00%	0.66%	0.00%	0.00%	1.63%	0.00%	0.00%	0.50%



Mortgages - La Hipotecaria Panama Migration Analysis (2004 Vintage)

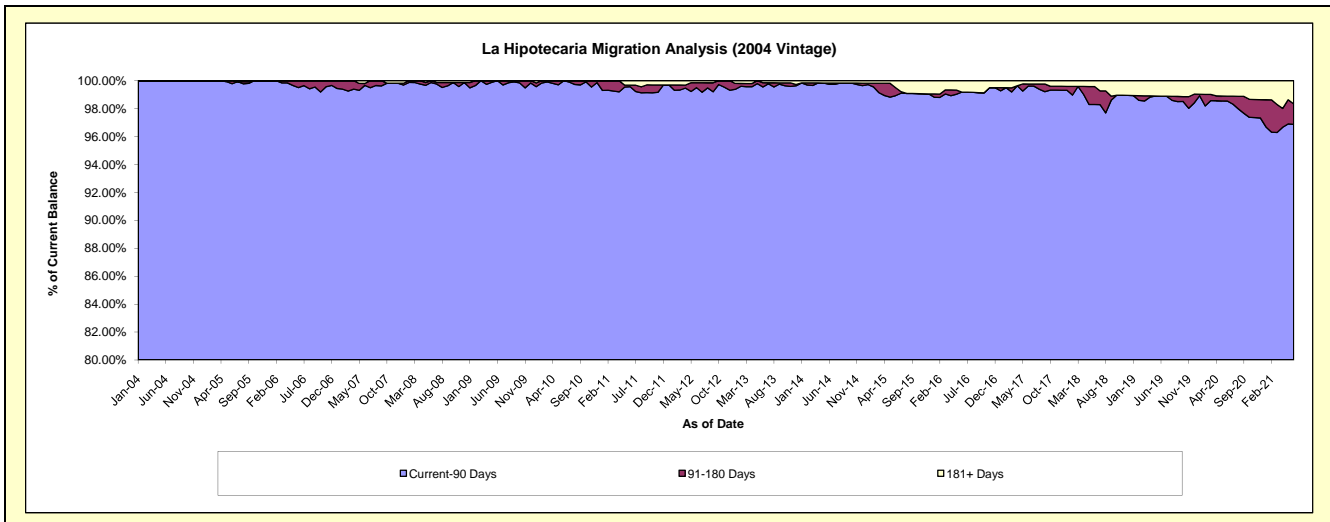
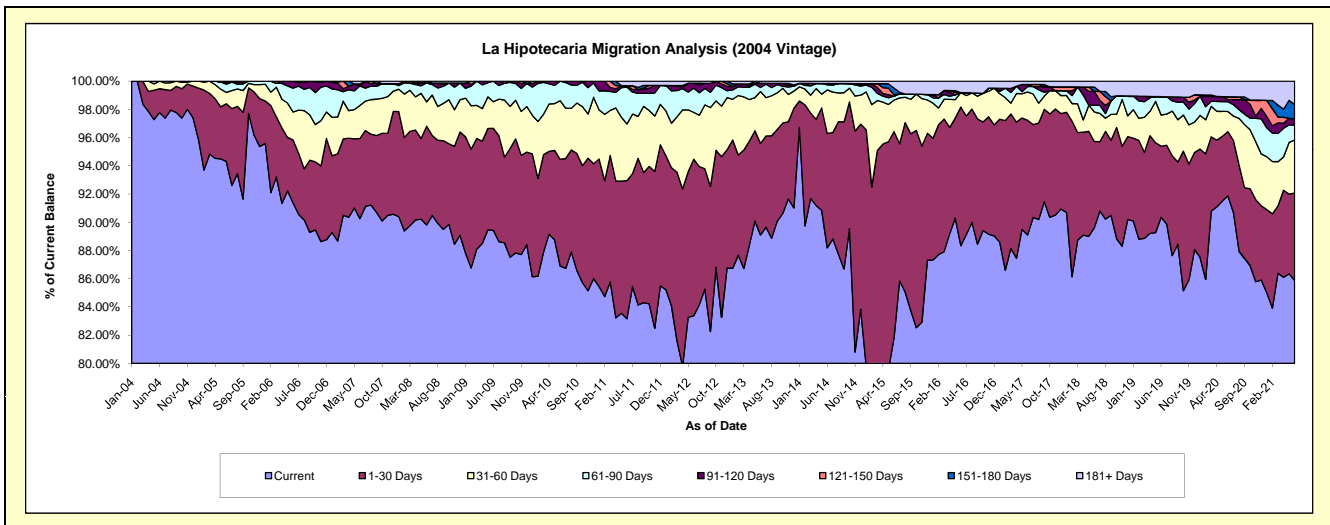
Delinquency Status (\$ of Current Balance)

Data Cutoff: 6/30/2021

Current Portfolio Balance	13,828,340.50	12,282,523.23	11,106,287.65	9,777,372.68	8,705,824.67	7,710,094.85	6,983,712.34	6,354,598.84	5,840,873.78	5,387,440.78
	Jun-12	Jun-13	Jun-14	Jun-15	Jun-16	Jun-17	Jun-18	Jun-19	Jun-20	Jun-21
Current	11,529,081.19	10,943,199.97	9,794,829.33	8,003,050.07	7,691,131.75	6,869,487.80	6,258,238.70	5,741,549.38	5,366,344.77	4,626,195.76
1-30 Days	1,534,194.73	796,975.13	899,718.96	1,424,889.91	854,773.36	626,725.11	426,736.18	320,320.61	265,717.59	334,095.07
31-60 Days	459,544.26	452,246.16	343,381.00	218,690.28	88,942.01	155,101.80	146,410.58	140,554.32	83,036.50	202,409.37
61-90 Days	236,903.14	35,367.60	39,382.68	26,474.97	-	29,523.29	33,265.20	82,192.53	40,738.20	56,613.16
91-120 Days	48,473.02	36,636.01	10,877.32	-	-	11,455.41	68,500.45	-	9,040.18	24,892.72
121-150 Days	-	-	-	10,330.78	-	-	-	-	11,466.22	-
151-180 Days	-	-	-	45,213.82	-	-	21,304.38	-	-	54,025.36
181+ Days	20,144.16	18,098.36	18,098.36	48,722.85	70,977.55	17,801.44	29,256.85	69,982.00	64,530.32	89,209.34

Delinquency Status (% of Current Balance)

Current Portfolio Balance	13,828,340.50	12,282,523.23	11,106,287.65	9,777,372.68	8,705,824.67	7,710,094.85	6,983,712.34	6,354,598.84	5,840,873.78	5,387,440.78
	Jun-12	Jun-13	Jun-14	Jun-15	Jun-16	Jun-17	Jun-18	Jun-19	Jun-20	Jun-21
Current	83.37%	89.10%	88.19%	81.85%	88.34%	89.10%	89.61%	90.35%	91.88%	85.87%
1-30 Days	11.09%	6.49%	8.10%	14.67%	9.82%	8.13%	6.11%	5.04%	4.55%	6.20%
31-60 Days	3.32%	3.68%	3.09%	2.24%	1.02%	2.01%	2.21%	2.21%	1.42%	3.76%
61-90 Days	1.71%	0.29%	0.35%	0.27%	0.00%	0.38%	0.48%	1.29%	0.70%	1.05%
91-120 Days	0.35%	0.30%	0.10%	0.00%	0.00%	0.15%	0.98%	0.00%	0.15%	0.46%
121-150 Days	0.00%	0.00%	0.00%	0.11%	0.00%	0.00%	0.00%	0.00%	0.20%	0.00%
151-180 Days	0.00%	0.00%	0.00%	0.46%	0.00%	0.00%	0.31%	0.00%	0.00%	1.00%
181+ Days	0.15%	0.15%	0.16%	0.50%	0.82%	0.23%	0.42%	1.10%	1.10%	1.66%
Current - 90 Days	99.50%	99.55%	99.74%	98.93%	99.18%	99.62%	98.30%	98.90%	98.54%	96.88%
91-180 Days	0.35%	0.30%	0.10%	0.57%	0.00%	0.15%	1.29%	0.00%	0.35%	1.46%



Mortgages - La Hipotecaria Panama Migration Analysis (2005 Vintage)

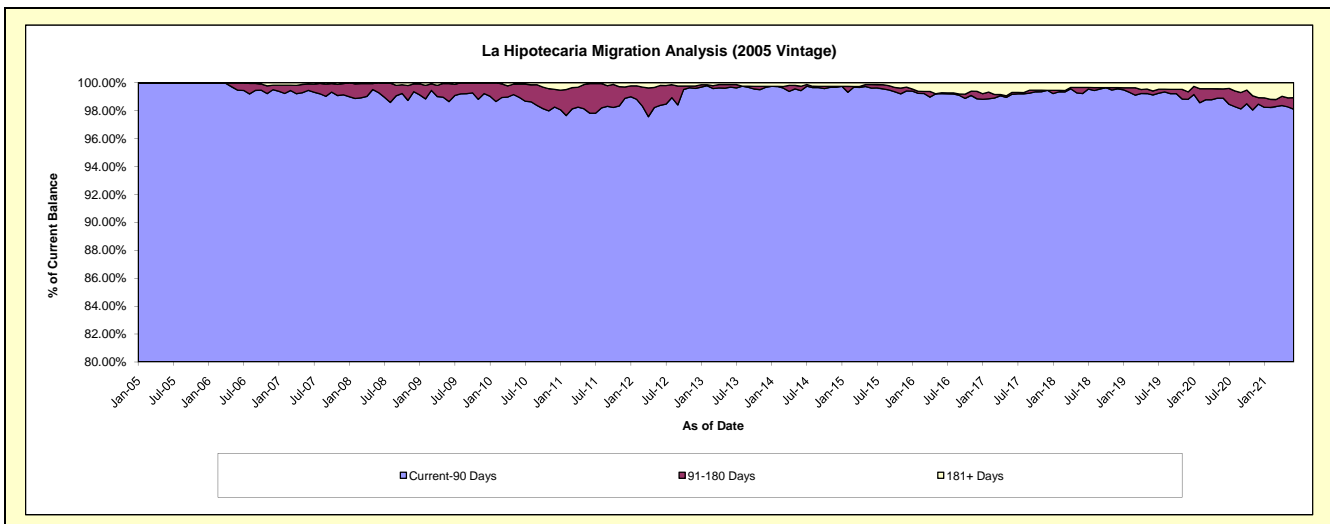
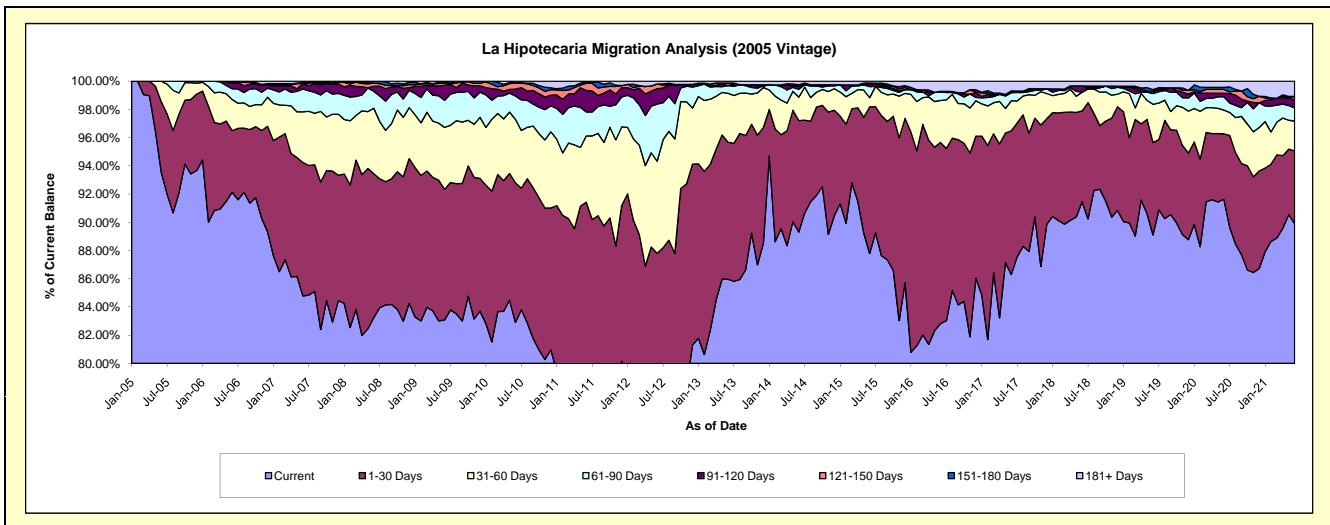
Delinquency Status (\$ of Current Balance)

Data Cutoff: 6/30/2021

Current Portfolio Balance	25,268,602.19	23,135,955.88	21,068,650.51	19,267,931.07	16,709,750.61	15,013,924.98	13,635,873.98	12,384,205.72	11,449,946.97	10,603,405.31
	Jun-12	Jun-13	Jun-14	Jun-15	Jun-16	Jun-17	Jun-18	Jun-19	Jun-20	Jun-21
Current	18,204,346.41	19,888,759.85	18,815,971.78	16,915,284.61	13,836,964.89	12,956,921.84	12,472,051.55	11,034,839.74	10,491,907.88	9,531,811.81
1-30 Days	3,980,042.48	2,246,329.16	1,663,746.04	2,002,662.03	2,146,792.78	1,529,124.43	876,752.91	810,803.27	530,809.77	547,377.70
31-60 Days	1,651,012.25	802,103.23	350,956.87	124,267.23	496,804.82	319,129.41	180,886.78	336,202.25	192,694.77	224,730.29
61-90 Days	1,023,308.86	125,463.46	118,093.33	151,458.41	97,874.72	84,955.41	-	93,944.95	107,773.00	98,614.74
91-120 Days	273,937.00	-	40,696.35	35,123.04	11,648.45	20,002.02	59,820.96	20,140.16	28,021.52	59,522.32
121-150 Days	86,623.87	42,936.45	26,091.67	12,794.48	-	-	-	-	32,487.67	27,739.45
151-180 Days	-	-	-	-	-	-	-	14,768.89	16,075.31	-
181+ Days	49,331.32	30,363.73	53,094.47	26,341.27	119,664.95	103,791.87	46,361.78	73,506.46	50,177.05	113,609.00

Delinquency Status (% of Current Balance)

Current Portfolio Balance	25,268,602.19	23,135,955.88	21,068,650.51	19,267,931.07	16,709,750.61	15,013,924.98	13,635,873.98	12,384,205.72	11,449,946.97	10,603,405.31
	Jun-12	Jun-13	Jun-14	Jun-15	Jun-16	Jun-17	Jun-18	Jun-19	Jun-20	Jun-21
Current	72.04%	85.96%	89.31%	87.79%	82.81%	86.30%	91.46%	89.10%	91.63%	89.89%
1-30 Days	15.75%	9.71%	7.90%	10.39%	12.85%	10.18%	6.43%	6.55%	4.64%	5.16%
31-60 Days	6.53%	3.47%	1.67%	0.64%	2.97%	2.13%	1.33%	2.71%	1.68%	2.12%
61-90 Days	4.05%	0.54%	0.56%	0.79%	0.59%	0.57%	0.00%	0.76%	0.94%	0.93%
91-120 Days	1.08%	0.00%	0.19%	0.18%	0.07%	0.13%	0.44%	0.16%	0.24%	0.56%
121-150 Days	0.34%	0.19%	0.12%	0.07%	0.00%	0.00%	0.00%	0.00%	0.28%	0.26%
151-180 Days	0.00%	0.00%	0.00%	0.00%	0.00%	0.00%	0.00%	0.12%	0.14%	0.00%
181+ Days	0.20%	0.13%	0.25%	0.14%	0.72%	0.69%	0.34%	0.59%	0.44%	1.07%
Current - 90 Days	98.38%	99.68%	99.43%	99.61%	99.21%	99.18%	99.22%	99.12%	98.89%	98.11%
91-180 Days	1.43%	0.19%	0.32%	0.25%	0.07%	0.13%	0.44%	0.28%	0.67%	0.82%



Mortgages - La Hipotecaria Panama Migration Analysis (2006 Vintage)

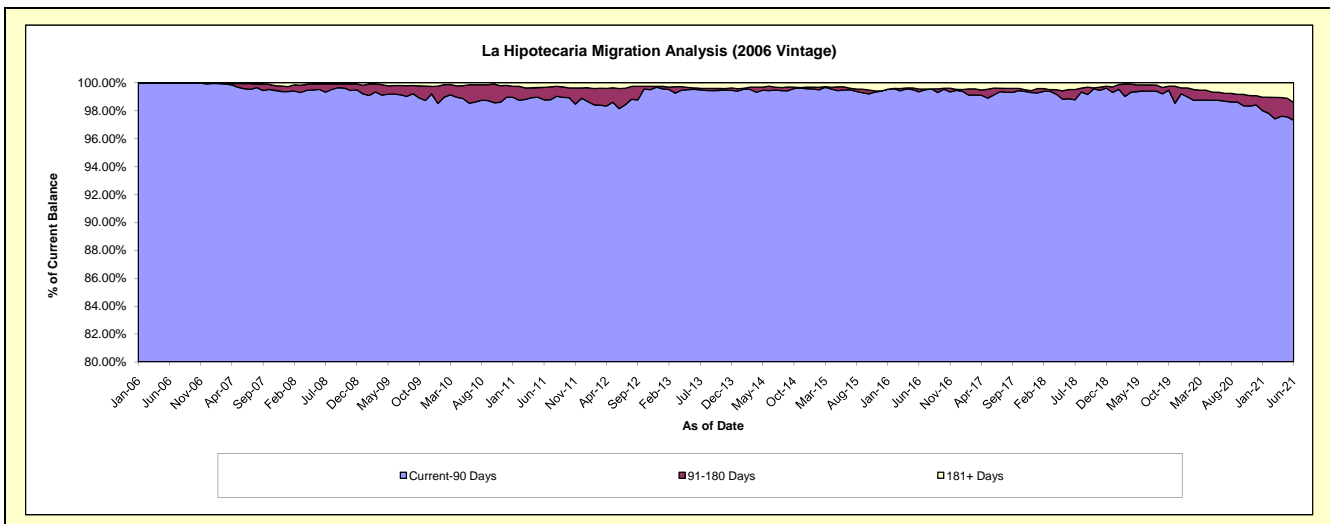
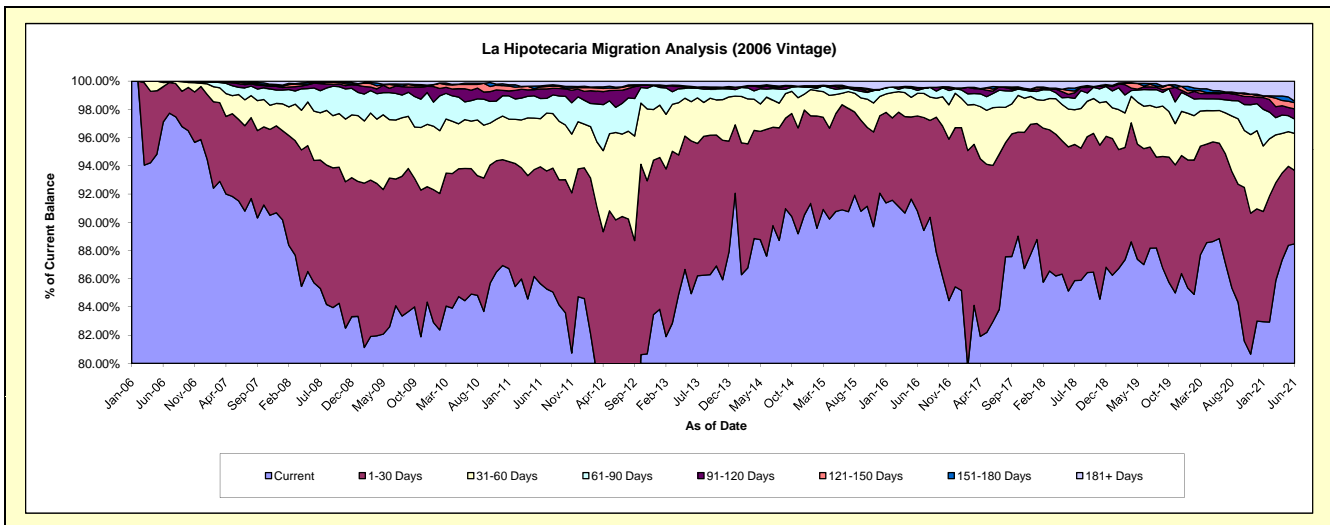
Delinquency Status (\$ of Current Balance)

Data Cutoff: 6/30/2021

Current Portfolio Balance	45,170,681.11	40,885,998.25	36,937,551.55	33,524,105.14	29,749,542.34	26,471,111.35	24,029,403.11	21,788,879.87	20,367,897.35	18,866,385.95
	Jun-12	Jun-13	Jun-14	Jun-15	Jun-16	Jun-17	Jun-18	Jun-19	Jun-20	Jun-21
Current	34,433,106.08	34,730,053.64	32,357,328.92	30,468,241.26	27,005,881.97	21,960,282.35	20,456,109.79	18,956,903.83	18,096,124.38	16,692,122.13
1-30 Days	6,295,011.86	4,426,951.77	3,322,986.04	2,497,460.05	2,009,599.20	2,930,697.65	2,454,747.61	1,790,979.79	1,377,472.66	979,993.23
31-60 Days	2,798,744.01	1,135,330.07	840,977.26	270,471.24	478,204.42	1,083,326.61	642,667.19	654,491.51	471,349.85	496,625.16
61-90 Days	806,841.16	400,593.94	207,976.21	111,551.29	62,374.25	266,713.94	200,319.13	256,585.79	166,299.27	189,976.08
91-120 Days	543,165.64	-	78,393.88	3,785.74	42,788.90	43,436.75	50,962.20	41,078.61	76,140.71	135,560.44
121-150 Days	65,124.78	27,076.70	13,921.12	39,249.01	16,566.02	37,079.98	66,844.11	14,444.76	13,457.41	84,389.91
151-180 Days	38,217.34	12,538.93	23,320.80	35,231.83	-	47,840.52	41,089.51	39,588.77	28,556.41	20,494.93
181+ Days	190,470.24	153,453.20	92,647.32	98,114.72	134,127.58	101,733.55	116,663.57	34,806.81	138,496.66	267,224.07

Delinquency Status (% of Current Balance)

Current Portfolio Balance	45,170,681.11	40,885,998.25	36,937,551.55	33,524,105.14	29,749,542.34	26,471,111.35	24,029,403.11	21,788,879.87	20,367,897.35	18,866,385.95
	Jun-12	Jun-13	Jun-14	Jun-15	Jun-16	Jun-17	Jun-18	Jun-19	Jun-20	Jun-21
Current	76.23%	84.94%	87.60%	90.89%	90.78%	82.96%	85.13%	87.00%	88.85%	88.48%
1-30 Days	13.94%	10.83%	9.00%	7.45%	6.76%	11.07%	10.22%	8.22%	6.76%	5.19%
31-60 Days	6.20%	2.78%	2.28%	0.81%	1.61%	4.09%	2.67%	3.00%	2.31%	2.63%
61-90 Days	1.79%	0.98%	0.56%	0.33%	0.21%	1.01%	0.83%	1.18%	0.82%	1.01%
91-120 Days	1.20%	0.00%	0.21%	0.01%	0.14%	0.16%	0.21%	0.19%	0.37%	0.72%
121-150 Days	0.14%	0.07%	0.04%	0.12%	0.06%	0.14%	0.28%	0.07%	0.07%	0.45%
151-180 Days	0.08%	0.03%	0.06%	0.11%	0.00%	0.18%	0.17%	0.18%	0.14%	0.11%
181+ Days	0.42%	0.38%	0.25%	0.29%	0.45%	0.38%	0.49%	0.16%	0.68%	1.42%
Current - 90 Days	98.15%	99.53%	99.44%	99.47%	99.35%	99.13%	98.85%	99.40%	98.74%	97.31%
91-180 Days	1.43%	0.10%	0.31%	0.23%	0.20%	0.48%	0.66%	0.44%	0.58%	1.27%



Mortgages - La Hipotecaria Panama Migration Analysis (2007 Vintage)

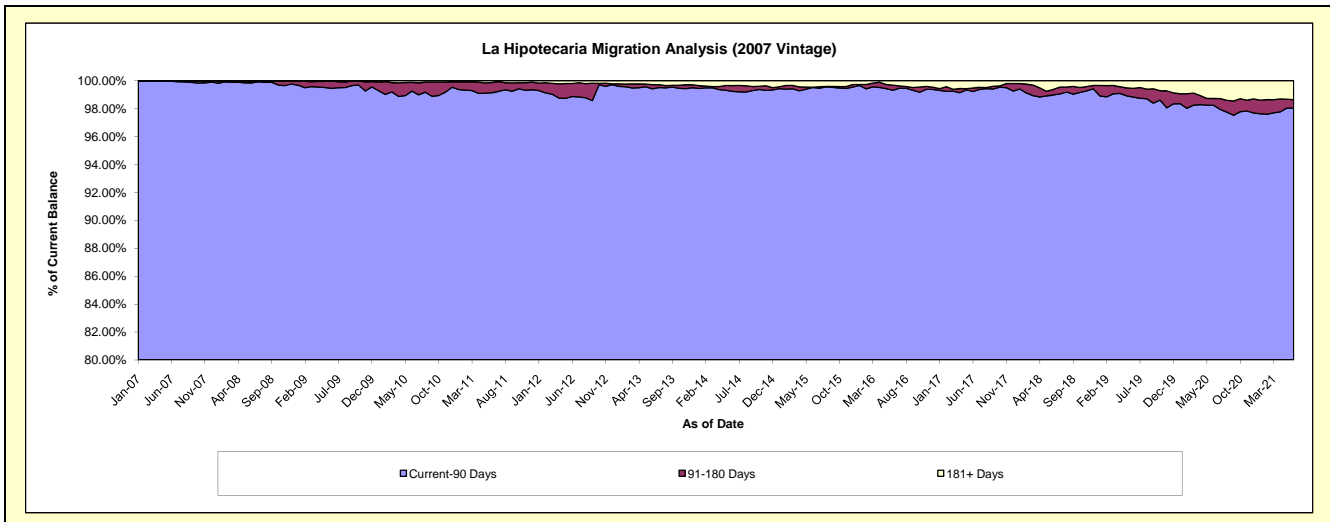
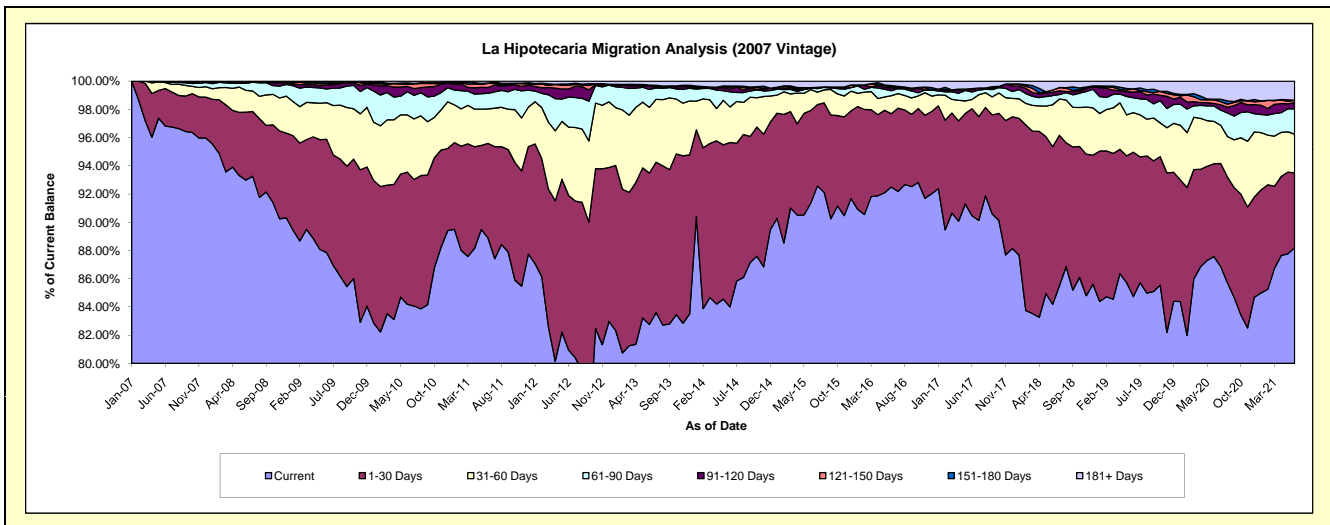
Delinquency Status (\$ of Current Balance)

Data Cutoff: 6/30/2021

Current Portfolio Balance	55,312,650.38	50,469,362.59	45,961,196.10	41,456,226.52	37,638,140.16	34,201,749.61	31,055,837.72	27,878,036.95	26,012,758.08	24,380,605.94
	Jun-12	Jun-13	Jun-14	Jun-15	Jun-16	Jun-17	Jun-18	Jun-19	Jun-20	Jun-21
Current	44,770,321.62	41,771,323.00	38,609,677.80	37,865,828.39	34,815,068.83	30,942,938.99	26,145,348.11	23,623,363.66	22,778,066.07	21,505,106.08
1-30 Days	6,061,334.80	5,412,353.54	5,353,385.51	2,728,804.65	1,954,454.32	2,591,980.85	3,470,452.46	2,850,487.96	1,712,832.29	1,289,822.20
31-60 Days	2,679,361.11	2,349,117.99	1,158,973.99	616,384.42	483,606.46	223,589.01	922,244.31	782,210.99	780,160.57	668,671.87
61-90 Days	1,179,961.49	643,198.29	490,946.81	42,211.35	129,506.04	180,718.82	201,791.60	294,385.85	284,964.54	437,060.69
91-120 Days	314,515.45	118,448.13	91,463.24	-	70,225.44	68,270.64	74,533.01	112,975.93	45,024.29	109,043.35
121-150 Days	150,672.03	31,675.95	63,112.45	-	26,884.64	-	47,646.63	61,629.20	67,848.02	40,140.22
151-180 Days	43,481.20	414.20	34,904.82	12,294.59	39,208.27	15,367.88	-	-	12,931.76	-
181+ Days	113,002.68	142,831.49	158,731.48	190,703.12	119,186.16	178,883.42	193,821.60	152,983.36	330,930.54	330,761.53

Delinquency Status (% of Current Balance)

Current Portfolio Balance	55,312,650.38	50,469,362.59	45,961,196.10	41,456,226.52	37,638,140.16	34,201,749.61	31,055,837.72	27,878,036.95	26,012,758.08	24,380,605.94
	Jun-12	Jun-13	Jun-14	Jun-15	Jun-16	Jun-17	Jun-18	Jun-19	Jun-20	Jun-21
Current	80.94%	82.77%	84.00%	91.34%	92.50%	90.47%	84.19%	84.74%	87.56%	88.21%
1-30 Days	10.96%	10.72%	11.65%	6.58%	5.19%	7.58%	11.17%	10.22%	6.58%	5.29%
31-60 Days	4.84%	4.65%	2.52%	1.49%	1.28%	0.65%	2.97%	2.81%	3.00%	2.74%
61-90 Days	2.13%	1.27%	1.07%	0.10%	0.34%	0.53%	0.65%	1.06%	1.10%	1.79%
91-120 Days	0.57%	0.23%	0.20%	0.00%	0.19%	0.20%	0.24%	0.41%	0.17%	0.45%
121-150 Days	0.27%	0.06%	0.14%	0.00%	0.07%	0.00%	0.15%	0.22%	0.26%	0.16%
151-180 Days	0.08%	0.00%	0.08%	0.03%	0.10%	0.04%	0.00%	0.00%	0.05%	0.00%
181+ Days	0.20%	0.28%	0.35%	0.46%	0.32%	0.52%	0.62%	0.55%	1.27%	1.36%
Current - 90 Days	98.88%	99.42%	99.24%	99.51%	99.32%	99.23%	98.98%	98.82%	98.24%	98.03%
91-180 Days	0.92%	0.30%	0.41%	0.03%	0.36%	0.24%	0.39%	0.63%	0.48%	0.61%



Mortgages - La Hipotecaria Panama Migration Analysis (2008 Vintage)

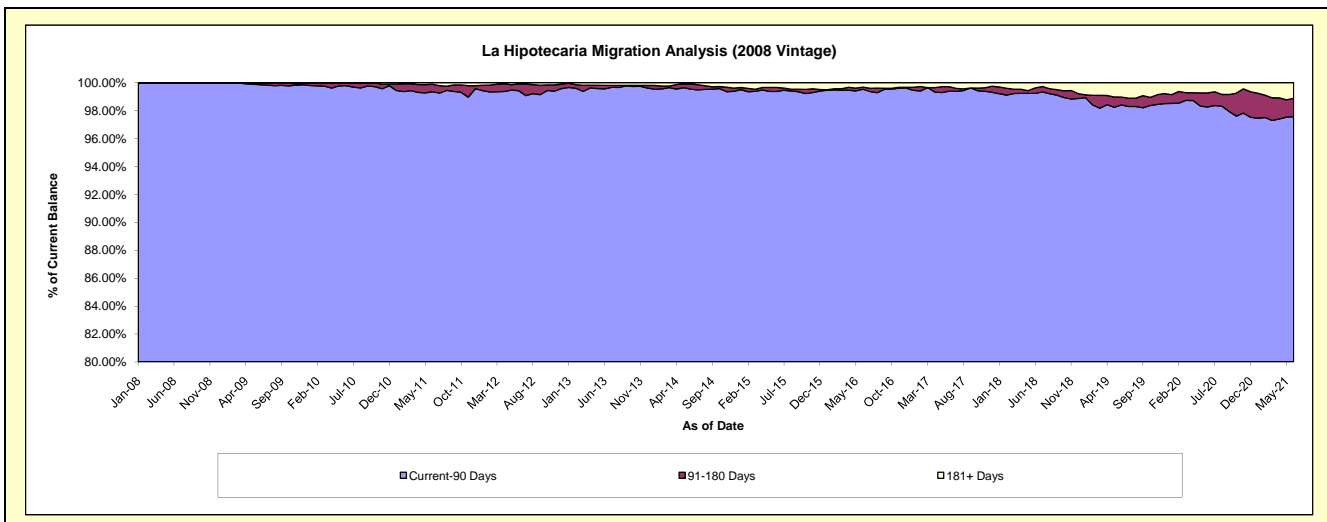
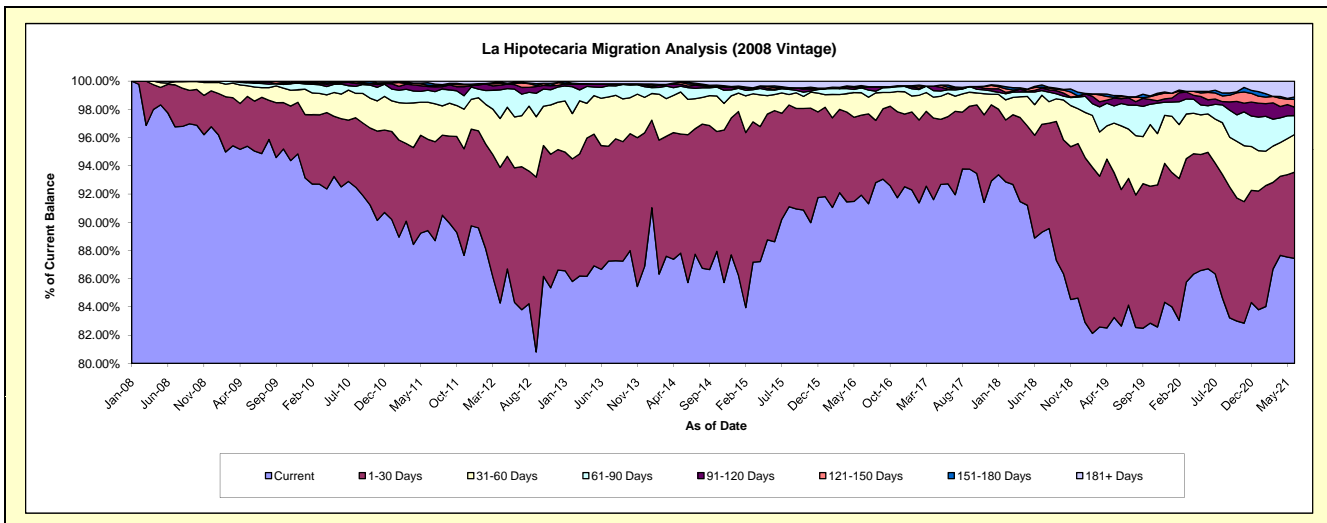
Delinquency Status (\$ of Current Balance)

Data Cutoff: 6/30/2021

Current Portfolio Balance	54,174,458.01	49,933,029.36	45,193,913.45	40,358,752.86	36,109,198.98	33,045,622.44	29,980,453.75	26,985,696.70	24,719,560.10	22,890,192.26
	Jun-12	Jun-13	Jun-14	Jun-15	Jun-16	Jun-17	Jun-18	Jun-19	Jun-20	Jun-21
Current	45,679,940.90	43,273,204.48	38,744,714.06	35,768,130.42	33,193,432.22	30,642,430.89	26,647,769.74	22,303,132.07	21,434,402.72	20,016,177.24
1-30 Days	5,167,827.55	4,378,862.27	4,736,635.25	3,747,914.04	2,046,913.03	1,572,900.69	2,182,137.42	2,610,692.23	2,038,626.69	1,398,910.29
31-60 Days	1,955,409.15	1,675,570.75	1,129,251.29	462,698.25	574,122.73	547,290.65	652,302.55	1,215,890.06	672,629.94	610,166.41
61-90 Days	1,066,012.53	386,159.39	375,166.25	128,134.13	125,408.61	83,596.48	269,489.76	428,507.80	144,317.32	306,871.25
91-120 Days	174,687.60	126,800.11	49,973.77	17,305.97	3,209.50	14,766.69	33,809.74	92,233.29	102,825.57	135,967.53
121-150 Days	49,109.10	-	70,228.12	47,977.82	25,805.34	41,835.23	60,181.41	39,696.76	128,041.65	128,513.12
151-180 Days	32,462.54	-	51,592.90	50,414.57	25,987.20	49,552.53	24,273.79	17,933.67	19,112.12	37,249.38
181+ Days	49,008.64	92,432.36	36,351.81	136,177.66	114,320.35	93,249.28	110,489.34	277,610.82	179,604.09	256,337.04

Delinquency Status (% of Current Balance)

Current Portfolio Balance	54,174,458.01	49,933,029.36	45,193,913.45	40,358,752.86	36,109,198.98	33,045,622.44	29,980,453.75	26,985,696.70	24,719,560.10	22,890,192.26
	Jun-12	Jun-13	Jun-14	Jun-15	Jun-16	Jun-17	Jun-18	Jun-19	Jun-20	Jun-21
Current	84.32%	86.66%	85.73%	88.63%	91.93%	92.73%	88.88%	82.65%	86.71%	87.44%
1-30 Days	9.54%	8.77%	10.48%	9.29%	5.67%	4.76%	7.28%	9.67%	8.25%	6.11%
31-60 Days	3.61%	3.36%	2.50%	1.15%	1.59%	1.66%	2.18%	4.51%	2.72%	2.67%
61-90 Days	1.97%	0.77%	0.83%	0.32%	0.35%	0.25%	0.90%	1.59%	0.58%	1.34%
91-120 Days	0.32%	0.25%	0.11%	0.04%	0.01%	0.04%	0.11%	0.34%	0.42%	0.59%
121-150 Days	0.09%	0.00%	0.16%	0.12%	0.07%	0.13%	0.20%	0.15%	0.52%	0.56%
151-180 Days	0.06%	0.00%	0.11%	0.12%	0.07%	0.15%	0.08%	0.07%	0.08%	0.16%
181+ Days	0.09%	0.19%	0.08%	0.34%	0.32%	0.28%	0.37%	1.03%	0.73%	1.12%
Current - 90 Days	99.44%	99.56%	99.54%	99.38%	99.53%	99.40%	99.24%	98.42%	98.26%	97.56%
91-180 Days	0.47%	0.25%	0.38%	0.29%	0.15%	0.32%	0.39%	0.56%	1.01%	1.32%



Mortgages - La Hipotecaria Panama Migration Analysis (2009 Vintage)

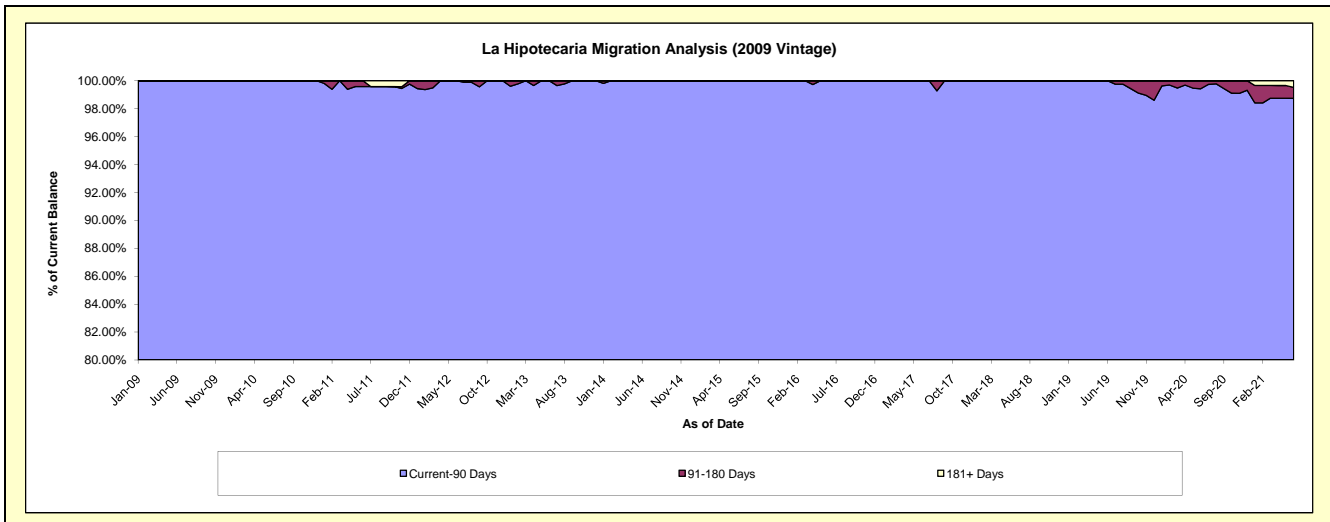
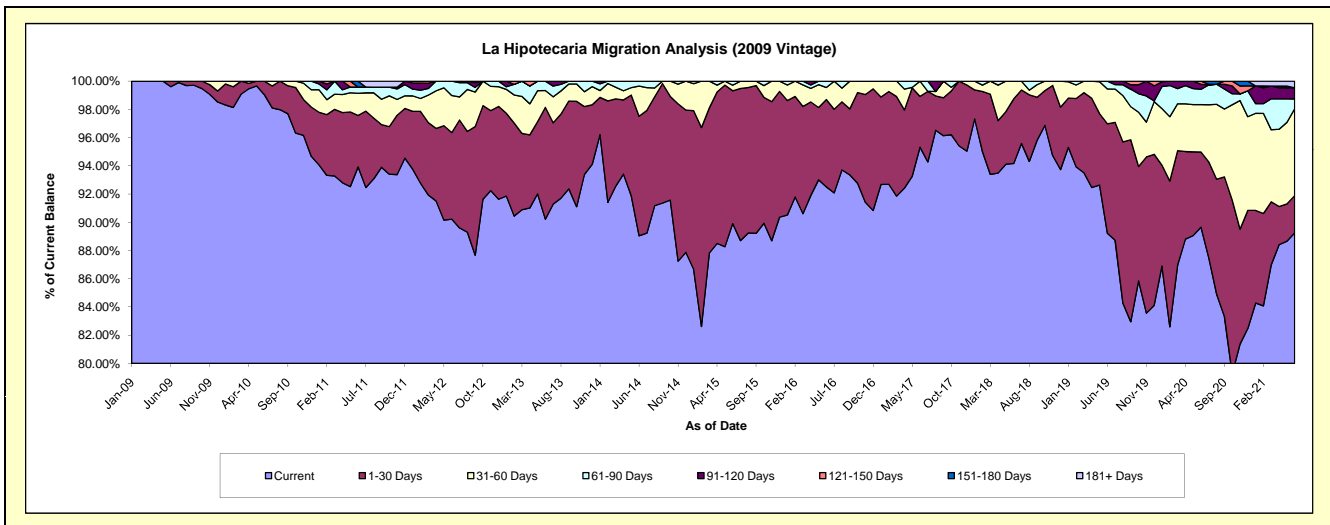
Delinquency Status (\$ of Current Balance)

Data Cutoff: 6/30/2021

Current Portfolio Balance	11,458,048.06	10,475,954.94	9,530,367.14	8,651,648.71	7,618,965.27	6,936,044.67	6,289,889.77	5,795,917.76	5,416,259.99	5,074,555.70
	Jun-12	Jun-13	Jun-14	Jun-15	Jun-16	Jun-17	Jun-18	Jun-19	Jun-20	Jun-21
Current	10,338,069.97	9,451,063.77	8,486,303.08	7,778,250.41	7,048,139.75	6,611,354.93	5,922,828.17	5,171,248.89	4,856,023.21	4,528,751.23
1-30 Days	702,363.86	830,199.45	806,769.44	814,331.42	471,668.44	249,718.62	287,832.52	449,788.05	288,151.27	134,362.35
31-60 Days	300,855.45	125,192.37	204,181.09	34,816.26	65,034.12	74,971.12	79,229.08	142,953.89	182,022.01	311,921.62
61-90 Days	116,758.78	69,499.35	33,113.53	24,250.62	34,122.96	-	-	31,926.93	58,933.13	35,536.49
91-120 Days	-	-	-	-	-	-	-	-	19,290.36	39,966.02
121-150 Days	-	-	-	-	-	-	-	-	11,840.01	-
151-180 Days	-	-	-	-	-	-	-	-	-	-
181+ Days	-	-	-	-	-	-	-	-	-	24,017.99

Delinquency Status (% of Current Balance)

Current Portfolio Balance	11,458,048.06	10,475,954.94	9,530,367.14	8,651,648.71	7,618,965.27	6,936,044.67	6,289,889.77	5,795,917.76	5,416,259.99	5,074,555.70
	Jun-12	Jun-13	Jun-14	Jun-15	Jun-16	Jun-17	Jun-18	Jun-19	Jun-20	Jun-21
Current	90.23%	90.22%	89.04%	89.90%	92.51%	95.32%	94.16%	89.22%	89.66%	89.24%
1-30 Days	6.13%	7.92%	8.47%	9.41%	6.19%	3.60%	4.58%	7.76%	5.32%	2.65%
31-60 Days	2.63%	1.20%	2.14%	0.40%	0.85%	1.08%	1.26%	2.47%	3.36%	6.15%
61-90 Days	1.02%	0.66%	0.35%	0.28%	0.45%	0.00%	0.00%	0.55%	1.09%	0.70%
91-120 Days	0.00%	0.00%	0.00%	0.00%	0.00%	0.00%	0.00%	0.00%	0.36%	0.79%
121-150 Days	0.00%	0.00%	0.00%	0.00%	0.00%	0.00%	0.00%	0.00%	0.22%	0.00%
151-180 Days	0.00%	0.00%	0.00%	0.00%	0.00%	0.00%	0.00%	0.00%	0.00%	0.00%
181+ Days	0.00%	0.00%	0.00%	0.00%	0.00%	0.00%	0.00%	0.00%	0.00%	0.47%
Current - 90 Days	100.00%	100.00%	100.00%	100.00%	100.00%	100.00%	100.00%	100.00%	99.43%	98.74%
91-180 Days	0.00%	0.00%	0.00%	0.00%	0.00%	0.00%	0.00%	0.00%	0.57%	0.79%



Mortgages - La Hipotecaria Panama Migration Analysis (2010 Vintage)

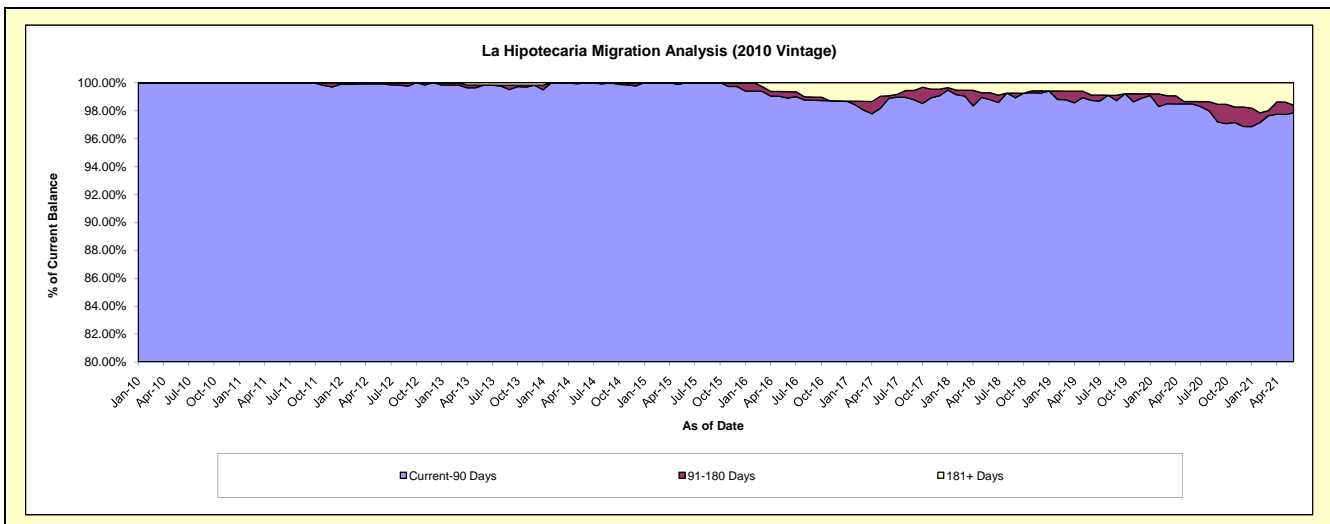
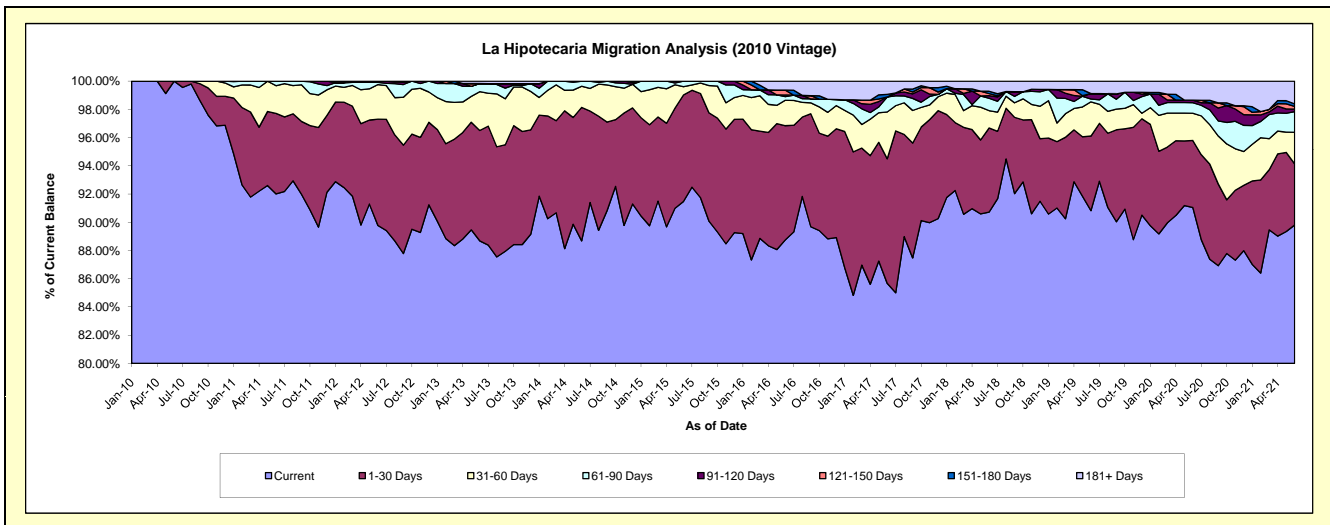
Delinquency Status (\$ of Current Balance)

Data Cutoff: 6/30/2021

Current Portfolio Balance	21,160,004.31	19,599,066.39	17,988,961.55	16,385,221.03	14,437,615.61	12,708,379.16	11,485,127.07	10,284,820.72	9,612,283.26	8,995,699.46
	Jun-12	Jun-13	Jun-14	Jun-15	Jun-16	Jun-17	Jun-18	Jun-19	Jun-20	Jun-21
Current	18,995,462.24	17,380,452.75	15,953,443.53	14,988,471.59	12,814,517.76	10,887,565.30	10,418,905.86	9,341,093.51	8,751,969.76	8,078,809.99
1-30 Days	1,594,835.47	1,533,540.55	1,701,156.86	1,236,412.41	1,167,875.08	1,121,940.18	685,005.82	543,753.32	456,619.51	389,299.77
31-60 Days	519,000.59	538,680.58	269,164.54	96,103.15	259,626.99	421,372.95	141,350.25	249,052.32	185,277.90	201,621.56
61-90 Days	32,179.65	112,850.31	65,196.62	64,233.88	37,015.34	134,944.25	100,484.92	21,131.21	72,045.65	131,426.52
91-120 Days	18,526.36	-	-	-	17,324.21	-	21,546.29	39,564.81	16,933.93	16,832.88
121-150 Days	-	-	-	-	49,959.33	-	16,269.79	-	-	16,444.80
151-180 Days	-	-	-	-	-	23,162.39	19,564.65	-	-	16,265.11
181+ Days	-	33,542.20	-	-	91,296.90	119,394.09	81,999.49	90,225.55	129,436.51	144,998.83

Delinquency Status (% of Current Balance)

Current Portfolio Balance	21,160,004.31	19,599,066.39	17,988,961.55	16,385,221.03	14,437,615.61	12,708,379.16	11,485,127.07	10,284,820.72	9,612,283.26	8,995,699.46
	Jun-12	Jun-13	Jun-14	Jun-15	Jun-16	Jun-17	Jun-18	Jun-19	Jun-20	Jun-21
Current	89.77%	88.68%	88.68%	91.49%	88.76%	85.67%	90.72%	90.82%	91.05%	89.81%
1-30 Days	7.54%	7.82%	9.46%	7.55%	8.09%	8.83%	5.96%	5.29%	4.75%	4.33%
31-60 Days	2.45%	2.75%	1.50%	0.59%	1.80%	3.32%	1.23%	2.42%	1.93%	2.24%
61-90 Days	0.15%	0.58%	0.36%	0.39%	0.26%	1.06%	0.87%	0.21%	0.75%	1.46%
91-120 Days	0.09%	0.00%	0.00%	0.00%	0.12%	0.00%	0.19%	0.38%	0.18%	0.19%
121-150 Days	0.00%	0.00%	0.00%	0.00%	0.35%	0.00%	0.14%	0.00%	0.00%	0.18%
151-180 Days	0.00%	0.00%	0.00%	0.00%	0.00%	0.18%	0.17%	0.00%	0.00%	0.18%
181+ Days	0.00%	0.17%	0.00%	0.00%	0.63%	0.94%	0.71%	0.88%	1.35%	1.61%
Current - 90 Days	99.91%	99.83%	100.00%	100.00%	98.90%	98.88%	98.79%	98.74%	98.48%	97.84%
91-180 Days	0.09%	0.00%	0.00%	0.00%	0.47%	0.18%	0.50%	0.38%	0.18%	0.55%



Mortgages - La Hipotecaria Panama Migration Analysis (2011 Vintage)

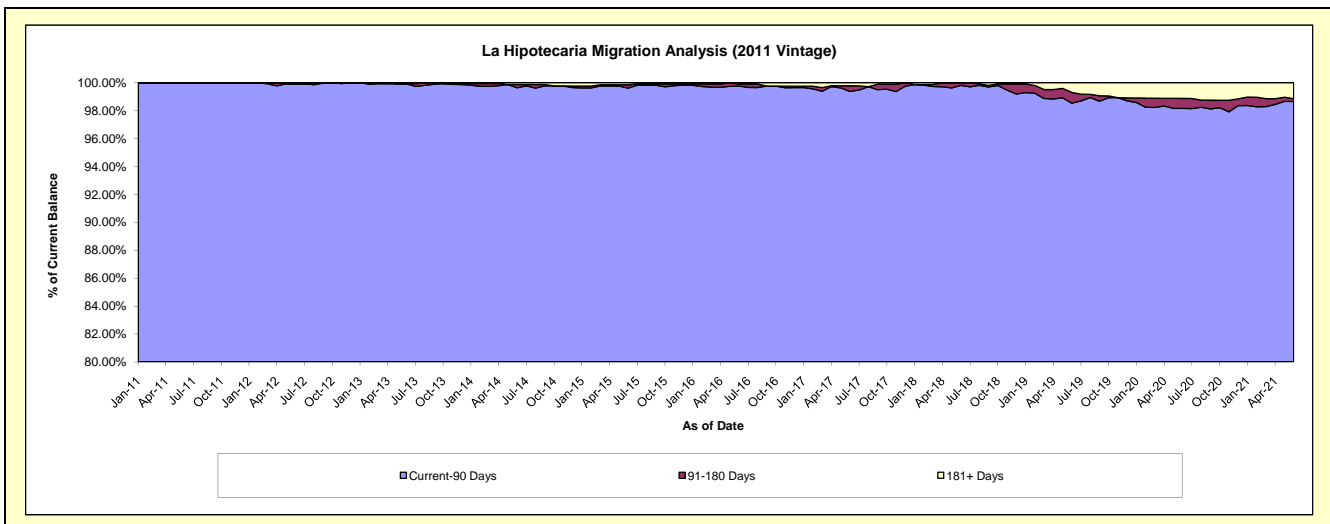
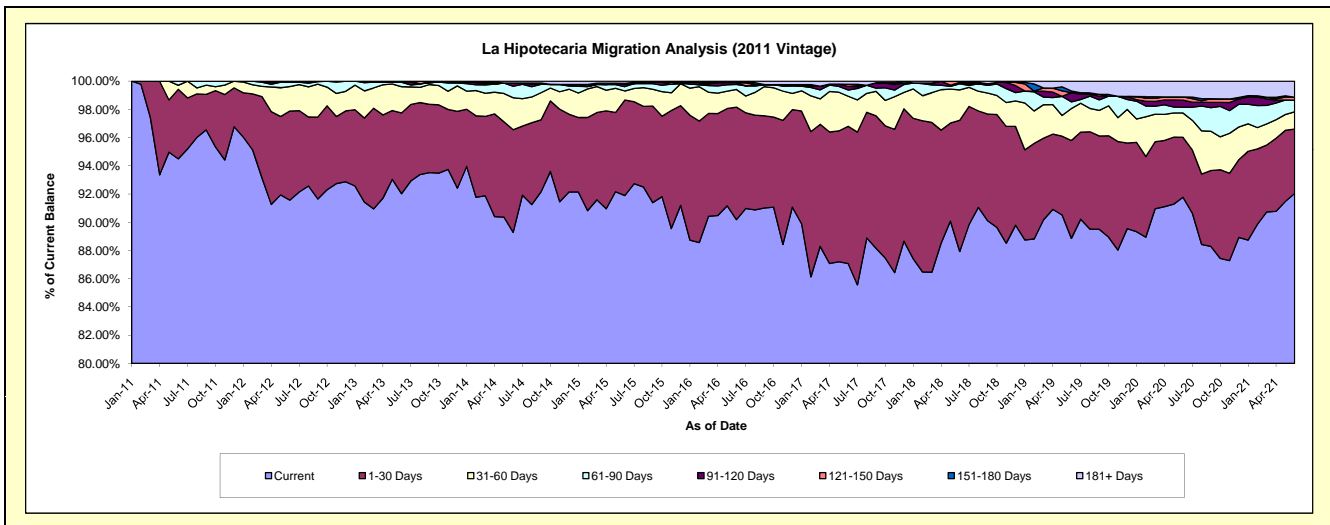
Delinquency Status (\$ of Current Balance)

Data Cutoff: 6/30/2021

Current Portfolio Balance	34,125,576.37	32,554,502.45	29,948,427.55	26,799,381.18	23,978,144.91	21,823,060.62	19,917,139.85	18,108,393.27	16,681,693.98	15,749,095.28
	Jun-12	Jun-13	Jun-14	Jun-15	Jun-16	Jun-17	Jun-18	Jun-19	Jun-20	Jun-21
Current	31,248,011.78	29,959,070.72	26,739,907.74	24,627,822.51	21,625,597.13	19,004,682.89	17,513,280.05	16,091,697.79	15,309,444.94	14,496,599.43
1-30 Days	2,156,698.92	1,863,770.88	2,177,769.76	1,813,673.30	1,910,780.89	2,119,657.41	1,852,479.82	1,255,387.37	709,059.87	717,162.65
31-60 Days	589,570.40	602,729.57	679,787.55	172,271.66	300,698.66	466,278.09	427,643.02	409,525.65	287,137.96	193,146.52
61-90 Days	106,168.02	104,767.41	243,661.68	81,921.76	85,047.36	95,994.67	86,533.74	86,216.99	68,952.08	130,625.37
91-120 Days	-	-	67,375.26	38,682.47	31,693.69	55,404.29	21,026.79	118,922.97	83,491.76	-
121-150 Days	-	-	-	25,083.92	-	33,399.43	16,176.43	-	36,376.89	32,174.81
151-180 Days	-	-	-	-	-	-	-	21,204.24	-	-
181+ Days	25,127.25	24,163.87	39,925.56	39,925.56	24,327.18	47,643.84	-	125,438.26	187,230.48	179,386.50

Delinquency Status (% of Current Balance)

Current Portfolio Balance	34,125,576.37	32,554,502.45	29,948,427.55	26,799,381.18	23,978,144.91	21,823,060.62	19,917,139.85	18,108,393.27	16,681,693.98	15,749,095.28
	Jun-12	Jun-13	Jun-14	Jun-15	Jun-16	Jun-17	Jun-18	Jun-19	Jun-20	Jun-21
Current	91.57%	92.03%	89.29%	91.90%	90.19%	87.09%	87.93%	88.86%	91.77%	92.05%
1-30 Days	6.32%	5.73%	7.27%	6.77%	7.97%	9.71%	9.30%	6.93%	4.25%	4.55%
31-60 Days	1.73%	1.85%	2.27%	0.64%	1.25%	2.14%	2.15%	2.26%	1.72%	1.23%
61-90 Days	0.31%	0.32%	0.81%	0.31%	0.35%	0.44%	0.43%	0.48%	0.41%	0.83%
91-120 Days	0.00%	0.00%	0.22%	0.14%	0.13%	0.25%	0.11%	0.66%	0.50%	0.00%
121-150 Days	0.00%	0.00%	0.00%	0.09%	0.00%	0.15%	0.08%	0.00%	0.22%	0.20%
151-180 Days	0.00%	0.00%	0.00%	0.00%	0.00%	0.00%	0.00%	0.12%	0.00%	0.00%
181+ Days	0.07%	0.07%	0.13%	0.15%	0.10%	0.22%	0.00%	0.69%	1.12%	1.14%
Current - 90 Days	99.93%	99.93%	99.64%	99.61%	99.77%	99.37%	99.81%	98.53%	98.16%	98.66%
91-180 Days	0.00%	0.00%	0.22%	0.24%	0.13%	0.41%	0.19%	0.77%	0.72%	0.20%



Mortgages - La Hipotecaria Panama Migration Analysis (2012 Vintage)

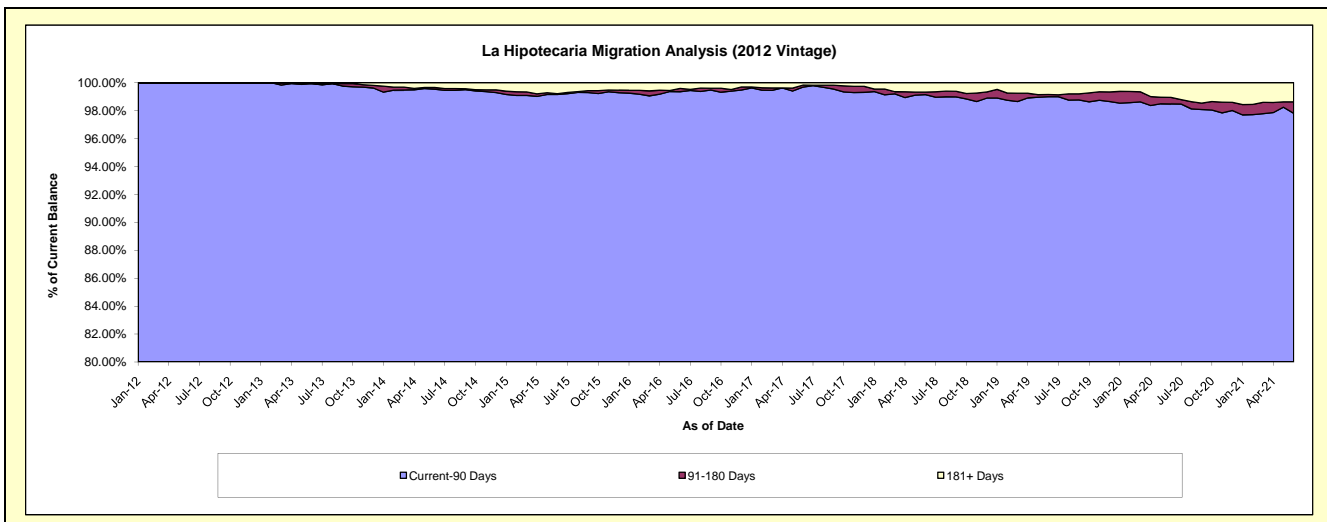
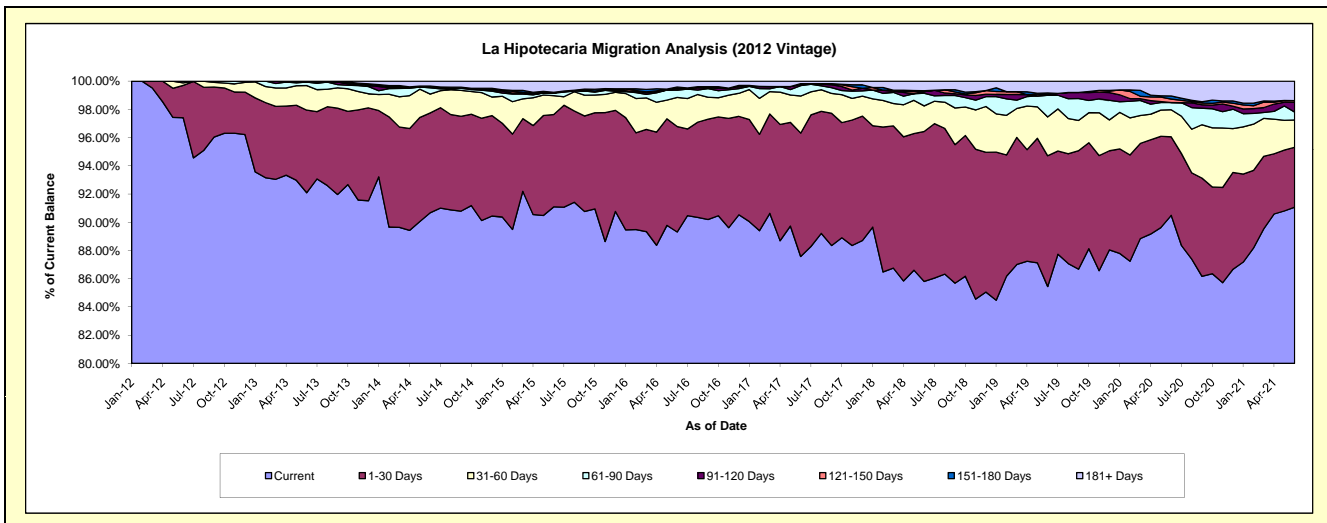
Delinquency Status (\$ of Current Balance)

Data Cutoff: 6/30/2021

Current Portfolio Balance	22,336,591.91	48,373,495.55	46,053,804.11	42,249,953.41	38,752,821.47	35,449,686.75	32,542,948.05	29,734,827.45	27,555,164.55	25,955,873.38
	Jun-12	Jun-13	Jun-14	Jun-15	Jun-16	Jun-17	Jun-18	Jun-19	Jun-20	Jun-21
Current	21,758,123.08	44,547,594.43	41,758,634.13	38,485,293.85	34,611,780.97	31,044,420.11	27,924,038.56	25,407,710.56	24,934,931.58	23,638,184.63
1-30 Days	510,700.69	2,834,310.43	3,258,753.89	2,765,985.49	2,894,683.45	3,102,355.02	3,458,568.81	2,755,771.26	1,535,421.58	1,102,116.20
31-60 Days	42,118.14	841,677.63	614,986.49	566,286.14	798,473.02	929,416.52	589,850.91	817,025.64	527,016.97	501,974.41
61-90 Days	25,650.00	118,708.78	205,896.81	76,314.15	199,367.73	261,038.21	291,830.46	455,138.11	139,775.71	145,722.65
91-120 Days	-	-	23,615.97	-	30,554.06	21,129.92	35,901.06	-	-	177,129.90
121-150 Days	-	-	-	-	31,314.29	30,053.87	-	15,877.58	68,040.21	34,205.60
151-180 Days	-	-	33,549.59	23,026.61	27,252.60	-	24,264.11	33,851.96	61,651.32	-
181+ Days	-	31,204.28	158,367.23	333,047.17	159,395.35	61,273.10	218,494.14	249,452.34	288,327.18	356,539.99

Delinquency Status (% of Current Balance)

Current Portfolio Balance	22,336,591.91	48,373,495.55	46,053,804.11	42,249,953.41	38,752,821.47	35,449,686.75	32,542,948.05	29,734,827.45	27,555,164.55	25,955,873.38
	Jun-12	Jun-13	Jun-14	Jun-15	Jun-16	Jun-17	Jun-18	Jun-19	Jun-20	Jun-21
Current	97.41%	92.09%	90.67%	91.09%	89.31%	87.57%	85.81%	85.45%	90.49%	91.07%
1-30 Days	2.29%	5.86%	7.08%	6.55%	7.47%	8.75%	10.63%	9.27%	5.57%	4.25%
31-60 Days	0.19%	1.74%	1.34%	1.34%	2.06%	2.62%	1.81%	2.75%	1.91%	1.93%
61-90 Days	0.11%	0.25%	0.45%	0.18%	0.51%	0.74%	0.90%	1.53%	0.51%	0.56%
91-120 Days	0.00%	0.00%	0.05%	0.00%	0.08%	0.06%	0.11%	0.00%	0.00%	0.68%
121-150 Days	0.00%	0.00%	0.00%	0.00%	0.08%	0.08%	0.00%	0.05%	0.25%	0.13%
151-180 Days	0.00%	0.00%	0.07%	0.05%	0.07%	0.00%	0.07%	0.11%	0.22%	0.00%
181+ Days	0.00%	0.06%	0.34%	0.79%	0.41%	0.17%	0.67%	0.84%	1.05%	1.37%
Current - 90 Days	100.00%	99.94%	99.53%	99.16%	99.36%	99.68%	99.14%	98.99%	98.48%	97.81%
91-180 Days	0.00%	0.00%	0.12%	0.05%	0.23%	0.14%	0.18%	0.17%	0.47%	0.81%



Mortgages - La Hipotecaria Panama Migration Analysis (2013 Vintage)

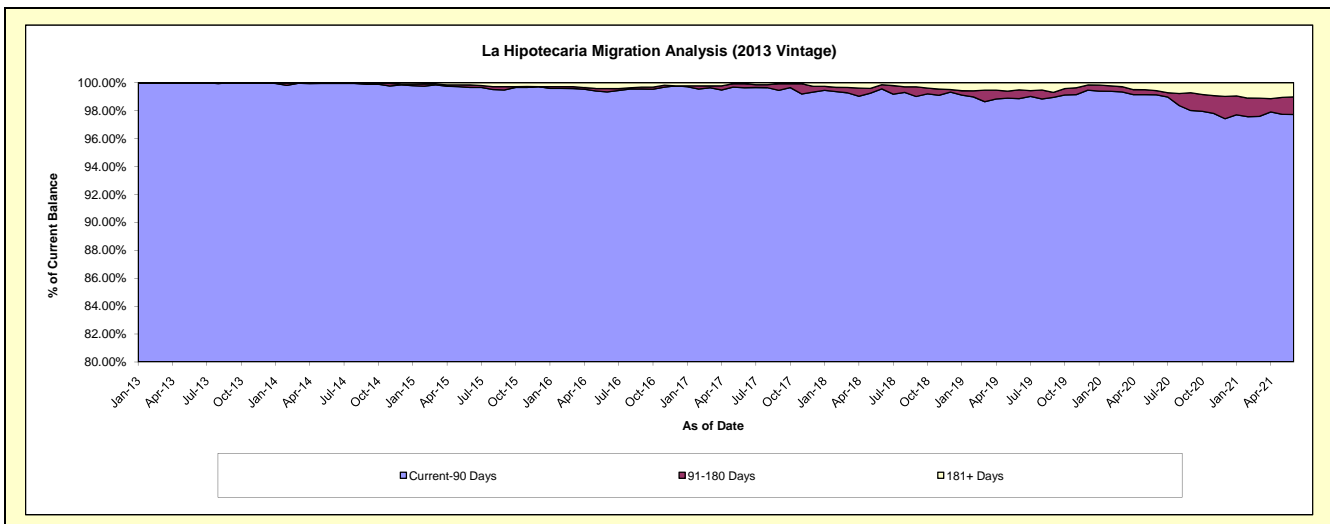
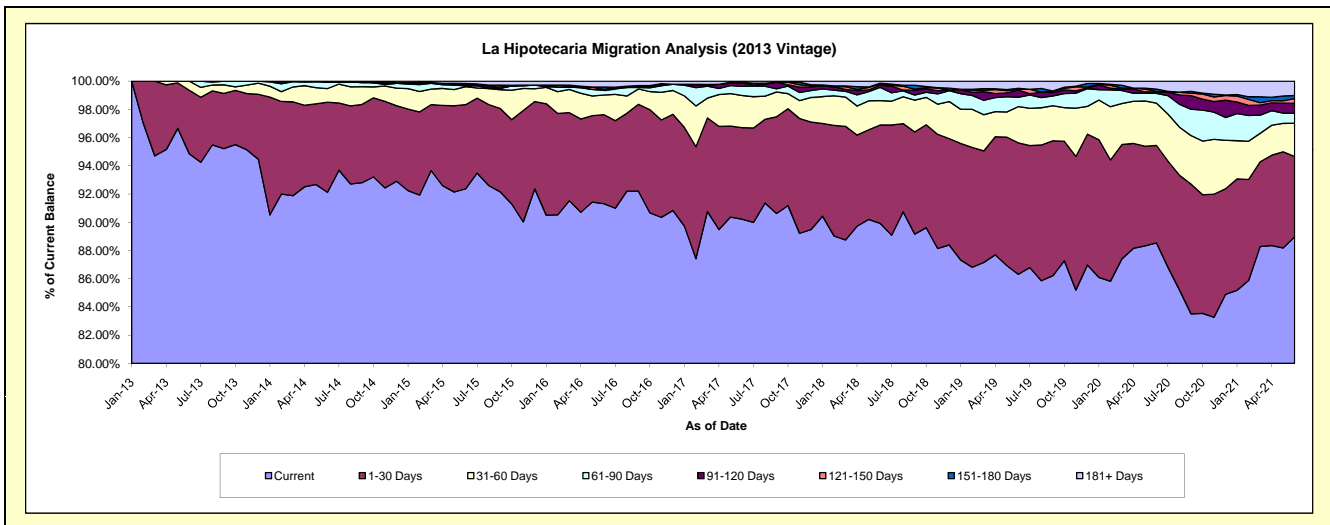
Delinquency Status (\$ of Current Balance)

Data Cutoff: 6/30/2021

Current Portfolio Balance	-	30,609,048.69	62,363,967.64	58,815,695.19	54,171,466.63	50,099,422.59	46,324,885.34	42,372,418.28	39,269,367.71	37,091,423.71
	Jun-13	Jun-14	Jun-15	Jun-16	Jun-17	Jun-18	Jun-19	Jun-20	Jun-21	
Current	29,032,377.49	57,453,378.93	54,327,443.76	49,469,755.03	45,201,469.22	41,657,441.24	36,571,355.70	34,768,534.92	33,002,932.28	
1-30 Days	1,380,238.69	3,980,625.19	3,510,022.69	3,417,045.00	3,246,696.33	3,228,054.36	3,950,265.76	2,712,895.34	2,106,359.37	
31-60 Days	196,432.51	603,514.70	749,223.18	755,563.64	1,144,703.17	799,922.28	1,088,157.91	1,174,968.58	878,191.82	
61-90 Days	-	293,974.32	32,489.24	174,446.25	323,821.01	435,261.14	278,639.66	272,761.27	261,681.28	
91-120 Days	-	-	32,552.24	35,845.19	110,201.61	72,552.88	214,930.29	38,695.95	255,230.90	
121-150 Days	-	32,474.50	46,715.19	-	-	36,988.41	28,929.91	20,000.13	132,000.27	
151-180 Days	-	-	22,944.73	90,934.30	35,515.09	28,170.81	24,478.00	59,580.63	77,316.15	
181+ Days	-	-	94,304.16	227,877.22	37,016.16	66,494.22	215,661.05	221,930.89	377,711.64	

Delinquency Status (% of Current Balance)

Current Portfolio Balance	-	30,609,048.69	62,363,967.64	58,815,695.19	54,171,466.63	50,099,422.59	46,324,885.34	42,372,418.28	39,269,367.71	37,091,423.71
	Jun-13	Jun-14	Jun-15	Jun-16	Jun-17	Jun-18	Jun-19	Jun-20	Jun-21	
Current	94.85%	92.13%	92.37%	91.32%	90.22%	89.92%	86.31%	88.54%	88.98%	
1-30 Days	4.51%	6.38%	5.97%	6.31%	6.48%	6.97%	9.32%	6.91%	5.68%	
31-60 Days	0.64%	0.97%	1.27%	1.39%	2.28%	1.73%	2.57%	2.99%	2.37%	
61-90 Days	0.00%	0.47%	0.06%	0.32%	0.65%	0.94%	0.66%	0.69%	0.71%	
91-120 Days	0.00%	0.00%	0.06%	0.07%	0.22%	0.16%	0.51%	0.10%	0.69%	
121-150 Days	0.00%	0.05%	0.08%	0.00%	0.00%	0.08%	0.07%	0.05%	0.36%	
151-180 Days	0.00%	0.00%	0.04%	0.17%	0.07%	0.06%	0.06%	0.15%	0.21%	
181+ Days	0.00%	0.00%	0.16%	0.42%	0.07%	0.14%	0.51%	0.57%	1.02%	
Current - 90 Days	100.00%	99.95%	99.67%	99.35%	99.64%	99.56%	98.86%	99.13%	97.73%	
91-180 Days	0.00%	0.05%	0.17%	0.23%	0.29%	0.30%	0.63%	0.30%	1.25%	



Mortgages - La Hipotecaria Panama Migration Analysis (2014 Vintage)

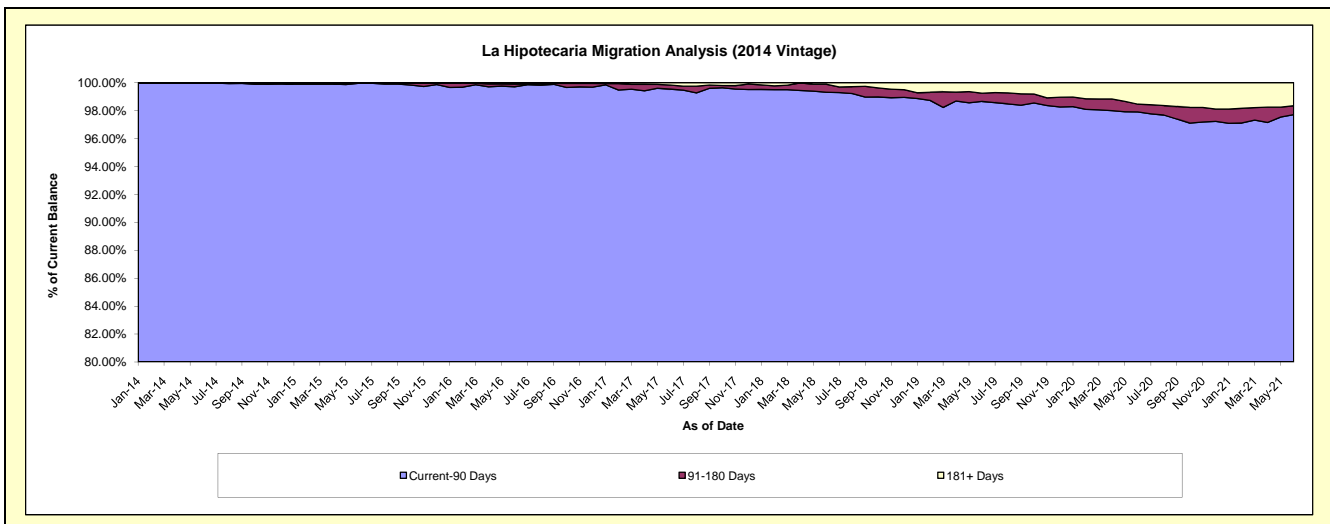
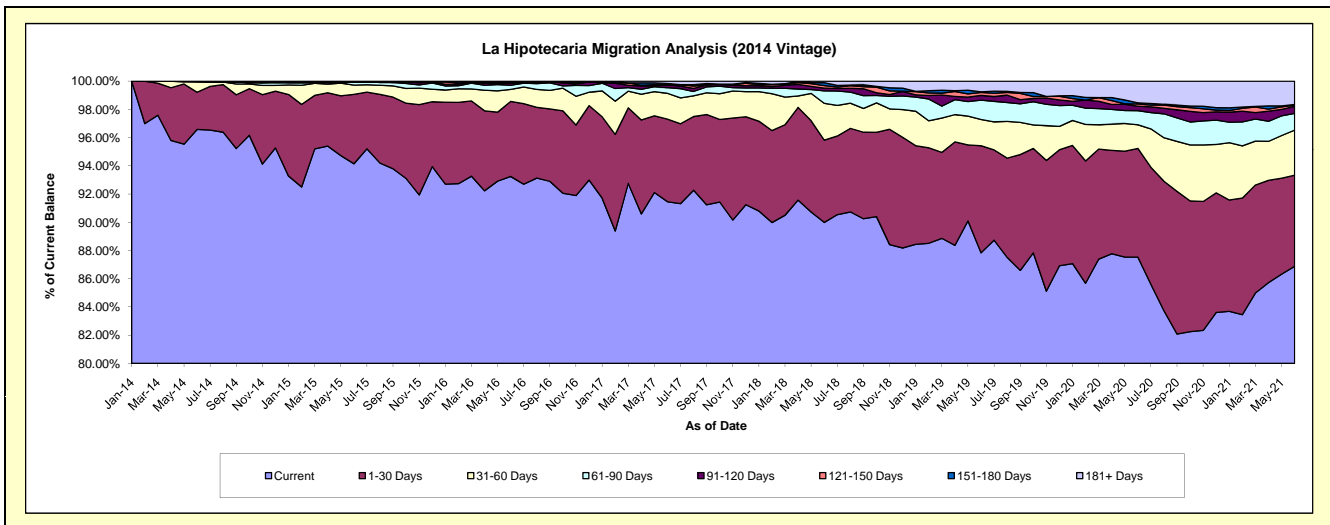
Delinquency Status (\$ of Current Balance)

Data Cutoff: 6/30/2021

Current Portfolio Balance	-	-	34,984,367.75	69,539,142.62	66,011,413.09	61,544,290.63	57,316,229.91	53,433,206.53	50,148,321.21	47,927,349.24
	Jun-14	Jun-15	Jun-16	Jun-17	Jun-18	Jun-19	Jun-20	Jun-21		
Current	33,786,742.82	65,467,204.92	61,554,288.16	56,288,881.31	51,579,424.96	46,933,119.54	43,896,362.20	41,640,898.43		
1-30 Days	924,819.18	3,421,441.75	3,512,610.54	3,600,702.82	3,341,590.53	4,055,378.27	3,862,750.30	3,094,678.85		
31-60 Days	259,166.75	459,997.18	556,204.36	1,124,133.02	1,494,164.39	995,054.46	839,536.36	1,529,039.28		
61-90 Days	-	160,193.07	198,725.88	247,993.90	508,682.49	733,684.96	503,414.04	567,449.89		
91-120 Days	13,639.00	-	95,668.86	120,999.82	109,042.58	176,644.54	157,741.22	240,904.61		
121-150 Days	-	-	-	11,777.63	106,470.89	112,545.80	78,015.73	35,034.31		
151-180 Days	-	-	33,559.98	46,555.96	114,026.80	26,220.42	40,579.45	28,864.92		
181+ Days	-	30,305.70	60,355.31	103,246.17	62,827.27	400,558.54	769,921.91	790,478.95		

Delinquency Status (% of Current Balance)

Current Portfolio Balance	-	-	34,984,367.75	69,539,142.62	66,011,413.09	61,544,290.63	57,316,229.91	53,433,206.53	50,148,321.21	47,927,349.24
	Jun-14	Jun-15	Jun-16	Jun-17	Jun-18	Jun-19	Jun-20	Jun-21		
Current	96.58%	94.14%	93.25%	91.46%	89.99%	87.84%	87.53%	86.88%		
1-30 Days	2.64%	4.92%	5.32%	5.85%	5.83%	7.59%	7.70%	6.46%		
31-60 Days	0.74%	0.66%	0.84%	1.83%	2.61%	1.86%	1.67%	3.19%		
61-90 Days	0.00%	0.23%	0.30%	0.40%	0.89%	1.37%	1.00%	1.18%		
91-120 Days	0.04%	0.00%	0.14%	0.20%	0.19%	0.33%	0.31%	0.50%		
121-150 Days	0.00%	0.00%	0.00%	0.02%	0.19%	0.21%	0.16%	0.07%		
151-180 Days	0.00%	0.00%	0.05%	0.08%	0.20%	0.05%	0.08%	0.06%		
181+ Days	0.00%	0.04%	0.09%	0.17%	0.11%	0.75%	1.54%	1.65%		
Current - 90 Days	99.96%	99.96%	99.71%	99.54%	99.32%	98.66%	97.91%	97.71%		
91-180 Days	0.04%	0.00%	0.20%	0.29%	0.57%	0.59%	0.55%	0.64%		



Mortgages - La Hipotecaria Panama Migration Analysis (2015 Vintage)

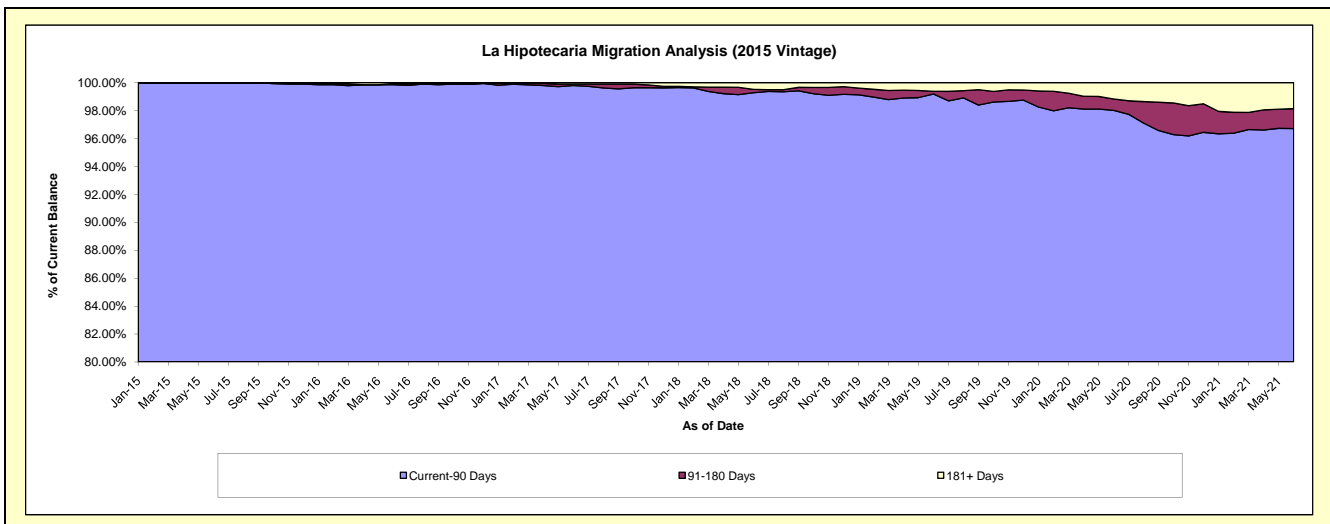
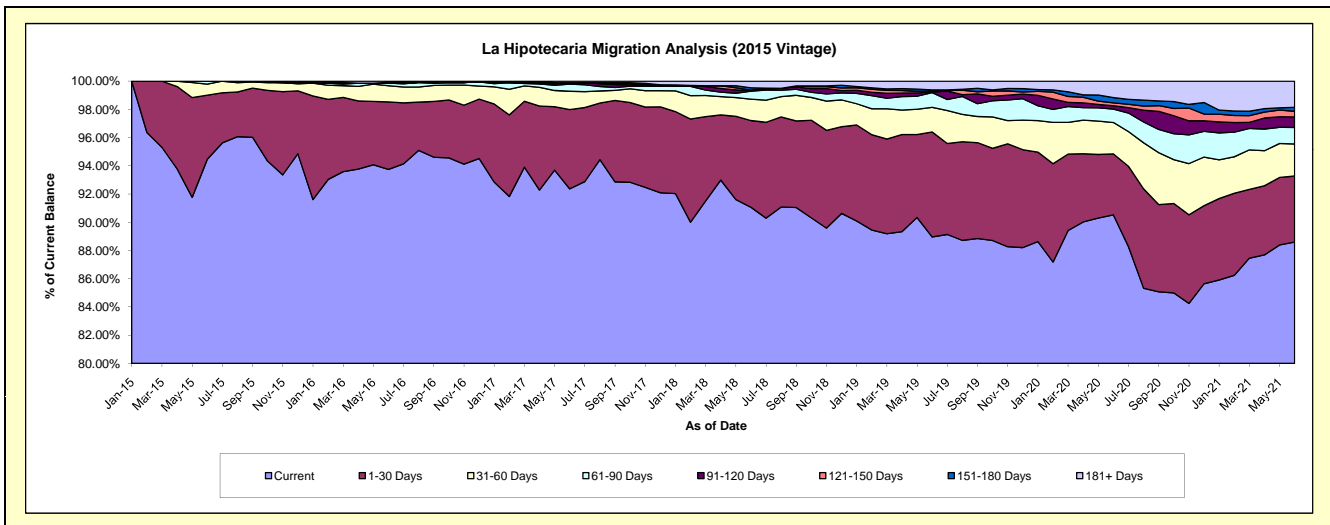
Delinquency Status (\$ of Current Balance)

Data Cutoff: 6/30/2021

Current Portfolio Balance	-	-	-	38,908,950.25	77,453,746.62	74,046,842.93	70,069,942.30	66,127,548.01	62,843,134.92	60,541,817.49
	Jun-15	Jun-16	Jun-17	Jun-18	Jun-19	Jun-20	Jun-21			
Current	36,753,656.24	72,608,832.81	68,395,144.99	63,809,807.84	58,826,992.26	56,891,032.61	53,637,716.46			
1-30 Days	1,770,276.72	3,705,463.35	4,163,924.25	4,305,323.20	4,916,636.92	2,711,518.28	2,833,283.20			
31-60 Days	303,977.29	885,962.08	959,059.26	1,059,822.28	1,154,855.22	1,398,984.09	1,373,967.30			
61-90 Days	81,040.00	144,576.67	377,706.66	396,306.93	693,267.78	597,051.38	711,481.50			
91-120 Days	-	-	70,592.39	30,814.37	23,489.10	151,945.83	453,487.97			
121-150 Days	-	-	-	27,536.70	46,659.21	126,778.22	241,319.53			
151-180 Days	-	39,049.05	-	109,152.12	58,428.31	232,264.65	167,214.34			
181+ Days	-	69,862.66	80,415.38	331,178.86	407,219.21	733,559.86	1,123,347.19			

Delinquency Status (% of Current Balance)

Current Portfolio Balance	-	-	-	38,908,950.25	77,453,746.62	74,046,842.93	70,069,942.30	66,127,548.01	62,843,134.92	60,541,817.49
	Jun-15	Jun-16	Jun-17	Jun-18	Jun-19	Jun-20	Jun-21			
Current	94.46%	93.74%	92.37%	91.07%	88.96%	90.53%	88.60%			
1-30 Days	4.55%	4.78%	5.62%	6.14%	7.44%	4.31%	4.68%			
31-60 Days	0.78%	1.14%	1.30%	1.51%	1.75%	2.23%	2.27%			
61-90 Days	0.21%	0.19%	0.51%	0.57%	1.05%	0.95%	1.18%			
91-120 Days	0.00%	0.00%	0.10%	0.04%	0.04%	0.24%	0.75%			
121-150 Days	0.00%	0.00%	0.00%	0.04%	0.07%	0.20%	0.40%			
151-180 Days	0.00%	0.05%	0.00%	0.16%	0.09%	0.37%	0.28%			
181+ Days	0.00%	0.09%	0.11%	0.47%	0.62%	1.17%	1.86%			
Current - 90 Days	100.00%	99.86%	99.80%	99.29%	99.19%	98.02%	96.72%			
91-180 Days	0.00%	0.05%	0.10%	0.24%	0.19%	0.81%	1.42%			



Mortgages - La Hipotecaria Panama Migration Analysis (2016 Vintage)

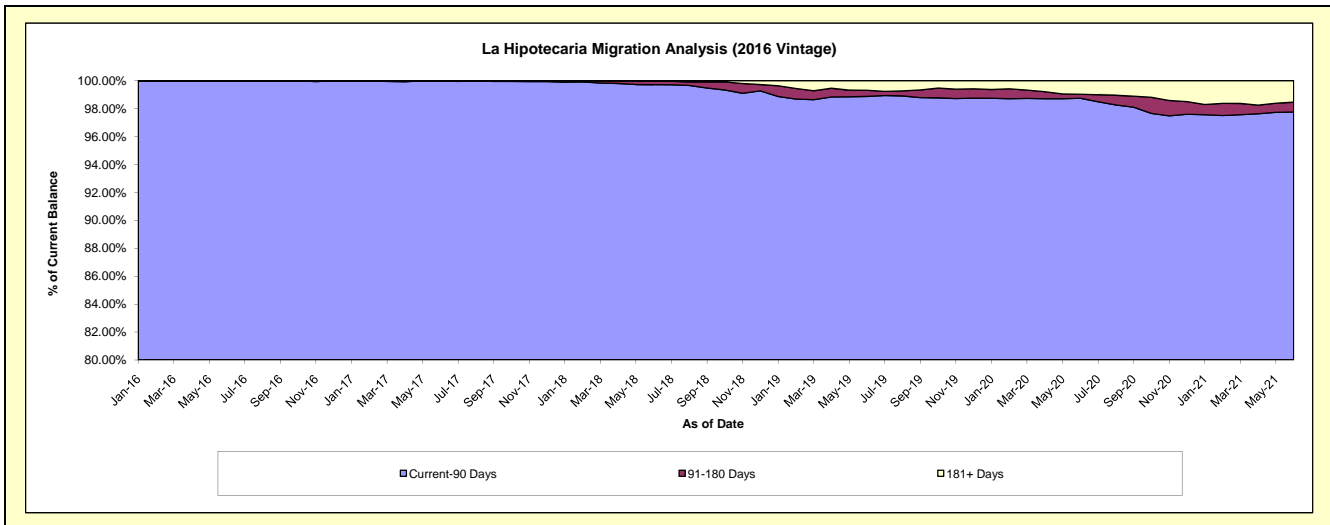
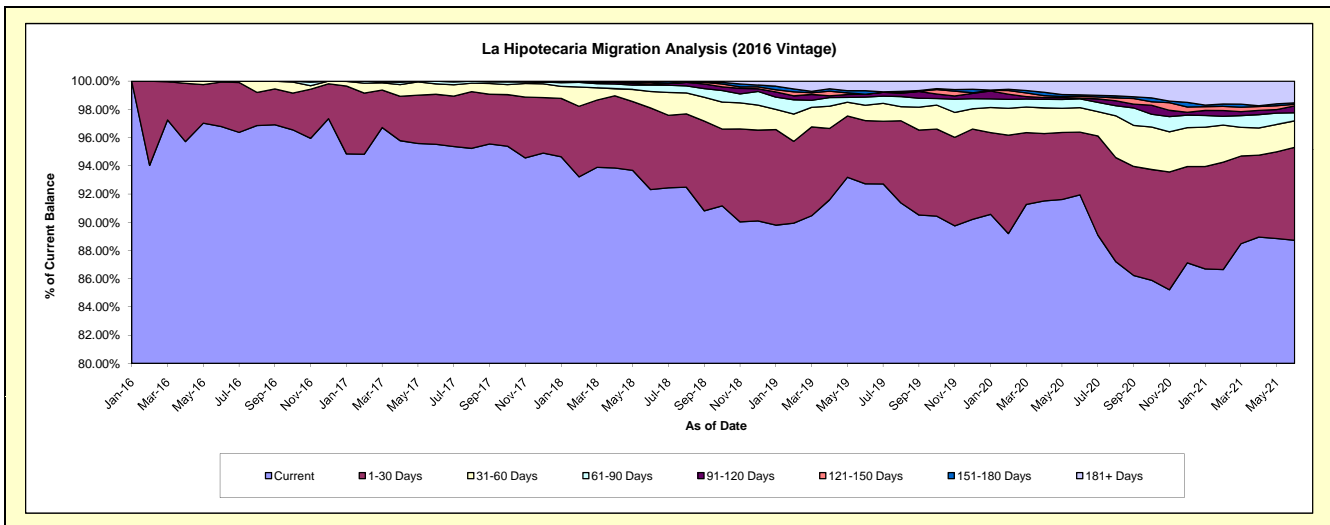
Delinquency Status (\$ of Current Balance)

Data Cutoff: 6/30/2021

Current Portfolio Balance	-	-	-	-	34,955,620.83	73,530,491.74	70,391,977.17	66,859,097.96	63,979,891.33	61,858,050.99
					Jun-16	Jun-17	Jun-18	Jun-19	Jun-20	Jun-21
Current					33,830,439.59	70,241,228.47	64,986,052.63	61,996,344.38	58,828,155.06	54,882,495.76
1-30 Days					1,102,281.24	2,605,427.35	4,070,739.97	2,996,892.76	2,838,617.60	4,073,349.23
31-60 Days					22,900.00	542,368.55	820,946.18	721,559.76	1,109,422.07	1,159,451.40
61-90 Days					-	141,467.37	315,920.96	392,936.31	399,997.51	355,899.28
91-120 Days					-	-	43,077.80	136,382.12	36,693.35	300,552.00
121-150 Days					-	-	75,859.34	-	83,271.52	75,130.60
151-180 Days					-	-	55,066.06	160,592.09	61,328.35	61,052.85
181+ Days					-	-	24,314.23	454,390.54	622,405.87	950,119.87

Delinquency Status (% of Current Balance)

Current Portfolio Balance	-	-	-	-	34,955,620.83	73,530,491.74	70,391,977.17	66,859,097.96	63,979,891.33	61,858,050.99
					Jun-16	Jun-17	Jun-18	Jun-19	Jun-20	Jun-21
Current					96.78%	95.53%	92.32%	92.73%	91.95%	88.72%
1-30 Days					3.15%	3.54%	5.78%	4.48%	4.44%	6.58%
31-60 Days					0.07%	0.74%	1.17%	1.08%	1.73%	1.87%
61-90 Days					0.00%	0.19%	0.45%	0.59%	0.63%	0.58%
91-120 Days					0.00%	0.00%	0.06%	0.20%	0.06%	0.49%
121-150 Days					0.00%	0.00%	0.11%	0.00%	0.13%	0.12%
151-180 Days					0.00%	0.00%	0.08%	0.24%	0.10%	0.10%
181+ Days					0.00%	0.00%	0.03%	0.68%	0.97%	1.54%
Current - 90 Days					100.00%	100.00%	99.72%	98.88%	98.74%	97.76%
91-180 Days					0.00%	0.00%	0.25%	0.44%	0.28%	0.71%



Mortgages - La Hipotecaria Panama Migration Analysis (2017 Vintage)

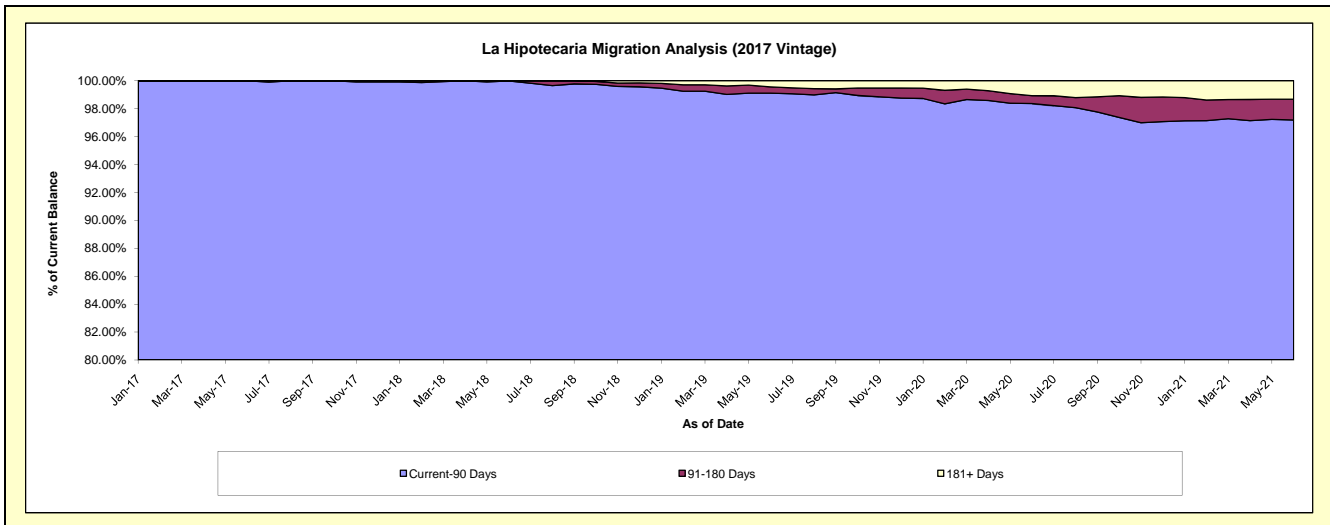
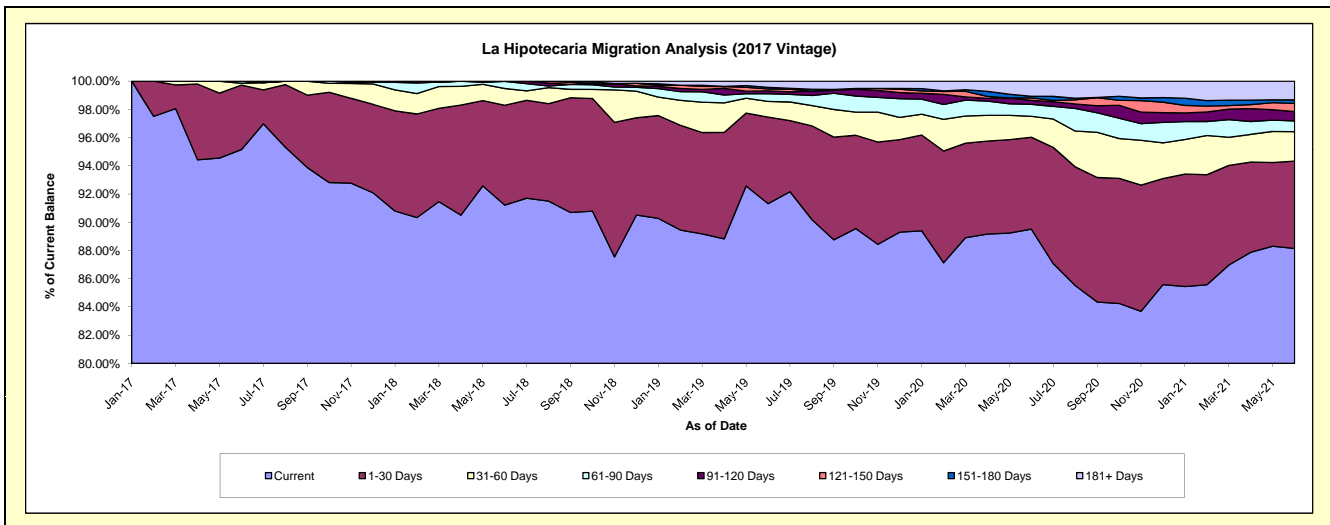
Delinquency Status (\$ of Current Balance)

Data Cutoff: 6/30/2021

Current Portfolio Balance	-	-	-	-	-	30,752,084.02	86,400,362.14	83,014,738.38	80,049,980.53	77,711,473.82
						Jun-17	Jun-18	Jun-19	Jun-20	Jun-21
Current						29,261,209.97	78,811,122.05	75,807,945.33	71,660,954.64	68,500,289.65
1-30 Days						1,404,834.05	6,110,649.68	5,096,578.29	5,206,845.64	4,810,215.99
31-60 Days						40,500.00	1,027,904.44	922,059.65	1,187,337.34	1,620,815.41
61-90 Days						45,540.00	432,445.70	452,448.83	685,260.32	594,708.39
91-120 Days						-	18,240.27	165,042.28	219,718.53	512,027.80
121-150 Days						-	-	115,848.51	140,185.77	452,301.43
151-180 Days						-	-	91,393.85	88,984.18	189,299.96
181+ Days						-	-	363,421.64	860,694.11	1,031,815.19

Delinquency Status (% of Current Balance)

Current Portfolio Balance	-	-	-	-	-	30,752,084.02	86,400,362.14	83,014,738.38	80,049,980.53	77,711,473.82
						Jun-17	Jun-18	Jun-19	Jun-20	Jun-21
Current						95.15%	91.22%	91.32%	89.52%	88.15%
1-30 Days						4.57%	7.07%	6.14%	6.50%	6.19%
31-60 Days						0.13%	1.19%	1.11%	1.48%	2.09%
61-90 Days						0.15%	0.50%	0.55%	0.86%	0.77%
91-120 Days						0.00%	0.02%	0.20%	0.27%	0.66%
121-150 Days						0.00%	0.00%	0.14%	0.18%	0.58%
151-180 Days						0.00%	0.00%	0.11%	0.11%	0.24%
181+ Days						0.00%	0.00%	0.44%	1.08%	1.33%
Current - 90 Days						100.00%	99.98%	99.11%	98.36%	97.19%
91-180 Days						0.00%	0.02%	0.45%	0.56%	1.48%



Mortgages - La Hipotecaria Panama Migration Analysis (2018 Vintage)

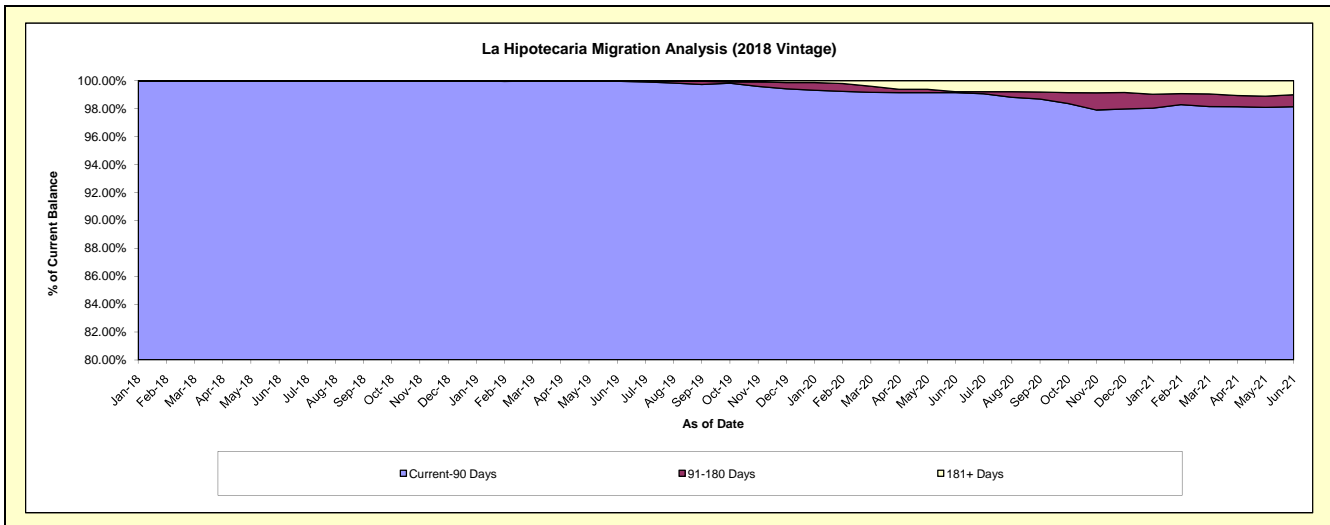
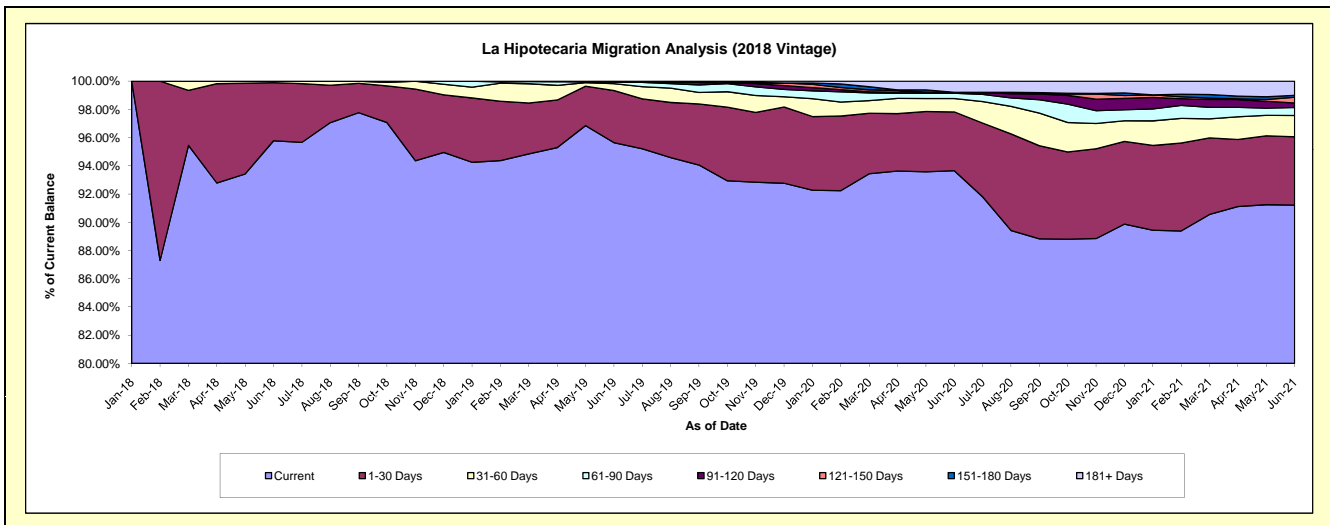
Delinquency Status (\$ of Current Balance)

Data Cutoff: 6/30/2021

Current Portfolio Balance	-	-	-	-	-	-	-	35,908,191.02	84,463,389.85	82,093,301.88	80,106,150.72
								Jun-18	Jun-19	Jun-20	Jun-21
Current								34,391,114.49	80,784,569.25	76,883,505.65	73,073,016.81
1-30 Days								1,477,076.53	3,115,597.00	3,420,784.24	3,878,249.48
31-60 Days								40,000.00	411,859.64	775,801.88	1,207,139.70
61-90 Days								-	121,769.08	311,195.53	453,674.72
91-120 Days								-	-	40,330.88	253,328.00
121-150 Days								-	-	17,574.97	324,054.38
151-180 Days								-	29,594.88	-	115,025.99
181+ Days								-	-	644,108.73	801,661.64

Delinquency Status (% of Current Balance)

Current Portfolio Balance	-	-	-	-	-	-	-	35,908,191.02	84,463,389.85	82,093,301.88	80,106,150.72
								Jun-18	Jun-19	Jun-20	Jun-21
Current								95.78%	95.64%	93.65%	91.22%
1-30 Days								4.11%	3.69%	4.17%	4.84%
31-60 Days								0.11%	0.49%	0.95%	1.51%
61-90 Days								0.00%	0.14%	0.38%	0.57%
91-120 Days								0.00%	0.00%	0.05%	0.32%
121-150 Days								0.00%	0.00%	0.02%	0.40%
151-180 Days								0.00%	0.04%	0.00%	0.14%
181+ Days								0.00%	0.00%	0.78%	1.00%
Current - 90 Days								100.00%	99.96%	99.14%	98.13%
91-180 Days								0.00%	0.04%	0.07%	0.86%



Mortgages - La Hipotecaria Panama Migration Analysis (2019 Vintage)

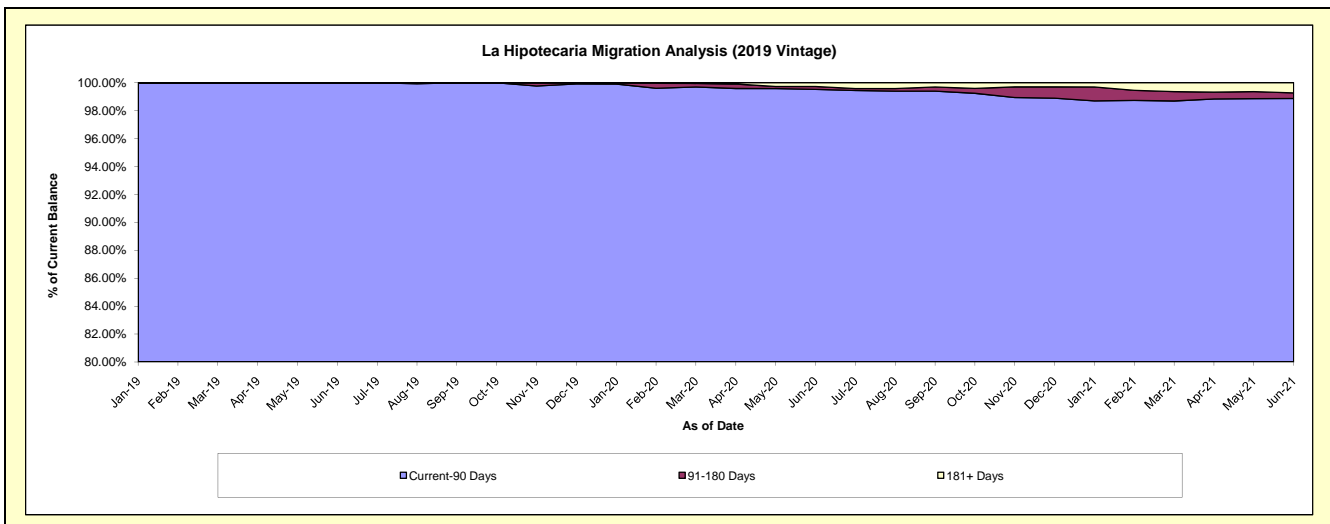
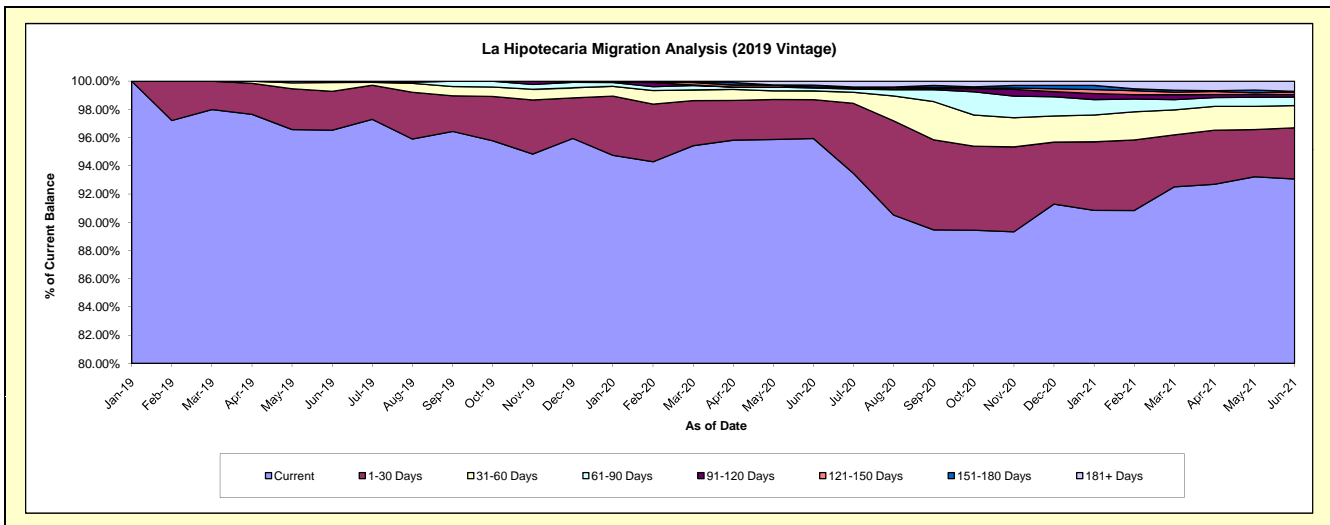
Delinquency Status (\$ of Current Balance)

Data Cutoff: 6/30/2021

Current Portfolio Balance	-	-	-	-	-	-	-	-	-	42,060,869.05	85,260,530.29	83,509,480.24
				Jun-19			Jun-20			Jun-21		
Current										40,600,180.88	81,796,749.95	77,717,008.22
1-30 Days										1,158,696.38	2,345,958.26	3,034,409.85
31-60 Days										260,427.25	528,482.63	1,312,943.81
61-90 Days										41,564.54	179,720.00	502,498.42
91-120 Days										-	55,357.03	152,752.87
121-150 Days										-	-	139,037.62
151-180 Days										-	121,140.12	46,889.56
181+ Days										-	233,122.30	603,939.89

Delinquency Status (% of Current Balance)

Current Portfolio Balance	-	-	-	-	-	-	-	-	-	42,060,869.05	85,260,530.29	83,509,480.24
				Jun-19			Jun-20			Jun-21		
Current										96.53%	95.94%	93.06%
1-30 Days										2.75%	2.75%	3.63%
31-60 Days										0.62%	0.62%	1.57%
61-90 Days										0.10%	0.21%	0.60%
91-120 Days										0.00%	0.06%	0.18%
121-150 Days										0.00%	0.00%	0.17%
151-180 Days										0.00%	0.14%	0.06%
181+ Days										0.00%	0.27%	0.72%
Current - 90 Days										100.00%	99.52%	98.87%
91-180 Days										0.00%	0.21%	0.41%



Mortgages - La Hipotecaria Panama Migration Analysis (2020 Vintage)

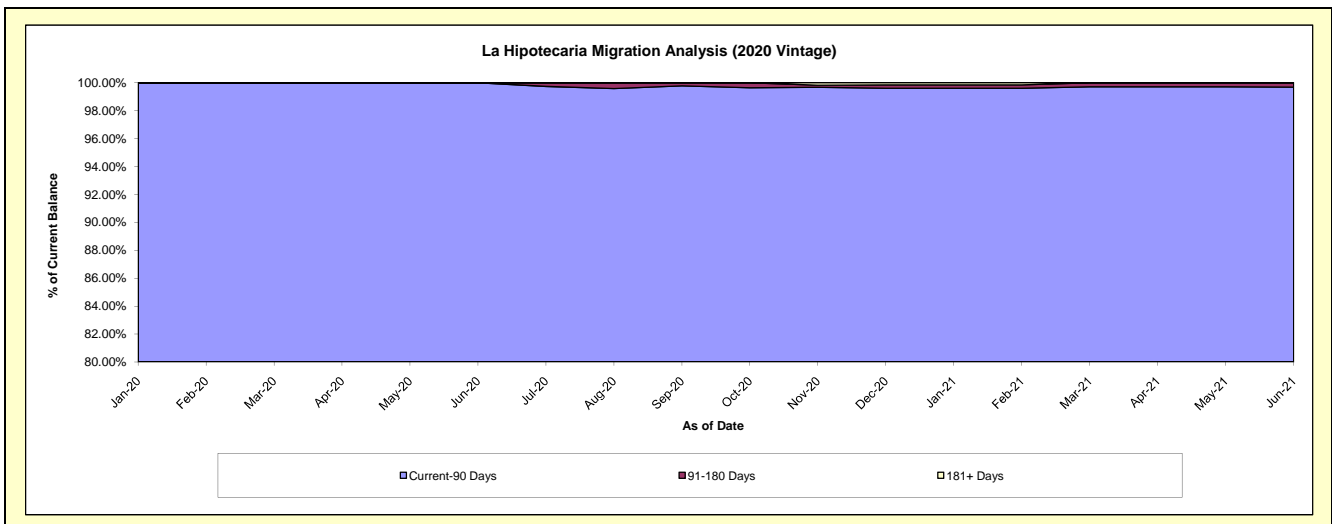
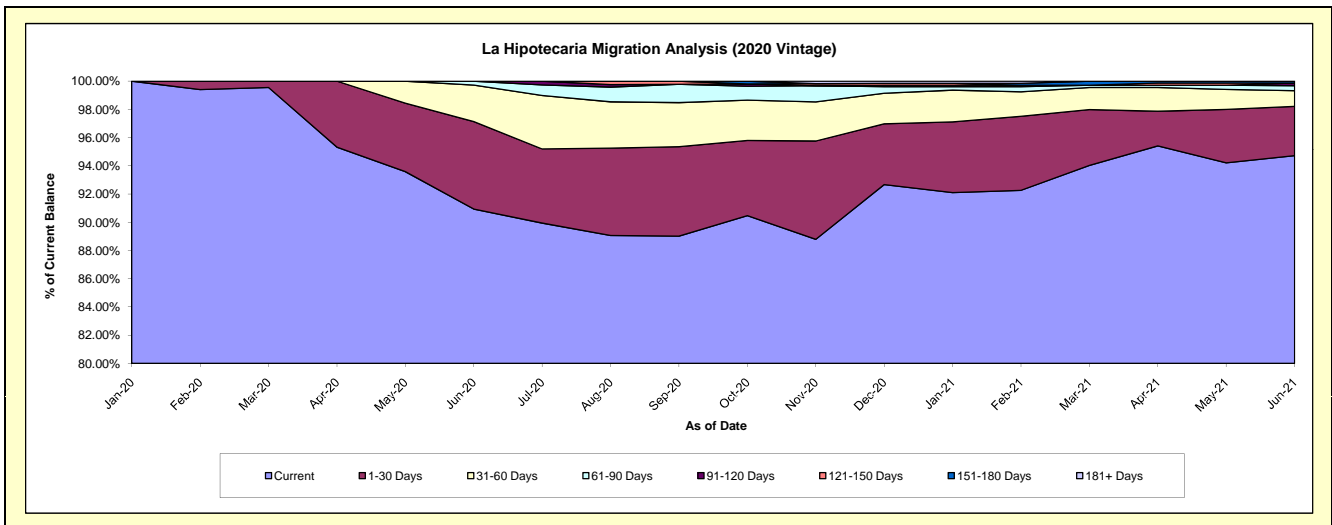
Delinquency Status (\$ of Current Balance)

Data Cutoff: 6/30/2021

Current Portfolio Balance										21,223,102.59	37,365,373.00
										Jun-20	Jun-21
Current										19,299,777.60	35,392,114.96
1-30 Days										1,316,278.58	1,304,962.46
31-60 Days										547,646.41	415,832.01
61-90 Days										59,400.00	133,638.82
91-120 Days										-	68,612.99
121-150 Days										-	-
151-180 Days										-	50,211.76
181+ Days										-	-

Delinquency Status (% of Current Balance)

Current Portfolio Balance										21,223,102.59	37,365,373.00
										Jun-20	Jun-21
Current										90.94%	94.72%
1-30 Days										6.20%	3.49%
31-60 Days										2.58%	1.11%
61-90 Days										0.28%	0.36%
91-120 Days										0.00%	0.18%
121-150 Days										0.00%	0.00%
151-180 Days										0.00%	0.13%
181+ Days										0.00%	0.00%
Current - 90 Days										100.00%	99.68%
91-180 Days										0.00%	0.32%



Mortgages - La Hipotecaria Panama Migration Analysis (2021 Vintage)

Delinquency Status (\$ of Current Balance)

Data Cutoff: 6/30/2021

Current Portfolio Balance	-	-	-	-	-	-	-	-	-	-	-	-	-	-	-	-	-	-	-	-	24,420,020.58
	Jun-21																				
Current																					24,261,451.02
1-30 Days																					158,569.56
31-60 Days																					-
61-90 Days																					-
91-120 Days																					-
121-150 Days																					-
151-180 Days																					-
181+ Days																					-

Delinquency Status (% of Current Balance)

Current Portfolio Balance	-	-	-	-	-	-	-	-	-	-	-	-	-	-	-	-	-	-	-	-	24,420,020.58
	Jun-21																				
Current																					99.35%
1-30 Days																					0.65%
31-60 Days																					0.00%
61-90 Days																					0.00%
91-120 Days																					0.00%
121-150 Days																					0.00%
151-180 Days																					0.00%
181+ Days																					0.00%
Current - 90 Days																					100.00%
91-180 Days																					0.00%

