



Migration Analysis for La Hipotecaria S.A Panama

Personal Loans June 2022

An analysis of historical loan payment data was used to compile a migration analysis of delinquency by annual vintage. Delinquencies for each vintage were grouped into the following buckets; Current, 1-30, 31-60, 61-90, 91-120, 121-150, 151-180, and 180+. Results are provided in graphical and tabular form. The cutoff date is 6/30/2022.

Personal Loans - La Hipotecaria Panama Migration Analysis (All Vintages)

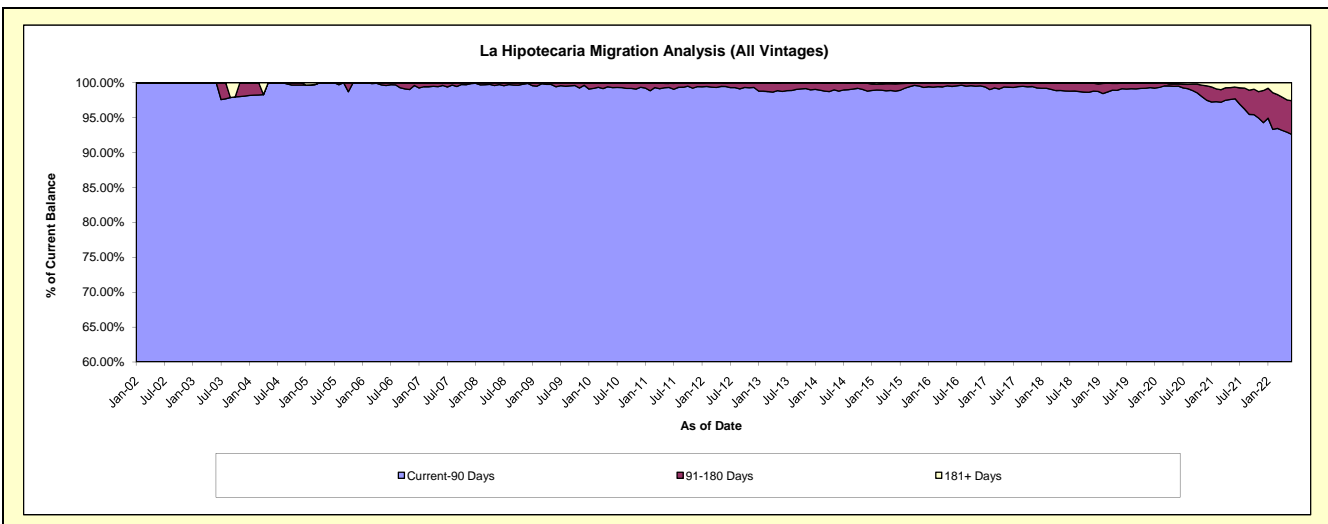
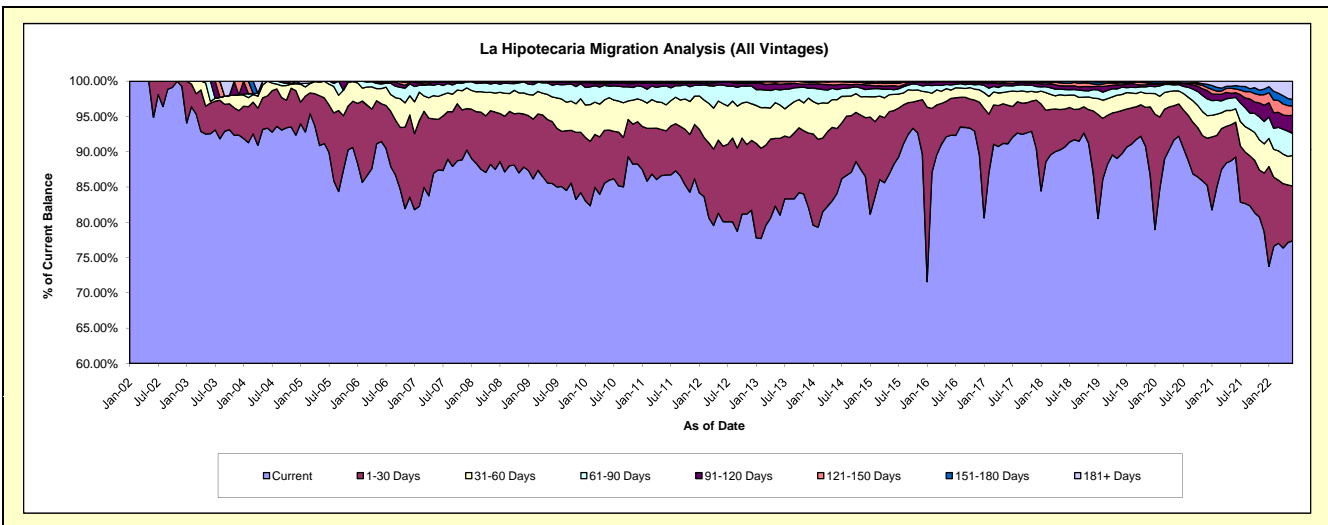
Delinquency Status (\$ of Current Balance)

Data Cutoff: 6/30/2022

Current Portfolio Balance	22,554,671.45	24,611,247.72	25,363,698.84	28,168,693.49	31,558,393.12	35,490,777.75	40,965,541.67	44,152,192.12	41,615,262.17	38,857,583.91
	Jun-13	Jun-14	Jun-15	Jun-16	Jun-17	Jun-18	Jun-19	Jun-20	Jun-21	Jun-22
Current	18,272,348.57	20,695,979.44	22,379,095.14	26,010,283.09	28,760,483.93	32,179,163.74	36,741,328.26	40,709,880.77	37,144,900.05	30,069,794.65
1-30 Days	2,453,118.25	2,262,242.41	1,929,658.86	1,470,767.41	1,719,686.11	1,910,799.18	2,522,701.08	2,017,000.26	2,055,005.75	3,011,894.33
31-60 Days	1,066,521.34	1,006,561.60	580,272.73	330,532.38	608,126.08	684,401.10	924,621.89	813,967.95	784,201.06	1,695,741.09
61-90 Days	482,153.37	351,903.84	168,631.38	208,197.01	267,554.54	295,826.05	424,286.24	394,790.77	676,839.41	1,204,546.64
91-120 Days	180,444.99	161,828.29	143,697.53	117,615.93	107,177.75	185,783.60	136,410.98	58,085.72	268,294.71	991,521.75
121-150 Days	88,677.73	113,045.66	84,320.80	25,927.74	75,871.44	133,950.91	117,145.56	42,279.83	227,715.08	517,779.58
151-180 Days	11,407.20	17,532.55	37,323.66	5,369.93	10,159.75	86,834.13	64,967.98	26,188.99	200,218.03	367,716.05
181+ Days	-	2,153.93	40,698.74	-	9,333.52	14,019.04	34,079.68	89,997.83	258,088.08	998,589.82

Delinquency Status (% of Current Balance)

Current Portfolio Balance	22,554,671.45	24,611,247.72	25,363,698.84	28,168,693.49	31,558,393.12	35,490,777.75	40,965,541.67	44,152,192.12	41,615,262.17	38,857,583.91
	Jun-13	Jun-14	Jun-15	Jun-16	Jun-17	Jun-18	Jun-19	Jun-20	Jun-21	Jun-22
Current	81.01%	84.09%	88.23%	92.34%	91.13%	90.67%	89.69%	92.20%	89.26%	77.38%
1-30 Days	10.88%	9.19%	7.61%	5.22%	5.45%	5.38%	6.16%	4.57%	4.94%	7.75%
31-60 Days	4.73%	4.09%	2.29%	1.17%	1.93%	1.93%	2.26%	1.84%	1.88%	4.36%
61-90 Days	2.14%	1.43%	0.66%	0.74%	0.85%	0.83%	1.04%	0.89%	1.63%	3.10%
91-120 Days	0.80%	0.66%	0.57%	0.42%	0.34%	0.52%	0.33%	0.13%	0.64%	2.55%
121-150 Days	0.39%	0.46%	0.33%	0.09%	0.24%	0.38%	0.29%	0.10%	0.55%	1.33%
151-180 Days	0.05%	0.07%	0.15%	0.02%	0.03%	0.24%	0.16%	0.06%	0.48%	0.95%
181+ Days	0.00%	0.01%	0.16%	0.00%	0.03%	0.04%	0.08%	0.20%	0.62%	2.57%
Current - 90 Days	98.76%	98.80%	98.79%	99.47%	99.36%	98.81%	99.14%	99.51%	97.71%	92.60%
91-180 Days	1.24%	1.19%	1.05%	0.53%	0.61%	1.15%	0.78%	0.29%	1.67%	4.83%



Personal Loans - La Hipotecaria Panama Migration Analysis (2002 Vintage)

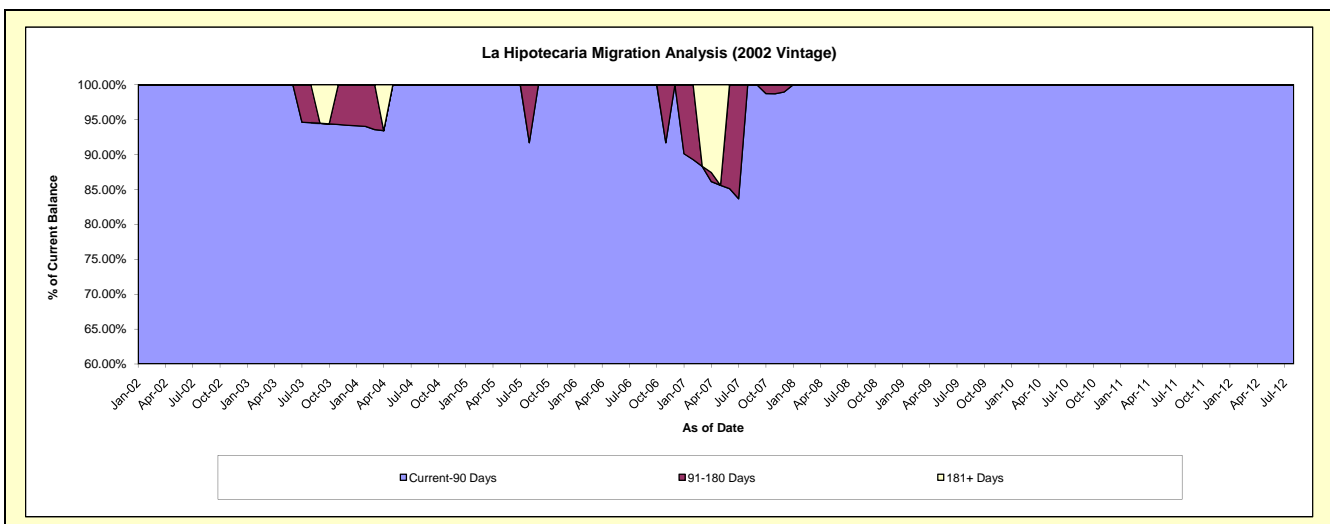
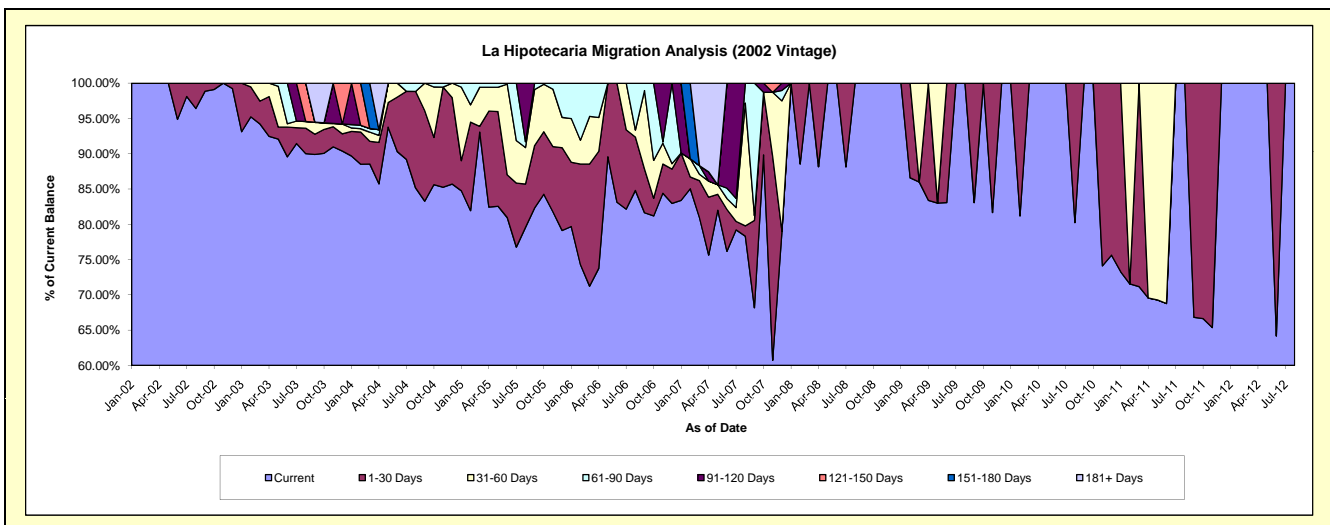
Delinquency Status (\$ of Current Balance)

Data Cutoff: 6/30/2022

Current Portfolio Balance	#/A	#/A	#/A	#/A	#/A	#/A	#/A	#/A	#/A	#/A	#/A
	Jun-13	Jun-14	Jun-15	Jun-16	Jun-17	Jun-18	Jun-19	Jun-20	Jun-21	Jun-22	
Current	#/A	#/A	#/A	#/A	#/A	#/A	#/A	#/A	#/A	#/A	#/A
1-30 Days	#/A	#/A	#/A	#/A	#/A	#/A	#/A	#/A	#/A	#/A	#/A
31-60 Days	#/A	#/A	#/A	#/A	#/A	#/A	#/A	#/A	#/A	#/A	#/A
61-90 Days	#/A	#/A	#/A	#/A	#/A	#/A	#/A	#/A	#/A	#/A	#/A
91-120 Days	#/A	#/A	#/A	#/A	#/A	#/A	#/A	#/A	#/A	#/A	#/A
121-150 Days	#/A	#/A	#/A	#/A	#/A	#/A	#/A	#/A	#/A	#/A	#/A
151-180 Days	#/A	#/A	#/A	#/A	#/A	#/A	#/A	#/A	#/A	#/A	#/A
181+ Days	#/A	#/A	#/A	#/A	#/A	#/A	#/A	#/A	#/A	#/A	#/A

Delinquency Status (% of Current Balance)

Current Portfolio Balance	#/A	#/A	#/A	#/A	#/A	#/A	#/A	#/A	#/A	#/A	#/A
	Jun-13	Jun-14	Jun-15	Jun-16	Jun-17	Jun-18	Jun-19	Jun-20	Jun-21	Jun-22	
Current	#/A	#/A	#/A	#/A	#/A	#/A	#/A	#/A	#/A	#/A	#/A
1-30 Days	#/A	#/A	#/A	#/A	#/A	#/A	#/A	#/A	#/A	#/A	#/A
31-60 Days	#/A	#/A	#/A	#/A	#/A	#/A	#/A	#/A	#/A	#/A	#/A
61-90 Days	#/A	#/A	#/A	#/A	#/A	#/A	#/A	#/A	#/A	#/A	#/A
91-120 Days	#/A	#/A	#/A	#/A	#/A	#/A	#/A	#/A	#/A	#/A	#/A
121-150 Days	#/A	#/A	#/A	#/A	#/A	#/A	#/A	#/A	#/A	#/A	#/A
151-180 Days	#/A	#/A	#/A	#/A	#/A	#/A	#/A	#/A	#/A	#/A	#/A
181+ Days	#/A	#/A	#/A	#/A	#/A	#/A	#/A	#/A	#/A	#/A	#/A
Current - 90 Days	#/A	#/A	#/A	#/A	#/A	#/A	#/A	#/A	#/A	#/A	#/A
91-180 Days	#/A	#/A	#/A	#/A	#/A	#/A	#/A	#/A	#/A	#/A	#/A



Personal Loans - La Hipotecaria Panama Migration Analysis (2003 Vintage)

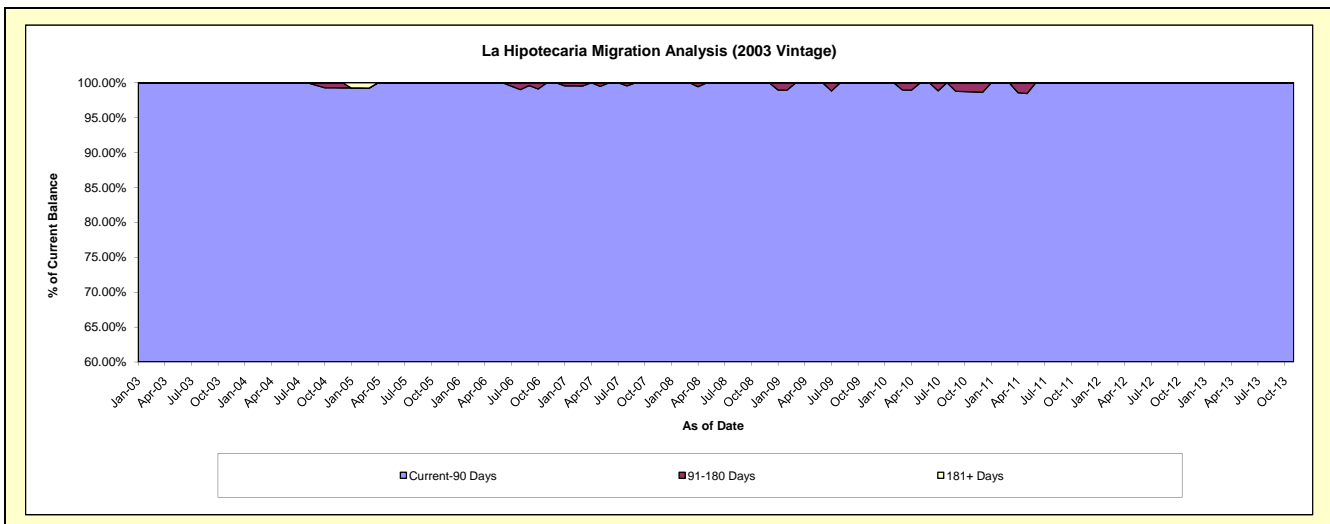
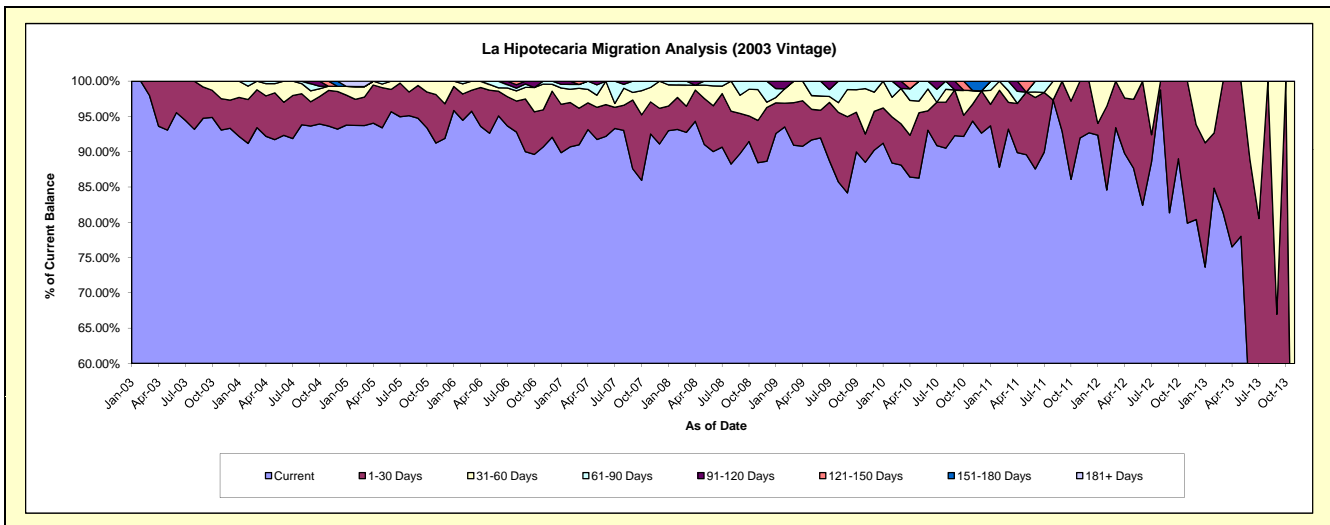
Delinquency Status (\$ of Current Balance)

Data Cutoff: 6/30/2022

Current Portfolio Balance	388.47	#N/A	#N/A	#N/A	#N/A	#N/A	#N/A	#N/A	#N/A	#N/A
	Jun-13	Jun-14	Jun-15	Jun-16	Jun-17	Jun-18	Jun-19	Jun-20	Jun-21	Jun-22
Current	207.91	#N/A	#N/A	#N/A	#N/A	#N/A	#N/A	#N/A	#N/A	#N/A
1-30 Days	137.47	#N/A	#N/A	#N/A	#N/A	#N/A	#N/A	#N/A	#N/A	#N/A
31-60 Days	43.09	#N/A	#N/A	#N/A	#N/A	#N/A	#N/A	#N/A	#N/A	#N/A
61-90 Days	-	#N/A	#N/A	#N/A	#N/A	#N/A	#N/A	#N/A	#N/A	#N/A
91-120 Days	-	#N/A	#N/A	#N/A	#N/A	#N/A	#N/A	#N/A	#N/A	#N/A
121-150 Days	-	#N/A	#N/A	#N/A	#N/A	#N/A	#N/A	#N/A	#N/A	#N/A
151-180 Days	-	#N/A	#N/A	#N/A	#N/A	#N/A	#N/A	#N/A	#N/A	#N/A
181+ Days	-	#N/A	#N/A	#N/A	#N/A	#N/A	#N/A	#N/A	#N/A	#N/A

Delinquency Status (% of Current Balance)

Current Portfolio Balance	388.47	#N/A	#N/A	#N/A	#N/A	#N/A	#N/A	#N/A	#N/A	#N/A
	Jun-13	Jun-14	Jun-15	Jun-16	Jun-17	Jun-18	Jun-19	Jun-20	Jun-21	Jun-22
Current	53.52%	#N/A	#N/A	#N/A	#N/A	#N/A	#N/A	#N/A	#N/A	#N/A
1-30 Days	35.39%	#N/A	#N/A	#N/A	#N/A	#N/A	#N/A	#N/A	#N/A	#N/A
31-60 Days	11.09%	#N/A	#N/A	#N/A	#N/A	#N/A	#N/A	#N/A	#N/A	#N/A
61-90 Days	0.00%	#N/A	#N/A	#N/A	#N/A	#N/A	#N/A	#N/A	#N/A	#N/A
91-120 Days	0.00%	#N/A	#N/A	#N/A	#N/A	#N/A	#N/A	#N/A	#N/A	#N/A
121-150 Days	0.00%	#N/A	#N/A	#N/A	#N/A	#N/A	#N/A	#N/A	#N/A	#N/A
151-180 Days	0.00%	#N/A	#N/A	#N/A	#N/A	#N/A	#N/A	#N/A	#N/A	#N/A
181+ Days	0.00%	#N/A	#N/A	#N/A	#N/A	#N/A	#N/A	#N/A	#N/A	#N/A
Current - 90 Days	100.00%	#N/A	#N/A	#N/A	#N/A	#N/A	#N/A	#N/A	#N/A	#N/A
91-180 Days	0.00%	#N/A	#N/A	#N/A	#N/A	#N/A	#N/A	#N/A	#N/A	#N/A



Personal Loans - La Hipotecaria Panama Migration Analysis (2004 Vintage)

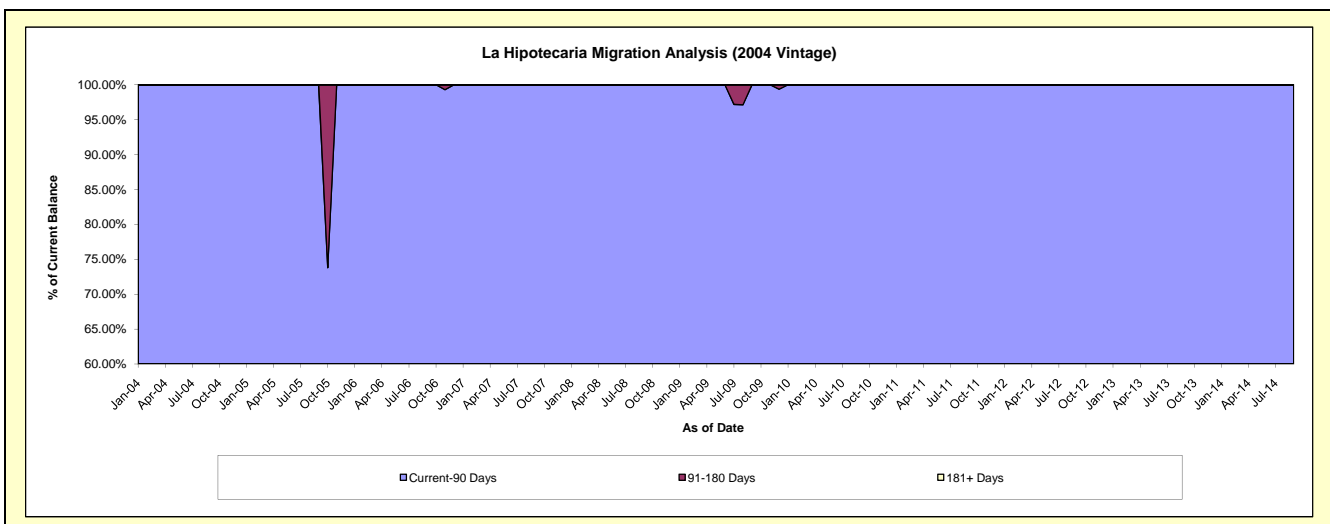
Delinquency Status (\$ of Current Balance)

Data Cutoff: 6/30/2022

Current Portfolio Balance	1,354.23	51.10	#N/A	#N/A	#N/A	#N/A	#N/A	#N/A	#N/A	#N/A
	Jun-13	Jun-14	Jun-15	Jun-16	Jun-17	Jun-18	Jun-19	Jun-20	Jun-21	Jun-22
Current	1,171.20	51.10	#N/A	#N/A	#N/A	#N/A	#N/A	#N/A	#N/A	#N/A
1-30 Days	183.03	-	#N/A	#N/A	#N/A	#N/A	#N/A	#N/A	#N/A	#N/A
31-60 Days	-	-	#N/A	#N/A	#N/A	#N/A	#N/A	#N/A	#N/A	#N/A
61-90 Days	-	-	#N/A	#N/A	#N/A	#N/A	#N/A	#N/A	#N/A	#N/A
91-120 Days	-	-	#N/A	#N/A	#N/A	#N/A	#N/A	#N/A	#N/A	#N/A
121-150 Days	-	-	#N/A	#N/A	#N/A	#N/A	#N/A	#N/A	#N/A	#N/A
151-180 Days	-	-	#N/A	#N/A	#N/A	#N/A	#N/A	#N/A	#N/A	#N/A
181+ Days	-	-	#N/A	#N/A	#N/A	#N/A	#N/A	#N/A	#N/A	#N/A

Delinquency Status (% of Current Balance)

Current Portfolio Balance	1,354.23	51.10	#N/A	#N/A	#N/A	#N/A	#N/A	#N/A	#N/A	#N/A
	Jun-13	Jun-14	Jun-15	Jun-16	Jun-17	Jun-18	Jun-19	Jun-20	Jun-21	Jun-22
Current	86.48%	100.00%	#N/A	#N/A	#N/A	#N/A	#N/A	#N/A	#N/A	#N/A
1-30 Days	13.52%	0.00%	#N/A	#N/A	#N/A	#N/A	#N/A	#N/A	#N/A	#N/A
31-60 Days	0.00%	0.00%	#N/A	#N/A	#N/A	#N/A	#N/A	#N/A	#N/A	#N/A
61-90 Days	0.00%	0.00%	#N/A	#N/A	#N/A	#N/A	#N/A	#N/A	#N/A	#N/A
91-120 Days	0.00%	0.00%	#N/A	#N/A	#N/A	#N/A	#N/A	#N/A	#N/A	#N/A
121-150 Days	0.00%	0.00%	#N/A	#N/A	#N/A	#N/A	#N/A	#N/A	#N/A	#N/A
151-180 Days	0.00%	0.00%	#N/A	#N/A	#N/A	#N/A	#N/A	#N/A	#N/A	#N/A
181+ Days	0.00%	0.00%	#N/A	#N/A	#N/A	#N/A	#N/A	#N/A	#N/A	#N/A
Current - 90 Days	100.00%	100.00%	#N/A	#N/A	#N/A	#N/A	#N/A	#N/A	#N/A	#N/A
91-180 Days	0.00%	0.00%	#N/A	#N/A	#N/A	#N/A	#N/A	#N/A	#N/A	#N/A



Personal Loans - La Hipotecaria Panama Migration Analysis (2005 Vintage)

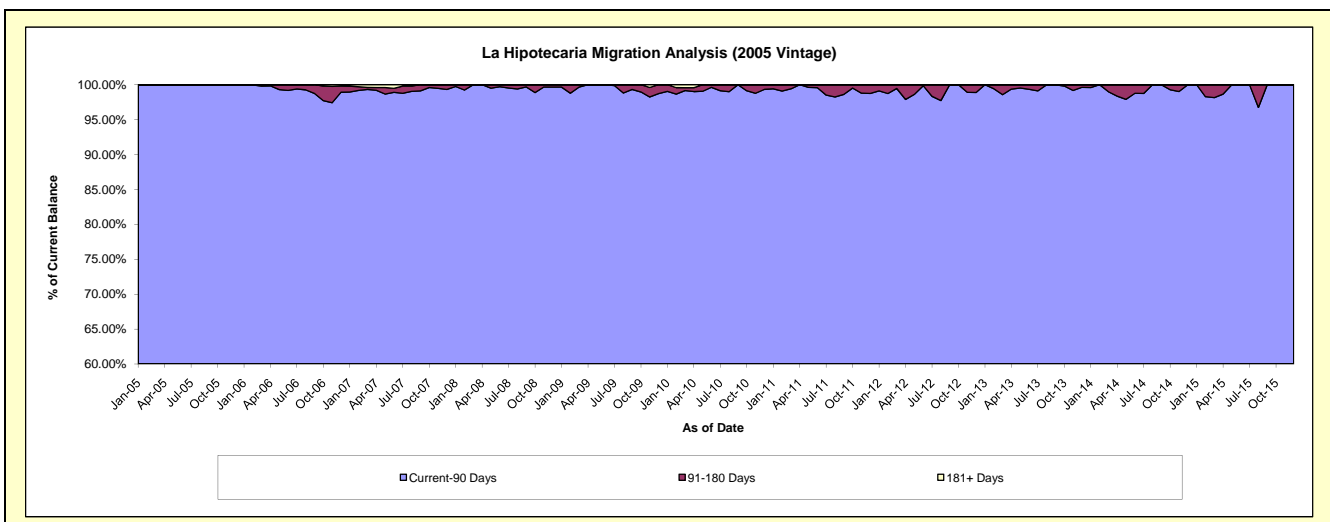
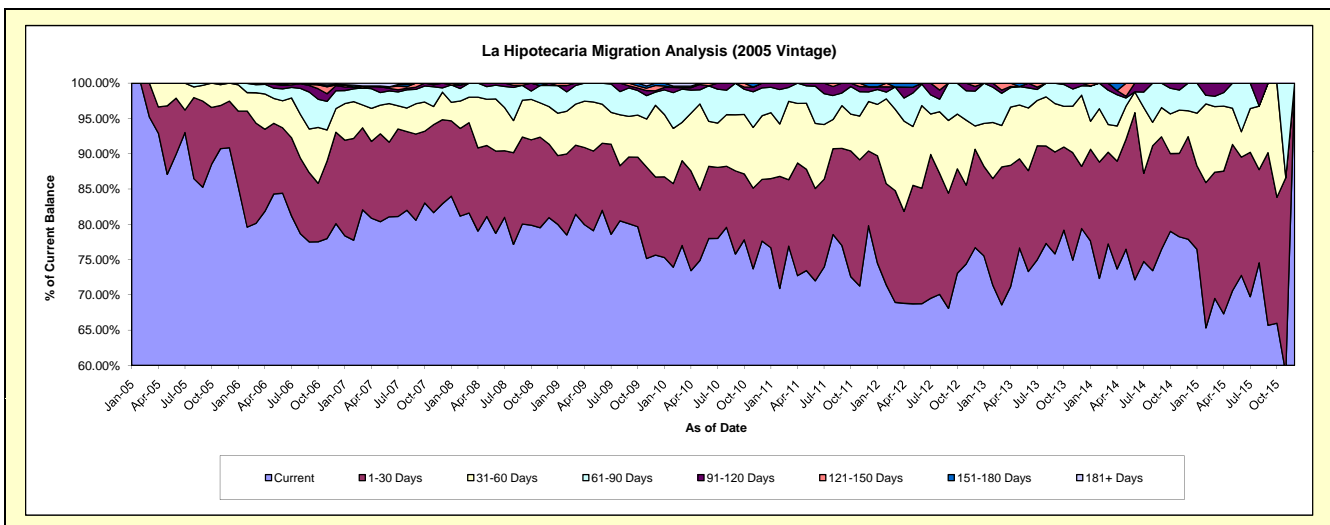
Delinquency Status (\$ of Current Balance)

Data Cutoff: 6/30/2022

Current Portfolio Balance	314,987.40	137,750.68	29,163.34	#N/A	#N/A	#N/A	#N/A	#N/A	#N/A	#N/A
	Jun-13	Jun-14	Jun-15	Jun-16	Jun-17	Jun-18	Jun-19	Jun-20	Jun-21	Jun-22
Current	230,914.38	99,364.82	21,218.36	#N/A	#N/A	#N/A	#N/A	#N/A	#N/A	#N/A
1-30 Days	45,027.31	32,625.51	4,887.05	#N/A	#N/A	#N/A	#N/A	#N/A	#N/A	#N/A
31-60 Days	27,967.86	4,070.10	1,053.40	#N/A	#N/A	#N/A	#N/A	#N/A	#N/A	#N/A
61-90 Days	9,002.93	-	2,004.53	#N/A	#N/A	#N/A	#N/A	#N/A	#N/A	#N/A
91-120 Days	2,074.92	1,690.25	-	#N/A	#N/A	#N/A	#N/A	#N/A	#N/A	#N/A
121-150 Days	-	-	-	#N/A	#N/A	#N/A	#N/A	#N/A	#N/A	#N/A
151-180 Days	-	-	-	#N/A	#N/A	#N/A	#N/A	#N/A	#N/A	#N/A
181+ Days	-	-	-	#N/A	#N/A	#N/A	#N/A	#N/A	#N/A	#N/A

Delinquency Status (% of Current Balance)

Current Portfolio Balance	314,987.40	137,750.68	29,163.34	#N/A	#N/A	#N/A	#N/A	#N/A	#N/A	#N/A
	Jun-13	Jun-14	Jun-15	Jun-16	Jun-17	Jun-18	Jun-19	Jun-20	Jun-21	Jun-22
Current	73.31%	72.13%	72.76%	#N/A	#N/A	#N/A	#N/A	#N/A	#N/A	#N/A
1-30 Days	14.29%	23.68%	16.76%	#N/A	#N/A	#N/A	#N/A	#N/A	#N/A	#N/A
31-60 Days	8.88%	2.95%	3.61%	#N/A	#N/A	#N/A	#N/A	#N/A	#N/A	#N/A
61-90 Days	2.86%	0.00%	6.87%	#N/A	#N/A	#N/A	#N/A	#N/A	#N/A	#N/A
91-120 Days	0.66%	1.23%	0.00%	#N/A	#N/A	#N/A	#N/A	#N/A	#N/A	#N/A
121-150 Days	0.00%	0.00%	0.00%	#N/A	#N/A	#N/A	#N/A	#N/A	#N/A	#N/A
151-180 Days	0.00%	0.00%	0.00%	#N/A	#N/A	#N/A	#N/A	#N/A	#N/A	#N/A
181+ Days	0.00%	0.00%	0.00%	#N/A	#N/A	#N/A	#N/A	#N/A	#N/A	#N/A
Current - 90 Days	99.34%	98.77%	100.00%	#N/A	#N/A	#N/A	#N/A	#N/A	#N/A	#N/A
91-180 Days	0.66%	1.23%	0.00%	#N/A	#N/A	#N/A	#N/A	#N/A	#N/A	#N/A



Personal Loans - La Hipotecaria Panama Migration Analysis (2006 Vintage)

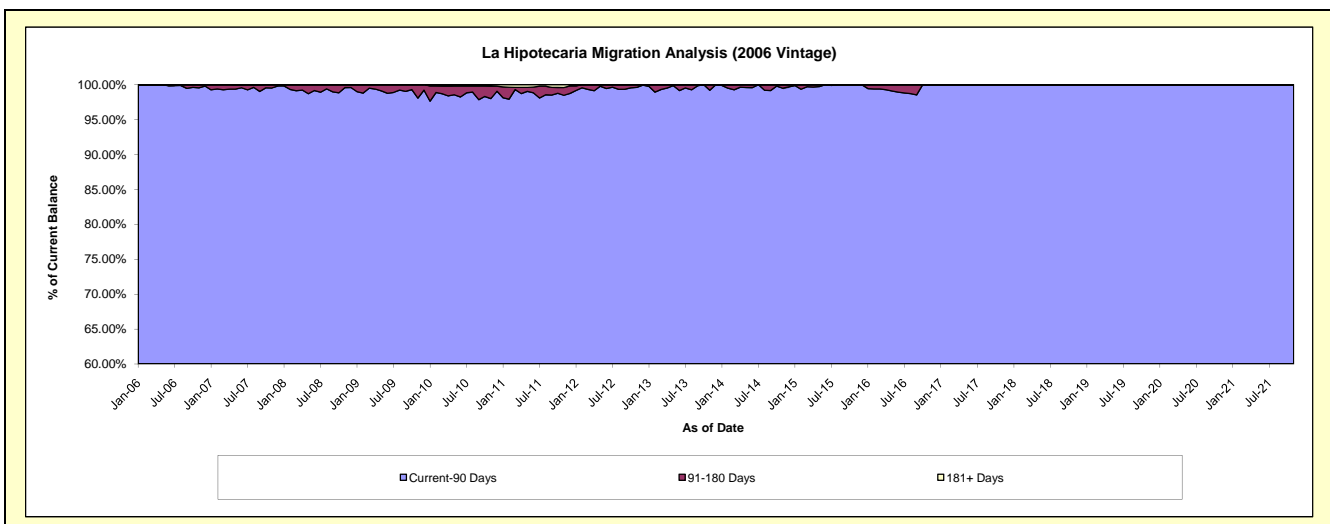
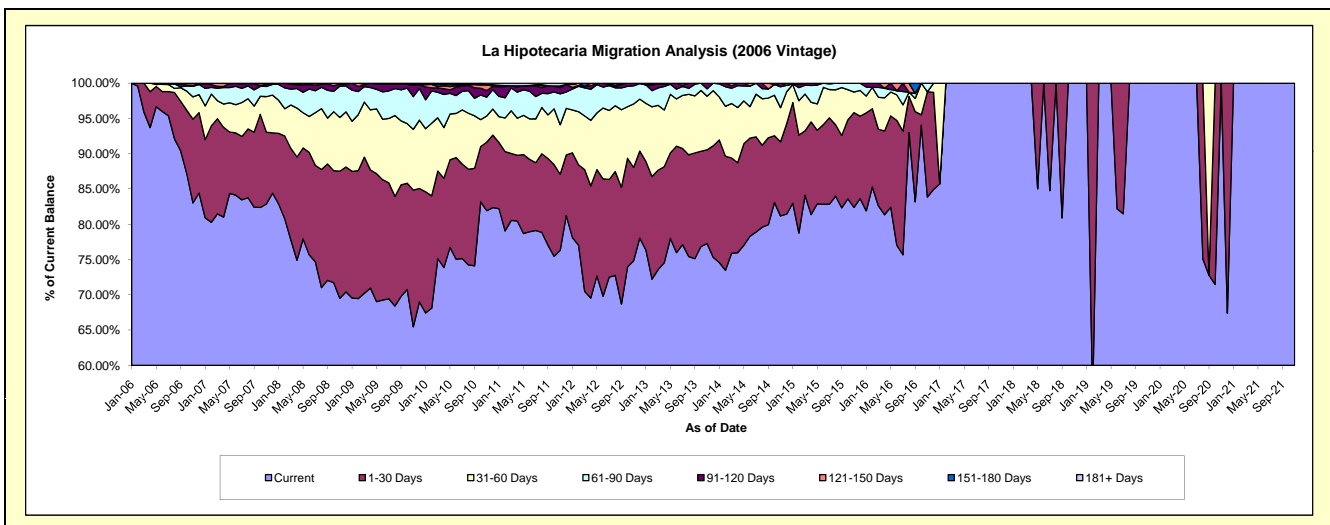
Delinquency Status (\$ of Current Balance)

Data Cutoff: 6/30/2022

Current Portfolio Balance	1,619,203.04	918,905.19	408,541.65	74,898.33	28,433.81	22,138.12	14,295.26	7,182.01	1,108.95	#N/A
	Jun-13	Jun-14	Jun-15	Jun-16	Jun-17	Jun-18	Jun-19	Jun-20	Jun-21	Jun-22
Current	1,230,421.19	719,444.97	338,479.33	57,686.43	28,433.81	22,138.12	11,747.35	7,182.01	1,108.95	#N/A
1-30 Days	244,231.35	127,935.16	46,097.13	13,257.28	-	-	2,547.91	-	-	#N/A
31-60 Days	108,418.18	40,908.26	21,502.83	2,711.14	-	-	-	-	-	#N/A
61-90 Days	22,566.56	26,827.03	2,462.36	442.43	-	-	-	-	-	#N/A
91-120 Days	13,565.76	-	-	-	-	-	-	-	-	#N/A
121-150 Days	-	3,789.77	-	801.05	-	-	-	-	-	#N/A
151-180 Days	-	-	-	-	-	-	-	-	-	#N/A
181+ Days	-	-	-	-	-	-	-	-	-	#N/A

Delinquency Status (% of Current Balance)

Current Portfolio Balance	1,619,203.04	918,905.19	408,541.65	74,898.33	28,433.81	22,138.12	14,295.26	7,182.01	1,108.95	#N/A
	Jun-13	Jun-14	Jun-15	Jun-16	Jun-17	Jun-18	Jun-19	Jun-20	Jun-21	Jun-22
Current	75.99%	78.29%	82.85%	77.02%	100.00%	100.00%	82.18%	100.00%	100.00%	#N/A
1-30 Days	15.08%	13.92%	11.28%	17.70%	0.00%	0.00%	17.82%	0.00%	0.00%	#N/A
31-60 Days	6.70%	4.45%	5.26%	3.62%	0.00%	0.00%	0.00%	0.00%	0.00%	#N/A
61-90 Days	1.39%	2.82%	0.60%	0.59%	0.00%	0.00%	0.00%	0.00%	0.00%	#N/A
91-120 Days	0.84%	0.00%	0.00%	0.00%	0.00%	0.00%	0.00%	0.00%	0.00%	#N/A
121-150 Days	0.00%	0.41%	0.00%	1.07%	0.00%	0.00%	0.00%	0.00%	0.00%	#N/A
151-180 Days	0.00%	0.00%	0.00%	0.00%	0.00%	0.00%	0.00%	0.00%	0.00%	#N/A
181+ Days	0.00%	0.00%	0.00%	0.00%	0.00%	0.00%	0.00%	0.00%	0.00%	#N/A
Current - 90 Days	99.16%	99.59%	100.00%	98.93%	100.00%	100.00%	100.00%	100.00%	100.00%	#N/A
91-180 Days	0.84%	0.41%	0.00%	1.07%	0.00%	0.00%	0.00%	0.00%	0.00%	#N/A



Personal Loans - La Hipotecaria Panama Migration Analysis (2007 Vintage)

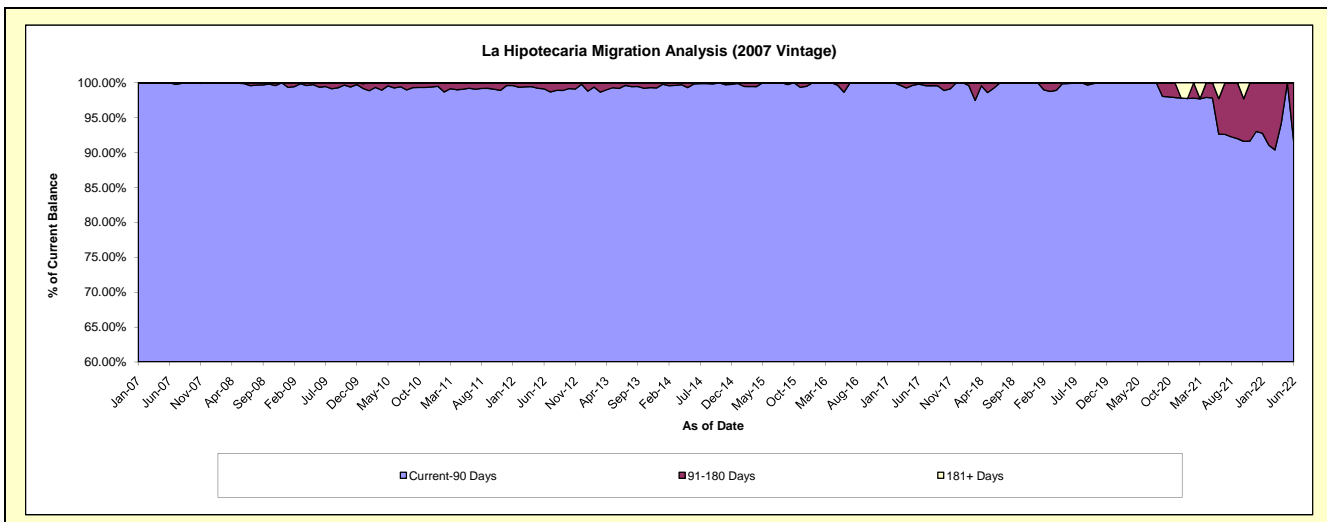
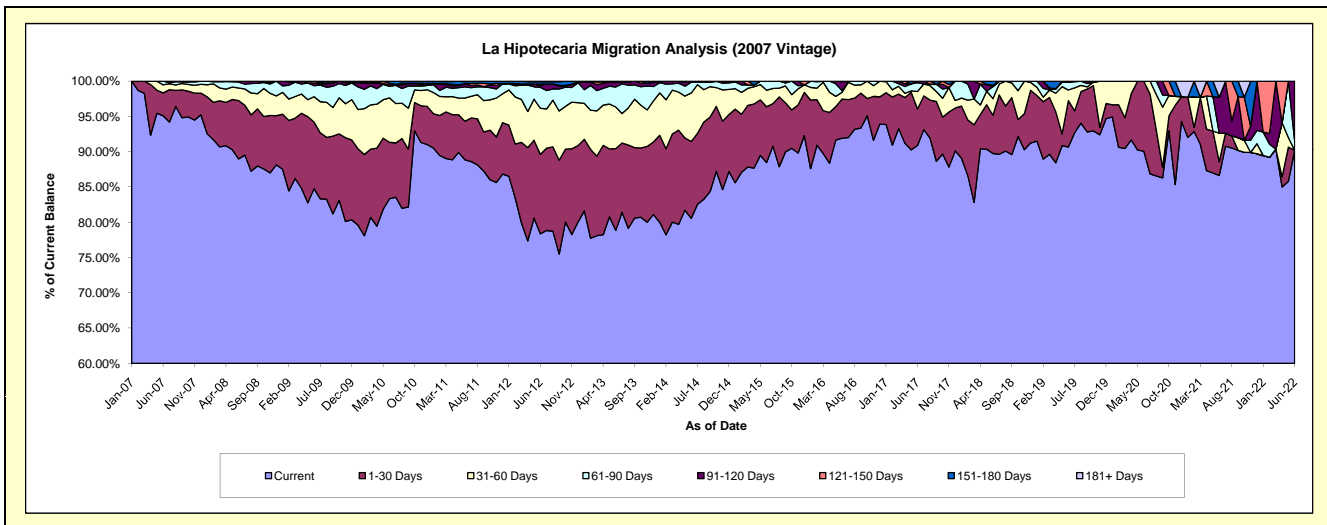
Delinquency Status (\$ of Current Balance)

Data Cutoff: 6/30/2022

Current Portfolio Balance	3,703,850.85	2,845,196.04	2,067,403.09	1,351,189.69	845,236.76	537,789.92	311,917.64	205,224.66	133,623.35	71,241.64
	Jun-13	Jun-14	Jun-15	Jun-16	Jun-17	Jun-18	Jun-19	Jun-20	Jun-21	Jun-22
Current	2,920,548.05	2,292,404.86	1,829,024.36	1,241,929.09	768,269.08	482,661.04	282,835.80	184,858.38	115,768.94	64,258.06
1-30 Days	428,970.66	309,468.56	163,632.12	75,078.18	43,826.28	29,189.51	20,466.01	20,366.28	2,590.62	-
31-60 Days	219,178.11	195,856.46	48,172.32	13,040.45	20,782.82	12,596.63	4,730.82	-	5,414.64	-
61-90 Days	104,876.14	42,831.80	26,574.29	2,797.50	10,623.87	9,200.32	3,533.62	-	-	1,025.14
91-120 Days	26,836.26	4,634.36	-	17,396.61	1,734.71	-	-	-	6,798.68	5,958.44
121-150 Days	-	-	-	947.86	-	-	1,028.17	351.39	-	-
151-180 Days	3,441.63	-	-	-	-	3,114.25	-	-	-	-
181+ Days	-	-	-	-	-	-	-	-	3,050.47	-

Delinquency Status (% of Current Balance)

Current Portfolio Balance	3,703,850.85	2,845,196.04	2,067,403.09	1,351,189.69	845,236.76	537,789.92	311,917.64	205,224.66	133,623.35	71,241.64
	Jun-13	Jun-14	Jun-15	Jun-16	Jun-17	Jun-18	Jun-19	Jun-20	Jun-21	Jun-22
Current	78.85%	80.57%	88.47%	91.91%	90.89%	89.75%	90.68%	90.08%	86.64%	90.20%
1-30 Days	11.58%	10.88%	7.91%	5.56%	5.19%	5.43%	6.56%	9.92%	1.94%	0.00%
31-60 Days	5.92%	6.88%	2.33%	0.97%	2.46%	2.34%	1.52%	0.00%	4.05%	0.00%
61-90 Days	2.83%	1.51%	1.29%	0.21%	1.26%	1.71%	1.13%	0.00%	0.00%	1.44%
91-120 Days	0.72%	0.16%	0.00%	1.29%	0.21%	0.00%	0.00%	0.00%	5.09%	8.36%
121-150 Days	0.00%	0.00%	0.00%	0.07%	0.00%	0.19%	0.11%	0.00%	0.00%	0.00%
151-180 Days	0.09%	0.00%	0.00%	0.00%	0.00%	0.58%	0.00%	0.00%	0.00%	0.00%
181+ Days	0.00%	0.00%	0.00%	0.00%	0.00%	0.00%	0.00%	0.00%	2.28%	0.00%
Current - 90 Days	99.18%	99.84%	100.00%	98.64%	99.79%	99.23%	99.89%	100.00%	92.63%	91.64%
91-180 Days	0.82%	0.16%	0.00%	1.36%	0.21%	0.77%	0.11%	0.00%	5.09%	8.36%



Personal Loans - La Hipotecaria Panama Migration Analysis (2008 Vintage)

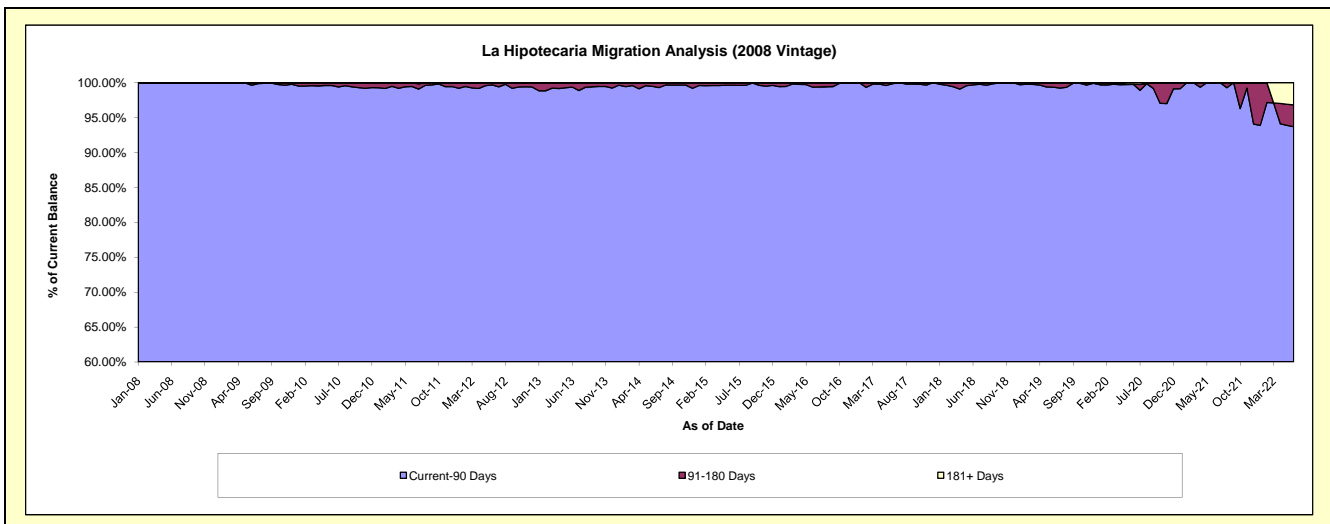
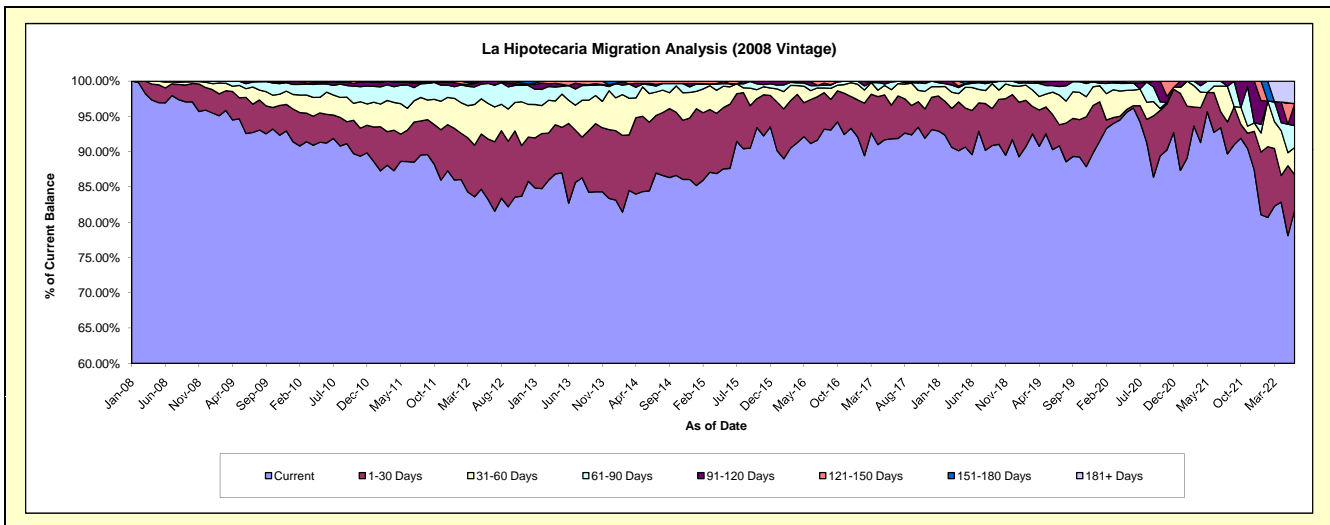
Delinquency Status (\$ of Current Balance)

Data Cutoff: 6/30/2022

Current Portfolio Balance	6,105,356.46	4,899,686.46	3,794,319.02	2,825,923.16	2,107,921.37	1,466,768.99	946,472.81	615,588.99	469,859.80	320,529.46
	Jun-13	Jun-14	Jun-15	Jun-16	Jun-17	Jun-18	Jun-19	Jun-20	Jun-21	Jun-22
Current	5,049,476.23	4,138,207.80	3,325,373.46	2,576,089.89	1,935,646.82	1,314,124.35	854,659.40	592,176.48	435,801.74	261,912.80
1-30 Days	690,000.22	476,762.51	345,525.51	176,169.26	100,503.77	91,793.86	47,033.93	1,992.06	26,479.74	16,106.03
31-60 Days	200,937.65	198,484.71	93,092.08	35,697.33	46,358.13	47,673.30	30,090.86	13,707.48	4,364.08	12,365.45
61-90 Days	126,862.93	61,284.38	16,493.81	19,898.77	22,551.46	8,621.22	8,751.74	6,298.09	3,214.24	9,960.80
91-120 Days	-	9,466.13	-	15,772.12	2,861.19	3,139.79	5,936.88	-	-	9,982.53
121-150 Days	38,079.43	15,480.93	13,834.16	2,295.79	-	1,416.47	-	-	-	-
151-180 Days	-	-	-	-	-	-	-	-	-	-
181+ Days	-	-	-	-	-	-	-	1,414.88	-	10,201.85

Delinquency Status (% of Current Balance)

Current Portfolio Balance	6,105,356.46	4,899,686.46	3,794,319.02	2,825,923.16	2,107,921.37	1,466,768.99	946,472.81	615,588.99	469,859.80	320,529.46
	Jun-13	Jun-14	Jun-15	Jun-16	Jun-17	Jun-18	Jun-19	Jun-20	Jun-21	Jun-22
Current	82.71%	84.46%	87.64%	91.16%	91.83%	89.59%	90.30%	96.20%	92.75%	81.71%
1-30 Days	11.30%	9.73%	9.11%	6.23%	4.77%	6.26%	4.97%	0.32%	5.64%	5.02%
31-60 Days	3.29%	4.05%	2.45%	1.26%	2.20%	3.25%	3.18%	2.23%	0.93%	3.86%
61-90 Days	2.08%	1.25%	0.43%	0.70%	1.07%	0.59%	0.92%	1.02%	0.68%	3.11%
91-120 Days	0.00%	0.19%	0.00%	0.56%	0.14%	0.21%	0.63%	0.00%	0.00%	3.11%
121-150 Days	0.62%	0.32%	0.36%	0.08%	0.00%	0.10%	0.00%	0.00%	0.00%	0.00%
151-180 Days	0.00%	0.00%	0.00%	0.00%	0.00%	0.00%	0.00%	0.00%	0.00%	0.00%
181+ Days	0.00%	0.00%	0.00%	0.00%	0.00%	0.00%	0.23%	0.00%	0.00%	3.18%
Current - 90 Days	99.38%	99.49%	99.64%	99.36%	99.86%	99.69%	99.37%	99.77%	100.00%	93.70%
91-180 Days	0.62%	0.51%	0.36%	0.64%	0.14%	0.31%	0.63%	0.00%	0.00%	3.11%



Personal Loans - La Hipotecaria Panama Migration Analysis (2009 Vintage)

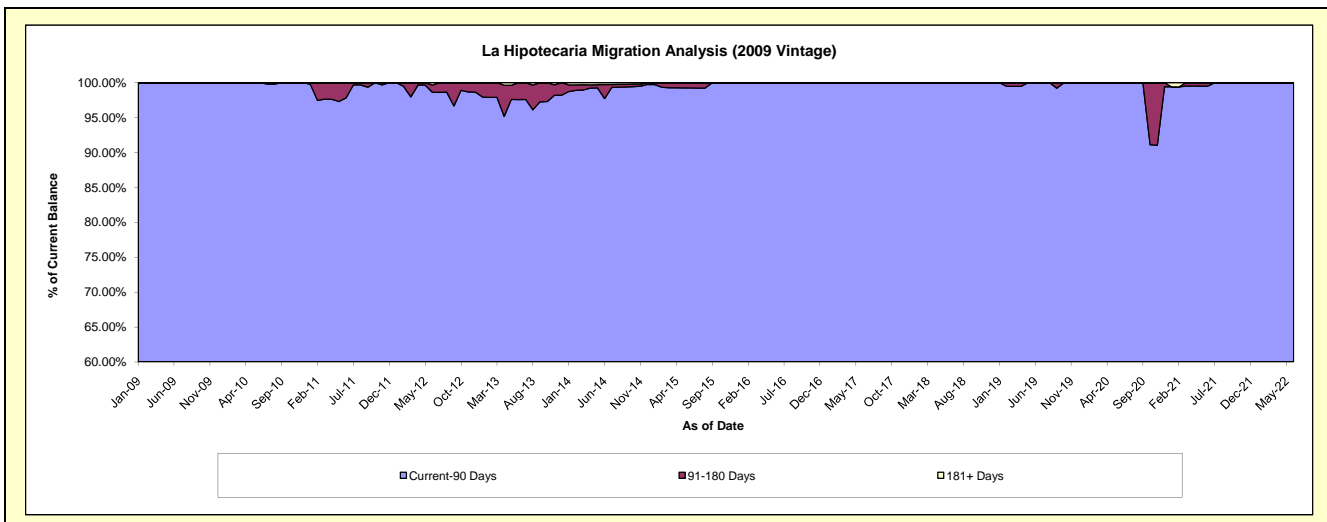
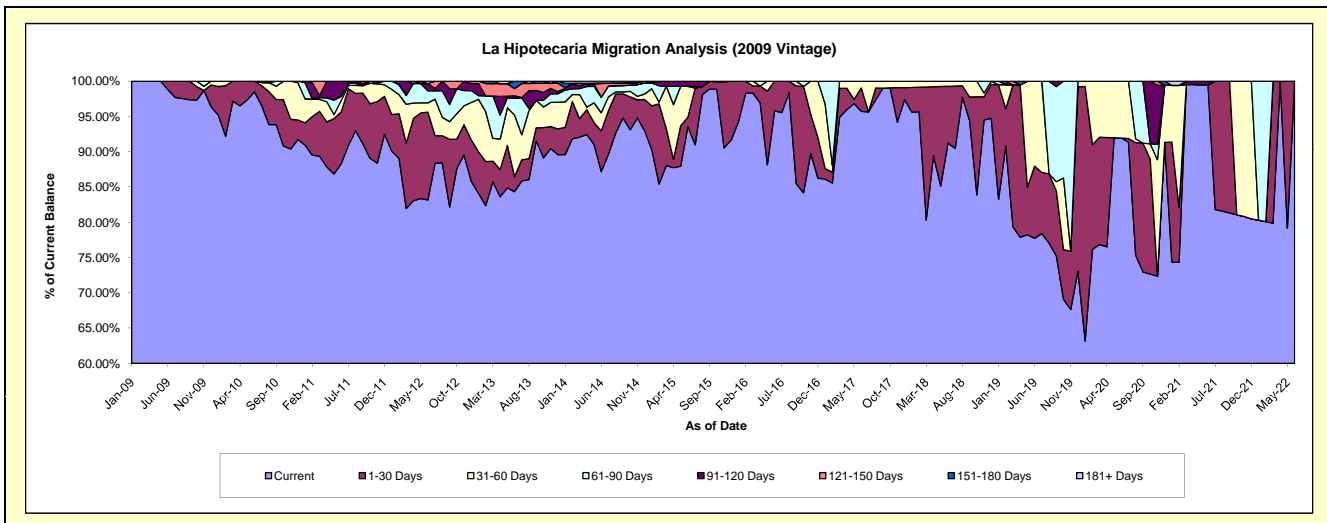
Delinquency Status (\$ of Current Balance)

Data Cutoff: 6/30/2022

Current Portfolio Balance	326,349.99	256,036.78	168,675.01	132,364.76	97,606.27	73,595.38	59,231.98	40,962.11	30,777.55	21,952.83
	Jun-13	Jun-14	Jun-15	Jun-16	Jun-17	Jun-18	Jun-19	Jun-20	Jun-21	Jun-22
Current	275,243.95	223,194.91	157,765.82	126,786.32	93,438.20	67,152.29	46,043.23	37,661.66	30,626.84	21,952.83
1-30 Days	6,922.31	14,797.63	2,275.67	5,578.44	3,224.42	5,904.24	6,051.57	-	-	-
31-60 Days	28,489.91	6,568.49	7,377.37	-	943.65	538.85	7,137.18	3,300.45	-	-
61-90 Days	7,805.94	5,679.10	-	-	-	-	-	-	-	-
91-120 Days	1,139.23	-	1,256.15	-	-	-	-	-	150.71	-
121-150 Days	3,254.43	4,983.68	-	-	-	-	-	-	-	-
151-180 Days	3,494.22	142.04	-	-	-	-	-	-	-	-
181+ Days	-	670.93	-	-	-	-	-	-	-	-

Delinquency Status (% of Current Balance)

Current Portfolio Balance	326,349.99	256,036.78	168,675.01	132,364.76	97,606.27	73,595.38	59,231.98	40,962.11	30,777.55	21,952.83
	Jun-13	Jun-14	Jun-15	Jun-16	Jun-17	Jun-18	Jun-19	Jun-20	Jun-21	Jun-22
Current	84.34%	87.17%	93.53%	95.79%	95.73%	91.25%	77.73%	91.94%	99.51%	100.00%
1-30 Days	2.12%	5.78%	1.35%	4.21%	3.30%	8.02%	10.22%	0.00%	0.00%	0.00%
31-60 Days	8.73%	2.57%	4.37%	0.00%	0.97%	0.73%	12.05%	8.06%	0.00%	0.00%
61-90 Days	2.39%	2.22%	0.00%	0.00%	0.00%	0.00%	0.00%	0.00%	0.00%	0.00%
91-120 Days	0.35%	0.00%	0.74%	0.00%	0.00%	0.00%	0.00%	0.00%	0.49%	0.00%
121-150 Days	1.00%	1.95%	0.00%	0.00%	0.00%	0.00%	0.00%	0.00%	0.00%	0.00%
151-180 Days	1.07%	0.06%	0.00%	0.00%	0.00%	0.00%	0.00%	0.00%	0.00%	0.00%
181+ Days	0.00%	0.26%	0.00%	0.00%	0.00%	0.00%	0.00%	0.00%	0.00%	0.00%
Current - 90 Days	97.58%	97.74%	99.26%	100.00%	100.00%	100.00%	100.00%	100.00%	99.51%	100.00%
91-180 Days	2.42%	2.00%	0.74%	0.00%	0.00%	0.00%	0.00%	0.00%	0.49%	0.00%



Personal Loans - La Hipotecaria Panama Migration Analysis (2010 Vintage)

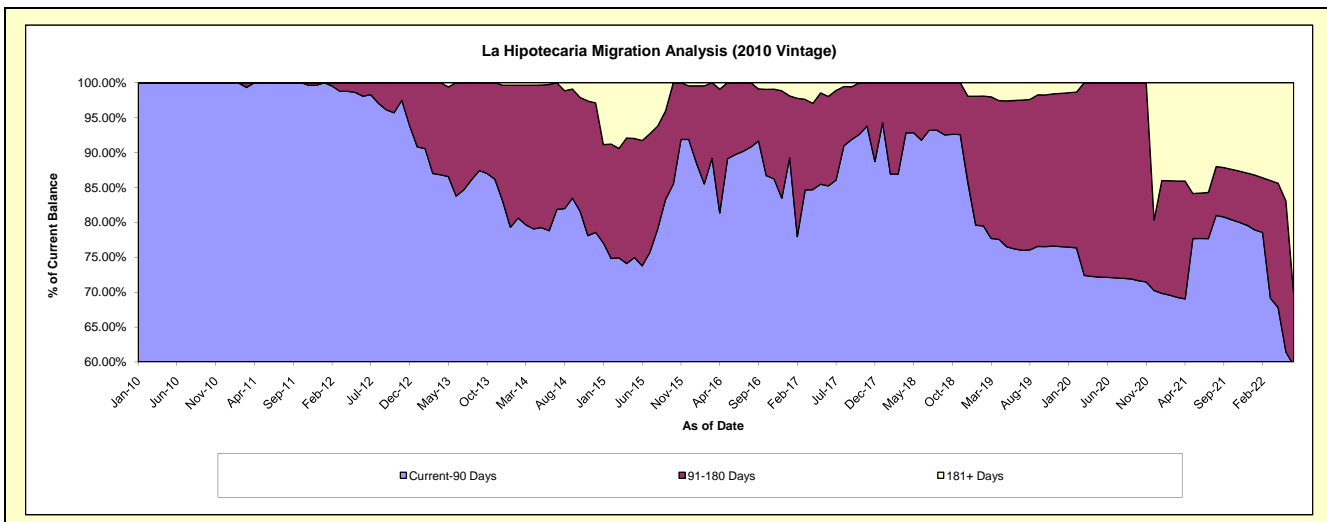
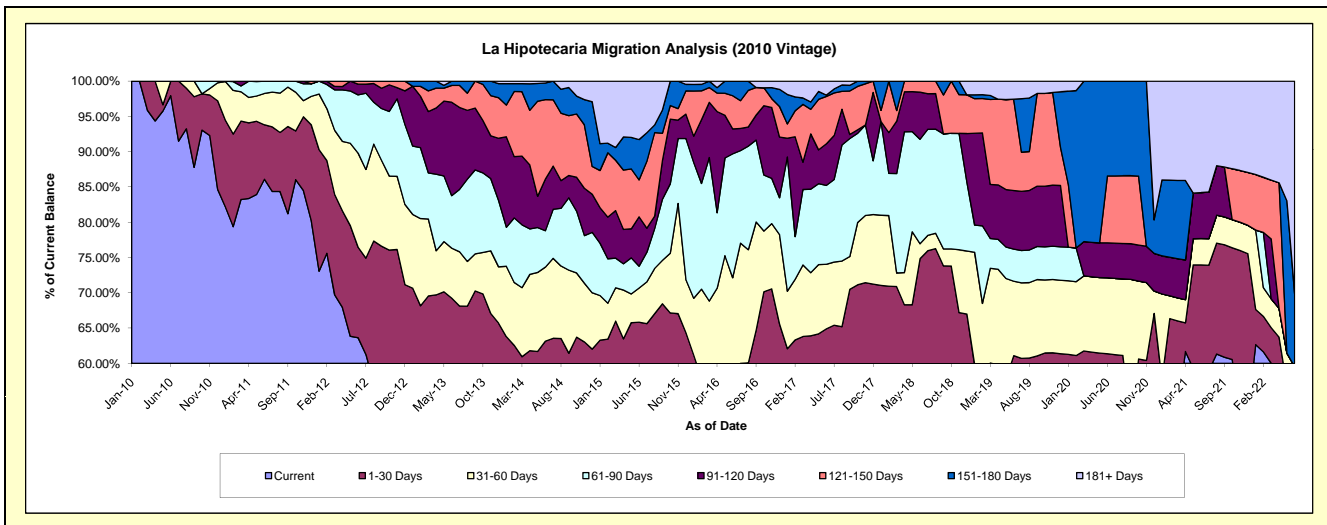
Delinquency Status (\$ of Current Balance)

Data Cutoff: 6/30/2022

Current Portfolio Balance	745,455.95	578,383.28	431,571.27	260,328.87	162,457.21	99,640.63	61,206.99	44,220.21	23,699.21	8,481.74
	Jun-13	Jun-14	Jun-15	Jun-16	Jun-17	Jun-18	Jun-19	Jun-20	Jun-21	Jun-22
Current	402,615.21	292,239.77	212,916.68	102,228.22	82,844.69	51,506.10	30,824.96	21,907.25	14,005.23	4,177.11
1-30 Days	113,626.29	72,999.15	71,252.99	47,498.62	22,578.36	23,060.10	6,567.68	5,229.72	3,521.02	481.48
31-60 Days	52,714.94	60,729.06	20,804.81	38,070.96	14,880.91	2,117.79	6,463.60	4,762.89	886.99	390.09
61-90 Days	55,517.42	29,828.06	13,433.43	45,726.72	18,151.05	14,750.53	2,788.10	-	-	-
91-120 Days	98,679.56	42,304.45	30,186.58	9,198.55	9,585.60	6,646.84	5,081.88	2,191.51	1,544.33	-
121-150 Days	17,831.18	65,099.27	22,589.07	12,235.87	10,891.98	1,559.27	7,922.94	4,184.23	-	-
151-180 Days	4,471.35	13,700.52	24,665.22	5,369.93	319.79	-	-	5,944.61	-	876.26
181+ Days	-	1,483.00	35,722.49	-	3,204.83	-	1,557.83	-	3,741.64	2,556.80

Delinquency Status (% of Current Balance)

Current Portfolio Balance	745,455.95	578,383.28	431,571.27	260,328.87	162,457.21	99,640.63	61,206.99	44,220.21	23,699.21	8,481.74
	Jun-13	Jun-14	Jun-15	Jun-16	Jun-17	Jun-18	Jun-19	Jun-20	Jun-21	Jun-22
Current	54.01%	50.53%	49.34%	39.27%	50.99%	51.69%	50.36%	49.54%	59.10%	49.25%
1-30 Days	15.24%	12.62%	16.51%	18.25%	13.90%	23.14%	10.73%	11.83%	14.86%	5.68%
31-60 Days	7.07%	10.50%	4.82%	14.62%	9.16%	2.13%	10.56%	10.77%	3.74%	4.60%
61-90 Days	7.45%	5.16%	3.11%	17.56%	11.17%	14.80%	4.56%	0.00%	0.00%	0.00%
91-120 Days	13.24%	7.31%	6.99%	3.53%	5.90%	6.67%	8.30%	4.96%	6.52%	0.00%
121-150 Days	2.39%	11.26%	5.23%	4.70%	6.70%	1.56%	12.94%	9.46%	0.00%	0.00%
151-180 Days	0.60%	2.37%	5.72%	2.06%	0.20%	0.00%	0.00%	13.44%	0.00%	10.33%
181+ Days	0.00%	0.26%	8.28%	0.00%	1.97%	0.00%	2.55%	0.00%	15.79%	30.14%
Current - 90 Days	83.77%	78.81%	73.78%	89.70%	85.23%	91.76%	76.21%	72.14%	77.70%	59.52%
91-180 Days	16.23%	20.94%	17.94%	10.30%	12.80%	8.24%	21.25%	27.86%	6.52%	10.33%



Personal Loans - La Hipotecaria Panama Migration Analysis (2011 Vintage)

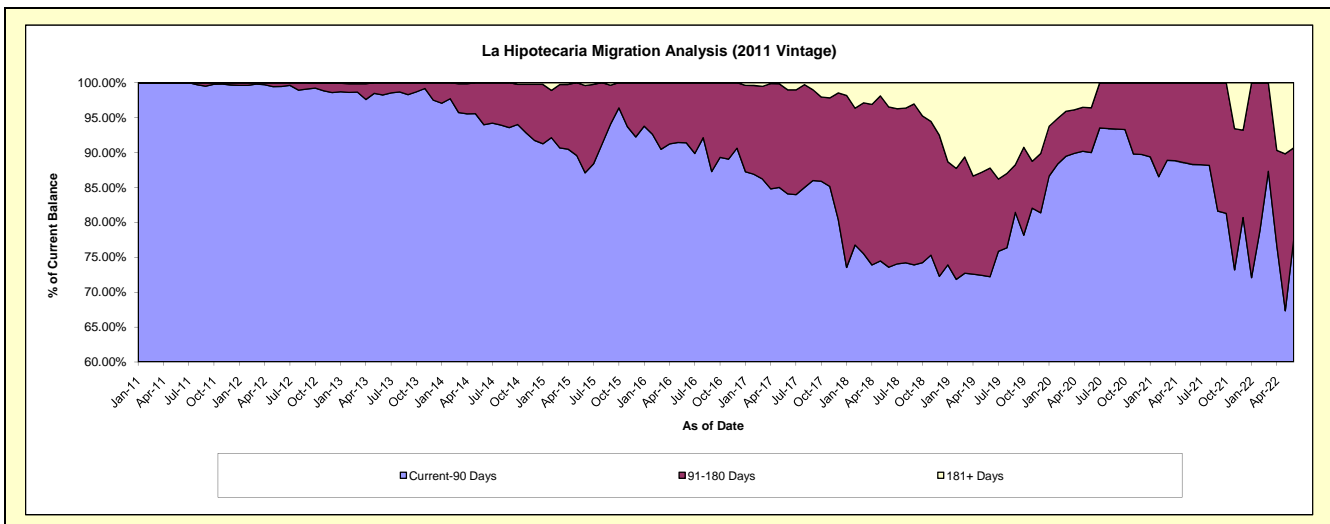
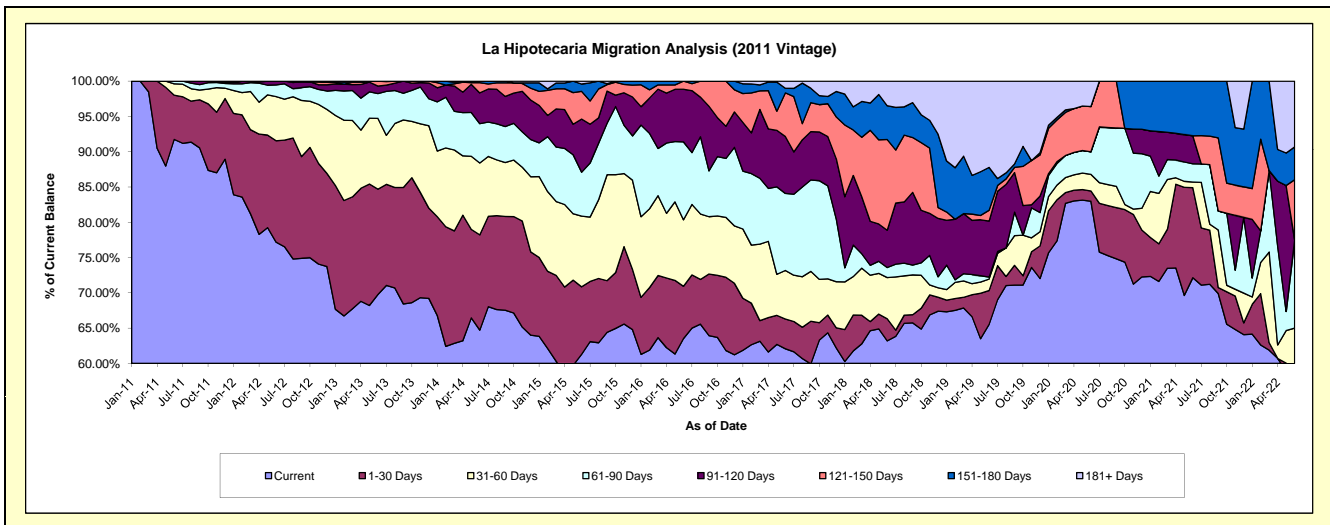
Delinquency Status (\$ of Current Balance)

Data Cutoff: 6/30/2022

Current Portfolio Balance	2,112,239.63	1,649,047.88	1,218,161.66	848,275.16	605,144.06	402,530.94	266,086.36	147,385.30	97,193.43	61,917.37
	Jun-13	Jun-14	Jun-15	Jun-16	Jun-17	Jun-18	Jun-19	Jun-20	Jun-21	Jun-22
Current	1,473,567.09	1,067,208.67	746,657.30	538,769.34	375,615.01	254,356.12	174,343.28	122,305.68	70,121.55	35,791.51
1-30 Days	315,529.19	222,675.28	116,428.97	62,877.47	25,516.09	12,611.90	12,775.50	2,131.95	12,395.95	733.29
31-60 Days	211,955.47	167,963.87	122,184.60	79,988.90	41,663.64	23,507.89	4,323.78	3,482.85	774.49	3,720.71
61-90 Days	73,941.78	91,882.56	75,715.97	93,633.06	66,034.00	5,711.99	746.45	4,715.93	2,520.68	7,728.40
91-120 Days	22,683.41	71,935.50	91,642.56	63,359.22	48,806.62	21,258.75	21,144.15	-	3,845.00	-
121-150 Days	14,562.69	23,692.01	47,897.57	9,647.17	37,520.46	51,800.84	4,055.11	9,450.17	-	5,298.72
151-180 Days	-	3,689.99	12,658.44	-	3,859.55	19,264.41	16,176.24	-	7,535.76	2,875.47
181+ Days	-	-	4,976.25	-	6,128.69	14,019.04	32,521.85	5,298.72	-	5,769.27

Delinquency Status (% of Current Balance)

Current Portfolio Balance	2,112,239.63	1,649,047.88	1,218,161.66	848,275.16	605,144.06	402,530.94	266,086.36	147,385.30	97,193.43	61,917.37
	Jun-13	Jun-14	Jun-15	Jun-16	Jun-17	Jun-18	Jun-19	Jun-20	Jun-21	Jun-22
Current	69.76%	64.72%	61.29%	63.51%	62.07%	63.19%	65.52%	82.98%	72.15%	57.81%
1-30 Days	14.94%	13.50%	9.56%	7.41%	4.22%	3.13%	4.80%	1.45%	12.75%	1.18%
31-60 Days	10.03%	10.19%	10.03%	9.43%	6.88%	5.84%	1.62%	2.36%	0.80%	6.01%
61-90 Days	3.50%	5.57%	6.22%	11.04%	10.91%	1.42%	0.28%	3.20%	2.59%	12.48%
91-120 Days	1.07%	4.36%	7.52%	7.47%	8.07%	5.28%	7.95%	0.00%	3.96%	0.00%
121-150 Days	0.69%	1.44%	3.93%	1.14%	6.20%	12.87%	1.52%	6.41%	0.00%	8.56%
151-180 Days	0.00%	0.22%	1.04%	0.00%	0.64%	4.79%	6.08%	0.00%	7.75%	4.64%
181+ Days	0.00%	0.00%	0.41%	0.00%	1.01%	3.48%	12.22%	3.60%	0.00%	9.32%
Current - 90 Days	98.24%	93.98%	87.10%	91.39%	84.08%	73.58%	72.23%	89.99%	88.29%	77.48%
91-180 Days	1.76%	6.02%	12.49%	8.61%	14.90%	22.94%	15.55%	6.41%	11.71%	13.20%



Personal Loans - La Hipotecaria Panama Migration Analysis (2012 Vintage)

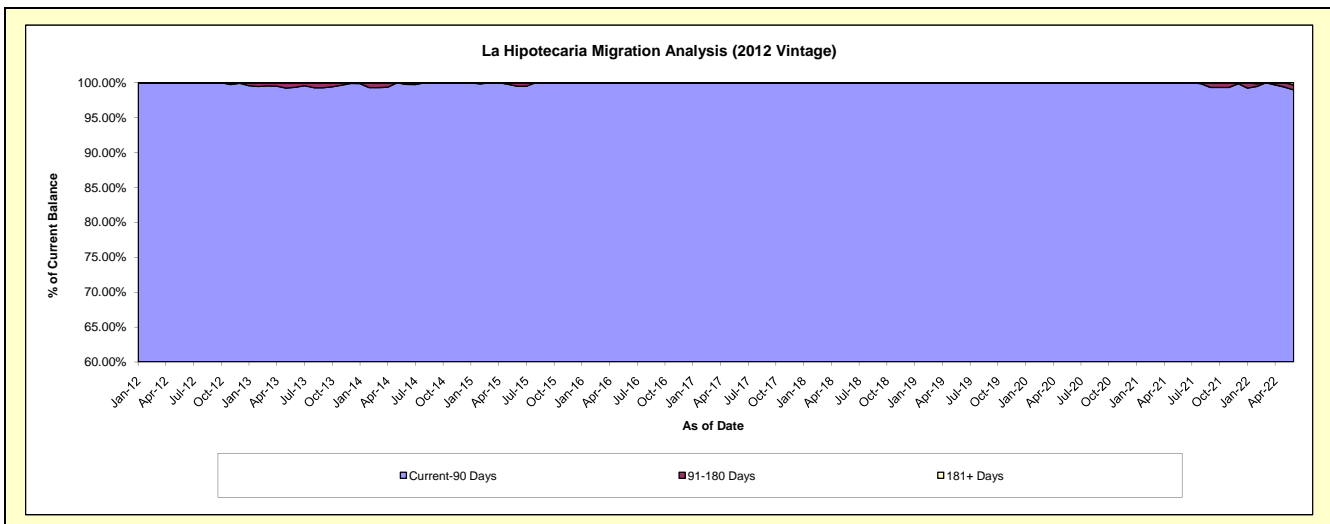
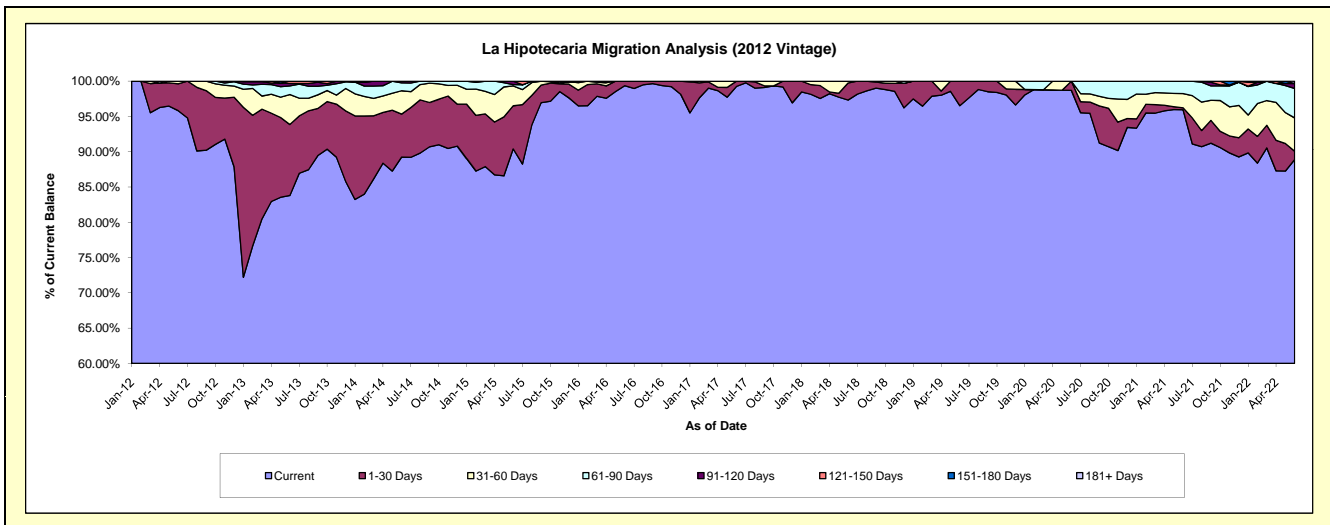
Delinquency Status (\$ of Current Balance)

Data Cutoff: 6/30/2022

Current Portfolio Balance	4,583,291.45	3,842,455.02	2,909,806.48	2,097,145.23	1,605,890.12	1,264,811.55	887,927.03	665,051.22	491,713.43	339,393.70
	Jun-13	Jun-14	Jun-15	Jun-16	Jun-17	Jun-18	Jun-19	Jun-20	Jun-21	Jun-22
Current	3,840,296.35	3,428,506.33	2,630,261.55	2,083,625.27	1,593,829.14	1,230,962.88	857,094.44	656,379.31	471,842.80	301,698.21
1-30 Days	461,420.87	234,706.94	177,902.31	13,519.96	12,060.98	30,499.11	30,832.59	8,671.91	1,346.01	3,991.00
31-60 Days	194,578.71	126,945.22	81,915.62	-	-	3,349.56	-	-	9,852.71	16,038.44
61-90 Days	56,579.67	43,231.48	5,540.21	-	-	-	-	-	8,671.91	14,164.54
91-120 Days	15,465.85	9,065.05	14,186.79	-	-	-	-	-	-	2,356.38
121-150 Days	14,950.00	-	-	-	-	-	-	-	-	-
151-180 Days	-	-	-	-	-	-	-	-	-	-
181+ Days	-	-	-	-	-	-	-	-	-	1,145.13

Delinquency Status (% of Current Balance)

Current Portfolio Balance	4,583,291.45	3,842,455.02	2,909,806.48	2,097,145.23	1,605,890.12	1,264,811.55	887,927.03	665,051.22	491,713.43	339,393.70
	Jun-13	Jun-14	Jun-15	Jun-16	Jun-17	Jun-18	Jun-19	Jun-20	Jun-21	Jun-22
Current	83.79%	89.23%	90.39%	99.36%	99.25%	97.32%	96.53%	98.70%	95.96%	88.89%
1-30 Days	10.07%	6.11%	6.11%	0.64%	0.75%	2.41%	3.47%	1.30%	0.27%	1.18%
31-60 Days	4.25%	3.30%	2.82%	0.00%	0.00%	0.26%	0.00%	0.00%	2.00%	4.73%
61-90 Days	1.23%	1.13%	0.19%	0.00%	0.00%	0.00%	0.00%	0.00%	1.76%	4.17%
91-120 Days	0.34%	0.24%	0.49%	0.00%	0.00%	0.00%	0.00%	0.00%	0.00%	0.69%
121-150 Days	0.33%	0.00%	0.00%	0.00%	0.00%	0.00%	0.00%	0.00%	0.00%	0.00%
151-180 Days	0.00%	0.00%	0.00%	0.00%	0.00%	0.00%	0.00%	0.00%	0.00%	0.00%
181+ Days	0.00%	0.00%	0.00%	0.00%	0.00%	0.00%	0.00%	0.00%	0.00%	0.34%
Current - 90 Days	99.34%	99.76%	99.51%	100.00%	100.00%	100.00%	100.00%	100.00%	100.00%	98.97%
91-180 Days	0.66%	0.24%	0.49%	0.00%	0.00%	0.00%	0.00%	0.00%	0.00%	0.69%



Personal Loans - La Hipotecaria Panama Migration Analysis (2013 Vintage)

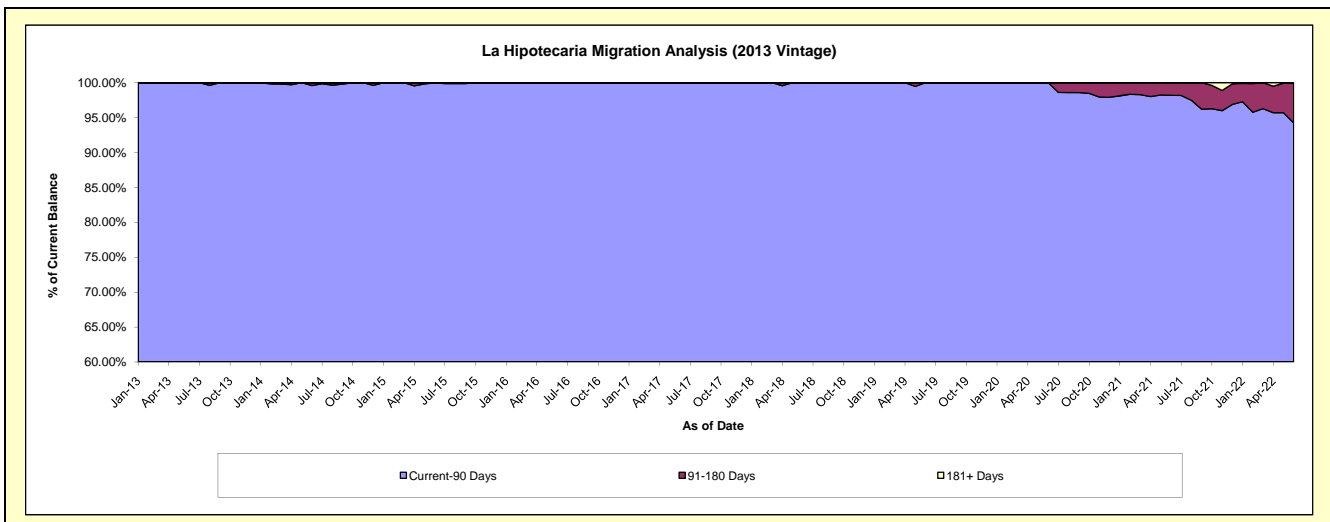
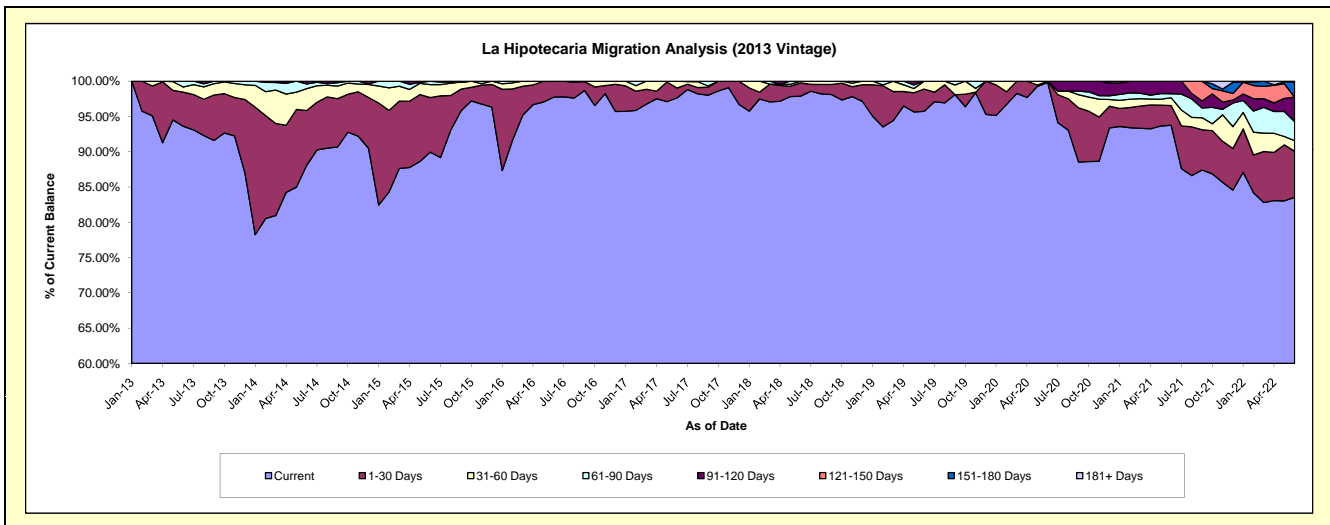
Delinquency Status (\$ of Current Balance)

Data Cutoff: 6/30/2022

Current Portfolio Balance	3,042,193.98	5,589,189.90	4,010,007.36	2,972,634.14	2,186,870.03	1,729,257.42	1,336,109.20	1,015,290.84	837,502.77	638,546.24
	Jun-13	Jun-14	Jun-15	Jun-16	Jun-17	Jun-18	Jun-19	Jun-20	Jun-21	Jun-22
Current	2,847,887.01	4,922,565.56	3,606,725.86	2,905,322.59	2,135,205.21	1,692,529.78	1,279,030.72	1,013,278.11	785,156.82	533,528.40
1-30 Days	147,069.55	434,311.06	310,324.80	66,554.91	30,519.52	32,732.14	42,178.92	2,012.73	23,429.44	41,565.03
31-60 Days	22,237.42	173,361.30	73,231.67	756.64	21,145.30	3,995.50	14,899.56	-	9,193.22	9,579.82
61-90 Days	25,000.00	36,219.43	19,725.03	-	-	-	-	-	4,731.15	17,172.05
91-120 Days	-	22,732.55	-	-	-	-	-	-	14,992.14	22,281.53
121-150 Days	-	-	-	-	-	-	-	-	-	-
151-180 Days	-	-	-	-	-	-	-	-	-	13,704.19
181+ Days	-	-	-	-	-	-	-	-	-	715.22

Delinquency Status (% of Current Balance)

Current Portfolio Balance	3,042,193.98	5,589,189.90	4,010,007.36	2,972,634.14	2,186,870.03	1,729,257.42	1,336,109.20	1,015,290.84	837,502.77	638,546.24
	Jun-13	Jun-14	Jun-15	Jun-16	Jun-17	Jun-18	Jun-19	Jun-20	Jun-21	Jun-22
Current	93.61%	88.07%	89.94%	97.74%	97.64%	97.88%	95.73%	99.80%	93.75%	83.55%
1-30 Days	4.83%	7.77%	7.74%	2.24%	1.40%	1.89%	3.16%	0.20%	2.80%	6.51%
31-60 Days	0.73%	3.10%	1.83%	0.03%	0.97%	0.23%	1.12%	0.00%	1.10%	1.50%
61-90 Days	0.82%	0.65%	0.49%	0.00%	0.00%	0.00%	0.00%	0.00%	0.56%	2.69%
91-120 Days	0.00%	0.41%	0.00%	0.00%	0.00%	0.00%	0.00%	0.00%	1.79%	3.49%
121-150 Days	0.00%	0.00%	0.00%	0.00%	0.00%	0.00%	0.00%	0.00%	0.00%	0.00%
151-180 Days	0.00%	0.00%	0.00%	0.00%	0.00%	0.00%	0.00%	0.00%	0.00%	2.15%
181+ Days	0.00%	0.00%	0.00%	0.00%	0.00%	0.00%	0.00%	0.00%	0.00%	0.11%
Current - 90 Days	100.00%	99.59%	100.00%	100.00%	100.00%	100.00%	100.00%	100.00%	98.21%	94.25%
91-180 Days	0.00%	0.41%	0.00%	0.00%	0.00%	0.00%	0.00%	0.00%	1.79%	5.64%



Personal Loans - La Hipotecaria Panama Migration Analysis (2014 Vintage)

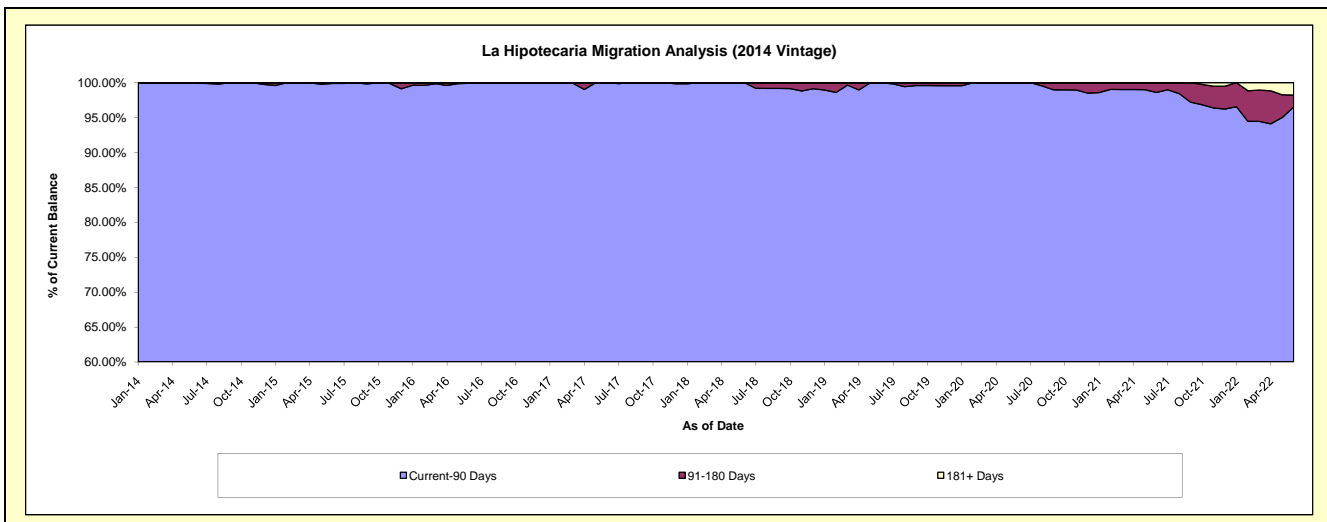
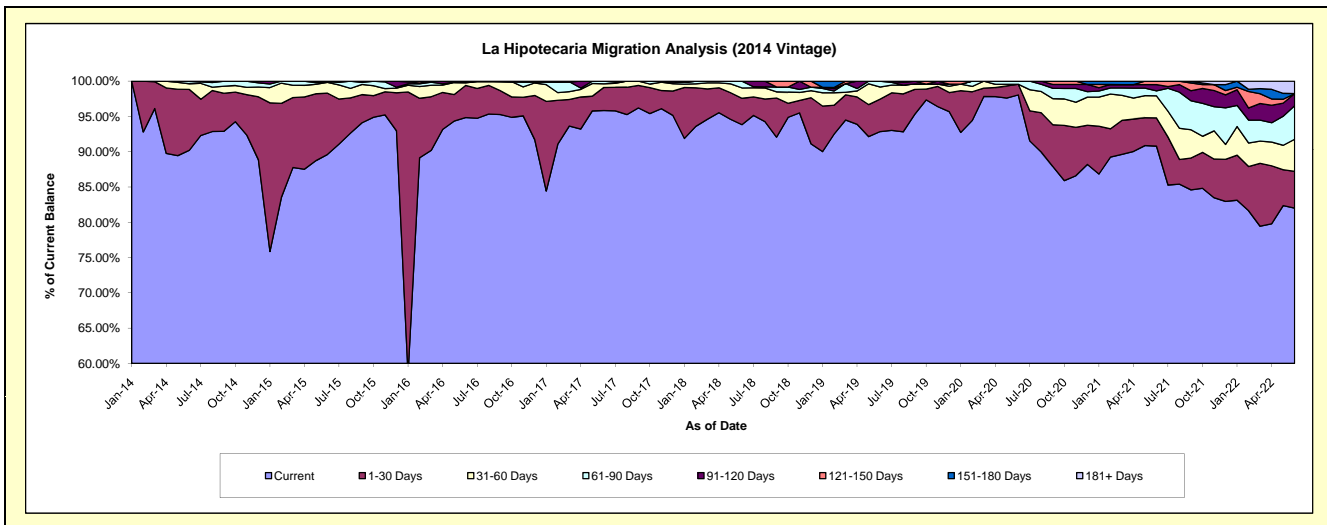
Delinquency Status (\$ of Current Balance)

Data Cutoff: 6/30/2022

Current Portfolio Balance	-	3,894,545.39	6,402,020.02	5,117,053.92	4,037,193.81	3,280,195.50	2,659,039.33	2,208,973.76	1,949,585.04	1,685,406.11
	Jun-14	Jun-15	Jun-16	Jun-17	Jun-18	Jun-19	Jun-20	Jun-21	Jun-22	
Current	3,512,790.65	5,737,270.29	4,853,160.93	3,869,544.97	3,078,008.87	2,468,999.61	2,165,906.25	1,770,054.89	1,382,313.16	
1-30 Days	335,960.61	555,751.12	233,388.38	131,828.64	122,588.28	122,352.67	33,269.95	78,025.62	87,598.26	
31-60 Days	31,674.13	98,105.41	17,927.86	20,468.14	48,227.00	45,638.52	-	60,965.73	76,874.04	
61-90 Days	14,120.00	4,467.75	8,011.13	15,352.06	31,371.35	22,048.53	9,797.56	13,596.22	80,103.85	
91-120 Days	-	6,425.45	4,565.62	-	-	-	-	17,405.54	28,751.97	
121-150 Days	-	-	-	-	-	-	-	9,537.04	-	
151-180 Days	-	-	-	-	-	-	-	-	-	
181+ Days	-	-	-	-	-	-	-	-	29,764.83	

Delinquency Status (% of Current Balance)

Current Portfolio Balance	-	3,894,545.39	6,402,020.02	5,117,053.92	4,037,193.81	3,280,195.50	2,659,039.33	2,208,973.76	1,949,585.04	1,685,406.11
	Jun-14	Jun-15	Jun-16	Jun-17	Jun-18	Jun-19	Jun-20	Jun-21	Jun-22	
Current	90.20%	89.62%	94.84%	95.85%	93.84%	92.85%	98.05%	90.79%	82.02%	
1-30 Days	8.63%	8.68%	4.56%	3.27%	3.74%	4.60%	1.51%	4.00%	5.20%	
31-60 Days	0.81%	1.53%	0.35%	0.51%	1.47%	1.72%	0.00%	3.13%	4.56%	
61-90 Days	0.36%	0.07%	0.16%	0.38%	0.96%	0.83%	0.44%	0.70%	4.75%	
91-120 Days	0.00%	0.10%	0.09%	0.00%	0.00%	0.00%	0.00%	0.89%	1.71%	
121-150 Days	0.00%	0.00%	0.00%	0.00%	0.00%	0.00%	0.00%	0.49%	0.00%	
151-180 Days	0.00%	0.00%	0.00%	0.00%	0.00%	0.00%	0.00%	0.00%	0.00%	
181+ Days	0.00%	0.00%	0.00%	0.00%	0.00%	0.00%	0.00%	0.00%	1.77%	
Current - 90 Days	100.00%	99.90%	99.91%	100.00%	100.00%	100.00%	100.00%	98.62%	96.53%	
91-180 Days	0.00%	0.10%	0.09%	0.00%	0.00%	0.00%	0.00%	1.38%	1.71%	



Personal Loans - La Hipotecaria Panama Migration Analysis (2015 Vintage)

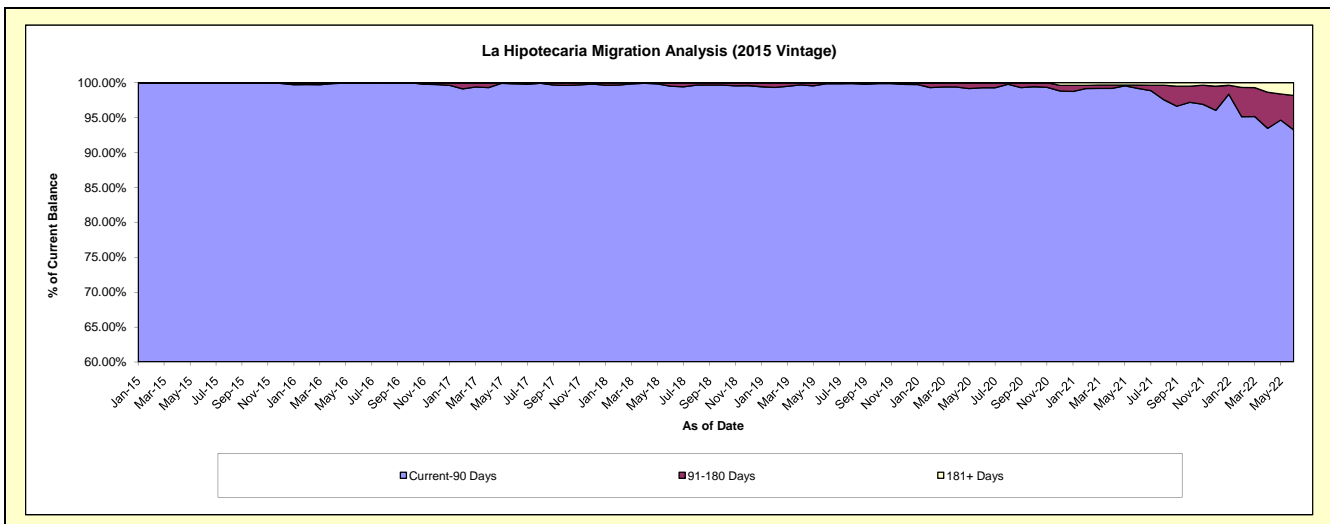
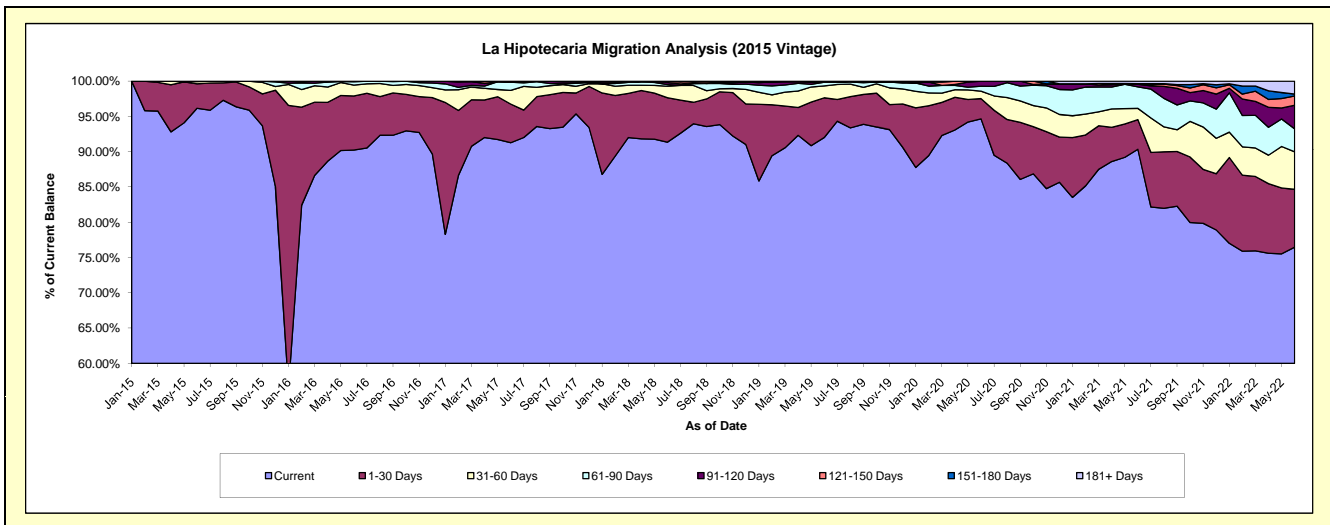
Delinquency Status (\$ of Current Balance)

Data Cutoff: 6/30/2022

Current Portfolio Balance	-	-	3,924,029.94	8,215,031.04	6,525,212.17	5,267,456.85	4,270,603.61	3,644,667.51	3,317,057.73	2,947,632.32
	Jun-15	Jun-16	Jun-17	Jun-18	Jun-19	Jun-20	Jun-21	Jun-22		
Current	3,773,402.13	7,413,154.51	5,955,612.02	4,812,082.81	3,930,109.70	3,449,878.04	2,996,989.74	2,254,149.22		
1-30 Days	135,581.19	629,501.98	357,955.61	331,897.82	239,775.48	104,617.81	139,423.87	241,589.15		
31-60 Days	12,832.62	127,363.34	127,063.26	86,067.81	72,416.22	38,400.71	52,764.01	156,610.08		
61-90 Days	2,214.00	37,687.40	74,673.04	11,447.60	22,173.48	25,476.95	101,016.02	96,049.19		
91-120 Days	-	7,323.81	4,962.12	16,179.57	-	26,294.00	12,025.44	98,567.48		
121-150 Days	-	-	4,946.12	9,781.24	6,128.73	-	3,456.28	39,016.97		
151-180 Days	-	-	-	-	-	-	-	7,899.99		
181+ Days	-	-	-	-	-	-	-	11,382.37		

Delinquency Status (% of Current Balance)

Current Portfolio Balance	-	-	3,924,029.94	8,215,031.04	6,525,212.17	5,267,456.85	4,270,603.61	3,644,667.51	3,317,057.73	2,947,632.32
	Jun-15	Jun-16	Jun-17	Jun-18	Jun-19	Jun-20	Jun-21	Jun-22		
Current	96.16%	90.24%	91.27%	91.35%	92.03%	94.66%	90.35%	76.47%		
1-30 Days	3.46%	7.66%	5.49%	6.30%	5.61%	2.87%	4.20%	8.20%		
31-60 Days	0.33%	1.55%	1.95%	1.63%	1.70%	1.05%	1.59%	5.31%		
61-90 Days	0.06%	0.46%	1.14%	0.22%	0.52%	0.70%	3.05%	3.28%		
91-120 Days	0.00%	0.09%	0.08%	0.31%	0.00%	0.72%	0.36%	3.34%		
121-150 Days	0.00%	0.00%	0.08%	0.19%	0.14%	0.00%	0.10%	1.32%		
151-180 Days	0.00%	0.00%	0.00%	0.00%	0.00%	0.00%	0.00%	0.27%		
181+ Days	0.00%	0.00%	0.00%	0.00%	0.00%	0.00%	0.34%	1.82%		
Current - 90 Days	100.00%	99.91%	99.85%	99.51%	99.86%	99.28%	99.19%	93.24%		
91-180 Days	0.00%	0.09%	0.15%	0.49%	0.14%	0.72%	0.47%	4.94%		



Personal Loans - La Hipotecaria Panama Migration Analysis (2016 Vintage)

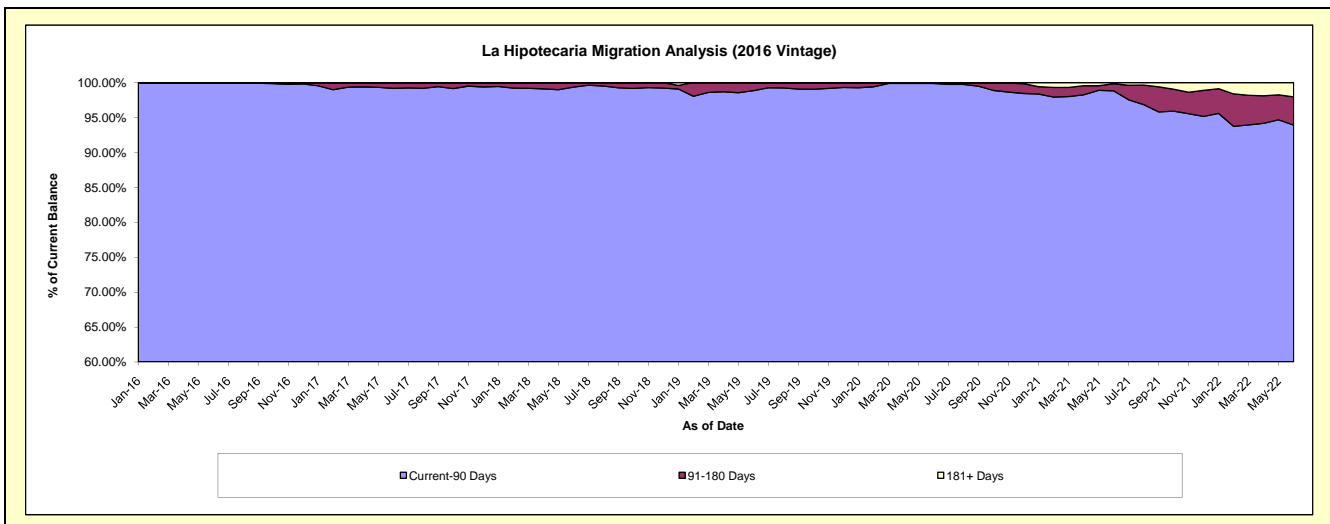
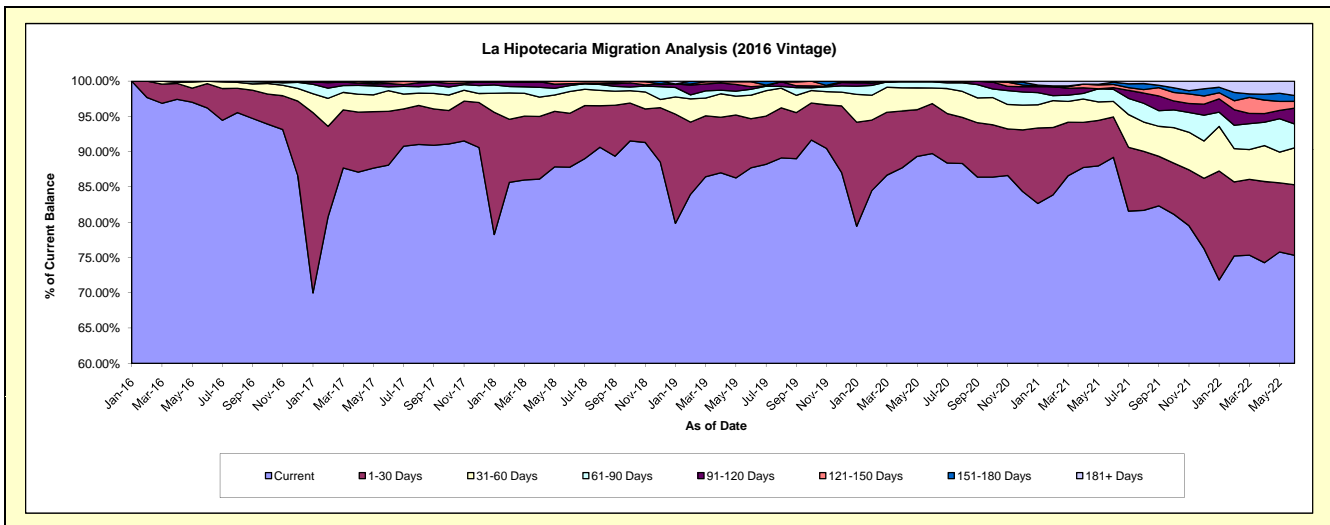
Delinquency Status (\$ of Current Balance)

Data Cutoff: 6/30/2022

Current Portfolio Balance	-	-	-	4,273,849.19	8,424,855.51	6,940,086.30	5,703,616.81	4,901,332.08	4,423,255.44	4,020,365.36
	Jun-16	Jun-17	Jun-18	Jun-19	Jun-20	Jun-21	Jun-22			
Current	4,111,530.50	7,423,532.26	6,094,165.78	5,003,149.14	4,398,862.45	3,945,702.49	3,027,617.77			
1-30 Days	147,342.93	641,506.51	529,783.67	397,747.39	346,915.86	253,632.54	402,178.25			
31-60 Days	14,975.76	246,926.88	214,866.73	189,717.05	108,738.30	97,167.12	210,972.04			
61-90 Days	-	45,169.06	57,658.44	47,936.28	41,865.73	75,541.19	135,519.89			
91-120 Days	-	39,227.51	19,727.41	19,932.84	4,949.74	10,963.51	90,031.84			
121-150 Days	-	22,512.88	23,884.27	40,548.38	-	19,368.24	39,146.01			
151-180 Days	-	5,980.41	-	4,585.73	-	14,471.86	33,210.67			
181+ Days	-	-	-	-	-	6,408.49	81,688.89			

Delinquency Status (% of Current Balance)

Current Portfolio Balance	-	-	-	4,273,849.19	8,424,855.51	6,940,086.30	5,703,616.81	4,901,332.08	4,423,255.44	4,020,365.36
	Jun-16	Jun-17	Jun-18	Jun-19	Jun-20	Jun-21	Jun-22			
Current	96.20%	88.11%	87.81%	87.72%	89.75%	89.20%	75.31%			
1-30 Days	3.45%	7.61%	7.63%	6.97%	7.08%	5.73%	10.00%			
31-60 Days	0.35%	2.93%	3.10%	3.33%	2.22%	2.20%	5.25%			
61-90 Days	0.00%	0.54%	0.83%	0.84%	0.85%	1.71%	3.37%			
91-120 Days	0.00%	0.47%	0.28%	0.35%	0.10%	0.25%	2.24%			
121-150 Days	0.00%	0.27%	0.34%	0.71%	0.00%	0.44%	0.97%			
151-180 Days	0.00%	0.07%	0.00%	0.08%	0.00%	0.33%	0.83%			
181+ Days	0.00%	0.00%	0.00%	0.00%	0.00%	0.14%	2.03%			
Current - 90 Days	100.00%	99.20%	99.37%	98.86%	99.90%	98.84%	93.93%			
91-180 Days	0.00%	0.80%	0.63%	1.14%	0.10%	1.01%	4.04%			



Personal Loans - La Hipotecaria Panama Migration Analysis (2017 Vintage)

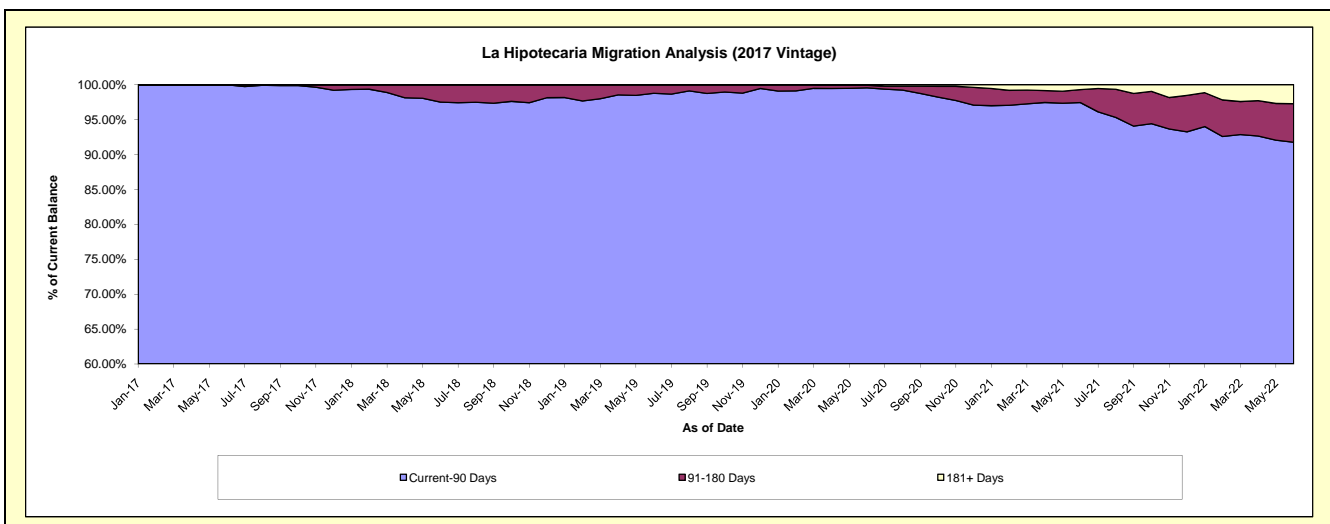
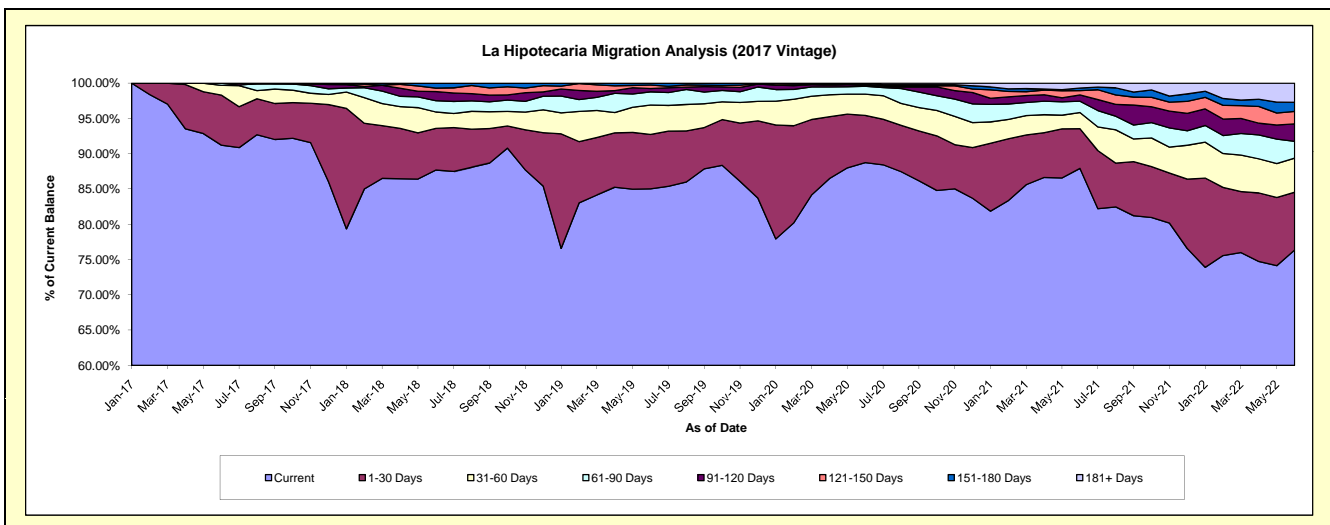
Delinquency Status (\$ of Current Balance)

Data Cutoff: 6/30/2022

Current Portfolio Balance	-	-	-	-	4,931,572.00	9,182,778.62	7,527,606.69	6,697,337.54	6,156,124.44	5,559,781.66
					Jun-17	Jun-18	Jun-19	Jun-20	Jun-21	Jun-22
Current					4,498,512.72	8,052,155.43	6,400,174.17	5,942,840.83	5,412,676.60	4,245,235.99
1-30 Days					350,165.93	542,046.67	580,156.48	448,879.13	345,945.20	454,840.98
31-60 Days					67,893.35	213,675.18	314,153.88	201,977.04	141,676.47	268,566.74
61-90 Days					15,000.00	147,133.98	140,979.88	74,034.91	98,413.01	133,104.19
91-120 Days					-	118,831.24	34,259.44	9,742.71	54,782.18	137,283.99
121-150 Days					-	44,480.65	38,496.39	4,901.69	38,214.27	98,600.27
151-180 Days					-	64,455.47	19,386.45	9,968.79	21,788.18	71,326.87
181+ Days					-	-	-	4,992.44	42,628.53	150,822.63

Delinquency Status (% of Current Balance)

Current Portfolio Balance	-	-	-	-	4,931,572.00	9,182,778.62	7,527,606.69	6,697,337.54	6,156,124.44	5,559,781.66
					Jun-17	Jun-18	Jun-19	Jun-20	Jun-21	Jun-22
Current					91.22%	87.69%	85.02%	88.73%	87.92%	76.36%
1-30 Days					7.10%	5.90%	7.71%	6.70%	5.62%	8.18%
31-60 Days					1.38%	2.33%	4.17%	3.02%	2.30%	4.83%
61-90 Days					0.30%	1.60%	1.87%	1.11%	1.60%	2.39%
91-120 Days					0.00%	1.29%	0.46%	0.15%	0.89%	2.47%
121-150 Days					0.00%	0.48%	0.51%	0.07%	0.62%	1.77%
151-180 Days					0.00%	0.70%	0.26%	0.15%	0.35%	1.28%
181+ Days					0.00%	0.00%	0.00%	0.07%	0.69%	2.71%
Current - 90 Days					100.00%	97.52%	98.78%	99.56%	97.44%	91.76%
91-180 Days					0.00%	2.48%	1.22%	0.37%	1.86%	5.53%



Personal Loans - La Hipotecaria Panama Migration Analysis (2018 Vintage)

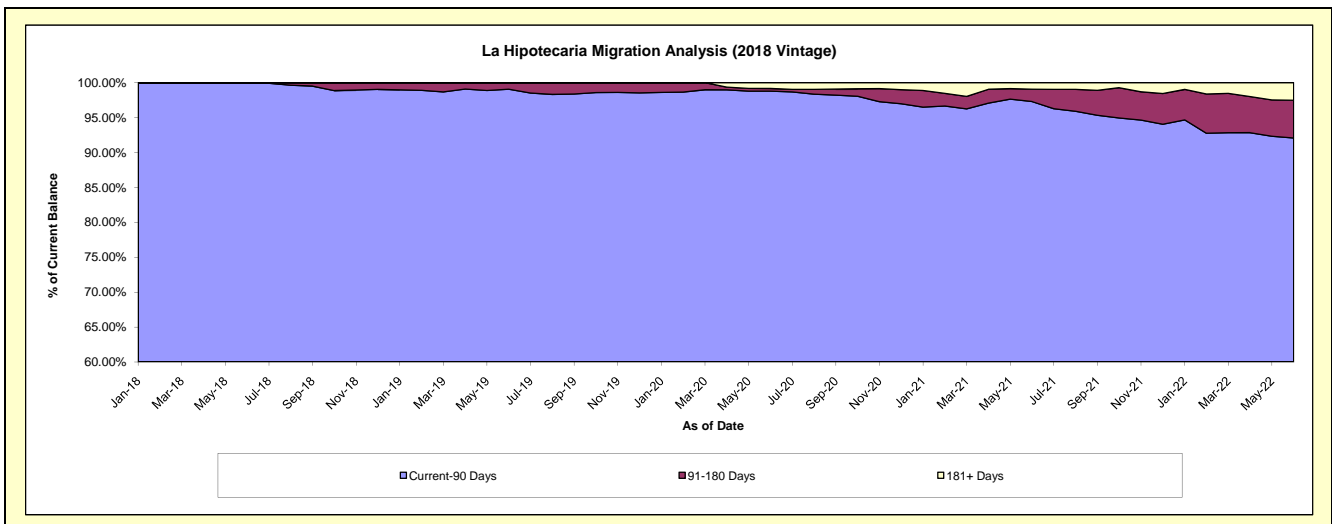
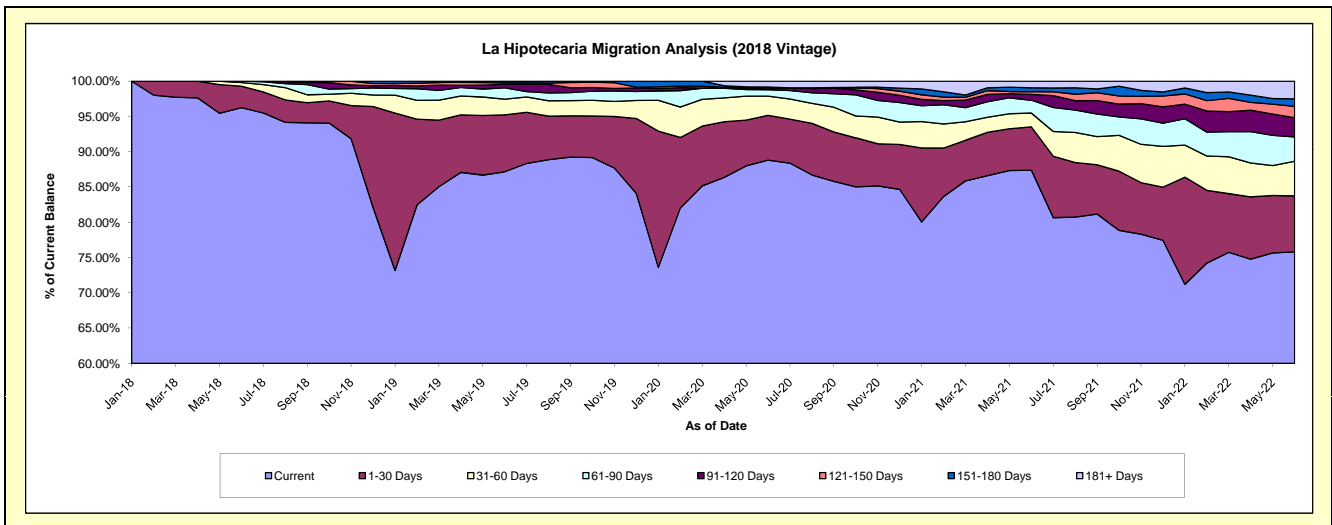
Delinquency Status (\$ of Current Balance)

Data Cutoff: 6/30/2022

Current Portfolio Balance	-	-	-	-	-	5,223,727.53	10,144,285.49	8,897,254.94	8,156,351.58	7,415,057.76
						Jun-18	Jun-19	Jun-20	Jun-21	Jun-22
Current						5,027,320.17	8,842,114.04	7,902,213.43	7,127,601.38	5,621,952.25
1-30 Days						158,691.88	817,106.13	564,924.82	500,062.42	587,382.48
31-60 Days						27,784.86	227,152.38	242,295.90	160,559.25	364,015.24
61-90 Days						9,930.62	163,394.97	80,257.38	147,754.26	255,026.02
91-120 Days						-	50,055.79	9,907.76	68,240.41	202,732.81
121-150 Days						-	19,642.62	18,846.78	30,528.33	118,714.60
151-180 Days						-	24,819.56	5,455.73	45,297.44	79,708.93
181+ Days						-	-	73,353.14	76,308.09	185,525.43

Delinquency Status (% of Current Balance)

Current Portfolio Balance	-	-	-	-	-	5,223,727.53	10,144,285.49	8,897,254.94	8,156,351.58	7,415,057.76
						Jun-18	Jun-19	Jun-20	Jun-21	Jun-22
Current						96.24%	87.16%	88.82%	87.39%	75.82%
1-30 Days						3.04%	8.05%	6.35%	6.13%	7.92%
31-60 Days						0.53%	2.24%	2.72%	1.97%	4.91%
61-90 Days						0.19%	1.61%	0.90%	1.81%	3.44%
91-120 Days						0.00%	0.49%	0.11%	0.84%	2.73%
121-150 Days						0.00%	0.19%	0.21%	0.37%	1.60%
151-180 Days						0.00%	0.24%	0.06%	0.56%	1.07%
181+ Days						0.00%	0.00%	0.82%	0.94%	2.50%
Current - 90 Days						100.00%	99.07%	98.79%	97.30%	92.09%
91-180 Days						0.00%	0.93%	0.38%	1.77%	5.41%



Personal Loans - La Hipotecaria Panama Migration Analysis (2019 Vintage)

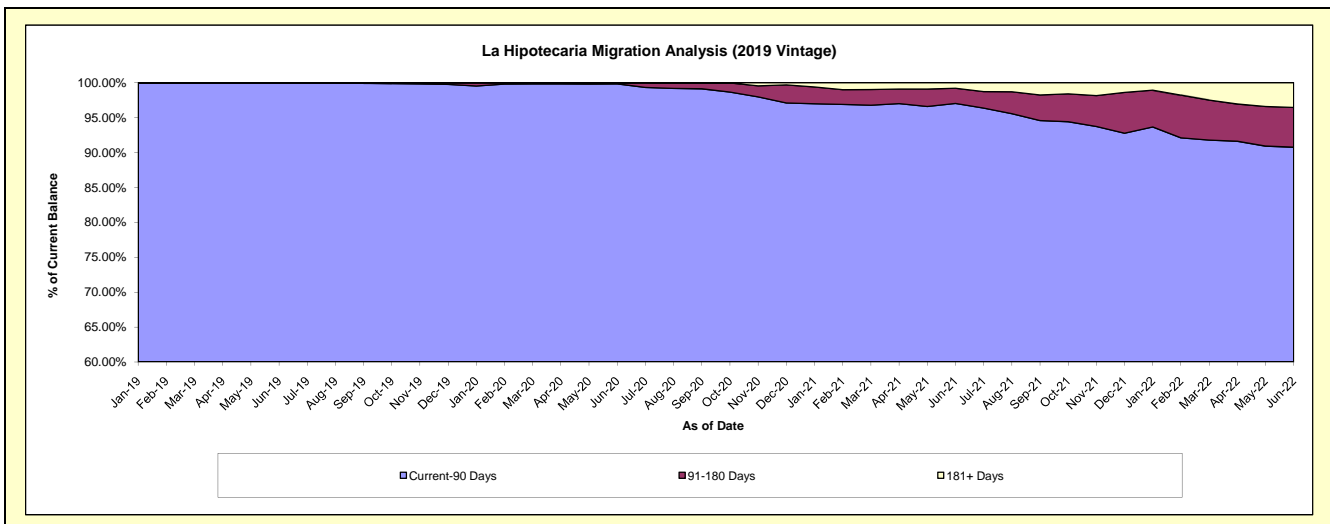
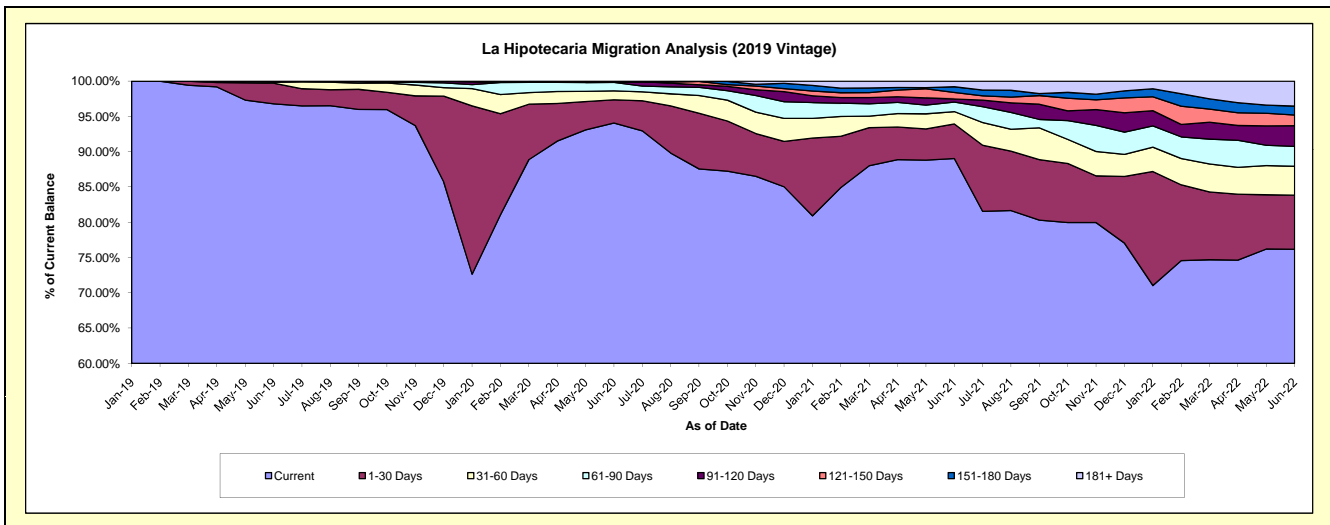
Delinquency Status (\$ of Current Balance)

Data Cutoff: 6/30/2022

Current Portfolio Balance	-	-	-	-	-	-	-	6,777,142.47	12,106,475.56	11,323,265.94	10,381,787.31
								Jun-19	Jun-20	Jun-21	Jun-22
Current								6,560,202.42	11,389,068.33	10,081,704.68	7,908,689.81
1-30 Days								197,108.82	398,098.99	555,219.90	794,829.88
31-60 Days								7,898.04	152,308.55	197,983.33	425,741.17
61-90 Days								11,933.19	147,344.22	153,110.15	293,990.79
91-120 Days								-	5,000.00	48,625.71	303,584.24
121-150 Days								-	4,896.96	105,396.03	156,443.86
151-180 Days								-	4,819.86	91,392.48	131,290.03
181+ Days								-	4,938.65	89,833.66	367,217.53

Delinquency Status (% of Current Balance)

Current Portfolio Balance	-	-	-	-	-	-	-	6,777,142.47	12,106,475.56	11,323,265.94	10,381,787.31
								Jun-19	Jun-20	Jun-21	Jun-22
Current								96.80%	94.07%	89.04%	76.18%
1-30 Days								2.91%	3.29%	4.90%	7.66%
31-60 Days								0.12%	1.26%	1.75%	4.10%
61-90 Days								0.18%	1.22%	1.35%	2.83%
91-120 Days								0.00%	0.04%	0.43%	2.92%
121-150 Days								0.00%	0.04%	0.93%	1.51%
151-180 Days								0.00%	0.04%	0.81%	1.26%
181+ Days								0.00%	0.04%	0.79%	3.54%
Current - 90 Days								100.00%	99.84%	97.04%	90.77%
91-180 Days								0.00%	0.12%	2.17%	5.70%



Personal Loans - La Hipotecaria Panama Migration Analysis (2020 Vintage)

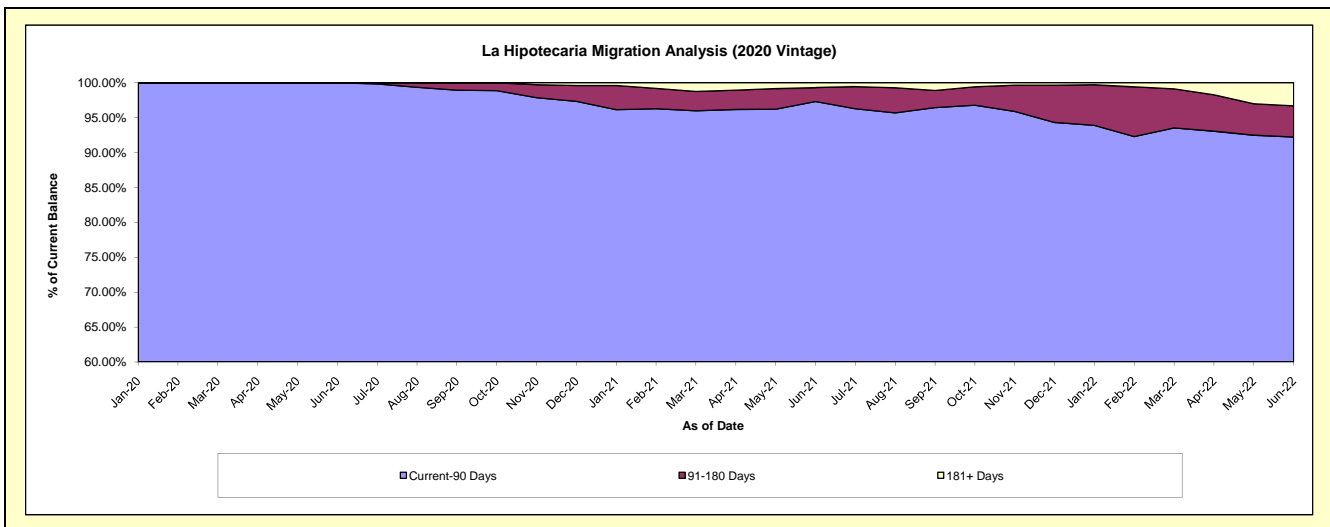
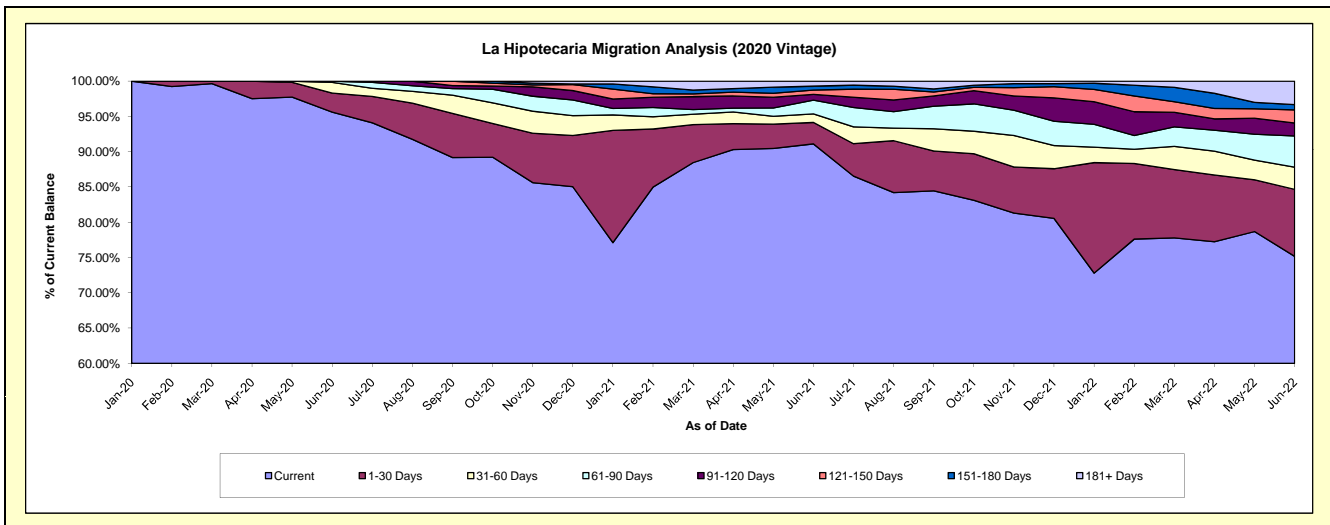
Delinquency Status (\$ of Current Balance)

Data Cutoff: 6/30/2022

Current Portfolio Balance	-	-	-	-	-	-	-	-	-	2,955,245.39	3,510,898.34	3,265,419.95
										Jun-20	Jun-21	Jun-22
Current										2,825,362.56	3,198,765.87	2,454,915.64
1-30 Days										79,889.05	106,659.78	309,913.77
31-60 Days										44,993.78	42,599.02	102,544.20
61-90 Days										5,000.00	68,270.58	144,349.60
91-120 Days										-	28,921.06	60,308.01
121-150 Days										-	21,214.89	60,559.15
151-180 Days										-	19,732.31	24,612.77
181+ Days										-	24,734.83	108,216.81

Delinquency Status (% of Current Balance)

Current Portfolio Balance	-	-	-	-	-	-	-	-	-	2,955,245.39	3,510,898.34	3,265,419.95
										Jun-20	Jun-21	Jun-22
Current										95.61%	91.11%	75.18%
1-30 Days										2.70%	3.04%	9.49%
31-60 Days										1.52%	1.21%	3.14%
61-90 Days										0.17%	1.94%	4.42%
91-120 Days										0.00%	0.82%	1.85%
121-150 Days										0.00%	0.60%	1.85%
151-180 Days										0.00%	0.56%	0.75%
181+ Days										0.00%	0.70%	3.31%
Current - 90 Days										100.00%	97.31%	92.23%
91-180 Days										0.00%	1.99%	4.46%



Personal Loans - La Hipotecaria Panama Migration Analysis (2021 Vintage)

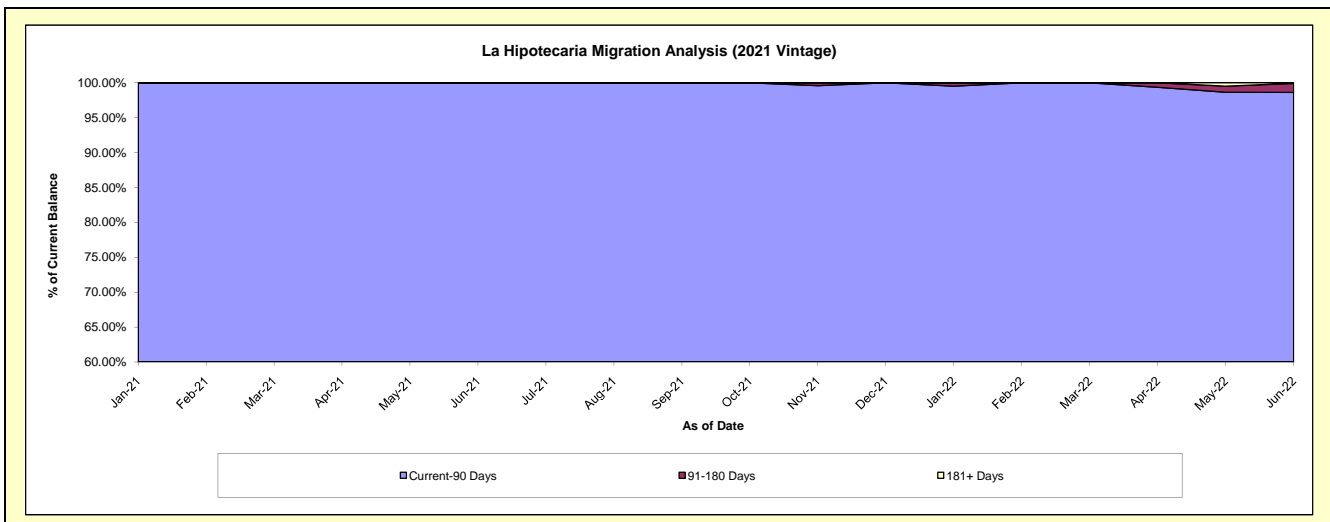
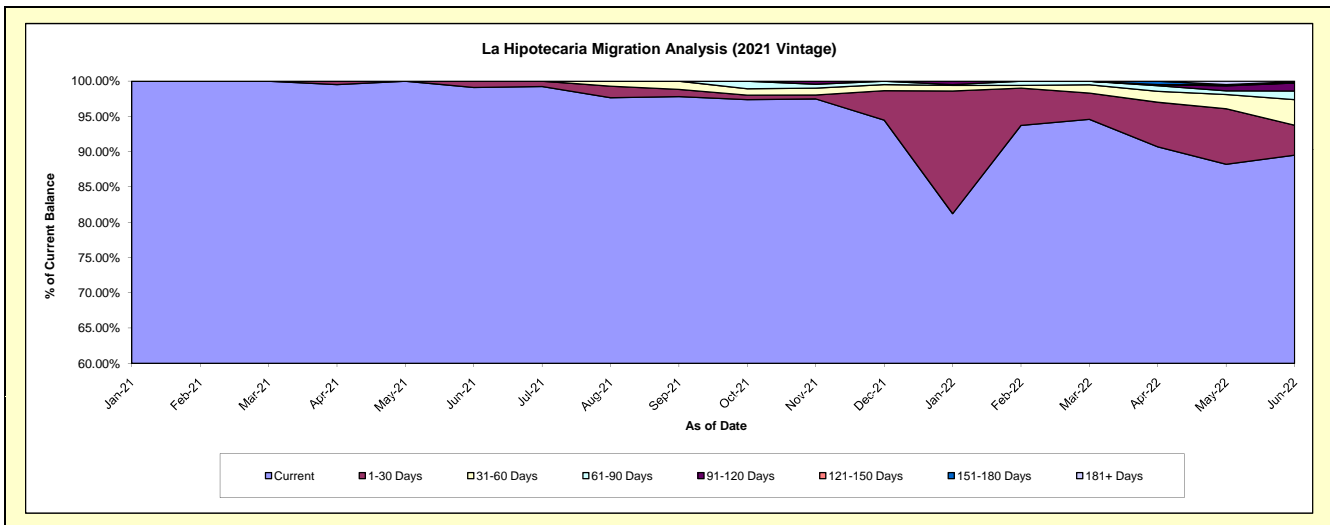
Delinquency Status (\$ of Current Balance)

Data Cutoff: 6/30/2022

Current Portfolio Balance										693,245.17	1,330,716.43
										Jun-21	Jun-22
Current										686,971.53	1,191,056.84
1-30 Days										6,273.64	56,446.63
31-60 Days										-	48,323.07
61-90 Days										-	16,352.18
91-120 Days										-	15,111.65
121-150 Days										-	-
151-180 Days										-	2,210.87
181+ Days										-	1,215.19

Delinquency Status (% of Current Balance)

Current Portfolio Balance										693,245.17	1,330,716.43
										Jun-21	Jun-22
Current										99.10%	89.50%
1-30 Days										0.90%	4.24%
31-60 Days										0.00%	3.63%
61-90 Days										0.00%	1.23%
91-120 Days										0.00%	1.14%
121-150 Days										0.00%	0.00%
151-180 Days										0.00%	0.17%
181+ Days										0.00%	0.09%
Current - 90 Days										100.00%	98.61%
91-180 Days										0.00%	1.30%



Personal Loans - La Hipotecaria Panama Migration Analysis (2022 Vintage)

Delinquency Status (\$ of Current Balance)

Data Cutoff: 6/30/2022

Current Portfolio Balance										789,354.03
										Jun-22
Current										760,545.05
1-30 Days										14,238.10
31-60 Days										-
61-90 Days										-
91-120 Days										14,570.88
121-150 Days										-
151-180 Days										-
181+ Days										-

Delinquency Status (% of Current Balance)

Current Portfolio Balance										789,354.03
										Jun-22
Current										96.35%
1-30 Days										1.80%
31-60 Days										0.00%
61-90 Days										0.00%
91-120 Days										1.85%
121-150 Days										0.00%
151-180 Days										0.00%
181+ Days										0.00%
Current - 90 Days										98.15%
91-180 Days										1.85%

