



ASSET | TECHNOLOGIES LLC

116 West 23rd St., 5th Floor
New York, NY 10011

Migration Analysis for La Hipotecaria S.A. de C.V El Salvador

Mortgages
February 2014

An analysis of historical loan payment data was used to compile a migration analysis of delinquency by annual vintage. Delinquencies for each vintage were grouped into the following buckets; Current, 1-30, 31-60, 61-90, 91-120, 121-150, 151-180, and 180+. Results are provided in graphical and tabular form. The cutoff date is 2/28/2014.

Mortgages - La Hipotecaria El Salvador Migration Analysis (All Vintages)

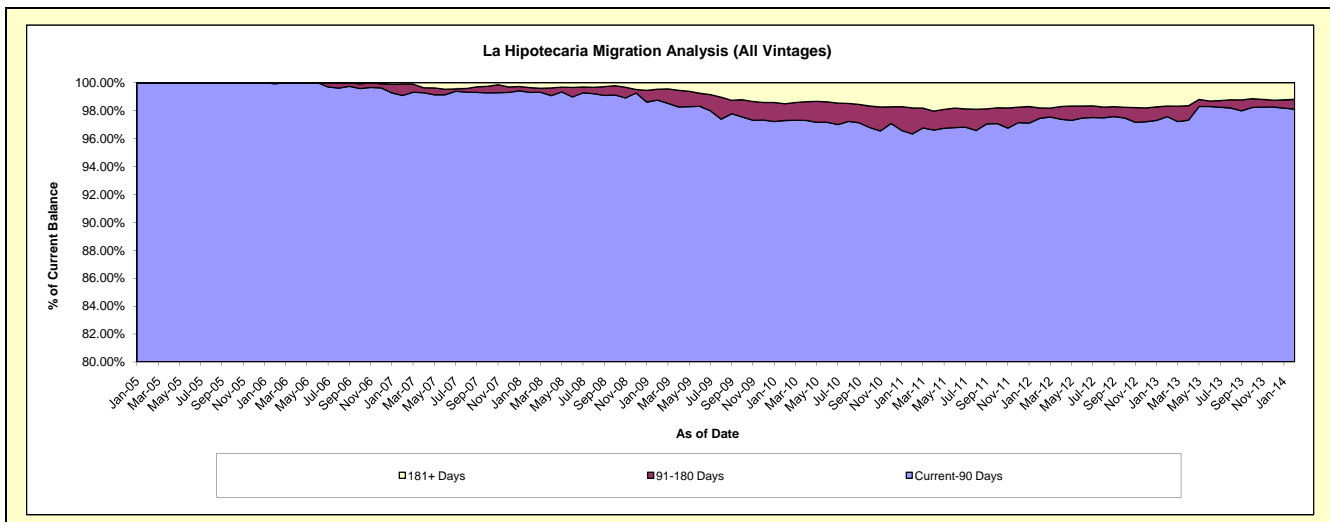
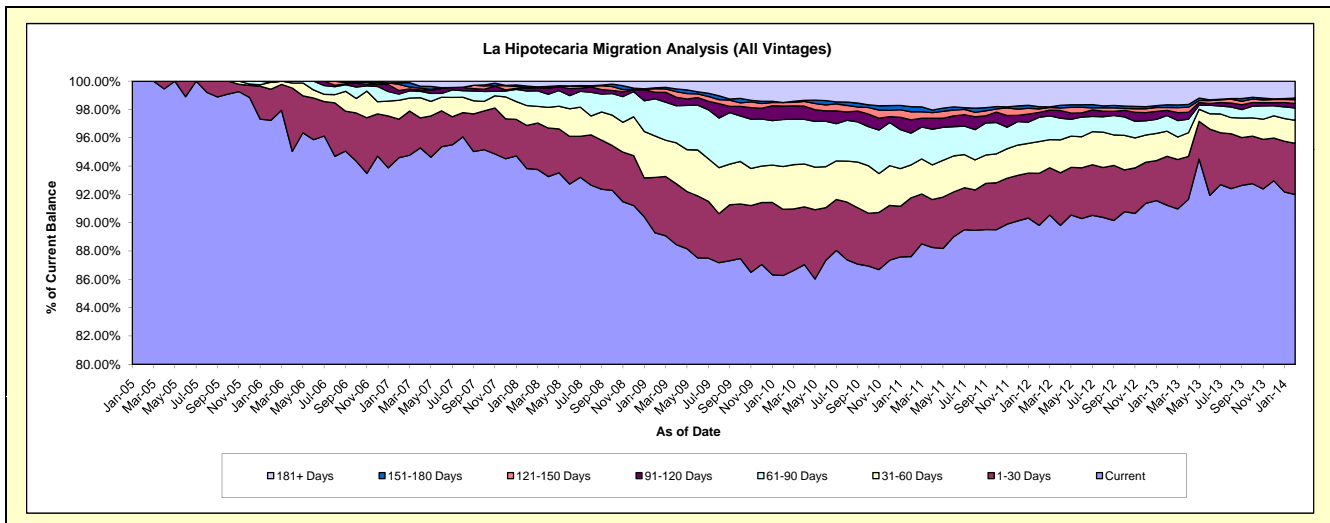
Delinquency Status (\$ of Current Balance)

Data Cutoff: 2/28/2014

Current Portfolio Balance	1,322,383.96	15,009,747.37	37,229,823.35	63,683,441.13	79,064,673.49	78,834,709.16	84,177,530.04	95,089,474.67	113,808,378.78	132,757,175.24
	Feb-05	Feb-06	Feb-07	Feb-08	Feb-09	Feb-10	Feb-11	Feb-12	Feb-13	Feb-14
Current	1,322,383.96	14,594,436.88	35,218,157.30	59,748,438.64	70,601,104.66	68,012,793.88	73,751,500.23	85,407,078.35	103,837,289.14	122,128,991.63
1-30 Days	-	329,811.79	1,012,765.95	1,942,312.56	3,088,672.99	3,687,382.13	3,491,302.36	3,496,282.60	3,935,732.95	4,795,721.75
31-60 Days	-	74,701.94	497,074.68	892,065.06	2,312,698.57	2,384,302.02	1,957,562.06	2,129,513.77	2,012,697.84	2,168,989.70
61-90 Days	-	-	160,836.57	659,648.33	2,078,341.47	2,618,970.85	1,890,647.17	1,631,141.01	1,259,023.21	1,143,981.66
91-120 Days	-	10,796.76	93,717.97	130,415.33	364,001.88	748,104.59	785,703.45	321,940.31	417,650.98	428,908.50
121-150 Days	-	-	162,884.38	15,276.30	192,152.78	194,668.27	476,931.34	236,276.75	225,110.21	361,135.65
151-180 Days	-	-	42,468.33	72,940.68	59,500.74	-	304,874.98	153,662.35	223,075.41	148,504.03
181+ Days	-	-	41,918.17	222,344.23	368,200.40	1,188,487.42	1,519,008.45	1,713,579.53	1,897,799.04	1,580,942.32

Delinquency Status (% of Current Balance)

Current Portfolio Balance	1,322,383.96	15,009,747.37	37,229,823.35	63,683,441.13	79,064,673.49	78,834,709.16	84,177,530.04	95,089,474.67	113,808,378.78	132,757,175.24
	Feb-05	Feb-06	Feb-07	Feb-08	Feb-09	Feb-10	Feb-11	Feb-12	Feb-13	Feb-14
Current	100.00%	97.23%	94.60%	93.82%	89.30%	86.27%	87.61%	89.82%	91.24%	91.99%
1-30 Days	0.00%	2.20%	2.72%	3.05%	3.91%	4.68%	4.15%	3.68%	3.46%	3.61%
31-60 Days	0.00%	0.50%	1.34%	1.40%	2.93%	3.02%	2.33%	2.24%	1.77%	1.63%
61-90 Days	0.00%	0.00%	0.43%	1.04%	2.63%	3.32%	2.25%	1.72%	1.11%	0.86%
91-120 Days	0.00%	0.07%	0.25%	0.20%	0.46%	0.95%	0.93%	0.34%	0.37%	0.32%
121-150 Days	0.00%	0.00%	0.44%	0.02%	0.24%	0.25%	0.57%	0.25%	0.20%	0.27%
151-180 Days	0.00%	0.00%	0.11%	0.11%	0.08%	0.00%	0.36%	0.16%	0.20%	0.11%
181+ Days	0.00%	0.00%	0.11%	0.35%	0.47%	1.51%	1.80%	1.80%	1.67%	1.19%
Current - 90 Days	100.00%	99.93%	99.08%	99.31%	98.76%	97.30%	96.33%	97.45%	97.57%	98.10%
91-180 Days	0.00%	0.07%	0.80%	0.34%	0.78%	1.20%	1.86%	0.75%	0.76%	0.71%



Mortgages - La Hipotecaria El Salvador Migration Analysis (2005 Vintage)

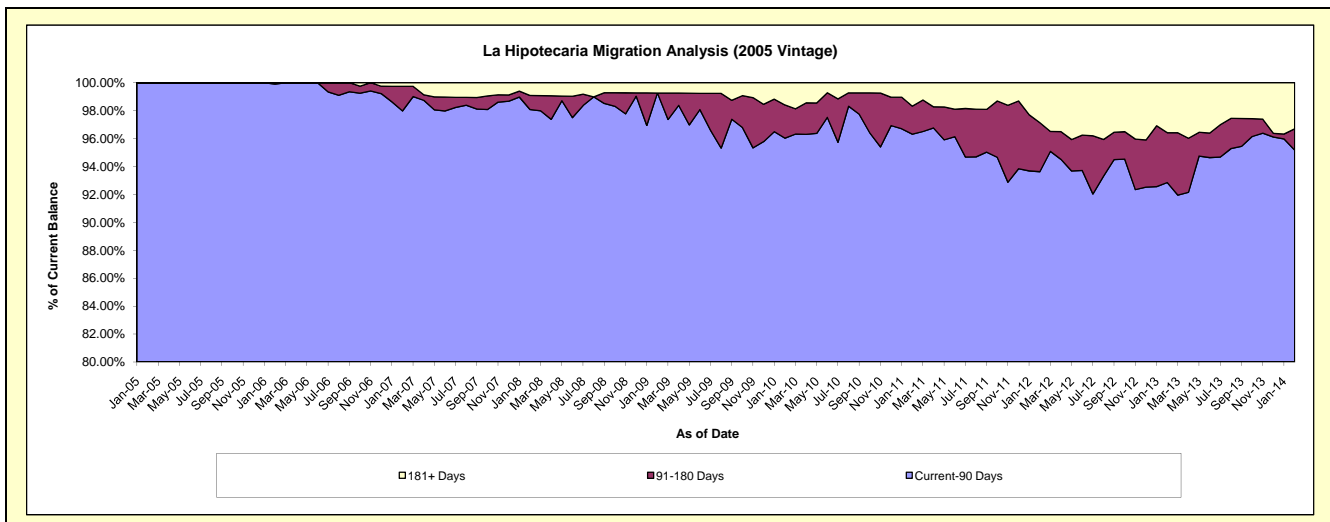
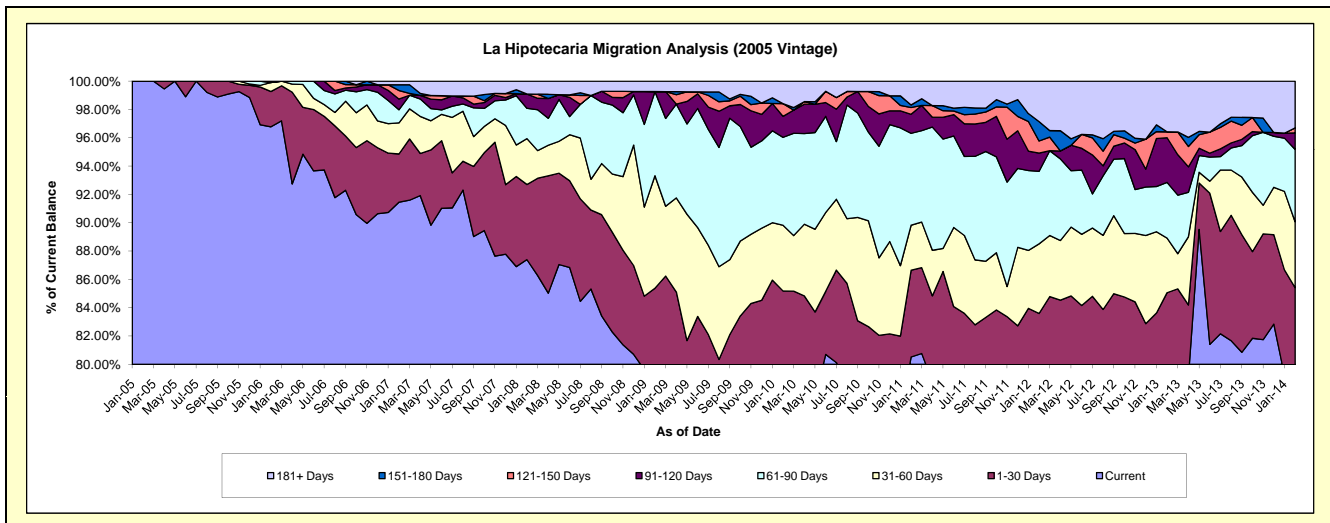
Delinquency Status (\$ of Current Balance)

Data Cutoff: 2/28/2014

Current Portfolio Balance	1,322,383.96	11,721,277.83	10,564,746.86	9,123,266.46	7,921,804.41	7,341,182.09	6,738,968.18	6,106,533.82	5,578,790.75	4,972,502.91
	Feb-05	Feb-06	Feb-07	Feb-08	Feb-09	Feb-10	Feb-11	Feb-12	Feb-13	Feb-14
Current	1,322,383.96	11,343,367.34	9,662,145.77	7,973,372.40	6,215,374.66	5,637,555.22	5,426,199.01	4,656,699.54	4,411,710.26	3,824,098.20
1-30 Days	-	292,411.79	359,420.13	484,063.76	548,045.53	616,014.00	412,775.69	447,792.95	333,791.63	422,883.28
31-60 Days	-	74,701.94	231,687.93	295,434.41	629,269.52	340,895.46	214,344.31	300,239.14	214,678.64	231,532.36
61-90 Days	-	-	97,971.18	195,441.72	470,871.22	455,478.90	437,397.41	312,873.02	219,752.80	254,172.34
91-120 Days	-	10,796.76	80,597.91	91,742.93	-	108,519.18	90,683.32	78,615.15	176,195.79	58,180.11
121-150 Days	-	-	63,423.84	-	-	66,142.68	32,174.55	52,273.45	23,149.86	17,677.21
151-180 Days	-	-	42,468.33	-	-	-	12,308.22	83,641.69	-	-
181+ Days	-	-	27,031.77	83,211.24	58,243.48	116,576.65	113,085.67	174,398.88	199,511.77	163,959.41

Delinquency Status (% of Current Balance)

Current Portfolio Balance	1,322,383.96	11,721,277.83	10,564,746.86	9,123,266.46	7,921,804.41	7,341,182.09	6,738,968.18	6,106,533.82	5,578,790.75	4,972,502.91
	Feb-05	Feb-06	Feb-07	Feb-08	Feb-09	Feb-10	Feb-11	Feb-12	Feb-13	Feb-14
Current	100.00%	96.78%	91.46%	87.40%	78.46%	76.79%	80.52%	76.26%	79.08%	76.90%
1-30 Days	0.00%	2.49%	3.40%	5.31%	6.92%	8.39%	6.13%	7.33%	5.98%	8.50%
31-60 Days	0.00%	0.64%	2.19%	3.24%	7.94%	4.64%	3.18%	4.92%	3.85%	4.66%
61-90 Days	0.00%	0.00%	0.93%	2.14%	5.94%	6.20%	6.49%	5.12%	3.94%	5.11%
91-120 Days	0.00%	0.09%	0.76%	1.01%	0.00%	1.48%	1.35%	1.29%	3.16%	1.17%
121-150 Days	0.00%	0.00%	0.60%	0.00%	0.00%	0.90%	0.48%	0.86%	0.41%	0.36%
151-180 Days	0.00%	0.00%	0.40%	0.00%	0.00%	0.00%	0.18%	1.37%	0.00%	0.00%
181+ Days	0.00%	0.00%	0.26%	0.91%	0.74%	1.59%	1.68%	2.86%	3.58%	3.30%
Current - 90 Days	100.00%	99.91%	97.98%	98.08%	99.26%	96.03%	96.32%	93.63%	92.85%	95.18%
91-180 Days	0.00%	0.09%	1.77%	1.01%	0.00%	2.38%	2.01%	3.51%	3.57%	1.53%



Mortgages - La Hipotecaria El Salvador Migration Analysis (2006 Vintage)

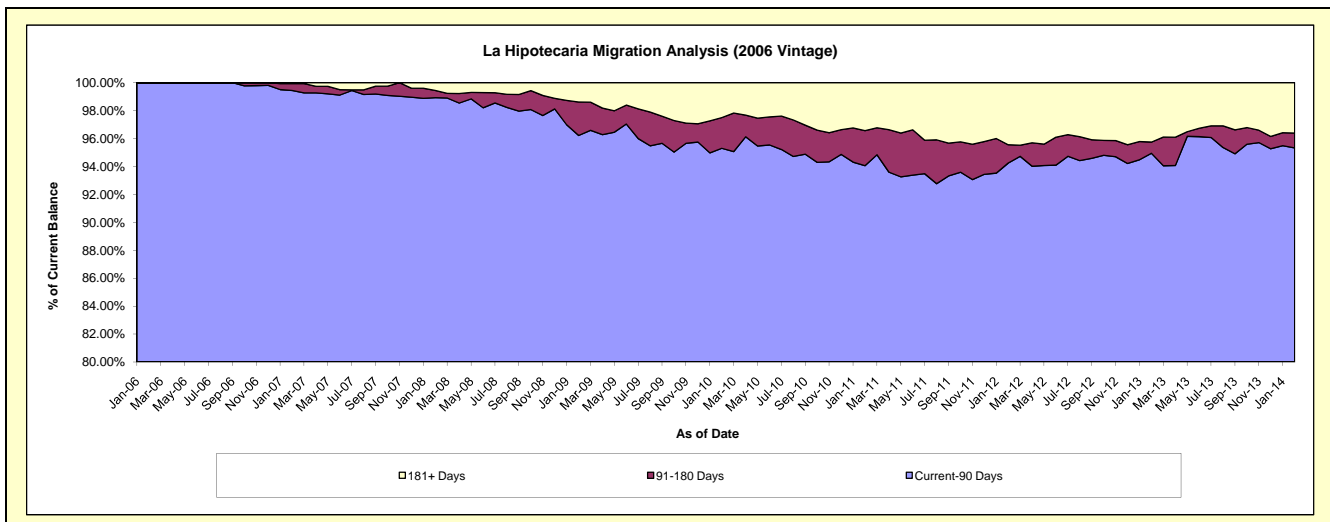
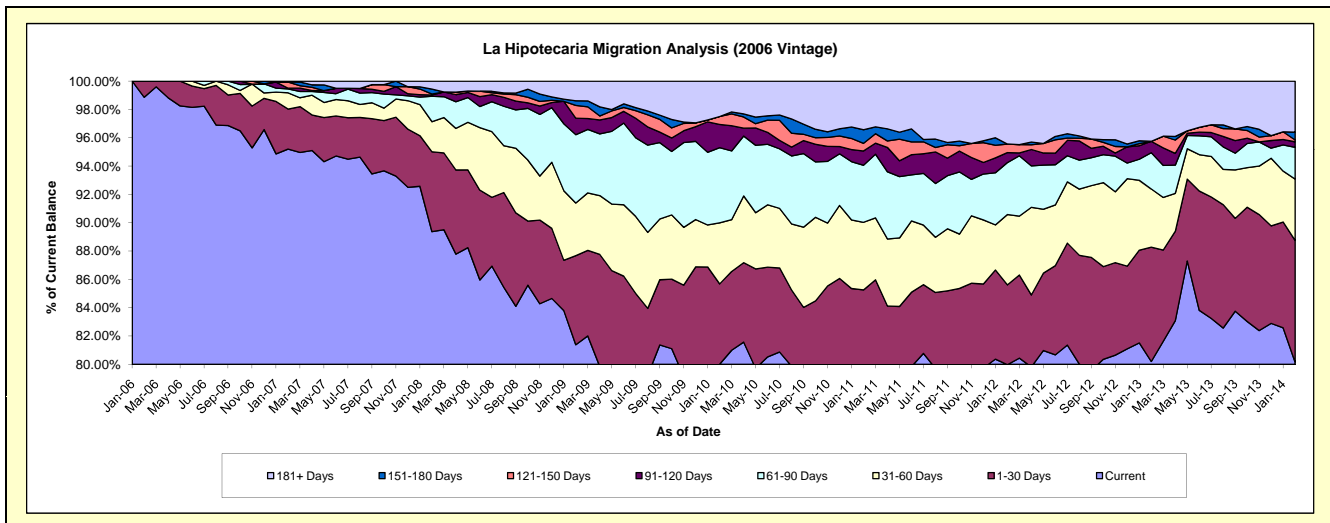
Delinquency Status (\$ of Current Balance)

Data Cutoff: 2/28/2014

Current Portfolio Balance	-	3,288,469.54	23,127,991.41	20,938,334.82	18,195,801.20	16,721,776.14	15,475,668.23	13,986,679.46	12,447,528.82	11,389,647.17
	Feb-06	Feb-07	Feb-08	Feb-09	Feb-10	Feb-11	Feb-12	Feb-13	Feb-14	
Current	3,251,069.54	22,018,926.45	18,712,457.27	14,808,749.44	13,379,453.42	12,258,504.56	11,185,898.71	9,983,561.46	9,129,098.66	
1-30 Days	37,400.00	653,345.82	1,181,411.23	1,145,219.86	948,229.33	935,283.14	788,458.14	1,004,592.19	978,867.82	
31-60 Days	-	265,386.75	445,185.66	676,813.08	720,421.96	739,359.91	695,306.29	512,273.10	493,996.43	
61-90 Days	-	62,865.39	374,804.93	877,531.69	888,215.82	623,179.40	512,570.46	318,269.96	256,058.22	
91-120 Days	-	13,120.06	19,198.24	211,403.29	274,378.13	156,466.21	98,637.79	99,858.11	43,836.63	
121-150 Days	-	99,460.54	15,276.30	164,561.51	93,747.92	83,094.67	84,537.49	-	14,896.79	
151-180 Days	-	-	72,940.68	59,500.74	-	148,605.60	-	-	62,382.66	
181+ Days	-	14,886.40	117,060.51	252,021.59	417,329.56	531,174.74	621,270.58	528,974.00	410,509.96	

Delinquency Status (% of Current Balance)

Current Portfolio Balance	-	3,288,469.54	23,127,991.41	20,938,334.82	18,195,801.20	16,721,776.14	15,475,668.23	13,986,679.46	12,447,528.82	11,389,647.17
	Feb-06	Feb-07	Feb-08	Feb-09	Feb-10	Feb-11	Feb-12	Feb-13	Feb-14	
Current	98.86%	95.20%	89.37%	81.39%	80.01%	79.21%	79.98%	80.21%	80.15%	
1-30 Days	1.14%	2.82%	5.64%	6.29%	5.67%	6.04%	5.64%	8.07%	8.59%	
31-60 Days	0.00%	1.15%	2.13%	3.72%	4.31%	4.78%	4.97%	4.12%	4.34%	
61-90 Days	0.00%	0.27%	1.79%	4.82%	5.31%	4.03%	3.66%	2.56%	2.25%	
91-120 Days	0.00%	0.06%	0.09%	1.16%	1.64%	1.01%	0.71%	0.80%	0.38%	
121-150 Days	0.00%	0.43%	0.07%	0.90%	0.56%	0.54%	0.60%	0.00%	0.13%	
151-180 Days	0.00%	0.00%	0.35%	0.33%	0.00%	0.96%	0.00%	0.00%	0.55%	
181+ Days	0.00%	0.06%	0.56%	1.39%	2.50%	3.43%	4.44%	4.25%	3.60%	
Current - 90 Days	100.00%	99.45%	98.93%	96.22%	95.30%	94.06%	94.25%	94.95%	95.33%	
91-180 Days	0.00%	0.49%	0.51%	2.39%	2.20%	2.51%	1.31%	0.80%	1.06%	



Mortgages - La Hipotecaria El Salvador Migration Analysis (2007 Vintage)

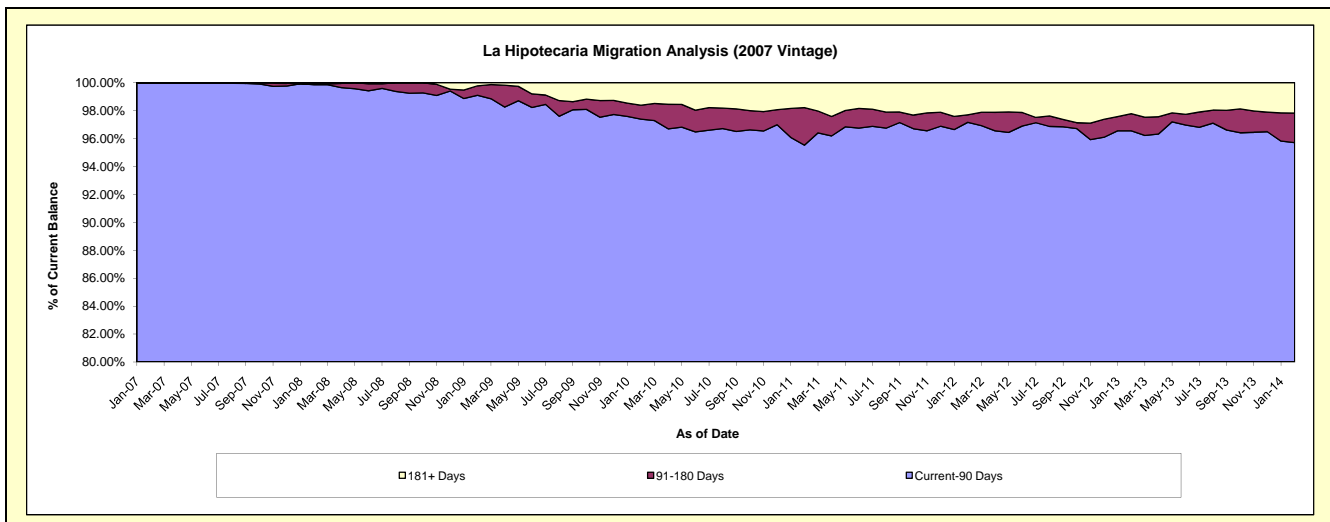
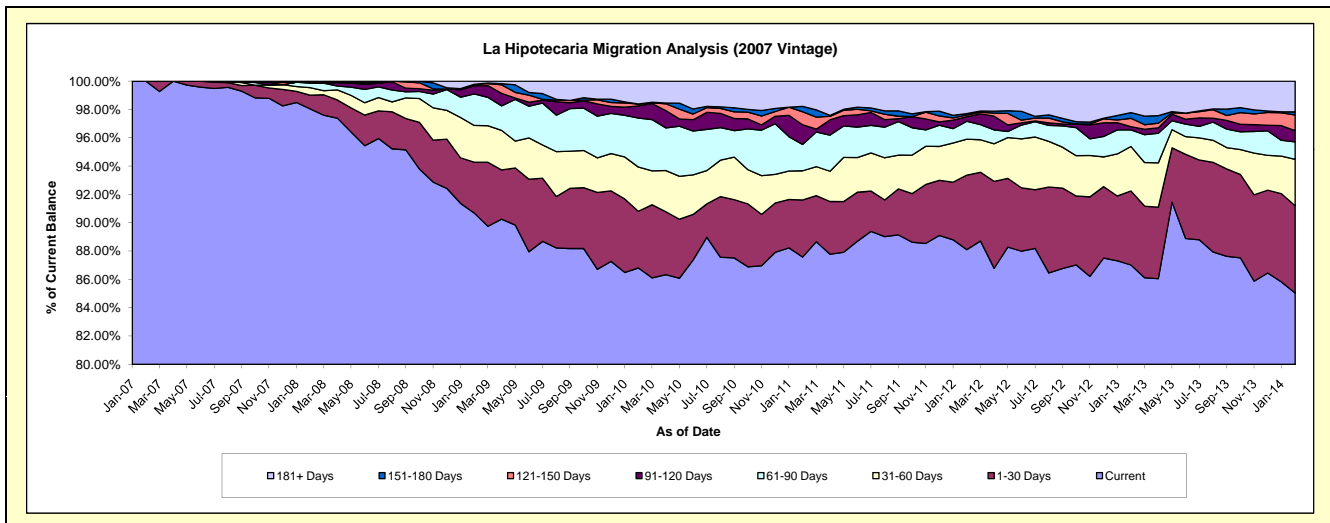
Delinquency Status (\$ of Current Balance)

Data Cutoff: 2/28/2014

Current Portfolio Balance	-	-	3,537,085.08	28,573,380.97	26,440,284.71	24,921,511.10	22,986,550.33	21,101,333.41	19,226,566.61	17,522,416.58
	Feb-07	Feb-08	Feb-09	Feb-10	Feb-11	Feb-12	Feb-13	Feb-14		
Current	3,537,085.08	28,014,150.09	23,978,487.48	21,633,394.61	20,131,462.09	18,591,066.42	16,730,308.59	14,900,493.12		
1-30 Days	-	276,837.57	948,531.33	998,354.93	926,586.85	1,110,513.50	1,005,800.38	1,081,236.83		
31-60 Days	-	151,444.99	686,357.56	778,021.34	474,093.32	535,540.08	603,680.03	574,139.93		
61-90 Days	-	89,401.68	588,783.15	862,319.71	427,181.55	265,964.72	224,512.63	214,879.43		
91-120 Days	-	19,474.16	152,598.59	214,459.22	319,593.29	67,771.77	44,972.64	138,758.57		
121-150 Days	-	-	27,591.27	34,777.67	211,034.96	27,170.25	113,149.69	194,488.04		
151-180 Days	-	-	-	-	86,747.21	19,522.02	77,691.36	38,167.82		
181+ Days	-	22,072.48	57,935.33	400,183.62	409,851.06	483,784.65	426,451.29	380,252.84		

Delinquency Status (% of Current Balance)

Current Portfolio Balance	-	-	3,537,085.08	28,573,380.97	26,440,284.71	24,921,511.10	22,986,550.33	21,101,333.41	19,226,566.61	17,522,416.58
	Feb-07	Feb-08	Feb-09	Feb-10	Feb-11	Feb-12	Feb-13	Feb-14		
Current	100.00%	98.04%	90.69%	86.81%	87.58%	88.10%	87.02%	85.04%		
1-30 Days	0.00%	0.97%	3.59%	4.01%	4.03%	5.26%	5.23%	6.17%		
31-60 Days	0.00%	0.53%	2.60%	3.12%	2.06%	2.54%	3.14%	3.28%		
61-90 Days	0.00%	0.31%	2.23%	3.46%	1.86%	1.26%	1.17%	1.23%		
91-120 Days	0.00%	0.07%	0.58%	0.86%	1.39%	0.32%	0.23%	0.79%		
121-150 Days	0.00%	0.00%	0.10%	0.14%	0.92%	0.13%	0.59%	1.11%		
151-180 Days	0.00%	0.00%	0.00%	0.00%	0.38%	0.09%	0.40%	0.22%		
181+ Days	0.00%	0.08%	0.22%	1.61%	1.78%	2.29%	2.22%	2.17%		
Current - 90 Days	100.00%	99.85%	99.10%	97.39%	95.53%	97.16%	96.56%	95.71%		
91-180 Days	0.00%	0.07%	0.68%	1.00%	2.69%	0.54%	1.23%	2.12%		



Mortgages - La Hipotecaria El Salvador Migration Analysis (2008 Vintage)

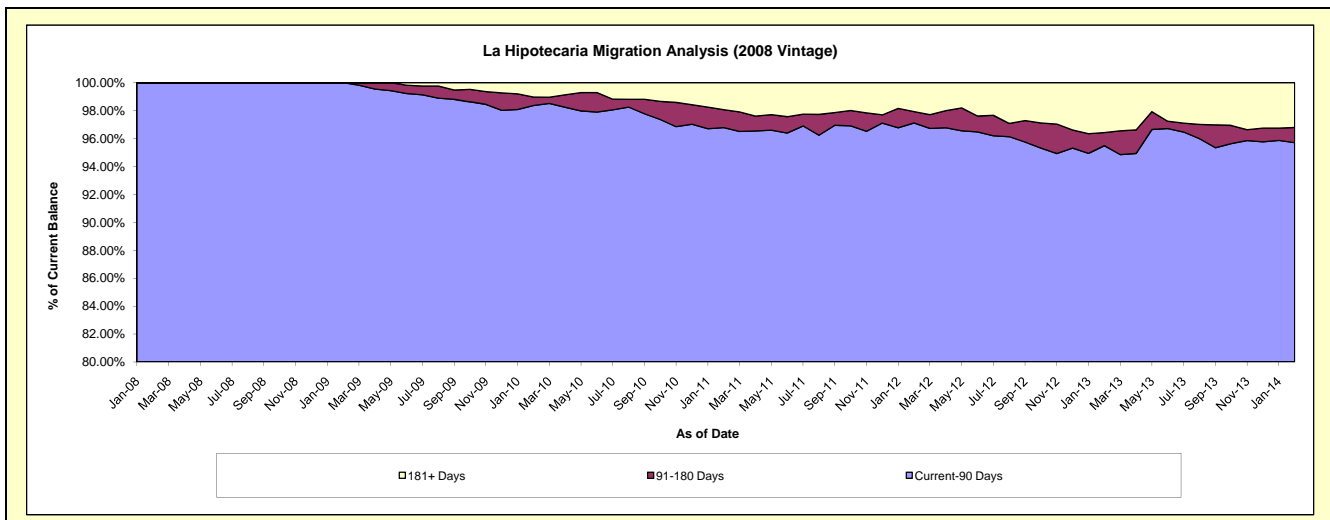
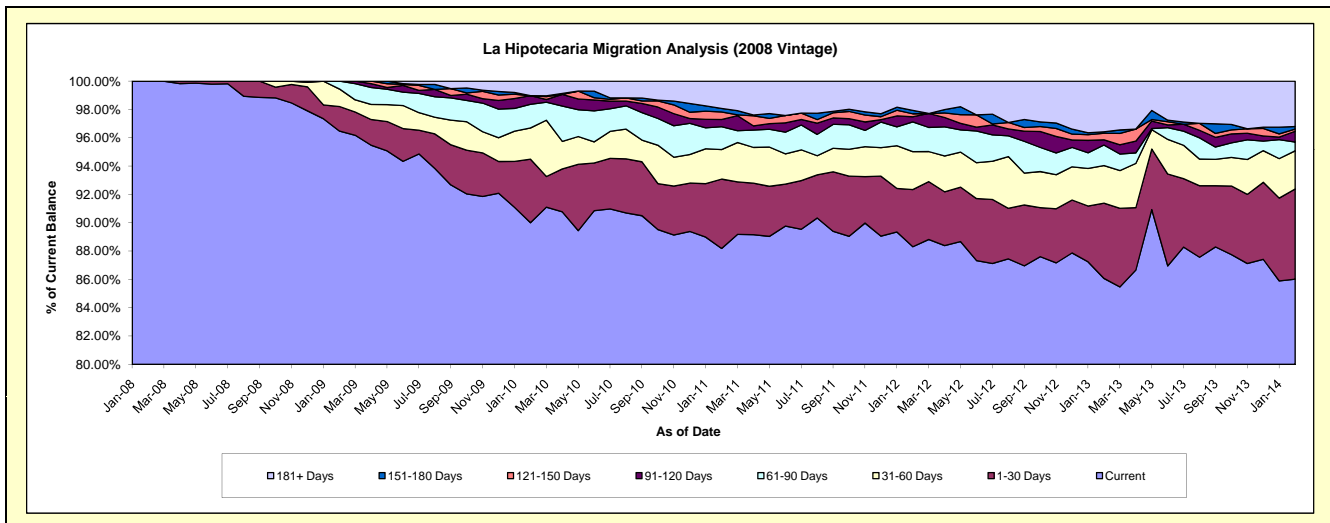
Delinquency Status (\$ of Current Balance)

Data Cutoff: 2/28/2014

Current Portfolio Balance	-	-	-	5,048,458.88	25,820,546.86	24,745,408.57	23,241,552.73	21,019,905.00	19,220,284.74	17,242,850.67
	Feb-08	Feb-09	Feb-10	Feb-11	Feb-12	Feb-13	Feb-14			
Current	5,048,458.88	24,912,256.77	22,271,589.65	20,496,126.27	18,562,098.10	16,543,400.86	14,832,418.13			
1-30 Days	-	446,876.27	1,110,753.59	1,138,136.70	848,810.34	1,020,366.78	1,097,864.75			
31-60 Days	-	320,258.41	544,963.26	484,635.52	562,273.52	511,079.91	463,997.70			
61-90 Days	-	141,155.41	412,956.42	376,200.64	441,550.01	279,046.84	108,013.07			
91-120 Days	-	-	150,748.06	117,665.34	76,915.60	70,728.27	130,498.84			
121-150 Days	-	-	-	123,427.05	43,633.37	88,810.66	27,168.04			
151-180 Days	-	-	-	57,213.95	50,498.64	20,127.71	30,917.45			
181+ Days	-	-	254,397.59	448,147.26	434,125.42	686,723.71	551,972.69			

Delinquency Status (% of Current Balance)

Current Portfolio Balance	-	-	-	5,048,458.88	25,820,546.86	24,745,408.57	23,241,552.73	21,019,905.00	19,220,284.74	17,242,850.67
	Feb-08	Feb-09	Feb-10	Feb-11	Feb-12	Feb-13	Feb-14			
Current	100.00%	96.48%	90.00%	88.19%	88.31%	86.07%	86.02%			
1-30 Days	0.00%	1.73%	4.49%	4.90%	4.04%	5.31%	6.37%			
31-60 Days	0.00%	1.24%	2.20%	2.09%	2.67%	2.66%	2.69%			
61-90 Days	0.00%	0.55%	1.67%	1.62%	2.10%	1.45%	0.63%			
91-120 Days	0.00%	0.00%	0.61%	0.51%	0.37%	0.37%	0.76%			
121-150 Days	0.00%	0.00%	0.00%	0.53%	0.21%	0.46%	0.16%			
151-180 Days	0.00%	0.00%	0.00%	0.25%	0.24%	0.10%	0.18%			
181+ Days	0.00%	0.00%	1.03%	1.93%	2.07%	3.57%	3.20%			
Current - 90 Days	100.00%	100.00%	98.36%	96.79%	97.12%	95.49%	95.71%			
91-180 Days	0.00%	0.00%	0.61%	1.28%	0.81%	0.93%	1.09%			



Mortgages - La Hipotecaria El Salvador Migration Analysis (2009 Vintage)

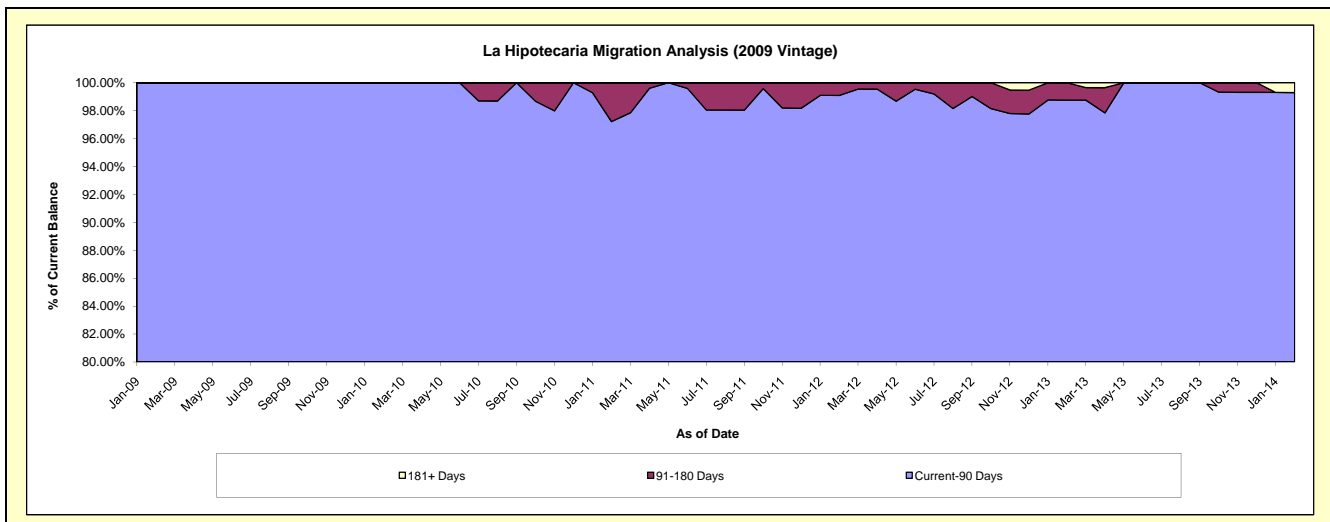
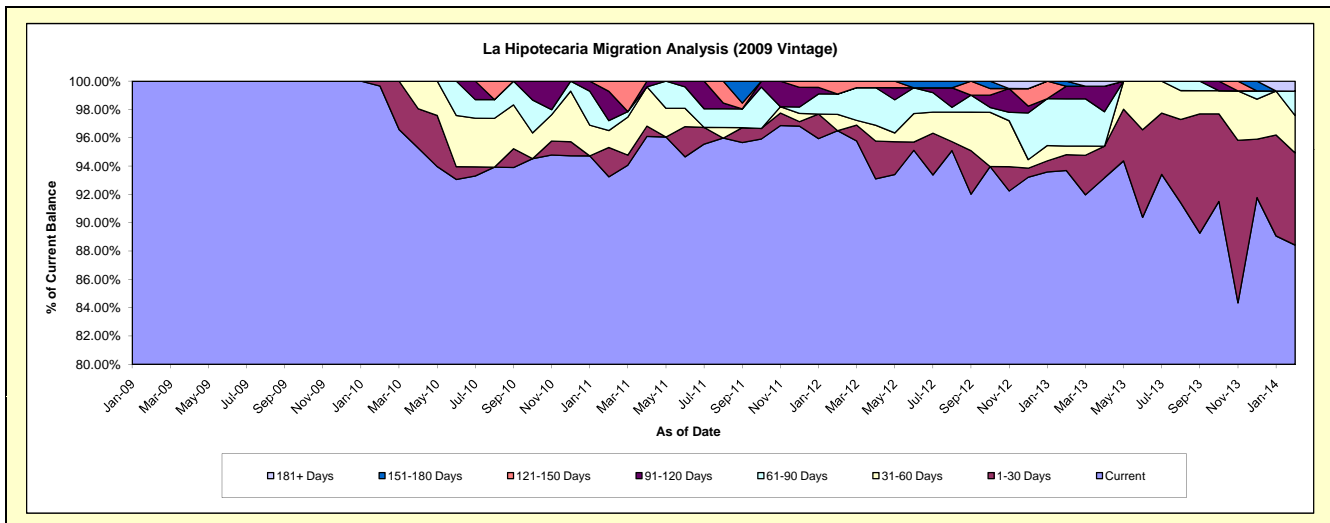
Delinquency Status (\$ of Current Balance)

Data Cutoff: 2/28/2014

Current Portfolio Balance	-	-	-	-	686,236.31	4,043,397.86	3,788,447.11	3,143,956.80	2,904,421.31	2,553,680.88
					Feb-09	Feb-10	Feb-11	Feb-12	Feb-13	Feb-14
Current					686,236.31	4,029,367.58	3,532,570.15	3,034,010.87	2,721,035.02	2,258,098.36
1-30 Days					-	14,030.28	78,519.98	-	32,611.27	166,096.87
31-60 Days					-	-	45,129.00	36,154.74	17,742.09	67,573.23
61-90 Days					-	-	26,688.17	45,129.00	96,878.19	43,803.27
91-120 Days					-	-	78,339.70	-	25,896.17	-
121-150 Days					-	-	27,200.11	28,662.19	-	-
151-180 Days					-	-	-	-	10,258.57	-
181+ Days					-	-	-	-	-	18,109.15

Delinquency Status (% of Current Balance)

Current Portfolio Balance	-	-	-	-	686,236.31	4,043,397.86	3,788,447.11	3,143,956.80	2,904,421.31	2,553,680.88
					Feb-09	Feb-10	Feb-11	Feb-12	Feb-13	Feb-14
Current					100.00%	99.65%	93.25%	96.50%	93.69%	88.43%
1-30 Days					0.00%	0.35%	2.07%	0.00%	1.12%	6.50%
31-60 Days					0.00%	0.00%	1.19%	1.15%	0.61%	2.65%
61-90 Days					0.00%	0.00%	0.70%	1.44%	3.34%	1.72%
91-120 Days					0.00%	0.00%	2.07%	0.00%	0.89%	0.00%
121-150 Days					0.00%	0.00%	0.72%	0.91%	0.00%	0.00%
151-180 Days					0.00%	0.00%	0.00%	0.00%	0.35%	0.00%
181+ Days					0.00%	0.00%	0.00%	0.00%	0.00%	0.71%
Current - 90 Days					100.00%	100.00%	97.21%	99.09%	98.76%	99.29%
91-180 Days					0.00%	0.00%	2.79%	0.91%	1.24%	0.00%



Mortgages - La Hipotecaria El Salvador Migration Analysis (2010 Vintage)

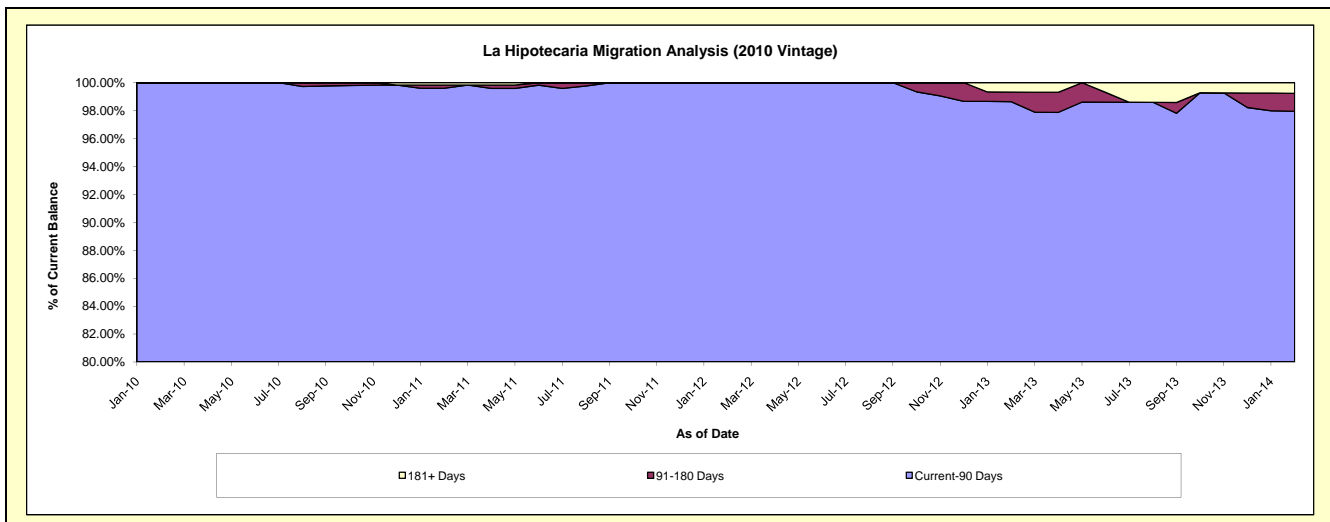
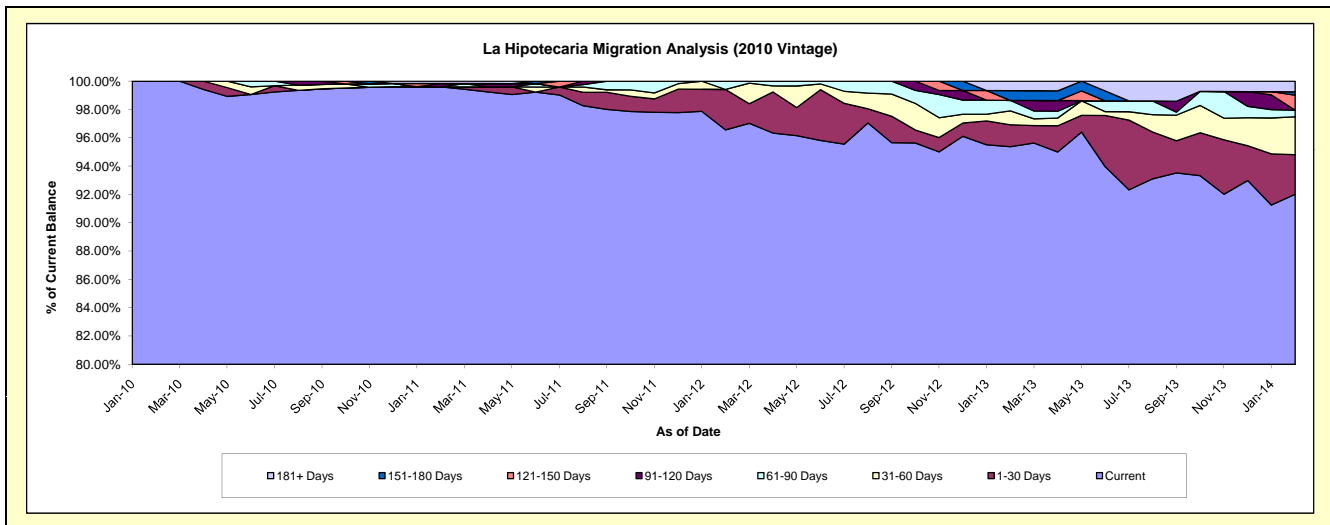
Delinquency Status (\$ of Current Balance)

Data Cutoff: 2/28/2014

Current Portfolio Balance	-	-	-	-	-	1,061,433.40	9,999,923.06	9,036,912.51	8,323,139.75	7,411,479.62
						Feb-10	Feb-11	Feb-12	Feb-13	Feb-14
Current						1,061,433.40	9,960,217.75	8,726,135.22	7,938,075.78	6,819,493.56
1-30 Days						-	-	257,723.49	128,774.95	206,973.68
31-60 Days						-	-	-	81,532.97	198,478.45
61-90 Days						-	-	53,053.80	61,631.60	34,798.66
91-120 Days						-	22,955.59	-	-	-
121-150 Days						-	-	-	-	78,560.90
151-180 Days						-	-	-	56,986.18	17,036.10
181+ Days						-	16,749.72	-	56,138.27	56,138.27

Delinquency Status (% of Current Balance)

Current Portfolio Balance	-	-	-	-	-	1,061,433.40	9,999,923.06	9,036,912.51	8,323,139.75	7,411,479.62
						Feb-10	Feb-11	Feb-12	Feb-13	Feb-14
Current						100.00%	99.60%	96.56%	95.37%	92.01%
1-30 Days						0.00%	0.00%	2.85%	1.55%	2.79%
31-60 Days						0.00%	0.00%	0.00%	0.98%	2.68%
61-90 Days						0.00%	0.00%	0.59%	0.74%	0.47%
91-120 Days						0.00%	0.23%	0.00%	0.00%	0.00%
121-150 Days						0.00%	0.00%	0.00%	0.00%	1.06%
151-180 Days						0.00%	0.00%	0.00%	0.68%	0.23%
181+ Days						0.00%	0.17%	0.00%	0.67%	0.76%
Current - 90 Days						100.00%	99.60%	100.00%	98.64%	97.95%
91-180 Days						0.00%	0.23%	0.00%	0.68%	1.29%



Mortgages - La Hipotecaria El Salvador Migration Analysis (2011 Vintage)

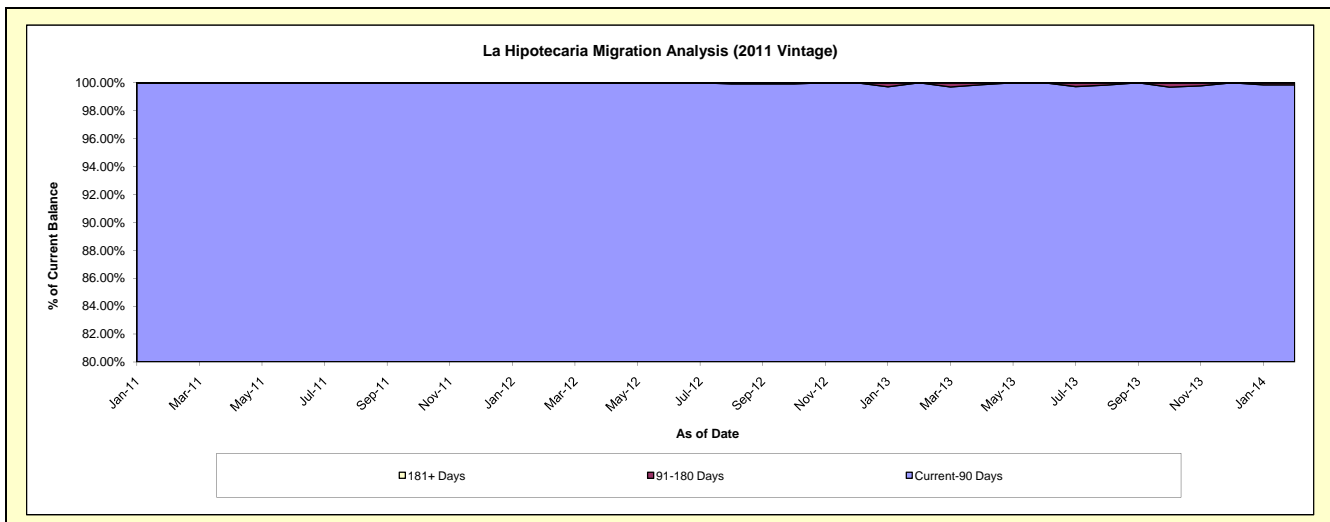
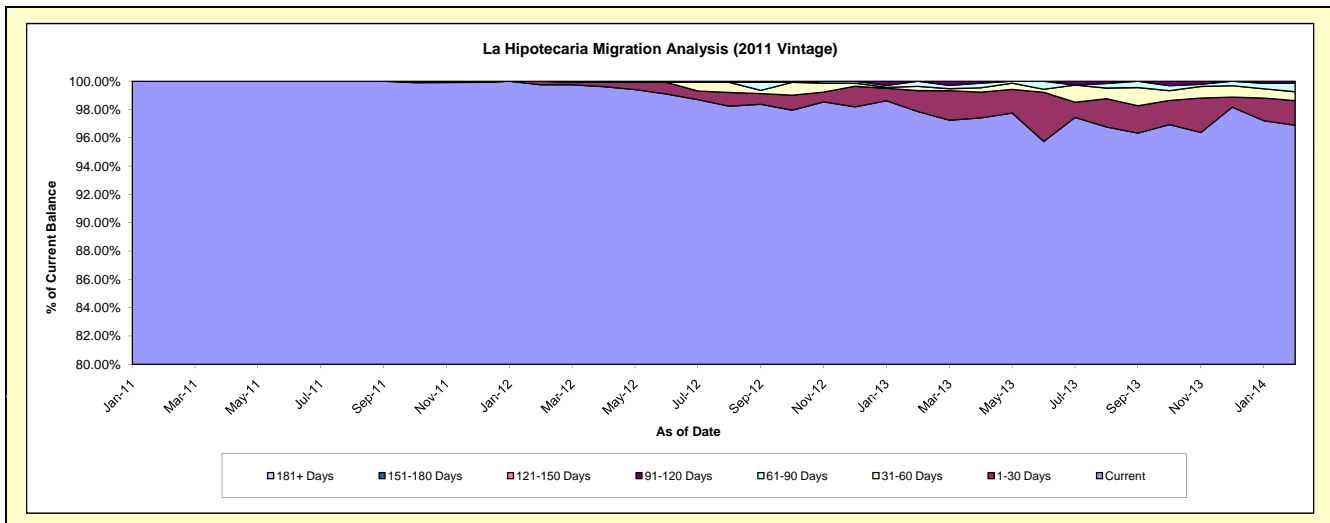
Delinquency Status (\$ of Current Balance)

Data Cutoff: 2/28/2014

Current Portfolio Balance	-	-	-	-	-	-	1,946,420.40	17,141,706.98	16,077,560.07	14,675,210.13
							Feb-11	Feb-12	Feb-13	Feb-14
Current							1,946,420.40	17,098,722.80	15,732,186.00	14,218,208.02
1-30 Days							-	42,984.18	238,087.73	256,176.63
31-60 Days							-	-	48,355.15	91,237.59
61-90 Days							-	-	58,931.19	87,252.43
91-120 Days							-	-	-	22,335.46
121-150 Days							-	-	-	-
151-180 Days							-	-	-	-
181+ Days							-	-	-	-

Delinquency Status (% of Current Balance)

Current Portfolio Balance	-	-	-	-	-	-	1,946,420.40	17,141,706.98	16,077,560.07	14,675,210.13
							Feb-11	Feb-12	Feb-13	Feb-14
Current							100.00%	99.75%	97.85%	96.89%
1-30 Days							0.00%	0.25%	1.48%	1.75%
31-60 Days							0.00%	0.00%	0.30%	0.62%
61-90 Days							0.00%	0.00%	0.37%	0.59%
91-120 Days							0.00%	0.00%	0.00%	0.15%
121-150 Days							0.00%	0.00%	0.00%	0.00%
151-180 Days							0.00%	0.00%	0.00%	0.00%
181+ Days							0.00%	0.00%	0.00%	0.00%
Current - 90 Days							100.00%	100.00%	100.00%	99.85%
91-180 Days							0.00%	0.00%	0.00%	0.15%



Mortgages - La Hipotecaria El Salvador Migration Analysis (2012 Vintage)

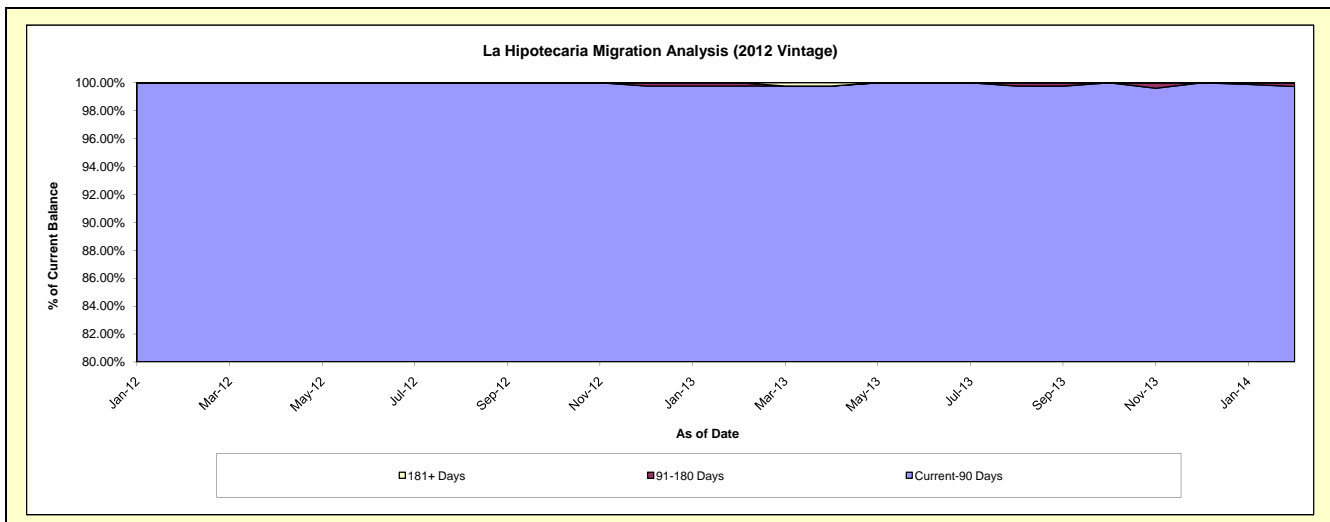
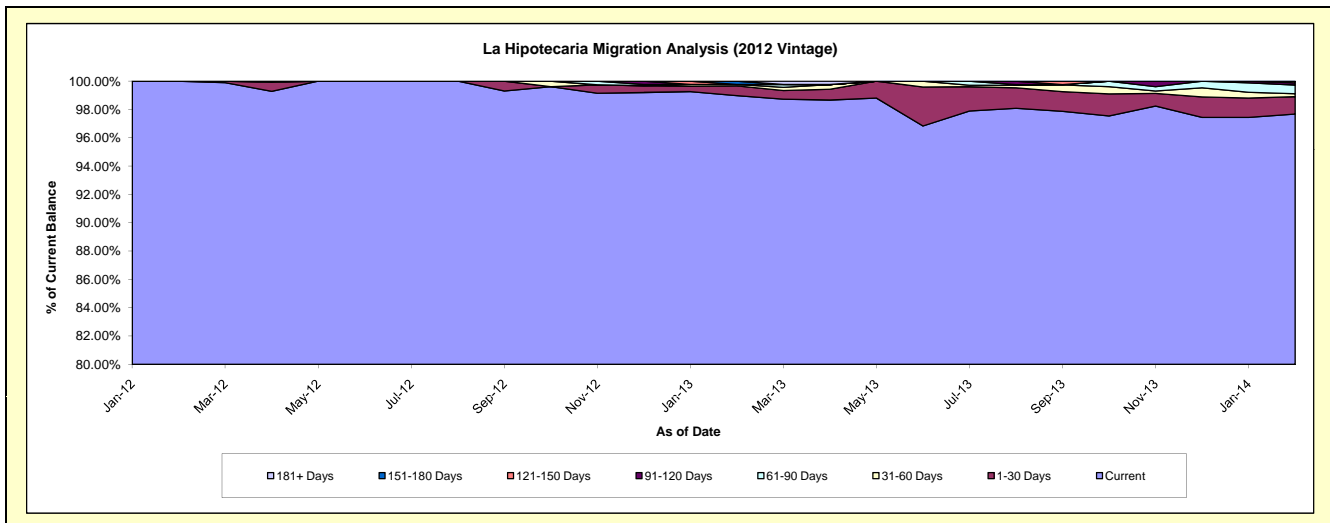
Delinquency Status (\$ of Current Balance)

Data Cutoff: 2/28/2014

Current Portfolio Balance	-	-	-	-	-	-	-	-	3,552,446.69	24,679,550.92	23,406,945.00
									Feb-12	Feb-13	Feb-14
Current									3,552,446.69	24,426,475.36	22,862,509.14
1-30 Days									-	171,708.02	287,754.05
31-60 Days									-	23,355.95	48,034.01
61-90 Days									-	-	145,004.24
91-120 Days									-	-	35,298.89
121-150 Days									-	-	28,344.67
151-180 Days									-	58,011.59	-
181+ Days									-	-	-

Delinquency Status (% of Current Balance)

Current Portfolio Balance	-	-	-	-	-	-	-	-	3,552,446.69	24,679,550.92	23,406,945.00
									Feb-12	Feb-13	Feb-14
Current									100.00%	98.97%	97.67%
1-30 Days									0.00%	0.70%	1.23%
31-60 Days									0.00%	0.09%	0.21%
61-90 Days									0.00%	0.00%	0.62%
91-120 Days									0.00%	0.00%	0.15%
121-150 Days									0.00%	0.00%	0.12%
151-180 Days									0.00%	0.24%	0.00%
181+ Days									0.00%	0.00%	0.00%
Current - 90 Days									100.00%	99.76%	99.73%
91-180 Days									0.00%	0.24%	0.27%



Mortgages - La Hipotecaria El Salvador Migration Analysis (2013 Vintage)

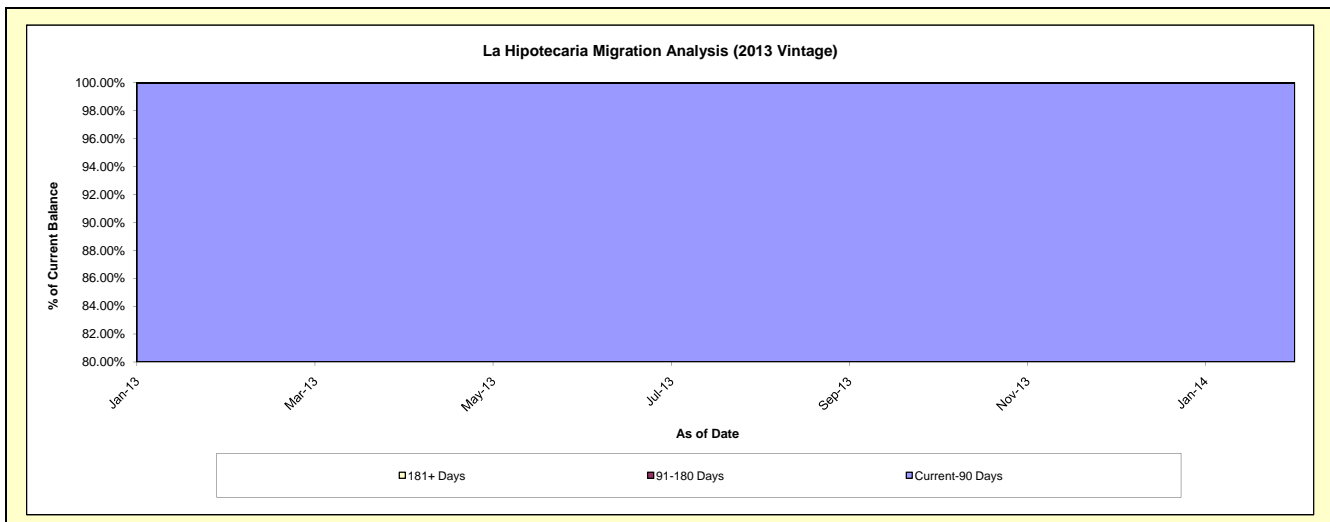
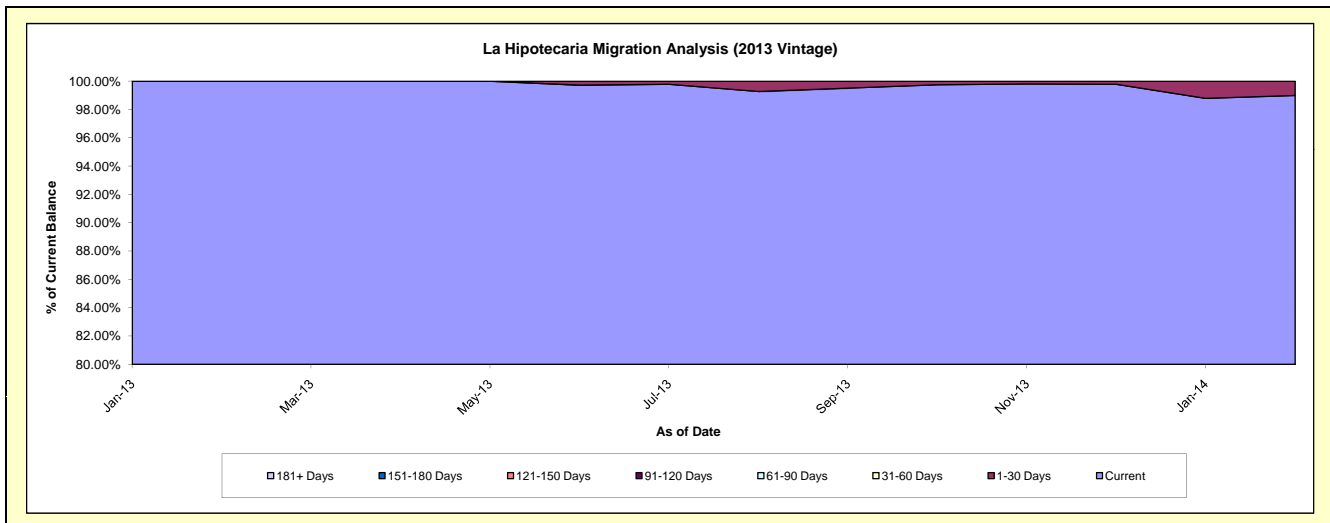
Delinquency Status (\$ of Current Balance)

Data Cutoff: 2/28/2014

Current Portfolio Balance	-	-	-	-	-	-	-	-	-	5,350,535.81	29,358,765.90
										Feb-13	Feb-14
Current										5,350,535.81	29,060,898.06
1-30 Days										-	297,867.84
31-60 Days										-	-
61-90 Days										-	-
91-120 Days										-	-
121-150 Days										-	-
151-180 Days										-	-
181+ Days										-	-

Delinquency Status (% of Current Balance)

Current Portfolio Balance	-	-	-	-	-	-	-	-	-	5,350,535.81	29,358,765.90
										Feb-13	Feb-14
Current										100.00%	98.99%
1-30 Days										0.00%	1.01%
31-60 Days										0.00%	0.00%
61-90 Days										0.00%	0.00%
91-120 Days										0.00%	0.00%
121-150 Days										0.00%	0.00%
151-180 Days										0.00%	0.00%
181+ Days										0.00%	0.00%
Current - 90 Days										100.00%	100.00%
91-180 Days										0.00%	0.00%



Mortgages - La Hipotecaria El Salvador Migration Analysis (2014 Vintage)

Delinquency Status (\$ of Current Balance)

Data Cutoff: 2/28/2014

Current Portfolio Balance	-	-	-	-	-	-	-	-	-	-	4,223,676.38
											Feb-14
Current											4,223,676.38
1-30 Days											-
31-60 Days											-
61-90 Days											-
91-120 Days											-
121-150 Days											-
151-180 Days											-
181+ Days											-

Delinquency Status (% of Current Balance)

Current Portfolio Balance	-	-	-	-	-	-	-	-	-	-	4,223,676.38
											Feb-14
Current											100.00%
1-30 Days											0.00%
31-60 Days											0.00%
61-90 Days											0.00%
91-120 Days											0.00%
121-150 Days											0.00%
151-180 Days											0.00%
181+ Days											0.00%
Current - 90 Days											100.00%
91-180 Days											0.00%

