



Migration Analysis for La Hipotecaria S.A. de C.V El Salvador

Mortgages
April 2015

An analysis of historical loan payment data was used to compile a migration analysis of delinquency by annual vintage. Delinquencies for each vintage were grouped into the following buckets; Current, 1-30, 31-60, 61-90, 91-120, 121-150, 151-180, and 180+. Results are provided in graphical and tabular form. The cutoff date is 4/30/2015.

Mortgages - La Hipotecaria El Salvador Migration Analysis (All Vintages)

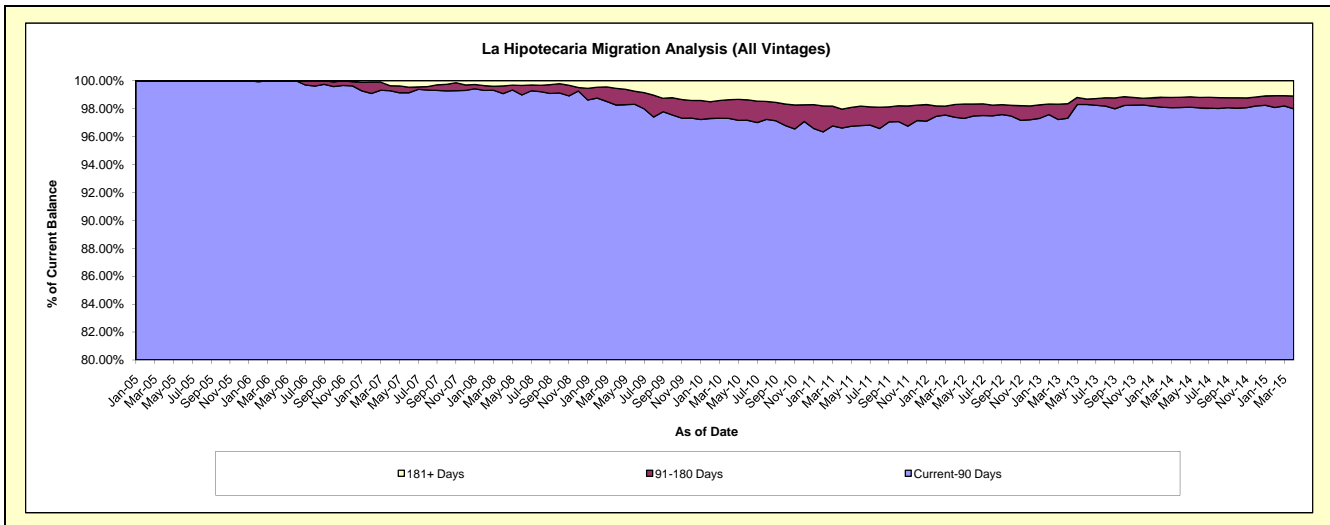
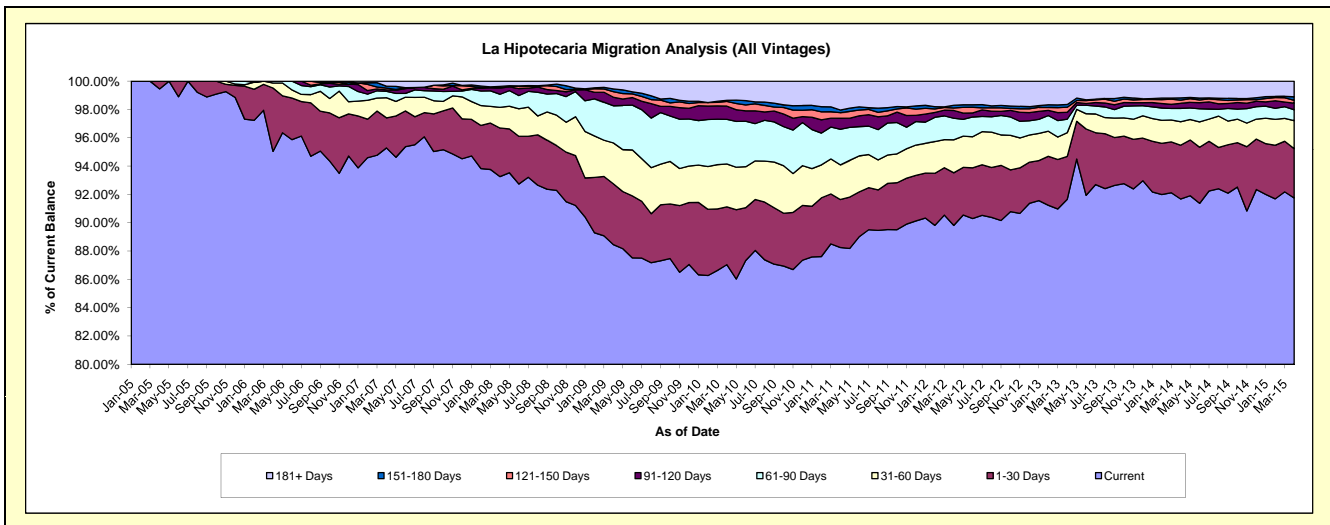
Delinquency Status (\$ of Current Balance)

Data Cutoff: 4/30/2015

Current Portfolio Balance	18,293,148.34	41,793,391.95	67,991,376.90	78,964,433.02	79,647,310.50	85,552,933.91	97,429,145.76	116,902,282.66	136,265,435.88	150,371,625.73
	Apr-06	Apr-07	Apr-08	Apr-09	Apr-10	Apr-11	Apr-12	Apr-13	Apr-14	Apr-15
Current	17,386,386.02	39,823,889.93	63,410,067.04	69,849,262.19	69,329,016.80	75,502,325.79	87,502,115.06	107,151,311.44	124,924,604.25	137,974,711.26
1-30 Days	817,904.58	887,735.34	2,331,057.46	3,393,242.55	3,250,846.64	2,897,533.97	3,623,627.07	3,539,139.85	5,178,844.52	5,225,346.94
31-60 Days	64,585.35	593,692.98	991,961.56	2,277,917.24	2,412,415.81	2,096,648.76	2,268,202.37	1,957,913.65	2,261,877.88	2,977,256.35
61-90 Days	24,272.39	188,601.18	629,429.78	2,071,624.90	2,509,145.52	2,155,433.41	1,489,575.49	1,118,076.85	1,281,257.93	1,166,504.07
91-120 Days	-	42,850.11	294,953.66	476,879.96	741,543.33	657,460.99	530,558.22	566,743.25	490,526.96	697,555.48
121-150 Days	-	52,865.39	56,109.31	309,036.43	262,511.79	343,664.83	169,732.09	418,650.60	304,923.55	295,454.68
151-180 Days	-	53,408.63	25,808.92	154,516.94	63,577.83	158,518.75	190,249.80	225,042.90	210,140.88	382,199.48
181+ Days	-	150,348.39	251,989.17	431,952.81	1,078,252.78	1,741,347.41	1,655,085.66	1,925,404.12	1,613,259.91	1,652,597.47

Delinquency Status (% of Current Balance)

Current Portfolio Balance	18,293,148.34	41,793,391.95	67,991,376.90	78,964,433.02	79,647,310.50	85,552,933.91	97,429,145.76	116,902,282.66	136,265,435.88	150,371,625.73
	Apr-06	Apr-07	Apr-08	Apr-09	Apr-10	Apr-11	Apr-12	Apr-13	Apr-14	Apr-15
Current	95.04%	95.29%	93.26%	88.46%	87.05%	88.25%	89.81%	91.66%	91.68%	91.76%
1-30 Days	4.47%	2.12%	3.43%	4.30%	4.08%	3.39%	3.72%	3.03%	3.80%	3.47%
31-60 Days	0.35%	1.42%	1.46%	2.88%	3.03%	2.45%	2.33%	1.67%	1.66%	1.98%
61-90 Days	0.13%	0.45%	0.93%	2.62%	3.15%	2.52%	1.53%	0.96%	0.94%	0.78%
91-120 Days	0.00%	0.10%	0.43%	0.60%	0.93%	0.77%	0.54%	0.48%	0.36%	0.46%
121-150 Days	0.00%	0.13%	0.08%	0.39%	0.33%	0.40%	0.17%	0.36%	0.22%	0.20%
151-180 Days	0.00%	0.13%	0.04%	0.20%	0.08%	0.19%	0.20%	0.19%	0.15%	0.25%
181+ Days	0.00%	0.36%	0.37%	0.55%	1.35%	2.04%	1.70%	1.65%	1.18%	1.10%
Current - 90 Days	100.00%	99.28%	99.08%	98.26%	97.31%	96.61%	97.39%	97.32%	98.08%	97.99%
91-180 Days	0.00%	0.36%	0.55%	1.19%	1.34%	1.36%	0.91%	1.04%	0.74%	0.91%



Mortgages - La Hipotecaria El Salvador Migration Analysis (2005 Vintage)

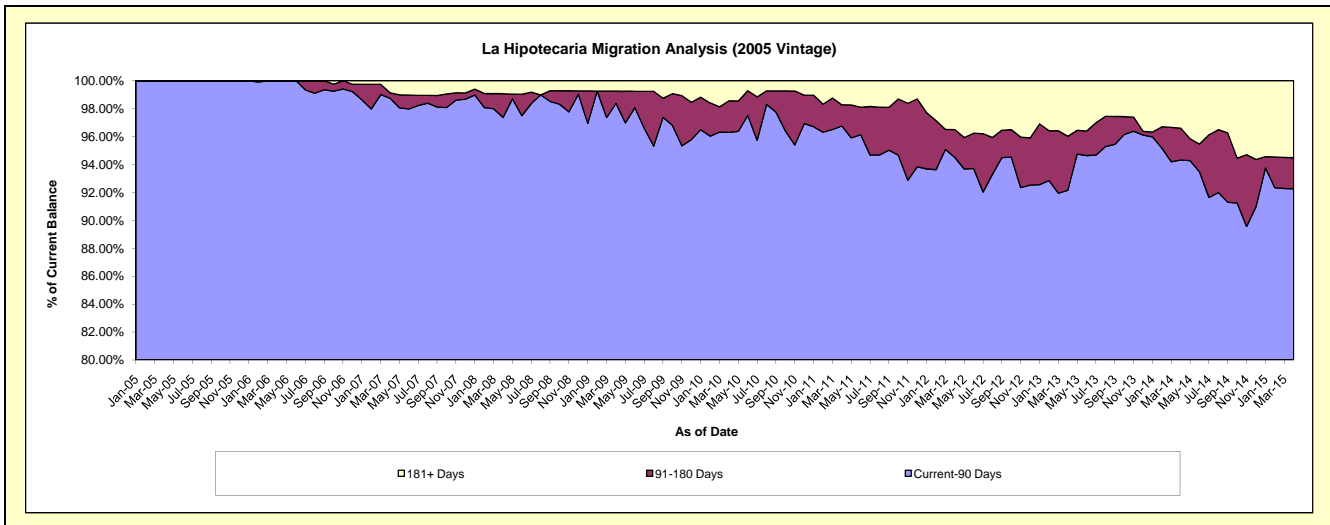
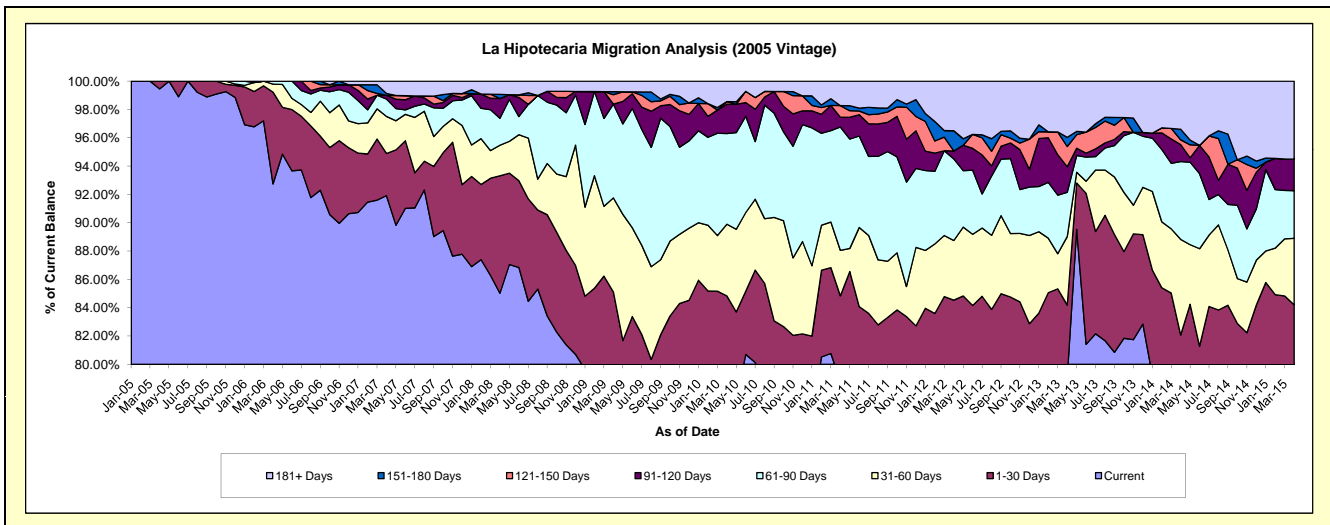
Delinquency Status (\$ of Current Balance)

Data Cutoff: 4/30/2015

Current Portfolio Balance	11,376,589.37	10,420,266.87	8,926,745.52	7,896,131.71	7,176,965.47	6,588,906.64	6,006,123.66	5,531,956.70	4,833,779.50	4,415,327.58
	Apr-06	Apr-07	Apr-08	Apr-09	Apr-10	Apr-11	Apr-12	Apr-13	Apr-14	Apr-15
Current	10,551,098.44	9,578,331.32	7,590,122.96	6,133,891.12	5,727,317.99	5,190,363.32	4,651,772.82	4,374,253.45	3,790,915.13	3,433,033.16
1-30 Days	736,633.19	309,747.40	739,774.45	586,447.68	361,349.60	399,510.50	425,676.29	283,196.93	176,374.83	284,955.85
31-60 Days	64,585.35	272,434.26	193,047.66	524,851.91	363,155.85	212,052.53	252,760.48	266,993.38	326,454.92	207,354.62
61-90 Days	24,272.39	128,561.40	169,612.85	522,918.55	459,646.21	573,459.24	346,216.85	173,432.71	265,484.77	148,490.64
91-120 Days	-	26,896.01	125,167.44	-	148,919.17	45,752.09	33,680.84	99,478.72	58,108.60	98,216.57
121-150 Days	-	-	-	52,832.86	12,970.54	53,905.94	-	79,263.87	16,277.05	-
151-180 Days	-	13,840.87	25,808.92	16,946.11	-	-	85,639.24	35,655.50	36,204.79	-
181+ Days	-	90,455.61	83,211.24	58,243.48	103,606.11	113,863.02	210,377.14	219,682.14	163,959.41	243,276.74

Delinquency Status (% of Current Balance)

Current Portfolio Balance	11,376,589.37	10,420,266.87	8,926,745.52	7,896,131.71	7,176,965.47	6,588,906.64	6,006,123.66	5,531,956.70	4,833,779.50	4,415,327.58
	Apr-06	Apr-07	Apr-08	Apr-09	Apr-10	Apr-11	Apr-12	Apr-13	Apr-14	Apr-15
Current	92.74%	91.92%	85.03%	77.68%	79.80%	78.77%	77.45%	79.07%	78.43%	77.75%
1-30 Days	6.47%	2.97%	8.29%	7.43%	5.03%	6.06%	7.09%	5.12%	3.65%	6.45%
31-60 Days	0.57%	2.61%	2.16%	6.65%	5.06%	3.22%	4.21%	4.83%	6.75%	4.70%
61-90 Days	0.21%	1.23%	1.90%	6.62%	6.40%	8.70%	5.76%	3.14%	5.49%	3.36%
91-120 Days	0.00%	0.26%	1.40%	0.00%	2.07%	0.69%	0.56%	1.80%	1.20%	2.22%
121-150 Days	0.00%	0.00%	0.00%	0.67%	0.18%	0.82%	0.00%	1.43%	0.34%	0.00%
151-180 Days	0.00%	0.13%	0.29%	0.21%	0.00%	0.00%	1.43%	0.64%	0.75%	0.00%
181+ Days	0.00%	0.87%	0.93%	0.74%	1.44%	1.73%	3.50%	3.97%	3.39%	5.51%
Current - 90 Days	100.00%	98.74%	97.38%	98.38%	96.30%	96.76%	94.51%	92.15%	94.32%	92.27%
91-180 Days	0.00%	0.39%	1.69%	0.88%	2.26%	1.51%	1.99%	3.88%	2.29%	2.22%



Mortgages - La Hipotecaria El Salvador Migration Analysis (2006 Vintage)

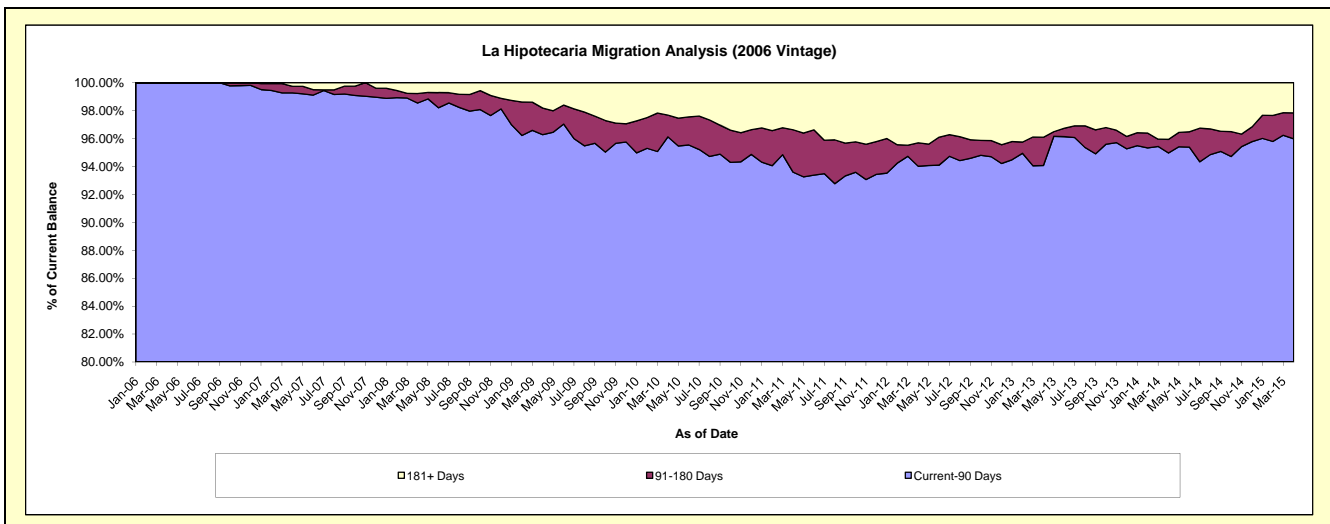
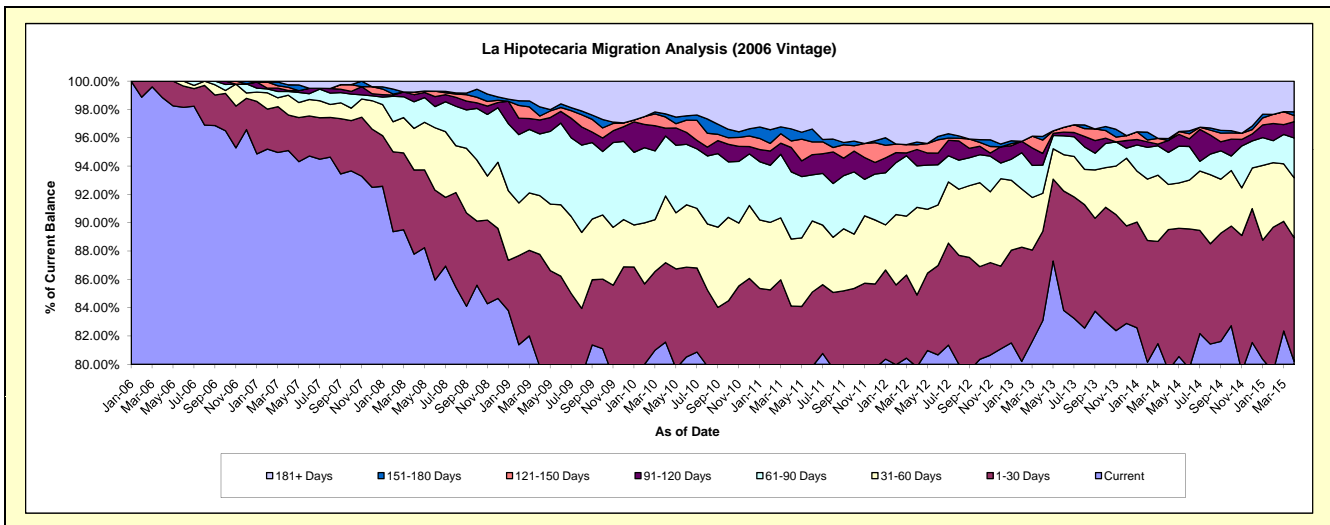
Delinquency Status (\$ of Current Balance)

Data Cutoff: 4/30/2015

Current Portfolio Balance	6,916,558.97	23,014,387.73	20,378,993.20	18,056,889.24	16,542,661.23	15,179,530.54	13,703,170.78	12,312,670.21	11,220,256.34	10,002,311.83
	Apr-06	Apr-07	Apr-08	Apr-09	Apr-10	Apr-11	Apr-12	Apr-13	Apr-14	Apr-15
Current	6,835,287.58	21,886,821.26	17,889,271.30	14,418,190.77	13,494,131.00	12,015,444.64	10,937,557.36	10,228,527.67	8,930,791.47	8,022,887.02
1-30 Days	81,271.39	577,987.94	1,211,613.26	1,429,922.74	928,093.17	752,631.24	696,927.88	777,429.02	1,113,364.12	872,528.80
31-60 Days	-	321,258.72	598,252.16	749,436.20	779,772.13	719,757.09	847,668.01	331,150.27	358,120.65	423,782.46
61-90 Days	-	60,039.78	383,289.04	787,513.56	699,869.07	719,606.33	401,628.00	245,432.79	253,578.45	281,879.63
91-120 Days	-	15,954.10	103,056.84	176,632.28	91,346.66	261,322.89	158,110.36	102,056.67	94,737.58	114,840.60
121-150 Days	-	52,865.39	36,635.15	50,933.98	131,050.10	69,961.28	45,749.34	115,974.68	-	43,208.22
151-180 Days	-	39,567.76	-	116,415.72	35,432.62	129,688.45	26,132.72	31,625.14	14,649.95	26,707.68
181+ Days	-	59,892.78	156,875.45	327,843.99	382,966.48	511,118.62	589,397.11	480,473.97	455,014.12	216,477.42

Delinquency Status (% of Current Balance)

Current Portfolio Balance	6,916,558.97	23,014,387.73	20,378,993.20	18,056,889.24	16,542,661.23	15,179,530.54	13,703,170.78	12,312,670.21	11,220,256.34	10,002,311.83
	Apr-06	Apr-07	Apr-08	Apr-09	Apr-10	Apr-11	Apr-12	Apr-13	Apr-14	Apr-15
Current	98.82%	95.10%	87.78%	79.85%	81.57%	79.16%	79.82%	83.07%	79.60%	80.21%
1-30 Days	1.18%	2.51%	5.95%	7.92%	5.61%	4.96%	5.09%	6.31%	9.92%	8.72%
31-60 Days	0.00%	1.40%	2.94%	4.15%	4.71%	4.74%	6.19%	2.69%	3.19%	4.24%
61-90 Days	0.00%	0.26%	1.88%	4.36%	4.23%	4.74%	2.93%	1.99%	2.26%	2.82%
91-120 Days	0.00%	0.07%	0.51%	0.98%	0.55%	1.72%	1.15%	0.83%	0.84%	1.15%
121-150 Days	0.00%	0.23%	0.18%	0.28%	0.79%	0.46%	0.33%	0.94%	0.00%	0.43%
151-180 Days	0.00%	0.17%	0.00%	0.64%	0.21%	0.85%	0.19%	0.26%	0.13%	0.27%
181+ Days	0.00%	0.26%	0.77%	1.82%	2.32%	3.37%	4.30%	3.90%	4.06%	2.16%
Current - 90 Days	100.00%	99.27%	98.54%	96.28%	96.13%	93.60%	94.02%	94.07%	94.97%	95.99%
91-180 Days	0.00%	0.47%	0.69%	1.90%	1.56%	3.04%	1.68%	2.03%	0.97%	1.85%



Mortgages - La Hipotecaria El Salvador Migration Analysis (2007 Vintage)

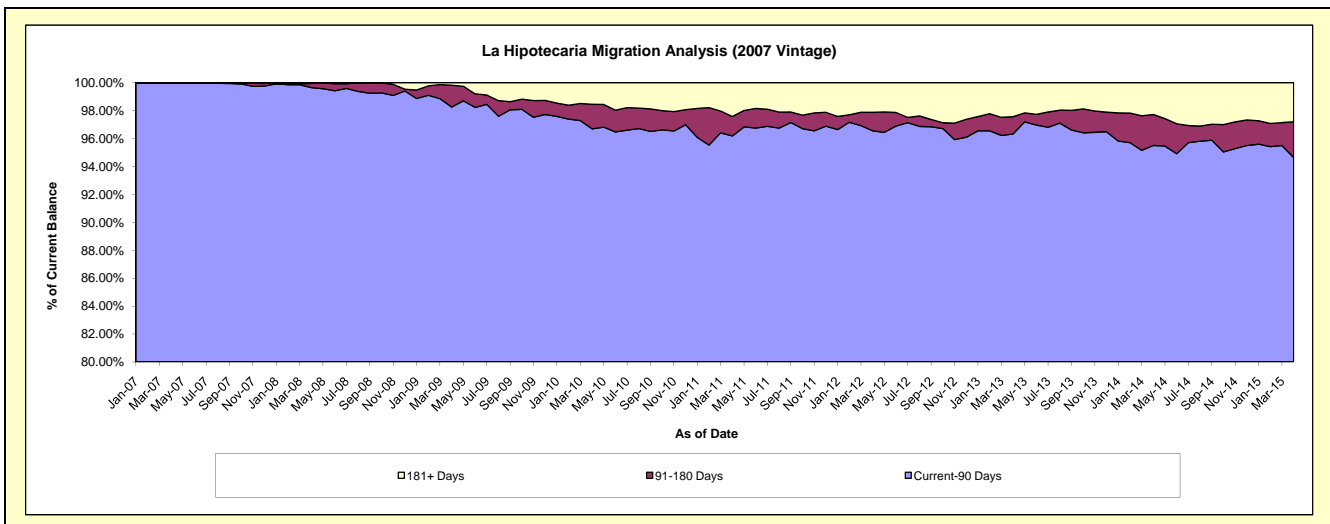
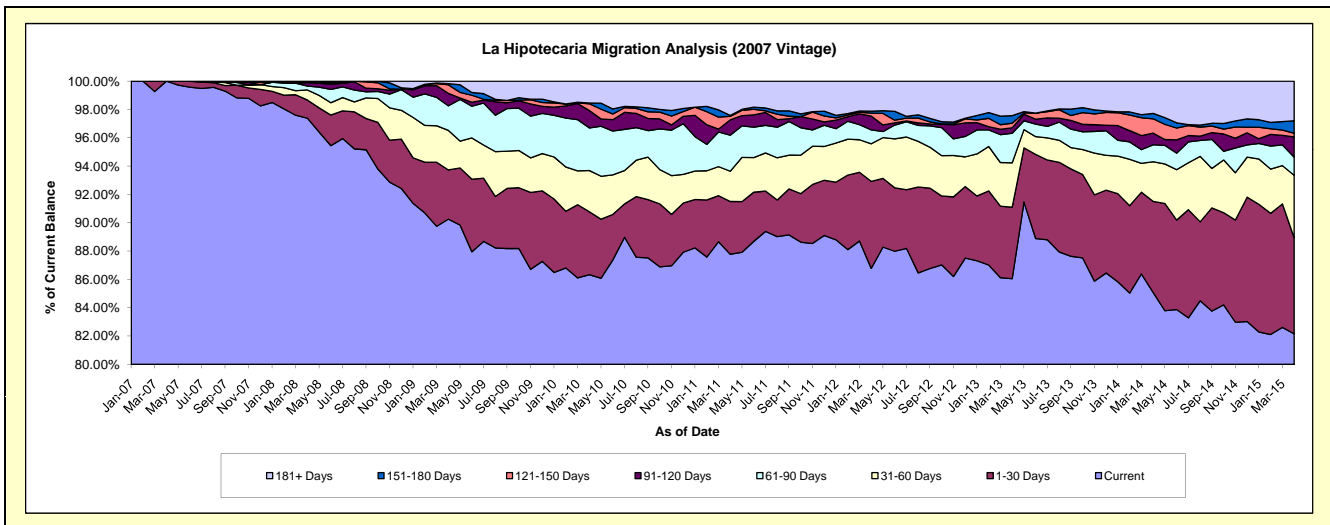
Delinquency Status (\$ of Current Balance)

Data Cutoff: 4/30/2015

Current Portfolio Balance	-	8,358,737.35	28,229,588.30	26,168,564.79	24,511,656.57	22,752,152.50	20,789,077.26	18,987,120.97	17,244,926.65	16,022,672.98
	Apr-07	Apr-08	Apr-09	Apr-10	Apr-11	Apr-12	Apr-13	Apr-14	Apr-15	
Current	8,358,737.35	27,492,452.90	23,618,727.61	21,160,545.47	19,970,516.90	18,041,666.64	16,339,404.28	14,669,775.13	13,164,023.97	
1-30 Days	-	361,839.75	909,527.18	1,090,394.83	848,274.43	1,276,034.97	957,535.15	1,110,470.35	1,087,248.03	
31-60 Days	-	200,661.74	730,389.54	713,769.65	485,685.15	552,304.01	594,783.50	482,785.27	705,492.41	
61-90 Days	-	76,527.89	453,487.95	737,623.73	580,814.04	203,812.78	397,560.63	207,545.02	207,241.49	
91-120 Days	-	66,729.38	230,538.10	299,929.75	245,170.31	201,903.29	73,093.46	141,167.63	227,373.29	
121-150 Days	-	19,474.16	158,873.96	118,491.15	56,938.75	44,640.57	61,677.56	174,831.69	41,451.64	
151-180 Days	-	-	21,155.11	11,611.25	15,069.78	27,979.20	100,776.08	65,773.38	141,393.40	
181+ Days	-	11,902.48	45,865.34	379,290.74	549,683.14	440,735.80	462,290.31	392,578.18	448,448.75	

Delinquency Status (% of Current Balance)

Current Portfolio Balance	-	8,358,737.35	28,229,588.30	26,168,564.79	24,511,656.57	22,752,152.50	20,789,077.26	18,987,120.97	17,244,926.65	16,022,672.98
	Apr-07	Apr-08	Apr-09	Apr-10	Apr-11	Apr-12	Apr-13	Apr-14	Apr-15	
Current	100.00%	97.39%	90.26%	86.33%	87.77%	86.78%	86.06%	85.07%	82.16%	
1-30 Days	0.00%	1.28%	3.48%	4.45%	3.73%	6.14%	5.04%	6.44%	6.79%	
31-60 Days	0.00%	0.71%	2.79%	2.91%	2.13%	2.66%	3.13%	2.80%	4.40%	
61-90 Days	0.00%	0.27%	1.73%	3.01%	2.55%	0.98%	2.09%	1.20%	1.29%	
91-120 Days	0.00%	0.24%	0.88%	1.22%	1.08%	0.97%	0.38%	0.82%	1.42%	
121-150 Days	0.00%	0.07%	0.61%	0.48%	0.25%	0.21%	0.32%	1.01%	0.26%	
151-180 Days	0.00%	0.00%	0.08%	0.05%	0.07%	0.13%	0.53%	0.38%	0.88%	
181+ Days	0.00%	0.04%	0.18%	1.55%	2.42%	2.12%	2.43%	2.28%	2.80%	
Current - 90 Days	100.00%	99.65%	98.26%	96.70%	96.19%	96.56%	96.32%	95.51%	94.64%	
91-180 Days	0.00%	0.31%	1.57%	1.75%	1.39%	1.32%	1.24%	2.21%	2.56%	



Mortgages - La Hipotecaria El Salvador Migration Analysis (2008 Vintage)

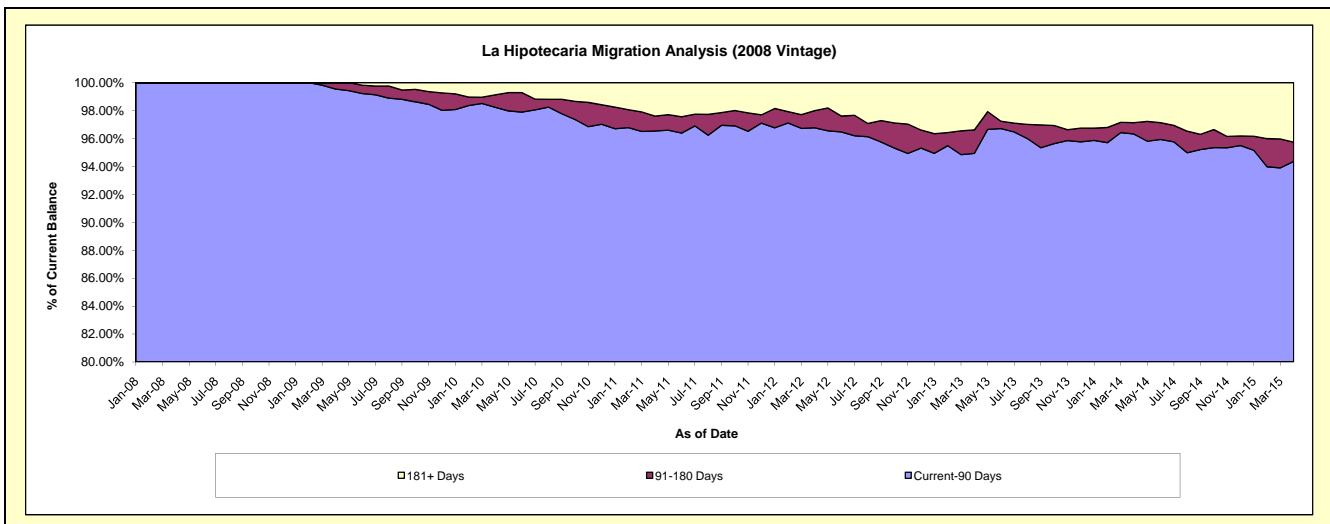
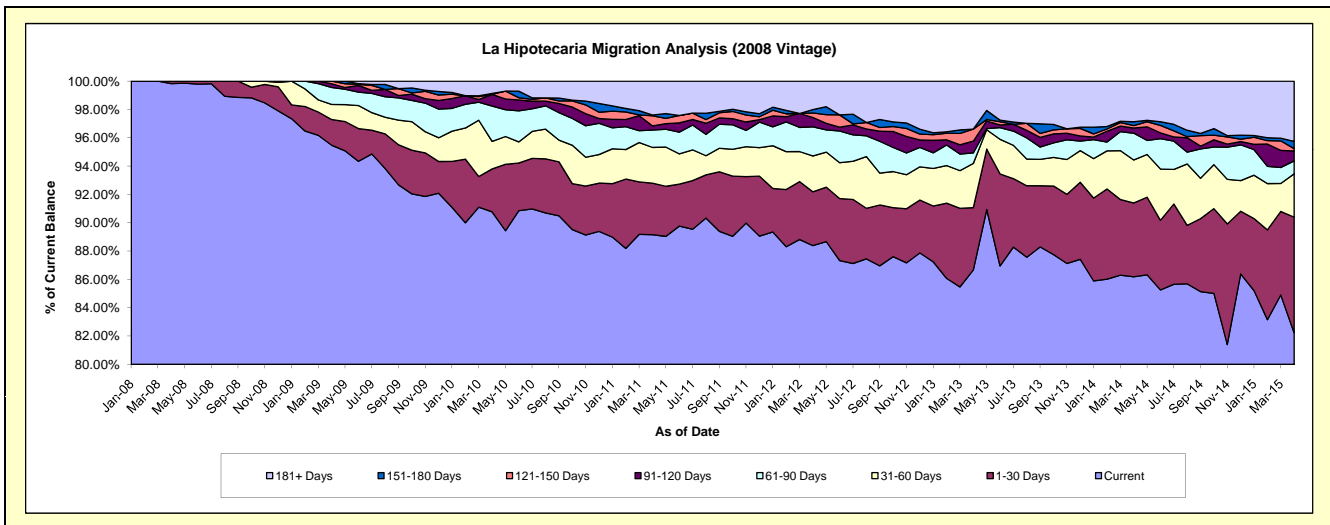
Delinquency Status (\$ of Current Balance)

Data Cutoff: 4/30/2015

Current Portfolio Balance	-	-	10,456,049.88	25,727,707.32	24,518,506.12	23,004,139.96	20,689,865.75	18,890,067.46	16,890,193.88	15,056,407.66
	Apr-08	Apr-09	Apr-10	Apr-11	Apr-12	Apr-13	Apr-14	Apr-15		
Current	10,438,219.88	24,563,312.73	22,255,856.43	20,510,759.24	18,287,028.61	16,371,206.41	14,556,162.22	12,382,018.39		
1-30 Days	17,830.00	467,344.95	742,993.54	835,799.66	786,025.01	830,988.26	880,243.20	1,227,924.82		
31-60 Days	-	273,239.59	477,378.48	581,245.14	523,026.34	590,732.38	513,639.26	461,510.06		
61-90 Days	-	307,704.84	612,006.51	281,553.80	426,535.91	140,809.63	319,445.50	137,078.46		
91-120 Days	-	69,709.58	201,347.75	68,229.83	136,863.73	156,047.02	61,410.82	105,510.66		
121-150 Days	-	46,395.63	-	162,858.86	65,311.90	161,734.49	29,847.75	25,249.98		
151-180 Days	-	-	16,533.96	13,760.52	50,498.64	-	46,185.27	76,042.59		
181+ Days	-	-	212,389.45	549,932.91	414,575.61	638,549.27	483,259.86	641,072.70		

Delinquency Status (% of Current Balance)

Current Portfolio Balance	-	-	10,456,049.88	25,727,707.32	24,518,506.12	23,004,139.96	20,689,865.75	18,890,067.46	16,890,193.88	15,056,407.66
	Apr-08	Apr-09	Apr-10	Apr-11	Apr-12	Apr-13	Apr-14	Apr-15		
Current	99.83%	95.47%	90.77%	89.16%	88.39%	86.67%	86.18%	82.24%		
1-30 Days	0.17%	1.82%	3.03%	3.63%	3.80%	4.40%	5.21%	8.16%		
31-60 Days	0.00%	1.06%	1.95%	2.53%	2.53%	3.13%	3.04%	3.07%		
61-90 Days	0.00%	1.20%	2.50%	1.22%	2.06%	0.75%	1.89%	0.91%		
91-120 Days	0.00%	0.27%	0.82%	0.30%	0.66%	0.83%	0.36%	0.70%		
121-150 Days	0.00%	0.18%	0.00%	0.71%	0.32%	0.86%	0.18%	0.17%		
151-180 Days	0.00%	0.00%	0.07%	0.06%	0.24%	0.00%	0.27%	0.51%		
181+ Days	0.00%	0.00%	0.87%	2.39%	2.00%	3.38%	2.86%	4.26%		
Current - 90 Days	100.00%	99.55%	98.25%	96.55%	96.77%	94.94%	96.33%	94.37%		
91-180 Days	0.00%	0.45%	0.89%	1.06%	1.22%	1.68%	0.81%	1.37%		



Mortgages - La Hipotecaria El Salvador Migration Analysis (2009 Vintage)

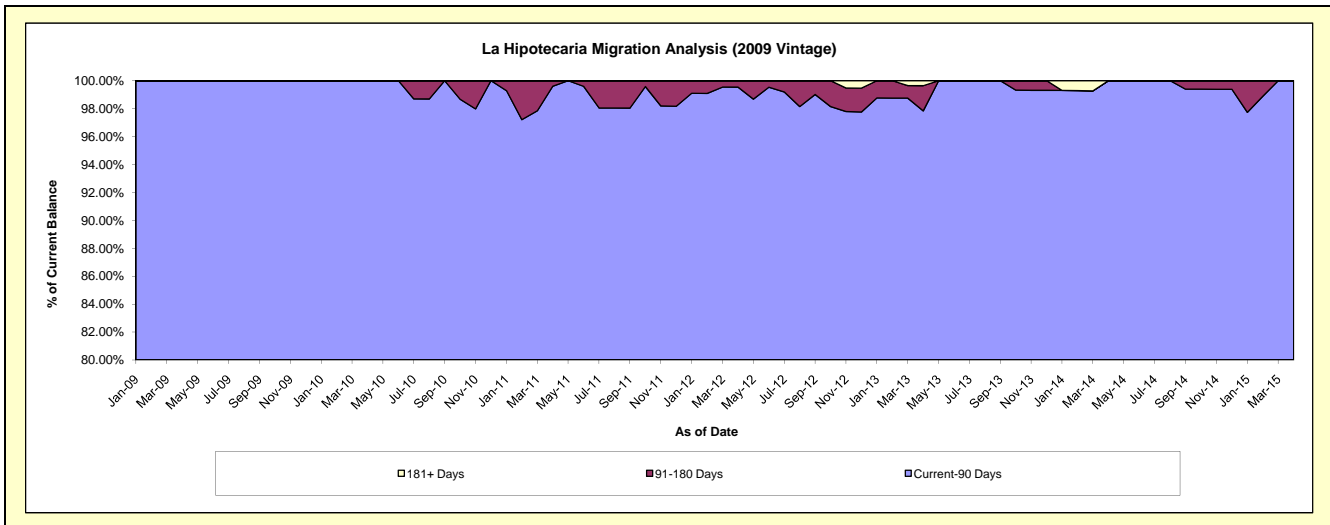
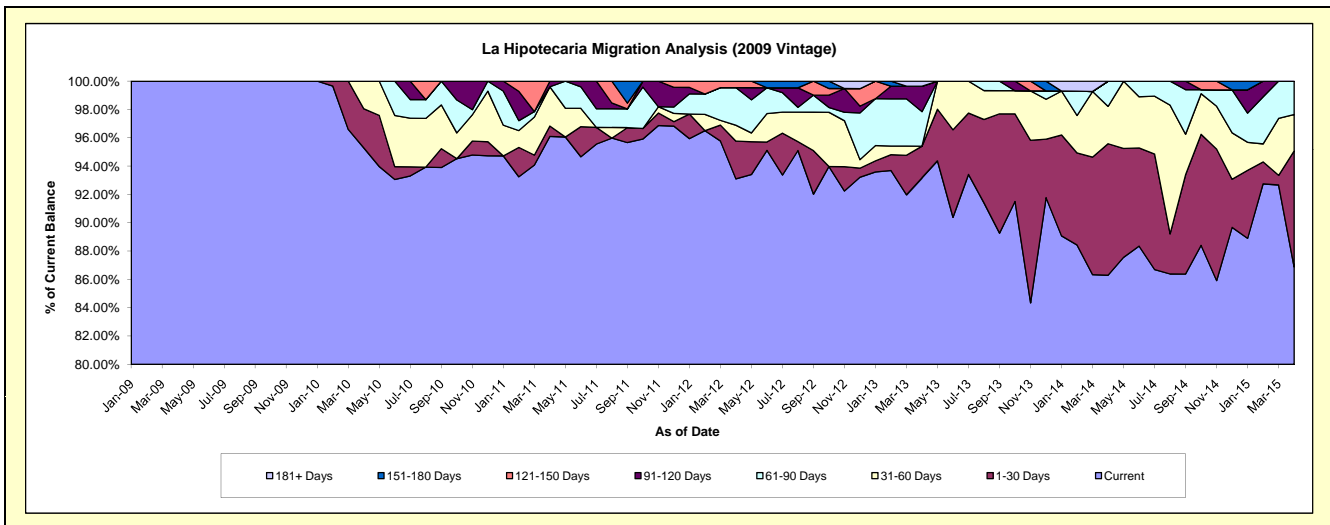
Delinquency Status (\$ of Current Balance)

Data Cutoff: 4/30/2015

Current Portfolio Balance	-	-	-	1,115,139.96	4,022,138.53	3,529,733.70	3,062,919.19	2,891,754.18	2,452,013.65	2,244,586.00
	Apr-09	Apr-10	Apr-11	Apr-12	Apr-13	Apr-14	Apr-15			
Current	1,115,139.96	3,832,533.05	3,392,054.44	2,851,558.87	2,694,303.33	2,115,930.67	1,949,997.56			
1-30 Days	-	111,265.78	25,740.13	81,652.38	64,623.10	227,746.71	184,200.78			
31-60 Days	-	78,339.70	97,908.85	34,393.92	-	64,648.76	57,381.62			
61-90 Days	-	-	-	81,283.74	70,468.86	43,687.51	53,006.04			
91-120 Days	-	-	14,030.28	-	52,100.32	-	-			
121-150 Days	-	-	-	14,030.28	-	-	-			
151-180 Days	-	-	-	-	-	-	-			
181+ Days	-	-	-	-	10,258.57	-	-			

Delinquency Status (% of Current Balance)

Current Portfolio Balance	-	-	-	1,115,139.96	4,022,138.53	3,529,733.70	3,062,919.19	2,891,754.18	2,452,013.65	2,244,586.00
	Apr-09	Apr-10	Apr-11	Apr-12	Apr-13	Apr-14	Apr-15			
Current	100.00%	95.29%	96.10%	93.10%	93.17%	86.29%	86.88%			
1-30 Days	0.00%	2.77%	0.73%	2.67%	2.23%	9.29%	8.21%			
31-60 Days	0.00%	1.95%	2.77%	1.12%	0.00%	2.64%	2.56%			
61-90 Days	0.00%	0.00%	0.00%	2.65%	2.44%	1.78%	2.36%			
91-120 Days	0.00%	0.00%	0.40%	0.00%	1.80%	0.00%	0.00%			
121-150 Days	0.00%	0.00%	0.00%	0.46%	0.00%	0.00%	0.00%			
151-180 Days	0.00%	0.00%	0.00%	0.00%	0.00%	0.00%	0.00%			
181+ Days	0.00%	0.00%	0.00%	0.00%	0.35%	0.00%	0.00%			
Current - 90 Days	100.00%	100.00%	99.60%	99.54%	97.84%	100.00%	100.00%			
91-180 Days	0.00%	0.00%	0.40%	0.46%	1.80%	0.00%	0.00%			



Mortgages - La Hipotecaria El Salvador Migration Analysis (2010 Vintage)

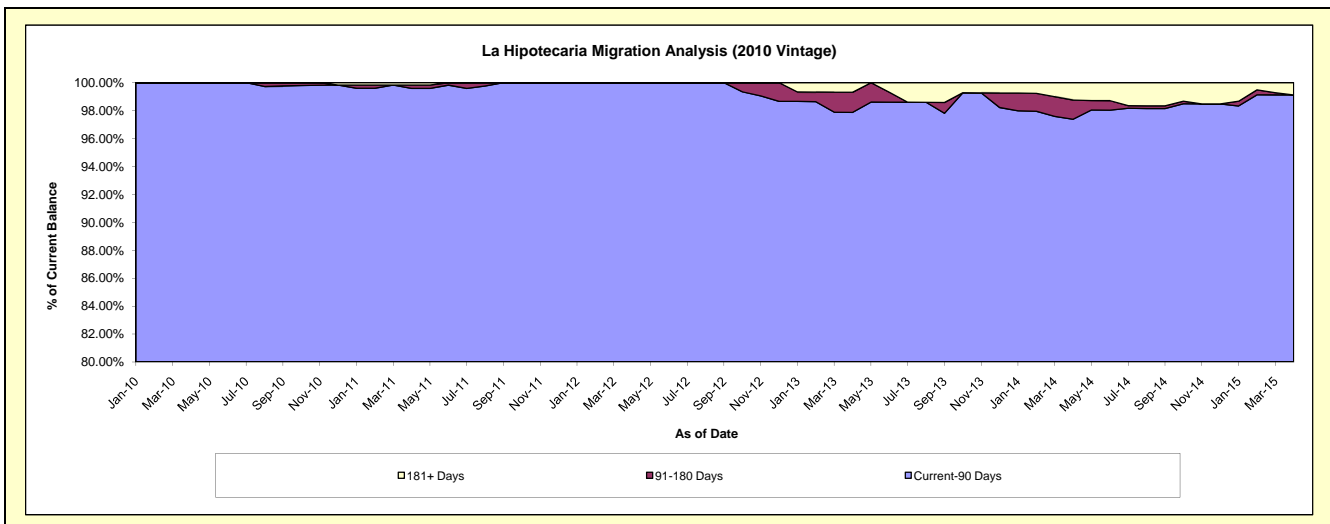
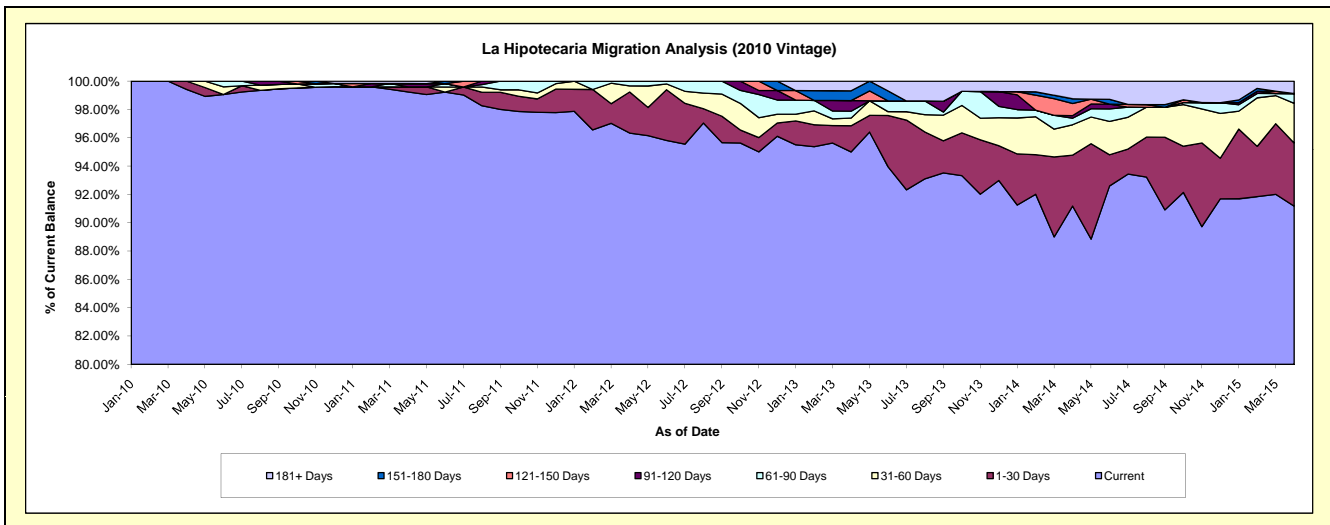
Delinquency Status (\$ of Current Balance)

Data Cutoff: 4/30/2015

Current Portfolio Balance	-	-	-	-	2,875,382.58	9,850,904.98	8,909,816.99	8,234,041.93	7,221,003.71	6,524,416.56
					Apr-10	Apr-11	Apr-12	Apr-13	Apr-14	Apr-15
Current					2,858,632.86	9,775,621.66	8,583,450.30	7,822,472.09	6,583,933.33	5,948,612.66
1-30 Days					16,749.72	35,578.01	258,391.95	152,140.75	259,919.34	290,895.06
31-60 Days					-	-	37,876.53	45,168.32	155,040.82	182,883.45
61-90 Days					-	-	30,098.21	39,504.72	33,327.46	44,554.48
91-120 Days					-	22,955.59	-	61,631.60	13,000.87	-
121-150 Days					-	-	-	-	61,631.60	-
151-180 Days					-	-	-	56,986.18	24,046.62	-
181+ Days					-	16,749.72	-	56,138.27	90,103.67	57,470.91

Delinquency Status (% of Current Balance)

Current Portfolio Balance	-	-	-	-	2,875,382.58	9,850,904.98	8,909,816.99	8,234,041.93	7,221,003.71	6,524,416.56
					Apr-10	Apr-11	Apr-12	Apr-13	Apr-14	Apr-15
Current					99.42%	99.24%	96.34%	95.00%	91.18%	91.17%
1-30 Days					0.58%	0.36%	2.90%	1.85%	3.60%	4.46%
31-60 Days					0.00%	0.00%	0.43%	0.55%	2.15%	2.80%
61-90 Days					0.00%	0.00%	0.34%	0.48%	0.46%	0.68%
91-120 Days					0.00%	0.23%	0.00%	0.75%	0.18%	0.00%
121-150 Days					0.00%	0.00%	0.00%	0.00%	0.85%	0.00%
151-180 Days					0.00%	0.00%	0.00%	0.69%	0.33%	0.00%
181+ Days					0.00%	0.17%	0.00%	0.68%	1.25%	0.88%
Current - 90 Days					100.00%	99.60%	100.00%	97.88%	97.39%	99.12%
91-180 Days					0.00%	0.23%	0.00%	1.44%	1.37%	0.00%



Mortgages - La Hipotecaria El Salvador Migration Analysis (2011 Vintage)

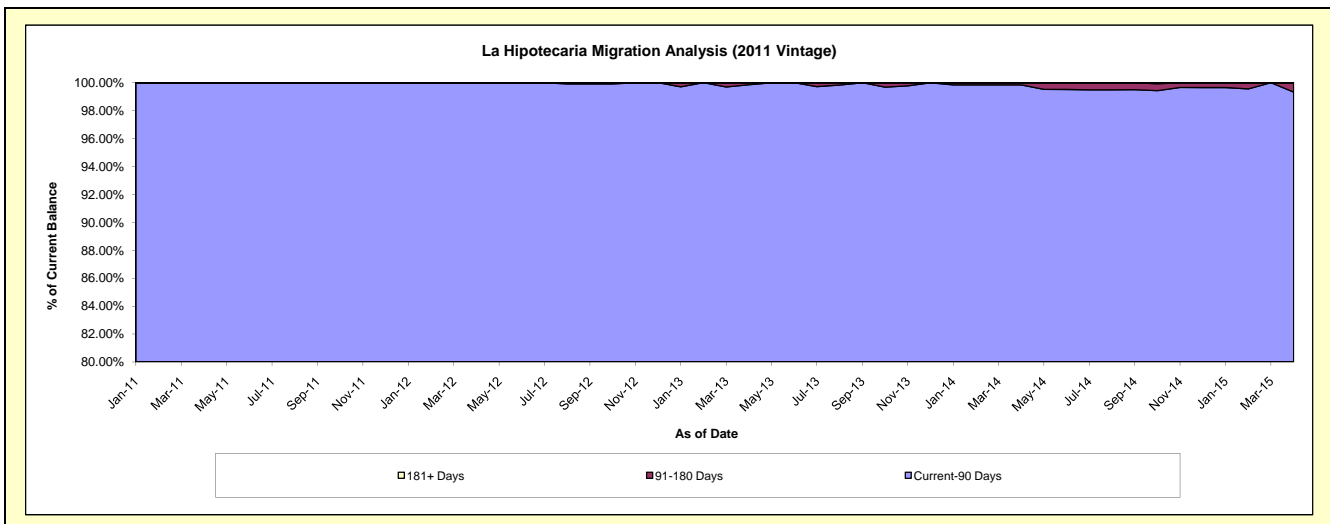
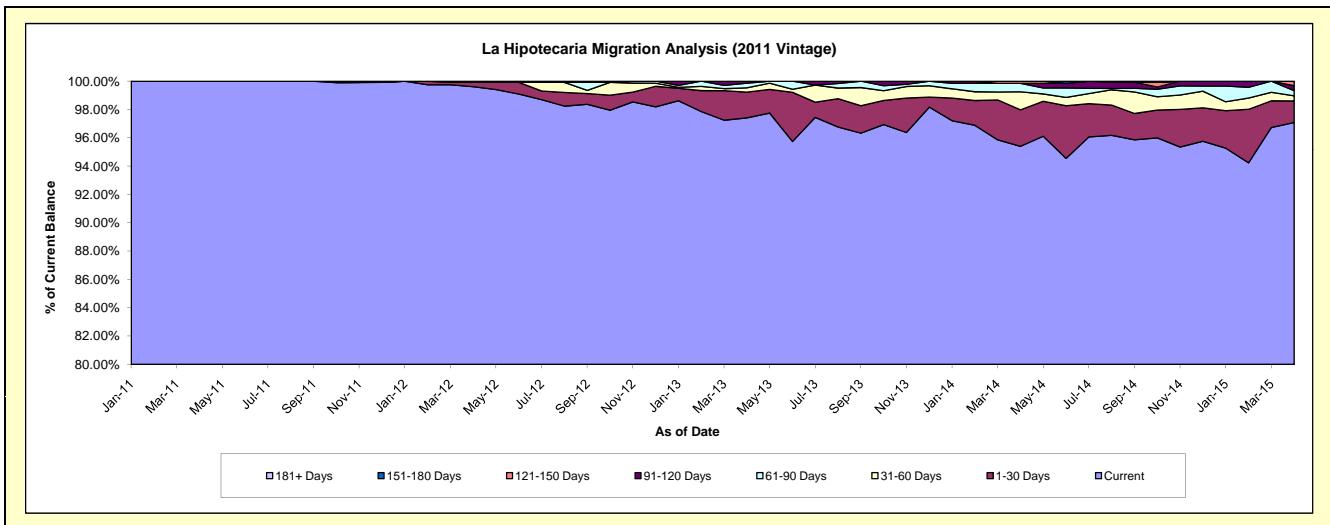
Delinquency Status (\$ of Current Balance)

Data Cutoff: 4/30/2015

Current Portfolio Balance	-	-	-	-	-	4,647,565.59	17,038,499.09	15,734,579.88	14,499,494.79	13,147,864.99
						Apr-11	Apr-12	Apr-13	Apr-14	Apr-15
Current						4,647,565.59	16,971,487.42	15,327,302.95	13,832,296.87	12,763,806.72
1-30 Days						-	52,838.59	285,572.84	373,805.56	200,566.20
31-60 Days						-	14,173.08	48,501.12	183,804.47	47,568.86
61-90 Days						-	-	50,867.51	87,252.43	47,512.79
91-120 Days						-	-	22,335.46	-	45,972.15
121-150 Days						-	-	-	22,335.46	42,438.27
151-180 Days						-	-	-	-	-
181+ Days						-	-	-	-	-

Delinquency Status (% of Current Balance)

Current Portfolio Balance	-	-	-	-	-	4,647,565.59	17,038,499.09	15,734,579.88	14,499,494.79	13,147,864.99
						Apr-11	Apr-12	Apr-13	Apr-14	Apr-15
Current						100.00%	99.61%	97.41%	95.40%	97.08%
1-30 Days						0.00%	0.31%	1.81%	2.58%	1.53%
31-60 Days						0.00%	0.08%	0.31%	1.27%	0.36%
61-90 Days						0.00%	0.00%	0.32%	0.60%	0.36%
91-120 Days						0.00%	0.00%	0.14%	0.00%	0.35%
121-150 Days						0.00%	0.00%	0.00%	0.15%	0.32%
151-180 Days						0.00%	0.00%	0.00%	0.00%	0.00%
181+ Days						0.00%	0.00%	0.00%	0.00%	0.00%
Current - 90 Days						100.00%	100.00%	99.86%	99.85%	99.33%
91-180 Days						0.00%	0.00%	0.14%	0.15%	0.67%



Mortgages - La Hipotecaria El Salvador Migration Analysis (2012 Vintage)

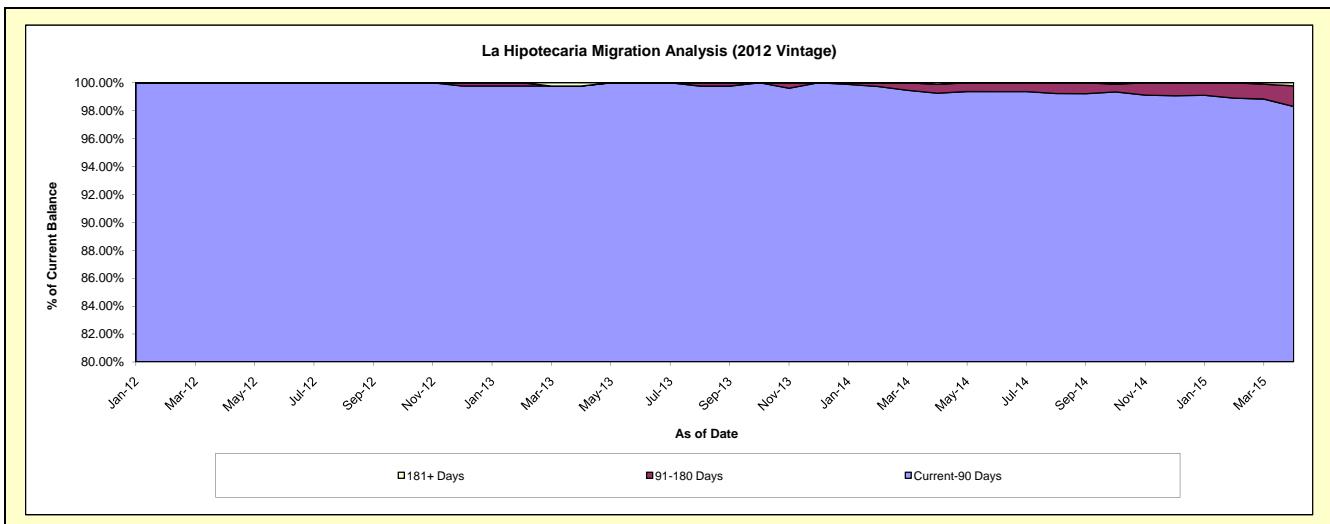
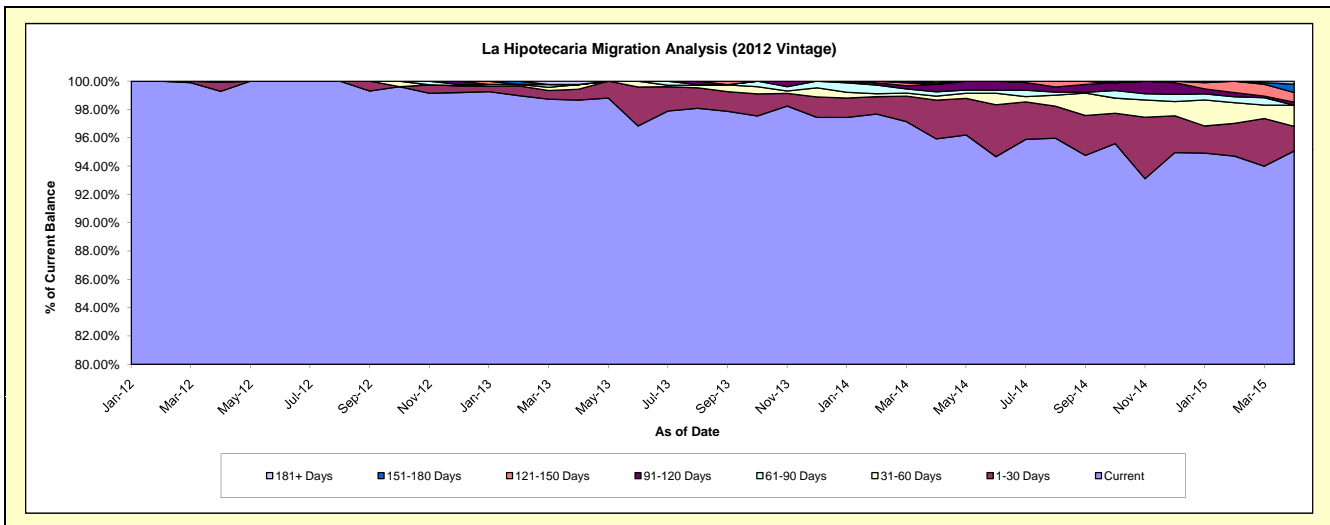
Delinquency Status (\$ of Current Balance)

Data Cutoff: 4/30/2015

Current Portfolio Balance	-	-	-	-	-	-	-	7,229,673.04	24,470,232.69	23,203,137.50	20,922,577.63
								Apr-12	Apr-13	Apr-14	Apr-15
Current								7,177,593.04	24,143,982.62	22,257,622.42	19,890,275.55
1-30 Days								46,080.00	187,653.80	633,700.24	363,413.93
31-60 Days								6,000.00	80,584.68	67,151.05	312,888.06
61-90 Days								-	-	70,936.79	-
91-120 Days								-	-	122,101.46	44,941.11
121-150 Days								-	-	-	143,106.57
151-180 Days								-	-	23,280.87	122,101.46
181+ Days								-	58,011.59	28,344.67	45,850.95

Delinquency Status (% of Current Balance)

Current Portfolio Balance	-	-	-	-	-	-	-	7,229,673.04	24,470,232.69	23,203,137.50	20,922,577.63
								Apr-12	Apr-13	Apr-14	Apr-15
Current								99.28%	98.67%	95.93%	95.07%
1-30 Days								0.64%	0.77%	2.73%	1.74%
31-60 Days								0.08%	0.33%	0.29%	1.50%
61-90 Days								0.00%	0.00%	0.31%	0.00%
91-120 Days								0.00%	0.00%	0.53%	0.21%
121-150 Days								0.00%	0.00%	0.00%	0.68%
151-180 Days								0.00%	0.00%	0.10%	0.58%
181+ Days								0.00%	0.24%	0.12%	0.22%
Current - 90 Days								100.00%	99.76%	99.25%	98.30%
91-180 Days								0.00%	0.00%	0.63%	1.48%



Mortgages - La Hipotecaria El Salvador Migration Analysis (2013 Vintage)

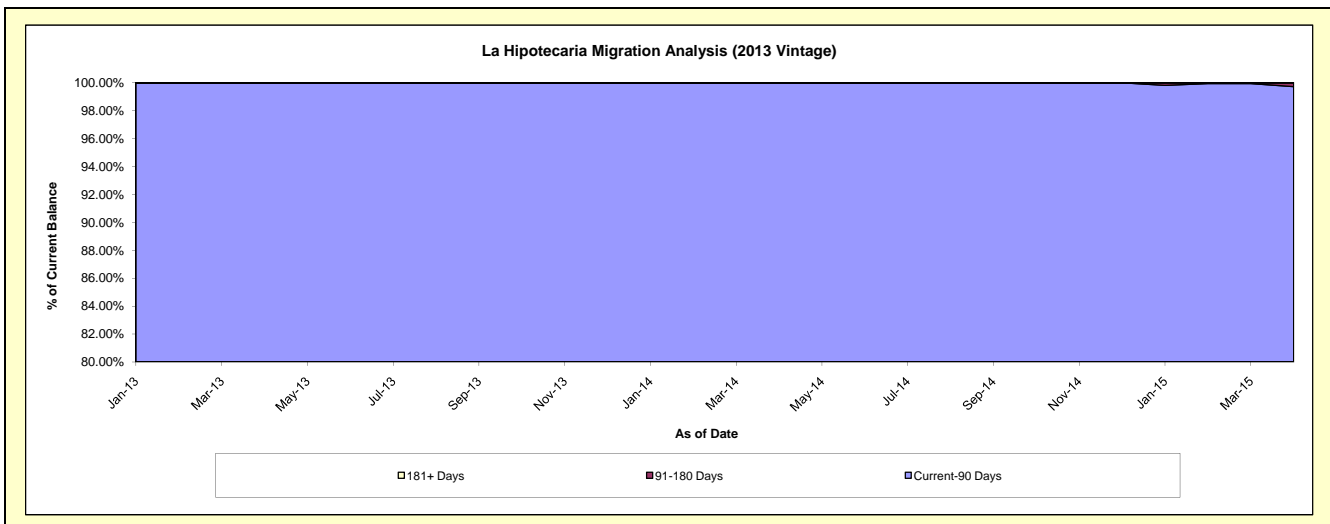
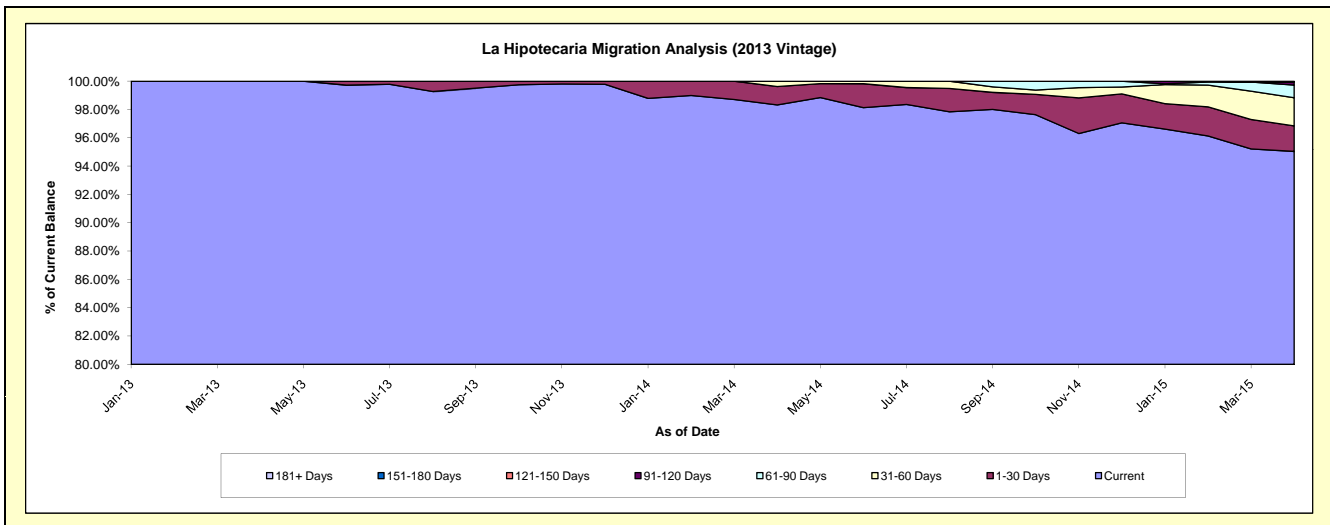
Delinquency Status (\$ of Current Balance)

Data Cutoff: 4/30/2015

Current Portfolio Balance	-	-	-	-	-	-	-	-	-	9,849,858.64	29,068,930.34	27,700,880.23
										Apr-13	Apr-14	Apr-15
Current										9,849,858.64	28,580,927.39	26,326,577.39
1-30 Days										-	377,770.27	498,893.87
31-60 Days										-	110,232.68	552,012.98
61-90 Days										-	-	246,740.54
91-120 Days										-	-	60,701.10
121-150 Days										-	-	-
151-180 Days										-	-	15,954.35
181+ Days										-	-	-

Delinquency Status (% of Current Balance)

Current Portfolio Balance	-	-	-	-	-	-	-	-	-	9,849,858.64	29,068,930.34	27,700,880.23
										Apr-13	Apr-14	Apr-15
Current										100.00%	98.32%	95.04%
1-30 Days										0.00%	1.30%	1.80%
31-60 Days										0.00%	0.38%	1.99%
61-90 Days										0.00%	0.00%	0.89%
91-120 Days										0.00%	0.00%	0.22%
121-150 Days										0.00%	0.00%	0.00%
151-180 Days										0.00%	0.00%	0.06%
181+ Days										0.00%	0.00%	0.00%
Current - 90 Days										100.00%	100.00%	99.72%
91-180 Days										0.00%	0.00%	0.28%



Mortgages - La Hipotecaria El Salvador Migration Analysis (2014 Vintage)

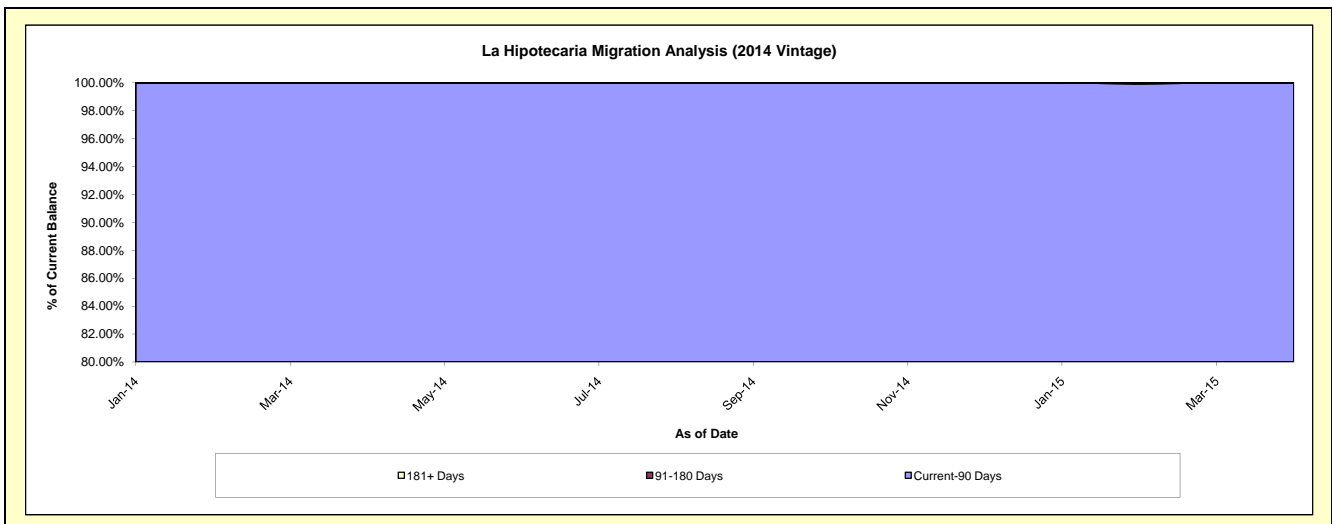
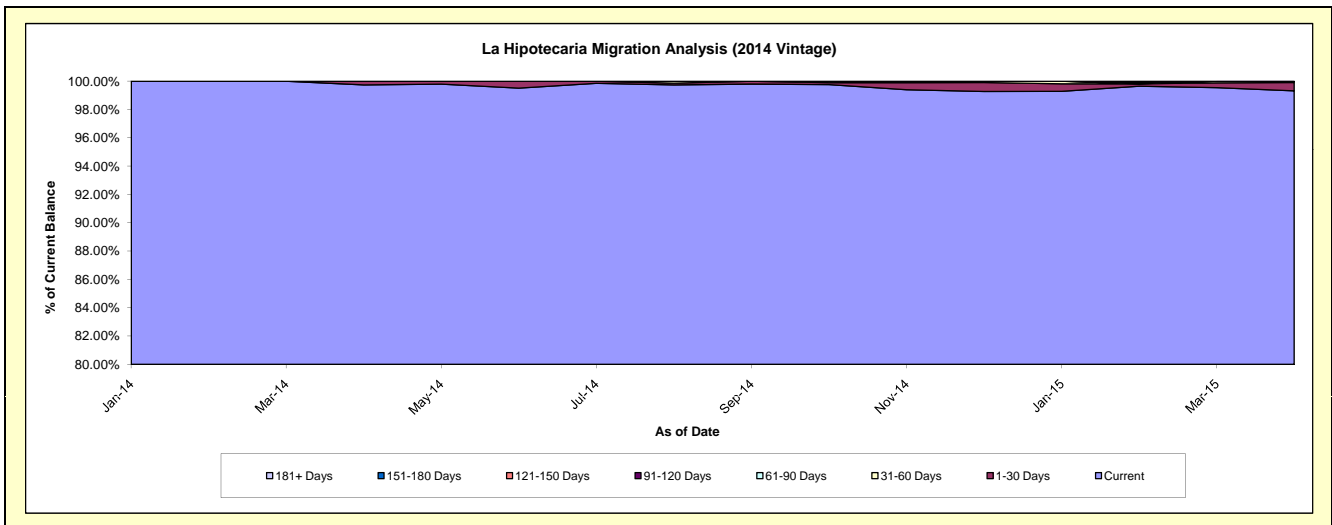
Delinquency Status (\$ of Current Balance)

Data Cutoff: 4/30/2015

Current Portfolio Balance										9,631,699.52	27,602,785.56
										Apr-14	Apr-15
Current										9,606,249.62	27,415,208.85
1-30 Days										25,449.90	161,194.88
31-60 Days										-	26,381.83
61-90 Days										-	-
91-120 Days										-	-
121-150 Days										-	-
151-180 Days										-	-
181+ Days										-	-

Delinquency Status (% of Current Balance)

Current Portfolio Balance										9,631,699.52	27,602,785.56
										Apr-14	Apr-15
Current										99.74%	99.32%
1-30 Days										0.26%	0.58%
31-60 Days										0.00%	0.10%
61-90 Days										0.00%	0.00%
91-120 Days										0.00%	0.00%
121-150 Days										0.00%	0.00%
151-180 Days										0.00%	0.00%
181+ Days										0.00%	0.00%
Current - 90 Days										100.00%	100.00%
91-180 Days										0.00%	0.00%



Mortgages - La Hipotecaria El Salvador Migration Analysis (2015 Vintage)

Delinquency Status (\$ of Current Balance)

Data Cutoff: 4/30/2015

Current Portfolio Balance										6,731,794.71
										Apr-15
Current										6,678,269.99
1-30 Days										53,524.72
31-60 Days										-
61-90 Days										-
91-120 Days										-
121-150 Days										-
151-180 Days										-
181+ Days										-

Delinquency Status (% of Current Balance)

Current Portfolio Balance										6,731,794.71
										Apr-15
Current										99.20%
1-30 Days										0.80%
31-60 Days										0.00%
61-90 Days										0.00%
91-120 Days										0.00%
121-150 Days										0.00%
151-180 Days										0.00%
181+ Days										0.00%
Current - 90 Days										100.00%
91-180 Days										0.00%

