



Migration Analysis for La Hipotecaria S.A. de C.V El Salvador

Personal Loans September 2016

An analysis of historical loan payment data was used to compile a migration analysis of delinquency by annual vintage. Delinquencies for each vintage were grouped into the following buckets; Current, 1-30, 31-60, 61-90, 91-120, 121-150, 151-180, and 180+. Results are provided in graphical and tabular form. The cutoff date is 9/30/2016.

Personal Loans - La Hipotecaria El Salvador Migration Analysis (All Vintages)

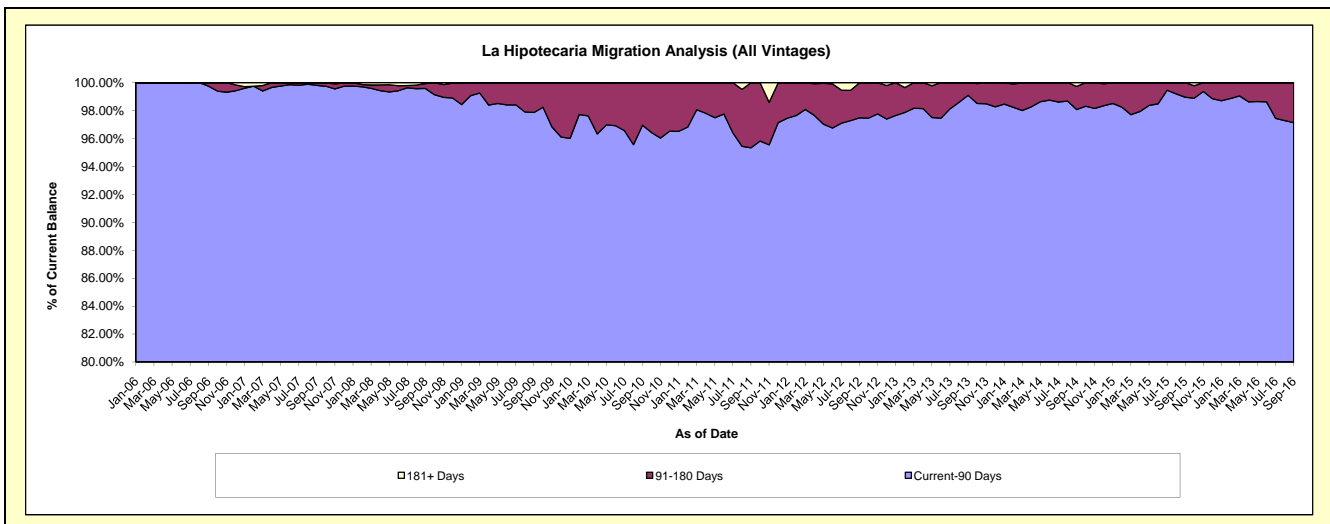
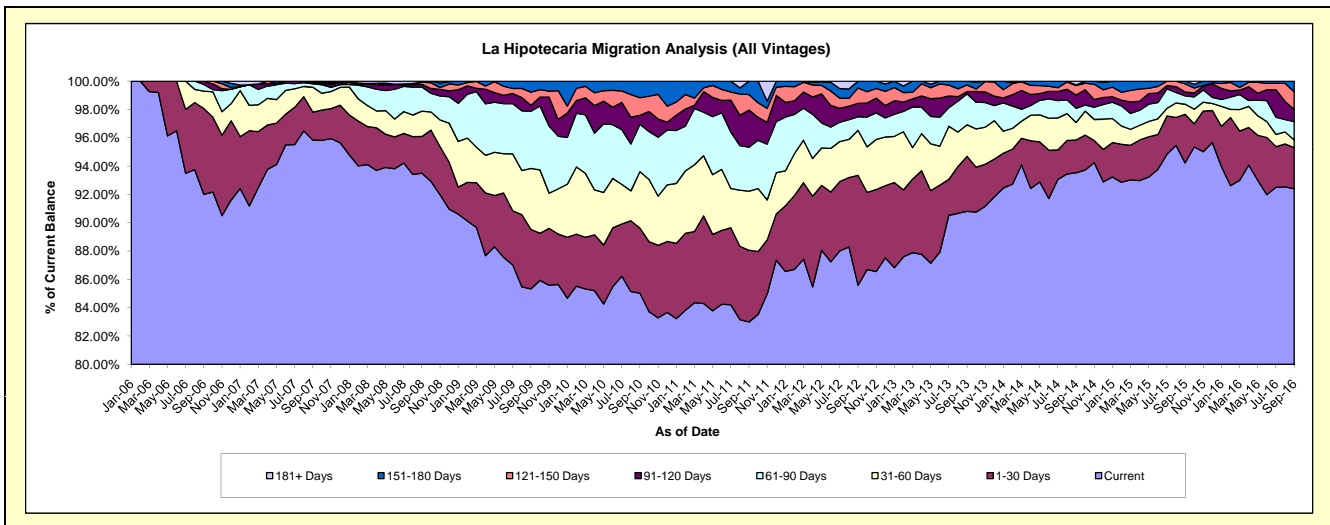
Delinquency Status (\$ of Current Balance)

Data Cutoff: 9/30/2016

Current Portfolio Balance	5,266,995.51	9,091,724.04	8,195,167.15	6,840,434.90	4,911,364.05	4,676,263.39	5,065,166.82	5,755,328.74	5,192,719.63	4,707,071.90
	Sep-07	Sep-08	Sep-09	Sep-10	Sep-11	Sep-12	Sep-13	Sep-14	Sep-15	Sep-16
Current	5,047,954.64	8,500,283.88	6,992,807.79	5,816,172.03	4,076,150.09	4,002,299.45	4,599,694.24	5,382,797.27	4,893,013.43	4,349,229.17
1-30 Days	103,706.07	236,285.16	344,157.92	314,386.45	248,674.58	362,981.36	196,625.34	133,174.71	177,972.86	136,786.76
31-60 Days	92,672.96	162,474.05	352,973.29	272,989.94	205,200.63	148,347.41	112,847.48	71,283.89	37,223.31	25,767.93
61-90 Days	12,774.63	155,498.20	330,727.71	228,693.62	152,536.46	45,039.57	110,310.58	57,743.91	30,702.94	60,706.52
91-120 Days	4,493.14	17,064.49	35,209.90	43,320.03	128,442.12	44,617.15	8,719.71	53,673.34	14,321.42	41,318.55
121-150 Days	5,394.07	13,966.15	75,753.74	84,844.12	53,973.04	50,630.16	23,401.57	38,859.11	30,012.21	58,645.33
151-180 Days	-	-	63,536.80	80,028.71	46,387.13	22,348.29	13,567.90	2,848.09	9,473.46	34,617.64
181+ Days	-	6,152.11	-	-	-	-	-	14,948.42	-	-

Delinquency Status (% of Current Balance)

Current Portfolio Balance	5,266,995.51	9,091,724.04	8,195,167.15	6,840,434.90	4,911,364.05	4,676,263.39	5,065,166.82	5,755,328.74	5,192,719.63	4,707,071.90
	Sep-07	Sep-08	Sep-09	Sep-10	Sep-11	Sep-12	Sep-13	Sep-14	Sep-15	Sep-16
Current	95.84%	93.49%	85.33%	85.03%	82.99%	85.59%	90.81%	93.53%	94.23%	92.40%
1-30 Days	1.97%	2.60%	4.20%	4.60%	5.06%	7.76%	3.88%	2.31%	3.43%	2.91%
31-60 Days	1.76%	1.79%	4.31%	3.99%	4.18%	3.17%	2.23%	1.24%	0.72%	0.55%
61-90 Days	0.24%	1.71%	4.04%	3.34%	3.11%	0.96%	2.18%	1.00%	0.59%	1.29%
91-120 Days	0.09%	0.19%	0.43%	0.63%	2.62%	0.95%	0.17%	0.93%	0.28%	0.88%
121-150 Days	0.10%	0.15%	0.92%	1.24%	1.10%	1.08%	0.46%	0.68%	0.58%	1.25%
151-180 Days	0.00%	0.00%	0.78%	1.17%	0.94%	0.48%	0.27%	0.05%	0.18%	0.74%
181+ Days	0.00%	0.07%	0.00%	0.00%	0.00%	0.00%	0.00%	0.26%	0.00%	0.00%
Current - 90 Days	99.81%	99.59%	97.87%	96.96%	95.34%	97.49%	99.10%	98.08%	98.96%	97.14%
91-180 Days	0.19%	0.34%	2.13%	3.04%	4.66%	2.51%	0.90%	1.66%	1.04%	2.86%



Personal Loans - La Hipotecaria El Salvador Migration Analysis (2006 Vintage)

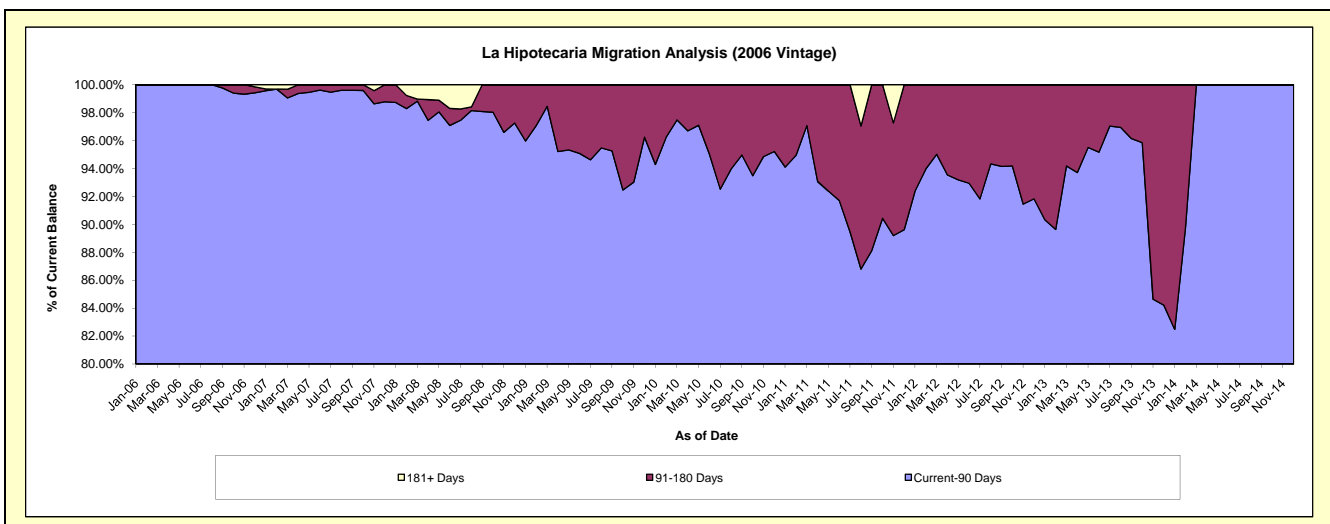
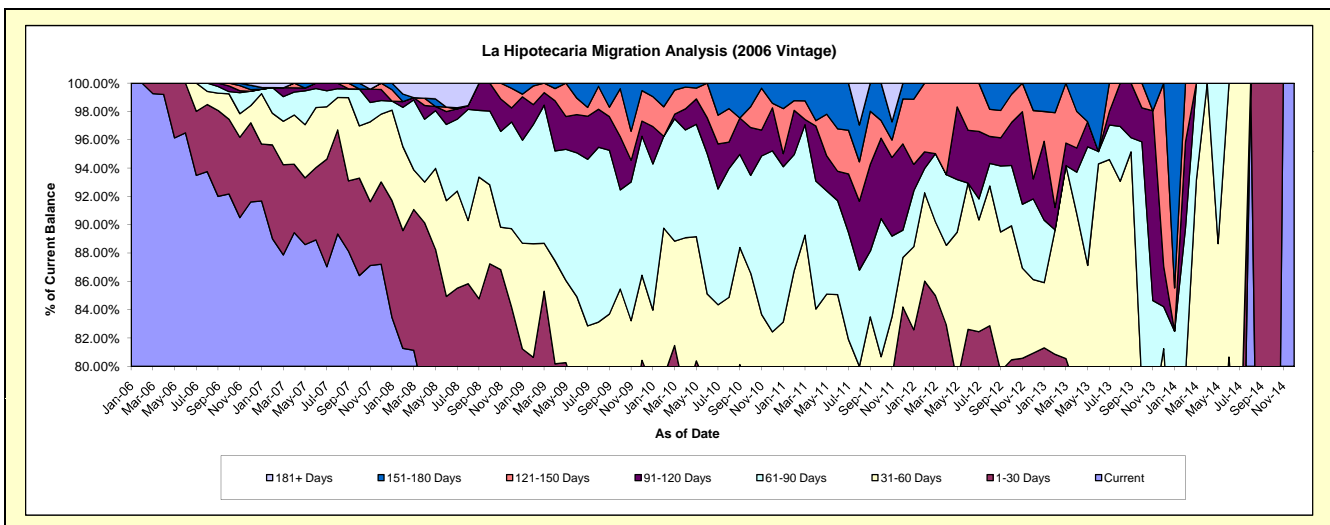
Delinquency Status (\$ of Current Balance)

Data Cutoff: 9/30/2016

Current Portfolio Balance	1,350,696.96	888,161.94	663,223.09	420,352.66	226,565.35	114,094.97	40,169.23	1,046.18	#N/A	#N/A
	Sep-07	Sep-08	Sep-09	Sep-10	Sep-11	Sep-12	Sep-13	Sep-14	Sep-15	Sep-16
Current	1,190,259.70	680,917.67	453,033.35	293,397.74	157,659.14	74,764.36	23,439.18	502.88	#N/A	#N/A
1-30 Days	67,239.97	72,017.30	61,033.10	43,405.07	13,393.89	16,127.02	3,488.84	543.30	#N/A	#N/A
31-60 Days	79,328.59	76,290.51	41,008.22	34,766.03	18,117.42	11,212.59	11,293.58	-	#N/A	#N/A
61-90 Days	8,474.63	41,871.97	76,738.06	27,649.68	10,491.99	5,322.20	399.36	-	#N/A	#N/A
91-120 Days	-	17,064.49	15,741.11	10,788.08	13,908.06	2,260.48	1,548.27	-	#N/A	#N/A
121-150 Days	5,394.07	-	4,427.58	-	8,505.27	2,208.75	-	-	#N/A	#N/A
151-180 Days	-	-	11,241.67	10,346.06	4,489.58	2,199.57	-	-	#N/A	#N/A
181+ Days	-	-	-	-	-	-	-	-	#N/A	#N/A

Delinquency Status (% of Current Balance)

Current Portfolio Balance	1,350,696.96	888,161.94	663,223.09	420,352.66	226,565.35	114,094.97	40,169.23	1,046.18	#N/A	#N/A
	Sep-07	Sep-08	Sep-09	Sep-10	Sep-11	Sep-12	Sep-13	Sep-14	Sep-15	Sep-16
Current	88.12%	76.67%	68.31%	69.80%	69.59%	65.53%	58.35%	48.07%	#N/A	#N/A
1-30 Days	4.98%	8.11%	9.20%	10.33%	5.91%	14.13%	8.69%	51.93%	#N/A	#N/A
31-60 Days	5.87%	8.59%	6.18%	8.27%	8.00%	9.83%	28.12%	0.00%	#N/A	#N/A
61-90 Days	0.63%	4.71%	11.57%	6.58%	4.63%	4.66%	0.99%	0.00%	#N/A	#N/A
91-120 Days	0.00%	1.92%	2.37%	2.57%	6.14%	1.98%	3.85%	0.00%	#N/A	#N/A
121-150 Days	0.40%	0.00%	0.67%	0.00%	3.75%	1.94%	0.00%	0.00%	#N/A	#N/A
151-180 Days	0.00%	0.00%	1.70%	2.46%	1.98%	1.93%	0.00%	0.00%	#N/A	#N/A
181+ Days	0.00%	0.00%	0.00%	0.00%	0.00%	0.00%	0.00%	0.00%	#N/A	#N/A
Current - 90 Days	99.60%	98.08%	95.26%	94.97%	88.13%	94.16%	96.15%	100.00%	#N/A	#N/A
91-180 Days	0.40%	1.92%	4.74%	5.03%	11.87%	5.84%	3.85%	0.00%	#N/A	#N/A



Personal Loans - La Hipotecaria El Salvador Migration Analysis (2007 Vintage)

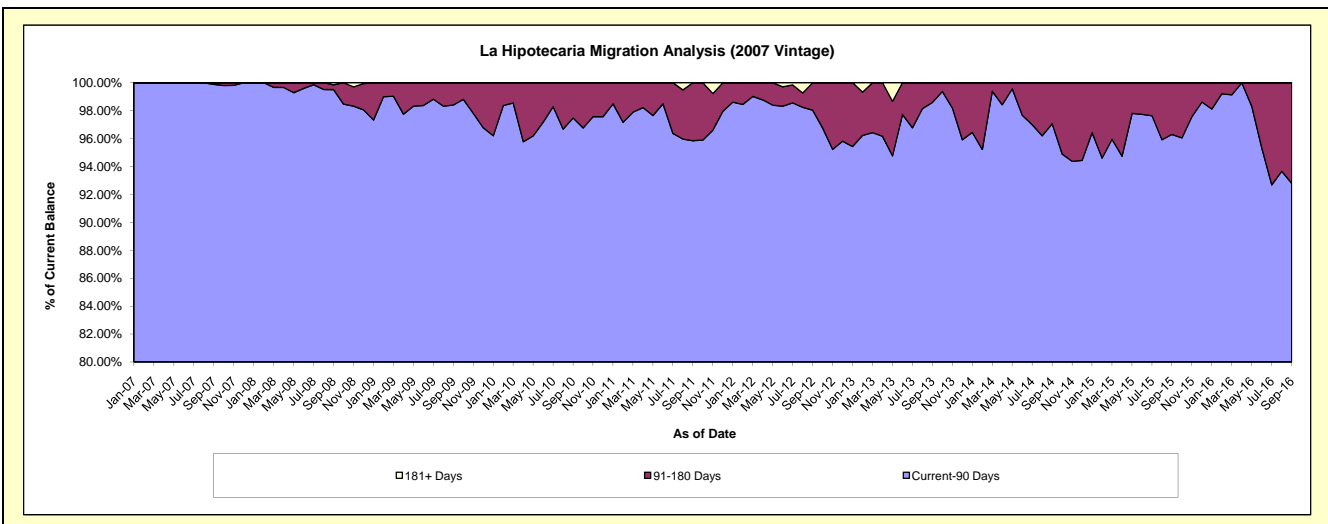
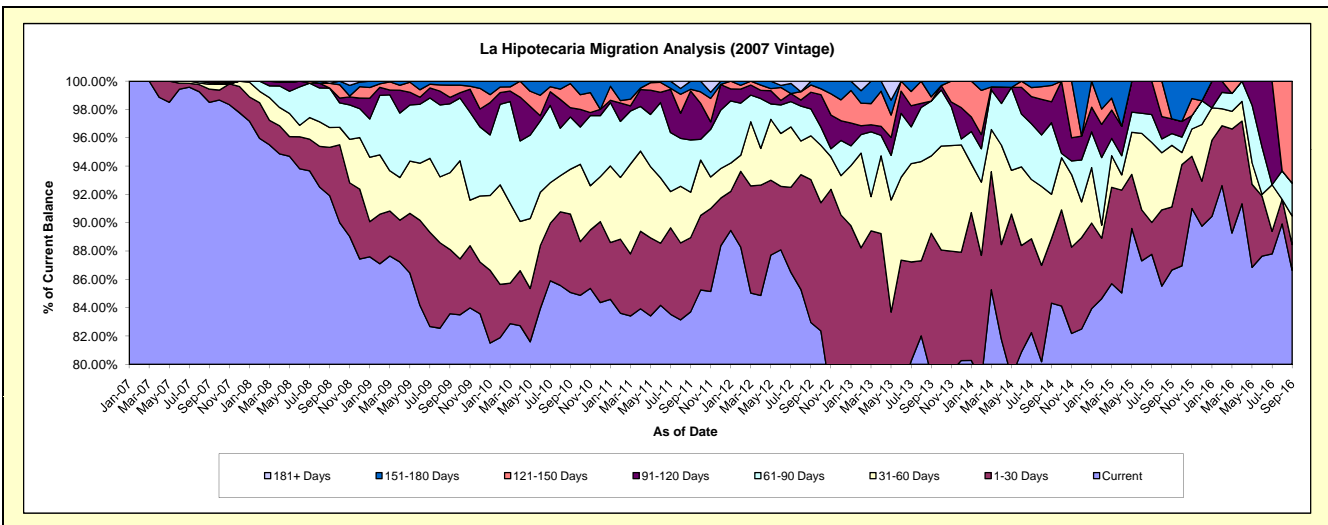
Delinquency Status (\$ of Current Balance)

Data Cutoff: 9/30/2016

Current Portfolio Balance	3,916,298.55	4,083,613.26	3,330,335.01	2,551,536.83	1,715,808.68	1,094,416.89	660,140.54	379,655.82	159,347.46	35,031.21
	Sep-07	Sep-08	Sep-09	Sep-10	Sep-11	Sep-12	Sep-13	Sep-14	Sep-15	Sep-16
Current	3,857,694.94	3,753,442.65	2,783,440.61	2,170,919.38	1,436,277.22	907,861.08	523,729.02	320,144.55	138,096.51	30,351.64
1-30 Days	36,466.10	139,561.46	151,118.84	141,263.48	89,885.74	110,527.89	65,517.39	17,302.27	7,089.31	635.98
31-60 Days	13,344.37	56,864.66	180,591.97	80,600.02	55,095.72	33,783.19	36,018.78	11,876.17	6,942.04	705.47
61-90 Days	4,300.00	113,626.23	162,061.78	94,240.96	63,386.55	20,772.50	25,591.11	19,203.26	1,319.09	815.95
91-120 Days	4,493.14	-	14,947.85	16,883.22	59,258.40	12,938.02	-	5,619.80	1,655.38	-
121-150 Days	-	13,966.15	28,740.09	43,303.50	2,030.97	5,611.27	1,967.81	4,356.15	-	2,522.17
151-180 Days	-	-	9,433.87	4,326.27	9,874.08	2,922.94	7,316.43	1,153.62	4,245.13	-
181+ Days	-	6,152.11	-	-	-	-	-	-	-	-

Delinquency Status (% of Current Balance)

Current Portfolio Balance	3,916,298.55	4,083,613.26	3,330,335.01	2,551,536.83	1,715,808.68	1,094,416.89	660,140.54	379,655.82	159,347.46	35,031.21
	Sep-07	Sep-08	Sep-09	Sep-10	Sep-11	Sep-12	Sep-13	Sep-14	Sep-15	Sep-16
Current	98.50%	91.91%	83.58%	85.08%	83.71%	82.95%	79.34%	84.32%	86.66%	86.64%
1-30 Days	0.93%	3.42%	4.54%	5.54%	5.24%	10.10%	9.92%	4.56%	4.45%	1.82%
31-60 Days	0.34%	1.39%	5.42%	3.16%	3.21%	3.09%	5.46%	3.13%	4.36%	2.01%
61-90 Days	0.11%	2.78%	4.87%	3.69%	3.69%	1.90%	3.88%	5.06%	0.83%	2.33%
91-120 Days	0.11%	0.00%	0.45%	0.66%	3.45%	1.18%	0.00%	1.48%	1.04%	0.00%
121-150 Days	0.00%	0.34%	0.86%	1.70%	0.12%	0.51%	0.30%	1.15%	0.00%	7.20%
151-180 Days	0.00%	0.00%	0.28%	0.17%	0.58%	0.27%	1.11%	0.30%	2.66%	0.00%
181+ Days	0.00%	0.15%	0.00%	0.00%	0.00%	0.00%	0.00%	0.00%	0.00%	0.00%
Current - 90 Days	99.89%	99.51%	98.40%	97.47%	95.85%	98.04%	98.59%	97.07%	96.30%	92.80%
91-180 Days	0.11%	0.34%	1.60%	2.53%	4.15%	1.96%	1.41%	2.93%	3.70%	7.20%



Personal Loans - La Hipotecaria El Salvador Migration Analysis (2008 Vintage)

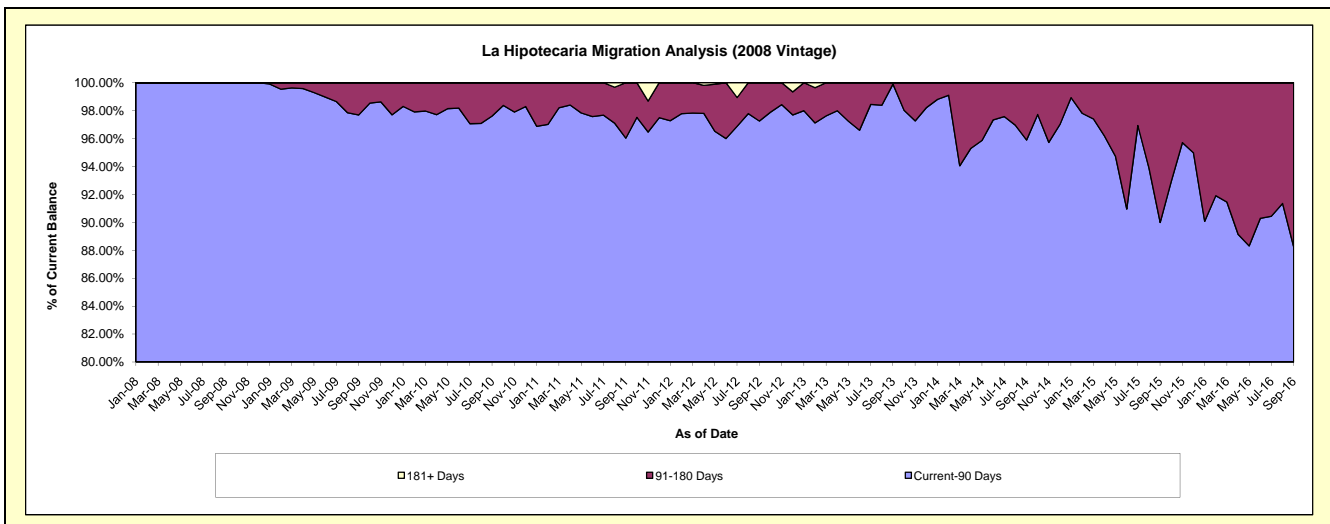
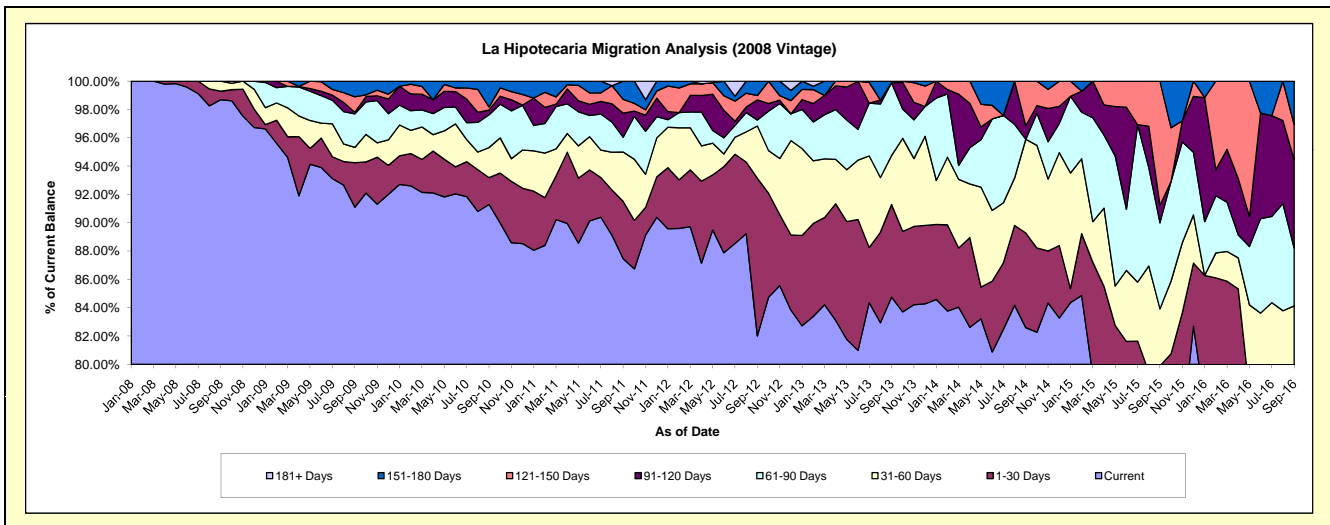
Delinquency Status (\$ of Current Balance)

Data Cutoff: 9/30/2016

Current Portfolio Balance	-	4,119,948.84	3,889,678.27	3,122,184.90	2,231,298.79	1,583,896.31	1,034,366.41	625,775.08	312,341.22	117,898.42
	Sep-08	Sep-09	Sep-10	Sep-11	Sep-12	Sep-13	Sep-14	Sep-15	Sep-16	
Current	4,065,923.56	3,543,414.63	2,850,334.75	1,951,683.06	1,298,961.24	876,620.16	516,859.16	234,837.73	85,117.64	
1-30 Days	24,706.40	122,181.82	59,266.52	90,152.81	176,333.24	67,603.26	41,798.64	14,712.36	7,704.46	
31-60 Days	29,318.88	42,185.68	66,199.99	77,775.11	58,437.47	35,884.85	41,456.51	12,582.01	6,365.26	
61-90 Days	-	91,927.87	72,206.50	23,254.55	6,714.20	53,207.26	-	18,965.01	4,820.71	
91-120 Days	-	4,520.94	10,555.32	38,013.92	22,451.64	-	5,894.11	3,835.40	7,347.68	
121-150 Days	-	42,586.07	6,659.14	21,681.35	4,903.44	-	19,766.66	27,408.71	2,947.24	
151-180 Days	-	42,861.26	56,962.68	28,737.99	16,095.08	1,050.88	-	-	3,595.43	
181+ Days	-	-	-	-	-	-	-	-	-	

Delinquency Status (% of Current Balance)

Current Portfolio Balance	-	4,119,948.84	3,889,678.27	3,122,184.90	2,231,298.79	1,583,896.31	1,034,366.41	625,775.08	312,341.22	117,898.42
	Sep-08	Sep-09	Sep-10	Sep-11	Sep-12	Sep-13	Sep-14	Sep-15	Sep-16	
Current	98.69%	91.10%	91.29%	87.47%	82.01%	84.75%	82.60%	75.19%	72.20%	
1-30 Days	0.60%	3.14%	1.90%	4.04%	11.13%	6.54%	6.68%	4.71%	6.53%	
31-60 Days	0.71%	1.08%	2.12%	3.49%	3.69%	3.47%	6.62%	4.03%	5.40%	
61-90 Days	0.00%	2.36%	2.31%	1.04%	0.42%	5.14%	0.00%	6.07%	4.09%	
91-120 Days	0.00%	0.12%	0.34%	1.70%	1.42%	0.00%	0.94%	1.23%	6.23%	
121-150 Days	0.00%	1.09%	0.21%	0.97%	0.31%	0.00%	3.16%	8.78%	2.50%	
151-180 Days	0.00%	1.10%	1.82%	1.29%	1.02%	0.10%	0.00%	0.00%	3.05%	
181+ Days	0.00%	0.00%	0.00%	0.00%	0.00%	0.00%	0.00%	0.00%	0.00%	
Current - 90 Days	100.00%	97.69%	97.62%	96.04%	97.26%	99.90%	95.90%	90.00%	88.22%	
91-180 Days	0.00%	2.31%	2.38%	3.96%	2.74%	0.10%	4.10%	10.00%	11.78%	



Personal Loans - La Hipotecaria El Salvador Migration Analysis (2009 Vintage)

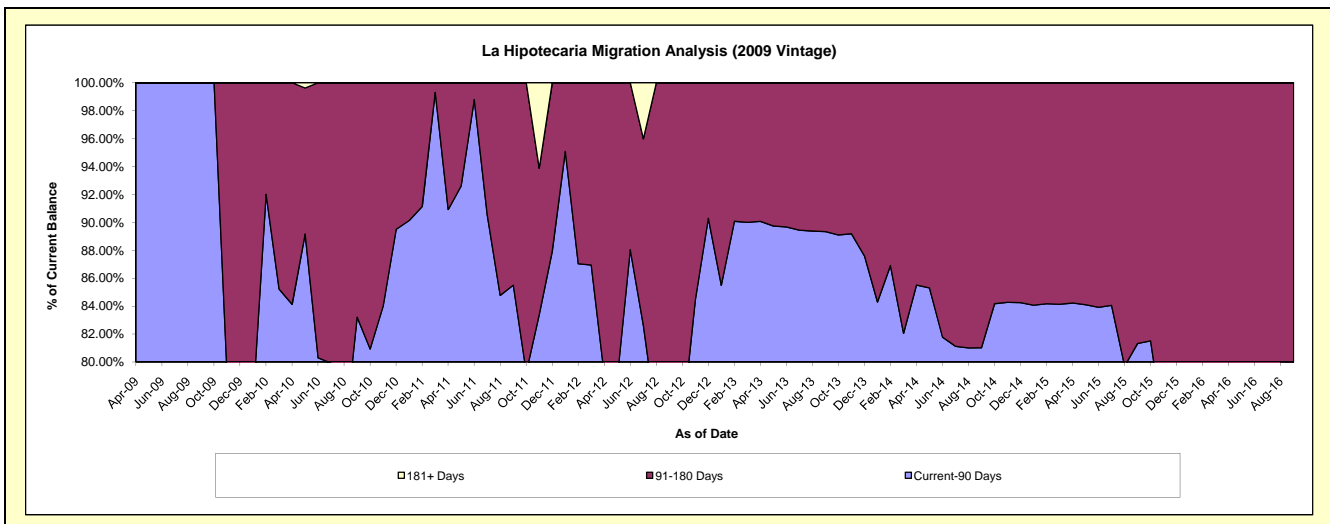
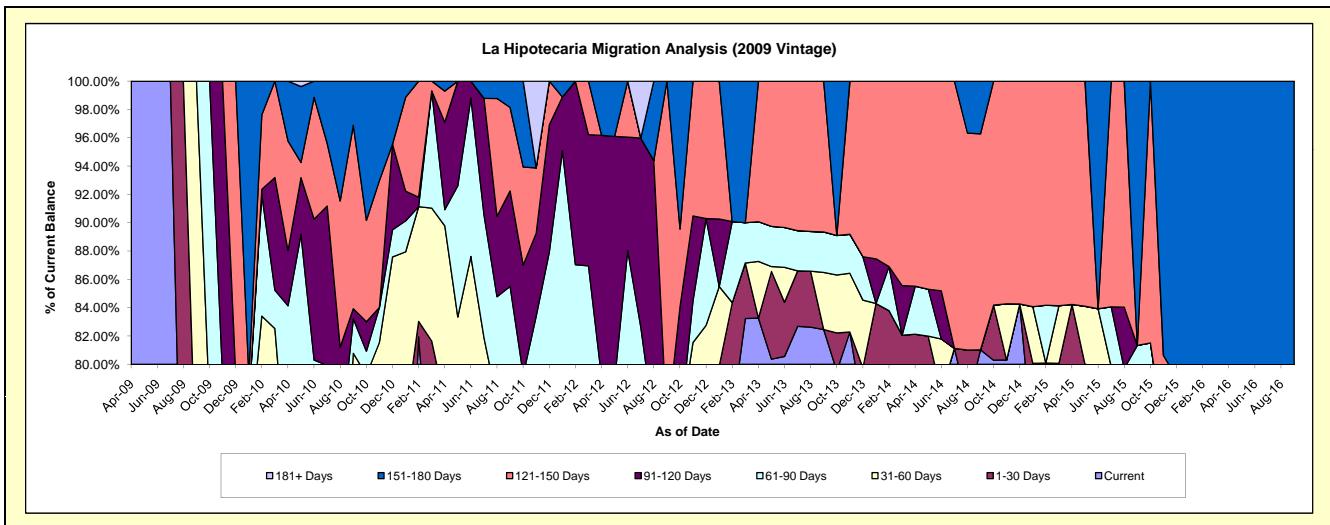
Delinquency Status (\$ of Current Balance)

Data Cutoff: 9/30/2016

Current Portfolio Balance	-	-	311,930.78	269,277.90	176,619.53	120,162.12	81,675.41	45,547.95	28,013.28	16,403.67
			Sep-09	Sep-10	Sep-11	Sep-12	Sep-13	Sep-14	Sep-15	Sep-16
Current			212,919.20	156,151.57	104,036.50	75,184.92	67,348.78	36,904.40	9,065.98	9,591.90
1-30 Days			9,824.16	25,594.36	8,838.60	3,013.79	-	-	10,104.05	1,254.72
31-60 Days			89,187.42	35,771.55	14,090.21	12,714.07	3,297.56	-	2,267.16	-
61-90 Days			-	6,569.14	24,054.68	-	2,327.00	-	1,347.76	2,267.16
91-120 Days			-	1,916.10	11,906.31	-	-	-	-	-
121-150 Days			-	34,881.48	10,407.75	29,249.34	8,702.07	6,949.08	-	-
151-180 Days			-	8,393.70	3,285.48	-	-	1,694.47	5,228.33	3,289.89
181+ Days			-	-	-	-	-	-	-	-

Delinquency Status (% of Current Balance)

Current Portfolio Balance	-	-	311,930.78	269,277.90	176,619.53	120,162.12	81,675.41	45,547.95	28,013.28	16,403.67
			Sep-09	Sep-10	Sep-11	Sep-12	Sep-13	Sep-14	Sep-15	Sep-16
Current			68.26%	57.99%	58.90%	62.57%	82.46%	81.02%	32.36%	58.47%
1-30 Days			3.15%	9.50%	5.00%	2.51%	0.00%	0.00%	36.07%	7.65%
31-60 Days			28.59%	13.28%	7.98%	10.58%	4.04%	0.00%	8.09%	0.00%
61-90 Days			0.00%	2.44%	13.62%	0.00%	2.85%	0.00%	4.81%	13.82%
91-120 Days			0.00%	0.71%	6.74%	0.00%	0.00%	0.00%	0.00%	0.00%
121-150 Days			0.00%	12.95%	5.89%	24.34%	10.65%	15.26%	0.00%	0.00%
151-180 Days			0.00%	3.12%	1.86%	0.00%	0.00%	3.72%	18.66%	20.06%
181+ Days			0.00%	0.00%	0.00%	0.00%	0.00%	0.00%	0.00%	0.00%
Current - 90 Days			100.00%	83.22%	85.51%	75.66%	89.35%	81.02%	81.34%	79.94%
91-180 Days			0.00%	16.78%	14.49%	24.34%	10.65%	18.98%	18.66%	20.06%



Personal Loans - La Hipotecaria El Salvador Migration Analysis (2010 Vintage)

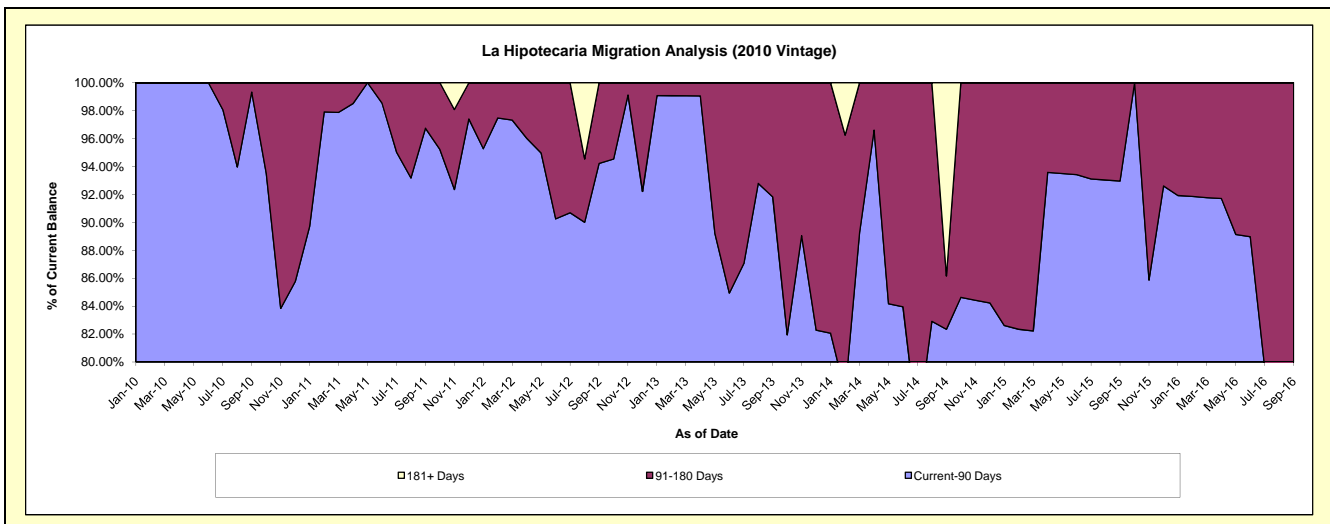
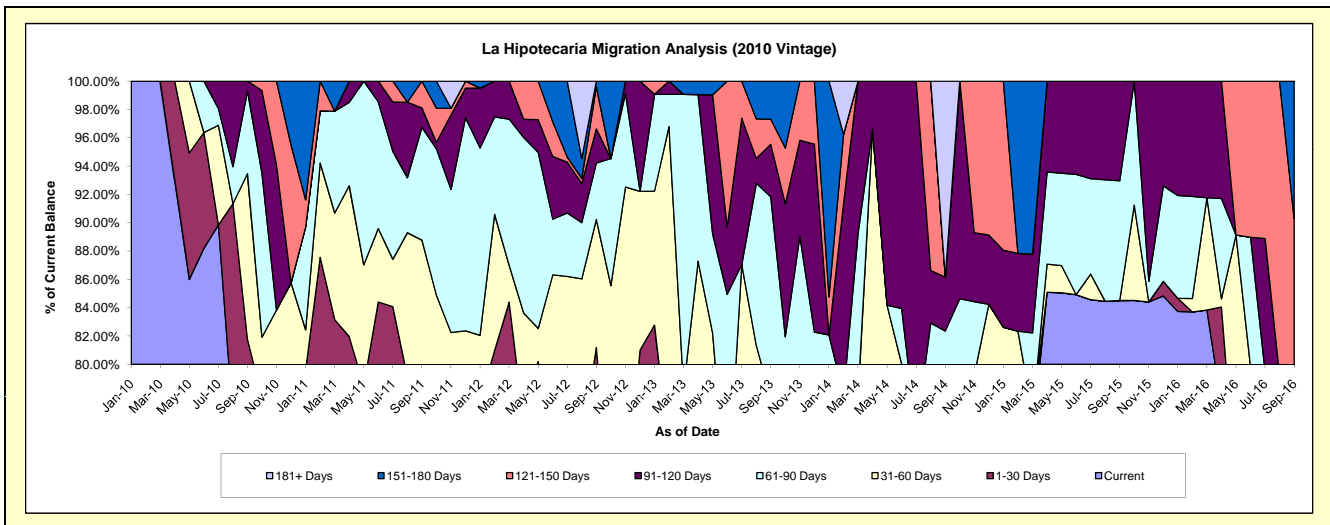
Delinquency Status (\$ of Current Balance)

Data Cutoff: 9/30/2016

Current Portfolio Balance	-	-	-	477,082.61	393,325.90	289,771.03	193,235.61	108,041.69	53,442.14	30,269.93
	Sep-10	Sep-11	Sep-12	Sep-13	Sep-14	Sep-15	Sep-16			
Current	345,368.59	277,623.08	194,155.38	110,560.66	62,182.63	45,163.39	21,337.29			
1-30 Days	44,857.02	36,023.31	41,103.28	33,136.32	13,294.06	-	-			
31-60 Days	55,652.35	35,527.69	26,200.09	6,280.53	4,476.98	-	2,568.53			
61-90 Days	28,027.34	31,348.69	11,557.21	27,466.11	9,018.08	4,518.54	-			
91-120 Days	3,177.31	5,355.43	6,967.01	7,171.44	4,121.52	3,760.21	-			
121-150 Days	-	7,447.70	8,657.36	3,419.96	-	-	3,424.65			
151-180 Days	-	-	1,130.70	5,200.59	-	-	2,939.46			
181+ Days	-	-	-	-	14,948.42	-	-			

Delinquency Status (% of Current Balance)

Current Portfolio Balance	-	-	-	477,082.61	393,325.90	289,771.03	193,235.61	108,041.69	53,442.14	30,269.93
	Sep-10	Sep-11	Sep-12	Sep-13	Sep-14	Sep-15	Sep-16			
Current	72.39%	70.58%	67.00%	57.22%	57.55%	84.51%	70.49%			
1-30 Days	9.40%	9.16%	14.18%	17.15%	12.30%	0.00%	0.00%			
31-60 Days	11.67%	9.03%	9.04%	3.25%	4.14%	0.00%	8.49%			
61-90 Days	5.87%	7.97%	3.99%	14.21%	8.35%	8.46%	0.00%			
91-120 Days	0.67%	1.36%	2.40%	3.71%	3.81%	7.04%	0.00%			
121-150 Days	0.00%	1.89%	2.99%	1.77%	0.00%	0.00%	11.31%			
151-180 Days	0.00%	0.00%	0.39%	2.69%	0.00%	0.00%	9.71%			
181+ Days	0.00%	0.00%	0.00%	0.00%	13.84%	0.00%	0.00%			
Current - 90 Days	99.33%	96.74%	94.22%	91.83%	82.35%	92.96%	78.98%			
91-180 Days	0.67%	3.26%	5.78%	8.17%	3.81%	7.04%	21.02%			



Personal Loans - La Hipotecaria El Salvador Migration Analysis (2011 Vintage)

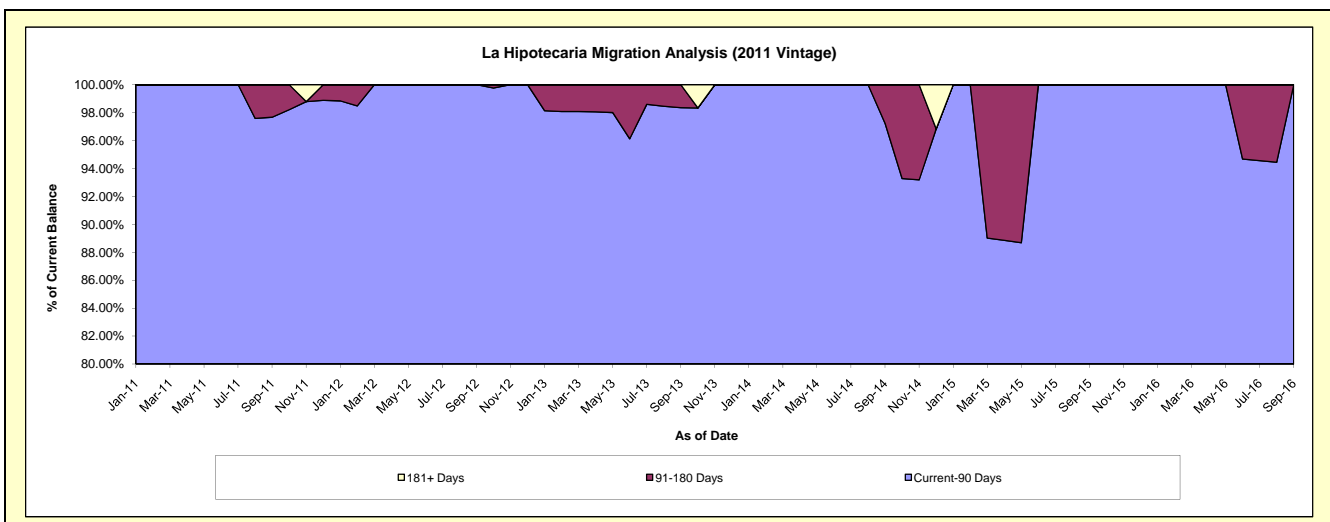
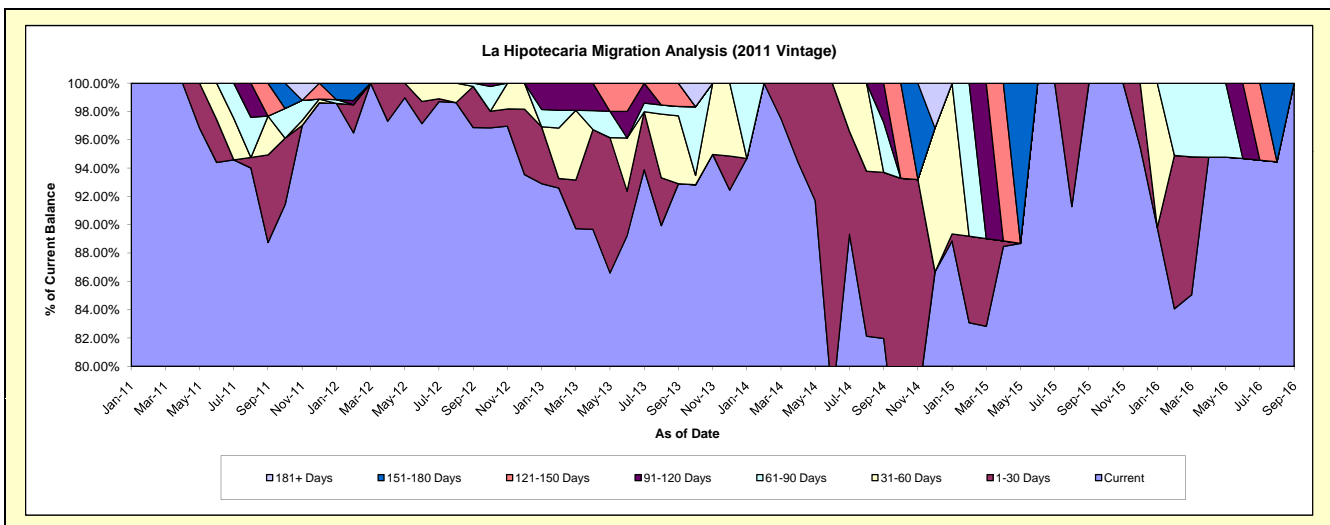
Delinquency Status (\$ of Current Balance)

Data Cutoff: 9/30/2016

Current Portfolio Balance	-	-	-	-	167,745.80	295,213.54	196,079.60	143,703.70	93,664.45	61,001.68
					Sep-11	Sep-12	Sep-13	Sep-14	Sep-15	Sep-16
Current					148,871.09	285,944.18	182,147.24	117,799.92	93,664.45	61,001.68
1-30 Days					10,380.23	8,595.90	-	16,854.57	-	-
31-60 Days					4,594.48	-	9,392.95	-	-	-
61-90 Days					-	673.46	1,319.74	5,059.81	-	-
91-120 Days					-	-	-	3,989.40	-	-
121-150 Days					3,900.00	-	3,219.67	-	-	-
151-180 Days					-	-	-	-	-	-
181+ Days					-	-	-	-	-	-

Delinquency Status (% of Current Balance)

Current Portfolio Balance	-	-	-	-	167,745.80	295,213.54	196,079.60	143,703.70	93,664.45	61,001.68
					Sep-11	Sep-12	Sep-13	Sep-14	Sep-15	Sep-16
Current					88.75%	96.86%	92.89%	81.97%	100.00%	100.00%
1-30 Days					6.19%	2.91%	0.00%	11.73%	0.00%	0.00%
31-60 Days					2.74%	0.00%	4.79%	0.00%	0.00%	0.00%
61-90 Days					0.00%	0.23%	0.67%	3.52%	0.00%	0.00%
91-120 Days					0.00%	0.00%	0.00%	2.78%	0.00%	0.00%
121-150 Days					2.32%	0.00%	1.64%	0.00%	0.00%	0.00%
151-180 Days					0.00%	0.00%	0.00%	0.00%	0.00%	0.00%
181+ Days					0.00%	0.00%	0.00%	0.00%	0.00%	0.00%
Current - 90 Days					97.68%	100.00%	98.36%	97.22%	100.00%	100.00%
91-180 Days					2.32%	0.00%	1.64%	2.78%	0.00%	0.00%



Personal Loans - La Hipotecaria El Salvador Migration Analysis (2012 Vintage)

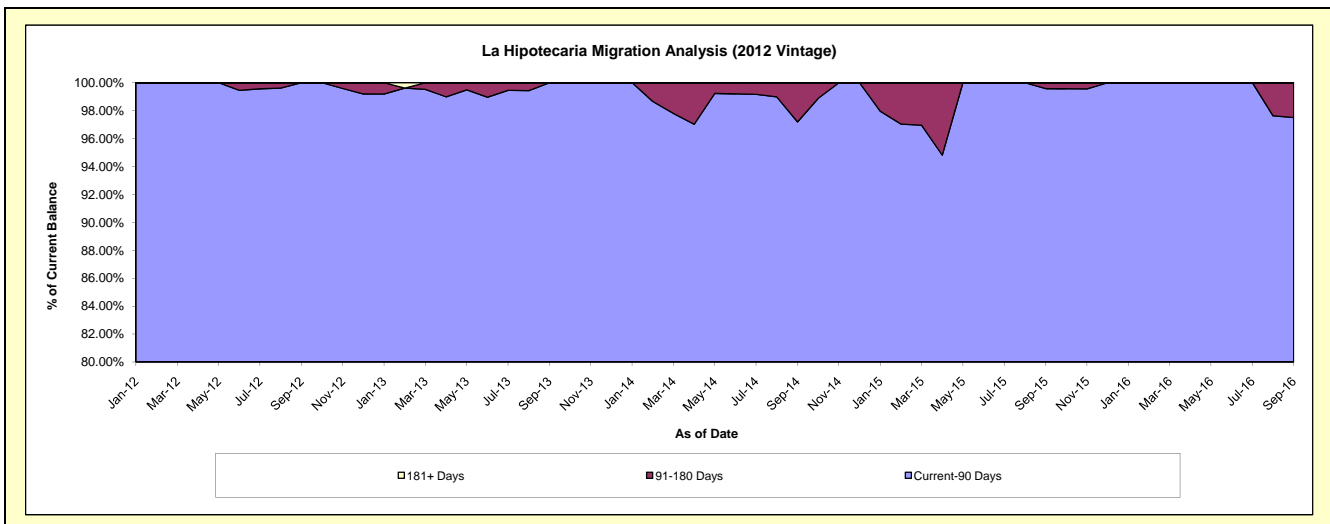
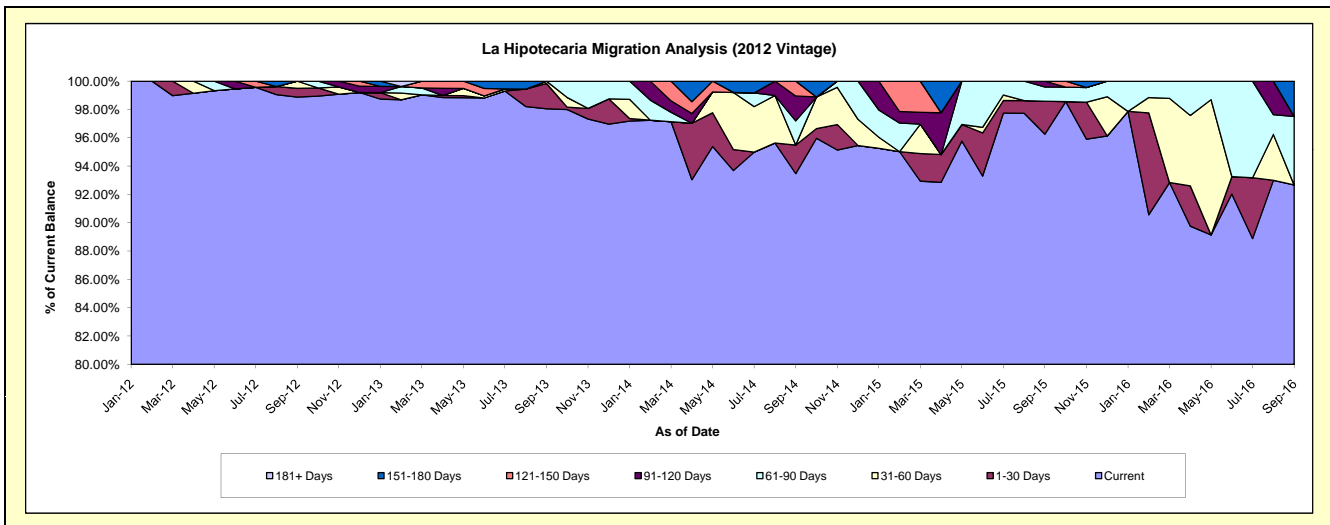
Delinquency Status (\$ of Current Balance)

Data Cutoff: 9/30/2016

Current Portfolio Balance	-	-	-	-	-	1,178,708.53	1,249,196.28	741,959.86	454,638.72	267,636.22
						Sep-12	Sep-13	Sep-14	Sep-15	Sep-16
Current						1,165,428.29	1,224,829.33	693,551.42	437,603.45	248,019.80
1-30 Days						7,280.24	22,302.57	14,929.51	10,601.26	-
31-60 Days						6,000.00	2,064.38	-	-	-
61-90 Days						-	-	12,665.74	4,552.54	12,957.29
91-120 Days						-	-	13,025.97	1,881.47	-
121-150 Days						-	-	7,787.22	-	-
151-180 Days						-	-	-	-	6,659.13
181+ Days						-	-	-	-	-

Delinquency Status (% of Current Balance)

Current Portfolio Balance	-	-	-	-	-	1,178,708.53	1,249,196.28	741,959.86	454,638.72	267,636.22
						Sep-12	Sep-13	Sep-14	Sep-15	Sep-16
Current						98.87%	98.05%	93.48%	96.25%	92.67%
1-30 Days						0.62%	1.79%	2.01%	2.33%	0.00%
31-60 Days						0.51%	0.17%	0.00%	0.00%	0.00%
61-90 Days						0.00%	0.00%	1.71%	1.00%	4.84%
91-120 Days						0.00%	0.00%	1.76%	0.41%	0.00%
121-150 Days						0.00%	0.00%	1.05%	0.00%	0.00%
151-180 Days						0.00%	0.00%	0.00%	0.00%	2.49%
181+ Days						0.00%	0.00%	0.00%	0.00%	0.00%
Current - 90 Days						100.00%	100.00%	97.19%	99.59%	97.51%
91-180 Days						0.00%	0.00%	2.81%	0.41%	2.49%



Personal Loans - La Hipotecaria El Salvador Migration Analysis (2013 Vintage)

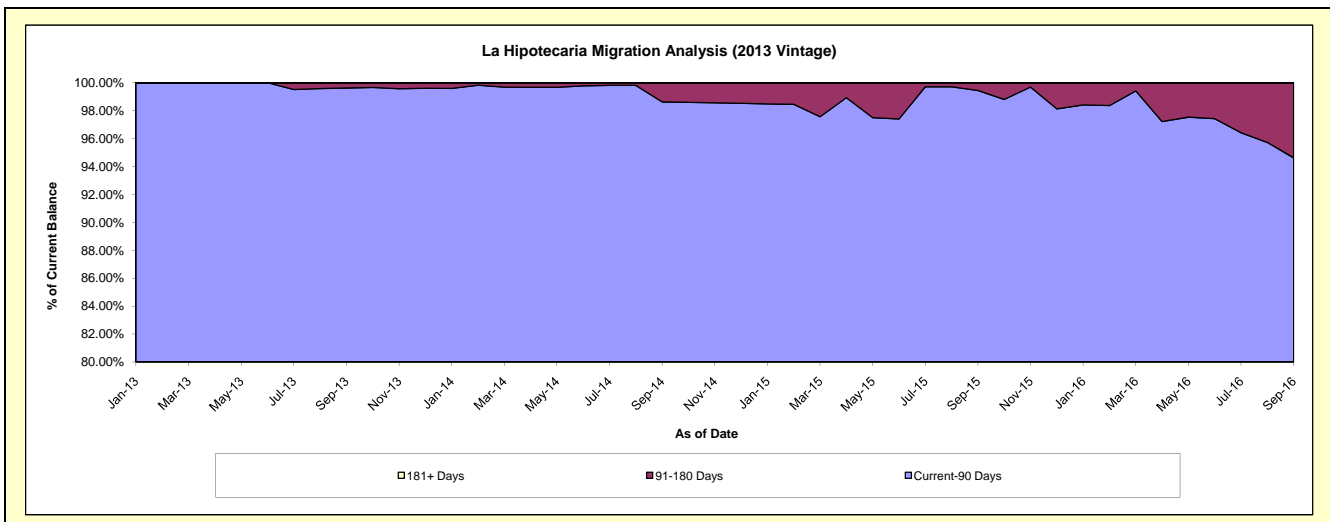
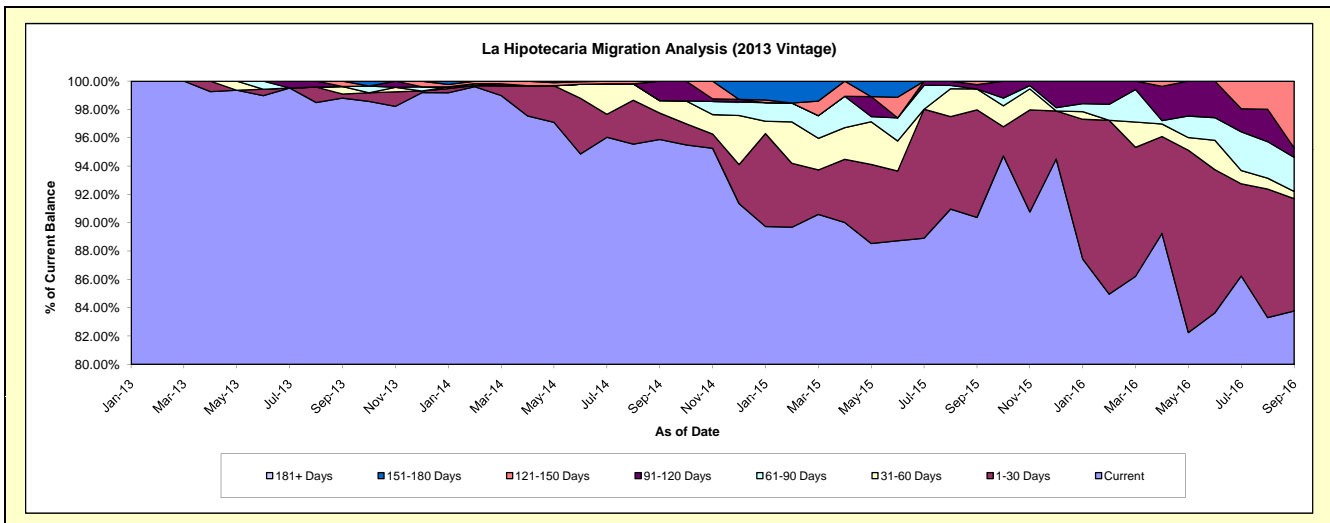
Delinquency Status (\$ of Current Balance)

Data Cutoff: 9/30/2016

Current Portfolio Balance	-	-	-	-	-	-	-	1,610,303.74	1,528,586.25	1,048,149.76	713,645.26
								Sep-13	Sep-14	Sep-15	Sep-16
Current								1,591,019.87	1,465,637.12	947,292.24	597,803.74
1-30 Days								4,576.96	28,452.36	79,632.96	56,597.75
31-60 Days								8,614.85	13,474.23	15,432.10	3,708.51
61-90 Days								-	-	-	17,153.16
91-120 Days								-	21,022.54	3,188.96	4,723.49
121-150 Days								6,092.06	-	2,603.50	33,658.61
151-180 Days								-	-	-	-
181+ Days								-	-	-	-

Delinquency Status (% of Current Balance)

Current Portfolio Balance	-	-	-	-	-	-	-	1,610,303.74	1,528,586.25	1,048,149.76	713,645.26
								Sep-13	Sep-14	Sep-15	Sep-16
Current								98.80%	95.88%	90.38%	83.77%
1-30 Days								0.28%	1.86%	7.60%	7.93%
31-60 Days								0.53%	0.88%	1.47%	0.52%
61-90 Days								0.00%	0.00%	0.00%	2.40%
91-120 Days								0.00%	1.38%	0.30%	0.66%
121-150 Days								0.38%	0.00%	0.25%	4.72%
151-180 Days								0.00%	0.00%	0.00%	0.00%
181+ Days								0.00%	0.00%	0.00%	0.00%
Current - 90 Days								99.62%	98.62%	99.45%	94.62%
91-180 Days								0.38%	1.38%	0.55%	5.38%



Personal Loans - La Hipotecaria El Salvador Migration Analysis (2014 Vintage)

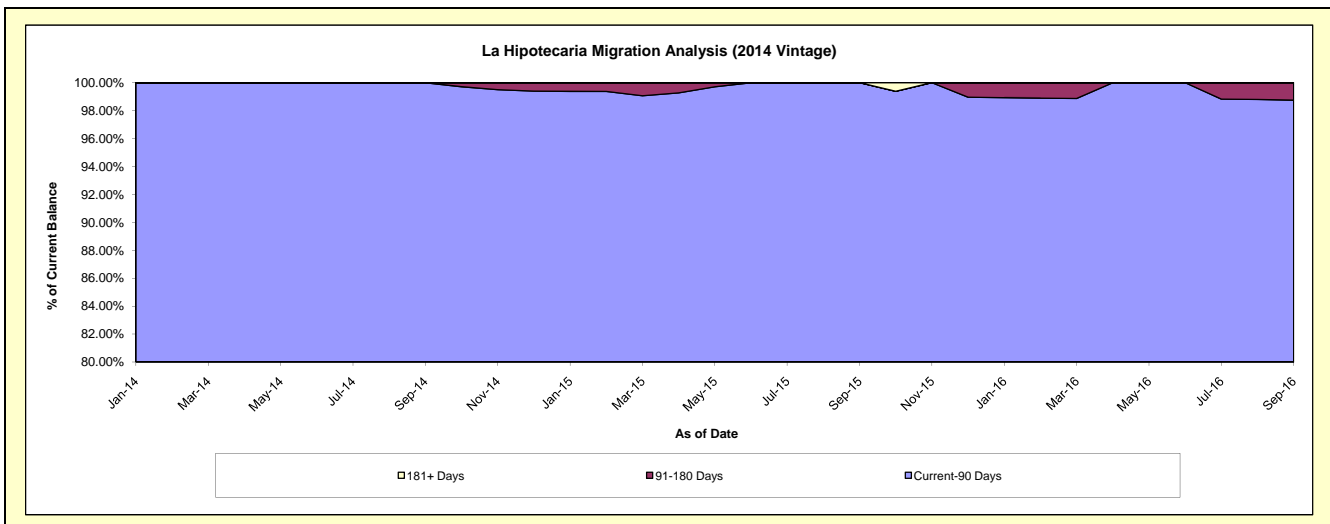
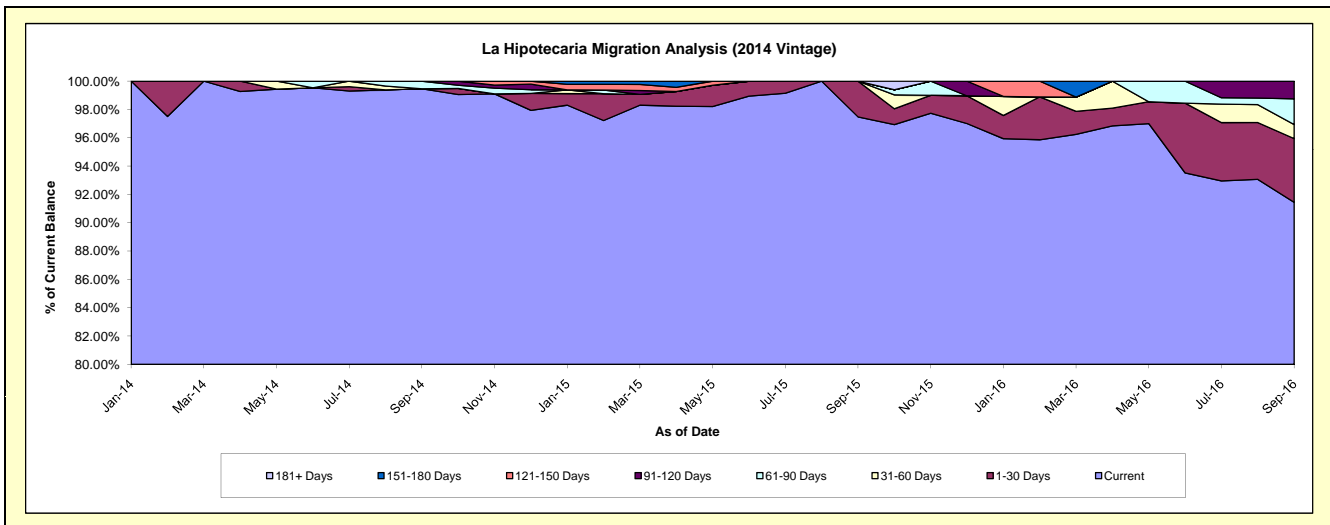
Delinquency Status (\$ of Current Balance)

Data Cutoff: 9/30/2016

Current Portfolio Balance	-	-	-	-	-	-	-	-	-	2,181,012.21	1,877,665.43	1,250,329.59
										Sep-14	Sep-15	Sep-16
Current										2,169,215.19	1,830,332.51	1,143,399.19
1-30 Days										-	47,332.92	56,213.40
31-60 Days										-	-	12,420.16
61-90 Days										11,797.02	-	22,692.25
91-120 Days										-	-	15,604.59
121-150 Days										-	-	-
151-180 Days										-	-	-
181+ Days										-	-	-

Delinquency Status (% of Current Balance)

Current Portfolio Balance	-	-	-	-	-	-	-	-	-	2,181,012.21	1,877,665.43	1,250,329.59
										Sep-14	Sep-15	Sep-16
Current										99.46%	97.48%	91.45%
1-30 Days										0.00%	2.52%	4.50%
31-60 Days										0.00%	0.00%	0.99%
61-90 Days										0.54%	0.00%	1.81%
91-120 Days										0.00%	0.00%	1.25%
121-150 Days										0.00%	0.00%	0.00%
151-180 Days										0.00%	0.00%	0.00%
181+ Days										0.00%	0.00%	0.00%
Current - 90 Days										100.00%	100.00%	98.75%
91-180 Days										0.00%	0.00%	1.25%



Personal Loans - La Hipotecaria El Salvador Migration Analysis (2015 Vintage)

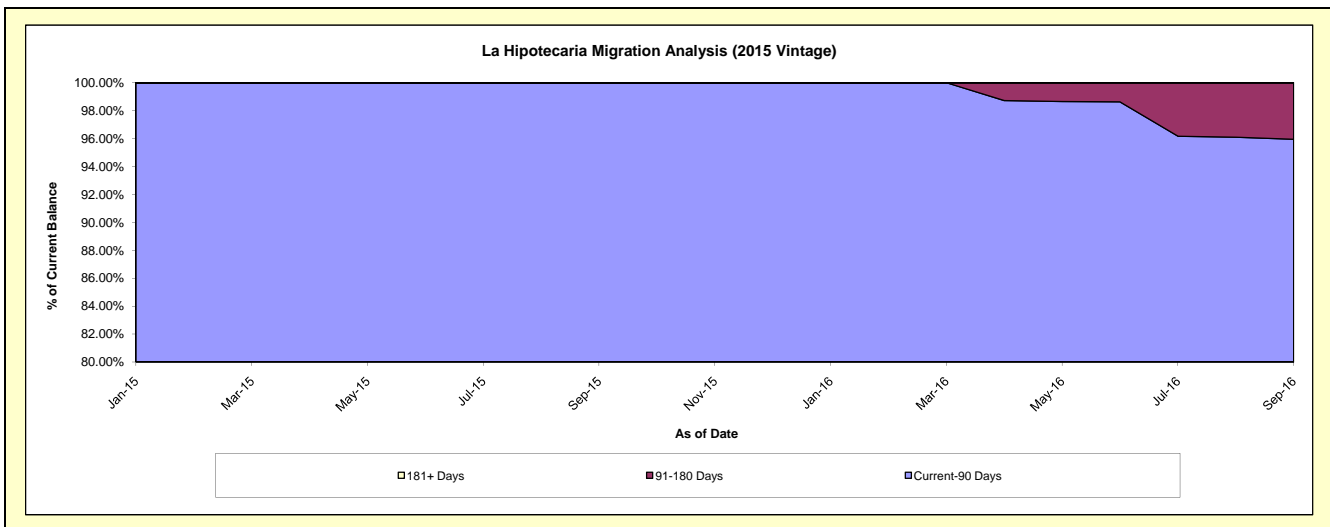
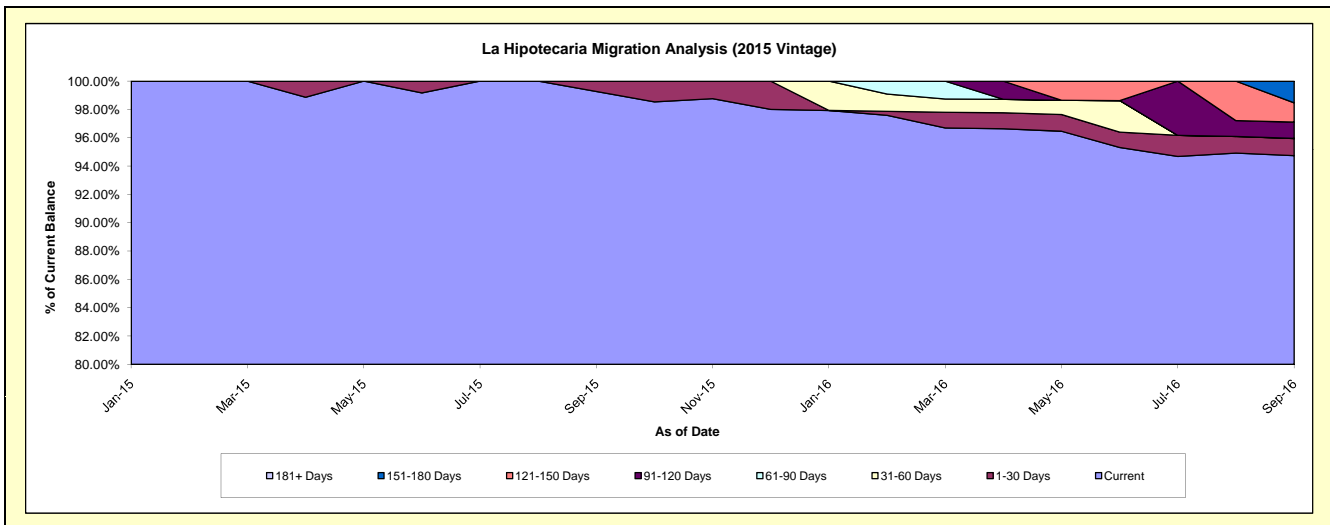
Delinquency Status (\$ of Current Balance)

Data Cutoff: 9/30/2016

Current Portfolio Balance										1,165,457.17	1,183,138.00
										Sep-15	Sep-16
Current										1,156,957.17	1,120,888.37
1-30 Days										8,500.00	14,380.45
31-60 Days										-	-
61-90 Days										-	-
91-120 Days										-	13,642.79
121-150 Days										-	16,092.66
151-180 Days										-	18,133.73
181+ Days										-	-

Delinquency Status (% of Current Balance)

Current Portfolio Balance										1,165,457.17	1,183,138.00
										Sep-15	Sep-16
Current										99.27%	94.74%
1-30 Days										0.73%	1.22%
31-60 Days										0.00%	0.00%
61-90 Days										0.00%	0.00%
91-120 Days										0.00%	1.15%
121-150 Days										0.00%	1.36%
151-180 Days										0.00%	1.53%
181+ Days										0.00%	0.00%
Current - 90 Days										100.00%	95.95%
91-180 Days										0.00%	4.05%



Personal Loans - La Hipotecaria El Salvador Migration Analysis (2016 Vintage)

Delinquency Status (\$ of Current Balance)

Data Cutoff: 9/30/2016

Current Portfolio Balance											1,031,717.92
											Sep-16
Current											1,031,717.92
1-30 Days											-
31-60 Days											-
61-90 Days											-
91-120 Days											-
121-150 Days											-
151-180 Days											-
181+ Days											-

Delinquency Status (% of Current Balance)

Current Portfolio Balance											1,031,717.92
											Sep-16
Current											100.00%
1-30 Days											0.00%
31-60 Days											0.00%
61-90 Days											0.00%
91-120 Days											0.00%
121-150 Days											0.00%
151-180 Days											0.00%
181+ Days											0.00%
Current - 90 Days											100.00%
91-180 Days											0.00%

