



Migration Analysis for La Hipotecaria S.A. de C.V El Salvador

Personal Loans June 2017

An analysis of historical loan payment data was used to compile a migration analysis of delinquency by annual vintage. Delinquencies for each vintage were grouped into the following buckets; Current, 1-30, 31-60, 61-90, 91-120, 121-150, 151-180, and 180+. Results are provided in graphical and tabular form. The cutoff date is 6/30/2017.

Personal Loans - La Hipotecaria El Salvador Migration Analysis (All Vintages)

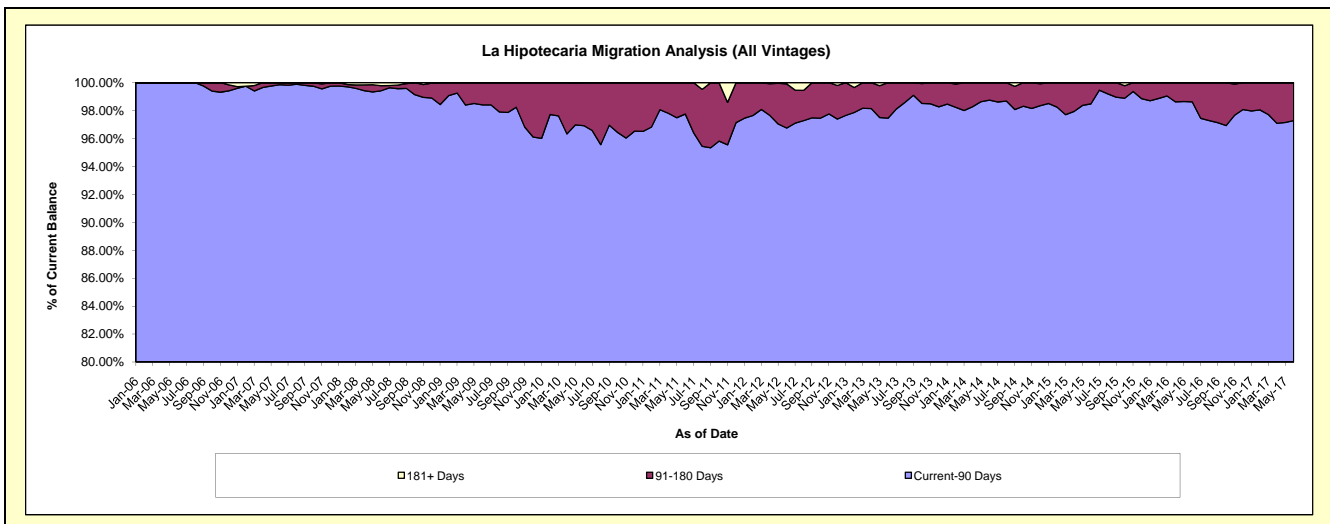
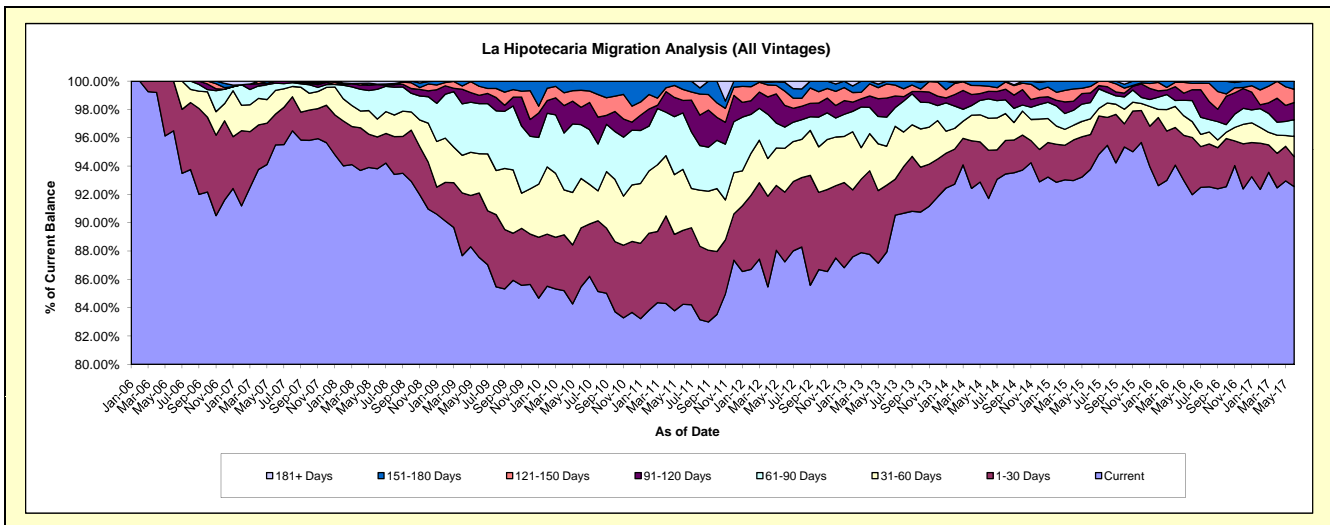
Delinquency Status (\$ of Current Balance)

Data Cutoff: 6/30/2017

Current Portfolio Balance	8,252,440.90	8,396,755.96	7,222,600.88	5,344,415.65	4,699,050.63	5,068,950.40	5,489,122.79	5,167,644.51	4,835,238.46	4,829,848.61
	Jun-08	Jun-09	Jun-10	Jun-11	Jun-12	Jun-13	Jun-14	Jun-15	Jun-16	Jun-17
Current	7,741,978.19	7,351,507.69	6,173,907.02	4,502,258.07	4,099,534.61	4,456,970.79	5,034,478.34	4,845,786.45	4,447,677.64	4,470,022.81
1-30 Days	185,723.77	382,130.85	300,527.12	279,042.39	231,569.84	239,544.16	186,955.69	126,897.24	195,231.96	102,095.64
31-60 Days	103,946.22	233,079.23	252,132.09	230,358.79	145,074.48	139,821.40	124,161.84	57,503.14	54,233.83	69,112.98
61-90 Days	173,456.46	296,558.26	274,175.28	213,076.56	70,509.86	104,058.99	75,058.39	59,316.62	71,859.80	57,581.86
91-120 Days	27,026.12	49,296.32	88,659.34	47,120.66	71,858.81	68,214.67	29,167.72	35,130.57	37,173.33	58,121.12
121-150 Days	3,141.91	53,813.40	86,674.70	41,488.04	47,504.65	50,335.18	19,490.63	23,982.88	21,846.14	45,456.74
151-180 Days	-	30,370.21	46,525.33	31,071.14	29,193.57	10,005.21	19,810.18	19,027.61	7,215.76	27,457.46
181+ Days	17,168.23	-	-	-	3,804.81	-	-	-	-	-

Delinquency Status (% of Current Balance)

Current Portfolio Balance	8,252,440.90	8,396,755.96	7,222,600.88	5,344,415.65	4,699,050.63	5,068,950.40	5,489,122.79	5,167,644.51	4,835,238.46	4,829,848.61
	Jun-08	Jun-09	Jun-10	Jun-11	Jun-12	Jun-13	Jun-14	Jun-15	Jun-16	Jun-17
Current	93.81%	87.55%	85.48%	84.24%	87.24%	87.93%	91.72%	93.77%	91.98%	92.55%
1-30 Days	2.25%	4.55%	4.16%	5.22%	4.93%	4.73%	3.41%	2.46%	4.04%	2.11%
31-60 Days	1.26%	2.78%	3.49%	4.31%	3.09%	2.76%	2.26%	1.11%	1.12%	1.43%
61-90 Days	2.10%	3.53%	3.80%	3.99%	1.50%	2.05%	1.37%	1.15%	1.49%	1.19%
91-120 Days	0.33%	0.59%	1.23%	0.88%	1.53%	1.35%	0.53%	0.68%	0.77%	1.20%
121-150 Days	0.04%	0.64%	1.20%	0.78%	1.01%	0.99%	0.36%	0.46%	0.45%	0.94%
151-180 Days	0.00%	0.36%	0.64%	0.58%	0.62%	0.20%	0.36%	0.37%	0.15%	0.57%
181+ Days	0.21%	0.00%	0.00%	0.00%	0.08%	0.00%	0.00%	0.00%	0.00%	0.00%
Current - 90 Days	99.43%	98.41%	96.93%	97.76%	96.76%	97.46%	98.75%	98.49%	98.63%	97.29%
91-180 Days	0.37%	1.59%	3.07%	2.24%	3.16%	2.54%	1.25%	1.51%	1.37%	2.71%



Personal Loans - La Hipotecaria El Salvador Migration Analysis (2006 Vintage)

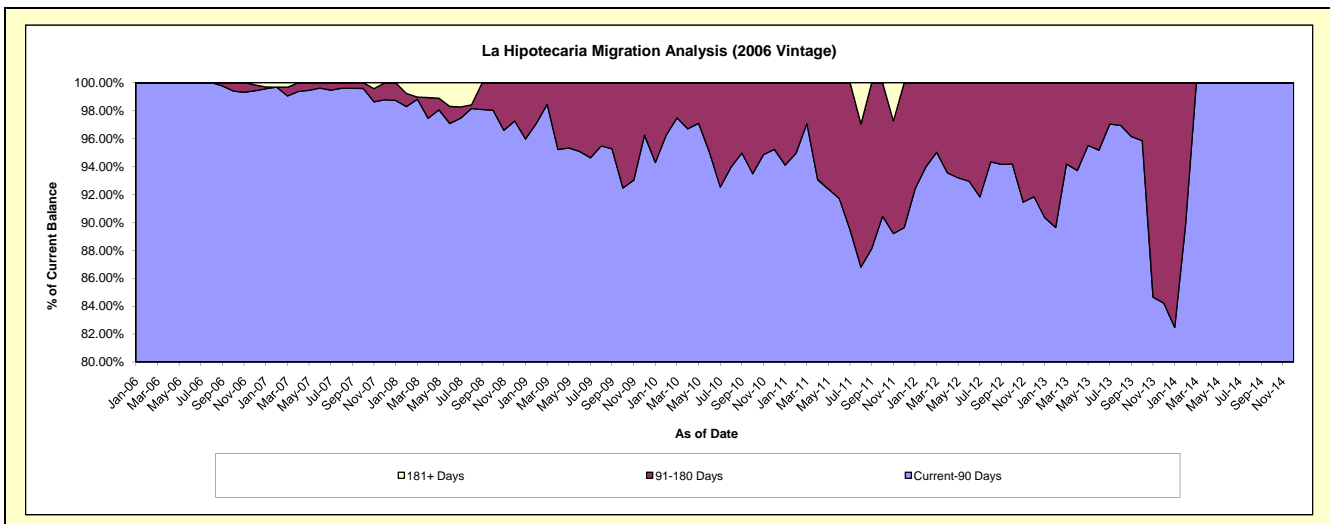
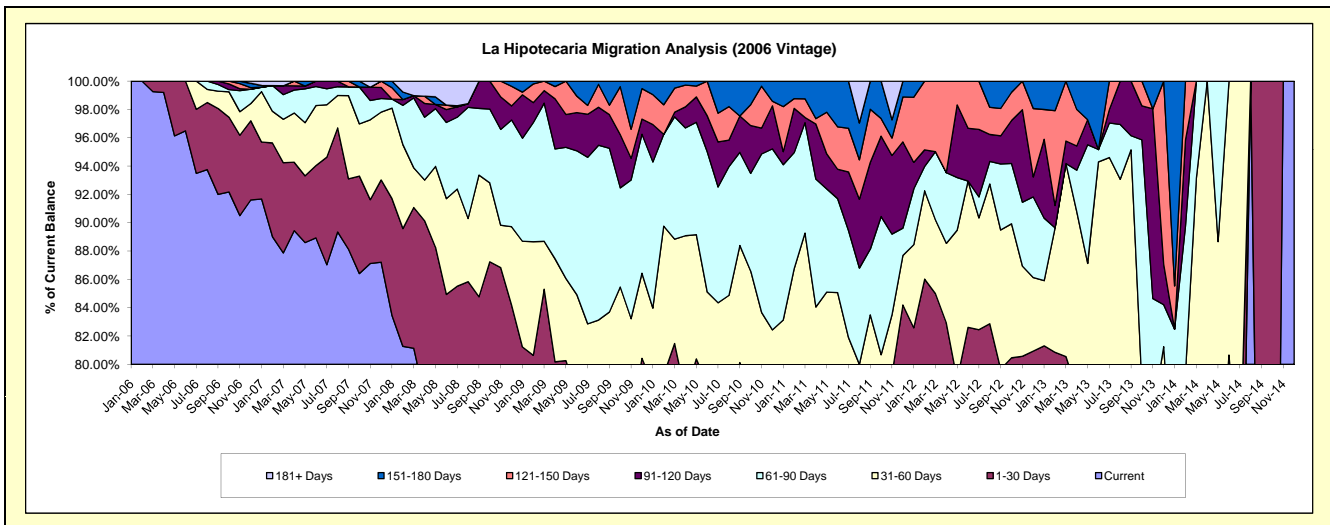
Delinquency Status (\$ of Current Balance)

Data Cutoff: 6/30/2017

Current Portfolio Balance	1,013,052.33	731,831.74	481,283.07	292,960.05	138,284.49	55,054.20	5,591.95	#N/A	#N/A	#N/A
	Jun-08	Jun-09	Jun-10	Jun-11	Jun-12	Jun-13	Jun-14	Jun-15	Jun-16	Jun-17
Current	785,689.36	478,880.00	339,713.06	191,309.07	105,217.12	32,187.48	3,053.53	#N/A	#N/A	#N/A
1-30 Days	74,767.95	90,730.78	38,436.04	30,428.64	9,024.98	10,103.63	1,456.99	#N/A	#N/A	#N/A
31-60 Days	68,555.24	51,919.55	31,474.46	27,484.12	14,284.86	9,625.58	1,081.43	#N/A	#N/A	#N/A
61-90 Days	54,505.17	74,295.17	47,691.16	19,441.51	-	480.86	-	#N/A	#N/A	#N/A
91-120 Days	9,224.47	19,741.73	12,212.41	6,070.29	5,154.52	-	-	#N/A	#N/A	#N/A
121-150 Days	3,141.91	8,568.46	11,755.94	8,784.87	4,603.01	-	-	#N/A	#N/A	#N/A
151-180 Days	-	7,696.05	-	9,441.55	-	2,656.65	-	#N/A	#N/A	#N/A
181+ Days	17,168.23	-	-	-	-	-	-	#N/A	#N/A	#N/A

Delinquency Status (% of Current Balance)

Current Portfolio Balance	1,013,052.33	731,831.74	481,283.07	292,960.05	138,284.49	55,054.20	5,591.95	#N/A	#N/A	#N/A
	Jun-08	Jun-09	Jun-10	Jun-11	Jun-12	Jun-13	Jun-14	Jun-15	Jun-16	Jun-17
Current	77.56%	65.44%	70.58%	65.30%	76.09%	58.47%	54.61%	#N/A	#N/A	#N/A
1-30 Days	7.38%	12.40%	7.99%	10.39%	6.53%	18.35%	26.06%	#N/A	#N/A	#N/A
31-60 Days	6.77%	7.09%	6.54%	9.38%	10.33%	17.48%	19.34%	#N/A	#N/A	#N/A
61-90 Days	5.38%	10.15%	9.91%	6.64%	0.00%	0.87%	0.00%	#N/A	#N/A	#N/A
91-120 Days	0.91%	2.70%	2.54%	2.07%	3.73%	0.00%	0.00%	#N/A	#N/A	#N/A
121-150 Days	0.31%	1.17%	2.44%	3.00%	3.33%	0.00%	0.00%	#N/A	#N/A	#N/A
151-180 Days	0.00%	1.05%	0.00%	3.22%	0.00%	4.83%	0.00%	#N/A	#N/A	#N/A
181+ Days	1.69%	0.00%	0.00%	0.00%	0.00%	0.00%	0.00%	#N/A	#N/A	#N/A
Current - 90 Days	97.08%	95.08%	95.02%	91.71%	92.94%	95.17%	100.00%	#N/A	#N/A	#N/A
91-180 Days	1.22%	4.92%	4.98%	8.29%	7.06%	4.83%	0.00%	#N/A	#N/A	#N/A



Personal Loans - La Hipotecaria El Salvador Migration Analysis (2007 Vintage)

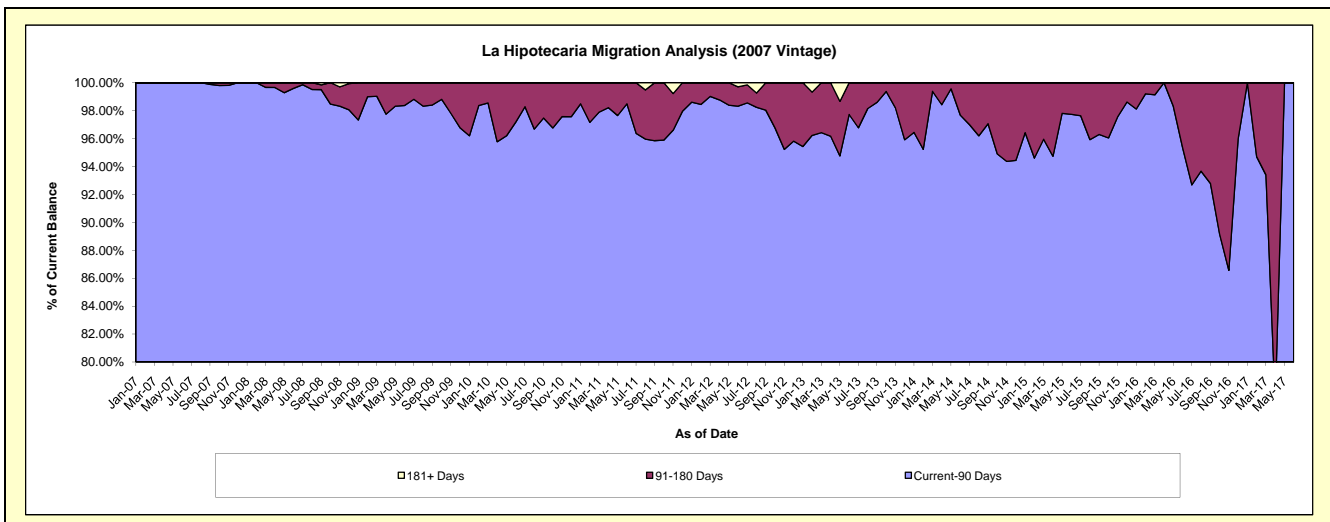
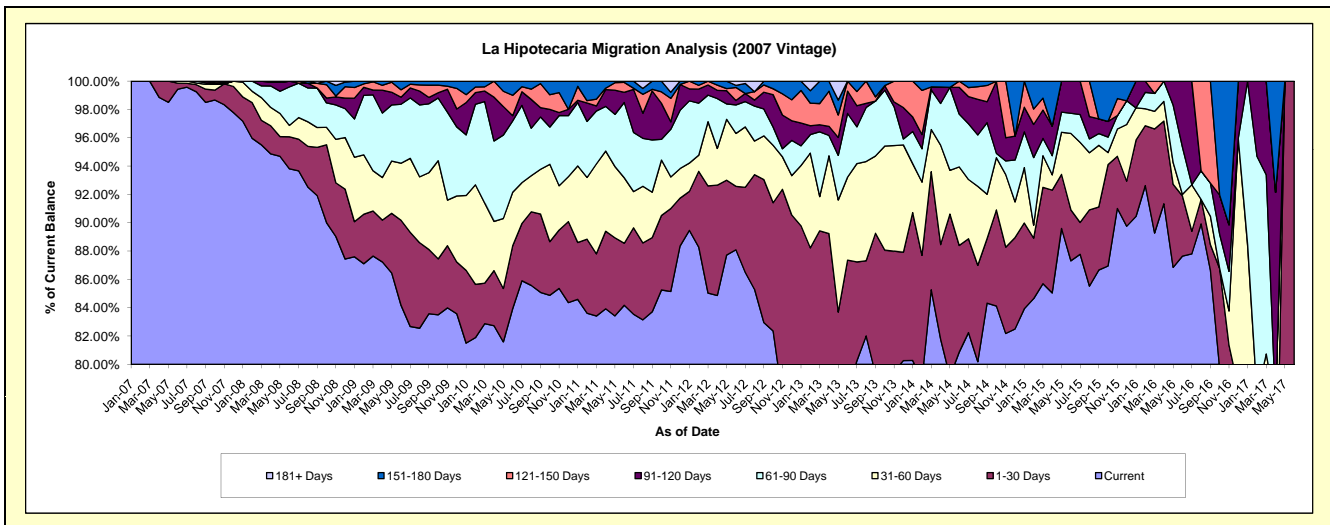
Delinquency Status (\$ of Current Balance)

Data Cutoff: 6/30/2017

Current Portfolio Balance	4,379,982.14	3,465,806.05	2,762,705.23	1,882,183.89	1,290,024.85	768,402.48	438,615.21	194,365.99	55,299.29	3,509.98
	Jun-08	Jun-09	Jun-10	Jun-11	Jun-12	Jun-13	Jun-14	Jun-15	Jun-16	Jun-17
Current	4,109,082.08	2,917,421.79	2,318,767.65	1,584,329.60	1,136,387.39	599,816.27	354,696.30	169,704.07	48,467.49	1,462.09
1-30 Days	98,756.14	208,106.05	122,710.70	82,336.16	57,825.96	71,444.07	33,021.10	7,013.04	2,346.93	2,047.89
31-60 Days	35,390.98	139,400.59	104,436.16	87,024.91	48,187.37	45,047.25	24,340.21	10,473.11	65.30	-
61-90 Days	118,951.29	144,417.50	138,946.07	100,107.08	25,972.92	34,613.31	16,354.69	2,772.51	1,849.19	-
91-120 Days	17,801.65	17,193.11	10,447.09	13,543.70	4,079.26	12,065.17	8,311.98	4,403.26	2,570.38	-
121-150 Days	-	18,296.20	39,912.71	13,231.86	11,827.05	5,416.41	1,890.93	-	-	-
151-180 Days	-	20,970.81	27,484.85	1,610.58	1,940.09	-	-	-	-	-
181+ Days	-	-	-	-	3,804.81	-	-	-	-	-

Delinquency Status (% of Current Balance)

Current Portfolio Balance	4,379,982.14	3,465,806.05	2,762,705.23	1,882,183.89	1,290,024.85	768,402.48	438,615.21	194,365.99	55,299.29	3,509.98
	Jun-08	Jun-09	Jun-10	Jun-11	Jun-12	Jun-13	Jun-14	Jun-15	Jun-16	Jun-17
Current	93.82%	84.18%	83.93%	84.18%	88.09%	78.06%	80.87%	87.31%	87.65%	41.66%
1-30 Days	2.25%	6.00%	4.44%	4.37%	4.48%	9.30%	7.53%	3.61%	4.24%	58.34%
31-60 Days	0.81%	4.02%	3.78%	4.62%	3.74%	5.86%	5.55%	5.39%	0.12%	0.00%
61-90 Days	2.72%	4.17%	5.03%	5.32%	2.01%	4.50%	3.73%	1.43%	3.34%	0.00%
91-120 Days	0.41%	0.50%	0.38%	0.72%	0.32%	1.57%	1.90%	2.27%	4.65%	0.00%
121-150 Days	0.00%	0.53%	1.44%	0.70%	0.92%	0.70%	0.43%	0.00%	0.00%	0.00%
151-180 Days	0.00%	0.61%	0.99%	0.09%	0.15%	0.00%	0.00%	0.00%	0.00%	0.00%
181+ Days	0.00%	0.00%	0.00%	0.00%	0.29%	0.00%	0.00%	0.00%	0.00%	0.00%
Current - 90 Days	99.59%	98.37%	97.18%	98.49%	98.32%	97.72%	97.67%	97.73%	95.35%	100.00%
91-180 Days	0.41%	1.63%	2.82%	1.51%	1.38%	2.28%	2.33%	2.27%	4.65%	0.00%



Personal Loans - La Hipotecaria El Salvador Migration Analysis (2008 Vintage)

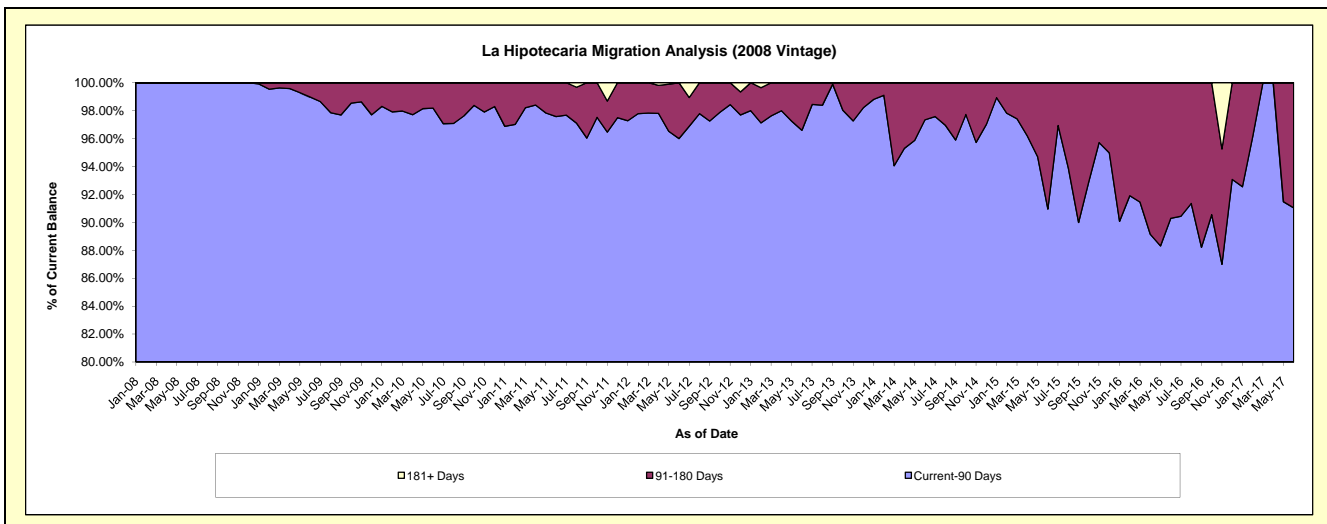
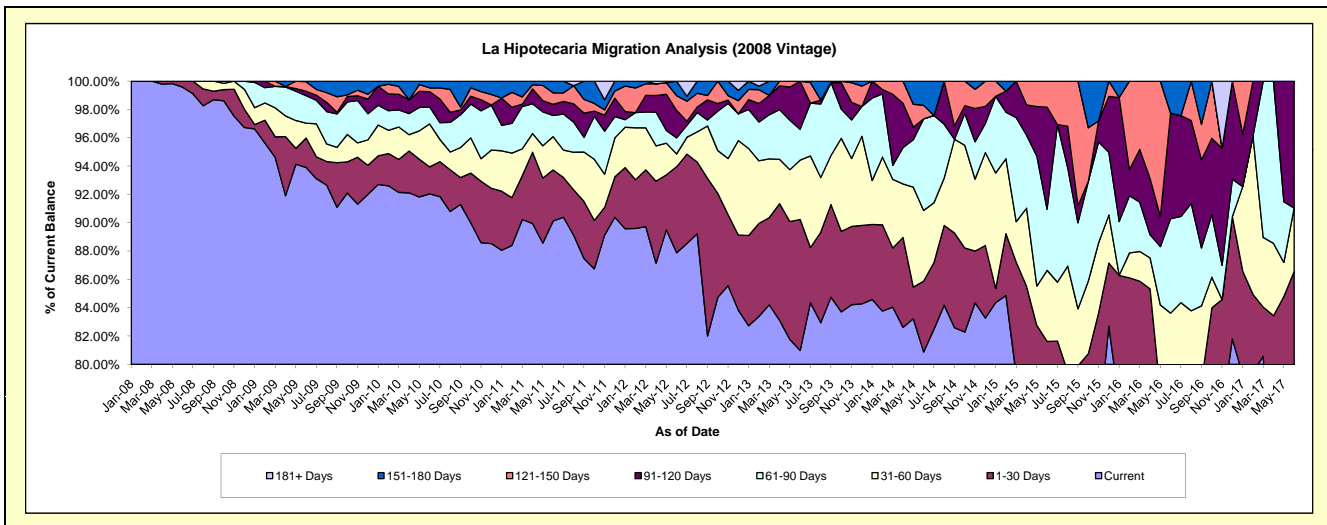
Delinquency Status (\$ of Current Balance)

Data Cutoff: 6/30/2017

Current Portfolio Balance	2,859,406.43	4,001,056.55	3,270,057.16	2,423,115.89	1,751,265.95	1,195,123.96	733,679.91	372,820.61	152,713.75	41,955.31
	Jun-08	Jun-09	Jun-10	Jun-11	Jun-12	Jun-13	Jun-14	Jun-15	Jun-16	Jun-17
Current	2,847,206.75	3,757,144.28	3,009,631.27	2,183,909.54	1,539,085.88	967,842.40	593,375.83	287,702.20	113,825.26	28,500.32
1-30 Days	12,199.68	83,294.02	62,602.27	87,193.52	106,389.47	110,557.91	36,698.69	16,598.29	8,028.41	7,810.17
31-60 Days	-	41,759.09	99,086.45	57,053.35	15,740.52	50,095.04	36,632.46	18,711.96	5,841.33	1,885.69
61-90 Days	-	77,845.59	39,264.75	36,169.01	19,993.98	25,940.20	47,464.79	16,092.58	10,194.14	-
91-120 Days	-	12,361.48	35,403.92	19,300.15	33,976.30	40,688.41	-	26,878.23	11,374.90	3,759.13
121-150 Days	-	26,948.74	8,556.04	19,471.31	18,053.00	-	6,989.02	6,837.35	-	-
151-180 Days	-	1,703.35	15,512.46	20,019.01	18,026.80	-	12,519.12	-	3,449.71	-
181+ Days	-	-	-	-	-	-	-	-	-	-

Delinquency Status (% of Current Balance)

Current Portfolio Balance	2,859,406.43	4,001,056.55	3,270,057.16	2,423,115.89	1,751,265.95	1,195,123.96	733,679.91	372,820.61	152,713.75	41,955.31
	Jun-08	Jun-09	Jun-10	Jun-11	Jun-12	Jun-13	Jun-14	Jun-15	Jun-16	Jun-17
Current	99.57%	93.90%	92.04%	90.13%	87.88%	80.98%	80.88%	77.17%	74.54%	67.93%
1-30 Days	0.43%	2.08%	1.91%	3.60%	6.08%	9.25%	5.00%	4.45%	5.26%	18.62%
31-60 Days	0.00%	1.04%	3.03%	2.35%	0.90%	4.19%	4.99%	5.02%	3.83%	4.49%
61-90 Days	0.00%	1.95%	1.20%	1.49%	1.14%	2.17%	6.47%	4.32%	6.68%	0.00%
91-120 Days	0.00%	0.31%	1.08%	0.80%	1.94%	3.40%	0.00%	7.21%	7.45%	8.96%
121-150 Days	0.00%	0.67%	0.26%	0.80%	1.03%	0.00%	0.95%	1.83%	0.00%	0.00%
151-180 Days	0.00%	0.04%	0.47%	0.83%	1.03%	0.00%	1.71%	0.00%	2.26%	0.00%
181+ Days	0.00%	0.00%	0.00%	0.00%	0.00%	0.00%	0.00%	0.00%	0.00%	0.00%
Current - 90 Days	100.00%	98.97%	98.18%	97.57%	96.00%	96.60%	97.34%	90.96%	90.29%	91.04%
91-180 Days	0.00%	1.03%	1.82%	2.43%	4.00%	3.40%	2.66%	9.04%	9.71%	8.96%



Personal Loans - La Hipotecaria El Salvador Migration Analysis (2009 Vintage)

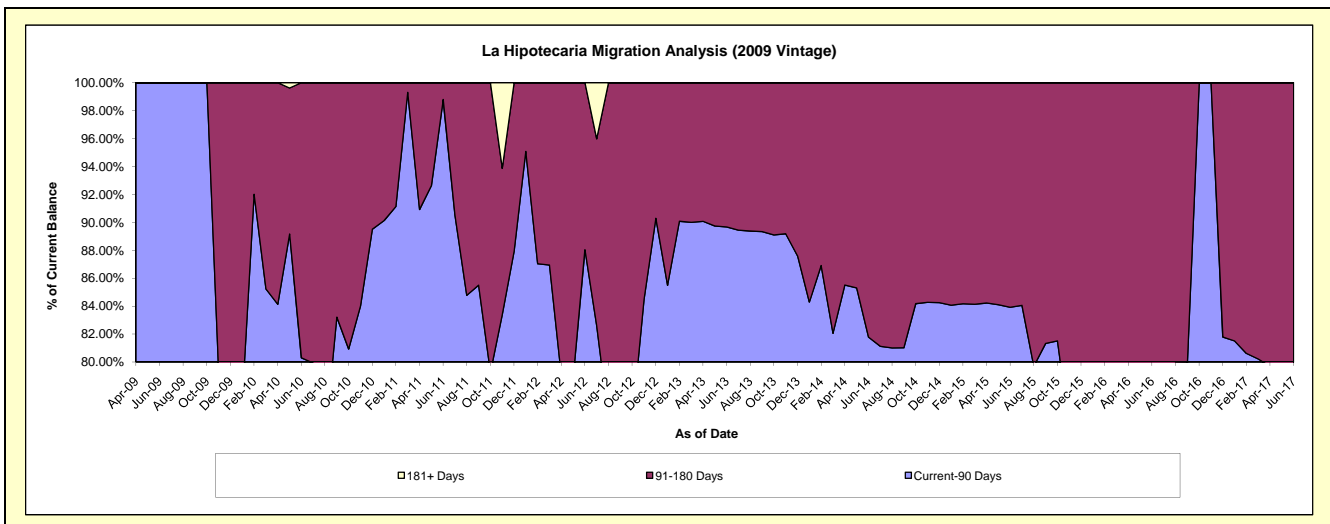
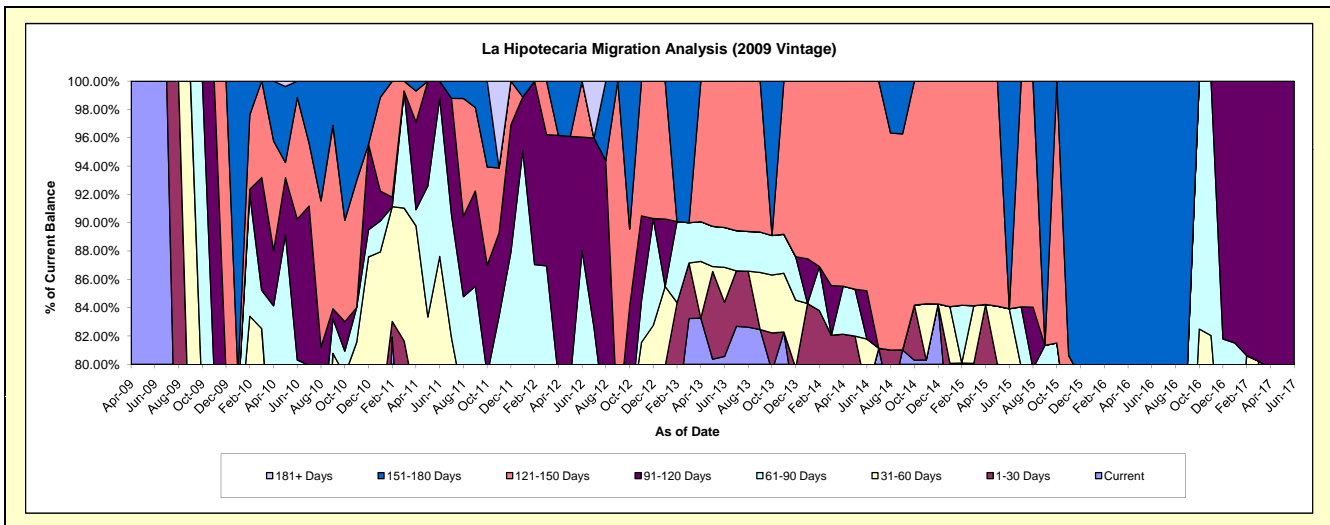
Delinquency Status (\$ of Current Balance)

Data Cutoff: 6/30/2017

Current Portfolio Balance	-	198,061.62	307,564.70	186,074.68	129,954.32	88,152.66	49,984.08	35,523.99	18,021.23	10,765.32
	Jun-09	Jun-10	Jun-11	Jun-12	Jun-13	Jun-14	Jun-15	Jun-16	Jun-17	
Current	198,061.62	152,201.81	126,354.32	75,011.24	71,014.20	38,971.41	25,748.61	11,988.02	988.95	
1-30 Days	-	43,928.24	2,940.05	11,831.00	3,368.28	-	2,621.35	-	-	
31-60 Days	-	17,135.02	33,738.60	15,648.96	2,183.54	1,910.97	1,443.78	-	7,509.21	
61-90 Days	-	33,725.68	20,806.00	11,920.99	2,480.31	-	-	2,267.16	-	
91-120 Days	-	30,595.92	2,235.71	10,401.78	-	1,699.04	-	-	2,267.16	
121-150 Days	-	26,450.01	-	5,140.35	9,106.33	7,402.66	-	-	-	
151-180 Days	-	3,528.02	-	-	-	-	5,710.25	3,766.05	-	
181+ Days	-	-	-	-	-	-	-	-	-	

Delinquency Status (% of Current Balance)

Current Portfolio Balance	-	198,061.62	307,564.70	186,074.68	129,954.32	88,152.66	49,984.08	35,523.99	18,021.23	10,765.32
	Jun-09	Jun-10	Jun-11	Jun-12	Jun-13	Jun-14	Jun-15	Jun-16	Jun-17	
Current	100.00%	49.49%	67.91%	57.72%	80.56%	77.97%	72.48%	66.52%	9.19%	
1-30 Days	0.00%	14.28%	1.58%	9.10%	3.82%	0.00%	7.38%	0.00%	0.00%	
31-60 Days	0.00%	5.57%	18.13%	12.04%	2.48%	3.82%	4.06%	0.00%	69.75%	
61-90 Days	0.00%	10.97%	11.18%	9.17%	2.81%	0.00%	0.00%	12.58%	0.00%	
91-120 Days	0.00%	9.95%	1.20%	8.00%	0.00%	3.40%	0.00%	0.00%	21.06%	
121-150 Days	0.00%	8.60%	0.00%	3.96%	10.33%	14.81%	0.00%	0.00%	0.00%	
151-180 Days	0.00%	1.15%	0.00%	0.00%	0.00%	0.00%	16.07%	20.90%	0.00%	
181+ Days	0.00%	0.00%	0.00%	0.00%	0.00%	0.00%	0.00%	0.00%	0.00%	
Current - 90 Days	100.00%	80.31%	98.80%	88.04%	89.67%	81.79%	83.93%	79.10%	78.94%	
91-180 Days	0.00%	19.69%	1.20%	11.96%	10.33%	18.21%	16.07%	20.90%	21.06%	



Personal Loans - La Hipotecaria El Salvador Migration Analysis (2010 Vintage)

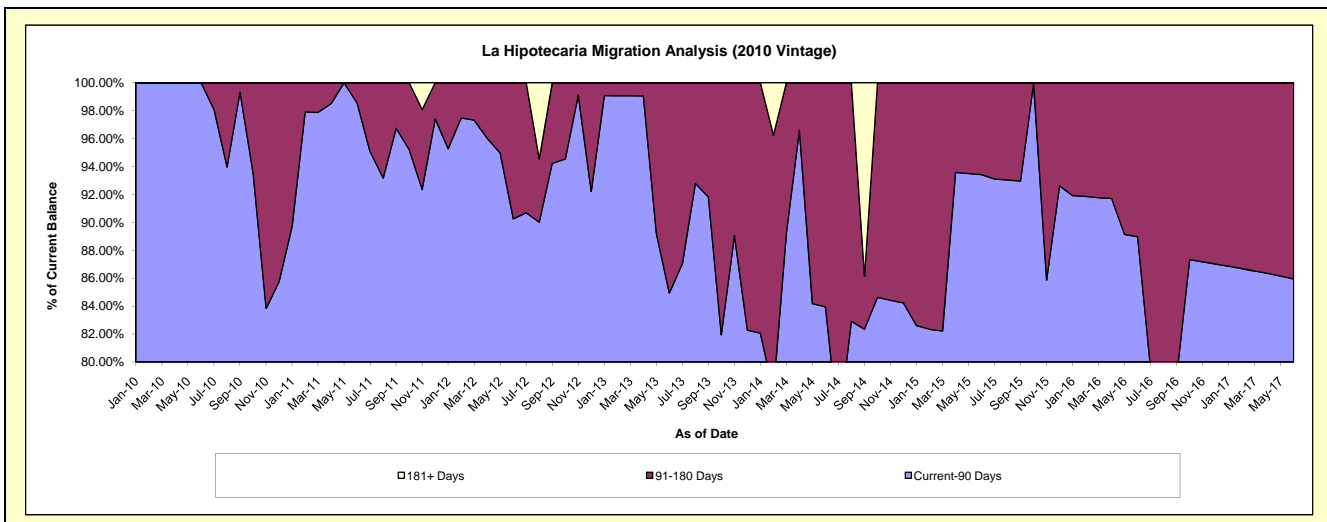
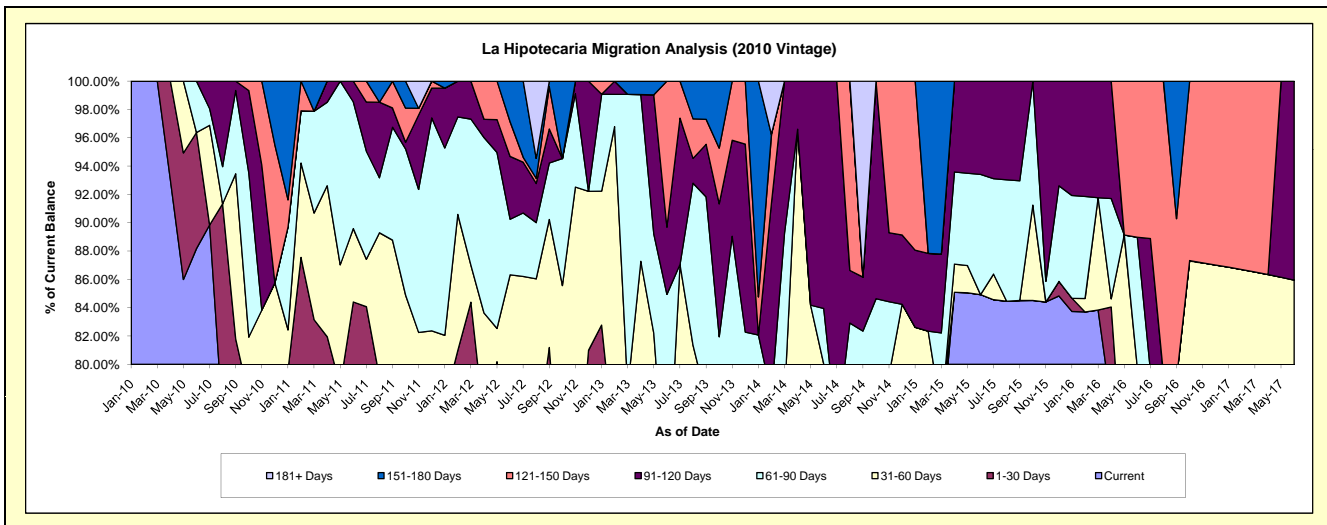
Delinquency Status (\$ of Current Balance)

Data Cutoff: 6/30/2017

Current Portfolio Balance	-	-	400,990.72	408,424.46	321,627.20	226,798.65	119,390.86	58,452.88	31,976.10	22,136.88
	Jun-10	Jun-11	Jun-12	Jun-13	Jun-14	Jun-15	Jun-16	Jun-17		
Current	353,593.23	273,193.34	189,494.05	105,462.02	86,323.68	49,641.05	22,679.81	17,279.68		
1-30 Days	32,849.87	71,549.54	41,270.69	31,381.44	-	-	-	-		
31-60 Days	-	21,157.81	46,885.62	21,354.80	9,220.24	-	2,832.39	1,746.62		
61-90 Days	14,547.62	36,552.96	12,621.97	34,452.25	4,690.24	4,962.75	2,939.46	-		
91-120 Days	-	5,970.81	14,246.95	10,765.61	19,156.70	3,849.08	-	3,110.58		
121-150 Days	-	-	7,881.24	23,382.53	-	-	3,524.44	-		
151-180 Days	-	-	9,226.68	-	-	-	-	-		
181+ Days	-	-	-	-	-	-	-	-		

Delinquency Status (% of Current Balance)

Current Portfolio Balance	-	-	400,990.72	408,424.46	321,627.20	226,798.65	119,390.86	58,452.88	31,976.10	22,136.88
	Jun-10	Jun-11	Jun-12	Jun-13	Jun-14	Jun-15	Jun-16	Jun-17		
Current	88.18%	66.89%	58.92%	46.50%	72.30%	84.92%	70.93%	78.06%		
1-30 Days	8.19%	17.52%	12.83%	13.84%	0.00%	0.00%	0.00%	0.00%		
31-60 Days	0.00%	5.18%	14.58%	9.42%	7.72%	0.00%	8.86%	7.89%		
61-90 Days	3.63%	8.95%	3.92%	15.19%	3.93%	8.49%	9.19%	0.00%		
91-120 Days	0.00%	1.46%	4.43%	4.75%	16.05%	6.58%	0.00%	14.05%		
121-150 Days	0.00%	0.00%	2.45%	10.31%	0.00%	0.00%	11.02%	0.00%		
151-180 Days	0.00%	0.00%	2.87%	0.00%	0.00%	0.00%	0.00%	0.00%		
181+ Days	0.00%	0.00%	0.00%	0.00%	0.00%	0.00%	0.00%	0.00%		
Current - 90 Days	100.00%	98.54%	90.25%	84.94%	83.95%	93.42%	88.98%	85.95%		
91-180 Days	0.00%	1.46%	9.75%	15.06%	16.05%	6.58%	11.02%	14.05%		



Personal Loans - La Hipotecaria El Salvador Migration Analysis (2011 Vintage)

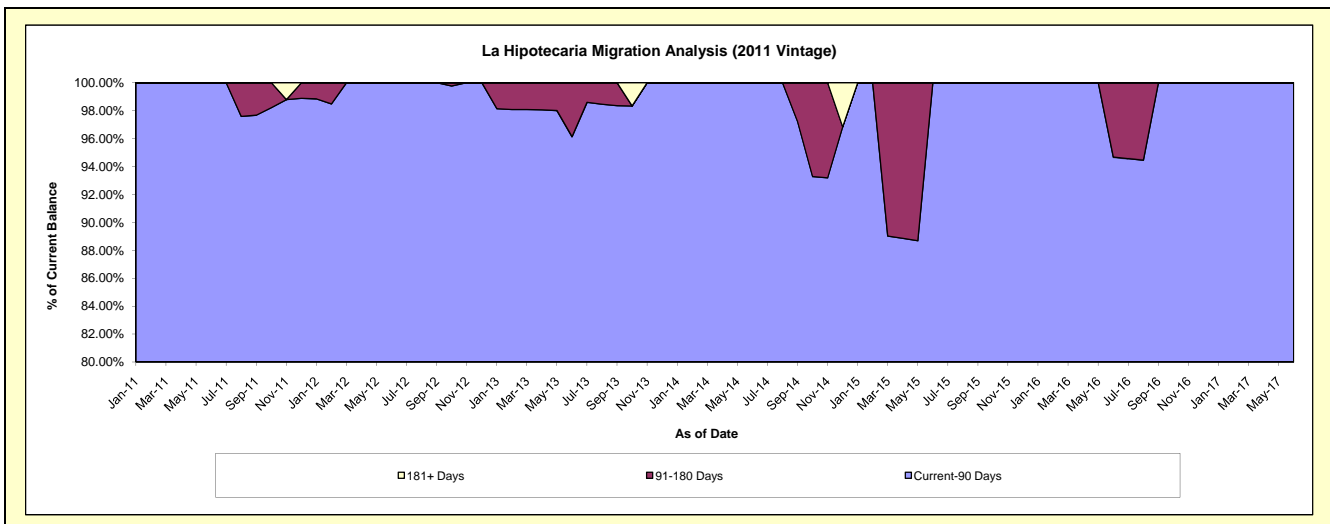
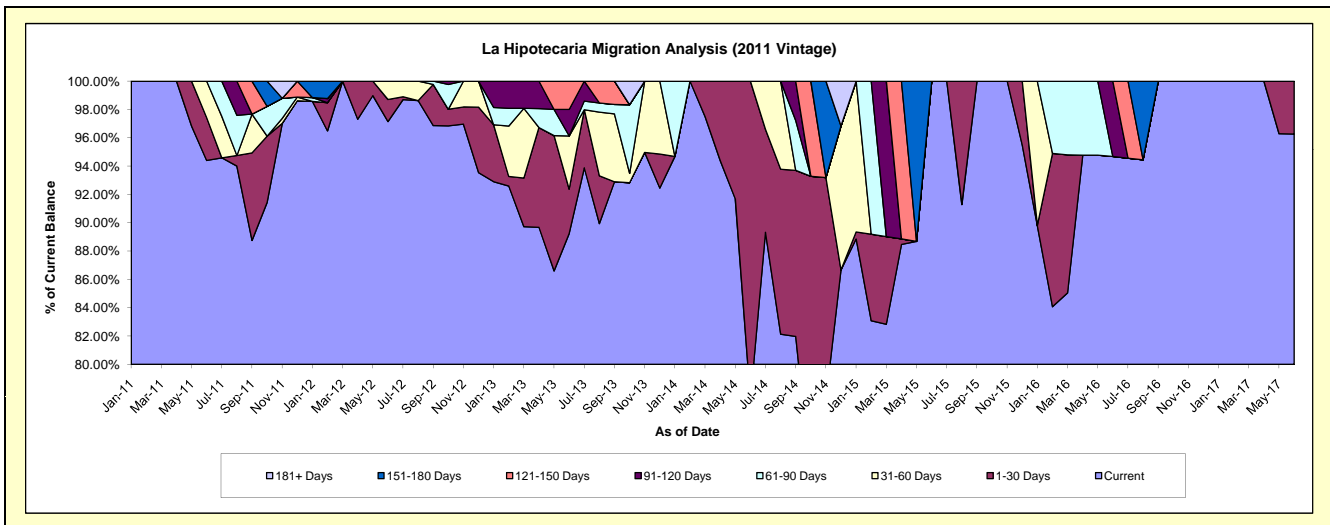
Delinquency Status (\$ of Current Balance)

Data Cutoff: 6/30/2017

Current Portfolio Balance	-	-	-	151,656.68	334,627.95	250,407.59	155,723.35	98,739.47	68,912.84	47,350.20
				Jun-11	Jun-12	Jun-13	Jun-14	Jun-15	Jun-16	Jun-17
Current				143,162.20	325,073.06	223,448.23	120,701.61	98,739.47	65,246.41	45,580.80
1-30 Days				4,594.48	5,227.74	7,857.50	35,021.74	-	-	1,769.40
31-60 Days				3,900.00	4,327.15	9,409.84	-	-	-	-
61-90 Days				-	-	-	-	-	-	-
91-120 Days				-	-	4,695.48	-	-	3,666.43	-
121-150 Days				-	-	4,996.54	-	-	-	-
151-180 Days				-	-	-	-	-	-	-
181+ Days				-	-	-	-	-	-	-

Delinquency Status (% of Current Balance)

Current Portfolio Balance	-	-	-	151,656.68	334,627.95	250,407.59	155,723.35	98,739.47	68,912.84	47,350.20
				Jun-11	Jun-12	Jun-13	Jun-14	Jun-15	Jun-16	Jun-17
Current				94.40%	97.14%	89.23%	77.51%	100.00%	94.68%	96.26%
1-30 Days				3.03%	1.56%	3.14%	22.49%	0.00%	0.00%	3.74%
31-60 Days				2.57%	1.29%	3.76%	0.00%	0.00%	0.00%	0.00%
61-90 Days				0.00%	0.00%	0.00%	0.00%	0.00%	0.00%	0.00%
91-120 Days				0.00%	0.00%	1.88%	0.00%	0.00%	5.32%	0.00%
121-150 Days				0.00%	0.00%	2.00%	0.00%	0.00%	0.00%	0.00%
151-180 Days				0.00%	0.00%	0.00%	0.00%	0.00%	0.00%	0.00%
181+ Days				0.00%	0.00%	0.00%	0.00%	0.00%	0.00%	0.00%
Current - 90 Days				100.00%	100.00%	96.13%	100.00%	100.00%	94.68%	100.00%
91-180 Days				0.00%	0.00%	3.87%	0.00%	0.00%	5.32%	0.00%



Personal Loans - La Hipotecaria El Salvador Migration Analysis (2012 Vintage)

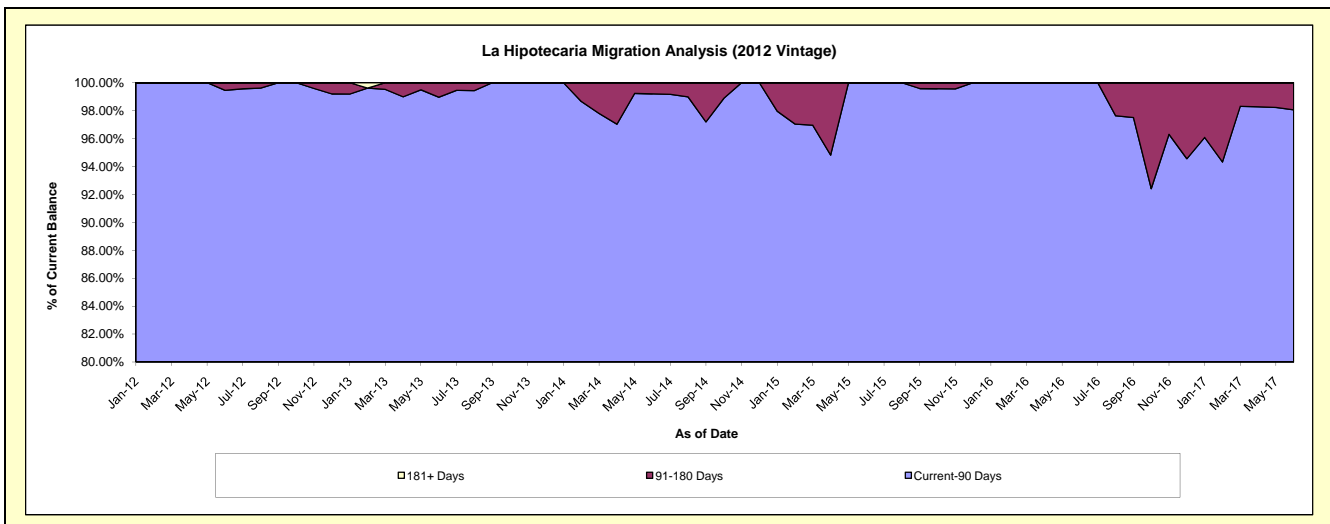
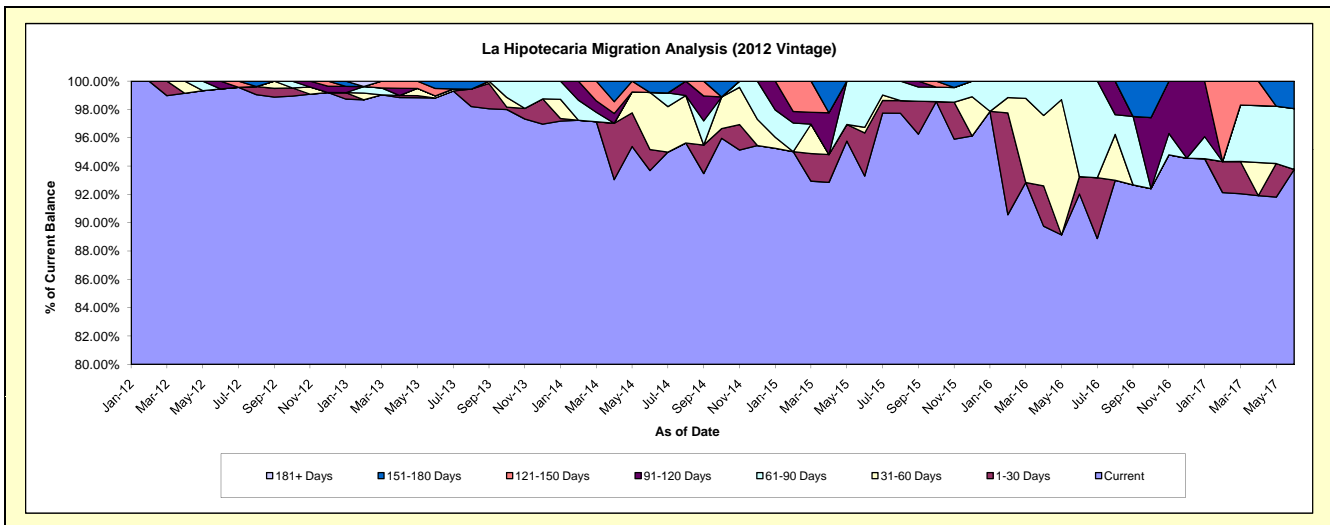
Delinquency Status (\$ of Current Balance)

Data Cutoff: 6/30/2017

Current Portfolio Balance	-	-	-	-	733,265.87	1,421,427.46	835,748.75	500,974.27	302,493.57	182,912.60
					Jun-12	Jun-13	Jun-14	Jun-15	Jun-16	Jun-17
Current					729,265.87	1,404,540.18	782,987.76	467,395.25	278,380.74	171,513.15
1-30 Days					-	-	12,369.08	15,264.14	3,712.16	-
31-60 Days					-	2,105.35	33,724.29	2,000.98	-	-
61-90 Days					-	-	-	16,313.90	20,400.67	7,850.91
91-120 Days					4,000.00	-	-	-	-	-
121-150 Days					-	7,433.37	-	-	-	-
151-180 Days					-	7,348.56	6,667.62	-	-	3,548.54
181+ Days					-	-	-	-	-	-

Delinquency Status (% of Current Balance)

Current Portfolio Balance	-	-	-	-	733,265.87	1,421,427.46	835,748.75	500,974.27	302,493.57	182,912.60
					Jun-12	Jun-13	Jun-14	Jun-15	Jun-16	Jun-17
Current					99.45%	98.81%	93.69%	93.30%	92.03%	93.77%
1-30 Days					0.00%	0.00%	1.48%	3.05%	1.23%	0.00%
31-60 Days					0.00%	0.15%	4.04%	4.00%	0.00%	0.00%
61-90 Days					0.00%	0.00%	0.00%	3.26%	6.74%	4.29%
91-120 Days					0.55%	0.00%	0.00%	0.00%	0.00%	0.00%
121-150 Days					0.00%	0.52%	0.00%	0.00%	0.00%	0.00%
151-180 Days					0.00%	0.52%	0.80%	0.00%	0.00%	1.94%
181+ Days					0.00%	0.00%	0.00%	0.00%	0.00%	0.00%
Current - 90 Days					99.45%	98.96%	99.20%	100.00%	100.00%	98.06%
91-180 Days					0.55%	1.04%	0.80%	0.00%	0.00%	1.94%



Personal Loans - La Hipotecaria El Salvador Migration Analysis (2013 Vintage)

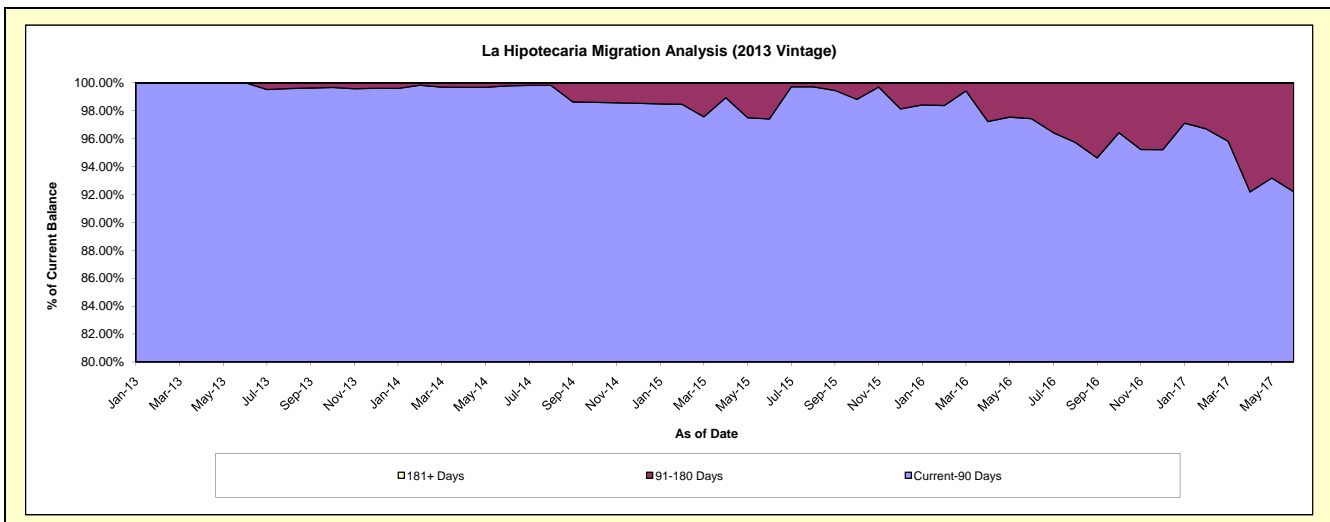
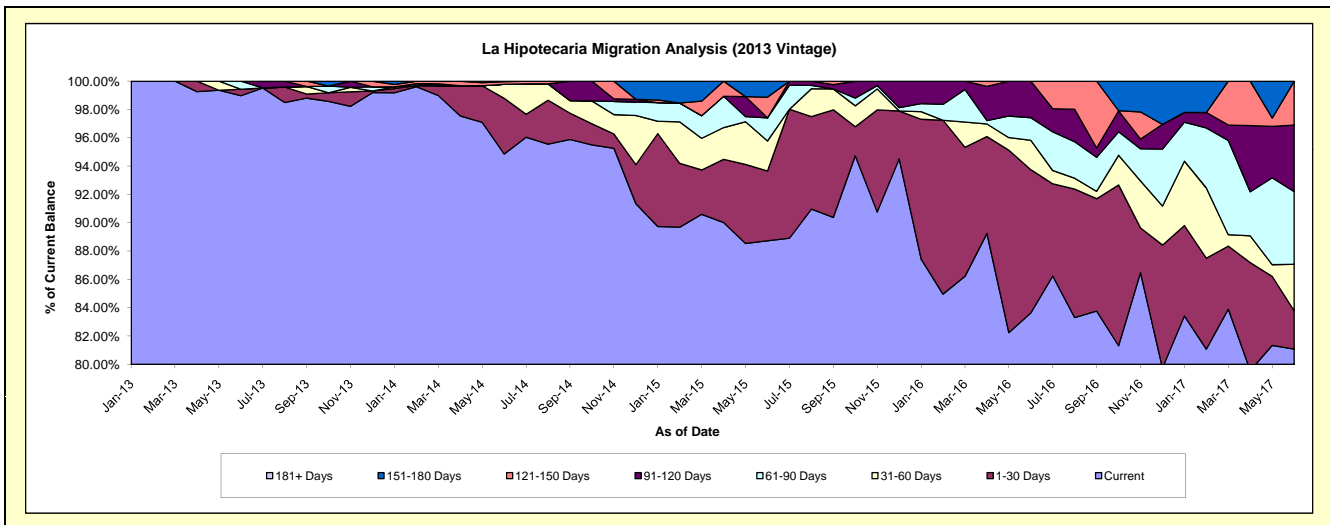
Delinquency Status (\$ of Current Balance)

Data Cutoff: 6/30/2017

Current Portfolio Balance	-	-	-	-	-	1,063,583.40	1,740,465.80	1,175,132.58	759,217.10	563,288.20
						Jun-13	Jun-14	Jun-15	Jun-16	Jun-17
Current						1,052,660.01	1,650,994.01	1,042,651.48	634,968.84	456,705.22
1-30 Days						4,831.33	68,388.09	57,970.02	76,784.14	15,235.89
31-60 Days						-	17,252.24	24,873.31	15,759.36	18,479.15
61-90 Days						6,092.06	-	19,174.88	12,143.14	28,928.09
91-120 Days						-	-	-	19,561.62	26,465.97
121-150 Days						-	3,208.02	17,145.53	-	17,473.88
151-180 Days						-	623.44	13,317.36	-	-
181+ Days						-	-	-	-	-

Delinquency Status (% of Current Balance)

Current Portfolio Balance	-	-	-	-	-	1,063,583.40	1,740,465.80	1,175,132.58	759,217.10	563,288.20
						Jun-13	Jun-14	Jun-15	Jun-16	Jun-17
Current						98.97%	94.86%	88.73%	83.63%	81.08%
1-30 Days						0.45%	3.93%	4.93%	10.11%	2.70%
31-60 Days						0.00%	0.99%	2.12%	2.08%	3.28%
61-90 Days						0.57%	0.00%	1.63%	1.60%	5.14%
91-120 Days						0.00%	0.00%	0.00%	2.58%	4.70%
121-150 Days						0.00%	0.18%	1.46%	0.00%	3.10%
151-180 Days						0.00%	0.04%	1.13%	0.00%	0.00%
181+ Days						0.00%	0.00%	0.00%	0.00%	0.00%
Current - 90 Days						100.00%	99.78%	97.41%	97.42%	92.20%
91-180 Days						0.00%	0.22%	2.59%	2.58%	7.80%



Personal Loans - La Hipotecaria El Salvador Migration Analysis (2014 Vintage)

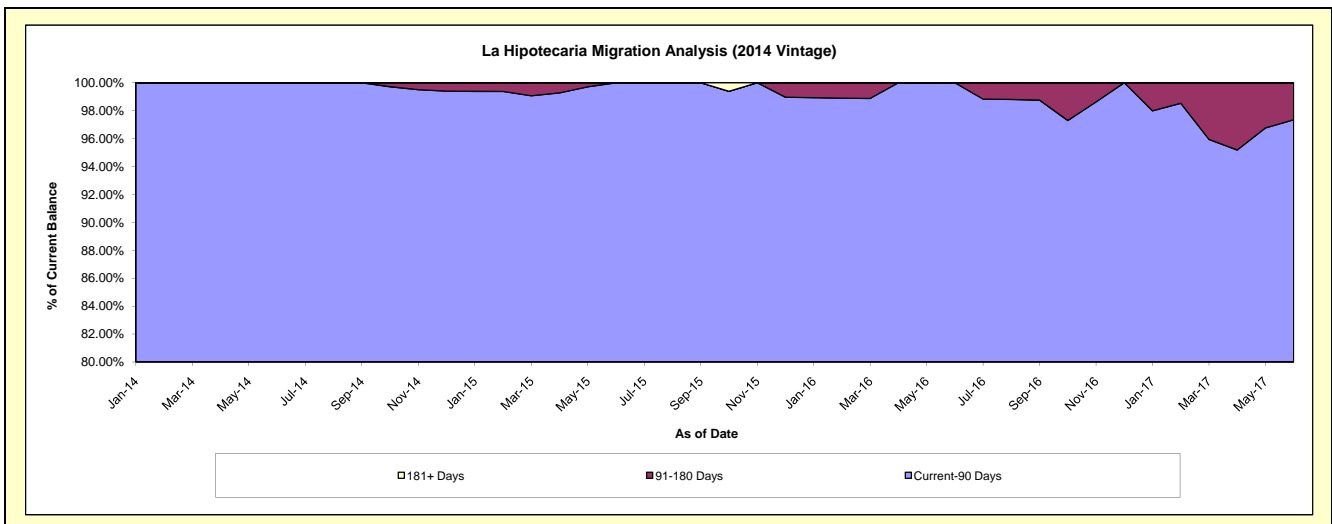
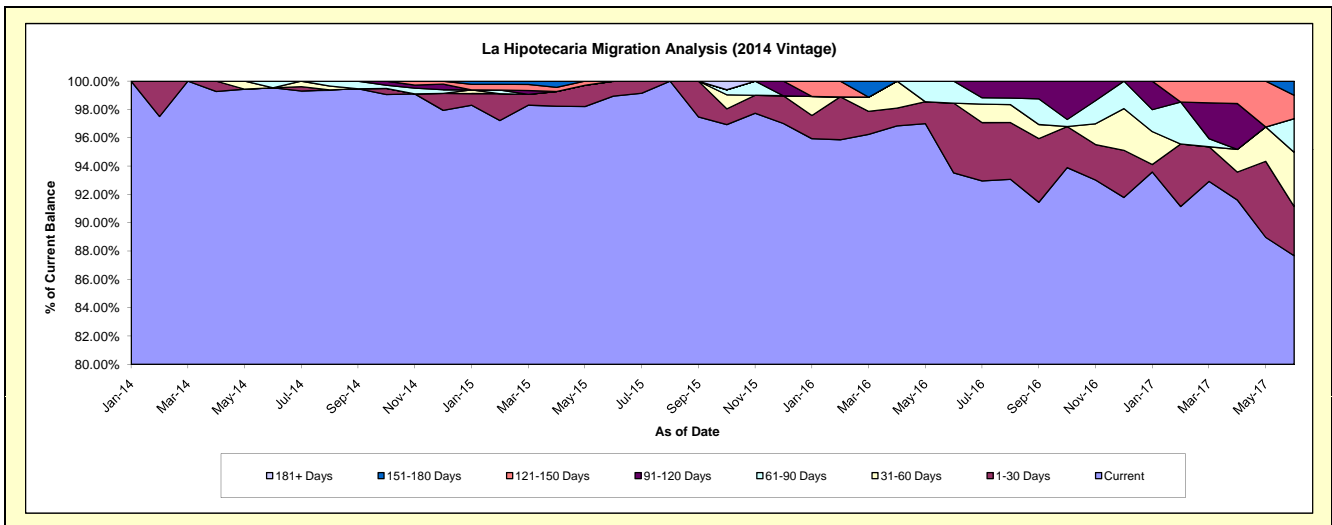
Delinquency Status (\$ of Current Balance)

Data Cutoff: 6/30/2017

Current Portfolio Balance	-	-	-	-	-	-	-	1,409,922.88	2,077,492.96	1,420,192.68	876,098.05
								Jun-14	Jun-15	Jun-16	Jun-17
Current								1,403,374.21	2,055,504.28	1,328,176.97	768,095.72
1-30 Days								-	21,988.68	69,949.67	30,391.17
31-60 Days								-	-	-	33,594.74
61-90 Days								6,548.67	-	22,066.04	20,802.86
91-120 Days								-	-	-	-
121-150 Days								-	-	-	14,505.63
151-180 Days								-	-	-	8,707.93
181+ Days								-	-	-	-

Delinquency Status (% of Current Balance)

Current Portfolio Balance	-	-	-	-	-	-	-	1,409,922.88	2,077,492.96	1,420,192.68	876,098.05
								Jun-14	Jun-15	Jun-16	Jun-17
Current								99.54%	98.94%	93.52%	87.67%
1-30 Days								0.00%	1.06%	4.93%	3.47%
31-60 Days								0.00%	0.00%	0.00%	3.83%
61-90 Days								0.46%	0.00%	1.55%	2.37%
91-120 Days								0.00%	0.00%	0.00%	0.00%
121-150 Days								0.00%	0.00%	0.00%	1.66%
151-180 Days								0.00%	0.00%	0.00%	0.99%
181+ Days								0.00%	0.00%	0.00%	0.00%
Current - 90 Days								100.00%	100.00%	100.00%	97.35%
91-180 Days								0.00%	0.00%	0.00%	2.65%



Personal Loans - La Hipotecaria El Salvador Migration Analysis (2015 Vintage)

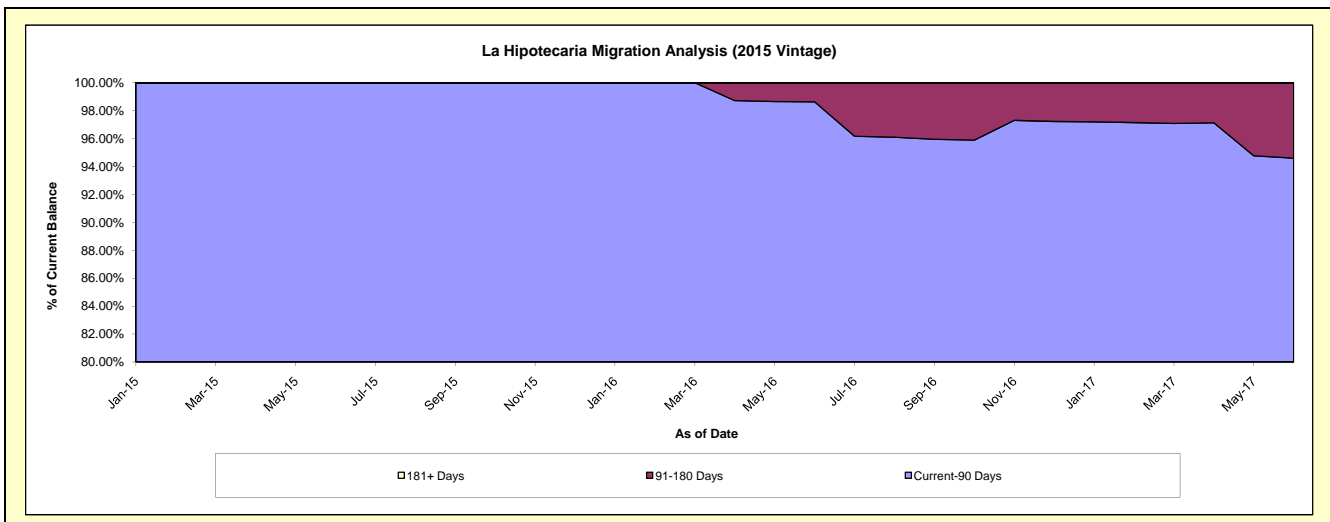
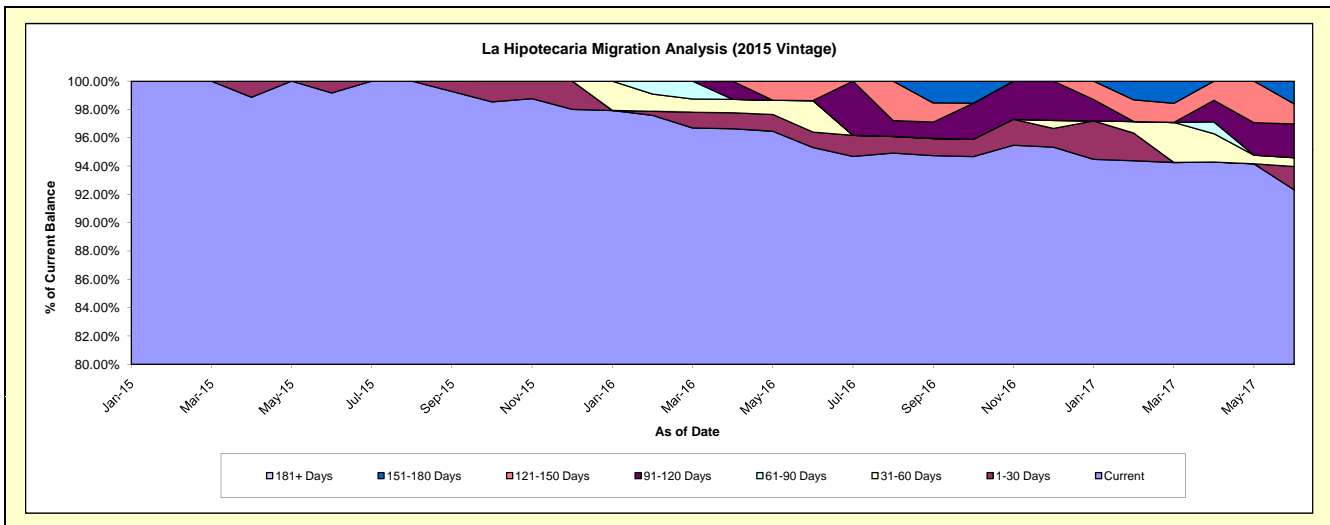
Delinquency Status (\$ of Current Balance)

Data Cutoff: 6/30/2017

Current Portfolio Balance	-	-	-	-	-	-	-	-	-	654,141.76	1,336,614.92	947,646.70
										Jun-15	Jun-16	Jun-17
Current										648,700.04	1,274,046.20	874,938.44
1-30 Days										5,441.72	14,511.57	15,614.19
31-60 Days										-	29,735.45	5,897.57
61-90 Days										-	-	-
91-120 Days										-	-	22,518.28
121-150 Days										-	18,321.70	13,477.23
151-180 Days										-	-	15,200.99
181+ Days										-	-	-

Delinquency Status (% of Current Balance)

Current Portfolio Balance	-	-	-	-	-	-	-	-	-	654,141.76	1,336,614.92	947,646.70
										Jun-15	Jun-16	Jun-17
Current										99.17%	95.32%	92.33%
1-30 Days										0.83%	1.09%	1.65%
31-60 Days										0.00%	2.22%	0.62%
61-90 Days										0.00%	0.00%	0.00%
91-120 Days										0.00%	0.00%	2.38%
121-150 Days										0.00%	1.37%	1.42%
151-180 Days										0.00%	0.00%	1.60%
181+ Days										0.00%	0.00%	0.00%
Current - 90 Days										100.00%	98.63%	94.60%
91-180 Days										0.00%	1.37%	5.40%



Personal Loans - La Hipotecaria El Salvador Migration Analysis (2016 Vintage)

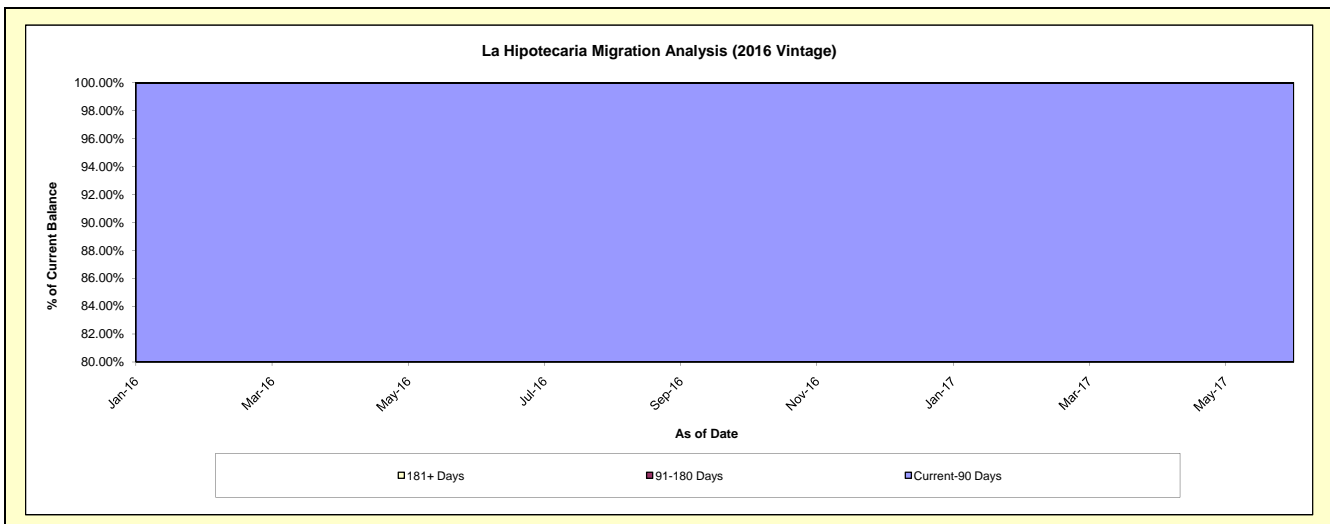
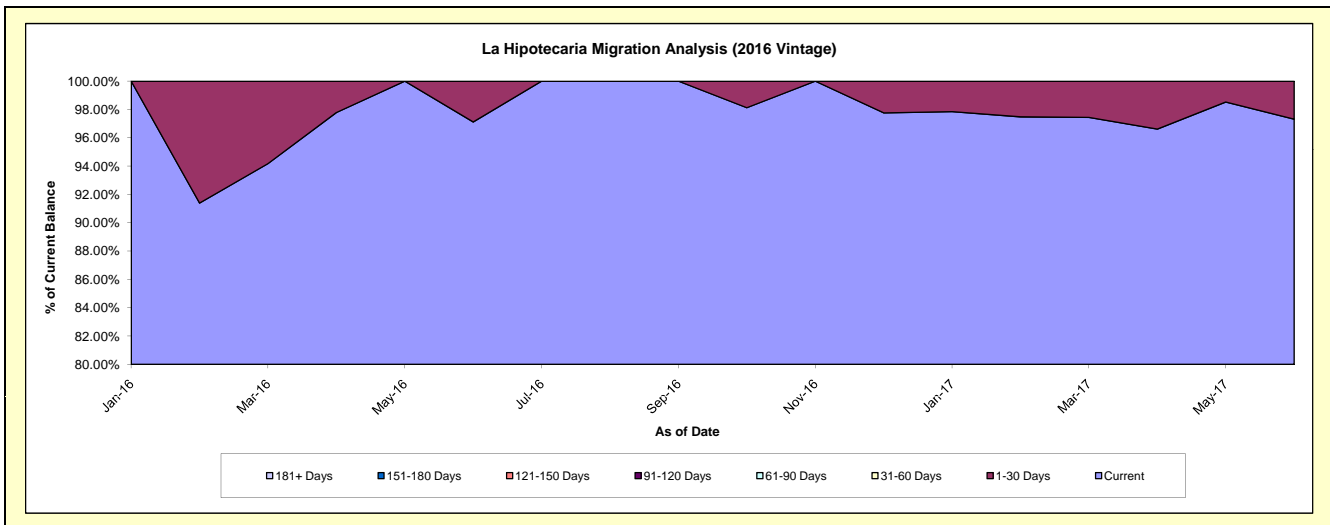
Delinquency Status (\$ of Current Balance)

Data Cutoff: 6/30/2017

Current Portfolio Balance										689,796.98	1,088,436.02
										Jun-16	Jun-17
Current										669,897.90	1,059,209.09
1-30 Days										19,899.08	29,226.93
31-60 Days										-	-
61-90 Days										-	-
91-120 Days										-	-
121-150 Days										-	-
151-180 Days										-	-
181+ Days										-	-

Delinquency Status (% of Current Balance)

Current Portfolio Balance										689,796.98	1,088,436.02
										Jun-16	Jun-17
Current										97.12%	97.31%
1-30 Days										2.88%	2.69%
31-60 Days										0.00%	0.00%
61-90 Days										0.00%	0.00%
91-120 Days										0.00%	0.00%
121-150 Days										0.00%	0.00%
151-180 Days										0.00%	0.00%
181+ Days										0.00%	0.00%
Current - 90 Days										100.00%	100.00%
91-180 Days										0.00%	0.00%



Personal Loans - La Hipotecaria El Salvador Migration Analysis (2017 Vintage)

Delinquency Status (\$ of Current Balance)

Data Cutoff: 6/30/2017

Current Portfolio Balance										1,045,749.35
										Jun-17
Current										1,045,749.35
1-30 Days										-
31-60 Days										-
61-90 Days										-
91-120 Days										-
121-150 Days										-
151-180 Days										-
181+ Days										-

Delinquency Status (% of Current Balance)

Current Portfolio Balance										1,045,749.35
										Jun-17
Current										100.00%
1-30 Days										0.00%
31-60 Days										0.00%
61-90 Days										0.00%
91-120 Days										0.00%
121-150 Days										0.00%
151-180 Days										0.00%
181+ Days										0.00%
Current - 90 Days										100.00%
91-180 Days										0.00%

