



Migration Analysis for La Hipotecaria S.A. de C.V El Salvador

Personal Loans July 2017

An analysis of historical loan payment data was used to compile a migration analysis of delinquency by annual vintage. Delinquencies for each vintage were grouped into the following buckets; Current, 1-30, 31-60, 61-90, 91-120, 121-150, 151-180, and 180+. Results are provided in graphical and tabular form. The cutoff date is 7/31/2017.

Personal Loans - La Hipotecaria El Salvador Migration Analysis (All Vintages)

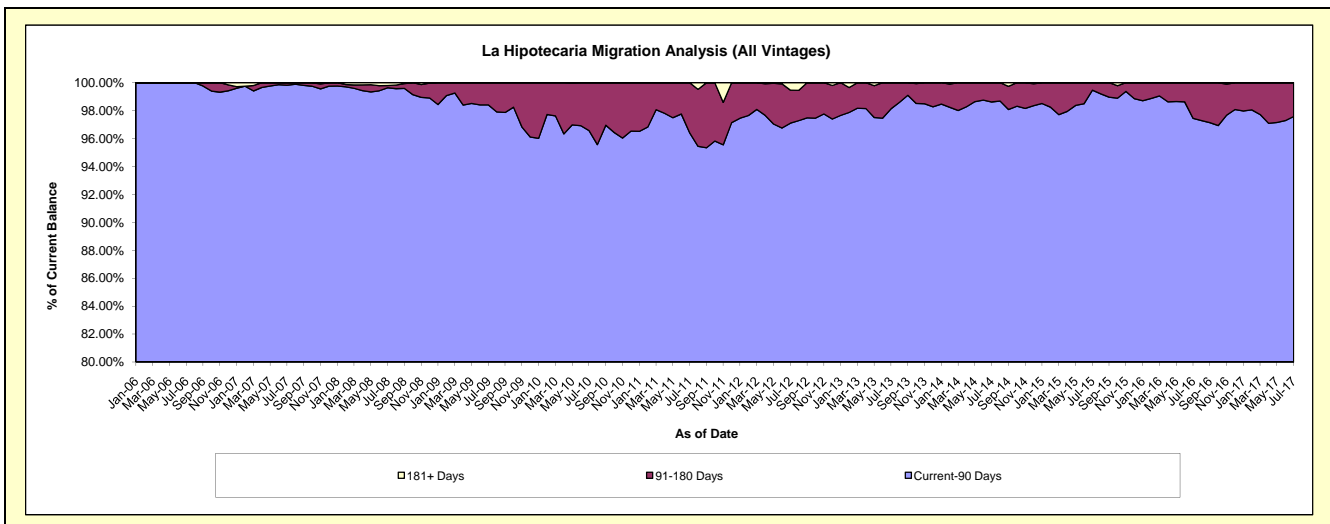
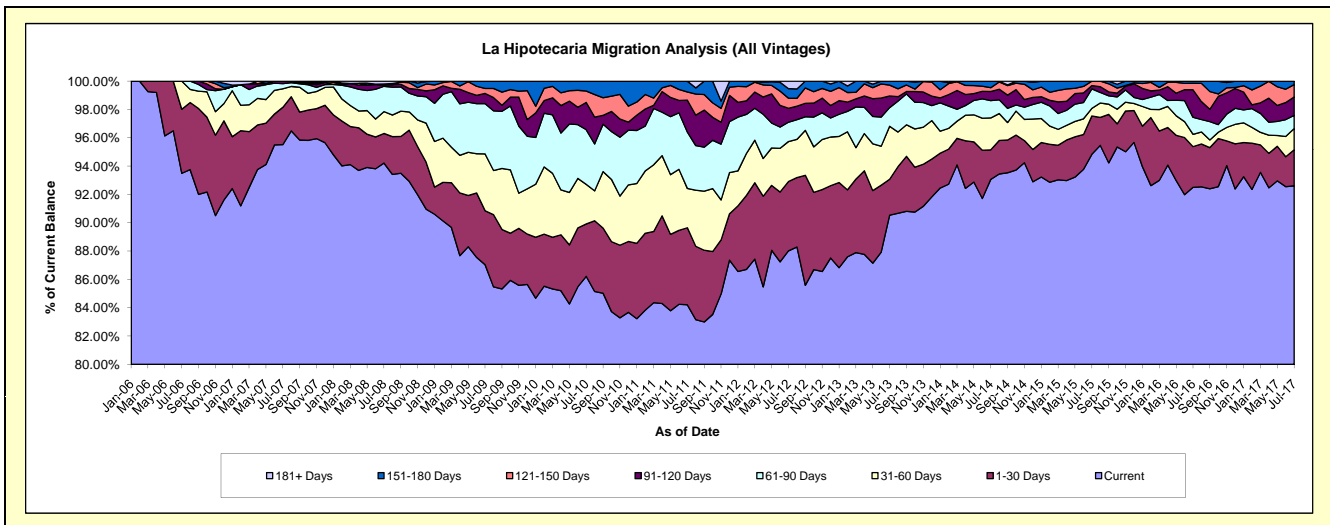
Delinquency Status (\$ of Current Balance)

Data Cutoff: 7/31/2017

Current Portfolio Balance	8,613,136.28	8,313,367.23	7,080,253.13	5,184,150.56	4,746,274.40	5,062,546.31	5,591,684.06	5,162,289.68	4,759,413.67	4,935,061.18
	Jul-08	Jul-09	Jul-10	Jul-11	Jul-12	Jul-13	Jul-14	Jul-15	Jul-16	Jul-17
Current	8,115,028.41	7,235,127.33	6,104,569.80	4,365,775.15	4,177,586.63	4,583,644.45	5,203,797.76	4,895,910.07	4,402,741.17	4,570,395.38
1-30 Days	180,042.59	317,521.09	261,472.25	281,763.20	232,389.50	128,307.78	116,657.13	139,579.54	136,665.49	125,552.30
31-60 Days	133,001.36	333,473.44	198,137.40	143,906.36	134,018.10	189,420.73	126,102.89	27,807.54	41,337.20	73,940.69
61-90 Days	153,776.11	295,118.85	273,325.08	206,533.40	64,819.26	66,645.72	68,215.79	71,394.06	57,543.25	45,859.51
91-120 Days	7,197.45	59,918.41	136,486.22	116,953.18	46,773.09	41,400.06	36,360.36	11,255.97	92,389.08	64,010.29
121-150 Days	6,152.11	29,646.97	56,943.86	29,602.68	33,739.98	39,226.91	14,751.23	16,342.50	21,740.95	43,255.23
151-180 Days	770.02	42,561.14	49,318.52	39,616.59	31,840.60	13,900.66	25,798.90	-	6,996.53	12,047.78
181+ Days	17,168.23	-	-	-	25,107.24	-	-	-	-	-

Delinquency Status (% of Current Balance)

Current Portfolio Balance	8,613,136.28	8,313,367.23	7,080,253.13	5,184,150.56	4,746,274.40	5,062,546.31	5,591,684.06	5,162,289.68	4,759,413.67	4,935,061.18
	Jul-08	Jul-09	Jul-10	Jul-11	Jul-12	Jul-13	Jul-14	Jul-15	Jul-16	Jul-17
Current	94.22%	87.03%	86.22%	84.21%	88.02%	90.54%	93.06%	94.84%	92.51%	92.61%
1-30 Days	2.09%	3.82%	3.69%	5.44%	4.90%	2.53%	2.09%	2.70%	2.87%	2.54%
31-60 Days	1.54%	4.01%	2.80%	2.78%	2.82%	3.74%	2.26%	0.54%	0.87%	1.50%
61-90 Days	1.79%	3.55%	3.86%	3.98%	1.37%	1.32%	1.22%	1.38%	1.21%	0.93%
91-120 Days	0.08%	0.72%	1.93%	2.26%	0.99%	0.82%	0.65%	0.22%	1.94%	1.30%
121-150 Days	0.07%	0.36%	0.80%	0.57%	0.71%	0.77%	0.26%	0.32%	0.46%	0.88%
151-180 Days	0.01%	0.51%	0.70%	0.76%	0.67%	0.27%	0.46%	0.00%	0.15%	0.24%
181+ Days	0.20%	0.00%	0.00%	0.00%	0.53%	0.00%	0.00%	0.00%	0.00%	0.00%
Current - 90 Days	99.64%	98.41%	96.57%	96.41%	97.10%	98.13%	98.62%	99.47%	97.46%	97.58%
91-180 Days	0.16%	1.59%	3.43%	3.59%	2.37%	1.87%	1.38%	0.53%	2.54%	2.42%



Personal Loans - La Hipotecaria El Salvador Migration Analysis (2006 Vintage)

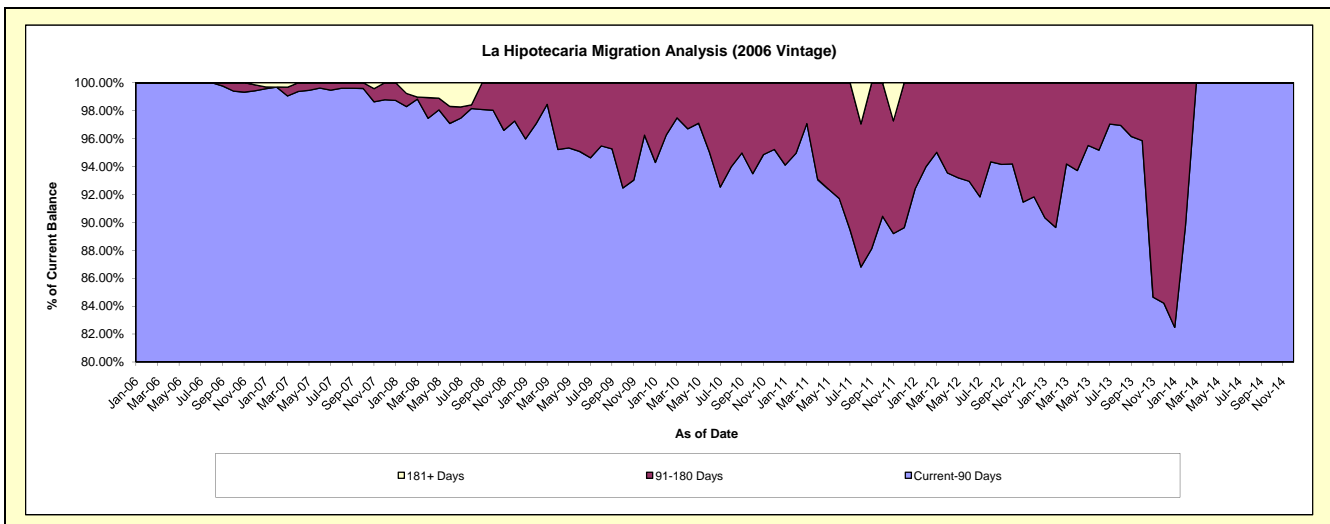
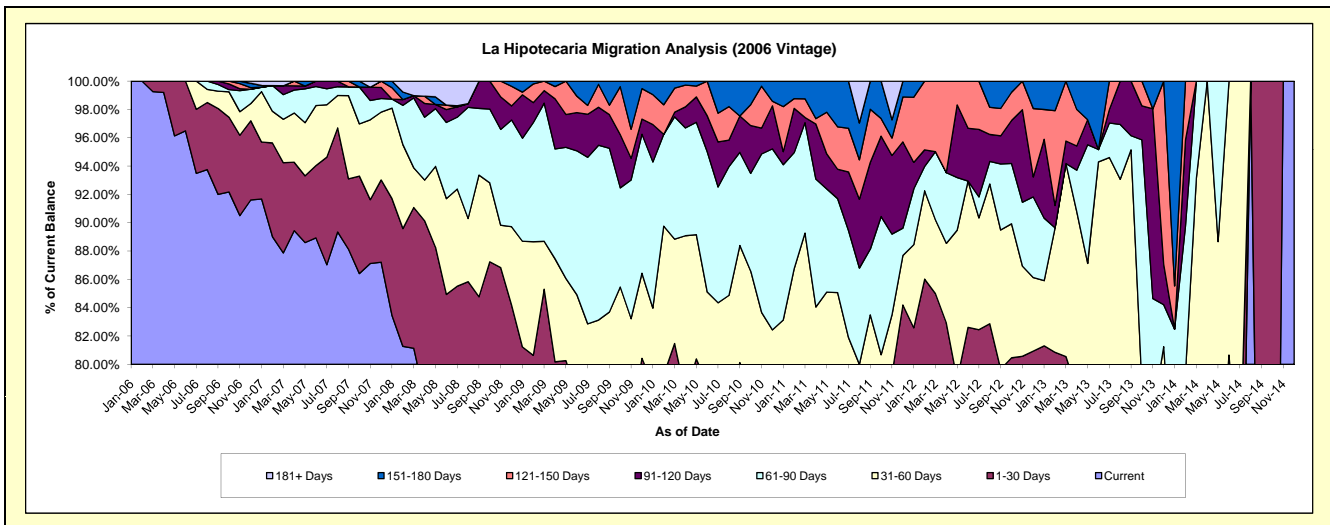
Delinquency Status (\$ of Current Balance)

Data Cutoff: 7/31/2017

Current Portfolio Balance	987,558.15	709,008.97	456,801.31	264,331.77	133,197.10	50,189.10	3,731.41	#N/A	#N/A	#N/A
	Jul-08	Jul-09	Jul-10	Jul-11	Jul-12	Jul-13	Jul-14	Jul-15	Jul-16	Jul-17
Current	789,981.24	496,634.24	306,670.11	182,416.84	99,810.57	31,886.63	2,036.27	#N/A	#N/A	#N/A
1-30 Days	54,590.71	28,584.61	44,105.75	15,855.58	10,011.57	5,917.41	641.70	#N/A	#N/A	#N/A
31-60 Days	67,748.74	62,248.36	34,534.11	18,202.97	10,513.86	9,677.00	1,053.44	#N/A	#N/A	#N/A
61-90 Days	50,101.76	83,424.47	37,347.52	19,968.82	1,972.27	1,223.33	-	#N/A	#N/A	#N/A
91-120 Days	7,197.45	21,550.75	14,532.91	10,946.55	6,349.64	480.86	-	#N/A	#N/A	#N/A
121-150 Days	-	4,454.62	9,286.82	8,156.14	4,539.19	1,003.87	-	#N/A	#N/A	#N/A
151-180 Days	770.02	12,111.92	10,324.09	8,784.87	-	-	-	#N/A	#N/A	#N/A
181+ Days	17,168.23	-	-	-	-	-	-	#N/A	#N/A	#N/A

Delinquency Status (% of Current Balance)

Current Portfolio Balance	987,558.15	709,008.97	456,801.31	264,331.77	133,197.10	50,189.10	3,731.41	#N/A	#N/A	#N/A
	Jul-08	Jul-09	Jul-10	Jul-11	Jul-12	Jul-13	Jul-14	Jul-15	Jul-16	Jul-17
Current	79.99%	70.05%	67.13%	69.01%	74.93%	63.53%	54.57%	#N/A	#N/A	#N/A
1-30 Days	5.53%	4.03%	9.66%	6.00%	7.52%	11.79%	17.20%	#N/A	#N/A	#N/A
31-60 Days	6.86%	8.78%	7.56%	6.89%	7.89%	19.28%	28.23%	#N/A	#N/A	#N/A
61-90 Days	5.07%	11.77%	8.18%	7.55%	1.48%	2.44%	0.00%	#N/A	#N/A	#N/A
91-120 Days	0.73%	3.04%	3.18%	4.14%	4.77%	0.96%	0.00%	#N/A	#N/A	#N/A
121-150 Days	0.00%	0.63%	2.03%	3.09%	3.41%	2.00%	0.00%	#N/A	#N/A	#N/A
151-180 Days	0.08%	1.71%	2.26%	3.32%	0.00%	0.00%	0.00%	#N/A	#N/A	#N/A
181+ Days	1.74%	0.00%	0.00%	0.00%	0.00%	0.00%	0.00%	#N/A	#N/A	#N/A
Current - 90 Days	97.45%	94.62%	92.53%	89.45%	91.83%	97.04%	100.00%	#N/A	#N/A	#N/A
91-180 Days	0.81%	5.38%	7.47%	10.55%	8.17%	2.96%	0.00%	#N/A	#N/A	#N/A



Personal Loans - La Hipotecaria El Salvador Migration Analysis (2007 Vintage)

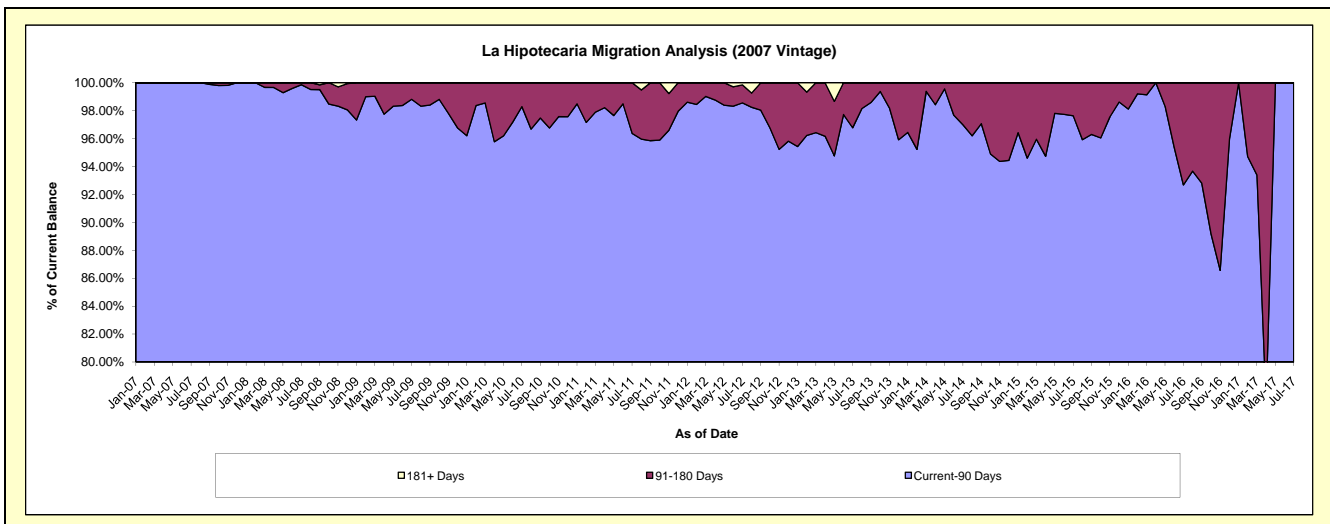
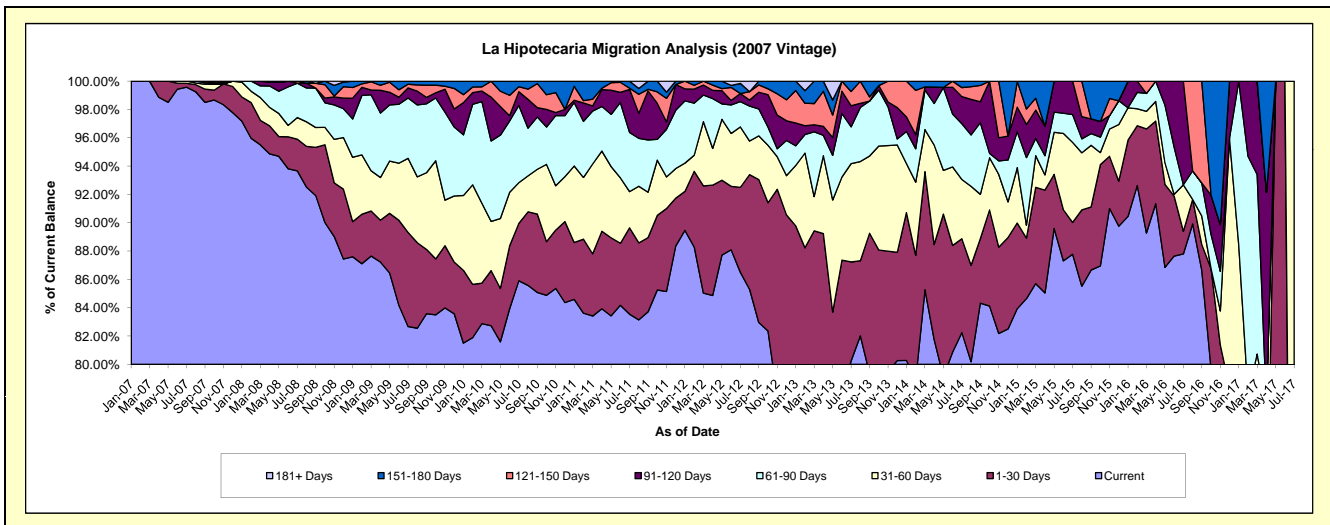
Delinquency Status (\$ of Current Balance)

Data Cutoff: 7/31/2017

Current Portfolio Balance	4,272,806.29	3,422,576.51	2,654,166.27	1,825,445.92	1,223,579.84	739,393.55	418,694.40	179,798.96	48,016.83	2,779.78
	Jul-08	Jul-09	Jul-10	Jul-11	Jul-12	Jul-13	Jul-14	Jul-15	Jul-16	Jul-17
Current	4,001,985.84	2,829,380.66	2,280,066.35	1,524,994.03	1,058,452.98	593,276.13	344,345.61	157,813.25	42,158.70	659.15
1-30 Days	95,741.37	227,831.51	107,572.69	111,386.67	73,395.45	51,712.14	27,762.26	4,039.83	767.23	145.82
31-60 Days	65,252.62	178,793.02	76,223.42	46,719.07	52,215.22	51,360.49	17,510.24	10,165.78	1,578.39	1,974.81
61-90 Days	103,674.35	146,014.96	144,791.17	76,133.08	21,851.46	19,195.55	16,481.63	3,534.97	-	-
91-120 Days	-	24,225.01	25,715.88	55,600.92	6,979.90	11,012.43	8,011.55	4,245.13	3,512.51	-
121-150 Days	6,152.11	8,997.33	9,499.25	1,487.45	-	7,420.40	2,692.18	-	-	-
151-180 Days	-	7,334.02	10,297.51	9,124.70	8,744.74	5,416.41	1,890.93	-	-	-
181+ Days	-	-	-	-	1,940.09	-	-	-	-	-

Delinquency Status (% of Current Balance)

Current Portfolio Balance	4,272,806.29	3,422,576.51	2,654,166.27	1,825,445.92	1,223,579.84	739,393.55	418,694.40	179,798.96	48,016.83	2,779.78
	Jul-08	Jul-09	Jul-10	Jul-11	Jul-12	Jul-13	Jul-14	Jul-15	Jul-16	Jul-17
Current	93.66%	82.67%	85.91%	83.54%	86.50%	80.24%	82.24%	87.77%	87.80%	23.71%
1-30 Days	2.24%	6.66%	4.05%	6.10%	6.00%	6.99%	6.63%	2.25%	1.60%	5.25%
31-60 Days	1.53%	5.22%	2.87%	2.56%	4.27%	6.95%	4.18%	5.65%	3.29%	71.04%
61-90 Days	2.43%	4.27%	5.46%	4.17%	1.79%	2.60%	3.94%	1.97%	0.00%	0.00%
91-120 Days	0.00%	0.71%	0.97%	3.05%	0.57%	1.49%	1.91%	2.36%	7.32%	0.00%
121-150 Days	0.14%	0.26%	0.36%	0.08%	0.00%	1.00%	0.64%	0.00%	0.00%	0.00%
151-180 Days	0.00%	0.21%	0.39%	0.50%	0.71%	0.73%	0.45%	0.00%	0.00%	0.00%
181+ Days	0.00%	0.00%	0.00%	0.00%	0.16%	0.00%	0.00%	0.00%	0.00%	0.00%
Current - 90 Days	99.86%	98.82%	98.29%	96.37%	98.56%	96.77%	96.99%	97.64%	92.68%	100.00%
91-180 Days	0.14%	1.18%	1.71%	3.63%	1.29%	3.23%	3.01%	2.36%	7.32%	0.00%



Personal Loans - La Hipotecaria El Salvador Migration Analysis (2008 Vintage)

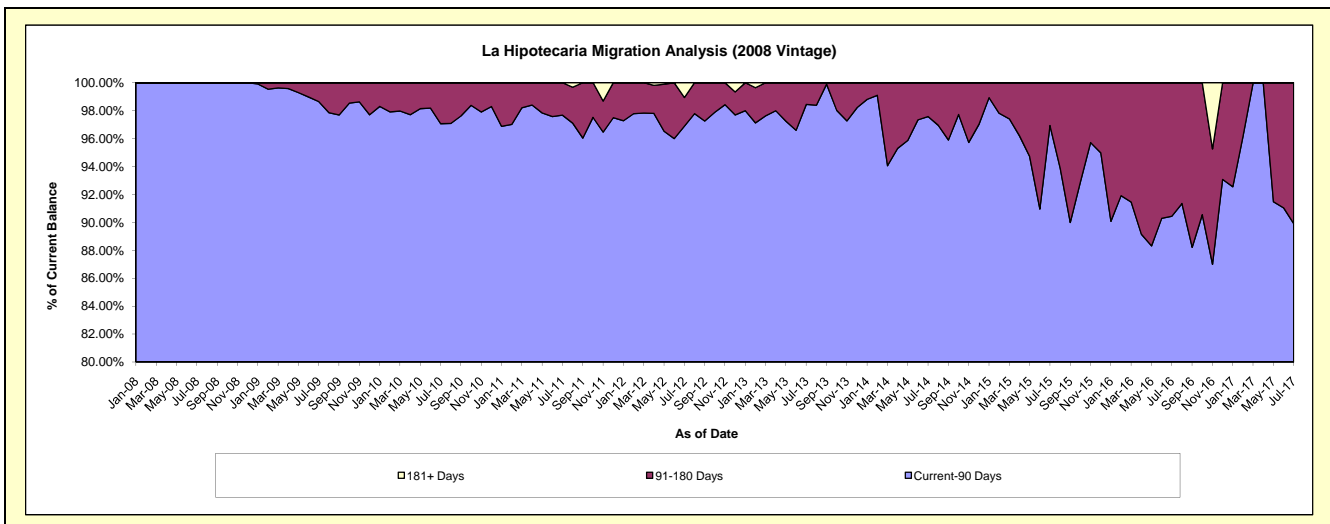
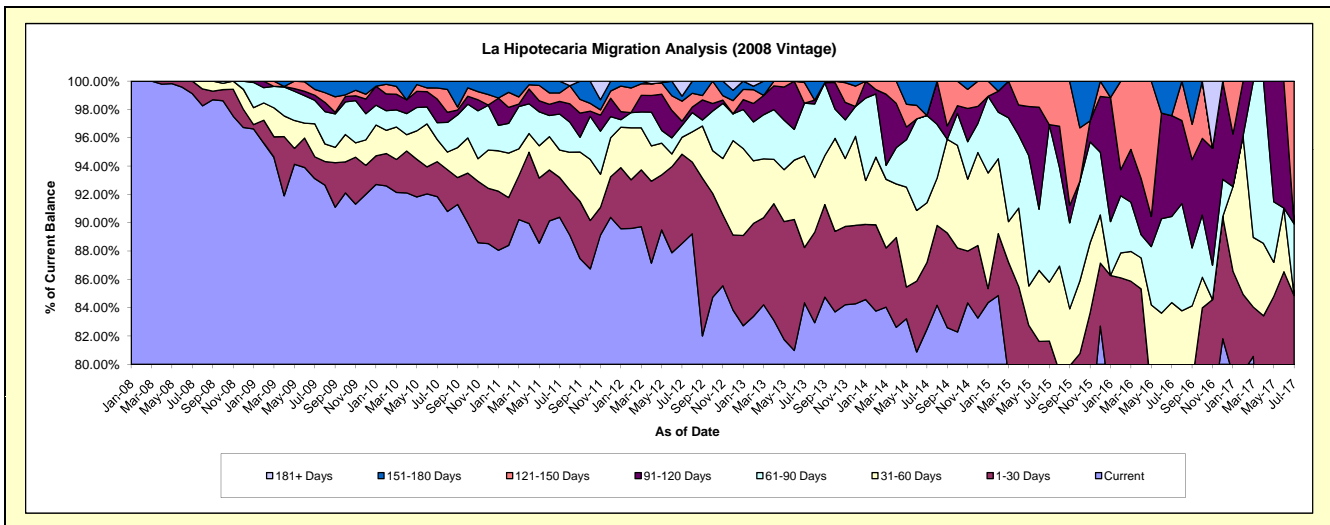
Delinquency Status (\$ of Current Balance)

Data Cutoff: 7/31/2017

Current Portfolio Balance	3,352,771.84	3,959,559.54	3,203,133.06	2,347,448.92	1,700,447.98	1,138,529.87	712,244.51	355,243.75	139,516.16	37,276.09
	Jul-08	Jul-09	Jul-10	Jul-11	Jul-12	Jul-13	Jul-14	Jul-15	Jul-16	Jul-17
Current	3,323,061.33	3,686,890.22	2,942,113.68	2,121,935.43	1,505,596.98	960,372.62	587,406.66	277,612.91	105,375.76	27,050.55
1-30 Days	29,710.51	61,104.97	78,855.67	65,816.40	107,123.58	44,377.46	33,553.10	12,434.98	-	4,580.72
31-60 Days	-	92,432.06	50,202.27	45,575.80	20,365.98	73,702.86	30,097.46	14,756.08	12,320.47	-
61-90 Days	-	65,679.42	38,046.22	59,567.61	14,373.17	42,400.94	43,946.94	39,540.09	8,488.28	1,885.69
91-120 Days	-	14,142.65	53,510.52	21,094.09	4,903.44	-	-	-	9,933.61	-
121-150 Days	-	16,195.02	24,892.24	13,988.28	24,070.09	16,625.11	-	10,899.69	-	3,759.13
151-180 Days	-	23,115.20	15,512.46	19,471.31	5,987.94	1,050.88	17,240.35	-	3,398.04	-
181+ Days	-	-	-	-	18,026.80	-	-	-	-	-

Delinquency Status (% of Current Balance)

Current Portfolio Balance	3,352,771.84	3,959,559.54	3,203,133.06	2,347,448.92	1,700,447.98	1,138,529.87	712,244.51	355,243.75	139,516.16	37,276.09
	Jul-08	Jul-09	Jul-10	Jul-11	Jul-12	Jul-13	Jul-14	Jul-15	Jul-16	Jul-17
Current	99.11%	93.11%	91.85%	90.39%	88.54%	84.35%	82.47%	78.15%	75.53%	72.57%
1-30 Days	0.89%	1.54%	2.46%	2.80%	6.30%	3.90%	4.71%	3.50%	0.00%	12.29%
31-60 Days	0.00%	2.33%	1.57%	1.94%	1.20%	6.47%	4.23%	4.15%	8.83%	0.00%
61-90 Days	0.00%	1.66%	1.19%	2.54%	0.85%	3.72%	6.17%	11.13%	6.08%	5.06%
91-120 Days	0.00%	0.36%	1.67%	0.90%	0.29%	0.00%	0.00%	0.00%	7.12%	0.00%
121-150 Days	0.00%	0.41%	0.78%	0.60%	1.42%	1.46%	0.00%	3.07%	0.00%	10.08%
151-180 Days	0.00%	0.58%	0.48%	0.83%	0.35%	0.09%	2.42%	0.00%	2.44%	0.00%
181+ Days	0.00%	0.00%	0.00%	0.00%	1.06%	0.00%	0.00%	0.00%	0.00%	0.00%
Current - 90 Days	100.00%	98.65%	97.07%	97.68%	96.88%	98.45%	97.58%	96.93%	90.44%	89.92%
91-180 Days	0.00%	1.35%	2.93%	2.32%	2.06%	1.55%	2.42%	3.07%	9.56%	10.08%



Personal Loans - La Hipotecaria El Salvador Migration Analysis (2009 Vintage)

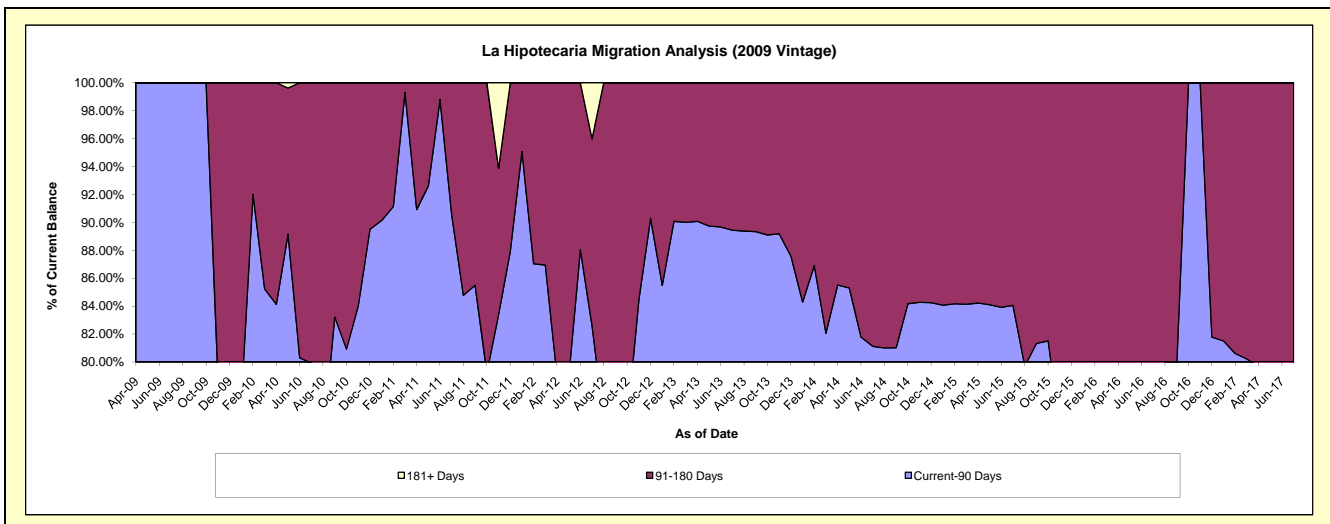
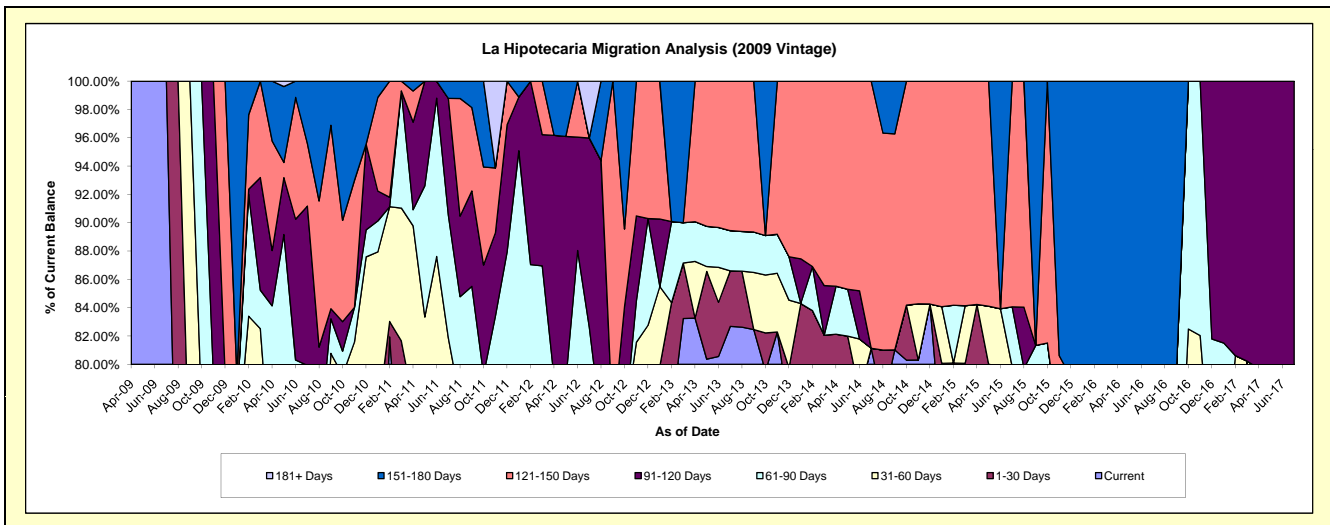
Delinquency Status (\$ of Current Balance)

Data Cutoff: 7/31/2017

Current Portfolio Balance	-	222,222.21	299,821.50	184,265.05	128,040.40	85,054.58	47,438.67	34,152.09	17,421.58	10,155.34
	Jul-09	Jul-10	Jul-11	Jul-12	Jul-13	Jul-14	Jul-15	Jul-16	Jul-17	
Current	222,222.21	156,786.16	123,245.49	77,348.02	70,323.95	38,488.47	24,998.34	11,555.93	815.19	
1-30 Days	-	30,938.14	12,350.04	6,231.75	3,333.47	-	-	-	7,072.99	
31-60 Days	-	4,327.73	15,250.05	9,852.91	-	-	-	-	-	
61-90 Days	-	47,592.55	15,991.97	12,350.72	2,420.22	-	1,443.78	2,267.16	-	
91-120 Days	-	33,726.91	15,191.79	17,116.65	-	-	-	-	2,267.16	
121-150 Days	-	13,265.55	-	-	8,976.94	8,950.20	5,442.81	-	-	
151-180 Days	-	13,184.46	2,235.71	-	-	-	-	3,598.49	-	
181+ Days	-	-	-	5,140.35	-	-	-	-	-	

Delinquency Status (% of Current Balance)

Current Portfolio Balance	-	222,222.21	299,821.50	184,265.05	128,040.40	85,054.58	47,438.67	34,152.09	17,421.58	10,155.34
	Jul-09	Jul-10	Jul-11	Jul-12	Jul-13	Jul-14	Jul-15	Jul-16	Jul-17	
Current	100.00%	52.29%	66.88%	60.41%	82.68%	81.13%	73.20%	66.33%	8.03%	
1-30 Days	0.00%	10.32%	6.70%	4.87%	3.92%	0.00%	6.64%	0.00%	69.65%	
31-60 Days	0.00%	1.44%	8.28%	7.70%	0.00%	0.00%	0.00%	0.00%	0.00%	
61-90 Days	0.00%	15.87%	8.68%	9.65%	2.85%	0.00%	4.23%	13.01%	0.00%	
91-120 Days	0.00%	11.25%	8.24%	13.37%	0.00%	0.00%	0.00%	0.00%	22.32%	
121-150 Days	0.00%	4.42%	0.00%	0.00%	10.55%	18.87%	15.94%	0.00%	0.00%	
151-180 Days	0.00%	4.40%	1.21%	0.00%	0.00%	0.00%	0.00%	20.66%	0.00%	
181+ Days	0.00%	0.00%	0.00%	4.01%	0.00%	0.00%	0.00%	0.00%	0.00%	
Current - 90 Days	100.00%	79.93%	90.54%	82.62%	89.45%	81.13%	84.06%	79.34%	77.68%	
91-180 Days	0.00%	20.07%	9.46%	13.37%	10.55%	18.87%	15.94%	20.66%	22.32%	



Personal Loans - La Hipotecaria El Salvador Migration Analysis (2010 Vintage)

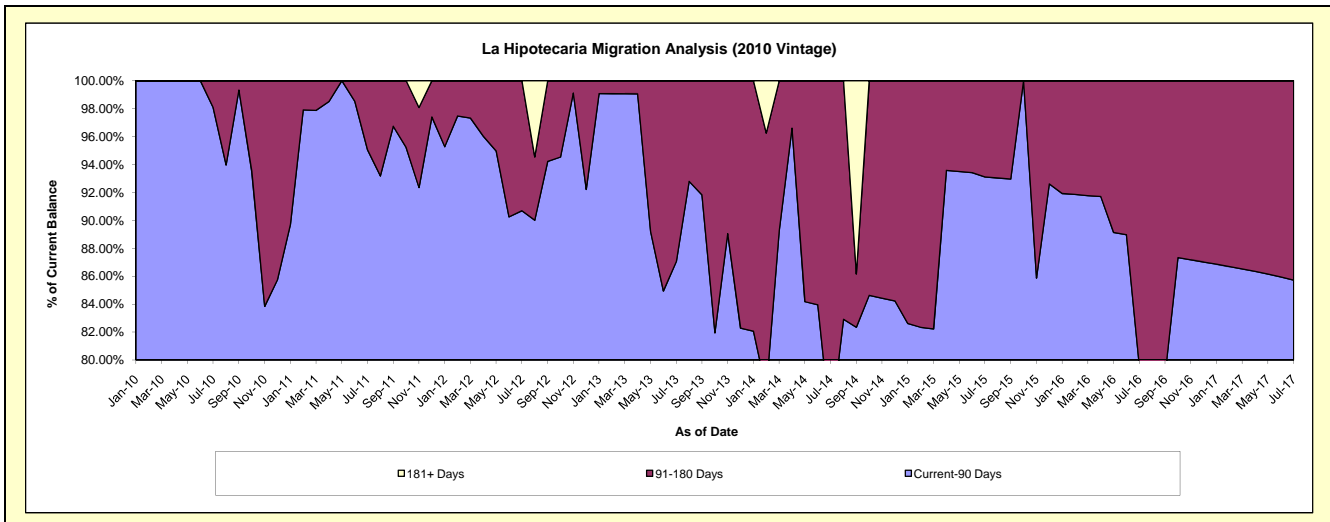
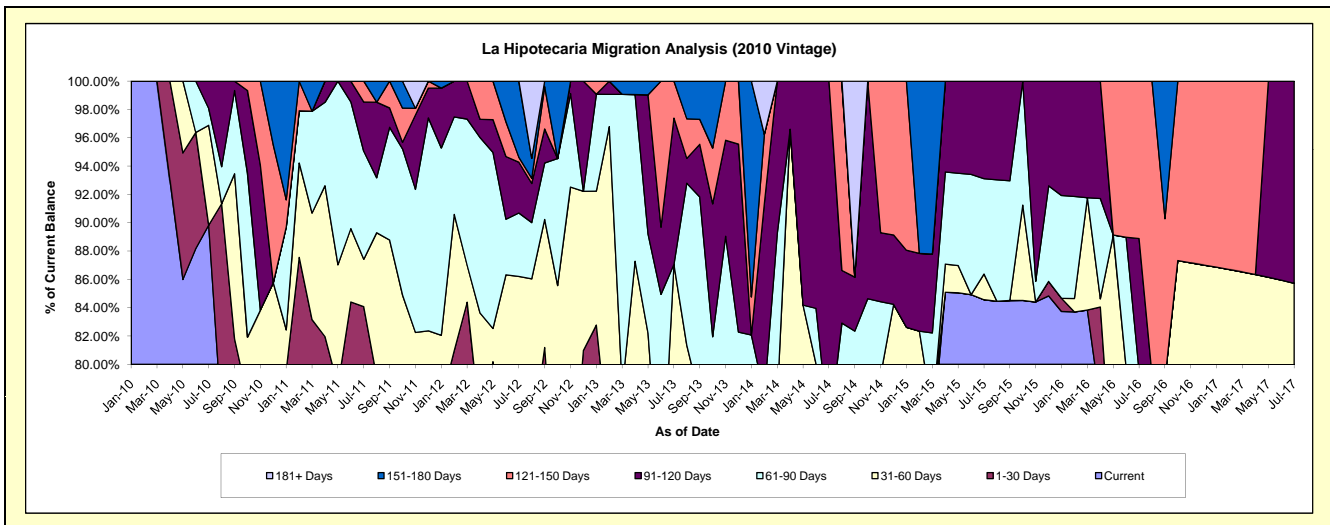
Delinquency Status (\$ of Current Balance)

Data Cutoff: 7/31/2017

Current Portfolio Balance	-	-	466,330.99	405,844.60	318,635.87	199,149.44	114,429.05	55,499.24	31,405.20	21,534.25
	Jul-10	Jul-11	Jul-12	Jul-13	Jul-14	Jul-15	Jul-16	Jul-17		
Current	418,933.50	264,863.54	202,262.48	107,194.89	69,482.30	46,932.97	22,235.90	16,819.65		
1-30 Days	-	76,354.51	34,953.69	13,564.01	11,979.44	-	-	-		
31-60 Days	32,849.87	13,563.99	37,485.98	52,594.91	4,618.50	1,004.21	2,738.95	1,640.87		
61-90 Days	5,547.62	30,971.92	14,271.64	-	-	3,740.18	-	-		
91-120 Days	9,000.00	14,119.83	11,423.46	20,595.04	28,348.81	3,821.88	2,939.46	3,073.73		
121-150 Days	-	5,970.81	1,130.70	5,200.59	-	-	3,490.89	-		
151-180 Days	-	-	17,107.92	-	-	-	-	-		
181+ Days	-	-	-	-	-	-	-	-		

Delinquency Status (% of Current Balance)

Current Portfolio Balance	-	-	466,330.99	405,844.60	318,635.87	199,149.44	114,429.05	55,499.24	31,405.20	21,534.25
	Jul-10	Jul-11	Jul-12	Jul-13	Jul-14	Jul-15	Jul-16	Jul-17		
Current	89.84%	65.26%	63.48%	53.83%	60.72%	84.57%	70.80%	78.11%		
1-30 Days	0.00%	18.81%	10.97%	6.81%	10.47%	0.00%	0.00%	0.00%		
31-60 Days	7.04%	3.34%	11.76%	26.41%	4.04%	1.81%	8.72%	7.62%		
61-90 Days	1.19%	7.63%	4.48%	0.00%	0.00%	6.74%	0.00%	0.00%		
91-120 Days	1.93%	3.48%	3.59%	10.34%	24.77%	6.89%	9.36%	14.27%		
121-150 Days	0.00%	1.47%	0.35%	2.61%	0.00%	0.00%	11.12%	0.00%		
151-180 Days	0.00%	0.00%	5.37%	0.00%	0.00%	0.00%	0.00%	0.00%		
181+ Days	0.00%	0.00%	0.00%	0.00%	0.00%	0.00%	0.00%	0.00%		
Current - 90 Days	98.07%	95.05%	90.69%	87.05%	75.23%	93.11%	79.52%	85.73%		
91-180 Days	1.93%	4.95%	9.31%	12.95%	24.77%	6.89%	20.48%	14.27%		



Personal Loans - La Hipotecaria El Salvador Migration Analysis (2011 Vintage)

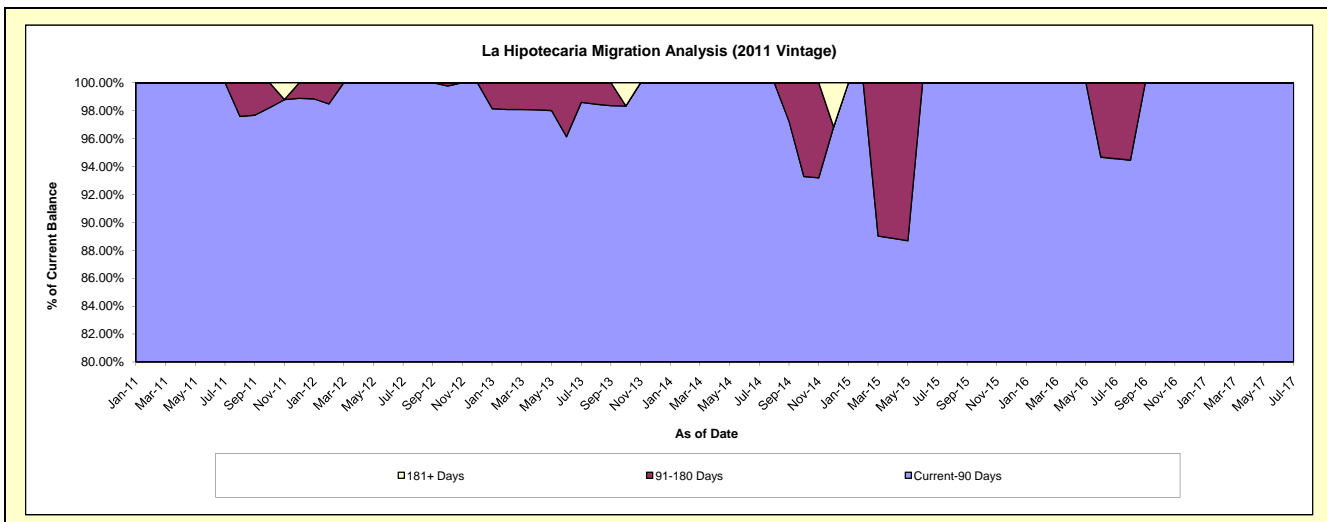
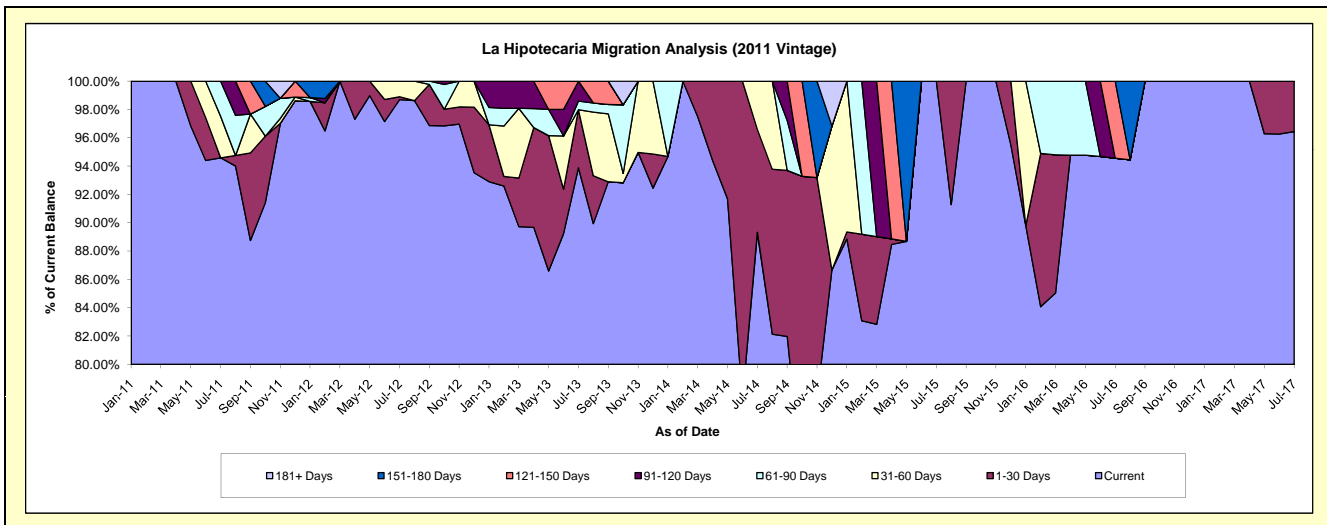
Delinquency Status (\$ of Current Balance)

Data Cutoff: 7/31/2017

Current Portfolio Balance	-	-	-	156,814.30	325,090.56	229,427.07	148,547.75	97,233.30	67,413.80	45,779.56
				Jul-11	Jul-12	Jul-13	Jul-14	Jul-15	Jul-16	Jul-17
Current				148,319.82	320,832.95	215,398.43	132,690.54	97,233.30	63,747.37	44,150.18
1-30 Days				-	673.46	9,403.29	10,797.40	-	-	1,629.38
31-60 Days				4,594.48	3,584.15	-	5,059.81	-	-	-
61-90 Days				3,900.00	-	1,405.68	-	-	-	-
91-120 Days				-	-	3,219.67	-	-	-	-
121-150 Days				-	-	-	-	-	3,666.43	-
151-180 Days				-	-	-	-	-	-	-
181+ Days				-	-	-	-	-	-	-

Delinquency Status (% of Current Balance)

Current Portfolio Balance	-	-	-	156,814.30	325,090.56	229,427.07	148,547.75	97,233.30	67,413.80	45,779.56
				Jul-11	Jul-12	Jul-13	Jul-14	Jul-15	Jul-16	Jul-17
Current				94.58%	98.69%	93.89%	89.33%	100.00%	94.56%	96.44%
1-30 Days				0.00%	0.21%	4.10%	7.27%	0.00%	0.00%	3.56%
31-60 Days				2.93%	1.10%	0.00%	3.41%	0.00%	0.00%	0.00%
61-90 Days				2.49%	0.00%	0.61%	0.00%	0.00%	0.00%	0.00%
91-120 Days				0.00%	0.00%	1.40%	0.00%	0.00%	0.00%	0.00%
121-150 Days				0.00%	0.00%	0.00%	0.00%	0.00%	5.44%	0.00%
151-180 Days				0.00%	0.00%	0.00%	0.00%	0.00%	0.00%	0.00%
181+ Days				0.00%	0.00%	0.00%	0.00%	0.00%	0.00%	0.00%
Current - 90 Days				100.00%	100.00%	98.60%	100.00%	100.00%	94.56%	100.00%
91-180 Days				0.00%	0.00%	1.40%	0.00%	0.00%	5.44%	0.00%



Personal Loans - La Hipotecaria El Salvador Migration Analysis (2012 Vintage)

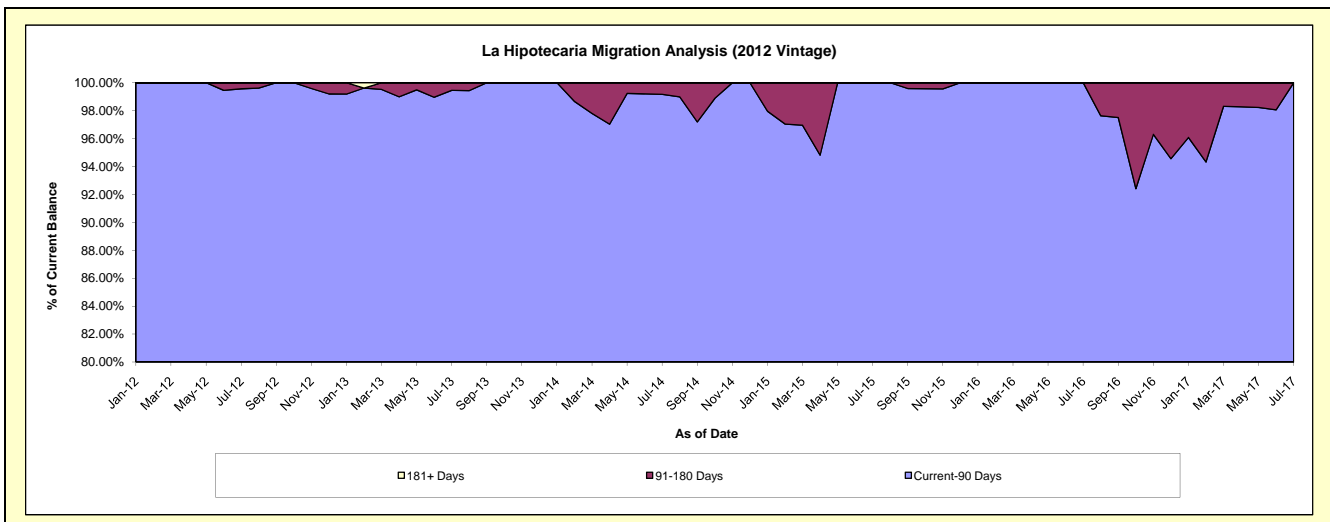
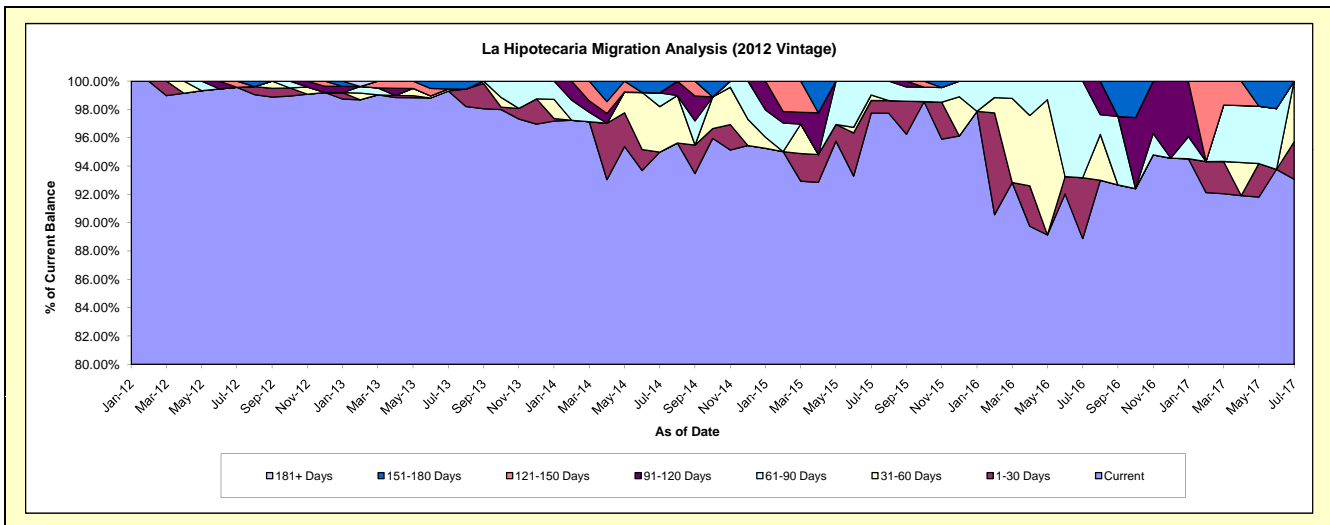
Delinquency Status (\$ of Current Balance)

Data Cutoff: 7/31/2017

Current Portfolio Balance	-	-	-	-	917,282.65	1,361,094.64	803,997.88	478,581.07	296,098.57	174,052.50
					Jul-12	Jul-13	Jul-14	Jul-15	Jul-16	Jul-17
Current					913,282.65	1,351,575.80	763,695.24	467,783.61	263,185.45	161,996.70
1-30 Days					-	-	-	4,257.06	12,727.89	4,607.88
31-60 Days					-	2,085.47	25,847.80	1,881.47	-	7,447.92
61-90 Days					-	-	7,787.22	4,658.93	20,185.23	-
91-120 Days					-	-	-	-	-	-
121-150 Days					4,000.00	-	-	-	-	-
151-180 Days					-	7,433.37	6,667.62	-	-	-
181+ Days					-	-	-	-	-	-

Delinquency Status (% of Current Balance)

Current Portfolio Balance	-	-	-	-	917,282.65	1,361,094.64	803,997.88	478,581.07	296,098.57	174,052.50
					Jul-12	Jul-13	Jul-14	Jul-15	Jul-16	Jul-17
Current					99.56%	99.30%	94.99%	97.74%	88.88%	93.07%
1-30 Days					0.00%	0.00%	0.00%	0.89%	4.30%	2.65%
31-60 Days					0.00%	0.15%	3.21%	0.39%	0.00%	4.28%
61-90 Days					0.00%	0.00%	0.97%	0.97%	6.82%	0.00%
91-120 Days					0.00%	0.00%	0.00%	0.00%	0.00%	0.00%
121-150 Days					0.44%	0.00%	0.00%	0.00%	0.00%	0.00%
151-180 Days					0.00%	0.55%	0.83%	0.00%	0.00%	0.00%
181+ Days					0.00%	0.00%	0.00%	0.00%	0.00%	0.00%
Current - 90 Days					99.56%	99.45%	99.17%	100.00%	100.00%	100.00%
91-180 Days					0.44%	0.55%	0.83%	0.00%	0.00%	0.00%



Personal Loans - La Hipotecaria El Salvador Migration Analysis (2013 Vintage)

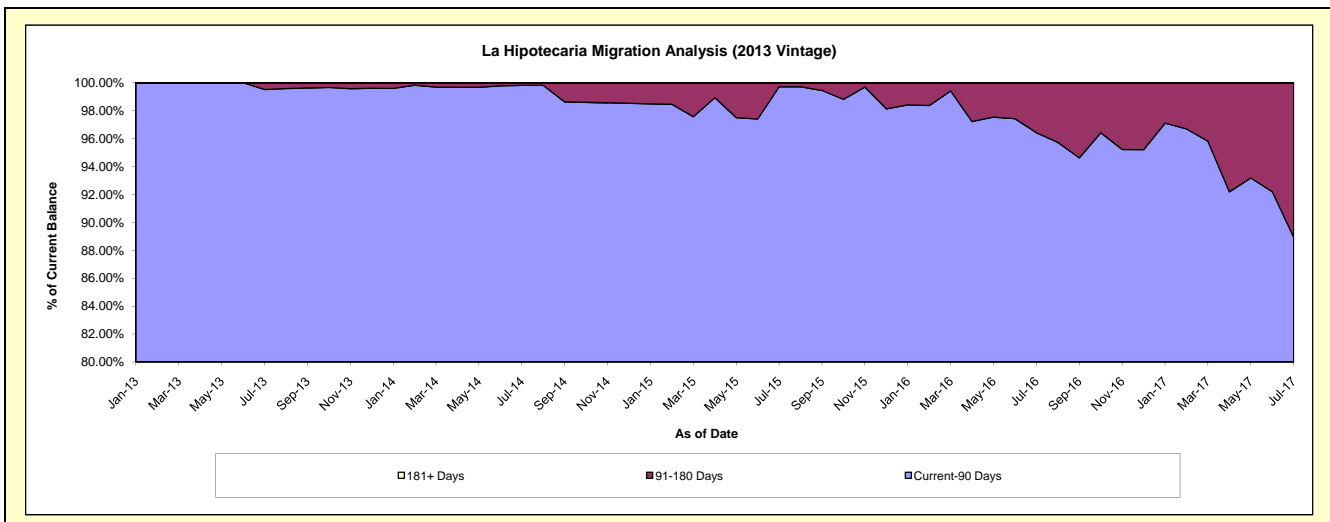
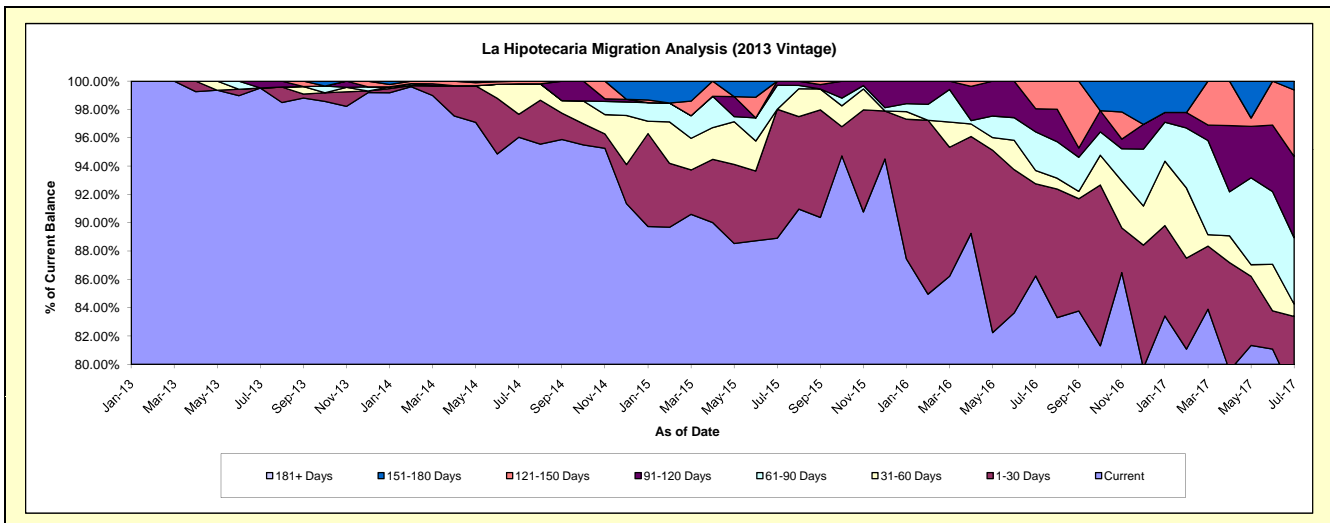
Delinquency Status (\$ of Current Balance)

Data Cutoff: 7/31/2017

Current Portfolio Balance	-	-	-	-	-	1,259,708.06	1,643,591.56	1,093,548.82	748,904.68	535,143.54
						Jul-13	Jul-14	Jul-15	Jul-16	Jul-17
Current						1,253,616.00	1,578,469.44	972,273.81	645,887.20	416,623.12
1-30 Days						-	26,646.30	99,609.94	48,701.54	29,580.41
31-60 Days						-	35,366.97	-	7,037.57	4,651.30
61-90 Days						-	-	18,476.11	20,476.07	25,110.29
91-120 Days						6,092.06	-	3,188.96	12,218.67	30,698.15
121-150 Days						-	3,108.85	-	14,583.63	25,140.42
151-180 Days						-	-	-	-	3,339.85
181+ Days						-	-	-	-	-

Delinquency Status (% of Current Balance)

Current Portfolio Balance	-	-	-	-	-	1,259,708.06	1,643,591.56	1,093,548.82	748,904.68	535,143.54
						Jul-13	Jul-14	Jul-15	Jul-16	Jul-17
Current						99.52%	96.04%	88.91%	86.24%	77.85%
1-30 Days						0.00%	1.62%	9.11%	6.50%	5.53%
31-60 Days						0.00%	2.15%	0.00%	0.94%	0.87%
61-90 Days						0.00%	0.00%	1.69%	2.73%	4.69%
91-120 Days						0.48%	0.00%	0.29%	1.63%	5.74%
121-150 Days						0.00%	0.19%	0.00%	1.95%	4.70%
151-180 Days						0.00%	0.00%	0.00%	0.00%	0.62%
181+ Days						0.00%	0.00%	0.00%	0.00%	0.00%
Current - 90 Days						99.52%	99.81%	99.71%	96.42%	88.94%
91-180 Days						0.48%	0.19%	0.29%	3.58%	11.06%



Personal Loans - La Hipotecaria El Salvador Migration Analysis (2014 Vintage)

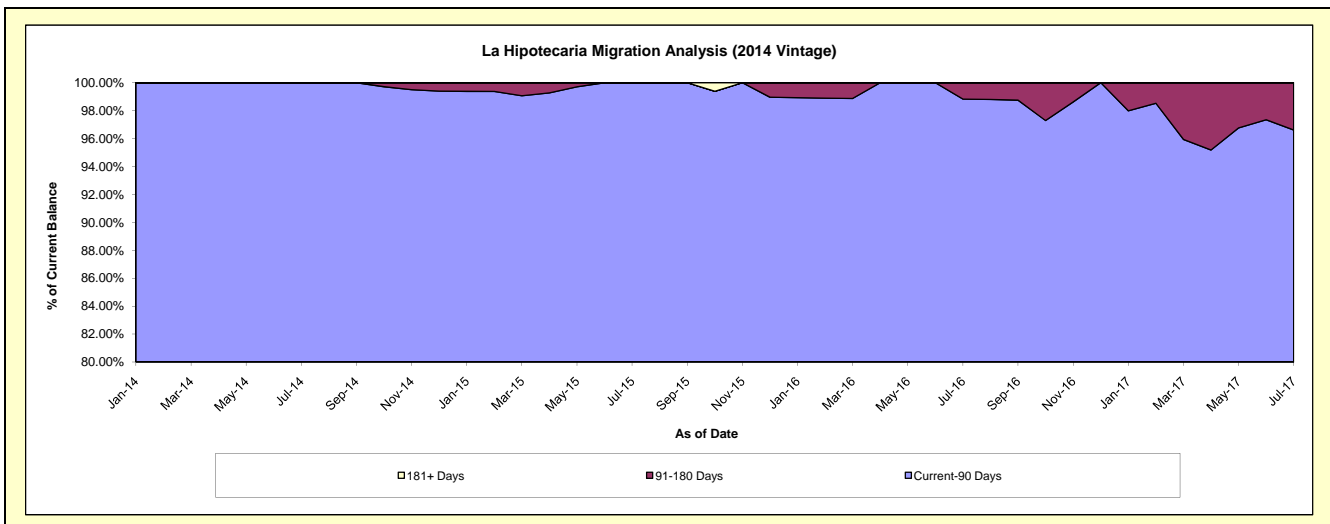
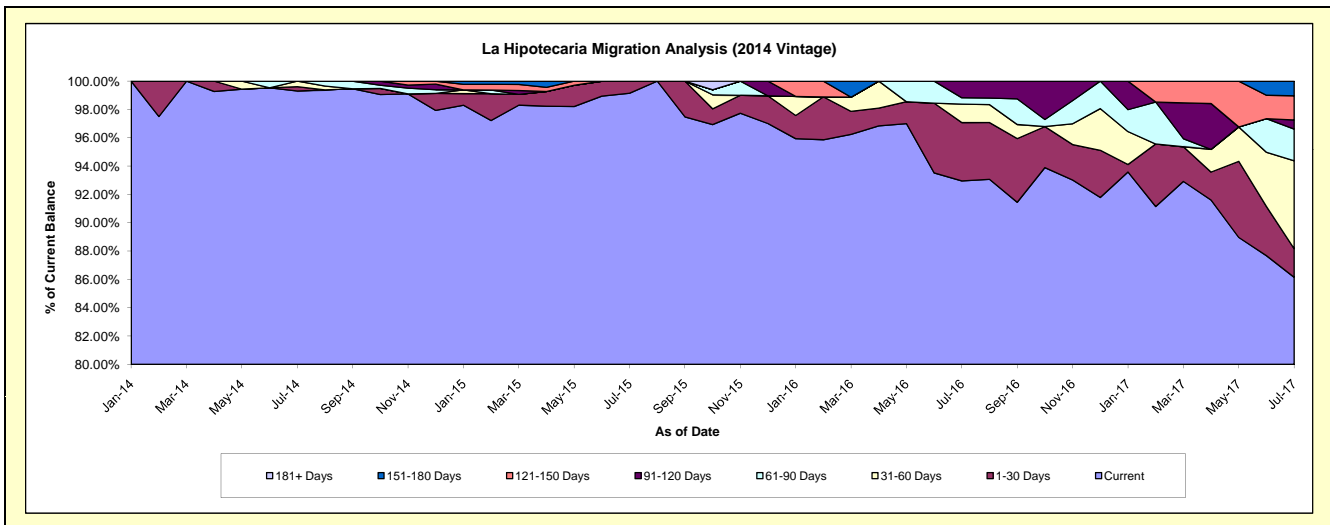
Delinquency Status (\$ of Current Balance)

Data Cutoff: 7/31/2017

Current Portfolio Balance	-	-	-	-	-	-	-	1,699,008.83	1,991,094.51	1,356,888.28	842,930.80
								Jul-14	Jul-15	Jul-16	Jul-17
Current								1,687,183.23	1,974,123.94	1,261,332.36	726,145.19
1-30 Days								5,276.93	16,970.57	55,851.94	17,020.54
31-60 Days								6,548.67	-	17,661.82	52,384.96
61-90 Days								-	-	6,126.51	18,863.53
91-120 Days								-	-	15,915.65	5,452.97
121-150 Days								-	-	-	14,355.68
151-180 Days								-	-	-	8,707.93
181+ Days								-	-	-	-

Delinquency Status (% of Current Balance)

Current Portfolio Balance	-	-	-	-	-	-	-	1,699,008.83	1,991,094.51	1,356,888.28	842,930.80
								Jul-14	Jul-15	Jul-16	Jul-17
Current								99.30%	99.15%	92.96%	86.15%
1-30 Days								0.31%	0.85%	4.12%	2.02%
31-60 Days								0.39%	0.00%	1.30%	6.21%
61-90 Days								0.00%	0.00%	0.45%	2.24%
91-120 Days								0.00%	0.00%	1.17%	0.65%
121-150 Days								0.00%	0.00%	0.00%	1.70%
151-180 Days								0.00%	0.00%	0.00%	1.03%
181+ Days								0.00%	0.00%	0.00%	0.00%
Current - 90 Days								100.00%	100.00%	98.83%	96.62%
91-180 Days								0.00%	0.00%	1.17%	3.38%



Personal Loans - La Hipotecaria El Salvador Migration Analysis (2015 Vintage)

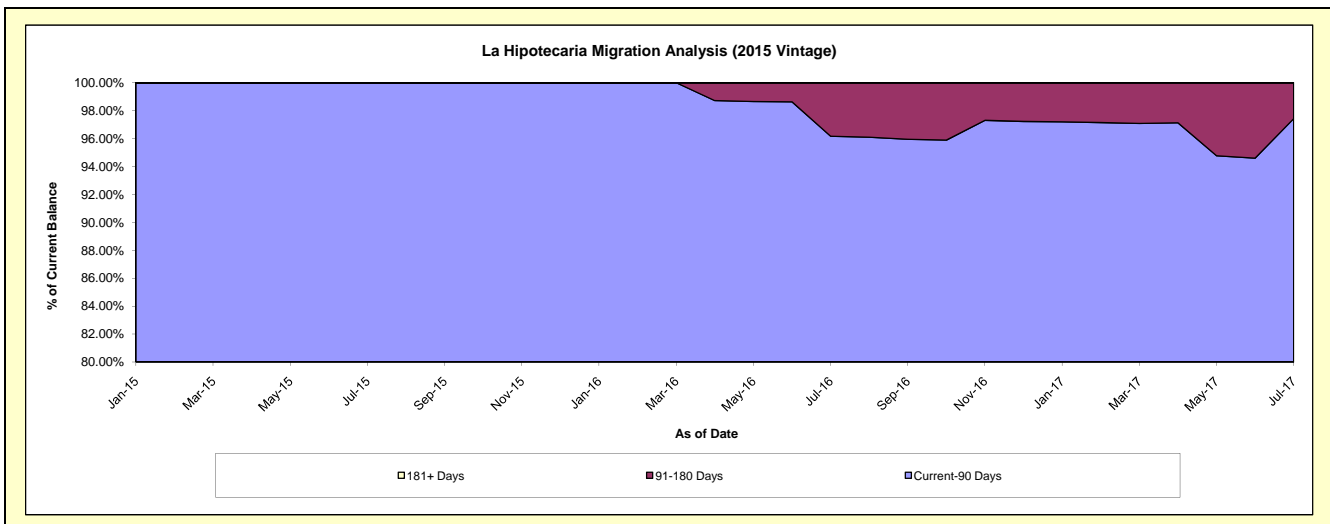
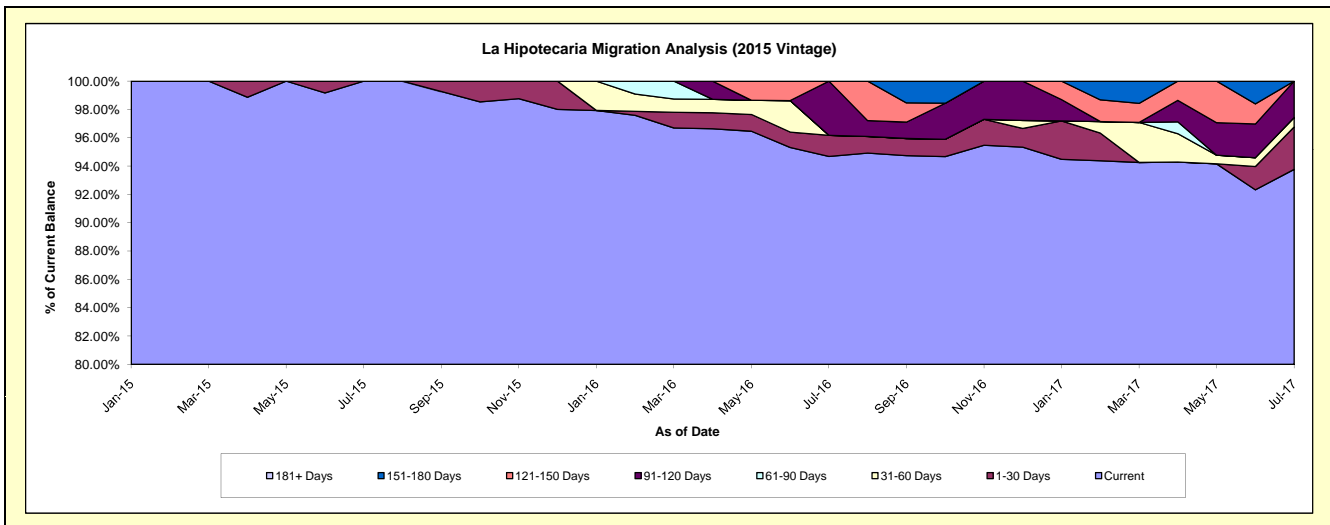
Delinquency Status (\$ of Current Balance)

Data Cutoff: 7/31/2017

Current Portfolio Balance	-	-	-	-	-	-	-	-	-	877,137.94	1,250,418.74	875,887.92
										Jul-15	Jul-16	Jul-17
Current										877,137.94	1,183,932.67	821,295.68
1-30 Days										-	18,616.89	26,233.13
31-60 Days										-	-	5,840.83
61-90 Days										-	-	-
91-120 Days										-	47,869.18	22,518.28
121-150 Days										-	-	-
151-180 Days										-	-	-
181+ Days										-	-	-

Delinquency Status (% of Current Balance)

Current Portfolio Balance	-	-	-	-	-	-	-	-	-	877,137.94	1,250,418.74	875,887.92
										Jul-15	Jul-16	Jul-17
Current										100.00%	94.68%	93.77%
1-30 Days										0.00%	1.49%	3.00%
31-60 Days										0.00%	0.00%	0.67%
61-90 Days										0.00%	0.00%	0.00%
91-120 Days										0.00%	3.83%	2.57%
121-150 Days										0.00%	0.00%	0.00%
151-180 Days										0.00%	0.00%	0.00%
181+ Days										0.00%	0.00%	0.00%
Current - 90 Days										100.00%	96.17%	97.43%
91-180 Days										0.00%	3.83%	2.57%



Personal Loans - La Hipotecaria El Salvador Migration Analysis (2016 Vintage)

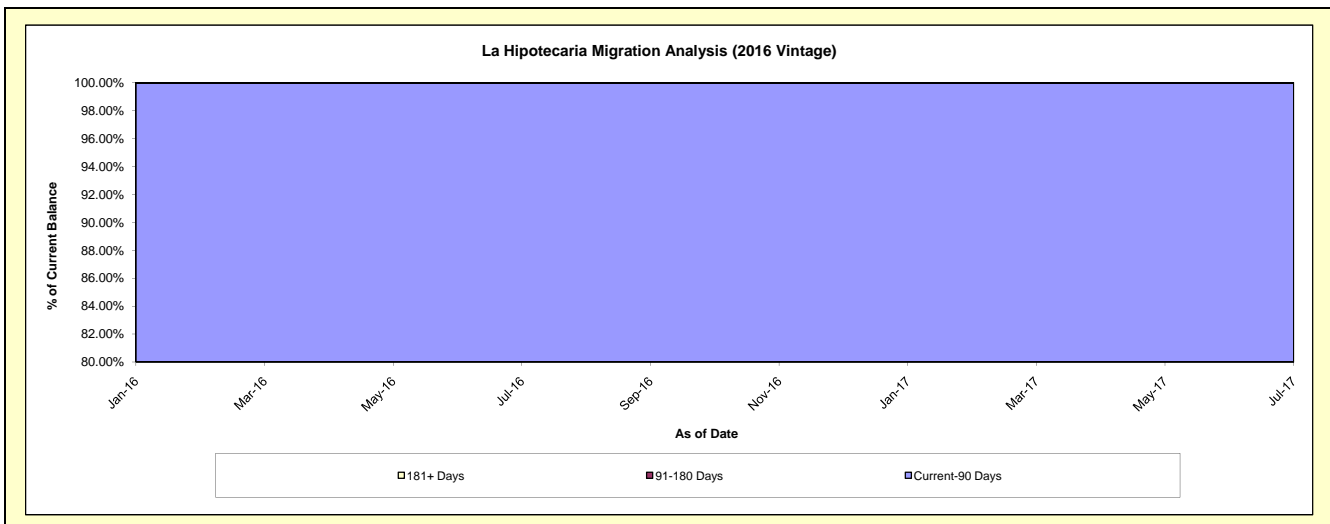
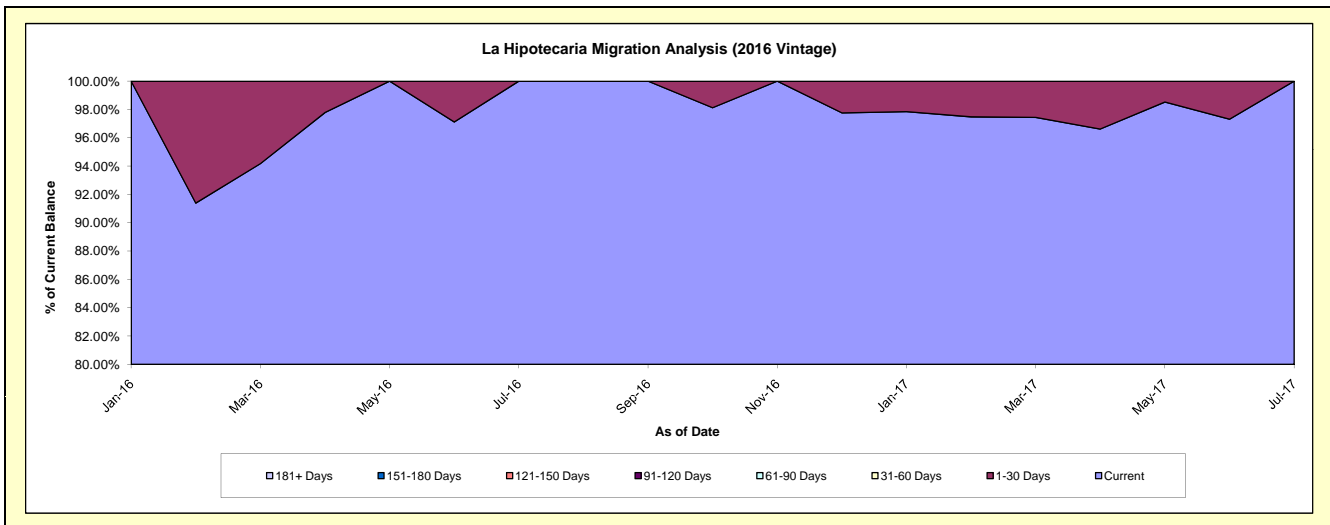
Delinquency Status (\$ of Current Balance)

Data Cutoff: 7/31/2017

Current Portfolio Balance										803,329.83	1,061,385.44
										Jul-16	Jul-17
Current										803,329.83	1,061,385.44
1-30 Days										-	-
31-60 Days										-	-
61-90 Days										-	-
91-120 Days										-	-
121-150 Days										-	-
151-180 Days										-	-
181+ Days										-	-

Delinquency Status (% of Current Balance)

Current Portfolio Balance										803,329.83	1,061,385.44
										Jul-16	Jul-17
Current										100.00%	100.00%
1-30 Days										0.00%	0.00%
31-60 Days										0.00%	0.00%
61-90 Days										0.00%	0.00%
91-120 Days										0.00%	0.00%
121-150 Days										0.00%	0.00%
151-180 Days										0.00%	0.00%
181+ Days										0.00%	0.00%
Current - 90 Days										100.00%	100.00%
91-180 Days										0.00%	0.00%



Personal Loans - La Hipotecaria El Salvador Migration Analysis (2017 Vintage)

Delinquency Status (\$ of Current Balance)

Data Cutoff: 7/31/2017

Current Portfolio Balance											1,328,135.96
											Jul-17
Current											1,293,454.53
1-30 Days											34,681.43
31-60 Days											-
61-90 Days											-
91-120 Days											-
121-150 Days											-
151-180 Days											-
181+ Days											-

Delinquency Status (% of Current Balance)

Current Portfolio Balance											1,328,135.96
											Jul-17
Current											97.39%
1-30 Days											2.61%
31-60 Days											0.00%
61-90 Days											0.00%
91-120 Days											0.00%
121-150 Days											0.00%
151-180 Days											0.00%
181+ Days											0.00%
Current - 90 Days											100.00%
91-180 Days											0.00%

