



Migration Analysis for La Hipotecaria S.A. de C.V El Salvador

Personal Loans October 2017

An analysis of historical loan payment data was used to compile a migration analysis of delinquency by annual vintage. Delinquencies for each vintage were grouped into the following buckets; Current, 1-30, 31-60, 61-90, 91-120, 121-150, 151-180, and 180+. Results are provided in graphical and tabular form. The cutoff date is 10/31/2017.

Personal Loans - La Hipotecaria El Salvador Migration Analysis (All Vintages)

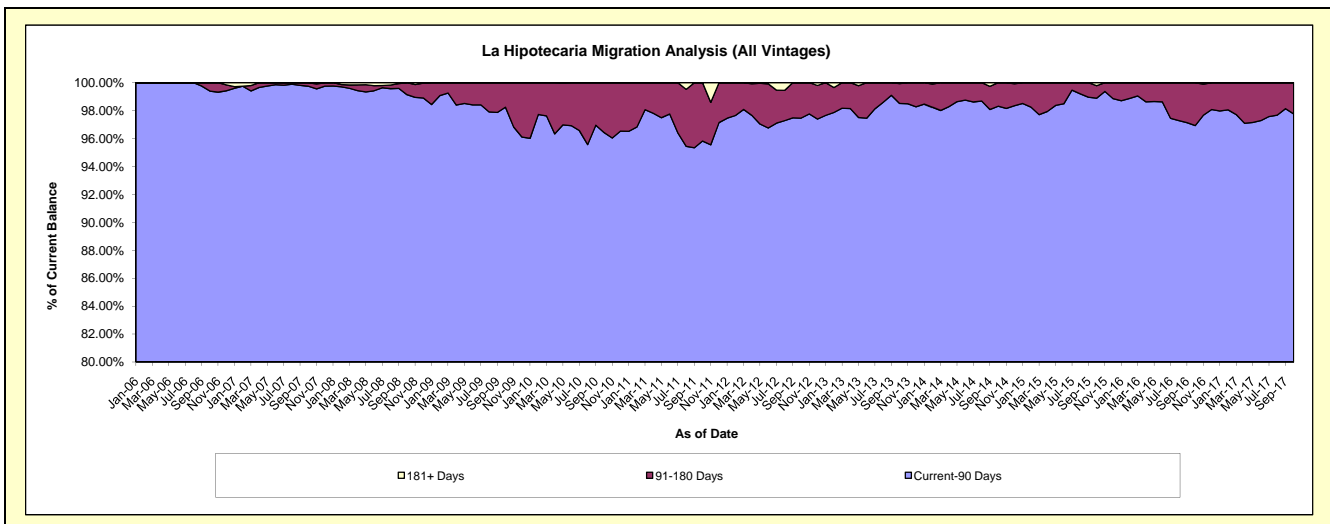
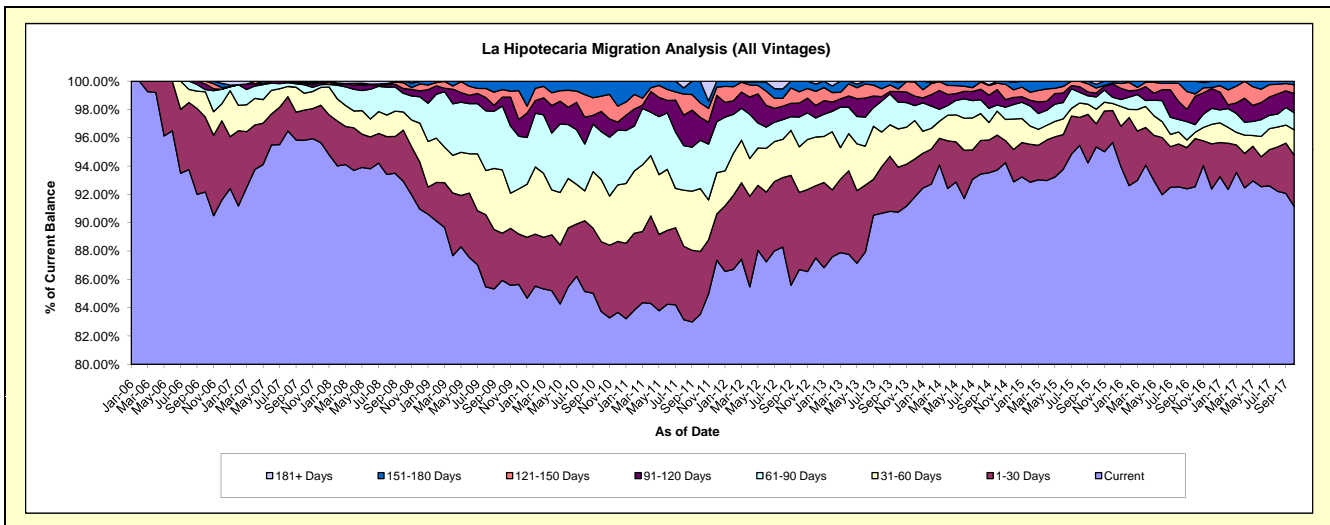
Delinquency Status (\$ of Current Balance)

Data Cutoff: 10/31/2017

Current Portfolio Balance	9,144,627.26	8,101,706.83	6,682,218.94	4,836,990.62	4,629,269.80	5,144,163.08	5,679,833.88	5,179,529.15	4,597,409.62	5,113,259.68
	Oct-08	Oct-09	Oct-10	Oct-11	Oct-12	Oct-13	Oct-14	Oct-15	Oct-16	Oct-17
Current	8,497,121.39	6,962,381.71	5,594,434.95	4,040,141.47	4,013,460.71	4,668,681.92	5,323,448.59	4,938,873.70	4,254,904.43	4,660,719.60
1-30 Days	331,208.29	269,346.50	330,603.83	214,917.65	252,274.18	162,979.09	140,193.31	84,717.29	156,154.32	185,153.42
31-60 Days	117,142.49	362,299.64	293,383.46	215,040.81	148,987.75	139,068.49	96,185.95	53,357.24	20,447.64	91,625.51
61-90 Days	120,821.78	365,675.12	225,762.73	164,987.05	97,215.60	96,942.45	24,399.95	45,201.34	24,967.28	61,750.76
91-120 Days	30,811.01	50,394.71	95,049.84	78,406.59	45,907.30	39,062.67	61,583.91	14,026.78	91,785.44	69,777.23
121-150 Days	37,507.82	43,212.57	72,116.46	49,449.38	36,993.11	8,832.90	26,234.95	18,197.82	7,681.40	31,171.71
151-180 Days	10,014.48	48,396.58	70,867.67	74,047.67	34,431.15	25,375.89	7,787.22	14,084.10	41,469.11	13,061.45
181+ Days	-	-	-	-	-	3,219.67	-	11,070.88	-	-

Delinquency Status (% of Current Balance)

Current Portfolio Balance	9,144,627.26	8,101,706.83	6,682,218.94	4,836,990.62	4,629,269.80	5,144,163.08	5,679,833.88	5,179,529.15	4,597,409.62	5,113,259.68
	Oct-08	Oct-09	Oct-10	Oct-11	Oct-12	Oct-13	Oct-14	Oct-15	Oct-16	Oct-17
Current	92.92%	85.94%	83.72%	83.53%	86.70%	90.76%	93.73%	95.35%	92.55%	91.15%
1-30 Days	3.62%	3.32%	4.95%	4.44%	5.45%	3.17%	2.47%	1.64%	3.40%	3.62%
31-60 Days	1.28%	4.47%	4.39%	4.45%	3.22%	2.70%	1.69%	1.03%	0.44%	1.79%
61-90 Days	1.32%	4.51%	3.38%	3.41%	2.10%	1.88%	0.43%	0.87%	0.54%	1.21%
91-120 Days	0.34%	0.62%	1.42%	1.62%	0.99%	0.76%	1.08%	0.27%	2.00%	1.36%
121-150 Days	0.41%	0.53%	1.08%	1.02%	0.80%	0.17%	0.46%	0.35%	0.17%	0.61%
151-180 Days	0.11%	0.60%	1.06%	1.53%	0.74%	0.49%	0.14%	0.27%	0.90%	0.26%
181+ Days	0.00%	0.00%	0.00%	0.00%	0.00%	0.06%	0.00%	0.21%	0.00%	0.00%
Current - 90 Days	99.14%	98.25%	96.44%	95.83%	97.47%	98.51%	98.32%	98.89%	96.93%	97.77%
91-180 Days	0.86%	1.75%	3.56%	4.17%	2.53%	1.42%	1.68%	0.89%	3.07%	2.23%



Personal Loans - La Hipotecaria El Salvador Migration Analysis (2006 Vintage)

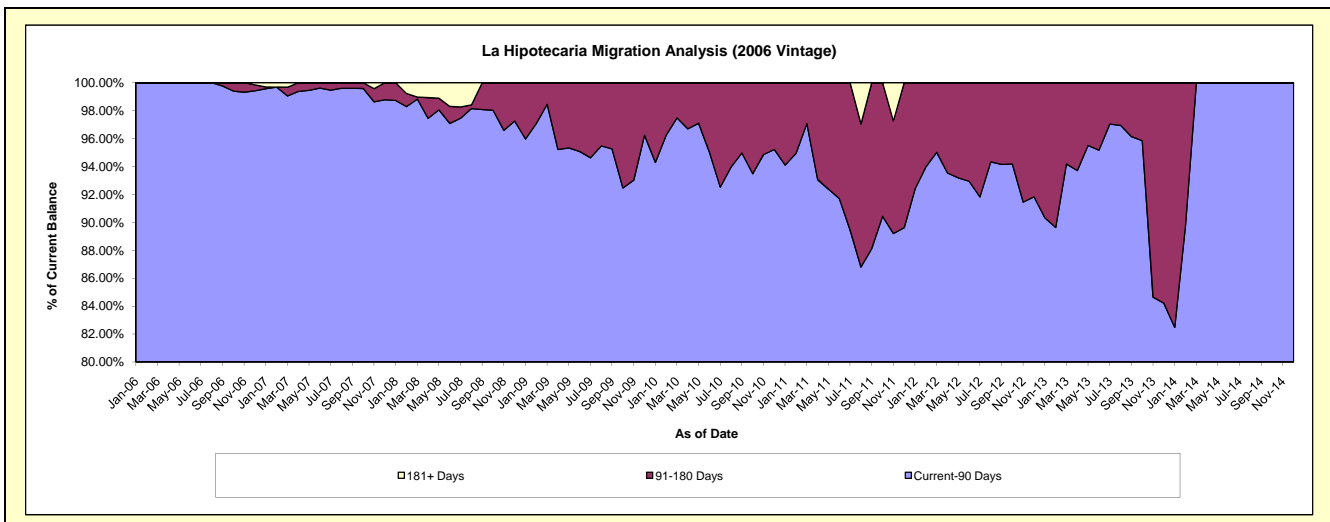
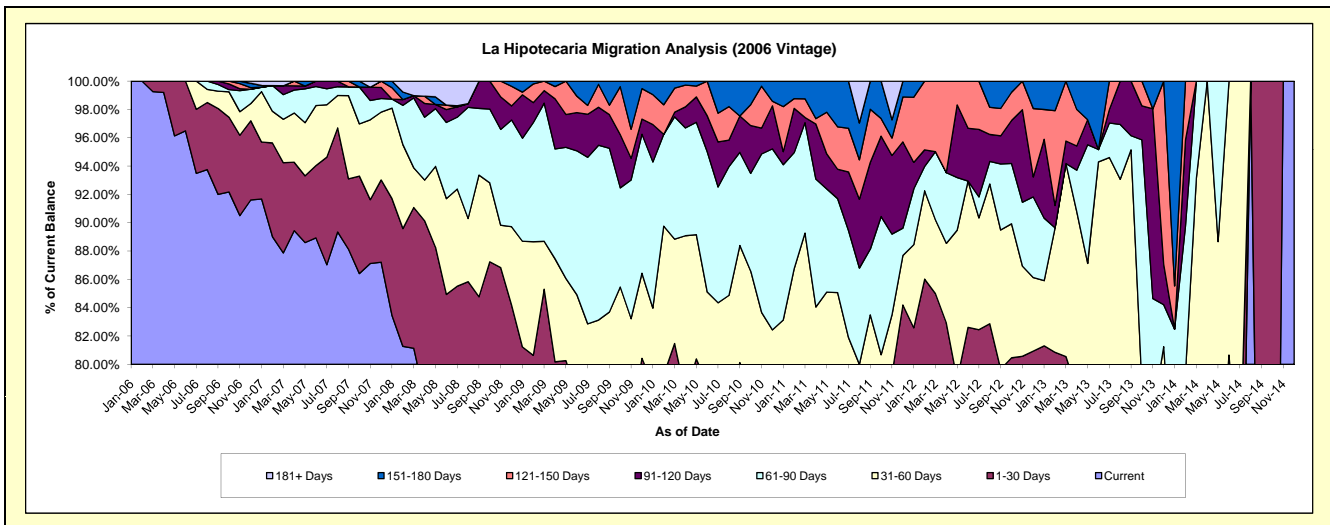
Delinquency Status (\$ of Current Balance)

Data Cutoff: 10/31/2017

Current Portfolio Balance	876,639.35	624,800.84	399,723.91	221,707.20	107,493.12	36,366.29	452.88	#N/A	#N/A	#N/A
	Oct-08	Oct-09	Oct-10	Oct-11	Oct-12	Oct-13	Oct-14	Oct-15	Oct-16	Oct-17
Current	685,817.51	427,368.98	265,190.74	155,410.30	69,345.01	20,792.85	98.29	#N/A	#N/A	#N/A
1-30 Days	78,974.61	53,627.90	45,604.22	12,820.20	17,147.40	4,334.47	354.59	#N/A	#N/A	#N/A
31-60 Days	48,841.58	52,981.09	35,326.34	10,648.48	10,172.81	3,400.42	-	#N/A	#N/A	#N/A
61-90 Days	45,725.89	43,744.45	27,561.49	21,631.18	4,582.23	6,330.10	-	#N/A	#N/A	#N/A
91-120 Days	17,279.76	23,477.97	13,509.84	12,590.40	3,259.75	872.54	-	#N/A	#N/A	#N/A
121-150 Days	-	21,181.22	5,907.95	2,747.32	2,141.13	635.91	-	#N/A	#N/A	#N/A
151-180 Days	-	2,419.23	6,623.33	5,859.32	844.79	-	-	#N/A	#N/A	#N/A
181+ Days	-	-	-	-	-	-	-	#N/A	#N/A	#N/A

Delinquency Status (% of Current Balance)

Current Portfolio Balance	876,639.35	624,800.84	399,723.91	221,707.20	107,493.12	36,366.29	452.88	#N/A	#N/A	#N/A
	Oct-08	Oct-09	Oct-10	Oct-11	Oct-12	Oct-13	Oct-14	Oct-15	Oct-16	Oct-17
Current	78.23%	68.40%	66.34%	70.10%	64.51%	57.18%	21.70%	#N/A	#N/A	#N/A
1-30 Days	9.01%	8.58%	11.41%	5.78%	15.95%	11.92%	78.30%	#N/A	#N/A	#N/A
31-60 Days	5.57%	8.48%	8.84%	4.80%	9.46%	9.35%	0.00%	#N/A	#N/A	#N/A
61-90 Days	5.22%	7.00%	6.90%	9.76%	4.26%	17.41%	0.00%	#N/A	#N/A	#N/A
91-120 Days	1.97%	3.76%	3.38%	5.68%	3.03%	2.40%	0.00%	#N/A	#N/A	#N/A
121-150 Days	0.00%	3.39%	1.48%	1.24%	1.99%	1.75%	0.00%	#N/A	#N/A	#N/A
151-180 Days	0.00%	0.39%	1.66%	2.64%	0.79%	0.00%	0.00%	#N/A	#N/A	#N/A
181+ Days	0.00%	0.00%	0.00%	0.00%	0.00%	0.00%	0.00%	#N/A	#N/A	#N/A
Current - 90 Days	98.03%	92.47%	93.49%	90.44%	94.19%	95.85%	100.00%	#N/A	#N/A	#N/A
91-180 Days	1.97%	7.53%	6.51%	9.56%	5.81%	4.15%	0.00%	#N/A	#N/A	#N/A



Personal Loans - La Hipotecaria El Salvador Migration Analysis (2007 Vintage)

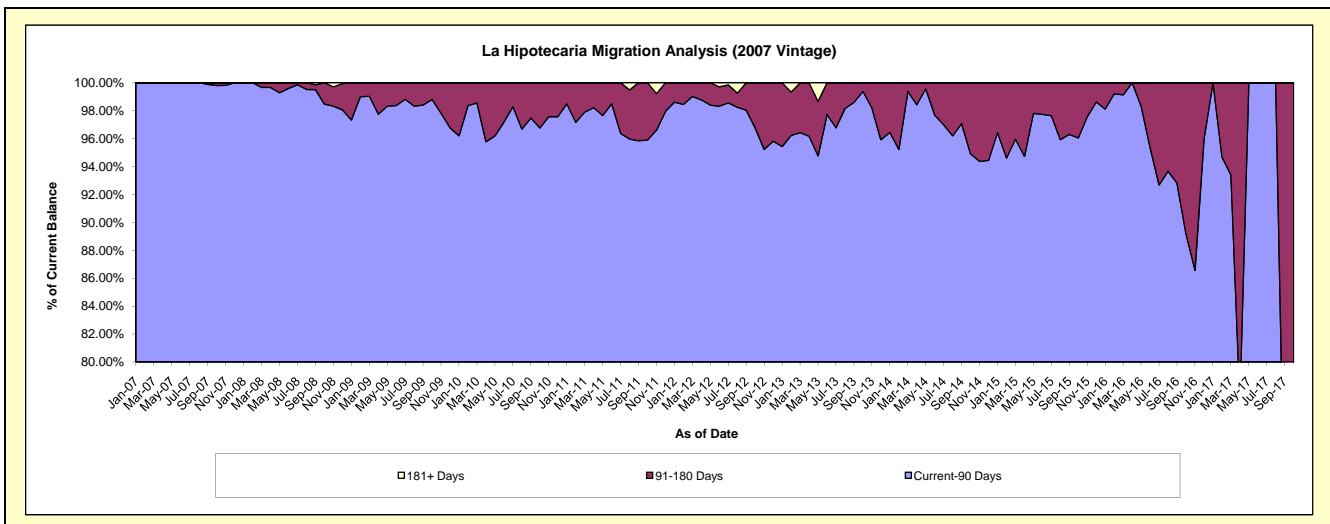
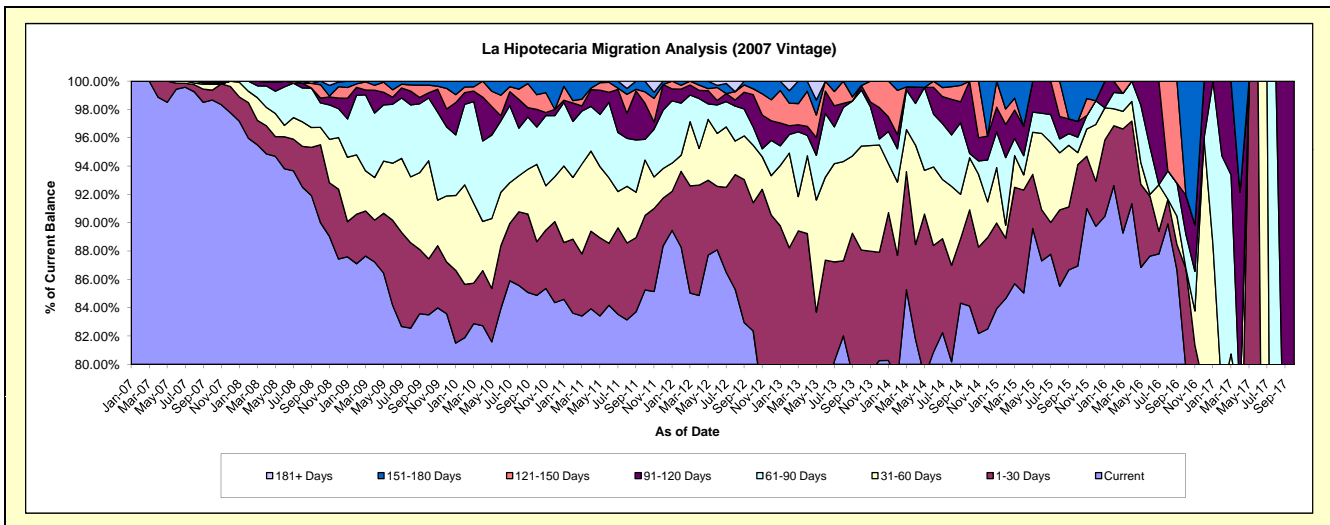
Delinquency Status (\$ of Current Balance)

Data Cutoff: 10/31/2017

Current Portfolio Balance	3,977,519.90	3,273,765.39	2,489,197.01	1,684,800.91	1,045,981.25	633,759.95	347,739.20	149,282.13	29,314.45	593.60
	Oct-08	Oct-09	Oct-10	Oct-11	Oct-12	Oct-13	Oct-14	Oct-15	Oct-16	Oct-17
Current	3,580,199.37	2,733,631.71	2,112,835.47	1,436,372.57	861,410.09	500,969.14	292,526.52	129,803.76	23,354.02	-
1-30 Days	218,558.11	129,228.71	94,194.51	88,718.85	94,763.05	57,189.78	23,610.94	10,678.22	2,079.07	-
31-60 Days	49,069.50	226,936.02	136,015.31	65,839.65	42,446.60	46,576.03	12,796.27	1,272.68	-	-
61-90 Days	68,639.37	144,945.88	65,516.05	24,676.91	13,428.93	25,033.81	1,069.33	1,626.96	705.47	-
91-120 Days	13,531.25	12,283.99	30,901.07	42,839.91	23,947.14	2,023.38	17,736.14	1,655.38	815.95	593.60
121-150 Days	37,507.82	17,510.41	25,908.83	13,632.96	4,374.17	-	-	-	-	-
151-180 Days	10,014.48	9,228.67	23,825.77	12,720.06	5,611.27	1,967.81	-	4,245.13	2,359.94	-
181+ Days	-	-	-	-	-	-	-	-	-	-

Delinquency Status (% of Current Balance)

Current Portfolio Balance	3,977,519.90	3,273,765.39	2,489,197.01	1,684,800.91	1,045,981.25	633,759.95	347,739.20	149,282.13	29,314.45	593.60
	Oct-08	Oct-09	Oct-10	Oct-11	Oct-12	Oct-13	Oct-14	Oct-15	Oct-16	Oct-17
Current	90.01%	83.50%	84.88%	85.25%	82.35%	79.05%	84.12%	86.95%	79.67%	0.00%
1-30 Days	5.49%	3.95%	3.78%	5.27%	9.06%	9.02%	6.79%	7.15%	7.09%	0.00%
31-60 Days	1.23%	6.93%	5.46%	3.91%	4.06%	7.35%	3.68%	0.85%	0.00%	0.00%
61-90 Days	1.73%	4.43%	2.63%	1.46%	1.28%	3.95%	0.31%	1.09%	2.41%	0.00%
91-120 Days	0.34%	0.38%	1.24%	2.54%	2.29%	0.32%	5.10%	1.11%	2.78%	100.00%
121-150 Days	0.94%	0.53%	1.04%	0.81%	0.42%	0.00%	0.00%	0.00%	0.00%	0.00%
151-180 Days	0.25%	0.28%	0.96%	0.75%	0.54%	0.31%	0.00%	2.84%	8.05%	0.00%
181+ Days	0.00%	0.00%	0.00%	0.00%	0.00%	0.00%	0.00%	0.00%	0.00%	0.00%
Current - 90 Days	98.47%	98.81%	96.76%	95.89%	96.76%	99.37%	94.90%	96.05%	89.17%	0.00%
91-180 Days	1.53%	1.19%	3.24%	4.11%	3.24%	0.63%	5.10%	3.95%	10.83%	100.00%



Personal Loans - La Hipotecaria El Salvador Migration Analysis (2008 Vintage)

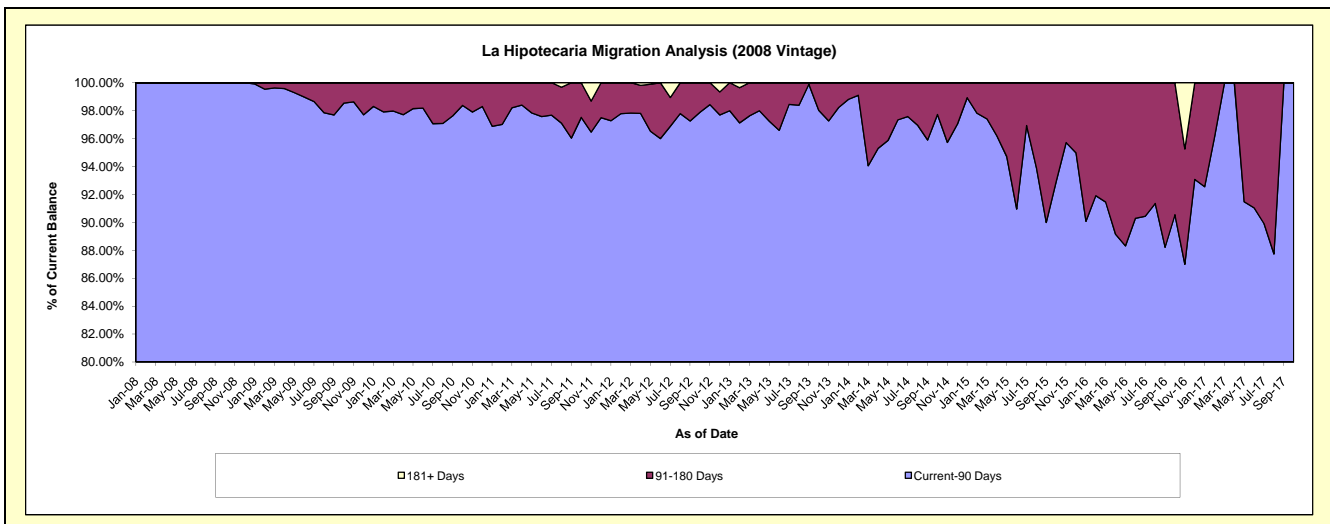
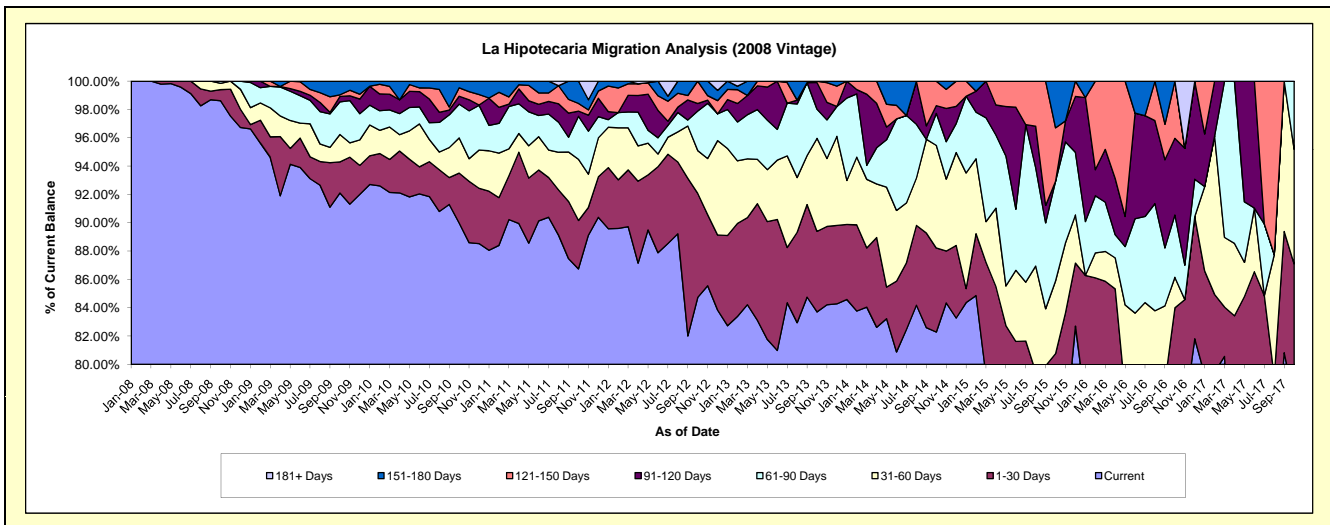
Delinquency Status (\$ of Current Balance)

Data Cutoff: 10/31/2017

Current Portfolio Balance	4,290,468.01	3,816,968.98	3,046,801.43	2,149,239.11	1,519,595.80	1,016,515.82	603,207.75	298,789.56	106,311.21	17,732.04
	Oct-08	Oct-09	Oct-10	Oct-11	Oct-12	Oct-13	Oct-14	Oct-15	Oct-16	Oct-17
Current	4,231,104.51	3,515,615.84	2,741,750.83	1,864,315.10	1,287,609.22	850,864.06	496,319.39	227,396.92	81,916.37	13,741.24
1-30 Days	33,675.57	83,770.87	107,275.13	73,442.59	111,623.45	57,827.22	35,812.39	13,889.50	7,373.55	1,701.14
31-60 Days	19,231.41	73,882.53	75,813.15	92,880.69	45,852.26	66,794.85	43,710.89	15,340.18	2,298.03	1,435.76
61-90 Days	6,456.52	87,797.37	72,543.69	65,302.66	42,428.74	20,939.25	13,645.19	21,039.68	4,678.93	853.90
91-120 Days	-	14,632.75	17,068.97	7,865.33	8,068.73	19,064.89	3,294.75	-	5,751.90	-
121-150 Days	-	4,520.94	18,071.25	11,719.90	24,013.40	1,025.55	10,425.14	11,284.31	4,292.43	-
151-180 Days	-	36,748.68	14,278.41	33,712.84	-	-	-	9,838.97	-	-
181+ Days	-	-	-	-	-	-	-	-	-	-

Delinquency Status (% of Current Balance)

Current Portfolio Balance	4,290,468.01	3,816,968.98	3,046,801.43	2,149,239.11	1,519,595.80	1,016,515.82	603,207.75	298,789.56	106,311.21	17,732.04
	Oct-08	Oct-09	Oct-10	Oct-11	Oct-12	Oct-13	Oct-14	Oct-15	Oct-16	Oct-17
Current	98.62%	92.10%	89.99%	86.74%	84.73%	83.70%	82.28%	76.11%	77.05%	77.49%
1-30 Days	0.78%	2.19%	3.52%	3.42%	7.35%	5.69%	5.94%	4.65%	6.94%	9.59%
31-60 Days	0.45%	1.94%	2.49%	4.32%	3.02%	6.57%	7.25%	5.13%	2.16%	8.10%
61-90 Days	0.15%	2.30%	2.38%	3.04%	2.79%	2.06%	2.26%	7.04%	4.40%	4.82%
91-120 Days	0.00%	0.38%	0.56%	0.37%	0.53%	1.88%	0.55%	0.00%	5.41%	0.00%
121-150 Days	0.00%	0.12%	0.59%	0.55%	1.58%	0.10%	1.73%	3.78%	4.04%	0.00%
151-180 Days	0.00%	0.96%	0.47%	1.57%	0.00%	0.00%	0.00%	3.29%	0.00%	0.00%
181+ Days	0.00%	0.00%	0.00%	0.00%	0.00%	0.00%	0.00%	0.00%	0.00%	0.00%
Current - 90 Days	100.00%	98.54%	98.38%	97.52%	97.89%	98.02%	97.73%	92.93%	90.55%	100.00%
91-180 Days	0.00%	1.46%	1.62%	2.48%	2.11%	1.98%	2.27%	7.07%	9.45%	0.00%



Personal Loans - La Hipotecaria El Salvador Migration Analysis (2009 Vintage)

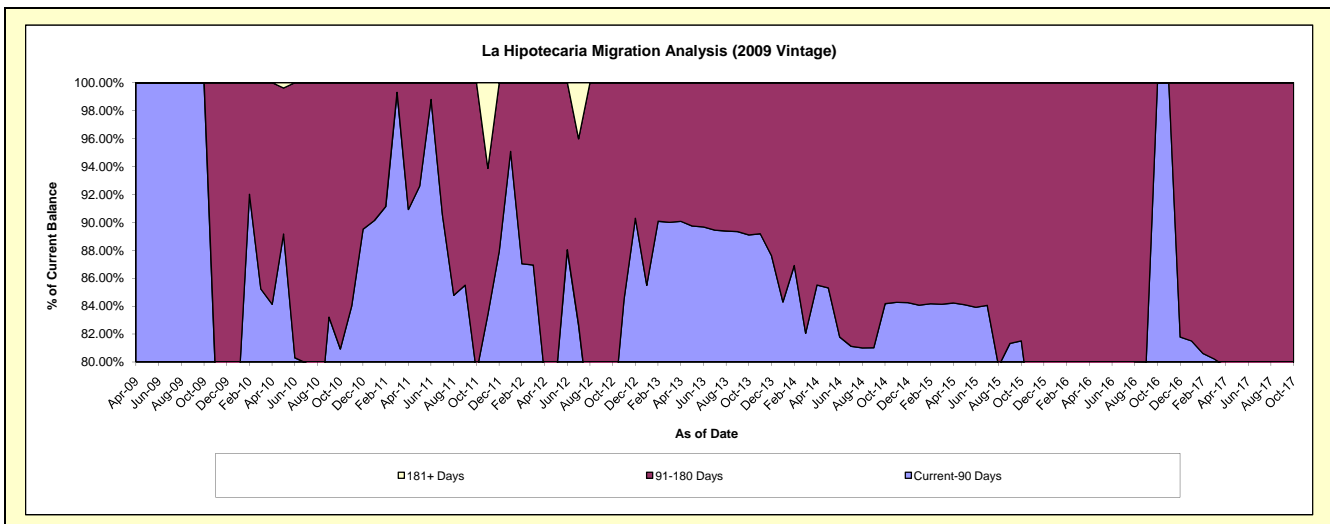
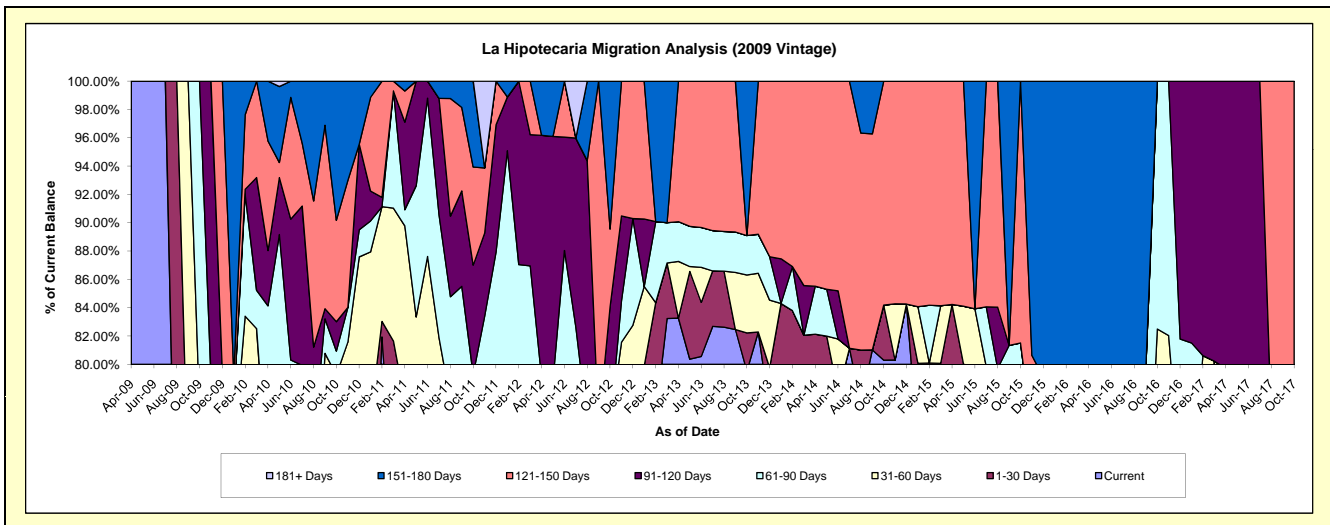
Delinquency Status (\$ of Current Balance)

Data Cutoff: 10/31/2017

Current Portfolio Balance	-	386,171.62	266,055.96	171,806.52	118,274.12	79,814.01	42,737.44	27,218.88	12,951.01	8,766.01
	Oct-09	Oct-10	Oct-11	Oct-12	Oct-13	Oct-14	Oct-15	Oct-16	Oct-17	
Current	285,765.18	134,024.10	103,990.38	74,030.91	63,468.46	34,316.04	20,839.08	9,429.13	5,546.21	
1-30 Days	2,719.02	50,885.83	9,095.92	12,411.73	2,151.53	1,660.80	-	-	-	
31-60 Days	8,500.00	25,922.98	14,724.56	3,058.13	3,267.57	-	-	1,254.72	-	
61-90 Days	89,187.42	4,489.15	8,369.05	-	2,224.38	-	-	2,267.16	952.64	
91-120 Days	-	5,542.62	13,312.55	9,958.22	-	-	-	-	-	
121-150 Days	-	19,051.12	11,906.31	6,464.41	-	6,760.60	5,032.04	-	2,267.16	
151-180 Days	-	26,140.16	10,407.75	12,350.72	8,702.07	-	-	-	-	
181+ Days	-	-	-	-	-	-	-	-	-	

Delinquency Status (% of Current Balance)

Current Portfolio Balance	-	386,171.62	266,055.96	171,806.52	118,274.12	79,814.01	42,737.44	27,218.88	12,951.01	8,766.01
	Oct-09	Oct-10	Oct-11	Oct-12	Oct-13	Oct-14	Oct-15	Oct-16	Oct-17	
Current	74.00%	50.37%	60.53%	62.59%	79.52%	80.30%	76.56%	72.81%	63.27%	
1-30 Days	0.70%	19.13%	5.29%	10.49%	2.70%	3.89%	0.00%	0.00%	0.00%	
31-60 Days	2.20%	9.74%	8.57%	2.59%	4.09%	0.00%	0.00%	9.69%	0.00%	
61-90 Days	23.10%	1.69%	4.87%	0.00%	2.79%	0.00%	4.95%	17.51%	10.87%	
91-120 Days	0.00%	2.08%	7.75%	8.42%	0.00%	0.00%	0.00%	0.00%	0.00%	
121-150 Days	0.00%	7.16%	6.93%	5.47%	0.00%	15.82%	18.49%	0.00%	25.86%	
151-180 Days	0.00%	9.63%	6.06%	10.44%	10.90%	0.00%	0.00%	0.00%	0.00%	
181+ Days	0.00%	0.00%	0.00%	0.00%	0.00%	0.00%	0.00%	0.00%	0.00%	
Current - 90 Days	100.00%	80.93%	79.26%	75.67%	89.10%	84.18%	81.51%	100.00%	74.14%	
91-180 Days	0.00%	19.07%	20.74%	24.33%	10.90%	15.82%	18.49%	0.00%	25.86%	



Personal Loans - La Hipotecaria El Salvador Migration Analysis (2010 Vintage)

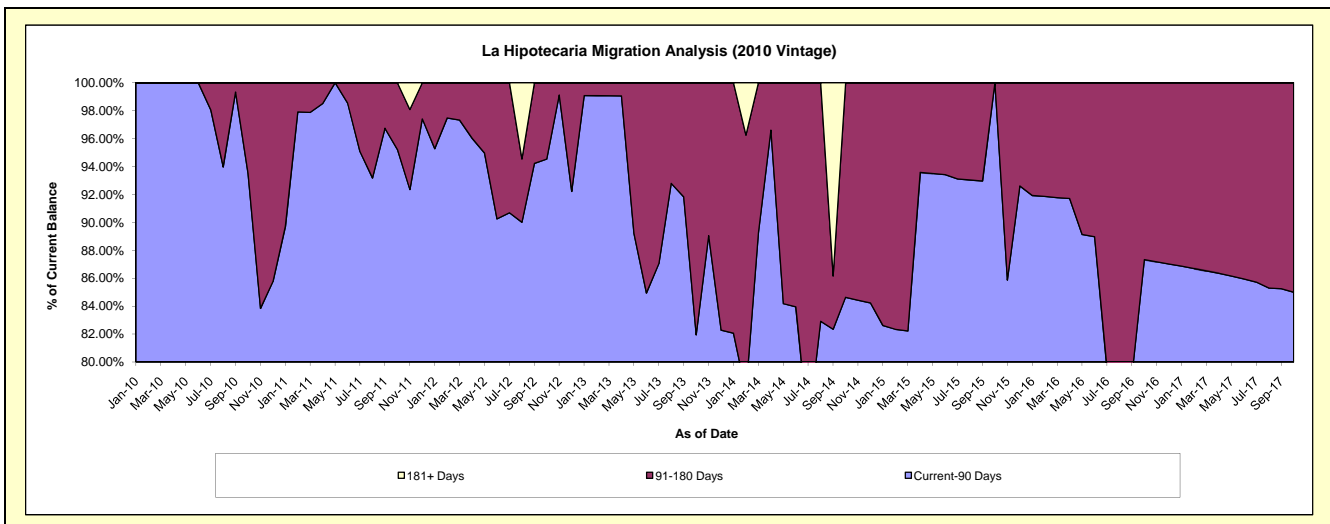
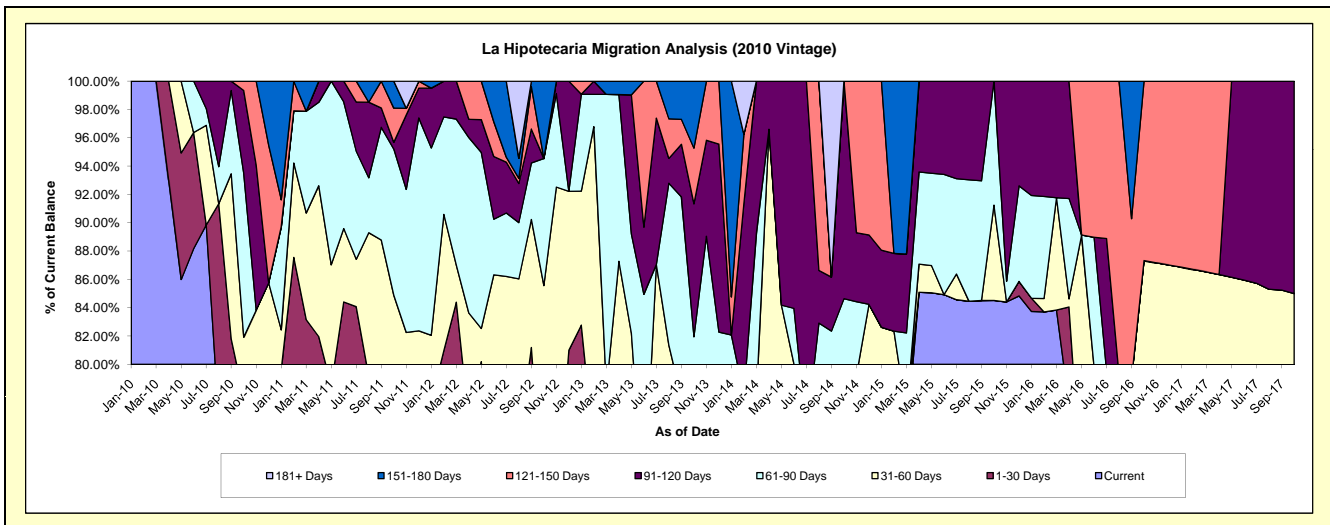
Delinquency Status (\$ of Current Balance)

Data Cutoff: 10/31/2017

Current Portfolio Balance	-	-	480,440.63	390,869.55	285,946.54	182,220.42	85,341.55	52,103.05	26,753.03	19,772.39
			Oct-10	Oct-11	Oct-12	Oct-13	Oct-14	Oct-15	Oct-16	Oct-17
Current			340,633.81	280,239.75	191,663.66	100,848.31	54,741.90	44,033.22	20,879.64	15,453.71
1-30 Days			32,644.14	20,580.61	5,553.32	28,626.44	13,079.37	-	-	-
31-60 Days			20,305.68	30,947.43	47,457.95	9,489.90	-	3,506.89	2,484.42	1,352.89
61-90 Days			55,652.35	40,412.77	25,647.24	10,368.52	4,408.50	4,562.94	-	-
91-120 Days			28,027.34	1,798.40	-	17,101.86	13,111.78	-	-	2,965.79
121-150 Days			3,177.31	9,442.89	-	7,171.44	-	-	3,388.97	-
151-180 Days			-	7,447.70	15,624.37	8,613.95	-	-	-	-
181+ Days			-	-	-	-	-	-	-	-

Delinquency Status (% of Current Balance)

Current Portfolio Balance	-	-	480,440.63	390,869.55	285,946.54	182,220.42	85,341.55	52,103.05	26,753.03	19,772.39
			Oct-10	Oct-11	Oct-12	Oct-13	Oct-14	Oct-15	Oct-16	Oct-17
Current			70.90%	71.70%	67.03%	55.34%	64.14%	84.51%	78.05%	78.16%
1-30 Days			6.79%	5.27%	1.94%	15.71%	15.33%	0.00%	0.00%	0.00%
31-60 Days			4.23%	7.92%	16.60%	5.21%	0.00%	6.73%	9.29%	6.84%
61-90 Days			11.58%	10.34%	8.97%	5.69%	5.17%	8.76%	0.00%	0.00%
91-120 Days			5.83%	0.46%	0.00%	9.39%	15.36%	0.00%	0.00%	15.00%
121-150 Days			0.66%	2.42%	0.00%	3.94%	0.00%	0.00%	12.67%	0.00%
151-180 Days			0.00%	1.91%	5.46%	4.73%	0.00%	0.00%	0.00%	0.00%
181+ Days			0.00%	0.00%	0.00%	0.00%	0.00%	0.00%	0.00%	0.00%
Current - 90 Days			93.50%	95.22%	94.54%	81.95%	84.64%	100.00%	87.33%	85.00%
91-180 Days			6.50%	4.78%	5.46%	18.05%	15.36%	0.00%	12.67%	15.00%



Personal Loans - La Hipotecaria El Salvador Migration Analysis (2011 Vintage)

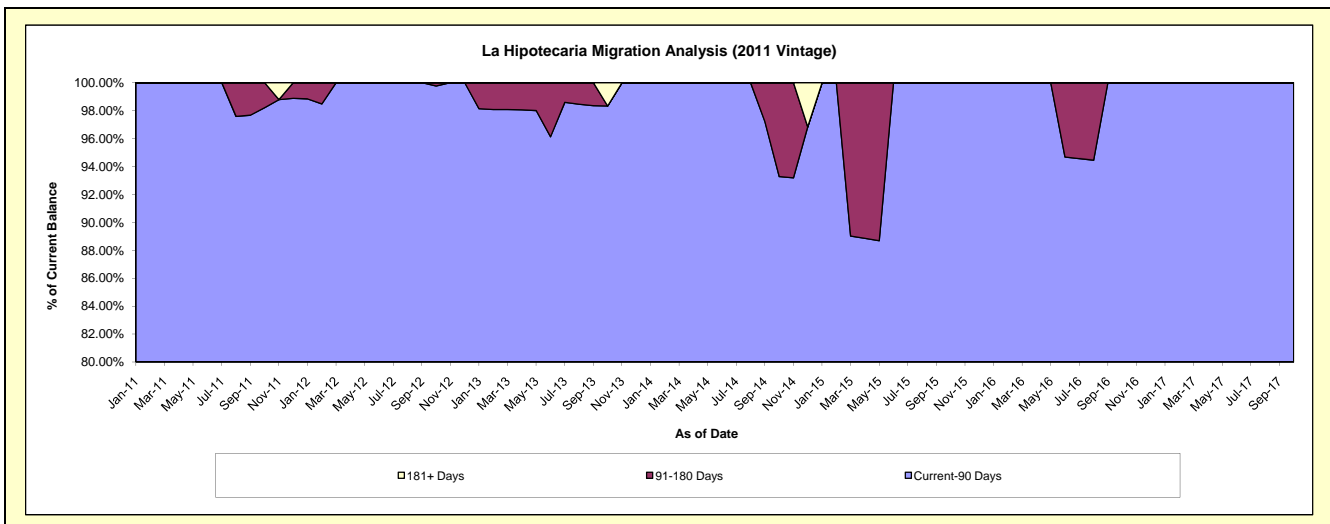
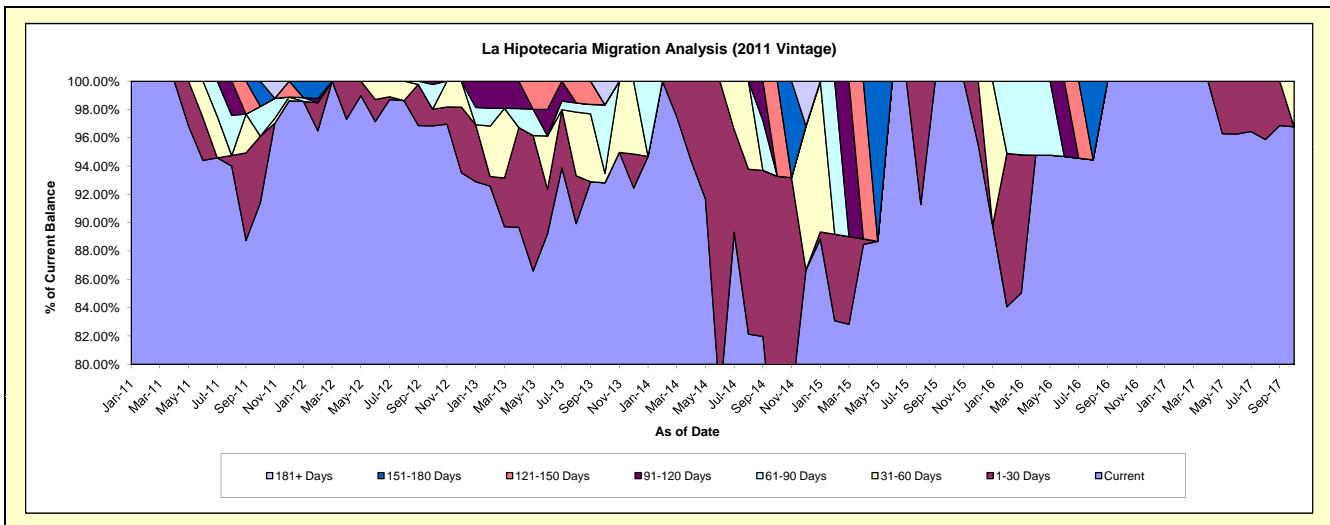
Delinquency Status (\$ of Current Balance)

Data Cutoff: 10/31/2017

Current Portfolio Balance	-	-	-	218,567.33	292,561.75	193,554.93	134,677.31	91,889.24	59,527.41	39,883.06
				Oct-11	Oct-12	Oct-13	Oct-14	Oct-15	Oct-16	Oct-17
Current				199,813.37	283,333.16	179,666.57	96,695.48	91,889.24	59,527.41	38,594.46
1-30 Days				10,259.48	3,426.67	-	28,932.62	-	-	-
31-60 Days				-	-	1,275.74	-	-	-	1,288.60
61-90 Days				4,594.48	5,128.46	9,392.95	-	-	-	-
91-120 Days				-	673.46	-	-	-	-	-
121-150 Days				-	-	-	9,049.21	-	-	-
151-180 Days				3,900.00	-	-	-	-	-	-
181+ Days				-	-	3,219.67	-	-	-	-

Delinquency Status (% of Current Balance)

Current Portfolio Balance	-	-	-	218,567.33	292,561.75	193,554.93	134,677.31	91,889.24	59,527.41	39,883.06
				Oct-11	Oct-12	Oct-13	Oct-14	Oct-15	Oct-16	Oct-17
Current				91.42%	96.85%	92.82%	71.80%	100.00%	100.00%	96.77%
1-30 Days				4.69%	1.17%	0.00%	21.48%	0.00%	0.00%	0.00%
31-60 Days				0.00%	0.00%	0.66%	0.00%	0.00%	0.00%	3.23%
61-90 Days				2.10%	1.75%	4.85%	0.00%	0.00%	0.00%	0.00%
91-120 Days				0.00%	0.23%	0.00%	0.00%	0.00%	0.00%	0.00%
121-150 Days				0.00%	0.00%	0.00%	6.72%	0.00%	0.00%	0.00%
151-180 Days				1.78%	0.00%	0.00%	0.00%	0.00%	0.00%	0.00%
181+ Days				0.00%	0.00%	1.66%	0.00%	0.00%	0.00%	0.00%
Current - 90 Days				98.22%	99.77%	98.34%	93.28%	100.00%	100.00%	100.00%
91-180 Days				1.78%	0.23%	0.00%	6.72%	0.00%	0.00%	0.00%



Personal Loans - La Hipotecaria El Salvador Migration Analysis (2012 Vintage)

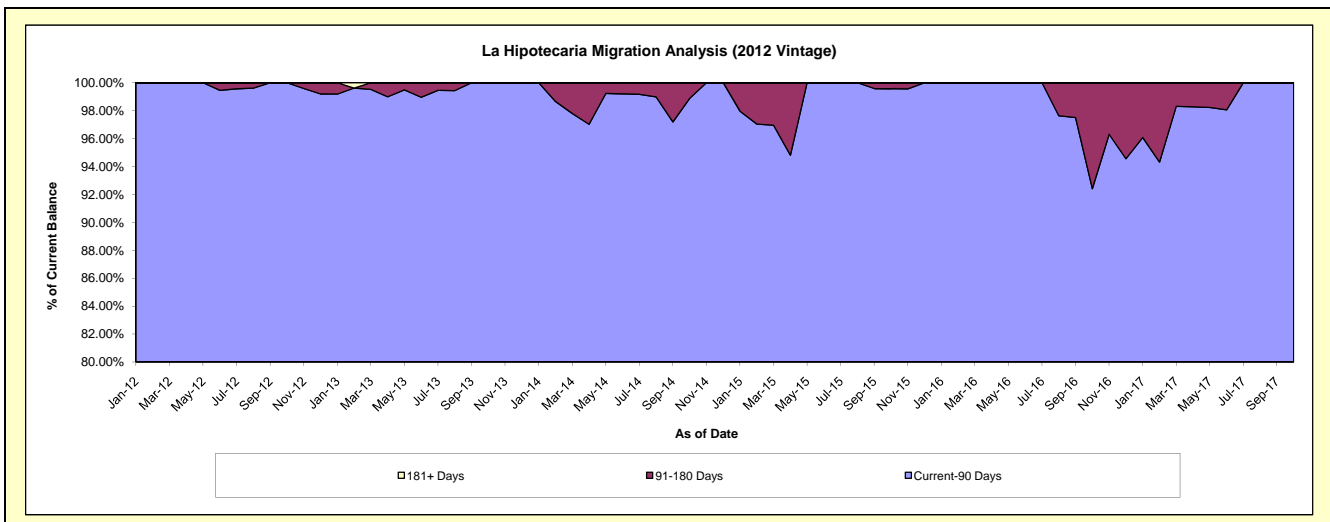
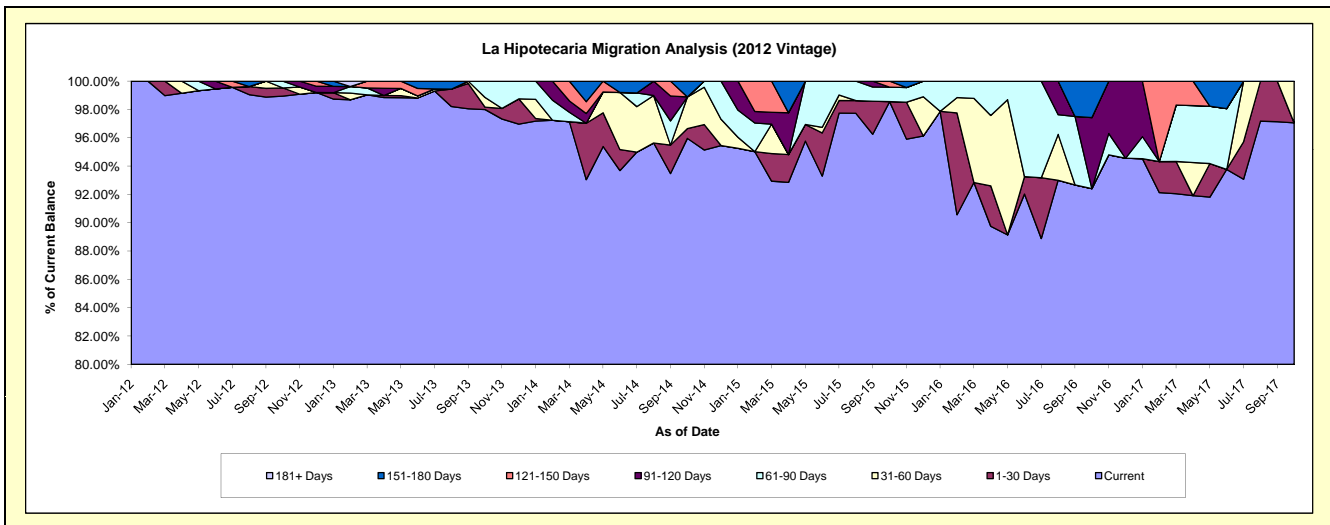
Delinquency Status (\$ of Current Balance)

Data Cutoff: 10/31/2017

Current Portfolio Balance	-	-	-	-	1,259,417.22	1,212,968.54	696,617.74	441,233.39	258,701.94	152,155.28
					Oct-12	Oct-13	Oct-14	Oct-15	Oct-16	Oct-17
Current					1,246,068.66	1,188,644.84	668,483.19	434,856.46	239,085.52	147,674.89
1-30 Days					7,348.56	2,021.13	4,771.89	-	-	-
31-60 Days					-	8,263.98	15,575.44	-	-	4,480.39
61-90 Days					6,000.00	14,038.59	-	4,495.46	-	-
91-120 Days					-	-	-	-	12,957.29	-
121-150 Days					-	-	-	1,881.47	-	-
151-180 Days					-	-	7,787.22	-	6,659.13	-
181+ Days					-	-	-	-	-	-

Delinquency Status (% of Current Balance)

Current Portfolio Balance	-	-	-	-	1,259,417.22	1,212,968.54	696,617.74	441,233.39	258,701.94	152,155.28
					Oct-12	Oct-13	Oct-14	Oct-15	Oct-16	Oct-17
Current					98.94%	97.99%	95.96%	98.55%	92.42%	97.06%
1-30 Days					0.58%	0.17%	0.69%	0.00%	0.00%	0.00%
31-60 Days					0.00%	0.68%	2.24%	0.00%	0.00%	2.94%
61-90 Days					0.48%	1.16%	0.00%	1.02%	0.00%	0.00%
91-120 Days					0.00%	0.00%	0.00%	0.00%	5.01%	0.00%
121-150 Days					0.00%	0.00%	0.00%	0.43%	0.00%	0.00%
151-180 Days					0.00%	0.00%	1.12%	0.00%	2.57%	0.00%
181+ Days					0.00%	0.00%	0.00%	0.00%	0.00%	0.00%
Current - 90 Days					100.00%	100.00%	98.88%	99.57%	92.42%	100.00%
91-180 Days					0.00%	0.00%	1.12%	0.43%	7.58%	0.00%



Personal Loans - La Hipotecaria El Salvador Migration Analysis (2013 Vintage)

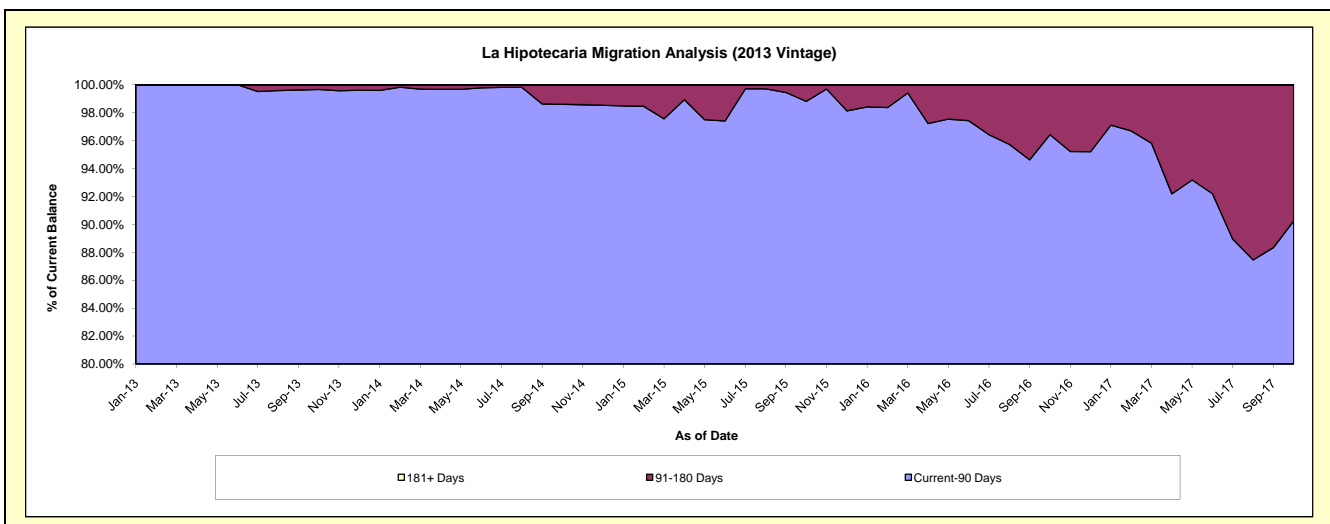
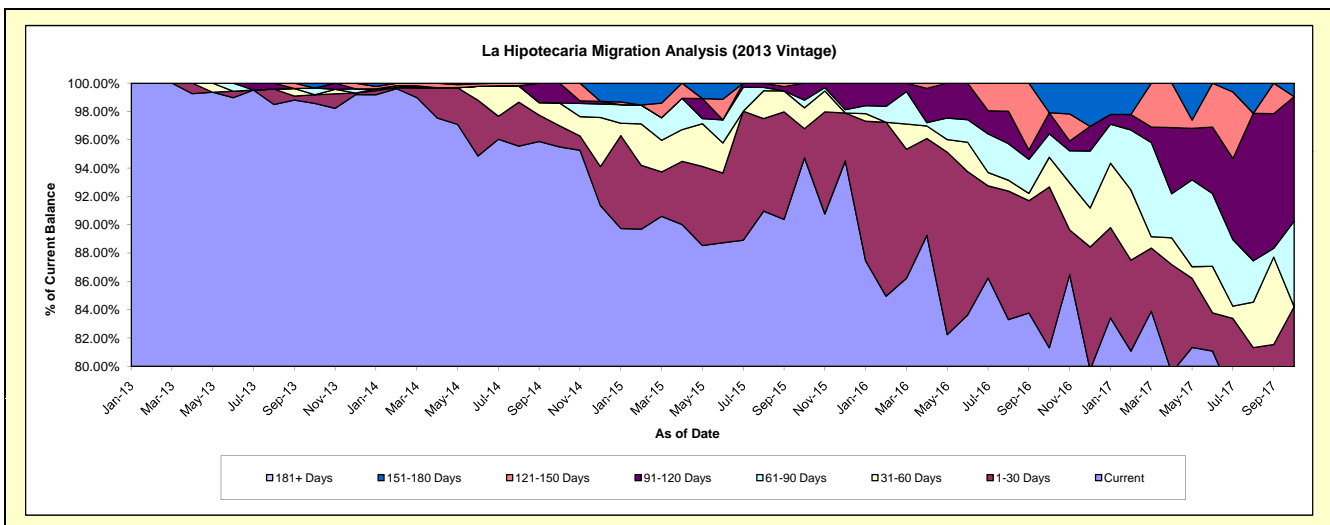
Delinquency Status (\$ of Current Balance)

Data Cutoff: 10/31/2017

Current Portfolio Balance	-	-	-	-	-	1,788,963.12	1,495,586.70	1,036,668.39	686,619.17	488,015.32
						Oct-13	Oct-14	Oct-15	Oct-16	Oct-17
Current						1,763,427.69	1,428,270.43	981,981.23	558,316.77	357,274.31
1-30 Days						10,828.52	22,291.77	21,347.06	77,976.77	53,752.27
31-60 Days						-	24,103.35	15,285.04	14,410.47	-
61-90 Days						8,614.85	-	5,683.66	11,338.25	29,404.65
91-120 Days						-	20,921.15	12,371.40	10,260.60	42,918.54
121-150 Days						-	-	-	-	-
151-180 Days						6,092.06	-	-	14,316.31	4,665.55
181+ Days						-	-	-	-	-

Delinquency Status (% of Current Balance)

Current Portfolio Balance	-	-	-	-	-	1,788,963.12	1,495,586.70	1,036,668.39	686,619.17	488,015.32
						Oct-13	Oct-14	Oct-15	Oct-16	Oct-17
Current						98.57%	95.50%	94.72%	81.31%	73.21%
1-30 Days						0.61%	1.49%	2.06%	11.36%	11.01%
31-60 Days						0.00%	1.61%	1.47%	2.10%	0.00%
61-90 Days						0.48%	0.00%	0.55%	1.65%	6.03%
91-120 Days						0.00%	1.40%	1.19%	1.49%	8.79%
121-150 Days						0.00%	0.00%	0.00%	0.00%	0.00%
151-180 Days						0.34%	0.00%	0.00%	2.09%	0.96%
181+ Days						0.00%	0.00%	0.00%	0.00%	0.00%
Current - 90 Days						99.66%	98.60%	98.81%	96.42%	90.25%
91-180 Days						0.34%	1.40%	1.19%	3.58%	9.75%



Personal Loans - La Hipotecaria El Salvador Migration Analysis (2014 Vintage)

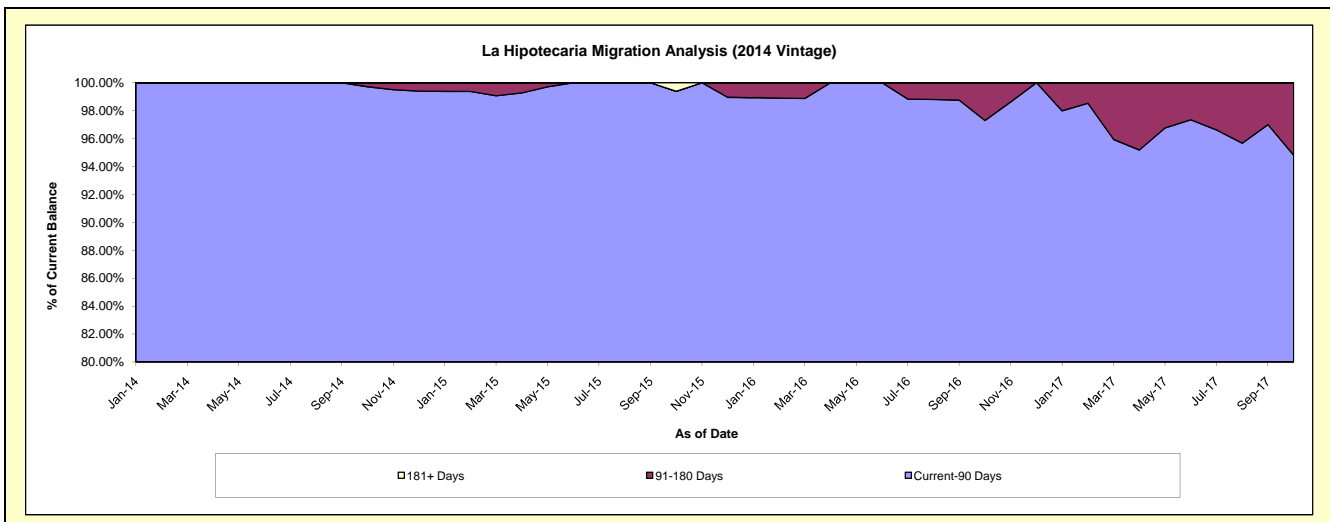
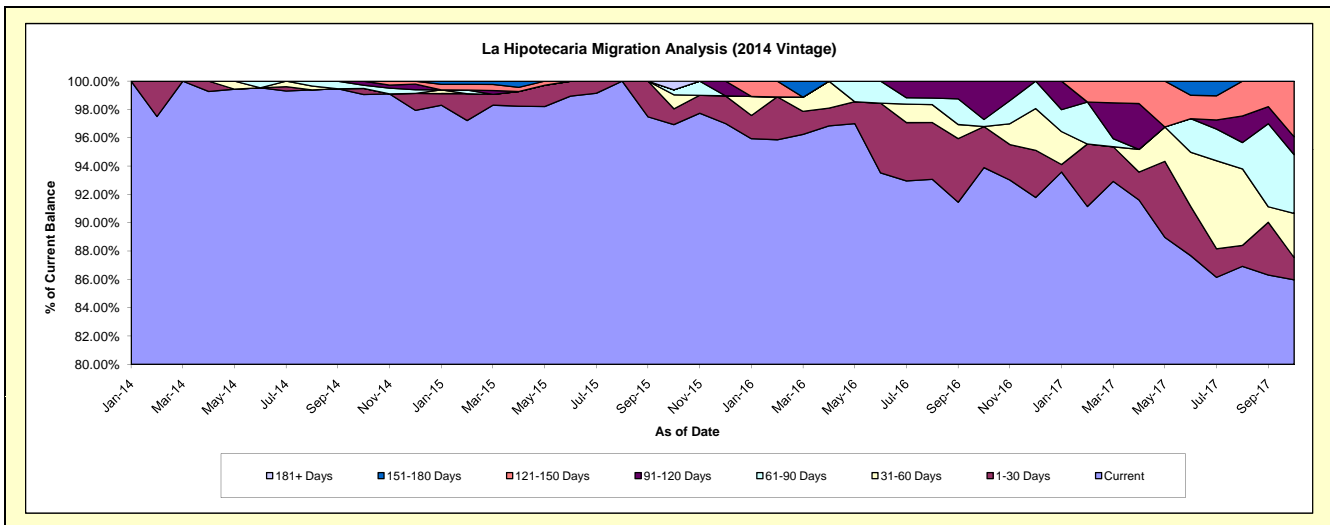
Delinquency Status (\$ of Current Balance)

Data Cutoff: 10/31/2017

Current Portfolio Balance	-	-	-	-	-	-	2,273,473.31	1,817,222.82	1,191,952.64	735,717.24
							Oct-14	Oct-15	Oct-16	Oct-17
Current							2,251,997.35	1,761,464.35	1,119,172.89	632,506.54
1-30 Days							9,678.94	20,290.26	34,538.03	11,558.35
31-60 Days							-	17,952.45	-	22,921.68
61-90 Days							5,276.93	6,444.88	5,977.47	30,539.57
91-120 Days							6,520.09	-	32,264.25	9,286.55
121-150 Days							-	-	-	28,904.55
151-180 Days							-	-	-	-
181+ Days							-	11,070.88	-	-

Delinquency Status (% of Current Balance)

Current Portfolio Balance	-	-	-	-	-	-	2,273,473.31	1,817,222.82	1,191,952.64	735,717.24
							Oct-14	Oct-15	Oct-16	Oct-17
Current							99.06%	96.93%	93.89%	85.97%
1-30 Days							0.43%	1.12%	2.90%	1.57%
31-60 Days							0.00%	0.99%	0.00%	3.12%
61-90 Days							0.23%	0.35%	0.50%	4.15%
91-120 Days							0.29%	0.00%	2.71%	1.26%
121-150 Days							0.00%	0.00%	0.00%	3.93%
151-180 Days							0.00%	0.00%	0.00%	0.00%
181+ Days							0.00%	0.61%	0.00%	0.00%
Current - 90 Days							99.71%	99.39%	97.29%	94.81%
91-180 Days							0.29%	0.00%	2.71%	5.19%



Personal Loans - La Hipotecaria El Salvador Migration Analysis (2015 Vintage)

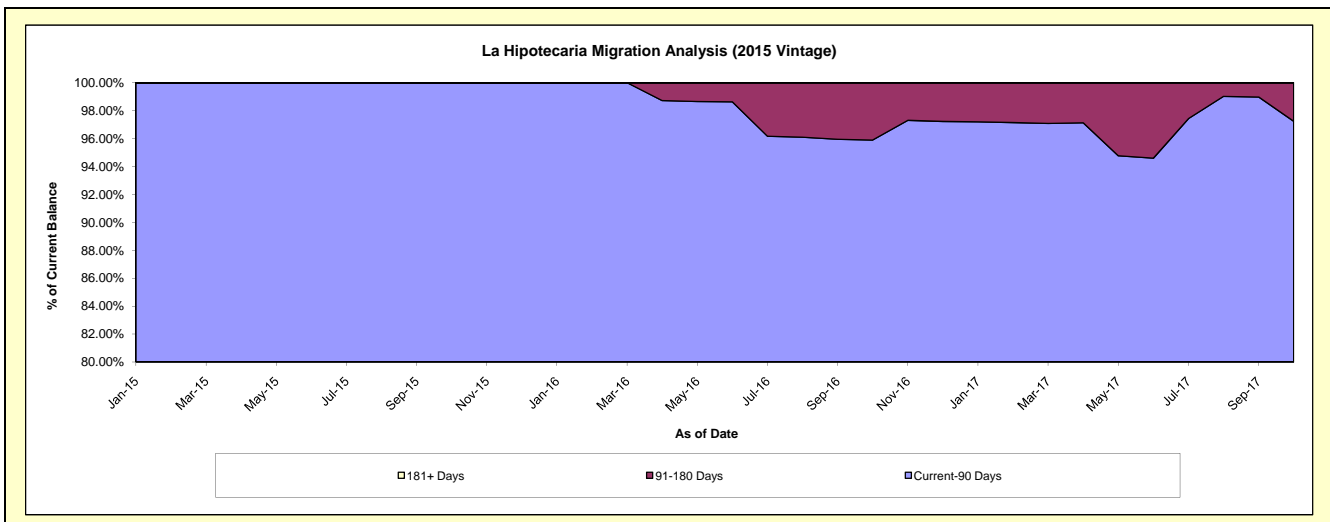
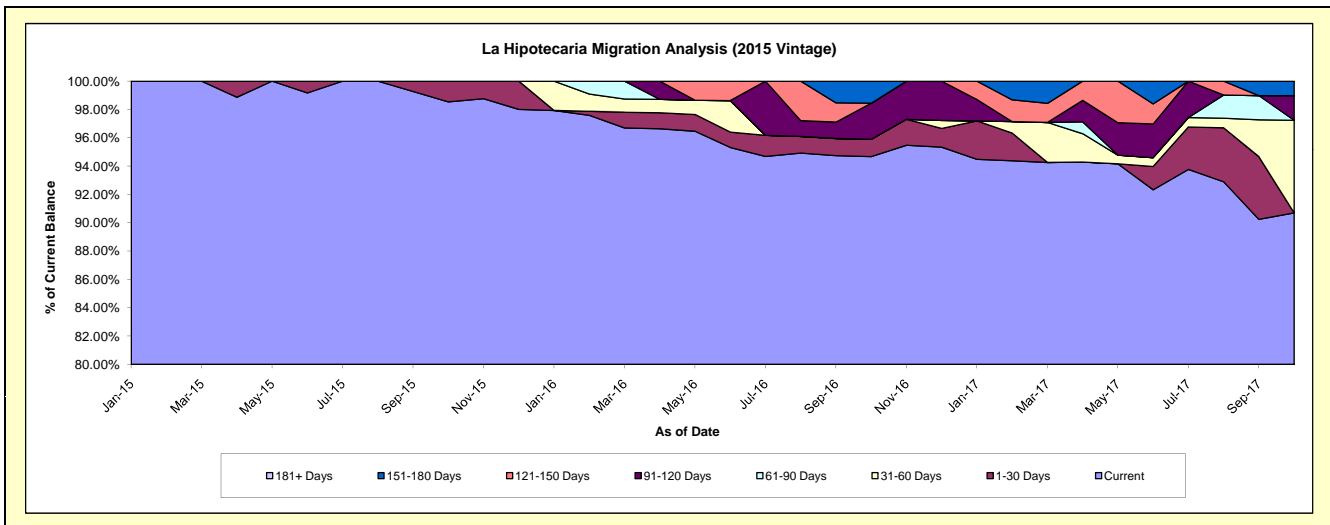
Delinquency Status (\$ of Current Balance)

Data Cutoff: 10/31/2017

Current Portfolio Balance	-	-	-	-	-	-	-	-	-	1,265,121.69	1,166,036.26	810,948.49
										Oct-15	Oct-16	Oct-17
Current										1,246,609.44	1,103,872.42	735,493.96
1-30 Days										18,512.25	14,294.66	-
31-60 Days										-	-	53,045.88
61-90 Days										-	-	-
91-120 Days										-	29,735.45	14,012.75
121-150 Days										-	-	-
151-180 Days										-	18,133.73	8,395.90
181+ Days										-	-	-

Delinquency Status (% of Current Balance)

Current Portfolio Balance	-	-	-	-	-	-	-	-	-	1,265,121.69	1,166,036.26	810,948.49
										Oct-15	Oct-16	Oct-17
Current										98.54%	94.67%	90.70%
1-30 Days										1.46%	1.23%	0.00%
31-60 Days										0.00%	0.00%	6.54%
61-90 Days										0.00%	0.00%	0.00%
91-120 Days										0.00%	2.55%	1.73%
121-150 Days										0.00%	0.00%	0.00%
151-180 Days										0.00%	1.56%	1.04%
181+ Days										0.00%	0.00%	0.00%
Current - 90 Days										100.00%	95.89%	97.24%
91-180 Days										0.00%	4.11%	2.76%



Personal Loans - La Hipotecaria El Salvador Migration Analysis (2016 Vintage)

Delinquency Status (\$ of Current Balance)

Data Cutoff: 10/31/2017

Current Portfolio Balance										1,059,242.50	1,000,988.45
										Oct-16	Oct-17
Current										1,039,350.26	982,256.39
1-30 Days										19,892.24	18,732.06
31-60 Days										-	-
61-90 Days										-	-
91-120 Days										-	-
121-150 Days										-	-
151-180 Days										-	-
181+ Days										-	-

Delinquency Status (% of Current Balance)

Current Portfolio Balance										1,059,242.50	1,000,988.45
										Oct-16	Oct-17
Current										98.12%	98.13%
1-30 Days										1.88%	1.87%
31-60 Days										0.00%	0.00%
61-90 Days										0.00%	0.00%
91-120 Days										0.00%	0.00%
121-150 Days										0.00%	0.00%
151-180 Days										0.00%	0.00%
181+ Days										0.00%	0.00%
Current - 90 Days										100.00%	100.00%
91-180 Days										0.00%	0.00%

