



Migration Analysis for La Hipotecaria S.A. de C.V El Salvador

Personal Loans April 2018

An analysis of historical loan payment data was used to compile a migration analysis of delinquency by annual vintage. Delinquencies for each vintage were grouped into the following buckets; Current, 1-30, 31-60, 61-90, 91-120, 121-150, 151-180, and 180+. Results are provided in graphical and tabular form. The cutoff date is 4/30/2018.

Personal Loans - La Hipotecaria El Salvador Migration Analysis (All Vintages)

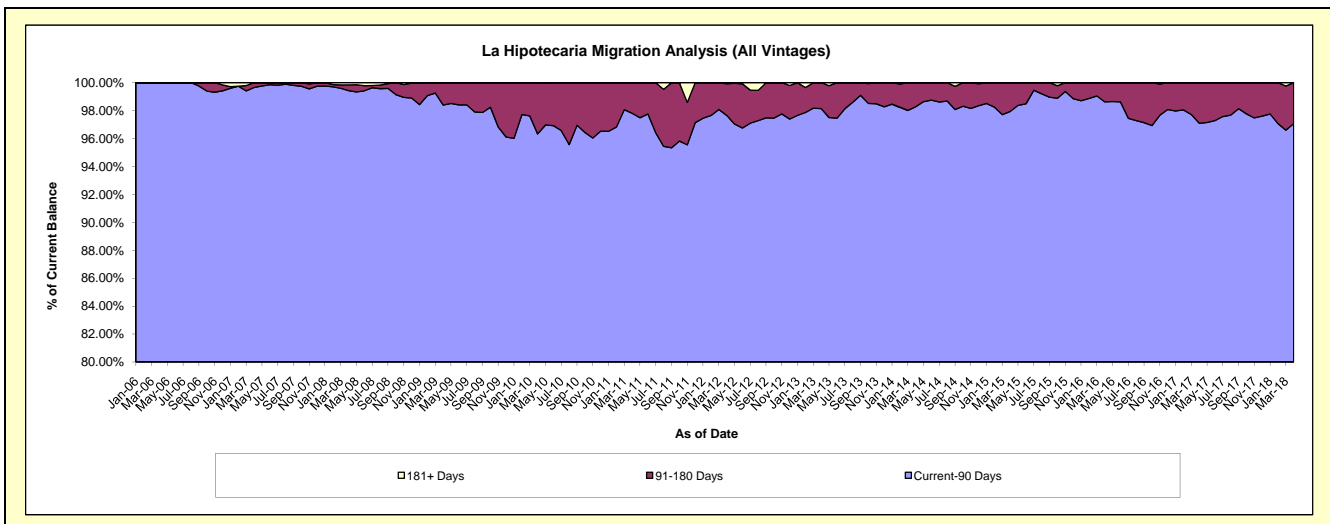
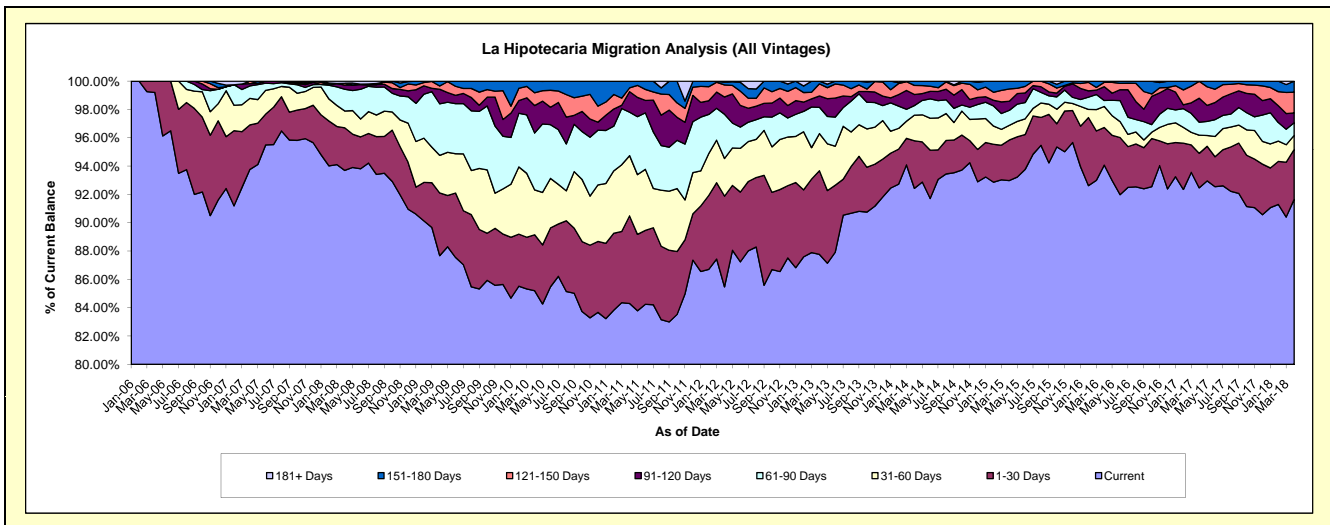
Delinquency Status (\$ of Current Balance)

Data Cutoff: 4/30/2018

Current Portfolio Balance	8,496,160.21	7,418,729.84	5,676,773.11	4,657,555.64	5,078,882.89	5,378,016.47	5,269,325.30	5,013,555.34	4,494,936.03	5,530,356.92
	Apr-09	Apr-10	Apr-11	Apr-12	Apr-13	Apr-14	Apr-15	Apr-16	Apr-17	Apr-18
Current	7,449,387.23	6,320,637.43	4,785,546.38	3,981,081.88	4,457,583.23	4,970,931.89	4,899,478.73	4,716,249.87	4,156,304.96	5,068,157.37
1-30 Days	376,020.44	293,364.62	351,131.89	298,241.63	299,952.85	180,716.25	150,917.92	133,285.57	109,569.53	195,594.59
31-60 Days	225,739.79	235,049.97	241,496.02	123,877.88	133,258.17	97,109.06	54,530.82	74,621.24	57,652.35	54,566.18
61-90 Days	309,104.21	297,892.85	174,346.55	145,453.38	94,344.88	36,683.79	55,946.44	20,900.31	41,065.91	49,955.09
91-120 Days	87,533.62	143,898.26	82,334.65	57,032.25	40,536.58	41,941.83	33,895.25	48,927.74	76,244.55	37,963.28
121-150 Days	19,454.77	67,000.65	15,280.50	39,445.38	43,569.49	34,613.85	45,413.65	15,472.65	53,535.77	81,002.08
151-180 Days	28,920.15	60,886.06	26,637.12	8,952.60	9,637.69	16,019.80	29,142.49	4,097.96	562.96	43,118.33
181+ Days	-	-	-	3,470.64	-	-	-	-	-	-

Delinquency Status (% of Current Balance)

Current Portfolio Balance	8,496,160.21	7,418,729.84	5,676,773.11	4,657,555.64	5,078,882.89	5,378,016.47	5,269,325.30	5,013,555.34	4,494,936.03	5,530,356.92
	Apr-09	Apr-10	Apr-11	Apr-12	Apr-13	Apr-14	Apr-15	Apr-16	Apr-17	Apr-18
Current	87.68%	85.20%	84.30%	85.48%	87.77%	92.43%	92.98%	94.07%	92.47%	91.64%
1-30 Days	4.43%	3.95%	6.19%	6.40%	5.91%	3.36%	2.86%	2.66%	2.44%	3.54%
31-60 Days	2.66%	3.17%	4.25%	2.66%	2.62%	1.81%	1.03%	1.49%	1.28%	0.99%
61-90 Days	3.64%	4.02%	3.07%	3.12%	1.86%	0.68%	1.06%	0.42%	0.91%	0.90%
91-120 Days	1.03%	1.94%	1.45%	1.22%	0.80%	0.78%	0.64%	0.98%	1.70%	0.69%
121-150 Days	0.23%	0.90%	0.27%	0.85%	0.86%	0.64%	0.86%	0.31%	1.19%	1.46%
151-180 Days	0.34%	0.82%	0.47%	0.19%	0.19%	0.30%	0.55%	0.08%	0.01%	0.78%
181+ Days	0.00%	0.00%	0.00%	0.07%	0.00%	0.00%	0.00%	0.00%	0.00%	0.00%
Current - 90 Days	98.40%	96.34%	97.81%	97.66%	98.15%	98.28%	97.94%	98.63%	97.10%	97.07%
91-180 Days	1.60%	3.66%	2.19%	2.26%	1.85%	1.72%	2.06%	1.37%	2.90%	2.93%



Personal Loans - La Hipotecaria El Salvador Migration Analysis (2006 Vintage)

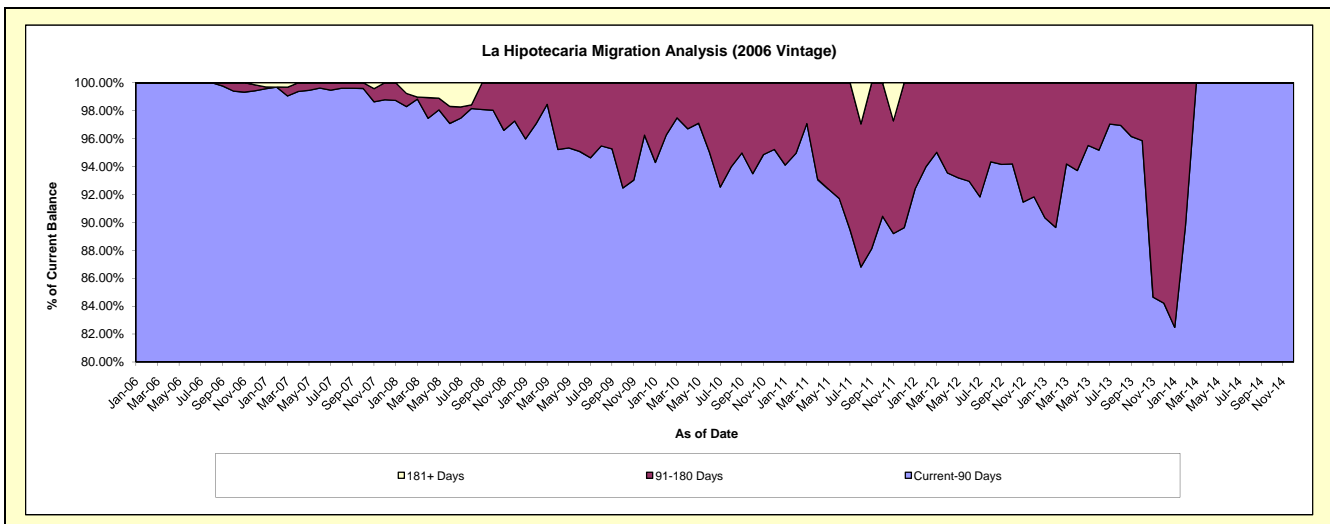
Delinquency Status (\$ of Current Balance)

Data Cutoff: 4/30/2018

Current Portfolio Balance	788,387.32	507,856.67	326,173.55	154,505.00	67,078.89	10,938.01	#N/A	#N/A	#N/A	#N/A
	Apr-09	Apr-10	Apr-11	Apr-12	Apr-13	Apr-14	Apr-15	Apr-16	Apr-17	Apr-18
Current	533,810.40	359,701.59	206,408.30	121,432.47	43,860.12	6,238.67	#N/A	#N/A	#N/A	#N/A
1-30 Days	98,328.54	35,760.67	43,186.28	6,701.16	8,623.56	1,100.68	#N/A	#N/A	#N/A	#N/A
31-60 Days	57,279.32	56,962.47	24,566.18	8,674.25	8,398.89	3,598.66	#N/A	#N/A	#N/A	#N/A
61-90 Days	61,275.35	38,662.30	29,446.75	7,715.65	1,978.74	-	#N/A	#N/A	#N/A	#N/A
91-120 Days	27,883.28	7,555.25	12,691.06	-	1,147.79	-	#N/A	#N/A	#N/A	#N/A
121-150 Days	6,818.77	7,782.54	1,236.48	9,981.47	1,731.92	-	#N/A	#N/A	#N/A	#N/A
151-180 Days	2,991.66	1,431.85	8,638.50	-	1,337.87	-	#N/A	#N/A	#N/A	#N/A
181+ Days	-	-	-	-	-	-	#N/A	#N/A	#N/A	#N/A

Delinquency Status (% of Current Balance)

Current Portfolio Balance	788,387.32	507,856.67	326,173.55	154,505.00	67,078.89	10,938.01	#N/A	#N/A	#N/A	#N/A
	Apr-09	Apr-10	Apr-11	Apr-12	Apr-13	Apr-14	Apr-15	Apr-16	Apr-17	Apr-18
Current	67.71%	70.83%	63.28%	78.59%	65.39%	57.04%	#N/A	#N/A	#N/A	#N/A
1-30 Days	12.47%	7.04%	13.24%	4.34%	12.86%	10.06%	#N/A	#N/A	#N/A	#N/A
31-60 Days	7.27%	11.22%	7.53%	5.61%	12.52%	32.90%	#N/A	#N/A	#N/A	#N/A
61-90 Days	7.77%	7.61%	9.03%	4.99%	2.95%	0.00%	#N/A	#N/A	#N/A	#N/A
91-120 Days	3.54%	1.49%	3.89%	0.00%	1.71%	0.00%	#N/A	#N/A	#N/A	#N/A
121-150 Days	0.86%	1.53%	0.38%	6.46%	2.58%	0.00%	#N/A	#N/A	#N/A	#N/A
151-180 Days	0.38%	0.28%	2.65%	0.00%	1.99%	0.00%	#N/A	#N/A	#N/A	#N/A
181+ Days	0.00%	0.00%	0.00%	0.00%	0.00%	0.00%	#N/A	#N/A	#N/A	#N/A
Current - 90 Days	95.22%	96.70%	93.08%	93.54%	93.71%	100.00%	#N/A	#N/A	#N/A	#N/A
91-180 Days	4.78%	3.30%	6.92%	6.46%	6.29%	0.00%	#N/A	#N/A	#N/A	#N/A



Personal Loans - La Hipotecaria El Salvador Migration Analysis (2007 Vintage)

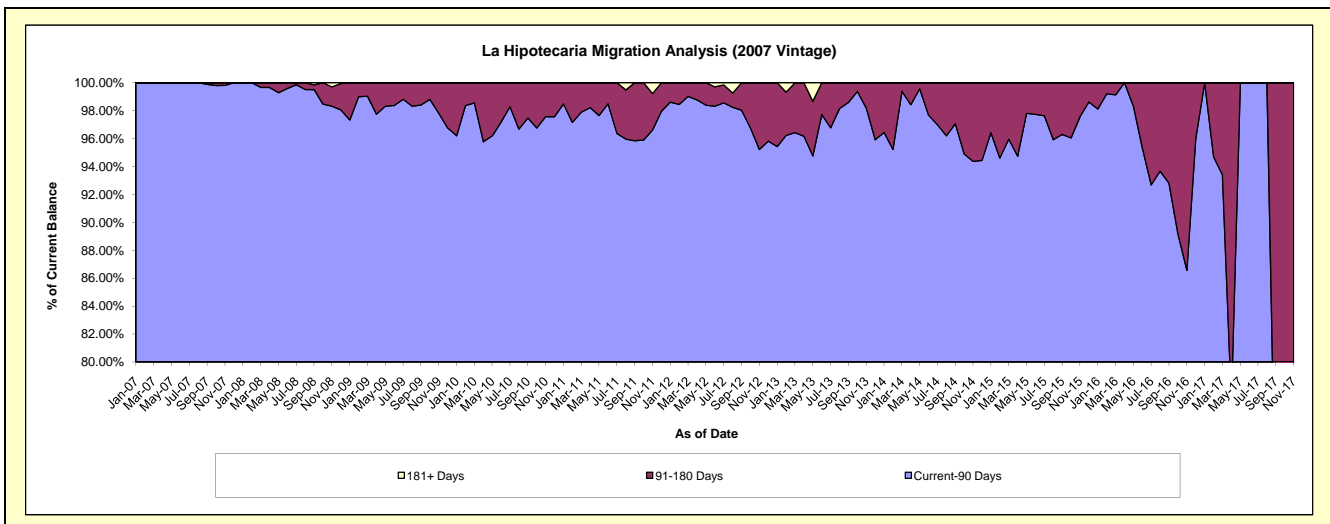
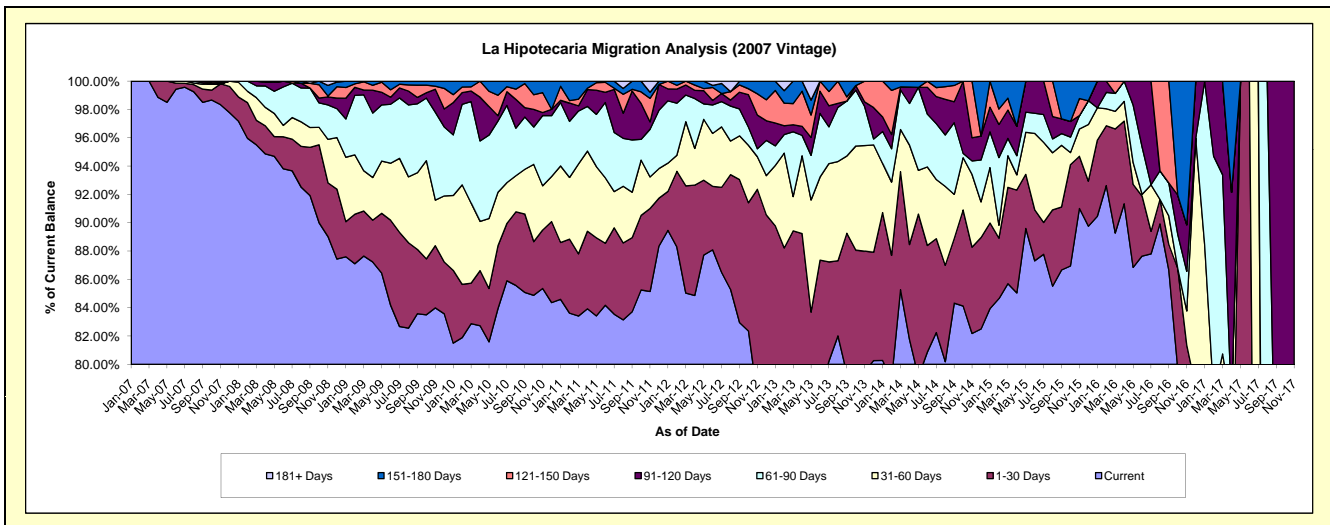
Delinquency Status (\$ of Current Balance)

Data Cutoff: 4/30/2018

Current Portfolio Balance	3,604,887.61	2,894,687.35	2,011,138.59	1,362,415.40	842,756.56	475,798.99	218,521.70	74,836.78	7,172.98	#N/A
	Apr-09	Apr-10	Apr-11	Apr-12	Apr-13	Apr-14	Apr-15	Apr-16	Apr-17	Apr-18
Current	3,144,658.69	2,394,621.58	1,687,909.42	1,156,249.08	638,413.25	389,035.35	185,840.80	68,357.57	4,466.04	#N/A
1-30 Days	106,379.43	112,778.61	110,018.77	106,124.41	113,631.50	31,868.99	15,866.89	4,368.59	263.44	#N/A
31-60 Days	108,534.56	100,527.29	113,908.90	35,341.34	46,320.89	33,430.12	2,358.19	1,040.51	801.81	#N/A
61-90 Days	164,201.32	164,539.12	63,429.53	47,965.48	12,121.83	13,964.18	2,953.12	1,070.11	-	#N/A
91-120 Days	57,946.99	89,607.69	23,862.32	7,900.44	5,408.57	5,519.14	4,543.88	-	1,078.73	#N/A
121-150 Days	12,636.00	32,613.06	2,102.22	5,022.40	20,890.30	-	-	-	-	#N/A
151-180 Days	10,530.62	-	9,907.43	3,812.25	5,970.22	1,981.21	6,958.82	-	562.96	#N/A
181+ Days	-	-	-	-	-	-	-	-	-	#N/A

Delinquency Status (% of Current Balance)

Current Portfolio Balance	3,604,887.61	2,894,687.35	2,011,138.59	1,362,415.40	842,756.56	475,798.99	218,521.70	74,836.78	7,172.98	#N/A
	Apr-09	Apr-10	Apr-11	Apr-12	Apr-13	Apr-14	Apr-15	Apr-16	Apr-17	Apr-18
Current	87.23%	82.72%	83.93%	84.87%	75.75%	81.76%	85.04%	91.34%	62.26%	#N/A
1-30 Days	2.95%	3.90%	5.47%	7.79%	13.48%	6.70%	7.26%	5.84%	3.67%	#N/A
31-60 Days	3.01%	3.47%	5.66%	2.59%	5.50%	7.03%	1.08%	1.39%	11.18%	#N/A
61-90 Days	4.55%	5.68%	3.15%	3.52%	1.44%	2.93%	1.35%	1.43%	0.00%	#N/A
91-120 Days	1.61%	3.10%	1.19%	0.58%	0.64%	1.16%	2.08%	0.00%	15.04%	#N/A
121-150 Days	0.35%	1.13%	0.10%	0.37%	2.48%	0.00%	0.00%	0.00%	0.00%	#N/A
151-180 Days	0.29%	0.00%	0.49%	0.28%	0.71%	0.42%	3.18%	0.00%	7.85%	#N/A
181+ Days	0.00%	0.00%	0.00%	0.00%	0.00%	0.00%	0.00%	0.00%	0.00%	#N/A
Current - 90 Days	97.75%	95.78%	98.22%	98.77%	96.17%	98.42%	94.74%	100.00%	77.11%	#N/A
91-180 Days	2.25%	4.22%	1.78%	1.23%	3.83%	1.58%	5.26%	0.00%	22.89%	#N/A



Personal Loans - La Hipotecaria El Salvador Migration Analysis (2008 Vintage)

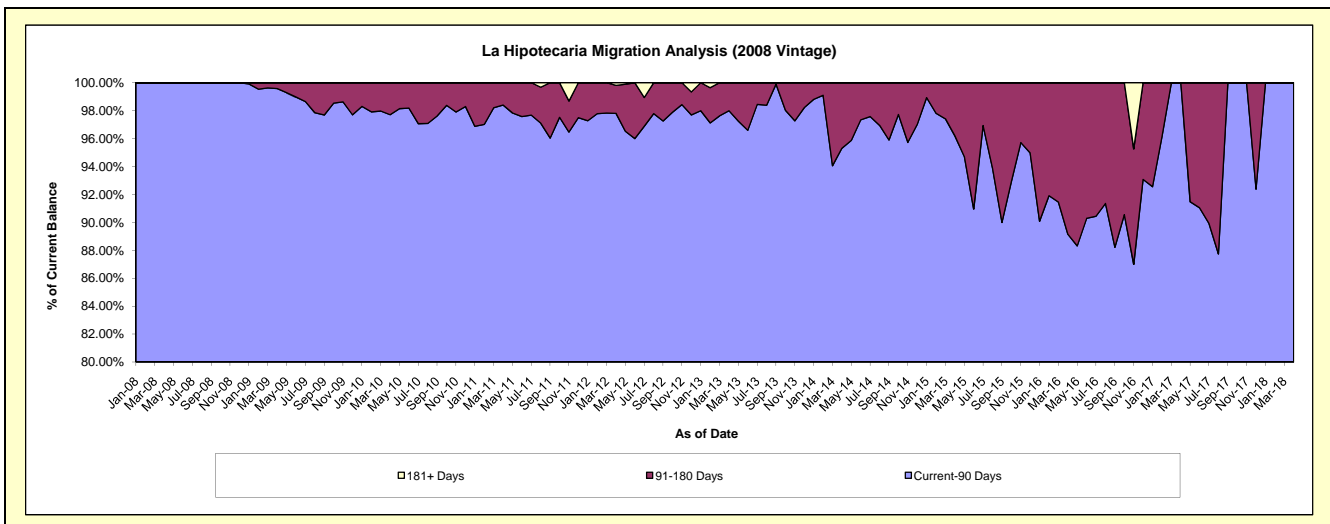
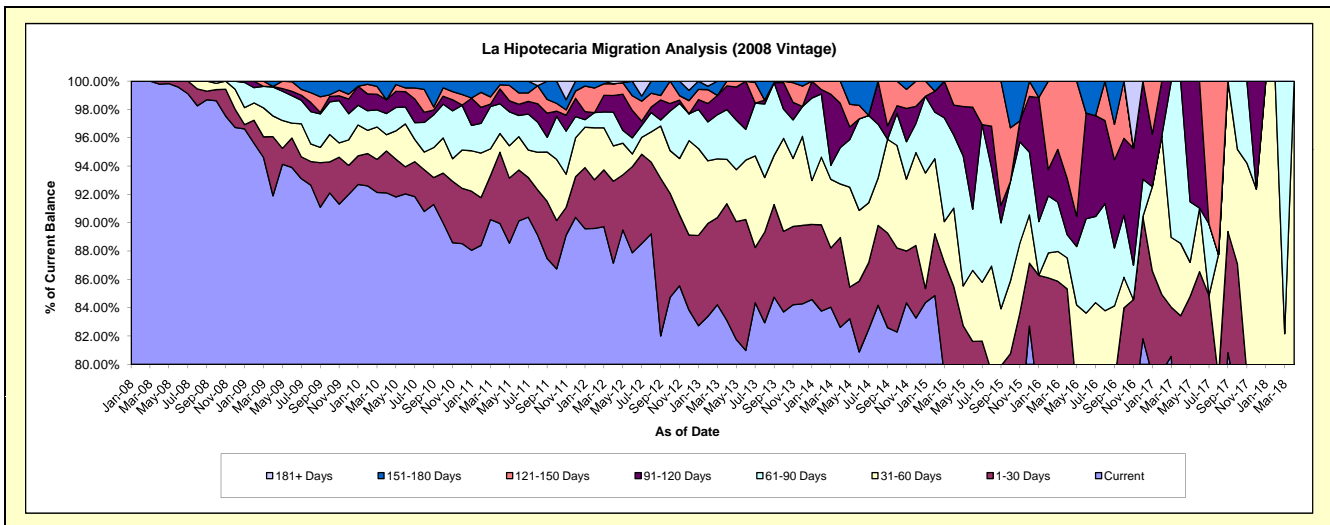
Delinquency Status (\$ of Current Balance)

Data Cutoff: 4/30/2018

Current Portfolio Balance	4,100,061.47	3,419,365.47	2,615,953.13	1,843,954.32	1,282,611.95	814,929.98	416,947.31	180,428.04	54,432.25	3,295.45
	Apr-09	Apr-10	Apr-11	Apr-12	Apr-13	Apr-14	Apr-15	Apr-16	Apr-17	Apr-18
Current	3,768,094.33	3,149,603.52	2,353,082.24	1,606,954.82	1,066,016.61	673,277.44	330,417.08	140,364.45	38,002.02	2,302.31
1-30 Days	171,312.47	100,998.28	131,609.28	106,691.23	105,604.14	51,663.17	26,082.42	13,600.12	7,412.89	284.55
31-60 Days	59,925.91	39,581.66	34,561.09	46,110.49	40,193.94	30,813.77	23,063.42	3,946.59	2,778.80	708.59
61-90 Days	83,627.54	50,911.05	54,903.07	43,823.31	45,080.85	20,917.36	21,509.69	2,940.87	6,238.54	-
91-120 Days	1,703.35	33,332.30	27,458.83	21,689.00	21,482.55	25,489.27	8,852.26	7,165.71	-	-
121-150 Days	-	-	7,620.03	15,214.83	4,233.86	12,768.97	7,022.44	12,410.30	-	-
151-180 Days	15,397.87	44,938.66	6,718.59	-	-	-	-	-	-	-
181+ Days	-	-	-	3,470.64	-	-	-	-	-	-

Delinquency Status (% of Current Balance)

Current Portfolio Balance	4,100,061.47	3,419,365.47	2,615,953.13	1,843,954.32	1,282,611.95	814,929.98	416,947.31	180,428.04	54,432.25	3,295.45
	Apr-09	Apr-10	Apr-11	Apr-12	Apr-13	Apr-14	Apr-15	Apr-16	Apr-17	Apr-18
Current	91.90%	92.11%	89.95%	87.15%	83.11%	82.62%	79.25%	77.80%	69.82%	69.86%
1-30 Days	4.18%	2.95%	5.03%	5.79%	8.23%	6.34%	6.26%	7.54%	13.62%	8.63%
31-60 Days	1.46%	1.16%	1.32%	2.50%	3.13%	3.78%	5.53%	2.19%	5.11%	21.50%
61-90 Days	2.04%	1.49%	2.10%	2.38%	3.51%	2.57%	5.16%	1.63%	11.46%	0.00%
91-120 Days	0.04%	0.97%	1.05%	1.18%	1.67%	3.13%	2.12%	3.97%	0.00%	0.00%
121-150 Days	0.00%	0.00%	0.29%	0.83%	0.33%	1.57%	1.68%	6.88%	0.00%	0.00%
151-180 Days	0.38%	1.31%	0.26%	0.00%	0.00%	0.00%	0.00%	0.00%	0.00%	0.00%
181+ Days	0.00%	0.00%	0.00%	0.19%	0.00%	0.00%	0.00%	0.00%	0.00%	0.00%
Current - 90 Days	99.58%	97.71%	98.40%	97.81%	97.99%	95.31%	96.19%	89.15%	100.00%	100.00%
91-180 Days	0.42%	2.29%	1.60%	2.00%	2.01%	4.69%	3.81%	10.85%	0.00%	0.00%



Personal Loans - La Hipotecaria El Salvador Migration Analysis (2009 Vintage)

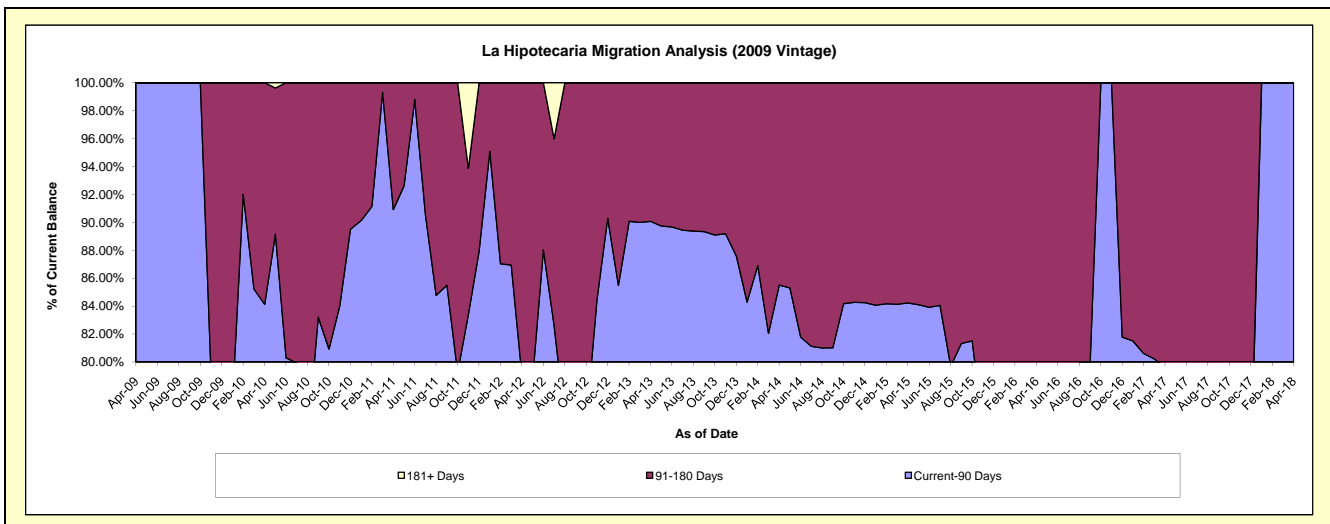
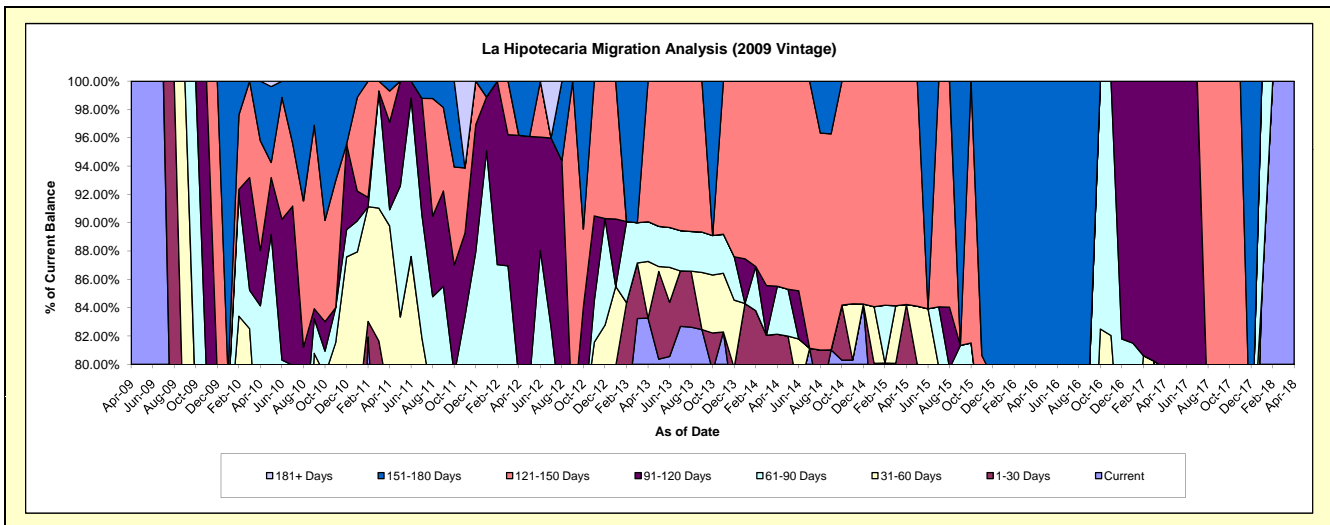
Delinquency Status (\$ of Current Balance)

Data Cutoff: 4/30/2018

Current Portfolio Balance	2,823.81	343,735.65	196,660.12	134,236.91	94,384.70	53,159.33	37,518.54	18,839.75	11,164.18	670.81
	Apr-09	Apr-10	Apr-11	Apr-12	Apr-13	Apr-14	Apr-15	Apr-16	Apr-17	Apr-18
Current	2,823.81	181,350.97	137,364.17	83,453.28	78,590.28	41,712.85	17,211.34	12,474.63	7,795.85	670.81
1-30 Days	-	26,102.13	14,761.40	15,747.80	-	1,944.90	14,389.65	-	-	-
31-60 Days	-	37,978.55	24,447.78	3,402.71	3,779.50	-	-	2,267.16	1,101.17	-
61-90 Days	-	43,780.38	2,235.71	3,471.47	2,650.07	1,802.25	-	-	-	-
91-120 Days	-	13,403.02	12,156.69	23,021.30	-	-	-	-	2,267.16	-
121-150 Days	-	26,605.05	4,321.77	-	9,364.85	7,699.33	5,917.55	-	-	-
151-180 Days	-	14,515.55	1,372.60	5,140.35	-	-	-	4,097.96	-	-
181+ Days	-	-	-	-	-	-	-	-	-	-

Delinquency Status (% of Current Balance)

Current Portfolio Balance	2,823.81	343,735.65	196,660.12	134,236.91	94,384.70	53,159.33	37,518.54	18,839.75	11,164.18	670.81
	Apr-09	Apr-10	Apr-11	Apr-12	Apr-13	Apr-14	Apr-15	Apr-16	Apr-17	Apr-18
Current	100.00%	52.76%	69.85%	62.17%	83.27%	78.47%	45.87%	66.21%	69.83%	100.00%
1-30 Days	0.00%	7.59%	7.51%	11.73%	0.00%	3.66%	38.35%	0.00%	0.00%	0.00%
31-60 Days	0.00%	11.05%	12.43%	2.53%	4.00%	0.00%	0.00%	12.03%	9.86%	0.00%
61-90 Days	0.00%	12.74%	1.14%	2.59%	2.81%	3.39%	0.00%	0.00%	0.00%	0.00%
91-120 Days	0.00%	3.90%	6.18%	17.15%	0.00%	0.00%	0.00%	0.00%	20.31%	0.00%
121-150 Days	0.00%	7.74%	2.20%	0.00%	9.92%	14.48%	15.77%	0.00%	0.00%	0.00%
151-180 Days	0.00%	4.22%	0.70%	3.83%	0.00%	0.00%	0.00%	21.75%	0.00%	0.00%
181+ Days	0.00%	0.00%	0.00%	0.00%	0.00%	0.00%	0.00%	0.00%	0.00%	0.00%
Current - 90 Days	100.00%	84.14%	90.92%	79.02%	90.08%	85.52%	84.23%	78.25%	79.69%	100.00%
91-180 Days	0.00%	15.86%	9.08%	20.98%	9.92%	14.48%	15.77%	21.75%	20.31%	0.00%



Personal Loans - La Hipotecaria El Salvador Migration Analysis (2010 Vintage)

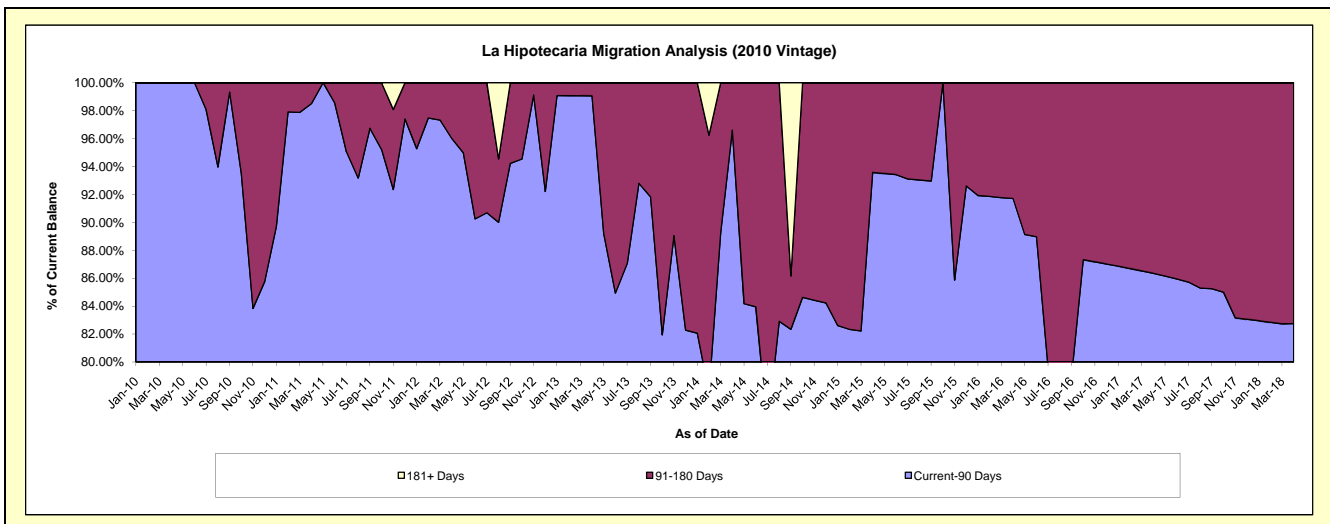
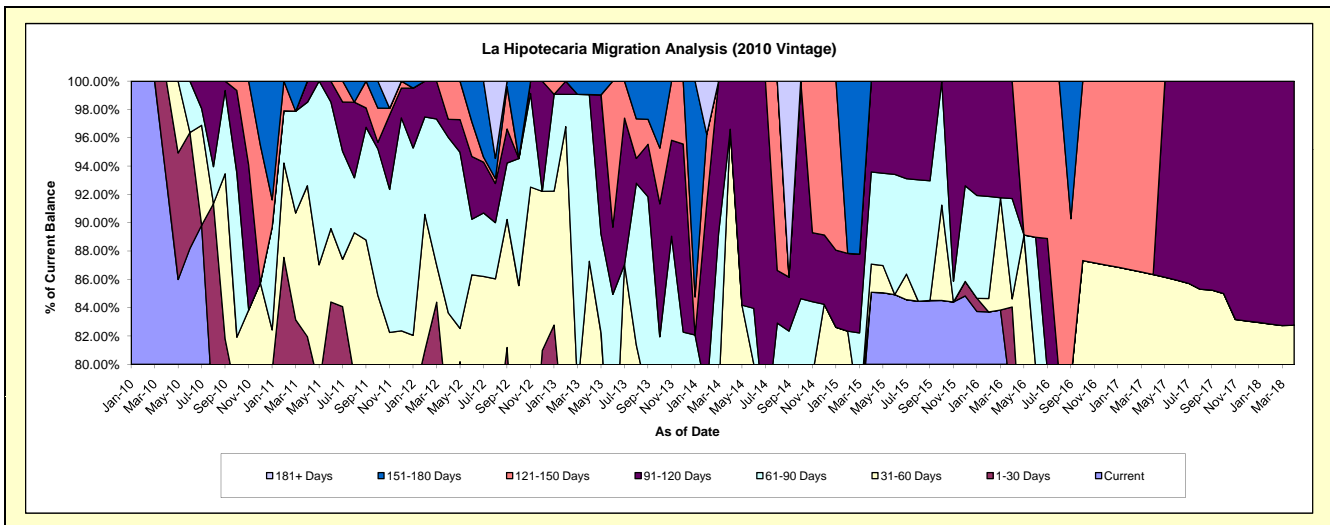
Delinquency Status (\$ of Current Balance)

Data Cutoff: 4/30/2018

Current Portfolio Balance	-	253,084.70	413,038.45	342,729.01	246,432.99	125,667.87	61,015.48	42,643.83	23,303.90	15,895.99
	Apr-10	Apr-11	Apr-12	Apr-13	Apr-14	Apr-15	Apr-16	Apr-17	Apr-18	
Current	235,359.77	286,972.98	206,791.30	134,999.65	92,135.56	51,917.92	32,902.46	18,191.48	12,420.04	
1-30 Days	17,724.93	51,556.16	53,462.96	45,512.93	-	-	2,939.46	-	-	
31-60 Days	-	44,012.07	26,349.09	34,564.95	29,266.51	1,214.03	248.60	1,930.85	735.34	
61-90 Days	-	24,331.49	42,477.47	29,025.86	-	3,968.98	3,019.82	-	-	
91-120 Days	-	6,165.75	4,421.51	-	4,265.80	3,914.55	3,533.49	-	2,740.61	
121-150 Days	-	-	9,226.68	-	-	-	-	3,181.57	-	
151-180 Days	-	-	-	2,329.60	-	-	-	-	-	
181+ Days	-	-	-	-	-	-	-	-	-	

Delinquency Status (% of Current Balance)

Current Portfolio Balance	-	253,084.70	413,038.45	342,729.01	246,432.99	125,667.87	61,015.48	42,643.83	23,303.90	15,895.99
	Apr-10	Apr-11	Apr-12	Apr-13	Apr-14	Apr-15	Apr-16	Apr-17	Apr-18	
Current	93.00%	69.48%	60.34%	54.78%	73.32%	85.09%	77.16%	78.06%	78.13%	
1-30 Days	7.00%	12.48%	15.60%	18.47%	0.00%	0.00%	6.89%	0.00%	0.00%	
31-60 Days	0.00%	10.66%	7.69%	14.03%	23.29%	1.99%	0.58%	8.29%	4.63%	
61-90 Days	0.00%	5.89%	12.39%	11.78%	0.00%	6.50%	7.08%	0.00%	0.00%	
91-120 Days	0.00%	1.49%	1.29%	0.00%	3.39%	6.42%	8.29%	0.00%	17.24%	
121-150 Days	0.00%	0.00%	2.69%	0.00%	0.00%	0.00%	0.00%	13.65%	0.00%	
151-180 Days	0.00%	0.00%	0.00%	0.95%	0.00%	0.00%	0.00%	0.00%	0.00%	
181+ Days	0.00%	0.00%	0.00%	0.00%	0.00%	0.00%	0.00%	0.00%	0.00%	
Current - 90 Days	100.00%	98.51%	96.02%	99.05%	96.61%	93.58%	91.71%	86.35%	82.76%	
91-180 Days	0.00%	1.49%	3.98%	0.95%	3.39%	6.42%	8.29%	13.65%	17.24%	



Personal Loans - La Hipotecaria El Salvador Migration Analysis (2011 Vintage)

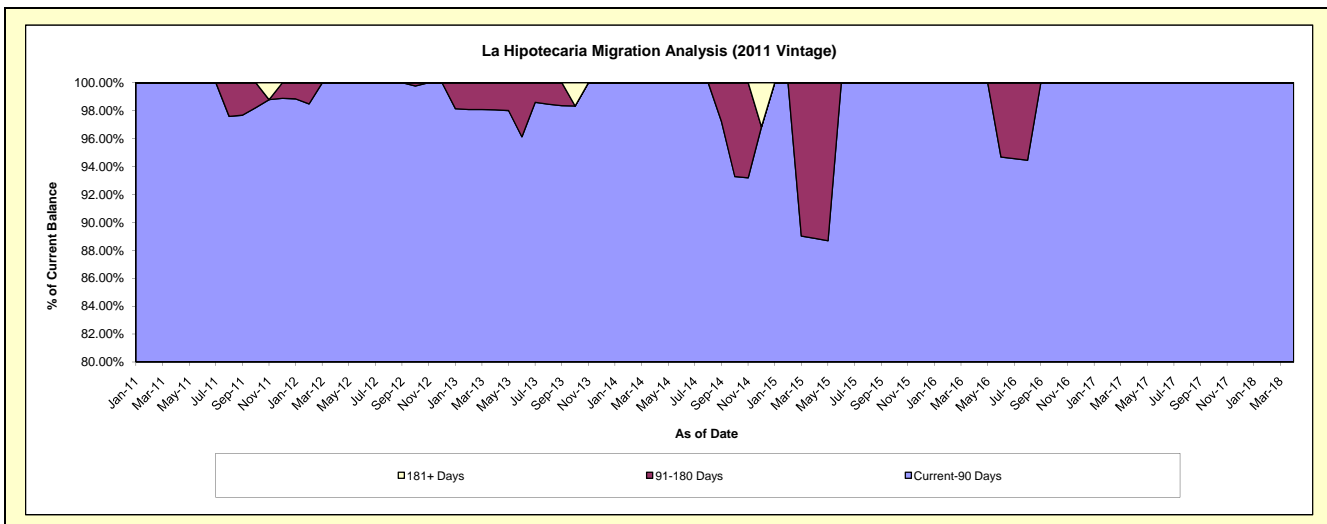
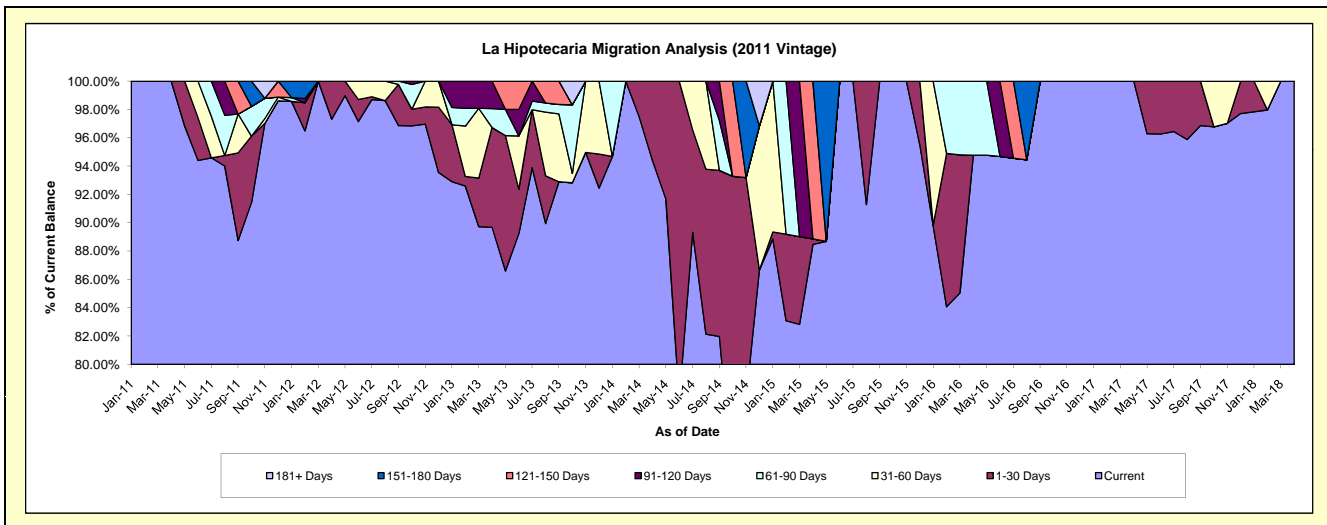
Delinquency Status (\$ of Current Balance)

Data Cutoff: 4/30/2018

Current Portfolio Balance	-	-	113,809.27	353,530.60	260,908.09	165,040.44	115,122.46	71,669.58	50,235.67	30,420.76
			Apr-11	Apr-12	Apr-13	Apr-14	Apr-15	Apr-16	Apr-17	Apr-18
Current			113,809.27	344,016.53	233,972.95	155,781.58	101,843.11	67,919.42	50,235.67	30,420.76
1-30 Days			-	9,514.07	18,383.31	9,258.86	457.53	-	-	-
31-60 Days			-	-	-	-	-	-	-	-
61-90 Days			-	-	3,487.53	-	-	3,750.16	-	-
91-120 Days			-	-	5,064.30	-	-	-	-	-
121-150 Days			-	-	-	-	12,821.82	-	-	-
151-180 Days			-	-	-	-	-	-	-	-
181+ Days			-	-	-	-	-	-	-	-

Delinquency Status (% of Current Balance)

Current Portfolio Balance	-	-	113,809.27	353,530.60	260,908.09	165,040.44	115,122.46	71,669.58	50,235.67	30,420.76
			Apr-11	Apr-12	Apr-13	Apr-14	Apr-15	Apr-16	Apr-17	Apr-18
Current			100.00%	97.31%	89.68%	94.39%	88.47%	94.77%	100.00%	100.00%
1-30 Days			0.00%	2.69%	7.05%	5.61%	0.40%	0.00%	0.00%	0.00%
31-60 Days			0.00%	0.00%	0.00%	0.00%	0.00%	0.00%	0.00%	0.00%
61-90 Days			0.00%	0.00%	1.34%	0.00%	0.00%	5.23%	0.00%	0.00%
91-120 Days			0.00%	0.00%	1.94%	0.00%	0.00%	0.00%	0.00%	0.00%
121-150 Days			0.00%	0.00%	0.00%	0.00%	11.14%	0.00%	0.00%	0.00%
151-180 Days			0.00%	0.00%	0.00%	0.00%	0.00%	0.00%	0.00%	0.00%
181+ Days			0.00%	0.00%	0.00%	0.00%	0.00%	0.00%	0.00%	0.00%
Current - 90 Days			100.00%	100.00%	98.06%	100.00%	88.86%	100.00%	100.00%	100.00%
91-180 Days			0.00%	0.00%	1.94%	0.00%	11.14%	0.00%	0.00%	0.00%



Personal Loans - La Hipotecaria El Salvador Migration Analysis (2012 Vintage)

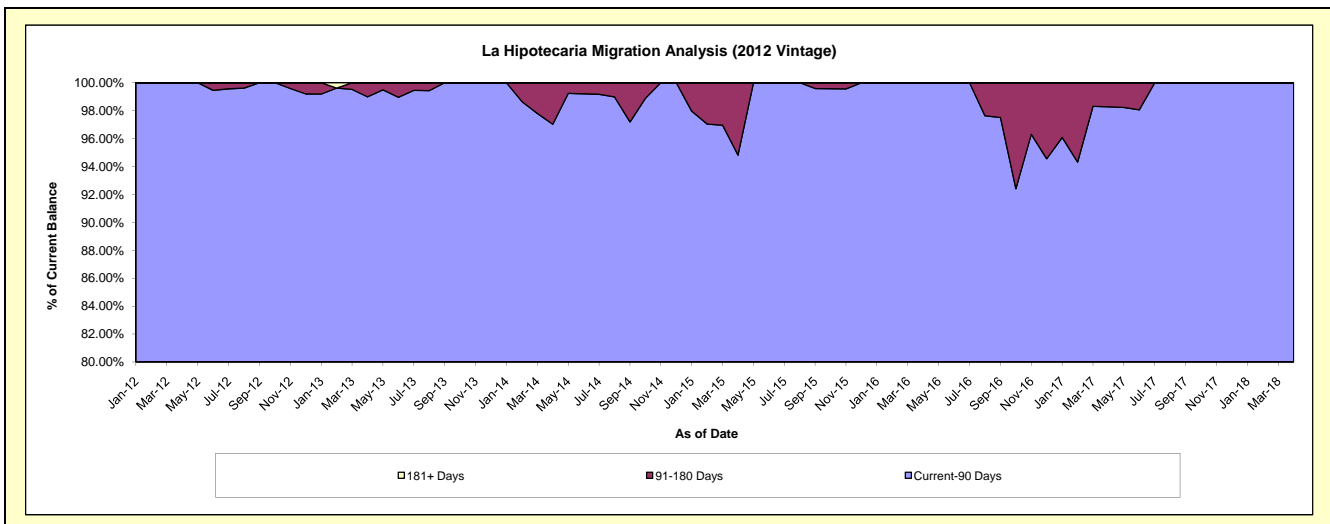
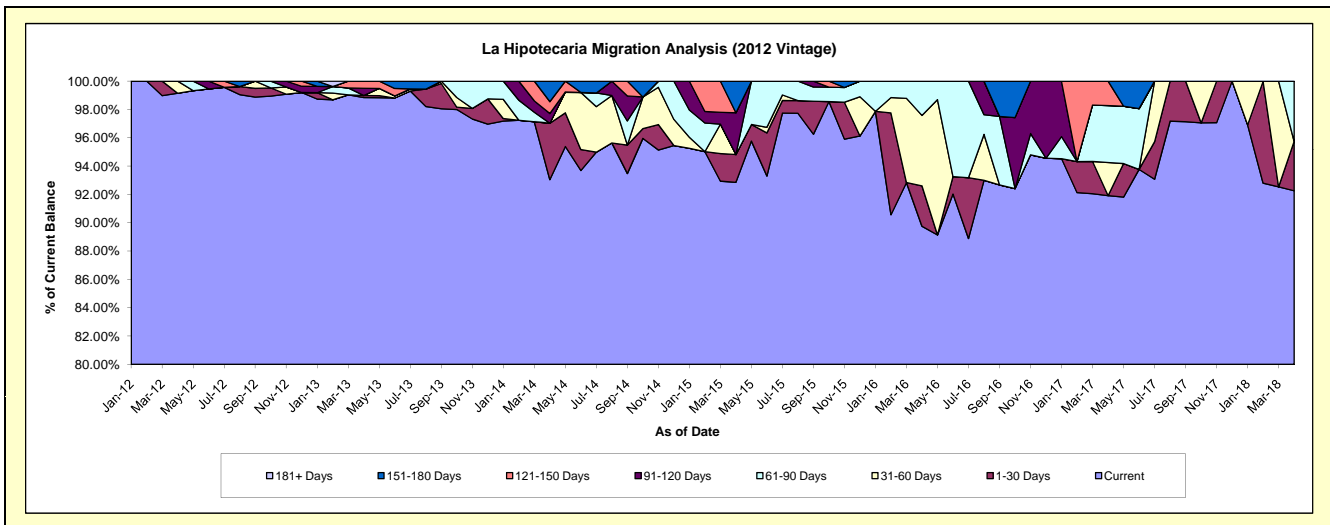
Delinquency Status (\$ of Current Balance)

Data Cutoff: 4/30/2018

Current Portfolio Balance	-	-	-	466,184.40	1,463,566.62	969,634.99	561,108.00	335,664.06	207,006.67	117,307.08
				Apr-12	Apr-13	Apr-14	Apr-15	Apr-16	Apr-17	Apr-18
Current				462,184.40	1,446,679.34	902,195.00	521,002.18	301,276.06	190,271.59	108,227.74
1-30 Days				-	2,105.35	38,622.07	11,016.53	9,574.31	-	4,090.17
31-60 Days				4,000.00	-	-	-	16,690.35	4,848.11	-
61-90 Days				-	-	-	-	8,123.34	8,326.20	4,989.17
91-120 Days				-	7,433.37	6,667.62	16,584.56	-	-	-
121-150 Days				-	7,348.56	8,111.71	-	-	3,560.77	-
151-180 Days				-	-	14,038.59	12,504.73	-	-	-
181+ Days				-	-	-	-	-	-	-

Delinquency Status (% of Current Balance)

Current Portfolio Balance	-	-	-	466,184.40	1,463,566.62	969,634.99	561,108.00	335,664.06	207,006.67	117,307.08
				Apr-12	Apr-13	Apr-14	Apr-15	Apr-16	Apr-17	Apr-18
Current				99.14%	98.85%	93.04%	92.85%	89.76%	91.92%	92.26%
1-30 Days				0.00%	0.14%	3.98%	1.96%	2.85%	0.00%	3.49%
31-60 Days				0.86%	0.00%	0.00%	0.00%	4.97%	2.34%	0.00%
61-90 Days				0.00%	0.00%	0.00%	0.00%	2.42%	4.02%	4.25%
91-120 Days				0.00%	0.51%	0.69%	2.96%	0.00%	0.00%	0.00%
121-150 Days				0.00%	0.50%	0.84%	0.00%	0.00%	1.72%	0.00%
151-180 Days				0.00%	0.00%	1.45%	2.23%	0.00%	0.00%	0.00%
181+ Days				0.00%	0.00%	0.00%	0.00%	0.00%	0.00%	0.00%
Current - 90 Days				100.00%	98.99%	97.03%	94.82%	100.00%	98.28%	100.00%
91-180 Days				0.00%	1.01%	2.97%	5.18%	0.00%	1.72%	0.00%



Personal Loans - La Hipotecaria El Salvador Migration Analysis (2013 Vintage)

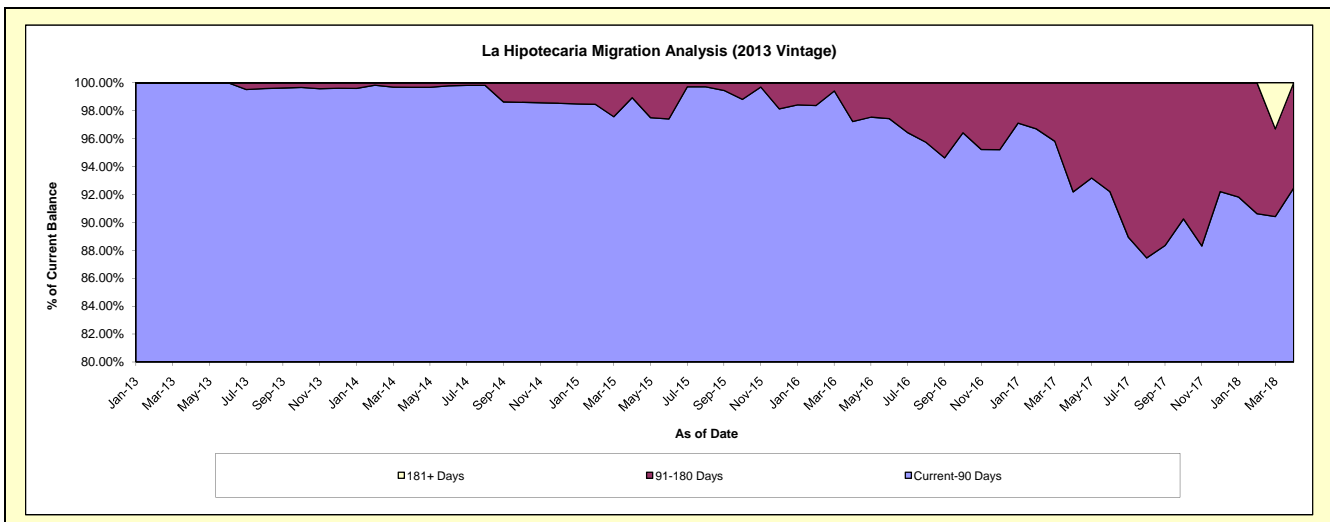
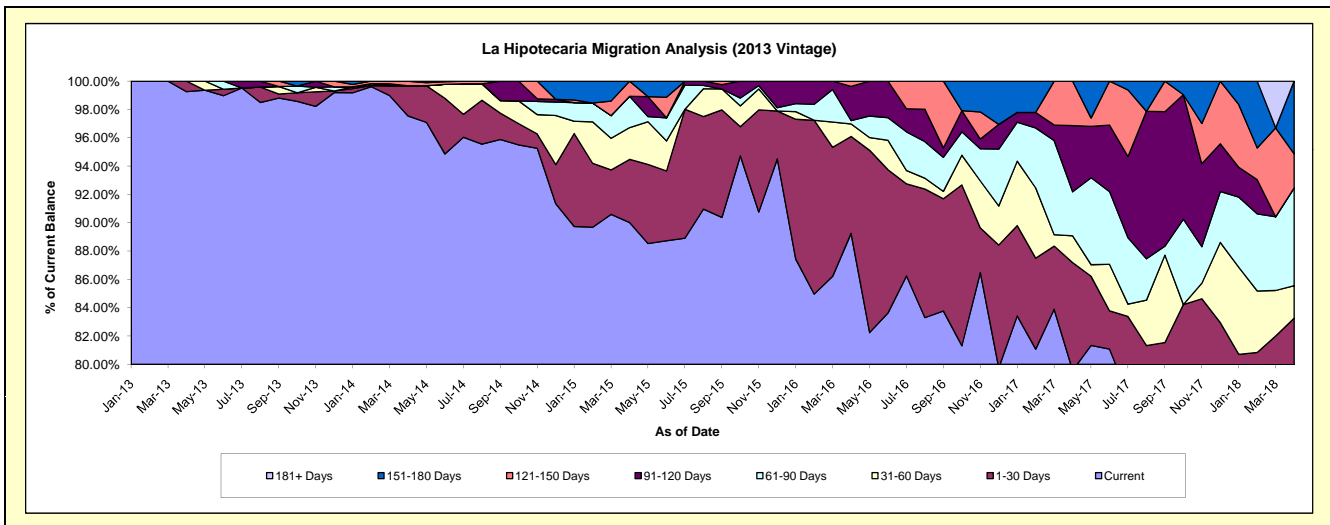
Delinquency Status (\$ of Current Balance)

Data Cutoff: 4/30/2018

Current Portfolio Balance	-	-	-	-	821,143.09	1,862,376.48	1,244,645.56	825,531.88	582,089.28	361,124.48
					Apr-13	Apr-14	Apr-15	Apr-16	Apr-17	Apr-18
Current					815,051.03	1,816,633.73	1,120,379.80	736,779.14	463,147.50	250,747.54
1-30 Days					6,092.06	39,708.91	55,538.57	56,483.08	44,349.77	49,939.25
31-60 Days					-	-	27,895.18	7,318.04	11,006.39	8,252.64
61-90 Days					-	-	27,514.65	1,996.01	18,105.27	24,971.81
91-120 Days					-	-	-	19,893.26	27,229.94	-
121-150 Days					-	6,033.84	13,317.36	3,062.35	18,250.41	8,666.57
151-180 Days					-	-	-	-	-	18,546.67
181+ Days					-	-	-	-	-	-

Delinquency Status (% of Current Balance)

Current Portfolio Balance	-	-	-	-	821,143.09	1,862,376.48	1,244,645.56	825,531.88	582,089.28	361,124.48
					Apr-13	Apr-14	Apr-15	Apr-16	Apr-17	Apr-18
Current					99.26%	97.54%	90.02%	89.25%	79.57%	69.44%
1-30 Days					0.74%	2.13%	4.46%	6.84%	7.62%	13.83%
31-60 Days					0.00%	0.00%	2.24%	0.89%	1.89%	2.29%
61-90 Days					0.00%	0.00%	2.21%	0.24%	3.11%	6.92%
91-120 Days					0.00%	0.00%	0.00%	2.41%	4.68%	0.00%
121-150 Days					0.00%	0.32%	1.07%	0.37%	3.14%	2.40%
151-180 Days					0.00%	0.00%	0.00%	0.00%	0.00%	5.14%
181+ Days					0.00%	0.00%	0.00%	0.00%	0.00%	0.00%
Current - 90 Days					100.00%	99.68%	98.93%	97.22%	92.19%	92.46%
91-180 Days					0.00%	0.32%	1.07%	2.78%	7.81%	7.54%



Personal Loans - La Hipotecaria El Salvador Migration Analysis (2014 Vintage)

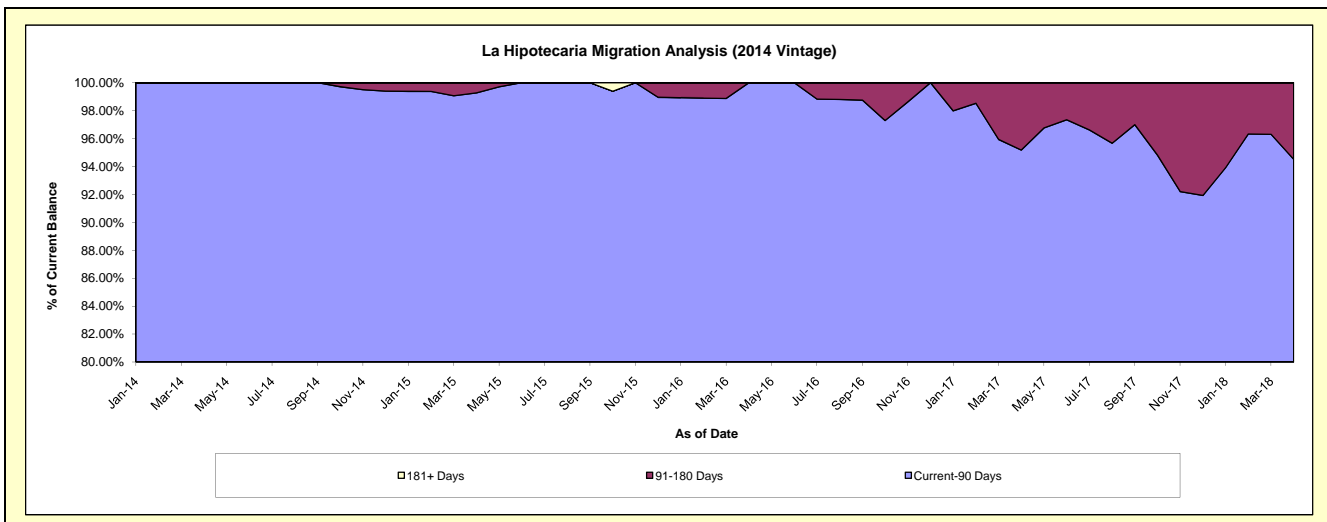
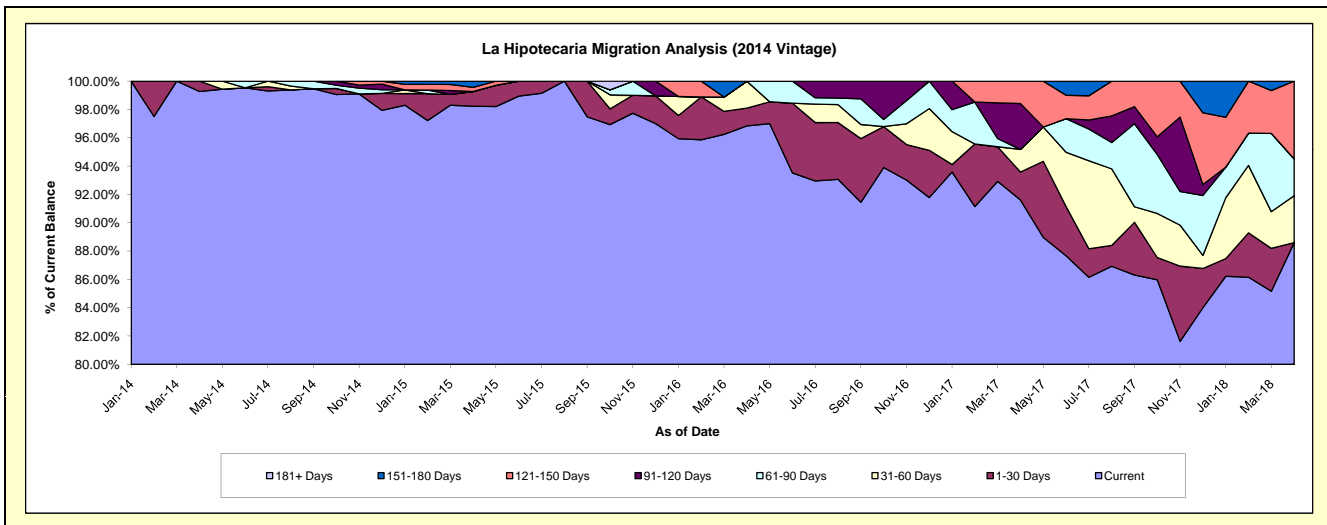
Delinquency Status (\$ of Current Balance)

Data Cutoff: 4/30/2018

Current Portfolio Balance	-	-	-	-	-	900,470.38	2,210,041.71	1,550,283.43	941,395.00	578,149.10
						Apr-14	Apr-15	Apr-16	Apr-17	Apr-18
Current						893,921.71	2,171,049.28	1,501,284.59	862,380.28	512,211.30
1-30 Days						6,548.67	22,979.01	19,531.64	18,582.73	-
31-60 Days						-	-	29,467.20	15,064.03	19,174.35
61-90 Days						-	-	-	-	15,055.92
91-120 Days						-	-	-	30,467.73	-
121-150 Days						-	6,334.48	-	14,900.23	31,707.53
151-180 Days						-	9,678.94	-	-	-
181+ Days						-	-	-	-	-

Delinquency Status (% of Current Balance)

Current Portfolio Balance	-	-	-	-	-	900,470.38	2,210,041.71	1,550,283.43	941,395.00	578,149.10
						Apr-14	Apr-15	Apr-16	Apr-17	Apr-18
Current						99.27%	98.24%	96.84%	91.61%	88.60%
1-30 Days						0.73%	1.04%	1.26%	1.97%	0.00%
31-60 Days						0.00%	0.00%	1.90%	1.60%	3.32%
61-90 Days						0.00%	0.00%	0.00%	0.00%	2.60%
91-120 Days						0.00%	0.00%	0.00%	3.24%	0.00%
121-150 Days						0.00%	0.29%	0.00%	1.58%	5.48%
151-180 Days						0.00%	0.44%	0.00%	0.00%	0.00%
181+ Days						0.00%	0.00%	0.00%	0.00%	0.00%
Current - 90 Days						100.00%	99.28%	100.00%	95.18%	94.52%
91-180 Days						0.00%	0.72%	0.00%	4.82%	5.48%



Personal Loans - La Hipotecaria El Salvador Migration Analysis (2015 Vintage)

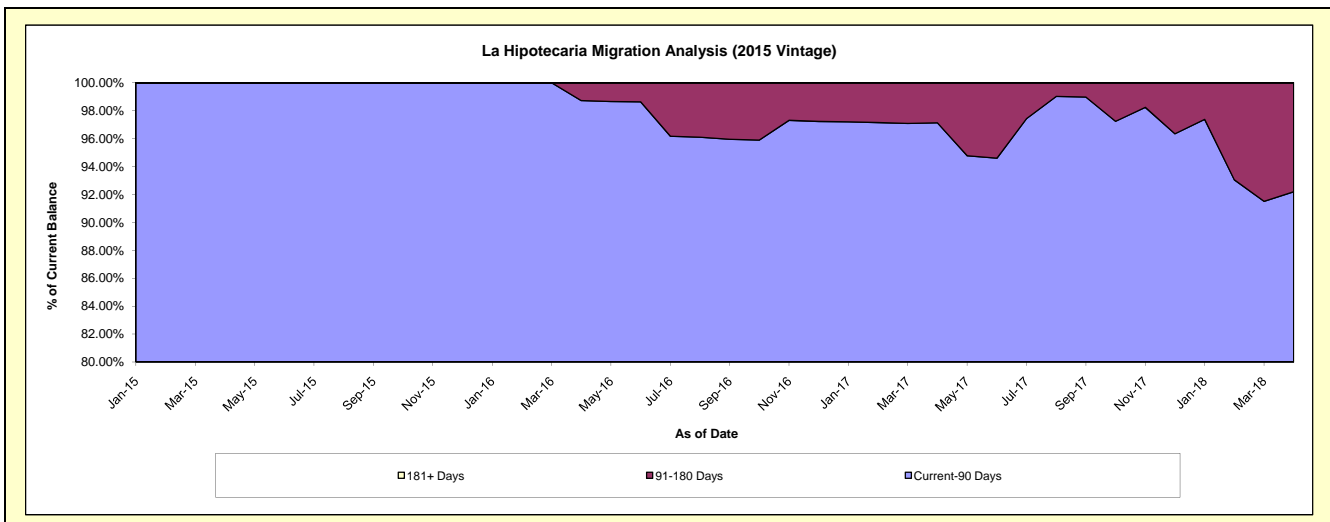
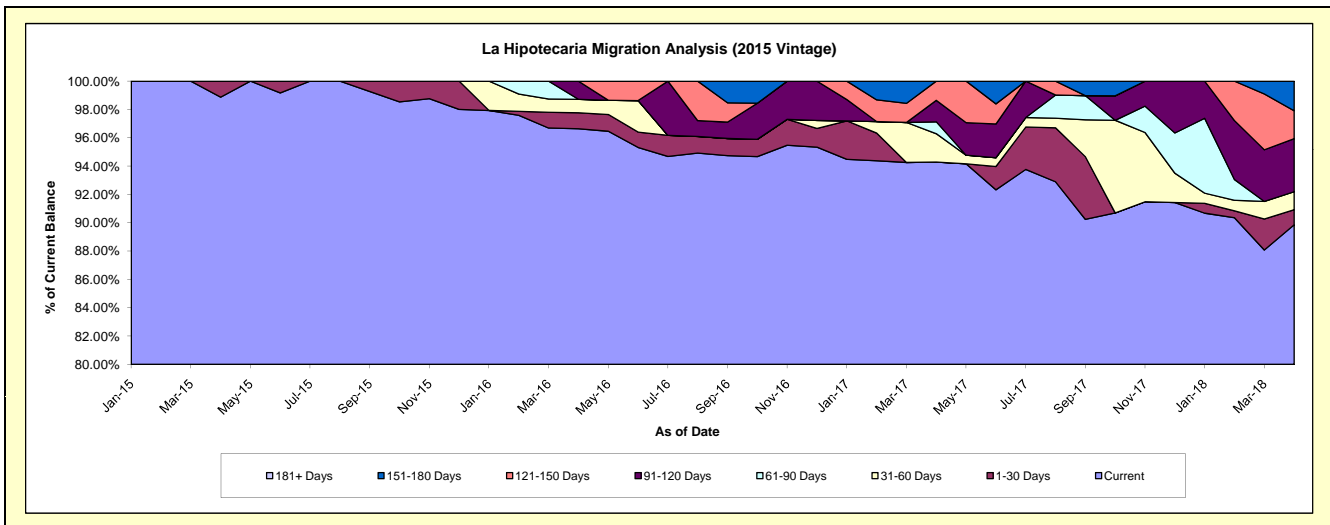
Delinquency Status (\$ of Current Balance)

Data Cutoff: 4/30/2018

Current Portfolio Balance	-	-	-	-	-	-	404,404.54	1,430,531.01	1,003,863.81	698,741.23
							Apr-15	Apr-16	Apr-17	Apr-18
Current							399,817.22	1,382,460.28	946,502.94	627,900.36
1-30 Days							4,587.32	16,092.66	-	7,408.83
31-60 Days							-	13,642.79	20,121.19	8,870.24
61-90 Days							-	-	8,395.90	-
91-120 Days							-	18,335.28	15,200.99	26,201.08
121-150 Days							-	-	13,642.79	13,725.65
151-180 Days							-	-	-	14,635.07
181+ Days							-	-	-	-

Delinquency Status (% of Current Balance)

Current Portfolio Balance	-	-	-	-	-	-	404,404.54	1,430,531.01	1,003,863.81	698,741.23
							Apr-15	Apr-16	Apr-17	Apr-18
Current							98.87%	96.64%	94.29%	89.86%
1-30 Days							1.13%	1.12%	0.00%	1.06%
31-60 Days							0.00%	0.95%	2.00%	1.27%
61-90 Days							0.00%	0.00%	0.84%	0.00%
91-120 Days							0.00%	1.28%	1.51%	3.75%
121-150 Days							0.00%	0.00%	1.36%	1.96%
151-180 Days							0.00%	0.00%	0.00%	2.09%
181+ Days							0.00%	0.00%	0.00%	0.00%
Current - 90 Days							100.00%	98.72%	97.13%	92.19%
91-180 Days							0.00%	1.28%	2.87%	7.81%



Personal Loans - La Hipotecaria El Salvador Migration Analysis (2016 Vintage)

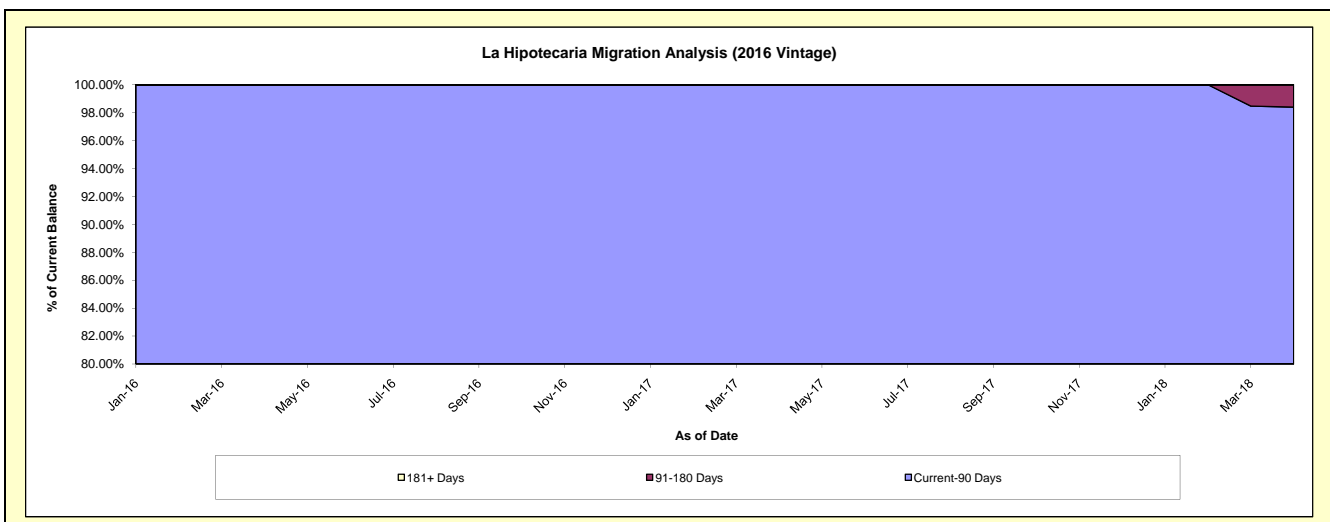
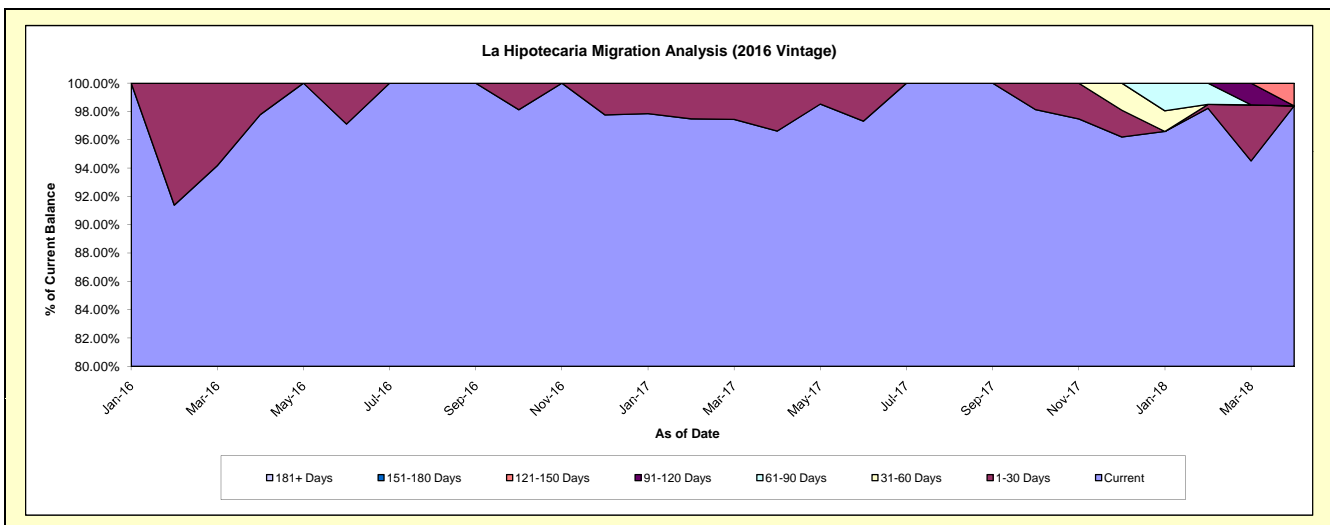
Delinquency Status (\$ of Current Balance)

Data Cutoff: 4/30/2018

Current Portfolio Balance	-	-	-	-	-	-	-	-	-	483,126.98	1,152,319.07	868,901.77
										Apr-16	Apr-17	Apr-18
Current										472,431.27	1,113,358.37	854,965.36
1-30 Days										10,695.71	38,960.70	-
31-60 Days										-	-	-
61-90 Days										-	-	-
91-120 Days										-	-	-
121-150 Days										-	-	13,936.41
151-180 Days										-	-	-
181+ Days										-	-	-

Delinquency Status (% of Current Balance)

Current Portfolio Balance	-	-	-	-	-	-	-	-	-	483,126.98	1,152,319.07	868,901.77
										Apr-16	Apr-17	Apr-18
Current										97.79%	96.62%	98.40%
1-30 Days										2.21%	3.38%	0.00%
31-60 Days										0.00%	0.00%	0.00%
61-90 Days										0.00%	0.00%	0.00%
91-120 Days										0.00%	0.00%	0.00%
121-150 Days										0.00%	0.00%	1.60%
151-180 Days										0.00%	0.00%	0.00%
181+ Days										0.00%	0.00%	0.00%
Current - 90 Days										100.00%	100.00%	98.40%
91-180 Days										0.00%	0.00%	1.60%



Personal Loans - La Hipotecaria El Salvador Migration Analysis (2017 Vintage)

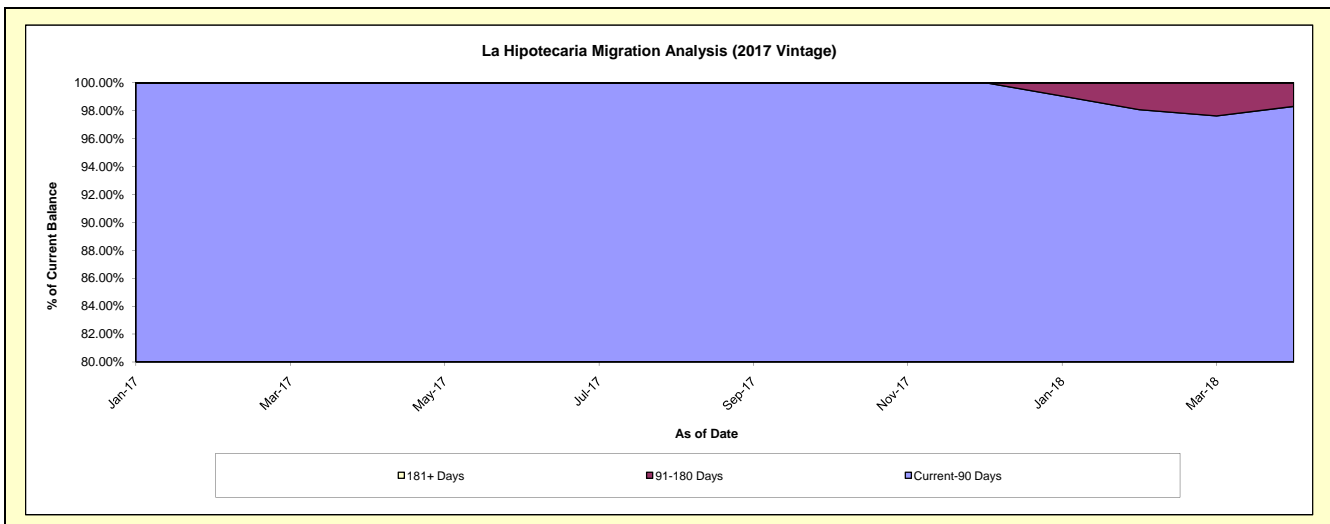
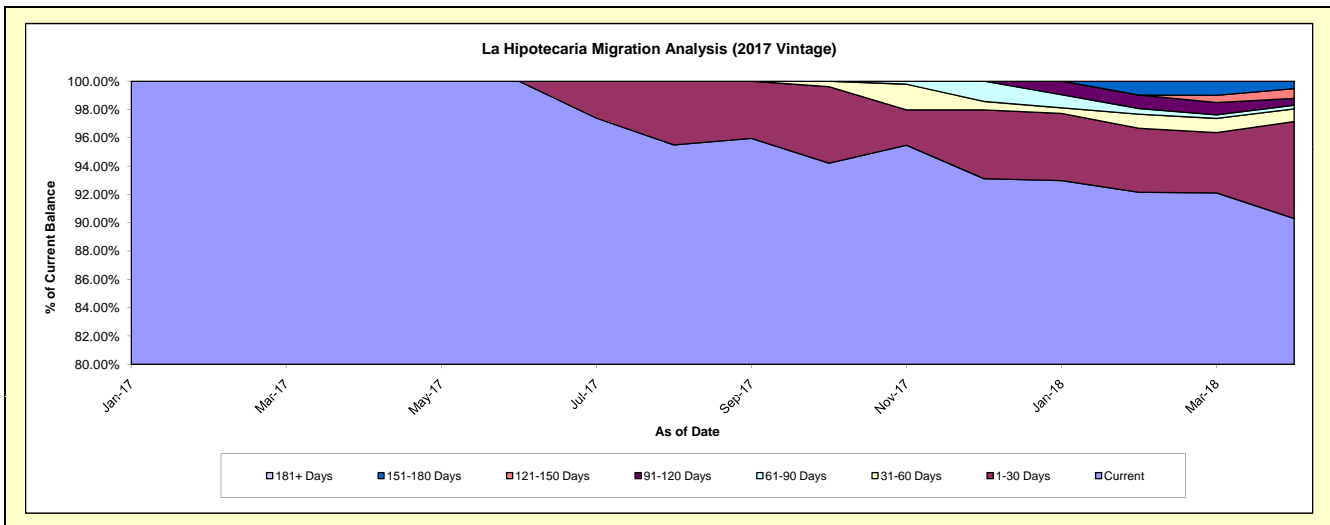
Delinquency Status (\$ of Current Balance)

Data Cutoff: 4/30/2018

Current Portfolio Balance										461,953.22	1,882,698.56
										Apr-17	Apr-18
Current										461,953.22	1,700,139.46
1-30 Days										-	128,871.79
31-60 Days										-	16,825.02
61-90 Days										-	4,938.19
91-120 Days										-	9,021.59
121-150 Days										-	12,965.92
151-180 Days										-	9,936.59
181+ Days										-	-

Delinquency Status (% of Current Balance)

Current Portfolio Balance										461,953.22	1,882,698.56
										Apr-17	Apr-18
Current										100.00%	90.30%
1-30 Days										0.00%	6.85%
31-60 Days										0.00%	0.89%
61-90 Days										0.00%	0.26%
91-120 Days										0.00%	0.48%
121-150 Days										0.00%	0.69%
151-180 Days										0.00%	0.53%
181+ Days										0.00%	0.00%
Current - 90 Days										100.00%	98.30%
91-180 Days										0.00%	1.70%



Personal Loans - La Hipotecaria El Salvador Migration Analysis (2018 Vintage)

Delinquency Status (\$ of Current Balance)

Data Cutoff: 4/30/2018

Current Portfolio Balance											973,151.69
											Apr-18
Current											968,151.69
1-30 Days											5,000.00
31-60 Days											-
61-90 Days											-
91-120 Days											-
121-150 Days											-
151-180 Days											-
181+ Days											-

Delinquency Status (% of Current Balance)

Current Portfolio Balance											973,151.69
											Apr-18
Current											99.49%
1-30 Days											0.51%
31-60 Days											0.00%
61-90 Days											0.00%
91-120 Days											0.00%
121-150 Days											0.00%
151-180 Days											0.00%
181+ Days											0.00%
Current - 90 Days											100.00%
91-180 Days											0.00%

