



## Migration Analysis for La Hipotecaria S.A. de C.V El Salvador

### Personal Loans July 2018

An analysis of historical loan payment data was used to compile a migration analysis of delinquency by annual vintage. Delinquencies for each vintage were grouped into the following buckets; Current, 1-30, 31-60, 61-90, 91-120, 121-150, 151-180, and 180+. Results are provided in graphical and tabular form. The cutoff date is 7/31/2018.

# Personal Loans - La Hipotecaria El Salvador Migration Analysis (All Vintages)

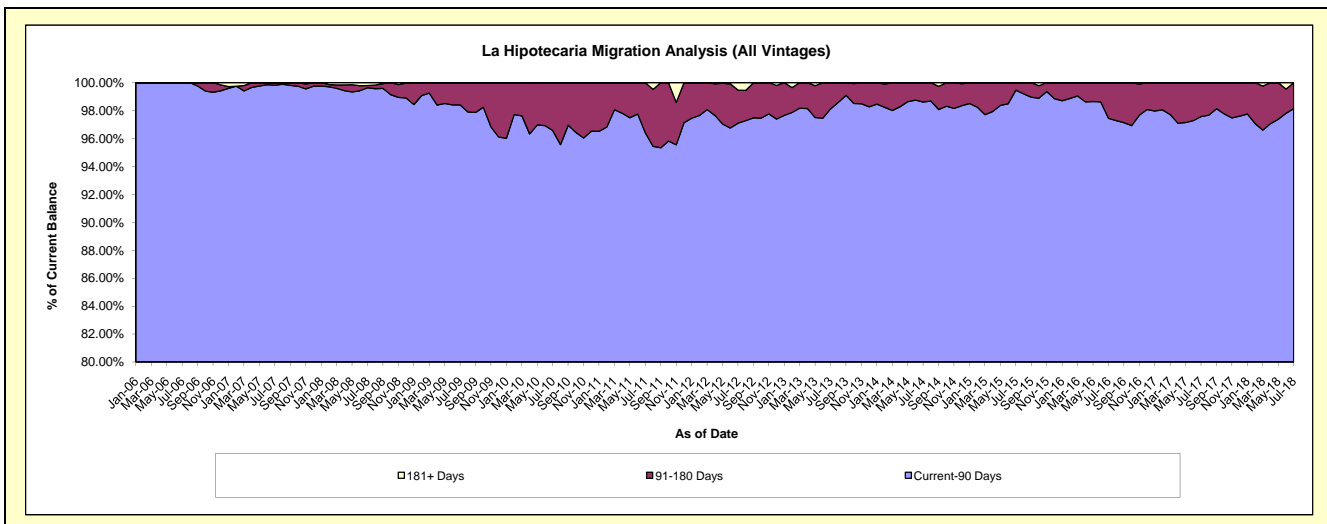
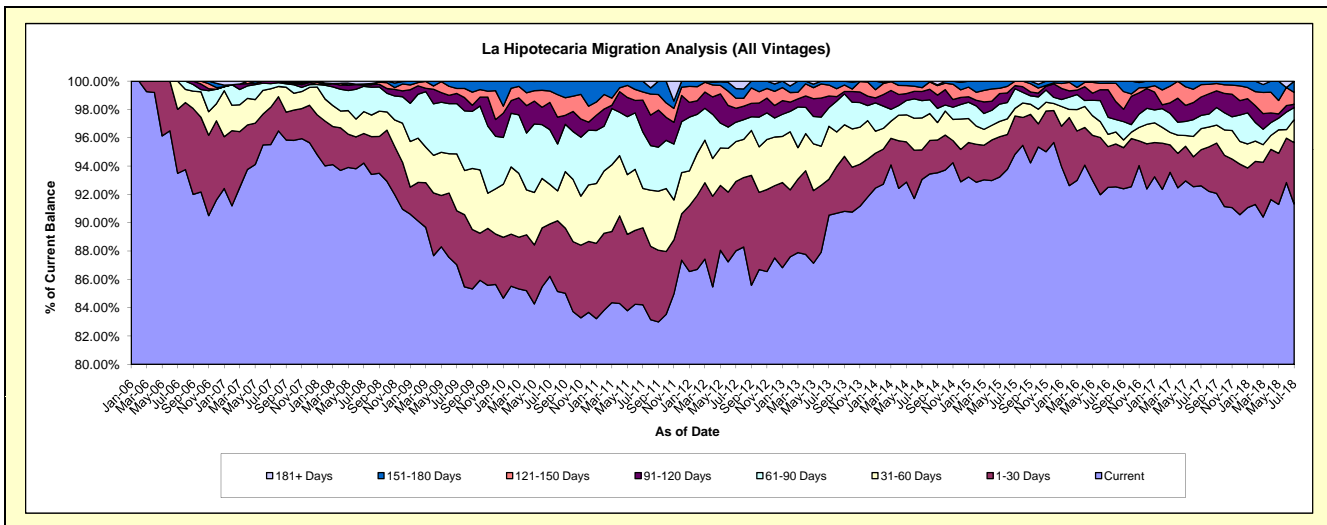
## Delinquency Status (\$ of Current Balance)

Data Cutoff: 7/31/2018

Current Portfolio Balance	8,313,367.23	7,080,253.13	5,184,150.56	4,746,274.40	5,062,546.31	5,591,684.06	5,162,289.68	4,759,413.67	4,935,061.18	5,954,947.03
	Jul-09	Jul-10	Jul-11	Jul-12	Jul-13	Jul-14	Jul-15	Jul-16	Jul-17	Jul-18
Current	7,235,127.33	6,104,569.80	4,365,775.15	4,177,586.63	4,583,644.45	5,203,797.76	4,895,910.07	4,402,741.17	4,570,395.38	5,437,829.12
1-30 Days	317,521.09	261,472.25	281,763.20	232,389.50	128,307.78	116,657.13	139,579.54	136,665.49	125,552.30	258,644.50
31-60 Days	333,473.44	198,137.40	143,906.36	134,018.10	189,420.73	126,102.89	27,807.54	41,337.20	73,940.69	96,689.02
61-90 Days	295,118.85	273,325.08	206,533.40	64,819.26	66,645.72	68,215.79	71,394.06	57,543.25	45,859.51	50,989.68
91-120 Days	59,918.41	136,486.22	116,953.18	46,773.09	41,400.06	36,360.36	11,255.97	92,389.08	64,010.29	13,290.27
121-150 Days	29,646.97	56,943.86	29,602.68	33,739.98	39,226.91	14,751.23	16,342.50	21,740.95	43,255.23	50,304.10
151-180 Days	42,561.14	49,318.52	39,616.59	31,840.60	13,900.66	25,798.90	-	6,996.53	12,047.78	47,200.34
181+ Days	-	-	-	25,107.24	-	-	-	-	-	-

## Delinquency Status (% of Current Balance)

Current Portfolio Balance	8,313,367.23	7,080,253.13	5,184,150.56	4,746,274.40	5,062,546.31	5,591,684.06	5,162,289.68	4,759,413.67	4,935,061.18	5,954,947.03
	Jul-09	Jul-10	Jul-11	Jul-12	Jul-13	Jul-14	Jul-15	Jul-16	Jul-17	Jul-18
Current	87.03%	86.22%	84.21%	88.02%	90.54%	93.06%	94.84%	92.51%	92.61%	91.32%
1-30 Days	3.82%	3.69%	5.44%	4.90%	2.53%	2.09%	2.70%	2.87%	2.54%	4.34%
31-60 Days	4.01%	2.80%	2.78%	2.82%	3.74%	2.26%	0.54%	0.87%	1.50%	1.62%
61-90 Days	3.55%	3.86%	3.98%	1.37%	1.32%	1.22%	1.38%	1.21%	0.93%	0.86%
91-120 Days	0.72%	1.93%	2.26%	0.99%	0.82%	0.65%	0.22%	1.94%	1.30%	0.22%
121-150 Days	0.36%	0.80%	0.57%	0.71%	0.77%	0.26%	0.32%	0.46%	0.88%	0.84%
151-180 Days	0.51%	0.70%	0.76%	0.67%	0.27%	0.46%	0.00%	0.15%	0.24%	0.79%
181+ Days	0.00%	0.00%	0.00%	0.53%	0.00%	0.00%	0.00%	0.00%	0.00%	0.00%
Current - 90 Days	98.41%	96.57%	96.41%	97.10%	98.13%	98.62%	99.47%	97.46%	97.58%	98.14%
91-180 Days	1.59%	3.43%	3.59%	2.37%	1.87%	1.38%	0.53%	2.54%	2.42%	1.86%



## Personal Loans - La Hipotecaria El Salvador Migration Analysis (2006 Vintage)

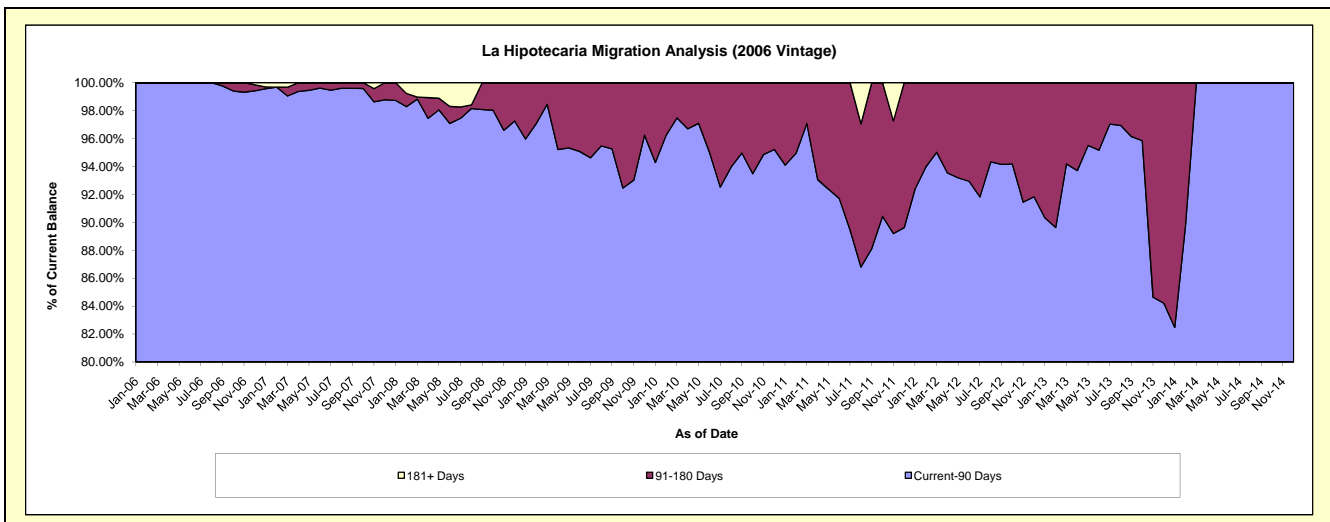
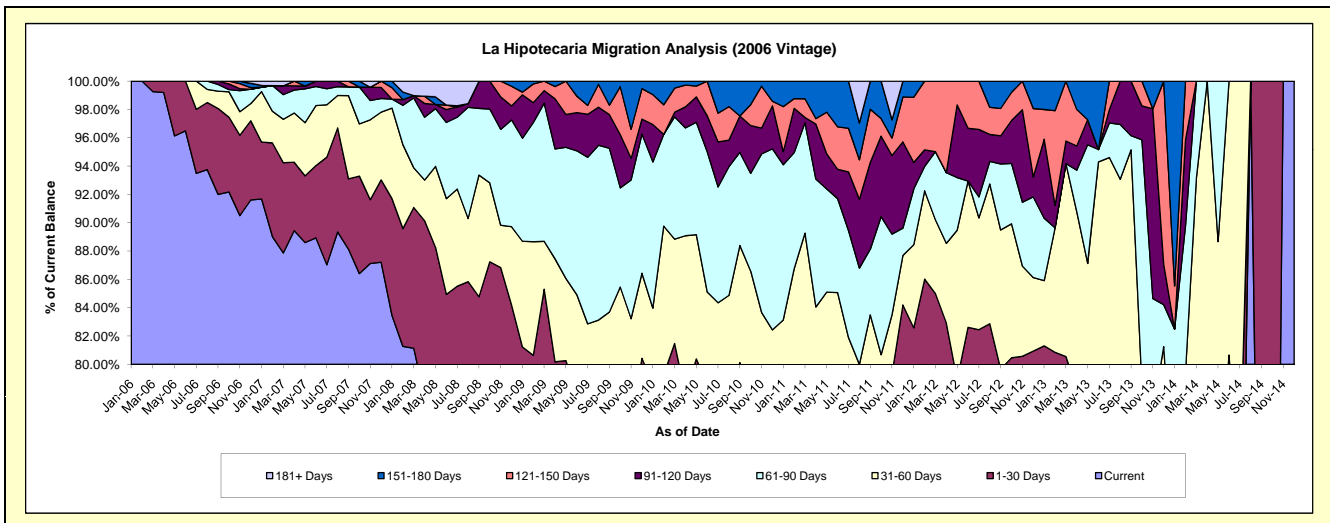
### Delinquency Status (\$ of Current Balance)

Data Cutoff: 7/31/2018

Current Portfolio Balance	709,008.97	456,801.31	264,331.77	133,197.10	50,189.10	3,731.41	#N/A	#N/A	#N/A	#N/A
	Jul-09	Jul-10	Jul-11	Jul-12	Jul-13	Jul-14	Jul-15	Jul-16	Jul-17	Jul-18
Current	496,634.24	306,670.11	182,416.84	99,810.57	31,886.63	2,036.27	#N/A	#N/A	#N/A	#N/A
1-30 Days	28,584.61	44,105.75	15,855.58	10,011.57	5,917.41	641.70	#N/A	#N/A	#N/A	#N/A
31-60 Days	62,248.36	34,534.11	18,202.97	10,513.86	9,677.00	1,053.44	#N/A	#N/A	#N/A	#N/A
61-90 Days	83,424.47	37,347.52	19,968.82	1,972.27	1,223.33	-	#N/A	#N/A	#N/A	#N/A
91-120 Days	21,550.75	14,532.91	10,946.55	6,349.64	480.86	-	#N/A	#N/A	#N/A	#N/A
121-150 Days	4,454.62	9,286.82	8,156.14	4,539.19	1,003.87	-	#N/A	#N/A	#N/A	#N/A
151-180 Days	12,111.92	10,324.09	8,784.87	-	-	-	#N/A	#N/A	#N/A	#N/A
181+ Days	-	-	-	-	-	-	#N/A	#N/A	#N/A	#N/A

### Delinquency Status (% of Current Balance)

Current Portfolio Balance	709,008.97	456,801.31	264,331.77	133,197.10	50,189.10	3,731.41	#N/A	#N/A	#N/A	#N/A
	Jul-09	Jul-10	Jul-11	Jul-12	Jul-13	Jul-14	Jul-15	Jul-16	Jul-17	Jul-18
Current	70.05%	67.13%	69.01%	74.93%	63.53%	54.57%	#N/A	#N/A	#N/A	#N/A
1-30 Days	4.03%	9.66%	6.00%	7.52%	11.79%	17.20%	#N/A	#N/A	#N/A	#N/A
31-60 Days	8.78%	7.56%	6.89%	7.89%	19.28%	28.23%	#N/A	#N/A	#N/A	#N/A
61-90 Days	11.77%	8.18%	7.55%	1.48%	2.44%	0.00%	#N/A	#N/A	#N/A	#N/A
91-120 Days	3.04%	3.18%	4.14%	4.77%	0.96%	0.00%	#N/A	#N/A	#N/A	#N/A
121-150 Days	0.63%	2.03%	3.09%	3.41%	2.00%	0.00%	#N/A	#N/A	#N/A	#N/A
151-180 Days	1.71%	2.26%	3.32%	0.00%	0.00%	0.00%	#N/A	#N/A	#N/A	#N/A
181+ Days	0.00%	0.00%	0.00%	0.00%	0.00%	0.00%	#N/A	#N/A	#N/A	#N/A
Current - 90 Days	94.62%	92.53%	89.45%	91.83%	97.04%	100.00%	#N/A	#N/A	#N/A	#N/A
91-180 Days	5.38%	7.47%	10.55%	8.17%	2.96%	0.00%	#N/A	#N/A	#N/A	#N/A



# Personal Loans - La Hipotecaria El Salvador Migration Analysis (2007 Vintage)

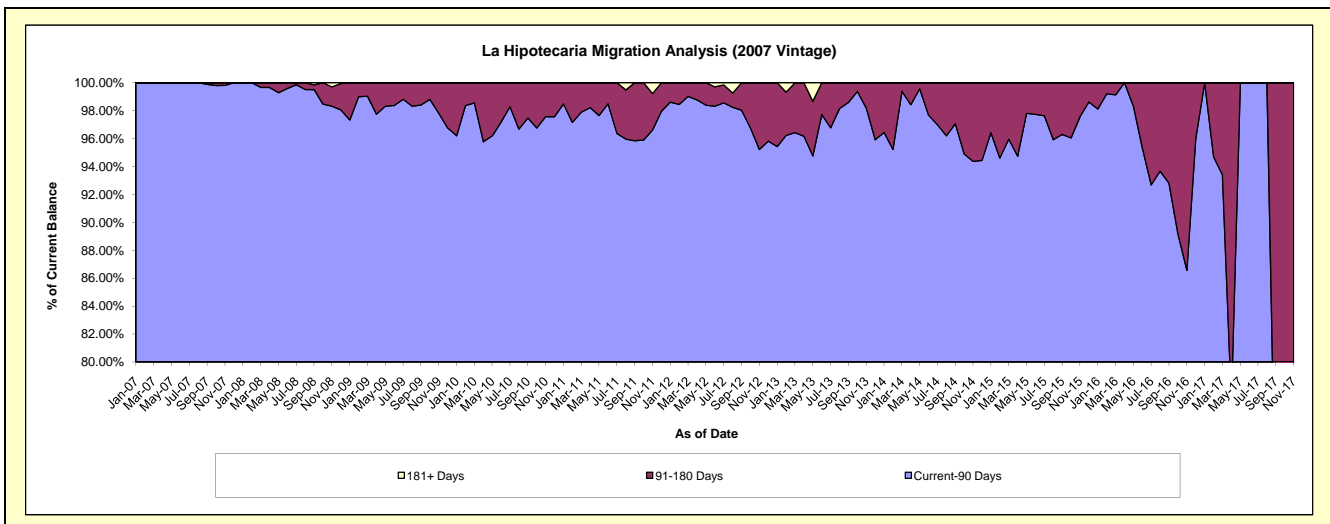
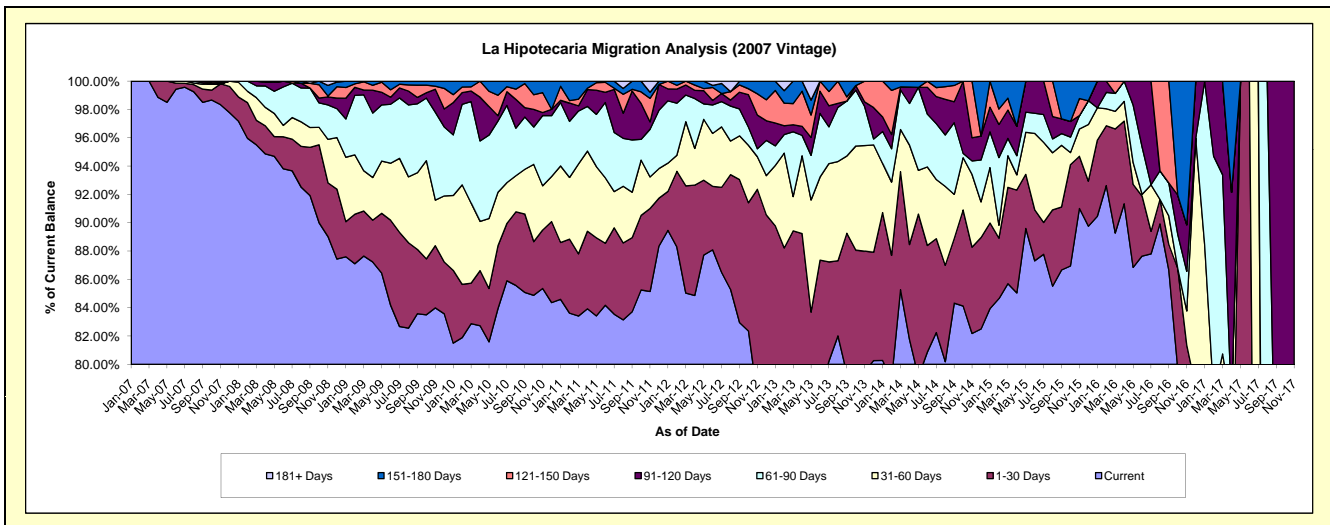
## Delinquency Status (\$ of Current Balance)

Data Cutoff: 7/31/2018

Current Portfolio Balance	3,422,576.51	2,654,166.27	1,825,445.92	1,223,579.84	739,393.55	418,694.40	179,798.96	48,016.83	2,779.78	#N/A
	Jul-09	Jul-10	Jul-11	Jul-12	Jul-13	Jul-14	Jul-15	Jul-16	Jul-17	Jul-18
Current	2,829,380.66	2,280,066.35	1,524,994.03	1,058,452.98	593,276.13	344,345.61	157,813.25	42,158.70	659.15	#N/A
1-30 Days	227,831.51	107,572.69	111,386.67	73,395.45	51,712.14	27,762.26	4,039.83	767.23	145.82	#N/A
31-60 Days	178,793.02	76,223.42	46,719.07	52,215.22	51,360.49	17,510.24	10,165.78	1,578.39	1,974.81	#N/A
61-90 Days	146,014.96	144,791.17	76,133.08	21,851.46	19,195.55	16,481.63	3,534.97	-	-	#N/A
91-120 Days	24,225.01	25,715.88	55,600.92	6,979.90	11,012.43	8,011.55	4,245.13	3,512.51	-	#N/A
121-150 Days	8,997.33	9,499.25	1,487.45	-	7,420.40	2,692.18	-	-	-	#N/A
151-180 Days	7,334.02	10,297.51	9,124.70	8,744.74	5,416.41	1,890.93	-	-	-	#N/A
181+ Days	-	-	-	1,940.09	-	-	-	-	-	#N/A

## Delinquency Status (% of Current Balance)

Current Portfolio Balance	3,422,576.51	2,654,166.27	1,825,445.92	1,223,579.84	739,393.55	418,694.40	179,798.96	48,016.83	2,779.78	#N/A
	Jul-09	Jul-10	Jul-11	Jul-12	Jul-13	Jul-14	Jul-15	Jul-16	Jul-17	Jul-18
Current	82.67%	85.91%	83.54%	86.50%	80.24%	82.24%	87.77%	87.80%	23.71%	#N/A
1-30 Days	6.66%	4.05%	6.10%	6.00%	6.99%	6.63%	2.25%	1.60%	5.25%	#N/A
31-60 Days	5.22%	2.87%	2.56%	4.27%	6.95%	4.18%	5.65%	3.29%	71.04%	#N/A
61-90 Days	4.27%	5.46%	4.17%	1.79%	2.60%	3.94%	1.97%	0.00%	0.00%	#N/A
91-120 Days	0.71%	0.97%	3.05%	0.57%	1.49%	1.91%	2.36%	7.32%	0.00%	#N/A
121-150 Days	0.26%	0.36%	0.08%	0.00%	1.00%	0.64%	0.00%	0.00%	0.00%	#N/A
151-180 Days	0.21%	0.39%	0.50%	0.71%	0.73%	0.45%	0.00%	0.00%	0.00%	#N/A
181+ Days	0.00%	0.00%	0.00%	0.16%	0.00%	0.00%	0.00%	0.00%	0.00%	#N/A
Current - 90 Days	98.82%	98.29%	96.37%	98.56%	96.77%	96.99%	97.64%	92.68%	100.00%	#N/A
91-180 Days	1.18%	1.71%	3.63%	1.29%	3.23%	3.01%	2.36%	7.32%	0.00%	#N/A



# Personal Loans - La Hipotecaria El Salvador Migration Analysis (2008 Vintage)

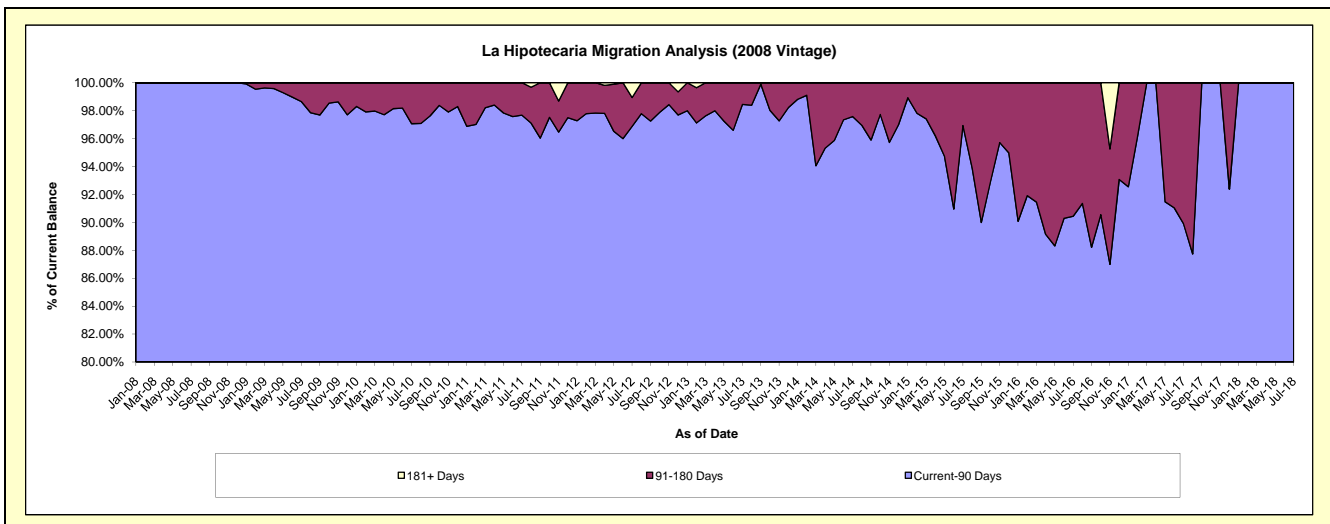
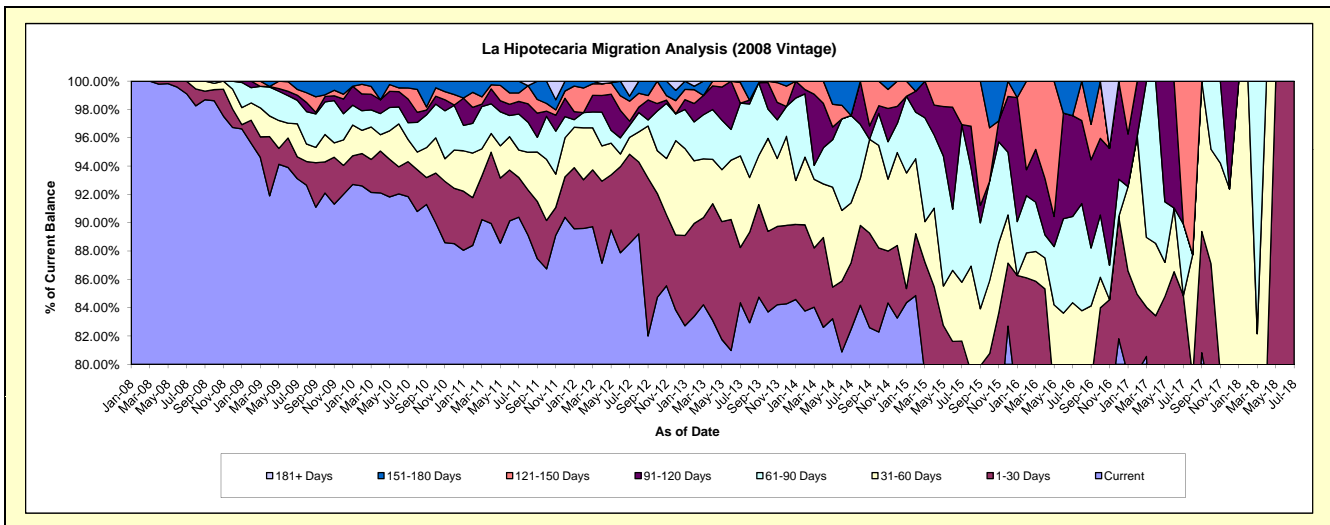
## Delinquency Status (\$ of Current Balance)

Data Cutoff: 7/31/2018

Current Portfolio Balance	3,959,559.54	3,203,133.06	2,347,448.92	1,700,447.98	1,138,529.87	712,244.51	355,243.75	139,516.16	37,276.09	653.09
	Jul-09	Jul-10	Jul-11	Jul-12	Jul-13	Jul-14	Jul-15	Jul-16	Jul-17	Jul-18
Current	3,686,890.22	2,942,113.68	2,121,935.43	1,505,596.98	960,372.62	587,406.66	277,612.91	105,375.76	27,050.55	391.84
1-30 Days	61,104.97	78,855.67	65,816.40	107,123.58	44,377.46	33,553.10	12,434.98	-	4,580.72	261.25
31-60 Days	92,432.06	50,202.27	45,575.80	20,365.98	73,702.86	30,097.46	14,756.08	12,320.47	-	-
61-90 Days	65,679.42	38,046.22	59,567.61	14,373.17	42,400.94	43,946.94	39,540.09	8,488.28	1,885.69	-
91-120 Days	14,142.65	53,510.52	21,094.09	4,903.44	-	-	-	9,933.61	-	-
121-150 Days	16,195.02	24,892.24	13,988.28	24,070.09	16,625.11	-	10,899.69	-	3,759.13	-
151-180 Days	23,115.20	15,512.46	19,471.31	5,987.94	1,050.88	17,240.35	-	3,398.04	-	-
181+ Days	-	-	-	18,026.80	-	-	-	-	-	-

## Delinquency Status (% of Current Balance)

Current Portfolio Balance	3,959,559.54	3,203,133.06	2,347,448.92	1,700,447.98	1,138,529.87	712,244.51	355,243.75	139,516.16	37,276.09	653.09
	Jul-09	Jul-10	Jul-11	Jul-12	Jul-13	Jul-14	Jul-15	Jul-16	Jul-17	Jul-18
Current	93.11%	91.85%	90.39%	88.54%	84.35%	82.47%	78.15%	75.53%	72.57%	60.00%
1-30 Days	1.54%	2.46%	2.80%	6.30%	3.90%	4.71%	3.50%	0.00%	12.29%	40.00%
31-60 Days	2.33%	1.57%	1.94%	1.20%	6.47%	4.23%	4.15%	8.83%	0.00%	0.00%
61-90 Days	1.66%	1.19%	2.54%	0.85%	3.72%	6.17%	11.13%	6.08%	5.06%	0.00%
91-120 Days	0.36%	1.67%	0.90%	0.29%	0.00%	0.00%	0.00%	7.12%	0.00%	0.00%
121-150 Days	0.41%	0.78%	0.60%	1.42%	1.46%	0.00%	3.07%	0.00%	10.08%	0.00%
151-180 Days	0.58%	0.48%	0.83%	0.35%	0.09%	2.42%	0.00%	2.44%	0.00%	0.00%
181+ Days	0.00%	0.00%	0.00%	1.06%	0.00%	0.00%	0.00%	0.00%	0.00%	0.00%
Current - 90 Days	98.65%	97.07%	97.68%	96.88%	98.45%	97.58%	96.93%	90.44%	89.92%	100.00%
91-180 Days	1.35%	2.93%	2.32%	2.06%	1.55%	2.42%	3.07%	9.56%	10.08%	0.00%



## Personal Loans - La Hipotecaria El Salvador Migration Analysis (2009 Vintage)

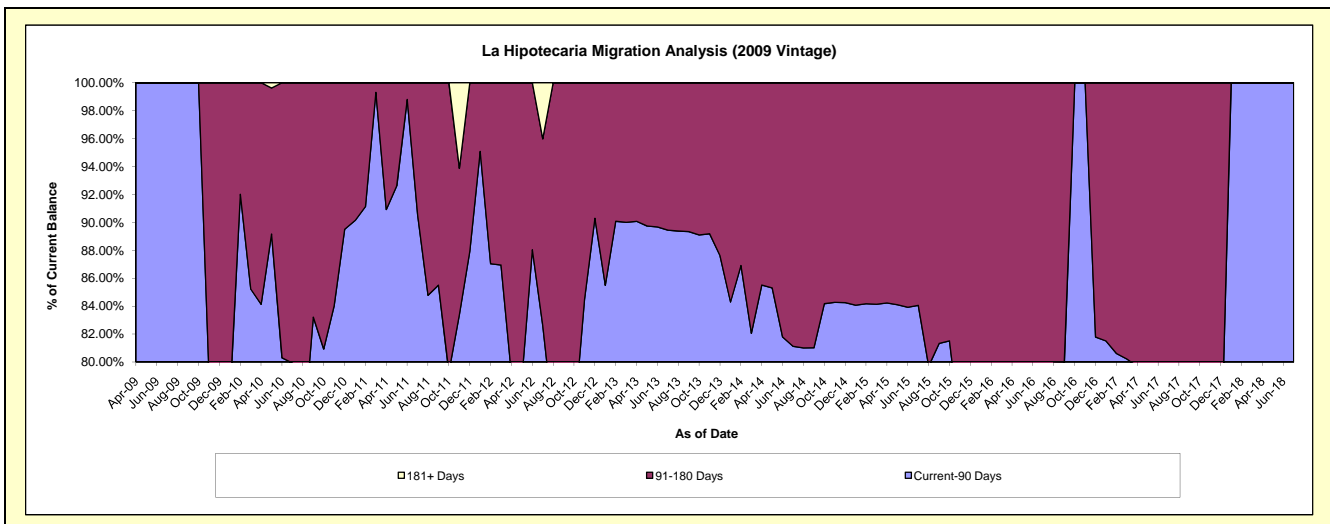
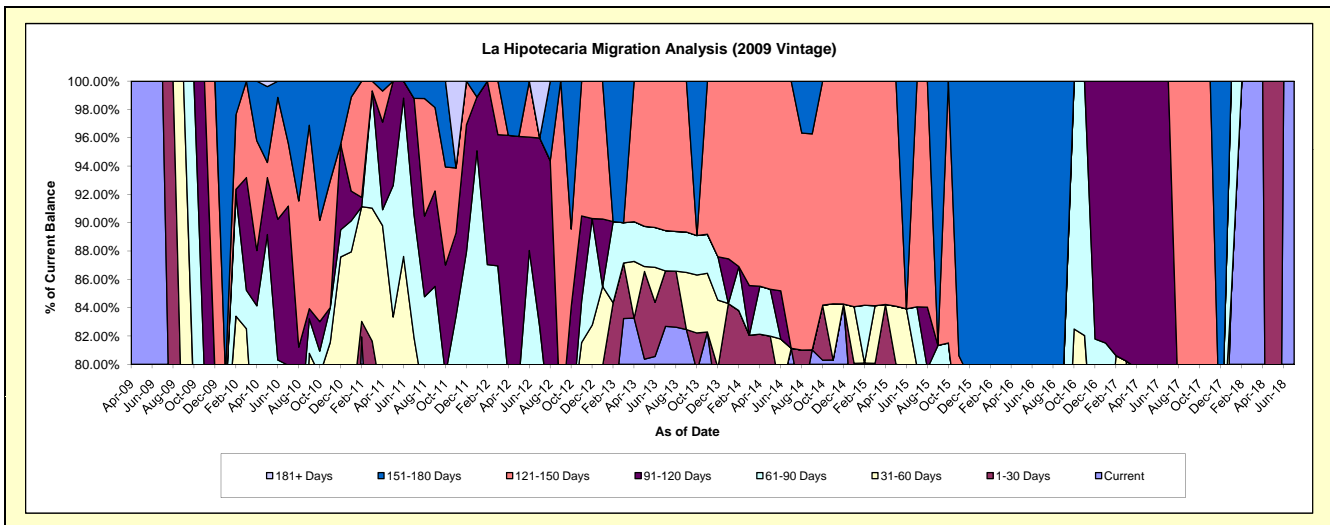
### Delinquency Status (\$ of Current Balance)

Data Cutoff: 7/31/2018

Current Portfolio Balance	222,222.21	299,821.50	184,265.05	128,040.40	85,054.58	47,438.67	34,152.09	17,421.58	10,155.34	532.86
	Jul-09	Jul-10	Jul-11	Jul-12	Jul-13	Jul-14	Jul-15	Jul-16	Jul-17	Jul-18
Current	222,222.21	156,786.16	123,245.49	77,348.02	70,323.95	38,488.47	24,998.34	11,555.93	815.19	532.86
1-30 Days	-	30,938.14	12,350.04	6,231.75	3,333.47	-	2,267.16	-	7,072.99	-
31-60 Days	-	4,327.73	15,250.05	9,852.91	-	-	-	-	-	-
61-90 Days	-	47,592.55	15,991.97	12,350.72	2,420.22	-	1,443.78	2,267.16	-	-
91-120 Days	-	33,726.91	15,191.79	17,116.65	-	-	-	-	2,267.16	-
121-150 Days	-	13,265.55	-	-	8,976.94	8,950.20	5,442.81	-	-	-
151-180 Days	-	13,184.46	2,235.71	-	-	-	-	3,598.49	-	-
181+ Days	-	-	-	5,140.35	-	-	-	-	-	-

### Delinquency Status (% of Current Balance)

Current Portfolio Balance	222,222.21	299,821.50	184,265.05	128,040.40	85,054.58	47,438.67	34,152.09	17,421.58	10,155.34	532.86
	Jul-09	Jul-10	Jul-11	Jul-12	Jul-13	Jul-14	Jul-15	Jul-16	Jul-17	Jul-18
Current	100.00%	52.29%	66.88%	60.41%	82.68%	81.13%	73.20%	66.33%	8.03%	100.00%
1-30 Days	0.00%	10.32%	6.70%	4.87%	3.92%	0.00%	6.64%	0.00%	69.65%	0.00%
31-60 Days	0.00%	1.44%	8.28%	7.70%	0.00%	0.00%	0.00%	0.00%	0.00%	0.00%
61-90 Days	0.00%	15.87%	8.68%	9.65%	2.85%	0.00%	4.23%	13.01%	0.00%	0.00%
91-120 Days	0.00%	11.25%	8.24%	13.37%	0.00%	0.00%	0.00%	0.00%	22.32%	0.00%
121-150 Days	0.00%	4.42%	0.00%	0.00%	10.55%	18.87%	15.94%	0.00%	0.00%	0.00%
151-180 Days	0.00%	4.40%	1.21%	0.00%	0.00%	0.00%	0.00%	20.66%	0.00%	0.00%
181+ Days	0.00%	0.00%	0.00%	4.01%	0.00%	0.00%	0.00%	0.00%	0.00%	0.00%
Current - 90 Days	100.00%	79.93%	90.54%	82.62%	89.45%	81.13%	84.06%	79.34%	77.68%	100.00%
91-180 Days	0.00%	20.07%	9.46%	13.37%	10.55%	18.87%	15.94%	20.66%	22.32%	0.00%



## Personal Loans - La Hipotecaria El Salvador Migration Analysis (2010 Vintage)

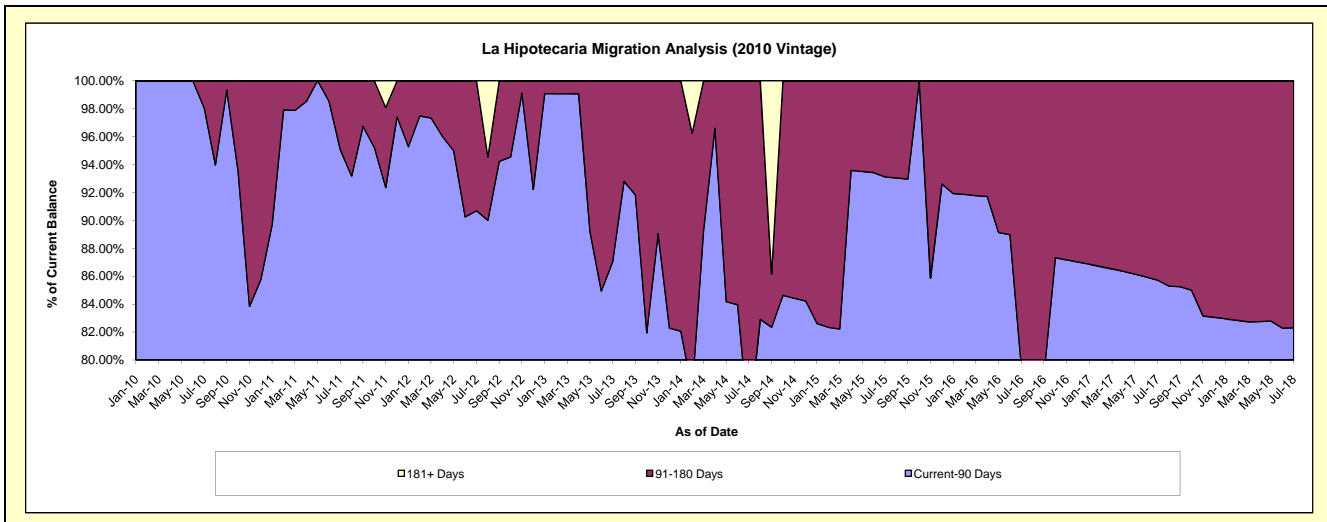
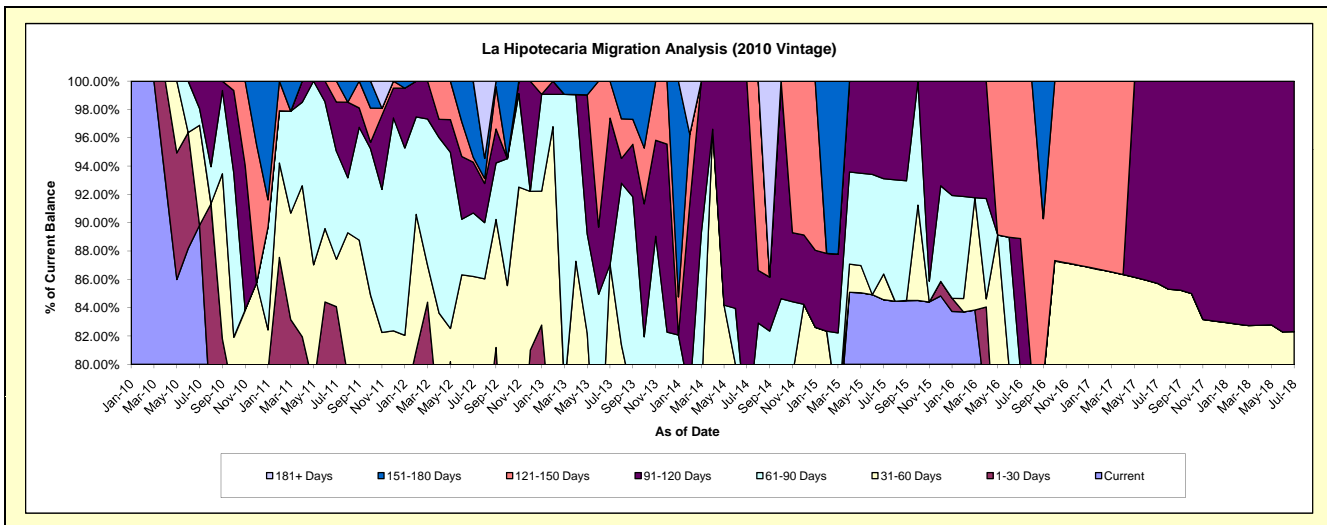
### Delinquency Status (\$ of Current Balance)

Data Cutoff: 7/31/2018

Current Portfolio Balance	-	466,330.99	405,844.60	318,635.87	199,149.44	114,429.05	55,499.24	31,405.20	21,534.25	14,836.29
	Jul-10	Jul-11	Jul-12	Jul-13	Jul-14	Jul-15	Jul-16	Jul-17	Jul-18	
Current	418,933.50	264,863.54	202,262.48	107,194.89	69,482.30	46,932.97	22,235.90	16,819.65	11,771.10	
1-30 Days	-	76,354.51	34,953.69	13,564.01	11,979.44	-	-	-	-	
31-60 Days	32,849.87	13,563.99	37,485.98	52,594.91	4,618.50	1,004.21	2,738.95	1,640.87	440.50	
61-90 Days	5,547.62	30,971.92	14,271.64	-	-	3,740.18	-	-	-	
91-120 Days	9,000.00	14,119.83	11,423.46	20,595.04	28,348.81	3,821.88	2,939.46	3,073.73	2,624.69	
121-150 Days	-	5,970.81	1,130.70	5,200.59	-	-	3,490.89	-	-	
151-180 Days	-	-	17,107.92	-	-	-	-	-	-	
181+ Days	-	-	-	-	-	-	-	-	-	

### Delinquency Status (% of Current Balance)

Current Portfolio Balance	-	466,330.99	405,844.60	318,635.87	199,149.44	114,429.05	55,499.24	31,405.20	21,534.25	14,836.29
	Jul-10	Jul-11	Jul-12	Jul-13	Jul-14	Jul-15	Jul-16	Jul-17	Jul-18	
Current	89.84%	65.26%	63.48%	53.83%	60.72%	84.57%	70.80%	78.11%	79.34%	
1-30 Days	0.00%	18.81%	10.97%	6.81%	10.47%	0.00%	0.00%	0.00%	0.00%	
31-60 Days	7.04%	3.34%	11.76%	26.41%	4.04%	1.81%	8.72%	7.62%	2.97%	
61-90 Days	1.19%	7.63%	4.48%	0.00%	0.00%	6.74%	0.00%	0.00%	0.00%	
91-120 Days	1.93%	3.48%	3.59%	10.34%	24.77%	6.89%	9.36%	14.27%	17.69%	
121-150 Days	0.00%	1.47%	0.35%	2.61%	0.00%	0.00%	11.12%	0.00%	0.00%	
151-180 Days	0.00%	0.00%	5.37%	0.00%	0.00%	0.00%	0.00%	0.00%	0.00%	
181+ Days	0.00%	0.00%	0.00%	0.00%	0.00%	0.00%	0.00%	0.00%	0.00%	
Current - 90 Days	98.07%	95.05%	90.69%	87.05%	75.23%	93.11%	79.52%	85.73%	82.31%	
91-180 Days	1.93%	4.95%	9.31%	12.95%	24.77%	6.89%	20.48%	14.27%	17.69%	



## Personal Loans - La Hipotecaria El Salvador Migration Analysis (2011 Vintage)

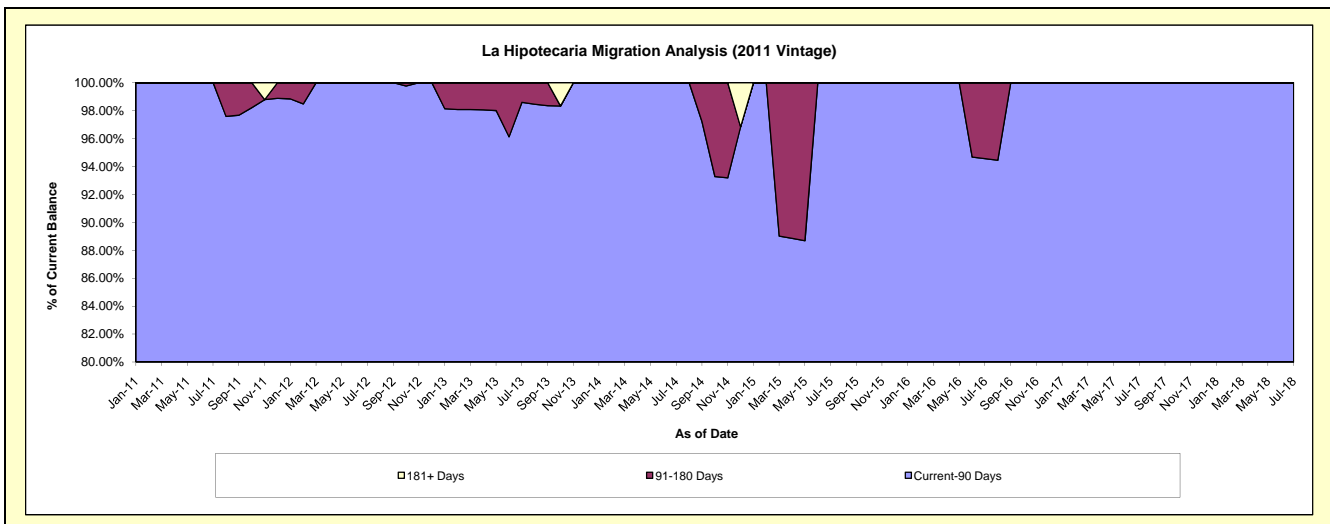
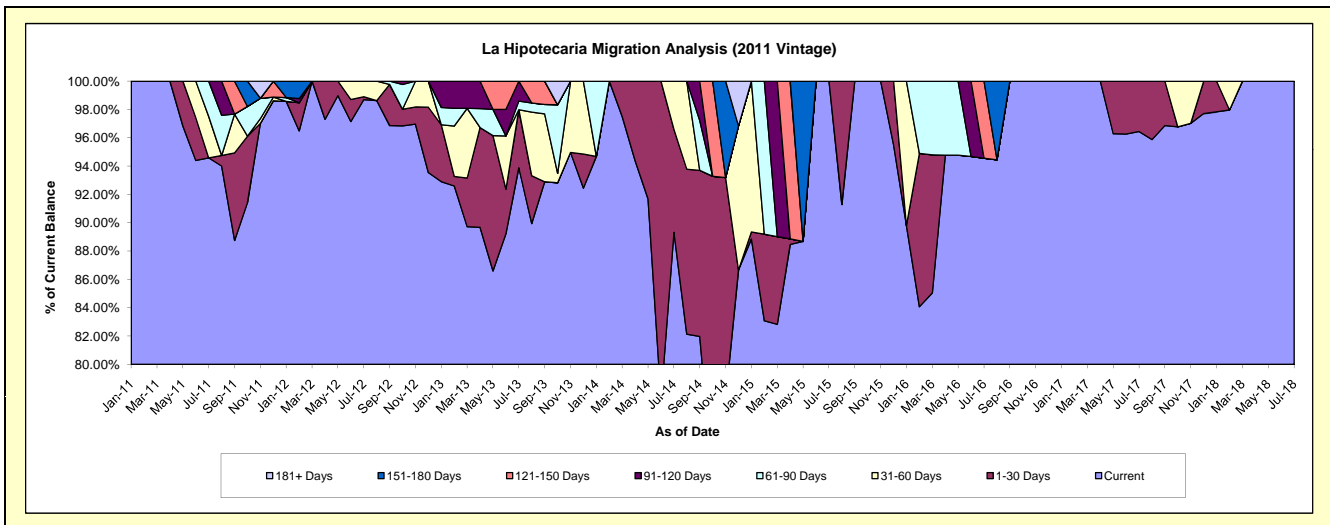
### Delinquency Status (\$ of Current Balance)

Data Cutoff: 7/31/2018

Current Portfolio Balance	-	-	156,814.30	325,090.56	229,427.07	148,547.75	97,233.30	67,413.80	45,779.56	26,543.58
	Jul-11	Jul-12	Jul-13	Jul-14	Jul-15	Jul-16	Jul-17	Jul-18		
Current	148,319.82	320,832.95	215,398.43	132,690.54	97,233.30	63,747.37	44,150.18	26,543.58		
1-30 Days	-	673.46	9,403.29	10,797.40	-	-	1,629.38	-		
31-60 Days	4,594.48	3,584.15	-	5,059.81	-	-	-	-		
61-90 Days	3,900.00	-	1,405.68	-	-	-	-	-		
91-120 Days	-	-	3,219.67	-	-	-	-	-		
121-150 Days	-	-	-	-	-	3,666.43	-	-		
151-180 Days	-	-	-	-	-	-	-	-		
181+ Days	-	-	-	-	-	-	-	-		

### Delinquency Status (% of Current Balance)

Current Portfolio Balance	-	-	156,814.30	325,090.56	229,427.07	148,547.75	97,233.30	67,413.80	45,779.56	26,543.58
	Jul-11	Jul-12	Jul-13	Jul-14	Jul-15	Jul-16	Jul-17	Jul-18		
Current	94.58%	98.69%	93.89%	89.33%	100.00%	94.56%	96.44%	100.00%		
1-30 Days	0.00%	0.21%	4.10%	7.27%	0.00%	0.00%	3.56%	0.00%		
31-60 Days	2.93%	1.10%	0.00%	3.41%	0.00%	0.00%	0.00%	0.00%		
61-90 Days	2.49%	0.00%	0.61%	0.00%	0.00%	0.00%	0.00%	0.00%		
91-120 Days	0.00%	0.00%	1.40%	0.00%	0.00%	0.00%	0.00%	0.00%		
121-150 Days	0.00%	0.00%	0.00%	0.00%	0.00%	5.44%	0.00%	0.00%		
151-180 Days	0.00%	0.00%	0.00%	0.00%	0.00%	0.00%	0.00%	0.00%		
181+ Days	0.00%	0.00%	0.00%	0.00%	0.00%	0.00%	0.00%	0.00%		
Current - 90 Days	100.00%	100.00%	98.60%	100.00%	100.00%	94.56%	100.00%	100.00%		
91-180 Days	0.00%	0.00%	1.40%	0.00%	0.00%	5.44%	0.00%	0.00%		





## Personal Loans - La Hipotecaria El Salvador Migration Analysis (2012 Vintage)

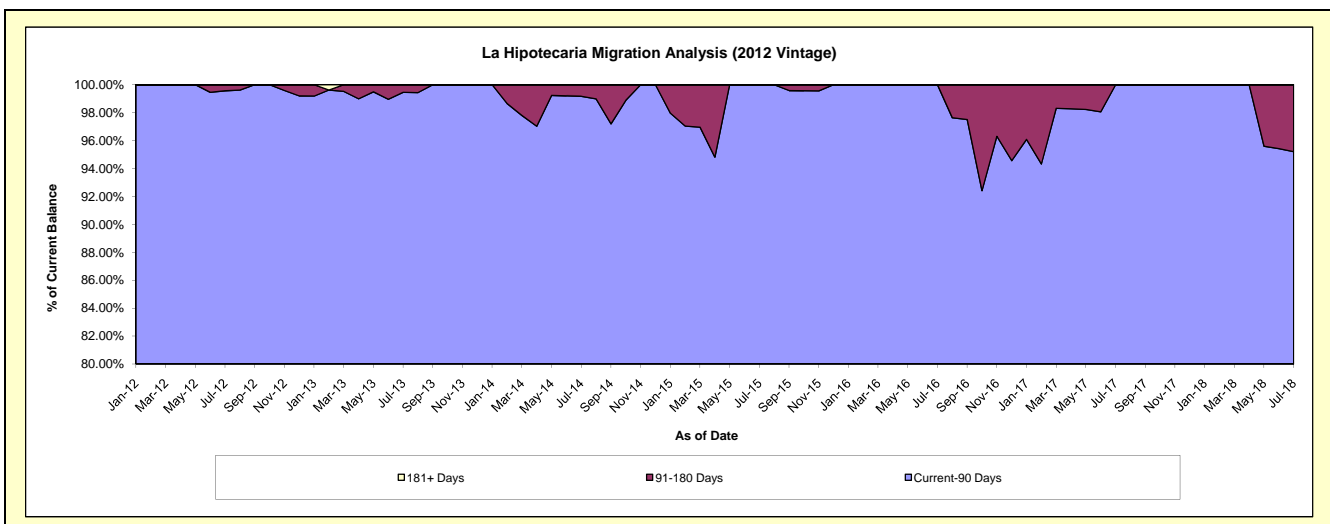
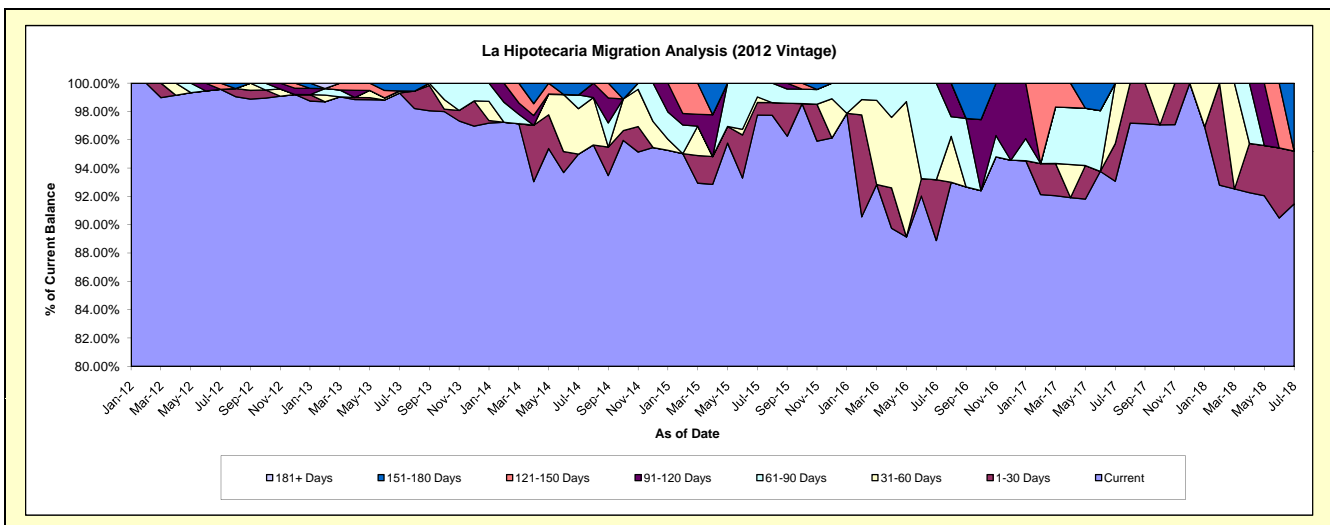
### Delinquency Status (\$ of Current Balance)

Data Cutoff: 7/31/2018

Current Portfolio Balance	-	-	-	917,282.65	1,361,094.64	803,997.88	478,581.07	296,098.57	174,052.50	104,007.54
	Jul-12	Jul-13	Jul-14	Jul-15	Jul-16	Jul-17	Jul-18			
Current	913,282.65	1,351,575.80	763,695.24	467,783.61	263,185.45	161,996.70	95,137.07			
1-30 Days	-	-	-	4,257.06	12,727.89	4,607.88	3,881.30			
31-60 Days	-	2,085.47	25,847.80	1,881.47	-	7,447.92	-			
61-90 Days	-	-	7,787.22	4,658.93	20,185.23	-	-			
91-120 Days	-	-	-	-	-	-	-			
121-150 Days	4,000.00	-	-	-	-	-	-			
151-180 Days	-	7,433.37	6,667.62	-	-	-	4,989.17			
181+ Days	-	-	-	-	-	-	-			

### Delinquency Status (% of Current Balance)

Current Portfolio Balance	-	-	-	917,282.65	1,361,094.64	803,997.88	478,581.07	296,098.57	174,052.50	104,007.54
	Jul-12	Jul-13	Jul-14	Jul-15	Jul-16	Jul-17	Jul-18			
Current	99.56%	99.30%	94.99%	97.74%	88.88%	93.07%	91.47%			
1-30 Days	0.00%	0.00%	0.00%	0.89%	4.30%	2.65%	3.73%			
31-60 Days	0.00%	0.15%	3.21%	0.39%	0.00%	4.28%	0.00%			
61-90 Days	0.00%	0.00%	0.97%	0.97%	6.82%	0.00%	0.00%			
91-120 Days	0.00%	0.00%	0.00%	0.00%	0.00%	0.00%	0.00%			
121-150 Days	0.44%	0.00%	0.00%	0.00%	0.00%	0.00%	0.00%			
151-180 Days	0.00%	0.55%	0.83%	0.00%	0.00%	0.00%	4.80%			
181+ Days	0.00%	0.00%	0.00%	0.00%	0.00%	0.00%	0.00%			
Current - 90 Days	99.56%	99.45%	99.17%	100.00%	100.00%	100.00%	95.20%			
91-180 Days	0.44%	0.55%	0.83%	0.00%	0.00%	0.00%	4.80%			



## Personal Loans - La Hipotecaria El Salvador Migration Analysis (2013 Vintage)

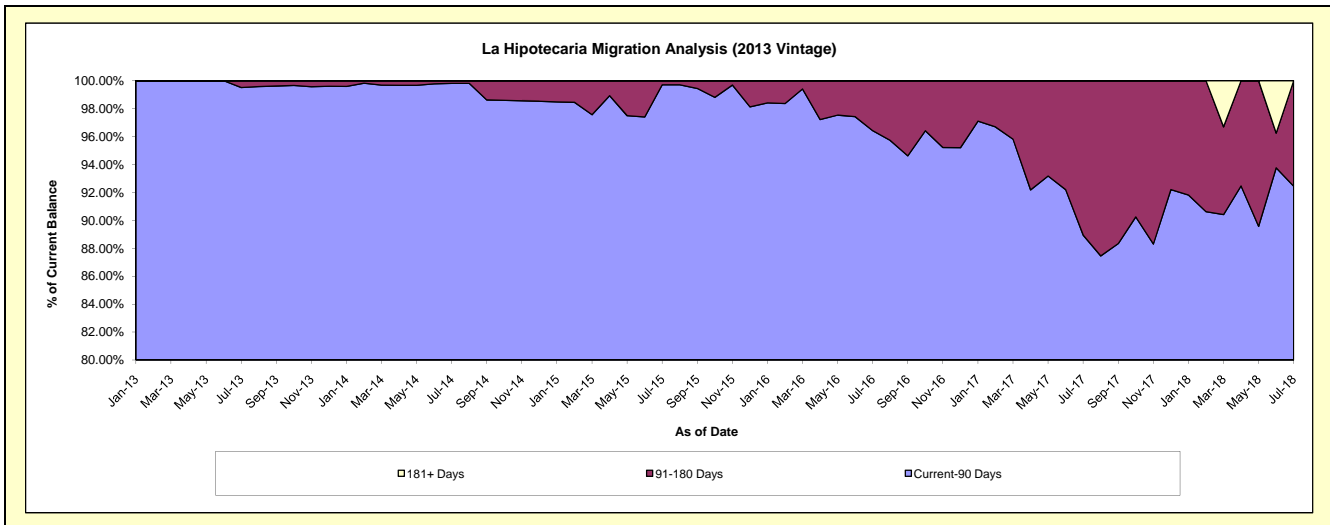
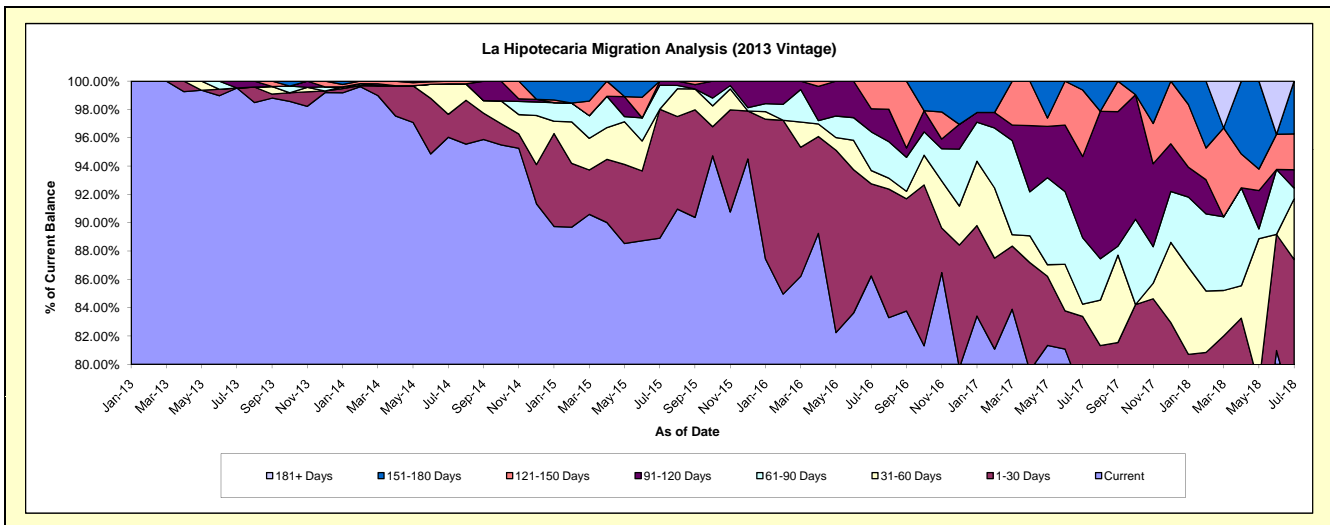
### Delinquency Status (\$ of Current Balance)

Data Cutoff: 7/31/2018

Current Portfolio Balance	-	-	-	-	1,259,708.06	1,643,591.56	1,093,548.82	748,904.68	535,143.54	319,985.50
					Jul-13	Jul-14	Jul-15	Jul-16	Jul-17	Jul-18
Current					1,253,616.00	1,578,469.44	972,273.81	645,887.20	416,623.12	244,977.21
1-30 Days					-	26,646.30	99,609.94	48,701.54	29,580.41	34,682.72
31-60 Days					-	35,366.97	-	7,037.57	4,651.30	13,791.75
61-90 Days					-	-	18,476.11	20,476.07	25,110.29	2,347.13
91-120 Days					6,092.06	-	3,188.96	12,218.67	30,698.15	4,182.12
121-150 Days					-	3,108.85	-	14,583.63	25,140.42	8,075.99
151-180 Days					-	-	-	-	3,339.85	11,928.58
181+ Days					-	-	-	-	-	-

### Delinquency Status (% of Current Balance)

Current Portfolio Balance	-	-	-	-	1,259,708.06	1,643,591.56	1,093,548.82	748,904.68	535,143.54	319,985.50
					Jul-13	Jul-14	Jul-15	Jul-16	Jul-17	Jul-18
Current					99.52%	96.04%	88.91%	86.24%	77.85%	76.56%
1-30 Days					0.00%	1.62%	9.11%	6.50%	5.53%	10.84%
31-60 Days					0.00%	2.15%	0.00%	0.94%	0.87%	4.31%
61-90 Days					0.00%	0.00%	1.69%	2.73%	4.69%	0.73%
91-120 Days					0.48%	0.00%	0.29%	1.63%	5.74%	1.31%
121-150 Days					0.00%	0.19%	0.00%	1.95%	4.70%	2.52%
151-180 Days					0.00%	0.00%	0.00%	0.00%	0.62%	3.73%
181+ Days					0.00%	0.00%	0.00%	0.00%	0.00%	0.00%
Current - 90 Days					99.52%	99.81%	99.71%	96.42%	88.94%	92.44%
91-180 Days					0.48%	0.19%	0.29%	3.58%	11.06%	7.56%



## Personal Loans - La Hipotecaria El Salvador Migration Analysis (2014 Vintage)

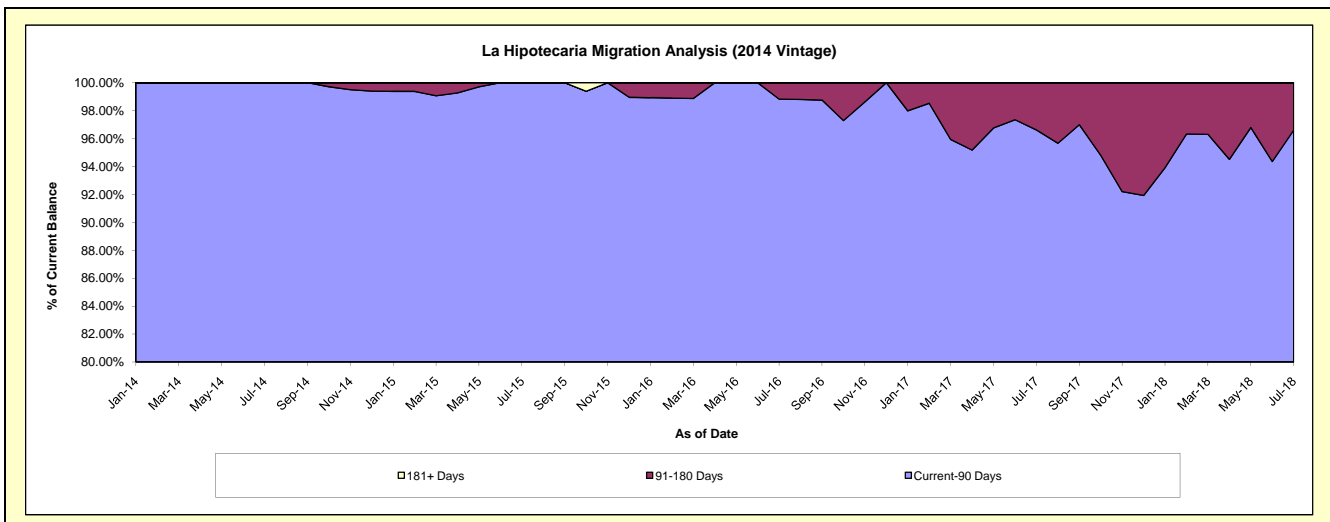
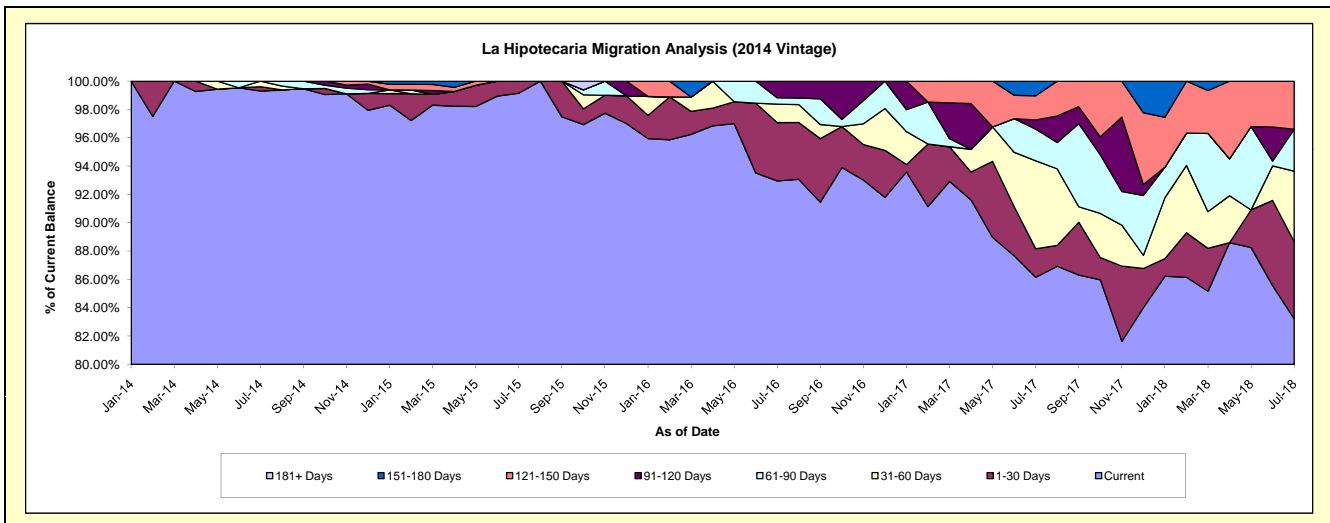
### Delinquency Status (\$ of Current Balance)

Data Cutoff: 7/31/2018

Current Portfolio Balance	-	-	-	-	-	1,699,008.83	1,991,094.51	1,356,888.28	842,930.80	505,777.91
						Jul-14	Jul-15	Jul-16	Jul-17	Jul-18
Current						1,687,183.23	1,974,123.94	1,261,332.36	726,145.19	420,883.40
1-30 Days						5,276.93	16,970.57	55,851.94	17,020.54	27,617.25
31-60 Days						6,548.67	-	17,661.82	52,384.96	25,149.60
61-90 Days						-	-	6,126.51	18,863.53	14,944.47
91-120 Days						-	-	15,915.65	5,452.97	-
121-150 Days						-	-	-	14,355.68	17,183.19
151-180 Days						-	-	-	8,707.93	-
181+ Days						-	-	-	-	-

### Delinquency Status (% of Current Balance)

Current Portfolio Balance	-	-	-	-	-	1,699,008.83	1,991,094.51	1,356,888.28	842,930.80	505,777.91
						Jul-14	Jul-15	Jul-16	Jul-17	Jul-18
Current						99.30%	99.15%	92.96%	86.15%	83.22%
1-30 Days						0.31%	0.85%	4.12%	2.02%	5.46%
31-60 Days						0.39%	0.00%	1.30%	6.21%	4.97%
61-90 Days						0.00%	0.00%	0.45%	2.24%	2.95%
91-120 Days						0.00%	0.00%	1.17%	0.65%	0.00%
121-150 Days						0.00%	0.00%	0.00%	1.70%	3.40%
151-180 Days						0.00%	0.00%	0.00%	1.03%	0.00%
181+ Days						0.00%	0.00%	0.00%	0.00%	0.00%
Current - 90 Days						100.00%	100.00%	98.83%	96.62%	96.60%
91-180 Days						0.00%	0.00%	1.17%	3.38%	3.40%



## Personal Loans - La Hipotecaria El Salvador Migration Analysis (2015 Vintage)

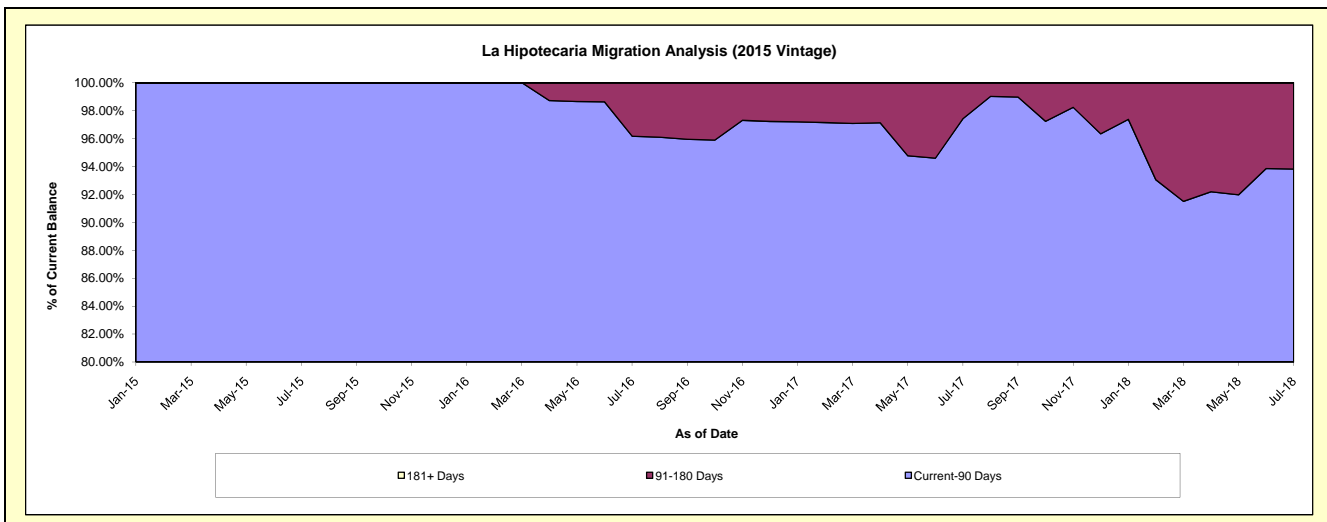
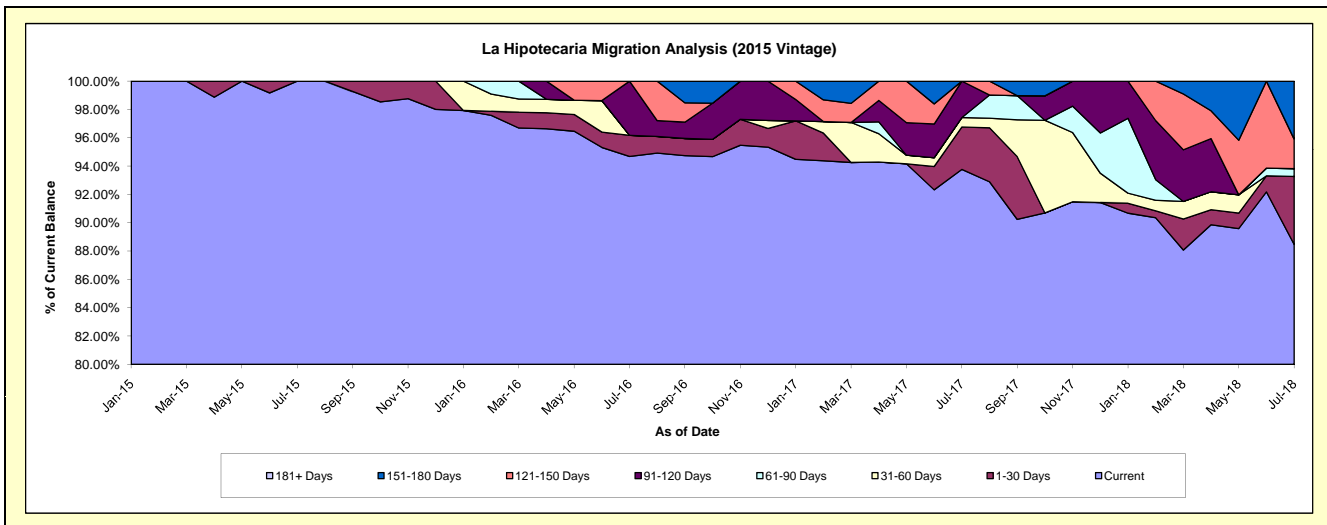
### Delinquency Status (\$ of Current Balance)

Data Cutoff: 7/31/2018

Current Portfolio Balance	-	-	-	-	-	-	-	877,137.94	1,250,418.74	875,887.92	641,536.34
								Jul-15	Jul-16	Jul-17	Jul-18
Current								877,137.94	1,183,932.67	821,295.68	567,563.50
1-30 Days								-	18,616.89	26,233.13	30,788.43
31-60 Days								-	-	5,840.83	-
61-90 Days								-	-	-	3,537.70
91-120 Days								-	47,869.18	22,518.28	-
121-150 Days								-	-	-	13,445.63
151-180 Days								-	-	-	26,201.08
181+ Days								-	-	-	-

### Delinquency Status (% of Current Balance)

Current Portfolio Balance	-	-	-	-	-	-	-	877,137.94	1,250,418.74	875,887.92	641,536.34
								Jul-15	Jul-16	Jul-17	Jul-18
Current								100.00%	94.68%	93.77%	88.47%
1-30 Days								0.00%	1.49%	3.00%	4.80%
31-60 Days								0.00%	0.00%	0.67%	0.00%
61-90 Days								0.00%	0.00%	0.00%	0.55%
91-120 Days								0.00%	3.83%	2.57%	0.00%
121-150 Days								0.00%	0.00%	0.00%	2.10%
151-180 Days								0.00%	0.00%	0.00%	4.08%
181+ Days								0.00%	0.00%	0.00%	0.00%
Current - 90 Days								100.00%	96.17%	97.43%	93.82%
91-180 Days								0.00%	3.83%	2.57%	6.18%



**Personal Loans - La Hipotecaria El Salvador Migration Analysis (2016 Vintage)**

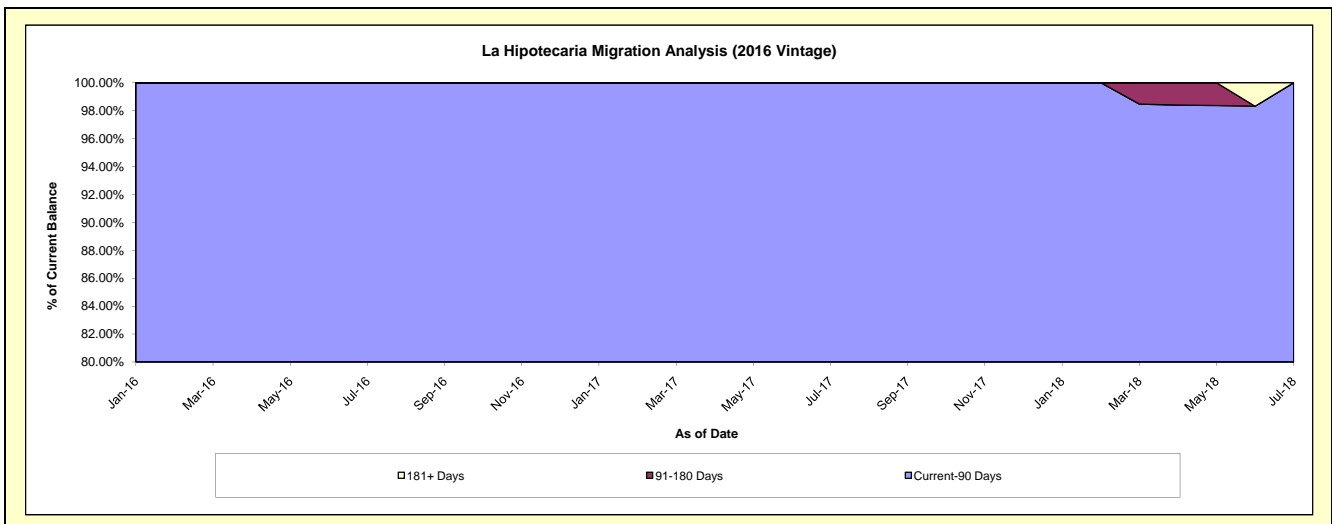
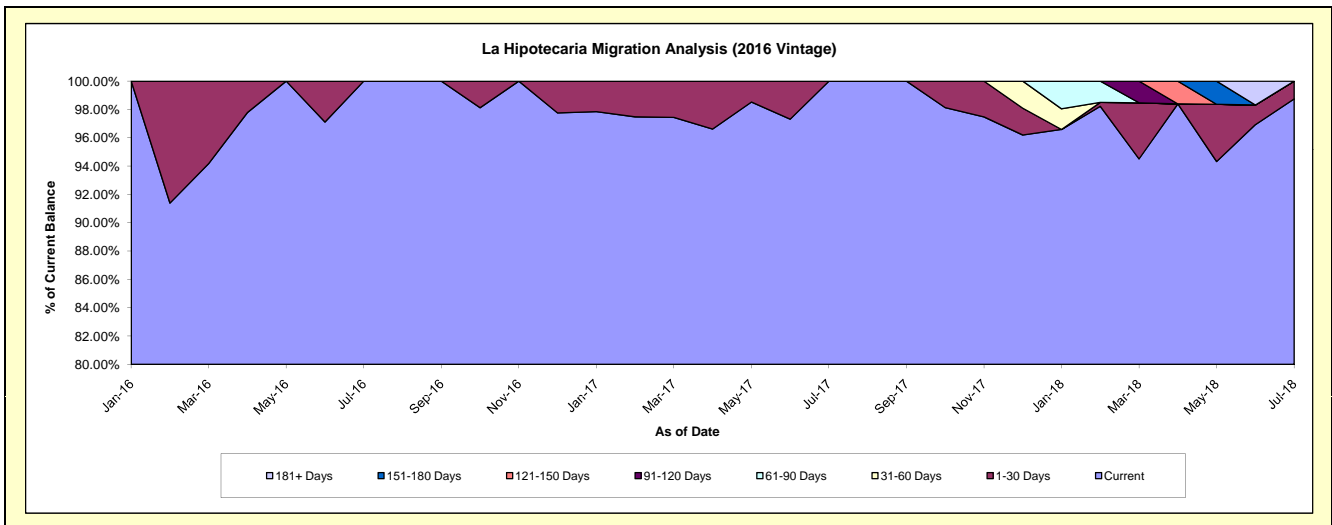
**Delinquency Status (\$ of Current Balance)**

Data Cutoff: 7/31/2018

Current Portfolio Balance	-	-	-	-	-	-	-	-	-	803,329.83	1,061,385.44	794,459.67
										Jul-16	Jul-17	Jul-18
Current										803,329.83	1,061,385.44	784,507.64
1-30 Days										-	-	9,952.03
31-60 Days										-	-	-
61-90 Days										-	-	-
91-120 Days										-	-	-
121-150 Days										-	-	-
151-180 Days										-	-	-
181+ Days										-	-	-

**Delinquency Status (% of Current Balance)**

Current Portfolio Balance	-	-	-	-	-	-	-	-	-	803,329.83	1,061,385.44	794,459.67
										Jul-16	Jul-17	Jul-18
Current										100.00%	100.00%	98.75%
1-30 Days										0.00%	0.00%	1.25%
31-60 Days										0.00%	0.00%	0.00%
61-90 Days										0.00%	0.00%	0.00%
91-120 Days										0.00%	0.00%	0.00%
121-150 Days										0.00%	0.00%	0.00%
151-180 Days										0.00%	0.00%	0.00%
181+ Days										0.00%	0.00%	0.00%
Current - 90 Days										100.00%	100.00%	100.00%
91-180 Days										0.00%	0.00%	0.00%



**Personal Loans - La Hipotecaria El Salvador Migration Analysis (2017 Vintage)**

**Delinquency Status (\$ of Current Balance)**

Data Cutoff: 7/31/2018

Current Portfolio Balance										1,328,135.96	1,682,572.95
										Jul-17	Jul-18
Current										1,293,454.53	1,521,787.27
1-30 Days										34,681.43	51,153.87
31-60 Days										-	57,307.17
61-90 Days										-	30,160.38
91-120 Days										-	6,483.46
121-150 Days										-	11,599.29
151-180 Days										-	4,081.51
181+ Days										-	-

**Delinquency Status (% of Current Balance)**

Current Portfolio Balance										1,328,135.96	1,682,572.95
										Jul-17	Jul-18
Current										97.39%	90.44%
1-30 Days										2.61%	3.04%
31-60 Days										0.00%	3.41%
61-90 Days										0.00%	1.79%
91-120 Days										0.00%	0.39%
121-150 Days										0.00%	0.69%
151-180 Days										0.00%	0.24%
181+ Days										0.00%	0.00%
Current - 90 Days										100.00%	98.68%
91-180 Days										0.00%	1.32%

