



Migration Analysis for La Hipotecaria S.A. de C.V El Salvador

Mortgages January 2019

An analysis of historical loan payment data was used to compile a migration analysis of delinquency by annual vintage. Delinquencies for each vintage were grouped into the following buckets; Current, 1-30, 31-60, 61-90, 91-120, 121-150, 151-180, and 180+. Results are provided in graphical and tabular form. The cutoff date is 1/31/2019.

Mortgages - La Hipotecaria El Salvador Migration Analysis (All Vintages)

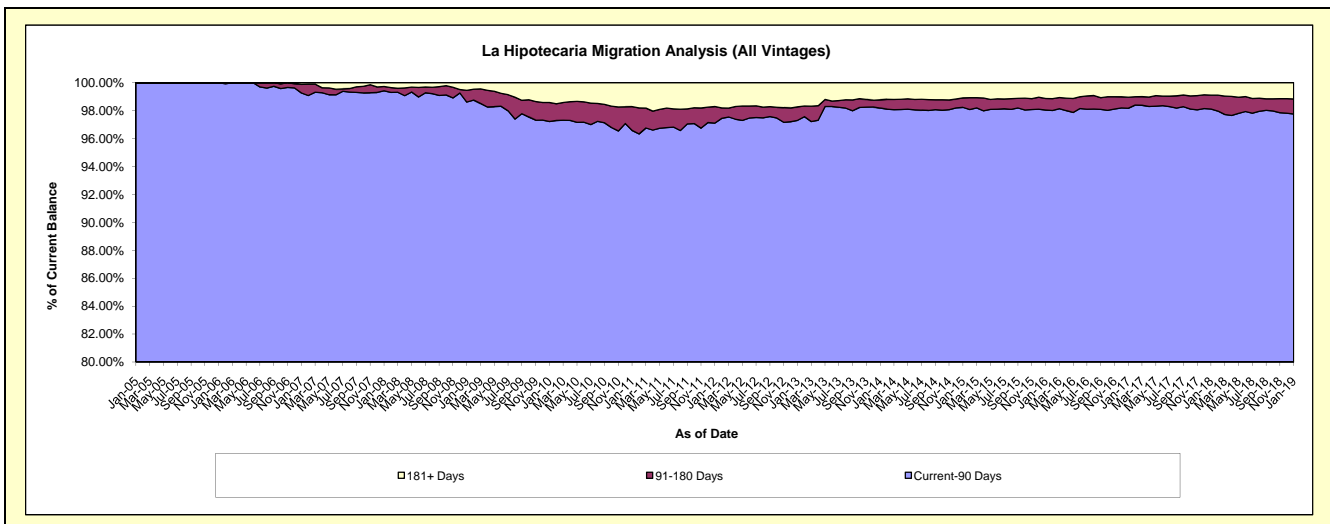
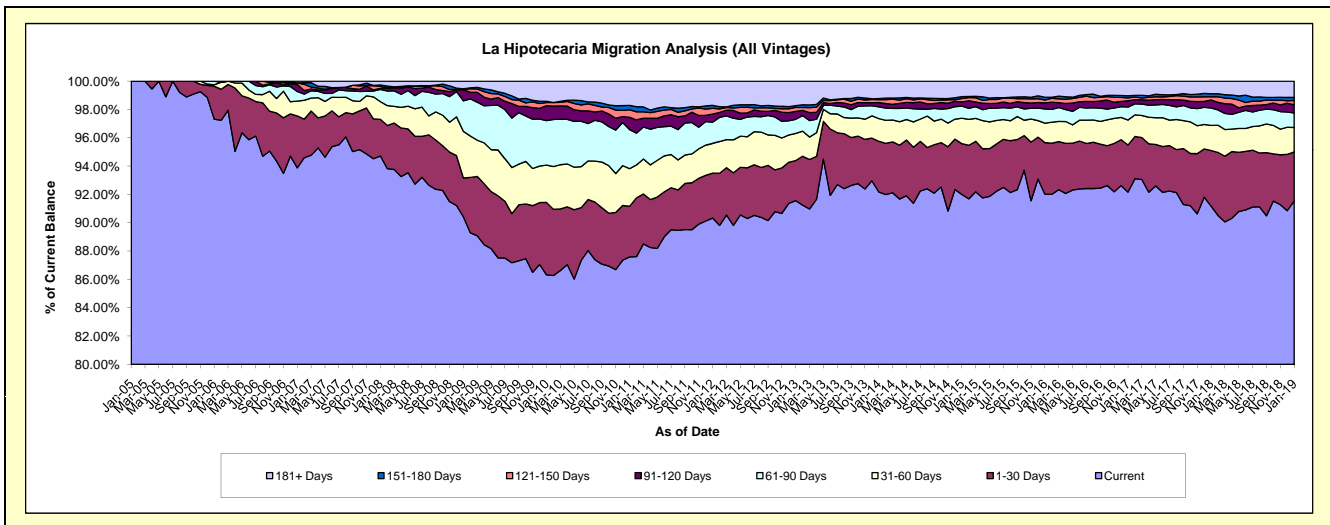
Delinquency Status (\$ of Current Balance)

Data Cutoff: 1/31/2019

Current Portfolio Balance	78,588,230.34	83,460,877.74	94,069,973.37	111,625,891.10	131,949,846.73	147,819,554.38	160,873,257.95	174,347,156.02	180,953,003.09	191,523,388.37
	Jan-10	Jan-11	Jan-12	Jan-13	Jan-14	Jan-15	Jan-16	Jan-17	Jan-18	Jan-19
Current	67,842,854.66	73,101,839.72	84,973,927.35	102,209,387.69	121,626,444.60	135,995,400.80	148,024,109.99	160,675,763.00	164,992,203.56	175,314,437.43
1-30 Days	4,014,310.90	2,984,273.72	2,990,722.53	3,154,780.07	4,724,697.81	5,294,831.18	5,868,561.80	5,818,068.29	7,105,855.27	6,629,387.47
31-60 Days	2,069,511.30	2,219,253.47	1,979,022.35	2,142,914.51	2,109,998.44	2,668,925.11	2,213,628.59	3,068,100.61	3,196,042.71	3,319,162.11
61-90 Days	2,476,582.43	2,300,905.17	1,404,411.84	1,111,544.60	1,090,352.71	1,253,524.63	1,616,684.56	1,597,060.01	2,240,125.37	1,962,729.83
91-120 Days	821,967.07	729,086.03	539,062.72	625,392.44	405,916.60	448,256.48	689,979.96	773,940.91	1,015,875.27	1,101,866.77
121-150 Days	174,456.46	439,909.38	385,254.21	313,520.97	278,702.72	353,525.79	323,379.47	354,732.44	407,173.08	589,630.89
151-180 Days	77,100.30	259,328.27	191,959.14	137,859.75	95,162.23	196,507.04	315,103.93	248,449.12	384,149.48	379,247.82
181+ Days	1,111,447.22	1,426,281.98	1,605,613.23	1,930,491.07	1,618,571.62	1,608,583.35	1,821,809.65	1,811,041.64	1,611,578.35	2,226,926.05

Delinquency Status (% of Current Balance)

Current Portfolio Balance	78,588,230.34	83,460,877.74	94,069,973.37	111,625,891.10	131,949,846.73	147,819,554.38	160,873,257.95	174,347,156.02	180,953,003.09	191,523,388.37
	Jan-10	Jan-11	Jan-12	Jan-13	Jan-14	Jan-15	Jan-16	Jan-17	Jan-18	Jan-19
Current	86.33%	87.59%	90.33%	91.56%	92.18%	92.00%	92.01%	92.16%	91.18%	91.54%
1-30 Days	5.11%	3.58%	3.18%	2.83%	3.58%	3.58%	3.65%	3.34%	3.93%	3.46%
31-60 Days	2.63%	2.66%	2.10%	1.92%	1.60%	1.81%	1.38%	1.76%	1.77%	1.73%
61-90 Days	3.15%	2.76%	1.49%	1.00%	0.83%	0.85%	1.00%	0.92%	1.24%	1.02%
91-120 Days	1.05%	0.87%	0.57%	0.56%	0.31%	0.30%	0.43%	0.44%	0.56%	0.58%
121-150 Days	0.22%	0.53%	0.41%	0.28%	0.21%	0.24%	0.20%	0.20%	0.23%	0.31%
151-180 Days	0.10%	0.31%	0.20%	0.12%	0.07%	0.13%	0.20%	0.14%	0.21%	0.20%
181+ Days	1.41%	1.71%	1.71%	1.73%	1.23%	1.09%	1.13%	1.04%	0.89%	1.16%
Current - 90 Days	97.22%	96.58%	97.11%	97.31%	98.18%	98.24%	98.04%	98.17%	98.11%	97.76%
91-180 Days	1.37%	1.71%	1.19%	0.96%	0.59%	0.68%	0.83%	0.79%	1.00%	1.08%



Mortgages - La Hipotecaria El Salvador Migration Analysis (2005 Vintage)

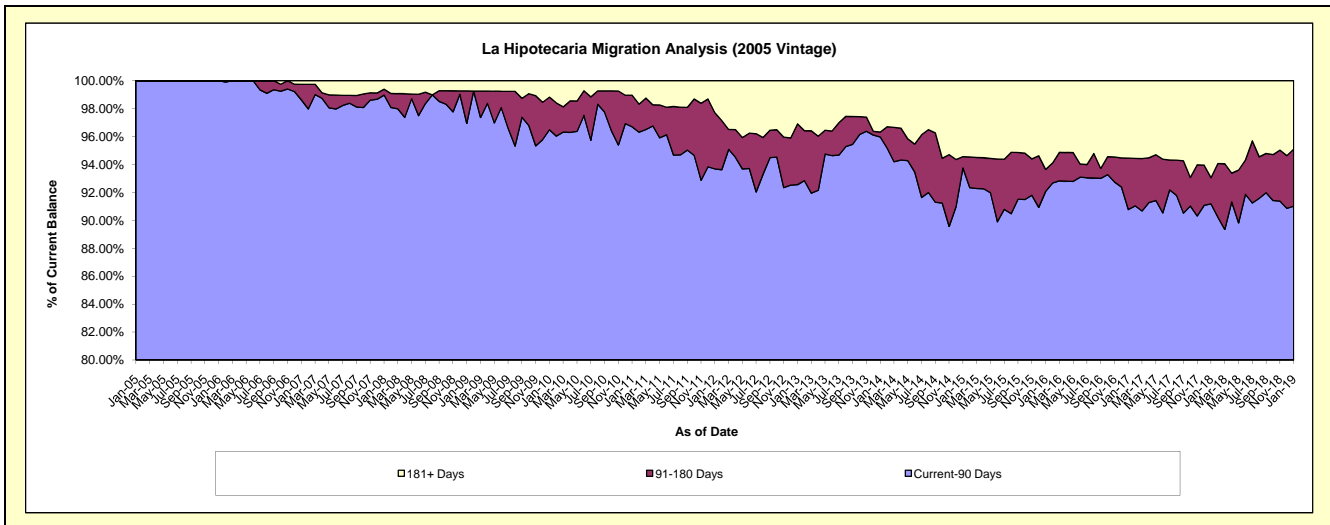
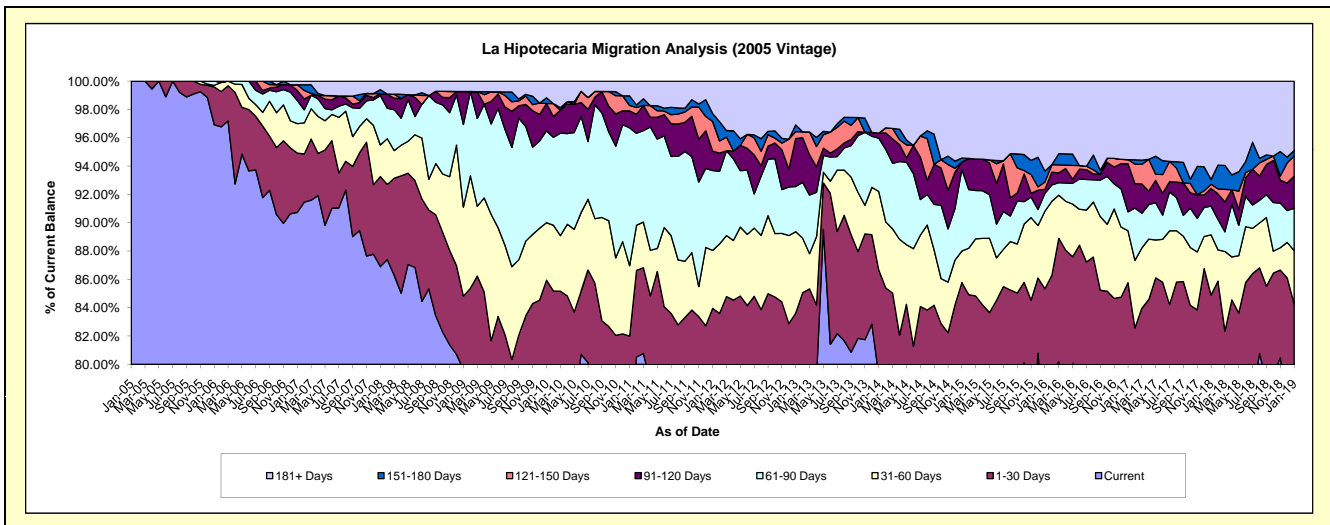
Delinquency Status (\$ of Current Balance)

Data Cutoff: 1/31/2019

Current Portfolio Balance	7,377,808.43	6,775,534.06	6,119,796.32	5,603,204.13	5,029,677.16	4,478,411.59	4,160,105.82	3,856,410.93	3,532,034.58	3,053,347.17
	Jan-10	Jan-11	Jan-12	Jan-13	Jan-14	Jan-15	Jan-16	Jan-17	Jan-18	Jan-19
Current	5,757,671.24	5,172,971.43	4,746,580.98	4,402,426.96	3,984,914.44	3,523,104.27	3,159,659.69	2,825,934.31	2,741,594.00	2,411,771.48
1-30 Days	583,255.21	382,543.81	391,385.87	283,145.22	374,294.52	318,447.39	390,785.78	481,594.63	256,824.85	161,479.09
31-60 Days	299,368.84	337,270.90	250,262.31	321,892.30	278,867.76	99,606.74	227,750.19	141,364.88	150,365.22	114,912.47
61-90 Days	478,795.41	659,357.18	345,247.98	178,867.09	189,205.83	257,658.85	52,326.98	51,747.13	71,868.48	90,994.14
91-120 Days	142,141.08	81,149.65	83,524.60	189,780.91	17,677.21	23,756.63	11,863.33	130,666.87	43,613.12	68,977.70
121-150 Days	-	26,005.16	128,395.70	27,579.88	-	-	21,378.59	11,399.85	10,593.26	43,448.09
151-180 Days	29,817.74	45,730.11	34,253.08	26,611.13	-	12,560.97	32,173.81	-	12,022.46	12,172.58
181+ Days	86,758.91	70,505.82	140,145.80	172,900.64	184,717.40	243,276.74	264,167.45	213,703.26	245,153.19	149,591.62

Delinquency Status (% of Current Balance)

Current Portfolio Balance	7,377,808.43	6,775,534.06	6,119,796.32	5,603,204.13	5,029,677.16	4,478,411.59	4,160,105.82	3,856,410.93	3,532,034.58	3,053,347.17
	Jan-10	Jan-11	Jan-12	Jan-13	Jan-14	Jan-15	Jan-16	Jan-17	Jan-18	Jan-19
Current	78.04%	76.35%	77.56%	78.57%	79.23%	78.67%	75.95%	73.28%	77.62%	78.99%
1-30 Days	7.91%	5.65%	6.40%	5.05%	7.44%	7.11%	9.39%	12.49%	7.27%	5.29%
31-60 Days	4.06%	4.98%	4.09%	5.74%	5.54%	2.22%	5.47%	3.67%	4.26%	3.76%
61-90 Days	6.49%	9.73%	5.64%	3.19%	3.76%	5.75%	1.26%	1.34%	2.03%	2.98%
91-120 Days	1.93%	1.20%	1.36%	3.39%	0.35%	0.53%	0.29%	3.39%	1.23%	2.26%
121-150 Days	0.00%	0.38%	2.10%	0.49%	0.00%	0.00%	0.51%	0.30%	0.30%	1.42%
151-180 Days	0.40%	0.67%	0.56%	0.47%	0.00%	0.28%	0.77%	0.00%	0.34%	0.40%
181+ Days	1.18%	1.04%	2.29%	3.09%	3.67%	5.43%	6.35%	5.54%	6.94%	4.90%
Current - 90 Days	96.49%	96.70%	93.69%	92.56%	95.98%	93.76%	92.08%	90.77%	91.18%	91.02%
91-180 Days	2.33%	2.26%	4.02%	4.35%	0.35%	0.81%	1.57%	3.68%	1.88%	4.08%



Mortgages - La Hipotecaria El Salvador Migration Analysis (2006 Vintage)

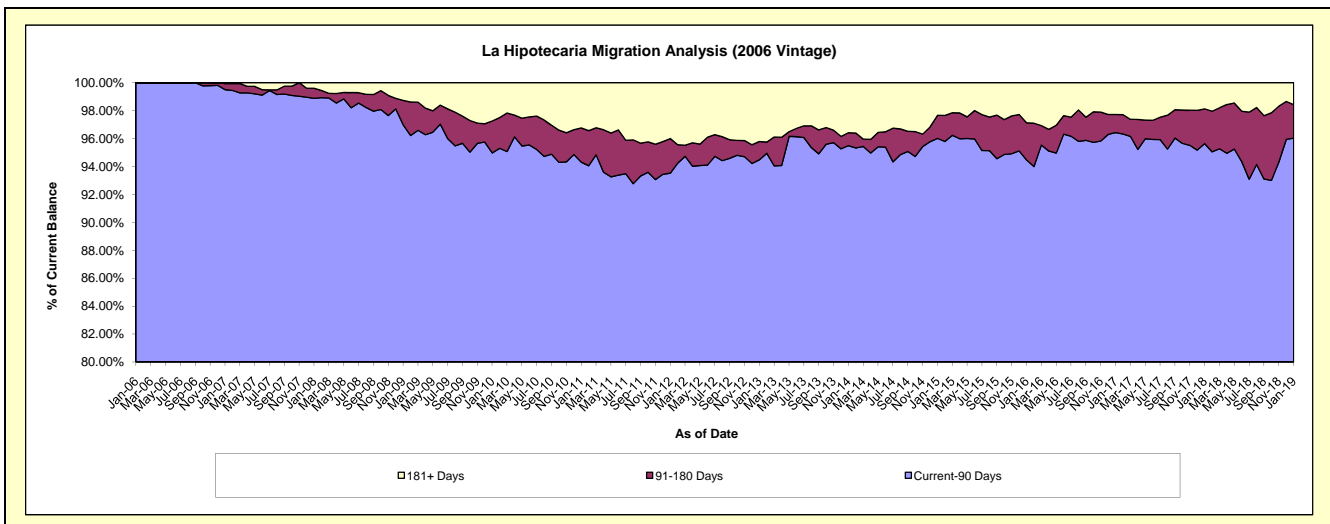
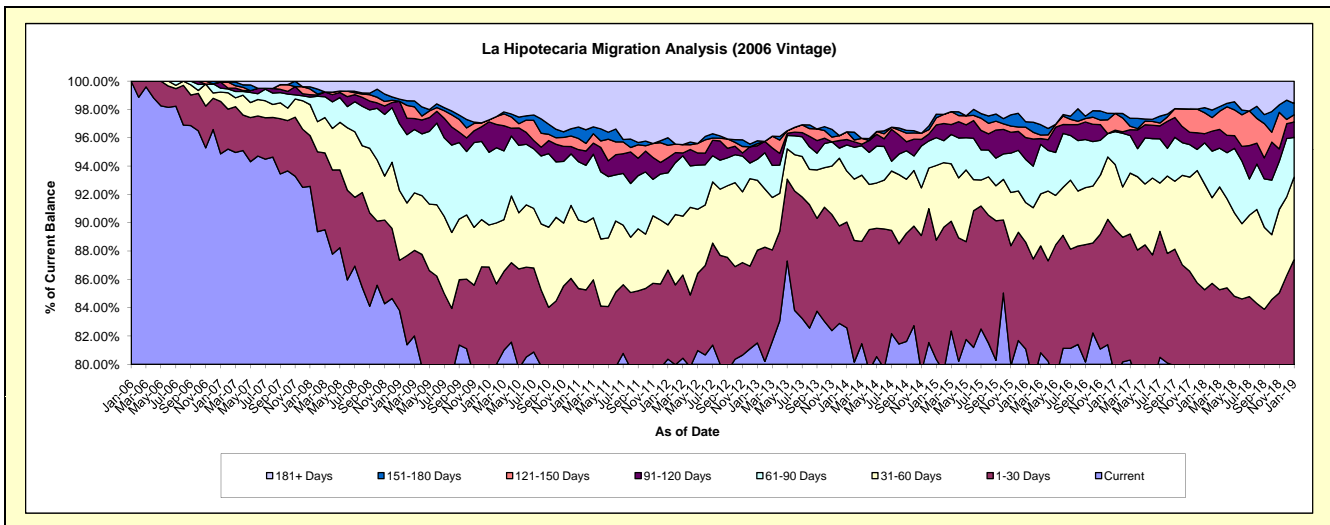
Delinquency Status (\$ of Current Balance)

Data Cutoff: 1/31/2019

Current Portfolio Balance	16,820,330.94	15,586,767.65	14,082,164.55	12,534,916.93	11,477,300.49	10,240,530.12	9,277,022.11	8,588,548.70	7,833,984.90	7,116,468.06
	Jan-10	Jan-11	Jan-12	Jan-13	Jan-14	Jan-15	Jan-16	Jan-17	Jan-18	Jan-19
Current	13,285,443.76	12,376,647.18	11,317,571.00	10,217,700.64	9,478,021.10	8,228,845.26	7,521,815.97	6,798,897.73	6,032,854.03	5,668,635.47
1-30 Days	1,327,916.20	927,617.13	886,456.12	821,060.30	857,468.76	862,016.23	699,785.08	891,028.38	647,146.97	550,848.17
31-60 Days	498,440.21	754,680.40	449,039.06	619,172.98	412,868.90	539,988.04	259,786.87	392,413.14	584,261.26	415,189.78
61-90 Days	863,453.78	641,621.06	517,679.56	185,815.26	211,965.64	201,402.56	282,455.06	199,980.05	228,395.14	199,167.45
91-120 Days	362,088.41	132,577.18	148,716.54	119,879.77	44,083.47	92,102.56	143,228.54	8,739.35	50,910.48	77,059.04
121-150 Days	22,694.90	122,915.66	125,862.22	18,531.51	62,382.66	50,926.65	68,371.32	101,932.00	115,687.29	37,006.67
151-180 Days	-	126,651.93	73,960.58	24,864.41	-	26,707.68	35,582.19	-	28,384.74	56,498.51
181+ Days	460,293.68	504,057.11	562,879.47	527,892.06	410,509.96	238,541.14	265,997.08	195,558.05	146,344.99	112,062.97

Delinquency Status (% of Current Balance)

Current Portfolio Balance	16,820,330.94	15,586,767.65	14,082,164.55	12,534,916.93	11,477,300.49	10,240,530.12	9,277,022.11	8,588,548.70	7,833,984.90	7,116,468.06
	Jan-10	Jan-11	Jan-12	Jan-13	Jan-14	Jan-15	Jan-16	Jan-17	Jan-18	Jan-19
Current	78.98%	79.40%	80.37%	81.51%	82.58%	80.36%	81.08%	79.16%	77.01%	79.66%
1-30 Days	7.89%	5.95%	6.29%	6.55%	7.47%	8.42%	7.54%	10.37%	8.26%	7.74%
31-60 Days	2.96%	4.84%	3.19%	4.94%	3.60%	5.27%	2.80%	4.57%	7.46%	5.83%
61-90 Days	5.13%	4.12%	3.68%	1.48%	1.85%	1.97%	3.04%	2.33%	2.92%	2.80%
91-120 Days	2.15%	0.85%	1.06%	0.96%	0.38%	0.90%	1.54%	0.10%	0.65%	1.08%
121-150 Days	0.13%	0.79%	0.89%	0.15%	0.54%	0.50%	0.74%	1.19%	1.48%	0.52%
151-180 Days	0.00%	0.81%	0.53%	0.20%	0.00%	0.26%	0.38%	0.00%	0.36%	0.79%
181+ Days	2.74%	3.23%	4.00%	4.21%	3.58%	2.33%	2.87%	2.28%	1.87%	1.57%
Current - 90 Days	94.98%	94.31%	93.53%	94.49%	95.50%	96.01%	94.47%	96.43%	95.64%	96.03%
91-180 Days	2.29%	2.45%	2.48%	1.30%	0.93%	1.66%	2.66%	1.29%	2.49%	2.40%



Mortgages - La Hipotecaria El Salvador Migration Analysis (2007 Vintage)

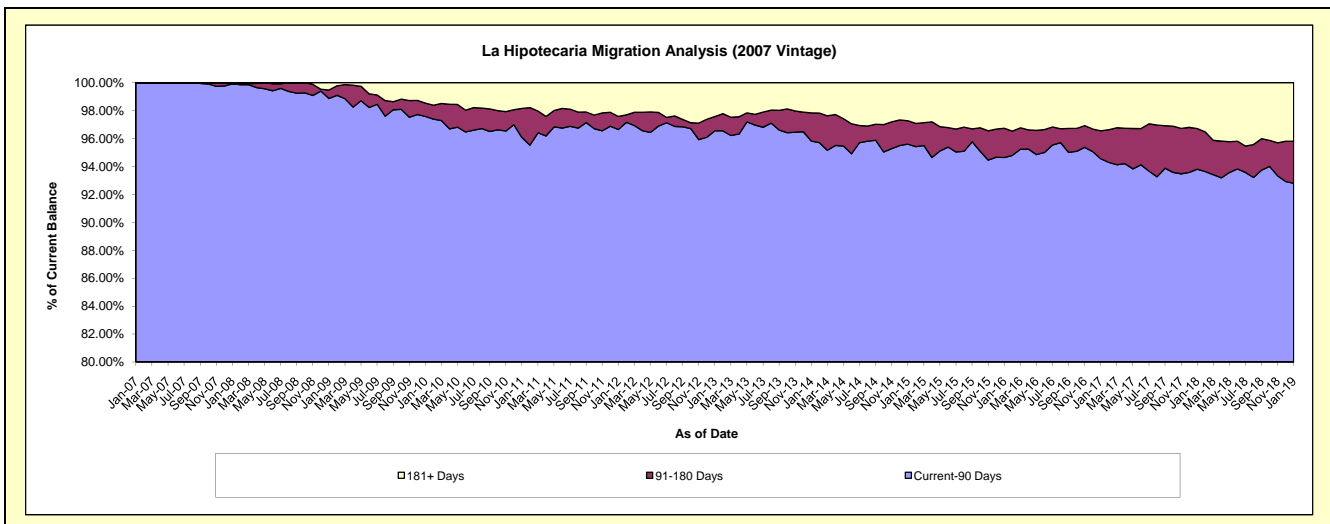
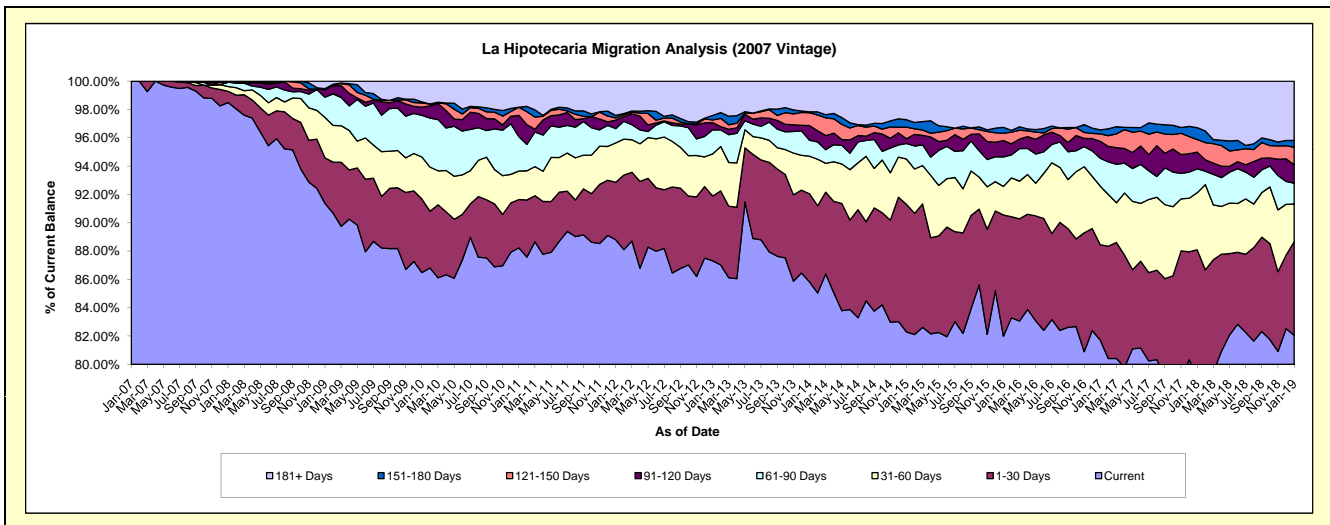
Delinquency Status (\$ of Current Balance)

Data Cutoff: 1/31/2019

Current Portfolio Balance	24,992,264.95	23,129,951.77	21,276,801.07	19,352,452.61	17,604,783.58	16,339,674.22	14,903,397.84	13,607,458.62	12,551,007.03	11,528,558.28
	Jan-10	Jan-11	Jan-12	Jan-13	Jan-14	Jan-15	Jan-16	Jan-17	Jan-18	Jan-19
Current	21,615,195.81	20,406,826.32	18,893,693.46	16,897,679.75	15,108,782.22	13,445,947.90	12,219,272.21	11,118,802.33	9,933,764.75	9,459,007.18
1-30 Days	1,297,395.32	789,530.61	865,124.88	885,748.88	1,095,734.26	1,472,760.64	1,275,352.71	916,680.89	1,122,555.71	762,010.03
31-60 Days	741,146.03	466,503.55	589,565.39	574,649.04	467,502.85	522,397.89	300,541.38	562,492.75	505,818.69	307,941.74
61-90 Days	734,737.86	561,128.81	214,870.54	328,170.72	197,225.76	179,870.48	310,547.01	268,953.89	211,807.37	169,639.00
91-120 Days	145,157.29	347,850.95	128,348.01	98,497.46	182,664.77	54,385.57	171,990.13	162,484.34	148,106.69	148,607.66
121-150 Days	74,481.36	133,190.69	32,990.77	38,263.59	160,214.64	132,658.61	78,172.00	71,817.43	112,214.56	143,464.99
151-180 Days	18,691.48	-	38,478.96	61,231.50	12,406.24	86,651.97	61,646.31	38,365.45	105,163.56	55,137.49
181+ Days	365,459.80	424,920.84	513,729.06	468,211.67	380,252.84	445,001.16	485,876.09	467,861.54	411,575.70	482,750.19

Delinquency Status (% of Current Balance)

Current Portfolio Balance	24,992,264.95	23,129,951.77	21,276,801.07	19,352,452.61	17,604,783.58	16,339,674.22	14,903,397.84	13,607,458.62	12,551,007.03	11,528,558.28
	Jan-10	Jan-11	Jan-12	Jan-13	Jan-14	Jan-15	Jan-16	Jan-17	Jan-18	Jan-19
Current	86.49%	88.23%	88.80%	87.32%	85.82%	82.29%	81.99%	81.71%	79.15%	82.05%
1-30 Days	5.19%	3.41%	4.07%	4.58%	6.22%	9.01%	8.56%	6.74%	8.94%	6.61%
31-60 Days	2.97%	2.02%	2.77%	2.97%	2.66%	3.20%	2.02%	4.13%	4.03%	2.67%
61-90 Days	2.94%	2.43%	1.01%	1.70%	1.12%	1.10%	2.08%	1.98%	1.69%	1.47%
91-120 Days	0.58%	1.50%	0.60%	0.51%	1.04%	0.33%	1.15%	1.19%	1.18%	1.29%
121-150 Days	0.30%	0.58%	0.16%	0.20%	0.91%	0.81%	0.52%	0.53%	0.89%	1.24%
151-180 Days	0.07%	0.00%	0.18%	0.32%	0.07%	0.53%	0.41%	0.28%	0.84%	0.48%
181+ Days	1.46%	1.84%	2.41%	2.42%	2.16%	2.72%	3.26%	3.44%	3.28%	4.19%
Current - 90 Days	97.58%	96.08%	96.65%	96.56%	95.82%	95.60%	94.65%	94.56%	93.81%	92.80%
91-180 Days	0.95%	2.08%	0.94%	1.02%	2.02%	1.68%	2.09%	2.00%	2.91%	3.01%



Mortgages - La Hipotecaria El Salvador Migration Analysis (2008 Vintage)

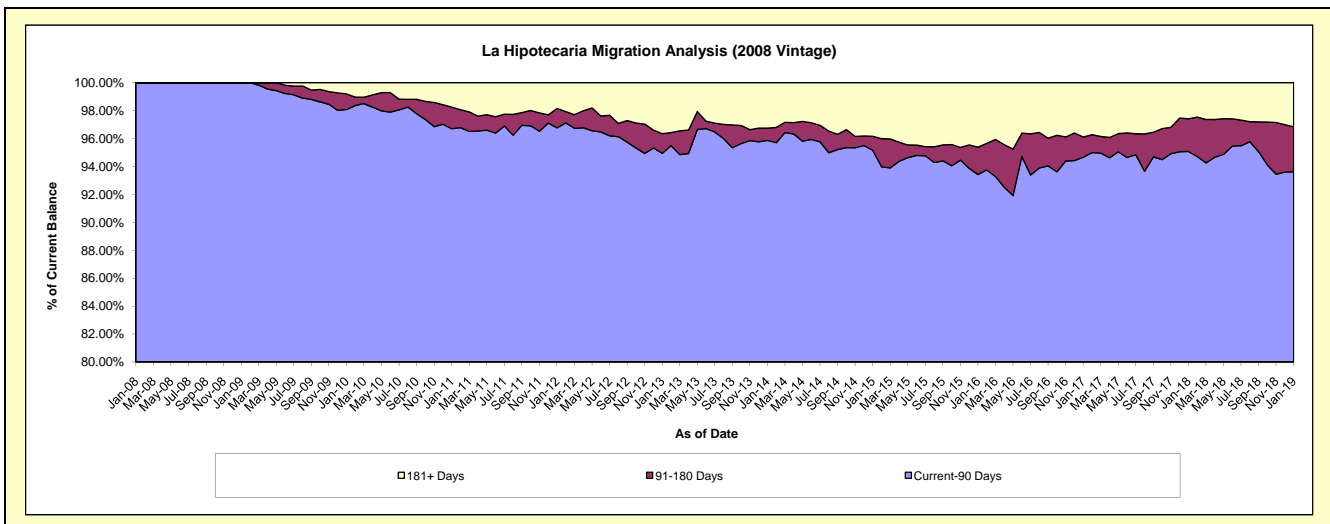
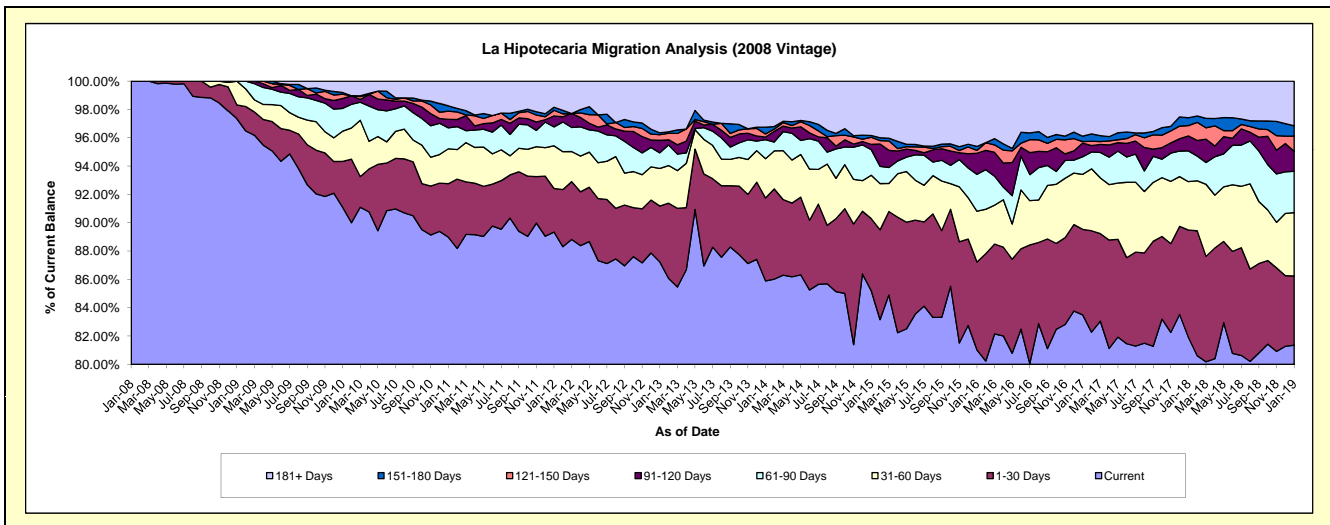
Delinquency Status (\$ of Current Balance)

Data Cutoff: 1/31/2019

Current Portfolio Balance	24,838,447.07	23,425,947.41	21,119,982.41	19,338,424.53	17,486,825.40	15,440,402.56	14,139,062.40	12,912,561.38	11,803,318.38	10,822,427.89
	Jan-10	Jan-11	Jan-12	Jan-13	Jan-14	Jan-15	Jan-16	Jan-17	Jan-18	Jan-19
Current	22,625,164.90	20,845,520.36	18,870,010.71	16,870,822.00	15,020,394.02	13,156,572.80	11,455,763.13	10,781,586.03	9,668,033.07	8,804,624.45
1-30 Days	805,744.17	884,582.17	649,442.83	762,943.16	1,023,023.77	785,589.67	877,959.13	779,384.00	894,551.64	528,355.50
31-60 Days	530,556.22	577,271.60	637,101.79	512,096.16	486,655.61	473,092.22	507,343.11	502,218.82	403,558.66	485,288.03
61-90 Days	399,595.38	346,428.14	281,484.76	214,589.56	233,832.57	278,577.03	368,160.39	160,365.57	256,130.55	314,885.22
91-120 Days	172,580.29	140,308.14	163,841.66	169,479.03	32,250.12	57,395.27	210,742.70	124,451.09	124,871.03	152,407.11
121-150 Days	77,280.20	134,842.28	83,975.24	77,993.48	39,069.32	76,995.85	28,204.91	13,398.32	85,785.57	116,729.61
151-180 Days	28,591.08	86,946.23	45,266.52	25,152.71	82,755.99	20,519.08	39,378.76	49,359.63	65,864.87	79,021.71
181+ Days	198,934.83	410,048.49	388,858.90	705,348.43	568,844.00	591,660.64	651,510.27	501,797.92	304,522.99	341,116.26

Delinquency Status (% of Current Balance)

Current Portfolio Balance	24,838,447.07	23,425,947.41	21,119,982.41	19,338,424.53	17,486,825.40	15,440,402.56	14,139,062.40	12,912,561.38	11,803,318.38	10,822,427.89
	Jan-10	Jan-11	Jan-12	Jan-13	Jan-14	Jan-15	Jan-16	Jan-17	Jan-18	Jan-19
Current	91.09%	88.98%	89.35%	87.24%	85.90%	85.21%	81.02%	83.50%	81.91%	81.36%
1-30 Days	3.24%	3.78%	3.08%	3.95%	5.85%	5.09%	6.21%	6.04%	7.58%	4.88%
31-60 Days	2.14%	2.46%	3.02%	2.65%	2.78%	3.06%	3.59%	3.89%	3.42%	4.48%
61-90 Days	1.61%	1.48%	1.33%	1.11%	1.34%	1.80%	2.60%	1.24%	2.17%	2.91%
91-120 Days	0.69%	0.60%	0.78%	0.88%	0.18%	0.37%	1.49%	0.96%	1.06%	1.41%
121-150 Days	0.31%	0.58%	0.40%	0.40%	0.22%	0.50%	0.20%	0.10%	0.73%	1.08%
151-180 Days	0.12%	0.37%	0.21%	0.13%	0.47%	0.13%	0.28%	0.38%	0.56%	0.73%
181+ Days	0.80%	1.75%	1.84%	3.65%	3.25%	3.83%	4.61%	3.89%	2.58%	3.15%
Current - 90 Days	98.08%	96.70%	96.77%	94.94%	95.87%	95.16%	93.42%	94.66%	95.08%	93.63%
91-180 Days	1.12%	1.55%	1.39%	1.41%	0.88%	1.00%	1.97%	1.45%	2.34%	3.22%



Mortgages - La Hipotecaria El Salvador Migration Analysis (2009 Vintage)

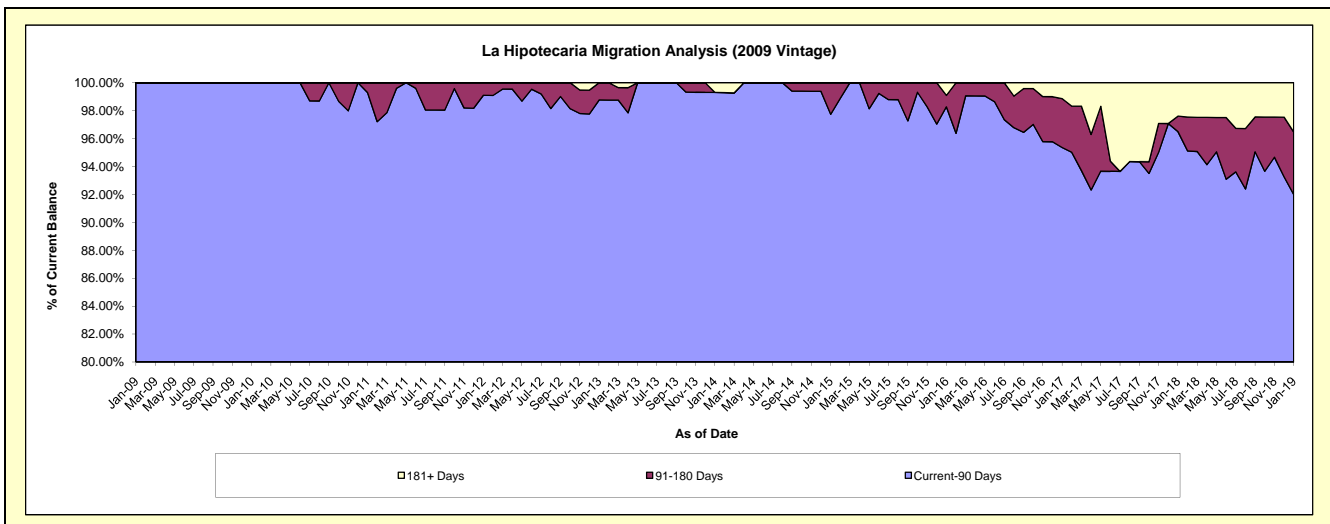
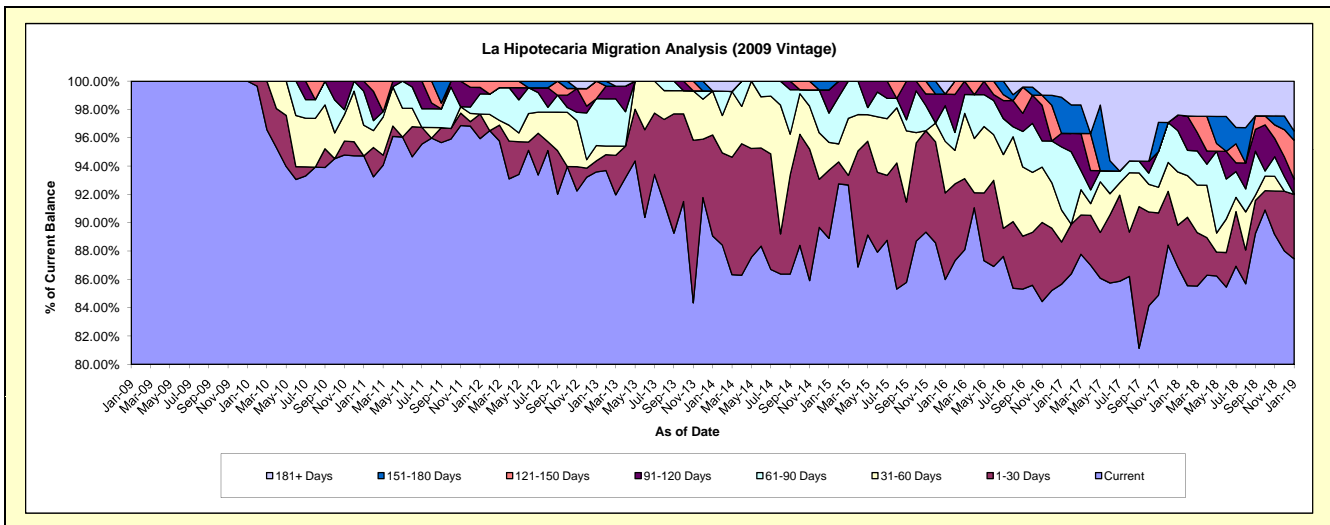
Delinquency Status (\$ of Current Balance)

Data Cutoff: 1/31/2019

Current Portfolio Balance	4,065,479.24	3,848,387.12	3,175,608.96	2,927,339.52	2,599,722.04	2,303,103.89	2,052,115.09	1,918,388.73	1,844,350.58	1,658,867.91
	Jan-10	Jan-11	Jan-12	Jan-13	Jan-14	Jan-15	Jan-16	Jan-17	Jan-18	Jan-19
Current	4,065,479.24	3,645,290.01	3,046,793.88	2,739,703.56	2,315,559.12	2,047,451.10	1,764,608.09	1,643,228.82	1,602,283.04	1,450,590.81
1-30 Days	-	-	55,023.89	22,866.71	185,398.87	110,784.53	125,452.50	57,276.93	54,530.81	75,593.23
31-60 Days	-	83,527.02	-	31,736.32	80,654.90	45,409.90	74,866.87	43,438.48	69,280.97	-
61-90 Days	-	92,369.98	45,129.00	96,878.19	-	47,427.51	51,690.58	85,395.53	53,774.68	-
91-120 Days	-	27,200.11	14,631.91	-	-	37,867.16	16,874.97	18,507.46	20,342.59	17,716.71
121-150 Days	-	-	14,030.28	36,154.74	-	-	-	-	-	45,618.60
151-180 Days	-	-	-	-	-	14,163.69	-	48,682.02	-	10,804.39
181+ Days	-	-	-	-	18,109.15	-	18,622.08	21,859.49	44,138.49	58,544.17

Delinquency Status (% of Current Balance)

Current Portfolio Balance	4,065,479.24	3,848,387.12	3,175,608.96	2,927,339.52	2,599,722.04	2,303,103.89	2,052,115.09	1,918,388.73	1,844,350.58	1,658,867.91
	Jan-10	Jan-11	Jan-12	Jan-13	Jan-14	Jan-15	Jan-16	Jan-17	Jan-18	Jan-19
Current	100.00%	94.72%	95.94%	93.59%	89.07%	88.90%	85.99%	85.66%	86.88%	87.44%
1-30 Days	0.00%	0.00%	1.73%	0.78%	7.13%	4.81%	6.11%	2.99%	2.96%	4.56%
31-60 Days	0.00%	2.17%	0.00%	1.08%	3.10%	1.97%	3.65%	2.26%	3.76%	0.00%
61-90 Days	0.00%	2.40%	1.42%	3.31%	0.00%	2.06%	2.52%	4.45%	2.92%	0.00%
91-120 Days	0.00%	0.71%	0.46%	0.00%	0.00%	1.64%	0.82%	0.96%	1.10%	1.07%
121-150 Days	0.00%	0.00%	0.44%	1.24%	0.00%	0.00%	0.00%	0.00%	0.00%	2.75%
151-180 Days	0.00%	0.00%	0.00%	0.00%	0.00%	0.61%	0.00%	2.54%	0.00%	0.65%
181+ Days	0.00%	0.00%	0.00%	0.00%	0.70%	0.00%	0.91%	1.14%	2.39%	3.53%
Current - 90 Days	100.00%	99.29%	99.10%	98.76%	99.30%	97.74%	98.27%	95.36%	96.50%	92.00%
91-180 Days	0.00%	0.71%	0.90%	1.24%	0.00%	2.26%	0.82%	3.50%	1.10%	4.47%



Mortgages - La Hipotecaria El Salvador Migration Analysis (2010 Vintage)

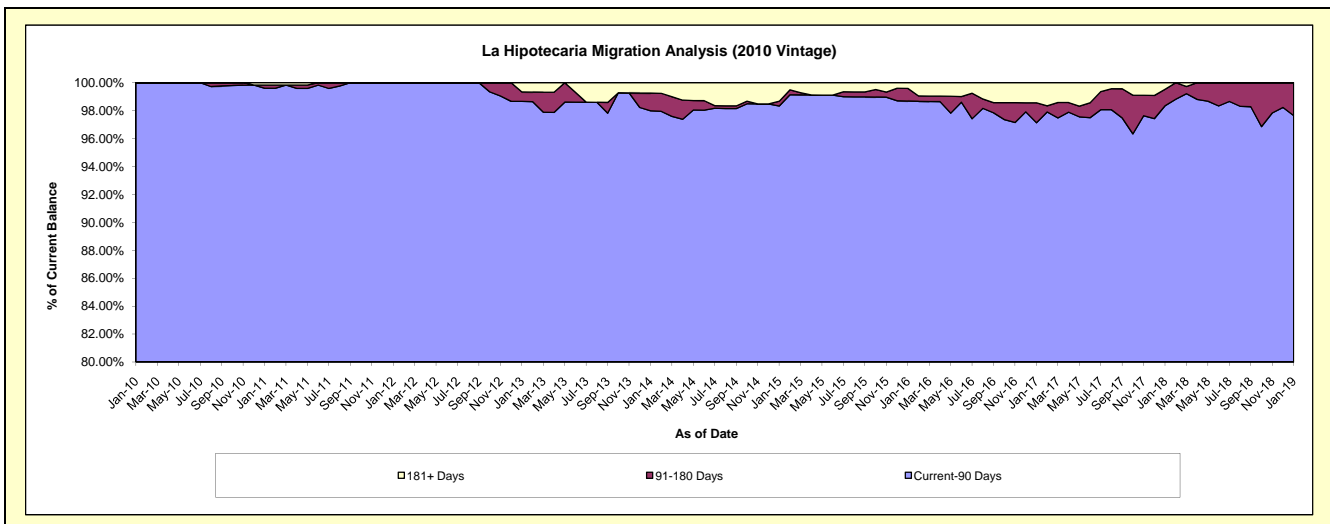
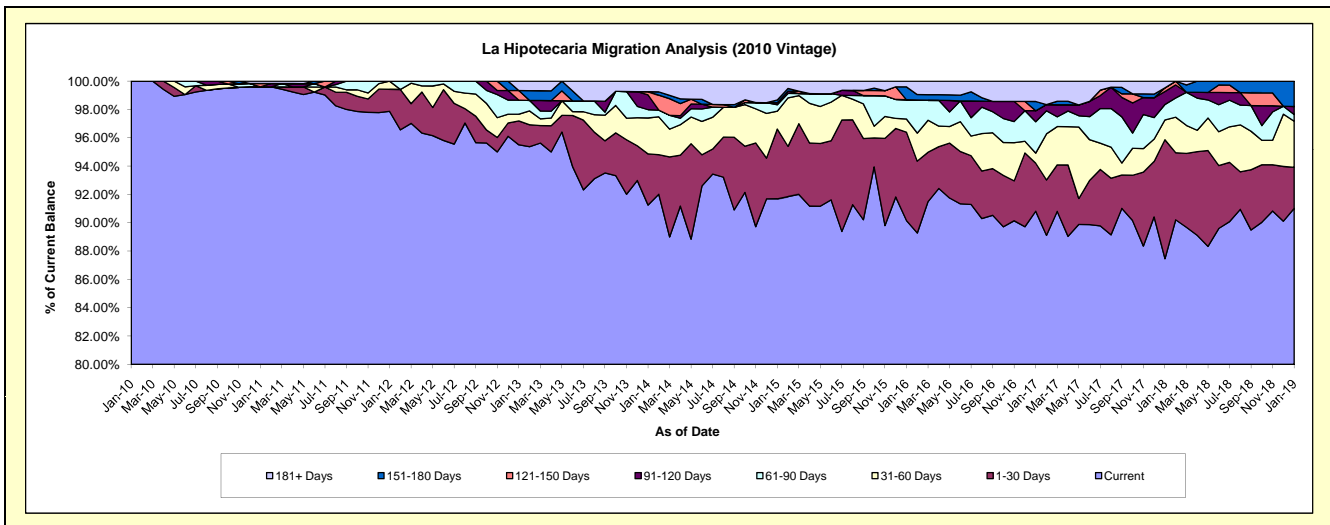
Delinquency Status (\$ of Current Balance)

Data Cutoff: 1/31/2019

Current Portfolio Balance	493,899.71	10,020,527.99	9,210,147.05	8,462,131.95	7,545,197.48	6,785,146.25	5,824,698.41	5,318,124.58	4,903,968.30	4,414,207.21
	Jan-10	Jan-11	Jan-12	Jan-13	Jan-14	Jan-15	Jan-16	Jan-17	Jan-18	Jan-19
Current	493,899.71	9,980,822.68	9,013,804.31	8,081,718.26	6,885,136.11	6,221,622.49	5,251,631.39	4,829,593.38	4,289,014.02	4,017,411.70
1-30 Days	-	-	143,288.94	142,740.11	272,295.38	334,194.51	363,126.27	180,730.86	412,152.21	128,355.33
31-60 Days	-	-	53,053.80	40,232.80	191,665.82	85,605.67	54,018.06	37,734.97	68,352.22	143,733.89
61-90 Days	-	-	-	84,316.33	44,364.90	30,822.92	79,587.21	117,784.13	53,543.06	20,749.09
91-120 Days	-	-	-	-	78,560.90	9,796.12	-	41,218.98	44,689.18	25,068.82
121-150 Days	-	22,955.59	-	56,986.18	17,036.10	-	-	-	12,919.90	-
151-180 Days	-	-	-	-	-	13,000.87	52,829.97	34,726.78	-	78,888.38
181+ Days	-	16,749.72	-	56,138.27	56,138.27	90,103.67	23,505.51	76,335.48	23,297.71	-

Delinquency Status (% of Current Balance)

Current Portfolio Balance	493,899.71	10,020,527.99	9,210,147.05	8,462,131.95	7,545,197.48	6,785,146.25	5,824,698.41	5,318,124.58	4,903,968.30	4,414,207.21
	Jan-10	Jan-11	Jan-12	Jan-13	Jan-14	Jan-15	Jan-16	Jan-17	Jan-18	Jan-19
Current	100.00%	99.60%	97.87%	95.50%	91.25%	91.69%	90.16%	90.81%	87.46%	91.01%
1-30 Days	0.00%	0.00%	1.56%	1.69%	3.61%	4.93%	6.23%	3.40%	8.40%	2.91%
31-60 Days	0.00%	0.00%	0.58%	0.48%	2.54%	1.26%	0.93%	0.71%	1.39%	3.26%
61-90 Days	0.00%	0.00%	0.00%	1.00%	0.59%	0.45%	1.37%	2.21%	1.09%	0.47%
91-120 Days	0.00%	0.00%	0.00%	0.00%	1.04%	0.14%	0.00%	0.78%	0.91%	0.57%
121-150 Days	0.00%	0.23%	0.00%	0.67%	0.23%	0.00%	0.00%	0.00%	0.26%	0.00%
151-180 Days	0.00%	0.00%	0.00%	0.00%	0.00%	0.19%	0.91%	0.65%	0.00%	1.79%
181+ Days	0.00%	0.17%	0.00%	0.66%	0.74%	1.33%	0.40%	1.44%	0.48%	0.00%
Current - 90 Days	100.00%	99.60%	100.00%	98.66%	97.99%	98.34%	98.69%	97.14%	98.35%	97.64%
91-180 Days	0.00%	0.23%	0.00%	0.67%	1.27%	0.34%	0.91%	1.43%	1.17%	2.36%



Mortgages - La Hipotecaria El Salvador Migration Analysis (2011 Vintage)

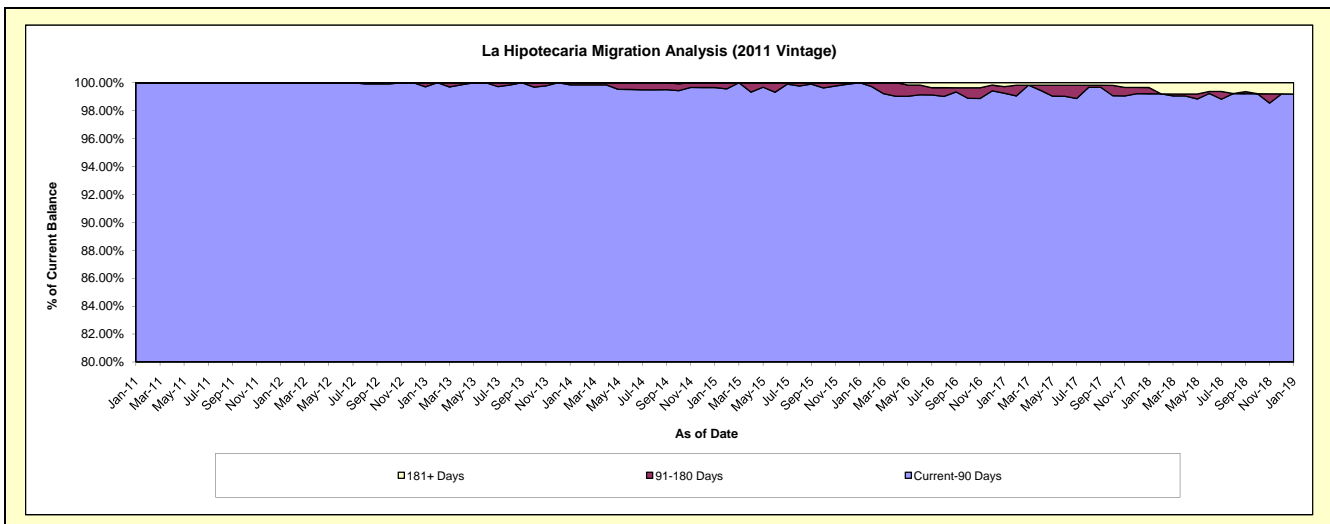
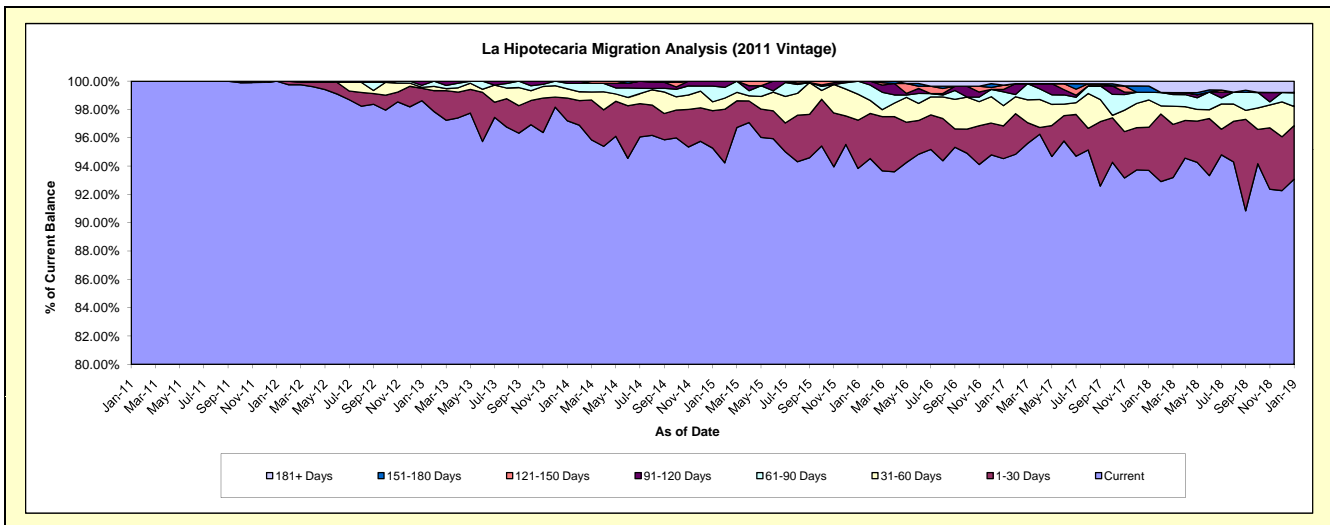
Delinquency Status (\$ of Current Balance)

Data Cutoff: 1/31/2019

Current Portfolio Balance	-	673,761.74	17,237,017.27	16,164,222.82	14,743,091.87	13,410,132.99	12,277,774.58	11,692,787.03	10,605,435.06	9,749,388.80
	Jan-11	Jan-12	Jan-13	Jan-14	Jan-15	Jan-16	Jan-17	Jan-18	Jan-19	
Current	673,761.74	17,237,017.27	15,940,761.44	14,331,193.68	12,775,917.09	11,520,640.04	11,053,397.38	9,937,074.15	9,074,176.12	
1-30 Days	-	-	141,622.74	236,444.62	354,049.74	419,157.20	270,142.80	323,219.90	369,343.54	
31-60 Days	-	-	11,175.92	96,760.45	84,788.77	224,821.49	167,474.05	204,712.11	131,070.11	
61-90 Days	-	-	22,907.45	56,357.66	149,262.37	113,155.85	114,390.04	56,630.64	96,496.49	
91-120 Days	-	-	47,755.27	22,335.46	46,115.02	-	18,572.83	-	-	
121-150 Days	-	-	-	-	-	-	35,713.34	-	-	
151-180 Days	-	-	-	-	-	-	-	47,348.80	-	
181+ Days	-	-	-	-	-	-	33,096.59	36,449.46	78,302.54	

Delinquency Status (% of Current Balance)

Current Portfolio Balance	-	673,761.74	17,237,017.27	16,164,222.82	14,743,091.87	13,410,132.99	12,277,774.58	11,692,787.03	10,605,435.06	9,749,388.80
	Jan-11	Jan-12	Jan-13	Jan-14	Jan-15	Jan-16	Jan-17	Jan-18	Jan-19	
Current	100.00%	100.00%	98.62%	97.21%	95.27%	93.83%	94.53%	93.70%	93.07%	
1-30 Days	0.00%	0.00%	0.88%	1.60%	2.64%	3.41%	2.31%	3.05%	3.79%	
31-60 Days	0.00%	0.00%	0.07%	0.66%	0.63%	1.83%	1.43%	1.93%	1.34%	
61-90 Days	0.00%	0.00%	0.14%	0.38%	1.11%	0.92%	0.98%	0.53%	0.99%	
91-120 Days	0.00%	0.00%	0.30%	0.15%	0.34%	0.00%	0.16%	0.00%	0.00%	
121-150 Days	0.00%	0.00%	0.00%	0.00%	0.00%	0.00%	0.31%	0.00%	0.00%	
151-180 Days	0.00%	0.00%	0.00%	0.00%	0.00%	0.00%	0.00%	0.45%	0.00%	
181+ Days	0.00%	0.00%	0.00%	0.00%	0.00%	0.00%	0.28%	0.34%	0.80%	
Current - 90 Days	100.00%	100.00%	99.70%	99.85%	99.66%	100.00%	99.25%	99.21%	99.20%	
91-180 Days	0.00%	0.00%	0.30%	0.15%	0.34%	0.00%	0.46%	0.45%	0.00%	



Mortgages - La Hipotecaria El Salvador Migration Analysis (2012 Vintage)

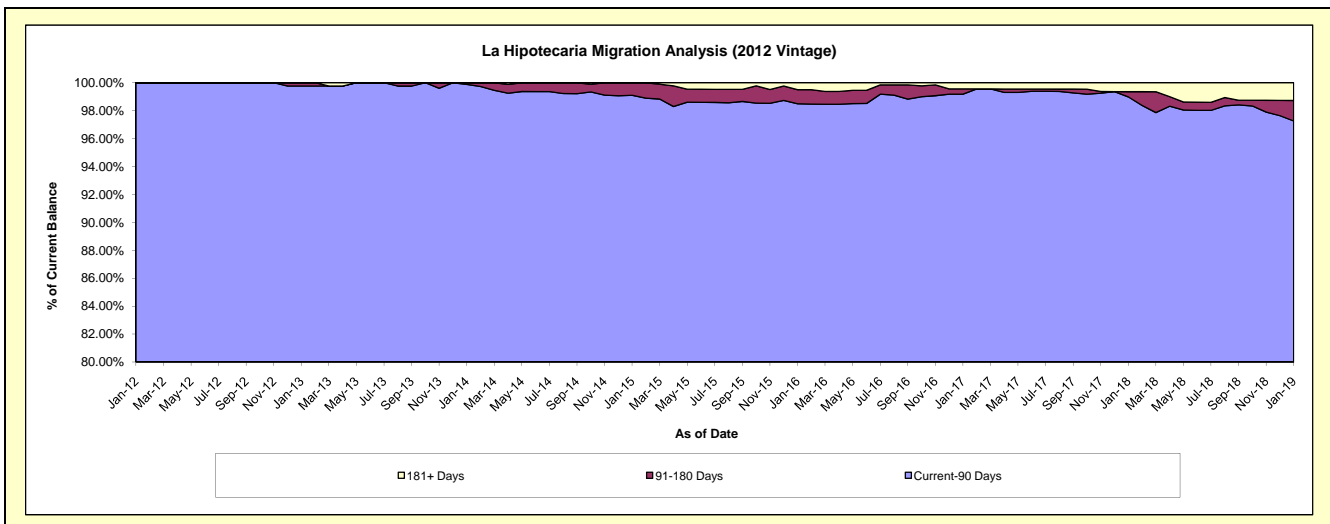
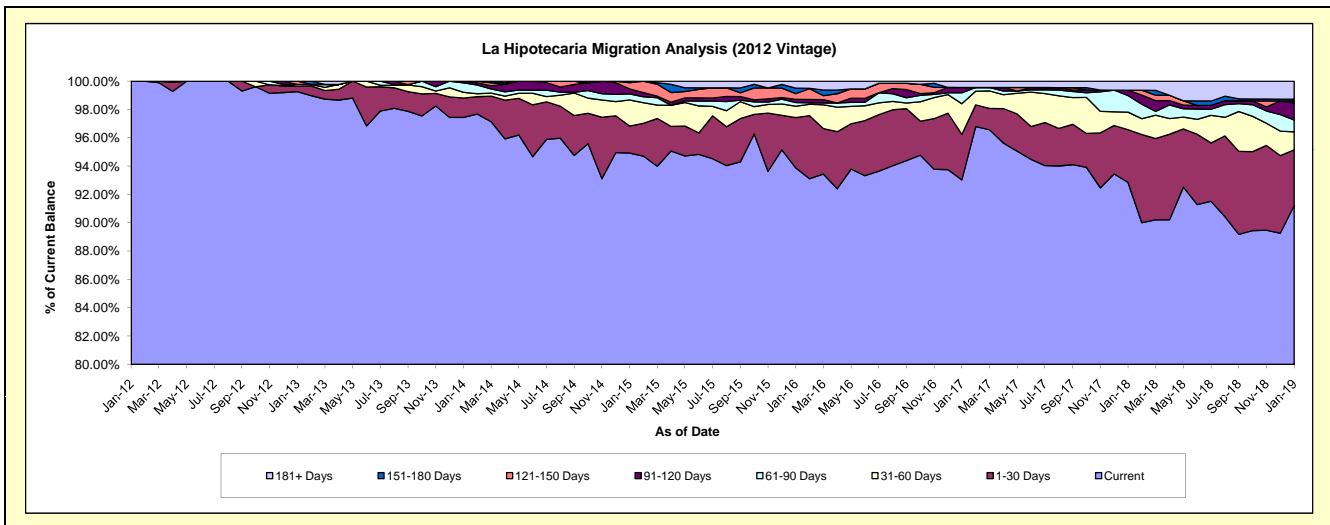
Delinquency Status (\$ of Current Balance)

Data Cutoff: 1/31/2019

Current Portfolio Balance	-	-	1,848,455.74	24,784,292.40	23,552,995.98	21,291,307.30	19,679,265.34	18,270,931.72	17,022,524.27	15,877,684.45
	Jan-12	Jan-13	Jan-14	Jan-15	Jan-16	Jan-17	Jan-18	Jan-19		
Current	1,848,455.74	24,599,668.87	22,950,444.06	20,210,370.02	18,473,711.37	16,997,480.62	15,805,587.19	14,483,854.07		
1-30 Days	-	94,652.95	321,784.75	407,198.35	700,321.47	587,273.97	633,886.48	623,924.93		
31-60 Days	-	31,958.99	95,022.15	390,629.52	156,723.73	395,363.52	210,485.92	202,163.26		
61-90 Days	-	-	157,400.35	92,548.56	51,901.34	141,056.40	199,898.41	132,857.12		
91-120 Days	-	-	28,344.67	74,713.39	44,941.11	68,925.95	63,578.67	190,683.68		
121-150 Days	-	58,011.59	-	92,944.68	77,869.24	-	-	21,564.46		
151-180 Days	-	-	-	22,902.78	76,180.91	-	-	20,859.90		
181+ Days	-	-	-	-	97,616.17	80,831.26	109,087.60	201,777.03		

Delinquency Status (% of Current Balance)

Current Portfolio Balance	-	-	1,848,455.74	24,784,292.40	23,552,995.98	21,291,307.30	19,679,265.34	18,270,931.72	17,022,524.27	15,877,684.45
	Jan-12	Jan-13	Jan-14	Jan-15	Jan-16	Jan-17	Jan-18	Jan-19		
Current	100.00%	99.26%	97.44%	94.92%	93.87%	93.03%	92.85%	91.22%		
1-30 Days	0.00%	0.38%	1.37%	1.91%	3.56%	3.21%	3.72%	3.93%		
31-60 Days	0.00%	0.13%	0.40%	1.83%	0.80%	2.16%	1.24%	1.27%		
61-90 Days	0.00%	0.00%	0.67%	0.43%	0.26%	0.77%	1.17%	0.84%		
91-120 Days	0.00%	0.00%	0.12%	0.35%	0.23%	0.38%	0.37%	1.20%		
121-150 Days	0.00%	0.23%	0.00%	0.44%	0.40%	0.00%	0.00%	0.14%		
151-180 Days	0.00%	0.00%	0.00%	0.11%	0.39%	0.00%	0.00%	0.13%		
181+ Days	0.00%	0.00%	0.00%	0.00%	0.50%	0.44%	0.64%	1.27%		
Current - 90 Days	100.00%	99.77%	99.88%	99.10%	98.49%	99.18%	98.99%	97.26%		
91-180 Days	0.00%	0.23%	0.12%	0.90%	1.01%	0.38%	0.37%	1.47%		



Mortgages - La Hipotecaria El Salvador Migration Analysis (2013 Vintage)

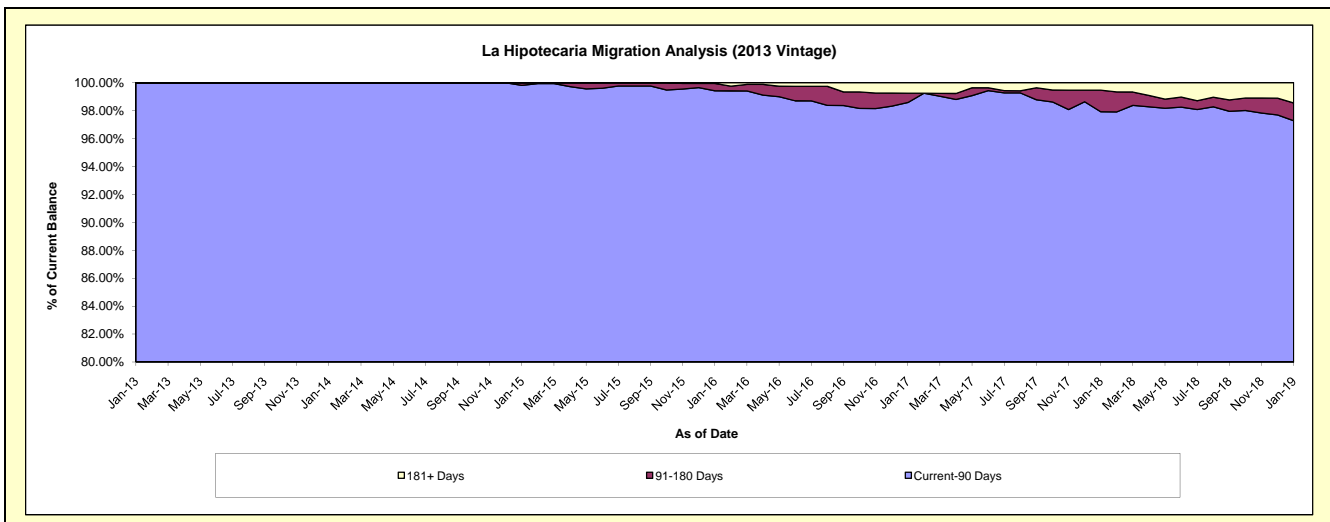
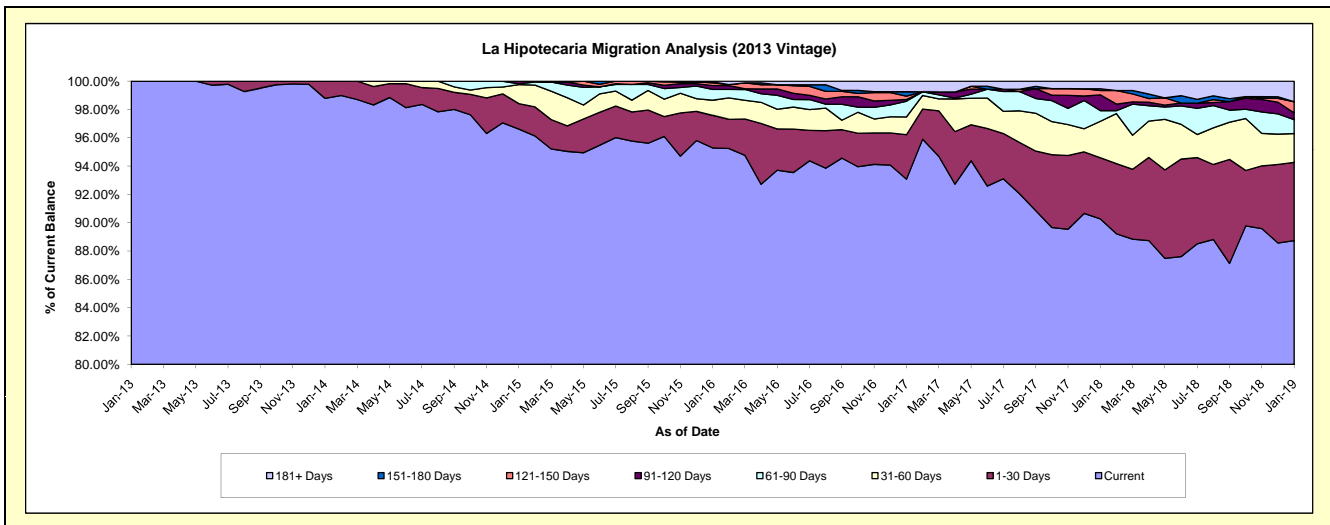
Delinquency Status (\$ of Current Balance)

Data Cutoff: 1/31/2019

Current Portfolio Balance	-	-	-	2,458,906.21	29,467,504.40	27,951,842.61	26,425,920.16	25,006,098.13	23,128,817.85	21,184,746.73
	Jan-13	Jan-14	Jan-15	Jan-16	Jan-17	Jan-18	Jan-19			
Current	2,458,906.21	29,109,251.52	27,005,698.84	25,180,413.99	23,276,377.64	20,879,889.19	18,798,540.41			
1-30 Days	-	358,252.88	502,490.03	608,167.16	784,974.55	999,261.17	1,170,768.94			
31-60 Days	-	-	375,574.63	281,861.90	313,734.81	594,336.02	432,065.53			
61-90 Days	-	-	15,954.35	201,876.67	276,827.27	174,486.81	206,889.08			
91-120 Days	-	-	52,124.76	72,390.05	30,882.30	258,300.14	103,198.47			
121-150 Days	-	-	-	49,383.41	59,217.49	69,972.50	166,551.69			
151-180 Days	-	-	-	17,311.98	77,315.24	28,778.55	-			
181+ Days	-	-	-	14,515.00	186,768.83	123,793.47	306,732.61			

Delinquency Status (% of Current Balance)

Current Portfolio Balance	-	-	-	2,458,906.21	29,467,504.40	27,951,842.61	26,425,920.16	25,006,098.13	23,128,817.85	21,184,746.73
	Jan-13	Jan-14	Jan-15	Jan-16	Jan-17	Jan-18	Jan-19			
Current	100.00%	98.78%	96.62%	95.29%	93.08%	90.28%	88.74%			
1-30 Days	0.00%	1.22%	1.80%	2.30%	3.14%	4.32%	5.53%			
31-60 Days	0.00%	0.00%	1.34%	1.07%	1.25%	2.57%	2.04%			
61-90 Days	0.00%	0.00%	0.06%	0.76%	1.11%	0.75%	0.98%			
91-120 Days	0.00%	0.00%	0.19%	0.27%	0.12%	1.12%	0.49%			
121-150 Days	0.00%	0.00%	0.00%	0.19%	0.24%	0.30%	0.79%			
151-180 Days	0.00%	0.00%	0.00%	0.07%	0.31%	0.12%	0.00%			
181+ Days	0.00%	0.00%	0.00%	0.05%	0.75%	0.54%	1.45%			
Current - 90 Days	100.00%	100.00%	99.81%	99.42%	98.58%	97.92%	97.28%			
91-180 Days	0.00%	0.00%	0.19%	0.53%	0.67%	1.54%	1.27%			



Mortgages - La Hipotecaria El Salvador Migration Analysis (2014 Vintage)

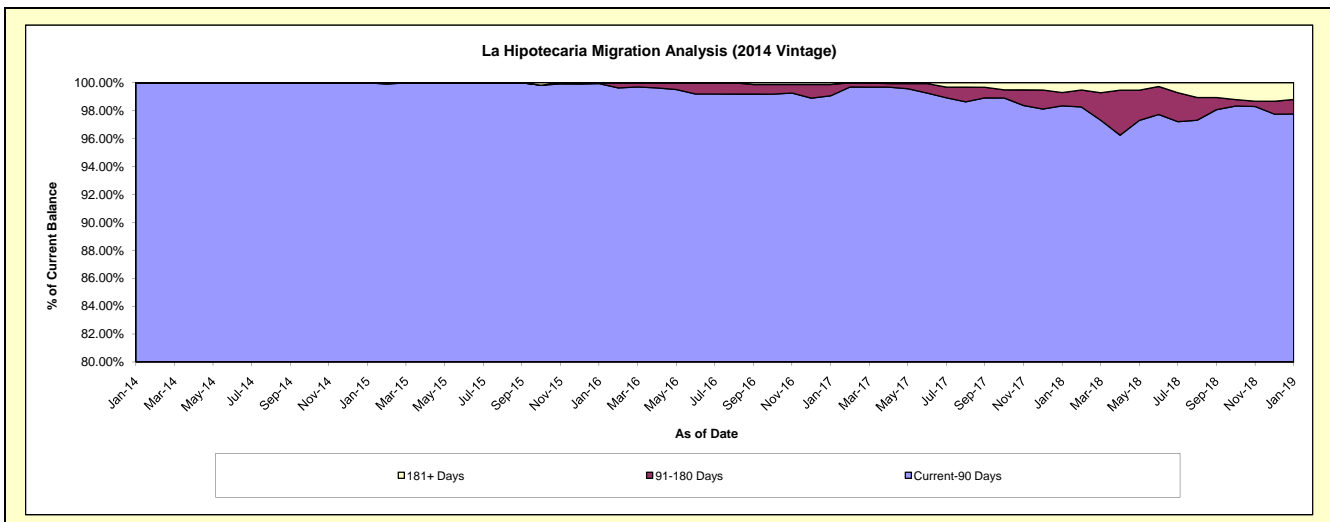
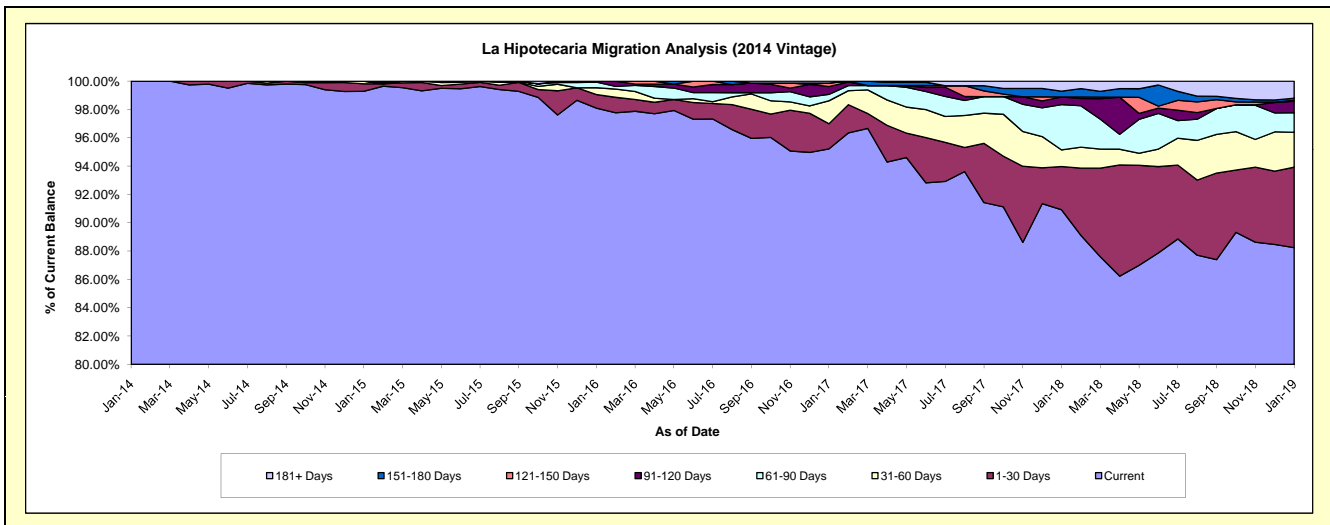
Delinquency Status (\$ of Current Balance)

Data Cutoff: 1/31/2019

Current Portfolio Balance	-	-	-	-	2,442,748.33	27,876,718.66	26,475,440.43	25,187,199.13	23,642,220.20	21,582,078.54
	Jan-14	Jan-15	Jan-16	Jan-17	Jan-18	Jan-19				
Current	2,442,748.33	27,677,586.84	25,971,247.97	23,982,733.39	21,495,296.44	19,044,680.32				
1-30 Days	-	147,300.09	255,344.87	447,504.74	722,306.96	1,227,732.18				
31-60 Days	-	51,831.73	125,914.99	408,364.83	277,505.01	530,002.48				
61-90 Days	-	-	104,983.47	112,719.58	756,350.75	297,177.83				
91-120 Days	-	-	17,949.13	141,393.36	126,959.79	175,727.35				
121-150 Days	-	-	-	61,254.01	-	15,246.78				
151-180 Days	-	-	-	-	96,586.50	32,791.06				
181+ Days	-	-	-	33,229.22	167,214.75	258,720.54				

Delinquency Status (% of Current Balance)

Current Portfolio Balance	-	-	-	-	2,442,748.33	27,876,718.66	26,475,440.43	25,187,199.13	23,642,220.20	21,582,078.54
	Jan-14	Jan-15	Jan-16	Jan-17	Jan-18	Jan-19				
Current	100.00%	99.29%	98.10%	95.22%	90.92%	88.24%				
1-30 Days	0.00%	0.53%	0.96%	1.78%	3.06%	5.69%				
31-60 Days	0.00%	0.19%	0.48%	1.62%	1.17%	2.46%				
61-90 Days	0.00%	0.00%	0.40%	0.45%	3.20%	1.38%				
91-120 Days	0.00%	0.00%	0.07%	0.56%	0.54%	0.81%				
121-150 Days	0.00%	0.00%	0.00%	0.24%	0.00%	0.07%				
151-180 Days	0.00%	0.00%	0.00%	0.00%	0.41%	0.15%				
181+ Days	0.00%	0.00%	0.00%	0.13%	0.71%	1.20%				
Current - 90 Days	100.00%	100.00%	99.93%	99.06%	98.35%	97.76%				
91-180 Days	0.00%	0.00%	0.07%	0.80%	0.95%	1.04%				



Mortgages - La Hipotecaria El Salvador Migration Analysis (2015 Vintage)

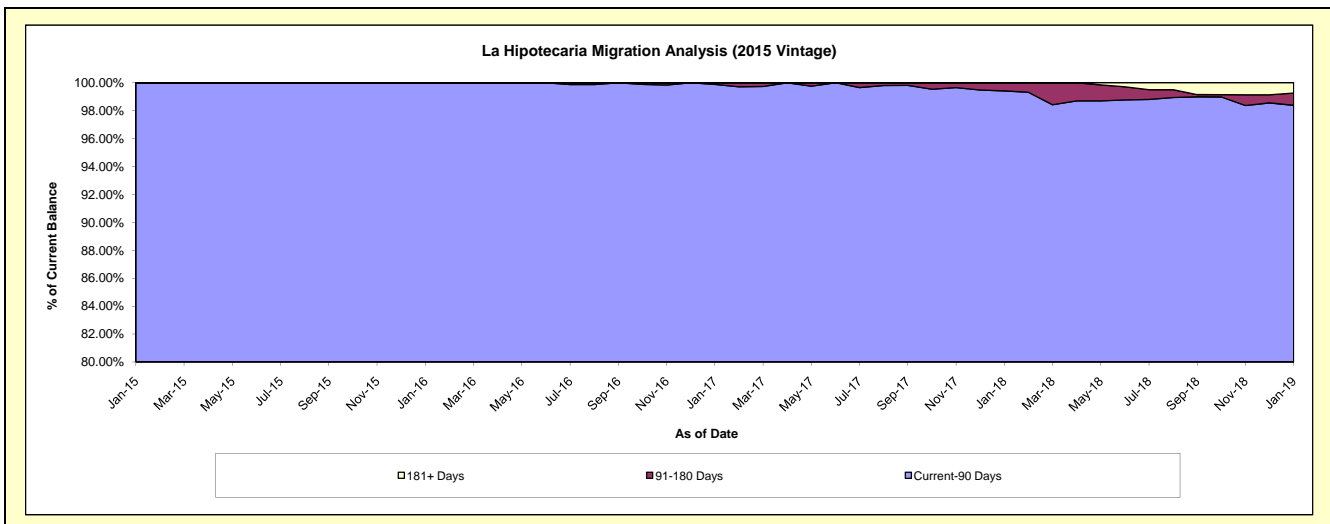
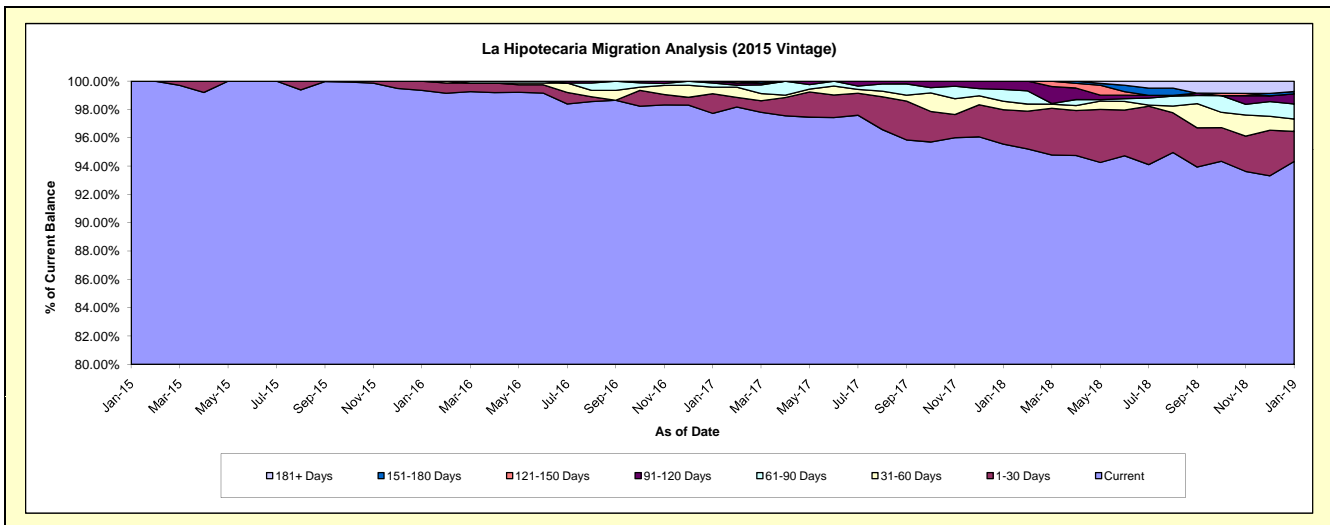
Delinquency Status (\$ of Current Balance)

Data Cutoff: 1/31/2019

Current Portfolio Balance	-	-	-	-	-	1,702,284.19	23,577,540.26	22,531,202.92	21,206,544.46	19,926,438.35
						Jan-15	Jan-16	Jan-17	Jan-18	Jan-19
Current						1,702,284.19	23,424,430.63	22,019,195.00	20,263,083.33	18,795,354.90
1-30 Days						-	153,109.63	312,568.76	514,851.35	423,956.48
31-60 Days						-	-	103,500.36	127,366.63	174,990.18
61-90 Days						-	-	67,840.42	177,239.48	210,340.14
91-120 Days						-	-	28,098.38	124,003.67	142,420.23
121-150 Days						-	-	-	-	-
151-180 Days						-	-	-	-	33,073.80
181+ Days						-	-	-	-	146,302.62

Delinquency Status (% of Current Balance)

Current Portfolio Balance	-	-	-	-	-	1,702,284.19	23,577,540.26	22,531,202.92	21,206,544.46	19,926,438.35
						Jan-15	Jan-16	Jan-17	Jan-18	Jan-19
Current						100.00%	99.35%	97.73%	95.55%	94.32%
1-30 Days						0.00%	0.65%	1.39%	2.43%	2.13%
31-60 Days						0.00%	0.00%	0.46%	0.60%	0.88%
61-90 Days						0.00%	0.00%	0.30%	0.84%	1.06%
91-120 Days						0.00%	0.00%	0.12%	0.58%	0.71%
121-150 Days						0.00%	0.00%	0.00%	0.00%	0.00%
151-180 Days						0.00%	0.00%	0.00%	0.00%	0.17%
181+ Days						0.00%	0.00%	0.00%	0.00%	0.73%
Current - 90 Days						100.00%	100.00%	99.88%	99.42%	98.39%
91-180 Days						0.00%	0.00%	0.12%	0.58%	0.88%



Mortgages - La Hipotecaria El Salvador Migration Analysis (2016 Vintage)

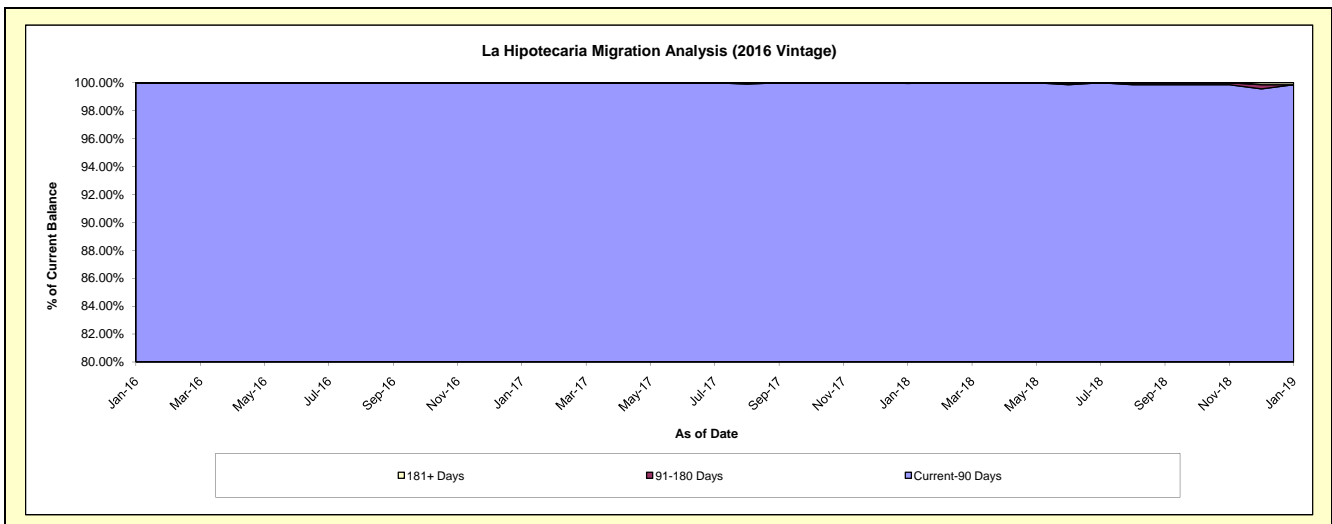
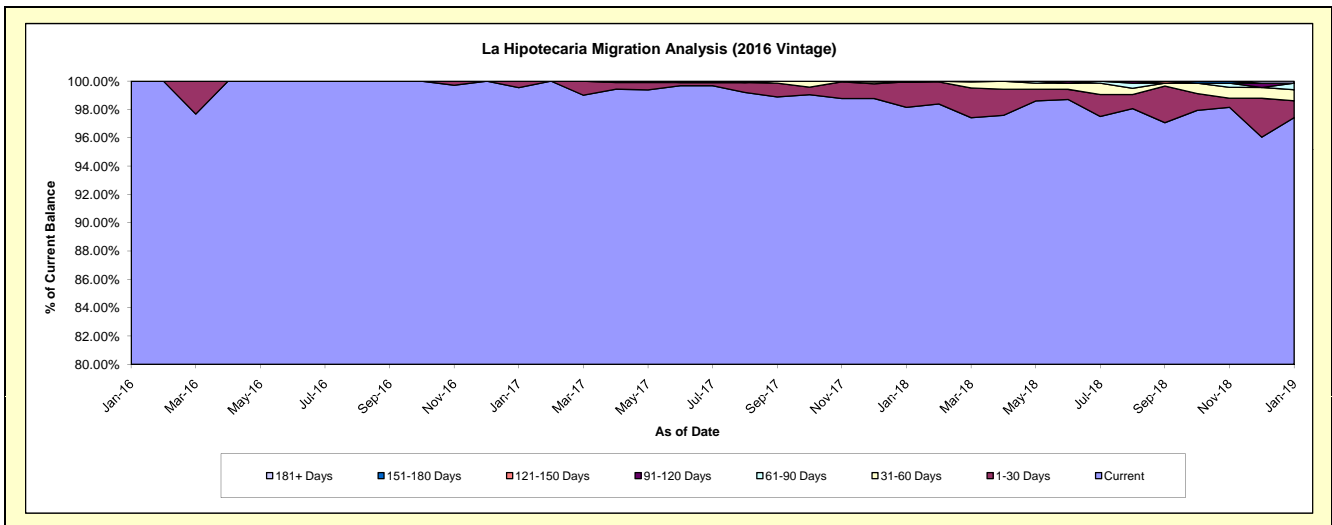
Delinquency Status (\$ of Current Balance)

Data Cutoff: 1/31/2019

Current Portfolio Balance	-	-	-	-	-	-	-	2,080,915.51	23,594,331.62	22,960,929.08	21,807,021.90
								Jan-16	Jan-17	Jan-18	Jan-19
Current								2,080,915.51	23,485,423.84	22,535,900.66	21,244,647.45
1-30 Days								-	108,907.78	414,528.51	260,660.50
31-60 Days								-	-	-	169,648.82
61-90 Days								-	-	-	100,439.63
91-120 Days								-	-	10,499.91	-
121-150 Days								-	-	-	-
151-180 Days								-	-	-	-
181+ Days								-	-	-	31,625.50

Delinquency Status (% of Current Balance)

Current Portfolio Balance	-	-	-	-	-	-	-	2,080,915.51	23,594,331.62	22,960,929.08	21,807,021.90
								Jan-16	Jan-17	Jan-18	Jan-19
Current								100.00%	99.54%	98.15%	97.42%
1-30 Days								0.00%	0.46%	1.81%	1.20%
31-60 Days								0.00%	0.00%	0.00%	0.78%
61-90 Days								0.00%	0.00%	0.00%	0.46%
91-120 Days								0.00%	0.00%	0.05%	0.00%
121-150 Days								0.00%	0.00%	0.00%	0.00%
151-180 Days								0.00%	0.00%	0.00%	0.00%
181+ Days								0.00%	0.00%	0.00%	0.15%
Current - 90 Days								100.00%	100.00%	99.95%	99.85%
91-180 Days								0.00%	0.00%	0.05%	0.00%



Mortgages - La Hipotecaria El Salvador Migration Analysis (2017 Vintage)

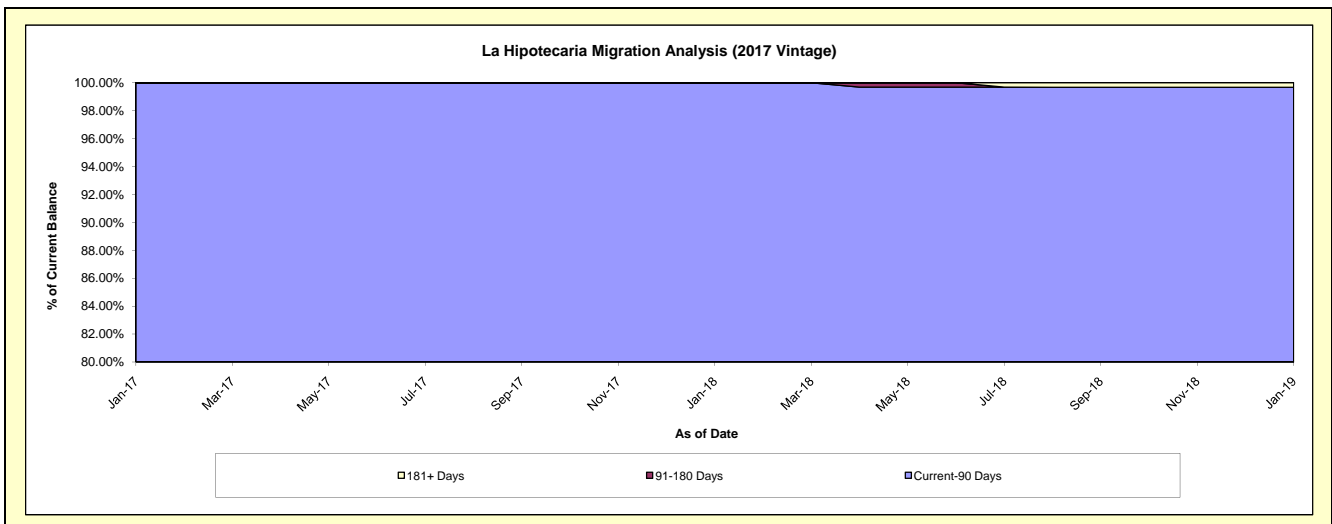
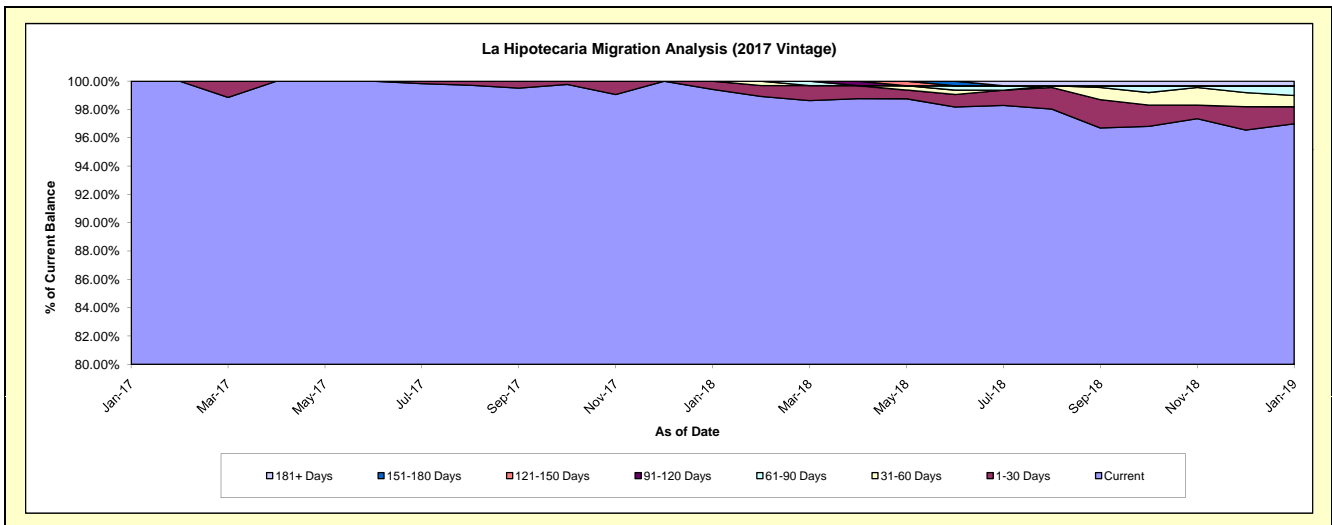
Delinquency Status (\$ of Current Balance)

Data Cutoff: 1/31/2019

Current Portfolio Balance	-	-	-	-	-	-	-	-	-	1,863,112.53	18,903,825.44	18,081,604.76
										Jan-17	Jan-18	Jan-19
Current										1,863,112.53	18,793,786.73	17,537,140.58
1-30 Days										-	110,038.71	217,691.13
31-60 Days										-	-	144,278.41
61-90 Days										-	-	123,094.64
91-120 Days										-	-	-
121-150 Days										-	-	-
151-180 Days										-	-	-
181+ Days										-	-	59,400.00

Delinquency Status (% of Current Balance)

Current Portfolio Balance	-	-	-	-	-	-	-	-	-	1,863,112.53	18,903,825.44	18,081,604.76
										Jan-17	Jan-18	Jan-19
Current										100.00%	99.42%	96.99%
1-30 Days										0.00%	0.58%	1.20%
31-60 Days										0.00%	0.00%	0.80%
61-90 Days										0.00%	0.00%	0.68%
91-120 Days										0.00%	0.00%	0.00%
121-150 Days										0.00%	0.00%	0.00%
151-180 Days										0.00%	0.00%	0.00%
181+ Days										0.00%	0.00%	0.33%
Current - 90 Days										100.00%	100.00%	99.67%
91-180 Days										0.00%	0.00%	0.00%



Mortgages - La Hipotecaria El Salvador Migration Analysis (2018 Vintage)

Delinquency Status (\$ of Current Balance)

Data Cutoff: 1/31/2019

Current Portfolio Balance										1,014,042.96	23,154,808.42
										Jan-18	Jan-19
Current										1,014,042.96	22,958,262.59
1-30 Days										-	128,668.42
31-60 Days										-	67,877.41
61-90 Days										-	-
91-120 Days										-	-
121-150 Days										-	-
151-180 Days										-	-
181+ Days										-	-

Delinquency Status (% of Current Balance)

Current Portfolio Balance										1,014,042.96	23,154,808.42
										Jan-18	Jan-19
Current										100.00%	99.15%
1-30 Days										0.00%	0.56%
31-60 Days										0.00%	0.29%
61-90 Days										0.00%	0.00%
91-120 Days										0.00%	0.00%
121-150 Days										0.00%	0.00%
151-180 Days										0.00%	0.00%
181+ Days										0.00%	0.00%
Current - 90 Days										100.00%	100.00%
91-180 Days										0.00%	0.00%

