



Migration Analysis for La Hipotecaria S.A. de C.V El Salvador

Personal Loans January 2019

An analysis of historical loan payment data was used to compile a migration analysis of delinquency by annual vintage. Delinquencies for each vintage were grouped into the following buckets; Current, 1-30, 31-60, 61-90, 91-120, 121-150, 151-180, and 180+. Results are provided in graphical and tabular form. The cutoff date is 1/31/2019.

Personal Loans - La Hipotecaria El Salvador Migration Analysis (All Vintages)

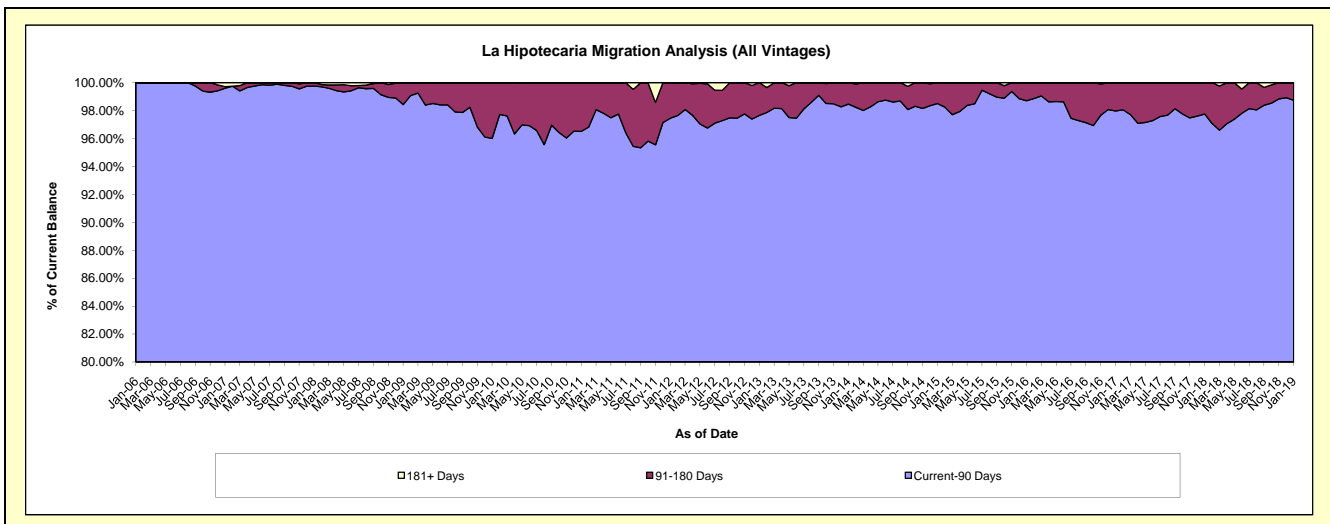
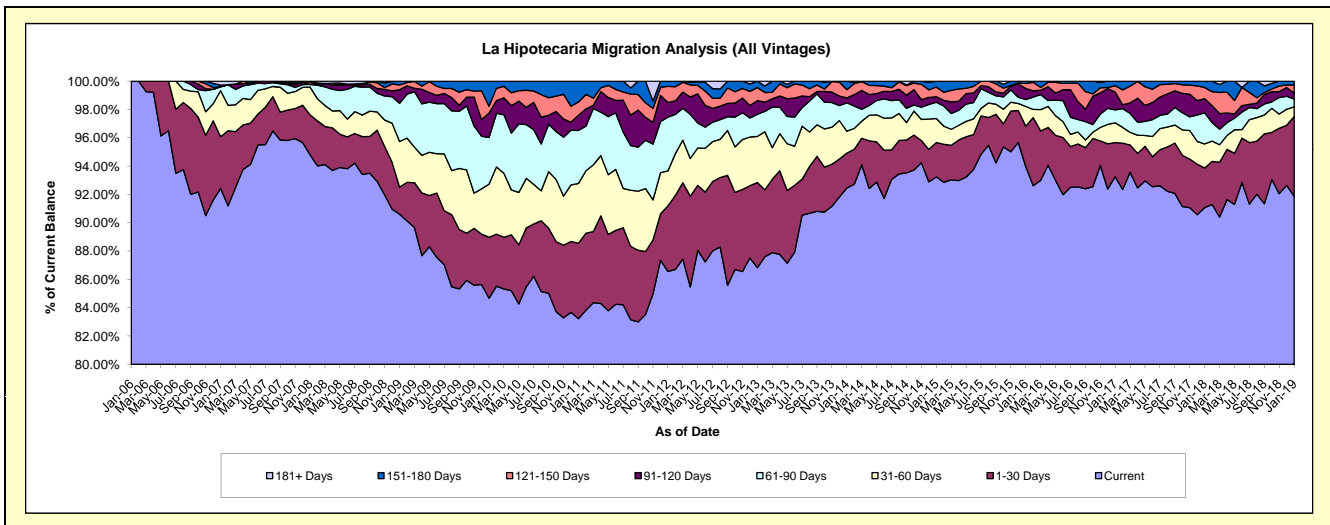
Delinquency Status (\$ of Current Balance)

Data Cutoff: 1/31/2019

Current Portfolio Balance	7,776,799.31	6,151,580.54	4,670,205.92	4,921,430.23	5,405,374.08	5,580,229.09	5,167,445.96	4,380,064.82	5,207,855.59	7,954,416.00
	Jan-10	Jan-11	Jan-12	Jan-13	Jan-14	Jan-15	Jan-16	Jan-17	Jan-18	Jan-19
Current	6,585,142.51	5,119,828.44	4,042,715.08	4,273,181.99	4,997,539.77	5,202,805.72	4,855,627.76	4,084,539.04	4,742,732.89	7,308,032.69
1-30 Days	334,679.76	327,420.38	216,315.86	295,832.83	133,094.63	135,733.11	147,583.17	105,884.94	145,929.75	447,509.88
31-60 Days	290,908.41	260,145.25	115,452.48	160,430.86	83,812.92	94,275.26	72,052.14	60,855.87	88,424.26	54,550.92
61-90 Days	256,794.17	230,087.95	177,120.20	76,905.65	108,308.11	64,447.10	25,459.94	40,013.32	114,283.25	44,059.26
91-120 Days	134,213.42	66,419.68	48,854.07	47,267.89	18,875.14	21,496.98	40,289.88	55,188.18	51,773.38	33,398.59
121-150 Days	37,993.15	57,101.21	52,715.57	45,578.97	31,061.41	38,079.26	17,952.45	19,614.06	41,360.83	45,151.71
151-180 Days	137,067.89	90,577.63	17,032.66	22,232.04	32,682.10	23,391.66	8,480.62	13,969.41	23,351.23	21,712.95
181+ Days	-	-	-	-	-	-	-	-	-	-

Delinquency Status (% of Current Balance)

Current Portfolio Balance	7,776,799.31	6,151,580.54	4,670,205.92	4,921,430.23	5,405,374.08	5,580,229.09	5,167,445.96	4,380,064.82	5,207,855.59	7,954,416.00
	Jan-10	Jan-11	Jan-12	Jan-13	Jan-14	Jan-15	Jan-16	Jan-17	Jan-18	Jan-19
Current	84.68%	83.23%	86.56%	86.83%	92.46%	93.24%	93.97%	93.25%	91.07%	91.87%
1-30 Days	4.30%	5.32%	4.63%	6.01%	2.46%	2.43%	2.86%	2.42%	2.80%	5.63%
31-60 Days	3.74%	4.23%	2.47%	3.26%	1.55%	1.69%	1.39%	1.39%	1.70%	0.69%
61-90 Days	3.30%	3.74%	3.79%	1.56%	2.00%	1.15%	0.49%	0.91%	2.19%	0.55%
91-120 Days	1.73%	1.08%	1.05%	0.96%	0.35%	0.39%	0.78%	1.26%	0.99%	0.42%
121-150 Days	0.49%	0.93%	1.13%	0.93%	0.57%	0.68%	0.35%	0.45%	0.79%	0.57%
151-180 Days	1.76%	1.47%	0.36%	0.45%	0.60%	0.42%	0.16%	0.32%	0.45%	0.27%
181+ Days	0.00%	0.00%	0.00%	0.00%	0.00%	0.00%	0.00%	0.00%	0.00%	0.00%
Current - 90 Days	96.02%	96.52%	97.46%	97.66%	98.47%	98.51%	98.71%	97.97%	97.76%	98.74%
91-180 Days	3.98%	3.48%	2.54%	2.34%	1.53%	1.49%	1.29%	2.03%	2.24%	1.26%



Personal Loans - La Hipotecaria El Salvador Migration Analysis (2006 Vintage)

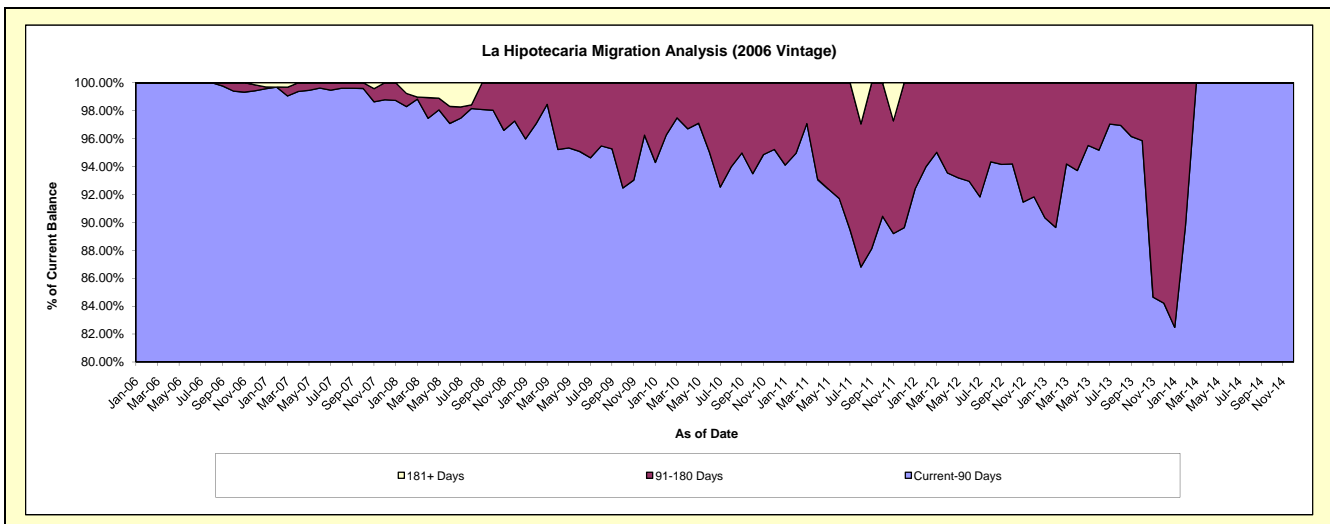
Delinquency Status (\$ of Current Balance)

Data Cutoff: 1/31/2019

Current Portfolio Balance	573,144.90	365,192.47	186,375.70	92,327.72	24,470.30	#N/A	#N/A	#N/A	#N/A	#N/A
	Jan-10	Jan-11	Jan-12	Jan-13	Jan-14	Jan-15	Jan-16	Jan-17	Jan-18	Jan-19
Current	388,472.29	235,239.38	126,841.83	55,643.82	12,757.63	#N/A	#N/A	#N/A	#N/A	#N/A
1-30 Days	61,711.75	48,639.88	27,077.83	19,423.98	1,028.91	#N/A	#N/A	#N/A	#N/A	#N/A
31-60 Days	31,112.18	19,732.52	10,930.84	4,251.50	3,335.26	#N/A	#N/A	#N/A	#N/A	#N/A
61-90 Days	59,148.28	40,033.00	7,330.75	4,078.52	3,063.51	#N/A	#N/A	#N/A	#N/A	#N/A
91-120 Days	15,137.96	3,383.09	3,508.17	5,140.44	-	#N/A	#N/A	#N/A	#N/A	#N/A
121-150 Days	12,108.05	11,603.09	8,564.97	1,942.81	746.27	#N/A	#N/A	#N/A	#N/A	#N/A
151-180 Days	5,454.39	6,561.51	2,121.31	1,846.65	3,538.72	#N/A	#N/A	#N/A	#N/A	#N/A
181+ Days	-	-	-	-	-	#N/A	#N/A	#N/A	#N/A	#N/A

Delinquency Status (% of Current Balance)

Current Portfolio Balance	573,144.90	365,192.47	186,375.70	92,327.72	24,470.30	#N/A	#N/A	#N/A	#N/A	#N/A
	Jan-10	Jan-11	Jan-12	Jan-13	Jan-14	Jan-15	Jan-16	Jan-17	Jan-18	Jan-19
Current	67.78%	64.42%	68.06%	60.27%	52.14%	#N/A	#N/A	#N/A	#N/A	#N/A
1-30 Days	10.77%	13.32%	14.53%	21.04%	4.20%	#N/A	#N/A	#N/A	#N/A	#N/A
31-60 Days	5.43%	5.40%	5.86%	4.60%	13.63%	#N/A	#N/A	#N/A	#N/A	#N/A
61-90 Days	10.32%	10.96%	3.93%	4.42%	12.52%	#N/A	#N/A	#N/A	#N/A	#N/A
91-120 Days	2.64%	0.93%	1.88%	5.57%	0.00%	#N/A	#N/A	#N/A	#N/A	#N/A
121-150 Days	2.11%	3.18%	4.60%	2.10%	3.05%	#N/A	#N/A	#N/A	#N/A	#N/A
151-180 Days	0.95%	1.80%	1.14%	2.00%	14.46%	#N/A	#N/A	#N/A	#N/A	#N/A
181+ Days	0.00%	0.00%	0.00%	0.00%	0.00%	#N/A	#N/A	#N/A	#N/A	#N/A
Current - 90 Days	94.29%	94.10%	92.38%	90.33%	82.49%	#N/A	#N/A	#N/A	#N/A	#N/A
91-180 Days	5.71%	5.90%	7.62%	9.67%	17.51%	#N/A	#N/A	#N/A	#N/A	#N/A



Personal Loans - La Hipotecaria El Salvador Migration Analysis (2007 Vintage)

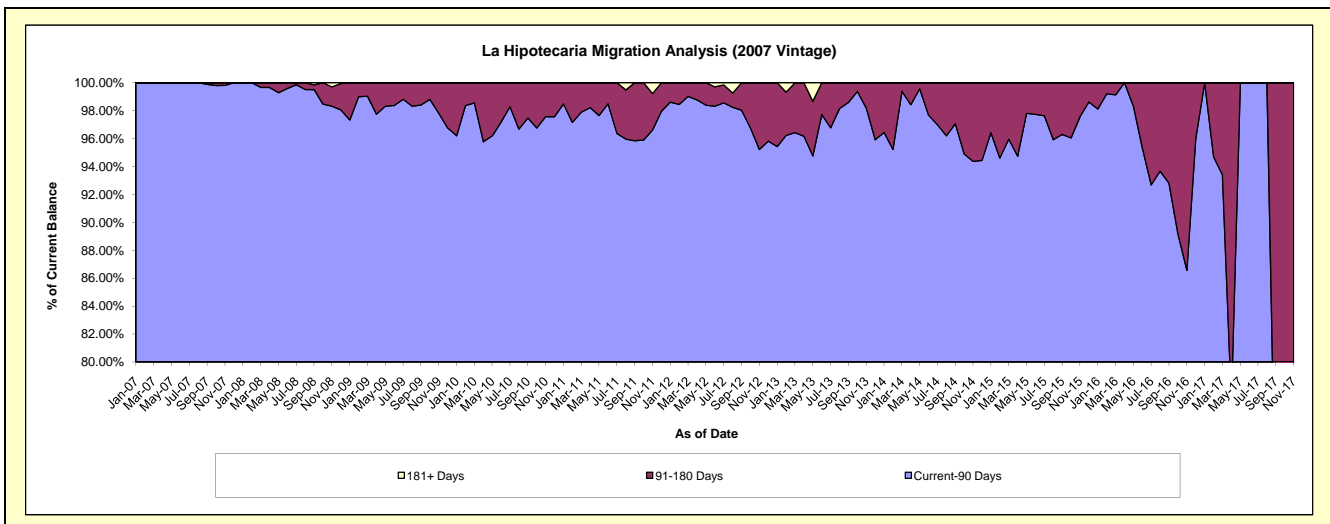
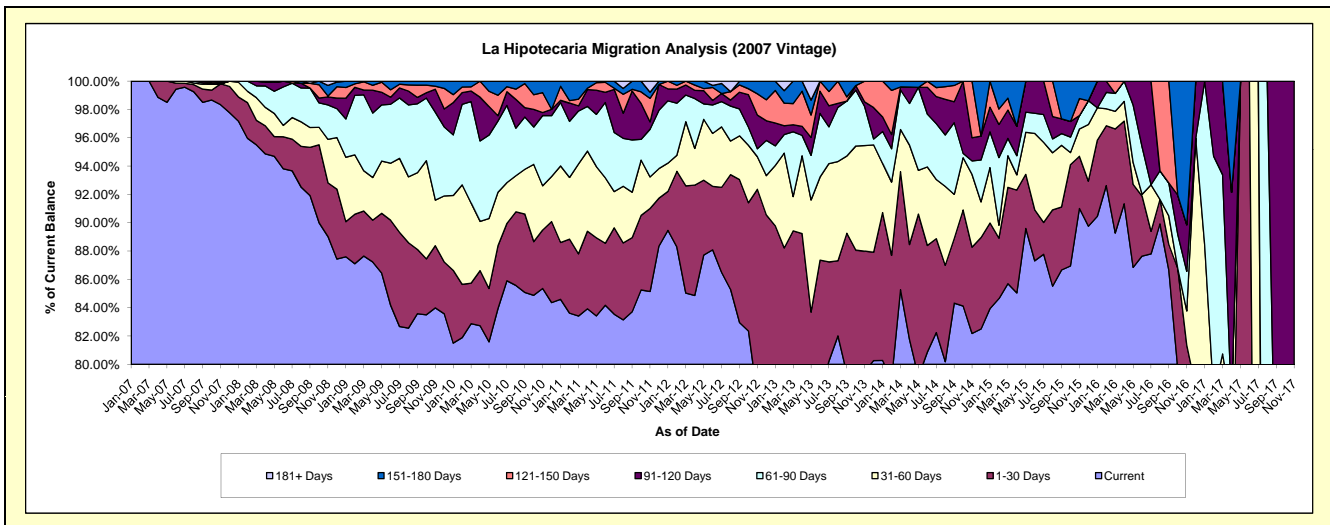
Delinquency Status (\$ of Current Balance)

Data Cutoff: 1/31/2019

Current Portfolio Balance	3,102,107.95	2,227,117.85	1,504,574.85	931,371.15	566,063.16	287,027.58	105,010.49	13,776.97	#N/A	#N/A
	Jan-10	Jan-11	Jan-12	Jan-13	Jan-14	Jan-15	Jan-16	Jan-17	Jan-18	Jan-19
Current	2,528,247.03	1,883,917.99	1,346,060.75	729,957.00	454,399.73	240,907.82	94,984.62	10,852.85	#N/A	#N/A
1-30 Days	159,519.30	89,449.02	41,366.94	106,309.16	59,122.24	17,363.49	5,650.53	-	#N/A	#N/A
31-60 Days	163,782.41	120,454.72	30,084.07	39,621.56	19,572.28	11,232.71	2,396.31	1,329.45	#N/A	#N/A
61-90 Days	132,818.70	99,662.53	66,143.87	12,947.22	12,854.70	7,253.90	-	1,594.67	#N/A	#N/A
91-120 Days	70,803.19	3,590.59	12,708.91	15,026.46	5,835.84	4,985.95	1,979.03	-	#N/A	#N/A
121-150 Days	17,385.10	21,982.79	8,210.31	21,369.48	14,278.37	5,283.71	-	-	#N/A	#N/A
151-180 Days	29,552.22	8,060.21	-	6,140.27	-	-	-	-	#N/A	#N/A
181+ Days	-	-	-	-	-	-	-	-	#N/A	#N/A

Delinquency Status (% of Current Balance)

Current Portfolio Balance	3,102,107.95	2,227,117.85	1,504,574.85	931,371.15	566,063.16	287,027.58	105,010.49	13,776.97	#N/A	#N/A
	Jan-10	Jan-11	Jan-12	Jan-13	Jan-14	Jan-15	Jan-16	Jan-17	Jan-18	Jan-19
Current	81.50%	84.59%	89.46%	78.37%	80.27%	83.93%	90.45%	78.78%	#N/A	#N/A
1-30 Days	5.14%	4.02%	2.75%	11.41%	10.44%	6.05%	5.38%	0.00%	#N/A	#N/A
31-60 Days	5.28%	5.41%	2.00%	4.25%	3.46%	3.91%	2.28%	9.65%	#N/A	#N/A
61-90 Days	4.28%	4.47%	4.40%	1.39%	2.27%	2.53%	0.00%	11.57%	#N/A	#N/A
91-120 Days	2.28%	0.16%	0.84%	1.61%	1.03%	1.74%	1.88%	0.00%	#N/A	#N/A
121-150 Days	0.56%	0.99%	0.55%	2.29%	2.52%	1.84%	0.00%	0.00%	#N/A	#N/A
151-180 Days	0.95%	0.36%	0.00%	0.66%	0.00%	0.00%	0.00%	0.00%	#N/A	#N/A
181+ Days	0.00%	0.00%	0.00%	0.00%	0.00%	0.00%	0.00%	0.00%	#N/A	#N/A
Current - 90 Days	96.20%	98.49%	98.61%	95.43%	96.45%	96.42%	98.12%	100.00%	#N/A	#N/A
91-180 Days	3.80%	1.51%	1.39%	4.57%	3.55%	3.58%	1.88%	0.00%	#N/A	#N/A



Personal Loans - La Hipotecaria El Salvador Migration Analysis (2008 Vintage)

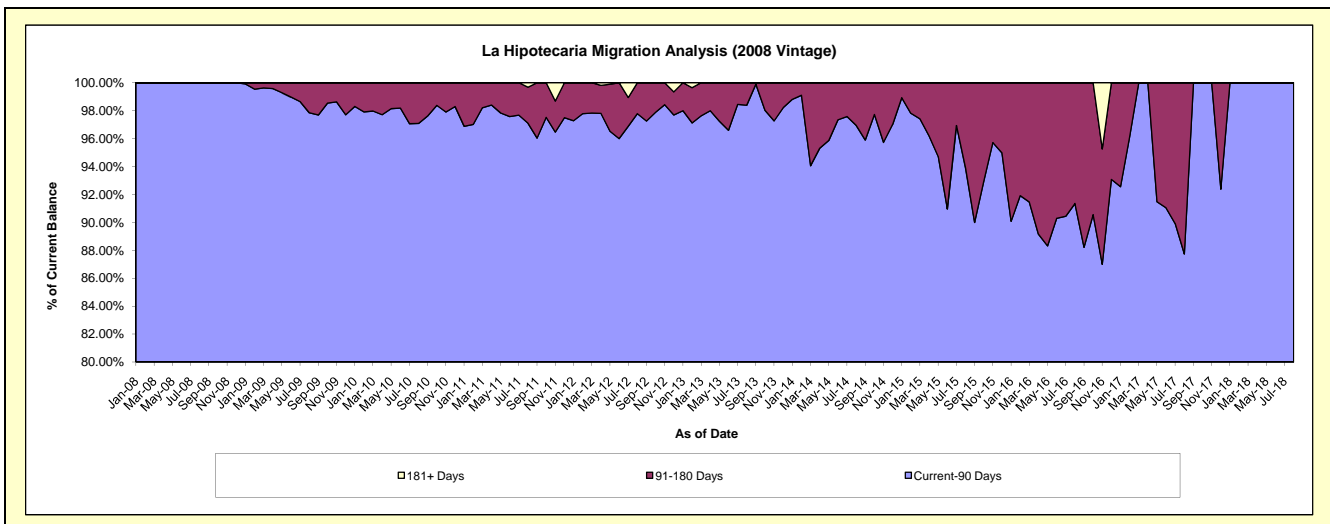
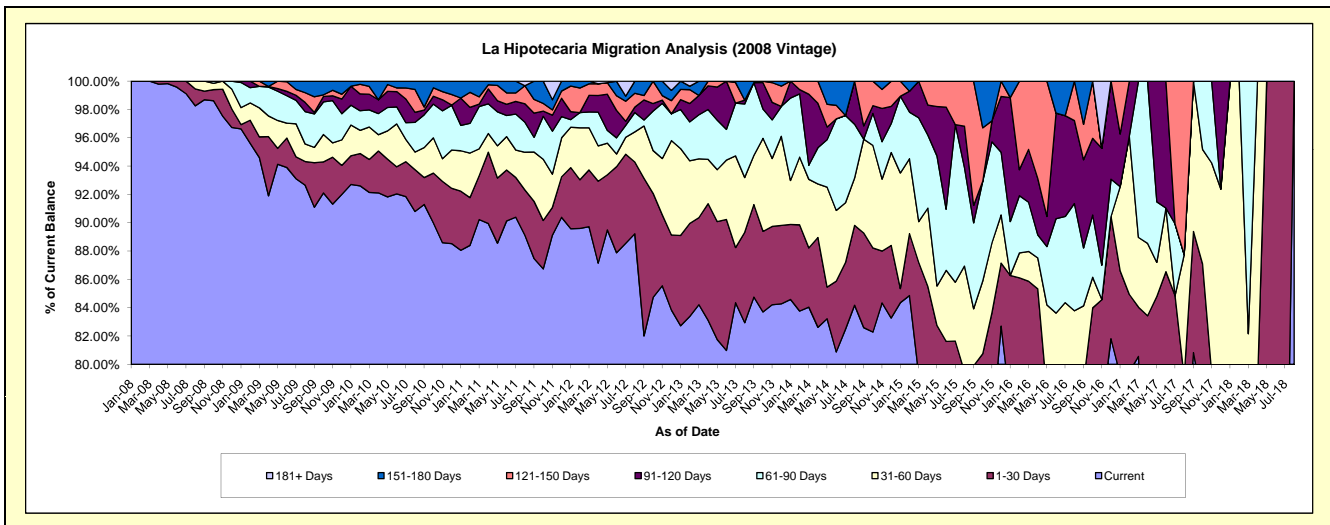
Delinquency Status (\$ of Current Balance)

Data Cutoff: 1/31/2019

Current Portfolio Balance	3,603,437.91	2,869,283.21	1,993,389.42	1,414,169.96	922,462.78	507,675.28	223,180.95	71,846.44	7,816.44	#N/A
	Jan-10	Jan-11	Jan-12	Jan-13	Jan-14	Jan-15	Jan-16	Jan-17	Jan-18	Jan-19
Current	3,340,459.76	2,526,668.60	1,785,671.81	1,169,874.14	780,243.82	428,286.83	172,296.38	56,947.63	5,090.76	#N/A
1-30 Days	73,111.61	119,652.41	85,992.80	90,197.58	48,906.66	5,023.66	20,267.77	5,267.41	614.67	#N/A
31-60 Days	78,408.77	81,921.20	56,862.39	86,769.46	28,598.37	41,449.12	-	4,282.90	2,111.01	#N/A
61-90 Days	50,311.64	51,512.47	10,648.20	39,016.78	53,724.59	27,491.87	8,482.87	-	-	#N/A
91-120 Days	48,272.27	54,984.36	11,385.35	9,881.90	10,989.34	-	19,557.85	2,665.27	-	#N/A
121-150 Days	-	459.40	35,940.29	10,184.98	-	5,423.80	-	2,683.23	-	#N/A
151-180 Days	12,873.86	34,084.77	6,888.58	8,245.12	-	-	2,576.08	-	-	#N/A
181+ Days	-	-	-	-	-	-	-	-	-	#N/A

Delinquency Status (% of Current Balance)

Current Portfolio Balance	3,603,437.91	2,869,283.21	1,993,389.42	1,414,169.96	922,462.78	507,675.28	223,180.95	71,846.44	7,816.44	#N/A
	Jan-10	Jan-11	Jan-12	Jan-13	Jan-14	Jan-15	Jan-16	Jan-17	Jan-18	Jan-19
Current	92.70%	88.06%	89.58%	82.73%	84.58%	84.36%	77.20%	79.26%	65.13%	#N/A
1-30 Days	2.03%	4.17%	4.31%	6.38%	5.30%	0.99%	9.08%	7.33%	7.86%	#N/A
31-60 Days	2.18%	2.86%	2.85%	6.14%	3.10%	8.16%	0.00%	5.96%	27.01%	#N/A
61-90 Days	1.40%	1.80%	0.53%	2.76%	5.82%	5.42%	3.80%	0.00%	0.00%	#N/A
91-120 Days	1.34%	1.92%	0.57%	0.70%	1.19%	0.00%	8.76%	3.71%	0.00%	#N/A
121-150 Days	0.00%	0.02%	1.80%	0.72%	0.00%	1.07%	0.00%	3.73%	0.00%	#N/A
151-180 Days	0.36%	1.19%	0.35%	0.58%	0.00%	0.00%	1.15%	0.00%	0.00%	#N/A
181+ Days	0.00%	0.00%	0.00%	0.00%	0.00%	0.00%	0.00%	0.00%	0.00%	#N/A
Current - 90 Days	98.30%	96.88%	97.28%	98.00%	98.81%	98.93%	90.08%	92.56%	100.00%	#N/A
91-180 Days	1.70%	3.12%	2.72%	2.00%	1.19%	1.07%	9.92%	7.44%	0.00%	#N/A



Personal Loans - La Hipotecaria El Salvador Migration Analysis (2009 Vintage)

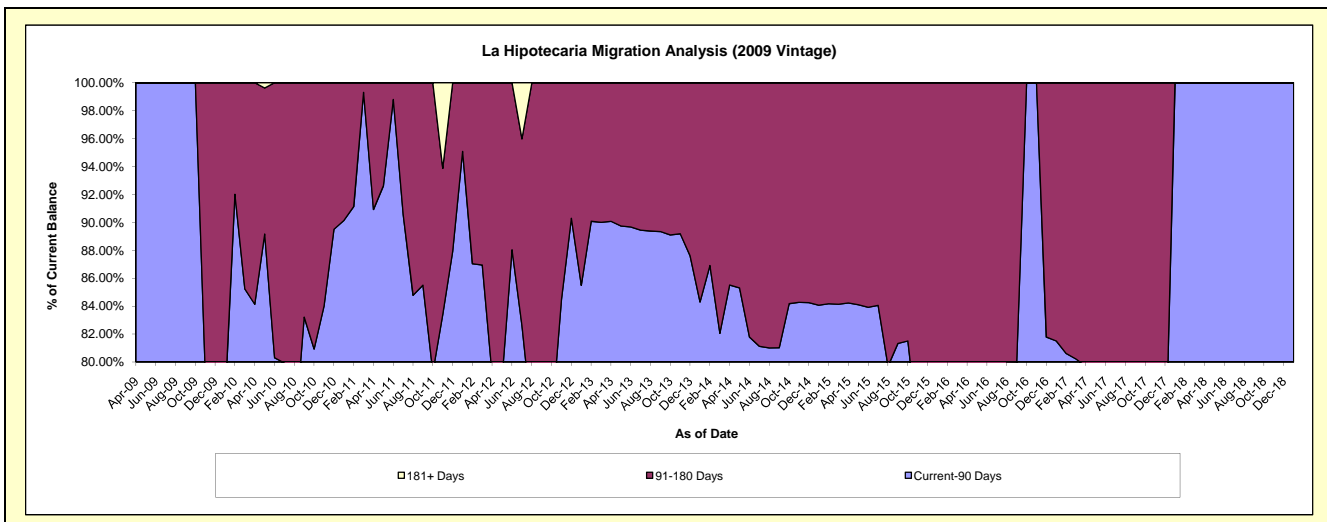
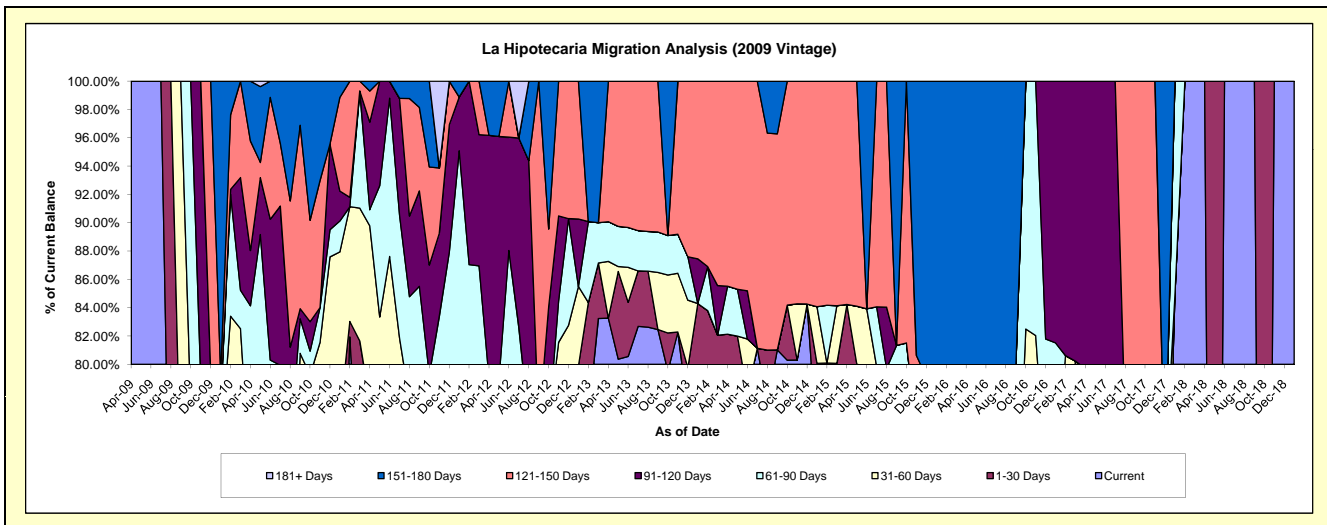
Delinquency Status (\$ of Current Balance)

Data Cutoff: 1/31/2019

Current Portfolio Balance	429,523.58	212,070.44	141,395.56	99,789.64	64,899.94	39,804.98	22,008.50	12,262.94	5,736.12	397.14
	Jan-10	Jan-11	Jan-12	Jan-13	Jan-14	Jan-15	Jan-16	Jan-17	Jan-18	Jan-19
Current	259,378.46	130,898.46	92,202.12	71,725.99	51,577.76	29,604.94	13,836.80	8,794.71	4,869.61	397.14
1-30 Days	40,337.10	30,926.90	-	7,989.81	3,131.66	2,267.16	-	-	-	-
31-60 Days	17,605.05	24,678.22	-	5,602.16	-	1,593.77	2,267.16	-	-	-
61-90 Days	14,515.55	4,637.66	42,239.47	-	-	-	-	1,201.07	866.51	-
91-120 Days	-	4,461.64	5,372.08	4,752.62	2,049.96	-	-	2,267.16	-	-
121-150 Days	8,500.00	14,055.93	-	9,719.06	8,140.56	6,339.11	-	-	-	-
151-180 Days	89,187.42	2,411.63	1,581.89	-	-	-	5,904.54	-	-	-
181+ Days	-	-	-	-	-	-	-	-	-	-

Delinquency Status (% of Current Balance)

Current Portfolio Balance	429,523.58	212,070.44	141,395.56	99,789.64	64,899.94	39,804.98	22,008.50	12,262.94	5,736.12	397.14
	Jan-10	Jan-11	Jan-12	Jan-13	Jan-14	Jan-15	Jan-16	Jan-17	Jan-18	Jan-19
Current	60.39%	61.72%	65.21%	71.89%	79.47%	74.37%	62.87%	71.72%	84.89%	100.00%
1-30 Days	9.39%	14.58%	0.00%	8.01%	4.83%	5.70%	0.00%	0.00%	0.00%	0.00%
31-60 Days	4.10%	11.64%	0.00%	5.61%	0.00%	4.00%	10.30%	0.00%	0.00%	0.00%
61-90 Days	3.38%	2.19%	29.87%	0.00%	0.00%	0.00%	0.00%	9.79%	15.11%	0.00%
91-120 Days	0.00%	2.10%	3.80%	4.76%	3.16%	0.00%	0.00%	18.49%	0.00%	0.00%
121-150 Days	1.98%	6.63%	0.00%	9.74%	12.54%	15.93%	0.00%	0.00%	0.00%	0.00%
151-180 Days	20.76%	1.14%	1.12%	0.00%	0.00%	0.00%	26.83%	0.00%	0.00%	0.00%
181+ Days	0.00%	0.00%	0.00%	0.00%	0.00%	0.00%	0.00%	0.00%	0.00%	0.00%
Current - 90 Days	77.26%	90.13%	95.08%	85.50%	84.30%	84.07%	73.17%	81.51%	100.00%	100.00%
91-180 Days	22.74%	9.87%	4.92%	14.50%	15.70%	15.93%	26.83%	18.49%	0.00%	0.00%



Personal Loans - La Hipotecaria El Salvador Migration Analysis (2010 Vintage)

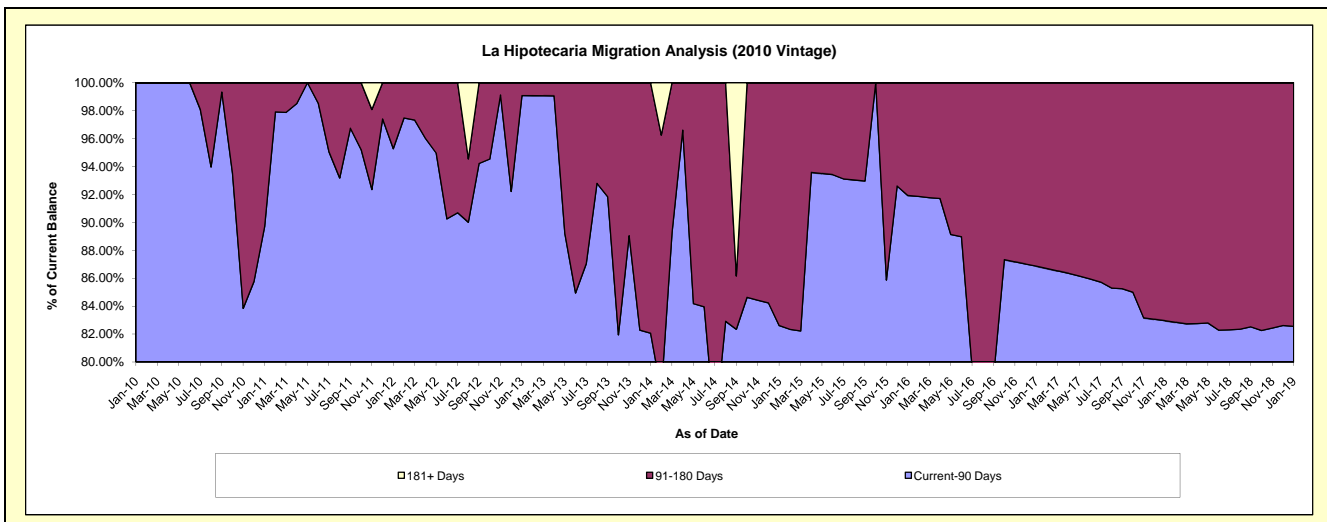
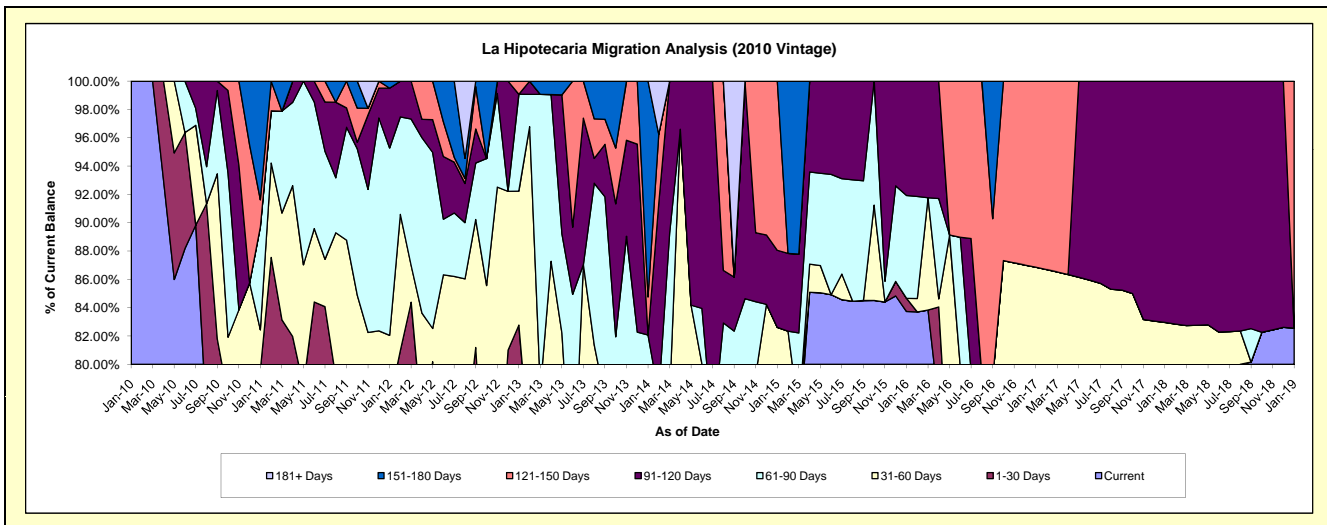
Delinquency Status (\$ of Current Balance)

Data Cutoff: 1/31/2019

Current Portfolio Balance	68,584.97	470,981.04	375,528.60	255,582.80	158,542.11	73,627.46	44,980.45	25,026.67	16,751.95	13,913.93
	Jan-10	Jan-11	Jan-12	Jan-13	Jan-14	Jan-15	Jan-16	Jan-17	Jan-18	Jan-19
Current	68,584.97	336,168.48	228,677.17	158,131.50	87,113.38	55,299.34	37,662.72	19,537.10	12,849.48	11,486.80
1-30 Days	-	38,752.17	61,878.29	53,419.33	12,721.72	1,342.01	420.09	-	-	-
31-60 Days	-	13,358.59	17,575.18	24,186.18	14,897.19	4,186.62	-	2,201.53	1,048.13	-
61-90 Days	-	34,242.29	49,672.00	17,483.15	15,385.08	-	3,264.96	-	-	-
91-120 Days	-	-	15,879.56	-	-	4,006.30	3,632.68	-	2,854.34	-
121-150 Days	-	9,000.00	-	2,362.64	4,266.71	8,793.19	-	3,288.04	-	2,427.13
151-180 Days	-	39,459.51	1,846.40	-	24,158.03	-	-	-	-	-
181+ Days	-	-	-	-	-	-	-	-	-	-

Delinquency Status (% of Current Balance)

Current Portfolio Balance	68,584.97	470,981.04	375,528.60	255,582.80	158,542.11	73,627.46	44,980.45	25,026.67	16,751.95	13,913.93
	Jan-10	Jan-11	Jan-12	Jan-13	Jan-14	Jan-15	Jan-16	Jan-17	Jan-18	Jan-19
Current	100.00%	71.38%	60.89%	61.87%	54.95%	75.11%	83.73%	78.07%	76.70%	82.56%
1-30 Days	0.00%	8.23%	16.48%	20.90%	8.02%	1.82%	0.93%	0.00%	0.00%	0.00%
31-60 Days	0.00%	2.84%	4.68%	9.46%	9.40%	5.69%	0.00%	8.80%	6.26%	0.00%
61-90 Days	0.00%	7.27%	13.23%	6.84%	9.70%	0.00%	7.26%	0.00%	0.00%	0.00%
91-120 Days	0.00%	0.00%	4.23%	0.00%	0.00%	5.44%	8.08%	0.00%	17.04%	0.00%
121-150 Days	0.00%	1.91%	0.00%	0.92%	2.69%	11.94%	0.00%	13.14%	0.00%	17.44%
151-180 Days	0.00%	8.38%	0.49%	0.00%	15.24%	0.00%	0.00%	0.00%	0.00%	0.00%
181+ Days	0.00%	0.00%	0.00%	0.00%	0.00%	0.00%	0.00%	0.00%	0.00%	0.00%
Current - 90 Days	100.00%	89.71%	95.28%	99.08%	82.07%	82.62%	91.92%	86.86%	82.96%	82.56%
91-180 Days	0.00%	10.29%	4.72%	0.92%	17.93%	17.38%	8.08%	13.14%	17.04%	17.44%



Personal Loans - La Hipotecaria El Salvador Migration Analysis (2011 Vintage)

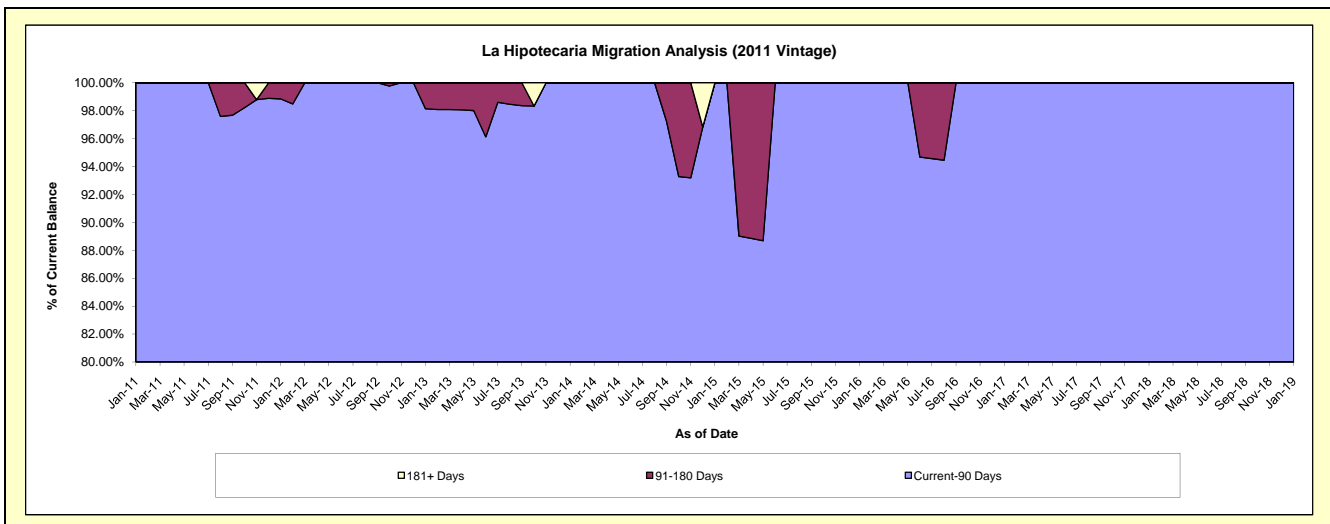
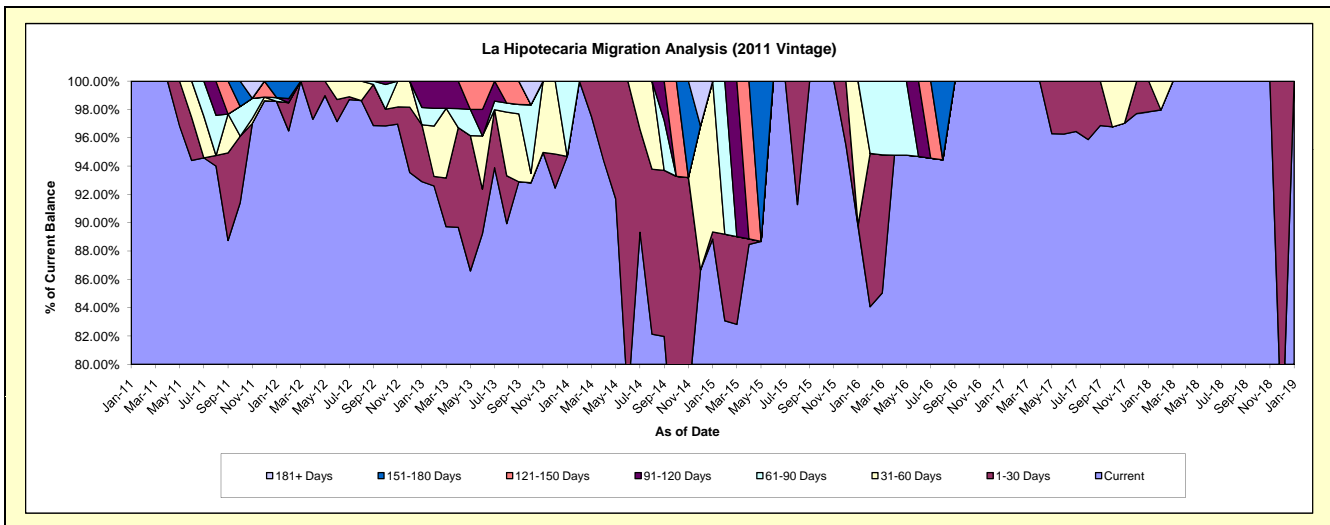
Delinquency Status (\$ of Current Balance)

Data Cutoff: 1/31/2019

Current Portfolio Balance	-	6,935.53	397,104.11	275,547.06	173,827.38	120,412.19	76,225.32	54,754.95	35,207.43	24,340.76
	Jan-11	Jan-12	Jan-13	Jan-14	Jan-15	Jan-16	Jan-17	Jan-18	Jan-19	
Current	6,935.53	391,423.72	255,989.57	164,585.74	106,989.34	68,452.55	54,754.95	34,444.05	24,340.76	
1-30 Days	-	-	11,059.60	-	601.03	-	-	763.38	-	
31-60 Days	-	-	-	-	12,821.82	7,772.77	-	-	-	
61-90 Days	-	1,085.91	3,379.98	9,241.64	-	-	-	-	-	
91-120 Days	-	-	5,117.91	-	-	-	-	-	-	
121-150 Days	-	-	-	-	-	-	-	-	-	
151-180 Days	-	4,594.48	-	-	-	-	-	-	-	
181+ Days	-	-	-	-	-	-	-	-	-	

Delinquency Status (% of Current Balance)

Current Portfolio Balance	-	6,935.53	397,104.11	275,547.06	173,827.38	120,412.19	76,225.32	54,754.95	35,207.43	24,340.76
	Jan-11	Jan-12	Jan-13	Jan-14	Jan-15	Jan-16	Jan-17	Jan-18	Jan-19	
Current	100.00%	98.57%	92.90%	94.68%	88.85%	89.80%	100.00%	97.83%	100.00%	
1-30 Days	0.00%	0.00%	4.01%	0.00%	0.50%	0.00%	0.00%	2.17%	0.00%	
31-60 Days	0.00%	0.00%	0.00%	0.00%	10.65%	10.20%	0.00%	0.00%	0.00%	
61-90 Days	0.00%	0.27%	1.23%	5.32%	0.00%	0.00%	0.00%	0.00%	0.00%	
91-120 Days	0.00%	0.00%	1.86%	0.00%	0.00%	0.00%	0.00%	0.00%	0.00%	
121-150 Days	0.00%	0.00%	0.00%	0.00%	0.00%	0.00%	0.00%	0.00%	0.00%	
151-180 Days	0.00%	1.16%	0.00%	0.00%	0.00%	0.00%	0.00%	0.00%	0.00%	
181+ Days	0.00%	0.00%	0.00%	0.00%	0.00%	0.00%	0.00%	0.00%	0.00%	
Current - 90 Days	100.00%	98.84%	98.14%	100.00%	100.00%	100.00%	100.00%	100.00%	100.00%	
91-180 Days	0.00%	1.16%	1.86%	0.00%	0.00%	0.00%	0.00%	0.00%	0.00%	



Personal Loans - La Hipotecaria El Salvador Migration Analysis (2012 Vintage)

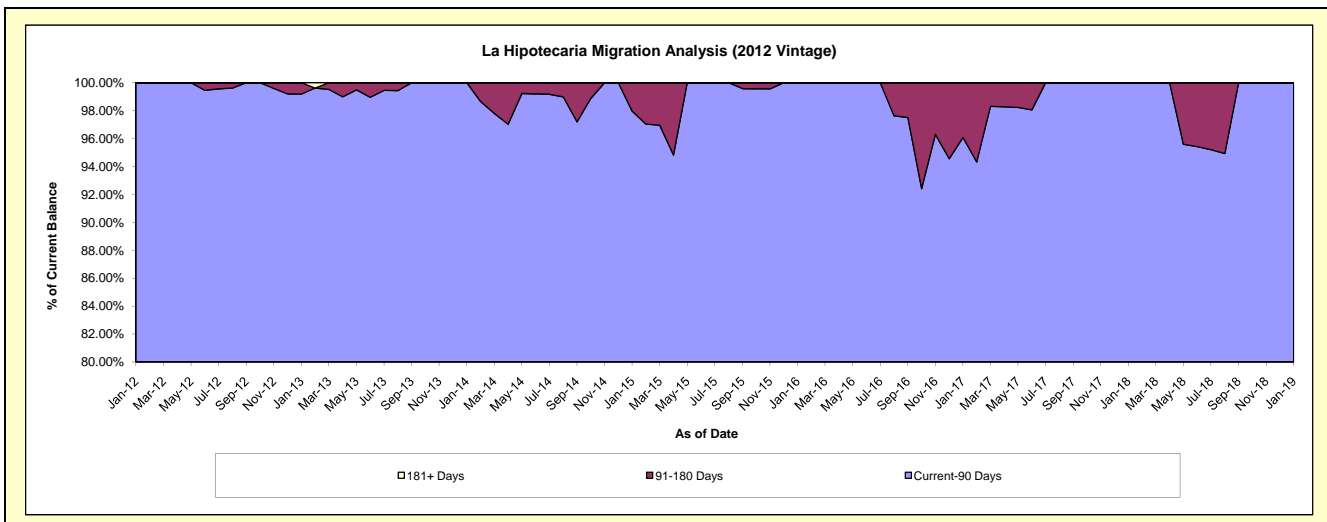
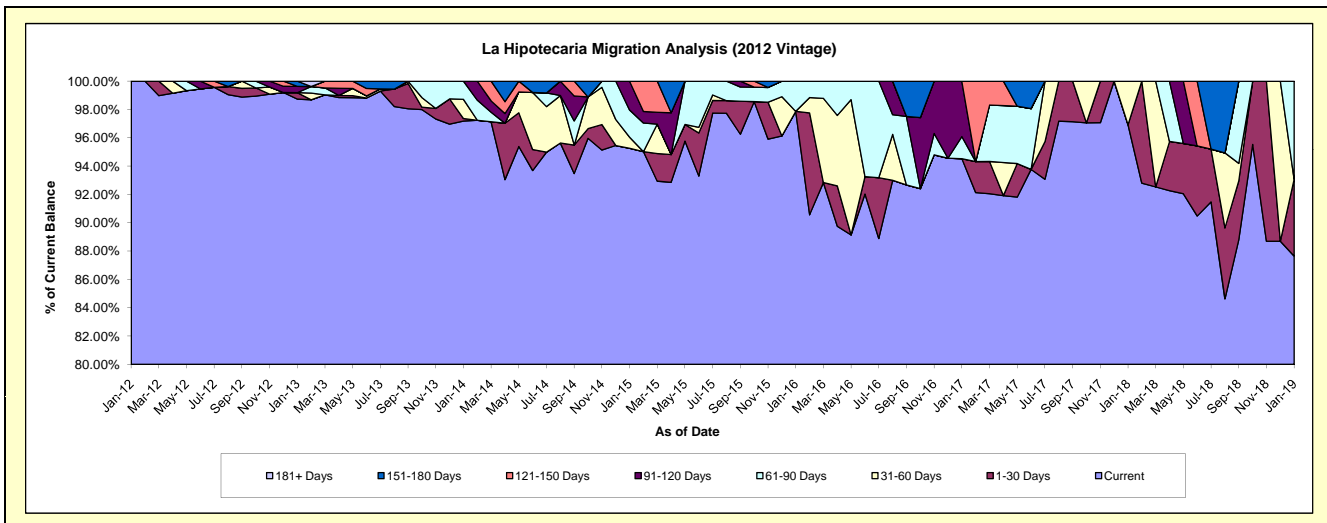
Delinquency Status (\$ of Current Balance)

Data Cutoff: 1/31/2019

Current Portfolio Balance	-	-	71,837.68	1,642,938.54	1,091,356.55	613,742.04	391,955.57	230,671.87	137,476.73	63,690.95
	Jan-12	Jan-13	Jan-14	Jan-15	Jan-16	Jan-17	Jan-18	Jan-19		
Current	71,837.68	1,622,156.61	1,060,583.28	584,652.75	383,592.66	218,052.54	133,240.52	55,823.00		
1-30 Days	-	7,433.37	1,955.35	-	-	-	-	3,450.97		
31-60 Days	-	-	14,779.33	4,771.89	-	-	4,236.21	-		
61-90 Days	-	-	14,038.59	11,812.67	8,362.91	3,586.66	-	4,416.98		
91-120 Days	-	7,348.56	-	12,504.73	-	9,032.67	-	-		
121-150 Days	-	-	-	-	-	-	-	-		
151-180 Days	-	6,000.00	-	-	-	-	-	-		
181+ Days	-	-	-	-	-	-	-	-		

Delinquency Status (% of Current Balance)

Current Portfolio Balance	-	-	71,837.68	1,642,938.54	1,091,356.55	613,742.04	391,955.57	230,671.87	137,476.73	63,690.95
	Jan-12	Jan-13	Jan-14	Jan-15	Jan-16	Jan-17	Jan-18	Jan-19		
Current	100.00%	98.74%	97.18%	95.26%	97.87%	94.53%	96.92%	87.65%		
1-30 Days	0.00%	0.45%	0.18%	0.00%	0.00%	0.00%	0.00%	5.42%		
31-60 Days	0.00%	0.00%	1.35%	0.78%	0.00%	0.00%	3.08%	0.00%		
61-90 Days	0.00%	0.00%	1.29%	1.92%	2.13%	1.55%	0.00%	6.94%		
91-120 Days	0.00%	0.45%	0.00%	2.04%	0.00%	3.92%	0.00%	0.00%		
121-150 Days	0.00%	0.00%	0.00%	0.00%	0.00%	0.00%	0.00%	0.00%		
151-180 Days	0.00%	0.37%	0.00%	0.00%	0.00%	0.00%	0.00%	0.00%		
181+ Days	0.00%	0.00%	0.00%	0.00%	0.00%	0.00%	0.00%	0.00%		
Current - 90 Days	100.00%	99.19%	100.00%	97.96%	100.00%	96.08%	100.00%	100.00%		
91-180 Days	0.00%	0.81%	0.00%	2.04%	0.00%	3.92%	0.00%	0.00%		



Personal Loans - La Hipotecaria El Salvador Migration Analysis (2013 Vintage)

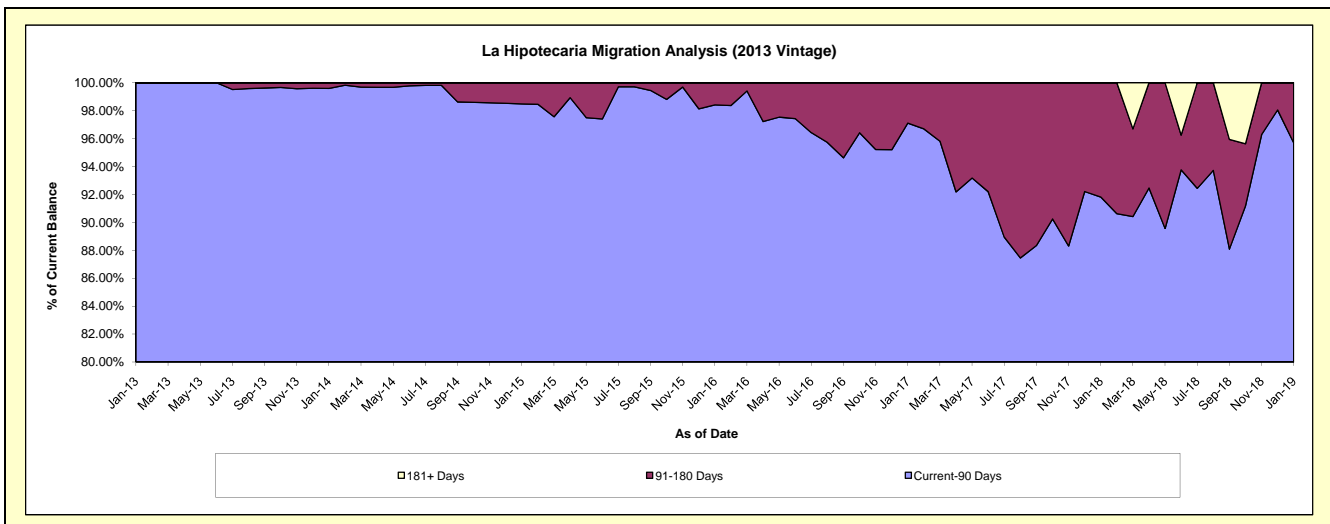
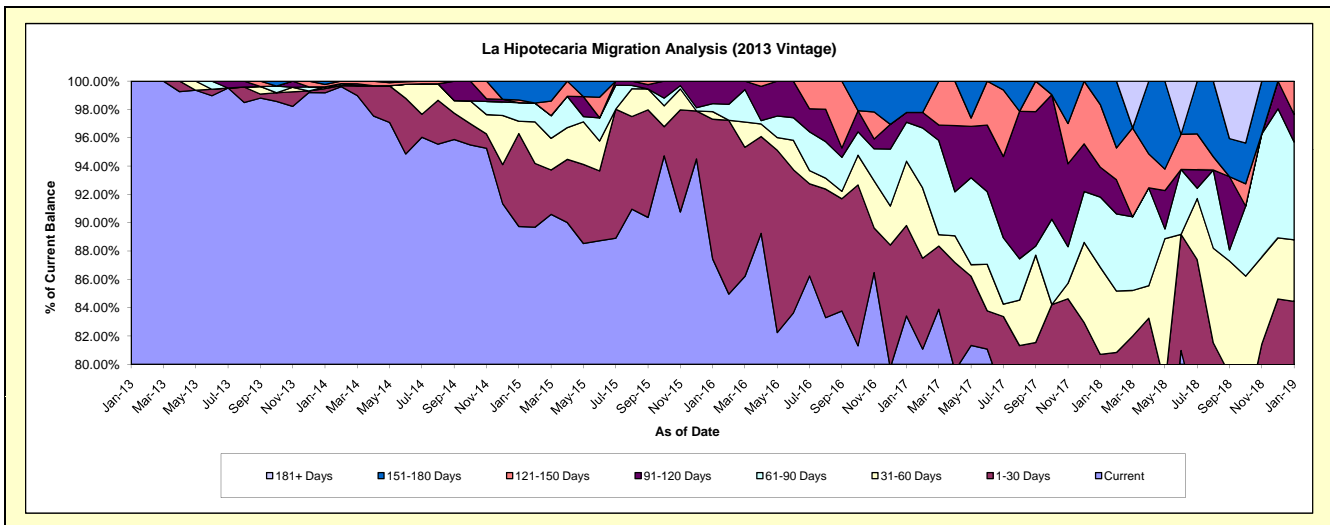
Delinquency Status (\$ of Current Balance)

Data Cutoff: 1/31/2019

Current Portfolio Balance	-	-	-	209,703.36	2,121,079.66	1,363,302.70	951,166.21	632,599.93	425,120.84	215,958.61
	Jan-13	Jan-14	Jan-15	Jan-16	Jan-17	Jan-18	Jan-19			
Current	209,703.36	2,103,606.23	1,223,387.77	831,737.97	527,713.76	309,657.18	169,561.24			
1-30 Days	-	6,228.09	89,466.18	93,853.42	40,386.85	33,450.85	12,816.45			
31-60 Days	-	2,630.49	11,884.85	5,105.30	28,748.12	26,136.52	9,397.03			
61-90 Days	-	-	17,888.66	5,349.20	17,437.05	21,068.85	14,878.21			
91-120 Days	-	-	-	15,120.32	4,344.74	8,977.61	4,223.17			
121-150 Days	-	3,629.50	2,560.51	-	-	18,803.24	5,082.51			
151-180 Days	-	4,985.35	18,114.73	-	13,969.41	7,026.59	-			
181+ Days	-	-	-	-	-	-	-			

Delinquency Status (% of Current Balance)

Current Portfolio Balance	-	-	-	209,703.36	2,121,079.66	1,363,302.70	951,166.21	632,599.93	425,120.84	215,958.61
	Jan-13	Jan-14	Jan-15	Jan-16	Jan-17	Jan-18	Jan-19			
Current	100.00%	99.18%	89.74%	87.44%	83.42%	72.84%	78.52%			
1-30 Days	0.00%	0.29%	6.56%	9.87%	6.38%	7.87%	5.93%			
31-60 Days	0.00%	0.12%	0.87%	0.54%	4.54%	6.15%	4.35%			
61-90 Days	0.00%	0.00%	1.31%	0.56%	2.76%	4.96%	6.89%			
91-120 Days	0.00%	0.00%	0.00%	1.59%	0.69%	2.11%	1.96%			
121-150 Days	0.00%	0.17%	0.19%	0.00%	0.00%	4.42%	2.35%			
151-180 Days	0.00%	0.24%	1.33%	0.00%	2.21%	1.65%	0.00%			
181+ Days	0.00%	0.00%	0.00%	0.00%	0.00%	0.00%	0.00%			
Current - 90 Days	100.00%	99.59%	98.48%	98.41%	97.10%	91.81%	95.69%			
91-180 Days	0.00%	0.41%	1.52%	1.59%	2.90%	8.19%	4.31%			



Personal Loans - La Hipotecaria El Salvador Migration Analysis (2014 Vintage)

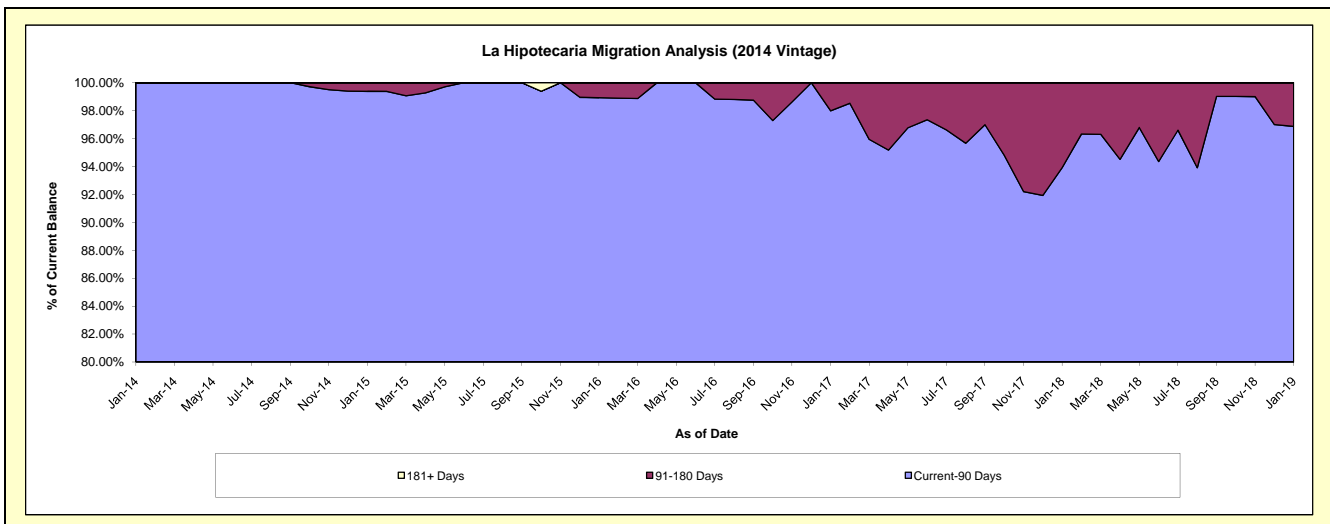
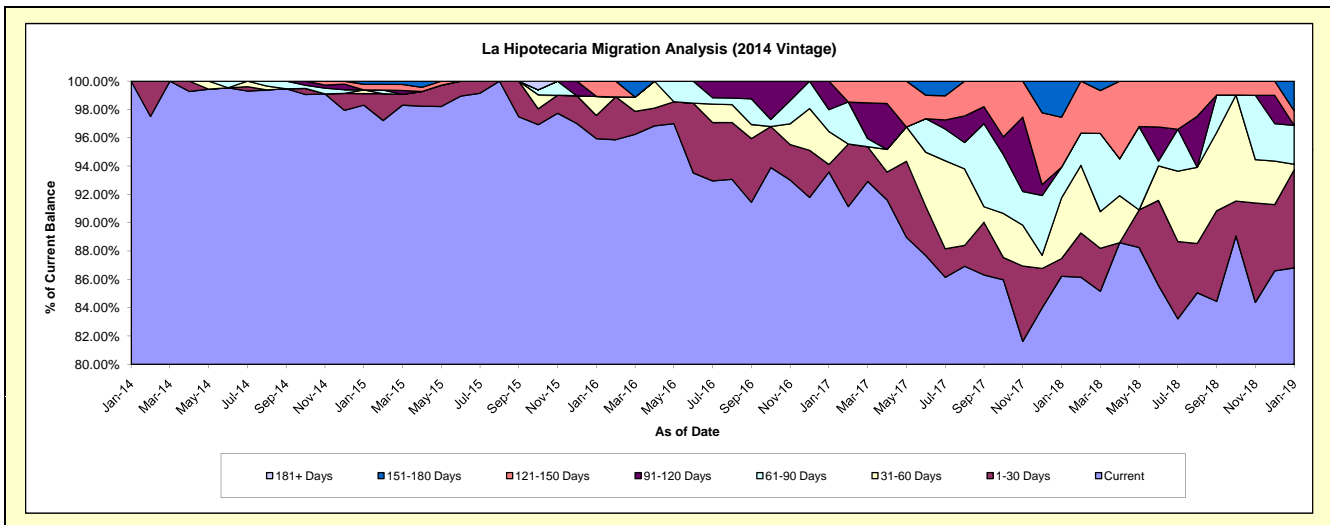
Delinquency Status (\$ of Current Balance)

Data Cutoff: 1/31/2019

Current Portfolio Balance	-	-	-	-	282,672.20	2,415,805.78	1,670,525.31	1,044,765.41	639,811.46	420,490.70
					Jan-14	Jan-15	Jan-16	Jan-17	Jan-18	Jan-19
Current					282,672.20	2,374,845.85	1,602,648.97	977,718.27	551,621.53	365,042.25
1-30 Days					-	19,669.58	27,391.36	5,540.71	8,020.68	29,138.98
31-60 Days					-	6,334.48	22,532.53	24,293.87	27,457.56	1,637.98
61-90 Days					-	-	-	16,193.87	13,829.46	11,521.18
91-120 Days					-	-	-	21,018.69	-	-
121-150 Days					-	9,678.94	17,952.45	-	22,557.59	4,358.16
151-180 Days					-	5,276.93	-	-	16,324.64	8,792.15
181+ Days					-	-	-	-	-	-

Delinquency Status (% of Current Balance)

Current Portfolio Balance	-	-	-	-	282,672.20	2,415,805.78	1,670,525.31	1,044,765.41	639,811.46	420,490.70
					Jan-14	Jan-15	Jan-16	Jan-17	Jan-18	Jan-19
Current					100.00%	98.30%	95.94%	93.58%	86.22%	86.81%
1-30 Days					0.00%	0.81%	1.64%	0.53%	1.25%	6.93%
31-60 Days					0.00%	0.26%	1.35%	2.33%	4.29%	0.39%
61-90 Days					0.00%	0.00%	0.00%	1.55%	2.16%	2.74%
91-120 Days					0.00%	0.00%	0.00%	2.01%	0.00%	0.00%
121-150 Days					0.00%	0.40%	1.07%	0.00%	3.53%	1.04%
151-180 Days					0.00%	0.22%	0.00%	0.00%	2.55%	2.09%
181+ Days					0.00%	0.00%	0.00%	0.00%	0.00%	0.00%
Current - 90 Days					100.00%	99.38%	98.93%	97.99%	93.92%	96.87%
91-180 Days					0.00%	0.62%	1.07%	2.01%	6.08%	3.13%



Personal Loans - La Hipotecaria El Salvador Migration Analysis (2015 Vintage)

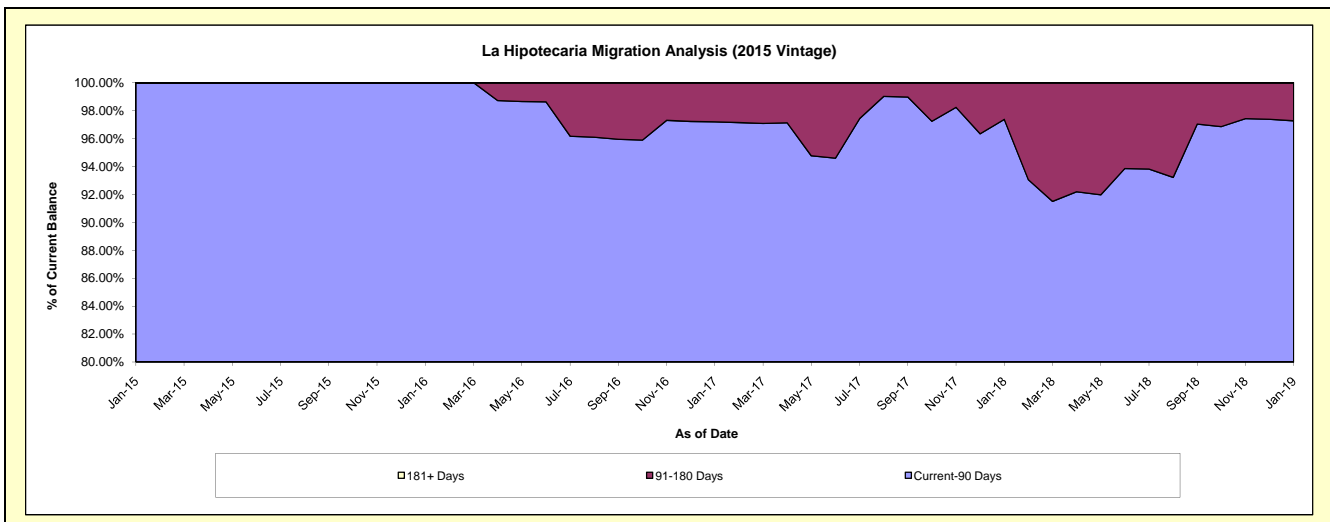
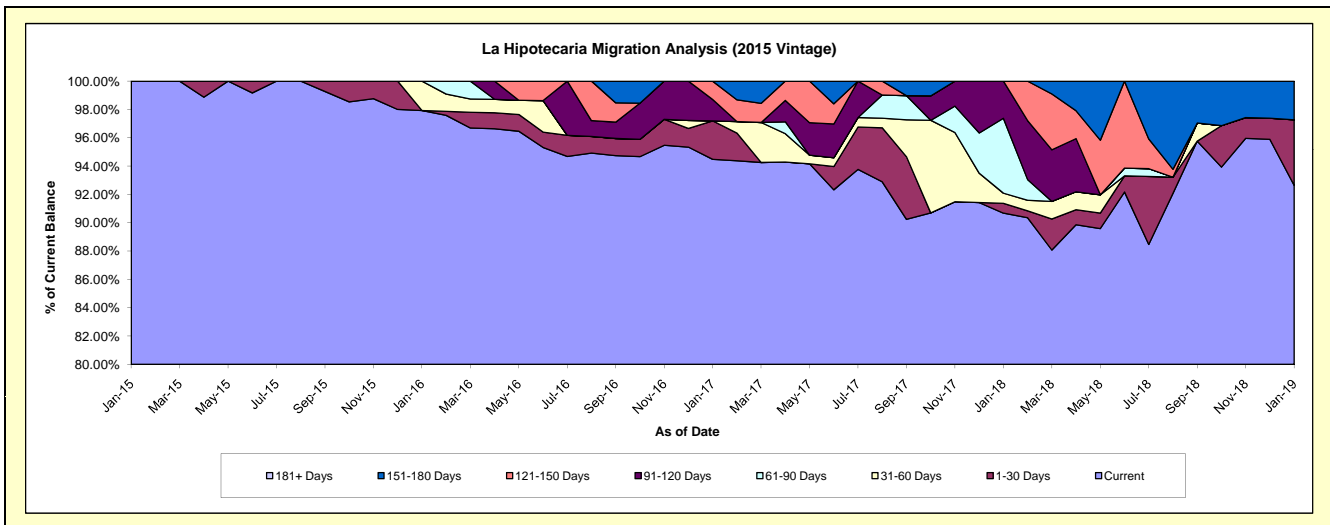
Delinquency Status (\$ of Current Balance)

Data Cutoff: 1/31/2019

Current Portfolio Balance	-	-	-	-	-	158,831.08	1,545,647.01	1,052,115.09	772,263.71	473,823.17
						Jan-15	Jan-16	Jan-17	Jan-18	Jan-19
Current						158,831.08	1,513,668.94	994,029.82	700,274.40	438,936.03
1-30 Days						-	-	28,582.83	5,394.14	21,966.34
31-60 Days						-	31,978.07	-	5,510.91	-
61-90 Days						-	-	-	40,840.56	-
91-120 Days						-	-	15,859.65	20,243.70	-
121-150 Days						-	-	13,642.79	-	-
151-180 Days						-	-	-	-	12,920.80
181+ Days						-	-	-	-	-

Delinquency Status (% of Current Balance)

Current Portfolio Balance	-	-	-	-	-	158,831.08	1,545,647.01	1,052,115.09	772,263.71	473,823.17
						Jan-15	Jan-16	Jan-17	Jan-18	Jan-19
Current						100.00%	97.93%	94.48%	90.68%	92.64%
1-30 Days						0.00%	0.00%	2.72%	0.70%	4.64%
31-60 Days						0.00%	2.07%	0.00%	0.71%	0.00%
61-90 Days						0.00%	0.00%	0.00%	5.29%	0.00%
91-120 Days						0.00%	0.00%	1.51%	2.62%	0.00%
121-150 Days						0.00%	0.00%	1.30%	0.00%	0.00%
151-180 Days						0.00%	0.00%	0.00%	0.00%	2.73%
181+ Days						0.00%	0.00%	0.00%	0.00%	0.00%
Current - 90 Days						100.00%	100.00%	97.20%	97.38%	97.27%
91-180 Days						0.00%	0.00%	2.80%	2.62%	2.73%



Personal Loans - La Hipotecaria El Salvador Migration Analysis (2016 Vintage)

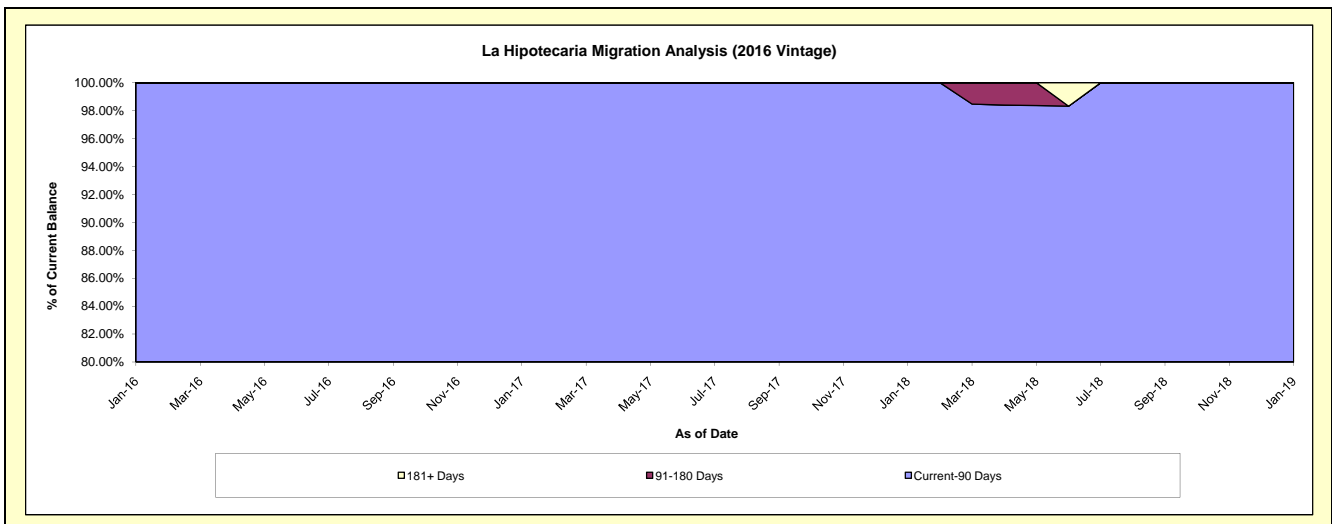
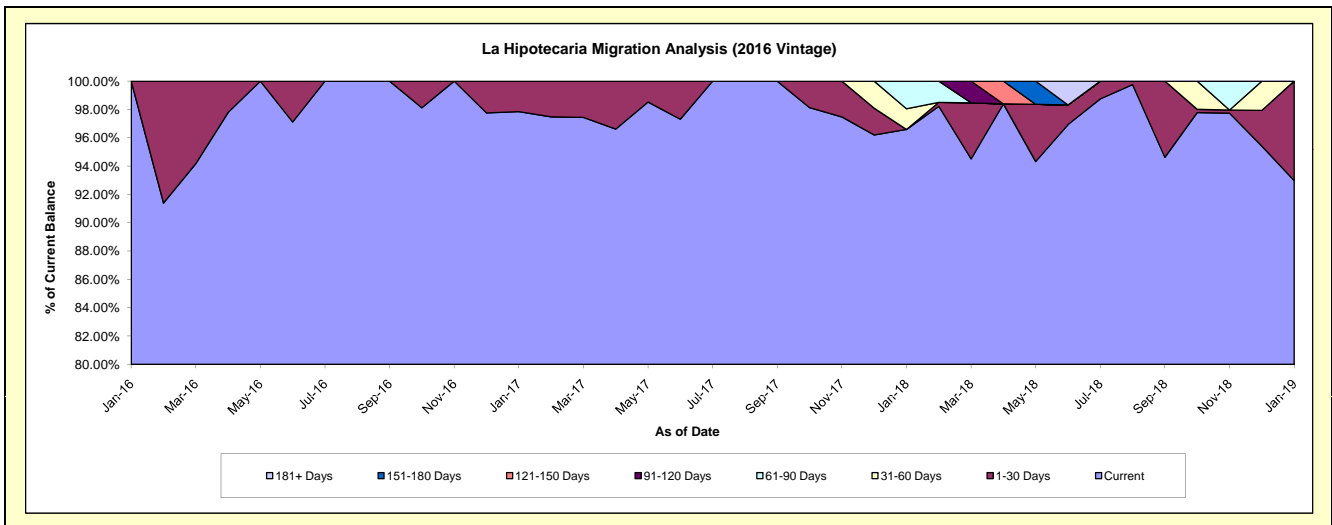
Delinquency Status (\$ of Current Balance)

Data Cutoff: 1/31/2019

Current Portfolio Balance	-	-	-	-	-	-	-	136,746.15	1,212,085.55	955,076.03	705,206.21
								Jan-16	Jan-17	Jan-18	Jan-19
Current								136,746.15	1,185,978.41	922,489.55	655,728.67
1-30 Days								-	26,107.14	-	49,477.54
31-60 Days								-	-	13,936.41	-
61-90 Days								-	-	18,650.07	-
91-120 Days								-	-	-	-
121-150 Days								-	-	-	-
151-180 Days								-	-	-	-
181+ Days								-	-	-	-

Delinquency Status (% of Current Balance)

Current Portfolio Balance	-	-	-	-	-	-	-	136,746.15	1,212,085.55	955,076.03	705,206.21
								Jan-16	Jan-17	Jan-18	Jan-19
Current								100.00%	97.85%	96.59%	92.98%
1-30 Days								0.00%	2.15%	0.00%	7.02%
31-60 Days								0.00%	0.00%	1.46%	0.00%
61-90 Days								0.00%	0.00%	1.95%	0.00%
91-120 Days								0.00%	0.00%	0.00%	0.00%
121-150 Days								0.00%	0.00%	0.00%	0.00%
151-180 Days								0.00%	0.00%	0.00%	0.00%
181+ Days								0.00%	0.00%	0.00%	0.00%
Current - 90 Days								100.00%	100.00%	100.00%	100.00%
91-180 Days								0.00%	0.00%	0.00%	0.00%



Personal Loans - La Hipotecaria El Salvador Migration Analysis (2017 Vintage)

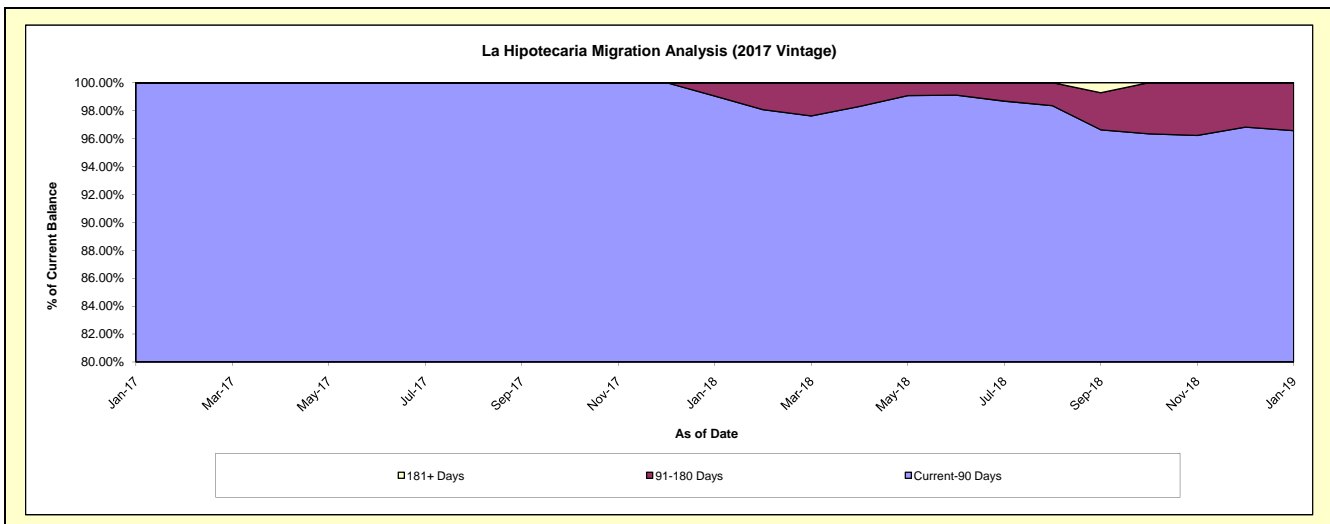
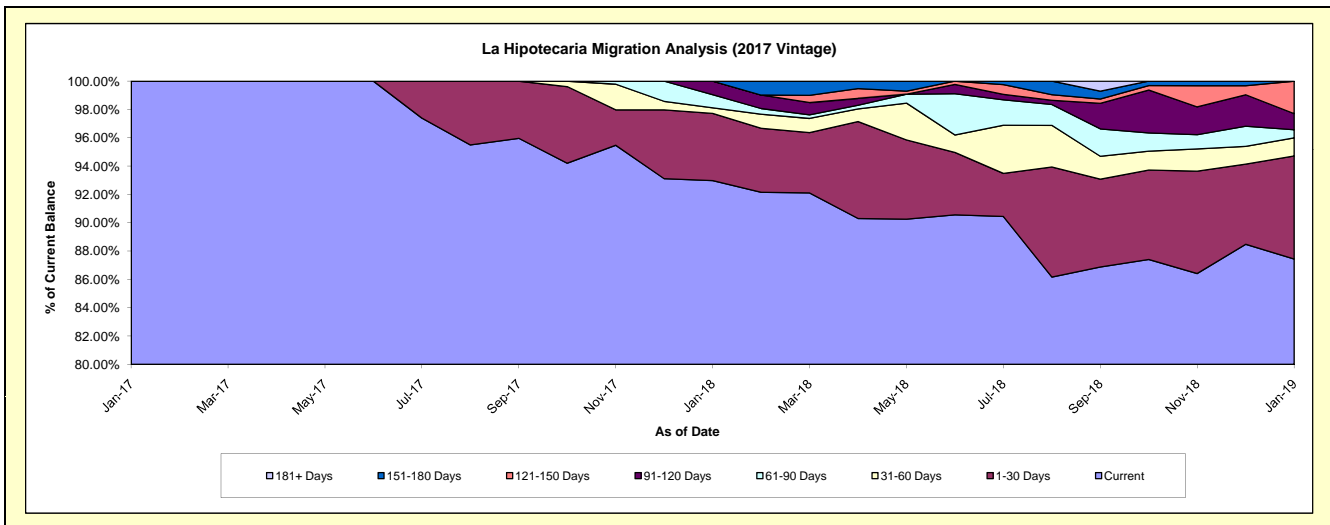
Delinquency Status (\$ of Current Balance)

Data Cutoff: 1/31/2019

Current Portfolio Balance	-	-	-	-	-	-	-	-	-	30,159.00	2,054,920.99	1,450,039.37
										Jan-17	Jan-18	Jan-19
Current										30,159.00	1,910,521.92	1,267,980.88
1-30 Days										-	97,686.03	105,399.05
31-60 Days										-	7,987.51	18,621.69
61-90 Days										-	19,027.80	8,295.24
91-120 Days										-	19,697.73	16,458.60
121-150 Days										-	-	33,283.91
151-180 Days										-	-	-
181+ Days										-	-	-

Delinquency Status (% of Current Balance)

Current Portfolio Balance	-	-	-	-	-	-	-	-	-	30,159.00	2,054,920.99	1,450,039.37
										Jan-17	Jan-18	Jan-19
Current										100.00%	92.97%	87.44%
1-30 Days										0.00%	4.75%	7.27%
31-60 Days										0.00%	0.39%	1.28%
61-90 Days										0.00%	0.93%	0.57%
91-120 Days										0.00%	0.96%	1.14%
121-150 Days										0.00%	0.00%	2.30%
151-180 Days										0.00%	0.00%	0.00%
181+ Days										0.00%	0.00%	0.00%
Current - 90 Days										100.00%	99.04%	96.57%
91-180 Days										0.00%	0.96%	3.43%



Personal Loans - La Hipotecaria El Salvador Migration Analysis (2018 Vintage)

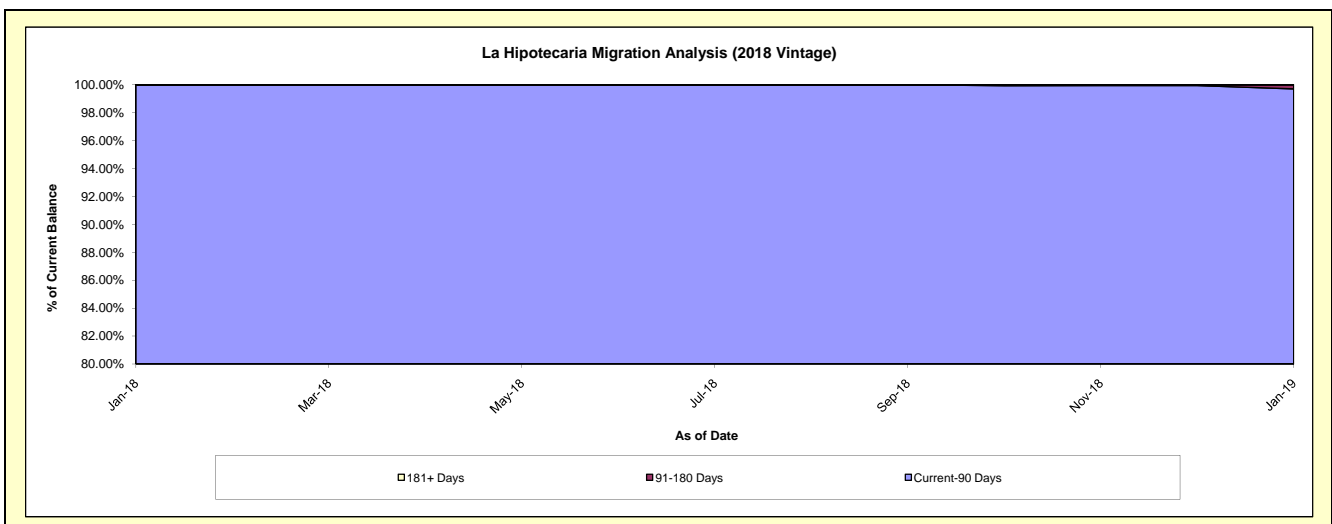
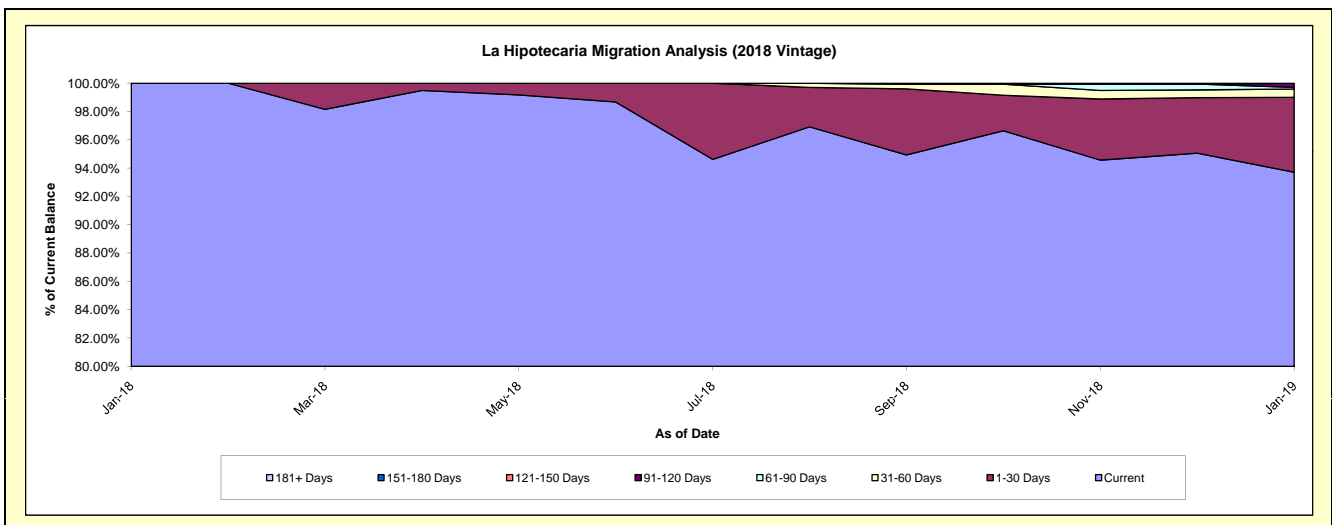
Delinquency Status (\$ of Current Balance)

Data Cutoff: 1/31/2019

Current Portfolio Balance										157,673.89	4,259,876.50
										Jan-18	Jan-19
Current										157,673.89	3,992,057.26
1-30 Days										-	225,260.55
31-60 Days										-	24,894.22
61-90 Days										-	4,947.65
91-120 Days										-	12,716.82
121-150 Days										-	-
151-180 Days										-	-
181+ Days										-	-

Delinquency Status (% of Current Balance)

Current Portfolio Balance										157,673.89	4,259,876.50
										Jan-18	Jan-19
Current										100.00%	93.71%
1-30 Days										0.00%	5.29%
31-60 Days										0.00%	0.58%
61-90 Days										0.00%	0.12%
91-120 Days										0.00%	0.30%
121-150 Days										0.00%	0.00%
151-180 Days										0.00%	0.00%
181+ Days										0.00%	0.00%
Current - 90 Days										100.00%	99.70%
91-180 Days										0.00%	0.30%



Personal Loans - La Hipotecaria El Salvador Migration Analysis (2019 Vintage)

Delinquency Status (\$ of Current Balance)

Data Cutoff: 1/31/2019

Current Portfolio Balance	-	-	-	-	-	-	-	-	-	-	-	326,678.66
	Jan-19											
Current												326,678.66
1-30 Days												-
31-60 Days												-
61-90 Days												-
91-120 Days												-
121-150 Days												-
151-180 Days												-
181+ Days												-

Delinquency Status (% of Current Balance)

Current Portfolio Balance	-	-	-	-	-	-	-	-	-	-	-	326,678.66
	Jan-19											
Current												100.00%
1-30 Days												0.00%
31-60 Days												0.00%
61-90 Days												0.00%
91-120 Days												0.00%
121-150 Days												0.00%
151-180 Days												0.00%
181+ Days												0.00%
Current - 90 Days												100.00%
91-180 Days												0.00%

