



ASSET | TECHNOLOGIES LLC

116 West 23rd St., 5th Floor
New York, NY 10011

Migration Analysis for La Hipotecaria S.A. de C.V El Salvador

Personal Loans February 2019

An analysis of historical loan payment data was used to compile a migration analysis of delinquency by annual vintage. Delinquencies for each vintage were grouped into the following buckets; Current, 1-30, 31-60, 61-90, 91-120, 121-150, 151-180, and 180+. Results are provided in graphical and tabular form. The cutoff date is 2/28/2019.

Personal Loans - La Hipotecaria El Salvador Migration Analysis (All Vintages)

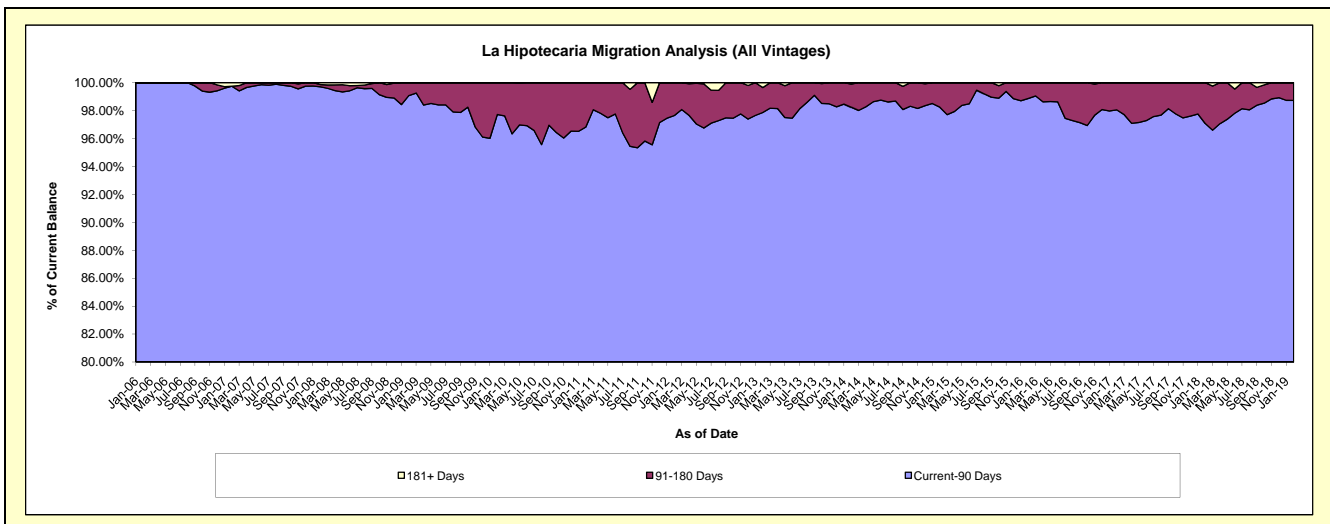
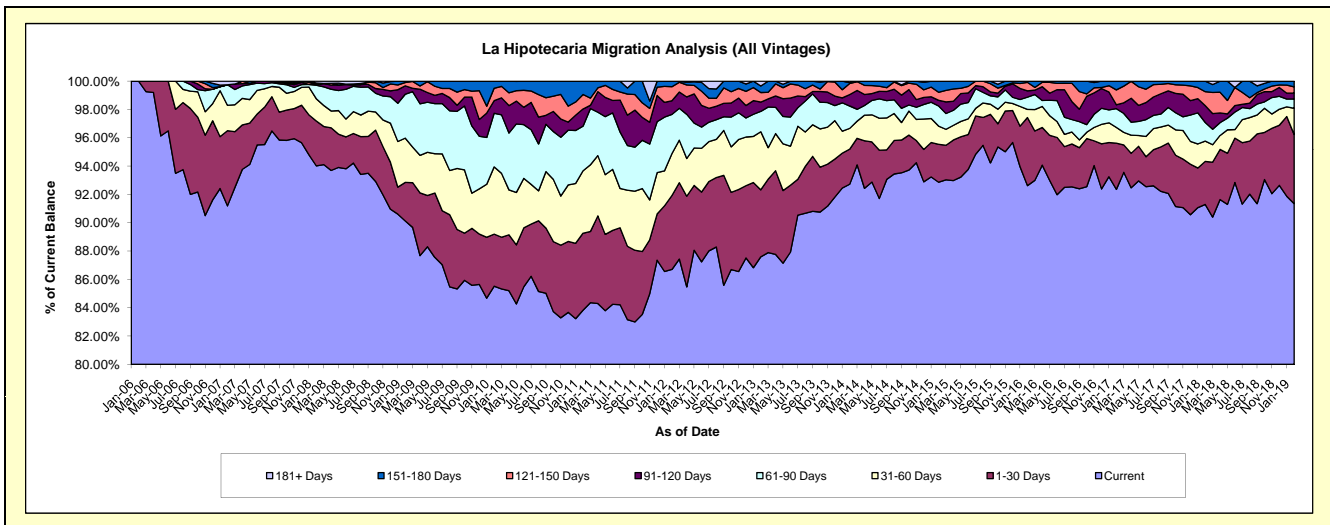
Delinquency Status (\$ of Current Balance)

Data Cutoff: 2/28/2019

Current Portfolio Balance	7,615,452.76	6,010,296.24	4,649,597.26	4,979,023.65	5,300,332.54	5,540,788.69	5,161,007.12	4,454,422.13	5,195,144.36	8,365,560.48
	Feb-10	Feb-11	Feb-12	Feb-13	Feb-14	Feb-15	Feb-16	Feb-17	Feb-18	Feb-19
Current	6,512,764.90	5,038,361.52	4,031,281.88	4,361,283.11	4,914,655.34	5,145,388.87	4,780,285.13	4,113,943.29	4,742,781.65	7,642,101.23
1-30 Days	280,150.33	326,627.59	242,949.95	235,611.60	130,991.89	148,572.96	247,948.76	145,350.77	157,802.39	408,340.78
31-60 Days	361,338.86	264,436.81	137,679.42	204,214.29	77,970.61	71,039.41	29,820.42	49,820.79	74,793.82	154,863.91
61-90 Days	288,275.18	190,092.98	128,515.34	71,831.53	83,591.62	78,942.92	44,642.49	58,804.48	68,038.28	54,614.97
91-120 Days	68,203.60	72,715.68	44,869.55	32,444.61	42,825.76	22,124.43	23,173.74	12,167.85	61,720.34	35,330.29
121-150 Days	66,513.59	61,571.88	45,963.07	33,681.93	41,394.68	31,289.88	30,740.54	46,890.66	51,506.91	36,815.08
151-180 Days	38,206.30	56,489.78	18,338.05	22,912.87	3,450.21	43,430.22	4,396.04	27,444.29	38,500.97	33,494.22
181+ Days	-	-	-	17,043.71	5,452.43	-	-	-	-	-

Delinquency Status (% of Current Balance)

Current Portfolio Balance	7,615,452.76	6,010,296.24	4,649,597.26	4,979,023.65	5,300,332.54	5,540,788.69	5,161,007.12	4,454,422.13	5,195,144.36	8,365,560.48
	Feb-10	Feb-11	Feb-12	Feb-13	Feb-14	Feb-15	Feb-16	Feb-17	Feb-18	Feb-19
Current	85.52%	83.83%	86.70%	87.59%	92.72%	92.86%	92.62%	92.36%	91.29%	91.35%
1-30 Days	3.68%	5.43%	5.23%	4.73%	2.47%	2.68%	4.80%	3.26%	3.04%	4.88%
31-60 Days	4.74%	4.40%	2.96%	4.10%	1.47%	1.28%	0.58%	1.12%	1.44%	1.85%
61-90 Days	3.79%	3.16%	2.76%	1.44%	1.58%	1.42%	0.86%	1.32%	1.31%	0.65%
91-120 Days	0.90%	1.21%	0.97%	0.65%	0.81%	0.40%	0.45%	0.27%	1.19%	0.42%
121-150 Days	0.87%	1.02%	0.99%	0.68%	0.78%	0.56%	0.60%	1.05%	0.99%	0.44%
151-180 Days	0.50%	0.94%	0.39%	0.46%	0.07%	0.78%	0.09%	0.62%	0.74%	0.40%
181+ Days	0.00%	0.00%	0.00%	0.34%	0.10%	0.00%	0.00%	0.00%	0.00%	0.00%
Current - 90 Days	97.73%	96.83%	97.65%	97.87%	98.24%	98.25%	98.87%	98.06%	97.08%	98.74%
91-180 Days	2.27%	3.17%	2.35%	1.79%	1.65%	1.75%	1.13%	1.94%	2.92%	1.26%



Personal Loans - La Hipotecaria El Salvador Migration Analysis (2006 Vintage)

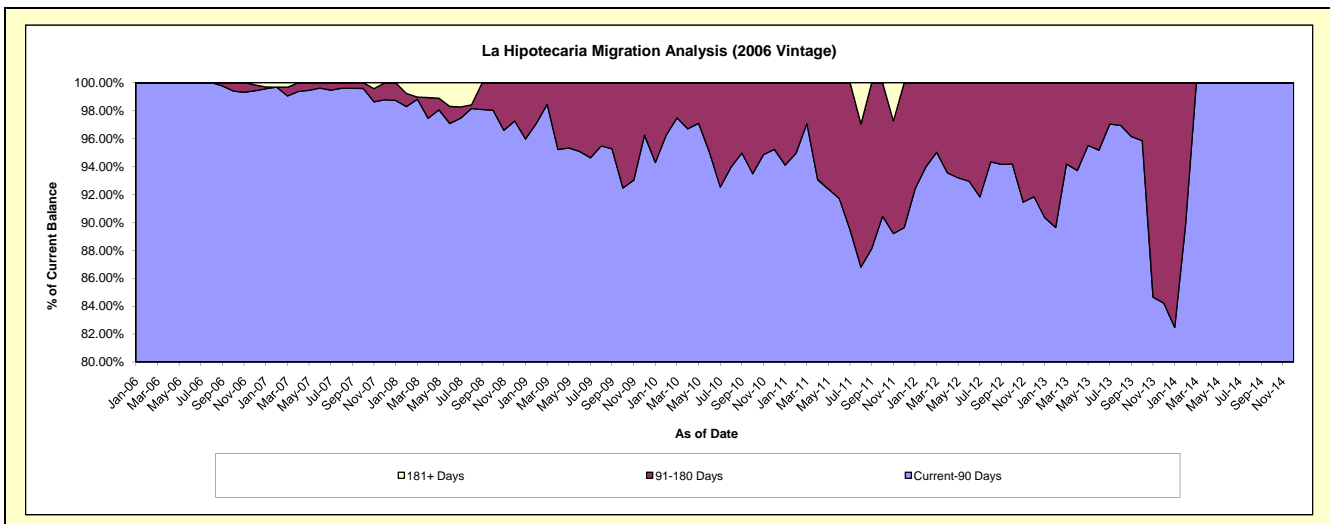
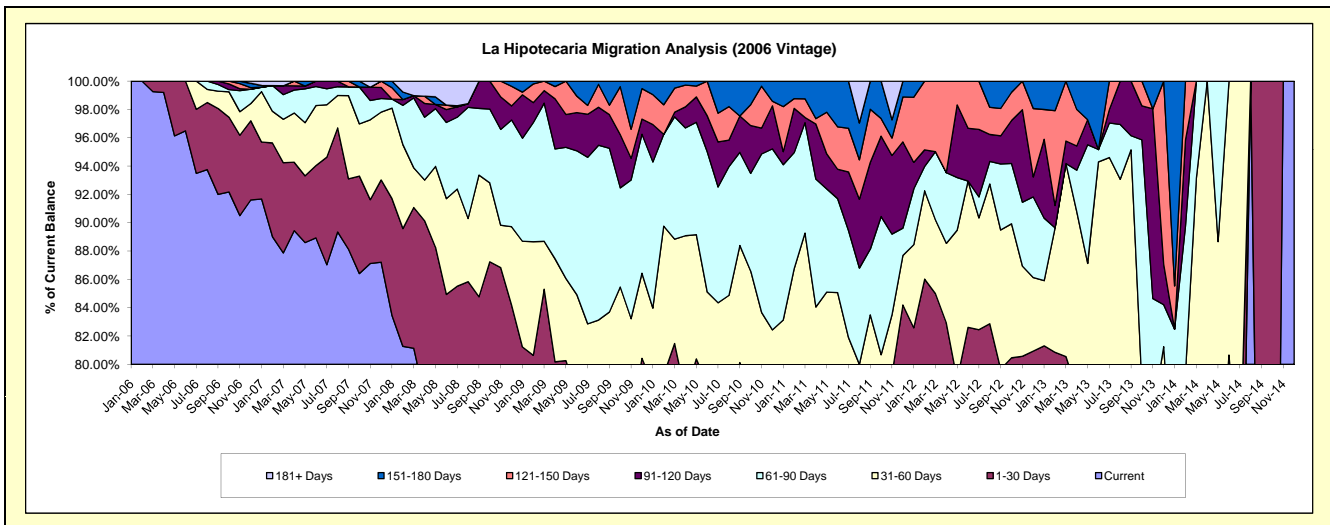
Delinquency Status (\$ of Current Balance)

Data Cutoff: 2/28/2019

Current Portfolio Balance	555,917.90	353,358.24	173,841.12	85,314.45	17,963.58	#N/A	#N/A	#N/A	#N/A	#N/A
	Feb-10	Feb-11	Feb-12	Feb-13	Feb-14	Feb-15	Feb-16	Feb-17	Feb-18	Feb-19
Current	388,946.20	234,834.65	131,680.43	57,805.98	9,129.24	#N/A	#N/A	#N/A	#N/A	#N/A
1-30 Days	51,693.66	35,923.92	17,859.47	11,172.28	2,397.15	#N/A	#N/A	#N/A	#N/A	#N/A
31-60 Days	58,371.76	35,749.38	10,845.20	7,499.01	2,734.15	#N/A	#N/A	#N/A	#N/A	#N/A
61-90 Days	36,033.94	29,007.94	2,976.01	-	1,864.29	#N/A	#N/A	#N/A	#N/A	#N/A
91-120 Days	-	11,052.23	2,042.06	1,344.02	1,092.48	#N/A	#N/A	#N/A	#N/A	#N/A
121-150 Days	11,623.44	2,428.90	8,437.95	5,717.28	746.27	#N/A	#N/A	#N/A	#N/A	#N/A
151-180 Days	9,248.90	4,361.22	-	1,775.88	-	#N/A	#N/A	#N/A	#N/A	#N/A
181+ Days	-	-	-	-	-	#N/A	#N/A	#N/A	#N/A	#N/A

Delinquency Status (% of Current Balance)

Current Portfolio Balance	555,917.90	353,358.24	173,841.12	85,314.45	17,963.58	#N/A	#N/A	#N/A	#N/A	#N/A
	Feb-10	Feb-11	Feb-12	Feb-13	Feb-14	Feb-15	Feb-16	Feb-17	Feb-18	Feb-19
Current	69.96%	66.46%	75.75%	67.76%	50.82%	#N/A	#N/A	#N/A	#N/A	#N/A
1-30 Days	9.30%	10.17%	10.27%	13.10%	13.34%	#N/A	#N/A	#N/A	#N/A	#N/A
31-60 Days	10.50%	10.12%	6.24%	8.79%	15.22%	#N/A	#N/A	#N/A	#N/A	#N/A
61-90 Days	6.48%	8.21%	1.71%	0.00%	10.38%	#N/A	#N/A	#N/A	#N/A	#N/A
91-120 Days	0.00%	3.13%	1.17%	1.58%	6.08%	#N/A	#N/A	#N/A	#N/A	#N/A
121-150 Days	2.09%	0.69%	4.85%	6.70%	4.15%	#N/A	#N/A	#N/A	#N/A	#N/A
151-180 Days	1.66%	1.23%	0.00%	2.08%	0.00%	#N/A	#N/A	#N/A	#N/A	#N/A
181+ Days	0.00%	0.00%	0.00%	0.00%	0.00%	#N/A	#N/A	#N/A	#N/A	#N/A
Current - 90 Days	96.25%	94.95%	93.97%	89.64%	89.76%	#N/A	#N/A	#N/A	#N/A	#N/A
91-180 Days	3.75%	5.05%	6.03%	10.36%	10.24%	#N/A	#N/A	#N/A	#N/A	#N/A



Personal Loans - La Hipotecaria El Salvador Migration Analysis (2007 Vintage)

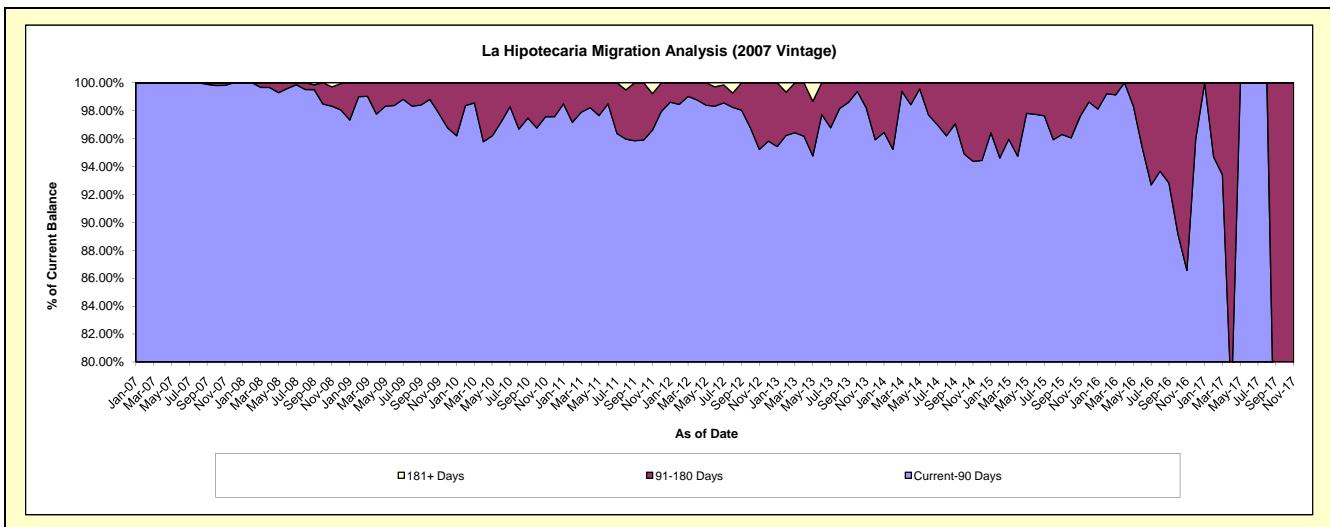
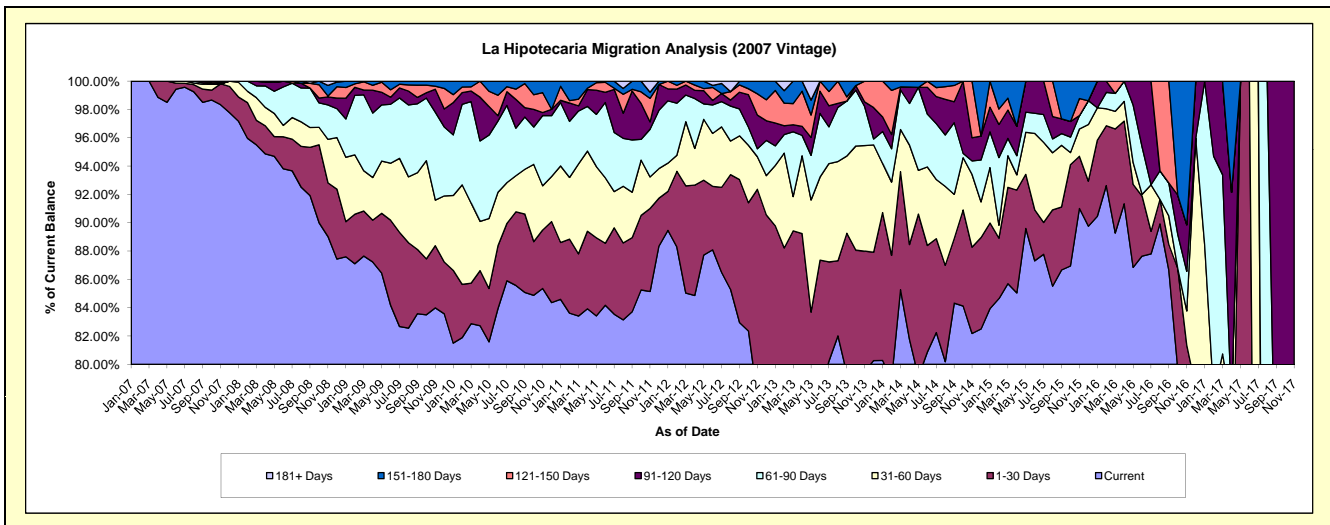
Delinquency Status (\$ of Current Balance)

Data Cutoff: 2/28/2019

Current Portfolio Balance	3,028,277.12	2,182,398.19	1,463,041.39	913,165.62	533,028.52	268,656.02	97,118.64	10,623.77	#N/A	#N/A
	Feb-10	Feb-11	Feb-12	Feb-13	Feb-14	Feb-15	Feb-16	Feb-17	Feb-18	Feb-19
Current	2,479,786.19	1,824,811.63	1,291,687.20	711,103.78	420,591.44	227,398.04	89,952.47	7,266.43	#N/A	#N/A
1-30 Days	113,936.38	114,086.45	78,161.11	94,554.51	46,858.20	11,464.69	4,107.37	1,005.53	#N/A	#N/A
31-60 Days	212,840.33	95,087.96	16,647.08	61,125.33	27,575.03	2,463.79	1,166.44	-	#N/A	#N/A
61-90 Days	172,264.29	86,430.40	53,766.61	11,934.08	12,568.94	12,832.56	1,123.73	1,788.85	#N/A	#N/A
91-120 Days	24,983.62	28,348.16	14,599.43	5,731.87	5,320.70	6,292.53	768.63	562.96	#N/A	#N/A
121-150 Days	11,902.10	3,590.59	3,841.47	14,499.53	16,664.00	2,920.70	-	-	#N/A	#N/A
151-180 Days	12,564.21	30,043.00	4,338.49	8,076.25	3,450.21	5,283.71	-	-	#N/A	#N/A
181+ Days	-	-	-	6,140.27	-	-	-	-	#N/A	#N/A

Delinquency Status (% of Current Balance)

Current Portfolio Balance	3,028,277.12	2,182,398.19	1,463,041.39	913,165.62	533,028.52	268,656.02	97,118.64	10,623.77	#N/A	#N/A
	Feb-10	Feb-11	Feb-12	Feb-13	Feb-14	Feb-15	Feb-16	Feb-17	Feb-18	Feb-19
Current	81.89%	83.61%	88.29%	77.87%	78.91%	84.64%	92.62%	68.40%	#N/A	#N/A
1-30 Days	3.76%	5.23%	5.34%	10.35%	8.79%	4.27%	4.23%	9.46%	#N/A	#N/A
31-60 Days	7.03%	4.36%	1.14%	6.69%	5.17%	0.92%	1.20%	0.00%	#N/A	#N/A
61-90 Days	5.69%	3.96%	3.67%	1.31%	2.36%	4.78%	1.16%	16.84%	#N/A	#N/A
91-120 Days	0.83%	1.30%	1.00%	0.63%	1.00%	2.34%	0.79%	5.30%	#N/A	#N/A
121-150 Days	0.39%	0.16%	0.26%	1.59%	3.13%	1.09%	0.00%	0.00%	#N/A	#N/A
151-180 Days	0.41%	1.38%	0.30%	0.88%	0.65%	1.97%	0.00%	0.00%	#N/A	#N/A
181+ Days	0.00%	0.00%	0.00%	0.67%	0.00%	0.00%	0.00%	0.00%	#N/A	#N/A
Current - 90 Days	98.37%	97.16%	98.44%	96.23%	95.23%	94.60%	99.21%	94.70%	#N/A	#N/A
91-180 Days	1.63%	2.84%	1.56%	3.10%	4.77%	5.40%	0.79%	5.30%	#N/A	#N/A



Personal Loans - La Hipotecaria El Salvador Migration Analysis (2008 Vintage)

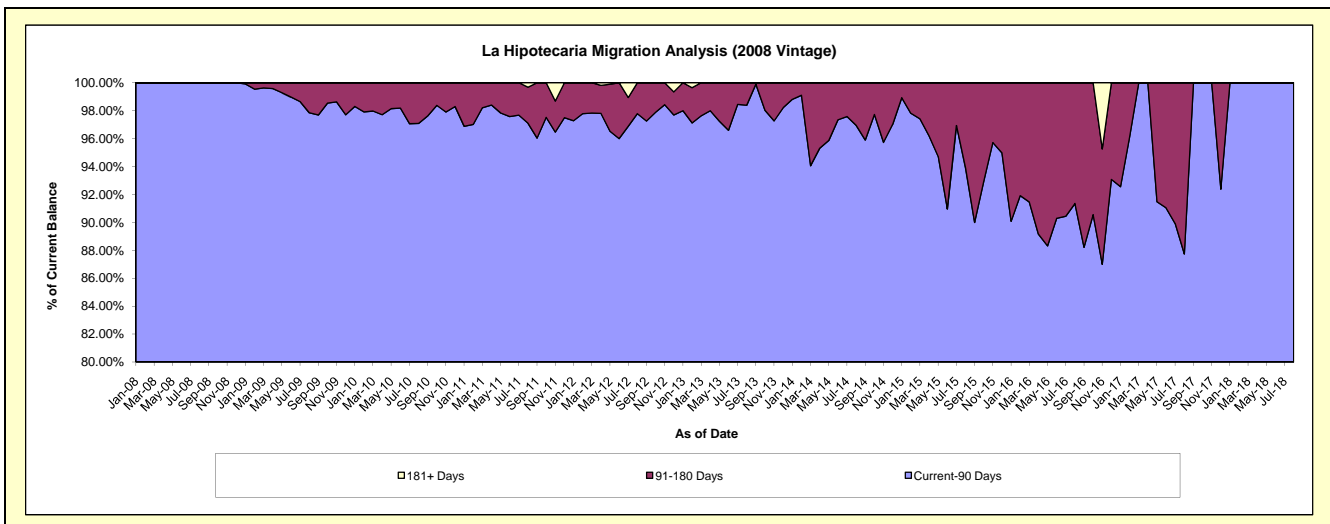
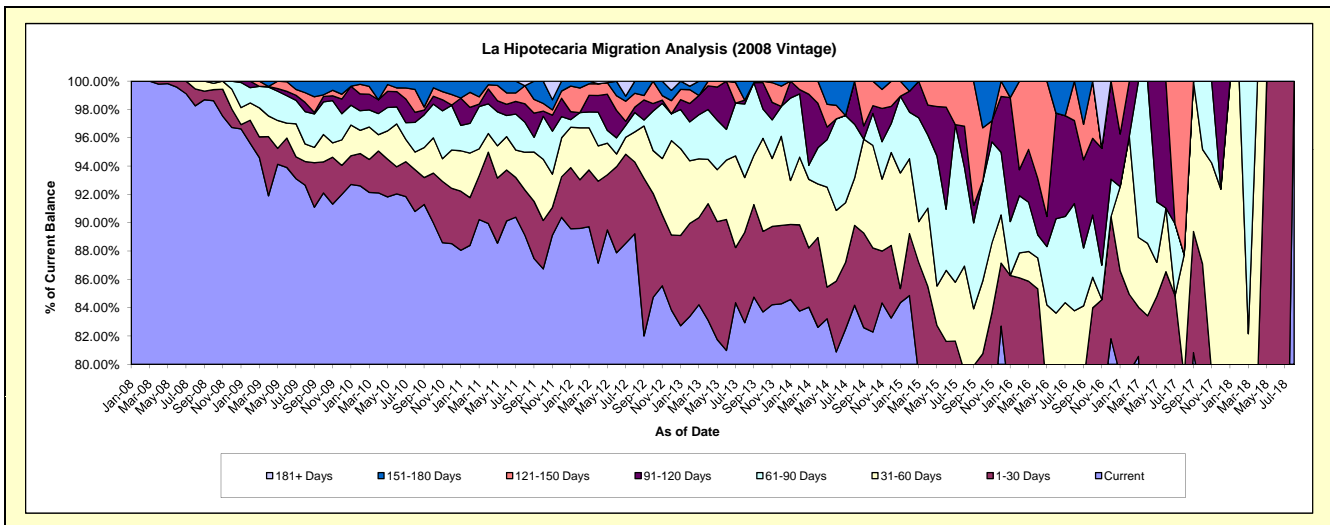
Delinquency Status (\$ of Current Balance)

Data Cutoff: 2/28/2019

Current Portfolio Balance	3,544,677.49	2,808,797.44	1,942,909.33	1,376,057.18	894,124.30	478,696.89	204,469.39	64,459.50	6,306.74	#N/A
	Feb-10	Feb-11	Feb-12	Feb-13	Feb-14	Feb-15	Feb-16	Feb-17	Feb-18	Feb-19
Current	3,282,681.87	2,483,026.63	1,740,845.78	1,147,438.44	748,949.11	406,220.76	159,982.43	51,230.16	4,475.86	#N/A
1-30 Days	80,837.55	94,818.55	66,728.58	90,337.53	54,456.68	20,910.73	16,090.65	3,523.52	466.35	#N/A
31-60 Days	58,075.50	88,365.81	71,403.37	60,863.88	42,726.69	25,350.73	3,592.50	7,210.24	1,364.53	#N/A
61-90 Days	49,106.35	58,797.94	20,842.87	37,807.89	39,957.85	15,725.99	8,264.79	-	-	#N/A
91-120 Days	41,969.98	31,942.69	-	17,899.20	2,722.20	7,087.53	3,750.93	2,495.58	-	#N/A
121-150 Days	24,113.05	29,760.26	33,683.65	13,465.12	5,311.77	-	12,788.09	-	-	#N/A
151-180 Days	7,893.19	22,085.56	9,405.08	3,341.68	-	3,401.15	-	-	-	#N/A
181+ Days	-	-	-	4,903.44	-	-	-	-	-	#N/A

Delinquency Status (% of Current Balance)

Current Portfolio Balance	3,544,677.49	2,808,797.44	1,942,909.33	1,376,057.18	894,124.30	478,696.89	204,469.39	64,459.50	6,306.74	#N/A
	Feb-10	Feb-11	Feb-12	Feb-13	Feb-14	Feb-15	Feb-16	Feb-17	Feb-18	Feb-19
Current	92.61%	88.40%	89.60%	83.39%	83.76%	84.86%	78.24%	79.48%	70.97%	#N/A
1-30 Days	2.28%	3.38%	3.43%	6.56%	6.09%	4.37%	7.87%	5.47%	7.39%	#N/A
31-60 Days	1.64%	3.15%	3.68%	4.42%	4.78%	5.30%	1.76%	11.19%	21.64%	#N/A
61-90 Days	1.39%	2.09%	1.07%	2.75%	4.47%	3.29%	4.04%	0.00%	0.00%	#N/A
91-120 Days	1.18%	1.14%	0.00%	1.30%	0.30%	1.48%	1.83%	3.87%	0.00%	#N/A
121-150 Days	0.68%	1.06%	1.73%	0.98%	0.59%	0.00%	6.25%	0.00%	0.00%	#N/A
151-180 Days	0.22%	0.79%	0.48%	0.24%	0.00%	0.71%	0.00%	0.00%	0.00%	#N/A
181+ Days	0.00%	0.00%	0.00%	0.36%	0.00%	0.00%	0.00%	0.00%	0.00%	#N/A
Current - 90 Days	97.91%	97.02%	97.78%	97.12%	99.10%	97.81%	91.91%	96.13%	100.00%	#N/A
91-180 Days	2.09%	2.98%	2.22%	2.52%	0.90%	2.19%	8.09%	3.87%	0.00%	#N/A



Personal Loans - La Hipotecaria El Salvador Migration Analysis (2009 Vintage)

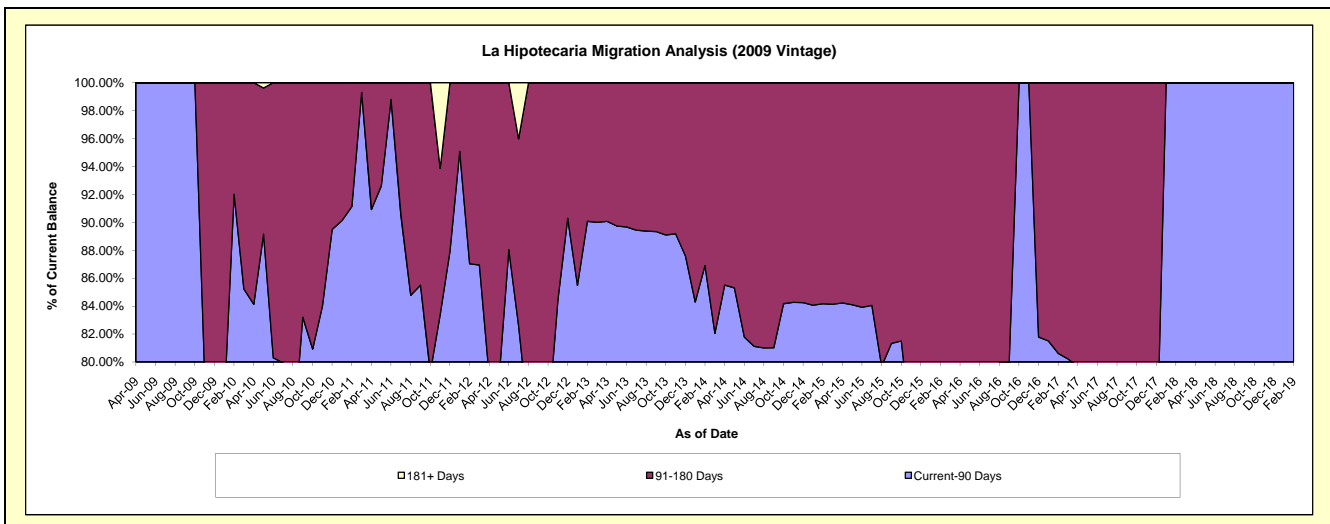
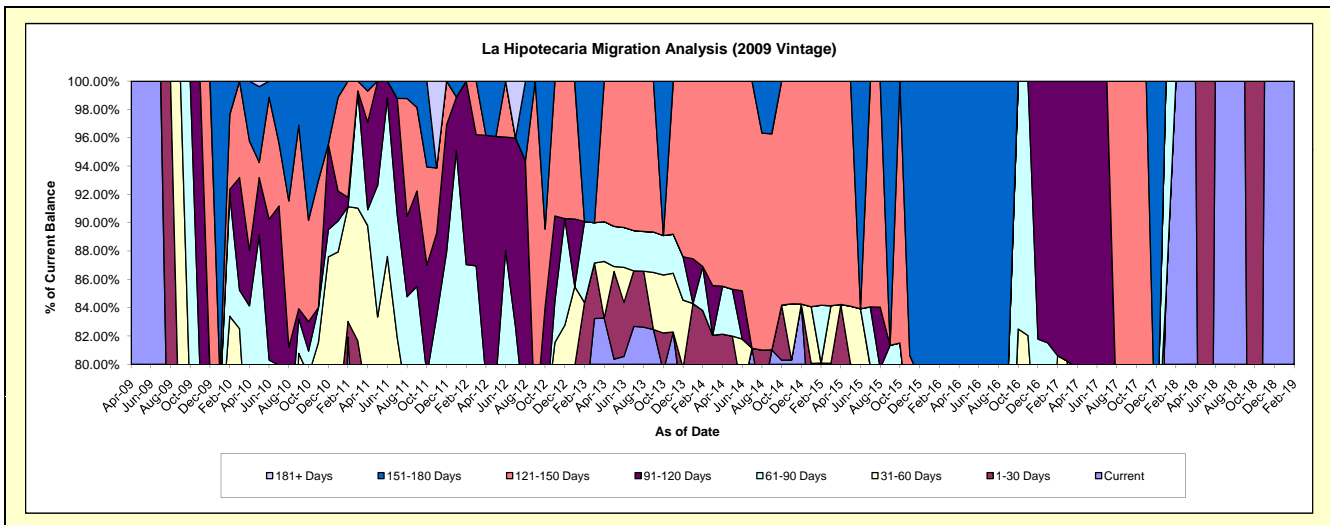
Delinquency Status (\$ of Current Balance)

Data Cutoff: 2/28/2019

Current Portfolio Balance	358,449.55	204,808.75	138,069.91	97,979.02	61,042.96	39,079.31	19,758.99	11,695.98	5,312.20	296.96
	Feb-10	Feb-11	Feb-12	Feb-13	Feb-14	Feb-15	Feb-16	Feb-17	Feb-18	Feb-19
Current	233,219.94	167,814.95	85,880.10	74,780.66	48,078.75	29,032.87	13,095.79	8,264.31	5,312.20	296.96
1-30 Days	33,682.74	2,235.71	5,066.08	7,877.14	3,071.88	2,267.16	-	-	-	-
31-60 Days	32,051.27	16,593.36	3,557.49	-	-	-	2,267.16	1,164.51	-	-
61-90 Days	30,870.60	-	25,672.89	5,602.16	1,901.38	1,593.77	-	-	-	-
91-120 Days	1,250.00	1,372.60	17,893.35	-	-	-	-	2,267.16	-	-
121-150 Days	18,875.00	16,792.13	-	-	7,990.95	6,185.51	-	-	-	-
151-180 Days	8,500.00	-	-	9,719.06	-	-	4,396.04	-	-	-
181+ Days	-	-	-	-	-	-	-	-	-	-

Delinquency Status (% of Current Balance)

Current Portfolio Balance	358,449.55	204,808.75	138,069.91	97,979.02	61,042.96	39,079.31	19,758.99	11,695.98	5,312.20	296.96
	Feb-10	Feb-11	Feb-12	Feb-13	Feb-14	Feb-15	Feb-16	Feb-17	Feb-18	Feb-19
Current	65.06%	81.94%	62.20%	76.32%	78.76%	74.29%	66.28%	70.66%	100.00%	100.00%
1-30 Days	9.40%	1.09%	3.67%	8.04%	5.03%	5.80%	0.00%	0.00%	0.00%	0.00%
31-60 Days	8.94%	8.10%	2.58%	0.00%	0.00%	0.00%	11.47%	9.96%	0.00%	0.00%
61-90 Days	8.61%	0.00%	18.59%	5.72%	3.11%	4.08%	0.00%	0.00%	0.00%	0.00%
91-120 Days	0.35%	0.67%	12.96%	0.00%	0.00%	0.00%	0.00%	19.38%	0.00%	0.00%
121-150 Days	5.27%	8.20%	0.00%	0.00%	13.09%	15.83%	0.00%	0.00%	0.00%	0.00%
151-180 Days	2.37%	0.00%	0.00%	9.92%	0.00%	0.00%	22.25%	0.00%	0.00%	0.00%
181+ Days	0.00%	0.00%	0.00%	0.00%	0.00%	0.00%	0.00%	0.00%	0.00%	0.00%
Current - 90 Days	92.01%	91.13%	87.04%	90.08%	86.91%	84.17%	77.75%	80.62%	100.00%	100.00%
91-180 Days	7.99%	8.87%	12.96%	9.92%	13.09%	15.83%	22.25%	19.38%	0.00%	0.00%



Personal Loans - La Hipotecaria El Salvador Migration Analysis (2010 Vintage)

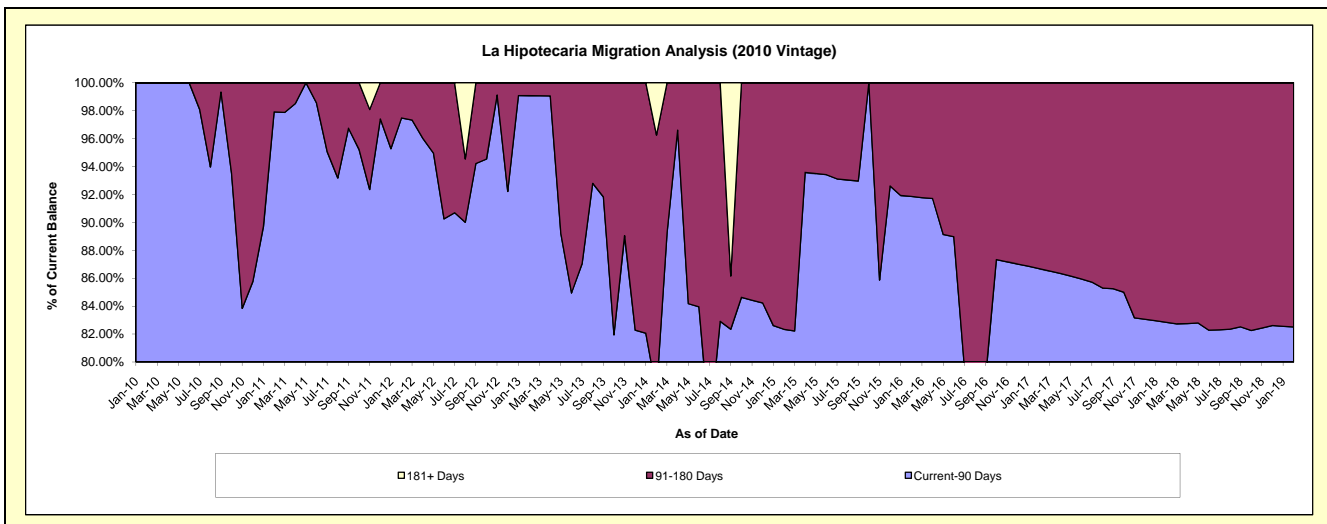
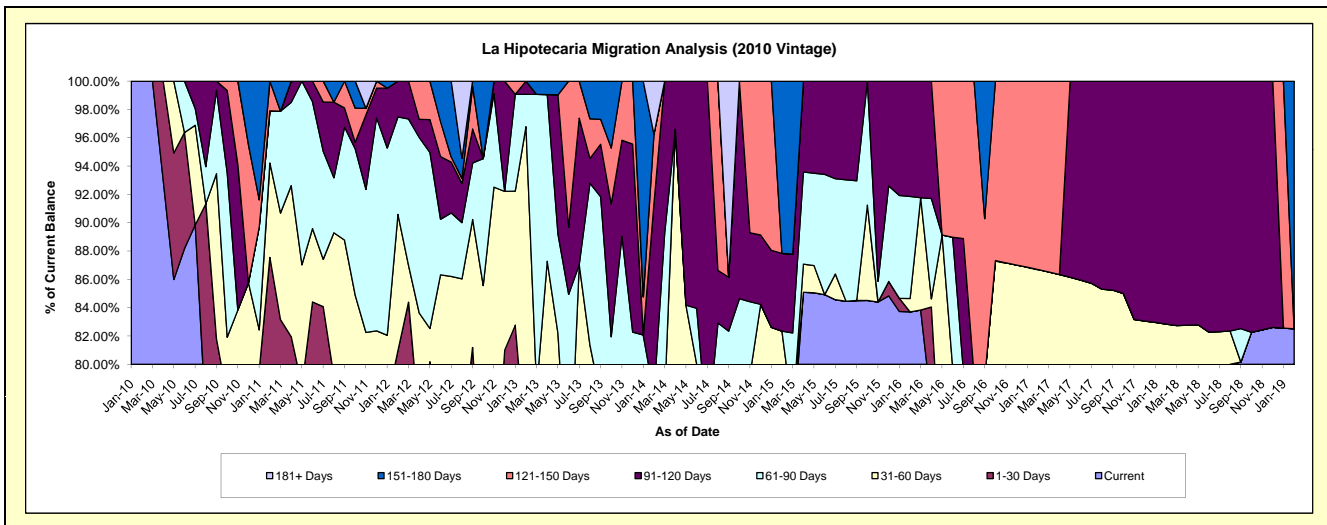
Delinquency Status (\$ of Current Balance)

Data Cutoff: 2/28/2019

Current Portfolio Balance	128,130.70	429,732.05	366,595.75	253,245.72	145,299.57	72,317.95	44,212.44	24,454.26	16,419.49	13,877.56
	Feb-10	Feb-11	Feb-12	Feb-13	Feb-14	Feb-15	Feb-16	Feb-17	Feb-18	Feb-19
Current	128,130.70	296,672.09	229,200.68	157,435.41	85,719.20	54,172.23	37,006.99	19,093.62	12,656.87	11,450.43
1-30 Days	-	79,562.96	67,663.03	29,885.18	12,566.11	1,267.58	-	-	-	-
31-60 Days	-	28,640.30	35,226.28	57,785.73	4,934.74	4,112.47	420.09	2,108.33	946.13	-
61-90 Days	-	15,856.70	25,256.96	5,787.79	9,889.34	-	3,185.53	-	-	-
91-120 Days	-	-	9,248.80	2,351.61	19,651.79	3,972.48	3,599.83	-	2,816.49	-
121-150 Days	-	9,000.00	-	-	7,085.96	-	-	3,252.31	-	-
151-180 Days	-	-	-	-	-	8,793.19	-	-	-	2,427.13
181+ Days	-	-	-	-	5,452.43	-	-	-	-	-

Delinquency Status (% of Current Balance)

Current Portfolio Balance	128,130.70	429,732.05	366,595.75	253,245.72	145,299.57	72,317.95	44,212.44	24,454.26	16,419.49	13,877.56
	Feb-10	Feb-11	Feb-12	Feb-13	Feb-14	Feb-15	Feb-16	Feb-17	Feb-18	Feb-19
Current	100.00%	69.04%	62.52%	62.17%	58.99%	74.91%	83.70%	78.08%	77.08%	82.51%
1-30 Days	0.00%	18.51%	18.46%	11.80%	8.65%	1.75%	0.00%	0.00%	0.00%	0.00%
31-60 Days	0.00%	6.66%	9.61%	22.82%	3.40%	5.69%	0.95%	8.62%	5.76%	0.00%
61-90 Days	0.00%	3.69%	6.89%	2.29%	6.81%	0.00%	7.21%	0.00%	0.00%	0.00%
91-120 Days	0.00%	0.00%	2.52%	0.93%	13.53%	5.49%	8.14%	0.00%	17.15%	0.00%
121-150 Days	0.00%	2.09%	0.00%	0.00%	4.88%	0.00%	0.00%	13.30%	0.00%	0.00%
151-180 Days	0.00%	0.00%	0.00%	0.00%	0.00%	12.16%	0.00%	0.00%	0.00%	17.49%
181+ Days	0.00%	0.00%	0.00%	0.00%	3.75%	0.00%	0.00%	0.00%	0.00%	0.00%
Current - 90 Days	100.00%	97.91%	97.48%	99.07%	77.85%	82.35%	91.86%	86.70%	82.85%	82.51%
91-180 Days	0.00%	2.09%	2.52%	0.93%	18.40%	17.65%	8.14%	13.30%	17.15%	17.49%



Personal Loans - La Hipotecaria El Salvador Migration Analysis (2011 Vintage)

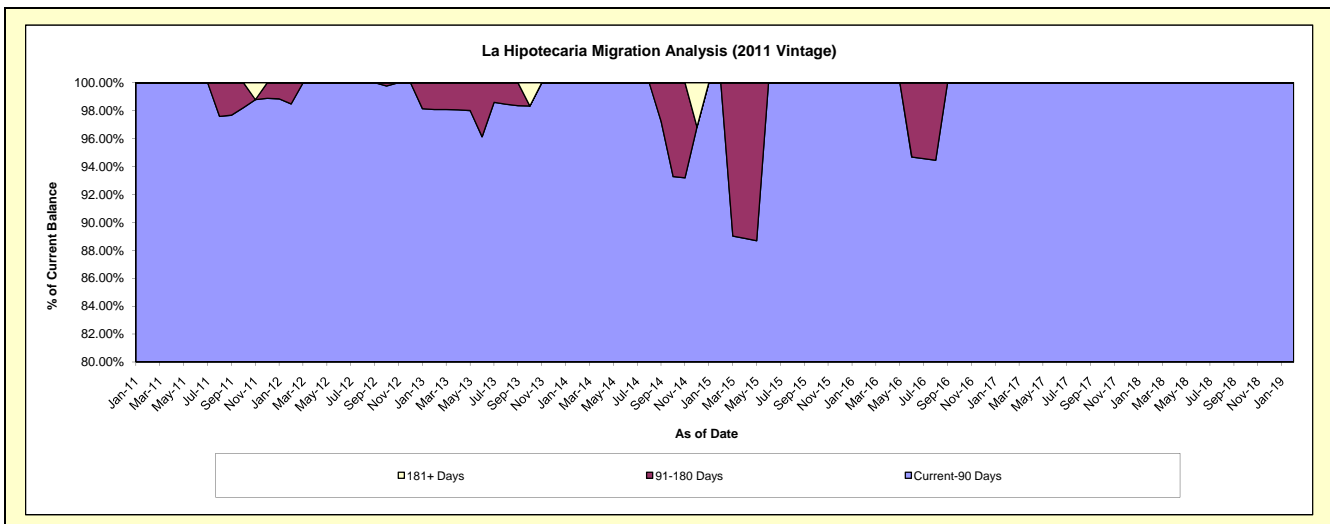
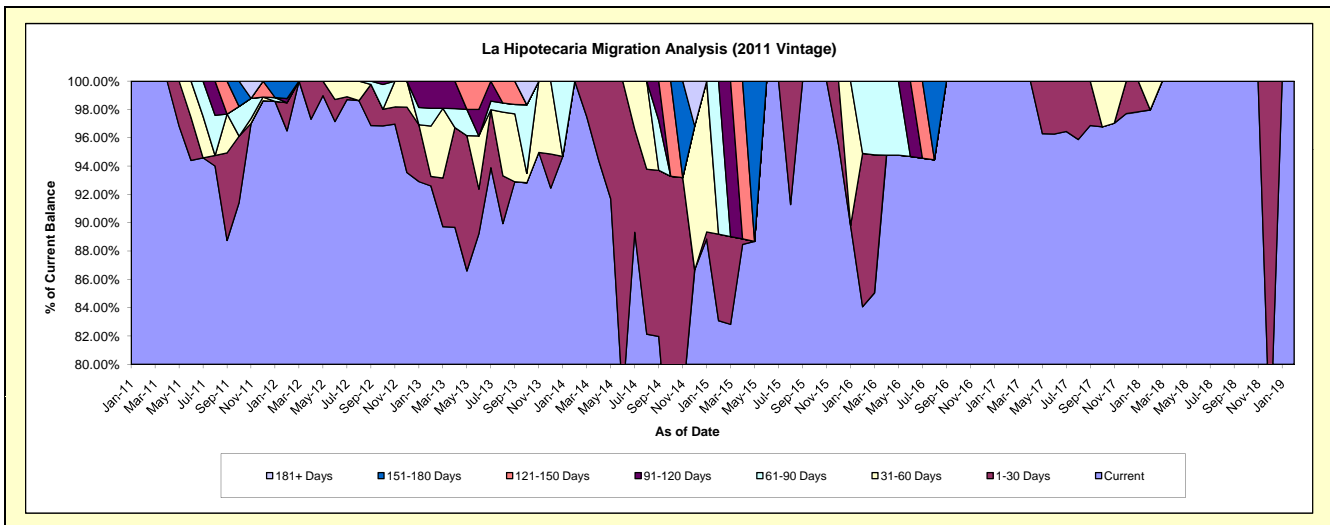
Delinquency Status (\$ of Current Balance)

Data Cutoff: 2/28/2019

Current Portfolio Balance	-	31,201.57	374,366.75	266,950.35	171,436.95	118,619.67	74,673.59	53,319.23	34,328.91	24,013.48
	Feb-11	Feb-12	Feb-13	Feb-14	Feb-15	Feb-16	Feb-17	Feb-18	Feb-19	
Current	31,201.57	361,214.68	247,189.46	171,436.95	98,547.58	62,776.84	53,319.23	33,630.62	24,013.48	
1-30 Days	-	7,471.68	1,784.96	-	7,250.27	8,088.87	-	-	-	
31-60 Days	-	-	9,506.97	-	-	-	-	698.29	-	
61-90 Days	-	-	3,351.05	-	12,821.82	3,807.88	-	-	-	
91-120 Days	-	1,085.91	5,117.91	-	-	-	-	-	-	
121-150 Days	-	-	-	-	-	-	-	-	-	
151-180 Days	-	4,594.48	-	-	-	-	-	-	-	
181+ Days	-	-	-	-	-	-	-	-	-	

Delinquency Status (% of Current Balance)

Current Portfolio Balance	-	31,201.57	374,366.75	266,950.35	171,436.95	118,619.67	74,673.59	53,319.23	34,328.91	24,013.48
	Feb-11	Feb-12	Feb-13	Feb-14	Feb-15	Feb-16	Feb-17	Feb-18	Feb-19	
Current	100.00%	96.49%	92.60%	100.00%	83.08%	84.07%	100.00%	97.97%	100.00%	
1-30 Days	0.00%	2.00%	0.67%	0.00%	6.11%	10.83%	0.00%	0.00%	0.00%	
31-60 Days	0.00%	0.00%	3.56%	0.00%	0.00%	0.00%	0.00%	2.03%	0.00%	
61-90 Days	0.00%	0.00%	1.26%	0.00%	10.81%	5.10%	0.00%	0.00%	0.00%	
91-120 Days	0.00%	0.29%	1.92%	0.00%	0.00%	0.00%	0.00%	0.00%	0.00%	
121-150 Days	0.00%	0.00%	0.00%	0.00%	0.00%	0.00%	0.00%	0.00%	0.00%	
151-180 Days	0.00%	1.23%	0.00%	0.00%	0.00%	0.00%	0.00%	0.00%	0.00%	
181+ Days	0.00%	0.00%	0.00%	0.00%	0.00%	0.00%	0.00%	0.00%	0.00%	
Current - 90 Days	100.00%	98.48%	98.08%	100.00%	100.00%	100.00%	100.00%	100.00%	100.00%	
91-180 Days	0.00%	1.52%	1.92%	0.00%	0.00%	0.00%	0.00%	0.00%	0.00%	



Personal Loans - La Hipotecaria El Salvador Migration Analysis (2012 Vintage)

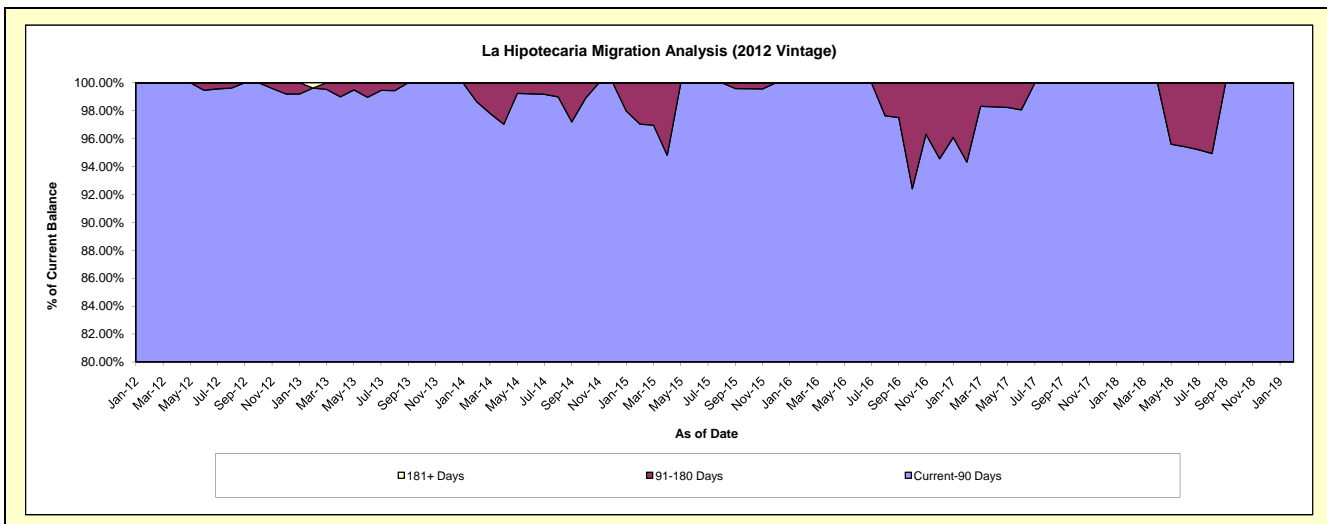
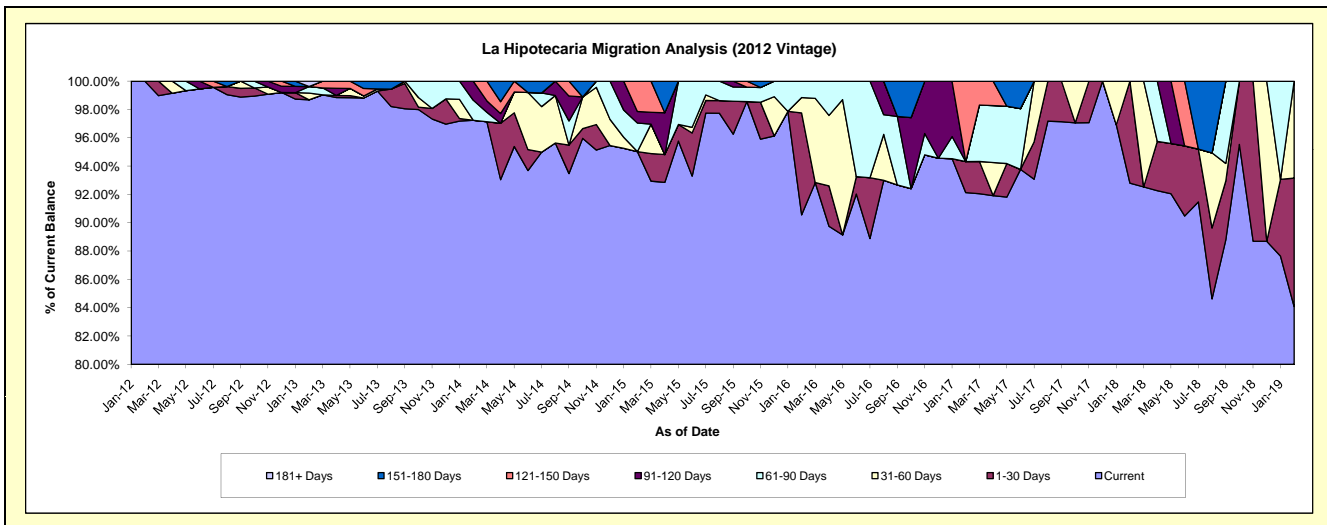
Delinquency Status (\$ of Current Balance)

Data Cutoff: 2/28/2019

Current Portfolio Balance	-	-	190,773.01	1,579,377.82	1,044,860.08	584,256.91	369,480.66	222,346.24	127,652.52	59,730.97
	Feb-12	Feb-13	Feb-14	Feb-15	Feb-16	Feb-17	Feb-18	Feb-19		
Current	190,773.01	1,558,595.89	1,016,042.16	555,167.62	334,621.82	204,840.05	118,460.87	50,223.14		
1-30 Days	-	-	-	-	-	26,553.71	4,886.86	9,191.65	5,417.38	
31-60 Days	-	7,433.37	-	-	4,038.95	-	-	-	4,090.45	
61-90 Days	-	7,348.56	14,779.33	11,812.67	4,266.18	-	-	-	-	
91-120 Days	-	-	14,038.59	4,771.89	-	-	-	-	-	
121-150 Days	-	-	-	12,504.73	-	-	12,619.33	-	-	
151-180 Days	-	-	-	-	-	-	-	-	-	
181+ Days	-	6,000.00	-	-	-	-	-	-	-	

Delinquency Status (% of Current Balance)

Current Portfolio Balance	-	-	190,773.01	1,579,377.82	1,044,860.08	584,256.91	369,480.66	222,346.24	127,652.52	59,730.97
	Feb-12	Feb-13	Feb-14	Feb-15	Feb-16	Feb-17	Feb-18	Feb-19		
Current	100.00%	98.68%	97.24%	95.02%	90.57%	92.13%	92.80%	84.08%		
1-30 Days	0.00%	0.00%	0.00%	0.00%	7.19%	2.20%	7.20%	9.07%		
31-60 Days	0.00%	0.47%	0.00%	0.00%	1.09%	0.00%	0.00%	6.85%		
61-90 Days	0.00%	0.47%	1.41%	2.02%	1.15%	0.00%	0.00%	0.00%		
91-120 Days	0.00%	0.00%	1.34%	0.82%	0.00%	0.00%	0.00%	0.00%		
121-150 Days	0.00%	0.00%	0.00%	2.14%	0.00%	5.68%	0.00%	0.00%		
151-180 Days	0.00%	0.00%	0.00%	0.00%	0.00%	0.00%	0.00%	0.00%		
181+ Days	0.00%	0.38%	0.00%	0.00%	0.00%	0.00%	0.00%	0.00%		
Current - 90 Days	100.00%	99.62%	98.66%	97.04%	100.00%	94.32%	100.00%	100.00%		
91-180 Days	0.00%	0.00%	1.34%	2.96%	0.00%	5.68%	0.00%	0.00%		



Personal Loans - La Hipotecaria El Salvador Migration Analysis (2013 Vintage)

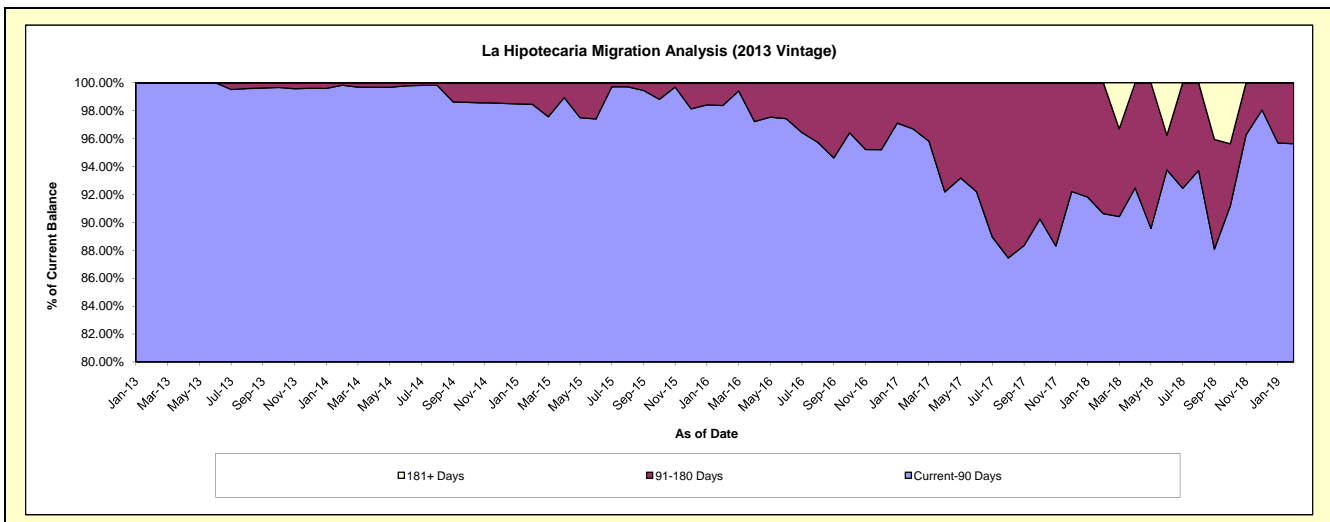
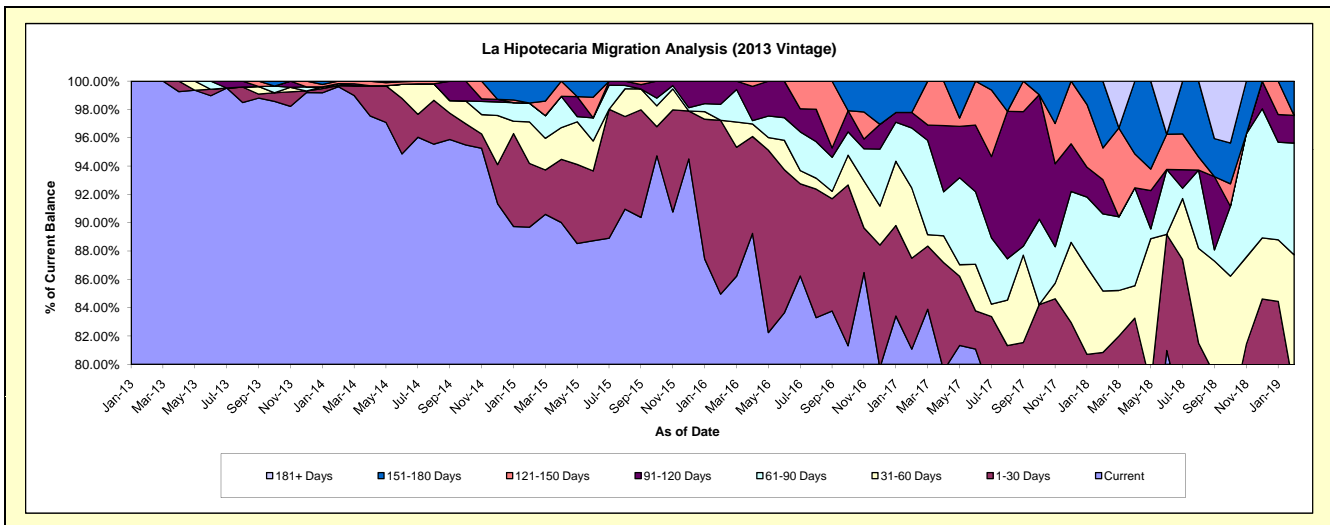
Delinquency Status (\$ of Current Balance)

Data Cutoff: 2/28/2019

Current Portfolio Balance	-	-	-	406,933.49	2,031,614.54	1,336,782.02	920,454.93	624,059.06	398,670.07	210,119.00
	Feb-13	Feb-14	Feb-15	Feb-16	Feb-17	Feb-18	Feb-19			
Current	406,933.49	2,023,746.45	1,198,887.80	782,029.60	505,957.49	289,782.20	164,330.87			
1-30 Days	-	1,641.87	60,284.93	113,019.39	40,092.54	32,503.54	-			
31-60 Days	-	-	39,112.42	-	30,941.81	17,309.61	20,008.95			
61-90 Days	-	2,630.49	17,821.63	10,351.59	26,423.57	21,698.01	16,589.05			
91-120 Days	-	-	-	15,054.35	6,842.15	9,626.79	4,107.62			
121-150 Days	-	3,595.73	-	-	-	8,946.68	-			
151-180 Days	-	-	20,675.24	-	13,801.50	18,803.24	5,082.51			
181+ Days	-	-	-	-	-	-	-			

Delinquency Status (% of Current Balance)

Current Portfolio Balance	-	-	-	406,933.49	2,031,614.54	1,336,782.02	920,454.93	624,059.06	398,670.07	210,119.00
	Feb-13	Feb-14	Feb-15	Feb-16	Feb-17	Feb-18	Feb-19			
Current	100.00%	99.61%	89.68%	84.96%	81.08%	72.69%	78.21%			
1-30 Days	0.00%	0.08%	4.51%	12.28%	6.42%	8.15%	0.00%			
31-60 Days	0.00%	0.00%	2.93%	0.00%	4.96%	5.44%	9.52%			
61-90 Days	0.00%	0.13%	1.33%	1.12%	4.23%	5.44%	7.90%			
91-120 Days	0.00%	0.00%	0.00%	1.64%	1.10%	2.41%	1.95%			
121-150 Days	0.00%	0.18%	0.00%	0.00%	0.00%	2.24%	0.00%			
151-180 Days	0.00%	0.00%	1.55%	0.00%	2.21%	4.72%	2.42%			
181+ Days	0.00%	0.00%	0.00%	0.00%	0.00%	0.00%	0.00%			
Current - 90 Days	100.00%	99.82%	98.45%	98.36%	96.69%	90.62%	95.63%			
91-180 Days	0.00%	0.18%	1.55%	1.64%	3.31%	9.38%	4.37%			



Personal Loans - La Hipotecaria El Salvador Migration Analysis (2014 Vintage)

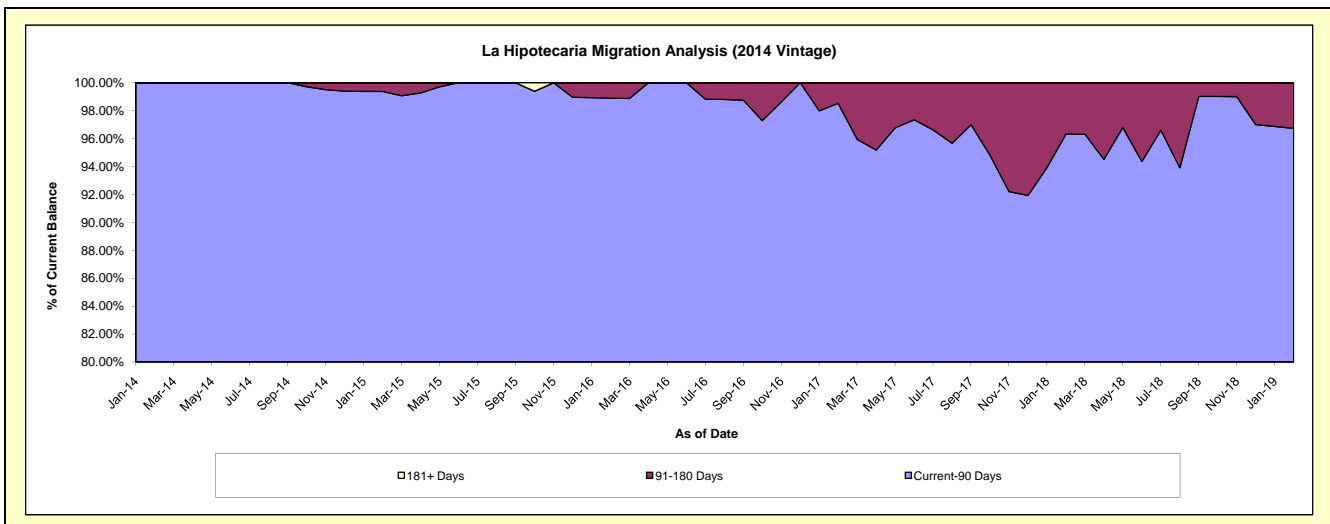
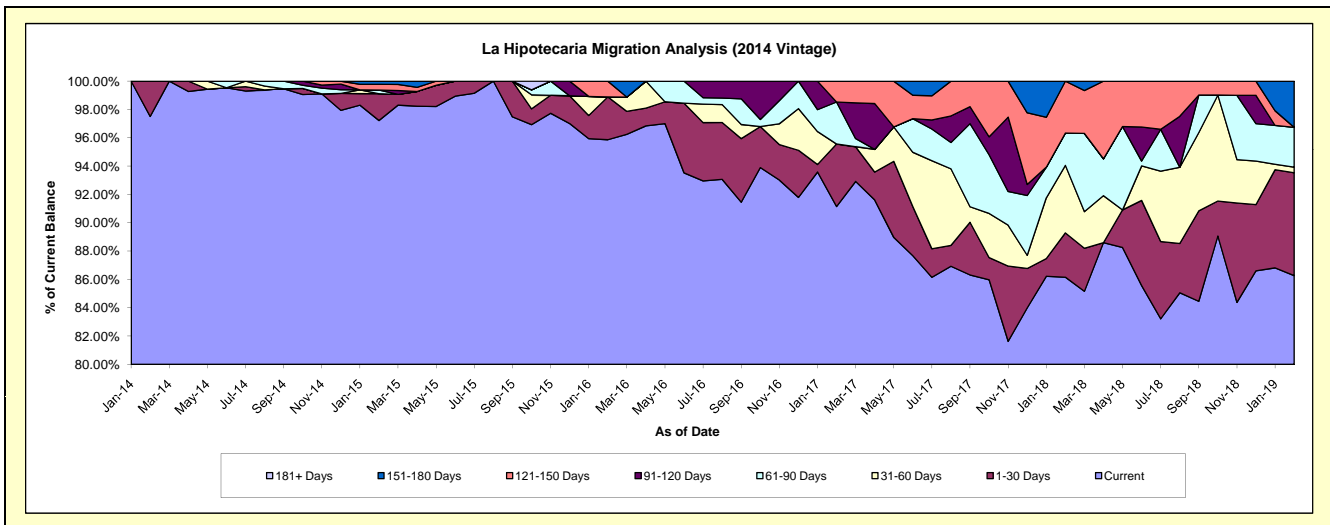
Delinquency Status (\$ of Current Balance)

Data Cutoff: 2/28/2019

Current Portfolio Balance	-	-	-	-	400,962.04	2,390,181.60	1,617,427.08	1,030,511.84	607,825.60	402,877.30
					Feb-14	Feb-15	Feb-16	Feb-17	Feb-18	Feb-19
Current					390,962.04	2,323,763.65	1,550,524.80	939,277.93	523,683.19	347,542.80
1-30 Days					10,000.00	45,127.60	48,949.83	45,482.48	19,017.96	29,263.52
31-60 Days					-	-	-	-	28,978.46	1,605.79
61-90 Days					-	6,334.48	-	30,592.06	13,829.46	11,314.88
91-120 Days					-	-	-	-	-	-
121-150 Days					-	9,678.94	17,952.45	15,159.37	22,316.53	-
151-180 Days					-	5,276.93	-	-	-	13,150.31
181+ Days					-	-	-	-	-	-

Delinquency Status (% of Current Balance)

Current Portfolio Balance	-	-	-	-	400,962.04	2,390,181.60	1,617,427.08	1,030,511.84	607,825.60	402,877.30
					Feb-14	Feb-15	Feb-16	Feb-17	Feb-18	Feb-19
Current					97.51%	97.22%	95.86%	91.15%	86.16%	86.27%
1-30 Days					2.49%	1.89%	3.03%	4.41%	3.13%	7.26%
31-60 Days					0.00%	0.00%	0.00%	0.00%	4.77%	0.40%
61-90 Days					0.00%	0.27%	0.00%	2.97%	2.28%	2.81%
91-120 Days					0.00%	0.00%	0.00%	0.00%	0.00%	0.00%
121-150 Days					0.00%	0.40%	1.11%	1.47%	3.67%	0.00%
151-180 Days					0.00%	0.22%	0.00%	0.00%	0.00%	3.26%
181+ Days					0.00%	0.00%	0.00%	0.00%	0.00%	0.00%
Current - 90 Days					100.00%	99.37%	98.89%	98.53%	96.33%	96.74%
91-180 Days					0.00%	0.63%	1.11%	1.47%	3.67%	3.26%



Personal Loans - La Hipotecaria El Salvador Migration Analysis (2015 Vintage)

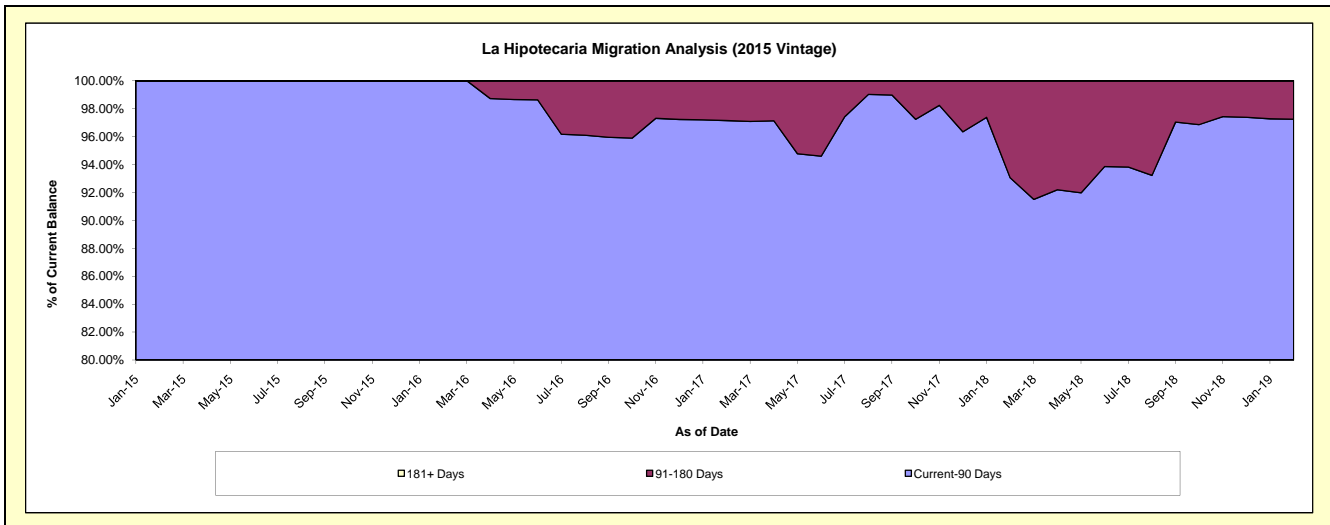
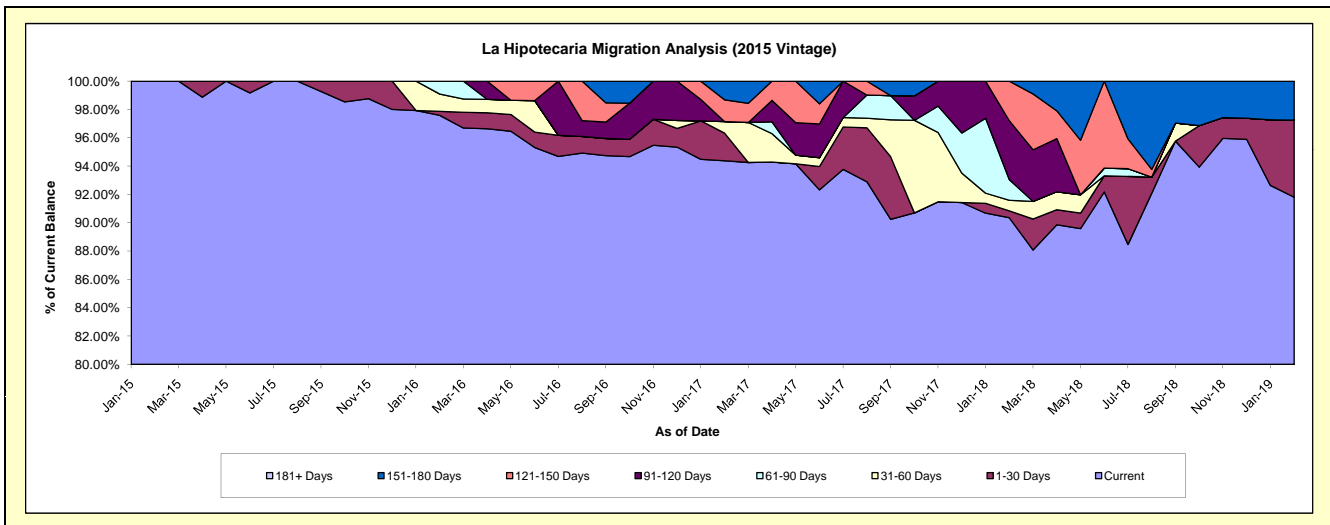
Delinquency Status (\$ of Current Balance)

Data Cutoff: 2/28/2019

Current Portfolio Balance	-	-	-	-	-	252,198.32	1,500,999.76	1,033,968.62	726,328.25	465,408.54
						Feb-15	Feb-16	Feb-17	Feb-18	Feb-19
Current						252,198.32	1,464,782.75	975,883.35	656,260.52	427,277.70
1-30 Days						-	4,238.94	20,186.93	3,537.70	25,296.57
31-60 Days						-	18,335.28	8,395.90	5,450.18	-
61-90 Days						-	13,642.79	-	10,586.89	-
91-120 Days						-	-	-	30,249.26	-
121-150 Days						-	-	15,859.65	20,243.70	-
151-180 Days						-	-	13,642.79	-	12,834.27
181+ Days						-	-	-	-	-

Delinquency Status (% of Current Balance)

Current Portfolio Balance	-	-	-	-	-	252,198.32	1,500,999.76	1,033,968.62	726,328.25	465,408.54
						Feb-15	Feb-16	Feb-17	Feb-18	Feb-19
Current						100.00%	97.59%	94.38%	90.35%	91.81%
1-30 Days						0.00%	0.28%	1.95%	0.49%	5.44%
31-60 Days						0.00%	1.22%	0.81%	0.75%	0.00%
61-90 Days						0.00%	0.91%	0.00%	1.46%	0.00%
91-120 Days						0.00%	0.00%	0.00%	4.16%	0.00%
121-150 Days						0.00%	0.00%	1.53%	2.79%	0.00%
151-180 Days						0.00%	0.00%	1.32%	0.00%	2.76%
181+ Days						0.00%	0.00%	0.00%	0.00%	0.00%
Current - 90 Days						100.00%	100.00%	97.15%	93.05%	97.24%
91-180 Days						0.00%	0.00%	2.85%	6.95%	2.76%



Personal Loans - La Hipotecaria El Salvador Migration Analysis (2016 Vintage)

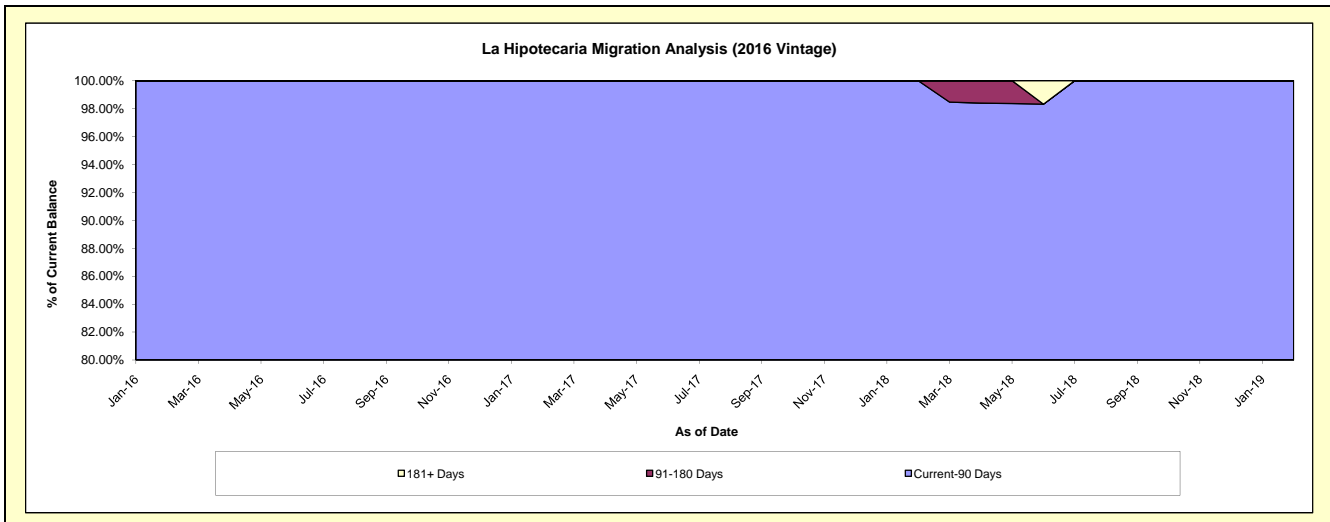
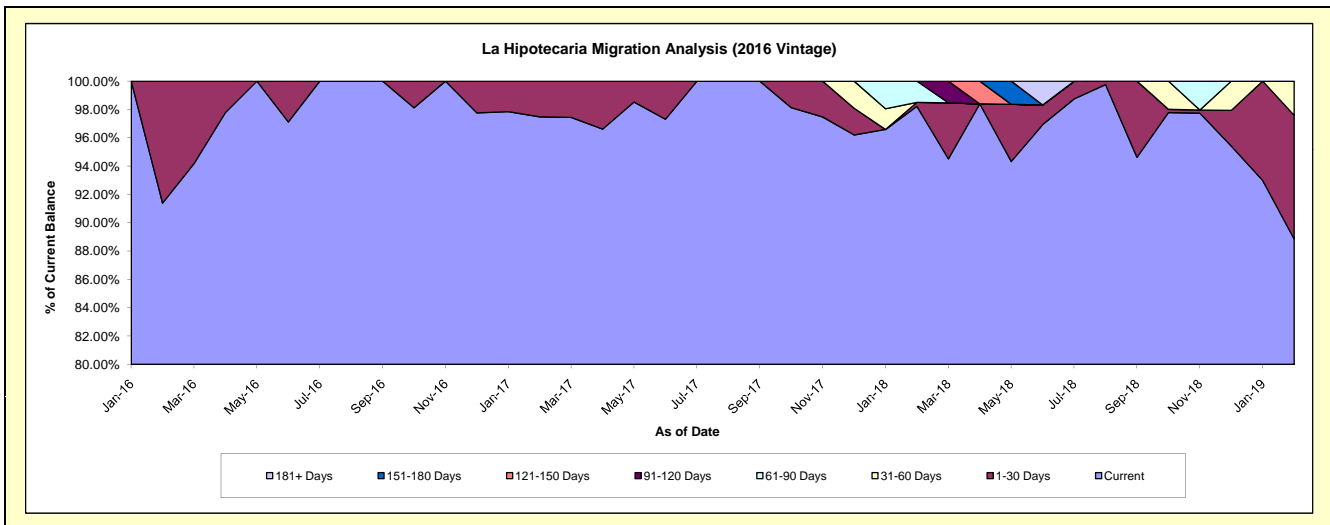
Delinquency Status (\$ of Current Balance)

Data Cutoff: 2/28/2019

Current Portfolio Balance	-	-	-	-	-	-	-	312,411.64	1,197,329.45	928,981.91	688,699.34
								Feb-16	Feb-17	Feb-18	Feb-19
Current								285,511.64	1,167,156.54	912,463.40	611,894.47
1-30 Days								26,900.00	30,172.91	2,582.10	60,238.72
31-60 Days								-	-	-	16,566.15
61-90 Days								-	-	13,936.41	-
91-120 Days								-	-	-	-
121-150 Days								-	-	-	-
151-180 Days								-	-	-	-
181+ Days								-	-	-	-

Delinquency Status (% of Current Balance)

Current Portfolio Balance	-	-	-	-	-	-	-	312,411.64	1,197,329.45	928,981.91	688,699.34
								Feb-16	Feb-17	Feb-18	Feb-19
Current								91.39%	97.48%	98.22%	88.85%
1-30 Days								8.61%	2.52%	0.28%	8.75%
31-60 Days								0.00%	0.00%	0.00%	2.41%
61-90 Days								0.00%	0.00%	1.50%	0.00%
91-120 Days								0.00%	0.00%	0.00%	0.00%
121-150 Days								0.00%	0.00%	0.00%	0.00%
151-180 Days								0.00%	0.00%	0.00%	0.00%
181+ Days								0.00%	0.00%	0.00%	0.00%
Current - 90 Days								100.00%	100.00%	100.00%	100.00%
91-180 Days								0.00%	0.00%	0.00%	0.00%



Personal Loans - La Hipotecaria El Salvador Migration Analysis (2017 Vintage)

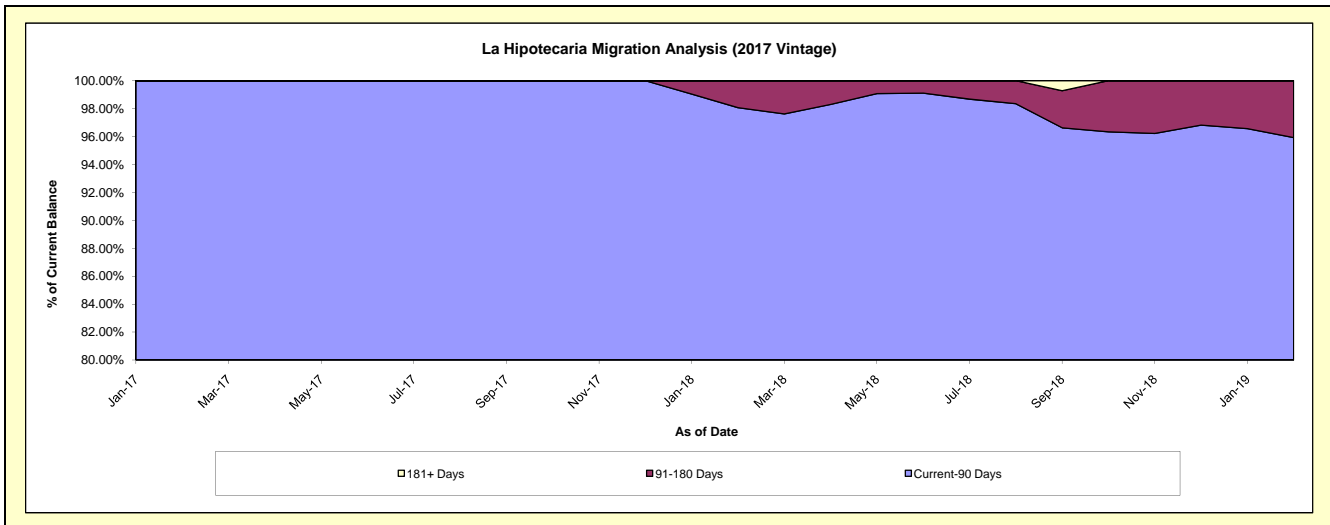
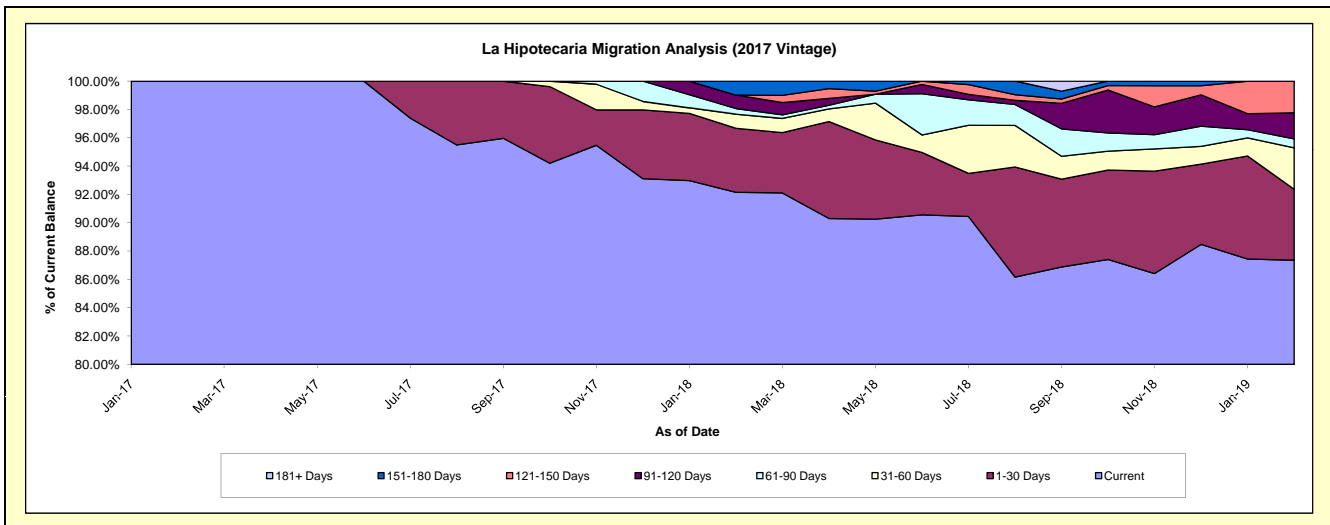
Delinquency Status (\$ of Current Balance)

Data Cutoff: 2/28/2019

Current Portfolio Balance	-	-	-	-	-	-	-	-	-	181,654.18	2,004,189.73	1,425,202.66
										Feb-17	Feb-18	Feb-19
Current										181,654.18	1,846,926.98	1,244,995.81
1-30 Days										-	90,503.09	71,337.25
31-60 Days										-	20,046.62	41,759.29
61-90 Days										-	7,987.51	9,072.56
91-120 Days										-	19,027.80	26,222.67
121-150 Days										-	-	31,815.08
151-180 Days										-	19,697.73	-
181+ Days										-	-	-

Delinquency Status (% of Current Balance)

Current Portfolio Balance	-	-	-	-	-	-	-	-	-	181,654.18	2,004,189.73	1,425,202.66
										Feb-17	Feb-18	Feb-19
Current										100.00%	92.15%	87.36%
1-30 Days										0.00%	4.52%	5.01%
31-60 Days										0.00%	1.00%	2.93%
61-90 Days										0.00%	0.40%	0.64%
91-120 Days										0.00%	0.95%	1.84%
121-150 Days										0.00%	0.00%	2.23%
151-180 Days										0.00%	0.98%	0.00%
181+ Days										0.00%	0.00%	0.00%
Current - 90 Days										100.00%	98.07%	95.93%
91-180 Days										0.00%	1.93%	4.07%



Personal Loans - La Hipotecaria El Salvador Migration Analysis (2018 Vintage)

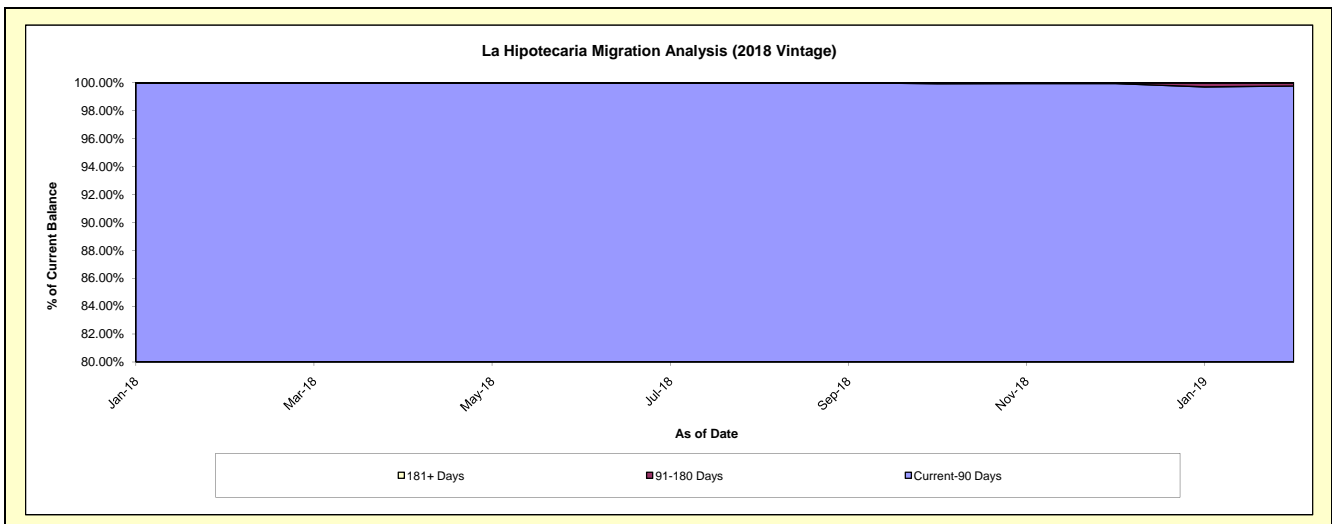
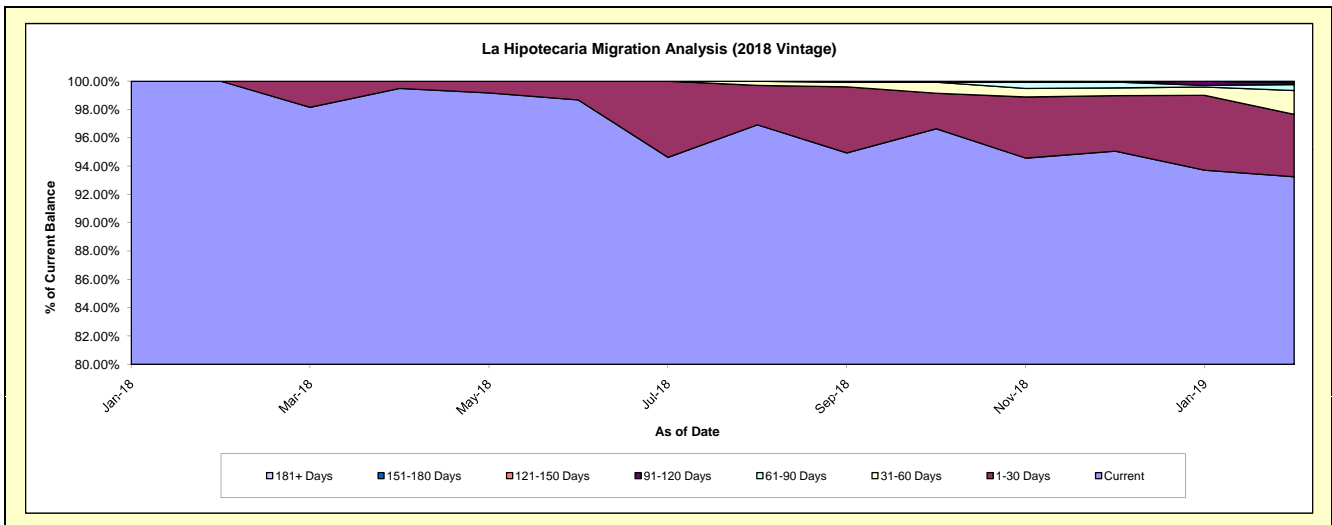
Delinquency Status (\$ of Current Balance)

Data Cutoff: 2/28/2019

Current Portfolio Balance										339,128.94	4,195,829.54
										Feb-18	Feb-19
Current										339,128.94	3,912,458.73
1-30 Days										-	184,899.05
31-60 Days										-	70,833.28
61-90 Days										-	17,638.48
91-120 Days										-	5,000.00
121-150 Days										-	5,000.00
151-180 Days										-	-
181+ Days										-	-

Delinquency Status (% of Current Balance)

Current Portfolio Balance										339,128.94	4,195,829.54
										Feb-18	Feb-19
Current										100.00%	93.25%
1-30 Days										0.00%	4.41%
31-60 Days										0.00%	1.69%
61-90 Days										0.00%	0.42%
91-120 Days										0.00%	0.12%
121-150 Days										0.00%	0.12%
151-180 Days										0.00%	0.00%
181+ Days										0.00%	0.00%
Current - 90 Days										100.00%	99.76%
91-180 Days										0.00%	0.24%



Personal Loans - La Hipotecaria El Salvador Migration Analysis (2019 Vintage)

Delinquency Status (\$ of Current Balance)

Data Cutoff: 2/28/2019

Current Portfolio Balance	-	-	-	-	-	-	-	-	-	-	-	879,505.13
												Feb-19
Current												847,616.84
1-30 Days												31,888.29
31-60 Days												-
61-90 Days												-
91-120 Days												-
121-150 Days												-
151-180 Days												-
181+ Days												-

Delinquency Status (% of Current Balance)

Current Portfolio Balance	-	-	-	-	-	-	-	-	-	-	-	879,505.13
												Feb-19
Current												96.37%
1-30 Days												3.63%
31-60 Days												0.00%
61-90 Days												0.00%
91-120 Days												0.00%
121-150 Days												0.00%
151-180 Days												0.00%
181+ Days												0.00%
Current - 90 Days												100.00%
91-180 Days												0.00%

