



## Migration Analysis for La Hipotecaria S.A. de C.V El Salvador

### Personal Loans May 2019

An analysis of historical loan payment data was used to compile a migration analysis of delinquency by annual vintage. Delinquencies for each vintage were grouped into the following buckets; Current, 1-30, 31-60, 61-90, 91-120, 121-150, 151-180, and 180+. Results are provided in graphical and tabular form. The cutoff date is 5/31/2019.

# Personal Loans - La Hipotecaria El Salvador Migration Analysis (All Vintages)

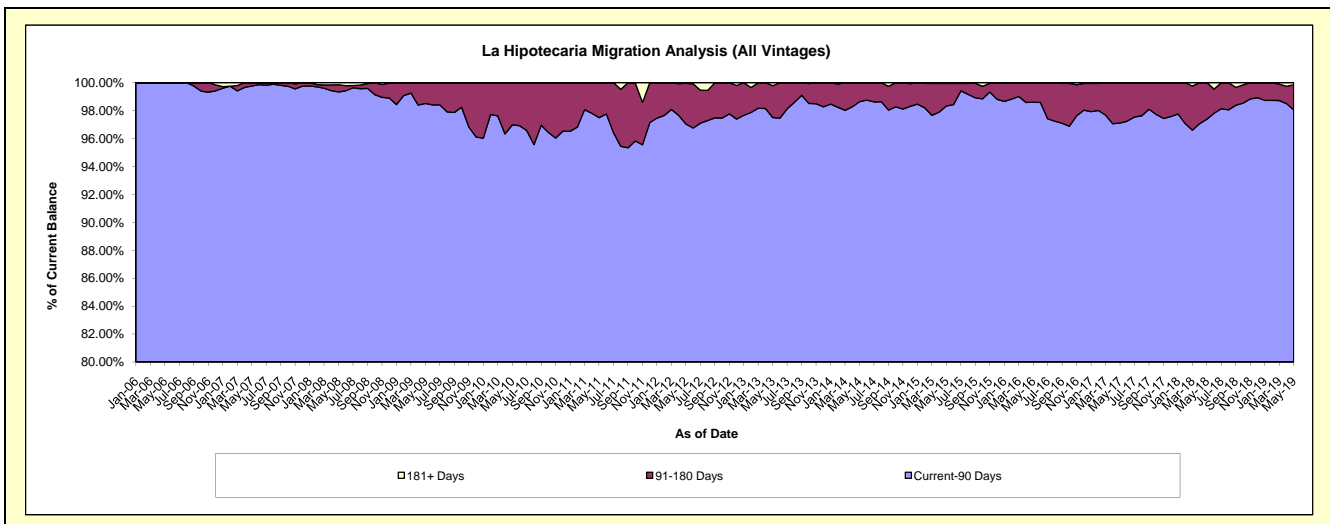
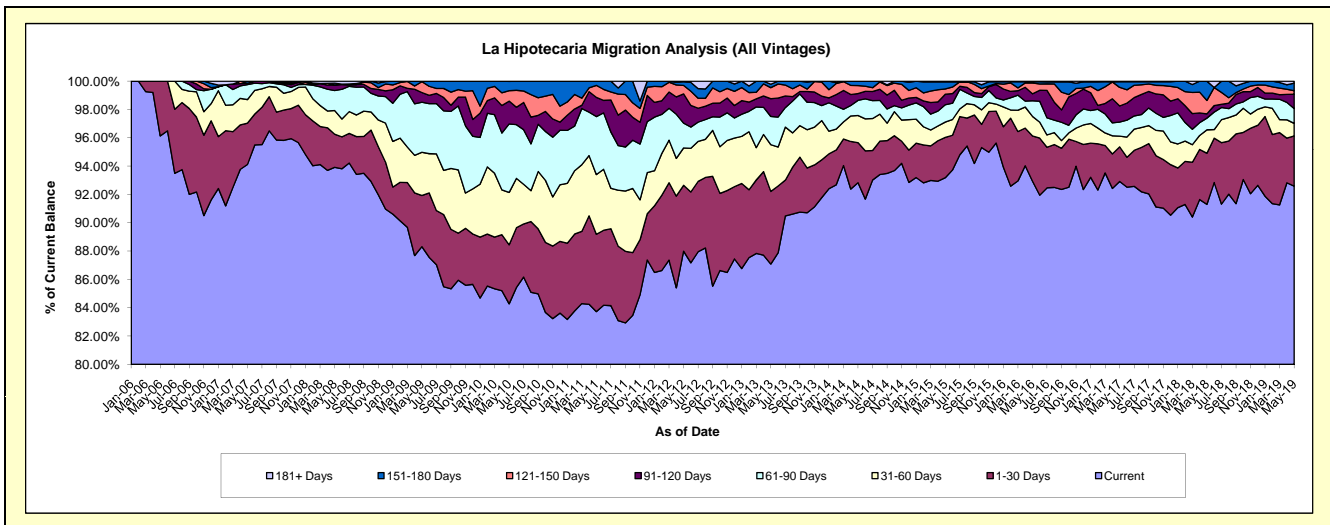
## Delinquency Status (\$ of Current Balance)

Data Cutoff: 5/31/2019

Current Portfolio Balance	7,323,790.07	5,515,449.19	4,678,337.73	5,093,579.66	5,427,275.17	5,181,189.17	4,893,067.09	4,663,532.04	5,635,671.49	9,481,380.49
	May-10	May-11	May-12	May-13	May-14	May-15	May-16	May-17	May-18	May-19
Current	6,172,288.56	4,617,838.66	4,116,493.08	4,435,849.05	5,038,104.60	4,827,909.94	4,547,936.22	4,333,293.83	5,145,296.38	8,778,726.36
1-30 Days	305,172.17	301,280.99	217,748.21	261,072.65	153,579.99	147,567.74	155,755.19	113,865.55	203,547.94	335,929.38
31-60 Days	271,042.33	232,428.99	123,571.09	168,180.59	104,001.66	56,119.72	67,759.77	35,510.25	93,271.70	84,363.70
61-90 Days	354,202.68	225,863.58	82,215.28	101,558.12	58,001.10	63,026.71	53,650.50	46,405.78	46,383.49	98,446.49
91-120 Days	117,936.38	74,858.26	96,229.72	63,872.12	26,174.57	38,962.25	24,361.00	52,783.32	17,096.66	96,047.73
121-150 Days	54,234.17	46,756.36	28,119.44	39,676.17	30,666.38	18,991.49	37,527.67	61,212.04	53,232.13	24,298.80
151-180 Days	47,663.78	16,422.35	12,027.47	12,541.20	16,746.87	26,139.18	3,933.26	18,458.14	76,843.19	49,880.79
181+ Days	1,250.00	-	1,933.44	10,829.76	-	2,472.14	2,143.48	2,003.13	-	13,687.24

## Delinquency Status (% of Current Balance)

Current Portfolio Balance	7,323,790.07	5,515,449.19	4,678,337.73	5,093,579.66	5,427,275.17	5,181,189.17	4,893,067.09	4,663,532.04	5,635,671.49	9,481,380.49
	May-10	May-11	May-12	May-13	May-14	May-15	May-16	May-17	May-18	May-19
Current	84.28%	83.73%	87.99%	87.09%	92.83%	93.18%	92.95%	92.92%	91.30%	92.59%
1-30 Days	4.17%	5.46%	4.65%	5.13%	2.83%	2.85%	3.18%	2.44%	3.61%	3.54%
31-60 Days	3.70%	4.21%	2.64%	3.30%	1.92%	1.08%	1.38%	0.76%	1.66%	0.89%
61-90 Days	4.84%	4.10%	1.76%	1.99%	1.07%	1.22%	1.10%	1.00%	0.82%	1.04%
91-120 Days	1.61%	1.36%	2.06%	1.25%	0.48%	0.75%	0.50%	1.13%	0.30%	1.01%
121-150 Days	0.74%	0.85%	0.60%	0.78%	0.57%	0.37%	0.77%	1.31%	0.94%	0.26%
151-180 Days	0.65%	0.30%	0.26%	0.25%	0.31%	0.50%	0.08%	0.40%	1.36%	0.53%
181+ Days	0.02%	0.00%	0.04%	0.21%	0.00%	0.05%	0.04%	0.04%	0.00%	0.14%
Current - 90 Days	96.98%	97.50%	97.04%	97.51%	98.64%	98.33%	98.61%	97.12%	97.39%	98.06%
91-180 Days	3.00%	2.50%	2.92%	2.28%	1.36%	1.62%	1.35%	2.84%	2.61%	1.80%



## Personal Loans - La Hipotecaria El Salvador Migration Analysis (2006 Vintage)

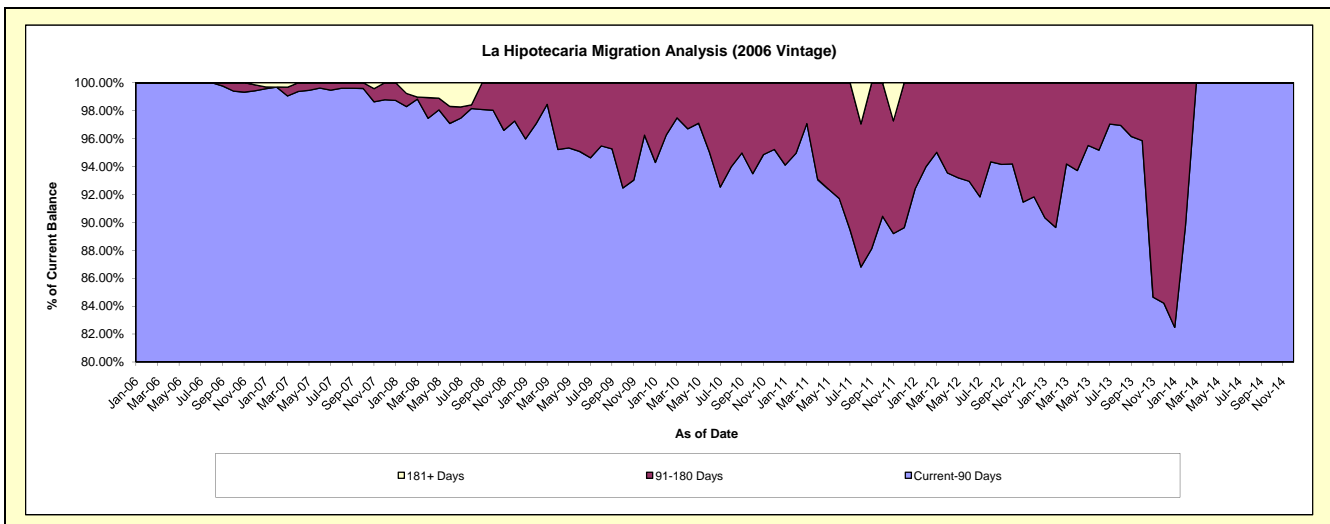
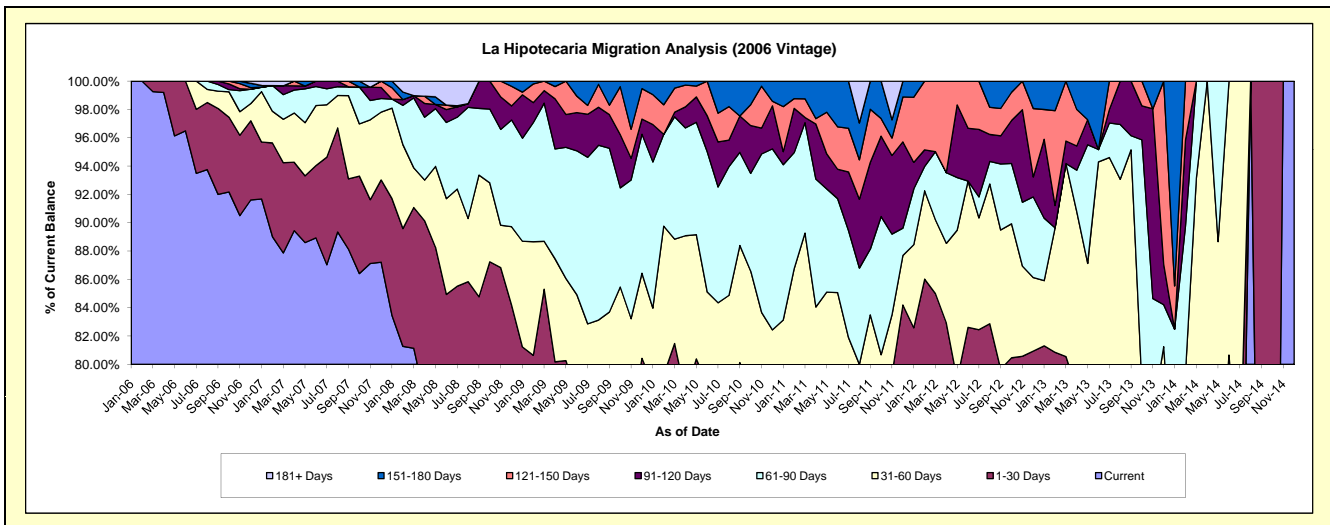
### Delinquency Status (\$ of Current Balance)

Data Cutoff: 5/31/2019

Current Portfolio Balance	497,825.11	305,165.37	146,655.92	60,998.04	7,915.16	#N/A	#N/A	#N/A	#N/A	#N/A
	May-10	May-11	May-12	May-13	May-14	May-15	May-16	May-17	May-18	May-19
Current	342,750.32	197,260.68	114,489.24	39,706.41	4,346.53	#N/A	#N/A	#N/A	#N/A	#N/A
1-30 Days	57,422.04	34,331.35	1,261.22	8,819.11	1,296.58	#N/A	#N/A	#N/A	#N/A	#N/A
31-60 Days	43,673.19	28,113.04	15,472.54	4,622.22	1,375.19	#N/A	#N/A	#N/A	#N/A	#N/A
61-90 Days	39,529.94	22,225.26	5,449.43	5,110.39	896.86	#N/A	#N/A	#N/A	#N/A	#N/A
91-120 Days	8,897.12	7,548.39	7,521.22	1,079.58	-	#N/A	#N/A	#N/A	#N/A	#N/A
121-150 Days	3,837.40	8,986.55	2,462.27	-	-	#N/A	#N/A	#N/A	#N/A	#N/A
151-180 Days	1,715.10	6,700.10	-	1,660.33	-	#N/A	#N/A	#N/A	#N/A	#N/A
181+ Days	-	-	-	-	-	#N/A	#N/A	#N/A	#N/A	#N/A

### Delinquency Status (% of Current Balance)

Current Portfolio Balance	497,825.11	305,165.37	146,655.92	60,998.04	7,915.16	#N/A	#N/A	#N/A	#N/A	#N/A
	May-10	May-11	May-12	May-13	May-14	May-15	May-16	May-17	May-18	May-19
Current	68.85%	64.64%	78.07%	65.09%	54.91%	#N/A	#N/A	#N/A	#N/A	#N/A
1-30 Days	11.53%	11.25%	0.86%	14.46%	16.38%	#N/A	#N/A	#N/A	#N/A	#N/A
31-60 Days	8.77%	9.21%	10.55%	7.58%	17.37%	#N/A	#N/A	#N/A	#N/A	#N/A
61-90 Days	7.94%	7.28%	3.72%	8.38%	11.33%	#N/A	#N/A	#N/A	#N/A	#N/A
91-120 Days	1.79%	2.47%	5.13%	1.77%	0.00%	#N/A	#N/A	#N/A	#N/A	#N/A
121-150 Days	0.77%	2.94%	1.68%	0.00%	0.00%	#N/A	#N/A	#N/A	#N/A	#N/A
151-180 Days	0.34%	2.20%	0.00%	2.72%	0.00%	#N/A	#N/A	#N/A	#N/A	#N/A
181+ Days	0.00%	0.00%	0.00%	0.00%	0.00%	#N/A	#N/A	#N/A	#N/A	#N/A
Current - 90 Days	97.10%	92.39%	93.19%	95.51%	100.00%	#N/A	#N/A	#N/A	#N/A	#N/A
91-180 Days	2.90%	7.61%	6.81%	4.49%	0.00%	#N/A	#N/A	#N/A	#N/A	#N/A



# Personal Loans - La Hipotecaria El Salvador Migration Analysis (2007 Vintage)

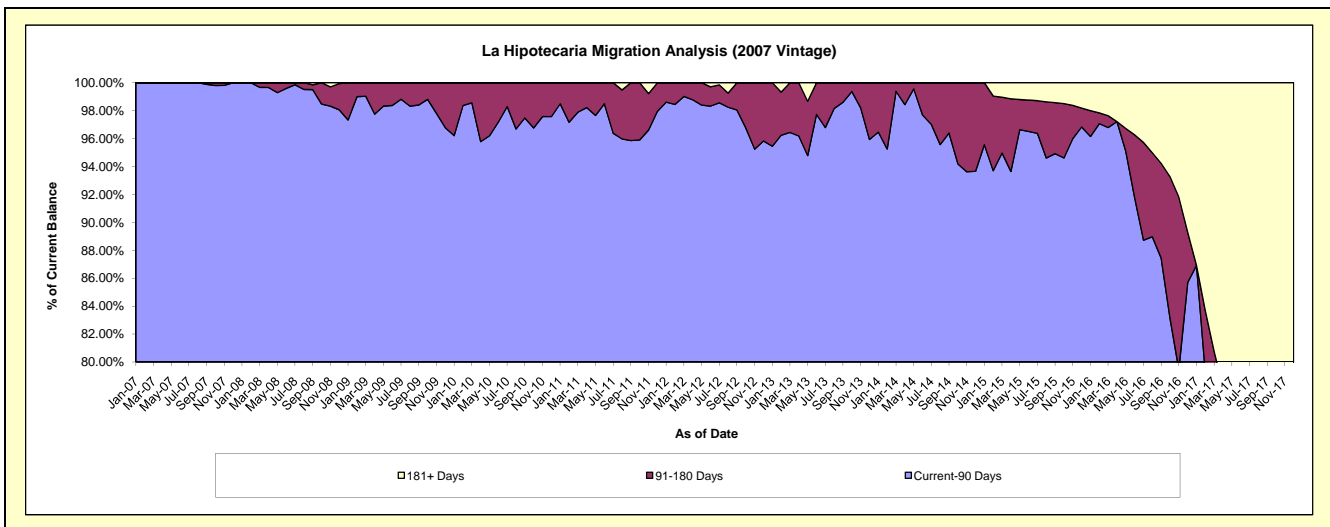
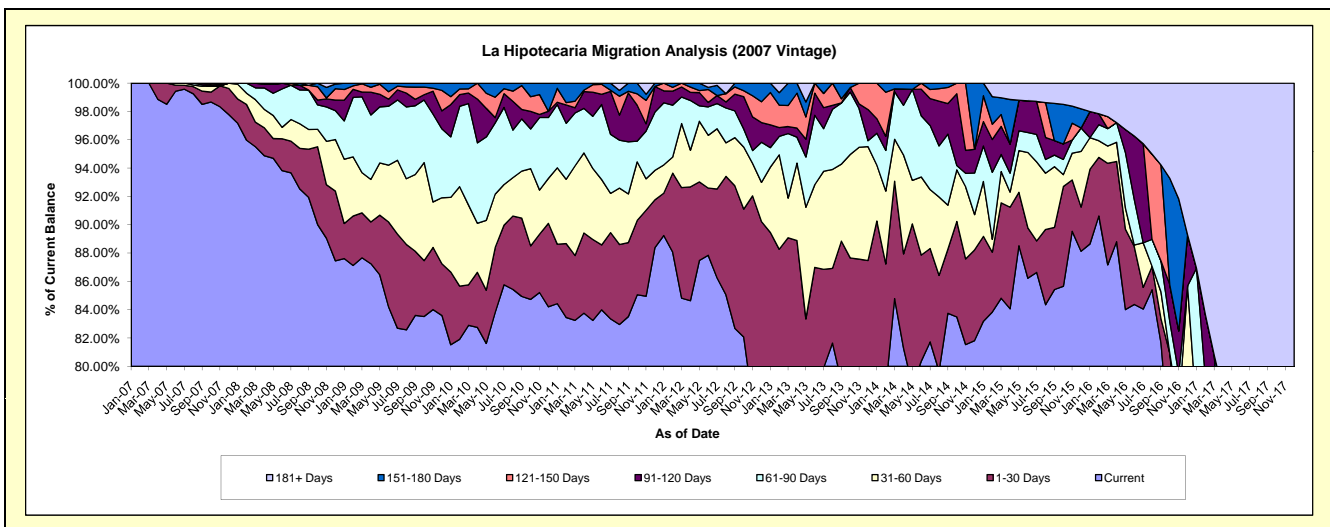
## Delinquency Status (\$ of Current Balance)

Data Cutoff: 5/31/2019

Current Portfolio Balance	2,869,193.06	1,948,299.60	1,322,761.40	814,096.95	453,127.58	205,635.16	65,482.17	6,306.09	#N/A	#N/A
	May-10	May-11	May-12	May-13	May-14	May-15	May-16	May-17	May-18	May-19
Current	2,341,847.84	1,621,892.81	1,157,133.80	590,287.32	356,387.84	182,024.31	55,010.04	3,380.89	#N/A	#N/A
1-30 Days	107,842.17	111,419.74	73,361.33	88,268.91	51,715.14	7,762.58	3,715.80	922.07	#N/A	#N/A
31-60 Days	141,603.52	97,678.36	56,703.97	64,199.19	13,920.20	6,048.94	972.36	-	#N/A	#N/A
61-90 Days	168,860.21	71,649.90	14,388.13	28,882.60	29,126.50	2,879.72	2,570.38	-	#N/A	#N/A
91-120 Days	57,895.44	33,245.59	12,346.96	10,225.16	-	4,447.47	1,070.11	-	#N/A	#N/A
121-150 Days	30,693.44	10,310.98	1,940.09	12,826.39	-	-	-	-	#N/A	#N/A
151-180 Days	20,450.44	2,102.22	6,887.12	8,577.62	1,977.90	-	-	-	#N/A	#N/A
181+ Days	-	-	-	10,829.76	-	2,472.14	2,143.48	2,003.13	#N/A	#N/A

## Delinquency Status (% of Current Balance)

Current Portfolio Balance	2,869,193.06	1,948,299.60	1,322,761.40	814,096.95	453,127.58	205,635.16	65,482.17	6,306.09	#N/A	#N/A
	May-10	May-11	May-12	May-13	May-14	May-15	May-16	May-17	May-18	May-19
Current	81.62%	83.25%	87.48%	72.51%	78.65%	88.52%	84.01%	53.61%	#N/A	#N/A
1-30 Days	3.76%	5.72%	5.55%	10.84%	11.41%	3.77%	5.67%	14.62%	#N/A	#N/A
31-60 Days	4.94%	5.01%	4.29%	7.89%	3.07%	2.94%	1.48%	0.00%	#N/A	#N/A
61-90 Days	5.89%	3.68%	1.09%	3.55%	6.43%	1.40%	3.93%	0.00%	#N/A	#N/A
91-120 Days	2.02%	1.71%	0.93%	1.26%	0.00%	2.16%	1.63%	0.00%	#N/A	#N/A
121-150 Days	1.07%	0.53%	0.15%	1.58%	0.00%	0.00%	0.00%	0.00%	#N/A	#N/A
151-180 Days	0.71%	0.11%	0.52%	1.05%	0.44%	0.00%	0.00%	0.00%	#N/A	#N/A
181+ Days	0.00%	0.00%	0.00%	1.33%	0.00%	1.20%	3.27%	31.77%	#N/A	#N/A
Current - 90 Days	96.20%	97.66%	98.40%	94.78%	99.56%	96.64%	95.09%	68.23%	#N/A	#N/A
91-180 Days	3.80%	2.34%	1.60%	3.89%	0.44%	2.16%	1.63%	0.00%	#N/A	#N/A



## Personal Loans - La Hipotecaria El Salvador Migration Analysis (2008 Vintage)

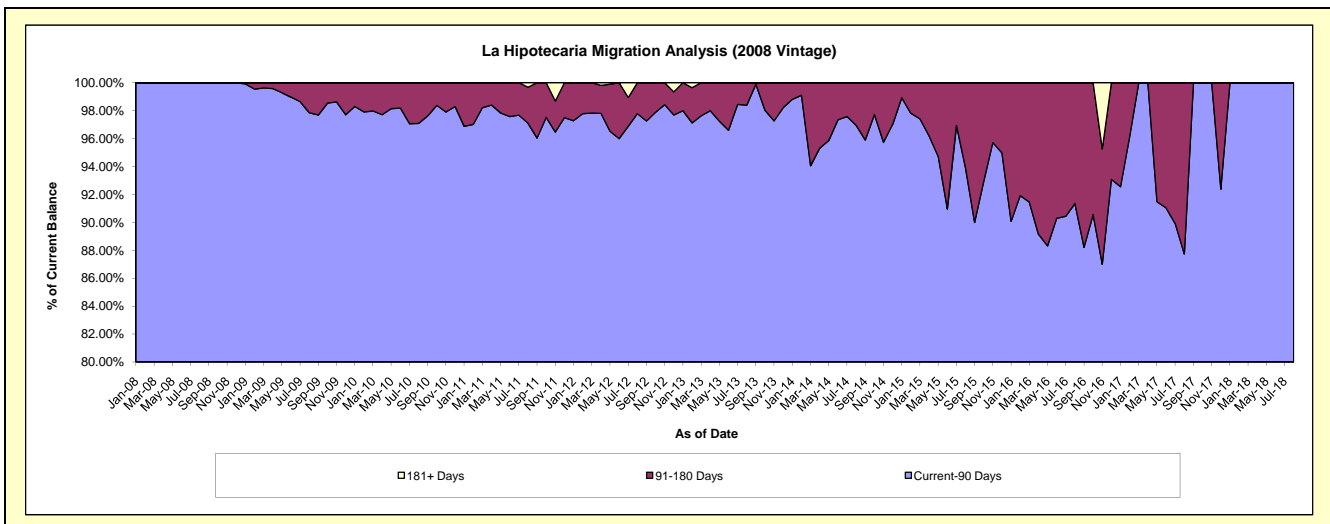
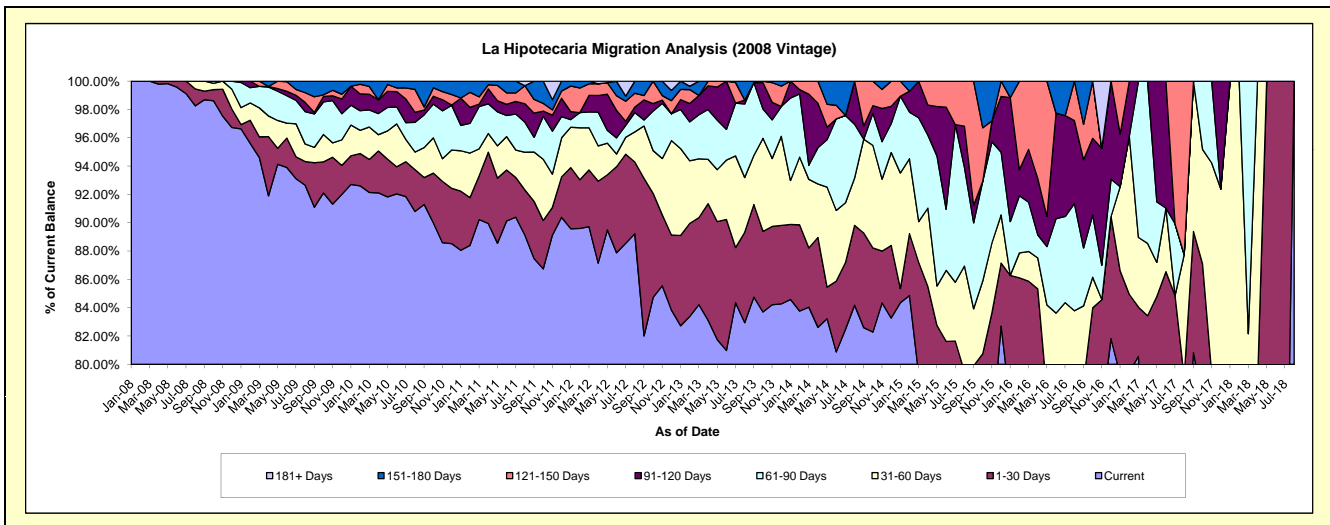
### Delinquency Status (\$ of Current Balance)

Data Cutoff: 5/31/2019

Current Portfolio Balance	3,341,406.30	2,535,572.69	1,788,594.11	1,248,154.29	781,832.40	385,721.92	163,829.20	47,612.03	1,995.73	#N/A
	May-10	May-11	May-12	May-13	May-14	May-15	May-16	May-17	May-18	May-19
Current	3,068,228.12	2,245,462.17	1,600,732.30	1,020,439.59	650,670.62	299,455.33	120,070.52	33,205.88	1,507.70	#N/A
1-30 Days	88,956.29	116,651.20	69,515.22	103,946.01	17,482.50	19,705.46	7,701.14	7,165.59	488.03	#N/A
31-60 Days	66,953.95	57,733.59	40,030.01	45,762.15	55,124.56	10,762.68	10,173.47	1,148.17	-	#N/A
61-90 Days	55,240.08	60,835.46	16,127.60	43,621.05	26,277.61	35,417.88	6,743.72	2,034.48	-	#N/A
91-120 Days	37,959.36	19,811.41	45,765.14	29,184.85	6,989.02	13,485.65	3,481.45	4,057.91	-	#N/A
121-150 Days	16,175.31	27,458.83	14,490.40	5,200.64	12,519.12	6,894.92	15,658.90	-	-	#N/A
151-180 Days	7,893.19	7,620.03	-	-	12,768.97	-	-	-	-	#N/A
181+ Days	-	-	1,933.44	-	-	-	-	-	-	#N/A

### Delinquency Status (% of Current Balance)

Current Portfolio Balance	3,341,406.30	2,535,572.69	1,788,594.11	1,248,154.29	781,832.40	385,721.92	163,829.20	47,612.03	1,995.73	#N/A
	May-10	May-11	May-12	May-13	May-14	May-15	May-16	May-17	May-18	May-19
Current	91.82%	88.56%	89.50%	81.76%	83.22%	77.64%	73.29%	69.74%	75.55%	#N/A
1-30 Days	2.66%	4.60%	3.89%	8.33%	2.24%	5.11%	4.70%	15.05%	24.45%	#N/A
31-60 Days	2.00%	2.28%	2.24%	3.67%	7.05%	2.79%	6.21%	2.41%	0.00%	#N/A
61-90 Days	1.65%	2.40%	0.90%	3.49%	3.36%	9.18%	4.12%	4.27%	0.00%	#N/A
91-120 Days	1.14%	0.78%	2.56%	2.34%	0.89%	3.50%	2.13%	8.52%	0.00%	#N/A
121-150 Days	0.48%	1.08%	0.81%	0.42%	1.60%	1.79%	9.56%	0.00%	0.00%	#N/A
151-180 Days	0.24%	0.30%	0.00%	0.00%	1.63%	0.00%	0.00%	0.00%	0.00%	#N/A
181+ Days	0.00%	0.00%	0.11%	0.00%	0.00%	0.00%	0.00%	0.00%	0.00%	#N/A
Current - 90 Days	98.14%	97.84%	96.52%	97.25%	95.87%	94.72%	88.32%	91.48%	100.00%	#N/A
91-180 Days	1.86%	2.16%	3.37%	2.75%	4.13%	5.28%	11.68%	8.52%	0.00%	#N/A



# Personal Loans - La Hipotecaria El Salvador Migration Analysis (2009 Vintage)

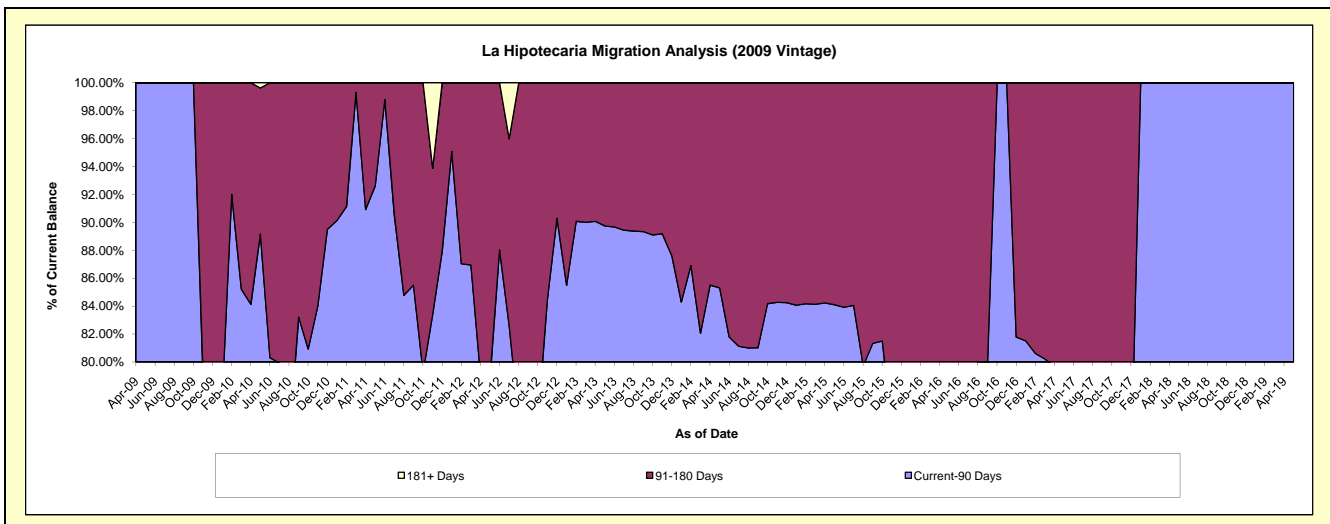
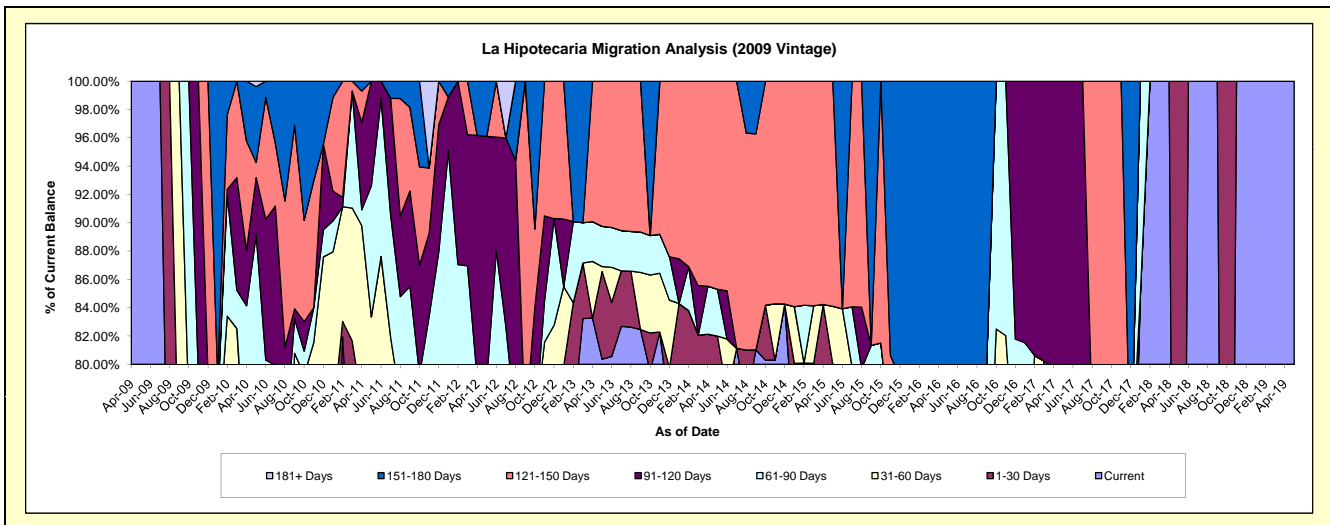
## Delinquency Status (\$ of Current Balance)

Data Cutoff: 5/31/2019

Current Portfolio Balance	328,347.17	193,047.70	131,716.31	90,170.52	51,386.55	36,245.08	18,291.30	10,989.51	670.81	181.23
	May-10	May-11	May-12	May-13	May-14	May-15	May-16	May-17	May-18	May-19
Current	172,648.50	135,812.27	79,846.97	72,463.63	40,224.89	15,677.96	10,754.79	1,161.29	-	181.23
1-30 Days	25,294.64	11,299.57	20,630.41	5,588.86	1,910.97	13,321.40	1,336.09	6,463.54	670.81	-
31-60 Days	4,264.05	13,786.51	3,383.42	310.87	-	1,483.63	-	-	-	-
61-90 Days	90,572.45	17,896.48	-	2,559.85	1,700.13	-	2,267.16	1,097.52	-	-
91-120 Days	13,184.46	14,252.87	22,715.16	-	-	-	-	2,267.16	-	-
121-150 Days	3,528.02	-	-	9,247.31	7,550.56	5,762.09	-	-	-	-
151-180 Days	17,605.05	-	5,140.35	-	-	-	3,933.26	-	-	-
181+ Days	1,250.00	-	-	-	-	-	-	-	-	-

## Delinquency Status (% of Current Balance)

Current Portfolio Balance	328,347.17	193,047.70	131,716.31	90,170.52	51,386.55	36,245.08	18,291.30	10,989.51	670.81	181.23
	May-10	May-11	May-12	May-13	May-14	May-15	May-16	May-17	May-18	May-19
Current	52.58%	70.35%	60.62%	80.36%	78.28%	43.26%	58.80%	10.57%	0.00%	100.00%
1-30 Days	7.70%	5.85%	15.66%	6.20%	3.72%	36.75%	7.30%	58.82%	100.00%	0.00%
31-60 Days	1.30%	7.14%	2.57%	0.34%	0.00%	4.09%	0.00%	0.00%	0.00%	0.00%
61-90 Days	27.58%	9.27%	0.00%	2.84%	3.31%	0.00%	12.39%	9.99%	0.00%	0.00%
91-120 Days	4.02%	7.38%	17.25%	0.00%	0.00%	0.00%	0.00%	20.63%	0.00%	0.00%
121-150 Days	1.07%	0.00%	0.00%	10.26%	14.69%	15.90%	0.00%	0.00%	0.00%	0.00%
151-180 Days	5.36%	0.00%	3.90%	0.00%	0.00%	0.00%	21.50%	0.00%	0.00%	0.00%
181+ Days	0.38%	0.00%	0.00%	0.00%	0.00%	0.00%	0.00%	0.00%	0.00%	0.00%
Current - 90 Days	89.17%	92.62%	78.85%	89.74%	85.31%	84.10%	78.50%	79.37%	100.00%	100.00%
91-180 Days	10.45%	7.38%	21.15%	10.26%	14.69%	15.90%	21.50%	20.63%	0.00%	0.00%



## Personal Loans - La Hipotecaria El Salvador Migration Analysis (2010 Vintage)

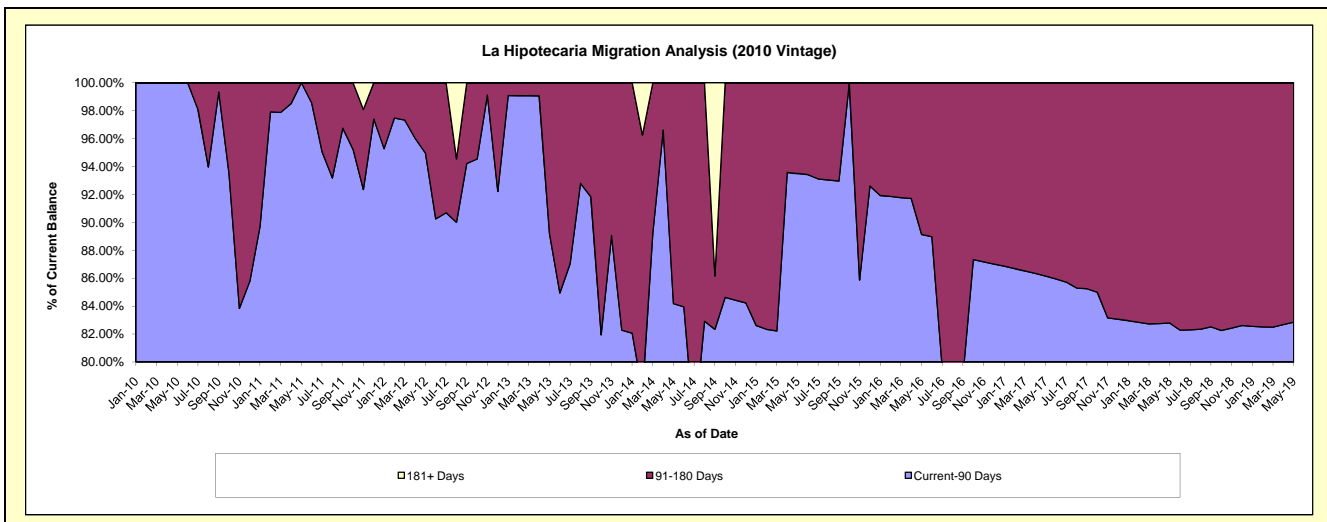
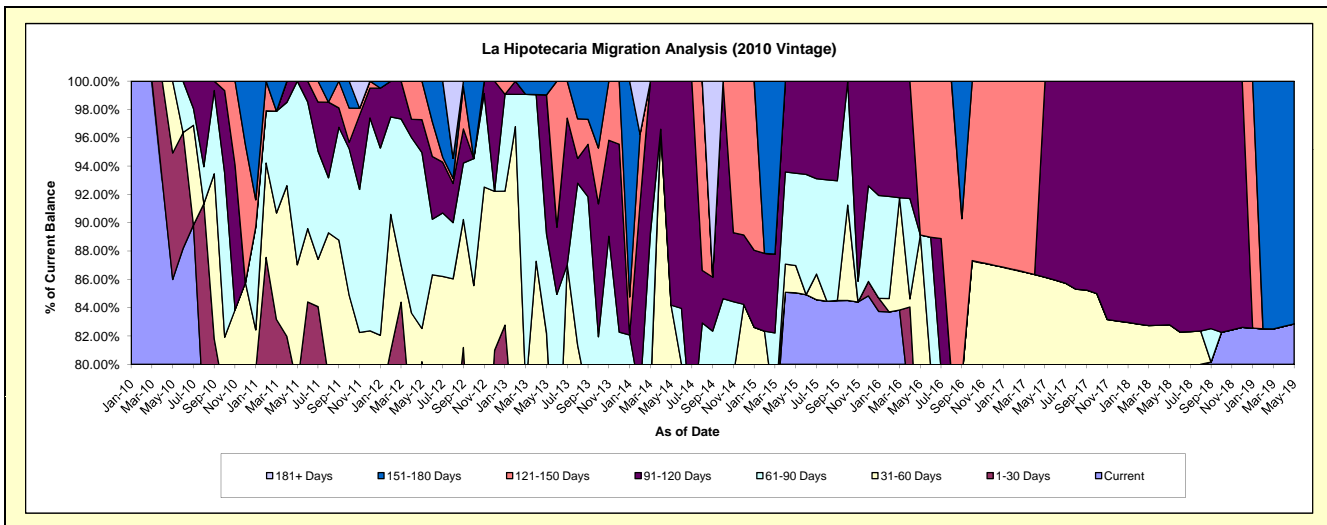
### Delinquency Status (\$ of Current Balance)

Data Cutoff: 5/31/2019

Current Portfolio Balance	287,018.43	410,718.69	339,871.85	238,018.22	121,280.43	59,733.99	32,517.81	22,729.15	15,706.42	13,632.78
	May-10	May-11	May-12	May-13	May-14	May-15	May-16	May-17	May-18	May-19
Current	246,813.78	298,665.59	223,136.78	127,749.55	87,981.85	50,809.43	23,121.26	17,741.02	12,373.24	11,295.80
1-30 Days	25,657.03	23,679.13	49,395.88	28,133.41	-	-	-	-	-	-
31-60 Days	14,547.62	35,117.49	7,981.15	39,760.73	14,113.03	1,146.70	5,863.06	1,841.60	631.15	-
61-90 Days	-	53,256.48	42,250.12	16,688.75	-	3,894.26	-	-	-	-
91-120 Days	-	-	7,881.24	23,382.53	19,185.55	3,883.60	-	3,146.53	2,702.03	-
121-150 Days	-	-	9,226.68	-	-	-	3,533.49	-	-	-
151-180 Days	-	-	-	2,303.25	-	-	-	-	-	2,336.98
181+ Days	-	-	-	-	-	-	-	-	-	-

### Delinquency Status (% of Current Balance)

Current Portfolio Balance	287,018.43	410,718.69	339,871.85	238,018.22	121,280.43	59,733.99	32,517.81	22,729.15	15,706.42	13,632.78
	May-10	May-11	May-12	May-13	May-14	May-15	May-16	May-17	May-18	May-19
Current	85.99%	72.72%	65.65%	53.67%	72.54%	85.06%	71.10%	78.05%	78.78%	82.86%
1-30 Days	8.94%	5.77%	14.53%	11.82%	0.00%	0.00%	0.00%	0.00%	0.00%	0.00%
31-60 Days	5.07%	8.55%	2.35%	16.70%	11.64%	1.92%	18.03%	8.10%	4.02%	0.00%
61-90 Days	0.00%	12.97%	12.43%	7.01%	0.00%	6.52%	0.00%	0.00%	0.00%	0.00%
91-120 Days	0.00%	0.00%	2.32%	9.82%	15.82%	6.50%	0.00%	13.84%	17.20%	0.00%
121-150 Days	0.00%	0.00%	2.71%	0.00%	0.00%	0.00%	10.87%	0.00%	0.00%	0.00%
151-180 Days	0.00%	0.00%	0.00%	0.97%	0.00%	0.00%	0.00%	0.00%	0.00%	17.14%
181+ Days	0.00%	0.00%	0.00%	0.00%	0.00%	0.00%	0.00%	0.00%	0.00%	0.00%
Current - 90 Days	100.00%	100.00%	94.97%	89.21%	84.18%	93.50%	89.13%	86.16%	82.80%	82.86%
91-180 Days	0.00%	0.00%	5.03%	10.79%	15.82%	6.50%	10.87%	13.84%	17.20%	17.14%



# Personal Loans - La Hipotecaria El Salvador Migration Analysis (2011 Vintage)

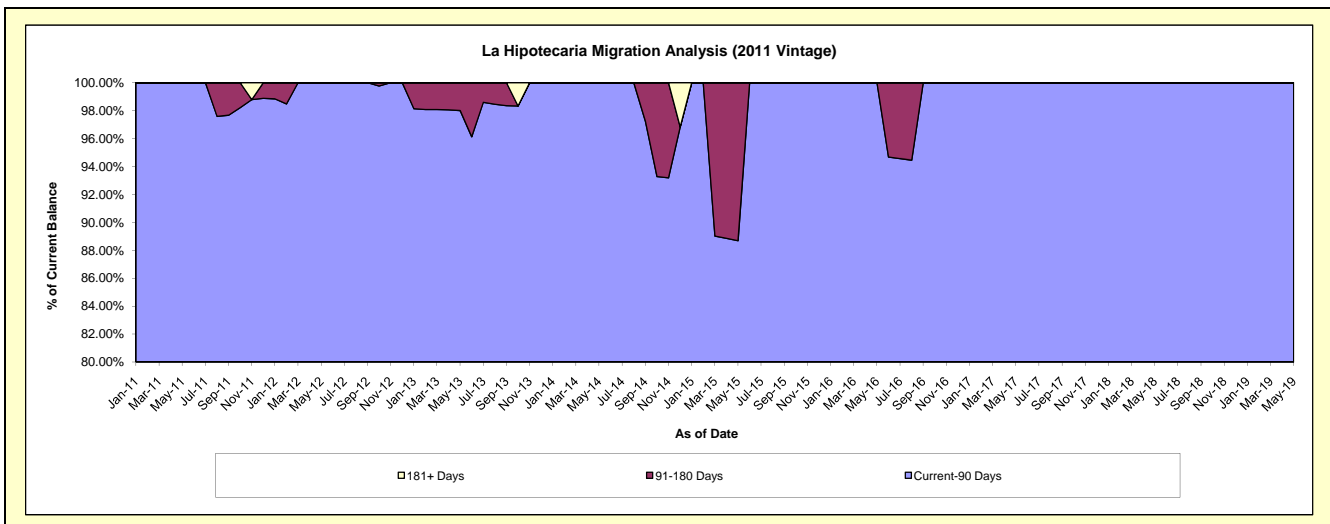
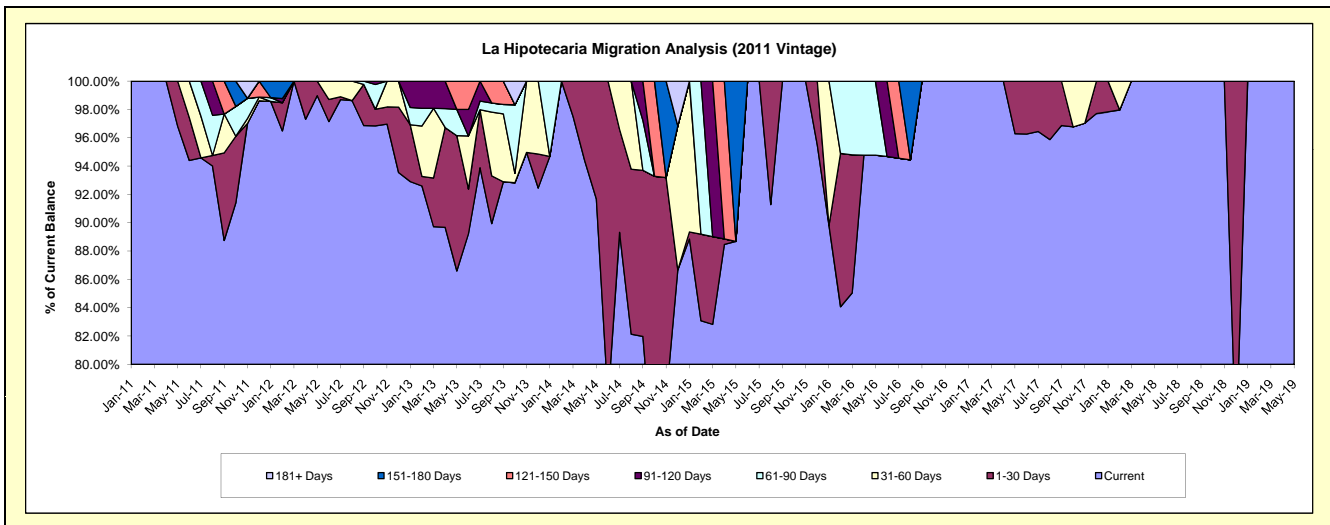
## Delinquency Status (\$ of Current Balance)

Data Cutoff: 5/31/2019

Current Portfolio Balance	-	122,645.14	349,971.54	253,401.89	159,678.23	113,329.39	70,204.03	48,828.49	28,408.66	22,996.33
	May-11	May-12	May-13	May-14	May-15	May-16	May-17	May-18	May-19	
Current	118,745.14	346,387.39	219,442.14	146,394.77	100,507.57	66,537.60	47,013.73	28,408.66	22,996.33	
1-30 Days	3,900.00	3,584.15	24,211.00	13,283.46	-	-	1,814.76	-	-	
31-60 Days	-	-	-	-	-	-	-	-	-	
61-90 Days	-	-	4,695.48	-	-	3,666.43	-	-	-	
91-120 Days	-	-	-	-	-	-	-	-	-	
121-150 Days	-	-	5,053.27	-	-	-	-	-	-	
151-180 Days	-	-	-	-	12,821.82	-	-	-	-	
181+ Days	-	-	-	-	-	-	-	-	-	

## Delinquency Status (% of Current Balance)

Current Portfolio Balance	-	122,645.14	349,971.54	253,401.89	159,678.23	113,329.39	70,204.03	48,828.49	28,408.66	22,996.33
	May-11	May-12	May-13	May-14	May-15	May-16	May-17	May-18	May-19	
Current	96.82%	98.98%	86.60%	91.68%	88.69%	94.78%	96.28%	100.00%	100.00%	
1-30 Days	3.18%	1.02%	9.55%	8.32%	0.00%	0.00%	3.72%	0.00%	0.00%	
31-60 Days	0.00%	0.00%	0.00%	0.00%	0.00%	0.00%	0.00%	0.00%	0.00%	
61-90 Days	0.00%	0.00%	1.85%	0.00%	0.00%	5.22%	0.00%	0.00%	0.00%	
91-120 Days	0.00%	0.00%	0.00%	0.00%	0.00%	0.00%	0.00%	0.00%	0.00%	
121-150 Days	0.00%	0.00%	1.99%	0.00%	0.00%	0.00%	0.00%	0.00%	0.00%	
151-180 Days	0.00%	0.00%	0.00%	0.00%	11.31%	0.00%	0.00%	0.00%	0.00%	
181+ Days	0.00%	0.00%	0.00%	0.00%	0.00%	0.00%	0.00%	0.00%	0.00%	
Current - 90 Days	100.00%	100.00%	98.01%	100.00%	88.69%	100.00%	100.00%	100.00%	100.00%	
91-180 Days	0.00%	0.00%	1.99%	0.00%	11.31%	0.00%	0.00%	0.00%	0.00%	





## Personal Loans - La Hipotecaria El Salvador Migration Analysis (2012 Vintage)

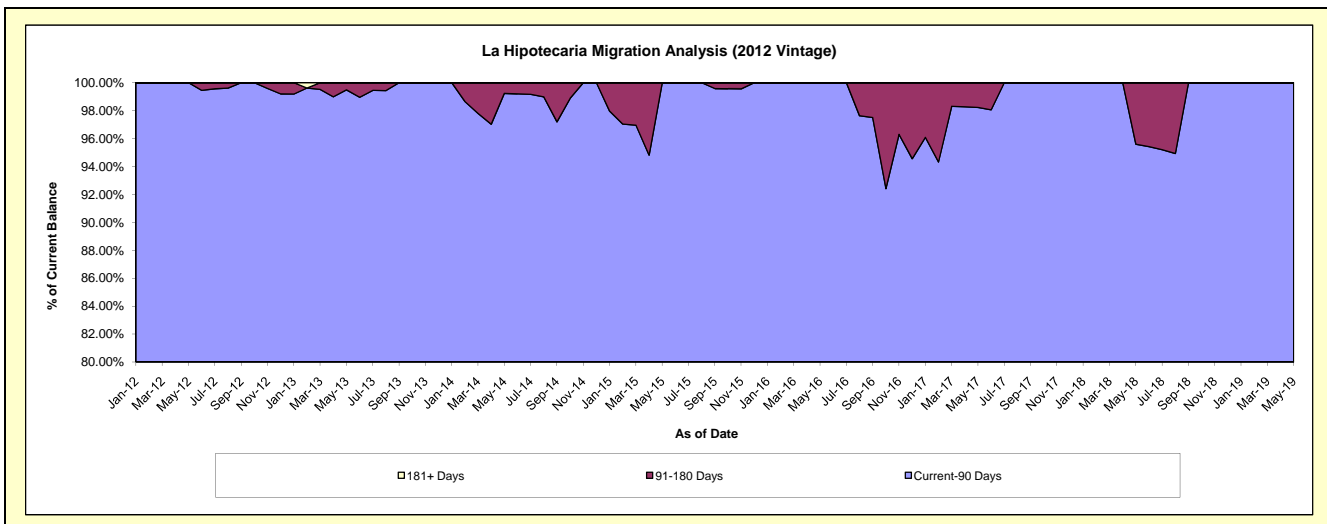
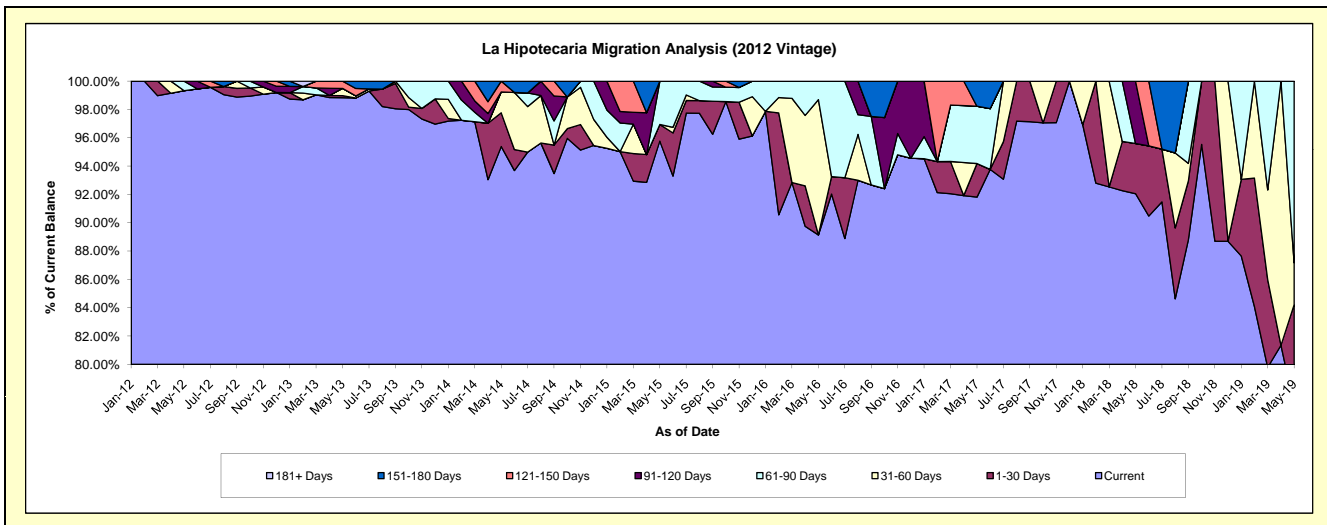
### Delinquency Status (\$ of Current Balance)

Data Cutoff: 5/31/2019

Current Portfolio Balance	-	-	598,766.60	1,441,677.18	877,015.27	534,803.75	313,288.65	201,174.71	113,338.78	44,137.16
	May-12	May-13	May-14	May-15	May-16	May-17	May-18	May-19		
Current	594,766.60	1,424,789.90	836,529.94	512,170.20	279,274.44	184,695.96	104,328.30	34,023.41		
1-30 Days	-	2,105.35	20,897.70	6,258.04	-	4,772.69	4,021.31	3,144.21		
31-60 Days	-	7,433.37	12,920.01	-	29,926.14	-	-	1,302.53		
61-90 Days	4,000.00	-	-	16,375.51	4,088.07	8,145.29	-	5,667.01		
91-120 Days	-	-	-	-	-	-	4,989.17	-		
121-150 Days	-	7,348.56	6,667.62	-	-	-	-	-		
151-180 Days	-	-	-	-	-	3,560.77	-	-		
181+ Days	-	-	-	-	-	-	-	-		

### Delinquency Status (% of Current Balance)

Current Portfolio Balance	-	-	598,766.60	1,441,677.18	877,015.27	534,803.75	313,288.65	201,174.71	113,338.78	44,137.16
	May-12	May-13	May-14	May-15	May-16	May-17	May-18	May-19		
Current	99.33%	98.83%	95.38%	95.77%	89.14%	91.81%	92.05%	77.09%		
1-30 Days	0.00%	0.15%	2.38%	1.17%	0.00%	2.37%	3.55%	7.12%		
31-60 Days	0.00%	0.52%	1.47%	0.00%	9.55%	0.00%	0.00%	2.95%		
61-90 Days	0.67%	0.00%	0.00%	3.06%	1.30%	4.05%	0.00%	12.84%		
91-120 Days	0.00%	0.00%	0.00%	0.00%	0.00%	0.00%	4.40%	0.00%		
121-150 Days	0.00%	0.51%	0.76%	0.00%	0.00%	0.00%	0.00%	0.00%		
151-180 Days	0.00%	0.00%	0.00%	0.00%	0.00%	1.77%	0.00%	0.00%		
181+ Days	0.00%	0.00%	0.00%	0.00%	0.00%	0.00%	0.00%	0.00%		
Current - 90 Days	100.00%	99.49%	99.24%	100.00%	100.00%	98.23%	95.60%	100.00%		
91-180 Days	0.00%	0.51%	0.76%	0.00%	0.00%	1.77%	4.40%	0.00%		



## Personal Loans - La Hipotecaria El Salvador Migration Analysis (2013 Vintage)

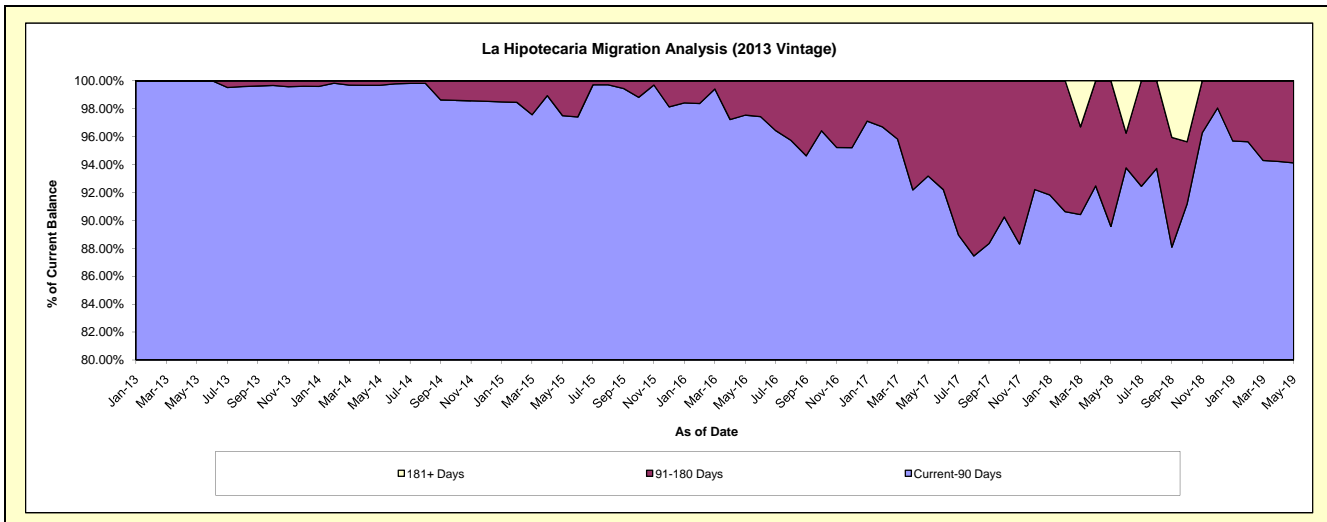
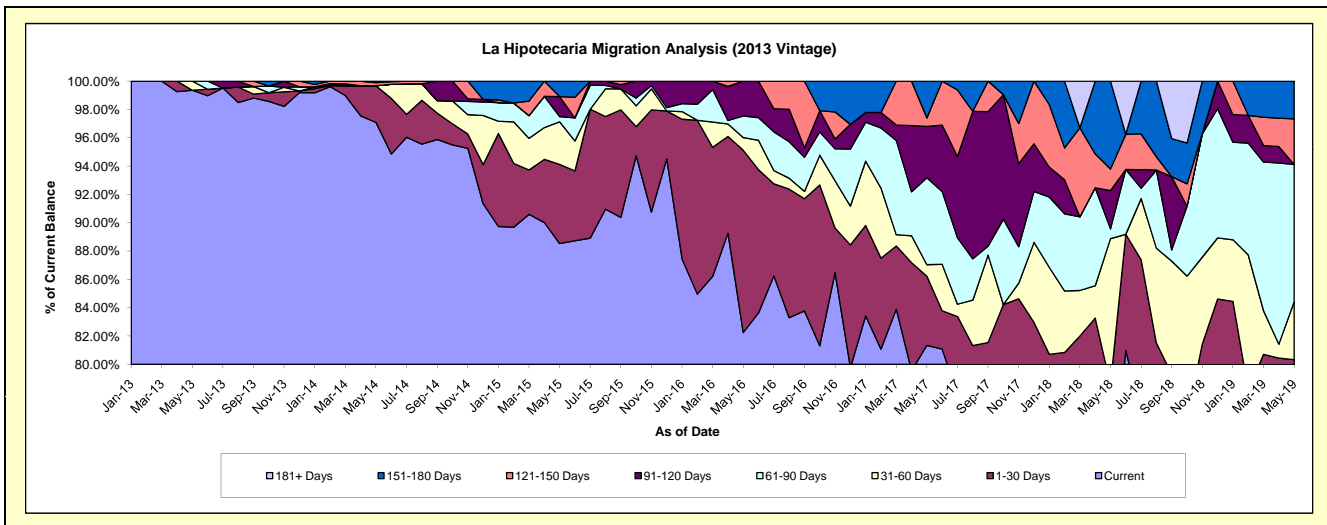
### Delinquency Status (\$ of Current Balance)

Data Cutoff: 5/31/2019

Current Portfolio Balance	-	-	-	947,062.57	1,815,906.01	1,217,381.62	804,363.41	572,331.04	347,766.58	186,891.03
	May-13	May-14	May-15	May-16	May-17	May-18	May-19			
Current	940,970.51	1,762,983.29	1,077,783.75	661,564.69	465,518.74	244,660.89	145,711.73			
1-30 Days	-	46,993.64	67,997.87	103,558.63	27,940.24	28,593.30	4,422.53			
31-60 Days	6,092.06	-	36,677.77	7,181.95	4,699.72	35,836.18	7,619.58			
61-90 Days	-	-	4,459.34	12,248.70	35,128.49	2,401.15	18,138.93			
91-120 Days	-	-	17,145.53	19,809.44	20,793.44	9,405.46	-			
121-150 Days	-	3,929.08	-	-	3,353.04	5,289.46	6,020.42			
151-180 Days	-	2,000.00	13,317.36	-	14,897.37	21,580.14	4,977.84			
181+ Days	-	-	-	-	-	-	-			

### Delinquency Status (% of Current Balance)

Current Portfolio Balance	-	-	-	947,062.57	1,815,906.01	1,217,381.62	804,363.41	572,331.04	347,766.58	186,891.03
	May-13	May-14	May-15	May-16	May-17	May-18	May-19			
Current	99.36%	97.09%	88.53%	82.25%	81.34%	70.35%	77.97%			
1-30 Days	0.00%	2.59%	5.59%	12.87%	4.88%	8.22%	2.37%			
31-60 Days	0.64%	0.00%	3.01%	0.89%	0.82%	10.30%	4.08%			
61-90 Days	0.00%	0.00%	0.37%	1.52%	6.14%	0.69%	9.71%			
91-120 Days	0.00%	0.00%	1.41%	2.46%	3.63%	2.70%	0.00%			
121-150 Days	0.00%	0.22%	0.00%	0.00%	0.59%	1.52%	3.22%			
151-180 Days	0.00%	0.11%	1.09%	0.00%	2.60%	6.21%	2.66%			
181+ Days	0.00%	0.00%	0.00%	0.00%	0.00%	0.00%	0.00%			
Current - 90 Days	100.00%	99.67%	97.50%	97.54%	93.18%	89.57%	94.12%			
91-180 Days	0.00%	0.33%	2.50%	2.46%	6.82%	10.43%	5.88%			



## Personal Loans - La Hipotecaria El Salvador Migration Analysis (2014 Vintage)

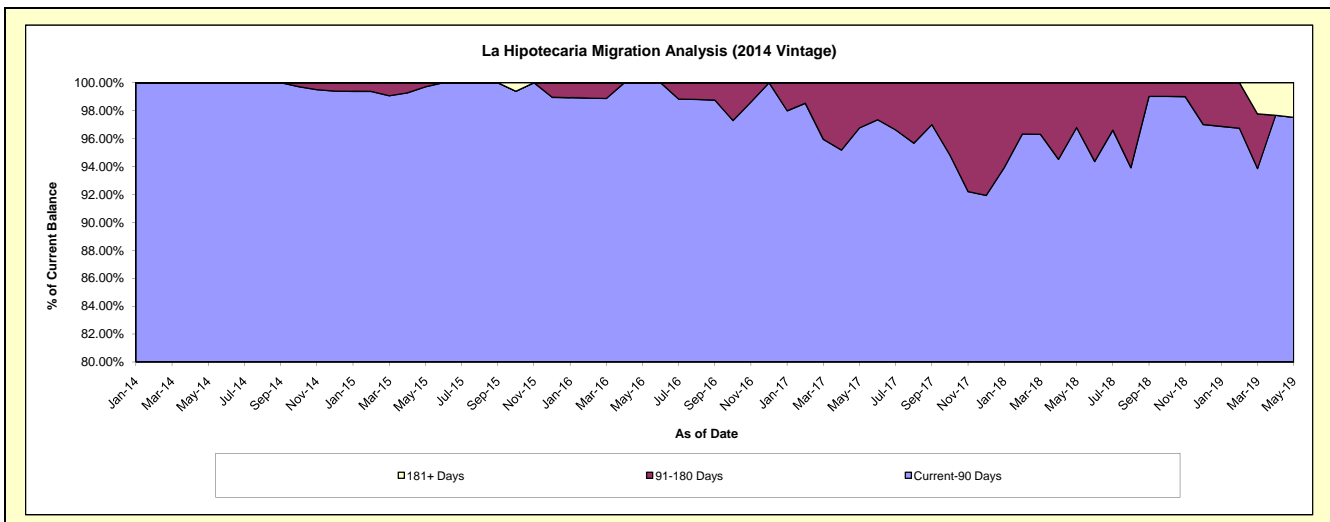
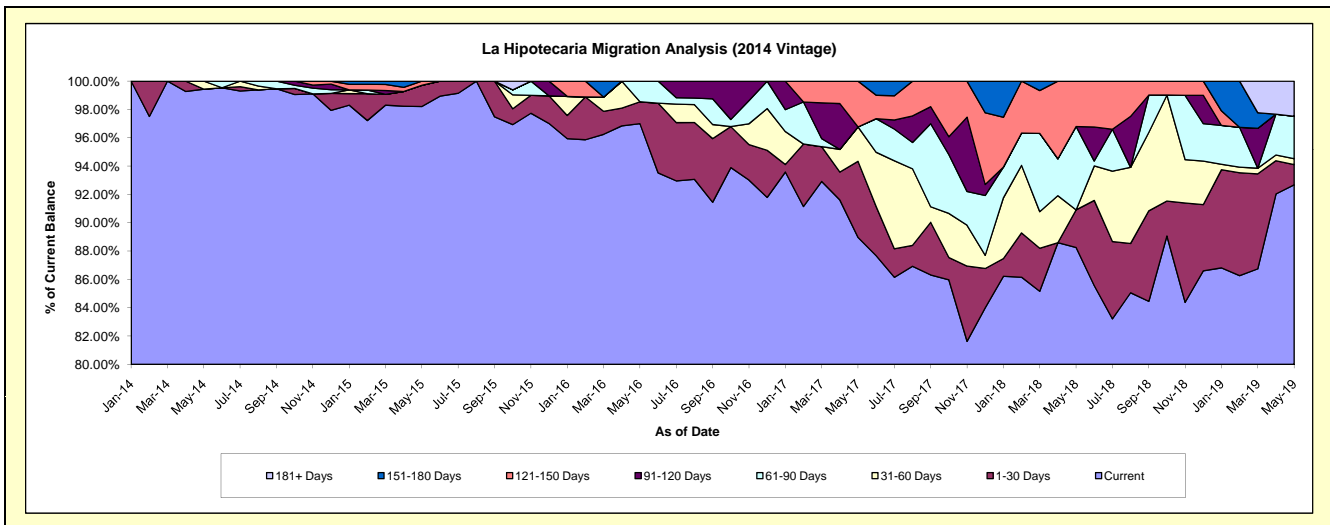
### Delinquency Status (\$ of Current Balance)

Data Cutoff: 5/31/2019

Current Portfolio Balance	-	-	-	-	1,159,133.54	2,171,745.49	1,514,307.76	900,132.35	550,536.54	354,440.52
					May-14	May-15	May-16	May-17	May-18	May-19
Current					1,152,584.87	2,132,888.62	1,468,890.85	800,815.17	485,870.01	328,478.01
1-30 Days					-	32,522.39	23,350.87	48,346.15	14,623.40	5,083.02
31-60 Days					6,548.67	-	-	21,871.23	-	1,493.87
61-90 Days					-	-	22,066.04	-	32,383.05	10,593.47
91-120 Days					-	-	-	-	-	-
121-150 Days					-	6,334.48	-	29,099.80	17,660.08	-
151-180 Days					-	-	-	-	-	-
181+ Days					-	-	-	-	-	8,792.15

### Delinquency Status (% of Current Balance)

Current Portfolio Balance	-	-	-	-	1,159,133.54	2,171,745.49	1,514,307.76	900,132.35	550,536.54	354,440.52
					May-14	May-15	May-16	May-17	May-18	May-19
Current					99.44%	98.21%	97.00%	88.97%	88.25%	92.68%
1-30 Days					0.00%	1.50%	1.54%	5.37%	2.66%	1.43%
31-60 Days					0.56%	0.00%	0.00%	2.43%	0.00%	0.42%
61-90 Days					0.00%	0.00%	1.46%	0.00%	5.88%	2.99%
91-120 Days					0.00%	0.00%	0.00%	0.00%	0.00%	0.00%
121-150 Days					0.00%	0.29%	0.00%	3.23%	3.21%	0.00%
151-180 Days					0.00%	0.00%	0.00%	0.00%	0.00%	0.00%
181+ Days					0.00%	0.00%	0.00%	0.00%	0.00%	2.48%
Current - 90 Days					100.00%	99.71%	100.00%	96.77%	96.79%	97.52%
91-180 Days					0.00%	0.29%	0.00%	3.23%	3.21%	0.00%



## Personal Loans - La Hipotecaria El Salvador Migration Analysis (2015 Vintage)

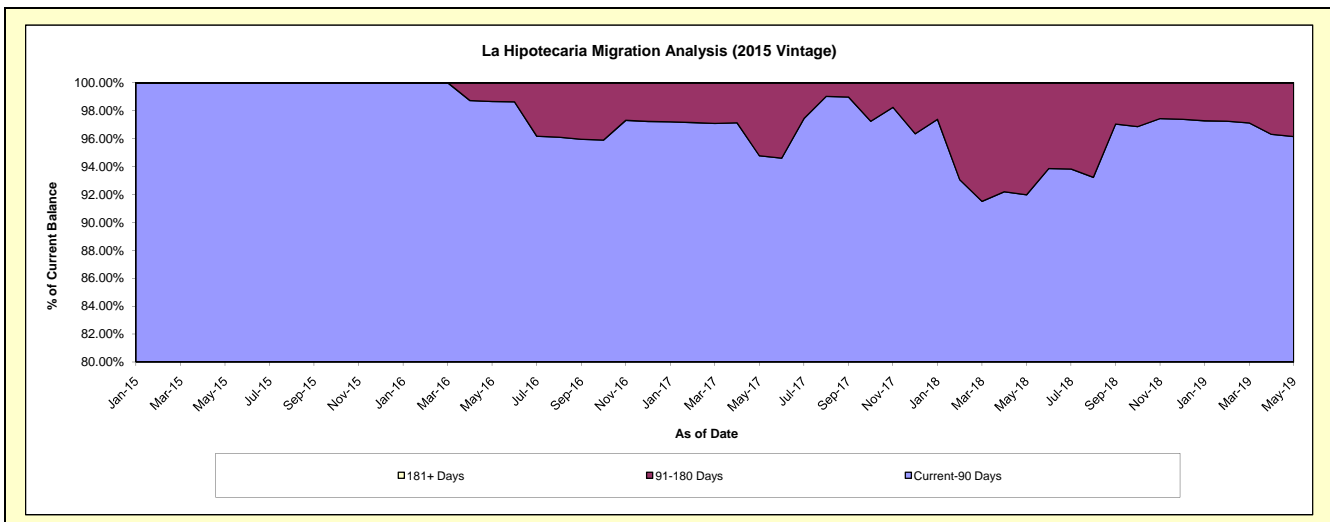
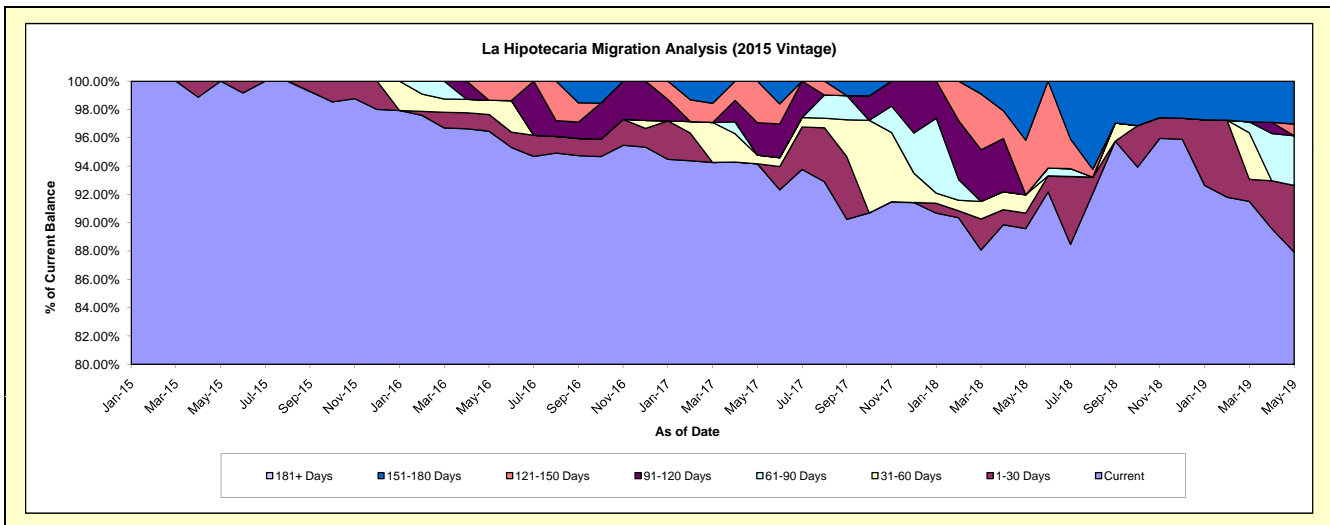
### Delinquency Status (\$ of Current Balance)

Data Cutoff: 5/31/2019

Current Portfolio Balance	-	-	-	-	-	456,592.77	1,359,372.88	980,291.59	679,852.35	414,175.89
						May-15	May-16	May-17	May-18	May-19
Current						456,592.77	1,311,302.15	923,064.58	609,079.77	364,194.29
1-30 Days						-	16,092.66	-	7,401.21	19,491.44
31-60 Days						-	13,642.79	5,949.53	8,809.57	-
61-90 Days						-	-	-	-	14,513.28
91-120 Days						-	-	22,518.28	-	-
121-150 Days						-	18,335.28	28,759.20	26,201.08	3,434.74
151-180 Days						-	-	-	28,360.72	12,542.14
181+ Days						-	-	-	-	-

### Delinquency Status (% of Current Balance)

Current Portfolio Balance	-	-	-	-	-	456,592.77	1,359,372.88	980,291.59	679,852.35	414,175.89
						May-15	May-16	May-17	May-18	May-19
Current						100.00%	96.46%	94.16%	89.59%	87.93%
1-30 Days						0.00%	1.18%	0.00%	1.09%	4.71%
31-60 Days						0.00%	1.00%	0.61%	1.30%	0.00%
61-90 Days						0.00%	0.00%	0.00%	0.00%	3.50%
91-120 Days						0.00%	0.00%	2.30%	0.00%	0.00%
121-150 Days						0.00%	1.35%	2.93%	3.85%	0.83%
151-180 Days						0.00%	0.00%	0.00%	4.17%	3.03%
181+ Days						0.00%	0.00%	0.00%	0.00%	0.00%
Current - 90 Days						100.00%	98.65%	94.77%	91.97%	96.14%
91-180 Days						0.00%	1.35%	5.23%	8.03%	3.86%



## Personal Loans - La Hipotecaria El Salvador Migration Analysis (2016 Vintage)

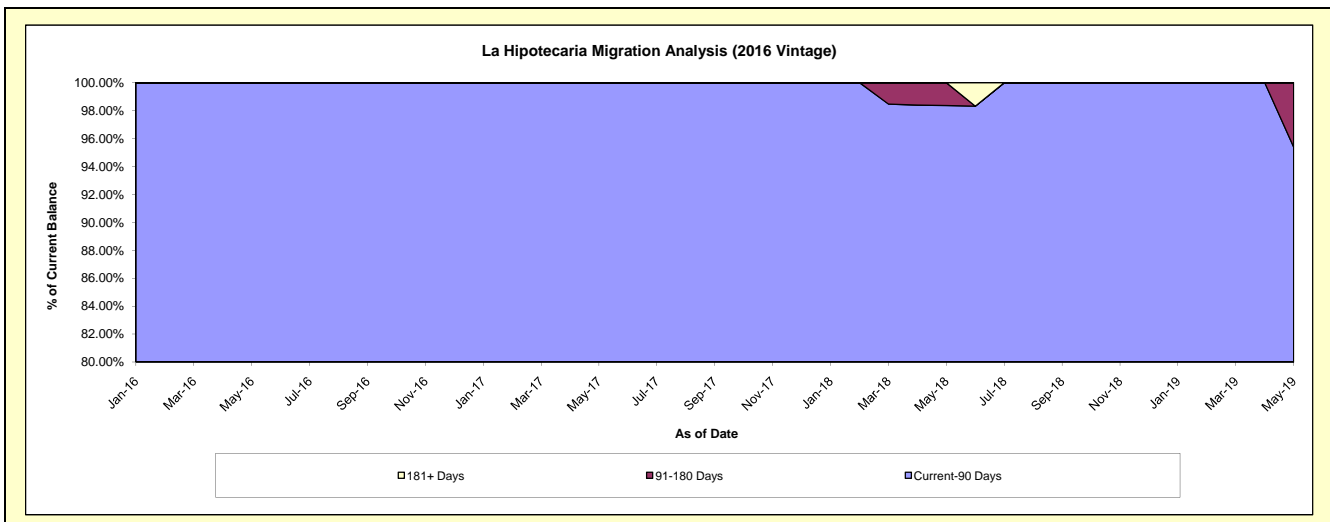
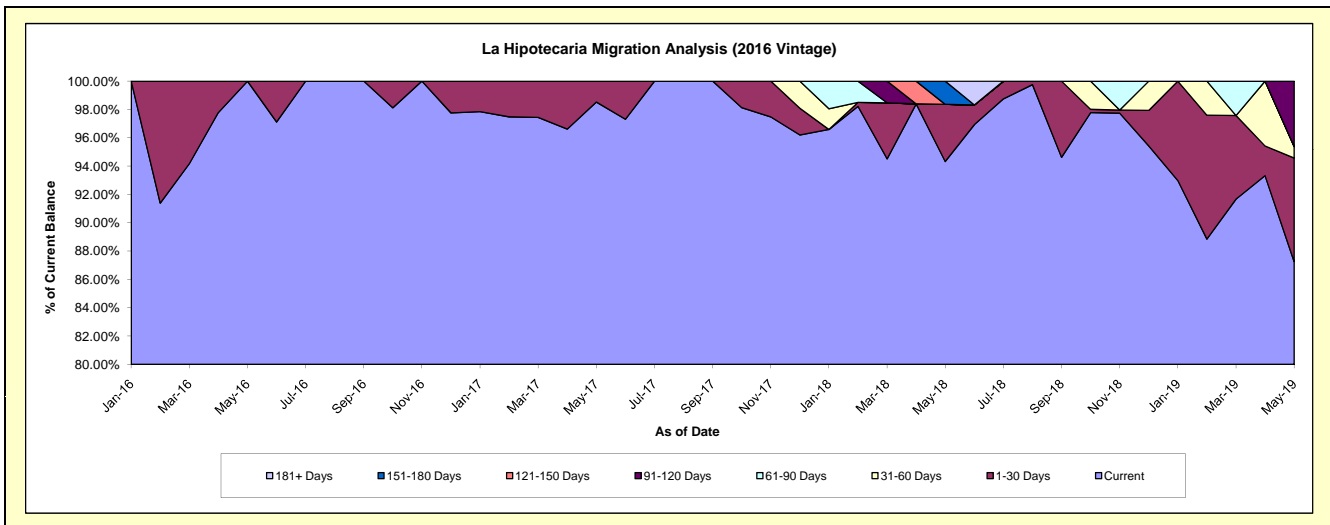
### Delinquency Status (\$ of Current Balance)

Data Cutoff: 5/31/2019

Current Portfolio Balance	-	-	-	-	-	-	-	551,409.88	1,114,790.95	851,343.84	672,080.55
								May-16	May-17	May-18	May-19
Current								551,409.88	1,098,350.44	803,043.54	586,471.32
1-30 Days								-	16,440.51	34,363.89	49,098.50
31-60 Days								-	-	-	5,532.55
61-90 Days								-	-	-	-
91-120 Days								-	-	-	30,978.18
121-150 Days								-	-	-	-
151-180 Days								-	-	13,936.41	-
181+ Days								-	-	-	-

### Delinquency Status (% of Current Balance)

Current Portfolio Balance	-	-	-	-	-	-	-	551,409.88	1,114,790.95	851,343.84	672,080.55
								May-16	May-17	May-18	May-19
Current								100.00%	98.53%	94.33%	87.26%
1-30 Days								0.00%	1.47%	4.04%	7.31%
31-60 Days								0.00%	0.00%	0.00%	0.82%
61-90 Days								0.00%	0.00%	0.00%	0.00%
91-120 Days								0.00%	0.00%	0.00%	4.61%
121-150 Days								0.00%	0.00%	0.00%	0.00%
151-180 Days								0.00%	0.00%	1.64%	0.00%
181+ Days								0.00%	0.00%	0.00%	0.00%
Current - 90 Days								100.00%	100.00%	98.36%	95.39%
91-180 Days								0.00%	0.00%	1.64%	4.61%



## Personal Loans - La Hipotecaria El Salvador Migration Analysis (2017 Vintage)

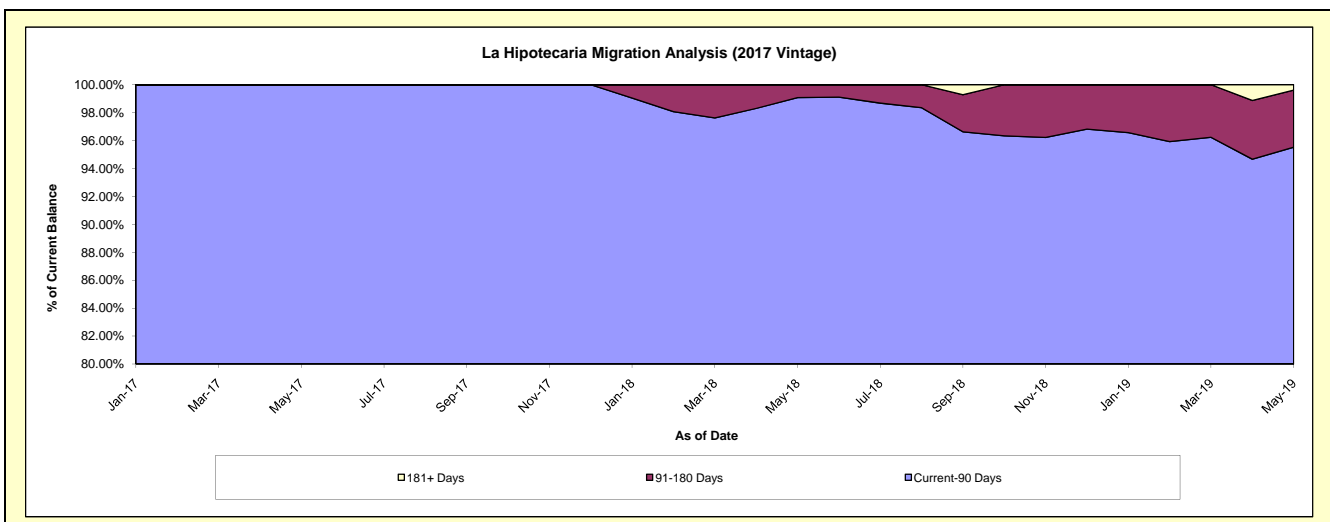
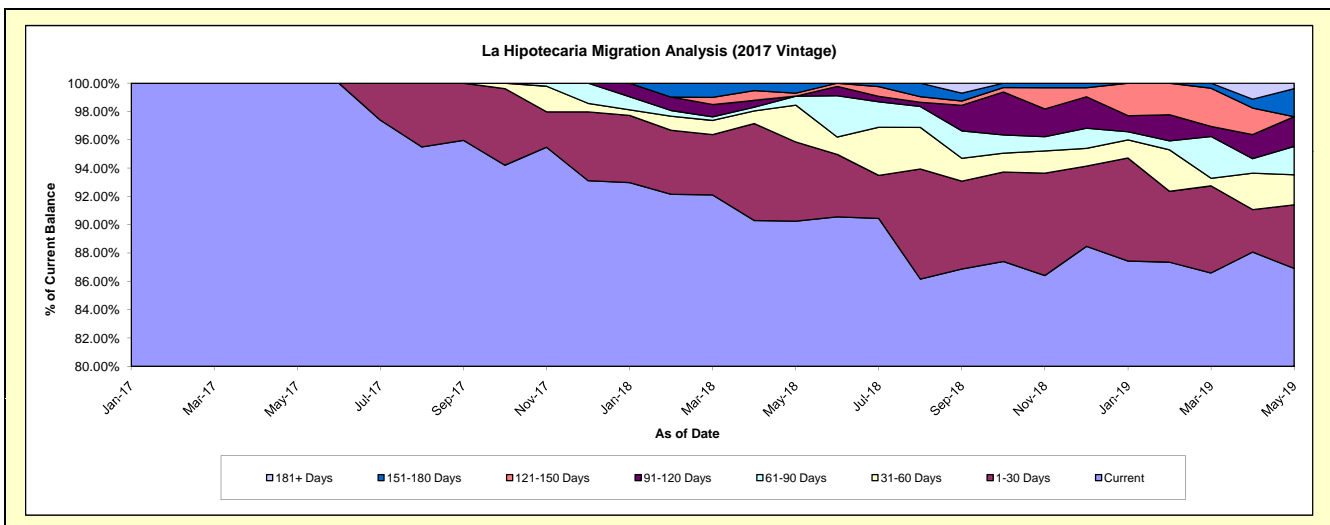
### Delinquency Status (\$ of Current Balance)

Data Cutoff: 5/31/2019

Current Portfolio Balance	-	-	-	-	-	-	-	-	-	758,346.13	1,847,623.87	1,264,162.40
										May-17	May-18	May-19
Current										758,346.13	1,667,580.54	1,098,727.63
1-30 Days										-	103,401.81	56,778.34
31-60 Days										-	47,994.80	26,836.39
61-90 Days										-	11,599.29	25,291.99
91-120 Days										-	-	26,607.22
121-150 Days										-	4,081.51	-
151-180 Days										-	12,965.92	25,025.74
181+ Days										-	-	4,895.09

### Delinquency Status (% of Current Balance)

Current Portfolio Balance	-	-	-	-	-	-	-	-	-	758,346.13	1,847,623.87	1,264,162.40
										May-17	May-18	May-19
Current										100.00%	90.26%	86.91%
1-30 Days										0.00%	5.60%	4.49%
31-60 Days										0.00%	2.60%	2.12%
61-90 Days										0.00%	0.63%	2.00%
91-120 Days										0.00%	0.00%	2.10%
121-150 Days										0.00%	0.22%	0.00%
151-180 Days										0.00%	0.70%	1.98%
181+ Days										0.00%	0.00%	0.39%
Current - 90 Days										100.00%	99.08%	95.53%
91-180 Days										0.00%	0.92%	4.08%



**Personal Loans - La Hipotecaria El Salvador Migration Analysis (2018 Vintage)**

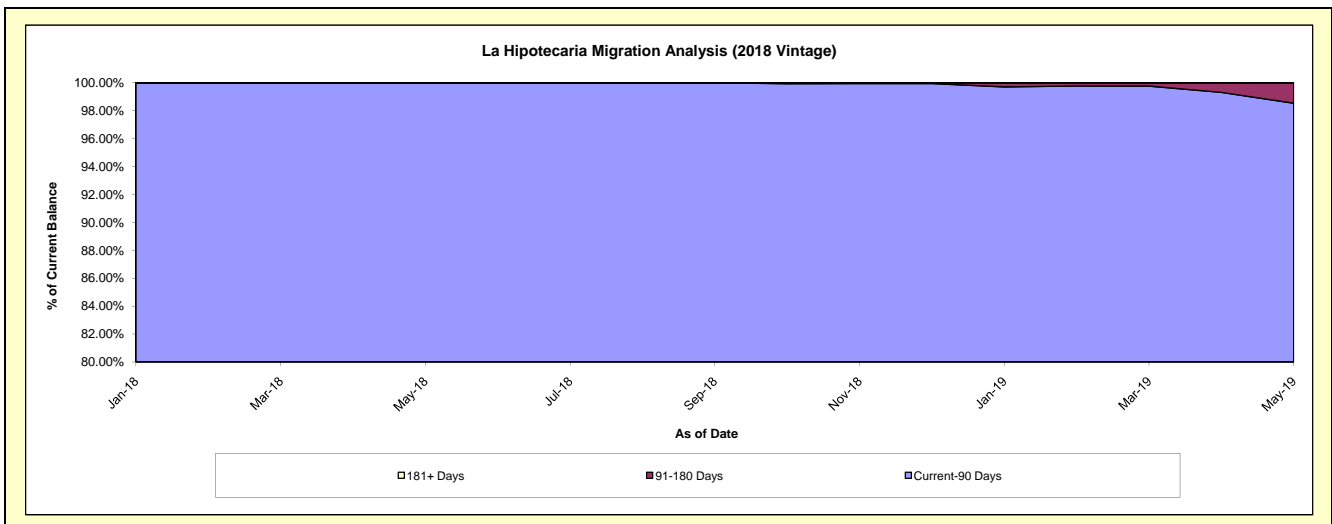
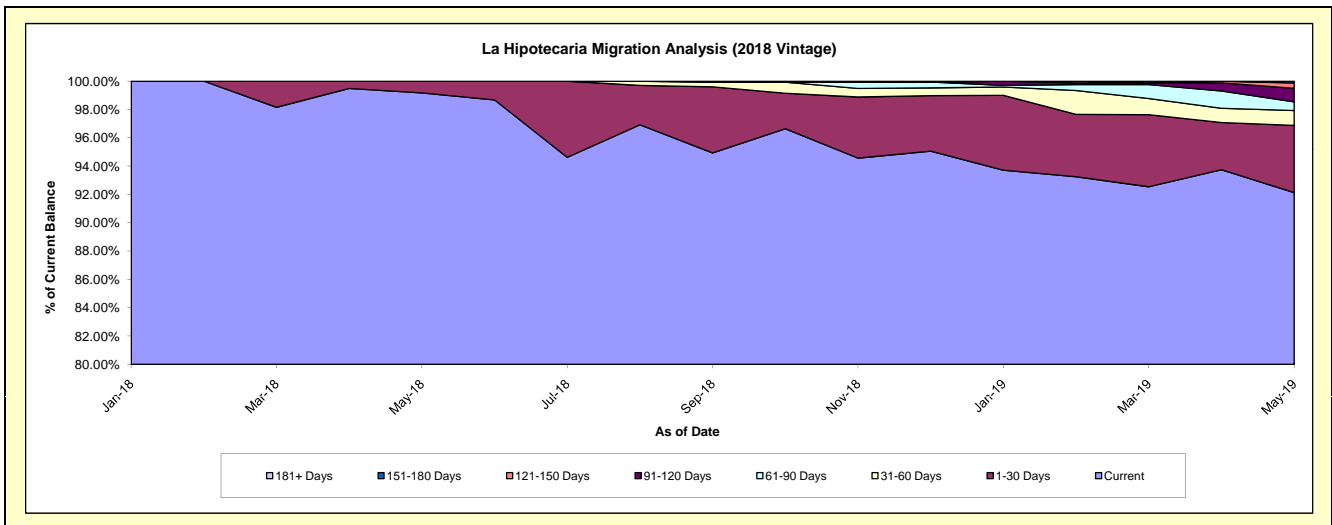
**Delinquency Status (\$ of Current Balance)**

Data Cutoff: 5/31/2019

Current Portfolio Balance										1,198,427.91	3,975,348.84
										May-18	May-19
Current										1,188,443.73	3,662,621.44
1-30 Days										9,984.18	188,602.75
31-60 Days										-	41,578.78
61-90 Days										-	24,241.81
91-120 Days										-	38,462.33
121-150 Days										-	14,843.64
151-180 Days										-	4,998.09
181+ Days										-	-

**Delinquency Status (% of Current Balance)**

Current Portfolio Balance										1,198,427.91	3,975,348.84
										May-18	May-19
Current										99.17%	92.13%
1-30 Days										0.83%	4.74%
31-60 Days										0.00%	1.05%
61-90 Days										0.00%	0.61%
91-120 Days										0.00%	0.97%
121-150 Days										0.00%	0.37%
151-180 Days										0.00%	0.13%
181+ Days										0.00%	0.00%
Current - 90 Days										100.00%	98.53%
91-180 Days										0.00%	1.47%



**Personal Loans - La Hipotecaria El Salvador Migration Analysis (2019 Vintage)**

**Delinquency Status (\$ of Current Balance)**

Data Cutoff: 5/31/2019

Current Portfolio Balance										2,533,333.76
										<b>May-19</b>
Current										2,524,025.17
1-30 Days										9,308.59
31-60 Days										-
61-90 Days										-
91-120 Days										-
121-150 Days										-
151-180 Days										-
181+ Days										-

**Delinquency Status (% of Current Balance)**

Current Portfolio Balance										2,533,333.76
										<b>May-19</b>
Current										99.63%
1-30 Days										0.37%
31-60 Days										0.00%
61-90 Days										0.00%
91-120 Days										0.00%
121-150 Days										0.00%
151-180 Days										0.00%
181+ Days										0.00%
Current - 90 Days										100.00%
91-180 Days										0.00%

