



Migration Analysis for La Hipotecaria S.A. de C.V El Salvador

Mortgages
June 2019

An analysis of historical loan payment data was used to compile a migration analysis of delinquency by annual vintage. Delinquencies for each vintage were grouped into the following buckets; Current, 1-30, 31-60, 61-90, 91-120, 121-150, 151-180, and 180+. Results are provided in graphical and tabular form. The cutoff date is 6/30/2019.

Mortgages - La Hipotecaria El Salvador Migration Analysis (All Vintages)

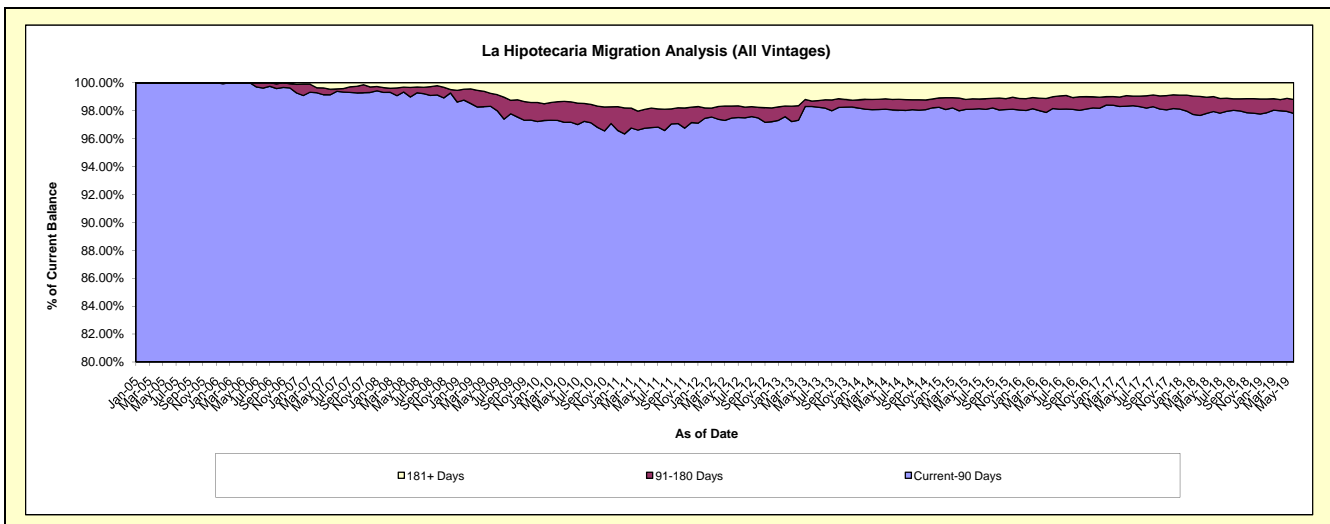
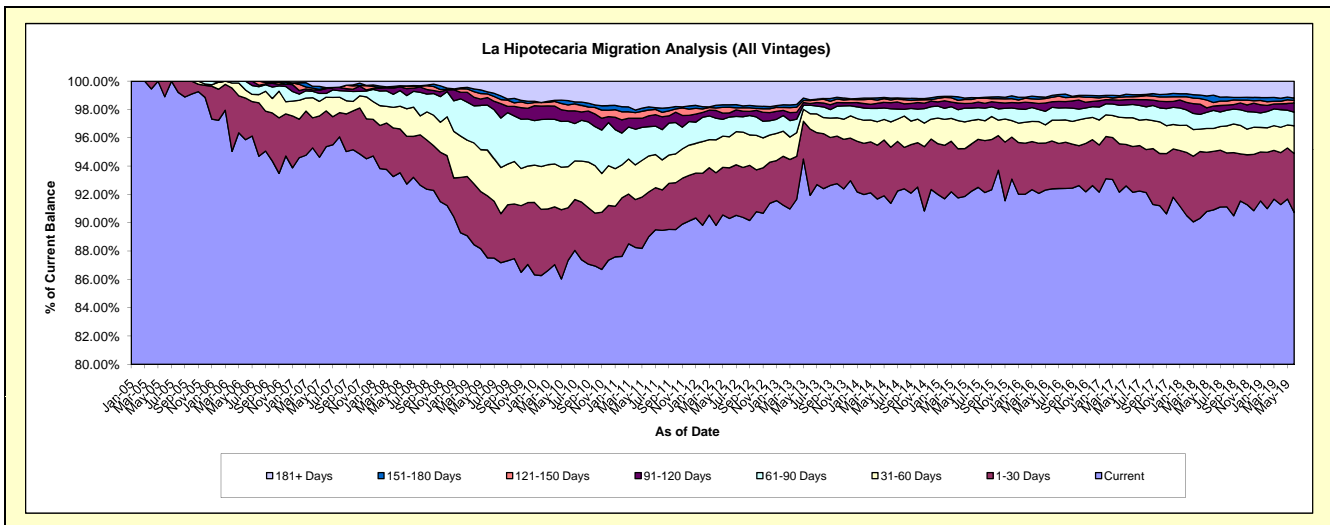
Delinquency Status (\$ of Current Balance)

Data Cutoff: 6/30/2019

Current Portfolio Balance	80,215,239.85	87,346,094.73	99,878,929.10	120,324,512.44	139,165,686.11	152,393,305.71	166,031,967.72	177,387,744.06	185,215,656.14	197,988,727.32
	Jun-10	Jun-11	Jun-12	Jun-13	Jun-14	Jun-15	Jun-16	Jun-17	Jun-18	Jun-19
Current	70,062,586.10	77,754,755.40	90,195,257.05	110,627,459.12	127,158,101.46	140,544,431.11	153,405,844.16	163,474,446.04	168,375,929.19	179,620,027.79
1-30 Days	2,983,747.13	2,760,740.80	3,574,726.04	5,632,365.48	5,517,786.33	5,101,082.10	5,611,510.04	5,726,310.73	7,666,177.04	8,241,242.81
31-60 Days	2,322,044.64	2,221,205.09	2,190,696.39	1,299,480.66	2,486,870.67	2,522,595.76	2,442,709.56	3,611,842.43	2,984,216.74	3,888,563.98
61-90 Days	2,576,425.50	1,805,798.97	1,390,588.64	718,862.90	1,295,510.19	1,333,067.25	1,507,305.11	1,656,299.28	2,369,828.30	1,902,688.12
91-120 Days	588,556.96	664,869.02	289,402.51	145,626.12	598,210.30	513,085.43	654,906.24	627,653.70	567,884.87	1,251,941.85
121-150 Days	334,223.29	355,238.46	397,894.32	243,818.99	267,584.89	415,036.76	532,105.76	329,587.73	451,608.45	383,122.27
151-180 Days	247,743.02	198,603.22	175,075.15	77,113.89	175,407.93	204,615.94	217,785.96	265,344.05	967,242.71	339,920.08
181+ Days	1,099,913.21	1,584,883.77	1,665,289.00	1,579,785.28	1,666,214.34	1,759,391.36	1,659,800.89	1,696,260.10	1,832,768.84	2,361,220.42

Delinquency Status (% of Current Balance)

Current Portfolio Balance	80,215,239.85	87,346,094.73	99,878,929.10	120,324,512.44	139,165,686.11	152,393,305.71	166,031,967.72	177,387,744.06	185,215,656.14	197,988,727.32
	Jun-10	Jun-11	Jun-12	Jun-13	Jun-14	Jun-15	Jun-16	Jun-17	Jun-18	Jun-19
Current	87.34%	89.02%	90.30%	91.94%	91.37%	92.22%	92.40%	92.16%	90.91%	90.72%
1-30 Days	3.72%	3.16%	3.58%	4.68%	3.96%	3.35%	3.38%	3.23%	4.14%	4.16%
31-60 Days	2.89%	2.54%	2.19%	1.08%	1.79%	1.66%	1.47%	2.04%	1.61%	1.96%
61-90 Days	3.21%	2.07%	1.39%	0.60%	0.93%	0.87%	0.91%	0.93%	1.28%	0.96%
91-120 Days	0.73%	0.76%	0.29%	0.12%	0.43%	0.34%	0.39%	0.35%	0.31%	0.63%
121-150 Days	0.42%	0.41%	0.40%	0.20%	0.19%	0.27%	0.32%	0.19%	0.24%	0.19%
151-180 Days	0.31%	0.23%	0.18%	0.06%	0.13%	0.13%	0.13%	0.15%	0.52%	0.17%
181+ Days	1.37%	1.81%	1.67%	1.31%	1.20%	1.15%	1.00%	0.96%	0.99%	1.19%
Current - 90 Days	97.17%	96.79%	97.47%	98.30%	98.05%	98.10%	98.15%	98.35%	97.94%	97.81%
91-180 Days	1.46%	1.40%	0.86%	0.39%	0.75%	0.74%	0.85%	0.69%	1.07%	1.00%



Mortgages - La Hipotecaria El Salvador Migration Analysis (2005 Vintage)

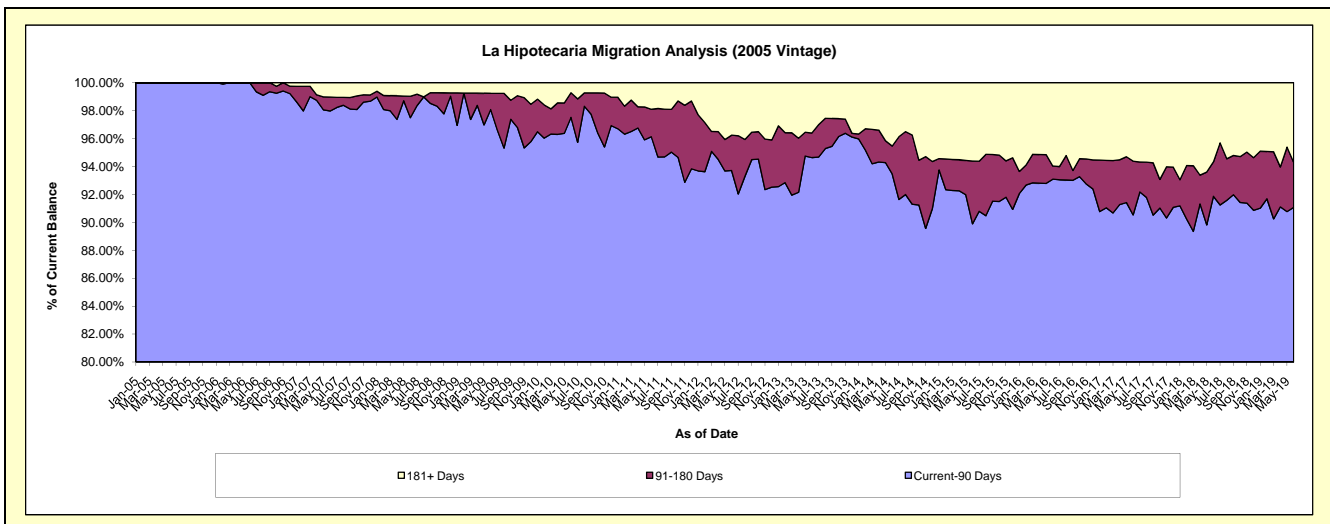
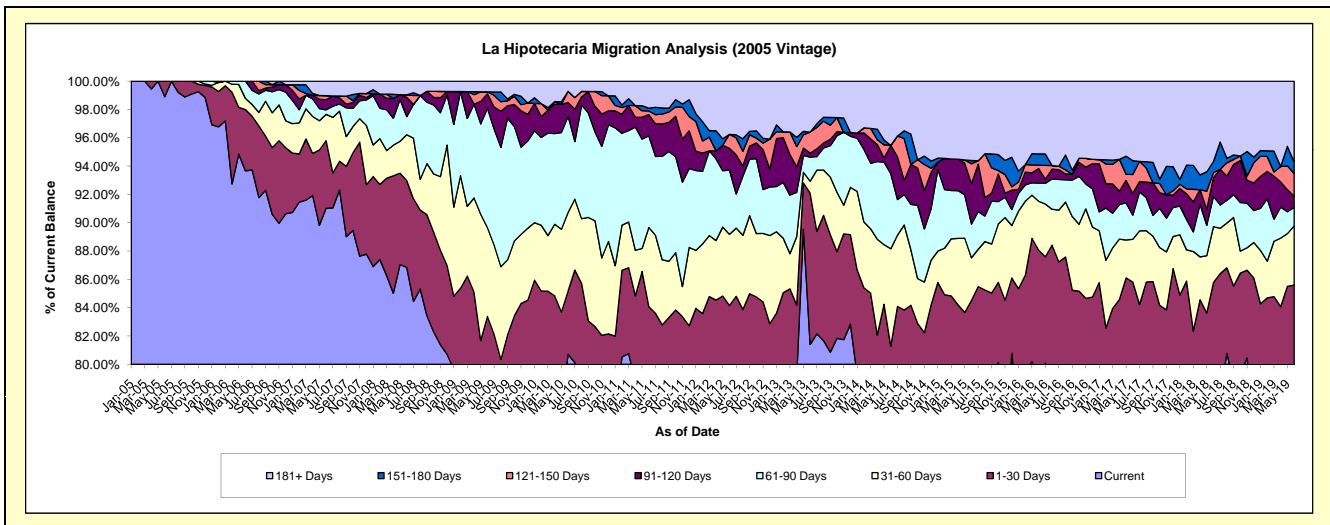
Delinquency Status (\$ of Current Balance)

Data Cutoff: 6/30/2019

Current Portfolio Balance	7,080,648.68	6,498,425.15	5,959,074.30	5,367,748.22	4,772,694.82	4,340,028.15	4,039,216.09	3,736,781.01	3,333,728.95	2,969,372.85
	Jun-10	Jun-11	Jun-12	Jun-13	Jun-14	Jun-15	Jun-16	Jun-17	Jun-18	Jun-19
Current	5,714,055.54	5,000,976.94	4,556,967.38	4,370,035.61	3,569,203.39	3,406,989.59	3,139,290.38	2,836,976.78	2,601,695.12	2,145,810.61
1-30 Days	316,853.95	462,757.53	458,020.23	572,569.84	310,314.62	260,966.16	431,700.98	369,562.75	258,092.45	395,786.87
31-60 Days	393,196.46	363,164.55	299,490.38	46,006.10	328,442.86	130,756.91	102,676.39	112,896.95	131,212.68	124,200.11
61-90 Days	480,724.68	420,209.62	270,203.24	91,377.72	253,045.73	102,868.46	86,628.33	63,770.51	71,636.69	38,678.07
91-120 Days	68,774.55	97,764.81	91,741.27	14,716.51	95,246.97	124,890.28	28,071.66	57,913.34	44,082.86	23,583.44
121-150 Days	56,270.25	16,483.03	58,934.47	79,799.17	-	60,312.28	9,967.73	49,144.84	11,957.61	47,599.92
151-180 Days	-	13,495.09	-	-	-	9,967.73	-	36,640.03	26,076.69	24,180.52
181+ Days	50,773.25	123,573.58	223,717.33	193,243.27	216,441.25	243,276.74	240,880.62	209,875.81	188,974.85	169,533.31

Delinquency Status (% of Current Balance)

Current Portfolio Balance	7,080,648.68	6,498,425.15	5,959,074.30	5,367,748.22	4,772,694.82	4,340,028.15	4,039,216.09	3,736,781.01	3,333,728.95	2,969,372.85
	Jun-10	Jun-11	Jun-12	Jun-13	Jun-14	Jun-15	Jun-16	Jun-17	Jun-18	Jun-19
Current	80.70%	76.96%	76.47%	81.41%	74.78%	78.50%	77.72%	75.92%	78.04%	72.26%
1-30 Days	4.47%	7.12%	7.69%	10.67%	6.50%	6.01%	10.69%	9.89%	7.74%	13.33%
31-60 Days	5.55%	5.59%	5.03%	0.86%	6.88%	3.01%	2.54%	3.02%	3.94%	4.18%
61-90 Days	6.79%	6.47%	4.53%	1.70%	5.30%	2.37%	2.14%	1.71%	2.15%	1.30%
91-120 Days	0.97%	1.50%	1.54%	0.27%	2.00%	2.88%	0.69%	1.55%	1.32%	0.79%
121-150 Days	0.79%	0.25%	0.99%	1.49%	0.00%	1.39%	0.25%	1.32%	0.36%	1.60%
151-180 Days	0.00%	0.21%	0.00%	0.00%	0.00%	0.23%	0.00%	0.98%	0.78%	0.81%
181+ Days	0.72%	1.90%	3.75%	3.60%	4.53%	5.61%	5.96%	5.62%	5.67%	5.71%
Current - 90 Days	97.52%	96.13%	93.72%	94.64%	93.47%	89.90%	93.09%	90.54%	91.87%	91.08%
91-180 Days	1.77%	1.97%	2.53%	1.76%	2.00%	4.50%	0.94%	3.85%	2.46%	3.21%



Mortgages - La Hipotecaria El Salvador Migration Analysis (2006 Vintage)

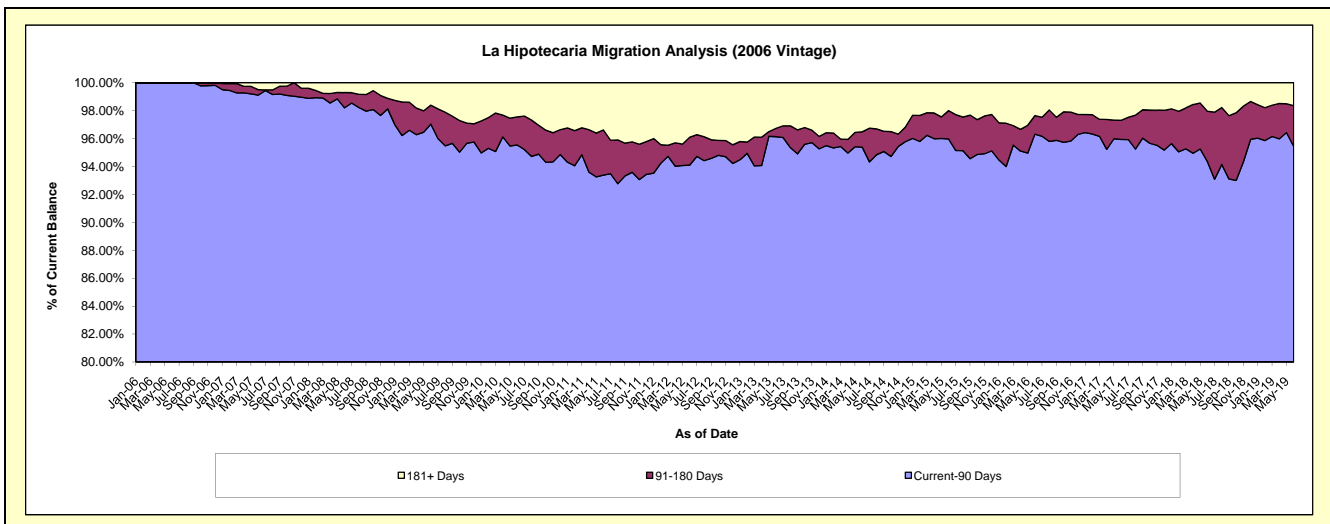
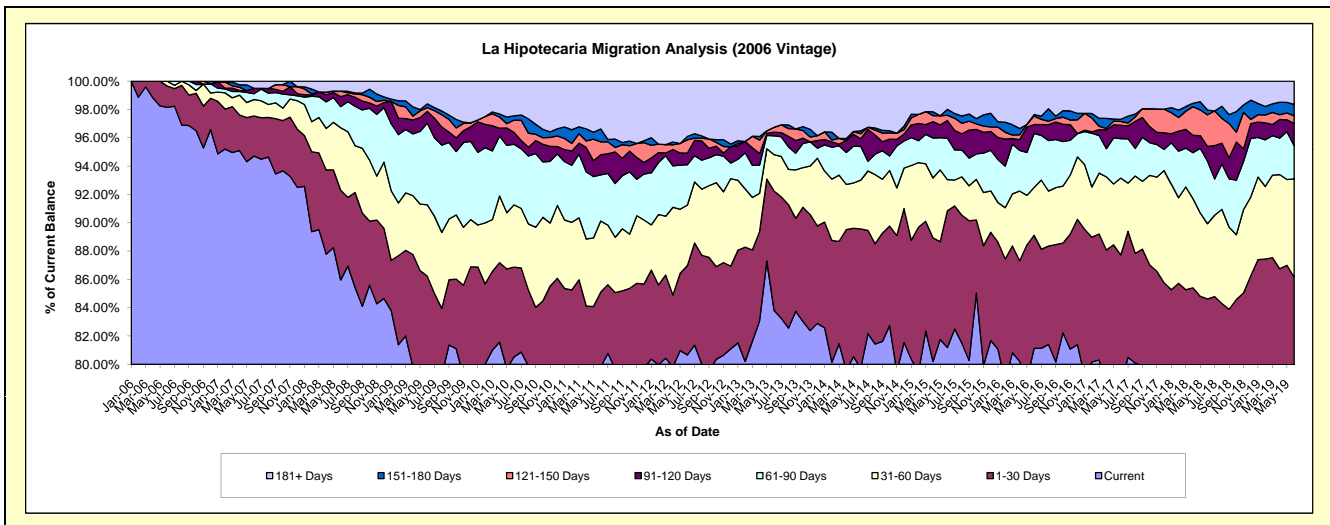
Delinquency Status (\$ of Current Balance)

Data Cutoff: 6/30/2019

Current Portfolio Balance	16,320,250.89	14,847,930.12	13,364,925.53	12,091,140.67	10,861,254.46	9,858,161.52	8,942,812.33	8,259,006.39	7,537,341.55	6,812,136.56
	Jun-10	Jun-11	Jun-12	Jun-13	Jun-14	Jun-15	Jun-16	Jun-17	Jun-18	Jun-19
Current	13,141,562.09	11,854,002.27	10,781,535.93	10,134,139.15	8,659,483.47	8,004,134.93	7,255,514.62	6,497,050.27	5,807,261.42	5,328,565.72
1-30 Days	1,035,479.40	781,559.30	842,486.39	1,019,035.04	1,068,599.01	951,948.41	713,897.49	748,811.28	570,959.95	540,451.70
31-60 Days	718,001.05	746,654.17	572,252.84	310,643.37	373,797.04	216,845.83	302,535.32	448,035.05	400,465.85	473,066.31
61-90 Days	697,892.75	483,250.28	380,174.19	160,551.83	258,658.09	288,130.22	341,291.51	230,032.21	332,881.32	159,418.75
91-120 Days	137,435.96	211,604.43	109,340.71	31,579.15	58,826.85	123,187.94	55,770.58	77,950.12	78,826.48	107,549.51
121-150 Days	141,156.40	134,262.50	124,988.92	40,584.36	38,644.29	35,828.99	53,446.66	22,148.79	168,071.76	36,367.58
151-180 Days	49,215.01	135,059.60	33,025.11	-	22,063.72	41,604.47	9,514.00	12,712.94	25,007.58	54,654.02
181+ Days	399,508.23	501,537.57	521,121.44	394,607.77	381,181.99	196,480.73	210,842.15	222,265.73	153,867.19	112,062.97

Delinquency Status (% of Current Balance)

Current Portfolio Balance	16,320,250.89	14,847,930.12	13,364,925.53	12,091,140.67	10,861,254.46	9,858,161.52	8,942,812.33	8,259,006.39	7,537,341.55	6,812,136.56
	Jun-10	Jun-11	Jun-12	Jun-13	Jun-14	Jun-15	Jun-16	Jun-17	Jun-18	Jun-19
Current	80.52%	79.84%	80.67%	83.81%	79.73%	81.19%	81.13%	78.67%	77.05%	78.22%
1-30 Days	6.34%	5.26%	6.30%	8.43%	9.84%	9.66%	7.98%	9.07%	7.58%	7.93%
31-60 Days	4.40%	5.03%	4.28%	2.57%	3.44%	2.20%	3.38%	5.42%	5.31%	6.94%
61-90 Days	4.28%	3.25%	2.84%	1.33%	2.38%	2.92%	3.82%	2.79%	4.42%	2.34%
91-120 Days	0.84%	1.43%	0.82%	0.26%	0.54%	1.25%	0.62%	0.94%	1.05%	1.58%
121-150 Days	0.86%	0.90%	0.94%	0.34%	0.36%	0.36%	0.60%	0.27%	2.23%	0.53%
151-180 Days	0.30%	0.91%	0.25%	0.00%	0.20%	0.42%	0.11%	0.15%	0.33%	0.80%
181+ Days	2.45%	3.38%	3.90%	3.26%	3.51%	1.99%	2.36%	2.69%	2.04%	1.65%
Current - 90 Days	95.54%	93.38%	94.10%	96.14%	95.39%	95.97%	96.31%	95.94%	94.35%	95.44%
91-180 Days	2.01%	3.24%	2.00%	0.60%	1.10%	2.04%	1.33%	1.37%	3.61%	2.91%



Mortgages - La Hipotecaria El Salvador Migration Analysis (2007 Vintage)

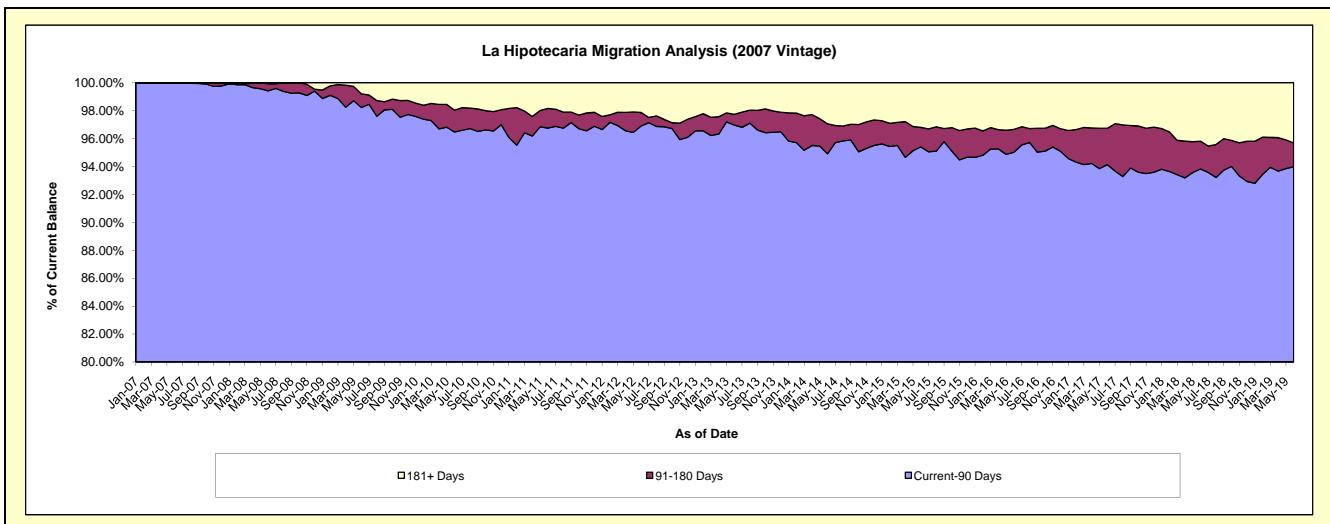
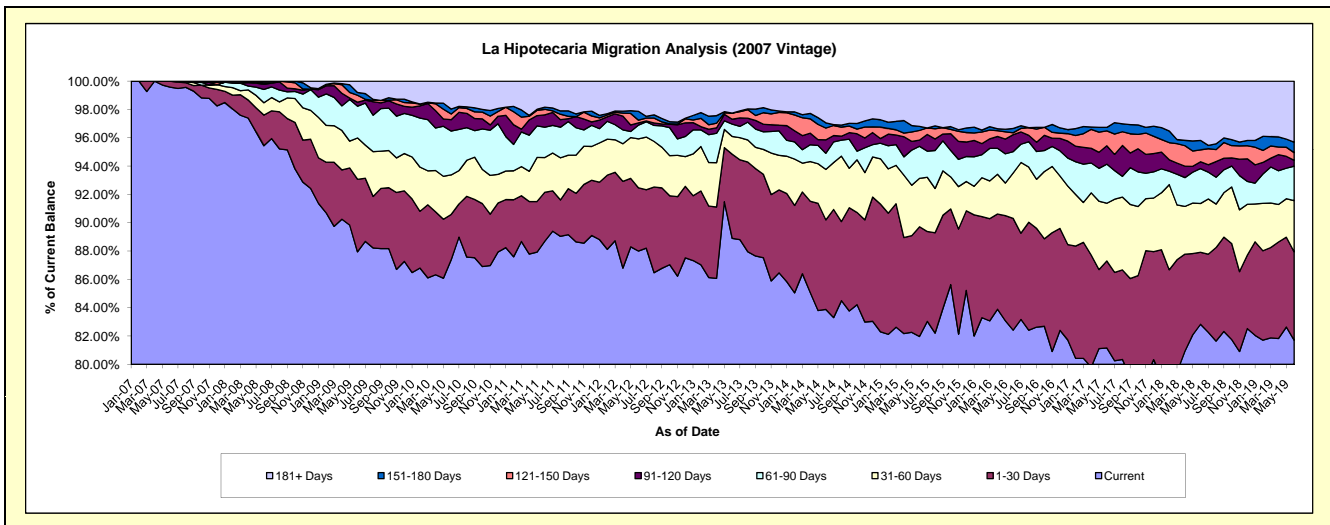
Delinquency Status (\$ of Current Balance)

Data Cutoff: 6/30/2019

Current Portfolio Balance	24,331,051.93	22,423,801.48	20,460,479.39	18,727,996.38	16,986,773.26	15,703,241.32	14,336,181.30	13,243,942.82	12,149,303.51	11,249,714.94
	Jun-10	Jun-11	Jun-12	Jun-13	Jun-14	Jun-15	Jun-16	Jun-17	Jun-18	Jun-19
Current	21,262,144.65	19,890,786.99	18,006,065.84	16,649,023.93	14,248,973.67	12,871,743.66	11,815,118.58	10,748,823.39	10,063,353.48	9,190,681.85
1-30 Days	778,793.32	774,232.06	912,923.70	1,113,415.25	1,074,024.89	1,216,102.25	1,132,308.51	813,223.66	617,847.27	702,353.51
31-60 Days	679,602.24	549,154.09	707,737.74	234,733.33	605,030.65	536,833.07	458,350.08	540,602.88	418,588.48	408,203.18
61-90 Days	752,815.90	482,027.09	199,398.42	163,287.88	194,746.66	356,942.83	216,877.81	365,017.31	299,562.01	272,517.17
91-120 Days	195,501.93	194,191.74	31,526.75	63,882.03	160,094.71	67,771.99	171,613.67	172,200.10	58,700.02	47,206.38
121-150 Days	97,978.77	87,537.92	38,891.28	80,615.36	141,549.92	107,441.98	19,555.52	139,171.22	101,498.74	60,485.09
151-180 Days	85,924.59	33,298.81	128,019.76	-	62,786.48	44,494.69	44,100.84	32,685.49	81,191.23	83,631.48
181+ Days	478,290.53	412,572.78	435,915.90	423,038.60	499,566.28	501,910.85	478,256.29	432,218.77	508,562.28	484,636.28

Delinquency Status (% of Current Balance)

Current Portfolio Balance	24,331,051.93	22,423,801.48	20,460,479.39	18,727,996.38	16,986,773.26	15,703,241.32	14,336,181.30	13,243,942.82	12,149,303.51	11,249,714.94
	Jun-10	Jun-11	Jun-12	Jun-13	Jun-14	Jun-15	Jun-16	Jun-17	Jun-18	Jun-19
Current	87.39%	88.70%	88.00%	88.90%	83.88%	81.97%	82.41%	81.16%	82.83%	81.70%
1-30 Days	3.20%	3.45%	4.46%	5.95%	6.32%	7.74%	7.90%	6.14%	5.09%	6.24%
31-60 Days	2.79%	2.45%	3.46%	1.25%	3.56%	3.42%	3.20%	4.08%	3.45%	3.63%
61-90 Days	3.09%	2.15%	0.97%	0.87%	1.15%	2.27%	1.51%	2.76%	2.47%	2.42%
91-120 Days	0.80%	0.87%	0.15%	0.34%	0.94%	0.43%	1.20%	1.30%	0.48%	0.42%
121-150 Days	0.40%	0.39%	0.19%	0.43%	0.83%	0.68%	0.14%	1.05%	0.84%	0.54%
151-180 Days	0.35%	0.15%	0.63%	0.00%	0.37%	0.28%	0.31%	0.25%	0.67%	0.74%
181+ Days	1.97%	1.84%	2.13%	2.26%	2.94%	3.20%	3.34%	3.26%	4.19%	4.31%
Current - 90 Days	96.47%	96.76%	96.90%	96.97%	94.91%	95.40%	95.02%	94.14%	93.83%	93.99%
91-180 Days	1.56%	1.40%	0.97%	0.77%	2.15%	1.40%	1.64%	2.60%	1.99%	1.70%



Mortgages - La Hipotecaria El Salvador Migration Analysis (2008 Vintage)

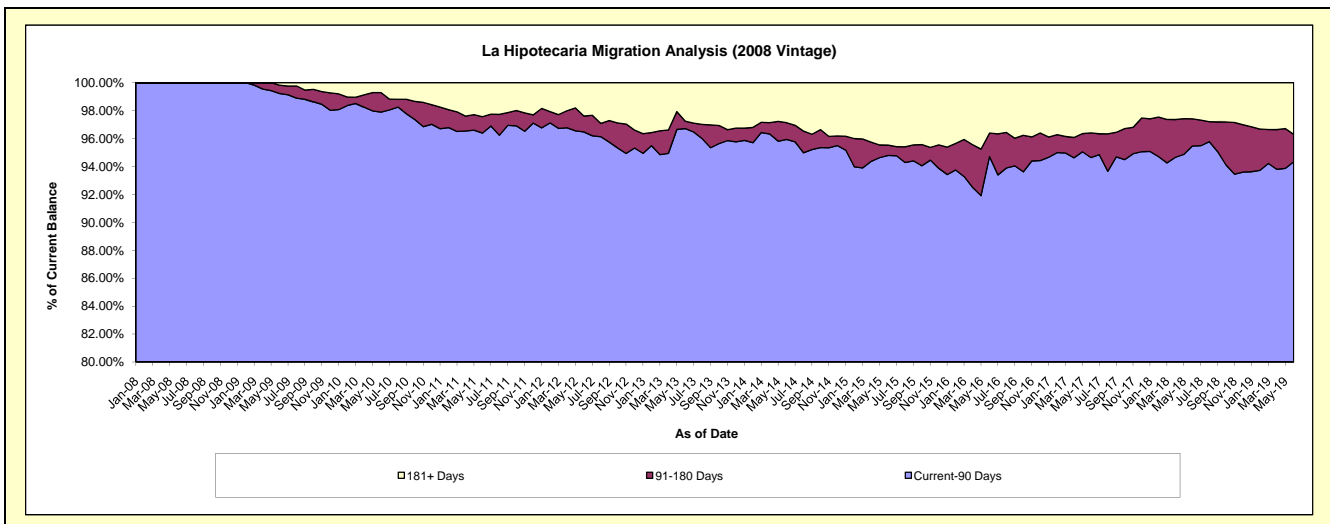
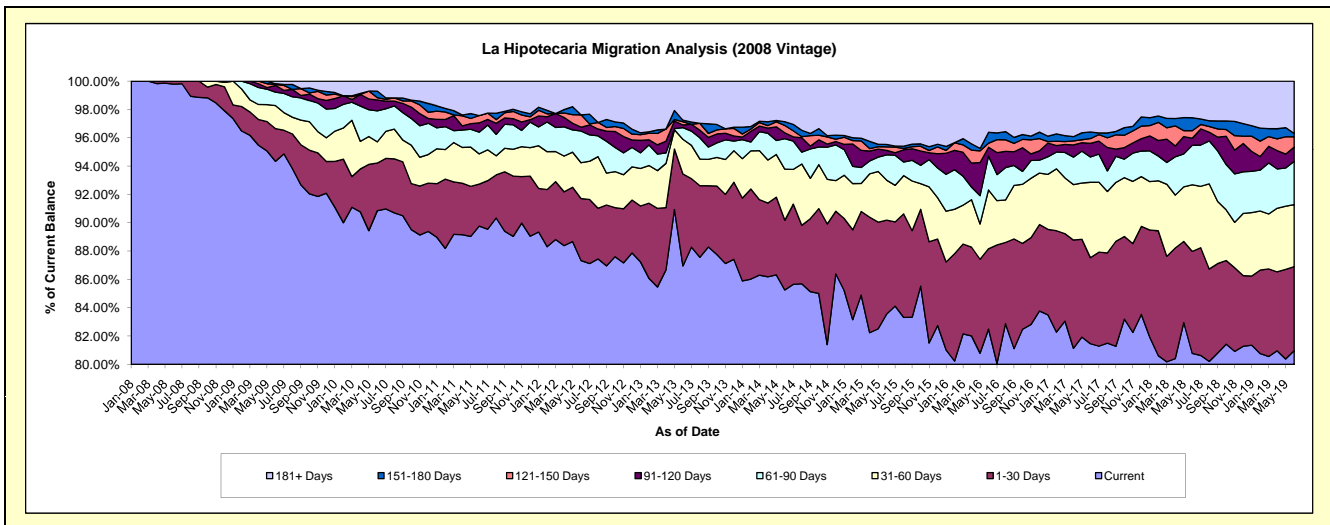
Delinquency Status (\$ of Current Balance)

Data Cutoff: 6/30/2019

Current Portfolio Balance	24,271,501.24	22,524,947.80	20,329,686.28	18,609,064.08	16,725,206.86	14,832,844.06	13,490,640.64	12,441,165.38	11,324,773.90	10,296,926.17
	Jun-10	Jun-11	Jun-12	Jun-13	Jun-14	Jun-15	Jun-16	Jun-17	Jun-18	Jun-19
Current	22,051,171.55	20,219,497.63	17,753,978.89	16,181,269.77	14,258,999.02	12,393,245.48	11,127,969.58	10,134,375.72	9,147,430.93	8,337,441.15
1-30 Days	816,576.26	667,915.75	889,782.41	1,208,294.75	823,716.41	983,335.79	766,171.62	755,816.56	816,043.52	610,302.10
31-60 Days	363,139.47	481,525.27	514,830.70	454,809.51	604,670.39	419,201.35	560,439.41	662,535.34	532,263.16	451,868.10
61-90 Days	531,006.95	344,576.54	454,686.52	153,536.44	358,163.96	264,874.10	322,714.53	222,007.64	315,826.45	314,207.48
91-120 Days	186,844.52	147,277.76	56,793.78	35,448.43	69,169.60	47,838.81	83,576.45	120,719.38	56,901.11	103,793.42
121-150 Days	38,817.87	116,955.01	175,079.65	42,820.10	87,390.68	36,473.06	39,421.97	41,110.44	60,103.72	75,038.42
151-180 Days	112,603.42	-	-	20,127.71	44,175.65	25,239.51	103,721.37	58,253.10	103,710.00	23,990.63
181+ Days	171,341.20	547,199.84	484,534.33	512,757.37	478,921.15	662,635.96	486,625.71	446,347.20	292,495.01	380,284.87

Delinquency Status (% of Current Balance)

Current Portfolio Balance	24,271,501.24	22,524,947.80	20,329,686.28	18,609,064.08	16,725,206.86	14,832,844.06	13,490,640.64	12,441,165.38	11,324,773.90	10,296,926.17
	Jun-10	Jun-11	Jun-12	Jun-13	Jun-14	Jun-15	Jun-16	Jun-17	Jun-18	Jun-19
Current	90.85%	89.76%	87.33%	86.95%	85.25%	83.55%	82.49%	81.46%	80.77%	80.97%
1-30 Days	3.36%	2.97%	4.38%	6.49%	4.92%	6.63%	5.68%	6.08%	7.21%	5.93%
31-60 Days	1.50%	2.14%	2.53%	2.44%	3.62%	2.83%	4.15%	5.33%	4.70%	4.39%
61-90 Days	2.19%	1.53%	2.24%	0.83%	2.14%	1.79%	2.39%	1.78%	2.79%	3.05%
91-120 Days	0.77%	0.65%	0.28%	0.19%	0.41%	0.32%	0.62%	0.97%	0.50%	1.01%
121-150 Days	0.16%	0.52%	0.86%	0.23%	0.52%	0.25%	0.29%	0.33%	0.53%	0.73%
151-180 Days	0.46%	0.00%	0.00%	0.11%	0.26%	0.17%	0.77%	0.47%	0.92%	0.23%
181+ Days	0.71%	2.43%	2.38%	2.76%	2.86%	4.47%	3.61%	3.59%	2.58%	3.69%
Current - 90 Days	97.90%	96.40%	96.48%	96.72%	95.94%	94.79%	94.71%	94.64%	95.47%	94.34%
91-180 Days	1.39%	1.17%	1.14%	0.53%	1.20%	0.74%	1.68%	1.77%	1.95%	1.97%



Mortgages - La Hipotecaria El Salvador Migration Analysis (2009 Vintage)

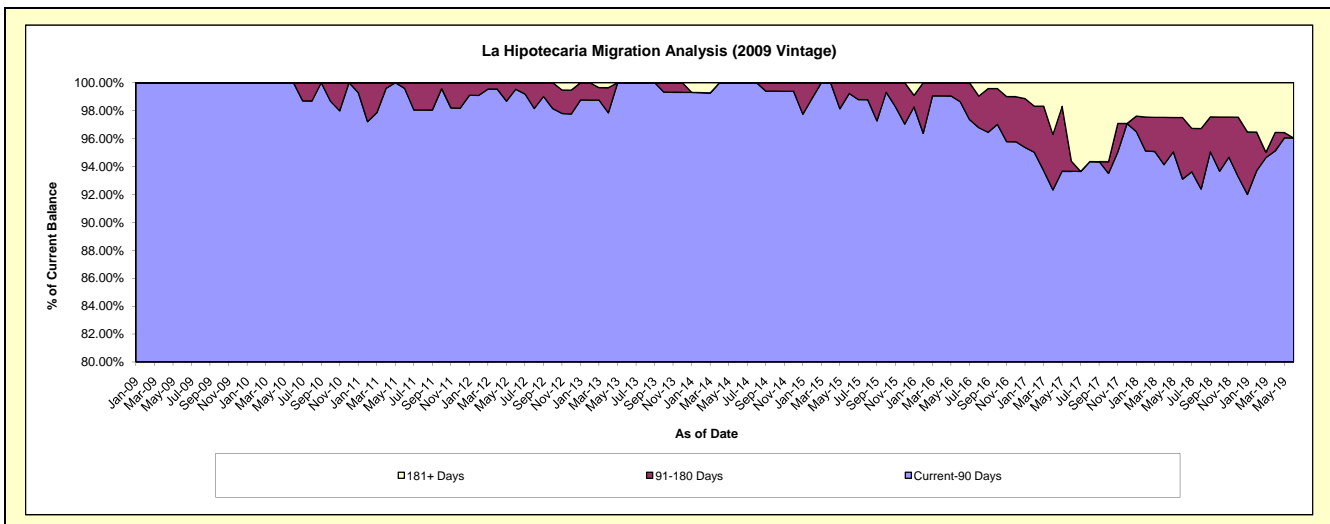
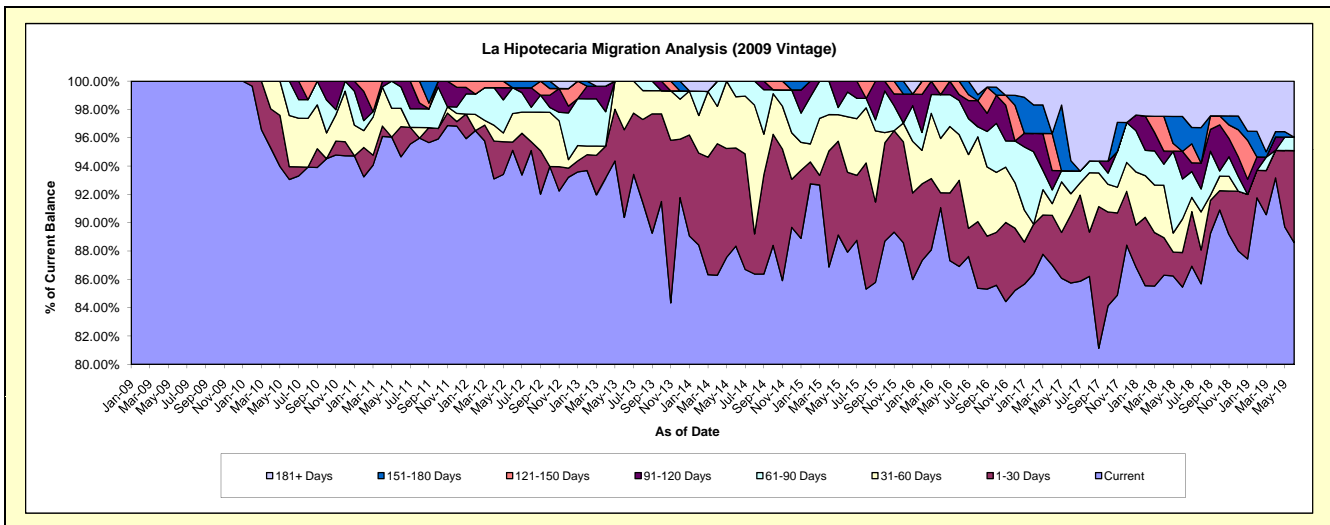
Delinquency Status (\$ of Current Balance)

Data Cutoff: 6/30/2019

Current Portfolio Balance	4,011,623.06	3,485,319.45	3,015,131.64	2,807,189.44	2,408,839.22	2,111,522.70	1,955,604.48	1,897,077.10	1,768,695.48	1,636,348.57
	Jun-10	Jun-11	Jun-12	Jun-13	Jun-14	Jun-15	Jun-16	Jun-17	Jun-18	Jun-19
Current	3,733,193.53	3,299,104.16	2,867,804.29	2,537,231.35	2,128,227.52	1,856,524.96	1,699,751.53	1,626,683.19	1,511,469.20	1,449,730.56
1-30 Days	36,044.20	74,276.16	17,742.09	173,573.80	166,888.96	119,140.07	118,924.41	91,246.91	43,174.74	106,318.73
31-60 Days	145,149.83	45,129.00	60,531.09	96,384.29	87,075.81	82,851.63	62,941.66	28,342.72	41,991.29	-
61-90 Days	97,235.50	52,779.85	55,023.89	-	26,646.93	36,813.44	47,219.52	30,567.51	49,870.91	15,501.79
91-120 Days	-	14,030.28	-	-	-	16,192.60	8,145.28	-	34,500.76	-
121-150 Days	-	-	-	-	-	-	18,622.08	-	-	-
151-180 Days	-	-	14,030.28	-	-	-	-	13,702.05	43,550.09	-
181+ Days	-	-	-	-	-	-	-	106,534.72	44,138.49	64,797.49

Delinquency Status (% of Current Balance)

Current Portfolio Balance	4,011,623.06	3,485,319.45	3,015,131.64	2,807,189.44	2,408,839.22	2,111,522.70	1,955,604.48	1,897,077.10	1,768,695.48	1,636,348.57
	Jun-10	Jun-11	Jun-12	Jun-13	Jun-14	Jun-15	Jun-16	Jun-17	Jun-18	Jun-19
Current	93.06%	94.66%	95.11%	90.38%	88.35%	87.92%	86.92%	85.75%	85.46%	88.60%
1-30 Days	0.90%	2.13%	0.59%	6.18%	6.93%	5.64%	6.08%	4.81%	2.44%	6.50%
31-60 Days	3.62%	1.29%	2.01%	3.43%	3.61%	3.92%	3.22%	1.49%	2.37%	0.00%
61-90 Days	2.42%	1.51%	1.82%	0.00%	1.11%	1.74%	2.41%	1.61%	2.82%	0.95%
91-120 Days	0.00%	0.40%	0.00%	0.00%	0.00%	0.77%	0.42%	0.00%	1.95%	0.00%
121-150 Days	0.00%	0.00%	0.00%	0.00%	0.00%	0.00%	0.95%	0.00%	0.00%	0.00%
151-180 Days	0.00%	0.00%	0.47%	0.00%	0.00%	0.00%	0.00%	0.72%	2.46%	0.00%
181+ Days	0.00%	0.00%	0.00%	0.00%	0.00%	0.00%	0.00%	5.62%	2.50%	3.96%
Current - 90 Days	100.00%	99.60%	99.53%	100.00%	100.00%	99.23%	98.63%	93.66%	93.09%	96.04%
91-180 Days	0.00%	0.40%	0.47%	0.00%	0.00%	0.77%	1.37%	0.72%	4.41%	0.00%



Mortgages - La Hipotecaria El Salvador Migration Analysis (2010 Vintage)

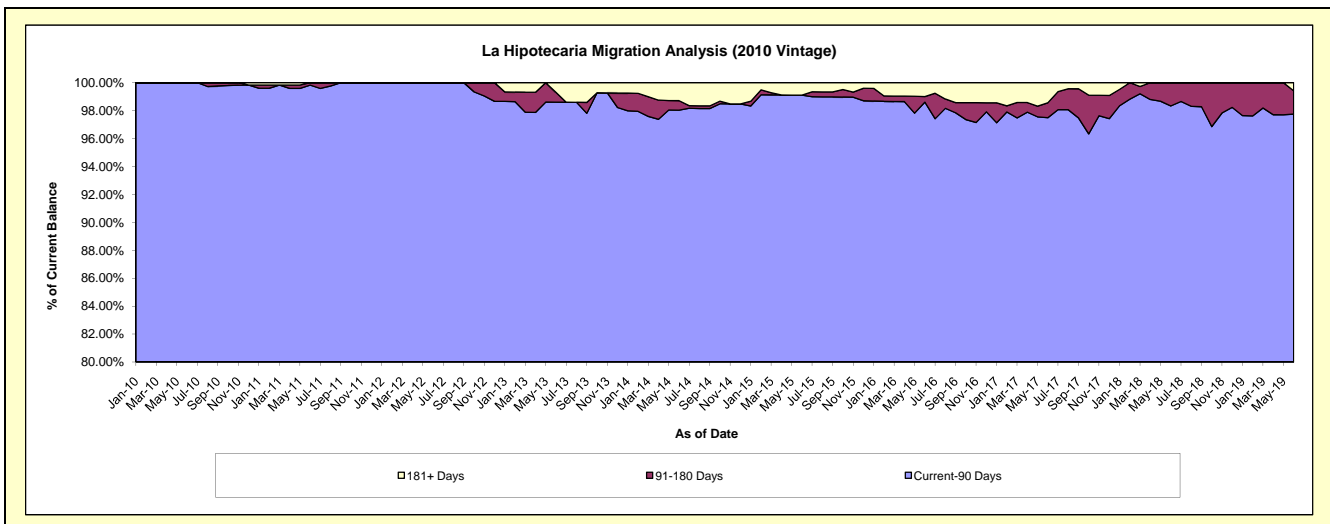
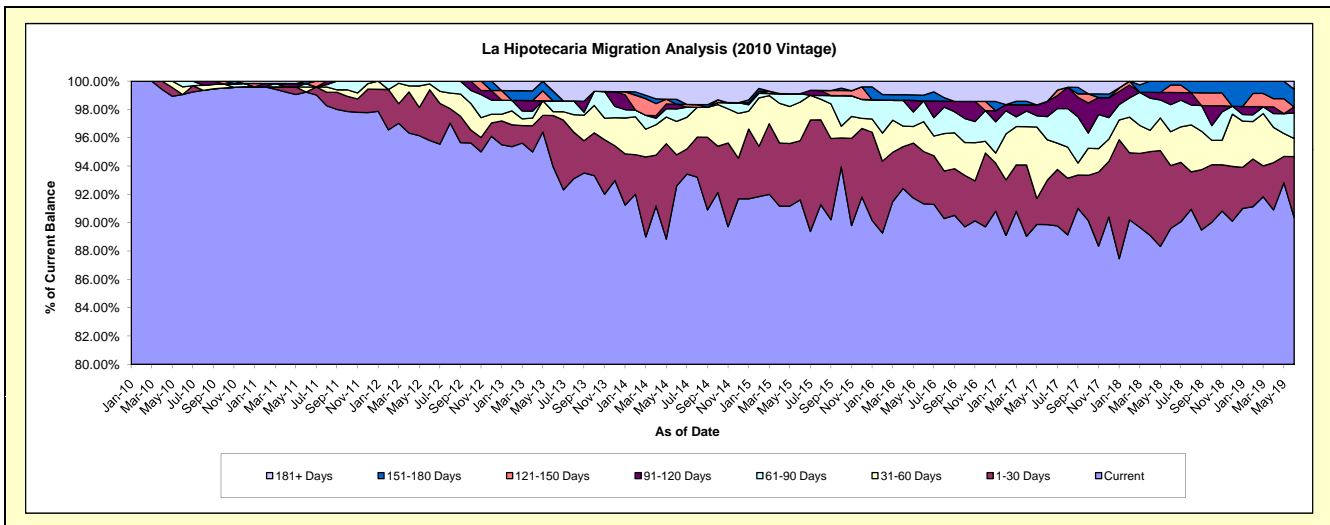
Delinquency Status (\$ of Current Balance)

Data Cutoff: 6/30/2019

Current Portfolio Balance	4,200,164.05	9,718,042.94	8,756,646.08	8,117,024.08	7,019,012.02	6,447,673.50	5,485,064.86	5,214,827.63	4,751,047.11	4,322,280.04
	Jun-10	Jun-11	Jun-12	Jun-13	Jun-14	Jun-15	Jun-16	Jun-17	Jun-18	Jun-19
Current	4,160,458.74	9,642,759.62	8,390,226.94	7,626,389.01	6,499,379.77	5,907,336.00	5,009,939.44	4,686,438.05	4,256,879.89	3,906,432.77
1-30 Days	-	-	313,636.20	293,718.56	154,780.27	269,141.31	202,548.40	162,601.16	211,059.94	185,403.40
31-60 Days	22,955.59	35,578.01	35,853.64	22,160.46	165,531.61	175,776.58	115,674.77	150,499.59	113,606.05	55,551.94
61-90 Days	16,749.72	22,955.59	16,929.30	61,631.60	61,417.17	37,948.70	80,566.77	84,543.32	90,606.91	77,827.37
91-120 Days	-	-	-	-	23,752.91	-	-	55,981.83	41,004.87	18,316.25
121-150 Days	-	-	-	-	-	-	-	-	24,969.55	-
151-180 Days	-	16,749.72	-	56,986.18	24,046.62	-	22,150.25	-	12,919.90	53,778.76
181+ Days	-	-	-	56,138.27	90,103.67	57,470.91	54,185.23	74,763.68	-	24,969.55

Delinquency Status (% of Current Balance)

Current Portfolio Balance	4,200,164.05	9,718,042.94	8,756,646.08	8,117,024.08	7,019,012.02	6,447,673.50	5,485,064.86	5,214,827.63	4,751,047.11	4,322,280.04
	Jun-10	Jun-11	Jun-12	Jun-13	Jun-14	Jun-15	Jun-16	Jun-17	Jun-18	Jun-19
Current	99.05%	99.23%	95.82%	93.96%	92.60%	91.62%	91.34%	89.87%	89.60%	90.38%
1-30 Days	0.00%	0.00%	3.58%	3.62%	2.21%	4.17%	3.69%	3.12%	4.44%	4.29%
31-60 Days	0.55%	0.37%	0.41%	0.27%	2.36%	2.73%	2.11%	2.89%	2.39%	1.29%
61-90 Days	0.40%	0.24%	0.19%	0.76%	0.88%	0.59%	1.47%	1.62%	1.91%	1.80%
91-120 Days	0.00%	0.00%	0.00%	0.00%	0.34%	0.00%	0.00%	1.07%	0.86%	0.42%
121-150 Days	0.00%	0.00%	0.00%	0.00%	0.00%	0.00%	0.00%	0.00%	0.53%	0.00%
151-180 Days	0.00%	0.17%	0.00%	0.70%	0.34%	0.00%	0.40%	0.00%	0.27%	1.24%
181+ Days	0.00%	0.00%	0.00%	0.69%	1.28%	0.89%	0.99%	1.43%	0.00%	0.58%
Current - 90 Days	100.00%	99.83%	100.00%	98.61%	98.04%	99.11%	98.61%	97.49%	98.34%	97.75%
91-180 Days	0.00%	0.17%	0.00%	0.70%	0.68%	0.00%	0.40%	1.07%	1.66%	1.67%



Mortgages - La Hipotecaria El Salvador Migration Analysis (2011 Vintage)

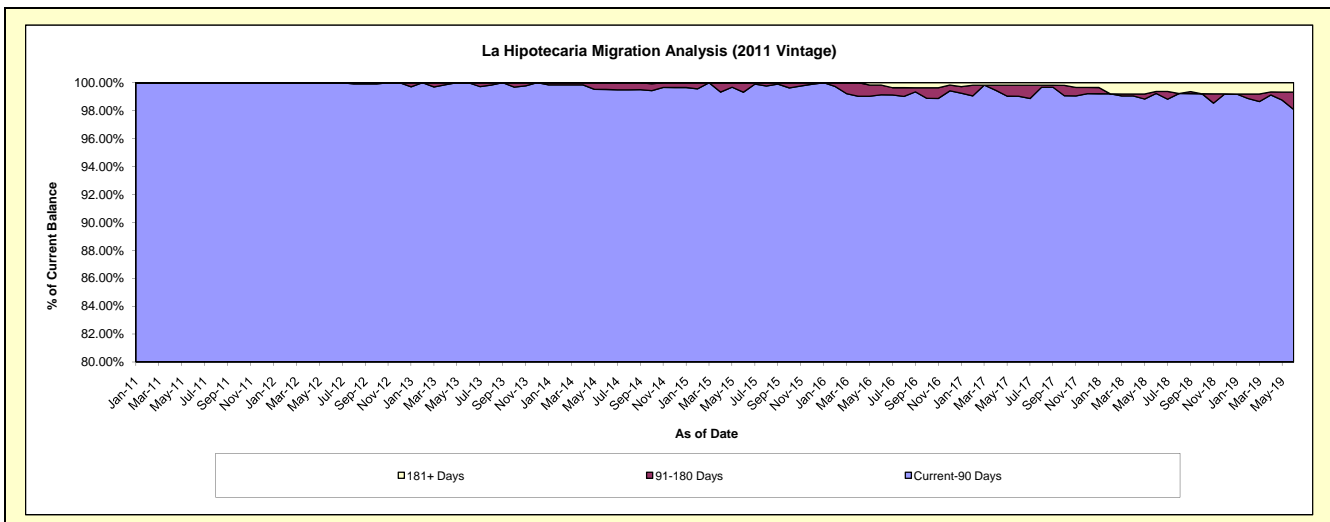
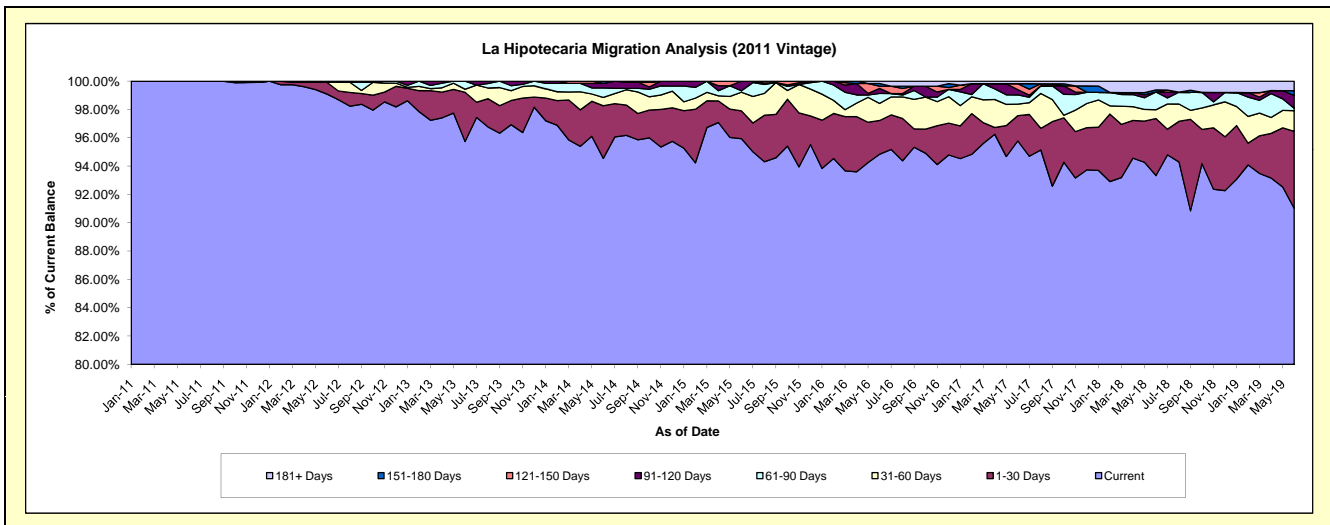
Delinquency Status (\$ of Current Balance)

Data Cutoff: 6/30/2019

Current Portfolio Balance	-	7,847,627.79	16,953,575.36	15,519,767.16	14,235,647.38	12,988,710.97	12,051,673.17	11,343,779.76	10,236,509.55	9,415,895.52
	Jun-11	Jun-12	Jun-13	Jun-14	Jun-15	Jun-16	Jun-17	Jun-18	Jun-19	
Current	7,847,627.79	16,799,267.26	14,858,688.15	13,460,027.68	12,461,126.35	11,429,950.43	10,864,979.98	9,554,088.59	8,570,358.69	
1-30 Days	-	140,135.02	539,090.20	528,837.06	254,785.78	286,824.65	202,608.41	412,016.84	512,277.68	
31-60 Days	-	-	33,511.38	83,534.52	171,733.56	145,270.93	91,900.87	64,030.35	136,843.04	
61-90 Days	-	14,173.08	88,477.43	94,797.64	12,802.58	84,991.84	74,125.47	128,071.23	15,925.12	
91-120 Days	-	-	-	46,115.02	88,262.70	42,438.27	42,438.27	-	85,857.84	
121-150 Days	-	-	-	-	-	19,557.89	47,432.75	-	-	
151-180 Days	-	-	-	22,335.46	-	22,345.15	-	14,798.29	31,128.90	
181+ Days	-	-	-	-	-	20,294.01	20,294.01	63,504.25	63,504.25	

Delinquency Status (% of Current Balance)

Current Portfolio Balance	-	7,847,627.79	16,953,575.36	15,519,767.16	14,235,647.38	12,988,710.97	12,051,673.17	11,343,779.76	10,236,509.55	9,415,895.52
	Jun-11	Jun-12	Jun-13	Jun-14	Jun-15	Jun-16	Jun-17	Jun-18	Jun-19	
Current	100.00%	99.09%	95.74%	94.55%	95.94%	94.84%	95.78%	93.33%	91.02%	
1-30 Days	0.00%	0.83%	3.47%	3.71%	1.96%	2.38%	1.79%	4.02%	5.44%	
31-60 Days	0.00%	0.00%	0.22%	0.59%	1.32%	1.21%	0.81%	0.63%	1.45%	
61-90 Days	0.00%	0.08%	0.57%	0.67%	1.0%	0.71%	0.65%	1.25%	0.17%	
91-120 Days	0.00%	0.00%	0.00%	0.32%	0.68%	0.35%	0.37%	0.00%	0.91%	
121-150 Days	0.00%	0.00%	0.00%	0.00%	0.00%	0.16%	0.42%	0.00%	0.00%	
151-180 Days	0.00%	0.00%	0.00%	0.16%	0.00%	0.19%	0.00%	0.14%	0.33%	
181+ Days	0.00%	0.00%	0.00%	0.00%	0.00%	0.17%	0.18%	0.62%	0.67%	
Current - 90 Days	100.00%	100.00%	100.00%	99.52%	99.32%	99.13%	99.03%	99.24%	98.08%	
91-180 Days	0.00%	0.00%	0.00%	0.48%	0.68%	0.70%	0.79%	0.14%	1.24%	



Mortgages - La Hipotecaria El Salvador Migration Analysis (2012 Vintage)

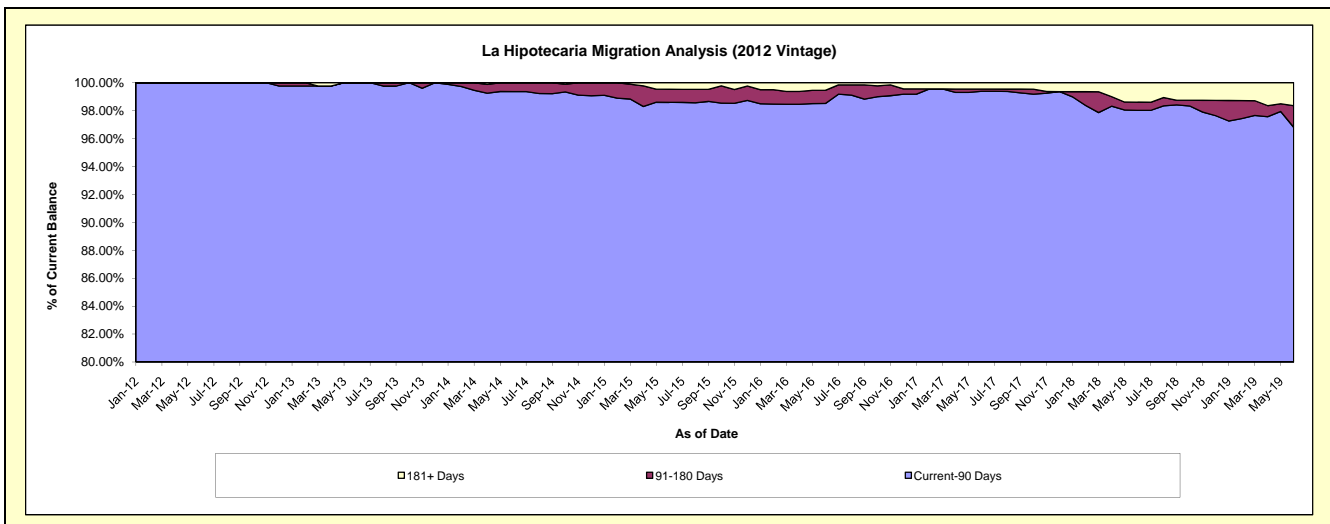
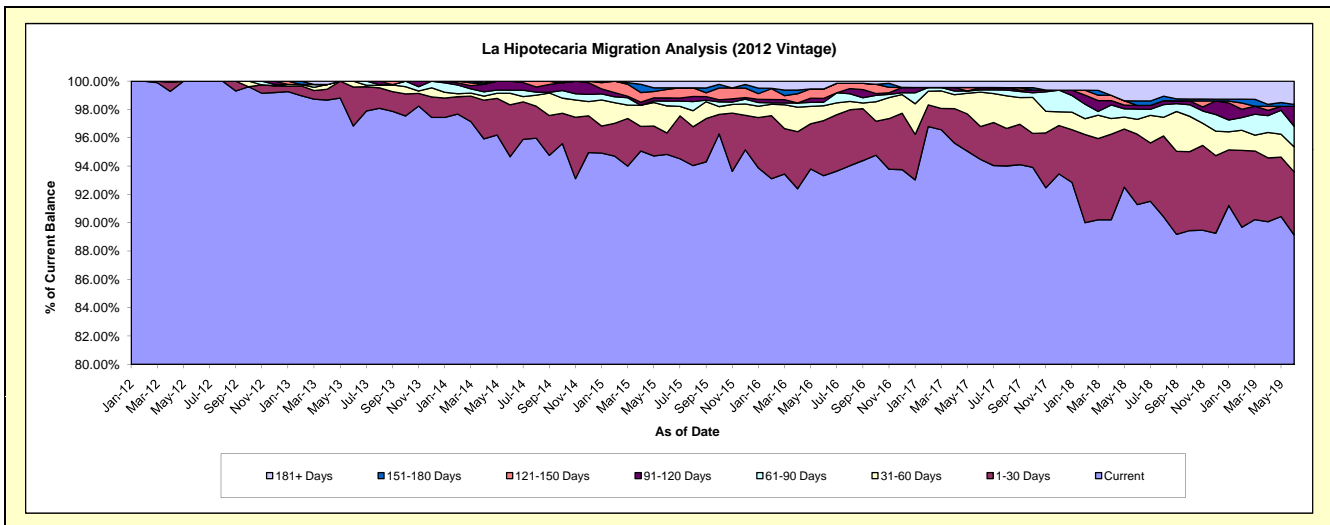
Delinquency Status (\$ of Current Balance)

Data Cutoff: 6/30/2019

Current Portfolio Balance	-	-	11,039,410.52	24,409,447.40	22,715,260.88	20,730,423.29	18,925,495.68	17,903,326.94	16,504,339.94	15,578,725.73
	Jun-12	Jun-13	Jun-14	Jun-15	Jun-16	Jun-17	Jun-18	Jun-19		
Current	11,039,410.52	23,637,054.13	21,503,517.86	19,658,974.87	17,661,956.51	16,914,073.41	15,065,674.94	13,885,871.92		
1-30 Days	-	671,161.05	832,041.74	313,466.94	737,302.11	416,510.11	820,164.56	694,309.78		
31-60 Days	-	101,232.22	186,663.03	397,042.99	198,789.34	434,550.39	172,967.22	275,701.46		
61-90 Days	-	-	48,034.01	70,175.73	45,873.67	28,825.61	119,849.80	225,691.54		
91-120 Days	-	-	145,004.24	44,941.11	52,083.81	28,598.78	43,485.51	219,835.51		
121-150 Days	-	-	-	125,597.04	126,029.40	-	-	-		
151-180 Days	-	-	-	22,608.44	-	-	51,444.27	20,532.76		
181+ Days	-	-	-	97,616.17	103,460.84	80,768.64	230,753.64	256,782.76		

Delinquency Status (% of Current Balance)

Current Portfolio Balance	-	-	11,039,410.52	24,409,447.40	22,715,260.88	20,730,423.29	18,925,495.68	17,903,326.94	16,504,339.94	15,578,725.73
	Jun-12	Jun-13	Jun-14	Jun-15	Jun-16	Jun-17	Jun-18	Jun-19		
Current	100.00%	96.84%	94.67%	94.83%	93.32%	94.47%	91.28%	89.13%		
1-30 Days	0.00%	2.75%	3.66%	1.51%	3.90%	2.33%	4.97%	4.46%		
31-60 Days	0.00%	0.41%	0.82%	1.92%	1.05%	2.43%	1.05%	1.77%		
61-90 Days	0.00%	0.00%	0.21%	0.34%	0.24%	0.16%	0.73%	1.45%		
91-120 Days	0.00%	0.00%	0.64%	0.22%	0.28%	0.16%	0.26%	1.41%		
121-150 Days	0.00%	0.00%	0.00%	0.61%	0.67%	0.00%	0.00%	0.00%		
151-180 Days	0.00%	0.00%	0.00%	0.11%	0.00%	0.00%	0.31%	0.13%		
181+ Days	0.00%	0.00%	0.00%	0.47%	0.55%	0.45%	1.40%	1.65%		
Current - 90 Days	100.00%	100.00%	99.36%	98.60%	98.51%	99.39%	98.03%	96.81%		
91-180 Days	0.00%	0.00%	0.64%	0.93%	0.94%	0.16%	0.58%	1.54%		



Mortgages - La Hipotecaria El Salvador Migration Analysis (2013 Vintage)

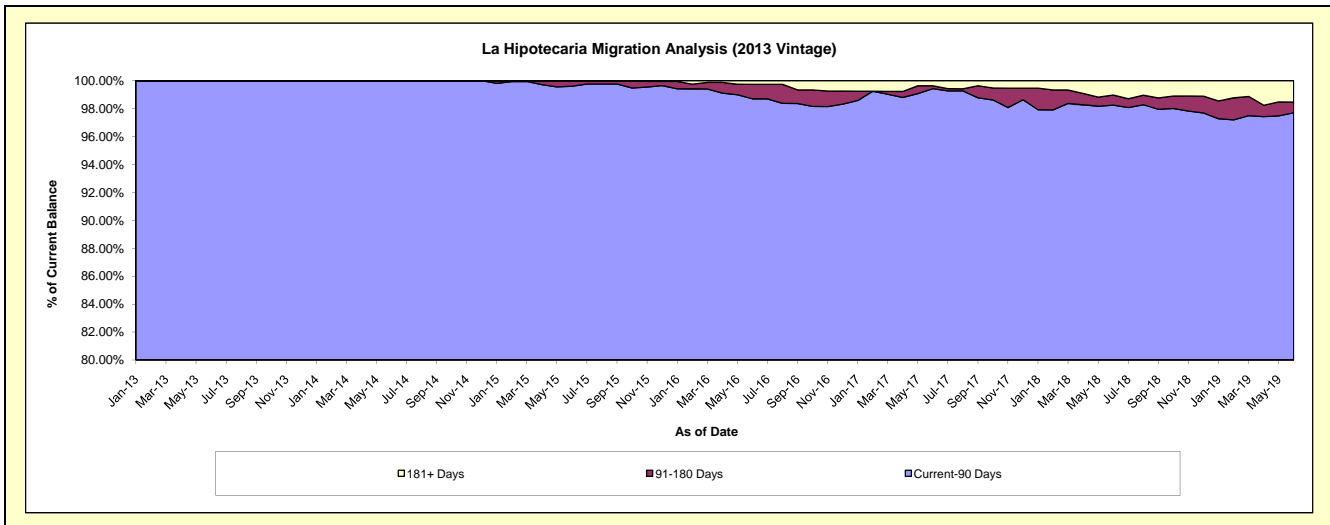
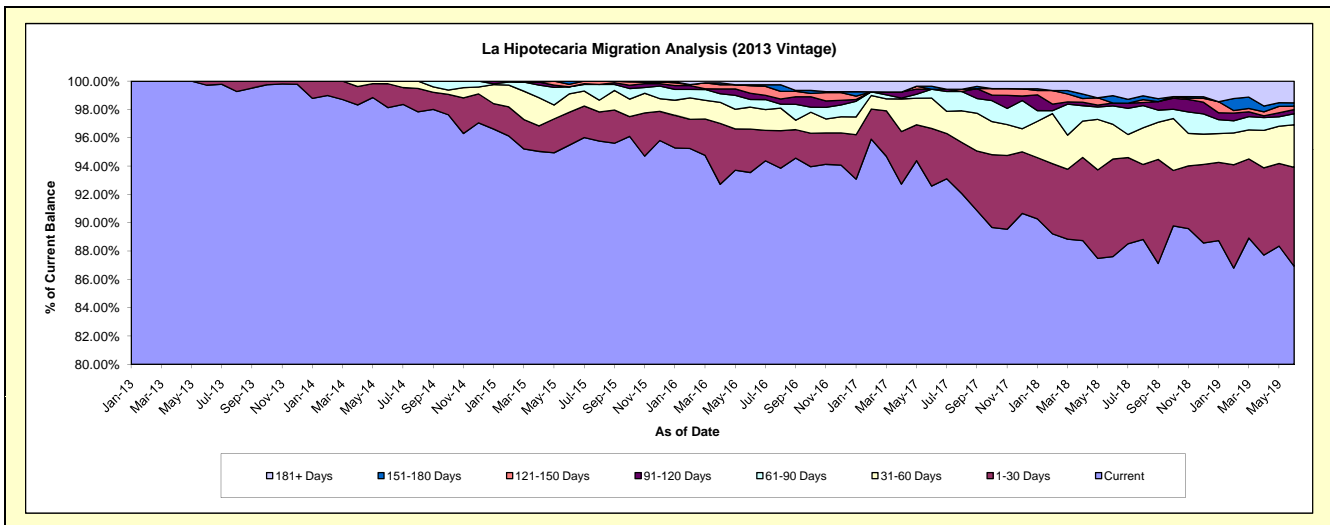
Delinquency Status (\$ of Current Balance)

Data Cutoff: 6/30/2019

Current Portfolio Balance	-	-	-	14,675,135.01	28,858,927.76	27,600,480.73	25,589,259.37	23,987,562.51	22,115,870.64	20,291,957.91
	Jun-13	Jun-14	Jun-15	Jun-16	Jun-17	Jun-18	Jun-19			
Current	14,633,628.02	28,320,126.21	26,351,833.22	23,938,159.25	22,211,288.58	19,374,891.43	17,638,842.31			
1-30 Days	41,506.99	486,676.79	641,262.74	784,036.96	974,664.67	1,524,123.14	1,418,173.21			
31-60 Days	-	52,124.76	359,213.77	398,500.82	516,668.18	543,353.37	609,699.13			
61-90 Days	-	-	138,086.49	137,376.93	148,345.55	287,658.25	159,575.60			
91-120 Days	-	-	-	112,023.32	-	44,019.53	58,597.03			
121-150 Days	-	-	49,383.41	137,951.70	-	-	48,849.42			
151-180 Days	-	-	60,701.10	15,954.35	50,096.43	114,481.75	48,023.01			
181+ Days	-	-	-	65,256.04	86,499.10	227,343.17	310,198.20			

Delinquency Status (% of Current Balance)

Current Portfolio Balance	-	-	-	14,675,135.01	28,858,927.76	27,600,480.73	25,589,259.37	23,987,562.51	22,115,870.64	20,291,957.91
	Jun-13	Jun-14	Jun-15	Jun-16	Jun-17	Jun-18	Jun-19			
Current	99.72%	98.13%	95.48%	93.55%	92.60%	87.61%	86.93%			
1-30 Days	0.28%	1.69%	2.32%	3.06%	4.06%	6.89%	6.99%			
31-60 Days	0.00%	0.18%	1.30%	1.56%	2.15%	2.46%	3.00%			
61-90 Days	0.00%	0.00%	0.50%	0.54%	0.62%	1.30%	0.79%			
91-120 Days	0.00%	0.00%	0.00%	0.44%	0.00%	0.20%	0.29%			
121-150 Days	0.00%	0.00%	0.18%	0.54%	0.00%	0.00%	0.24%			
151-180 Days	0.00%	0.00%	0.22%	0.06%	0.21%	0.52%	0.24%			
181+ Days	0.00%	0.00%	0.00%	0.26%	0.36%	1.03%	1.53%			
Current - 90 Days	100.00%	100.00%	99.60%	98.71%	99.43%	98.26%	97.71%			
91-180 Days	0.00%	0.00%	0.40%	1.04%	0.21%	0.72%	0.77%			



Mortgages - La Hipotecaria El Salvador Migration Analysis (2014 Vintage)

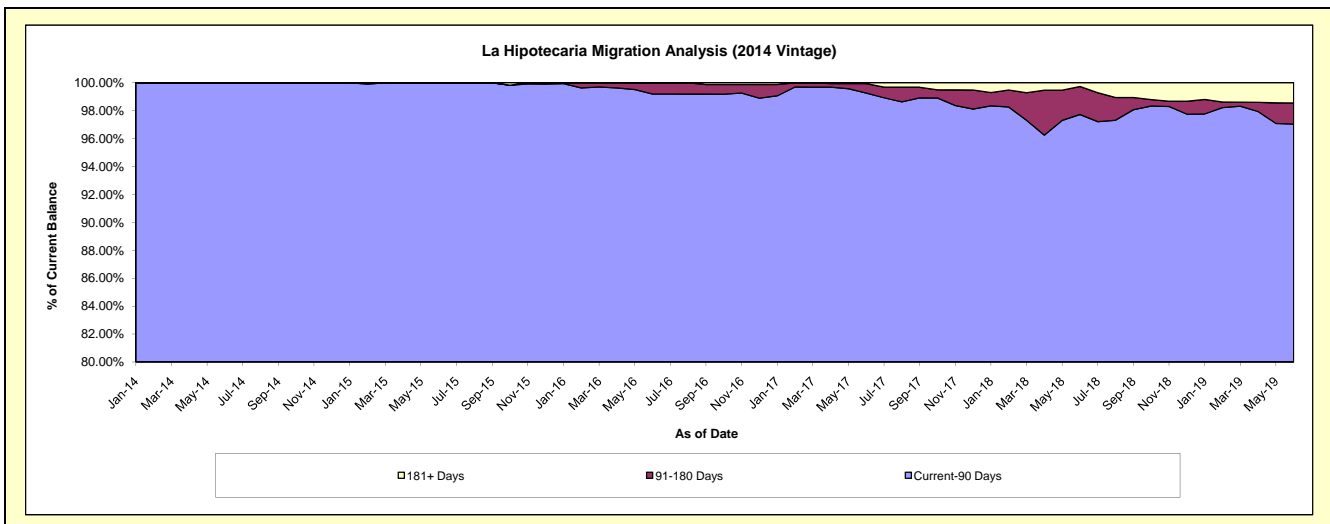
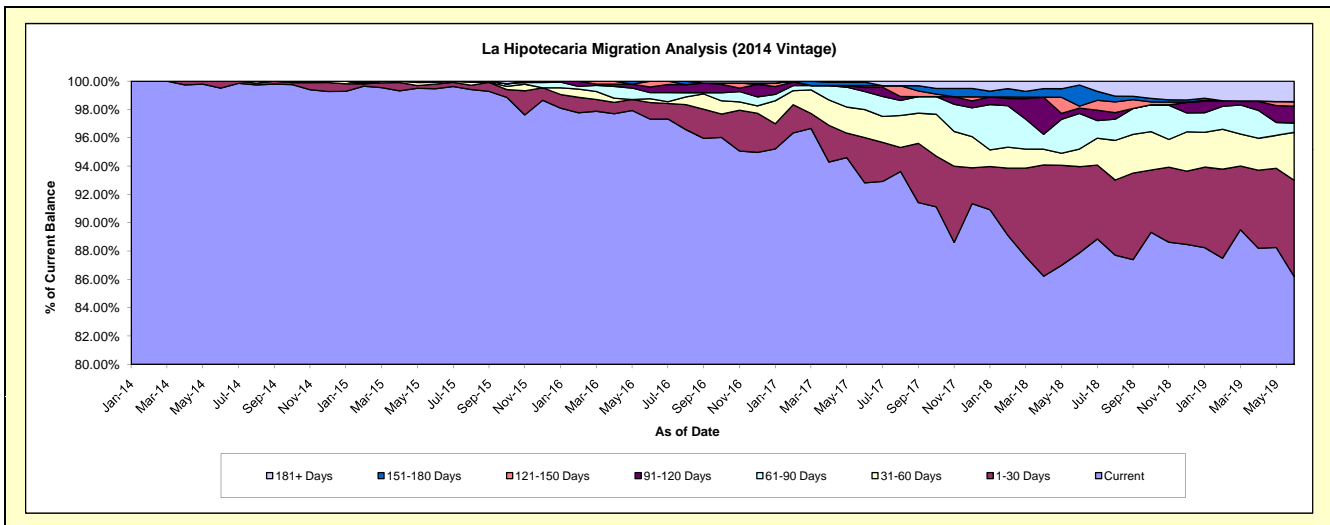
Delinquency Status (\$ of Current Balance)

Data Cutoff: 6/30/2019

Current Portfolio Balance	-	-	-	-	14,582,069.45	27,444,310.99	25,881,028.76	24,566,295.89	22,841,117.21	20,594,411.36
					Jun-14	Jun-15	Jun-16	Jun-17	Jun-18	Jun-19
Current					14,510,162.87	27,296,613.57	25,186,965.44	22,802,333.73	20,072,139.89	17,751,496.37
1-30 Days					71,906.58	90,932.65	303,161.70	786,260.62	1,390,569.62	1,401,911.03
31-60 Days					-	32,340.07	69,432.46	485,576.35	283,401.17	694,597.46
61-90 Days					-	24,424.70	112,733.15	311,747.17	575,189.36	136,558.85
91-120 Days					-	-	101,183.20	71,851.88	84,449.78	244,376.72
121-150 Days					-	-	107,552.81	30,579.69	32,791.06	67,394.93
151-180 Days					-	-	-	61,254.01	340,576.30	-
181+ Days					-	-	-	16,692.44	62,000.03	298,076.00

Delinquency Status (% of Current Balance)

Current Portfolio Balance	-	-	-	-	14,582,069.45	27,444,310.99	25,881,028.76	24,566,295.89	22,841,117.21	20,594,411.36
					Jun-14	Jun-15	Jun-16	Jun-17	Jun-18	Jun-19
Current					99.51%	99.46%	97.32%	92.82%	87.88%	86.20%
1-30 Days					0.49%	0.33%	1.17%	3.20%	6.09%	6.81%
31-60 Days					0.00%	0.12%	0.27%	1.98%	1.24%	3.37%
61-90 Days					0.00%	0.09%	0.44%	1.27%	2.52%	0.66%
91-120 Days					0.00%	0.00%	0.39%	0.29%	0.37%	1.19%
121-150 Days					0.00%	0.00%	0.42%	0.12%	0.14%	0.33%
151-180 Days					0.00%	0.00%	0.00%	0.25%	1.49%	0.00%
181+ Days					0.00%	0.00%	0.00%	0.07%	0.27%	1.45%
Current - 90 Days					100.00%	100.00%	99.19%	99.27%	97.72%	97.04%
91-180 Days					0.00%	0.00%	0.81%	0.67%	2.00%	1.51%



Mortgages - La Hipotecaria El Salvador Migration Analysis (2015 Vintage)

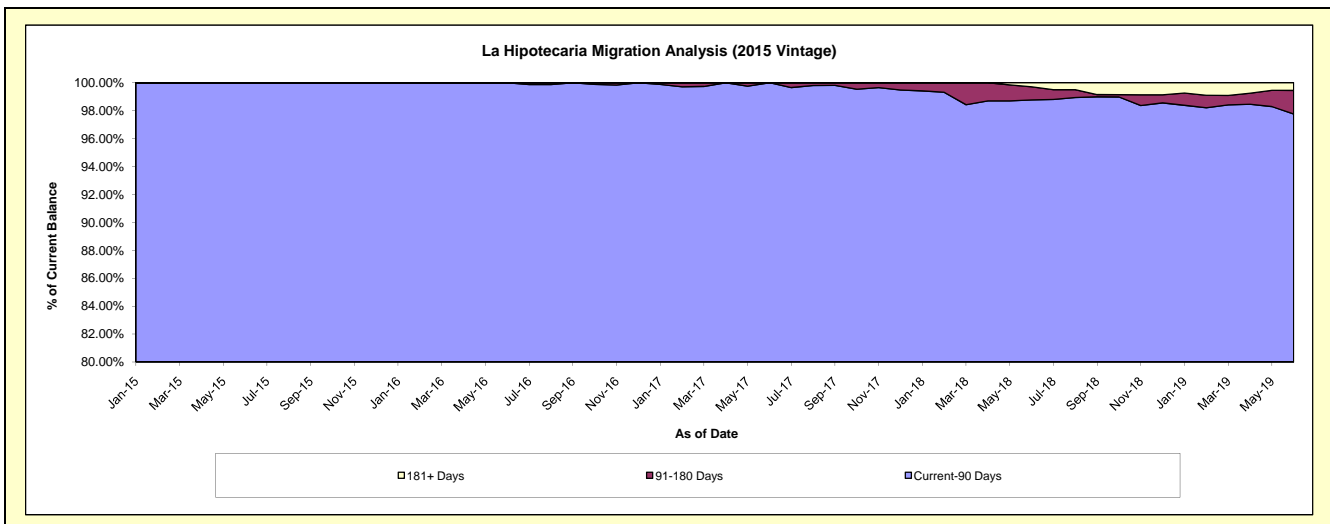
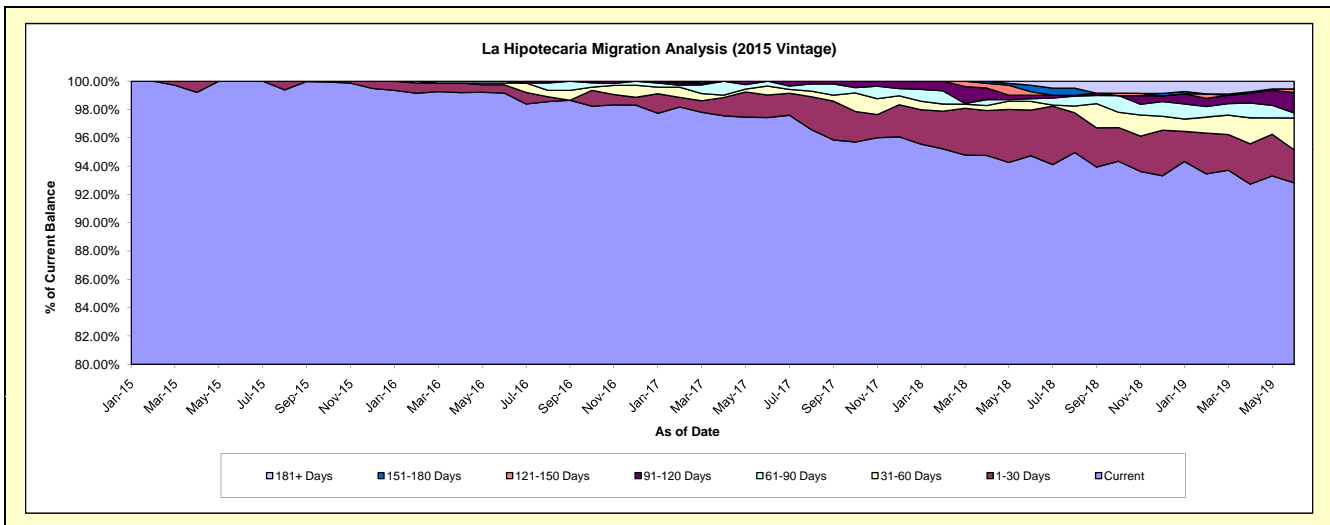
Delinquency Status (\$ of Current Balance)

Data Cutoff: 6/30/2019

Current Portfolio Balance	-	-	-	-	-	10,335,908.48	23,091,641.80	22,072,104.63	20,880,098.34	19,144,431.40
						Jun-15	Jun-16	Jun-17	Jun-18	Jun-19
Current						10,335,908.48	22,897,879.16	21,504,999.92	19,779,047.31	17,768,885.77
1-30 Days						-	134,633.21	351,227.62	675,760.63	446,495.23
31-60 Days						-	28,098.38	140,234.11	127,343.30	430,261.53
61-90 Days						-	31,031.05	75,642.98	40,226.10	70,118.72
91-120 Days						-	-	-	50,288.45	275,934.00
121-150 Days						-	-	-	52,216.01	47,386.91
151-180 Days						-	-	-	94,086.61	-
181+ Days						-	-	-	61,129.93	105,349.24

Delinquency Status (% of Current Balance)

Current Portfolio Balance	-	-	-	-	-	10,335,908.48	23,091,641.80	22,072,104.63	20,880,098.34	19,144,431.40
						Jun-15	Jun-16	Jun-17	Jun-18	Jun-19
Current						100.00%	99.16%	97.43%	94.73%	92.81%
1-30 Days						0.00%	0.58%	1.59%	3.24%	2.33%
31-60 Days						0.00%	0.12%	0.64%	0.61%	2.25%
61-90 Days						0.00%	0.13%	0.34%	0.19%	0.37%
91-120 Days						0.00%	0.00%	0.00%	0.24%	1.44%
121-150 Days						0.00%	0.00%	0.00%	0.25%	0.25%
151-180 Days						0.00%	0.00%	0.00%	0.45%	0.00%
181+ Days						0.00%	0.00%	0.00%	0.29%	0.55%
Current - 90 Days						100.00%	100.00%	100.00%	98.77%	97.76%
91-180 Days						0.00%	0.00%	0.00%	0.94%	1.69%



Mortgages - La Hipotecaria El Salvador Migration Analysis (2016 Vintage)

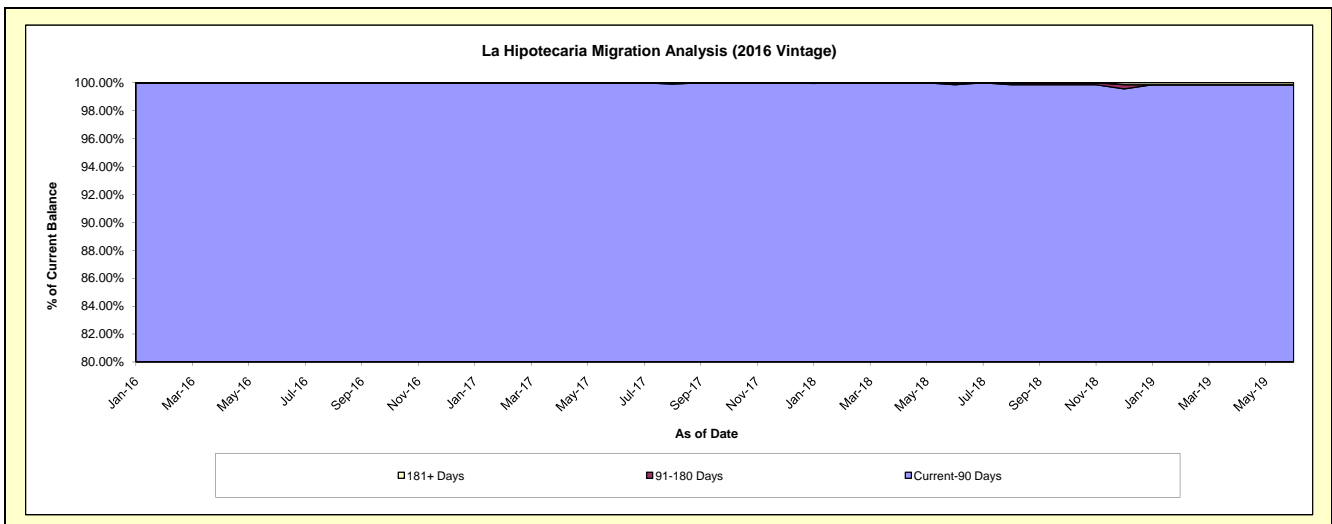
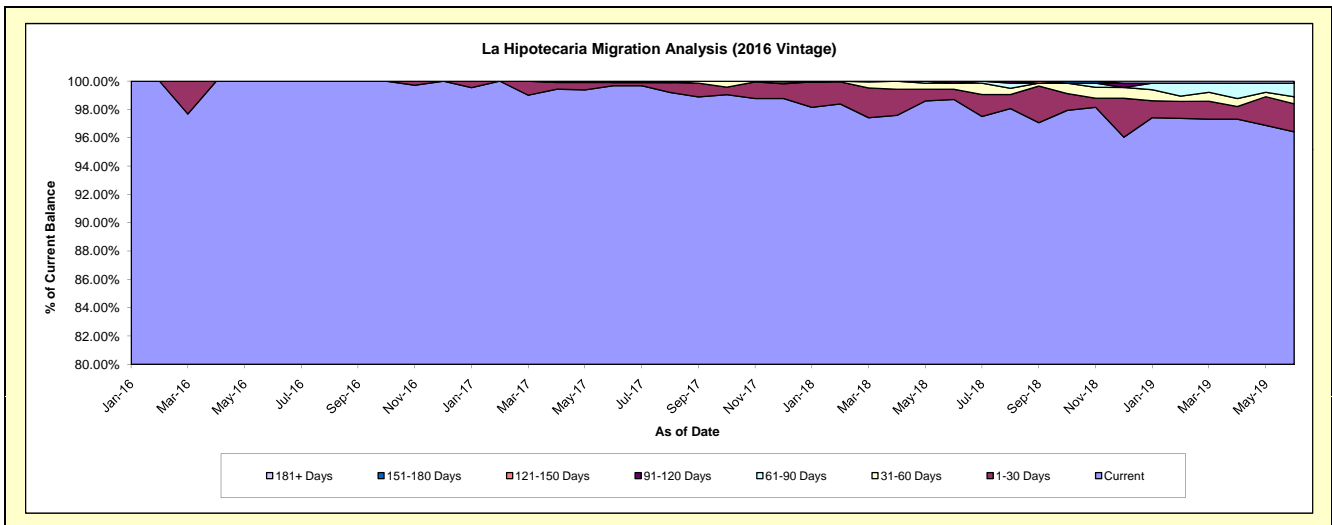
Delinquency Status (\$ of Current Balance)

Data Cutoff: 6/30/2019

Current Portfolio Balance	-	-	-	-	-	-	-	12,243,349.24	23,342,057.20	22,451,482.15	21,458,317.56
								Jun-16	Jun-17	Jun-18	Jun-19
Current								12,243,349.24	23,266,606.22	22,161,287.92	20,690,473.52
1-30 Days								-	53,776.98	160,836.83	425,785.52
31-60 Days								-	-	97,731.90	106,206.94
61-90 Days								-	21,674.00	-	204,226.08
91-120 Days								-	-	31,625.50	-
121-150 Days								-	-	-	-
151-180 Days								-	-	-	-
181+ Days								-	-	-	31,625.50

Delinquency Status (% of Current Balance)

Current Portfolio Balance	-	-	-	-	-	-	-	12,243,349.24	23,342,057.20	22,451,482.15	21,458,317.56
								Jun-16	Jun-17	Jun-18	Jun-19
Current								100.00%	99.68%	98.71%	96.42%
1-30 Days								0.00%	0.23%	0.72%	1.98%
31-60 Days								0.00%	0.00%	0.44%	0.49%
61-90 Days								0.00%	0.09%	0.00%	0.95%
91-120 Days								0.00%	0.00%	0.14%	0.00%
121-150 Days								0.00%	0.00%	0.00%	0.00%
151-180 Days								0.00%	0.00%	0.00%	0.00%
181+ Days								0.00%	0.00%	0.00%	0.15%
Current - 90 Days								100.00%	100.00%	99.86%	99.85%
91-180 Days								0.00%	0.00%	0.14%	0.00%



Mortgages - La Hipotecaria El Salvador Migration Analysis (2017 Vintage)

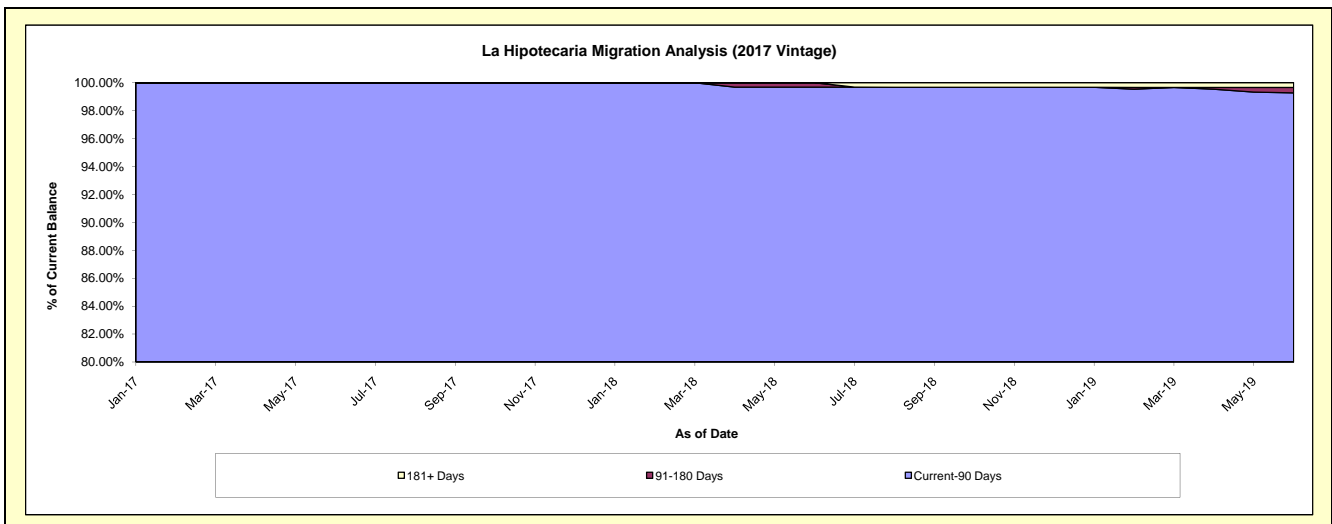
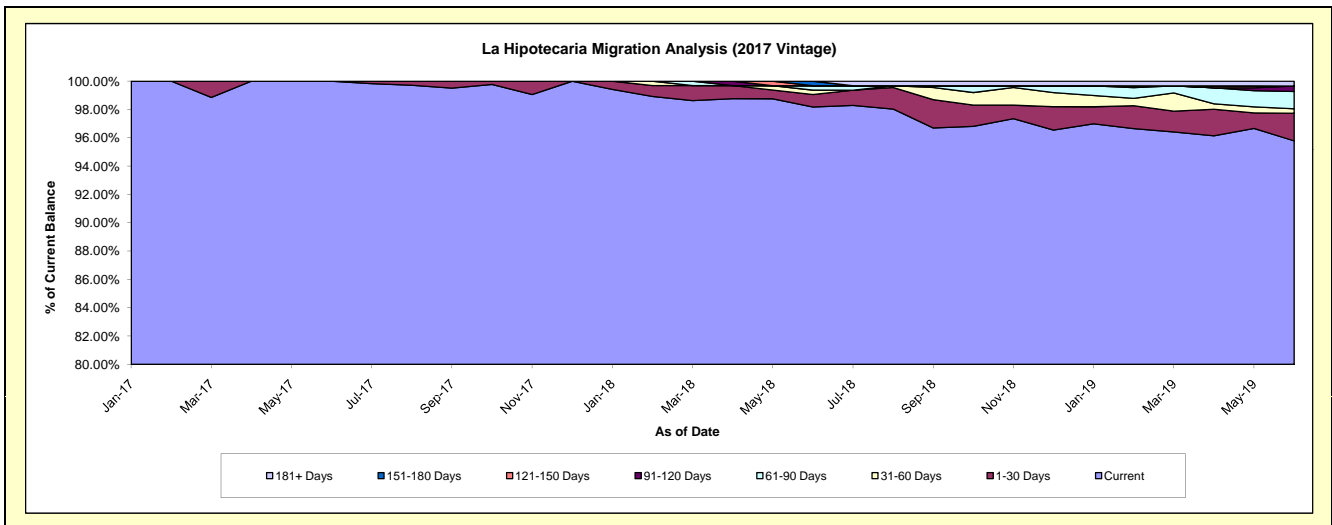
Delinquency Status (\$ of Current Balance)

Data Cutoff: 6/30/2019

Current Portfolio Balance	-	-	-	-	-	-	-	-	-	9,379,816.80	18,619,160.25	17,357,048.90
										Jun-17	Jun-18	Jun-19
Current										9,379,816.80	18,278,521.51	16,625,451.23
1-30 Days										-	165,527.55	338,376.97
31-60 Days										-	57,261.92	54,487.37
61-90 Days										-	58,449.27	212,441.58
91-120 Days										-	-	66,891.75
121-150 Days										-	-	-
151-180 Days										-	59,400.00	-
181+ Days										-	-	59,400.00

Delinquency Status (% of Current Balance)

Current Portfolio Balance	-	-	-	-	-	-	-	-	-	9,379,816.80	18,619,160.25	17,357,048.90
										Jun-17	Jun-18	Jun-19
Current										100.00%	98.17%	95.79%
1-30 Days										0.00%	0.89%	1.95%
31-60 Days										0.00%	0.31%	0.31%
61-90 Days										0.00%	0.31%	1.22%
91-120 Days										0.00%	0.00%	0.39%
121-150 Days										0.00%	0.00%	0.00%
151-180 Days										0.00%	0.32%	0.00%
181+ Days										0.00%	0.00%	0.34%
Current - 90 Days										100.00%	99.68%	99.27%
91-180 Days										0.00%	0.32%	0.39%



Mortgages - La Hipotecaria El Salvador Migration Analysis (2018 Vintage)

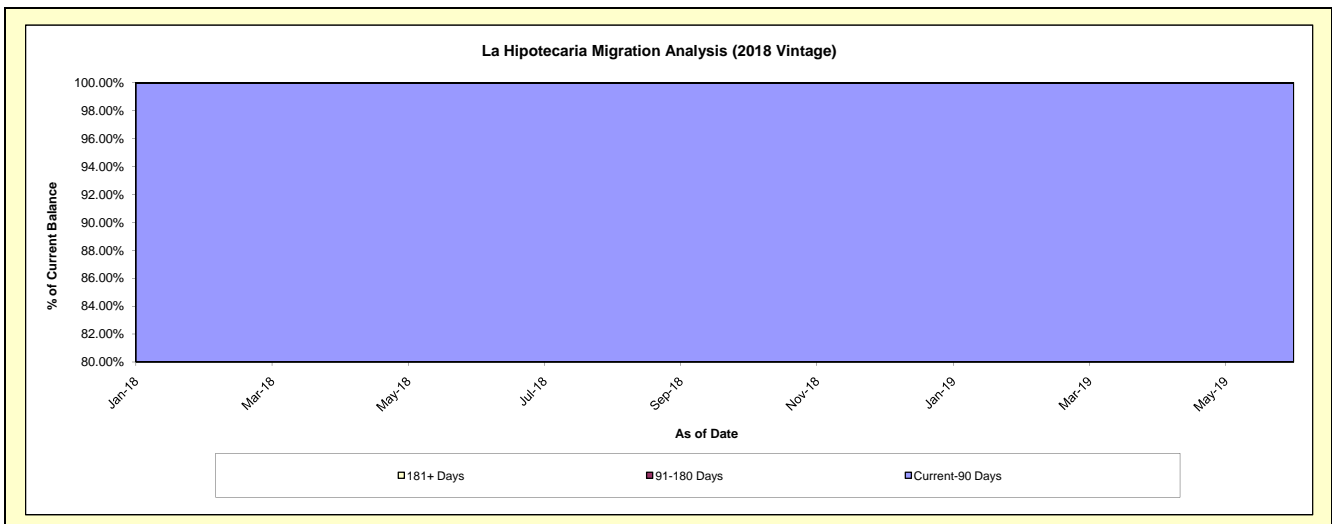
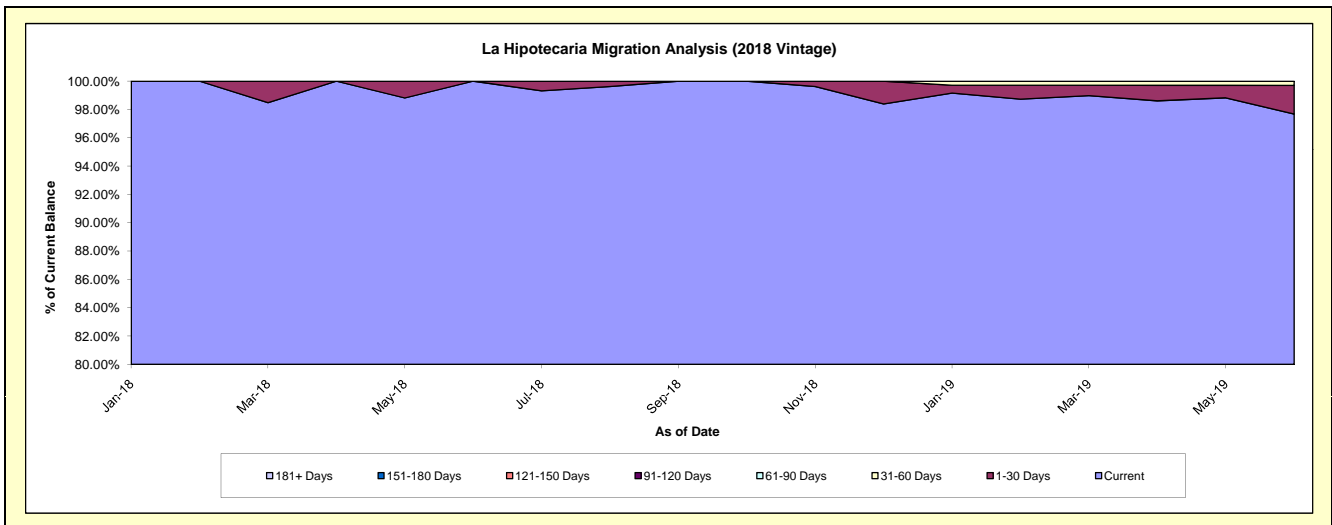
Delinquency Status (\$ of Current Balance)

Data Cutoff: 6/30/2019

Current Portfolio Balance										10,702,187.56	22,897,928.04
										Jun-18	Jun-19
Current										10,702,187.56	22,366,753.55
1-30 Days										-	463,297.08
31-60 Days										-	67,877.41
61-90 Days										-	-
91-120 Days										-	-
121-150 Days										-	-
151-180 Days										-	-
181+ Days										-	-

Delinquency Status (% of Current Balance)

Current Portfolio Balance										10,702,187.56	22,897,928.04
										Jun-18	Jun-19
Current										100.00%	97.68%
1-30 Days										0.00%	2.02%
31-60 Days										0.00%	0.30%
61-90 Days										0.00%	0.00%
91-120 Days										0.00%	0.00%
121-150 Days										0.00%	0.00%
151-180 Days										0.00%	0.00%
181+ Days										0.00%	0.00%
Current - 90 Days										100.00%	100.00%
91-180 Days										0.00%	0.00%



Mortgages - La Hipotecaria El Salvador Migration Analysis (2019 Vintage)

Delinquency Status (\$ of Current Balance)

Data Cutoff: 6/30/2019

Current Portfolio Balance	-	-	-	-	-	-	-	-	-	-	-	-	13,963,231.77
	Jun-19												
Current													13,963,231.77
1-30 Days													-
31-60 Days													-
61-90 Days													-
91-120 Days													-
121-150 Days													-
151-180 Days													-
181+ Days													-

Delinquency Status (% of Current Balance)

Current Portfolio Balance	-	-	-	-	-	-	-	-	-	-	-	-	13,963,231.77
	Jun-19												
Current													100.00%
1-30 Days													0.00%
31-60 Days													0.00%
61-90 Days													0.00%
91-120 Days													0.00%
121-150 Days													0.00%
151-180 Days													0.00%
181+ Days													0.00%
Current - 90 Days													100.00%
91-180 Days													0.00%

