



Migration Analysis for La Hipotecaria S.A. de C.V El Salvador

Personal Loans June 2019

An analysis of historical loan payment data was used to compile a migration analysis of delinquency by annual vintage. Delinquencies for each vintage were grouped into the following buckets; Current, 1-30, 31-60, 61-90, 91-120, 121-150, 151-180, and 180+. Results are provided in graphical and tabular form. The cutoff date is 6/30/2019.

Personal Loans - La Hipotecaria El Salvador Migration Analysis (All Vintages)

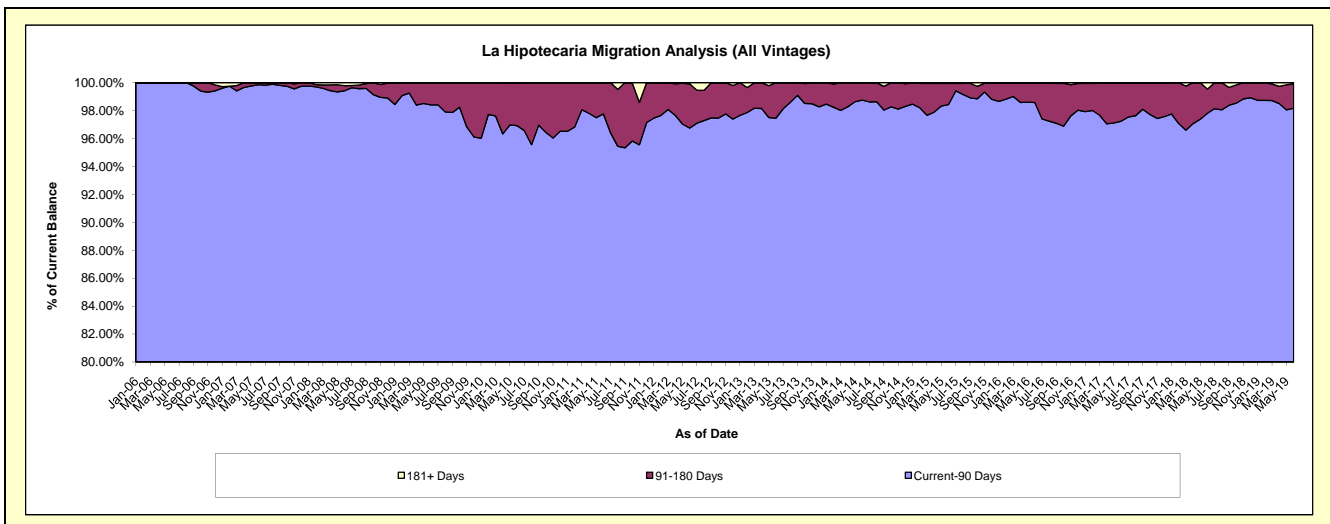
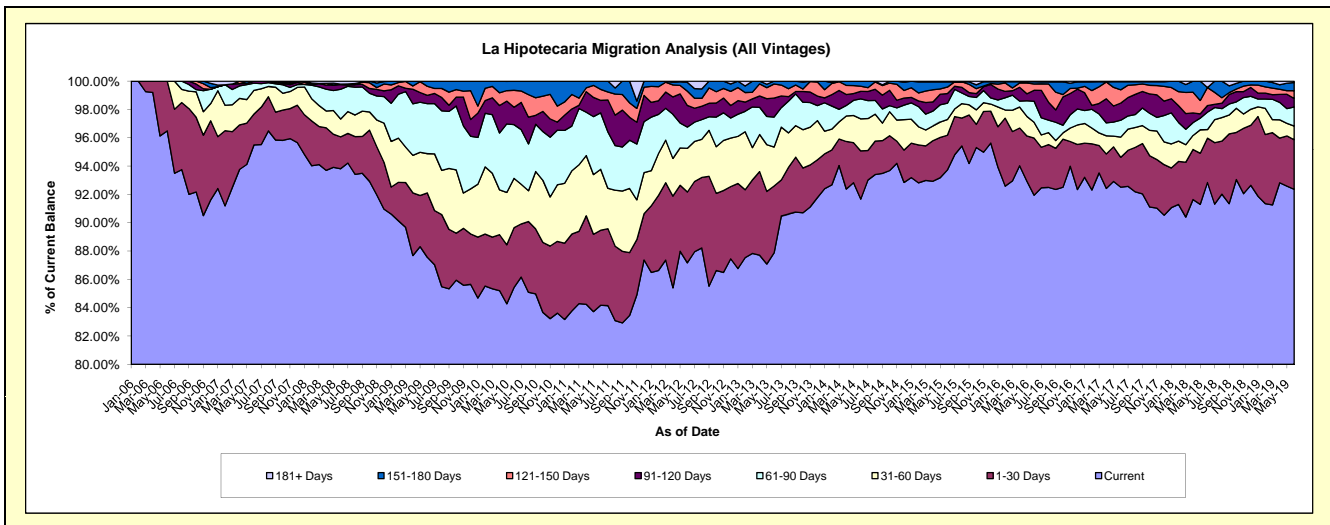
Delinquency Status (\$ of Current Balance)

Data Cutoff: 6/30/2019

Current Portfolio Balance	7,226,952.28	5,348,484.54	4,702,675.09	5,072,194.67	5,491,802.43	5,170,099.28	4,837,381.94	4,831,848.53	5,860,680.28	9,568,968.44
	Jun-10	Jun-11	Jun-12	Jun-13	Jun-14	Jun-15	Jun-16	Jun-17	Jun-18	Jun-19
Current	6,173,907.02	4,502,258.07	4,099,534.61	4,456,970.79	5,034,478.34	4,845,786.45	4,447,677.64	4,470,022.81	5,441,063.77	8,838,270.03
1-30 Days	304,878.52	283,111.28	235,194.30	239,544.16	186,955.69	126,897.24	195,231.96	102,095.64	183,557.67	335,277.63
31-60 Days	252,132.09	230,358.79	145,074.48	139,821.40	124,161.84	57,503.14	54,233.83	69,112.98	35,554.53	92,233.98
61-90 Days	274,175.28	213,076.56	70,509.86	107,303.26	77,738.03	59,316.62	71,859.80	57,581.86	72,390.85	128,472.85
91-120 Days	88,659.34	47,120.66	71,858.81	68,214.67	29,167.72	35,130.57	37,173.33	58,121.12	27,192.76	57,634.41
121-150 Days	86,674.70	41,488.04	47,504.65	50,335.18	19,490.63	23,982.88	21,846.14	45,456.74	74,506.95	52,725.40
151-180 Days	46,525.33	31,071.14	29,193.57	10,005.21	19,810.18	19,027.61	7,215.76	27,457.46	-	55,561.99
181+ Days	-	-	3,804.81	-	-	2,454.77	2,143.48	1,999.92	26,413.75	8,792.15

Delinquency Status (% of Current Balance)

Current Portfolio Balance	7,226,952.28	5,348,484.54	4,702,675.09	5,072,194.67	5,491,802.43	5,170,099.28	4,837,381.94	4,831,848.53	5,860,680.28	9,568,968.44
	Jun-10	Jun-11	Jun-12	Jun-13	Jun-14	Jun-15	Jun-16	Jun-17	Jun-18	Jun-19
Current	85.43%	84.18%	87.17%	87.87%	91.67%	93.73%	91.94%	92.51%	92.84%	92.36%
1-30 Days	4.22%	5.29%	5.00%	4.72%	3.40%	2.45%	4.04%	2.11%	3.13%	3.50%
31-60 Days	3.49%	4.31%	3.08%	2.76%	2.26%	1.11%	1.12%	1.43%	0.61%	0.96%
61-90 Days	3.79%	3.98%	1.50%	2.12%	1.42%	1.15%	1.49%	1.19%	1.24%	1.34%
91-120 Days	1.23%	0.88%	1.53%	1.34%	0.53%	0.68%	0.77%	1.20%	0.46%	0.60%
121-150 Days	1.20%	0.78%	1.01%	0.99%	0.35%	0.46%	0.45%	0.94%	1.27%	0.55%
151-180 Days	0.64%	0.58%	0.62%	0.20%	0.36%	0.37%	0.15%	0.57%	0.00%	0.58%
181+ Days	0.00%	0.00%	0.08%	0.00%	0.00%	0.05%	0.04%	0.04%	0.45%	0.09%
Current - 90 Days	96.93%	97.76%	96.76%	97.47%	98.75%	98.44%	98.59%	97.25%	97.81%	98.17%
91-180 Days	3.07%	2.24%	3.16%	2.53%	1.25%	1.51%	1.37%	2.71%	1.74%	1.73%



Personal Loans - La Hipotecaria El Salvador Migration Analysis (2006 Vintage)

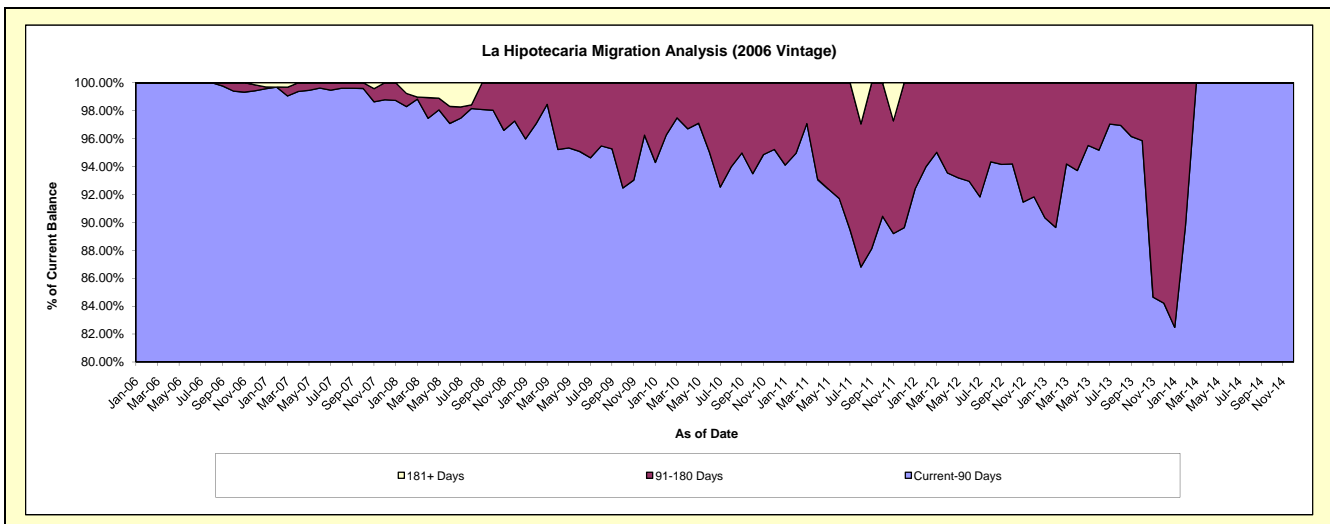
Delinquency Status (\$ of Current Balance)

Data Cutoff: 6/30/2019

Current Portfolio Balance	481,283.07	292,960.05	138,284.49	55,054.20	5,591.95	#N/A	#N/A	#N/A	#N/A	#N/A
	Jun-10	Jun-11	Jun-12	Jun-13	Jun-14	Jun-15	Jun-16	Jun-17	Jun-18	Jun-19
Current	339,713.06	191,309.07	105,217.12	32,187.48	3,053.53	#N/A	#N/A	#N/A	#N/A	#N/A
1-30 Days	38,436.04	30,428.64	9,024.98	10,103.63	1,456.99	#N/A	#N/A	#N/A	#N/A	#N/A
31-60 Days	31,474.46	27,484.12	14,284.86	9,625.58	1,081.43	#N/A	#N/A	#N/A	#N/A	#N/A
61-90 Days	47,691.16	19,441.51	-	480.86	-	#N/A	#N/A	#N/A	#N/A	#N/A
91-120 Days	12,212.41	6,070.29	5,154.52	-	-	#N/A	#N/A	#N/A	#N/A	#N/A
121-150 Days	11,755.94	8,784.87	4,603.01	-	-	#N/A	#N/A	#N/A	#N/A	#N/A
151-180 Days	-	9,441.55	-	2,656.65	-	#N/A	#N/A	#N/A	#N/A	#N/A
181+ Days	-	-	-	-	-	#N/A	#N/A	#N/A	#N/A	#N/A

Delinquency Status (% of Current Balance)

Current Portfolio Balance	481,283.07	292,960.05	138,284.49	55,054.20	5,591.95	#N/A	#N/A	#N/A	#N/A	#N/A
	Jun-10	Jun-11	Jun-12	Jun-13	Jun-14	Jun-15	Jun-16	Jun-17	Jun-18	Jun-19
Current	70.58%	65.30%	76.09%	58.47%	54.61%	#N/A	#N/A	#N/A	#N/A	#N/A
1-30 Days	7.99%	10.39%	6.53%	18.35%	26.06%	#N/A	#N/A	#N/A	#N/A	#N/A
31-60 Days	6.54%	9.38%	10.33%	17.48%	19.34%	#N/A	#N/A	#N/A	#N/A	#N/A
61-90 Days	9.91%	6.64%	0.00%	0.87%	0.00%	#N/A	#N/A	#N/A	#N/A	#N/A
91-120 Days	2.54%	2.07%	3.73%	0.00%	0.00%	#N/A	#N/A	#N/A	#N/A	#N/A
121-150 Days	2.44%	3.00%	3.33%	0.00%	0.00%	#N/A	#N/A	#N/A	#N/A	#N/A
151-180 Days	0.00%	3.22%	0.00%	4.83%	0.00%	#N/A	#N/A	#N/A	#N/A	#N/A
181+ Days	0.00%	0.00%	0.00%	0.00%	0.00%	#N/A	#N/A	#N/A	#N/A	#N/A
Current - 90 Days	95.02%	91.71%	92.94%	95.17%	100.00%	#N/A	#N/A	#N/A	#N/A	#N/A
91-180 Days	4.98%	8.29%	7.06%	4.83%	0.00%	#N/A	#N/A	#N/A	#N/A	#N/A



Personal Loans - La Hipotecaria El Salvador Migration Analysis (2007 Vintage)

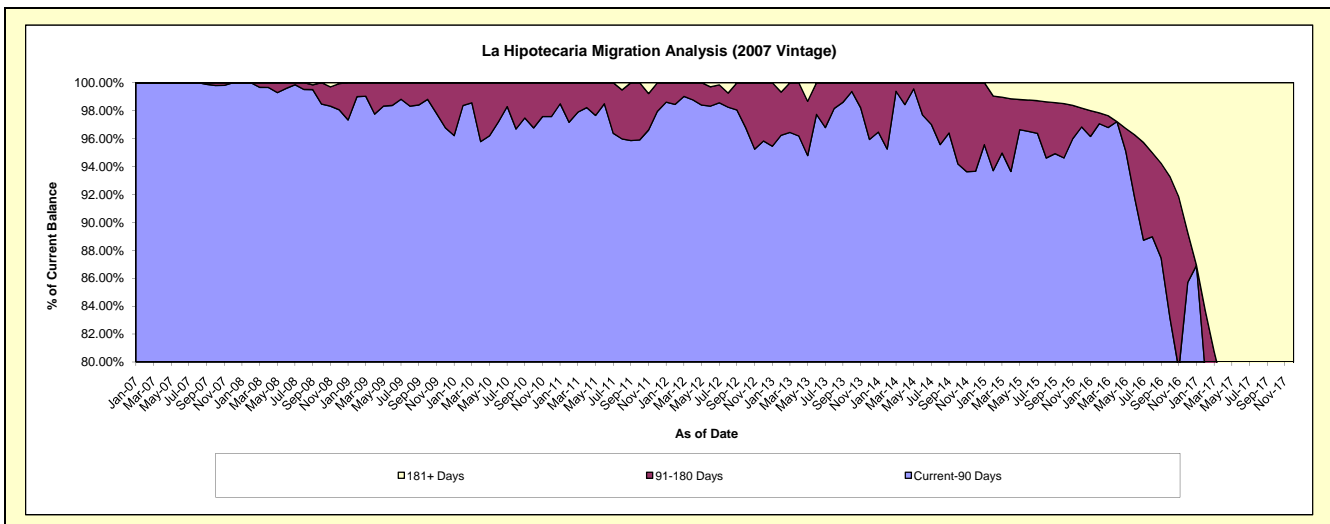
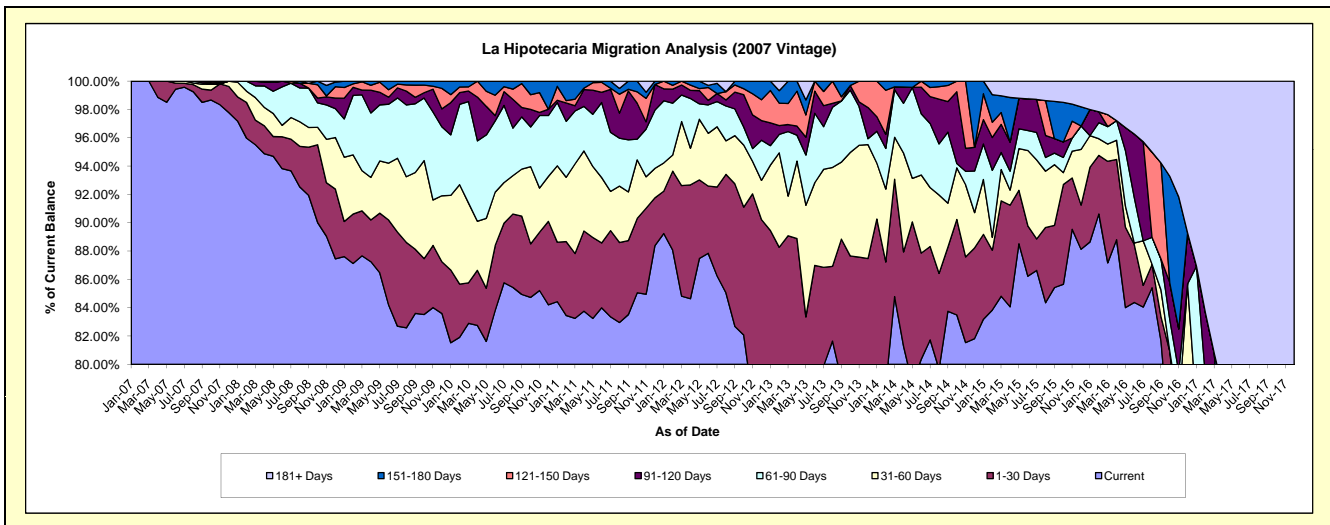
Delinquency Status (\$ of Current Balance)

Data Cutoff: 6/30/2019

Current Portfolio Balance	2,767,056.63	1,886,252.78	1,293,649.31	771,646.75	441,294.85	196,820.76	57,442.77	5,509.90	#N/A	#N/A
	Jun-10	Jun-11	Jun-12	Jun-13	Jun-14	Jun-15	Jun-16	Jun-17	Jun-18	Jun-19
Current	2,318,767.65	1,584,329.60	1,136,387.39	599,816.27	354,696.30	169,704.07	48,467.49	1,462.09	#N/A	#N/A
1-30 Days	127,062.10	86,405.05	61,450.42	71,444.07	33,021.10	7,013.04	2,346.93	2,047.89	#N/A	#N/A
31-60 Days	104,436.16	87,024.91	48,187.37	45,047.25	24,340.21	10,473.11	65.30	-	#N/A	#N/A
61-90 Days	138,946.07	100,107.08	25,972.92	37,857.58	19,034.33	2,772.51	1,849.19	-	#N/A	#N/A
91-120 Days	10,447.09	13,543.70	4,079.26	12,065.17	8,311.98	4,403.26	2,570.38	-	#N/A	#N/A
121-150 Days	39,912.71	13,231.86	11,827.05	5,416.41	1,890.93	-	-	-	#N/A	#N/A
151-180 Days	27,484.85	1,610.58	1,940.09	-	-	-	-	-	#N/A	#N/A
181+ Days	-	-	3,804.81	-	-	2,454.77	2,143.48	1,999.92	#N/A	#N/A

Delinquency Status (% of Current Balance)

Current Portfolio Balance	2,767,056.63	1,886,252.78	1,293,649.31	771,646.75	441,294.85	196,820.76	57,442.77	5,509.90	#N/A	#N/A
	Jun-10	Jun-11	Jun-12	Jun-13	Jun-14	Jun-15	Jun-16	Jun-17	Jun-18	Jun-19
Current	83.80%	83.99%	87.84%	77.73%	80.38%	86.22%	84.38%	26.54%	#N/A	#N/A
1-30 Days	4.59%	4.58%	4.75%	9.26%	7.48%	3.56%	4.09%	37.17%	#N/A	#N/A
31-60 Days	3.77%	4.61%	3.72%	5.84%	5.52%	5.32%	0.11%	0.00%	#N/A	#N/A
61-90 Days	5.02%	5.31%	2.01%	4.91%	4.31%	1.41%	3.22%	0.00%	#N/A	#N/A
91-120 Days	0.38%	0.72%	0.32%	1.56%	1.88%	2.24%	4.47%	0.00%	#N/A	#N/A
121-150 Days	1.44%	0.70%	0.91%	0.70%	0.43%	0.00%	0.00%	0.00%	#N/A	#N/A
151-180 Days	0.99%	0.09%	0.15%	0.00%	0.00%	0.00%	0.00%	0.00%	#N/A	#N/A
181+ Days	0.00%	0.00%	0.29%	0.00%	0.00%	1.25%	3.73%	36.30%	#N/A	#N/A
Current - 90 Days	97.19%	98.50%	98.33%	97.73%	97.69%	96.52%	91.79%	63.70%	#N/A	#N/A
91-180 Days	2.81%	1.50%	1.38%	2.27%	2.31%	2.24%	4.47%	0.00%	#N/A	#N/A



Personal Loans - La Hipotecaria El Salvador Migration Analysis (2008 Vintage)

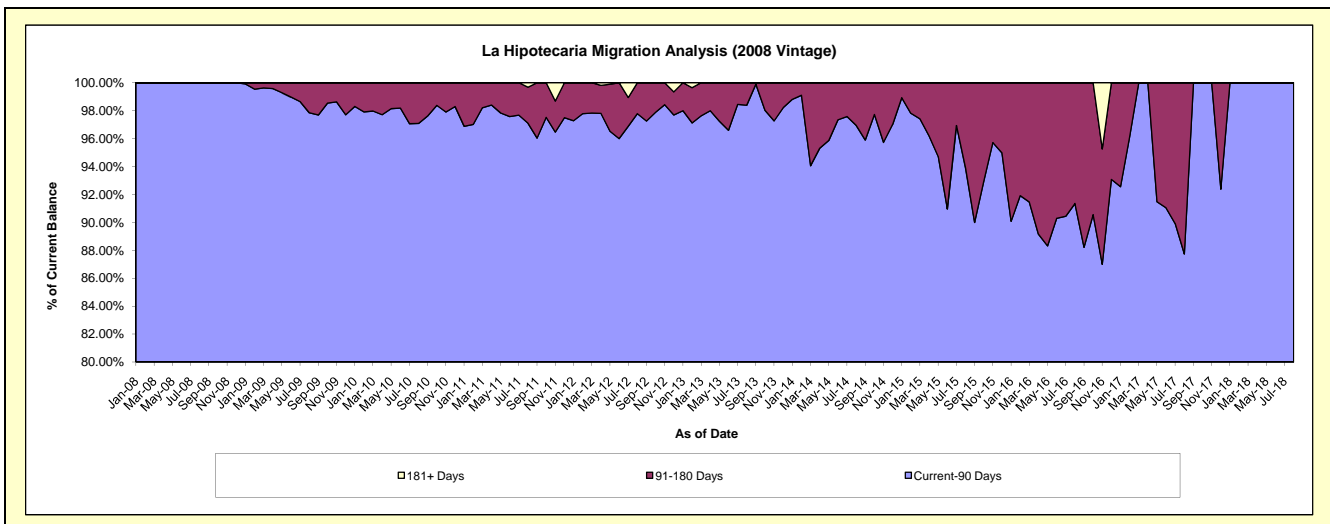
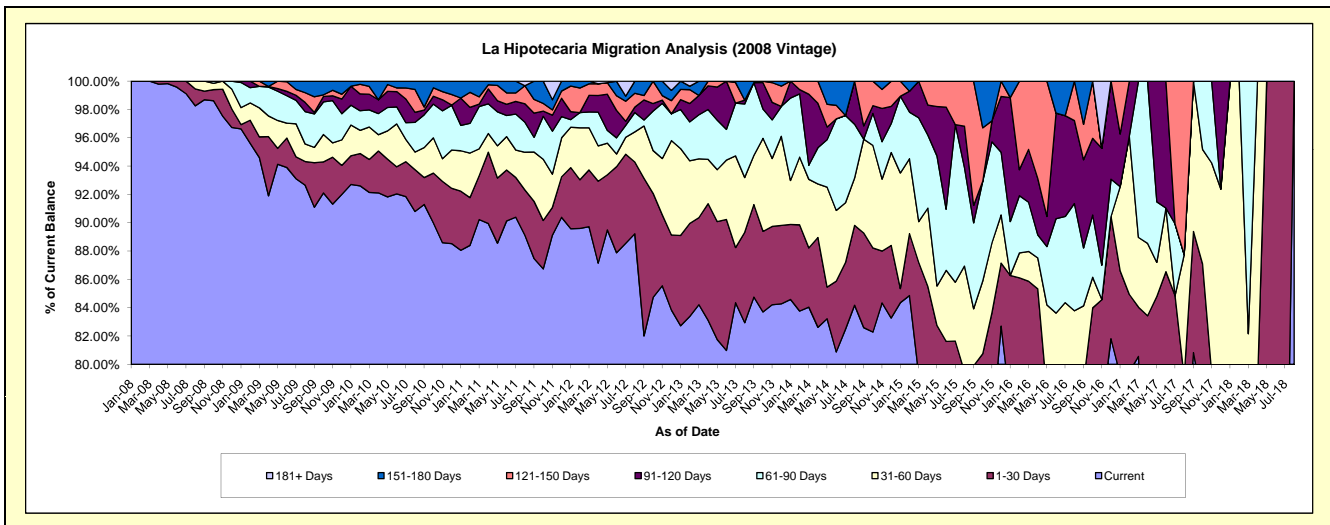
Delinquency Status (\$ of Current Balance)

Data Cutoff: 6/30/2019

Current Portfolio Balance	3,270,057.16	2,423,115.89	1,751,265.95	1,195,123.96	733,679.91	372,820.61	152,713.75	41,955.31	1,255.19	#N/A
	Jun-10	Jun-11	Jun-12	Jun-13	Jun-14	Jun-15	Jun-16	Jun-17	Jun-18	Jun-19
Current	3,009,631.27	2,183,909.54	1,539,085.88	967,842.40	593,375.83	287,702.20	113,825.26	28,500.32	904.93	#N/A
1-30 Days	62,602.27	87,193.52	106,389.47	110,557.91	36,698.69	16,598.29	8,028.41	7,810.17	350.26	#N/A
31-60 Days	99,086.45	57,053.35	15,740.52	50,095.04	36,632.46	18,711.96	5,841.33	1,885.69	-	#N/A
61-90 Days	39,264.75	36,169.01	19,993.98	25,940.20	47,464.79	16,092.58	10,194.14	-	-	#N/A
91-120 Days	35,403.92	19,300.15	33,976.30	40,688.41	-	26,878.23	11,374.90	3,759.13	-	#N/A
121-150 Days	8,556.04	19,471.31	18,053.00	-	6,989.02	6,837.35	-	-	-	#N/A
151-180 Days	15,512.46	20,019.01	18,026.80	-	12,519.12	-	3,449.71	-	-	#N/A
181+ Days	-	-	-	-	-	-	-	-	-	#N/A

Delinquency Status (% of Current Balance)

Current Portfolio Balance	3,270,057.16	2,423,115.89	1,751,265.95	1,195,123.96	733,679.91	372,820.61	152,713.75	41,955.31	1,255.19	#N/A
	Jun-10	Jun-11	Jun-12	Jun-13	Jun-14	Jun-15	Jun-16	Jun-17	Jun-18	Jun-19
Current	92.04%	90.13%	87.88%	80.98%	80.88%	77.17%	74.54%	67.93%	72.10%	#N/A
1-30 Days	1.91%	3.60%	6.08%	9.25%	5.00%	4.45%	5.26%	18.62%	27.90%	#N/A
31-60 Days	3.03%	2.35%	0.90%	4.19%	4.99%	5.02%	3.83%	4.49%	0.00%	#N/A
61-90 Days	1.20%	1.49%	1.14%	2.17%	6.47%	4.32%	6.68%	0.00%	0.00%	#N/A
91-120 Days	1.08%	0.80%	1.94%	3.40%	0.00%	7.21%	7.45%	8.96%	0.00%	#N/A
121-150 Days	0.26%	0.80%	1.03%	0.00%	0.95%	1.83%	0.00%	0.00%	0.00%	#N/A
151-180 Days	0.47%	0.83%	1.03%	0.00%	1.71%	0.00%	2.26%	0.00%	0.00%	#N/A
181+ Days	0.00%	0.00%	0.00%	0.00%	0.00%	0.00%	0.00%	0.00%	0.00%	#N/A
Current - 90 Days	98.18%	97.57%	96.00%	96.60%	97.34%	90.96%	90.29%	91.04%	100.00%	#N/A
91-180 Days	1.82%	2.43%	4.00%	3.40%	2.66%	9.04%	9.71%	8.96%	0.00%	#N/A



Personal Loans - La Hipotecaria El Salvador Migration Analysis (2009 Vintage)

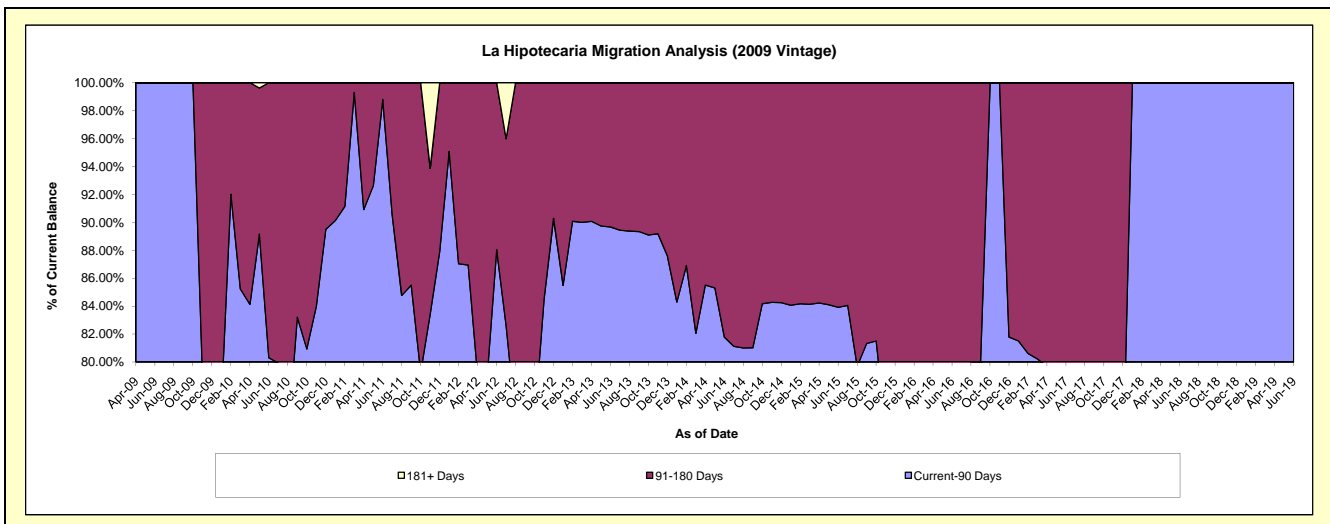
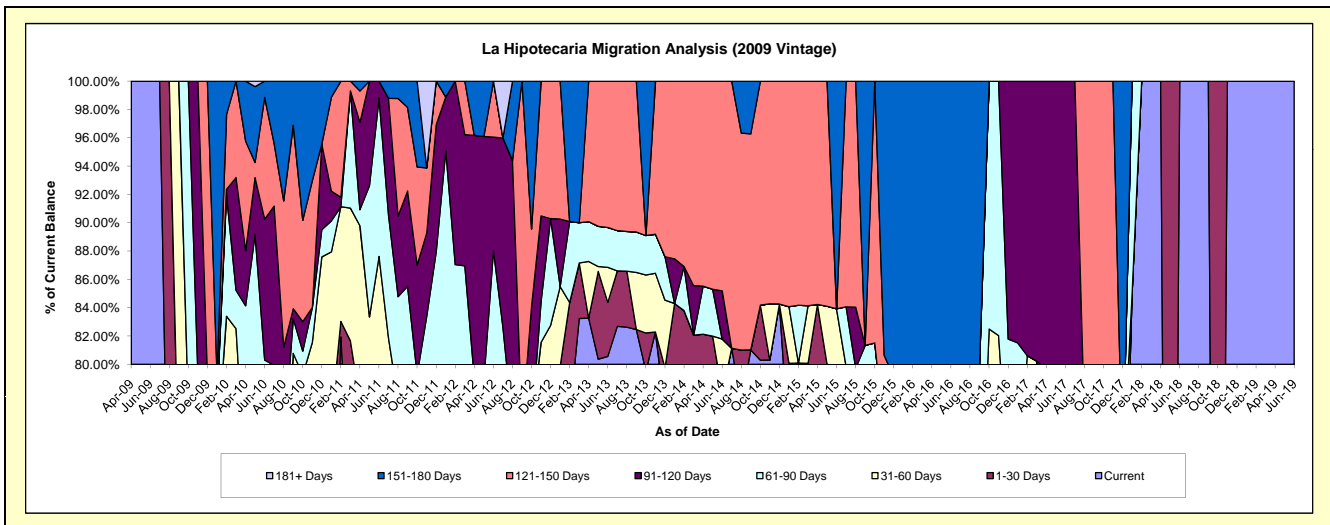
Delinquency Status (\$ of Current Balance)

Data Cutoff: 6/30/2019

Current Portfolio Balance	307,564.70	186,074.68	129,954.32	88,152.66	49,984.08	35,523.99	18,021.23	10,765.32	568.39	181.23
	Jun-10	Jun-11	Jun-12	Jun-13	Jun-14	Jun-15	Jun-16	Jun-17	Jun-18	Jun-19
Current	152,201.81	126,354.32	75,011.24	71,014.20	38,971.41	25,748.61	11,988.02	988.95	568.39	181.23
1-30 Days	43,928.24	2,940.05	11,831.00	3,368.28	-	2,621.35	-	-	-	-
31-60 Days	17,135.02	33,738.60	15,648.96	2,183.54	1,910.97	1,443.78	-	7,509.21	-	-
61-90 Days	33,725.68	20,806.00	11,920.99	2,480.31	-	-	2,267.16	-	-	-
91-120 Days	30,595.92	2,235.71	10,401.78	-	1,699.04	-	-	2,267.16	-	-
121-150 Days	26,450.01	-	5,140.35	9,106.33	7,402.66	-	-	-	-	-
151-180 Days	3,528.02	-	-	-	-	5,710.25	3,766.05	-	-	-
181+ Days	-	-	-	-	-	-	-	-	-	-

Delinquency Status (% of Current Balance)

Current Portfolio Balance	307,564.70	186,074.68	129,954.32	88,152.66	49,984.08	35,523.99	18,021.23	10,765.32	568.39	181.23
	Jun-10	Jun-11	Jun-12	Jun-13	Jun-14	Jun-15	Jun-16	Jun-17	Jun-18	Jun-19
Current	49.49%	67.91%	57.72%	80.56%	77.97%	72.48%	66.52%	9.19%	100.00%	100.00%
1-30 Days	14.28%	1.58%	9.10%	3.82%	0.00%	7.38%	0.00%	0.00%	0.00%	0.00%
31-60 Days	5.57%	18.13%	12.04%	2.48%	3.82%	4.06%	0.00%	69.75%	0.00%	0.00%
61-90 Days	10.97%	11.18%	9.17%	2.81%	0.00%	0.00%	12.58%	0.00%	0.00%	0.00%
91-120 Days	9.95%	1.20%	8.00%	0.00%	3.40%	0.00%	0.00%	21.06%	0.00%	0.00%
121-150 Days	8.60%	0.00%	3.96%	10.33%	14.81%	0.00%	0.00%	0.00%	0.00%	0.00%
151-180 Days	1.15%	0.00%	0.00%	0.00%	0.00%	16.07%	20.90%	0.00%	0.00%	0.00%
181+ Days	0.00%	0.00%	0.00%	0.00%	0.00%	0.00%	0.00%	0.00%	0.00%	0.00%
Current - 90 Days	80.31%	98.80%	88.04%	89.67%	81.79%	83.93%	79.10%	78.94%	100.00%	100.00%
91-180 Days	19.69%	1.20%	11.96%	10.33%	18.21%	16.07%	20.90%	21.06%	0.00%	0.00%



Personal Loans - La Hipotecaria El Salvador Migration Analysis (2010 Vintage)

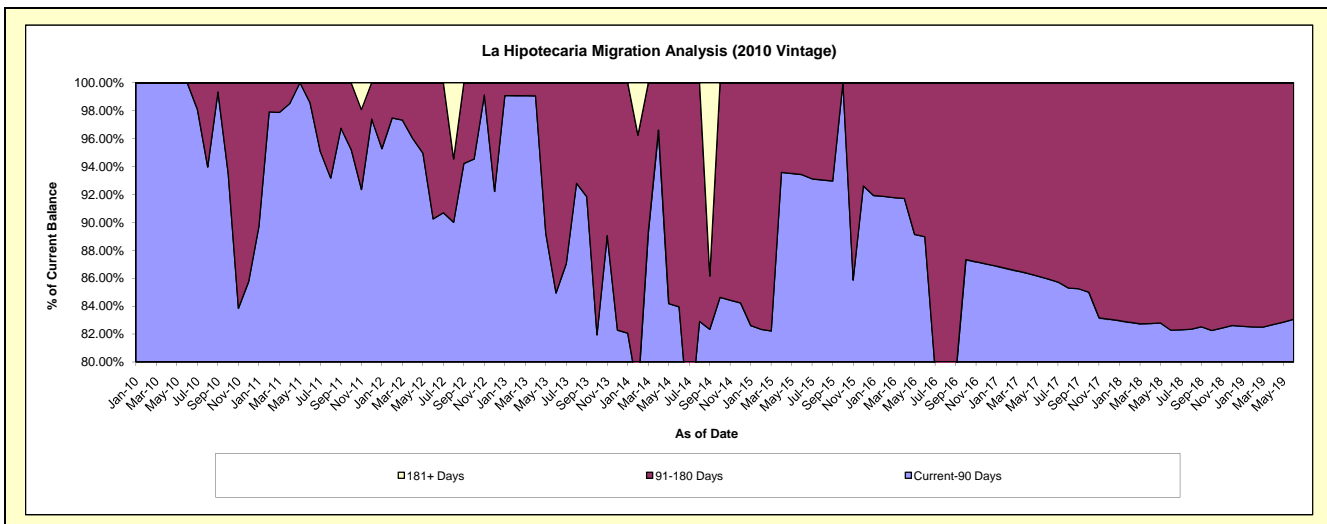
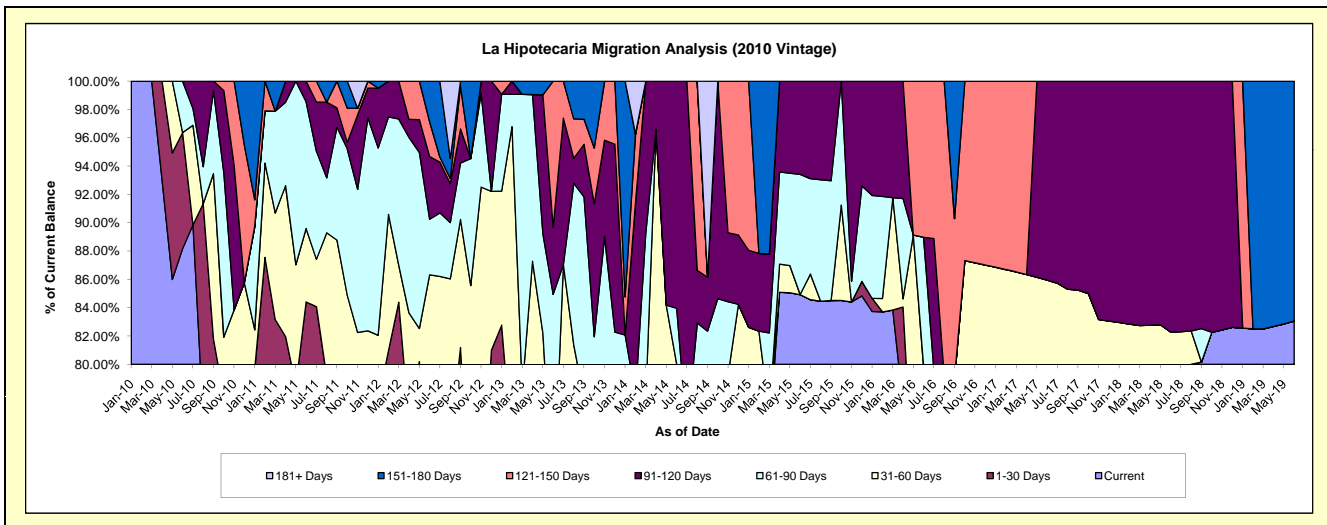
Delinquency Status (\$ of Current Balance)

Data Cutoff: 6/30/2019

Current Portfolio Balance	400,990.72	408,424.46	321,627.20	226,798.65	119,390.86	58,452.88	31,976.10	22,136.88	15,033.93	13,553.63
	Jun-10	Jun-11	Jun-12	Jun-13	Jun-14	Jun-15	Jun-16	Jun-17	Jun-18	Jun-19
Current	353,593.23	273,193.34	189,494.05	105,462.02	86,323.68	49,641.05	22,679.81	17,279.68	11,834.60	11,257.85
1-30 Days	32,849.87	71,549.54	41,270.69	31,381.44	-	-	-	-	-	-
31-60 Days	-	21,157.81	46,885.62	21,354.80	9,220.24	-	2,832.39	1,746.62	536.13	-
61-90 Days	14,547.62	36,552.96	12,621.97	34,452.25	4,690.24	4,962.75	2,939.46	-	-	-
91-120 Days	-	5,970.81	14,246.95	10,765.61	19,156.70	3,849.08	-	3,110.58	2,663.20	-
121-150 Days	-	-	7,881.24	23,382.53	-	-	3,524.44	-	-	-
151-180 Days	-	-	9,226.68	-	-	-	-	-	-	2,295.78
181+ Days	-	-	-	-	-	-	-	-	-	-

Delinquency Status (% of Current Balance)

Current Portfolio Balance	400,990.72	408,424.46	321,627.20	226,798.65	119,390.86	58,452.88	31,976.10	22,136.88	15,033.93	13,553.63
	Jun-10	Jun-11	Jun-12	Jun-13	Jun-14	Jun-15	Jun-16	Jun-17	Jun-18	Jun-19
Current	88.18%	66.89%	58.92%	46.50%	72.30%	84.92%	70.93%	78.06%	78.72%	83.06%
1-30 Days	8.19%	17.52%	12.83%	13.84%	0.00%	0.00%	0.00%	0.00%	0.00%	0.00%
31-60 Days	0.00%	5.18%	14.58%	9.42%	7.72%	0.00%	8.86%	7.89%	3.57%	0.00%
61-90 Days	3.63%	8.95%	3.92%	15.19%	3.93%	8.49%	9.19%	0.00%	0.00%	0.00%
91-120 Days	0.00%	1.46%	4.43%	4.75%	16.05%	6.58%	0.00%	14.05%	17.71%	0.00%
121-150 Days	0.00%	0.00%	2.45%	10.31%	0.00%	0.00%	11.02%	0.00%	0.00%	0.00%
151-180 Days	0.00%	0.00%	2.87%	0.00%	0.00%	0.00%	0.00%	0.00%	0.00%	16.94%
181+ Days	0.00%	0.00%	0.00%	0.00%	0.00%	0.00%	0.00%	0.00%	0.00%	0.00%
Current - 90 Days	100.00%	98.54%	90.25%	84.94%	83.95%	93.42%	88.98%	85.95%	82.29%	83.06%
91-180 Days	0.00%	1.46%	9.75%	15.06%	16.05%	6.58%	11.02%	14.05%	17.71%	16.94%



Personal Loans - La Hipotecaria El Salvador Migration Analysis (2011 Vintage)

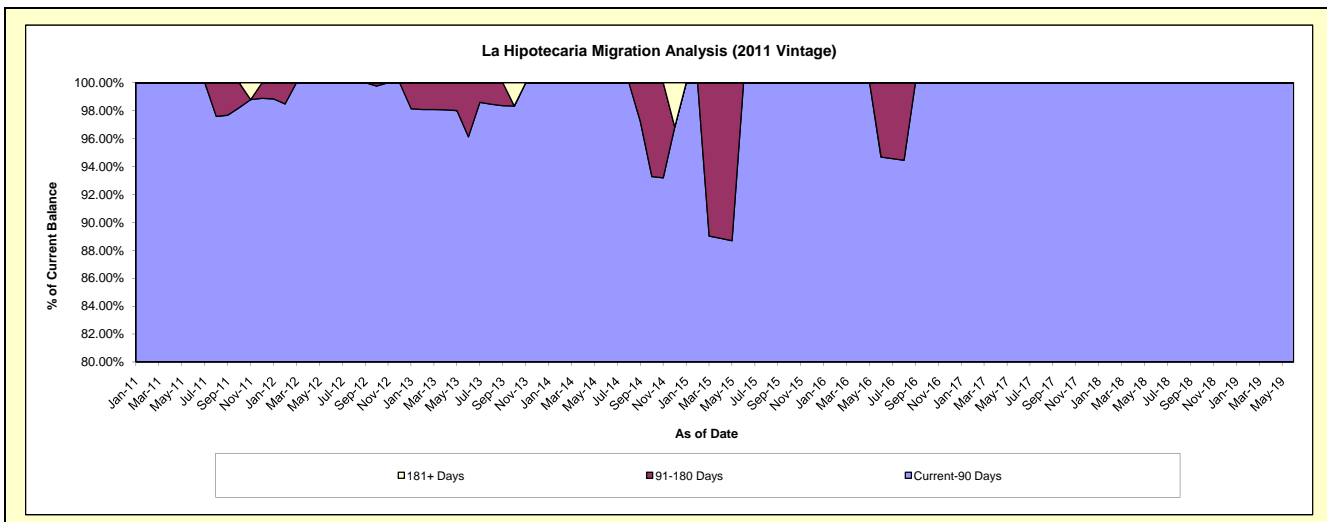
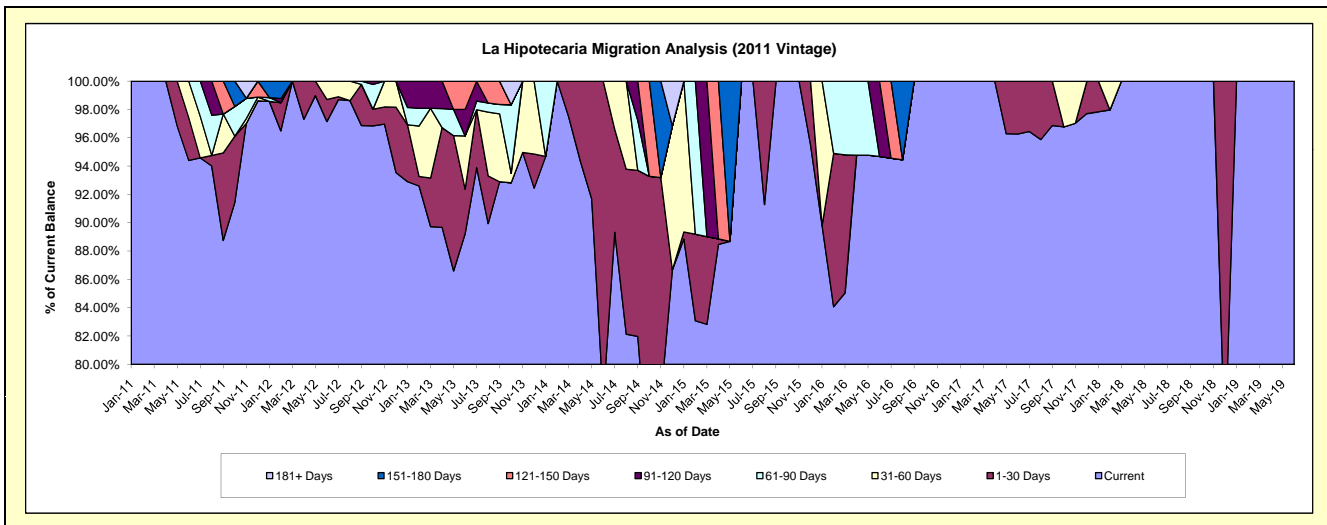
Delinquency Status (\$ of Current Balance)

Data Cutoff: 6/30/2019

Current Portfolio Balance	-	151,656.68	334,627.95	250,407.59	155,723.35	98,739.47	68,912.84	47,350.20	27,399.61	22,575.94
	Jun-11	Jun-12	Jun-13	Jun-14	Jun-15	Jun-16	Jun-17	Jun-18	Jun-19	
Current	143,162.20	325,073.06	223,448.23	120,701.61	98,739.47	65,246.41	45,580.80	27,399.61	22,575.94	
1-30 Days	4,594.48	5,227.74	7,857.50	35,021.74	-	-	1,769.40	-	-	
31-60 Days	3,900.00	4,327.15	9,409.84	-	-	-	-	-	-	
61-90 Days	-	-	-	-	-	-	-	-	-	
91-120 Days	-	-	4,695.48	-	-	3,666.43	-	-	-	
121-150 Days	-	-	4,996.54	-	-	-	-	-	-	
151-180 Days	-	-	-	-	-	-	-	-	-	
181+ Days	-	-	-	-	-	-	-	-	-	

Delinquency Status (% of Current Balance)

Current Portfolio Balance	-	151,656.68	334,627.95	250,407.59	155,723.35	98,739.47	68,912.84	47,350.20	27,399.61	22,575.94
	Jun-11	Jun-12	Jun-13	Jun-14	Jun-15	Jun-16	Jun-17	Jun-18	Jun-19	
Current	94.40%	97.14%	89.23%	77.51%	100.00%	94.68%	96.26%	100.00%	100.00%	
1-30 Days	3.03%	1.56%	3.14%	22.49%	0.00%	0.00%	3.74%	0.00%	0.00%	
31-60 Days	2.57%	1.29%	3.76%	0.00%	0.00%	0.00%	0.00%	0.00%	0.00%	
61-90 Days	0.00%	0.00%	0.00%	0.00%	0.00%	0.00%	0.00%	0.00%	0.00%	
91-120 Days	0.00%	0.00%	1.88%	0.00%	0.00%	5.32%	0.00%	0.00%	0.00%	
121-150 Days	0.00%	0.00%	2.00%	0.00%	0.00%	0.00%	0.00%	0.00%	0.00%	
151-180 Days	0.00%	0.00%	0.00%	0.00%	0.00%	0.00%	0.00%	0.00%	0.00%	
181+ Days	0.00%	0.00%	0.00%	0.00%	0.00%	0.00%	0.00%	0.00%	0.00%	
Current - 90 Days	100.00%	100.00%	96.13%	100.00%	100.00%	94.68%	100.00%	100.00%	100.00%	
91-180 Days	0.00%	0.00%	3.87%	0.00%	0.00%	5.32%	0.00%	0.00%	0.00%	



Personal Loans - La Hipotecaria El Salvador Migration Analysis (2012 Vintage)

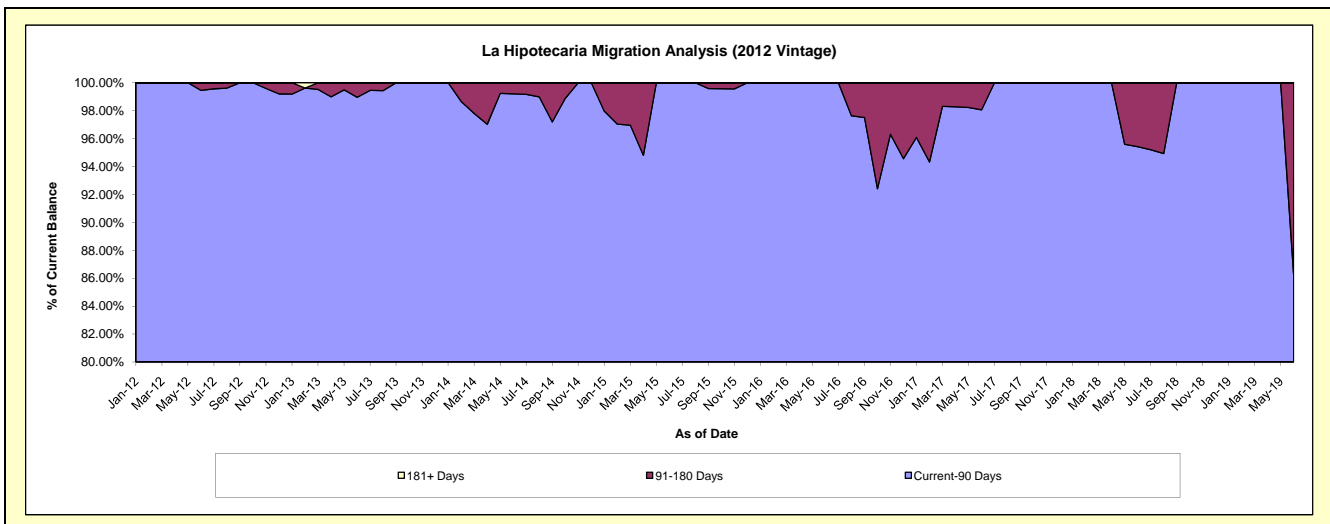
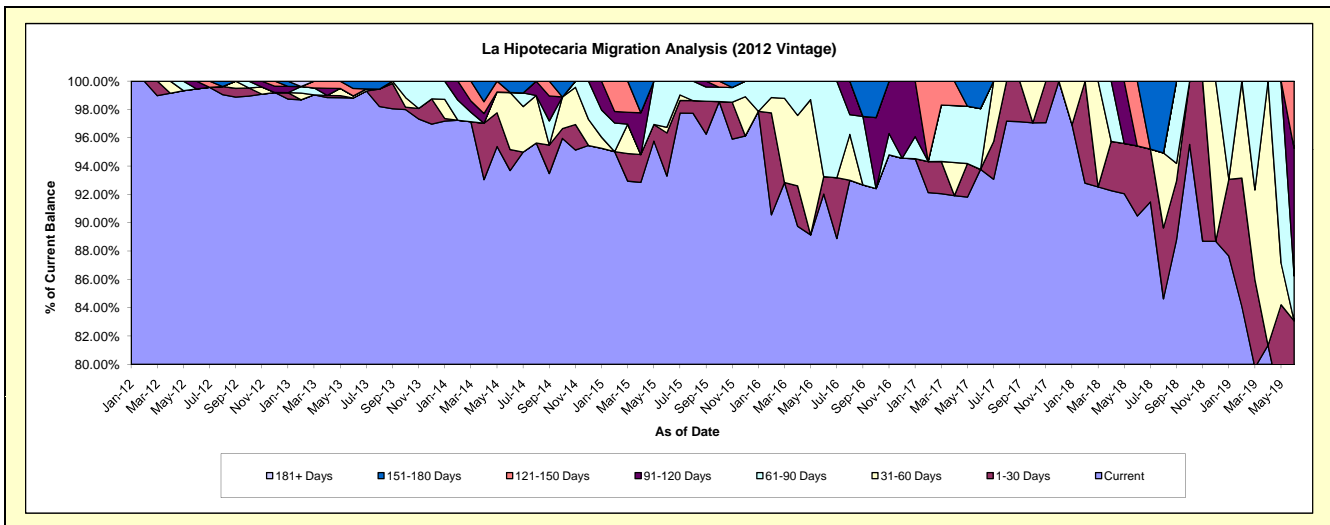
Delinquency Status (\$ of Current Balance)

Data Cutoff: **6/30/2019**

Current Portfolio Balance	-	-	733,265.87	1,421,427.46	835,748.75	500,974.27	302,493.57	182,912.60	109,038.90	41,169.91
	Jun-12	Jun-13	Jun-14	Jun-15	Jun-16	Jun-17	Jun-18	Jun-19		
Current	729,265.87	1,404,540.18	782,987.76	467,395.25	278,380.74	171,513.15	98,653.98	31,137.52		
1-30 Days	-	-	12,369.08	15,264.14	3,712.16	-	5,395.75	3,062.85		
31-60 Days	-	2,105.35	33,724.29	2,000.98	-	-	-	-		
61-90 Days	-	-	-	16,313.90	20,400.67	7,850.91	-	-		
91-120 Days	4,000.00	-	-	-	-	-	-	-		
121-150 Days	-	7,433.37	-	-	-	-	4,989.17	1,954.30		
151-180 Days	-	7,348.56	6,667.62	-	-	3,548.54	-	-		
181+ Days	-	-	-	-	-	-	-	-		

Delinquency Status (% of Current Balance)

Current Portfolio Balance	-	-	733,265.87	1,421,427.46	835,748.75	500,974.27	302,493.57	182,912.60	109,038.90	41,169.91
	Jun-12	Jun-13	Jun-14	Jun-15	Jun-16	Jun-17	Jun-18	Jun-19		
Current	99.45%	98.81%	93.69%	93.30%	92.03%	93.77%	90.48%	75.63%		
1-30 Days	0.00%	0.00%	1.48%	3.05%	1.23%	0.00%	4.95%	7.44%		
31-60 Days	0.00%	0.15%	4.04%	0.40%	0.00%	0.00%	0.00%	0.00%		
61-90 Days	0.00%	0.00%	0.00%	3.26%	6.74%	4.29%	0.00%	3.16%		
91-120 Days	0.55%	0.00%	0.00%	0.00%	0.00%	0.00%	0.00%	9.02%		
121-150 Days	0.00%	0.52%	0.00%	0.00%	0.00%	0.00%	4.58%	4.75%		
151-180 Days	0.00%	0.00%	0.80%	0.00%	0.00%	1.94%	0.00%	0.00%		
181+ Days	0.00%	0.00%	0.00%	0.00%	0.00%	0.00%	0.00%	0.00%		
Current - 90 Days	99.45%	98.96%	99.20%	100.00%	100.00%	98.06%	95.42%	86.24%		
91-180 Days	0.55%	1.04%	0.80%	0.00%	0.00%	1.94%	4.58%	13.76%		



Personal Loans - La Hipotecaria El Salvador Migration Analysis (2013 Vintage)

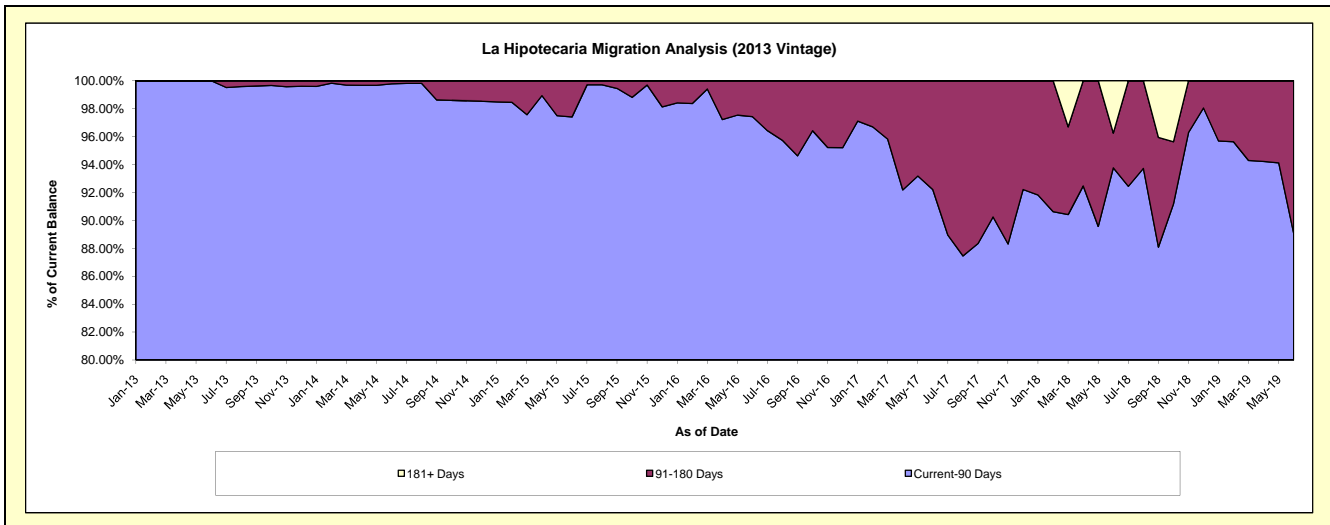
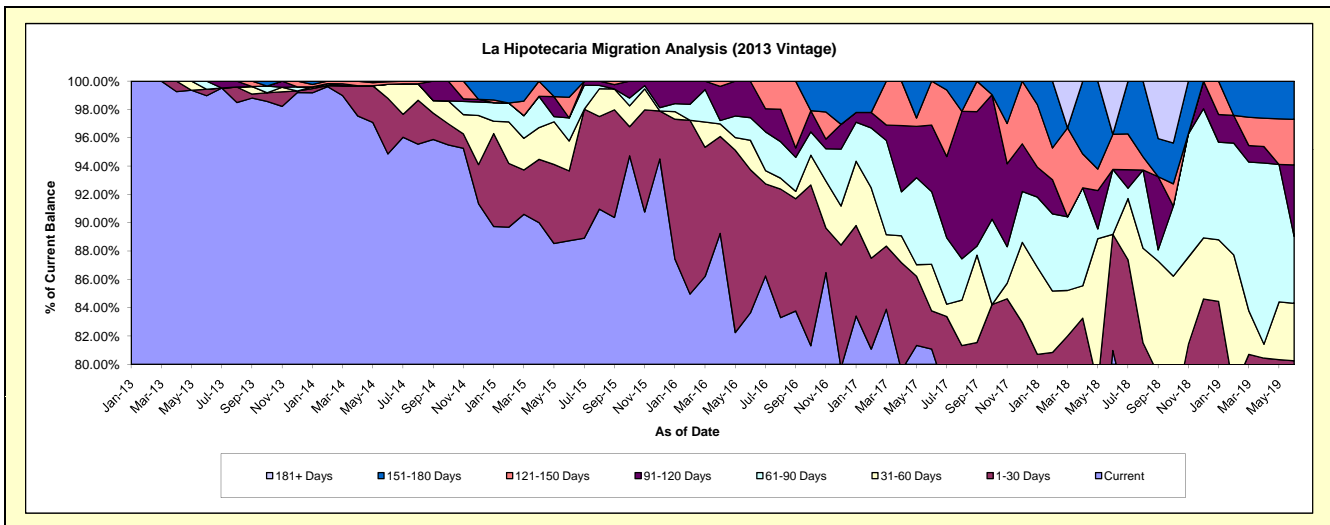
Delinquency Status (\$ of Current Balance)

Data Cutoff: 6/30/2019

Current Portfolio Balance	-	-	-	1,063,583.40	1,740,465.80	1,175,132.58	759,217.10	563,288.20	332,579.63	181,283.72
	Jun-13	Jun-14	Jun-15	Jun-16	Jun-17	Jun-18	Jun-19			
Current	1,052,660.01	1,650,994.01	1,042,651.48	634,968.84	456,705.22	269,300.53	128,761.11			
1-30 Days	4,831.33	68,388.09	57,970.02	76,784.14	15,235.89	27,297.96	16,719.92			
31-60 Days	-	17,252.24	24,873.31	15,759.36	18,479.15	-	7,364.44			
61-90 Days	6,092.06	-	19,174.88	12,143.14	28,928.09	15,236.64	8,566.01			
91-120 Days	-	-	-	19,561.62	26,465.97	-	9,156.37			
121-150 Days	-	3,208.02	17,145.53	-	17,473.88	8,267.16	5,834.73			
151-180 Days	-	623.44	13,317.36	-	-	-	4,881.14			
181+ Days	-	-	-	-	-	12,477.34	-			

Delinquency Status (% of Current Balance)

Current Portfolio Balance	-	-	-	1,063,583.40	1,740,465.80	1,175,132.58	759,217.10	563,288.20	332,579.63	181,283.72
	Jun-13	Jun-14	Jun-15	Jun-16	Jun-17	Jun-18	Jun-19			
Current	98.97%	94.86%	88.73%	83.63%	81.08%	80.97%	71.03%			
1-30 Days	0.45%	3.93%	4.93%	10.11%	2.70%	8.21%	9.22%			
31-60 Days	0.00%	0.99%	2.12%	2.08%	3.28%	0.00%	4.06%			
61-90 Days	0.57%	0.00%	1.63%	1.60%	5.14%	4.58%	4.73%			
91-120 Days	0.00%	0.00%	0.00%	2.58%	4.70%	0.00%	5.05%			
121-150 Days	0.00%	0.18%	1.46%	0.00%	3.10%	2.49%	3.22%			
151-180 Days	0.00%	0.04%	1.13%	0.00%	0.00%	0.00%	2.69%			
181+ Days	0.00%	0.00%	0.00%	0.00%	0.00%	3.75%	0.00%			
Current - 90 Days	100.00%	99.78%	97.41%	97.42%	92.20%	93.76%	89.04%			
91-180 Days	0.00%	0.22%	2.59%	2.58%	7.80%	2.49%	10.96%			



Personal Loans - La Hipotecaria El Salvador Migration Analysis (2014 Vintage)

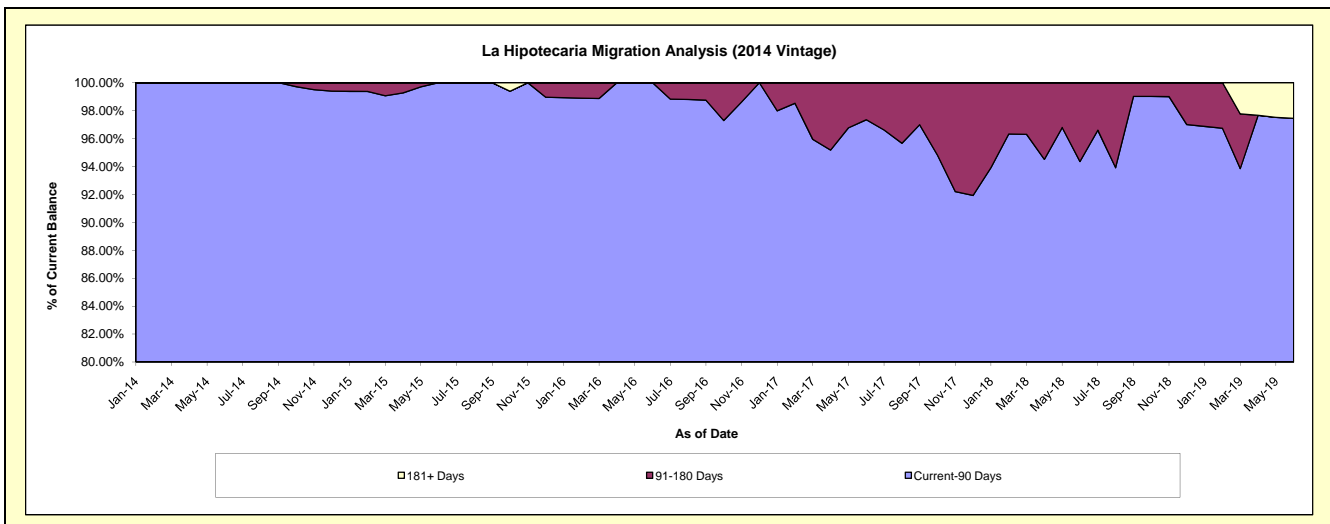
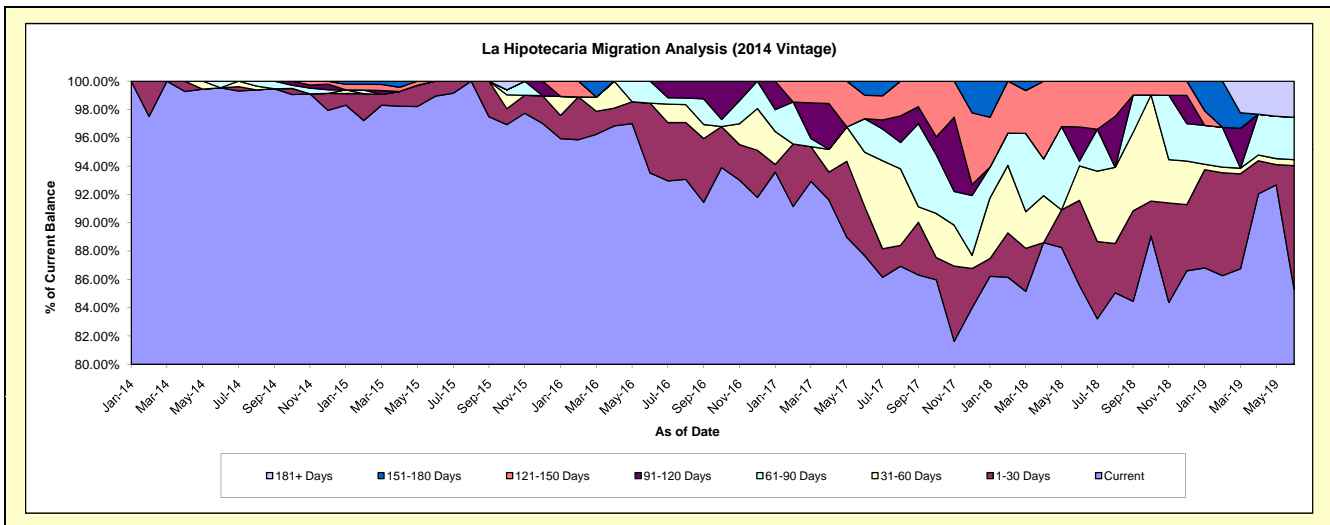
Delinquency Status (\$ of Current Balance)

Data Cutoff: 6/30/2019

Current Portfolio Balance	-	-	-	-	1,409,922.88	2,077,492.96	1,420,192.68	876,098.05	538,102.19	345,468.01
	Jun-14	Jun-15	Jun-16	Jun-17	Jun-18	Jun-19				
Current	1,403,374.21	2,055,504.28	1,328,176.97	768,095.72	460,459.04	294,658.97				
1-30 Days	-	21,988.68	69,949.67	30,391.17	32,318.45	30,199.67				
31-60 Days	-	-	-	33,594.74	13,112.80	1,459.80				
61-90 Days	6,548.67	-	22,066.04	20,802.86	1,860.13	10,357.42				
91-120 Days	-	-	-	-	12,930.27	-				
121-150 Days	-	-	-	14,505.63	17,421.50	-				
151-180 Days	-	-	-	8,707.93	-	-				
181+ Days	-	-	-	-	-	8,792.15				

Delinquency Status (% of Current Balance)

Current Portfolio Balance	-	-	-	-	1,409,922.88	2,077,492.96	1,420,192.68	876,098.05	538,102.19	345,468.01
	Jun-14	Jun-15	Jun-16	Jun-17	Jun-18	Jun-19				
Current	99.54%	98.94%	93.52%	87.67%	85.57%	85.29%				
1-30 Days	0.00%	1.06%	4.93%	3.47%	6.01%	8.74%				
31-60 Days	0.00%	0.00%	0.00%	3.83%	2.44%	0.42%				
61-90 Days	0.46%	0.00%	1.55%	2.37%	0.35%	3.00%				
91-120 Days	0.00%	0.00%	0.00%	0.00%	2.40%	0.00%				
121-150 Days	0.00%	0.00%	0.00%	1.66%	3.24%	0.00%				
151-180 Days	0.00%	0.00%	0.00%	0.99%	0.00%	0.00%				
181+ Days	0.00%	0.00%	0.00%	0.00%	0.00%	2.54%				
Current - 90 Days	100.00%	100.00%	100.00%	97.35%	94.36%	97.46%				
91-180 Days	0.00%	0.00%	0.00%	2.65%	5.64%	0.00%				



Personal Loans - La Hipotecaria El Salvador Migration Analysis (2015 Vintage)

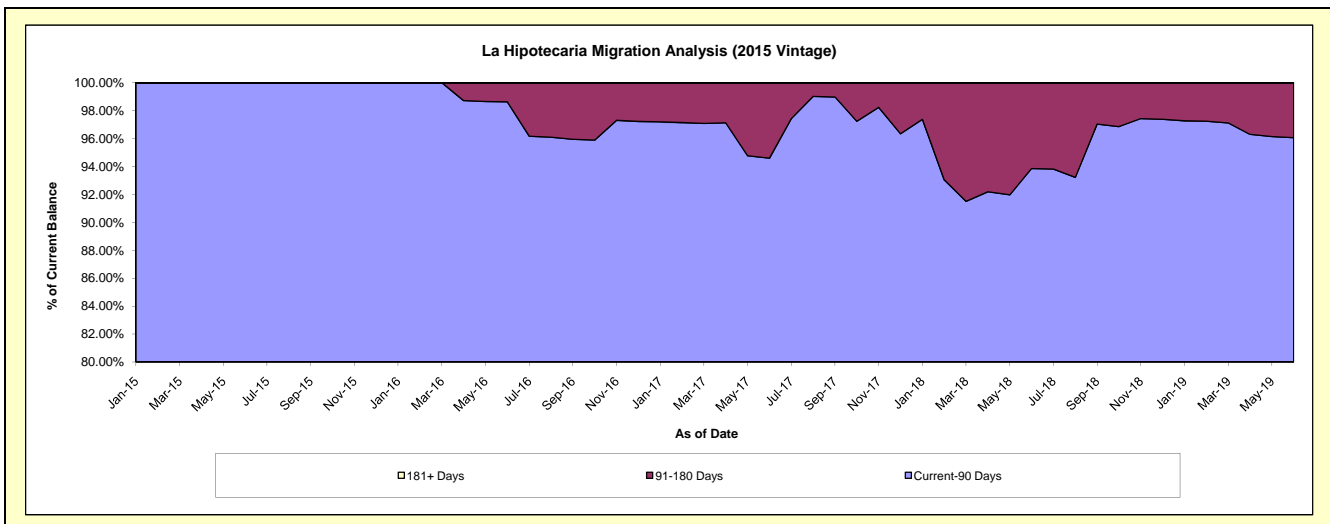
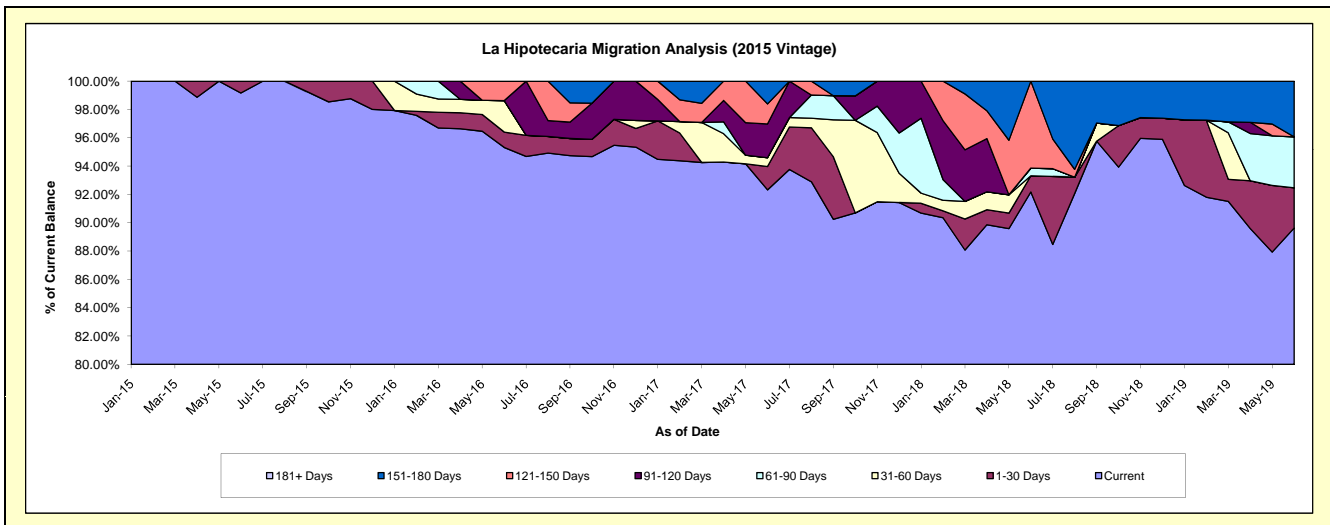
Delinquency Status (\$ of Current Balance)

Data Cutoff: 6/30/2019

Current Portfolio Balance	-	-	-	-	-	654,141.76	1,336,614.92	947,646.70	647,213.62	403,347.62
						Jun-15	Jun-16	Jun-17	Jun-18	Jun-19
Current						648,700.04	1,274,046.20	874,938.44	596,573.72	361,507.48
1-30 Days						5,441.72	14,511.57	15,614.19	7,354.59	11,447.72
31-60 Days						-	29,735.45	5,897.57	-	-
61-90 Days						-	-	-	3,537.70	14,513.28
91-120 Days						-	-	22,518.28	-	-
121-150 Days						-	18,321.70	13,477.23	39,747.61	-
151-180 Days						-	-	15,200.99	-	15,879.14
181+ Days						-	-	-	-	-

Delinquency Status (% of Current Balance)

Current Portfolio Balance	-	-	-	-	-	654,141.76	1,336,614.92	947,646.70	647,213.62	403,347.62
						Jun-15	Jun-16	Jun-17	Jun-18	Jun-19
Current						99.17%	95.32%	92.33%	92.18%	89.63%
1-30 Days						0.83%	1.09%	1.65%	1.14%	2.84%
31-60 Days						0.00%	2.22%	0.62%	0.00%	0.00%
61-90 Days						0.00%	0.00%	0.00%	0.55%	3.60%
91-120 Days						0.00%	0.00%	2.38%	0.00%	0.00%
121-150 Days						0.00%	1.37%	1.42%	6.14%	0.00%
151-180 Days						0.00%	0.00%	1.60%	0.00%	3.94%
181+ Days						0.00%	0.00%	0.00%	0.00%	0.00%
Current - 90 Days						100.00%	98.63%	94.60%	93.86%	96.06%
91-180 Days						0.00%	1.37%	5.40%	6.14%	3.94%



Personal Loans - La Hipotecaria El Salvador Migration Analysis (2016 Vintage)

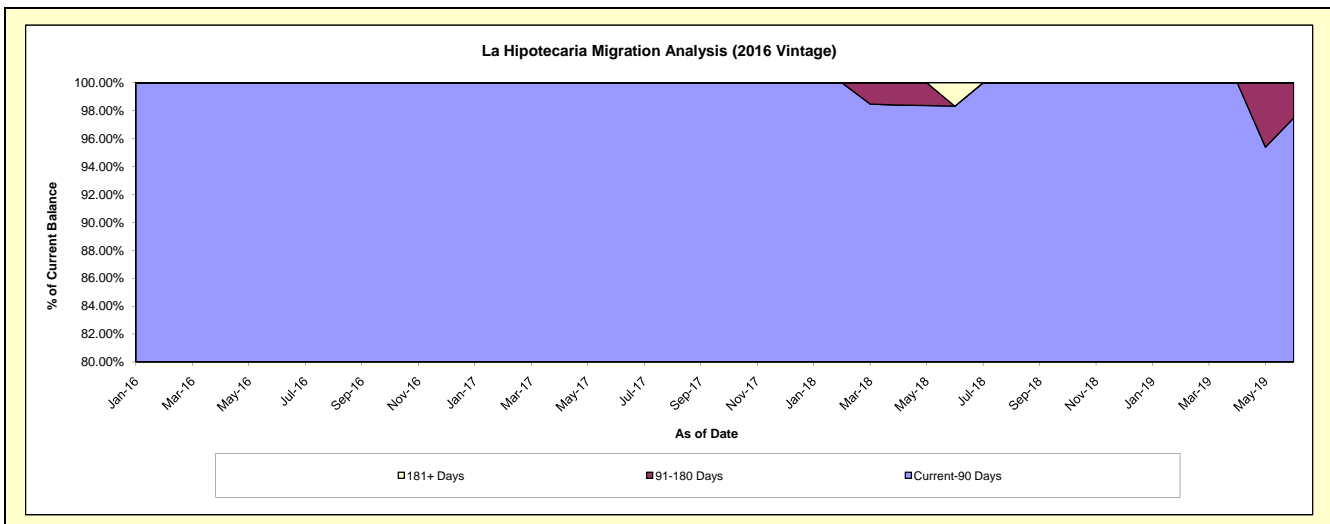
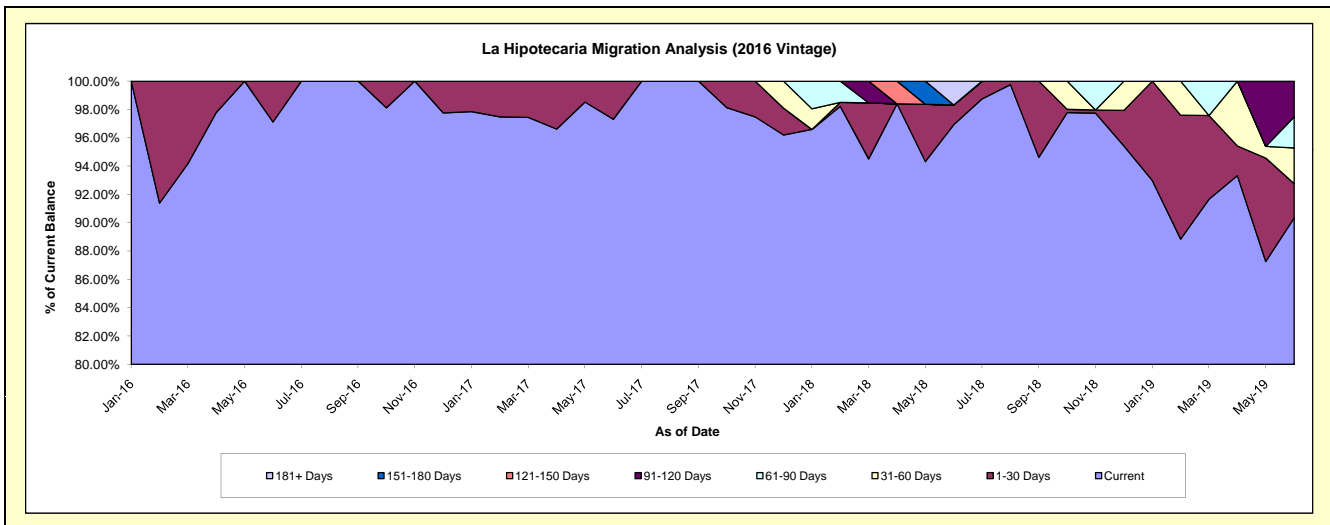
Delinquency Status (\$ of Current Balance)

Data Cutoff: 6/30/2019

Current Portfolio Balance	-	-	-	-	-	-	-	689,796.98	1,088,436.02	829,285.15	656,570.01
								Jun-16	Jun-17	Jun-18	Jun-19
Current								669,897.90	1,059,209.09	803,814.40	593,162.70
1-30 Days								19,899.08	29,226.93	11,534.34	15,877.30
31-60 Days								-	-	-	16,574.65
61-90 Days								-	-	-	14,389.21
91-120 Days								-	-	-	16,566.15
121-150 Days								-	-	-	-
151-180 Days								-	-	-	-
181+ Days								-	-	13,936.41	-

Delinquency Status (% of Current Balance)

Current Portfolio Balance	-	-	-	-	-	-	-	689,796.98	1,088,436.02	829,285.15	656,570.01
								Jun-16	Jun-17	Jun-18	Jun-19
Current								97.12%	97.31%	96.93%	90.34%
1-30 Days								2.88%	2.69%	1.39%	2.42%
31-60 Days								0.00%	0.00%	0.00%	2.52%
61-90 Days								0.00%	0.00%	0.00%	2.19%
91-120 Days								0.00%	0.00%	0.00%	2.52%
121-150 Days								0.00%	0.00%	0.00%	0.00%
151-180 Days								0.00%	0.00%	0.00%	0.00%
181+ Days								0.00%	0.00%	1.68%	0.00%
Current - 90 Days								100.00%	100.00%	98.32%	97.48%
91-180 Days								0.00%	0.00%	0.00%	2.52%



Personal Loans - La Hipotecaria El Salvador Migration Analysis (2017 Vintage)

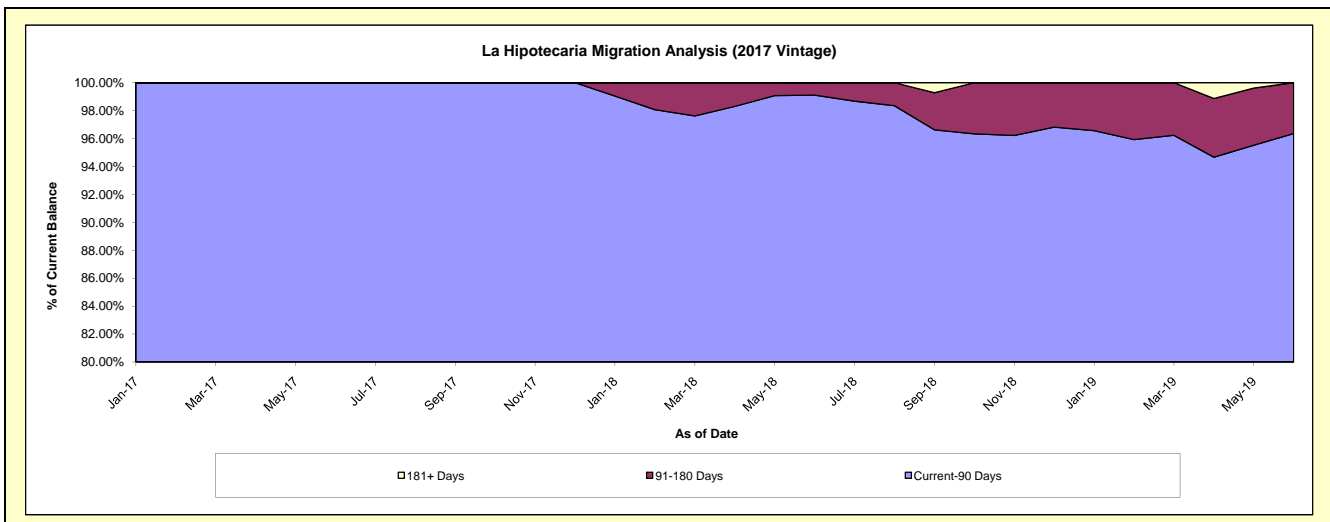
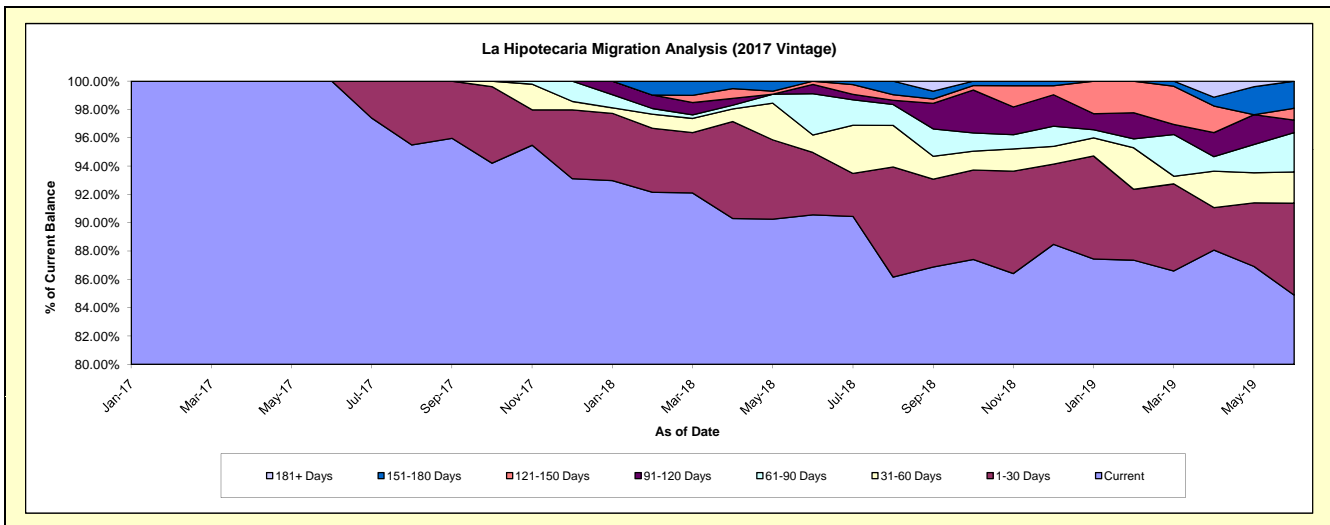
Delinquency Status (\$ of Current Balance)

Data Cutoff: 6/30/2019

Current Portfolio Balance	-	-	-	-	-	-	-	-	-	1,045,749.35	1,774,308.12	1,181,132.33
										Jun-17	Jun-18	Jun-19
Current										1,045,749.35	1,606,760.24	1,002,631.70
1-30 Days										-	78,205.10	76,677.49
31-60 Days										-	21,905.60	26,074.89
61-90 Days										-	51,756.38	32,786.11
91-120 Days										-	11,599.29	10,522.14
121-150 Days										-	4,081.51	9,830.06
151-180 Days										-	-	22,609.94
181+ Days										-	-	-

Delinquency Status (% of Current Balance)

Current Portfolio Balance	-	-	-	-	-	-	-	-	-	1,045,749.35	1,774,308.12	1,181,132.33
										Jun-17	Jun-18	Jun-19
Current										100.00%	90.56%	84.89%
1-30 Days										0.00%	4.41%	6.49%
31-60 Days										0.00%	1.23%	2.21%
61-90 Days										0.00%	2.92%	2.78%
91-120 Days										0.00%	0.65%	0.89%
121-150 Days										0.00%	0.23%	0.83%
151-180 Days										0.00%	0.00%	1.91%
181+ Days										0.00%	0.00%	0.00%
Current - 90 Days										100.00%	99.12%	96.36%
91-180 Days										0.00%	0.88%	3.64%



Personal Loans - La Hipotecaria El Salvador Migration Analysis (2018 Vintage)

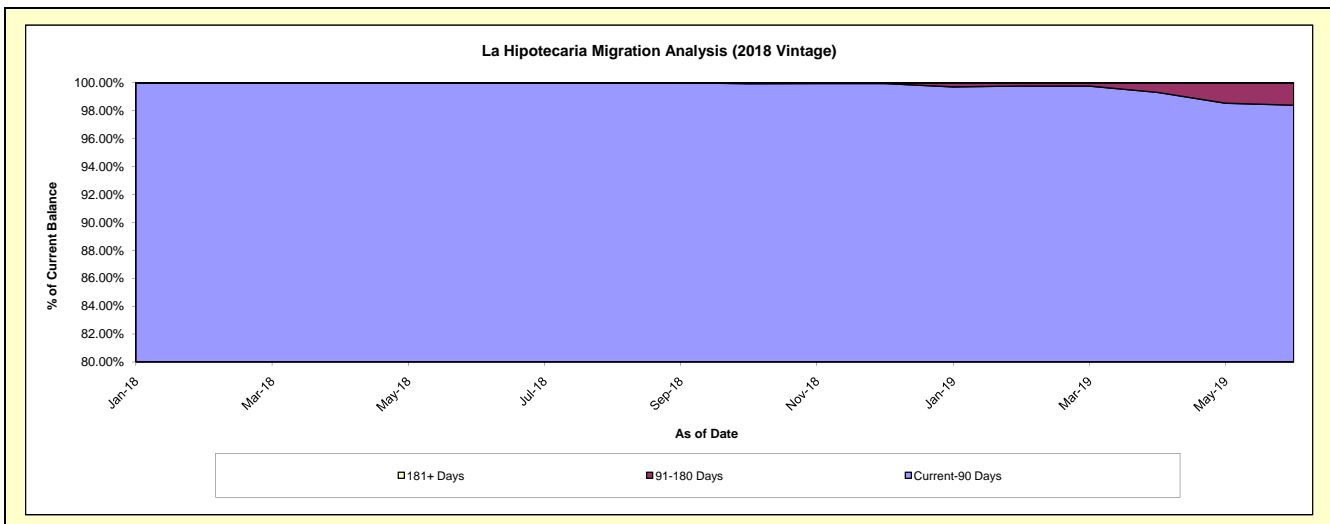
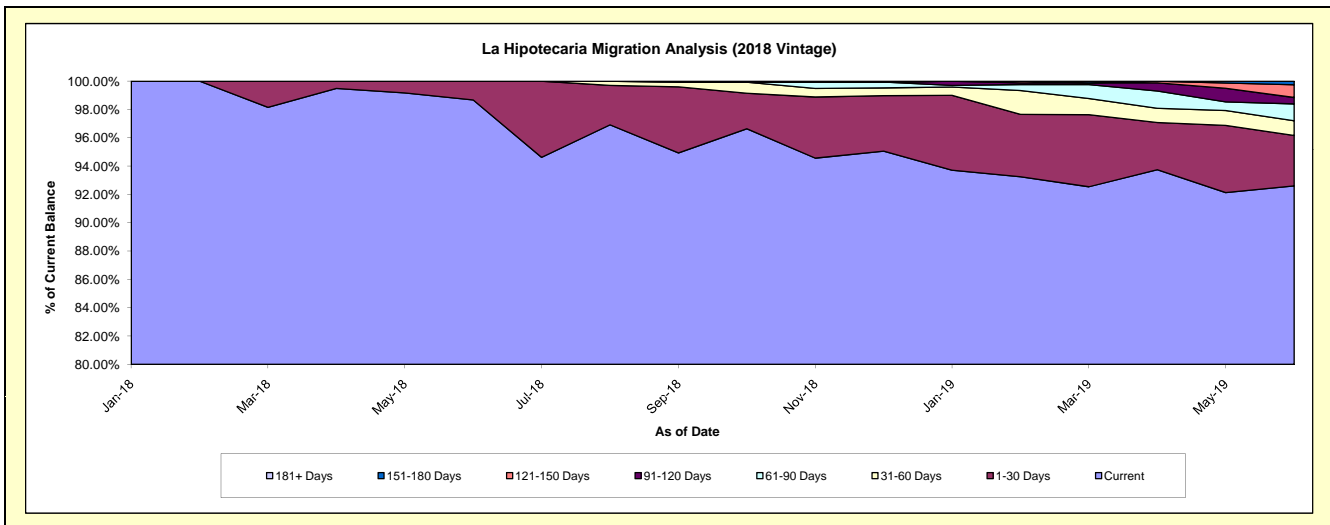
Delinquency Status (\$ of Current Balance)

Data Cutoff: 6/30/2019

Current Portfolio Balance										1,585,895.55	3,905,006.00
										Jun-18	Jun-19
Current										1,564,794.33	3,616,314.29
1-30 Days										21,101.22	138,693.88
31-60 Days										-	40,760.20
61-90 Days										-	46,558.29
91-120 Days										-	17,677.04
121-150 Days										-	35,106.31
151-180 Days										-	9,895.99
181+ Days										-	-

Delinquency Status (% of Current Balance)

Current Portfolio Balance										1,585,895.55	3,905,006.00
										Jun-18	Jun-19
Current										98.67%	92.61%
1-30 Days										1.33%	3.55%
31-60 Days										0.00%	1.04%
61-90 Days										0.00%	1.19%
91-120 Days										0.00%	0.45%
121-150 Days										0.00%	0.90%
151-180 Days										0.00%	0.25%
181+ Days										0.00%	0.00%
Current - 90 Days										100.00%	98.39%
91-180 Days										0.00%	1.61%



Personal Loans - La Hipotecaria El Salvador Migration Analysis (2019 Vintage)

Delinquency Status (\$ of Current Balance)

Data Cutoff: 6/30/2019

Current Portfolio Balance											2,818,680.04
											Jun-19
Current											2,776,081.24
1-30 Days											42,598.80
31-60 Days											-
61-90 Days											-
91-120 Days											-
121-150 Days											-
151-180 Days											-
181+ Days											-

Delinquency Status (% of Current Balance)

Current Portfolio Balance											2,818,680.04
											Jun-19
Current											98.49%
1-30 Days											1.51%
31-60 Days											0.00%
61-90 Days											0.00%
91-120 Days											0.00%
121-150 Days											0.00%
151-180 Days											0.00%
181+ Days											0.00%
Current - 90 Days											100.00%
91-180 Days											0.00%

