



## Migration Analysis for La Hipotecaria S.A. de C.V El Salvador

### Personal Loans July 2020

An analysis of historical loan payment data was used to compile a migration analysis of delinquency by annual vintage. Delinquencies for each vintage were grouped into the following buckets; Current, 1-30, 31-60, 61-90, 91-120, 121-150, 151-180, and 180+. Results are provided in graphical and tabular form. The cutoff date is 7/31/2020.

# Personal Loans - La Hipotecaria El Salvador Migration Analysis (All Vintages)

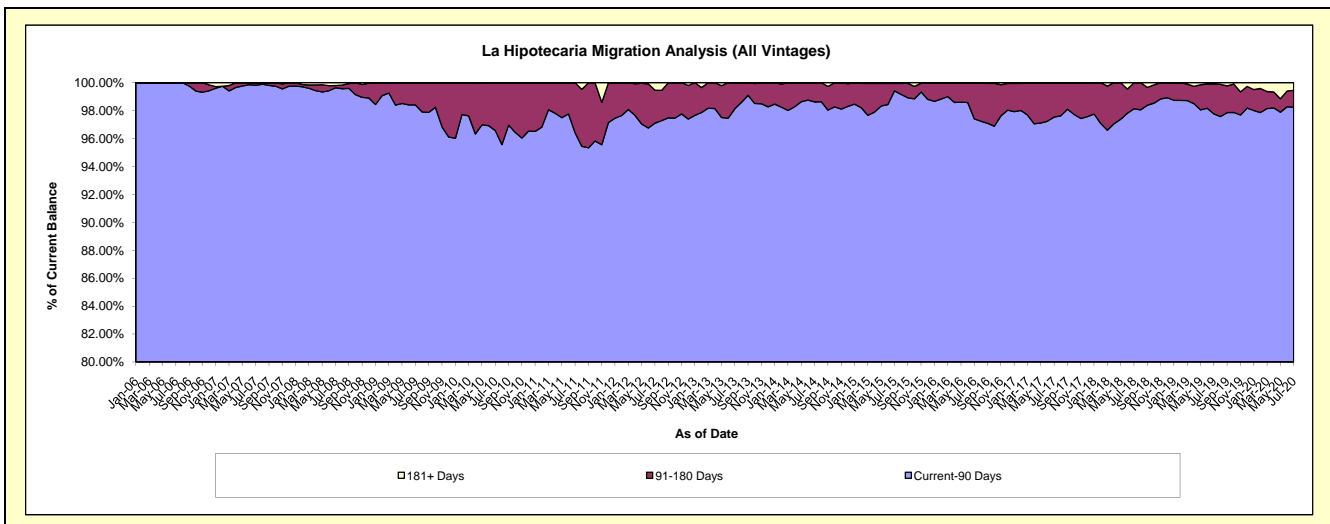
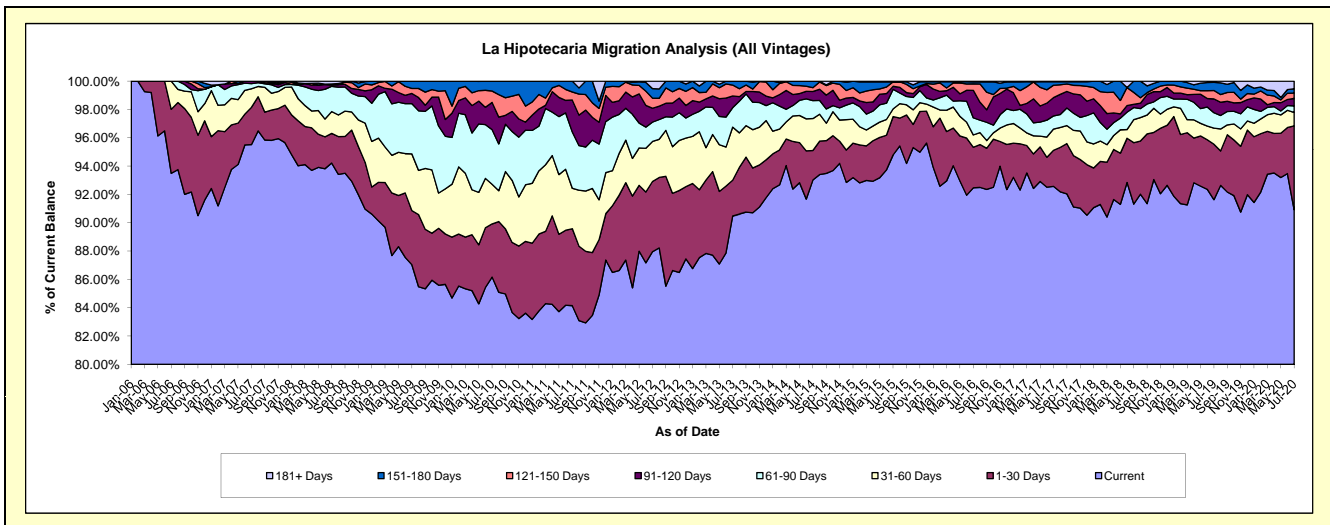
## Delinquency Status (\$ of Current Balance)

Data Cutoff: 7/31/2020

Current Portfolio Balance	5,188,219.45	4,749,887.96	5,065,734.82	5,594,303.44	5,164,645.71	4,761,557.15	4,937,032.82	5,954,947.03	9,896,196.15	10,794,980.24
	Jul-11	Jul-12	Jul-13	Jul-14	Jul-15	Jul-16	Jul-17	Jul-18	Jul-19	Jul-20
Current	4,365,775.15	4,177,586.63	4,583,644.45	5,203,797.76	4,895,910.07	4,402,741.17	4,570,395.38	5,437,829.12	9,067,834.42	9,814,309.13
1-30 Days	281,763.20	236,003.06	128,307.78	116,657.13	139,579.54	136,665.49	125,552.30	258,644.50	387,490.12	639,737.68
31-60 Days	147,975.25	134,018.10	189,420.73	126,102.89	27,807.54	41,337.20	73,940.69	96,689.02	112,309.19	102,336.03
61-90 Days	206,533.40	64,819.26	69,834.23	70,835.17	71,394.06	57,543.25	45,859.51	50,989.68	108,062.15	49,746.65
91-120 Days	116,953.18	46,773.09	41,400.06	36,360.36	11,255.97	92,389.08	64,010.29	13,290.27	96,294.94	57,093.38
121-150 Days	29,602.68	33,739.98	39,226.91	14,751.23	16,342.50	21,740.95	43,255.23	50,304.10	59,059.56	41,331.02
151-180 Days	39,616.59	31,840.60	13,900.66	25,798.90	-	6,996.53	12,047.78	47,200.34	56,829.89	32,031.28
181+ Days	-	25,107.24	-	-	2,356.03	2,143.48	1,971.64	-	8,315.88	58,395.07

## Delinquency Status (% of Current Balance)

Current Portfolio Balance	5,188,219.45	4,749,887.96	5,065,734.82	5,594,303.44	5,164,645.71	4,761,557.15	4,937,032.82	5,954,947.03	9,896,196.15	10,794,980.24
	Jul-11	Jul-12	Jul-13	Jul-14	Jul-15	Jul-16	Jul-17	Jul-18	Jul-19	Jul-20
Current	84.15%	87.95%	90.48%	93.02%	94.80%	92.46%	92.57%	91.32%	91.63%	90.92%
1-30 Days	5.43%	4.97%	2.53%	2.09%	2.70%	2.87%	2.54%	4.34%	3.92%	5.93%
31-60 Days	2.85%	2.82%	3.74%	2.25%	0.54%	0.87%	1.50%	1.62%	1.13%	0.95%
61-90 Days	3.98%	1.36%	1.38%	1.27%	1.38%	1.21%	0.93%	0.86%	1.09%	0.46%
91-120 Days	2.25%	0.98%	0.82%	0.65%	0.22%	1.94%	1.30%	0.22%	0.97%	0.53%
121-150 Days	0.57%	0.71%	0.77%	0.26%	0.32%	0.46%	0.88%	0.84%	0.60%	0.38%
151-180 Days	0.76%	0.67%	0.27%	0.46%	0.00%	0.15%	0.24%	0.79%	0.57%	0.30%
181+ Days	0.00%	0.53%	0.00%	0.00%	0.05%	0.05%	0.04%	0.00%	0.08%	0.54%
Current - 90 Days	96.41%	97.11%	98.13%	98.63%	99.42%	97.41%	97.54%	98.14%	97.77%	98.25%
91-180 Days	3.59%	2.37%	1.87%	1.37%	0.53%	2.54%	2.42%	1.86%	2.14%	1.21%



## Personal Loans - La Hipotecaria El Salvador Migration Analysis (2006 Vintage)

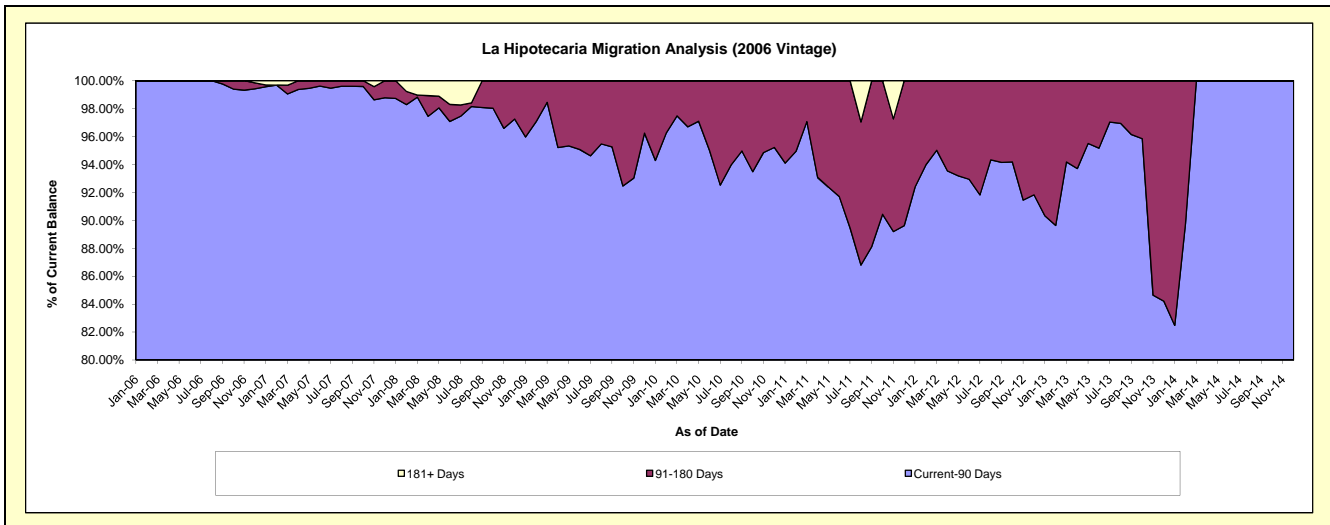
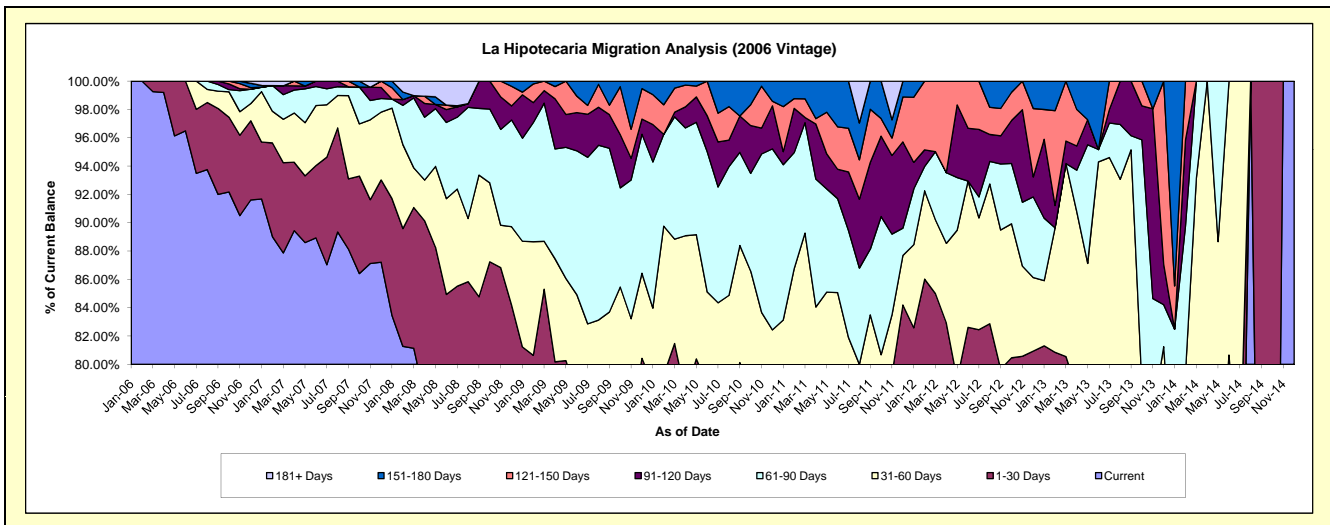
### Delinquency Status (\$ of Current Balance)

Data Cutoff: 7/31/2020

Current Portfolio Balance	264,331.77	133,197.10	50,189.10	3,731.41	#N/A	#N/A	#N/A	#N/A	#N/A	#N/A
	Jul-11	Jul-12	Jul-13	Jul-14	Jul-15	Jul-16	Jul-17	Jul-18	Jul-19	Jul-20
Current	182,416.84	99,810.57	31,886.63	2,036.27	#N/A	#N/A	#N/A	#N/A	#N/A	#N/A
1-30 Days	15,855.58	10,011.57	5,917.41	641.70	#N/A	#N/A	#N/A	#N/A	#N/A	#N/A
31-60 Days	18,202.97	10,513.86	9,677.00	1,053.44	#N/A	#N/A	#N/A	#N/A	#N/A	#N/A
61-90 Days	19,968.82	1,972.27	1,223.33	-	#N/A	#N/A	#N/A	#N/A	#N/A	#N/A
91-120 Days	10,946.55	6,349.64	480.86	-	#N/A	#N/A	#N/A	#N/A	#N/A	#N/A
121-150 Days	8,156.14	4,539.19	1,003.87	-	#N/A	#N/A	#N/A	#N/A	#N/A	#N/A
151-180 Days	8,784.87	-	-	-	#N/A	#N/A	#N/A	#N/A	#N/A	#N/A
181+ Days	-	-	-	-	#N/A	#N/A	#N/A	#N/A	#N/A	#N/A

### Delinquency Status (% of Current Balance)

Current Portfolio Balance	264,331.77	133,197.10	50,189.10	3,731.41	#N/A	#N/A	#N/A	#N/A	#N/A	#N/A
	Jul-11	Jul-12	Jul-13	Jul-14	Jul-15	Jul-16	Jul-17	Jul-18	Jul-19	Jul-20
Current	69.01%	74.93%	63.53%	54.67%	#N/A	#N/A	#N/A	#N/A	#N/A	#N/A
1-30 Days	6.00%	7.52%	11.79%	17.20%	#N/A	#N/A	#N/A	#N/A	#N/A	#N/A
31-60 Days	6.89%	7.89%	19.28%	28.23%	#N/A	#N/A	#N/A	#N/A	#N/A	#N/A
61-90 Days	7.55%	1.46%	2.44%	0.00%	#N/A	#N/A	#N/A	#N/A	#N/A	#N/A
91-120 Days	4.14%	4.77%	0.96%	0.00%	#N/A	#N/A	#N/A	#N/A	#N/A	#N/A
121-150 Days	3.09%	3.41%	2.00%	0.00%	#N/A	#N/A	#N/A	#N/A	#N/A	#N/A
151-180 Days	3.32%	0.00%	0.00%	0.00%	#N/A	#N/A	#N/A	#N/A	#N/A	#N/A
181+ Days	0.00%	0.00%	0.00%	0.00%	#N/A	#N/A	#N/A	#N/A	#N/A	#N/A
Current - 90 Days	89.45%	91.83%	97.04%	100.00%	#N/A	#N/A	#N/A	#N/A	#N/A	#N/A
91-180 Days	10.55%	8.17%	2.96%	0.00%	#N/A	#N/A	#N/A	#N/A	#N/A	#N/A



## Personal Loans - La Hipotecaria El Salvador Migration Analysis (2007 Vintage)

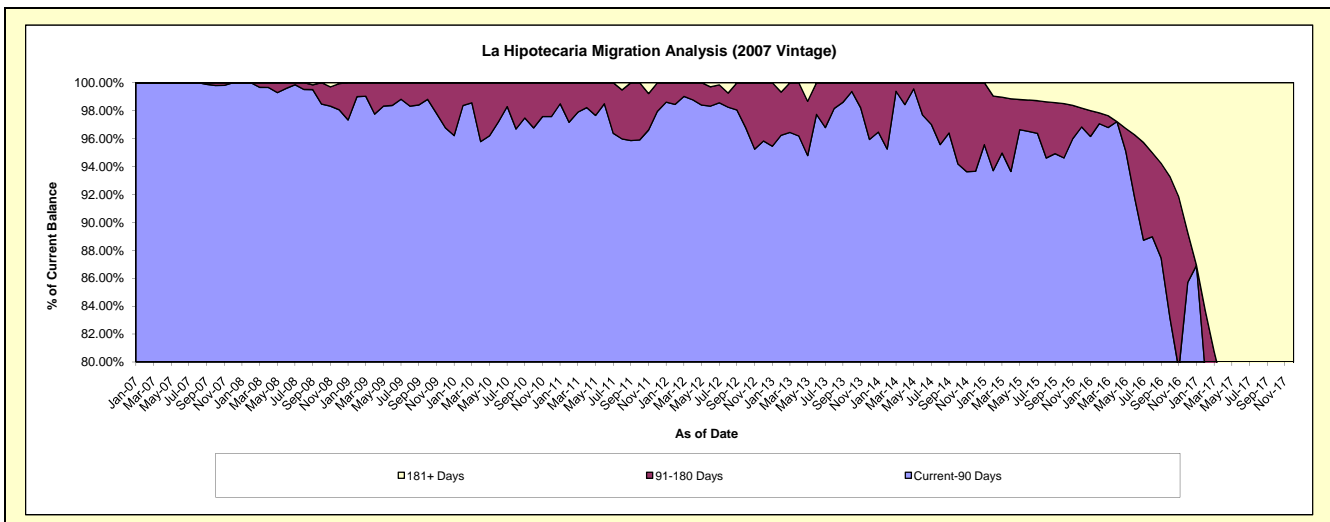
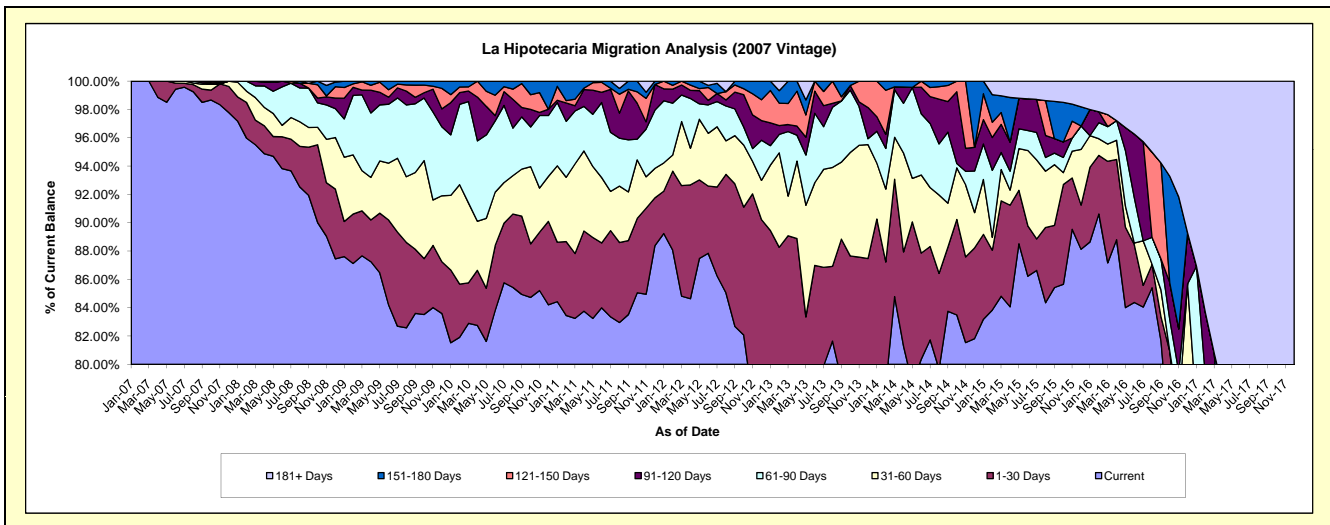
### Delinquency Status (\$ of Current Balance)

Data Cutoff: 7/31/2020

Current Portfolio Balance	1,829,514.81	1,227,193.40	742,582.06	421,313.78	182,154.99	50,160.31	4,751.42	#N/A	#N/A	#N/A
	Jul-11	Jul-12	Jul-13	Jul-14	Jul-15	Jul-16	Jul-17	Jul-18	Jul-19	Jul-20
Current	1,524,994.03	1,058,452.98	593,276.13	344,345.61	157,813.25	42,158.70	659.15	#N/A	#N/A	#N/A
1-30 Days	111,386.67	77,009.01	51,712.14	27,762.26	4,039.83	767.23	145.82	#N/A	#N/A	#N/A
31-60 Days	50,787.96	52,215.22	51,360.49	17,510.24	10,165.78	1,578.39	1,974.81	#N/A	#N/A	#N/A
61-90 Days	76,133.08	21,851.46	22,384.06	19,101.01	3,534.97	-	-	#N/A	#N/A	#N/A
91-120 Days	55,600.92	6,979.90	11,012.43	8,011.55	4,245.13	3,512.51	-	#N/A	#N/A	#N/A
121-150 Days	1,487.45	-	7,420.40	2,692.18	-	-	-	#N/A	#N/A	#N/A
151-180 Days	9,124.70	8,744.74	5,416.41	1,890.93	-	-	-	#N/A	#N/A	#N/A
181+ Days	-	1,940.09	-	-	2,356.03	2,143.48	1,971.64	#N/A	#N/A	#N/A

### Delinquency Status (% of Current Balance)

Current Portfolio Balance	1,829,514.81	1,227,193.40	742,582.06	421,313.78	182,154.99	50,160.31	4,751.42	#N/A	#N/A	#N/A
	Jul-11	Jul-12	Jul-13	Jul-14	Jul-15	Jul-16	Jul-17	Jul-18	Jul-19	Jul-20
Current	83.36%	86.25%	79.89%	81.73%	86.64%	84.05%	13.87%	#N/A	#N/A	#N/A
1-30 Days	6.09%	6.28%	6.96%	6.59%	2.22%	1.53%	3.07%	#N/A	#N/A	#N/A
31-60 Days	2.78%	4.25%	6.92%	4.16%	5.58%	3.15%	41.56%	#N/A	#N/A	#N/A
61-90 Days	4.16%	1.78%	3.01%	4.53%	1.94%	0.00%	0.00%	#N/A	#N/A	#N/A
91-120 Days	3.04%	0.57%	1.48%	1.90%	2.33%	7.00%	0.00%	#N/A	#N/A	#N/A
121-150 Days	0.08%	0.00%	1.00%	0.64%	0.00%	0.00%	0.00%	#N/A	#N/A	#N/A
151-180 Days	0.50%	0.71%	0.73%	0.45%	0.00%	0.00%	0.00%	#N/A	#N/A	#N/A
181+ Days	0.00%	0.16%	0.00%	0.00%	1.29%	4.27%	41.50%	#N/A	#N/A	#N/A
Current - 90 Days	96.38%	98.56%	96.79%	97.01%	96.38%	88.72%	58.50%	#N/A	#N/A	#N/A
91-180 Days	3.62%	1.28%	3.21%	2.99%	2.33%	7.00%	0.00%	#N/A	#N/A	#N/A



## Personal Loans - La Hipotecaria El Salvador Migration Analysis (2008 Vintage)

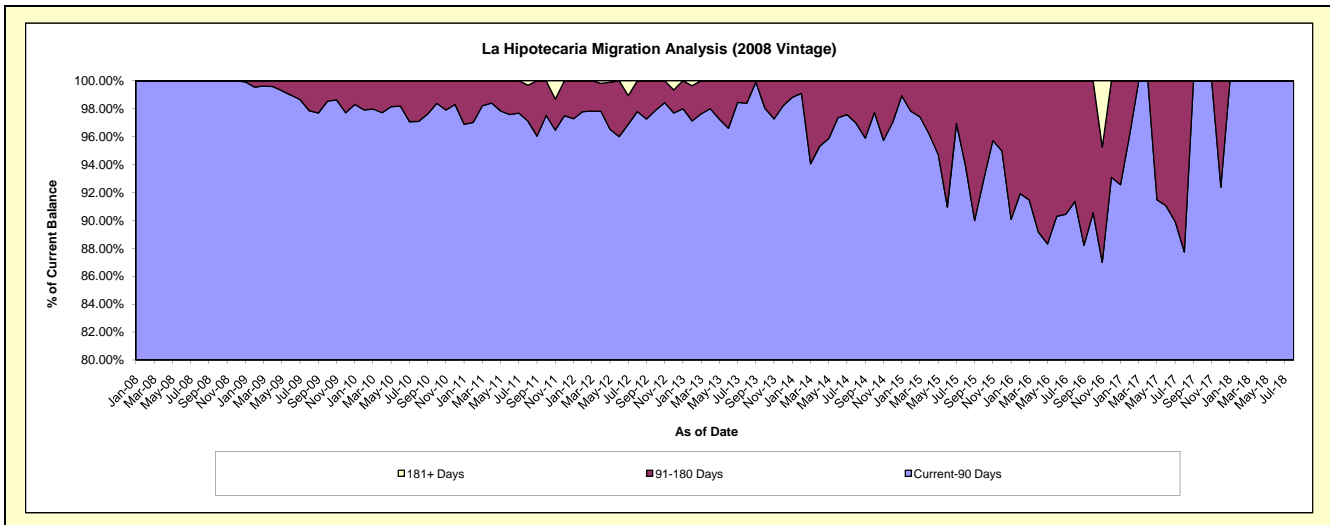
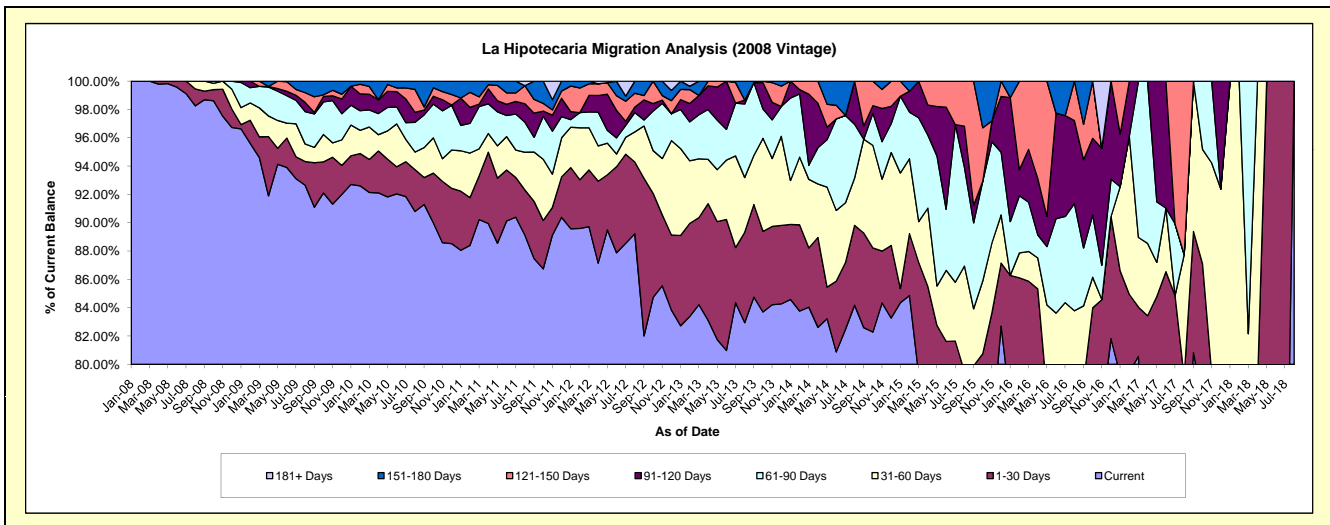
### Delinquency Status (\$ of Current Balance)

Data Cutoff: 7/31/2020

Current Portfolio Balance	2,347,448.92	1,700,447.98	1,138,529.87	712,244.51	355,243.75	139,516.16	37,276.09	653.09	#N/A	#N/A
	Jul-11	Jul-12	Jul-13	Jul-14	Jul-15	Jul-16	Jul-17	Jul-18	Jul-19	Jul-20
Current	2,121,935.43	1,505,596.98	960,372.62	587,406.66	277,612.91	105,375.76	27,050.55	391.84	#N/A	#N/A
1-30 Days	65,816.40	107,123.58	44,377.46	33,553.10	12,434.98	-	4,580.72	261.25	#N/A	#N/A
31-60 Days	45,575.80	20,365.98	73,702.86	30,097.46	14,756.08	12,320.47	-	-	#N/A	#N/A
61-90 Days	59,567.61	14,373.17	42,400.94	43,946.94	39,540.09	8,488.28	1,885.69	-	#N/A	#N/A
91-120 Days	21,094.09	4,903.44	-	-	-	9,933.61	-	-	#N/A	#N/A
121-150 Days	13,988.28	24,070.09	16,625.11	-	10,899.69	-	3,759.13	-	#N/A	#N/A
151-180 Days	19,471.31	5,987.94	1,050.88	17,240.35	-	3,398.04	-	-	#N/A	#N/A
181+ Days	-	18,026.80	-	-	-	-	-	-	#N/A	#N/A

### Delinquency Status (% of Current Balance)

Current Portfolio Balance	2,347,448.92	1,700,447.98	1,138,529.87	712,244.51	355,243.75	139,516.16	37,276.09	653.09	#N/A	#N/A
	Jul-11	Jul-12	Jul-13	Jul-14	Jul-15	Jul-16	Jul-17	Jul-18	Jul-19	Jul-20
Current	90.39%	88.54%	84.35%	82.47%	78.15%	75.53%	72.57%	60.00%	#N/A	#N/A
1-30 Days	2.80%	6.30%	3.90%	4.71%	3.50%	0.00%	12.29%	40.00%	#N/A	#N/A
31-60 Days	1.94%	1.20%	6.47%	4.23%	4.15%	8.83%	0.00%	0.00%	#N/A	#N/A
61-90 Days	2.54%	0.85%	3.72%	6.17%	11.13%	6.08%	5.06%	0.00%	#N/A	#N/A
91-120 Days	0.90%	0.29%	0.00%	0.00%	0.00%	7.12%	0.00%	0.00%	#N/A	#N/A
121-150 Days	0.60%	1.42%	1.46%	0.00%	3.07%	0.00%	10.08%	0.00%	#N/A	#N/A
151-180 Days	0.83%	0.35%	0.09%	2.42%	0.00%	2.44%	0.00%	0.00%	#N/A	#N/A
181+ Days	0.00%	1.06%	0.00%	0.00%	0.00%	0.00%	0.00%	0.00%	#N/A	#N/A
Current - 90 Days	97.68%	96.88%	98.45%	97.58%	96.93%	90.44%	89.92%	100.00%	#N/A	#N/A
91-180 Days	2.32%	2.06%	1.55%	2.42%	3.07%	9.56%	10.08%	0.00%	#N/A	#N/A



## Personal Loans - La Hipotecaria El Salvador Migration Analysis (2009 Vintage)

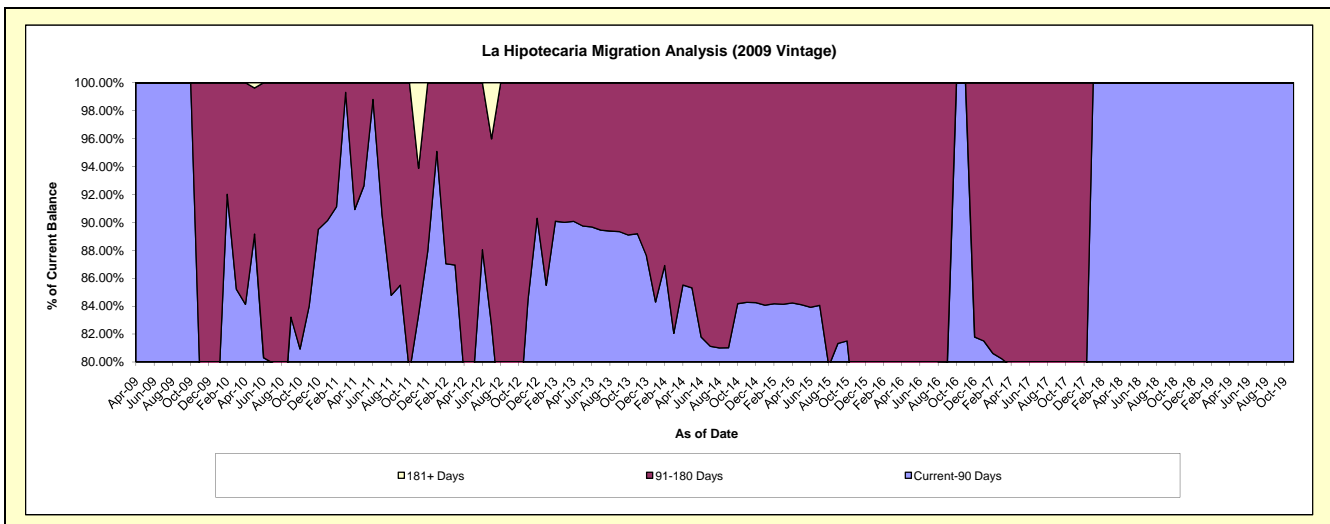
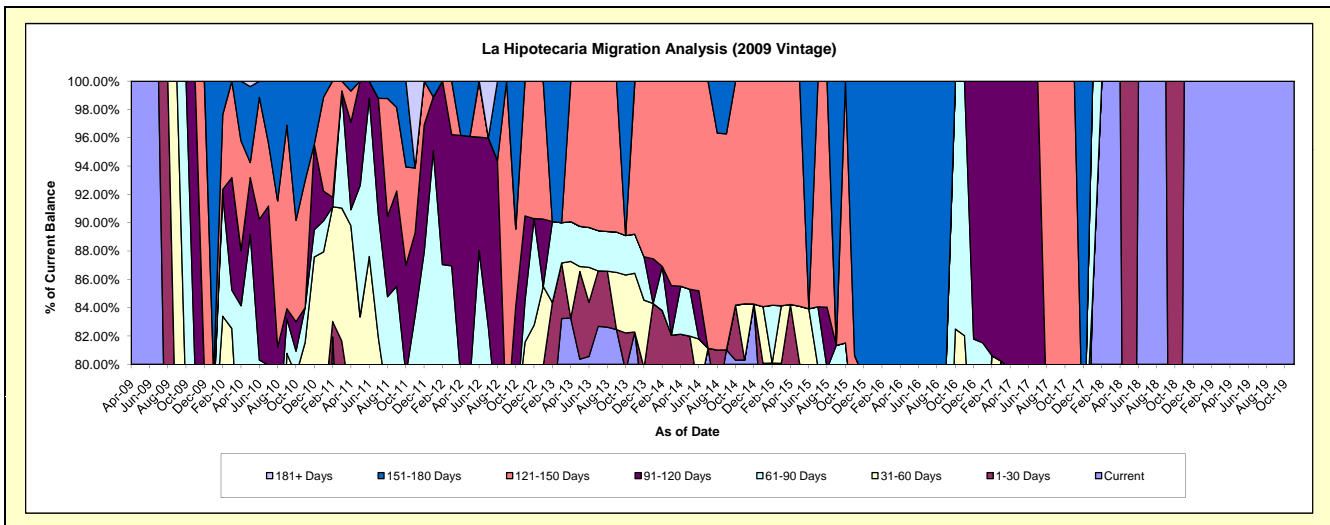
### Delinquency Status (\$ of Current Balance)

Data Cutoff: 7/31/2020

Current Portfolio Balance	184,265.05	128,040.40	85,054.58	47,438.67	34,152.09	17,421.58	10,155.34	532.86	181.23	#N/A
	Jul-11	Jul-12	Jul-13	Jul-14	Jul-15	Jul-16	Jul-17	Jul-18	Jul-19	Jul-20
Current	123,245.49	77,348.02	70,323.95	38,488.47	24,998.34	11,555.93	815.19	532.86	181.23	#N/A
1-30 Days	12,350.04	6,231.75	3,333.47	-	2,267.16	-	7,072.99	-	-	#N/A
31-60 Days	15,250.05	9,852.91	-	-	-	-	-	-	-	#N/A
61-90 Days	15,991.97	12,350.72	2,420.22	-	1,443.78	2,267.16	-	-	-	#N/A
91-120 Days	15,191.79	17,116.65	-	-	-	-	2,267.16	-	-	#N/A
121-150 Days	-	-	8,976.94	8,950.20	5,442.81	-	-	-	-	#N/A
151-180 Days	2,235.71	-	-	-	-	3,598.49	-	-	-	#N/A
181+ Days	-	5,140.35	-	-	-	-	-	-	-	#N/A

### Delinquency Status (% of Current Balance)

Current Portfolio Balance	184,265.05	128,040.40	85,054.58	47,438.67	34,152.09	17,421.58	10,155.34	532.86	181.23	#N/A
	Jul-11	Jul-12	Jul-13	Jul-14	Jul-15	Jul-16	Jul-17	Jul-18	Jul-19	Jul-20
Current	66.88%	60.41%	82.68%	81.13%	73.20%	66.33%	8.03%	100.00%	100.00%	#N/A
1-30 Days	6.70%	4.87%	3.92%	0.00%	6.64%	0.00%	69.65%	0.00%	0.00%	#N/A
31-60 Days	8.28%	7.70%	0.00%	0.00%	0.00%	0.00%	0.00%	0.00%	0.00%	#N/A
61-90 Days	8.68%	9.65%	2.85%	0.00%	4.23%	13.01%	0.00%	0.00%	0.00%	#N/A
91-120 Days	8.24%	13.37%	0.00%	0.00%	0.00%	0.00%	22.32%	0.00%	0.00%	#N/A
121-150 Days	0.00%	0.00%	10.55%	18.87%	15.94%	0.00%	0.00%	0.00%	0.00%	#N/A
151-180 Days	1.21%	0.00%	0.00%	0.00%	0.00%	20.66%	0.00%	0.00%	0.00%	#N/A
181+ Days	0.00%	4.01%	0.00%	0.00%	0.00%	0.00%	0.00%	0.00%	0.00%	#N/A
Current - 90 Days	90.54%	82.62%	89.45%	81.13%	84.06%	79.34%	77.68%	100.00%	100.00%	#N/A
91-180 Days	9.46%	13.37%	10.55%	18.87%	15.94%	20.66%	22.32%	0.00%	0.00%	#N/A



# Personal Loans - La Hipotecaria El Salvador Migration Analysis (2010 Vintage)

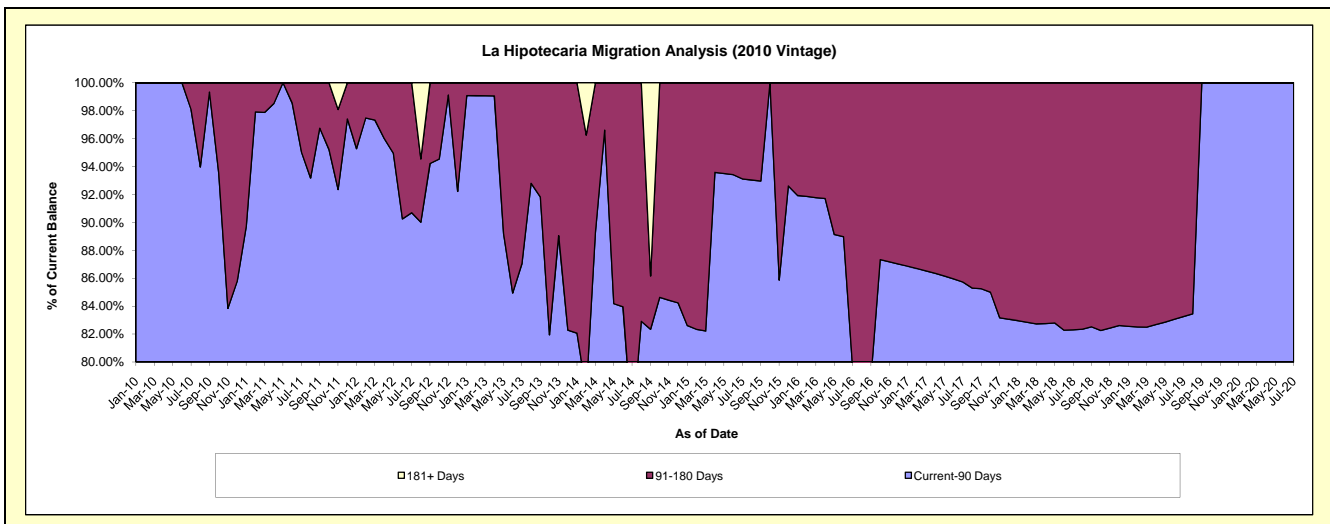
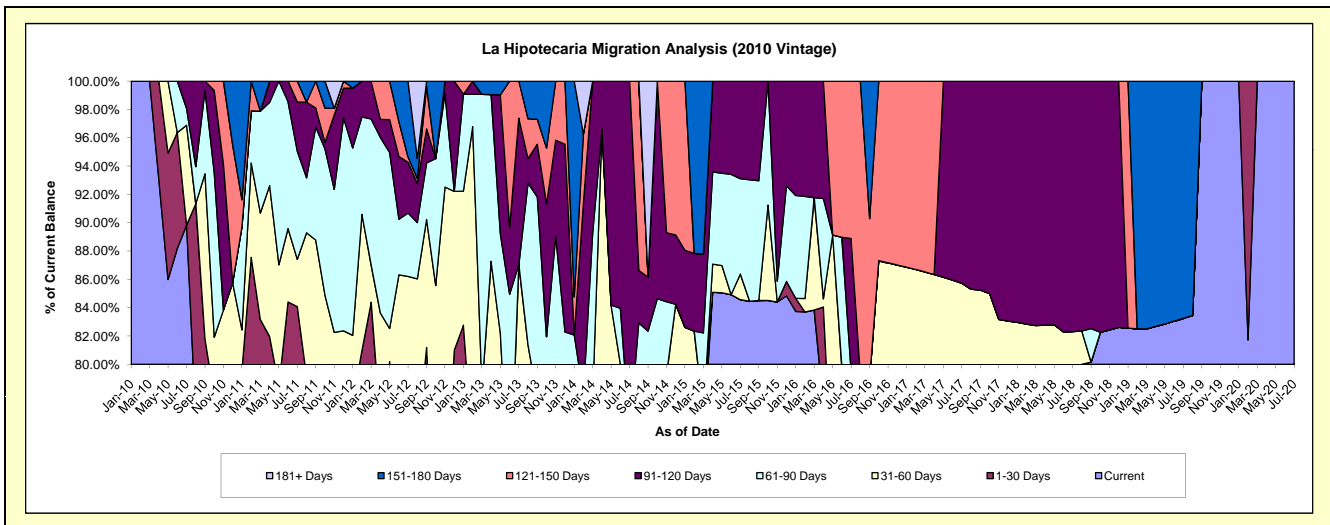
## Delinquency Status (\$ of Current Balance)

Data Cutoff: 7/31/2020

Current Portfolio Balance	405,844.60	318,635.87	199,149.44	114,429.05	55,499.24	31,405.20	21,534.25	14,836.29	13,465.21	10,622.09
	Jul-11	Jul-12	Jul-13	Jul-14	Jul-15	Jul-16	Jul-17	Jul-18	Jul-19	Jul-20
Current	264,863.54	202,262.48	107,194.89	69,482.30	46,932.97	22,235.90	16,819.65	11,771.10	11,210.41	10,622.09
1-30 Days	76,354.51	34,953.69	13,564.01	11,979.44	-	-	-	-	-	-
31-60 Days	13,563.99	37,485.98	52,594.91	4,618.50	1,004.21	2,738.95	1,640.87	440.50	-	-
61-90 Days	30,971.92	14,271.64	-	-	3,740.18	-	-	-	-	-
91-120 Days	14,119.83	11,423.46	20,595.04	28,348.81	3,821.88	2,939.46	3,073.73	2,624.69	-	-
121-150 Days	5,970.81	1,130.70	5,200.59	-	-	3,490.89	-	-	-	-
151-180 Days	-	17,107.92	-	-	-	-	-	-	2,254.80	-
181+ Days	-	-	-	-	-	-	-	-	-	-

## Delinquency Status (% of Current Balance)

Current Portfolio Balance	405,844.60	318,635.87	199,149.44	114,429.05	55,499.24	31,405.20	21,534.25	14,836.29	13,465.21	10,622.09
	Jul-11	Jul-12	Jul-13	Jul-14	Jul-15	Jul-16	Jul-17	Jul-18	Jul-19	Jul-20
Current	65.26%	63.48%	53.83%	60.72%	84.57%	70.80%	78.11%	79.34%	83.25%	100.00%
1-30 Days	18.81%	10.97%	6.81%	10.47%	0.00%	0.00%	0.00%	0.00%	0.00%	0.00%
31-60 Days	3.34%	11.76%	26.41%	4.04%	1.81%	8.72%	7.62%	2.97%	0.00%	0.00%
61-90 Days	7.63%	4.48%	0.00%	0.00%	6.74%	0.00%	0.00%	0.00%	0.00%	0.00%
91-120 Days	3.48%	3.59%	10.34%	24.77%	6.89%	9.36%	14.27%	17.69%	0.00%	0.00%
121-150 Days	1.47%	0.35%	2.61%	0.00%	0.00%	11.12%	0.00%	0.00%	0.00%	0.00%
151-180 Days	0.00%	5.37%	0.00%	0.00%	0.00%	0.00%	0.00%	0.00%	16.75%	0.00%
181+ Days	0.00%	0.00%	0.00%	0.00%	0.00%	0.00%	0.00%	0.00%	0.00%	0.00%
Current - 90 Days	95.05%	90.69%	87.05%	75.23%	93.11%	79.52%	85.73%	82.31%	83.25%	100.00%
91-180 Days	4.95%	9.31%	12.95%	24.77%	6.89%	20.48%	14.27%	17.69%	16.75%	0.00%



# Personal Loans - La Hipotecaria El Salvador Migration Analysis (2011 Vintage)

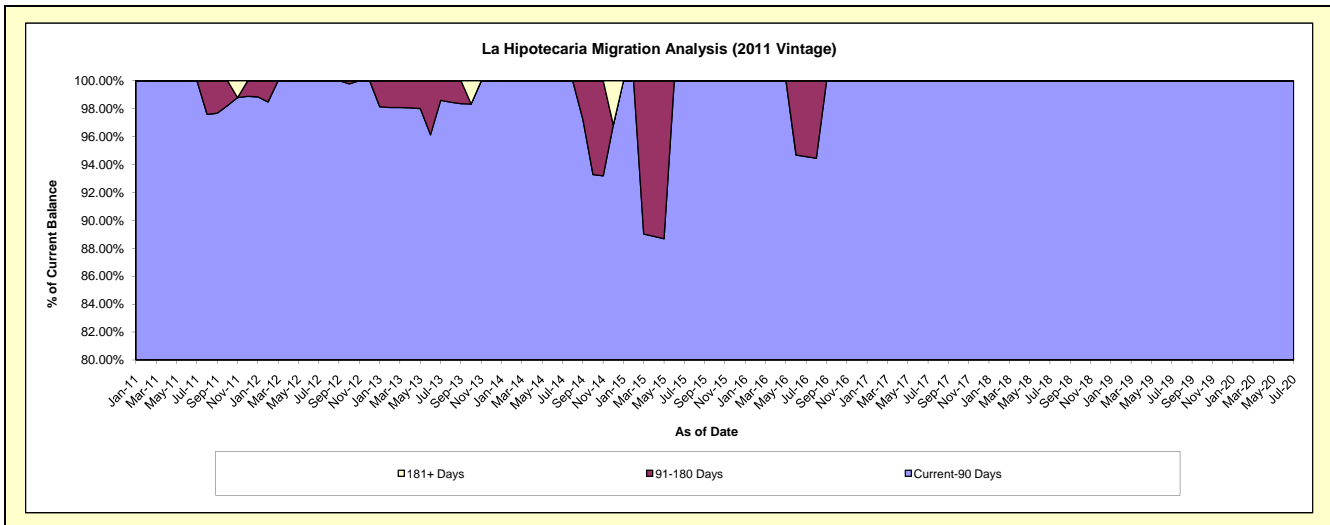
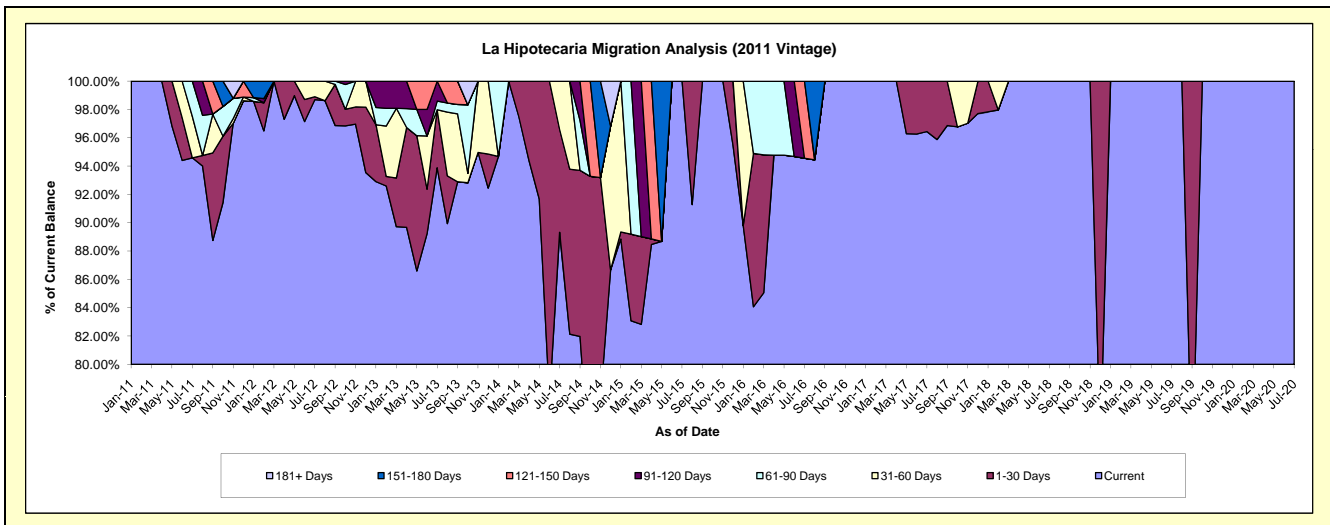
## Delinquency Status (\$ of Current Balance)

Data Cutoff: 7/31/2020

Current Portfolio Balance	156,814.30	325,090.56	229,427.07	148,547.75	97,233.30	67,413.80	45,779.56	26,543.58	22,172.96	17,468.02
	Jul-11	Jul-12	Jul-13	Jul-14	Jul-15	Jul-16	Jul-17	Jul-18	Jul-19	Jul-20
Current	148,319.82	320,832.95	215,398.43	132,690.54	97,233.30	63,747.37	44,150.18	26,543.58	22,172.96	17,468.02
1-30 Days	-	673.46	9,403.29	10,797.40	-	-	1,629.38	-	-	-
31-60 Days	4,594.48	3,584.15	-	5,059.81	-	-	-	-	-	-
61-90 Days	3,900.00	-	1,405.68	-	-	-	-	-	-	-
91-120 Days	-	-	3,219.67	-	-	-	-	-	-	-
121-150 Days	-	-	-	-	-	3,666.43	-	-	-	-
151-180 Days	-	-	-	-	-	-	-	-	-	-
181+ Days	-	-	-	-	-	-	-	-	-	-

## Delinquency Status (% of Current Balance)

Current Portfolio Balance	156,814.30	325,090.56	229,427.07	148,547.75	97,233.30	67,413.80	45,779.56	26,543.58	22,172.96	17,468.02
	Jul-11	Jul-12	Jul-13	Jul-14	Jul-15	Jul-16	Jul-17	Jul-18	Jul-19	Jul-20
Current	94.58%	98.69%	93.89%	89.33%	100.00%	94.56%	96.44%	100.00%	100.00%	100.00%
1-30 Days	0.00%	0.21%	4.10%	7.27%	0.00%	0.00%	3.56%	0.00%	0.00%	0.00%
31-60 Days	2.93%	1.10%	0.00%	3.41%	0.00%	0.00%	0.00%	0.00%	0.00%	0.00%
61-90 Days	2.49%	0.00%	0.61%	0.00%	0.00%	0.00%	0.00%	0.00%	0.00%	0.00%
91-120 Days	0.00%	0.00%	1.40%	0.00%	0.00%	0.00%	0.00%	0.00%	0.00%	0.00%
121-150 Days	0.00%	0.00%	0.00%	0.00%	0.00%	5.44%	0.00%	0.00%	0.00%	0.00%
151-180 Days	0.00%	0.00%	0.00%	0.00%	0.00%	0.00%	0.00%	0.00%	0.00%	0.00%
181+ Days	0.00%	0.00%	0.00%	0.00%	0.00%	0.00%	0.00%	0.00%	0.00%	0.00%
Current - 90 Days	100.00%	100.00%	98.60%	100.00%	100.00%	94.56%	100.00%	100.00%	100.00%	100.00%
91-180 Days	0.00%	0.00%	1.40%	0.00%	0.00%	5.44%	0.00%	0.00%	0.00%	0.00%





## Personal Loans - La Hipotecaria El Salvador Migration Analysis (2012 Vintage)

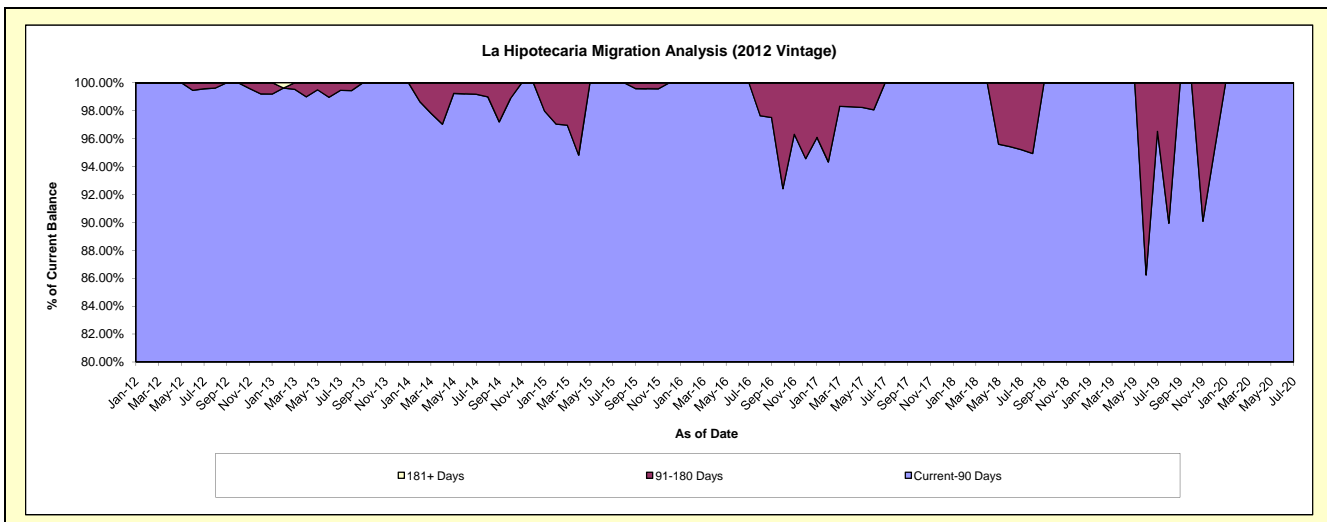
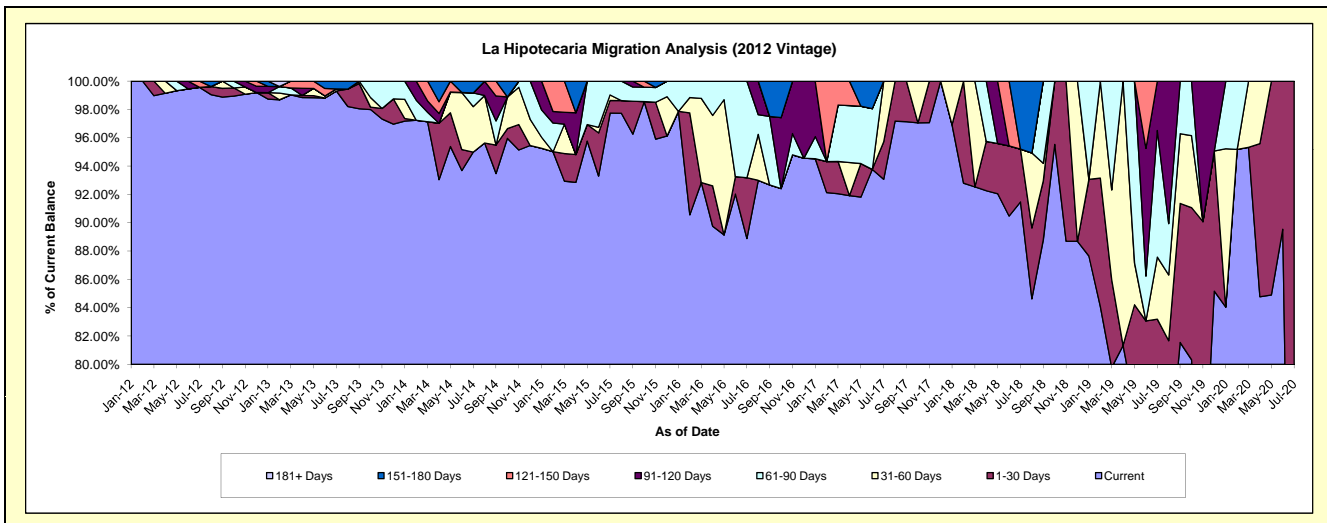
### Delinquency Status (\$ of Current Balance)

Data Cutoff: 7/31/2020

Current Portfolio Balance	-	917,282.65	1,361,094.64	803,997.88	478,581.07	296,098.57	174,052.50	104,007.54	37,384.89	3,584.16
	Jul-12	Jul-13	Jul-14	Jul-15	Jul-16	Jul-17	Jul-18	Jul-19	Jul-20	
Current	913,282.65	1,351,575.80	763,695.24	467,783.61	263,185.45	161,996.70	95,137.07	28,107.78	1,442.05	
1-30 Days	-	-	-	4,257.06	12,727.89	4,607.88	3,881.30	2,992.66	2,142.11	
31-60 Days	-	2,085.47	25,847.80	1,881.47	-	7,447.92	-	1,638.26	-	
61-90 Days	-	-	7,787.22	4,658.93	20,185.23	-	-	3,343.66	-	
91-120 Days	-	-	-	-	-	-	-	1,302.53	-	
121-150 Days	4,000.00	-	-	-	-	-	-	-	-	
151-180 Days	-	7,433.37	6,667.62	-	-	-	4,989.17	-	-	
181+ Days	-	-	-	-	-	-	-	-	-	

### Delinquency Status (% of Current Balance)

Current Portfolio Balance	-	917,282.65	1,361,094.64	803,997.88	478,581.07	296,098.57	174,052.50	104,007.54	37,384.89	3,584.16
	Jul-12	Jul-13	Jul-14	Jul-15	Jul-16	Jul-17	Jul-18	Jul-19	Jul-20	
Current	99.56%	99.30%	94.99%	97.74%	88.88%	93.07%	91.47%	75.18%	40.23%	
1-30 Days	0.00%	0.00%	0.00%	0.89%	4.30%	2.65%	3.73%	8.00%	59.77%	
31-60 Days	0.00%	0.15%	3.21%	0.39%	0.00%	4.28%	0.00%	4.38%	0.00%	
61-90 Days	0.00%	0.00%	0.97%	0.97%	6.82%	0.00%	0.00%	8.94%	0.00%	
91-120 Days	0.00%	0.00%	0.00%	0.00%	0.00%	0.00%	0.00%	3.48%	0.00%	
121-150 Days	0.44%	0.00%	0.00%	0.00%	0.00%	0.00%	0.00%	0.00%	0.00%	
151-180 Days	0.00%	0.55%	0.83%	0.00%	0.00%	0.00%	4.80%	0.00%	0.00%	
181+ Days	0.00%	0.00%	0.00%	0.00%	0.00%	0.00%	0.00%	0.00%	0.00%	
Current - 90 Days	99.56%	99.45%	99.17%	100.00%	100.00%	100.00%	95.20%	96.52%	100.00%	
91-180 Days	0.44%	0.55%	0.83%	0.00%	0.00%	0.00%	4.80%	3.48%	0.00%	



## Personal Loans - La Hipotecaria El Salvador Migration Analysis (2013 Vintage)

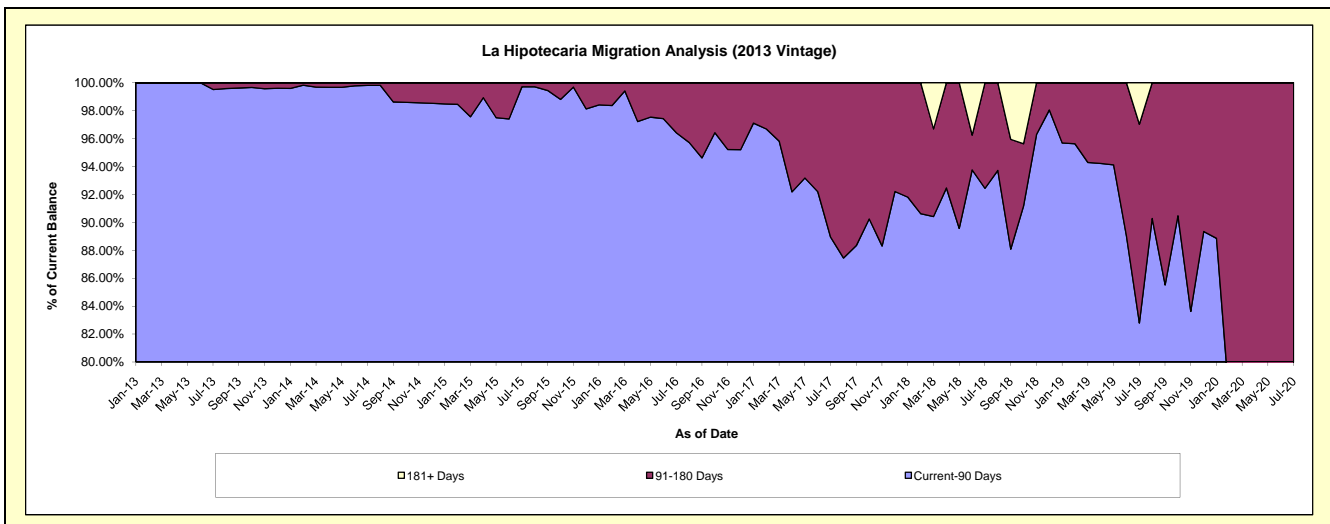
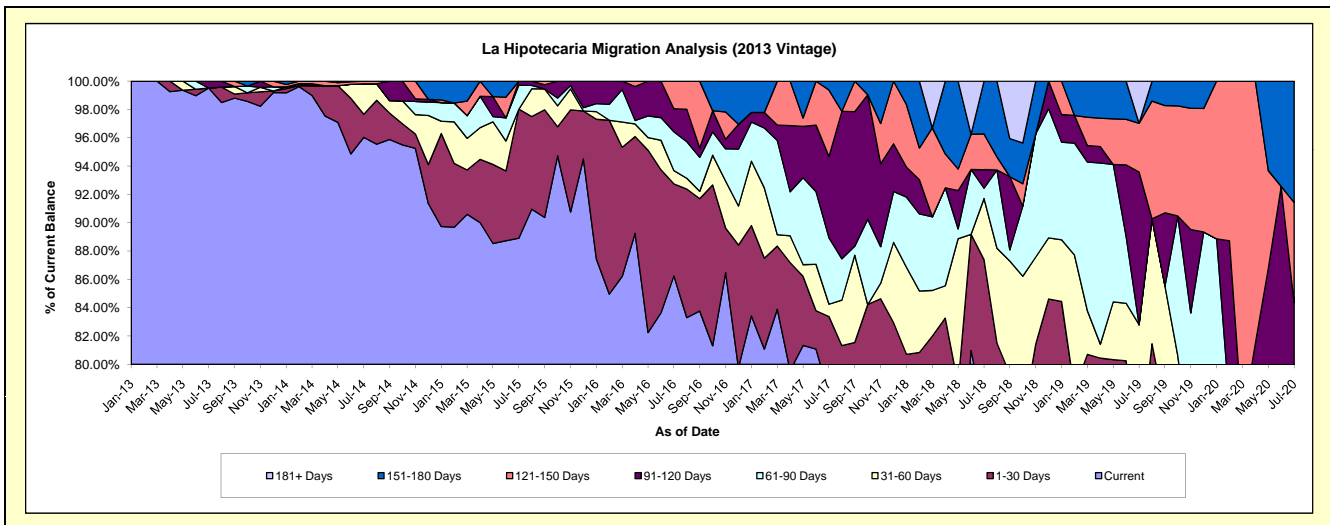
### Delinquency Status (\$ of Current Balance)

Data Cutoff: 7/31/2020

Current Portfolio Balance	-	-	1,259,708.06	1,643,591.56	1,093,548.82	748,904.68	535,143.54	319,985.50	164,037.34	53,334.29
	Jul-13	Jul-14	Jul-15	Jul-16	Jul-17	Jul-18	Jul-19	Jul-20		
Current	1,253,616.00	1,578,469.44	972,273.81	645,887.20	416,623.12	244,977.21	110,404.57	34,529.27		
1-30 Days	-	26,646.30	99,609.94	48,701.54	29,580.41	34,682.72	9,911.81	2,426.56		
31-60 Days	-	35,366.97	-	7,037.57	4,651.30	13,791.75	15,502.54	922.77		
61-90 Days	-	-	18,476.11	20,476.07	25,110.29	2,347.13	-	1,007.46		
91-120 Days	6,092.06	-	3,188.96	12,218.67	30,698.15	4,182.12	17,693.24	6,098.78		
121-150 Days	-	3,108.85	-	14,583.63	25,140.42	8,075.99	5,644.04	3,781.40		
151-180 Days	-	-	-	-	3,339.85	11,928.58	-	4,568.05		
181+ Days	-	-	-	-	-	-	4,881.14	-		

### Delinquency Status (% of Current Balance)

Current Portfolio Balance	-	-	1,259,708.06	1,643,591.56	1,093,548.82	748,904.68	535,143.54	319,985.50	164,037.34	53,334.29
	Jul-13	Jul-14	Jul-15	Jul-16	Jul-17	Jul-18	Jul-19	Jul-20		
Current	99.52%	96.04%	88.91%	86.24%	77.85%	76.56%	67.30%	64.74%		
1-30 Days	0.00%	1.62%	9.11%	6.50%	5.53%	10.84%	6.04%	4.55%		
31-60 Days	0.00%	2.15%	0.00%	0.94%	0.87%	4.31%	9.45%	1.73%		
61-90 Days	0.00%	0.00%	1.69%	2.73%	4.69%	0.73%	0.00%	1.89%		
91-120 Days	0.48%	0.00%	0.29%	1.63%	5.74%	1.31%	10.79%	11.44%		
121-150 Days	0.00%	0.19%	0.00%	1.95%	4.70%	2.52%	3.44%	7.09%		
151-180 Days	0.00%	0.00%	0.00%	0.00%	0.62%	3.73%	0.00%	8.56%		
181+ Days	0.00%	0.00%	0.00%	0.00%	0.00%	0.00%	2.98%	0.00%		
Current - 90 Days	99.52%	99.81%	99.71%	96.42%	88.94%	92.44%	82.80%	72.91%		
91-180 Days	0.48%	0.19%	0.29%	3.58%	11.06%	7.56%	14.23%	27.09%		



# Personal Loans - La Hipotecaria El Salvador Migration Analysis (2014 Vintage)

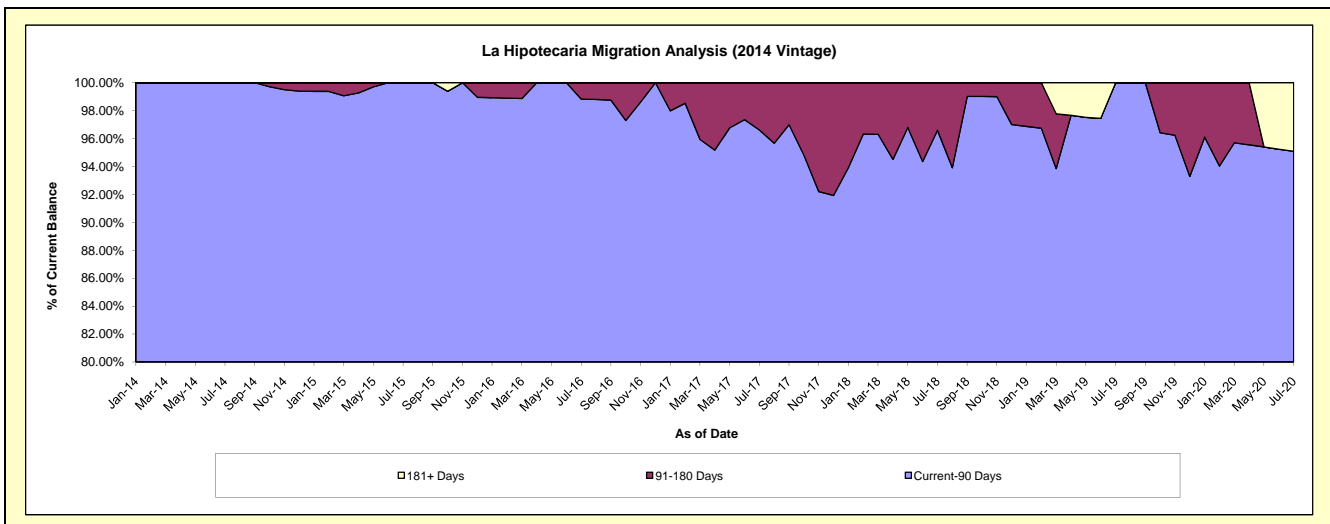
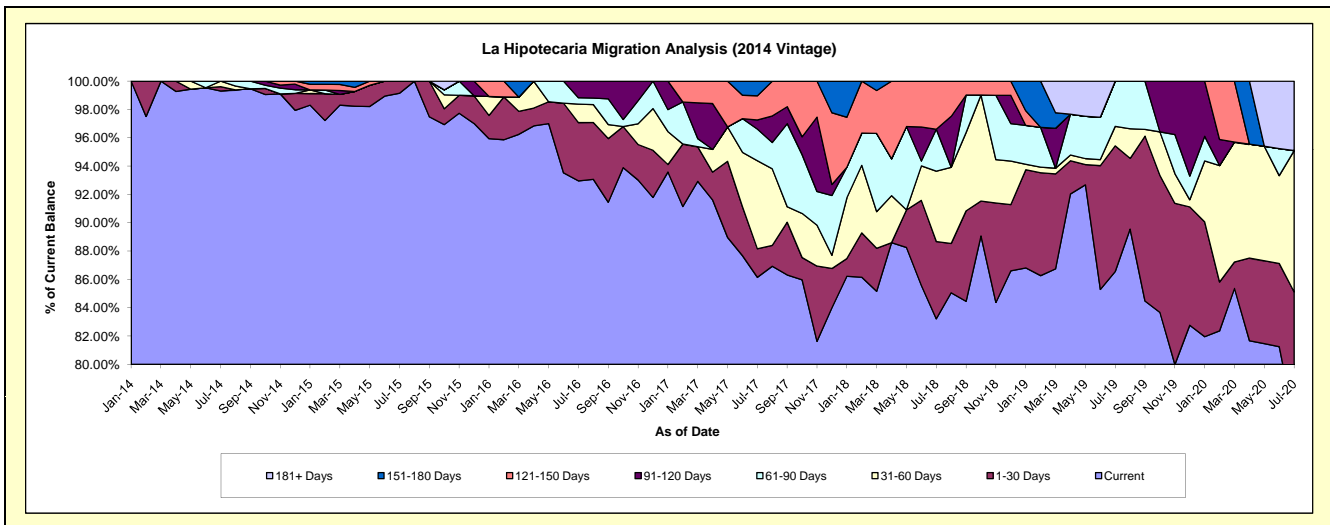
## Delinquency Status (\$ of Current Balance)

Data Cutoff: 7/31/2020

Current Portfolio Balance	-	-	-	1,699,008.83	1,991,094.51	1,356,888.28	842,930.80	505,777.91	317,138.11	181,859.50
	Jul-14	Jul-15	Jul-16	Jul-17	Jul-18	Jul-19	Jul-20			
Current	1,687,183.23	1,974,123.94	1,261,332.36	726,145.19	420,883.40	274,507.54	138,240.52			
1-30 Days	5,276.93	16,970.57	55,851.94	17,020.54	27,617.25	28,138.07	16,534.33			
31-60 Days	6,548.67	-	17,661.82	52,384.96	25,149.60	4,373.39	18,165.54			
61-90 Days	-	-	6,126.51	18,863.53	14,944.47	10,119.11	-			
91-120 Days	-	-	15,915.65	5,452.97	-	-	-			
121-150 Days	-	-	-	14,355.68	17,183.19	-	-			
151-180 Days	-	-	-	8,707.93	-	-	-			
181+ Days	-	-	-	-	-	-	-	8,919.11		

## Delinquency Status (% of Current Balance)

Current Portfolio Balance	-	-	-	1,699,008.83	1,991,094.51	1,356,888.28	842,930.80	505,777.91	317,138.11	181,859.50
	Jul-14	Jul-15	Jul-16	Jul-17	Jul-18	Jul-19	Jul-20			
Current	99.30%	99.15%	92.96%	86.15%	83.22%	86.56%	76.02%			
1-30 Days	0.31%	0.85%	4.12%	2.02%	5.46%	8.87%	9.09%			
31-60 Days	0.39%	0.00%	1.30%	6.21%	4.97%	1.38%	9.99%			
61-90 Days	0.00%	0.00%	0.45%	2.24%	2.95%	3.19%	0.00%			
91-120 Days	0.00%	0.00%	1.17%	0.65%	0.00%	0.00%	0.00%			
121-150 Days	0.00%	0.00%	0.00%	1.70%	3.40%	0.00%	0.00%			
151-180 Days	0.00%	0.00%	0.00%	1.03%	0.00%	0.00%	0.00%			
181+ Days	0.00%	0.00%	0.00%	0.00%	0.00%	0.00%	4.90%			
Current - 90 Days	100.00%	100.00%	98.83%	96.62%	96.60%	100.00%	95.10%			
91-180 Days	0.00%	0.00%	1.17%	3.38%	3.40%	0.00%	0.00%			



## Personal Loans - La Hipotecaria El Salvador Migration Analysis (2015 Vintage)

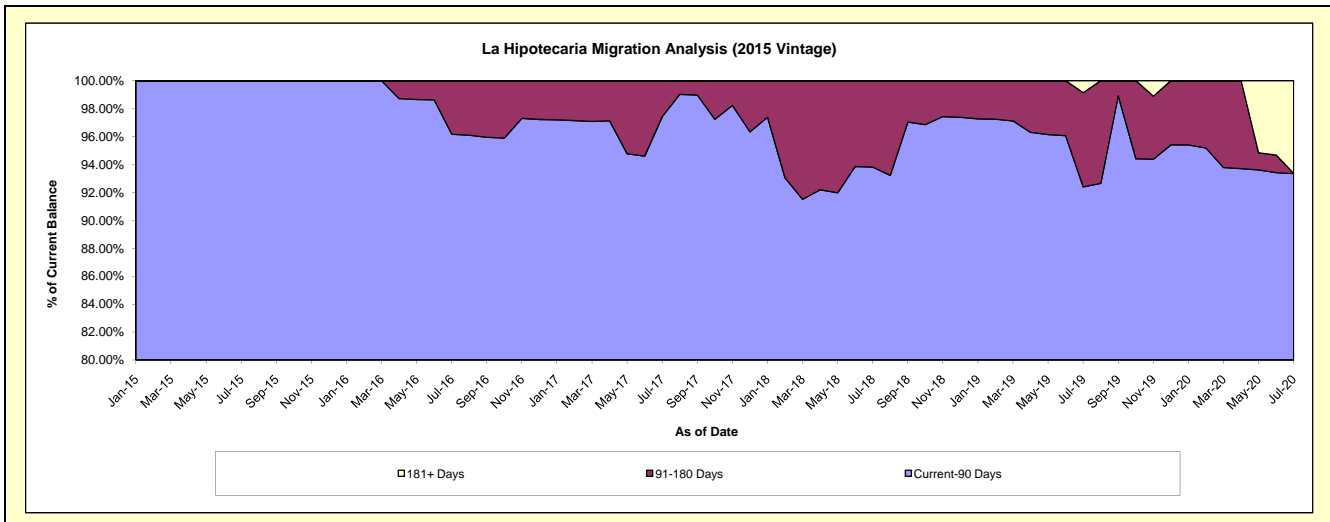
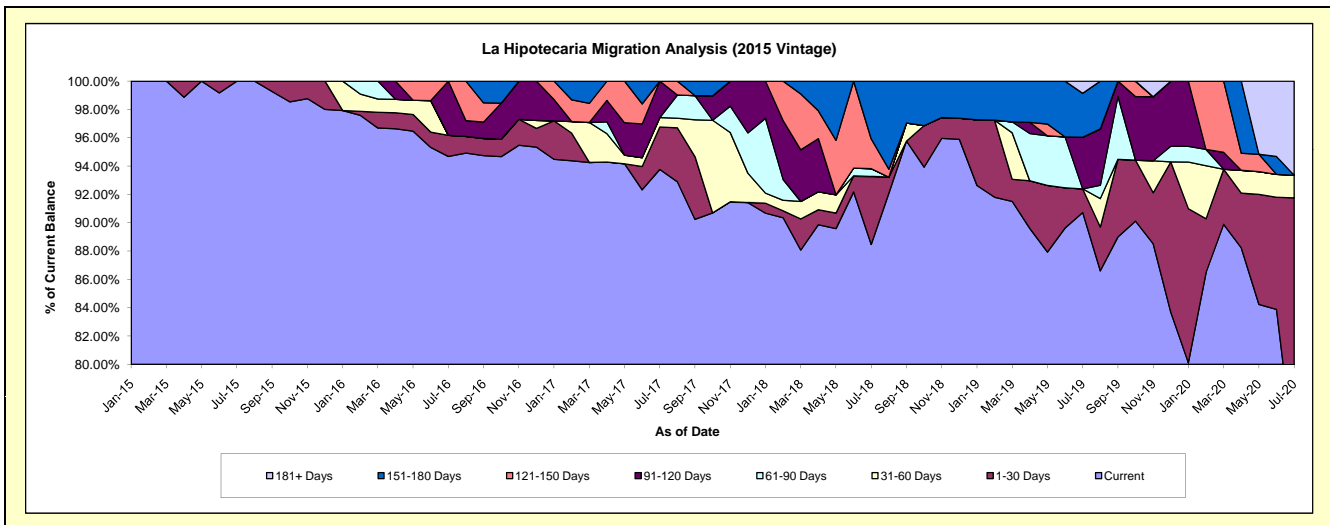
### Delinquency Status (\$ of Current Balance)

Data Cutoff: 7/31/2020

Current Portfolio Balance	-	-	-	-	877,137.94	1,250,418.74	875,887.92	641,536.34	398,253.54	256,687.19
					Jul-15	Jul-16	Jul-17	Jul-18	Jul-19	Jul-20
Current					877,137.94	1,183,932.67	821,295.68	567,563.50	361,279.78	188,966.43
1-30 Days					-	18,616.89	26,233.13	30,788.43	6,683.71	46,556.00
31-60 Days					-	-	5,840.83	-	-	4,106.00
61-90 Days					-	-	-	3,537.70	-	-
91-120 Days					-	47,869.18	22,518.28	-	14,513.28	-
121-150 Days					-	-	-	13,445.63	-	-
151-180 Days					-	-	-	26,201.08	12,342.03	-
181+ Days					-	-	-	-	3,434.74	17,058.76

### Delinquency Status (% of Current Balance)

Current Portfolio Balance	-	-	-	-	877,137.94	1,250,418.74	875,887.92	641,536.34	398,253.54	256,687.19
					Jul-15	Jul-16	Jul-17	Jul-18	Jul-19	Jul-20
Current					100.00%	94.68%	93.77%	88.47%	90.72%	73.62%
1-30 Days					0.00%	1.49%	3.00%	4.80%	1.68%	18.14%
31-60 Days					0.00%	0.00%	0.67%	0.00%	0.00%	1.60%
61-90 Days					0.00%	0.00%	0.00%	0.55%	0.00%	0.00%
91-120 Days					0.00%	3.83%	2.57%	0.00%	3.64%	0.00%
121-150 Days					0.00%	0.00%	0.00%	2.10%	0.00%	0.00%
151-180 Days					0.00%	0.00%	0.00%	4.08%	3.10%	0.00%
181+ Days					0.00%	0.00%	0.00%	0.00%	0.86%	6.65%
Current - 90 Days					100.00%	96.17%	97.43%	93.82%	92.39%	93.35%
91-180 Days					0.00%	3.83%	2.57%	6.18%	6.74%	0.00%



## Personal Loans - La Hipotecaria El Salvador Migration Analysis (2016 Vintage)

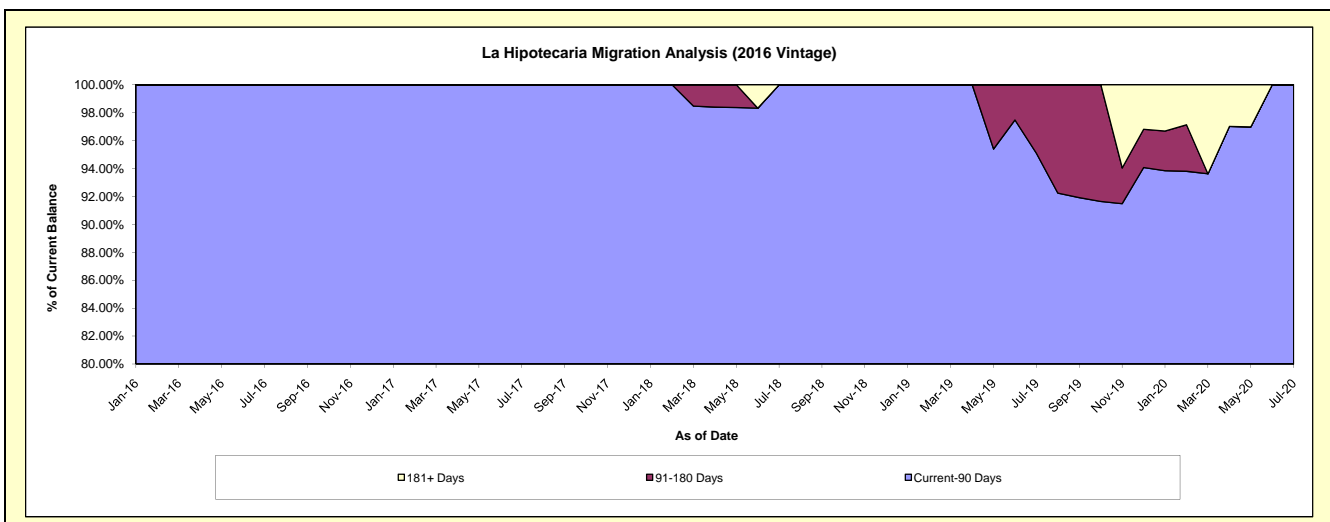
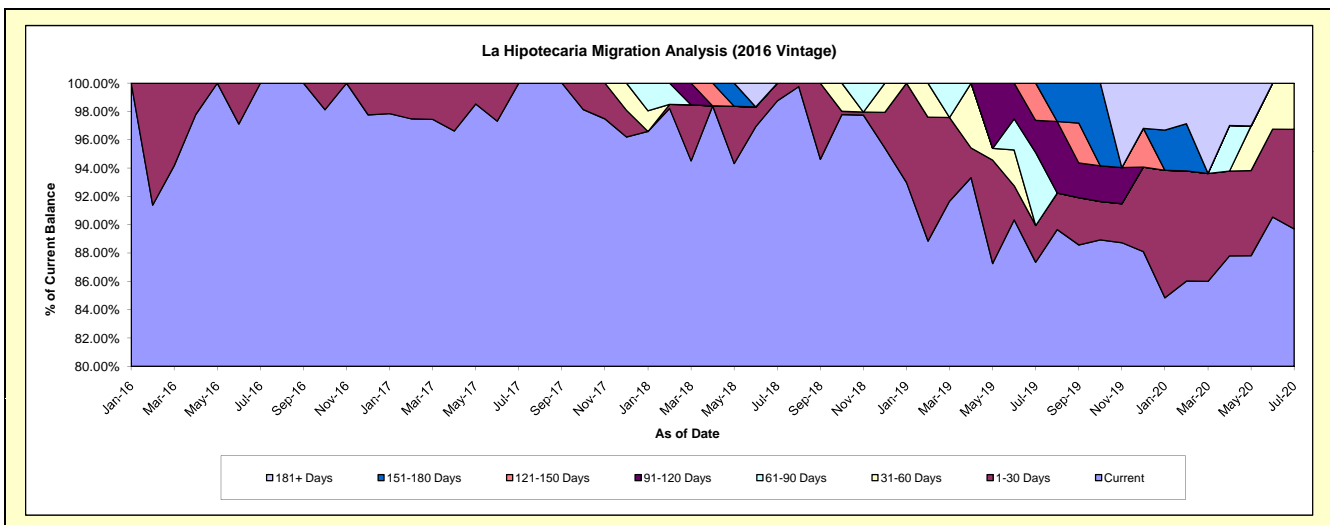
### Delinquency Status (\$ of Current Balance)

Data Cutoff: 7/31/2020

Current Portfolio Balance	-	-	-	-	-	803,329.83	1,061,385.44	794,459.67	630,987.24	446,250.24
						Jul-16	Jul-17	Jul-18	Jul-19	Jul-20
Current						803,329.83	1,061,385.44	784,507.64	551,188.45	400,327.68
1-30 Days						-	-	9,952.03	16,391.48	31,385.33
31-60 Days						-	-	-	-	14,537.23
61-90 Days						-	-	-	32,451.95	-
91-120 Days						-	-	-	14,389.21	-
121-150 Days						-	-	-	16,566.15	-
151-180 Days						-	-	-	-	-
181+ Days						-	-	-	-	-

### Delinquency Status (% of Current Balance)

Current Portfolio Balance	-	-	-	-	-	803,329.83	1,061,385.44	794,459.67	630,987.24	446,250.24
						Jul-16	Jul-17	Jul-18	Jul-19	Jul-20
Current						100.00%	100.00%	98.75%	87.35%	89.71%
1-30 Days						0.00%	0.00%	1.25%	2.60%	7.03%
31-60 Days						0.00%	0.00%	0.00%	0.00%	3.26%
61-90 Days						0.00%	0.00%	0.00%	5.14%	0.00%
91-120 Days						0.00%	0.00%	0.00%	2.28%	0.00%
121-150 Days						0.00%	0.00%	0.00%	2.63%	0.00%
151-180 Days						0.00%	0.00%	0.00%	0.00%	0.00%
181+ Days						0.00%	0.00%	0.00%	0.00%	0.00%
Current - 90 Days						100.00%	100.00%	100.00%	95.09%	100.00%
91-180 Days						0.00%	0.00%	0.00%	4.91%	0.00%



## Personal Loans - La Hipotecaria El Salvador Migration Analysis (2017 Vintage)

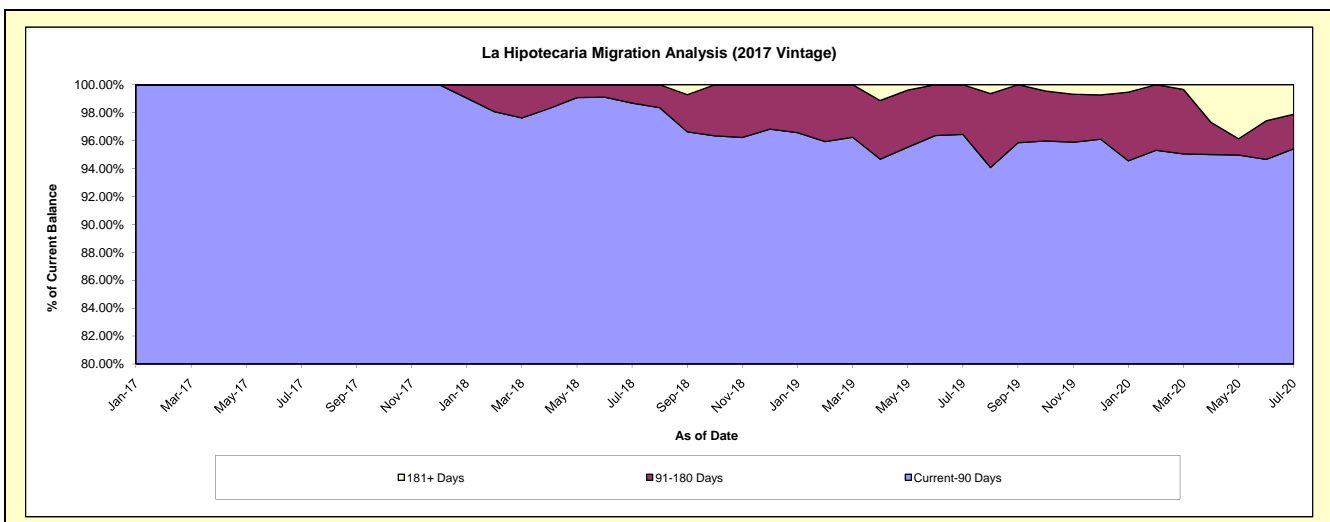
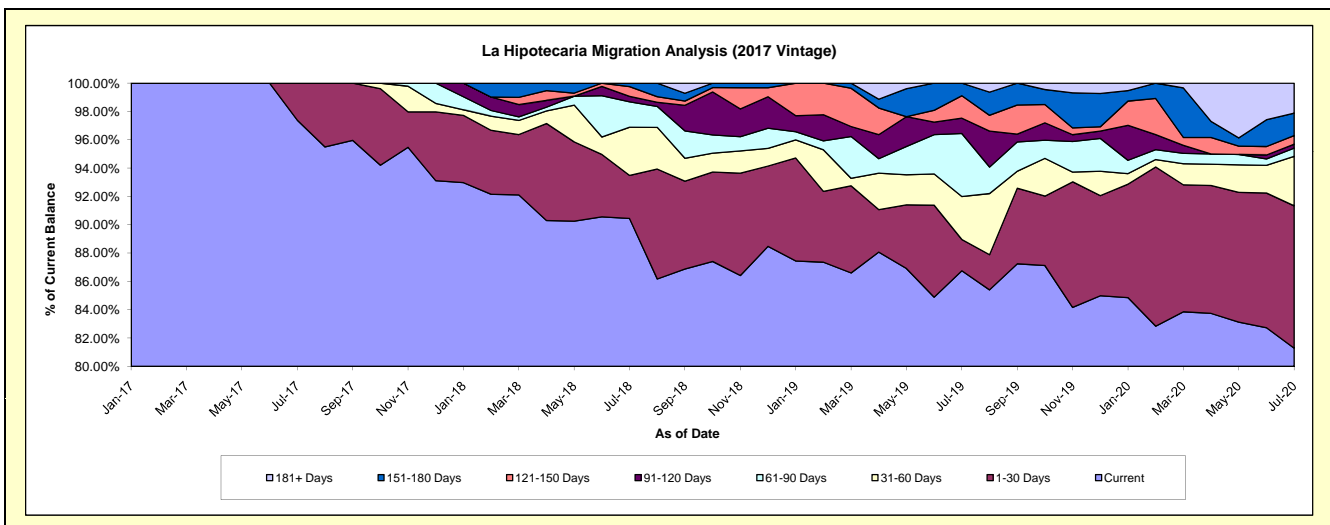
### Delinquency Status (\$ of Current Balance)

Data Cutoff: 7/31/2020

Current Portfolio Balance	-	-	-	-	-	-	-	1,328,135.96	1,682,572.95	1,108,253.30	787,105.99
								Jul-17	Jul-18	Jul-19	Jul-20
Current								1,293,454.53	1,521,787.27	961,414.78	639,791.97
1-30 Days								34,681.43	51,153.87	24,500.69	79,151.38
31-60 Days								-	57,307.17	33,578.21	27,441.56
61-90 Days								-	30,160.38	49,348.56	4,610.13
91-120 Days								-	6,483.46	12,007.36	2,195.12
121-150 Days								-	11,599.29	17,573.64	4,804.66
151-180 Days								-	4,081.51	9,830.06	12,474.79
181+ Days								-	-	-	16,636.38

### Delinquency Status (% of Current Balance)

Current Portfolio Balance	-	-	-	-	-	-	-	1,328,135.96	1,682,572.95	1,108,253.30	787,105.99
								Jul-17	Jul-18	Jul-19	Jul-20
Current								97.39%	90.44%	86.75%	81.28%
1-30 Days								2.61%	3.04%	2.21%	10.06%
31-60 Days								0.00%	3.41%	3.03%	3.49%
61-90 Days								0.00%	1.79%	4.45%	0.59%
91-120 Days								0.00%	0.39%	1.08%	0.28%
121-150 Days								0.00%	0.69%	1.59%	0.61%
151-180 Days								0.00%	0.24%	0.89%	1.58%
181+ Days								0.00%	0.00%	0.00%	2.11%
Current - 90 Days								100.00%	98.68%	96.44%	95.41%
91-180 Days								0.00%	1.32%	3.56%	2.47%



## Personal Loans - La Hipotecaria El Salvador Migration Analysis (2018 Vintage)

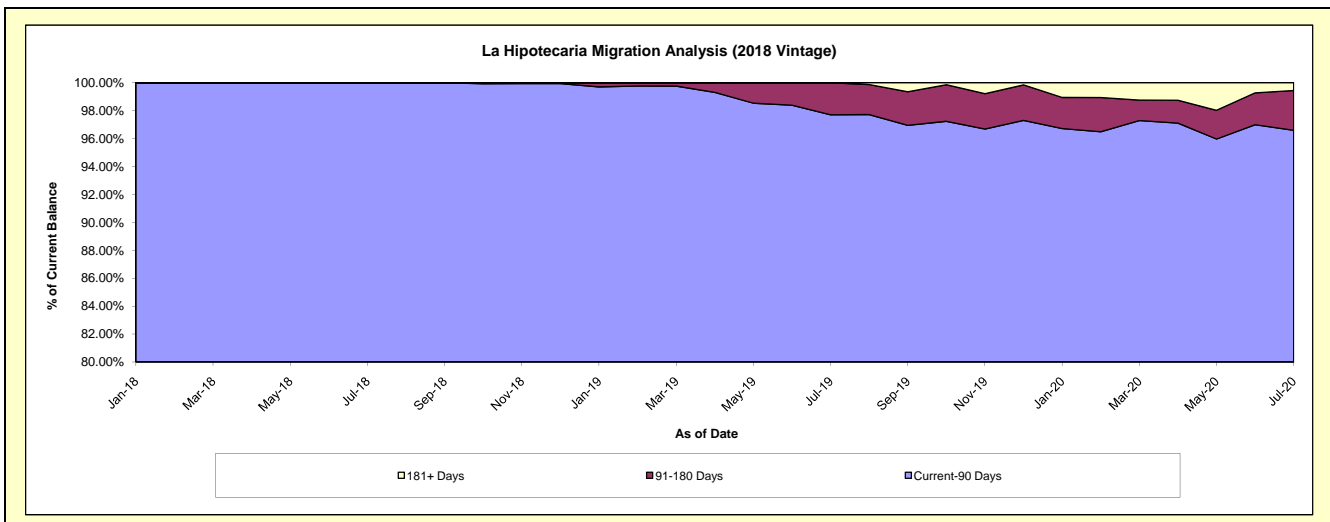
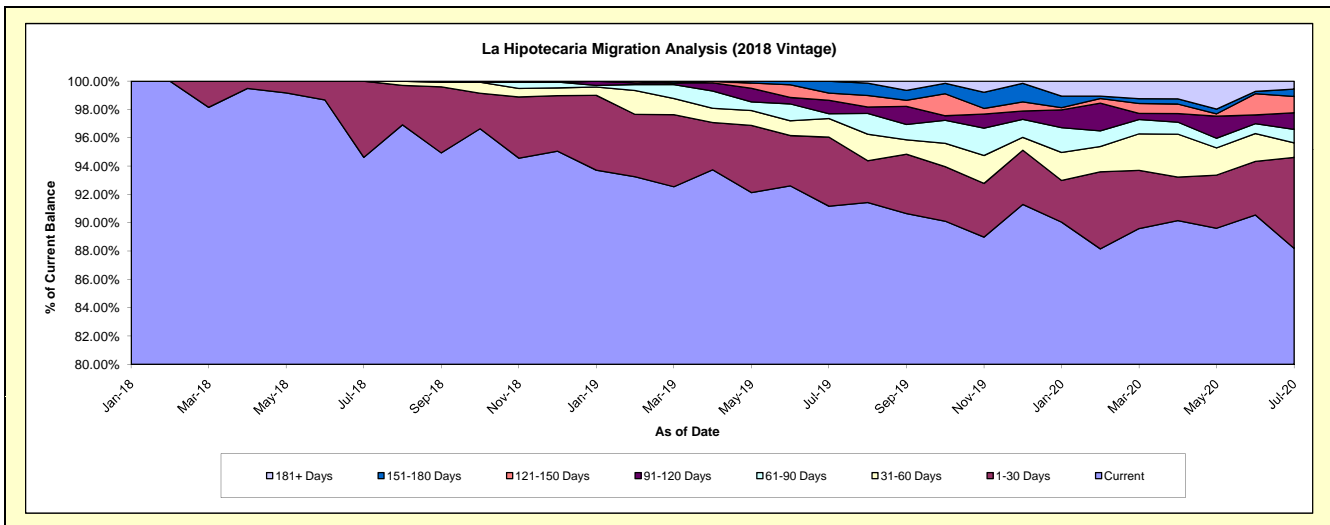
### Delinquency Status (\$ of Current Balance)

Data Cutoff: 7/31/2020

Current Portfolio Balance	-	-	-	-	-	-	-	-	-	1,864,041.30	3,827,162.32	2,843,645.64
										Jul-18	Jul-19	Jul-20
Current										1,763,733.65	3,489,157.58	2,507,595.98
1-30 Days										100,307.65	186,640.58	182,965.50
31-60 Days										-	50,497.24	29,160.65
61-90 Days										-	12,798.87	27,064.96
91-120 Days										-	36,389.32	33,344.33
121-150 Days										-	19,275.73	32,744.96
151-180 Days										-	32,403.00	14,988.44
181+ Days										-	-	15,780.82

### Delinquency Status (% of Current Balance)

Current Portfolio Balance	-	-	-	-	-	-	-	-	-	1,864,041.30	3,827,162.32	2,843,645.64
										Jul-18	Jul-19	Jul-20
Current										94.62%	91.17%	88.18%
1-30 Days										5.38%	4.88%	6.43%
31-60 Days										0.00%	1.32%	1.03%
61-90 Days										0.00%	0.33%	0.95%
91-120 Days										0.00%	0.95%	1.17%
121-150 Days										0.00%	0.50%	1.15%
151-180 Days										0.00%	0.85%	0.53%
181+ Days										0.00%	0.00%	0.55%
Current - 90 Days										100.00%	97.70%	96.59%
91-180 Days										0.00%	2.30%	2.85%



**Personal Loans - La Hipotecaria El Salvador Migration Analysis (2019 Vintage)**

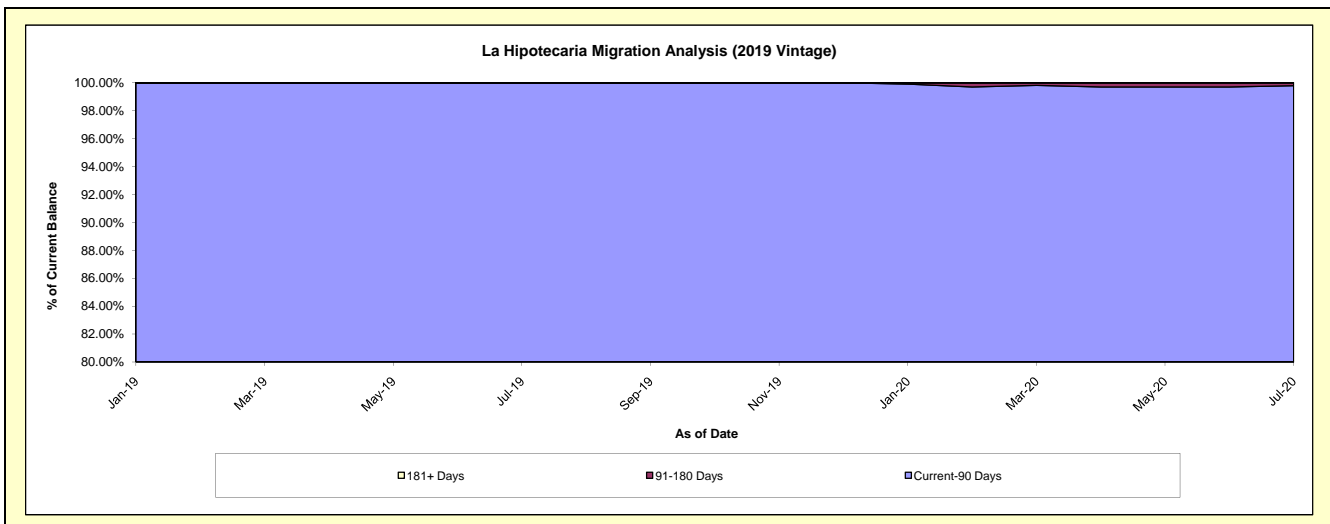
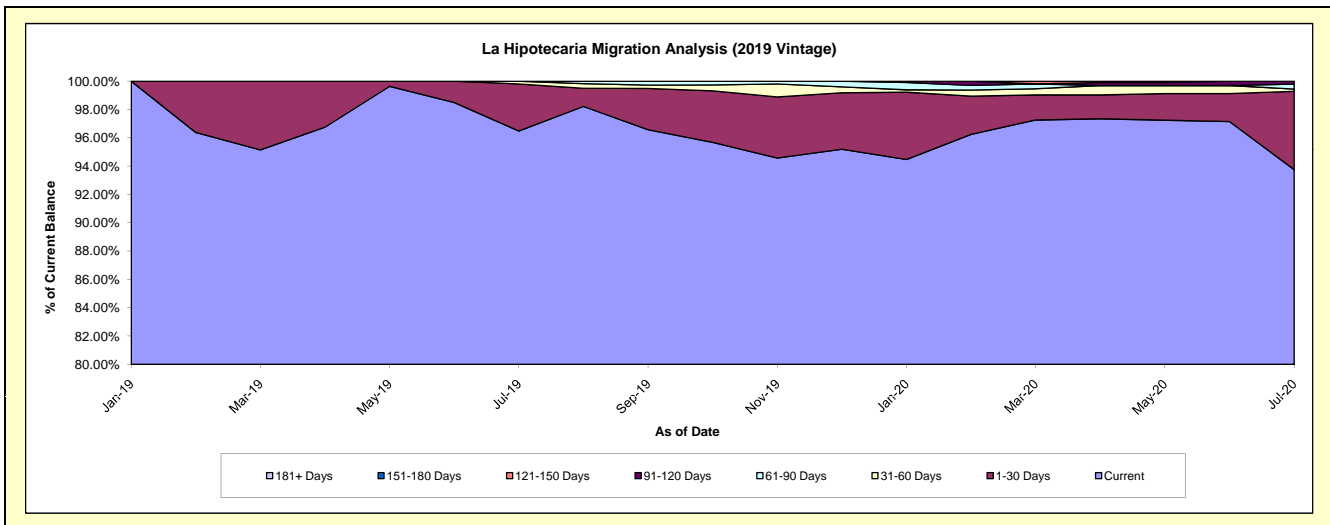
**Delinquency Status (\$ of Current Balance)**

Data Cutoff: 7/31/2020

Current Portfolio Balance										3,377,160.01	4,946,579.70
										Jul-19	Jul-20
Current										3,258,209.34	4,637,455.18
1-30 Days										112,231.12	273,602.99
31-60 Days										6,719.55	8,002.28
61-90 Days										-	17,064.10
91-120 Days										-	10,455.15
121-150 Days										-	-
151-180 Days										-	-
181+ Days										-	-

**Delinquency Status (% of Current Balance)**

Current Portfolio Balance										3,377,160.01	4,946,579.70
										Jul-19	Jul-20
Current										96.48%	93.75%
1-30 Days										3.32%	5.53%
31-60 Days										0.20%	0.16%
61-90 Days										0.00%	0.34%
91-120 Days										0.00%	0.21%
121-150 Days										0.00%	0.00%
151-180 Days										0.00%	0.00%
181+ Days										0.00%	0.00%
Current - 90 Days										100.00%	99.79%
91-180 Days										0.00%	0.21%





## Personal Loans - La Hipotecaria El Salvador Migration Analysis (2020 Vintage)

### Delinquency Status (\$ of Current Balance)

**Data Cutoff:** 7/31/2020

Current Portfolio Balance	1,247,843.42
<b>Jul-20</b>	
Current	1,237,869.94
1-30 Days	4,973.48
31-60 Days	-
61-90 Days	-
91-120 Days	5,000.00
121-150 Days	-
151-180 Days	-
181+ Days	-

### Delinquency Status (% of Current Balance)

Current Portfolio Balance	1,247,843.42
<b>Jul-20</b>	
Current	99.20%
1-30 Days	0.40%
31-60 Days	0.00%
61-90 Days	0.00%
91-120 Days	0.40%
121-150 Days	0.00%
151-180 Days	0.00%
181+ Days	0.00%
<hr/>	
Current - 90 Days	99.60%
91-180 Days	0.40%

