



Migration Analysis for La Hipotecaria S.A. de C.V El Salvador

Mortgages September 2020

An analysis of historical loan payment data was used to compile a migration analysis of delinquency by annual vintage. Delinquencies for each vintage were grouped into the following buckets; Current, 1-30, 31-60, 61-90, 91-120, 121-150, 151-180, and 180+. Results are provided in graphical and tabular form. The cutoff date is 9/30/2020.

Mortgages - La Hipotecaria El Salvador Migration Analysis (All Vintages)

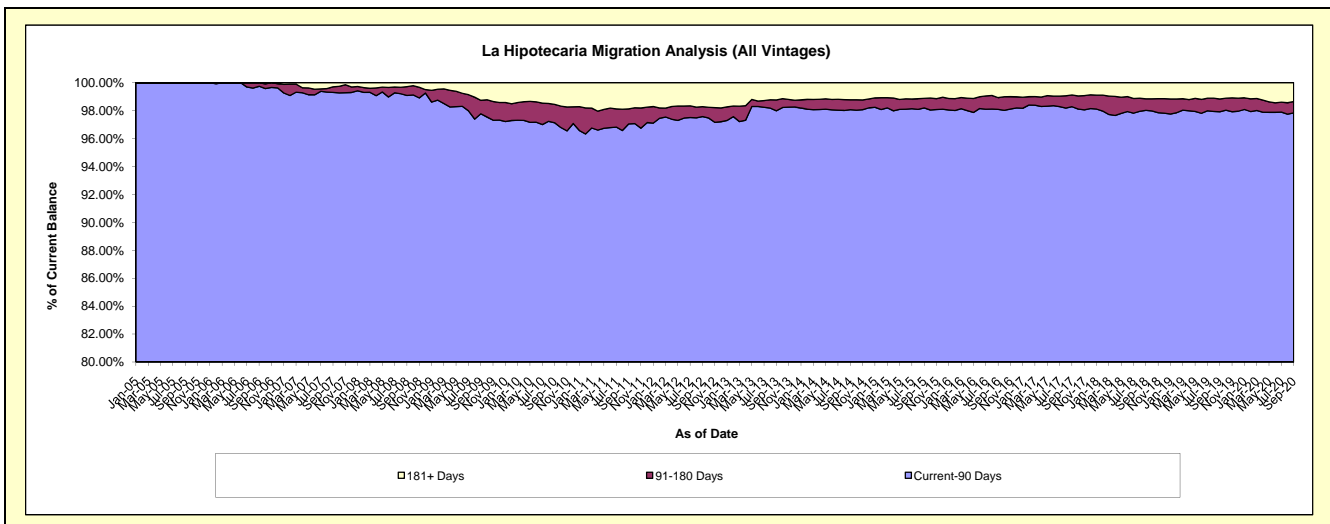
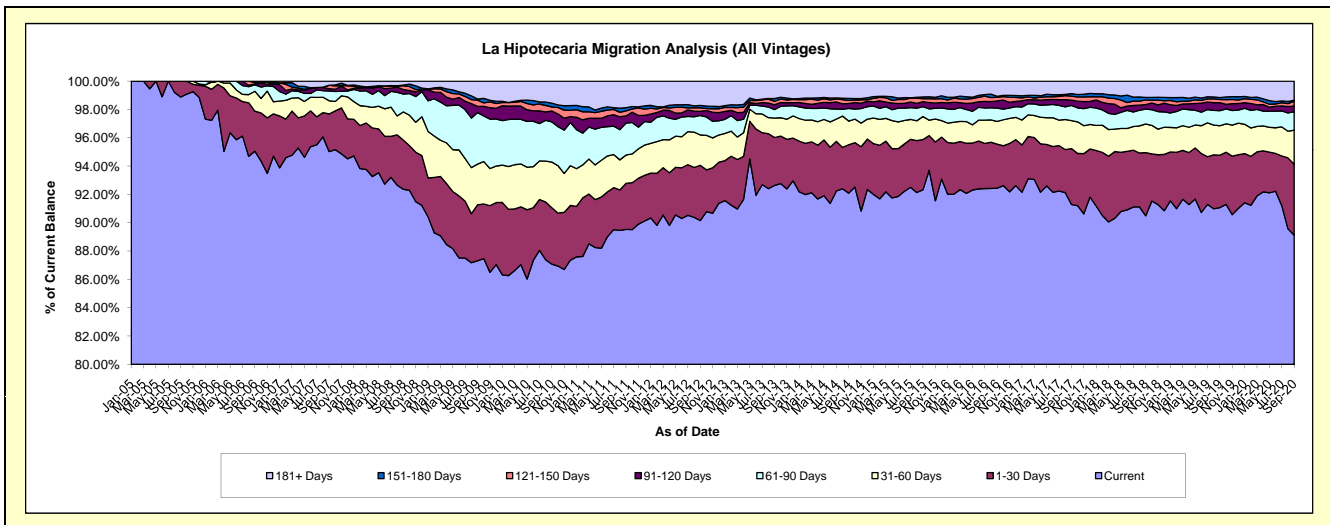
Delinquency Status (\$ of Current Balance)

Data Cutoff: 9/30/2020

Current Portfolio Balance	89,972,207.36	104,818,000.02	125,763,330.32	143,818,513.00	155,849,681.55	169,551,076.71	180,120,885.61	188,730,066.92	201,025,111.73	201,013,631.39
	Sep-11	Sep-12	Sep-13	Sep-14	Sep-15	Sep-16	Sep-17	Sep-18	Sep-19	Sep-20
Current	80,548,972.00	94,506,038.82	116,501,708.35	132,447,260.00	143,898,735.45	156,746,374.00	164,444,187.08	170,788,074.35	183,074,649.98	179,146,173.13
1-30 Days	2,930,153.29	4,083,056.85	4,259,282.08	4,921,048.11	5,527,522.26	5,270,170.42	7,105,091.46	8,417,895.19	7,447,891.37	10,077,326.90
31-60 Days	1,797,342.18	2,248,762.06	1,723,573.05	2,401,182.27	2,536,942.37	2,709,856.88	3,547,182.30	3,822,288.19	4,168,197.55	4,834,995.85
61-90 Days	2,038,869.87	1,441,711.53	753,656.12	1,276,467.84	1,068,469.28	1,593,203.40	1,931,521.61	1,977,542.47	2,145,471.88	2,625,040.29
91-120 Days	453,395.66	309,798.38	424,547.97	504,476.40	548,966.66	863,760.24	687,888.08	608,052.81	1,130,253.48	793,075.27
121-150 Days	317,967.07	256,007.81	320,516.97	315,021.86	347,795.68	444,545.20	501,776.10	612,686.02	463,174.98	706,890.94
151-180 Days	200,053.69	175,713.00	231,619.96	199,438.43	186,792.17	116,195.10	316,294.16	330,205.80	264,517.44	123,570.66
181+ Days	1,685,453.60	1,796,911.57	1,548,425.82	1,753,618.09	1,734,457.48	1,806,971.47	1,586,944.82	2,173,322.09	2,330,955.05	2,706,558.35

Delinquency Status (% of Current Balance)

Current Portfolio Balance	89,972,207.36	104,818,000.02	125,763,330.32	143,818,513.00	155,849,681.55	169,551,076.71	180,120,885.61	188,730,066.92	201,025,111.73	201,013,631.39
	Sep-11	Sep-12	Sep-13	Sep-14	Sep-15	Sep-16	Sep-17	Sep-18	Sep-19	Sep-20
Current	89.53%	90.16%	92.64%	92.09%	92.33%	92.45%	91.30%	90.49%	91.07%	89.12%
1-30 Days	3.26%	3.90%	3.39%	3.42%	3.55%	3.11%	3.94%	4.46%	3.70%	5.01%
31-60 Days	2.00%	2.15%	1.37%	1.67%	1.63%	1.60%	1.97%	2.03%	2.07%	2.41%
61-90 Days	2.27%	1.38%	0.60%	0.89%	0.69%	0.94%	1.07%	1.05%	1.07%	1.31%
91-120 Days	0.50%	0.30%	0.34%	0.35%	0.35%	0.51%	0.38%	0.32%	0.56%	0.39%
121-150 Days	0.35%	0.24%	0.25%	0.22%	0.22%	0.26%	0.28%	0.32%	0.23%	0.35%
151-180 Days	0.22%	0.17%	0.18%	0.14%	0.12%	0.07%	0.18%	0.17%	0.13%	0.06%
181+ Days	1.87%	1.71%	1.23%	1.22%	1.11%	1.07%	0.88%	1.15%	1.16%	1.35%
Current - 90 Days	97.05%	97.58%	97.99%	98.07%	98.19%	98.09%	98.28%	98.03%	97.92%	97.85%
91-180 Days	1.08%	0.71%	0.78%	0.71%	0.70%	0.84%	0.84%	0.82%	0.92%	0.81%



Mortgages - La Hipotecaria El Salvador Migration Analysis (2005 Vintage)

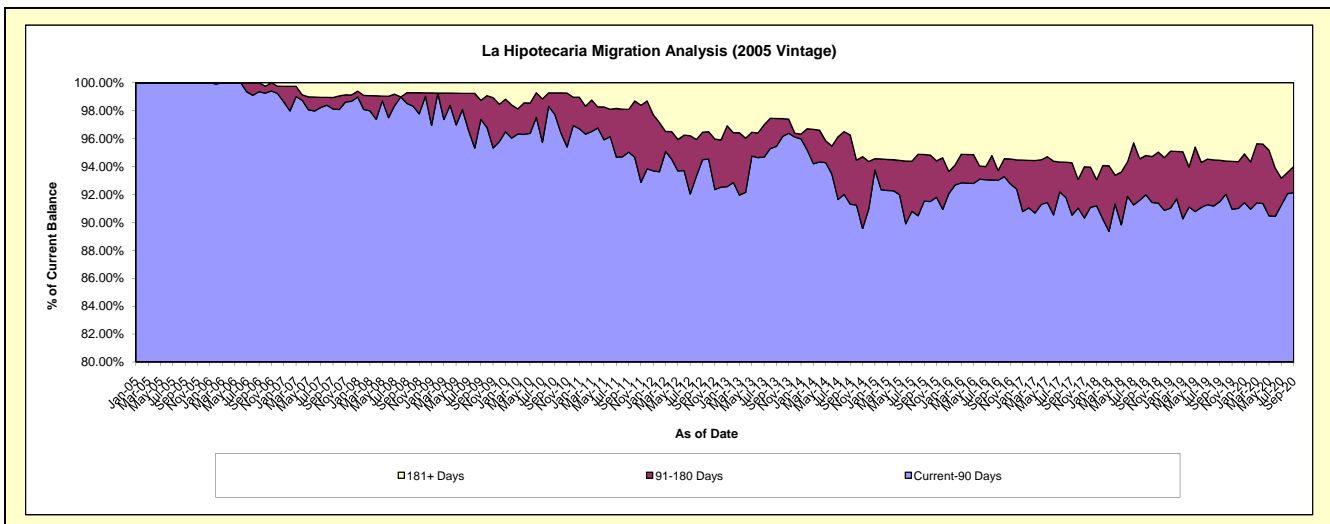
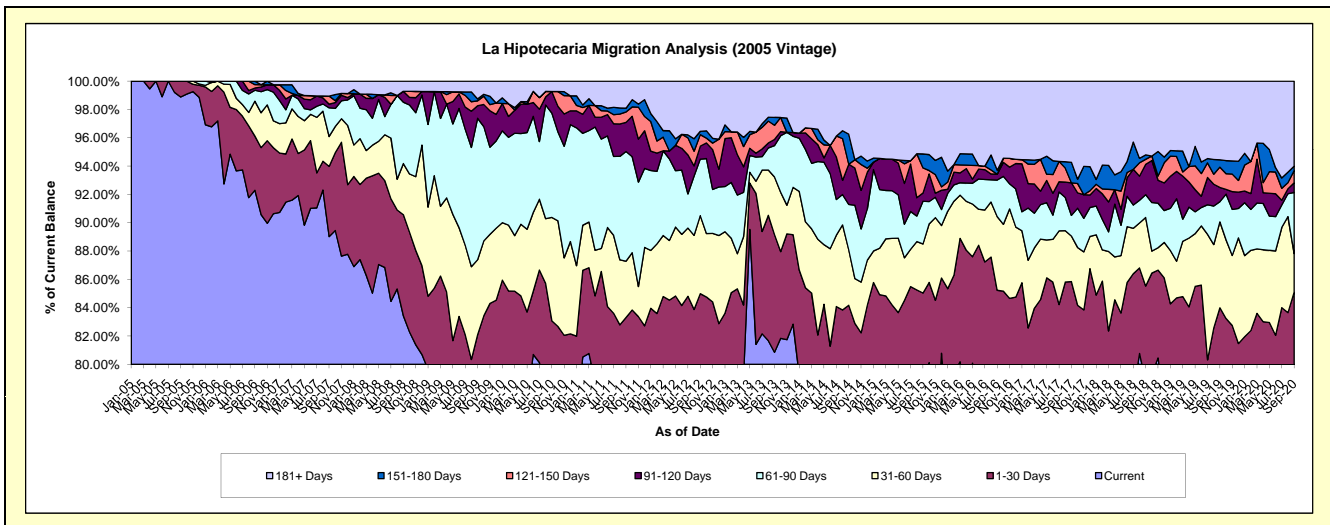
Delinquency Status (\$ of Current Balance)

Data Cutoff: 9/30/2020

Current Portfolio Balance	6,358,011.71	5,792,305.74	5,200,931.83	4,633,646.30	4,283,384.69	3,990,520.70	3,659,564.69	3,216,168.34	2,874,594.57	2,611,500.86
	Sep-11	Sep-12	Sep-13	Sep-14	Sep-15	Sep-16	Sep-17	Sep-18	Sep-19	Sep-20
Current	5,017,336.20	4,362,262.10	4,205,036.92	3,631,042.68	3,266,983.99	2,989,215.02	2,717,025.67	2,534,466.31	2,162,698.79	1,871,299.19
1-30 Days	279,963.10	560,585.74	432,503.79	269,281.48	375,511.82	411,988.69	424,709.20	216,352.16	251,709.20	350,823.55
31-60 Days	252,371.01	319,187.26	211,304.49	181,178.96	148,315.11	207,556.91	117,391.42	155,719.59	174,587.83	71,244.82
61-90 Days	492,470.01	231,315.41	115,360.25	148,822.77	129,342.04	102,927.63	53,544.19	51,822.58	40,932.97	112,832.80
91-120 Days	131,060.77	52,992.98	22,748.53	131,509.43	24,931.80	16,432.88	84,003.90	68,876.65	28,879.84	17,637.22
121-150 Days	46,430.12	47,019.09	52,008.98	-	75,959.78	-	-	-	11,410.86	41,266.58
151-180 Days	17,003.35	13,756.85	28,672.61	98,416.87	42,141.54	11,551.22	53,072.91	10,060.43	14,805.95	8,188.87
181+ Days	121,377.15	205,186.31	133,296.26	173,394.11	220,198.61	250,848.35	209,817.40	167,459.76	159,713.41	156,672.79

Delinquency Status (% of Current Balance)

Current Portfolio Balance	6,358,011.71	5,792,305.74	5,200,931.83	4,633,646.30	4,283,384.69	3,990,520.70	3,659,564.69	3,216,168.34	2,874,594.57	2,611,500.86
	Sep-11	Sep-12	Sep-13	Sep-14	Sep-15	Sep-16	Sep-17	Sep-18	Sep-19	Sep-20
Current	78.91%	75.31%	80.85%	78.36%	76.27%	74.91%	74.24%	78.80%	75.23%	71.66%
1-30 Days	4.40%	9.68%	8.32%	5.81%	8.77%	10.32%	11.61%	6.73%	8.76%	13.43%
31-60 Days	3.97%	5.51%	4.06%	3.91%	3.46%	5.20%	3.21%	4.84%	6.07%	2.73%
61-90 Days	7.75%	3.99%	2.22%	3.21%	3.02%	2.58%	1.46%	1.61%	1.42%	4.32%
91-120 Days	2.06%	0.91%	0.44%	2.84%	0.58%	0.41%	2.30%	2.14%	1.00%	0.68%
121-150 Days	0.73%	0.81%	1.00%	0.00%	1.77%	0.00%	0.00%	0.35%	1.44%	0.87%
151-180 Days	0.27%	0.24%	0.55%	2.12%	0.98%	0.29%	1.45%	0.31%	0.52%	0.31%
181+ Days	1.91%	3.54%	2.56%	3.74%	5.14%	6.29%	5.73%	5.21%	5.56%	6.00%
Current - 90 Days	95.03%	94.49%	95.45%	91.30%	91.52%	93.01%	90.52%	91.98%	91.49%	92.14%
91-180 Days	3.06%	1.96%	1.99%	4.96%	3.34%	0.70%	3.75%	2.81%	2.96%	1.86%



Mortgages - La Hipotecaria El Salvador Migration Analysis (2006 Vintage)

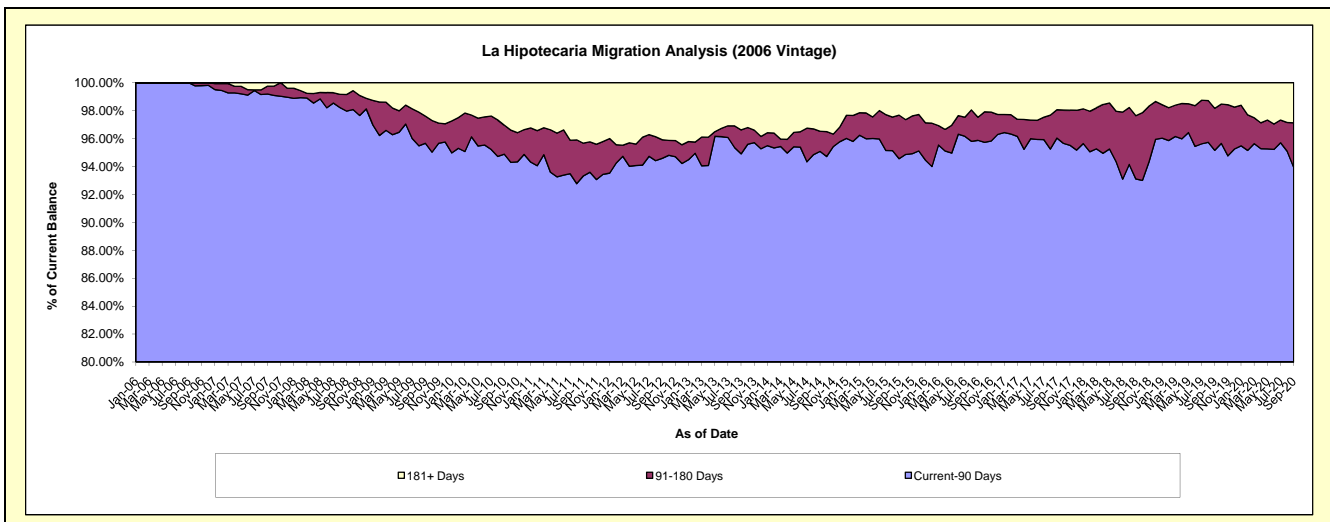
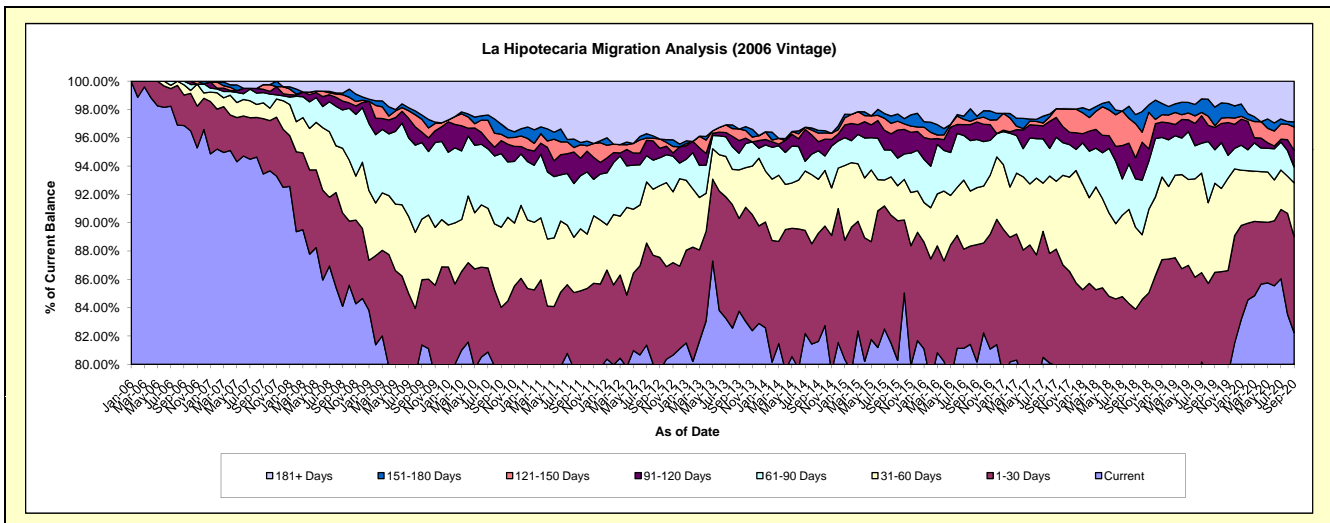
Delinquency Status (\$ of Current Balance)

Data Cutoff: 9/30/2020

Current Portfolio Balance	14,549,101.56	12,818,468.61	11,911,418.14	10,527,694.32	9,625,367.78	8,802,747.57	8,050,679.02	7,362,565.47	6,597,407.08	5,987,787.84
	Sep-11	Sep-12	Sep-13	Sep-14	Sep-15	Sep-16	Sep-17	Sep-18	Sep-19	Sep-20
Current	11,543,533.19	10,198,840.65	9,976,374.29	8,592,791.65	7,727,578.11	7,066,747.10	6,432,928.28	5,759,851.72	5,089,549.33	4,923,933.29
1-30 Days	851,724.57	1,024,047.07	781,397.92	804,675.32	949,261.76	729,853.68	662,702.47	416,777.94	617,013.50	406,327.93
31-60 Days	637,247.90	649,762.91	407,682.88	401,415.71	237,485.05	354,217.92	386,105.26	426,284.32	415,229.27	227,698.44
61-90 Days	545,632.54	252,318.39	139,870.33	211,061.60	187,787.39	298,916.54	249,851.14	252,016.02	156,370.12	66,841.80
91-120 Days	179,602.32	85,885.23	106,366.61	67,208.92	191,149.72	109,318.11	112,689.69	109,001.67	103,508.38	69,837.21
121-150 Days	137,906.64	84,314.40	97,445.33	64,455.54	60,236.17	21,273.32	50,543.19	177,906.77	8,660.99	99,268.24
151-180 Days	23,653.99	-	-	20,399.87	48,681.17	14,896.79	-	46,876.50	86,134.38	21,916.27
181+ Days	629,800.41	523,299.96	402,280.78	365,685.71	223,188.41	217,524.11	155,858.99	173,850.53	120,941.11	171,964.66

Delinquency Status (% of Current Balance)

Current Portfolio Balance	14,549,101.56	12,818,468.61	11,911,418.14	10,527,694.32	9,625,367.78	8,802,747.57	8,050,679.02	7,362,565.47	6,597,407.08	5,987,787.84
	Sep-11	Sep-12	Sep-13	Sep-14	Sep-15	Sep-16	Sep-17	Sep-18	Sep-19	Sep-20
Current	79.34%	79.56%	83.75%	81.62%	80.28%	80.17%	79.91%	78.23%	77.14%	82.23%
1-30 Days	5.85%	7.99%	6.56%	7.64%	9.86%	8.29%	8.23%	5.66%	9.35%	6.79%
31-60 Days	4.38%	5.07%	3.42%	3.81%	2.47%	4.02%	4.80%	5.79%	6.29%	3.80%
61-90 Days	3.75%	1.97%	1.17%	2.00%	1.95%	3.40%	3.10%	3.42%	2.37%	1.12%
91-120 Days	1.23%	0.67%	0.89%	0.64%	1.99%	1.24%	1.40%	1.48%	1.57%	1.17%
121-150 Days	0.95%	0.66%	0.82%	0.61%	0.63%	0.24%	0.63%	2.42%	0.13%	1.66%
151-180 Days	0.16%	0.00%	0.00%	0.19%	0.51%	0.17%	0.00%	0.64%	1.31%	0.37%
181+ Days	4.33%	4.08%	3.38%	3.47%	2.32%	2.47%	1.94%	2.36%	1.83%	2.87%
Current - 90 Days	93.33%	94.59%	94.91%	95.08%	94.56%	95.88%	96.04%	93.11%	95.16%	93.94%
91-180 Days	2.34%	1.33%	1.71%	1.44%	3.12%	1.65%	2.03%	4.53%	3.01%	3.19%



Mortgages - La Hipotecaria El Salvador Migration Analysis (2007 Vintage)

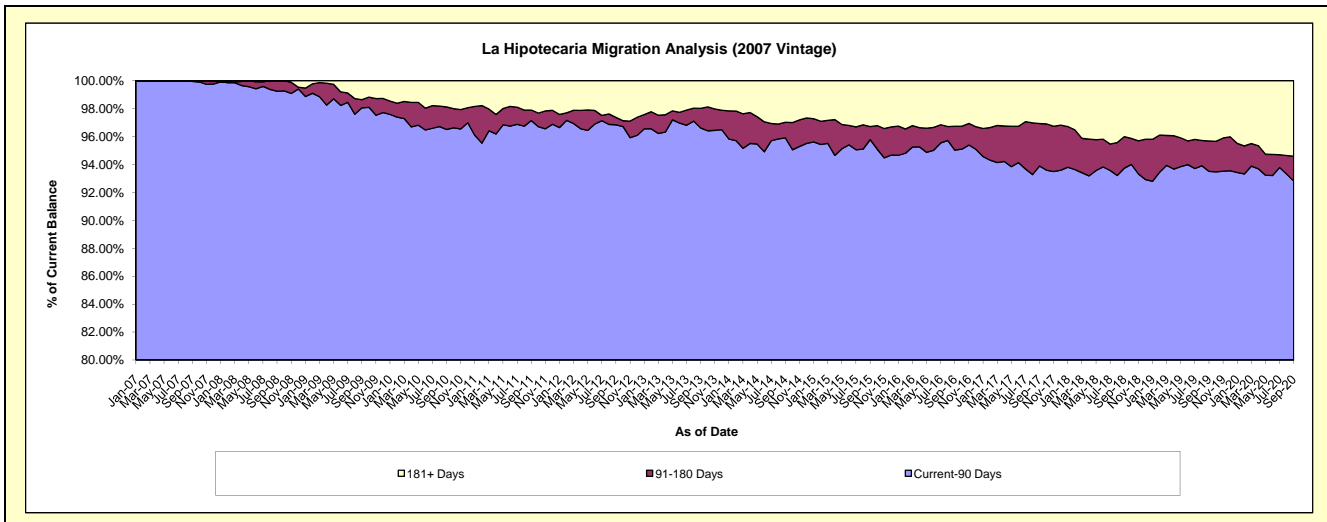
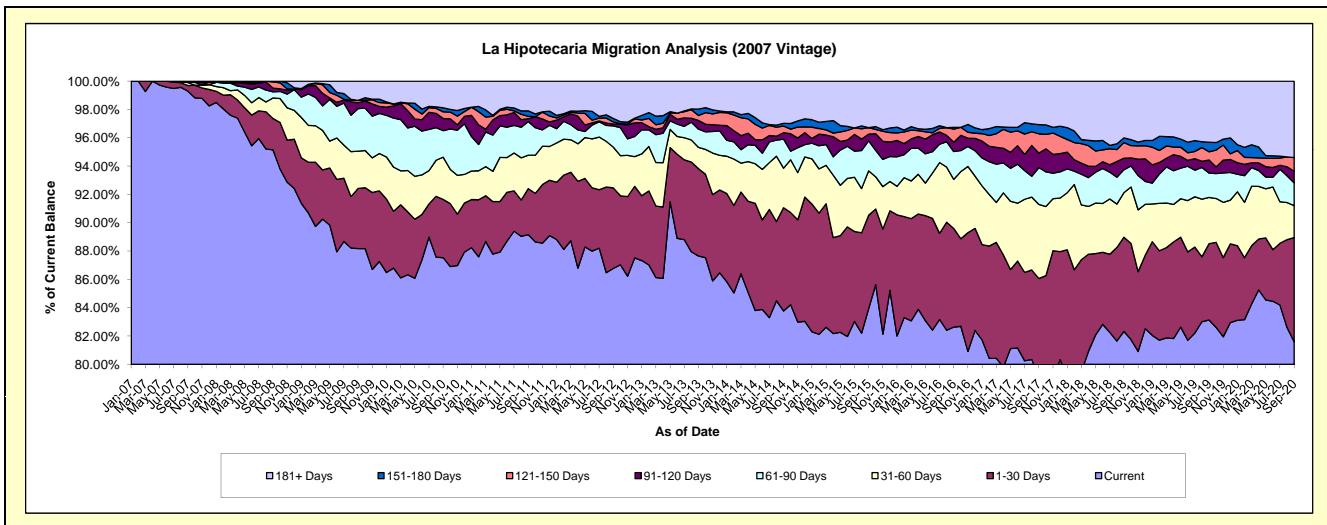
Delinquency Status (\$ of Current Balance)

Data Cutoff: 9/30/2020

Current Portfolio Balance	22,169,842.08	20,009,822.92	18,112,233.40	16,765,340.88	15,294,976.00	14,022,474.06	12,868,683.43	11,835,898.96	10,976,956.72	10,283,831.07
	Sep-11	Sep-12	Sep-13	Sep-14	Sep-15	Sep-16	Sep-17	Sep-18	Sep-19	Sep-20
Current	19,766,165.52	17,365,269.65	15,875,419.78	14,044,690.57	12,838,763.52	11,586,966.55	10,182,820.30	9,743,986.90	9,125,416.14	8,391,377.02
1-30 Days	720,764.31	1,136,446.89	1,117,141.89	1,222,093.83	1,007,928.46	977,498.29	892,108.09	787,895.57	592,334.90	756,642.25
31-60 Days	525,078.29	574,724.80	272,747.68	467,915.57	480,069.12	485,968.46	673,034.85	372,735.02	358,011.81	231,862.55
61-90 Days	525,521.16	301,185.95	233,702.74	343,366.51	323,939.27	275,025.81	334,790.09	190,328.26	188,374.50	165,443.40
91-120 Days	43,878.06	27,156.22	110,881.19	77,418.53	73,259.33	91,956.76	132,941.27	97,157.28	101,891.49	84,157.65
121-150 Days	39,440.37	28,575.22	63,014.09	78,633.16	68,519.49	130,569.87	174,658.16	130,559.55	63,729.79	99,247.84
151-180 Days	83,941.08	49,909.72	81,408.59	32,707.68	-	17,918.98	83,839.93	39,079.78	73,553.68	-
181+ Days	465,053.29	526,554.47	357,917.44	498,515.03	502,496.81	456,569.34	394,490.74	474,156.60	473,644.41	555,100.36

Delinquency Status (% of Current Balance)

Current Portfolio Balance	22,169,842.08	20,009,822.92	18,112,233.40	16,765,340.88	15,294,976.00	14,022,474.06	12,868,683.43	11,835,898.96	10,976,956.72	10,283,831.07
	Sep-11	Sep-12	Sep-13	Sep-14	Sep-15	Sep-16	Sep-17	Sep-18	Sep-19	Sep-20
Current	89.16%	86.78%	87.65%	83.77%	83.94%	82.63%	79.13%	82.33%	83.13%	81.60%
1-30 Days	3.25%	5.68%	6.17%	7.29%	6.59%	6.97%	6.93%	6.66%	5.40%	7.36%
31-60 Days	2.37%	2.87%	1.51%	2.79%	3.14%	3.47%	5.23%	3.15%	3.26%	2.25%
61-90 Days	2.37%	1.51%	1.29%	2.05%	2.12%	1.96%	2.60%	1.61%	1.72%	1.61%
91-120 Days	0.20%	0.14%	0.61%	0.46%	0.48%	0.66%	1.03%	0.82%	0.93%	0.82%
121-150 Days	0.18%	0.14%	0.35%	0.47%	0.45%	0.93%	1.36%	1.10%	0.58%	0.97%
151-180 Days	0.38%	0.25%	0.45%	0.20%	0.00%	0.13%	0.65%	0.33%	0.67%	0.00%
181+ Days	2.10%	2.63%	1.98%	2.97%	3.29%	3.26%	3.07%	4.01%	4.31%	5.40%
Current - 90 Days	97.15%	96.84%	96.61%	95.90%	95.79%	95.03%	93.89%	93.74%	93.51%	92.82%
91-180 Days	0.75%	0.53%	1.41%	1.13%	0.93%	1.71%	3.04%	2.25%	2.18%	1.78%



Mortgages - La Hipotecaria El Salvador Migration Analysis (2008 Vintage)

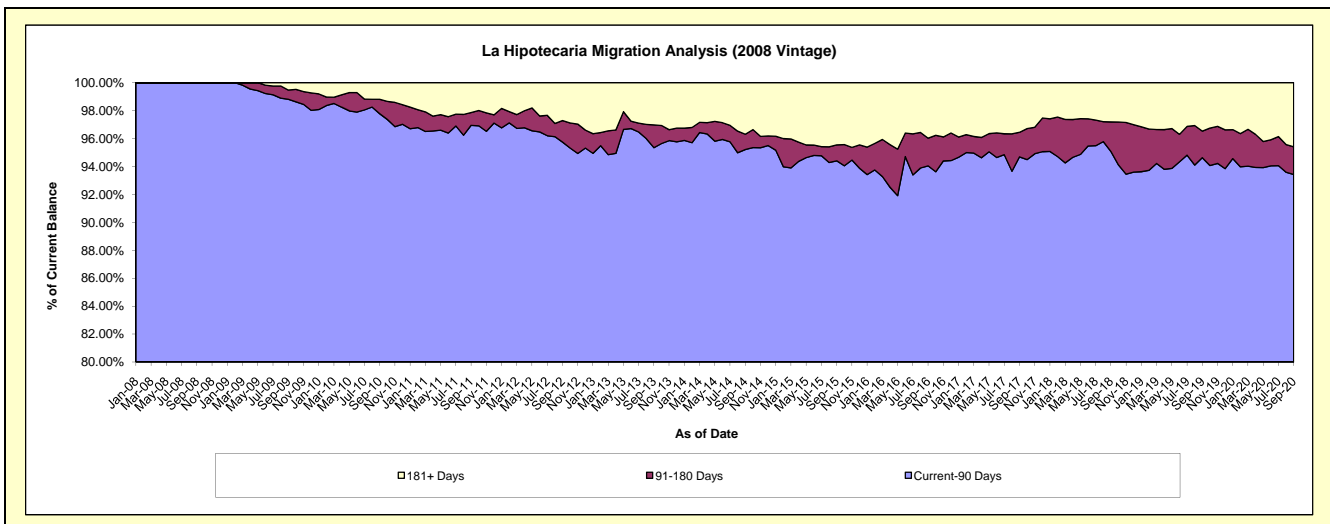
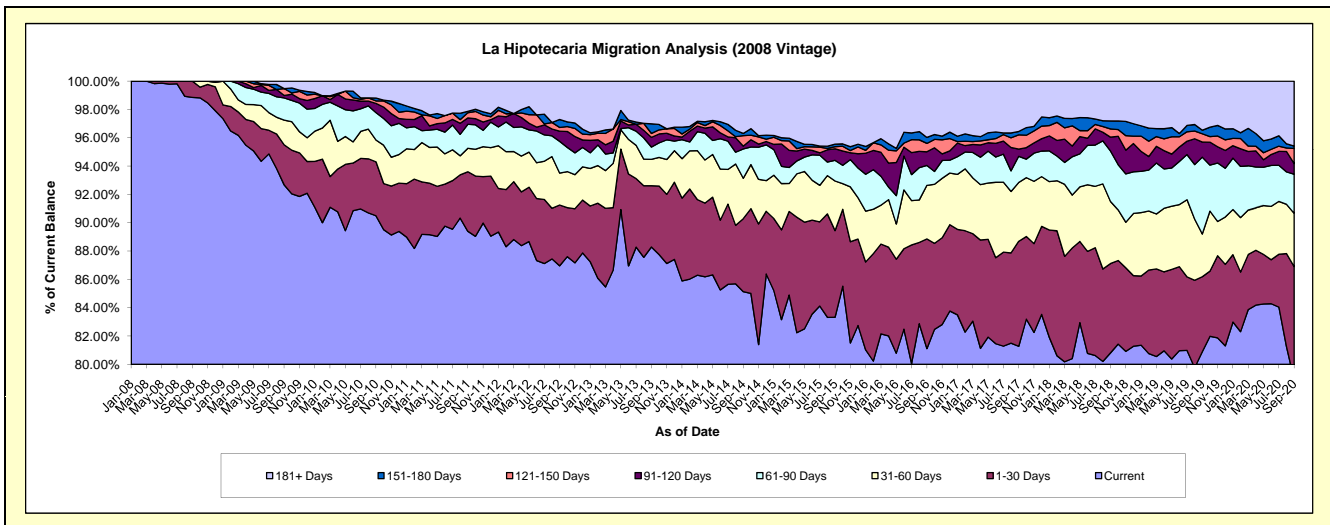
Delinquency Status (\$ of Current Balance)

Data Cutoff: 9/30/2020

Current Portfolio Balance	22,010,589.88	20,005,407.76	17,972,787.46	16,309,358.28	14,619,289.17	13,281,137.23	12,196,094.75	11,126,431.14	9,993,541.39	9,305,740.17
	Sep-11	Sep-12	Sep-13	Sep-14	Sep-15	Sep-16	Sep-17	Sep-18	Sep-19	Sep-20
Current	19,677,054.90	17,396,849.13	15,868,476.63	13,885,176.00	12,182,497.60	10,772,510.23	9,912,663.01	8,991,344.47	8,084,655.49	7,345,575.29
1-30 Days	925,143.82	858,878.10	776,903.66	840,618.91	894,037.80	1,028,790.47	904,563.24	702,172.24	529,010.90	741,252.83
31-60 Days	365,895.26	451,712.99	335,736.41	465,048.47	511,999.93	501,805.54	506,864.45	487,059.83	300,843.28	350,723.93
61-90 Days	371,583.56	447,915.36	155,368.09	338,409.98	213,271.23	187,483.83	224,605.56	397,165.61	542,795.05	256,837.44
91-120 Days	98,854.51	143,763.95	122,920.04	32,393.55	118,929.46	128,319.88	62,983.22	108,949.28	106,363.89	69,341.50
121-150 Days	80,159.66	52,370.97	50,036.98	120,685.71	22,397.26	78,946.21	122,087.29	64,203.62	58,448.28	99,945.70
151-180 Days	22,675.42	112,046.43	121,538.76	25,152.71	25,633.22	55,873.76	29,520.94	63,164.84	25,259.98	15,424.00
181+ Days	469,222.75	541,870.83	541,806.89	601,872.95	650,522.67	527,407.31	432,807.04	312,371.25	346,164.52	426,639.48

Delinquency Status (% of Current Balance)

Current Portfolio Balance	22,010,589.88	20,005,407.76	17,972,787.46	16,309,358.28	14,619,289.17	13,281,137.23	12,196,094.75	11,126,431.14	9,993,541.39	9,305,740.17
	Sep-11	Sep-12	Sep-13	Sep-14	Sep-15	Sep-16	Sep-17	Sep-18	Sep-19	Sep-20
Current	89.40%	86.96%	88.29%	85.14%	83.33%	81.11%	81.28%	80.81%	80.90%	78.94%
1-30 Days	4.20%	4.29%	4.32%	5.15%	6.12%	7.75%	7.42%	6.31%	5.29%	7.97%
31-60 Days	1.66%	2.26%	1.87%	2.85%	3.50%	3.78%	4.16%	4.38%	3.01%	3.77%
61-90 Days	1.69%	2.24%	0.86%	2.07%	1.46%	1.41%	1.84%	3.57%	5.43%	2.76%
91-120 Days	0.45%	0.72%	0.68%	0.20%	0.81%	0.97%	0.52%	0.98%	1.06%	0.75%
121-150 Days	0.36%	0.26%	0.28%	0.74%	0.15%	0.59%	1.00%	0.58%	0.58%	1.07%
151-180 Days	0.10%	0.56%	0.68%	0.15%	0.18%	0.42%	0.24%	0.57%	0.25%	0.17%
181+ Days	2.13%	2.71%	3.01%	3.69%	4.45%	3.97%	3.55%	2.81%	3.46%	4.58%
Current - 90 Days	96.95%	95.75%	95.35%	95.22%	94.41%	94.05%	94.69%	95.07%	94.63%	93.43%
91-180 Days	0.92%	1.54%	1.64%	1.09%	1.14%	1.98%	1.76%	2.12%	1.90%	1.98%



Mortgages - La Hipotecaria El Salvador Migration Analysis (2009 Vintage)

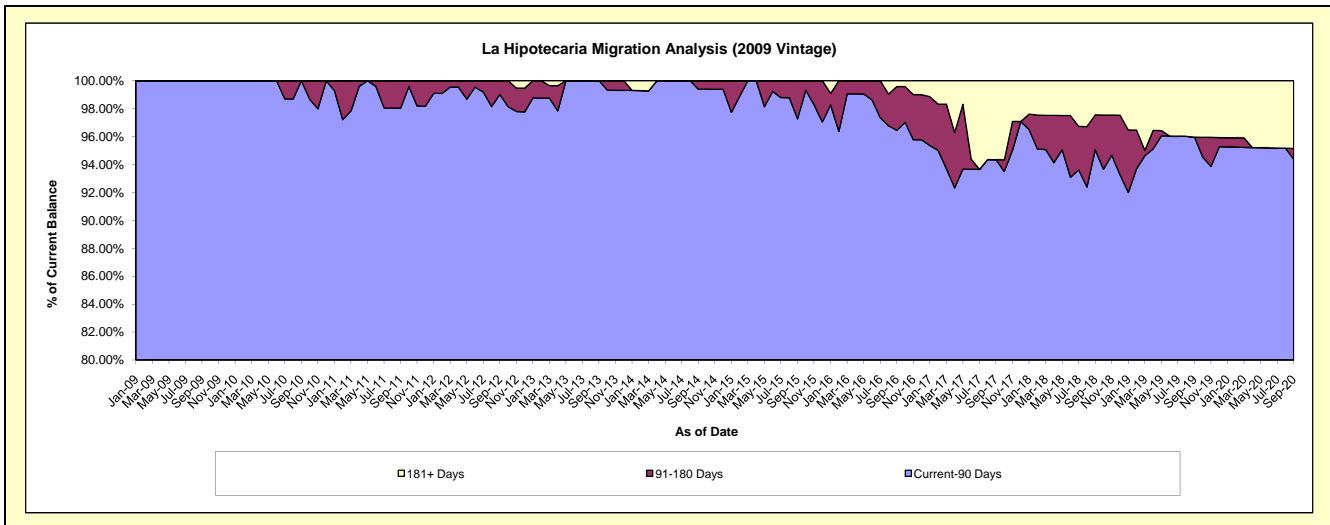
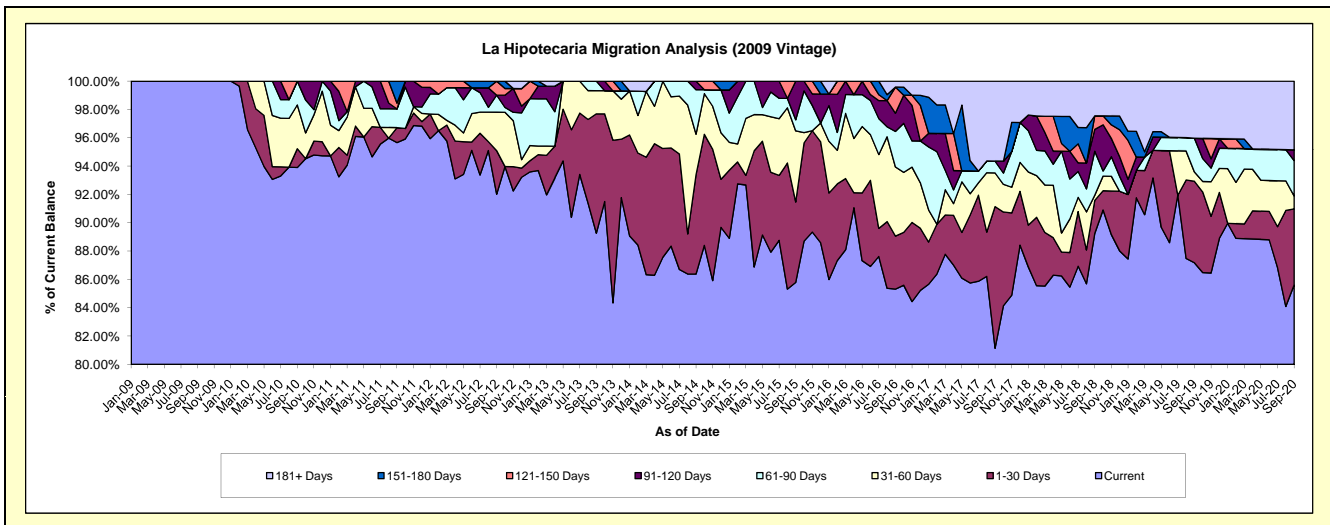
Delinquency Status (\$ of Current Balance)

Data Cutoff: 9/30/2020

Current Portfolio Balance	3,409,535.18	2,996,445.29	2,693,739.22	2,345,502.14	2,069,797.52	1,944,999.84	1,885,999.62	1,718,679.97	1,606,110.85	1,553,341.14
	Sep-11	Sep-12	Sep-13	Sep-14	Sep-15	Sep-16	Sep-17	Sep-18	Sep-19	Sep-20
Current	3,261,597.35	2,757,254.16	2,404,566.02	2,025,996.43	1,775,718.47	1,659,348.65	1,530,267.63	1,533,844.25	1,400,064.46	1,329,688.47
1-30 Days	35,998.70	92,092.23	227,030.83	164,676.07	117,416.00	72,756.57	188,651.01	40,097.91	92,500.02	83,479.02
31-60 Days	-	81,389.11	44,033.22	67,041.18	103,988.74	95,133.59	44,877.35	6,253.32	10,531.26	14,001.51
61-90 Days	45,129.00	36,154.74	18,109.15	73,624.77	16,192.60	48,682.02	15,668.91	53,467.02	38,217.62	38,983.69
91-120 Days	-	-	-	14,163.69	56,481.71	24,931.99	-	26,473.30	-	11,859.70
121-150 Days	14,030.28	29,555.05	-	-	-	36,001.74	-	16,485.29	-	-
151-180 Days	52,779.85	-	-	-	-	-	-	-	-	-
181+ Days	-	-	-	-	-	8,145.28	106,534.72	42,058.88	64,797.49	75,328.75

Delinquency Status (% of Current Balance)

Current Portfolio Balance	3,409,535.18	2,996,445.29	2,693,739.22	2,345,502.14	2,069,797.52	1,944,999.84	1,885,999.62	1,718,679.97	1,606,110.85	1,553,341.14
	Sep-11	Sep-12	Sep-13	Sep-14	Sep-15	Sep-16	Sep-17	Sep-18	Sep-19	Sep-20
Current	95.66%	92.02%	89.26%	86.39%	85.79%	85.31%	81.14%	89.25%	87.17%	85.60%
1-30 Days	1.06%	3.07%	8.43%	7.02%	5.67%	3.74%	10.00%	2.33%	5.76%	5.37%
31-60 Days	0.00%	2.72%	1.63%	2.86%	5.02%	4.89%	2.38%	0.36%	0.66%	0.90%
61-90 Days	1.32%	1.21%	0.67%	3.14%	0.78%	2.50%	0.83%	3.11%	2.38%	2.51%
91-120 Days	0.00%	0.00%	0.00%	0.60%	2.73%	1.28%	0.00%	1.54%	0.00%	0.76%
121-150 Days	0.41%	0.99%	0.00%	0.00%	0.00%	1.85%	0.00%	0.96%	0.00%	0.00%
151-180 Days	1.55%	0.00%	0.00%	0.00%	0.00%	0.00%	0.00%	0.00%	0.00%	0.00%
181+ Days	0.00%	0.00%	0.00%	0.00%	0.00%	0.42%	5.65%	2.45%	4.03%	4.85%
Current - 90 Days	98.04%	99.01%	100.00%	99.40%	97.27%	96.45%	94.35%	95.05%	95.97%	94.39%
91-180 Days	1.96%	0.99%	0.00%	0.60%	2.73%	3.13%	0.00%	2.50%	0.00%	0.76%



Mortgages - La Hipotecaria El Salvador Migration Analysis (2010 Vintage)

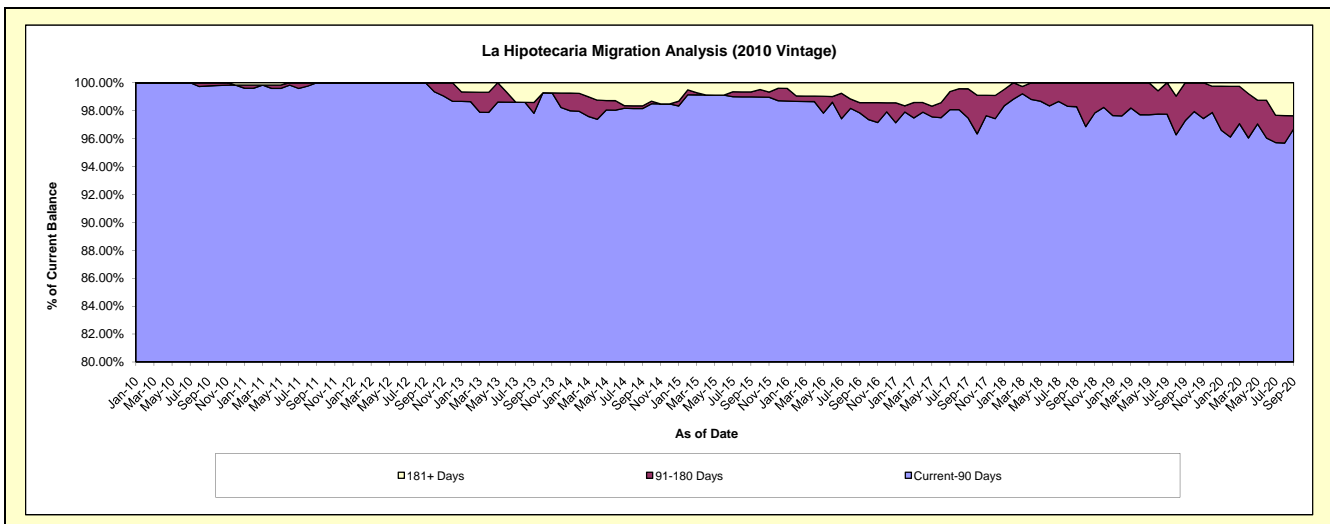
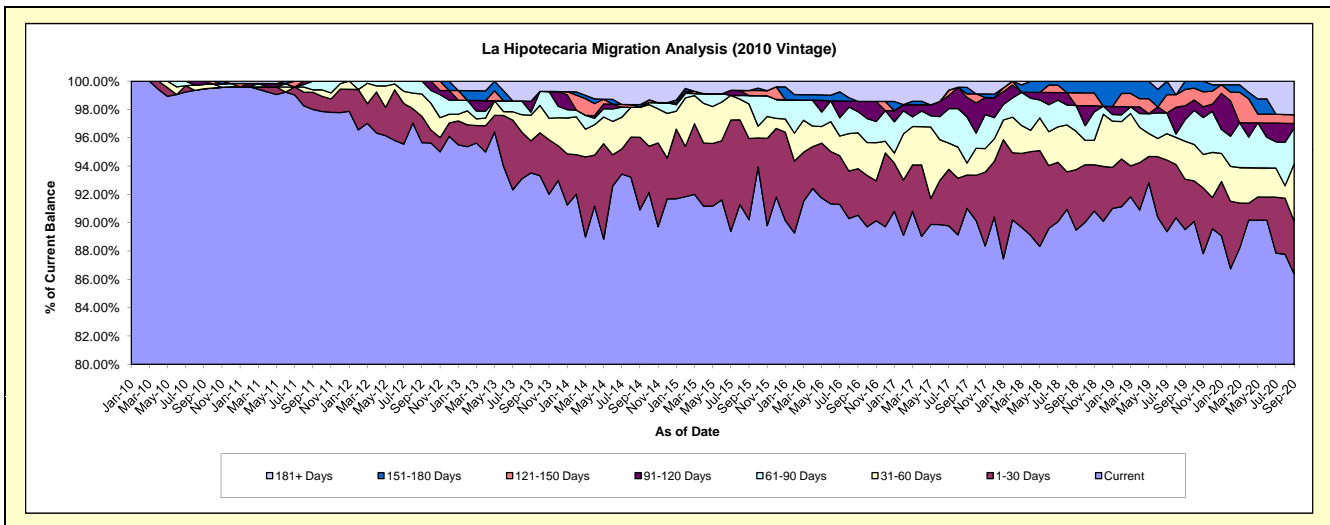
Delinquency Status (\$ of Current Balance)

Data Cutoff: 9/30/2020

Current Portfolio Balance	9,596,647.93	8,646,636.51	7,993,043.92	6,876,988.15	6,150,367.31	5,356,043.83	5,087,949.73	4,589,929.57	4,276,302.07	3,867,105.52
	Sep-11	Sep-12	Sep-13	Sep-14	Sep-15	Sep-16	Sep-17	Sep-18	Sep-19	Sep-20
Current	9,404,805.82	8,271,249.19	7,474,812.54	6,251,731.30	5,548,754.94	4,848,815.34	4,630,962.35	4,107,447.99	3,828,176.71	3,341,193.16
1-30 Days	116,558.79	161,175.06	181,552.14	352,986.52	352,538.96	176,188.89	119,620.00	195,519.71	152,112.59	143,513.99
31-60 Days	16,749.72	135,389.26	144,993.89	145,119.17	150,469.05	135,739.24	43,262.72	124,675.60	114,524.26	155,941.57
61-90 Days	58,533.60	78,823.00	16,929.30	-	36,019.30	79,868.72	165,850.84	83,391.95	65,079.01	98,520.77
91-120 Days	-	-	61,631.60	-	-	39,096.16	69,885.96	-	42,194.93	12,248.81
121-150 Days	-	-	-	-	22,150.25	-	12,919.90	41,004.87	49,261.25	24,299.23
151-180 Days	-	-	-	13,000.87	-	-	23,297.71	37,889.45	24,953.32	-
181+ Days	-	-	113,124.45	114,150.29	40,434.81	76,335.48	22,150.25	-	-	91,387.99

Delinquency Status (% of Current Balance)

Current Portfolio Balance	9,596,647.93	8,646,636.51	7,993,043.92	6,876,988.15	6,150,367.31	5,356,043.83	5,087,949.73	4,589,929.57	4,276,302.07	3,867,105.52
	Sep-11	Sep-12	Sep-13	Sep-14	Sep-15	Sep-16	Sep-17	Sep-18	Sep-19	Sep-20
Current	98.00%	95.66%	93.52%	90.91%	90.22%	90.53%	91.02%	89.49%	89.52%	86.40%
1-30 Days	1.21%	1.86%	2.27%	5.13%	5.73%	3.29%	2.35%	4.26%	3.56%	3.71%
31-60 Days	0.17%	1.57%	1.81%	2.11%	2.45%	2.53%	0.85%	2.72%	2.68%	4.03%
61-90 Days	0.61%	0.91%	0.21%	0.00%	0.59%	1.49%	3.26%	1.82%	1.52%	2.55%
91-120 Days	0.00%	0.00%	0.77%	0.00%	0.00%	0.73%	1.37%	0.00%	0.99%	0.32%
121-150 Days	0.00%	0.00%	0.00%	0.00%	0.36%	0.00%	0.25%	0.89%	1.15%	0.63%
151-180 Days	0.00%	0.00%	0.00%	0.19%	0.00%	0.00%	0.46%	0.83%	0.58%	0.00%
181+ Days	0.00%	0.00%	1.42%	1.66%	0.66%	1.43%	0.44%	0.00%	0.00%	2.36%
Current - 90 Days	100.00%	100.00%	97.81%	98.15%	98.98%	97.84%	97.48%	98.28%	97.28%	96.69%
91-180 Days	0.00%	0.00%	0.77%	0.19%	0.36%	0.73%	2.09%	1.72%	2.72%	0.95%



Mortgages - La Hipotecaria El Salvador Migration Analysis (2011 Vintage)

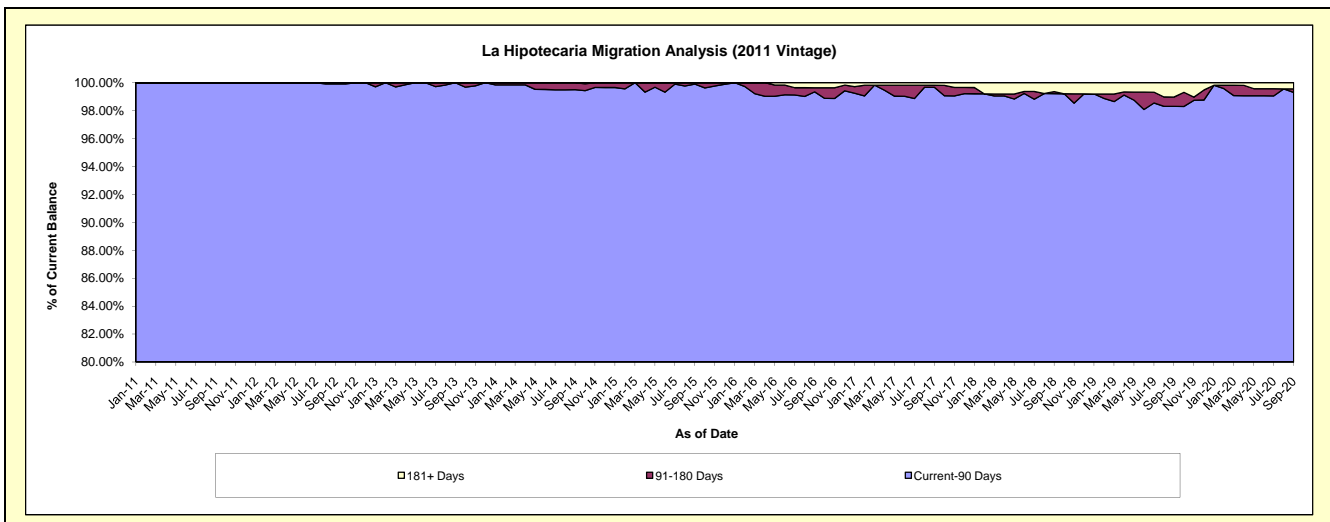
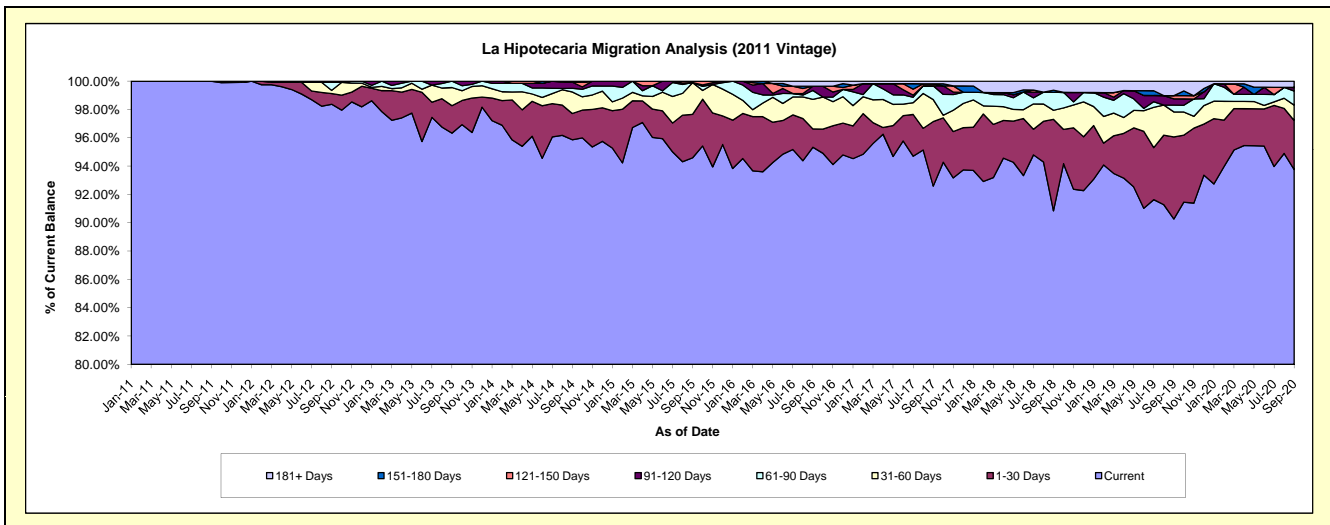
Delinquency Status (\$ of Current Balance)

Data Cutoff: 9/30/2020

Current Portfolio Balance	11,878,479.02	16,564,451.88	15,126,353.08	13,821,353.49	12,762,659.79	11,954,033.34	11,103,730.53	10,020,307.66	9,244,748.78	8,413,714.20
	Sep-11	Sep-12	Sep-13	Sep-14	Sep-15	Sep-16	Sep-17	Sep-18	Sep-19	Sep-20
Current	11,878,479.02	16,294,354.80	14,570,861.72	13,249,501.36	12,072,121.13	11,395,832.39	10,280,838.10	9,103,185.12	8,344,876.80	7,888,235.26
1-30 Days	-	125,329.59	293,571.99	256,358.46	391,769.53	154,805.17	505,959.87	647,131.16	536,216.85	292,027.29
31-60 Days	-	36,595.73	193,516.29	210,230.52	285,966.55	249,948.87	172,695.56	63,877.12	162,753.54	91,011.25
61-90 Days	-	93,998.68	68,403.08	35,821.90	-	75,094.41	107,787.54	127,811.72	44,342.12	84,231.81
91-120 Days	-	-	-	59,680.82	-	35,713.34	-	-	40,978.09	21,104.91
121-150 Days	-	14,173.08	-	-	12,802.58	-	16,155.45	-	20,948.23	-
151-180 Days	-	-	-	9,760.43	-	-	-	14,798.29	-	-
181+ Days	-	-	-	-	-	42,639.16	20,294.01	63,504.25	94,633.15	37,103.68

Delinquency Status (% of Current Balance)

Current Portfolio Balance	11,878,479.02	16,564,451.88	15,126,353.08	13,821,353.49	12,762,659.79	11,954,033.34	11,103,730.53	10,020,307.66	9,244,748.78	8,413,714.20
	Sep-11	Sep-12	Sep-13	Sep-14	Sep-15	Sep-16	Sep-17	Sep-18	Sep-19	Sep-20
Current	100.00%	98.37%	96.33%	95.86%	94.59%	95.33%	92.59%	90.85%	90.27%	93.75%
1-30 Days	0.00%	0.76%	1.94%	1.85%	3.07%	1.30%	4.56%	6.46%	5.80%	3.47%
31-60 Days	0.00%	0.22%	1.28%	1.52%	2.24%	2.09%	1.56%	0.64%	1.76%	1.08%
61-90 Days	0.00%	0.57%	0.45%	0.26%	0.00%	0.63%	0.97%	1.28%	0.48%	1.00%
91-120 Days	0.00%	0.00%	0.00%	0.43%	0.00%	0.30%	0.00%	0.00%	0.44%	0.25%
121-150 Days	0.00%	0.09%	0.00%	0.00%	0.10%	0.00%	0.15%	0.00%	0.23%	0.00%
151-180 Days	0.00%	0.00%	0.00%	0.07%	0.00%	0.00%	0.00%	0.15%	0.00%	0.00%
181+ Days	0.00%	0.00%	0.00%	0.00%	0.00%	0.36%	0.18%	0.63%	1.02%	0.44%
Current - 90 Days	100.00%	99.91%	100.00%	99.50%	99.90%	99.34%	99.67%	99.22%	98.31%	99.31%
91-180 Days	0.00%	0.09%	0.00%	0.50%	0.10%	0.30%	0.15%	0.15%	0.67%	0.25%



Mortgages - La Hipotecaria El Salvador Migration Analysis (2012 Vintage)

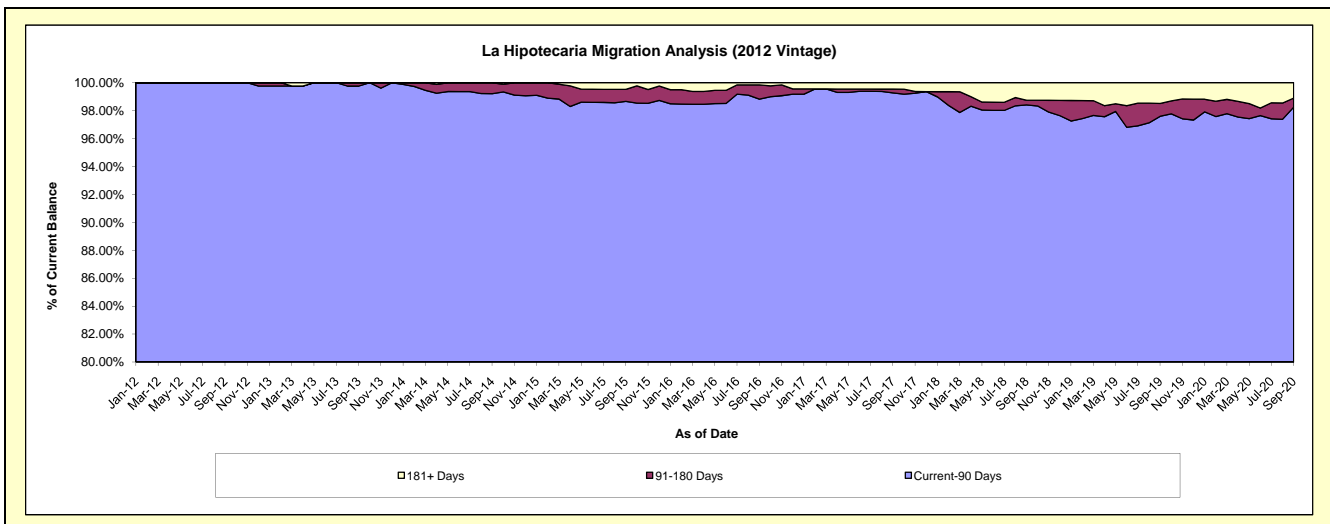
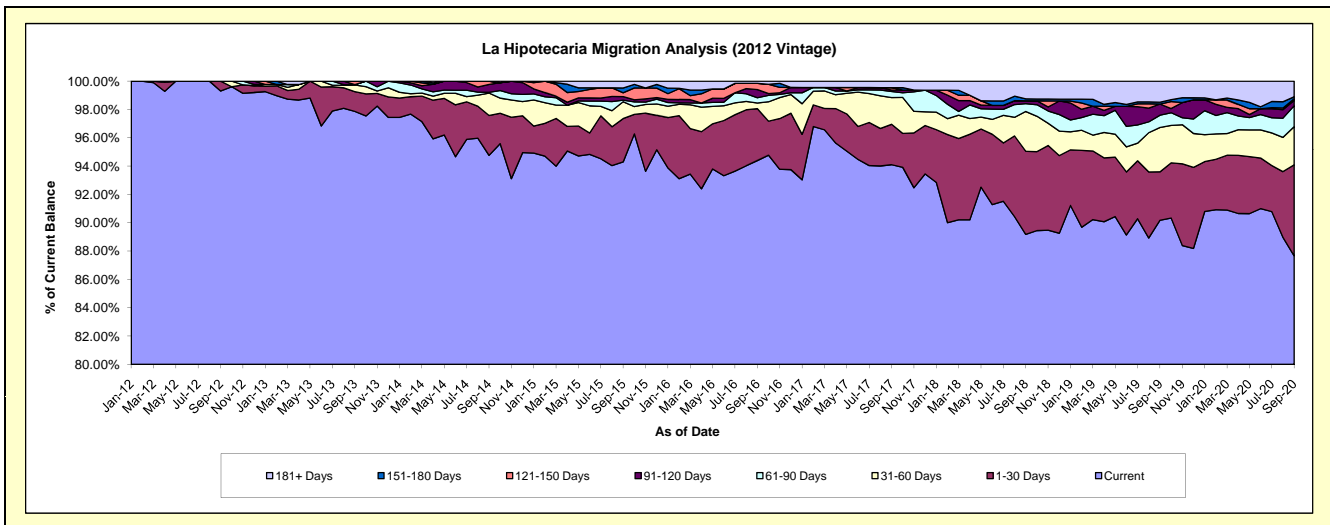
Delinquency Status (\$ of Current Balance)

Data Cutoff: 9/30/2020

Current Portfolio Balance	-	17,984,461.31	24,104,063.75	22,126,525.46	20,449,568.62	18,661,085.70	17,559,010.47	16,134,008.14	15,074,864.57	14,001,843.72
	Sep-12	Sep-13	Sep-14	Sep-15	Sep-16	Sep-17	Sep-18	Sep-19	Sep-20	
Current	17,859,959.14	23,589,843.84	20,966,632.22	19,283,878.39	17,614,509.06	16,523,352.11	14,388,559.84	13,593,368.89	12,273,861.86	
1-30 Days	124,502.17	336,736.95	623,021.23	625,485.32	683,802.29	501,322.31	946,779.81	515,931.94	899,965.78	
31-60 Days	-	113,558.19	351,505.08	243,597.48	75,600.78	331,613.85	453,419.35	472,073.90	378,052.36	
61-90 Days	-	5,913.18	12,018.02	22,608.44	68,500.77	75,170.46	89,691.37	131,304.98	205,977.99	
91-120 Days	-	-	122,101.46	50,785.78	107,946.87	18,180.01	32,398.53	118,485.44	53,982.54	
121-150 Days	-	58,011.59	51,247.45	55,260.80	81,978.48	28,825.61	-	-	16,406.24	
151-180 Days	-	-	-	70,336.24	-	-	21,382.21	20,357.93	19,539.80	
181+ Days	-	-	-	97,616.17	28,747.45	80,546.12	201,777.03	223,341.49	154,057.15	

Delinquency Status (% of Current Balance)

Current Portfolio Balance	-	17,984,461.31	24,104,063.75	22,126,525.46	20,449,568.62	18,661,085.70	17,559,010.47	16,134,008.14	15,074,864.57	14,001,843.72
	Sep-12	Sep-13	Sep-14	Sep-15	Sep-16	Sep-17	Sep-18	Sep-19	Sep-20	
Current	99.31%	97.87%	94.76%	94.30%	94.39%	94.10%	89.18%	90.17%	87.66%	
1-30 Days	0.69%	1.40%	2.82%	3.06%	3.66%	2.86%	5.87%	3.42%	6.43%	
31-60 Days	0.00%	0.47%	1.59%	1.19%	0.41%	1.89%	2.81%	3.13%	2.70%	
61-90 Days	0.00%	0.02%	0.05%	0.11%	0.37%	0.43%	0.56%	0.87%	1.47%	
91-120 Days	0.00%	0.00%	0.55%	0.25%	0.58%	0.10%	0.20%	0.79%	0.39%	
121-150 Days	0.00%	0.24%	0.23%	0.27%	0.44%	0.16%	0.00%	0.00%	0.12%	
151-180 Days	0.00%	0.00%	0.00%	0.34%	0.00%	0.00%	0.13%	0.14%	0.14%	
181+ Days	0.00%	0.00%	0.00%	0.48%	0.15%	0.46%	1.25%	1.48%	1.10%	
Current - 90 Days	100.00%	99.76%	99.22%	98.66%	98.83%	99.27%	98.42%	97.60%	98.26%	
91-180 Days	0.00%	0.24%	0.78%	0.86%	1.02%	0.27%	0.33%	0.92%	0.64%	



Mortgages - La Hipotecaria El Salvador Migration Analysis (2013 Vintage)

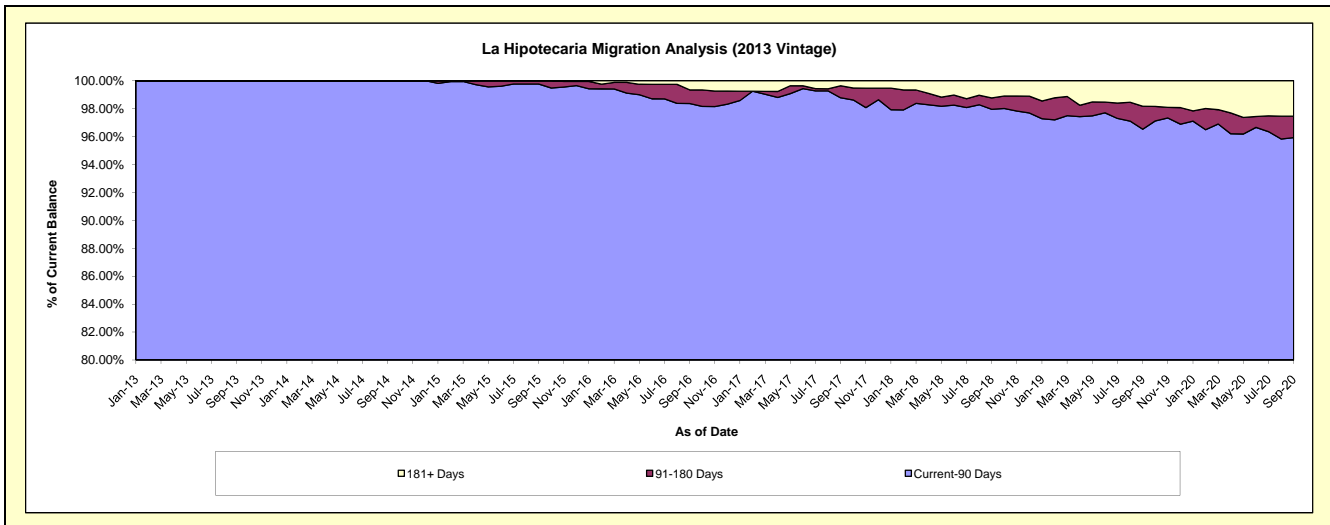
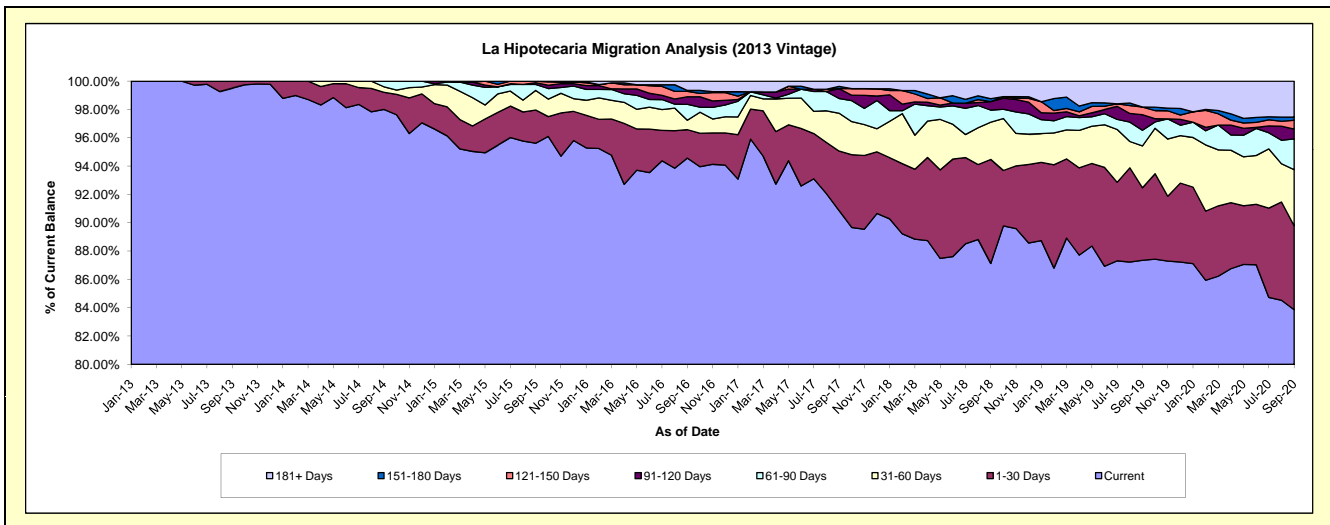
Delinquency Status (\$ of Current Balance)

Data Cutoff: 9/30/2020

Current Portfolio Balance	-	-	22,648,759.52	28,466,984.03	27,181,844.03	25,268,705.50	23,654,383.42	21,740,631.12	19,880,177.69	18,242,434.35
	Sep-13	Sep-14	Sep-15	Sep-16	Sep-17	Sep-18	Sep-19	Sep-20		
Current	22,536,316.61	27,899,408.75	25,990,774.84	23,894,999.17	21,491,712.21	18,942,246.85	17,366,194.45	15,298,133.84		
1-30 Days	112,442.91	342,505.38	637,235.13	508,488.50	994,879.83	1,597,132.89	1,017,033.91	1,079,085.54		
31-60 Days	-	111,727.61	375,051.34	168,179.51	632,478.13	571,701.83	587,976.59	724,689.99		
61-90 Days	-	113,342.29	114,884.31	284,747.98	246,107.11	184,890.17	219,149.16	397,030.51		
91-120 Days	-	-	33,429.06	135,034.64	165,412.67	132,122.30	219,643.61	126,670.02		
121-150 Days	-	-	30,469.35	95,775.58	-	-	106,620.04	113,163.62		
151-180 Days	-	-	-	15,954.35	37,294.37	44,019.53	-	39,956.49		
181+ Days	-	-	-	165,525.77	86,499.10	268,517.55	363,559.93	463,704.34		

Delinquency Status (% of Current Balance)

Current Portfolio Balance	-	-	22,648,759.52	28,466,984.03	27,181,844.03	25,268,705.50	23,654,383.42	21,740,631.12	19,880,177.69	18,242,434.35
	Sep-13	Sep-14	Sep-15	Sep-16	Sep-17	Sep-18	Sep-19	Sep-20		
Current	99.50%	98.01%	95.62%	94.56%	90.86%	87.13%	87.35%	83.86%		
1-30 Days	0.50%	1.20%	2.34%	2.01%	4.21%	7.35%	5.12%	5.92%		
31-60 Days	0.00%	0.39%	1.38%	0.67%	2.67%	2.63%	2.96%	3.97%		
61-90 Days	0.00%	0.40%	0.42%	1.13%	1.04%	0.85%	1.10%	2.18%		
91-120 Days	0.00%	0.00%	0.12%	0.53%	0.70%	0.61%	1.10%	0.69%		
121-150 Days	0.00%	0.00%	0.11%	0.38%	0.00%	0.00%	0.54%	0.62%		
151-180 Days	0.00%	0.00%	0.00%	0.06%	0.16%	0.20%	0.00%	0.22%		
181+ Days	0.00%	0.00%	0.00%	0.66%	0.37%	1.24%	1.83%	2.54%		
Current - 90 Days	100.00%	100.00%	99.76%	98.37%	98.78%	97.95%	96.53%	95.92%		
91-180 Days	0.00%	0.00%	0.24%	0.98%	0.86%	0.81%	1.64%	1.53%		



Mortgages - La Hipotecaria El Salvador Migration Analysis (2014 Vintage)

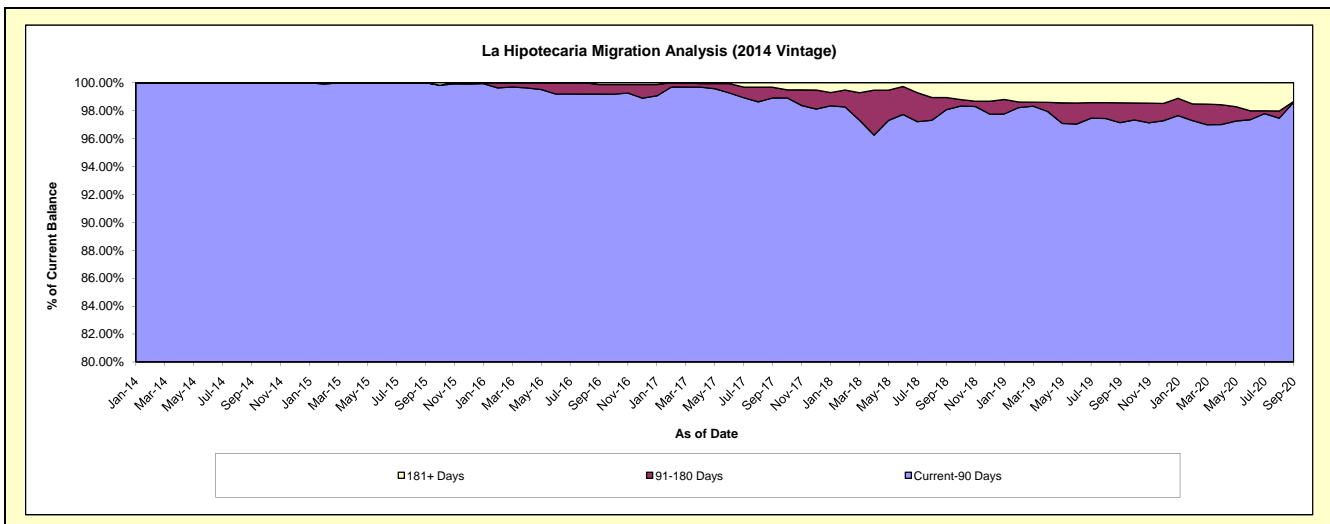
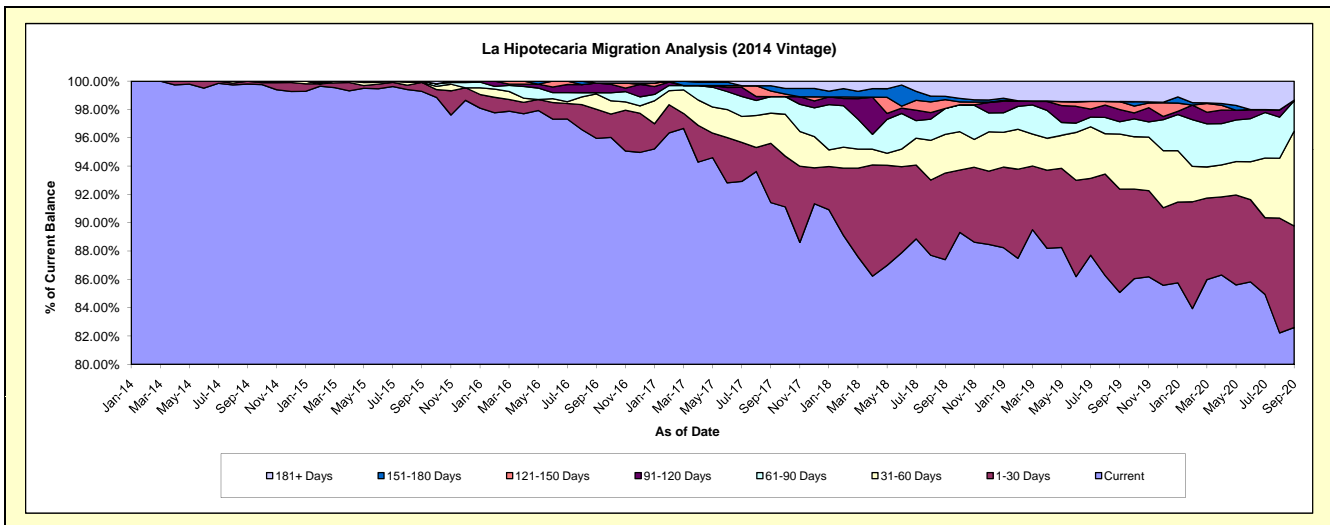
Delinquency Status (\$ of Current Balance)

Data Cutoff: 9/30/2020

Current Portfolio Balance	-	-	-	21,945,119.95	27,236,080.98	25,600,872.17	24,240,549.77	22,185,787.79	20,258,381.61	18,626,601.15
	Sep-14	Sep-15	Sep-16	Sep-17	Sep-18	Sep-19	Sep-20			
Current	21,900,289.04	27,039,318.80	24,567,162.62	22,161,584.88	19,389,722.66	17,236,072.89	15,386,151.70			
1-30 Days	44,830.91	172,337.48	525,997.87	1,014,408.88	1,356,720.90	1,477,921.04	1,335,619.79			
31-60 Days	-	-	276,619.80	516,632.34	605,956.11	788,373.68	1,249,210.67			
61-90 Days	-	24,424.70	22,853.05	284,122.42	405,096.30	176,147.49	397,434.57			
91-120 Days	-	-	175,009.61	-	-	174,151.10	8,682.38			
121-150 Days	-	-	-	96,586.50	139,489.56	114,239.82	-			
151-180 Days	-	-	-	89,268.30	52,934.77	-	-			
181+ Days	-	-	33,229.22	77,946.45	235,867.49	291,475.59	249,502.04			

Delinquency Status (% of Current Balance)

Current Portfolio Balance	-	-	-	21,945,119.95	27,236,080.98	25,600,872.17	24,240,549.77	22,185,787.79	20,258,381.61	18,626,601.15
	Sep-14	Sep-15	Sep-16	Sep-17	Sep-18	Sep-19	Sep-20			
Current	99.80%	99.28%	95.96%	91.42%	87.40%	85.08%	82.60%			
1-30 Days	0.20%	0.63%	2.05%	4.18%	6.12%	7.30%	7.17%			
31-60 Days	0.00%	0.00%	1.08%	2.13%	2.73%	3.89%	6.71%			
61-90 Days	0.00%	0.09%	0.09%	1.17%	1.83%	0.87%	2.13%			
91-120 Days	0.00%	0.00%	0.68%	0.00%	0.00%	0.86%	0.05%			
121-150 Days	0.00%	0.00%	0.00%	0.40%	0.63%	0.56%	0.00%			
151-180 Days	0.00%	0.00%	0.00%	0.37%	0.24%	0.00%	0.00%			
181+ Days	0.00%	0.00%	0.13%	0.32%	1.06%	1.44%	1.34%			
Current - 90 Days	100.00%	100.00%	99.19%	98.91%	98.07%	97.14%	98.61%			
91-180 Days	0.00%	0.00%	0.68%	0.77%	0.87%	1.42%	0.05%			



Mortgages - La Hipotecaria El Salvador Migration Analysis (2015 Vintage)

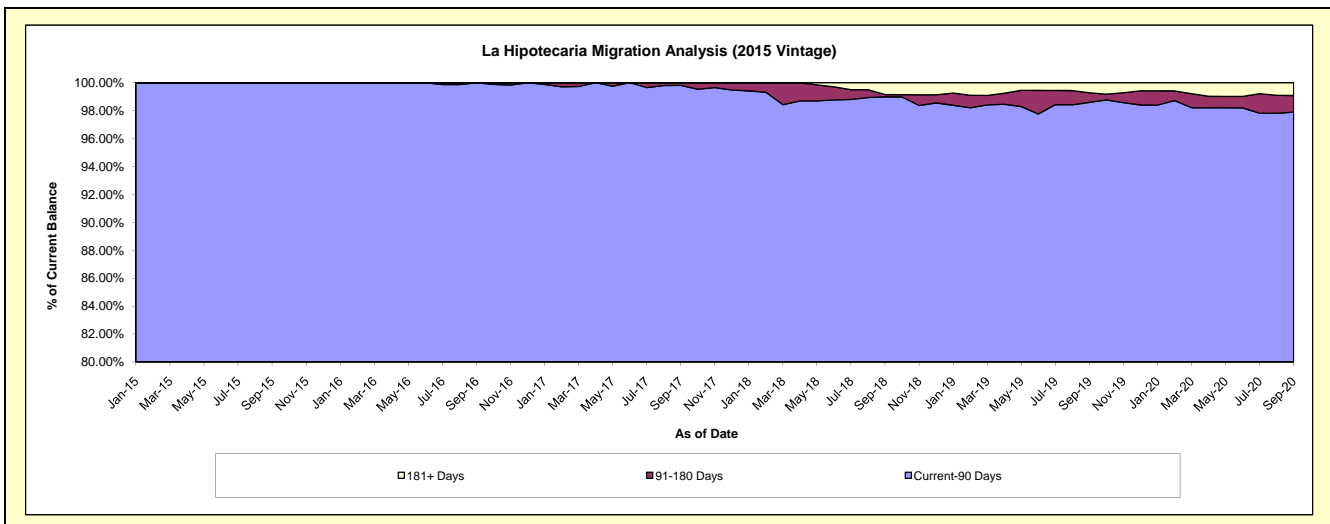
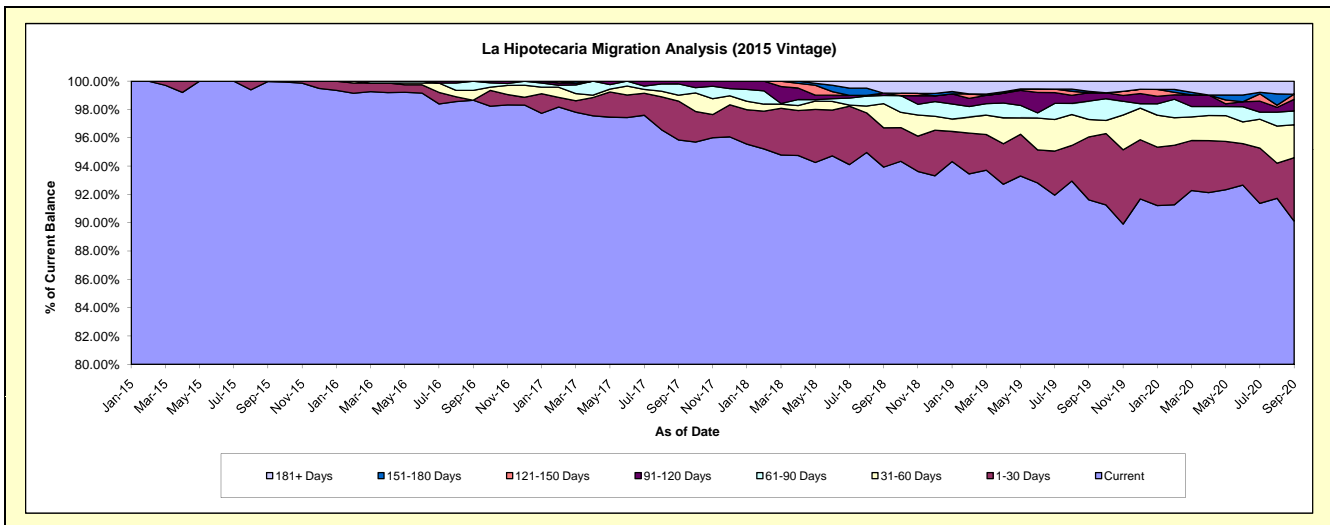
Delinquency Status (\$ of Current Balance)

Data Cutoff: 9/30/2020

Current Portfolio Balance	-	-	-	-	16,176,345.66	22,889,500.26	21,743,066.00	20,553,475.16	18,681,831.98	17,354,724.49
					Sep-15	Sep-16	Sep-17	Sep-18	Sep-19	Sep-20
Current					16,172,345.66	22,581,311.36	20,840,968.10	19,306,451.60	17,115,594.80	15,639,746.34
1-30 Days					4,000.00	-	596,269.66	569,089.17	831,273.29	776,558.54
31-60 Days					-	159,086.26	90,013.53	351,125.23	229,521.13	404,498.76
61-90 Days					-	149,102.64	174,023.35	119,376.61	242,572.70	169,159.61
91-120 Days					-	-	41,791.36	33,073.80	110,133.91	141,990.72
121-150 Days					-	-	-	-	-	63,581.07
151-180 Days					-	-	-	-	19,452.20	-
181+ Days					-	-	-	174,358.75	133,283.95	159,189.45

Delinquency Status (% of Current Balance)

Current Portfolio Balance	-	-	-	-	16,176,345.66	22,889,500.26	21,743,066.00	20,553,475.16	18,681,831.98	17,354,724.49
					Sep-15	Sep-16	Sep-17	Sep-18	Sep-19	Sep-20
Current					99.98%	98.65%	95.85%	93.93%	91.62%	90.12%
1-30 Days					0.02%	0.00%	2.74%	2.77%	4.45%	4.47%
31-60 Days					0.00%	0.70%	0.41%	1.71%	1.23%	2.33%
61-90 Days					0.00%	0.65%	0.80%	0.58%	1.30%	0.97%
91-120 Days					0.00%	0.00%	0.19%	0.16%	0.59%	0.82%
121-150 Days					0.00%	0.00%	0.00%	0.00%	0.00%	0.37%
151-180 Days					0.00%	0.00%	0.00%	0.00%	0.10%	0.00%
181+ Days					0.00%	0.00%	0.00%	0.85%	0.71%	0.92%
Current - 90 Days					100.00%	100.00%	99.81%	98.99%	98.59%	97.90%
91-180 Days					0.00%	0.00%	0.19%	0.16%	0.69%	1.18%



Mortgages - La Hipotecaria El Salvador Migration Analysis (2016 Vintage)

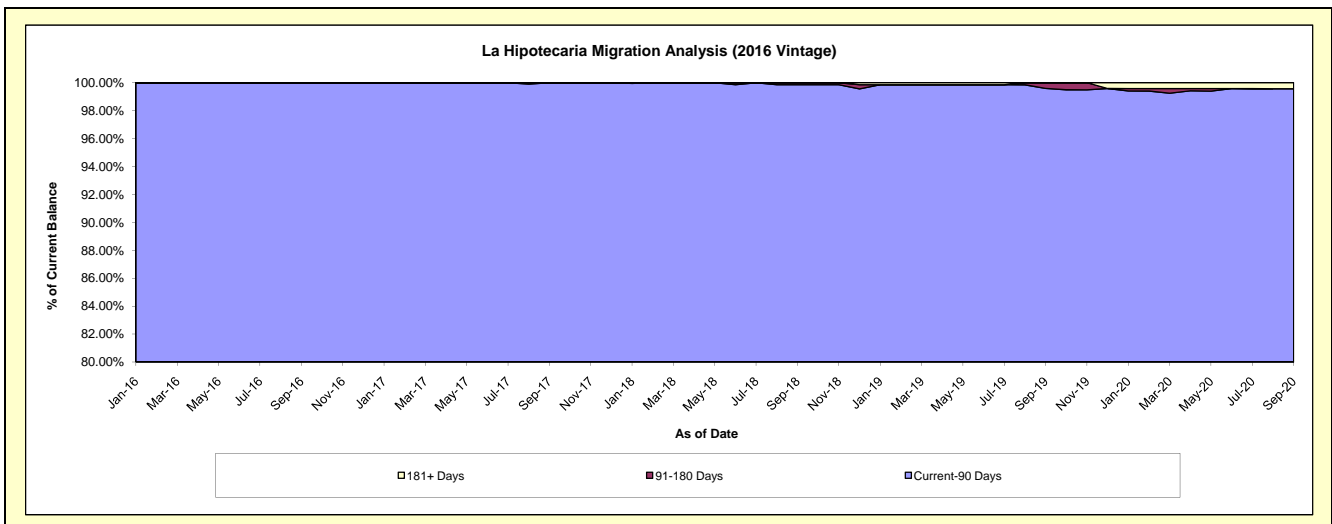
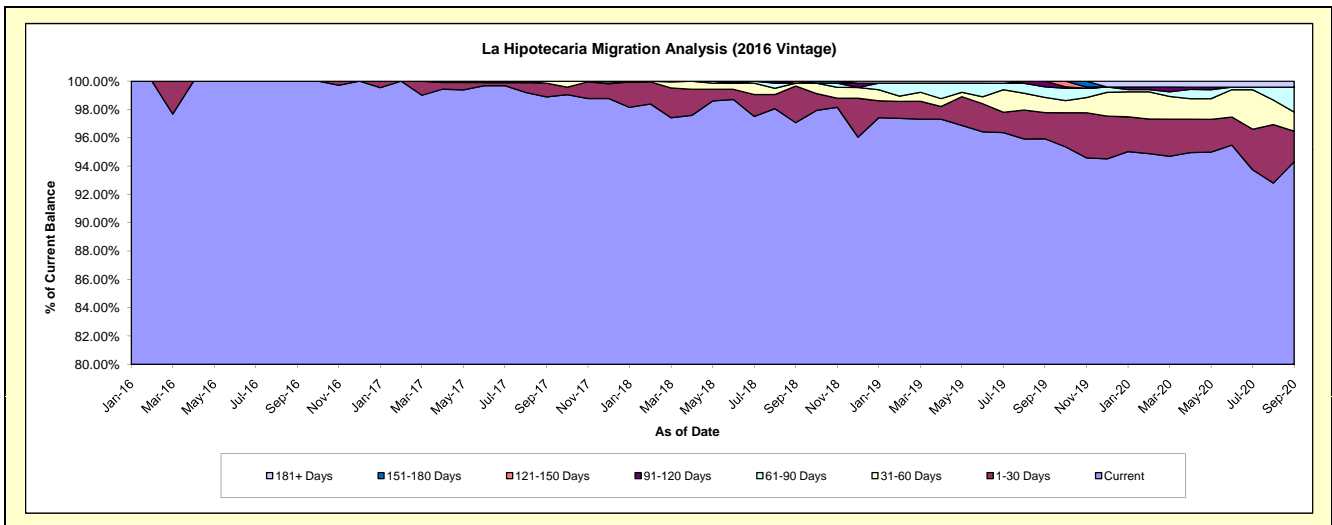
Delinquency Status (\$ of Current Balance)

Data Cutoff: 9/30/2020

Current Portfolio Balance	-	-	-	-	-	17,778,956.51	23,147,821.38	22,217,608.27	20,758,383.65	19,562,994.41
						Sep-16	Sep-17	Sep-18	Sep-19	Sep-20
Current						17,778,956.51	22,889,604.73	21,566,197.55	19,913,961.45	18,448,822.02
1-30 Days						-	226,003.81	574,176.05	383,206.93	423,808.69
31-60 Days						-	32,212.84	45,609.17	223,953.43	263,359.23
61-90 Days						-	-	-	153,239.04	342,981.67
91-120 Days						-	-	-	84,022.80	-
121-150 Days						-	-	31,625.50	-	-
151-180 Days						-	-	-	-	-
181+ Days						-	-	-	-	84,022.80

Delinquency Status (% of Current Balance)

Current Portfolio Balance	-	-	-	-	-	17,778,956.51	23,147,821.38	22,217,608.27	20,758,383.65	19,562,994.41
						Sep-16	Sep-17	Sep-18	Sep-19	Sep-20
Current						100.00%	98.88%	97.07%	95.93%	94.30%
1-30 Days						0.00%	0.98%	2.58%	1.85%	2.17%
31-60 Days						0.00%	0.14%	0.21%	1.08%	1.35%
61-90 Days						0.00%	0.00%	0.00%	0.74%	1.75%
91-120 Days						0.00%	0.00%	0.00%	0.40%	0.00%
121-150 Days						0.00%	0.00%	0.14%	0.00%	0.00%
151-180 Days						0.00%	0.00%	0.00%	0.00%	0.00%
181+ Days						0.00%	0.00%	0.00%	0.00%	0.43%
Current - 90 Days						100.00%	100.00%	99.86%	99.60%	99.57%
91-180 Days						0.00%	0.00%	0.14%	0.40%	0.00%



Mortgages - La Hipotecaria El Salvador Migration Analysis (2017 Vintage)

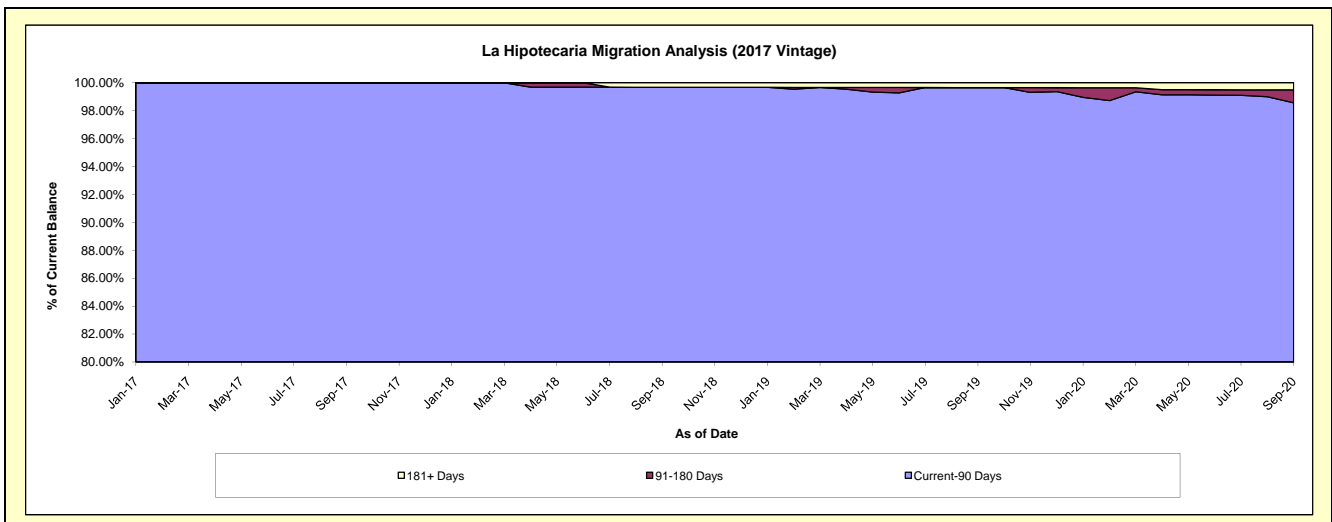
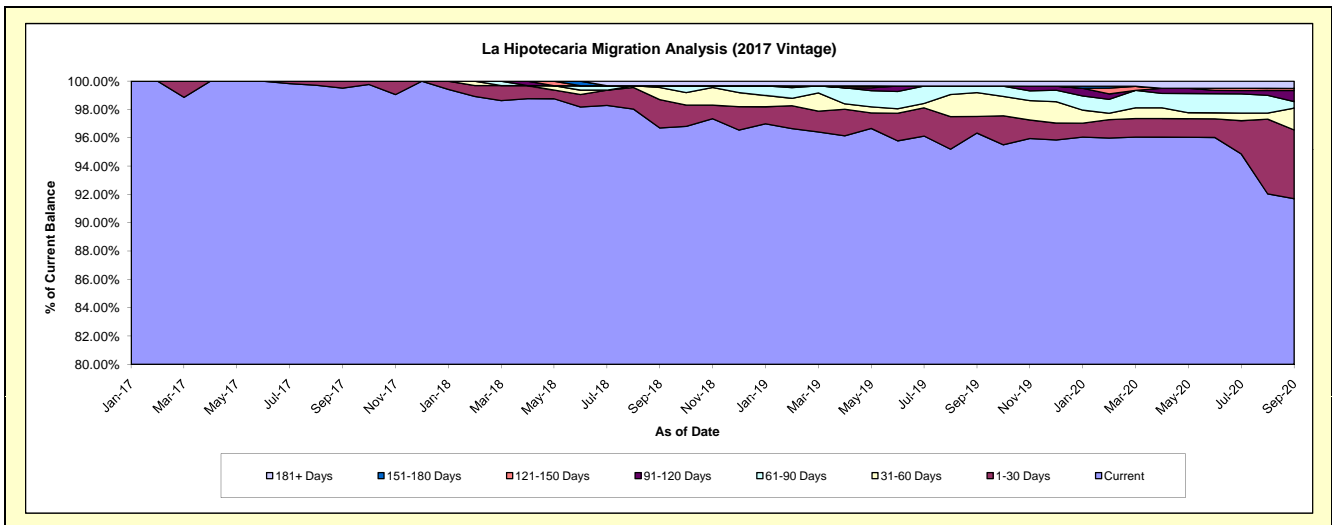
Delinquency Status (\$ of Current Balance)

Data Cutoff: 9/30/2020

Current Portfolio Balance	-	-	-	-	-	-	-	14,923,352.80	18,378,028.41	17,106,999.97	16,004,404.49
								Sep-17	Sep-18	Sep-19	Sep-20
Current								14,849,459.71	17,770,222.17	16,479,980.09	14,675,295.43
1-30 Days								73,893.09	368,049.68	200,732.60	777,791.34
31-60 Days								-	157,871.70	287,817.57	246,654.26
61-90 Days								-	22,484.86	79,069.71	74,584.65
91-120 Days								-	-	-	123,979.69
121-150 Days								-	-	-	24,214.26
151-180 Days								-	-	-	-
181+ Days								-	59,400.00	59,400.00	81,884.86

Delinquency Status (% of Current Balance)

Current Portfolio Balance	-	-	-	-	-	-	-	14,923,352.80	18,378,028.41	17,106,999.97	16,004,404.49
								Sep-17	Sep-18	Sep-19	Sep-20
Current								99.50%	96.69%	96.33%	91.70%
1-30 Days								0.50%	2.00%	1.17%	4.86%
31-60 Days								0.00%	0.86%	1.68%	1.54%
61-90 Days								0.00%	0.12%	0.46%	0.47%
91-120 Days								0.00%	0.00%	0.00%	0.77%
121-150 Days								0.00%	0.00%	0.00%	0.15%
151-180 Days								0.00%	0.00%	0.00%	0.00%
181+ Days								0.00%	0.32%	0.35%	0.51%
Current - 90 Days								100.00%	99.68%	99.65%	98.56%
91-180 Days								0.00%	0.00%	0.00%	0.93%



Mortgages - La Hipotecaria El Salvador Migration Analysis (2018 Vintage)

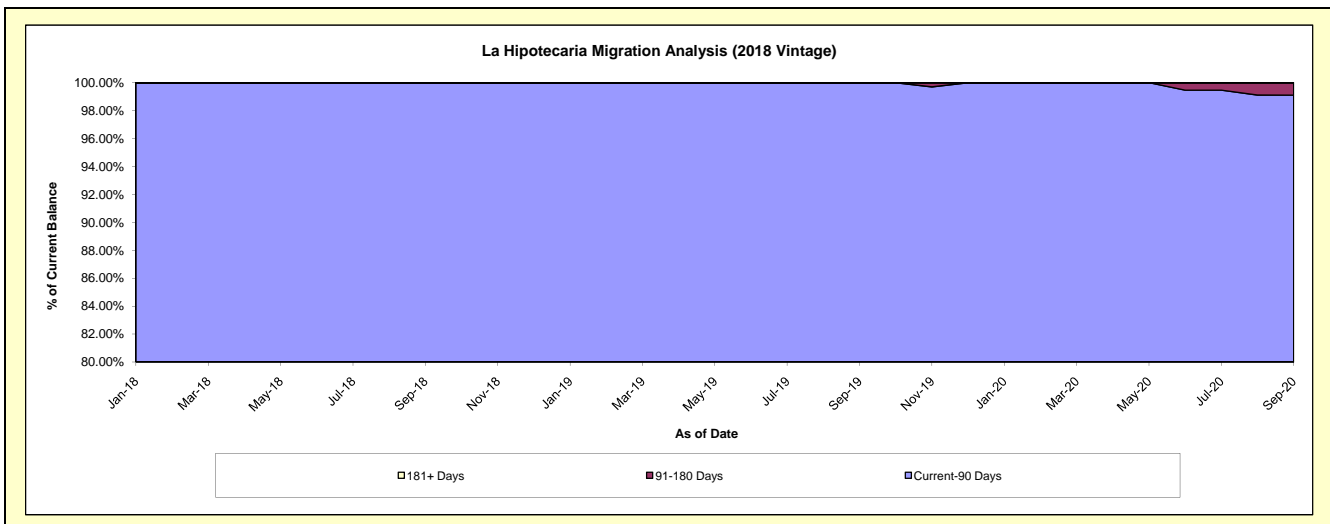
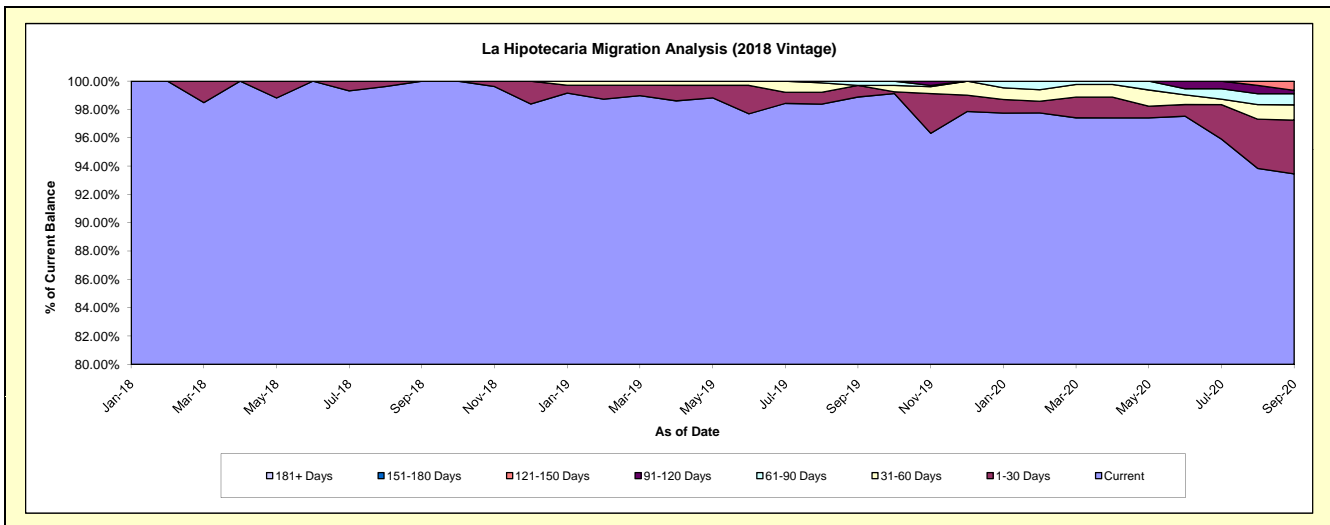
Delinquency Status (\$ of Current Balance)

Data Cutoff: 9/30/2020

Current Portfolio Balance	-	-	-	-	-	-	-	-	-	17,650,546.92	22,848,792.40	21,976,558.41
										Sep-18	Sep-19	Sep-20
Current										17,650,546.92	22,593,055.44	20,538,052.56
1-30 Days										-	187,859.55	833,489.62
31-60 Days										-	-	237,290.61
61-90 Days										-	67,877.41	172,179.58
91-120 Days										-	-	51,582.92
121-150 Days										-	-	143,963.12
151-180 Days										-	-	-
181+ Days										-	-	-

Delinquency Status (% of Current Balance)

Current Portfolio Balance	-	-	-	-	-	-	-	-	-	17,650,546.92	22,848,792.40	21,976,558.41
										Sep-18	Sep-19	Sep-20
Current										100.00%	98.88%	93.45%
1-30 Days										0.00%	0.82%	3.79%
31-60 Days										0.00%	0.00%	1.08%
61-90 Days										0.00%	0.30%	0.78%
91-120 Days										0.00%	0.00%	0.23%
121-150 Days										0.00%	0.00%	0.66%
151-180 Days										0.00%	0.00%	0.00%
181+ Days										0.00%	0.00%	0.00%
Current - 90 Days										100.00%	100.00%	99.11%
91-180 Days										0.00%	0.00%	0.89%



Mortgages - La Hipotecaria El Salvador Migration Analysis (2019 Vintage)

Delinquency Status (\$ of Current Balance)

Data Cutoff: 9/30/2020

Current Portfolio Balance										20,846,018.40	26,035,384.10
										Sep-19	Sep-20
Current										20,740,984.25	24,754,493.03
1-30 Days										63,034.15	1,031,589.94
31-60 Days										42,000.00	188,755.90
61-90 Days										-	42,000.00
91-120 Days										-	-
121-150 Days										-	-
151-180 Days										-	18,545.23
181+ Days										-	-

Delinquency Status (% of Current Balance)

Current Portfolio Balance										20,846,018.40	26,035,384.10
										Sep-19	Sep-20
Current										99.50%	95.08%
1-30 Days										0.30%	3.96%
31-60 Days										0.20%	0.72%
61-90 Days										0.00%	0.16%
91-120 Days										0.00%	0.00%
121-150 Days										0.00%	0.00%
151-180 Days										0.00%	0.07%
181+ Days										0.00%	0.00%
Current - 90 Days										100.00%	99.93%
91-180 Days										0.00%	0.07%

