



## Migration Analysis for La Hipotecaria S.A. de C.V El Salvador

### Mortgages November 2020

An analysis of historical loan payment data was used to compile a migration analysis of delinquency by annual vintage. Delinquencies for each vintage were grouped into the following buckets; Current, 1-30, 31-60, 61-90, 91-120, 121-150, 151-180, and 180+. Results are provided in graphical and tabular form. The cutoff date is 11/30/2020.

# Mortgages - La Hipotecaria El Salvador Migration Analysis (All Vintages)

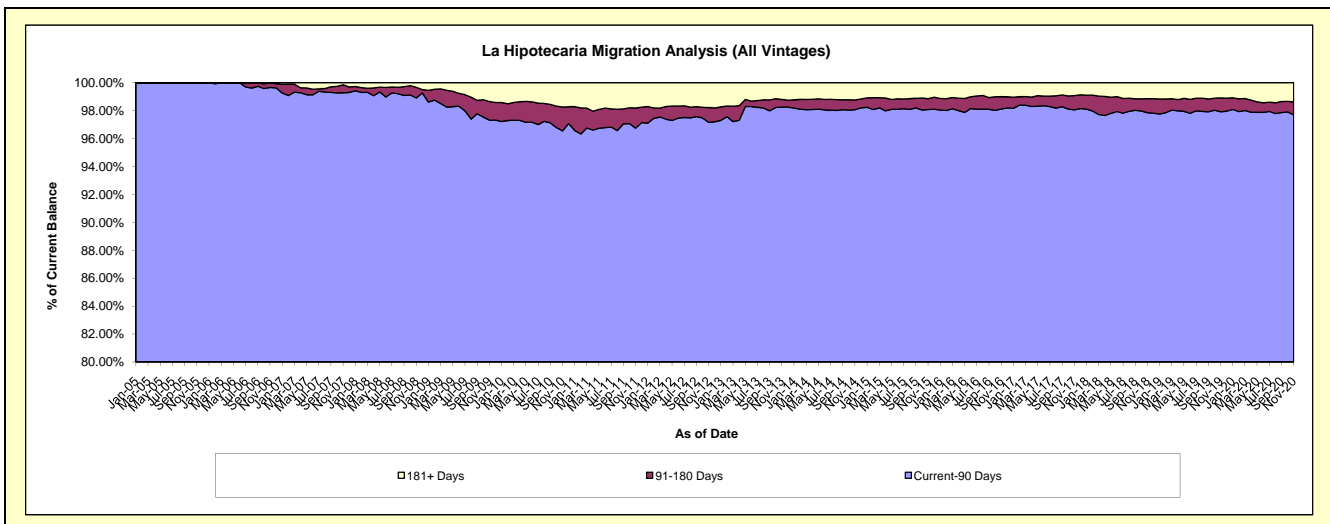
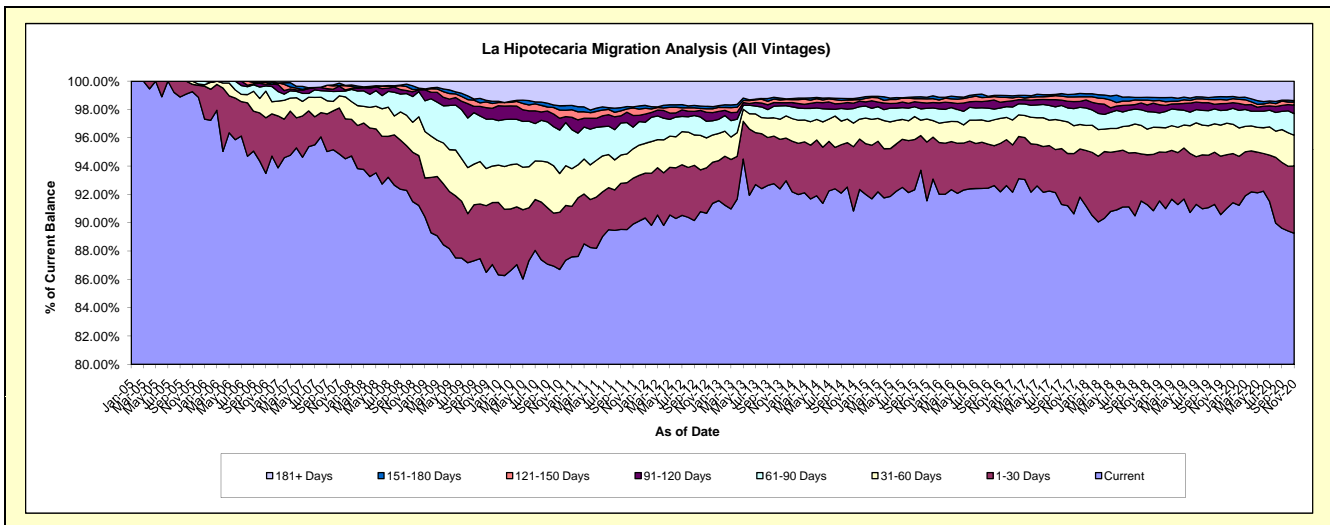
## Delinquency Status (\$ of Current Balance)

Data Cutoff: 11/30/2020

Current Portfolio Balance	92,108,666.06	108,209,662.35	129,039,412.07	145,704,438.64	158,194,677.44	171,596,137.85	180,742,680.39	191,075,941.23	202,880,055.91	201,088,191.98
	Nov-11	Nov-12	Nov-13	Nov-14	Nov-15	Nov-16	Nov-17	Nov-18	Nov-19	Nov-20
Current	82,810,201.41	98,111,406.68	119,221,093.17	132,341,755.74	144,837,373.64	158,189,632.85	163,806,706.96	174,410,873.82	183,758,695.97	179,492,478.67
1-30 Days	2,985,679.51	3,474,205.04	4,516,827.86	6,621,665.34	6,557,560.18	5,865,731.56	7,686,899.17	6,732,978.39	8,373,802.03	9,551,012.23
31-60 Days	1,913,908.63	2,287,492.92	1,831,774.29	2,428,307.58	2,577,467.34	3,040,305.77	3,567,238.86	3,458,587.44	4,456,501.18	4,360,490.85
61-90 Days	1,404,616.52	1,268,742.74	1,219,391.59	1,495,731.61	1,193,800.65	1,260,897.64	2,180,186.83	2,370,208.22	2,076,611.99	3,067,142.92
91-120 Days	764,701.45	692,111.23	293,071.48	558,892.00	588,698.09	681,823.84	904,790.84	903,620.28	993,433.59	1,209,998.71
121-150 Days	490,727.87	264,609.05	251,059.68	349,084.20	468,529.58	612,025.04	580,715.26	638,912.02	590,153.81	430,413.63
151-180 Days	71,282.76	181,550.00	165,972.06	114,274.84	173,881.38	233,833.06	354,292.05	391,025.01	427,579.52	213,249.33
181+ Days	1,667,547.91	1,929,544.69	1,540,221.94	1,794,727.33	1,797,366.58	1,711,888.09	1,661,850.42	2,169,736.05	2,203,277.82	2,763,405.64

## Delinquency Status (% of Current Balance)

Current Portfolio Balance	92,108,666.06	108,209,662.35	129,039,412.07	145,704,438.64	158,194,677.44	171,596,137.85	180,742,680.39	191,075,941.23	202,880,055.91	201,088,191.98
	Nov-11	Nov-12	Nov-13	Nov-14	Nov-15	Nov-16	Nov-17	Nov-18	Nov-19	Nov-20
Current	89.90%	90.67%	92.39%	90.83%	91.56%	92.19%	90.63%	91.28%	90.58%	89.26%
1-30 Days	3.24%	3.21%	3.50%	4.54%	4.15%	3.42%	4.25%	3.52%	4.13%	4.75%
31-60 Days	2.08%	2.11%	1.42%	1.67%	1.63%	1.77%	1.97%	1.81%	2.20%	2.17%
61-90 Days	1.52%	1.17%	0.94%	1.03%	0.75%	0.73%	1.21%	1.24%	1.02%	1.53%
91-120 Days	0.83%	0.64%	0.23%	0.38%	0.37%	0.40%	0.50%	0.47%	0.49%	0.60%
121-150 Days	0.53%	0.24%	0.19%	0.24%	0.30%	0.36%	0.32%	0.33%	0.29%	0.21%
151-180 Days	0.08%	0.17%	0.13%	0.08%	0.11%	0.14%	0.20%	0.20%	0.21%	0.11%
181+ Days	1.81%	1.78%	1.19%	1.23%	1.14%	1.00%	0.92%	1.14%	1.09%	1.37%
Current - 90 Days	96.75%	97.16%	98.26%	98.07%	98.09%	98.11%	98.06%	97.85%	97.92%	97.70%
91-180 Days	1.44%	1.05%	0.55%	0.70%	0.78%	0.89%	1.02%	1.01%	0.99%	0.92%



# Mortgages - La Hipotecaria El Salvador Migration Analysis (2005 Vintage)

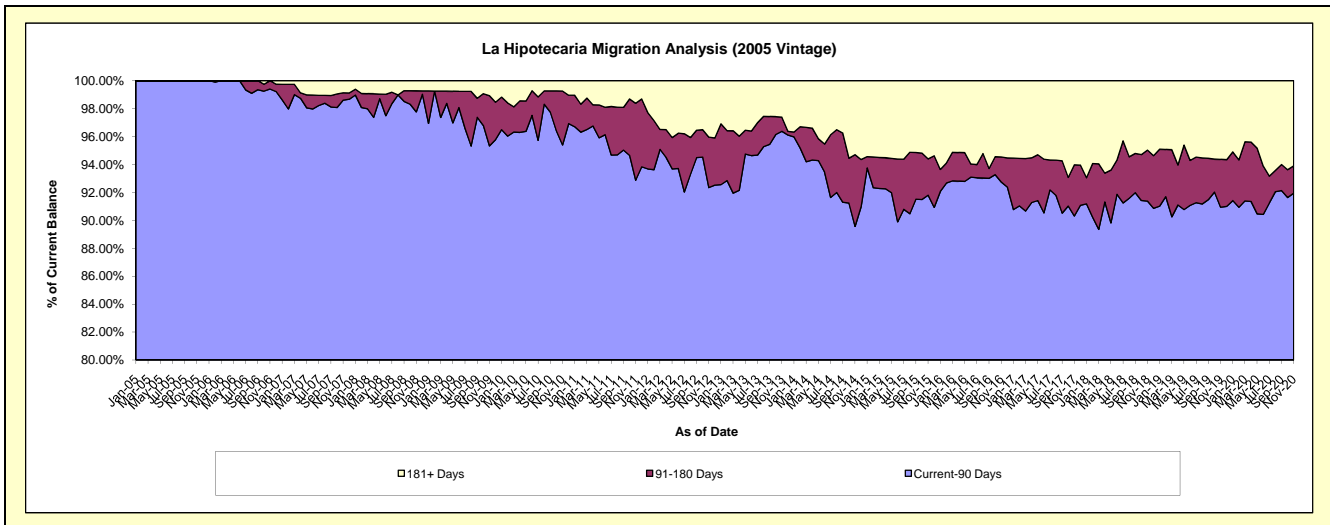
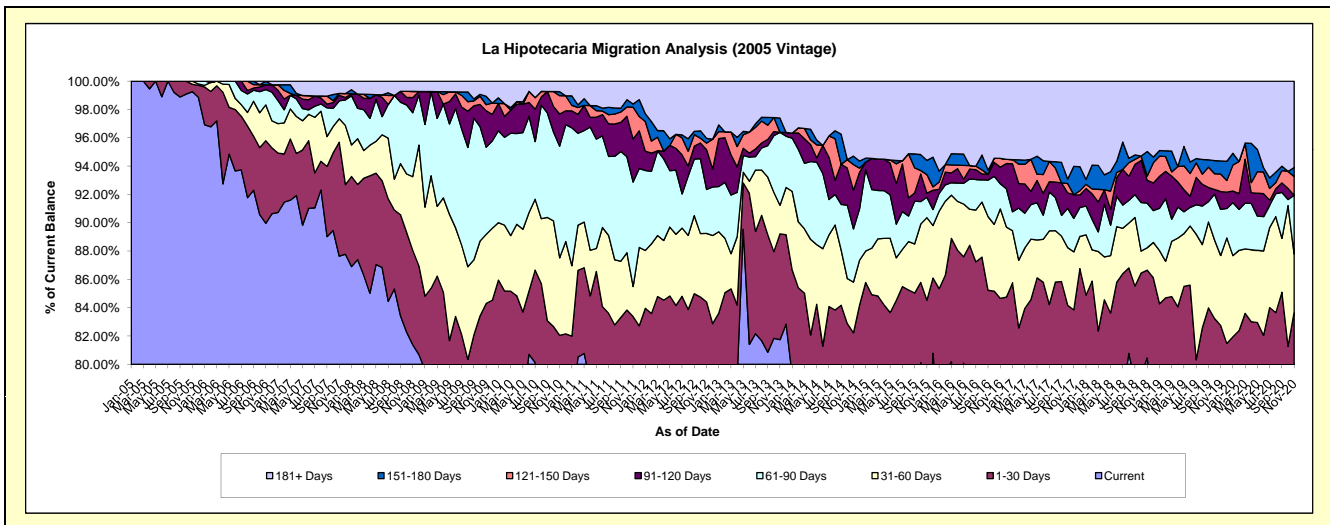
## Delinquency Status (\$ of Current Balance)

Data Cutoff: 11/30/2020

Current Portfolio Balance	6,194,298.38	5,765,264.66	5,108,768.94	4,567,869.78	4,214,345.31	3,917,254.11	3,574,595.39	3,126,554.41	2,836,794.17	2,569,675.54
	Nov-11	Nov-12	Nov-13	Nov-14	Nov-15	Nov-16	Nov-17	Nov-18	Nov-19	Nov-20
Current	4,762,892.10	4,470,740.29	4,176,094.45	3,425,736.75	3,088,255.27	2,876,238.94	2,672,107.06	2,515,410.57	2,069,791.21	1,889,498.67
1-30 Days	401,354.20	395,791.47	381,789.23	330,552.09	474,045.92	440,064.56	325,187.21	194,016.08	277,478.43	261,033.97
31-60 Days	131,683.99	278,906.67	103,265.59	163,447.51	245,869.10	247,571.49	146,461.97	49,354.76	140,254.74	105,520.40
61-90 Days	456,844.76	178,667.33	262,902.27	171,539.11	60,697.72	69,289.34	84,698.45	98,423.25	92,343.03	106,635.40
91-120 Days	187,858.86	162,374.42	-	124,281.52	12,029.01	46,349.06	59,565.72	50,556.54	35,561.92	-
121-150 Days	140,003.30	26,611.13	-	83,390.41	55,460.64	24,037.46	-	9,330.72	35,175.58	33,886.79
151-180 Days	13,495.09	19,560.42	51,421.14	27,177.36	42,141.54	-	71,497.74	54,175.31	26,475.85	16,427.52
181+ Days	100,166.08	232,612.93	133,296.26	241,745.03	235,846.11	213,703.26	215,077.24	155,287.18	159,713.41	156,672.79

## Delinquency Status (% of Current Balance)

Current Portfolio Balance	6,194,298.38	5,765,264.66	5,108,768.94	4,567,869.78	4,214,345.31	3,917,254.11	3,574,595.39	3,126,554.41	2,836,794.17	2,569,675.54
	Nov-11	Nov-12	Nov-13	Nov-14	Nov-15	Nov-16	Nov-17	Nov-18	Nov-19	Nov-20
Current	76.89%	77.55%	81.74%	75.00%	73.28%	73.42%	74.75%	80.45%	72.96%	73.53%
1-30 Days	6.48%	6.87%	7.47%	7.24%	11.25%	11.23%	9.10%	6.21%	9.78%	10.16%
31-60 Days	2.13%	4.84%	2.02%	3.58%	5.83%	6.32%	4.10%	1.58%	4.94%	4.11%
61-90 Days	7.38%	3.10%	5.15%	3.76%	1.44%	1.77%	2.37%	3.15%	3.26%	4.15%
91-120 Days	3.03%	2.82%	0.00%	2.72%	0.29%	1.18%	1.67%	1.62%	1.25%	0.00%
121-150 Days	2.26%	0.46%	0.00%	1.83%	1.32%	0.61%	0.00%	0.30%	1.24%	1.32%
151-180 Days	0.22%	0.34%	1.01%	0.59%	1.00%	0.00%	2.00%	1.73%	0.93%	0.64%
181+ Days	1.62%	4.03%	2.61%	5.29%	5.60%	5.46%	6.02%	4.97%	5.63%	6.10%
Current - 90 Days	92.87%	92.35%	96.38%	89.57%	91.80%	92.75%	90.32%	91.39%	90.94%	91.95%
91-180 Days	5.51%	3.62%	1.01%	5.14%	2.60%	1.80%	3.67%	3.65%	3.43%	1.96%



# Mortgages - La Hipotecaria El Salvador Migration Analysis (2006 Vintage)

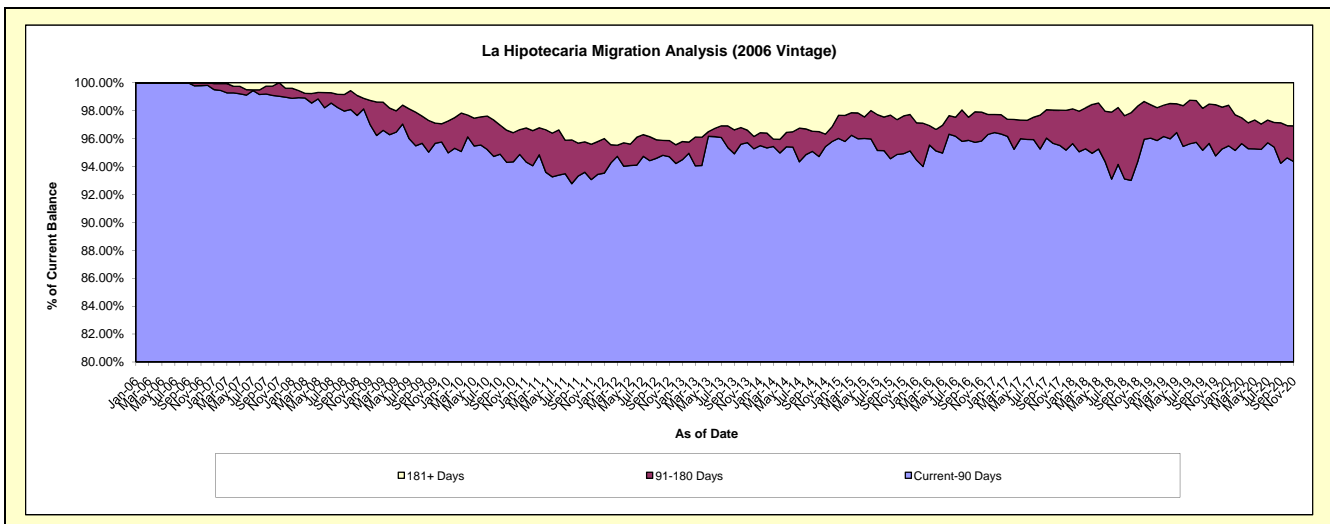
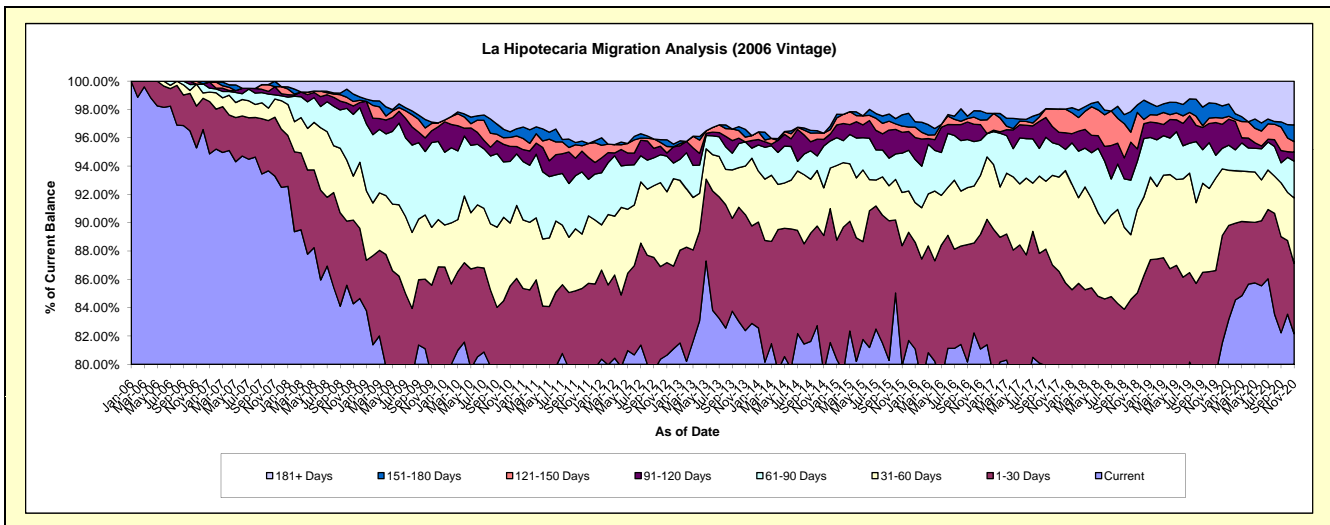
## Delinquency Status (\$ of Current Balance)

Data Cutoff: 11/30/2020

Current Portfolio Balance	14,320,474.13	12,706,517.14	11,685,799.01	10,400,938.38	9,515,052.08	8,636,619.77	7,932,916.28	7,233,814.24	6,475,829.39	5,895,254.27
	Nov-11	Nov-12	Nov-13	Nov-14	Nov-15	Nov-16	Nov-17	Nov-18	Nov-19	Nov-20
Current	11,437,921.53	10,247,775.50	9,627,294.90	8,267,349.23	7,603,935.23	7,002,652.16	6,092,565.22	5,514,868.42	5,134,792.11	4,843,204.56
1-30 Days	838,738.96	830,382.45	957,395.66	999,912.19	805,774.08	700,557.81	774,794.65	637,118.21	475,124.66	292,861.38
31-60 Days	682,241.15	635,647.05	400,450.88	349,933.08	357,146.86	360,062.16	528,300.93	426,408.12	422,867.45	272,720.90
61-90 Days	368,643.72	319,565.57	199,596.08	307,938.46	264,460.72	212,975.97	181,758.41	245,519.49	103,936.48	153,634.18
91-120 Days	221,129.25	28,863.83	-	47,983.25	140,562.59	95,410.56	69,059.44	64,111.41	149,890.63	37,636.84
121-150 Days	141,348.12	58,501.16	40,006.68	45,362.06	41,593.33	27,822.05	130,578.64	186,511.90	22,805.70	43,309.08
151-180 Days	-	59,718.10	63,793.22	-	75,243.97	55,630.47	-	38,137.15	64,176.88	69,898.79
181+ Days	630,451.40	526,063.48	397,261.59	382,460.11	226,335.30	181,508.59	155,858.99	121,139.54	102,235.48	181,988.54

## Delinquency Status (% of Current Balance)

Current Portfolio Balance	14,320,474.13	12,706,517.14	11,685,799.01	10,400,938.38	9,515,052.08	8,636,619.77	7,932,916.28	7,233,814.24	6,475,829.39	5,895,254.27
	Nov-11	Nov-12	Nov-13	Nov-14	Nov-15	Nov-16	Nov-17	Nov-18	Nov-19	Nov-20
Current	79.87%	80.65%	82.38%	79.49%	79.91%	81.08%	76.80%	76.24%	79.29%	82.15%
1-30 Days	5.86%	6.54%	8.19%	9.61%	8.47%	8.11%	9.77%	8.81%	7.34%	4.97%
31-60 Days	4.76%	5.00%	3.43%	3.36%	3.75%	4.17%	6.66%	5.89%	6.53%	4.63%
61-90 Days	2.57%	2.51%	1.71%	2.96%	2.78%	2.47%	2.29%	3.39%	1.60%	2.61%
91-120 Days	1.54%	0.23%	0.00%	0.46%	1.48%	1.10%	0.87%	0.89%	2.31%	0.64%
121-150 Days	0.99%	0.46%	0.34%	0.44%	0.44%	0.32%	1.65%	2.58%	0.35%	0.73%
151-180 Days	0.00%	0.47%	0.55%	0.00%	0.79%	0.64%	0.00%	0.53%	0.99%	1.19%
181+ Days	4.40%	4.14%	3.40%	3.68%	2.38%	2.10%	1.96%	1.67%	1.58%	3.09%
Current - 90 Days	93.07%	94.70%	95.71%	95.43%	94.92%	95.83%	95.52%	94.33%	94.76%	94.35%
91-180 Days	2.53%	1.16%	0.89%	0.90%	2.71%	2.07%	2.52%	3.99%	3.66%	2.56%



# Mortgages - La Hipotecaria El Salvador Migration Analysis (2007 Vintage)

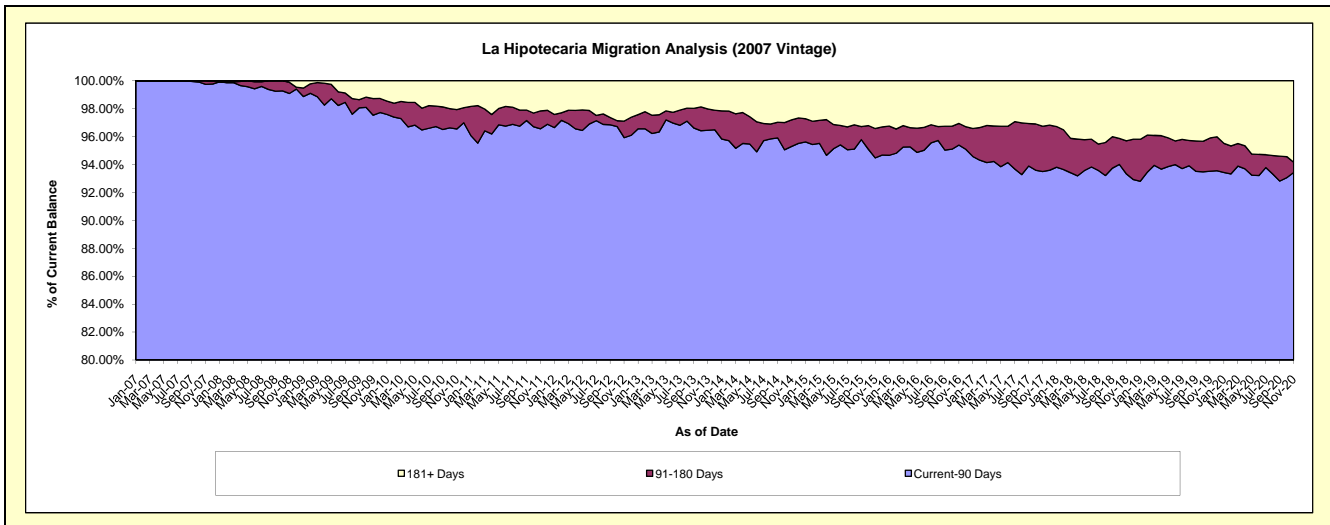
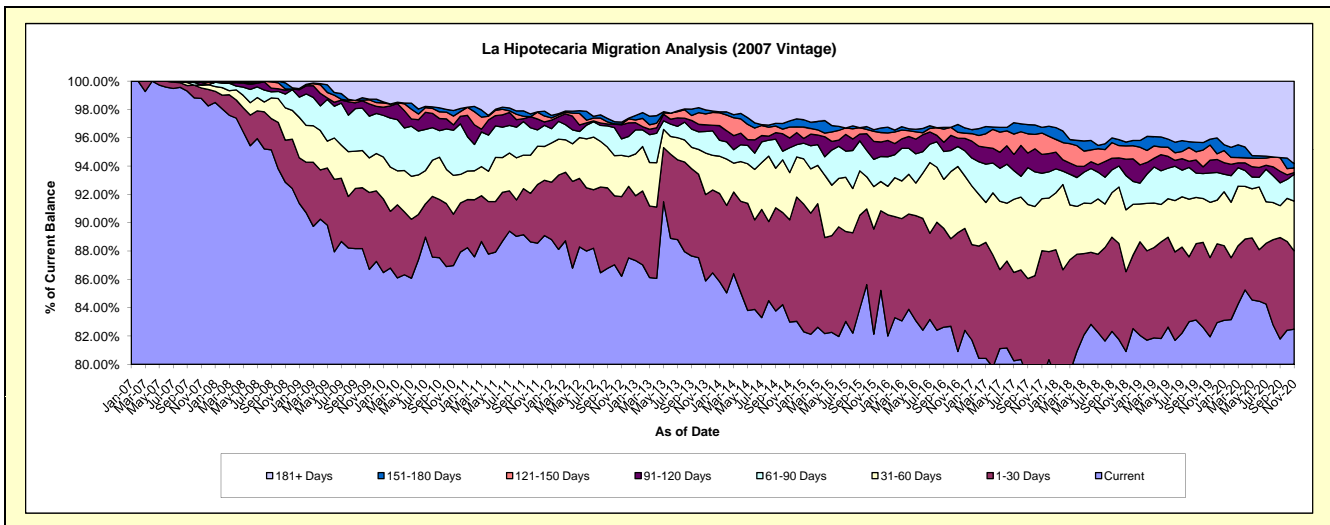
## Delinquency Status (\$ of Current Balance)

Data Cutoff: 11/30/2020

Current Portfolio Balance	21,801,432.38	19,690,275.85	17,849,986.72	16,512,048.16	15,106,882.42	13,864,449.71	12,698,410.54	11,656,198.65	10,837,199.24	10,067,591.76
	Nov-11	Nov-12	Nov-13	Nov-14	Nov-15	Nov-16	Nov-17	Nov-18	Nov-19	Nov-20
Current	19,306,574.80	16,978,173.86	15,331,931.90	13,703,719.08	12,408,081.74	11,217,689.72	10,042,779.42	9,430,748.51	8,881,143.86	8,304,047.16
1-30 Days	904,589.93	1,106,586.70	1,088,566.56	1,191,125.65	1,121,064.37	1,163,273.08	1,135,679.89	657,207.51	605,694.43	556,842.13
31-60 Days	588,379.57	574,878.17	523,497.63	551,828.76	452,957.99	648,028.76	465,884.32	509,550.54	423,086.52	353,998.25
61-90 Days	251,765.00	227,916.56	272,388.10	288,993.95	290,585.56	196,417.34	228,224.93	281,478.22	225,382.49	191,142.43
91-120 Days	168,092.24	196,678.64	84,866.04	113,896.66	191,978.95	81,038.58	169,529.79	135,575.36	97,135.41	10,982.67
121-150 Days	103,934.12	10,246.63	136,785.05	127,576.91	107,338.52	57,328.51	191,124.03	109,172.64	115,639.53	33,699.98
151-180 Days	7,289.03	26,620.13	50,757.70	71,829.66	17,525.12	77,070.26	51,385.08	31,061.43	45,022.98	29,665.94
181+ Days	470,807.69	569,175.16	361,373.74	463,077.49	517,350.17	423,603.46	413,803.08	501,404.44	444,094.02	587,213.20

## Delinquency Status (% of Current Balance)

Current Portfolio Balance	21,801,432.38	19,690,275.85	17,849,986.72	16,512,048.16	15,106,882.42	13,864,449.71	12,698,410.54	11,656,198.65	10,837,199.24	10,067,591.76
	Nov-11	Nov-12	Nov-13	Nov-14	Nov-15	Nov-16	Nov-17	Nov-18	Nov-19	Nov-20
Current	88.56%	86.23%	85.89%	82.99%	82.14%	80.91%	79.09%	80.91%	81.95%	82.48%
1-30 Days	4.15%	5.62%	6.10%	7.21%	7.42%	8.39%	8.94%	5.64%	5.59%	5.53%
31-60 Days	2.70%	2.92%	2.93%	3.34%	3.00%	4.67%	3.67%	4.37%	3.90%	3.52%
61-90 Days	1.15%	1.16%	1.53%	1.75%	1.92%	1.42%	1.80%	2.41%	2.08%	1.90%
91-120 Days	0.77%	1.00%	0.47%	0.69%	1.27%	0.58%	1.34%	1.16%	0.90%	0.11%
121-150 Days	0.48%	0.05%	0.77%	0.77%	0.71%	0.41%	1.51%	0.94%	1.07%	0.33%
151-180 Days	0.03%	0.14%	0.28%	0.44%	0.12%	0.56%	0.40%	0.27%	0.42%	0.29%
181+ Days	2.16%	2.89%	2.02%	2.80%	3.42%	3.06%	3.26%	4.30%	4.10%	5.83%
Current - 90 Days	96.56%	95.92%	96.45%	95.30%	94.48%	95.39%	93.50%	93.33%	93.52%	93.43%
91-180 Days	1.28%	1.19%	1.53%	1.90%	2.10%	1.55%	3.24%	2.37%	2.38%	0.74%



# Mortgages - La Hipotecaria El Salvador Migration Analysis (2008 Vintage)

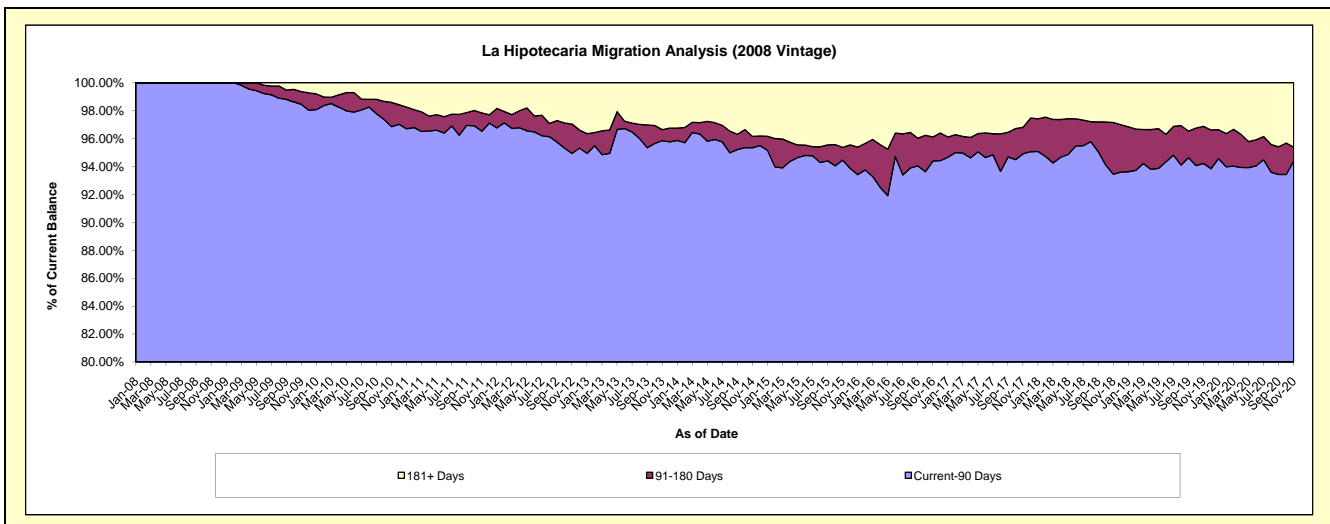
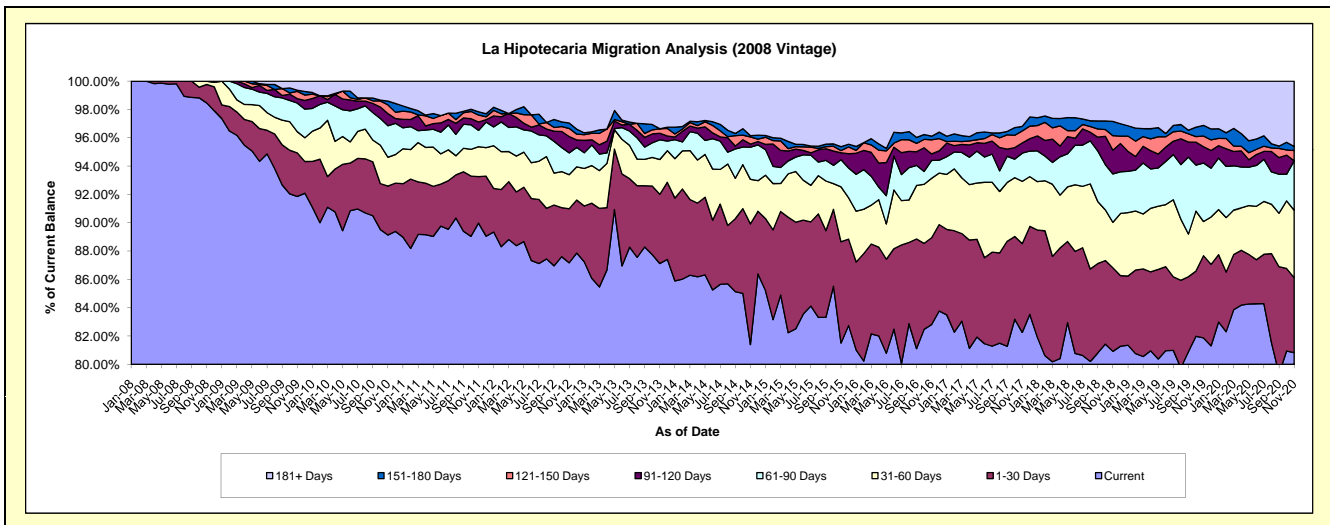
## Delinquency Status (\$ of Current Balance)

Data Cutoff: 11/30/2020

Current Portfolio Balance	21,587,696.81	19,824,501.35	17,612,916.22	15,716,230.25	14,374,470.21	13,033,923.95	12,060,027.81	10,976,998.12	9,788,848.57	9,179,297.09
	Nov-11	Nov-12	Nov-13	Nov-14	Nov-15	Nov-16	Nov-17	Nov-18	Nov-19	Nov-20
Current	19,424,082.22	17,280,907.10	15,345,179.31	12,792,563.37	11,716,421.92	10,794,009.54	9,920,322.31	8,882,570.13	8,013,711.29	7,419,504.95
1-30 Days	707,708.13	757,796.91	859,840.72	1,339,310.07	1,027,797.86	799,101.39	756,246.74	648,003.43	568,361.20	486,030.94
31-60 Days	457,087.12	476,372.72	433,509.03	495,344.85	557,146.95	546,643.06	529,959.72	352,286.01	236,337.88	437,212.29
61-90 Days	248,293.81	305,234.77	244,182.33	357,079.72	276,638.76	164,157.14	240,382.15	375,260.33	405,012.87	320,250.48
91-120 Days	128,461.82	229,258.29	81,893.95	33,733.13	68,979.25	60,657.52	86,898.77	184,145.95	111,849.61	-
121-150 Days	105,442.33	113,111.86	56,158.80	78,591.13	23,245.70	130,189.75	102,170.08	111,879.56	74,493.58	66,611.43
151-180 Days	50,498.64	75,651.35	-	15,267.82	38,970.75	33,094.17	39,508.87	110,481.46	73,440.90	26,151.96
181+ Days	466,122.74	586,168.35	592,152.08	604,340.16	665,269.02	506,071.38	384,539.17	312,371.25	305,641.24	423,535.04

## Delinquency Status (% of Current Balance)

Current Portfolio Balance	21,587,696.81	19,824,501.35	17,612,916.22	15,716,230.25	14,374,470.21	13,033,923.95	12,060,027.81	10,976,998.12	9,788,848.57	9,179,297.09
	Nov-11	Nov-12	Nov-13	Nov-14	Nov-15	Nov-16	Nov-17	Nov-18	Nov-19	Nov-20
Current	89.98%	87.17%	87.12%	81.40%	81.51%	82.81%	82.26%	80.92%	81.87%	80.83%
1-30 Days	3.28%	3.82%	4.88%	8.52%	7.15%	6.13%	6.27%	5.90%	5.81%	5.29%
31-60 Days	2.12%	2.40%	2.46%	3.15%	3.88%	4.19%	4.39%	3.21%	2.41%	4.76%
61-90 Days	1.15%	1.54%	1.39%	2.27%	1.92%	1.26%	1.99%	3.42%	4.14%	3.49%
91-120 Days	0.60%	1.16%	0.46%	0.21%	0.48%	0.47%	0.72%	1.68%	1.14%	0.00%
121-150 Days	0.49%	0.57%	0.32%	0.50%	0.16%	1.00%	0.85%	1.02%	0.76%	0.73%
151-180 Days	0.23%	0.38%	0.00%	0.10%	0.27%	0.25%	0.33%	1.01%	0.75%	0.28%
181+ Days	2.16%	2.96%	3.36%	3.85%	4.63%	3.88%	3.19%	2.85%	3.12%	4.61%
Current - 90 Days	96.52%	94.93%	95.85%	95.34%	94.46%	94.40%	94.92%	93.45%	94.22%	94.38%
91-180 Days	1.32%	2.11%	0.78%	0.81%	0.91%	1.72%	1.90%	3.70%	2.65%	1.01%



# Mortgages - La Hipotecaria El Salvador Migration Analysis (2009 Vintage)

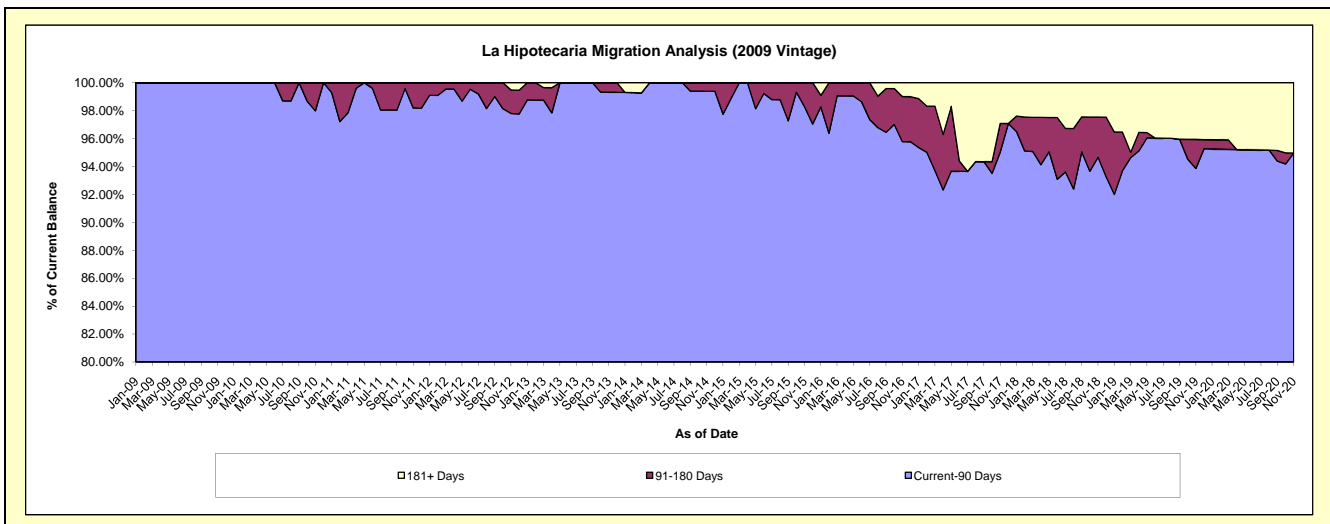
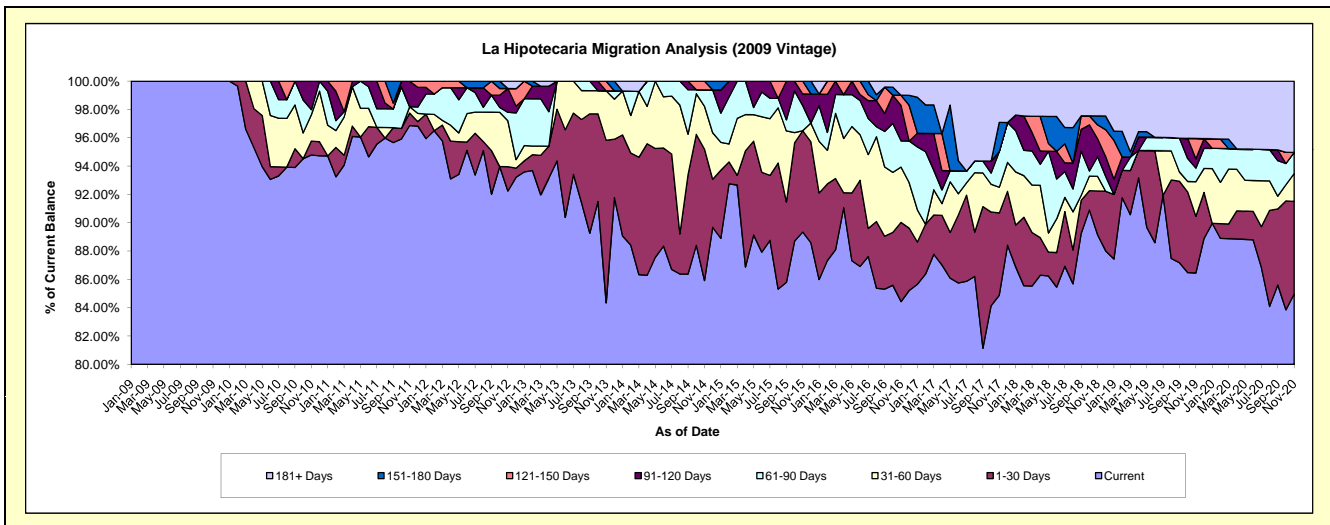
## Delinquency Status (\$ of Current Balance)

Data Cutoff: 11/30/2020

Current Portfolio Balance	3,277,789.45	2,984,481.02	2,635,926.28	2,310,491.59	2,059,821.73	1,936,943.96	1,866,956.15	1,711,081.51	1,598,220.48	1,495,698.78
	Nov-11	Nov-12	Nov-13	Nov-14	Nov-15	Nov-16	Nov-17	Nov-18	Nov-19	Nov-20
Current	3,174,870.54	2,753,002.84	2,223,237.57	1,985,155.93	1,840,296.61	1,635,437.88	1,584,680.40	1,525,504.82	1,381,709.40	1,270,915.54
1-30 Days	29,127.72	51,148.11	302,614.90	214,606.67	147,485.01	108,274.61	108,489.17	52,892.82	63,981.26	97,782.56
31-60 Days	14,631.91	96,878.19	91,964.66	69,918.37	-	75,647.99	33,913.60	17,716.71	39,074.77	29,257.12
61-90 Days	-	17,742.09	-	26,646.93	36,543.06	35,905.99	47,052.47	23,696.37	15,342.66	22,414.81
91-120 Days	59,159.28	50,185.02	-	-	16,874.97	48,682.02	-	21,922.23	10,531.26	-
121-150 Days	-	-	18,109.15	14,163.69	18,622.08	13,714.21	-	16,485.29	22,783.64	-
151-180 Days	-	-	-	-	-	-	38,433.25	10,804.39	-	-
181+ Days	-	15,524.77	-	-	-	19,281.26	54,387.26	42,058.88	64,797.49	75,328.75

## Delinquency Status (% of Current Balance)

Current Portfolio Balance	3,277,789.45	2,984,481.02	2,635,926.28	2,310,491.59	2,059,821.73	1,936,943.96	1,866,956.15	1,711,081.51	1,598,220.48	1,495,698.78
	Nov-11	Nov-12	Nov-13	Nov-14	Nov-15	Nov-16	Nov-17	Nov-18	Nov-19	Nov-20
Current	96.86%	92.24%	84.34%	85.92%	89.34%	84.43%	84.88%	89.15%	86.45%	84.97%
1-30 Days	0.89%	1.71%	11.48%	9.29%	7.16%	5.59%	5.81%	3.09%	4.00%	6.54%
31-60 Days	0.45%	3.25%	3.49%	3.03%	0.00%	3.91%	1.82%	1.04%	2.44%	1.96%
61-90 Days	0.00%	0.59%	0.00%	1.15%	1.77%	1.85%	2.52%	1.38%	0.96%	1.50%
91-120 Days	1.80%	1.68%	0.00%	0.00%	0.82%	2.51%	0.00%	1.28%	0.66%	0.00%
121-150 Days	0.00%	0.00%	0.69%	0.61%	0.90%	0.71%	0.00%	0.96%	1.43%	0.00%
151-180 Days	0.00%	0.00%	0.00%	0.00%	0.00%	0.00%	2.06%	0.63%	0.00%	0.00%
181+ Days	0.00%	0.52%	0.00%	0.00%	0.00%	1.00%	2.91%	2.46%	4.05%	5.04%
Current - 90 Days	98.20%	97.80%	99.31%	99.39%	98.28%	95.78%	95.03%	94.67%	93.86%	94.96%
91-180 Days	1.80%	1.68%	0.69%	0.61%	1.72%	3.22%	2.06%	2.88%	2.08%	0.00%



# Mortgages - La Hipotecaria El Salvador Migration Analysis (2010 Vintage)

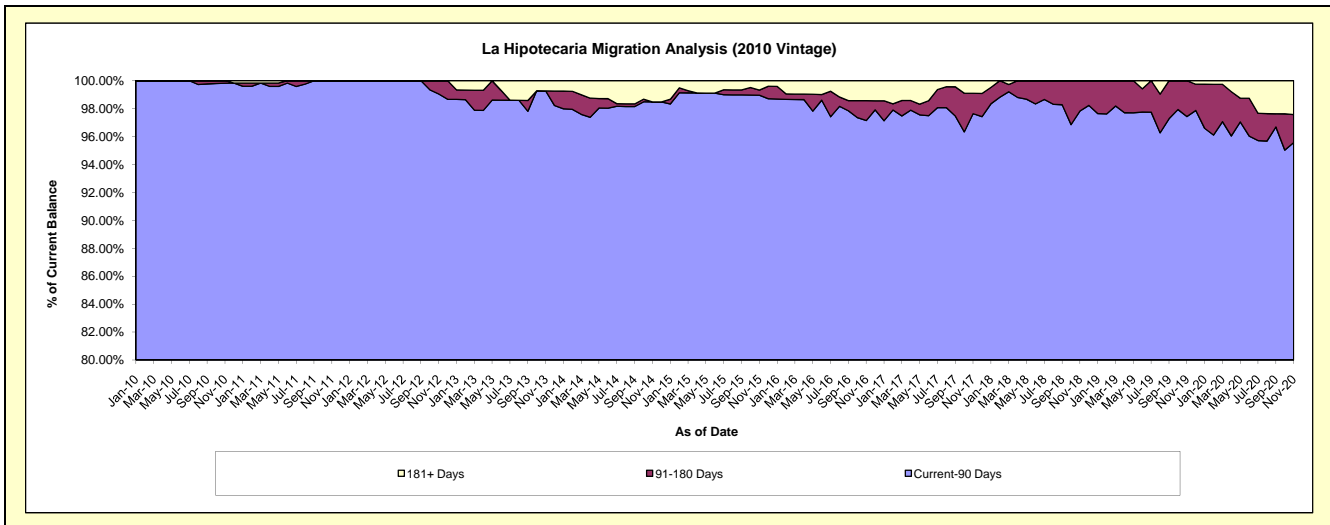
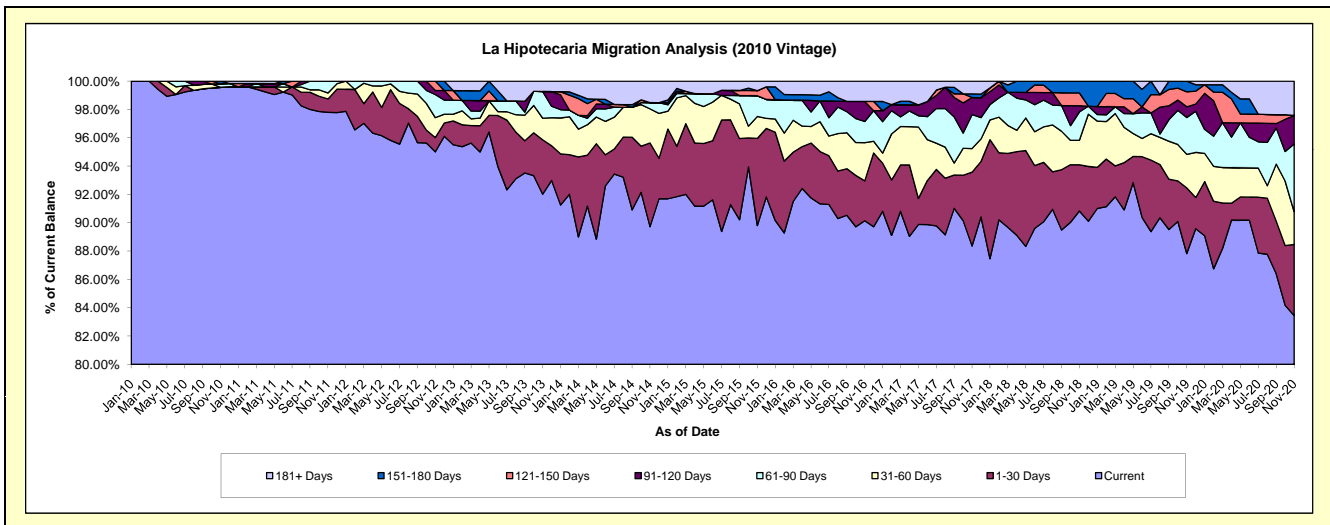
## Delinquency Status (\$ of Current Balance)

Data Cutoff: 11/30/2020

Current Portfolio Balance	9,484,434.16	8,541,315.41	7,743,292.48	6,810,932.18	6,033,064.09	5,337,676.29	5,054,585.95	4,535,671.54	4,096,037.69	3,775,736.76
	Nov-11	Nov-12	Nov-13	Nov-14	Nov-15	Nov-16	Nov-17	Nov-18	Nov-19	Nov-20
Current	9,275,521.27	8,114,793.07	7,125,010.21	6,111,201.41	5,417,835.11	4,811,418.24	4,465,982.48	4,119,864.27	3,597,413.09	3,150,689.00
1-30 Days	89,958.77	86,464.39	297,670.32	402,563.63	371,670.34	150,699.20	263,809.50	147,962.12	189,647.02	189,701.09
31-60 Days	39,884.89	119,899.28	118,192.63	163,948.20	93,024.80	143,827.82	84,267.59	78,474.40	97,432.19	87,563.74
61-90 Days	79,069.23	139,269.37	146,281.05	30,114.40	87,948.78	79,673.54	121,196.05	90,992.42	106,565.08	180,474.63
91-120 Days	-	24,751.03	-	-	-	75,722.01	60,962.47	19,484.01	30,848.91	75,920.31
121-150 Days	-	56,138.27	-	-	22,150.25	-	-	41,004.87	43,186.40	-
151-180 Days	-	-	-	-	-	-	12,919.90	37,889.45	30,945.00	-
181+ Days	-	-	56,138.27	103,104.54	40,434.81	76,335.48	45,447.96	-	-	91,387.99

## Delinquency Status (% of Current Balance)

Current Portfolio Balance	9,484,434.16	8,541,315.41	7,743,292.48	6,810,932.18	6,033,064.09	5,337,676.29	5,054,585.95	4,535,671.54	4,096,037.69	3,775,736.76
	Nov-11	Nov-12	Nov-13	Nov-14	Nov-15	Nov-16	Nov-17	Nov-18	Nov-19	Nov-20
Current	97.80%	95.01%	92.02%	89.73%	89.80%	90.14%	88.36%	90.83%	87.83%	83.45%
1-30 Days	0.95%	1.01%	3.84%	5.91%	6.16%	2.82%	5.22%	3.26%	4.63%	5.02%
31-60 Days	0.42%	1.40%	1.53%	2.41%	1.54%	2.69%	1.67%	1.73%	2.38%	2.32%
61-90 Days	0.83%	1.63%	1.89%	0.44%	1.46%	1.49%	2.40%	2.01%	2.60%	4.78%
91-120 Days	0.00%	0.29%	0.00%	0.00%	0.00%	1.42%	1.21%	0.43%	0.75%	2.01%
121-150 Days	0.00%	0.66%	0.00%	0.00%	0.37%	0.00%	0.00%	0.90%	1.05%	0.00%
151-180 Days	0.00%	0.00%	0.00%	0.00%	0.00%	0.00%	0.26%	0.84%	0.76%	0.00%
181+ Days	0.00%	0.00%	0.72%	1.51%	0.67%	1.43%	0.90%	0.00%	0.00%	2.42%
Current - 90 Days	100.00%	99.05%	99.28%	98.49%	98.96%	97.15%	97.64%	97.83%	97.44%	95.57%
91-180 Days	0.00%	0.95%	0.00%	0.00%	0.37%	1.42%	1.46%	2.17%	2.56%	2.01%





# Mortgages - La Hipotecaria El Salvador Migration Analysis (2011 Vintage)

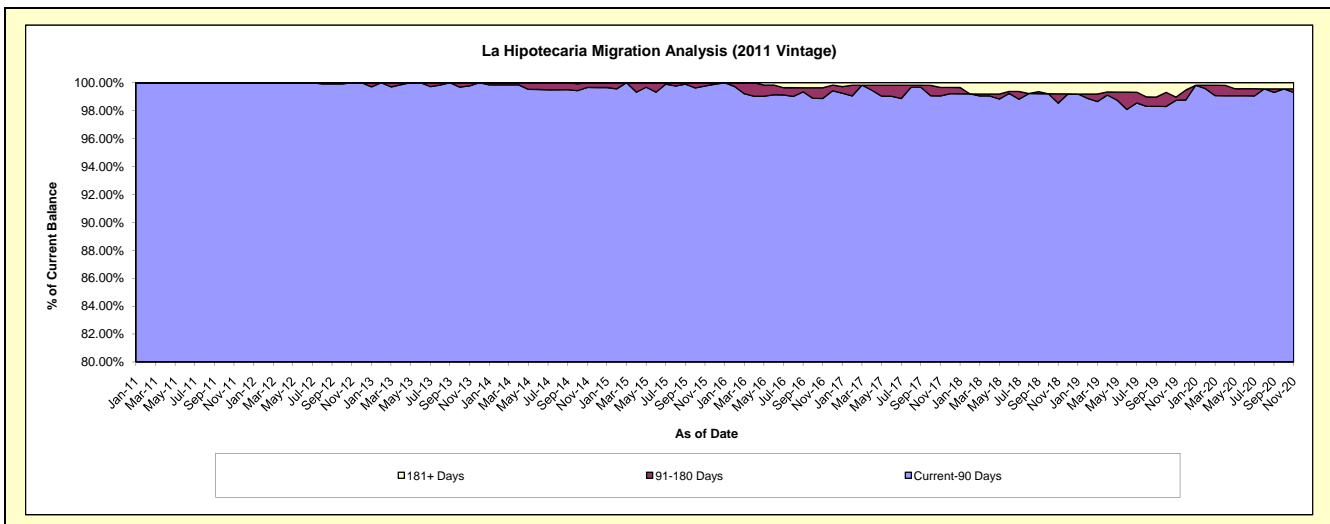
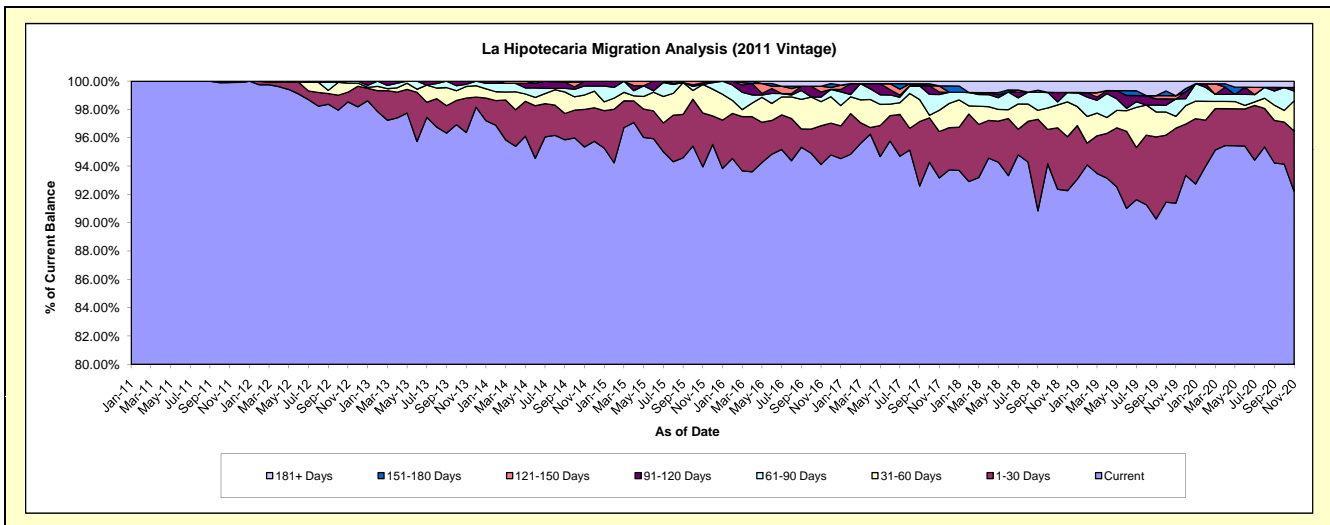
## Delinquency Status (\$ of Current Balance)

Data Cutoff: 11/30/2020

Current Portfolio Balance	15,442,540.75	16,428,184.36	14,784,707.41	13,631,569.84	12,469,462.29	11,875,544.11	10,832,687.86	9,851,195.02	9,186,925.11	8,329,246.00
	Nov-11	Nov-12	Nov-13	Nov-14	Nov-15	Nov-16	Nov-17	Nov-18	Nov-19	Nov-20
Current	15,428,338.95	16,187,607.66	14,248,593.05	12,997,833.45	11,714,975.52	11,176,426.23	10,092,453.67	9,098,944.67	8,395,908.90	7,681,515.40
1-30 Days	14,201.80	113,330.40	360,373.34	361,395.78	474,245.69	325,595.06	354,732.45	427,433.92	486,186.15	354,800.61
31-60 Days	-	104,910.84	120,531.18	139,588.64	251,254.02	201,584.10	163,441.63	159,891.21	76,925.25	177,168.49
61-90 Days	-	22,335.46	22,335.46	86,636.95	-	38,345.37	119,787.21	20,948.23	112,323.43	57,587.96
91-120 Days	-	-	32,874.38	46,115.02	16,184.48	42,438.27	18,474.64	65,674.45	-	21,069.86
121-150 Days	-	-	-	-	12,802.58	48,515.92	47,348.80	-	20,948.23	-
151-180 Days	-	-	-	-	-	-	-	-	-	-
181+ Days	-	-	-	-	-	42,639.16	36,449.46	78,302.54	94,633.15	37,103.68

## Delinquency Status (% of Current Balance)

Current Portfolio Balance	15,442,540.75	16,428,184.36	14,784,707.41	13,631,569.84	12,469,462.29	11,875,544.11	10,832,687.86	9,851,195.02	9,186,925.11	8,329,246.00
	Nov-11	Nov-12	Nov-13	Nov-14	Nov-15	Nov-16	Nov-17	Nov-18	Nov-19	Nov-20
Current	99.91%	98.54%	96.37%	95.35%	93.95%	94.11%	93.17%	92.36%	91.39%	92.22%
1-30 Days	0.09%	0.69%	2.44%	2.65%	3.80%	2.74%	3.27%	4.34%	5.29%	4.26%
31-60 Days	0.00%	0.64%	0.82%	1.02%	2.01%	1.70%	1.51%	1.62%	0.84%	2.13%
61-90 Days	0.00%	0.14%	0.15%	0.64%	0.00%	0.32%	1.11%	0.21%	1.22%	0.69%
91-120 Days	0.00%	0.00%	0.22%	0.34%	0.13%	0.36%	0.17%	0.67%	0.00%	0.25%
121-150 Days	0.00%	0.00%	0.00%	0.00%	0.10%	0.41%	0.44%	0.00%	0.23%	0.00%
151-180 Days	0.00%	0.00%	0.00%	0.00%	0.00%	0.00%	0.00%	0.00%	0.00%	0.00%
181+ Days	0.00%	0.00%	0.00%	0.00%	0.00%	0.36%	0.34%	0.79%	1.03%	0.45%
Current - 90 Days	100.00%	100.00%	99.78%	99.66%	99.77%	98.88%	99.06%	98.54%	98.74%	99.30%
91-180 Days	0.00%	0.00%	0.22%	0.34%	0.23%	0.77%	0.61%	0.67%	0.23%	0.25%



# Mortgages - La Hipotecaria El Salvador Migration Analysis (2012 Vintage)

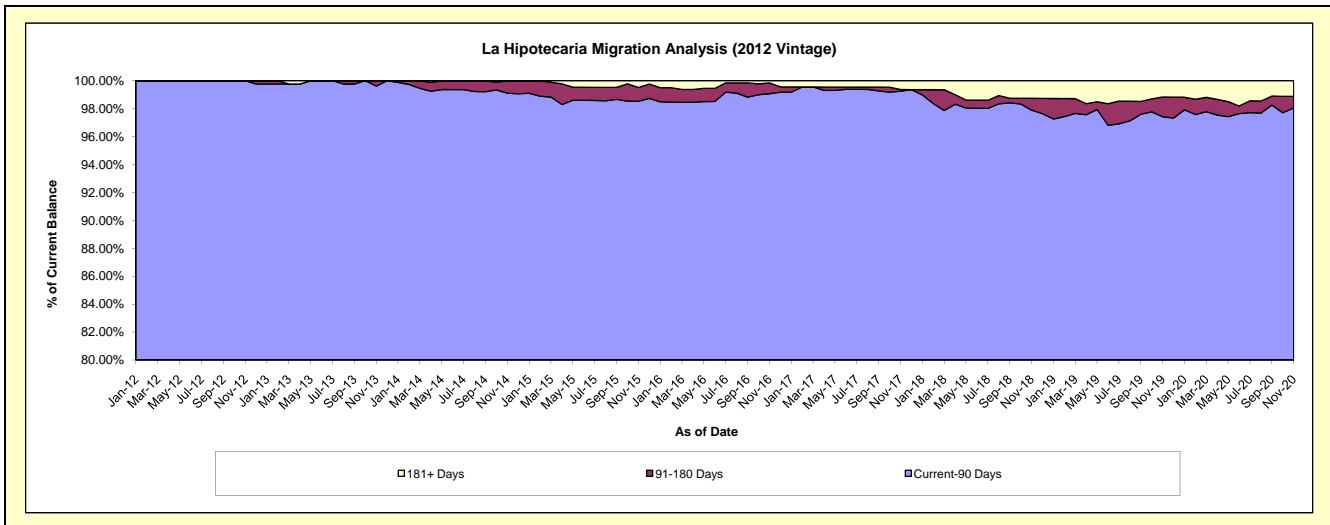
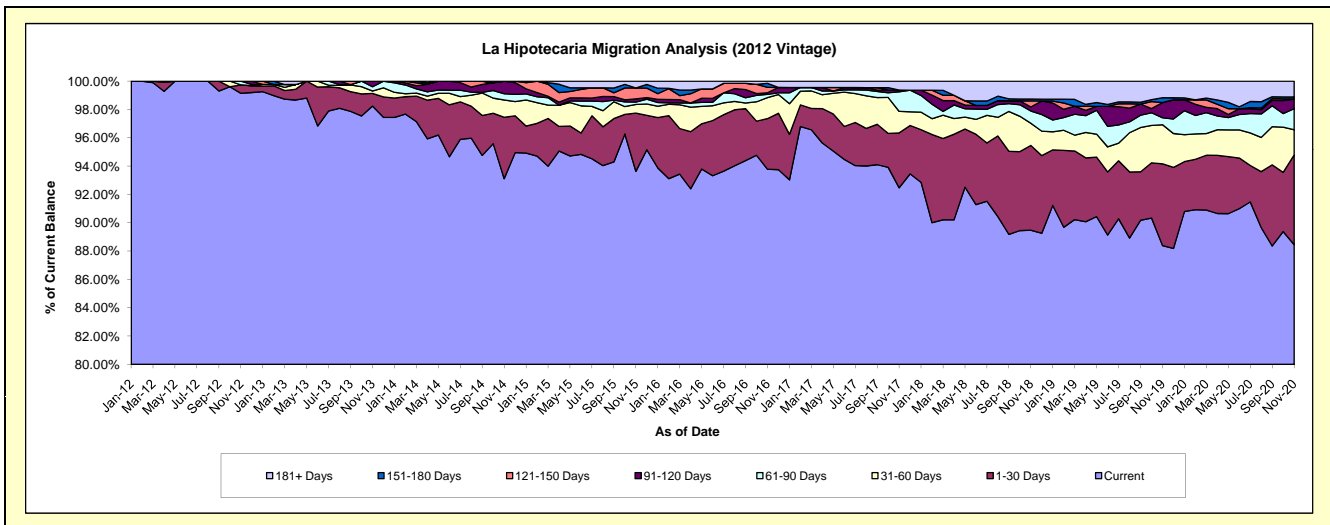
## Delinquency Status (\$ of Current Balance)

Data Cutoff: 11/30/2020

Current Portfolio Balance	-	22,269,122.56	23,844,416.25	21,780,819.18	20,160,279.77	18,394,618.90	17,352,992.15	16,013,043.88	14,837,757.69	13,760,256.55
	Nov-12	Nov-13	Nov-14	Nov-15	Nov-16	Nov-17	Nov-18	Nov-19	Nov-20	
Current	22,078,406.36	23,425,172.31	20,281,119.07	18,876,123.87	17,250,226.62	16,046,602.66	14,326,884.56	13,115,612.21	12,172,065.67	
1-30 Days	132,704.61	213,557.84	944,500.44	829,830.36	658,291.93	672,790.92	959,417.52	856,804.14	872,380.45	
31-60 Days	-	40,362.69	265,644.23	122,166.45	273,475.91	263,843.74	250,694.67	409,021.20	244,240.22	
61-90 Days	58,011.59	71,706.30	96,673.02	35,551.66	41,940.93	239,624.82	139,217.84	73,509.69	203,830.37	
91-120 Days	-	93,617.11	192,882.42	44,941.11	20,521.18	20,890.26	45,663.16	158,242.83	94,282.19	
121-150 Days	-	-	-	154,050.15	69,331.07	-	-	-	-	
151-180 Days	-	-	-	-	52,083.81	-	20,978.00	51,616.20	19,400.50	
181+ Days	-	-	-	97,616.17	28,747.45	109,239.75	201,777.03	172,951.42	154,057.15	

## Delinquency Status (% of Current Balance)

Current Portfolio Balance	-	22,269,122.56	23,844,416.25	21,780,819.18	20,160,279.77	18,394,618.90	17,352,992.15	16,013,043.88	14,837,757.69	13,760,256.55
	Nov-12	Nov-13	Nov-14	Nov-15	Nov-16	Nov-17	Nov-18	Nov-19	Nov-20	
Current	99.14%	98.24%	93.11%	93.63%	93.78%	92.47%	89.47%	88.39%	88.46%	
1-30 Days	0.60%	0.90%	4.34%	4.12%	3.58%	3.88%	5.99%	5.77%	6.34%	
31-60 Days	0.00%	0.17%	1.22%	0.61%	1.49%	1.52%	1.57%	2.76%	1.77%	
61-90 Days	0.26%	0.30%	0.44%	0.18%	0.23%	1.38%	0.87%	0.50%	1.48%	
91-120 Days	0.00%	0.39%	0.89%	0.22%	0.11%	0.12%	0.29%	1.07%	0.69%	
121-150 Days	0.00%	0.00%	0.00%	0.76%	0.38%	0.00%	0.43%	0.00%	0.00%	
151-180 Days	0.00%	0.00%	0.00%	0.00%	0.28%	0.00%	0.13%	0.35%	0.14%	
181+ Days	0.00%	0.00%	0.00%	0.48%	0.16%	0.63%	1.26%	1.17%	1.12%	
Current - 90 Days	100.00%	99.61%	99.11%	98.53%	99.07%	99.25%	97.90%	97.42%	98.05%	
91-180 Days	0.00%	0.39%	0.89%	0.99%	0.77%	0.12%	0.84%	1.41%	0.83%	



# Mortgages - La Hipotecaria El Salvador Migration Analysis (2013 Vintage)

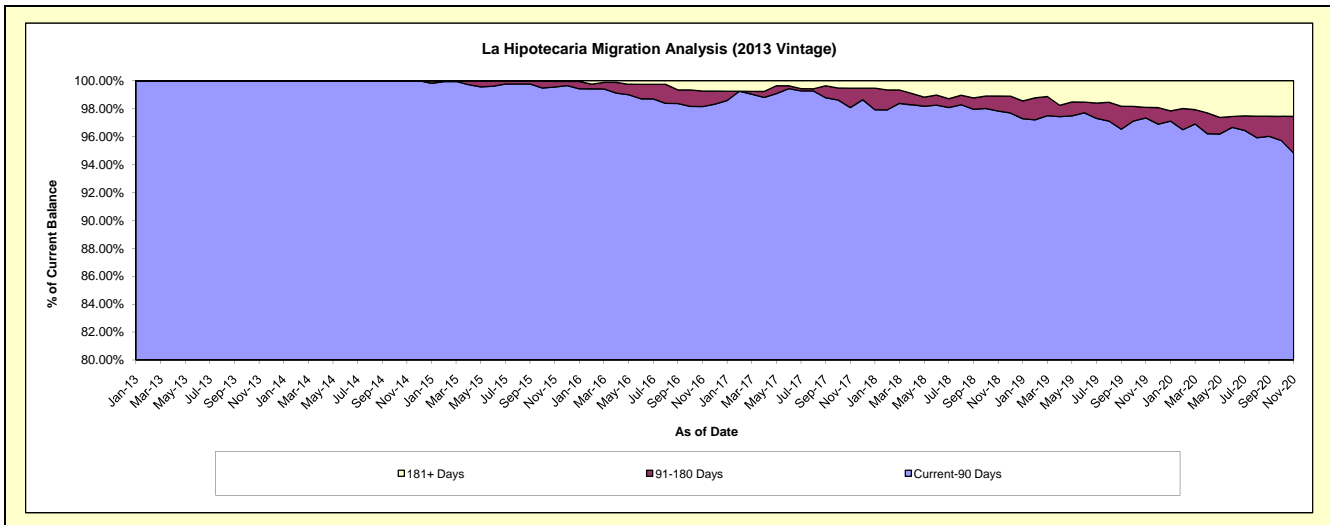
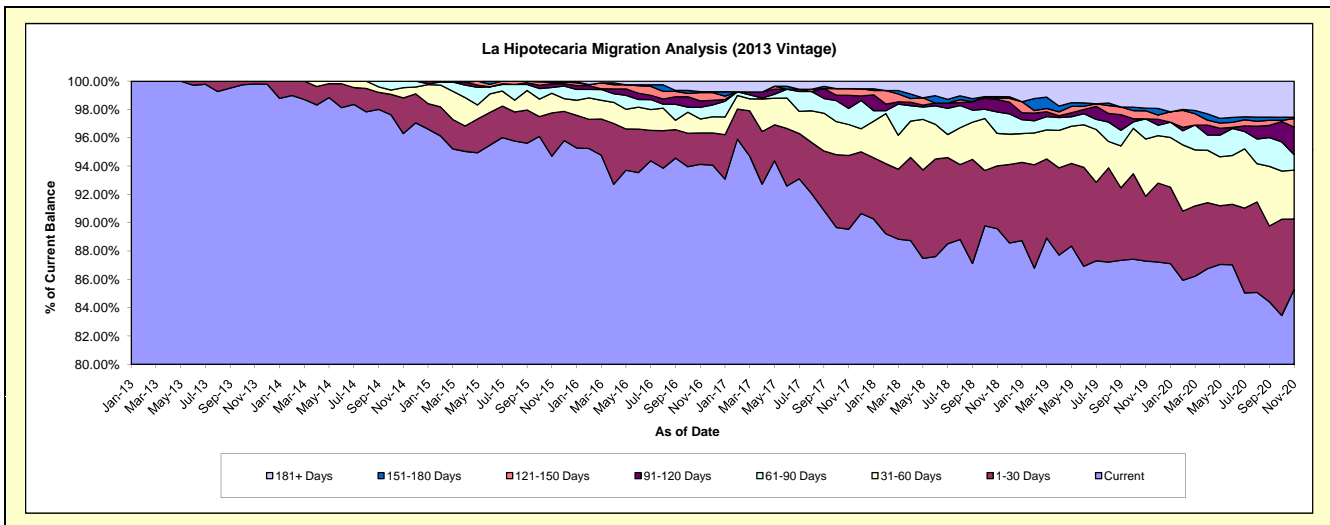
## Delinquency Status (\$ of Current Balance)

Data Cutoff: 11/30/2020

Current Portfolio Balance	-	-	27,773,598.76	28,162,827.61	26,805,061.18	25,154,878.50	23,401,117.98	21,421,005.11	19,677,886.30	18,113,034.40
	Nov-13	Nov-14	Nov-15	Nov-16	Nov-17	Nov-18	Nov-19	Nov-20		
Current	27,718,579.47	27,121,737.12	25,385,988.37	23,676,940.17	20,954,099.09	19,191,621.72	17,178,047.84	15,448,890.32		
1-30 Days	55,019.29	708,709.31	817,337.64	557,938.76	1,219,664.34	948,429.67	899,887.95	901,646.49		
31-60 Days	-	202,272.11	373,204.47	248,561.47	510,679.32	489,739.27	795,348.04	623,720.66		
61-90 Days	-	130,109.07	108,026.34	207,066.27	267,487.52	325,517.44	279,781.36	198,739.17		
91-120 Days	-	-	72,723.03	112,941.26	215,900.53	188,700.14	-	352,352.54		
121-150 Days	-	-	33,266.33	148,707.39	109,493.71	19,081.43	113,439.03	109,234.76		
151-180 Days	-	-	-	15,954.35	-	23,081.26	36,303.99	15,358.19		
181+ Days	-	-	14,515.00	186,768.83	123,793.47	234,834.18	375,078.09	463,092.27		

## Delinquency Status (% of Current Balance)

Current Portfolio Balance	-	-	27,773,598.76	28,162,827.61	26,805,061.18	25,154,878.50	23,401,117.98	21,421,005.11	19,677,886.30	18,113,034.40
	Nov-13	Nov-14	Nov-15	Nov-16	Nov-17	Nov-18	Nov-19	Nov-20		
Current	99.80%	96.30%	94.71%	94.12%	89.54%	89.59%	87.30%	85.29%		
1-30 Days	0.20%	2.52%	3.05%	2.22%	5.21%	4.43%	4.57%	4.98%		
31-60 Days	0.00%	0.72%	1.39%	0.99%	2.18%	2.29%	4.04%	3.44%		
61-90 Days	0.00%	0.46%	0.40%	0.82%	1.14%	1.52%	1.42%	1.10%		
91-120 Days	0.00%	0.00%	0.27%	0.45%	0.92%	0.88%	0.00%	1.95%		
121-150 Days	0.00%	0.00%	0.12%	0.59%	0.47%	0.09%	0.58%	0.60%		
151-180 Days	0.00%	0.00%	0.00%	0.06%	0.00%	0.11%	0.18%	0.08%		
181+ Days	0.00%	0.00%	0.05%	0.74%	0.53%	1.10%	1.91%	2.56%		
Current - 90 Days	100.00%	100.00%	99.55%	98.15%	98.08%	97.83%	97.33%	94.81%		
91-180 Days	0.00%	0.00%	0.40%	1.10%	1.39%	1.08%	0.76%	2.63%		



# Mortgages - La Hipotecaria El Salvador Migration Analysis (2014 Vintage)

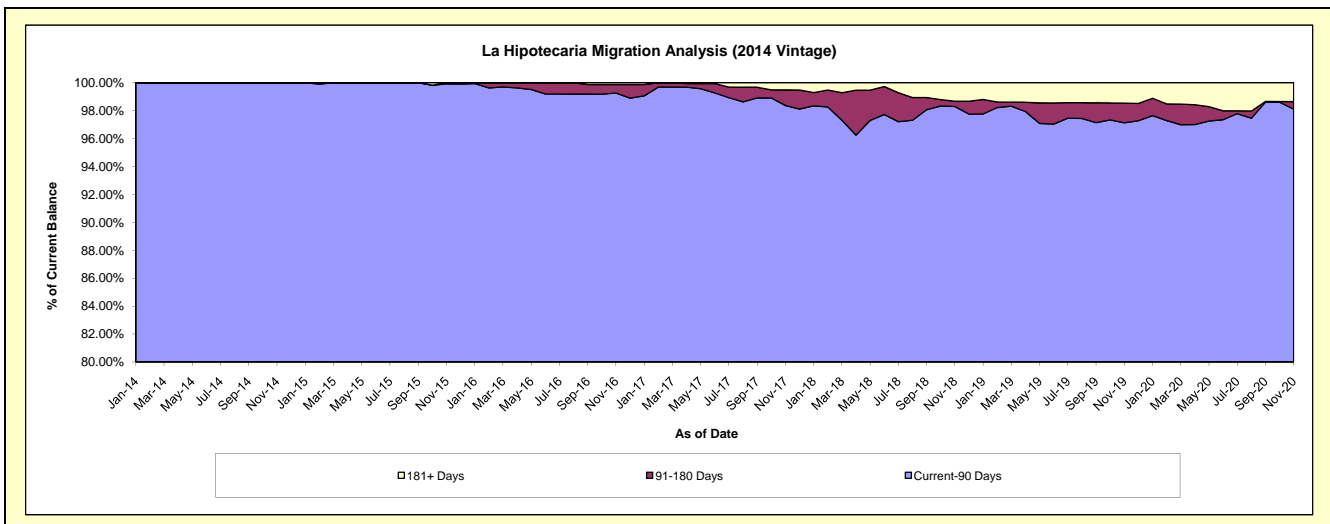
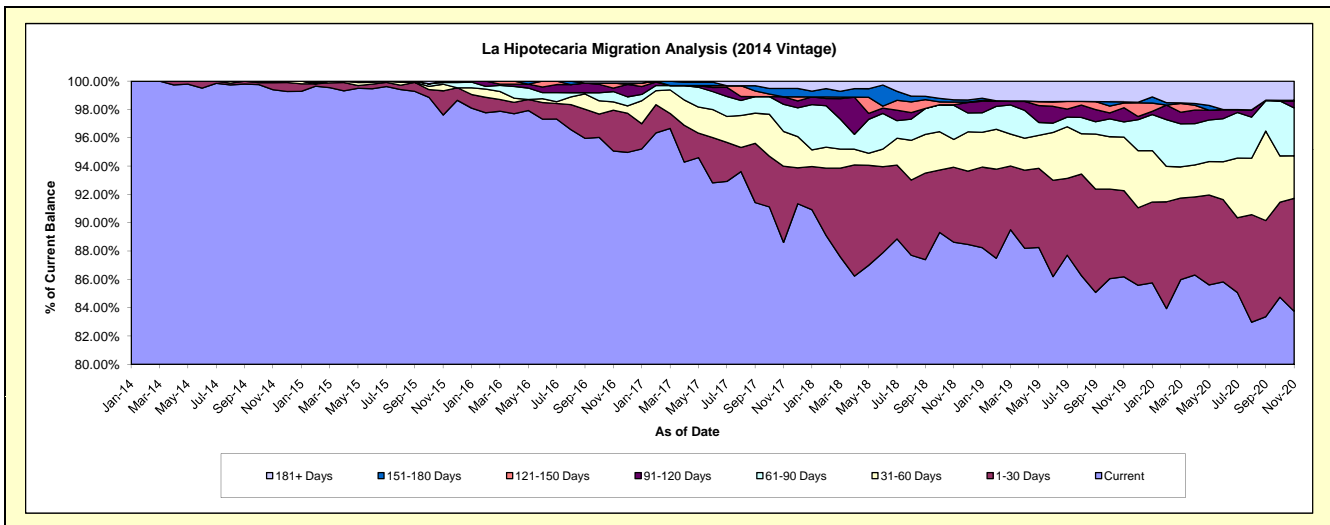
## Delinquency Status (\$ of Current Balance)

Data Cutoff: 11/30/2020

Current Portfolio Balance	-	-	-	25,810,711.67	26,878,275.93	25,409,223.97	23,935,457.97	21,861,729.33	19,968,078.70	18,455,643.98
				Nov-14	Nov-15	Nov-16	Nov-17	Nov-18	Nov-19	Nov-20
Current				25,655,340.33	26,235,994.23	24,156,437.17	21,209,961.28	19,375,408.05	17,209,413.38	15,456,802.28
1-30 Days				128,989.51	459,812.25	732,529.22	1,287,456.06	1,157,428.90	1,214,935.10	1,470,527.65
31-60 Days				26,381.83	124,696.70	149,300.97	588,243.53	429,416.35	755,961.41	555,443.98
61-90 Days				-	33,348.05	184,094.70	458,886.07	527,357.60	214,451.26	624,038.04
91-120 Days				-	24,424.70	61,254.01	127,109.78	6,564.40	198,898.13	90,765.76
121-150 Days				-	-	92,378.68	-	43,960.71	67,394.93	-
151-180 Days				-	-	-	140,547.21	32,791.06	15,574.92	8,682.38
181+ Days				-	-	33,229.22	123,254.04	288,802.26	291,449.57	249,383.89

## Delinquency Status (% of Current Balance)

Current Portfolio Balance	-	-	-	25,810,711.67	26,878,275.93	25,409,223.97	23,935,457.97	21,861,729.33	19,968,078.70	18,455,643.98
				Nov-14	Nov-15	Nov-16	Nov-17	Nov-18	Nov-19	Nov-20
Current				99.40%	97.61%	95.07%	88.61%	88.63%	86.18%	83.75%
1-30 Days				0.50%	1.71%	2.88%	5.38%	5.29%	6.08%	7.97%
31-60 Days				0.10%	0.46%	0.59%	2.46%	1.96%	3.79%	3.01%
61-90 Days				0.00%	0.12%	0.72%	1.92%	2.41%	1.07%	3.38%
91-120 Days				0.00%	0.09%	0.24%	0.53%	0.03%	1.00%	0.49%
121-150 Days				0.00%	0.00%	0.36%	0.00%	0.20%	0.34%	0.00%
151-180 Days				0.00%	0.00%	0.00%	0.59%	0.15%	0.08%	0.05%
181+ Days				0.00%	0.00%	0.13%	0.51%	1.32%	1.46%	1.35%
Current - 90 Days				100.00%	99.91%	99.26%	98.37%	98.30%	97.13%	98.11%
91-180 Days				0.00%	0.09%	0.60%	1.12%	0.38%	1.41%	0.54%



# Mortgages - La Hipotecaria El Salvador Migration Analysis (2015 Vintage)

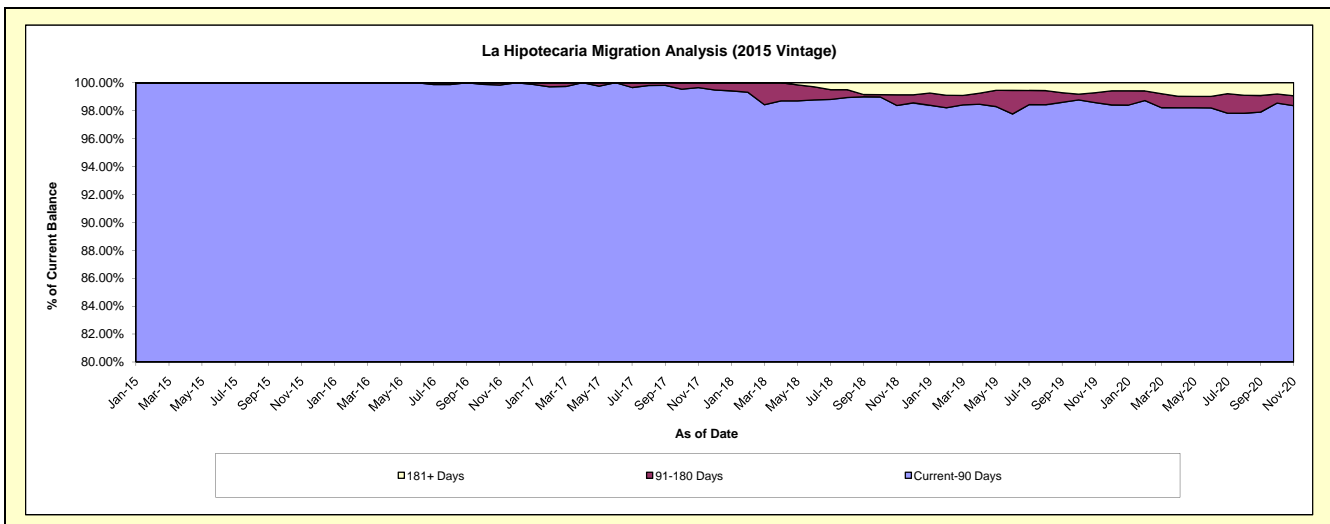
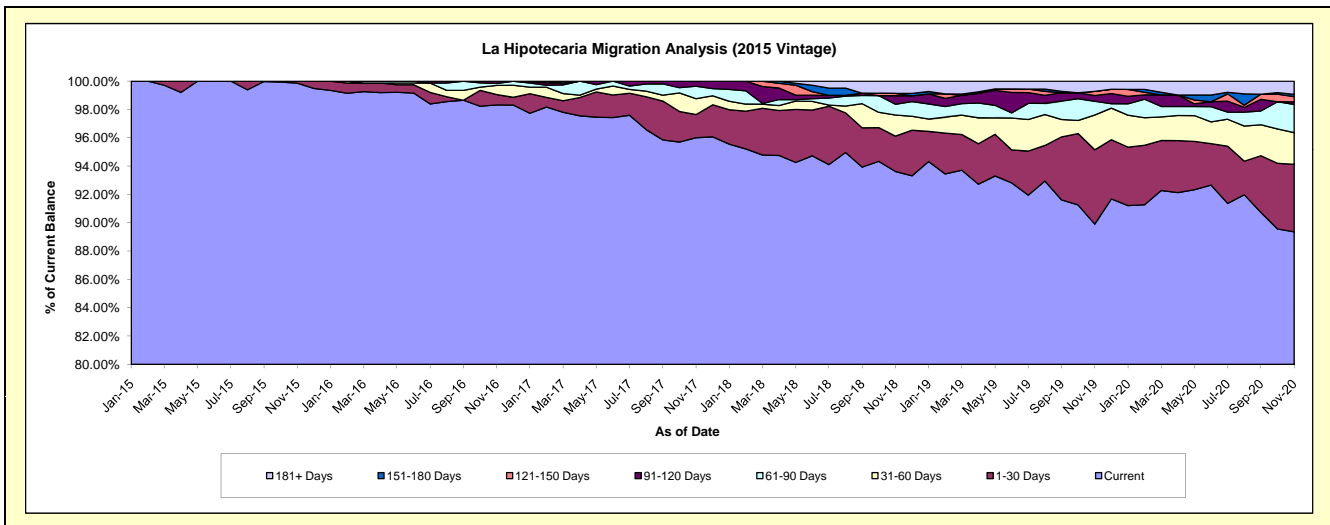
## Delinquency Status (\$ of Current Balance)

Data Cutoff: 11/30/2020

Current Portfolio Balance	-	-	-	-	20,577,962.43	22,666,209.29	21,568,851.15	20,162,219.67	18,505,603.20	17,135,600.01
					Nov-15	Nov-16	Nov-17	Nov-18	Nov-19	Nov-20
Current					20,549,465.77	22,285,917.35	20,708,043.20	18,876,992.23	16,638,436.50	15,312,256.39
1-30 Days					28,496.66	166,849.48	351,938.36	502,664.72	970,803.37	817,242.47
31-60 Days					-	145,602.04	241,381.40	299,914.07	453,714.56	383,734.41
61-90 Days					-	31,031.05	191,088.75	153,993.47	179,425.52	340,198.70
91-120 Days					-	36,809.37	76,399.44	121,222.63	76,012.63	31,733.47
121-150 Days					-	-	-	33,073.80	53,926.67	63,581.07
151-180 Days					-	-	-	-	-	27,664.05
181+ Days					-	-	-	174,358.75	133,283.95	159,189.45

## Delinquency Status (% of Current Balance)

Current Portfolio Balance	-	-	-	-	20,577,962.43	22,666,209.29	21,568,851.15	20,162,219.67	18,505,603.20	17,135,600.01
					Nov-15	Nov-16	Nov-17	Nov-18	Nov-19	Nov-20
Current					99.86%	98.32%	96.01%	93.63%	89.91%	89.36%
1-30 Days					0.14%	0.74%	1.63%	2.49%	5.25%	4.77%
31-60 Days					0.00%	0.64%	1.12%	1.49%	2.45%	2.24%
61-90 Days					0.00%	0.14%	0.89%	0.76%	0.97%	1.99%
91-120 Days					0.00%	0.16%	0.35%	0.60%	0.41%	0.19%
121-150 Days					0.00%	0.00%	0.00%	0.16%	0.29%	0.37%
151-180 Days					0.00%	0.00%	0.00%	0.00%	0.00%	0.16%
181+ Days					0.00%	0.00%	0.00%	0.86%	0.72%	0.93%
Current - 90 Days					100.00%	99.84%	99.65%	98.37%	98.58%	98.35%
91-180 Days					0.00%	0.16%	0.35%	0.77%	0.70%	0.72%



# Mortgages - La Hipotecaria El Salvador Migration Analysis (2016 Vintage)

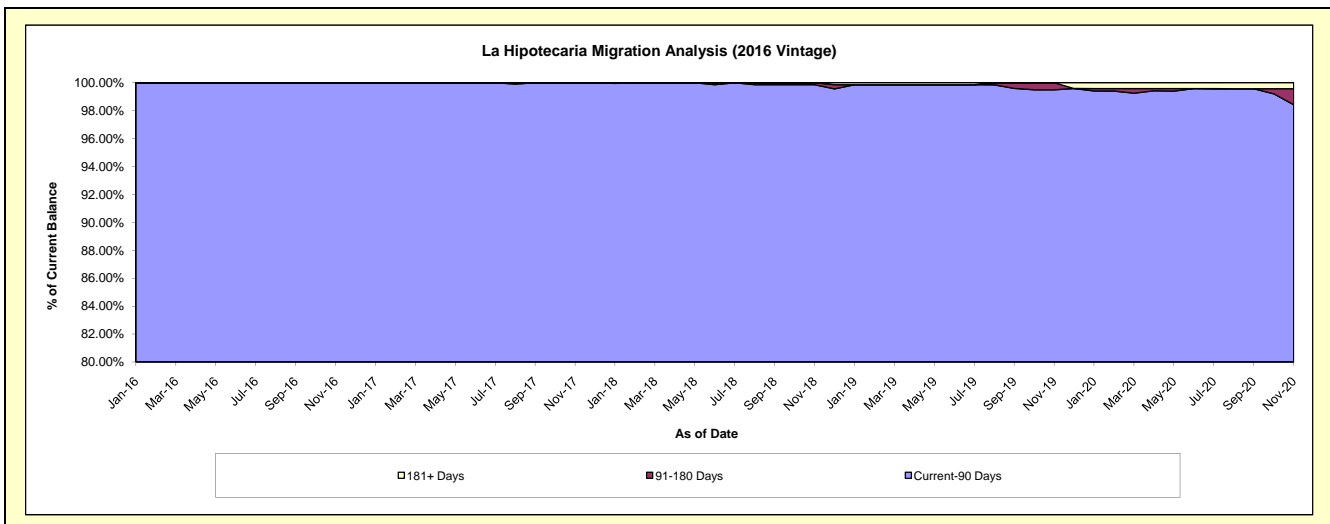
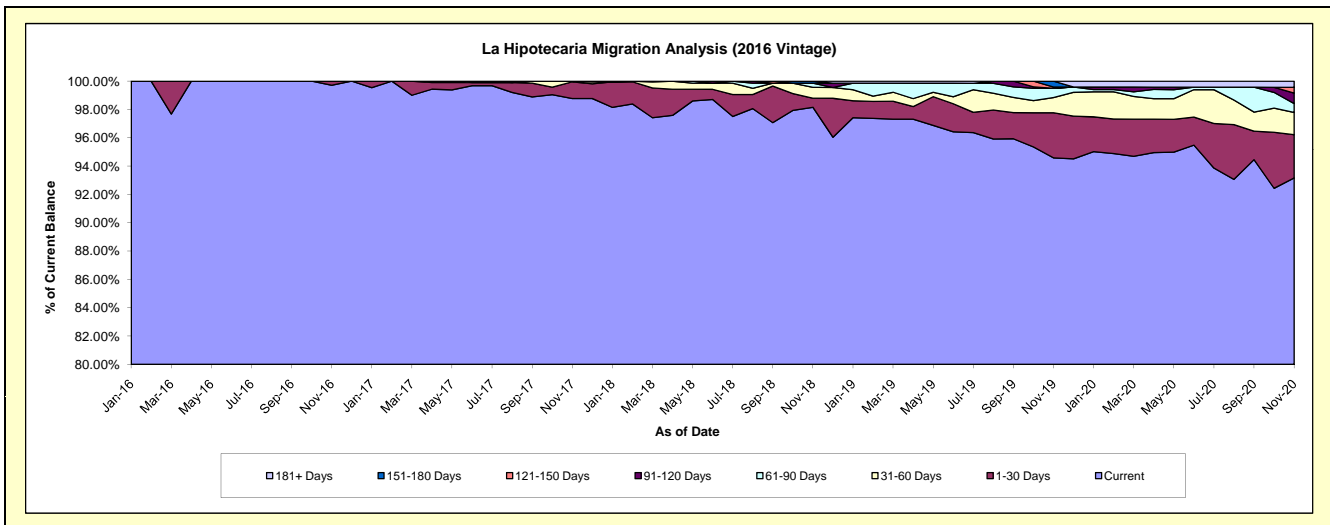
## Delinquency Status (\$ of Current Balance)

Data Cutoff: 11/30/2020

Current Portfolio Balance	-	-	-	-	-	21,368,795.29	23,023,999.73	22,039,284.91	20,567,584.30	19,420,905.49
						Nov-16	Nov-17	Nov-18	Nov-19	Nov-20
Current						21,306,238.83	22,741,945.78	21,633,124.82	19,453,901.40	18,093,232.01
1-30 Days						62,556.46	271,554.04	140,672.76	654,770.00	593,271.07
31-60 Days						-	10,499.91	168,543.13	221,651.06	306,184.53
61-90 Days						-	-	65,318.70	132,878.52	121,866.30
91-120 Days						-	-	-	-	142,238.26
121-150 Days						-	-	-	20,360.52	80,090.52
151-180 Days						-	-	31,625.50	84,022.80	-
181+ Days						-	-	-	-	84,022.80

## Delinquency Status (% of Current Balance)

Current Portfolio Balance	-	-	-	-	-	21,368,795.29	23,023,999.73	22,039,284.91	20,567,584.30	19,420,905.49
						Nov-16	Nov-17	Nov-18	Nov-19	Nov-20
Current						99.71%	98.77%	98.16%	94.59%	93.16%
1-30 Days						0.29%	1.18%	0.64%	3.18%	3.05%
31-60 Days						0.00%	0.05%	0.76%	1.08%	1.58%
61-90 Days						0.00%	0.00%	0.30%	0.65%	0.63%
91-120 Days						0.00%	0.00%	0.00%	0.00%	0.73%
121-150 Days						0.00%	0.00%	0.00%	0.10%	0.41%
151-180 Days						0.00%	0.00%	0.14%	0.41%	0.00%
181+ Days						0.00%	0.00%	0.00%	0.00%	0.43%
Current - 90 Days						100.00%	100.00%	99.86%	99.49%	98.42%
91-180 Days						0.00%	0.00%	0.14%	0.51%	1.14%



# Mortgages - La Hipotecaria El Salvador Migration Analysis (2017 Vintage)

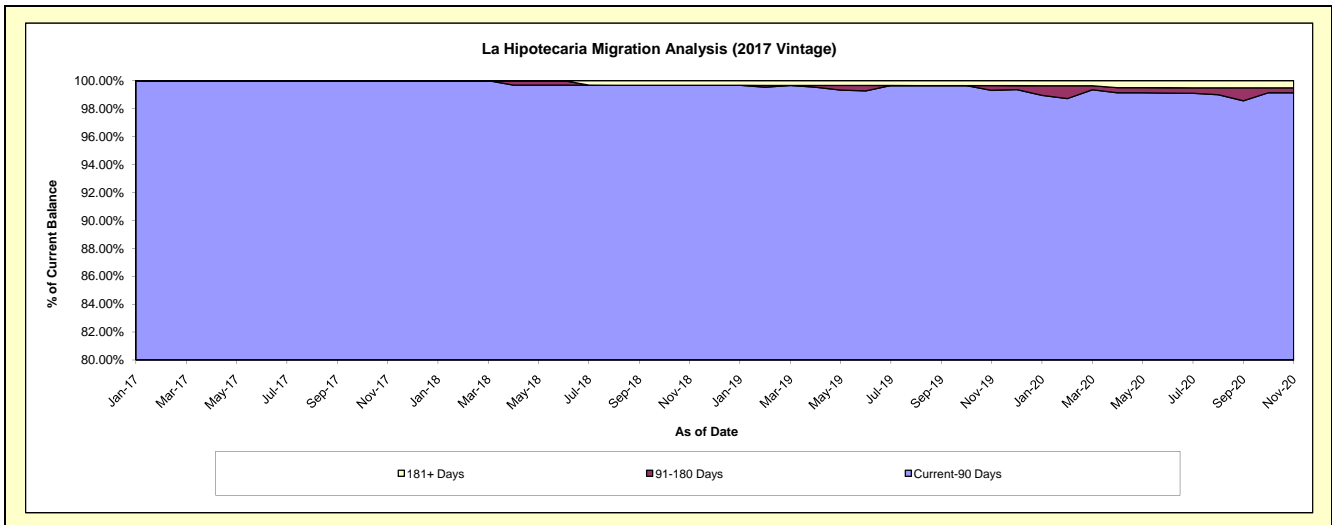
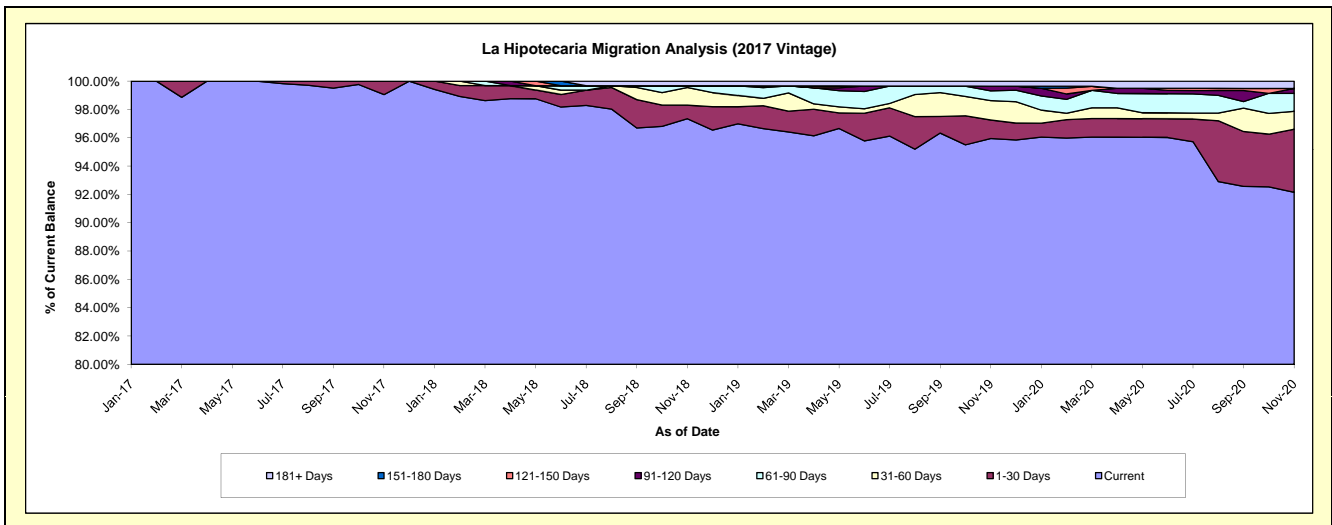
## Delinquency Status (\$ of Current Balance)

Data Cutoff: 11/30/2020

Current Portfolio Balance	-	-	-	-	-	-	-	17,440,081.43	18,194,767.51	16,847,736.88	15,944,079.71
								Nov-17	Nov-18	Nov-19	Nov-20
Current								17,275,164.39	17,711,798.29	16,165,064.02	14,692,920.43
1-30 Days								164,555.84	174,486.16	220,114.29	709,757.67
31-60 Days								361.20	226,598.20	231,148.10	201,954.48
61-90 Days								-	22,484.86	115,425.62	202,057.61
91-120 Days								-	-	56,584.85	55,504.66
121-150 Days								-	-	-	-
151-180 Days								-	-	-	-
181+ Days								-	59,400.00	59,400.00	81,884.86

## Delinquency Status (% of Current Balance)

Current Portfolio Balance	-	-	-	-	-	-	-	17,440,081.43	18,194,767.51	16,847,736.88	15,944,079.71
								Nov-17	Nov-18	Nov-19	Nov-20
Current								99.05%	97.35%	95.95%	92.15%
1-30 Days								0.94%	0.96%	1.31%	4.45%
31-60 Days								0.00%	1.25%	1.37%	1.27%
61-90 Days								0.00%	0.12%	0.69%	1.27%
91-120 Days								0.00%	0.00%	0.34%	0.35%
121-150 Days								0.00%	0.00%	0.00%	0.00%
151-180 Days								0.00%	0.00%	0.00%	0.00%
181+ Days								0.00%	0.33%	0.35%	0.51%
Current - 90 Days								100.00%	99.67%	99.31%	99.14%
91-180 Days								0.00%	0.00%	0.34%	0.35%



# Mortgages - La Hipotecaria El Salvador Migration Analysis (2018 Vintage)

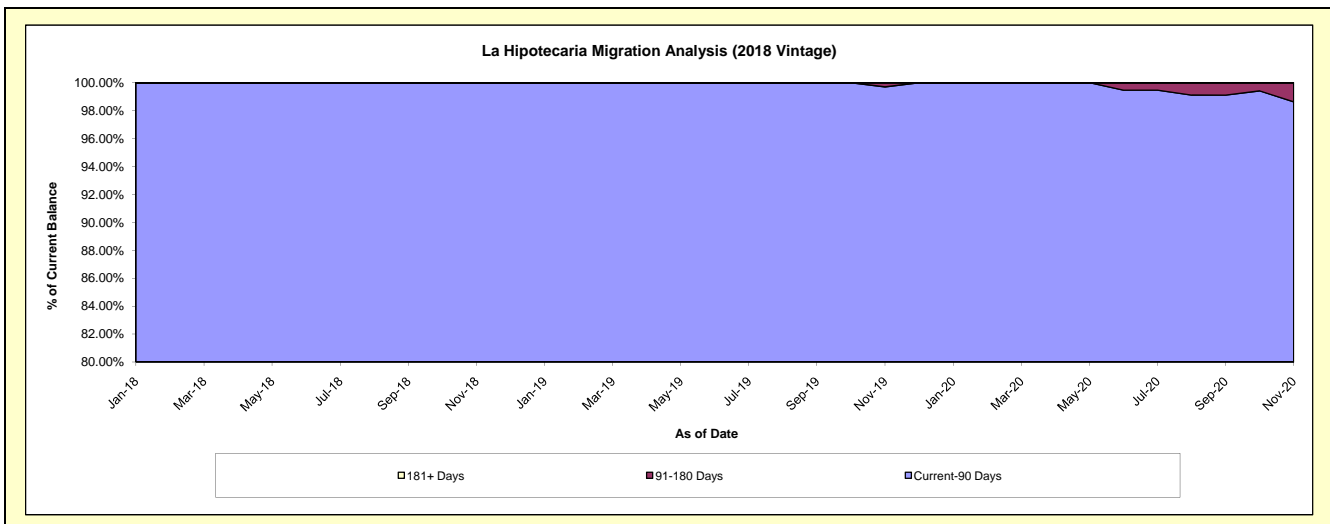
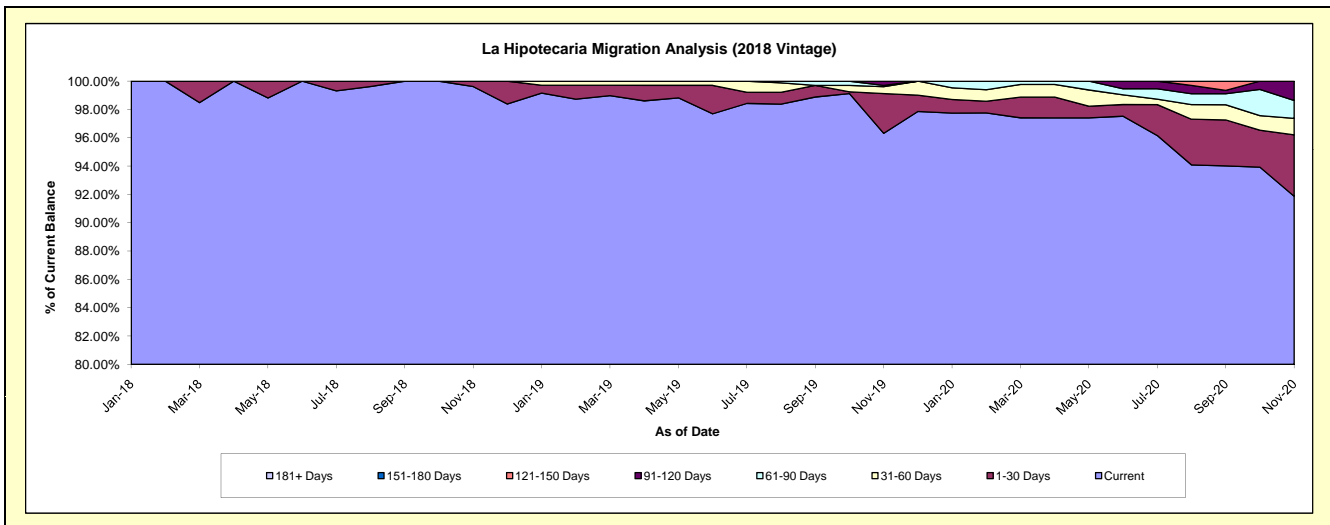
## Delinquency Status (\$ of Current Balance)

Data Cutoff: 11/30/2020

Current Portfolio Balance	-	-	-	-	-	-	-	-	-	22,292,377.33	22,774,252.21	21,786,664.57
										Nov-18	Nov-19	Nov-20
Current										22,207,132.76	21,935,351.25	20,014,670.03
1-30 Days										85,244.57	639,111.56	946,108.83
31-60 Days										-	111,678.01	253,637.44
61-90 Days										-	20,233.98	274,736.12
91-120 Days										-	67,877.41	297,512.15
121-150 Days										-	-	-
151-180 Days										-	-	-
181+ Days										-	-	-

## Delinquency Status (% of Current Balance)

Current Portfolio Balance	-	-	-	-	-	-	-	-	-	22,292,377.33	22,774,252.21	21,786,664.57
										Nov-18	Nov-19	Nov-20
Current										99.62%	96.32%	91.87%
1-30 Days										0.38%	2.81%	4.34%
31-60 Days										0.00%	0.49%	1.16%
61-90 Days										0.00%	0.09%	1.26%
91-120 Days										0.00%	0.30%	1.37%
121-150 Days										0.00%	0.00%	0.00%
151-180 Days										0.00%	0.00%	0.00%
181+ Days										0.00%	0.00%	0.00%
Current - 90 Days										100.00%	99.70%	98.63%
91-180 Days										0.00%	0.30%	1.37%





**Mortgages - La Hipotecaria El Salvador Migration Analysis (2019 Vintage)**

**Delinquency Status (\$ of Current Balance)**

Data Cutoff: 11/30/2020

Current Portfolio Balance										24,881,301.98	25,656,790.64
										Nov-19	Nov-20
Current										24,588,399.51	24,416,178.35
1-30 Days										250,902.47	920,103.74
31-60 Days										42,000.00	232,426.60
61-90 Days										-	69,536.72
91-120 Days										-	-
121-150 Days										-	-
151-180 Days										-	-
181+ Days										-	18,545.23

**Delinquency Status (% of Current Balance)**

Current Portfolio Balance										24,881,301.98	25,656,790.64
										Nov-19	Nov-20
Current										98.82%	95.16%
1-30 Days										1.01%	3.59%
31-60 Days										0.17%	0.91%
61-90 Days										0.00%	0.27%
91-120 Days										0.00%	0.00%
121-150 Days										0.00%	0.00%
151-180 Days										0.00%	0.00%
181+ Days										0.00%	0.07%
Current - 90 Days										100.00%	99.93%
91-180 Days										0.00%	0.00%

