



Migration Analysis for La Hipotecaria S.A. de C.V El Salvador

Mortgages July 2021

An analysis of historical loan payment data was used to compile a migration analysis of delinquency by annual vintage. Delinquencies for each vintage were grouped into the following buckets; Current, 1-30, 31-60, 61-90, 91-120, 121-150, 151-180, and 180+. Results are provided in graphical and tabular form. The cutoff date is 7/31/2021.

Mortgages - La Hipotecaria El Salvador Migration Analysis (All Vintages)

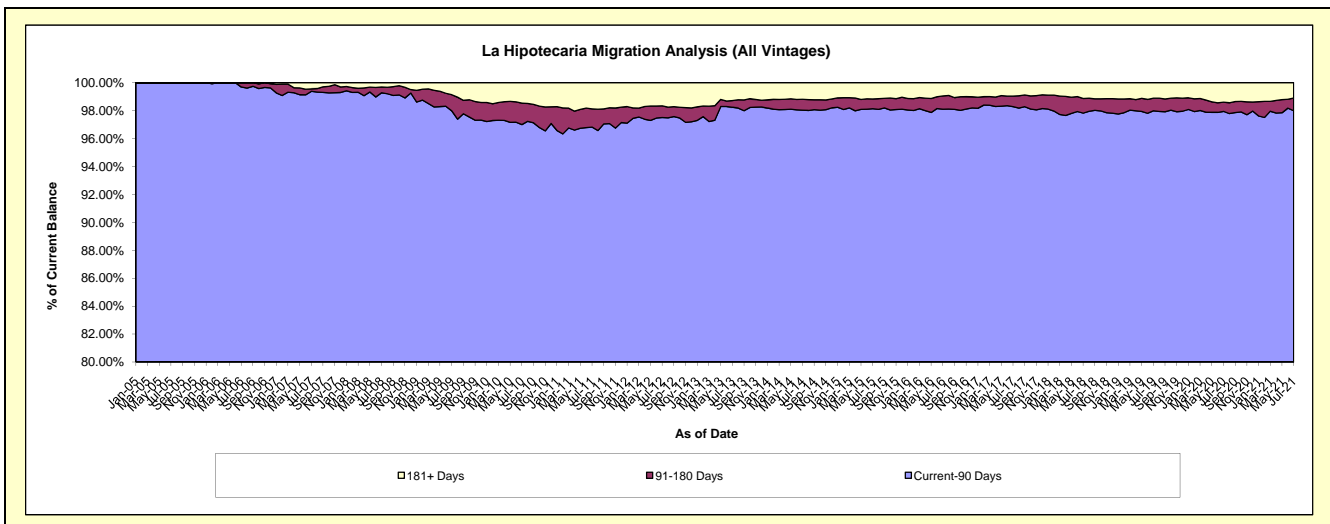
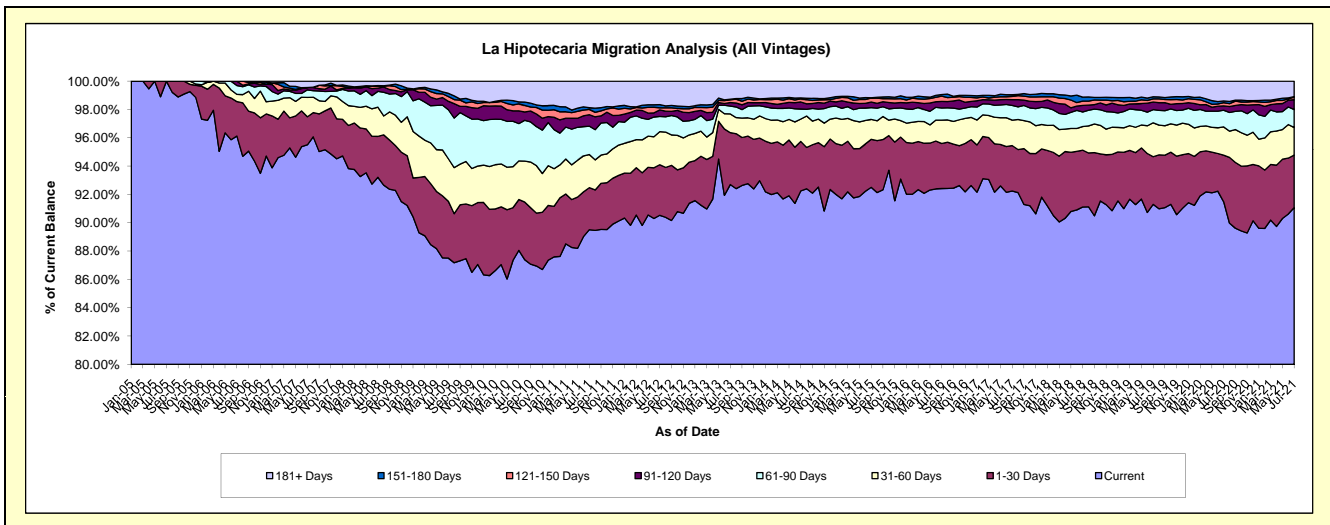
Delinquency Status (\$ of Current Balance)

Data Cutoff: 7/31/2021

Current Portfolio Balance	101,784,819.17	122,369,871.73	141,089,610.00	153,863,185.56	167,100,487.19	178,512,136.70	186,352,814.80	199,165,930.62	202,194,319.34	196,639,042.69
	Jul-12	Jul-13	Jul-14	Jul-15	Jul-16	Jul-17	Jul-18	Jul-19	Jul-20	Jul-21
Current	92,142,489.94	113,434,728.20	130,151,194.81	142,327,441.66	154,431,599.54	164,665,945.95	169,790,897.48	181,836,456.54	184,985,114.25	179,076,260.48
1-30 Days	3,635,120.55	4,483,433.76	4,939,130.29	5,223,261.37	5,315,803.05	5,727,350.30	7,483,812.00	6,705,977.27	6,643,207.75	7,296,673.41
31-60 Days	2,375,458.13	1,620,409.82	2,223,952.83	2,157,312.31	2,762,721.42	3,212,023.49	3,108,246.29	4,765,656.27	4,038,056.16	3,830,222.60
61-90 Days	1,097,660.31	681,407.48	1,000,042.46	1,284,804.15	1,425,214.34	1,853,091.91	1,912,375.07	1,856,335.43	2,378,660.01	2,489,981.34
91-120 Days	470,296.01	306,028.84	703,039.59	609,356.70	774,170.45	727,692.63	857,992.88	1,057,216.13	626,289.60	1,371,270.23
121-150 Days	148,093.06	228,278.86	313,553.71	422,143.16	619,872.59	408,982.53	572,883.89	452,971.29	451,100.60	353,353.33
151-180 Days	228,707.01	52,172.69	87,317.15	44,194.93	191,393.59	202,180.60	524,780.10	296,686.02	247,614.08	73,422.89
181+ Days	1,686,994.16	1,563,412.08	1,671,379.16	1,794,671.28	1,579,712.21	1,714,869.29	2,101,827.09	2,194,631.67	2,824,276.89	2,147,858.41

Delinquency Status (% of Current Balance)

Current Portfolio Balance	101,784,819.17	122,369,871.73	141,089,610.00	153,863,185.56	167,100,487.19	178,512,136.70	186,352,814.80	199,165,930.62	202,194,319.34	196,639,042.69
	Jul-12	Jul-13	Jul-14	Jul-15	Jul-16	Jul-17	Jul-18	Jul-19	Jul-20	Jul-21
Current	90.53%	92.70%	92.25%	92.50%	92.42%	92.24%	91.11%	91.30%	91.49%	91.07%
1-30 Days	3.57%	3.66%	3.50%	3.39%	3.18%	3.21%	4.02%	3.37%	3.29%	3.71%
31-60 Days	2.33%	1.32%	1.58%	1.40%	1.65%	1.80%	1.67%	2.39%	2.00%	1.95%
61-90 Days	1.08%	0.56%	0.71%	0.84%	0.85%	1.04%	1.03%	0.93%	1.18%	1.27%
91-120 Days	0.46%	0.25%	0.50%	0.40%	0.46%	0.41%	0.46%	0.53%	0.31%	0.70%
121-150 Days	0.15%	0.19%	0.22%	0.27%	0.37%	0.23%	0.31%	0.23%	0.22%	0.18%
151-180 Days	0.22%	0.04%	0.06%	0.03%	0.11%	0.11%	0.28%	0.15%	0.12%	0.04%
181+ Days	1.66%	1.28%	1.18%	1.17%	0.95%	0.96%	1.13%	1.10%	1.40%	1.09%
Current - 90 Days	97.51%	98.24%	98.03%	98.13%	98.11%	98.29%	97.82%	97.99%	97.95%	97.99%
91-180 Days	0.83%	0.48%	0.78%	0.70%	0.95%	0.75%	1.05%	0.91%	0.66%	0.91%



Mortgages - La Hipotecaria El Salvador Migration Analysis (2005 Vintage)

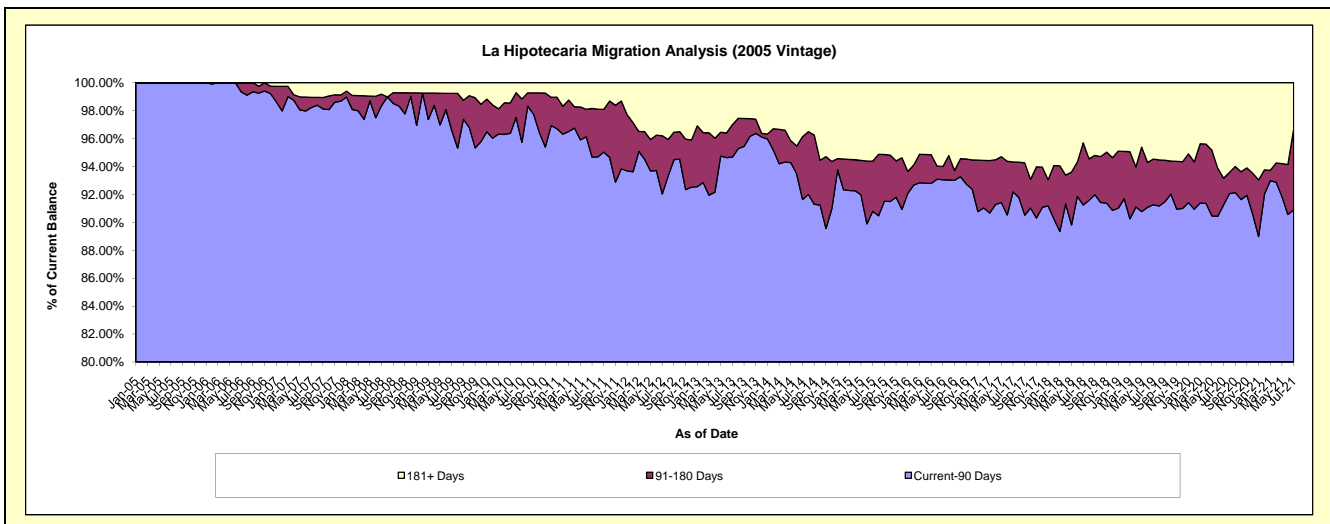
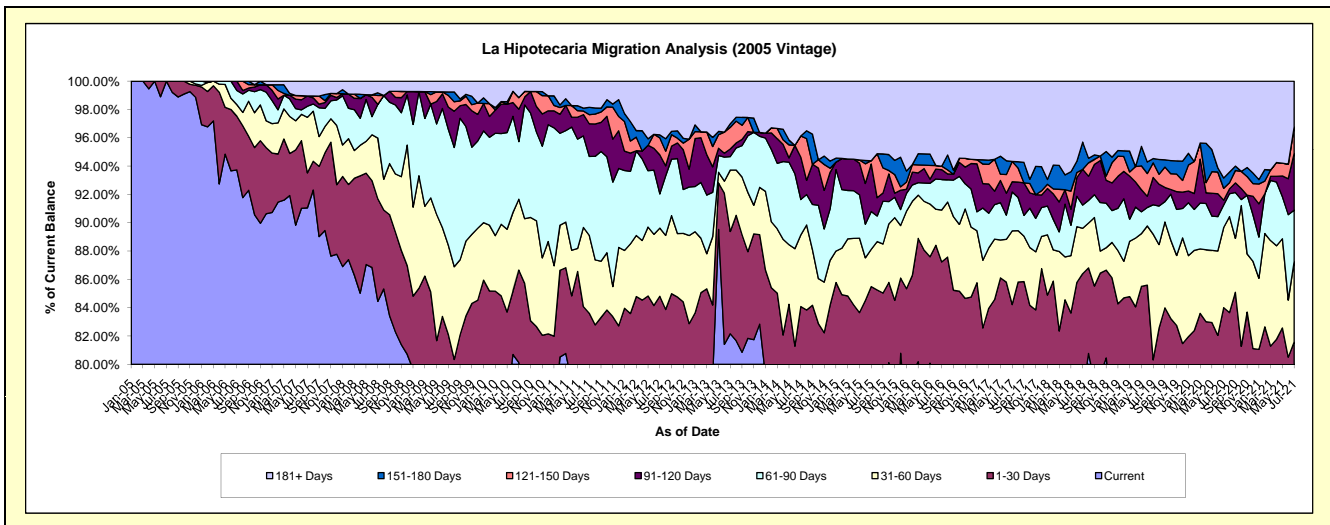
Delinquency Status (\$ of Current Balance)

Data Cutoff: 7/31/2021

Current Portfolio Balance	5,896,894.38	5,314,390.11	4,717,471.20	4,329,324.14	4,013,585.88	3,700,068.66	3,263,099.19	2,920,857.19	2,714,111.32	2,378,237.43
	Jul-12	Jul-13	Jul-14	Jul-15	Jul-16	Jul-17	Jul-18	Jul-19	Jul-20	Jul-21
Current	4,506,344.18	4,366,299.97	3,663,940.08	3,358,645.08	3,088,183.10	2,799,024.76	2,543,727.58	2,186,007.01	2,084,929.25	1,836,249.67
1-30 Days	494,629.63	383,821.50	302,704.02	342,621.09	413,037.05	317,420.15	275,783.06	160,127.34	195,130.66	103,585.81
31-60 Days	284,179.14	230,757.55	238,026.84	113,908.15	147,110.08	192,357.54	104,541.78	258,885.32	153,448.40	135,300.63
61-90 Days	142,050.93	50,590.09	118,475.13	115,567.42	86,423.20	101,884.26	53,549.19	60,820.75	43,077.68	86,528.02
91-120 Days	162,778.03	28,672.61	141,654.81	145,337.93	27,984.10	26,433.23	82,442.35	56,339.14	9,278.63	95,048.18
121-150 Days	70,933.71	80,845.91	70,183.33	9,967.73	9,967.73	53,072.91	-	30,104.62	22,852.13	44,382.40
151-180 Days	12,261.43	13,669.77	-	-	-	-	62,648.92	8,859.60	19,882.57	-
181+ Days	223,717.33	159,732.71	182,486.99	243,276.74	240,880.62	209,875.81	140,406.31	159,713.41	185,512.00	77,142.72

Delinquency Status (% of Current Balance)

Current Portfolio Balance	5,896,894.38	5,314,390.11	4,717,471.20	4,329,324.14	4,013,585.88	3,700,068.66	3,263,099.19	2,920,857.19	2,714,111.32	2,378,237.43
	Jul-12	Jul-13	Jul-14	Jul-15	Jul-16	Jul-17	Jul-18	Jul-19	Jul-20	Jul-21
Current	76.42%	82.16%	77.67%	77.59%	76.94%	75.65%	77.95%	74.84%	76.82%	77.21%
1-30 Days	8.39%	7.22%	6.42%	7.91%	10.29%	8.58%	8.45%	5.48%	7.19%	4.36%
31-60 Days	4.82%	4.34%	5.05%	2.63%	3.67%	5.20%	3.20%	8.86%	5.65%	5.69%
61-90 Days	2.41%	0.95%	2.51%	2.67%	2.15%	2.75%	1.64%	2.08%	1.59%	3.64%
91-120 Days	2.76%	0.54%	3.00%	3.36%	0.70%	0.71%	2.53%	1.93%	0.34%	4.00%
121-150 Days	1.20%	1.52%	1.49%	0.23%	0.25%	1.43%	0.00%	1.03%	0.84%	1.87%
151-180 Days	0.21%	0.26%	0.00%	0.00%	0.00%	0.00%	1.92%	0.30%	0.73%	0.00%
181+ Days	3.79%	3.01%	3.87%	5.62%	6.00%	5.67%	4.30%	5.47%	6.84%	3.24%
Current - 90 Days	92.03%	94.68%	91.64%	90.79%	93.05%	92.18%	91.25%	91.27%	91.25%	90.89%
91-180 Days	4.17%	2.32%	4.49%	3.59%	0.95%	2.15%	4.45%	3.26%	1.92%	5.86%



Mortgages - La Hipotecaria El Salvador Migration Analysis (2006 Vintage)

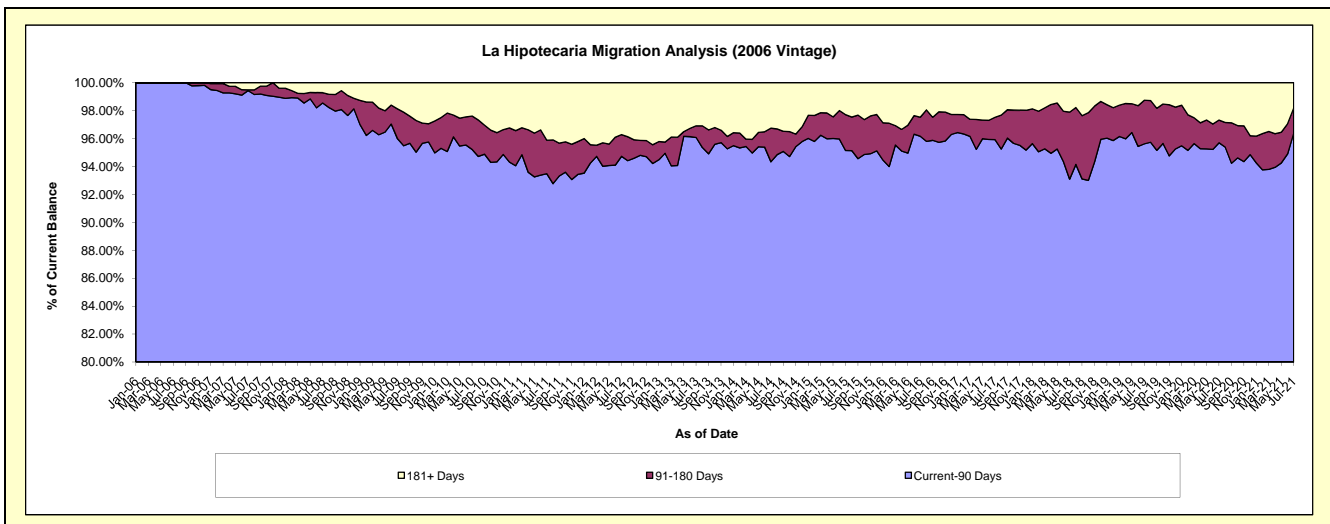
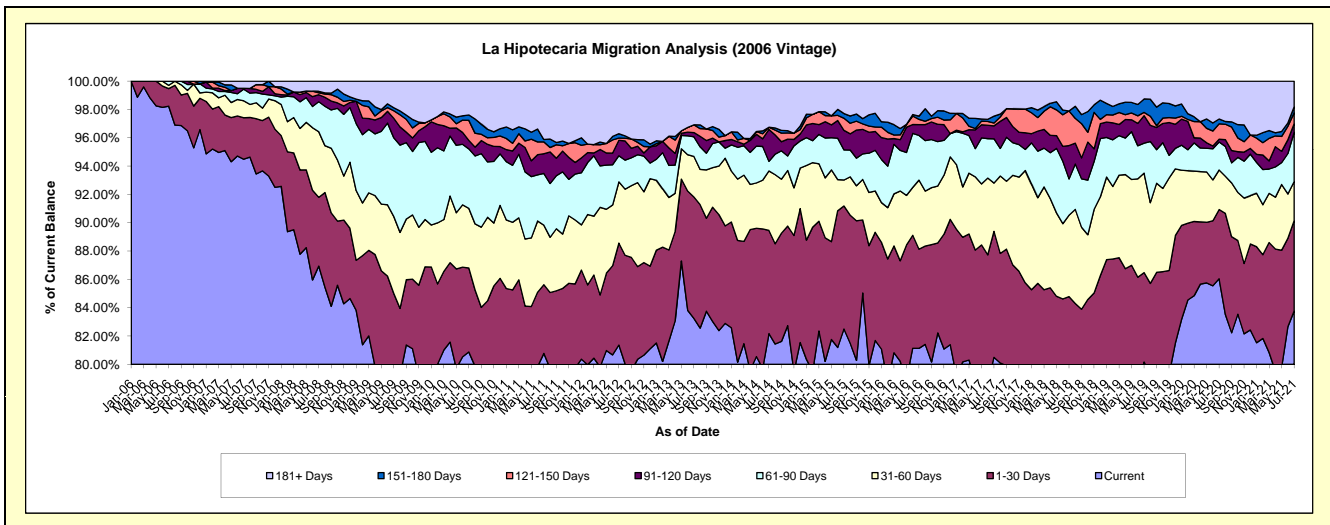
Delinquency Status (\$ of Current Balance)

Data Cutoff: 7/31/2021

Current Portfolio Balance	13,089,394.53	12,024,885.73	10,733,925.31	9,766,335.57	8,921,441.47	8,179,856.43	7,445,627.95	6,738,990.09	6,096,351.40	5,457,226.78
	Jul-12	Jul-13	Jul-14	Jul-15	Jul-16	Jul-17	Jul-18	Jul-19	Jul-20	Jul-21
Current	10,650,053.45	10,010,810.37	8,820,287.62	8,057,225.65	7,238,399.81	6,584,555.35	5,754,242.99	5,402,564.36	5,245,746.26	4,571,263.35
1-30 Days	942,625.53	1,030,928.89	782,232.93	848,170.23	624,712.54	727,423.68	558,427.68	425,385.58	297,868.22	347,982.70
31-60 Days	565,706.20	344,221.62	450,368.89	179,095.71	434,847.19	279,158.35	428,393.46	473,357.47	170,388.86	151,385.78
61-90 Days	241,589.18	166,873.03	73,354.27	207,625.80	281,608.62	255,821.92	190,490.70	142,786.69	120,267.24	189,280.49
91-120 Days	142,414.25	35,766.63	241,995.89	134,799.26	68,138.38	74,881.38	175,761.68	130,626.39	12,062.21	32,692.71
121-150 Days	21,525.74	65,583.56	16,412.66	83,910.05	33,405.62	16,258.68	181,674.78	15,549.88	66,193.31	42,238.36
151-180 Days	39,412.75	-	-	32,320.46	19,973.16	39,464.50	-	64,123.16	20,912.00	23,395.34
181+ Days	486,067.43	370,701.63	349,273.05	223,188.41	220,356.15	202,292.57	156,636.66	84,596.56	162,913.30	98,988.05

Delinquency Status (% of Current Balance)

Current Portfolio Balance	13,089,394.53	12,024,885.73	10,733,925.31	9,766,335.57	8,921,441.47	8,179,856.43	7,445,627.95	6,738,990.09	6,096,351.40	5,457,226.78
	Jul-12	Jul-13	Jul-14	Jul-15	Jul-16	Jul-17	Jul-18	Jul-19	Jul-20	Jul-21
Current	81.36%	83.25%	82.17%	82.50%	81.13%	80.50%	77.28%	80.17%	86.05%	83.77%
1-30 Days	7.20%	8.57%	7.29%	8.68%	7.00%	8.89%	7.50%	6.31%	4.89%	6.38%
31-60 Days	4.32%	2.86%	4.20%	1.83%	4.87%	3.41%	5.75%	7.02%	2.79%	2.77%
61-90 Days	1.85%	1.39%	0.68%	2.13%	3.16%	3.13%	2.56%	2.12%	1.97%	3.47%
91-120 Days	1.09%	0.30%	2.25%	1.38%	0.76%	0.92%	2.36%	1.94%	0.20%	0.60%
121-150 Days	0.16%	0.55%	0.15%	0.86%	0.37%	0.20%	2.44%	0.23%	1.09%	0.77%
151-180 Days	0.30%	0.00%	0.00%	0.33%	0.22%	0.48%	0.00%	0.95%	0.34%	0.43%
181+ Days	3.71%	3.08%	3.25%	2.29%	2.47%	2.47%	2.10%	1.26%	2.67%	1.81%
Current - 90 Days	94.73%	96.07%	94.34%	95.14%	96.17%	95.93%	93.10%	95.62%	95.70%	96.38%
91-180 Days	1.55%	0.84%	2.41%	2.57%	1.36%	1.60%	4.80%	3.12%	1.63%	1.80%



Mortgages - La Hipotecaria El Salvador Migration Analysis (2007 Vintage)

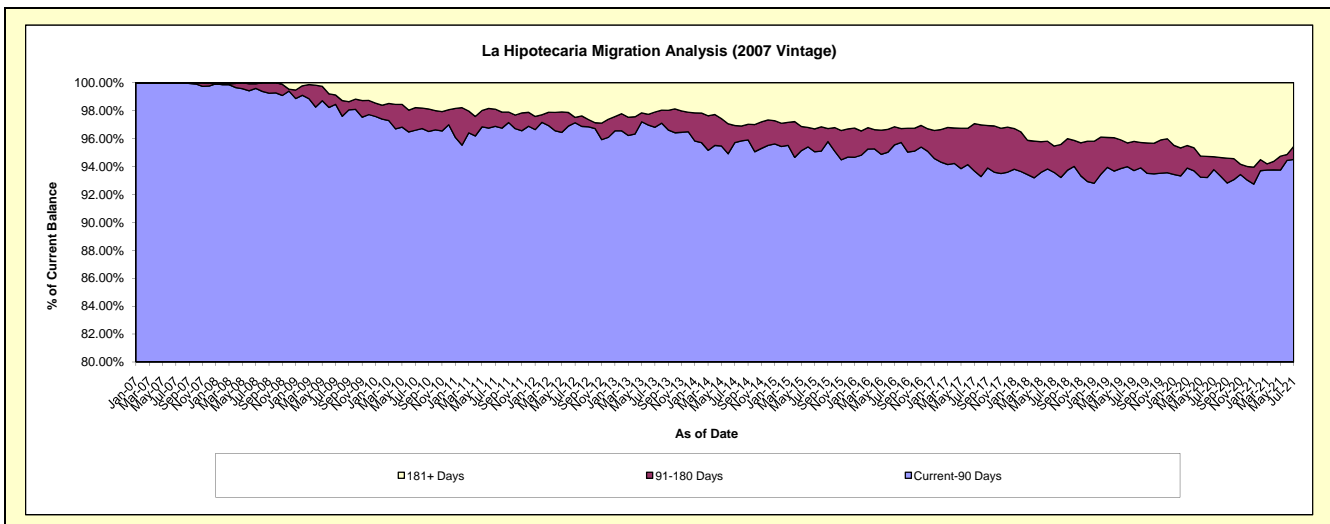
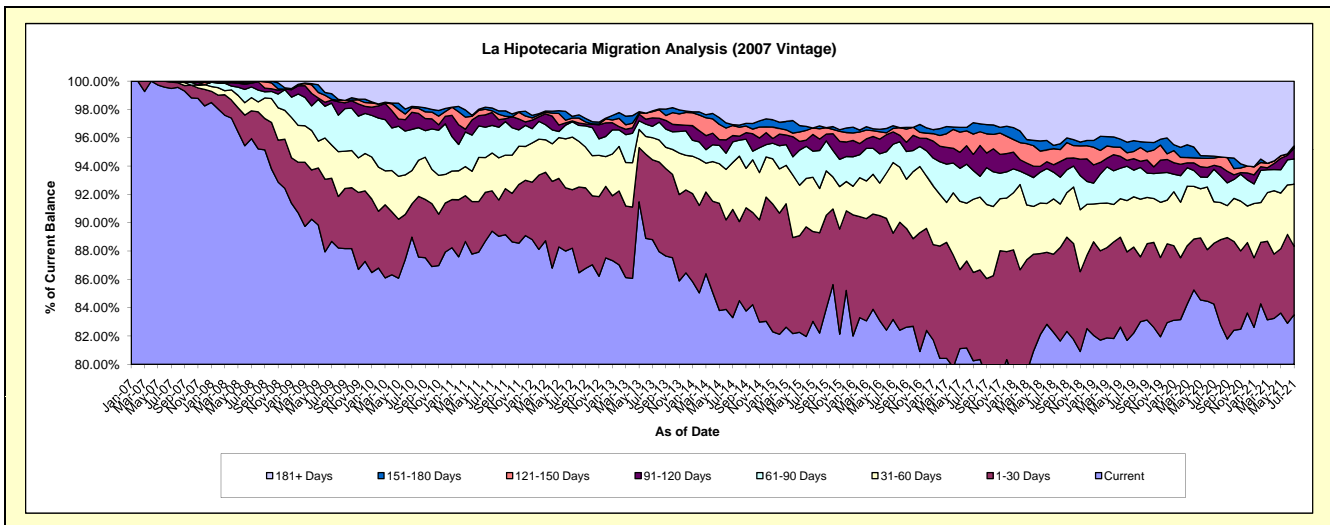
Delinquency Status (\$ of Current Balance)

Data Cutoff: 7/31/2021

Current Portfolio Balance	20,320,890.08	18,450,690.11	16,909,735.72	15,579,138.56	14,261,269.04	13,088,436.48	12,054,121.88	11,193,928.66	10,441,306.93	9,243,267.22
	Jul-12	Jul-13	Jul-14	Jul-15	Jul-16	Jul-17	Jul-18	Jul-19	Jul-20	Jul-21
Current	17,924,119.84	16,386,171.08	14,085,896.59	12,936,561.85	11,861,412.23	10,503,737.19	9,915,660.90	9,203,130.33	8,797,718.16	7,719,171.00
1-30 Days	838,391.39	1,039,888.67	1,291,831.90	988,288.62	868,471.75	816,819.79	665,254.54	679,407.67	448,050.70	445,196.40
31-60 Days	756,820.43	288,588.77	560,129.95	596,693.44	712,054.81	676,568.38	471,107.38	397,485.47	306,120.16	406,188.36
61-90 Days	219,469.68	147,487.90	246,630.87	287,808.12	184,521.94	264,740.36	227,868.30	210,125.95	240,000.76	164,947.22
91-120 Days	11,351.21	110,282.69	75,584.78	184,148.25	123,610.46	149,390.94	63,306.17	91,257.66	28,965.94	70,282.22
121-150 Days	42,017.65	81,849.39	120,210.37	71,484.13	35,864.31	188,562.20	136,063.90	56,819.18	53,141.14	6,294.98
151-180 Days	23,720.97	9,453.40	11,120.78	-	26,143.53	105,192.63	28,439.57	85,752.07	14,179.14	9,714.10
181+ Days	504,998.91	386,968.21	518,330.48	514,154.15	449,190.01	383,424.99	546,421.12	469,950.33	553,130.93	421,472.94

Delinquency Status (% of Current Balance)

Current Portfolio Balance	20,320,890.08	18,450,690.11	16,909,735.72	15,579,138.56	14,261,269.04	13,088,436.48	12,054,121.88	11,193,928.66	10,441,306.93	9,243,267.22
	Jul-12	Jul-13	Jul-14	Jul-15	Jul-16	Jul-17	Jul-18	Jul-19	Jul-20	Jul-21
Current	88.21%	88.81%	83.30%	83.04%	83.17%	80.25%	82.26%	82.22%	84.26%	83.51%
1-30 Days	4.13%	5.64%	7.64%	6.34%	6.09%	6.24%	5.52%	6.07%	4.29%	4.82%
31-60 Days	3.72%	1.56%	3.31%	3.83%	4.99%	5.17%	3.91%	3.55%	2.93%	4.39%
61-90 Days	1.08%	0.80%	1.48%	1.85%	1.29%	2.02%	1.89%	1.88%	2.30%	1.78%
91-120 Days	0.06%	0.60%	0.45%	1.18%	0.87%	1.14%	0.53%	0.82%	0.28%	0.76%
121-150 Days	0.21%	0.44%	0.71%	0.46%	0.25%	1.44%	1.13%	0.51%	0.51%	0.07%
151-180 Days	0.12%	0.05%	0.07%	0.00%	0.18%	0.80%	0.24%	0.77%	0.14%	0.11%
181+ Days	2.49%	2.10%	3.07%	3.30%	3.15%	2.93%	4.53%	4.20%	5.30%	4.56%
Current - 90 Days	97.14%	96.81%	95.71%	95.06%	95.55%	93.68%	93.58%	93.71%	93.78%	94.51%
91-180 Days	0.38%	1.09%	1.22%	1.64%	1.30%	3.39%	1.89%	2.09%	0.92%	0.93%



Mortgages - La Hipotecaria El Salvador Migration Analysis (2008 Vintage)

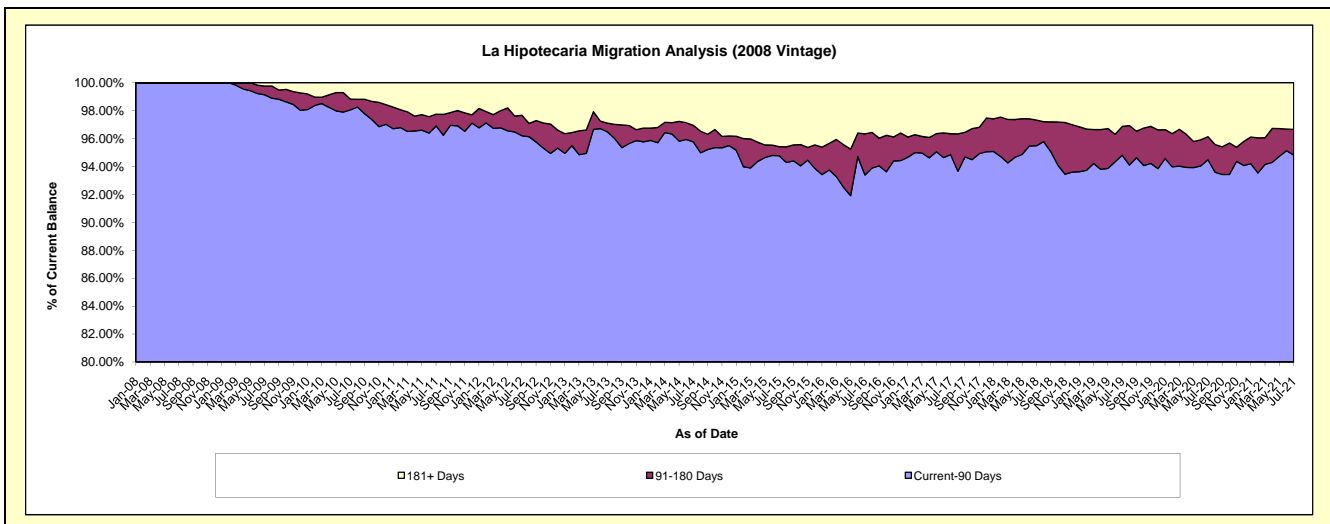
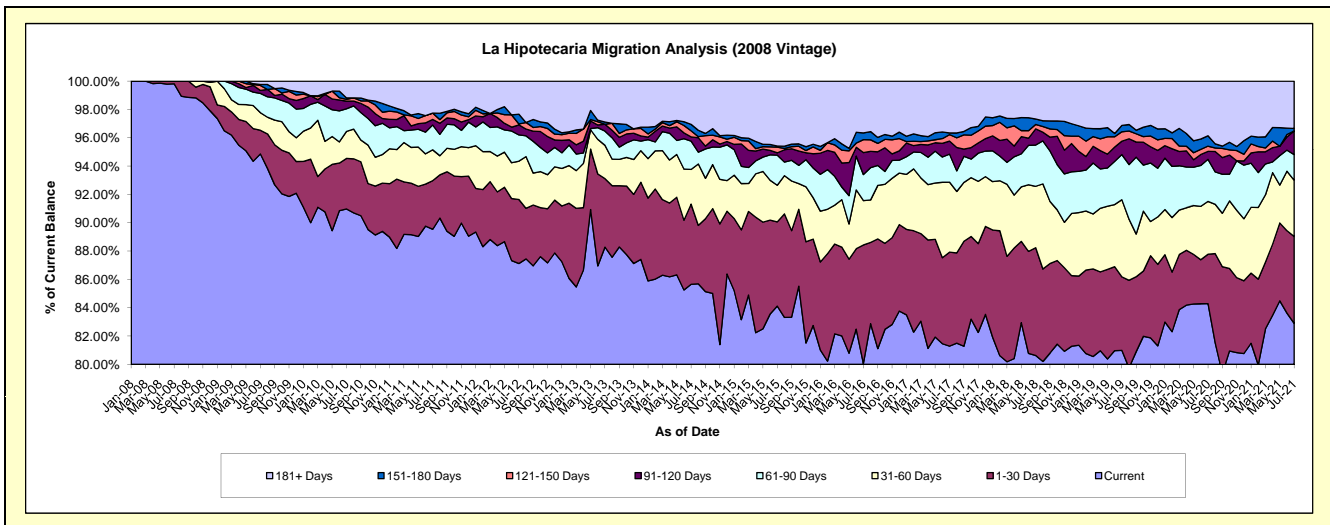
Delinquency Status (\$ of Current Balance)

Data Cutoff: 7/31/2021

Current Portfolio Balance	20,253,193.52	18,441,008.70	16,623,248.16	14,763,324.91	13,440,650.12	12,339,693.25	11,248,519.20	10,198,455.22	9,413,782.82	8,401,015.33
	Jul-12	Jul-13	Jul-14	Jul-15	Jul-16	Jul-17	Jul-18	Jul-19	Jul-20	Jul-21
Current	17,644,989.79	16,279,996.51	14,238,250.06	12,418,438.13	10,761,211.97	10,030,733.43	9,069,747.30	8,259,562.99	7,935,059.68	6,963,652.99
1-30 Days	916,212.18	891,220.79	942,162.52	878,327.47	1,124,668.72	818,643.80	855,867.24	529,446.83	327,782.82	515,774.80
31-60 Days	546,764.99	434,267.53	407,178.65	381,148.51	420,858.79	610,336.76	487,810.39	555,647.98	351,572.38	334,197.92
61-90 Days	376,624.58	184,775.56	331,452.30	313,223.46	246,972.66	244,305.89	327,718.50	324,984.13	279,950.48	151,969.75
91-120 Days	143,493.95	88,813.71	50,026.21	25,119.51	208,905.20	113,685.19	128,673.68	96,525.12	52,657.67	140,057.59
121-150 Days	13,615.96	-	70,843.70	59,192.36	122,778.60	56,045.19	34,555.42	68,017.36	34,739.24	-
151-180 Days	139,281.58	29,049.52	76,196.37	11,874.47	63,795.76	15,085.20	43,203.05	45,339.31	68,893.33	14,999.20
181+ Days	472,210.49	532,885.08	507,138.35	676,001.00	491,458.42	450,857.79	300,943.62	318,931.50	363,127.22	280,363.08

Delinquency Status (% of Current Balance)

Current Portfolio Balance	20,253,193.52	18,441,008.70	16,623,248.16	14,763,324.91	13,440,650.12	12,339,693.25	11,248,519.20	10,198,455.22	9,413,782.82	8,401,015.33
	Jul-12	Jul-13	Jul-14	Jul-15	Jul-16	Jul-17	Jul-18	Jul-19	Jul-20	Jul-21
Current	87.12%	88.28%	85.65%	84.12%	80.06%	81.29%	80.63%	80.99%	84.29%	82.89%
1-30 Days	4.52%	4.83%	5.67%	5.95%	8.37%	6.63%	7.61%	5.19%	3.48%	6.14%
31-60 Days	2.70%	2.35%	2.45%	2.58%	3.13%	4.95%	4.34%	5.45%	3.73%	3.98%
61-90 Days	1.86%	1.00%	1.99%	2.12%	1.84%	1.98%	2.91%	3.19%	2.97%	1.81%
91-120 Days	0.71%	0.48%	0.30%	0.17%	1.55%	0.92%	1.14%	0.95%	0.56%	1.67%
121-150 Days	0.07%	0.00%	0.43%	0.40%	0.91%	0.45%	0.31%	0.67%	0.37%	0.00%
151-180 Days	0.69%	0.16%	0.46%	0.08%	0.47%	0.12%	0.38%	0.44%	0.73%	0.18%
181+ Days	2.33%	2.89%	3.05%	4.58%	3.66%	3.65%	2.68%	3.13%	3.86%	3.34%
Current - 90 Days	96.21%	96.47%	95.76%	94.77%	93.40%	94.85%	95.49%	94.81%	94.48%	94.82%
91-180 Days	1.46%	0.64%	1.19%	0.65%	2.94%	1.50%	1.84%	2.06%	1.66%	1.85%



Mortgages - La Hipotecaria El Salvador Migration Analysis (2009 Vintage)

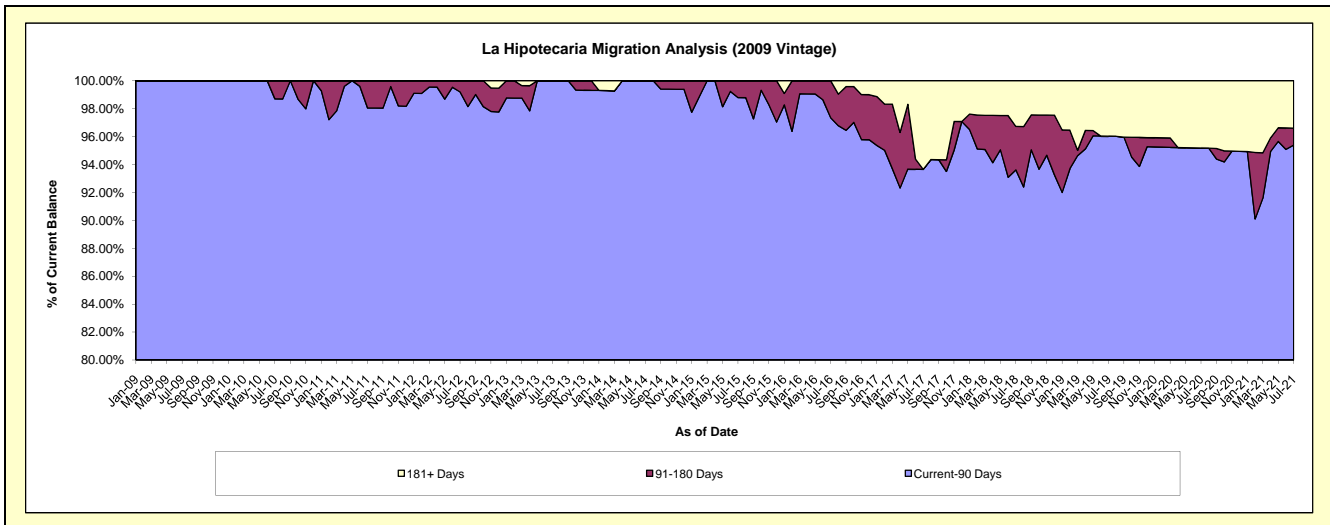
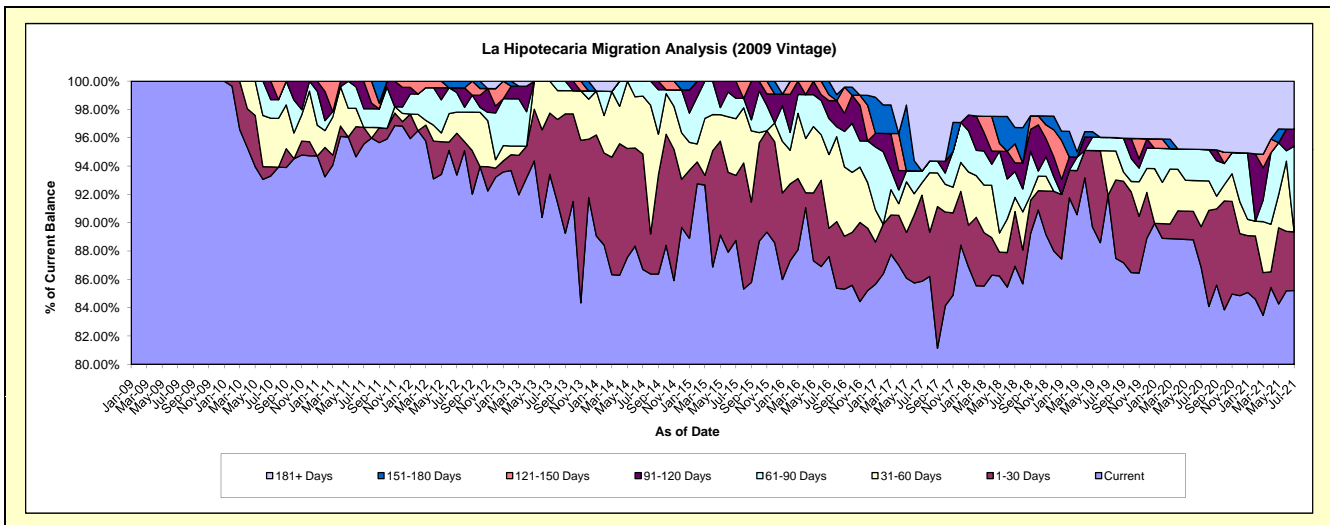
Delinquency Status (\$ of Current Balance)

Data Cutoff: 7/31/2021

Current Portfolio Balance	3,006,449.41	2,761,914.22	2,405,028.18	2,107,622.52	1,951,956.68	1,893,153.65	1,763,483.32	1,631,633.58	1,562,618.14	1,422,171.85
	Jul-12	Jul-13	Jul-14	Jul-15	Jul-16	Jul-17	Jul-18	Jul-19	Jul-20	Jul-21
Current	2,807,248.29	2,579,964.95	2,085,138.94	1,870,718.99	1,710,269.52	1,625,641.46	1,533,013.42	1,500,332.80	1,357,195.66	1,211,855.57
1-30 Days	88,713.45	119,690.94	196,128.53	96,674.10	38,788.65	115,121.22	68,046.14	-	44,844.53	58,945.88
31-60 Days	44,777.88	62,258.33	98,326.39	84,430.09	101,696.16	16,485.29	17,716.71	51,031.61	50,693.65	-
61-90 Days	41,420.94	-	25,434.32	30,256.53	49,569.23	15,668.91	32,154.20	15,471.68	34,555.55	85,937.67
91-120 Days	10,258.57	-	-	25,542.81	24,865.76	-	10,804.39	-	-	17,120.53
121-150 Days	-	-	-	-	8,145.28	-	23,696.37	-	-	-
151-180 Days	14,030.28	-	-	-	18,622.08	-	20,342.59	-	-	-
181+ Days	-	-	-	-	-	120,236.77	57,709.50	64,797.49	75,328.75	48,312.20

Delinquency Status (% of Current Balance)

Current Portfolio Balance	3,006,449.41	2,761,914.22	2,405,028.18	2,107,622.52	1,951,956.68	1,893,153.65	1,763,483.32	1,631,633.58	1,562,618.14	1,422,171.85
	Jul-12	Jul-13	Jul-14	Jul-15	Jul-16	Jul-17	Jul-18	Jul-19	Jul-20	Jul-21
Current	93.37%	93.41%	86.70%	88.76%	87.62%	85.87%	86.93%	91.95%	86.85%	85.21%
1-30 Days	2.95%	4.33%	8.15%	4.59%	1.99%	6.08%	3.86%	0.00%	2.87%	4.14%
31-60 Days	1.49%	2.25%	4.09%	4.01%	5.21%	0.87%	1.00%	3.13%	3.24%	0.00%
61-90 Days	1.38%	0.00%	1.06%	1.44%	2.54%	0.83%	1.82%	0.95%	2.21%	6.04%
91-120 Days	0.34%	0.00%	0.00%	1.21%	1.27%	0.00%	0.61%	0.00%	0.00%	1.20%
121-150 Days	0.00%	0.00%	0.00%	0.00%	0.42%	0.00%	1.34%	0.00%	0.00%	0.00%
151-180 Days	0.47%	0.00%	0.00%	0.00%	0.95%	0.00%	1.15%	0.00%	0.00%	0.00%
181+ Days	0.00%	0.00%	0.00%	0.00%	0.00%	6.35%	3.27%	3.97%	4.82%	3.40%
Current - 90 Days	99.19%	100.00%	100.00%	98.79%	97.35%	93.65%	93.62%	96.03%	95.18%	95.40%
91-180 Days	0.81%	0.00%	0.00%	1.21%	2.65%	0.00%	3.11%	0.00%	0.00%	1.20%



Mortgages - La Hipotecaria El Salvador Migration Analysis (2010 Vintage)

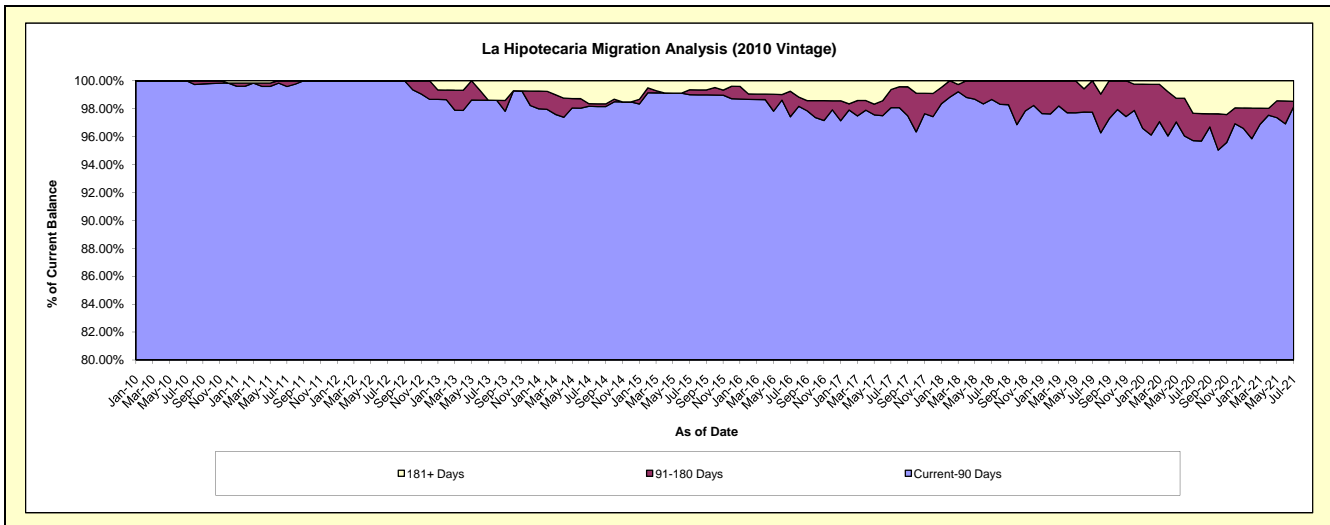
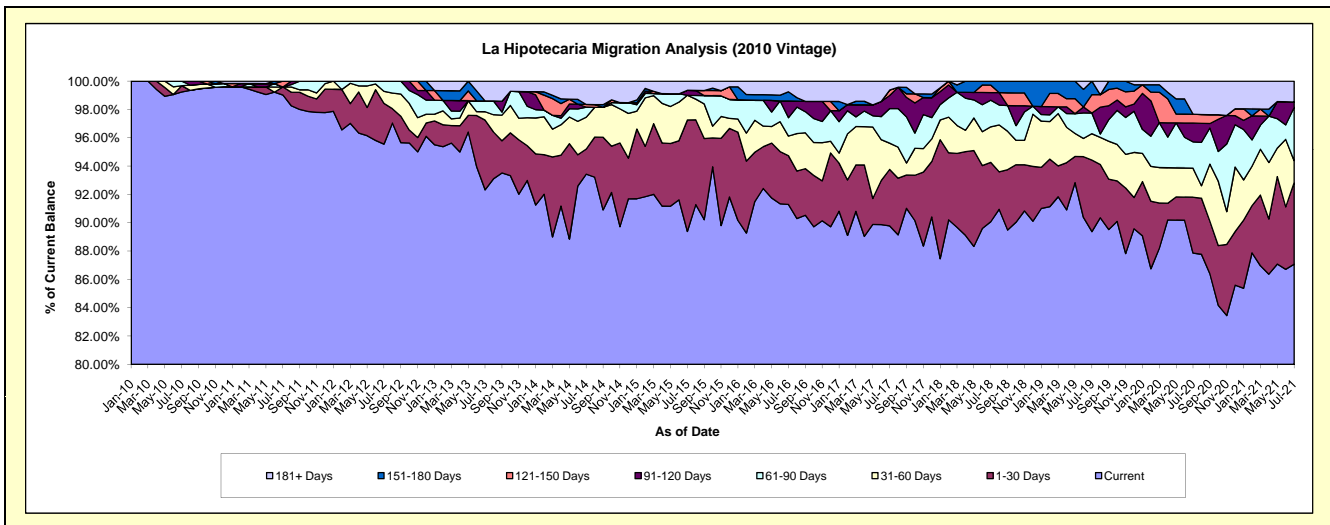
Delinquency Status (\$ of Current Balance)

Data Cutoff: 7/31/2021

Current Portfolio Balance	8,740,982.16	8,095,403.62	6,942,448.98	6,272,278.31	5,473,465.40	5,173,194.90	4,697,336.07	4,312,743.74	3,916,483.48	3,541,290.01
	Jul-12	Jul-13	Jul-14	Jul-15	Jul-16	Jul-17	Jul-18	Jul-19	Jul-20	Jul-21
Current	8,352,402.56	7,474,040.66	6,486,782.50	5,606,699.31	4,997,059.61	4,644,442.88	4,231,095.82	3,854,686.74	3,441,116.50	3,083,608.82
1-30 Days	251,447.17	398,684.35	122,793.90	493,485.96	188,121.28	206,382.91	196,884.88	217,683.80	154,256.00	203,538.21
31-60 Days	74,800.51	47,922.56	156,127.63	109,507.98	76,134.74	95,817.95	118,028.56	80,392.58	80,334.08	55,171.48
61-90 Days	62,331.92	61,631.60	49,593.79	-	71,045.97	126,529.96	88,261.12	62,944.02	72,944.23	133,405.91
91-120 Days	-	-	-	22,150.25	64,768.32	47,646.68	25,176.24	-	52,048.11	13,242.94
121-150 Days	-	-	13,000.87	-	-	19,719.63	24,969.55	56,031.73	24,396.57	-
151-180 Days	-	-	-	-	35,151.12	-	12,919.90	41,004.87	-	-
181+ Days	-	113,124.45	114,150.29	40,434.81	41,184.36	32,654.89	-	-	91,387.99	52,322.65

Delinquency Status (% of Current Balance)

Current Portfolio Balance	8,740,982.16	8,095,403.62	6,942,448.98	6,272,278.31	5,473,465.40	5,173,194.90	4,697,336.07	4,312,743.74	3,916,483.48	3,541,290.01
	Jul-12	Jul-13	Jul-14	Jul-15	Jul-16	Jul-17	Jul-18	Jul-19	Jul-20	Jul-21
Current	95.55%	92.32%	93.44%	89.39%	91.30%	89.78%	90.07%	89.38%	87.86%	87.08%
1-30 Days	2.88%	4.92%	1.77%	7.87%	3.44%	3.99%	4.19%	5.05%	3.94%	5.75%
31-60 Days	0.86%	0.59%	2.25%	1.75%	1.39%	1.85%	2.51%	1.86%	2.05%	1.56%
61-90 Days	0.71%	0.76%	0.71%	0.00%	1.30%	2.45%	1.86%	1.46%	1.86%	3.77%
91-120 Days	0.00%	0.00%	0.00%	0.35%	1.18%	0.92%	0.54%	0.00%	1.33%	0.37%
121-150 Days	0.00%	0.00%	0.19%	0.00%	0.00%	0.38%	0.53%	1.30%	0.62%	0.00%
151-180 Days	0.00%	0.00%	0.00%	0.00%	0.64%	0.00%	0.28%	0.95%	0.00%	0.00%
181+ Days	0.00%	1.40%	1.64%	0.64%	0.75%	0.63%	0.00%	0.00%	2.33%	1.48%
Current - 90 Days	100.00%	98.60%	98.17%	99.00%	97.42%	98.07%	98.66%	97.75%	95.71%	98.15%
91-180 Days	0.00%	0.00%	0.19%	0.35%	1.83%	1.30%	1.34%	2.25%	1.95%	0.37%



Mortgages - La Hipotecaria El Salvador Migration Analysis (2011 Vintage)

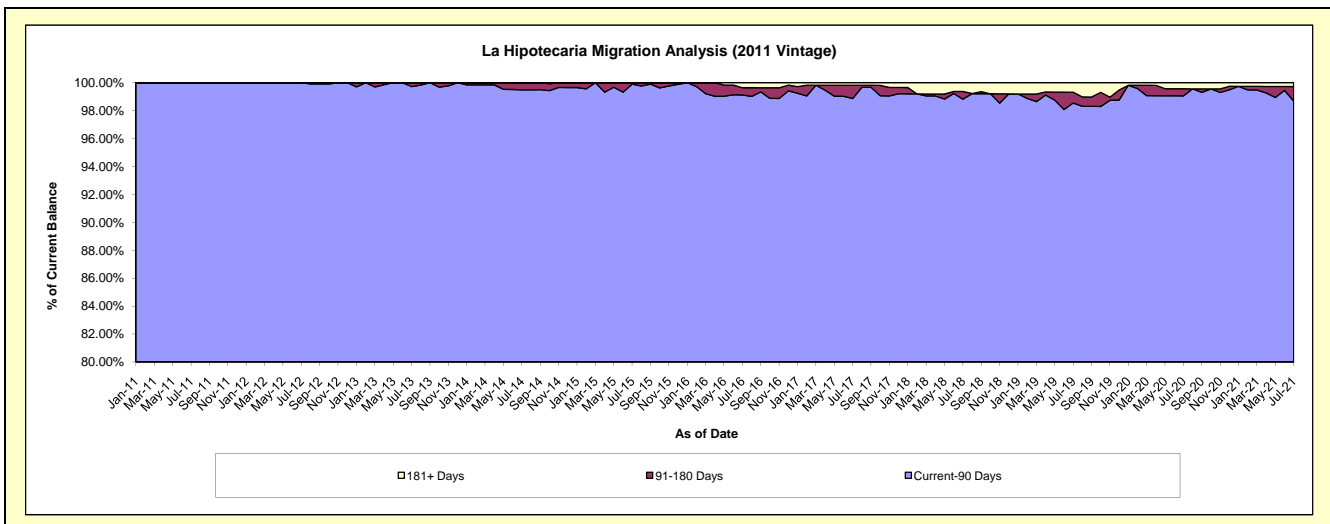
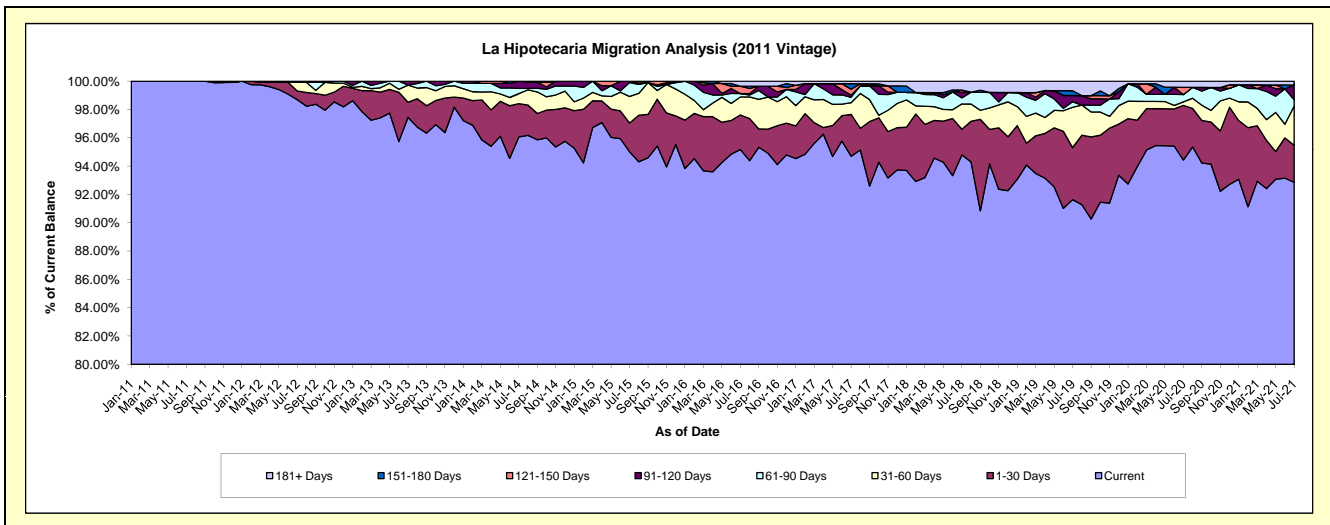
Delinquency Status (\$ of Current Balance)

Data Cutoff: 7/31/2021

Current Portfolio Balance	16,797,052.53	15,400,750.77	14,132,023.23	12,906,969.12	11,991,689.81	11,155,862.22	10,155,103.85	9,356,651.18	8,541,588.63	7,628,968.73
	Jul-12	Jul-13	Jul-14	Jul-15	Jul-16	Jul-17	Jul-18	Jul-19	Jul-20	Jul-21
Current	16,577,369.27	15,006,804.25	13,575,003.04	12,262,971.61	11,413,214.45	10,564,474.28	9,626,681.27	8,573,781.59	8,065,987.02	7,084,084.66
1-30 Days	103,101.20	164,914.12	332,177.73	262,929.62	292,805.08	329,155.33	183,931.66	344,013.97	329,667.15	199,330.28
31-60 Days	102,408.98	186,539.20	100,707.04	241,505.69	152,070.12	92,905.51	181,084.77	266,371.03	21,104.91	211,371.08
61-90 Days	14,173.08	-	52,458.98	126,759.62	28,964.84	43,006.62	43,521.93	36,873.35	43,930.09	34,222.94
91-120 Days	-	42,493.20	71,676.44	12,802.58	-	16,155.45	41,581.68	40,978.09	-	79,011.54
121-150 Days	-	-	-	-	61,996.16	47,432.75	14,798.29	-	43,795.78	-
151-180 Days	-	-	-	-	-	42,438.27	-	31,128.90	-	-
181+ Days	-	-	-	-	42,639.16	20,294.01	63,504.25	63,504.25	37,103.68	20,948.23

Delinquency Status (% of Current Balance)

Current Portfolio Balance	16,797,052.53	15,400,750.77	14,132,023.23	12,906,969.12	11,991,689.81	11,155,862.22	10,155,103.85	9,356,651.18	8,541,588.63	7,628,968.73
	Jul-12	Jul-13	Jul-14	Jul-15	Jul-16	Jul-17	Jul-18	Jul-19	Jul-20	Jul-21
Current	98.69%	97.44%	96.06%	95.01%	95.18%	94.70%	94.80%	91.63%	94.43%	92.86%
1-30 Days	0.61%	1.07%	2.35%	2.04%	2.44%	2.95%	1.81%	3.68%	3.86%	2.61%
31-60 Days	0.61%	1.21%	0.71%	1.87%	1.27%	0.83%	1.78%	2.85%	0.25%	2.77%
61-90 Days	0.08%	0.00%	0.37%	0.98%	0.24%	0.39%	0.43%	0.39%	0.51%	0.45%
91-120 Days	0.00%	0.28%	0.51%	0.10%	0.00%	0.14%	0.41%	0.44%	0.00%	1.04%
121-150 Days	0.00%	0.00%	0.00%	0.00%	0.52%	0.43%	0.15%	0.00%	0.51%	0.00%
151-180 Days	0.00%	0.00%	0.00%	0.00%	0.00%	0.38%	0.00%	0.33%	0.00%	0.00%
181+ Days	0.00%	0.00%	0.00%	0.00%	0.36%	0.18%	0.63%	0.68%	0.43%	0.27%
Current - 90 Days	100.00%	99.72%	99.49%	99.90%	99.13%	98.87%	98.82%	98.55%	99.05%	98.69%
91-180 Days	0.00%	0.28%	0.51%	0.10%	0.52%	0.95%	0.56%	0.77%	0.51%	1.04%



Mortgages - La Hipotecaria El Salvador Migration Analysis (2012 Vintage)

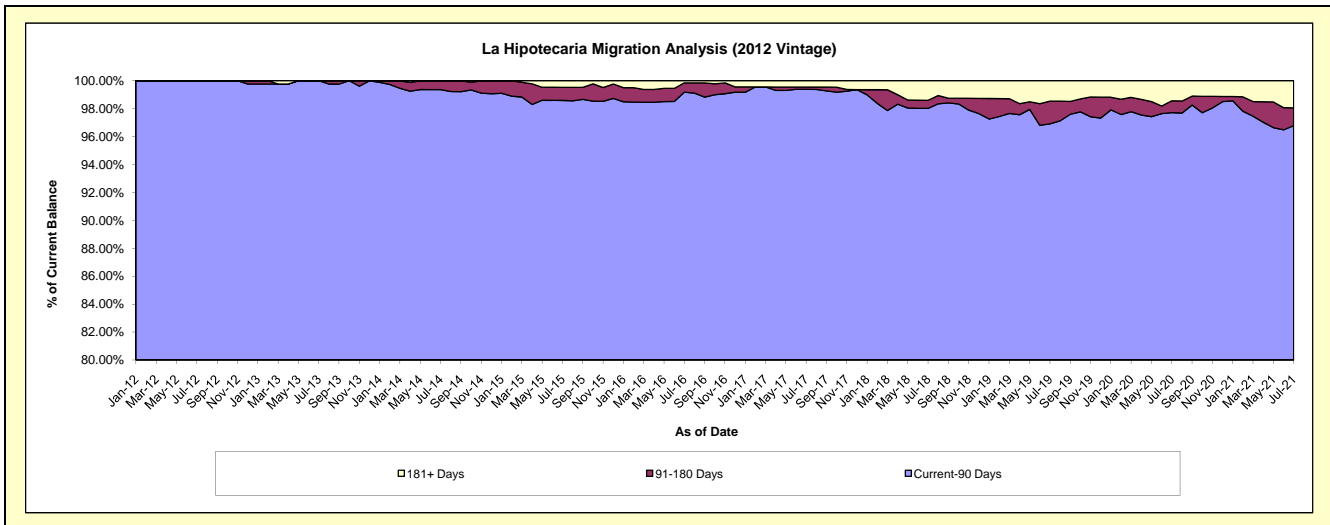
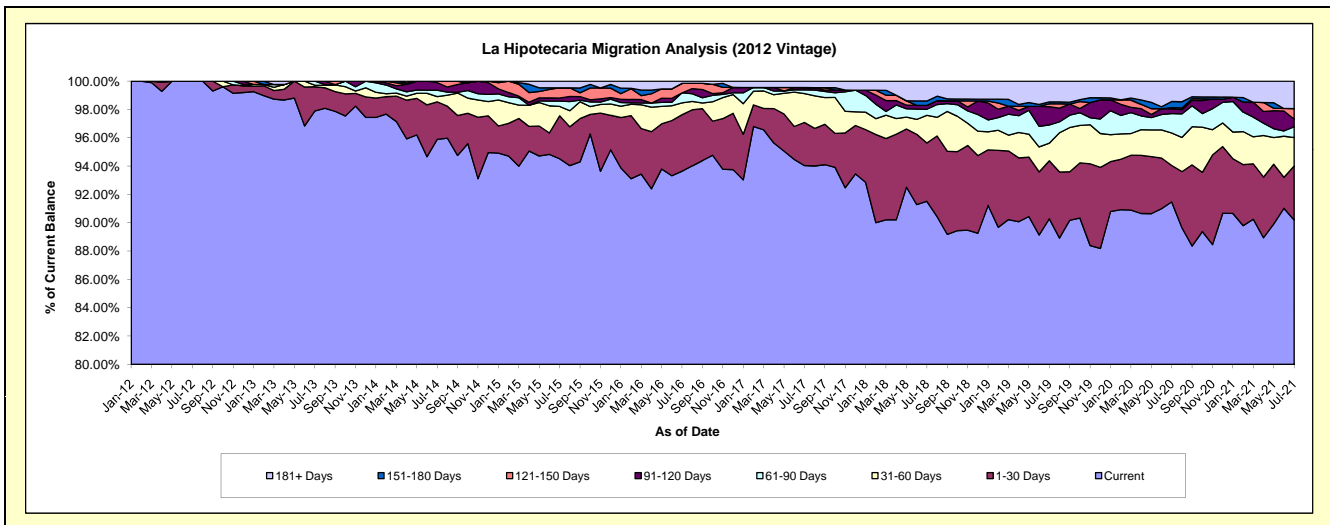
Delinquency Status (\$ of Current Balance)

Data Cutoff: 7/31/2021

Current Portfolio Balance	13,679,962.56	24,257,405.39	22,663,525.12	20,629,509.93	18,782,677.75	17,833,122.02	16,473,166.96	15,275,945.07	14,368,549.52	12,708,328.58
	Jul-12	Jul-13	Jul-14	Jul-15	Jul-16	Jul-17	Jul-18	Jul-19	Jul-20	Jul-21
Current	13,679,962.56	23,746,451.59	21,732,551.10	19,498,808.59	17,588,909.97	16,770,033.34	15,075,510.61	13,791,635.60	13,143,545.43	11,461,717.63
1-30 Days	-	415,050.24	600,348.61	626,034.20	748,754.72	542,873.71	678,779.45	625,242.56	370,030.23	484,501.07
31-60 Days	-	25,854.26	82,978.37	136,831.30	157,629.11	363,920.09	320,938.97	190,624.88	329,298.95	256,380.00
61-90 Days	-	70,049.30	102,642.80	77,073.08	132,805.74	47,005.62	71,642.31	196,703.77	197,184.24	96,804.05
91-120 Days	-	-	122,101.46	44,941.11	-	28,598.78	44,202.64	196,516.68	47,808.21	67,638.85
121-150 Days	-	-	22,902.78	148,205.48	125,830.76	-	-	31,401.98	11,555.70	94,476.52
151-180 Days	-	-	-	-	-	-	51,444.27	20,478.11	62,985.80	-
181+ Days	-	-	-	97,616.17	28,747.45	80,690.48	230,648.71	223,341.49	206,140.96	246,810.46

Delinquency Status (% of Current Balance)

Current Portfolio Balance	13,679,962.56	24,257,405.39	22,663,525.12	20,629,509.93	18,782,677.75	17,833,122.02	16,473,166.96	15,275,945.07	14,368,549.52	12,708,328.58
	Jul-12	Jul-13	Jul-14	Jul-15	Jul-16	Jul-17	Jul-18	Jul-19	Jul-20	Jul-21
Current	100.00%	97.89%	95.89%	94.52%	93.64%	94.04%	91.52%	90.28%	91.47%	90.19%
1-30 Days	0.00%	1.71%	2.65%	3.03%	3.99%	3.04%	4.12%	4.09%	2.58%	3.81%
31-60 Days	0.00%	0.11%	0.37%	0.66%	0.84%	2.04%	1.95%	1.25%	2.29%	2.02%
61-90 Days	0.00%	0.29%	0.45%	0.37%	0.71%	0.26%	0.43%	1.29%	1.37%	0.76%
91-120 Days	0.00%	0.00%	0.54%	0.22%	0.00%	0.16%	0.27%	1.29%	0.33%	0.53%
121-150 Days	0.00%	0.00%	0.10%	0.72%	0.67%	0.00%	0.00%	0.21%	0.08%	0.74%
151-180 Days	0.00%	0.00%	0.00%	0.00%	0.00%	0.00%	0.31%	0.13%	0.44%	0.00%
181+ Days	0.00%	0.00%	0.00%	0.47%	0.15%	0.45%	1.40%	1.46%	1.43%	1.94%
Current - 90 Days	100.00%	100.00%	99.36%	98.59%	99.18%	99.39%	98.02%	96.91%	97.71%	96.78%
91-180 Days	0.00%	0.00%	0.64%	0.94%	0.67%	0.16%	0.58%	1.63%	0.85%	1.28%



Mortgages - La Hipotecaria El Salvador Migration Analysis (2013 Vintage)

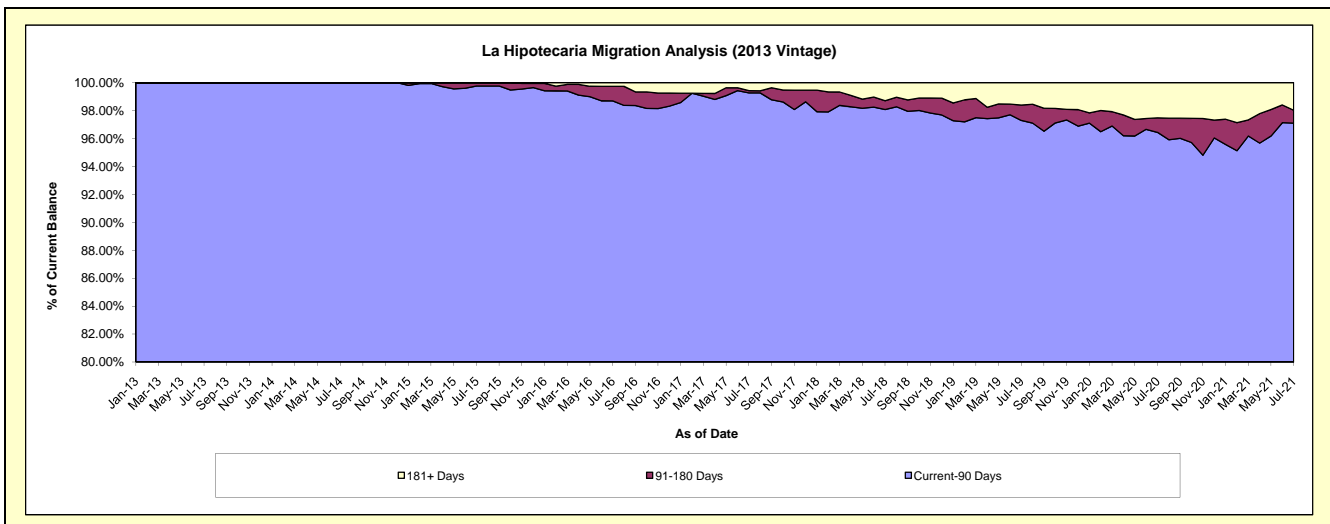
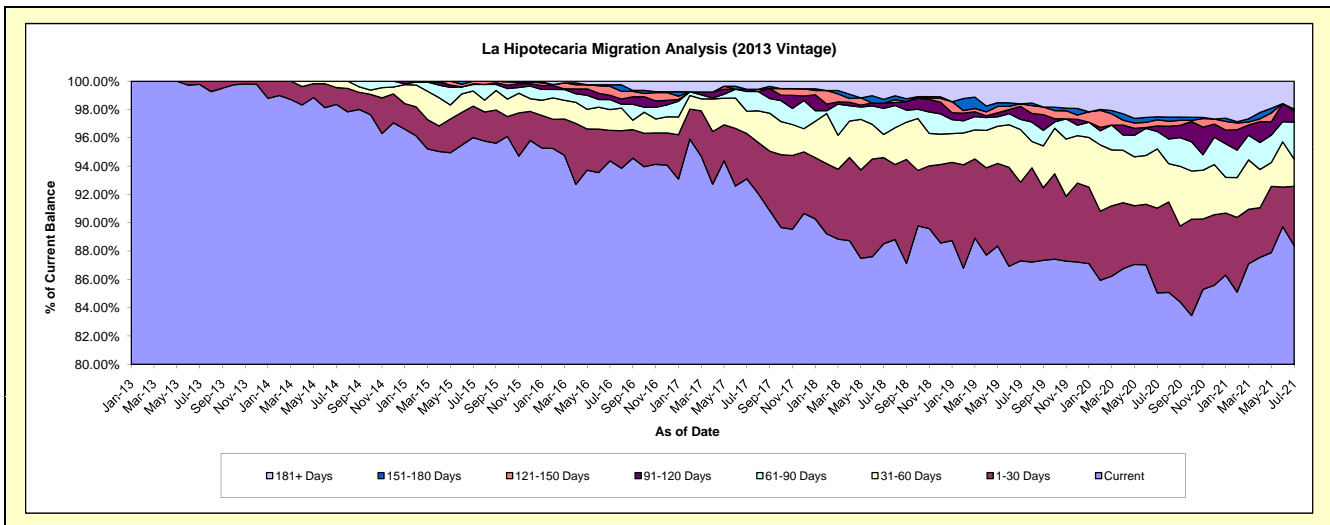
Delinquency Status (\$ of Current Balance)

Data Cutoff: 7/31/2021

Current Portfolio Balance	-	17,623,423.08	28,778,334.37	27,293,216.90	25,477,719.13	23,879,249.05	22,025,129.94	20,143,266.87	18,431,906.33	16,549,606.14
	Jul-13	Jul-14	Jul-15	Jul-16	Jul-17	Jul-18	Jul-19	Jul-20	Jul-21	
Current	17,584,188.82	28,305,856.98	26,205,929.74	24,044,893.50	22,233,257.59	19,496,056.36	17,587,379.58	15,676,594.70	14,628,639.10	
1-30 Days	39,234.26	342,368.32	607,131.89	546,813.05	762,863.91	1,340,609.29	1,117,014.28	1,103,031.34	691,085.39	
31-60 Days	-	130,109.07	289,766.74	375,954.86	374,078.30	358,648.49	751,825.02	770,523.66	319,549.42	
61-90 Days	-	-	126,490.12	179,078.44	335,159.35	406,836.55	143,042.11	226,694.59	431,119.30	
91-120 Days	-	-	14,515.00	77,315.24	37,294.37	81,154.33	185,791.59	72,289.97	129,923.39	
121-150 Days	-	-	49,383.41	160,700.06	-	-	36,303.99	78,967.35	23,239.82	
151-180 Days	-	-	-	27,707.94	-	58,800.23	-	39,956.49	-	
181+ Days	-	-	-	65,256.04	136,595.53	283,024.69	321,910.30	463,848.23	326,049.72	

Delinquency Status (% of Current Balance)

Current Portfolio Balance	-	17,623,423.08	28,778,334.37	27,293,216.90	25,477,719.13	23,879,249.05	22,025,129.94	20,143,266.87	18,431,906.33	16,549,606.14
	Jul-13	Jul-14	Jul-15	Jul-16	Jul-17	Jul-18	Jul-19	Jul-20	Jul-21	
Current	99.78%	98.36%	96.02%	94.38%	93.11%	88.52%	87.31%	85.05%	88.39%	
1-30 Days	0.22%	1.19%	2.22%	2.15%	3.19%	6.09%	5.55%	5.98%	4.18%	
31-60 Days	0.00%	0.45%	1.06%	1.48%	1.57%	1.63%	3.73%	4.18%	1.93%	
61-90 Days	0.00%	0.00%	0.46%	0.70%	1.40%	1.85%	0.71%	1.23%	2.61%	
91-120 Days	0.00%	0.00%	0.05%	0.30%	0.16%	0.37%	0.92%	0.39%	0.79%	
121-150 Days	0.00%	0.00%	0.18%	0.63%	0.00%	0.00%	0.18%	0.43%	0.14%	
151-180 Days	0.00%	0.00%	0.00%	0.11%	0.00%	0.27%	0.00%	0.22%	0.00%	
181+ Days	0.00%	0.00%	0.00%	0.26%	0.57%	1.29%	1.60%	2.52%	1.97%	
Current - 90 Days	100.00%	100.00%	99.77%	98.70%	99.27%	98.08%	97.30%	96.45%	97.10%	
91-180 Days	0.00%	0.00%	0.23%	1.04%	0.16%	0.64%	1.10%	1.04%	0.93%	



Mortgages - La Hipotecaria El Salvador Migration Analysis (2014 Vintage)

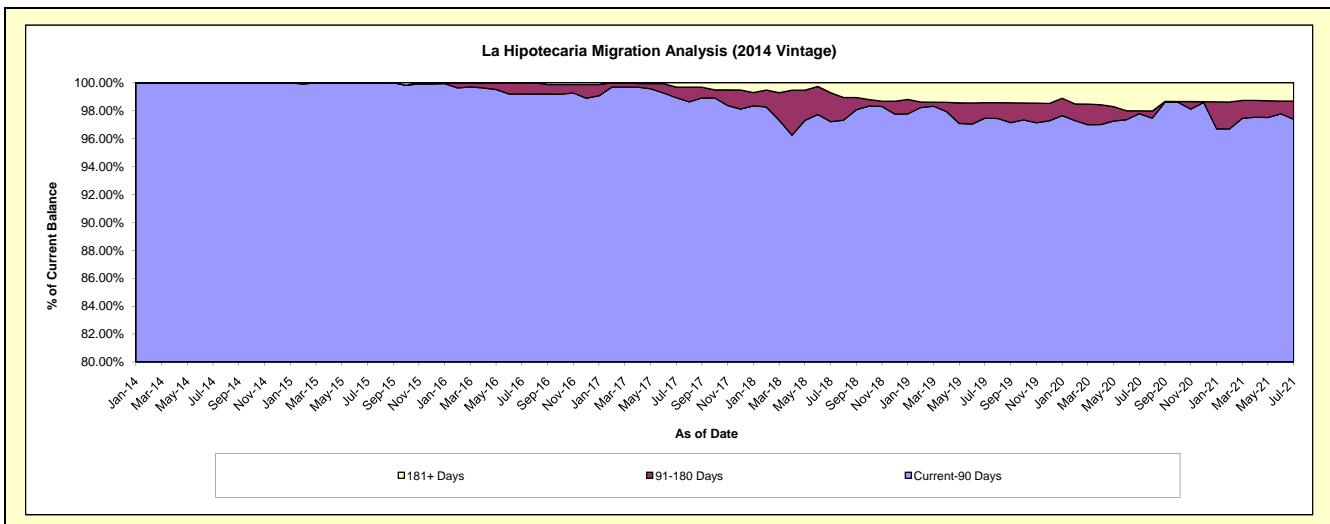
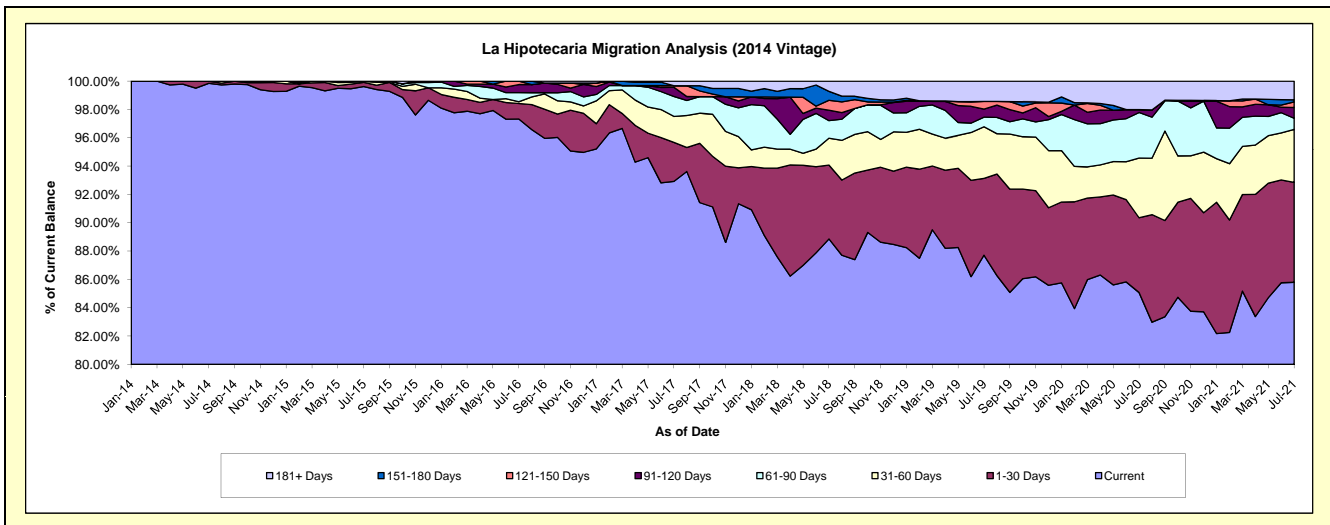
Delinquency Status (\$ of Current Balance)

Data Cutoff: 7/31/2021

Current Portfolio Balance	-	-	17,183,869.73	27,337,427.83	25,729,667.13	24,491,084.99	22,423,030.36	20,425,853.87	18,985,635.37	17,025,020.32
	Jul-14	Jul-15	Jul-16	Jul-17	Jul-18	Jul-19	Jul-20	Jul-21		
Current	17,157,487.90	27,233,404.94	25,042,466.46	22,756,681.10	19,924,987.20	17,916,146.40	16,151,719.32	14,606,840.94		
1-30 Days	26,381.83	79,598.19	281,798.61	675,048.03	1,169,404.78	1,108,407.68	1,002,982.70	1,201,082.88		
31-60 Days	-	24,424.70	32,442.35	449,838.90	425,959.52	743,584.85	799,863.02	636,837.56		
61-90 Days	-	-	164,223.70	345,715.71	277,510.45	138,993.63	610,957.02	133,686.45		
91-120 Days	-	-	147,551.94	157,963.63	165,361.58	115,854.07	38,621.84	130,876.46		
121-150 Days	-	-	61,184.07	27,891.17	157,125.58	111,355.64	-	65,955.55		
151-180 Days	-	-	-	-	141,632.33	-	-	25,314.25		
181+ Days	-	-	-	77,946.45	161,048.92	291,511.60	381,491.47	224,426.23		

Delinquency Status (% of Current Balance)

Current Portfolio Balance	-	-	17,183,869.73	27,337,427.83	25,729,667.13	24,491,084.99	22,423,030.36	20,425,853.87	18,985,635.37	17,025,020.32
	Jul-14	Jul-15	Jul-16	Jul-17	Jul-18	Jul-19	Jul-20	Jul-21		
Current	99.85%	99.62%	97.33%	92.92%	88.86%	87.71%	85.07%	85.80%		
1-30 Days	0.15%	0.29%	1.10%	2.76%	5.22%	5.43%	5.28%	7.05%		
31-60 Days	0.00%	0.09%	0.13%	1.84%	1.90%	3.64%	4.21%	3.74%		
61-90 Days	0.00%	0.00%	0.64%	1.41%	1.24%	0.68%	3.22%	0.79%		
91-120 Days	0.00%	0.00%	0.57%	0.64%	0.74%	0.57%	0.20%	0.77%		
121-150 Days	0.00%	0.00%	0.24%	0.11%	0.70%	0.55%	0.00%	0.39%		
151-180 Days	0.00%	0.00%	0.00%	0.00%	0.63%	0.00%	0.00%	0.15%		
181+ Days	0.00%	0.00%	0.00%	0.32%	0.72%	1.43%	2.01%	1.32%		
Current - 90 Days	100.00%	100.00%	99.19%	98.92%	97.21%	97.46%	97.79%	97.38%		
91-180 Days	0.00%	0.00%	0.81%	0.76%	2.07%	1.11%	0.20%	1.30%		



Mortgages - La Hipotecaria El Salvador Migration Analysis (2015 Vintage)

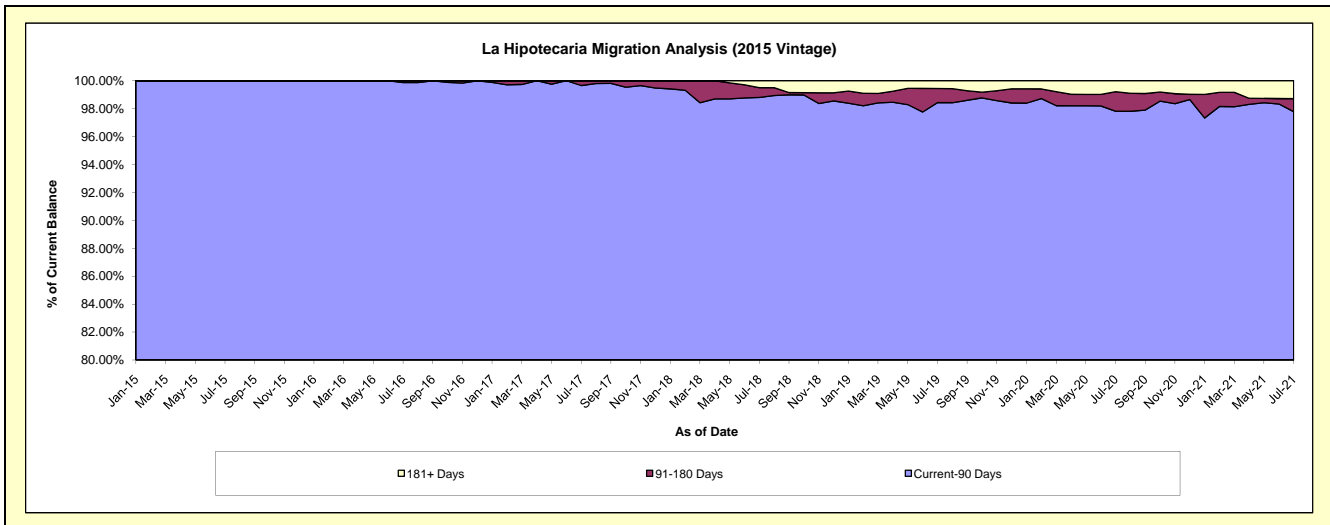
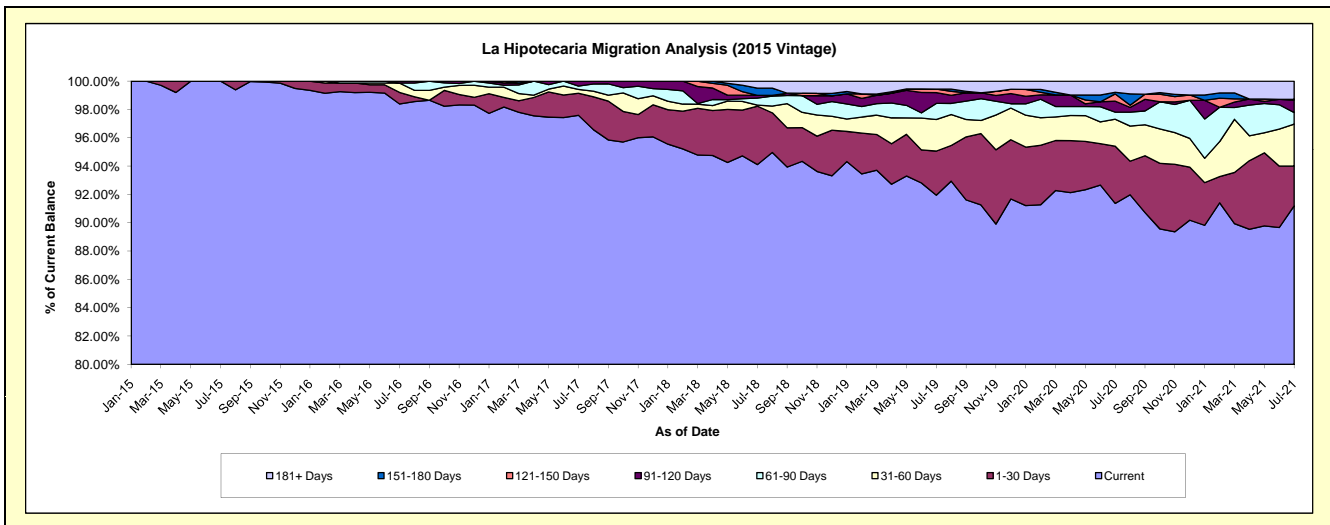
Delinquency Status (\$ of Current Balance)

Data Cutoff: 7/31/2021

Current Portfolio Balance	-	-	-	12,878,037.77	23,044,170.72	21,977,156.54	20,661,184.21	18,868,248.95	17,722,550.34	16,143,785.88
	Jul-15	Jul-16	Jul-17	Jul-18	Jul-19	Jul-20	Jul-21			
Current	12,878,037.77	22,673,384.86	21,448,078.59	19,443,752.24	17,349,092.16	16,192,938.82	14,722,343.89			
1-30 Days	-	187,831.60	341,299.24	852,681.02	587,521.10	716,236.09	454,049.96			
31-60 Days	-	151,923.21	60,556.42	15,043.21	421,480.05	336,873.49	478,219.67			
61-90 Days	-	-	51,579.31	102,747.05	214,092.10	89,219.48	131,240.48			
91-120 Days	-	31,031.05	75,642.98	39,528.14	143,327.39	136,847.89	139,177.96			
121-150 Days	-	-	-	-	47,386.91	91,245.12	11,154.59			
151-180 Days	-	-	-	105,349.24	-	20,804.75	-			
181+ Days	-	-	-	102,083.31	105,349.24	138,384.70	207,599.33			

Delinquency Status (% of Current Balance)

Current Portfolio Balance	-	-	-	12,878,037.77	23,044,170.72	21,977,156.54	20,661,184.21	18,868,248.95	17,722,550.34	16,143,785.88
	Jul-15	Jul-16	Jul-17	Jul-18	Jul-19	Jul-20	Jul-21			
Current	100.00%	98.39%	97.59%	94.11%	91.95%	91.37%	91.20%			
1-30 Days	0.00%	0.82%	1.55%	4.13%	3.11%	4.04%	2.81%			
31-60 Days	0.00%	0.66%	0.28%	0.07%	2.23%	1.90%	2.96%			
61-90 Days	0.00%	0.00%	0.23%	0.50%	1.13%	0.50%	0.81%			
91-120 Days	0.00%	0.13%	0.34%	0.19%	0.76%	0.77%	0.86%			
121-150 Days	0.00%	0.00%	0.00%	0.00%	0.25%	0.51%	0.07%			
151-180 Days	0.00%	0.00%	0.00%	0.51%	0.00%	0.12%	0.00%			
181+ Days	0.00%	0.00%	0.00%	0.49%	0.56%	0.78%	1.29%			
Current - 90 Days	100.00%	99.87%	99.66%	98.80%	98.43%	97.81%	97.78%			
91-180 Days	0.00%	0.13%	0.34%	0.70%	1.01%	1.40%	0.93%			



Mortgages - La Hipotecaria El Salvador Migration Analysis (2016 Vintage)

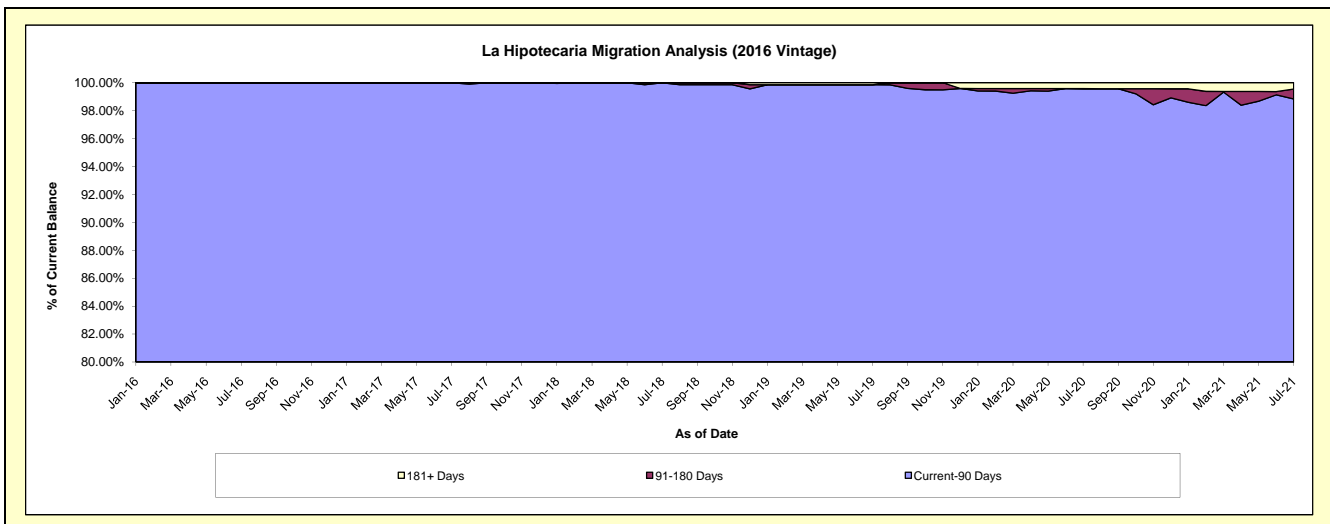
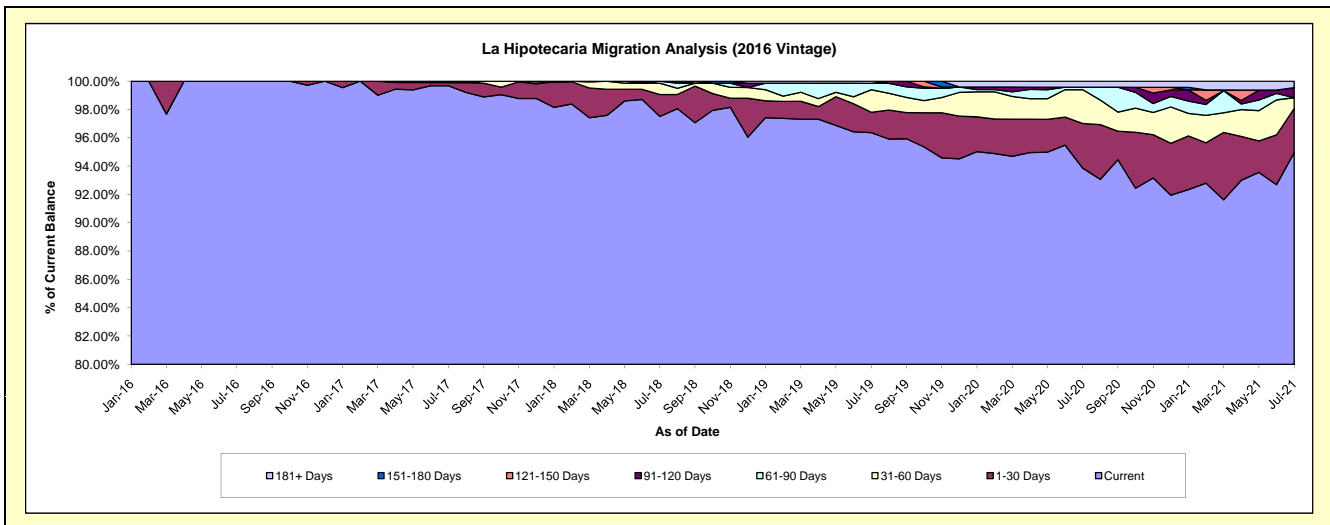
Delinquency Status (\$ of Current Balance)

Data Cutoff: 7/31/2021

Current Portfolio Balance	-	-	-	-	14,012,194.06	23,283,111.86	22,399,552.03	21,388,407.62	19,829,074.14	18,356,068.60
					Jul-16	Jul-17	Jul-18	Jul-19	Jul-20	Jul-21
Current					14,012,194.06	23,207,660.88	21,840,789.12	20,611,562.66	18,611,511.43	17,430,477.80
1-30 Days					-	53,776.98	348,164.36	307,236.57	624,285.90	571,123.08
31-60 Days					-	-	178,973.05	340,927.22	473,431.16	140,813.68
61-90 Days					-	21,674.00	31,625.50	97,055.67	35,822.85	-
91-120 Days					-	-	-	-	-	129,631.24
121-150 Days					-	-	-	-	-	-
151-180 Days					-	-	-	-	-	-
181+ Days					-	-	-	31,625.50	84,022.80	84,022.80

Delinquency Status (% of Current Balance)

Current Portfolio Balance	-	-	-	-	14,012,194.06	23,283,111.86	22,399,552.03	21,388,407.62	19,829,074.14	18,356,068.60
					Jul-16	Jul-17	Jul-18	Jul-19	Jul-20	Jul-21
Current					100.00%	99.68%	97.51%	96.37%	93.86%	94.96%
1-30 Days					0.00%	0.23%	1.55%	1.44%	3.15%	3.11%
31-60 Days					0.00%	0.00%	0.80%	1.59%	2.39%	0.77%
61-90 Days					0.00%	0.09%	0.14%	0.45%	0.18%	0.00%
91-120 Days					0.00%	0.00%	0.00%	0.00%	0.00%	0.71%
121-150 Days					0.00%	0.00%	0.00%	0.00%	0.00%	0.00%
151-180 Days					0.00%	0.00%	0.00%	0.00%	0.00%	0.00%
181+ Days					0.00%	0.00%	0.00%	0.15%	0.42%	0.46%
Current - 90 Days					100.00%	100.00%	100.00%	99.85%	99.58%	98.84%
91-180 Days					0.00%	0.00%	0.00%	0.00%	0.00%	0.71%



Mortgages - La Hipotecaria El Salvador Migration Analysis (2017 Vintage)

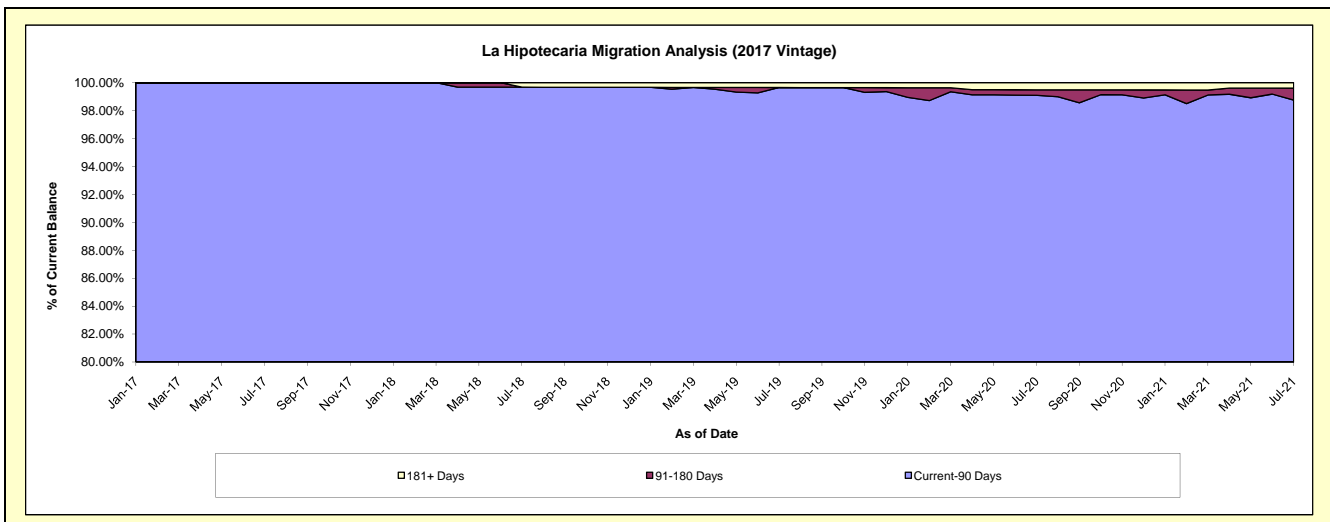
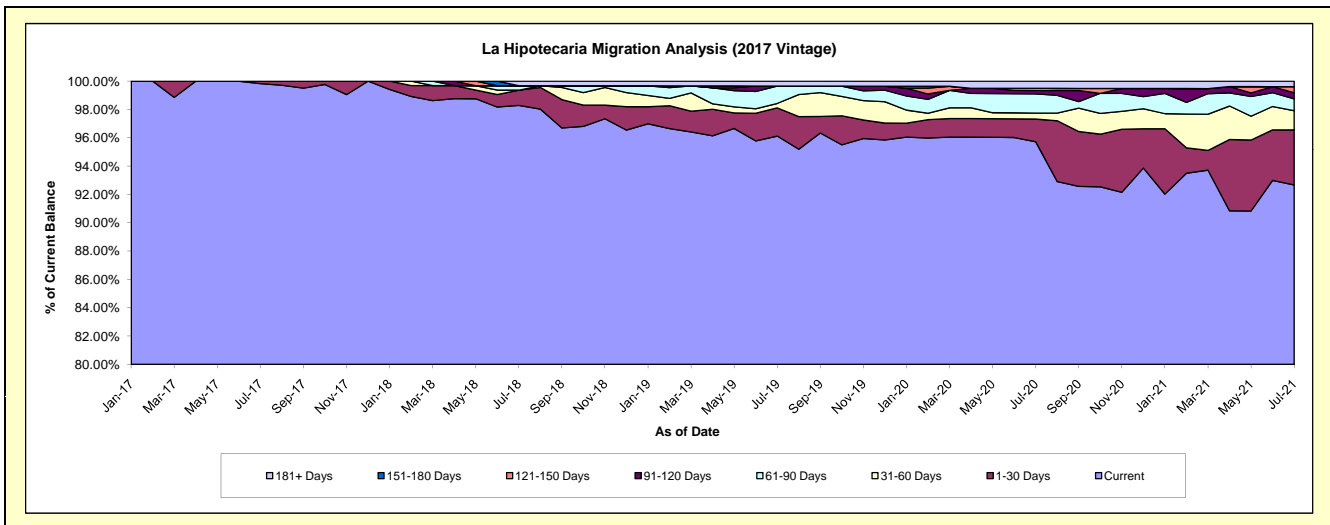
Delinquency Status (\$ of Current Balance)

Data Cutoff: 7/31/2021

Current Portfolio Balance	-	-	-	-	-	11,518,146.65	18,590,970.68	17,296,316.86	16,131,129.21	15,256,858.19
						Jul-17	Jul-18	Jul-19	Jul-20	Jul-21
Current						11,497,625.10	18,273,091.22	16,625,747.21	15,441,755.60	14,138,462.20
1-30 Days						20,521.55	200,030.19	344,240.70	257,376.97	592,609.97
31-60 Days						-	-	54,487.37	68,335.25	208,350.57
61-90 Days						-	58,449.27	212,441.58	218,932.80	127,036.34
91-120 Days						-	-	-	38,629.47	65,388.00
121-150 Days						-	-	-	24,214.26	65,611.11
151-180 Days						-	-	-	-	-
181+ Days						-	59,400.00	59,400.00	81,884.86	59,400.00

Delinquency Status (% of Current Balance)

Current Portfolio Balance	-	-	-	-	-	11,518,146.65	18,590,970.68	17,296,316.86	16,131,129.21	15,256,858.19
						Jul-17	Jul-18	Jul-19	Jul-20	Jul-21
Current						99.82%	98.29%	96.12%	95.73%	92.67%
1-30 Days						0.18%	1.08%	1.99%	1.60%	3.88%
31-60 Days						0.00%	0.00%	0.32%	0.42%	1.37%
61-90 Days						0.00%	0.31%	1.23%	1.36%	0.83%
91-120 Days						0.00%	0.00%	0.00%	0.24%	0.43%
121-150 Days						0.00%	0.00%	0.00%	0.15%	0.43%
151-180 Days						0.00%	0.00%	0.00%	0.00%	0.00%
181+ Days						0.00%	0.32%	0.34%	0.51%	0.39%
Current - 90 Days						100.00%	99.68%	99.66%	99.10%	98.75%
91-180 Days						0.00%	0.00%	0.00%	0.39%	0.86%



Mortgages - La Hipotecaria El Salvador Migration Analysis (2018 Vintage)

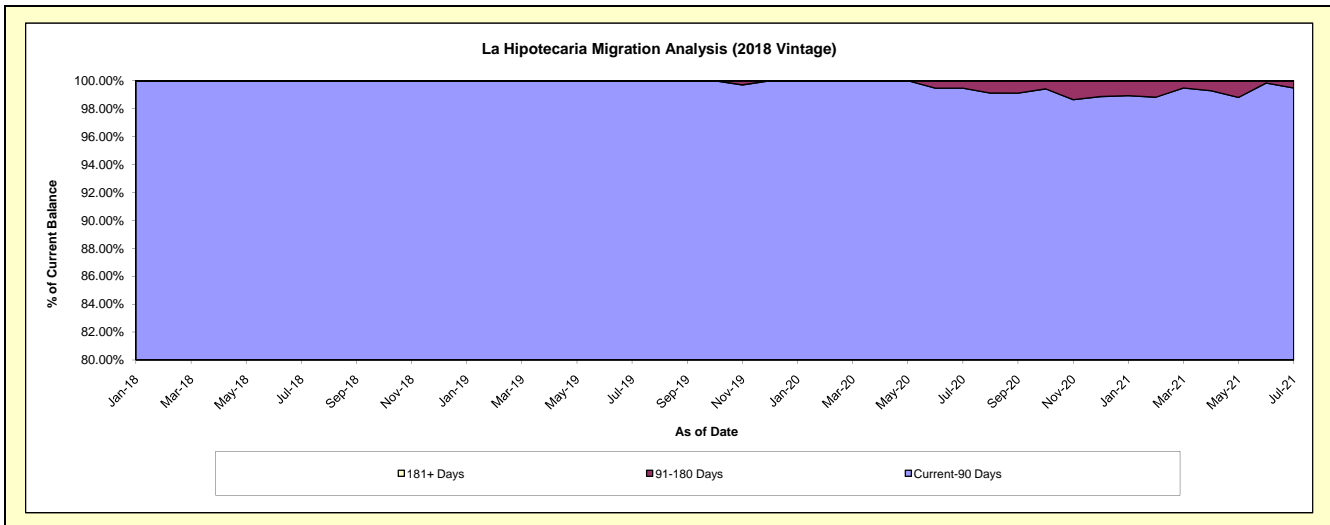
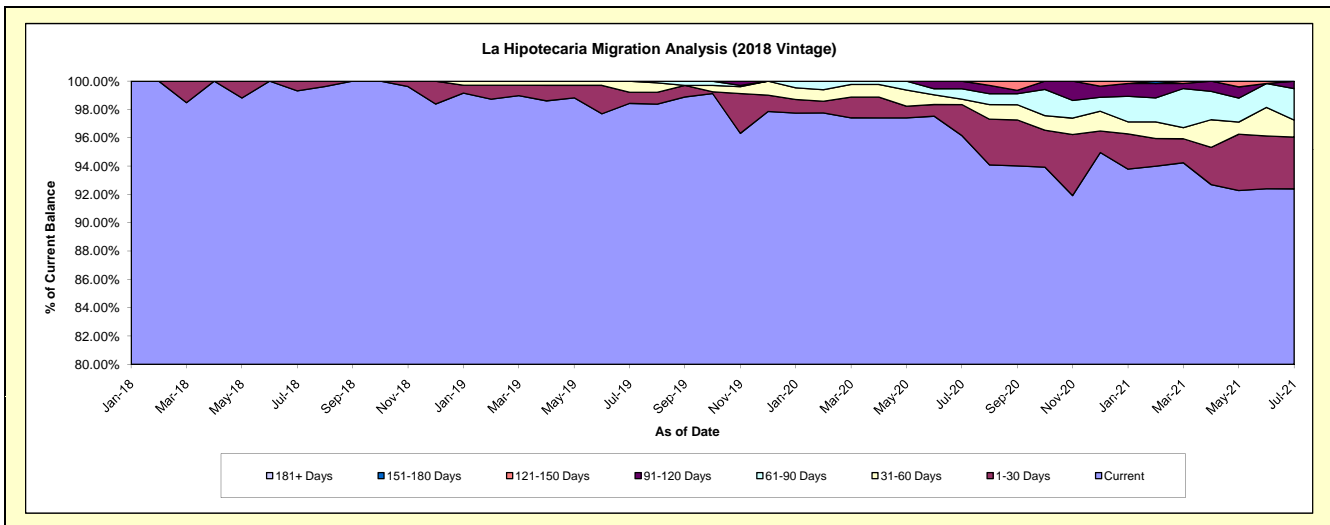
Delinquency Status (\$ of Current Balance)

Data Cutoff: 7/31/2021

Current Portfolio Balance	-	-	-	-	-	-	-	13,152,489.16	22,936,407.95	22,235,098.09	21,098,353.25
								Jul-18	Jul-19	Jul-20	Jul-21
Current								13,062,541.45	22,576,293.42	21,381,367.17	19,493,898.88
1-30 Days								89,947.71	180,559.11	486,005.30	772,003.27
31-60 Days								-	179,555.42	84,068.19	252,951.13
61-90 Days								-	-	165,123.00	469,154.17
91-120 Days								-	-	118,534.43	110,345.80
121-150 Days								-	-	-	-
151-180 Days								-	-	-	-
181+ Days								-	-	-	-

Delinquency Status (% of Current Balance)

Current Portfolio Balance	-	-	-	-	-	-	-	13,152,489.16	22,936,407.95	22,235,098.09	21,098,353.25
								Jul-18	Jul-19	Jul-20	Jul-21
Current								99.32%	98.43%	96.16%	92.40%
1-30 Days								0.68%	0.79%	2.19%	3.66%
31-60 Days								0.00%	0.78%	0.38%	1.20%
61-90 Days								0.00%	0.00%	0.74%	2.22%
91-120 Days								0.00%	0.00%	0.53%	0.52%
121-150 Days								0.00%	0.00%	0.00%	0.00%
151-180 Days								0.00%	0.00%	0.00%	0.00%
181+ Days								0.00%	0.00%	0.00%	0.00%
Current - 90 Days								100.00%	100.00%	99.47%	99.48%
91-180 Days								0.00%	0.00%	0.53%	0.52%



Mortgages - La Hipotecaria El Salvador Migration Analysis (2019 Vintage)

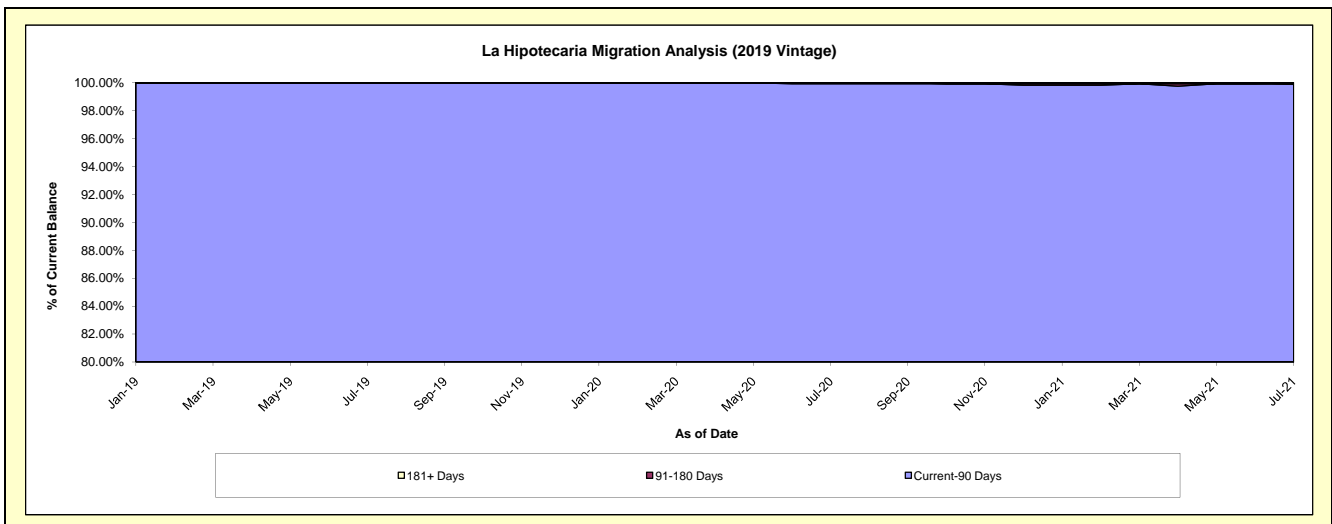
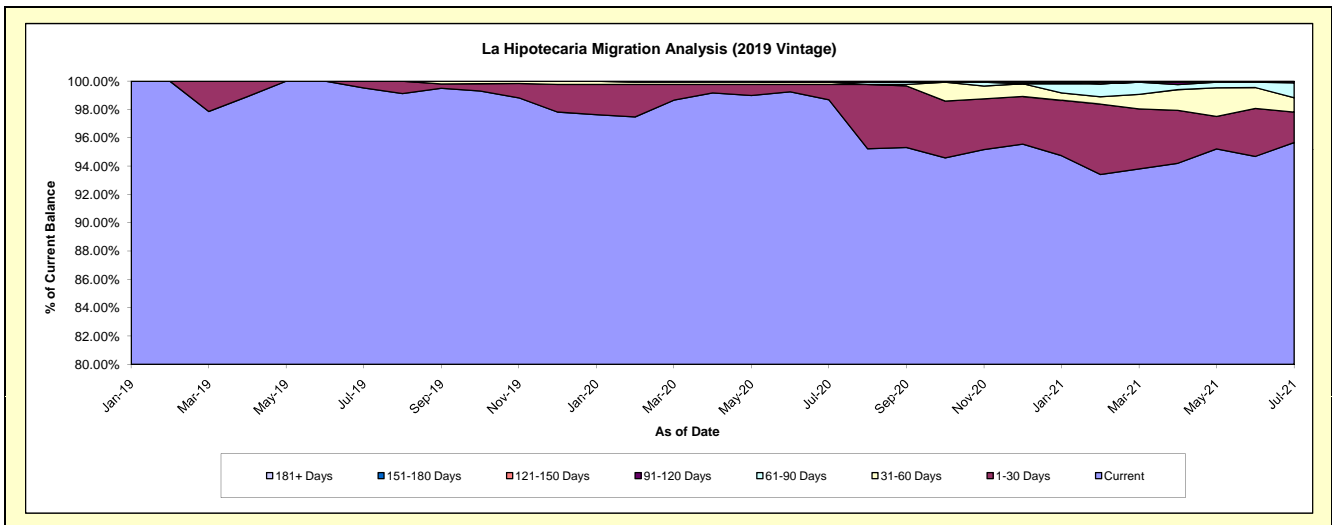
Delinquency Status (\$ of Current Balance)

Data Cutoff: 7/31/2021

Current Portfolio Balance	-	-	-	-	-	-	-	-	-	16,478,223.77	26,266,545.77	24,054,777.39
										Jul-19	Jul-20	Jul-21
Current										16,398,533.69	25,920,341.40	23,013,169.81
1-30 Days										79,690.08	285,659.14	515,916.99
31-60 Days										-	42,000.00	243,505.32
61-90 Days										-	-	254,648.55
91-120 Days										-	18,545.23	27,536.72
121-150 Days										-	-	-
151-180 Days										-	-	-
181+ Days										-	-	-

Delinquency Status (% of Current Balance)

Current Portfolio Balance	-	-	-	-	-	-	-	-	-	16,478,223.77	26,266,545.77	24,054,777.39
										Jul-19	Jul-20	Jul-21
Current										99.52%	98.68%	95.67%
1-30 Days										0.48%	1.09%	2.14%
31-60 Days										0.00%	0.16%	1.01%
61-90 Days										0.00%	0.00%	1.06%
91-120 Days										0.00%	0.07%	0.11%
121-150 Days										0.00%	0.00%	0.00%
151-180 Days										0.00%	0.00%	0.00%
181+ Days										0.00%	0.00%	0.00%
Current - 90 Days										100.00%	99.93%	99.89%
91-180 Days										0.00%	0.07%	0.11%



Mortgages - La Hipotecaria El Salvador Migration Analysis (2020 Vintage)

Delinquency Status (\$ of Current Balance)

Data Cutoff: 7/31/2021

Current Portfolio Balance										5,537,587.85	10,390,541.24
										Jul-20	Jul-21
Current										5,537,587.85	10,145,284.46
1-30 Days										-	121,960.68
31-60 Days										-	-
61-90 Days										-	-
91-120 Days										-	123,296.10
121-150 Days										-	-
151-180 Days										-	-
181+ Days										-	-

Delinquency Status (% of Current Balance)

Current Portfolio Balance										5,537,587.85	10,390,541.24
										Jul-20	Jul-21
Current										100.00%	97.64%
1-30 Days										0.00%	1.17%
31-60 Days										0.00%	0.00%
61-90 Days										0.00%	0.00%
91-120 Days										0.00%	1.19%
121-150 Days										0.00%	0.00%
151-180 Days										0.00%	0.00%
181+ Days										0.00%	0.00%
Current - 90 Days										100.00%	98.81%
91-180 Days										0.00%	1.19%

