



Migration Analysis for La Hipotecaria S.A. de C.V El Salvador

Personal Loans July 2021

An analysis of historical loan payment data was used to compile a migration analysis of delinquency by annual vintage. Delinquencies for each vintage were grouped into the following buckets; Current, 1-30, 31-60, 61-90, 91-120, 121-150, 151-180, and 180+. Results are provided in graphical and tabular form. The cutoff date is 7/31/2021.

Personal Loans - La Hipotecaria El Salvador Migration Analysis (All Vintages)

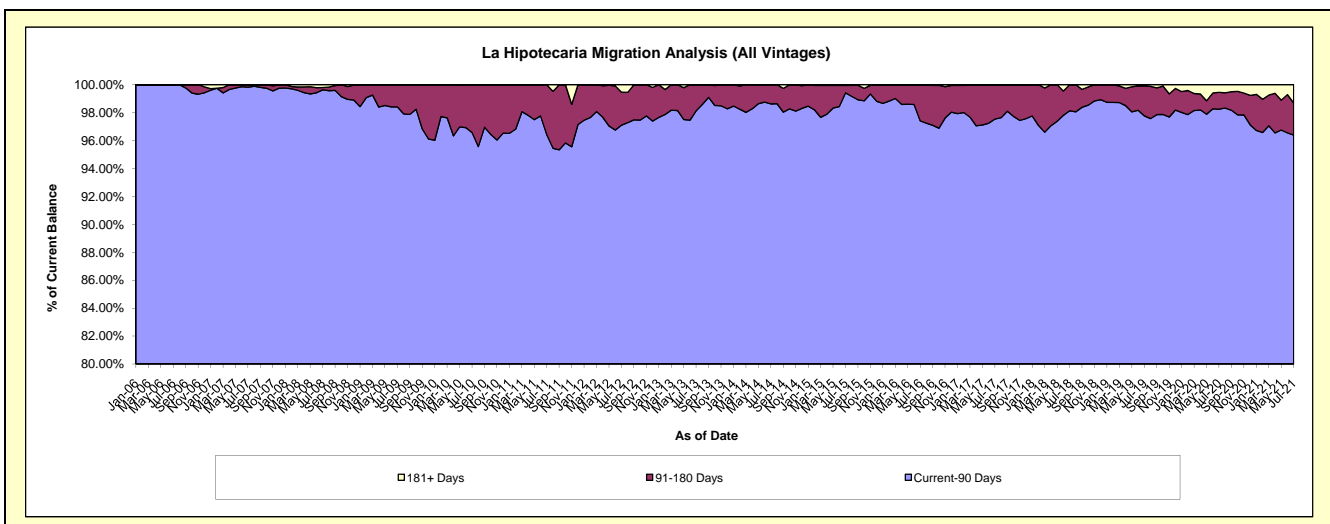
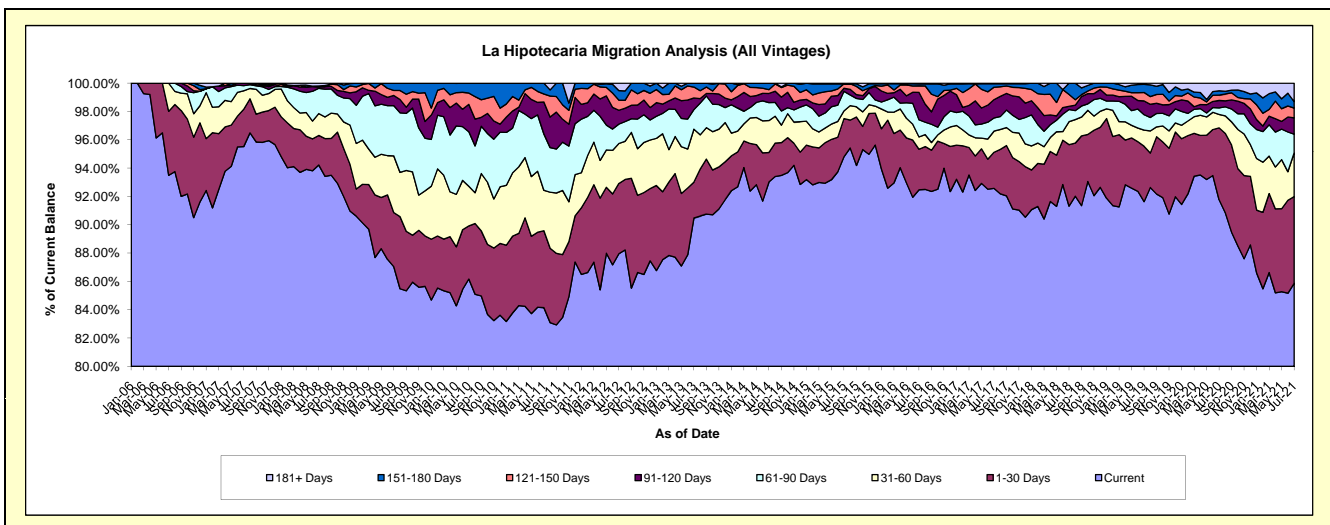
Delinquency Status (\$ of Current Balance)

Data Cutoff: 7/31/2021

Current Portfolio Balance	4,749,887.96	5,065,734.82	5,594,303.44	5,164,645.71	4,761,557.15	4,937,032.82	5,954,947.03	9,896,196.15	10,794,980.24	8,857,475.95
	Jul-12	Jul-13	Jul-14	Jul-15	Jul-16	Jul-17	Jul-18	Jul-19	Jul-20	Jul-21
Current	4,177,586.63	4,583,644.45	5,203,797.76	4,895,910.07	4,402,741.17	4,570,395.38	5,437,829.12	9,067,834.42	9,905,518.52	7,606,059.70
1-30 Days	236,003.06	128,307.78	116,657.13	139,579.54	136,665.49	125,552.30	258,644.50	387,490.12	548,528.29	541,696.08
31-60 Days	134,018.10	189,420.73	126,102.89	27,807.54	41,337.20	73,940.69	96,689.02	112,309.19	102,336.03	273,411.69
61-90 Days	64,819.26	69,834.23	70,835.17	71,394.06	57,543.25	45,859.51	50,989.68	108,062.15	49,746.65	116,980.80
91-120 Days	46,773.09	41,400.06	36,360.36	11,255.97	92,389.08	64,010.29	13,290.27	96,294.94	57,093.38	103,002.99
121-150 Days	33,739.98	39,226.91	14,751.23	16,342.50	21,740.95	43,255.23	50,304.10	59,059.56	41,331.02	60,388.23
151-180 Days	31,840.60	13,900.66	25,798.90	-	6,996.53	12,047.78	47,200.34	56,829.89	32,031.28	40,609.38
181+ Days	25,107.24	-	-	2,356.03	2,143.48	1,971.64	-	8,315.88	58,395.07	115,327.08

Delinquency Status (% of Current Balance)

Current Portfolio Balance	4,749,887.96	5,065,734.82	5,594,303.44	5,164,645.71	4,761,557.15	4,937,032.82	5,954,947.03	9,896,196.15	10,794,980.24	8,857,475.95
	Jul-12	Jul-13	Jul-14	Jul-15	Jul-16	Jul-17	Jul-18	Jul-19	Jul-20	Jul-21
Current	87.95%	90.48%	93.02%	94.80%	92.46%	92.57%	91.32%	91.63%	91.76%	85.87%
1-30 Days	4.97%	2.53%	2.09%	2.70%	2.87%	2.54%	4.34%	3.92%	5.08%	6.12%
31-60 Days	2.82%	3.74%	2.25%	0.54%	0.87%	1.50%	1.62%	1.13%	0.95%	3.09%
61-90 Days	1.36%	1.38%	1.27%	1.38%	1.21%	0.93%	0.86%	1.09%	0.46%	1.32%
91-120 Days	0.98%	0.82%	0.65%	0.22%	1.94%	1.30%	0.22%	0.97%	0.53%	1.16%
121-150 Days	0.71%	0.77%	0.26%	0.32%	0.46%	0.88%	0.84%	0.60%	0.38%	0.68%
151-180 Days	0.67%	0.27%	0.46%	0.00%	0.15%	0.24%	0.79%	0.57%	0.30%	0.46%
181+ Days	0.53%	0.00%	0.00%	0.05%	0.05%	0.04%	0.00%	0.08%	0.54%	1.30%
Current - 90 Days	97.11%	98.13%	98.63%	99.42%	97.41%	97.54%	98.14%	97.77%	98.25%	96.39%
91-180 Days	2.37%	1.87%	1.37%	0.53%	2.54%	2.42%	1.86%	2.14%	1.21%	2.30%



Personal Loans - La Hipotecaria El Salvador Migration Analysis (2006 Vintage)

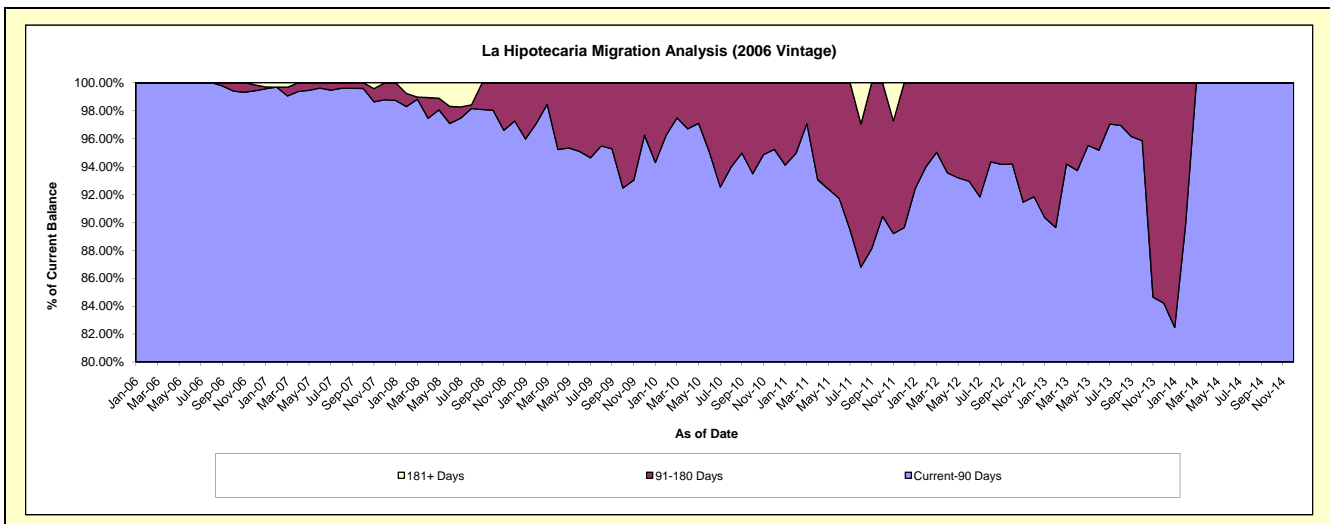
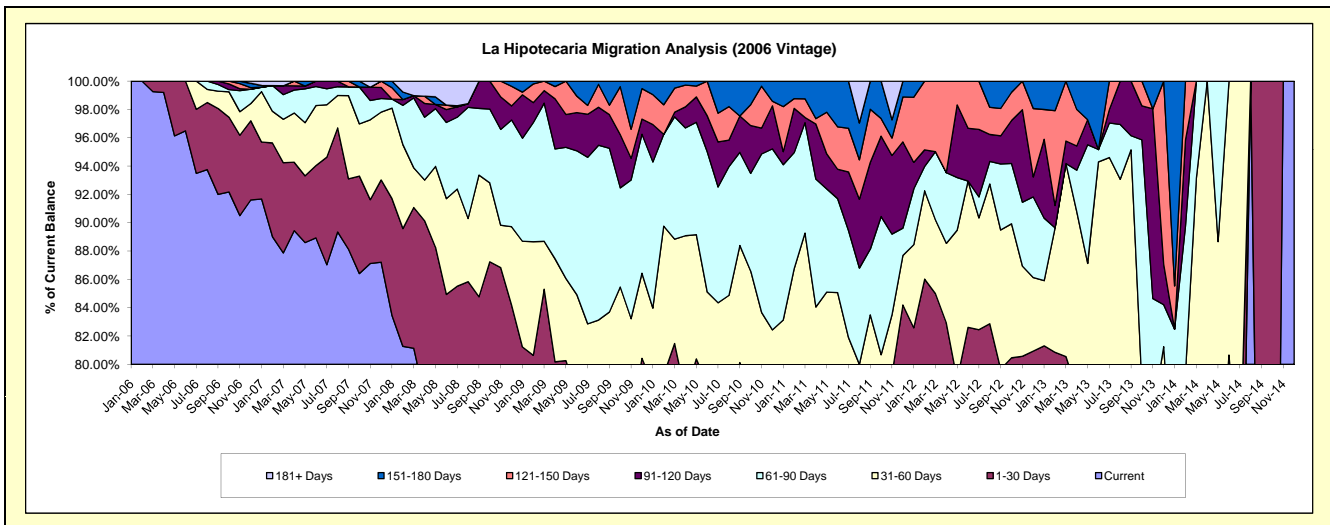
Delinquency Status (\$ of Current Balance)

Data Cutoff: 7/31/2021

Current Portfolio Balance	133,197.10	50,189.10	3,731.41	#N/A	#N/A	#N/A	#N/A	#N/A	#N/A	#N/A
	Jul-12	Jul-13	Jul-14	Jul-15	Jul-16	Jul-17	Jul-18	Jul-19	Jul-20	Jul-21
Current	99,810.57	31,886.63	2,036.27	#N/A	#N/A	#N/A	#N/A	#N/A	#N/A	#N/A
1-30 Days	10,011.57	5,917.41	641.70	#N/A	#N/A	#N/A	#N/A	#N/A	#N/A	#N/A
31-60 Days	10,513.86	9,677.00	1,053.44	#N/A	#N/A	#N/A	#N/A	#N/A	#N/A	#N/A
61-90 Days	1,972.27	1,223.33	-	#N/A	#N/A	#N/A	#N/A	#N/A	#N/A	#N/A
91-120 Days	6,349.64	480.86	-	#N/A	#N/A	#N/A	#N/A	#N/A	#N/A	#N/A
121-150 Days	4,539.19	1,003.87	-	#N/A	#N/A	#N/A	#N/A	#N/A	#N/A	#N/A
151-180 Days	-	-	-	#N/A	#N/A	#N/A	#N/A	#N/A	#N/A	#N/A
181+ Days	-	-	-	#N/A	#N/A	#N/A	#N/A	#N/A	#N/A	#N/A

Delinquency Status (% of Current Balance)

Current Portfolio Balance	133,197.10	50,189.10	3,731.41	#N/A	#N/A	#N/A	#N/A	#N/A	#N/A	#N/A
	Jul-12	Jul-13	Jul-14	Jul-15	Jul-16	Jul-17	Jul-18	Jul-19	Jul-20	Jul-21
Current	74.93%	63.53%	54.57%	#N/A	#N/A	#N/A	#N/A	#N/A	#N/A	#N/A
1-30 Days	7.52%	11.79%	17.20%	#N/A	#N/A	#N/A	#N/A	#N/A	#N/A	#N/A
31-60 Days	7.89%	19.28%	28.23%	#N/A	#N/A	#N/A	#N/A	#N/A	#N/A	#N/A
61-90 Days	1.48%	2.44%	0.00%	#N/A	#N/A	#N/A	#N/A	#N/A	#N/A	#N/A
91-120 Days	4.77%	0.96%	0.00%	#N/A	#N/A	#N/A	#N/A	#N/A	#N/A	#N/A
121-150 Days	3.41%	2.00%	0.00%	#N/A	#N/A	#N/A	#N/A	#N/A	#N/A	#N/A
151-180 Days	0.00%	0.00%	0.00%	#N/A	#N/A	#N/A	#N/A	#N/A	#N/A	#N/A
181+ Days	0.00%	0.00%	0.00%	#N/A	#N/A	#N/A	#N/A	#N/A	#N/A	#N/A
Current - 90 Days	91.83%	97.04%	100.00%	#N/A	#N/A	#N/A	#N/A	#N/A	#N/A	#N/A
91-180 Days	8.17%	2.96%	0.00%	#N/A	#N/A	#N/A	#N/A	#N/A	#N/A	#N/A



Personal Loans - La Hipotecaria El Salvador Migration Analysis (2007 Vintage)

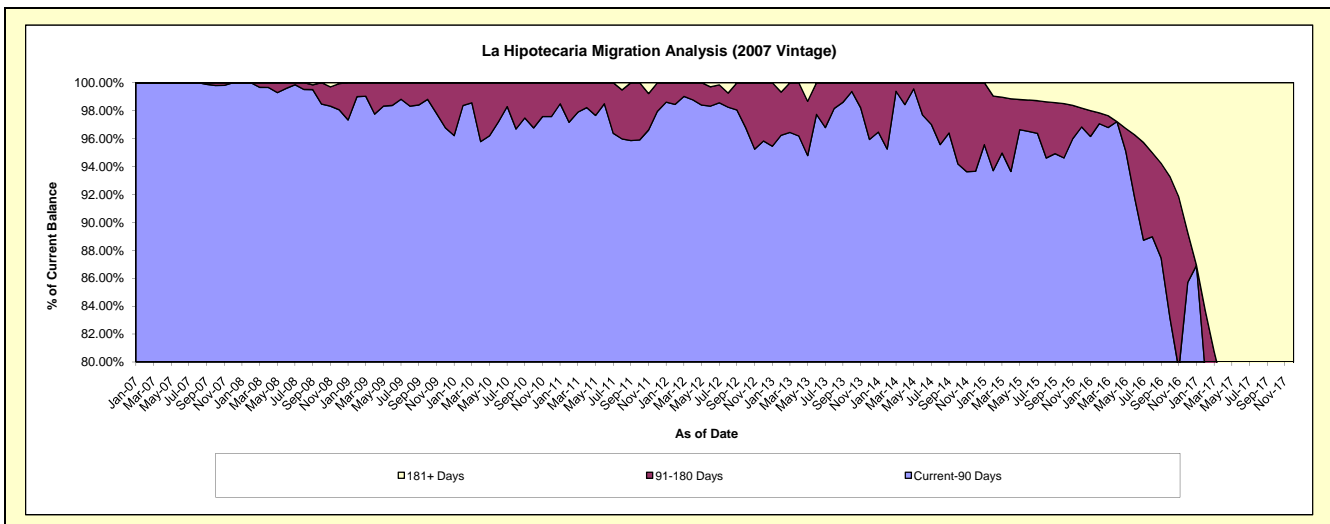
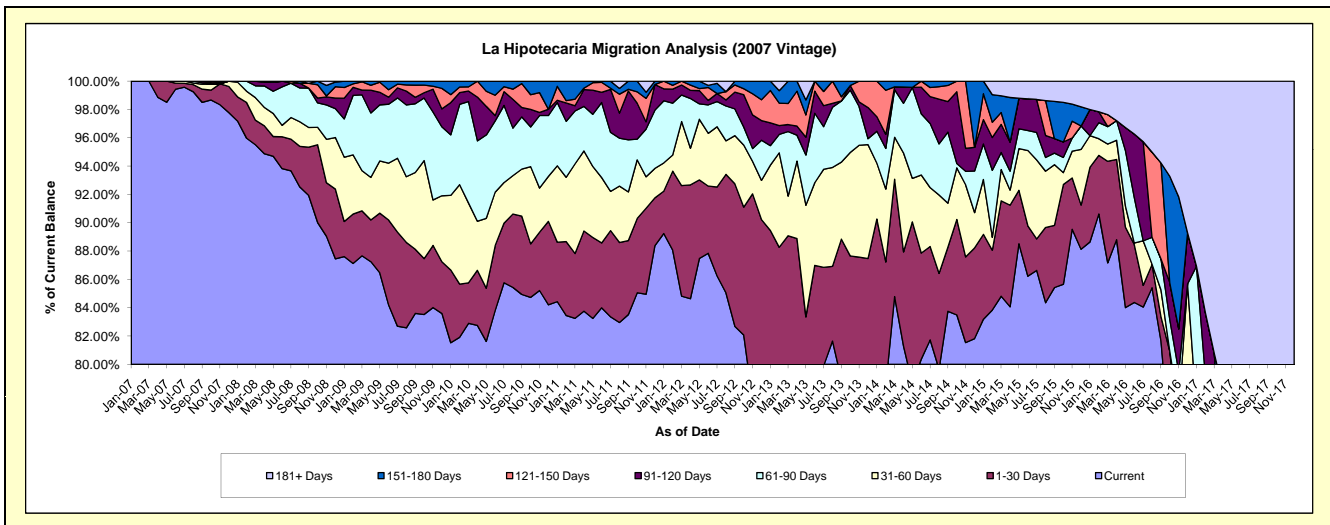
Delinquency Status (\$ of Current Balance)

Data Cutoff: 7/31/2021

Current Portfolio Balance	1,227,193.40	742,582.06	421,313.78	182,154.99	50,160.31	4,751.42	#N/A	#N/A	#N/A	#N/A
	Jul-12	Jul-13	Jul-14	Jul-15	Jul-16	Jul-17	Jul-18	Jul-19	Jul-20	Jul-21
Current	1,058,452.98	593,276.13	344,345.61	157,813.25	42,158.70	659.15	#N/A	#N/A	#N/A	#N/A
1-30 Days	77,009.01	51,712.14	27,762.26	4,039.83	767.23	145.82	#N/A	#N/A	#N/A	#N/A
31-60 Days	52,215.22	51,360.49	17,510.24	10,165.78	1,578.39	1,974.81	#N/A	#N/A	#N/A	#N/A
61-90 Days	21,851.46	22,384.06	19,101.01	3,534.97	-	-	#N/A	#N/A	#N/A	#N/A
91-120 Days	6,979.90	11,012.43	8,011.55	4,245.13	3,512.51	-	#N/A	#N/A	#N/A	#N/A
121-150 Days	-	7,420.40	2,692.18	-	-	-	#N/A	#N/A	#N/A	#N/A
151-180 Days	8,744.74	5,416.41	1,890.93	-	-	-	#N/A	#N/A	#N/A	#N/A
181+ Days	1,940.09	-	-	2,356.03	2,143.48	1,971.64	#N/A	#N/A	#N/A	#N/A

Delinquency Status (% of Current Balance)

Current Portfolio Balance	1,227,193.40	742,582.06	421,313.78	182,154.99	50,160.31	4,751.42	#N/A	#N/A	#N/A	#N/A
	Jul-12	Jul-13	Jul-14	Jul-15	Jul-16	Jul-17	Jul-18	Jul-19	Jul-20	Jul-21
Current	86.25%	79.89%	81.73%	86.64%	84.05%	13.87%	#N/A	#N/A	#N/A	#N/A
1-30 Days	6.28%	6.96%	6.59%	2.22%	1.53%	3.07%	#N/A	#N/A	#N/A	#N/A
31-60 Days	4.25%	6.92%	4.16%	5.58%	3.15%	41.56%	#N/A	#N/A	#N/A	#N/A
61-90 Days	1.76%	3.01%	4.53%	1.94%	0.00%	0.00%	#N/A	#N/A	#N/A	#N/A
91-120 Days	0.57%	1.48%	1.90%	2.33%	7.00%	0.00%	#N/A	#N/A	#N/A	#N/A
121-150 Days	0.00%	1.00%	0.64%	0.00%	0.00%	0.00%	#N/A	#N/A	#N/A	#N/A
151-180 Days	0.71%	0.73%	0.45%	0.00%	0.00%	0.00%	#N/A	#N/A	#N/A	#N/A
181+ Days	0.16%	0.00%	0.00%	1.29%	4.27%	41.50%	#N/A	#N/A	#N/A	#N/A
Current - 90 Days	98.56%	96.79%	97.01%	96.38%	88.72%	58.50%	#N/A	#N/A	#N/A	#N/A
91-180 Days	1.28%	3.21%	2.99%	2.33%	7.00%	0.00%	#N/A	#N/A	#N/A	#N/A



Personal Loans - La Hipotecaria El Salvador Migration Analysis (2008 Vintage)

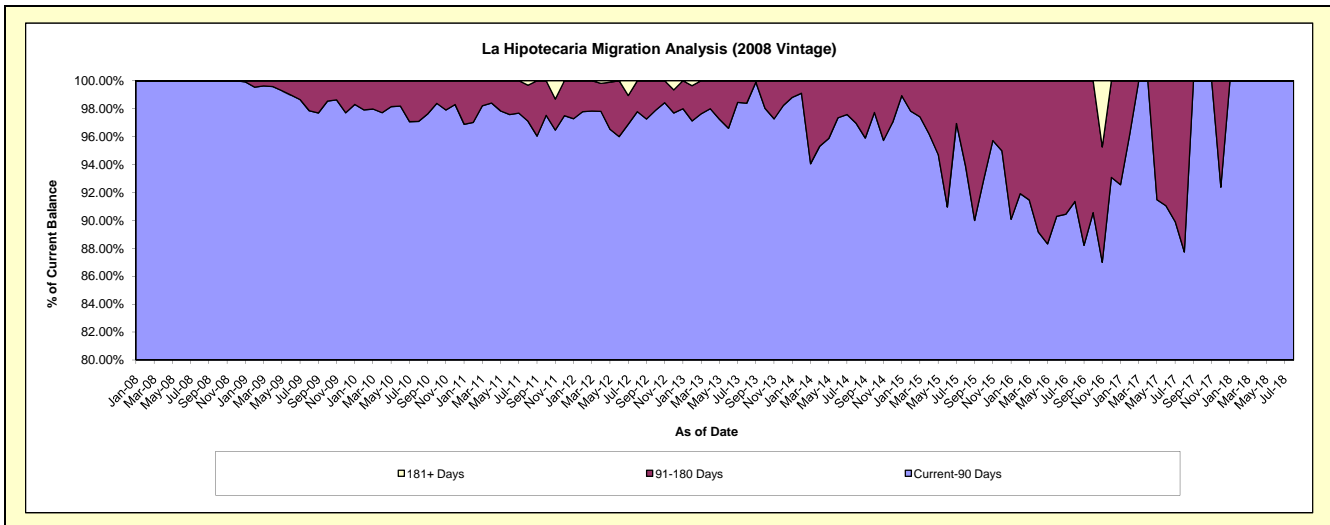
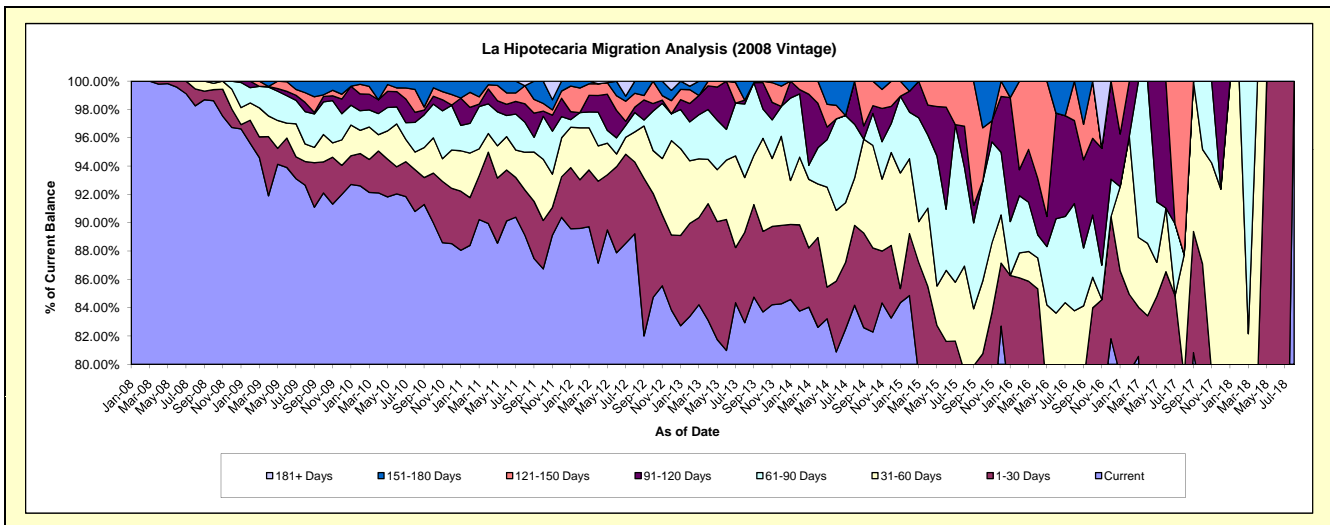
Delinquency Status (\$ of Current Balance)

Data Cutoff: 7/31/2021

Current Portfolio Balance	1,700,447.98	1,138,529.87	712,244.51	355,243.75	139,516.16	37,276.09	653.09	#N/A	#N/A	#N/A
	Jul-12	Jul-13	Jul-14	Jul-15	Jul-16	Jul-17	Jul-18	Jul-19	Jul-20	Jul-21
Current	1,505,596.98	960,372.62	587,406.66	277,612.91	105,375.76	27,050.55	391.84	#N/A	#N/A	#N/A
1-30 Days	107,123.58	44,377.46	33,553.10	12,434.98	-	4,580.72	261.25	#N/A	#N/A	#N/A
31-60 Days	20,365.98	73,702.86	30,097.46	14,756.08	12,320.47	-	-	#N/A	#N/A	#N/A
61-90 Days	14,373.17	42,400.94	43,946.94	39,540.09	8,488.28	1,885.69	-	#N/A	#N/A	#N/A
91-120 Days	4,903.44	-	-	-	9,933.61	-	-	#N/A	#N/A	#N/A
121-150 Days	24,070.09	16,625.11	-	10,899.69	-	3,759.13	-	#N/A	#N/A	#N/A
151-180 Days	5,987.94	1,050.88	17,240.35	-	3,398.04	-	-	#N/A	#N/A	#N/A
181+ Days	18,026.80	-	-	-	-	-	-	#N/A	#N/A	#N/A

Delinquency Status (% of Current Balance)

Current Portfolio Balance	1,700,447.98	1,138,529.87	712,244.51	355,243.75	139,516.16	37,276.09	653.09	#N/A	#N/A	#N/A
	Jul-12	Jul-13	Jul-14	Jul-15	Jul-16	Jul-17	Jul-18	Jul-19	Jul-20	Jul-21
Current	88.54%	84.35%	82.47%	78.15%	75.53%	72.57%	60.00%	#N/A	#N/A	#N/A
1-30 Days	6.30%	3.90%	4.71%	3.50%	0.00%	12.29%	40.00%	#N/A	#N/A	#N/A
31-60 Days	1.20%	6.47%	4.23%	4.15%	8.83%	0.00%	0.00%	#N/A	#N/A	#N/A
61-90 Days	0.85%	3.72%	6.17%	11.13%	6.08%	5.06%	0.00%	#N/A	#N/A	#N/A
91-120 Days	0.29%	0.00%	0.00%	0.00%	7.12%	0.00%	0.00%	#N/A	#N/A	#N/A
121-150 Days	1.42%	1.46%	0.00%	3.07%	0.00%	10.08%	0.00%	#N/A	#N/A	#N/A
151-180 Days	0.35%	0.09%	2.42%	0.00%	2.44%	0.00%	0.00%	#N/A	#N/A	#N/A
181+ Days	1.06%	0.00%	0.00%	0.00%	0.00%	0.00%	0.00%	#N/A	#N/A	#N/A
Current - 90 Days	96.88%	98.45%	97.58%	96.93%	90.44%	89.92%	100.00%	#N/A	#N/A	#N/A
91-180 Days	2.06%	1.55%	2.42%	3.07%	9.56%	10.08%	0.00%	#N/A	#N/A	#N/A



Personal Loans - La Hipotecaria El Salvador Migration Analysis (2009 Vintage)

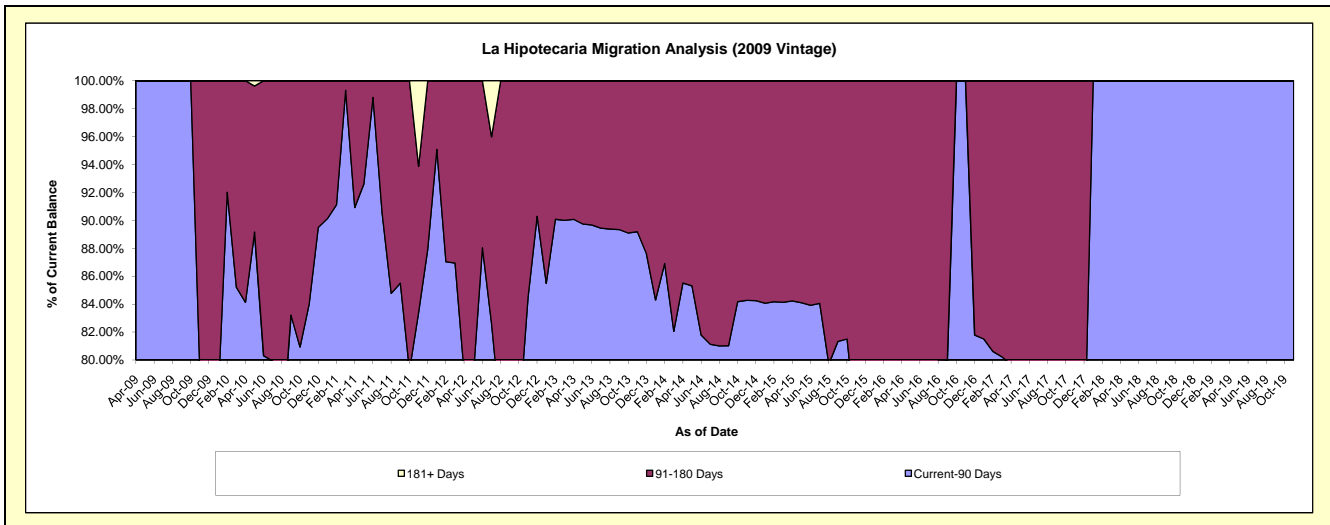
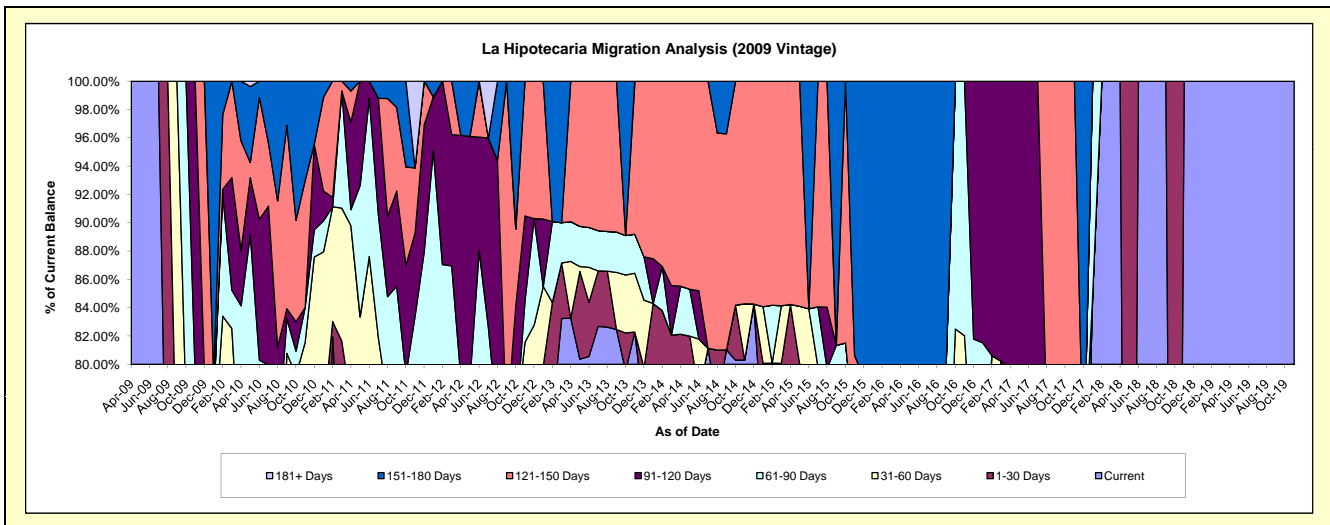
Delinquency Status (\$ of Current Balance)

Data Cutoff: 7/31/2021

Current Portfolio Balance	128,040.40	85,054.58	47,438.67	34,152.09	17,421.58	10,155.34	532.86	181.23	#N/A	#N/A
	Jul-12	Jul-13	Jul-14	Jul-15	Jul-16	Jul-17	Jul-18	Jul-19	Jul-20	Jul-21
Current	77,348.02	70,323.95	38,488.47	24,998.34	11,555.93	815.19	532.86	181.23	#N/A	#N/A
1-30 Days	6,231.75	3,333.47	-	2,267.16	-	7,072.99	-	-	#N/A	#N/A
31-60 Days	9,852.91	-	-	-	-	-	-	-	#N/A	#N/A
61-90 Days	12,350.72	2,420.22	-	1,443.78	2,267.16	-	-	-	#N/A	#N/A
91-120 Days	17,116.65	-	-	-	-	2,267.16	-	-	#N/A	#N/A
121-150 Days	-	8,976.94	8,950.20	5,442.81	-	-	-	-	#N/A	#N/A
151-180 Days	-	-	-	-	3,598.49	-	-	-	#N/A	#N/A
181+ Days	5,140.35	-	-	-	-	-	-	-	#N/A	#N/A

Delinquency Status (% of Current Balance)

Current Portfolio Balance	128,040.40	85,054.58	47,438.67	34,152.09	17,421.58	10,155.34	532.86	181.23	#N/A	#N/A
	Jul-12	Jul-13	Jul-14	Jul-15	Jul-16	Jul-17	Jul-18	Jul-19	Jul-20	Jul-21
Current	60.41%	82.68%	81.13%	73.20%	66.33%	8.03%	100.00%	100.00%	#N/A	#N/A
1-30 Days	4.87%	3.92%	0.00%	6.64%	0.00%	69.65%	0.00%	0.00%	#N/A	#N/A
31-60 Days	7.70%	0.00%	0.00%	0.00%	0.00%	0.00%	0.00%	0.00%	#N/A	#N/A
61-90 Days	9.65%	2.85%	0.00%	4.23%	13.01%	0.00%	0.00%	0.00%	#N/A	#N/A
91-120 Days	13.37%	0.00%	0.00%	0.00%	0.00%	22.32%	0.00%	0.00%	#N/A	#N/A
121-150 Days	0.00%	10.55%	18.87%	15.94%	0.00%	0.00%	0.00%	0.00%	#N/A	#N/A
151-180 Days	0.00%	0.00%	0.00%	0.00%	20.66%	0.00%	0.00%	0.00%	#N/A	#N/A
181+ Days	4.01%	0.00%	0.00%	0.00%	0.00%	0.00%	0.00%	0.00%	#N/A	#N/A
Current - 90 Days	82.62%	89.45%	81.13%	84.06%	79.34%	77.68%	100.00%	100.00%	#N/A	#N/A
91-180 Days	13.37%	10.55%	18.87%	15.94%	20.66%	22.32%	0.00%	0.00%	#N/A	#N/A



Personal Loans - La Hipotecaria El Salvador Migration Analysis (2010 Vintage)

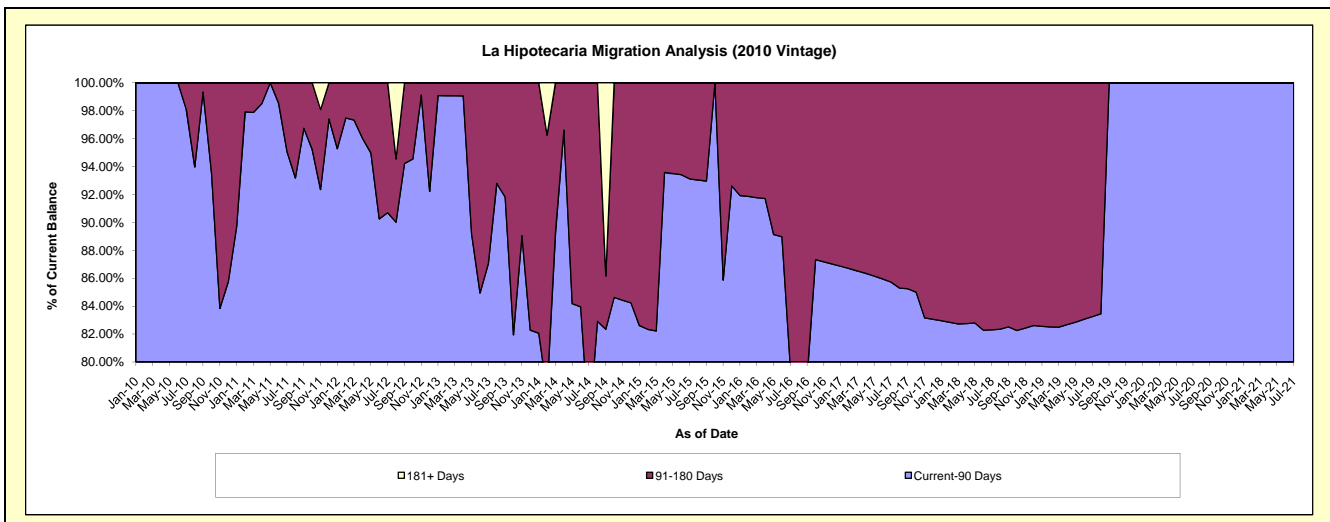
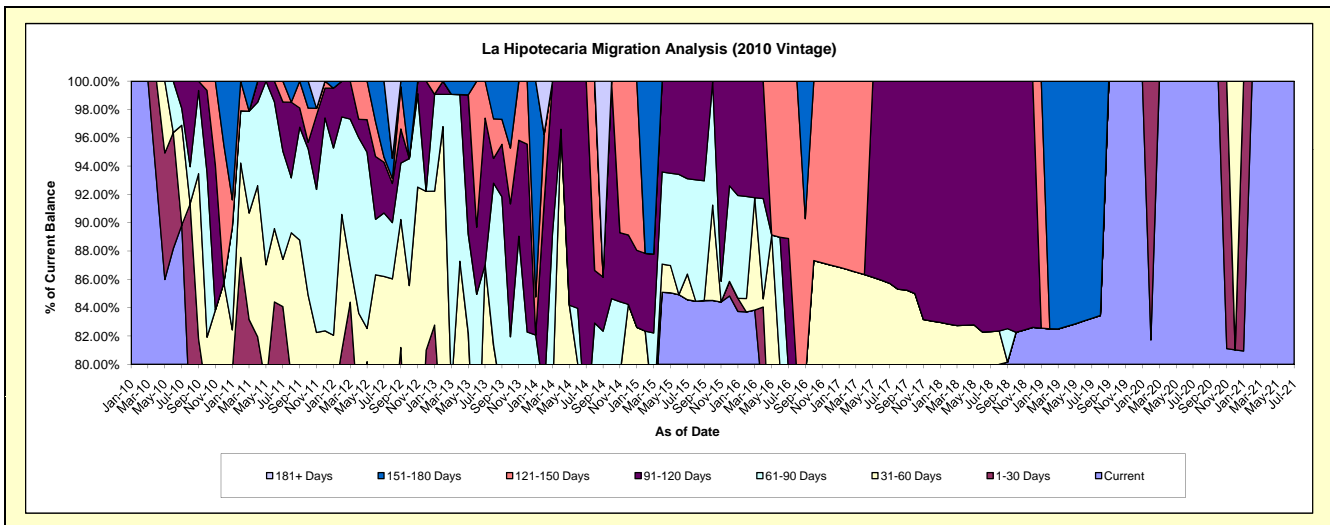
Delinquency Status (\$ of Current Balance)

Data Cutoff: 7/31/2021

Current Portfolio Balance	318,635.87	199,149.44	114,429.05	55,499.24	31,405.20	21,534.25	14,836.29	13,465.21	10,622.09	9,982.70
	Jul-12	Jul-13	Jul-14	Jul-15	Jul-16	Jul-17	Jul-18	Jul-19	Jul-20	Jul-21
Current	202,262.48	107,194.89	69,482.30	46,932.97	22,235.90	16,819.65	11,771.10	11,210.41	10,622.09	9,982.70
1-30 Days	34,953.69	13,564.01	11,979.44	-	-	-	-	-	-	-
31-60 Days	37,485.98	52,594.91	4,618.50	1,004.21	2,738.95	1,640.87	440.50	-	-	-
61-90 Days	14,271.64	-	-	3,740.18	-	-	-	-	-	-
91-120 Days	11,423.46	20,595.04	28,348.81	3,821.88	2,939.46	3,073.73	2,624.69	-	-	-
121-150 Days	1,130.70	5,200.59	-	-	3,490.89	-	-	-	-	-
151-180 Days	17,107.92	-	-	-	-	-	-	2,254.80	-	-
181+ Days	-	-	-	-	-	-	-	-	-	-

Delinquency Status (% of Current Balance)

Current Portfolio Balance	318,635.87	199,149.44	114,429.05	55,499.24	31,405.20	21,534.25	14,836.29	13,465.21	10,622.09	9,982.70
	Jul-12	Jul-13	Jul-14	Jul-15	Jul-16	Jul-17	Jul-18	Jul-19	Jul-20	Jul-21
Current	63.48%	53.83%	60.72%	84.57%	70.80%	78.11%	79.34%	83.25%	100.00%	100.00%
1-30 Days	10.97%	6.81%	10.47%	0.00%	0.00%	0.00%	0.00%	0.00%	0.00%	0.00%
31-60 Days	11.76%	26.41%	4.04%	1.81%	8.72%	7.62%	2.97%	0.00%	0.00%	0.00%
61-90 Days	4.48%	0.00%	0.00%	6.74%	0.00%	0.00%	0.00%	0.00%	0.00%	0.00%
91-120 Days	3.59%	10.34%	24.77%	6.89%	9.36%	14.27%	17.69%	0.00%	0.00%	0.00%
121-150 Days	0.35%	2.61%	0.00%	0.00%	11.12%	0.00%	0.00%	0.00%	0.00%	0.00%
151-180 Days	5.37%	0.00%	0.00%	0.00%	0.00%	0.00%	0.00%	16.75%	0.00%	0.00%
181+ Days	0.00%	0.00%	0.00%	0.00%	0.00%	0.00%	0.00%	0.00%	0.00%	0.00%
Current - 90 Days	90.69%	87.05%	75.23%	93.11%	79.52%	85.73%	82.31%	83.25%	100.00%	100.00%
91-180 Days	9.31%	12.95%	24.77%	6.89%	20.48%	14.27%	17.69%	16.75%	0.00%	0.00%



Personal Loans - La Hipotecaria El Salvador Migration Analysis (2011 Vintage)

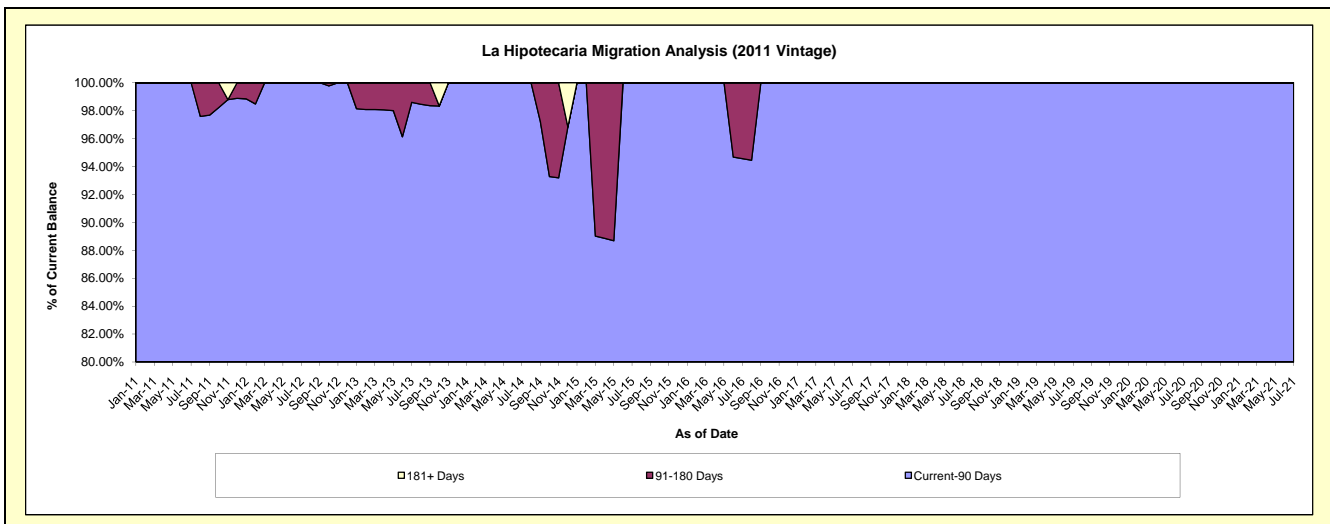
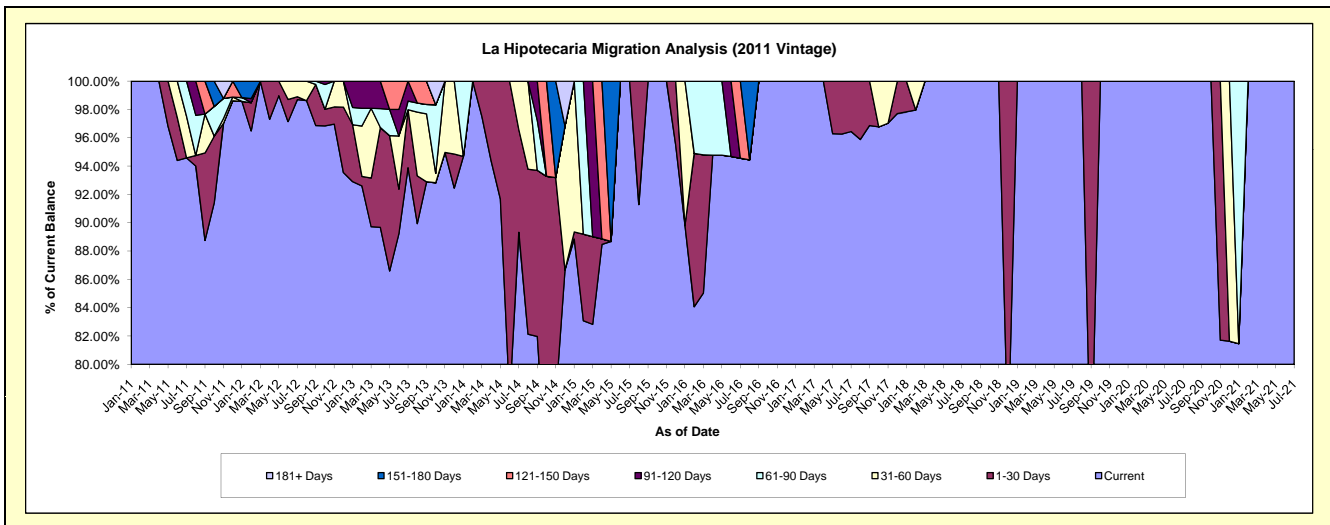
Delinquency Status (\$ of Current Balance)

Data Cutoff: 7/31/2021

Current Portfolio Balance	325,090.56	229,427.07	148,547.75	97,233.30	67,413.80	45,779.56	26,543.58	22,172.96	17,468.02	12,313.65
	Jul-12	Jul-13	Jul-14	Jul-15	Jul-16	Jul-17	Jul-18	Jul-19	Jul-20	Jul-21
Current	320,832.95	215,398.43	132,690.54	97,233.30	63,747.37	44,150.18	26,543.58	22,172.96	17,468.02	12,313.65
1-30 Days	673.46	9,403.29	10,797.40	-	-	1,629.38	-	-	-	-
31-60 Days	3,584.15	-	5,059.81	-	-	-	-	-	-	-
61-90 Days	-	1,405.68	-	-	-	-	-	-	-	-
91-120 Days	-	3,219.67	-	-	-	-	-	-	-	-
121-150 Days	-	-	-	-	3,666.43	-	-	-	-	-
151-180 Days	-	-	-	-	-	-	-	-	-	-
181+ Days	-	-	-	-	-	-	-	-	-	-

Delinquency Status (% of Current Balance)

Current Portfolio Balance	325,090.56	229,427.07	148,547.75	97,233.30	67,413.80	45,779.56	26,543.58	22,172.96	17,468.02	12,313.65
	Jul-12	Jul-13	Jul-14	Jul-15	Jul-16	Jul-17	Jul-18	Jul-19	Jul-20	Jul-21
Current	98.69%	93.89%	89.33%	100.00%	94.56%	96.44%	100.00%	100.00%	100.00%	100.00%
1-30 Days	0.21%	4.10%	7.27%	0.00%	0.00%	3.56%	0.00%	0.00%	0.00%	0.00%
31-60 Days	1.10%	0.00%	3.41%	0.00%	0.00%	0.00%	0.00%	0.00%	0.00%	0.00%
61-90 Days	0.00%	0.61%	0.00%	0.00%	0.00%	0.00%	0.00%	0.00%	0.00%	0.00%
91-120 Days	0.00%	1.40%	0.00%	0.00%	0.00%	0.00%	0.00%	0.00%	0.00%	0.00%
121-150 Days	0.00%	0.00%	0.00%	0.00%	5.44%	0.00%	0.00%	0.00%	0.00%	0.00%
151-180 Days	0.00%	0.00%	0.00%	0.00%	0.00%	0.00%	0.00%	0.00%	0.00%	0.00%
181+ Days	0.00%	0.00%	0.00%	0.00%	0.00%	0.00%	0.00%	0.00%	0.00%	0.00%
Current - 90 Days	100.00%	98.60%	100.00%	100.00%	94.56%	100.00%	100.00%	100.00%	100.00%	100.00%
91-180 Days	0.00%	1.40%	0.00%	0.00%	5.44%	0.00%	0.00%	0.00%	0.00%	0.00%



Personal Loans - La Hipotecaria El Salvador Migration Analysis (2012 Vintage)

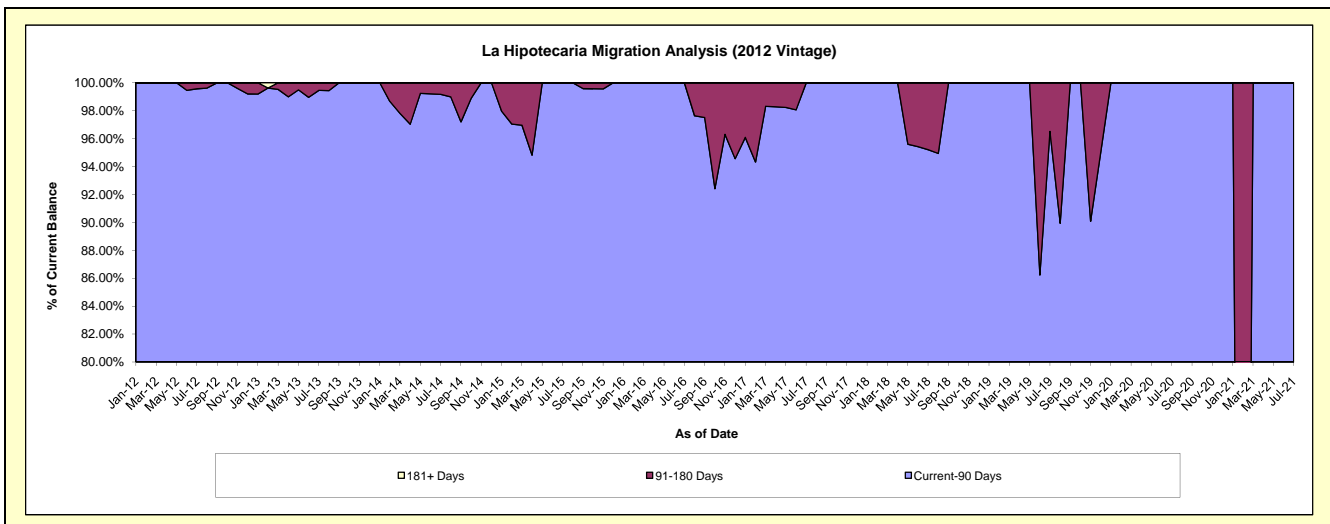
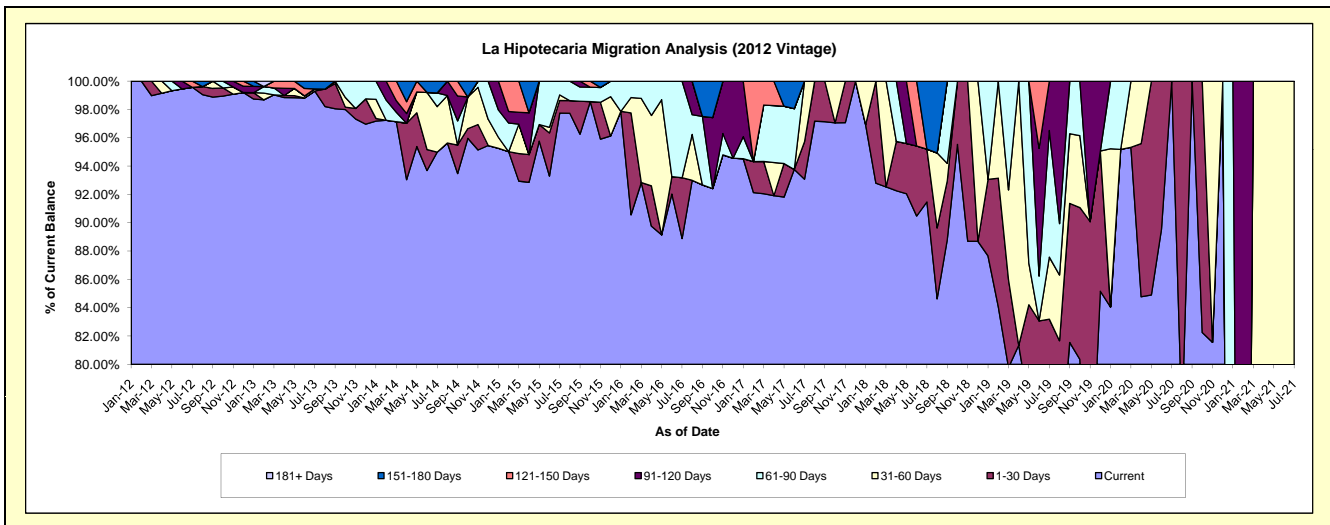
Delinquency Status (\$ of Current Balance)

Data Cutoff: 7/31/2021

Current Portfolio Balance	917,282.65	1,361,094.64	803,997.88	478,581.07	296,098.57	174,052.50	104,007.54	37,384.89	3,584.16	1,269.16
	Jul-12	Jul-13	Jul-14	Jul-15	Jul-16	Jul-17	Jul-18	Jul-19	Jul-20	Jul-21
Current	913,282.65	1,351,575.80	763,695.24	467,783.61	263,185.45	161,996.70	95,137.07	28,107.78	3,584.16	-
1-30 Days	-	-	-	4,257.06	12,727.89	4,607.88	3,881.30	2,992.66	-	-
31-60 Days	-	2,085.47	25,847.80	1,881.47	-	7,447.92	-	1,638.26	-	1,269.16
61-90 Days	-	-	7,787.22	4,658.93	20,185.23	-	-	3,343.66	-	-
91-120 Days	-	-	-	-	-	-	-	1,302.53	-	-
121-150 Days	4,000.00	-	-	-	-	-	-	-	-	-
151-180 Days	-	7,433.37	6,667.62	-	-	-	4,989.17	-	-	-
181+ Days	-	-	-	-	-	-	-	-	-	-

Delinquency Status (% of Current Balance)

Current Portfolio Balance	917,282.65	1,361,094.64	803,997.88	478,581.07	296,098.57	174,052.50	104,007.54	37,384.89	3,584.16	1,269.16
	Jul-12	Jul-13	Jul-14	Jul-15	Jul-16	Jul-17	Jul-18	Jul-19	Jul-20	Jul-21
Current	99.56%	99.30%	94.99%	97.74%	88.88%	93.07%	91.47%	75.18%	100.00%	0.00%
1-30 Days	0.00%	0.00%	0.00%	0.89%	4.30%	2.65%	3.73%	8.00%	0.00%	0.00%
31-60 Days	0.00%	0.15%	3.21%	0.39%	0.00%	4.28%	0.00%	4.38%	0.00%	100.00%
61-90 Days	0.00%	0.00%	0.97%	0.97%	6.82%	0.00%	0.00%	8.94%	0.00%	0.00%
91-120 Days	0.00%	0.00%	0.00%	0.00%	0.00%	0.00%	0.00%	3.48%	0.00%	0.00%
121-150 Days	0.44%	0.00%	0.00%	0.00%	0.00%	0.00%	0.00%	0.00%	0.00%	0.00%
151-180 Days	0.00%	0.55%	0.83%	0.00%	0.00%	0.00%	4.80%	0.00%	0.00%	0.00%
181+ Days	0.00%	0.00%	0.00%	0.00%	0.00%	0.00%	0.00%	0.00%	0.00%	0.00%
Current - 90 Days	99.56%	99.45%	99.17%	100.00%	100.00%	100.00%	95.20%	96.52%	100.00%	100.00%
91-180 Days	0.44%	0.55%	0.83%	0.00%	0.00%	0.00%	4.80%	3.48%	0.00%	0.00%



Personal Loans - La Hipotecaria El Salvador Migration Analysis (2013 Vintage)

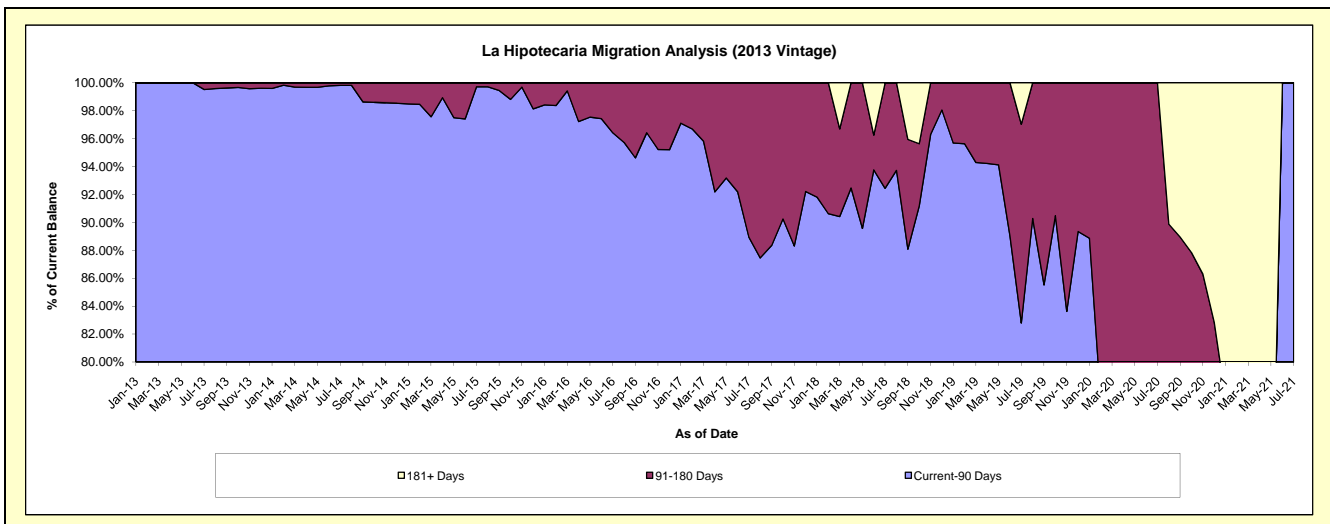
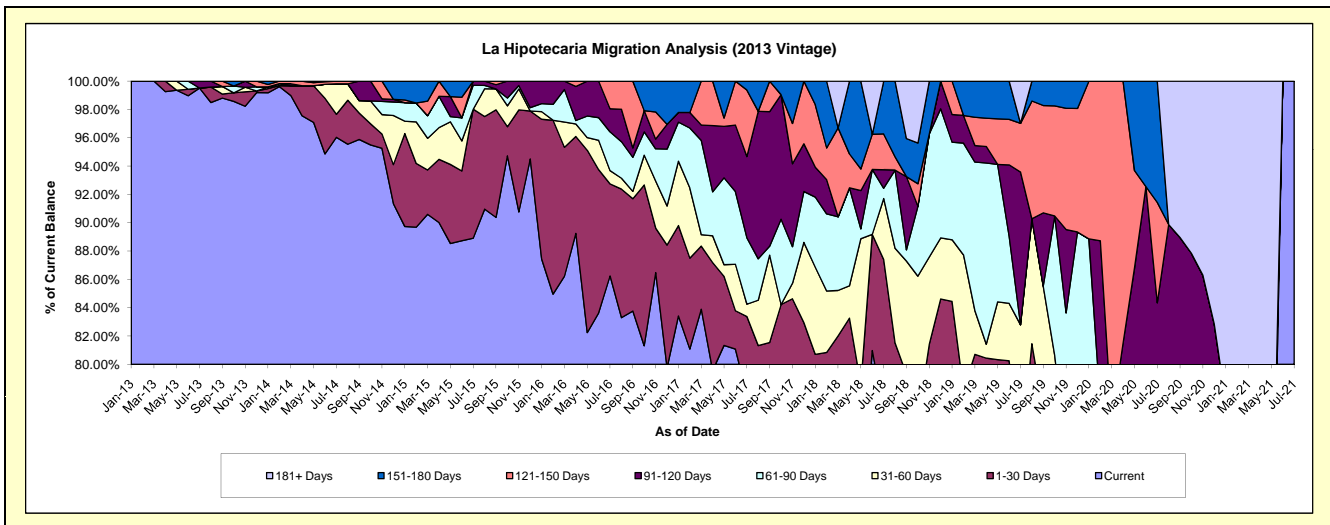
Delinquency Status (\$ of Current Balance)

Data Cutoff: 7/31/2021

Current Portfolio Balance	-	1,259,708.06	1,643,591.56	1,093,548.82	748,904.68	535,143.54	319,985.50	164,037.34	53,334.29	3,347.35
	Jul-13	Jul-14	Jul-15	Jul-16	Jul-17	Jul-18	Jul-19	Jul-20	Jul-21	
Current	1,253,616.00	1,578,469.44	972,273.81	645,887.20	416,623.12	244,977.21	110,404.57	34,529.27	3,347.35	
1-30 Days	-	26,646.30	99,609.94	48,701.54	29,580.41	34,682.72	9,911.81	2,426.56	-	
31-60 Days	-	35,366.97	-	7,037.57	4,651.30	13,791.75	15,502.54	922.77	-	
61-90 Days	-	-	18,476.11	20,476.07	25,110.29	2,347.13	-	1,007.46	-	
91-120 Days	6,092.06	-	3,188.96	12,218.67	30,698.15	4,182.12	17,693.24	6,098.78	-	
121-150 Days	-	3,108.85	-	14,583.63	25,140.42	8,075.99	5,644.04	3,781.40	-	
151-180 Days	-	-	-	-	3,339.85	11,928.58	-	4,568.05	-	
181+ Days	-	-	-	-	-	-	4,881.14	-	-	

Delinquency Status (% of Current Balance)

Current Portfolio Balance	-	1,259,708.06	1,643,591.56	1,093,548.82	748,904.68	535,143.54	319,985.50	164,037.34	53,334.29	3,347.35
	Jul-13	Jul-14	Jul-15	Jul-16	Jul-17	Jul-18	Jul-19	Jul-20	Jul-21	
Current	99.52%	96.04%	88.91%	86.24%	77.85%	76.56%	67.30%	64.74%	100.00%	
1-30 Days	0.00%	1.62%	9.11%	6.50%	5.53%	10.84%	6.04%	4.55%	0.00%	
31-60 Days	0.00%	2.15%	0.00%	0.94%	0.87%	4.31%	9.45%	1.73%	0.00%	
61-90 Days	0.00%	0.00%	1.63%	2.73%	4.69%	0.73%	0.00%	1.89%	0.00%	
91-120 Days	0.48%	0.00%	0.29%	1.63%	5.74%	1.31%	10.79%	11.44%	0.00%	
121-150 Days	0.00%	0.19%	0.00%	1.95%	4.70%	2.52%	3.44%	7.09%	0.00%	
151-180 Days	0.00%	0.00%	0.00%	0.00%	0.62%	3.73%	0.00%	8.56%	0.00%	
181+ Days	0.00%	0.00%	0.00%	0.00%	0.00%	0.00%	2.98%	0.00%	0.00%	
Current - 90 Days	99.52%	99.81%	99.71%	96.42%	88.94%	92.44%	82.80%	72.91%	100.00%	
91-180 Days	0.48%	0.19%	0.29%	3.58%	11.06%	7.56%	14.23%	27.09%	0.00%	



Personal Loans - La Hipotecaria El Salvador Migration Analysis (2014 Vintage)

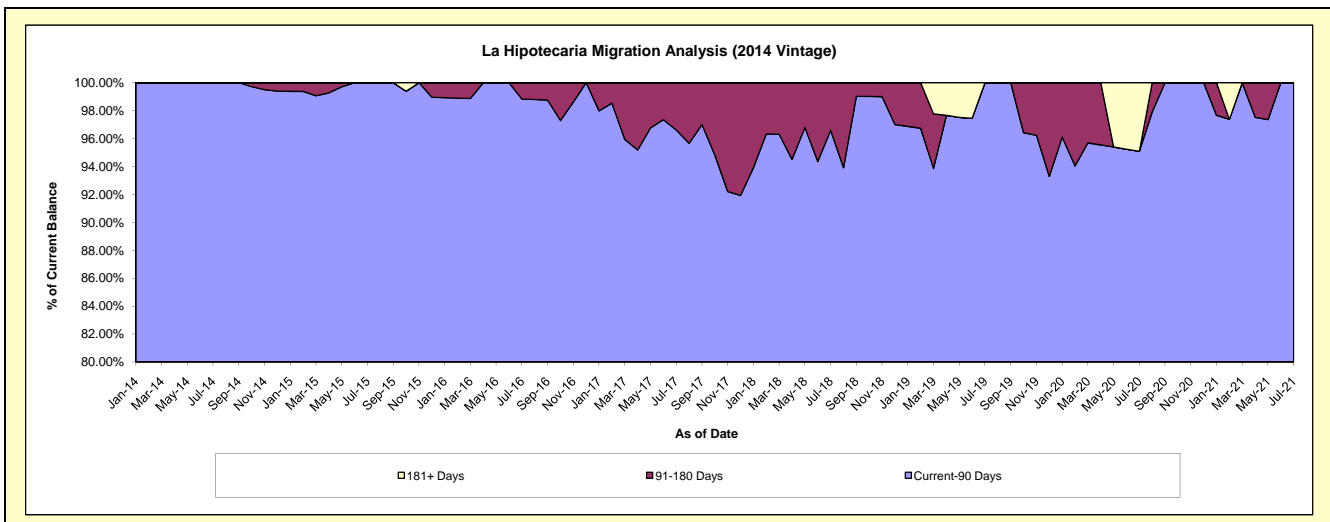
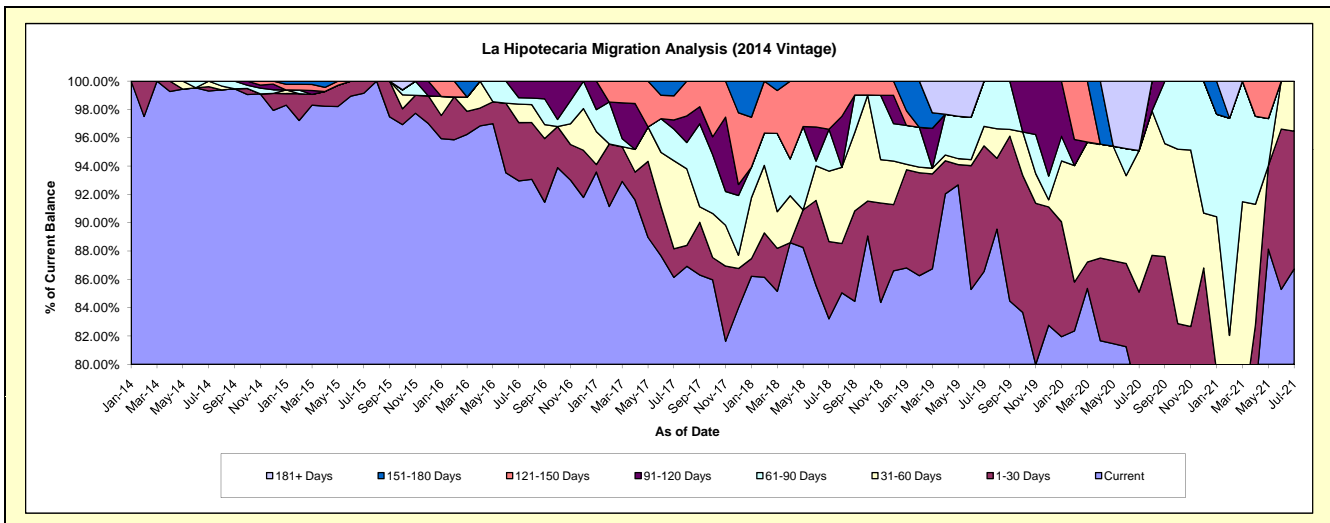
Delinquency Status (\$ of Current Balance)

Data Cutoff: 7/31/2021

Current Portfolio Balance	-	-	1,699,008.83	1,991,094.51	1,356,888.28	842,930.80	505,777.91	317,138.11	181,859.50	61,471.56
	Jul-14	Jul-15	Jul-16	Jul-17	Jul-18	Jul-19	Jul-20	Jul-21		
Current	1,687,183.23	1,974,123.94	1,261,332.36	726,145.19	420,883.40	274,507.54	140,923.33	53,323.35		
1-30 Days	5,276.93	16,970.57	55,851.94	17,020.54	27,617.25	28,138.07	13,851.52	5,978.14		
31-60 Days	6,548.67	-	17,661.82	52,384.96	25,149.60	4,373.39	18,165.54	2,170.07		
61-90 Days	-	-	6,126.51	18,863.53	14,944.47	10,119.11	-	-		
91-120 Days	-	-	15,915.65	5,452.97	-	-	-	-		
121-150 Days	-	-	-	14,355.68	17,183.19	-	-	-		
151-180 Days	-	-	-	8,707.93	-	-	-	-		
181+ Days	-	-	-	-	-	-	8,919.11	-		

Delinquency Status (% of Current Balance)

Current Portfolio Balance	-	-	1,699,008.83	1,991,094.51	1,356,888.28	842,930.80	505,777.91	317,138.11	181,859.50	61,471.56
	Jul-14	Jul-15	Jul-16	Jul-17	Jul-18	Jul-19	Jul-20	Jul-21		
Current	99.30%	99.15%	92.96%	86.15%	83.22%	86.56%	77.49%	86.74%		
1-30 Days	0.31%	0.85%	4.12%	2.02%	5.46%	8.87%	7.62%	9.73%		
31-60 Days	0.39%	0.00%	1.30%	6.21%	4.97%	1.38%	9.99%	3.53%		
61-90 Days	0.00%	0.00%	0.45%	2.24%	2.95%	3.19%	0.00%	0.00%		
91-120 Days	0.00%	0.00%	1.17%	0.65%	0.00%	0.00%	0.00%	0.00%		
121-150 Days	0.00%	0.00%	0.00%	1.70%	3.40%	0.00%	0.00%	0.00%		
151-180 Days	0.00%	0.00%	0.00%	1.03%	0.00%	0.00%	0.00%	0.00%		
181+ Days	0.00%	0.00%	0.00%	0.00%	0.00%	0.00%	4.90%	0.00%		
Current - 90 Days	100.00%	100.00%	98.83%	96.62%	96.60%	100.00%	95.10%	100.00%		
91-180 Days	0.00%	0.00%	1.17%	3.38%	3.40%	0.00%	0.00%	0.00%		



Personal Loans - La Hipotecaria El Salvador Migration Analysis (2015 Vintage)

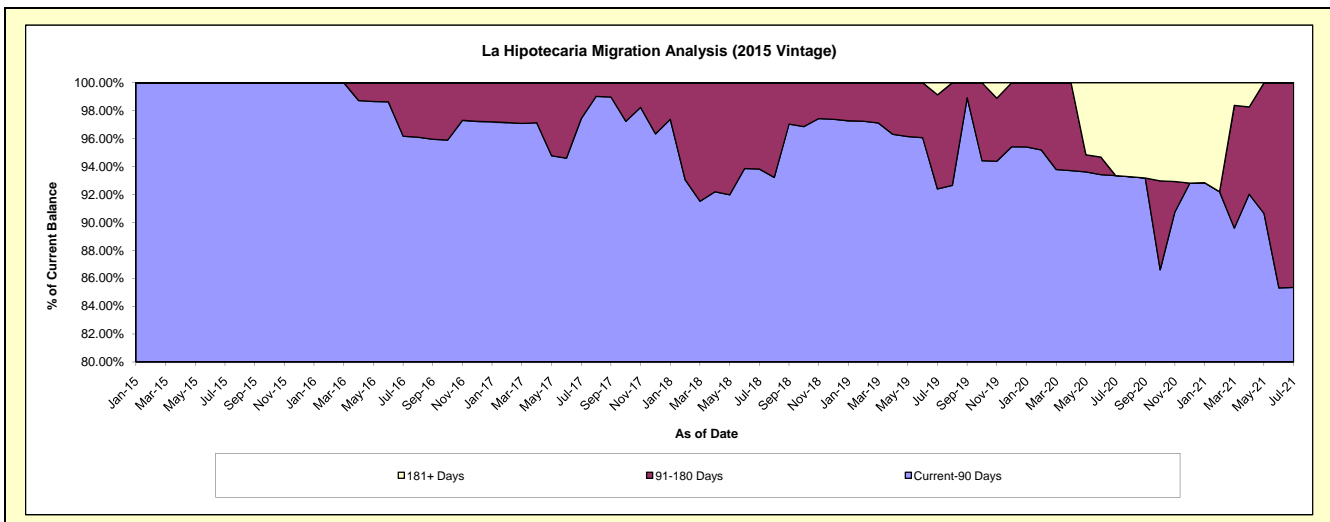
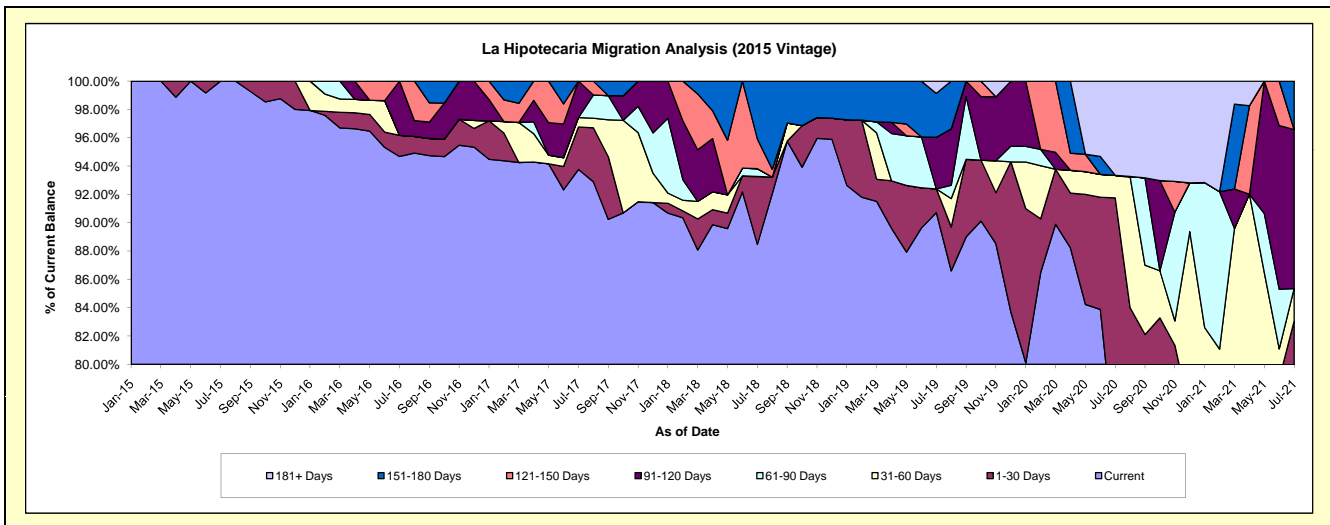
Delinquency Status (\$ of Current Balance)

Data Cutoff: 7/31/2021

Current Portfolio Balance	-	-	-	877,137.94	1,250,418.74	875,887.92	641,536.34	398,253.54	256,687.19	161,641.23
	Jul-15	Jul-16	Jul-17	Jul-18	Jul-19	Jul-20	Jul-21			
Current	877,137.94	1,183,932.67	821,295.68	567,563.50	361,279.78	188,966.43	128,048.83			
1-30 Days	-	18,616.89	26,233.13	30,788.43	6,683.71	46,556.00	6,212.81			
31-60 Days	-	-	5,840.83	-	-	4,106.00	3,696.34			
61-90 Days	-	-	-	3,537.70	-	-	-			
91-120 Days	-	47,869.18	22,518.28	-	14,513.28	-	18,159.04			
121-150 Days	-	-	-	13,445.63	-	-	-			
151-180 Days	-	-	-	26,201.08	12,342.03	-	5,524.21			
181+ Days	-	-	-	-	3,434.74	17,058.76	-			

Delinquency Status (% of Current Balance)

Current Portfolio Balance	-	-	-	877,137.94	1,250,418.74	875,887.92	641,536.34	398,253.54	256,687.19	161,641.23
	Jul-15	Jul-16	Jul-17	Jul-18	Jul-19	Jul-20	Jul-21			
Current	100.00%	94.68%	93.77%	88.47%	90.72%	73.62%	79.22%			
1-30 Days	0.00%	1.49%	3.00%	4.80%	1.68%	18.14%	3.84%			
31-60 Days	0.00%	0.00%	0.67%	0.00%	0.00%	1.60%	2.29%			
61-90 Days	0.00%	0.00%	0.00%	0.55%	0.00%	0.00%	0.00%			
91-120 Days	0.00%	3.83%	2.57%	0.00%	3.64%	0.00%	11.23%			
121-150 Days	0.00%	0.00%	0.00%	2.10%	0.00%	0.00%	0.00%			
151-180 Days	0.00%	0.00%	0.00%	4.08%	3.10%	0.00%	3.42%			
181+ Days	0.00%	0.00%	0.00%	0.00%	0.86%	6.65%	0.00%			
Current - 90 Days	100.00%	96.17%	97.43%	93.82%	92.39%	93.35%	85.35%			
91-180 Days	0.00%	3.83%	2.57%	6.18%	6.74%	0.00%	14.65%			



Personal Loans - La Hipotecaria El Salvador Migration Analysis (2016 Vintage)

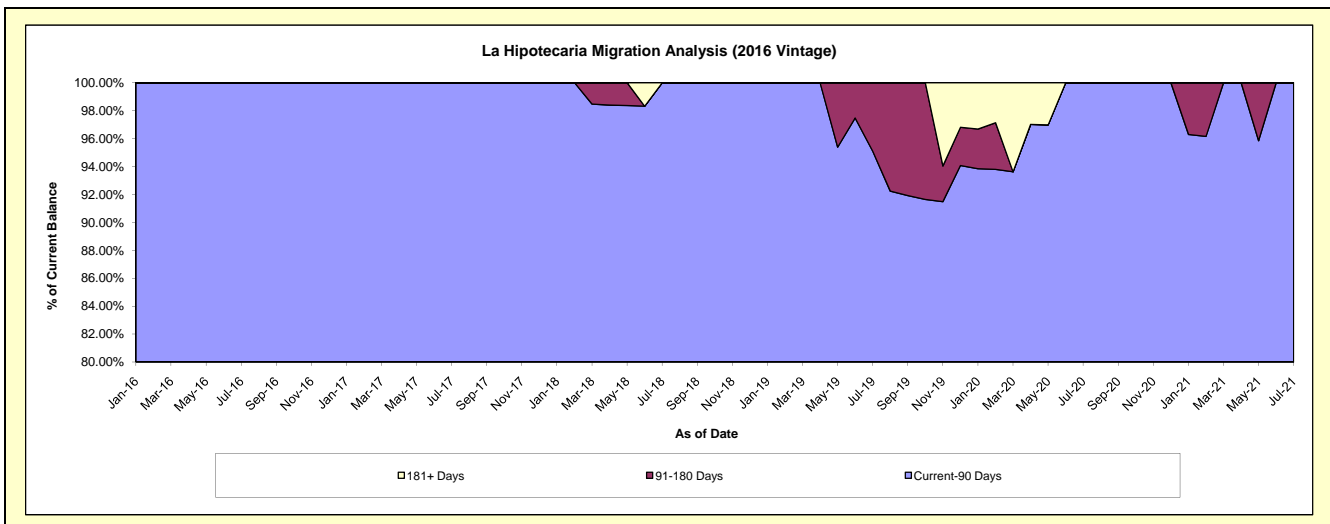
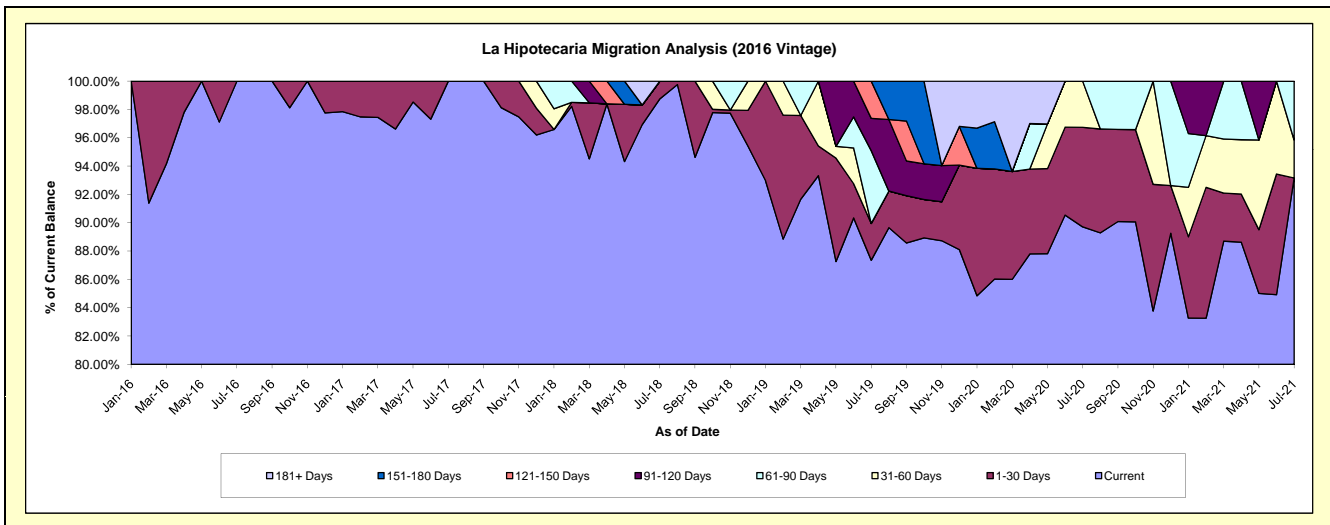
Delinquency Status (\$ of Current Balance)

Data Cutoff: 7/31/2021

Current Portfolio Balance	-	-	-	-	803,329.83	1,061,385.44	794,459.67	630,987.24	446,250.24	309,202.55
					Jul-16	Jul-17	Jul-18	Jul-19	Jul-20	Jul-21
Current					803,329.83	1,061,385.44	784,507.64	551,188.45	400,327.68	288,064.33
1-30 Days					-	-	9,952.03	16,391.48	31,385.33	-
31-60 Days					-	-	-	-	14,537.23	8,279.34
61-90 Days					-	-	-	32,451.95	-	12,858.88
91-120 Days					-	-	-	14,389.21	-	-
121-150 Days					-	-	-	16,566.15	-	-
151-180 Days					-	-	-	-	-	-
181+ Days					-	-	-	-	-	-

Delinquency Status (% of Current Balance)

Current Portfolio Balance	-	-	-	-	803,329.83	1,061,385.44	794,459.67	630,987.24	446,250.24	309,202.55
					Jul-16	Jul-17	Jul-18	Jul-19	Jul-20	Jul-21
Current					100.00%	100.00%	98.75%	87.35%	89.71%	93.16%
1-30 Days					0.00%	0.00%	1.25%	2.60%	7.03%	0.00%
31-60 Days					0.00%	0.00%	0.00%	0.00%	3.26%	2.68%
61-90 Days					0.00%	0.00%	0.00%	5.14%	0.00%	4.16%
91-120 Days					0.00%	0.00%	0.00%	2.28%	0.00%	0.00%
121-150 Days					0.00%	0.00%	0.00%	2.53%	0.00%	0.00%
151-180 Days					0.00%	0.00%	0.00%	0.00%	0.00%	0.00%
181+ Days					0.00%	0.00%	0.00%	0.00%	0.00%	0.00%
Current - 90 Days					100.00%	100.00%	100.00%	95.09%	100.00%	100.00%
91-180 Days					0.00%	0.00%	0.00%	4.91%	0.00%	0.00%



Personal Loans - La Hipotecaria El Salvador Migration Analysis (2017 Vintage)

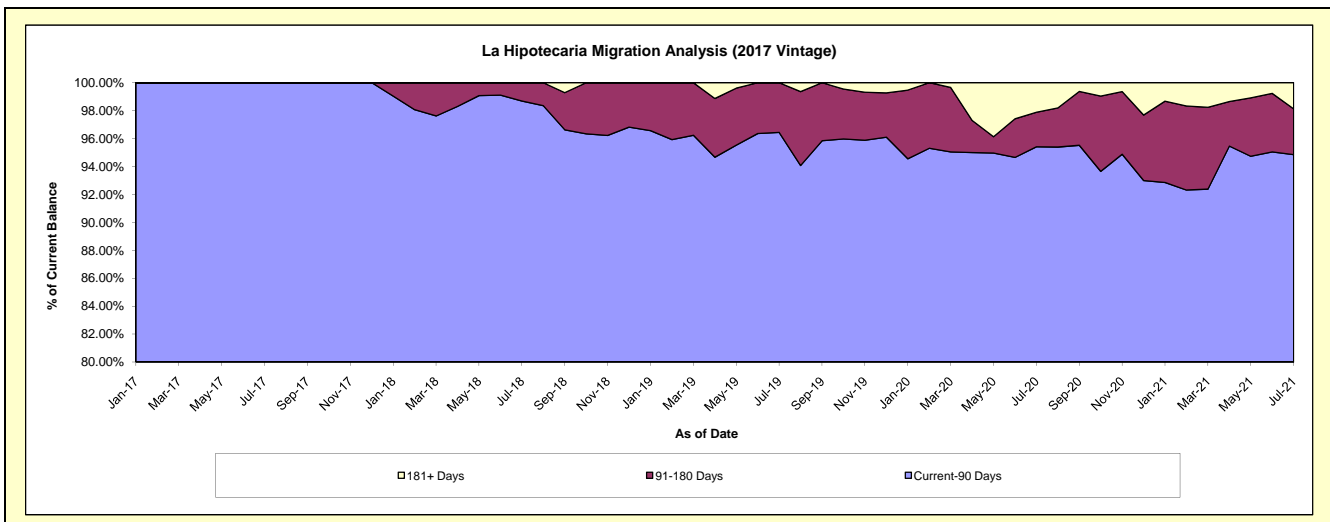
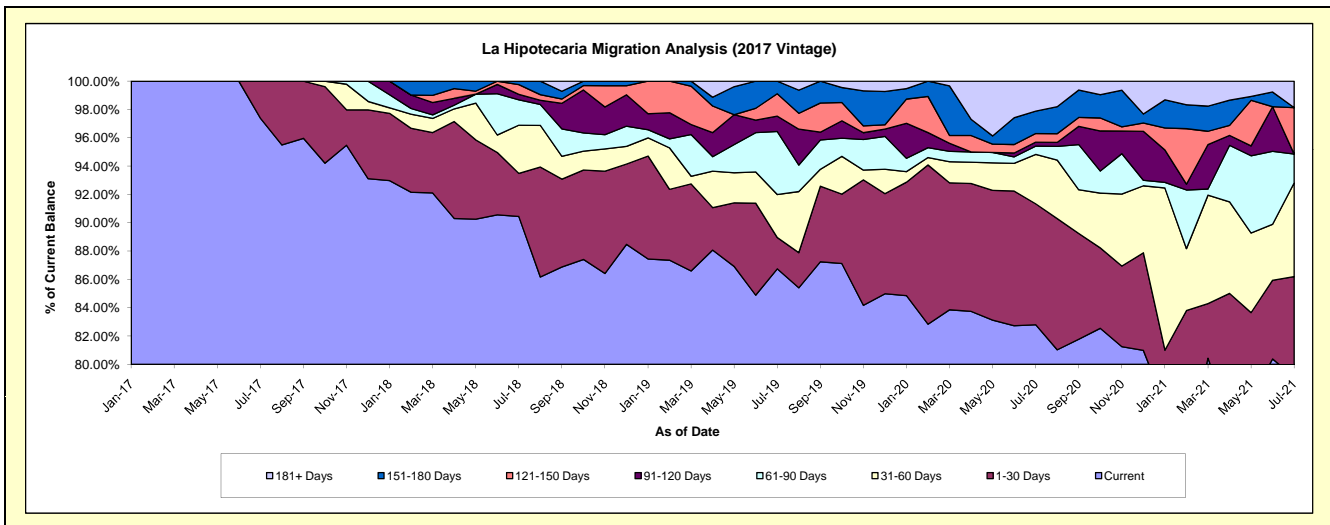
Delinquency Status (\$ of Current Balance)

Data Cutoff: 7/31/2021

Current Portfolio Balance	-	-	-	-	-	1,328,135.96	1,682,572.95	1,108,253.30	787,105.99	578,056.53
						Jul-17	Jul-18	Jul-19	Jul-20	Jul-21
Current						1,293,454.53	1,521,787.27	961,414.78	651,723.48	457,183.38
1-30 Days						34,681.43	51,153.87	24,500.69	67,219.87	41,109.90
31-60 Days						-	57,307.17	33,578.21	27,441.56	38,229.06
61-90 Days						-	30,160.38	49,348.56	4,610.13	11,777.59
91-120 Days						-	6,483.46	12,007.36	2,195.12	-
121-150 Days						-	11,599.29	17,573.64	4,804.66	18,935.21
151-180 Days						-	4,081.51	9,830.06	12,474.79	-
181+ Days						-	-	-	16,636.38	10,821.39

Delinquency Status (% of Current Balance)

Current Portfolio Balance	-	-	-	-	-	1,328,135.96	1,682,572.95	1,108,253.30	787,105.99	578,056.53
						Jul-17	Jul-18	Jul-19	Jul-20	Jul-21
Current						97.39%	90.44%	86.75%	82.80%	79.09%
1-30 Days						2.61%	3.04%	2.21%	8.54%	7.11%
31-60 Days						0.00%	3.41%	3.03%	3.49%	6.61%
61-90 Days						0.00%	1.79%	4.45%	0.59%	2.04%
91-120 Days						0.00%	0.39%	1.08%	0.28%	0.00%
121-150 Days						0.00%	0.69%	1.59%	0.61%	3.28%
151-180 Days						0.00%	0.24%	0.89%	1.58%	0.00%
181+ Days						0.00%	0.00%	0.00%	2.11%	1.87%
Current - 90 Days						100.00%	98.68%	96.44%	95.41%	94.85%
91-180 Days						0.00%	1.32%	3.56%	2.47%	3.28%



Personal Loans - La Hipotecaria El Salvador Migration Analysis (2018 Vintage)

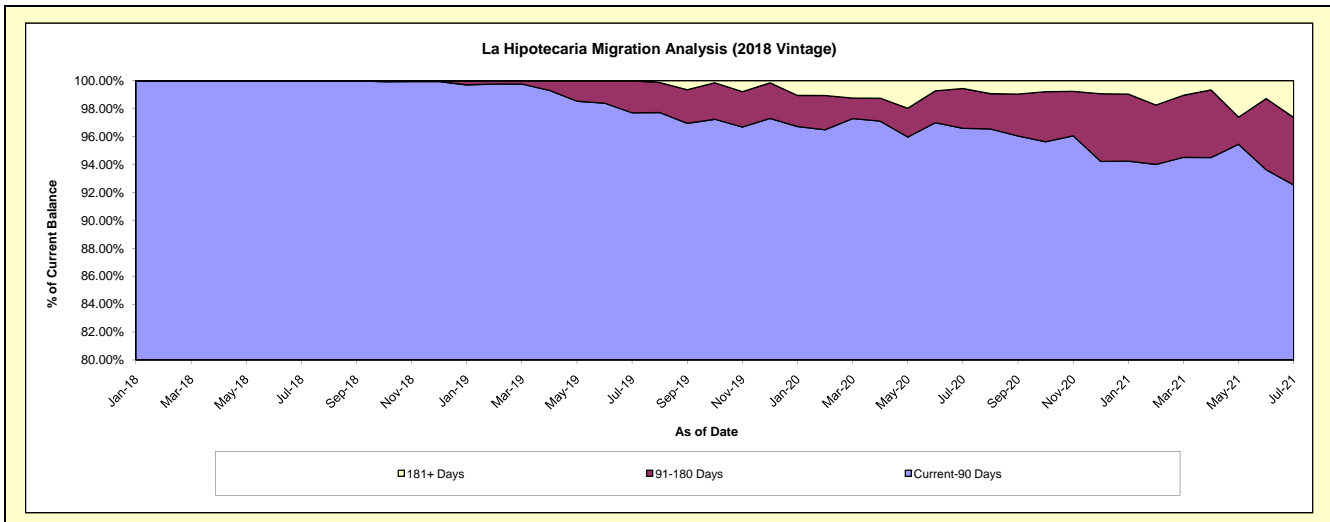
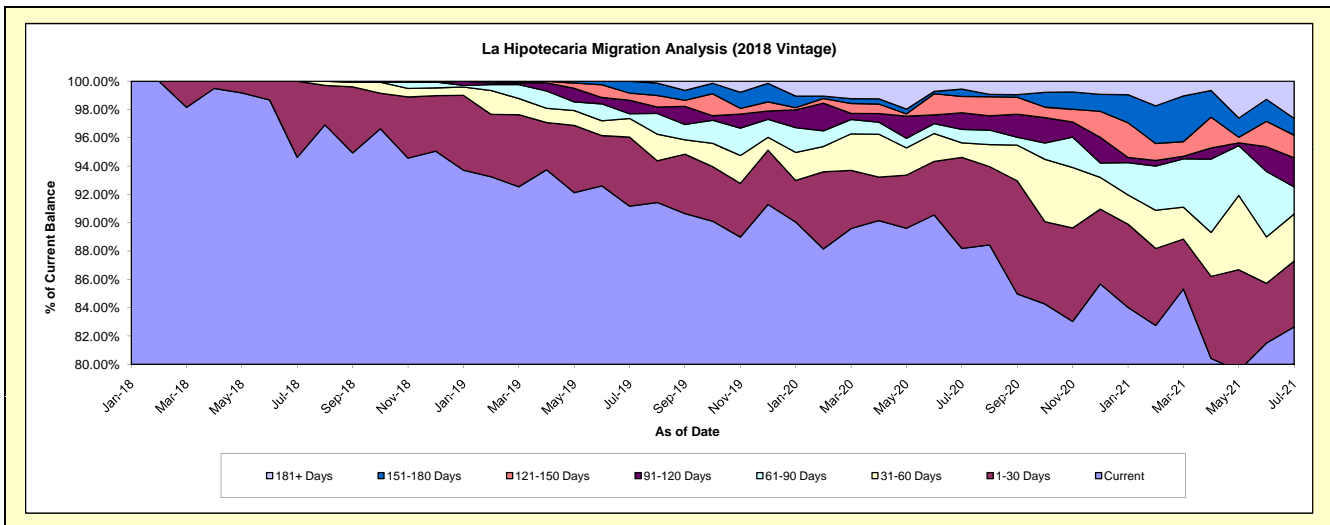
Delinquency Status (\$ of Current Balance)

Data Cutoff: 7/31/2021

Current Portfolio Balance	-	-	-	-	-	-	-	1,864,041.30	3,827,162.32	2,843,645.64	2,207,001.64
								Jul-18	Jul-19	Jul-20	Jul-21
Current								1,763,733.65	3,489,157.58	2,507,595.98	1,823,973.23
1-30 Days								100,307.65	186,640.58	182,965.50	102,701.73
31-60 Days								-	50,497.24	29,160.65	73,344.80
61-90 Days								-	12,798.87	27,064.96	42,118.32
91-120 Days								-	36,389.32	33,344.33	45,347.63
121-150 Days								-	19,275.73	32,744.96	35,347.65
151-180 Days								-	32,403.00	14,988.44	26,053.06
181+ Days								-	-	15,780.82	58,115.22

Delinquency Status (% of Current Balance)

Current Portfolio Balance	-	-	-	-	-	-	-	1,864,041.30	3,827,162.32	2,843,645.64	2,207,001.64
								Jul-18	Jul-19	Jul-20	Jul-21
Current								94.62%	91.17%	88.18%	82.64%
1-30 Days								5.38%	4.88%	6.43%	4.65%
31-60 Days								0.00%	1.32%	1.03%	3.32%
61-90 Days								0.00%	0.33%	0.95%	1.91%
91-120 Days								0.00%	0.95%	1.17%	2.05%
121-150 Days								0.00%	0.50%	1.15%	1.60%
151-180 Days								0.00%	0.85%	0.53%	1.18%
181+ Days								0.00%	0.00%	0.55%	2.63%
Current - 90 Days								100.00%	97.70%	96.59%	92.53%
91-180 Days								0.00%	2.30%	2.85%	4.84%



Personal Loans - La Hipotecaria El Salvador Migration Analysis (2019 Vintage)

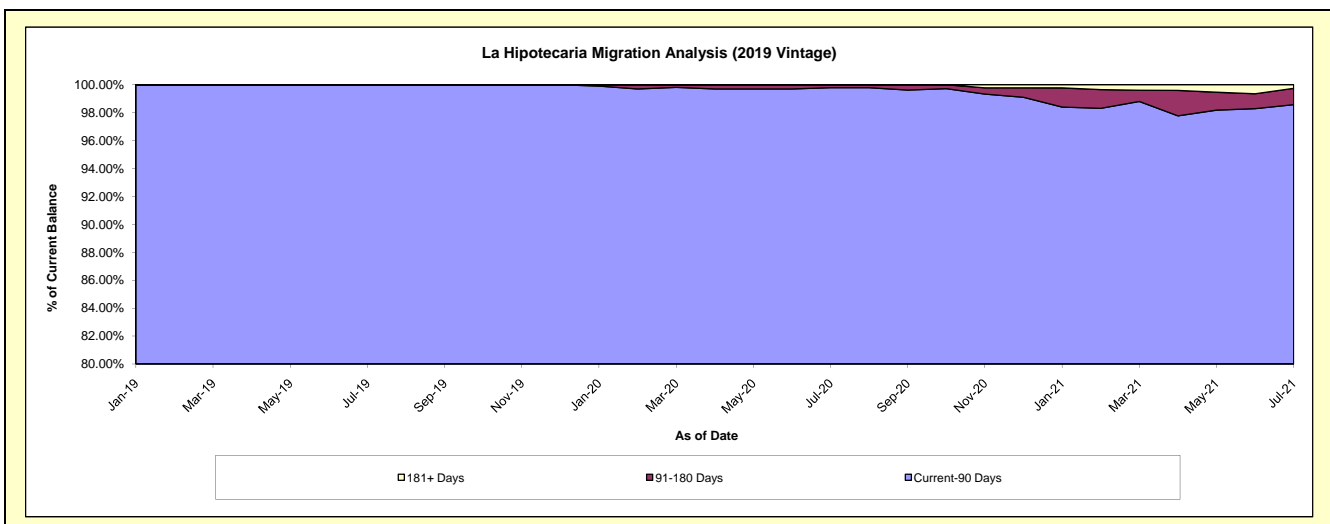
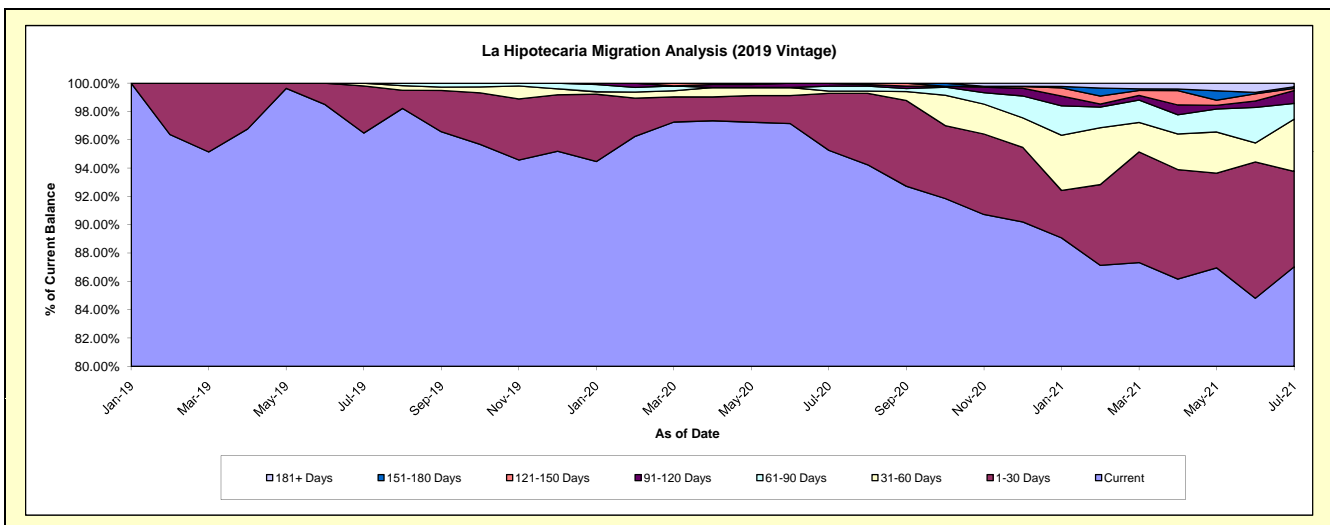
Delinquency Status (\$ of Current Balance)

Data Cutoff: 7/31/2021

Current Portfolio Balance	-	-	-	-	-	-	-	-	-	3,377,160.01	4,946,579.70	3,831,103.82
										Jul-19	Jul-20	Jul-21
Current										3,258,209.34	4,711,908.14	3,334,464.69
1-30 Days										112,231.12	199,150.03	257,737.28
31-60 Days										6,719.55	8,002.28	141,551.41
61-90 Days										-	17,064.10	42,659.23
91-120 Days										-	10,455.15	34,631.50
121-150 Days										-	-	6,105.37
151-180 Days										-	-	4,183.41
181+ Days										-	-	9,770.93

Delinquency Status (% of Current Balance)

Current Portfolio Balance	-	-	-	-	-	-	-	-	-	3,377,160.01	4,946,579.70	3,831,103.82
										Jul-19	Jul-20	Jul-21
Current										96.48%	95.26%	87.04%
1-30 Days										3.32%	4.03%	6.73%
31-60 Days										0.20%	0.16%	3.69%
61-90 Days										0.00%	0.34%	1.11%
91-120 Days										0.00%	0.21%	0.90%
121-150 Days										0.00%	0.00%	0.16%
151-180 Days										0.00%	0.00%	0.11%
181+ Days										0.00%	0.00%	0.26%
Current - 90 Days										100.00%	99.79%	98.57%
91-180 Days										0.00%	0.21%	1.17%



Personal Loans - La Hipotecaria El Salvador Migration Analysis (2020 Vintage)

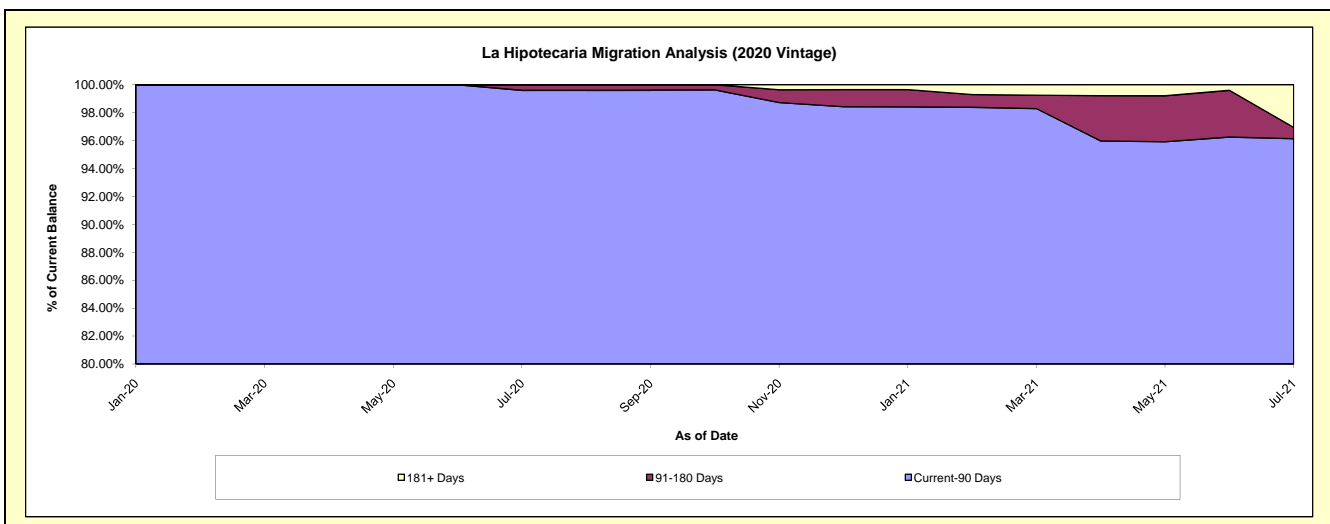
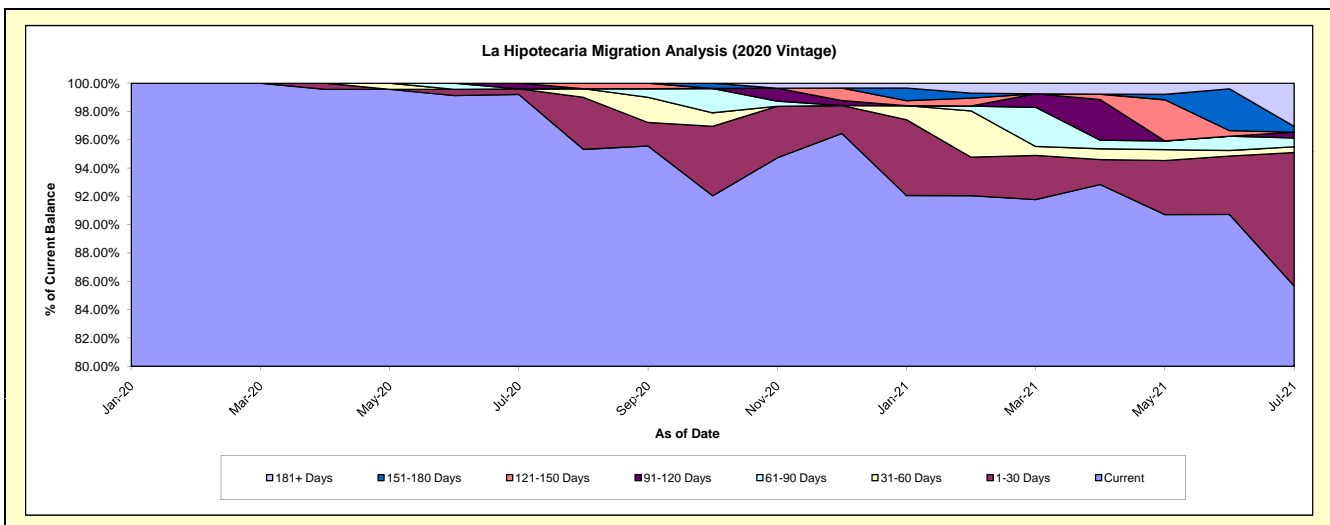
Delinquency Status (\$ of Current Balance)

Data Cutoff: 7/31/2021

Current Portfolio Balance										1,247,843.42	1,198,910.77
										Jul-20	Jul-21
Current										1,237,869.94	1,027,183.20
1-30 Days										4,973.48	112,956.22
31-60 Days										-	4,871.51
61-90 Days										-	7,566.78
91-120 Days										5,000.00	4,864.82
121-150 Days										-	-
151-180 Days										-	4,848.70
181+ Days										-	36,619.54

Delinquency Status (% of Current Balance)

Current Portfolio Balance										1,247,843.42	1,198,910.77
										Jul-20	Jul-21
Current										99.20%	85.68%
1-30 Days										0.40%	9.42%
31-60 Days										0.00%	0.41%
61-90 Days										0.00%	0.63%
91-120 Days										0.40%	0.41%
121-150 Days										0.00%	0.00%
151-180 Days										0.00%	0.40%
181+ Days										0.00%	3.05%
Current - 90 Days										99.60%	96.14%
91-180 Days										0.40%	0.81%



Personal Loans - La Hipotecaria El Salvador Migration Analysis (2021 Vintage)

Delinquency Status (\$ of Current Balance)

Data Cutoff: 7/31/2021

Current Portfolio Balance											483,174.99
											Jul-21
Current											468,174.99
1-30 Days											15,000.00
31-60 Days											-
61-90 Days											-
91-120 Days											-
121-150 Days											-
151-180 Days											-
181+ Days											-

Delinquency Status (% of Current Balance)

Current Portfolio Balance											483,174.99
											Jul-21
Current											96.90%
1-30 Days											3.10%
31-60 Days											0.00%
61-90 Days											0.00%
91-120 Days											0.00%
121-150 Days											0.00%
151-180 Days											0.00%
181+ Days											0.00%
Current - 90 Days											100.00%
91-180 Days											0.00%

