



Migration Analysis for La Hipotecaria S.A. de C.V El Salvador

Mortgages August 2021

An analysis of historical loan payment data was used to compile a migration analysis of delinquency by annual vintage. Delinquencies for each vintage were grouped into the following buckets; Current, 1-30, 31-60, 61-90, 91-120, 121-150, 151-180, and 180+. Results are provided in graphical and tabular form. The cutoff date is 8/31/2021.

Mortgages - La Hipotecaria El Salvador Migration Analysis (All Vintages)

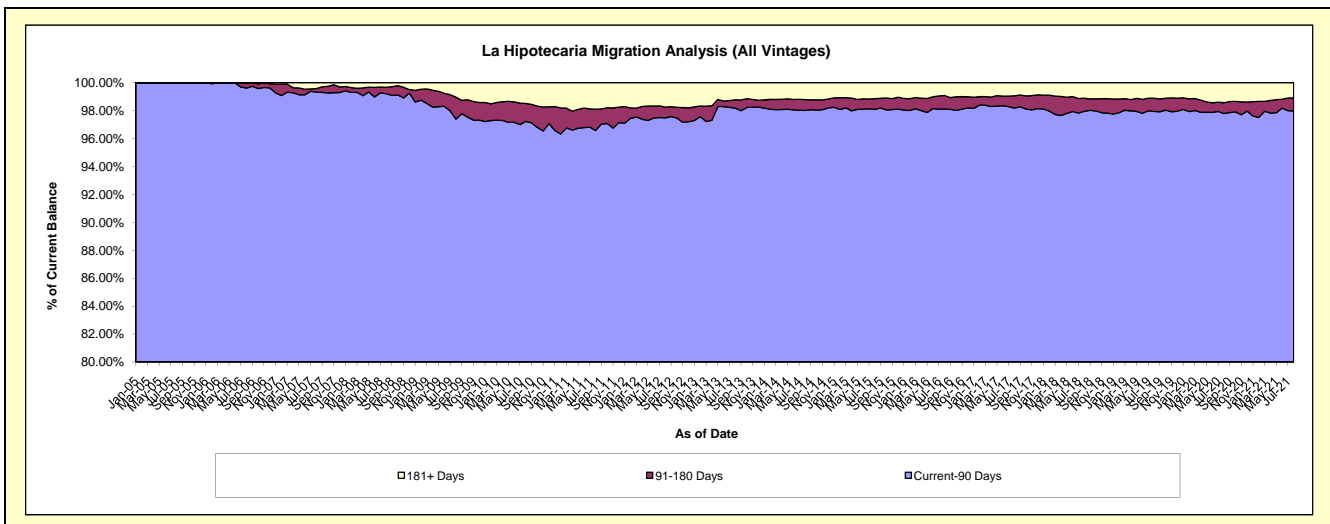
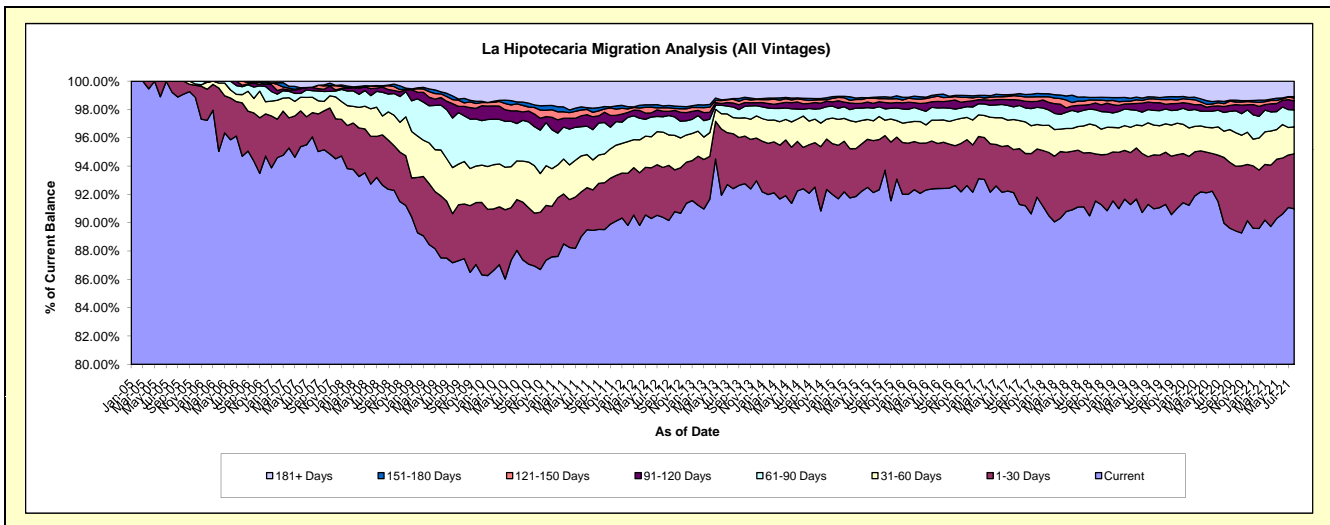
Delinquency Status (\$ of Current Balance)

Data Cutoff: 8/31/2021

Current Portfolio Balance	103,056,773.38	123,975,493.80	141,957,616.94	154,935,255.52	168,463,175.41	179,743,904.17	187,496,118.93	199,955,826.72	202,034,430.79	195,676,845.39
	Aug-12	Aug-13	Aug-14	Aug-15	Aug-16	Aug-17	Aug-18	Aug-19	Aug-20	Aug-21
Current	93,146,991.31	114,568,277.74	131,169,916.95	142,749,170.09	155,693,106.61	165,605,137.25	170,850,113.73	181,940,582.44	181,780,449.73	178,037,203.07
1-30 Days	3,631,745.18	4,811,597.24	4,147,601.54	5,675,348.35	5,504,586.42	5,455,343.80	7,135,633.06	7,606,171.30	9,373,128.58	7,591,796.99
31-60 Days	2,572,546.17	1,405,932.81	3,142,082.30	2,173,302.62	2,657,328.20	3,822,205.13	3,589,068.04	4,209,040.78	3,747,796.75	3,727,559.15
61-90 Days	1,114,899.21	933,186.63	683,486.66	1,385,040.22	1,435,931.03	1,595,644.85	2,083,314.92	2,083,385.99	2,668,180.01	2,354,895.33
91-120 Days	406,251.15	338,508.59	546,489.19	526,658.43	746,268.89	922,581.59	677,041.23	1,082,721.49	838,970.40	1,262,889.77
121-150 Days	246,764.24	344,757.12	410,328.54	562,157.92	468,231.49	511,021.24	518,618.94	529,602.99	417,122.55	401,101.70
151-180 Days	133,336.83	56,387.00	139,885.50	104,594.62	416,558.74	146,460.77	557,456.61	286,077.88	315,304.93	170,768.72
181+ Days	1,804,239.29	1,516,846.67	1,717,826.26	1,758,983.27	1,541,164.03	1,685,509.54	2,084,872.40	2,218,243.85	2,893,477.84	2,130,630.66

Delinquency Status (% of Current Balance)

Current Portfolio Balance	103,056,773.38	123,975,493.80	141,957,616.94	154,935,255.52	168,463,175.41	179,743,904.17	187,496,118.93	199,955,826.72	202,034,430.79	195,676,845.39
	Aug-12	Aug-13	Aug-14	Aug-15	Aug-16	Aug-17	Aug-18	Aug-19	Aug-20	Aug-21
Current	90.38%	92.41%	92.40%	92.13%	92.42%	92.13%	91.12%	90.99%	89.97%	90.99%
1-30 Days	3.52%	3.88%	2.92%	3.66%	3.27%	3.04%	3.81%	3.80%	4.64%	3.88%
31-60 Days	2.50%	1.13%	2.21%	1.40%	1.58%	2.13%	1.91%	2.10%	1.86%	1.90%
61-90 Days	1.08%	0.75%	0.48%	0.89%	0.85%	0.89%	1.11%	1.04%	1.32%	1.20%
91-120 Days	0.39%	0.27%	0.38%	0.34%	0.44%	0.51%	0.36%	0.54%	0.42%	0.65%
121-150 Days	0.24%	0.28%	0.29%	0.36%	0.28%	0.28%	0.28%	0.26%	0.21%	0.20%
151-180 Days	0.13%	0.05%	0.10%	0.07%	0.25%	0.08%	0.30%	0.14%	0.16%	0.09%
181+ Days	1.75%	1.22%	1.21%	1.14%	0.91%	0.94%	1.11%	1.11%	1.43%	1.09%
Current - 90 Days	97.49%	98.18%	98.02%	98.09%	98.12%	98.18%	97.95%	97.94%	97.79%	97.97%
91-180 Days	0.76%	0.60%	0.77%	0.77%	0.97%	0.88%	0.94%	0.95%	0.78%	0.94%



Mortgages - La Hipotecaria El Salvador Migration Analysis (2005 Vintage)

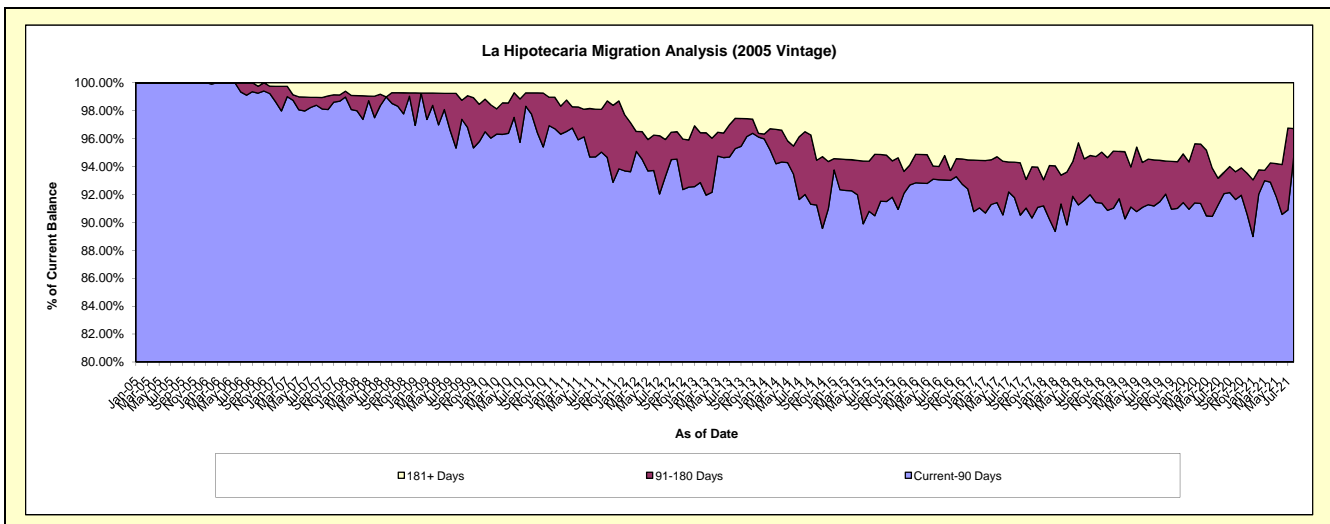
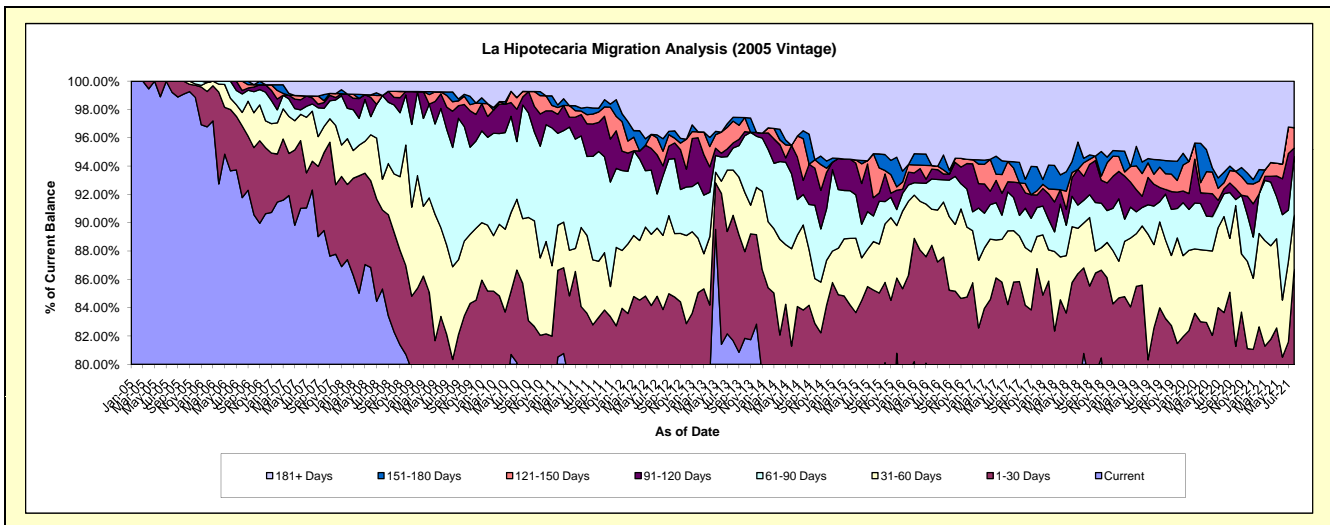
Delinquency Status (\$ of Current Balance)

Data Cutoff: 8/31/2021

Current Portfolio Balance	5,808,110.79	5,227,698.71	4,677,608.31	4,298,113.40	4,003,370.44	3,688,262.78	3,250,430.29	2,887,415.32	2,653,329.43	2,350,379.51
	Aug-12	Aug-13	Aug-14	Aug-15	Aug-16	Aug-17	Aug-18	Aug-19	Aug-20	Aug-21
Current	4,444,932.94	4,269,614.22	3,704,087.08	3,309,736.12	3,040,150.08	2,830,626.98	2,625,312.32	2,205,726.76	2,021,548.22	1,736,328.18
1-30 Days	426,717.54	462,590.62	217,674.94	354,459.21	465,949.63	334,346.10	196,480.32	178,291.23	198,100.86	301,557.95
31-60 Days	303,985.52	167,303.22	280,811.07	146,979.02	155,532.73	133,854.85	103,153.12	170,260.96	179,847.42	90,218.82
61-90 Days	243,615.25	81,564.80	100,634.40	77,661.45	62,905.55	86,471.12	51,926.41	78,448.58	43,053.39	96,953.04
91-120 Days	41,579.09	18,527.58	46,887.55	55,460.64	16,432.88	40,015.01	55,411.92	44,469.50	9,246.19	14,311.79
121-150 Days	59,928.40	80,681.59	137,842.11	133,618.35	11,551.22	36,640.03	30,837.66	20,400.26	11,415.19	33,867.01
151-180 Days	51,373.29	14,120.42	25,863.63	-	42,141.54	16,432.88	10,262.20	30,104.62	19,688.52	-
181+ Days	235,978.76	133,296.26	163,807.53	220,198.61	208,706.81	209,875.81	177,046.34	159,713.41	170,429.64	77,142.72

Delinquency Status (% of Current Balance)

Current Portfolio Balance	5,808,110.79	5,227,698.71	4,677,608.31	4,298,113.40	4,003,370.44	3,688,262.78	3,250,430.29	2,887,415.32	2,653,329.43	2,350,379.51
	Aug-12	Aug-13	Aug-14	Aug-15	Aug-16	Aug-17	Aug-18	Aug-19	Aug-20	Aug-21
Current	76.53%	81.67%	79.19%	77.00%	75.94%	76.75%	80.77%	76.39%	76.19%	73.87%
1-30 Days	7.35%	8.85%	4.65%	8.25%	11.64%	9.07%	6.04%	6.17%	7.47%	12.83%
31-60 Days	5.23%	3.20%	6.00%	3.42%	3.89%	3.63%	3.17%	5.90%	6.78%	3.84%
61-90 Days	4.19%	1.56%	2.15%	1.81%	1.57%	2.34%	1.60%	2.72%	1.62%	4.12%
91-120 Days	0.72%	0.35%	1.00%	1.29%	0.41%	1.08%	1.70%	1.54%	0.35%	0.61%
121-150 Days	1.03%	1.54%	2.95%	3.11%	0.29%	0.99%	0.95%	0.71%	0.43%	1.44%
151-180 Days	0.88%	0.27%	0.55%	0.00%	1.05%	0.45%	0.32%	1.04%	0.74%	0.00%
181+ Days	4.06%	2.55%	3.50%	5.12%	5.21%	5.69%	5.45%	5.53%	6.42%	3.28%
Current - 90 Days	93.30%	95.28%	92.00%	90.48%	93.04%	91.79%	91.58%	91.18%	92.06%	94.67%
91-180 Days	2.63%	2.17%	4.50%	4.40%	1.75%	2.52%	2.97%	3.29%	1.52%	2.05%



Mortgages - La Hipotecaria El Salvador Migration Analysis (2006 Vintage)

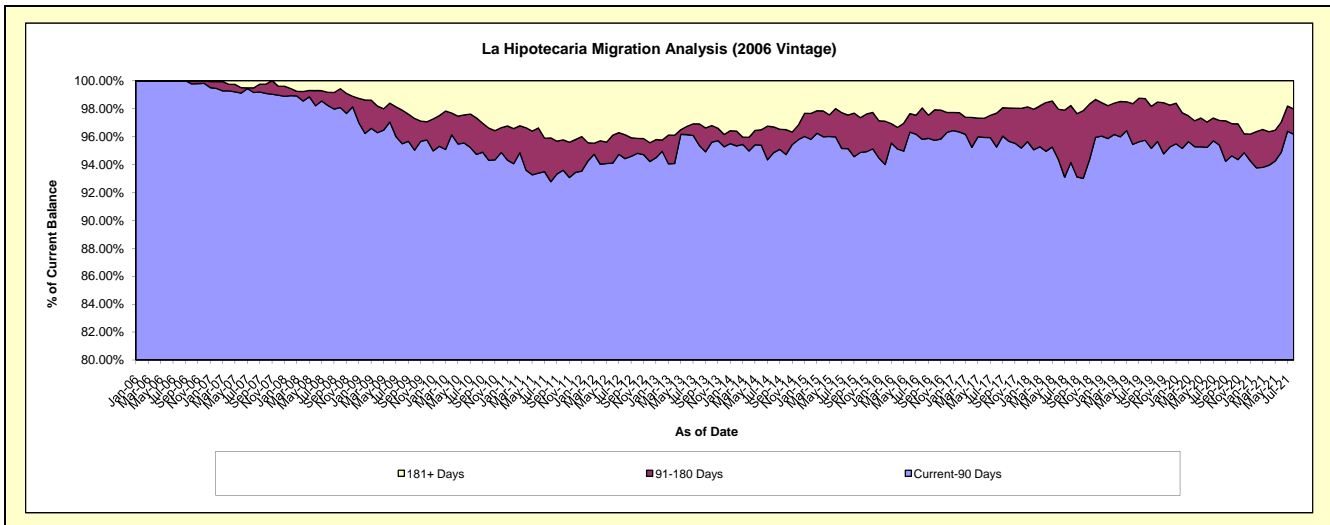
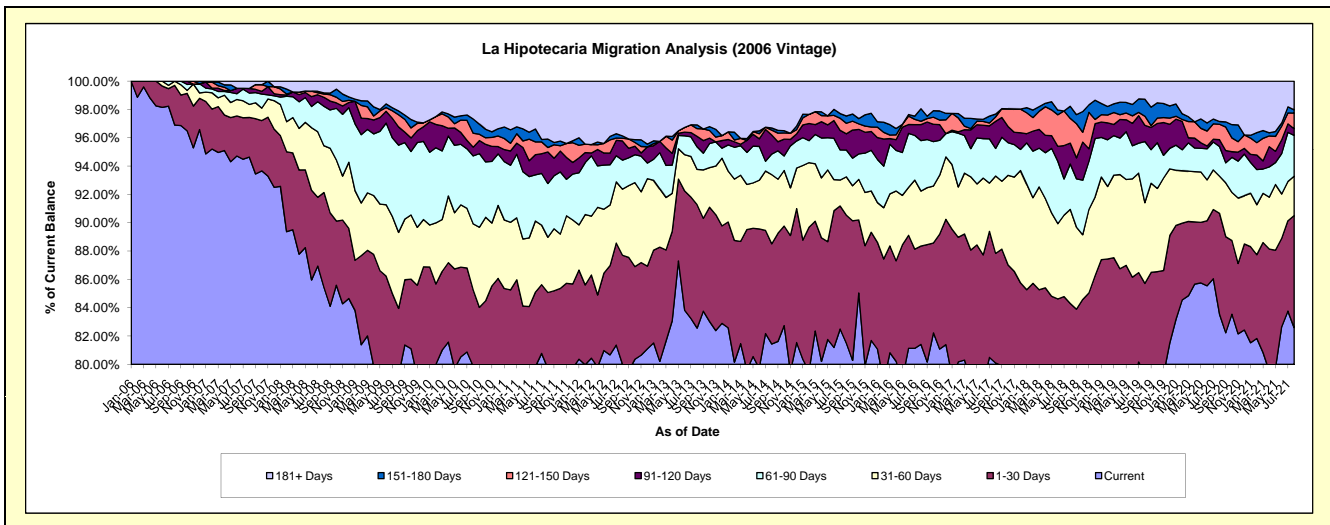
Delinquency Status (\$ of Current Balance)

Data Cutoff: 8/31/2021

Current Portfolio Balance	12,982,169.45	12,005,767.06	10,576,541.10	9,683,032.42	8,863,922.53	8,158,263.74	7,408,174.51	6,643,269.10	6,040,068.68	5,434,355.59
	Aug-12	Aug-13	Aug-14	Aug-15	Aug-16	Aug-17	Aug-18	Aug-19	Aug-20	Aug-21
Current	10,388,442.31	9,912,378.89	8,612,951.33	7,891,526.05	7,215,948.97	6,534,497.98	5,691,573.52	5,269,594.37	5,045,614.46	4,488,134.30
1-30 Days	997,611.95	1,045,865.17	749,111.99	874,984.71	615,899.50	631,423.49	553,330.06	424,868.88	430,750.40	430,927.36
31-60 Days	606,025.15	299,419.73	516,050.40	262,343.51	344,381.43	445,845.86	492,258.06	379,013.70	158,353.57	150,885.28
61-90 Days	266,012.77	191,029.31	153,881.95	183,496.09	315,878.72	159,076.16	237,377.72	286,666.84	126,875.14	156,234.13
91-120 Days	175,912.90	88,516.50	142,396.79	110,865.23	99,629.54	156,275.76	109,177.15	75,971.96	28,766.26	25,399.23
121-150 Days	24,864.41	66,276.68	36,462.93	71,916.06	21,338.60	25,421.68	129,684.19	42,946.02	66,020.61	60,391.90
151-180 Days	21,525.74	31,579.15	16,412.66	49,815.57	78,220.79	16,258.68	63,144.73	79,610.77	11,723.58	12,446.74
181+ Days	501,774.22	370,701.63	349,273.05	238,085.20	172,624.98	189,464.13	131,629.08	84,596.56	171,964.66	109,936.65

Delinquency Status (% of Current Balance)

Current Portfolio Balance	12,982,169.45	12,005,767.06	10,576,541.10	9,683,032.42	8,863,922.53	8,158,263.74	7,408,174.51	6,643,269.10	6,040,068.68	5,434,355.59
	Aug-12	Aug-13	Aug-14	Aug-15	Aug-16	Aug-17	Aug-18	Aug-19	Aug-20	Aug-21
Current	80.02%	82.56%	81.43%	81.50%	81.41%	80.10%	76.83%	79.32%	83.54%	82.59%
1-30 Days	7.68%	8.71%	7.08%	9.04%	6.95%	7.74%	7.47%	6.40%	7.13%	7.93%
31-60 Days	4.67%	2.49%	4.88%	2.71%	3.89%	5.46%	6.64%	5.71%	2.62%	2.78%
61-90 Days	2.05%	1.59%	1.45%	1.90%	3.56%	1.95%	3.20%	4.32%	2.10%	2.87%
91-120 Days	1.36%	0.74%	1.35%	1.14%	1.12%	1.92%	1.47%	1.14%	0.48%	0.47%
121-150 Days	0.19%	0.55%	0.34%	0.74%	0.24%	0.31%	1.75%	0.65%	1.09%	1.11%
151-180 Days	0.17%	0.26%	0.16%	0.51%	0.88%	0.20%	0.85%	1.20%	0.19%	0.23%
181+ Days	3.87%	3.09%	3.30%	2.46%	1.95%	2.32%	1.78%	1.27%	2.85%	2.02%
Current - 90 Days	94.42%	95.36%	94.85%	95.14%	95.81%	95.25%	94.15%	95.74%	95.39%	96.17%
91-180 Days	1.71%	1.55%	1.85%	2.40%	2.25%	2.43%	4.08%	2.99%	1.76%	1.81%



Mortgages - La Hipotecaria El Salvador Migration Analysis (2007 Vintage)

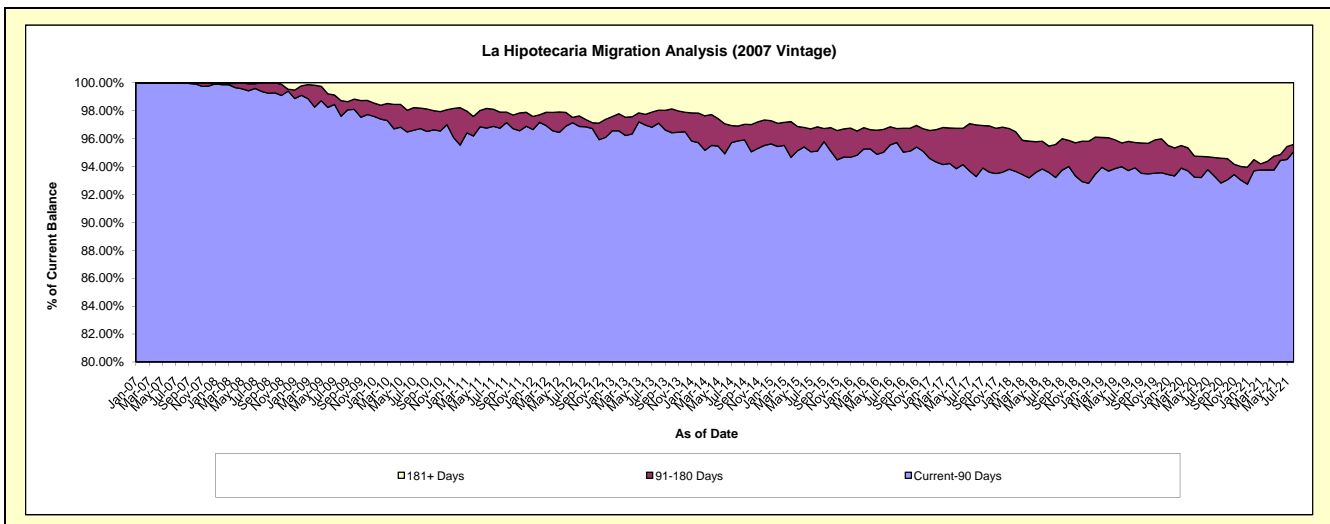
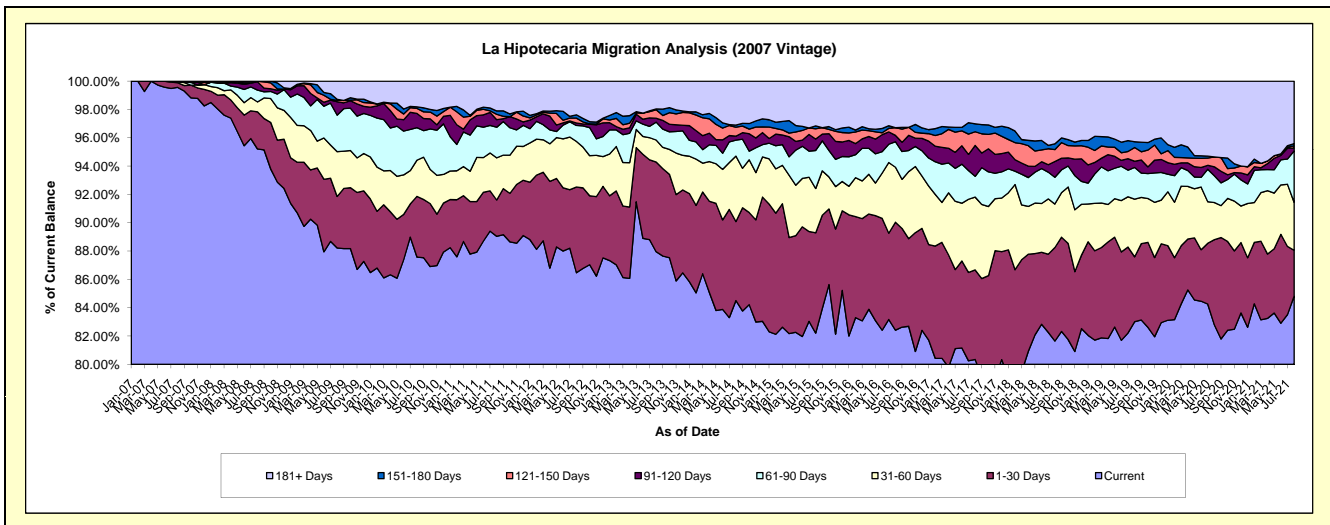
Delinquency Status (\$ of Current Balance)

Data Cutoff: 8/31/2021

Current Portfolio Balance	20,196,795.95	18,259,774.22	16,830,623.23	15,397,345.14	14,146,417.13	12,969,883.93	12,018,944.03	11,080,881.51	10,376,825.74	9,141,895.61
	Aug-12	Aug-13	Aug-14	Aug-15	Aug-16	Aug-17	Aug-18	Aug-19	Aug-20	Aug-21
Current	17,464,325.28	16,060,323.23	14,221,864.73	12,657,482.70	11,658,447.52	10,421,278.04	9,813,022.66	9,198,311.81	8,591,201.96	7,753,307.57
1-30 Days	1,222,295.44	1,156,184.69	939,504.47	1,091,180.75	1,078,658.71	819,633.05	794,114.93	507,994.34	624,251.39	296,428.89
31-60 Days	651,147.78	284,281.61	777,857.96	481,491.59	550,258.70	667,213.11	368,919.86	451,425.76	271,907.77	309,906.58
61-90 Days	227,364.48	230,562.18	189,742.56	413,934.26	254,194.29	190,108.34	227,358.13	248,126.78	195,783.14	331,354.20
91-120 Days	35,867.68	50,832.50	47,604.15	124,508.50	63,684.48	282,794.49	133,857.84	48,088.32	66,349.66	18,663.52
121-150 Days	69,240.82	108,985.14	108,138.24	111,080.22	76,938.47	125,740.55	101,239.94	107,868.77	72,094.72	13,888.08
151-180 Days	46,407.52	10,687.43	23,691.45	31,019.64	-	71,911.35	48,969.91	45,323.02	-	14,886.39
181+ Days	480,146.95	357,917.44	522,219.67	486,647.48	464,234.96	391,205.00	531,460.76	473,742.71	555,237.10	403,460.38

Delinquency Status (% of Current Balance)

Current Portfolio Balance	20,196,795.95	18,259,774.22	16,830,623.23	15,397,345.14	14,146,417.13	12,969,883.93	12,018,944.03	11,080,881.51	10,376,825.74	9,141,895.61
	Aug-12	Aug-13	Aug-14	Aug-15	Aug-16	Aug-17	Aug-18	Aug-19	Aug-20	Aug-21
Current	86.47%	87.95%	84.50%	82.21%	82.41%	80.35%	81.65%	83.01%	82.79%	84.81%
1-30 Days	6.05%	6.33%	5.59%	7.09%	7.62%	6.32%	6.61%	4.58%	6.02%	3.24%
31-60 Days	3.22%	1.56%	4.62%	3.13%	3.89%	5.14%	3.07%	4.07%	2.62%	3.39%
61-90 Days	1.13%	1.26%	1.13%	2.69%	1.80%	1.47%	1.89%	2.24%	1.89%	3.62%
91-120 Days	0.18%	0.28%	0.28%	0.81%	0.45%	2.18%	1.11%	0.43%	0.64%	0.20%
121-150 Days	0.34%	0.60%	0.64%	0.72%	0.54%	0.97%	0.84%	0.97%	0.69%	0.15%
151-180 Days	0.23%	0.06%	0.14%	0.20%	0.00%	0.55%	0.41%	0.41%	0.00%	0.16%
181+ Days	2.38%	1.96%	3.10%	3.16%	3.28%	3.02%	4.42%	4.28%	5.35%	4.41%
Current - 90 Days	96.87%	97.11%	95.83%	95.11%	95.72%	93.28%	93.21%	93.91%	93.32%	95.07%
91-180 Days	0.75%	0.93%	1.07%	1.73%	0.99%	3.70%	2.36%	1.82%	1.33%	0.52%



Mortgages - La Hipotecaria El Salvador Migration Analysis (2008 Vintage)

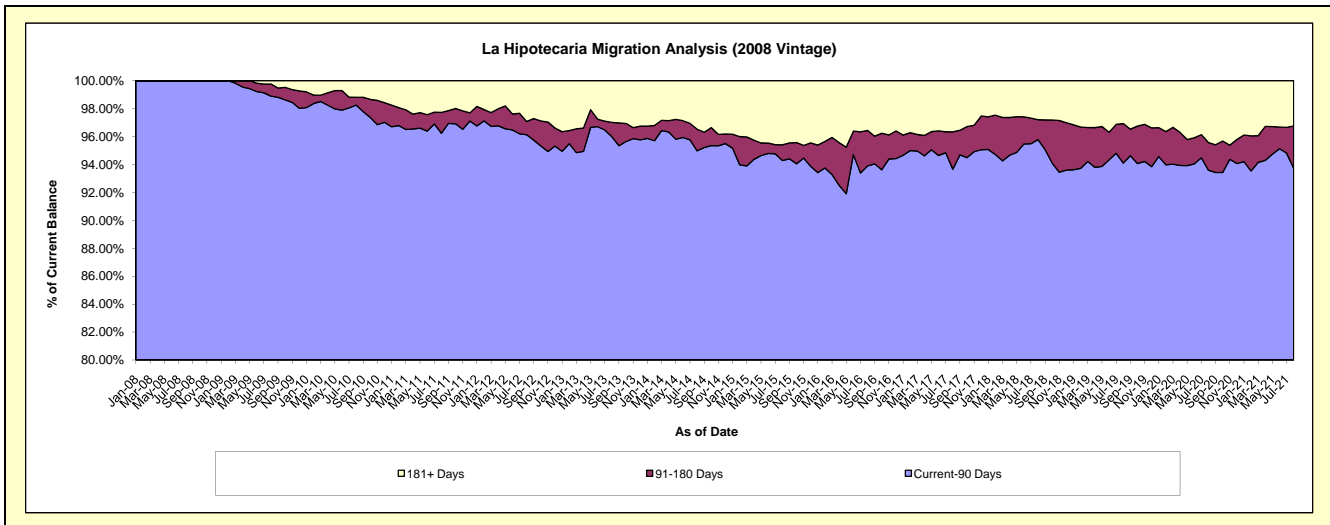
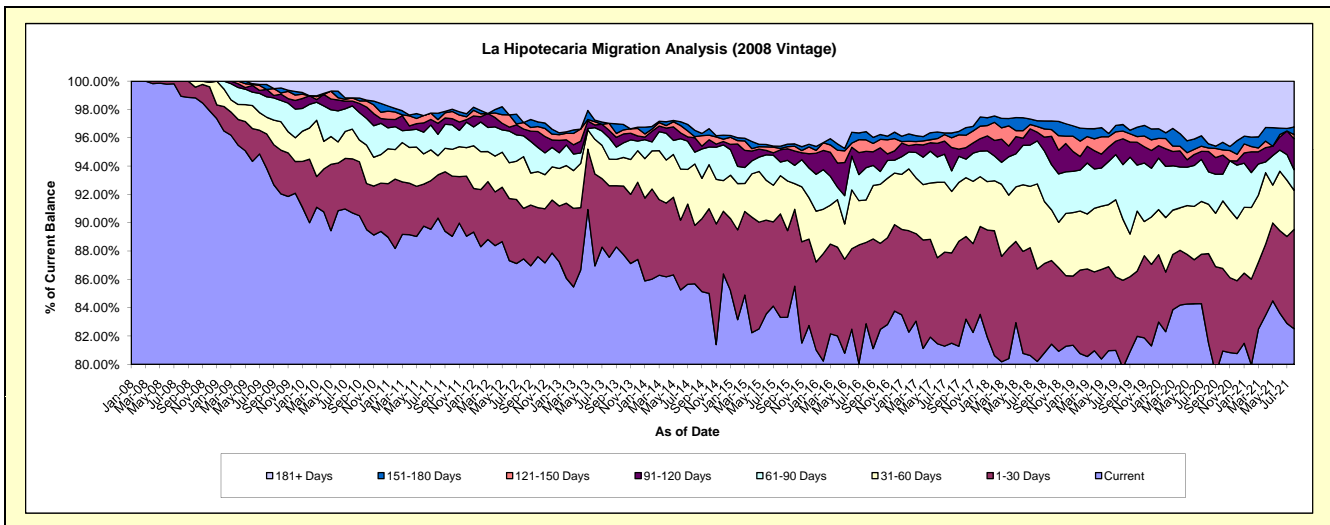
Delinquency Status (\$ of Current Balance)

Data Cutoff: 8/31/2021

Current Portfolio Balance	20,102,216.89	18,173,204.97	16,387,940.72	14,722,263.77	13,397,369.40	12,315,506.04	11,184,889.19	10,130,187.84	9,387,586.11	8,360,157.00
	Aug-12	Aug-13	Aug-14	Aug-15	Aug-16	Aug-17	Aug-18	Aug-19	Aug-20	Aug-21
Current	17,578,990.37	15,913,182.24	14,042,307.71	12,266,707.22	11,102,343.22	10,036,671.34	8,971,314.57	8,080,322.34	7,652,163.86	6,897,489.35
1-30 Days	718,281.36	917,640.29	677,110.75	1,075,735.65	769,328.65	785,309.68	729,557.89	625,397.90	592,705.01	587,307.61
31-60 Days	733,997.16	342,135.77	709,880.17	397,596.09	402,019.06	534,069.12	672,758.85	437,344.81	326,757.37	230,087.20
61-90 Days	294,580.57	272,425.46	136,888.87	141,228.64	305,701.13	178,956.54	339,333.15	390,369.65	214,547.61	122,094.37
91-120 Days	97,297.46	97,200.61	167,574.80	127,477.01	154,275.29	203,899.81	68,612.32	184,584.26	135,049.11	182,265.82
121-150 Days	92,730.61	88,813.71	11,884.94	13,758.75	108,619.89	83,914.36	44,985.56	55,534.20	23,896.85	25,065.56
151-180 Days	-	-	73,917.76	23,759.41	78,084.22	41,857.86	45,955.60	46,385.66	26,940.01	45,573.13
181+ Days	586,339.36	541,806.89	568,375.72	676,001.00	476,997.94	450,827.33	312,371.25	310,249.02	415,526.29	270,273.96

Delinquency Status (% of Current Balance)

Current Portfolio Balance	20,102,216.89	18,173,204.97	16,387,940.72	14,722,263.77	13,397,369.40	12,315,506.04	11,184,889.19	10,130,187.84	9,387,586.11	8,360,157.00
	Aug-12	Aug-13	Aug-14	Aug-15	Aug-16	Aug-17	Aug-18	Aug-19	Aug-20	Aug-21
Current	87.45%	87.56%	85.69%	83.32%	82.87%	81.50%	80.21%	79.76%	81.51%	82.50%
1-30 Days	3.57%	5.05%	4.13%	7.31%	5.74%	6.38%	6.52%	6.17%	6.31%	7.03%
31-60 Days	3.65%	1.88%	4.33%	2.70%	3.00%	4.34%	6.01%	4.32%	3.48%	2.75%
61-90 Days	1.47%	1.50%	0.84%	0.96%	2.28%	1.45%	3.03%	3.85%	2.29%	1.46%
91-120 Days	0.48%	0.53%	1.02%	0.87%	1.15%	1.66%	0.61%	1.82%	1.44%	2.18%
121-150 Days	0.46%	0.49%	0.07%	0.09%	0.81%	0.68%	0.40%	0.55%	0.25%	0.30%
151-180 Days	0.00%	0.00%	0.45%	0.16%	0.58%	0.34%	0.41%	0.46%	0.29%	0.55%
181+ Days	2.92%	2.98%	3.47%	4.59%	3.56%	3.66%	2.79%	3.06%	4.43%	3.23%
Current - 90 Days	96.14%	96.00%	94.99%	94.29%	93.89%	93.66%	95.78%	94.11%	93.59%	93.74%
91-180 Days	0.95%	1.02%	1.55%	1.12%	2.55%	2.68%	1.43%	2.83%	1.98%	3.03%



Mortgages - La Hipotecaria El Salvador Migration Analysis (2009 Vintage)

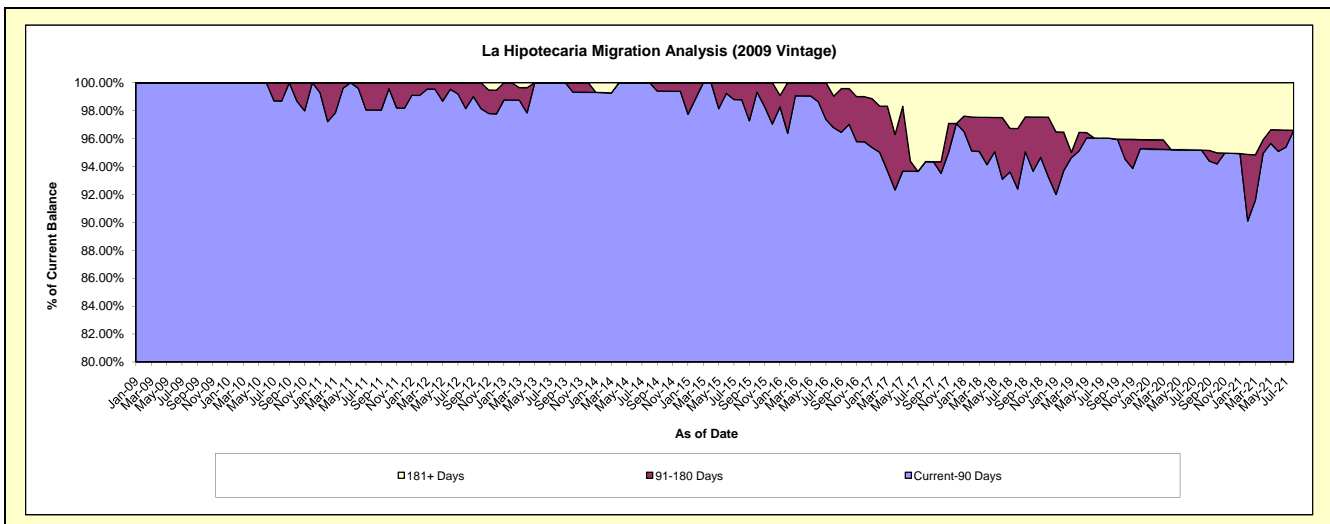
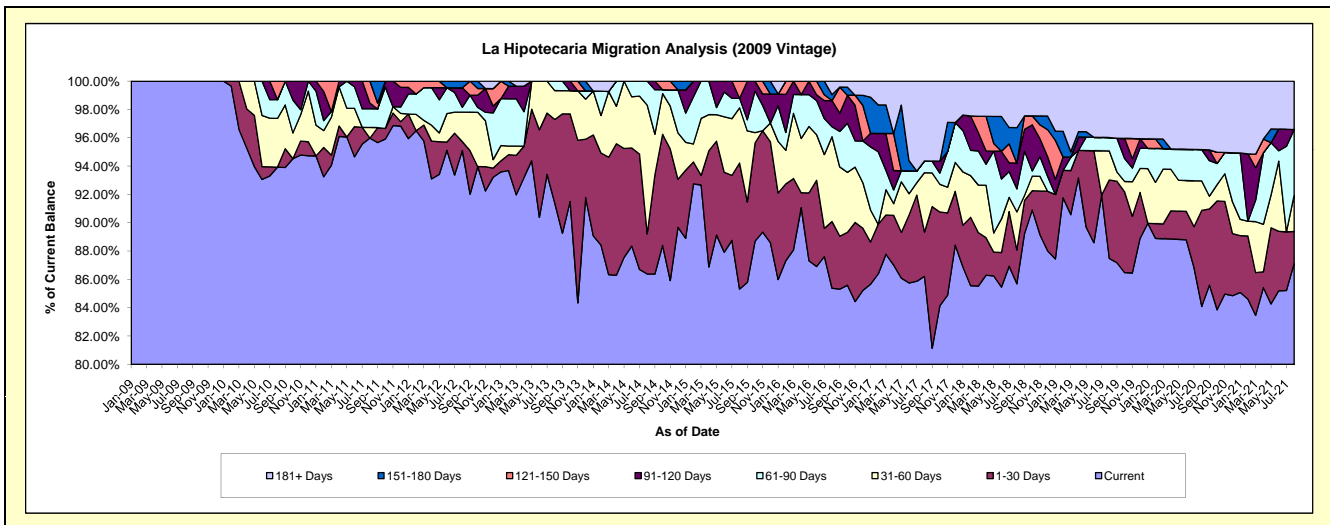
Delinquency Status (\$ of Current Balance)

Data Cutoff: 8/31/2021

Current Portfolio Balance	3,000,998.20	2,717,539.78	2,348,679.76	2,104,840.46	1,948,678.46	1,889,466.14	1,759,536.44	1,627,139.93	1,558,657.09	1,414,083.96
	Aug-12	Aug-13	Aug-14	Aug-15	Aug-16	Aug-17	Aug-18	Aug-19	Aug-20	Aug-21
Current	2,853,899.29	2,483,823.93	2,028,866.45	1,795,763.80	1,663,699.95	1,628,952.80	1,507,759.27	1,423,493.87	1,310,678.32	1,231,878.79
1-30 Days	18,869.15	160,183.32	66,425.18	187,469.31	91,688.96	59,044.04	42,017.73	90,073.09	105,706.06	32,032.27
31-60 Days	62,519.97	55,423.38	213,643.44	82,000.61	116,806.24	79,265.67	47,335.68	33,314.90	32,444.30	36,289.25
61-90 Days	10,258.57	18,109.15	39,744.69	14,063.93	13,714.21	15,668.91	28,521.10	15,460.58	34,499.66	65,571.45
91-120 Days	41,420.94	-	-	-	36,001.74	-	32,154.20	-	-	-
121-150 Days	-	-	-	25,542.81	-	-	-	-	-	-
151-180 Days	14,030.28	-	-	-	8,145.28	-	44,038.96	-	-	-
181+ Days	-	-	-	-	18,622.08	106,534.72	57,709.50	64,797.49	75,328.75	48,312.20

Delinquency Status (% of Current Balance)

Current Portfolio Balance	3,000,998.20	2,717,539.78	2,348,679.76	2,104,840.46	1,948,678.46	1,889,466.14	1,759,536.44	1,627,139.93	1,558,657.09	1,414,083.96
	Aug-12	Aug-13	Aug-14	Aug-15	Aug-16	Aug-17	Aug-18	Aug-19	Aug-20	Aug-21
Current	95.10%	91.40%	86.38%	85.32%	85.38%	86.21%	85.69%	87.48%	84.09%	87.11%
1-30 Days	0.63%	5.89%	2.83%	8.91%	4.71%	3.12%	2.39%	5.54%	6.78%	2.27%
31-60 Days	2.08%	2.04%	9.10%	3.90%	5.99%	4.20%	2.69%	2.05%	2.08%	2.57%
61-90 Days	0.34%	0.67%	1.69%	0.67%	0.70%	0.83%	1.62%	0.95%	2.21%	4.64%
91-120 Days	1.38%	0.00%	0.00%	0.00%	1.85%	0.00%	1.83%	0.00%	0.00%	0.00%
121-150 Days	0.00%	0.00%	0.00%	1.21%	0.00%	0.00%	0.00%	0.00%	0.00%	0.00%
151-180 Days	0.47%	0.00%	0.00%	0.00%	0.42%	0.00%	2.50%	0.00%	0.00%	0.00%
181+ Days	0.00%	0.00%	0.00%	0.00%	0.96%	5.64%	3.28%	3.98%	4.83%	3.42%
Current - 90 Days	98.15%	100.00%	100.00%	98.79%	96.78%	94.36%	92.39%	96.02%	95.17%	96.58%
91-180 Days	1.85%	0.00%	0.00%	1.21%	2.27%	0.00%	4.33%	0.00%	0.00%	0.00%



Mortgages - La Hipotecaria El Salvador Migration Analysis (2010 Vintage)

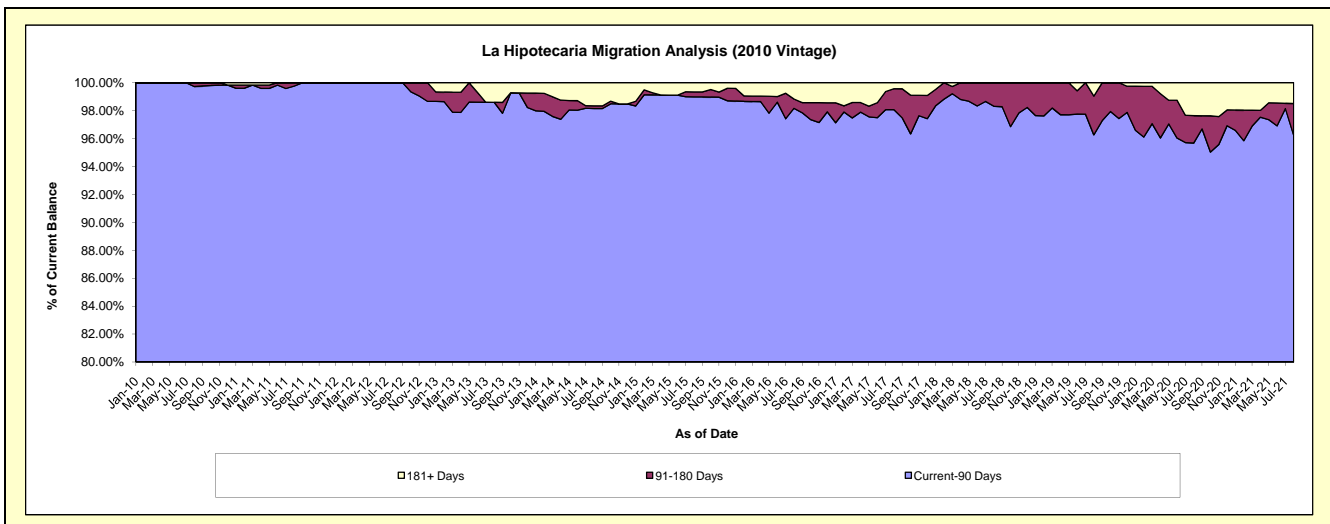
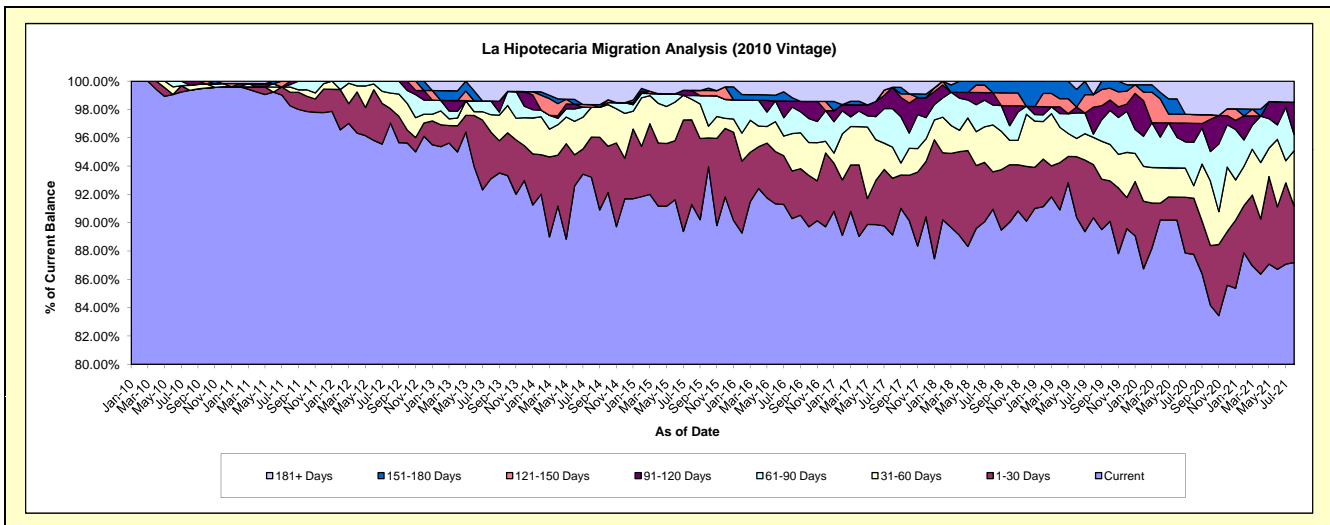
Delinquency Status (\$ of Current Balance)

Data Cutoff: 8/31/2021

Current Portfolio Balance	8,661,341.00	8,081,616.80	6,887,281.20	6,161,313.36	5,431,154.41	5,164,695.98	4,676,153.45	4,286,355.77	3,884,531.65	3,501,588.18
	Aug-12	Aug-13	Aug-14	Aug-15	Aug-16	Aug-17	Aug-18	Aug-19	Aug-20	Aug-21
Current	8,405,152.77	7,524,378.63	6,420,367.89	5,624,064.40	4,904,182.72	4,604,214.11	4,252,952.31	3,872,922.19	3,409,626.00	3,053,165.42
1-30 Days	87,668.56	266,839.41	194,642.98	368,801.77	182,364.29	206,503.41	123,729.49	161,116.64	153,912.19	139,473.00
31-60 Days	95,452.10	98,713.41	145,119.17	90,063.68	143,839.28	113,368.09	155,020.08	82,172.85	34,366.44	137,059.63
61-90 Days	73,067.57	78,560.90	-	15,798.45	101,134.93	140,692.67	65,557.25	10,195.91	118,840.20	39,888.48
91-120 Days	-	-	-	22,150.25	23,297.71	77,767.45	41,004.87	81,260.27	52,048.11	79,679.00
121-150 Days	-	-	13,000.87	-	-	-	-	37,683.04	24,350.72	-
151-180 Days	-	-	-	-	13,000.87	-	37,889.45	-	-	-
181+ Days	-	113,124.45	114,150.29	40,434.81	63,334.61	22,150.25	-	41,004.87	91,387.99	52,322.65

Delinquency Status (% of Current Balance)

Current Portfolio Balance	8,661,341.00	8,081,616.80	6,887,281.20	6,161,313.36	5,431,154.41	5,164,695.98	4,676,153.45	4,286,355.77	3,884,531.65	3,501,588.18
	Aug-12	Aug-13	Aug-14	Aug-15	Aug-16	Aug-17	Aug-18	Aug-19	Aug-20	Aug-21
Current	97.04%	93.10%	93.22%	91.28%	90.30%	89.15%	90.95%	90.35%	87.77%	87.19%
1-30 Days	1.01%	3.30%	2.83%	5.99%	3.36%	4.00%	2.65%	3.76%	3.96%	3.98%
31-60 Days	1.10%	1.22%	2.11%	1.46%	2.65%	2.20%	3.32%	1.92%	0.88%	3.91%
61-90 Days	0.84%	0.97%	0.00%	0.26%	1.86%	2.72%	1.40%	0.24%	3.06%	1.14%
91-120 Days	0.00%	0.00%	0.00%	0.36%	0.43%	1.51%	0.88%	1.90%	1.34%	2.28%
121-150 Days	0.00%	0.00%	0.19%	0.00%	0.00%	0.00%	0.00%	0.88%	0.63%	0.00%
151-180 Days	0.00%	0.00%	0.00%	0.00%	0.24%	0.00%	0.81%	0.00%	0.00%	0.00%
181+ Days	0.00%	1.40%	1.66%	0.66%	1.17%	0.43%	0.00%	0.96%	2.35%	1.49%
Current - 90 Days	100.00%	98.60%	98.15%	98.98%	98.17%	98.07%	98.31%	96.27%	95.68%	96.23%
91-180 Days	0.00%	0.00%	0.19%	0.36%	0.67%	1.51%	1.69%	2.77%	1.97%	2.28%



Mortgages - La Hipotecaria El Salvador Migration Analysis (2011 Vintage)

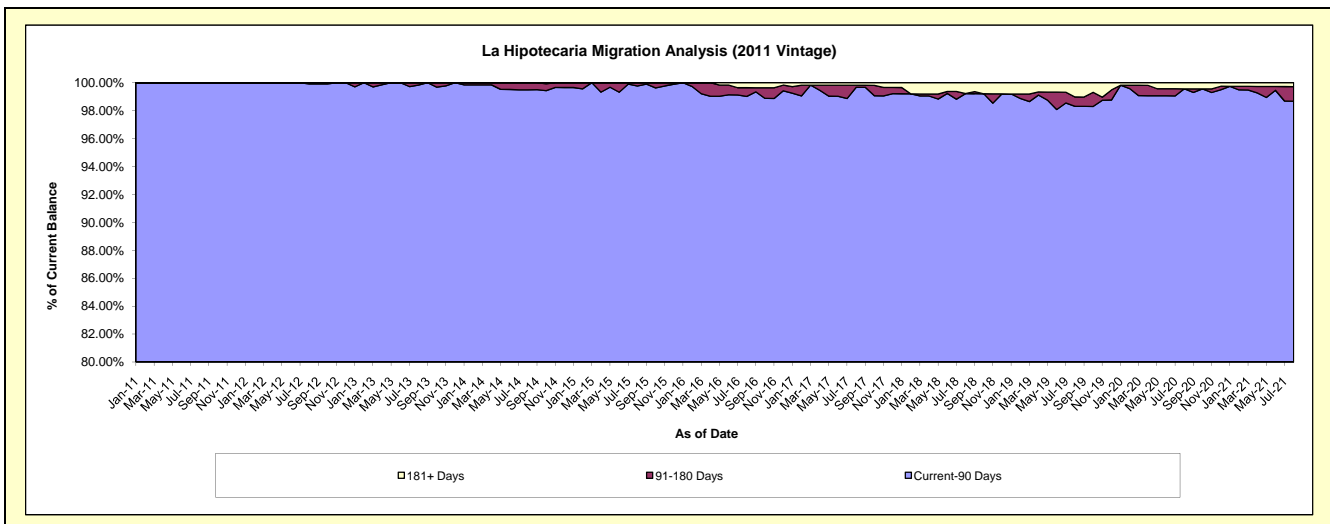
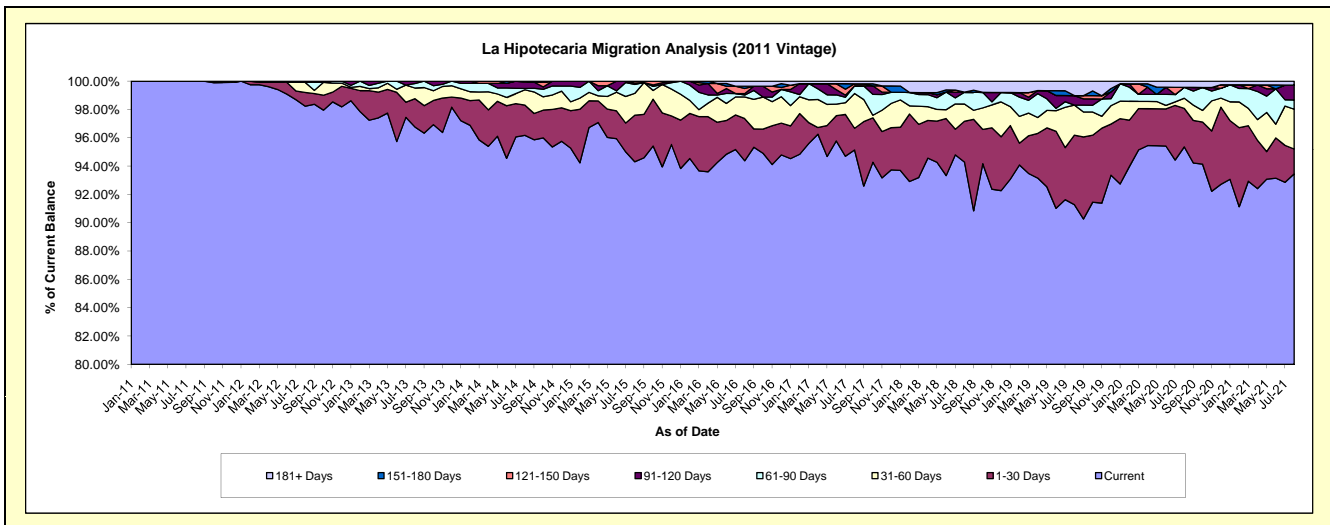
Delinquency Status (\$ of Current Balance)

Data Cutoff: 8/31/2021

Current Portfolio Balance	16,666,897.74	15,285,987.77	13,969,226.59	12,823,840.70	11,973,404.33	11,136,540.18	10,107,069.56	9,283,919.21	8,482,678.92	7,535,764.54
	Aug-12	Aug-13	Aug-14	Aug-15	Aug-16	Aug-17	Aug-18	Aug-19	Aug-20	Aug-21
Current	16,373,004.99	14,790,517.72	13,434,623.09	12,094,163.79	11,300,507.37	10,595,231.53	9,530,078.31	8,474,417.00	8,088,812.53	7,042,053.04
1-30 Days	160,301.18	305,794.46	298,998.83	421,409.17	356,691.89	170,592.03	290,485.98	455,495.18	230,961.68	132,627.67
31-60 Days	119,418.49	115,358.66	150,362.43	198,163.22	182,611.72	273,815.46	123,226.98	197,447.56	60,914.57	212,064.23
61-90 Days	-	48,897.12	13,565.80	80,555.66	16,155.45	60,451.70	84,975.75	-	64,886.46	49,059.83
91-120 Days	14,173.08	25,419.81	61,916.01	12,802.58	12,802.58	-	-	61,926.32	-	79,011.54
121-150 Days	-	-	9,760.43	16,746.28	42,438.27	16,155.45	-	-	-	-
151-180 Days	-	-	-	-	19,557.89	-	-	-	-	-
181+ Days	-	-	-	-	42,639.16	20,294.01	78,302.54	94,633.15	37,103.68	20,948.23

Delinquency Status (% of Current Balance)

Current Portfolio Balance	16,666,897.74	15,285,987.77	13,969,226.59	12,823,840.70	11,973,404.33	11,136,540.18	10,107,069.56	9,283,919.21	8,482,678.92	7,535,764.54
	Aug-12	Aug-13	Aug-14	Aug-15	Aug-16	Aug-17	Aug-18	Aug-19	Aug-20	Aug-21
Current	98.24%	96.76%	96.17%	94.31%	94.38%	95.14%	94.29%	91.28%	95.36%	93.45%
1-30 Days	0.96%	2.00%	2.14%	3.29%	2.98%	1.53%	2.87%	4.91%	2.72%	1.76%
31-60 Days	0.72%	0.75%	1.08%	1.55%	1.53%	2.46%	1.22%	2.13%	0.72%	2.81%
61-90 Days	0.00%	0.32%	0.10%	0.63%	0.13%	0.54%	0.84%	0.00%	0.76%	0.65%
91-120 Days	0.09%	0.17%	0.44%	0.10%	0.11%	0.00%	0.00%	0.67%	0.00%	1.05%
121-150 Days	0.00%	0.00%	0.07%	0.13%	0.35%	0.15%	0.00%	0.00%	0.00%	0.00%
151-180 Days	0.00%	0.00%	0.00%	0.00%	0.16%	0.00%	0.00%	0.00%	0.00%	0.00%
181+ Days	0.00%	0.00%	0.00%	0.00%	0.36%	0.18%	0.77%	1.02%	0.44%	0.28%
Current - 90 Days	99.91%	99.83%	99.49%	99.77%	99.02%	99.67%	99.23%	98.31%	99.56%	98.67%
91-180 Days	0.09%	0.17%	0.51%	0.23%	0.62%	0.15%	0.00%	0.67%	0.00%	1.05%



Mortgages - La Hipotecaria El Salvador Migration Analysis (2012 Vintage)

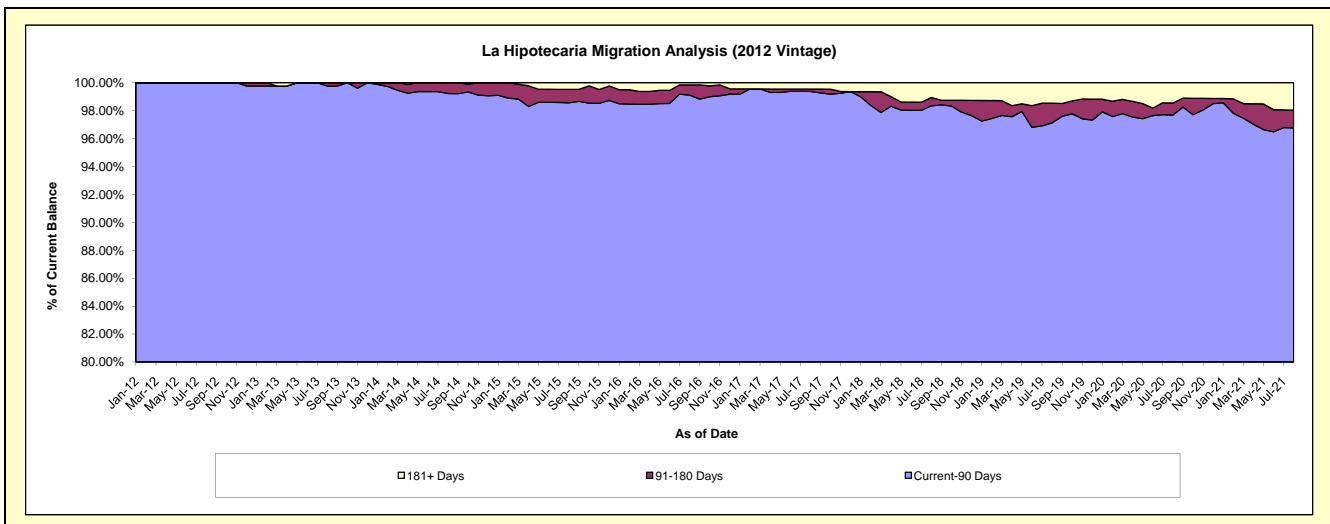
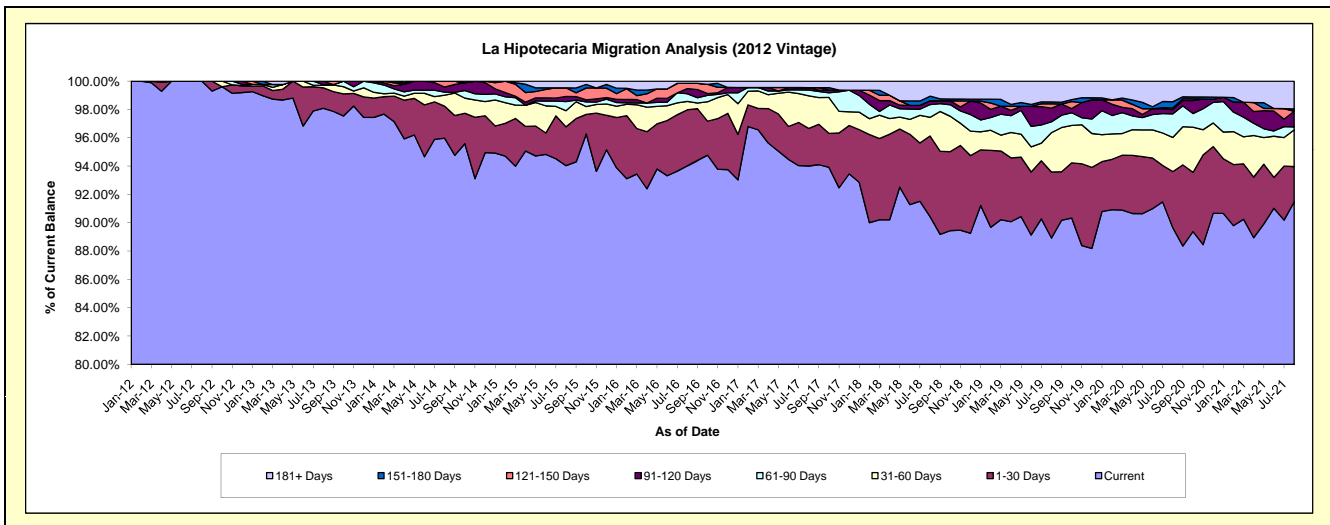
Delinquency Status (\$ of Current Balance)

Data Cutoff: 8/31/2021

Current Portfolio Balance	15,638,243.36	24,167,340.04	22,418,845.63	20,594,156.93	18,752,941.94	17,613,767.71	16,193,913.66	15,240,306.60	14,193,361.69	12,552,192.79
	Aug-12	Aug-13	Aug-14	Aug-15	Aug-16	Aug-17	Aug-18	Aug-19	Aug-20	Aug-21
Current	15,638,243.36	23,704,478.38	21,515,756.39	19,366,097.90	17,632,208.31	16,568,974.95	14,644,944.07	13,552,528.28	12,725,526.52	11,482,360.73
1-30 Days	-	349,515.33	506,634.13	565,184.09	741,694.88	466,716.83	922,342.15	710,634.11	560,936.54	312,389.07
31-60 Days	-	43,297.03	174,077.81	233,593.57	111,734.95	405,044.08	213,154.04	422,599.52	343,396.57	325,434.13
61-90 Days	-	12,037.71	49,028.39	132,673.94	100,615.61	73,589.93	145,930.09	117,120.84	235,079.64	26,620.61
91-120 Days	-	58,011.59	80,109.89	73,394.22	68,084.22	28,825.61	44,202.64	147,318.96	42,957.67	137,825.47
121-150 Days	-	-	93,239.02	125,597.04	69,856.52	-	-	46,348.29	16,406.24	-
151-180 Days	-	-	-	-	-	-	51,444.27	20,415.11	62,917.55	20,752.32
181+ Days	-	-	-	97,616.17	28,747.45	80,616.31	171,896.40	223,341.49	206,140.96	246,810.46

Delinquency Status (% of Current Balance)

Current Portfolio Balance	15,638,243.36	24,167,340.04	22,418,845.63	20,594,156.93	18,752,941.94	17,613,767.71	16,193,913.66	15,240,306.60	14,193,361.69	12,552,192.79
	Aug-12	Aug-13	Aug-14	Aug-15	Aug-16	Aug-17	Aug-18	Aug-19	Aug-20	Aug-21
Current	100.00%	98.08%	95.97%	94.04%	94.02%	94.01%	90.43%	88.93%	89.66%	91.48%
1-30 Days	0.00%	1.45%	2.26%	2.74%	3.96%	2.65%	5.70%	4.66%	3.95%	2.49%
31-60 Days	0.00%	0.18%	0.78%	1.13%	0.60%	2.30%	1.32%	2.77%	2.42%	2.59%
61-90 Days	0.00%	0.05%	0.22%	0.64%	0.54%	0.42%	0.90%	0.77%	1.66%	0.21%
91-120 Days	0.00%	0.24%	0.36%	0.36%	0.36%	0.16%	0.27%	0.97%	0.30%	1.10%
121-150 Days	0.00%	0.00%	0.42%	0.61%	0.37%	0.00%	0.00%	0.30%	0.12%	0.00%
151-180 Days	0.00%	0.00%	0.00%	0.00%	0.00%	0.00%	0.32%	0.13%	0.44%	0.17%
181+ Days	0.00%	0.00%	0.00%	0.47%	0.15%	0.46%	1.06%	1.47%	1.45%	1.97%
Current - 90 Days	100.00%	99.76%	99.23%	98.56%	99.11%	99.38%	98.35%	97.13%	97.69%	96.77%
91-180 Days	0.00%	0.24%	0.77%	0.97%	0.74%	0.16%	0.59%	1.40%	0.86%	1.26%



Mortgages - La Hipotecaria El Salvador Migration Analysis (2013 Vintage)

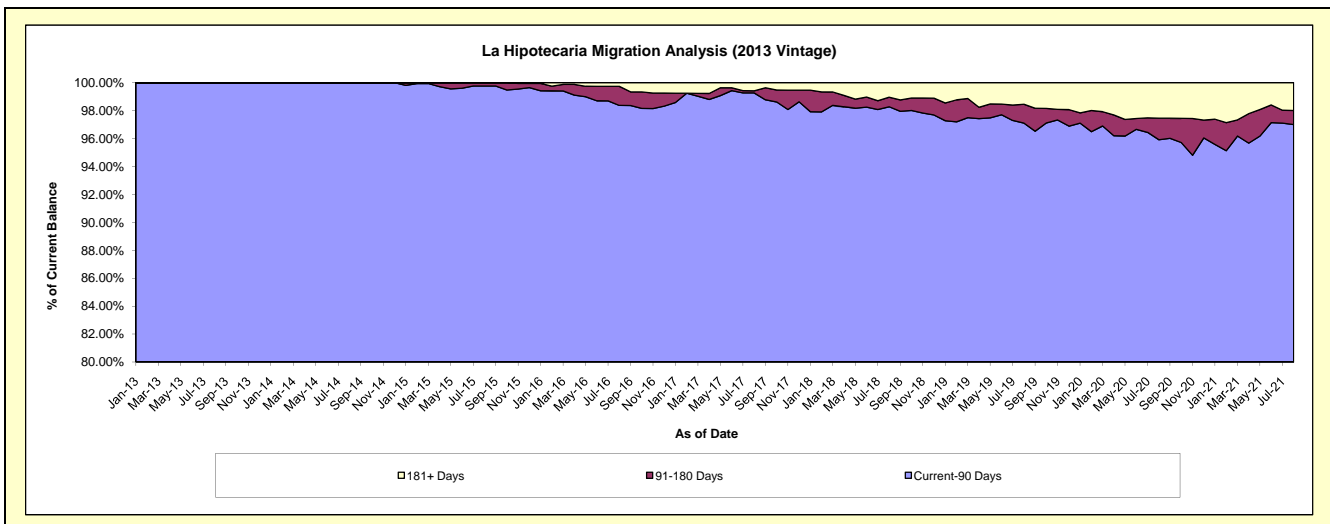
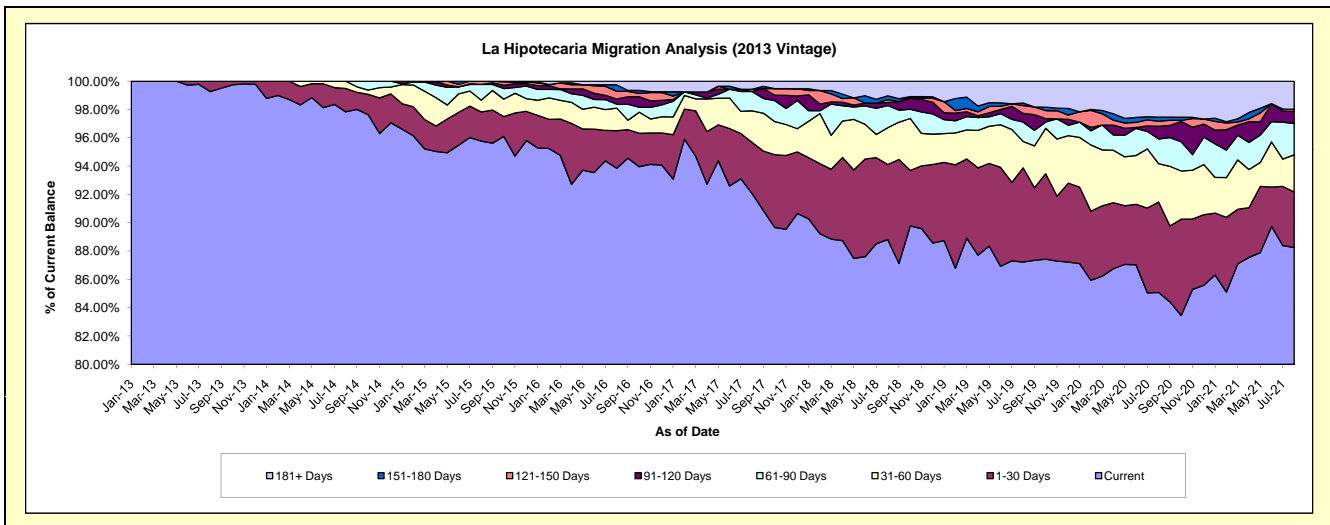
Delinquency Status (\$ of Current Balance)

Data Cutoff: 8/31/2021

Current Portfolio Balance	-	20,056,564.45	28,617,610.24	27,261,549.38	25,387,809.22	23,751,466.82	21,897,463.14	20,100,996.22	18,293,195.33	16,423,541.90
	Aug-13	Aug-14	Aug-15	Aug-16	Aug-17	Aug-18	Aug-19	Aug-20	Aug-21	
Current	19,909,580.50	27,997,663.85	26,107,581.94	23,826,636.05	21,864,204.71	19,448,841.02	17,533,781.37	15,564,038.02	14,494,441.11	
1-30 Days	146,983.95	472,048.37	561,152.79	672,431.17	859,357.90	1,159,895.23	1,336,834.22	1,168,003.39	643,990.10	
31-60 Days	-	147,898.02	227,713.14	406,456.04	531,251.95	568,018.17	374,233.16	495,182.56	430,118.31	
61-90 Days	-	-	301,203.10	69,839.86	322,762.36	344,210.14	274,969.05	319,618.44	363,620.13	
91-120 Days	-	-	-	93,477.46	-	46,649.52	122,717.47	163,580.85	142,082.71	
121-150 Days	-	-	63,898.41	137,488.52	37,294.37	44,019.53	112,252.65	65,563.17	23,239.82	
151-180 Days	-	-	-	116,224.08	-	58,723.80	36,303.99	53,360.67	-	
181+ Days	-	-	-	65,256.04	136,595.53	227,105.73	309,904.31	463,848.23	326,049.72	

Delinquency Status (% of Current Balance)

Current Portfolio Balance	-	20,056,564.45	28,617,610.24	27,261,549.38	25,387,809.22	23,751,466.82	21,897,463.14	20,100,996.22	18,293,195.33	16,423,541.90
	Aug-13	Aug-14	Aug-15	Aug-16	Aug-17	Aug-18	Aug-19	Aug-20	Aug-21	
Current	99.27%	97.83%	95.77%	93.85%	92.05%	88.82%	87.23%	85.08%	88.25%	
1-30 Days	0.73%	1.65%	2.06%	2.65%	3.62%	5.30%	6.65%	6.38%	3.92%	
31-60 Days	0.00%	0.52%	0.84%	1.60%	2.24%	2.59%	1.86%	2.71%	2.62%	
61-90 Days	0.00%	0.00%	1.10%	0.28%	1.36%	1.57%	1.37%	1.75%	2.21%	
91-120 Days	0.00%	0.00%	0.00%	0.37%	0.00%	0.21%	0.61%	0.89%	0.87%	
121-150 Days	0.00%	0.00%	0.23%	0.54%	0.16%	0.20%	0.56%	0.36%	0.14%	
151-180 Days	0.00%	0.00%	0.00%	0.46%	0.00%	0.27%	0.18%	0.29%	0.00%	
181+ Days	0.00%	0.00%	0.00%	0.26%	0.58%	1.04%	1.54%	2.54%	1.99%	
Current - 90 Days	100.00%	100.00%	99.77%	98.38%	99.27%	98.28%	97.11%	95.92%	97.01%	
91-180 Days	0.00%	0.00%	0.23%	1.37%	0.16%	0.68%	1.35%	1.54%	1.01%	



Mortgages - La Hipotecaria El Salvador Migration Analysis (2014 Vintage)

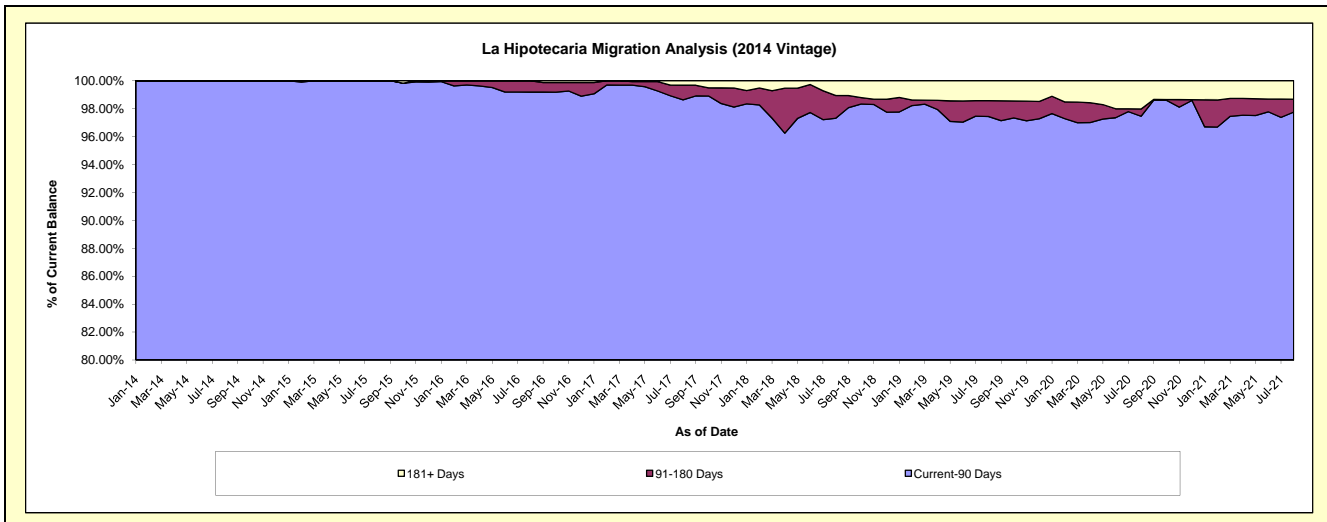
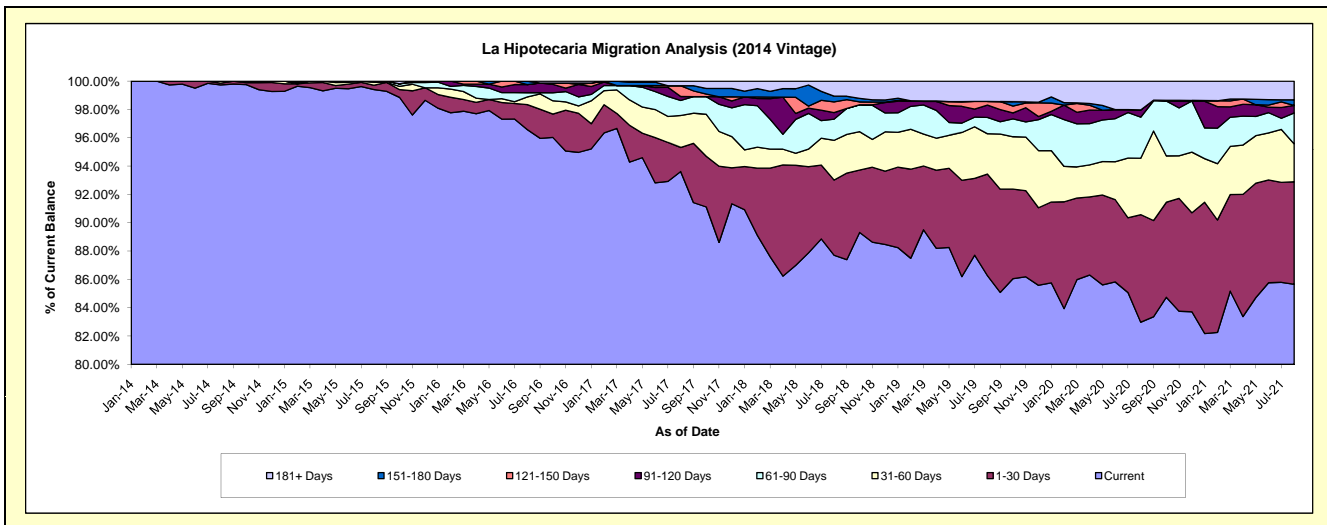
Delinquency Status (\$ of Current Balance)

Data Cutoff: 8/31/2021

Current Portfolio Balance	-	-	19,243,260.16	27,294,013.64	25,669,563.87	24,320,614.39	22,309,042.90	20,395,386.11	18,826,726.00	16,992,640.96
	Aug-14	Aug-15	Aug-16	Aug-17	Aug-18	Aug-19	Aug-20	Aug-21		
Current	19,191,428.43	27,130,826.66	24,791,686.86	22,768,730.42	19,566,623.08	17,595,021.28	15,621,470.67	14,555,616.48		
1-30 Days	25,449.90	85,404.09	453,288.08	412,334.90	1,184,314.29	1,462,478.97	1,430,665.06	1,229,143.80		
31-60 Days	26,381.83	53,358.19	138,133.23	550,478.33	625,494.57	580,948.84	750,334.17	455,337.60		
61-90 Days	-	24,424.70	77,719.69	257,022.25	333,628.00	234,693.11	545,723.67	371,127.22		
91-120 Days	-	-	147,551.94	68,247.24	103,584.96	178,089.22	97,119.00	91,108.75		
121-150 Days	-	-	-	185,854.80	167,852.06	52,643.09	-	-		
151-180 Days	-	-	61,184.07	-	91,678.45	-	-	65,955.55		
181+ Days	-	-	-	77,946.45	235,867.49	291,511.60	381,413.43	224,351.56		

Delinquency Status (% of Current Balance)

Current Portfolio Balance	-	-	19,243,260.16	27,294,013.64	25,669,563.87	24,320,614.39	22,309,042.90	20,395,386.11	18,826,726.00	16,992,640.96
	Aug-14	Aug-15	Aug-16	Aug-17	Aug-18	Aug-19	Aug-20	Aug-21		
Current	99.73%	99.40%	96.58%	93.62%	87.71%	86.27%	82.97%	85.66%		
1-30 Days	0.13%	0.31%	1.77%	1.70%	5.31%	7.17%	7.60%	7.23%		
31-60 Days	0.14%	0.20%	0.54%	2.26%	2.80%	2.85%	3.99%	2.68%		
61-90 Days	0.00%	0.09%	0.30%	1.06%	1.50%	1.15%	2.90%	2.18%		
91-120 Days	0.00%	0.00%	0.57%	0.28%	0.46%	0.87%	0.52%	0.54%		
121-150 Days	0.00%	0.00%	0.00%	0.76%	0.26%	0.00%	0.00%	0.00%		
151-180 Days	0.00%	0.00%	0.24%	0.00%	0.41%	0.00%	0.00%	0.39%		
181+ Days	0.00%	0.00%	0.00%	0.32%	1.06%	1.43%	2.03%	1.32%		
Current - 90 Days	100.00%	100.00%	99.19%	98.63%	97.32%	97.44%	97.46%	97.76%		
91-180 Days	0.00%	0.00%	0.81%	1.04%	1.63%	1.13%	0.52%	0.92%		



Mortgages - La Hipotecaria El Salvador Migration Analysis (2015 Vintage)

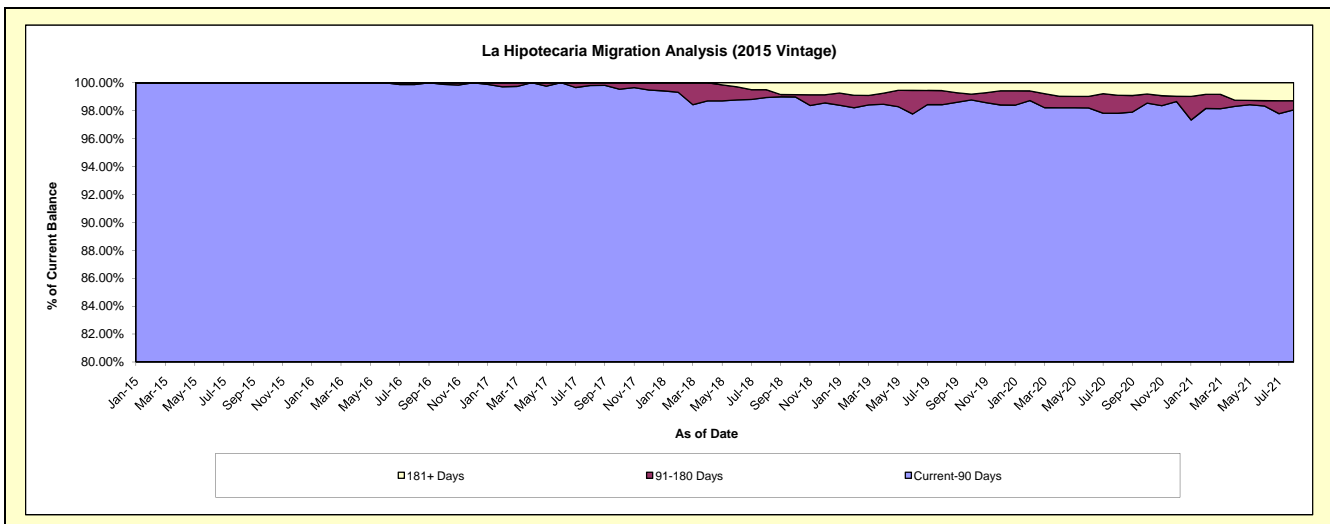
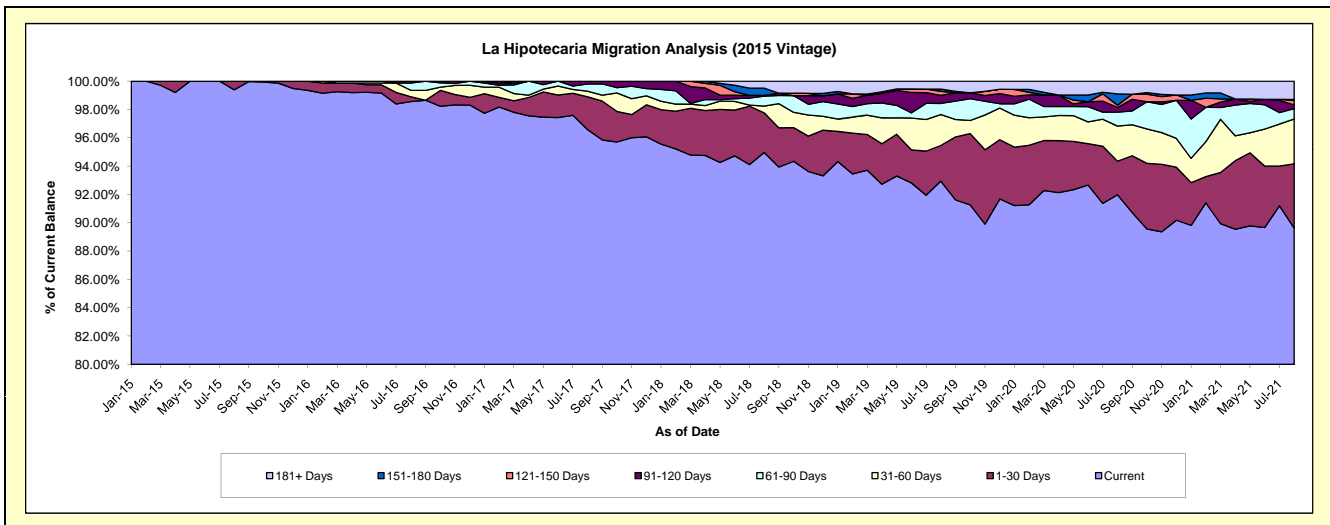
Delinquency Status (\$ of Current Balance)

Data Cutoff: 8/31/2021

Current Portfolio Balance	-	-	-	14,594,786.32	23,019,129.18	21,927,223.51	20,621,147.87	18,708,500.51	17,696,174.50	16,099,598.93
	Aug-15	Aug-16	Aug-17	Aug-18	Aug-19	Aug-20	Aug-21			
Current	14,505,219.51	22,687,881.06	21,177,151.62	19,582,647.32	17,388,195.58	16,276,714.66	14,429,032.30			
1-30 Days	89,566.81	76,590.66	508,146.19	577,539.79	470,810.55	419,635.61	730,789.84			
31-60 Days	-	105,554.82	87,998.61	99,511.87	408,626.16	438,609.14	508,703.01			
61-90 Days	-	118,071.59	110,844.87	143,256.03	147,099.36	173,932.63	118,392.86			
91-120 Days	-	31,031.05	43,082.22	10,760.31	106,558.24	59,754.36	43,504.78			
121-150 Days	-	-	-	-	53,926.67	27,664.05	50,422.22			
151-180 Days	-	-	-	105,349.24	27,934.71	140,674.60	11,154.59			
181+ Days	-	-	-	102,083.31	105,349.24	159,189.45	207,599.33			

Delinquency Status (% of Current Balance)

Current Portfolio Balance	-	-	-	14,594,786.32	23,019,129.18	21,927,223.51	20,621,147.87	18,708,500.51	17,696,174.50	16,099,598.93
	Aug-15	Aug-16	Aug-17	Aug-18	Aug-19	Aug-20	Aug-21			
Current	99.39%	98.56%	96.58%	94.96%	92.94%	91.98%	89.62%			
1-30 Days	0.61%	0.33%	2.32%	2.80%	2.52%	2.37%	4.54%			
31-60 Days	0.00%	0.46%	0.40%	0.48%	2.18%	2.48%	3.16%			
61-90 Days	0.00%	0.51%	0.51%	0.69%	0.79%	0.98%	0.74%			
91-120 Days	0.00%	0.13%	0.20%	0.05%	0.57%	0.34%	0.27%			
121-150 Days	0.00%	0.00%	0.00%	0.00%	0.29%	0.16%	0.31%			
151-180 Days	0.00%	0.00%	0.00%	0.51%	0.15%	0.79%	0.07%			
181+ Days	0.00%	0.00%	0.00%	0.50%	0.56%	0.90%	1.29%			
Current - 90 Days	100.00%	99.87%	99.80%	98.94%	98.43%	97.81%	98.06%			
91-180 Days	0.00%	0.13%	0.20%	0.56%	1.01%	1.29%	0.65%			



Mortgages - La Hipotecaria El Salvador Migration Analysis (2016 Vintage)

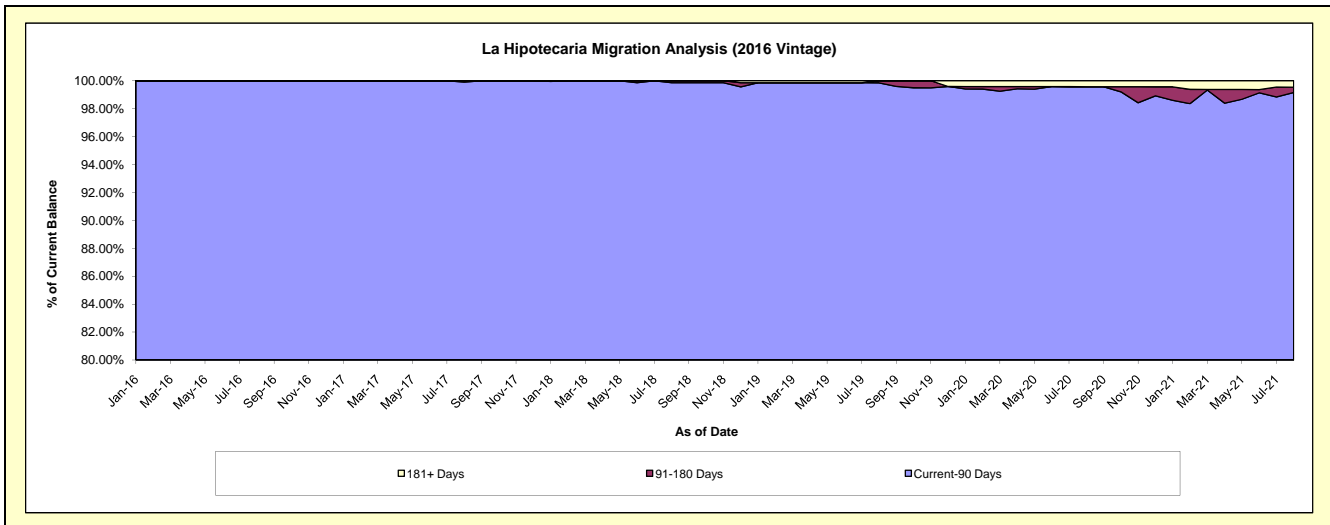
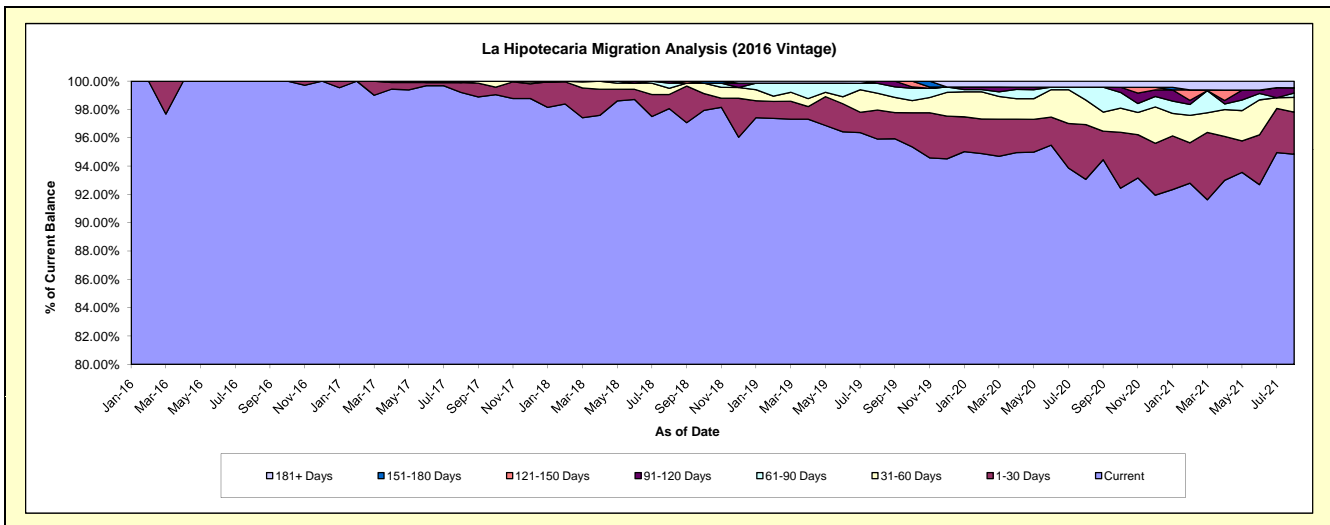
Delinquency Status (\$ of Current Balance)

Data Cutoff: 8/31/2021

Current Portfolio Balance	-	-	-	-	15,869,414.50	23,177,890.92	22,372,749.42	21,249,347.37	19,731,410.08	18,087,859.76		
	Aug-16		Aug-17		Aug-18		Aug-19		Aug-20		Aug-21	
Current	15,869,414.50	22,994,169.20	21,938,782.43	20,380,438.81	18,363,265.57	17,154,121.51						
1-30 Days	-	162,047.72	223,368.44	436,198.32	763,410.83	538,412.79						
31-60 Days	-	-	97,731.90	251,631.77	341,608.04	187,474.42						
61-90 Days	-	-	81,241.15	149,341.50	179,102.84	54,641.59						
91-120 Days	-	21,674.00	31,625.50	31,736.97	-	69,186.65						
121-150 Days	-	-	-	-	-	-						
151-180 Days	-	-	-	-	-	-						
181+ Days	-	-	-	-	84,022.80	84,022.80						

Delinquency Status (% of Current Balance)

Current Portfolio Balance	-	-	-	-	15,869,414.50	23,177,890.92	22,372,749.42	21,249,347.37	19,731,410.08	18,087,859.76		
	Aug-16		Aug-17		Aug-18		Aug-19		Aug-20		Aug-21	
Current	100.00%	99.21%	98.06%	95.91%	93.07%	94.84%						
1-30 Days	0.00%	0.70%	1.00%	2.05%	3.87%	2.98%						
31-60 Days	0.00%	0.00%	0.44%	1.18%	1.73%	1.04%						
61-90 Days	0.00%	0.00%	0.36%	0.70%	0.91%	0.30%						
91-120 Days	0.00%	0.09%	0.14%	0.15%	0.00%	0.38%						
121-150 Days	0.00%	0.00%	0.00%	0.00%	0.00%	0.00%						
151-180 Days	0.00%	0.00%	0.00%	0.00%	0.00%	0.00%						
181+ Days	0.00%	0.00%	0.00%	0.00%	0.43%	0.46%						
Current - 90 Days	100.00%	99.91%	99.86%	99.85%	99.57%	99.15%						
91-180 Days	0.00%	0.09%	0.14%	0.15%	0.00%	0.38%						



Mortgages - La Hipotecaria El Salvador Migration Analysis (2017 Vintage)

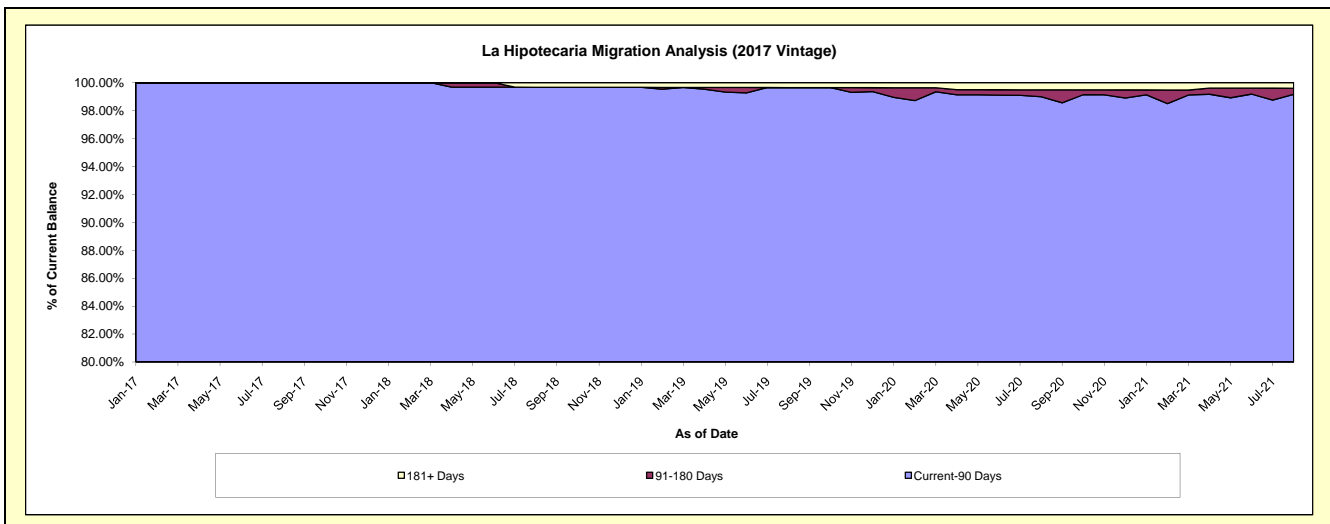
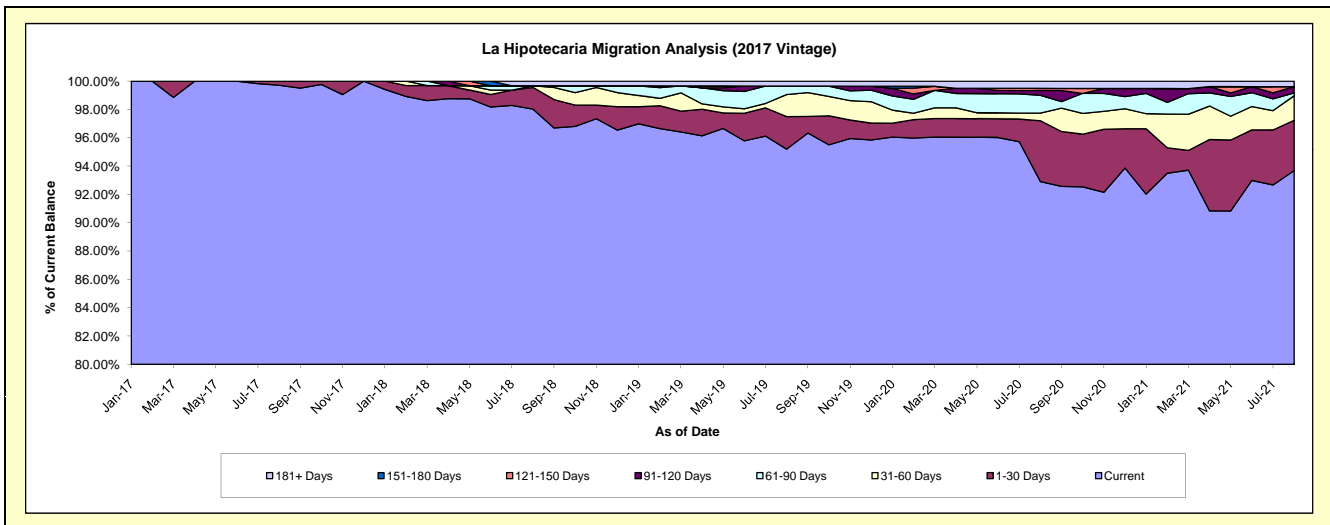
Delinquency Status (\$ of Current Balance)

Data Cutoff: 8/31/2021

Current Portfolio Balance	-	-	-	-	-	13,630,322.03	18,406,301.79	17,194,843.49	16,109,052.17	15,067,825.09
						Aug-17	Aug-18	Aug-19	Aug-20	Aug-21
Current						13,590,433.57	18,043,967.08	16,369,583.08	14,966,591.31	14,115,207.62
1-30 Days						39,888.46	280,449.85	394,501.25	692,317.77	535,441.97
31-60 Days						-	22,484.86	268,075.19	86,481.70	262,385.65
61-90 Days						-	-	103,283.97	202,057.61	30,001.85
91-120 Days						-	-	-	55,504.66	65,388.00
121-150 Days						-	-	-	24,214.26	-
151-180 Days						-	-	-	-	-
181+ Days						-	59,400.00	59,400.00	81,884.86	59,400.00

Delinquency Status (% of Current Balance)

Current Portfolio Balance	-	-	-	-	-	13,630,322.03	18,406,301.79	17,194,843.49	16,109,052.17	15,067,825.09
						Aug-17	Aug-18	Aug-19	Aug-20	Aug-21
Current						99.71%	98.03%	95.20%	92.91%	93.68%
1-30 Days						0.29%	1.52%	2.29%	4.30%	3.55%
31-60 Days						0.00%	0.12%	1.56%	0.54%	1.74%
61-90 Days						0.00%	0.00%	0.60%	1.25%	0.20%
91-120 Days						0.00%	0.00%	0.00%	0.34%	0.43%
121-150 Days						0.00%	0.00%	0.00%	0.15%	0.00%
151-180 Days						0.00%	0.00%	0.00%	0.00%	0.00%
181+ Days						0.00%	0.32%	0.35%	0.51%	0.39%
Current - 90 Days						100.00%	99.68%	99.65%	99.00%	99.17%
91-180 Days						0.00%	0.00%	0.00%	0.49%	0.43%



Mortgages - La Hipotecaria El Salvador Migration Analysis (2018 Vintage)

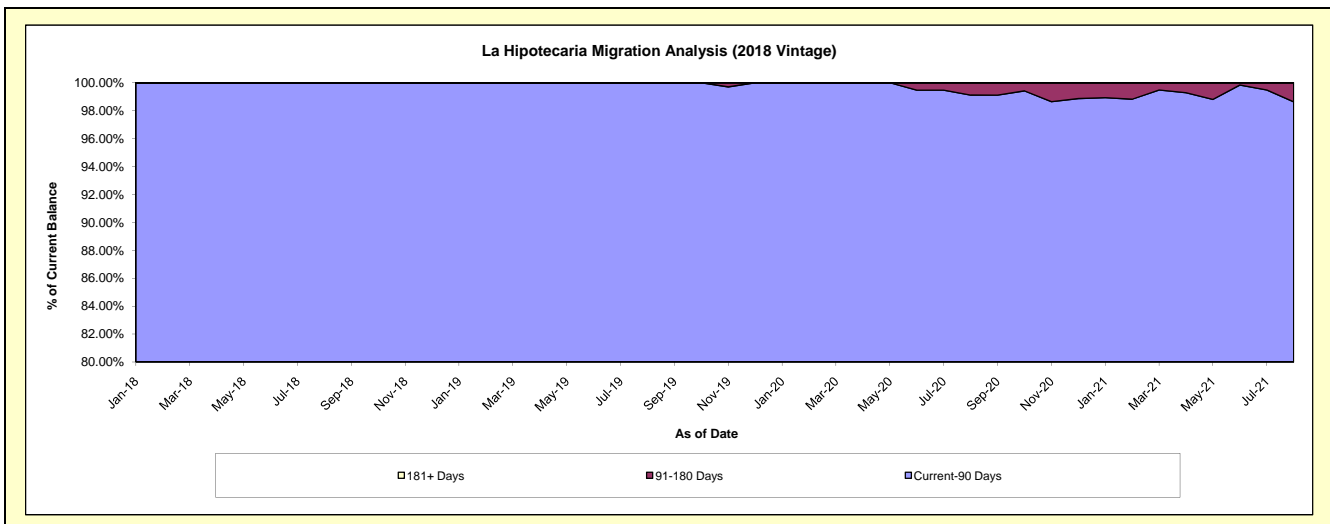
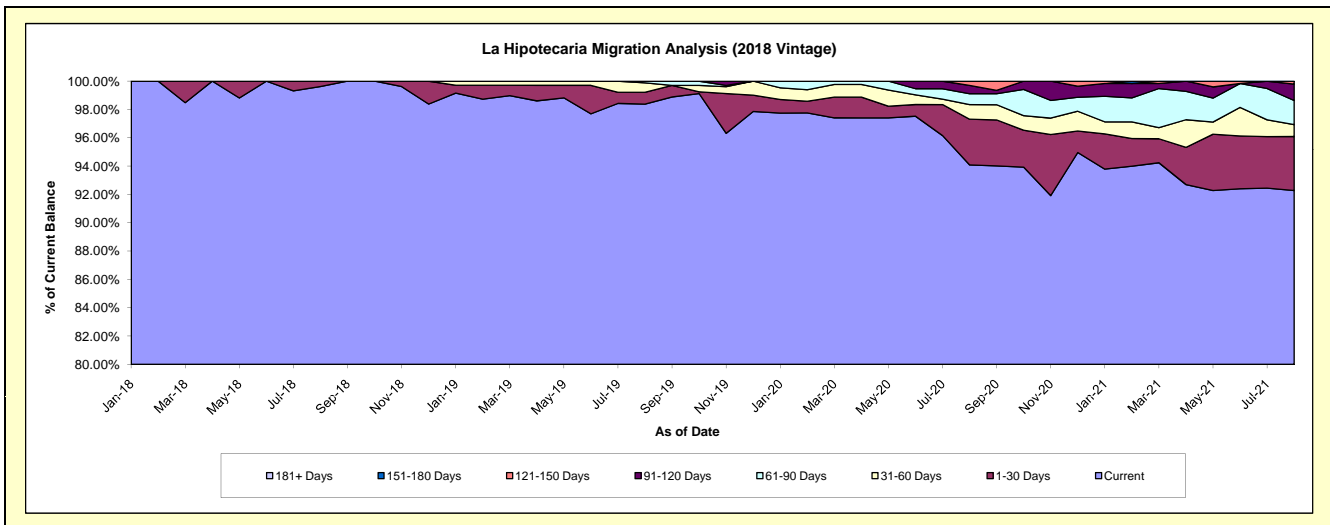
Delinquency Status (\$ of Current Balance)

Data Cutoff: 8/31/2021

Current Portfolio Balance	-	-	-	-	-	-	-	15,290,302.68	22,911,949.27	22,151,104.18	21,035,903.78
								Aug-18	Aug-19	Aug-20	Aug-21
Current								15,232,295.77	22,540,787.15	20,840,226.52	19,411,808.98
1-30 Days								58,006.91	191,606.70	715,558.91	801,461.26
31-60 Days								-	151,945.60	227,593.13	176,443.88
61-90 Days								-	27,609.82	172,179.58	358,248.91
91-120 Days								-	-	128,594.53	244,546.46
121-150 Days								-	-	66,951.51	43,394.29
151-180 Days								-	-	-	-
181+ Days								-	-	-	-

Delinquency Status (% of Current Balance)

Current Portfolio Balance	-	-	-	-	-	-	-	15,290,302.68	22,911,949.27	22,151,104.18	21,035,903.78
								Aug-18	Aug-19	Aug-20	Aug-21
Current								99.62%	98.38%	94.08%	92.28%
1-30 Days								0.38%	0.84%	3.23%	3.81%
31-60 Days								0.00%	0.66%	1.03%	0.84%
61-90 Days								0.00%	0.12%	0.78%	1.70%
91-120 Days								0.00%	0.00%	0.58%	1.16%
121-150 Days								0.00%	0.00%	0.30%	0.21%
151-180 Days								0.00%	0.00%	0.00%	0.00%
181+ Days								0.00%	0.00%	0.00%	0.00%
Current - 90 Days								100.00%	100.00%	99.12%	98.63%
91-180 Days								0.00%	0.00%	0.88%	1.37%



Mortgages - La Hipotecaria El Salvador Migration Analysis (2019 Vintage)

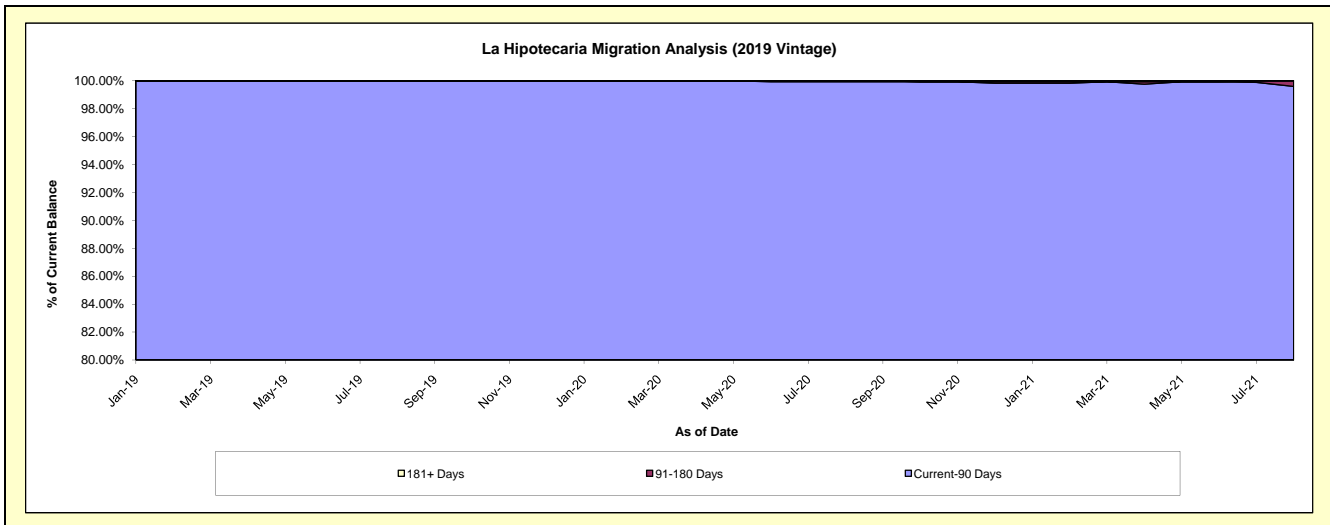
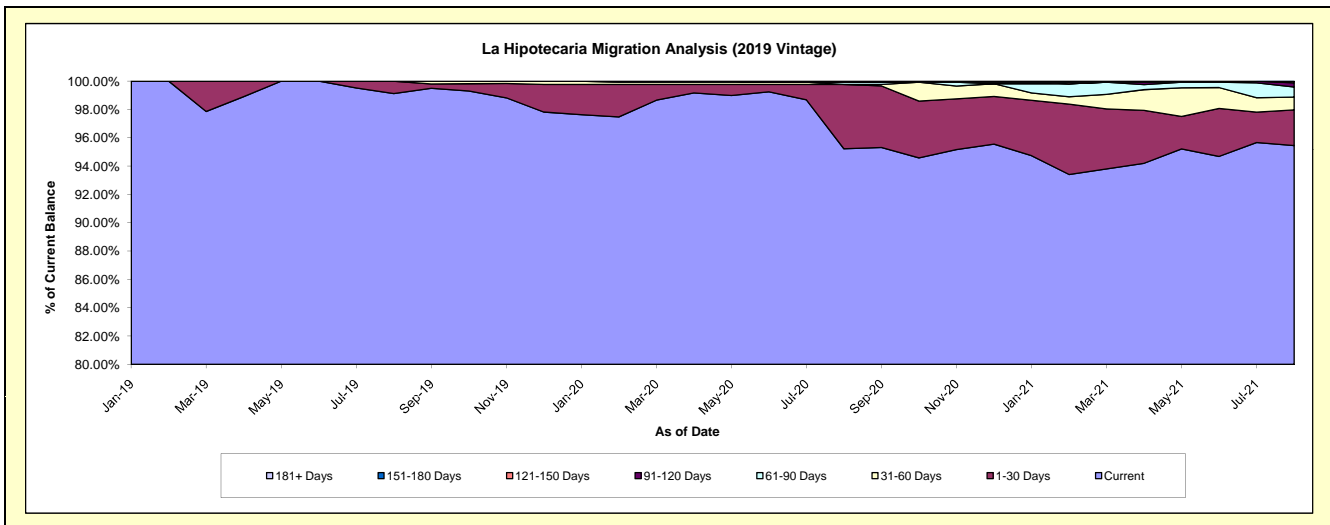
Delinquency Status (\$ of Current Balance)

Data Cutoff: 8/31/2021

Current Portfolio Balance	-	-	-	-	-	-	-	-	-	18,215,328.47	26,185,966.38	23,851,170.69
										Aug-19	Aug-20	Aug-21
Current										18,055,458.55	24,935,084.27	22,765,462.55
1-30 Days										159,869.92	1,190,336.88	602,017.55
31-60 Days										-	-	215,151.16
61-90 Days										-	42,000.00	171,086.66
91-120 Days										-	-	69,916.05
121-150 Days										-	18,545.23	27,536.72
151-180 Days										-	-	-
181+ Days										-	-	-

Delinquency Status (% of Current Balance)

Current Portfolio Balance	-	-	-	-	-	-	-	-	-	18,215,328.47	26,185,966.38	23,851,170.69
										Aug-19	Aug-20	Aug-21
Current										99.12%	95.22%	95.45%
1-30 Days										0.88%	4.55%	2.52%
31-60 Days										0.00%	0.00%	0.90%
61-90 Days										0.00%	0.16%	0.72%
91-120 Days										0.00%	0.00%	0.29%
121-150 Days										0.00%	0.07%	0.12%
151-180 Days										0.00%	0.00%	0.00%
181+ Days										0.00%	0.00%	0.00%
Current - 90 Days										100.00%	99.93%	99.59%
91-180 Days										0.00%	0.07%	0.41%



Mortgages - La Hipotecaria El Salvador Migration Analysis (2020 Vintage)

Delinquency Status (\$ of Current Balance)

Data Cutoff: 8/31/2021

Current Portfolio Balance										6,463,762.84	10,378,948.08
										Aug-20	Aug-21
Current										6,367,886.84	10,075,087.31
1-30 Days										95,876.00	180,564.67
31-60 Days										-	-
61-90 Days										-	-
91-120 Days										-	-
121-150 Days										-	123,296.10
151-180 Days										-	-
181+ Days										-	-

Delinquency Status (% of Current Balance)

Current Portfolio Balance										6,463,762.84	10,378,948.08
										Aug-20	Aug-21
Current										98.52%	97.07%
1-30 Days										1.48%	1.74%
31-60 Days										0.00%	0.00%
61-90 Days										0.00%	0.00%
91-120 Days										0.00%	0.00%
121-150 Days										0.00%	1.19%
151-180 Days										0.00%	0.00%
181+ Days										0.00%	0.00%
Current - 90 Days										100.00%	98.81%
91-180 Days										0.00%	1.19%

