



Migration Analysis for La Hipotecaria S.A. de C.V El Salvador

Personal Loans August 2021

An analysis of historical loan payment data was used to compile a migration analysis of delinquency by annual vintage. Delinquencies for each vintage were grouped into the following buckets; Current, 1-30, 31-60, 61-90, 91-120, 121-150, 151-180, and 180+. Results are provided in graphical and tabular form. The cutoff date is 8/31/2021.

Personal Loans - La Hipotecaria El Salvador Migration Analysis (All Vintages)

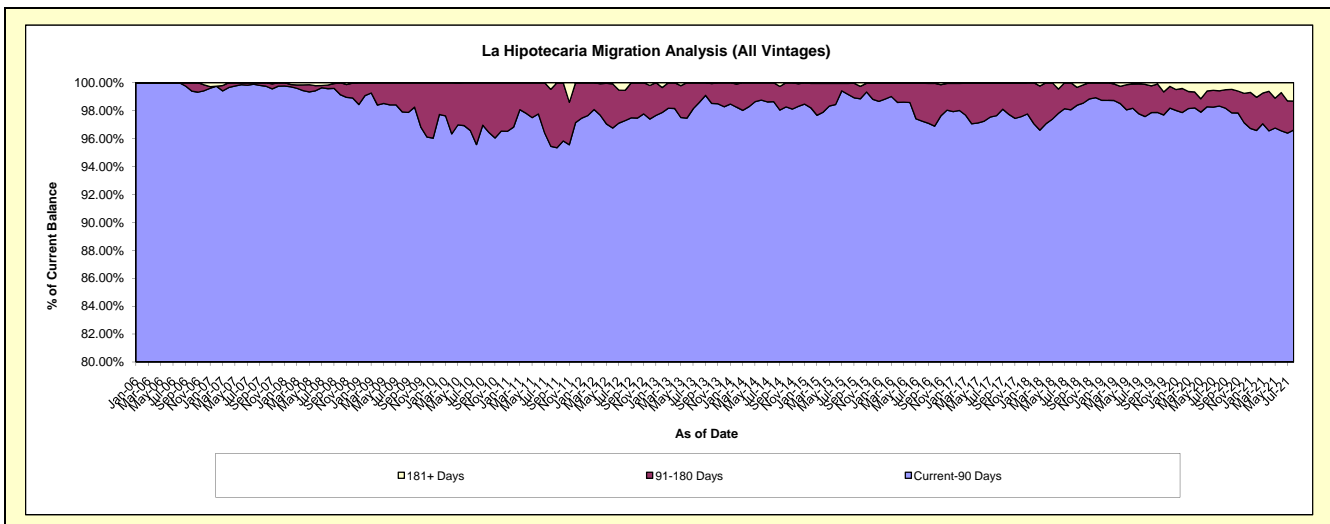
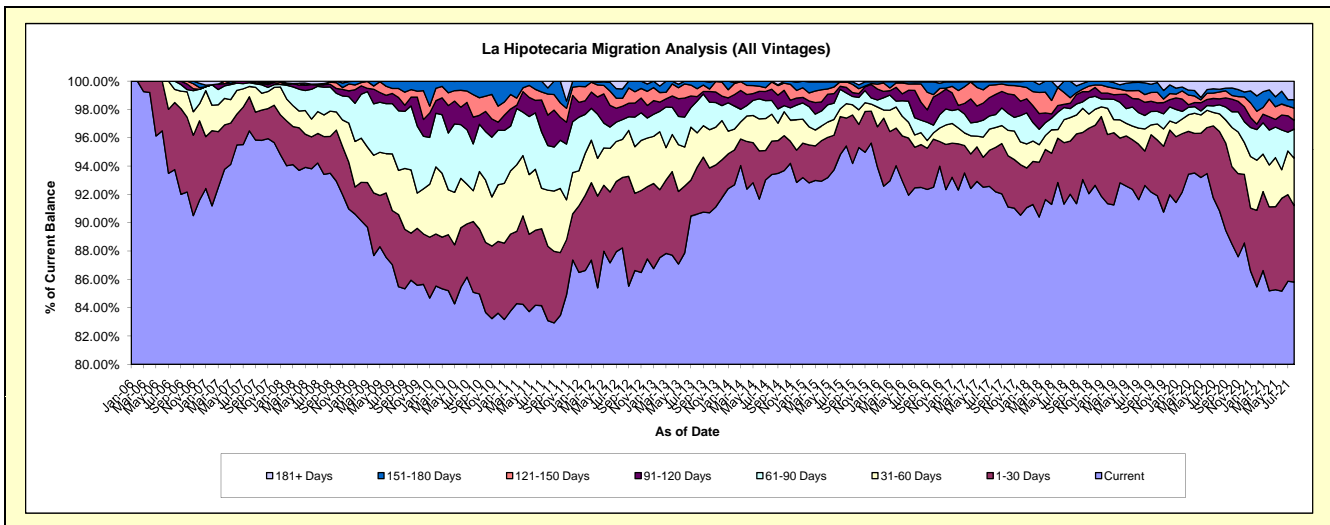
Delinquency Status (\$ of Current Balance)

Data Cutoff: 8/31/2021

Current Portfolio Balance	4,735,411.01	5,105,183.16	5,605,068.15	5,188,968.81	4,753,129.32	5,038,587.10	6,570,470.95	9,961,918.26	10,691,277.95	8,635,482.81
	Aug-12	Aug-13	Aug-14	Aug-15	Aug-16	Aug-17	Aug-18	Aug-19	Aug-20	Aug-21
Current	4,177,651.42	4,626,015.50	5,235,282.96	4,951,584.27	4,396,487.47	4,644,751.03	6,046,055.11	9,228,187.27	9,712,159.28	7,410,407.79
1-30 Days	235,700.69	168,745.73	132,477.34	102,093.97	143,801.28	158,090.74	246,307.39	242,523.25	598,933.51	465,491.26
31-60 Days	127,700.45	124,123.21	106,521.13	53,042.50	40,078.41	70,778.14	109,196.97	155,180.77	132,730.24	289,263.37
61-90 Days	65,915.23	114,611.27	54,641.13	38,726.63	41,760.61	46,055.94	41,511.00	94,682.14	68,767.48	177,919.35
91-120 Days	44,706.94	15,886.85	44,309.78	20,929.02	60,428.72	71,921.40	25,280.42	92,750.18	45,138.22	53,297.13
121-150 Days	26,478.78	28,534.44	28,600.41	20,236.39	61,333.43	34,011.82	25,186.77	54,261.59	52,351.26	74,422.86
151-180 Days	31,404.84	27,266.16	3,235.40	-	7,095.92	11,006.39	76,933.29	82,534.66	19,713.52	51,656.51
181+ Days	25,852.66	-	-	2,356.03	2,143.48	1,971.64	-	11,798.40	61,484.44	113,024.54

Delinquency Status (% of Current Balance)

Current Portfolio Balance	4,735,411.01	5,105,183.16	5,605,068.15	5,188,968.81	4,753,129.32	5,038,587.10	6,570,470.95	9,961,918.26	10,691,277.95	8,635,482.81
	Aug-12	Aug-13	Aug-14	Aug-15	Aug-16	Aug-17	Aug-18	Aug-19	Aug-20	Aug-21
Current	88.22%	90.61%	93.40%	95.43%	92.50%	92.18%	92.02%	92.63%	90.84%	85.81%
1-30 Days	4.98%	3.31%	2.36%	1.97%	3.03%	3.14%	3.75%	2.43%	5.60%	5.39%
31-60 Days	2.70%	2.43%	1.90%	1.02%	0.84%	1.40%	1.66%	1.56%	1.24%	3.35%
61-90 Days	1.39%	2.24%	0.97%	0.75%	0.88%	0.91%	0.63%	0.95%	0.64%	2.06%
91-120 Days	0.94%	0.31%	0.79%	0.40%	1.27%	1.43%	0.38%	0.93%	0.42%	0.62%
121-150 Days	0.56%	0.56%	0.51%	0.39%	1.29%	0.68%	0.38%	0.54%	0.49%	0.86%
151-180 Days	0.66%	0.53%	0.06%	0.00%	0.15%	0.22%	1.17%	0.83%	0.18%	0.60%
181+ Days	0.55%	0.00%	0.00%	0.05%	0.05%	0.04%	0.00%	0.12%	0.58%	1.31%
Current - 90 Days	97.29%	98.60%	98.64%	99.16%	97.24%	97.64%	98.06%	97.58%	98.33%	96.61%
91-180 Days	2.17%	1.40%	1.36%	0.79%	2.71%	2.32%	1.94%	2.30%	1.10%	2.08%



Personal Loans - La Hipotecaria El Salvador Migration Analysis (2006 Vintage)

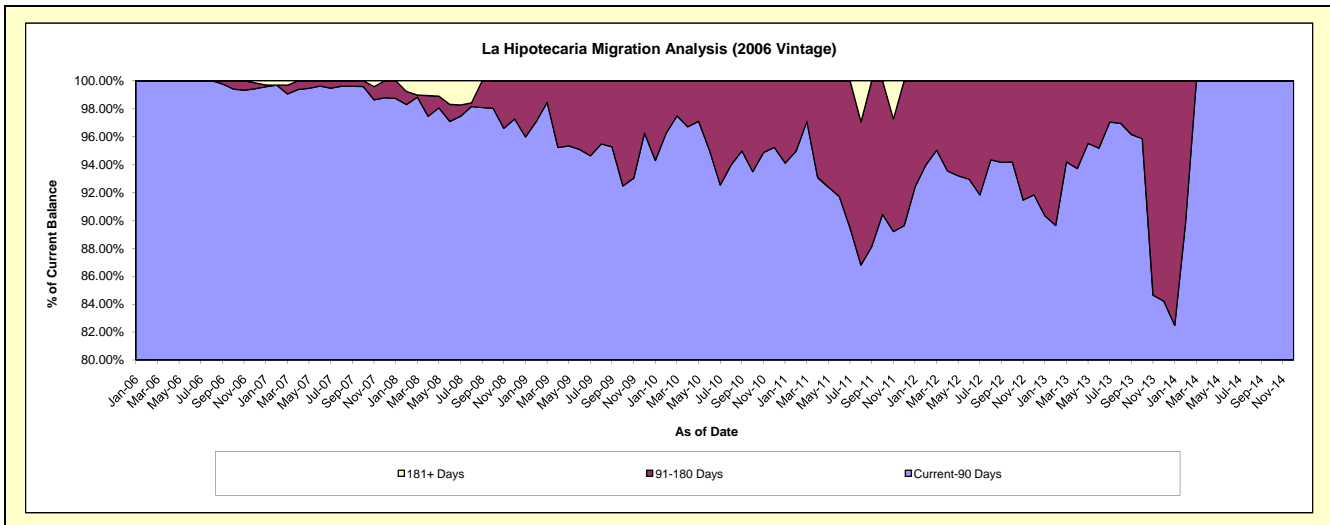
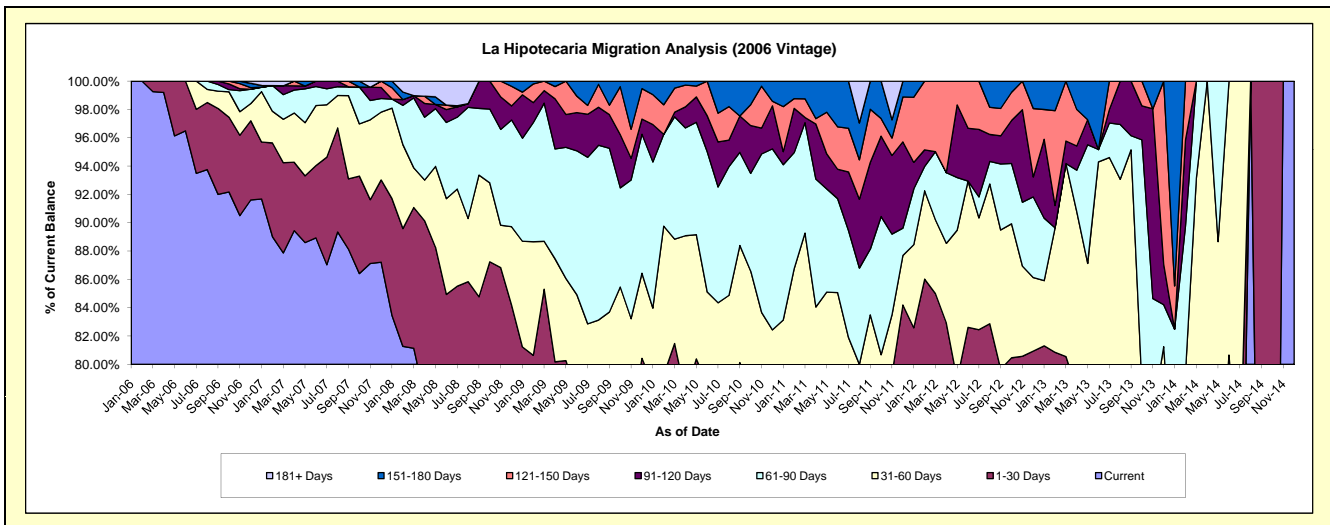
Delinquency Status (\$ of Current Balance)

Data Cutoff: 8/31/2021

Current Portfolio Balance	118,853.16	45,656.86	1,437.33	#N/A	#N/A	#N/A	#N/A	#N/A	#N/A	#N/A
	Aug-12	Aug-13	Aug-14	Aug-15	Aug-16	Aug-17	Aug-18	Aug-19	Aug-20	Aug-21
Current	88,724.06	29,305.25	1,437.33	#N/A	#N/A	#N/A	#N/A	#N/A	#N/A	#N/A
1-30 Days	9,766.63	2,556.60	-	#N/A	#N/A	#N/A	#N/A	#N/A	#N/A	#N/A
31-60 Days	11,734.55	10,630.09	-	#N/A	#N/A	#N/A	#N/A	#N/A	#N/A	#N/A
61-90 Days	1,894.77	1,769.42	-	#N/A	#N/A	#N/A	#N/A	#N/A	#N/A	#N/A
91-120 Days	2,260.48	1,395.50	-	#N/A	#N/A	#N/A	#N/A	#N/A	#N/A	#N/A
121-150 Days	2,273.10	-	-	#N/A	#N/A	#N/A	#N/A	#N/A	#N/A	#N/A
151-180 Days	2,199.57	-	-	#N/A	#N/A	#N/A	#N/A	#N/A	#N/A	#N/A
181+ Days	-	-	-	#N/A	#N/A	#N/A	#N/A	#N/A	#N/A	#N/A

Delinquency Status (% of Current Balance)

Current Portfolio Balance	118,853.16	45,656.86	1,437.33	#N/A	#N/A	#N/A	#N/A	#N/A	#N/A	#N/A
	Aug-12	Aug-13	Aug-14	Aug-15	Aug-16	Aug-17	Aug-18	Aug-19	Aug-20	Aug-21
Current	74.65%	64.19%	100.00%	#N/A	#N/A	#N/A	#N/A	#N/A	#N/A	#N/A
1-30 Days	8.22%	5.60%	0.00%	#N/A	#N/A	#N/A	#N/A	#N/A	#N/A	#N/A
31-60 Days	9.87%	23.28%	0.00%	#N/A	#N/A	#N/A	#N/A	#N/A	#N/A	#N/A
61-90 Days	1.59%	3.88%	0.00%	#N/A	#N/A	#N/A	#N/A	#N/A	#N/A	#N/A
91-120 Days	1.90%	3.06%	0.00%	#N/A	#N/A	#N/A	#N/A	#N/A	#N/A	#N/A
121-150 Days	1.91%	0.00%	0.00%	#N/A	#N/A	#N/A	#N/A	#N/A	#N/A	#N/A
151-180 Days	1.85%	0.00%	0.00%	#N/A	#N/A	#N/A	#N/A	#N/A	#N/A	#N/A
181+ Days	0.00%	0.00%	0.00%	#N/A	#N/A	#N/A	#N/A	#N/A	#N/A	#N/A
Current - 90 Days	94.33%	96.94%	100.00%	#N/A	#N/A	#N/A	#N/A	#N/A	#N/A	#N/A
91-180 Days	5.67%	3.06%	0.00%	#N/A	#N/A	#N/A	#N/A	#N/A	#N/A	#N/A



Personal Loans - La Hipotecaria El Salvador Migration Analysis (2007 Vintage)

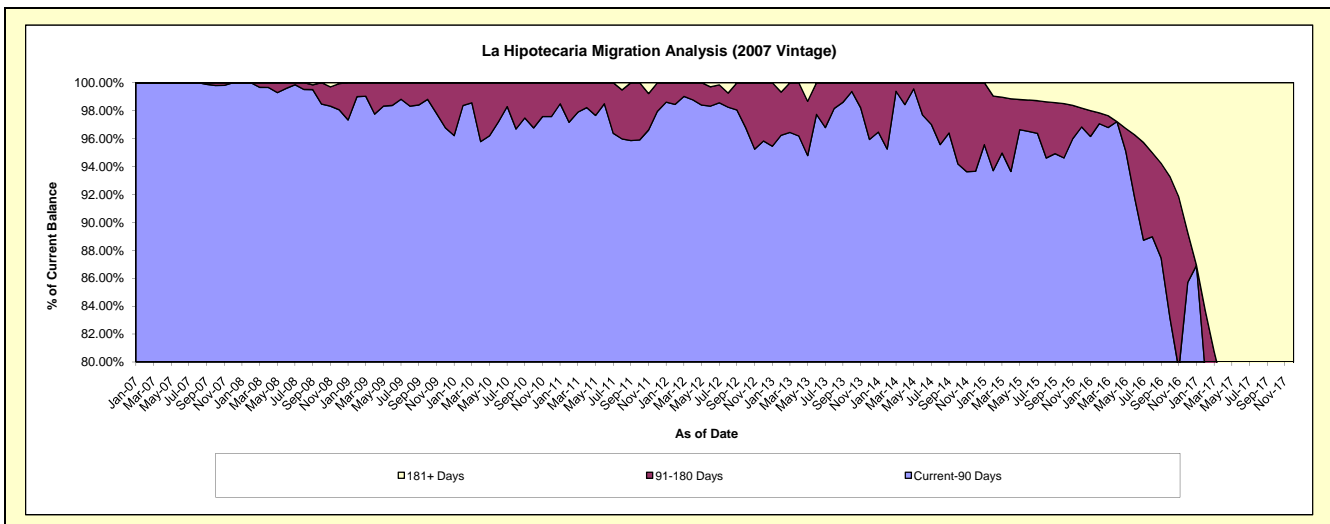
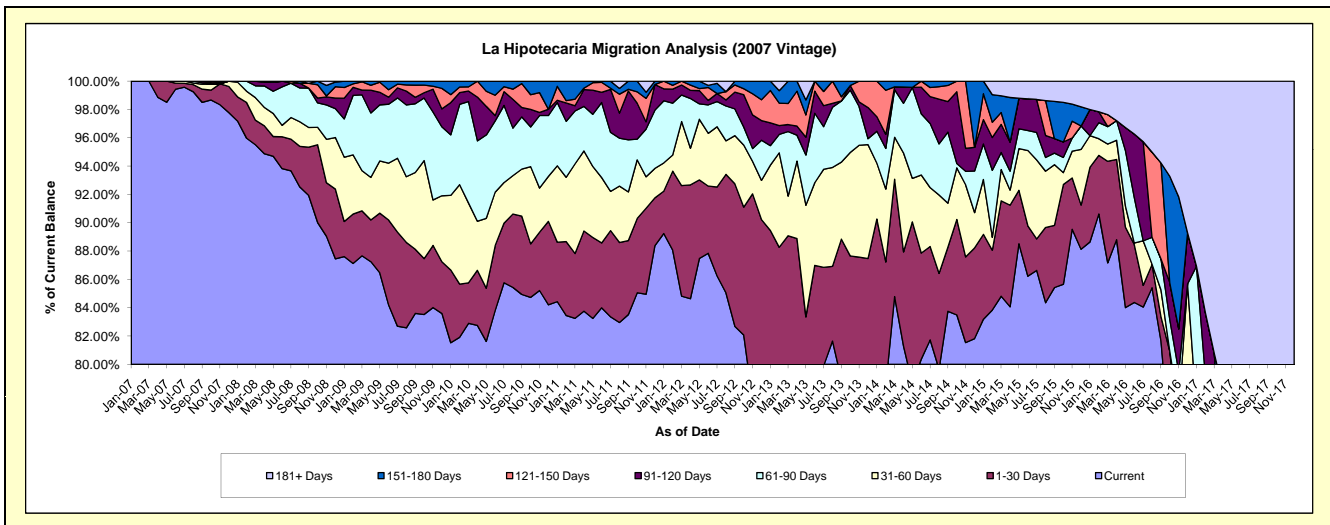
Delinquency Status (\$ of Current Balance)

Data Cutoff: 8/31/2021

Current Portfolio Balance	1,182,688.71	704,474.88	398,985.36	171,939.23	42,742.88	4,266.25	#N/A	#N/A	#N/A	#N/A
	Aug-12	Aug-13	Aug-14	Aug-15	Aug-16	Aug-17	Aug-18	Aug-19	Aug-20	Aug-21
Current	1,005,798.84	575,175.08	317,831.67	145,033.19	36,507.60	319.80	#N/A	#N/A	#N/A	#N/A
1-30 Days	99,019.71	37,169.34	26,983.89	9,141.55	705.47	-	#N/A	#N/A	#N/A	#N/A
31-60 Days	28,033.29	49,191.60	22,112.64	6,835.80	-	-	#N/A	#N/A	#N/A	#N/A
61-90 Days	29,108.32	29,958.62	14,377.90	1,660.55	815.95	1,974.81	#N/A	#N/A	#N/A	#N/A
91-120 Days	5,003.91	1,967.81	12,595.33	2,666.98	-	-	#N/A	#N/A	#N/A	#N/A
121-150 Days	6,979.90	11,012.43	3,545.37	4,245.13	2,570.38	-	#N/A	#N/A	#N/A	#N/A
151-180 Days	-	-	1,538.56	-	-	-	#N/A	#N/A	#N/A	#N/A
181+ Days	8,744.74	-	-	2,356.03	2,143.48	1,971.64	#N/A	#N/A	#N/A	#N/A

Delinquency Status (% of Current Balance)

Current Portfolio Balance	1,182,688.71	704,474.88	398,985.36	171,939.23	42,742.88	4,266.25	#N/A	#N/A	#N/A	#N/A
	Aug-12	Aug-13	Aug-14	Aug-15	Aug-16	Aug-17	Aug-18	Aug-19	Aug-20	Aug-21
Current	85.04%	81.65%	79.66%	84.35%	85.41%	7.50%	#N/A	#N/A	#N/A	#N/A
1-30 Days	8.37%	5.28%	6.76%	5.32%	1.65%	0.00%	#N/A	#N/A	#N/A	#N/A
31-60 Days	2.37%	6.98%	5.54%	3.98%	0.00%	0.00%	#N/A	#N/A	#N/A	#N/A
61-90 Days	2.46%	4.25%	3.60%	0.97%	1.91%	46.29%	#N/A	#N/A	#N/A	#N/A
91-120 Days	0.42%	0.28%	3.16%	1.55%	0.00%	0.00%	#N/A	#N/A	#N/A	#N/A
121-150 Days	0.59%	1.56%	0.89%	2.47%	6.01%	0.00%	#N/A	#N/A	#N/A	#N/A
151-180 Days	0.00%	0.00%	0.39%	0.00%	0.00%	0.00%	#N/A	#N/A	#N/A	#N/A
181+ Days	0.74%	0.00%	0.00%	1.37%	5.01%	46.21%	#N/A	#N/A	#N/A	#N/A
Current - 90 Days	98.25%	98.16%	95.57%	94.61%	88.97%	53.79%	#N/A	#N/A	#N/A	#N/A
91-180 Days	1.01%	1.84%	4.43%	4.02%	6.01%	0.00%	#N/A	#N/A	#N/A	#N/A



Personal Loans - La Hipotecaria El Salvador Migration Analysis (2008 Vintage)

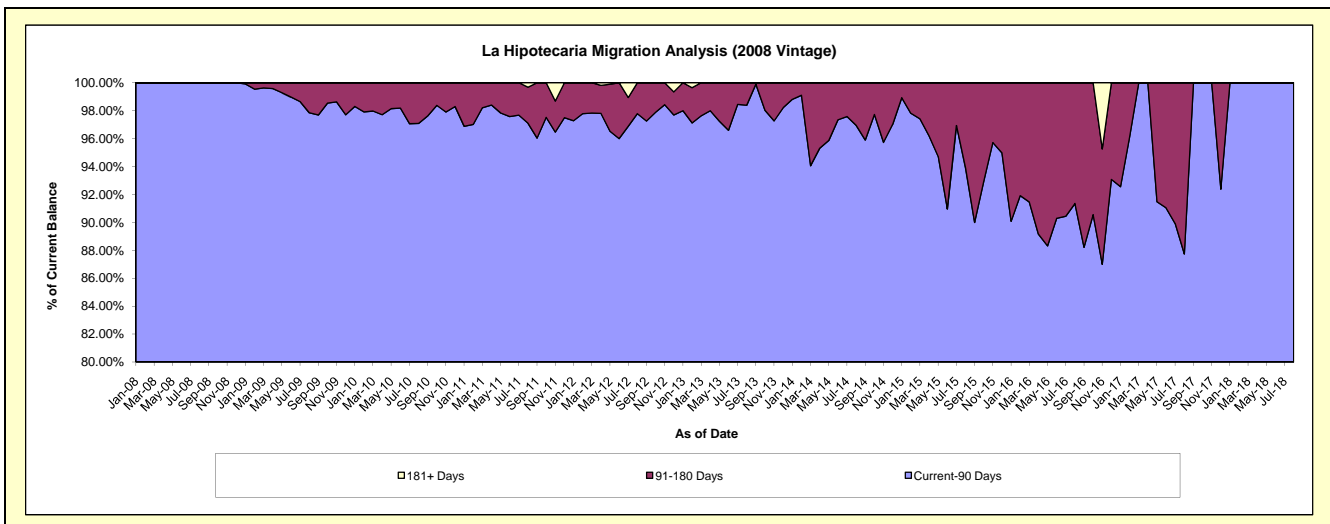
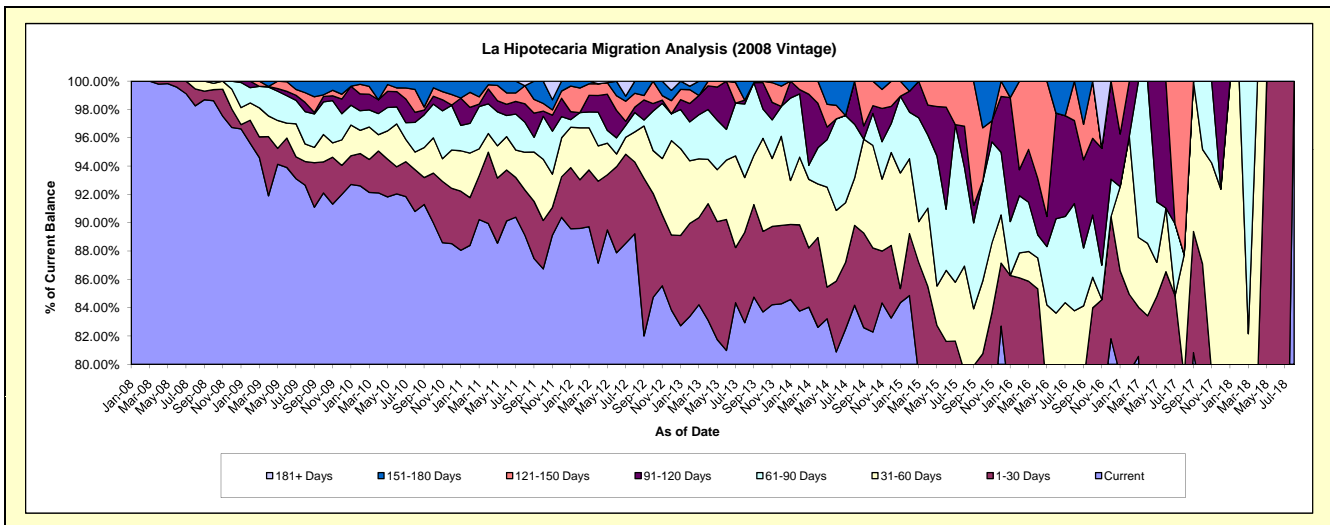
Delinquency Status (\$ of Current Balance)

Data Cutoff: 8/31/2021

Current Portfolio Balance	1,640,623.23	1,095,230.11	648,835.63	335,442.33	129,051.22	30,116.64	108.01	#N/A	#N/A	#N/A
	Aug-12	Aug-13	Aug-14	Aug-15	Aug-16	Aug-17	Aug-18	Aug-19	Aug-20	Aug-21
Current	1,463,793.82	908,392.14	546,174.93	258,956.03	94,117.21	21,654.98	108.01	#N/A	#N/A	#N/A
1-30 Days	83,102.92	69,954.97	36,567.03	7,635.27	7,987.51	2,166.94	-	#N/A	#N/A	#N/A
31-60 Days	34,965.58	42,388.87	21,732.17	25,037.60	6,023.02	2,603.40	-	#N/A	#N/A	#N/A
61-90 Days	22,451.64	56,850.41	24,586.10	23,304.09	9,767.77	-	-	#N/A	#N/A	#N/A
91-120 Days	6,251.24	3,011.52	19,775.40	9,838.97	7,560.28	-	-	#N/A	#N/A	#N/A
121-150 Days	16,095.08	-	-	10,670.37	3,595.43	3,691.32	-	#N/A	#N/A	#N/A
151-180 Days	13,962.95	14,632.20	-	-	-	-	-	#N/A	#N/A	#N/A
181+ Days	-	-	-	-	-	-	-	#N/A	#N/A	#N/A

Delinquency Status (% of Current Balance)

Current Portfolio Balance	1,640,623.23	1,095,230.11	648,835.63	335,442.33	129,051.22	30,116.64	108.01	#N/A	#N/A	#N/A
	Aug-12	Aug-13	Aug-14	Aug-15	Aug-16	Aug-17	Aug-18	Aug-19	Aug-20	Aug-21
Current	89.22%	82.94%	84.18%	77.20%	72.93%	71.90%	100.00%	#N/A	#N/A	#N/A
1-30 Days	5.07%	6.39%	5.64%	2.28%	6.19%	7.20%	0.00%	#N/A	#N/A	#N/A
31-60 Days	2.13%	3.87%	3.35%	7.46%	4.67%	8.64%	0.00%	#N/A	#N/A	#N/A
61-90 Days	1.37%	5.19%	3.79%	6.95%	7.57%	0.00%	0.00%	#N/A	#N/A	#N/A
91-120 Days	0.38%	0.27%	3.05%	2.93%	5.86%	0.00%	0.00%	#N/A	#N/A	#N/A
121-150 Days	0.98%	0.00%	0.00%	3.18%	2.79%	12.26%	0.00%	#N/A	#N/A	#N/A
151-180 Days	0.85%	1.34%	0.00%	0.00%	0.00%	0.00%	0.00%	#N/A	#N/A	#N/A
181+ Days	0.00%	0.00%	0.00%	0.00%	0.00%	0.00%	0.00%	#N/A	#N/A	#N/A
Current - 90 Days	97.79%	98.39%	96.95%	93.89%	91.36%	87.74%	100.00%	#N/A	#N/A	#N/A
91-180 Days	2.21%	1.61%	3.05%	6.11%	8.64%	12.26%	0.00%	#N/A	#N/A	#N/A



Personal Loans - La Hipotecaria El Salvador Migration Analysis (2009 Vintage)

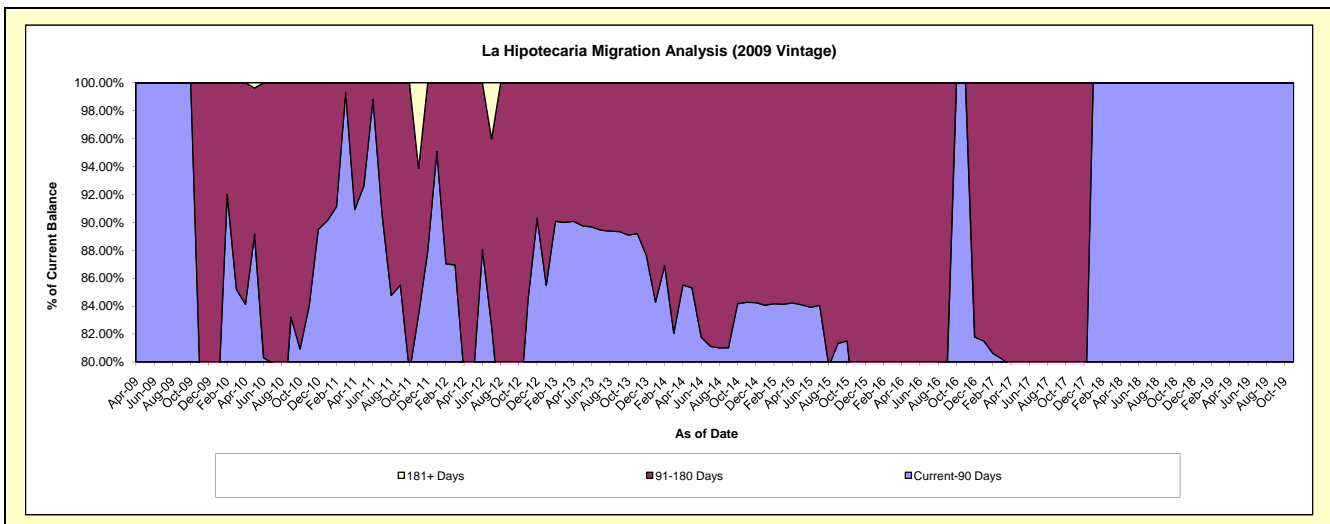
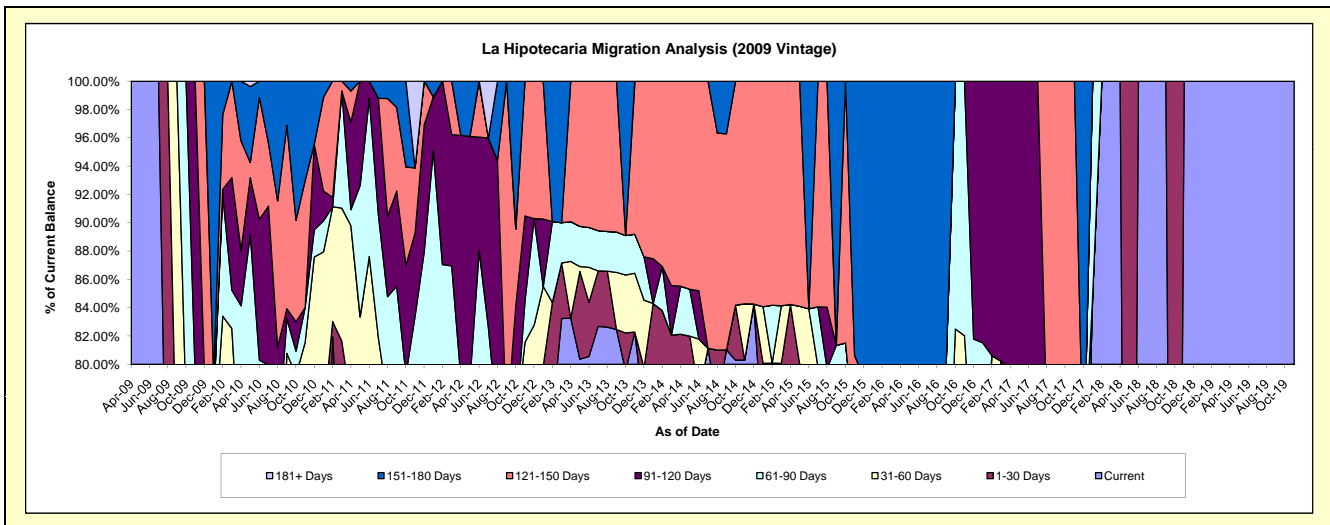
Delinquency Status (\$ of Current Balance)

Data Cutoff: 8/31/2021

Current Portfolio Balance	121,607.82	83,236.23	46,328.42	33,337.35	17,093.31	9,452.88	532.86	83.75	#N/A	#N/A
	Aug-12	Aug-13	Aug-14	Aug-15	Aug-16	Aug-17	Aug-18	Aug-19	Aug-20	Aug-21
Current	76,263.99	68,772.82	35,794.22	24,305.52	10,126.11	6,206.52	532.86	83.75	#N/A	#N/A
1-30 Days	3,072.30	3,297.56	1,738.45	2,267.16	1,270.55	-	-	-	#N/A	#N/A
31-60 Days	12,916.77	-	-	-	-	979.20	-	-	#N/A	#N/A
61-90 Days	-	2,327.00	-	-	2,267.16	-	-	-	#N/A	#N/A
91-120 Days	22,533.95	-	-	1,443.78	-	-	-	-	#N/A	#N/A
121-150 Days	-	8,838.85	7,098.91	5,320.89	-	2,267.16	-	-	#N/A	#N/A
151-180 Days	6,820.81	-	1,696.84	-	3,429.49	-	-	-	#N/A	#N/A
181+ Days	-	-	-	-	-	-	-	-	#N/A	#N/A

Delinquency Status (% of Current Balance)

Current Portfolio Balance	121,607.82	83,236.23	46,328.42	33,337.35	17,093.31	9,452.88	532.86	83.75	#N/A	#N/A
	Aug-12	Aug-13	Aug-14	Aug-15	Aug-16	Aug-17	Aug-18	Aug-19	Aug-20	Aug-21
Current	62.71%	82.62%	77.26%	72.91%	59.24%	65.66%	100.00%	100.00%	#N/A	#N/A
1-30 Days	2.53%	3.96%	3.75%	6.80%	7.43%	0.00%	0.00%	0.00%	#N/A	#N/A
31-60 Days	10.62%	0.00%	0.00%	0.00%	0.00%	10.36%	0.00%	0.00%	#N/A	#N/A
61-90 Days	0.00%	2.80%	0.00%	0.00%	13.26%	0.00%	0.00%	0.00%	#N/A	#N/A
91-120 Days	18.53%	0.00%	0.00%	4.33%	0.00%	0.00%	0.00%	0.00%	#N/A	#N/A
121-150 Days	0.00%	10.62%	15.32%	15.96%	0.00%	23.98%	0.00%	0.00%	#N/A	#N/A
151-180 Days	5.61%	0.00%	3.66%	0.00%	20.06%	0.00%	0.00%	0.00%	#N/A	#N/A
181+ Days	0.00%	0.00%	0.00%	0.00%	0.00%	0.00%	0.00%	0.00%	#N/A	#N/A
Current - 90 Days	75.86%	89.38%	81.01%	79.71%	79.94%	76.02%	100.00%	100.00%	#N/A	#N/A
91-180 Days	24.14%	10.62%	18.99%	20.29%	20.06%	23.98%	0.00%	0.00%	#N/A	#N/A



Personal Loans - La Hipotecaria El Salvador Migration Analysis (2010 Vintage)

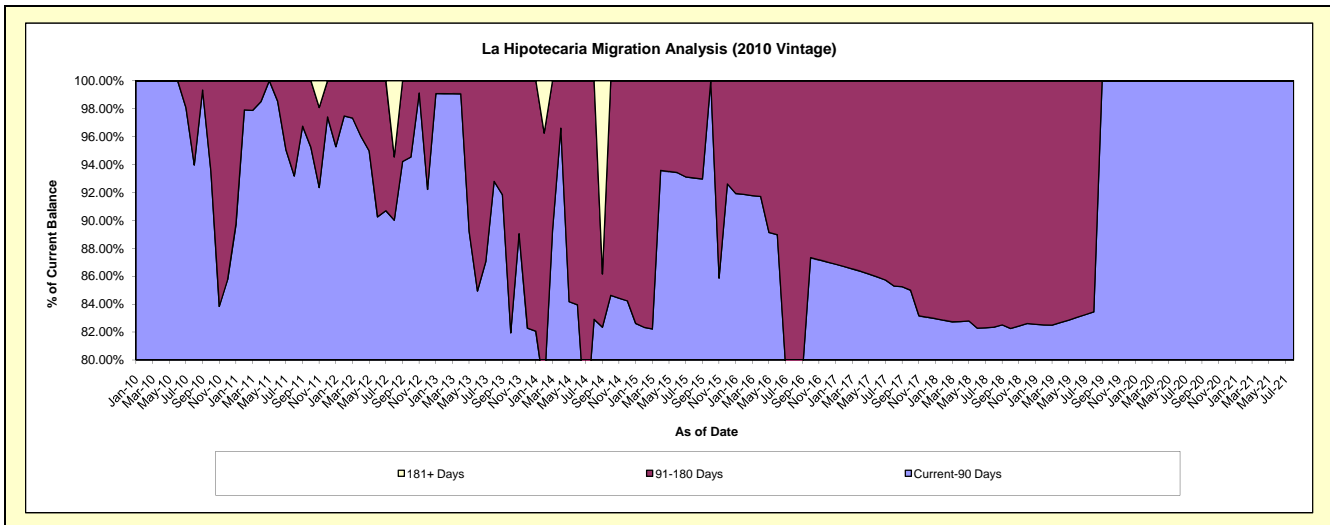
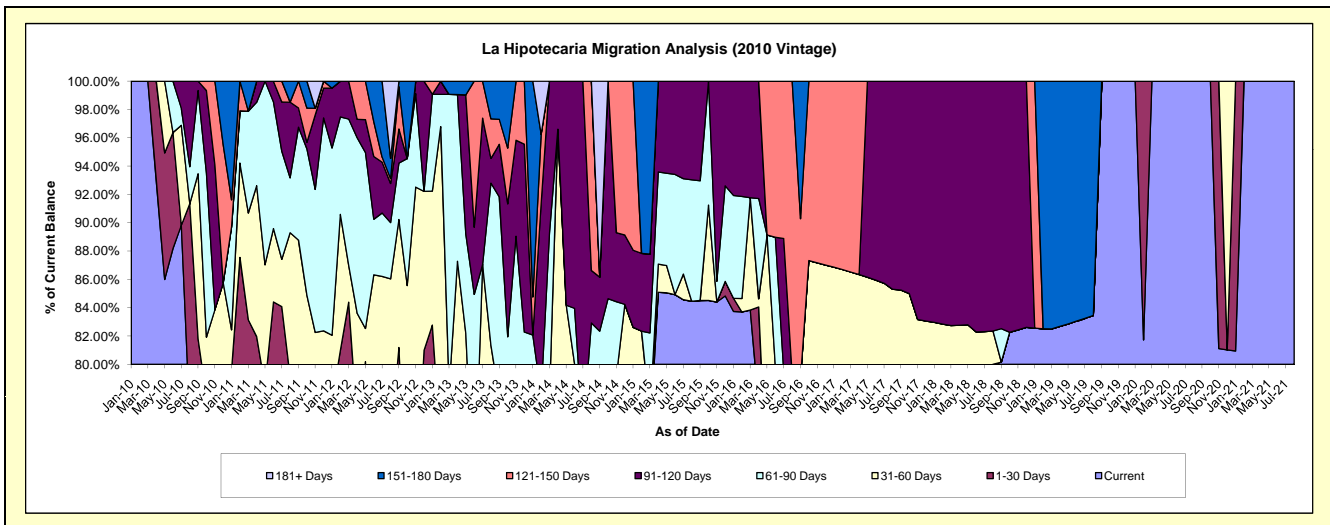
Delinquency Status (\$ of Current Balance)

Data Cutoff: 8/31/2021

Current Portfolio Balance	313,526.09	195,422.70	111,818.83	54,421.50	30,826.59	20,672.51	14,657.86	13,382.38	10,578.56	8,785.04
	Aug-12	Aug-13	Aug-14	Aug-15	Aug-16	Aug-17	Aug-18	Aug-19	Aug-20	Aug-21
Current	199,195.14	129,730.66	77,368.45	45,963.27	21,777.29	16,085.48	11,727.85	11,168.18	10,578.56	8,785.04
1-30 Days	34,739.13	16,756.06	1,677.93	-	-	-	-	-	-	-
31-60 Days	35,813.83	12,509.36	4,543.74	-	2,651.96	1,548.39	344.09	-	-	-
61-90 Days	12,460.50	22,342.58	9,128.46	4,667.90	-	-	-	-	-	-
91-120 Days	8,657.36	3,419.96	4,151.83	3,790.33	-	3,038.64	2,585.92	-	-	-
121-150 Days	1,130.70	5,463.49	14,948.42	-	6,397.34	-	-	-	-	-
151-180 Days	4,421.51	5,200.59	-	-	-	-	-	2,214.20	-	-
181+ Days	17,107.92	-	-	-	-	-	-	-	-	-

Delinquency Status (% of Current Balance)

Current Portfolio Balance	313,526.09	195,422.70	111,818.83	54,421.50	30,826.59	20,672.51	14,657.86	13,382.38	10,578.56	8,785.04
	Aug-12	Aug-13	Aug-14	Aug-15	Aug-16	Aug-17	Aug-18	Aug-19	Aug-20	Aug-21
Current	63.53%	66.38%	69.19%	84.46%	70.64%	77.81%	80.01%	83.45%	100.00%	100.00%
1-30 Days	11.08%	8.57%	1.50%	0.00%	0.00%	0.00%	0.00%	0.00%	0.00%	0.00%
31-60 Days	11.42%	6.40%	4.06%	0.00%	8.60%	7.49%	2.35%	0.00%	0.00%	0.00%
61-90 Days	3.97%	11.43%	8.16%	8.58%	0.00%	0.00%	0.00%	0.00%	0.00%	0.00%
91-120 Days	2.76%	1.75%	3.71%	6.96%	0.00%	14.70%	17.64%	0.00%	0.00%	0.00%
121-150 Days	0.36%	2.80%	13.37%	0.00%	20.75%	0.00%	0.00%	0.00%	0.00%	0.00%
151-180 Days	1.41%	2.66%	0.00%	0.00%	0.00%	0.00%	0.00%	16.55%	0.00%	0.00%
181+ Days	5.46%	0.00%	0.00%	0.00%	0.00%	0.00%	0.00%	0.00%	0.00%	0.00%
Current - 90 Days	90.01%	92.79%	82.92%	93.04%	79.25%	85.30%	82.36%	83.45%	100.00%	100.00%
91-180 Days	4.53%	7.21%	17.08%	6.96%	20.75%	14.70%	17.64%	16.55%	0.00%	0.00%



Personal Loans - La Hipotecaria El Salvador Migration Analysis (2011 Vintage)

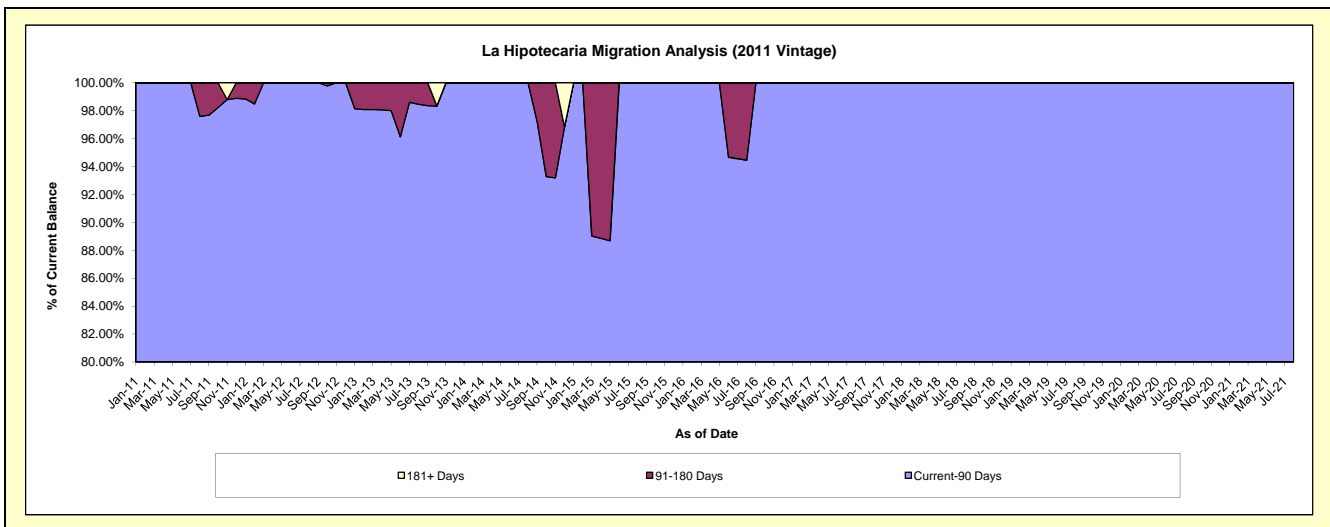
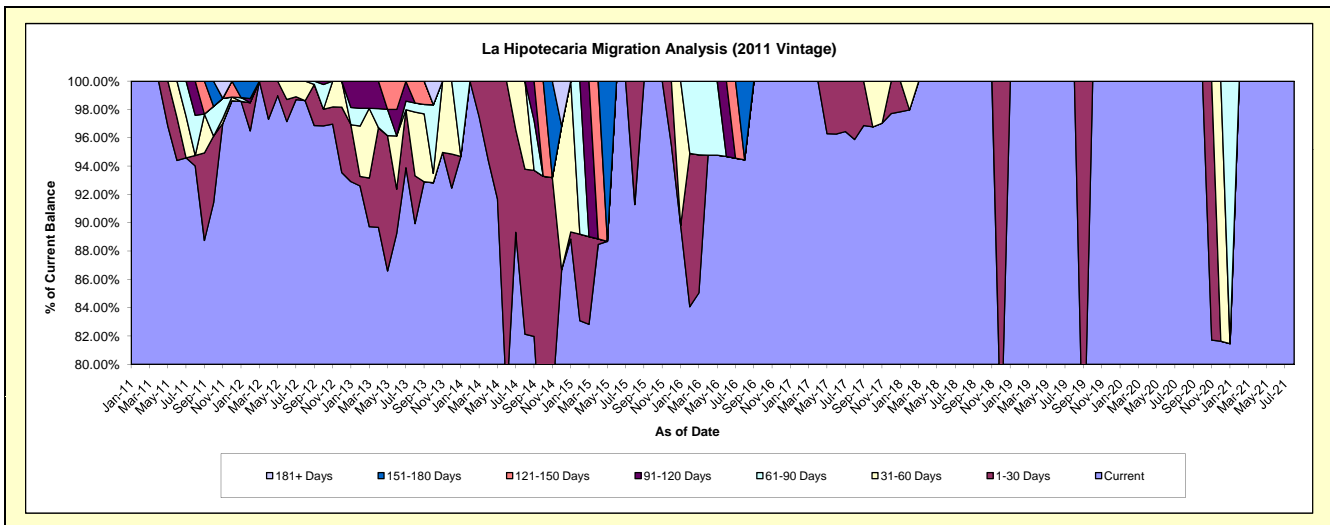
Delinquency Status (\$ of Current Balance)

Data Cutoff: 8/31/2021

Current Portfolio Balance	307,613.08	209,211.45	145,475.34	95,575.74	66,075.08	44,327.51	26,115.82	21,850.27	17,348.89	12,292.68
	Aug-12	Aug-13	Aug-14	Aug-15	Aug-16	Aug-17	Aug-18	Aug-19	Aug-20	Aug-21
Current	303,376.65	188,171.87	119,478.99	87,247.26	62,408.65	42,500.22	26,115.82	21,850.27	17,348.89	12,292.68
1-30 Days	-	7,053.38	16,947.14	8,328.48	-	1,827.29	-	-	-	-
31-60 Days	4,236.43	9,403.29	9,049.21	-	-	-	-	-	-	-
61-90 Days	-	1,363.24	-	-	-	-	-	-	-	-
91-120 Days	-	-	-	-	-	-	-	-	-	-
121-150 Days	-	3,219.67	-	-	-	-	-	-	-	-
151-180 Days	-	-	-	-	3,666.43	-	-	-	-	-
181+ Days	-	-	-	-	-	-	-	-	-	-

Delinquency Status (% of Current Balance)

Current Portfolio Balance	307,613.08	209,211.45	145,475.34	95,575.74	66,075.08	44,327.51	26,115.82	21,850.27	17,348.89	12,292.68
	Aug-12	Aug-13	Aug-14	Aug-15	Aug-16	Aug-17	Aug-18	Aug-19	Aug-20	Aug-21
Current	98.62%	89.94%	82.13%	91.29%	94.45%	95.88%	100.00%	100.00%	100.00%	100.00%
1-30 Days	0.00%	3.37%	11.65%	8.71%	0.00%	4.12%	0.00%	0.00%	0.00%	0.00%
31-60 Days	1.38%	4.49%	6.22%	0.00%	0.00%	0.00%	0.00%	0.00%	0.00%	0.00%
61-90 Days	0.00%	0.65%	0.00%	0.00%	0.00%	0.00%	0.00%	0.00%	0.00%	0.00%
91-120 Days	0.00%	0.00%	0.00%	0.00%	0.00%	0.00%	0.00%	0.00%	0.00%	0.00%
121-150 Days	0.00%	1.54%	0.00%	0.00%	0.00%	0.00%	0.00%	0.00%	0.00%	0.00%
151-180 Days	0.00%	0.00%	0.00%	0.00%	5.55%	0.00%	0.00%	0.00%	0.00%	0.00%
181+ Days	0.00%	0.00%	0.00%	0.00%	0.00%	0.00%	0.00%	0.00%	0.00%	0.00%
Current - 90 Days	100.00%	98.46%	100.00%	100.00%	94.45%	100.00%	100.00%	100.00%	100.00%	100.00%
91-180 Days	0.00%	1.54%	0.00%	0.00%	5.55%	0.00%	0.00%	0.00%	0.00%	0.00%



Personal Loans - La Hipotecaria El Salvador Migration Analysis (2012 Vintage)

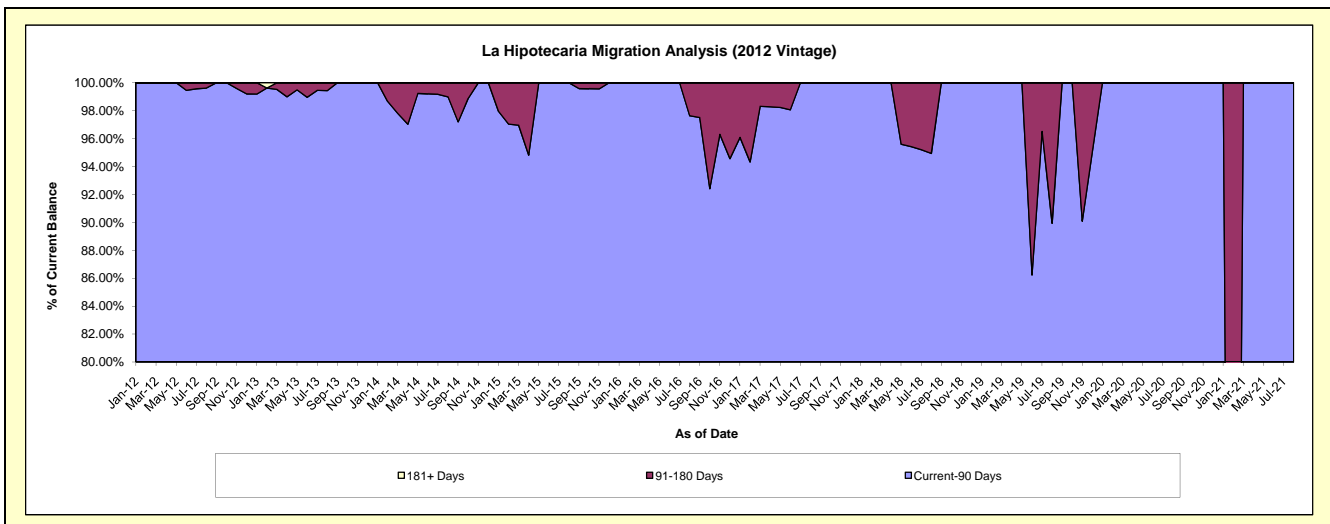
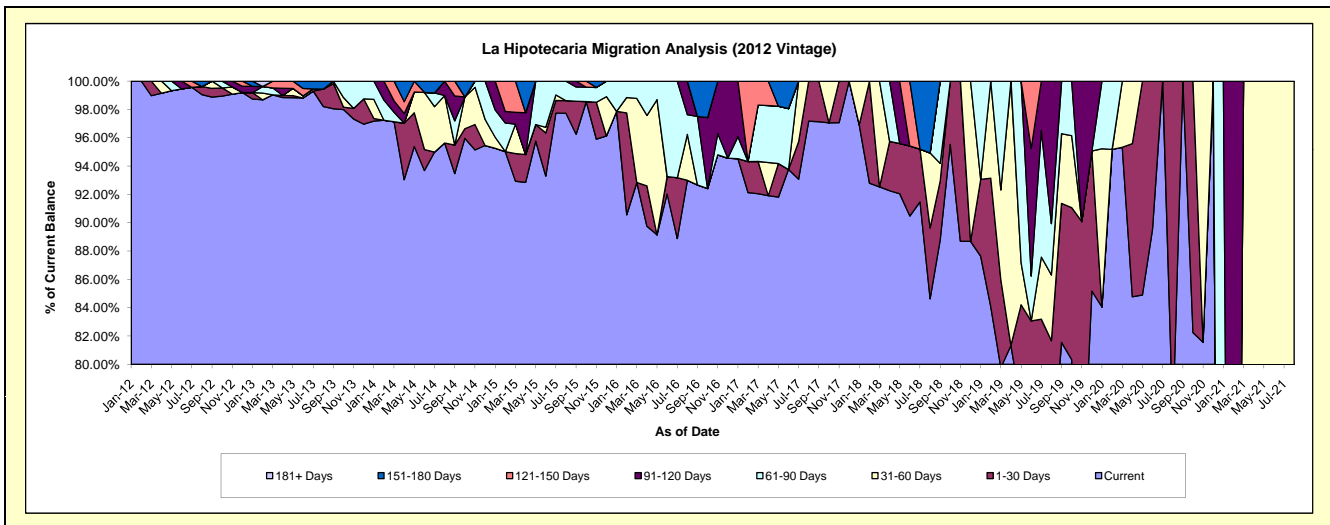
Delinquency Status (\$ of Current Balance)

Data Cutoff: 8/31/2021

Current Portfolio Balance	1,050,498.92	1,317,551.29	766,640.19	471,432.91	280,968.94	161,418.65	98,502.07	33,242.53	2,912.22	1,185.41
	Aug-12	Aug-13	Aug-14	Aug-15	Aug-16	Aug-17	Aug-18	Aug-19	Aug-20	Aug-21
Current	1,040,498.92	1,294,014.95	733,161.26	460,732.85	261,291.41	156,858.60	83,363.42	24,224.10	2,212.18	-
1-30 Days	6,000.00	16,102.97	-	4,209.47	-	4,560.05	4,928.01	2,924.62	700.04	-
31-60 Days	-	-	25,691.71	-	9,110.67	-	5,221.47	1,543.45	-	1,185.41
61-90 Days	-	-	-	6,490.59	-	-	-	1,206.70	-	-
91-120 Days	-	-	7,787.22	-	6,659.13	-	-	3,343.66	-	-
121-150 Days	-	-	-	-	-	-	-	-	-	-
151-180 Days	4,000.00	7,433.37	-	-	-	-	4,989.17	-	-	-
181+ Days	-	-	-	-	-	-	-	-	-	-

Delinquency Status (% of Current Balance)

Current Portfolio Balance	1,050,498.92	1,317,551.29	766,640.19	471,432.91	280,968.94	161,418.65	98,502.07	33,242.53	2,912.22	1,185.41
	Aug-12	Aug-13	Aug-14	Aug-15	Aug-16	Aug-17	Aug-18	Aug-19	Aug-20	Aug-21
Current	99.05%	98.21%	95.63%	97.73%	93.00%	97.18%	84.63%	72.87%	75.96%	0.00%
1-30 Days	0.57%	1.22%	0.00%	0.89%	0.00%	2.82%	5.00%	8.80%	24.04%	0.00%
31-60 Days	0.00%	0.00%	3.35%	0.00%	3.24%	0.00%	5.30%	4.64%	0.00%	100.00%
61-90 Days	0.00%	0.00%	0.00%	1.38%	1.39%	0.00%	0.00%	3.63%	0.00%	0.00%
91-120 Days	0.00%	0.00%	1.02%	0.00%	2.37%	0.00%	0.00%	10.06%	0.00%	0.00%
121-150 Days	0.00%	0.00%	0.00%	0.00%	0.00%	0.00%	0.00%	0.00%	0.00%	0.00%
151-180 Days	0.38%	0.56%	0.00%	0.00%	0.00%	0.00%	5.07%	0.00%	0.00%	0.00%
181+ Days	0.00%	0.00%	0.00%	0.00%	0.00%	0.00%	0.00%	0.00%	0.00%	0.00%
Current - 90 Days	99.62%	99.44%	98.98%	100.00%	97.63%	100.00%	94.93%	89.94%	100.00%	100.00%
91-180 Days	0.38%	0.56%	1.02%	0.00%	2.37%	0.00%	5.07%	10.06%	0.00%	0.00%



Personal Loans - La Hipotecaria El Salvador Migration Analysis (2013 Vintage)

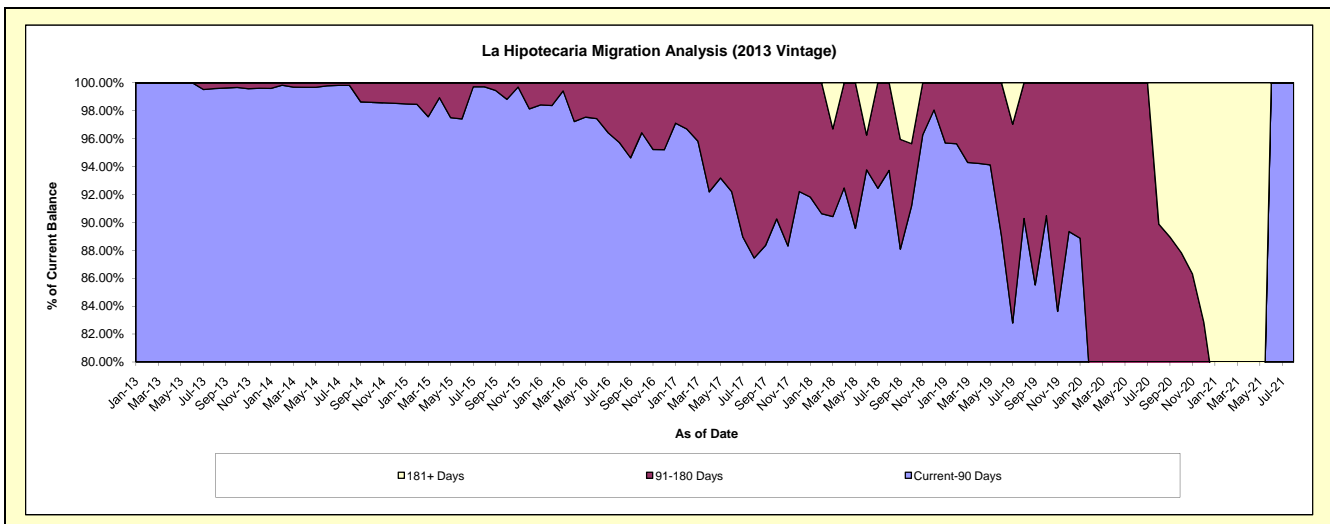
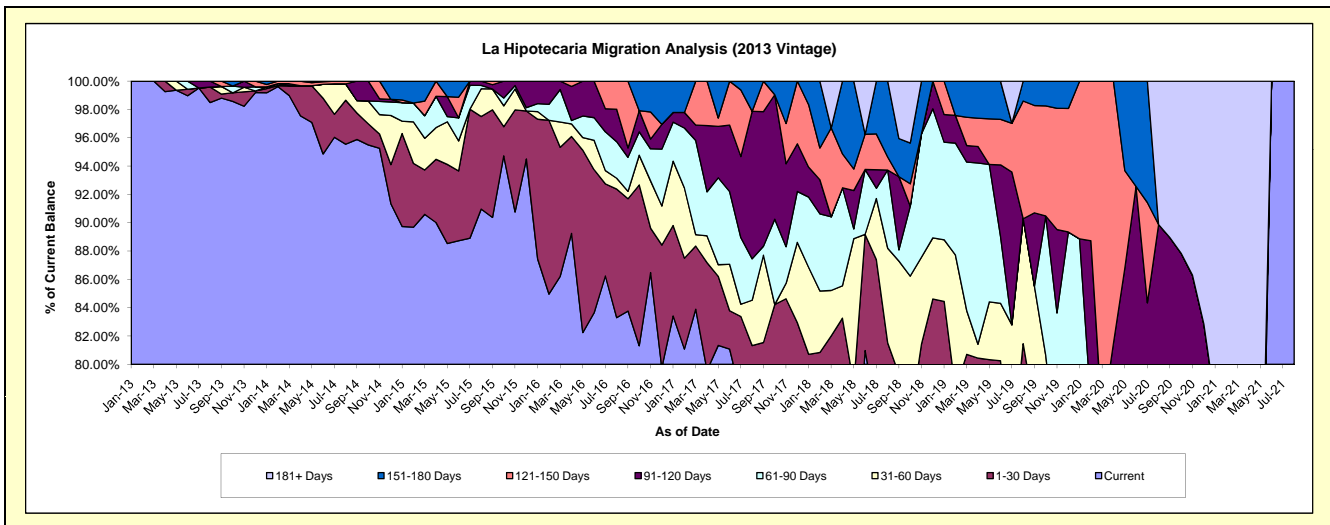
Delinquency Status (\$ of Current Balance)

Data Cutoff: 8/31/2021

Current Portfolio Balance	-	1,454,399.64	1,566,024.92	1,078,722.65	733,390.28	516,926.08	312,293.65	151,040.99	43,583.27	2,582.83
	Aug-13	Aug-14	Aug-15	Aug-16	Aug-17	Aug-18	Aug-19	Aug-20	Aug-21	Aug-21
Current	1,432,452.73	1,496,339.58	981,249.05	610,924.39	385,573.04	238,344.30	107,428.16	27,679.45	2,582.83	
1-30 Days	15,854.85	48,562.90	70,512.04	66,566.27	34,816.06	16,208.38	15,601.97	3,942.46	-	
31-60 Days	-	18,114.73	21,169.10	5,633.10	16,583.38	20,878.24	13,330.48	847.00	-	
61-90 Days	-	-	2,603.50	18,914.75	15,109.55	17,256.89	-	890.55	-	
91-120 Days	6,092.06	-	3,188.96	16,807.88	53,837.66	-	-	5,809.78	-	
121-150 Days	-	3,007.71	-	14,543.89	-	2,911.82	12,560.60	-	-	
151-180 Days	-	-	-	-	11,006.39	16,694.02	2,119.78	-	-	
181+ Days	-	-	-	-	-	-	-	4,414.03	-	

Delinquency Status (% of Current Balance)

Current Portfolio Balance	-	1,454,399.64	1,566,024.92	1,078,722.65	733,390.28	516,926.08	312,293.65	151,040.99	43,583.27	2,582.83
	Aug-13	Aug-14	Aug-15	Aug-16	Aug-17	Aug-18	Aug-19	Aug-20	Aug-21	Aug-21
Current	98.49%	95.55%	90.96%	83.30%	74.59%	76.32%	71.13%	63.51%	100.00%	
1-30 Days	1.09%	3.10%	6.54%	9.08%	6.74%	5.19%	10.33%	9.05%	0.00%	
31-60 Days	0.00%	1.16%	1.96%	0.77%	3.21%	6.69%	8.83%	1.94%	0.00%	
61-90 Days	0.00%	0.00%	0.24%	2.58%	2.92%	5.53%	0.00%	2.04%	0.00%	
91-120 Days	0.42%	0.00%	0.30%	2.29%	10.41%	0.00%	0.00%	13.33%	0.00%	
121-150 Days	0.00%	0.19%	0.00%	1.98%	0.00%	0.93%	8.32%	0.00%	0.00%	
151-180 Days	0.00%	0.00%	0.00%	0.00%	2.13%	5.35%	1.40%	0.00%	0.00%	
181+ Days	0.00%	0.00%	0.00%	0.00%	0.00%	0.00%	0.00%	10.13%	0.00%	
Current - 90 Days	99.58%	99.81%	99.70%	95.73%	87.46%	93.72%	90.28%	76.54%	100.00%	
91-180 Days	0.42%	0.19%	0.30%	4.27%	12.54%	6.28%	9.72%	13.33%	0.00%	



Personal Loans - La Hipotecaria El Salvador Migration Analysis (2014 Vintage)

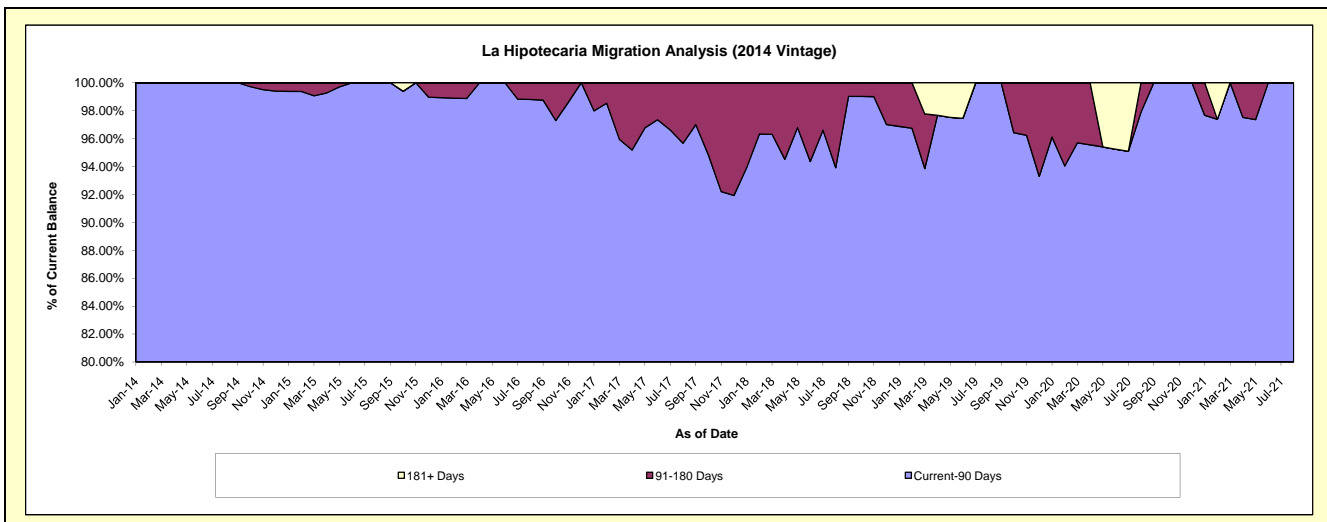
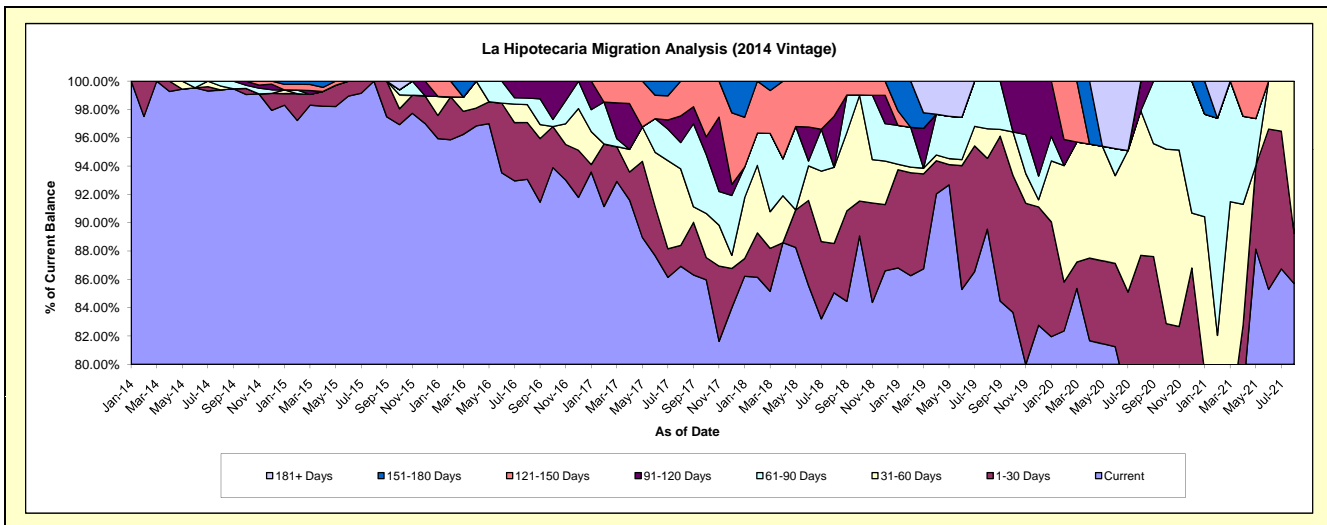
Delinquency Status (\$ of Current Balance)

Data Cutoff: 8/31/2021

Current Portfolio Balance	-	-	1,919,522.13	1,949,733.40	1,316,969.32	800,971.23	493,599.81	292,979.05	166,434.23	55,209.16
	Aug-14	Aug-15	Aug-16	Aug-17	Aug-18	Aug-19	Aug-20	Aug-21		
Current	1,907,696.53	1,949,733.40	1,225,628.62	696,245.04	419,832.26	262,370.75	131,713.66	47,317.66		
1-30 Days	-	-	52,835.15	11,841.94	17,179.56	14,626.13	14,251.59	1,947.31		
31-60 Days	5,276.93	-	16,659.66	43,274.02	26,565.44	6,134.15	16,980.02	5,944.19		
61-90 Days	6,548.67	-	6,087.25	14,907.69	-	9,848.02	-	-		
91-120 Days	-	-	15,758.64	15,045.10	17,768.76	-	3,488.96	-		
121-150 Days	-	-	-	19,657.44	12,253.79	-	-	-		
151-180 Days	-	-	-	-	-	-	-	-		
181+ Days	-	-	-	-	-	-	-	-		

Delinquency Status (% of Current Balance)

Current Portfolio Balance	-	-	1,919,522.13	1,949,733.40	1,316,969.32	800,971.23	493,599.81	292,979.05	166,434.23	55,209.16
	Aug-14	Aug-15	Aug-16	Aug-17	Aug-18	Aug-19	Aug-20	Aug-21		
Current	99.38%	100.00%	93.06%	86.93%	85.06%	89.55%	79.14%	85.71%		
1-30 Days	0.00%	0.00%	4.01%	1.48%	3.48%	4.99%	8.56%	3.53%		
31-60 Days	0.27%	0.00%	1.26%	5.40%	5.38%	2.09%	10.20%	10.77%		
61-90 Days	0.34%	0.00%	0.46%	1.86%	0.00%	3.36%	0.00%	0.00%		
91-120 Days	0.00%	0.00%	1.20%	1.88%	3.60%	0.00%	2.10%	0.00%		
121-150 Days	0.00%	0.00%	0.00%	2.45%	2.48%	0.00%	0.00%	0.00%		
151-180 Days	0.00%	0.00%	0.00%	0.00%	0.00%	0.00%	0.00%	0.00%		
181+ Days	0.00%	0.00%	0.00%	0.00%	0.00%	0.00%	0.00%	0.00%		
Current - 90 Days	100.00%	100.00%	98.80%	95.67%	93.92%	100.00%	97.90%	100.00%		
91-180 Days	0.00%	0.00%	1.20%	4.33%	6.08%	0.00%	2.10%	0.00%		



Personal Loans - La Hipotecaria El Salvador Migration Analysis (2015 Vintage)

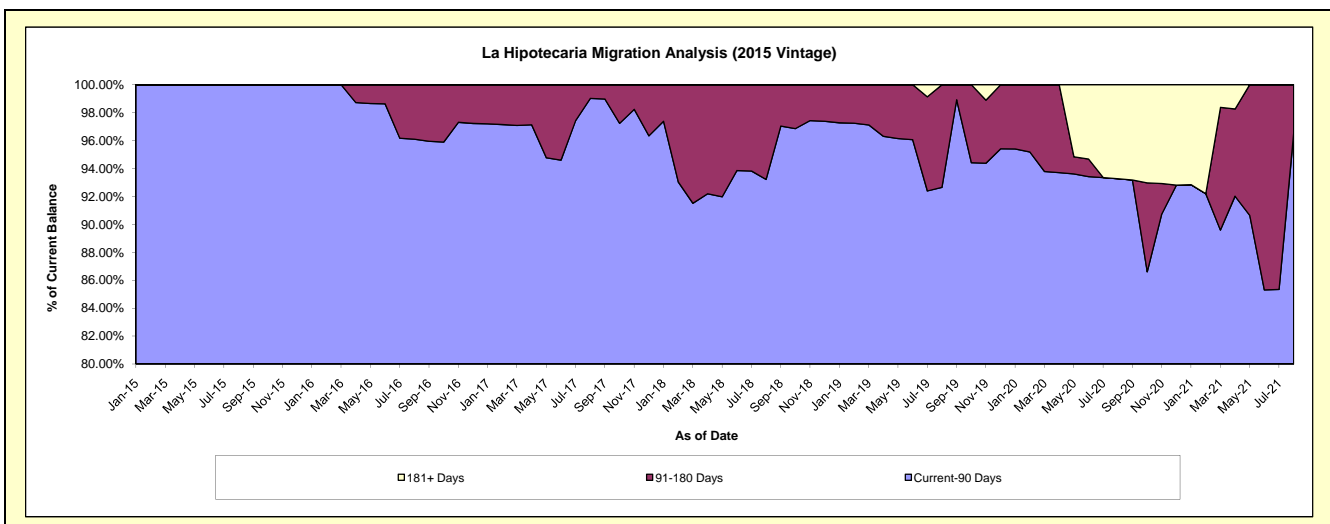
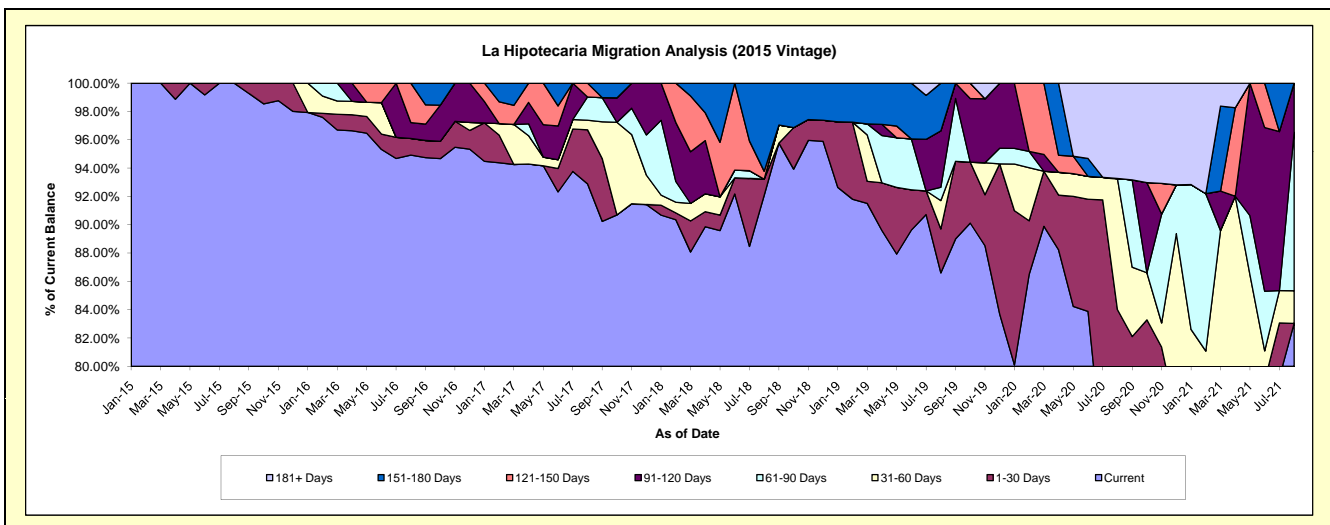
Delinquency Status (\$ of Current Balance)

Data Cutoff: 8/31/2021

Current Portfolio Balance	-	-	-	998,363.70	1,226,728.75	857,927.96	635,919.32	363,452.03	253,307.06	158,231.13
				Aug-15	Aug-16	Aug-17	Aug-18	Aug-19	Aug-20	Aug-21
Current				998,363.70	1,164,423.24	796,947.23	585,554.84	314,754.22	186,015.27	131,392.25
1-30 Days				-	14,436.33	32,731.19	7,257.48	11,277.79	26,738.10	-
31-60 Days				-	-	5,789.75	-	7,272.70	23,494.93	3,644.67
61-90 Days				-	-	14,063.89	-	3,434.74	-	17,701.89
91-120 Days				-	13,642.79	-	-	14,458.94	-	5,492.32
121-150 Days				-	34,226.39	8,395.90	3,537.70	-	-	-
151-180 Days				-	-	-	39,569.30	12,253.64	-	-
181+ Days				-	-	-	-	-	17,058.76	-

Delinquency Status (% of Current Balance)

Current Portfolio Balance	-	-	-	998,363.70	1,226,728.75	857,927.96	635,919.32	363,452.03	253,307.06	158,231.13
				Aug-15	Aug-16	Aug-17	Aug-18	Aug-19	Aug-20	Aug-21
Current				100.00%	94.92%	92.89%	92.08%	86.60%	73.43%	83.04%
1-30 Days				0.00%	1.18%	3.82%	1.14%	3.10%	10.56%	0.00%
31-60 Days				0.00%	0.00%	0.67%	0.00%	2.00%	9.28%	2.30%
61-90 Days				0.00%	0.00%	1.64%	0.00%	0.95%	0.00%	11.19%
91-120 Days				0.00%	1.11%	0.00%	0.00%	3.98%	0.00%	3.47%
121-150 Days				0.00%	2.79%	0.98%	0.56%	0.00%	0.00%	0.00%
151-180 Days				0.00%	0.00%	0.00%	6.22%	3.37%	0.00%	0.00%
181+ Days				0.00%	0.00%	0.00%	0.00%	0.00%	6.73%	0.00%
Current - 90 Days				100.00%	96.10%	99.02%	93.22%	92.65%	93.27%	96.53%
91-180 Days				0.00%	3.90%	0.98%	6.78%	7.35%	0.00%	3.47%



Personal Loans - La Hipotecaria El Salvador Migration Analysis (2016 Vintage)

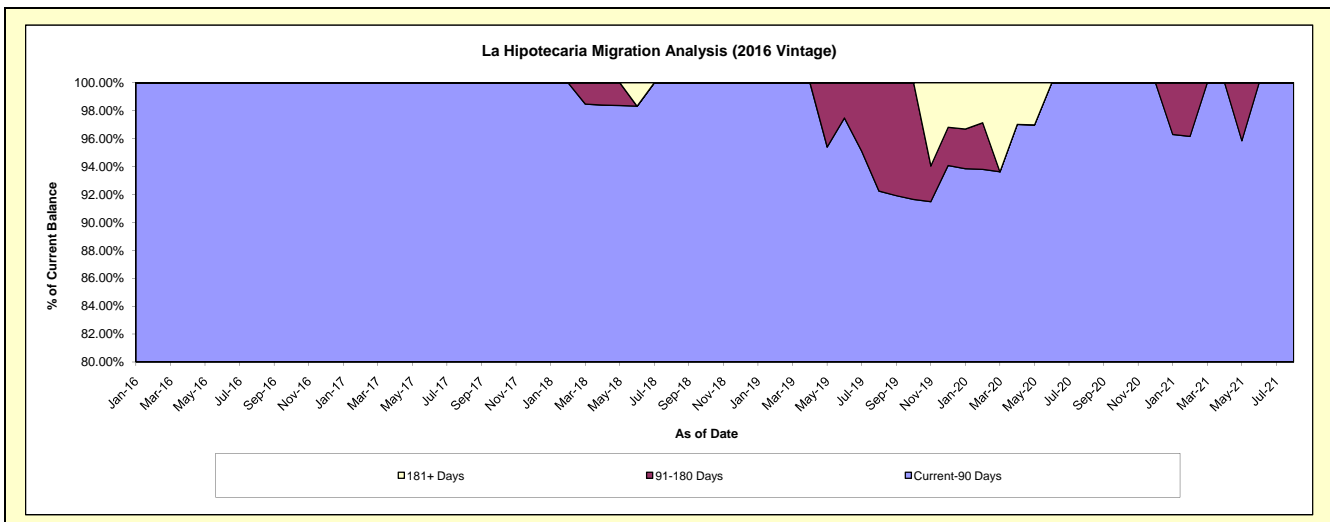
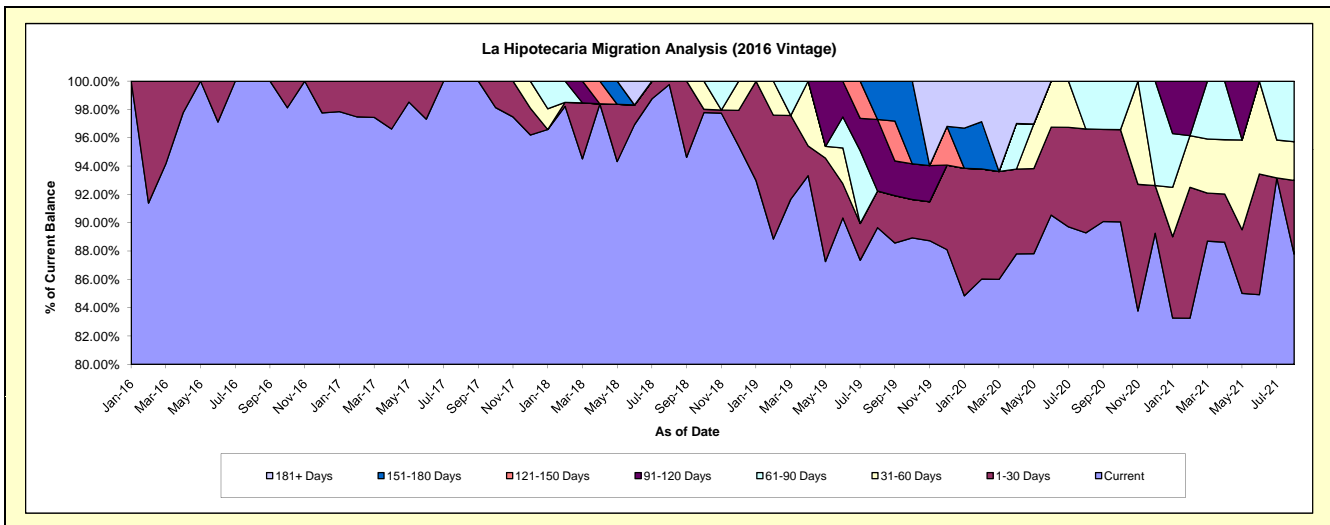
Delinquency Status (\$ of Current Balance)

Data Cutoff: 8/31/2021

Current Portfolio Balance	-	-	-	-	909,282.95	1,035,926.11	788,857.55	612,481.92	430,250.13	299,654.25
					Aug-16	Aug-17	Aug-18	Aug-19	Aug-20	Aug-21
Current					909,282.95	1,035,926.11	786,935.29	549,150.53	384,167.33	263,040.22
1-30 Days					-	-	1,922.26	15,801.38	31,545.57	15,614.58
31-60 Days					-	-	-	-	-	8,175.83
61-90 Days					-	-	-	-	14,537.23	12,823.62
91-120 Days					-	-	-	30,963.86	-	-
121-150 Days					-	-	-	-	-	-
151-180 Days					-	-	-	16,566.15	-	-
181+ Days					-	-	-	-	-	-

Delinquency Status (% of Current Balance)

Current Portfolio Balance	-	-	-	-	909,282.95	1,035,926.11	788,857.55	612,481.92	430,250.13	299,654.25
					Aug-16	Aug-17	Aug-18	Aug-19	Aug-20	Aug-21
Current					100.00%	100.00%	99.76%	89.66%	89.29%	87.78%
1-30 Days					0.00%	0.00%	0.24%	2.58%	7.33%	5.21%
31-60 Days					0.00%	0.00%	0.00%	0.00%	0.00%	2.73%
61-90 Days					0.00%	0.00%	0.00%	0.00%	3.38%	4.28%
91-120 Days					0.00%	0.00%	0.00%	5.06%	0.00%	0.00%
121-150 Days					0.00%	0.00%	0.00%	0.00%	0.00%	0.00%
151-180 Days					0.00%	0.00%	0.00%	2.70%	0.00%	0.00%
181+ Days					0.00%	0.00%	0.00%	0.00%	0.00%	0.00%
Current - 90 Days					100.00%	100.00%	100.00%	92.24%	100.00%	100.00%
91-180 Days					0.00%	0.00%	0.00%	7.76%	0.00%	0.00%



Personal Loans - La Hipotecaria El Salvador Migration Analysis (2017 Vintage)

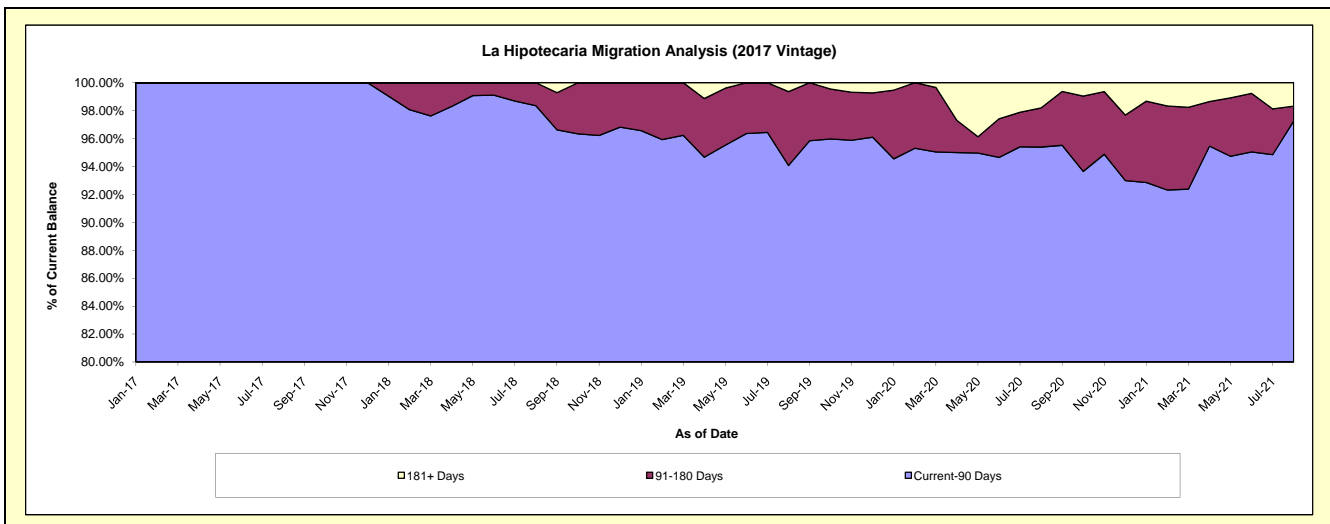
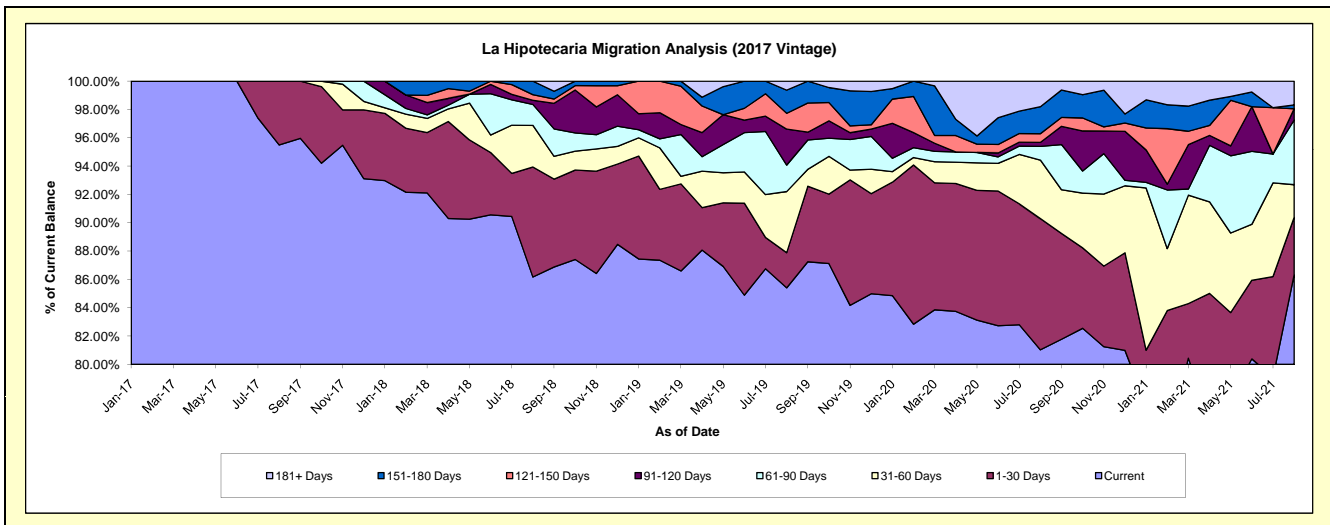
Delinquency Status (\$ of Current Balance)

Data Cutoff: 8/31/2021

Current Portfolio Balance	-	-	-	-	-	1,556,581.28	1,645,059.63	1,075,426.93	780,835.99	546,543.26
						Aug-17	Aug-18	Aug-19	Aug-20	Aug-21
Current						1,486,434.01	1,417,518.10	918,461.84	632,676.05	471,771.55
1-30 Days						70,147.27	127,766.32	26,686.02	72,370.67	22,171.34
31-60 Days						-	48,431.10	46,429.37	32,265.14	12,647.25
61-90 Days						-	24,254.11	20,127.98	7,568.44	24,979.88
91-120 Days						-	4,925.74	27,323.55	2,195.12	4,302.31
121-150 Days						-	6,483.46	12,007.36	4,804.66	-
151-180 Days						-	15,680.80	17,573.64	14,880.73	1,512.71
181+ Days						-	-	6,817.17	14,075.18	9,158.22

Delinquency Status (% of Current Balance)

Current Portfolio Balance	-	-	-	-	-	1,556,581.28	1,645,059.63	1,075,426.93	780,835.99	546,543.26
						Aug-17	Aug-18	Aug-19	Aug-20	Aug-21
Current						95.49%	86.17%	85.40%	81.03%	86.32%
1-30 Days						4.51%	7.77%	2.48%	9.27%	4.06%
31-60 Days						0.00%	2.94%	4.32%	4.13%	2.31%
61-90 Days						0.00%	1.47%	1.87%	0.97%	4.57%
91-120 Days						0.00%	0.30%	2.54%	0.28%	0.79%
121-150 Days						0.00%	0.39%	1.12%	0.62%	0.00%
151-180 Days						0.00%	0.95%	1.63%	1.91%	0.28%
181+ Days						0.00%	0.00%	0.63%	1.80%	1.68%
Current - 90 Days						100.00%	98.35%	94.07%	95.40%	97.26%
91-180 Days						0.00%	1.65%	5.29%	2.80%	1.06%



Personal Loans - La Hipotecaria El Salvador Migration Analysis (2018 Vintage)

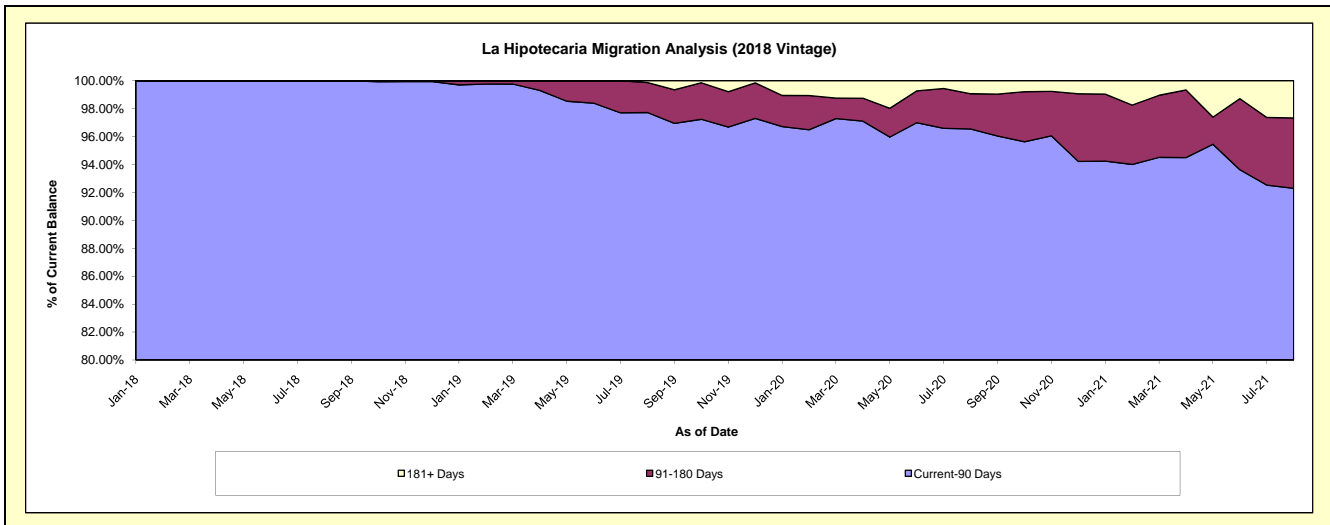
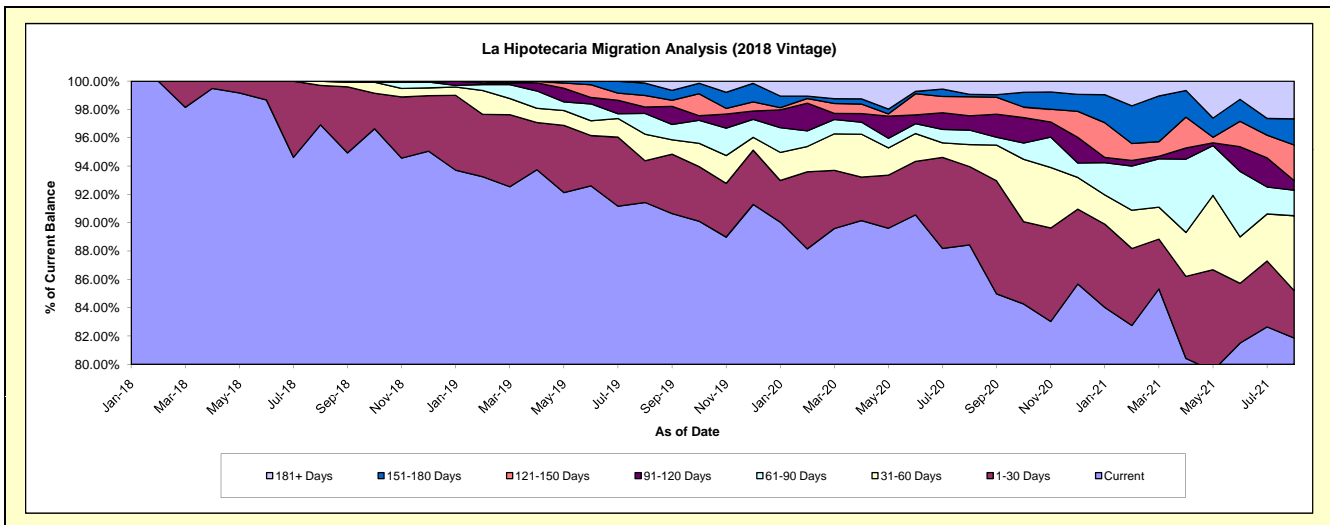
Delinquency Status (\$ of Current Balance)

Data Cutoff: 8/31/2021

Current Portfolio Balance	-	-	-	-	-	-	-	2,554,824.37	3,645,712.11	2,794,150.89	2,185,847.53
								Aug-18	Aug-19	Aug-20	Aug-21
Current								2,476,022.36	3,333,377.08	2,471,066.13	1,789,320.98
1-30 Days								71,045.38	107,452.25	154,450.67	73,192.91
31-60 Days								7,756.63	68,395.35	43,319.72	115,623.93
61-90 Days								-	53,345.15	28,707.16	39,383.33
91-120 Days								-	16,660.17	28,268.20	14,878.18
121-150 Days								-	29,693.63	37,569.75	54,862.51
151-180 Days								-	31,807.25	4,832.79	40,470.47
181+ Days								-	4,981.23	25,936.47	58,115.22

Delinquency Status (% of Current Balance)

Current Portfolio Balance	-	-	-	-	-	-	-	2,554,824.37	3,645,712.11	2,794,150.89	2,185,847.53
								Aug-18	Aug-19	Aug-20	Aug-21
Current								96.92%	91.43%	88.44%	81.86%
1-30 Days								2.78%	2.95%	5.53%	3.35%
31-60 Days								0.30%	1.88%	1.55%	5.29%
61-90 Days								0.00%	1.46%	1.03%	1.80%
91-120 Days								0.00%	0.46%	1.01%	0.68%
121-150 Days								0.00%	0.81%	1.34%	2.51%
151-180 Days								0.00%	0.87%	0.17%	1.85%
181+ Days								0.00%	0.14%	0.93%	2.66%
Current - 90 Days								100.00%	97.72%	96.54%	92.30%
91-180 Days								0.00%	2.14%	2.53%	5.04%



Personal Loans - La Hipotecaria El Salvador Migration Analysis (2019 Vintage)

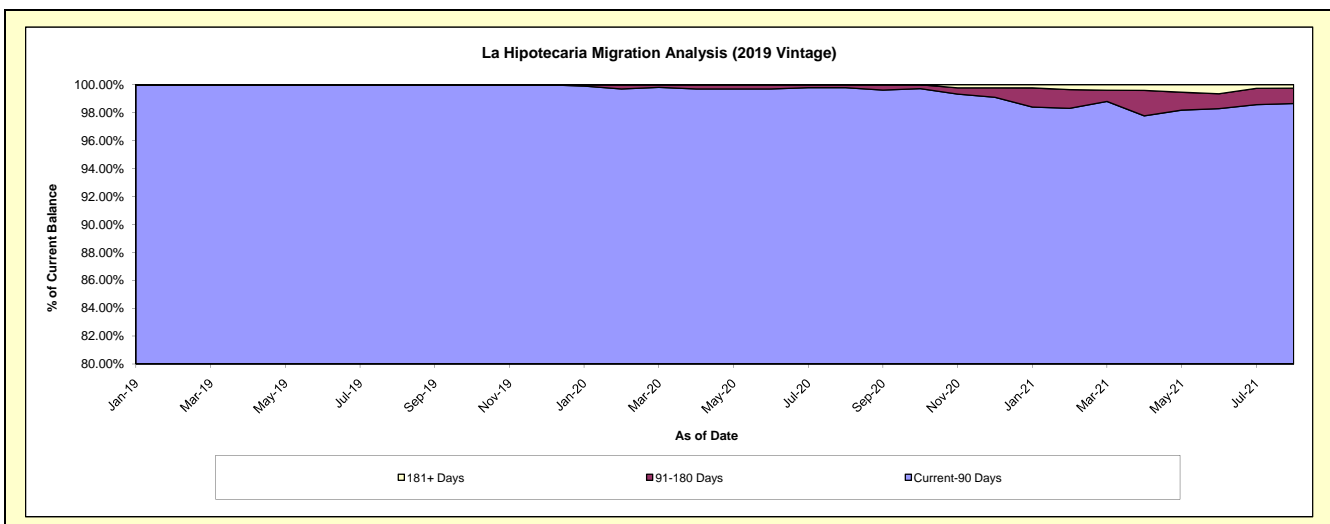
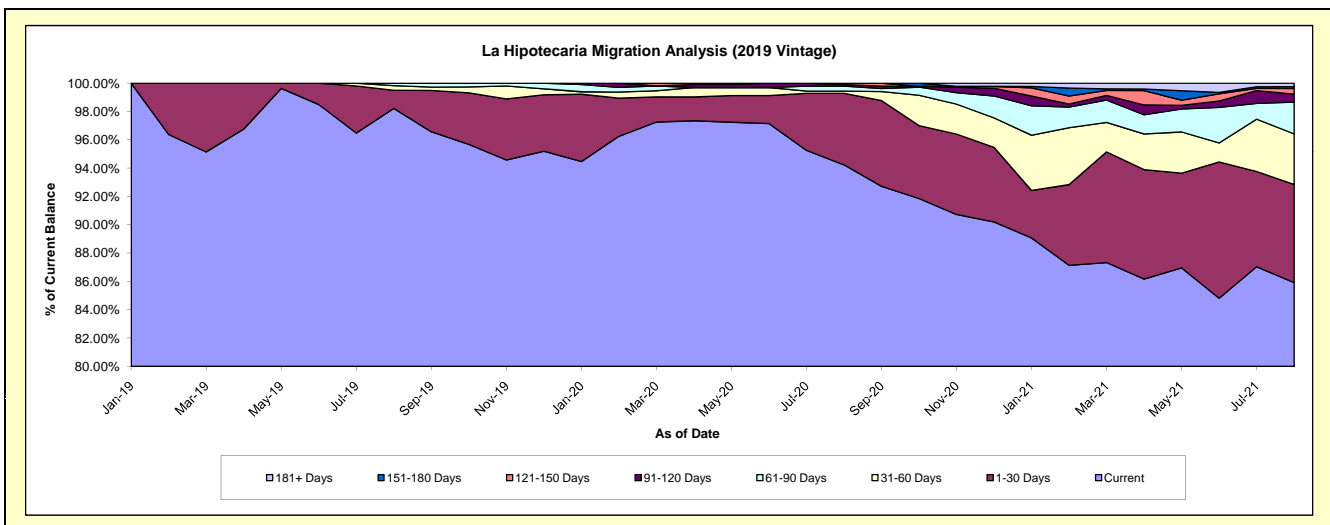
Delinquency Status (\$ of Current Balance)

Data Cutoff: 8/31/2021

Current Portfolio Balance	-	-	-	-	-	-	-	-	-	3,752,266.30	4,914,685.59	3,704,861.00
										Aug-19	Aug-20	Aug-21
Current										3,685,318.39	4,631,267.24	3,182,869.52
1-30 Days										48,153.09	247,998.96	256,837.12
31-60 Days										12,075.27	8,002.28	132,414.47
61-90 Days										6,719.55	17,064.10	83,030.63
91-120 Days										-	5,376.16	21,057.54
121-150 Days										-	4,976.85	14,695.53
151-180 Days										-	-	4,824.63
181+ Days										-	-	9,131.56

Delinquency Status (% of Current Balance)

Current Portfolio Balance	-	-	-	-	-	-	-	-	-	3,752,266.30	4,914,685.59	3,704,861.00
										Aug-19	Aug-20	Aug-21
Current										98.22%	94.23%	85.91%
1-30 Days										1.28%	5.05%	6.93%
31-60 Days										0.32%	0.16%	3.57%
61-90 Days										0.18%	0.35%	2.24%
91-120 Days										0.00%	0.11%	0.57%
121-150 Days										0.00%	0.10%	0.40%
151-180 Days										0.00%	0.00%	0.13%
181+ Days										0.00%	0.00%	0.25%
Current - 90 Days										100.00%	99.79%	98.66%
91-180 Days										0.00%	0.21%	1.10%



Personal Loans - La Hipotecaria El Salvador Migration Analysis (2020 Vintage)

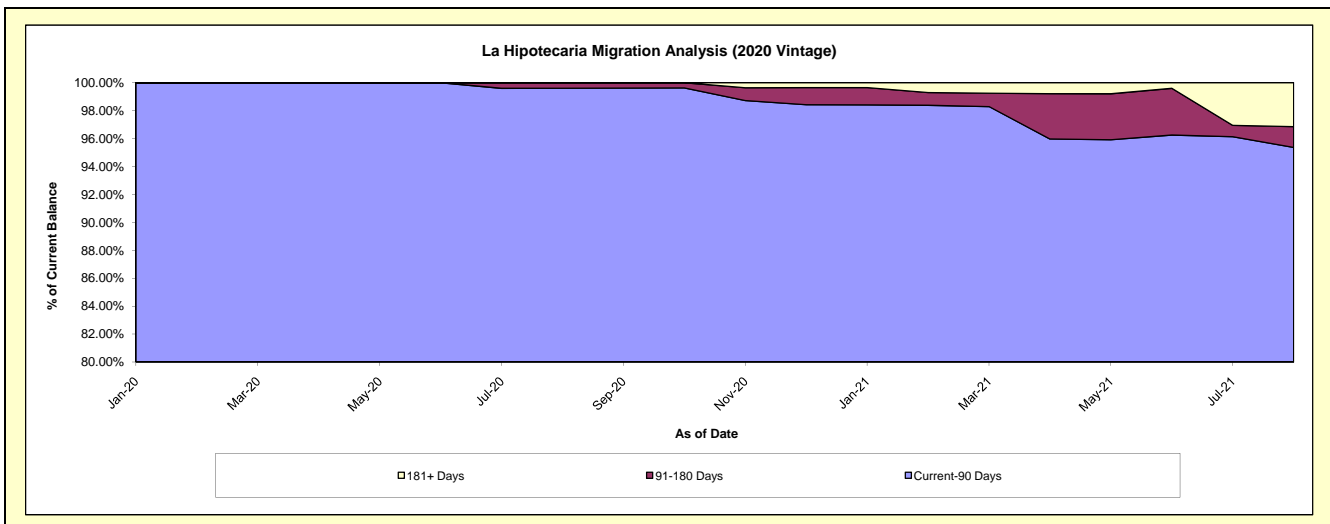
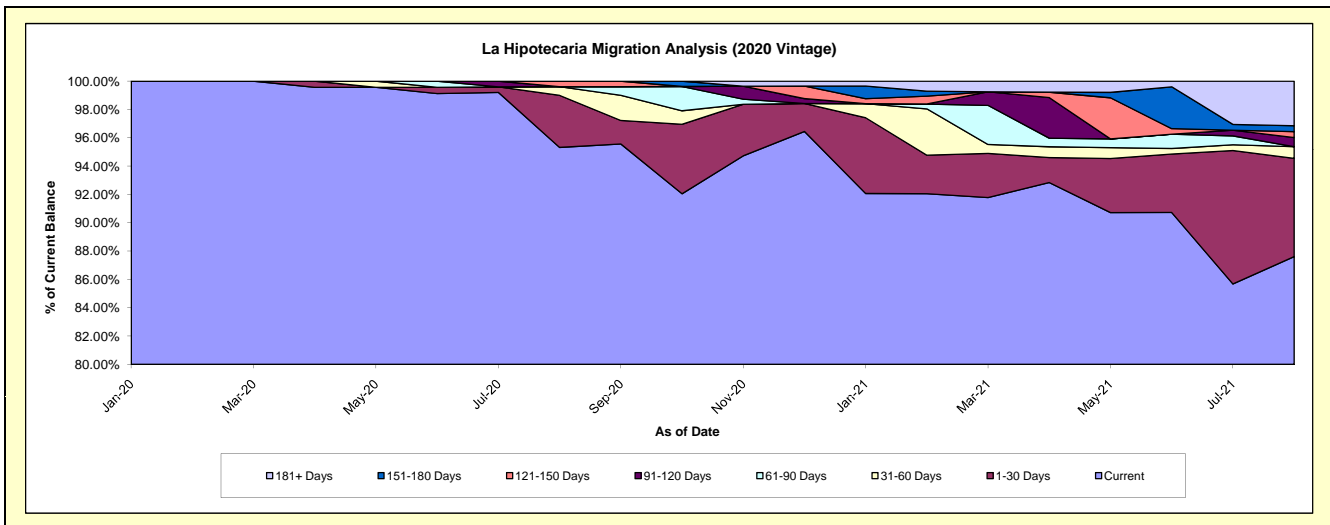
Delinquency Status (\$ of Current Balance)

Data Cutoff: 8/31/2021

Current Portfolio Balance										1,277,191.12	1,164,541.07
										Aug-20	Aug-21
Current										1,217,434.52	1,020,285.61
1-30 Days										46,935.45	80,728.00
31-60 Days										7,821.15	9,627.62
61-90 Days										-	-
91-120 Days										-	7,566.78
121-150 Days										5,000.00	4,864.82
151-180 Days										-	4,848.70
181+ Days										-	36,619.54

Delinquency Status (% of Current Balance)

Current Portfolio Balance										1,277,191.12	1,164,541.07
										Aug-20	Aug-21
Current										95.32%	87.61%
1-30 Days										3.67%	6.93%
31-60 Days										0.61%	0.83%
61-90 Days										0.00%	0.00%
91-120 Days										0.00%	0.65%
121-150 Days										0.39%	0.42%
151-180 Days										0.00%	0.42%
181+ Days										0.00%	3.14%
Current - 90 Days										99.61%	95.37%
91-180 Days										0.39%	1.48%



Personal Loans - La Hipotecaria El Salvador Migration Analysis (2021 Vintage)

Delinquency Status (\$ of Current Balance)

Data Cutoff: 8/31/2021

Current Portfolio Balance	-	-	-	-	-	-	-	-	-	-	-	-	-	-	-	495,749.45
	Aug-21															
Current																480,749.45
1-30 Days																15,000.00
31-60 Days																-
61-90 Days																-
91-120 Days																-
121-150 Days																-
151-180 Days																-
181+ Days																-

Delinquency Status (% of Current Balance)

Current Portfolio Balance	-	-	-	-	-	-	-	-	-	-	-	-	-	-	-	495,749.45
	Aug-21															
Current																96.97%
1-30 Days																3.03%
31-60 Days																0.00%
61-90 Days																0.00%
91-120 Days																0.00%
121-150 Days																0.00%
151-180 Days																0.00%
181+ Days																0.00%
Current - 90 Days																100.00%
91-180 Days																0.00%

