



## Migration Analysis for La Hipotecaria S.A. de C.V El Salvador

### Mortgages October 2021

An analysis of historical loan payment data was used to compile a migration analysis of delinquency by annual vintage. Delinquencies for each vintage were grouped into the following buckets; Current, 1-30, 31-60, 61-90, 91-120, 121-150, 151-180, and 180+. Results are provided in graphical and tabular form. The cutoff date is 10/31/2021.

# Mortgages - La Hipotecaria El Salvador Migration Analysis (All Vintages)

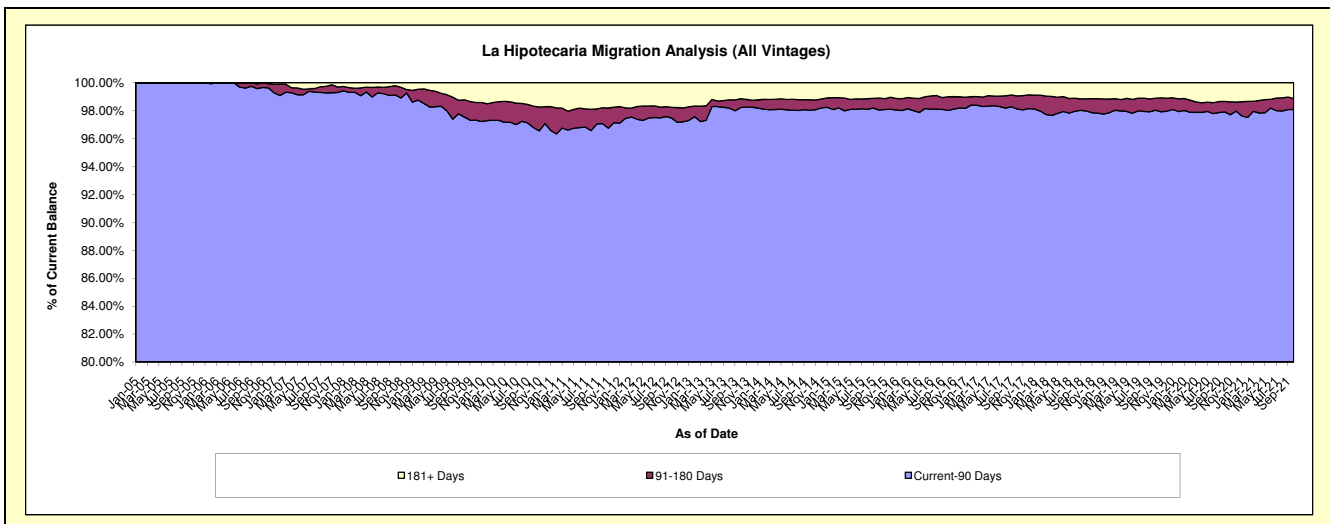
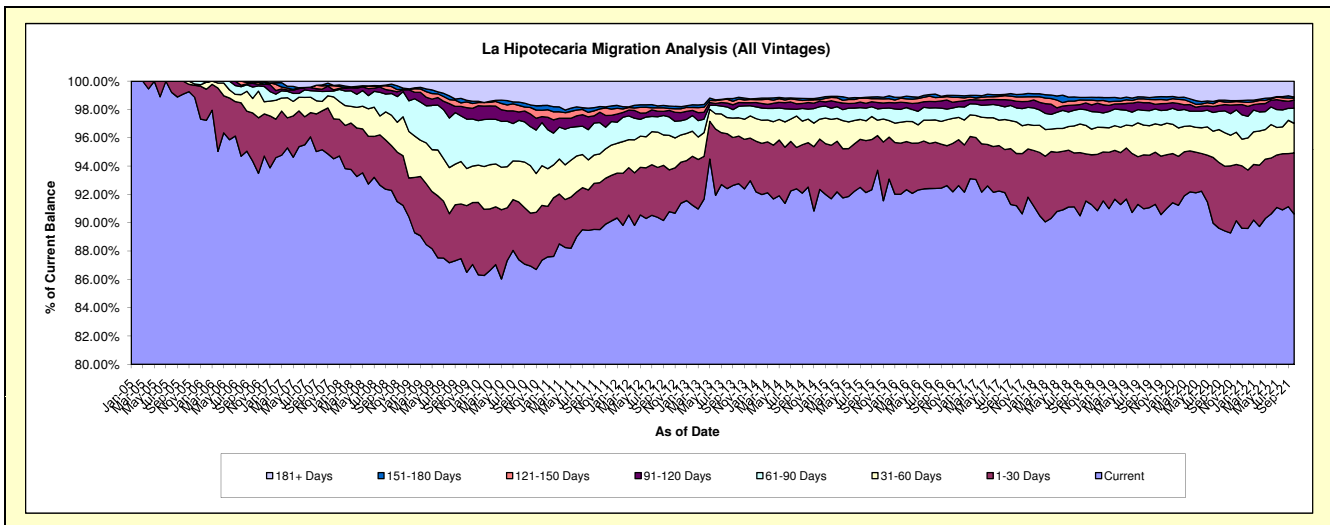
## Delinquency Status (\$ of Current Balance)

Data Cutoff: 10/31/2021

Current Portfolio Balance	106,278,022.32	127,419,525.28	145,138,925.87	156,782,361.22	170,828,493.57	180,117,101.08	189,585,362.77	202,384,203.98	201,379,456.17	194,230,803.55
	Oct-12	Oct-13	Oct-14	Oct-15	Oct-16	Oct-17	Oct-18	Oct-19	Oct-20	Oct-21
Current	96,483,149.53	118,195,540.19	134,286,527.98	146,923,881.41	158,230,632.63	164,282,550.50	173,544,696.15	184,781,359.89	180,080,515.40	175,986,785.42
1-30 Days	3,139,696.53	4,284,560.36	4,549,938.54	3,831,397.61	4,804,619.04	6,635,835.88	6,300,254.31	7,442,508.34	9,207,491.73	8,389,642.92
31-60 Days	2,589,346.84	1,642,445.32	2,414,073.31	1,706,330.92	3,140,713.88	4,023,555.63	3,821,002.32	4,069,164.06	4,764,284.47	4,070,286.37
61-90 Days	1,378,007.12	1,039,396.22	1,030,054.90	1,256,268.94	1,277,622.77	1,775,809.67	2,094,905.75	2,121,480.15	3,114,230.38	2,066,400.79
91-120 Days	494,811.60	333,005.45	675,125.85	692,783.40	1,098,475.34	850,767.49	911,101.17	672,871.96	876,565.98	1,110,784.51
121-150 Days	145,354.66	313,534.42	254,139.72	430,634.55	418,020.12	546,776.38	367,526.37	651,126.27	378,569.48	278,244.23
151-180 Days	177,241.13	162,680.15	154,164.48	215,408.92	147,907.85	301,741.85	369,652.86	402,203.74	261,672.47	146,868.46
181+ Days	1,870,414.91	1,448,363.17	1,774,901.09	1,725,655.47	1,710,501.94	1,700,063.68	2,176,223.84	2,243,489.57	2,696,126.26	2,181,790.85

## Delinquency Status (% of Current Balance)

Current Portfolio Balance	106,278,022.32	127,419,525.28	145,138,925.87	156,782,361.22	170,828,493.57	180,117,101.08	189,585,362.77	202,384,203.98	201,379,456.17	194,230,803.55
	Oct-12	Oct-13	Oct-14	Oct-15	Oct-16	Oct-17	Oct-18	Oct-19	Oct-20	Oct-21
Current	90.78%	92.76%	92.52%	93.71%	92.63%	91.21%	91.54%	91.30%	89.42%	90.61%
1-30 Days	2.95%	3.36%	3.13%	2.44%	2.81%	3.68%	3.32%	3.68%	4.57%	4.32%
31-60 Days	2.44%	1.29%	1.66%	1.09%	1.84%	2.23%	2.02%	2.01%	2.37%	2.10%
61-90 Days	1.30%	0.82%	0.71%	0.80%	0.75%	0.99%	1.10%	1.05%	1.55%	1.06%
91-120 Days	0.47%	0.26%	0.47%	0.44%	0.64%	0.47%	0.48%	0.33%	0.44%	0.57%
121-150 Days	0.14%	0.25%	0.18%	0.27%	0.24%	0.30%	0.19%	0.32%	0.19%	0.14%
151-180 Days	0.17%	0.13%	0.11%	0.14%	0.09%	0.17%	0.19%	0.20%	0.13%	0.08%
181+ Days	1.76%	1.14%	1.22%	1.10%	1.00%	0.94%	1.15%	1.11%	1.34%	1.12%
Current - 90 Days	97.47%	98.23%	98.03%	98.05%	98.02%	98.11%	97.98%	98.04%	97.91%	98.09%
91-180 Days	0.77%	0.64%	0.75%	0.85%	0.97%	0.94%	0.87%	0.85%	0.75%	0.79%



# Mortgages - La Hipotecaria El Salvador Migration Analysis (2005 Vintage)

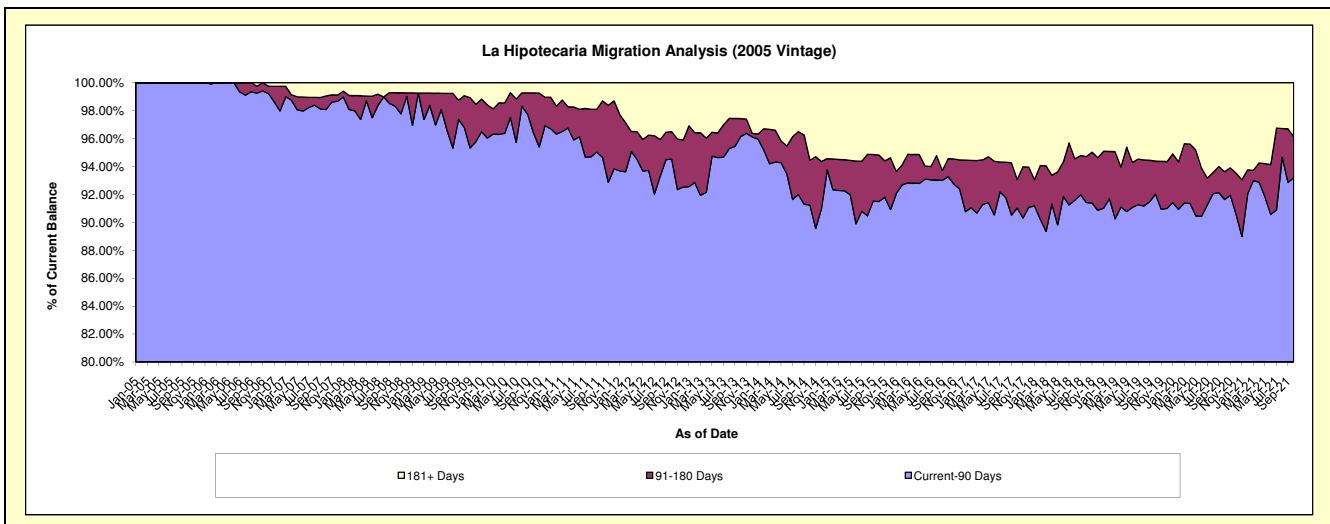
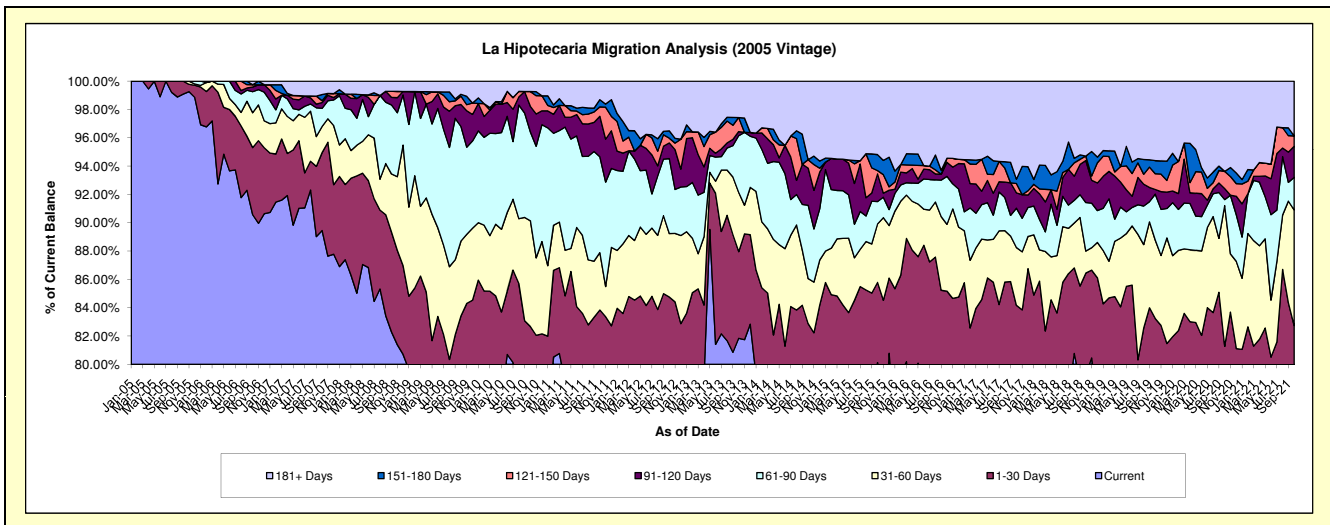
## Delinquency Status (\$ of Current Balance)

Data Cutoff: 10/31/2021

Current Portfolio Balance	5,779,394.74	5,187,561.81	4,604,248.98	4,245,382.35	3,928,092.15	3,634,669.24	3,166,110.32	2,847,535.21	2,586,919.58	2,324,167.71
	Oct-12	Oct-13	Oct-14	Oct-15	Oct-16	Oct-17	Oct-18	Oct-19	Oct-20	Oct-21
Current	4,501,788.42	4,245,576.34	3,623,705.26	3,401,375.70	2,941,803.92	2,589,809.40	2,511,235.56	2,149,803.88	1,875,282.73	1,751,965.08
1-30 Days	396,604.01	317,463.23	192,436.58	240,551.34	403,725.53	469,514.06	225,773.07	220,434.46	227,155.97	170,930.27
31-60 Days	259,069.91	217,074.27	146,017.88	175,497.25	185,480.84	148,271.59	49,095.04	157,764.07	257,065.73	189,697.82
61-90 Days	305,877.64	207,803.12	238,732.93	66,962.44	132,909.41	100,974.62	108,513.96	92,443.99	11,036.41	53,598.73
91-120 Days	63,881.41	14,927.45	120,645.04	83,007.97	38,917.97	39,461.37	94,067.43	9,308.76	20,320.86	50,892.77
121-150 Days	19,560.42	51,421.14	27,177.36	9,967.73	11,551.22	23,985.96	9,965.50	31,590.79	31,196.22	17,118.44
151-180 Days	29,989.05	-	-	47,821.31	-	10,934.97	-	26,475.85	-	-
181+ Days	202,623.88	133,296.26	255,533.93	220,198.61	213,703.26	251,717.27	167,459.76	159,713.41	164,861.66	89,964.60

## Delinquency Status (% of Current Balance)

Current Portfolio Balance	5,779,394.74	5,187,561.81	4,604,248.98	4,245,382.35	3,928,092.15	3,634,669.24	3,166,110.32	2,847,535.21	2,586,919.58	2,324,167.71
	Oct-12	Oct-13	Oct-14	Oct-15	Oct-16	Oct-17	Oct-18	Oct-19	Oct-20	Oct-21
Current	77.89%	81.84%	78.70%	80.12%	74.89%	71.25%	79.32%	75.50%	72.49%	75.38%
1-30 Days	6.86%	6.12%	4.18%	5.67%	10.28%	12.92%	7.13%	7.74%	8.78%	7.35%
31-60 Days	4.48%	4.18%	3.17%	4.13%	4.72%	4.08%	1.55%	5.54%	9.94%	8.16%
61-90 Days	5.29%	4.01%	5.19%	1.58%	3.38%	2.78%	3.43%	3.25%	0.43%	2.31%
91-120 Days	1.11%	0.29%	2.62%	1.96%	0.99%	1.09%	2.97%	0.33%	0.79%	2.19%
121-150 Days	0.34%	0.99%	0.59%	0.23%	0.29%	0.66%	0.31%	1.11%	1.21%	0.74%
151-180 Days	0.52%	0.00%	0.00%	1.13%	0.00%	0.30%	0.00%	0.93%	0.00%	0.00%
181+ Days	3.51%	2.57%	5.55%	5.19%	5.44%	6.93%	5.29%	5.61%	6.37%	3.87%
Current - 90 Days	94.53%	96.15%	91.24%	91.50%	93.27%	91.03%	91.43%	92.03%	91.64%	93.20%
91-180 Days	1.96%	1.28%	3.21%	3.32%	1.28%	2.05%	3.29%	2.37%	1.99%	2.93%



# Mortgages - La Hipotecaria El Salvador Migration Analysis (2006 Vintage)

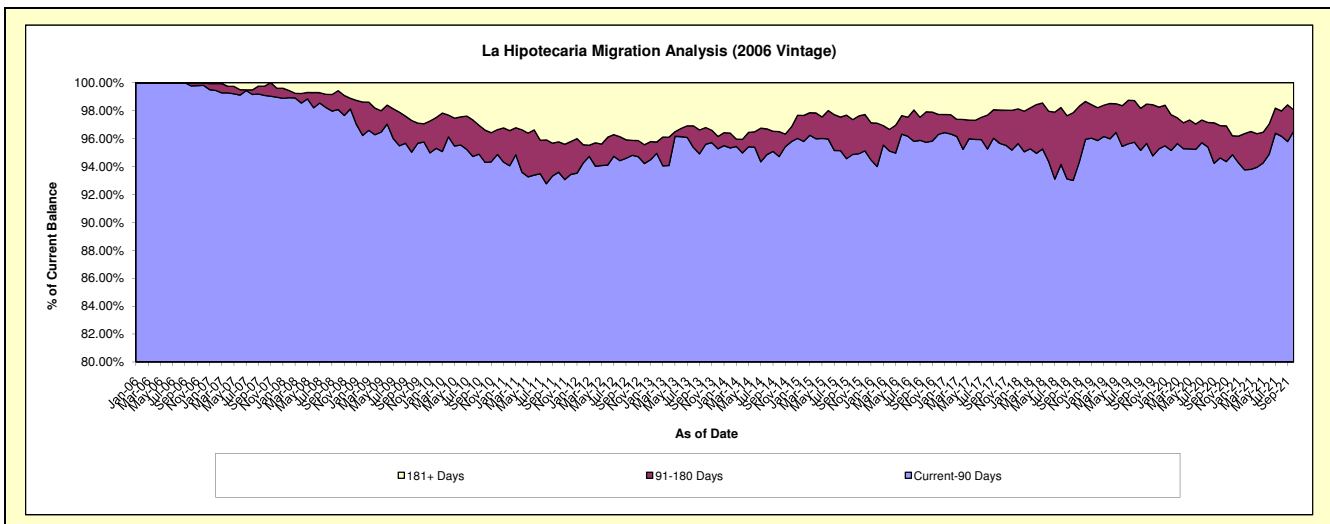
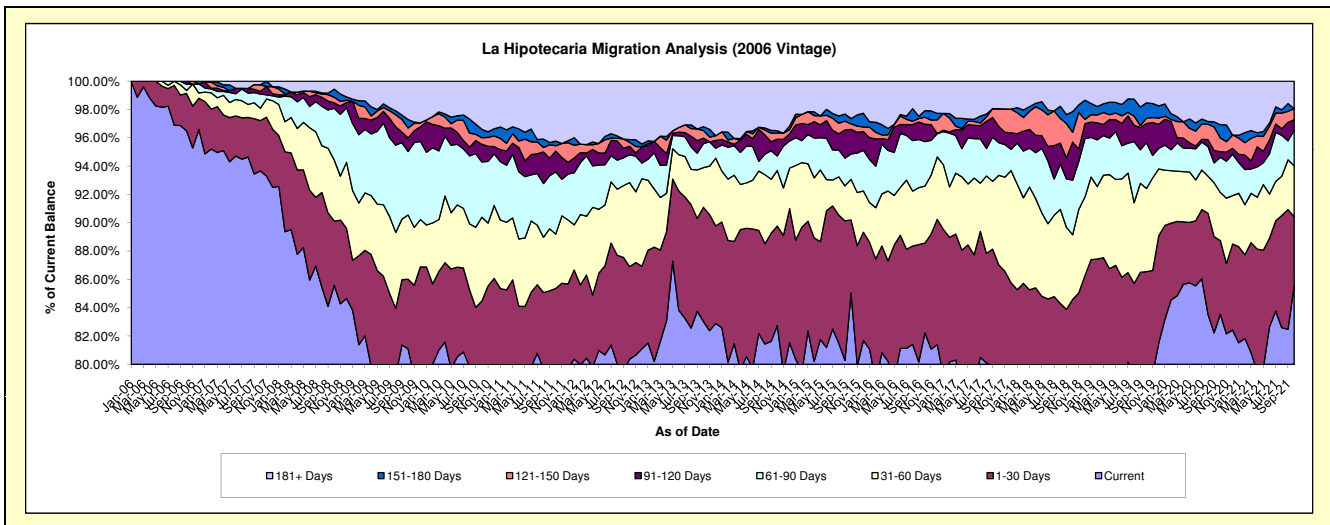
## Delinquency Status (\$ of Current Balance)

Data Cutoff: 10/31/2021

Current Portfolio Balance	12,749,381.75	11,765,117.71	10,474,662.22	9,566,370.01	8,705,372.97	7,987,262.84	7,301,965.43	6,514,238.55	5,930,100.58	5,314,655.42
	Oct-12	Oct-13	Oct-14	Oct-15	Oct-16	Oct-17	Oct-18	Oct-19	Oct-20	Oct-21
Current	10,245,109.17	9,768,253.15	8,665,999.50	8,135,563.21	7,157,957.47	6,177,315.47	5,724,724.86	5,154,375.33	4,954,316.55	4,546,545.37
1-30 Days	834,556.95	949,310.19	736,845.75	492,725.95	552,332.75	773,687.00	451,422.82	483,847.10	308,546.66	259,376.64
31-60 Days	755,981.63	328,986.75	410,927.28	274,414.34	350,295.57	505,175.89	334,026.29	382,297.25	201,282.38	191,160.25
61-90 Days	251,111.35	200,742.64	107,476.84	172,249.55	273,071.07	184,363.21	281,245.77	210,694.49	146,881.64	132,945.10
91-120 Days	76,841.07	44,346.98	124,379.32	165,730.12	106,692.51	90,737.26	196,251.02	88,486.56	23,581.37	39,672.57
121-150 Days	34,853.69	63,793.22	46,573.42	37,150.03	43,692.25	100,125.02	51,039.21	24,572.33	57,618.17	41,846.75
151-180 Days	24,864.41	32,268.41	16,063.06	35,828.99	39,822.76	-	106,618.80	70,526.06	55,716.46	-
181+ Days	526,063.48	377,416.37	366,397.05	252,707.82	181,508.59	155,858.99	156,636.66	99,439.43	182,157.35	103,108.74

## Delinquency Status (% of Current Balance)

Current Portfolio Balance	12,749,381.75	11,765,117.71	10,474,662.22	9,566,370.01	8,705,372.97	7,987,262.84	7,301,965.43	6,514,238.55	5,930,100.58	5,314,655.42
	Oct-12	Oct-13	Oct-14	Oct-15	Oct-16	Oct-17	Oct-18	Oct-19	Oct-20	Oct-21
Current	80.36%	83.03%	82.73%	85.04%	82.22%	77.34%	78.40%	79.12%	83.55%	85.55%
1-30 Days	6.55%	8.07%	7.03%	5.15%	6.34%	9.69%	6.18%	7.43%	5.20%	4.88%
31-60 Days	5.93%	2.80%	3.92%	2.87%	4.02%	6.32%	4.57%	5.87%	3.39%	3.60%
61-90 Days	1.97%	1.71%	1.03%	1.80%	3.14%	2.31%	3.85%	3.23%	2.48%	2.50%
91-120 Days	0.60%	0.38%	1.19%	1.73%	1.23%	1.14%	2.69%	1.36%	0.40%	0.75%
121-150 Days	0.27%	0.54%	0.44%	0.39%	0.50%	1.25%	0.70%	0.38%	0.97%	0.79%
151-180 Days	0.20%	0.27%	0.15%	0.37%	0.46%	0.00%	1.46%	1.08%	0.94%	0.00%
181+ Days	4.13%	3.21%	3.50%	2.64%	2.09%	1.95%	2.15%	1.53%	3.07%	1.94%
Current - 90 Days	94.80%	95.60%	94.72%	94.86%	95.73%	95.66%	93.01%	95.66%	94.82%	96.53%
91-180 Days	1.07%	1.19%	1.79%	2.50%	2.18%	2.39%	4.85%	2.82%	2.31%	1.53%



# Mortgages - La Hipotecaria El Salvador Migration Analysis (2007 Vintage)

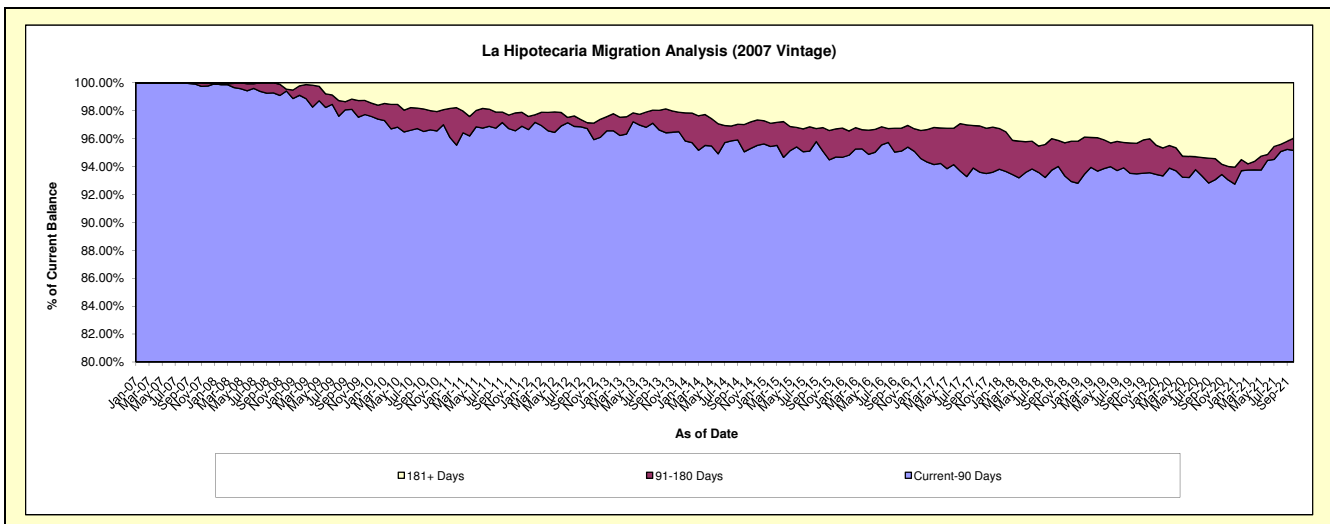
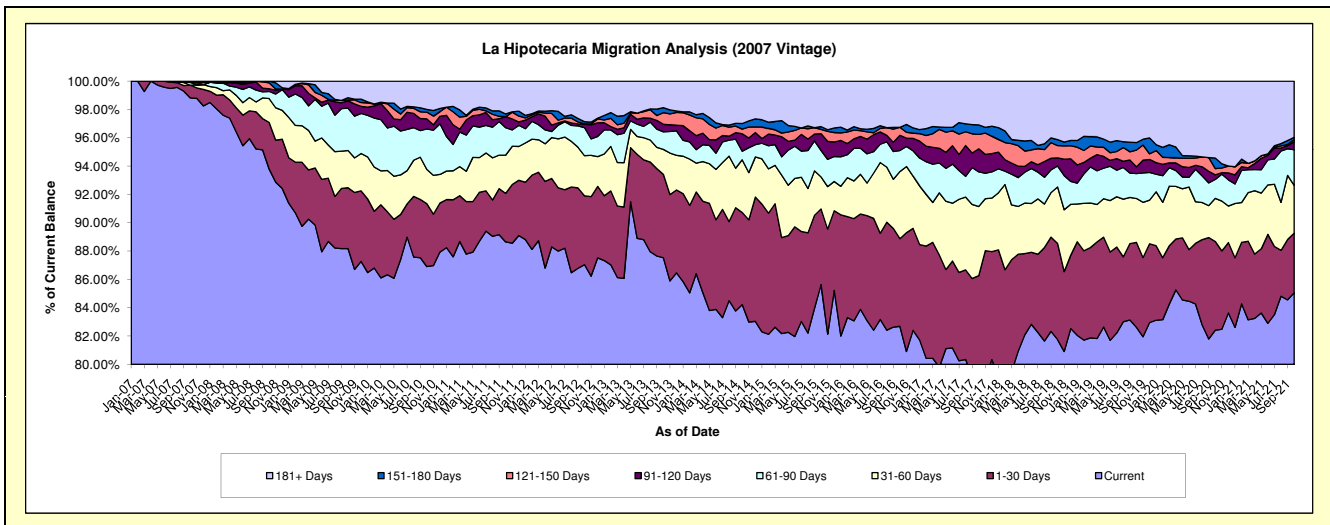
## Delinquency Status (\$ of Current Balance)

Data Cutoff: 10/31/2021

Current Portfolio Balance	19,871,771.85	17,937,909.12	16,660,541.81	15,163,777.40	13,953,056.94	12,807,400.73	11,698,191.78	10,923,931.34	10,216,985.72	8,935,915.51
	Oct-12	Oct-13	Oct-14	Oct-15	Oct-16	Oct-17	Oct-18	Oct-19	Oct-20	Oct-21
Current	17,295,913.44	15,700,961.73	14,030,921.74	12,984,535.36	11,537,770.88	10,111,736.85	9,563,338.54	9,024,837.85	8,420,332.36	7,600,004.91
1-30 Days	967,031.81	1,057,028.10	1,084,325.18	810,632.52	862,652.76	936,963.83	793,784.01	655,998.08	640,263.71	375,800.36
31-60 Days	562,961.94	315,578.14	620,461.22	343,376.11	662,199.13	625,332.78	467,031.12	338,011.83	310,686.85	302,146.69
61-90 Days	392,696.19	222,345.67	101,089.09	282,734.82	207,002.96	312,836.47	172,949.30	192,460.83	136,518.52	224,951.09
91-120 Days	48,129.06	96,061.72	204,976.20	180,100.42	149,796.92	209,045.19	66,659.45	51,992.64	33,844.14	49,441.31
121-150 Days	7,289.03	146,677.59	54,803.89	45,048.00	79,116.57	130,644.33	101,880.50	129,467.86	44,211.90	13,780.12
151-180 Days	28,575.22	63,014.09	65,449.46	30,702.69	-	84,600.46	49,473.28	57,530.70	76,208.76	14,739.24
181+ Days	569,175.16	336,242.08	498,515.03	486,647.48	454,517.72	396,240.82	483,075.58	473,631.55	554,919.48	355,051.79

## Delinquency Status (% of Current Balance)

Current Portfolio Balance	19,871,771.85	17,937,909.12	16,660,541.81	15,163,777.40	13,953,056.94	12,807,400.73	11,698,191.78	10,923,931.34	10,216,985.72	8,935,915.51
	Oct-12	Oct-13	Oct-14	Oct-15	Oct-16	Oct-17	Oct-18	Oct-19	Oct-20	Oct-21
Current	87.04%	87.53%	84.22%	85.63%	82.69%	78.95%	81.75%	82.62%	82.42%	85.05%
1-30 Days	4.87%	5.89%	6.51%	5.35%	6.18%	7.32%	6.79%	6.01%	6.27%	4.21%
31-60 Days	2.83%	1.76%	3.72%	2.26%	4.75%	4.88%	3.99%	3.09%	3.04%	3.38%
61-90 Days	1.98%	1.24%	0.61%	1.86%	1.48%	2.44%	1.48%	1.76%	1.34%	2.52%
91-120 Days	0.24%	0.54%	1.23%	1.19%	1.07%	1.63%	0.57%	0.48%	0.33%	0.55%
121-150 Days	0.04%	0.82%	0.33%	0.30%	0.57%	1.02%	0.87%	1.19%	0.43%	0.15%
151-180 Days	0.14%	0.35%	0.39%	0.20%	0.00%	0.66%	0.42%	0.53%	0.75%	0.16%
181+ Days	2.86%	1.87%	2.99%	3.21%	3.26%	3.09%	4.13%	4.34%	5.43%	3.97%
Current - 90 Days	96.71%	96.42%	95.06%	95.10%	95.10%	93.59%	94.01%	93.48%	93.06%	95.15%
91-180 Days	0.42%	1.70%	1.95%	1.69%	1.64%	3.31%	1.86%	2.19%	1.51%	0.87%



# Mortgages - La Hipotecaria El Salvador Migration Analysis (2008 Vintage)

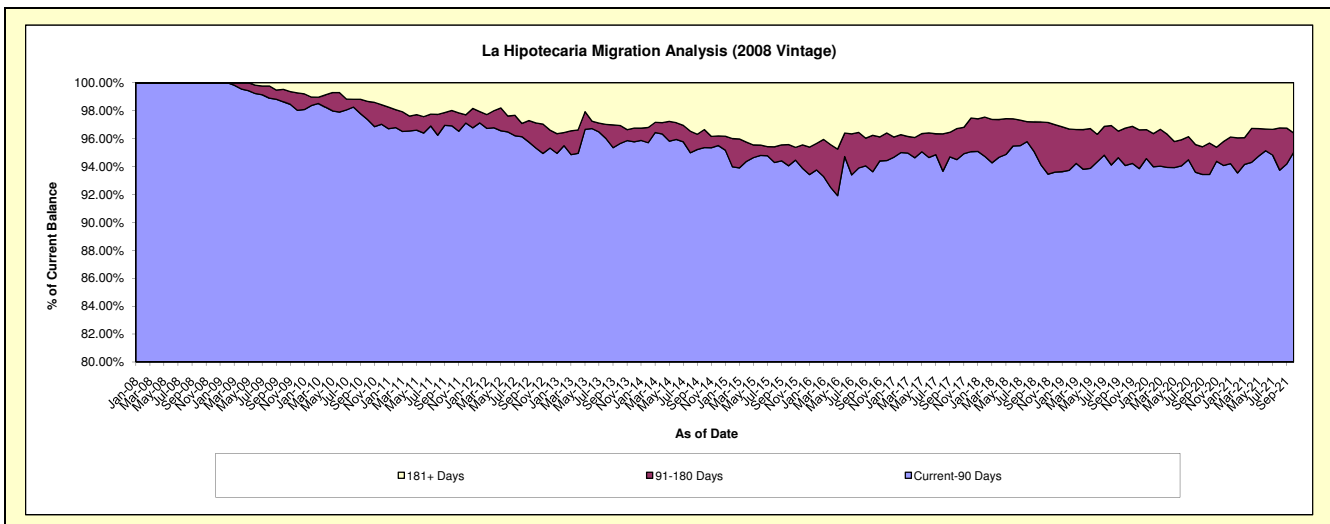
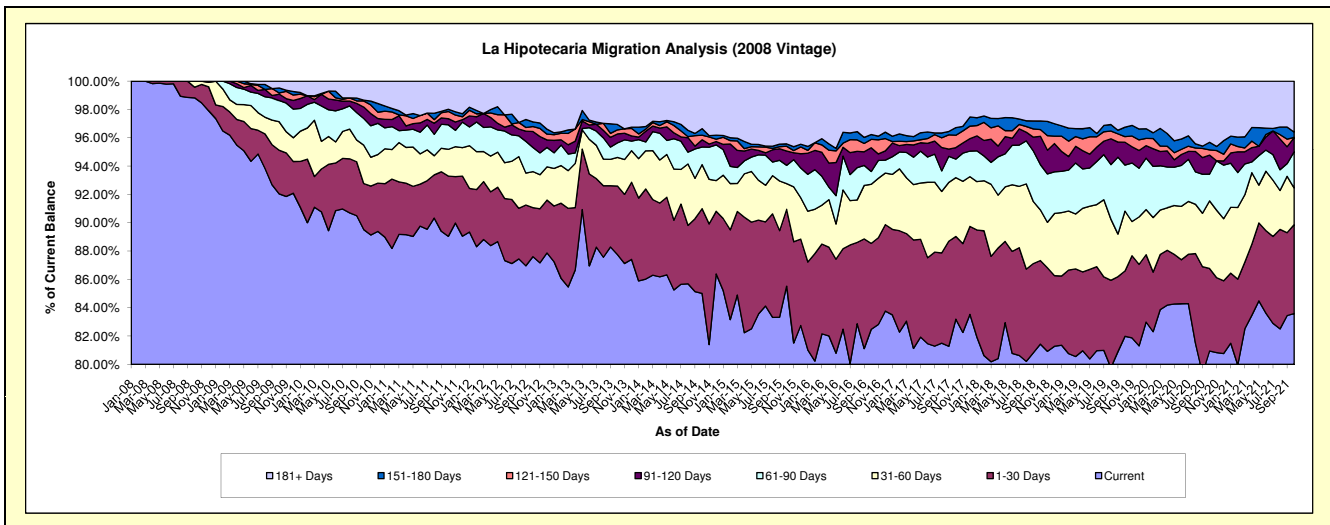
## Delinquency Status (\$ of Current Balance)

Data Cutoff: 10/31/2021

Current Portfolio Balance	19,882,743.62	17,820,746.62	15,862,346.00	14,471,932.98	13,118,612.17	12,083,364.11	11,100,587.77	9,870,457.15	9,276,167.53	8,296,771.12
	Oct-12	Oct-13	Oct-14	Oct-15	Oct-16	Oct-17	Oct-18	Oct-19	Oct-20	Oct-21
Current	17,418,492.49	15,638,719.09	13,484,848.47	12,376,679.08	10,820,050.35	10,052,789.35	9,039,266.94	8,091,878.35	7,508,411.69	6,935,357.18
1-30 Days	688,096.98	862,723.85	949,474.49	785,447.18	795,925.20	705,022.78	655,338.77	454,950.68	540,632.92	520,853.60
31-60 Days	506,733.47	360,383.90	492,618.38	262,596.68	547,474.54	502,233.85	396,981.61	417,929.44	442,943.24	214,030.86
61-90 Days	339,206.83	182,804.59	198,070.66	186,865.52	118,776.22	158,117.23	354,685.81	320,647.40	175,132.55	213,284.86
91-120 Days	223,925.62	111,804.88	80,688.37	146,130.64	219,272.93	98,210.81	221,921.05	159,590.91	124,695.74	82,380.57
121-150 Days	69,621.24	51,642.47	52,305.47	48,944.86	77,947.38	105,927.12	52,716.13	38,845.49	34,238.09	1,554.37
151-180 Days	64,114.60	67,397.65	72,651.96	24,271.07	45,236.70	64,638.86	67,306.21	65,879.20	49,522.83	30,573.93
181+ Days	572,552.39	545,270.19	531,688.20	640,997.95	493,928.85	396,424.11	312,371.25	320,735.68	400,590.47	298,735.75

## Delinquency Status (% of Current Balance)

Current Portfolio Balance	19,882,743.62	17,820,746.62	15,862,346.00	14,471,932.98	13,118,612.17	12,083,364.11	11,100,587.77	9,870,457.15	9,276,167.53	8,296,771.12
	Oct-12	Oct-13	Oct-14	Oct-15	Oct-16	Oct-17	Oct-18	Oct-19	Oct-20	Oct-21
Current	87.61%	87.76%	85.01%	85.52%	82.48%	83.20%	81.43%	81.98%	80.94%	83.59%
1-30 Days	3.46%	4.84%	5.99%	5.43%	6.07%	5.83%	5.90%	4.61%	5.83%	6.28%
31-60 Days	2.55%	2.02%	3.11%	1.81%	4.17%	4.16%	3.58%	4.23%	4.78%	2.58%
61-90 Days	1.71%	1.03%	1.25%	1.29%	0.91%	1.31%	3.20%	3.25%	1.89%	2.57%
91-120 Days	1.13%	0.63%	0.51%	1.01%	1.67%	0.81%	2.00%	1.62%	1.34%	0.99%
121-150 Days	0.35%	0.29%	0.33%	0.34%	0.59%	0.88%	0.47%	0.39%	0.37%	0.02%
151-180 Days	0.32%	0.38%	0.46%	0.17%	0.34%	0.53%	0.61%	0.67%	0.53%	0.37%
181+ Days	2.88%	3.06%	3.35%	4.43%	3.77%	3.28%	2.81%	3.25%	4.32%	3.60%
Current - 90 Days	95.32%	95.64%	95.35%	94.06%	93.62%	94.49%	94.11%	94.07%	93.43%	95.02%
91-180 Days	1.80%	1.30%	1.30%	1.52%	2.61%	2.22%	3.08%	2.68%	2.25%	1.38%



# Mortgages - La Hipotecaria El Salvador Migration Analysis (2009 Vintage)

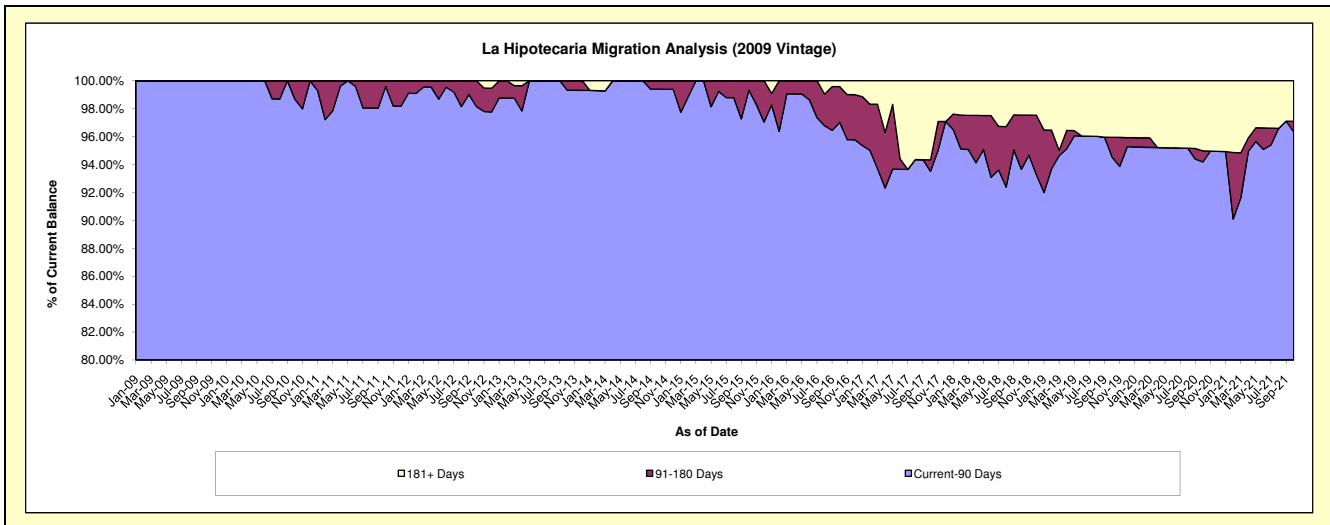
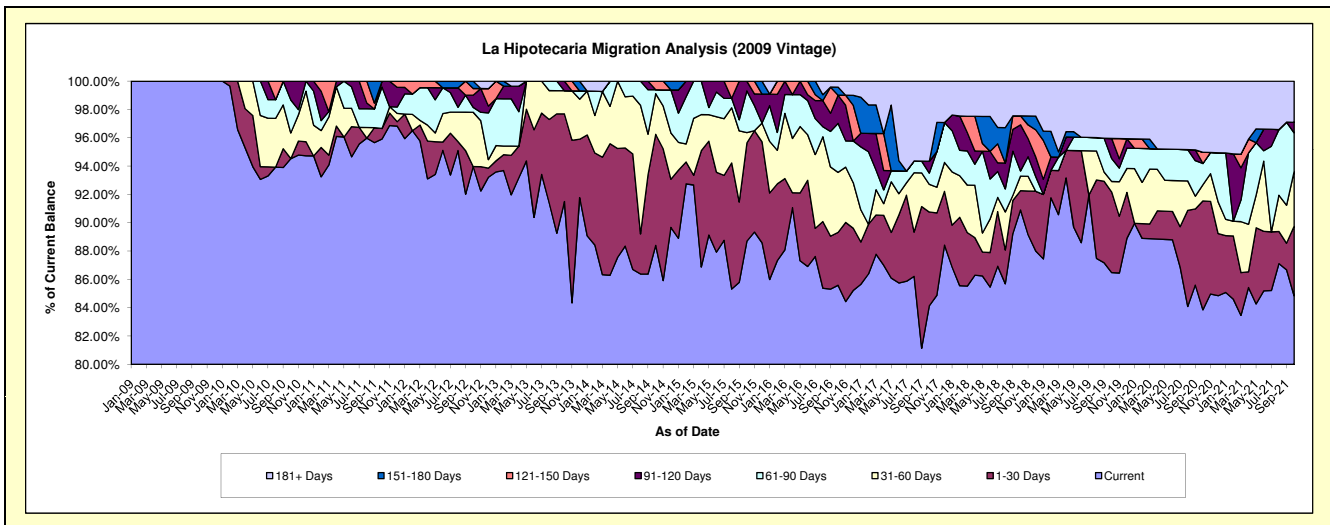
## Delinquency Status (\$ of Current Balance)

Data Cutoff: 10/31/2021

Current Portfolio Balance	2,989,748.78	2,688,730.60	2,341,255.19	2,064,434.26	1,940,941.75	1,882,278.14	1,714,716.97	1,601,523.65	1,499,607.54	1,382,084.12
	Oct-12	Oct-13	Oct-14	Oct-15	Oct-16	Oct-17	Oct-18	Oct-19	Oct-20	Oct-21
Current	2,809,418.71	2,460,224.73	2,069,763.70	1,831,166.17	1,661,219.34	1,583,742.07	1,558,731.44	1,384,993.04	1,257,480.24	1,172,481.36
1-30 Days	-	166,417.91	183,633.96	143,165.64	72,496.12	124,606.29	23,301.66	91,187.79	115,341.80	67,924.14
31-60 Days	114,620.28	43,978.81	67,185.44	15,188.78	82,157.91	36,827.88	17,716.71	11,868.24	17,120.53	53,510.86
61-90 Days	10,258.57	-	6,508.40	60,849.74	67,207.15	14,898.27	6,253.32	25,893.45	22,476.52	37,578.97
91-120 Days	25,896.17	18,109.15	-	14,063.93	38,579.97	15,668.91	55,850.57	22,783.64	-	10,421.87
121-150 Days	14,030.28	-	14,163.69	-	-	-	10,804.39	-	11,859.70	-
151-180 Days	15,524.77	-	-	-	11,135.98	-	-	-	-	-
181+ Days	-	-	-	-	8,145.28	106,534.72	42,058.88	64,797.49	75,328.75	40,166.92

## Delinquency Status (% of Current Balance)

Current Portfolio Balance	2,989,748.78	2,688,730.60	2,341,255.19	2,064,434.26	1,940,941.75	1,882,278.14	1,714,716.97	1,601,523.65	1,499,607.54	1,382,084.12
	Oct-12	Oct-13	Oct-14	Oct-15	Oct-16	Oct-17	Oct-18	Oct-19	Oct-20	Oct-21
Current	93.97%	91.50%	88.40%	88.70%	85.59%	84.14%	90.90%	86.48%	83.85%	84.83%
1-30 Days	0.00%	6.19%	7.84%	6.93%	3.74%	6.62%	1.36%	5.69%	7.69%	4.91%
31-60 Days	3.83%	1.64%	2.87%	0.74%	4.23%	1.96%	1.03%	0.74%	1.14%	3.87%
61-90 Days	0.34%	0.00%	0.28%	2.95%	3.46%	0.79%	0.36%	1.62%	1.50%	2.72%
91-120 Days	0.87%	0.67%	0.00%	0.68%	1.99%	0.83%	3.26%	1.42%	0.00%	0.75%
121-150 Days	0.47%	0.00%	0.60%	0.00%	0.00%	0.00%	0.63%	0.00%	0.79%	0.00%
151-180 Days	0.52%	0.00%	0.00%	0.00%	0.57%	0.00%	0.00%	0.00%	0.00%	0.00%
181+ Days	0.00%	0.00%	0.00%	0.00%	0.42%	5.66%	2.45%	4.05%	5.02%	2.91%
Current - 90 Days	98.15%	99.33%	99.40%	99.32%	97.02%	93.51%	93.66%	94.53%	94.19%	96.34%
91-180 Days	1.85%	0.67%	0.60%	0.68%	2.56%	0.83%	3.89%	1.42%	0.79%	0.75%



## Mortgages - La Hipotecaria El Salvador Migration Analysis (2010 Vintage)

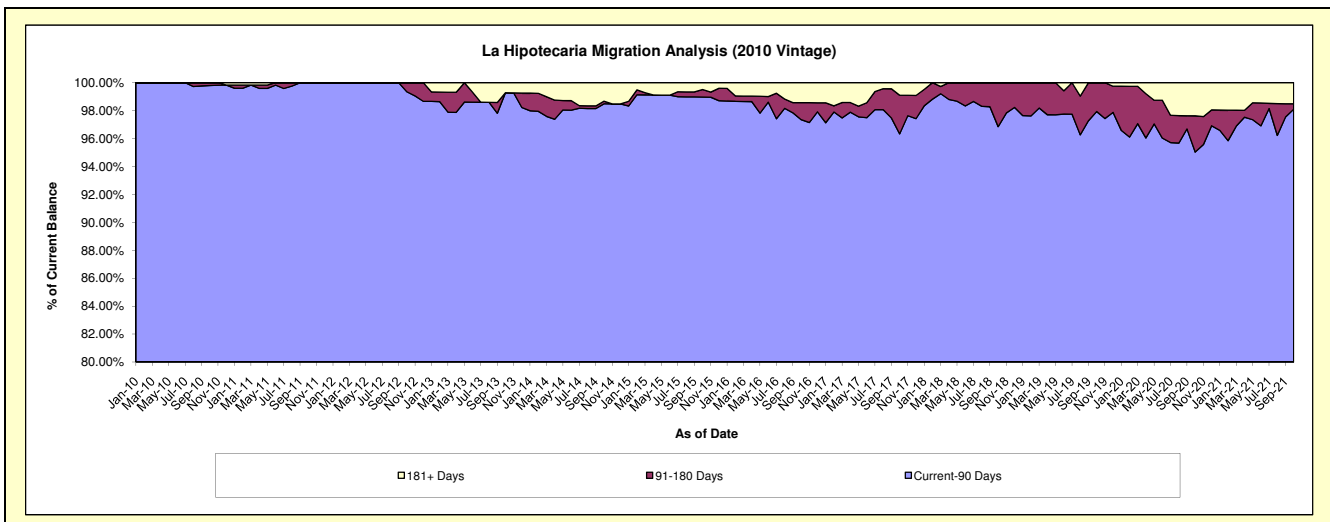
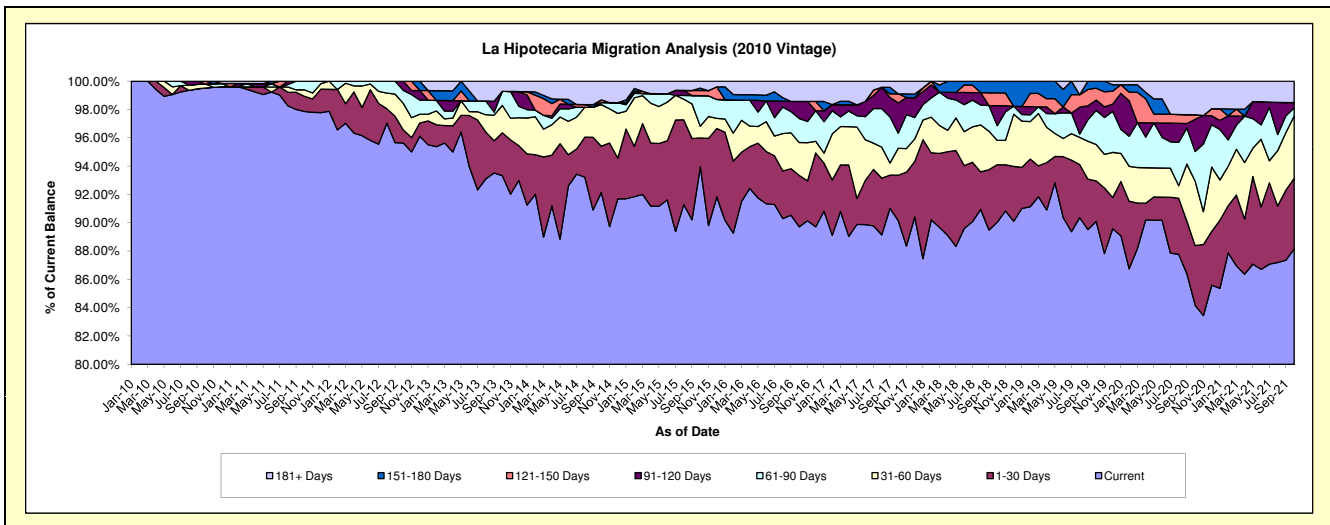
### Delinquency Status (\$ of Current Balance)

Data Cutoff: 10/31/2021

Current Portfolio Balance	8,591,737.88	7,860,504.42	6,822,393.81	6,106,886.01	5,346,760.33	5,077,409.55	4,544,848.05	4,194,554.12	3,854,867.00	3,466,239.05
	Oct-12	Oct-13	Oct-14	Oct-15	Oct-16	Oct-17	Oct-18	Oct-19	Oct-20	Oct-21
Current	8,216,350.56	7,335,727.72	6,286,371.61	5,737,428.51	4,796,892.99	4,577,360.65	4,091,913.02	3,779,053.69	3,244,752.43	3,055,254.68
1-30 Days	78,988.82	237,988.91	222,496.99	124,429.07	193,832.94	162,681.52	184,652.05	119,932.34	162,559.68	173,044.54
31-60 Days	161,403.69	152,088.62	200,624.55	51,059.69	124,108.19	96,805.78	78,536.44	107,972.78	175,280.60	152,759.62
61-90 Days	78,856.54	78,560.90	9,796.12	131,383.68	90,824.48	54,533.42	47,018.49	101,131.93	80,810.36	19,614.62
91-120 Days	56,138.27	-	-	-	64,766.25	107,940.69	63,833.73	30,565.06	87,827.13	13,242.94
121-150 Days	-	-	13,000.87	22,150.25	-	32,639.53	41,004.87	35,149.23	12,248.81	-
151-180 Days	-	-	-	10,504.64	-	-	37,889.45	20,749.09	-	-
181+ Days	-	56,138.27	90,103.67	29,930.17	76,335.48	45,447.96	-	-	91,387.99	52,322.65

### Delinquency Status (% of Current Balance)

Current Portfolio Balance	8,591,737.88	7,860,504.42	6,822,393.81	6,106,886.01	5,346,760.33	5,077,409.55	4,544,848.05	4,194,554.12	3,854,867.00	3,466,239.05
	Oct-12	Oct-13	Oct-14	Oct-15	Oct-16	Oct-17	Oct-18	Oct-19	Oct-20	Oct-21
Current	95.63%	93.32%	92.14%	93.95%	89.72%	90.15%	90.03%	90.09%	84.17%	88.14%
1-30 Days	0.92%	3.03%	3.26%	2.04%	3.63%	3.20%	4.06%	2.86%	4.22%	4.99%
31-60 Days	1.88%	1.93%	2.94%	0.84%	2.32%	1.91%	1.73%	2.57%	4.55%	4.41%
61-90 Days	0.92%	1.00%	0.14%	2.15%	1.70%	1.07%	1.03%	2.41%	2.10%	0.57%
91-120 Days	0.65%	0.00%	0.00%	0.00%	1.21%	2.13%	1.40%	0.73%	2.28%	0.38%
121-150 Days	0.00%	0.00%	0.19%	0.36%	0.00%	0.64%	0.90%	0.84%	0.32%	0.00%
151-180 Days	0.00%	0.00%	0.00%	0.17%	0.00%	0.00%	0.83%	0.49%	0.00%	0.00%
181+ Days	0.00%	0.71%	1.32%	0.49%	1.43%	0.90%	0.00%	0.00%	2.37%	1.51%
Current - 90 Days	99.35%	99.29%	98.49%	98.98%	97.36%	96.34%	96.86%	97.94%	95.03%	98.11%
91-180 Days	0.65%	0.00%	0.19%	0.53%	1.21%	2.77%	3.14%	2.06%	2.60%	0.38%





# Mortgages - La Hipotecaria El Salvador Migration Analysis (2011 Vintage)

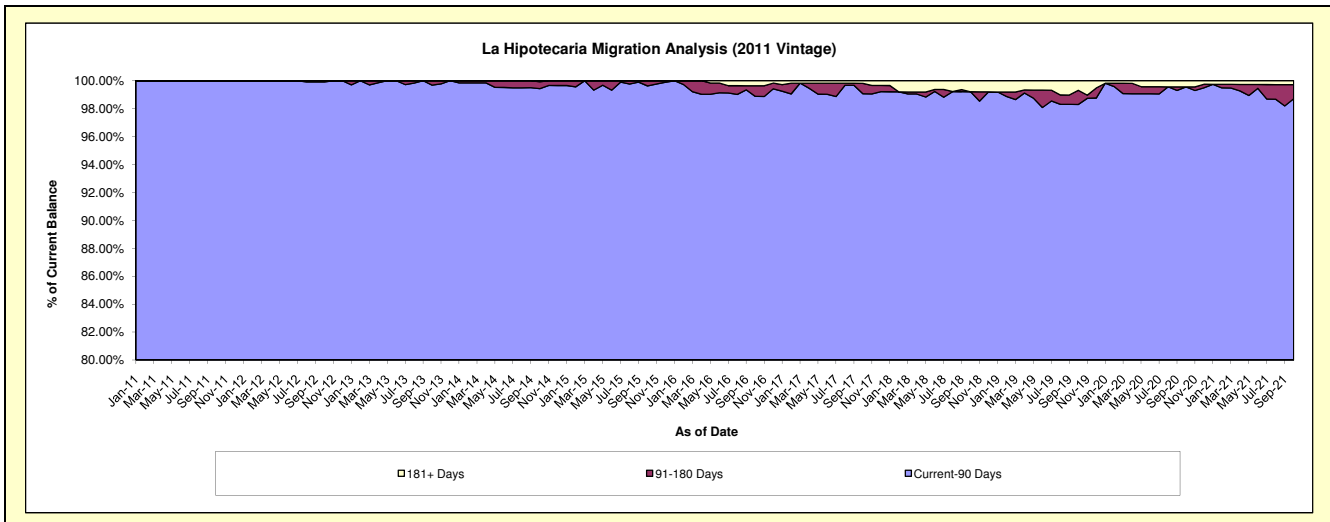
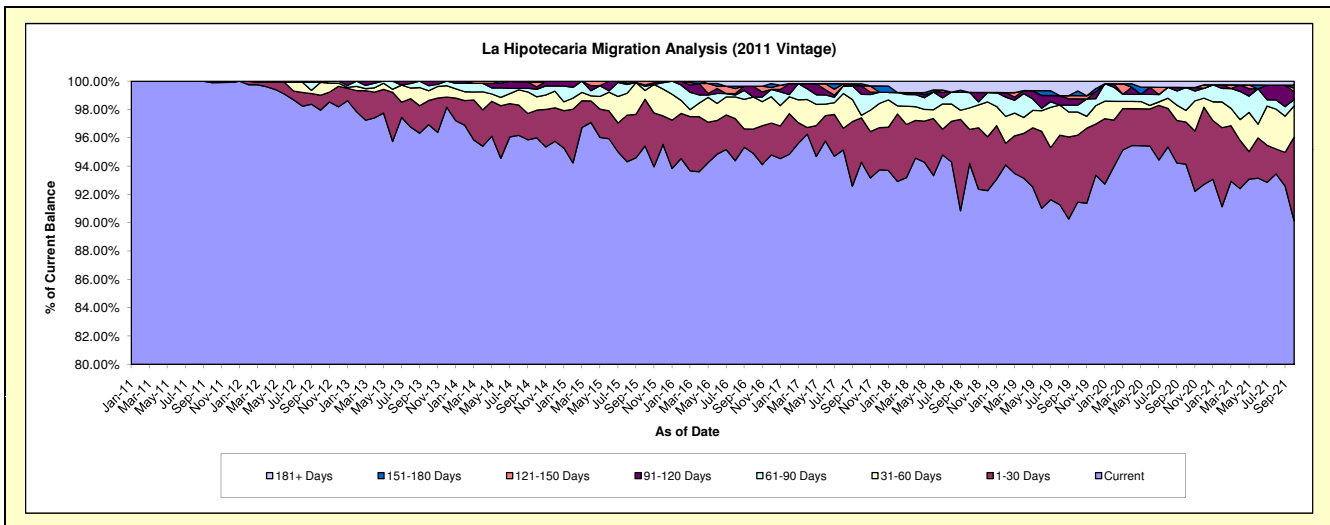
## Delinquency Status (\$ of Current Balance)

Data Cutoff: 10/31/2021

Current Portfolio Balance	16,541,166.08	14,979,924.71	13,714,946.97	12,658,692.26	11,910,533.33	10,952,584.38	9,901,421.94	9,217,231.56	8,367,633.36	7,462,561.11
	Oct-12	Oct-13	Oct-14	Oct-15	Oct-16	Oct-17	Oct-18	Oct-19	Oct-20	Oct-21
Current	16,202,421.29	14,519,922.74	13,165,678.20	12,079,111.71	11,304,221.22	10,325,232.40	9,324,123.47	8,429,791.51	7,877,156.24	6,726,027.63
1-30 Days	174,417.96	255,294.27	268,944.08	418,125.80	203,147.67	343,870.42	240,199.10	436,143.05	248,500.82	442,244.53
31-60 Days	150,153.75	103,430.24	128,601.67	78,463.90	269,571.09	19,557.89	150,184.94	150,449.88	69,193.76	163,871.24
61-90 Days	-	53,522.19	73,512.11	36,094.67	-	161,650.77	108,611.89	44,342.11	135,678.86	34,217.55
91-120 Days	-	47,755.27	22,335.46	12,802.58	90,954.19	65,823.44	-	40,923.63	-	40,079.49
121-150 Days	-	-	46,115.02	34,093.60	-	-	-	20,948.23	-	20,400.58
151-180 Days	14,173.08	-	-	-	-	16,155.45	-	31,128.90	-	14,771.86
181+ Days	-	-	9,760.43	-	42,639.16	20,294.01	78,302.54	63,504.25	37,103.68	20,948.23

## Delinquency Status (% of Current Balance)

Current Portfolio Balance	16,541,166.08	14,979,924.71	13,714,946.97	12,658,692.26	11,910,533.33	10,952,584.38	9,901,421.94	9,217,231.56	8,367,633.36	7,462,561.11
	Oct-12	Oct-13	Oct-14	Oct-15	Oct-16	Oct-17	Oct-18	Oct-19	Oct-20	Oct-21
Current	97.95%	96.93%	96.00%	95.42%	94.91%	94.27%	94.17%	91.46%	94.14%	90.13%
1-30 Days	1.05%	1.70%	1.96%	3.30%	1.71%	3.14%	2.43%	4.73%	2.97%	5.93%
31-60 Days	0.91%	0.69%	0.94%	0.62%	2.26%	0.18%	1.52%	1.63%	0.83%	2.20%
61-90 Days	0.00%	0.36%	0.54%	0.29%	0.00%	1.48%	1.10%	0.48%	1.62%	0.46%
91-120 Days	0.00%	0.32%	0.16%	0.10%	0.76%	0.60%	0.00%	0.44%	0.00%	0.54%
121-150 Days	0.00%	0.00%	0.34%	0.27%	0.00%	0.00%	0.00%	0.23%	0.00%	0.27%
151-180 Days	0.09%	0.00%	0.00%	0.00%	0.00%	0.15%	0.00%	0.34%	0.00%	0.20%
181+ Days	0.00%	0.00%	0.07%	0.00%	0.36%	0.19%	0.79%	0.69%	0.44%	0.28%
Current - 90 Days	99.91%	99.68%	99.43%	99.63%	98.88%	99.07%	99.21%	98.30%	99.56%	98.71%
91-180 Days	0.09%	0.32%	0.50%	0.37%	0.76%	0.75%	0.00%	1.01%	0.00%	1.01%



# Mortgages - La Hipotecaria El Salvador Migration Analysis (2012 Vintage)

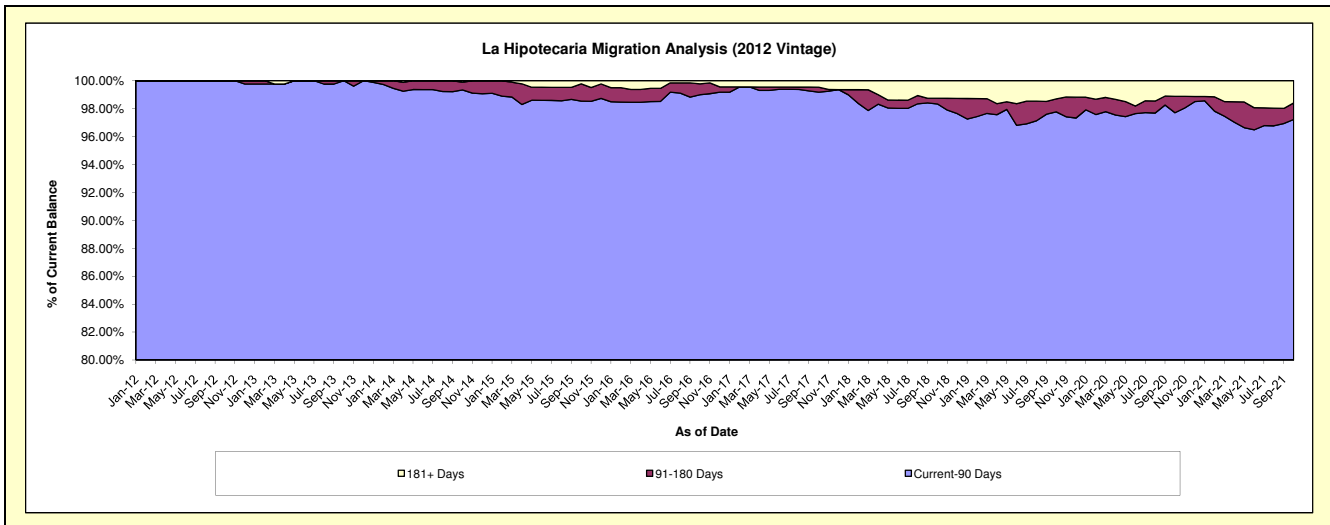
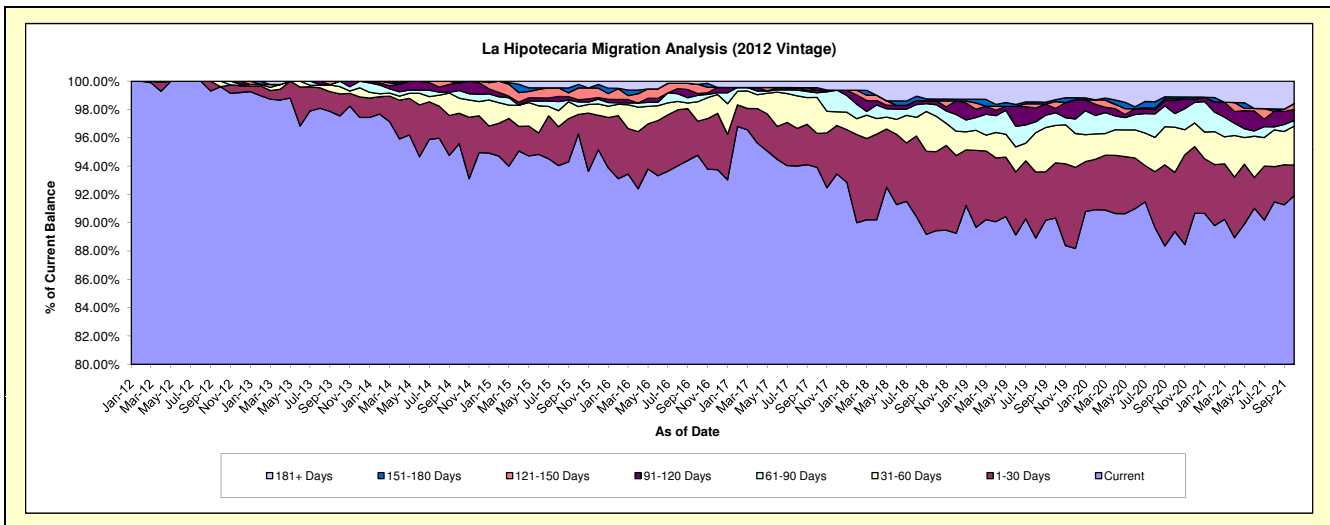
## Delinquency Status (\$ of Current Balance)

Data Cutoff: 10/31/2021

Current Portfolio Balance	19,872,077.62	23,954,055.77	21,945,898.95	20,331,909.67	18,541,802.59	17,395,047.68	16,041,265.13	14,956,498.38	13,834,844.51	12,321,498.83
	Oct-12	Oct-13	Oct-14	Oct-15	Oct-16	Oct-17	Oct-18	Oct-19	Oct-20	Oct-21
Current	19,793,655.45	23,365,780.17	20,977,529.40	19,574,016.56	17,571,781.12	16,336,056.15	14,348,248.11	13,511,261.19	12,365,431.31	11,324,204.48
1-30 Days	-	373,733.90	471,302.40	280,664.10	446,173.05	417,077.07	894,737.47	582,723.28	578,372.77	266,343.77
31-60 Days	78,422.17	120,924.59	234,127.41	111,937.22	253,885.55	441,616.45	400,491.37	395,823.14	441,232.12	339,731.76
61-90 Days	-	93,617.11	117,935.50	68,684.36	83,843.56	58,493.76	130,887.43	133,395.25	132,968.51	49,679.41
91-120 Days	-	-	122,101.46	28,453.11	23,559.66	32,480.35	44,028.21	43,627.71	126,913.23	93,963.38
121-150 Days	-	-	-	170,538.15	121,591.04	-	-	74,857.73	16,406.24	51,989.65
151-180 Days	-	-	-	51,765.22	-	28,825.61	21,095.51	20,294.20	19,463.18	-
181+ Days	-	-	22,902.78	45,850.95	40,968.61	80,498.29	201,777.03	194,515.88	154,057.15	195,586.38

## Delinquency Status (% of Current Balance)

Current Portfolio Balance	19,872,077.62	23,954,055.77	21,945,898.95	20,331,909.67	18,541,802.59	17,395,047.68	16,041,265.13	14,956,498.38	13,834,844.51	12,321,498.83
	Oct-12	Oct-13	Oct-14	Oct-15	Oct-16	Oct-17	Oct-18	Oct-19	Oct-20	Oct-21
Current	99.61%	97.54%	95.59%	96.27%	94.77%	93.91%	89.45%	90.34%	89.38%	91.91%
1-30 Days	0.00%	1.56%	2.15%	1.38%	2.41%	2.40%	5.58%	3.90%	4.18%	2.16%
31-60 Days	0.39%	0.50%	1.07%	0.55%	1.37%	2.54%	2.50%	2.65%	3.19%	2.76%
61-90 Days	0.00%	0.39%	0.54%	0.34%	0.45%	0.34%	0.82%	0.89%	0.96%	0.40%
91-120 Days	0.00%	0.00%	0.56%	0.14%	0.13%	0.19%	0.27%	0.29%	0.92%	0.76%
121-150 Days	0.00%	0.00%	0.00%	0.84%	0.66%	0.00%	0.00%	0.50%	0.12%	0.42%
151-180 Days	0.00%	0.00%	0.00%	0.25%	0.00%	0.17%	0.13%	0.14%	0.14%	0.00%
181+ Days	0.00%	0.00%	0.10%	0.23%	0.22%	0.46%	1.26%	1.30%	1.11%	1.59%
Current - 90 Days	100.00%	100.00%	99.34%	98.54%	99.00%	99.18%	98.34%	97.77%	97.71%	97.23%
91-180 Days	0.00%	0.00%	0.56%	1.23%	0.78%	0.35%	0.41%	0.93%	1.18%	1.18%



## Mortgages - La Hipotecaria El Salvador Migration Analysis (2013 Vintage)

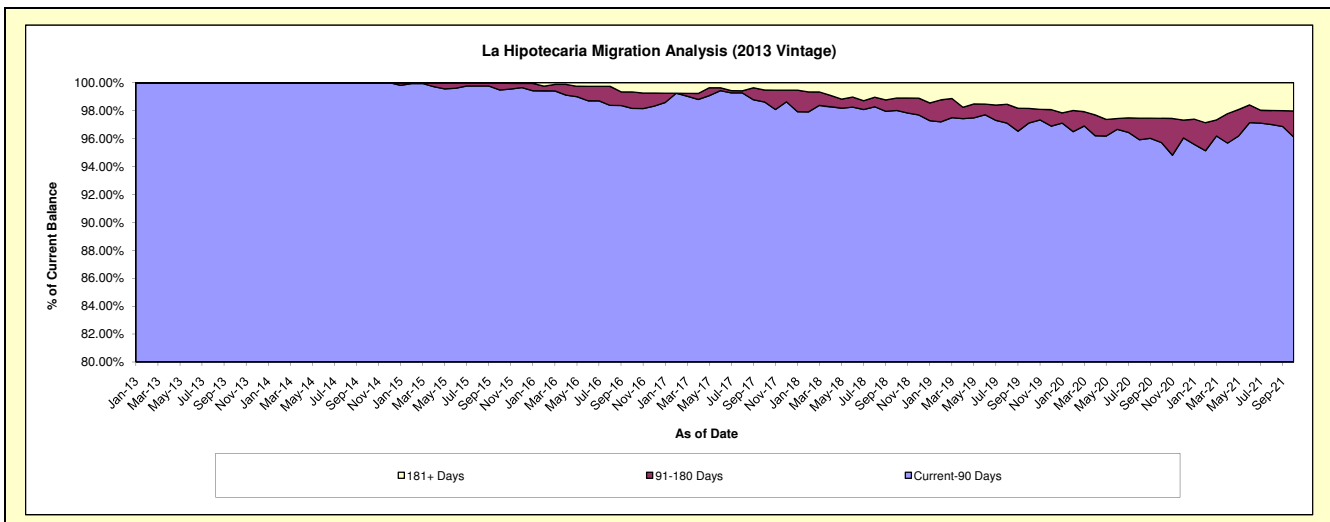
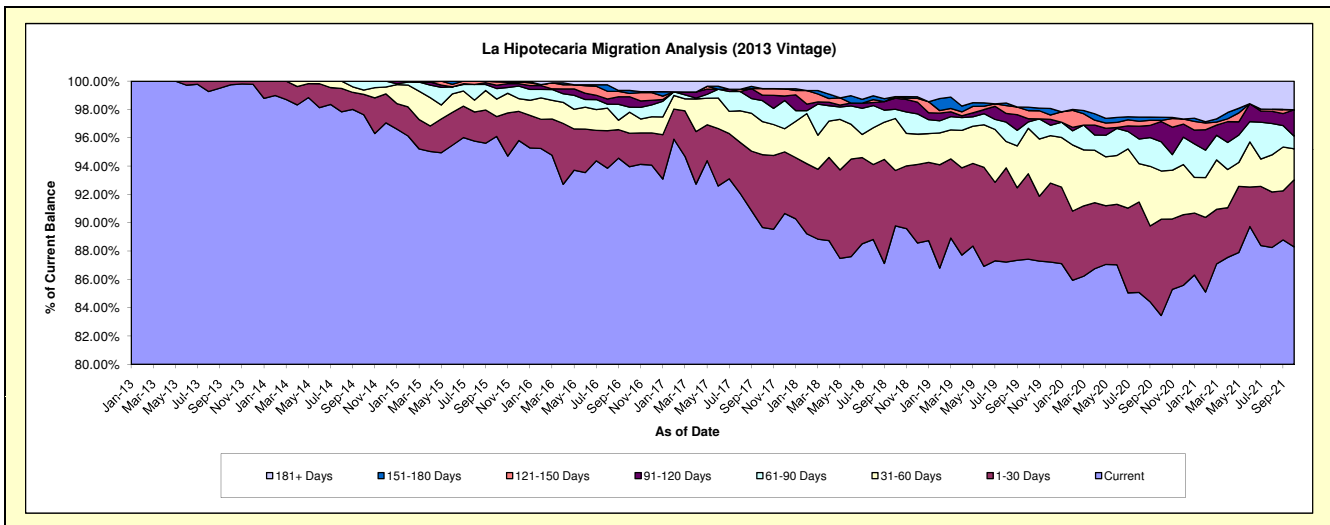
### Delinquency Status (\$ of Current Balance)

Data Cutoff: 10/31/2021

Current Portfolio Balance	-	25,224,974.52	28,292,758.36	26,880,015.81	25,226,133.24	23,556,107.29	21,481,600.47	19,788,829.04	18,177,191.34	16,121,532.66
	Oct-13	Oct-14	Oct-15	Oct-16	Oct-17	Oct-18	Oct-19	Oct-20	Oct-21	
Current	25,160,374.52	27,621,541.57	25,831,210.60	23,701,271.88	21,122,105.88	19,286,190.34	17,301,533.91	15,168,855.42	14,234,728.76	
1-30 Days	64,600.00	407,155.89	376,227.72	597,834.01	1,209,986.42	840,821.87	1,194,150.90	1,236,480.99	764,650.14	
31-60 Days	-	87,127.65	331,747.97	373,330.11	550,981.55	788,738.82	634,893.85	619,205.94	352,859.01	
61-90 Days	-	176,933.25	201,077.96	89,510.45	348,431.35	139,444.29	88,646.76	373,829.03	142,530.52	
91-120 Days	-	-	62,494.63	187,251.65	91,314.91	168,489.71	44,601.44	260,050.31	300,714.51	
121-150 Days	-	-	62,741.93	59,696.96	109,493.71	23,081.26	113,439.03	15,358.19	-	
151-180 Days	-	-	14,515.00	51,712.41	-	-	48,023.01	39,956.49	-	
181+ Days	-	-	-	165,525.77	123,793.47	234,834.18	363,540.14	463,454.97	326,049.72	

### Delinquency Status (% of Current Balance)

Current Portfolio Balance	-	25,224,974.52	28,292,758.36	26,880,015.81	25,226,133.24	23,556,107.29	21,481,600.47	19,788,829.04	18,177,191.34	16,121,532.66
	Oct-13	Oct-14	Oct-15	Oct-16	Oct-17	Oct-18	Oct-19	Oct-20	Oct-21	
Current	99.74%	97.63%	96.10%	93.96%	89.67%	89.78%	87.43%	83.45%	88.30%	
1-30 Days	0.26%	1.44%	1.40%	2.37%	5.14%	3.91%	6.03%	6.80%	4.74%	
31-60 Days	0.00%	0.31%	1.23%	1.48%	2.34%	3.67%	3.21%	3.41%	2.19%	
61-90 Days	0.00%	0.63%	0.75%	0.35%	1.48%	0.65%	0.45%	2.06%	0.88%	
91-120 Days	0.00%	0.00%	0.23%	0.74%	0.39%	0.78%	0.23%	1.43%	1.87%	
121-150 Days	0.00%	0.00%	0.23%	0.24%	0.46%	0.11%	0.57%	0.08%	0.00%	
151-180 Days	0.00%	0.00%	0.05%	0.20%	0.00%	0.00%	0.24%	0.22%	0.00%	
181+ Days	0.00%	0.00%	0.00%	0.66%	0.53%	1.09%	1.84%	2.55%	2.02%	
Current - 90 Days	100.00%	100.00%	99.48%	98.16%	98.62%	98.02%	97.12%	95.72%	96.11%	
91-180 Days	0.00%	0.00%	0.52%	1.18%	0.85%	0.89%	1.04%	1.73%	1.87%	



# Mortgages - La Hipotecaria El Salvador Migration Analysis (2014 Vintage)

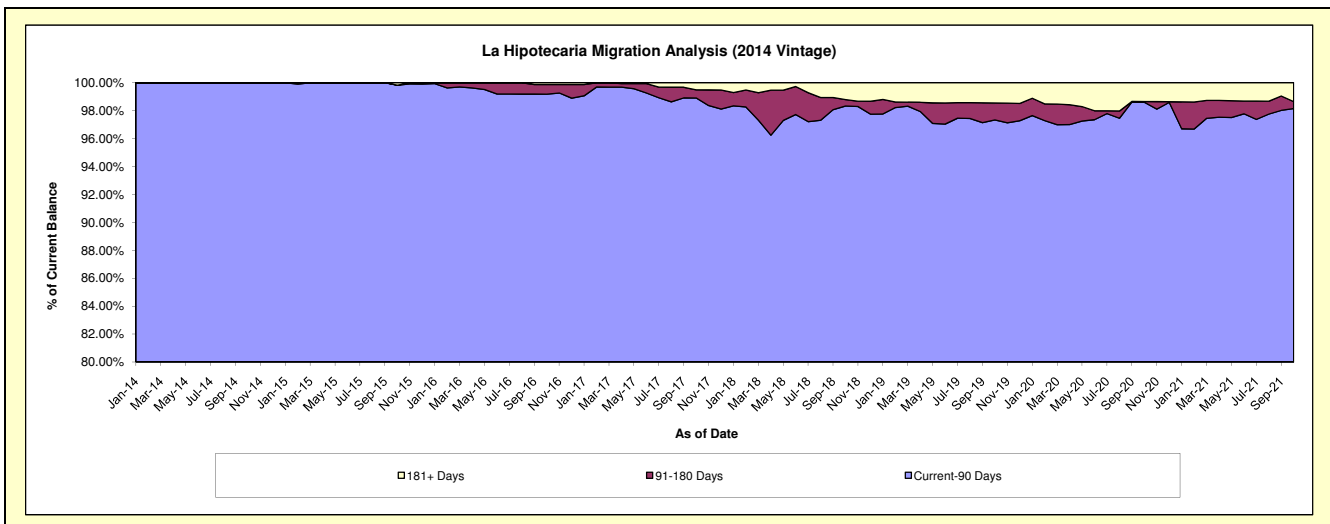
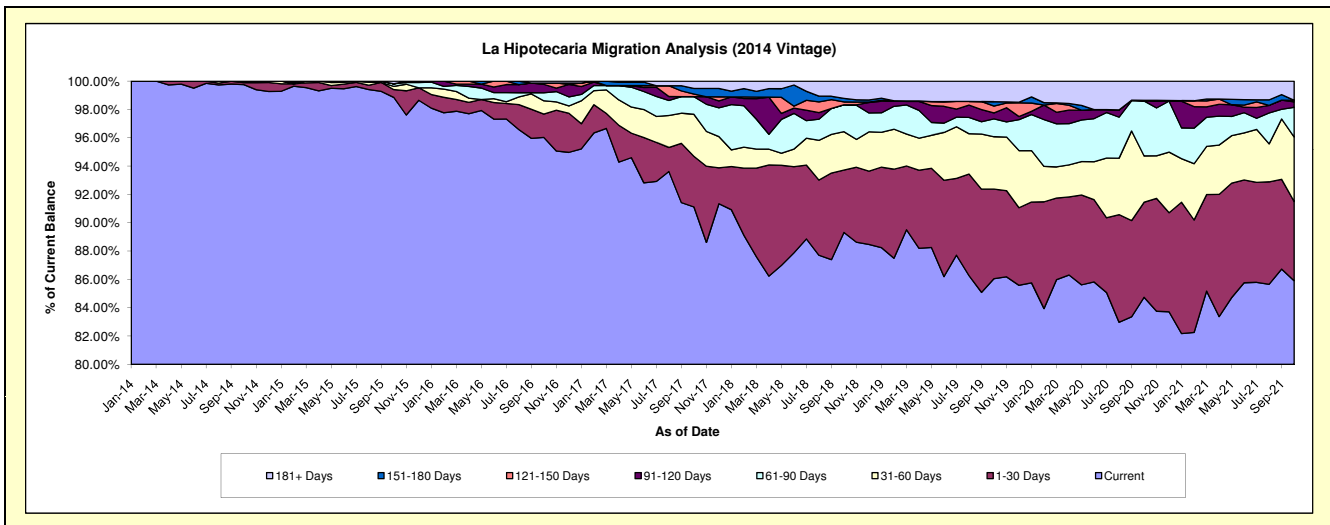
## Delinquency Status (\$ of Current Balance)

Data Cutoff: 10/31/2021

Current Portfolio Balance	-	-	24,419,873.58	27,003,719.66	25,547,476.39	24,168,542.75	21,952,691.74	20,097,797.96	18,499,897.53	16,710,902.07
	Oct-14	Oct-15	Oct-16	Oct-17	Oct-18	Oct-19	Oct-20	Oct-21		
Current	24,360,168.53	26,694,429.28	24,531,703.58	22,022,164.25	19,607,813.10	17,293,899.37	15,677,138.52	14,356,153.79		
1-30 Days	33,323.22	148,552.71	421,849.82	864,828.48	967,276.47	1,271,798.58	1,240,796.87	933,238.34		
31-60 Days	26,381.83	62,048.98	239,047.11	716,170.21	594,624.51	743,878.22	605,609.11	761,773.40		
61-90 Days	-	49,366.20	146,637.05	301,578.56	417,423.63	253,737.24	718,243.48	350,497.88		
91-120 Days	-	-	150,584.91	-	-	83,179.45	-	65,703.74		
121-150 Days	-	-	24,424.70	43,960.71	43,960.71	98,232.78	8,682.38	17,997.08		
151-180 Days	-	-	-	96,586.50	55,644.11	61,596.73	-	-		
181+ Days	-	49,322.49	33,229.22	123,254.04	265,949.21	291,475.59	249,427.17	225,537.84		

## Delinquency Status (% of Current Balance)

Current Portfolio Balance	-	-	24,419,873.58	27,003,719.66	25,547,476.39	24,168,542.75	21,952,691.74	20,097,797.96	18,499,897.53	16,710,902.07
	Oct-14	Oct-15	Oct-16	Oct-17	Oct-18	Oct-19	Oct-20	Oct-21		
Current	99.76%	98.85%	96.02%	91.12%	89.32%	86.05%	84.74%	85.91%		
1-30 Days	0.14%	0.55%	1.65%	3.58%	4.41%	6.33%	6.71%	5.58%		
31-60 Days	0.11%	0.23%	0.94%	2.96%	2.71%	3.70%	3.27%	4.56%		
61-90 Days	0.00%	0.18%	0.57%	1.25%	1.90%	1.26%	3.88%	2.10%		
91-120 Days	0.00%	0.00%	0.59%	0.00%	0.00%	0.41%	0.00%	0.39%		
121-150 Days	0.00%	0.00%	0.10%	0.18%	0.20%	0.49%	0.05%	0.11%		
151-180 Days	0.00%	0.00%	0.00%	0.40%	0.25%	0.31%	0.00%	0.00%		
181+ Days	0.00%	0.18%	0.13%	0.51%	1.21%	1.45%	1.35%	1.35%		
Current - 90 Days	100.00%	99.82%	99.18%	98.91%	98.33%	97.34%	98.80%	98.15%		
91-180 Days	0.00%	0.00%	0.69%	0.58%	0.45%	1.21%	0.05%	0.50%		



# Mortgages - La Hipotecaria El Salvador Migration Analysis (2015 Vintage)

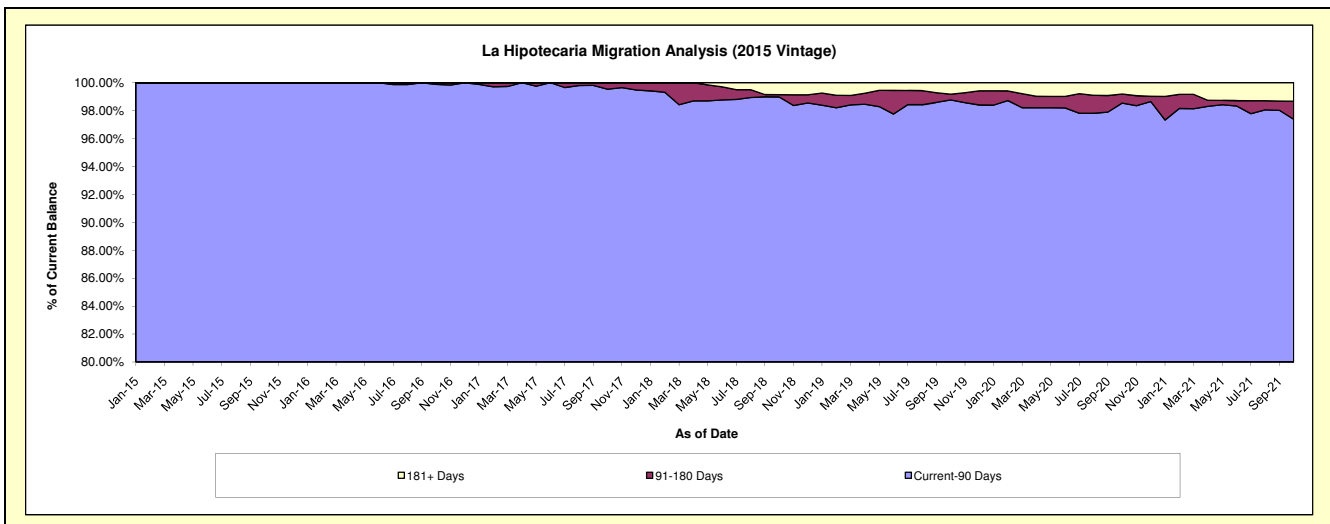
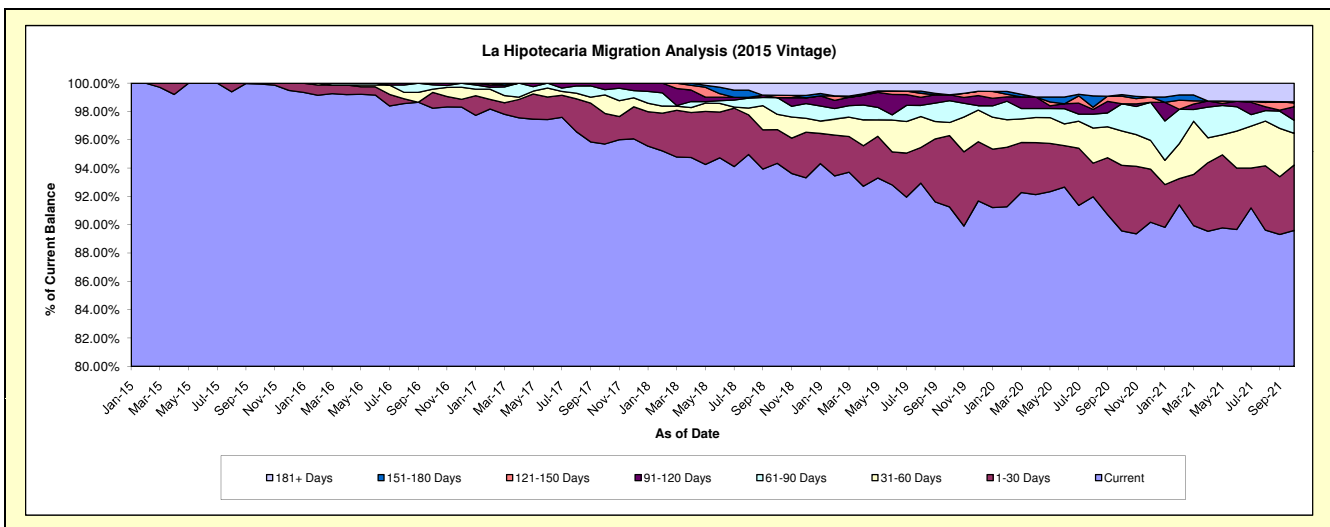
## Delinquency Status (\$ of Current Balance)

Data Cutoff: 10/31/2021

Current Portfolio Balance	-	-	-	18,289,240.81	22,852,578.72	21,644,032.51	20,350,735.42	18,620,187.26	17,200,777.50	15,729,033.21
				Oct-15	Oct-16	Oct-17	Oct-18	Oct-19	Oct-20	Oct-21
Current				18,278,365.23	22,448,826.89	20,714,510.64	19,198,888.05	16,992,358.69	15,405,599.24	14,093,196.93
1-30 Days				10,875.58	254,649.19	467,084.57	484,717.12	937,846.49	797,314.94	727,371.99
31-60 Days				-	53,163.84	282,420.73	218,956.07	172,742.32	418,003.64	350,684.31
61-90 Days				-	67,840.42	79,932.01	240,741.63	287,051.97	329,425.11	146,029.32
91-120 Days				-	28,098.38	100,084.56	-	77,451.64	-	149,491.96
121-150 Days				-	-	-	33,073.80	-	91,245.12	43,504.78
151-180 Days				-	-	-	-	-	20,804.75	11,154.59
181+ Days				-	-	-	174,358.75	152,736.15	138,384.70	207,599.33

## Delinquency Status (% of Current Balance)

Current Portfolio Balance	-	-	-	18,289,240.81	22,852,578.72	21,644,032.51	20,350,735.42	18,620,187.26	17,200,777.50	15,729,033.21
				Oct-15	Oct-16	Oct-17	Oct-18	Oct-19	Oct-20	Oct-21
Current				99.94%	98.23%	95.71%	94.34%	91.26%	89.56%	89.60%
1-30 Days				0.06%	1.11%	2.16%	2.38%	5.04%	4.64%	4.62%
31-60 Days				0.00%	0.23%	1.30%	1.08%	0.93%	2.43%	2.23%
61-90 Days				0.00%	0.30%	0.37%	1.18%	1.54%	1.92%	0.93%
91-120 Days				0.00%	0.12%	0.46%	0.00%	0.42%	0.00%	0.95%
121-150 Days				0.00%	0.00%	0.00%	0.16%	0.00%	0.53%	0.28%
151-180 Days				0.00%	0.00%	0.00%	0.00%	0.00%	0.12%	0.07%
181+ Days				0.00%	0.00%	0.00%	0.86%	0.82%	0.80%	1.32%
Current - 90 Days				100.00%	99.88%	99.54%	98.98%	98.76%	98.54%	97.38%
91-180 Days				0.00%	0.12%	0.46%	0.16%	0.42%	0.65%	1.30%



# Mortgages - La Hipotecaria El Salvador Migration Analysis (2016 Vintage)

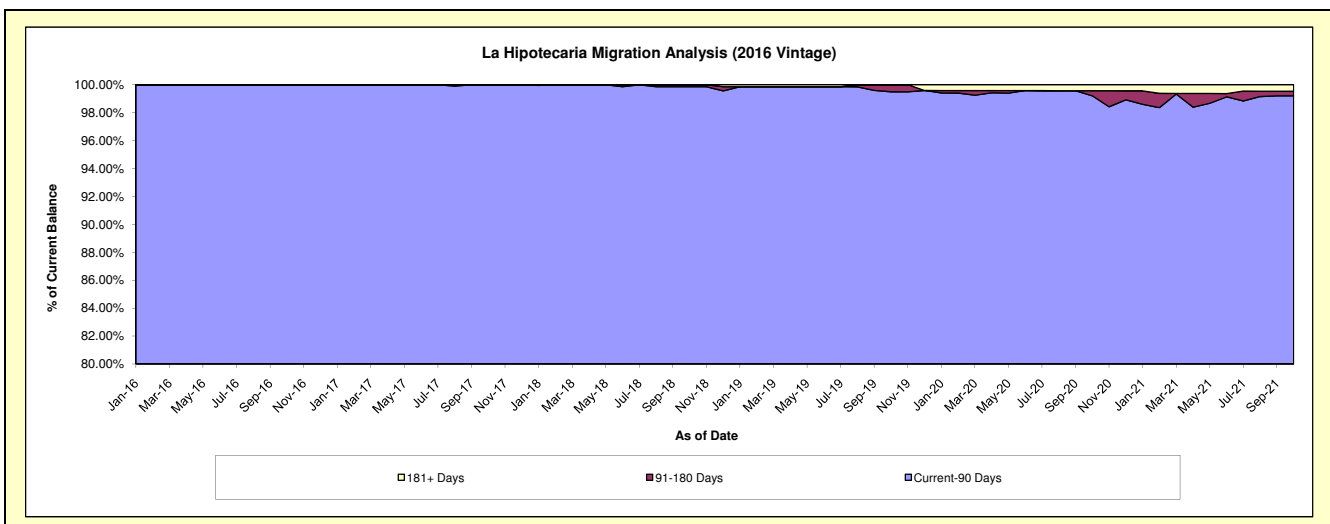
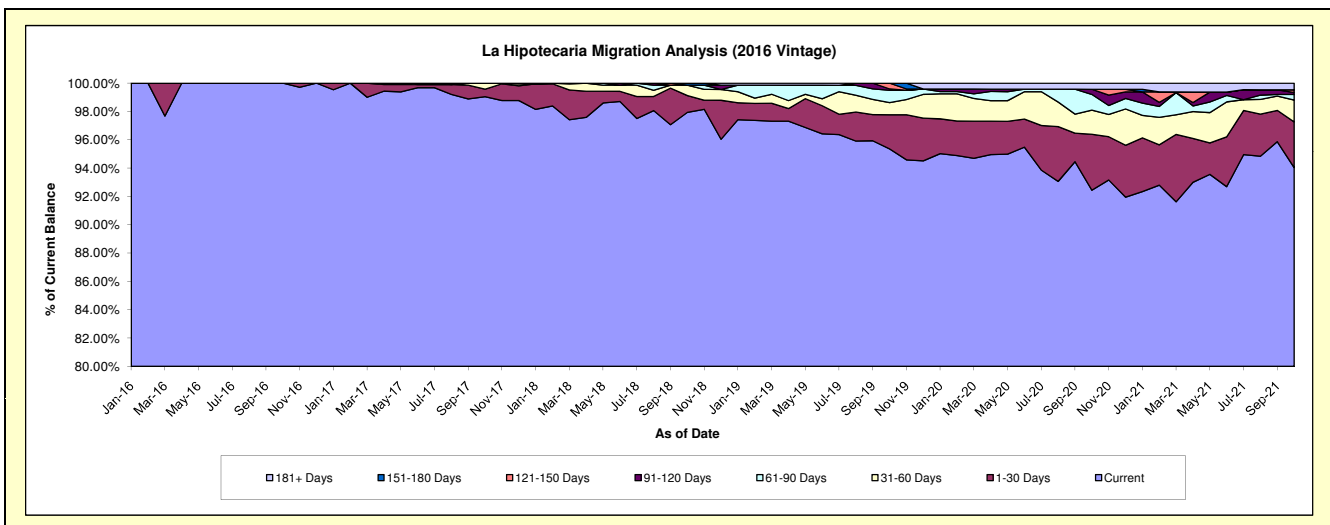
## Delinquency Status (\$ of Current Balance)

Data Cutoff: 10/31/2021

Current Portfolio Balance	-	-	-	-	19,757,132.99	23,068,314.99	22,190,641.85	20,701,172.95	19,490,775.64	17,905,077.90
					Oct-16	Oct-17	Oct-18	Oct-19	Oct-20	Oct-21
Current					19,757,132.99	22,847,118.19	21,732,639.99	19,740,046.82	18,016,505.55	16,837,186.14
1-30 Days					-	123,464.90	263,458.32	499,910.86	770,075.16	578,591.60
31-60 Days					-	97,731.90	162,918.04	177,155.00	332,524.65	274,906.49
61-90 Days					-	-	-	179,676.95	216,908.81	71,234.79
91-120 Days					-	-	-	20,360.52	70,738.67	24,688.65
121-150 Days					-	-	-	84,022.80	-	34,447.43
151-180 Days					-	-	31,625.50	-	-	-
181+ Days					-	-	-	-	84,022.80	84,022.80

## Delinquency Status (% of Current Balance)

Current Portfolio Balance	-	-	-	-	19,757,132.99	23,068,314.99	22,190,641.85	20,701,172.95	19,490,775.64	17,905,077.90
					Oct-16	Oct-17	Oct-18	Oct-19	Oct-20	Oct-21
Current					100.00%	99.04%	97.94%	95.36%	92.44%	94.04%
1-30 Days					0.00%	0.54%	1.19%	2.41%	3.95%	3.23%
31-60 Days					0.00%	0.42%	0.73%	0.86%	1.71%	1.54%
61-90 Days					0.00%	0.00%	0.00%	0.87%	1.11%	0.40%
91-120 Days					0.00%	0.00%	0.00%	0.10%	0.36%	0.14%
121-150 Days					0.00%	0.00%	0.00%	0.41%	0.00%	0.19%
151-180 Days					0.00%	0.00%	0.14%	0.00%	0.00%	0.00%
181+ Days					0.00%	0.00%	0.00%	0.00%	0.43%	0.47%
Current - 90 Days					100.00%	100.00%	99.86%	99.50%	99.21%	99.20%
91-180 Days					0.00%	0.00%	0.14%	0.50%	0.36%	0.33%



# Mortgages - La Hipotecaria El Salvador Migration Analysis (2017 Vintage)

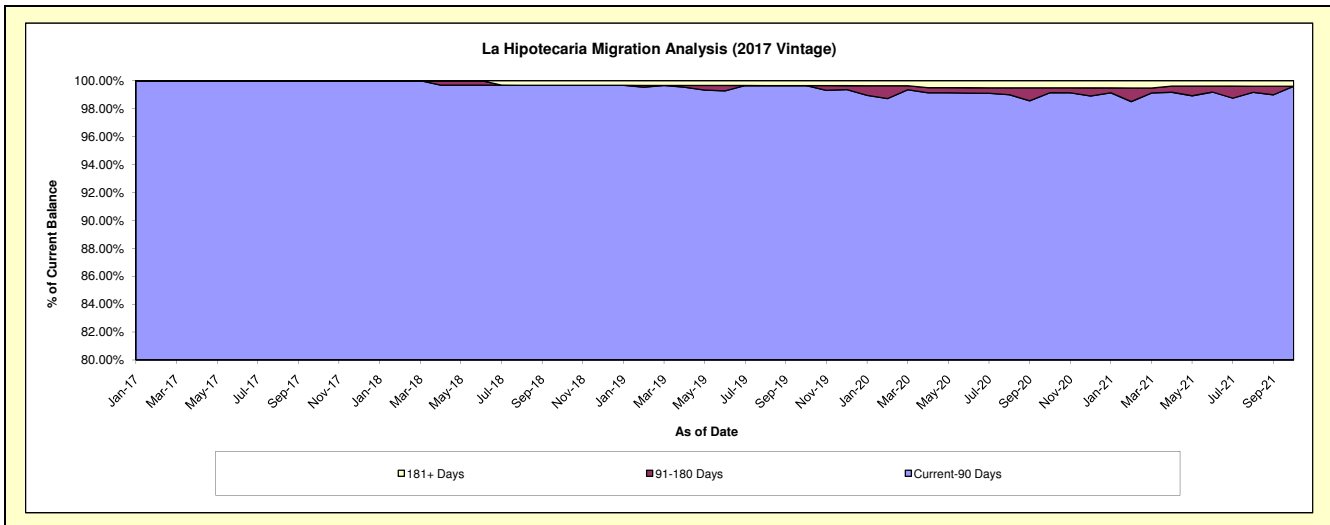
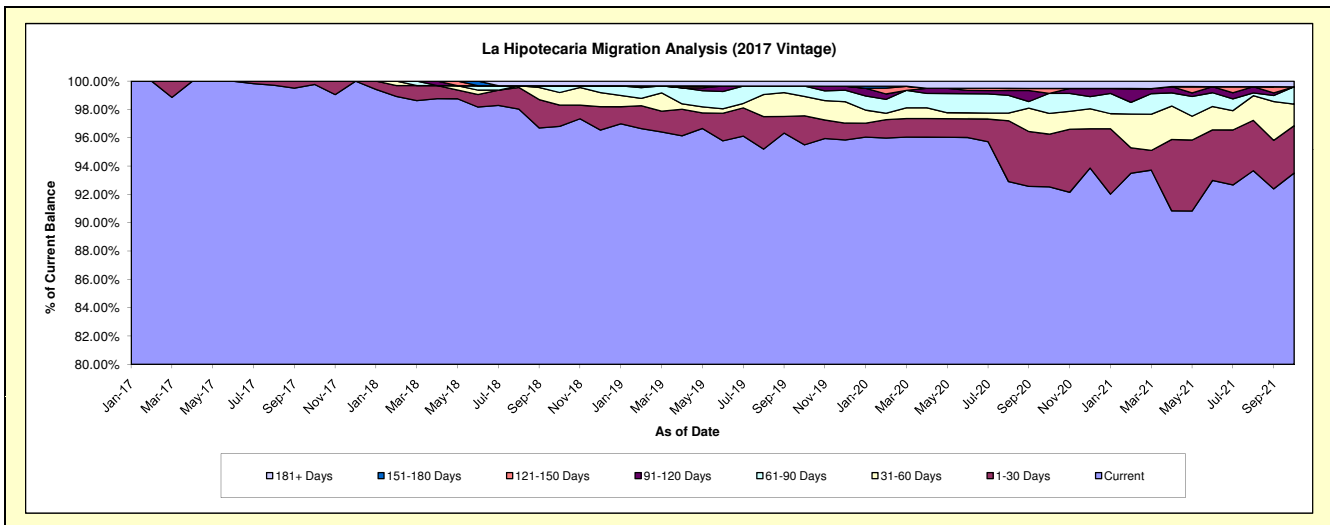
## Delinquency Status (\$ of Current Balance)

Data Cutoff: 10/31/2021

Current Portfolio Balance	-	-	-	-	-	15,860,086.87	18,251,728.33	16,932,406.75	15,978,449.43	14,953,387.57
						Oct-17	Oct-18	Oct-19	Oct-20	Oct-21
Current						15,822,609.20	17,668,725.16	16,170,975.34	14,786,412.02	13,983,410.25
1-30 Days						37,048.54	274,771.58	346,475.17	594,339.54	499,879.90
31-60 Days						429.13	161,701.36	232,075.87	234,036.48	226,979.23
61-90 Days						-	87,130.23	123,480.37	226,271.87	183,718.19
91-120 Days						-	-	-	-	-
121-150 Days						-	-	-	55,504.66	-
151-180 Days						-	-	-	-	-
181+ Days						-	59,400.00	59,400.00	81,884.86	59,400.00

## Delinquency Status (% of Current Balance)

Current Portfolio Balance	-	-	-	-	-	15,860,086.87	18,251,728.33	16,932,406.75	15,978,449.43	14,953,387.57
						Oct-17	Oct-18	Oct-19	Oct-20	Oct-21
Current						99.76%	96.81%	95.50%	92.54%	93.51%
1-30 Days						0.23%	1.51%	2.05%	3.72%	3.34%
31-60 Days						0.00%	0.89%	1.37%	1.46%	1.52%
61-90 Days						0.00%	0.48%	0.73%	1.42%	1.23%
91-120 Days						0.00%	0.00%	0.00%	0.00%	0.00%
121-150 Days						0.00%	0.00%	0.00%	0.35%	0.00%
151-180 Days						0.00%	0.00%	0.00%	0.00%	0.00%
181+ Days						0.00%	0.33%	0.35%	0.51%	0.40%
Current - 90 Days						100.00%	99.67%	99.65%	99.14%	99.60%
91-180 Days						0.00%	0.00%	0.00%	0.35%	0.00%



# Mortgages - La Hipotecaria El Salvador Migration Analysis (2018 Vintage)

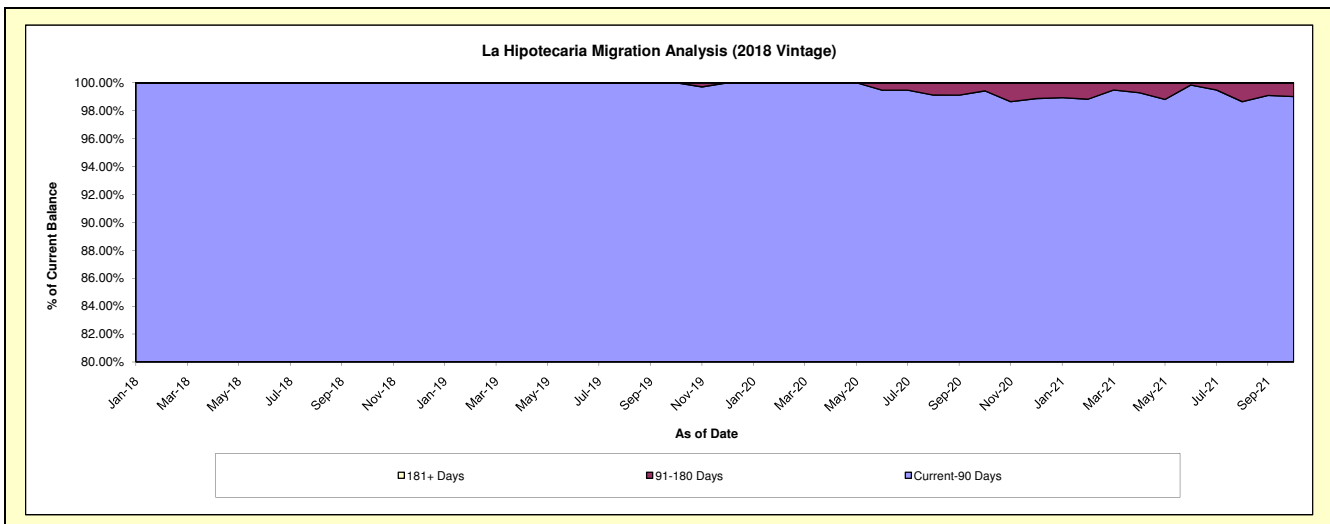
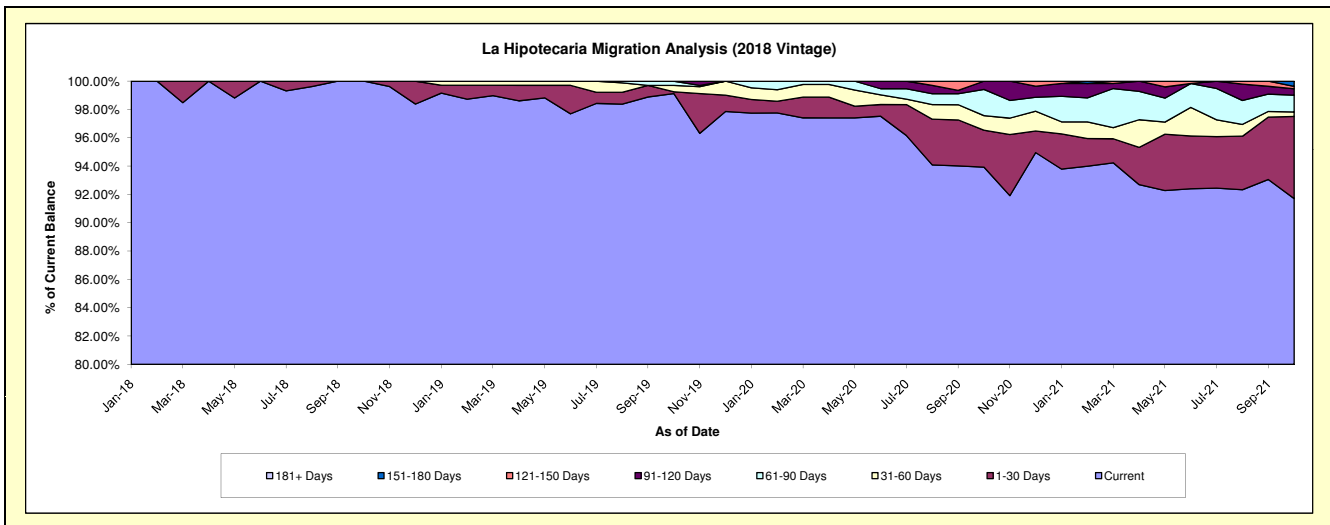
## Delinquency Status (\$ of Current Balance)

Data Cutoff: 10/31/2021

Current Portfolio Balance	-	-	-	-	-	-	-	19,888,857.57	22,822,785.30	22,014,228.22	20,695,621.12
								Oct-18	Oct-19	Oct-20	Oct-21
Current								19,888,857.57	22,622,995.90	20,676,951.38	18,979,069.15
1-30 Days								-	27,609.82	575,401.44	1,200,596.26
31-60 Days								-	104,302.17	225,232.16	65,206.35
61-90 Days								-	67,877.41	408,048.71	245,764.87
91-120 Days								-	-	128,594.53	93,750.62
121-150 Days								-	-	-	35,605.03
151-180 Days								-	-	-	75,628.84
181+ Days								-	-	-	-

## Delinquency Status (% of Current Balance)

Current Portfolio Balance	-	-	-	-	-	-	-	19,888,857.57	22,822,785.30	22,014,228.22	20,695,621.12
								Oct-18	Oct-19	Oct-20	Oct-21
Current								100.00%	99.12%	93.93%	91.71%
1-30 Days								0.00%	0.12%	2.61%	5.80%
31-60 Days								0.00%	0.46%	1.02%	0.32%
61-90 Days								0.00%	0.30%	1.85%	1.19%
91-120 Days								0.00%	0.00%	0.58%	0.45%
121-150 Days								0.00%	0.00%	0.00%	0.17%
151-180 Days								0.00%	0.00%	0.00%	0.37%
181+ Days								0.00%	0.00%	0.00%	0.00%
Current - 90 Days								100.00%	100.00%	99.42%	99.01%
91-180 Days								0.00%	0.00%	0.58%	0.99%





# Mortgages - La Hipotecaria El Salvador Migration Analysis (2019 Vintage)

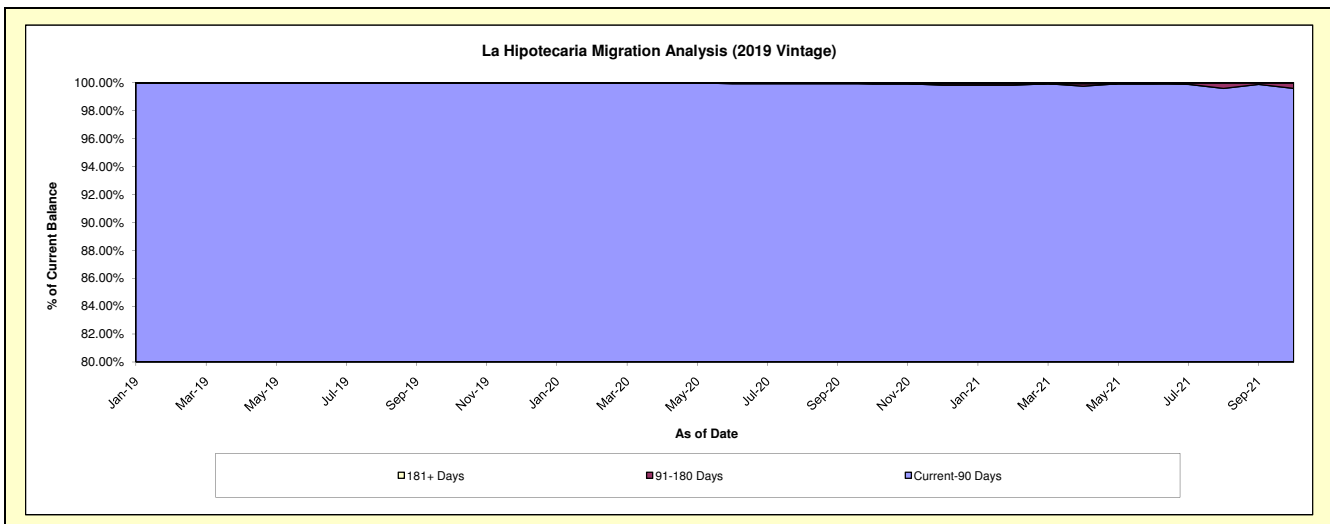
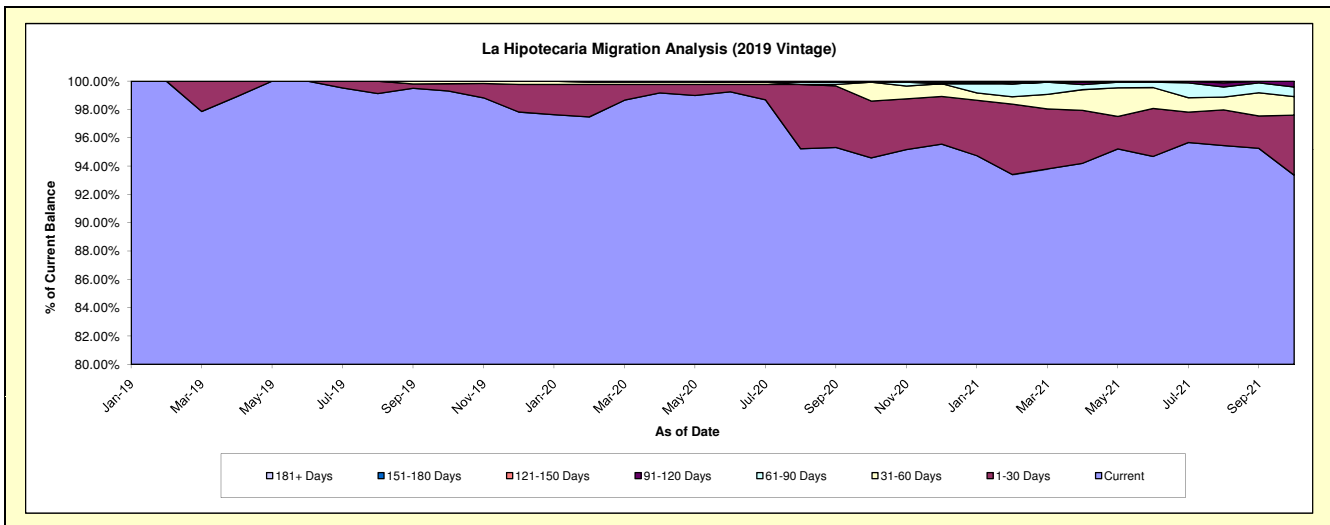
## Delinquency Status (\$ of Current Balance)

Data Cutoff: 10/31/2021

Current Portfolio Balance	-	-	-	-	-	-	-	-	-	23,295,054.76	25,871,888.44	23,600,449.14
										Oct-19	Oct-20	Oct-21
Current										23,133,555.02	24,470,536.09	22,032,929.64
1-30 Days										119,499.74	1,038,165.84	1,000,938.62
31-60 Days										42,000.00	344,641.28	309,485.86
61-90 Days										-	-	160,754.89
91-120 Days										-	-	96,340.13
121-150 Days										-	-	-
151-180 Days										-	-	-
181+ Days										-	18,545.23	-

## Delinquency Status (% of Current Balance)

Current Portfolio Balance	-	-	-	-	-	-	-	-	-	23,295,054.76	25,871,888.44	23,600,449.14
										Oct-19	Oct-20	Oct-21
Current										99.31%	94.58%	93.36%
1-30 Days										0.51%	4.01%	4.24%
31-60 Days										0.18%	1.33%	1.31%
61-90 Days										0.00%	0.00%	0.68%
91-120 Days										0.00%	0.00%	0.41%
121-150 Days										0.00%	0.00%	0.00%
151-180 Days										0.00%	0.00%	0.00%
181+ Days										0.00%	0.07%	0.00%
Current - 90 Days										100.00%	99.93%	99.59%
91-180 Days										0.00%	0.00%	0.41%



**Mortgages - La Hipotecaria El Salvador Migration Analysis (2020 Vintage)**

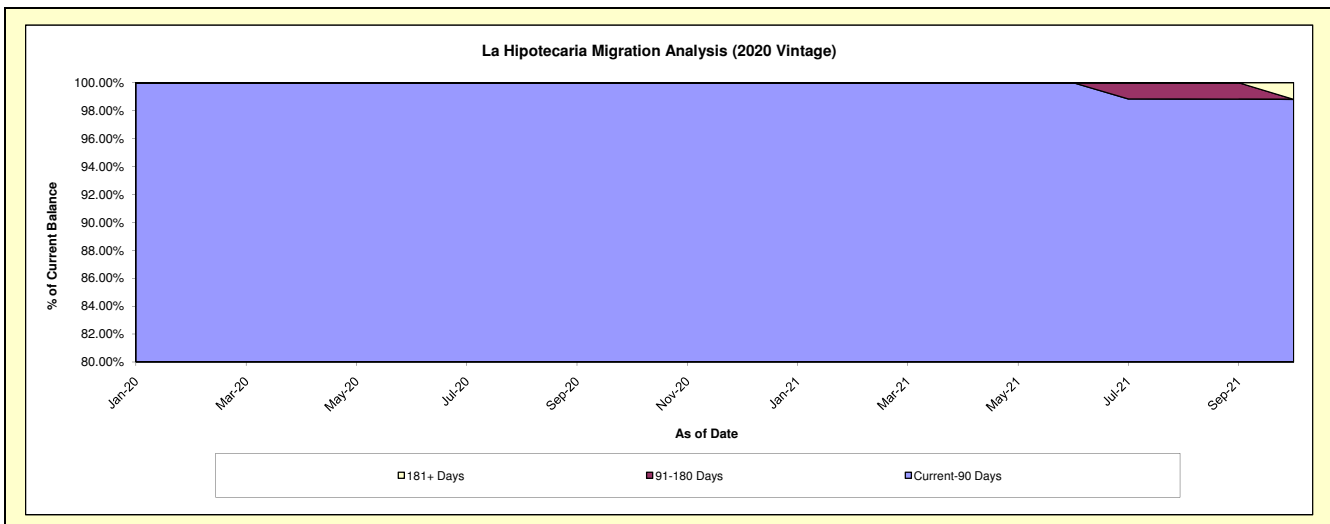
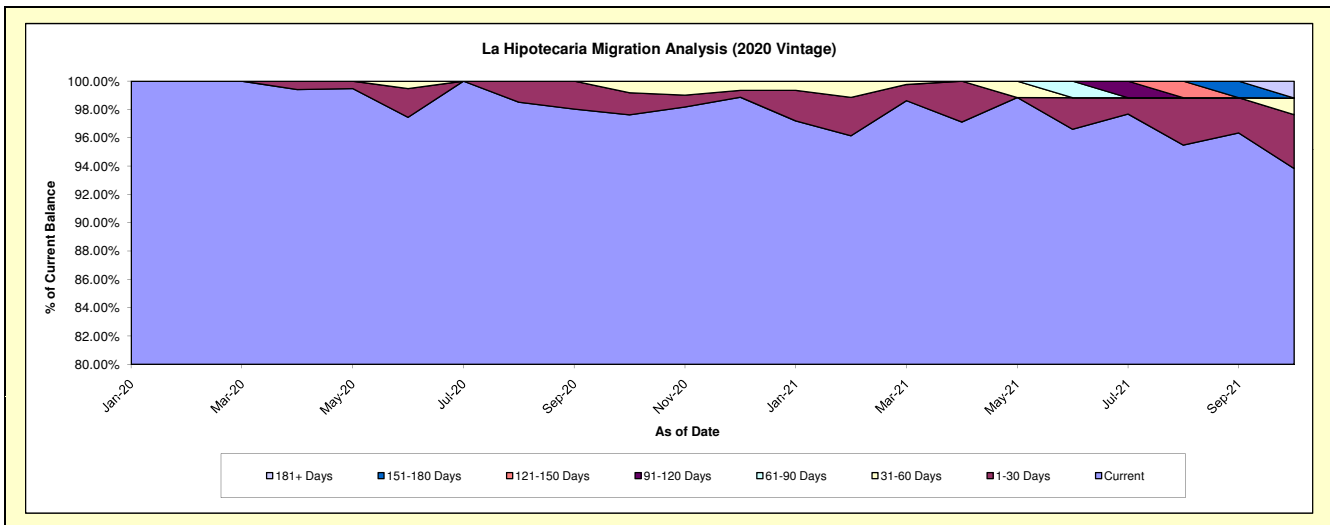
**Delinquency Status (\$ of Current Balance)**

Data Cutoff: 10/31/2021

Current Portfolio Balance										8,579,122.25	10,347,881.29
										Oct-20	Oct-21
Current										8,375,353.63	9,709,784.09
1-30 Days										133,542.62	393,318.48
31-60 Days										70,226.00	121,482.62
61-90 Days										-	-
91-120 Days										-	-
121-150 Days										-	-
151-180 Days										-	-
181+ Days										-	123,296.10

**Delinquency Status (% of Current Balance)**

Current Portfolio Balance										8,579,122.25	10,347,881.29
										Oct-20	Oct-21
Current										97.62%	93.83%
1-30 Days										1.56%	3.80%
31-60 Days										0.82%	1.17%
61-90 Days										0.00%	0.00%
91-120 Days										0.00%	0.00%
121-150 Days										0.00%	0.00%
151-180 Days										0.00%	0.00%
181+ Days										0.00%	1.19%
Current - 90 Days										100.00%	98.81%
91-180 Days										0.00%	0.00%



# Mortgages - La Hipotecaria El Salvador Migration Analysis (2021 Vintage)

## Delinquency Status (\$ of Current Balance)

Data Cutoff: 10/31/2021

Current Portfolio Balance										8,663,025.72
										<b>Oct-21</b>
Current										8,648,485.98
1-30 Days										14,539.74
31-60 Days										-
61-90 Days										-
91-120 Days										-
121-150 Days										-
151-180 Days										-
181+ Days										-

## Delinquency Status (% of Current Balance)

Current Portfolio Balance										8,663,025.72
										<b>Oct-21</b>
Current										99.83%
1-30 Days										0.17%
31-60 Days										0.00%
61-90 Days										0.00%
91-120 Days										0.00%
121-150 Days										0.00%
151-180 Days										0.00%
181+ Days										0.00%
Current - 90 Days										100.00%
91-180 Days										0.00%

