



Migration Analysis for La Hipotecaria S.A. de C.V El Salvador

Personal Loans October 2021

An analysis of historical loan payment data was used to compile a migration analysis of delinquency by annual vintage. Delinquencies for each vintage were grouped into the following buckets; Current, 1-30, 31-60, 61-90, 91-120, 121-150, 151-180, and 180+. Results are provided in graphical and tabular form. The cutoff date is 10/31/2021.

Personal Loans - La Hipotecaria El Salvador Migration Analysis (All Vintages)

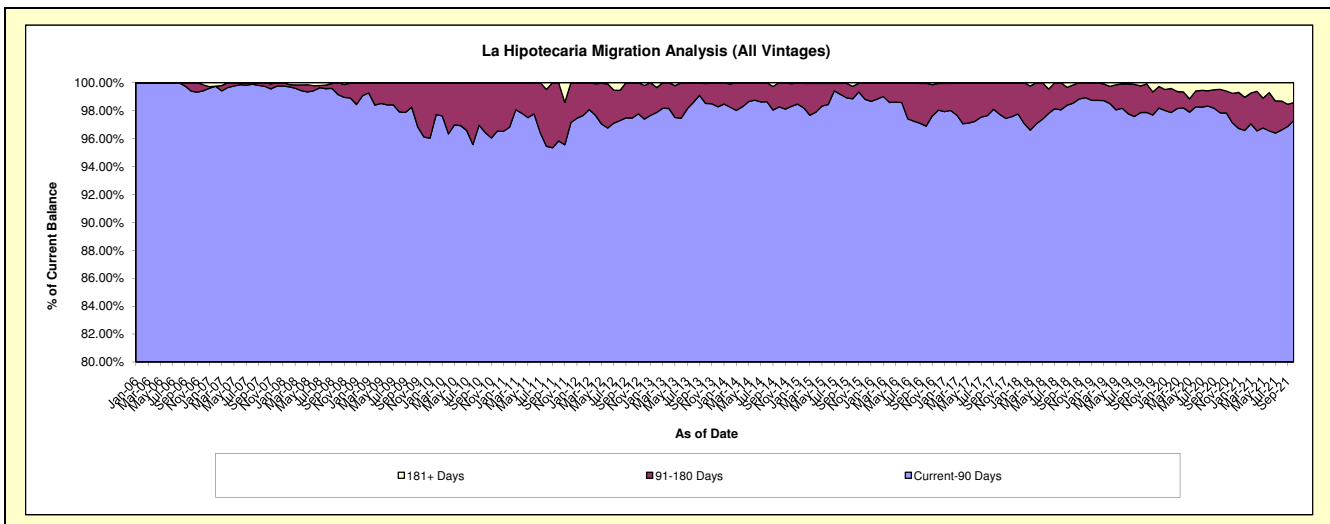
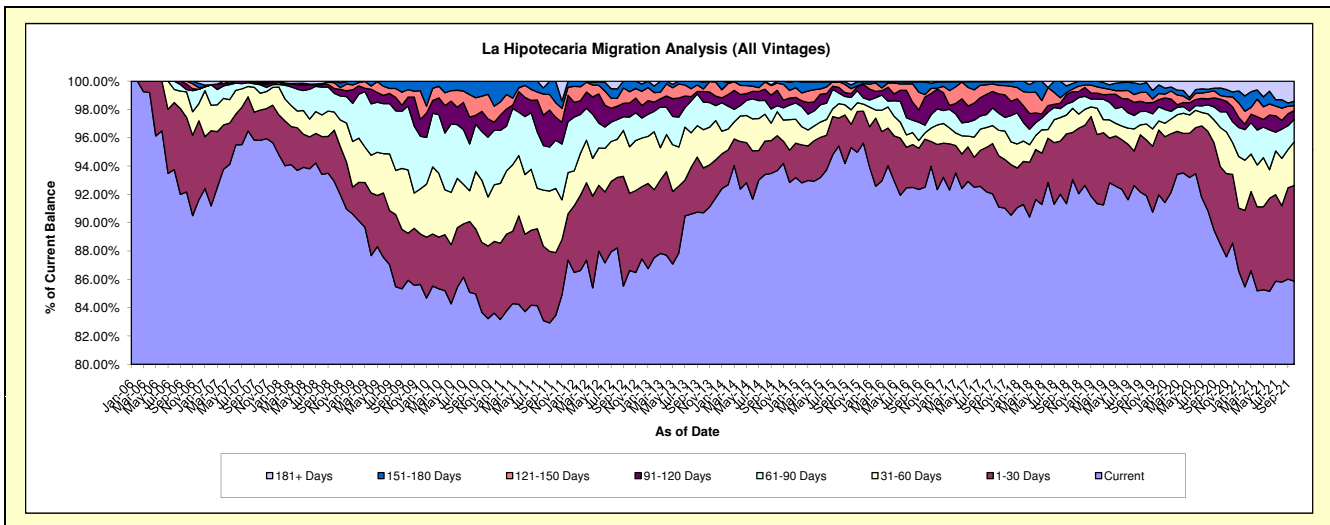
Delinquency Status (\$ of Current Balance)

Data Cutoff: 10/31/2021

Current Portfolio Balance	4,632,805.64	5,147,190.66	5,682,453.26	5,181,792.71	4,599,524.13	5,115,201.52	7,340,192.73	10,316,362.32	10,356,419.43	8,345,722.16
	Oct-12	Oct-13	Oct-14	Oct-15	Oct-16	Oct-17	Oct-18	Oct-19	Oct-20	Oct-21
Current	4,013,460.71	4,668,681.92	5,323,448.59	4,938,873.70	4,254,904.43	4,660,719.60	6,830,170.99	9,482,245.63	9,165,484.58	7,167,456.72
1-30 Days	252,274.18	162,979.09	140,193.31	84,717.29	156,154.32	185,153.42	244,251.54	405,325.78	565,969.41	563,474.24
31-60 Days	152,523.59	139,068.49	96,185.95	53,357.24	20,447.64	91,625.51	125,304.19	117,018.87	286,383.99	256,614.66
61-90 Days	97,215.60	99,970.03	24,399.95	45,201.34	24,967.28	61,750.76	33,191.36	92,013.40	115,002.91	132,409.30
91-120 Days	45,907.30	39,062.67	61,583.91	14,026.78	91,785.44	69,777.23	52,912.99	61,638.79	92,308.47	52,252.16
121-150 Days	36,993.11	8,832.90	28,854.33	18,197.82	7,681.40	31,171.71	13,591.40	77,411.19	26,593.94	29,567.98
151-180 Days	34,431.15	25,375.89	7,787.22	14,084.10	41,469.11	13,061.45	29,256.92	71,039.92	55,224.81	25,291.44
181+ Days	-	3,219.67	-	13,334.44	2,114.51	1,941.84	11,513.34	9,668.74	49,451.32	118,655.66

Delinquency Status (% of Current Balance)

Current Portfolio Balance	4,632,805.64	5,147,190.66	5,682,453.26	5,181,792.71	4,599,524.13	5,115,201.52	7,340,192.73	10,316,362.32	10,356,419.43	8,345,722.16
	Oct-12	Oct-13	Oct-14	Oct-15	Oct-16	Oct-17	Oct-18	Oct-19	Oct-20	Oct-21
Current	86.63%	90.70%	93.68%	95.31%	92.51%	91.12%	93.05%	91.91%	88.50%	85.88%
1-30 Days	5.45%	3.17%	2.47%	1.63%	3.40%	3.62%	3.33%	3.33%	5.46%	6.75%
31-60 Days	3.29%	2.70%	1.69%	1.03%	0.44%	1.79%	1.71%	1.13%	2.77%	3.07%
61-90 Days	2.10%	1.94%	0.43%	0.87%	0.54%	1.21%	0.45%	0.89%	1.11%	1.59%
91-120 Days	0.99%	0.76%	1.08%	0.27%	2.00%	1.36%	0.72%	0.60%	0.89%	0.63%
121-150 Days	0.80%	0.17%	0.51%	0.35%	0.17%	0.61%	0.19%	0.75%	0.26%	0.35%
151-180 Days	0.74%	0.49%	0.14%	0.27%	0.90%	0.26%	0.40%	0.69%	0.53%	0.30%
181+ Days	0.00%	0.06%	0.00%	0.26%	0.05%	0.04%	0.16%	0.09%	0.48%	1.42%
Current - 90 Days	97.47%	98.51%	98.27%	98.85%	96.89%	97.73%	98.54%	97.87%	97.84%	97.29%
91-180 Days	2.53%	1.42%	1.73%	0.89%	3.06%	2.23%	1.30%	2.04%	1.68%	1.28%



Personal Loans - La Hipotecaria El Salvador Migration Analysis (2006 Vintage)

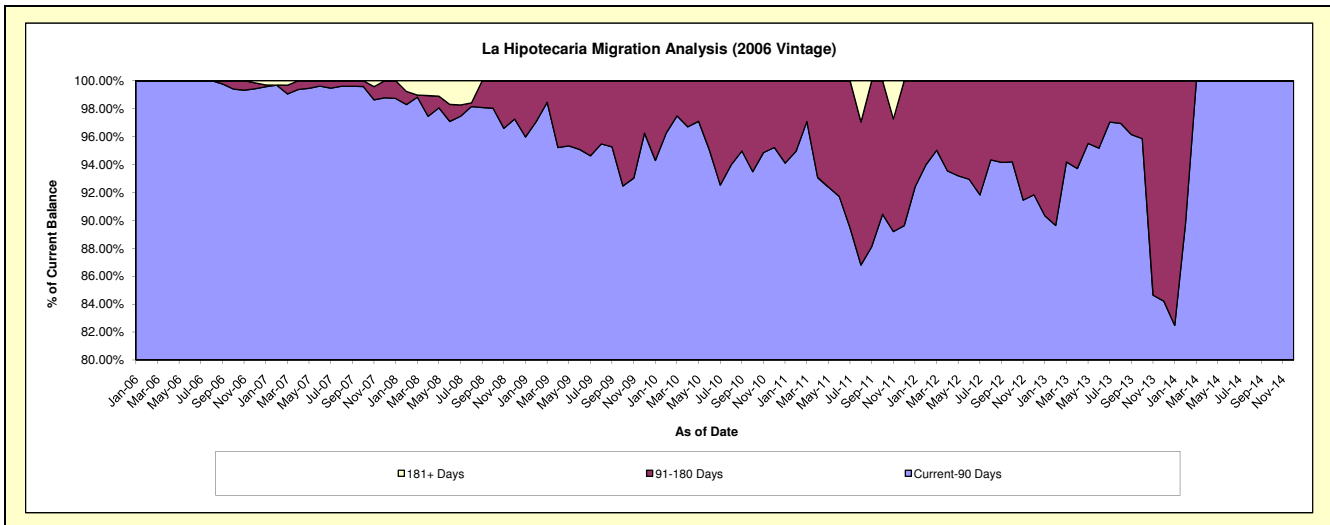
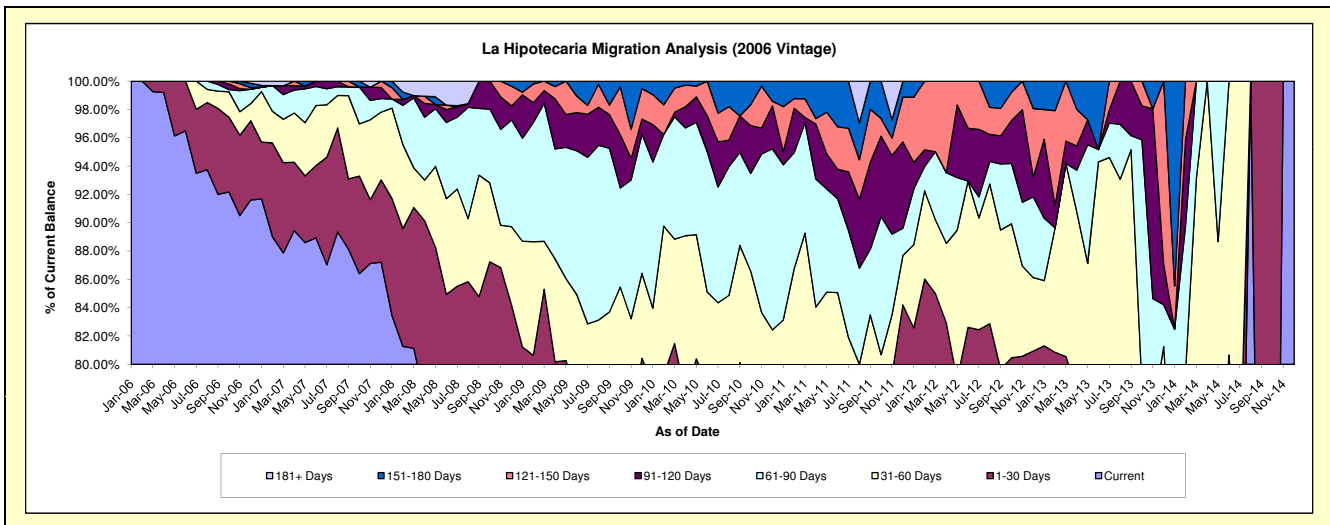
Delinquency Status (\$ of Current Balance)

Data Cutoff: 10/31/2021

Current Portfolio Balance	107,493.12	36,366.29	452.88	#N/A	#N/A	#N/A	#N/A	#N/A	#N/A	#N/A
	Oct-12	Oct-13	Oct-14	Oct-15	Oct-16	Oct-17	Oct-18	Oct-19	Oct-20	Oct-21
Current	69,345.01	20,792.85	98.29	#N/A	#N/A	#N/A	#N/A	#N/A	#N/A	#N/A
1-30 Days	17,147.40	4,334.47	354.59	#N/A	#N/A	#N/A	#N/A	#N/A	#N/A	#N/A
31-60 Days	10,172.81	3,400.42	-	#N/A	#N/A	#N/A	#N/A	#N/A	#N/A	#N/A
61-90 Days	4,582.23	6,330.10	-	#N/A	#N/A	#N/A	#N/A	#N/A	#N/A	#N/A
91-120 Days	3,259.75	872.54	-	#N/A	#N/A	#N/A	#N/A	#N/A	#N/A	#N/A
121-150 Days	2,141.13	635.91	-	#N/A	#N/A	#N/A	#N/A	#N/A	#N/A	#N/A
151-180 Days	844.79	-	-	#N/A	#N/A	#N/A	#N/A	#N/A	#N/A	#N/A
181+ Days	-	-	-	#N/A	#N/A	#N/A	#N/A	#N/A	#N/A	#N/A

Delinquency Status (% of Current Balance)

Current Portfolio Balance	107,493.12	36,366.29	452.88	#N/A	#N/A	#N/A	#N/A	#N/A	#N/A	#N/A
	Oct-12	Oct-13	Oct-14	Oct-15	Oct-16	Oct-17	Oct-18	Oct-19	Oct-20	Oct-21
Current	64.51%	57.18%	21.70%	#N/A	#N/A	#N/A	#N/A	#N/A	#N/A	#N/A
1-30 Days	15.95%	11.92%	78.30%	#N/A	#N/A	#N/A	#N/A	#N/A	#N/A	#N/A
31-60 Days	9.46%	9.35%	0.00%	#N/A	#N/A	#N/A	#N/A	#N/A	#N/A	#N/A
61-90 Days	4.26%	17.41%	0.00%	#N/A	#N/A	#N/A	#N/A	#N/A	#N/A	#N/A
91-120 Days	3.03%	2.40%	0.00%	#N/A	#N/A	#N/A	#N/A	#N/A	#N/A	#N/A
121-150 Days	1.99%	1.75%	0.00%	#N/A	#N/A	#N/A	#N/A	#N/A	#N/A	#N/A
151-180 Days	0.79%	0.00%	0.00%	#N/A	#N/A	#N/A	#N/A	#N/A	#N/A	#N/A
181+ Days	0.00%	0.00%	0.00%	#N/A	#N/A	#N/A	#N/A	#N/A	#N/A	#N/A
Current - 90 Days	94.19%	95.85%	100.00%	#N/A	#N/A	#N/A	#N/A	#N/A	#N/A	#N/A
91-180 Days	5.81%	4.15%	0.00%	#N/A	#N/A	#N/A	#N/A	#N/A	#N/A	#N/A



Personal Loans - La Hipotecaria El Salvador Migration Analysis (2007 Vintage)

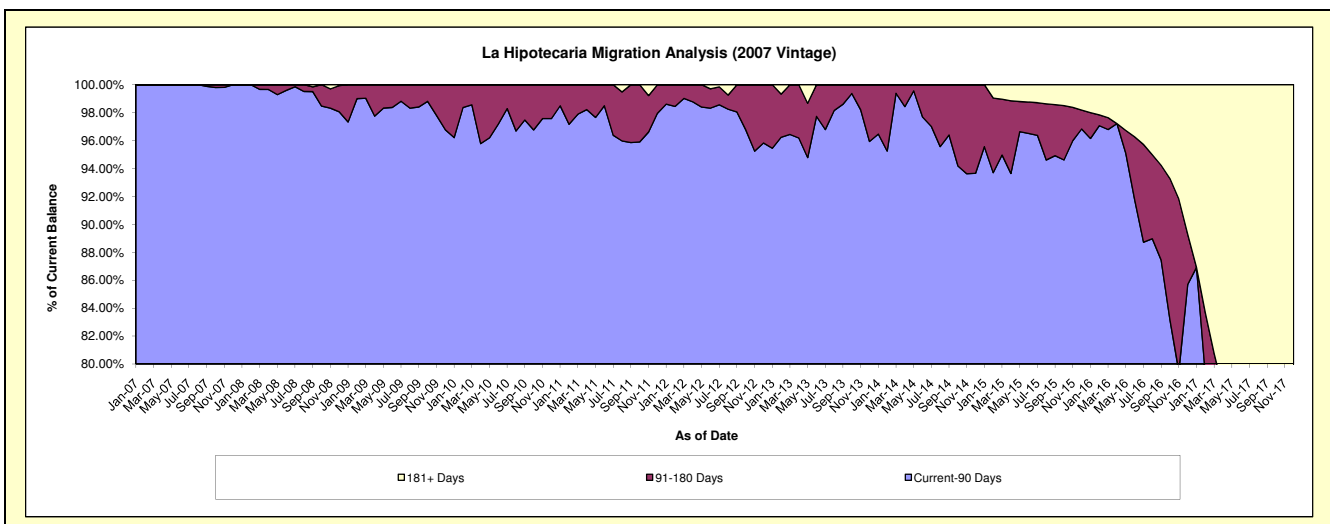
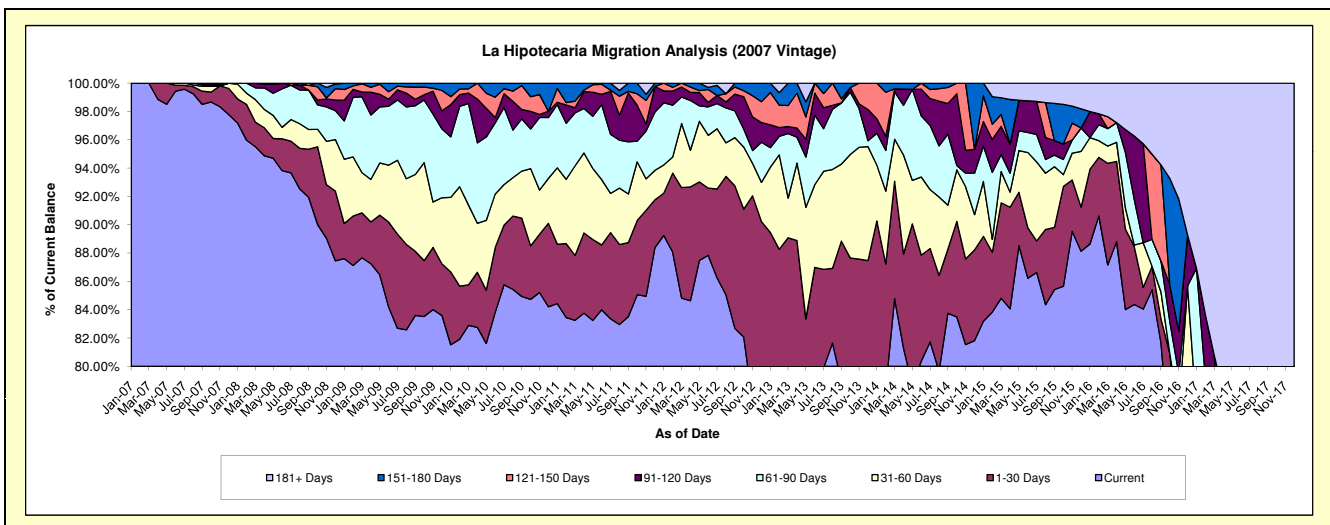
Delinquency Status (\$ of Current Balance)

Data Cutoff: 10/31/2021

Current Portfolio Balance	1,049,517.09	636,787.53	350,358.58	151,545.69	31,428.96	2,535.44	#N/A	#N/A	#N/A	#N/A
	Oct-12	Oct-13	Oct-14	Oct-15	Oct-16	Oct-17	Oct-18	Oct-19	Oct-20	Oct-21
Current	861,410.09	500,969.14	292,526.52	129,803.76	23,354.02	-	#N/A	#N/A	#N/A	#N/A
1-30 Days	94,763.05	57,189.78	23,610.94	10,678.22	2,079.07	-	#N/A	#N/A	#N/A	#N/A
31-60 Days	45,982.44	46,576.03	12,796.27	1,272.68	-	-	#N/A	#N/A	#N/A	#N/A
61-90 Days	13,428.93	28,061.39	1,069.33	1,626.96	705.47	-	#N/A	#N/A	#N/A	#N/A
91-120 Days	23,947.14	2,023.38	17,736.14	1,655.38	815.95	593.60	#N/A	#N/A	#N/A	#N/A
121-150 Days	4,374.17	-	2,619.38	-	-	-	#N/A	#N/A	#N/A	#N/A
151-180 Days	5,611.27	1,967.81	-	4,245.13	2,359.94	-	#N/A	#N/A	#N/A	#N/A
181+ Days	-	-	-	2,263.56	2,114.51	1,941.84	#N/A	#N/A	#N/A	#N/A

Delinquency Status (% of Current Balance)

Current Portfolio Balance	1,049,517.09	636,787.53	350,358.58	151,545.69	31,428.96	2,535.44	#N/A	#N/A	#N/A	#N/A
	Oct-12	Oct-13	Oct-14	Oct-15	Oct-16	Oct-17	Oct-18	Oct-19	Oct-20	Oct-21
Current	82.08%	78.67%	83.49%	85.65%	74.31%	0.00%	#N/A	#N/A	#N/A	#N/A
1-30 Days	9.03%	8.98%	6.74%	7.05%	6.62%	0.00%	#N/A	#N/A	#N/A	#N/A
31-60 Days	4.38%	7.31%	3.65%	0.84%	0.00%	0.00%	#N/A	#N/A	#N/A	#N/A
61-90 Days	1.28%	4.41%	0.31%	1.07%	2.24%	0.00%	#N/A	#N/A	#N/A	#N/A
91-120 Days	2.28%	0.32%	5.06%	1.09%	2.60%	23.41%	#N/A	#N/A	#N/A	#N/A
121-150 Days	0.42%	0.00%	0.75%	0.00%	0.00%	0.00%	#N/A	#N/A	#N/A	#N/A
151-180 Days	0.53%	0.31%	0.00%	2.80%	7.51%	0.00%	#N/A	#N/A	#N/A	#N/A
181+ Days	0.00%	0.00%	0.00%	1.49%	6.73%	76.59%	#N/A	#N/A	#N/A	#N/A
Current - 90 Days	96.77%	99.37%	94.19%	94.61%	83.17%	0.00%	#N/A	#N/A	#N/A	#N/A
91-180 Days	3.23%	0.63%	5.81%	3.89%	10.10%	23.41%	#N/A	#N/A	#N/A	#N/A



Personal Loans - La Hipotecaria El Salvador Migration Analysis (2008 Vintage)

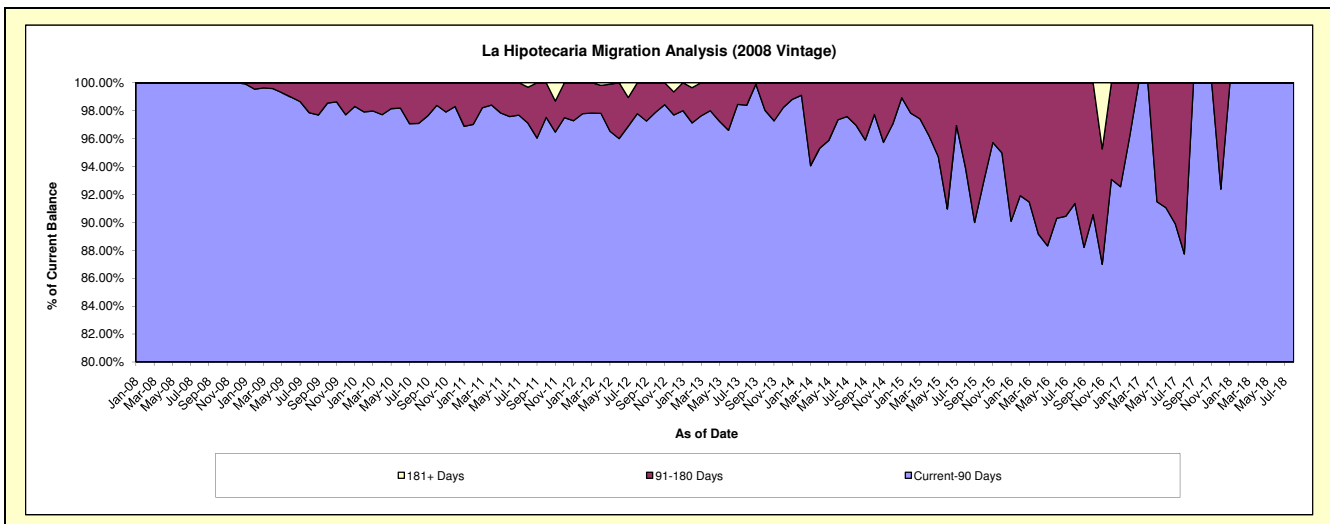
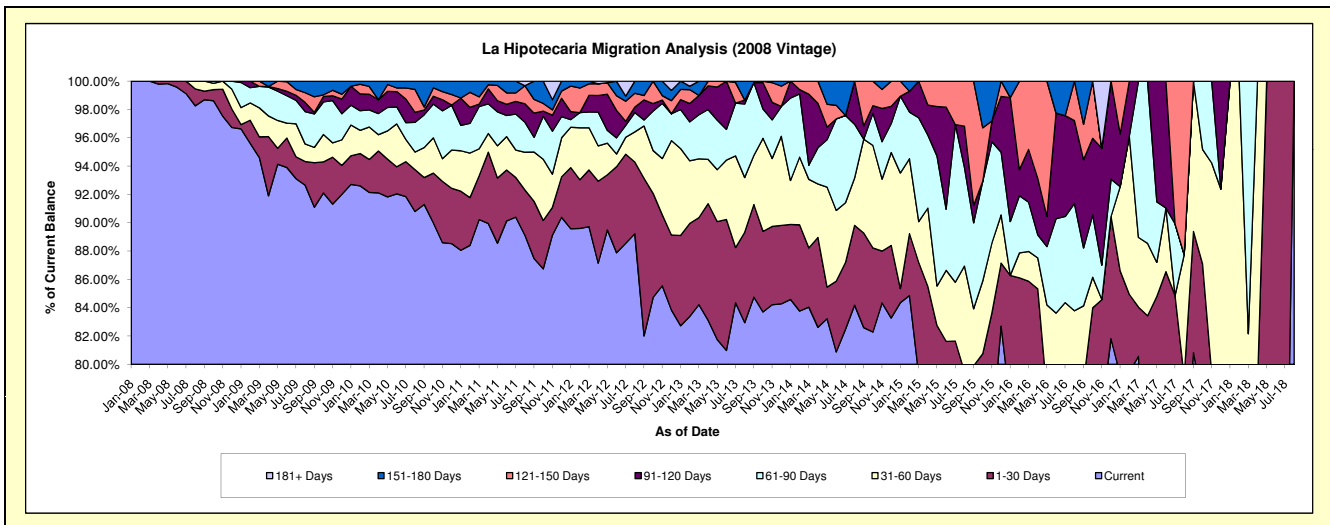
Delinquency Status (\$ of Current Balance)

Data Cutoff: 10/31/2021

Current Portfolio Balance	1,519,595.80	1,016,515.82	603,207.75	298,789.56	106,311.21	17,732.04	#N/A	#N/A	#N/A	#N/A
	Oct-12	Oct-13	Oct-14	Oct-15	Oct-16	Oct-17	Oct-18	Oct-19	Oct-20	Oct-21
Current	1,287,609.22	850,864.06	496,319.39	227,396.92	81,916.37	13,741.24	#N/A	#N/A	#N/A	#N/A
1-30 Days	111,623.45	57,827.22	35,812.39	13,889.50	7,373.55	1,701.14	#N/A	#N/A	#N/A	#N/A
31-60 Days	45,852.26	66,794.85	43,710.89	15,340.18	2,298.03	1,435.76	#N/A	#N/A	#N/A	#N/A
61-90 Days	42,428.74	20,939.25	13,645.19	21,039.68	4,678.93	853.90	#N/A	#N/A	#N/A	#N/A
91-120 Days	8,068.73	19,064.89	3,294.75	-	5,751.90	-	#N/A	#N/A	#N/A	#N/A
121-150 Days	24,013.40	1,025.55	10,425.14	11,284.31	4,292.43	-	#N/A	#N/A	#N/A	#N/A
151-180 Days	-	-	-	9,838.97	-	-	#N/A	#N/A	#N/A	#N/A
181+ Days	-	-	-	-	-	-	#N/A	#N/A	#N/A	#N/A

Delinquency Status (% of Current Balance)

Current Portfolio Balance	1,519,595.80	1,016,515.82	603,207.75	298,789.56	106,311.21	17,732.04	#N/A	#N/A	#N/A	#N/A
	Oct-12	Oct-13	Oct-14	Oct-15	Oct-16	Oct-17	Oct-18	Oct-19	Oct-20	Oct-21
Current	84.73%	83.70%	82.28%	76.11%	77.05%	77.49%	#N/A	#N/A	#N/A	#N/A
1-30 Days	7.35%	5.69%	5.94%	4.65%	6.94%	9.59%	#N/A	#N/A	#N/A	#N/A
31-60 Days	3.02%	6.57%	7.25%	5.13%	2.16%	8.10%	#N/A	#N/A	#N/A	#N/A
61-90 Days	2.79%	2.06%	2.26%	7.04%	4.40%	4.82%	#N/A	#N/A	#N/A	#N/A
91-120 Days	0.53%	1.88%	0.55%	0.00%	5.41%	0.00%	#N/A	#N/A	#N/A	#N/A
121-150 Days	1.58%	0.10%	1.73%	3.78%	4.04%	0.00%	#N/A	#N/A	#N/A	#N/A
151-180 Days	0.00%	0.00%	0.00%	3.29%	0.00%	0.00%	#N/A	#N/A	#N/A	#N/A
181+ Days	0.00%	0.00%	0.00%	0.00%	0.00%	0.00%	#N/A	#N/A	#N/A	#N/A
Current - 90 Days	97.89%	98.02%	97.73%	92.93%	90.55%	100.00%	#N/A	#N/A	#N/A	#N/A
91-180 Days	2.11%	1.98%	2.27%	7.07%	9.45%	0.00%	#N/A	#N/A	#N/A	#N/A



Personal Loans - La Hipotecaria El Salvador Migration Analysis (2009 Vintage)

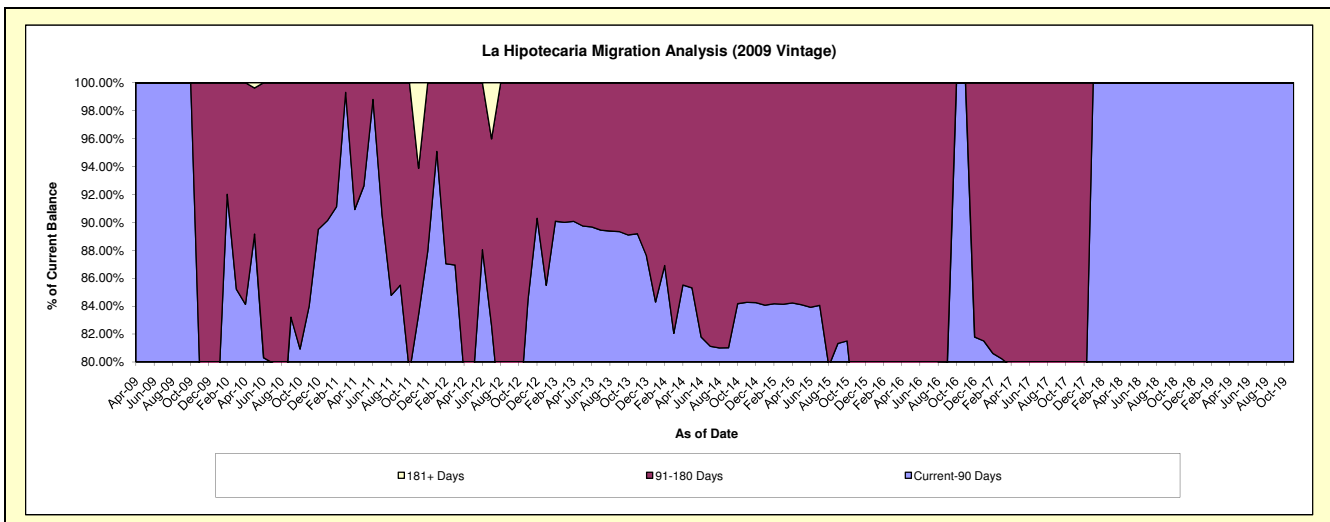
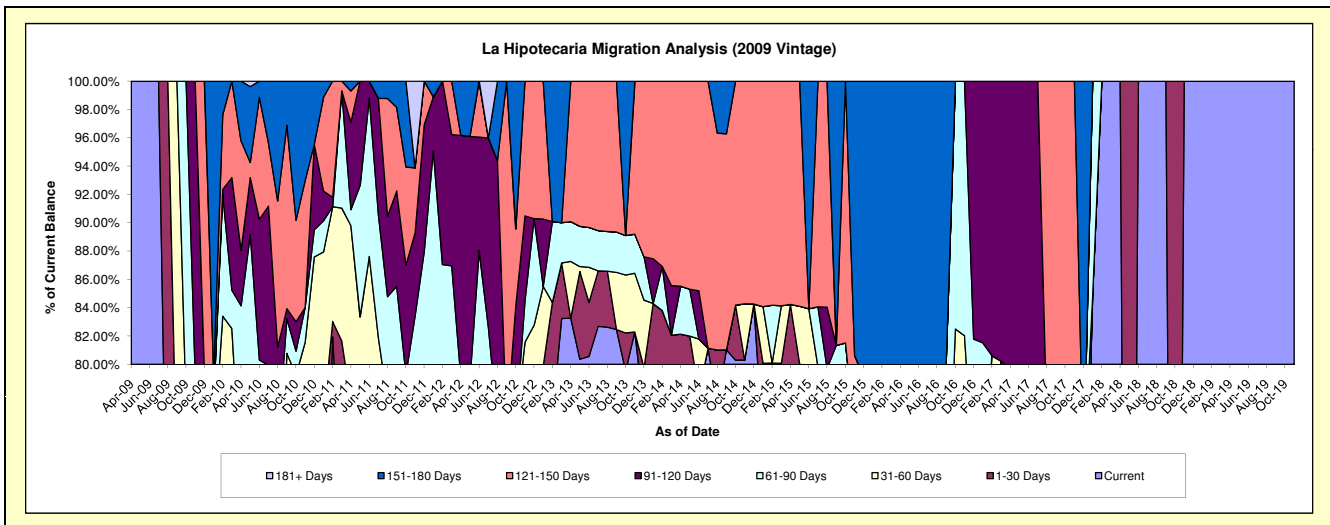
Delinquency Status (\$ of Current Balance)

Data Cutoff: 10/31/2021

Current Portfolio Balance	118,274.12	79,814.01	42,737.44	27,218.88	12,951.01	8,766.01	498.72	83.75	#N/A	#N/A
	Oct-12	Oct-13	Oct-14	Oct-15	Oct-16	Oct-17	Oct-18	Oct-19	Oct-20	Oct-21
Current	74,030.91	63,468.46	34,316.04	20,839.08	9,429.13	5,546.21	-	83.75	#N/A	#N/A
1-30 Days	12,411.73	2,151.53	1,660.80	-	-	-	498.72	-	#N/A	#N/A
31-60 Days	3,058.13	3,267.57	-	-	1,254.72	-	-	-	#N/A	#N/A
61-90 Days	-	2,224.38	-	1,347.76	2,267.16	952.64	-	-	#N/A	#N/A
91-120 Days	9,958.22	-	-	-	-	-	-	-	#N/A	#N/A
121-150 Days	6,464.41	-	6,760.60	5,032.04	-	2,267.16	-	-	#N/A	#N/A
151-180 Days	12,350.72	8,702.07	-	-	-	-	-	-	#N/A	#N/A
181+ Days	-	-	-	-	-	-	-	-	#N/A	#N/A

Delinquency Status (% of Current Balance)

Current Portfolio Balance	118,274.12	79,814.01	42,737.44	27,218.88	12,951.01	8,766.01	498.72	83.75	#N/A	#N/A
	Oct-12	Oct-13	Oct-14	Oct-15	Oct-16	Oct-17	Oct-18	Oct-19	Oct-20	Oct-21
Current	62.59%	79.52%	80.30%	76.56%	72.81%	63.27%	0.00%	100.00%	#N/A	#N/A
1-30 Days	10.49%	2.70%	3.89%	0.00%	0.00%	0.00%	100.00%	0.00%	#N/A	#N/A
31-60 Days	2.59%	4.09%	0.00%	0.00%	9.69%	0.00%	0.00%	0.00%	#N/A	#N/A
61-90 Days	0.00%	2.79%	0.00%	4.95%	17.51%	10.87%	0.00%	0.00%	#N/A	#N/A
91-120 Days	8.42%	0.00%	0.00%	0.00%	0.00%	0.00%	0.00%	0.00%	#N/A	#N/A
121-150 Days	5.47%	0.00%	15.82%	18.49%	0.00%	25.86%	0.00%	0.00%	#N/A	#N/A
151-180 Days	10.44%	10.90%	0.00%	0.00%	0.00%	0.00%	0.00%	0.00%	#N/A	#N/A
181+ Days	0.00%	0.00%	0.00%	0.00%	0.00%	0.00%	0.00%	0.00%	#N/A	#N/A
Current - 90 Days	75.67%	89.10%	84.18%	81.51%	100.00%	74.14%	100.00%	100.00%	#N/A	#N/A
91-180 Days	24.33%	10.90%	15.82%	18.49%	0.00%	25.86%	0.00%	0.00%	#N/A	#N/A



Personal Loans - La Hipotecaria El Salvador Migration Analysis (2010 Vintage)

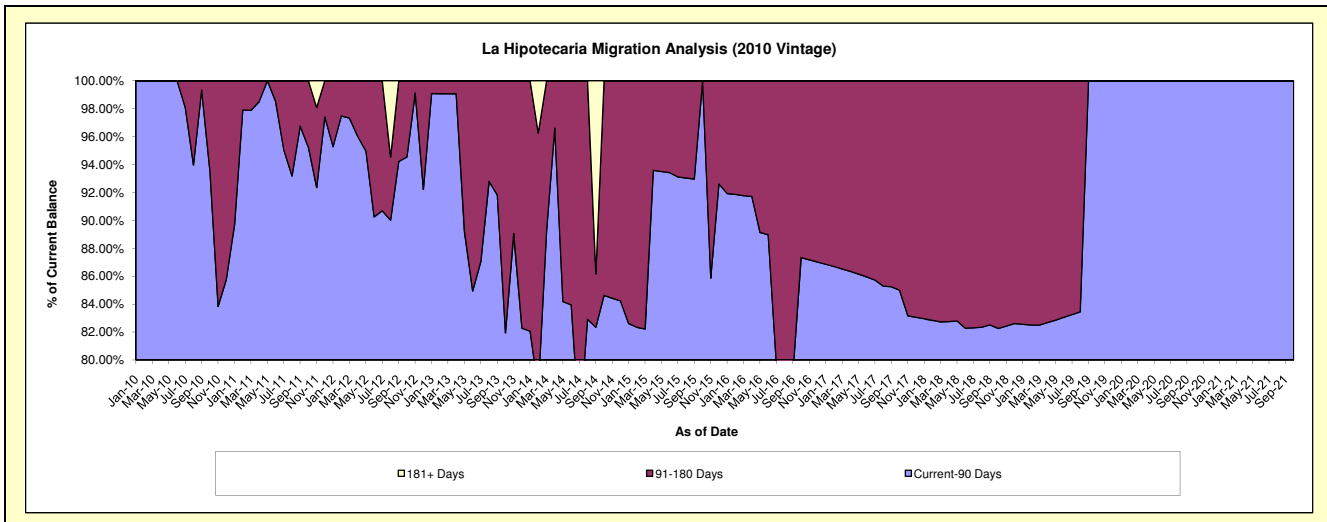
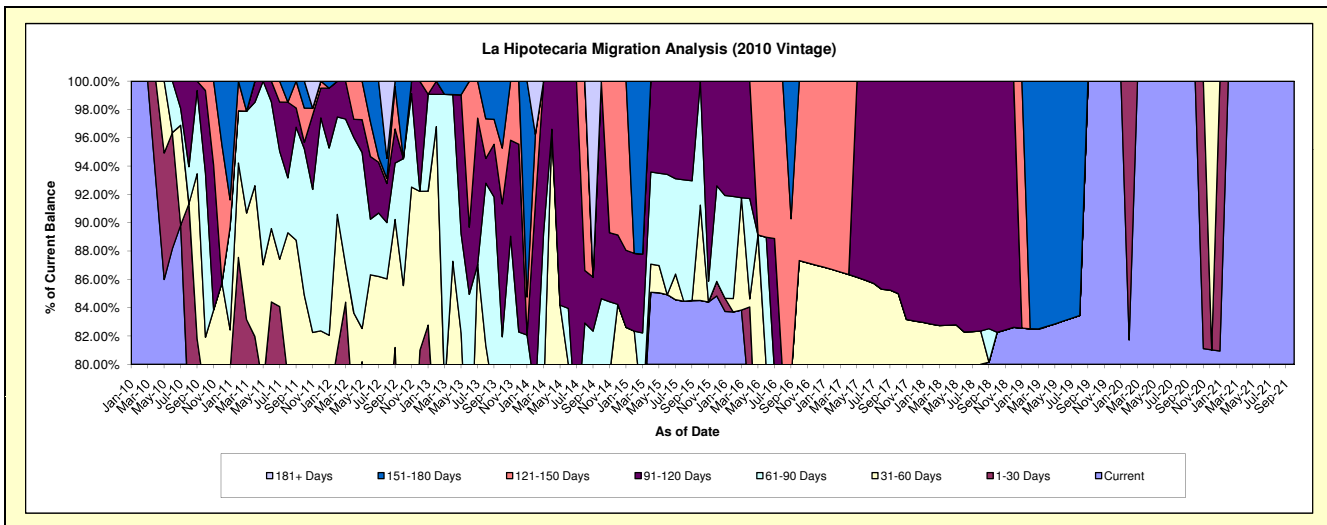
Delinquency Status (\$ of Current Balance)

Data Cutoff: 10/31/2021

Current Portfolio Balance	285,946.54	182,220.42	85,341.55	52,103.05	26,753.03	19,772.39	14,136.01	11,070.44	10,465.18	8,678.83
	Oct-12	Oct-13	Oct-14	Oct-15	Oct-16	Oct-17	Oct-18	Oct-19	Oct-20	Oct-21
Current	191,663.66	100,848.31	54,741.90	44,033.22	20,879.64	15,453.71	11,628.97	11,070.44	10,465.18	8,678.83
1-30 Days	5,553.32	28,626.44	13,079.37	-	-	-	-	-	-	-
31-60 Days	47,457.95	9,489.90	-	3,506.89	2,484.42	1,352.89	-	-	-	-
61-90 Days	25,647.24	10,368.52	4,408.50	4,562.94	-	-	-	-	-	-
91-120 Days	-	17,101.86	13,111.78	-	-	2,965.79	2,507.04	-	-	-
121-150 Days	-	7,171.44	-	-	3,388.97	-	-	-	-	-
151-180 Days	15,624.37	8,613.95	-	-	-	-	-	-	-	-
181+ Days	-	-	-	-	-	-	-	-	-	-

Delinquency Status (% of Current Balance)

Current Portfolio Balance	285,946.54	182,220.42	85,341.55	52,103.05	26,753.03	19,772.39	14,136.01	11,070.44	10,465.18	8,678.83
	Oct-12	Oct-13	Oct-14	Oct-15	Oct-16	Oct-17	Oct-18	Oct-19	Oct-20	Oct-21
Current	67.03%	55.34%	64.14%	84.51%	78.05%	78.16%	82.26%	100.00%	100.00%	100.00%
1-30 Days	1.94%	15.71%	15.33%	0.00%	0.00%	0.00%	0.00%	0.00%	0.00%	0.00%
31-60 Days	16.60%	5.21%	0.00%	6.73%	9.29%	6.84%	0.00%	0.00%	0.00%	0.00%
61-90 Days	8.97%	5.69%	5.17%	8.76%	0.00%	0.00%	0.00%	0.00%	0.00%	0.00%
91-120 Days	0.00%	9.39%	15.36%	0.00%	0.00%	15.00%	17.74%	0.00%	0.00%	0.00%
121-150 Days	0.00%	3.94%	0.00%	0.00%	12.67%	0.00%	0.00%	0.00%	0.00%	0.00%
151-180 Days	5.46%	4.73%	0.00%	0.00%	0.00%	0.00%	0.00%	0.00%	0.00%	0.00%
181+ Days	0.00%	0.00%	0.00%	0.00%	0.00%	0.00%	0.00%	0.00%	0.00%	0.00%
Current - 90 Days	94.54%	81.95%	84.64%	100.00%	87.33%	85.00%	82.26%	100.00%	100.00%	100.00%
91-180 Days	5.46%	18.05%	15.36%	0.00%	12.67%	15.00%	17.74%	0.00%	0.00%	0.00%



Personal Loans - La Hipotecaria El Salvador Migration Analysis (2011 Vintage)

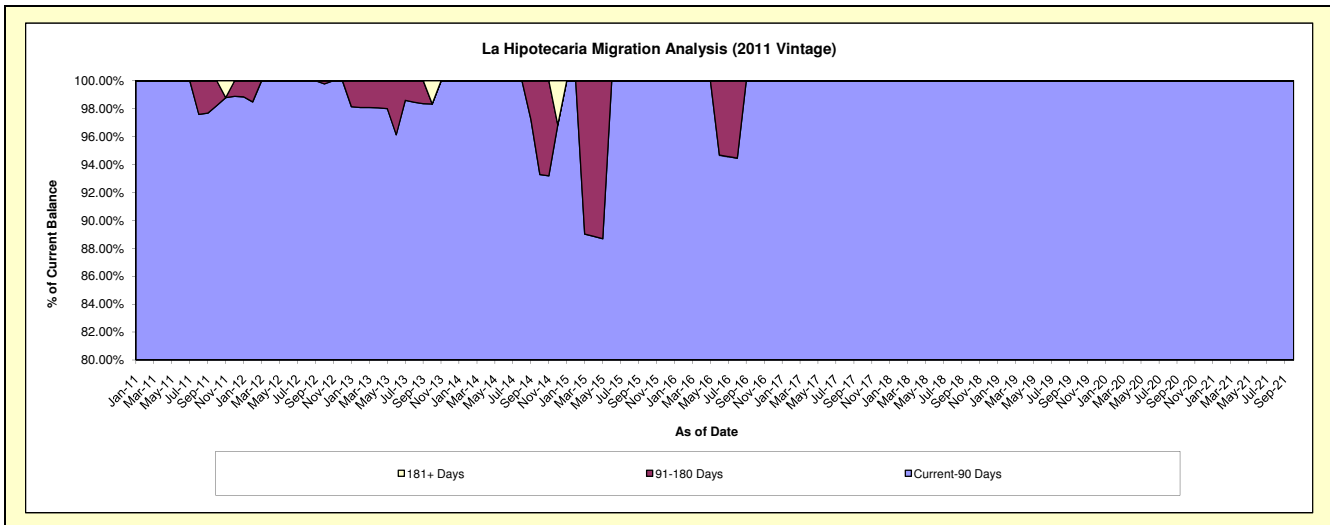
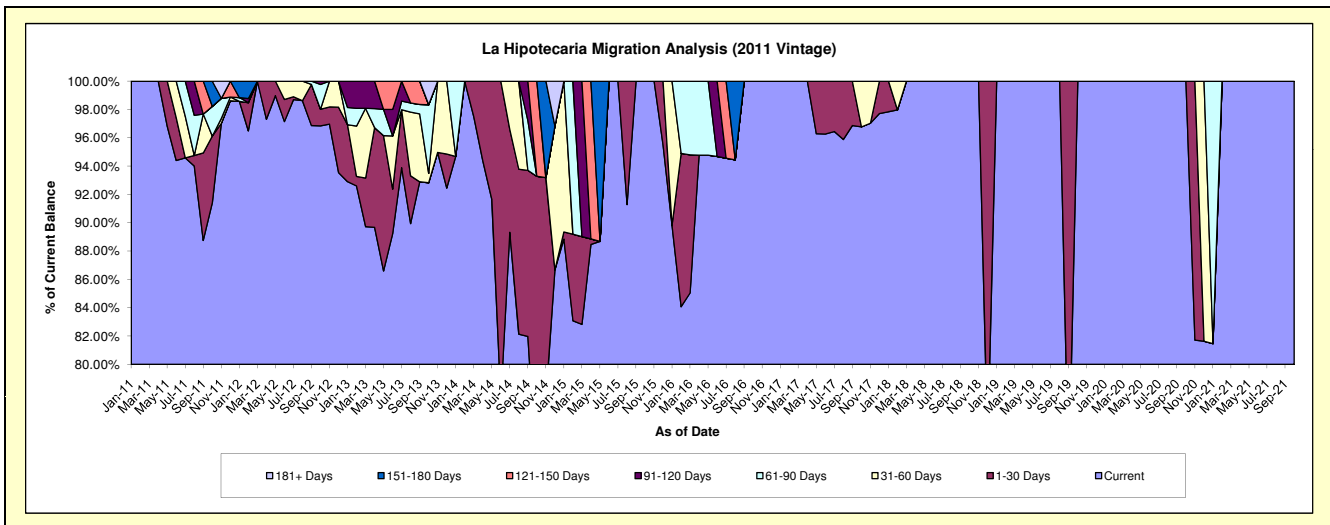
Delinquency Status (\$ of Current Balance)

Data Cutoff: 10/31/2021

Current Portfolio Balance	292,561.75	193,554.93	134,677.31	91,889.24	59,527.41	39,883.06	25,617.50	21,004.36	16,898.38	12,149.04
	Oct-12	Oct-13	Oct-14	Oct-15	Oct-16	Oct-17	Oct-18	Oct-19	Oct-20	Oct-21
Current	283,333.16	179,666.57	96,695.48	91,889.24	59,527.41	38,594.46	25,617.50	21,004.36	16,898.38	12,149.04
1-30 Days	3,426.67	-	28,932.62	-	-	-	-	-	-	-
31-60 Days	-	1,275.74	-	-	-	1,288.60	-	-	-	-
61-90 Days	5,128.46	9,392.95	-	-	-	-	-	-	-	-
91-120 Days	673.46	-	-	-	-	-	-	-	-	-
121-150 Days	-	-	9,049.21	-	-	-	-	-	-	-
151-180 Days	-	-	-	-	-	-	-	-	-	-
181+ Days	-	3,219.67	-	-	-	-	-	-	-	-

Delinquency Status (% of Current Balance)

Current Portfolio Balance	292,561.75	193,554.93	134,677.31	91,889.24	59,527.41	39,883.06	25,617.50	21,004.36	16,898.38	12,149.04
	Oct-12	Oct-13	Oct-14	Oct-15	Oct-16	Oct-17	Oct-18	Oct-19	Oct-20	Oct-21
Current	96.85%	92.82%	71.80%	100.00%	100.00%	96.77%	100.00%	100.00%	100.00%	100.00%
1-30 Days	1.17%	0.00%	21.48%	0.00%	0.00%	0.00%	0.00%	0.00%	0.00%	0.00%
31-60 Days	0.00%	0.66%	0.00%	0.00%	0.00%	3.23%	0.00%	0.00%	0.00%	0.00%
61-90 Days	1.75%	4.85%	0.00%	0.00%	0.00%	0.00%	0.00%	0.00%	0.00%	0.00%
91-120 Days	0.23%	0.00%	0.00%	0.00%	0.00%	0.00%	0.00%	0.00%	0.00%	0.00%
121-150 Days	0.00%	0.00%	6.72%	0.00%	0.00%	0.00%	0.00%	0.00%	0.00%	0.00%
151-180 Days	0.00%	0.00%	0.00%	0.00%	0.00%	0.00%	0.00%	0.00%	0.00%	0.00%
181+ Days	0.00%	1.66%	0.00%	0.00%	0.00%	0.00%	0.00%	0.00%	0.00%	0.00%
Current - 90 Days	99.77%	98.34%	93.28%	100.00%	100.00%	100.00%	100.00%	100.00%	100.00%	100.00%
91-180 Days	0.23%	0.00%	6.72%	0.00%	0.00%	0.00%	0.00%	0.00%	0.00%	0.00%



Personal Loans - La Hipotecaria El Salvador Migration Analysis (2012 Vintage)

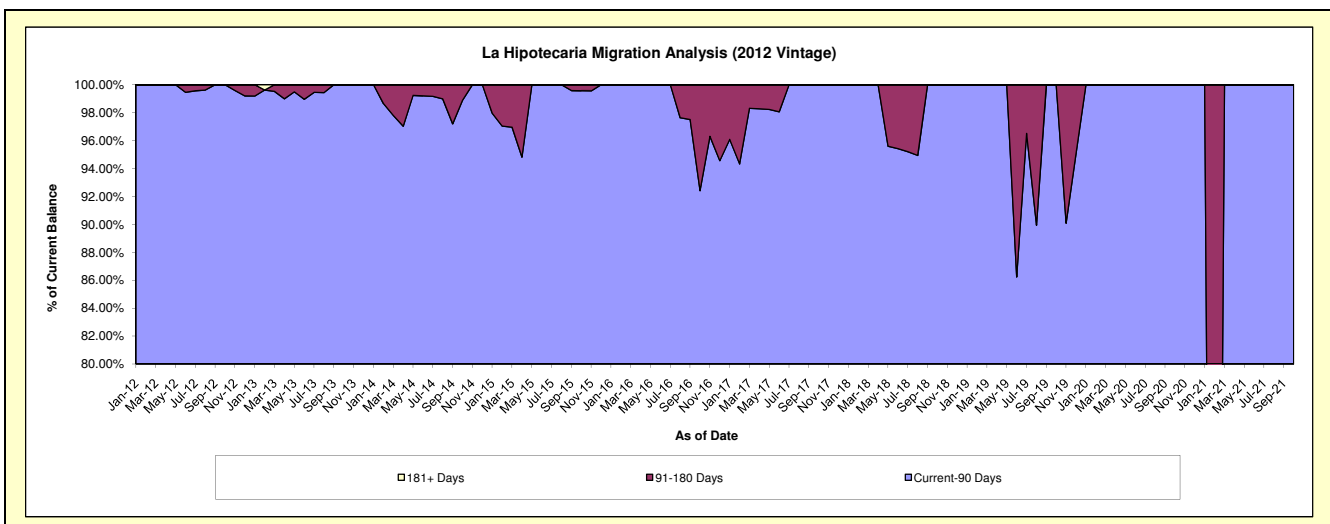
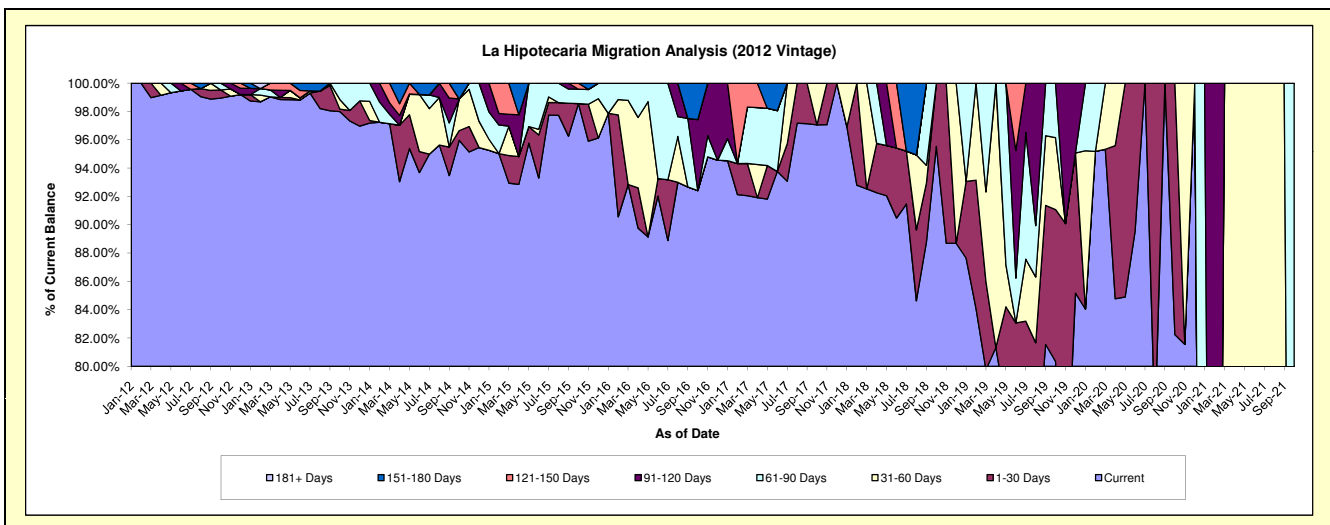
Delinquency Status (\$ of Current Balance)

Data Cutoff: 10/31/2021

Current Portfolio Balance	1,259,417.22	1,212,968.54	696,617.74	441,233.39	258,701.94	152,155.28	82,117.19	25,898.68	2,604.76	1,097.55
	Oct-12	Oct-13	Oct-14	Oct-15	Oct-16	Oct-17	Oct-18	Oct-19	Oct-20	Oct-21
Current	1,246,068.66	1,188,644.84	668,483.19	434,856.46	239,085.52	147,674.89	78,449.85	20,807.36	2,142.11	-
1-30 Days	7,348.56	2,021.13	4,771.89	-	-	-	3,667.34	2,778.65	462.65	-
31-60 Days	-	8,263.98	15,575.44	-	-	4,480.39	-	1,314.94	-	-
61-90 Days	6,000.00	14,038.59	-	4,495.46	-	-	-	997.73	-	1,097.55
91-120 Days	-	-	-	-	12,957.29	-	-	-	-	-
121-150 Days	-	-	-	1,881.47	-	-	-	-	-	-
151-180 Days	-	-	7,787.22	-	6,659.13	-	-	-	-	-
181+ Days	-	-	-	-	-	-	-	-	-	-

Delinquency Status (% of Current Balance)

Current Portfolio Balance	1,259,417.22	1,212,968.54	696,617.74	441,233.39	258,701.94	152,155.28	82,117.19	25,898.68	2,604.76	1,097.55
	Oct-12	Oct-13	Oct-14	Oct-15	Oct-16	Oct-17	Oct-18	Oct-19	Oct-20	Oct-21
Current	98.94%	97.99%	95.96%	98.55%	92.42%	97.06%	95.53%	80.34%	82.24%	0.00%
1-30 Days	0.58%	0.17%	0.69%	0.00%	0.00%	0.00%	4.47%	10.73%	17.76%	0.00%
31-60 Days	0.00%	0.68%	2.24%	0.00%	0.00%	2.94%	0.00%	5.08%	0.00%	0.00%
61-90 Days	0.48%	1.16%	0.00%	1.02%	0.00%	0.00%	0.00%	3.85%	0.00%	100.00%
91-120 Days	0.00%	0.00%	0.00%	0.00%	5.01%	0.00%	0.00%	0.00%	0.00%	0.00%
121-150 Days	0.00%	0.00%	0.00%	0.43%	0.00%	0.00%	0.00%	0.00%	0.00%	0.00%
151-180 Days	0.00%	0.00%	1.12%	0.00%	2.57%	0.00%	0.00%	0.00%	0.00%	0.00%
181+ Days	0.00%	0.00%	0.00%	0.00%	0.00%	0.00%	0.00%	0.00%	0.00%	0.00%
Current - 90 Days	100.00%	100.00%	98.88%	99.57%	92.42%	100.00%	100.00%	100.00%	100.00%	100.00%
91-180 Days	0.00%	0.00%	1.12%	0.43%	7.58%	0.00%	0.00%	0.00%	0.00%	0.00%



Personal Loans - La Hipotecaria El Salvador Migration Analysis (2013 Vintage)

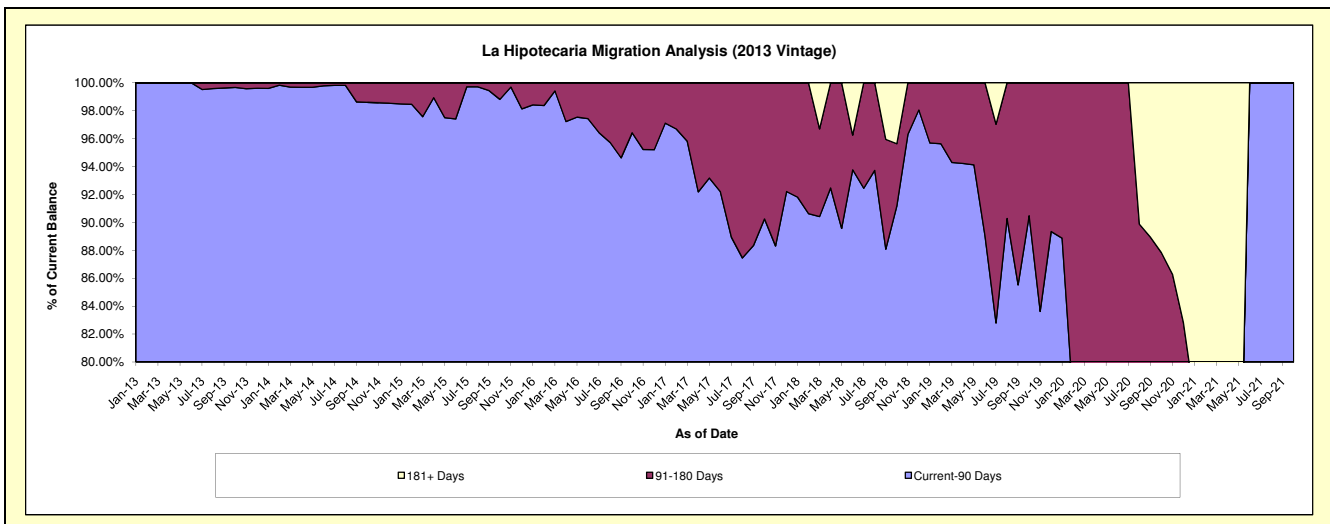
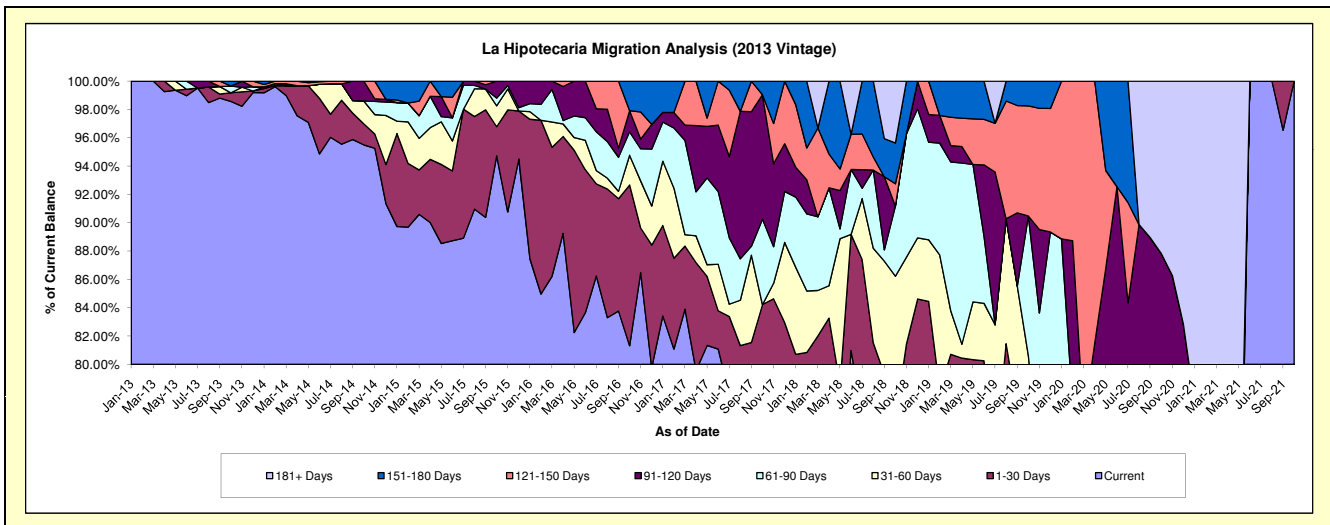
Delinquency Status (\$ of Current Balance)

Data Cutoff: 10/31/2021

Current Portfolio Balance	-	1,788,963.12	1,495,586.70	1,036,668.39	686,619.17	488,015.32	263,695.22	112,785.68	36,285.31	1,253.85
	Oct-13	Oct-14	Oct-15	Oct-16	Oct-17	Oct-18	Oct-19	Oct-20	Oct-21	
Current	1,763,427.69	1,428,270.43	981,981.23	558,316.77	357,274.31	180,175.33	86,038.18	20,160.94	1,253.85	
1-30 Days	10,828.52	22,291.77	21,347.06	77,976.77	53,752.27	20,694.16	-	5,054.04	-	
31-60 Days	-	24,103.35	15,285.04	14,410.47	-	26,512.06	4,880.23	-	-	
61-90 Days	8,614.85	-	5,683.66	11,338.25	29,404.65	13,041.98	11,125.05	1,442.60	-	
91-120 Days	-	20,921.15	12,371.40	10,260.60	42,918.54	-	-	5,213.70	-	
121-150 Days	-	-	-	-	-	4,159.81	8,772.94	-	-	
151-180 Days	6,092.06	-	-	14,316.31	4,665.55	7,598.54	1,969.28	-	-	
181+ Days	-	-	-	-	-	11,513.34	-	4,414.03	-	

Delinquency Status (% of Current Balance)

Current Portfolio Balance	-	1,788,963.12	1,495,586.70	1,036,668.39	686,619.17	488,015.32	263,695.22	112,785.68	36,285.31	1,253.85
	Oct-13	Oct-14	Oct-15	Oct-16	Oct-17	Oct-18	Oct-19	Oct-20	Oct-21	
Current	98.57%	95.50%	94.72%	81.31%	73.21%	68.33%	76.28%	55.56%	100.00%	
1-30 Days	0.61%	1.49%	2.06%	11.36%	11.01%	7.85%	0.00%	13.93%	0.00%	
31-60 Days	0.00%	1.61%	1.47%	2.10%	0.00%	10.05%	4.33%	0.00%	0.00%	
61-90 Days	0.48%	0.00%	0.55%	1.65%	6.03%	4.95%	9.86%	3.98%	0.00%	
91-120 Days	0.00%	1.40%	1.19%	1.49%	8.79%	0.00%	0.00%	14.37%	0.00%	
121-150 Days	0.00%	0.00%	0.00%	0.00%	0.00%	1.58%	7.78%	0.00%	0.00%	
151-180 Days	0.34%	0.00%	0.00%	2.09%	0.96%	2.88%	1.75%	0.00%	0.00%	
181+ Days	0.00%	0.00%	0.00%	0.00%	0.00%	4.37%	0.00%	12.16%	0.00%	
Current - 90 Days	99.66%	98.60%	98.81%	96.42%	90.25%	91.17%	90.48%	73.47%	100.00%	
91-180 Days	0.34%	1.40%	1.19%	3.58%	9.75%	4.46%	9.52%	14.37%	0.00%	



Personal Loans - La Hipotecaria El Salvador Migration Analysis (2014 Vintage)

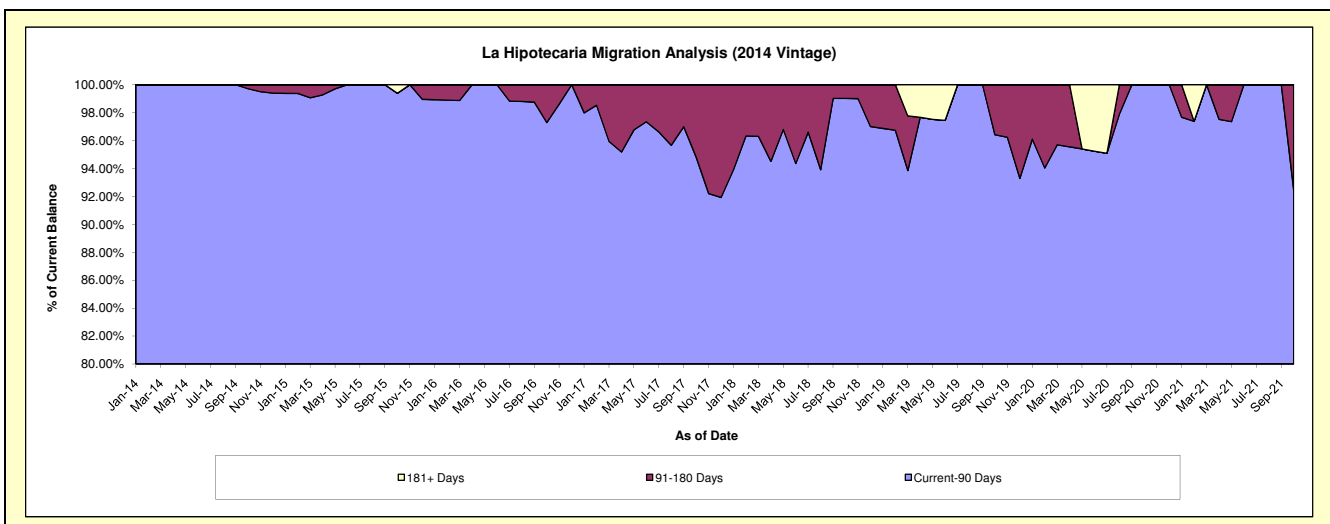
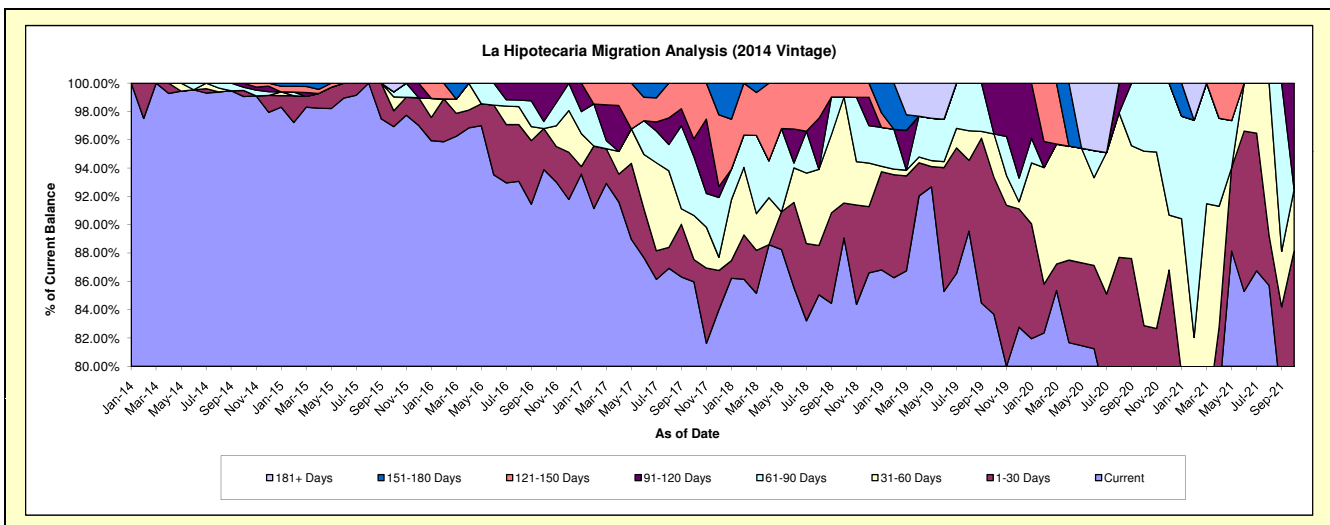
Delinquency Status (\$ of Current Balance)

Data Cutoff: 10/31/2021

Current Portfolio Balance	-	-	2,273,473.31	1,817,222.82	1,191,952.64	735,717.24	462,989.52	271,641.18	147,370.46	42,550.60
	Oct-14	Oct-15	Oct-16	Oct-17	Oct-18	Oct-19	Oct-20	Oct-21		
Current	2,251,997.35	1,761,464.35	1,119,172.89	632,506.54	412,371.44	227,276.67	116,385.31	34,041.23		
1-30 Days	9,678.94	20,290.26	34,538.03	11,558.35	11,424.09	26,280.10	5,753.98	3,472.41		
31-60 Days	-	17,952.45	-	22,921.68	34,648.91	8,353.69	18,144.20	1,841.34		
61-90 Days	5,276.93	6,444.88	5,977.47	30,539.57	-	-	7,086.97	-		
91-120 Days	6,520.09	-	32,264.25	9,286.55	-	9,730.72	-	3,195.62		
121-150 Days	-	-	-	28,904.55	4,545.08	-	-	-		
151-180 Days	-	-	-	-	-	-	-	-		
181+ Days	-	11,070.88	-	-	-	-	-	-		

Delinquency Status (% of Current Balance)

Current Portfolio Balance	-	-	2,273,473.31	1,817,222.82	1,191,952.64	735,717.24	462,989.52	271,641.18	147,370.46	42,550.60
	Oct-14	Oct-15	Oct-16	Oct-17	Oct-18	Oct-19	Oct-20	Oct-21		
Current	99.06%	96.93%	93.89%	85.97%	89.07%	83.67%	78.97%	80.00%		
1-30 Days	0.43%	1.12%	2.90%	1.57%	2.47%	9.67%	3.90%	8.16%		
31-60 Days	0.00%	0.99%	0.00%	3.12%	7.48%	3.08%	12.31%	4.33%		
61-90 Days	0.23%	0.35%	0.50%	4.15%	0.00%	0.00%	4.81%	0.00%		
91-120 Days	0.29%	0.00%	2.71%	1.26%	0.00%	3.58%	0.00%	7.51%		
121-150 Days	0.00%	0.00%	0.00%	3.93%	0.98%	0.00%	0.00%	0.00%		
151-180 Days	0.00%	0.00%	0.00%	0.00%	0.00%	0.00%	0.00%	0.00%		
181+ Days	0.00%	0.61%	0.00%	0.00%	0.00%	0.00%	0.00%	0.00%		
Current - 90 Days	99.71%	99.39%	97.29%	94.81%	99.02%	96.42%	100.00%	92.49%		
91-180 Days	0.29%	0.00%	2.71%	5.19%	0.98%	3.58%	0.00%	7.51%		



Personal Loans - La Hipotecaria El Salvador Migration Analysis (2015 Vintage)

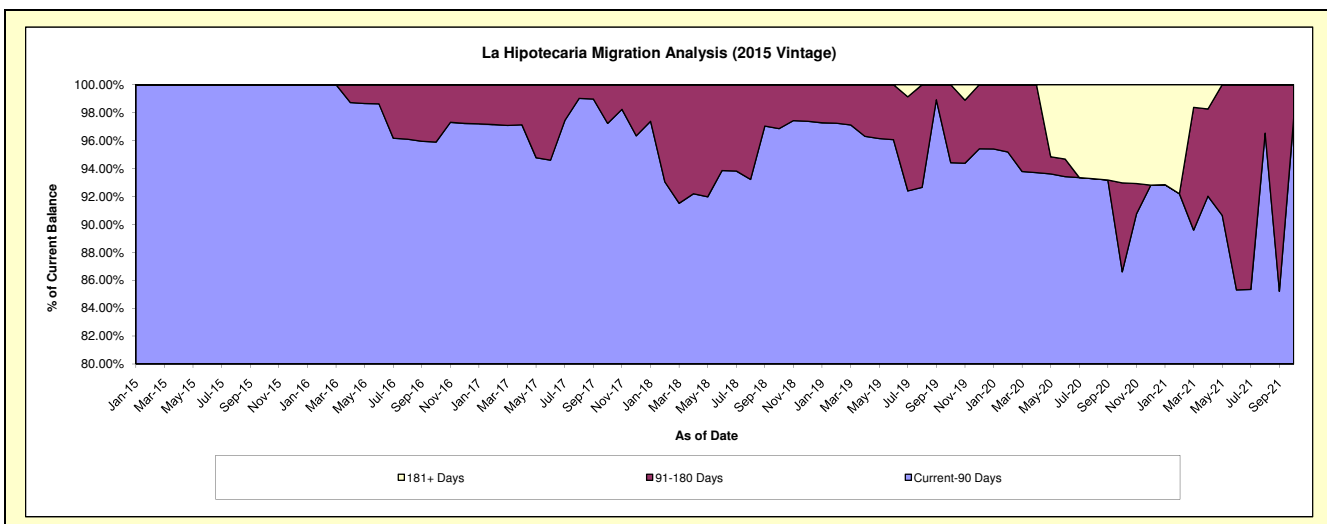
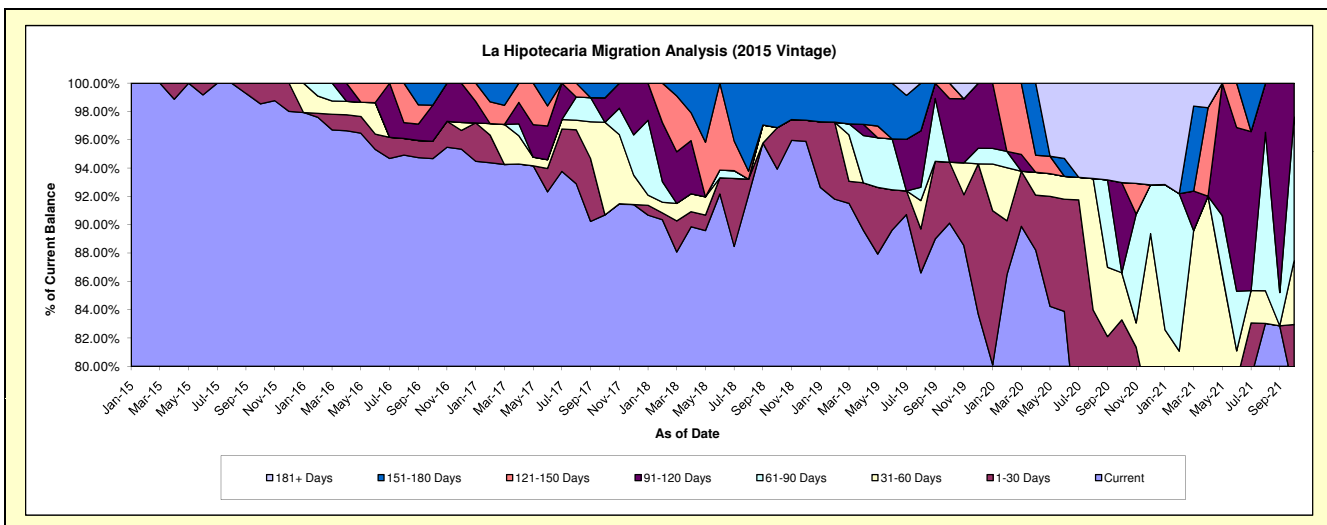
Delinquency Status (\$ of Current Balance)

Data Cutoff: 10/31/2021

Current Portfolio Balance	-	-	-	1,265,121.69	1,166,036.26	810,948.49	532,869.20	314,928.25	242,376.29	152,158.18
				Oct-15	Oct-16	Oct-17	Oct-18	Oct-19	Oct-20	Oct-21
Current				1,246,609.44	1,103,872.42	735,493.96	500,526.55	283,804.94	180,910.38	118,871.76
1-30 Days				18,512.25	14,294.66	-	15,610.01	13,545.69	20,943.34	7,343.79
31-60 Days				-	-	53,045.88	-	-	8,064.68	6,875.02
61-90 Days				-	-	-	-	-	-	15,422.94
91-120 Days				-	29,735.45	14,012.75	-	14,142.88	15,429.09	3,644.67
121-150 Days				-	-	-	-	3,434.74	-	-
151-180 Days				-	18,133.73	8,395.90	16,732.64	-	-	-
181+ Days				-	-	-	-	-	17,028.80	-

Delinquency Status (% of Current Balance)

Current Portfolio Balance	-	-	-	1,265,121.69	1,166,036.26	810,948.49	532,869.20	314,928.25	242,376.29	152,158.18
				Oct-15	Oct-16	Oct-17	Oct-18	Oct-19	Oct-20	Oct-21
Current				98.54%	94.67%	90.70%	93.93%	90.12%	74.64%	78.12%
1-30 Days				1.46%	1.23%	0.00%	2.93%	4.30%	8.64%	4.83%
31-60 Days				0.00%	0.00%	6.54%	0.00%	0.00%	3.33%	4.52%
61-90 Days				0.00%	0.00%	0.00%	0.00%	0.00%	0.00%	10.14%
91-120 Days				0.00%	2.55%	1.73%	0.00%	4.49%	6.37%	2.40%
121-150 Days				0.00%	0.00%	0.00%	0.00%	1.09%	0.00%	0.00%
151-180 Days				0.00%	1.56%	1.04%	3.14%	0.00%	0.00%	0.00%
181+ Days				0.00%	0.00%	0.00%	0.00%	0.00%	7.03%	0.00%
Current - 90 Days				100.00%	95.89%	97.24%	96.86%	94.42%	86.61%	97.60%
91-180 Days				0.00%	4.11%	2.76%	3.14%	5.58%	6.37%	2.40%



Personal Loans - La Hipotecaria El Salvador Migration Analysis (2016 Vintage)

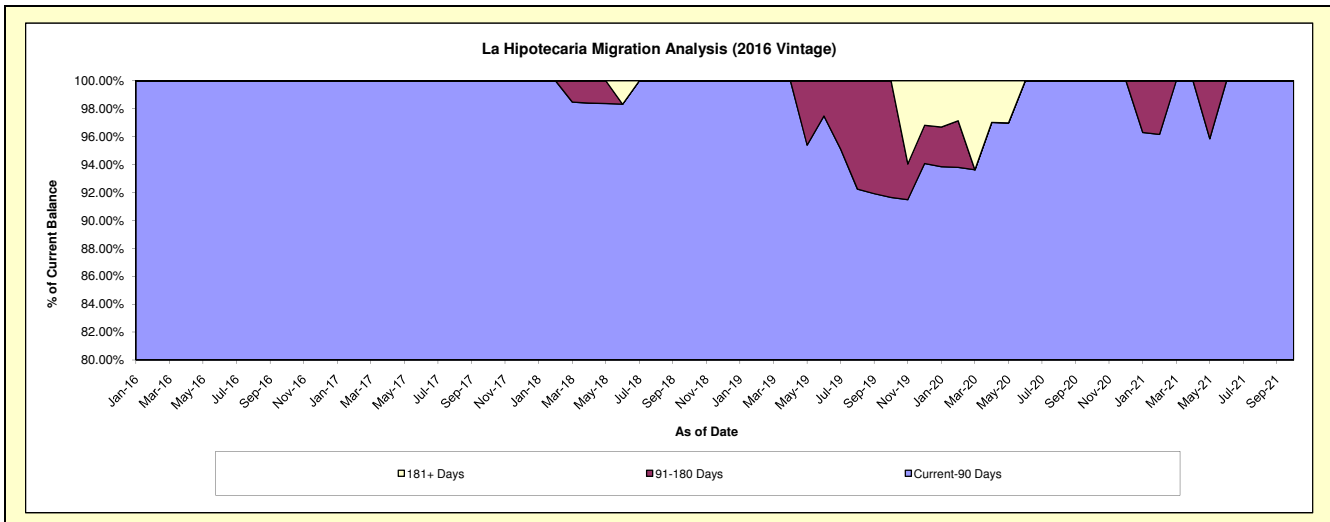
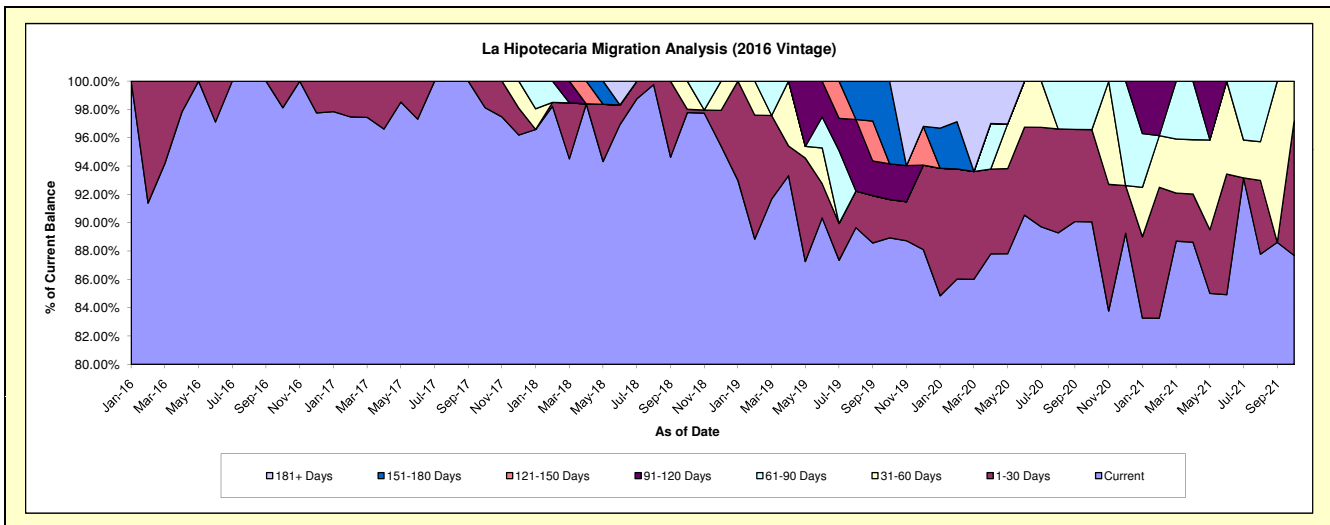
Delinquency Status (\$ of Current Balance)

Data Cutoff: 10/31/2021

Current Portfolio Balance	-	-	-	-	1,059,242.50	1,000,988.45	739,817.92	567,889.95	420,343.18	284,133.85
					Oct-16	Oct-17	Oct-18	Oct-19	Oct-20	Oct-21
Current					1,039,350.26	982,256.39	723,401.15	505,059.62	378,565.55	249,147.61
1-30 Days					19,892.24	18,732.06	1,699.23	15,402.31	27,395.50	27,034.15
31-60 Days					-	-	14,717.54	-	-	7,952.09
61-90 Days					-	-	-	-	14,382.13	-
91-120 Days					-	-	-	14,287.22	-	-
121-150 Days					-	-	-	-	-	-
151-180 Days					-	-	-	33,140.80	-	-
181+ Days					-	-	-	-	-	-

Delinquency Status (% of Current Balance)

Current Portfolio Balance	-	-	-	-	1,059,242.50	1,000,988.45	739,817.92	567,889.95	420,343.18	284,133.85
					Oct-16	Oct-17	Oct-18	Oct-19	Oct-20	Oct-21
Current					98.12%	98.13%	97.78%	88.94%	90.06%	87.69%
1-30 Days					1.88%	1.87%	0.23%	2.71%	6.52%	9.51%
31-60 Days					0.00%	0.00%	1.99%	0.00%	0.00%	2.80%
61-90 Days					0.00%	0.00%	0.00%	0.00%	3.42%	0.00%
91-120 Days					0.00%	0.00%	0.00%	2.52%	0.00%	0.00%
121-150 Days					0.00%	0.00%	0.00%	0.00%	0.00%	0.00%
151-180 Days					0.00%	0.00%	0.00%	5.84%	0.00%	0.00%
181+ Days					0.00%	0.00%	0.00%	0.00%	0.00%	0.00%
Current - 90 Days					100.00%	100.00%	100.00%	91.65%	100.00%	100.00%
91-180 Days					0.00%	0.00%	0.00%	8.35%	0.00%	0.00%



Personal Loans - La Hipotecaria El Salvador Migration Analysis (2017 Vintage)

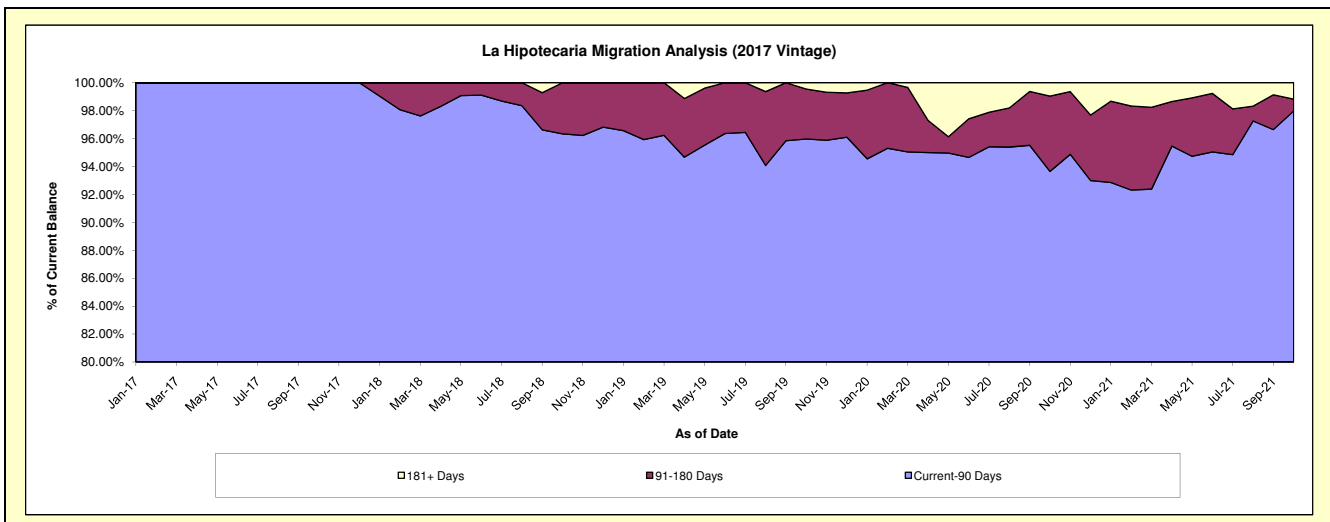
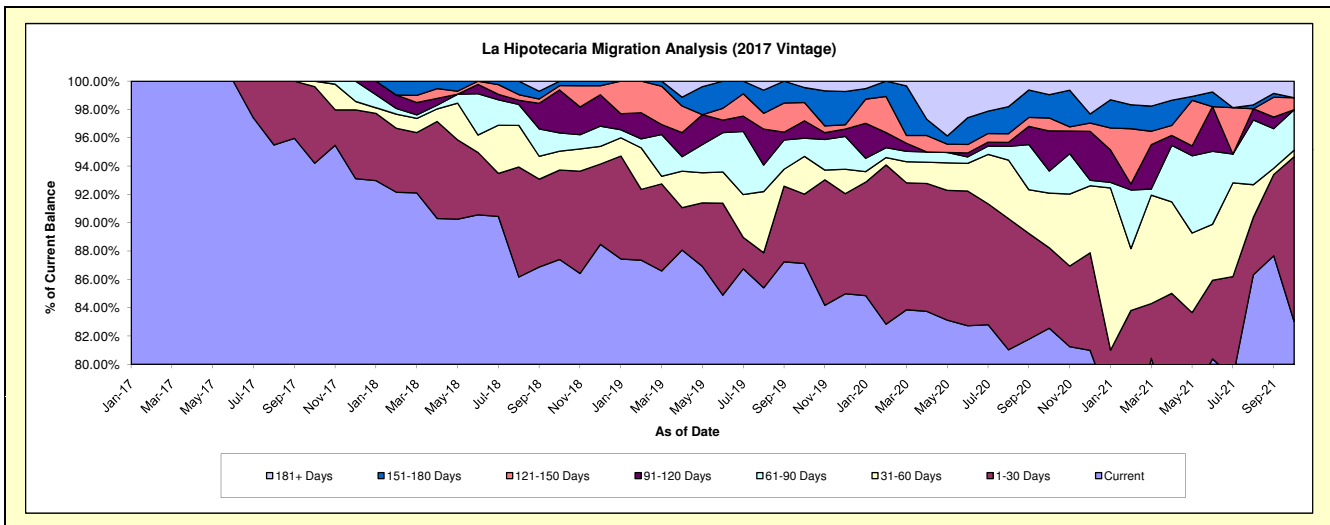
Delinquency Status (\$ of Current Balance)

Data Cutoff: 10/31/2021

Current Portfolio Balance	-	-	-	-	-	1,838,687.80	1,571,002.47	1,047,214.75	742,292.64	509,710.47
						Oct-17	Oct-18	Oct-19	Oct-20	Oct-21
Current						1,732,177.89	1,373,181.22	912,329.87	612,759.22	423,208.97
1-30 Days						99,409.60	99,232.81	51,358.29	42,142.25	59,310.97
31-60 Days						7,100.31	20,977.49	27,888.02	28,682.87	2,337.31
61-90 Days						-	20,149.38	13,491.67	11,595.98	14,567.93
91-120 Days						-	47,649.32	12,813.74	21,021.12	-
121-150 Days						-	4,886.51	13,490.78	6,805.25	4,302.31
151-180 Days						-	4,925.74	11,109.29	12,221.62	-
181+ Days						-	-	4,733.09	7,064.33	5,982.98

Delinquency Status (% of Current Balance)

Current Portfolio Balance	-	-	-	-	-	1,838,687.80	1,571,002.47	1,047,214.75	742,292.64	509,710.47
						Oct-17	Oct-18	Oct-19	Oct-20	Oct-21
Current						94.21%	87.41%	87.12%	82.55%	83.03%
1-30 Days						5.41%	6.32%	4.90%	5.68%	11.64%
31-60 Days						0.39%	1.34%	2.66%	3.86%	0.46%
61-90 Days						0.00%	1.28%	1.29%	1.56%	2.86%
91-120 Days						0.00%	3.03%	1.22%	2.83%	0.00%
121-150 Days						0.00%	0.31%	1.29%	0.92%	0.84%
151-180 Days						0.00%	0.31%	1.06%	1.65%	0.00%
181+ Days						0.00%	0.00%	0.45%	0.95%	1.17%
Current - 90 Days						100.00%	96.34%	95.98%	93.85%	97.98%
91-180 Days						0.00%	3.66%	3.57%	5.40%	0.84%



Personal Loans - La Hipotecaria El Salvador Migration Analysis (2018 Vintage)

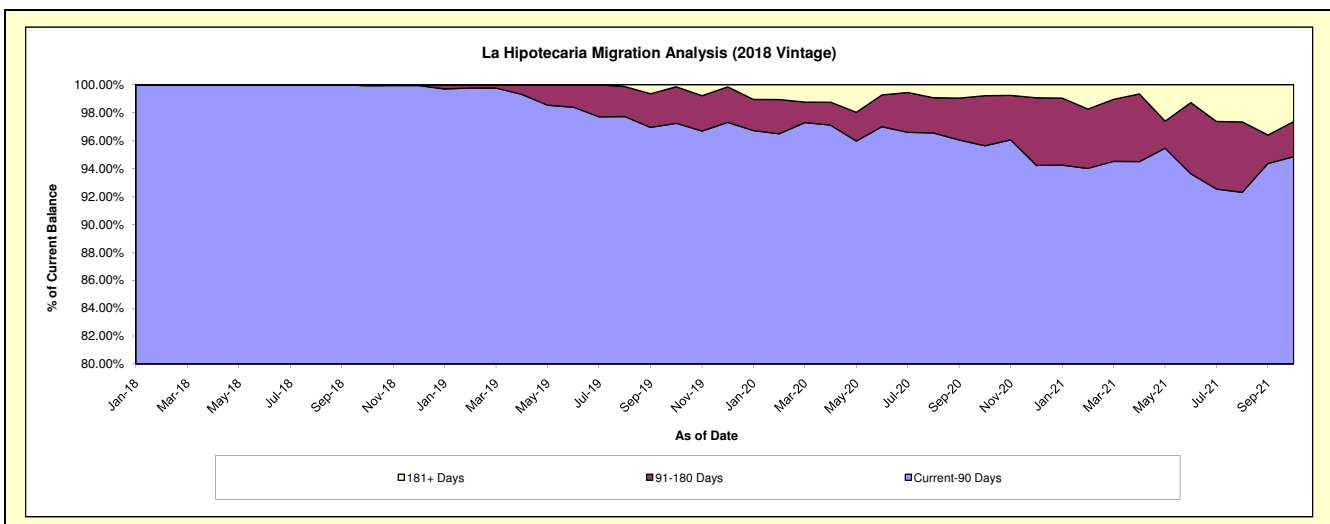
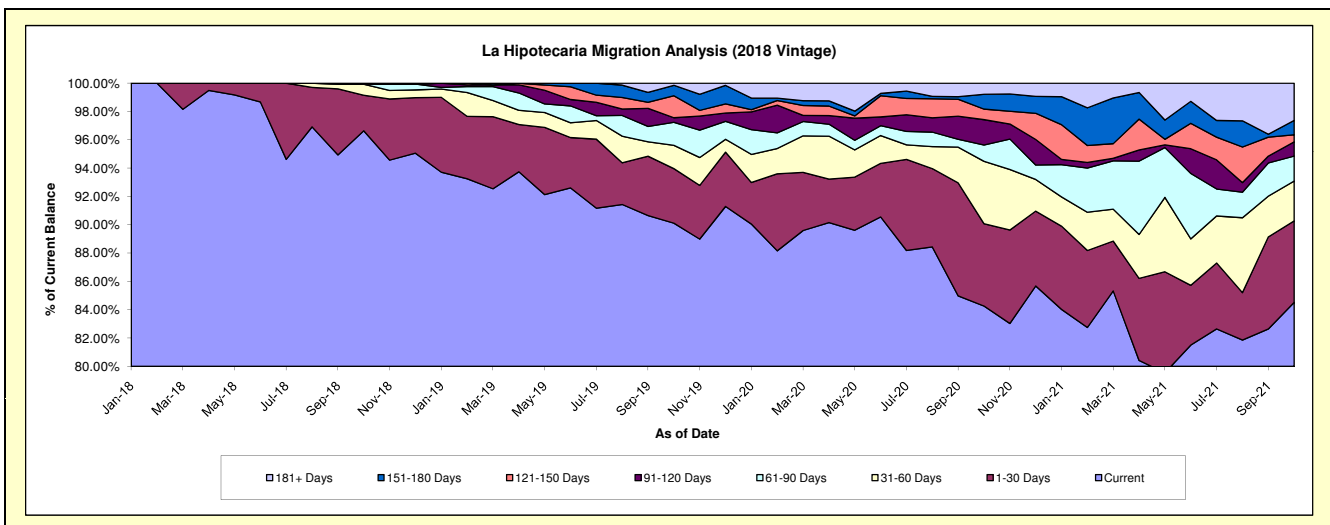
Delinquency Status (\$ of Current Balance)

Data Cutoff: 10/31/2021

Current Portfolio Balance	-	-	-	-	-	-	-	3,647,448.98	3,336,692.39	2,654,048.11	2,028,033.57
								Oct-18	Oct-19	Oct-20	Oct-21
Current								3,524,818.98	3,006,768.03	2,236,356.36	1,714,031.47
1-30 Days								91,425.18	128,432.15	154,359.86	116,699.90
31-60 Days								28,448.19	55,035.37	116,829.30	57,101.15
61-90 Days								-	54,323.68	30,501.54	35,702.14
91-120 Days								2,756.63	10,664.23	47,618.02	20,455.04
121-150 Days								-	51,712.73	19,788.69	10,158.62
151-180 Days								-	24,820.55	27,650.18	20,442.74
181+ Days								-	4,935.65	20,944.16	53,442.51

Delinquency Status (% of Current Balance)

Current Portfolio Balance	-	-	-	-	-	-	-	3,647,448.98	3,336,692.39	2,654,048.11	2,028,033.57
								Oct-18	Oct-19	Oct-20	Oct-21
Current								96.64%	90.11%	84.26%	84.52%
1-30 Days								2.51%	3.85%	5.82%	5.75%
31-60 Days								0.78%	1.65%	4.40%	2.82%
61-90 Days								0.00%	1.63%	1.15%	1.76%
91-120 Days								0.08%	0.32%	1.79%	1.01%
121-150 Days								0.00%	1.55%	0.75%	0.50%
151-180 Days								0.00%	0.74%	1.04%	1.01%
181+ Days								0.00%	0.15%	0.79%	2.64%
Current - 90 Days								99.92%	97.24%	95.63%	94.85%
91-180 Days								0.08%	2.61%	3.58%	2.52%



Personal Loans - La Hipotecaria El Salvador Migration Analysis (2019 Vintage)

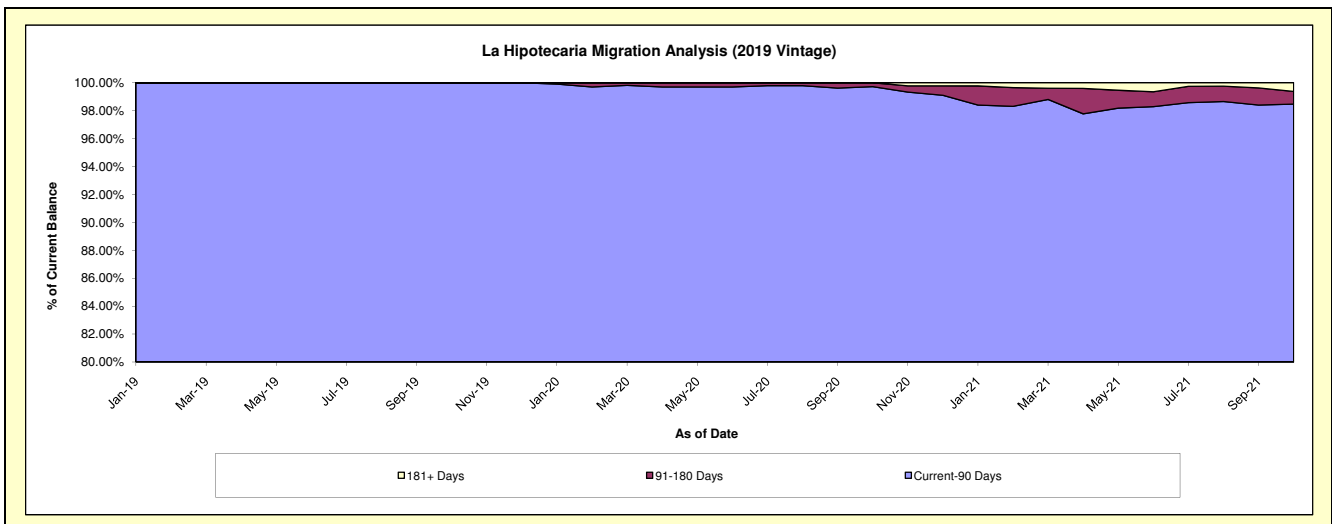
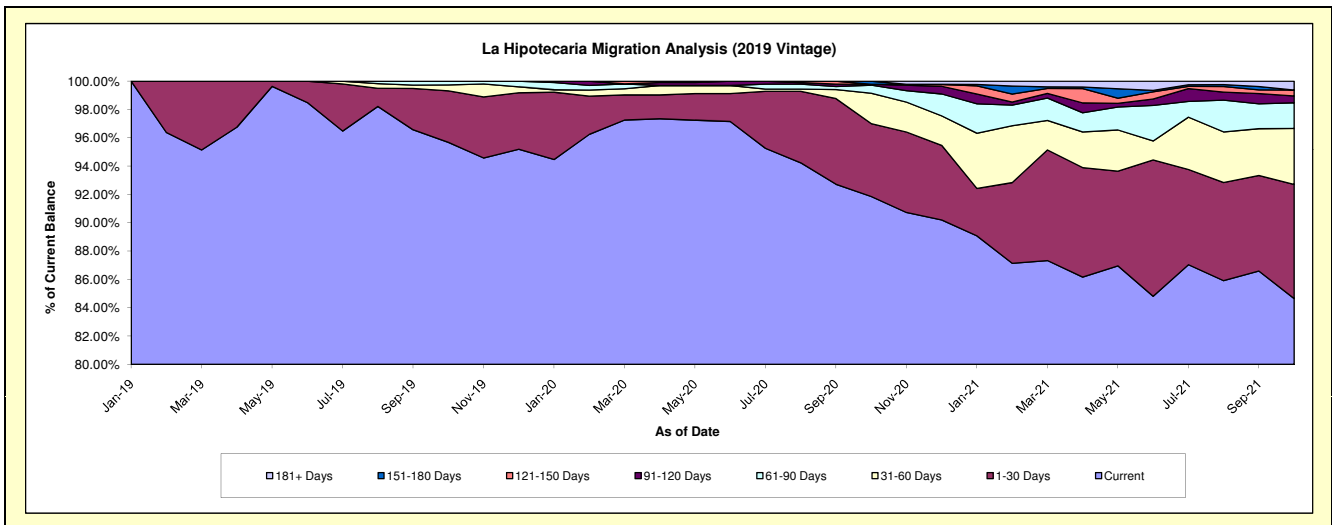
Delinquency Status (\$ of Current Balance)

Data Cutoff: 10/31/2021

Current Portfolio Balance													
										4,607,152.89	4,746,648.01	3,612,692.55	
											Oct-19	Oct-20	Oct-21
Current										4,408,002.41	4,360,058.13	3,057,908.09	
1-30 Days										167,528.59	244,317.37	291,355.08	
31-60 Days										19,546.62	101,861.24	142,671.57	
61-90 Days										12,075.27	27,031.72	65,618.74	
91-120 Days										-	3,026.54	17,421.39	
121-150 Days										-	-	15,107.05	
151-180 Days										-	10,353.01	-	
181+ Days										-	-	22,610.63	

Delinquency Status (% of Current Balance)

Current Portfolio Balance													
										4,607,152.89	4,746,648.01	3,612,692.55	
											Oct-19	Oct-20	Oct-21
Current										95.68%	91.86%	84.64%	
1-30 Days										3.64%	5.15%	8.06%	
31-60 Days										0.42%	2.15%	3.95%	
61-90 Days										0.26%	0.57%	1.82%	
91-120 Days										0.00%	0.06%	0.48%	
121-150 Days										0.00%	0.00%	0.42%	
151-180 Days										0.00%	0.22%	0.00%	
181+ Days										0.00%	0.00%	0.63%	
Current - 90 Days										100.00%	99.72%	98.47%	
91-180 Days										0.00%	0.28%	0.90%	



Personal Loans - La Hipotecaria El Salvador Migration Analysis (2020 Vintage)

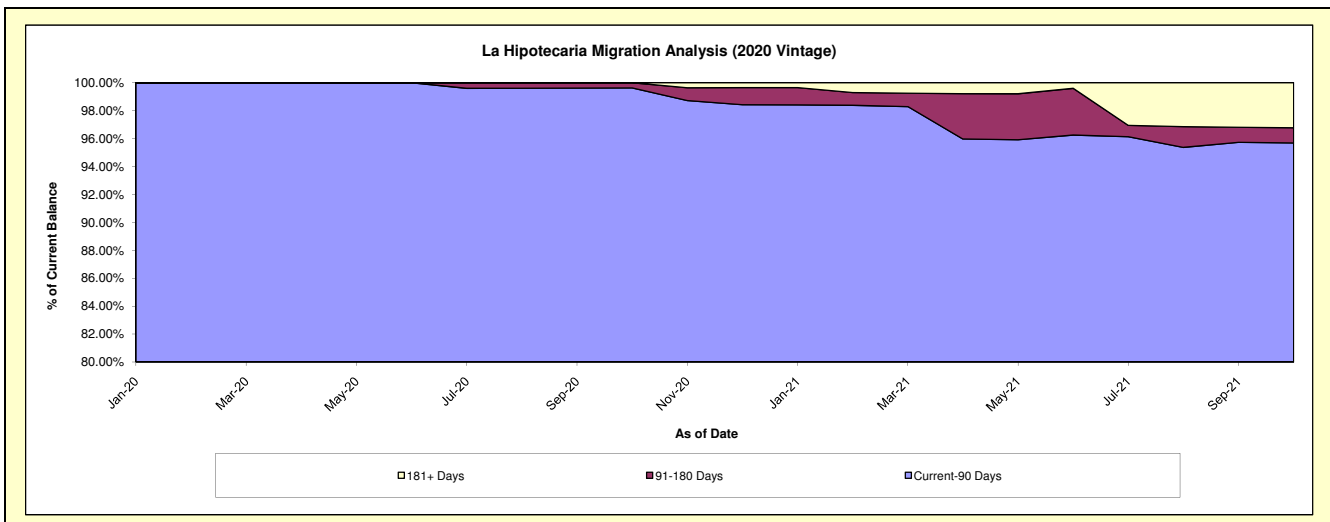
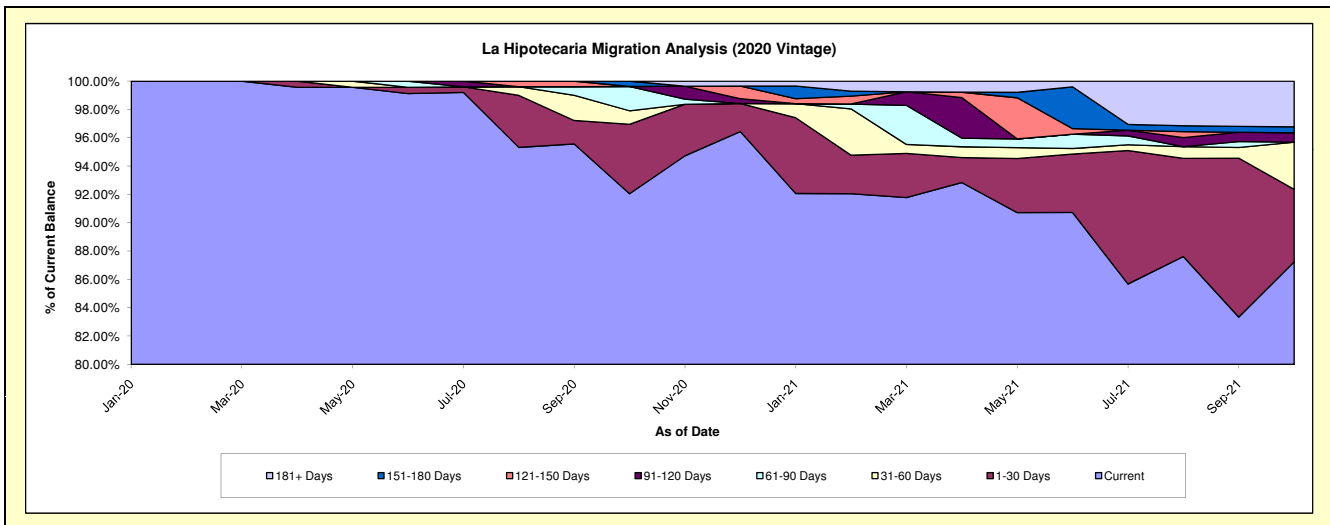
Delinquency Status (\$ of Current Balance)

Data Cutoff: 10/31/2021

Current Portfolio Balance										1,337,087.11	1,136,472.26
										Oct-20	Oct-21
Current										1,230,783.02	991,374.46
1-30 Days										65,540.42	58,257.94
31-60 Days										12,801.70	37,836.18
61-90 Days										22,961.97	-
91-120 Days										-	7,535.44
121-150 Days										-	-
151-180 Days										5,000.00	4,848.70
181+ Days										-	36,619.54

Delinquency Status (% of Current Balance)

Current Portfolio Balance										1,337,087.11	1,136,472.26
										Oct-20	Oct-21
Current										92.05%	87.23%
1-30 Days										4.90%	5.13%
31-60 Days										0.96%	3.33%
61-90 Days										1.72%	0.00%
91-120 Days										0.00%	0.66%
121-150 Days										0.00%	0.00%
151-180 Days										0.37%	0.43%
181+ Days										0.00%	3.22%
Current - 90 Days										99.63%	95.69%
91-180 Days										0.37%	1.09%



Personal Loans - La Hipotecaria El Salvador Migration Analysis (2021 Vintage)

Delinquency Status (\$ of Current Balance)

Data Cutoff: 10/31/2021

Current Portfolio Balance	-	-	-	-	-	-	-	-	-	-	-	-	-	-	-	-	-	-	-	-	556,791.41
	Oct-21																				
Current																					556,791.41
1-30 Days																					-
31-60 Days																					-
61-90 Days																					-
91-120 Days																					-
121-150 Days																					-
151-180 Days																					-
181+ Days																					-

Delinquency Status (% of Current Balance)

Current Portfolio Balance	-	-	-	-	-	-	-	-	-	-	-	-	-	-	-	-	-	-	-	-	556,791.41
	Oct-21																				
Current																					100.00%
1-30 Days																					0.00%
31-60 Days																					0.00%
61-90 Days																					0.00%
91-120 Days																					0.00%
121-150 Days																					0.00%
151-180 Days																					0.00%
181+ Days																					0.00%
Current - 90 Days																					100.00%
91-180 Days																					0.00%

