



Migration Analysis for La Hipotecaria S.A. de C.V El Salvador

Mortgages December 2021

An analysis of historical loan payment data was used to compile a migration analysis of delinquency by annual vintage. Delinquencies for each vintage were grouped into the following buckets; Current, 1-30, 31-60, 61-90, 91-120, 121-150, 151-180, and 180+. Results are provided in graphical and tabular form. The cutoff date is 12/31/2021.

Mortgages - La Hipotecaria El Salvador Migration Analysis (All Vintages)

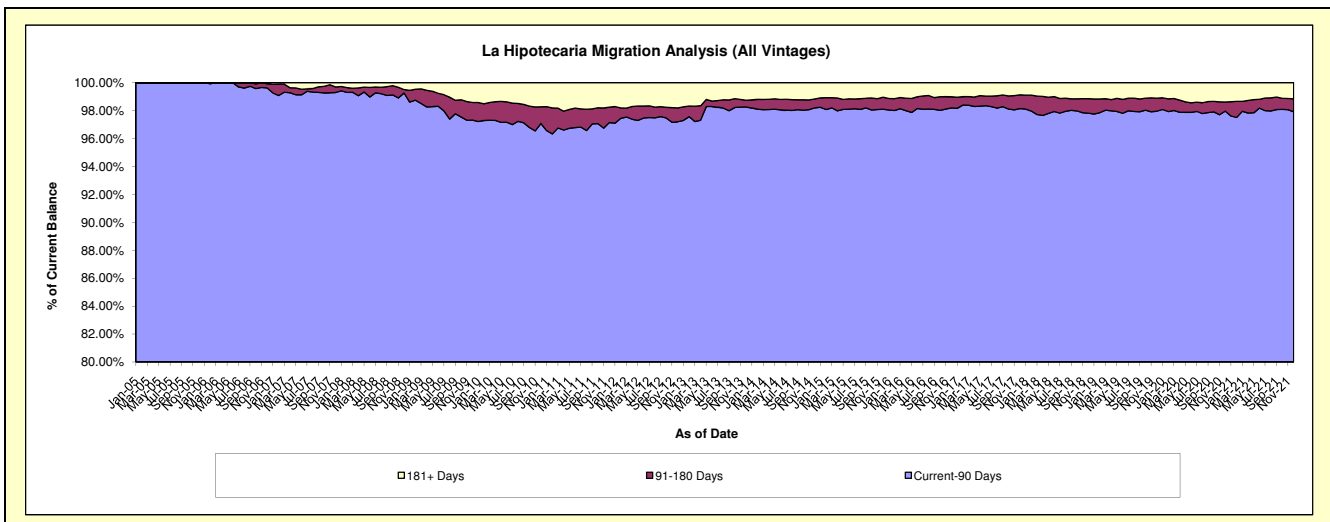
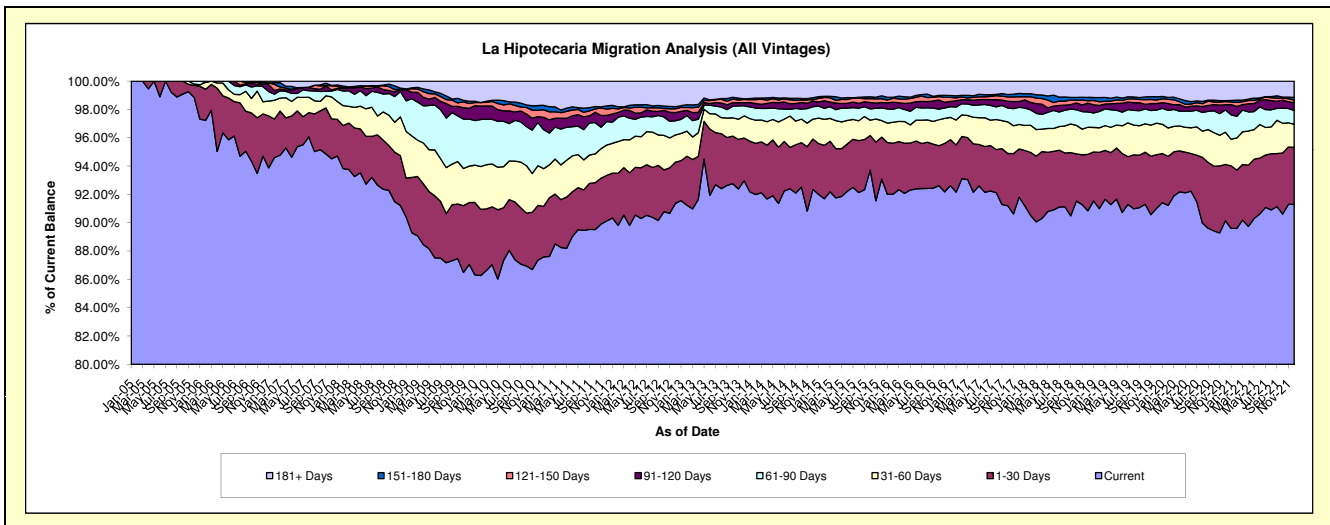
Delinquency Status (\$ of Current Balance)

Data Cutoff: 12/31/2021

Current Portfolio Balance	110,045,386.95	130,154,624.02	146,819,000.24	159,641,657.10	173,166,901.27	180,914,740.26	191,184,050.75	202,947,508.20	201,325,855.88	192,400,011.12
	Dec-12	Dec-13	Dec-14	Dec-15	Dec-16	Dec-17	Dec-18	Dec-19	Dec-20	Dec-21
Current	100,550,745.67	121,005,782.49	135,589,569.56	148,616,244.42	160,405,500.41	166,103,136.43	173,696,706.61	184,735,418.79	181,484,780.29	175,646,071.83
1-30 Days	3,200,551.95	3,917,009.27	5,228,633.76	4,721,026.50	5,609,180.28	6,147,337.65	7,610,776.41	7,667,637.53	7,993,798.37	7,754,379.29
31-60 Days	2,112,512.16	2,043,813.11	2,067,662.58	1,857,744.32	2,727,568.28	3,138,815.99	3,655,958.63	4,528,834.51	4,591,570.80	3,136,694.07
61-90 Days	1,105,962.38	925,398.34	1,291,695.64	1,418,032.33	1,303,419.96	2,180,245.94	2,057,753.97	1,876,984.03	3,168,853.31	1,860,819.52
91-120 Days	636,604.93	288,342.92	567,845.70	626,494.99	646,071.05	762,606.79	1,196,999.25	940,303.01	733,189.42	1,084,584.87
121-150 Days	291,967.41	292,989.66	157,734.50	425,637.73	493,786.69	589,381.54	327,963.69	507,499.63	448,368.05	359,237.77
151-180 Days	160,054.71	52,316.57	201,849.46	323,783.95	236,617.83	428,198.40	452,805.63	448,175.58	135,347.19	350,234.84
181+ Days	1,986,987.74	1,628,971.66	1,714,009.04	1,652,692.86	1,744,756.77	1,565,017.52	2,185,086.56	2,242,655.12	2,769,948.45	2,207,988.93

Delinquency Status (% of Current Balance)

Current Portfolio Balance	110,045,386.95	130,154,624.02	146,819,000.24	159,641,657.10	173,166,901.27	180,914,740.26	191,184,050.75	202,947,508.20	201,325,855.88	192,400,011.12
	Dec-12	Dec-13	Dec-14	Dec-15	Dec-16	Dec-17	Dec-18	Dec-19	Dec-20	Dec-21
Current	91.37%	92.97%	92.35%	93.09%	92.63%	91.81%	90.85%	91.03%	90.14%	91.29%
1-30 Days	2.91%	3.01%	3.56%	2.96%	3.24%	3.40%	3.98%	3.78%	3.97%	4.03%
31-60 Days	1.92%	1.57%	1.41%	1.16%	1.58%	1.73%	1.91%	2.23%	2.28%	1.63%
61-90 Days	1.01%	0.71%	0.88%	0.89%	0.75%	1.21%	1.08%	0.92%	1.57%	0.97%
91-120 Days	0.58%	0.22%	0.39%	0.39%	0.37%	0.42%	0.63%	0.46%	0.36%	0.56%
121-150 Days	0.27%	0.23%	0.11%	0.27%	0.29%	0.33%	0.17%	0.25%	0.22%	0.19%
151-180 Days	0.15%	0.04%	0.14%	0.20%	0.14%	0.24%	0.24%	0.22%	0.07%	0.18%
181+ Days	1.81%	1.25%	1.17%	1.04%	1.01%	0.87%	1.14%	1.11%	1.38%	1.15%
Current - 90 Days	97.21%	98.26%	98.20%	98.10%	98.20%	98.15%	97.82%	97.96%	97.97%	97.92%
91-180 Days	0.99%	0.49%	0.63%	0.86%	0.79%	0.98%	1.03%	0.93%	0.65%	0.93%



Mortgages - La Hipotecaria El Salvador Migration Analysis (2005 Vintage)

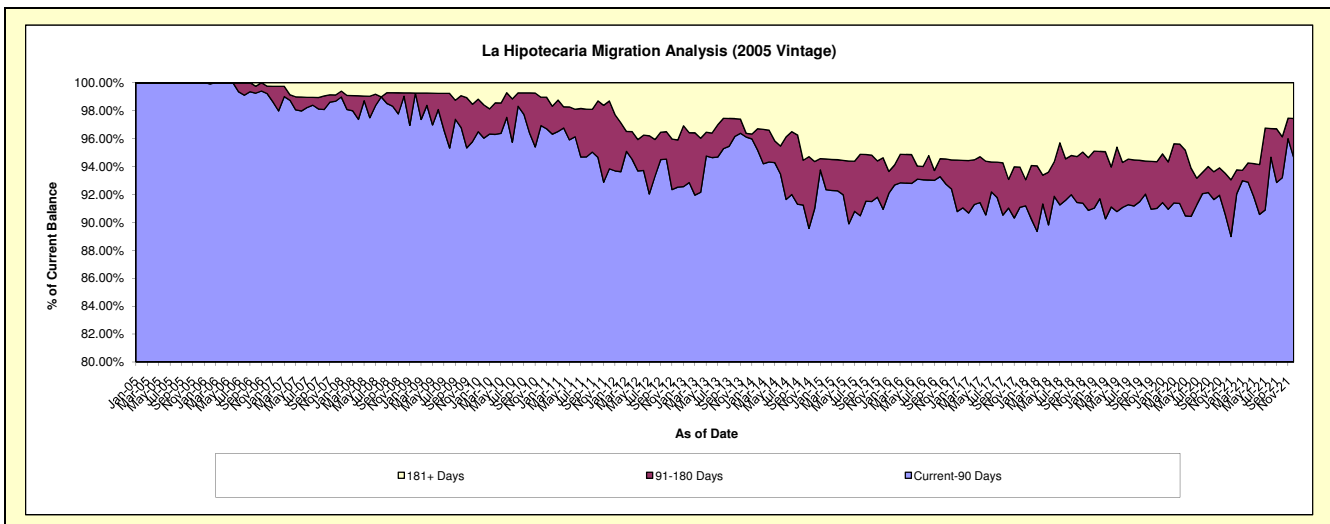
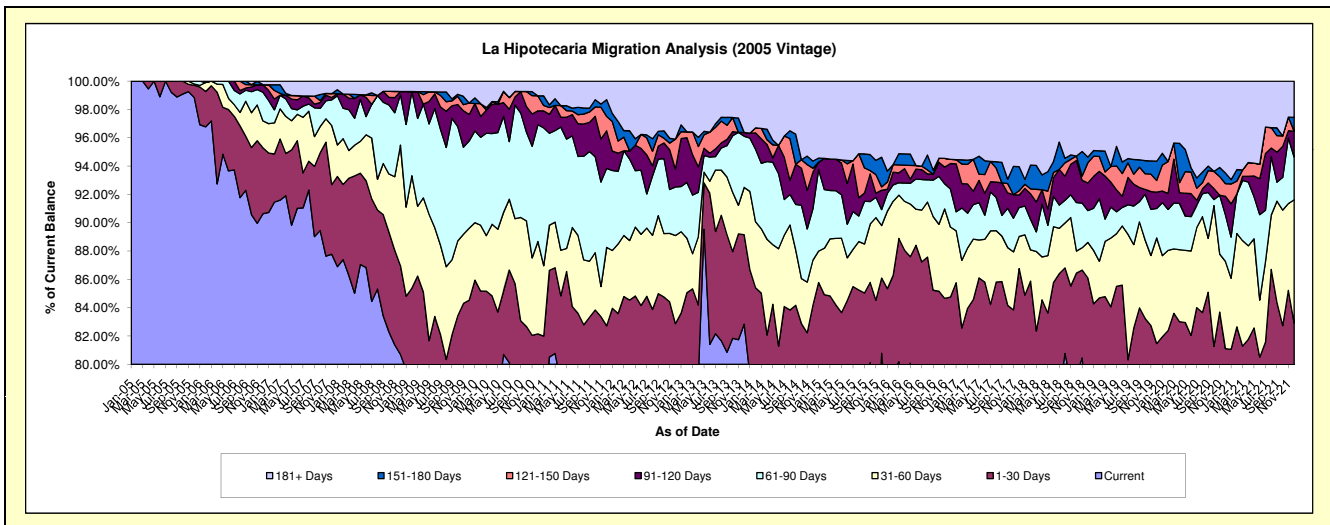
Delinquency Status (\$ of Current Balance)

Data Cutoff: 12/31/2021

Current Portfolio Balance	5,673,853.01	5,094,388.02	4,524,510.95	4,188,926.68	3,868,600.11	3,561,991.25	3,081,472.31	2,823,801.70	2,545,417.89	2,261,746.06
	Dec-12	Dec-13	Dec-14	Dec-15	Dec-16	Dec-17	Dec-18	Dec-19	Dec-20	Dec-21
Current	4,416,735.16	4,220,206.04	3,585,094.95	3,383,842.72	2,961,073.11	2,719,775.35	2,380,367.69	2,111,512.02	1,897,703.36	1,779,563.62
1-30 Days	285,515.88	321,736.02	223,947.93	222,592.87	317,494.75	370,518.55	273,039.29	189,035.55	167,047.41	95,708.56
31-60 Days	353,130.76	170,355.95	143,459.86	155,417.04	191,551.74	81,223.24	77,096.11	210,584.62	156,825.30	196,992.95
61-90 Days	194,322.18	183,926.08	164,209.78	47,323.46	104,137.34	72,669.80	69,405.24	58,704.06	83,400.83	68,218.99
91-120 Days	71,547.21	13,446.53	116,906.71	57,122.32	69,197.54	31,456.13	60,171.85	32,695.01	33,607.46	41,451.68
121-150 Days	119,988.89	-	12,560.97	9,967.73	11,442.37	10,644.95	43,966.87	23,268.78	22,684.02	-
151-180 Days	-	-	23,078.13	87,634.45	-	60,625.99	12,172.58	38,288.25	19,050.52	21,882.89
181+ Days	232,612.93	184,717.40	255,252.62	225,026.09	213,703.26	215,077.24	165,252.68	159,713.41	165,098.99	57,927.37

Delinquency Status (% of Current Balance)

Current Portfolio Balance	5,673,853.01	5,094,388.02	4,524,510.95	4,188,926.68	3,868,600.11	3,561,991.25	3,081,472.31	2,823,801.70	2,545,417.89	2,261,746.06
	Dec-12	Dec-13	Dec-14	Dec-15	Dec-16	Dec-17	Dec-18	Dec-19	Dec-20	Dec-21
Current	77.84%	82.84%	79.24%	80.78%	76.54%	76.36%	77.25%	74.78%	74.55%	78.68%
1-30 Days	5.03%	6.32%	4.95%	5.31%	8.21%	10.40%	8.86%	6.69%	6.56%	4.23%
31-60 Days	6.22%	3.34%	3.17%	3.71%	4.95%	2.28%	2.50%	7.46%	6.16%	8.71%
61-90 Days	3.42%	3.61%	3.63%	1.13%	2.69%	2.04%	2.25%	2.08%	3.28%	3.02%
91-120 Days	1.26%	0.26%	2.58%	1.36%	1.79%	0.88%	1.95%	1.16%	1.32%	1.83%
121-150 Days	2.11%	0.00%	0.28%	0.24%	0.30%	0.30%	1.43%	0.82%	0.89%	0.00%
151-180 Days	0.00%	0.00%	0.51%	2.09%	0.00%	1.70%	0.40%	1.36%	0.75%	0.97%
181+ Days	4.10%	3.63%	5.64%	5.37%	5.52%	6.04%	5.36%	5.66%	6.49%	2.56%
Current - 90 Days	92.52%	96.11%	90.99%	90.93%	92.39%	91.08%	90.86%	91.01%	90.55%	94.64%
91-180 Days	3.38%	0.26%	3.37%	3.69%	2.08%	2.88%	3.77%	3.34%	2.96%	2.80%



Mortgages - La Hipotecaria El Salvador Migration Analysis (2006 Vintage)

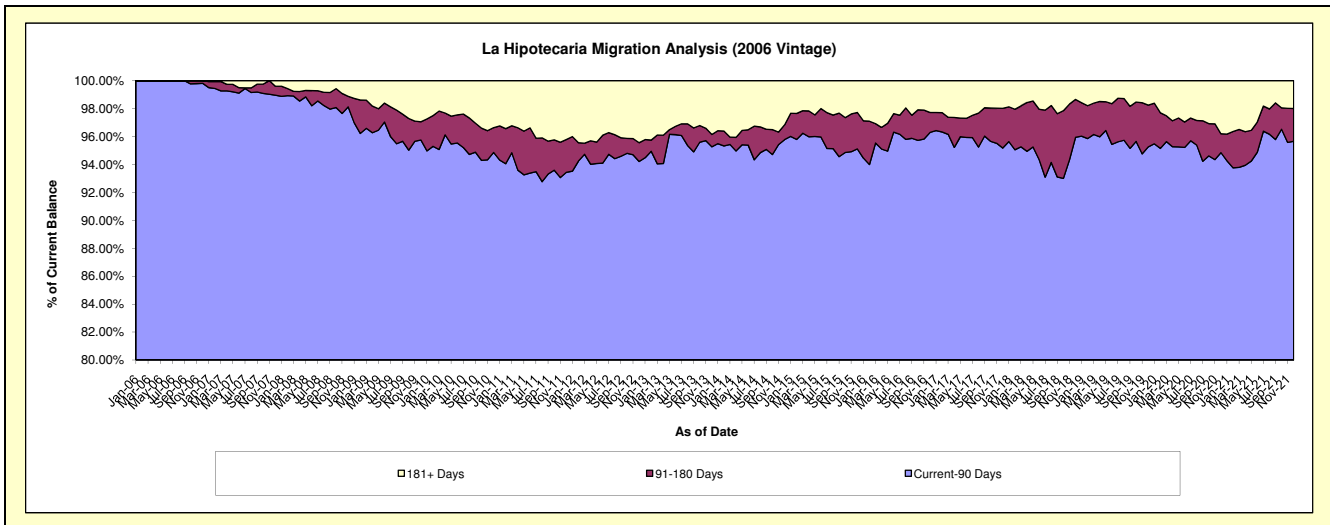
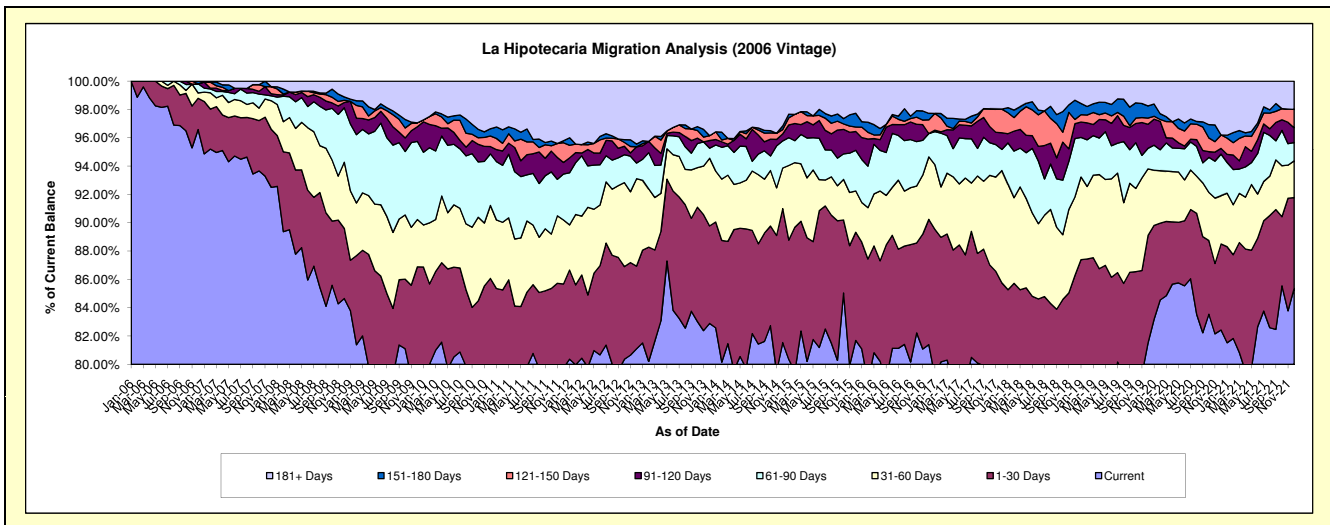
Delinquency Status (\$ of Current Balance)

Data Cutoff: 12/31/2021

Current Portfolio Balance	12,634,215.62	11,591,176.81	10,314,419.05	9,315,996.75	8,607,112.74	7,886,741.78	7,170,801.03	6,378,905.27	5,817,853.41	5,179,749.57
	Dec-12	Dec-13	Dec-14	Dec-15	Dec-16	Dec-17	Dec-18	Dec-19	Dec-20	Dec-21
Current	10,245,871.58	9,608,188.79	8,410,455.45	7,609,791.49	7,005,502.89	6,197,557.06	5,715,527.41	5,199,262.52	4,795,406.92	4,421,763.90
1-30 Days	738,095.52	798,314.17	975,179.15	712,049.75	761,773.19	565,767.79	470,968.26	484,147.51	353,460.19	332,277.29
31-60 Days	779,752.76	553,931.98	295,998.34	271,917.26	379,744.50	625,769.69	398,316.16	300,312.50	198,608.69	134,168.55
61-90 Days	140,087.54	82,409.95	197,570.09	267,435.57	141,662.52	117,491.93	295,377.71	92,836.80	170,838.29	66,991.65
91-120 Days	144,626.64	62,382.66	50,542.49	124,193.72	-	92,601.03	75,379.81	107,994.34	23,329.54	54,177.18
121-150 Days	-	40,006.68	31,676.63	29,029.69	83,197.37	131,695.29	21,494.68	27,939.24	55,139.75	67,262.26
151-180 Days	24,864.41	-	26,707.68	90,140.76	39,674.21	-	97,605.04	54,975.17	-	-
181+ Days	560,917.17	445,942.58	326,289.22	211,438.51	195,558.06	155,858.99	96,131.96	111,437.19	221,070.03	103,108.74

Delinquency Status (% of Current Balance)

Current Portfolio Balance	12,634,215.62	11,591,176.81	10,314,419.05	9,315,996.75	8,607,112.74	7,886,741.78	7,170,801.03	6,378,905.27	5,817,853.41	5,179,749.57
	Dec-12	Dec-13	Dec-14	Dec-15	Dec-16	Dec-17	Dec-18	Dec-19	Dec-20	Dec-21
Current	81.10%	82.89%	81.54%	81.69%	81.39%	78.58%	79.71%	81.51%	82.43%	85.37%
1-30 Days	5.84%	6.89%	9.45%	7.64%	8.85%	7.17%	6.57%	7.59%	6.08%	6.41%
31-60 Days	6.17%	4.78%	2.87%	2.92%	4.41%	7.93%	5.55%	4.71%	3.41%	2.59%
61-90 Days	1.11%	0.71%	1.92%	2.87%	1.65%	1.49%	4.12%	1.46%	2.94%	1.29%
91-120 Days	1.14%	0.54%	0.49%	1.33%	0.00%	1.17%	1.05%	1.69%	0.40%	1.05%
121-150 Days	0.00%	0.35%	0.31%	0.31%	0.97%	1.67%	0.30%	0.44%	0.95%	1.30%
151-180 Days	0.20%	0.00%	0.26%	0.97%	0.46%	0.00%	1.36%	0.86%	0.00%	0.00%
181+ Days	4.44%	3.85%	3.16%	2.27%	2.27%	1.98%	1.34%	1.75%	3.80%	1.99%
Current - 90 Days	94.22%	95.27%	95.78%	95.12%	96.30%	95.18%	95.95%	95.26%	94.85%	95.66%
91-180 Days	1.34%	0.88%	1.06%	2.61%	1.43%	2.84%	2.71%	2.99%	1.35%	2.34%



Mortgages - La Hipotecaria El Salvador Migration Analysis (2007 Vintage)

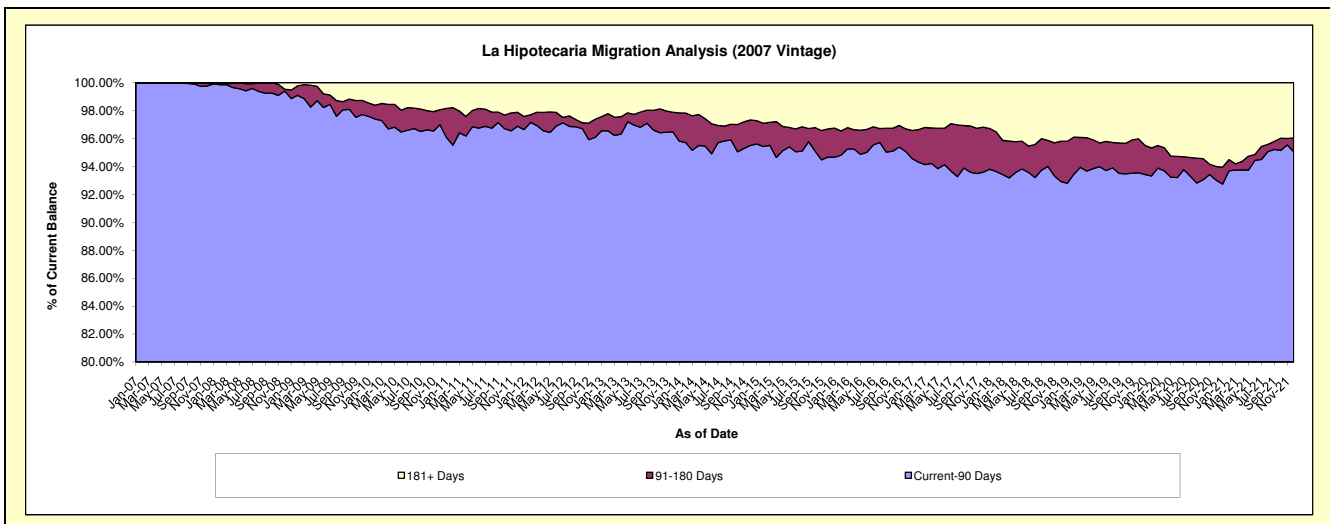
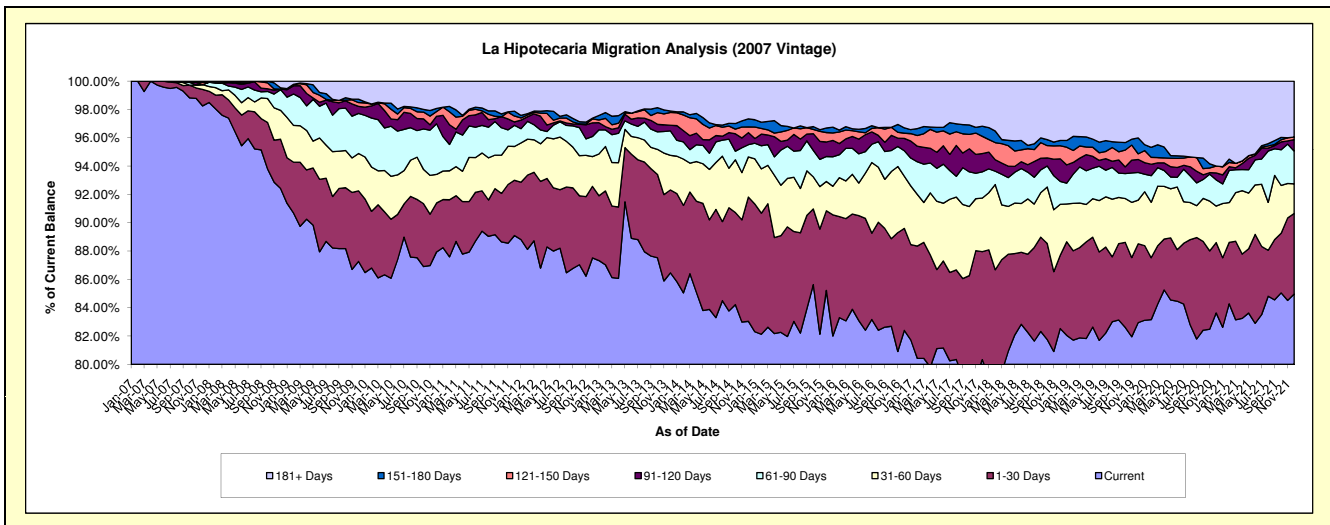
Delinquency Status (\$ of Current Balance)

Data Cutoff: 12/31/2021

Current Portfolio Balance	19,501,103.00	17,703,527.64	16,384,596.44	15,014,179.63	13,731,128.28	12,622,054.52	11,582,044.24	10,770,460.62	9,972,672.45	8,747,453.90
	Dec-12	Dec-13	Dec-14	Dec-15	Dec-16	Dec-17	Dec-18	Dec-19	Dec-20	Dec-21
Current	17,067,261.78	15,307,239.25	13,605,768.30	12,795,426.99	11,314,753.06	10,139,875.52	9,558,602.20	8,933,948.82	8,340,595.04	7,432,542.78
1-30 Days	985,245.22	1,036,656.06	1,438,207.55	844,356.34	988,575.34	963,078.66	600,022.03	599,319.09	495,371.02	497,378.39
31-60 Days	409,535.59	432,501.13	464,063.31	310,737.76	507,266.35	477,413.96	416,171.47	332,479.50	257,444.97	183,252.84
61-90 Days	277,253.61	305,300.36	141,760.41	264,613.00	245,457.43	233,072.31	187,843.87	210,282.92	184,386.15	202,152.61
91-120 Days	188,042.07	71,048.37	139,892.04	154,325.51	120,203.33	163,791.15	184,461.46	99,044.93	48,962.92	71,134.79
121-150 Days	53,942.47	159,204.09	65,344.14	100,126.53	50,674.59	153,339.64	107,304.10	42,942.09	48,335.48	15,696.94
151-180 Days	10,246.63	18,248.97	92,953.13	48,479.15	51,422.95	89,934.43	42,628.33	120,515.08	-	-
181+ Days	509,575.63	373,329.41	436,607.56	496,114.35	452,775.23	401,548.85	485,010.78	431,928.19	597,576.87	345,295.55

Delinquency Status (% of Current Balance)

Current Portfolio Balance	19,501,103.00	17,703,527.64	16,384,596.44	15,014,179.63	13,731,128.28	12,622,054.52	11,582,044.24	10,770,460.62	9,972,672.45	8,747,453.90
	Dec-12	Dec-13	Dec-14	Dec-15	Dec-16	Dec-17	Dec-18	Dec-19	Dec-20	Dec-21
Current	87.52%	86.46%	83.04%	85.22%	82.40%	80.33%	82.53%	82.95%	83.63%	84.97%
1-30 Days	5.05%	5.86%	8.78%	5.62%	7.20%	7.63%	5.18%	5.56%	4.97%	5.69%
31-60 Days	2.10%	2.44%	2.83%	2.07%	3.69%	3.78%	3.59%	3.09%	2.58%	2.09%
61-90 Days	1.42%	1.72%	0.87%	1.76%	1.79%	1.85%	1.62%	1.95%	1.85%	2.31%
91-120 Days	0.96%	0.40%	0.85%	1.03%	0.88%	1.30%	1.59%	0.92%	0.48%	0.81%
121-150 Days	0.28%	0.90%	0.40%	0.67%	0.37%	1.21%	0.93%	0.40%	0.48%	0.18%
151-180 Days	0.05%	0.10%	0.57%	0.32%	0.37%	0.71%	0.37%	1.12%	0.00%	0.00%
181+ Days	2.61%	2.11%	2.66%	3.30%	3.30%	3.18%	4.19%	4.01%	5.99%	3.95%
Current - 90 Days	96.09%	96.49%	95.52%	94.68%	95.08%	93.59%	92.93%	93.55%	93.03%	95.06%
91-180 Days	1.29%	1.40%	1.82%	2.02%	1.62%	3.23%	2.89%	2.44%	0.98%	0.99%



Mortgages - La Hipotecaria El Salvador Migration Analysis (2008 Vintage)

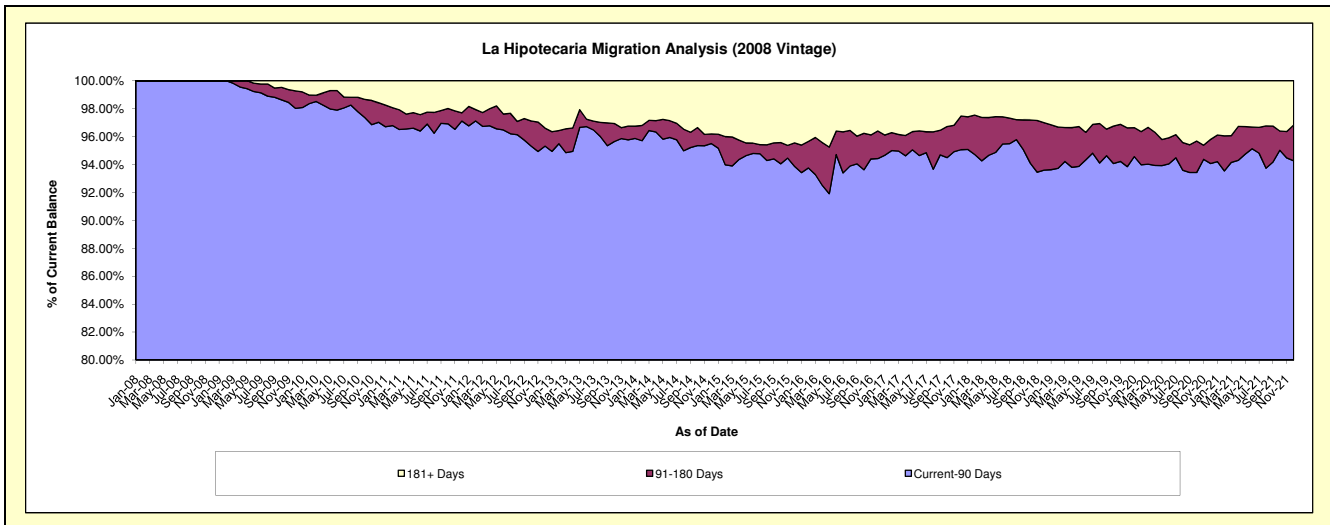
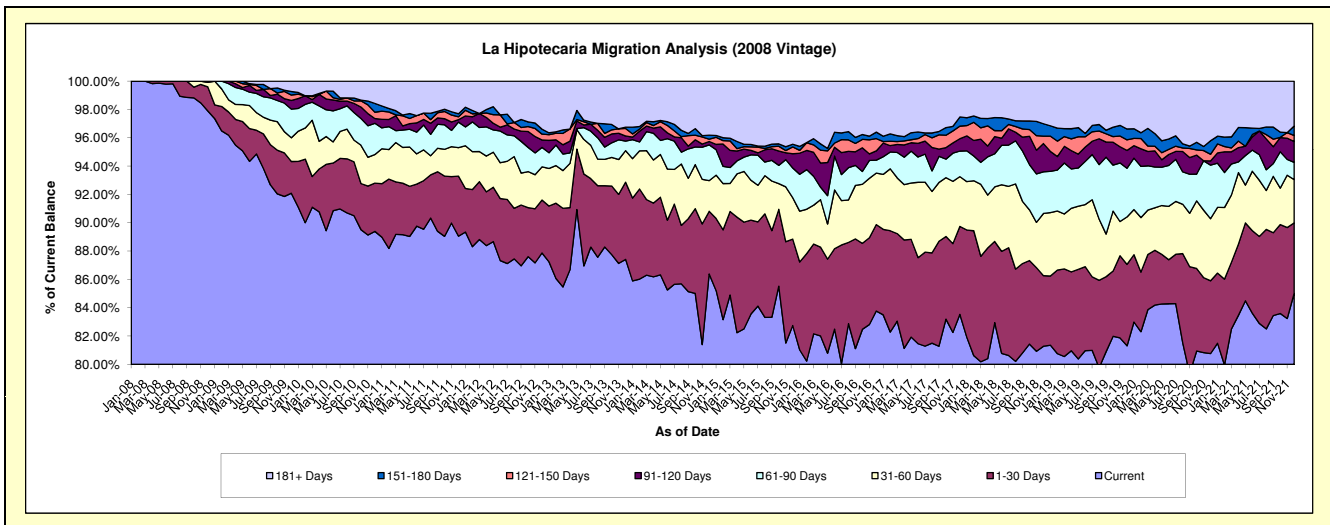
Delinquency Status (\$ of Current Balance)

Data Cutoff: 12/31/2021

Current Portfolio Balance	19,716,461.64	17,521,439.58	15,558,372.67	14,290,317.02	12,947,850.85	11,871,050.06	10,899,640.89	9,748,214.45	9,151,707.81	8,171,656.52
	Dec-12	Dec-13	Dec-14	Dec-15	Dec-16	Dec-17	Dec-18	Dec-19	Dec-20	Dec-21
Current	17,324,745.81	15,316,712.82	13,440,097.19	11,824,469.47	10,846,019.10	9,915,648.15	8,859,258.57	7,926,069.13	7,391,296.14	6,946,406.13
1-30 Days	736,303.27	953,707.94	688,955.26	872,366.95	790,173.17	737,888.45	543,730.58	560,847.20	470,475.97	407,066.29
31-60 Days	462,972.29	390,919.18	336,299.92	417,752.50	471,487.38	417,380.10	478,361.29	326,626.34	400,883.04	250,572.32
61-90 Days	270,035.36	118,720.64	393,041.21	299,708.16	118,243.40	214,004.78	320,956.14	335,142.89	346,594.00	99,066.89
91-120 Days	103,360.96	62,797.66	37,027.18	143,659.43	84,653.67	103,909.20	217,159.55	122,522.06	26,822.01	120,191.33
121-150 Days	81,881.31	93,778.89	25,249.98	68,975.77	112,227.03	105,360.96	57,454.58	72,762.20	42,668.18	34,251.95
151-180 Days	68,805.40	15,958.45	44,946.83	27,142.29	59,066.94	76,822.07	95,155.93	75,158.55	88,292.76	55,035.73
181+ Days	668,357.24	568,844.00	592,755.10	636,242.45	465,980.16	300,036.35	327,564.25	329,086.08	384,675.71	259,065.88

Delinquency Status (% of Current Balance)

Current Portfolio Balance	19,716,461.64	17,521,439.58	15,558,372.67	14,290,317.02	12,947,850.85	11,871,050.06	10,899,640.89	9,748,214.45	9,151,707.81	8,171,656.52
	Dec-12	Dec-13	Dec-14	Dec-15	Dec-16	Dec-17	Dec-18	Dec-19	Dec-20	Dec-21
Current	87.87%	87.42%	86.38%	82.74%	83.77%	83.53%	81.28%	81.31%	80.76%	85.01%
1-30 Days	3.73%	5.44%	4.43%	6.10%	6.10%	6.22%	4.99%	5.75%	5.14%	4.98%
31-60 Days	2.35%	2.23%	2.16%	2.92%	3.64%	3.52%	4.39%	3.35%	4.38%	3.07%
61-90 Days	1.37%	0.68%	2.53%	2.10%	0.91%	1.80%	2.94%	3.44%	3.79%	1.21%
91-120 Days	0.52%	0.36%	0.24%	1.01%	0.65%	0.88%	1.99%	1.26%	0.29%	1.47%
121-150 Days	0.42%	0.54%	0.16%	0.48%	0.87%	0.89%	0.53%	0.75%	0.47%	0.42%
151-180 Days	0.35%	0.09%	0.29%	0.19%	0.46%	0.65%	0.87%	0.77%	0.96%	0.67%
181+ Days	3.39%	3.25%	3.81%	4.45%	3.60%	2.53%	3.01%	3.38%	4.20%	3.17%
Current - 90 Days	95.32%	95.77%	95.50%	93.87%	94.42%	95.06%	93.60%	93.85%	94.07%	94.27%
91-180 Days	1.29%	0.98%	0.69%	1.68%	1.98%	2.41%	3.39%	2.77%	1.72%	2.56%



Mortgages - La Hipotecaria El Salvador Migration Analysis (2009 Vintage)

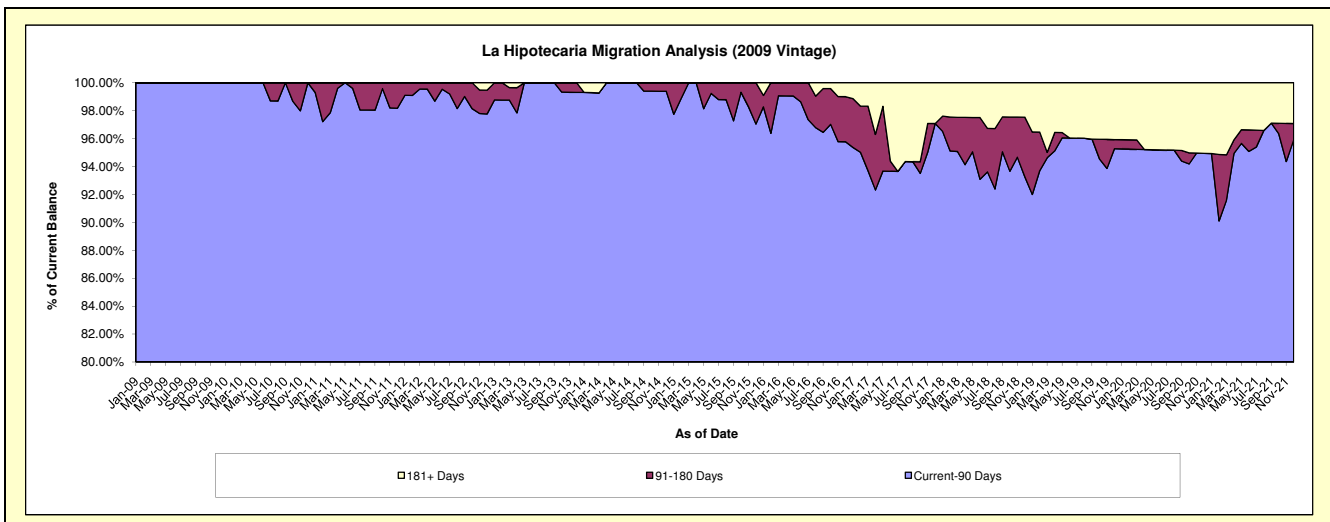
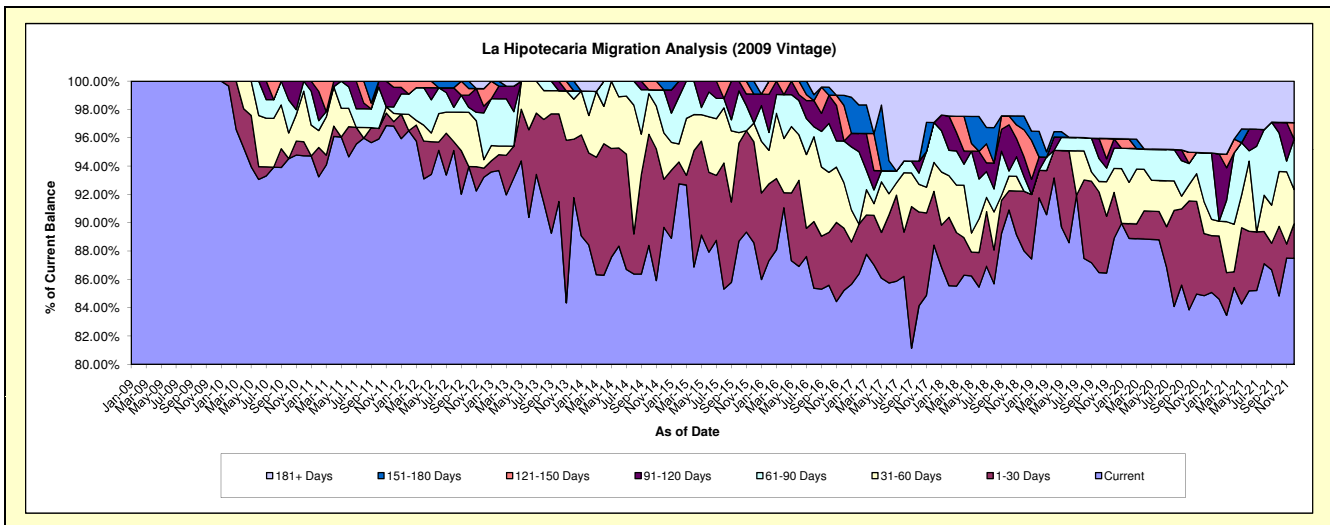
Delinquency Status (\$ of Current Balance)

Data Cutoff: 12/31/2021

Current Portfolio Balance	2,934,143.25	2,629,898.63	2,306,349.64	2,055,535.80	1,932,514.61	1,862,162.20	1,706,623.40	1,592,870.32	1,490,017.08	1,371,215.45
	Dec-12	Dec-13	Dec-14	Dec-15	Dec-16	Dec-17	Dec-18	Dec-19	Dec-20	Dec-21
Current	2,735,038.15	2,413,571.02	2,068,179.92	1,820,884.02	1,646,913.48	1,646,555.59	1,501,985.38	1,415,979.11	1,264,253.77	1,199,636.11
1-30 Days	18,775.03	108,541.98	78,337.44	146,567.67	84,980.10	70,616.79	71,954.15	51,685.58	65,430.01	33,633.83
31-60 Days	17,742.09	74,300.18	75,750.22	27,286.39	62,088.32	38,105.77	-	27,093.24	33,400.21	33,016.94
61-90 Days	96,878.19	15,376.30	69,918.37	-	56,855.22	52,496.79	17,716.71	22,783.64	51,604.34	48,753.63
91-120 Days	14,030.28	-	-	42,175.64	-	-	23,696.37	10,531.26	-	-
121-150 Days	36,154.74	-	-	-	48,682.02	-	32,726.62	-	-	16,008.02
151-180 Days	-	18,109.15	14,163.69	18,622.08	13,714.21	-	16,485.29	-	-	-
181+ Days	15,524.77	-	-	-	19,281.26	54,387.26	42,058.88	64,797.49	75,328.75	40,166.92

Delinquency Status (% of Current Balance)

Current Portfolio Balance	2,934,143.25	2,629,898.63	2,306,349.64	2,055,535.80	1,932,514.61	1,862,162.20	1,706,623.40	1,592,870.32	1,490,017.08	1,371,215.45
	Dec-12	Dec-13	Dec-14	Dec-15	Dec-16	Dec-17	Dec-18	Dec-19	Dec-20	Dec-21
Current	93.21%	91.77%	89.67%	88.58%	85.22%	88.42%	88.01%	88.89%	84.85%	87.49%
1-30 Days	0.64%	4.13%	3.40%	7.13%	4.40%	3.79%	4.22%	3.24%	4.39%	2.45%
31-60 Days	0.60%	2.83%	3.28%	1.33%	3.21%	2.05%	0.00%	1.70%	2.24%	2.41%
61-90 Days	3.30%	0.58%	3.03%	0.00%	2.94%	2.82%	1.04%	1.43%	3.46%	3.56%
91-120 Days	0.48%	0.00%	0.00%	2.05%	0.00%	0.00%	1.39%	0.66%	0.00%	0.00%
121-150 Days	1.23%	0.00%	0.00%	0.00%	2.52%	0.00%	1.92%	0.00%	0.00%	1.17%
151-180 Days	0.00%	0.69%	0.61%	0.91%	0.71%	0.00%	0.97%	0.00%	0.00%	0.00%
181+ Days	0.53%	0.00%	0.00%	0.00%	1.00%	2.92%	2.46%	4.07%	5.06%	2.93%
Current - 90 Days	97.76%	99.31%	99.39%	97.04%	95.77%	97.08%	93.26%	95.27%	94.94%	95.90%
91-180 Days	1.71%	0.69%	0.61%	2.96%	3.23%	0.00%	4.27%	0.66%	0.00%	1.17%



Mortgages - La Hipotecaria El Salvador Migration Analysis (2010 Vintage)

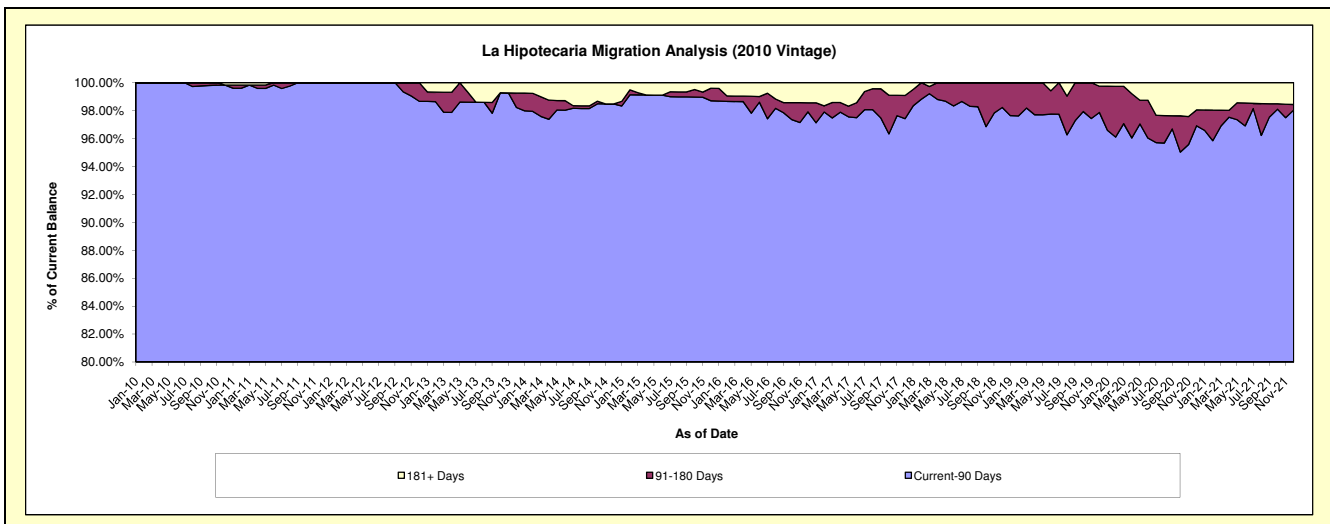
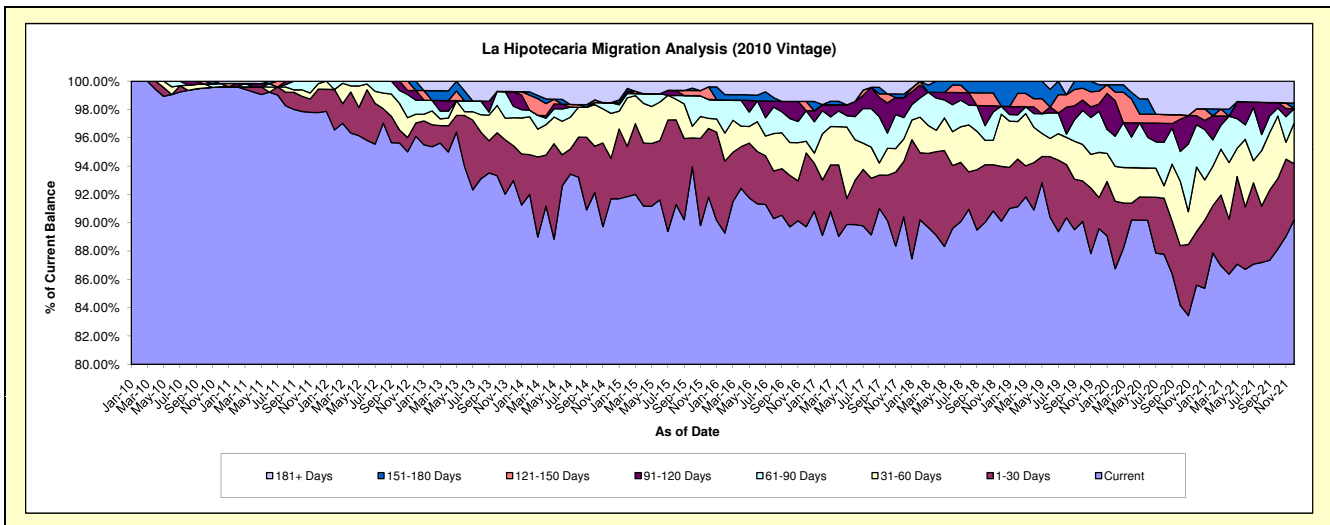
Delinquency Status (\$ of Current Balance)

Data Cutoff: 12/31/2021

Current Portfolio Balance	8,477,931.87	7,591,365.30	6,795,449.02	5,925,580.14	5,326,518.14	4,987,470.64	4,460,140.41	4,056,375.60	3,752,038.53	3,359,433.05	
	Dec-12	Dec-13	Dec-14	Dec-15	Dec-16	Dec-17	Dec-18	Dec-19	Dec-20	Dec-21	
Current	8,147,955.76	7,058,920.66	6,230,671.89	5,440,918.66	4,778,888.17	4,509,453.86	4,019,016.84	3,633,685.95	3,211,489.24	3,030,453.47	
1-30 Days	79,429.26	186,178.37	195,171.81	286,745.52	277,564.60	195,242.92	172,509.23	89,385.13	142,062.01	132,948.78	
31-60 Days	52,782.94	150,166.10	214,907.59	41,993.27	43,865.87	79,230.76	164,651.20	129,312.46	171,059.80	96,609.24	
61-90 Days	84,639.46	61,294.20	51,593.19	79,587.21	115,137.24	75,289.28	25,068.82	117,719.06	111,986.61	33,855.97	
91-120 Days	56,986.18	78,667.70	-	-	-	69,885.96	-	20,749.09	24,052.88	-	
121-150 Days	-	-	-	52,829.97	34,726.78	-	-	-	37,011.75	18,316.25	-
151-180 Days	56,138.27	-	-	-	-	12,919.90	78,894.32	18,316.25	-	13,242.94	
181+ Days	-	56,138.27	103,104.54	23,505.51	76,335.48	45,447.96	-	10,195.91	73,071.74	52,322.65	

Delinquency Status (% of Current Balance)

Current Portfolio Balance	8,477,931.87	7,591,365.30	6,795,449.02	5,925,580.14	5,326,518.14	4,987,470.64	4,460,140.41	4,056,375.60	3,752,038.53	3,359,433.05
	Dec-12	Dec-13	Dec-14	Dec-15	Dec-16	Dec-17	Dec-18	Dec-19	Dec-20	Dec-21
Current	96.11%	92.99%	91.69%	91.82%	89.72%	90.42%	90.11%	89.58%	85.59%	90.21%
1-30 Days	0.94%	2.45%	2.87%	4.84%	5.21%	3.91%	3.87%	2.20%	3.79%	3.96%
31-60 Days	0.62%	1.98%	3.16%	0.71%	0.82%	1.59%	3.69%	3.19%	4.56%	2.88%
61-90 Days	1.00%	0.81%	0.76%	1.34%	2.16%	1.51%	0.56%	2.90%	2.98%	1.01%
91-120 Days	0.67%	1.04%	0.00%	0.00%	0.00%	1.40%	0.00%	0.51%	0.64%	0.00%
121-150 Days	0.00%	0.00%	0.00%	0.89%	0.65%	0.00%	0.00%	0.91%	0.49%	0.00%
151-180 Days	0.66%	0.00%	0.00%	0.00%	0.00%	0.26%	1.77%	0.45%	0.00%	0.39%
181+ Days	0.00%	0.74%	1.52%	0.40%	1.43%	0.91%	0.00%	0.25%	1.95%	1.56%
Current - 90 Days	98.67%	98.22%	98.48%	98.71%	97.91%	97.43%	98.23%	97.87%	96.92%	98.05%
91-180 Days	1.33%	1.04%	0.00%	0.89%	0.65%	1.66%	1.77%	1.88%	1.13%	0.39%



Mortgages - La Hipotecaria El Salvador Migration Analysis (2011 Vintage)

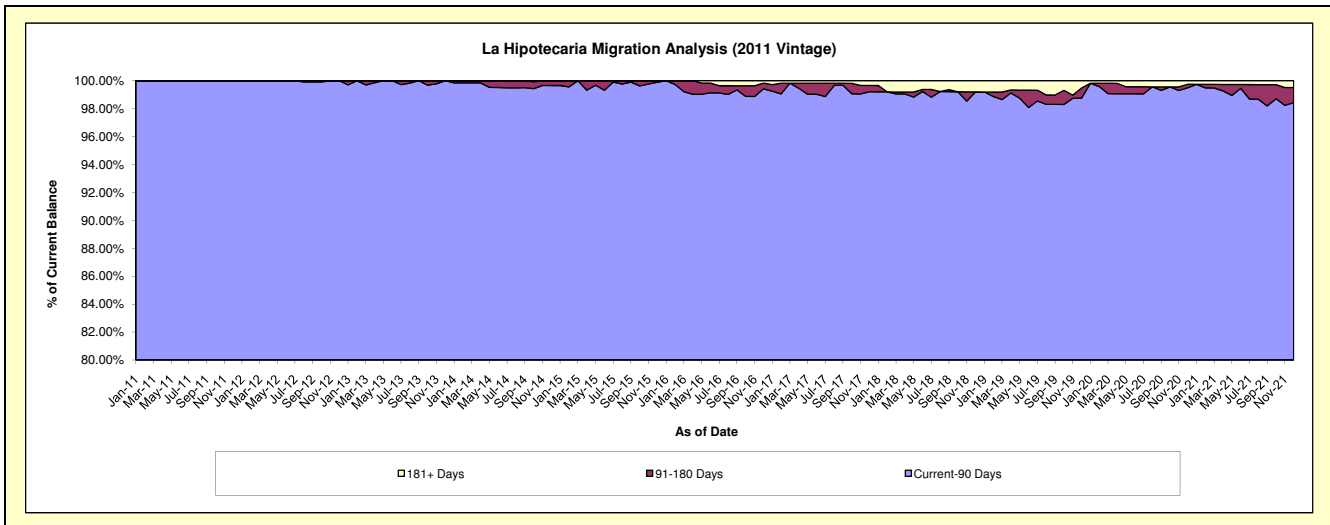
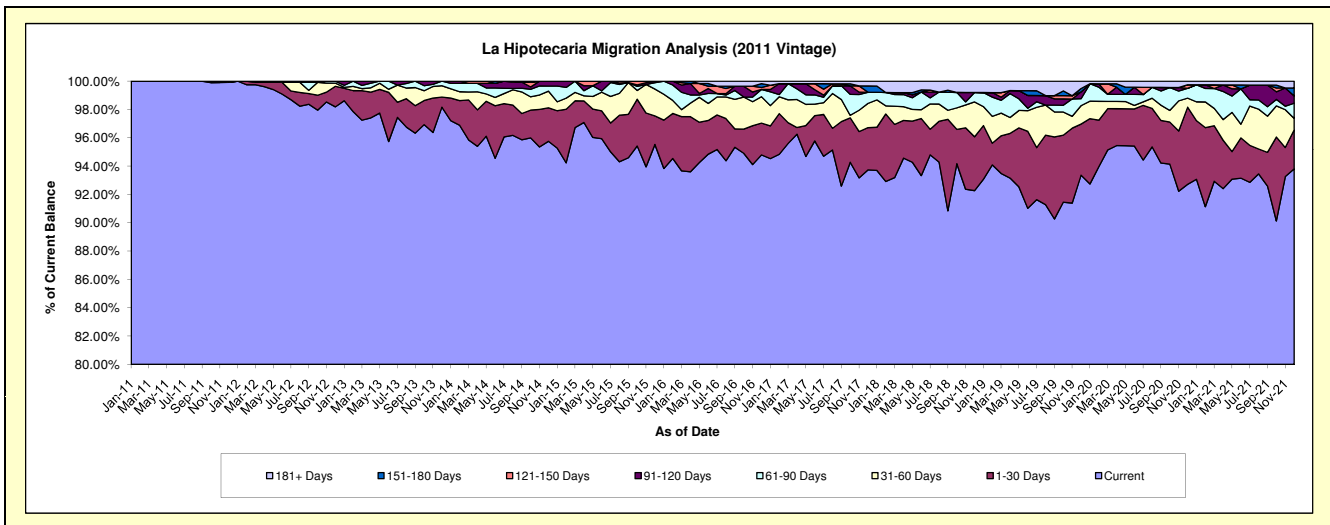
Delinquency Status (\$ of Current Balance)

Data Cutoff: 12/31/2021

Current Portfolio Balance	16,292,329.70	14,758,299.41	13,431,520.09	12,383,466.45	11,829,113.47	10,729,572.09	9,814,709.18	9,099,203.27	8,298,212.86	7,347,096.33
	Dec-12	Dec-13	Dec-14	Dec-15	Dec-16	Dec-17	Dec-18	Dec-19	Dec-20	Dec-21
Current	15,996,922.09	14,487,398.20	12,861,351.56	11,829,455.70	11,213,065.44	10,057,160.35	9,056,169.91	8,495,185.24	7,693,155.80	6,892,179.90
1-30 Days	236,476.42	105,217.97	317,763.05	250,022.13	265,849.88	320,491.70	373,114.79	328,106.19	452,729.54	201,968.19
31-60 Days	36,595.73	118,011.36	157,792.51	234,797.36	220,377.12	183,359.07	241,627.11	118,912.54	52,851.99	59,983.14
61-90 Days	22,335.46	47,671.88	48,497.95	56,388.68	61,011.10	84,762.71	65,494.83	44,424.61	57,457.44	78,340.15
91-120 Days	-	-	46,115.02	12,802.58	-	-	-	44,342.11	-	38,825.37
121-150 Days	-	-	-	-	16,155.45	-	-	-	21,069.86	-
151-180 Days	-	-	-	-	32,360.47	47,348.80	-	20,948.23	-	40,079.49
181+ Days	-	-	-	-	20,294.01	36,449.46	78,302.54	47,284.35	20,948.23	35,720.09

Delinquency Status (% of Current Balance)

Current Portfolio Balance	16,292,329.70	14,758,299.41	13,431,520.09	12,383,466.45	11,829,113.47	10,729,572.09	9,814,709.18	9,099,203.27	8,298,212.86	7,347,096.33
	Dec-12	Dec-13	Dec-14	Dec-15	Dec-16	Dec-17	Dec-18	Dec-19	Dec-20	Dec-21
Current	98.19%	98.16%	95.75%	95.53%	94.79%	93.73%	92.27%	93.36%	92.71%	93.81%
1-30 Days	1.45%	0.71%	2.37%	2.02%	2.25%	2.99%	3.80%	3.61%	5.46%	2.75%
31-60 Days	0.22%	0.80%	1.17%	1.90%	1.86%	1.71%	2.46%	1.31%	0.64%	0.82%
61-90 Days	0.14%	0.32%	0.36%	0.46%	0.52%	0.79%	0.67%	0.49%	0.69%	1.07%
91-120 Days	0.00%	0.00%	0.34%	0.10%	0.00%	0.00%	0.00%	0.49%	0.00%	0.53%
121-150 Days	0.00%	0.00%	0.00%	0.00%	0.14%	0.00%	0.00%	0.00%	0.25%	0.00%
151-180 Days	0.00%	0.00%	0.00%	0.00%	0.27%	0.44%	0.00%	0.23%	0.00%	0.55%
181+ Days	0.00%	0.00%	0.00%	0.00%	0.17%	0.34%	0.80%	0.52%	0.25%	0.49%
Current - 90 Days	100.00%	100.00%	99.66%	99.90%	99.42%	99.22%	99.20%	98.76%	99.49%	98.44%
91-180 Days	0.00%	0.00%	0.34%	0.10%	0.41%	0.44%	0.00%	0.72%	0.25%	1.07%



Mortgages - La Hipotecaria El Salvador Migration Analysis (2012 Vintage)

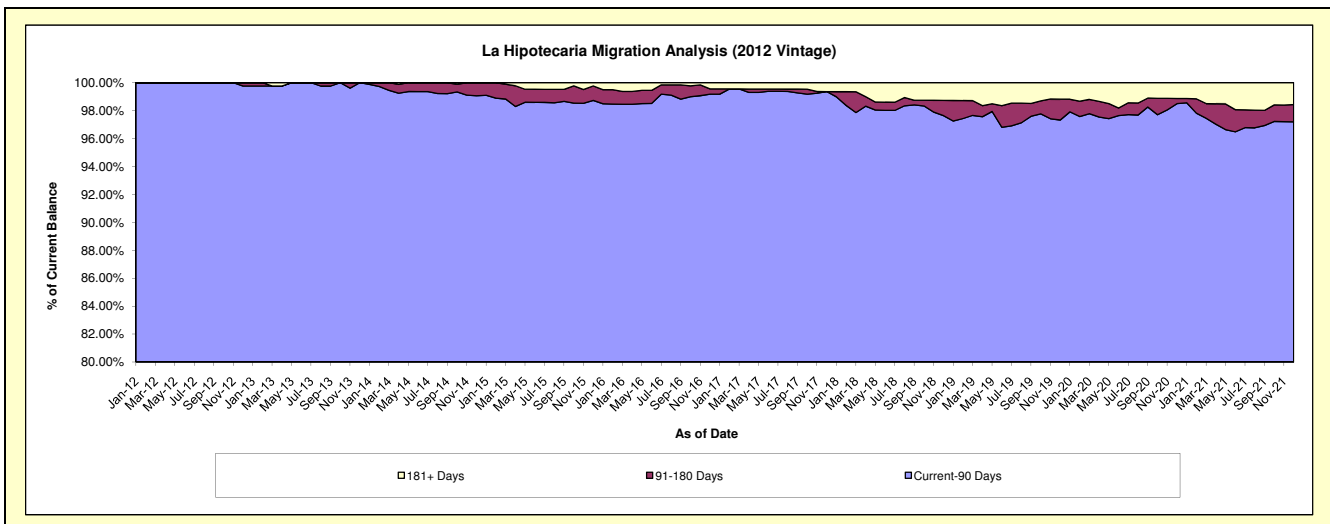
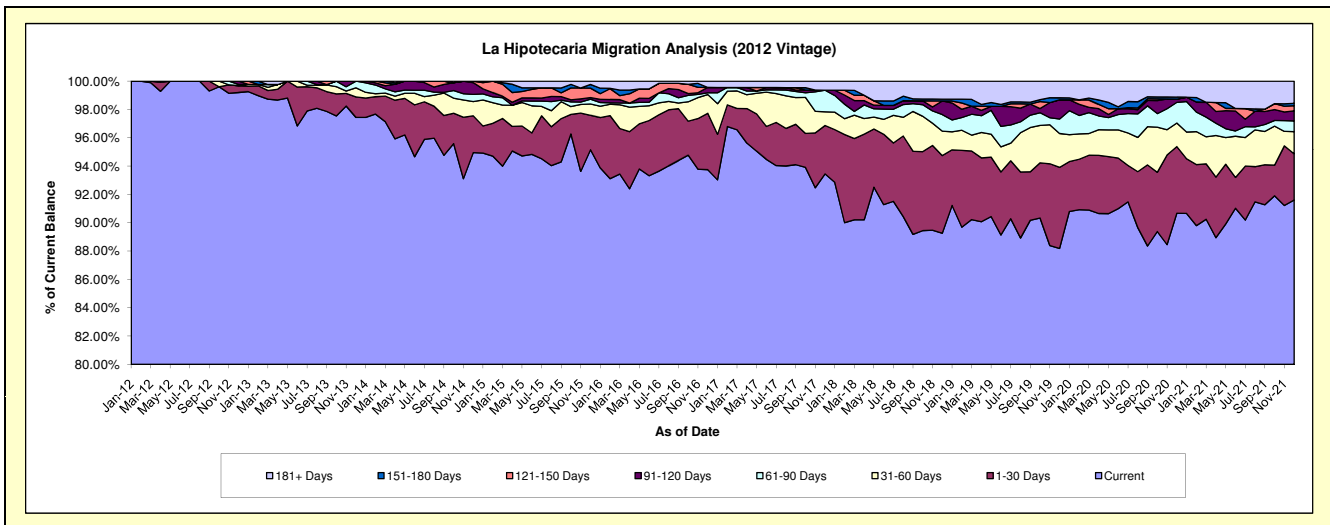
Delinquency Status (\$ of Current Balance)

Data Cutoff: 12/31/2021

Current Portfolio Balance	24,815,348.86	23,694,177.80	21,474,048.48	19,838,695.12	18,303,503.65	17,192,315.72	15,925,017.91	14,712,693.75	13,673,957.45	12,135,935.18
	Dec-12	Dec-13	Dec-14	Dec-15	Dec-16	Dec-17	Dec-18	Dec-19	Dec-20	Dec-21
Current	24,616,215.34	23,087,743.79	20,390,217.92	18,877,379.12	17,159,758.15	16,066,568.63	14,214,697.61	12,974,788.85	12,398,472.95	11,116,714.03
1-30 Days	120,711.35	342,107.85	558,025.09	482,669.09	728,778.68	587,738.75	873,001.09	842,207.00	644,073.96	396,228.76
31-60 Days	-	153,627.23	215,926.79	158,261.11	241,522.07	165,500.33	275,268.54	351,968.29	227,535.50	190,339.13
61-90 Days	20,410.58	110,698.93	109,613.64	68,719.48	23,559.66	263,344.11	186,581.55	151,046.39	199,094.39	92,229.87
91-120 Days	58,011.59	-	177,362.26	22,608.44	69,053.83	-	152,774.07	199,586.12	31,401.97	85,922.23
121-150 Days	-	-	22,902.78	131,441.71	-	-	-	-	-	44,084.18
151-180 Days	-	-	-	51,765.22	-	-	20,918.02	20,145.68	19,321.53	20,675.27
181+ Days	-	-	-	45,850.95	80,831.26	109,163.90	201,777.03	172,951.42	154,057.15	189,741.71

Delinquency Status (% of Current Balance)

Current Portfolio Balance	24,815,348.86	23,694,177.80	21,474,048.48	19,838,695.12	18,303,503.65	17,192,315.72	15,925,017.91	14,712,693.75	13,673,957.45	12,135,935.18
	Dec-12	Dec-13	Dec-14	Dec-15	Dec-16	Dec-17	Dec-18	Dec-19	Dec-20	Dec-21
Current	99.20%	97.44%	94.95%	95.15%	93.75%	93.45%	89.26%	88.19%	90.67%	91.60%
1-30 Days	0.49%	1.44%	2.60%	2.43%	3.98%	3.42%	5.48%	5.72%	4.71%	3.26%
31-60 Days	0.00%	0.65%	1.01%	0.80%	1.32%	0.96%	1.73%	2.39%	1.66%	1.57%
61-90 Days	0.08%	0.47%	0.51%	0.35%	0.13%	1.53%	1.17%	1.03%	1.46%	0.76%
91-120 Days	0.23%	0.00%	0.83%	0.11%	0.38%	0.00%	0.96%	1.36%	0.23%	0.71%
121-150 Days	0.00%	0.00%	0.11%	0.66%	0.00%	0.00%	0.00%	0.00%	0.00%	0.36%
151-180 Days	0.00%	0.00%	0.00%	0.26%	0.00%	0.00%	0.13%	0.14%	0.14%	0.17%
181+ Days	0.00%	0.00%	0.00%	0.23%	0.44%	0.63%	1.27%	1.18%	1.13%	1.56%
Current - 90 Days	99.77%	100.00%	99.07%	98.73%	99.18%	99.37%	97.64%	97.33%	98.50%	97.19%
91-180 Days	0.23%	0.00%	0.93%	1.04%	0.38%	0.00%	1.09%	1.49%	0.37%	1.24%



Mortgages - La Hipotecaria El Salvador Migration Analysis (2013 Vintage)

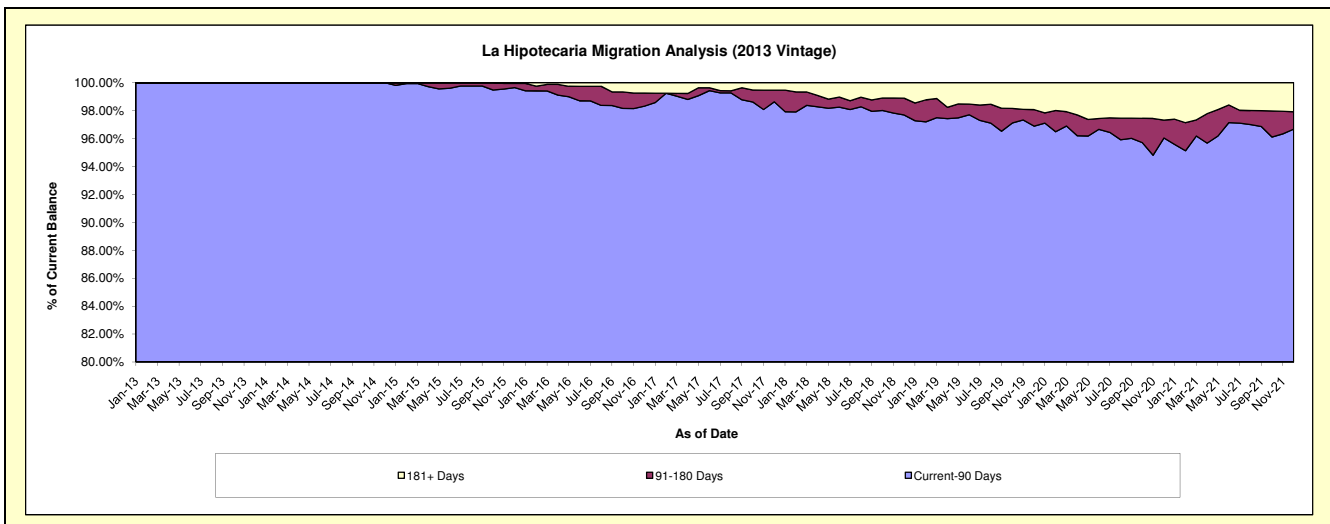
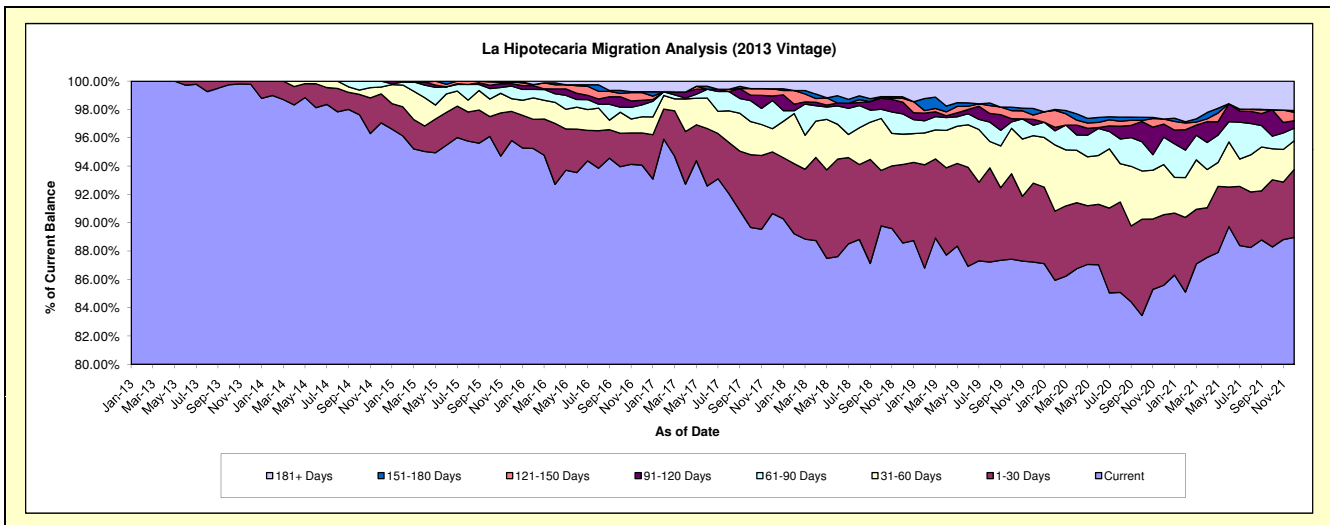
Delinquency Status (\$ of Current Balance)

Data Cutoff: 12/31/2021

Current Portfolio Balance	-	29,570,350.83	28,123,347.52	26,583,597.52	25,066,896.34	23,219,143.36	21,251,190.50	19,490,217.66	17,903,757.58	15,679,854.14
	Dec-13	Dec-14	Dec-15	Dec-16	Dec-17	Dec-18	Dec-19	Dec-20	Dec-21	
Current	29,505,801.92	27,295,529.21	25,468,981.12	23,580,554.89	21,049,914.20	18,822,306.77	17,000,300.37	15,322,561.32	13,949,501.38	
1-30 Days	64,548.91	575,245.10	547,098.04	570,793.08	1,009,791.70	1,179,851.86	1,087,286.71	892,569.72	752,369.03	
31-60 Days	-	137,082.21	239,581.63	285,948.19	379,772.23	454,271.04	652,385.77	634,336.45	318,361.48	
61-90 Days	-	115,491.00	234,972.75	210,039.52	462,924.53	303,576.06	144,336.44	346,321.39	138,977.67	
91-120 Days	-	-	45,182.65	80,156.40	72,853.77	174,849.14	81,087.26	165,087.24	82,416.85	
121-150 Days	-	-	33,266.33	136,681.08	120,093.46	58,452.44	58,597.03	64,646.01	93,178.68	
151-180 Days	-	-	-	15,954.35	-	23,081.26	91,145.99	-	18,999.33	
181+ Days	-	-	14,515.00	186,768.83	123,793.47	234,801.93	375,078.09	478,235.45	326,049.72	

Delinquency Status (% of Current Balance)

Current Portfolio Balance	-	29,570,350.83	28,123,347.52	26,583,597.52	25,066,896.34	23,219,143.36	21,251,190.50	19,490,217.66	17,903,757.58	15,679,854.14
	Dec-13	Dec-14	Dec-15	Dec-16	Dec-17	Dec-18	Dec-19	Dec-20	Dec-21	
Current	99.78%	97.06%	95.81%	94.07%	90.66%	88.57%	87.22%	85.58%	88.96%	
1-30 Days	0.22%	2.05%	2.06%	2.28%	4.35%	5.55%	5.58%	4.99%	4.80%	
31-60 Days	0.00%	0.49%	0.90%	1.14%	1.64%	2.14%	3.35%	3.54%	2.03%	
61-90 Days	0.00%	0.41%	0.88%	0.84%	1.99%	1.43%	0.74%	1.93%	0.89%	
91-120 Days	0.00%	0.00%	0.17%	0.32%	0.31%	0.82%	0.42%	0.92%	0.53%	
121-150 Days	0.00%	0.00%	0.13%	0.55%	0.52%	0.28%	0.30%	0.36%	0.59%	
151-180 Days	0.00%	0.00%	0.00%	0.06%	0.00%	0.11%	0.47%	0.00%	0.12%	
181+ Days	0.00%	0.00%	0.05%	0.75%	0.53%	1.10%	1.92%	2.67%	2.08%	
Current - 90 Days	100.00%	100.00%	99.65%	98.33%	98.64%	97.69%	96.89%	96.05%	96.68%	
91-180 Days	0.00%	0.00%	0.30%	0.93%	0.83%	1.21%	1.18%	1.28%	1.24%	



Mortgages - La Hipotecaria El Salvador Migration Analysis (2014 Vintage)

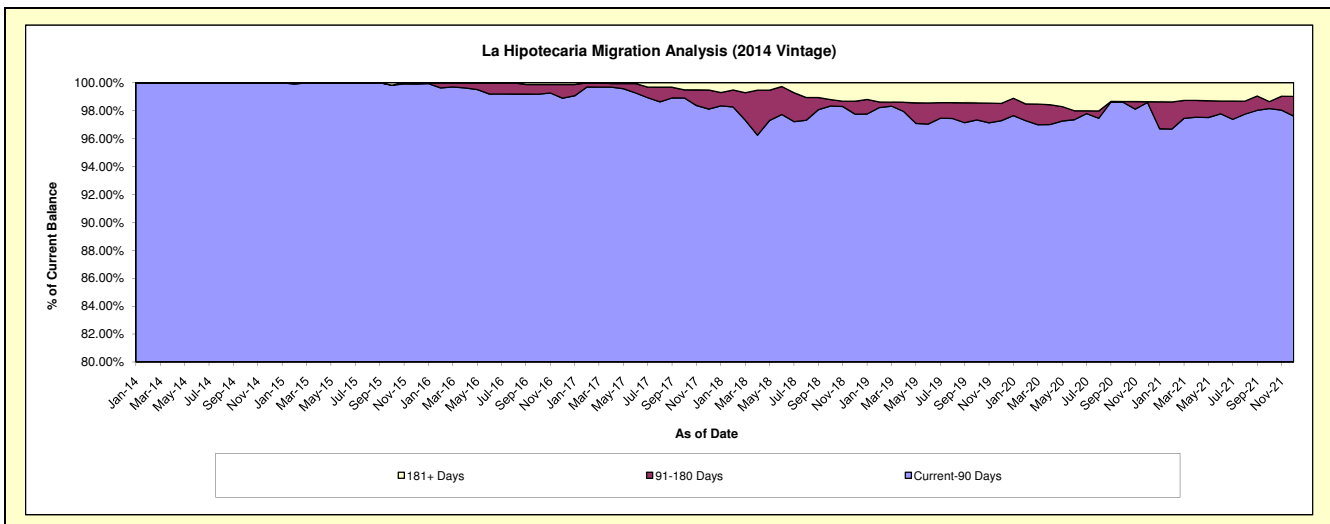
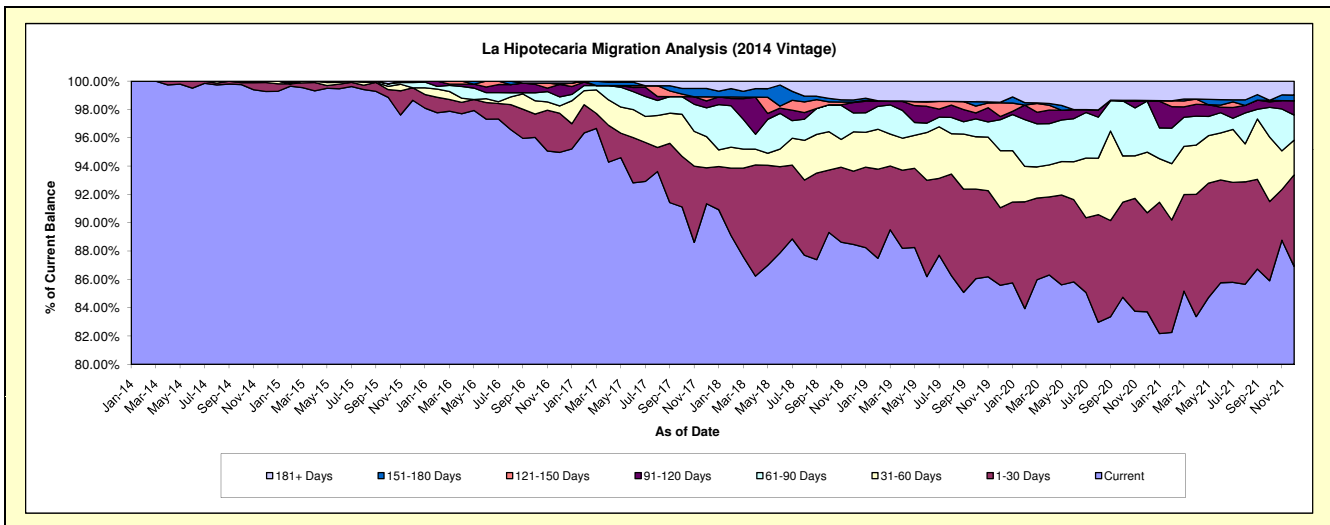
Delinquency Status (\$ of Current Balance)

Data Cutoff: 12/31/2021

Current Portfolio Balance	-	-	27,906,386.38	26,581,172.14	25,317,249.76	23,828,444.95	21,728,649.05	19,609,850.07	18,357,023.57	16,238,178.98
	Dec-14	Dec-15	Dec-16	Dec-17	Dec-18	Dec-19	Dec-20	Dec-21		
Current	27,702,203.17	26,222,169.11	24,044,150.85	21,766,403.75	19,222,062.79	16,782,962.78	15,367,043.75	14,114,038.41		
1-30 Days	177,801.38	235,294.31	699,707.90	604,896.98	1,125,171.22	1,074,172.46	1,284,211.63	1,051,339.60		
31-60 Days	26,381.83	-	130,522.03	524,628.60	603,514.64	790,791.48	785,836.24	396,997.48		
61-90 Days	-	99,284.02	162,408.78	484,364.76	289,757.65	428,686.24	661,865.68	287,990.66		
91-120 Days	-	24,424.70	222,806.28	116,102.37	159,985.03	43,960.71	-	162,320.85		
121-150 Days	-	-	-	68,247.24	6,564.40	189,183.07	-	-		
151-180 Days	-	-	24,424.70	140,547.21	32,791.06	8,682.38	8,682.38	65,955.55		
181+ Days	-	-	33,229.22	123,254.04	288,802.26	291,410.95	249,383.89	159,536.43		

Delinquency Status (% of Current Balance)

Current Portfolio Balance	-	-	27,906,386.38	26,581,172.14	25,317,249.76	23,828,444.95	21,728,649.05	19,609,850.07	18,357,023.57	16,238,178.98
	Dec-14	Dec-15	Dec-16	Dec-17	Dec-18	Dec-19	Dec-20	Dec-21		
Current	99.27%	98.65%	94.97%	91.35%	88.46%	85.58%	83.71%	86.92%		
1-30 Days	0.64%	0.89%	2.76%	2.54%	5.18%	5.48%	7.00%	6.47%		
31-60 Days	0.09%	0.00%	0.52%	2.20%	2.78%	4.03%	4.28%	2.44%		
61-90 Days	0.00%	0.37%	0.64%	2.03%	1.33%	2.19%	3.61%	1.77%		
91-120 Days	0.00%	0.09%	0.88%	0.49%	0.74%	0.22%	0.00%	1.00%		
121-150 Days	0.00%	0.00%	0.00%	0.29%	0.03%	0.96%	0.00%	0.00%		
151-180 Days	0.00%	0.00%	0.10%	0.59%	0.15%	0.04%	0.05%	0.41%		
181+ Days	0.00%	0.00%	0.13%	0.52%	1.33%	1.49%	1.36%	0.98%		
Current - 90 Days	100.00%	99.91%	98.89%	98.12%	97.75%	97.28%	98.59%	97.61%		
91-180 Days	0.00%	0.09%	0.98%	1.36%	0.92%	1.23%	0.05%	1.41%		



Mortgages - La Hipotecaria El Salvador Migration Analysis (2015 Vintage)

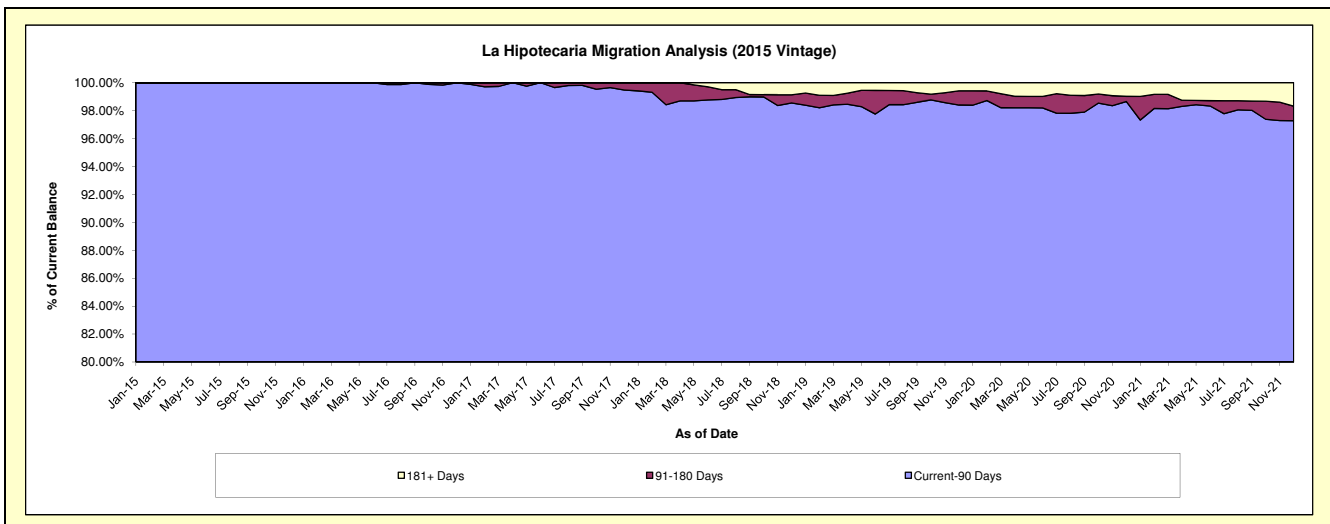
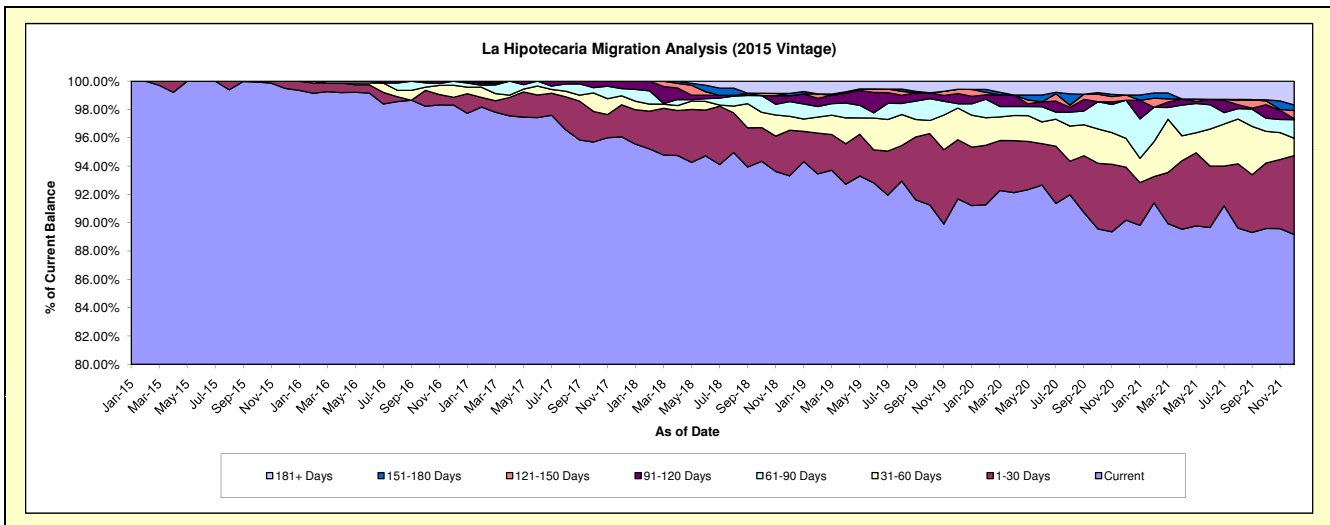
Delinquency Status (\$ of Current Balance)

Data Cutoff: 12/31/2021

Current Portfolio Balance	-	-	-	23,464,189.85	22,616,206.76	21,301,724.78	20,128,712.62	18,347,511.08	17,061,486.74	15,592,629.81
				Dec-15	Dec-16	Dec-17	Dec-18	Dec-19	Dec-20	Dec-21
Current				23,342,926.02	22,234,614.71	20,464,239.61	18,784,249.51	16,821,345.43	15,386,075.31	13,904,211.49
1-30 Days				121,263.83	123,489.59	481,872.68	647,290.95	767,280.46	639,010.36	868,247.89
31-60 Days				-	193,194.71	134,641.48	197,691.18	409,970.09	346,971.20	192,387.32
61-90 Days				-	64,907.75	108,963.83	208,845.16	56,679.39	459,800.05	203,843.77
91-120 Days				-	-	112,007.18	83,203.27	131,091.00	-	12,188.68
121-150 Days				-	-	-	-	55,795.47	63,581.07	88,755.74
151-180 Days				-	-	-	33,073.80	-	-	60,736.22
181+ Days				-	-	-	174,358.75	105,349.24	166,048.75	262,258.70

Delinquency Status (% of Current Balance)

Current Portfolio Balance	-	-	-	23,464,189.85	22,616,206.76	21,301,724.78	20,128,712.62	18,347,511.08	17,061,486.74	15,592,629.81
				Dec-15	Dec-16	Dec-17	Dec-18	Dec-19	Dec-20	Dec-21
Current				99.49%	98.31%	96.07%	93.32%	91.68%	90.18%	89.17%
1-30 Days				0.52%	0.55%	2.26%	3.22%	4.18%	3.75%	5.57%
31-60 Days				0.00%	0.85%	0.63%	0.98%	2.23%	2.03%	1.23%
61-90 Days				0.00%	0.29%	0.51%	1.04%	0.31%	2.69%	1.31%
91-120 Days				0.00%	0.00%	0.53%	0.41%	0.71%	0.00%	0.08%
121-150 Days				0.00%	0.00%	0.00%	0.00%	0.30%	0.37%	0.57%
151-180 Days				0.00%	0.00%	0.00%	0.16%	0.00%	0.00%	0.39%
181+ Days				0.00%	0.00%	0.00%	0.87%	0.57%	0.97%	1.68%
Current - 90 Days				100.00%	100.00%	99.47%	98.56%	98.41%	98.85%	97.28%
91-180 Days				0.00%	0.00%	0.53%	0.58%	1.02%	0.37%	1.04%



Mortgages - La Hipotecaria El Salvador Migration Analysis (2016 Vintage)

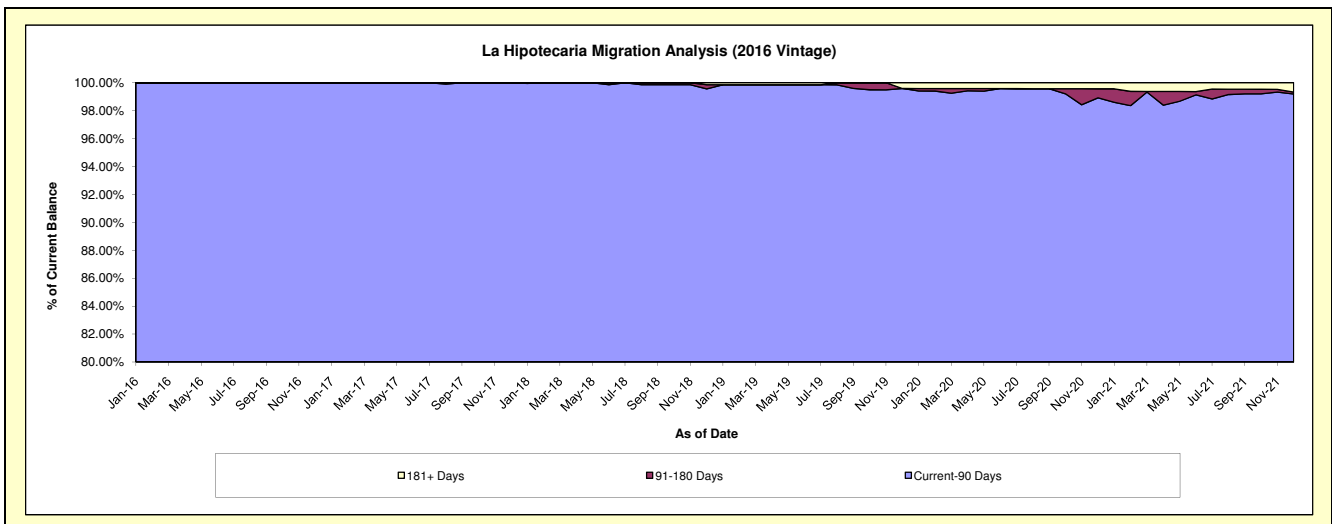
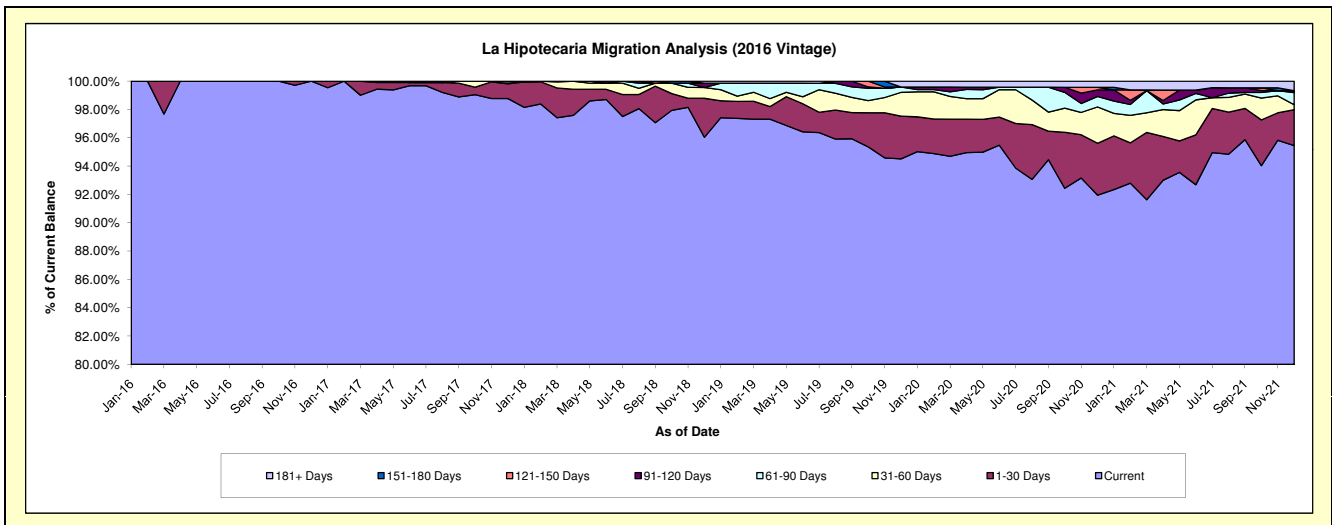
Delinquency Status (\$ of Current Balance)

Data Cutoff: 12/31/2021

Current Portfolio Balance	-	-	-	-	23,620,206.56	22,983,533.48	21,950,958.14	20,388,734.00	19,284,157.00	17,662,455.83
					Dec-16	Dec-17	Dec-18	Dec-19	Dec-20	Dec-21
Current					23,620,206.56	22,701,810.13	21,082,291.96	19,269,722.69	17,731,971.09	16,858,879.95
1-30 Days					-	239,432.68	603,178.86	615,731.29	706,085.76	448,011.05
31-60 Days					-	31,790.76	168,543.12	342,117.16	495,250.57	61,885.92
61-90 Days					-	10,499.91	-	77,140.06	142,238.26	150,520.03
91-120 Days					-	-	65,318.70	-	89,672.70	24,688.65
121-150 Days					-	-	-	-	34,915.82	-
151-180 Days					-	-	-	-	-	-
181+ Days					-	-	31,625.50	84,022.80	84,022.80	118,470.23

Delinquency Status (% of Current Balance)

Current Portfolio Balance	-	-	-	-	23,620,206.56	22,983,533.48	21,950,958.14	20,388,734.00	19,284,157.00	17,662,455.83
					Dec-16	Dec-17	Dec-18	Dec-19	Dec-20	Dec-21
Current					100.00%	98.77%	96.04%	94.51%	91.95%	95.45%
1-30 Days					0.00%	1.04%	2.75%	3.02%	3.66%	2.54%
31-60 Days					0.00%	0.14%	0.77%	1.68%	2.57%	0.35%
61-90 Days					0.00%	0.05%	0.00%	0.38%	0.74%	0.85%
91-120 Days					0.00%	0.00%	0.30%	0.00%	0.47%	0.14%
121-150 Days					0.00%	0.00%	0.00%	0.00%	0.18%	0.00%
151-180 Days					0.00%	0.00%	0.00%	0.00%	0.00%	0.00%
181+ Days					0.00%	0.00%	0.14%	0.41%	0.44%	0.67%
Current - 90 Days					100.00%	100.00%	99.56%	99.59%	98.92%	99.19%
91-180 Days					0.00%	0.00%	0.30%	0.00%	0.65%	0.14%



Mortgages - La Hipotecaria El Salvador Migration Analysis (2017 Vintage)

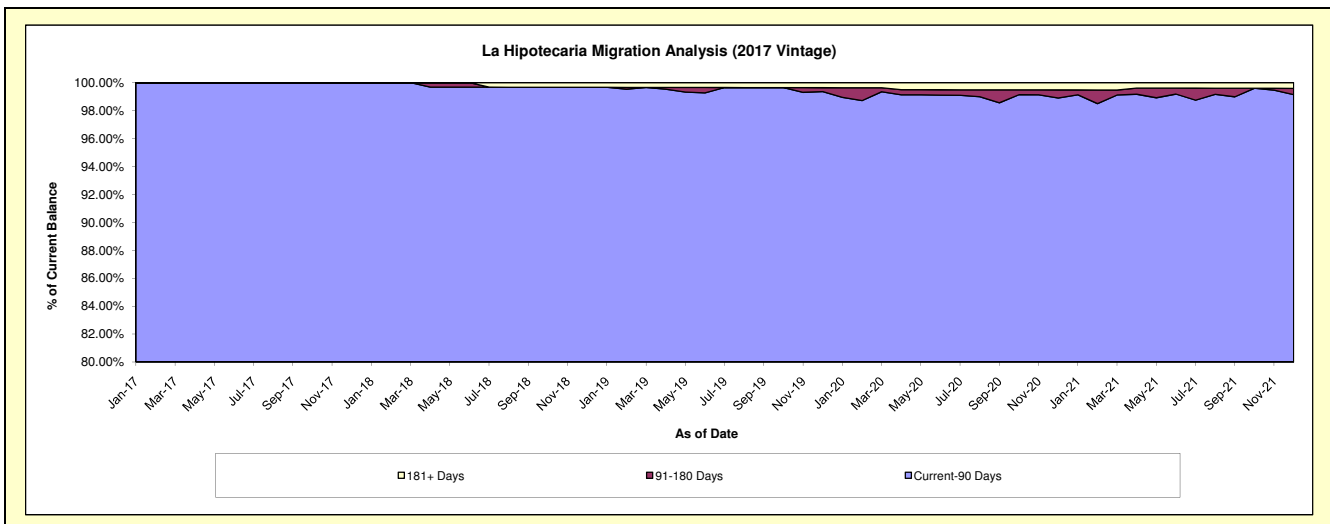
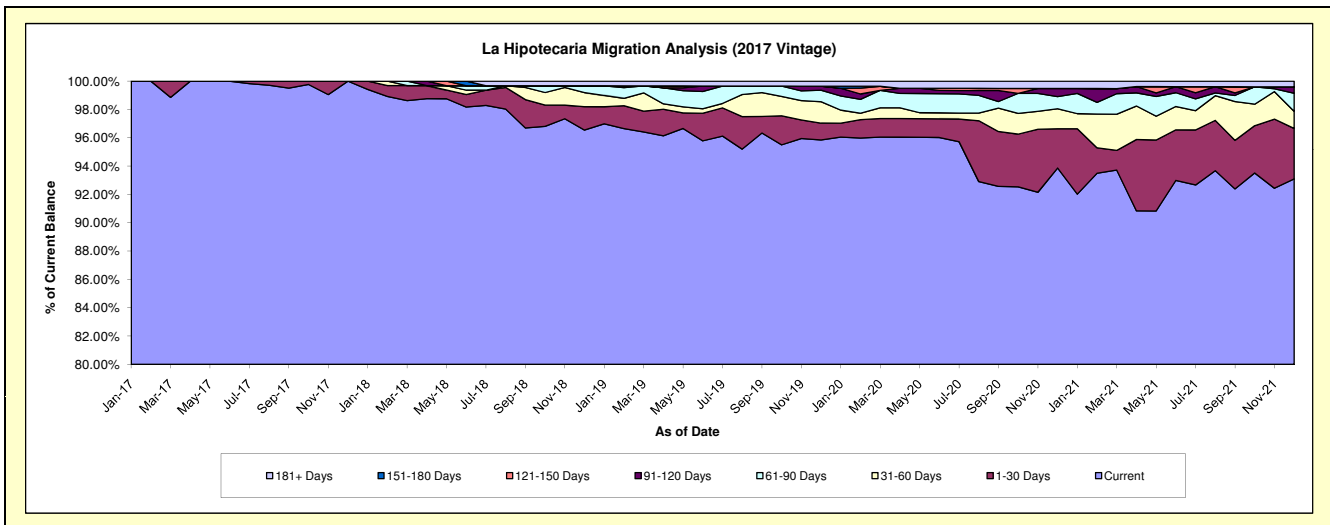
Delinquency Status (\$ of Current Balance)

Data Cutoff: 12/31/2021

Current Portfolio Balance	-	-	-	-	-	18,868,535.43	18,162,834.29	16,724,100.27	15,890,451.77	14,723,879.10
						Dec-17	Dec-18	Dec-19	Dec-20	Dec-21
Current						18,868,174.23	17,535,246.20	16,030,379.95	14,915,711.65	13,707,096.69
1-30 Days						-	300,611.09	198,446.88	439,986.49	525,152.43
31-60 Days						-	180,446.77	251,972.79	224,386.41	177,767.06
61-90 Days						361.20	87,130.23	137,201.53	137,022.52	188,029.83
91-120 Days						-	-	46,699.12	91,459.84	66,433.09
121-150 Days						-	-	-	-	-
151-180 Days						-	-	-	-	-
181+ Days						-	59,400.00	59,400.00	81,884.86	59,400.00

Delinquency Status (% of Current Balance)

Current Portfolio Balance	-	-	-	-	-	18,868,535.43	18,162,834.29	16,724,100.27	15,890,451.77	14,723,879.10
						Dec-17	Dec-18	Dec-19	Dec-20	Dec-21
Current						100.00%	96.54%	95.85%	93.87%	93.09%
1-30 Days						0.00%	1.66%	1.19%	2.77%	3.57%
31-60 Days						0.00%	0.99%	1.51%	1.41%	1.21%
61-90 Days						0.00%	0.48%	0.82%	0.86%	1.28%
91-120 Days						0.00%	0.00%	0.28%	0.58%	0.45%
121-150 Days						0.00%	0.00%	0.00%	0.00%	0.00%
151-180 Days						0.00%	0.00%	0.00%	0.00%	0.00%
181+ Days						0.00%	0.33%	0.36%	0.52%	0.40%
Current - 90 Days						100.00%	99.67%	99.37%	98.91%	99.15%
91-180 Days						0.00%	0.00%	0.28%	0.58%	0.45%



Mortgages - La Hipotecaria El Salvador Migration Analysis (2018 Vintage)

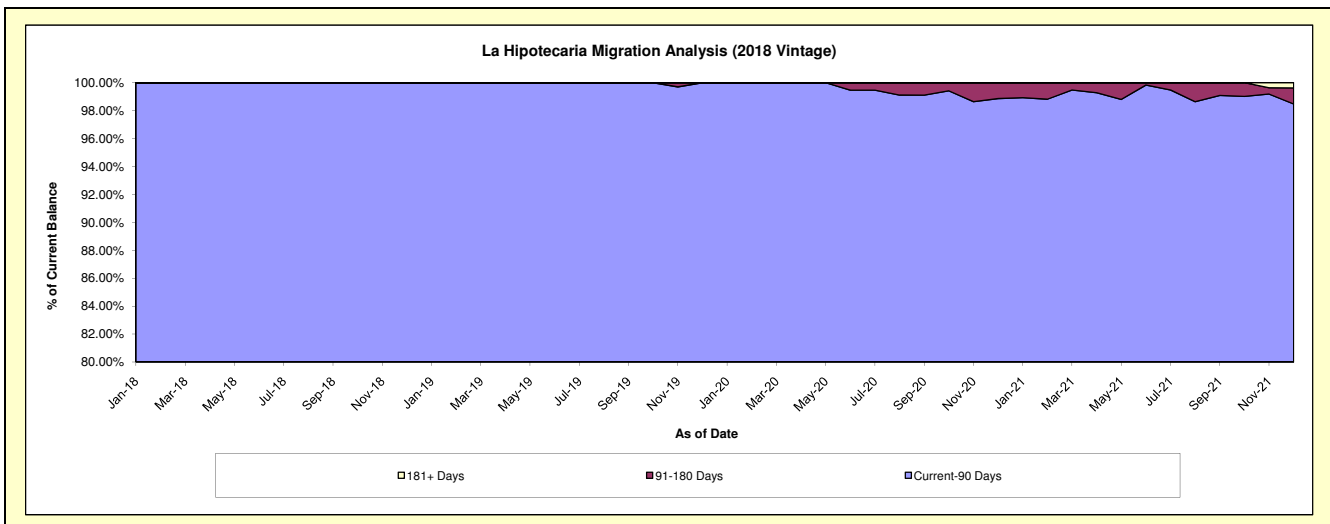
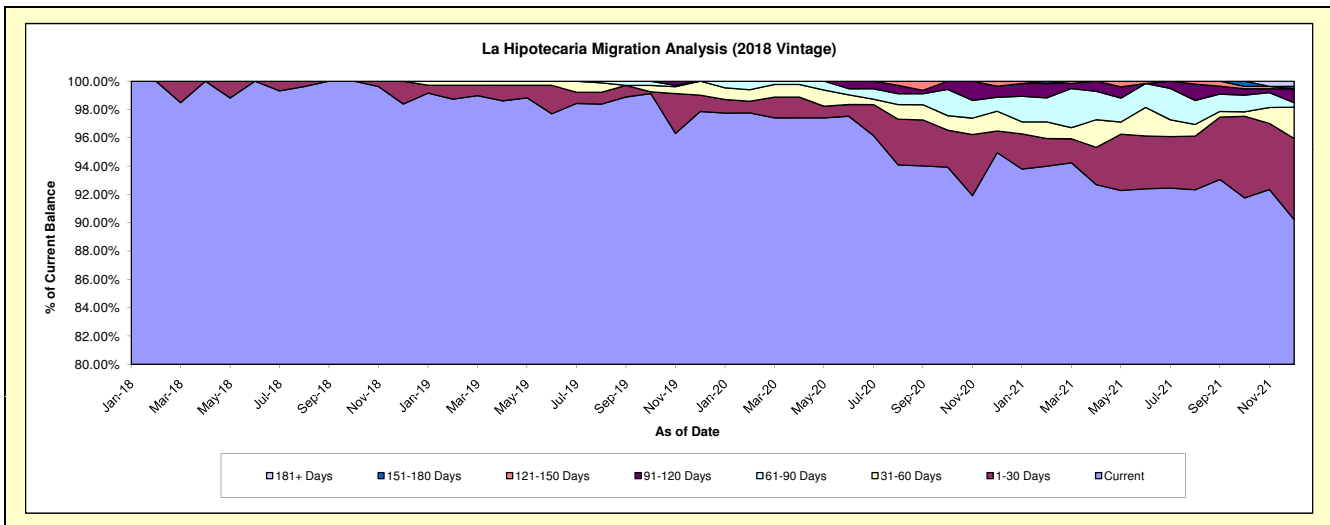
Delinquency Status (\$ of Current Balance)

Data Cutoff: 12/31/2021

Current Portfolio Balance	-	-	-	-	-	-	-	23,321,256.78	22,687,057.88	21,885,403.29	20,486,225.58
								Dec-18	Dec-19	Dec-20	Dec-21
Current								22,944,923.77	22,201,176.49	20,781,296.19	18,483,892.26
1-30 Days								376,333.01	262,118.89	333,060.46	1,173,615.81
31-60 Days								-	223,762.50	306,535.53	453,277.44
61-90 Days								-	-	216,243.36	63,128.34
91-120 Days								-	-	171,256.14	201,077.86
121-150 Days								-	-	77,011.61	-
151-180 Days								-	-	-	35,605.03
181+ Days								-	-	-	75,628.84

Delinquency Status (% of Current Balance)

Current Portfolio Balance	-	-	-	-	-	-	-	23,321,256.78	22,687,057.88	21,885,403.29	20,486,225.58
								Dec-18	Dec-19	Dec-20	Dec-21
Current								98.39%	97.86%	94.96%	90.23%
1-30 Days								1.61%	1.16%	1.52%	5.73%
31-60 Days								0.00%	0.99%	1.40%	2.21%
61-90 Days								0.00%	0.00%	0.99%	0.31%
91-120 Days								0.00%	0.00%	0.78%	0.98%
121-150 Days								0.00%	0.00%	0.35%	0.00%
151-180 Days								0.00%	0.00%	0.00%	0.17%
181+ Days								0.00%	0.00%	0.00%	0.37%
Current - 90 Days								100.00%	100.00%	98.87%	98.48%
91-180 Days								0.00%	0.00%	1.13%	1.16%



Mortgages - La Hipotecaria El Salvador Migration Analysis (2019 Vintage)

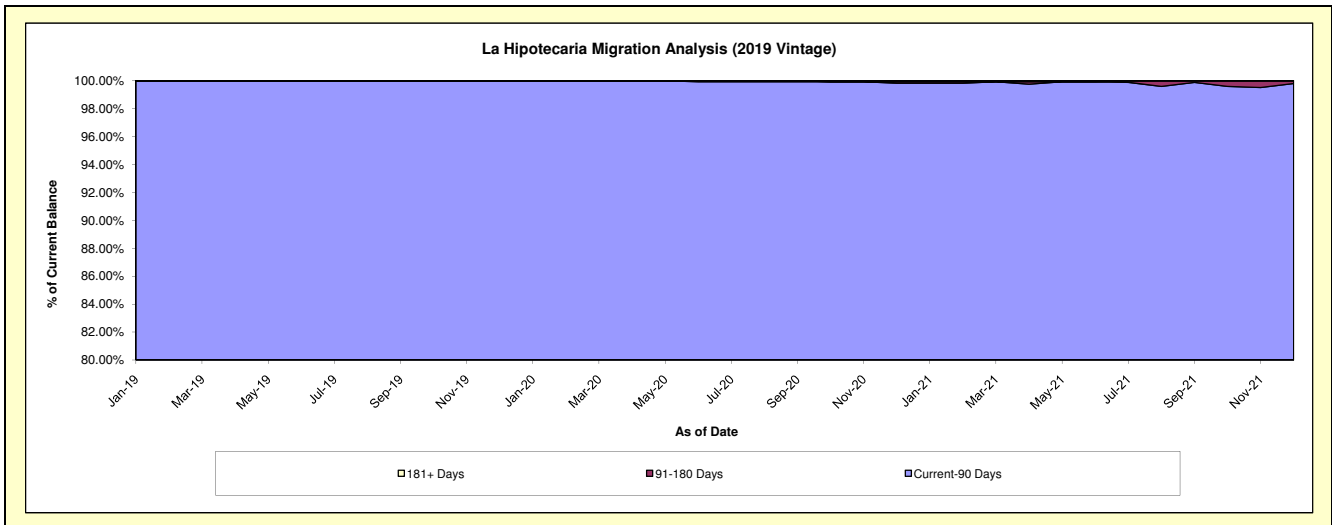
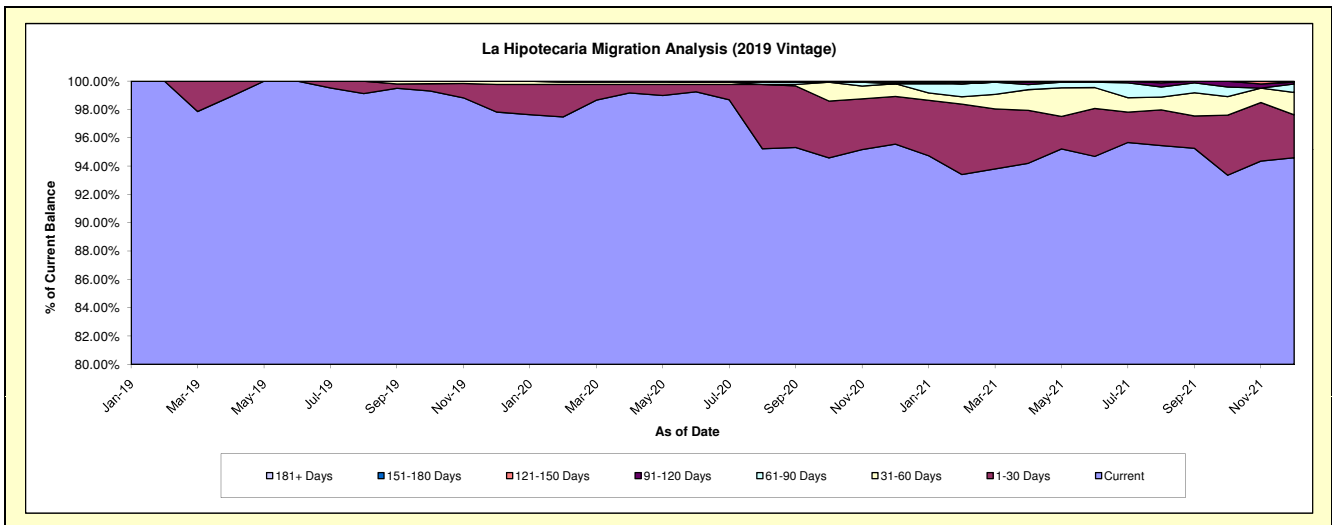
Delinquency Status (\$ of Current Balance)

Data Cutoff: 12/31/2021

Current Portfolio Balance	-	-	-	-	-	-	-	-	-	26,517,512.26	25,475,279.52	23,138,048.74
										Dec-19	Dec-20	Dec-21
Current										25,939,099.44	24,343,446.52	21,886,487.65
1-30 Days										517,867.59	856,332.15	701,463.29
31-60 Days										60,545.23	229,418.90	365,819.23
61-90 Days										-	-	138,719.46
91-120 Days										-	27,536.72	27,536.72
121-150 Days										-	-	-
151-180 Days										-	-	18,022.39
181+ Days										-	18,545.23	-

Delinquency Status (% of Current Balance)

Current Portfolio Balance	-	-	-	-	-	-	-	-	-	26,517,512.26	25,475,279.52	23,138,048.74
										Dec-19	Dec-20	Dec-21
Current										97.82%	95.56%	94.59%
1-30 Days										1.95%	3.36%	3.03%
31-60 Days										0.23%	0.90%	1.58%
61-90 Days										0.00%	0.00%	0.60%
91-120 Days										0.00%	0.11%	0.12%
121-150 Days										0.00%	0.00%	0.00%
151-180 Days										0.00%	0.00%	0.08%
181+ Days										0.00%	0.07%	0.00%
Current - 90 Days										100.00%	99.82%	99.80%
91-180 Days										0.00%	0.11%	0.20%



Mortgages - La Hipotecaria El Salvador Migration Analysis (2020 Vintage)

Delinquency Status (\$ of Current Balance)

Data Cutoff: 12/31/2021

Current Portfolio Balance										10,766,418.93	10,314,129.14
										Dec-20	Dec-21
Current										10,644,301.24	10,069,350.42
1-30 Days										51,891.69	-
31-60 Days										70,226.00	25,263.03
61-90 Days										-	-
91-120 Days										-	96,219.59
121-150 Days										-	-
151-180 Days										-	-
181+ Days										-	123,296.10

Delinquency Status (% of Current Balance)

Current Portfolio Balance										10,766,418.93	10,314,129.14
										Dec-20	Dec-21
Current										98.87%	97.63%
1-30 Days										0.48%	0.00%
31-60 Days										0.65%	0.24%
61-90 Days										0.00%	0.00%
91-120 Days										0.00%	0.93%
121-150 Days										0.00%	0.00%
151-180 Days										0.00%	0.00%
181+ Days										0.00%	1.20%
Current - 90 Days										100.00%	97.87%
91-180 Days										0.00%	0.93%

