



Migration Analysis for La Hipotecaria S.A. de C.V El Salvador

Personal Loans December 2021

An analysis of historical loan payment data was used to compile a migration analysis of delinquency by annual vintage. Delinquencies for each vintage were grouped into the following buckets; Current, 1-30, 31-60, 61-90, 91-120, 121-150, 151-180, and 180+. Results are provided in graphical and tabular form. The cutoff date is 12/31/2021.

Personal Loans - La Hipotecaria El Salvador Migration Analysis (All Vintages)

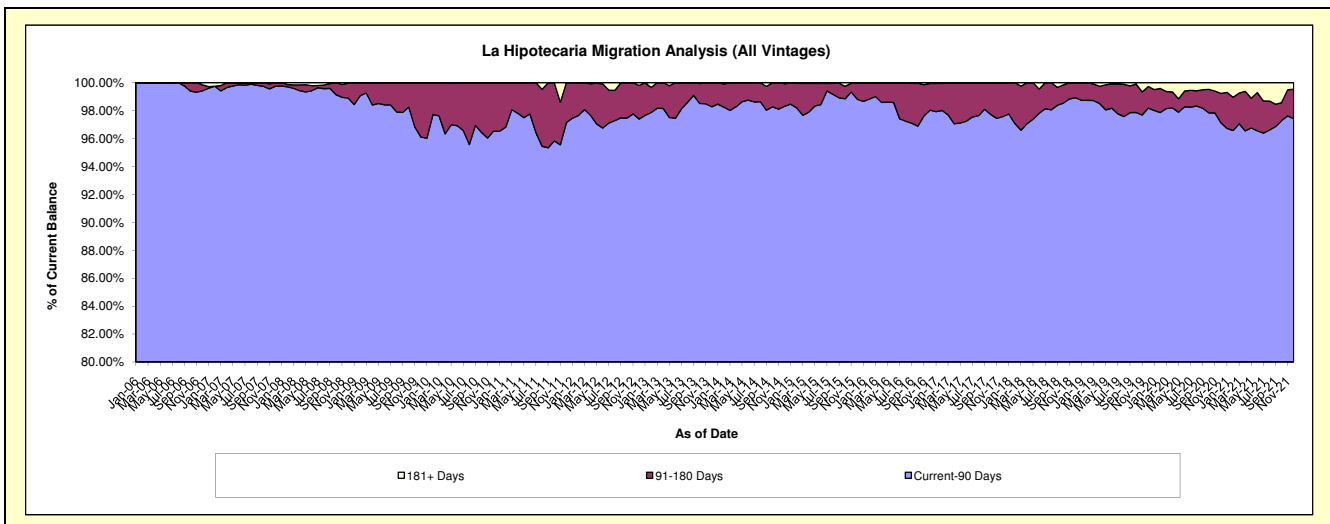
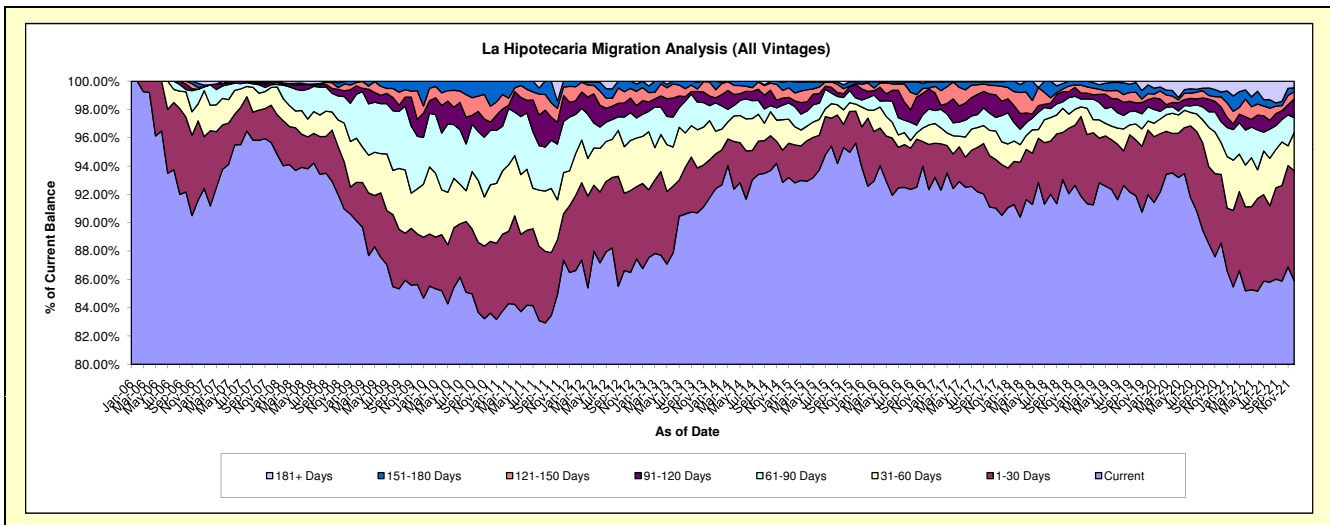
Delinquency Status (\$ of Current Balance)

Data Cutoff: 12/31/2021

Current Portfolio Balance	4,823,213.80	5,255,845.82	5,626,014.28	5,223,507.56	4,451,179.97	5,168,148.98	7,789,112.05	10,738,839.10	10,135,731.77	7,871,656.90
	Dec-12	Dec-13	Dec-14	Dec-15	Dec-16	Dec-17	Dec-18	Dec-19	Dec-20	Dec-21
Current	4,218,007.17	4,823,288.26	5,223,736.60	4,995,254.68	4,110,435.67	4,678,859.45	7,216,093.24	9,877,735.96	8,977,909.01	6,763,885.74
1-30 Days	246,018.37	140,521.26	128,398.78	117,631.00	141,766.55	184,631.10	330,406.52	490,294.33	491,061.59	610,325.40
31-60 Days	165,610.19	145,765.61	121,163.03	26,185.14	61,189.31	82,957.70	88,263.66	69,059.33	227,388.43	210,669.97
61-90 Days	68,206.71	55,760.77	57,489.19	22,637.05	50,360.27	96,245.37	70,958.24	106,820.95	148,876.10	83,880.64
91-120 Days	42,365.44	35,059.74	28,122.09	49,357.58	62,276.71	52,527.50	48,784.68	54,903.28	106,554.14	103,806.06
121-150 Days	48,437.56	52,144.63	30,216.65	3,923.84	3,322.83	53,819.77	14,004.96	46,002.18	71,087.48	40,125.06
151-180 Days	25,104.52	3,305.55	32,898.54	6,343.11	19,755.70	17,212.96	20,600.75	65,639.75	35,574.55	22,401.94
181+ Days	9,463.84	-	3,989.40	2,175.16	2,072.93	1,895.13	-	28,383.32	77,280.47	36,562.09

Delinquency Status (% of Current Balance)

Current Portfolio Balance	4,823,213.80	5,255,845.82	5,626,014.28	5,223,507.56	4,451,179.97	5,168,148.98	7,789,112.05	10,738,839.10	10,135,731.77	7,871,656.90
	Dec-12	Dec-13	Dec-14	Dec-15	Dec-16	Dec-17	Dec-18	Dec-19	Dec-20	Dec-21
Current	87.45%	91.77%	92.85%	95.63%	92.34%	90.53%	92.64%	91.98%	88.58%	85.93%
1-30 Days	5.10%	2.67%	2.28%	2.25%	3.18%	3.57%	4.24%	4.57%	4.84%	7.75%
31-60 Days	3.43%	2.77%	2.15%	0.50%	1.37%	1.61%	1.13%	0.64%	2.24%	2.68%
61-90 Days	1.41%	1.06%	1.02%	0.43%	1.13%	1.86%	0.91%	0.99%	1.47%	1.07%
91-120 Days	0.88%	0.67%	0.50%	0.94%	1.40%	1.02%	0.63%	0.51%	1.05%	1.32%
121-150 Days	1.00%	0.99%	0.54%	0.08%	0.07%	1.04%	0.18%	0.43%	0.70%	0.51%
151-180 Days	0.52%	0.06%	0.58%	0.12%	0.44%	0.33%	0.26%	0.61%	0.35%	0.28%
181+ Days	0.20%	0.00%	0.07%	0.04%	0.05%	0.04%	0.00%	0.26%	0.76%	0.46%
Current - 90 Days	97.40%	98.28%	98.31%	98.82%	98.04%	97.57%	98.93%	98.18%	97.13%	97.42%
91-180 Days	2.40%	1.72%	1.62%	1.14%	1.92%	2.39%	1.07%	1.55%	2.10%	2.11%



Personal Loans - La Hipotecaria El Salvador Migration Analysis (2006 Vintage)

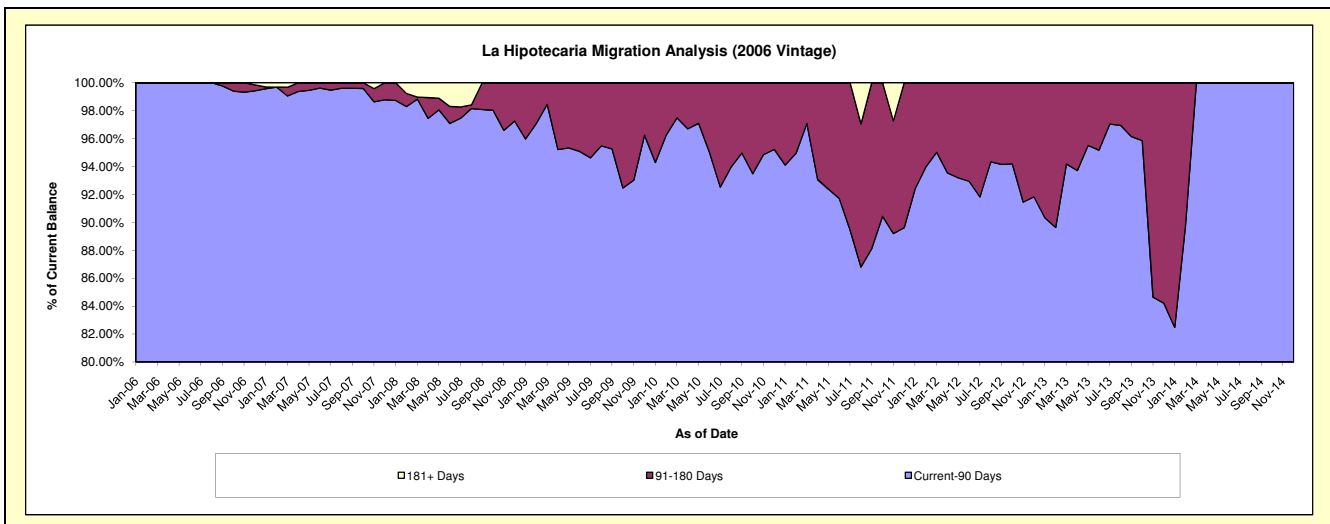
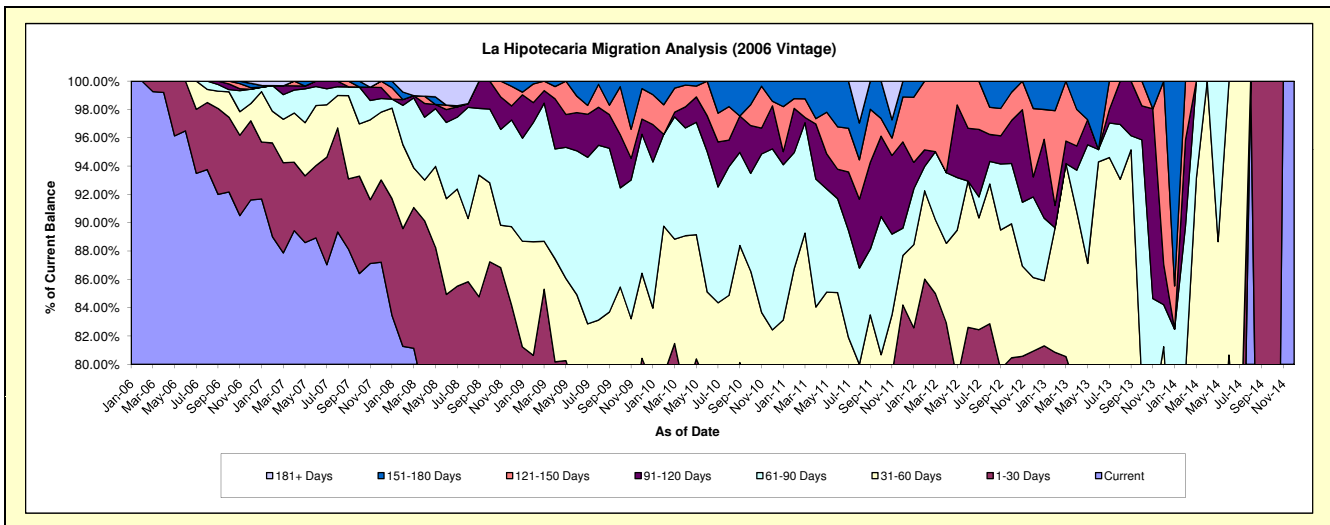
Delinquency Status (\$ of Current Balance)

Data Cutoff: 12/31/2021

Current Portfolio Balance	96,222.79	27,382.66	58.65	#N/A	#N/A	#N/A	#N/A	#N/A	#N/A	#N/A
	Dec-12	Dec-13	Dec-14	Dec-15	Dec-16	Dec-17	Dec-18	Dec-19	Dec-20	Dec-21
Current	70,858.76	14,946.69	58.65	#N/A	#N/A	#N/A	#N/A	#N/A	#N/A	#N/A
1-30 Days	7,020.41	1,383.63	-	#N/A	#N/A	#N/A	#N/A	#N/A	#N/A	#N/A
31-60 Days	4,993.77	5,917.33	-	#N/A	#N/A	#N/A	#N/A	#N/A	#N/A	#N/A
61-90 Days	5,489.90	812.10	-	#N/A	#N/A	#N/A	#N/A	#N/A	#N/A	#N/A
91-120 Days	1,348.76	784.19	-	#N/A	#N/A	#N/A	#N/A	#N/A	#N/A	#N/A
121-150 Days	4,652.05	3,538.72	-	#N/A	#N/A	#N/A	#N/A	#N/A	#N/A	#N/A
151-180 Days	1,859.14	-	-	#N/A	#N/A	#N/A	#N/A	#N/A	#N/A	#N/A
181+ Days	-	-	-	#N/A	#N/A	#N/A	#N/A	#N/A	#N/A	#N/A

Delinquency Status (% of Current Balance)

Current Portfolio Balance	96,222.79	27,382.66	58.65	#N/A	#N/A	#N/A	#N/A	#N/A	#N/A	#N/A
	Dec-12	Dec-13	Dec-14	Dec-15	Dec-16	Dec-17	Dec-18	Dec-19	Dec-20	Dec-21
Current	73.64%	54.58%	100.00%	#N/A	#N/A	#N/A	#N/A	#N/A	#N/A	#N/A
1-30 Days	7.30%	5.05%	0.00%	#N/A	#N/A	#N/A	#N/A	#N/A	#N/A	#N/A
31-60 Days	5.19%	21.61%	0.00%	#N/A	#N/A	#N/A	#N/A	#N/A	#N/A	#N/A
61-90 Days	5.71%	2.97%	0.00%	#N/A	#N/A	#N/A	#N/A	#N/A	#N/A	#N/A
91-120 Days	1.40%	2.86%	0.00%	#N/A	#N/A	#N/A	#N/A	#N/A	#N/A	#N/A
121-150 Days	4.83%	12.92%	0.00%	#N/A	#N/A	#N/A	#N/A	#N/A	#N/A	#N/A
151-180 Days	1.93%	0.00%	0.00%	#N/A	#N/A	#N/A	#N/A	#N/A	#N/A	#N/A
181+ Days	0.00%	0.00%	0.00%	#N/A	#N/A	#N/A	#N/A	#N/A	#N/A	#N/A
Current - 90 Days	91.83%	84.21%	100.00%	#N/A	#N/A	#N/A	#N/A	#N/A	#N/A	#N/A
91-180 Days	8.17%	15.79%	0.00%	#N/A	#N/A	#N/A	#N/A	#N/A	#N/A	#N/A



Personal Loans - La Hipotecaria El Salvador Migration Analysis (2007 Vintage)

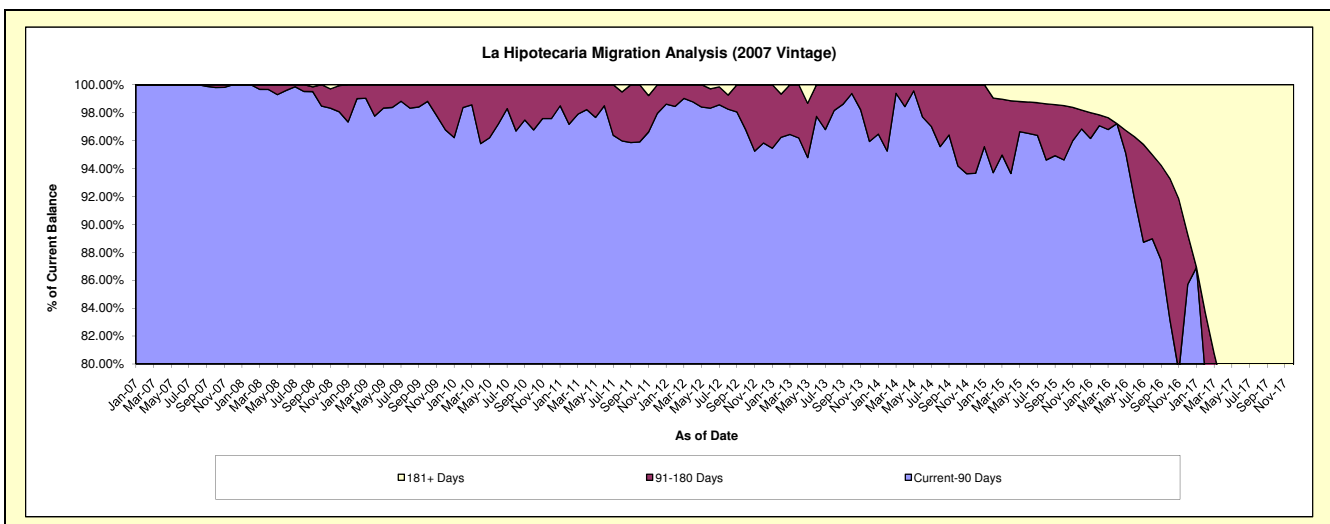
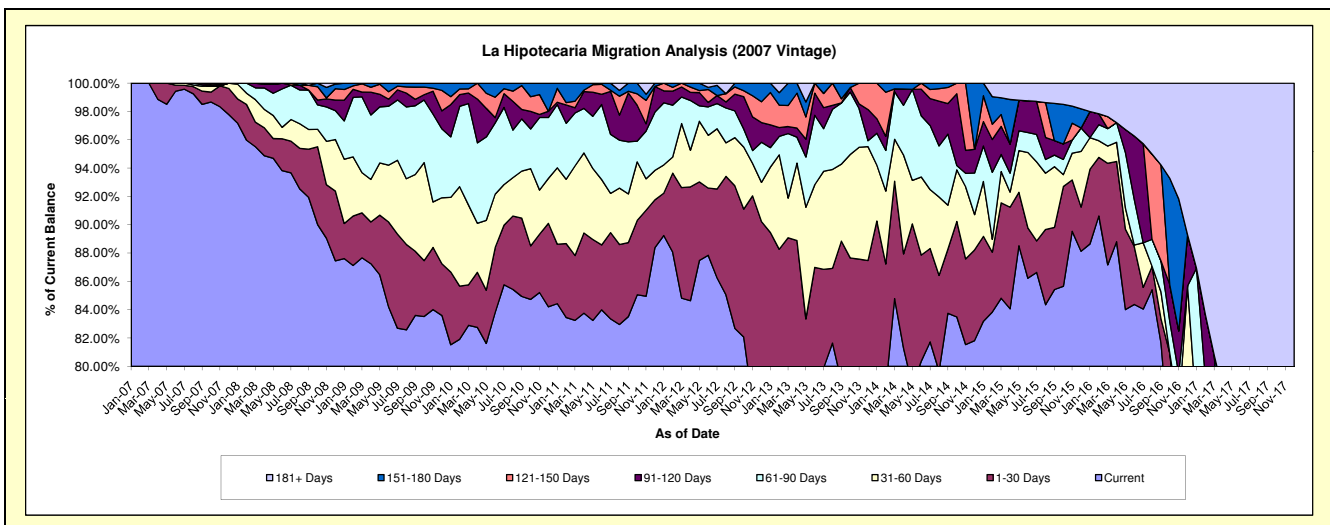
Delinquency Status (\$ of Current Balance)

Data Cutoff: 12/31/2021

Current Portfolio Balance	980,234.47	589,647.47	316,275.35	120,022.16	19,356.22	1,895.13	#N/A	#N/A	#N/A	#N/A
	Dec-12	Dec-13	Dec-14	Dec-15	Dec-16	Dec-17	Dec-18	Dec-19	Dec-20	Dec-21
Current	775,520.85	470,969.00	258,764.63	105,771.67	12,374.01	-	#N/A	#N/A	#N/A	#N/A
1-30 Days	108,944.66	44,850.79	20,255.74	3,752.55	1,173.27	-	#N/A	#N/A	#N/A	#N/A
31-60 Days	27,117.01	47,387.69	7,895.57	4,716.79	3,038.49	-	#N/A	#N/A	#N/A	#N/A
61-90 Days	27,764.92	2,481.46	9,291.89	1,979.03	-	-	#N/A	#N/A	#N/A	#N/A
91-120 Days	13,597.91	12,990.03	5,283.71	-	697.52	-	#N/A	#N/A	#N/A	#N/A
121-150 Days	14,428.99	10,968.50	-	-	-	-	#N/A	#N/A	#N/A	#N/A
151-180 Days	12,860.13	-	14,783.81	1,626.96	-	-	#N/A	#N/A	#N/A	#N/A
181+ Days	-	-	-	2,175.16	2,072.93	1,895.13	#N/A	#N/A	#N/A	#N/A

Delinquency Status (% of Current Balance)

Current Portfolio Balance	980,234.47	589,647.47	316,275.35	120,022.16	19,356.22	1,895.13	#N/A	#N/A	#N/A	#N/A
	Dec-12	Dec-13	Dec-14	Dec-15	Dec-16	Dec-17	Dec-18	Dec-19	Dec-20	Dec-21
Current	79.12%	79.87%	81.82%	88.13%	63.93%	0.00%	#N/A	#N/A	#N/A	#N/A
1-30 Days	11.11%	7.61%	6.40%	3.13%	6.06%	0.00%	#N/A	#N/A	#N/A	#N/A
31-60 Days	2.77%	8.04%	2.50%	3.93%	15.70%	0.00%	#N/A	#N/A	#N/A	#N/A
61-90 Days	2.83%	0.42%	2.94%	1.65%	0.00%	0.00%	#N/A	#N/A	#N/A	#N/A
91-120 Days	1.39%	2.20%	1.67%	0.00%	3.60%	0.00%	#N/A	#N/A	#N/A	#N/A
121-150 Days	1.47%	1.86%	0.00%	0.00%	0.00%	0.00%	#N/A	#N/A	#N/A	#N/A
151-180 Days	1.31%	0.00%	4.67%	1.36%	0.00%	0.00%	#N/A	#N/A	#N/A	#N/A
181+ Days	0.00%	0.00%	0.00%	1.81%	10.71%	100.00%	#N/A	#N/A	#N/A	#N/A
Current - 90 Days	95.83%	95.94%	93.66%	96.83%	85.69%	0.00%	#N/A	#N/A	#N/A	#N/A
91-180 Days	4.17%	4.06%	6.34%	1.36%	3.60%	0.00%	#N/A	#N/A	#N/A	#N/A



Personal Loans - La Hipotecaria El Salvador Migration Analysis (2008 Vintage)

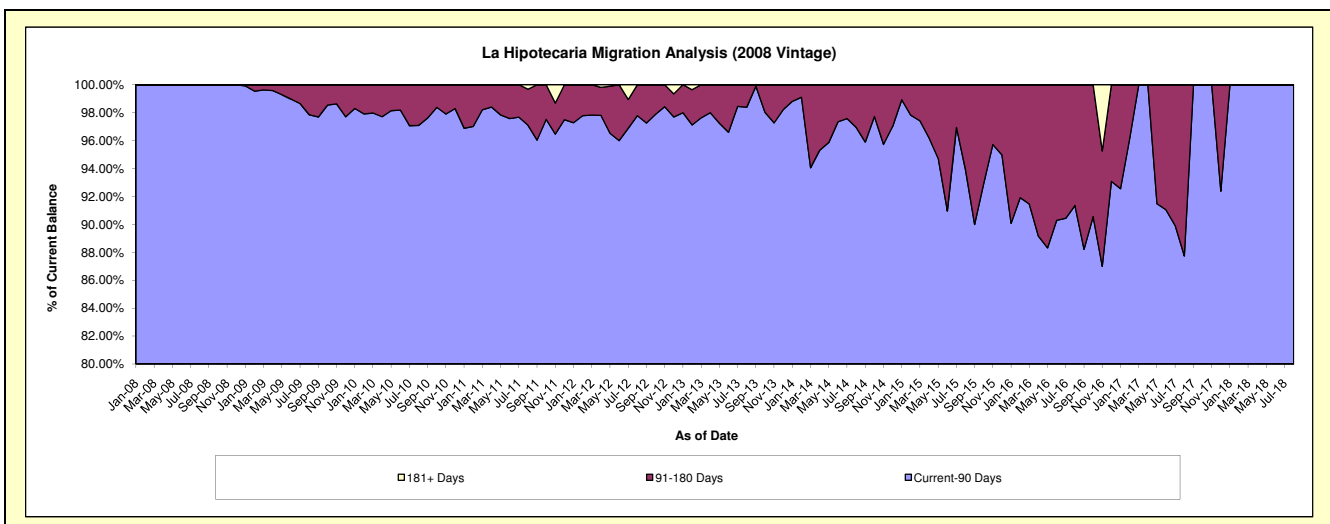
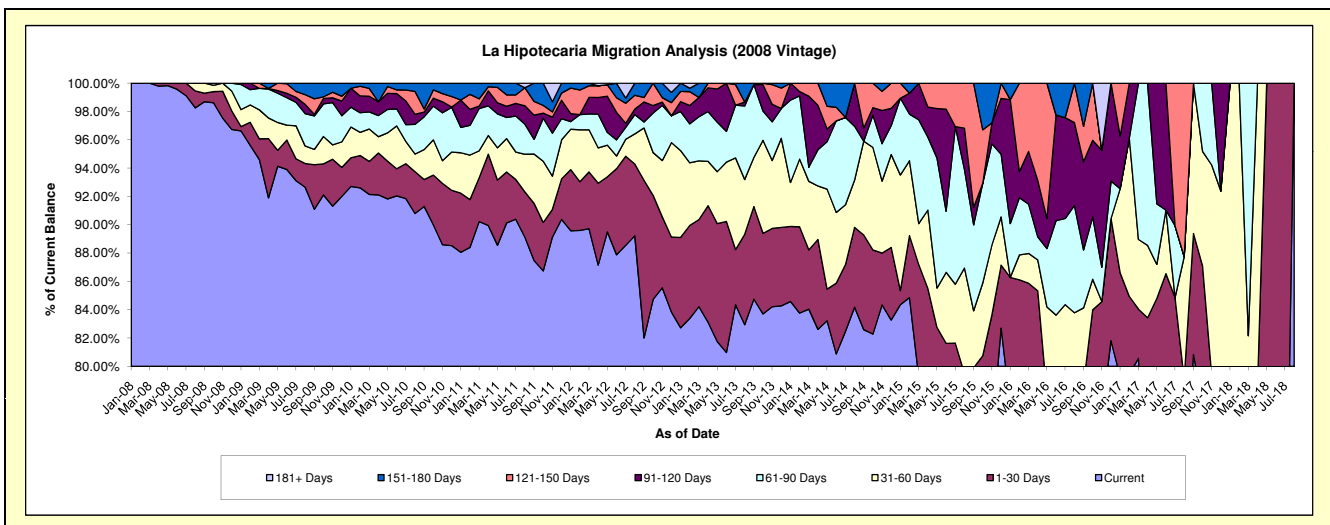
Delinquency Status (\$ of Current Balance)

Data Cutoff: 12/31/2021

Current Portfolio Balance	1,446,632.11	947,240.07	540,339.94	239,729.25	79,326.09	10,030.55	#N/A	#N/A	#N/A	#N/A
	Dec-12	Dec-13	Dec-14	Dec-15	Dec-16	Dec-17	Dec-18	Dec-19	Dec-20	Dec-21
Current	1,212,719.22	798,265.61	449,953.99	198,262.42	64,895.85	6,730.46	#N/A	#N/A	#N/A	#N/A
1-30 Days	76,684.17	52,508.72	27,677.66	10,668.11	6,842.88	764.28	#N/A	#N/A	#N/A	#N/A
31-60 Days	96,529.73	59,565.90	35,471.42	8,151.89	-	1,771.77	#N/A	#N/A	#N/A	#N/A
61-90 Days	27,323.24	19,990.81	11,091.02	10,609.46	2,095.16	-	#N/A	#N/A	#N/A	#N/A
91-120 Days	-	-	6,528.76	9,461.29	5,492.20	764.04	#N/A	#N/A	#N/A	#N/A
121-150 Days	13,526.66	13,603.48	9,617.09	2,576.08	-	-	#N/A	#N/A	#N/A	#N/A
151-180 Days	10,385.25	3,305.55	-	-	-	-	#N/A	#N/A	#N/A	#N/A
181+ Days	9,463.84	-	-	-	-	-	#N/A	#N/A	#N/A	#N/A

Delinquency Status (% of Current Balance)

Current Portfolio Balance	1,446,632.11	947,240.07	540,339.94	239,729.25	79,326.09	10,030.55	#N/A	#N/A	#N/A	#N/A
	Dec-12	Dec-13	Dec-14	Dec-15	Dec-16	Dec-17	Dec-18	Dec-19	Dec-20	Dec-21
Current	83.83%	84.27%	83.27%	82.70%	81.81%	67.10%	#N/A	#N/A	#N/A	#N/A
1-30 Days	5.30%	5.54%	5.12%	4.45%	8.63%	7.62%	#N/A	#N/A	#N/A	#N/A
31-60 Days	6.67%	6.29%	6.56%	3.40%	0.00%	17.66%	#N/A	#N/A	#N/A	#N/A
61-90 Days	1.89%	2.11%	2.05%	4.43%	2.64%	0.00%	#N/A	#N/A	#N/A	#N/A
91-120 Days	0.00%	0.00%	1.21%	3.95%	6.92%	7.62%	#N/A	#N/A	#N/A	#N/A
121-150 Days	0.94%	1.44%	1.78%	1.07%	0.00%	0.00%	#N/A	#N/A	#N/A	#N/A
151-180 Days	0.72%	0.35%	0.00%	0.00%	0.00%	0.00%	#N/A	#N/A	#N/A	#N/A
181+ Days	0.65%	0.00%	0.00%	0.00%	0.00%	0.00%	#N/A	#N/A	#N/A	#N/A
Current - 90 Days	97.69%	98.21%	97.01%	94.98%	93.08%	92.38%	#N/A	#N/A	#N/A	#N/A
91-180 Days	1.65%	1.79%	2.99%	5.02%	6.92%	7.62%	#N/A	#N/A	#N/A	#N/A



Personal Loans - La Hipotecaria El Salvador Migration Analysis (2009 Vintage)

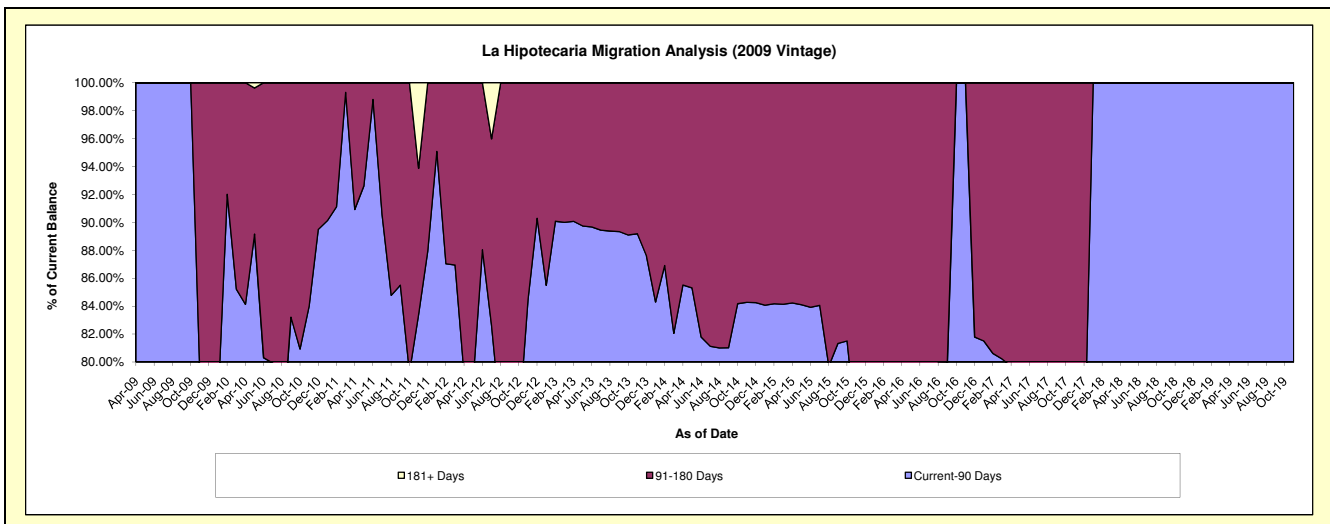
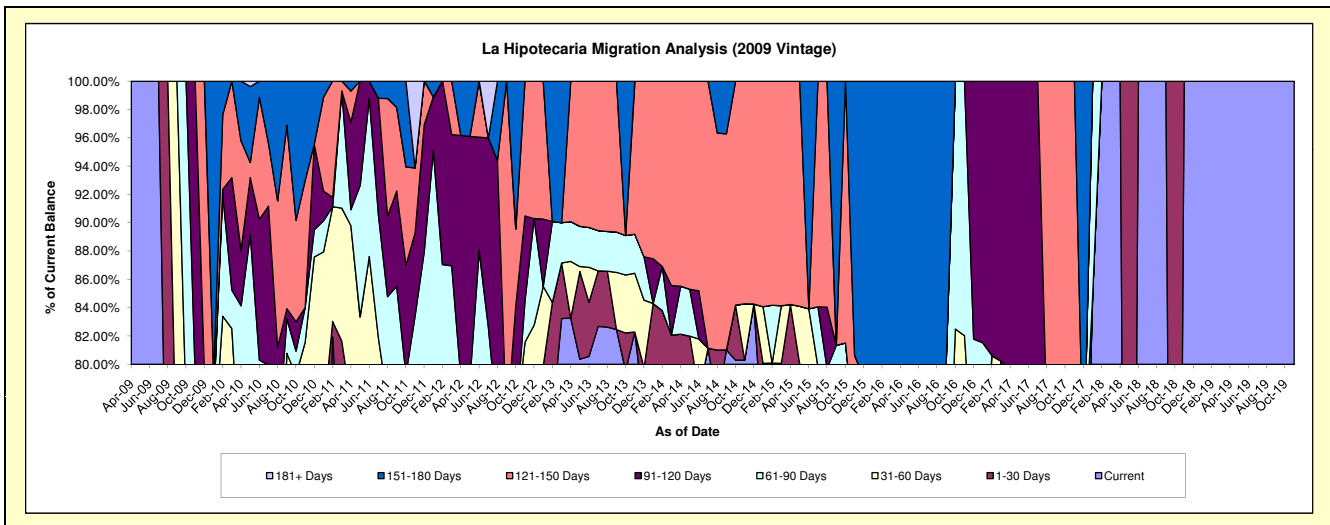
Delinquency Status (\$ of Current Balance)

Data Cutoff: 12/31/2021

Current Portfolio Balance	101,279.84	66,791.53	40,600.90	22,547.57	12,451.10	8,111.00	397.14	#N/A	#N/A	#N/A
	Dec-12	Dec-13	Dec-14	Dec-15	Dec-16	Dec-17	Dec-18	Dec-19	Dec-20	Dec-21
Current	72,822.15	51,262.78	34,210.43	14,216.50	8,959.96	4,977.33	397.14	#N/A	#N/A	#N/A
1-30 Days	8,093.51	2,006.07	-	-	-	-	-	#N/A	#N/A	#N/A
31-60 Days	2,905.67	3,192.86	-	2,267.16	-	866.51	-	#N/A	#N/A	#N/A
61-90 Days	7,628.65	2,049.96	-	-	1,223.98	-	-	#N/A	#N/A	#N/A
91-120 Days	-	-	-	-	2,267.16	-	-	#N/A	#N/A	#N/A
121-150 Days	9,829.86	8,279.86	6,390.47	1,347.76	-	-	-	#N/A	#N/A	#N/A
151-180 Days	-	-	-	4,716.15	-	2,267.16	-	#N/A	#N/A	#N/A
181+ Days	-	-	-	-	-	-	-	#N/A	#N/A	#N/A

Delinquency Status (% of Current Balance)

Current Portfolio Balance	101,279.84	66,791.53	40,600.90	22,547.57	12,451.10	8,111.00	397.14	#N/A	#N/A	#N/A
	Dec-12	Dec-13	Dec-14	Dec-15	Dec-16	Dec-17	Dec-18	Dec-19	Dec-20	Dec-21
Current	71.90%	76.75%	84.26%	63.05%	71.96%	61.37%	100.00%	#N/A	#N/A	#N/A
1-30 Days	7.99%	3.00%	0.00%	0.00%	0.00%	0.00%	0.00%	#N/A	#N/A	#N/A
31-60 Days	2.87%	4.78%	0.00%	10.06%	0.00%	10.68%	0.00%	#N/A	#N/A	#N/A
61-90 Days	7.53%	3.07%	0.00%	0.00%	9.83%	0.00%	0.00%	#N/A	#N/A	#N/A
91-120 Days	0.00%	0.00%	0.00%	0.00%	18.21%	0.00%	0.00%	#N/A	#N/A	#N/A
121-150 Days	9.71%	12.40%	15.74%	5.98%	0.00%	0.00%	0.00%	#N/A	#N/A	#N/A
151-180 Days	0.00%	0.00%	0.00%	20.92%	0.00%	27.95%	0.00%	#N/A	#N/A	#N/A
181+ Days	0.00%	0.00%	0.00%	0.00%	0.00%	0.00%	0.00%	#N/A	#N/A	#N/A
Current - 90 Days	90.29%	87.60%	84.26%	73.11%	81.79%	72.05%	100.00%	#N/A	#N/A	#N/A
91-180 Days	9.71%	12.40%	15.74%	26.89%	18.21%	27.95%	0.00%	#N/A	#N/A	#N/A



Personal Loans - La Hipotecaria El Salvador Migration Analysis (2010 Vintage)

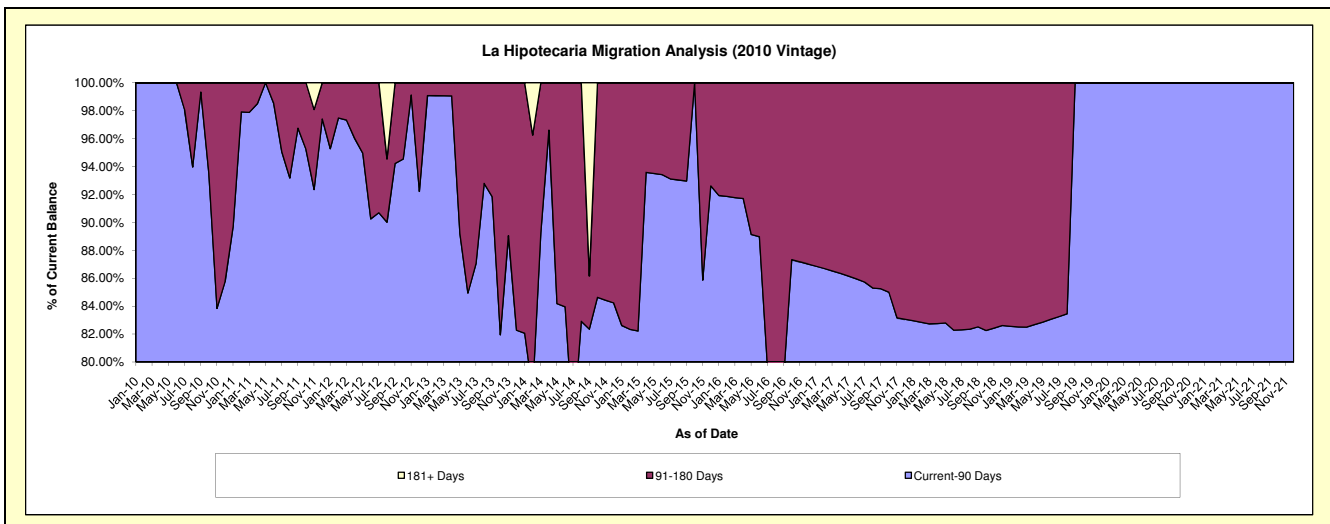
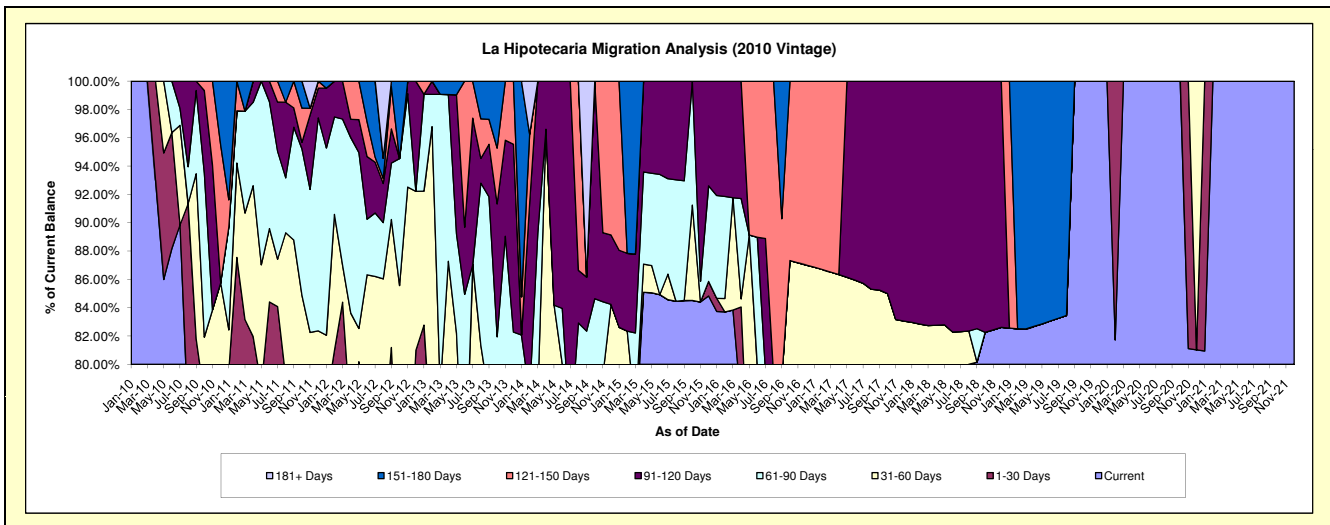
Delinquency Status (\$ of Current Balance)

Data Cutoff: 12/31/2021

Current Portfolio Balance	257,854.72	160,424.55	82,227.29	49,573.73	25,589.76	17,067.70	13,960.42	10,955.31	10,363.73	8,229.38
	Dec-12	Dec-13	Dec-14	Dec-15	Dec-16	Dec-17	Dec-18	Dec-19	Dec-20	Dec-21
Current	176,449.74	88,621.27	53,035.78	42,053.98	19,974.10	13,032.88	11,533.29	10,955.31	8,396.50	8,229.38
1-30 Days	32,388.67	12,863.70	11,968.85	509.53	-	-	-	-	-	-
31-60 Days	28,946.10	20,460.19	4,261.85	-	2,292.83	1,143.50	-	-	1,967.23	-
61-90 Days	-	10,054.65	-	3,346.49	-	-	-	-	-	-
91-120 Days	20,070.21	21,285.52	4,028.65	3,663.73	-	2,891.32	2,427.13	-	-	-
121-150 Days	-	7,139.22	8,932.16	-	3,322.83	-	-	-	-	-
151-180 Days	-	-	-	-	-	-	-	-	-	-
181+ Days	-	-	-	-	-	-	-	-	-	-

Delinquency Status (% of Current Balance)

Current Portfolio Balance	257,854.72	160,424.55	82,227.29	49,573.73	25,589.76	17,067.70	13,960.42	10,955.31	10,363.73	8,229.38
	Dec-12	Dec-13	Dec-14	Dec-15	Dec-16	Dec-17	Dec-18	Dec-19	Dec-20	Dec-21
Current	68.43%	55.24%	64.50%	84.83%	78.06%	76.36%	82.61%	100.00%	81.02%	100.00%
1-30 Days	12.56%	8.02%	14.56%	1.03%	0.00%	0.00%	0.00%	0.00%	0.00%	0.00%
31-60 Days	11.23%	12.75%	5.18%	0.00%	8.96%	6.70%	0.00%	0.00%	18.98%	0.00%
61-90 Days	0.00%	6.27%	0.00%	6.75%	0.00%	0.00%	0.00%	0.00%	0.00%	0.00%
91-120 Days	7.78%	13.27%	4.90%	7.39%	0.00%	16.94%	17.39%	0.00%	0.00%	0.00%
121-150 Days	0.00%	4.45%	10.66%	0.00%	12.98%	0.00%	0.00%	0.00%	0.00%	0.00%
151-180 Days	0.00%	0.00%	0.00%	0.00%	0.00%	0.00%	0.00%	0.00%	0.00%	0.00%
181+ Days	0.00%	0.00%	0.00%	0.00%	0.00%	0.00%	0.00%	0.00%	0.00%	0.00%
Current - 90 Days	92.22%	82.28%	84.24%	92.61%	87.02%	83.06%	82.61%	100.00%	100.00%	100.00%
91-180 Days	7.78%	17.72%	15.76%	7.39%	12.98%	16.94%	17.39%	0.00%	0.00%	0.00%



Personal Loans - La Hipotecaria El Salvador Migration Analysis (2011 Vintage)

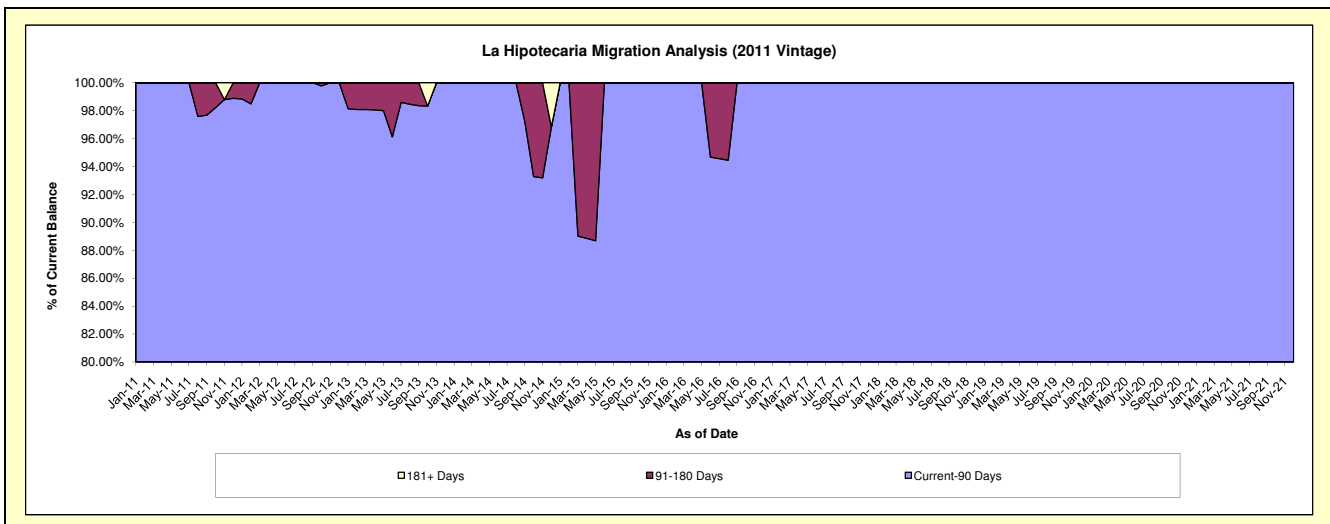
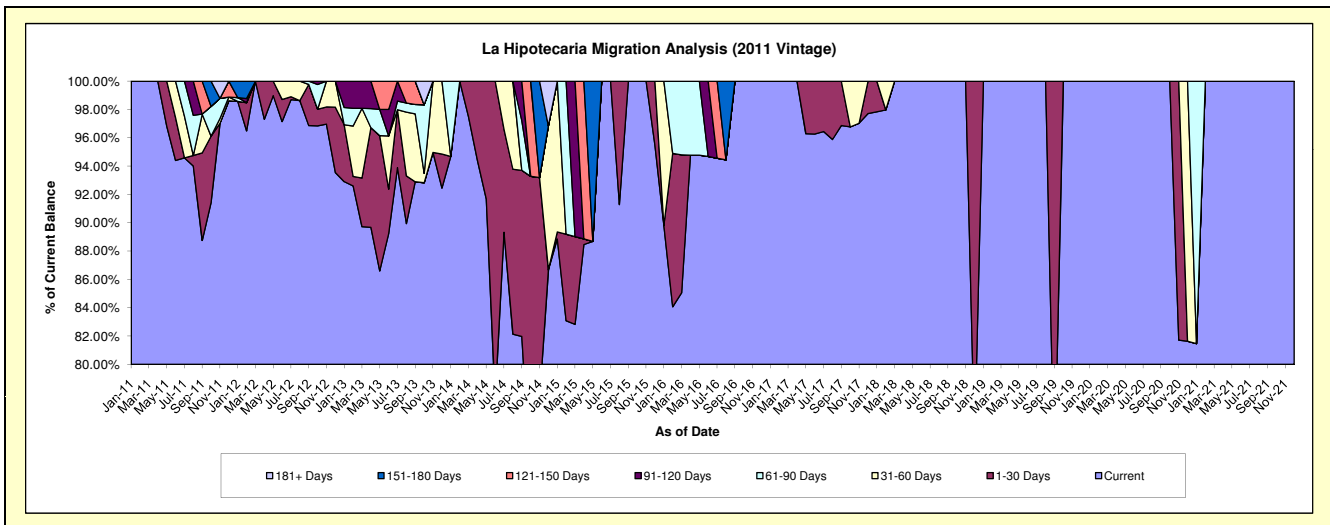
Delinquency Status (\$ of Current Balance)

Data Cutoff: 12/31/2021

Current Portfolio Balance	278,769.57	179,395.55	126,117.90	84,266.33	56,255.12	36,703.35	25,195.01	20,251.68	16,681.22	11,947.62
	Dec-12	Dec-13	Dec-14	Dec-15	Dec-16	Dec-17	Dec-18	Dec-19	Dec-20	Dec-21
Current	260,764.71	165,847.28	109,306.68	80,458.45	56,255.12	35,864.29	18,730.70	20,251.68	13,617.45	11,947.62
1-30 Days	12,886.95	4,306.63	-	3,807.88	-	839.06	6,464.31	-	-	-
31-60 Days	5,117.91	9,241.64	12,821.82	-	-	-	-	-	3,063.77	-
61-90 Days	-	-	-	-	-	-	-	-	-	-
91-120 Days	-	-	-	-	-	-	-	-	-	-
121-150 Days	-	-	-	-	-	-	-	-	-	-
151-180 Days	-	-	-	-	-	-	-	-	-	-
181+ Days	-	-	3,989.40	-	-	-	-	-	-	-

Delinquency Status (% of Current Balance)

Current Portfolio Balance	278,769.57	179,395.55	126,117.90	84,266.33	56,255.12	36,703.35	25,195.01	20,251.68	16,681.22	11,947.62
	Dec-12	Dec-13	Dec-14	Dec-15	Dec-16	Dec-17	Dec-18	Dec-19	Dec-20	Dec-21
Current	93.54%	92.45%	86.67%	95.48%	100.00%	97.71%	74.34%	100.00%	81.63%	100.00%
1-30 Days	4.62%	2.40%	0.00%	4.52%	0.00%	2.29%	25.66%	0.00%	0.00%	0.00%
31-60 Days	1.84%	5.15%	10.17%	0.00%	0.00%	0.00%	0.00%	0.00%	18.37%	0.00%
61-90 Days	0.00%	0.00%	0.00%	0.00%	0.00%	0.00%	0.00%	0.00%	0.00%	0.00%
91-120 Days	0.00%	0.00%	0.00%	0.00%	0.00%	0.00%	0.00%	0.00%	0.00%	0.00%
121-150 Days	0.00%	0.00%	0.00%	0.00%	0.00%	0.00%	0.00%	0.00%	0.00%	0.00%
151-180 Days	0.00%	0.00%	0.00%	0.00%	0.00%	0.00%	0.00%	0.00%	0.00%	0.00%
181+ Days	0.00%	0.00%	3.16%	0.00%	0.00%	0.00%	0.00%	0.00%	0.00%	0.00%
Current - 90 Days	100.00%	100.00%	96.84%	100.00%	100.00%	100.00%	100.00%	100.00%	100.00%	100.00%
91-180 Days	0.00%	0.00%	0.00%	0.00%	0.00%	0.00%	0.00%	0.00%	0.00%	0.00%



Personal Loans - La Hipotecaria El Salvador Migration Analysis (2012 Vintage)

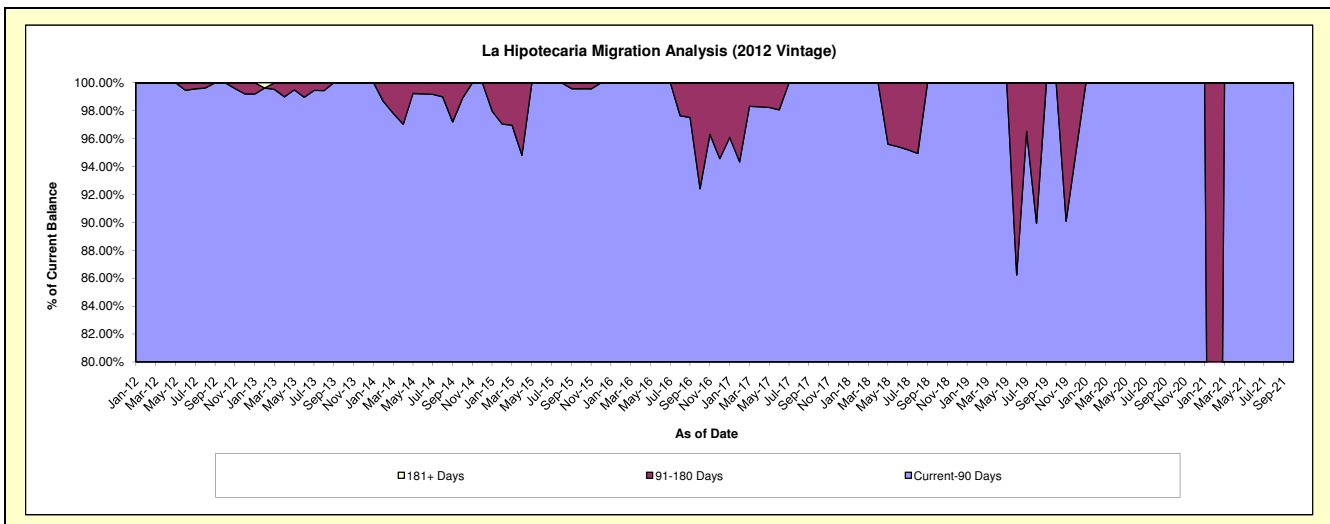
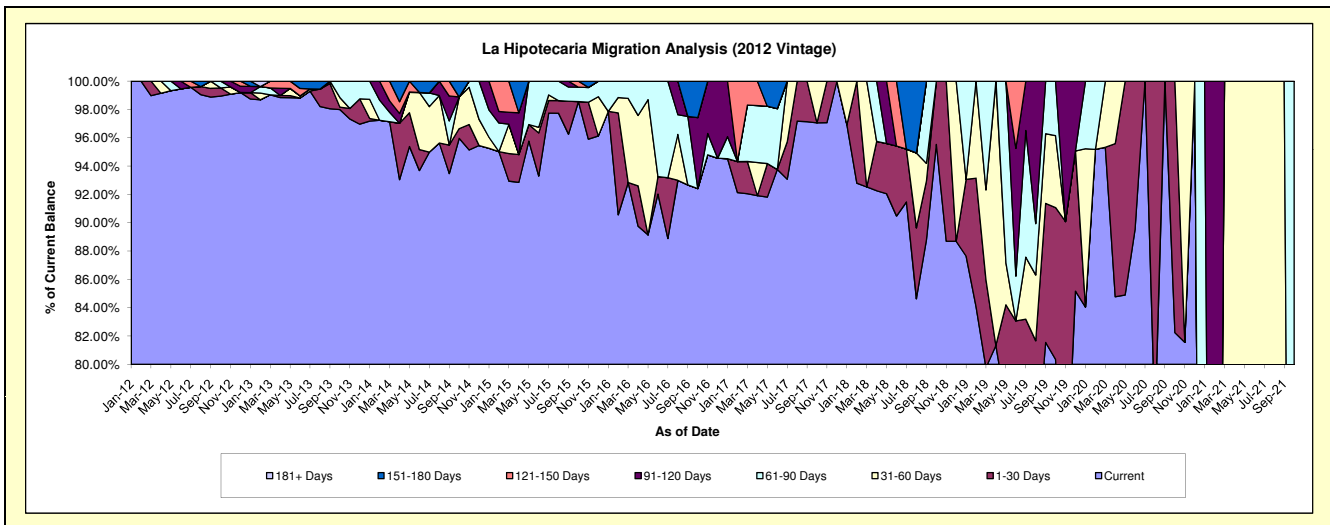
Delinquency Status (\$ of Current Balance)

Data Cutoff: 12/31/2021

Current Portfolio Balance	1,662,220.30	1,120,207.37	640,236.24	398,808.85	235,730.60	141,859.63	70,857.25	18,760.30	1,958.72	#N/A
	Dec-12	Dec-13	Dec-14	Dec-15	Dec-16	Dec-17	Dec-18	Dec-19	Dec-20	Dec-21
Current	1,648,871.74	1,086,197.55	611,146.95	383,378.25	222,907.71	141,859.63	62,844.66	15,977.57	1,958.72	#N/A
1-30 Days	-	19,971.23	-	-	-	-	-	1,857.45	-	#N/A
31-60 Days	-	-	11,812.67	11,049.30	-	-	8,012.59	-	-	#N/A
61-90 Days	-	14,038.59	17,276.62	4,381.30	-	-	-	-	-	#N/A
91-120 Days	7,348.56	-	-	-	12,822.89	-	-	925.28	-	#N/A
121-150 Days	6,000.00	-	-	-	-	-	-	-	-	#N/A
151-180 Days	-	-	-	-	-	-	-	-	-	#N/A
181+ Days	-	-	-	-	-	-	-	-	-	#N/A

Delinquency Status (% of Current Balance)

Current Portfolio Balance	1,662,220.30	1,120,207.37	640,236.24	398,808.85	235,730.60	141,859.63	70,857.25	18,760.30	1,958.72	#N/A
	Dec-12	Dec-13	Dec-14	Dec-15	Dec-16	Dec-17	Dec-18	Dec-19	Dec-20	Dec-21
Current	99.20%	96.96%	95.46%	96.13%	94.56%	100.00%	88.69%	85.17%	100.00%	#N/A
1-30 Days	0.00%	1.78%	0.00%	0.00%	0.00%	0.00%	0.00%	9.90%	0.00%	#N/A
31-60 Days	0.00%	0.00%	1.85%	2.77%	0.00%	0.00%	11.31%	0.00%	0.00%	#N/A
61-90 Days	0.00%	1.25%	2.70%	1.10%	0.00%	0.00%	0.00%	0.00%	0.00%	#N/A
91-120 Days	0.44%	0.00%	0.00%	0.00%	5.44%	0.00%	0.00%	4.93%	0.00%	#N/A
121-150 Days	0.36%	0.00%	0.00%	0.00%	0.00%	0.00%	0.00%	0.00%	0.00%	#N/A
151-180 Days	0.00%	0.00%	0.00%	0.00%	0.00%	0.00%	0.00%	0.00%	0.00%	#N/A
181+ Days	0.00%	0.00%	0.00%	0.00%	0.00%	0.00%	0.00%	0.00%	0.00%	#N/A
Current - 90 Days	99.20%	100.00%	100.00%	100.00%	94.56%	100.00%	100.00%	95.07%	100.00%	#N/A
91-180 Days	0.80%	0.00%	0.00%	0.00%	5.44%	0.00%	0.00%	4.93%	0.00%	#N/A



Personal Loans - La Hipotecaria El Salvador Migration Analysis (2013 Vintage)

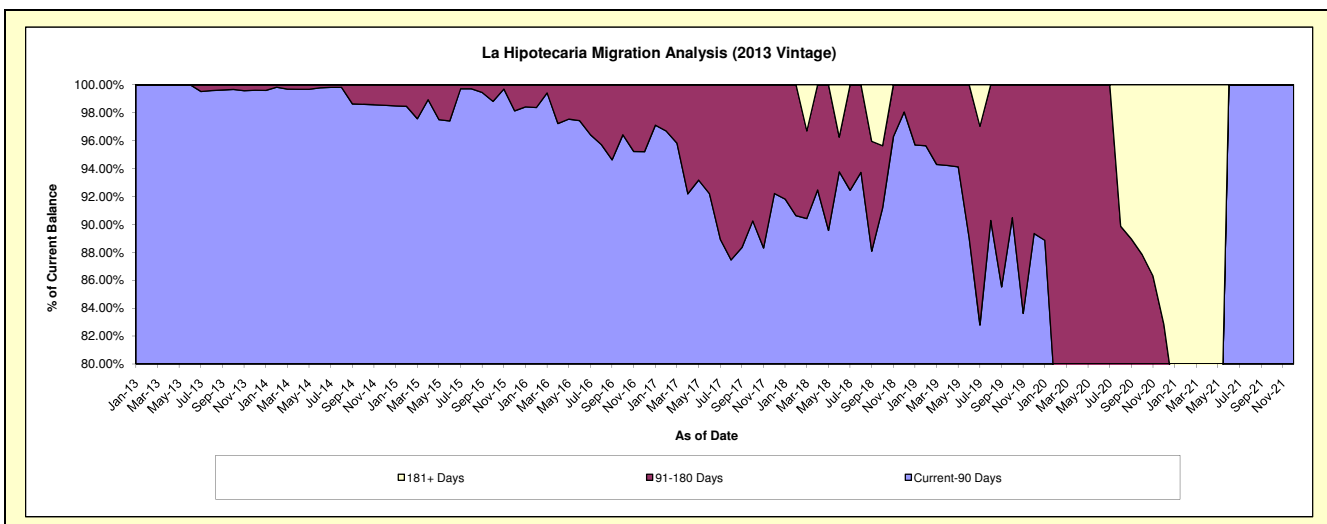
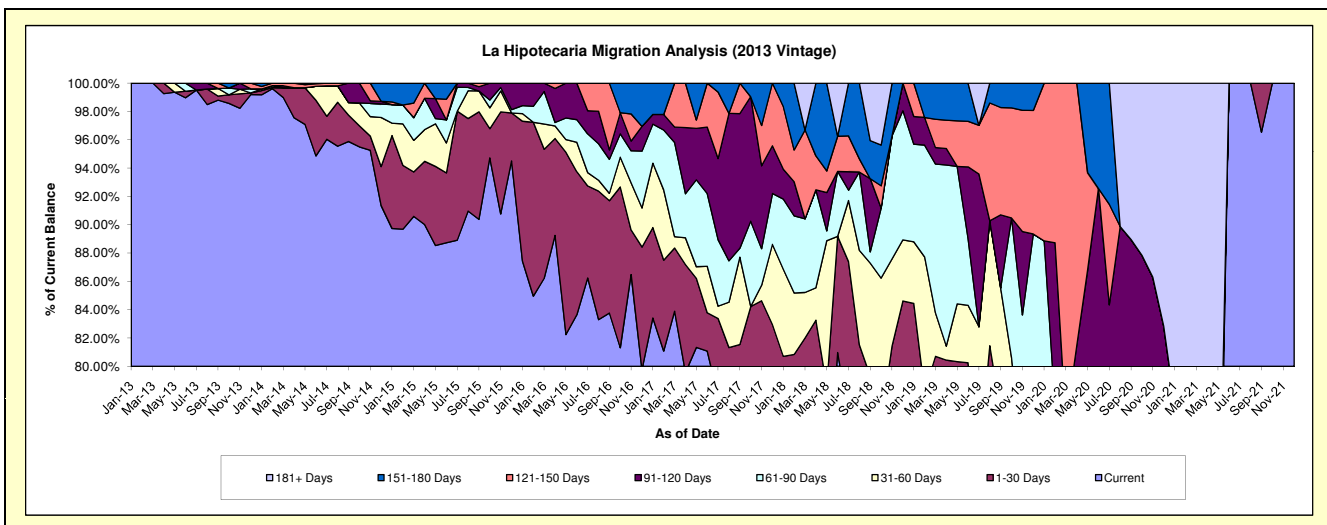
Delinquency Status (\$ of Current Balance)

Data Cutoff: 12/31/2021

Current Portfolio Balance	-	2,164,756.62	1,409,727.42	977,777.70	647,711.72	451,569.20	222,320.73	93,279.30	24,003.66	848.38
	Dec-13	Dec-14	Dec-15	Dec-16	Dec-17	Dec-18	Dec-19	Dec-20	Dec-21	
Current	2,147,178.08	1,287,784.19	924,080.48	516,587.31	329,419.71	164,161.01	66,726.07	12,877.02	848.38	
1-30 Days	2,630.49	38,882.05	33,096.34	56,173.99	45,172.09	23,967.63	1,243.13	1,840.28	-	
31-60 Days	-	48,899.70	-	17,848.02	25,559.67	9,585.86	-	-	-	
61-90 Days	6,333.20	13,444.72	2,320.77	26,022.44	16,237.03	20,270.75	15,371.88	560.01	-	
91-120 Days	-	2,602.03	18,280.11	11,324.26	15,204.92	4,335.48	-	4,608.39	-	
121-150 Days	8,614.85	-	-	-	19,975.78	-	8,137.95	-	-	
151-180 Days	-	18,114.73	-	19,755.70	-	-	1,800.27	-	-	
181+ Days	-	-	-	-	-	-	-	4,117.96	-	

Delinquency Status (% of Current Balance)

Current Portfolio Balance	-	2,164,756.62	1,409,727.42	977,777.70	647,711.72	451,569.20	222,320.73	93,279.30	24,003.66	848.38
	Dec-13	Dec-14	Dec-15	Dec-16	Dec-17	Dec-18	Dec-19	Dec-20	Dec-21	
Current	99.19%	91.35%	94.51%	79.76%	72.95%	73.84%	71.53%	53.65%	100.00%	
1-30 Days	0.12%	2.76%	3.38%	8.67%	10.00%	10.78%	1.33%	7.67%	0.00%	
31-60 Days	0.00%	3.47%	0.00%	2.76%	5.66%	4.31%	0.00%	0.00%	0.00%	
61-90 Days	0.29%	0.95%	0.24%	4.02%	3.60%	9.12%	16.48%	2.33%	0.00%	
91-120 Days	0.00%	0.18%	1.87%	1.75%	3.37%	1.95%	0.00%	19.20%	0.00%	
121-150 Days	0.40%	0.00%	0.00%	0.00%	4.42%	0.00%	8.72%	0.00%	0.00%	
151-180 Days	0.00%	1.28%	0.00%	3.05%	0.00%	0.00%	1.93%	0.00%	0.00%	
181+ Days	0.00%	0.00%	0.00%	0.00%	0.00%	0.00%	0.00%	17.16%	0.00%	
Current - 90 Days	99.60%	98.53%	98.13%	95.20%	92.21%	98.05%	89.35%	63.85%	100.00%	
91-180 Days	0.40%	1.47%	1.87%	4.80%	7.79%	1.95%	10.65%	19.20%	0.00%	



Personal Loans - La Hipotecaria El Salvador Migration Analysis (2014 Vintage)

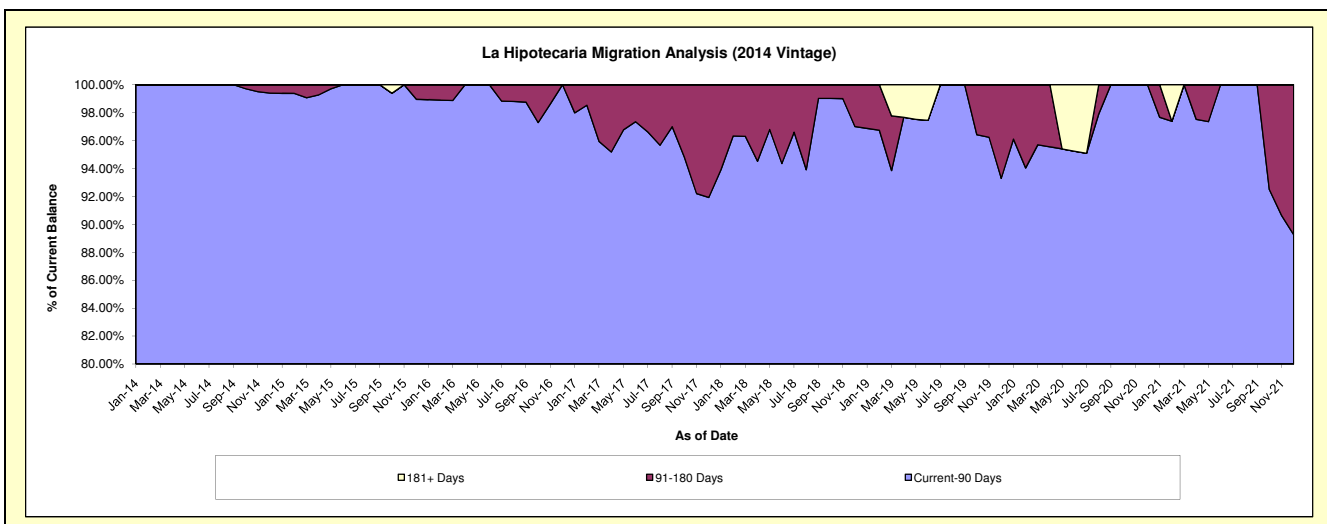
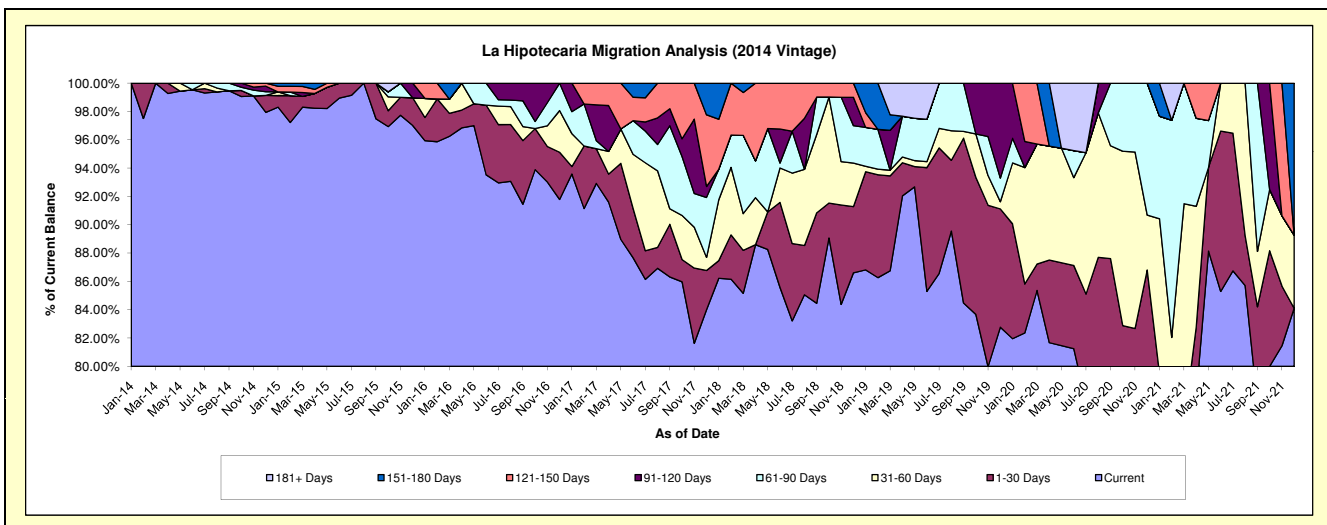
Delinquency Status (\$ of Current Balance)

Data Cutoff: 12/31/2021

Current Portfolio Balance	-	-	2,470,430.59	1,729,754.06	1,084,800.96	668,726.51	440,604.10	244,626.12	129,489.66	29,754.48
	Dec-14	Dec-15	Dec-16	Dec-17	Dec-18	Dec-19	Dec-20	Dec-21		
Current	2,419,475.30	1,677,983.09	995,710.41	561,718.38	381,589.81	202,466.31	99,798.52	25,021.70		
1-30 Days	29,614.48	33,818.52	36,126.45	18,537.79	20,604.56	20,433.10	12,607.22	-		
31-60 Days	-	-	31,945.41	6,217.85	13,555.10	1,244.54	5,017.53	1,537.16		
61-90 Days	6,384.94	-	21,018.69	28,273.95	11,639.30	4,076.26	12,066.39	-		
91-120 Days	9,678.94	17,952.45	-	5,188.75	8,792.15	16,405.91	-	-		
121-150 Days	5,276.93	-	-	33,843.99	4,423.18	-	-	-		
151-180 Days	-	-	-	14,945.80	-	-	-	-		3,195.62
181+ Days	-	-	-	-	-	-	-	-		-

Delinquency Status (% of Current Balance)

Current Portfolio Balance	-	-	2,470,430.59	1,729,754.06	1,084,800.96	668,726.51	440,604.10	244,626.12	129,489.66	29,754.48
	Dec-14	Dec-15	Dec-16	Dec-17	Dec-18	Dec-19	Dec-20	Dec-21		
Current	97.94%	97.01%	91.79%	84.00%	86.61%	82.77%	77.07%	84.09%		
1-30 Days	1.20%	1.96%	3.33%	2.77%	4.68%	8.35%	9.74%	0.00%		
31-60 Days	0.00%	0.00%	2.94%	0.93%	3.08%	0.51%	3.87%	5.17%		
61-90 Days	0.26%	0.00%	1.94%	4.23%	2.64%	1.67%	9.32%	0.00%		
91-120 Days	0.39%	1.04%	0.00%	0.78%	2.00%	6.71%	0.00%	0.00%		
121-150 Days	0.21%	0.00%	0.00%	5.06%	1.00%	0.00%	0.00%	0.00%		
151-180 Days	0.00%	0.00%	0.00%	2.23%	0.00%	0.00%	0.00%	10.74%		
181+ Days	0.00%	0.00%	0.00%	0.00%	0.00%	0.00%	0.00%	0.00%		
Current - 90 Days	99.39%	98.96%	100.00%	91.93%	97.00%	93.29%	100.00%	89.26%		
91-180 Days	0.61%	1.04%	0.00%	8.07%	3.00%	6.71%	0.00%	10.74%		



Personal Loans - La Hipotecaria El Salvador Migration Analysis (2015 Vintage)

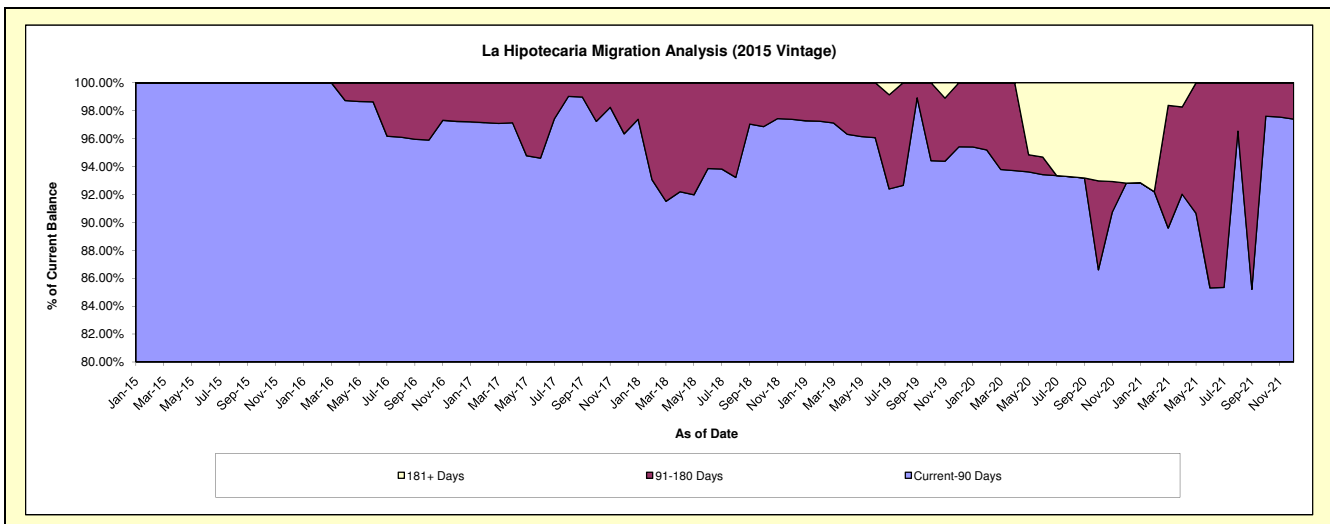
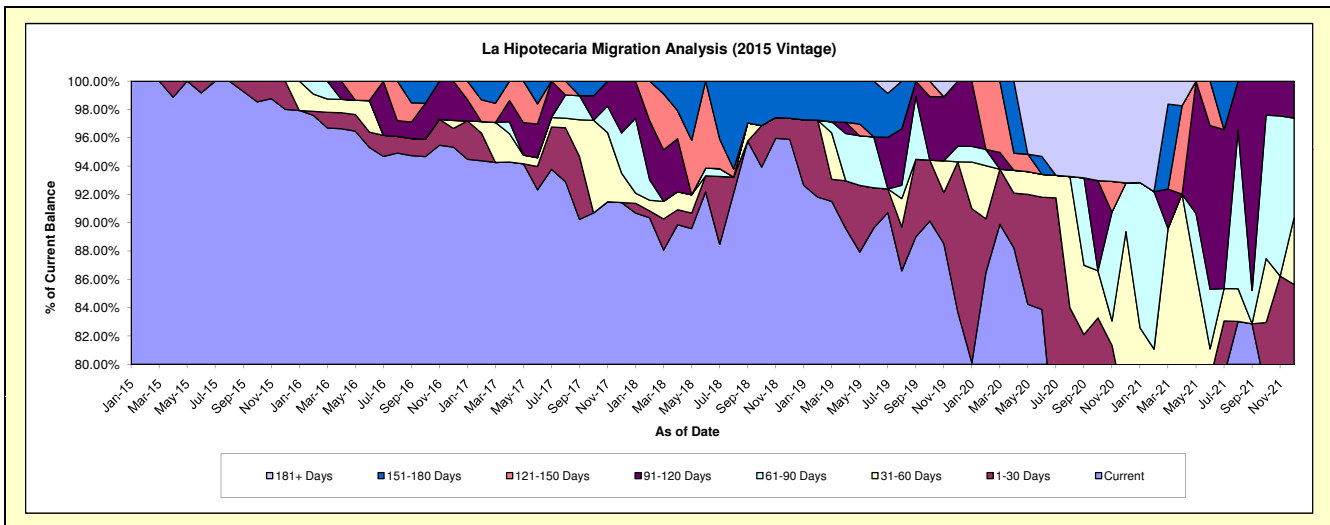
Delinquency Status (\$ of Current Balance)

Data Cutoff: 12/31/2021

Current Portfolio Balance	-	-	-	1,601,027.91	1,070,320.61	778,553.84	497,708.04	303,540.83	232,075.64	139,058.93
	Dec-15	Dec-16	Dec-17	Dec-18	Dec-19	Dec-20	Dec-21			
Current	1,569,049.84	1,020,460.99	711,799.43	477,254.55	254,031.79	170,868.60	104,371.69			
1-30 Days	31,978.07	14,122.38	-	7,446.99	32,216.27	6,850.55	14,718.13			
31-60 Days	-	6,064.56	16,163.69	-	-	29,683.36	6,571.23			
61-90 Days	-	-	22,112.25	-	3,352.59	7,994.02	9,767.03			
91-120 Days	-	29,672.68	28,478.47	-	13,940.18	-	3,630.85			
121-150 Days	-	-	-	-	-	-	-			
151-180 Days	-	-	-	13,006.50	-	-	-			
181+ Days	-	-	-	-	-	16,679.11	-			

Delinquency Status (% of Current Balance)

Current Portfolio Balance	-	-	-	1,601,027.91	1,070,320.61	778,553.84	497,708.04	303,540.83	232,075.64	139,058.93
	Dec-15	Dec-16	Dec-17	Dec-18	Dec-19	Dec-20	Dec-21			
Current	98.00%	95.34%	91.43%	95.89%	83.69%	73.63%	75.06%			
1-30 Days	2.00%	1.32%	0.00%	1.50%	10.61%	2.95%	10.58%			
31-60 Days	0.00%	0.57%	2.08%	0.00%	0.00%	12.79%	4.73%			
61-90 Days	0.00%	0.00%	2.84%	0.00%	1.10%	3.44%	7.02%			
91-120 Days	0.00%	2.77%	3.66%	0.00%	4.59%	0.00%	2.61%			
121-150 Days	0.00%	0.00%	0.00%	0.00%	0.00%	0.00%	0.00%			
151-180 Days	0.00%	0.00%	0.00%	2.61%	0.00%	0.00%	0.00%			
181+ Days	0.00%	0.00%	0.00%	0.00%	0.00%	7.19%	0.00%			
Current - 90 Days	100.00%	97.23%	96.34%	97.39%	95.41%	92.81%	97.39%			
91-180 Days	0.00%	2.77%	3.66%	2.61%	4.59%	0.00%	2.61%			



Personal Loans - La Hipotecaria El Salvador Migration Analysis (2016 Vintage)

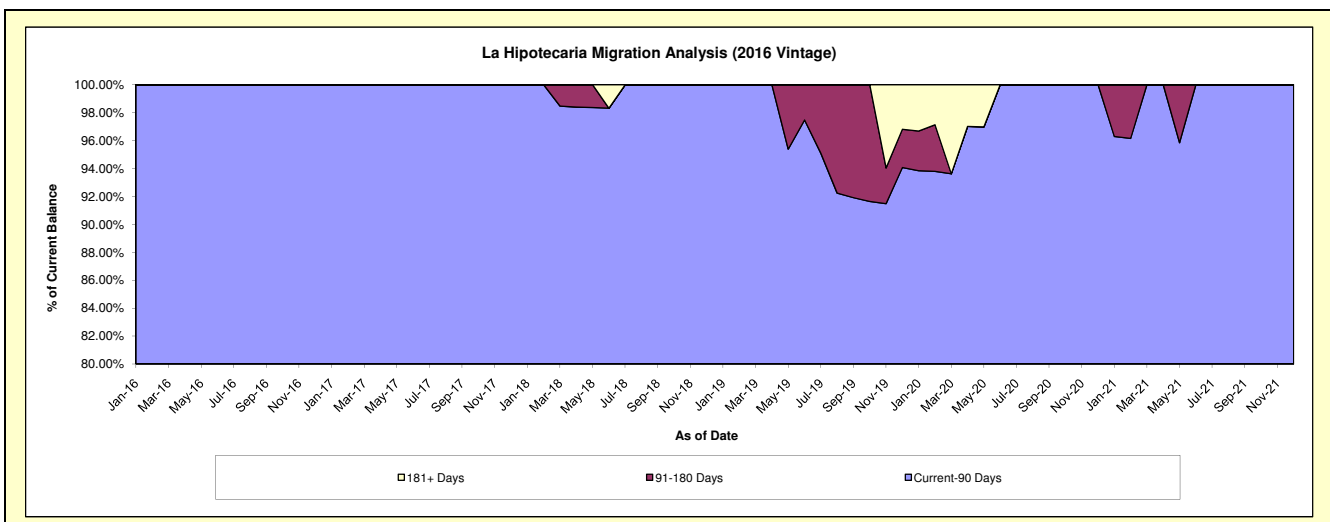
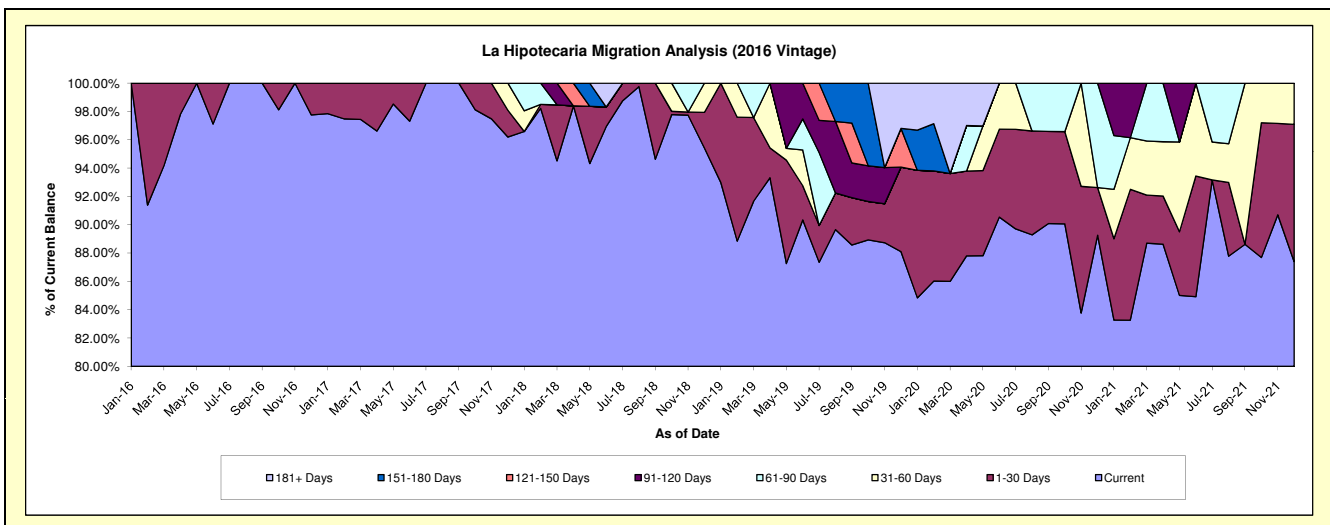
Delinquency Status (\$ of Current Balance)

Data Cutoff: 12/31/2021

Current Portfolio Balance	-	-	-	-	1,219,637.79	975,445.35	714,109.04	518,567.58	382,773.63	265,551.44
					Dec-16	Dec-17	Dec-18	Dec-19	Dec-20	Dec-21
Current					1,192,310.21	938,364.96	681,410.83	456,873.31	341,672.29	232,082.18
1-30 Days					27,327.58	18,430.32	17,980.67	30,940.98	12,870.88	25,740.12
31-60 Days					-	-	-	-	-	-
61-90 Days					-	18,650.07	14,717.54	-	-	7,729.14
91-120 Days					-	-	-	-	28,230.46	-
121-150 Days					-	-	-	14,187.14	-	-
151-180 Days					-	-	-	-	-	-
181+ Days					-	-	-	16,566.15	-	-

Delinquency Status (% of Current Balance)

Current Portfolio Balance	-	-	-	-	1,219,637.79	975,445.35	714,109.04	518,567.58	382,773.63	265,551.44
					Dec-16	Dec-17	Dec-18	Dec-19	Dec-20	Dec-21
Current					97.76%	96.20%	95.42%	88.10%	89.26%	87.40%
1-30 Days					2.24%	1.89%	2.52%	5.97%	3.36%	9.69%
31-60 Days					0.00%	1.91%	2.06%	0.00%	0.00%	2.91%
61-90 Days					0.00%	0.00%	0.00%	0.00%	7.38%	0.00%
91-120 Days					0.00%	0.00%	0.00%	0.00%	0.00%	0.00%
121-150 Days					0.00%	0.00%	0.00%	2.74%	0.00%	0.00%
151-180 Days					0.00%	0.00%	0.00%	0.00%	0.00%	0.00%
181+ Days					0.00%	0.00%	0.00%	3.19%	0.00%	0.00%
Current - 90 Days					100.00%	100.00%	100.00%	94.07%	100.00%	100.00%
91-180 Days					0.00%	0.00%	0.00%	2.74%	0.00%	0.00%



Personal Loans - La Hipotecaria El Salvador Migration Analysis (2017 Vintage)

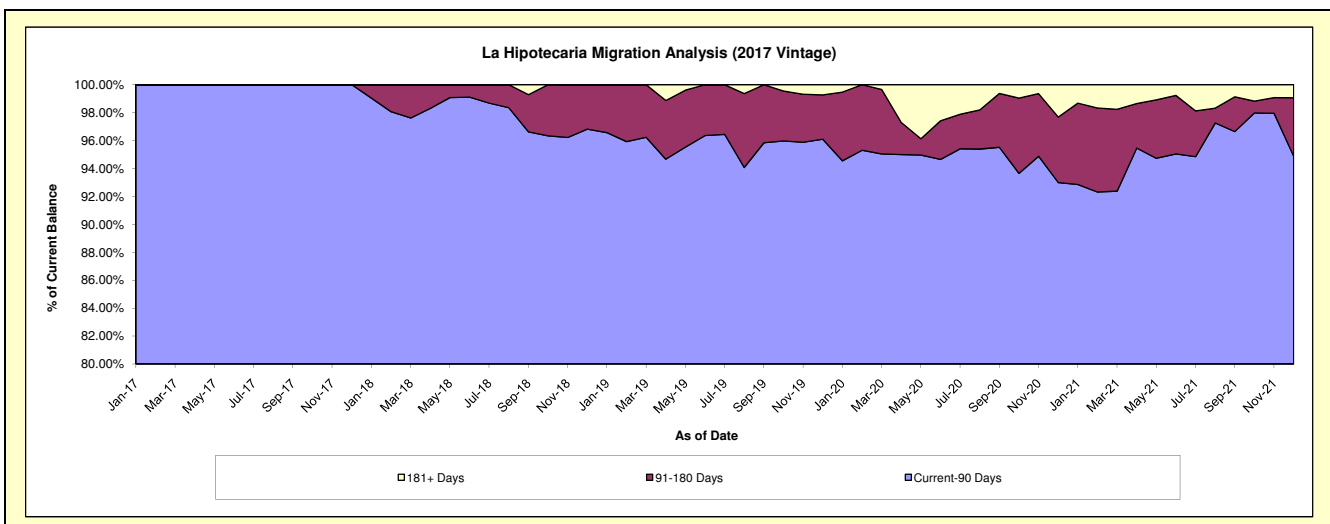
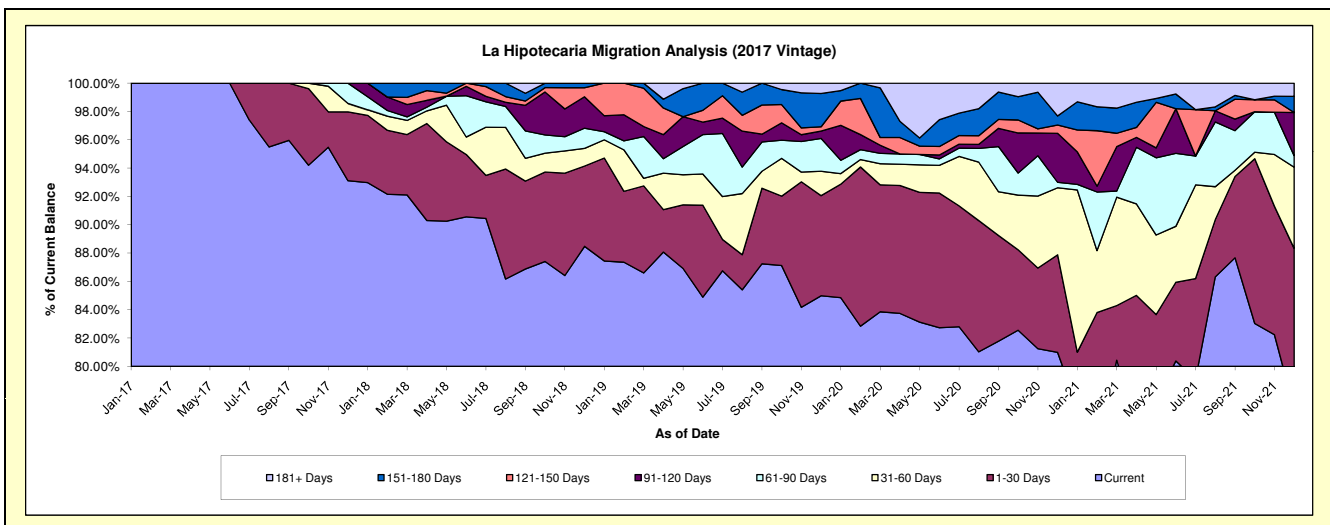
Delinquency Status (\$ of Current Balance)

Data Cutoff: 12/31/2021

Current Portfolio Balance	-	-	-	-	-	2,078,186.72	1,499,632.00	932,817.71	726,704.58	485,371.50
						Dec-17	Dec-18	Dec-19	Dec-20	Dec-21
Current						1,935,092.38	1,326,811.79	792,756.42	588,538.33	373,871.68
1-30 Days						100,887.56	85,038.56	65,948.14	50,089.89	54,871.79
31-60 Days						12,584.64	18,768.68	16,057.81	34,378.78	27,829.72
61-90 Days						29,622.14	21,363.65	21,676.76	2,828.60	3,960.71
91-120 Days						-	33,229.92	4,784.23	25,132.32	14,792.55
121-150 Days						-	9,581.78	2,866.66	4,285.16	-
151-180 Days						-	4,837.62	21,910.52	4,610.13	5,496.93
181+ Days						-	-	6,817.17	16,841.37	4,548.12

Delinquency Status (% of Current Balance)

Current Portfolio Balance	-	-	-	-	-	2,078,186.72	1,499,632.00	932,817.71	726,704.58	485,371.50
						Dec-17	Dec-18	Dec-19	Dec-20	Dec-21
Current						93.11%	88.48%	84.99%	80.99%	77.03%
1-30 Days						4.85%	5.67%	7.07%	6.89%	11.31%
31-60 Days						0.61%	1.25%	1.72%	4.73%	5.73%
61-90 Days						1.43%	1.42%	2.32%	0.39%	0.82%
91-120 Days						0.00%	2.22%	0.51%	3.46%	3.05%
121-150 Days						0.00%	0.64%	0.31%	0.59%	0.00%
151-180 Days						0.00%	0.32%	2.35%	0.63%	1.13%
181+ Days						0.00%	0.00%	0.73%	2.32%	0.94%
Current - 90 Days						100.00%	96.82%	96.10%	93.00%	94.88%
91-180 Days						0.00%	3.18%	3.17%	4.68%	4.18%



Personal Loans - La Hipotecaria El Salvador Migration Analysis (2018 Vintage)

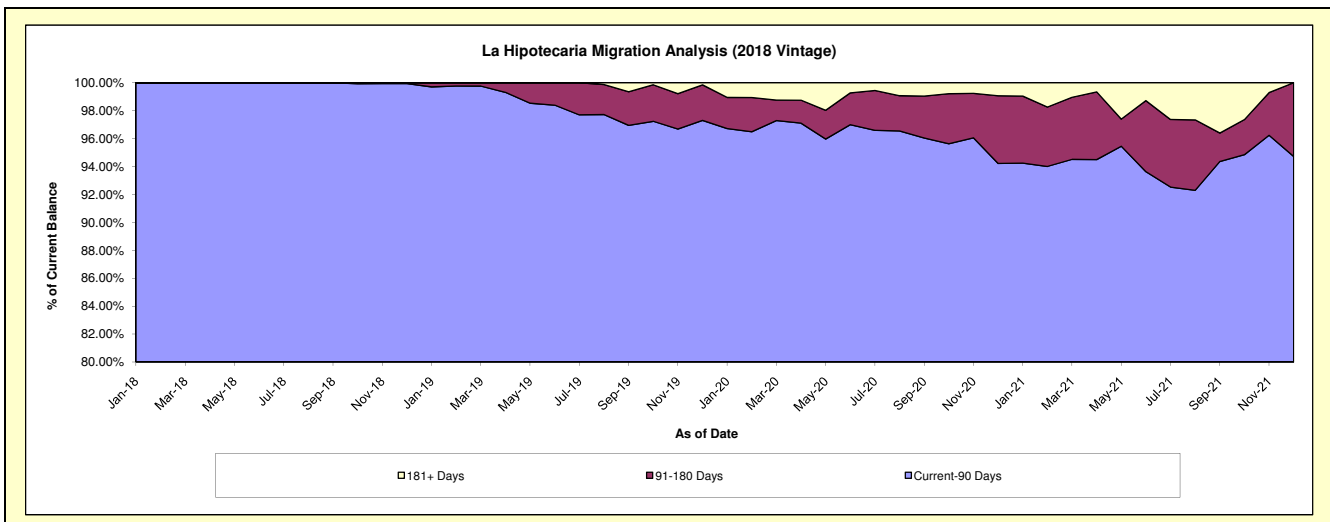
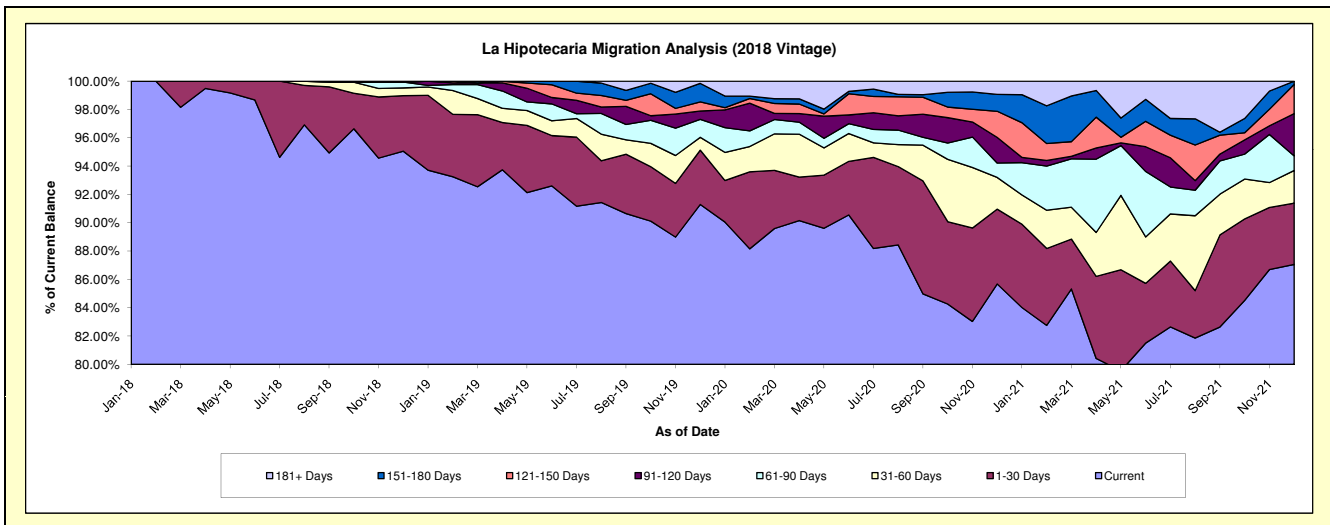
Delinquency Status (\$ of Current Balance)

Data Cutoff: 12/31/2021

Current Portfolio Balance	-	-	-	-	-	-	-	4,304,328.32	3,213,636.03	2,597,273.37	1,884,900.12
								Dec-18	Dec-19	Dec-20	Dec-21
Current								4,091,359.46	2,933,848.13	2,225,232.57	1,641,010.21
1-30 Days								168,903.80	123,134.48	137,352.29	81,392.92
31-60 Days								23,623.89	29,105.71	58,093.42	43,571.95
61-90 Days								17,684.54	40,960.64	26,453.89	19,392.57
91-120 Days								-	18,847.68	47,055.04	56,279.63
121-150 Days								-	20,810.43	47,832.72	38,894.25
151-180 Days								2,756.63	41,928.96	30,964.42	4,358.59
181+ Days								-	5,000.00	24,289.02	-

Delinquency Status (% of Current Balance)

Current Portfolio Balance	-	-	-	-	-	-	-	4,304,328.32	3,213,636.03	2,597,273.37	1,884,900.12
								Dec-18	Dec-19	Dec-20	Dec-21
Current								95.05%	91.29%	85.68%	87.06%
1-30 Days								3.92%	3.83%	5.29%	4.32%
31-60 Days								0.55%	0.91%	2.24%	2.31%
61-90 Days								0.41%	1.27%	1.02%	1.03%
91-120 Days								0.00%	0.59%	1.81%	2.99%
121-150 Days								0.00%	0.65%	1.84%	2.06%
151-180 Days								0.06%	1.30%	1.19%	0.23%
181+ Days								0.00%	0.16%	0.94%	0.00%
Current - 90 Days								99.94%	97.31%	94.22%	94.72%
91-180 Days								0.06%	2.54%	4.85%	5.28%



Personal Loans - La Hipotecaria El Salvador Migration Analysis (2019 Vintage)

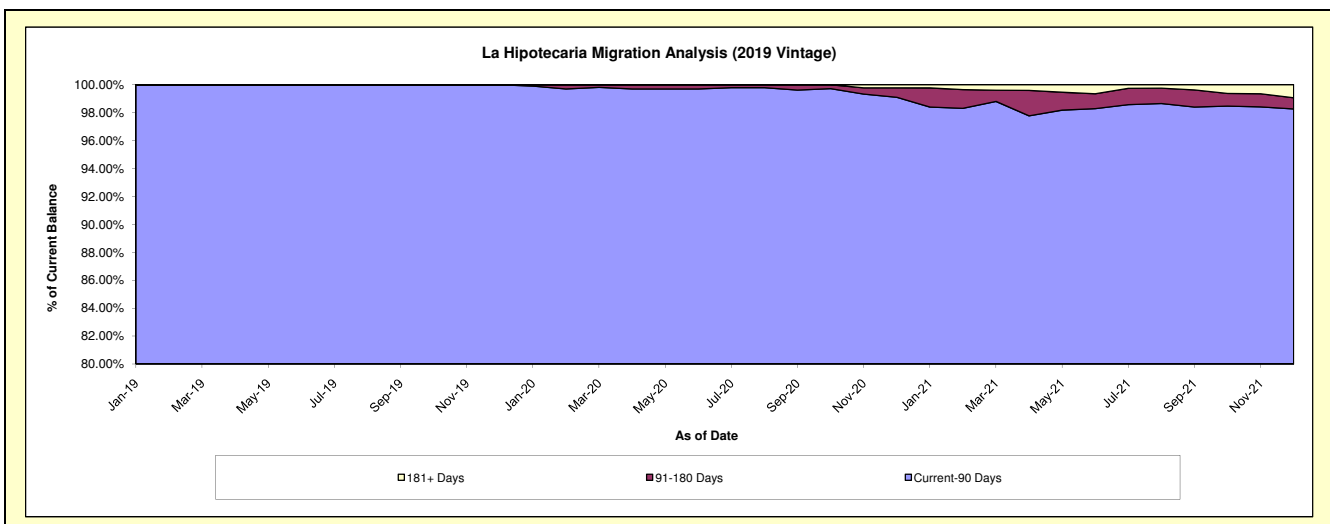
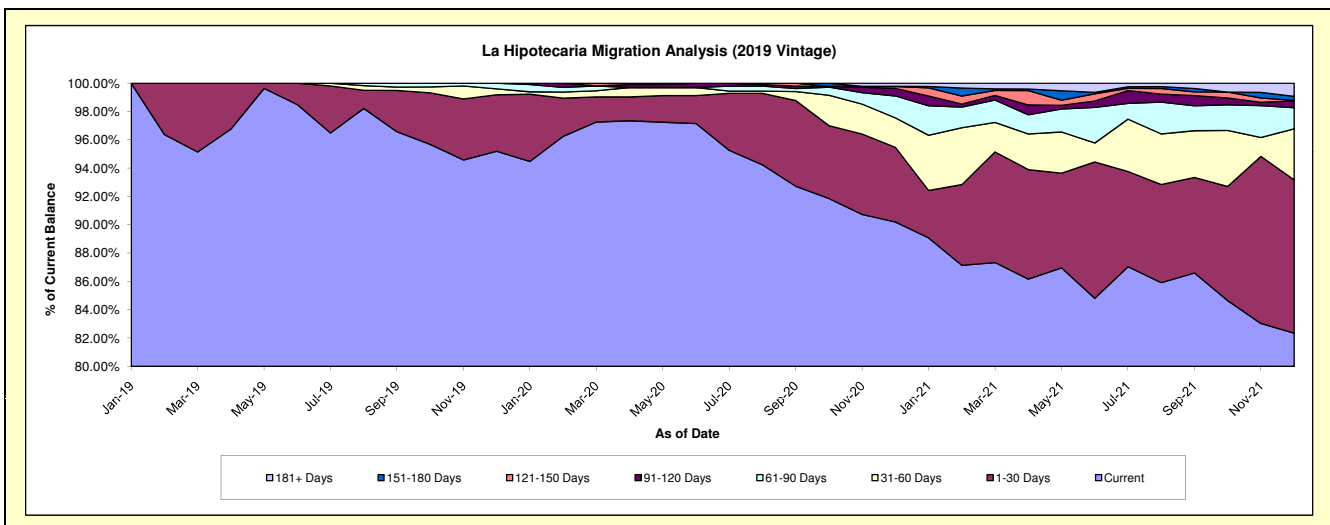
Delinquency Status (\$ of Current Balance)

Data Cutoff: 12/31/2021

Current Portfolio Balance												
-	-	-	-	-	-	-	-	-	-	5,382,404.24	4,571,348.81	3,415,272.25
										Dec-19	Dec-20	Dec-21
Current										5,123,849.37	4,123,218.02	2,812,389.14
1-30 Days										214,520.78	240,891.11	369,330.31
31-60 Days										22,651.27	95,184.34	123,430.77
61-90 Days										21,382.82	70,742.73	50,760.33
91-120 Days										-	24,777.84	16,766.12
121-150 Days										-	6,181.76	1,230.81
151-180 Days										-	-	9,350.80
181+ Days										-	10,353.01	32,013.97

Delinquency Status (% of Current Balance)

Current Portfolio Balance												
-	-	-	-	-	-	-	-	-	-	5,382,404.24	4,571,348.81	3,415,272.25
										Dec-19	Dec-20	Dec-21
Current										95.20%	90.20%	82.35%
1-30 Days										3.99%	5.27%	10.81%
31-60 Days										0.42%	2.08%	3.61%
61-90 Days										0.40%	1.55%	1.49%
91-120 Days										0.00%	0.54%	0.49%
121-150 Days										0.00%	0.14%	0.04%
151-180 Days										0.00%	0.00%	0.27%
181+ Days										0.00%	0.23%	0.94%
Current - 90 Days										100.00%	99.10%	98.26%
91-180 Days										0.00%	0.68%	0.80%



Personal Loans - La Hipotecaria El Salvador Migration Analysis (2020 Vintage)

Delinquency Status (\$ of Current Balance)

Data Cutoff: 12/31/2021

Current Portfolio Balance										1,443,058.75	1,048,548.23
										Dec-20	Dec-21
Current										1,391,730.99	986,552.85
1-30 Days										28,559.37	49,658.47
31-60 Days										-	-
61-90 Days										-	-
91-120 Days										4,980.55	12,336.91
121-150 Days										12,787.84	-
151-180 Days										-	-
181+ Days										5,000.00	-

Delinquency Status (% of Current Balance)

Current Portfolio Balance										1,443,058.75	1,048,548.23
										Dec-20	Dec-21
Current										96.44%	94.09%
1-30 Days										1.98%	4.74%
31-60 Days										0.00%	0.00%
61-90 Days										0.00%	0.00%
91-120 Days										0.35%	1.18%
121-150 Days										0.89%	0.00%
151-180 Days										0.00%	0.00%
181+ Days										0.35%	0.00%
Current - 90 Days										98.42%	98.82%
91-180 Days										1.23%	1.18%

