



Migration Analysis for La Hipotecaria S.A. de C.V El Salvador

Mortgages January 2022

An analysis of historical loan payment data was used to compile a migration analysis of delinquency by annual vintage. Delinquencies for each vintage were grouped into the following buckets; Current, 1-30, 31-60, 61-90, 91-120, 121-150, 151-180, and 180+. Results are provided in graphical and tabular form. The cutoff date is 1/31/2022.

Mortgages - La Hipotecaria El Salvador Migration Analysis (All Vintages)

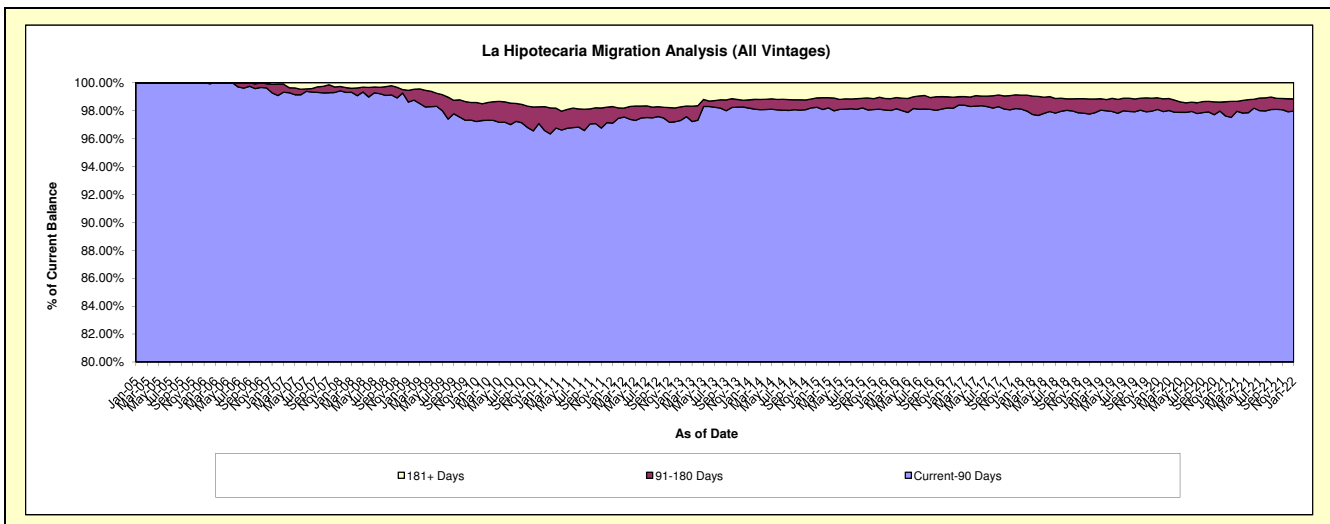
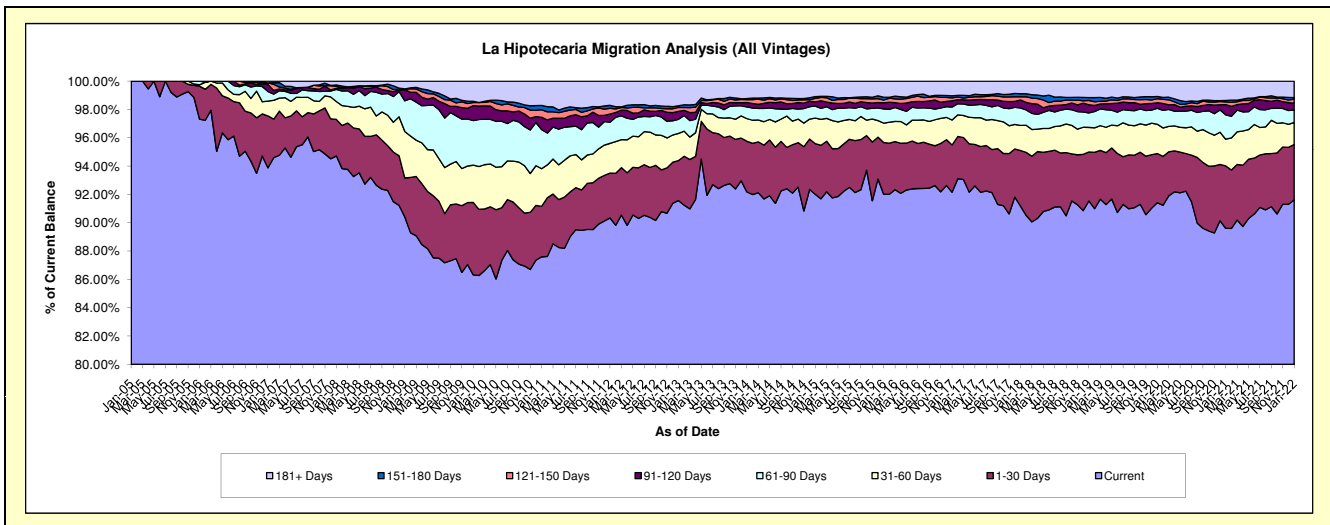
Delinquency Status (\$ of Current Balance)

Data Cutoff: 1/31/2022

Current Portfolio Balance	111,622,460.30	131,947,003.20	147,816,971.84	160,871,114.47	174,345,083.09	180,953,003.09	191,666,091.10	203,288,012.08	201,150,091.21	191,579,193.41
	Jan-13	Jan-14	Jan-15	Jan-16	Jan-17	Jan-18	Jan-19	Jan-20	Jan-21	Jan-22
Current	102,209,387.69	121,626,444.60	135,995,400.80	148,024,109.99	160,675,763.00	164,992,203.56	175,457,140.16	185,839,147.16	180,248,705.21	175,518,383.63
1-30 Days	3,154,780.07	4,724,697.81	5,294,831.18	5,868,561.80	5,818,068.29	7,105,855.27	6,629,387.47	7,063,207.14	8,869,316.06	7,479,788.56
31-60 Days	2,139,483.71	2,107,154.91	2,668,925.11	2,213,628.59	3,068,100.61	3,196,042.71	3,319,162.11	4,197,850.07	3,788,988.71	2,977,803.47
61-90 Days	1,111,544.60	1,090,352.71	1,253,524.63	1,616,684.56	1,597,060.01	2,240,125.37	1,962,729.83	2,300,251.14	3,449,945.66	1,704,214.55
91-120 Days	625,392.44	405,916.60	448,256.48	689,979.96	773,940.91	1,015,875.27	1,101,866.77	796,005.77	1,455,446.48	893,411.52
121-150 Days	313,520.97	278,702.72	353,525.79	323,379.47	354,732.44	407,173.08	589,630.89	583,028.56	400,539.94	565,295.63
151-180 Days	137,859.75	95,162.23	193,924.50	315,103.93	248,449.12	384,149.48	379,247.82	317,511.93	207,253.31	221,850.52
181+ Days	1,930,491.07	1,618,571.62	1,608,583.35	1,819,666.17	1,808,968.71	1,611,578.35	2,226,926.05	2,191,010.31	2,729,895.84	2,218,445.53

Delinquency Status (% of Current Balance)

Current Portfolio Balance	111,622,460.30	131,947,003.20	147,816,971.84	160,871,114.47	174,345,083.09	180,953,003.09	191,666,091.10	203,288,012.08	201,150,091.21	191,579,193.41
	Jan-13	Jan-14	Jan-15	Jan-16	Jan-17	Jan-18	Jan-19	Jan-20	Jan-21	Jan-22
Current	91.57%	92.18%	92.00%	92.01%	92.16%	91.18%	91.54%	91.42%	89.61%	91.62%
1-30 Days	2.83%	3.58%	3.58%	3.65%	3.34%	3.93%	3.46%	3.47%	4.41%	3.90%
31-60 Days	1.92%	1.60%	1.81%	1.38%	1.76%	1.77%	1.73%	2.06%	1.88%	1.55%
61-90 Days	1.00%	0.83%	0.85%	1.00%	0.92%	1.24%	1.02%	1.13%	1.72%	0.89%
91-120 Days	0.56%	0.31%	0.30%	0.43%	0.44%	0.56%	0.57%	0.39%	0.72%	0.47%
121-150 Days	0.28%	0.21%	0.24%	0.20%	0.20%	0.23%	0.31%	0.29%	0.20%	0.30%
151-180 Days	0.12%	0.07%	0.13%	0.20%	0.14%	0.21%	0.20%	0.16%	0.10%	0.12%
181+ Days	1.73%	1.23%	1.09%	1.13%	1.04%	0.89%	1.16%	1.08%	1.36%	1.16%
Current - 90 Days	97.31%	98.18%	98.24%	98.04%	98.17%	98.11%	97.76%	98.09%	97.62%	97.96%
91-180 Days	0.96%	0.59%	0.67%	0.83%	0.79%	1.00%	1.08%	0.83%	1.03%	0.88%



Mortgages - La Hipotecaria El Salvador Migration Analysis (2005 Vintage)

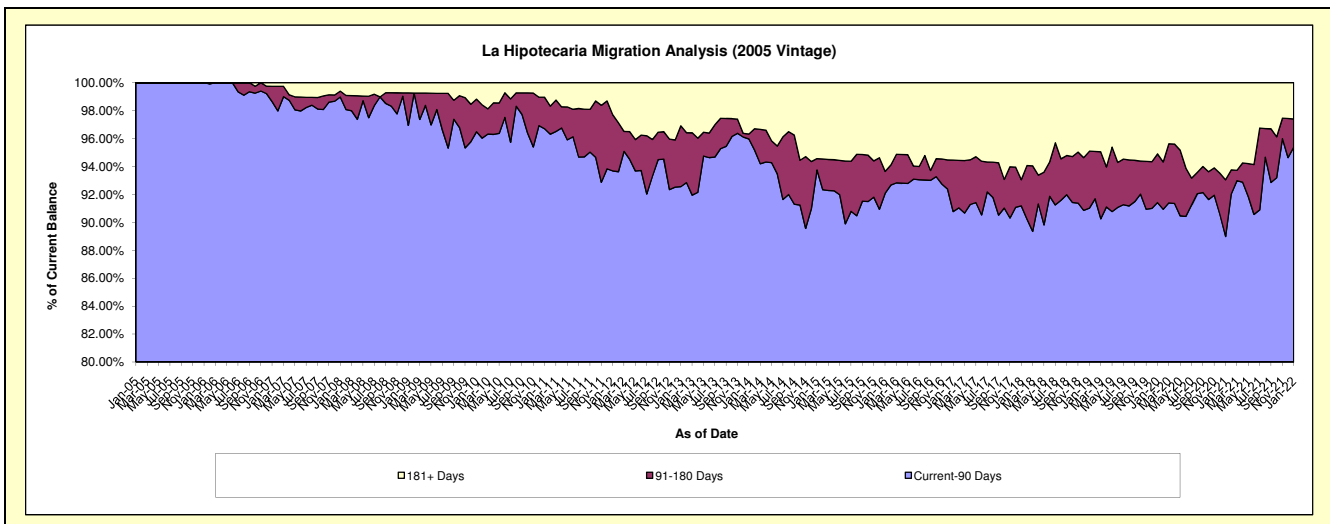
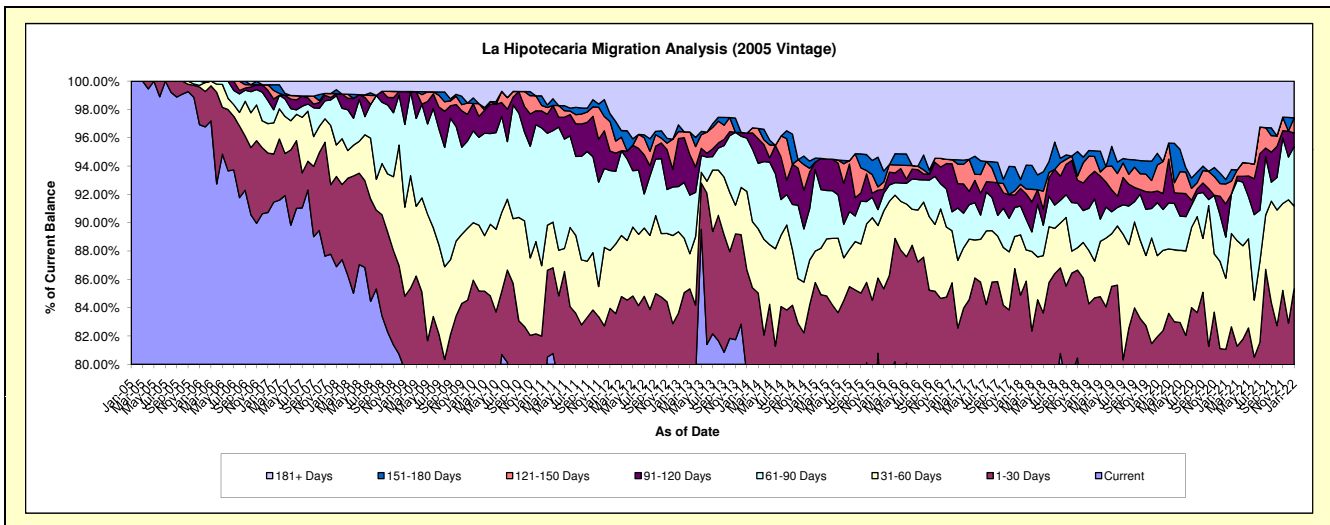
Delinquency Status (\$ of Current Balance)

Data Cutoff: 1/31/2022

Current Portfolio Balance	5,603,204.13	5,029,677.16	4,478,411.59	4,160,105.82	3,856,410.93	3,532,034.58	3,053,347.17	2,800,091.55	2,535,431.46	2,232,064.85
	Jan-13	Jan-14	Jan-15	Jan-16	Jan-17	Jan-18	Jan-19	Jan-20	Jan-21	Jan-22
Current	4,402,426.96	3,984,914.44	3,523,104.27	3,159,659.69	2,825,934.31	2,741,594.00	2,411,771.48	2,094,072.77	1,817,844.39	1,738,865.43
1-30 Days	283,145.22	374,294.52	318,447.39	390,785.78	481,594.63	256,824.85	161,479.09	200,764.08	237,314.73	166,740.67
31-60 Days	321,892.30	278,867.76	99,606.74	227,750.19	141,364.88	150,365.22	114,912.47	160,284.48	127,412.34	129,636.00
61-90 Days	178,867.09	189,205.83	257,658.85	52,326.98	51,747.13	71,868.48	90,994.14	104,719.80	73,779.84	93,756.72
91-120 Days	189,780.91	17,677.21	23,756.63	11,863.33	130,666.87	43,613.12	68,977.70	23,010.03	59,448.57	21,280.03
121-150 Days	27,579.88	-	-	21,378.59	11,399.85	10,593.26	43,448.09	51,495.61	35,588.59	23,858.63
151-180 Days	26,611.13	-	12,560.97	32,173.81	-	12,022.46	12,172.58	23,122.82	7,801.18	-
181+ Days	172,900.64	184,717.40	243,276.74	264,167.45	213,703.26	245,153.19	149,591.62	142,621.96	176,241.82	57,927.37

Delinquency Status (% of Current Balance)

Current Portfolio Balance	5,603,204.13	5,029,677.16	4,478,411.59	4,160,105.82	3,856,410.93	3,532,034.58	3,053,347.17	2,800,091.55	2,535,431.46	2,232,064.85
	Jan-13	Jan-14	Jan-15	Jan-16	Jan-17	Jan-18	Jan-19	Jan-20	Jan-21	Jan-22
Current	78.57%	79.23%	78.67%	75.95%	73.28%	77.62%	78.99%	74.79%	71.70%	77.90%
1-30 Days	5.05%	7.44%	7.11%	9.39%	12.49%	7.27%	5.29%	7.17%	9.36%	7.47%
31-60 Days	5.74%	5.54%	2.22%	5.47%	3.67%	4.26%	3.76%	5.72%	5.03%	5.81%
61-90 Days	3.19%	3.76%	5.75%	1.26%	1.34%	2.03%	2.98%	3.74%	2.91%	4.20%
91-120 Days	3.39%	0.35%	0.53%	0.29%	3.39%	1.23%	2.26%	0.82%	2.34%	0.95%
121-150 Days	0.49%	0.00%	0.00%	0.51%	0.30%	0.30%	1.42%	1.84%	1.40%	1.07%
151-180 Days	0.47%	0.00%	0.28%	0.77%	0.00%	0.34%	0.40%	0.83%	0.31%	0.00%
181+ Days	3.09%	3.67%	5.43%	6.35%	5.54%	6.94%	4.90%	5.09%	6.95%	2.60%
Current - 90 Days	92.56%	95.98%	93.76%	92.08%	90.77%	91.18%	91.02%	91.42%	88.99%	95.38%
91-180 Days	4.35%	0.35%	0.81%	1.57%	3.68%	1.88%	4.08%	3.49%	4.06%	2.02%



Mortgages - La Hipotecaria El Salvador Migration Analysis (2006 Vintage)

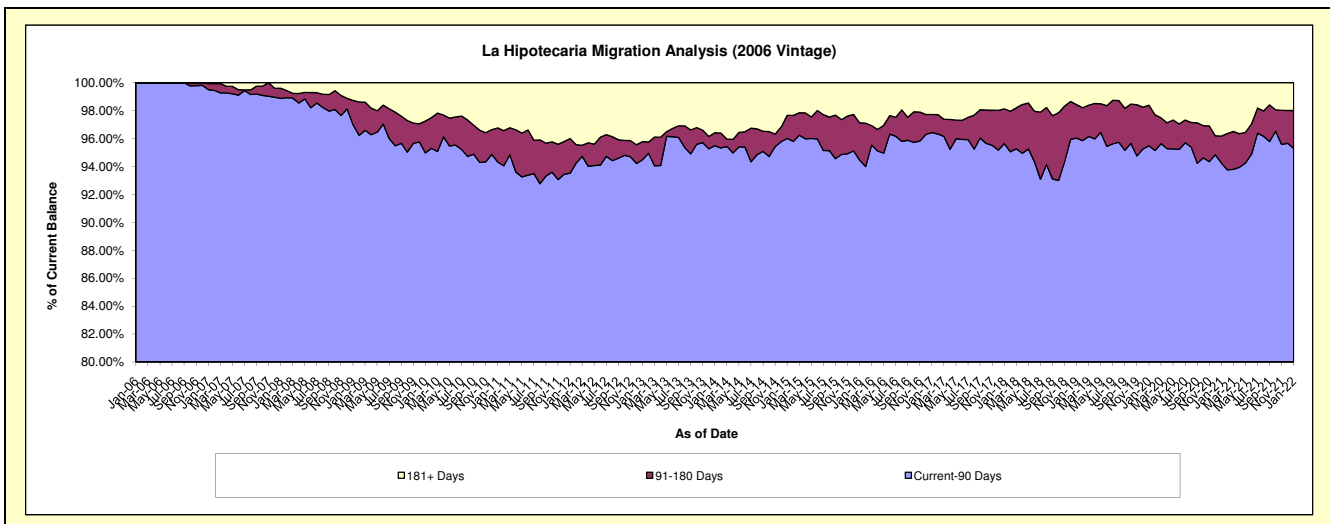
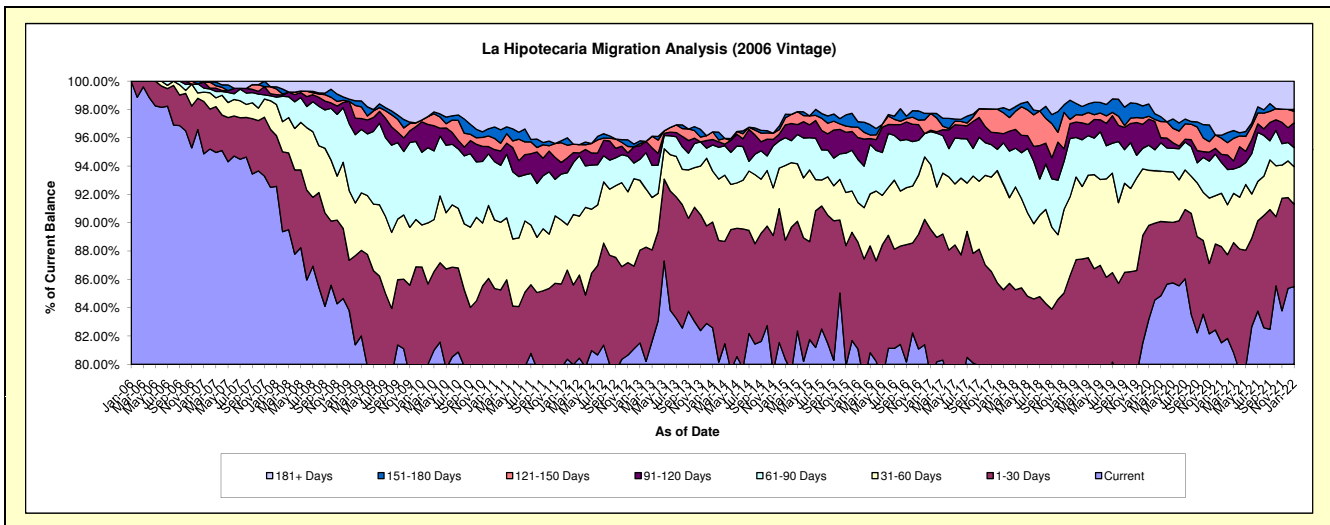
Delinquency Status (\$ of Current Balance)

Data Cutoff: 1/31/2022

Current Portfolio Balance	12,534,916.93	11,477,300.49	10,240,530.12	9,277,022.11	8,588,548.70	7,833,984.90	7,116,468.06	6,343,888.79	5,790,277.65	5,158,739.92
	Jan-13	Jan-14	Jan-15	Jan-16	Jan-17	Jan-18	Jan-19	Jan-20	Jan-21	Jan-22
Current	10,217,700.64	9,478,021.10	8,228,845.26	7,521,815.97	6,798,897.73	6,032,854.03	5,668,635.47	5,277,374.49	4,720,572.06	4,410,571.74
1-30 Days	821,060.30	857,468.76	862,016.23	699,785.08	891,028.38	647,146.97	550,848.17	420,491.68	392,846.48	299,678.50
31-60 Days	619,172.98	412,868.90	539,988.04	259,786.87	392,413.14	584,261.26	415,189.78	247,315.09	218,378.98	136,639.22
61-90 Days	185,815.26	211,965.64	201,402.56	282,455.06	199,980.05	228,395.14	199,167.45	112,134.35	125,795.13	69,297.57
91-120 Days	119,879.77	44,083.47	92,102.56	143,228.54	8,739.35	50,910.48	77,059.04	116,497.62	33,263.40	91,148.24
121-150 Days	18,531.51	62,382.66	50,926.65	68,371.32	101,932.00	115,687.29	37,006.67	12,864.91	66,403.23	41,462.06
151-180 Days	24,864.41	-	26,707.68	35,582.19	-	28,384.74	56,498.51	54,975.17	11,948.34	6,833.85
181+ Days	527,892.06	410,509.96	238,541.14	265,997.08	195,558.05	146,344.99	112,062.97	102,235.48	221,070.03	103,108.74

Delinquency Status (% of Current Balance)

Current Portfolio Balance	12,534,916.93	11,477,300.49	10,240,530.12	9,277,022.11	8,588,548.70	7,833,984.90	7,116,468.06	6,343,888.79	5,790,277.65	5,158,739.92
	Jan-13	Jan-14	Jan-15	Jan-16	Jan-17	Jan-18	Jan-19	Jan-20	Jan-21	Jan-22
Current	81.51%	82.58%	80.36%	81.08%	79.16%	77.01%	79.66%	83.19%	81.53%	85.50%
1-30 Days	6.55%	7.47%	8.42%	7.54%	10.37%	8.26%	7.74%	6.63%	6.78%	5.81%
31-60 Days	4.94%	3.60%	5.27%	2.80%	4.57%	7.46%	5.83%	3.90%	3.77%	2.65%
61-90 Days	1.48%	1.85%	1.97%	3.04%	2.33%	2.92%	2.80%	1.77%	2.17%	1.34%
91-120 Days	0.96%	0.38%	0.90%	1.54%	0.10%	0.65%	1.08%	1.84%	0.57%	1.77%
121-150 Days	0.15%	0.54%	0.50%	0.74%	1.19%	1.48%	0.52%	0.20%	1.15%	0.80%
151-180 Days	0.20%	0.00%	0.26%	0.38%	0.00%	0.36%	0.79%	0.87%	0.21%	0.13%
181+ Days	4.21%	3.58%	2.33%	2.87%	2.28%	1.87%	1.57%	1.61%	3.82%	2.00%
Current - 90 Days	94.49%	95.50%	96.01%	94.47%	96.43%	95.64%	96.03%	95.48%	94.25%	95.30%
91-180 Days	1.30%	0.93%	1.66%	2.66%	1.29%	2.49%	2.40%	2.91%	1.93%	2.70%



Mortgages - La Hipotecaria El Salvador Migration Analysis (2007 Vintage)

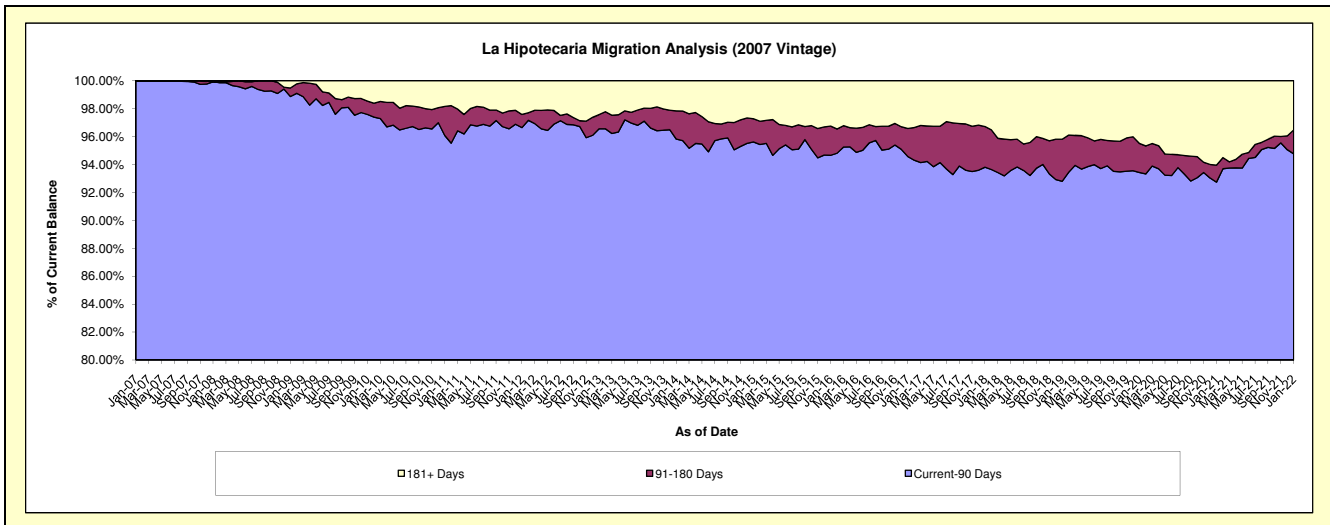
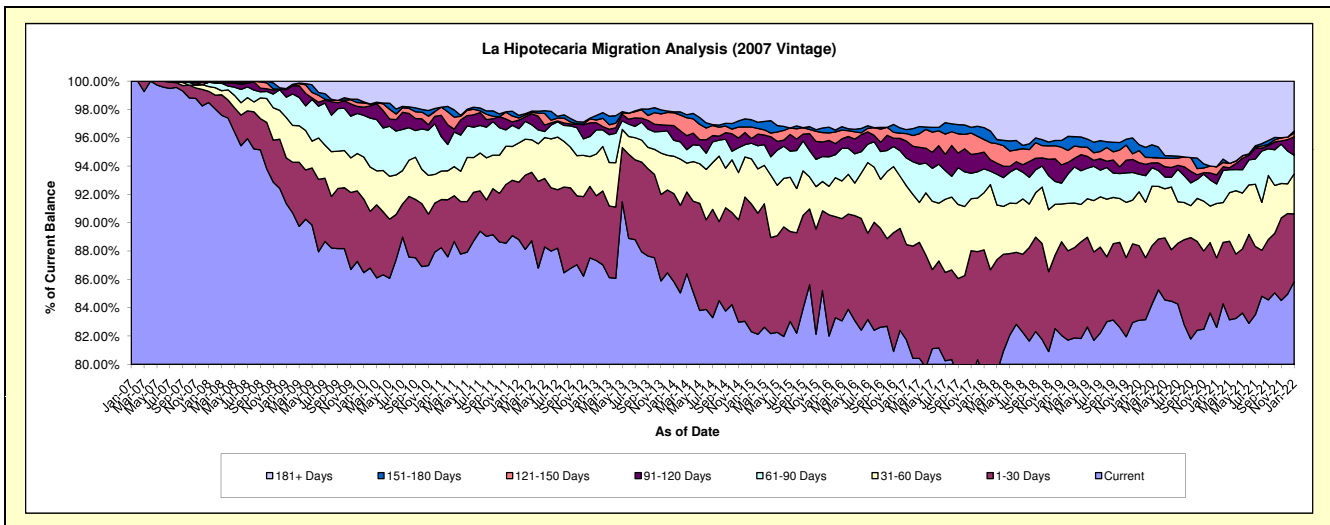
Delinquency Status (\$ of Current Balance)

Data Cutoff: 1/31/2022

Current Portfolio Balance	19,349,021.81	17,601,940.05	16,337,091.68	14,901,254.36	13,605,385.69	12,551,007.03	11,528,558.28	10,729,232.68	9,886,398.04	8,687,898.03
	Jan-13	Jan-14	Jan-15	Jan-16	Jan-17	Jan-18	Jan-19	Jan-20	Jan-21	Jan-22
Current	16,897,679.75	15,108,782.22	13,445,947.90	12,219,272.21	11,118,802.33	9,933,764.75	9,459,007.18	8,917,844.06	8,167,694.96	7,457,968.44
1-30 Days	885,748.88	1,095,734.26	1,472,760.64	1,275,352.71	916,680.89	1,122,555.71	762,010.03	565,050.99	485,709.94	415,908.67
31-60 Days	571,218.24	464,659.32	522,397.89	300,541.38	562,492.75	505,818.69	307,941.74	408,421.85	378,964.33	246,137.68
61-90 Days	328,170.72	197,225.76	179,870.48	310,547.01	268,953.89	211,807.37	169,639.00	132,704.87	136,513.97	112,874.67
91-120 Days	98,497.46	182,664.77	54,385.57	171,990.13	162,484.34	148,106.69	148,607.66	87,394.84	63,439.96	113,277.75
121-150 Days	38,263.59	160,214.64	132,658.61	78,172.00	71,817.43	112,214.56	143,464.99	92,031.52	56,600.30	23,900.72
151-180 Days	61,231.50	12,406.24	84,069.43	61,646.31	38,365.45	105,163.56	55,137.49	44,582.64	-	12,204.35
181+ Days	468,211.67	380,252.84	445,001.16	483,732.61	465,788.61	411,575.70	482,750.19	481,201.91	597,474.58	305,625.75

Delinquency Status (% of Current Balance)

Current Portfolio Balance	19,349,021.81	17,601,940.05	16,337,091.68	14,901,254.36	13,605,385.69	12,551,007.03	11,528,558.28	10,729,232.68	9,886,398.04	8,687,898.03
	Jan-13	Jan-14	Jan-15	Jan-16	Jan-17	Jan-18	Jan-19	Jan-20	Jan-21	Jan-22
Current	87.33%	85.84%	82.30%	82.00%	81.72%	79.15%	82.05%	83.12%	82.62%	85.84%
1-30 Days	4.58%	6.23%	9.01%	8.56%	6.74%	8.94%	6.61%	5.27%	4.91%	4.79%
31-60 Days	2.95%	2.64%	3.20%	2.02%	4.13%	4.03%	2.67%	3.81%	3.83%	2.83%
61-90 Days	1.70%	1.12%	1.10%	2.08%	1.98%	1.69%	1.47%	1.24%	1.38%	1.30%
91-120 Days	0.51%	1.04%	0.33%	1.15%	1.19%	1.18%	1.29%	0.81%	0.64%	1.30%
121-150 Days	0.20%	0.91%	0.81%	0.52%	0.53%	0.89%	1.24%	0.86%	0.57%	0.28%
151-180 Days	0.32%	0.07%	0.51%	0.41%	0.28%	0.84%	0.48%	0.42%	0.00%	0.14%
181+ Days	2.42%	2.16%	2.72%	3.25%	3.42%	3.28%	4.19%	4.48%	6.04%	3.52%
Current - 90 Days	96.56%	95.82%	95.62%	94.66%	94.57%	93.81%	92.80%	93.43%	92.74%	94.76%
91-180 Days	1.02%	2.02%	1.66%	2.09%	2.00%	2.91%	3.01%	2.09%	1.21%	1.72%



Mortgages - La Hipotecaria El Salvador Migration Analysis (2008 Vintage)

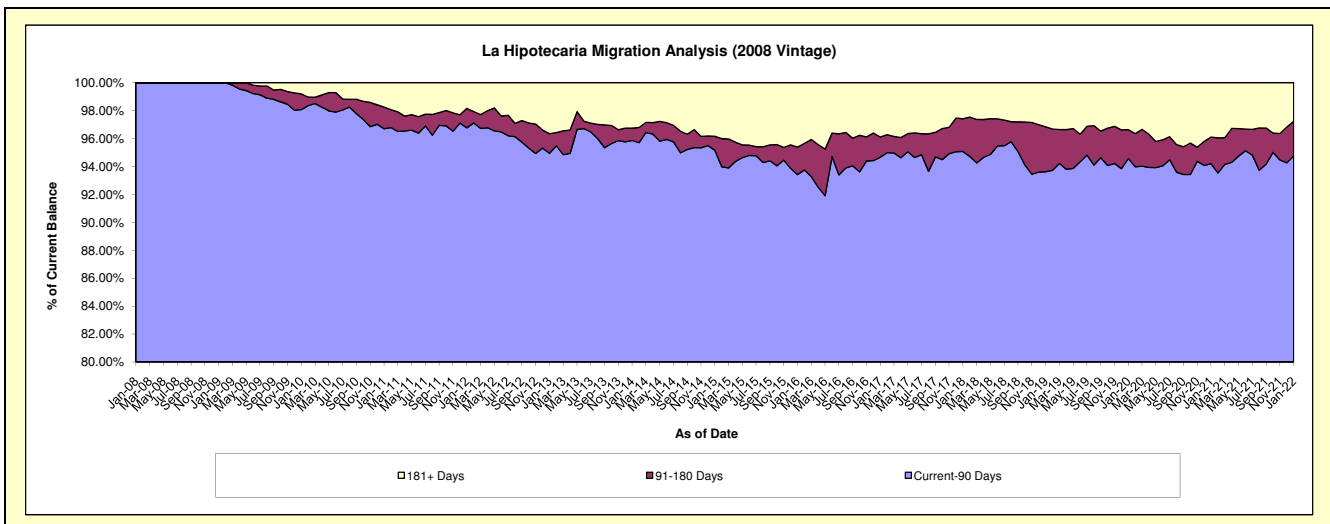
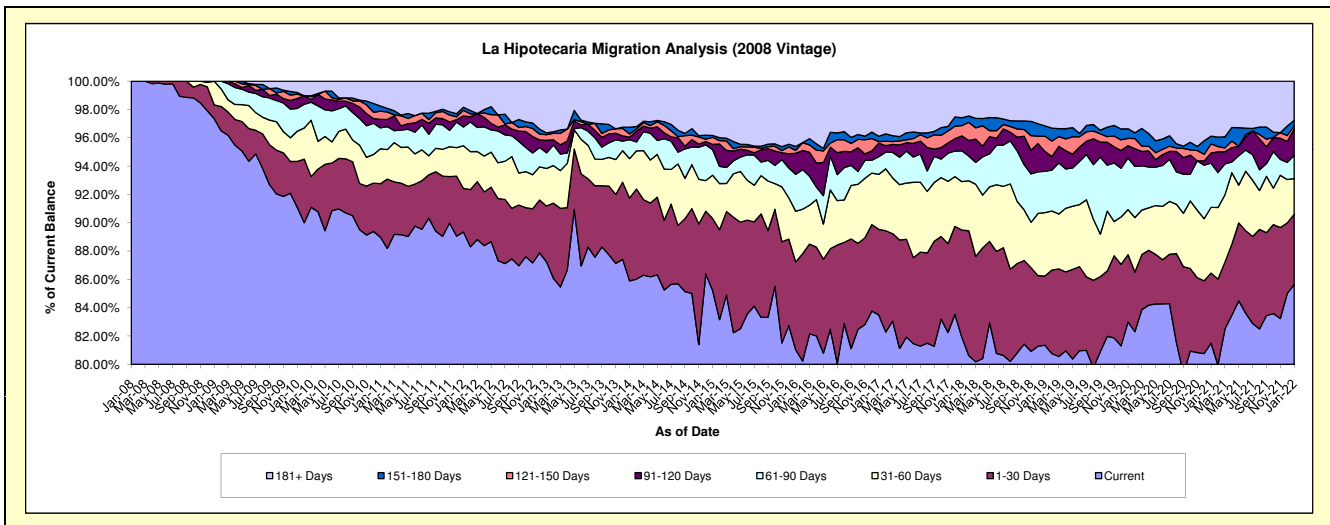
Delinquency Status (\$ of Current Balance)

Data Cutoff: 1/31/2022

Current Portfolio Balance	19,338,424.53	17,486,825.40	15,440,402.56	14,139,062.40	12,912,561.38	11,803,318.38	10,822,427.89	9,655,570.33	8,990,432.90	8,099,286.45
	Jan-13	Jan-14	Jan-15	Jan-16	Jan-17	Jan-18	Jan-19	Jan-20	Jan-21	Jan-22
Current	16,870,822.00	15,020,394.02	13,156,572.80	11,455,763.13	10,781,586.03	9,668,033.07	8,804,624.45	8,013,145.47	7,326,222.00	6,936,010.00
1-30 Days	762,943.16	1,023,023.77	785,589.67	877,959.13	779,384.00	894,551.64	528,355.50	459,215.19	445,451.05	401,610.35
31-60 Days	512,096.16	486,655.61	473,092.22	507,343.11	502,218.82	403,558.66	485,288.03	307,553.33	417,840.23	204,602.93
61-90 Days	214,589.56	233,832.57	278,577.03	368,160.39	160,365.57	256,130.55	314,885.22	351,082.56	280,102.32	132,062.87
91-120 Days	169,479.03	32,250.12	57,395.27	210,742.70	124,451.09	124,871.03	152,407.11	84,614.32	64,983.76	151,897.64
121-150 Days	77,993.48	39,069.32	76,995.85	28,204.91	13,398.32	85,785.57	116,729.61	49,927.16	57,550.51	16,299.44
151-180 Days	25,152.71	82,755.99	20,519.08	39,378.76	49,359.63	65,864.87	79,021.71	65,633.26	49,050.41	33,315.22
181+ Days	705,348.43	568,844.00	591,660.64	651,510.27	501,797.92	304,522.99	341,116.26	324,399.04	349,232.62	223,488.00

Delinquency Status (% of Current Balance)

Current Portfolio Balance	19,338,424.53	17,486,825.40	15,440,402.56	14,139,062.40	12,912,561.38	11,803,318.38	10,822,427.89	9,655,570.33	8,990,432.90	8,099,286.45
	Jan-13	Jan-14	Jan-15	Jan-16	Jan-17	Jan-18	Jan-19	Jan-20	Jan-21	Jan-22
Current	87.24%	85.90%	85.21%	81.02%	83.50%	81.91%	81.36%	82.99%	81.49%	85.64%
1-30 Days	3.95%	5.85%	5.09%	6.21%	6.04%	7.58%	4.88%	4.76%	4.95%	4.96%
31-60 Days	2.65%	2.78%	3.06%	3.59%	3.89%	3.42%	4.48%	3.19%	4.65%	2.53%
61-90 Days	1.11%	1.34%	1.80%	2.60%	1.24%	2.17%	2.91%	3.64%	3.12%	1.63%
91-120 Days	0.88%	0.18%	0.37%	1.49%	0.96%	1.06%	1.41%	0.88%	0.72%	1.88%
121-150 Days	0.40%	0.22%	0.50%	0.20%	0.10%	0.73%	1.08%	0.52%	0.64%	0.20%
151-180 Days	0.13%	0.47%	0.13%	0.28%	0.38%	0.56%	0.73%	0.68%	0.55%	0.41%
181+ Days	3.65%	3.25%	3.83%	4.61%	3.89%	2.58%	3.15%	3.36%	3.88%	2.76%
Current - 90 Days	94.94%	95.87%	95.16%	93.42%	94.66%	95.08%	93.63%	94.57%	94.21%	94.75%
91-180 Days	1.41%	0.88%	1.00%	1.97%	1.45%	2.34%	3.22%	2.07%	1.91%	2.49%



Mortgages - La Hipotecaria El Salvador Migration Analysis (2009 Vintage)

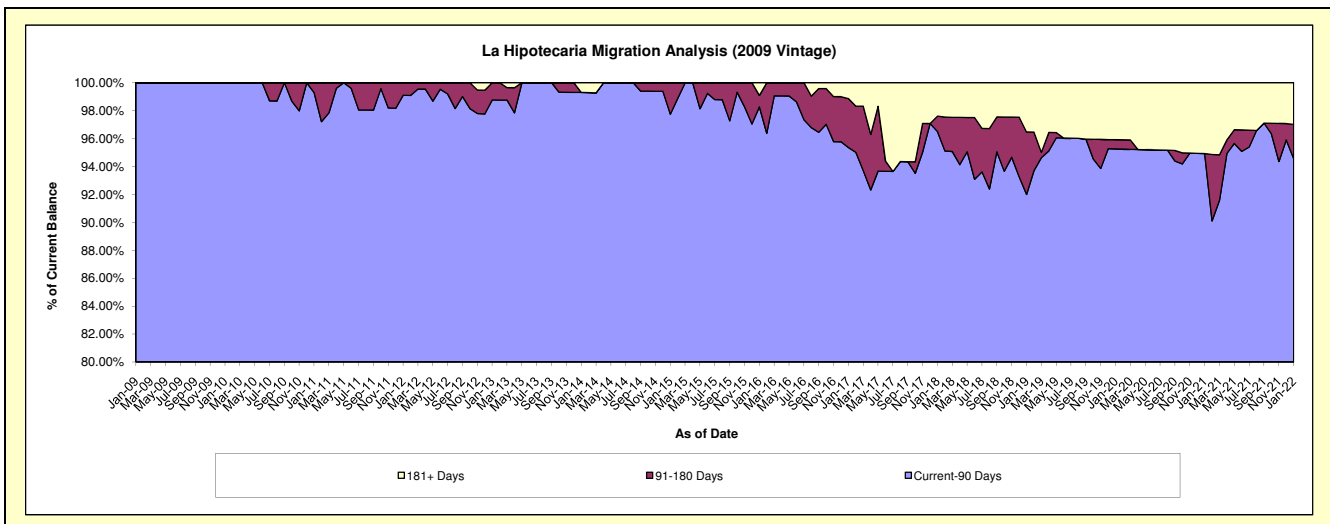
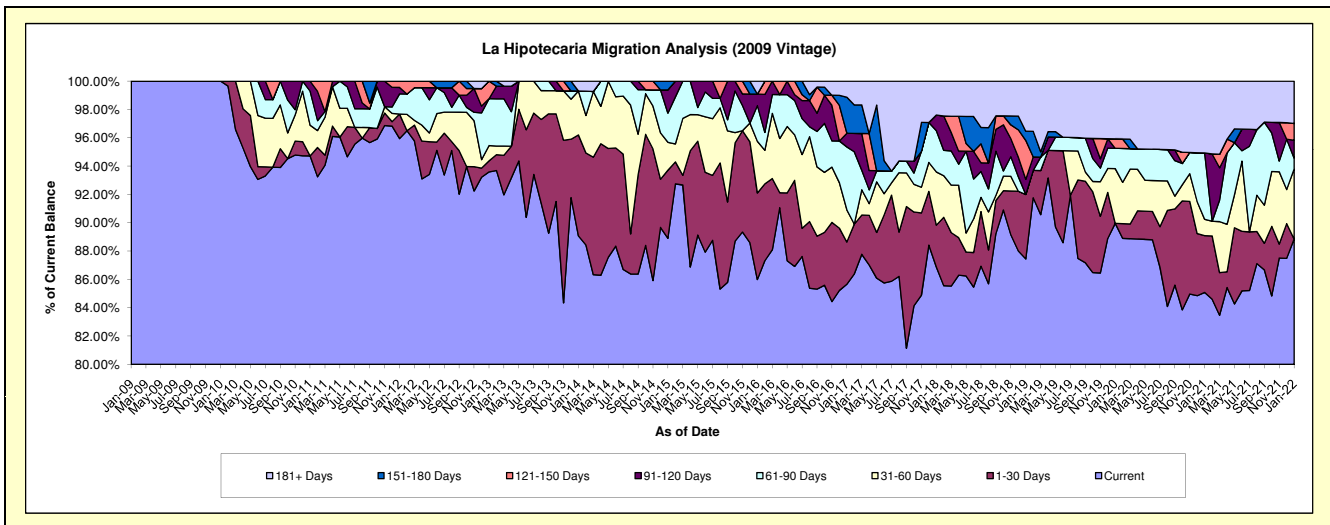
Delinquency Status (\$ of Current Balance)

Data Cutoff: 1/31/2022

Current Portfolio Balance	2,927,339.52	2,599,722.04	2,303,103.89	2,052,115.09	1,918,388.73	1,844,350.58	1,658,867.91	1,588,608.37	1,485,663.85	1,345,028.71
	Jan-13	Jan-14	Jan-15	Jan-16	Jan-17	Jan-18	Jan-19	Jan-20	Jan-21	Jan-22
Current	2,739,703.56	2,315,559.12	2,047,451.10	1,764,608.09	1,643,228.82	1,602,283.04	1,450,590.81	1,429,152.20	1,263,966.46	1,194,963.78
1-30 Days	22,866.71	185,398.87	110,784.53	125,452.50	57,276.93	54,530.81	75,593.23	-	59,577.00	-
31-60 Days	31,736.32	80,654.90	45,409.90	74,866.87	43,438.48	69,280.97	-	61,343.78	17,120.53	66,557.14
61-90 Days	96,878.19	-	47,427.51	51,690.58	85,395.53	53,774.68	-	22,783.64	69,671.11	10,363.37
91-120 Days	-	-	37,867.16	16,874.97	18,570.46	20,342.59	17,716.71	-	-	16,969.48
121-150 Days	36,154.74	-	-	-	-	-	45,618.60	10,531.26	-	16,008.02
151-180 Days	-	-	14,163.69	-	48,682.02	-	10,804.39	-	-	-
181+ Days	-	18,109.15	-	18,622.08	21,859.49	44,138.49	58,544.17	64,797.49	75,328.75	40,166.92

Delinquency Status (% of Current Balance)

Current Portfolio Balance	2,927,339.52	2,599,722.04	2,303,103.89	2,052,115.09	1,918,388.73	1,844,350.58	1,658,867.91	1,588,608.37	1,485,663.85	1,345,028.71
	Jan-13	Jan-14	Jan-15	Jan-16	Jan-17	Jan-18	Jan-19	Jan-20	Jan-21	Jan-22
Current	93.59%	89.07%	88.90%	85.99%	85.66%	86.88%	87.44%	89.96%	85.08%	88.84%
1-30 Days	0.78%	7.13%	4.81%	6.11%	2.99%	2.96%	4.56%	0.00%	4.01%	0.00%
31-60 Days	1.08%	3.10%	1.97%	3.65%	2.26%	3.76%	0.00%	3.86%	1.15%	4.95%
61-90 Days	3.31%	0.00%	2.06%	2.52%	4.45%	2.92%	0.00%	1.43%	4.69%	0.77%
91-120 Days	0.00%	0.00%	1.64%	0.82%	0.96%	1.10%	1.07%	0.00%	0.00%	1.26%
121-150 Days	1.24%	0.00%	0.00%	0.00%	0.00%	0.00%	2.75%	0.66%	0.00%	1.19%
151-180 Days	0.00%	0.00%	0.61%	0.00%	2.54%	0.00%	0.65%	0.00%	0.00%	0.00%
181+ Days	0.00%	0.70%	0.00%	0.91%	1.14%	2.39%	3.53%	4.08%	5.07%	2.99%
Current - 90 Days	98.76%	99.30%	97.74%	98.27%	95.36%	96.50%	92.00%	95.26%	94.93%	94.56%
91-180 Days	1.24%	0.00%	2.26%	0.82%	3.50%	1.10%	4.47%	0.66%	0.00%	2.45%



Mortgages - La Hipotecaria El Salvador Migration Analysis (2010 Vintage)

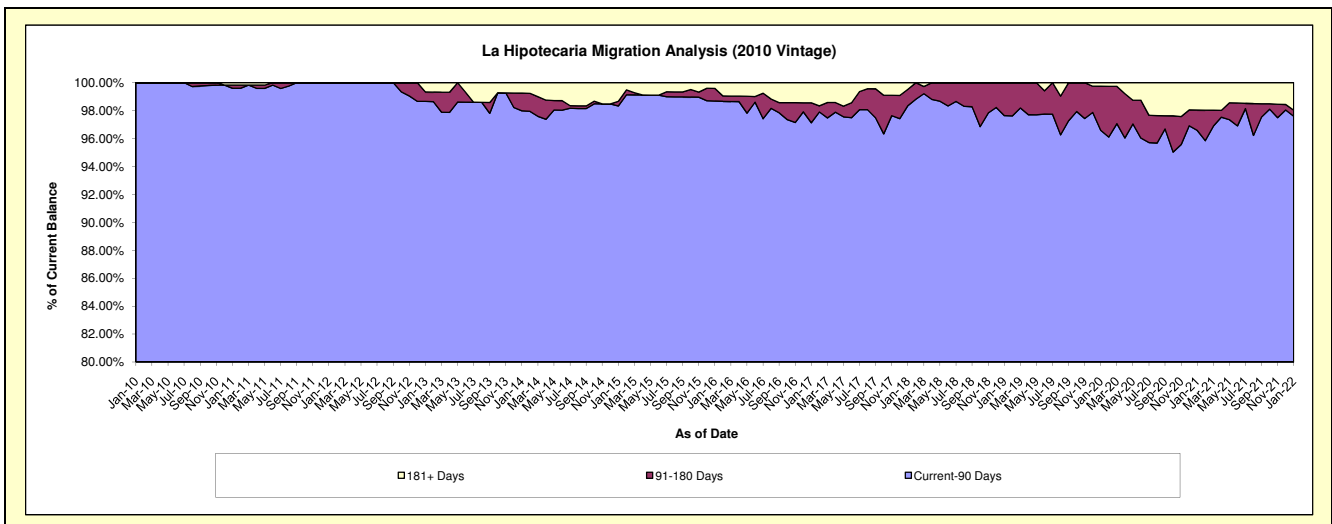
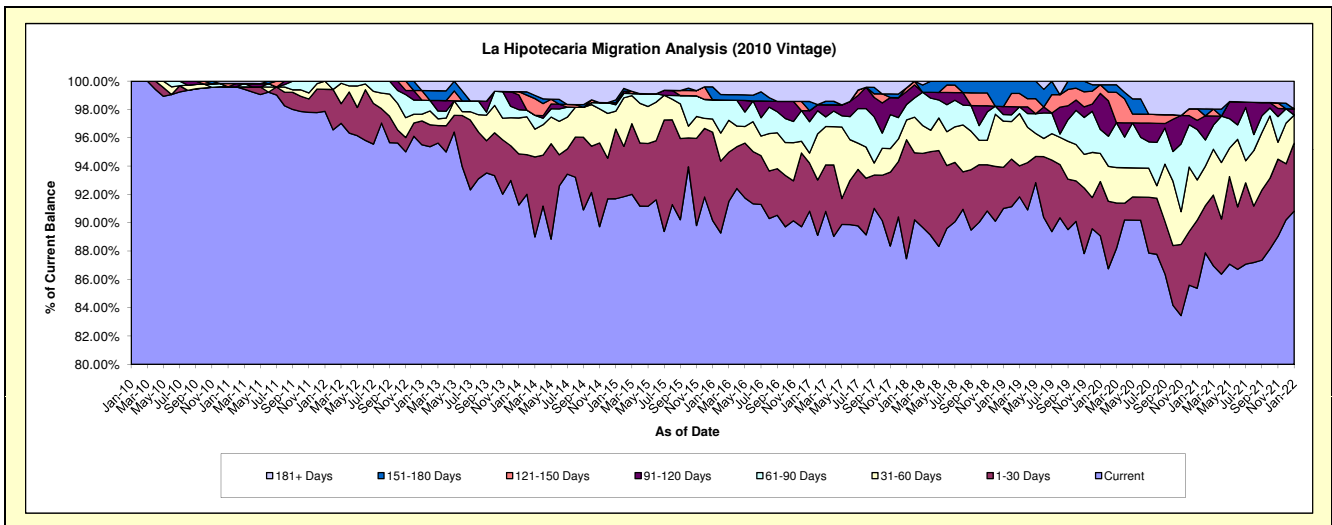
Delinquency Status (\$ of Current Balance)

Data Cutoff: 1/31/2022

Current Portfolio Balance	8,462,131.95	7,545,197.48	6,785,146.25	5,824,698.41	5,318,124.58	4,903,968.30	4,414,207.21	4,047,989.79	3,740,836.47	3,338,379.58
	Jan-13	Jan-14	Jan-15	Jan-16	Jan-17	Jan-18	Jan-19	Jan-20	Jan-21	Jan-22
Current	8,081,718.26	6,885,136.11	6,221,622.49	5,251,631.39	4,829,593.38	4,289,014.02	4,017,411.70	3,606,013.27	3,193,651.41	3,031,948.06
1-30 Days	142,740.11	272,295.38	334,194.51	363,126.27	180,730.86	412,152.21	128,355.33	155,037.37	179,980.01	160,390.55
31-60 Days	40,232.80	191,665.82	85,605.67	54,018.06	37,734.97	68,352.22	143,733.89	80,474.08	106,421.26	65,992.58
61-90 Days	84,316.33	44,364.90	30,822.92	79,587.21	117,784.13	53,543.06	20,749.09	68,488.66	133,094.82	-
91-120 Days	-	78,560.90	9,796.12	-	41,218.98	44,689.18	25,068.82	103,087.51	24,052.17	14,482.80
121-150 Days	56,986.18	17,036.10	-	-	-	-	12,919.90	-	24,692.99	30,565.06
151-180 Days	-	-	13,000.87	52,829.97	34,726.78	-	78,888.38	-	-	-
181+ Days	56,138.27	56,138.27	90,103.67	23,505.51	76,335.48	23,297.71	-	10,195.91	73,071.74	65,565.59

Delinquency Status (% of Current Balance)

Current Portfolio Balance	8,462,131.95	7,545,197.48	6,785,146.25	5,824,698.41	5,318,124.58	4,903,968.30	4,414,207.21	4,047,989.79	3,740,836.47	3,338,379.58
	Jan-13	Jan-14	Jan-15	Jan-16	Jan-17	Jan-18	Jan-19	Jan-20	Jan-21	Jan-22
Current	95.50%	91.25%	91.69%	90.16%	90.81%	87.46%	91.01%	89.08%	85.37%	90.82%
1-30 Days	1.69%	3.61%	4.93%	6.23%	3.40%	8.40%	2.91%	3.83%	4.81%	4.80%
31-60 Days	0.48%	2.54%	1.26%	0.93%	0.71%	1.39%	3.26%	1.99%	2.84%	1.98%
61-90 Days	1.00%	0.59%	0.45%	1.37%	2.21%	1.09%	0.47%	1.69%	3.56%	0.00%
91-120 Days	0.00%	1.04%	0.14%	0.00%	0.78%	0.91%	0.57%	2.55%	0.64%	0.43%
121-150 Days	0.67%	0.23%	0.00%	0.00%	0.00%	0.26%	0.00%	0.61%	0.82%	0.00%
151-180 Days	0.00%	0.00%	0.19%	0.91%	0.65%	0.00%	1.79%	0.00%	0.00%	0.00%
181+ Days	0.66%	0.74%	1.33%	0.40%	1.44%	0.48%	0.00%	0.25%	1.95%	1.96%
Current - 90 Days	98.66%	97.99%	98.34%	98.69%	97.14%	98.35%	97.64%	96.59%	96.59%	97.60%
91-180 Days	0.67%	1.27%	0.34%	0.91%	1.43%	1.17%	2.36%	3.16%	1.46%	0.43%



Mortgages - La Hipotecaria El Salvador Migration Analysis (2011 Vintage)

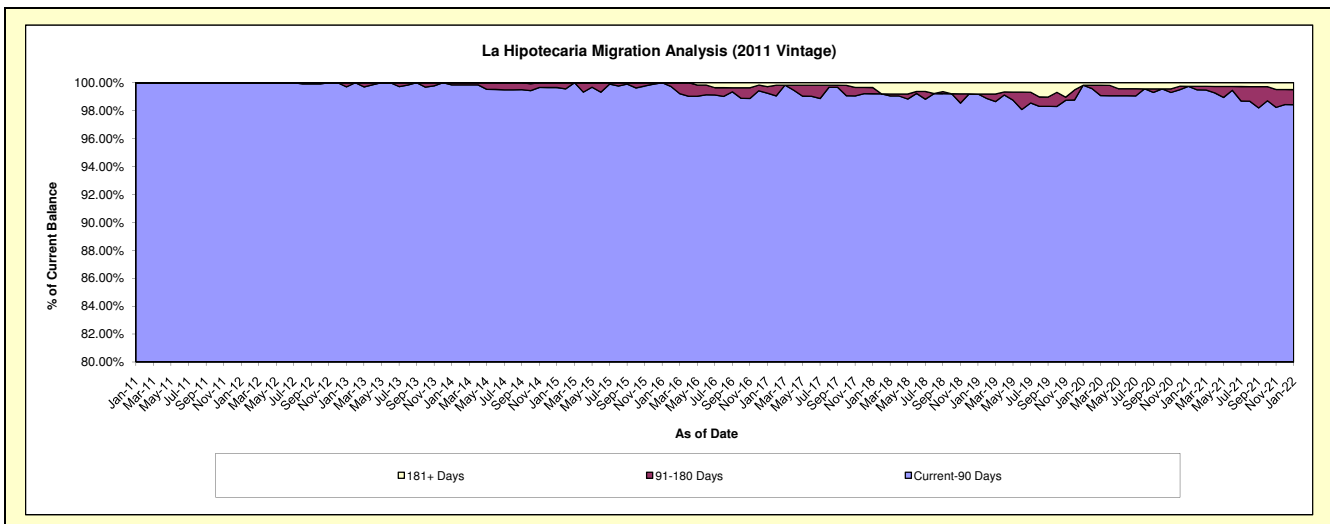
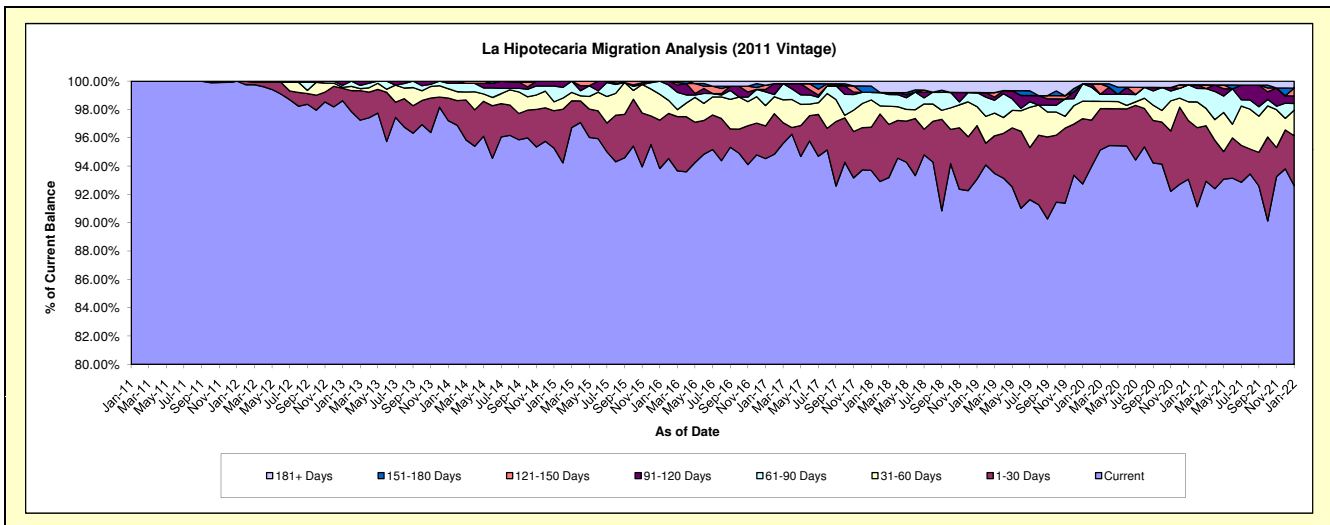
Delinquency Status (\$ of Current Balance)

Data Cutoff: 1/31/2022

Current Portfolio Balance	16,164,222.82	14,743,091.87	13,410,132.99	12,277,774.58	11,692,787.03	10,605,435.06	9,749,388.80	8,897,878.57	8,204,052.88	7,257,194.62
	Jan-13	Jan-14	Jan-15	Jan-16	Jan-17	Jan-18	Jan-19	Jan-20	Jan-21	Jan-22
Current	15,940,761.44	14,331,193.68	12,775,917.09	11,520,640.04	11,053,397.38	9,937,074.15	9,074,176.12	8,251,580.67	7,635,406.95	6,721,324.17
1-30 Days	141,622.74	236,444.62	354,049.74	419,157.20	270,142.80	323,219.90	369,343.54	410,739.72	340,250.93	256,158.69
31-60 Days	11,175.92	96,760.45	84,788.77	224,821.49	167,474.05	204,712.11	131,070.11	109,813.25	108,764.10	131,170.19
61-90 Days	22,907.45	56,357.66	149,262.37	113,155.85	114,390.04	56,630.64	96,496.49	109,589.48	98,682.67	33,916.63
91-120 Days	47,755.27	22,335.46	46,115.02	-	18,572.83	-	-	-	-	38,825.36
121-150 Days	-	-	-	-	35,713.34	-	-	-	-	40,079.49
151-180 Days	-	-	-	-	-	47,348.80	-	-	-	-
181+ Days	-	-	-	-	33,096.59	36,449.46	78,302.54	16,155.45	20,948.23	35,720.09

Delinquency Status (% of Current Balance)

Current Portfolio Balance	16,164,222.82	14,743,091.87	13,410,132.99	12,277,774.58	11,692,787.03	10,605,435.06	9,749,388.80	8,897,878.57	8,204,052.88	7,257,194.62
	Jan-13	Jan-14	Jan-15	Jan-16	Jan-17	Jan-18	Jan-19	Jan-20	Jan-21	Jan-22
Current	98.62%	97.21%	95.27%	93.83%	94.53%	93.70%	93.07%	92.74%	93.07%	92.62%
1-30 Days	0.88%	1.60%	2.64%	3.41%	2.31%	3.05%	3.79%	4.62%	4.15%	3.53%
31-60 Days	0.07%	0.66%	0.63%	1.83%	1.43%	1.93%	1.34%	1.23%	1.33%	1.81%
61-90 Days	0.14%	0.38%	1.11%	0.92%	0.98%	0.53%	0.99%	1.23%	1.20%	0.47%
91-120 Days	0.30%	0.15%	0.34%	0.00%	0.16%	0.00%	0.00%	0.00%	0.00%	0.53%
121-150 Days	0.00%	0.00%	0.00%	0.00%	0.31%	0.00%	0.00%	0.00%	0.00%	0.55%
151-180 Days	0.00%	0.00%	0.00%	0.00%	0.00%	0.45%	0.00%	0.00%	0.00%	0.00%
181+ Days	0.00%	0.00%	0.00%	0.00%	0.28%	0.34%	0.80%	0.18%	0.26%	0.49%
Current - 90 Days	99.70%	99.85%	99.66%	100.00%	99.25%	99.21%	99.20%	99.82%	99.74%	98.42%
91-180 Days	0.30%	0.15%	0.34%	0.00%	0.46%	0.45%	0.00%	0.00%	0.00%	1.09%



Mortgages - La Hipotecaria El Salvador Migration Analysis (2012 Vintage)

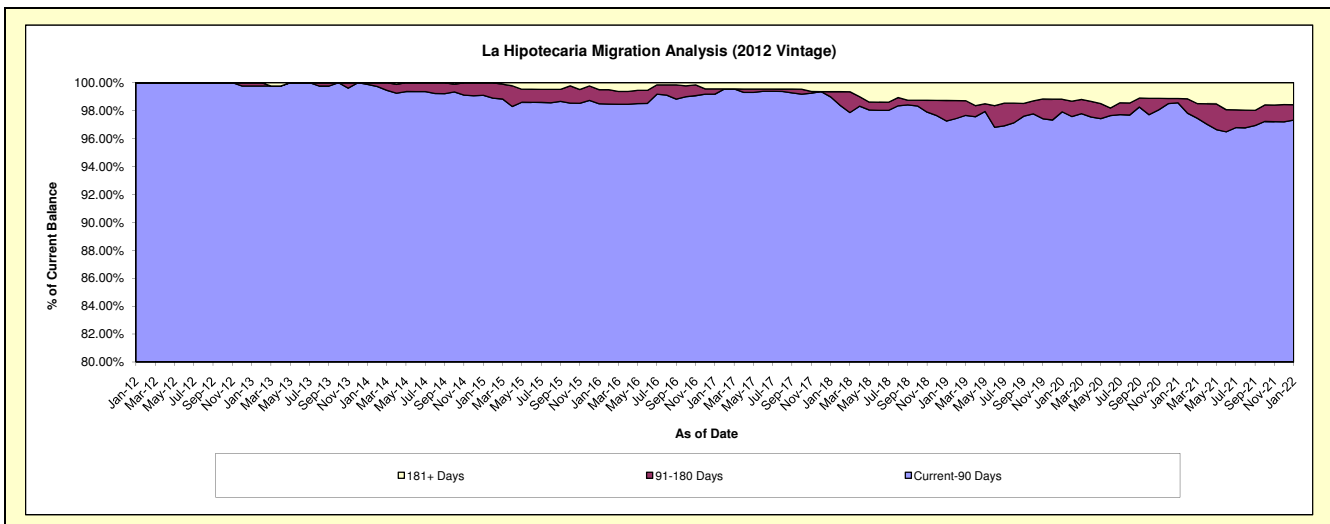
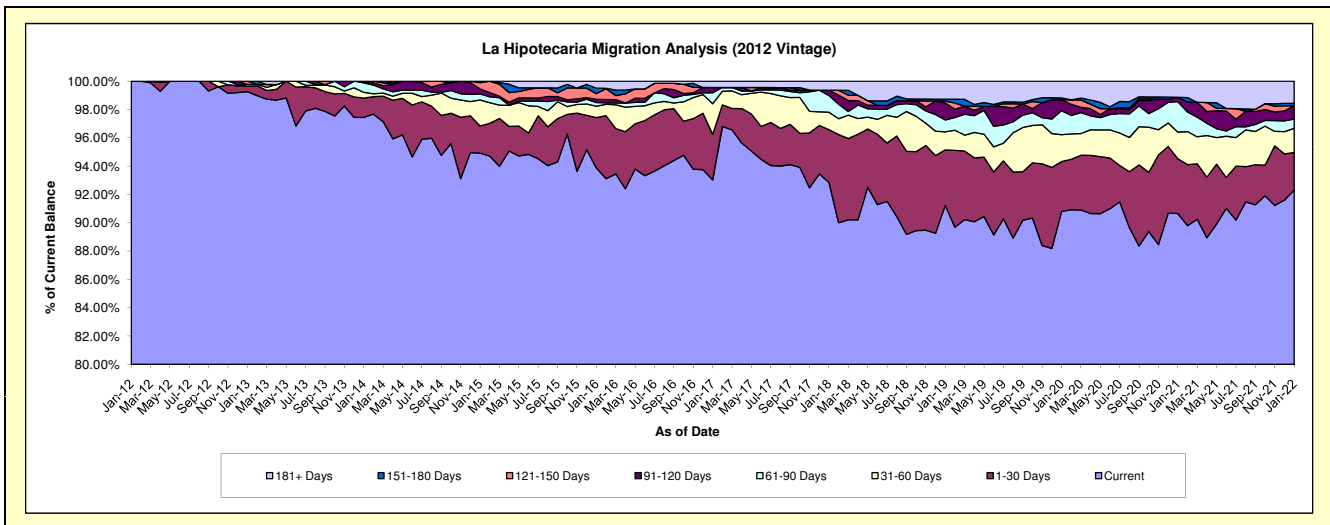
Delinquency Status (\$ of Current Balance)

Data Cutoff: 1/31/2022

Current Portfolio Balance	24,784,292.40	23,552,995.98	21,291,307.30	19,679,265.34	18,270,931.72	17,022,524.27	15,877,684.45	14,651,365.84	13,596,608.76	12,073,039.94
	Jan-13	Jan-14	Jan-15	Jan-16	Jan-17	Jan-18	Jan-19	Jan-20	Jan-21	Jan-22
Current	24,599,668.87	22,950,444.06	20,210,370.02	18,473,711.37	16,997,480.62	15,805,587.19	14,483,854.07	13,302,176.96	12,326,573.19	11,145,132.14
1-30 Days	94,652.95	321,784.75	407,198.35	700,321.47	587,273.97	633,886.48	623,924.93	516,822.06	525,444.55	319,632.45
31-60 Days	31,958.99	95,022.15	390,629.52	156,723.73	395,363.52	210,485.92	202,163.26	278,909.68	255,954.07	206,595.51
61-90 Days	-	157,400.35	92,548.56	51,901.34	141,056.40	199,898.41	132,857.12	247,815.04	293,050.57	78,951.53
91-120 Days	-	28,344.67	74,713.39	44,941.11	68,925.95	63,578.67	190,683.68	112,602.46	41,529.23	112,405.53
121-150 Days	58,011.59	-	92,944.68	77,869.24	-	-	21,564.46	-	-	-
151-180 Days	-	-	22,902.78	76,180.91	-	-	20,859.90	20,088.22	-	20,581.07
181+ Days	-	-	-	97,616.17	80,831.26	109,087.60	201,777.03	172,951.42	154,057.15	189,741.71

Delinquency Status (% of Current Balance)

Current Portfolio Balance	24,784,292.40	23,552,995.98	21,291,307.30	19,679,265.34	18,270,931.72	17,022,524.27	15,877,684.45	14,651,365.84	13,596,608.76	12,073,039.94
	Jan-13	Jan-14	Jan-15	Jan-16	Jan-17	Jan-18	Jan-19	Jan-20	Jan-21	Jan-22
Current	99.26%	97.44%	94.92%	93.87%	93.03%	92.85%	91.22%	90.79%	90.66%	92.31%
1-30 Days	0.38%	1.37%	1.91%	3.56%	3.21%	3.72%	3.93%	3.53%	3.86%	2.65%
31-60 Days	0.13%	0.40%	1.83%	0.80%	2.16%	1.24%	1.27%	1.90%	1.88%	1.71%
61-90 Days	0.00%	0.67%	0.43%	0.26%	0.77%	1.17%	0.84%	1.69%	2.16%	0.65%
91-120 Days	0.00%	0.12%	0.35%	0.23%	0.38%	0.37%	1.20%	0.77%	0.31%	0.93%
121-150 Days	0.23%	0.00%	0.44%	0.40%	0.00%	0.00%	0.14%	0.00%	0.00%	0.00%
151-180 Days	0.00%	0.00%	0.11%	0.39%	0.00%	0.00%	0.13%	0.14%	0.00%	0.17%
181+ Days	0.00%	0.00%	0.00%	0.50%	0.44%	0.64%	1.27%	1.18%	1.13%	1.57%
Current - 90 Days	99.77%	99.88%	99.10%	98.49%	99.18%	98.99%	97.26%	97.91%	98.56%	97.33%
91-180 Days	0.23%	0.12%	0.90%	1.01%	0.38%	0.37%	1.47%	0.91%	0.31%	1.10%



Mortgages - La Hipotecaria El Salvador Migration Analysis (2013 Vintage)

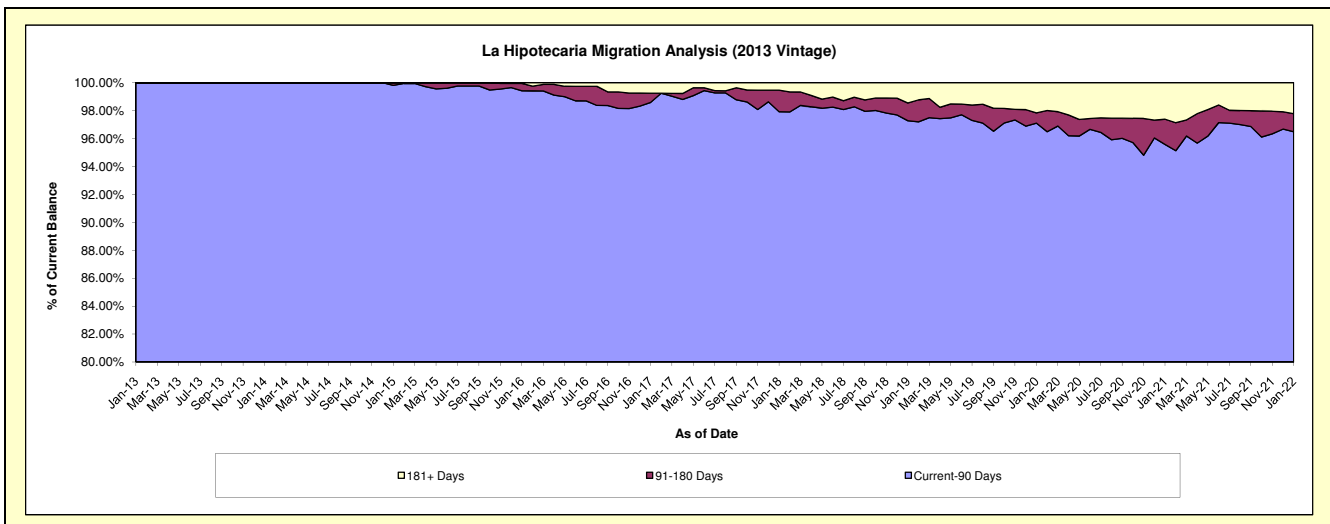
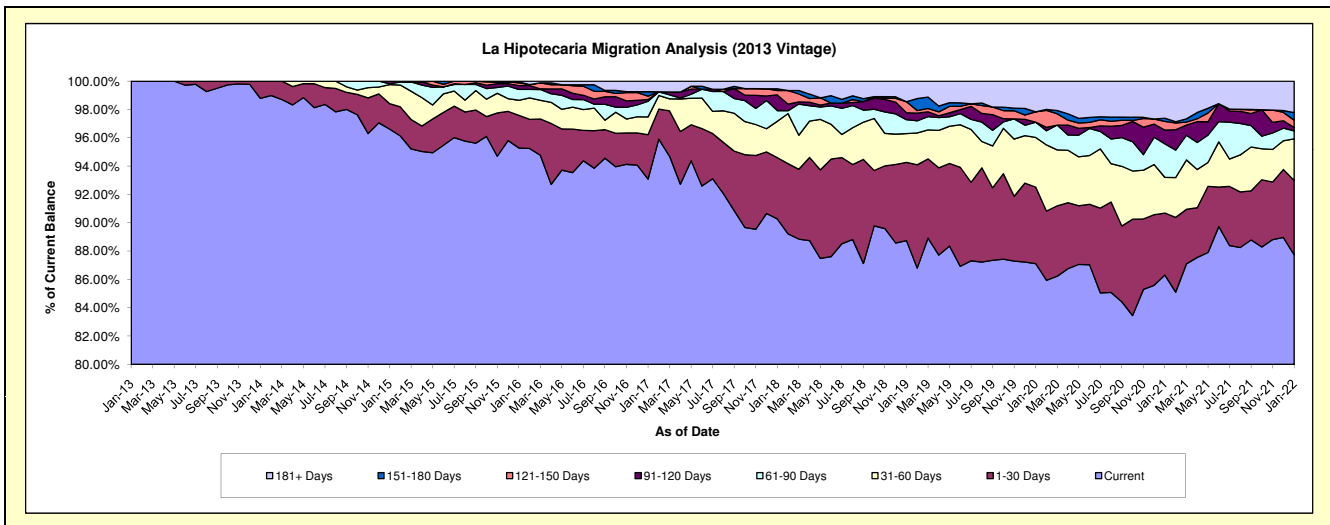
Delinquency Status (\$ of Current Balance)

Data Cutoff: 1/31/2022

Current Portfolio Balance	2,458,906.21	29,467,504.40	27,951,842.61	26,425,920.16	25,006,098.13	23,128,817.85	21,184,746.73	19,033,392.77	17,710,504.54	15,534,188.72
	Jan-13	Jan-14	Jan-15	Jan-16	Jan-17	Jan-18	Jan-19	Jan-20	Jan-21	Jan-22
Current	2,458,906.21	29,109,251.52	27,005,698.84	25,180,413.99	23,276,377.64	20,879,889.19	18,798,540.41	16,581,356.13	15,285,402.23	13,629,388.91
1-30 Days	-	358,252.88	502,490.03	608,167.16	784,974.55	999,261.17	1,170,768.94	1,028,240.06	776,024.47	816,509.72
31-60 Days	-	-	375,574.63	281,861.90	313,734.81	594,336.02	432,065.53	666,823.55	445,412.49	456,116.88
61-90 Days	-	-	15,954.35	201,876.67	276,827.27	174,486.81	206,889.08	206,121.29	419,868.03	87,315.89
91-120 Days	-	-	52,124.76	72,390.05	30,882.30	258,300.14	103,198.47	-	171,622.58	36,406.99
121-150 Days	-	-	-	49,383.41	59,217.49	69,972.50	166,551.69	139,684.29	109,544.84	80,440.80
151-180 Days	-	-	-	17,311.98	77,315.24	28,778.55	-	-	39,956.49	82,960.48
181+ Days	-	-	-	14,515.00	186,768.83	123,793.47	306,732.61	411,167.45	462,673.41	345,049.05

Delinquency Status (% of Current Balance)

Current Portfolio Balance	2,458,906.21	29,467,504.40	27,951,842.61	26,425,920.16	25,006,098.13	23,128,817.85	21,184,746.73	19,033,392.77	17,710,504.54	15,534,188.72
	Jan-13	Jan-14	Jan-15	Jan-16	Jan-17	Jan-18	Jan-19	Jan-20	Jan-21	Jan-22
Current	100.00%	98.78%	96.62%	95.29%	93.08%	90.28%	88.74%	87.12%	86.31%	87.74%
1-30 Days	0.00%	1.22%	1.80%	2.30%	3.14%	4.32%	5.53%	5.40%	4.38%	5.28%
31-60 Days	0.00%	0.00%	1.34%	1.07%	1.25%	2.57%	2.04%	3.50%	2.51%	2.94%
61-90 Days	0.00%	0.00%	0.06%	0.76%	1.11%	0.75%	0.98%	1.08%	2.37%	0.56%
91-120 Days	0.00%	0.00%	0.19%	0.27%	0.12%	1.12%	0.49%	0.00%	0.97%	0.23%
121-150 Days	0.00%	0.00%	0.00%	0.19%	0.24%	0.30%	0.79%	0.73%	0.62%	0.52%
151-180 Days	0.00%	0.00%	0.00%	0.07%	0.31%	0.12%	0.00%	0.00%	0.23%	0.53%
181+ Days	0.00%	0.00%	0.00%	0.05%	0.75%	0.54%	1.45%	2.16%	2.61%	2.22%
Current - 90 Days	100.00%	100.00%	99.81%	99.42%	98.58%	97.92%	97.28%	97.11%	95.57%	96.49%
91-180 Days	0.00%	0.00%	0.19%	0.53%	0.67%	1.54%	1.27%	0.73%	1.81%	1.29%



Mortgages - La Hipotecaria El Salvador Migration Analysis (2014 Vintage)

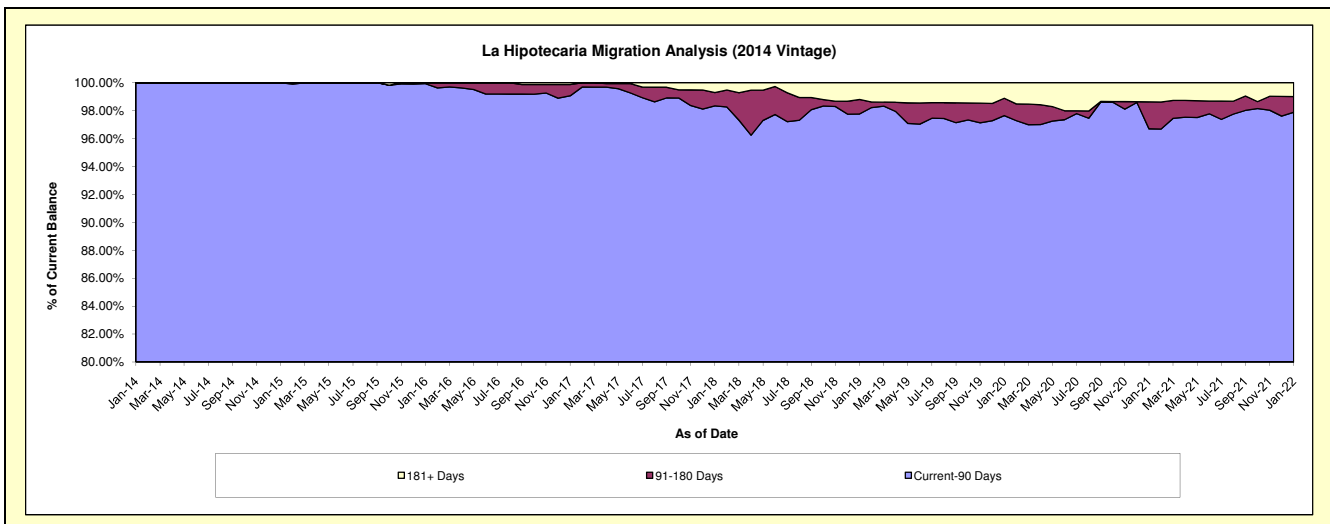
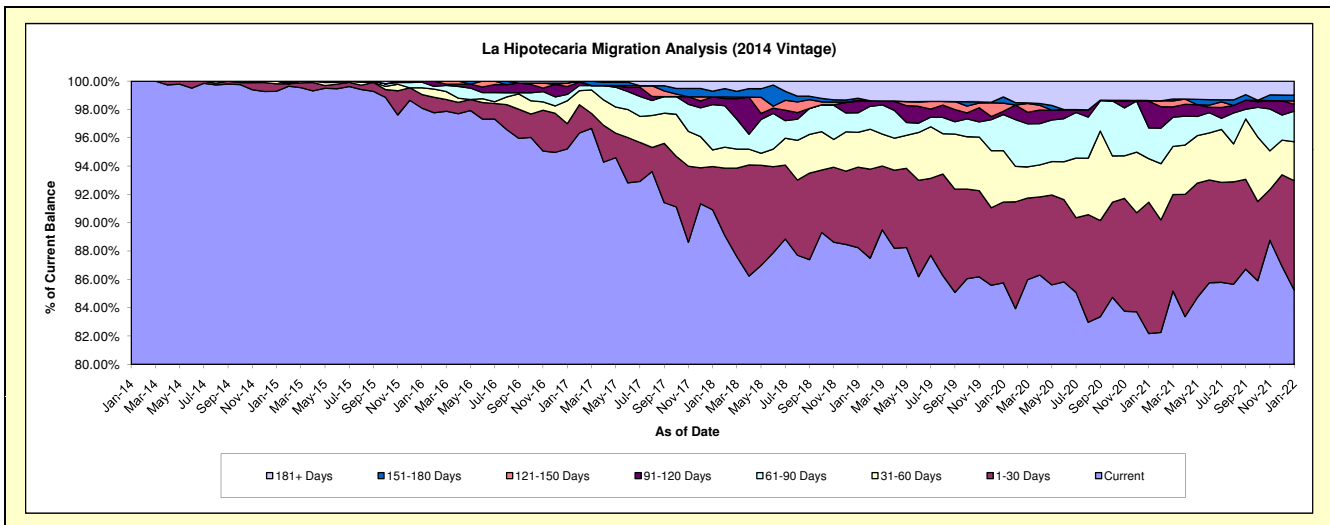
Delinquency Status (\$ of Current Balance)

Data Cutoff: 1/31/2022

Current Portfolio Balance	-	2,442,748.33	27,876,718.66	26,475,440.43	25,187,199.13	23,642,220.20	21,582,078.54	19,465,259.12	18,202,156.57	16,111,114.23
	Jan-14	Jan-15	Jan-16	Jan-17	Jan-18	Jan-19	Jan-20	Jan-21	Jan-22	
Current	2,442,748.33	27,677,586.84	25,971,247.97	23,982,733.39	21,495,296.44	19,044,680.32	16,692,747.50	14,957,889.09	13,733,775.02	
1-30 Days	-	147,300.09	255,344.87	447,504.74	722,306.96	1,227,732.18	1,111,449.12	1,687,984.62	1,245,466.18	
31-60 Days	-	51,831.73	125,914.99	408,364.83	277,505.01	530,002.48	706,223.67	559,244.87	443,023.19	
61-90 Days	-	-	104,983.47	112,719.58	756,350.75	297,177.83	496,500.51	396,450.69	347,918.48	
91-120 Days	-	-	17,949.13	141,393.36	126,959.79	175,727.35	43,960.71	342,609.05	78,643.45	
121-150 Days	-	-	-	61,254.01	-	15,246.78	112,969.89	8,682.38	36,961.34	
151-180 Days	-	-	-	-	96,586.50	32,791.06	84,895.56	-	65,955.55	
181+ Days	-	-	-	33,229.22	167,214.75	258,720.54	216,512.16	249,295.87	159,371.02	

Delinquency Status (% of Current Balance)

Current Portfolio Balance	-	2,442,748.33	27,876,718.66	26,475,440.43	25,187,199.13	23,642,220.20	21,582,078.54	19,465,259.12	18,202,156.57	16,111,114.23
	Jan-14	Jan-15	Jan-16	Jan-17	Jan-18	Jan-19	Jan-20	Jan-21	Jan-22	
Current	100.00%	99.29%	98.10%	95.22%	90.92%	88.24%	85.76%	82.18%	85.24%	
1-30 Days	0.00%	0.53%	0.96%	1.78%	3.06%	5.69%	5.71%	9.27%	7.73%	
31-60 Days	0.00%	0.19%	0.48%	1.62%	1.17%	2.46%	3.63%	3.07%	2.75%	
61-90 Days	0.00%	0.00%	0.40%	0.45%	3.20%	1.38%	2.55%	2.18%	2.16%	
91-120 Days	0.00%	0.00%	0.07%	0.56%	0.54%	0.81%	0.23%	1.88%	0.49%	
121-150 Days	0.00%	0.00%	0.00%	0.24%	0.00%	0.07%	0.58%	0.05%	0.23%	
151-180 Days	0.00%	0.00%	0.00%	0.00%	0.41%	0.15%	0.44%	0.00%	0.41%	
181+ Days	0.00%	0.00%	0.00%	0.13%	0.71%	1.20%	1.11%	1.37%	0.99%	
Current - 90 Days	100.00%	100.00%	99.93%	99.06%	98.35%	97.76%	97.65%	96.70%	97.88%	
91-180 Days	0.00%	0.00%	0.07%	0.80%	0.95%	1.04%	1.24%	1.93%	1.13%	



Mortgages - La Hipotecaria El Salvador Migration Analysis (2015 Vintage)

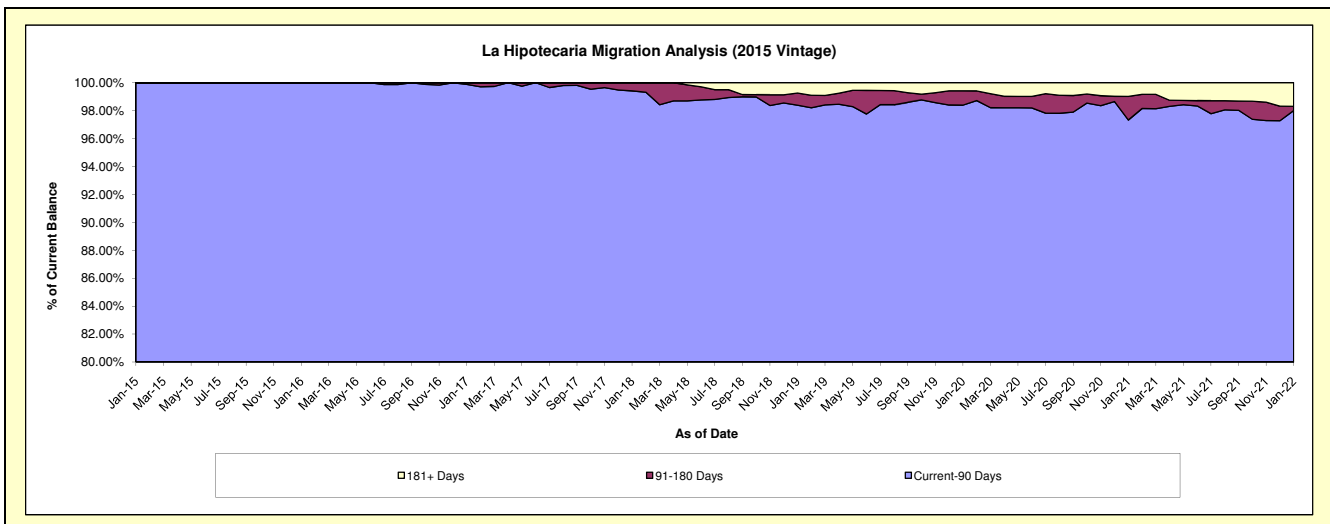
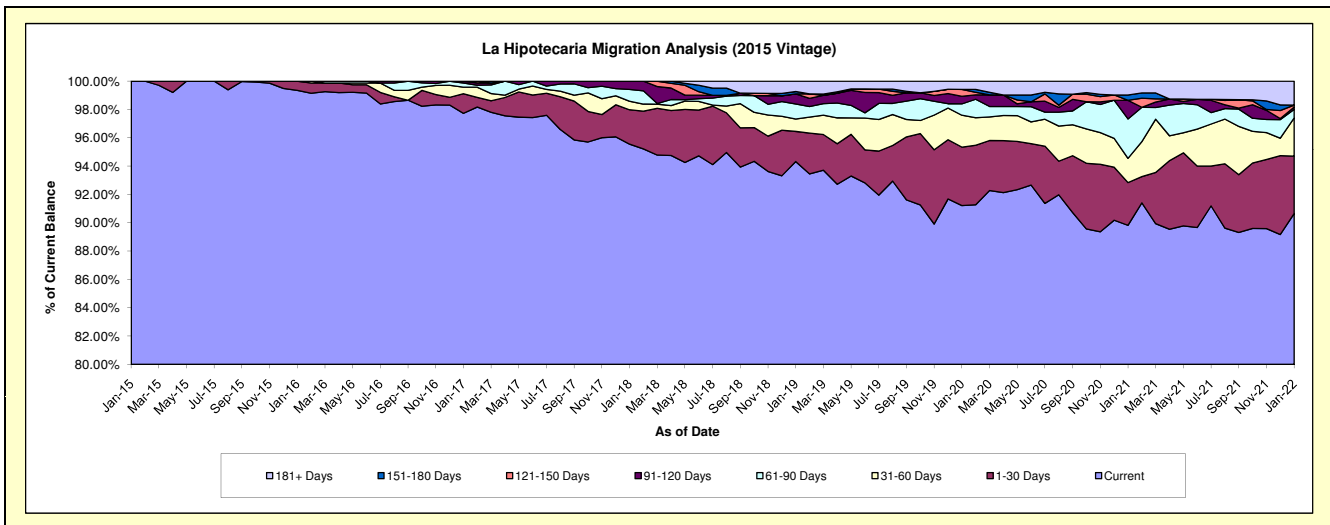
Delinquency Status (\$ of Current Balance)

Data Cutoff: 1/31/2022

Current Portfolio Balance	-	-	1,702,284.19	23,577,540.26	22,531,202.92	21,206,544.46	19,926,438.35	18,225,021.50	16,967,147.14	15,542,286.21
	Jan-15	Jan-16	Jan-17	Jan-18	Jan-19	Jan-20	Jan-21	Jan-22		
Current	1,702,284.19	23,424,430.63	22,019,195.00	20,263,083.33	18,795,354.90	16,623,649.50	15,239,932.19	14,090,010.96		
1-30 Days	-	153,109.63	312,568.76	514,851.35	423,956.48	752,454.99	511,935.82	629,218.68		
31-60 Days	-	-	103,500.36	127,366.63	174,990.18	410,763.40	290,952.36	419,806.26		
61-90 Days	-	-	67,840.42	177,239.48	210,340.14	145,917.90	471,302.62	93,593.16		
91-120 Days	-	-	28,098.38	124,003.67	142,420.23	98,055.54	223,394.33	24,895.77		
121-150 Days	-	-	-	-	-	88,830.93	-	22,502.68		
151-180 Days	-	-	-	-	33,073.80	-	63,581.07	-		
181+ Days	-	-	-	-	146,302.62	105,349.24	166,048.75	262,258.70		

Delinquency Status (% of Current Balance)

Current Portfolio Balance	-	-	1,702,284.19	23,577,540.26	22,531,202.92	21,206,544.46	19,926,438.35	18,225,021.50	16,967,147.14	15,542,286.21
	Jan-15	Jan-16	Jan-17	Jan-18	Jan-19	Jan-20	Jan-21	Jan-22		
Current	100.00%	99.35%	97.73%	95.55%	94.32%	91.21%	89.82%	90.66%		
1-30 Days	0.00%	0.65%	1.39%	2.43%	2.13%	4.13%	3.02%	4.05%		
31-60 Days	0.00%	0.00%	0.46%	0.60%	0.88%	2.25%	1.71%	2.70%		
61-90 Days	0.00%	0.00%	0.30%	0.84%	1.06%	0.80%	2.78%	0.60%		
91-120 Days	0.00%	0.00%	0.12%	0.58%	0.71%	0.54%	1.32%	0.16%		
121-150 Days	0.00%	0.00%	0.00%	0.00%	0.00%	0.49%	0.00%	0.14%		
151-180 Days	0.00%	0.00%	0.00%	0.00%	0.17%	0.00%	0.37%	0.00%		
181+ Days	0.00%	0.00%	0.00%	0.00%	0.73%	0.58%	0.98%	1.69%		
Current - 90 Days	100.00%	100.00%	99.88%	99.42%	98.39%	98.40%	97.33%	98.01%		
91-180 Days	0.00%	0.00%	0.12%	0.58%	0.88%	1.03%	1.69%	0.30%		



Mortgages - La Hipotecaria El Salvador Migration Analysis (2016 Vintage)

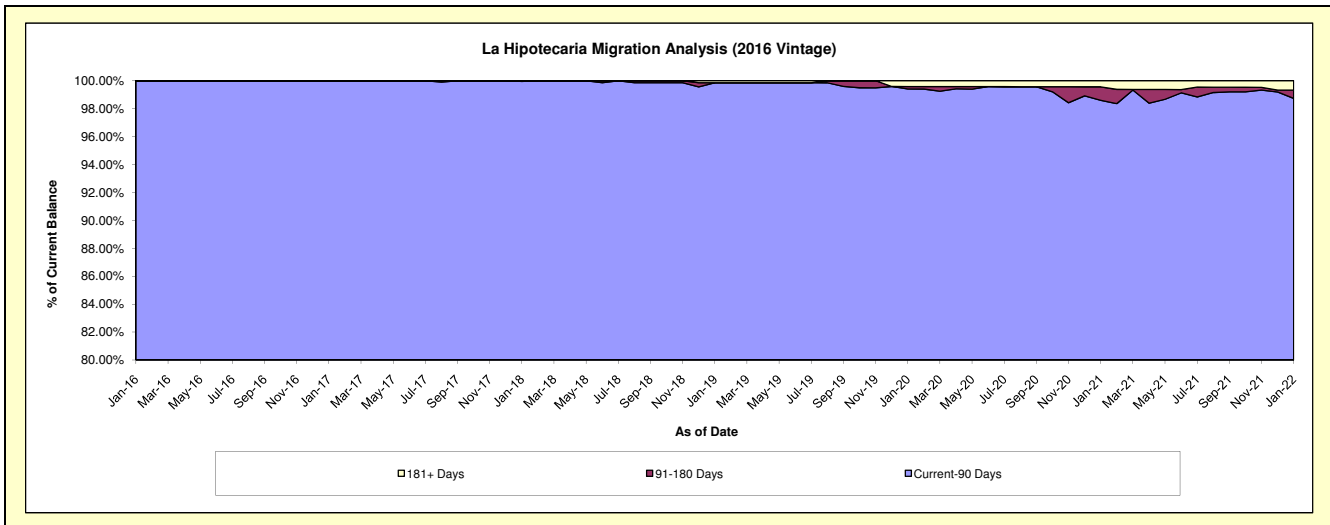
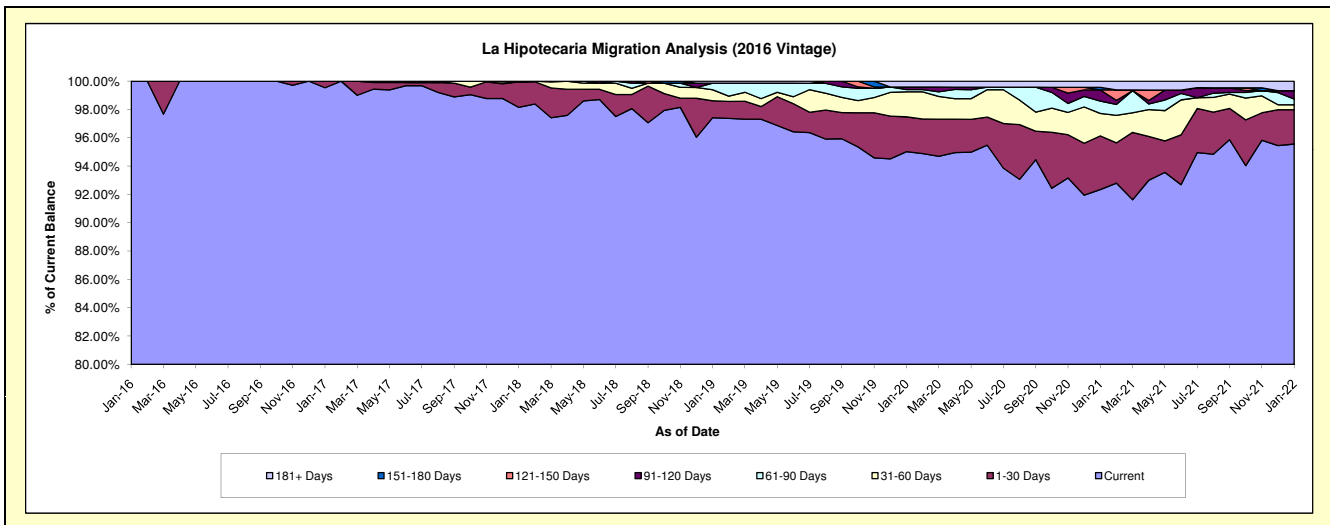
Delinquency Status (\$ of Current Balance)

Data Cutoff: 1/31/2022

Current Portfolio Balance	-	-	-	2,080,915.51	23,594,331.62	22,960,929.08	21,807,021.90	20,255,375.18	19,249,989.38	17,626,601.87
	Jan-16	Jan-17	Jan-18	Jan-19	Jan-20	Jan-21	Jan-22			
Current	2,080,915.51	23,485,423.84	22,535,900.66	21,244,647.45	19,246,845.46	17,775,940.02	16,843,727.89			
1-30 Days	-	108,907.78	414,528.51	260,660.50	498,189.81	730,131.13	427,309.15			
31-60 Days	-	-	-	169,648.82	358,757.29	305,683.32	61,885.92			
61-90 Days	-	-	-	100,439.63	31,736.97	167,706.18	70,629.76			
91-120 Days	-	-	10,499.91	-	35,822.85	151,590.11	104,578.92			
121-150 Days	-	-	-	-	-	-	-			
151-180 Days	-	-	-	-	-	34,915.82	-			
181+ Days	-	-	-	31,625.50	84,022.80	84,022.80	118,470.23			

Delinquency Status (% of Current Balance)

Current Portfolio Balance	-	-	-	2,080,915.51	23,594,331.62	22,960,929.08	21,807,021.90	20,255,375.18	19,249,989.38	17,626,601.87
	Jan-16	Jan-17	Jan-18	Jan-19	Jan-20	Jan-21	Jan-22			
Current	100.00%	99.54%	98.15%	97.42%	95.02%	92.34%	95.56%			
1-30 Days	0.00%	0.46%	1.81%	1.20%	2.46%	3.79%	2.42%			
31-60 Days	0.00%	0.00%	0.00%	0.78%	1.77%	1.59%	0.35%			
61-90 Days	0.00%	0.00%	0.00%	0.46%	0.16%	0.87%	0.40%			
91-120 Days	0.00%	0.00%	0.05%	0.00%	0.18%	0.79%	0.59%			
121-150 Days	0.00%	0.00%	0.00%	0.00%	0.00%	0.00%	0.00%			
151-180 Days	0.00%	0.00%	0.00%	0.00%	0.00%	0.18%	0.00%			
181+ Days	0.00%	0.00%	0.00%	0.15%	0.41%	0.44%	0.67%			
Current - 90 Days	100.00%	100.00%	99.95%	99.85%	99.41%	98.59%	98.73%			
91-180 Days	0.00%	0.00%	0.05%	0.00%	0.18%	0.97%	0.59%			



Mortgages - La Hipotecaria El Salvador Migration Analysis (2017 Vintage)

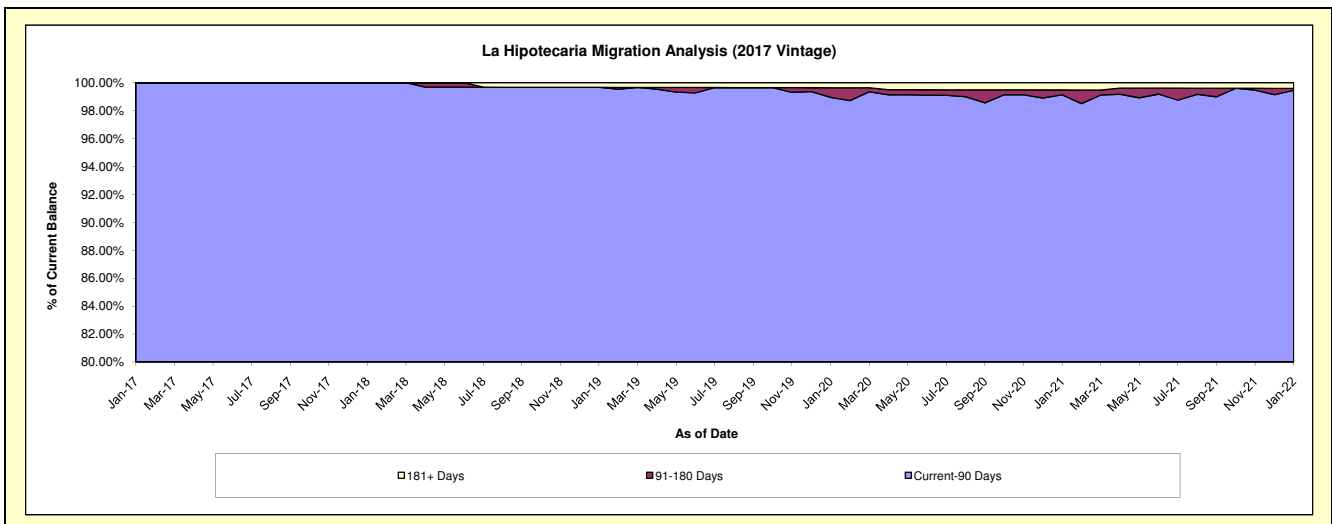
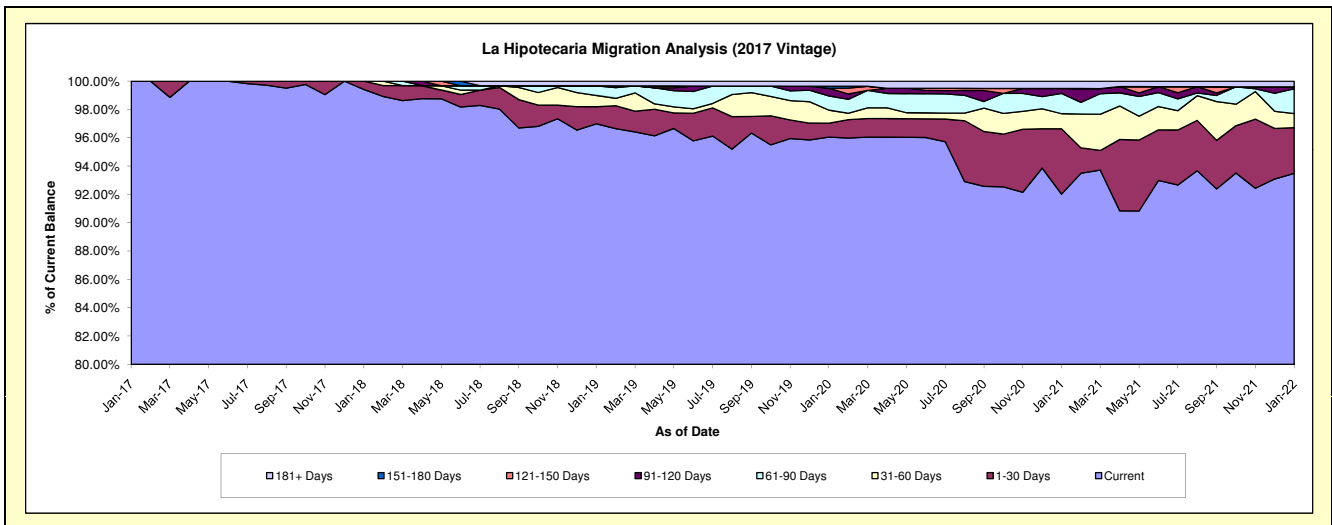
Delinquency Status (\$ of Current Balance)

Data Cutoff: 1/31/2022

Current Portfolio Balance	-	-	-	-	1,863,112.53	18,903,825.44	18,081,604.76	16,667,211.84	15,848,423.44	14,616,750.49
	Jan-17	Jan-18	Jan-19	Jan-20	Jan-21	Jan-22				
Current	1,863,112.53	18,793,786.73	17,537,140.58	16,008,939.49	14,584,015.21	13,664,102.39				
1-30 Days	-	110,038.71	217,691.13	163,134.75	731,111.73	472,431.33				
31-60 Days	-	-	144,278.41	154,209.55	169,709.84	145,151.74				
61-90 Days	-	-	123,094.64	166,353.90	226,197.14	255,868.88				
91-120 Days	-	-	-	90,959.89	55,504.66	19,796.15				
121-150 Days	-	-	-	-	-	-				
151-180 Days	-	-	-	24,214.26	-	-				
181+ Days	-	-	59,400.00	59,400.00	81,884.86	59,400.00				

Delinquency Status (% of Current Balance)

Current Portfolio Balance	-	-	-	-	1,863,112.53	18,903,825.44	18,081,604.76	16,667,211.84	15,848,423.44	14,616,750.49
	Jan-17	Jan-18	Jan-19	Jan-20	Jan-21	Jan-22				
Current	100.00%	99.42%	96.99%	96.05%	92.02%	93.48%				
1-30 Days	0.00%	0.58%	1.20%	0.98%	4.61%	3.23%				
31-60 Days	0.00%	0.00%	0.80%	0.93%	1.07%	0.99%				
61-90 Days	0.00%	0.00%	0.68%	1.00%	1.43%	1.75%				
91-120 Days	0.00%	0.00%	0.00%	0.55%	0.35%	0.14%				
121-150 Days	0.00%	0.00%	0.00%	0.00%	0.00%	0.00%				
151-180 Days	0.00%	0.00%	0.00%	0.15%	0.00%	0.00%				
181+ Days	0.00%	0.00%	0.33%	0.36%	0.52%	0.41%				
Current - 90 Days	100.00%	100.00%	99.67%	98.95%	99.13%	99.46%				
91-180 Days	0.00%	0.00%	0.00%	0.69%	0.35%	0.14%				



Mortgages - La Hipotecaria El Salvador Migration Analysis (2018 Vintage)

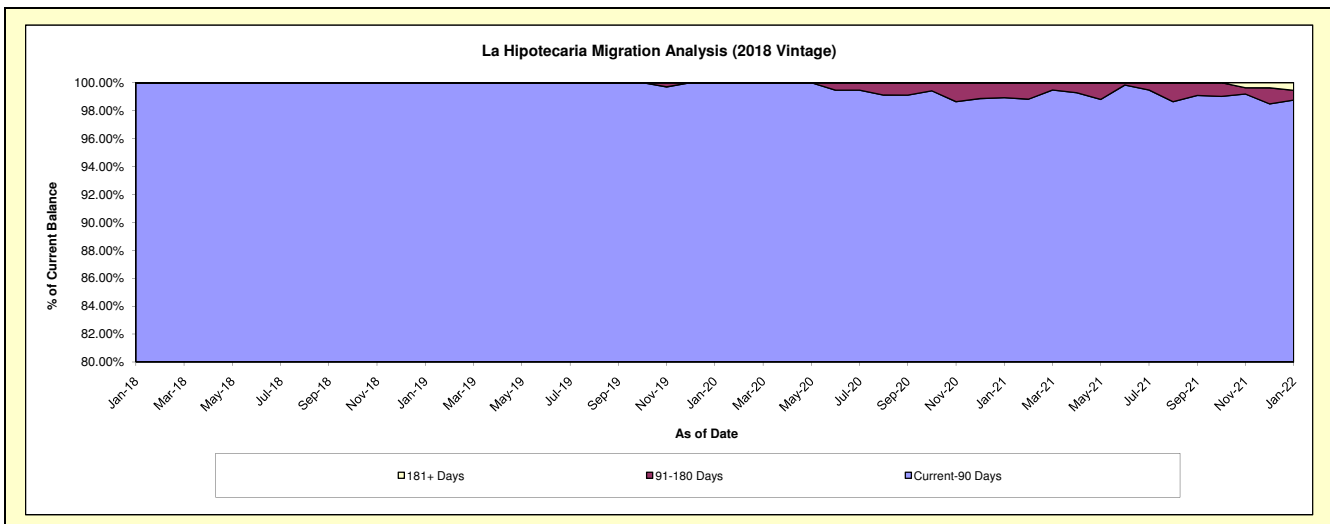
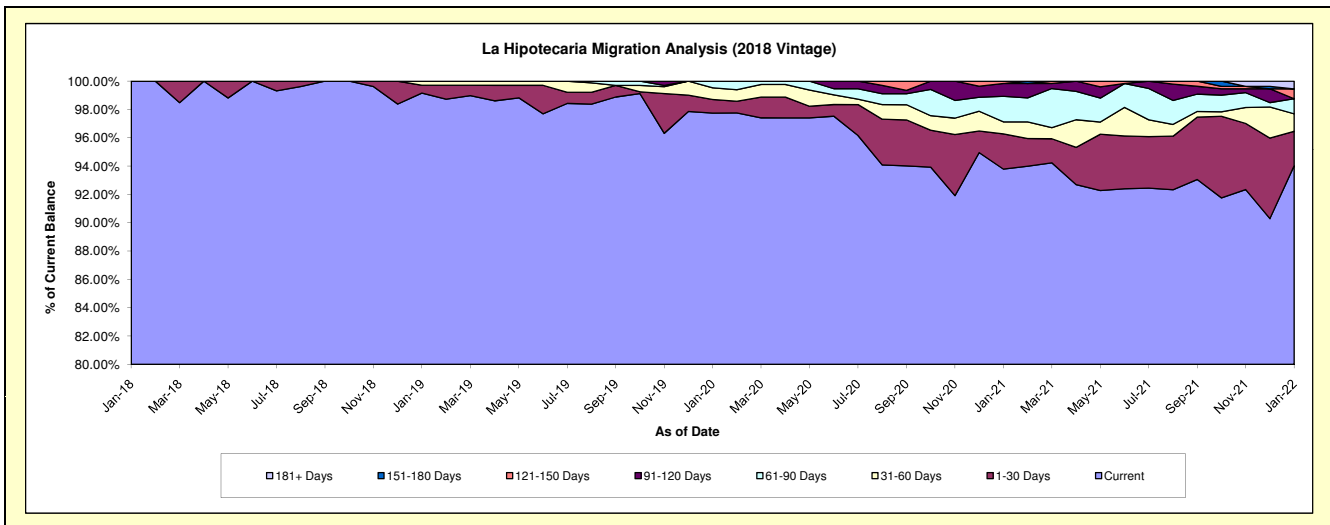
Delinquency Status (\$ of Current Balance)

Data Cutoff: 1/31/2022

Current Portfolio Balance	-	-	-	-	-	1,014,042.96	23,297,511.15	22,429,125.17	21,760,694.42	20,247,526.16
						Jan-18	Jan-19	Jan-20	Jan-21	Jan-22
Current						1,014,042.96	23,100,965.32	21,924,443.59	20,409,510.87	19,037,677.62
1-30 Days						-	128,668.42	213,967.57	539,932.54	493,226.66
31-60 Days						-	67,877.41	186,411.84	186,261.63	249,948.49
61-90 Days						-	-	104,302.17	392,912.41	215,413.38
91-120 Days						-	-	-	196,471.94	-
121-150 Days						-	-	-	35,605.03	140,026.14
151-180 Days						-	-	-	-	-
181+ Days						-	-	-	-	111,233.87

Delinquency Status (% of Current Balance)

Current Portfolio Balance	-	-	-	-	-	1,014,042.96	23,297,511.15	22,429,125.17	21,760,694.42	20,247,526.16
						Jan-18	Jan-19	Jan-20	Jan-21	Jan-22
Current						100.00%	99.16%	97.75%	93.79%	94.02%
1-30 Days						0.00%	0.55%	0.95%	2.48%	2.44%
31-60 Days						0.00%	0.29%	0.83%	0.86%	1.23%
61-90 Days						0.00%	0.00%	0.47%	1.81%	1.06%
91-120 Days						0.00%	0.00%	0.00%	0.90%	0.00%
121-150 Days						0.00%	0.00%	0.00%	0.16%	0.69%
151-180 Days						0.00%	0.00%	0.00%	0.00%	0.00%
181+ Days						0.00%	0.00%	0.00%	0.00%	0.55%
Current - 90 Days						100.00%	100.00%	100.00%	98.93%	98.76%
91-180 Days						0.00%	0.00%	0.00%	1.07%	0.69%



Mortgages - La Hipotecaria El Salvador Migration Analysis (2019 Vintage)

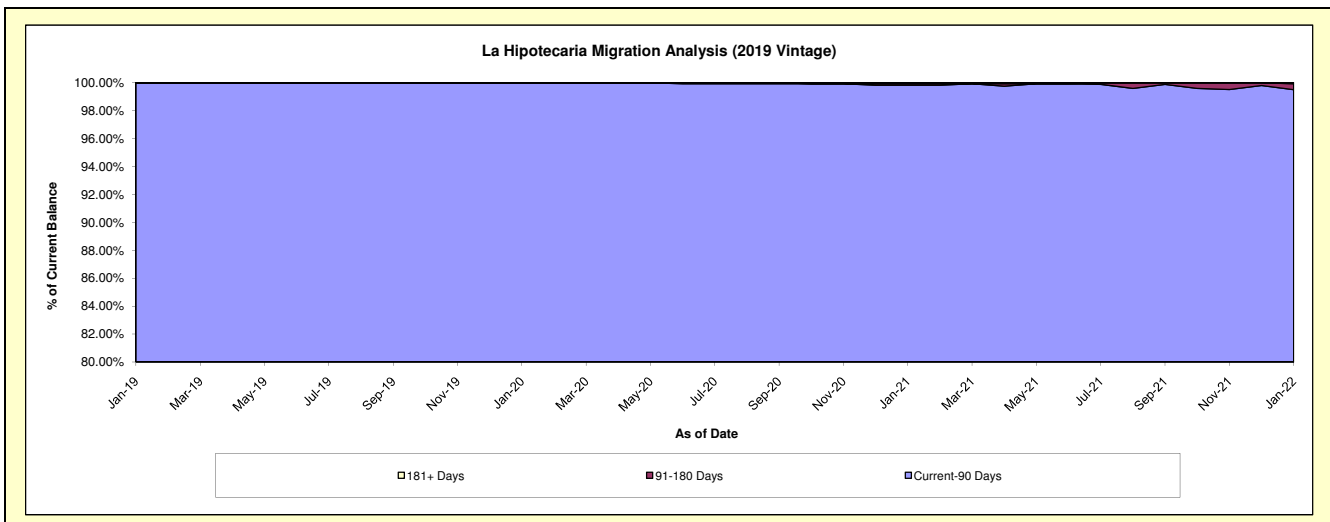
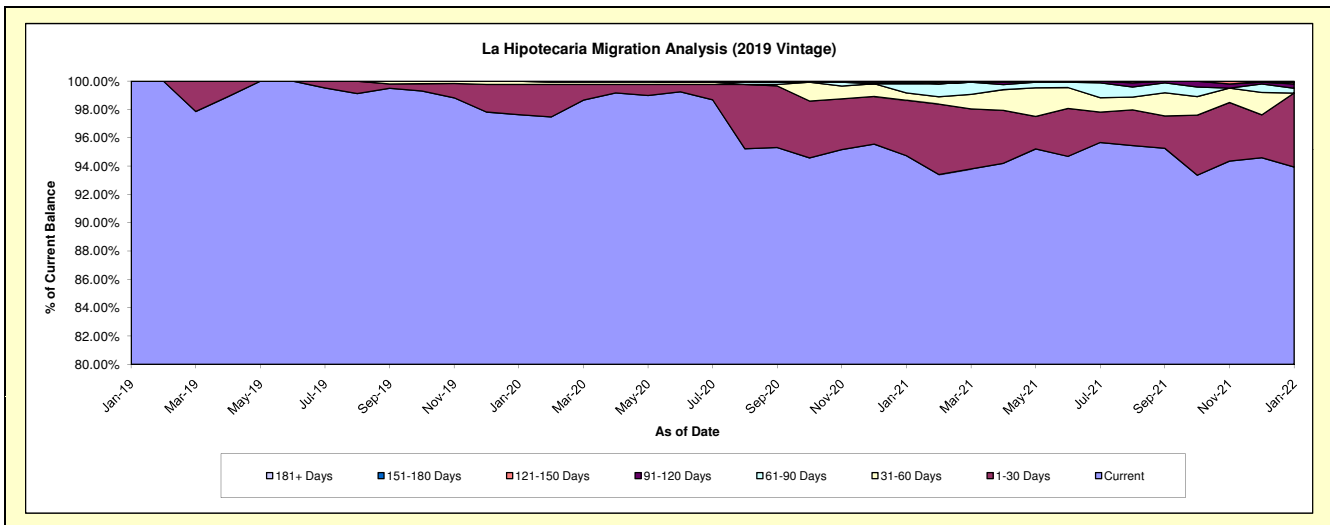
Delinquency Status (\$ of Current Balance)

Data Cutoff: 1/31/2022

Current Portfolio Balance	-	-	-	-	-	-	-	1,565,739.90	26,493,014.31	25,373,077.81	22,829,664.69
								Jan-19	Jan-20	Jan-21	Jan-22
Current								1,565,739.90	25,864,819.33	24,037,350.56	21,445,785.80
1-30 Days								-	567,649.75	994,184.78	1,192,527.76
31-60 Days								-	60,545.23	130,642.36	-
61-90 Days								-	-	164,818.16	76,988.61
91-120 Days								-	-	27,536.72	68,803.41
121-150 Days								-	-	-	27,536.72
151-180 Days								-	-	-	-
181+ Days								-	-	18,545.23	18,022.39

Delinquency Status (% of Current Balance)

Current Portfolio Balance	-	-	-	-	-	-	-	1,565,739.90	26,493,014.31	25,373,077.81	22,829,664.69
								Jan-19	Jan-20	Jan-21	Jan-22
Current								100.00%	97.63%	94.74%	93.94%
1-30 Days								0.00%	2.14%	3.92%	5.22%
31-60 Days								0.00%	0.23%	0.51%	0.00%
61-90 Days								0.00%	0.00%	0.65%	0.34%
91-120 Days								0.00%	0.00%	0.11%	0.30%
121-150 Days								0.00%	0.00%	0.00%	0.12%
151-180 Days								0.00%	0.00%	0.00%	0.00%
181+ Days								0.00%	0.00%	0.07%	0.08%
Current - 90 Days								100.00%	100.00%	99.82%	99.50%
91-180 Days								0.00%	0.00%	0.11%	0.42%



Mortgages - La Hipotecaria El Salvador Migration Analysis (2020 Vintage)

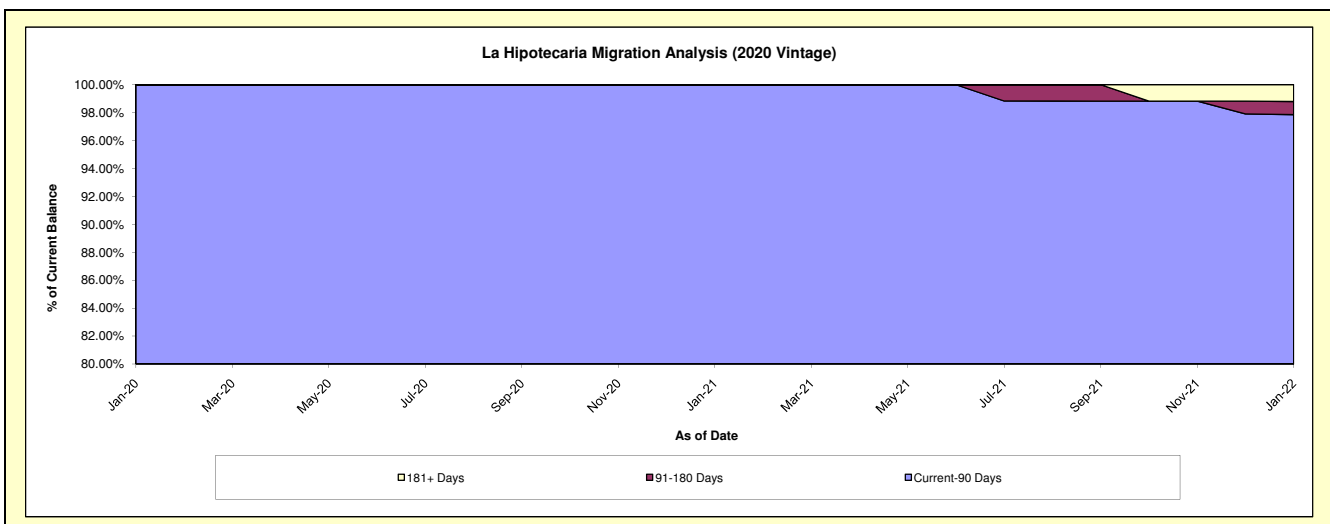
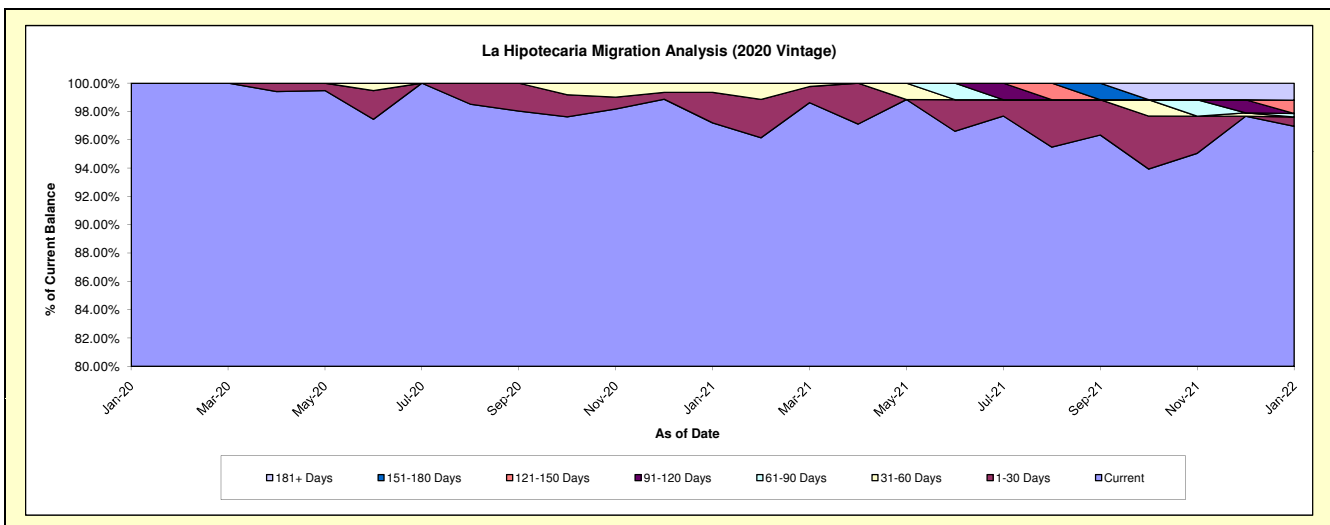
Delinquency Status (\$ of Current Balance)

Data Cutoff: 1/31/2022

Current Portfolio Balance	-	-	-	-	-	-	-	-	-	2,004,986.27	10,741,784.80	10,250,756.21
										Jan-20	Jan-21	Jan-22
Current										2,004,986.27	10,440,122.52	9,938,568.43
1-30 Days										-	231,436.28	67,409.06
31-60 Days										-	70,226.00	-
61-90 Days										-	-	25,263.03
91-120 Days										-	-	-
121-150 Days										-	-	96,219.59
151-180 Days										-	-	-
181+ Days										-	-	123,296.10

Delinquency Status (% of Current Balance)

Current Portfolio Balance	-	-	-	-	-	-	-	-	-	2,004,986.27	10,741,784.80	10,250,756.21
										Jan-20	Jan-21	Jan-22
Current										100.00%	97.19%	96.95%
1-30 Days										0.00%	2.15%	0.66%
31-60 Days										0.00%	0.65%	0.00%
61-90 Days										0.00%	0.00%	0.25%
91-120 Days										0.00%	0.00%	0.00%
121-150 Days										0.00%	0.00%	0.94%
151-180 Days										0.00%	0.00%	0.00%
181+ Days										0.00%	0.00%	1.20%
Current - 90 Days										100.00%	100.00%	97.86%
91-180 Days										0.00%	0.00%	0.94%



Mortgages - La Hipotecaria El Salvador Migration Analysis (2021 Vintage)

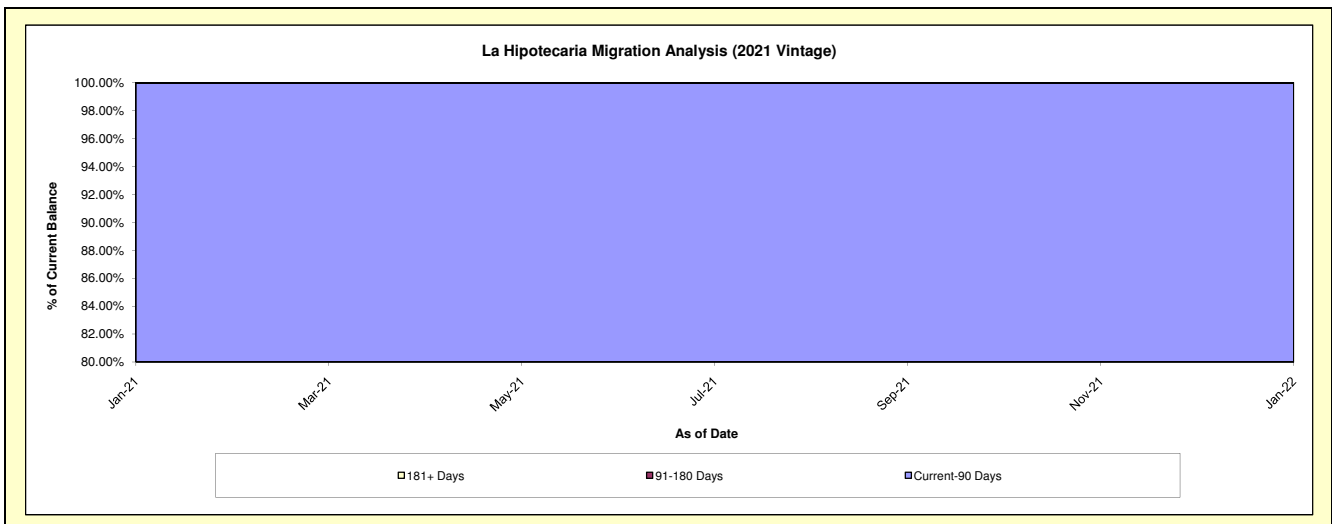
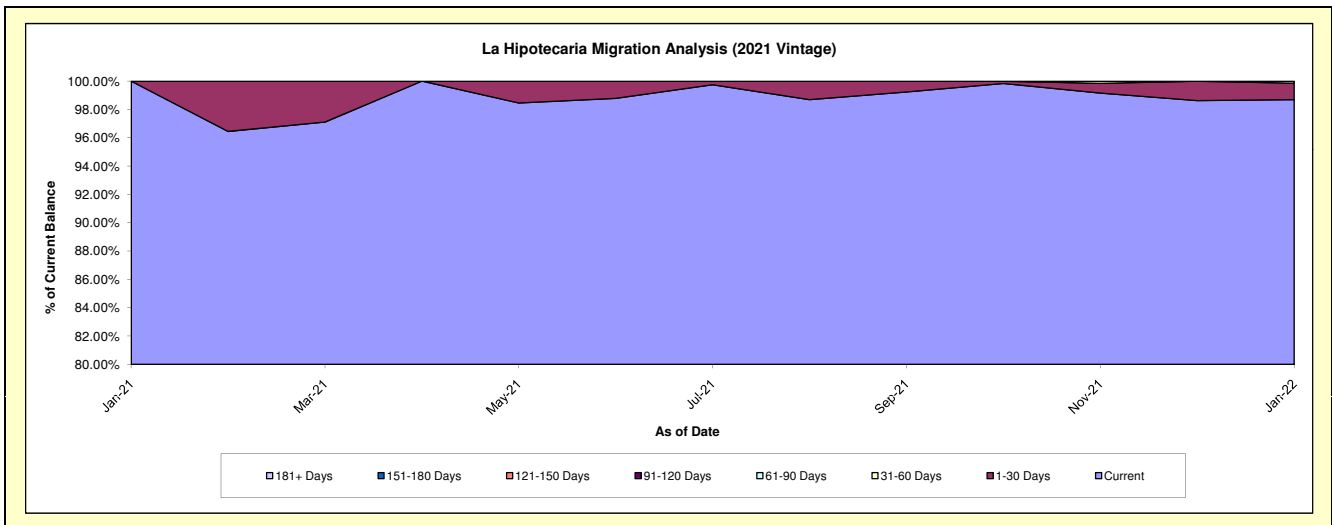
Delinquency Status (\$ of Current Balance)

Data Cutoff: 1/31/2022

Current Portfolio Balance										1,066,611.10	9,998,408.88
										Jan-21	Jan-22
Current										1,066,611.10	9,868,299.00
1-30 Days										-	115,570.14
31-60 Days										-	14,539.74
61-90 Days										-	-
91-120 Days										-	-
121-150 Days										-	-
151-180 Days										-	-
181+ Days										-	-

Delinquency Status (% of Current Balance)

Current Portfolio Balance										1,066,611.10	9,998,408.88
										Jan-21	Jan-22
Current										100.00%	98.70%
1-30 Days										0.00%	1.16%
31-60 Days										0.00%	0.15%
61-90 Days										0.00%	0.00%
91-120 Days										0.00%	0.00%
121-150 Days										0.00%	0.00%
151-180 Days										0.00%	0.00%
181+ Days										0.00%	0.00%
Current - 90 Days										100.00%	100.00%
91-180 Days										0.00%	0.00%



Mortgages - La Hipotecaria El Salvador Migration Analysis (2022 Vintage)

Delinquency Status (\$ of Current Balance)

Data Cutoff: 1/31/2022

Current Portfolio Balance	-	-	-	-	-	-	-	-	-	-	-	630,263.85
												Jan-22
Current												630,263.85
1-30 Days												-
31-60 Days												-
61-90 Days												-
91-120 Days												-
121-150 Days												-
151-180 Days												-
181+ Days												-

Delinquency Status (% of Current Balance)

Current Portfolio Balance	-	-	-	-	-	-	-	-	-	-	-	630,263.85
												Jan-22
Current												100.00%
1-30 Days												0.00%
31-60 Days												0.00%
61-90 Days												0.00%
91-120 Days												0.00%
121-150 Days												0.00%
151-180 Days												0.00%
181+ Days												0.00%
Current - 90 Days												100.00%
91-180 Days												0.00%

