



Migration Analysis for La Hipotecaria S.A. de C.V El Salvador

Personal Loans February 2022

An analysis of historical loan payment data was used to compile a migration analysis of delinquency by annual vintage. Delinquencies for each vintage were grouped into the following buckets; Current, 1-30, 31-60, 61-90, 91-120, 121-150, 151-180, and 180+. Results are provided in graphical and tabular form. The cutoff date is 2/28/2022.

Personal Loans - La Hipotecaria El Salvador Migration Analysis (All Vintages)

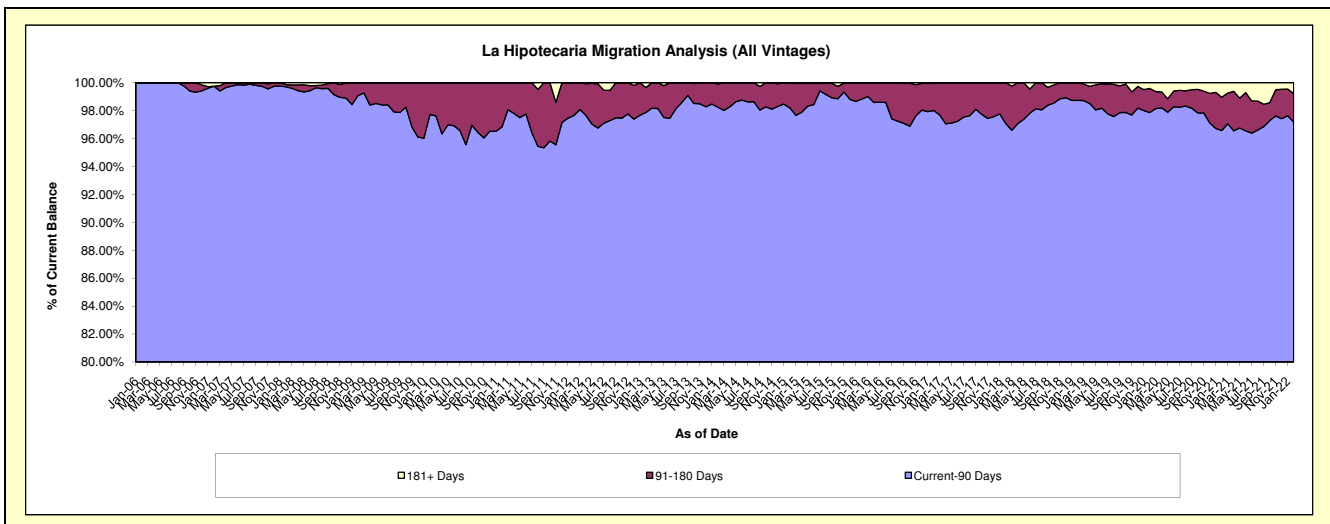
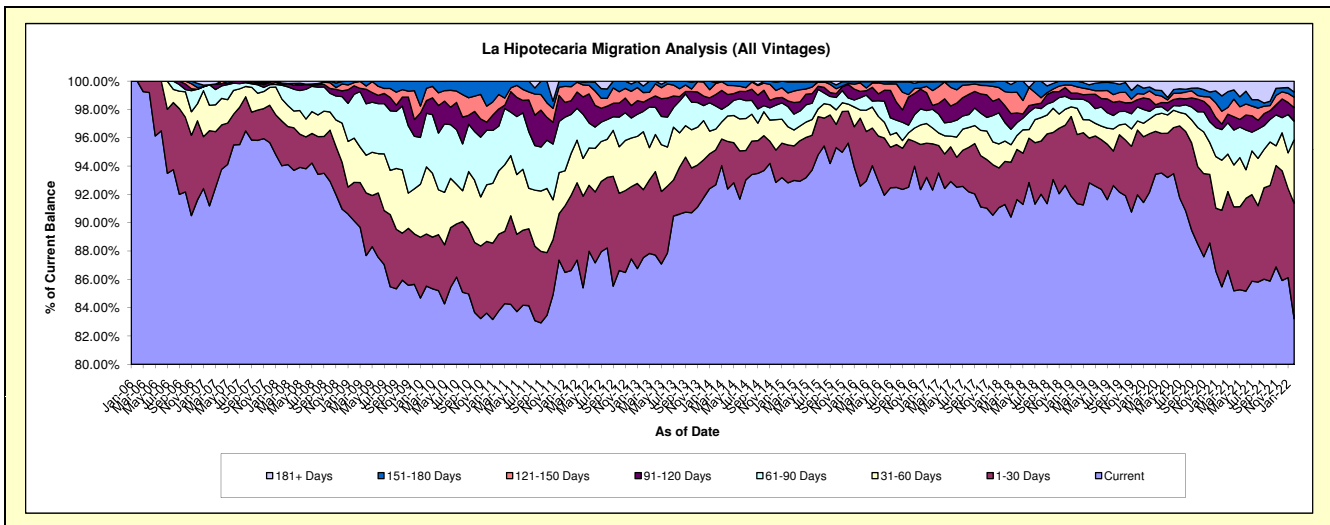
Delinquency Status (\$ of Current Balance)

Data Cutoff: 2/28/2022

Current Portfolio Balance	4,982,359.03	5,303,176.07	5,543,371.23	5,163,150.60	4,456,493.26	5,195,144.36	8,365,560.48	11,178,513.14	9,800,211.69	7,537,000.22
	Feb-13	Feb-14	Feb-15	Feb-16	Feb-17	Feb-18	Feb-19	Feb-20	Feb-21	Feb-22
Current	4,361,283.11	4,914,655.34	5,145,388.87	4,780,285.13	4,113,943.29	4,742,781.65	7,642,101.23	10,303,050.25	8,377,103.84	6,271,572.29
1-30 Days	238,946.98	130,991.89	148,572.96	247,948.76	145,350.77	157,802.39	408,340.78	461,111.97	529,187.91	615,679.07
31-60 Days	204,214.29	77,970.61	71,039.41	29,820.42	49,820.79	74,793.82	154,863.91	115,706.27	346,782.25	338,035.88
61-90 Days	71,831.53	86,435.15	78,942.92	44,642.49	58,804.48	68,038.28	54,614.97	60,207.54	212,254.93	98,319.29
91-120 Days	32,444.61	42,825.76	22,124.43	23,173.74	12,167.85	61,720.34	35,330.29	97,065.26	38,089.85	72,000.19
121-150 Days	33,681.93	41,394.68	31,289.88	30,740.54	46,890.66	51,506.91	36,815.08	64,287.16	88,452.18	56,243.12
151-180 Days	22,912.87	3,450.21	43,430.22	4,396.04	27,444.29	38,500.97	33,494.22	30,942.88	106,289.73	26,326.92
181+ Days	17,043.71	5,452.43	2,582.54	2,143.48	2,071.13	-	-	46,141.81	102,051.00	58,823.46

Delinquency Status (% of Current Balance)

Current Portfolio Balance	4,982,359.03	5,303,176.07	5,543,371.23	5,163,150.60	4,456,493.26	5,195,144.36	8,365,560.48	11,178,513.14	9,800,211.69	7,537,000.22
	Feb-13	Feb-14	Feb-15	Feb-16	Feb-17	Feb-18	Feb-19	Feb-20	Feb-21	Feb-22
Current	87.53%	92.67%	92.82%	92.58%	92.31%	91.29%	91.35%	92.17%	85.48%	83.21%
1-30 Days	4.80%	2.47%	2.68%	4.80%	3.26%	3.04%	4.88%	4.12%	5.40%	8.17%
31-60 Days	4.10%	1.47%	1.28%	0.58%	1.12%	1.44%	1.85%	1.04%	3.54%	4.49%
61-90 Days	1.44%	1.63%	1.42%	0.86%	1.32%	1.31%	0.65%	0.54%	2.17%	1.30%
91-120 Days	0.65%	0.81%	0.40%	0.45%	0.27%	1.19%	0.42%	0.87%	0.39%	0.96%
121-150 Days	0.68%	0.78%	0.56%	0.60%	1.05%	0.99%	0.44%	0.58%	0.90%	0.75%
151-180 Days	0.46%	0.07%	0.78%	0.09%	0.62%	0.74%	0.40%	0.28%	1.08%	0.35%
181+ Days	0.34%	0.10%	0.05%	0.04%	0.05%	0.00%	0.00%	0.41%	1.04%	0.78%
Current - 90 Days	97.87%	98.24%	98.21%	98.83%	98.01%	97.08%	98.74%	97.87%	96.58%	97.17%
91-180 Days	1.79%	1.65%	1.75%	1.13%	1.94%	2.92%	1.26%	1.72%	2.38%	2.05%



Personal Loans - La Hipotecaria El Salvador Migration Analysis (2006 Vintage)

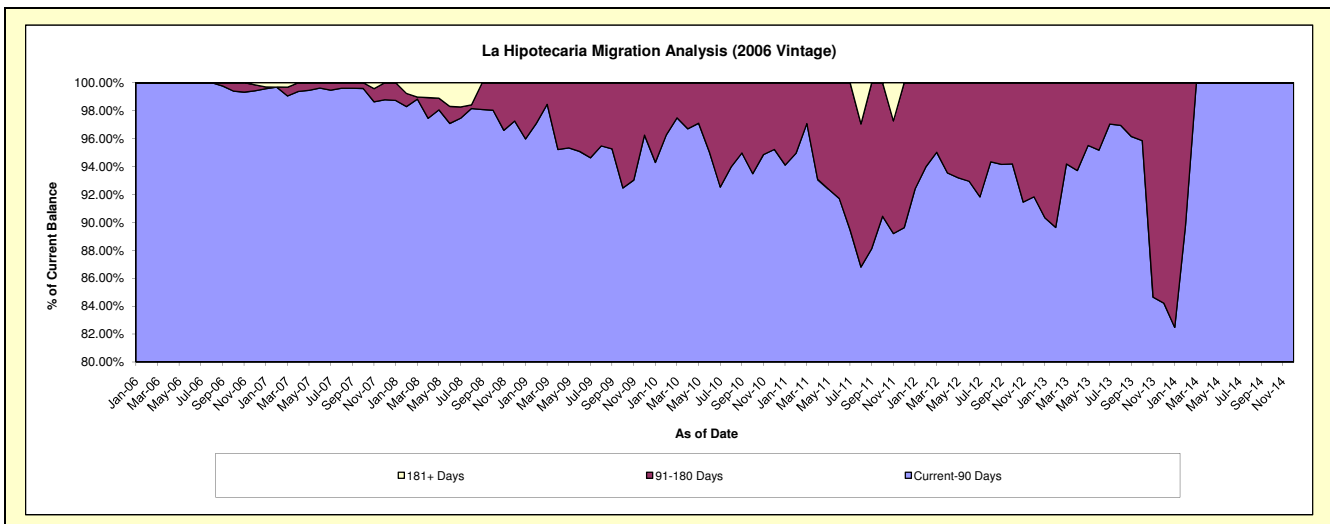
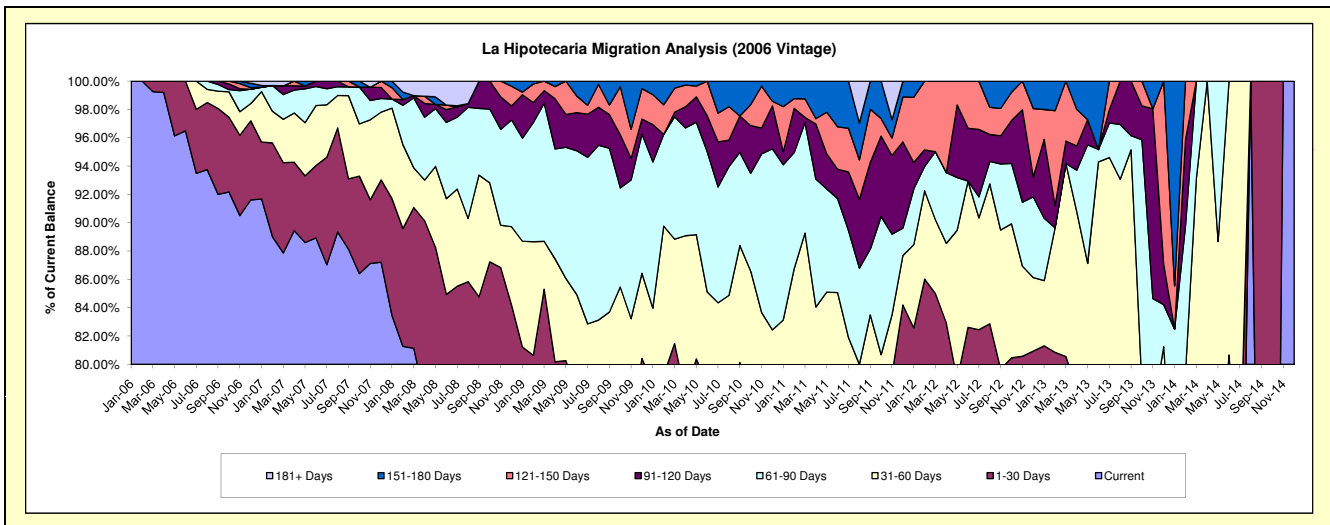
Delinquency Status (\$ of Current Balance)

Data Cutoff: 2/28/2022

Current Portfolio Balance	85,314.45	17,963.58	#N/A	#N/A	#N/A	#N/A	#N/A	#N/A	#N/A	#N/A
	Feb-13	Feb-14	Feb-15	Feb-16	Feb-17	Feb-18	Feb-19	Feb-20	Feb-21	Feb-22
Current	57,805.98	9,129.24	#N/A	#N/A	#N/A	#N/A	#N/A	#N/A	#N/A	#N/A
1-30 Days	11,172.28	2,397.15	#N/A	#N/A	#N/A	#N/A	#N/A	#N/A	#N/A	#N/A
31-60 Days	7,499.01	2,734.15	#N/A	#N/A	#N/A	#N/A	#N/A	#N/A	#N/A	#N/A
61-90 Days	-	1,864.29	#N/A	#N/A	#N/A	#N/A	#N/A	#N/A	#N/A	#N/A
91-120 Days	1,344.02	1,092.48	#N/A	#N/A	#N/A	#N/A	#N/A	#N/A	#N/A	#N/A
121-150 Days	5,717.28	746.27	#N/A	#N/A	#N/A	#N/A	#N/A	#N/A	#N/A	#N/A
151-180 Days	1,775.88	-	#N/A	#N/A	#N/A	#N/A	#N/A	#N/A	#N/A	#N/A
181+ Days	-	-	#N/A	#N/A	#N/A	#N/A	#N/A	#N/A	#N/A	#N/A

Delinquency Status (% of Current Balance)

Current Portfolio Balance	85,314.45	17,963.58	#N/A	#N/A	#N/A	#N/A	#N/A	#N/A	#N/A	#N/A
	Feb-13	Feb-14	Feb-15	Feb-16	Feb-17	Feb-18	Feb-19	Feb-20	Feb-21	Feb-22
Current	67.76%	50.82%	#N/A	#N/A	#N/A	#N/A	#N/A	#N/A	#N/A	#N/A
1-30 Days	13.10%	13.34%	#N/A	#N/A	#N/A	#N/A	#N/A	#N/A	#N/A	#N/A
31-60 Days	8.79%	15.22%	#N/A	#N/A	#N/A	#N/A	#N/A	#N/A	#N/A	#N/A
61-90 Days	0.00%	10.38%	#N/A	#N/A	#N/A	#N/A	#N/A	#N/A	#N/A	#N/A
91-120 Days	1.58%	6.08%	#N/A	#N/A	#N/A	#N/A	#N/A	#N/A	#N/A	#N/A
121-150 Days	6.70%	4.15%	#N/A	#N/A	#N/A	#N/A	#N/A	#N/A	#N/A	#N/A
151-180 Days	2.08%	0.00%	#N/A	#N/A	#N/A	#N/A	#N/A	#N/A	#N/A	#N/A
181+ Days	0.00%	0.00%	#N/A	#N/A	#N/A	#N/A	#N/A	#N/A	#N/A	#N/A
Current - 90 Days	89.64%	89.76%	#N/A	#N/A	#N/A	#N/A	#N/A	#N/A	#N/A	#N/A
91-180 Days	10.36%	10.24%	#N/A	#N/A	#N/A	#N/A	#N/A	#N/A	#N/A	#N/A



Personal Loans - La Hipotecaria El Salvador Migration Analysis (2007 Vintage)

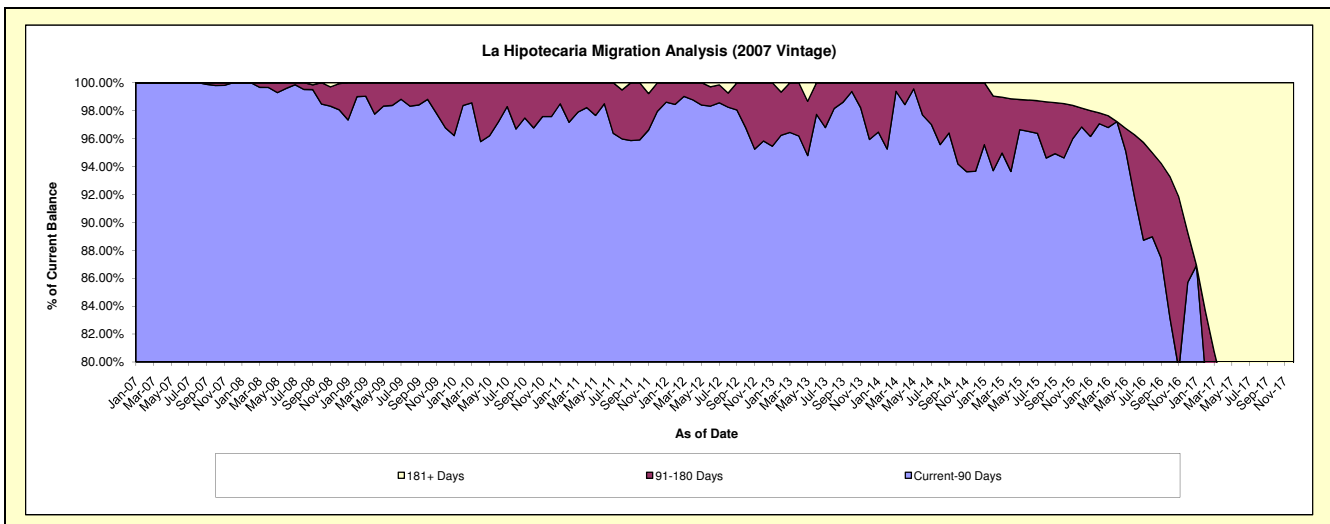
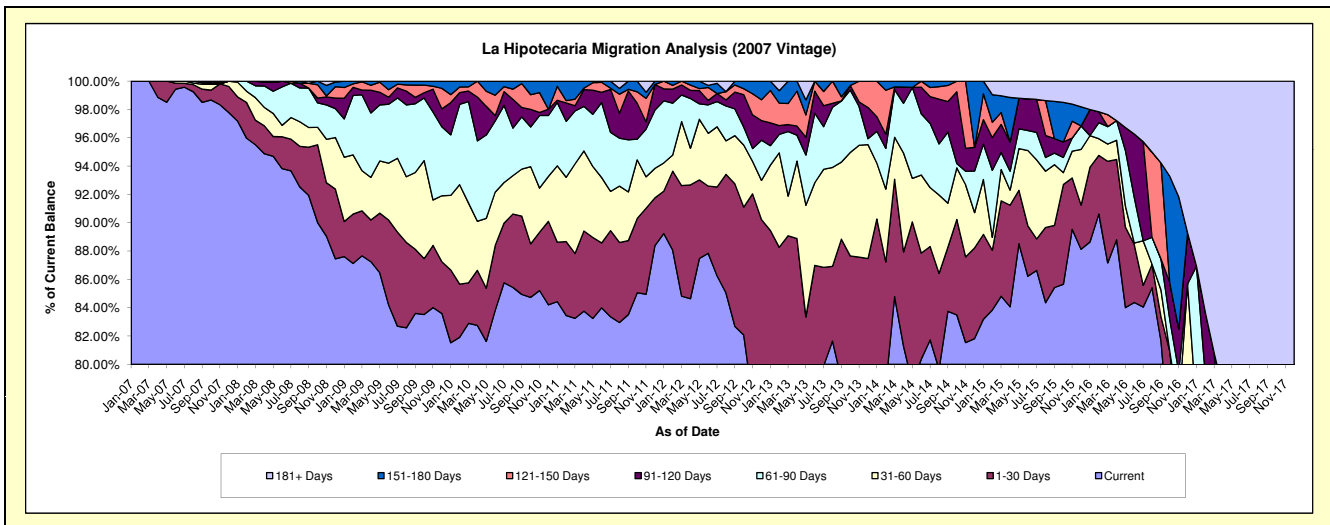
Delinquency Status (\$ of Current Balance)

Data Cutoff: 2/28/2022

Current Portfolio Balance	916,501.00	535,872.05	271,238.56	99,262.12	12,694.90	#N/A	#N/A	#N/A	#N/A	#N/A
	Feb-13	Feb-14	Feb-15	Feb-16	Feb-17	Feb-18	Feb-19	Feb-20	Feb-21	Feb-22
Current	711,103.78	420,591.44	227,398.04	89,952.47	7,266.43	#N/A	#N/A	#N/A	#N/A	#N/A
1-30 Days	97,889.89	46,858.20	11,464.69	4,107.37	1,005.53	#N/A	#N/A	#N/A	#N/A	#N/A
31-60 Days	61,125.33	27,575.03	2,463.79	1,166.44	-	#N/A	#N/A	#N/A	#N/A	#N/A
61-90 Days	11,934.08	15,412.47	12,832.56	1,123.73	1,788.85	#N/A	#N/A	#N/A	#N/A	#N/A
91-120 Days	5,731.87	5,320.70	6,292.53	768.63	562.96	#N/A	#N/A	#N/A	#N/A	#N/A
121-150 Days	14,499.53	16,664.00	2,920.70	-	-	#N/A	#N/A	#N/A	#N/A	#N/A
151-180 Days	8,076.25	3,450.21	5,283.71	-	-	#N/A	#N/A	#N/A	#N/A	#N/A
181+ Days	6,140.27	-	2,582.54	2,143.48	2,071.13	#N/A	#N/A	#N/A	#N/A	#N/A

Delinquency Status (% of Current Balance)

Current Portfolio Balance	916,501.00	535,872.05	271,238.56	99,262.12	12,694.90	#N/A	#N/A	#N/A	#N/A	#N/A
	Feb-13	Feb-14	Feb-15	Feb-16	Feb-17	Feb-18	Feb-19	Feb-20	Feb-21	Feb-22
Current	77.59%	78.49%	83.84%	90.62%	57.24%	#N/A	#N/A	#N/A	#N/A	#N/A
1-30 Days	10.68%	8.74%	4.23%	4.14%	7.92%	#N/A	#N/A	#N/A	#N/A	#N/A
31-60 Days	6.67%	5.15%	0.91%	1.18%	0.00%	#N/A	#N/A	#N/A	#N/A	#N/A
61-90 Days	1.30%	2.88%	4.73%	1.13%	14.09%	#N/A	#N/A	#N/A	#N/A	#N/A
91-120 Days	0.63%	0.99%	2.32%	0.77%	4.43%	#N/A	#N/A	#N/A	#N/A	#N/A
121-150 Days	1.58%	3.11%	1.08%	0.00%	0.00%	#N/A	#N/A	#N/A	#N/A	#N/A
151-180 Days	0.88%	0.64%	1.95%	0.00%	0.00%	#N/A	#N/A	#N/A	#N/A	#N/A
181+ Days	0.67%	0.00%	0.95%	2.16%	16.31%	#N/A	#N/A	#N/A	#N/A	#N/A
Current - 90 Days	96.24%	95.25%	93.70%	97.07%	79.25%	#N/A	#N/A	#N/A	#N/A	#N/A
91-180 Days	3.09%	4.75%	5.34%	0.77%	4.43%	#N/A	#N/A	#N/A	#N/A	#N/A



Personal Loans - La Hipotecaria El Salvador Migration Analysis (2008 Vintage)

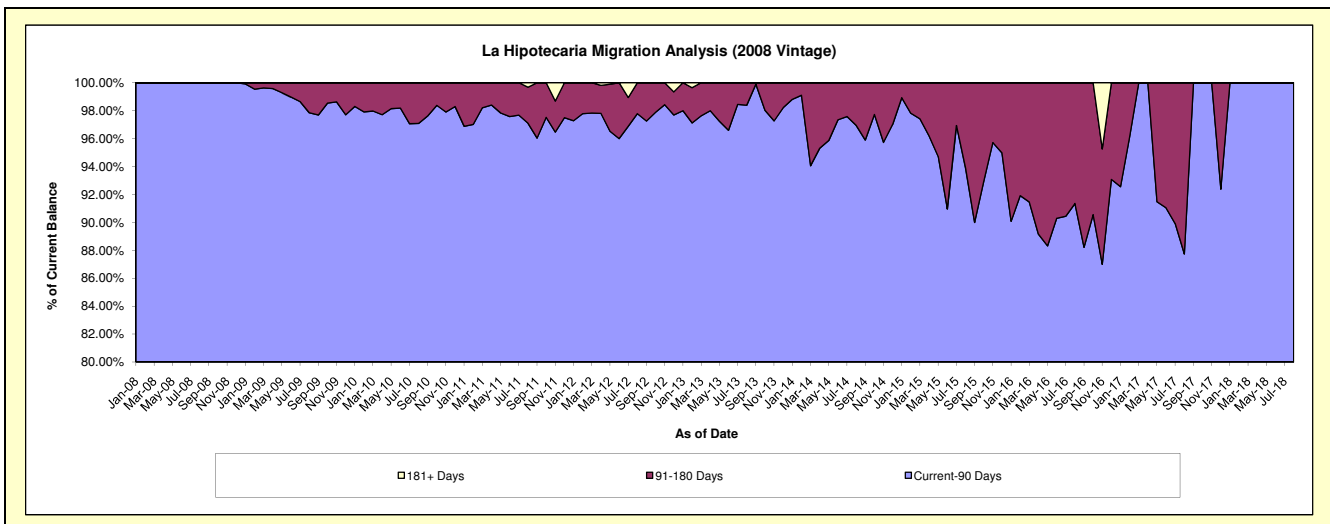
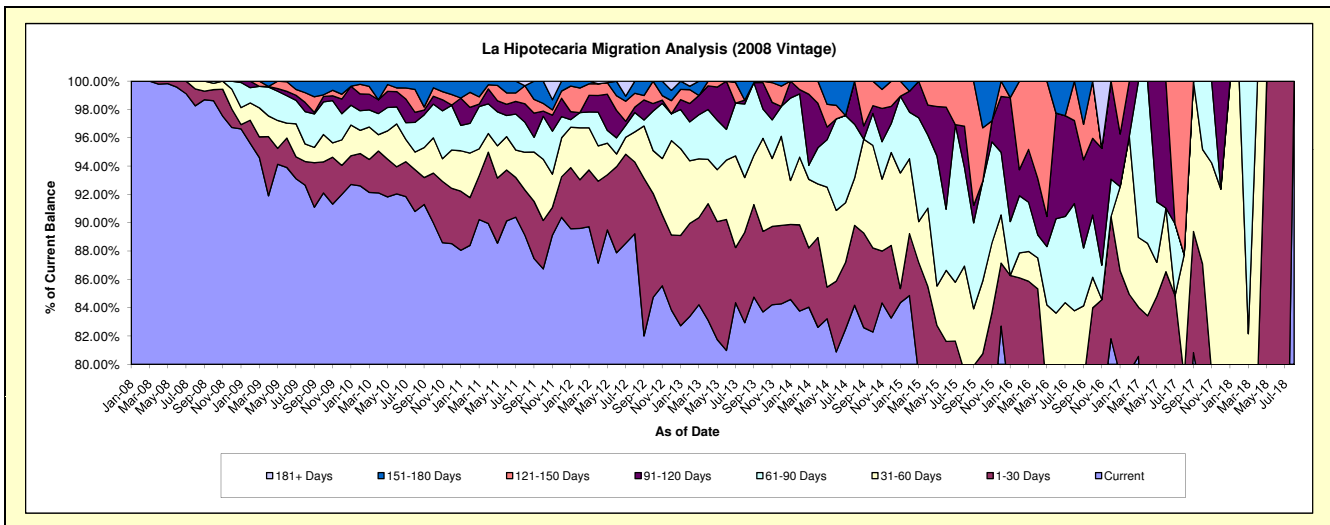
Delinquency Status (\$ of Current Balance)

Data Cutoff: 2/28/2022

Current Portfolio Balance	1,376,057.18	894,124.30	478,696.89	204,469.39	64,459.50	6,306.74	#N/A	#N/A	#N/A	#N/A
	Feb-13	Feb-14	Feb-15	Feb-16	Feb-17	Feb-18	Feb-19	Feb-20	Feb-21	Feb-22
Current	1,147,438.44	748,949.11	406,220.76	159,982.43	51,230.16	4,475.86	#N/A	#N/A	#N/A	#N/A
1-30 Days	90,337.53	54,456.68	20,910.73	16,090.65	3,523.52	466.35	#N/A	#N/A	#N/A	#N/A
31-60 Days	60,863.88	42,726.69	25,350.73	3,592.50	7,210.24	1,364.53	#N/A	#N/A	#N/A	#N/A
61-90 Days	37,807.89	39,957.85	15,725.99	8,264.79	-	-	#N/A	#N/A	#N/A	#N/A
91-120 Days	17,899.20	2,722.20	7,087.53	3,750.93	2,495.58	-	#N/A	#N/A	#N/A	#N/A
121-150 Days	13,465.12	5,311.77	-	12,788.09	-	-	#N/A	#N/A	#N/A	#N/A
151-180 Days	3,341.68	-	3,401.15	-	-	-	#N/A	#N/A	#N/A	#N/A
181+ Days	4,903.44	-	-	-	-	-	#N/A	#N/A	#N/A	#N/A

Delinquency Status (% of Current Balance)

Current Portfolio Balance	1,376,057.18	894,124.30	478,696.89	204,469.39	64,459.50	6,306.74	#N/A	#N/A	#N/A	#N/A
	Feb-13	Feb-14	Feb-15	Feb-16	Feb-17	Feb-18	Feb-19	Feb-20	Feb-21	Feb-22
Current	83.39%	83.76%	84.86%	78.24%	79.48%	70.97%	#N/A	#N/A	#N/A	#N/A
1-30 Days	6.56%	6.09%	4.37%	7.87%	5.47%	7.39%	#N/A	#N/A	#N/A	#N/A
31-60 Days	4.42%	4.78%	5.30%	1.76%	11.19%	21.64%	#N/A	#N/A	#N/A	#N/A
61-90 Days	2.75%	4.47%	3.29%	4.04%	0.00%	0.00%	#N/A	#N/A	#N/A	#N/A
91-120 Days	1.30%	0.30%	1.48%	1.83%	3.87%	0.00%	#N/A	#N/A	#N/A	#N/A
121-150 Days	0.98%	0.59%	0.00%	6.25%	0.00%	0.00%	#N/A	#N/A	#N/A	#N/A
151-180 Days	0.24%	0.00%	0.71%	0.00%	0.00%	0.00%	#N/A	#N/A	#N/A	#N/A
181+ Days	0.36%	0.00%	0.00%	0.00%	0.00%	0.00%	#N/A	#N/A	#N/A	#N/A
Current - 90 Days	97.12%	99.10%	97.81%	91.91%	96.13%	100.00%	#N/A	#N/A	#N/A	#N/A
91-180 Days	2.52%	0.90%	2.19%	8.09%	3.87%	0.00%	#N/A	#N/A	#N/A	#N/A



Personal Loans - La Hipotecaria El Salvador Migration Analysis (2009 Vintage)

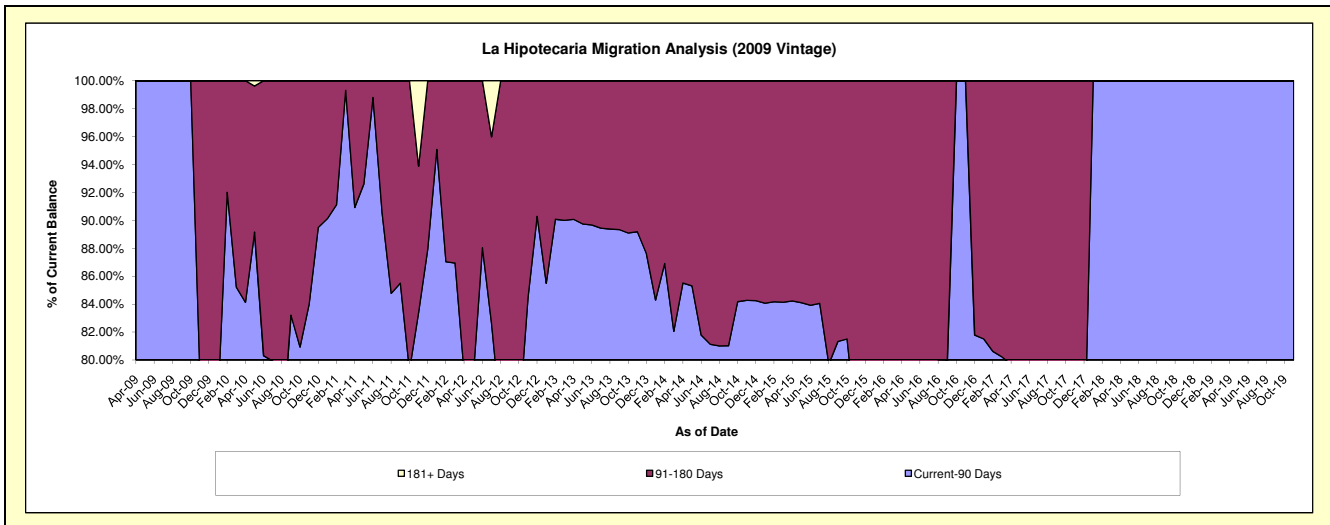
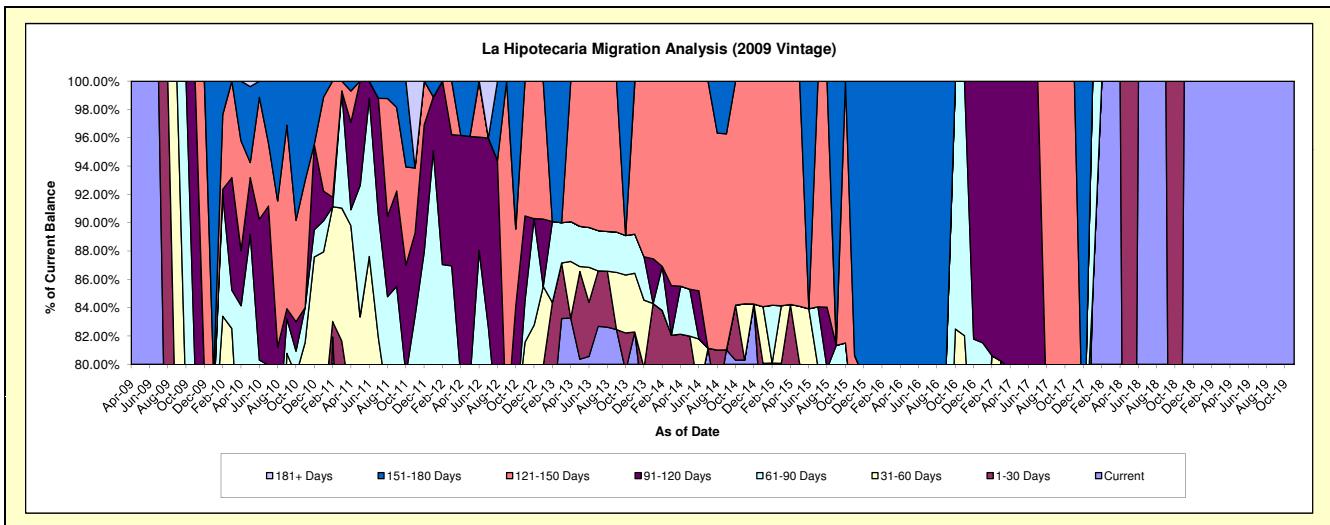
Delinquency Status (\$ of Current Balance)

Data Cutoff: 2/28/2022

Current Portfolio Balance	97,979.02	61,042.96	39,079.31	19,758.99	11,695.98	5,312.20	296.96	#N/A	#N/A	#N/A
	Feb-13	Feb-14	Feb-15	Feb-16	Feb-17	Feb-18	Feb-19	Feb-20	Feb-21	Feb-22
Current	74,780.66	48,078.75	29,032.87	13,095.79	8,264.31	5,312.20	296.96	#N/A	#N/A	#N/A
1-30 Days	7,877.14	3,071.88	2,267.16	-	-	-	-	#N/A	#N/A	#N/A
31-60 Days	-	-	-	2,267.16	1,164.51	-	-	#N/A	#N/A	#N/A
61-90 Days	5,602.16	1,901.38	1,593.77	-	-	-	-	#N/A	#N/A	#N/A
91-120 Days	-	-	-	-	2,267.16	-	-	#N/A	#N/A	#N/A
121-150 Days	-	7,990.95	6,185.51	-	-	-	-	#N/A	#N/A	#N/A
151-180 Days	9,719.06	-	-	4,396.04	-	-	-	#N/A	#N/A	#N/A
181+ Days	-	-	-	-	-	-	-	#N/A	#N/A	#N/A

Delinquency Status (% of Current Balance)

Current Portfolio Balance	97,979.02	61,042.96	39,079.31	19,758.99	11,695.98	5,312.20	296.96	#N/A	#N/A	#N/A
	Feb-13	Feb-14	Feb-15	Feb-16	Feb-17	Feb-18	Feb-19	Feb-20	Feb-21	Feb-22
Current	76.32%	78.76%	74.29%	66.28%	70.66%	100.00%	100.00%	#N/A	#N/A	#N/A
1-30 Days	8.04%	5.03%	5.80%	0.00%	0.00%	0.00%	0.00%	#N/A	#N/A	#N/A
31-60 Days	0.00%	0.00%	0.00%	11.47%	9.96%	0.00%	0.00%	#N/A	#N/A	#N/A
61-90 Days	5.72%	3.11%	4.08%	0.00%	0.00%	0.00%	0.00%	#N/A	#N/A	#N/A
91-120 Days	0.00%	0.00%	0.00%	0.00%	19.38%	0.00%	0.00%	#N/A	#N/A	#N/A
121-150 Days	0.00%	13.09%	15.83%	0.00%	0.00%	0.00%	0.00%	#N/A	#N/A	#N/A
151-180 Days	9.92%	0.00%	0.00%	22.25%	0.00%	0.00%	0.00%	#N/A	#N/A	#N/A
181+ Days	0.00%	0.00%	0.00%	0.00%	0.00%	0.00%	0.00%	#N/A	#N/A	#N/A
Current - 90 Days	90.08%	86.91%	84.17%	77.75%	80.62%	100.00%	100.00%	#N/A	#N/A	#N/A
91-180 Days	9.92%	13.09%	15.83%	22.25%	19.38%	0.00%	0.00%	#N/A	#N/A	#N/A



Personal Loans - La Hipotecaria El Salvador Migration Analysis (2010 Vintage)

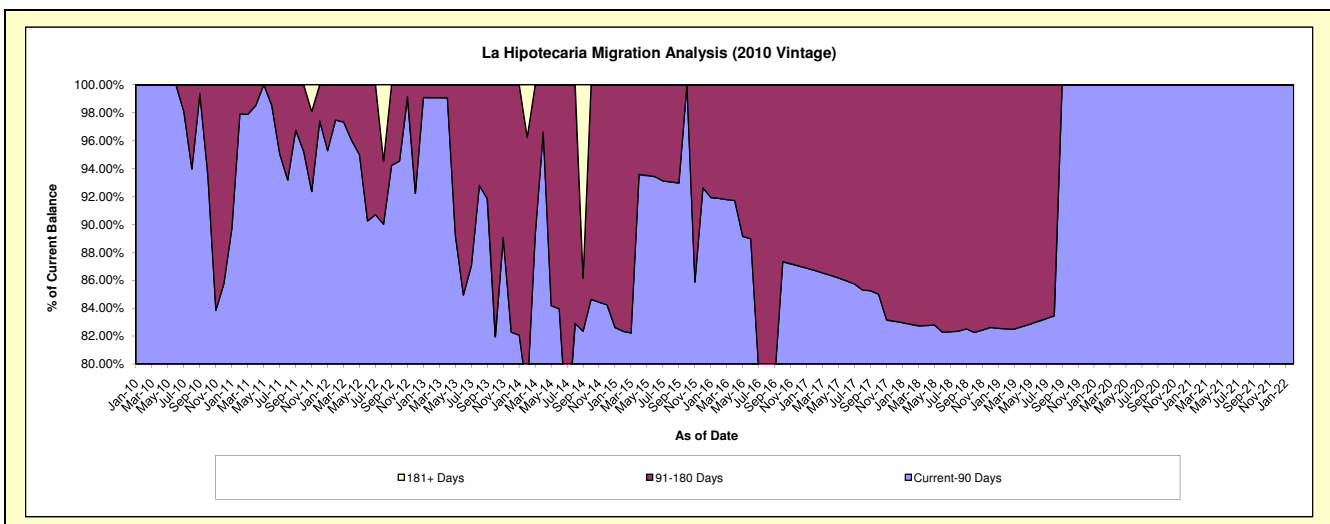
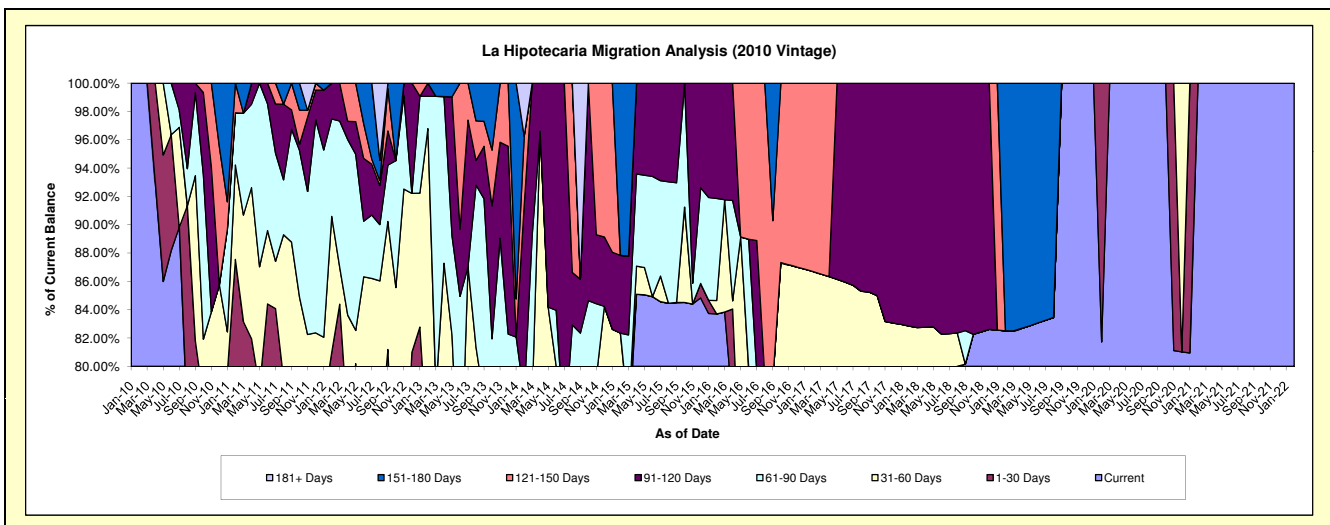
Delinquency Status (\$ of Current Balance)

Data Cutoff: 2/28/2022

Current Portfolio Balance	253,245.72	145,299.57	72,317.95	44,212.44	24,454.26	16,419.49	13,877.56	10,863.89	10,259.28	8,141.41
	Feb-13	Feb-14	Feb-15	Feb-16	Feb-17	Feb-18	Feb-19	Feb-20	Feb-21	Feb-22
Current	157,435.41	85,719.20	54,172.23	37,006.99	19,093.62	12,656.87	11,450.43	8,878.80	10,259.28	8,141.41
1-30 Days	29,885.18	12,566.11	1,267.58	-	-	-	-	1,985.09	-	-
31-60 Days	57,785.73	4,934.74	4,112.47	420.09	2,108.33	946.13	-	-	-	-
61-90 Days	5,787.79	9,889.34	-	3,185.53	-	-	-	-	-	-
91-120 Days	2,351.61	19,651.79	3,972.48	3,599.83	-	2,816.49	-	-	-	-
121-150 Days	-	7,085.96	-	-	3,252.31	-	-	-	-	-
151-180 Days	-	-	8,793.19	-	-	-	2,427.13	-	-	-
181+ Days	-	5,452.43	-	-	-	-	-	-	-	-

Delinquency Status (% of Current Balance)

Current Portfolio Balance	253,245.72	145,299.57	72,317.95	44,212.44	24,454.26	16,419.49	13,877.56	10,863.89	10,259.28	8,141.41
	Feb-13	Feb-14	Feb-15	Feb-16	Feb-17	Feb-18	Feb-19	Feb-20	Feb-21	Feb-22
Current	62.17%	58.99%	74.91%	83.70%	78.08%	77.08%	82.51%	81.73%	100.00%	100.00%
1-30 Days	11.80%	8.65%	1.75%	0.00%	0.00%	0.00%	0.00%	18.27%	0.00%	0.00%
31-60 Days	22.82%	3.40%	5.69%	0.95%	8.62%	5.76%	0.00%	0.00%	0.00%	0.00%
61-90 Days	2.29%	6.81%	0.00%	7.21%	0.00%	0.00%	0.00%	0.00%	0.00%	0.00%
91-120 Days	0.93%	13.53%	5.49%	8.14%	0.00%	17.15%	0.00%	0.00%	0.00%	0.00%
121-150 Days	0.00%	4.88%	0.00%	0.00%	13.30%	0.00%	0.00%	0.00%	0.00%	0.00%
151-180 Days	0.00%	0.00%	12.16%	0.00%	0.00%	0.00%	17.49%	0.00%	0.00%	0.00%
181+ Days	0.00%	3.75%	0.00%	0.00%	0.00%	0.00%	0.00%	0.00%	0.00%	0.00%
Current - 90 Days	99.07%	77.85%	82.35%	91.86%	86.70%	82.85%	82.51%	100.00%	100.00%	100.00%
91-180 Days	0.93%	18.40%	17.65%	8.14%	13.30%	17.15%	17.49%	0.00%	0.00%	0.00%



Personal Loans - La Hipotecaria El Salvador Migration Analysis (2011 Vintage)

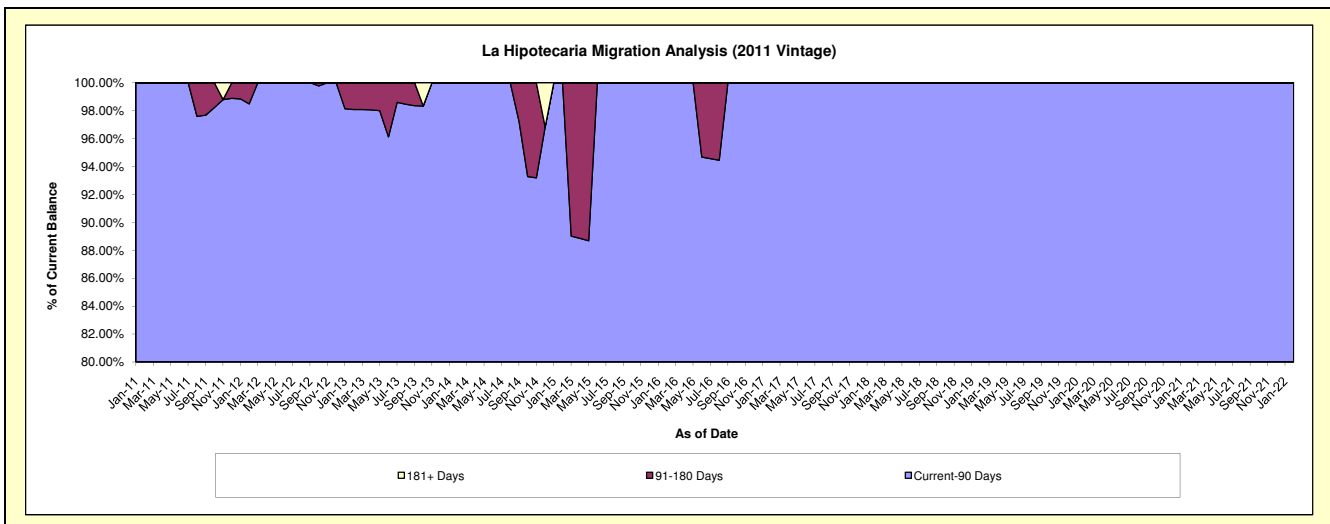
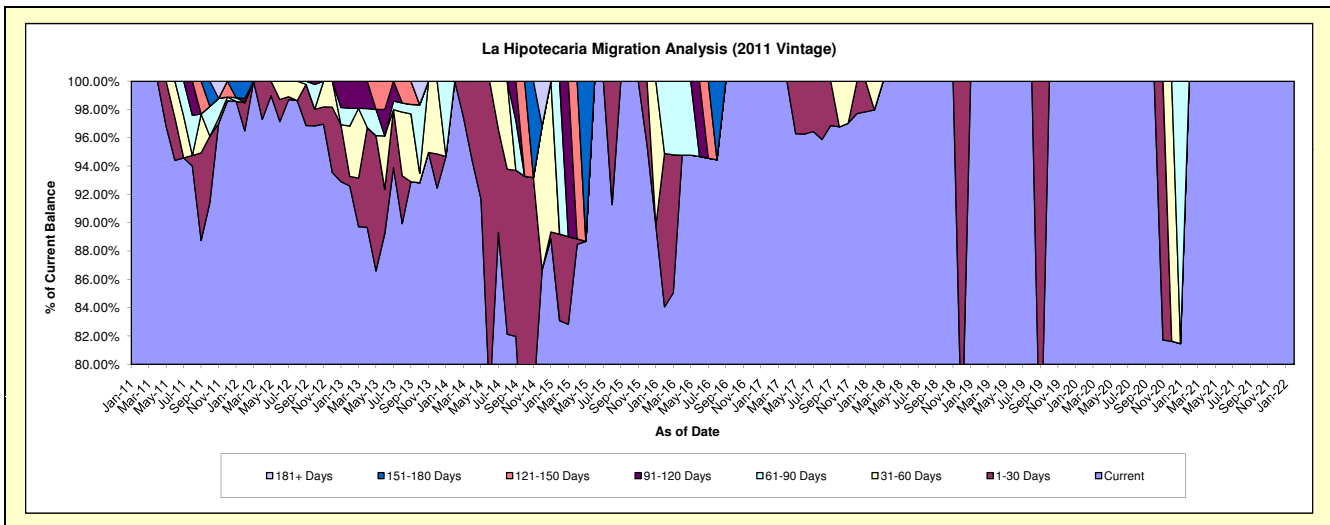
Delinquency Status (\$ of Current Balance)

Data Cutoff: 2/28/2022

Current Portfolio Balance	266,950.35	171,436.95	118,619.67	74,673.59	53,319.23	34,328.91	24,013.48	19,402.42	13,349.93	11,852.97
	Feb-13	Feb-14	Feb-15	Feb-16	Feb-17	Feb-18	Feb-19	Feb-20	Feb-21	Feb-22
Current	247,189.46	171,436.95	98,547.58	62,776.84	53,319.23	33,630.62	24,013.48	19,402.42	13,349.93	11,852.97
1-30 Days	1,784.96	-	7,250.27	8,088.87	-	-	-	-	-	-
31-60 Days	9,506.97	-	-	-	-	698.29	-	-	-	-
61-90 Days	3,351.05	-	12,821.82	3,807.88	-	-	-	-	-	-
91-120 Days	5,117.91	-	-	-	-	-	-	-	-	-
121-150 Days	-	-	-	-	-	-	-	-	-	-
151-180 Days	-	-	-	-	-	-	-	-	-	-
181+ Days	-	-	-	-	-	-	-	-	-	-

Delinquency Status (% of Current Balance)

Current Portfolio Balance	266,950.35	171,436.95	118,619.67	74,673.59	53,319.23	34,328.91	24,013.48	19,402.42	13,349.93	11,852.97
	Feb-13	Feb-14	Feb-15	Feb-16	Feb-17	Feb-18	Feb-19	Feb-20	Feb-21	Feb-22
Current	92.60%	100.00%	83.08%	84.07%	100.00%	97.97%	100.00%	100.00%	100.00%	100.00%
1-30 Days	0.67%	0.00%	6.11%	10.83%	0.00%	0.00%	0.00%	0.00%	0.00%	0.00%
31-60 Days	3.56%	0.00%	0.00%	0.00%	0.00%	2.03%	0.00%	0.00%	0.00%	0.00%
61-90 Days	1.26%	0.00%	10.81%	5.10%	0.00%	0.00%	0.00%	0.00%	0.00%	0.00%
91-120 Days	1.92%	0.00%	0.00%	0.00%	0.00%	0.00%	0.00%	0.00%	0.00%	0.00%
121-150 Days	0.00%	0.00%	0.00%	0.00%	0.00%	0.00%	0.00%	0.00%	0.00%	0.00%
151-180 Days	0.00%	0.00%	0.00%	0.00%	0.00%	0.00%	0.00%	0.00%	0.00%	0.00%
181+ Days	0.00%	0.00%	0.00%	0.00%	0.00%	0.00%	0.00%	0.00%	0.00%	0.00%
Current - 90 Days	98.08%	100.00%	100.00%	100.00%	100.00%	100.00%	100.00%	100.00%	100.00%	100.00%
91-180 Days	1.92%	0.00%	0.00%	0.00%	0.00%	0.00%	0.00%	0.00%	0.00%	0.00%



Personal Loans - La Hipotecaria El Salvador Migration Analysis (2012 Vintage)

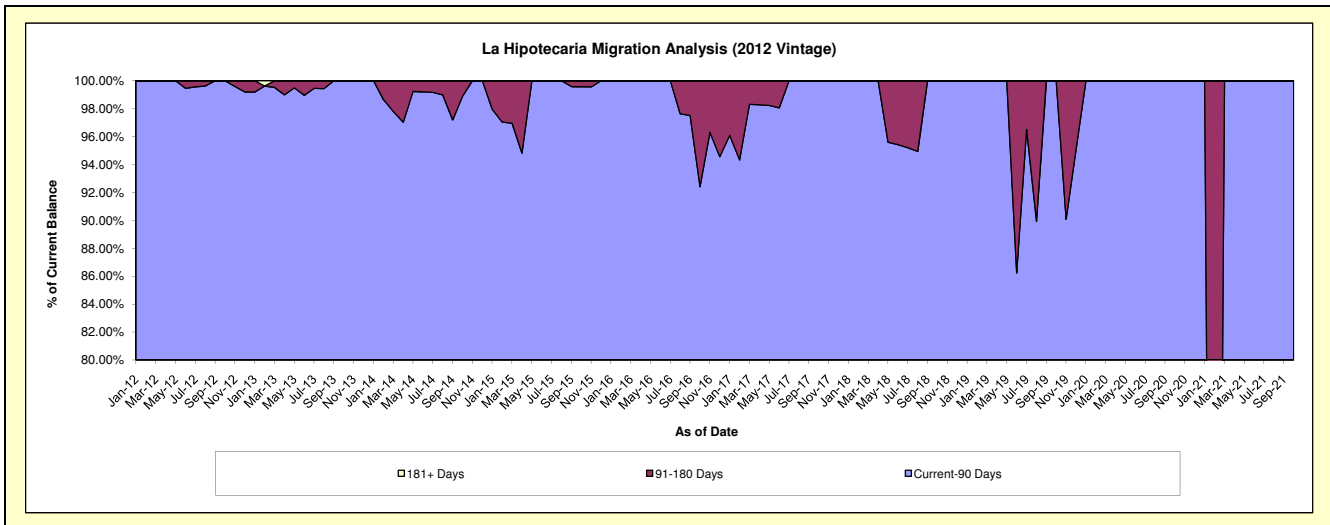
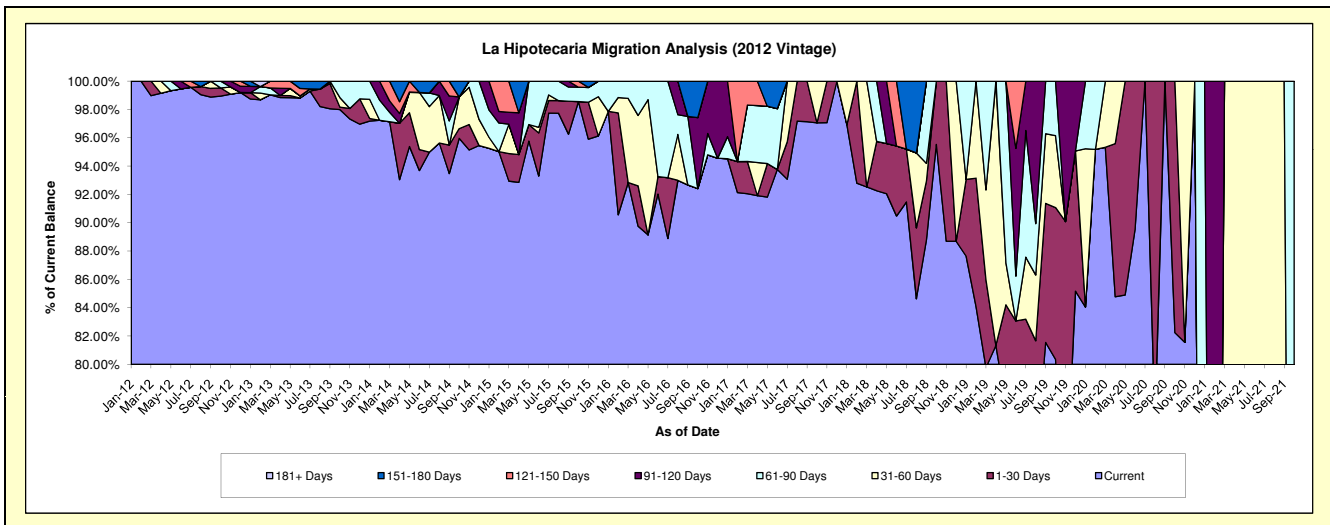
Delinquency Status (\$ of Current Balance)

Data Cutoff: 2/28/2022

Current Portfolio Balance	1,579,377.82	1,044,860.08	584,256.91	369,480.66	222,346.24	127,652.52	59,730.97	13,505.05	1,841.38	#N/A
	Feb-13	Feb-14	Feb-15	Feb-16	Feb-17	Feb-18	Feb-19	Feb-20	Feb-21	Feb-22
Current	1,558,595.89	1,016,042.16	555,167.62	334,621.82	204,840.05	118,460.87	50,223.14	12,853.96	-	#N/A
1-30 Days	-	-	-	26,553.71	4,886.86	9,191.65	5,417.38	-	-	#N/A
31-60 Days	7,433.37	-	-	4,038.95	-	-	4,090.45	-	-	#N/A
61-90 Days	7,348.56	14,779.33	11,812.67	4,266.18	-	-	-	651.09	-	#N/A
91-120 Days	-	14,038.59	4,771.89	-	-	-	-	-	1,841.38	#N/A
121-150 Days	-	-	12,504.73	-	12,619.33	-	-	-	-	#N/A
151-180 Days	-	-	-	-	-	-	-	-	-	#N/A
181+ Days	6,000.00	-	-	-	-	-	-	-	-	#N/A

Delinquency Status (% of Current Balance)

Current Portfolio Balance	1,579,377.82	1,044,860.08	584,256.91	369,480.66	222,346.24	127,652.52	59,730.97	13,505.05	1,841.38	#N/A
	Feb-13	Feb-14	Feb-15	Feb-16	Feb-17	Feb-18	Feb-19	Feb-20	Feb-21	Feb-22
Current	98.68%	97.24%	95.02%	90.57%	92.13%	92.80%	84.08%	95.18%	0.00%	#N/A
1-30 Days	0.00%	0.00%	0.00%	7.19%	2.20%	7.20%	9.07%	0.00%	0.00%	#N/A
31-60 Days	0.47%	0.00%	0.00%	1.09%	0.00%	0.00%	6.85%	0.00%	0.00%	#N/A
61-90 Days	0.47%	1.41%	2.02%	1.15%	0.00%	0.00%	0.00%	4.82%	0.00%	#N/A
91-120 Days	0.00%	1.34%	0.82%	0.00%	0.00%	0.00%	0.00%	0.00%	100.00%	#N/A
121-150 Days	0.00%	0.00%	2.14%	0.00%	5.68%	0.00%	0.00%	0.00%	0.00%	#N/A
151-180 Days	0.00%	0.00%	0.00%	0.00%	0.00%	0.00%	0.00%	0.00%	0.00%	#N/A
181+ Days	0.38%	0.00%	0.00%	0.00%	0.00%	0.00%	0.00%	0.00%	0.00%	#N/A
Current - 90 Days	99.62%	98.66%	97.04%	100.00%	94.32%	100.00%	100.00%	100.00%	0.00%	#N/A
91-180 Days	0.00%	1.34%	2.96%	0.00%	5.68%	0.00%	0.00%	0.00%	100.00%	#N/A



Personal Loans - La Hipotecaria El Salvador Migration Analysis (2013 Vintage)

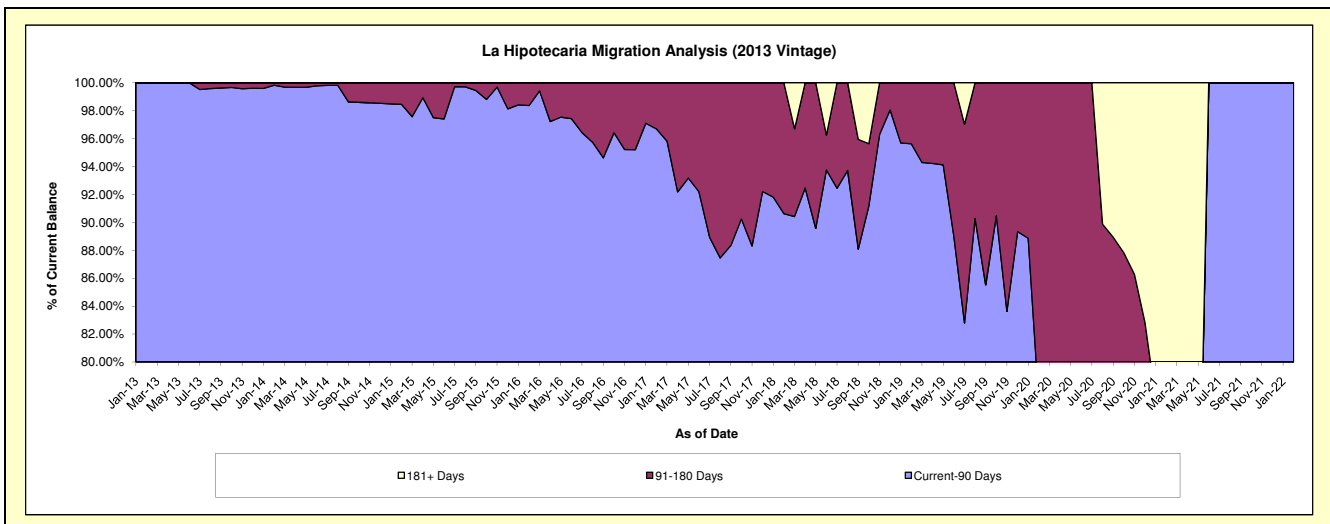
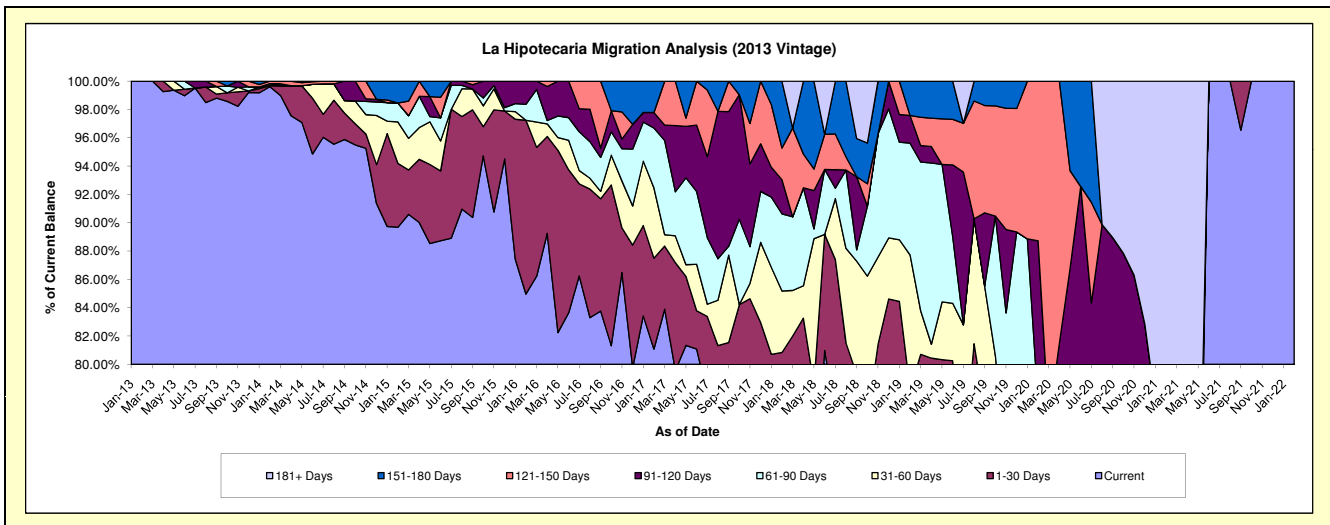
Delinquency Status (\$ of Current Balance)

Data Cutoff: 2/28/2022

Current Portfolio Balance	406,933.49	2,031,614.54	1,336,782.02	920,454.93	624,059.06	398,670.07	210,119.00	81,278.04	15,253.46	773.37
	Feb-13	Feb-14	Feb-15	Feb-16	Feb-17	Feb-18	Feb-19	Feb-20	Feb-21	Feb-22
Current	406,933.49	2,023,746.45	1,198,887.80	782,029.60	505,957.49	289,782.20	164,330.87	56,530.76	9,681.11	773.37
1-30 Days	-	1,641.87	60,284.93	113,019.39	40,092.54	32,503.54	-	-	771.82	-
31-60 Days	-	-	39,112.42	-	30,941.81	17,309.61	20,008.95	6,198.27	878.03	-
61-90 Days	-	2,630.49	17,821.63	10,351.59	26,423.57	21,698.01	16,589.05	-	-	-
91-120 Days	-	-	-	15,054.35	6,842.15	9,626.79	4,107.62	9,387.93	-	-
121-150 Days	-	3,595.73	-	-	-	8,946.68	-	9,161.08	-	-
151-180 Days	-	-	20,675.24	-	13,801.50	18,803.24	5,082.51	-	-	-
181+ Days	-	-	-	-	-	-	-	-	3,922.50	-

Delinquency Status (% of Current Balance)

Current Portfolio Balance	406,933.49	2,031,614.54	1,336,782.02	920,454.93	624,059.06	398,670.07	210,119.00	81,278.04	15,253.46	773.37
	Feb-13	Feb-14	Feb-15	Feb-16	Feb-17	Feb-18	Feb-19	Feb-20	Feb-21	Feb-22
Current	100.00%	99.61%	89.68%	84.96%	81.08%	72.69%	78.21%	69.55%	63.47%	100.00%
1-30 Days	0.00%	0.08%	4.51%	12.28%	6.42%	8.15%	0.00%	0.00%	5.06%	0.00%
31-60 Days	0.00%	0.00%	2.93%	0.00%	4.96%	4.34%	9.52%	7.63%	5.76%	0.00%
61-90 Days	0.00%	0.13%	1.33%	1.12%	4.23%	5.44%	7.90%	0.00%	0.00%	0.00%
91-120 Days	0.00%	0.00%	0.00%	1.64%	1.10%	2.41%	1.95%	11.55%	0.00%	0.00%
121-150 Days	0.00%	0.18%	0.00%	0.00%	0.00%	2.24%	0.00%	11.27%	0.00%	0.00%
151-180 Days	0.00%	0.00%	1.55%	0.00%	2.21%	4.72%	2.42%	0.00%	0.00%	0.00%
181+ Days	0.00%	0.00%	0.00%	0.00%	0.00%	0.00%	0.00%	0.00%	25.72%	0.00%
Current - 90 Days	100.00%	99.82%	98.45%	98.36%	96.69%	90.62%	95.63%	77.18%	74.28%	100.00%
91-180 Days	0.00%	0.18%	1.55%	1.64%	3.31%	9.38%	4.37%	22.82%	0.00%	0.00%



Personal Loans - La Hipotecaria El Salvador Migration Analysis (2014 Vintage)

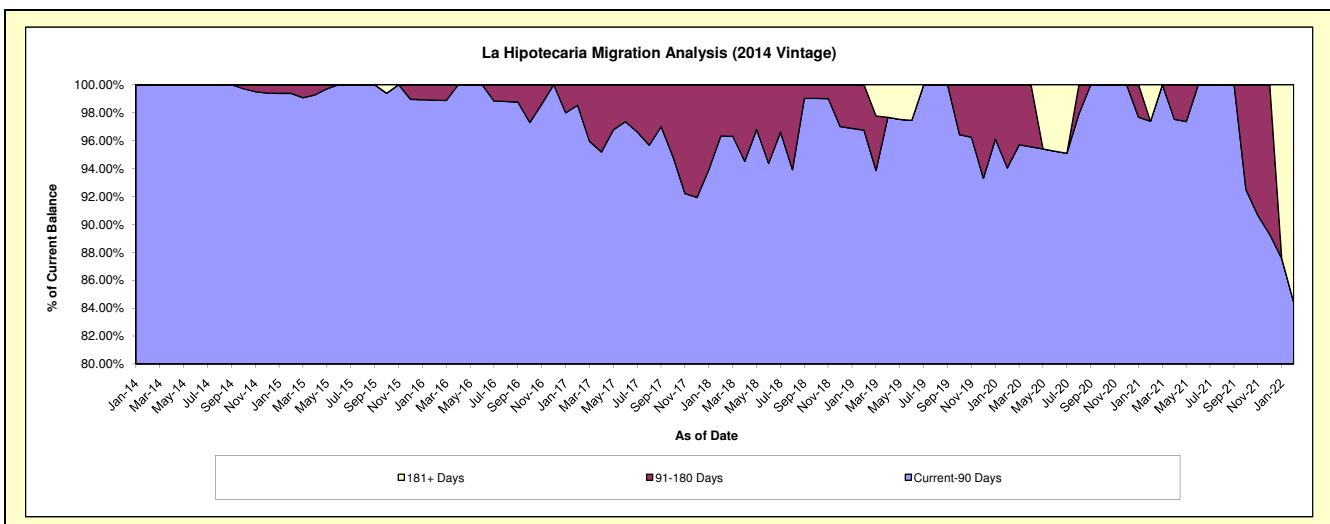
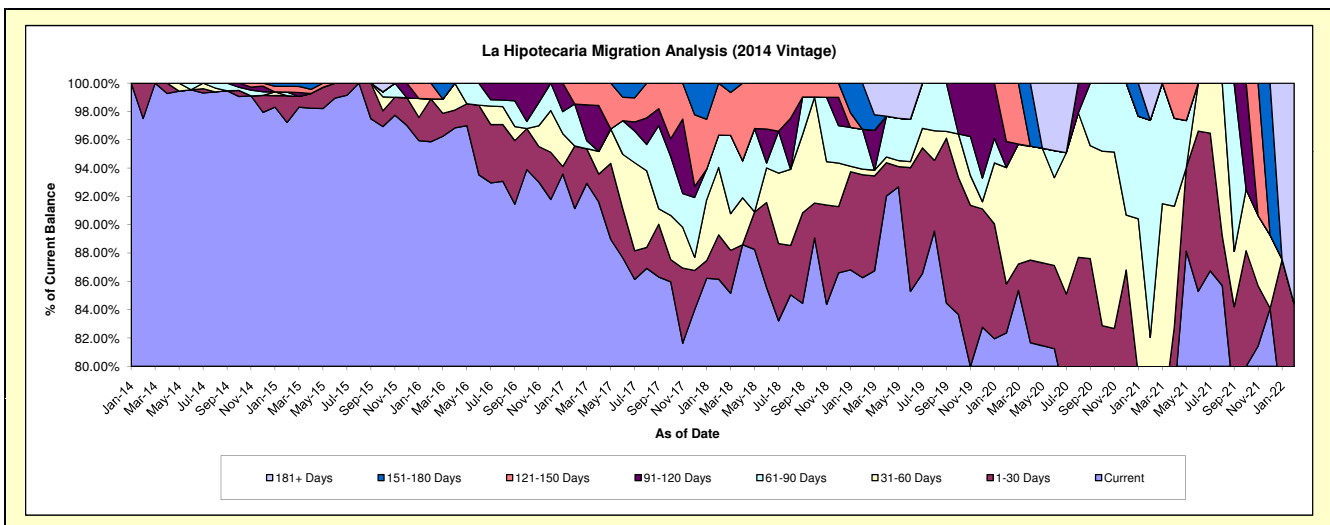
Delinquency Status (\$ of Current Balance)

Data Cutoff: 2/28/2022

Current Portfolio Balance	-	400,962.04	2,390,181.60	1,617,427.08	1,030,511.84	607,825.60	402,877.30	221,631.90	102,514.84	20,527.21
	Feb-14	Feb-15	Feb-16	Feb-17	Feb-18	Feb-19	Feb-20	Feb-21	Feb-22	
Current	390,962.04	2,323,763.65	1,550,524.80	939,277.93	523,683.19	347,542.80	182,546.71	73,350.60	14,867.17	
1-30 Days	10,000.00	45,127.60	48,949.83	45,482.48	19,017.96	29,263.52	7,649.22	5,529.70	2,464.42	
31-60 Days	-	-	-	-	28,978.46	1,605.79	18,226.82	5,225.78	-	
61-90 Days	-	6,334.48	-	30,592.06	13,829.46	11,314.88	-	15,725.95	-	
91-120 Days	-	-	-	-	-	-	4,076.26	-	-	
121-150 Days	-	9,678.94	17,952.45	15,159.37	22,316.53	-	9,132.89	-	-	
151-180 Days	-	5,276.93	-	-	-	13,150.31	-	-	-	
181+ Days	-	-	-	-	-	-	-	2,682.81	3,195.62	

Delinquency Status (% of Current Balance)

Current Portfolio Balance	-	400,962.04	2,390,181.60	1,617,427.08	1,030,511.84	607,825.60	402,877.30	221,631.90	102,514.84	20,527.21
	Feb-14	Feb-15	Feb-16	Feb-17	Feb-18	Feb-19	Feb-20	Feb-21	Feb-22	
Current	97.51%	97.22%	95.86%	91.15%	86.16%	86.27%	82.36%	71.55%	72.43%	
1-30 Days	2.49%	1.89%	3.03%	4.41%	3.13%	7.26%	3.45%	5.39%	12.01%	
31-60 Days	0.00%	0.00%	0.00%	0.00%	4.77%	0.40%	8.22%	5.10%	0.00%	
61-90 Days	0.00%	0.27%	0.00%	2.97%	2.28%	2.81%	0.00%	15.34%	0.00%	
91-120 Days	0.00%	0.00%	0.00%	0.00%	0.00%	0.00%	1.84%	0.00%	0.00%	
121-150 Days	0.00%	0.40%	1.11%	1.47%	3.67%	0.00%	4.12%	0.00%	0.00%	
151-180 Days	0.00%	0.22%	0.00%	0.00%	0.00%	3.26%	0.00%	0.00%	0.00%	
181+ Days	0.00%	0.00%	0.00%	0.00%	0.00%	0.00%	0.00%	2.62%	15.57%	
Current - 90 Days	100.00%	99.37%	98.89%	98.53%	96.33%	96.74%	94.04%	97.38%	84.43%	
91-180 Days	0.00%	0.63%	1.11%	1.47%	3.67%	3.26%	5.96%	0.00%	0.00%	



Personal Loans - La Hipotecaria El Salvador Migration Analysis (2015 Vintage)

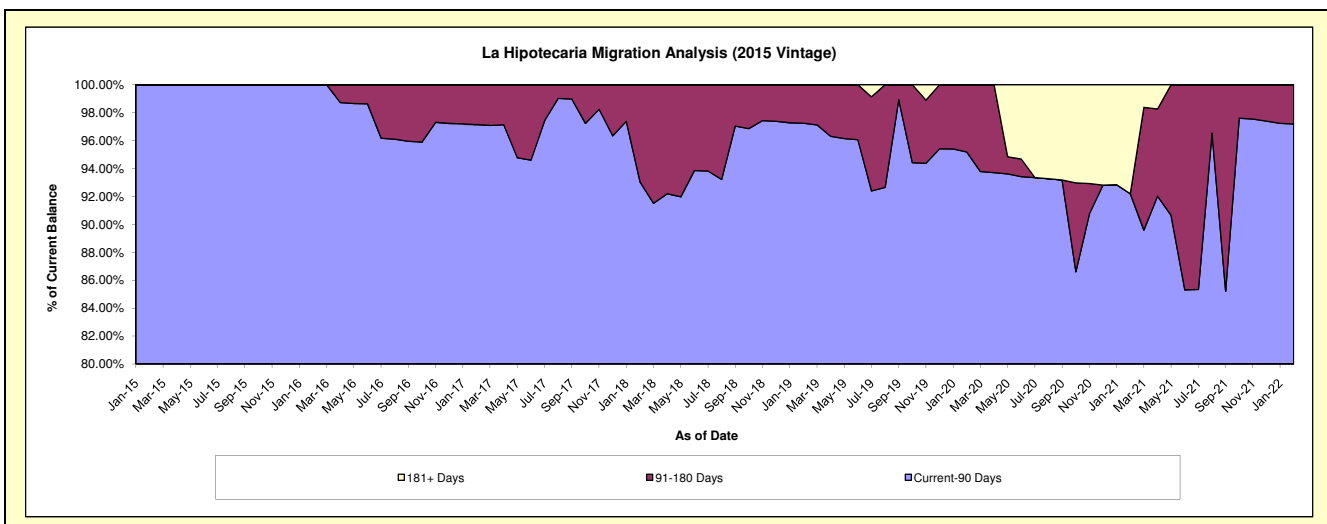
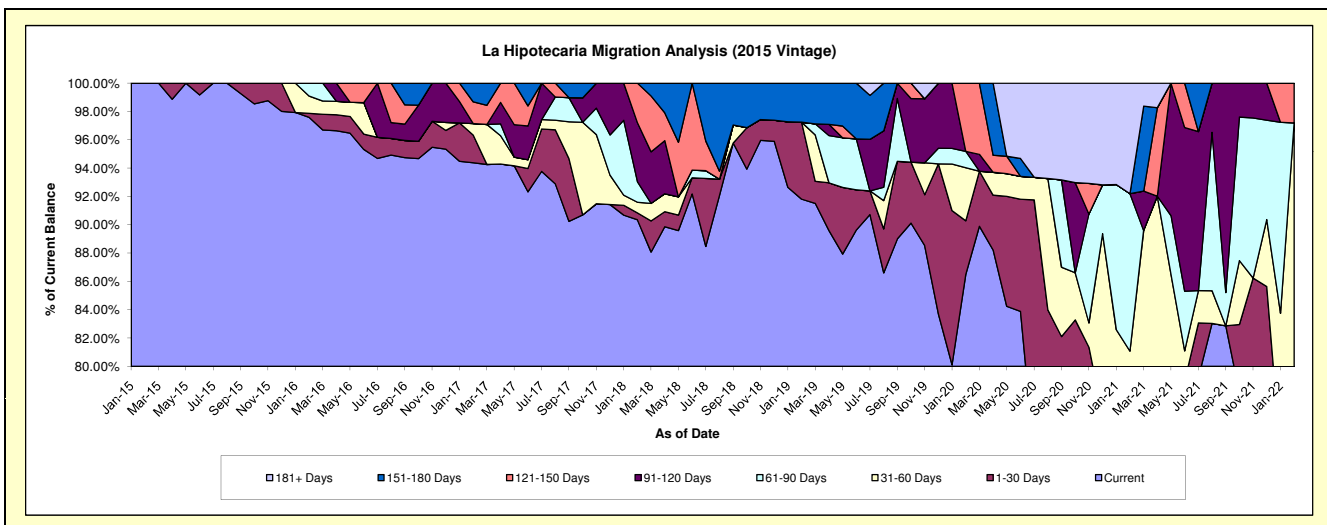
Delinquency Status (\$ of Current Balance)

Data Cutoff: 2/28/2022

Current Portfolio Balance	-	-	252,198.32	1,500,999.76	1,033,968.62	726,328.25	465,408.54	286,195.11	209,384.05	127,950.33
	Feb-15	Feb-16	Feb-17	Feb-18	Feb-19	Feb-20	Feb-21	Feb-22		
Current	252,198.32	1,464,782.75	975,883.35	656,260.52	427,277.70	247,537.97	156,879.37	94,443.70		
1-30 Days	-	4,238.94	20,186.93	3,537.70	25,296.57	10,841.82	3,280.34	6,061.57		
31-60 Days	-	18,335.28	8,395.90	5,450.18	-	10,727.46	9,598.02	23,850.62		
61-90 Days	-	13,642.79	-	10,586.89	-	3,290.25	23,289.51	-		
91-120 Days	-	-	-	30,249.26	-	-	-	-		
121-150 Days	-	-	15,859.65	20,243.70	-	13,797.61	-	3,594.44		
151-180 Days	-	-	13,642.79	-	12,834.27	-	-	-		
181+ Days	-	-	-	-	-	-	16,336.81	-		

Delinquency Status (% of Current Balance)

Current Portfolio Balance	-	-	252,198.32	1,500,999.76	1,033,968.62	726,328.25	465,408.54	286,195.11	209,384.05	127,950.33
	Feb-15	Feb-16	Feb-17	Feb-18	Feb-19	Feb-20	Feb-21	Feb-22		
Current	100.00%	97.59%	94.38%	90.35%	91.81%	86.49%	74.92%	73.81%		
1-30 Days	0.00%	0.28%	1.95%	0.49%	5.44%	3.79%	1.57%	4.74%		
31-60 Days	0.00%	1.22%	0.81%	0.75%	0.00%	3.75%	4.58%	18.64%		
61-90 Days	0.00%	0.91%	0.00%	1.46%	0.00%	1.15%	11.12%	0.00%		
91-120 Days	0.00%	0.00%	0.00%	4.16%	0.00%	0.00%	0.00%	0.00%		
121-150 Days	0.00%	0.00%	1.53%	2.79%	0.00%	4.82%	0.00%	2.81%		
151-180 Days	0.00%	0.00%	1.32%	0.00%	2.76%	0.00%	0.00%	0.00%		
181+ Days	0.00%	0.00%	0.00%	0.00%	0.00%	0.00%	7.80%	0.00%		
Current - 90 Days	100.00%	100.00%	97.15%	93.05%	97.24%	95.18%	92.20%	97.19%		
91-180 Days	0.00%	0.00%	2.85%	6.95%	2.76%	4.82%	0.00%	2.81%		



Personal Loans - La Hipotecaria El Salvador Migration Analysis (2016 Vintage)

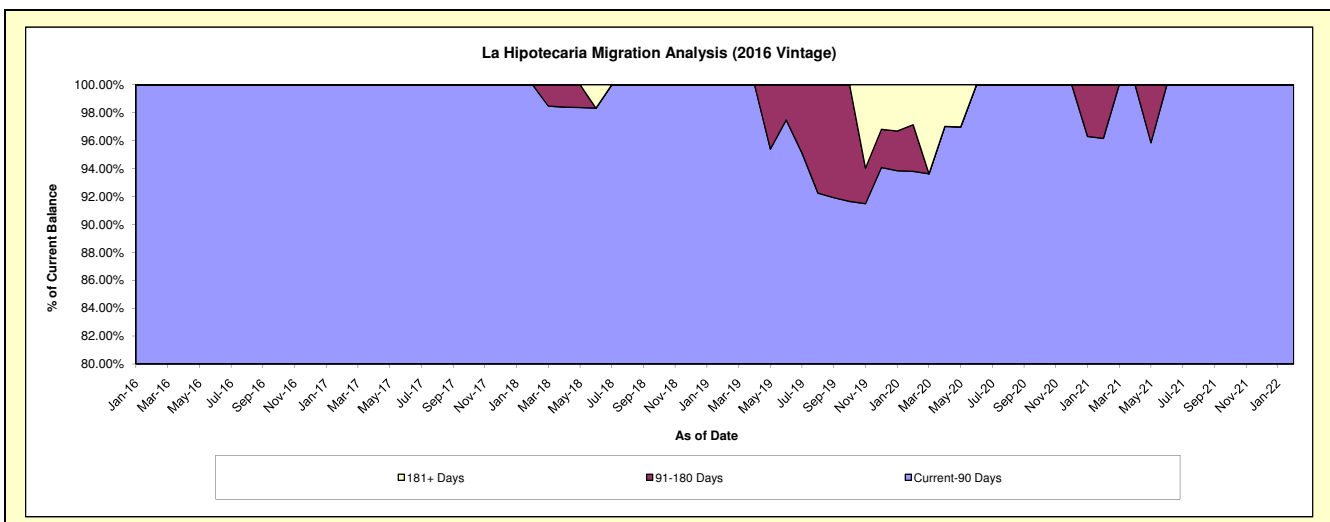
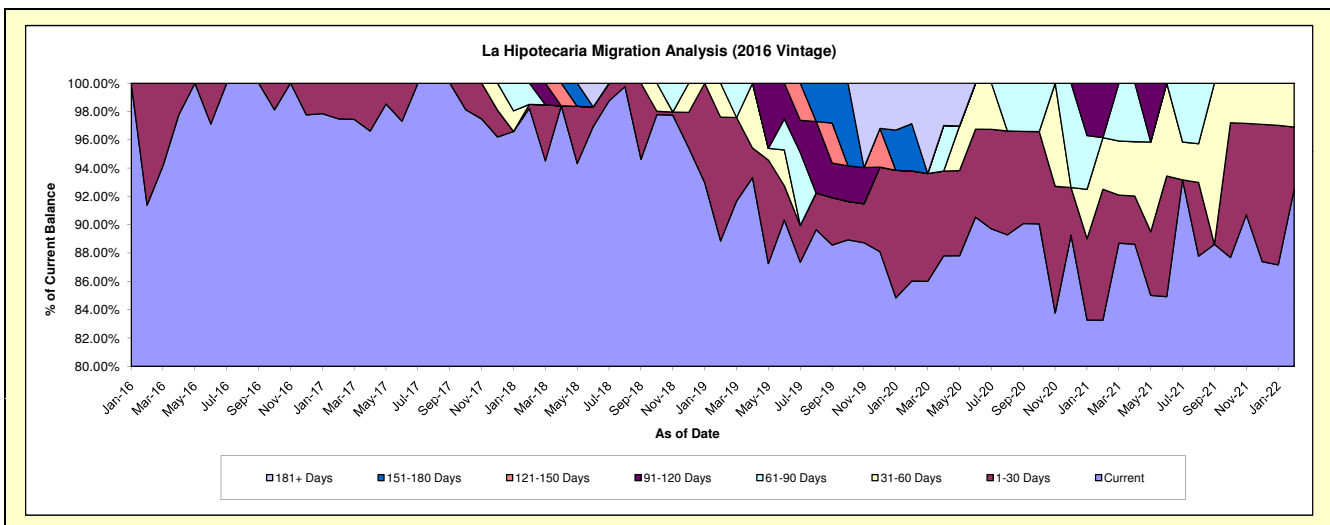
Delinquency Status (\$ of Current Balance)

Data Cutoff: 2/28/2022

Current Portfolio Balance	-	-	-	312,411.64	1,197,329.45	928,981.91	688,699.34	494,998.68	371,245.13	241,635.90
				Feb-16	Feb-17	Feb-18	Feb-19	Feb-20	Feb-21	Feb-22
Current				285,511.64	1,167,156.54	912,463.40	611,894.47	425,812.61	309,115.51	223,493.98
1-30 Days				26,900.00	30,172.91	2,582.10	60,238.72	38,507.17	34,293.17	10,637.60
31-60 Days				-	-	-	16,566.15	-	13,559.52	7,504.32
61-90 Days				-	-	13,936.41	-	-	-	-
91-120 Days				-	-	-	-	-	14,276.93	-
121-150 Days				-	-	-	-	-	-	-
151-180 Days				-	-	-	-	16,491.76	-	-
181+ Days				-	-	-	-	14,187.14	-	-

Delinquency Status (% of Current Balance)

Current Portfolio Balance	-	-	-	312,411.64	1,197,329.45	928,981.91	688,699.34	494,998.68	371,245.13	241,635.90
				Feb-16	Feb-17	Feb-18	Feb-19	Feb-20	Feb-21	Feb-22
Current				91.39%	97.48%	98.22%	88.85%	86.02%	83.26%	92.49%
1-30 Days				8.61%	2.52%	0.28%	8.75%	7.78%	9.24%	4.40%
31-60 Days				0.00%	0.00%	0.00%	2.41%	0.00%	3.65%	3.11%
61-90 Days				0.00%	0.00%	1.50%	0.00%	0.00%	0.00%	0.00%
91-120 Days				0.00%	0.00%	0.00%	0.00%	0.00%	3.85%	0.00%
121-150 Days				0.00%	0.00%	0.00%	0.00%	0.00%	0.00%	0.00%
151-180 Days				0.00%	0.00%	0.00%	0.00%	3.33%	0.00%	0.00%
181+ Days				0.00%	0.00%	0.00%	0.00%	2.87%	0.00%	0.00%
Current - 90 Days				100.00%	100.00%	100.00%	100.00%	93.80%	96.15%	100.00%
91-180 Days				0.00%	0.00%	0.00%	0.00%	3.33%	3.85%	0.00%



Personal Loans - La Hipotecaria El Salvador Migration Analysis (2017 Vintage)

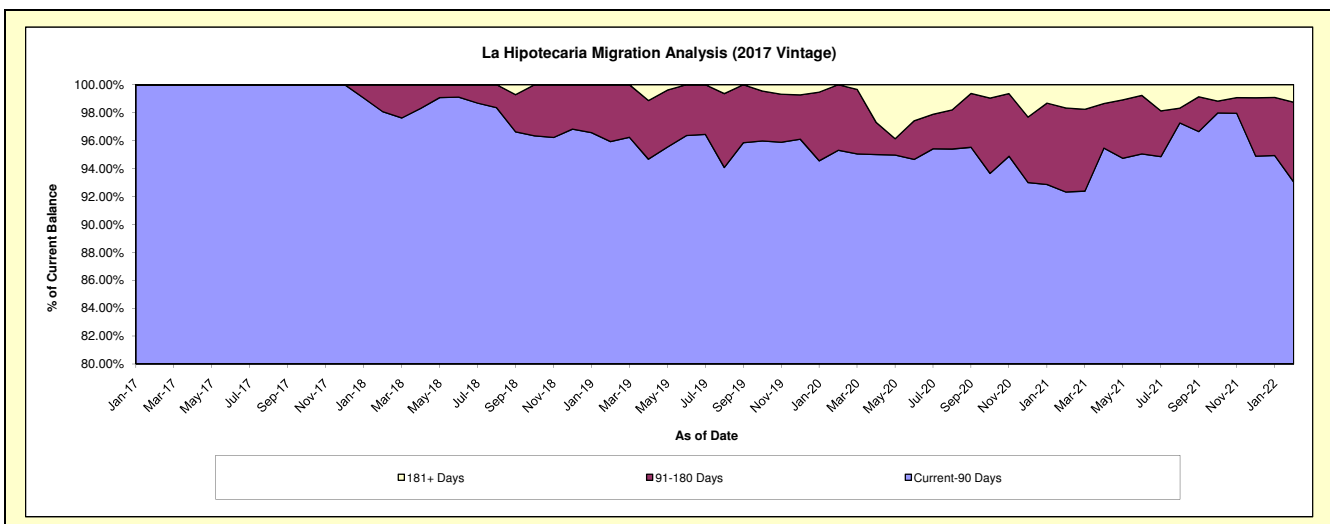
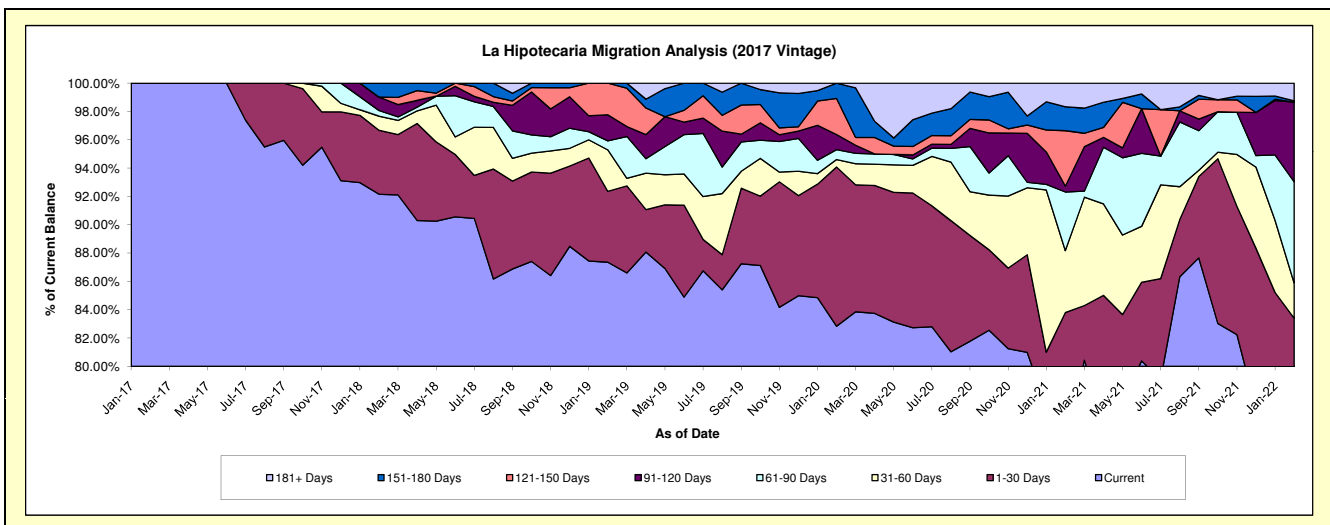
Delinquency Status (\$ of Current Balance)

Data Cutoff: 2/28/2022

Current Portfolio Balance	-	-	-	-	181,654.18	2,004,189.73	1,425,202.66	873,700.95	691,087.12	426,531.97
					Feb-17	Feb-18	Feb-19	Feb-20	Feb-21	Feb-22
Current					181,654.18	1,846,926.98	1,244,995.81	723,762.27	513,757.67	306,165.20
1-30 Days					-	90,503.09	71,337.25	98,208.51	65,417.06	49,588.44
31-60 Days					-	20,046.62	41,759.29	4,610.13	30,186.77	10,607.90
61-90 Days					-	7,987.51	9,072.56	6,096.03	28,618.45	30,453.77
91-120 Days					-	19,027.80	26,222.67	9,290.95	2,828.60	24,004.65
121-150 Days					-	-	31,815.08	22,281.94	27,083.90	-
151-180 Days					-	19,697.73	-	9,451.12	11,675.81	382.05
181+ Days					-	-	-	-	11,518.86	5,329.96

Delinquency Status (% of Current Balance)

Current Portfolio Balance	-	-	-	-	181,654.18	2,004,189.73	1,425,202.66	873,700.95	691,087.12	426,531.97
					Feb-17	Feb-18	Feb-19	Feb-20	Feb-21	Feb-22
Current					100.00%	92.15%	87.36%	82.84%	74.34%	71.78%
1-30 Days					0.00%	4.52%	5.01%	11.24%	9.47%	11.63%
31-60 Days					0.00%	1.00%	2.93%	0.53%	4.37%	2.49%
61-90 Days					0.00%	0.40%	0.64%	0.70%	4.14%	7.14%
91-120 Days					0.00%	0.95%	1.84%	1.06%	0.41%	5.63%
121-150 Days					0.00%	0.00%	2.23%	2.55%	3.92%	0.00%
151-180 Days					0.00%	0.98%	0.00%	1.08%	1.69%	0.09%
181+ Days					0.00%	0.00%	0.00%	0.00%	1.67%	1.25%
Current - 90 Days					100.00%	98.07%	95.93%	95.30%	92.32%	93.03%
91-180 Days					0.00%	1.93%	4.07%	4.70%	6.02%	5.72%



Personal Loans - La Hipotecaria El Salvador Migration Analysis (2018 Vintage)

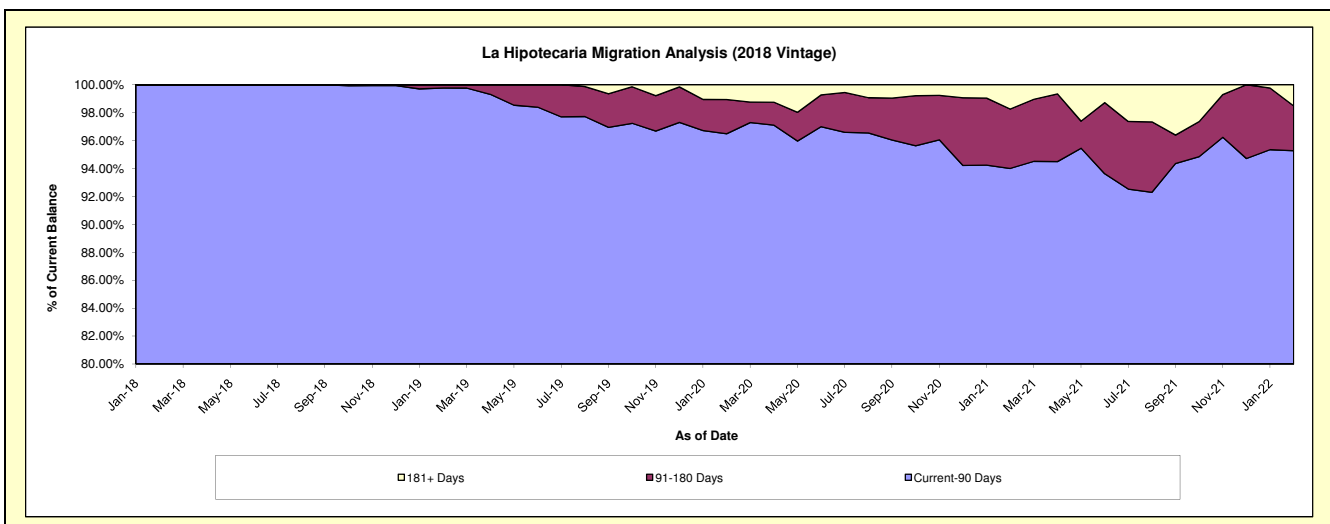
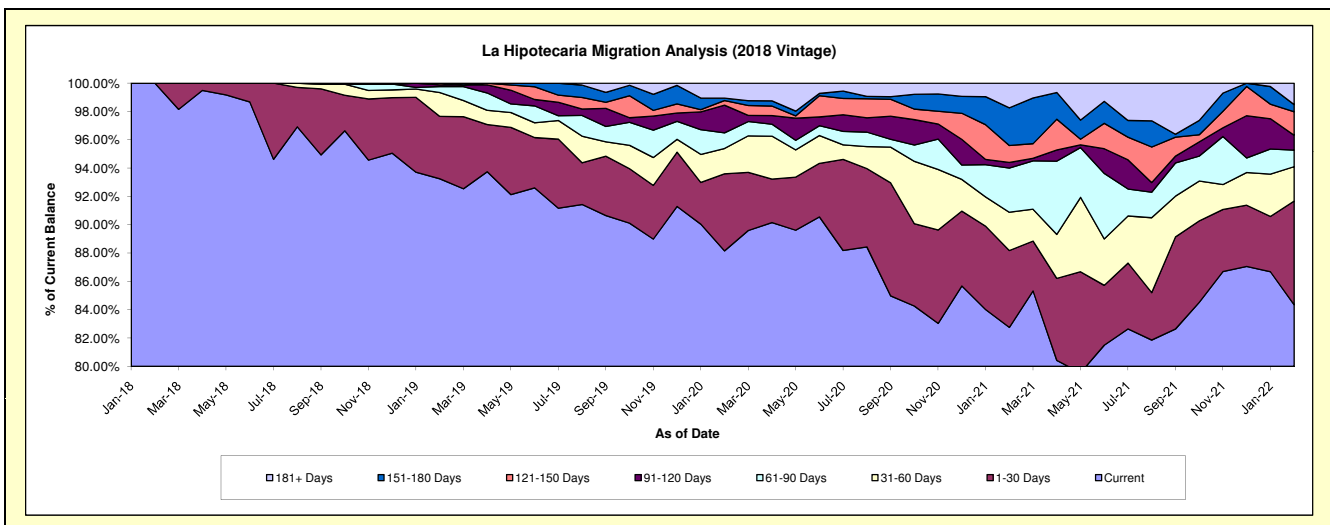
Delinquency Status (\$ of Current Balance)

Data Cutoff: 2/28/2022

Current Portfolio Balance	-	-	-	-	-	339,128.94	4,195,829.54	3,011,007.91	2,436,416.55	1,794,624.36
						Feb-18	Feb-19	Feb-20	Feb-21	Feb-22
Current						339,128.94	3,912,458.73	2,654,412.69	2,016,123.89	1,513,682.72
1-30 Days						-	184,899.05	163,905.73	132,360.75	131,501.35
31-60 Days						-	70,833.28	53,805.01	65,804.20	43,606.98
61-90 Days						-	17,638.48	33,226.35	76,148.87	20,988.96
91-120 Days						-	5,000.00	58,789.82	9,451.86	18,705.20
121-150 Days						-	5,000.00	9,913.64	29,250.56	29,964.02
151-180 Days						-	-	5,000.00	64,855.53	8,962.51
181+ Days						-	-	31,954.67	42,420.89	27,212.62

Delinquency Status (% of Current Balance)

Current Portfolio Balance	-	-	-	-	-	339,128.94	4,195,829.54	3,011,007.91	2,436,416.55	1,794,624.36
						Feb-18	Feb-19	Feb-20	Feb-21	Feb-22
Current						100.00%	93.25%	88.16%	82.75%	84.35%
1-30 Days						0.00%	4.41%	5.44%	5.43%	7.33%
31-60 Days						0.00%	1.69%	1.79%	2.70%	2.43%
61-90 Days						0.00%	0.42%	1.10%	3.13%	1.17%
91-120 Days						0.00%	0.12%	1.95%	0.39%	1.04%
121-150 Days						0.00%	0.12%	0.33%	1.20%	1.67%
151-180 Days						0.00%	0.00%	0.17%	2.66%	0.50%
181+ Days						0.00%	0.00%	1.06%	1.74%	1.52%
Current - 90 Days						100.00%	99.76%	96.49%	94.01%	95.27%
91-180 Days						0.00%	0.24%	2.45%	4.25%	3.21%



Personal Loans - La Hipotecaria El Salvador Migration Analysis (2019 Vintage)

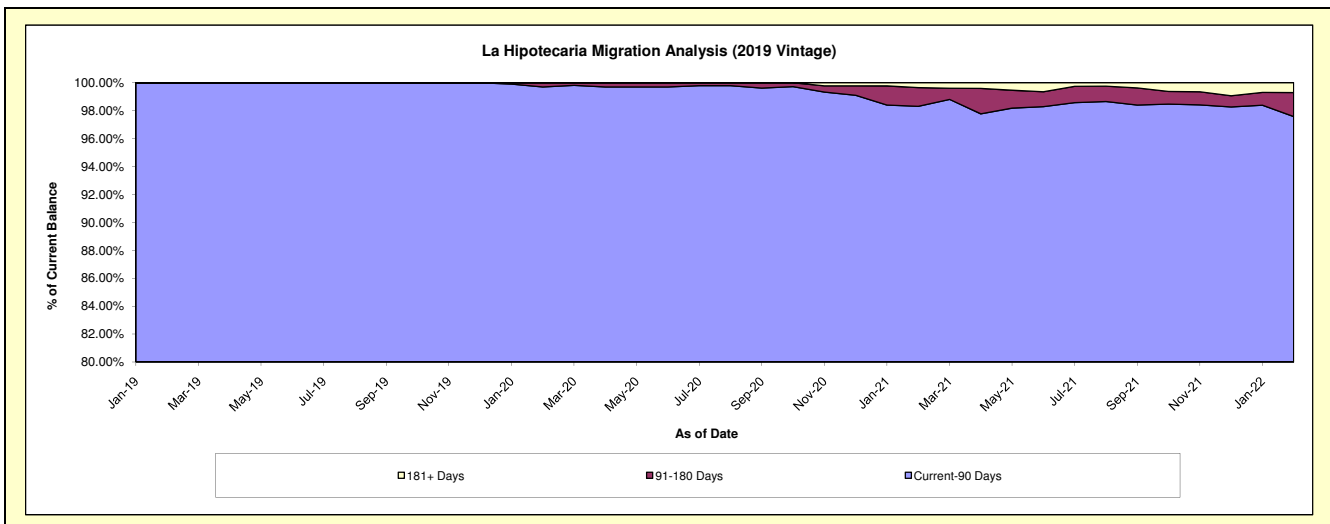
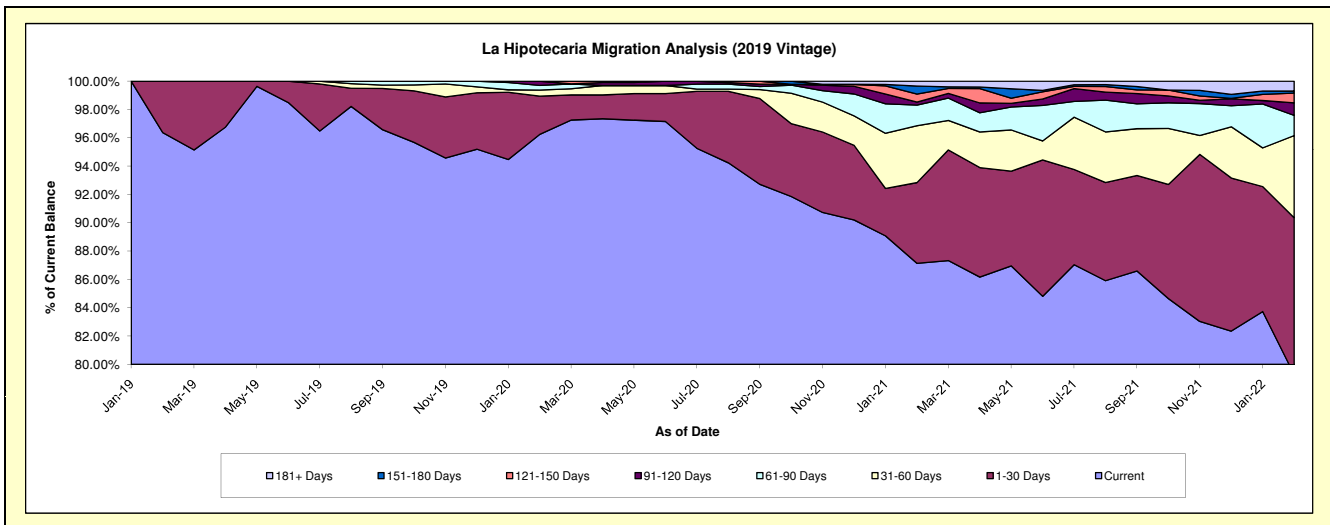
Delinquency Status (\$ of Current Balance)

Data Cutoff: 2/28/2022

Current Portfolio Balance	-	-	-	-	-	-	-	879,505.13	5,181,784.80	4,369,857.93	3,294,771.88
								Feb-19	Feb-20	Feb-21	Feb-22
Current								847,616.84	4,987,167.67	3,807,669.05	2,612,016.96
1-30 Days								31,888.29	140,014.43	249,136.70	365,122.27
31-60 Days								-	22,138.58	175,460.80	191,050.38
61-90 Days								-	16,943.82	63,623.45	46,876.56
91-120 Days								-	15,520.30	9,691.08	29,290.34
121-150 Days								-	-	24,296.57	22,684.66
151-180 Days								-	-	24,777.84	4,645.45
181+ Days								-	-	15,202.44	23,085.26

Delinquency Status (% of Current Balance)

Current Portfolio Balance	-	-	-	-	-	-	-	879,505.13	5,181,784.80	4,369,857.93	3,294,771.88
								Feb-19	Feb-20	Feb-21	Feb-22
Current								96.37%	96.24%	87.13%	79.28%
1-30 Days								3.63%	2.70%	5.70%	11.08%
31-60 Days								0.00%	0.43%	4.02%	5.80%
61-90 Days								0.00%	0.33%	1.46%	1.42%
91-120 Days								0.00%	0.30%	0.22%	0.89%
121-150 Days								0.00%	0.00%	0.56%	0.69%
151-180 Days								0.00%	0.00%	0.57%	0.14%
181+ Days								0.00%	0.00%	0.35%	0.70%
Current - 90 Days								100.00%	99.70%	98.31%	97.58%
91-180 Days								0.00%	0.30%	1.34%	1.72%



Personal Loans - La Hipotecaria El Salvador Migration Analysis (2020 Vintage)

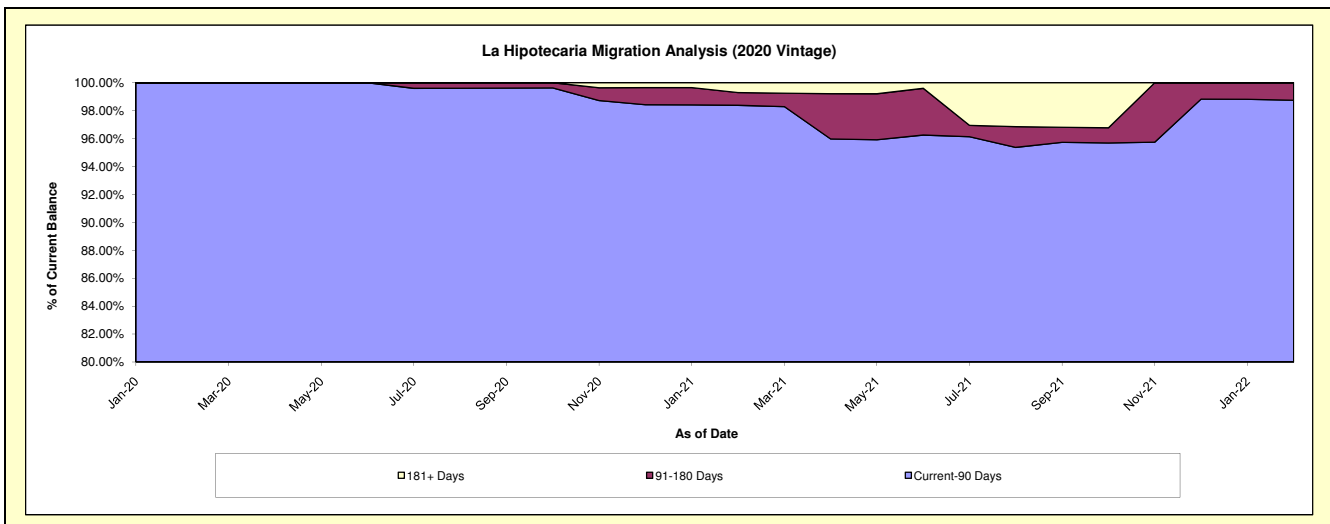
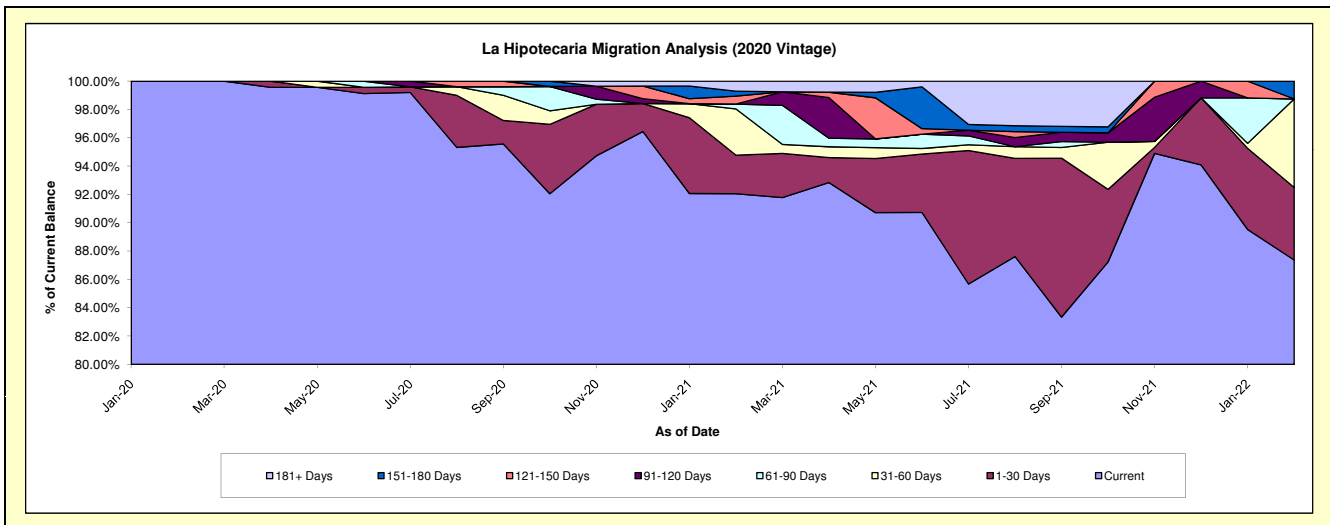
Delinquency Status (\$ of Current Balance)

Data Cutoff: 2/28/2022

Current Portfolio Balance	-	-	-	-	-	-	-	-	-	984,144.39	1,409,371.23	982,458.81
										Feb-20	Feb-21	Feb-22
Current										984,144.39	1,297,286.64	858,402.80
1-30 Days										-	38,398.37	50,303.42
31-60 Days										-	46,069.13	61,415.68
61-90 Days										-	4,848.70	-
91-120 Days										-	-	-
121-150 Days										-	7,821.15	-
151-180 Days										-	4,980.55	12,336.91
181+ Days										-	9,966.69	-

Delinquency Status (% of Current Balance)

Current Portfolio Balance	-	-	-	-	-	-	-	-	-	984,144.39	1,409,371.23	982,458.81
										Feb-20	Feb-21	Feb-22
Current										100.00%	92.05%	87.37%
1-30 Days										0.00%	2.72%	5.12%
31-60 Days										0.00%	3.27%	6.25%
61-90 Days										0.00%	0.34%	0.00%
91-120 Days										0.00%	0.00%	0.00%
121-150 Days										0.00%	0.55%	0.00%
151-180 Days										0.00%	0.35%	1.26%
181+ Days										0.00%	0.71%	0.00%
Current - 90 Days										100.00%	98.38%	98.74%
91-180 Days										0.00%	0.91%	1.26%



Personal Loans - La Hipotecaria El Salvador Migration Analysis (2021 Vintage)

Delinquency Status (\$ of Current Balance)

Data Cutoff: 2/28/2022

Current Portfolio Balance										169,630.79	574,727.28
										Feb-21	Feb-22
Current										169,630.79	574,727.28
1-30 Days										-	-
31-60 Days										-	-
61-90 Days										-	-
91-120 Days										-	-
121-150 Days										-	-
151-180 Days										-	-
181+ Days										-	-

Delinquency Status (% of Current Balance)

Current Portfolio Balance										169,630.79	574,727.28
										Feb-21	Feb-22
Current										100.00%	100.00%
1-30 Days										0.00%	0.00%
31-60 Days										0.00%	0.00%
61-90 Days										0.00%	0.00%
91-120 Days										0.00%	0.00%
121-150 Days										0.00%	0.00%
151-180 Days										0.00%	0.00%
181+ Days										0.00%	0.00%
Current - 90 Days										100.00%	100.00%
91-180 Days										0.00%	0.00%

