



Migration Analysis for La Hipotecaria S.A. de C.V El Salvador

Mortgages April 2022

An analysis of historical loan payment data was used to compile a migration analysis of delinquency by annual vintage. Delinquencies for each vintage were grouped into the following buckets; Current, 1-30, 31-60, 61-90, 91-120, 121-150, 151-180, and 180+. Results are provided in graphical and tabular form. The cutoff date is 4/30/2022.

Mortgages - La Hipotecaria El Salvador Migration Analysis (All Vintages)

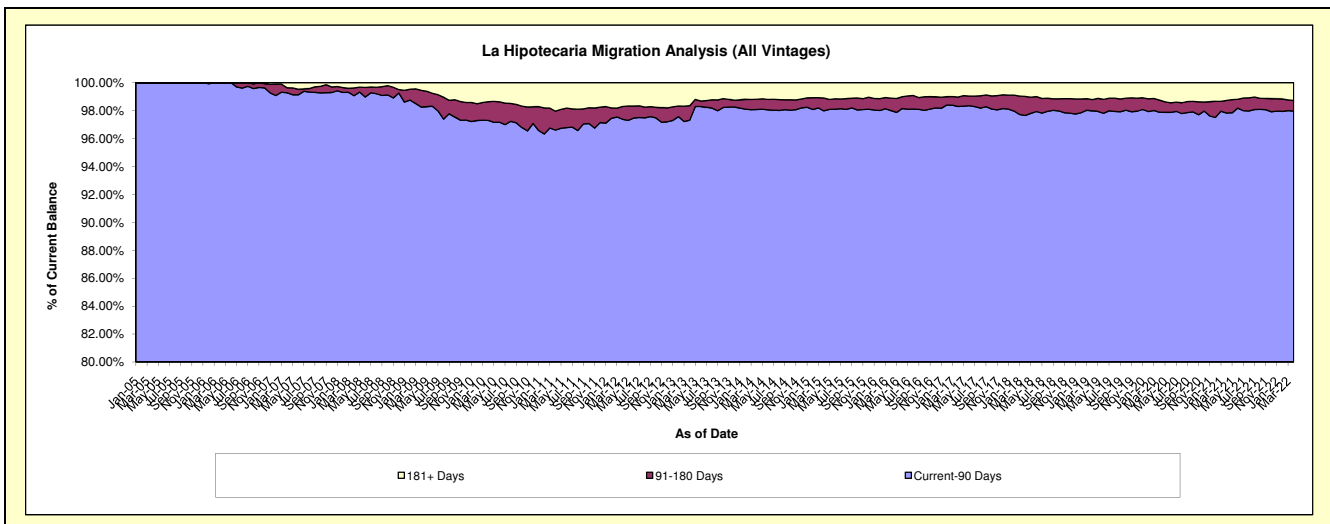
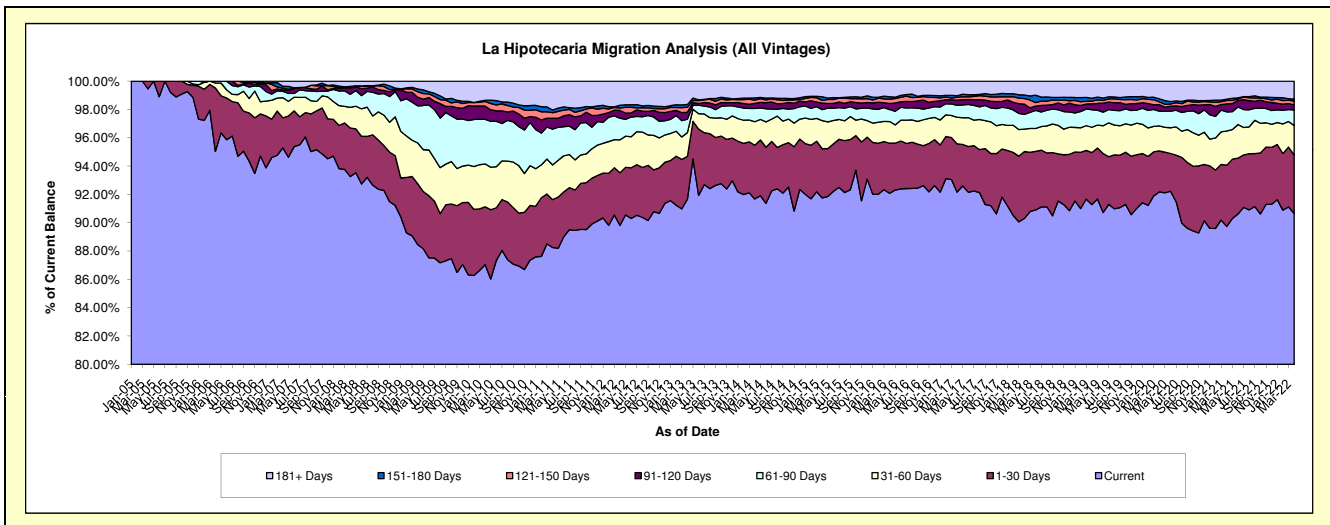
Delinquency Status (\$ of Current Balance)

Data Cutoff: 4/30/2022

Current Portfolio Balance	116,898,947.28	136,262,619.64	150,369,076.10	165,145,468.25	176,266,358.53	182,768,123.16	195,712,382.20	203,564,210.96	199,216,751.11	188,964,600.36
	Apr-13	Apr-14	Apr-15	Apr-16	Apr-17	Apr-18	Apr-19	Apr-20	Apr-21	Apr-22
Current	107,151,311.44	124,924,604.25	137,974,711.26	152,056,865.08	162,445,643.48	165,072,107.15	178,651,748.54	187,646,881.70	178,772,132.63	171,318,246.61
1-30 Days	3,539,139.85	5,178,844.52	5,225,346.94	5,848,519.72	6,023,448.64	8,608,916.42	7,182,730.69	5,900,120.45	8,627,456.27	7,774,531.46
31-60 Days	1,957,913.65	2,261,877.88	2,977,256.35	2,534,766.31	3,309,842.18	2,901,594.17	3,509,240.75	3,590,175.81	4,806,444.91	3,953,243.70
61-90 Days	1,114,741.47	1,278,441.69	1,166,504.07	1,401,675.12	1,483,376.81	1,903,574.92	2,430,889.08	2,120,516.24	2,688,940.53	2,083,455.09
91-120 Days	566,743.25	490,526.96	697,555.48	697,108.44	637,475.61	1,316,482.23	815,835.21	939,738.58	1,143,032.72	660,883.19
121-150 Days	418,650.60	304,923.55	295,454.68	501,140.48	358,469.05	730,167.75	357,020.57	402,819.42	463,789.71	542,904.63
151-180 Days	225,042.90	210,140.88	382,199.48	281,350.58	194,533.45	442,468.79	409,058.75	432,138.08	189,548.75	228,628.99
181+ Days	1,925,404.12	1,613,259.91	1,650,047.84	1,824,042.52	1,813,569.31	1,792,811.73	2,355,858.61	2,531,820.68	2,525,405.59	2,402,706.69

Delinquency Status (% of Current Balance)

Current Portfolio Balance	116,898,947.28	136,262,619.64	150,369,076.10	165,145,468.25	176,266,358.53	182,768,123.16	195,712,382.20	203,564,210.96	199,216,751.11	188,964,600.36
	Apr-13	Apr-14	Apr-15	Apr-16	Apr-17	Apr-18	Apr-19	Apr-20	Apr-21	Apr-22
Current	91.66%	91.68%	91.76%	92.07%	92.16%	90.32%	91.28%	92.18%	89.74%	90.66%
1-30 Days	3.03%	3.80%	3.48%	3.54%	3.42%	4.71%	3.67%	2.90%	4.33%	4.11%
31-60 Days	1.67%	1.66%	1.98%	1.53%	1.88%	1.59%	1.79%	1.76%	2.41%	2.09%
61-90 Days	0.95%	0.94%	0.78%	0.85%	0.84%	1.04%	1.24%	1.04%	1.35%	1.10%
91-120 Days	0.48%	0.36%	0.46%	0.42%	0.36%	0.72%	0.42%	0.46%	0.57%	0.35%
121-150 Days	0.36%	0.22%	0.20%	0.30%	0.20%	0.40%	0.18%	0.20%	0.23%	0.29%
151-180 Days	0.19%	0.15%	0.25%	0.17%	0.11%	0.24%	0.21%	0.21%	0.10%	0.12%
181+ Days	1.65%	1.18%	1.10%	1.10%	1.03%	0.98%	1.20%	1.24%	1.27%	1.27%
Current - 90 Days	97.32%	98.08%	97.99%	98.00%	98.30%	97.66%	97.99%	97.88%	97.83%	97.97%
91-180 Days	1.04%	0.74%	0.91%	0.90%	0.68%	1.36%	0.81%	0.87%	0.90%	0.76%



Mortgages - La Hipotecaria El Salvador Migration Analysis (2005 Vintage)

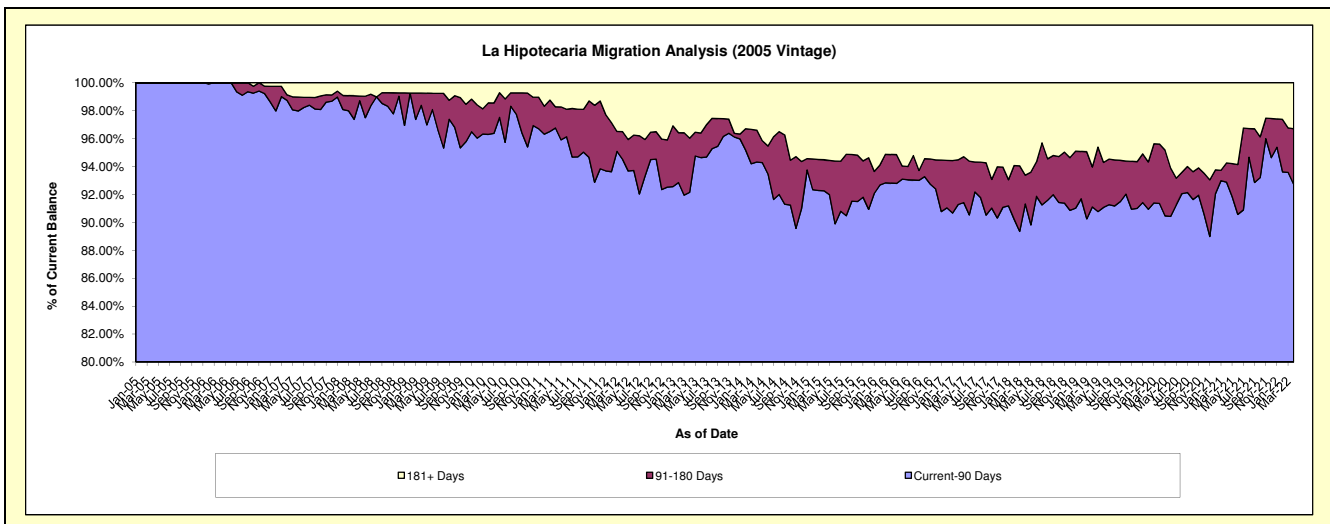
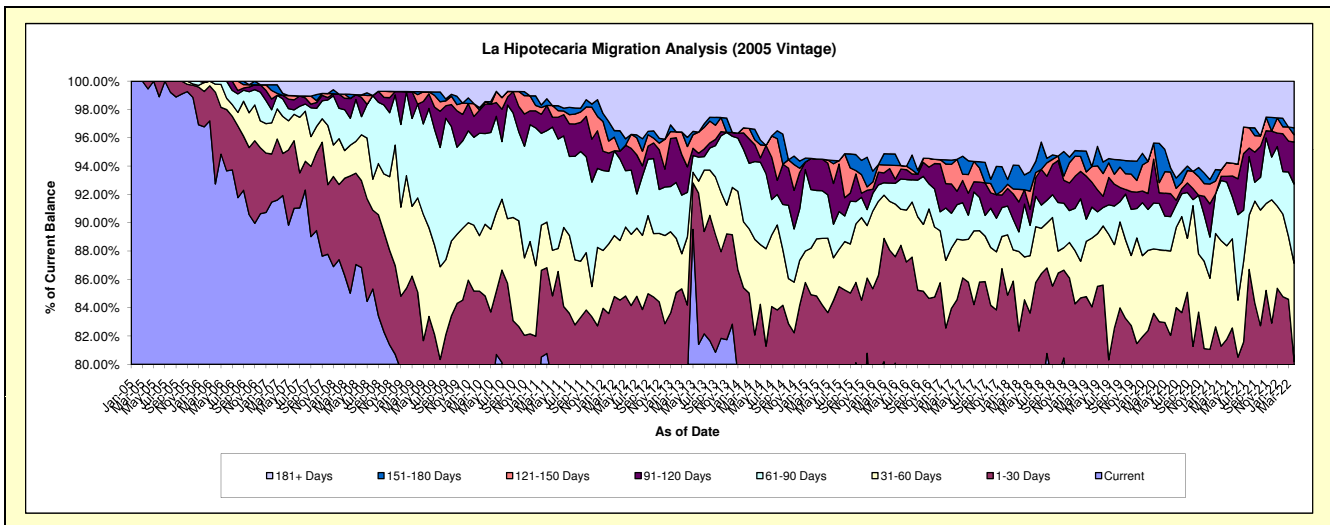
Delinquency Status (\$ of Current Balance)

Data Cutoff: 4/30/2022

Current Portfolio Balance	5,531,956.70	4,833,779.50	4,415,327.58	4,062,805.72	3,806,827.29	3,494,699.81	3,011,140.84	2,751,264.61	2,470,006.91	2,154,008.78
	Apr-13	Apr-14	Apr-15	Apr-16	Apr-17	Apr-18	Apr-19	Apr-20	Apr-21	Apr-22
Current	4,374,253.45	3,790,915.13	3,433,033.16	3,152,764.59	2,771,943.25	2,676,832.83	2,304,111.63	2,093,235.22	1,831,103.94	1,664,278.20
1-30 Days	283,196.93	176,374.83	284,955.85	425,177.06	447,704.36	278,341.54	227,237.34	190,608.62	188,597.08	62,978.66
31-60 Days	266,993.38	326,454.92	207,354.62	140,143.05	162,547.25	105,898.43	146,187.09	140,006.97	163,182.72	149,695.75
61-90 Days	173,432.71	265,484.77	148,490.64	52,641.16	92,745.43	130,313.95	65,855.45	89,723.04	111,239.65	120,401.79
91-120 Days	99,478.72	58,108.60	98,216.57	41,231.51	36,057.92	35,468.13	53,235.98	20,793.18	9,918.58	64,096.92
121-150 Days	79,263.87	16,277.05	-	9,967.73	85,784.87	-	32,953.09	19,793.08	24,161.48	10,793.49
151-180 Days	35,655.50	36,204.79	-	32,173.81	-	36,640.03	-	76,316.62	-	10,855.71
181+ Days	219,682.14	163,959.41	243,276.74	208,706.81	210,044.21	231,204.90	181,560.26	120,787.88	141,803.46	70,908.26

Delinquency Status (% of Current Balance)

Current Portfolio Balance	5,531,956.70	4,833,779.50	4,415,327.58	4,062,805.72	3,806,827.29	3,494,699.81	3,011,140.84	2,751,264.61	2,470,006.91	2,154,008.78
	Apr-13	Apr-14	Apr-15	Apr-16	Apr-17	Apr-18	Apr-19	Apr-20	Apr-21	Apr-22
Current	79.07%	78.43%	77.75%	77.60%	72.82%	76.60%	76.52%	76.08%	74.13%	77.26%
1-30 Days	5.12%	3.65%	6.45%	10.47%	11.76%	7.96%	7.55%	6.93%	7.64%	2.92%
31-60 Days	4.83%	6.75%	4.70%	3.45%	4.27%	3.03%	4.85%	5.09%	6.61%	6.95%
61-90 Days	3.14%	5.49%	3.36%	1.30%	2.44%	3.73%	2.19%	3.26%	4.50%	5.59%
91-120 Days	1.80%	1.20%	2.22%	1.01%	0.95%	1.01%	1.77%	0.76%	0.40%	2.98%
121-150 Days	1.43%	0.34%	0.00%	0.25%	2.25%	0.00%	1.09%	0.72%	0.98%	0.50%
151-180 Days	0.64%	0.75%	0.00%	0.79%	0.00%	1.05%	0.00%	2.77%	0.00%	0.50%
181+ Days	3.97%	3.39%	5.51%	5.14%	5.52%	6.62%	6.03%	4.39%	5.74%	3.29%
Current - 90 Days	92.15%	94.32%	92.27%	92.81%	91.28%	91.32%	91.11%	91.36%	92.88%	92.73%
91-180 Days	3.88%	2.29%	2.22%	2.05%	3.20%	2.06%	2.86%	4.25%	1.38%	3.98%



Mortgages - La Hipotecaria El Salvador Migration Analysis (2006 Vintage)

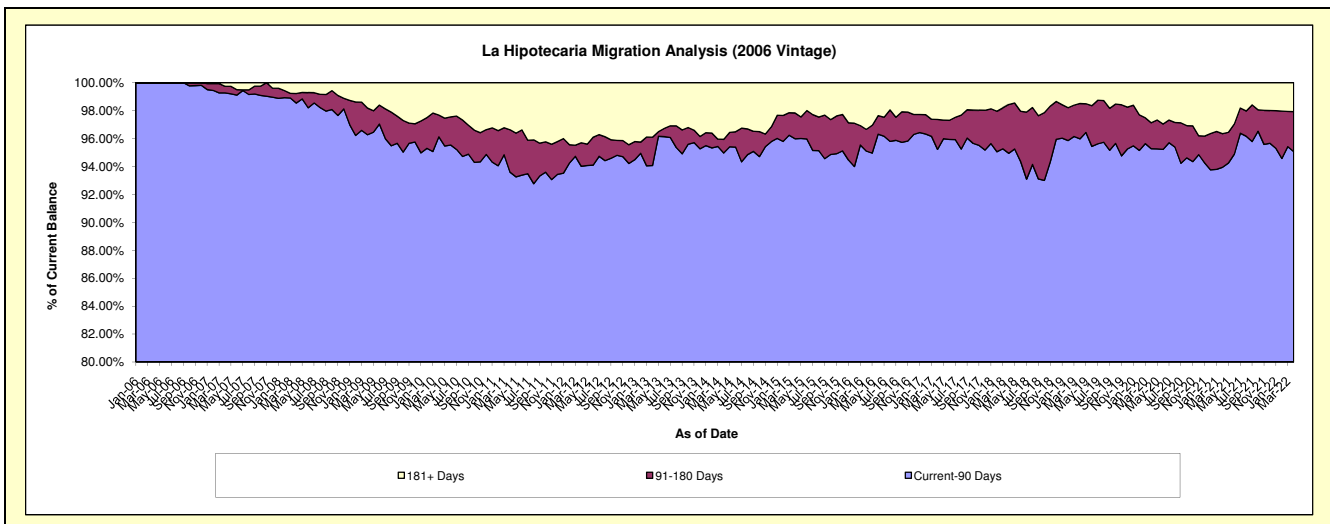
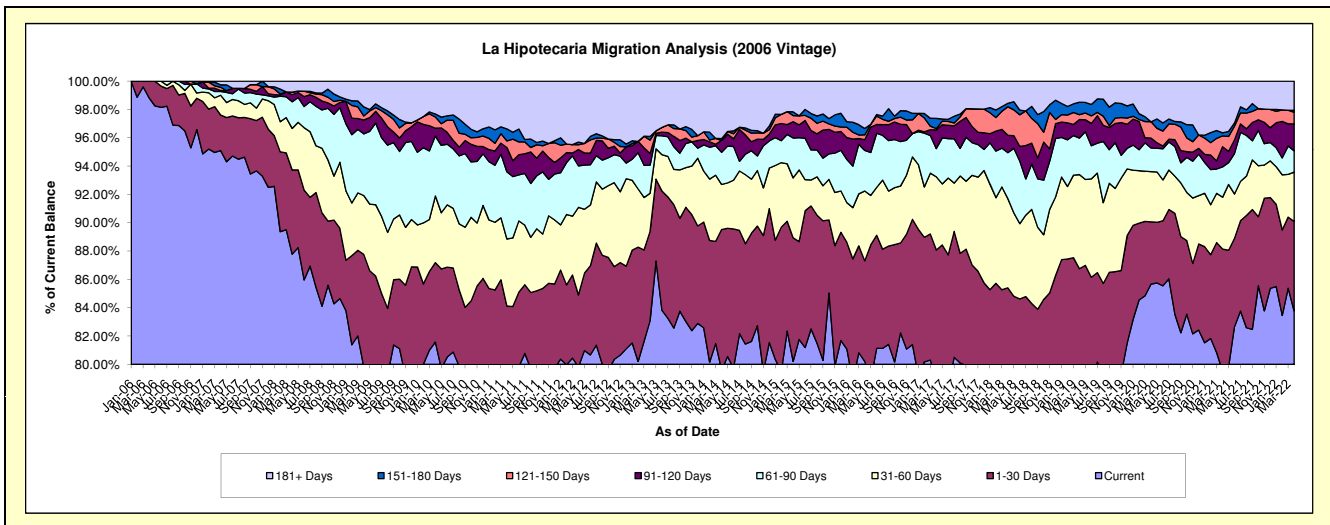
Delinquency Status (\$ of Current Balance)

Data Cutoff: 4/30/2022

Current Portfolio Balance	12,312,670.21	11,220,256.34	10,002,311.83	9,177,254.78	8,449,278.00	7,622,438.79	6,941,287.51	6,228,169.50	5,624,033.22	4,985,720.33
	Apr-13	Apr-14	Apr-15	Apr-16	Apr-17	Apr-18	Apr-19	Apr-20	Apr-21	Apr-22
Current	10,228,527.67	8,930,791.47	8,022,887.02	7,361,869.44	6,667,956.06	5,959,874.38	5,471,560.91	5,335,637.01	4,471,955.07	4,176,481.49
1-30 Days	777,429.02	1,113,364.12	872,528.80	651,021.17	773,809.93	549,937.92	550,368.40	273,389.74	485,409.02	315,239.58
31-60 Days	331,150.27	358,120.65	423,782.46	452,328.16	436,919.98	480,281.36	461,257.77	221,231.31	205,683.50	173,771.18
61-90 Days	245,432.79	253,578.45	281,879.63	263,274.99	167,850.95	247,373.05	179,211.99	103,827.72	120,412.40	74,257.01
91-120 Days	102,056.67	94,737.58	114,840.60	69,827.05	111,865.51	93,413.61	91,064.77	43,710.91	80,447.55	95,171.39
121-150 Days	115,974.68	-	43,208.22	30,848.06	8,269.55	153,850.97	23,558.99	71,803.27	42,665.32	41,017.90
151-180 Days	31,625.14	14,649.95	26,707.68	41,581.00	60,340.09	18,727.06	60,941.06	-	12,446.74	6,673.04
181+ Days	480,473.97	455,014.12	216,477.42	306,504.91	222,265.73	118,980.44	103,323.62	178,569.54	205,013.62	103,108.74

Delinquency Status (% of Current Balance)

Current Portfolio Balance	12,312,670.21	11,220,256.34	10,002,311.83	9,177,254.78	8,449,278.00	7,622,438.79	6,941,287.51	6,228,169.50	5,624,033.22	4,985,720.33
	Apr-13	Apr-14	Apr-15	Apr-16	Apr-17	Apr-18	Apr-19	Apr-20	Apr-21	Apr-22
Current	83.07%	79.60%	80.21%	80.22%	78.92%	78.19%	78.83%	85.67%	79.52%	83.77%
1-30 Days	6.31%	9.92%	8.72%	7.09%	9.16%	7.21%	7.93%	4.39%	8.63%	6.32%
31-60 Days	2.69%	3.19%	4.24%	4.93%	5.17%	6.30%	6.65%	3.55%	3.66%	3.49%
61-90 Days	1.99%	2.26%	2.82%	2.87%	1.99%	3.25%	2.58%	1.67%	2.14%	1.49%
91-120 Days	0.83%	0.84%	1.15%	0.76%	1.32%	1.23%	1.31%	0.70%	1.43%	1.91%
121-150 Days	0.94%	0.00%	0.43%	0.34%	0.10%	2.02%	0.34%	1.15%	0.76%	0.82%
151-180 Days	0.26%	0.13%	0.27%	0.45%	0.71%	0.25%	0.88%	0.00%	0.22%	0.13%
181+ Days	3.90%	4.06%	2.16%	3.34%	2.63%	1.56%	1.49%	2.87%	3.65%	2.07%
Current - 90 Days	94.07%	94.97%	95.99%	95.11%	95.23%	94.95%	95.98%	95.28%	93.94%	95.07%
91-180 Days	2.03%	0.97%	1.85%	1.55%	2.14%	3.49%	2.53%	1.85%	2.41%	2.87%



Mortgages - La Hipotecaria El Salvador Migration Analysis (2007 Vintage)

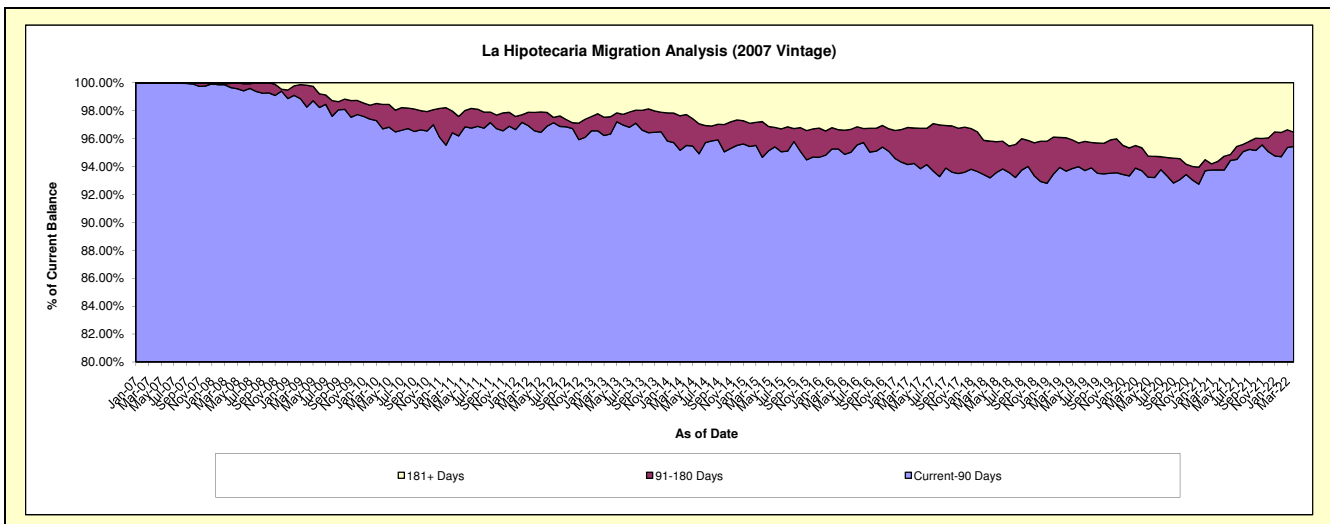
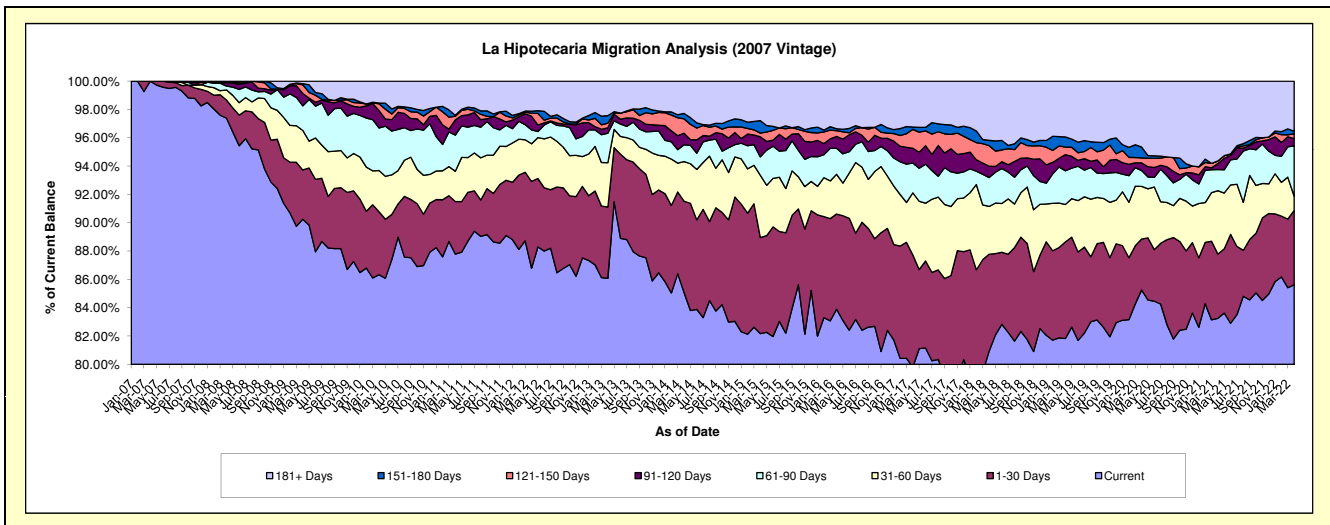
Delinquency Status (\$ of Current Balance)

Data Cutoff: 4/30/2022

Current Portfolio Balance	18,983,785.59	17,242,110.41	16,020,123.35	14,703,387.17	13,418,923.11	12,308,412.70	11,327,588.59	10,566,928.59	9,603,039.69	8,370,627.05
	Apr-13	Apr-14	Apr-15	Apr-16	Apr-17	Apr-18	Apr-19	Apr-20	Apr-21	Apr-22
Current	16,339,404.28	14,669,775.13	13,164,023.97	12,335,294.97	10,709,038.28	9,961,036.23	9,268,930.89	9,009,403.68	7,994,378.60	7,166,376.67
1-30 Days	957,535.15	1,110,470.35	1,087,248.03	988,974.67	1,063,172.63	843,627.53	772,872.21	379,517.58	435,961.76	439,857.25
31-60 Days	594,783.50	482,785.27	705,492.41	412,390.81	588,609.93	415,022.27	299,431.39	392,568.09	430,290.01	85,098.26
61-90 Days	394,225.25	204,728.78	207,241.49	269,682.92	282,630.33	250,566.19	269,737.94	118,848.28	142,919.47	297,027.36
91-120 Days	73,093.46	141,167.63	227,373.29	123,174.00	139,466.67	99,509.45	128,813.28	56,666.78	40,701.67	42,164.24
121-150 Days	61,677.56	174,831.69	41,451.64	59,865.94	179,017.67	178,095.86	60,655.53	37,446.76	18,078.02	29,614.50
151-180 Days	100,776.08	65,773.38	141,393.40	19,687.53	21,939.98	45,973.88	81,181.73	80,790.34	-	14,334.98
181+ Days	462,290.31	392,578.18	445,899.12	494,316.33	435,047.62	514,581.29	445,965.62	491,687.08	540,710.16	296,153.79

Delinquency Status (% of Current Balance)

Current Portfolio Balance	18,983,785.59	17,242,110.41	16,020,123.35	14,703,387.17	13,418,923.11	12,308,412.70	11,327,588.59	10,566,928.59	9,603,039.69	8,370,627.05
	Apr-13	Apr-14	Apr-15	Apr-16	Apr-17	Apr-18	Apr-19	Apr-20	Apr-21	Apr-22
Current	86.07%	85.08%	82.17%	83.89%	79.81%	80.93%	81.83%	85.26%	83.25%	85.61%
1-30 Days	5.04%	6.44%	6.79%	6.73%	7.92%	6.85%	6.82%	3.59%	4.54%	5.25%
31-60 Days	3.13%	2.80%	4.40%	2.80%	4.39%	3.37%	2.64%	3.72%	4.48%	1.02%
61-90 Days	2.08%	1.19%	1.29%	1.83%	2.11%	2.04%	1.12%	1.49%	1.49%	3.55%
91-120 Days	0.39%	0.82%	1.42%	0.84%	1.04%	0.81%	1.14%	0.54%	0.42%	0.50%
121-150 Days	0.32%	1.01%	0.26%	0.41%	1.33%	1.45%	0.54%	0.35%	0.19%	0.35%
151-180 Days	0.53%	0.38%	0.88%	0.13%	0.16%	0.37%	0.72%	0.76%	0.00%	0.17%
181+ Days	2.44%	2.28%	2.78%	3.36%	3.24%	4.18%	3.94%	4.65%	5.63%	3.54%
Current - 90 Days	96.32%	95.51%	94.66%	95.26%	94.22%	93.19%	93.67%	93.69%	93.76%	95.43%
91-180 Days	1.24%	2.21%	2.56%	1.38%	2.54%	2.63%	2.39%	1.66%	0.61%	1.03%



Mortgages - La Hipotecaria El Salvador Migration Analysis (2008 Vintage)

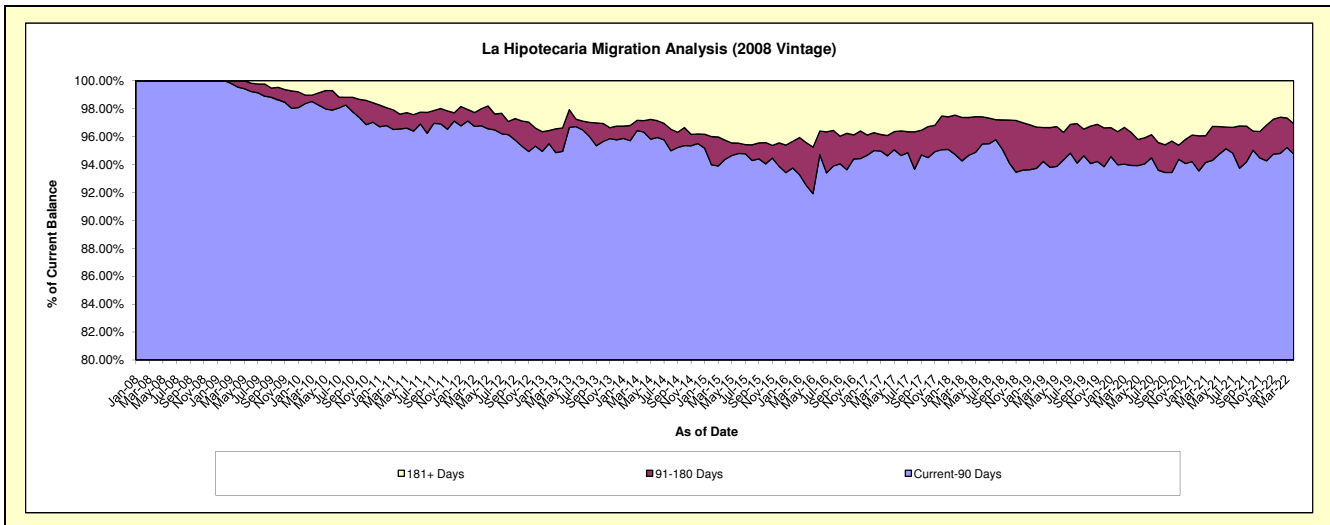
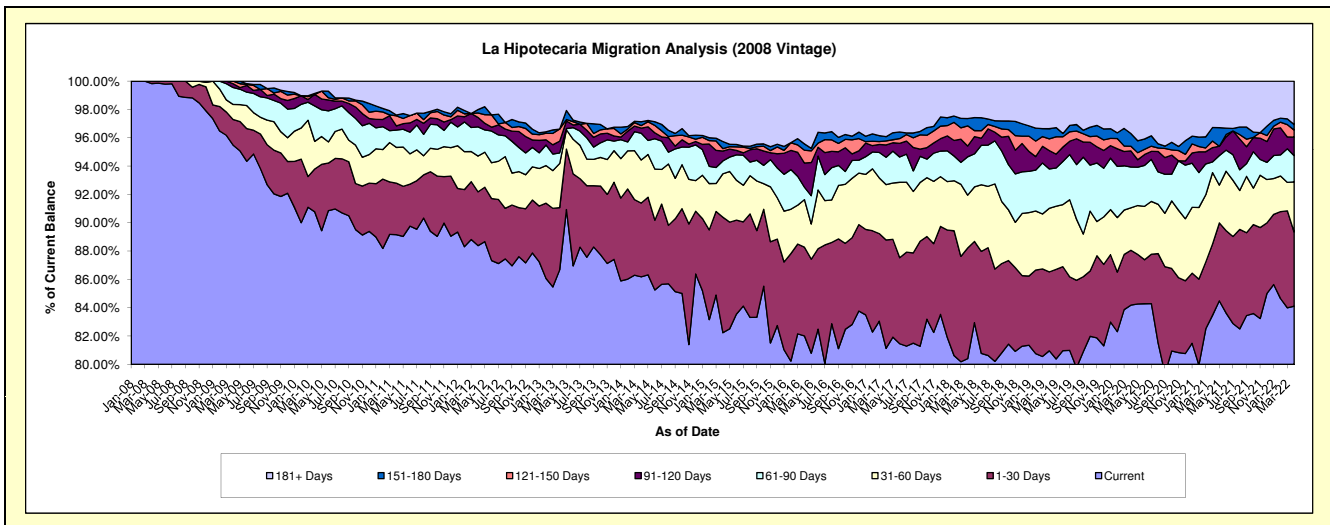
Delinquency Status (\$ of Current Balance)

Data Cutoff: 4/30/2022

Current Portfolio Balance	18,890,067.46	16,890,193.88	15,056,407.66	13,733,553.98	12,666,966.85	11,474,401.32	10,515,327.02	9,543,185.59	8,587,950.11	7,827,480.61
	Apr-13	Apr-14	Apr-15	Apr-16	Apr-17	Apr-18	Apr-19	Apr-20	Apr-21	Apr-22
Current	16,371,206.41	14,556,162.22	12,382,018.39	11,262,098.23	10,276,647.31	9,226,031.44	8,513,206.32	8,033,740.42	7,167,926.25	6,583,856.08
1-30 Days	830,988.26	880,243.20	1,227,924.82	861,448.46	969,154.59	896,462.38	585,998.51	369,999.49	431,822.55	409,369.12
31-60 Days	590,732.38	513,639.26	461,510.06	460,716.51	496,295.16	428,736.27	472,376.30	286,063.93	433,265.04	277,612.69
61-90 Days	140,809.63	319,445.50	137,078.46	120,999.10	244,467.45	310,717.56	292,051.43	274,658.42	65,143.91	144,990.10
91-120 Days	156,047.02	61,410.82	105,510.66	234,289.33	110,382.12	87,186.39	135,623.49	108,547.40	86,935.41	102,472.20
121-150 Days	161,734.49	29,847.75	25,249.98	124,475.56	35,701.70	163,282.42	88,138.36	32,145.91	39,483.00	38,402.14
151-180 Days	-	46,185.27	76,042.59	61,249.14	37,998.50	59,644.86	75,028.50	84,916.98	82,525.28	31,133.79
181+ Days	638,549.27	483,259.86	641,072.70	608,277.65	496,320.02	302,340.00	352,904.11	353,113.04	280,848.67	239,644.49

Delinquency Status (% of Current Balance)

Current Portfolio Balance	18,890,067.46	16,890,193.88	15,056,407.66	13,733,553.98	12,666,966.85	11,474,401.32	10,515,327.02	9,543,185.59	8,587,950.11	7,827,480.61
	Apr-13	Apr-14	Apr-15	Apr-16	Apr-17	Apr-18	Apr-19	Apr-20	Apr-21	Apr-22
Current	86.67%	86.18%	82.24%	82.00%	81.13%	80.41%	80.96%	84.18%	83.46%	84.11%
1-30 Days	4.40%	5.21%	8.16%	6.27%	7.65%	7.81%	5.57%	3.88%	5.03%	5.23%
31-60 Days	3.13%	3.04%	3.07%	3.35%	3.92%	3.74%	4.49%	3.00%	5.05%	3.55%
61-90 Days	0.75%	1.89%	0.91%	0.88%	1.93%	2.71%	2.78%	2.88%	0.76%	1.85%
91-120 Days	0.83%	0.36%	0.70%	1.71%	0.87%	0.76%	1.29%	1.14%	1.01%	1.31%
121-150 Days	0.86%	0.18%	0.17%	0.91%	0.28%	1.42%	0.84%	0.34%	0.46%	0.49%
151-180 Days	0.00%	0.27%	0.51%	0.45%	0.30%	0.52%	0.71%	0.89%	0.96%	0.40%
181+ Days	3.38%	2.86%	4.26%	4.43%	3.92%	2.63%	3.36%	3.70%	3.27%	3.06%
Current - 90 Days	94.94%	96.33%	94.37%	92.51%	94.63%	94.66%	93.80%	93.94%	94.30%	94.74%
91-180 Days	1.68%	0.81%	1.37%	3.06%	1.45%	2.70%	2.84%	2.36%	2.43%	2.20%



Mortgages - La Hipotecaria El Salvador Migration Analysis (2009 Vintage)

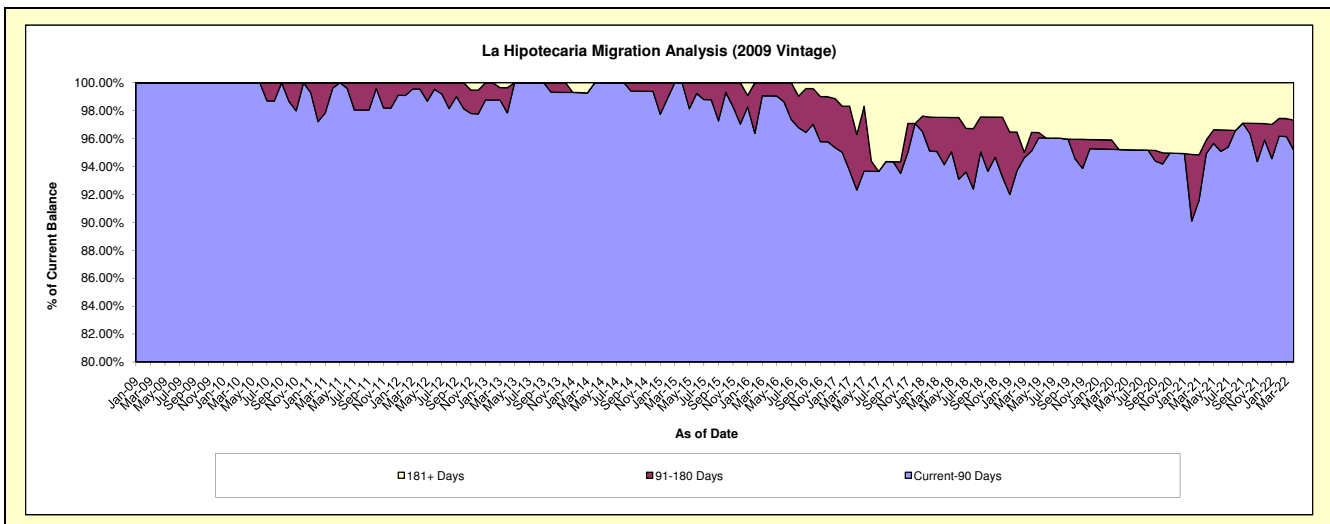
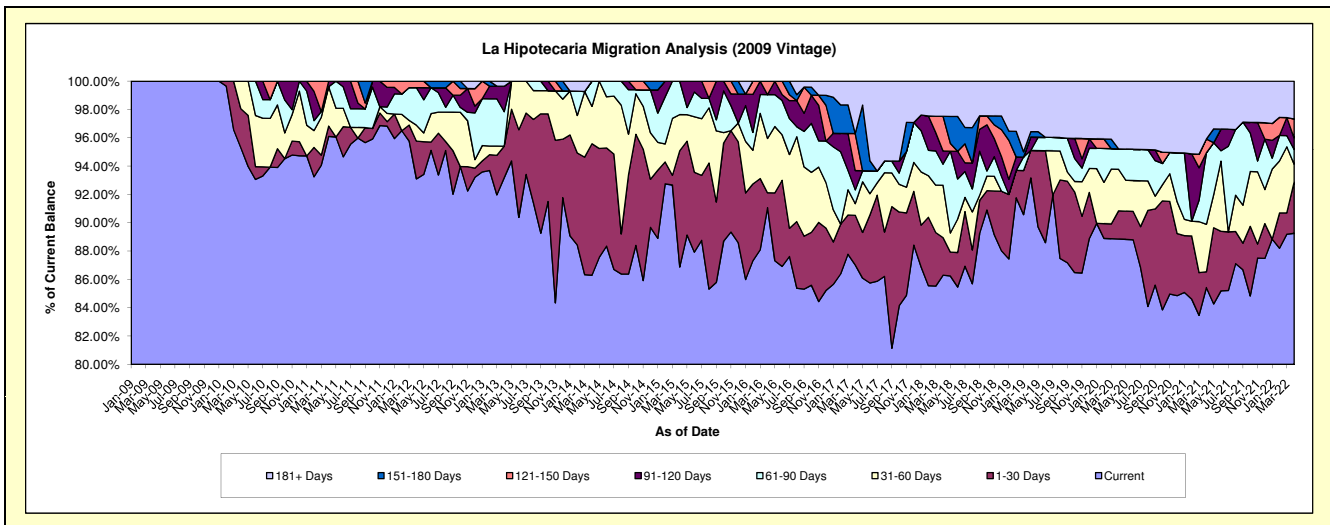
Delinquency Status (\$ of Current Balance)

Data Cutoff: 4/30/2022

Current Portfolio Balance	2,891,754.18	2,452,013.65	2,244,586.00	1,962,800.69	1,905,741.45	1,776,417.64	1,644,200.78	1,575,642.00	1,438,965.96	1,266,532.93
	Apr-13	Apr-14	Apr-15	Apr-16	Apr-17	Apr-18	Apr-19	Apr-20	Apr-21	Apr-22
Current	2,694,303.33	2,115,930.67	1,949,997.56	1,787,348.97	1,658,176.50	1,532,960.18	1,531,901.06	1,400,022.16	1,229,216.01	1,130,437.91
1-30 Days	64,623.10	227,746.71	184,200.78	20,739.19	67,074.34	47,122.63	31,940.29	31,325.07	16,031.67	45,801.21
31-60 Days	-	64,648.76	57,381.62	75,278.83	15,668.91	65,687.66	-	46,182.38	48,309.48	16,008.02
61-90 Days	70,468.86	43,687.51	53,006.04	60,811.62	18,489.82	26,473.30	-	22,783.64	72,563.83	13,078.75
91-120 Days	52,100.32	-	-	-	26,095.11	16,485.29	15,561.94	-	-	10,323.96
121-150 Days	-	-	-	18,622.08	49,695.26	43,550.09	-	-	14,001.51	16,969.48
151-180 Days	-	-	-	-	-	-	6,253.32	-	-	-
181+ Days	10,258.57	-	-	-	70,541.51	44,138.49	58,544.17	75,328.75	58,843.46	33,913.60

Delinquency Status (% of Current Balance)

Current Portfolio Balance	2,891,754.18	2,452,013.65	2,244,586.00	1,962,800.69	1,905,741.45	1,776,417.64	1,644,200.78	1,575,642.00	1,438,965.96	1,266,532.93
	Apr-13	Apr-14	Apr-15	Apr-16	Apr-17	Apr-18	Apr-19	Apr-20	Apr-21	Apr-22
Current	93.17%	86.29%	86.88%	91.06%	87.01%	86.30%	93.17%	88.85%	85.42%	89.25%
1-30 Days	2.23%	9.29%	8.21%	1.06%	3.52%	2.65%	1.94%	1.99%	1.11%	3.62%
31-60 Days	0.00%	2.64%	2.56%	3.84%	0.82%	3.70%	0.00%	2.93%	3.36%	1.26%
61-90 Days	2.44%	1.78%	2.36%	3.10%	0.97%	1.49%	0.00%	1.45%	5.04%	1.03%
91-120 Days	1.80%	0.00%	0.00%	0.00%	1.37%	0.93%	0.95%	0.00%	0.00%	0.82%
121-150 Days	0.00%	0.00%	0.00%	0.95%	2.61%	2.45%	0.00%	0.00%	0.97%	1.34%
151-180 Days	0.00%	0.00%	0.00%	0.00%	0.00%	0.00%	0.38%	0.00%	0.00%	0.00%
181+ Days	0.35%	0.00%	0.00%	0.00%	3.70%	2.48%	3.56%	4.78%	4.09%	2.68%
Current - 90 Days	97.84%	100.00%	100.00%	99.05%	92.32%	94.14%	95.11%	95.22%	94.94%	95.17%
91-180 Days	1.80%	0.00%	0.00%	0.95%	3.98%	3.38%	1.33%	0.00%	0.97%	2.15%



Mortgages - La Hipotecaria El Salvador Migration Analysis (2010 Vintage)

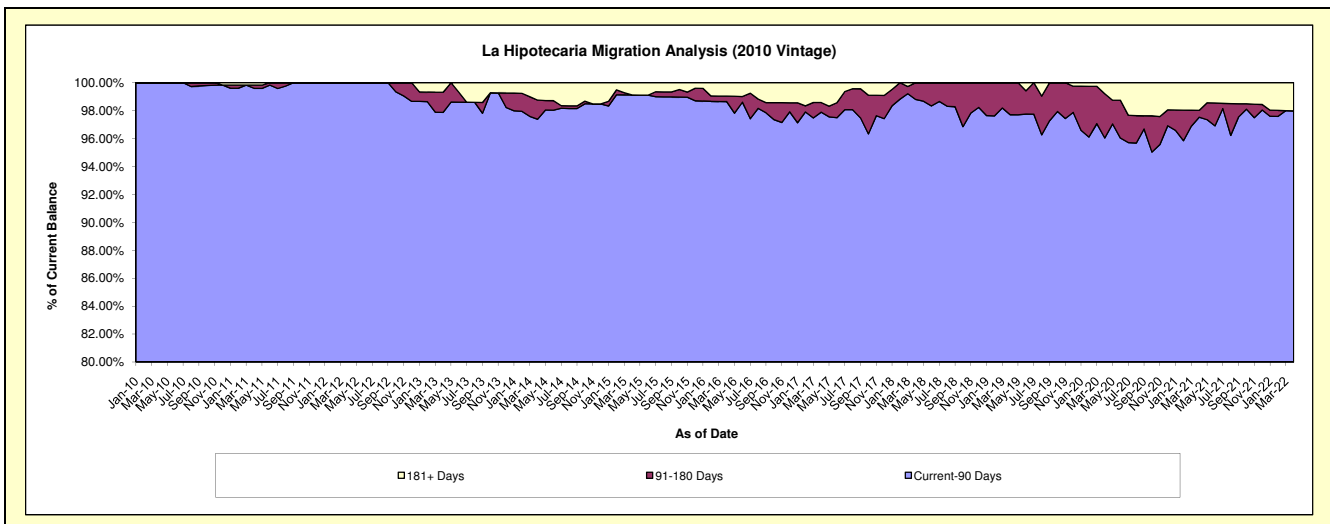
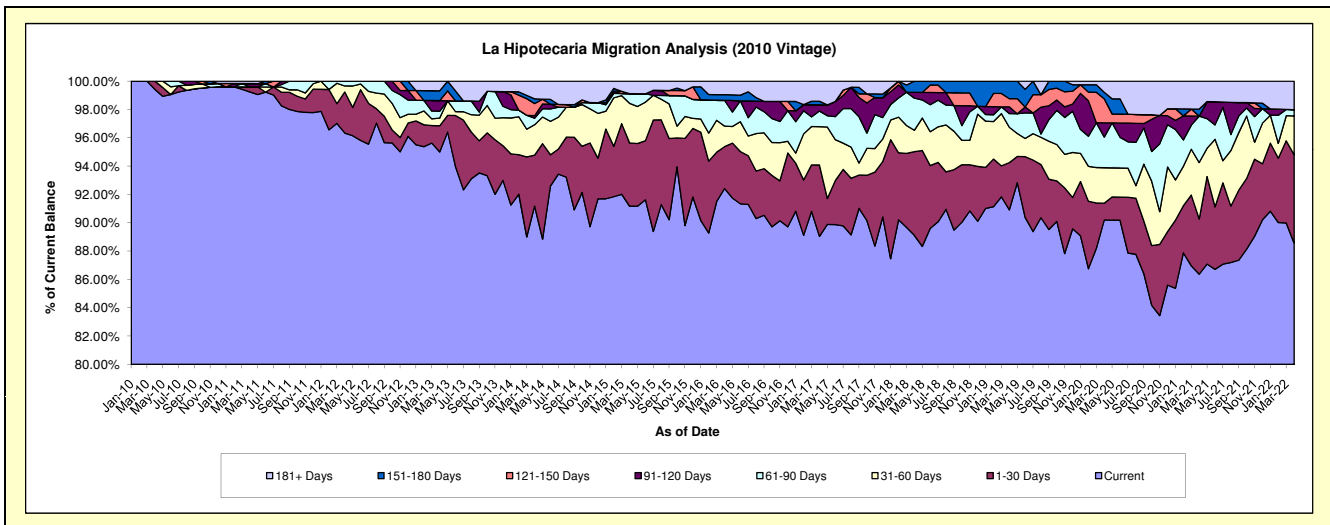
Delinquency Status (\$ of Current Balance)

Data Cutoff: 4/30/2022

Current Portfolio Balance	8,234,041.93	7,221,003.71	6,524,416.56	5,645,941.76	5,267,667.06	4,808,410.96	4,345,242.25	3,945,829.75	3,698,402.63	3,250,662.38
	Apr-13	Apr-14	Apr-15	Apr-16	Apr-17	Apr-18	Apr-19	Apr-20	Apr-21	Apr-22
Current	7,822,472.09	6,583,933.33	5,948,612.66	5,218,052.31	4,690,301.55	4,284,819.91	3,950,161.14	3,558,948.83	3,194,268.78	2,879,056.46
1-30 Days	152,140.75	259,919.34	290,895.06	166,694.83	265,507.99	284,109.61	145,070.28	46,731.78	144,151.66	202,315.95
31-60 Days	45,168.32	155,040.82	182,883.45	82,022.66	142,674.52	72,658.18	108,283.84	98,959.72	147,466.57	89,241.58
61-90 Days	39,504.72	33,327.46	44,554.48	102,836.48	58,120.74	109,214.18	42,194.93	85,242.23	121,127.63	14,482.80
91-120 Days	61,631.60	13,000.87	-	-	23,297.71	19,719.63	20,749.09	39,965.95	-	-
121-150 Days	-	61,631.60	-	-	-	-	24,969.55	66,719.99	-	-
151-180 Days	56,986.18	24,046.62	-	22,150.25	13,000.87	37,889.45	53,813.42	18,316.25	18,316.25	-
181+ Days	56,138.27	90,103.67	57,470.91	54,185.23	74,763.68	-	-	30,945.00	73,071.74	65,565.59

Delinquency Status (% of Current Balance)

Current Portfolio Balance	8,234,041.93	7,221,003.71	6,524,416.56	5,645,941.76	5,267,667.06	4,808,410.96	4,345,242.25	3,945,829.75	3,698,402.63	3,250,662.38
	Apr-13	Apr-14	Apr-15	Apr-16	Apr-17	Apr-18	Apr-19	Apr-20	Apr-21	Apr-22
Current	95.00%	91.18%	91.17%	92.42%	89.04%	89.11%	90.91%	90.20%	86.37%	88.57%
1-30 Days	1.85%	3.60%	4.46%	2.95%	5.04%	5.91%	3.34%	1.18%	3.90%	6.22%
31-60 Days	0.55%	2.15%	2.80%	1.45%	2.71%	1.51%	2.49%	2.51%	3.99%	2.75%
61-90 Days	0.48%	0.46%	0.68%	1.82%	1.10%	2.27%	0.97%	2.16%	3.28%	0.45%
91-120 Days	0.75%	0.18%	0.00%	0.00%	0.44%	0.41%	0.48%	1.01%	0.00%	0.00%
121-150 Days	0.00%	0.85%	0.00%	0.00%	0.00%	0.00%	0.57%	1.69%	0.00%	0.00%
151-180 Days	0.69%	0.33%	0.00%	0.39%	0.25%	0.79%	1.24%	0.46%	0.50%	0.00%
181+ Days	0.68%	1.25%	0.88%	0.96%	1.42%	0.00%	0.00%	0.78%	1.98%	2.02%
Current - 90 Days	97.88%	97.39%	99.12%	98.65%	97.89%	98.80%	97.71%	96.05%	97.53%	97.98%
91-180 Days	1.44%	1.37%	0.00%	0.39%	0.69%	1.20%	2.29%	3.17%	0.50%	0.00%



Mortgages - La Hipotecaria El Salvador Migration Analysis (2011 Vintage)

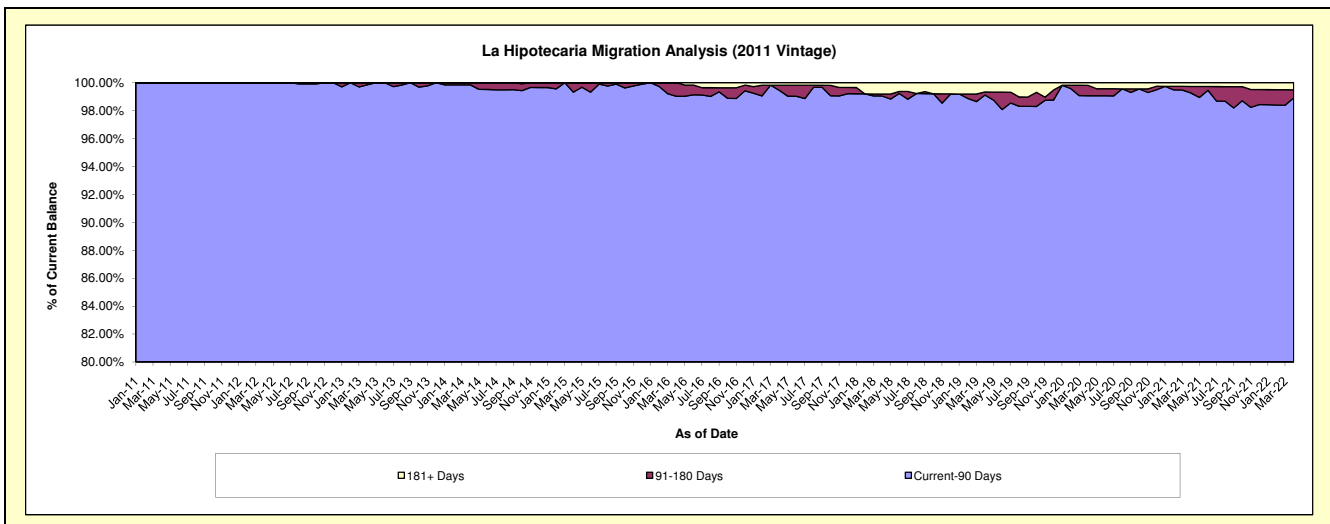
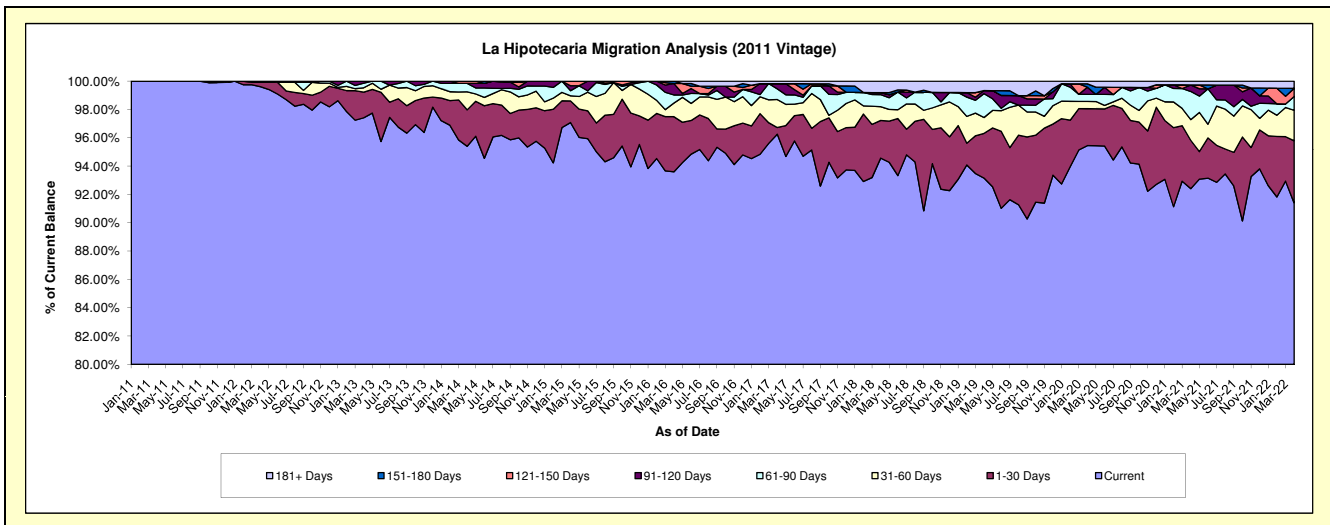
Delinquency Status (\$ of Current Balance)

Data Cutoff: 4/30/2022

Current Portfolio Balance	15,734,579.88	14,499,494.79	13,147,864.99	12,091,852.27	11,557,467.34	10,381,834.45	9,606,549.57	8,744,257.68	7,887,550.80	7,023,876.18
	Apr-13	Apr-14	Apr-15	Apr-16	Apr-17	Apr-18	Apr-19	Apr-20	Apr-21	Apr-22
Current	15,327,302.95	13,832,296.87	12,763,806.72	11,317,608.77	11,124,597.34	9,817,477.25	8,949,043.23	8,346,335.48	7,288,822.69	6,420,122.50
1-30 Days	285,572.84	373,805.56	200,566.20	471,418.11	54,533.81	276,262.83	303,264.88	228,036.18	269,395.62	308,103.97
31-60 Days	48,501.12	183,804.47	47,568.86	115,221.44	228,650.10	101,370.83	107,762.34	44,597.47	115,284.08	151,158.24
61-90 Days	50,867.51	87,252.43	47,512.79	70,166.05	86,953.81	88,126.99	162,026.64	44,021.89	156,717.39	68,691.89
91-120 Days	22,335.46	-	45,972.15	97,143.89	42,438.27	14,798.29	20,948.23	44,162.98	36,382.79	-
121-150 Days	-	22,335.46	42,438.27	-	-	-	-	-	-	40,079.49
151-180 Days	-	-	-	20,294.01	-	-	-	20,948.23	-	-
181+ Days	-	-	-	-	20,294.01	83,798.26	63,504.25	16,155.45	20,948.23	35,720.09

Delinquency Status (% of Current Balance)

Current Portfolio Balance	15,734,579.88	14,499,494.79	13,147,864.99	12,091,852.27	11,557,467.34	10,381,834.45	9,606,549.57	8,744,257.68	7,887,550.80	7,023,876.18
	Apr-13	Apr-14	Apr-15	Apr-16	Apr-17	Apr-18	Apr-19	Apr-20	Apr-21	Apr-22
Current	97.41%	95.40%	97.08%	93.60%	96.25%	94.56%	93.16%	95.45%	92.41%	91.40%
1-30 Days	1.81%	2.58%	1.53%	3.90%	0.47%	2.66%	3.16%	2.61%	3.42%	4.39%
31-60 Days	0.31%	1.27%	0.36%	0.95%	1.98%	0.98%	1.12%	0.51%	1.46%	2.15%
61-90 Days	0.32%	0.60%	0.36%	0.58%	0.75%	0.85%	1.69%	0.50%	1.99%	0.98%
91-120 Days	0.14%	0.00%	0.35%	0.80%	0.37%	0.14%	0.22%	0.51%	0.46%	0.00%
121-150 Days	0.00%	0.15%	0.32%	0.00%	0.00%	0.00%	0.00%	0.00%	0.00%	0.57%
151-180 Days	0.00%	0.00%	0.00%	0.17%	0.00%	0.00%	0.00%	0.24%	0.00%	0.00%
181+ Days	0.00%	0.00%	0.00%	0.00%	0.18%	0.81%	0.66%	0.18%	0.27%	0.51%
Current - 90 Days	99.86%	99.85%	99.33%	99.03%	99.46%	99.05%	99.12%	99.07%	99.27%	98.92%
91-180 Days	0.14%	0.15%	0.67%	0.97%	0.37%	0.14%	0.22%	0.74%	0.46%	0.57%



Mortgages - La Hipotecaria El Salvador Migration Analysis (2012 Vintage)

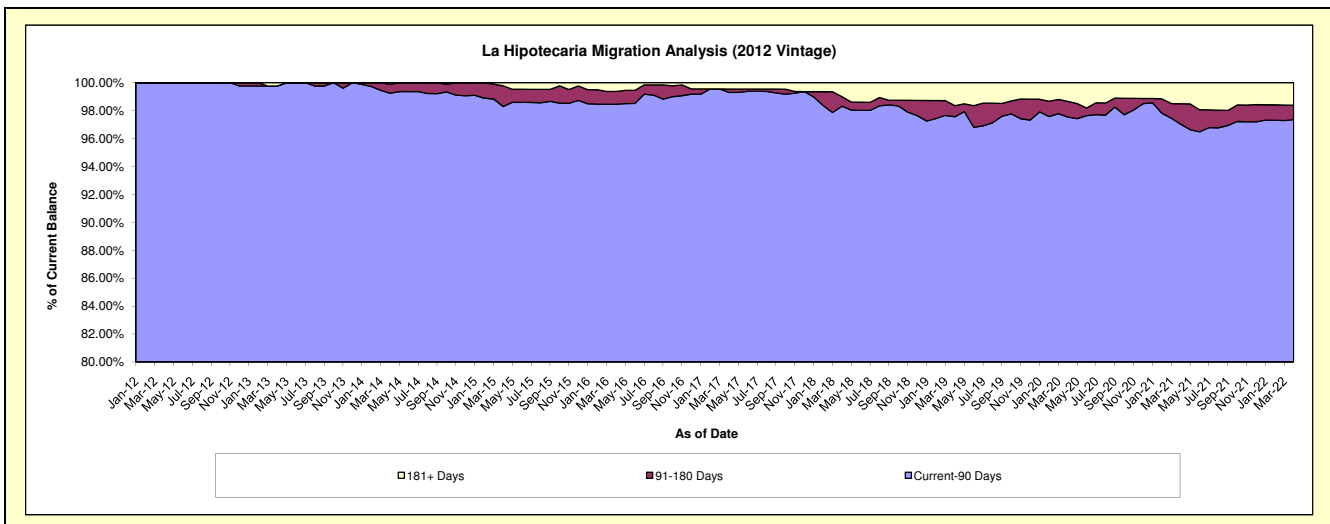
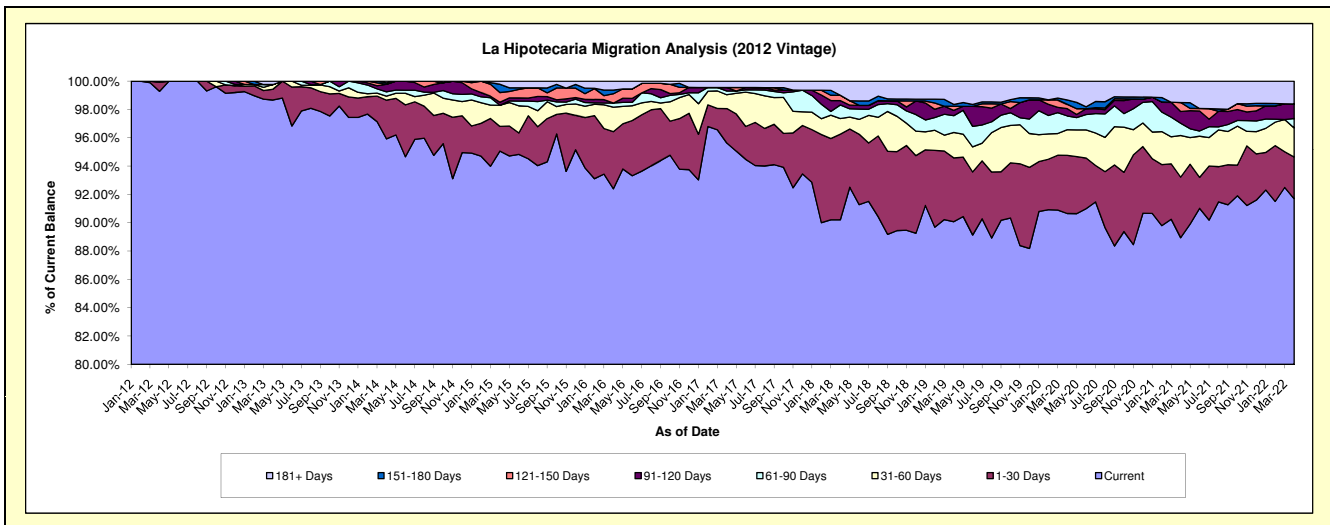
Delinquency Status (\$ of Current Balance)

Data Cutoff: 4/30/2022

Current Portfolio Balance	24,470,232.69	23,203,137.50	20,922,577.63	19,198,362.95	17,996,964.18	16,797,995.49	15,668,311.24	14,482,356.55	12,983,587.08	11,773,555.97
	Apr-13	Apr-14	Apr-15	Apr-16	Apr-17	Apr-18	Apr-19	Apr-20	Apr-21	Apr-22
Current	24,143,982.62	22,257,622.42	19,890,275.55	17,739,274.97	17,210,619.24	15,153,695.82	14,113,337.07	13,128,974.45	11,548,581.76	10,796,219.87
1-30 Days	187,653.80	633,700.24	363,413.93	774,320.44	438,302.99	1,015,415.02	706,479.22	594,575.61	555,499.90	346,933.45
31-60 Days	80,584.68	67,151.05	312,888.06	332,297.05	175,412.35	185,713.84	280,702.25	261,759.48	382,049.08	241,372.52
61-90 Days	-	70,936.79	-	55,863.06	47,978.51	160,815.83	186,233.34	141,726.87	111,481.59	78,312.07
91-120 Days	-	122,101.46	44,941.11	-	43,819.83	51,444.27	58,442.73	74,361.77	107,762.32	120,976.35
121-150 Days	-	-	143,106.57	125,597.04	-	63,578.67	45,663.16	44,745.24	82,626.05	-
151-180 Days	-	23,280.87	122,101.46	50,785.78	-	-	20,670.71	43,320.54	-	-
181+ Days	58,011.59	28,344.67	45,850.95	120,224.61	80,831.26	167,332.04	256,782.76	192,892.59	195,586.38	189,741.71

Delinquency Status (% of Current Balance)

Current Portfolio Balance	24,470,232.69	23,203,137.50	20,922,577.63	19,198,362.95	17,996,964.18	16,797,995.49	15,668,311.24	14,482,356.55	12,983,587.08	11,773,555.97
	Apr-13	Apr-14	Apr-15	Apr-16	Apr-17	Apr-18	Apr-19	Apr-20	Apr-21	Apr-22
Current	98.67%	95.93%	95.07%	92.40%	95.63%	90.21%	90.08%	90.65%	88.95%	91.70%
1-30 Days	0.77%	2.73%	1.74%	4.03%	2.44%	6.04%	4.51%	4.11%	4.28%	2.95%
31-60 Days	0.33%	0.29%	1.50%	1.73%	0.97%	1.11%	1.79%	1.81%	2.94%	2.05%
61-90 Days	0.00%	0.31%	0.00%	0.29%	0.27%	0.96%	1.19%	0.98%	0.86%	0.67%
91-120 Days	0.00%	0.53%	0.21%	0.00%	0.24%	0.31%	0.37%	0.51%	0.83%	1.03%
121-150 Days	0.00%	0.00%	0.68%	0.65%	0.00%	0.38%	0.29%	0.31%	0.64%	0.00%
151-180 Days	0.00%	0.10%	0.58%	0.26%	0.00%	0.00%	0.13%	0.30%	0.00%	0.00%
181+ Days	0.24%	0.12%	0.22%	0.63%	0.45%	1.00%	1.64%	1.33%	1.51%	1.61%
Current - 90 Days	99.76%	99.25%	98.30%	98.46%	99.31%	98.32%	97.56%	97.55%	97.03%	97.36%
91-180 Days	0.00%	0.63%	1.48%	0.92%	0.24%	0.68%	0.80%	1.12%	1.47%	1.03%



Mortgages - La Hipotecaria El Salvador Migration Analysis (2013 Vintage)

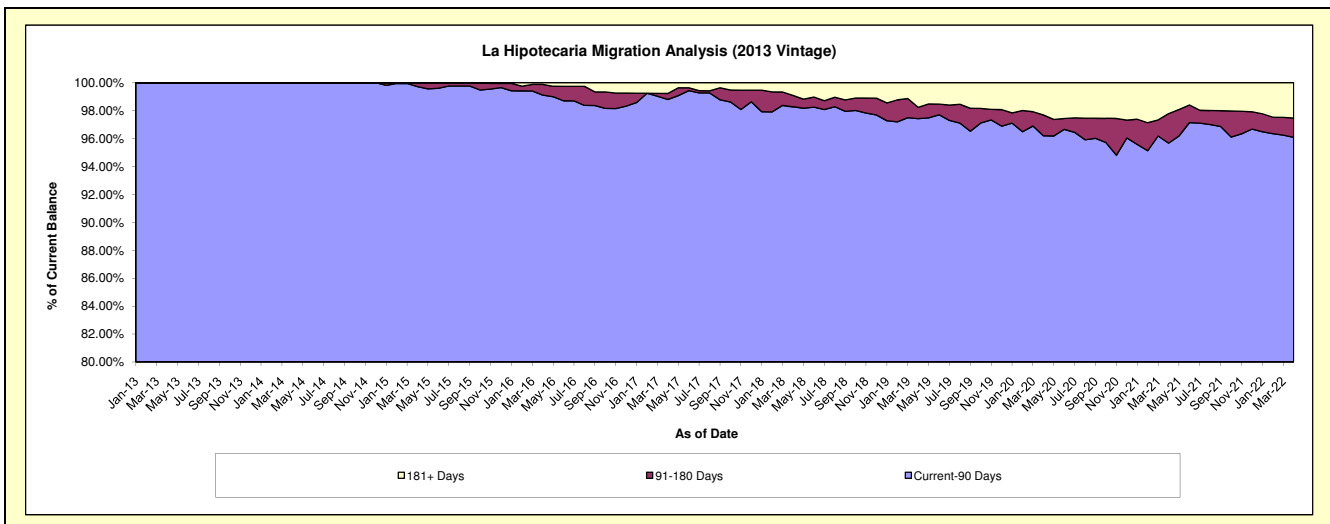
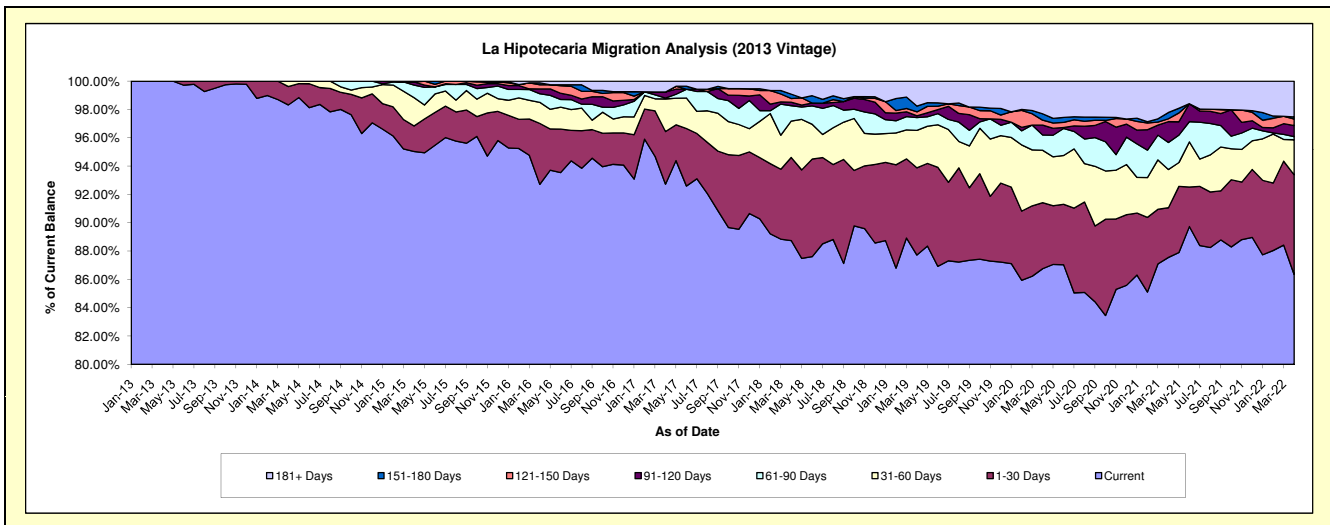
Delinquency Status (\$ of Current Balance)

Data Cutoff: 4/30/2022

Current Portfolio Balance	9,849,858.64	29,068,930.34	27,700,880.23	26,009,725.55	24,332,590.96	22,656,269.72	20,745,311.20	18,664,515.63	17,153,395.31	15,076,708.53
	Apr-13	Apr-14	Apr-15	Apr-16	Apr-17	Apr-18	Apr-19	Apr-20	Apr-21	Apr-22
Current	9,849,858.64	28,580,927.39	26,326,577.39	24,114,893.68	22,563,212.01	20,106,259.81	18,197,615.26	16,192,786.26	15,018,364.47	13,018,849.83
1-30 Days	-	377,770.27	498,893.87	1,118,541.45	903,393.67	1,329,614.88	1,277,753.77	870,433.47	601,852.81	1,060,851.56
31-60 Days	-	110,232.68	552,012.98	387,935.75	560,917.23	582,101.33	549,399.94	691,134.51	463,032.45	373,438.51
61-90 Days	-	-	246,740.54	157,438.99	14,246.95	246,657.18	186,906.71	200,527.91	328,307.16	33,728.58
91-120 Days	-	-	60,701.10	89,068.83	104,052.27	55,681.52	25,450.98	130,409.36	251,572.99	116,653.22
121-150 Days	-	-	-	76,590.81	-	58,800.23	58,597.03	65,563.17	34,580.52	70,090.44
151-180 Days	-	-	15,954.35	33,429.06	-	69,972.50	85,153.41	83,286.55	76,260.48	22,687.31
181+ Days	-	-	-	31,826.98	186,768.83	207,182.27	364,434.10	430,374.40	379,424.43	380,409.08

Delinquency Status (% of Current Balance)

Current Portfolio Balance	9,849,858.64	29,068,930.34	27,700,880.23	26,009,725.55	24,332,590.96	22,656,269.72	20,745,311.20	18,664,515.63	17,153,395.31	15,076,708.53
	Apr-13	Apr-14	Apr-15	Apr-16	Apr-17	Apr-18	Apr-19	Apr-20	Apr-21	Apr-22
Current	100.00%	98.32%	95.04%	92.71%	92.73%	88.74%	87.72%	86.76%	87.55%	86.35%
1-30 Days	0.00%	1.30%	1.80%	4.30%	3.71%	5.87%	6.16%	4.66%	3.51%	7.04%
31-60 Days	0.00%	0.38%	1.99%	1.49%	2.31%	2.57%	2.65%	3.70%	2.70%	2.48%
61-90 Days	0.00%	0.00%	0.89%	0.61%	0.06%	1.09%	0.90%	1.07%	1.91%	0.22%
91-120 Days	0.00%	0.00%	0.22%	0.34%	0.43%	0.25%	0.12%	0.70%	1.47%	0.77%
121-150 Days	0.00%	0.00%	0.00%	0.29%	0.00%	0.26%	0.28%	0.35%	0.20%	0.46%
151-180 Days	0.00%	0.00%	0.06%	0.13%	0.00%	0.31%	0.41%	0.45%	0.44%	0.15%
181+ Days	0.00%	0.00%	0.00%	0.12%	0.77%	0.91%	1.76%	2.31%	2.21%	2.52%
Current - 90 Days	100.00%	100.00%	99.72%	99.11%	98.80%	98.27%	97.43%	96.20%	95.88%	96.09%
91-180 Days	0.00%	0.00%	0.28%	0.77%	0.43%	0.81%	0.82%	1.50%	2.11%	1.39%



Mortgages - La Hipotecaria El Salvador Migration Analysis (2014 Vintage)

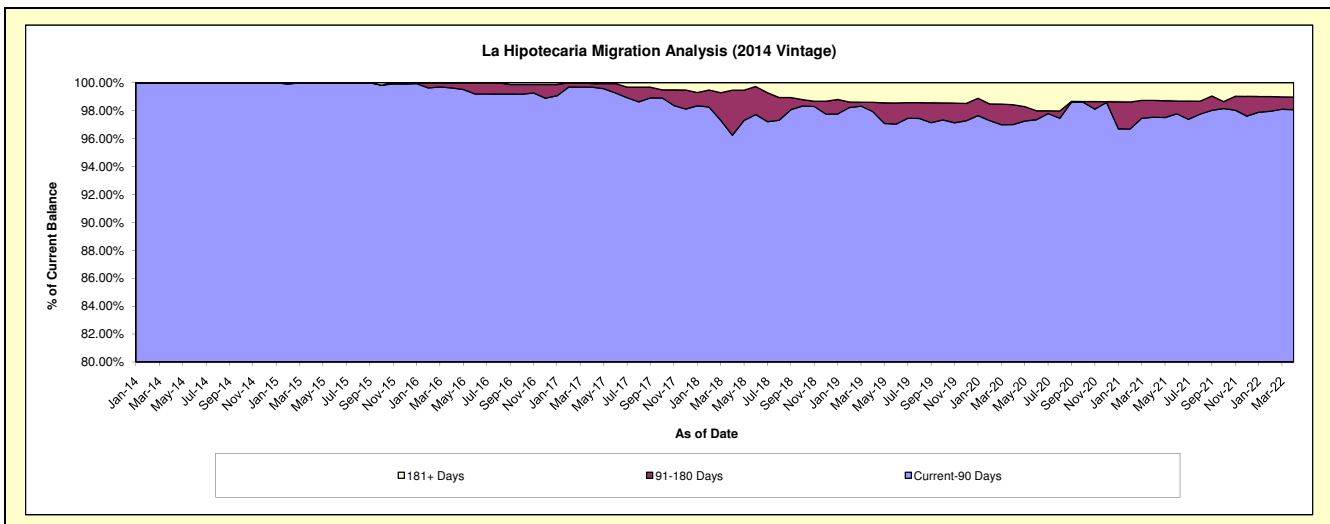
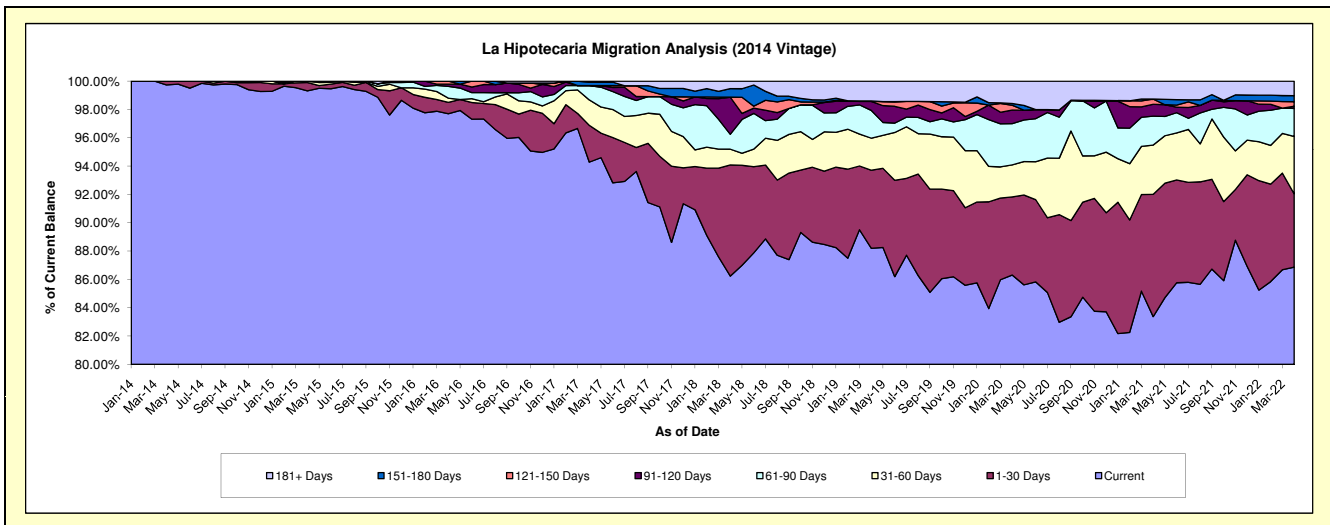
Delinquency Status (\$ of Current Balance)

Data Cutoff: 4/30/2022

Current Portfolio Balance	-	9,631,699.52	27,602,785.56	26,197,505.70	24,761,382.19	23,334,270.59	20,831,123.45	19,114,845.89	17,759,690.50	15,525,615.49
	Apr-14	Apr-15	Apr-16	Apr-17	Apr-18	Apr-19	Apr-20	Apr-21	Apr-22	
Current	9,606,249.62	27,415,208.85	25,595,254.85	23,345,881.37	20,121,428.86	18,372,677.44	16,498,494.54	14,807,273.88	13,485,631.05	
1-30 Days	25,449.90	161,194.88	211,342.01	643,238.35	1,831,848.45	1,148,614.94	1,053,763.66	1,532,619.57	804,748.97	
31-60 Days	-	26,381.83	76,432.05	443,663.38	260,179.45	471,661.07	432,910.40	618,922.96	629,215.12	
61-90 Days	-	-	216,929.70	250,652.64	244,625.30	408,768.87	556,811.90	362,409.34	306,662.60	
91-120 Days	-	-	42,373.83	-	612,387.28	131,325.13	182,689.50	147,836.94	23,840.76	
121-150 Days	-	-	55,173.26	-	-	-	64,602.00	65,955.55	50,251.12	
151-180 Days	-	-	-	61,254.01	140,547.21	6,564.40	24,242.57	-	65,955.55	
181+ Days	-	-	-	16,692.44	123,254.04	291,511.60	301,331.32	224,672.26	159,310.32	

Delinquency Status (% of Current Balance)

Current Portfolio Balance	-	9,631,699.52	27,602,785.56	26,197,505.70	24,761,382.19	23,334,270.59	20,831,123.45	19,114,845.89	17,759,690.50	15,525,615.49
	Apr-14	Apr-15	Apr-16	Apr-17	Apr-18	Apr-19	Apr-20	Apr-21	Apr-22	
Current	99.74%	99.32%	97.70%	94.28%	86.23%	88.20%	86.31%	83.38%	86.86%	
1-30 Days	0.26%	0.58%	0.81%	2.60%	7.85%	5.51%	5.51%	8.63%	5.18%	
31-60 Days	0.00%	0.10%	0.29%	1.79%	1.12%	2.26%	2.26%	3.48%	4.05%	
61-90 Days	0.00%	0.00%	0.83%	1.01%	1.05%	1.96%	2.91%	2.04%	1.98%	
91-120 Days	0.00%	0.00%	0.16%	0.00%	2.62%	0.63%	0.96%	0.83%	0.15%	
121-150 Days	0.00%	0.00%	0.21%	0.00%	0.00%	0.00%	0.34%	0.37%	0.32%	
151-180 Days	0.00%	0.00%	0.00%	0.25%	0.80%	0.03%	0.13%	0.00%	0.42%	
181+ Days	0.00%	0.00%	0.00%	0.07%	0.53%	1.40%	1.58%	1.27%	1.03%	
Current - 90 Days	100.00%	100.00%	99.63%	99.69%	96.25%	97.94%	97.00%	97.53%	98.07%	
91-180 Days	0.00%	0.00%	0.37%	0.25%	3.23%	0.66%	1.42%	1.20%	0.90%	



Mortgages - La Hipotecaria El Salvador Migration Analysis (2015 Vintage)

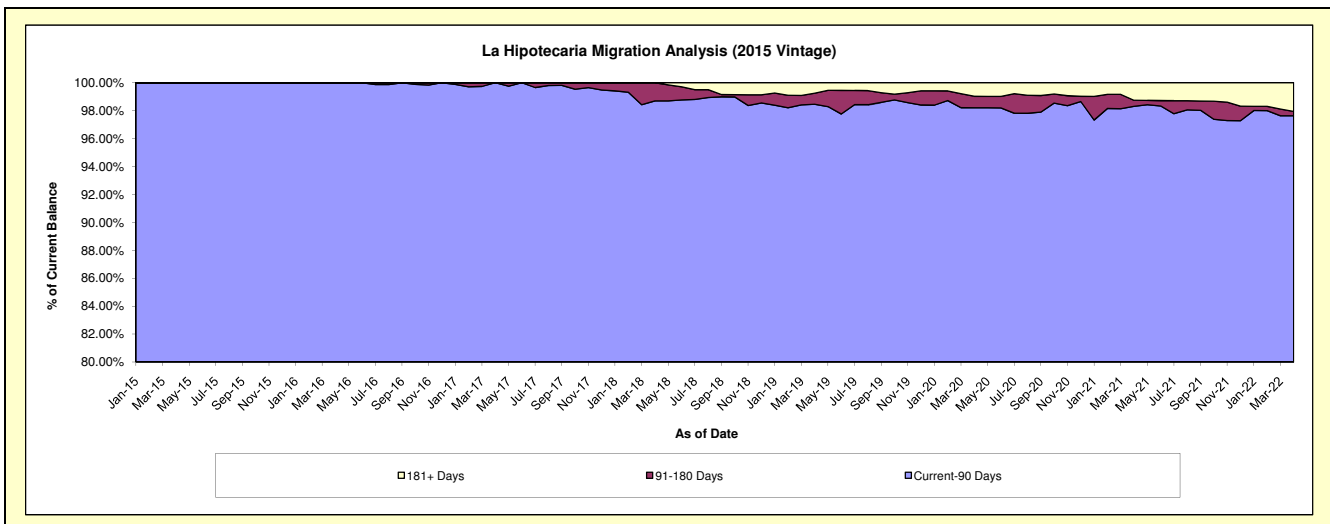
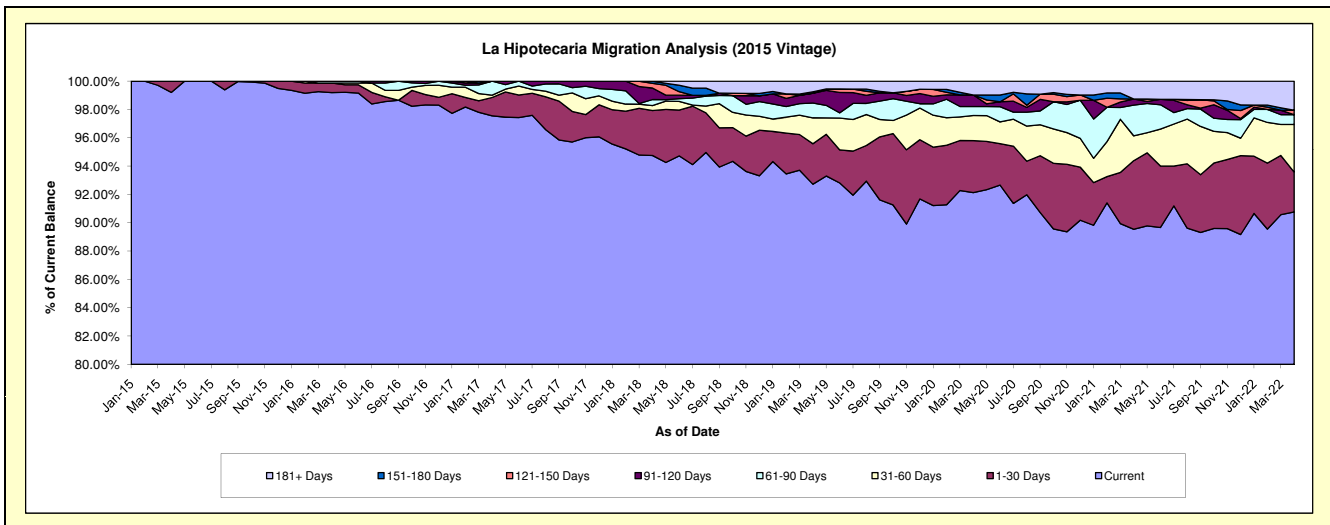
Delinquency Status (\$ of Current Balance)

Data Cutoff: 4/30/2022

Current Portfolio Balance	-	-	6,731,794.71	23,440,227.90	22,211,018.33	21,009,012.86	19,450,504.19	17,949,395.84	16,494,452.27	15,092,985.51
	Apr-15	Apr-16	Apr-17	Apr-18	Apr-19	Apr-20	Apr-21	Apr-22		
Current	6,678,269.99	23,250,354.52	21,668,163.32	19,906,180.94	18,034,754.24	16,536,764.69	14,769,686.62	13,698,105.66		
1-30 Days	53,524.72	158,842.33	286,805.46	666,481.70	555,825.09	659,079.48	798,975.06	426,654.27		
31-60 Days	-	-	36,809.37	74,587.15	356,525.88	317,972.69	289,186.90	506,309.70		
61-90 Days	-	31,031.05	219,240.18	88,691.39	203,024.57	114,326.67	357,366.62	104,494.88		
91-120 Days	-	-	-	170,988.37	134,619.59	146,524.34	71,637.74	-		
121-150 Days	-	-	-	69,009.51	-	-	-	47,763.85		
151-180 Days	-	-	-	33,073.80	19,452.20	-	-	-		
181+ Days	-	-	-	-	146,302.62	174,727.97	207,599.33	309,657.15		

Delinquency Status (% of Current Balance)

Current Portfolio Balance	-	-	6,731,794.71	23,440,227.90	22,211,018.33	21,009,012.86	19,450,504.19	17,949,395.84	16,494,452.27	15,092,985.51
	Apr-15	Apr-16	Apr-17	Apr-18	Apr-19	Apr-20	Apr-21	Apr-22		
Current	99.20%	99.19%	97.56%	94.75%	92.72%	92.13%	89.54%	90.76%		
1-30 Days	0.80%	0.68%	1.29%	3.17%	2.86%	3.67%	4.84%	2.83%		
31-60 Days	0.00%	0.00%	0.17%	0.36%	1.83%	1.77%	1.75%	3.35%		
61-90 Days	0.00%	0.13%	0.99%	0.42%	1.04%	0.64%	2.17%	0.69%		
91-120 Days	0.00%	0.00%	0.00%	0.81%	0.69%	0.82%	0.43%	0.00%		
121-150 Days	0.00%	0.00%	0.00%	0.33%	0.00%	0.00%	0.00%	0.32%		
151-180 Days	0.00%	0.00%	0.00%	0.16%	0.10%	0.00%	0.00%	0.00%		
181+ Days	0.00%	0.00%	0.00%	0.00%	0.75%	0.97%	1.26%	2.05%		
Current - 90 Days	100.00%	100.00%	100.00%	98.70%	98.46%	98.21%	98.31%	97.63%		
91-180 Days	0.00%	0.00%	0.00%	1.30%	0.79%	0.82%	0.43%	0.32%		



Mortgages - La Hipotecaria El Salvador Migration Analysis (2016 Vintage)

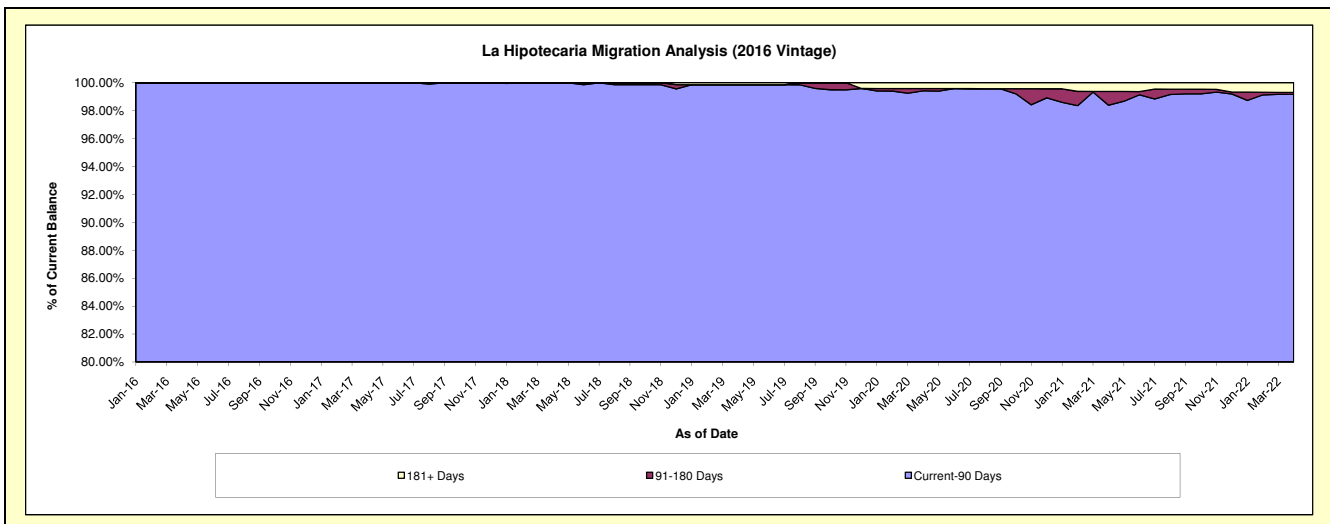
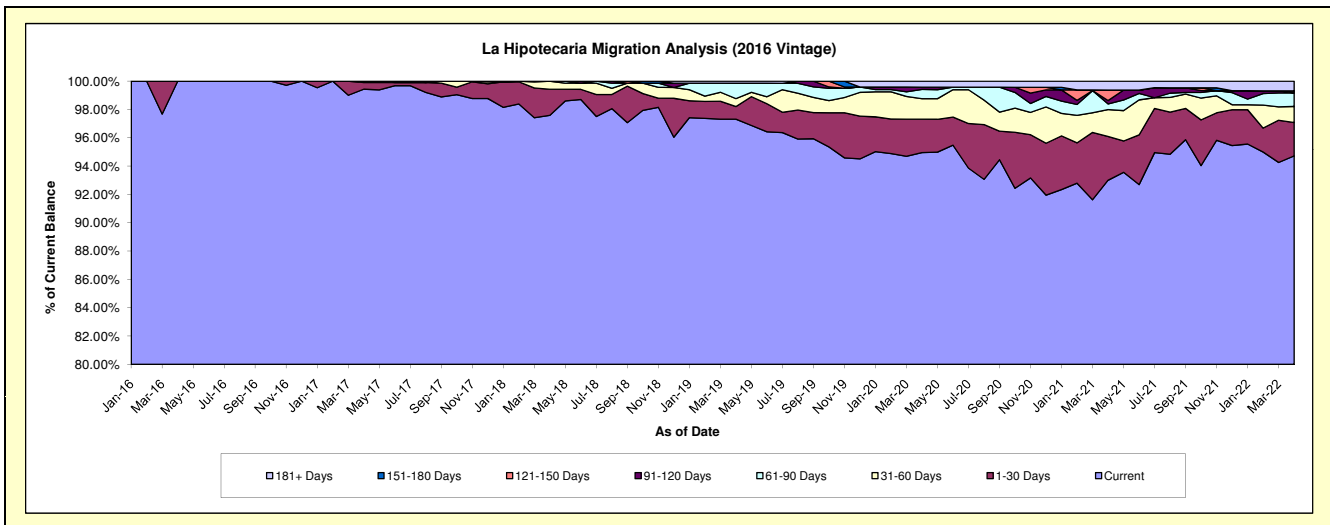
Delinquency Status (\$ of Current Balance)

Data Cutoff: 4/30/2022

Current Portfolio Balance	-	-	-	8,922,049.78	23,396,755.70	22,588,963.31	21,624,891.78	20,034,721.66	19,041,830.97	17,173,364.83
	Apr-16	Apr-17	Apr-18	Apr-19	Apr-20	Apr-21	Apr-22			
Current	8,922,049.78	23,264,331.18	22,042,978.89	21,044,919.50	19,024,756.10	17,709,017.29	16,266,783.00			
1-30 Days	-	110,750.52	416,627.02	192,195.24	471,872.09	589,203.16	405,149.05			
31-60 Days	-	21,674.00	129,357.40	121,537.95	290,546.61	361,807.00	194,709.92			
61-90 Days	-	-	-	234,613.59	131,787.09	76,128.64	163,563.98			
91-120 Days	-	-	-	-	31,736.97	44,498.00	-			
121-150 Days	-	-	-	-	-	142,238.26	24,688.65			
151-180 Days	-	-	-	-	-	-	-			
181+ Days	-	-	-	31,625.50	84,022.80	118,938.62	118,470.23			

Delinquency Status (% of Current Balance)

Current Portfolio Balance	-	-	-	8,922,049.78	23,396,755.70	22,588,963.31	21,624,891.78	20,034,721.66	19,041,830.97	17,173,364.83
	Apr-16	Apr-17	Apr-18	Apr-19	Apr-20	Apr-21	Apr-22			
Current	100.00%	99.43%	97.58%	97.32%	94.96%	93.00%	94.72%			
1-30 Days	0.00%	0.47%	1.84%	0.89%	2.36%	3.09%	2.36%			
31-60 Days	0.00%	0.09%	0.57%	0.56%	1.45%	1.90%	1.13%			
61-90 Days	0.00%	0.00%	0.00%	1.08%	0.66%	0.40%	0.95%			
91-120 Days	0.00%	0.00%	0.00%	0.00%	0.16%	0.23%	0.00%			
121-150 Days	0.00%	0.00%	0.00%	0.00%	0.00%	0.75%	0.14%			
151-180 Days	0.00%	0.00%	0.00%	0.00%	0.00%	0.00%	0.00%			
181+ Days	0.00%	0.00%	0.00%	0.15%	0.42%	0.62%	0.69%			
Current - 90 Days	100.00%	100.00%	100.00%	99.85%	99.42%	98.39%	99.17%			
91-180 Days	0.00%	0.00%	0.00%	0.00%	0.16%	0.98%	0.14%			



Mortgages - La Hipotecaria El Salvador Migration Analysis (2017 Vintage)

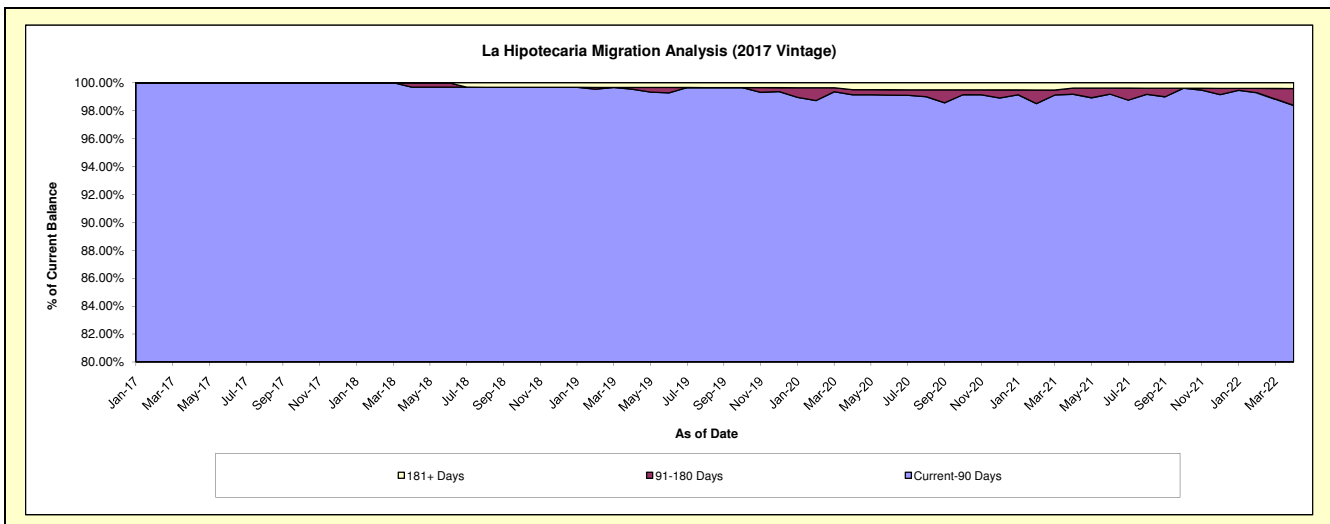
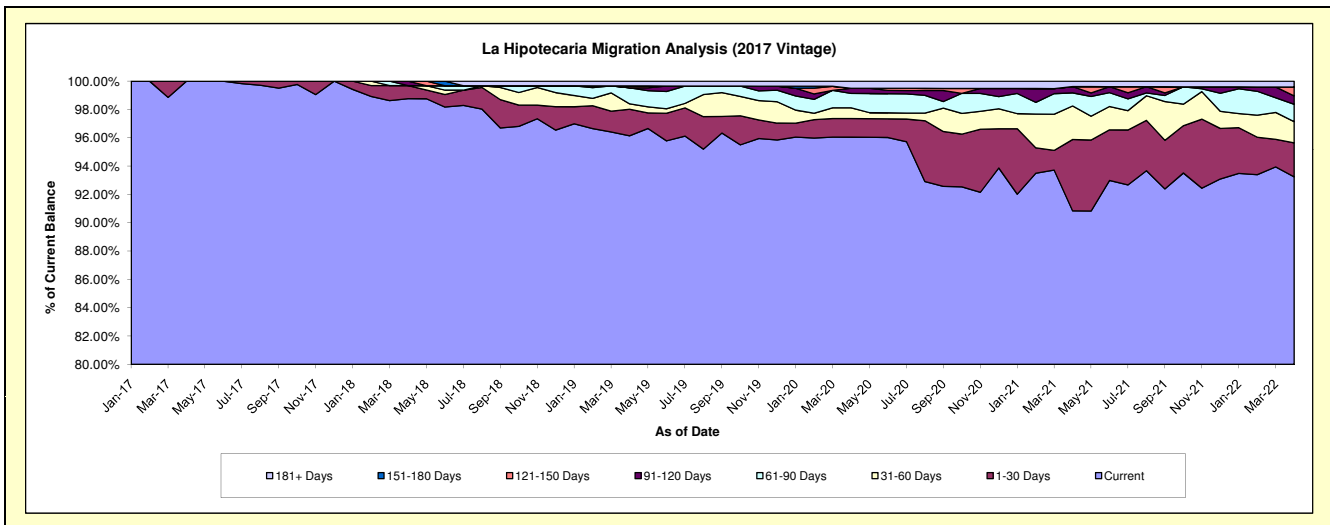
Delinquency Status (\$ of Current Balance)

Data Cutoff: 4/30/2022

Current Portfolio Balance	-	-	-	-	6,494,776.07	18,818,299.63	17,605,515.23	16,367,165.57	15,473,085.70	14,346,638.83
					Apr-17	Apr-18	Apr-19	Apr-20	Apr-21	Apr-22
Current					6,494,776.07	18,585,834.72	16,926,715.30	15,719,777.26	14,056,523.24	13,377,030.47
1-30 Days					-	173,064.91	330,413.93	214,778.72	779,272.38	344,874.79
31-60 Days					-	-	66,237.52	124,452.86	365,801.78	215,095.15
61-90 Days					-	-	200,263.62	166,102.43	143,814.93	175,284.09
91-120 Days					-	59,400.00	-	60,169.44	68,273.37	85,184.15
121-150 Days					-	-	22,484.86	-	-	89,770.18
151-180 Days					-	-	-	-	-	-
181+ Days					-	-	59,400.00	81,884.86	59,400.00	59,400.00

Delinquency Status (% of Current Balance)

Current Portfolio Balance	-	-	-	-	6,494,776.07	18,818,299.63	17,605,515.23	16,367,165.57	15,473,085.70	14,346,638.83
					Apr-17	Apr-18	Apr-19	Apr-20	Apr-21	Apr-22
Current					100.00%	98.76%	96.14%	96.04%	90.84%	93.24%
1-30 Days					0.00%	0.92%	1.88%	1.31%	5.04%	2.40%
31-60 Days					0.00%	0.00%	0.38%	0.76%	2.36%	1.50%
61-90 Days					0.00%	0.00%	1.14%	1.01%	0.93%	1.22%
91-120 Days					0.00%	0.32%	0.00%	0.37%	0.44%	0.59%
121-150 Days					0.00%	0.00%	0.13%	0.00%	0.00%	0.63%
151-180 Days					0.00%	0.00%	0.00%	0.00%	0.00%	0.00%
181+ Days					0.00%	0.00%	0.34%	0.50%	0.38%	0.41%
Current - 90 Days					100.00%	99.68%	99.53%	99.13%	99.17%	98.37%
91-180 Days					0.00%	0.32%	0.13%	0.37%	0.44%	1.22%



Mortgages - La Hipotecaria El Salvador Migration Analysis (2018 Vintage)

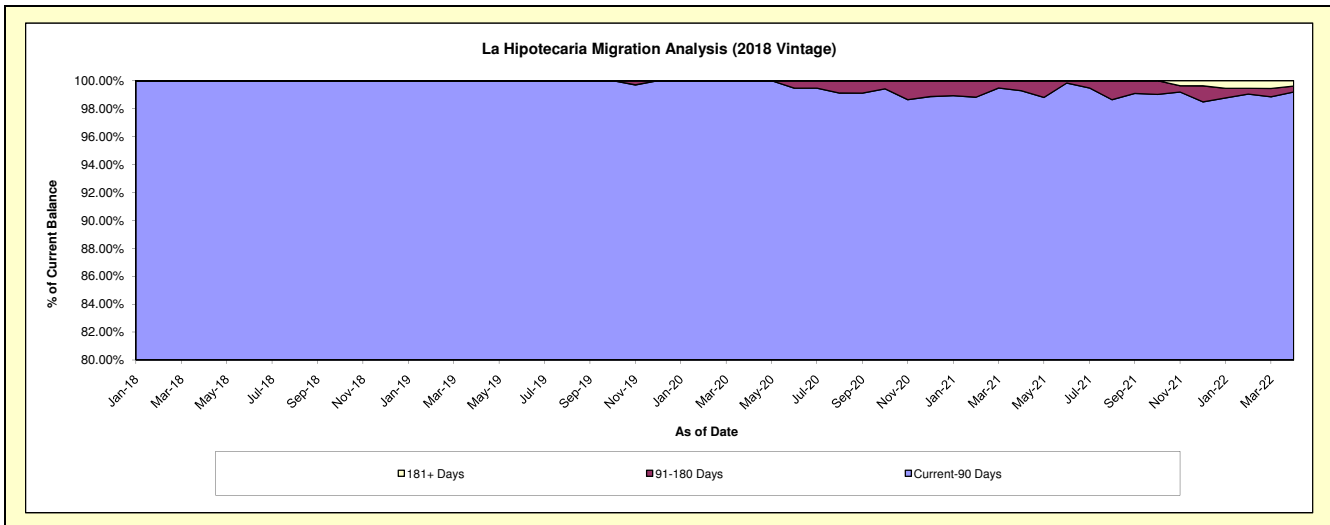
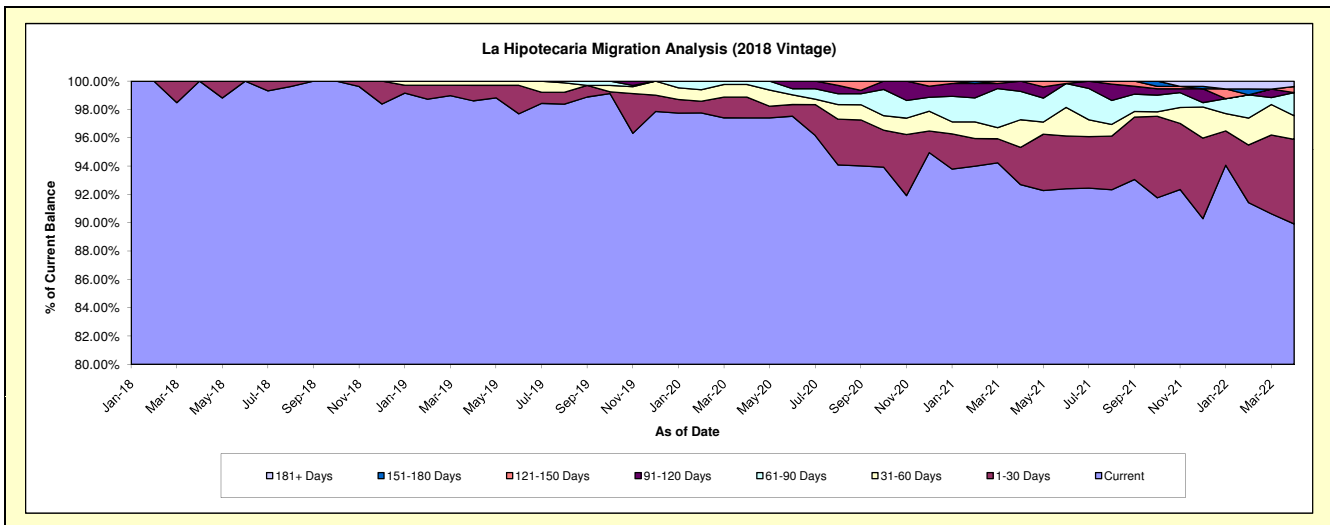
Delinquency Status (\$ of Current Balance)

Data Cutoff: 4/30/2022

Current Portfolio Balance	-	-	-	-	-	5,696,695.89	23,097,982.77	22,337,497.63	21,532,217.41	19,812,880.42
						Apr-18	Apr-19	Apr-20	Apr-21	Apr-22
Current						5,696,695.89	22,776,930.17	21,758,552.33	19,960,053.92	17,814,360.39
1-30 Days						-	253,175.19	327,572.99	565,407.88	1,185,002.35
31-60 Days						-	67,877.41	199,789.39	420,207.20	329,918.38
61-90 Days						-	-	51,582.92	431,483.05	324,507.07
91-120 Days						-	-	-	155,065.36	-
121-150 Days						-	-	-	-	83,463.39
151-180 Days						-	-	-	-	-
181+ Days						-	-	-	-	75,628.84

Delinquency Status (% of Current Balance)

Current Portfolio Balance	-	-	-	-	-	5,696,695.89	23,097,982.77	22,337,497.63	21,532,217.41	19,812,880.42
						Apr-18	Apr-19	Apr-20	Apr-21	Apr-22
Current						100.00%	98.61%	97.41%	92.70%	89.91%
1-30 Days						0.00%	1.10%	1.47%	2.63%	5.98%
31-60 Days						0.00%	0.29%	0.89%	1.95%	1.67%
61-90 Days						0.00%	0.00%	0.23%	2.00%	1.64%
91-120 Days						0.00%	0.00%	0.00%	0.72%	0.00%
121-150 Days						0.00%	0.00%	0.00%	0.00%	0.42%
151-180 Days						0.00%	0.00%	0.00%	0.00%	0.00%
181+ Days						0.00%	0.00%	0.00%	0.00%	0.38%
Current - 90 Days						100.00%	100.00%	100.00%	99.28%	99.20%
91-180 Days						0.00%	0.00%	0.00%	0.72%	0.42%



Mortgages - La Hipotecaria El Salvador Migration Analysis (2019 Vintage)

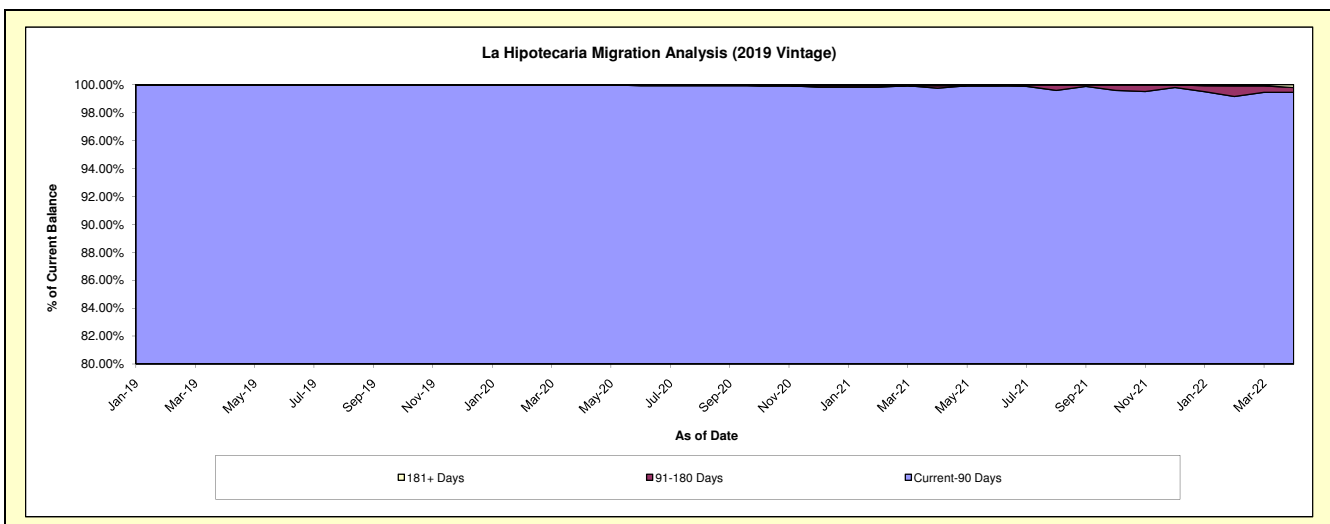
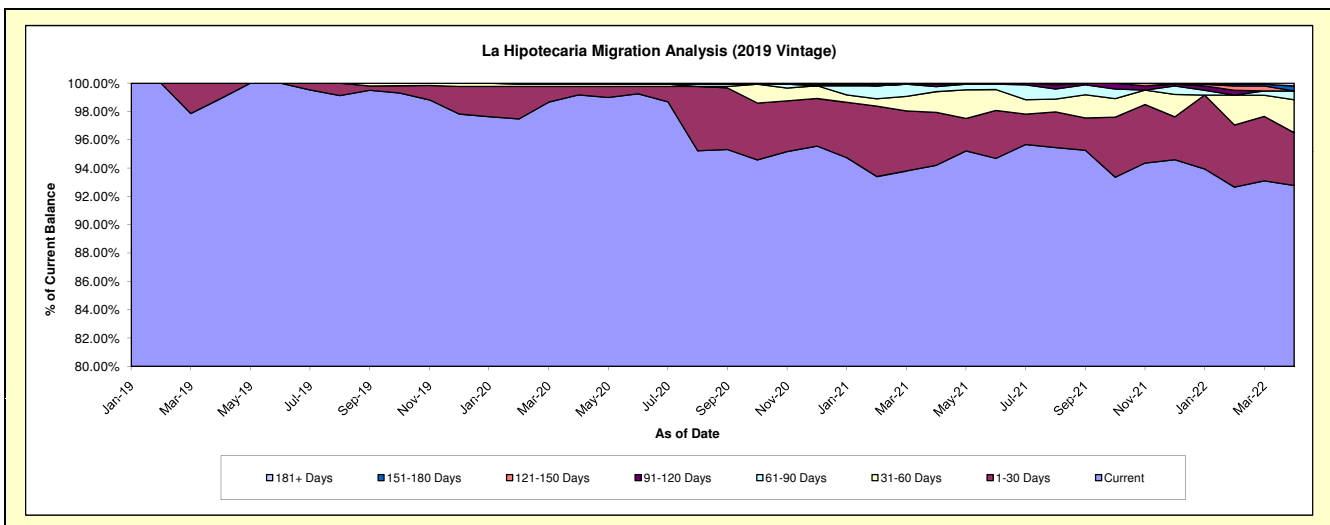
Delinquency Status (\$ of Current Balance)

Data Cutoff: 4/30/2022

Current Portfolio Balance	-	-	-	-	-	-	-	9,297,405.78	26,360,710.30	24,757,050.24	22,361,968.62
								Apr-19	Apr-20	Apr-21	Apr-22
Current								9,195,884.38	26,140,829.10	23,321,592.56	20,746,419.59
1-30 Days								101,521.40	159,335.97	925,131.39	833,683.17
31-60 Days								-	42,000.00	361,956.14	520,598.68
61-90 Days								-	18,545.23	87,824.92	138,719.46
91-120 Days								-	-	42,000.00	-
121-150 Days								-	-	-	-
151-180 Days								-	-	-	76,988.61
181+ Days								-	-	18,545.23	45,559.11

Delinquency Status (% of Current Balance)

Current Portfolio Balance	-	-	-	-	-	-	-	9,297,405.78	26,360,710.30	24,757,050.24	22,361,968.62
								Apr-19	Apr-20	Apr-21	Apr-22
Current								98.91%	99.17%	94.20%	92.78%
1-30 Days								1.09%	0.60%	3.74%	3.73%
31-60 Days								0.00%	0.16%	1.46%	2.33%
61-90 Days								0.00%	0.07%	0.35%	0.62%
91-120 Days								0.00%	0.00%	0.17%	0.00%
121-150 Days								0.00%	0.00%	0.00%	0.00%
151-180 Days								0.00%	0.00%	0.00%	0.34%
181+ Days								0.00%	0.00%	0.07%	0.20%
Current - 90 Days								100.00%	100.00%	99.76%	99.45%
91-180 Days								0.00%	0.00%	0.17%	0.34%



Mortgages - La Hipotecaria El Salvador Migration Analysis (2020 Vintage)

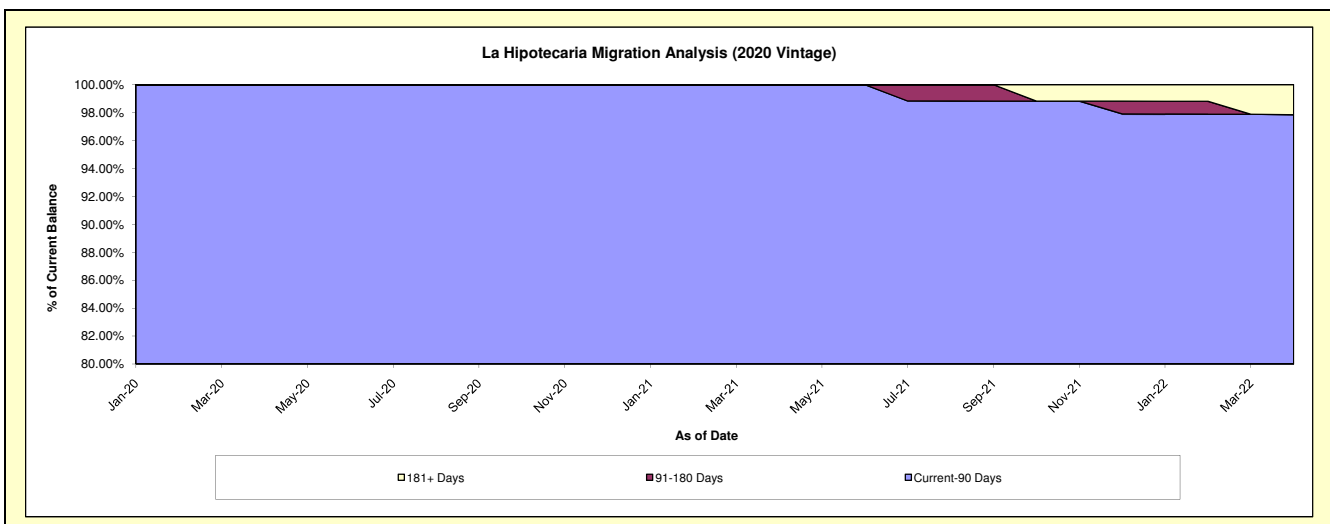
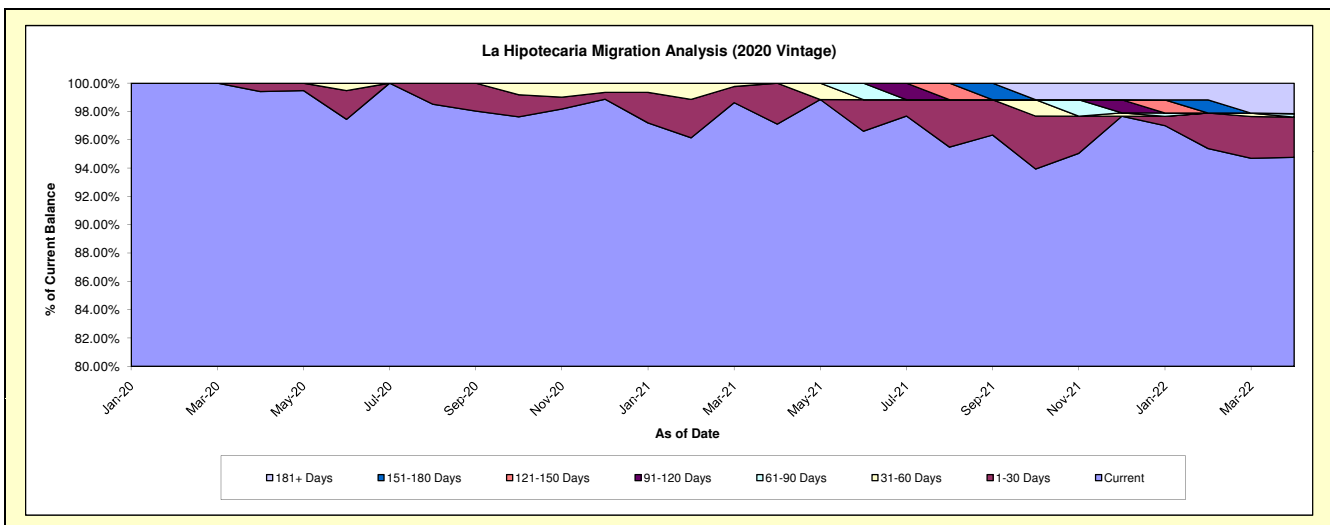
Delinquency Status (\$ of Current Balance)

Data Cutoff: 4/30/2022

Current Portfolio Balance	-	-	-	-	-	-	-	-	-	4,897,724.17	10,664,021.47	10,202,615.88
										Apr-20	Apr-21	Apr-22
Current										4,868,624.17	10,355,896.71	9,668,374.93
1-30 Days										29,100.00	308,124.76	289,472.60
31-60 Days										-	-	-
61-90 Days										-	-	25,252.66
91-120 Days										-	-	-
121-150 Days										-	-	-
151-180 Days										-	-	-
181+ Days										-	-	219,515.69

Delinquency Status (% of Current Balance)

Current Portfolio Balance	-	-	-	-	-	-	-	-	-	4,897,724.17	10,664,021.47	10,202,615.88
										Apr-20	Apr-21	Apr-22
Current										99.41%	97.11%	94.76%
1-30 Days										0.59%	2.89%	2.84%
31-60 Days										0.00%	0.00%	0.00%
61-90 Days										0.00%	0.00%	0.25%
91-120 Days										0.00%	0.00%	0.00%
121-150 Days										0.00%	0.00%	0.00%
151-180 Days										0.00%	0.00%	0.00%
181+ Days										0.00%	0.00%	2.15%
Current - 90 Days										100.00%	100.00%	97.85%
91-180 Days										0.00%	0.00%	0.00%



Mortgages - La Hipotecaria El Salvador Migration Analysis (2021 Vintage)

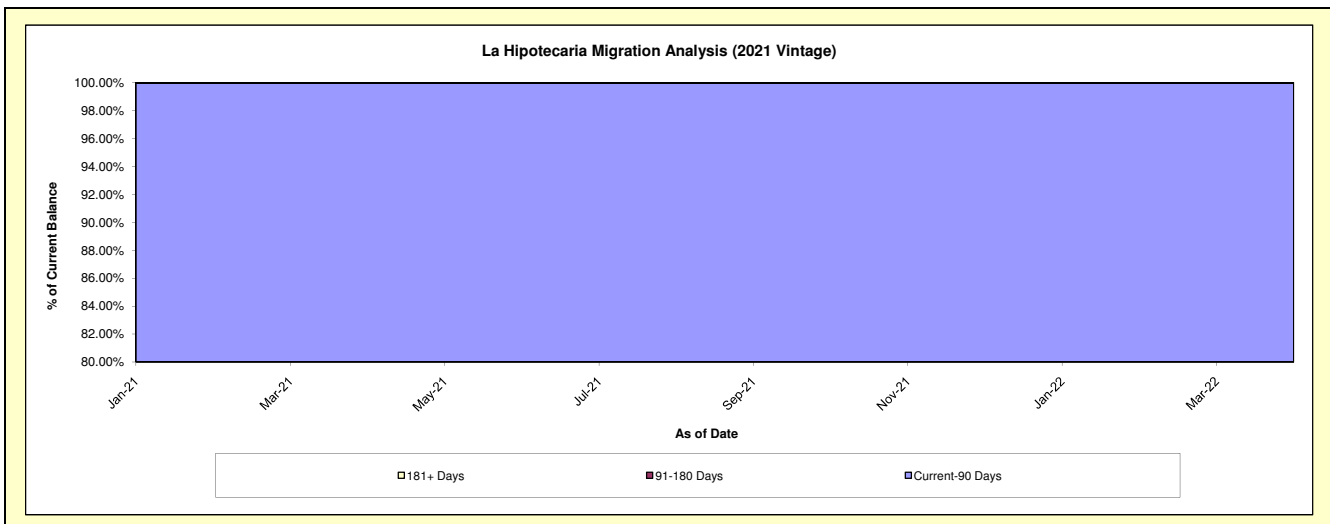
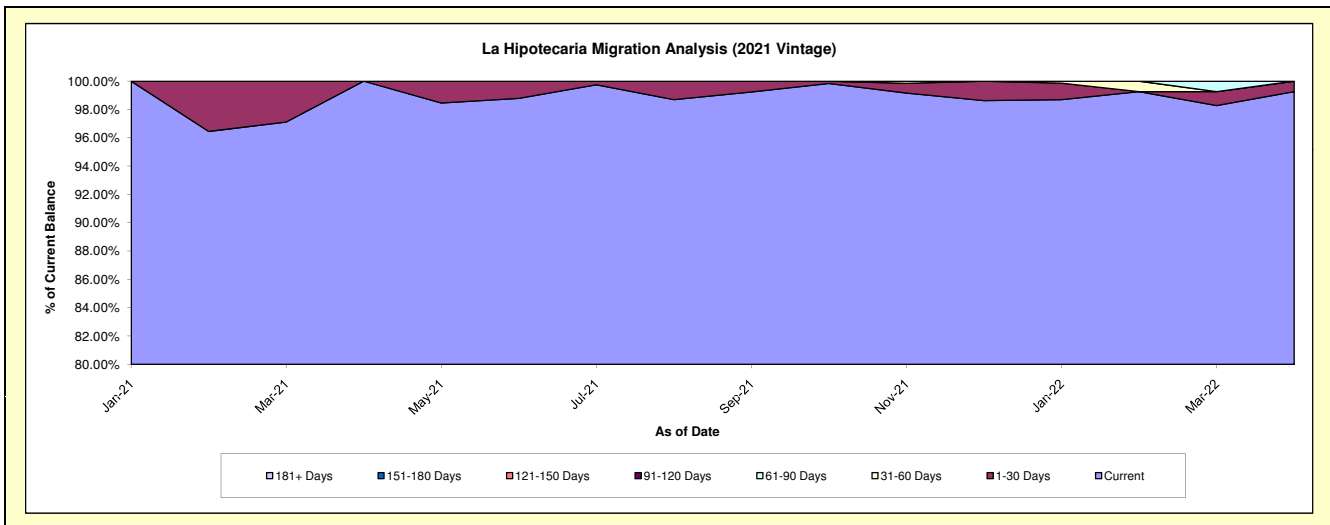
Delinquency Status (\$ of Current Balance)

Data Cutoff: 4/30/2022

Current Portfolio Balance										4,047,470.84	9,872,711.91
										Apr-21	Apr-22
Current										4,047,470.84	9,799,734.32
1-30 Days										-	72,977.59
31-60 Days										-	-
61-90 Days										-	-
91-120 Days										-	-
121-150 Days										-	-
151-180 Days										-	-
181+ Days										-	-

Delinquency Status (% of Current Balance)

Current Portfolio Balance										4,047,470.84	9,872,711.91
										Apr-21	Apr-22
Current										100.00%	99.26%
1-30 Days										0.00%	0.74%
31-60 Days										0.00%	0.00%
61-90 Days										0.00%	0.00%
91-120 Days										0.00%	0.00%
121-150 Days										0.00%	0.00%
151-180 Days										0.00%	0.00%
181+ Days										0.00%	0.00%
Current - 90 Days										100.00%	100.00%
91-180 Days										0.00%	0.00%



Mortgages - La Hipotecaria El Salvador Migration Analysis (2022 Vintage)

Delinquency Status (\$ of Current Balance)

Data Cutoff: 4/30/2022

Current Portfolio Balance										2,846,646.11
										Apr-22
Current										2,626,128.19
1-30 Days										220,517.92
31-60 Days										-
61-90 Days										-
91-120 Days										-
121-150 Days										-
151-180 Days										-
181+ Days										-

Delinquency Status (% of Current Balance)

Current Portfolio Balance										2,846,646.11
										Apr-22
Current										92.25%
1-30 Days										7.75%
31-60 Days										0.00%
61-90 Days										0.00%
91-120 Days										0.00%
121-150 Days										0.00%
151-180 Days										0.00%
181+ Days										0.00%
Current - 90 Days										100.00%
91-180 Days										0.00%

