



Migration Analysis for La Hipotecaria S.A. de C.V El Salvador

Mortgages June 2022

An analysis of historical loan payment data was used to compile a migration analysis of delinquency by annual vintage. Delinquencies for each vintage were grouped into the following buckets; Current, 1-30, 31-60, 61-90, 91-120, 121-150, 151-180, and 180+. Results are provided in graphical and tabular form. The cutoff date is 6/30/2022.

Mortgages - La Hipotecaria El Salvador Migration Analysis (All Vintages)

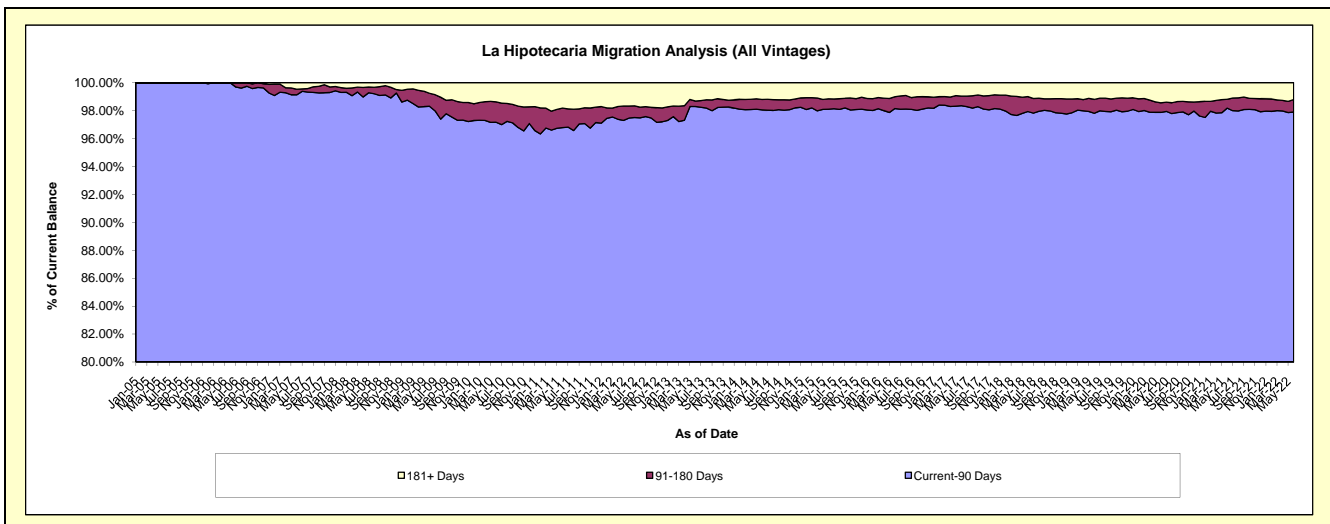
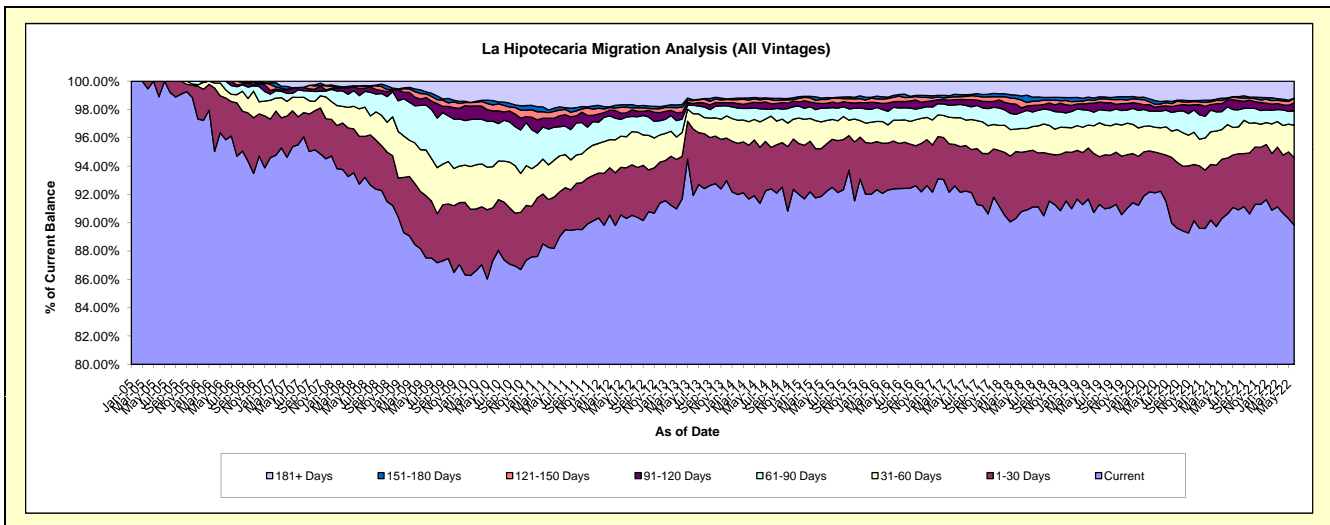
Delinquency Status (\$ of Current Balance)

Data Cutoff: 6/30/2022

Current Portfolio Balance	120,324,512.44	139,165,686.11	152,393,305.71	166,031,967.72	177,387,744.06	185,215,656.14	198,130,616.77	202,506,538.26	197,504,026.78	187,393,268.92
	Jun-13	Jun-14	Jun-15	Jun-16	Jun-17	Jun-18	Jun-19	Jun-20	Jun-21	Jun-22
Current	110,627,459.12	127,158,101.46	140,544,431.11	153,405,844.16	163,474,446.04	168,375,929.19	179,761,917.24	186,782,796.57	178,970,812.86	168,342,496.35
1-30 Days	5,632,365.48	5,517,786.33	5,101,082.10	5,611,510.04	5,726,310.73	7,666,177.04	8,241,242.81	5,382,141.87	7,802,175.75	8,915,000.02
31-60 Days	1,299,480.66	2,486,870.67	2,522,595.76	2,442,709.56	3,611,842.43	2,984,216.74	3,888,563.98	3,681,639.16	4,680,062.60	4,308,548.37
61-90 Days	718,862.90	1,295,510.19	1,333,067.25	1,507,305.11	1,656,299.28	2,369,828.30	1,902,688.12	2,366,815.36	2,457,484.84	1,899,948.49
91-120 Days	145,626.12	598,210.30	513,085.43	654,906.24	627,653.70	567,884.87	1,251,941.85	718,421.58	935,776.21	1,039,391.68
121-150 Days	243,818.99	267,584.89	415,036.76	532,105.76	329,587.73	451,608.45	383,122.27	323,246.59	186,358.39	575,009.42
151-180 Days	77,113.89	175,407.93	204,615.94	217,785.96	265,344.05	967,242.71	339,920.08	342,167.86	137,101.01	58,324.66
181+ Days	1,579,785.28	1,666,214.34	1,759,391.36	1,659,800.89	1,696,260.10	1,832,768.84	2,361,220.42	2,909,309.27	2,334,255.12	2,254,549.93

Delinquency Status (% of Current Balance)

Current Portfolio Balance	120,324,512.44	139,165,686.11	152,393,305.71	166,031,967.72	177,387,744.06	185,215,656.14	198,130,616.77	202,506,538.26	197,504,026.78	187,393,268.92
	Jun-13	Jun-14	Jun-15	Jun-16	Jun-17	Jun-18	Jun-19	Jun-20	Jun-21	Jun-22
Current	91.94%	91.37%	92.22%	92.40%	92.16%	90.91%	90.73%	92.24%	90.62%	89.83%
1-30 Days	4.68%	3.96%	3.35%	3.38%	3.23%	4.14%	4.16%	2.66%	3.95%	4.76%
31-60 Days	1.08%	1.79%	1.66%	1.47%	2.04%	1.61%	1.96%	1.82%	2.37%	2.30%
61-90 Days	0.60%	0.93%	0.87%	0.91%	0.93%	1.28%	0.96%	1.17%	1.24%	1.01%
91-120 Days	0.12%	0.43%	0.34%	0.39%	0.35%	0.31%	0.63%	0.35%	0.47%	0.55%
121-150 Days	0.20%	0.19%	0.27%	0.32%	0.19%	0.24%	0.19%	0.16%	0.09%	0.31%
151-180 Days	0.06%	0.13%	0.13%	0.13%	0.15%	0.52%	0.17%	0.17%	0.07%	0.03%
181+ Days	1.31%	1.20%	1.15%	1.00%	0.96%	0.99%	1.19%	1.44%	1.18%	1.20%
Current - 90 Days	98.30%	98.05%	98.10%	98.15%	98.35%	97.94%	97.81%	97.88%	98.18%	97.90%
91-180 Days	0.39%	0.75%	0.74%	0.85%	0.69%	1.07%	1.00%	0.68%	0.64%	0.89%



Mortgages - La Hipotecaria El Salvador Migration Analysis (2005 Vintage)

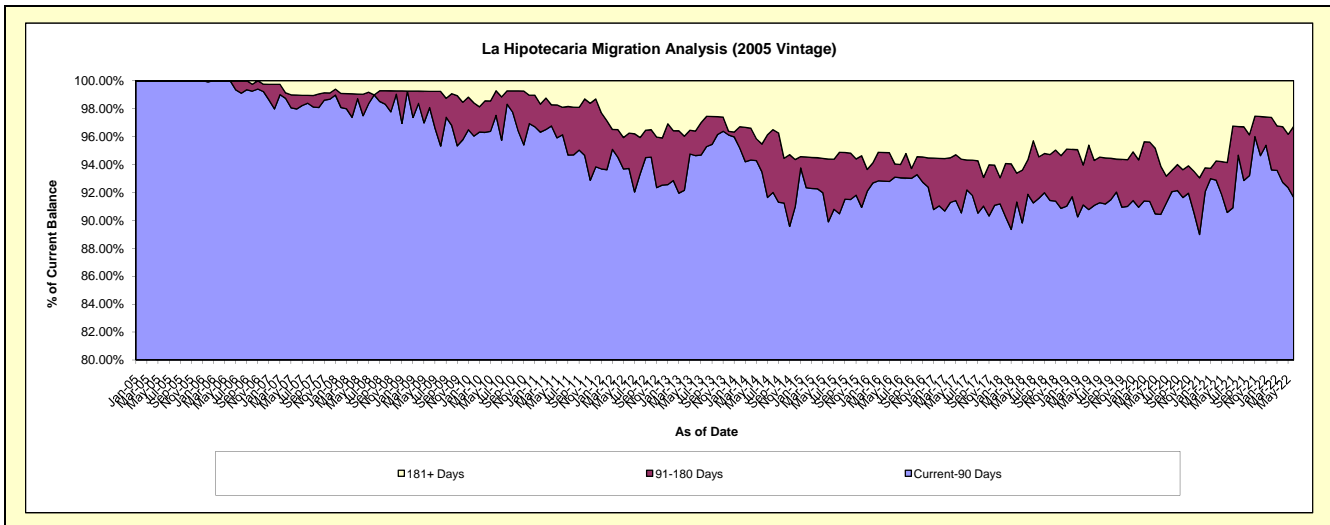
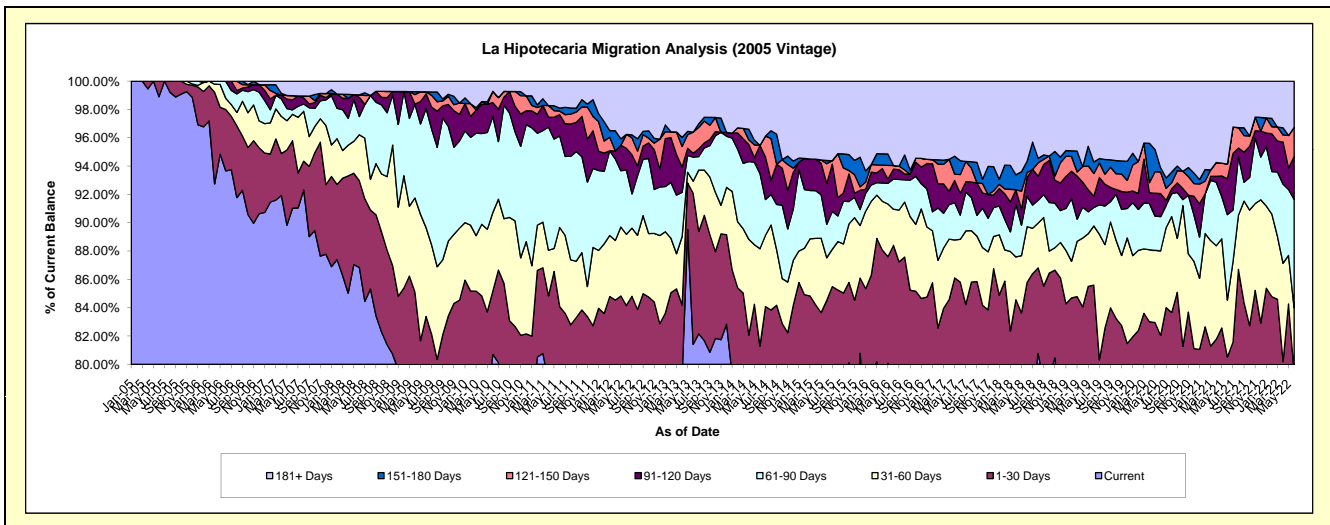
Delinquency Status (\$ of Current Balance)

Data Cutoff: 6/30/2022

Current Portfolio Balance	5,367,748.22	4,772,694.82	4,340,028.15	4,039,216.09	3,736,781.01	3,333,728.95	2,969,372.85	2,728,716.06	2,413,338.90	2,105,608.36
	Jun-13	Jun-14	Jun-15	Jun-16	Jun-17	Jun-18	Jun-19	Jun-20	Jun-21	Jun-22
Current	4,370,035.61	3,569,203.39	3,406,989.59	3,139,290.38	2,836,976.78	2,601,695.12	2,145,810.61	2,102,911.88	1,843,029.27	1,563,881.27
1-30 Days	572,569.84	310,314.62	260,966.16	431,700.98	369,562.75	258,092.45	395,786.87	135,908.11	99,965.12	108,317.34
31-60 Days	46,006.10	328,442.86	130,756.91	102,676.39	112,896.95	131,212.68	124,200.11	162,677.22	97,239.52	96,109.36
61-90 Days	91,377.72	253,045.73	102,868.46	86,628.33	63,770.51	71,636.69	38,678.07	66,155.03	145,569.01	161,393.29
91-120 Days	14,716.51	95,246.97	124,890.28	28,071.66	57,913.34	44,082.86	23,583.44	44,236.25	61,231.47	63,918.52
121-150 Days	79,799.17	-	60,312.28	9,967.73	49,144.84	11,957.61	47,599.92	41,675.73	24,865.49	43,253.35
151-180 Days	-	-	9,967.73	-	36,640.03	26,076.69	24,180.52	8,382.22	-	-
181+ Days	193,243.27	216,441.25	243,276.74	240,880.62	209,875.81	188,974.85	169,533.31	166,769.62	141,439.02	68,735.23

Delinquency Status (% of Current Balance)

Current Portfolio Balance	5,367,748.22	4,772,694.82	4,340,028.15	4,039,216.09	3,736,781.01	3,333,728.95	2,969,372.85	2,728,716.06	2,413,338.90	2,105,608.36
	Jun-13	Jun-14	Jun-15	Jun-16	Jun-17	Jun-18	Jun-19	Jun-20	Jun-21	Jun-22
Current	81.41%	74.78%	78.50%	77.72%	75.92%	78.04%	72.26%	77.07%	76.37%	74.27%
1-30 Days	10.67%	6.50%	6.01%	10.69%	9.89%	7.74%	13.33%	4.98%	4.14%	5.14%
31-60 Days	0.86%	6.88%	3.01%	2.54%	3.02%	3.94%	4.18%	5.96%	4.03%	4.56%
61-90 Days	1.70%	5.30%	2.37%	2.14%	1.71%	2.15%	1.30%	2.42%	6.03%	7.66%
91-120 Days	0.27%	2.00%	2.88%	0.69%	1.55%	1.32%	0.79%	1.62%	2.54%	3.04%
121-150 Days	1.49%	0.00%	1.39%	0.25%	1.32%	0.36%	1.60%	1.53%	1.03%	2.05%
151-180 Days	0.00%	0.00%	0.23%	0.00%	0.98%	0.78%	0.81%	0.31%	0.00%	0.00%
181+ Days	3.60%	4.53%	5.61%	5.96%	5.62%	5.67%	5.71%	6.11%	5.86%	3.26%
Current - 90 Days	94.64%	93.47%	89.90%	93.09%	90.54%	91.87%	91.08%	90.43%	90.57%	91.65%
91-180 Days	1.76%	2.00%	4.50%	0.94%	3.85%	2.46%	3.21%	3.46%	3.57%	5.09%



Mortgages - La Hipotecaria El Salvador Migration Analysis (2006 Vintage)

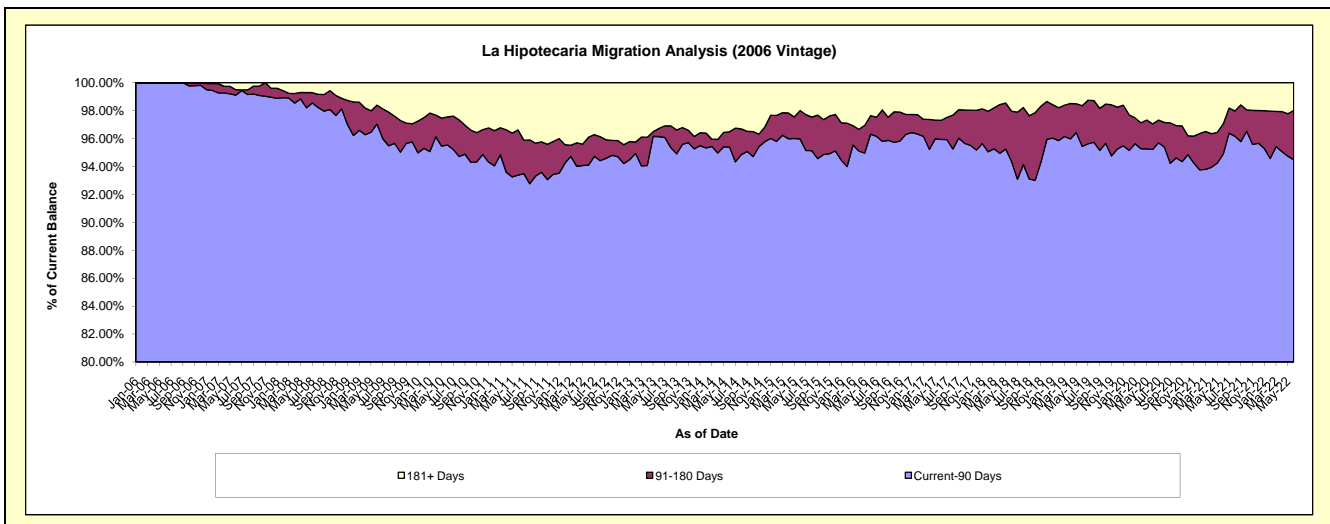
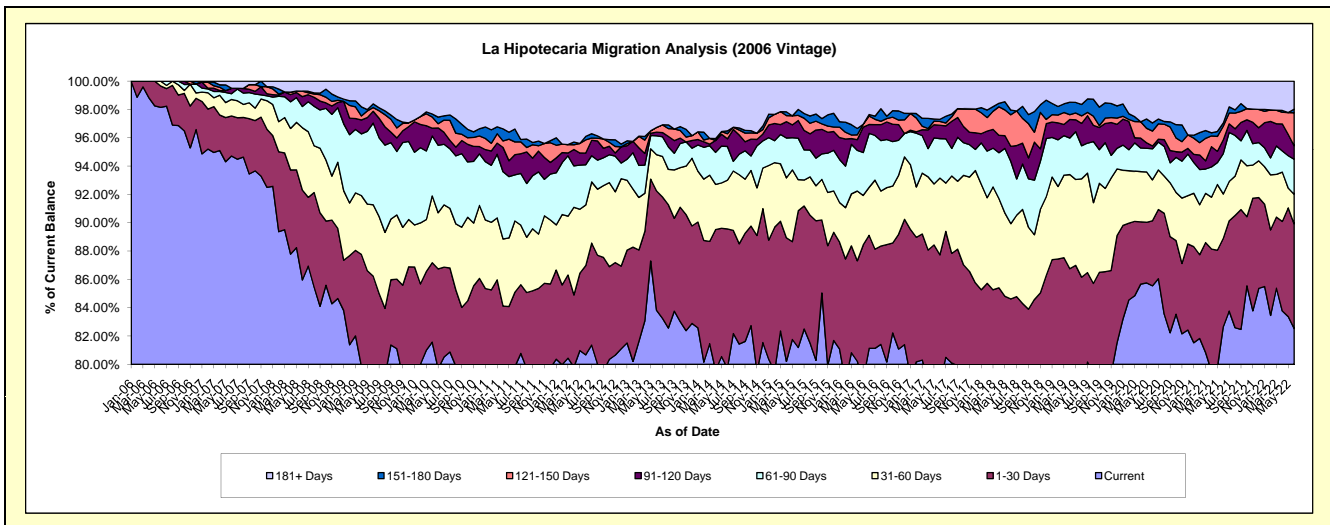
Delinquency Status (\$ of Current Balance)

Data Cutoff: 6/30/2022

Current Portfolio Balance	12,091,140.67	10,861,254.46	9,858,161.52	8,942,812.33	8,259,006.39	7,537,341.55	6,812,136.56	6,155,805.36	5,538,811.54	4,903,098.26
	Jun-13	Jun-14	Jun-15	Jun-16	Jun-17	Jun-18	Jun-19	Jun-20	Jun-21	Jun-22
Current	10,134,139.15	8,659,483.47	8,004,134.93	7,255,514.62	6,497,050.27	5,807,261.42	5,328,565.72	5,266,254.44	4,578,230.20	4,046,193.16
1-30 Days	1,019,035.04	1,068,599.01	951,948.41	713,897.49	748,811.28	570,959.95	540,451.70	282,876.95	346,132.86	362,478.68
31-60 Days	310,643.37	373,797.04	216,845.83	302,535.32	448,035.05	400,465.85	473,066.31	177,576.44	173,162.37	102,643.62
61-90 Days	160,551.83	258,658.09	288,130.22	341,291.51	230,032.21	332,881.32	159,418.75	135,121.98	158,146.92	121,533.49
91-120 Days	31,579.15	58,826.85	123,187.94	55,770.58	77,950.12	78,826.48	107,549.51	12,085.01	53,993.77	46,156.37
121-150 Days	40,584.36	38,644.29	35,828.99	53,446.66	22,148.79	168,071.76	36,367.58	65,197.49	53,345.09	114,801.81
151-180 Days	-	22,063.72	41,604.47	9,514.00	12,712.94	25,007.58	54,654.02	34,927.74	12,446.74	12,374.26
181+ Days	394,607.77	381,181.99	196,480.73	210,842.15	222,265.73	153,867.19	112,062.97	181,765.31	163,353.59	96,916.87

Delinquency Status (% of Current Balance)

Current Portfolio Balance	12,091,140.67	10,861,254.46	9,858,161.52	8,942,812.33	8,259,006.39	7,537,341.55	6,812,136.56	6,155,805.36	5,538,811.54	4,903,098.26
	Jun-13	Jun-14	Jun-15	Jun-16	Jun-17	Jun-18	Jun-19	Jun-20	Jun-21	Jun-22
Current	83.81%	79.73%	81.19%	81.13%	78.67%	77.05%	78.22%	85.55%	82.66%	82.52%
1-30 Days	8.43%	9.84%	9.66%	7.98%	9.07%	7.58%	7.93%	4.60%	6.25%	7.39%
31-60 Days	2.57%	3.44%	2.20%	3.38%	5.42%	5.31%	6.94%	2.88%	3.13%	2.09%
61-90 Days	1.33%	2.38%	2.92%	3.82%	2.79%	4.42%	2.34%	2.20%	2.86%	2.48%
91-120 Days	0.26%	0.54%	1.25%	0.62%	0.94%	1.05%	1.58%	0.20%	0.97%	0.94%
121-150 Days	0.34%	0.36%	0.36%	0.60%	0.27%	2.23%	0.53%	1.06%	0.96%	2.34%
151-180 Days	0.00%	0.20%	0.42%	0.11%	0.15%	0.33%	0.80%	0.57%	0.22%	0.25%
181+ Days	3.26%	3.51%	1.99%	2.36%	2.69%	2.04%	1.65%	2.95%	2.95%	1.98%
Current - 90 Days	96.14%	95.39%	95.97%	96.31%	95.94%	94.35%	95.44%	95.22%	94.89%	94.49%
91-180 Days	0.60%	1.10%	2.04%	1.33%	1.37%	3.61%	2.91%	1.82%	2.16%	3.54%



Mortgages - La Hipotecaria El Salvador Migration Analysis (2007 Vintage)

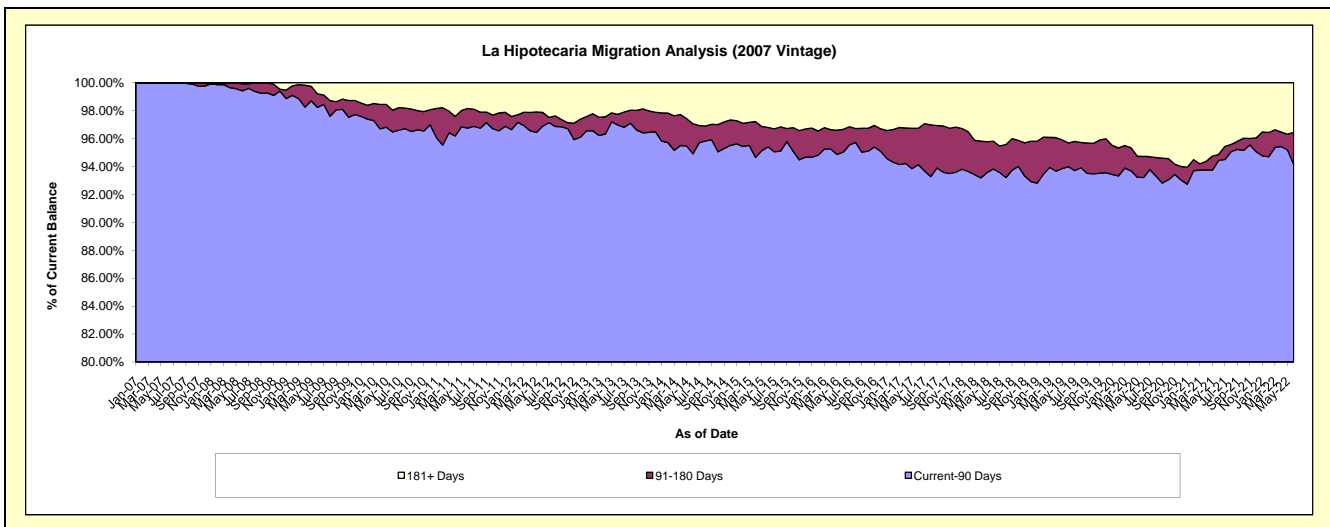
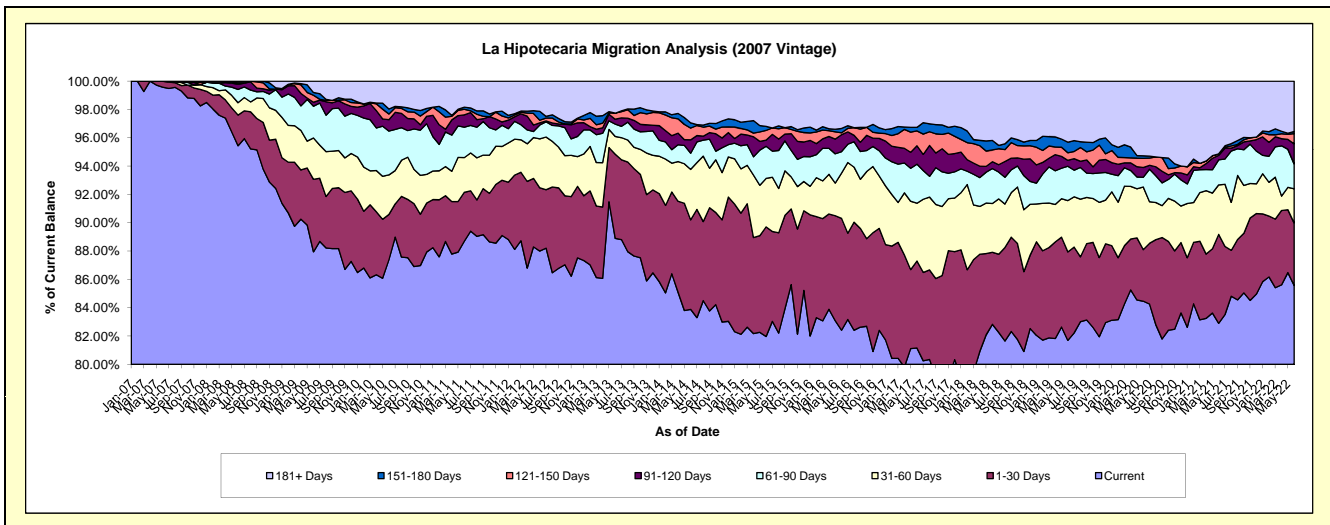
Delinquency Status (\$ of Current Balance)

Data Cutoff: 6/30/2022

Current Portfolio Balance	18,727,996.38	16,986,773.26	15,703,241.32	14,336,181.30	13,243,942.82	12,149,303.51	11,249,714.94	10,489,480.37	9,435,690.38	8,172,208.45
	Jun-13	Jun-14	Jun-15	Jun-16	Jun-17	Jun-18	Jun-19	Jun-20	Jun-21	Jun-22
Current	16,649,023.93	14,248,973.67	12,871,743.66	11,815,118.58	10,748,823.39	10,063,353.48	9,190,681.85	8,859,746.51	7,822,081.12	6,992,559.62
1-30 Days	1,113,415.25	1,074,024.89	1,216,102.25	1,132,308.51	813,223.66	617,847.27	702,353.51	381,604.68	592,413.76	360,870.46
31-60 Days	234,733.33	605,030.65	536,833.07	458,350.08	540,602.88	418,588.48	408,203.18	464,225.80	330,031.52	197,831.74
61-90 Days	163,287.88	194,746.66	356,942.83	216,877.81	365,017.31	299,562.01	272,517.17	71,765.43	166,719.88	143,157.32
91-120 Days	63,882.03	160,094.71	67,771.99	171,613.67	172,200.10	58,700.02	47,206.38	72,546.65	30,268.50	115,572.37
121-150 Days	80,615.36	141,549.92	107,441.98	19,555.52	139,171.22	101,498.74	60,485.09	67,368.58	9,714.10	60,137.33
151-180 Days	-	62,786.48	44,494.69	44,100.84	32,685.49	81,191.23	83,631.48	18,992.89	-	11,859.43
181+ Days	423,038.60	499,566.28	501,910.85	478,256.29	432,218.77	508,562.28	484,636.28	553,229.83	484,461.50	290,220.18

Delinquency Status (% of Current Balance)

Current Portfolio Balance	18,727,996.38	16,986,773.26	15,703,241.32	14,336,181.30	13,243,942.82	12,149,303.51	11,249,714.94	10,489,480.37	9,435,690.38	8,172,208.45
	Jun-13	Jun-14	Jun-15	Jun-16	Jun-17	Jun-18	Jun-19	Jun-20	Jun-21	Jun-22
Current	88.90%	83.88%	81.97%	82.41%	81.16%	82.83%	81.70%	84.46%	82.90%	85.57%
1-30 Days	5.95%	6.32%	7.74%	7.90%	6.14%	5.09%	6.24%	3.64%	6.28%	4.42%
31-60 Days	1.25%	3.56%	3.42%	3.20%	4.08%	3.45%	3.63%	4.43%	3.50%	2.42%
61-90 Days	0.87%	1.15%	2.27%	1.51%	2.76%	2.47%	2.42%	0.68%	1.77%	1.75%
91-120 Days	0.34%	0.94%	0.43%	1.20%	1.30%	0.48%	0.42%	0.69%	0.32%	1.41%
121-150 Days	0.43%	0.83%	0.68%	0.14%	1.05%	0.84%	0.54%	0.64%	0.10%	0.74%
151-180 Days	0.00%	0.37%	0.28%	0.31%	0.25%	0.67%	0.74%	0.18%	0.00%	0.15%
181+ Days	2.26%	2.94%	3.20%	3.34%	3.26%	4.19%	4.31%	5.27%	5.13%	3.55%
Current - 90 Days	96.97%	94.91%	95.40%	95.02%	94.14%	93.83%	93.99%	93.21%	94.44%	94.15%
91-180 Days	0.77%	2.15%	1.40%	1.64%	2.60%	1.99%	1.70%	1.51%	0.42%	2.30%



Mortgages - La Hipotecaria El Salvador Migration Analysis (2008 Vintage)

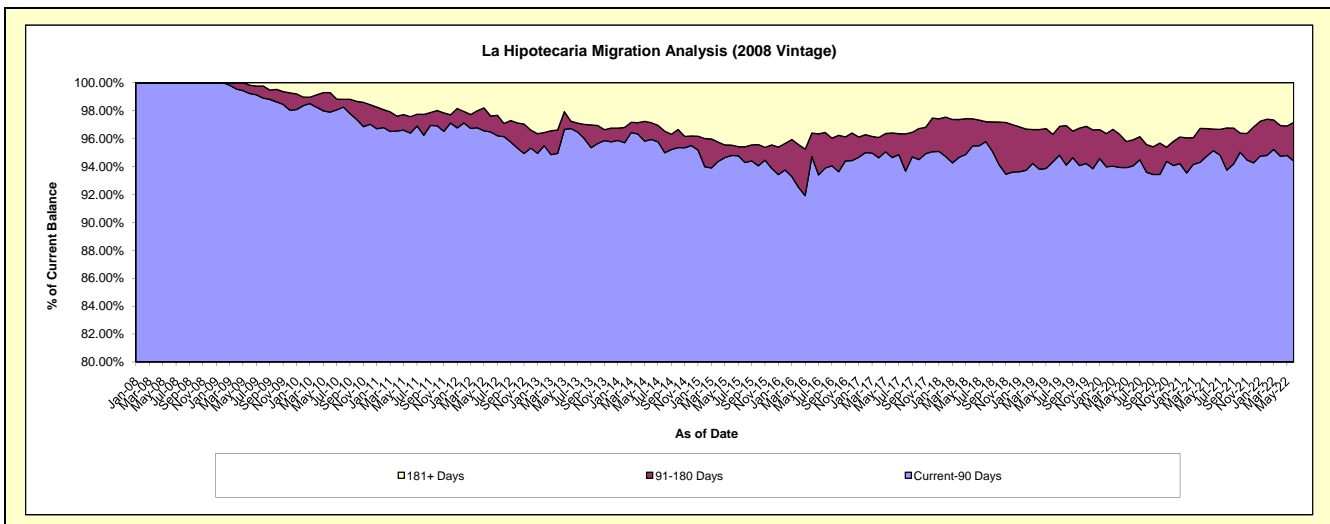
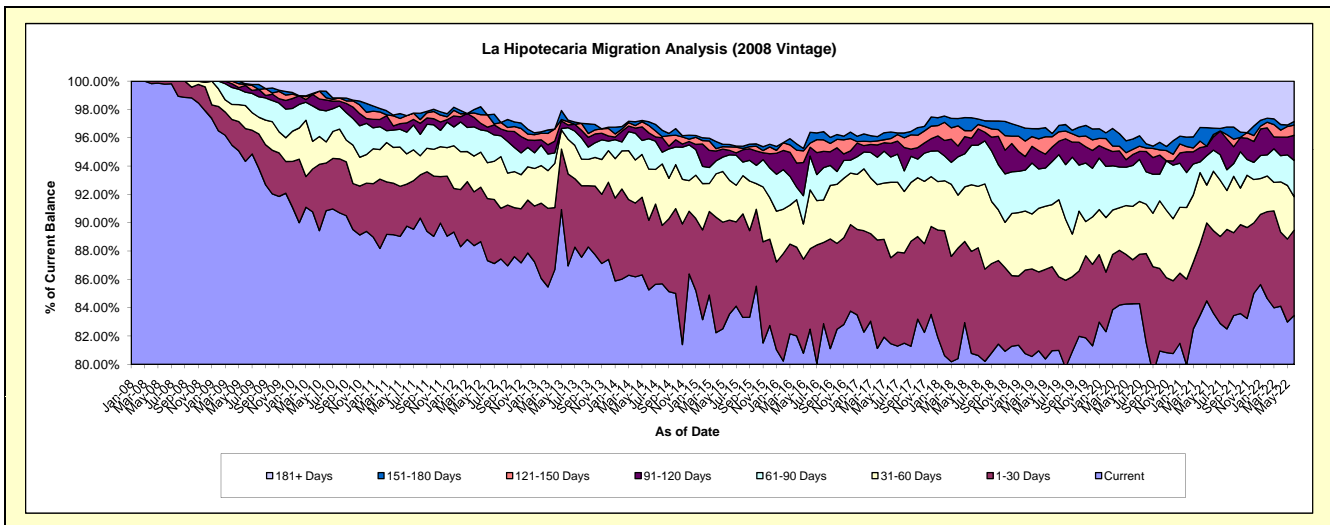
Delinquency Status (\$ of Current Balance)

Data Cutoff: 6/30/2022

Current Portfolio Balance	18,609,064.08	16,725,206.86	14,832,844.06	13,490,640.64	12,441,165.38	11,324,773.90	10,296,926.17	9,479,110.88	8,462,916.57	7,662,596.53
	Jun-13	Jun-14	Jun-15	Jun-16	Jun-17	Jun-18	Jun-19	Jun-20	Jun-21	Jun-22
Current	16,181,269.77	14,258,999.02	12,393,245.48	11,127,969.58	10,134,375.72	9,147,430.93	8,337,441.15	7,989,254.37	7,076,187.26	6,394,535.85
1-30 Days	1,208,294.75	823,716.41	983,335.79	766,171.62	755,816.56	816,043.52	610,302.10	294,691.38	493,180.27	462,317.65
31-60 Days	454,809.51	604,670.39	419,201.35	560,439.41	662,535.34	532,263.16	451,868.10	357,278.38	355,456.11	179,704.97
61-90 Days	153,536.44	358,163.96	264,874.10	322,714.53	222,007.64	315,826.45	314,207.48	273,557.69	126,257.49	196,596.24
91-120 Days	35,448.43	69,169.60	47,838.81	83,576.45	120,719.38	56,901.11	103,793.42	73,490.71	78,583.71	136,421.79
121-150 Days	42,820.10	87,390.68	36,473.06	39,421.97	41,110.44	60,103.72	75,038.42	34,739.24	14,999.20	54,986.65
151-180 Days	20,127.71	44,175.65	25,239.51	103,721.37	58,253.10	103,710.00	23,990.63	68,961.87	37,809.04	19,994.33
181+ Days	512,757.37	478,921.15	662,835.96	486,625.71	446,347.20	292,495.01	380,284.87	387,137.24	280,443.49	218,039.05

Delinquency Status (% of Current Balance)

Current Portfolio Balance	18,609,064.08	16,725,206.86	14,832,844.06	13,490,640.64	12,441,165.38	11,324,773.90	10,296,926.17	9,479,110.88	8,462,916.57	7,662,596.53
	Jun-13	Jun-14	Jun-15	Jun-16	Jun-17	Jun-18	Jun-19	Jun-20	Jun-21	Jun-22
Current	86.95%	85.25%	83.55%	82.49%	81.46%	80.77%	80.97%	84.28%	83.61%	83.45%
1-30 Days	6.49%	4.92%	6.63%	5.68%	6.08%	7.21%	5.93%	3.11%	5.83%	6.03%
31-60 Days	2.44%	3.62%	2.83%	4.15%	5.33%	4.70%	4.39%	3.77%	4.20%	2.35%
61-90 Days	0.83%	2.14%	1.79%	2.39%	1.78%	2.79%	3.05%	2.89%	1.49%	2.57%
91-120 Days	0.19%	0.41%	0.32%	0.62%	0.97%	0.50%	1.01%	0.78%	0.93%	1.78%
121-150 Days	0.23%	0.52%	0.25%	0.29%	0.33%	0.53%	0.73%	0.37%	0.18%	0.72%
151-180 Days	0.11%	0.26%	0.17%	0.77%	0.47%	0.92%	0.23%	0.73%	0.45%	0.26%
181+ Days	2.76%	2.86%	4.47%	3.61%	3.59%	2.58%	3.69%	4.08%	3.31%	2.85%
Current - 90 Days	96.72%	95.94%	94.79%	94.71%	94.64%	95.47%	94.34%	94.05%	95.13%	94.40%
91-180 Days	0.53%	1.20%	0.74%	1.68%	1.77%	1.95%	1.97%	1.87%	1.55%	2.76%



Mortgages - La Hipotecaria El Salvador Migration Analysis (2009 Vintage)

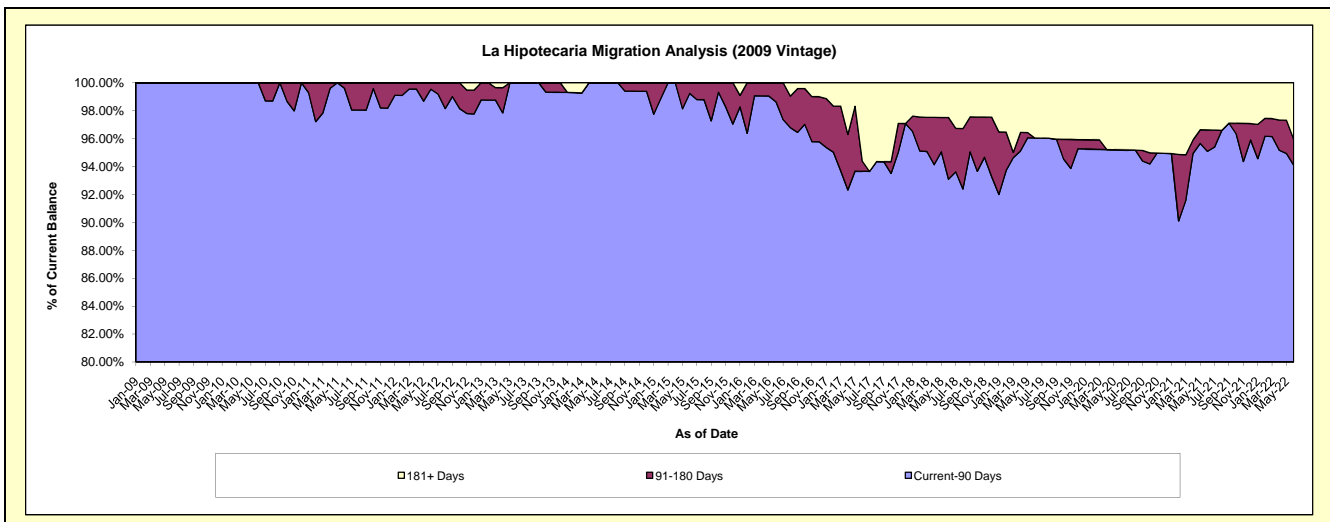
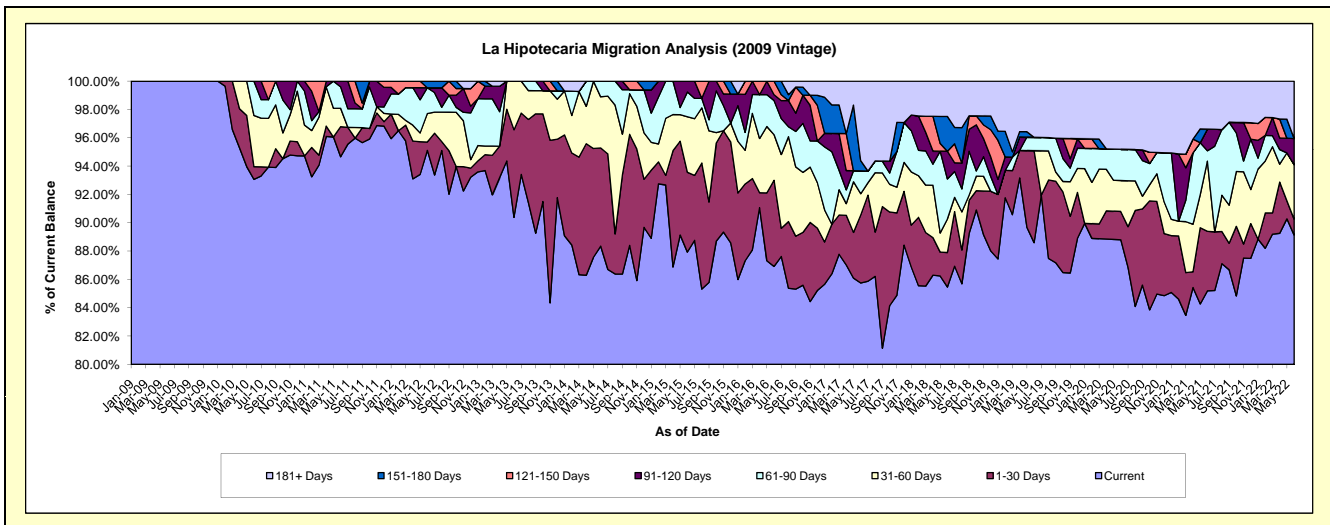
Delinquency Status (\$ of Current Balance)

Data Cutoff: 6/30/2022

Current Portfolio Balance	2,807,189.44	2,408,839.22	2,111,522.70	1,955,604.48	1,897,077.10	1,768,695.48	1,636,348.57	1,566,911.88	1,429,297.29	1,257,516.45
	Jun-13	Jun-14	Jun-15	Jun-16	Jun-17	Jun-18	Jun-19	Jun-20	Jun-21	Jun-22
Current	2,537,231.35	2,128,227.52	1,856,524.96	1,699,751.53	1,626,683.19	1,511,469.20	1,449,730.56	1,391,390.59	1,217,694.95	1,120,810.39
1-30 Days	173,573.80	166,888.96	119,140.07	118,924.41	91,246.91	43,174.74	106,318.73	31,256.88	60,054.71	14,095.32
31-60 Days	96,384.29	87,075.81	82,851.63	62,941.66	28,342.72	41,991.29	-	34,314.14	70,801.97	48,389.05
61-90 Days	-	26,646.93	36,813.44	47,219.52	30,567.51	49,870.91	15,501.79	34,621.52	10,465.19	-
91-120 Days	-	-	16,192.60	8,145.28	-	34,500.76	-	-	21,968.27	23,338.61
121-150 Days	-	-	-	18,622.08	-	-	-	-	-	-
151-180 Days	-	-	-	-	13,702.05	43,550.09	-	-	-	-
181+ Days	-	-	-	-	106,534.72	44,138.49	64,797.49	75,328.75	48,312.20	50,883.08

Delinquency Status (% of Current Balance)

Current Portfolio Balance	2,807,189.44	2,408,839.22	2,111,522.70	1,955,604.48	1,897,077.10	1,768,695.48	1,636,348.57	1,566,911.88	1,429,297.29	1,257,516.45
	Jun-13	Jun-14	Jun-15	Jun-16	Jun-17	Jun-18	Jun-19	Jun-20	Jun-21	Jun-22
Current	90.38%	88.35%	87.92%	86.92%	85.75%	85.46%	88.60%	88.80%	85.20%	89.13%
1-30 Days	6.18%	6.93%	5.64%	6.08%	4.81%	2.44%	6.50%	1.99%	4.20%	1.12%
31-60 Days	3.43%	3.61%	3.92%	3.22%	1.49%	2.37%	0.00%	2.19%	4.95%	3.85%
61-90 Days	0.00%	1.11%	1.74%	2.41%	1.61%	2.82%	0.95%	2.21%	0.73%	0.00%
91-120 Days	0.00%	0.00%	0.77%	0.42%	0.00%	1.95%	0.00%	0.00%	1.54%	1.86%
121-150 Days	0.00%	0.00%	0.00%	0.95%	0.00%	0.00%	0.00%	0.00%	0.00%	0.00%
151-180 Days	0.00%	0.00%	0.00%	0.00%	0.72%	2.46%	0.00%	0.00%	0.00%	0.00%
181+ Days	0.00%	0.00%	0.00%	0.00%	5.62%	2.50%	3.96%	4.81%	3.38%	4.05%
Current - 90 Days	100.00%	100.00%	99.23%	98.63%	93.66%	93.09%	96.04%	95.19%	95.08%	94.10%
91-180 Days	0.00%	0.00%	0.77%	1.37%	0.72%	4.41%	0.00%	0.00%	1.54%	1.86%



Mortgages - La Hipotecaria El Salvador Migration Analysis (2010 Vintage)

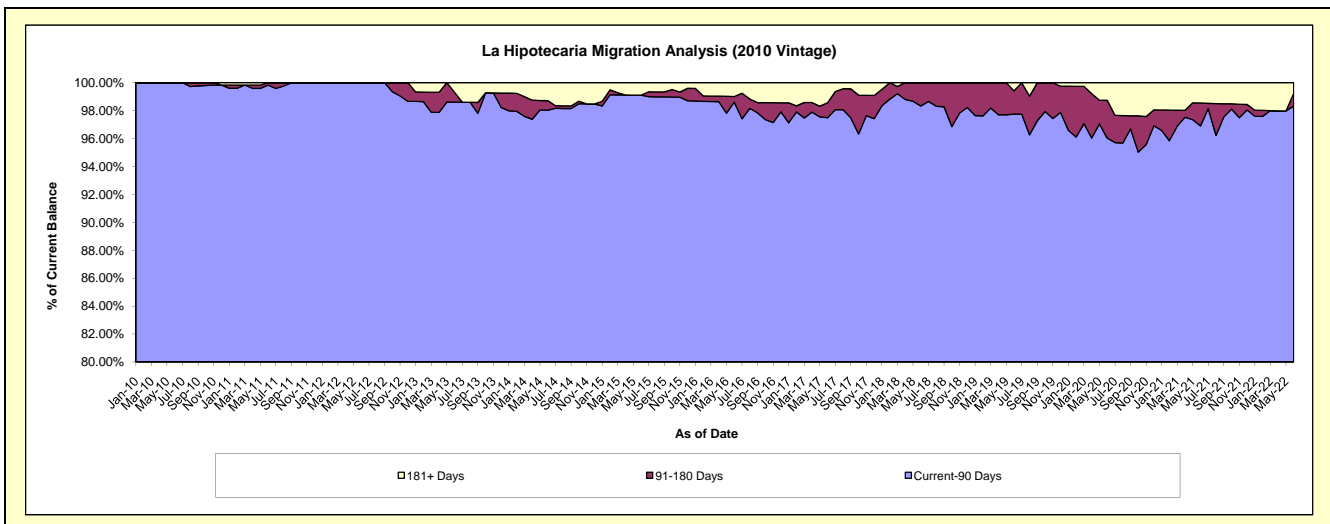
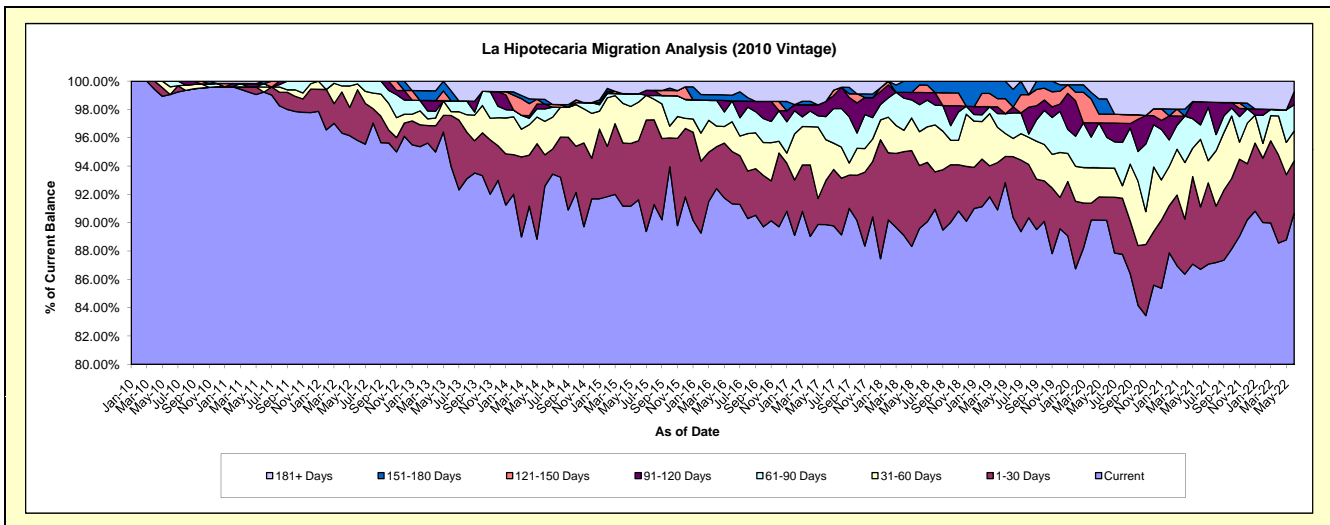
Delinquency Status (\$ of Current Balance)

Data Cutoff: 6/30/2022

Current Portfolio Balance	8,117,024.08	7,019,012.02	6,447,673.50	5,485,064.86	5,214,827.63	4,751,047.11	4,322,280.04	3,925,967.20	3,599,040.31	3,110,543.17
	Jun-13	Jun-14	Jun-15	Jun-16	Jun-17	Jun-18	Jun-19	Jun-20	Jun-21	Jun-22
Current	7,626,389.01	6,499,379.77	5,907,336.00	5,009,939.44	4,686,438.05	4,256,879.89	3,906,432.77	3,540,322.25	3,120,783.40	2,820,316.43
1-30 Days	293,718.56	154,780.27	269,141.31	202,548.40	162,601.16	211,059.94	185,403.40	64,205.31	158,780.63	115,332.89
31-60 Days	22,160.46	165,531.61	175,776.58	115,674.77	150,499.59	113,606.05	55,551.94	80,522.00	171,615.35	65,495.37
61-90 Days	61,631.60	61,417.17	37,948.70	80,566.77	84,543.32	90,606.91	77,827.37	85,242.23	36,805.05	57,697.14
91-120 Days	-	23,752.91	-	-	55,981.83	41,004.87	18,316.25	39,799.30	58,733.23	28,262.49
121-150 Days	-	-	-	-	-	24,969.55	-	24,488.12	-	-
151-180 Days	56,986.18	24,046.62	-	22,150.25	-	12,919.90	53,778.76	42,126.74	-	-
181+ Days	56,138.27	90,103.67	57,470.91	54,185.23	74,763.68	-	24,969.55	49,261.25	52,322.65	23,438.85

Delinquency Status (% of Current Balance)

Current Portfolio Balance	8,117,024.08	7,019,012.02	6,447,673.50	5,485,064.86	5,214,827.63	4,751,047.11	4,322,280.04	3,925,967.20	3,599,040.31	3,110,543.17
	Jun-13	Jun-14	Jun-15	Jun-16	Jun-17	Jun-18	Jun-19	Jun-20	Jun-21	Jun-22
Current	93.96%	92.60%	91.62%	91.34%	89.87%	89.60%	90.38%	90.18%	86.71%	90.67%
1-30 Days	3.62%	2.21%	4.17%	3.69%	3.12%	4.44%	4.29%	1.64%	4.41%	3.71%
31-60 Days	0.27%	2.36%	2.73%	2.11%	2.89%	2.39%	1.29%	2.05%	4.77%	2.11%
61-90 Days	0.76%	0.88%	0.59%	1.47%	1.62%	1.91%	1.80%	2.17%	1.02%	1.85%
91-120 Days	0.00%	0.34%	0.00%	0.00%	1.07%	0.86%	0.42%	1.01%	1.63%	0.91%
121-150 Days	0.00%	0.00%	0.00%	0.00%	0.00%	0.53%	0.00%	0.62%	0.00%	0.00%
151-180 Days	0.70%	0.34%	0.00%	0.40%	0.00%	0.27%	1.24%	1.07%	0.00%	0.00%
181+ Days	0.69%	1.28%	0.89%	0.99%	1.43%	0.00%	0.58%	1.25%	1.45%	0.75%
Current - 90 Days	98.61%	98.04%	99.11%	98.61%	97.49%	98.34%	97.75%	96.03%	96.91%	98.34%
91-180 Days	0.70%	0.68%	0.00%	0.40%	1.07%	1.66%	1.67%	2.71%	1.63%	0.91%



Mortgages - La Hipotecaria El Salvador Migration Analysis (2011 Vintage)

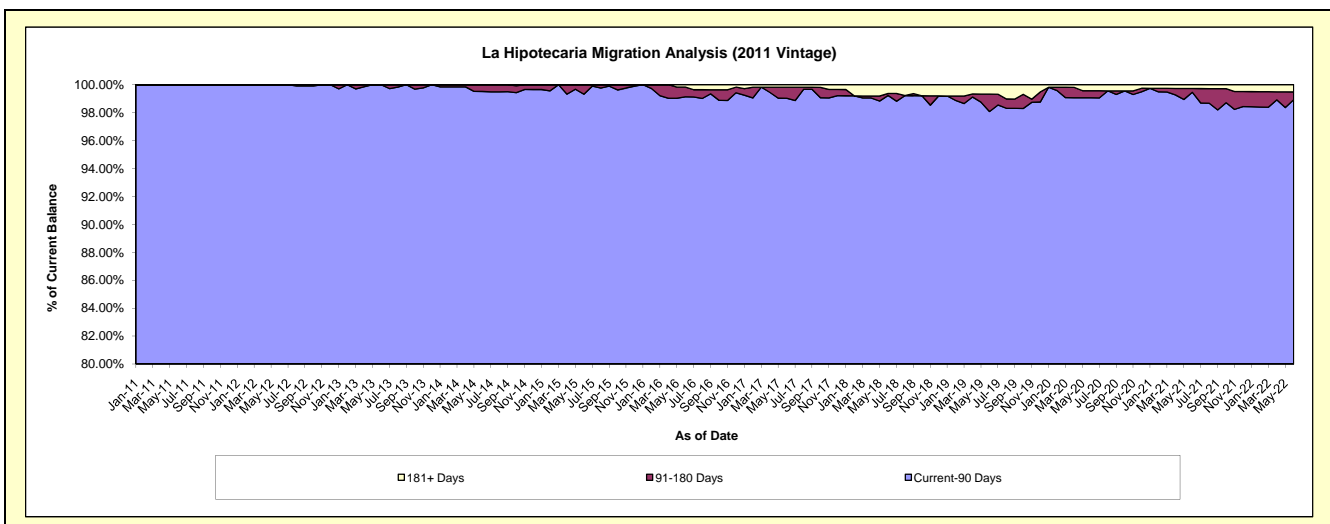
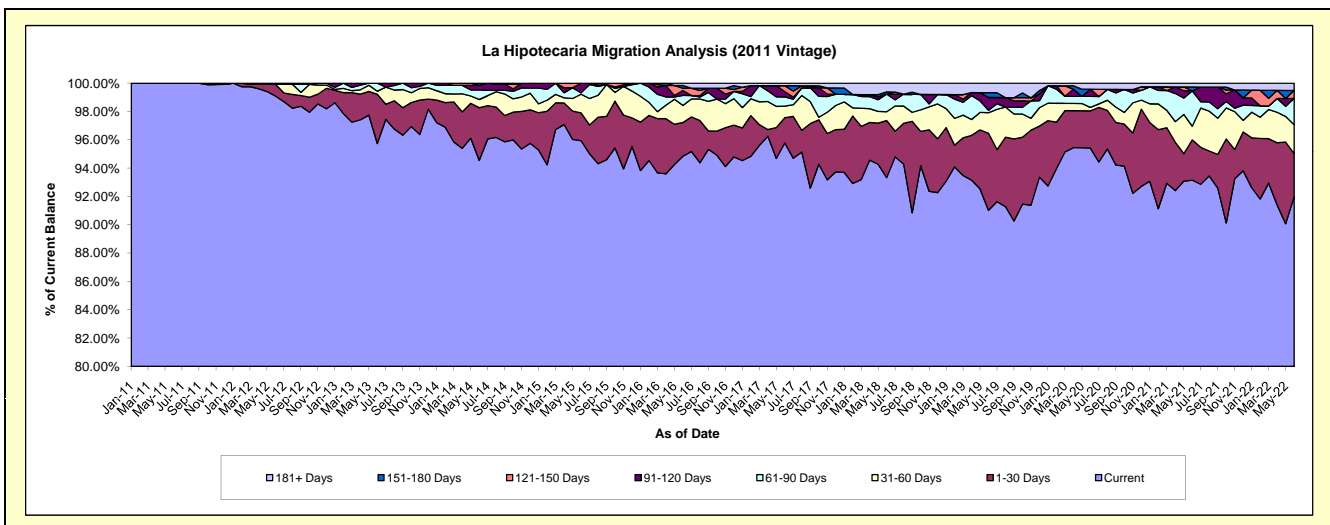
Delinquency Status (\$ of Current Balance)

Data Cutoff: 6/30/2022

Current Portfolio Balance	15,519,767.16	14,235,647.38	12,988,710.97	12,051,673.17	11,343,779.76	10,236,509.55	9,415,895.52	8,655,218.14	7,698,493.57	6,918,553.13
	Jun-13	Jun-14	Jun-15	Jun-16	Jun-17	Jun-18	Jun-19	Jun-20	Jun-21	Jun-22
Current	14,858,688.15	13,460,027.68	12,461,126.35	11,429,950.43	10,864,979.98	9,554,088.59	8,570,358.69	8,258,449.58	7,171,184.45	6,363,130.50
1-30 Days	539,090.20	528,837.06	254,785.78	286,824.65	202,608.41	412,016.84	512,277.68	227,332.49	219,122.01	211,621.93
31-60 Days	33,511.38	83,534.52	171,733.56	145,270.93	91,900.87	64,030.35	136,843.04	21,104.91	74,316.58	140,552.32
61-90 Days	88,477.43	94,797.64	12,802.58	84,991.84	74,125.47	128,071.23	15,925.12	67,351.26	192,032.62	128,816.88
91-120 Days	-	46,115.02	88,262.70	42,438.27	42,438.27	-	85,857.84	43,876.22	-	-
121-150 Days	-	-	-	19,557.89	47,432.75	-	-	-	-	38,711.41
151-180 Days	-	22,335.46	-	22,345.15	-	14,798.29	31,128.90	-	20,889.68	-
181+ Days	-	-	-	20,294.01	20,294.01	63,504.25	63,504.25	37,103.68	20,948.23	35,720.09

Delinquency Status (% of Current Balance)

Current Portfolio Balance	15,519,767.16	14,235,647.38	12,988,710.97	12,051,673.17	11,343,779.76	10,236,509.55	9,415,895.52	8,655,218.14	7,698,493.57	6,918,553.13
	Jun-13	Jun-14	Jun-15	Jun-16	Jun-17	Jun-18	Jun-19	Jun-20	Jun-21	Jun-22
Current	95.74%	94.55%	95.94%	94.84%	95.78%	93.33%	91.02%	95.42%	93.15%	91.97%
1-30 Days	3.47%	3.71%	1.96%	2.38%	1.79%	4.02%	5.44%	2.63%	2.85%	3.06%
31-60 Days	0.22%	0.59%	1.32%	1.21%	0.81%	0.63%	1.45%	0.24%	0.97%	2.03%
61-90 Days	0.57%	0.67%	0.10%	0.71%	0.65%	1.25%	0.17%	0.78%	2.49%	1.86%
91-120 Days	0.00%	0.32%	0.68%	0.35%	0.37%	0.00%	0.91%	0.51%	0.00%	0.00%
121-150 Days	0.00%	0.00%	0.00%	0.16%	0.42%	0.00%	0.00%	0.00%	0.00%	0.56%
151-180 Days	0.00%	0.16%	0.00%	0.19%	0.00%	0.14%	0.33%	0.00%	0.27%	0.00%
181+ Days	0.00%	0.00%	0.00%	0.17%	0.18%	0.62%	0.67%	0.43%	0.27%	0.52%
Current - 90 Days	100.00%	99.52%	99.32%	99.13%	99.03%	99.24%	98.08%	99.06%	99.46%	98.92%
91-180 Days	0.00%	0.48%	0.68%	0.70%	0.79%	0.14%	1.24%	0.51%	0.27%	0.56%



Mortgages - La Hipotecaria El Salvador Migration Analysis (2012 Vintage)

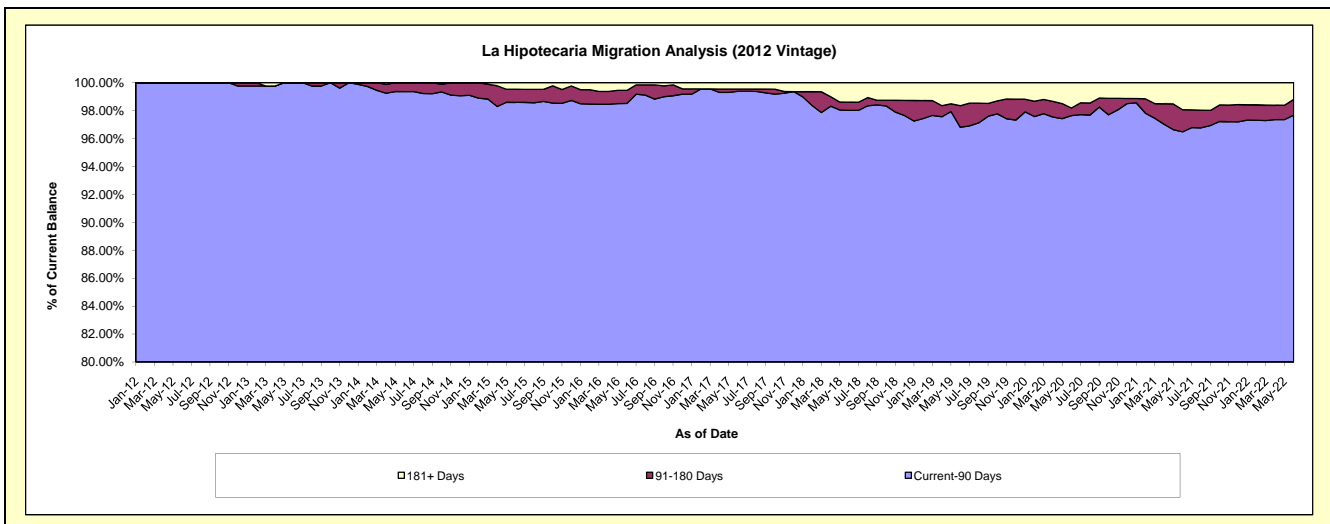
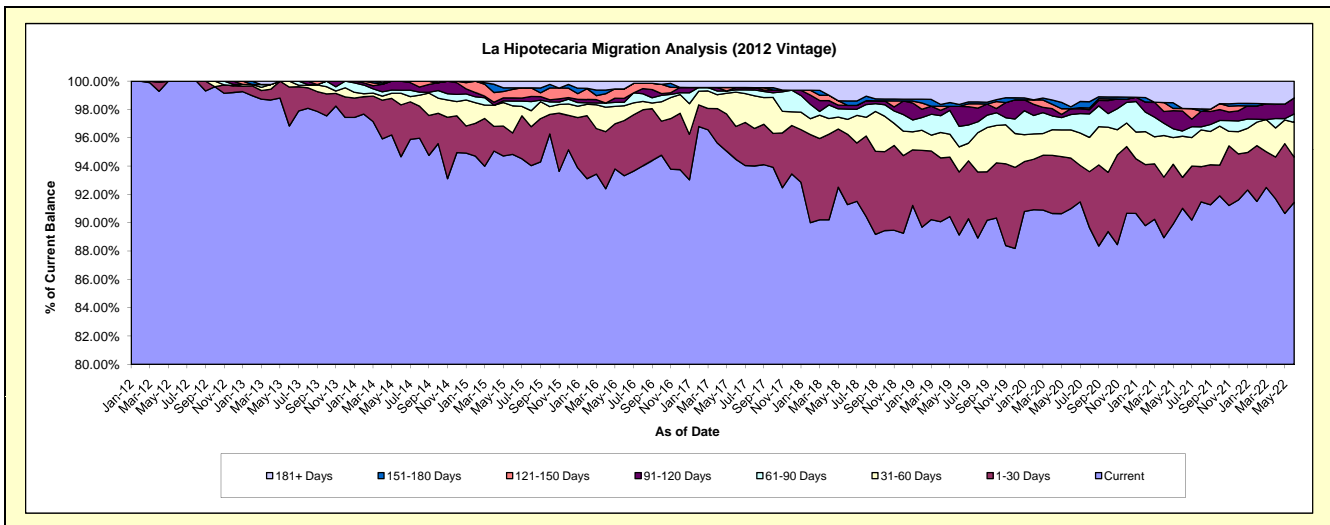
Delinquency Status (\$ of Current Balance)

Data Cutoff: 6/30/2022

Current Portfolio Balance	24,409,447.40	22,715,260.88	20,730,423.29	18,925,495.68	17,903,326.94	16,504,339.94	15,578,725.73	14,421,913.77	12,785,219.48	11,624,113.05
	Jun-13	Jun-14	Jun-15	Jun-16	Jun-17	Jun-18	Jun-19	Jun-20	Jun-21	Jun-22
Current	23,637,054.13	21,503,517.86	19,658,974.87	17,661,956.51	16,914,073.41	15,065,674.94	13,885,871.92	13,123,503.41	11,637,480.75	10,629,039.90
1-30 Days	671,161.05	832,041.74	313,466.94	737,302.11	416,510.11	820,164.56	694,309.78	515,611.94	278,802.83	370,416.65
31-60 Days	101,232.22	186,663.03	397,042.99	198,789.34	434,550.39	172,967.22	275,701.46	286,427.08	371,941.70	286,156.44
61-90 Days	-	48,034.01	70,175.73	45,873.67	28,825.61	119,849.80	225,691.54	156,313.44	47,383.77	68,796.32
91-120 Days	-	145,004.24	44,941.11	52,083.81	28,598.78	43,485.51	219,835.51	59,296.13	180,284.74	131,406.30
121-150 Days	-	-	125,597.04	126,029.40	-	-	-	-	22,515.23	-
151-180 Days	-	-	22,608.44	-	-	51,444.27	20,532.76	19,744.57	-	-
181+ Days	-	-	97,616.17	103,460.84	80,768.64	230,753.64	256,782.76	261,017.20	246,810.46	138,297.44

Delinquency Status (% of Current Balance)

Current Portfolio Balance	24,409,447.40	22,715,260.88	20,730,423.29	18,925,495.68	17,903,326.94	16,504,339.94	15,578,725.73	14,421,913.77	12,785,219.48	11,624,113.05
	Jun-13	Jun-14	Jun-15	Jun-16	Jun-17	Jun-18	Jun-19	Jun-20	Jun-21	Jun-22
Current	96.84%	94.67%	94.83%	93.32%	94.47%	91.28%	89.13%	91.00%	91.02%	91.44%
1-30 Days	2.75%	3.66%	1.51%	3.90%	2.33%	4.97%	4.46%	3.58%	2.18%	3.19%
31-60 Days	0.41%	0.82%	1.92%	1.05%	2.43%	1.05%	1.77%	1.99%	2.91%	2.46%
61-90 Days	0.00%	0.21%	0.34%	0.24%	0.16%	0.73%	1.45%	1.08%	0.37%	0.59%
91-120 Days	0.00%	0.64%	0.22%	0.28%	0.16%	0.26%	1.41%	0.41%	1.41%	1.13%
121-150 Days	0.00%	0.00%	0.61%	0.67%	0.00%	0.00%	0.00%	0.00%	0.18%	0.00%
151-180 Days	0.00%	0.00%	0.11%	0.00%	0.00%	0.31%	0.13%	0.14%	0.00%	0.00%
181+ Days	0.00%	0.00%	0.47%	0.55%	0.45%	1.40%	1.65%	1.81%	1.93%	1.19%
Current - 90 Days	100.00%	99.36%	98.60%	98.51%	99.39%	98.03%	96.81%	97.64%	96.48%	97.68%
91-180 Days	0.00%	0.64%	0.93%	0.94%	0.16%	0.58%	1.54%	0.55%	1.59%	1.13%



Mortgages - La Hipotecaria El Salvador Migration Analysis (2013 Vintage)

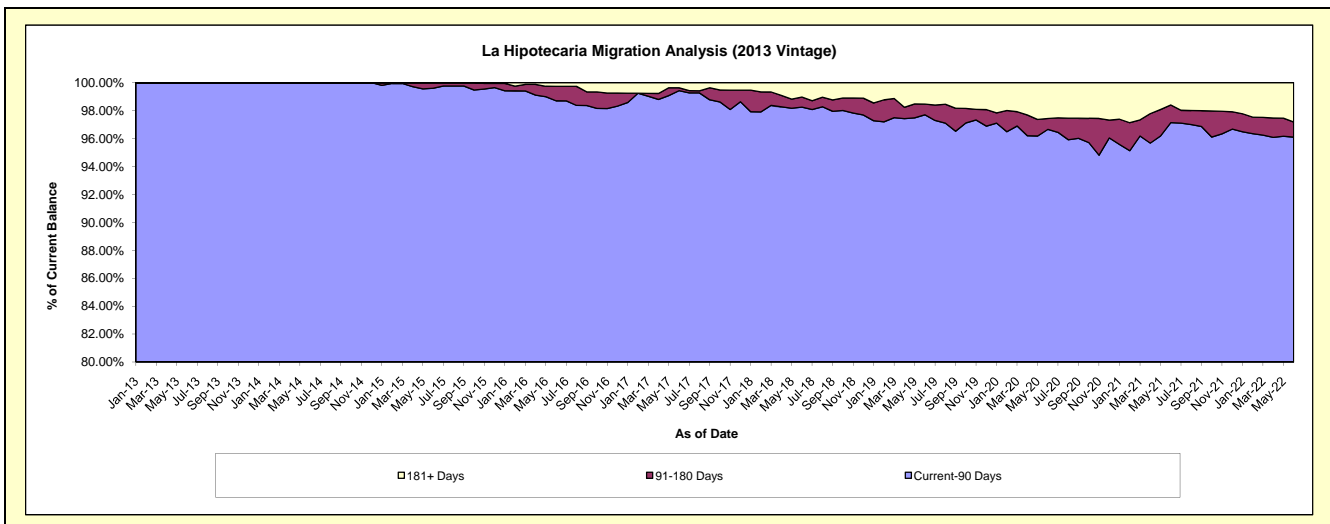
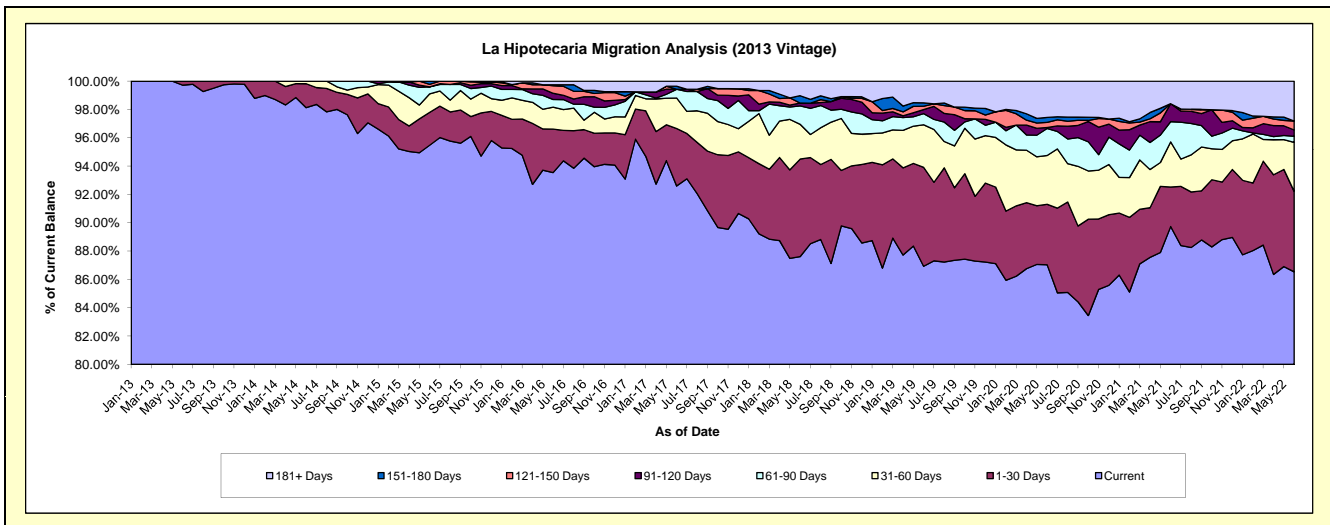
Delinquency Status (\$ of Current Balance)

Data Cutoff: 6/30/2022

Current Portfolio Balance	14,675,135.01	28,858,927.76	27,600,480.73	25,589,259.37	23,987,562.51	22,115,870.64	20,291,957.91	18,546,393.65	16,805,614.35	14,770,256.73
	Jun-13	Jun-14	Jun-15	Jun-16	Jun-17	Jun-18	Jun-19	Jun-20	Jun-21	Jun-22
Current	14,633,628.02	28,320,126.21	26,351,833.22	23,938,159.25	22,211,288.58	19,374,891.43	17,638,842.31	16,142,221.08	15,079,870.57	12,781,963.09
1-30 Days	41,506.99	486,676.79	641,262.74	784,036.96	974,664.67	1,524,123.14	1,418,173.21	791,468.22	470,315.94	838,904.84
31-60 Days	-	52,124.76	359,213.77	398,500.82	516,668.18	543,353.37	609,699.13	639,285.93	534,987.64	511,128.25
61-90 Days	-	-	138,086.49	137,376.93	148,345.55	287,658.25	159,575.60	354,237.81	240,086.45	62,873.02
91-120 Days	-	-	-	112,023.32	-	44,019.53	58,597.03	13,404.18	213,181.97	65,977.22
121-150 Days	-	-	49,383.41	137,951.70	-	-	48,849.42	65,563.17	-	93,724.18
151-180 Days	-	-	60,701.10	15,954.35	50,096.43	114,481.75	48,023.01	64,646.01	-	-
181+ Days	-	-	-	65,256.04	86,499.10	227,343.17	310,198.20	475,567.25	267,171.78	415,686.13

Delinquency Status (% of Current Balance)

Current Portfolio Balance	14,675,135.01	28,858,927.76	27,600,480.73	25,589,259.37	23,987,562.51	22,115,870.64	20,291,957.91	18,546,393.65	16,805,614.35	14,770,256.73
	Jun-13	Jun-14	Jun-15	Jun-16	Jun-17	Jun-18	Jun-19	Jun-20	Jun-21	Jun-22
Current	99.72%	98.13%	95.48%	93.55%	92.60%	87.61%	86.93%	87.04%	89.73%	86.54%
1-30 Days	0.28%	1.69%	2.32%	3.06%	4.06%	6.89%	6.99%	4.27%	2.80%	5.68%
31-60 Days	0.00%	0.18%	1.30%	1.56%	2.15%	2.46%	3.00%	3.45%	3.18%	3.46%
61-90 Days	0.00%	0.00%	0.50%	0.54%	0.62%	1.30%	0.79%	1.31%	1.43%	0.43%
91-120 Days	0.00%	0.00%	0.00%	0.44%	0.00%	0.20%	0.29%	0.07%	1.27%	0.45%
121-150 Days	0.00%	0.00%	0.18%	0.54%	0.00%	0.00%	0.24%	0.35%	0.00%	0.63%
151-180 Days	0.00%	0.00%	0.22%	0.06%	0.21%	0.52%	0.24%	0.35%	0.00%	0.00%
181+ Days	0.00%	0.00%	0.00%	0.26%	0.36%	1.03%	1.53%	2.56%	1.59%	2.81%
Current - 90 Days	100.00%	100.00%	99.60%	98.71%	99.43%	98.26%	97.71%	96.66%	97.14%	96.10%
91-180 Days	0.00%	0.00%	0.40%	1.04%	0.21%	0.72%	0.77%	0.77%	1.27%	1.08%



Mortgages - La Hipotecaria El Salvador Migration Analysis (2014 Vintage)

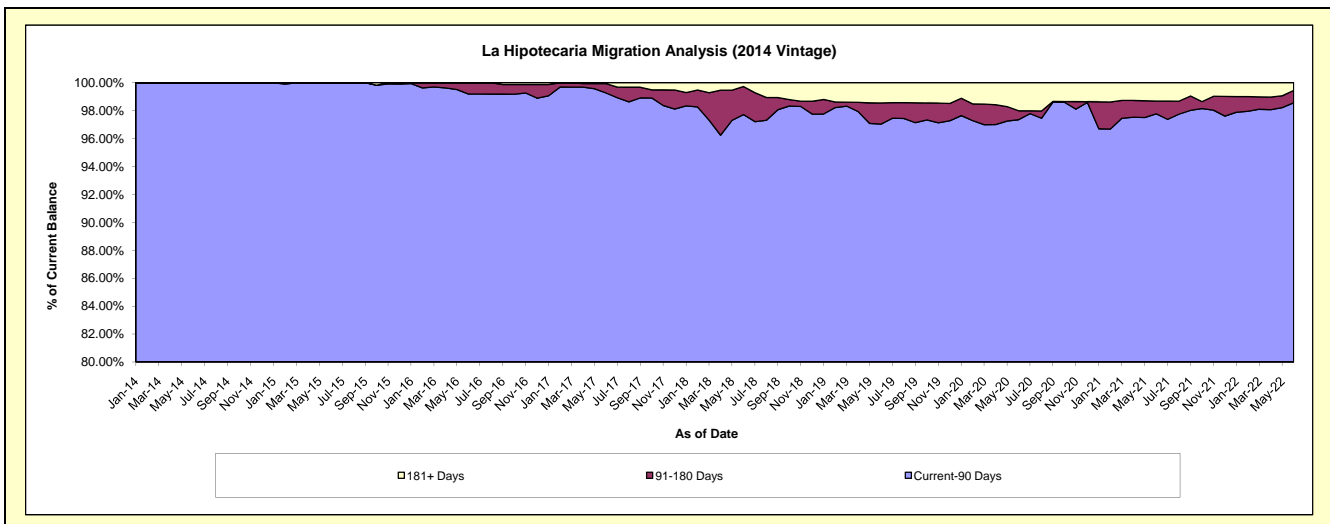
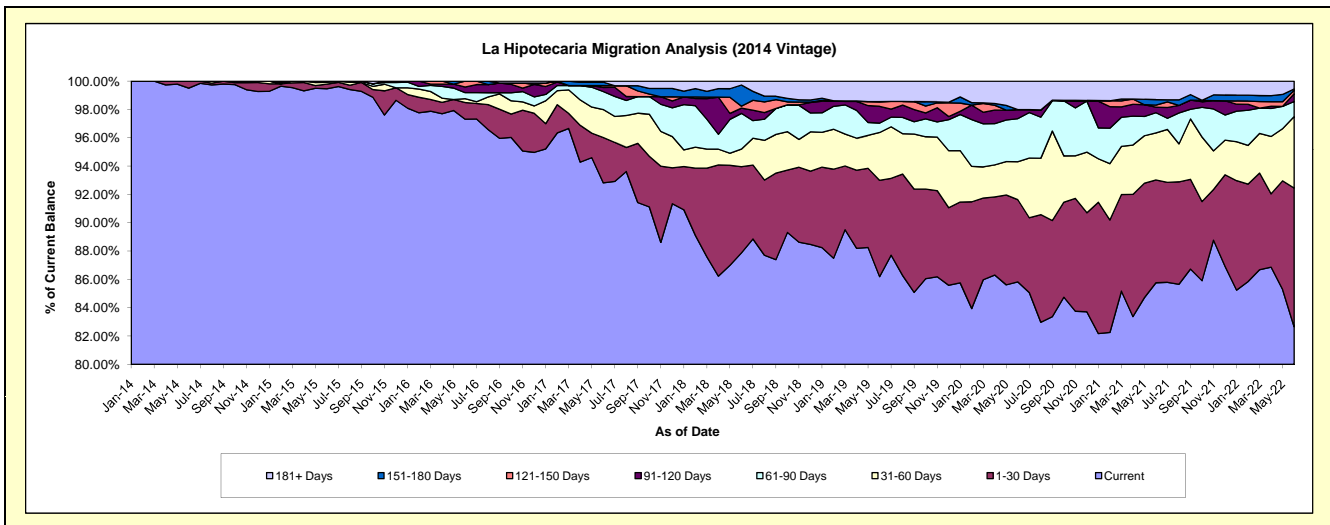
Delinquency Status (\$ of Current Balance)

Data Cutoff: 6/30/2022

Current Portfolio Balance	-	14,582,069.45	27,444,310.99	25,881,028.76	24,566,295.89	22,841,117.21	20,594,411.36	19,019,638.15	17,150,622.24	15,239,999.23
	Jun-14	Jun-15	Jun-16	Jun-17	Jun-18	Jun-19	Jun-20	Jun-21	Jun-22	
Current	14,510,162.87	27,296,613.57	25,186,965.44	22,802,333.73	20,072,139.89	17,751,496.37	16,322,768.03	14,708,857.58	12,596,022.72	
1-30 Days	71,906.58	90,932.65	303,161.70	786,260.62	1,390,569.62	1,401,911.03	1,105,386.40	1,245,854.11	1,493,154.58	
31-60 Days	-	32,340.07	69,432.46	485,576.35	283,401.17	694,597.46	509,123.20	569,061.36	769,126.87	
61-90 Days	-	24,424.70	112,733.15	311,747.17	575,189.36	136,558.85	579,027.53	245,225.74	162,600.04	
91-120 Days	-	-	101,183.20	71,851.88	84,449.78	244,376.72	121,839.48	65,844.63	83,934.20	
121-150 Days	-	-	107,552.81	30,579.69	32,791.06	67,394.93	-	25,314.25	36,788.30	
151-180 Days	-	-	-	61,254.01	340,576.30	-	-	65,955.55	14,096.64	
181+ Days	-	-	-	16,692.44	62,000.03	298,076.00	381,493.51	224,509.02	84,275.88	

Delinquency Status (% of Current Balance)

Current Portfolio Balance	-	14,582,069.45	27,444,310.99	25,881,028.76	24,566,295.89	22,841,117.21	20,594,411.36	19,019,638.15	17,150,622.24	15,239,999.23
	Jun-14	Jun-15	Jun-16	Jun-17	Jun-18	Jun-19	Jun-20	Jun-21	Jun-22	
Current	99.51%	99.46%	97.32%	92.82%	87.88%	86.20%	85.82%	85.76%	82.65%	
1-30 Days	0.49%	0.33%	1.17%	3.20%	6.09%	6.81%	5.81%	7.26%	9.80%	
31-60 Days	0.00%	0.12%	0.27%	1.98%	1.24%	3.37%	2.68%	3.32%	5.05%	
61-90 Days	0.00%	0.09%	0.44%	1.27%	2.52%	0.66%	3.04%	1.43%	1.07%	
91-120 Days	0.00%	0.00%	0.39%	0.29%	0.37%	1.19%	0.64%	0.38%	0.55%	
121-150 Days	0.00%	0.00%	0.42%	0.12%	0.14%	0.33%	0.00%	0.15%	0.24%	
151-180 Days	0.00%	0.00%	0.00%	0.25%	1.49%	0.00%	0.00%	0.38%	0.09%	
181+ Days	0.00%	0.00%	0.00%	0.07%	0.27%	1.45%	2.01%	1.31%	0.55%	
Current - 90 Days	100.00%	100.00%	99.19%	99.27%	97.72%	97.04%	97.35%	97.77%	98.56%	
91-180 Days	0.00%	0.00%	0.81%	0.67%	2.00%	1.51%	0.64%	0.92%	0.88%	



Mortgages - La Hipotecaria El Salvador Migration Analysis (2015 Vintage)

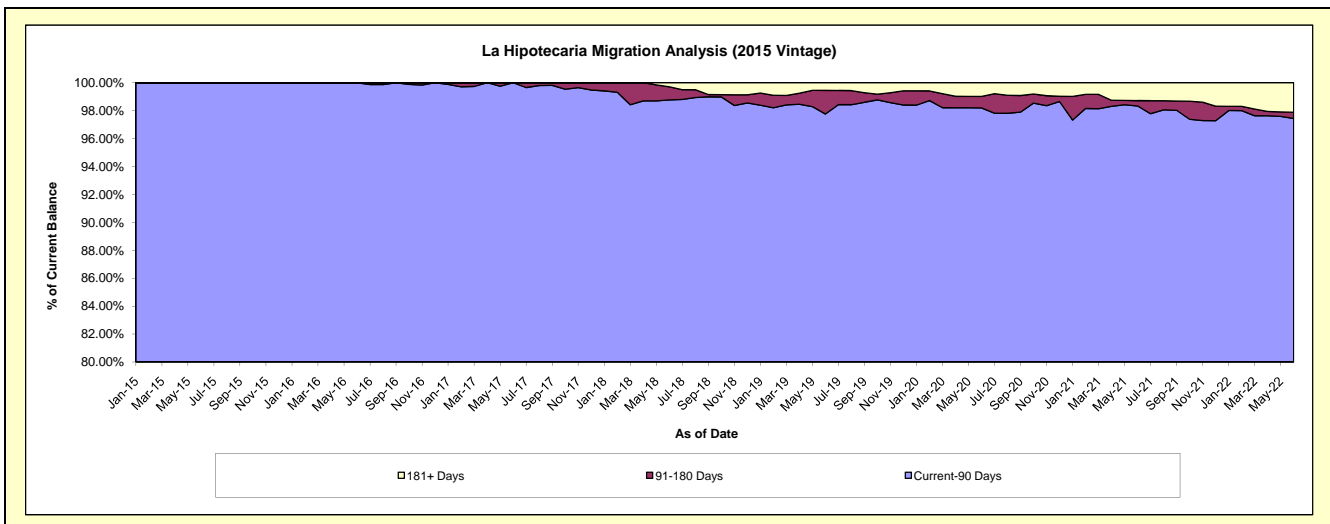
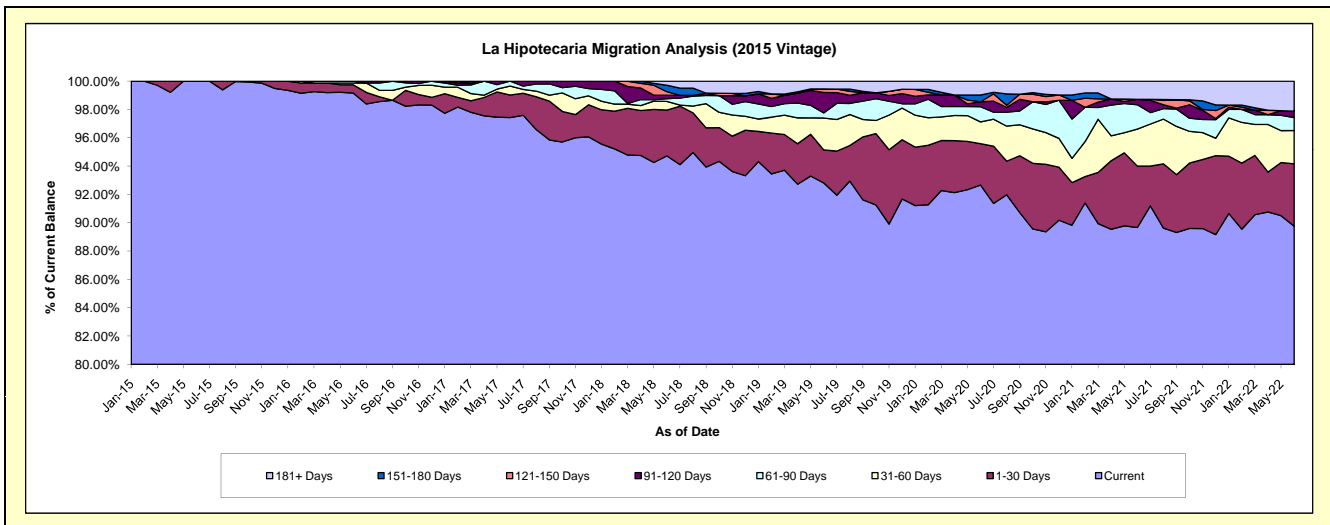
Delinquency Status (\$ of Current Balance)

Data Cutoff: 6/30/2022

Current Portfolio Balance	-	-	10,335,908.48	23,091,641.80	22,072,104.63	20,880,098.34	19,144,431.40	17,821,300.50	16,189,581.30	14,636,979.80
	Jun-15	Jun-16	Jun-17	Jun-18	Jun-19	Jun-20	Jun-21	Jun-22		
Current	10,335,908.48	22,897,879.16	21,504,999.92	19,779,047.31	17,768,885.77	16,513,713.07	14,516,318.72	13,137,461.98		
1-30 Days	-	134,633.21	351,227.62	675,760.63	446,495.23	520,401.67	702,294.81	644,915.15		
31-60 Days	-	28,098.38	140,234.11	127,343.30	430,261.53	274,513.25	423,045.47	343,782.17		
61-90 Days	-	31,031.05	75,642.98	40,226.10	70,118.72	191,420.20	278,746.16	135,330.50		
91-120 Days	-	-	-	50,288.45	275,934.00	62,138.52	61,576.81	65,832.85		
121-150 Days	-	-	-	52,216.01	47,386.91	-	-	-		
151-180 Days	-	-	-	94,086.61	-	84,385.82	-	-		
181+ Days	-	-	-	61,129.93	105,349.24	174,727.97	207,599.33	309,657.15		

Delinquency Status (% of Current Balance)

Current Portfolio Balance	-	-	10,335,908.48	23,091,641.80	22,072,104.63	20,880,098.34	19,144,431.40	17,821,300.50	16,189,581.30	14,636,979.80
	Jun-15	Jun-16	Jun-17	Jun-18	Jun-19	Jun-20	Jun-21	Jun-22		
Current	100.00%	99.16%	97.43%	94.73%	92.81%	92.66%	89.66%	89.76%		
1-30 Days	0.00%	0.58%	1.59%	3.24%	2.33%	2.92%	4.34%	4.41%		
31-60 Days	0.00%	0.12%	0.64%	0.61%	2.25%	1.54%	2.61%	2.35%		
61-90 Days	0.00%	0.13%	0.34%	0.19%	0.37%	1.07%	1.72%	0.92%		
91-120 Days	0.00%	0.00%	0.00%	0.24%	1.44%	0.35%	0.38%	0.45%		
121-150 Days	0.00%	0.00%	0.00%	0.25%	0.25%	0.00%	0.00%	0.00%		
151-180 Days	0.00%	0.00%	0.00%	0.45%	0.00%	0.47%	0.00%	0.00%		
181+ Days	0.00%	0.00%	0.00%	0.29%	0.55%	0.98%	1.28%	2.12%		
Current - 90 Days	100.00%	100.00%	100.00%	98.77%	97.76%	98.20%	98.34%	97.43%		
91-180 Days	0.00%	0.00%	0.00%	0.94%	1.69%	0.82%	0.38%	0.45%		



Mortgages - La Hipotecaria El Salvador Migration Analysis (2016 Vintage)

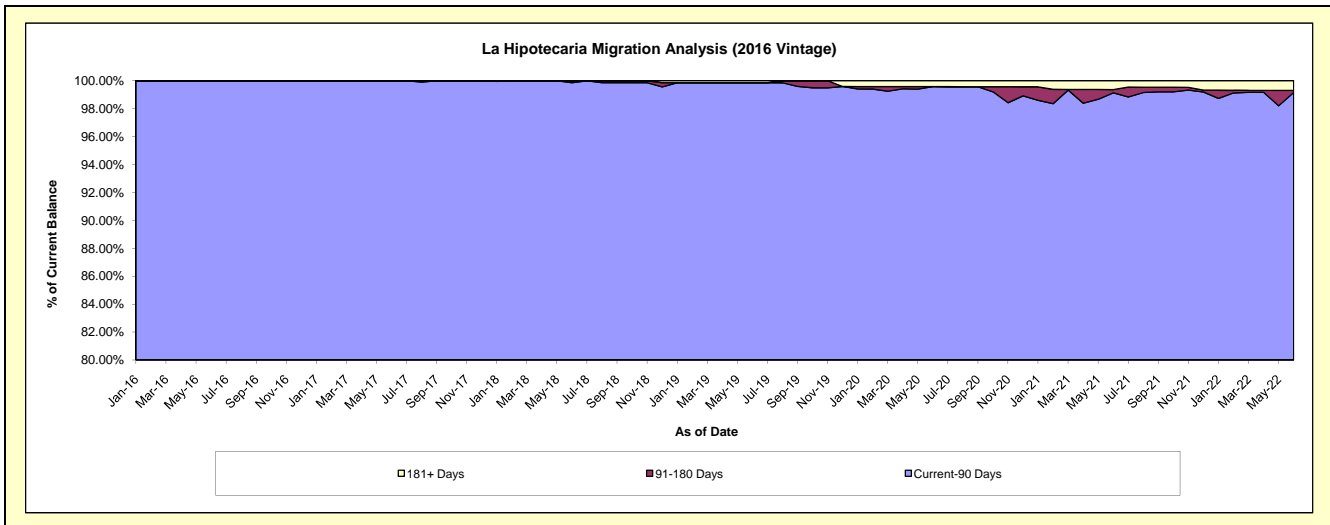
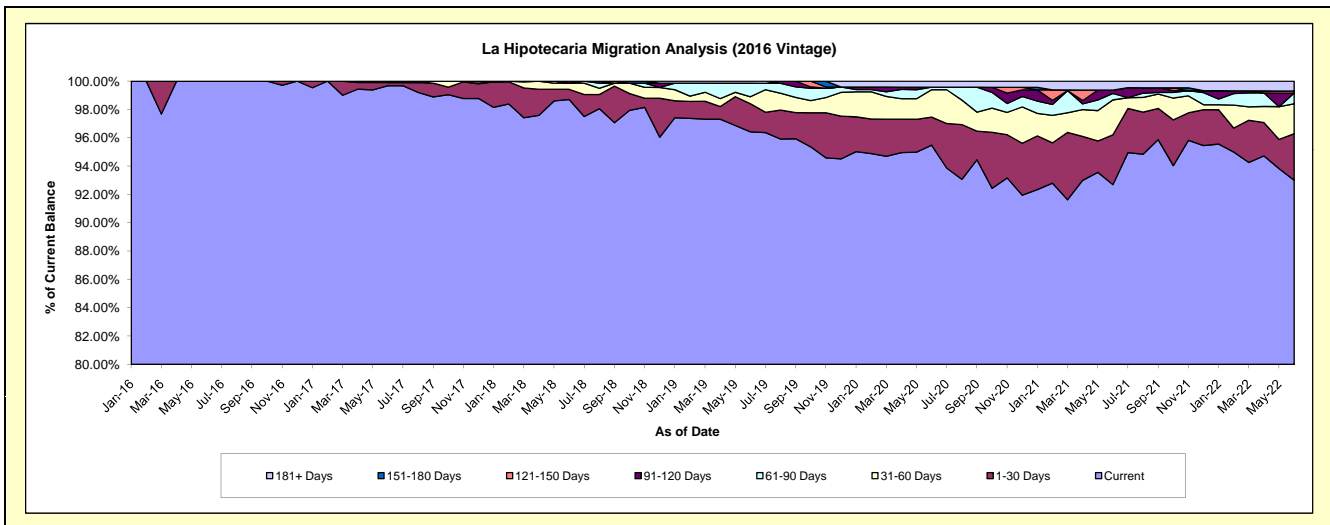
Delinquency Status (\$ of Current Balance)

Data Cutoff: 6/30/2022

Current Portfolio Balance	-	-	-	12,243,349.24	23,342,057.20	22,451,482.15	21,458,317.56	19,969,153.88	18,794,544.19	17,031,005.50
				Jun-16	Jun-17	Jun-18	Jun-19	Jun-20	Jun-21	Jun-22
Current				12,243,349.24	23,266,606.22	22,161,287.92	20,690,473.52	19,066,740.38	17,420,948.51	15,839,231.81
1-30 Days				-	53,776.98	160,836.83	425,785.52	396,136.07	660,583.48	559,518.40
31-60 Days				-	-	97,731.90	106,206.94	386,431.78	464,442.34	360,226.08
61-90 Days				-	21,674.00	-	204,226.08	35,822.85	85,133.24	128,870.33
91-120 Days				-	-	31,625.50	-	-	44,498.00	-
121-150 Days				-	-	-	-	-	-	24,688.65
151-180 Days				-	-	-	-	-	-	-
181+ Days				-	-	-	31,625.50	84,022.80	118,938.62	118,470.23

Delinquency Status (% of Current Balance)

Current Portfolio Balance	-	-	-	12,243,349.24	23,342,057.20	22,451,482.15	21,458,317.56	19,969,153.88	18,794,544.19	17,031,005.50
				Jun-16	Jun-17	Jun-18	Jun-19	Jun-20	Jun-21	Jun-22
Current				100.00%	99.68%	98.71%	96.42%	95.48%	92.69%	93.00%
1-30 Days				0.00%	0.23%	0.72%	1.98%	1.98%	3.51%	3.29%
31-60 Days				0.00%	0.00%	0.44%	0.49%	1.94%	2.47%	2.12%
61-90 Days				0.00%	0.09%	0.00%	0.95%	0.18%	0.45%	0.76%
91-120 Days				0.00%	0.00%	0.14%	0.00%	0.00%	0.24%	0.00%
121-150 Days				0.00%	0.00%	0.00%	0.00%	0.00%	0.00%	0.14%
151-180 Days				0.00%	0.00%	0.00%	0.00%	0.00%	0.00%	0.00%
181+ Days				0.00%	0.00%	0.00%	0.15%	0.42%	0.63%	0.70%
Current - 90 Days				100.00%	100.00%	99.86%	99.85%	99.58%	99.13%	99.16%
91-180 Days				0.00%	0.00%	0.14%	0.00%	0.00%	0.24%	0.14%



Mortgages - La Hipotecaria El Salvador Migration Analysis (2017 Vintage)

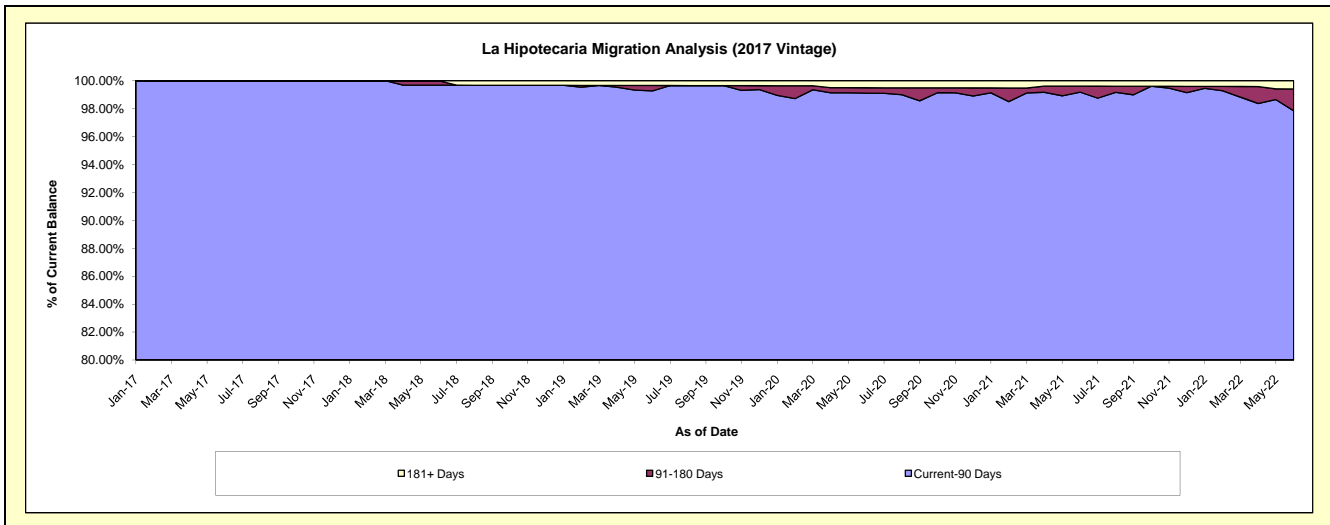
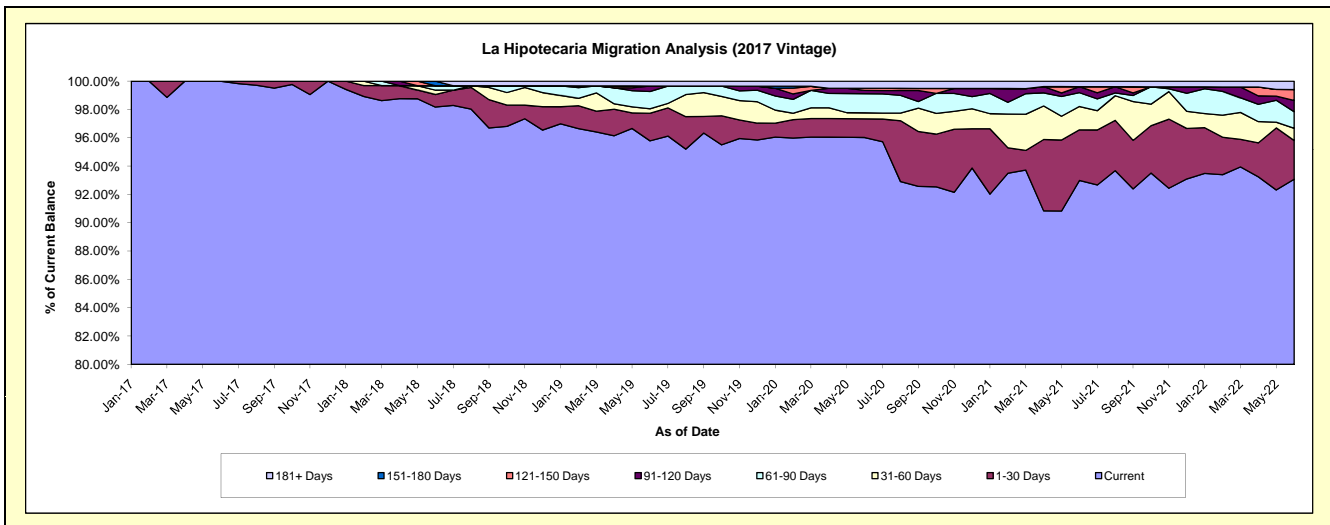
Delinquency Status (\$ of Current Balance)

Data Cutoff: 6/30/2022

Current Portfolio Balance	-	-	-	-	9,379,816.80	18,619,160.25	17,357,048.90	16,257,710.50	15,363,591.20	13,952,714.23
	Jun-17	Jun-18	Jun-19	Jun-20	Jun-21	Jun-22				
Current	9,379,816.80	18,278,521.51	16,625,451.23	15,610,938.23	14,286,948.13	12,986,849.60				
1-30 Days	-	165,527.55	338,376.97	214,547.45	548,235.79	380,931.16				
31-60 Days	-	57,261.92	54,487.37	68,563.43	253,930.28	120,446.41				
61-90 Days	-	58,449.27	212,441.58	218,932.80	149,465.89	163,905.04				
91-120 Days	-	-	66,891.75	38,629.47	65,611.11	109,927.19				
121-150 Days	-	-	-	24,214.26	-	107,917.74				
151-180 Days	-	59,400.00	-	-	-	-				
181+ Days	-	-	59,400.00	81,884.86	59,400.00	82,737.09				

Delinquency Status (% of Current Balance)

Current Portfolio Balance	-	-	-	-	9,379,816.80	18,619,160.25	17,357,048.90	16,257,710.50	15,363,591.20	13,952,714.23
	Jun-17	Jun-18	Jun-19	Jun-20	Jun-21	Jun-22				
Current	100.00%	98.17%	95.79%	96.02%	92.99%	93.08%				
1-30 Days	0.00%	0.89%	1.95%	1.32%	3.57%	2.73%				
31-60 Days	0.00%	0.31%	0.31%	0.42%	1.65%	0.86%				
61-90 Days	0.00%	0.31%	1.22%	1.35%	0.97%	1.17%				
91-120 Days	0.00%	0.00%	0.39%	0.24%	0.43%	0.79%				
121-150 Days	0.00%	0.00%	0.00%	0.15%	0.00%	0.77%				
151-180 Days	0.00%	0.32%	0.00%	0.00%	0.00%	0.00%				
181+ Days	0.00%	0.00%	0.34%	0.50%	0.39%	0.59%				
Current - 90 Days	100.00%	99.68%	99.27%	99.11%	99.19%	97.85%				
91-180 Days	0.00%	0.32%	0.39%	0.39%	0.43%	1.56%				



Mortgages - La Hipotecaria El Salvador Migration Analysis (2018 Vintage)

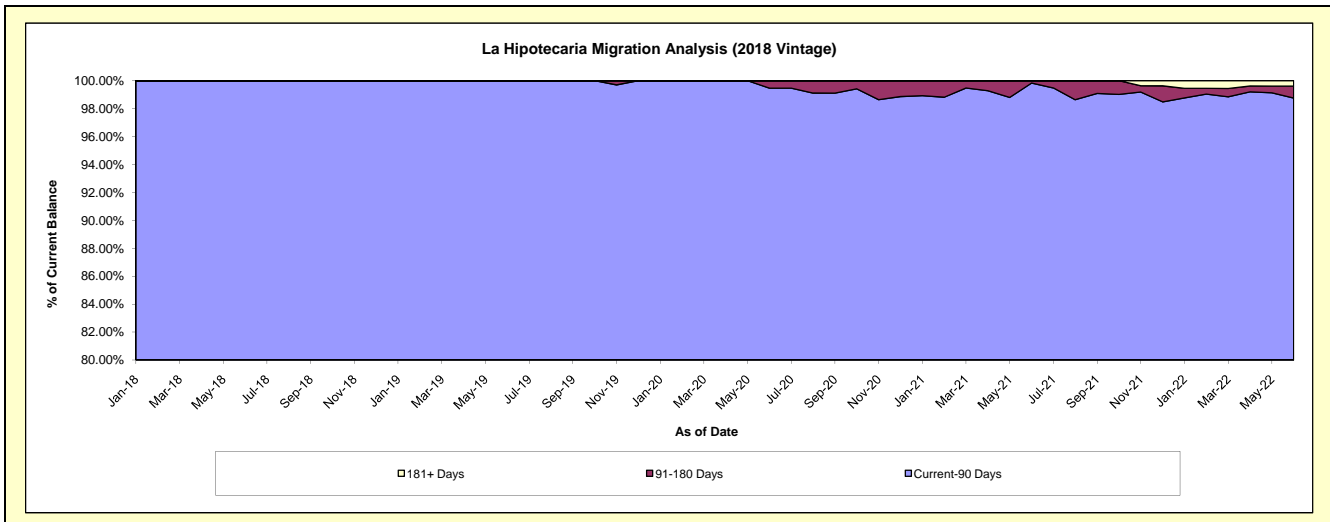
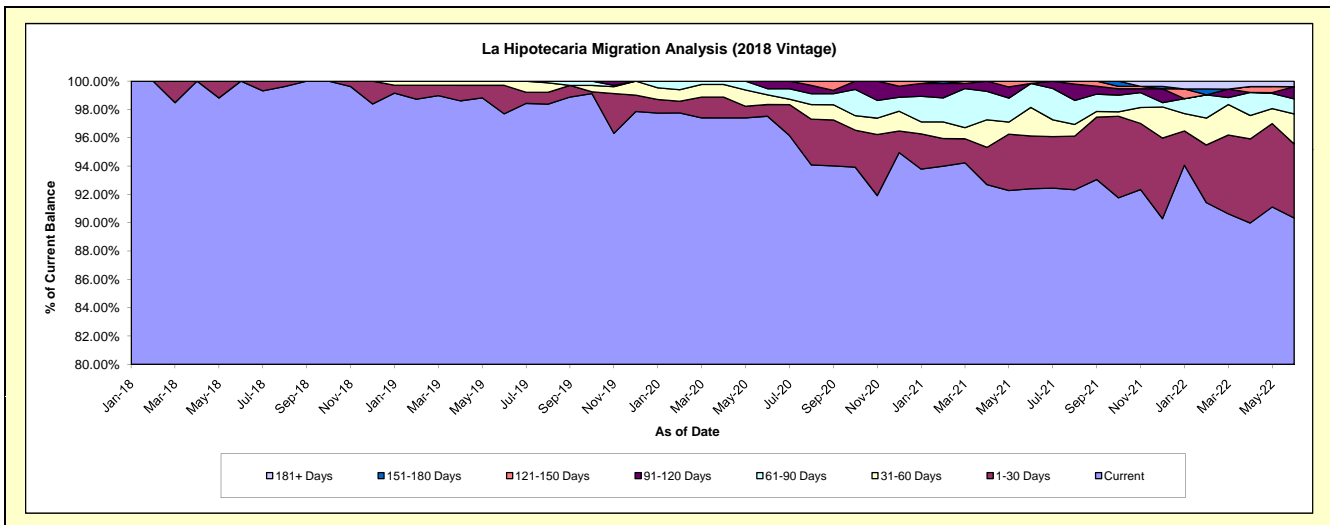
Delinquency Status (\$ of Current Balance)

Data Cutoff: 6/30/2022

Current Portfolio Balance	-	-	-	-	-	10,702,187.56	23,039,817.49	22,280,685.98	21,392,821.61	19,588,049.55
						Jun-18	Jun-19	Jun-20	Jun-21	Jun-22
Current						10,702,187.56	22,508,643.00	21,729,350.49	19,766,969.48	17,695,415.90
1-30 Days						-	463,297.08	183,609.87	798,684.07	1,022,942.73
31-60 Days						-	67,877.41	151,945.60	431,034.09	416,488.20
61-90 Days						-	-	97,245.59	360,528.94	208,930.11
91-120 Days						-	-	118,534.43	-	168,643.77
121-150 Days						-	-	-	35,605.03	-
151-180 Days						-	-	-	-	-
181+ Days						-	-	-	-	75,628.84

Delinquency Status (% of Current Balance)

Current Portfolio Balance	-	-	-	-	-	10,702,187.56	23,039,817.49	22,280,685.98	21,392,821.61	19,588,049.55
						Jun-18	Jun-19	Jun-20	Jun-21	Jun-22
Current						100.00%	97.69%	97.53%	92.40%	90.34%
1-30 Days						0.00%	2.01%	0.82%	3.73%	5.22%
31-60 Days						0.00%	0.29%	0.68%	2.01%	2.13%
61-90 Days						0.00%	0.00%	0.44%	1.69%	1.07%
91-120 Days						0.00%	0.00%	0.53%	0.00%	0.86%
121-150 Days						0.00%	0.00%	0.00%	0.17%	0.00%
151-180 Days						0.00%	0.00%	0.00%	0.00%	0.00%
181+ Days						0.00%	0.00%	0.00%	0.00%	0.39%
Current - 90 Days						100.00%	100.00%	99.47%	99.83%	98.75%
91-180 Days						0.00%	0.00%	0.53%	0.17%	0.86%



Mortgages - La Hipotecaria El Salvador Migration Analysis (2019 Vintage)

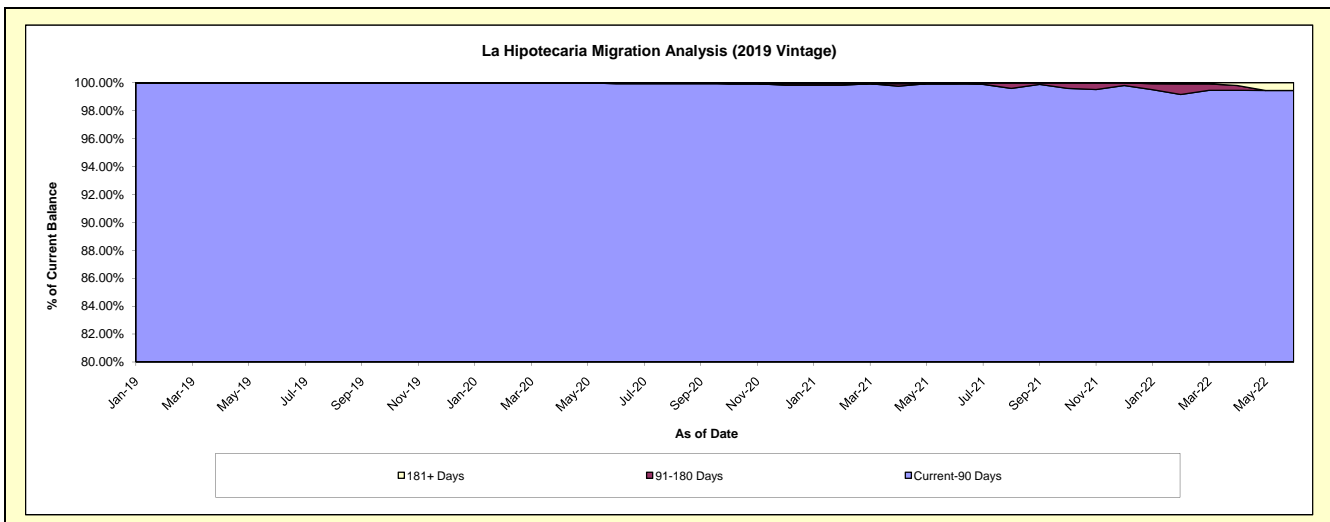
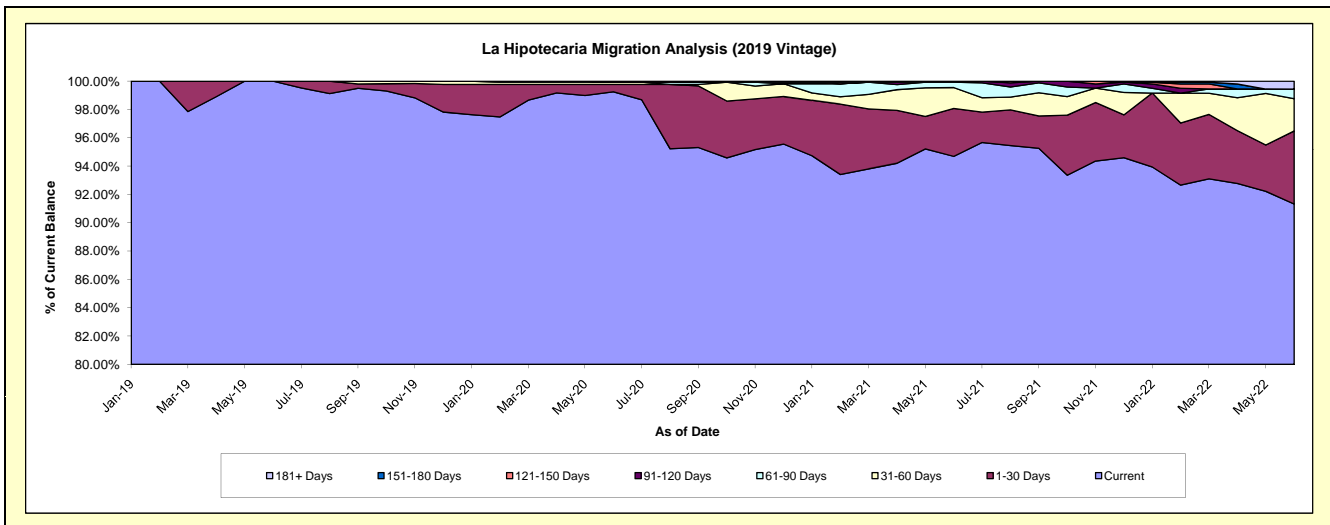
Delinquency Status (\$ of Current Balance)

Data Cutoff: 6/30/2022

Current Portfolio Balance	-	-	-	-	-	-	-	13,963,231.77	26,300,212.22	24,366,394.30	21,995,170.41
								Jun-19	Jun-20	Jun-21	Jun-22
Current								13,963,231.77	26,101,887.77	23,072,297.17	20,086,375.78
1-30 Days								-	137,779.22	824,933.21	1,134,441.96
31-60 Days								-	42,000.00	358,996.30	502,356.18
61-90 Days								-	-	91,622.39	149,448.77
91-120 Days								-	18,545.23	-	-
121-150 Days								-	-	-	-
151-180 Days								-	-	-	-
181+ Days								-	-	18,545.23	122,547.72

Delinquency Status (% of Current Balance)

Current Portfolio Balance	-	-	-	-	-	-	-	13,963,231.77	26,300,212.22	24,366,394.30	21,995,170.41
								Jun-19	Jun-20	Jun-21	Jun-22
Current								100.00%	99.25%	94.69%	91.32%
1-30 Days								0.00%	0.52%	3.39%	5.16%
31-60 Days								0.00%	0.16%	1.47%	2.28%
61-90 Days								0.00%	0.00%	0.38%	0.68%
91-120 Days								0.00%	0.07%	0.00%	0.00%
121-150 Days								0.00%	0.00%	0.00%	0.00%
151-180 Days								0.00%	0.00%	0.00%	0.00%
181+ Days								0.00%	0.00%	0.08%	0.56%
Current - 90 Days								100.00%	99.93%	99.92%	99.44%
91-180 Days								0.00%	0.07%	0.00%	0.00%



Mortgages - La Hipotecaria El Salvador Migration Analysis (2020 Vintage)

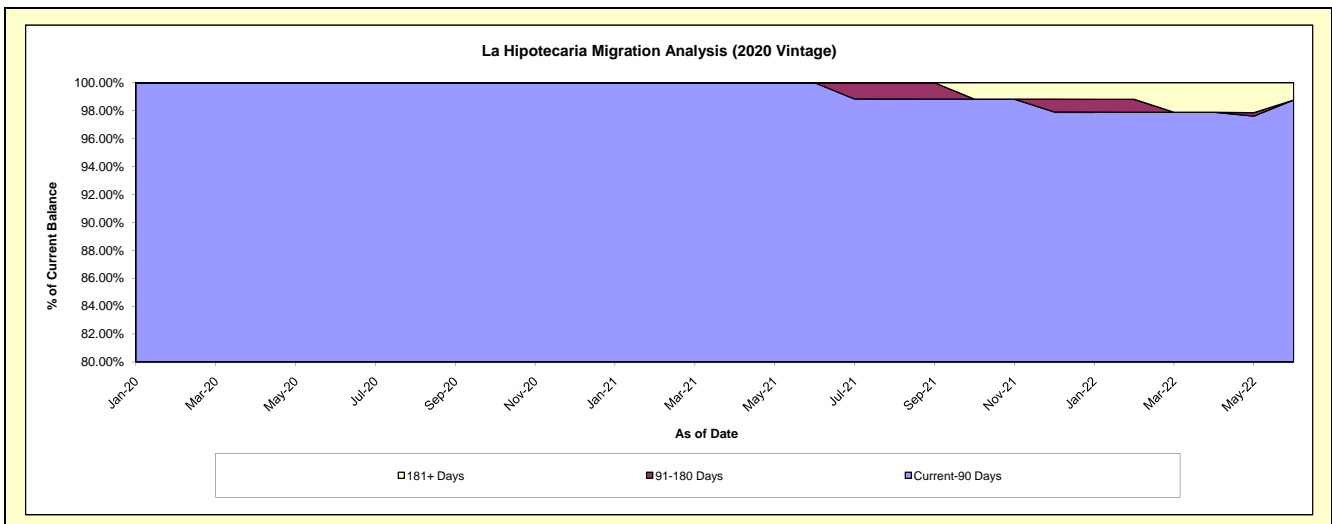
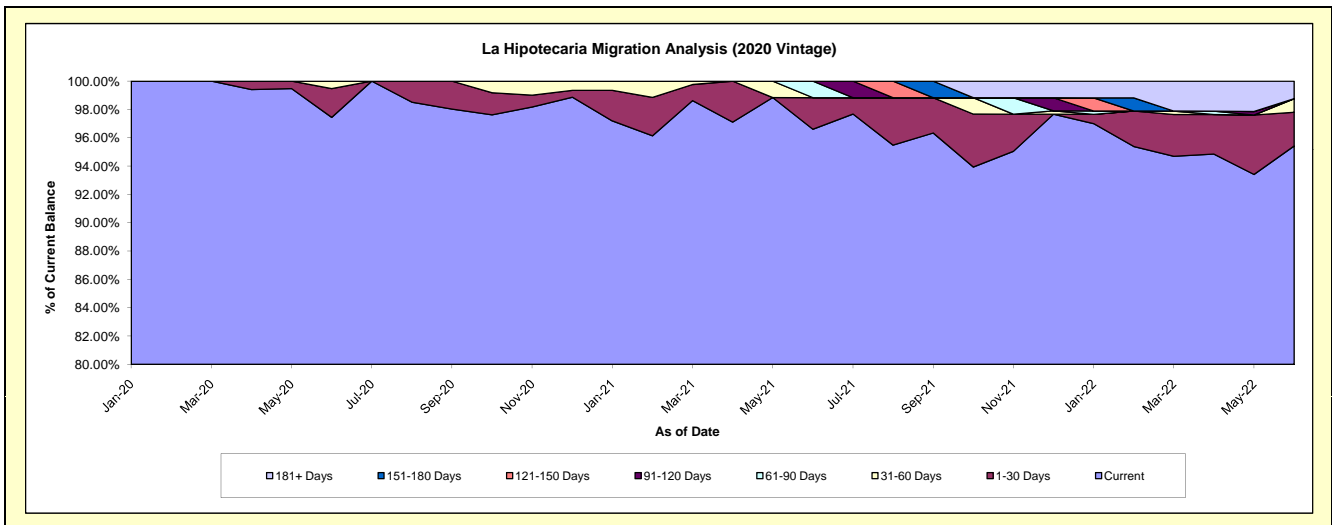
Delinquency Status (\$ of Current Balance)

Data Cutoff: 6/30/2022

Current Portfolio Balance	-	-	-	-	-	-	-	-	-	4,888,319.72	10,578,514.59	9,959,122.51
										Jun-20	Jun-21	Jun-22
Current										4,763,344.49	10,219,246.34	9,503,439.13
1-30 Days										99,325.23	235,972.15	236,959.37
31-60 Days										25,650.00	-	95,427.91
61-90 Days										-	123,296.10	-
91-120 Days										-	-	-
121-150 Days										-	-	-
151-180 Days										-	-	-
181+ Days										-	-	123,296.10

Delinquency Status (% of Current Balance)

Current Portfolio Balance	-	-	-	-	-	-	-	-	-	4,888,319.72	10,578,514.59	9,959,122.51
										Jun-20	Jun-21	Jun-22
Current										97.44%	96.60%	95.42%
1-30 Days										2.03%	2.23%	2.38%
31-60 Days										0.52%	0.00%	0.96%
61-90 Days										0.00%	1.17%	0.00%
91-120 Days										0.00%	0.00%	0.00%
121-150 Days										0.00%	0.00%	0.00%
151-180 Days										0.00%	0.00%	0.00%
181+ Days										0.00%	0.00%	1.24%
Current - 90 Days										100.00%	100.00%	98.76%
91-180 Days										0.00%	0.00%	0.00%



Mortgages - La Hipotecaria El Salvador Migration Analysis (2021 Vintage)

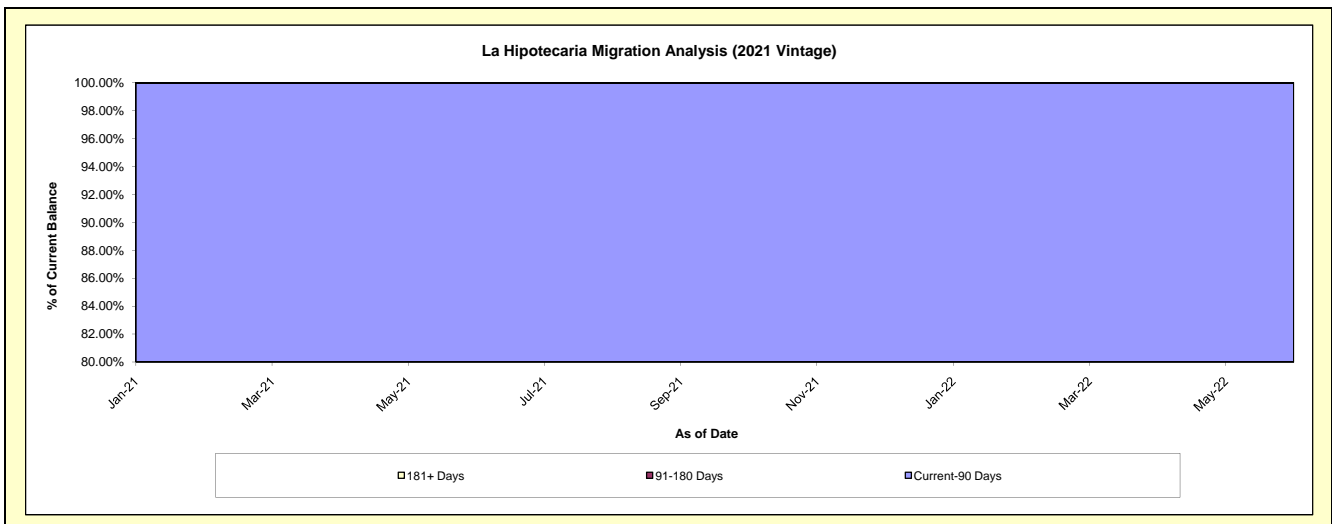
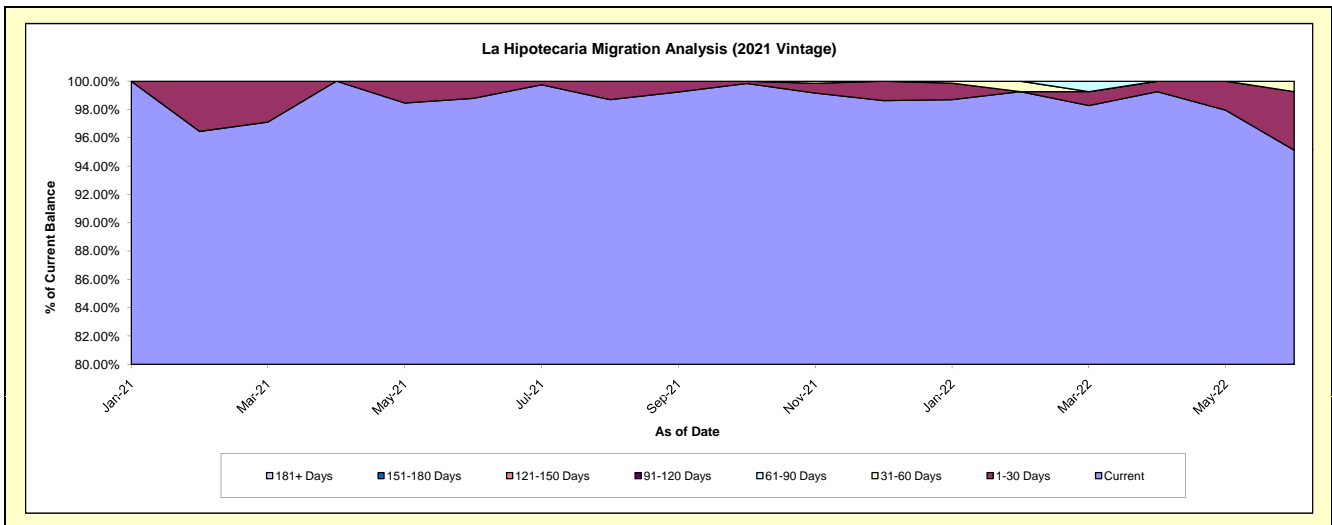
Delinquency Status (\$ of Current Balance)

Data Cutoff: 6/30/2022

Current Portfolio Balance										5,499,534.96	9,800,293.25
										Jun-21	Jun-22
Current										5,432,684.96	9,322,919.84
1-30 Days										66,850.00	404,689.98
31-60 Days										-	72,683.43
61-90 Days										-	-
91-120 Days										-	-
121-150 Days										-	-
151-180 Days										-	-
181+ Days										-	-

Delinquency Status (% of Current Balance)

Current Portfolio Balance										5,499,534.96	9,800,293.25
										Jun-21	Jun-22
Current										98.78%	95.13%
1-30 Days										1.22%	4.13%
31-60 Days										0.00%	0.74%
61-90 Days										0.00%	0.00%
91-120 Days										0.00%	0.00%
121-150 Days										0.00%	0.00%
151-180 Days										0.00%	0.00%
181+ Days										0.00%	0.00%
Current - 90 Days										100.00%	100.00%
91-180 Days										0.00%	0.00%



Mortgages - La Hipotecaria El Salvador Migration Analysis (2022 Vintage)

Delinquency Status (\$ of Current Balance)

Data Cutoff: 6/30/2022

Current Portfolio Balance										4,665,440.31
										Jun-22
Current										4,462,349.38
1-30 Days										193,090.93
31-60 Days										-
61-90 Days										10,000.00
91-120 Days										-
121-150 Days										-
151-180 Days										-
181+ Days										-

Delinquency Status (% of Current Balance)

Current Portfolio Balance										4,665,440.31
										Jun-22
Current										95.65%
1-30 Days										4.14%
31-60 Days										0.00%
61-90 Days										0.21%
91-120 Days										0.00%
121-150 Days										0.00%
151-180 Days										0.00%
181+ Days										0.00%
Current - 90 Days										100.00%
91-180 Days										0.00%

